



Monthly Performance Measures Report Palm Beach County



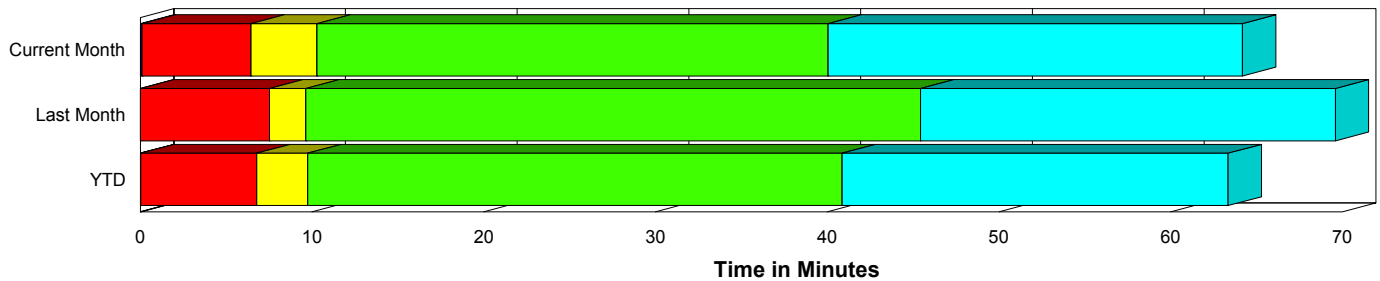
Created on:
April 12, 2010
6:09 pm

Period From Mar 1, 2010 to Mar 31, 2010

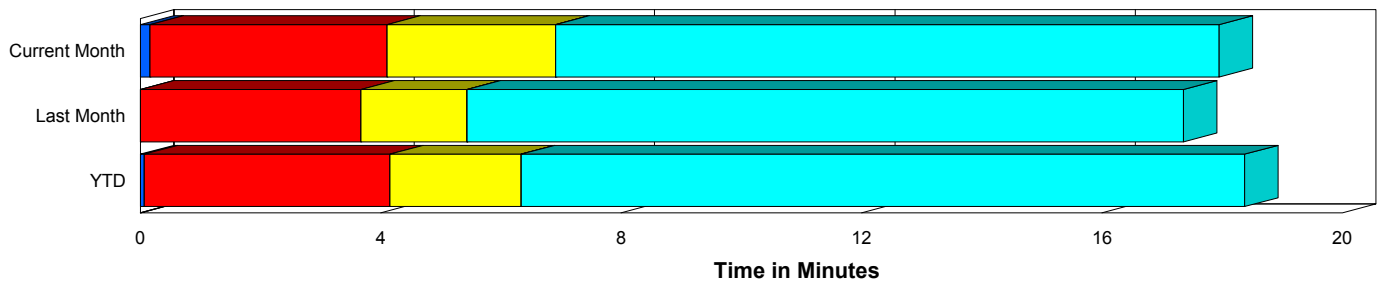
Performance Measures Summary

	Traffic Events (No Lanes Blocked)			Incidents (Lanes Blocked)		
	<u>This Month</u>	<u>Last Month</u>	<u>YTD</u>	<u>This Month</u>	<u>Last Month</u>	<u>YTD</u>
Number of Events	2,409	1,797	5,965	101	100	293
TMC Detection (min.)	0.16	0.00	0.06	0.10	0.00	0.03
TMC Verification (min.)	3.94	3.67	4.09	6.57	7.52	6.83
TMC Response (min.)	7.32	5.88	6.72	10.46	9.95	9.96
RR Dispatch Time (min.)	2.33	1.77	2.25	2.71	2.70	2.42
RR Response Time (min.)	5.02	4.19	4.52	7.88	7.23	7.58
Roadway Clearance (min.)				39.68	44.28	40.79
Event Clearance (min.)	18.51	17.80	18.82	66.15	68.39	64.07
# of Events w/ RR/SIRV	2,208	1,701	5,619	101	97	288
RR/SIRV Responses	2,208	1,701	5,619	101	97	288
RR/SIRV Activities	2,248	1,764	5,843	131	125	373

Incident Clearance Time-Line



Traffic Event (Non-Lane Blockage) Time-Line



■ Avg. TMC Detection Time	■ Avg. Time from TMC Response to Roadway Clearance*
■ Avg. Time from TMC Detection to TMC Verification	■ Avg. Time from Roadway Clearance to Incident/Event Clearance**
■ Avg. Time from TMC Verification to TMC Response	

* Roadway clearance equals all travel lanes open

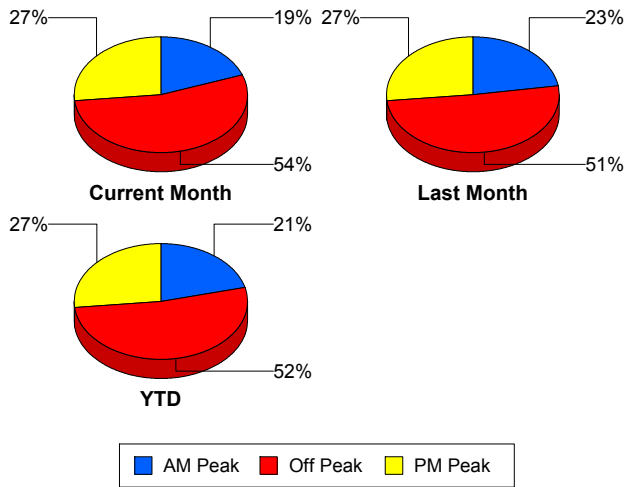
** Incident clearance equals time when last responder has left the scene

Performance Measures by Peak Period

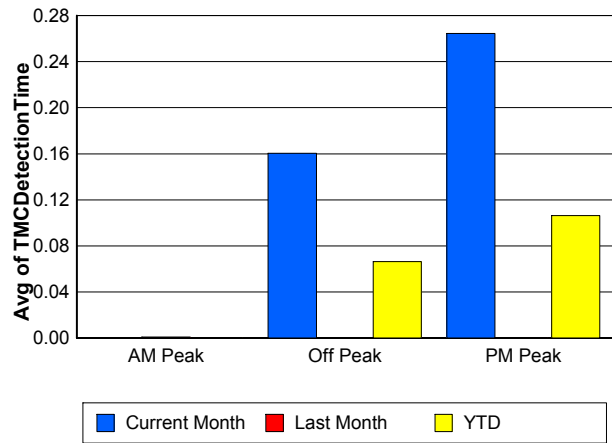
Note: AM peak period is defined as 6am to 10am and PM peak period is defined as 3pm to 7pm.

	AM Peak			Off Peak			PM Peak		
	<u>Current Month</u>	<u>Last Month</u>	<u>YTD</u>	<u>Current Month</u>	<u>Last Month</u>	<u>YTD</u>	<u>Current Month</u>	<u>Last Month</u>	<u>YTD</u>
Number of Events	487	427	1,318	1,354	964	3,274	669	506	1,666
Number of Incidents	25	22	73	55	49	147	21	29	73
TMC Detection (min.)	0.00	0.00	0.00	0.16	0.00	0.07	0.26	0.00	0.11
TMC Verification (min.)	2.39	2.34	2.79	4.18	4.03	4.42	5.00	4.89	4.95
TMC Response (min.)	5.88	4.14	5.36	8.01	6.53	7.54	7.52	6.88	6.80
RR Dispatch Time (min.)	1.79	1.11	1.37	2.20	1.75	2.47	3.06	2.50	2.52
RR Response Time (min.)	4.15	3.14	4.05	5.83	4.87	5.11	4.50	4.40	4.31
Event Clearance (min.)	19.60	21.08	20.47	21.26	20.55	21.73	19.36	19.77	19.77
Roadway Clearance (min.)	32.42	37.67	36.61	45.88	55.47	47.02	32.08	30.40	32.44
Incident Clearance (min.)	73.01	78.08	70.14	60.23	71.85	63.48	62.16	55.20	55.92
# of Events w/ RR/SIRV	447	397	1,236	1,244	908	3,085	618	493	1,586
RR/SIRV Responses	447	397	1,236	1,244	908	3,085	618	493	1,586
RR/SIRV Activities	467	421	1,307	1,281	954	3,248	631	514	1,661

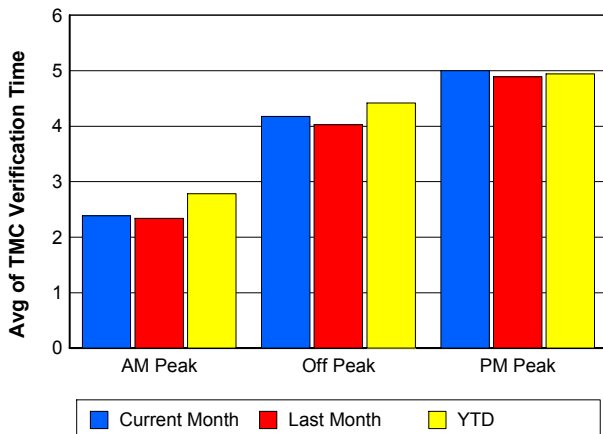
Number of Events / Peak Period



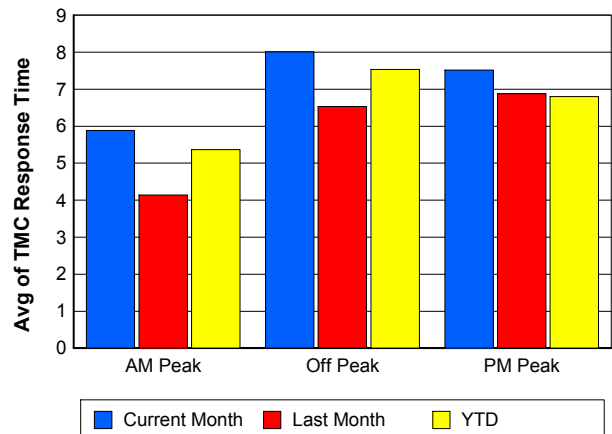
TMC Detection Time



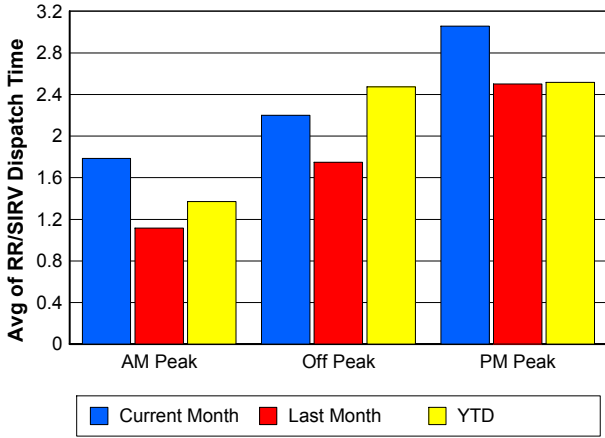
TMC Verification Time



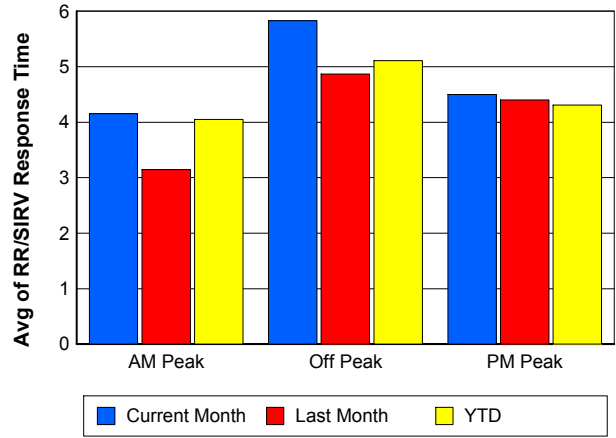
TMC Response Time



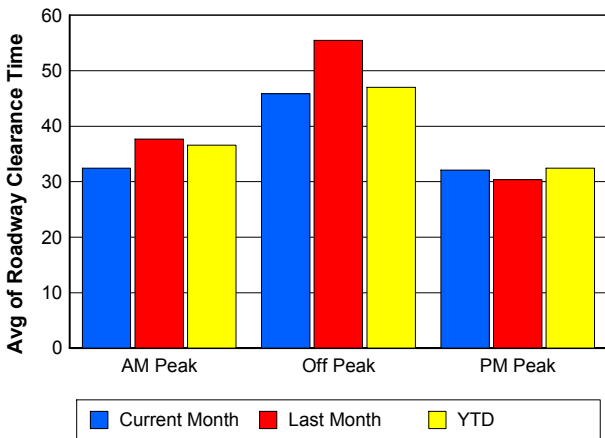
Road Ranger / SIRV Dispatch Time



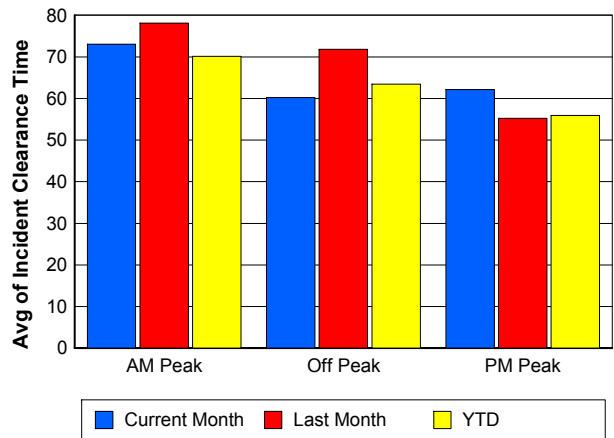
Road Ranger / SIRV Response Time



Roadway Clearance Time (2A)



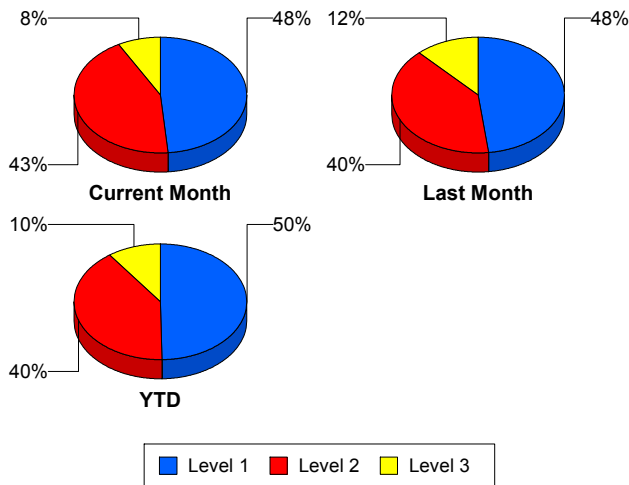
Incident Clearance Time (3B)



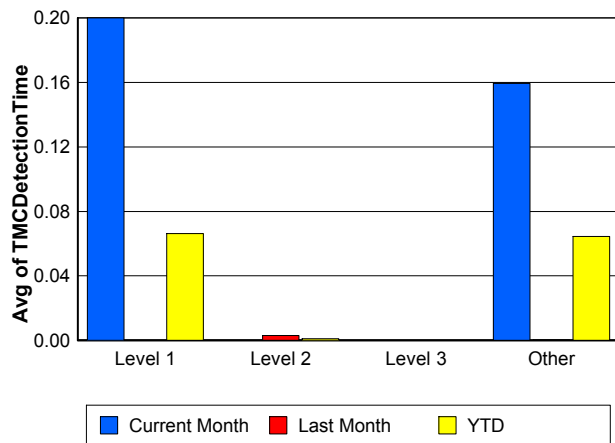
Performance Measures by Severity

	Level 1			Level 2			Level 3			Other		
	<u>This Month</u>	<u>Last Month</u>	<u>YTD</u>	<u>This Month</u>	<u>Last Month</u>	<u>YTD</u>	<u>This Month</u>	<u>Last Month</u>	<u>YTD</u>	<u>This Month</u>	<u>Last Month</u>	<u>YTD</u>
Number of Events	48	48	145	43	40	117	8	12	29	2,411	1,797	5,967
Number of Incidents	48	48	145	43	40	117	8	12	29	2	0	2
TMC Detection (min.)	0.20	0.00	0.07	0.00	0.00	0.00	0.00	0.00	0.00	0.16	0.00	0.06
TMC Verification (min.)	3.67	3.51	3.49	9.07	12.21	10.77	10.75	7.97	7.70	3.95	3.67	4.09
TMC Response (min.)	6.64	5.74	5.93	14.62	14.42	14.69	12.19	10.96	10.65	7.31	5.88	6.72
RR Dispatch Time (min.)	1.44	0.77	1.02	4.23	4.36	3.99	2.74	4.75	3.08	2.33	1.77	2.25
RR Resp. Time (min.)	5.22	4.97	4.92	10.68	10.05	10.81	9.45	6.20	7.57	5.02	4.19	4.52
Event Clearance (min.)	46.67	49.91	45.89	72.41	72.24	70.88	143.16	129.51	125.62	18.57	17.80	18.85
Roadway Clear. (min.)	15.88	13.96	15.26	55.33	59.87	57.01	113.65	113.65	107.31	-21.46		-21.46
Incident Clearance (min.)	46.67	49.91	45.89	72.41	72.24	70.88	136.17	129.51	123.69	0.00		0.00
# of Events w/ RR/SIRV	48	46	142	43	40	117	8	11	27	2,210	1,701	5,621
RR/SIRV Responses	48	46	142	43	40	117	8	11	27	2,210	1,701	5,621
RR/SIRV Activities	63	55	173	50	55	155	13	15	40	2,253	1,764	5,848

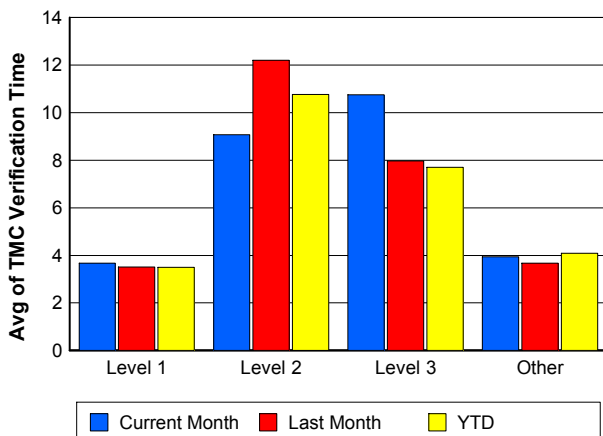
Number of Events / Severity



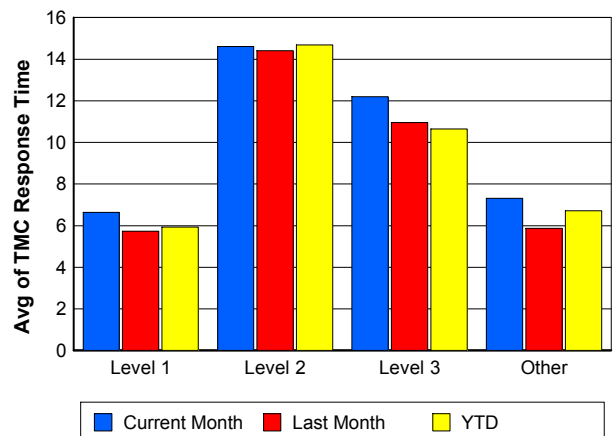
TMC Detection Time



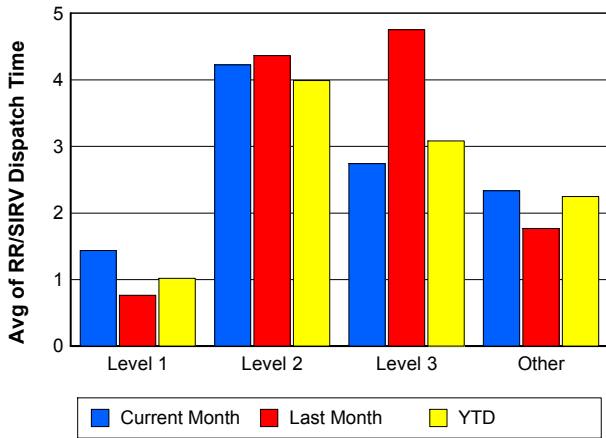
TMC Verification Time



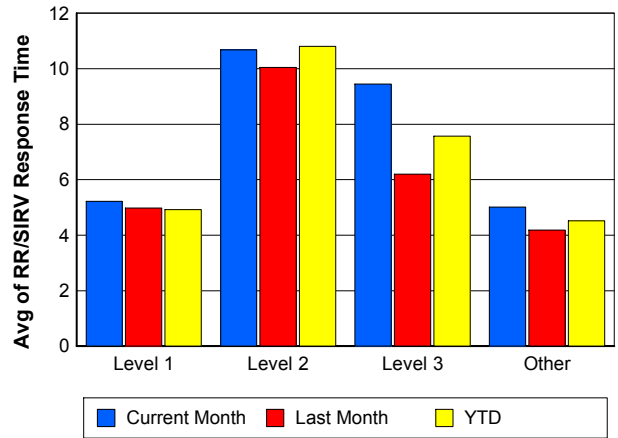
TMC Response Time



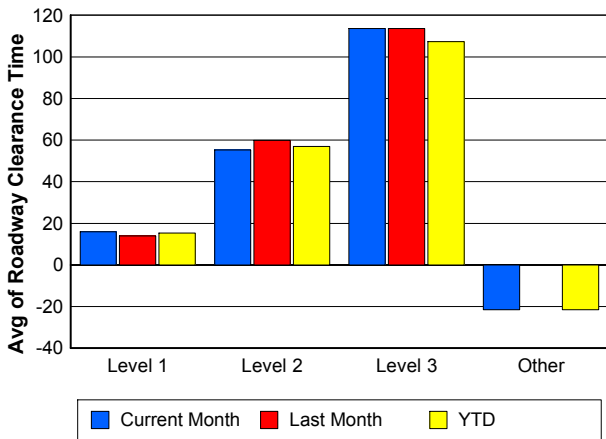
Road Ranger / SIRV Dispatch Time



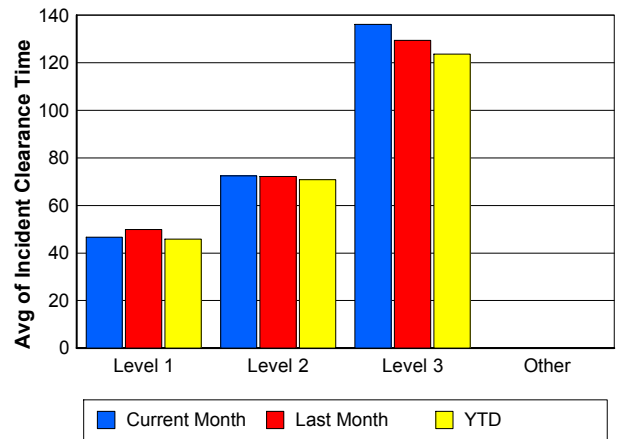
Road Ranger / SIRV Response Time



Roadway Clearance Time (2A)



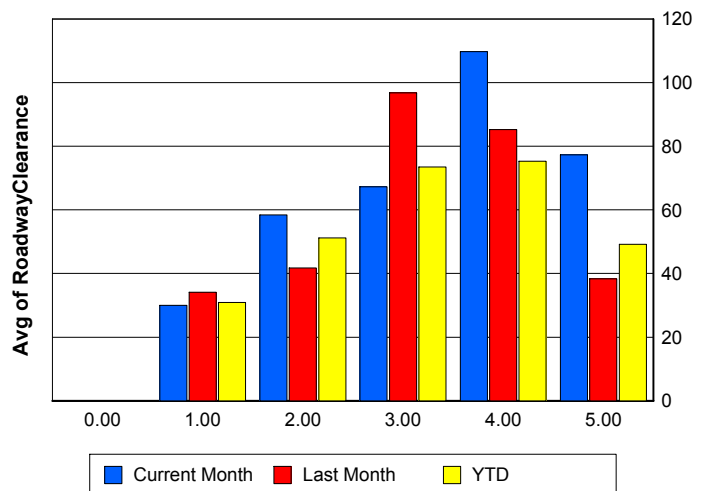
Incident Clearance Time (3B)



Roadway Clearance by Maximum Number of Lanes Blocked

	Current Month	Last Month	YTD
0			
1	30.00	34.10	30.94
2	58.44	41.74	51.17
3	67.27	96.79	73.44
4	109.69	85.27	75.33
5	77.28	38.37	49.19

Roadway Clearance Time (2A)



Performance Measures by Roadway

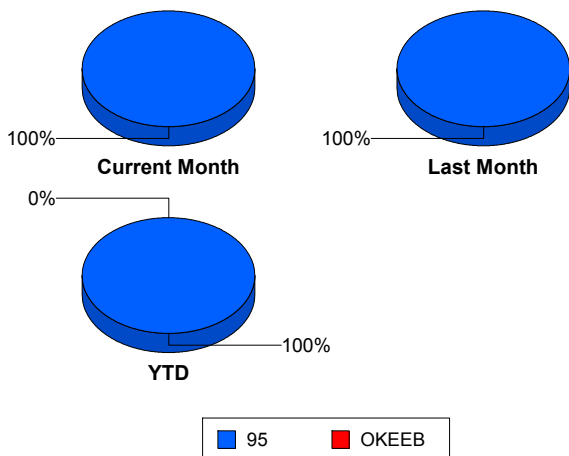
95

	<u>Current Month</u>	<u>Last Month</u>	<u>YTD</u>
Number of Events	2,510	1,897	6,257
Number of Incidents	101	100	293
TMC Detection (min.)	0.16	0.00	0.06
TMC Verification (min.)	4.05	3.88	4.22
TMC Response (min.)	7.46	6.11	6.89
RR Dispatch Time (min.)	2.35	1.82	2.25
RR Resp. Time (min.)	5.15	4.36	4.67
Event Clearance (min.)	20.43	20.46	20.94
Roadway Clear. (min.)	39.68	44.28	40.79
Incident Clearance (min.)	63.80	68.39	63.25
# of Events w/ RR/SIRV	2,309	1,798	5,906
RR/SIRV Responses	2,309	1,798	5,906
RR/SIRV Activities	2,379	1,889	6,215

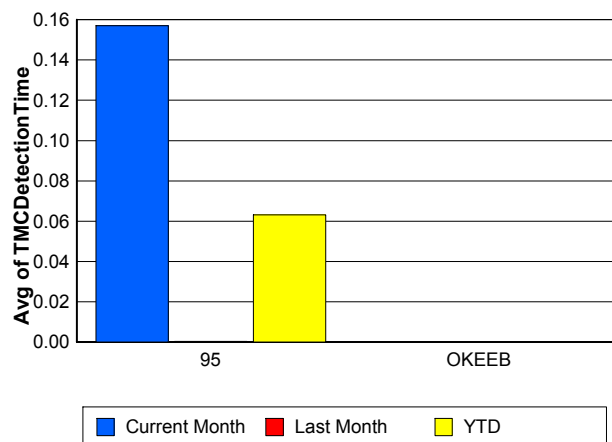
OKEEB

	<u>YTD</u>
Number of Events	1
Number of Incidents	0
TMC Detection (min.)	0.00
TMC Verification (min.)	0.00
TMC Response (min.)	0.00
RR Dispatch Time (min.)	0.00
RR Resp. Time (min.)	0.00
Event Clearance (min.)	18.45
Roadway Clear. (min.)	
Incident Clearance (min.)	
# of Events w/ RR/SIRV	1
RR/SIRV Responses	1
RR/SIRV Activities	1

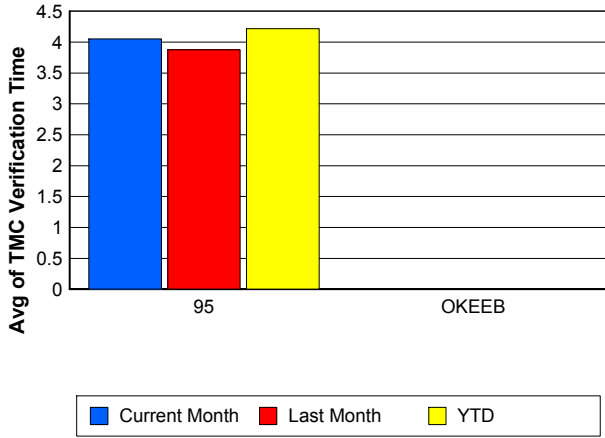
Number of Events / Roadway



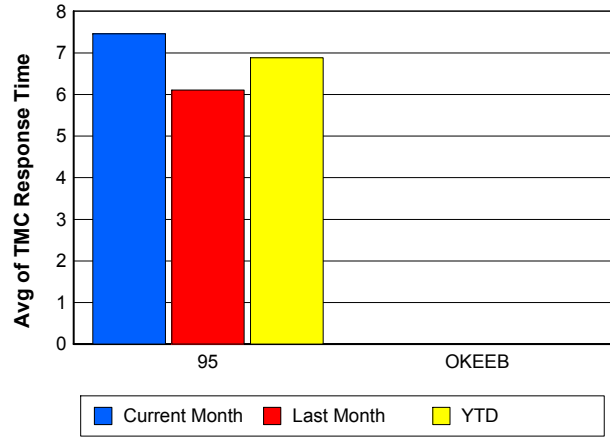
TMC Detection Time



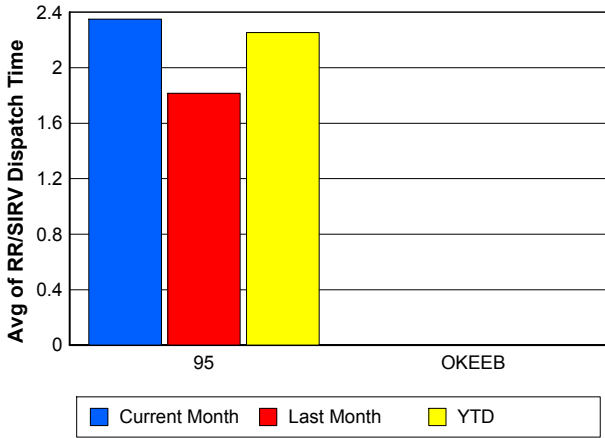
TMC Verification Time



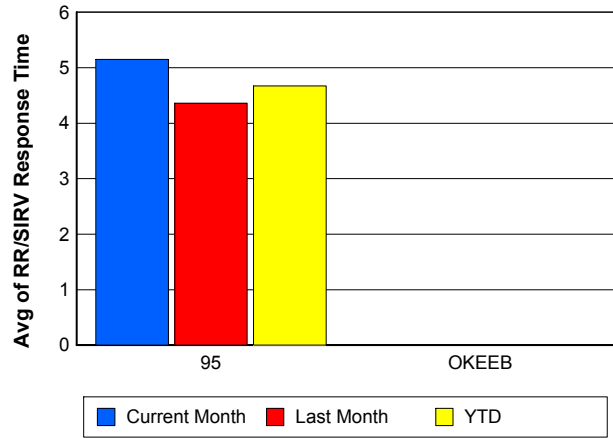
TMC Response Time



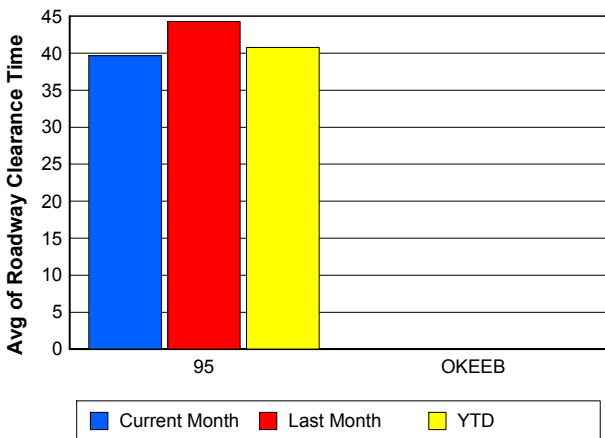
Road Ranger / SIRV Dispatch Time



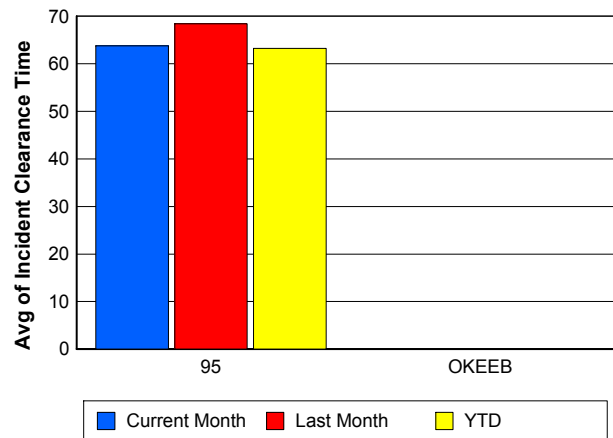
Road Ranger / SIRV Response Time



Roadway Clearance Time (2A)



Incident Clearance Time (3B)



Performance Measures by Event Type

Accident

	<u>Current Month</u>	<u>Last Month</u>	<u>YTD</u>
Number of Events	176	171	489
Number of Incidents	78	73	213
TMC Detection (min.)	0.21	0.00	0.08
TMC Verification (min.)	7.81	6.83	7.58
TMC Response (min.)	10.29	9.11	10.06
RR Dispatch Time (min.)	2.43	1.93	2.14
RR Response Time (min.)	7.94	7.20	7.95
Event Clearance (min.)	56.12	59.43	57.25
Roadway Clearance (min.)	44.22	48.36	44.82
Incident Clearance (min.)	72.59	76.68	71.87
# of Events w/ RR/SIRV	173	167	479
RR/SIRV Assists	173	167	479
RR/SIRV Activities	199	193	557

Debris on Roadway

	<u>Current Month</u>	<u>Last Month</u>	<u>YTD</u>
Number of Events	119	118	350
Number of Incidents	1	1	5
TMC Detection (min.)	0.00	0.00	0.00
TMC Verification (min.)	13.27	9.22	9.93
TMC Response (min.)	13.64	9.28	10.11
RR Dispatch Time (min.)	4.22	2.98	3.15
RR Response Time (min.)	9.64	6.27	7.02
Event Clearance (min.)	17.87	13.11	13.88
Roadway Clearance (min.)	15.07	15.02	10.01
Incident Clearance (min.)	15.70	15.60	16.45
# of Events w/ RR/SIRV	118	118	347
RR/SIRV Assists	118	118	347
RR/SIRV Activities	118	125	354

Disabled Vehicle

	<u>Current Month</u>	<u>Last Month</u>	<u>YTD</u>
Number of Events	2,086	1,472	5,064
Number of Incidents	20	19	60
TMC Detection (min.)	0.14	0.00	0.06
TMC Verification (min.)	3.38	3.45	3.74
TMC Response (min.)	6.50	5.35	6.11
RR Dispatch Time (min.)	2.17	1.67	2.17
RR Response Time (min.)	4.40	3.76	4.01
Event Clearance (min.)	17.59	16.76	17.96
Roadway Clearance (min.)	25.61	37.32	29.66
Incident Clearance (min.)	36.15	48.47	40.26
# of Events w/ RR/SIRV	1,918	1,414	4,815
RR/SIRV Assists	1,918	1,414	4,815
RR/SIRV Activities	1,989	1,514	5,128

Emergency Vehicles

	<u>Last Month</u>	<u>YTD</u>
Number of Events	1	4
Number of Incidents	1	3
TMC Detection (min.)	0.00	0.00
TMC Verification (min.)	0.00	0.00
TMC Response (min.)		0.00
RR Dispatch Time (min.)		0.00
RR Response Time (min.)		0.00
Event Clearance (min.)	7.37	65.10
Roadway Clearance (min.)	7.97	78.74
Incident Clearance (min.)	7.37	79.08
# of Events w/ RR/SIRV	0	2
RR/SIRV Assists	0	2
RR/SIRV Activities	0	2

Other

	<u>Current Month</u>	<u>Last Month</u>	<u>YTD</u>
Number of Events	103	112	286
Number of Incidents	0	1	1
TMC Detection (min.)	0.57	0.00	0.20
TMC Verification (min.)	1.02	0.00	0.52
TMC Response (min.)	18.15	10.50	14.33
RR Dispatch Time (min.)	3.81	2.36	3.07
RR Response Time (min.)	11.84	7.38	9.68
Event Clearance (min.)	20.04	16.75	18.72
Roadway Clearance (min.)		8.12	8.12
Incident Clearance (min.)		24.77	24.77
# of Events w/ RR/SIRV	77	79	207
RR/SIRV Assists	77	79	207
RR/SIRV Activities	54	43	128

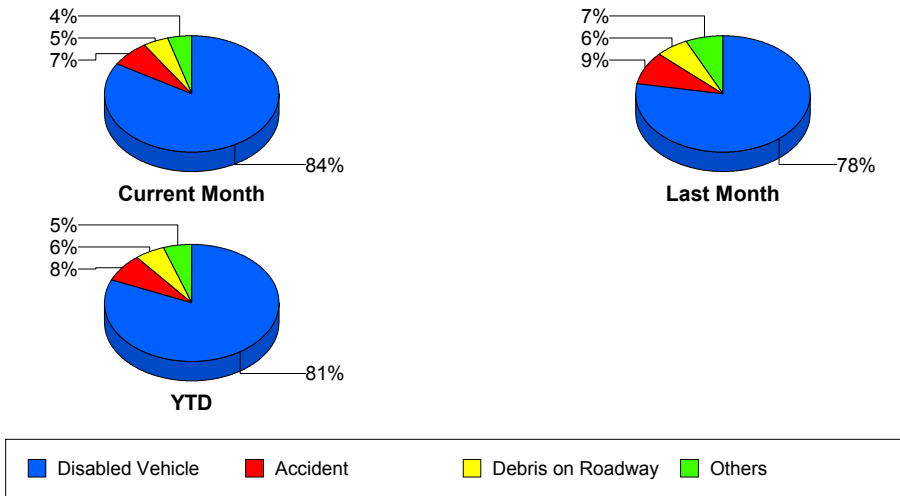
Police Activity

	<u>Current Month</u>	<u>Last Month</u>	<u>YTD</u>
Number of Events	5	10	24
Number of Incidents	1	1	6
TMC Detection (min.)	0.00	0.00	0.00
TMC Verification (min.)	0.00	0.00	0.00
TMC Response (min.)	4.07	16.83	18.69
RR Dispatch Time (min.)	2.74	4.19	2.64
RR Response Time (min.)	0.17	15.00	17.32
Event Clearance (min.)	20.74	17.13	28.76
Roadway Clearance (min.)	14.55	11.72	28.07
Incident Clearance (min.)	16.30	15.80	30.24
# of Events w/ RR/SIRV	3	8	18
RR/SIRV Assists	3	8	18
RR/SIRV Activities	1	2	9

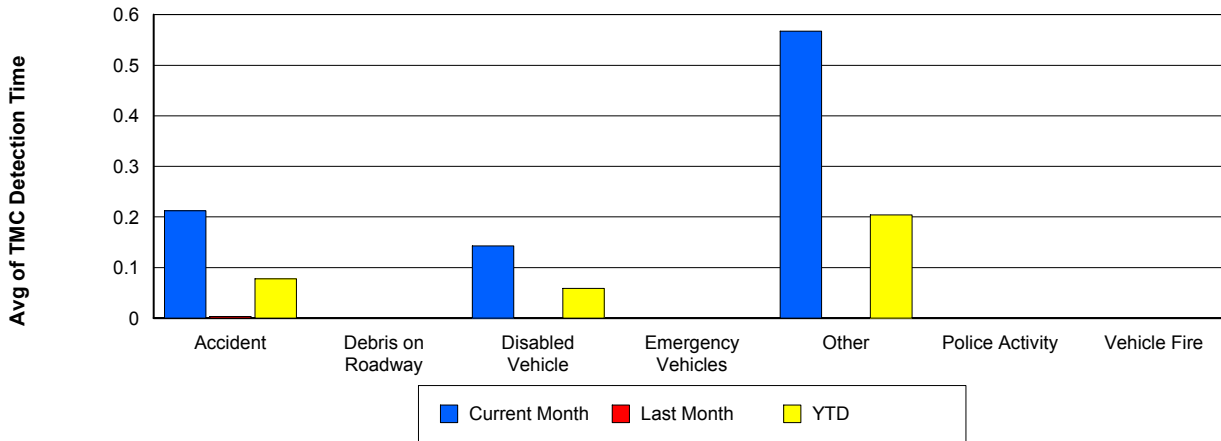
Vehicle Fire

	<u>Current Month</u>	<u>Last Month</u>	<u>YTD</u>
Number of Events	4	6	12
Number of Incidents	1	4	5
TMC Detection (min.)	0.00	0.00	0.00
TMC Verification (min.)	5.17	0.70	3.94
TMC Response (min.)	5.14	1.64	4.35
RR Dispatch Time (min.)	1.68	0.69	1.44
RR Response Time (min.)	3.46	0.95	2.91
Event Clearance (min.)	22.35	48.52	35.61
Roadway Clearance (min.)	16.95	36.49	32.58
Incident Clearance (min.)	26.33	64.42	56.80
# of Events w/ RR/SIRV	4	5	11
RR/SIRV Assists	4	5	11
RR/SIRV Activities	4	5	11

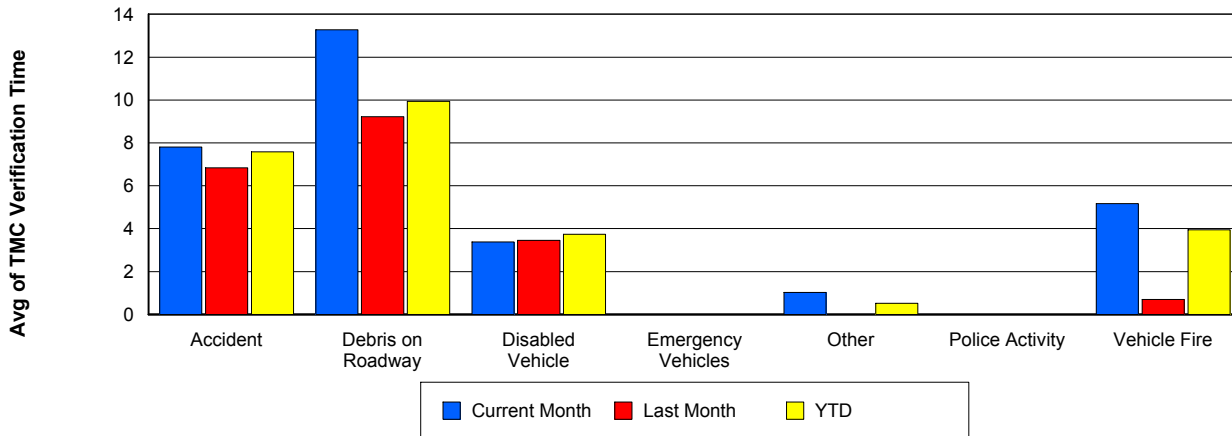
Number of Events / Event Type



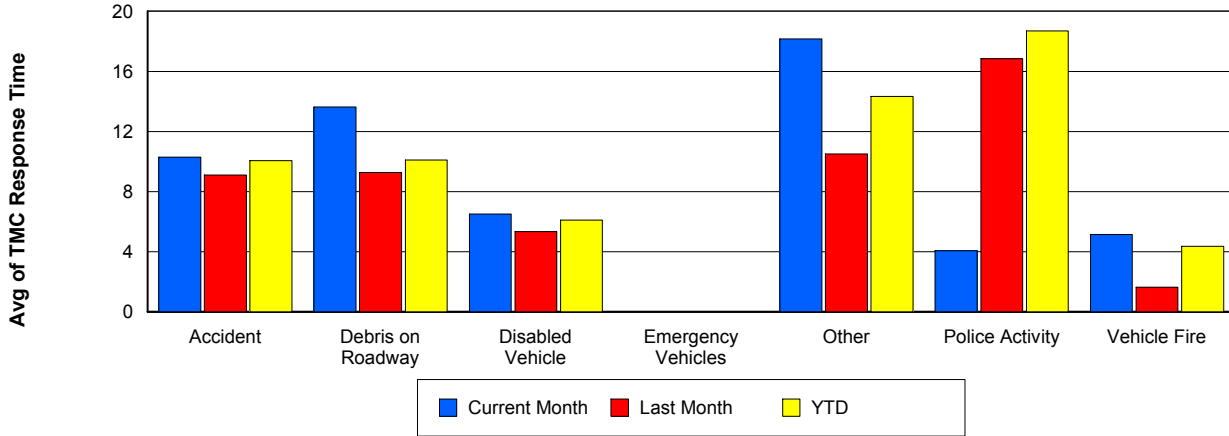
TMC Detection Time



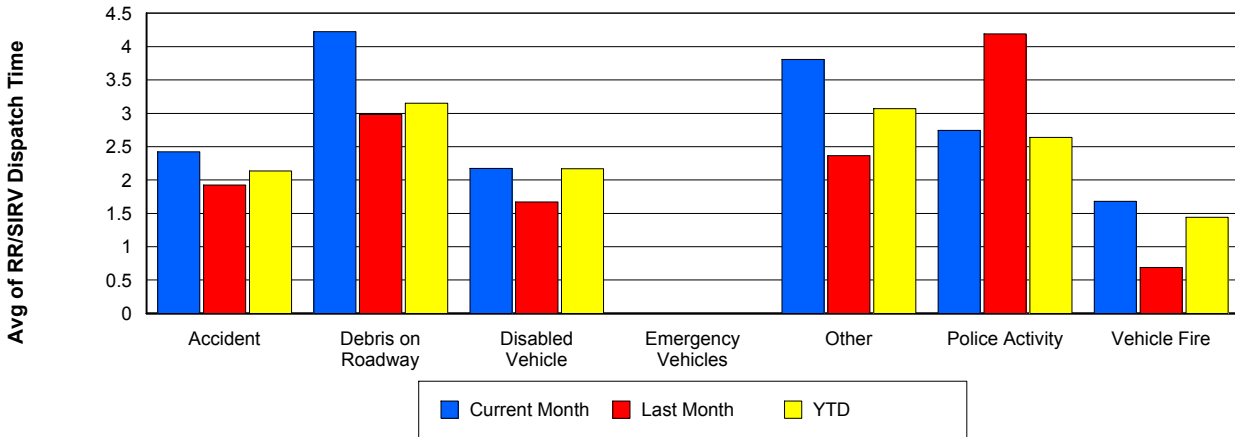
TMC Verification Time



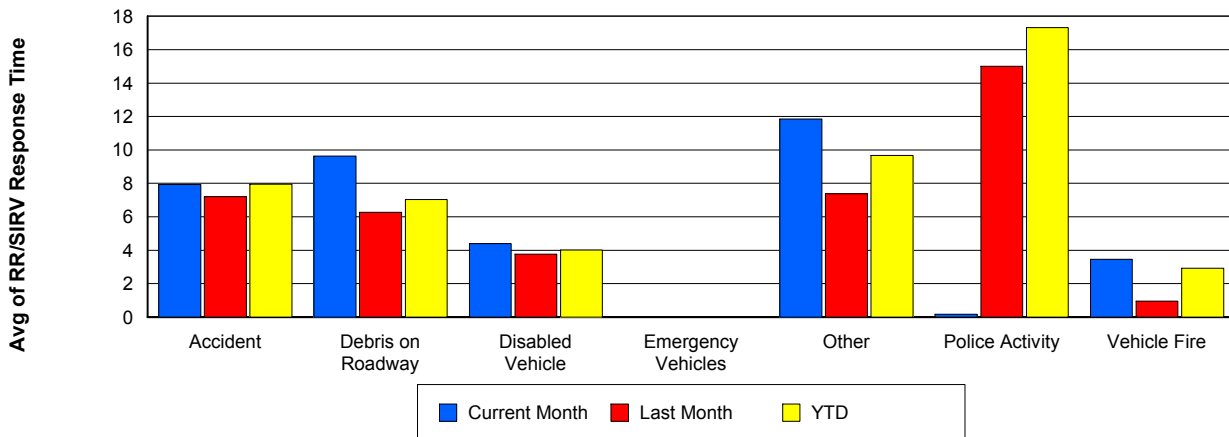
TMC Response Time



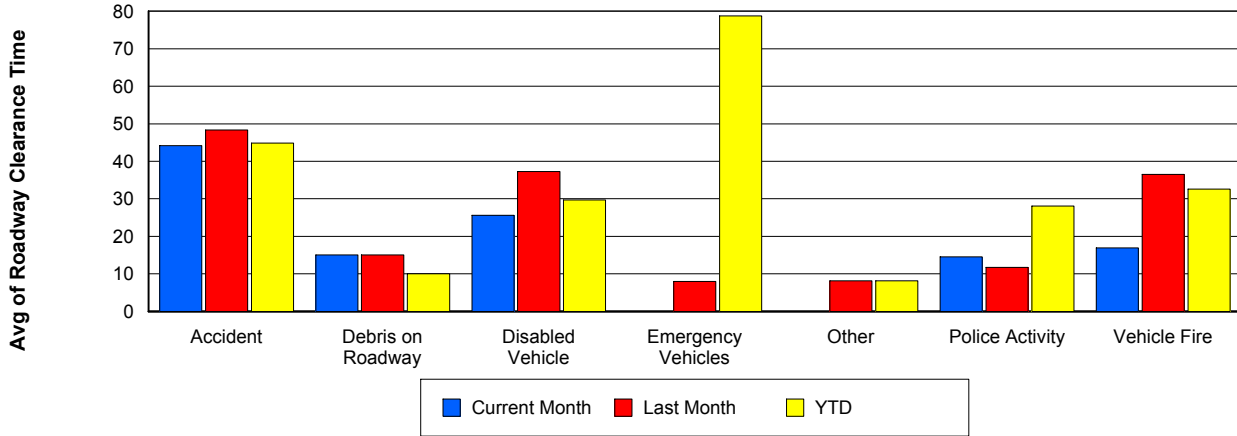
Road Ranger / SIRV Dispatch Time



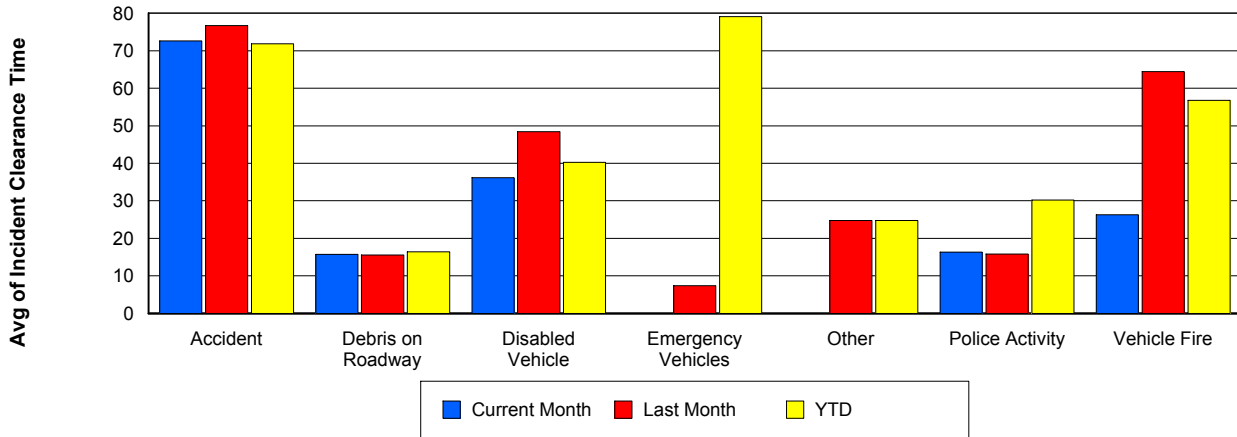
Road Ranger / SIRV Response Time



Roadway Clearance Time (2A)



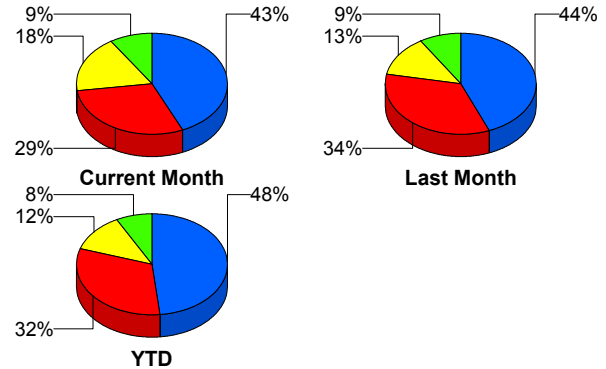
Incident Clearance Time (3B)



Incident Detection Methods

	Current Month	Last Month	YTD
Broward Road Ranger	3	0	5
Broward TMC	2	3	5
District 4	1	4	6
FDOT Maintenance	1	0	1
FHP	43	44	141
ITMS CCTV	18	13	35
Media	1	0	1
Motorist	1	2	5
Palm Beach Road Ran	29	34	92
Total	99	100	291

Total Incidents by Detection Method

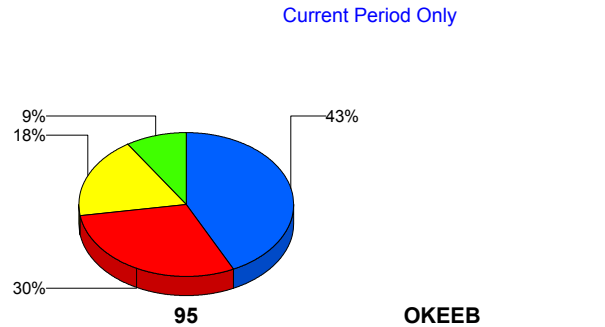


■ FHP
 ■ Palm Beach Road Ranger
 ■ ITMS CCTV
 ■ Others

Incident Detection Methods by Roadway

		Current Month	Last Month	YTD
95	Broward Road Ranger	3	0	5
	Broward TMC	2	3	5
	District 4	1	4	6
	FDOT Maintenance	1	0	1
	FHP	43	44	141
	ITMS CCTV	18	13	35
	Media	1	0	1
	Motorist	1	2	5
	Palm Beach Road Ran	29	34	92
	Total	99	100	291
Total	99	100	291	

Total Events by Roadway and Detection Method

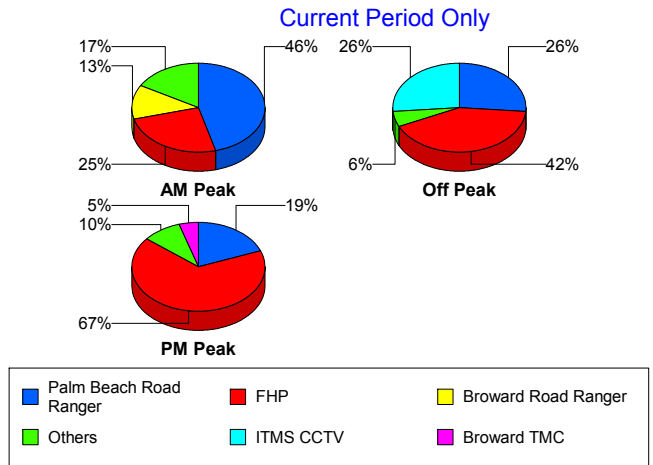


■ FHP
 ■ Palm Beach Road Ranger
 ■ ITMS CCTV
 ■ Others

Incident Detection Methods by Peak Period

		Current Month	Last Month	YTD
AM Peak	Broward Road Ranger	3	0	4
	District 4	0	0	1
	FHP	7	10	33
	ITMS CCTV	3	4	7
	Media	1	0	1
	Palm Beach Road Ran	11	8	27
	Total	25	22	73
Off Peak	Broward Road Ranger	0	0	1
	Broward TMC	1	1	2
	District 4	1	2	3
	FDOT Maintenance	1	0	1
	FHP	23	22	68
	ITMS CCTV	14	6	24
	Motorist	0	1	2
	Palm Beach Road Ran	14	17	45
	Total	54	49	146
PM Peak	Broward TMC	1	2	3
	District 4	0	2	2
	FHP	14	12	41
	ITMS CCTV	1	3	4
	Motorist	1	1	3
	Palm Beach Road Ran	4	9	20
	Total	21	29	73
Total	99	100	291	

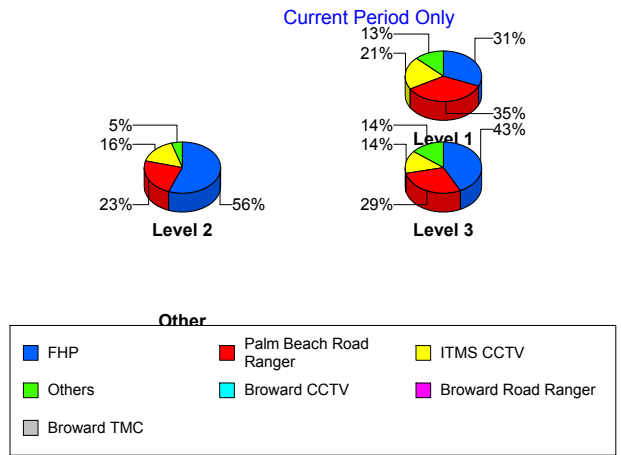
Total Events by Peak Period and Detection Method



Incident Detection Methods by Severity

		Current Month	Last Month	YTD
	FHP	1	0	1
	Total	1	0	1
Level 1	Broward Road Ranger	3	0	5
	Broward TMC	2	1	3
	District 4	1	2	4
	FHP	15	16	51
	ITMS CCTV	10	5	18
	Motorist	0	1	3
	Palm Beach Road Ran	17	23	61
	Total	48	48	145
Level 2	Broward TMC	0	2	2
	District 4	0	1	1
	FDOT Maintenance	1	0	1
	FHP	24	23	75
	ITMS CCTV	7	6	14
	Motorist	1	1	2
	Palm Beach Road Ran	10	7	22
	Total	43	40	117
Level 3	District 4	0	1	1
	FHP	4	5	15
	ITMS CCTV	1	2	3
	Media	1	0	1
	Palm Beach Road Ran	2	4	9
	Total	8	12	29
Total		99	100	291

Total Events by Severity and Detection Method



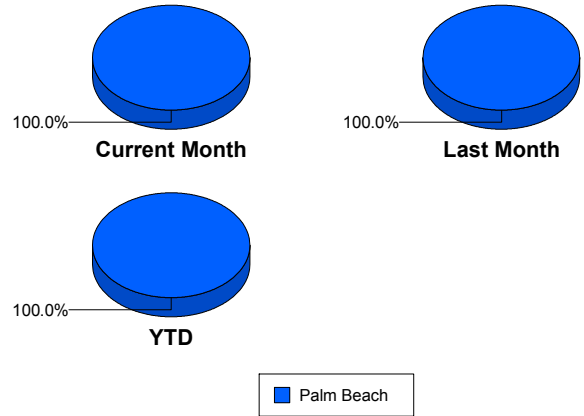
Road Ranger / SIRV Performance Measures

Road Ranger / SIRV Performance By County

RR/SIRV Responses per County

Values presented are: - Total Events with a RR/SIRV Response - Total RR/SIRV Responses, - Total Activities Performed

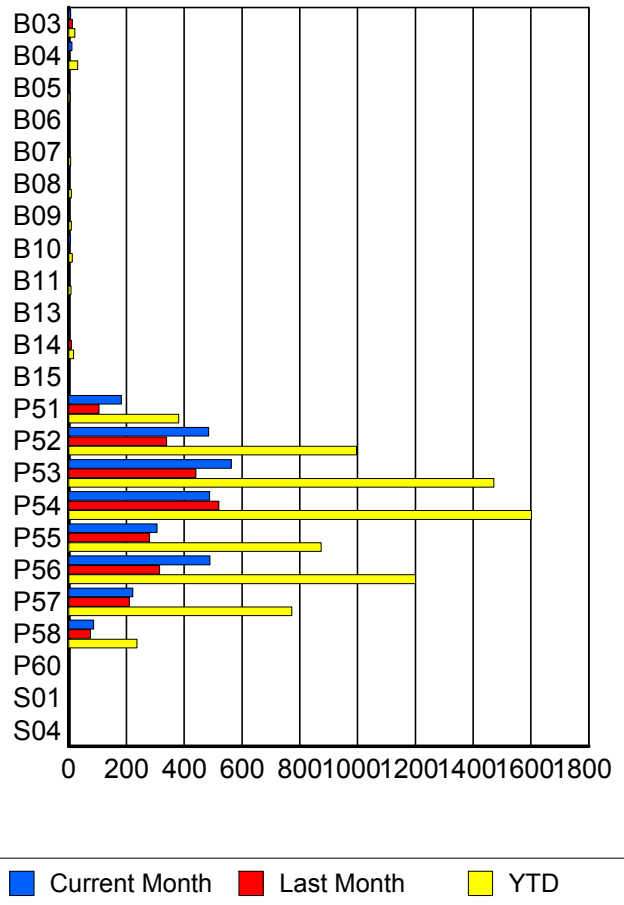
	Current Mo	Last Month	YTD
Palm Beach	2,773	2,248	7,412
	2,868	2,332	7,666
	3,022	2,465	8,106



Road Ranger / SIRV Performance By Truck

	Current Mo	Last Month	YTD
B03	7	13	21
	7	13	21
	7	14	22
B04	10	4	30
	11	4	31
	13	4	34
B05	4	0	5
	4	0	5
	4	0	5
B06	0	0	1
	0	0	1
	0	0	3
B07	1	4	7
	1	4	7
	1	4	7
B08	1	3	9
	1	3	9
	1	3	9
B09	4	4	9
	4	4	9
	4	5	10
B10	6	4	13
	6	4	13
	6	4	13
B11	1	3	8
	1	3	8
	1	3	8

**RR/SIRV
Responses per
Truck**



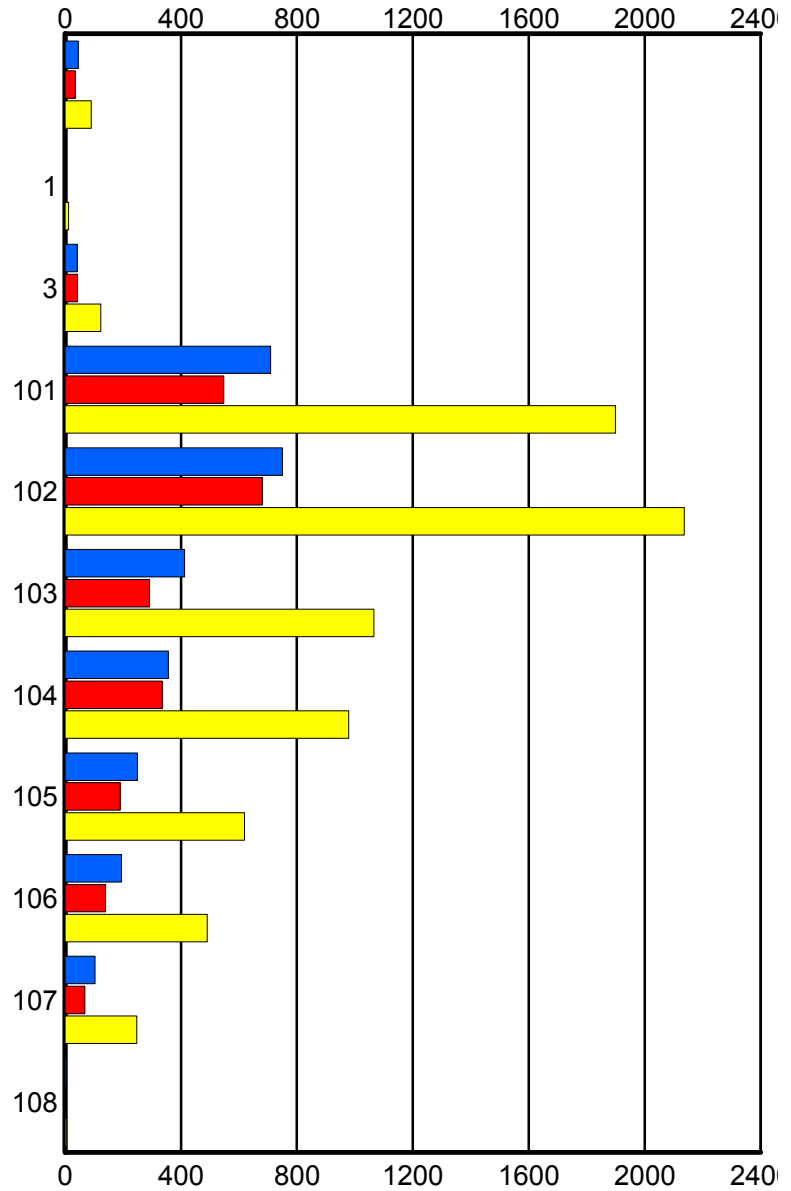
	Current Mo	Last Month	YTD
B13	2	1	3
	2	1	3
	2	1	3
B14	4	9	17
	4	9	17
	4	9	17
B15	3	0	3
	3	0	3
	3	0	3
P51	180	104	377
	183	105	381
	190	110	398
P52	480	333	983
	485	339	996
	514	363	1,061
P53	557	434	1,455
	563	441	1,472
	594	458	1,554
P54	480	516	1,577
	488	520	1,602
	518	558	1,698
P55	304	274	865
	306	279	874
	321	290	915
P56	485	310	1,187
	489	315	1,201
	515	337	1,279
P57	221	208	760
	222	210	772
	234	221	810
P58	85	75	234
	87	76	237
	89	79	253
P60	0	0	1
	0	0	1
	0	0	1
S01	0	2	2
	0	2	2
	0	2	2
S04	1	0	1
	1	0	1
	1	0	1

Road Ranger / SIRV Performance By Beat

	Current Mo	Last Month	YTD
	45	35	90
	45	35	90
	48	40	98
1	1	0	11
	1	0	12
	1	0	12
3	41	43	121
	42	43	123
	44	45	130
101	696	535	1,862
	709	548	1,899
	749	572	1,999
102	736	671	2,098
	750	681	2,136
	791	716	2,259
103	408	290	1,058
	412	291	1,066
	430	311	1,120
104	356	332	971
	356	336	979
	377	365	1,045
105	250	187	614
	250	190	619
	269	201	663
106	194	139	485
	195	140	491
	202	144	510
107	103	67	245
	104	68	247
	107	71	266
108	3	0	3
	4	0	4
	4	0	4

Values presented are:
 - Total Events with a RR/SIRV Response
 - Total RR/SIRV Responses,
 - Total Activities Performed

RR/SIRV Responses per Beat



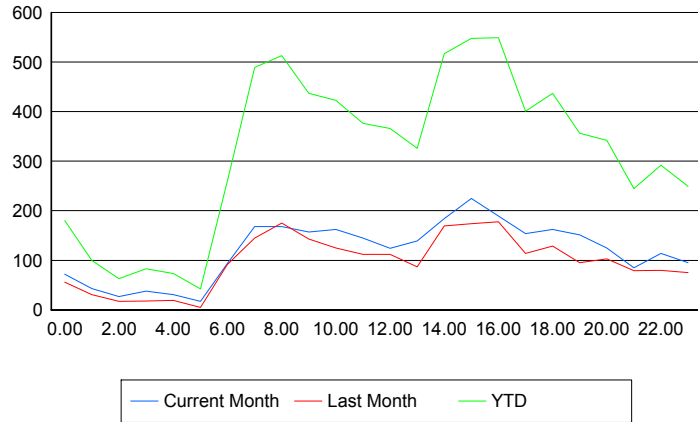
■ Current Month
 ■ Last Month
 ■ YTD

Road Ranger / SIRV Performance By Time of Day

Values presented are:
 - Total Events with a RR/SIRV Response
 - Total RR/SIRV Responses,
 - Total Activities Performed

	Current Mo	Last Month	YTD
12AM-1AM	68	55	174
	72	56	180
	77	60	195
1AM-2AM	42	30	98
	43	31	100
	44	31	102
2AM-3AM	26	17	61
	27	17	63
	27	18	65
3AM-4AM	35	18	80
	38	18	83
	42	19	90
4AM-5AM	29	19	71
	31	19	73
	31	20	77
5AM-6AM	15	5	34
	17	5	42
	19	5	45
6AM-7AM	88	85	243
	93	91	259
	96	98	275
7AM-8AM	162	142	476
	168	145	489
	175	154	516
8AM-9AM	160	164	488
	168	175	513
	174	181	535
9AM-10AM	151	140	424
	157	143	437
	167	155	465
10AM-11AM	155	119	405
	162	125	423
	165	135	443
11AM-12PM	144	110	368
	145	112	376
	153	120	399
12PM-1PM	121	102	349
	124	112	366
	128	117	380

Number of Responses / Hour of the Day



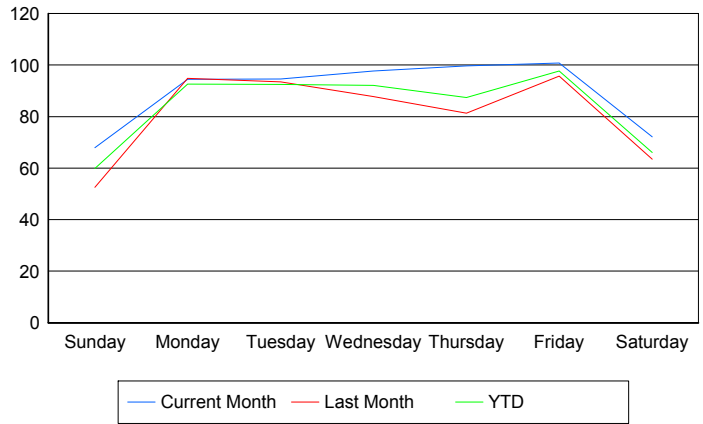
	Current Mo	Last Month	YTD
1PM-2PM	133	84	311
	139	87	326
	144	90	343
2PM-3PM	178	162	500
	184	169	517
	202	178	552
3PM-4PM	222	170	539
	225	174	548
	241	184	583
4PM-5PM	181	172	527
	189	178	549
	198	191	583
5PM-6PM	150	110	391
	154	114	401
	161	119	425
6PM-7PM	156	127	427
	162	129	437
	169	134	459
7PM-8PM	146	90	344
	151	95	356
	158	97	373
8PM-9PM	124	99	336
	125	103	342
	127	109	354
9PM-10PM	81	76	235
	85	79	245
	93	82	259
10PM-11PM	113	79	287
	114	80	292
	123	87	314
11PM-12AM	93	73	244
	95	75	249
	108	81	274

Road Ranger / SIRV Performance By Day of Week

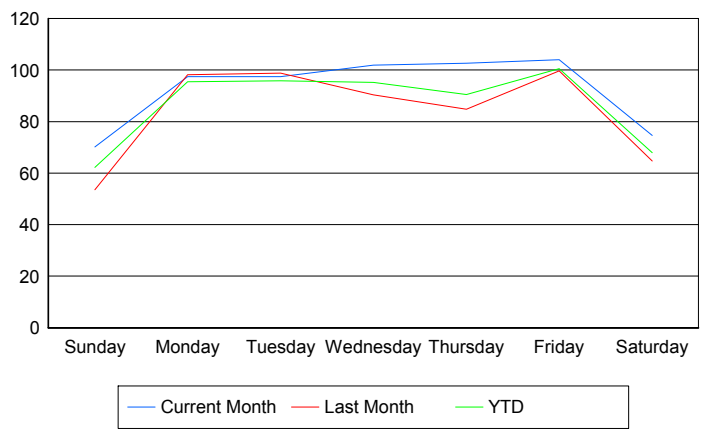
Values presented are: - Total Events with a RR/SIRV Response - Total RR/SIRV Responses, - Total Activities Performed

	Current Mo	Last Month	YTD
Sunday	266 275 287	210 214 228	761 789 830
Monday	470 485 515	373 386 412	1,171 1,208 1,283
Tuesday	470 484 516	371 391 416	1,192 1,235 1,310
Wednesday	485 505 532	349 359 386	1,183 1,221 1,300
Thursday	395 407 428	323 337 354	1,031 1,069 1,141
Friday	401 414 432	379 394 405	1,238 1,276 1,332
Saturday	288 298 312	246 251 264	845 868 910

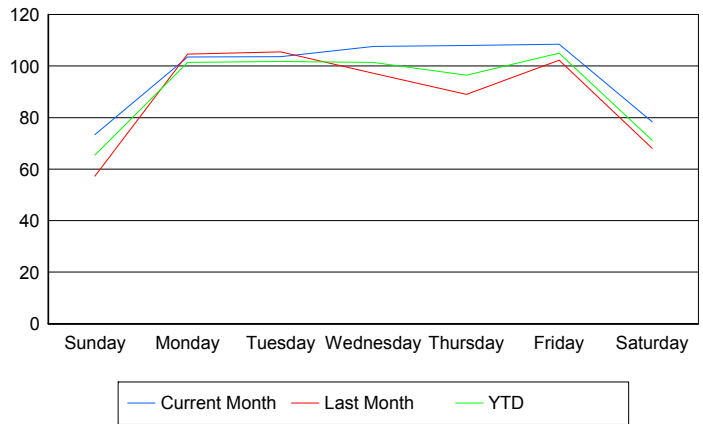
Avg # of events with a RR/SIRV Response per Day of the Week



Avg # of RR/SIRV Responses per Day of the Week



Avg # of RR/SIRV Activities Performed per Day of the Week



Road Ranger / SIRV Responses per Time of Day and Day of Week

