



# Monthly Performance Measures Report Palm Beach County



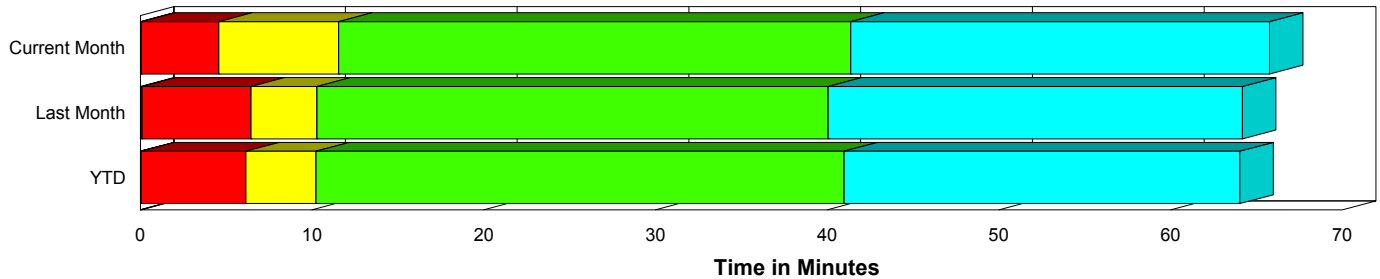
Created on:  
May 05, 2010  
11:22 am

Period From Apr 1, 2010 to Apr 30, 2010

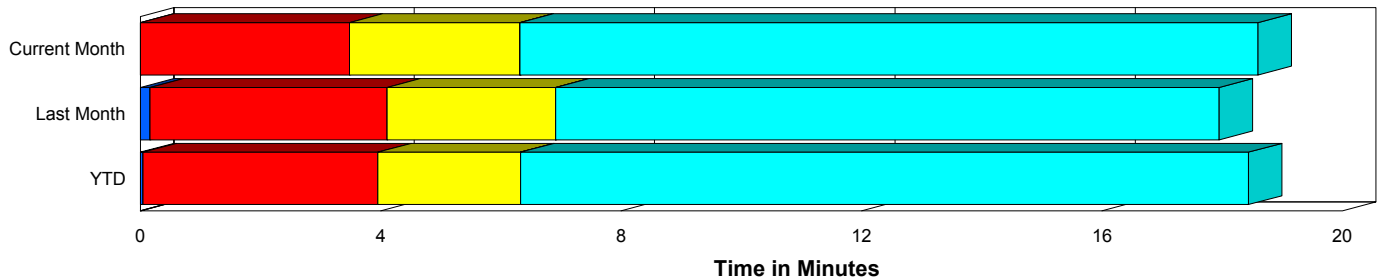
## Performance Measures Summary

	Traffic Events (No Lanes Blocked)			Incidents (Lanes Blocked)		
	<u>This Month</u>	<u>Last Month</u>	<u>YTD</u>	<u>This Month</u>	<u>Last Month</u>	<u>YTD</u>
Number of Events	2,485	2,409	8,450	119	101	412
TMC Detection (min.)	0.00	0.16	0.05	0.06	0.10	0.04
TMC Verification (min.)	3.48	3.94	3.91	4.51	6.57	6.16
TMC Response (min.)	6.89	7.32	6.77	11.70	10.46	10.45
RR Dispatch Time (min.)	2.63	2.33	2.36	3.23	2.71	2.65
RR Response Time (min.)	4.54	5.02	4.52	8.46	7.88	7.83
Roadway Clearance (min.)				40.35	39.68	40.67
Event Clearance (min.)	19.17	18.51	18.92	64.40	66.15	64.16
# of Events w/ RR/SIRV	2,262	2,208	7,881	117	101	405
RR/SIRV Responses	2,262	2,208	7,881	117	101	405
RR/SIRV Activities	2,343	2,248	8,186	148	131	521

### Incident Clearance Time-Line



### Traffic Event (Non-Lane Blockage) Time-Line



<ul style="list-style-type: none"> <li><span style="display: inline-block; width: 15px; height: 15px; background-color: blue; margin-right: 5px;"></span> Avg. TMC Detection Time</li> <li><span style="display: inline-block; width: 15px; height: 15px; background-color: red; margin-right: 5px;"></span> Avg. Time from TMC Detection to TMC Verification</li> <li><span style="display: inline-block; width: 15px; height: 15px; background-color: yellow; margin-right: 5px;"></span> Avg. Time from TMC Verification to TMC Response</li> </ul>	<ul style="list-style-type: none"> <li><span style="display: inline-block; width: 15px; height: 15px; background-color: green; margin-right: 5px;"></span> Avg. Time from TMC Response to Roadway Clearance*</li> <li><span style="display: inline-block; width: 15px; height: 15px; background-color: cyan; margin-right: 5px;"></span> Avg. Time from Roadway Clearance to Incident/Event Clearance**</li> </ul>
--	--

\* Roadway clearance equals all travel lanes open

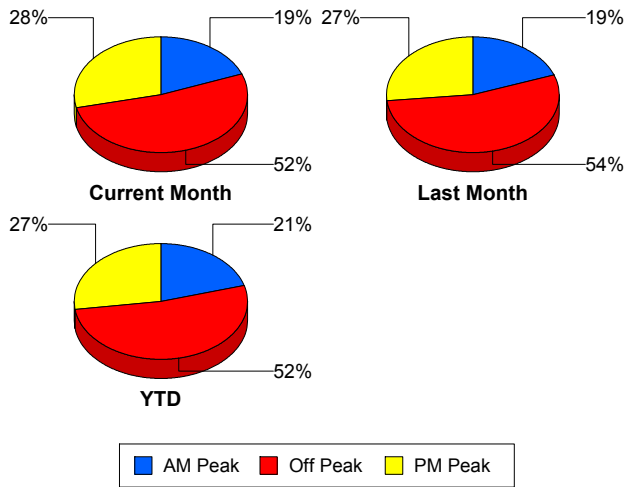
\*\* Incident clearance equals time when last responder has left the scene

## Performance Measures by Peak Period

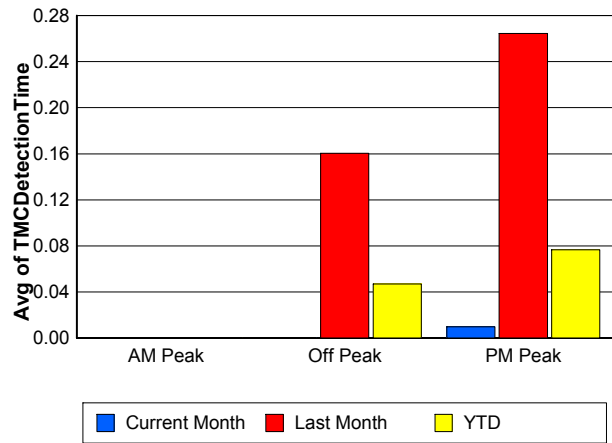
Note: AM peak period is defined as 6am to 10am and PM peak period is defined as 3pm to 7pm.

	AM Peak			Off Peak			PM Peak		
	<u>Current Month</u>	<u>Last Month</u>	<u>YTD</u>	<u>Current Month</u>	<u>Last Month</u>	<u>YTD</u>	<u>Current Month</u>	<u>Last Month</u>	<u>YTD</u>
Number of Events	501	487	1,819	1,361	1,354	4,635	742	669	2,408
Number of Incidents	31	25	104	61	55	208	27	21	100
TMC Detection (min.)	0.00	0.00	0.00	0.00	0.16	0.05	0.01	0.26	0.08
TMC Verification (min.)	2.53	2.39	2.72	3.71	4.18	4.21	3.85	5.00	4.61
TMC Response (min.)	6.37	5.88	5.64	7.44	8.01	7.51	7.10	7.52	6.89
RR Dispatch Time (min.)	1.93	1.79	1.52	2.75	2.20	2.55	2.98	3.06	2.66
RR Response Time (min.)	4.57	4.15	4.19	4.98	5.83	5.07	4.43	4.50	4.34
Event Clearance (min.)	21.71	19.60	20.81	22.03	21.26	21.81	19.47	19.36	19.68
Roadway Clearance (min.)	46.77	32.42	39.64	38.66	45.88	44.57	36.80	32.08	33.62
Incident Clearance (min.)	65.43	73.01	68.73	63.10	60.23	63.37	66.18	62.16	58.69
# of Events w/ RR/SIRV	464	447	1,700	1,226	1,244	4,311	689	618	2,275
RR/SIRV Responses	464	447	1,700	1,226	1,244	4,311	689	618	2,275
RR/SIRV Activities	489	467	1,796	1,288	1,281	4,536	714	631	2,375

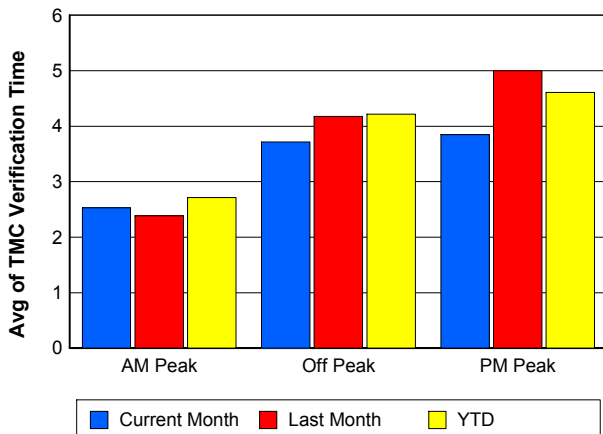
### Number of Events / Peak Period



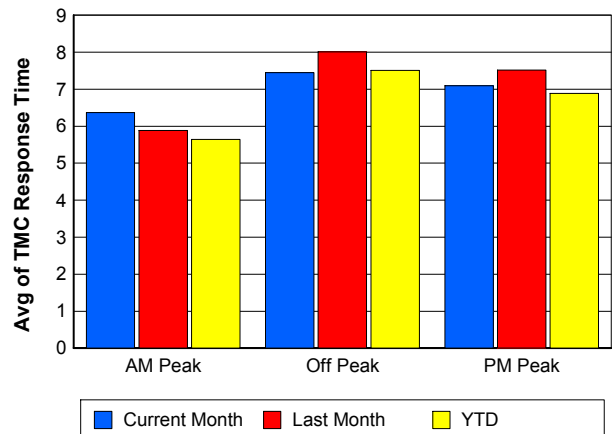
### TMC Detection Time



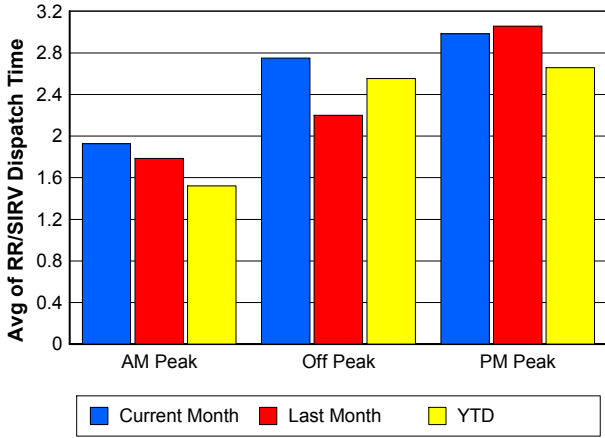
### TMC Verification Time



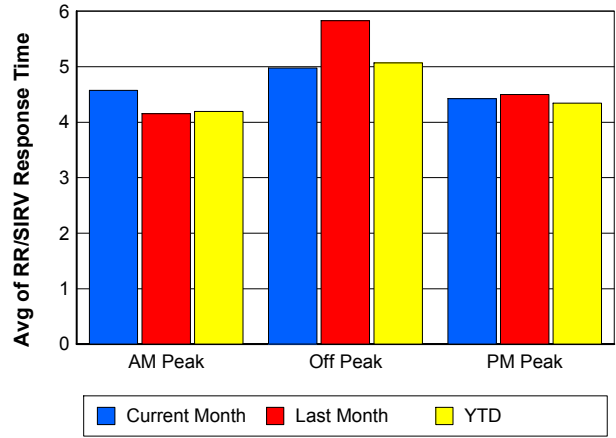
### TMC Response Time



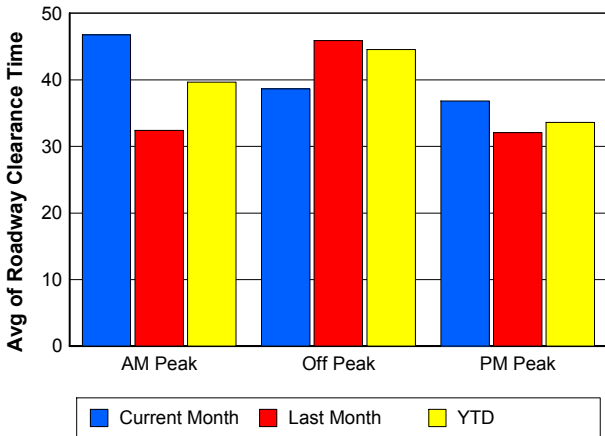
## Road Ranger / SIRV Dispatch Time



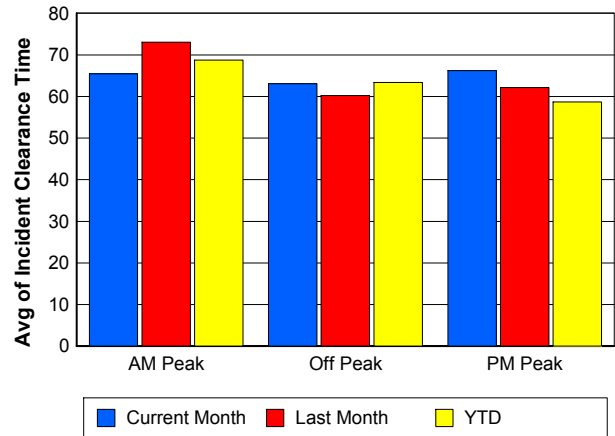
## Road Ranger / SIRV Response Time



## Roadway Clearance Time (2A)



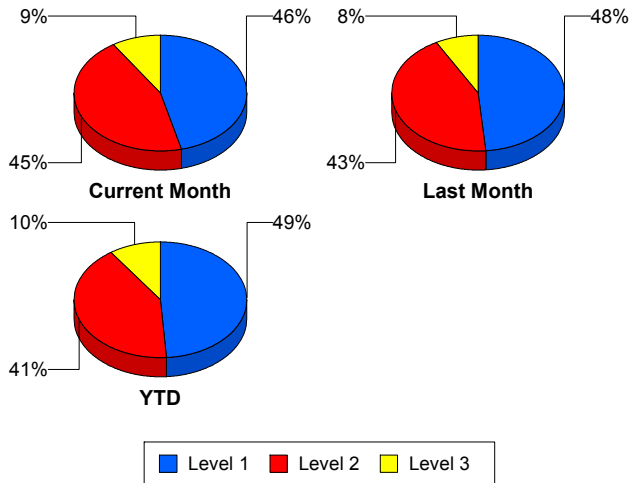
## Incident Clearance Time (3B)



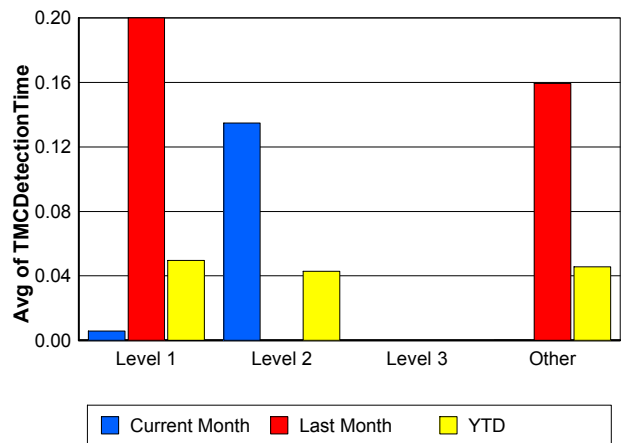
## Performance Measures by Severity

	Level 1			Level 2			Level 3			Other		
	<u>This Month</u>	<u>Last Month</u>	<u>YTD</u>	<u>This Month</u>	<u>Last Month</u>	<u>YTD</u>	<u>This Month</u>	<u>Last Month</u>	<u>YTD</u>	<u>This Month</u>	<u>Last Month</u>	<u>YTD</u>
Number of Events	55	48	200	53	43	170	11	8	40	2,485	2,411	8,452
Number of Incidents	55	48	200	53	43	170	11	8	40	0	2	2
TMC Detection (min.)	0.01	0.20	0.05	0.13	0.00	0.04	0.00	0.00	0.00	0.00	0.16	0.05
TMC Verification (min.)	2.28	3.67	3.16	6.45	9.07	9.42	6.27	10.75	7.31	3.48	3.95	3.91
TMC Response (min.)	6.17	6.64	6.00	15.75	14.62	15.01	18.95	12.19	13.06	6.89	7.31	6.77
RR Dispatch Time (min.)	1.20	1.44	1.07	3.90	4.23	3.96	10.27	2.74	5.16	2.63	2.33	2.35
RR Resp. Time (min.)	5.11	5.22	4.97	11.83	10.68	11.11	8.69	9.45	7.90	4.54	5.02	4.52
Event Clearance (min.)	39.47	46.67	44.12	77.26	72.41	72.87	127.12	143.16	126.03	19.17	18.57	18.94
Roadway Clear. (min.)	15.11	15.88	15.22	51.83	55.33	55.40	111.31	113.65	108.41		-21.46	-21.46
Incident Clearance (min.)	39.47	46.67	44.12	77.26	72.41	72.87	127.12	136.17	124.63		0.00	0.00
# of Events w/ RR/SIRV	55	48	197	51	43	168	11	8	38	2,262	2,210	7,883
RR/SIRV Responses	55	48	197	51	43	168	11	8	38	2,262	2,210	7,883
RR/SIRV Activities	59	63	232	74	50	229	15	13	55	2,343	2,253	8,191

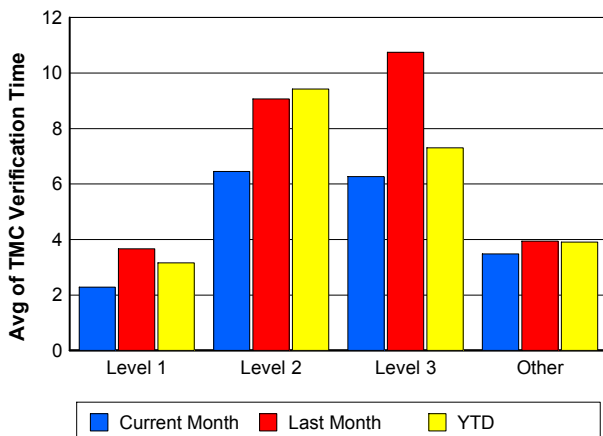
### Number of Events / Severity



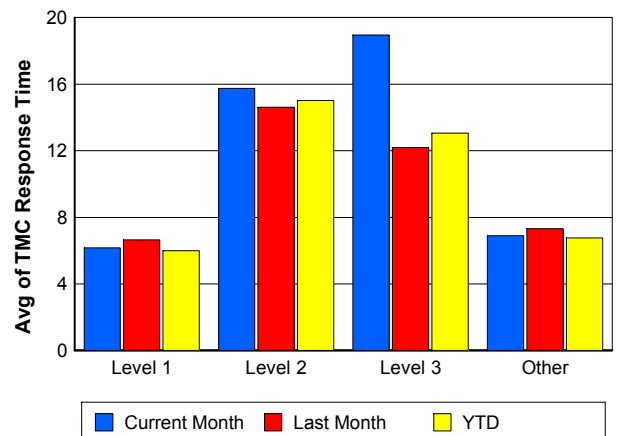
### TMC Detection Time



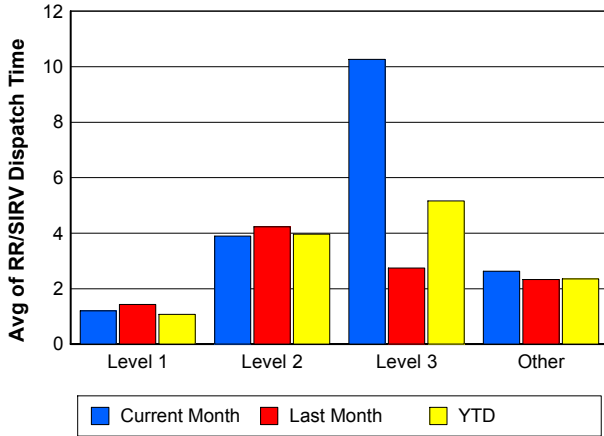
### TMC Verification Time



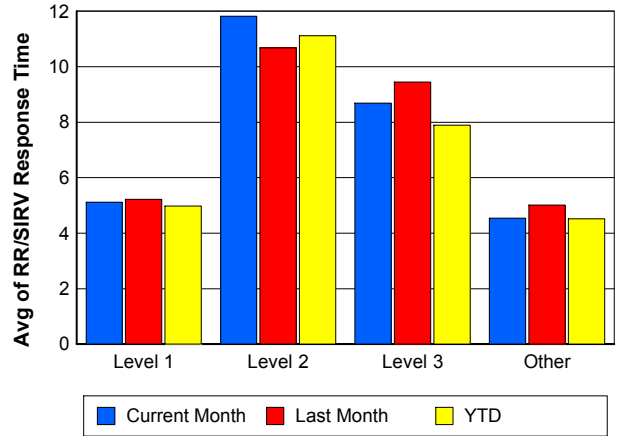
### TMC Response Time



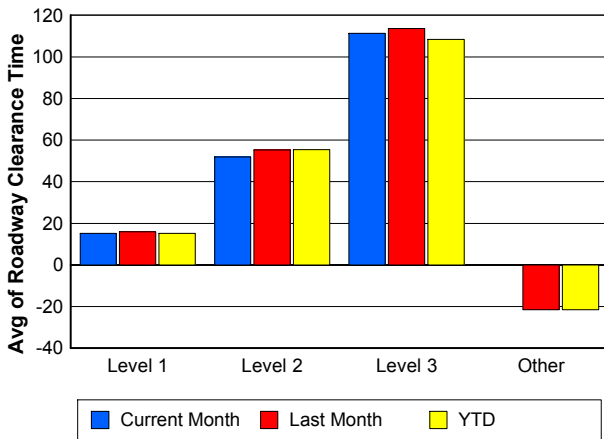
## Road Ranger / SIRV Dispatch Time



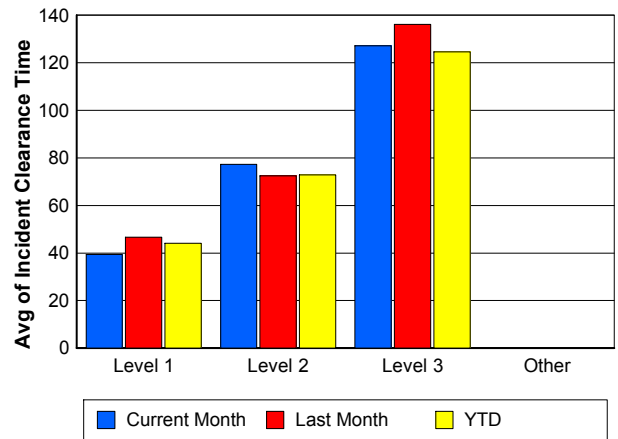
## Road Ranger / SIRV Response Time



## Roadway Clearance Time (2A)



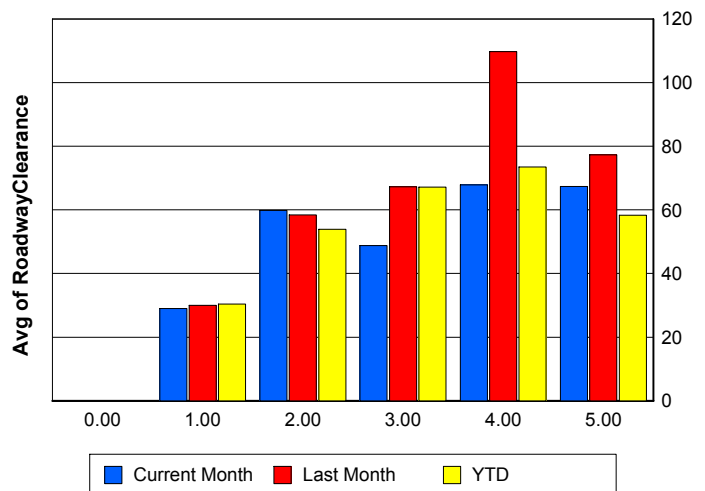
## Incident Clearance Time (3B)



## Roadway Clearance by Maximum Number of Lanes Blocked

	Current Month	Last Month	YTD
0			
1	28.97	30.00	30.39
2	59.81	58.44	53.90
3	48.75	67.27	67.11
4	67.82	109.69	73.45
5	67.40	77.28	58.30

## Roadway Clearance Time (2A)



## Performance Measures by Roadway

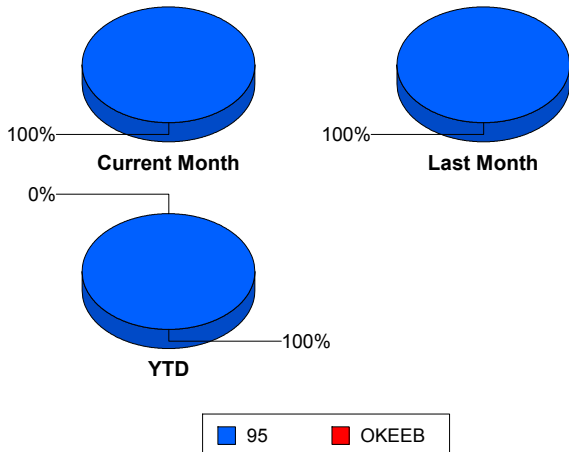
95

	<u>Current Month</u>	<u>Last Month</u>	<u>YTD</u>
Number of Events	2,604	2,510	8,861
Number of Incidents	119	101	412
TMC Detection (min.)	0.00	0.16	0.05
TMC Verification (min.)	3.53	4.05	4.01
TMC Response (min.)	7.13	7.46	6.96
RR Dispatch Time (min.)	2.66	2.35	2.37
RR Resp. Time (min.)	4.74	5.15	4.69
Event Clearance (min.)	21.24	20.43	21.03
Roadway Clear. (min.)	40.35	39.68	40.67
Incident Clearance (min.)	64.40	63.80	63.59
# of Events w/ RR/SIRV	2,379	2,309	8,285
RR/SIRV Responses	2,379	2,309	8,285
RR/SIRV Activities	2,491	2,379	8,706

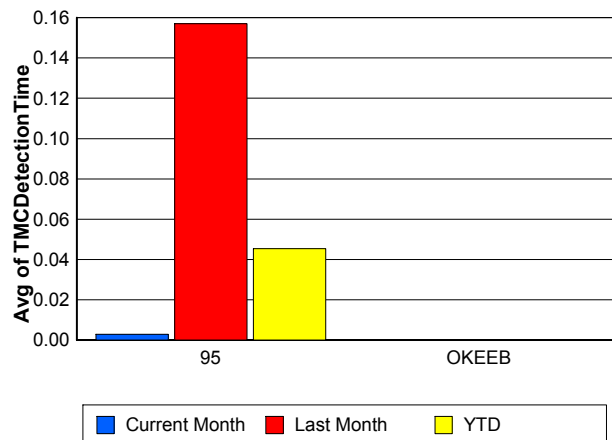
OKEEB

	<u>YTD</u>
Number of Events	1
Number of Incidents	0
TMC Detection (min.)	0.00
TMC Verification (min.)	0.00
TMC Response (min.)	0.00
RR Dispatch Time (min.)	0.00
RR Resp. Time (min.)	0.00
Event Clearance (min.)	18.45
Roadway Clear. (min.)	
Incident Clearance (min.)	
# of Events w/ RR/SIRV	1
RR/SIRV Responses	1
RR/SIRV Activities	1

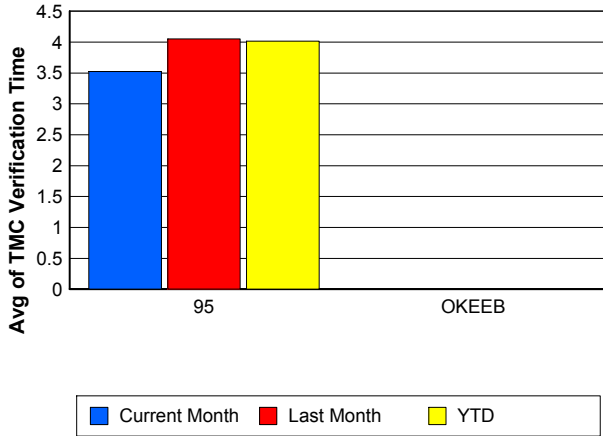
### Number of Events / Roadway



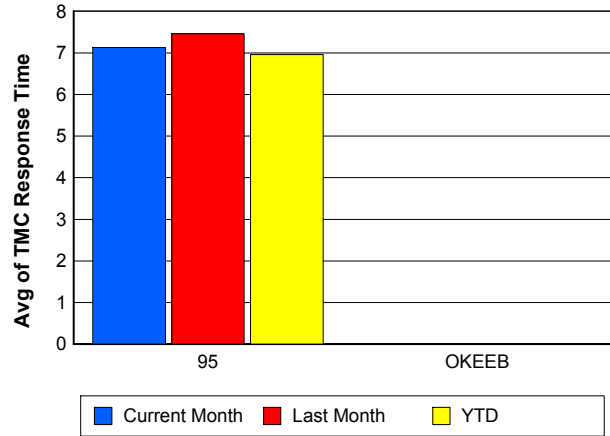
### TMC Detection Time



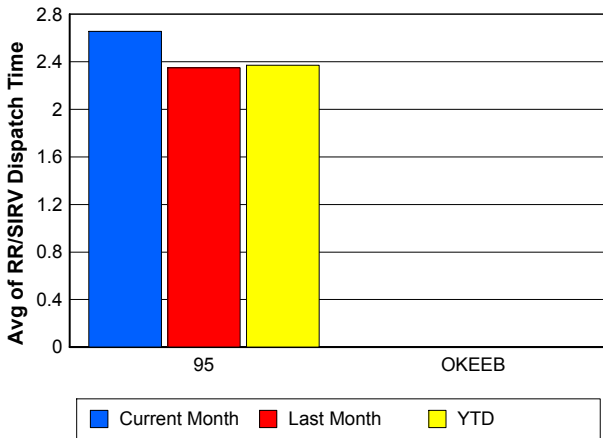
### TMC Verification Time



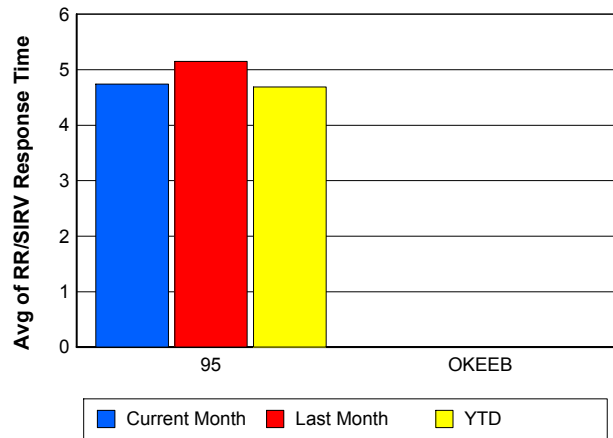
### TMC Response Time



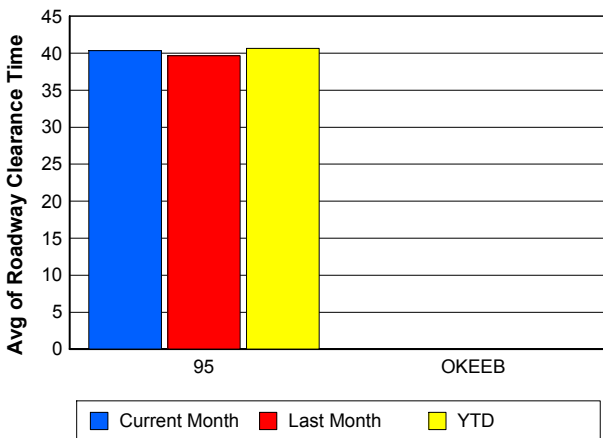
### Road Ranger / SIRV Dispatch Time



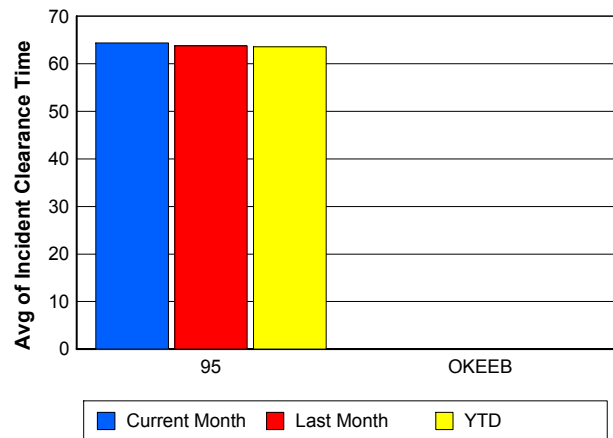
### Road Ranger / SIRV Response Time



### Roadway Clearance Time (2A)



### Incident Clearance Time (3B)



## Performance Measures by Event Type

### Accident

	<u>Current Month</u>	<u>Last Month</u>	<u>YTD</u>
Number of Events	167	176	656
Number of Incidents	80	78	293
TMC Detection (min.)	0.00	0.21	0.06
TMC Verification (min.)	5.97	7.81	7.17
TMC Response (min.)	11.21	10.29	10.35
RR Dispatch Time (min.)	2.84	2.43	2.32
RR Response Time (min.)	8.50	7.94	8.09
Event Clearance (min.)	64.29	56.12	59.04
Roadway Clearance (min.)	45.97	44.22	45.14
Incident Clearance (min.)	78.04	72.59	73.55
# of Events w/ RR/SIRV	165	173	644
RR/SIRV Assists	165	173	644
RR/SIRV Activities	197	199	754

### Debris on Roadway

	<u>Current Month</u>	<u>Last Month</u>	<u>YTD</u>
Number of Events	143	119	493
Number of Incidents	5	1	10
TMC Detection (min.)	0.00	0.00	0.00
TMC Verification (min.)	11.45	13.27	10.36
TMC Response (min.)	12.13	13.64	10.69
RR Dispatch Time (min.)	4.45	4.22	3.53
RR Response Time (min.)	7.68	9.64	7.21
Event Clearance (min.)	16.20	17.87	14.55
Roadway Clearance (min.)	19.42	15.07	14.71
Incident Clearance (min.)	22.36	15.70	19.40
# of Events w/ RR/SIRV	141	118	488
RR/SIRV Assists	141	118	488
RR/SIRV Activities	147	118	501

### Disabled Vehicle

	<u>Current Month</u>	<u>Last Month</u>	<u>YTD</u>
Number of Events	2,169	2,086	7,233
Number of Incidents	22	20	82
TMC Detection (min.)	0.00	0.14	0.04
TMC Verification (min.)	2.98	3.38	3.51
TMC Response (min.)	5.99	6.50	6.08
RR Dispatch Time (min.)	2.23	2.17	2.19
RR Response Time (min.)	4.03	4.40	4.01
Event Clearance (min.)	17.63	17.59	17.86
Roadway Clearance (min.)	14.80	25.61	25.67
Incident Clearance (min.)	25.14	36.15	36.20
# of Events w/ RR/SIRV	1,994	1,918	6,809
RR/SIRV Assists	1,994	1,918	6,809
RR/SIRV Activities	2,081	1,989	7,209

## Emergency Vehicles

	<u>Current Month</u>	<u>YTD</u>
Number of Events	2	6
Number of Incidents	2	5
TMC Detection (min.)	0.00	0.00
TMC Verification (min.)	13.97	4.66
TMC Response (min.)	13.96	6.98
RR Dispatch Time (min.)	0.27	0.13
RR Response Time (min.)	13.69	6.85
Event Clearance (min.)	56.47	62.23
Roadway Clearance (min.)	52.94	68.42
Incident Clearance (min.)	56.47	70.04
# of Events w/ RR/SIRV	2	4
RR/SIRV Assists	2	4
RR/SIRV Activities	2	4

## Other

	<u>Current Month</u>	<u>Last Month</u>	<u>YTD</u>
Number of Events	98	103	384
Number of Incidents	0	0	1
TMC Detection (min.)	0.00	0.57	0.15
TMC Verification (min.)	0.57	1.02	0.53
TMC Response (min.)	21.03	18.15	16.04
RR Dispatch Time (min.)	11.52	3.81	4.82
RR Response Time (min.)	6.86	11.84	8.96
Event Clearance (min.)	29.23	20.04	21.40
Roadway Clearance (min.)			8.12
Incident Clearance (min.)			24.77
# of Events w/ RR/SIRV	54	77	261
RR/SIRV Assists	54	77	261
RR/SIRV Activities	41	54	169

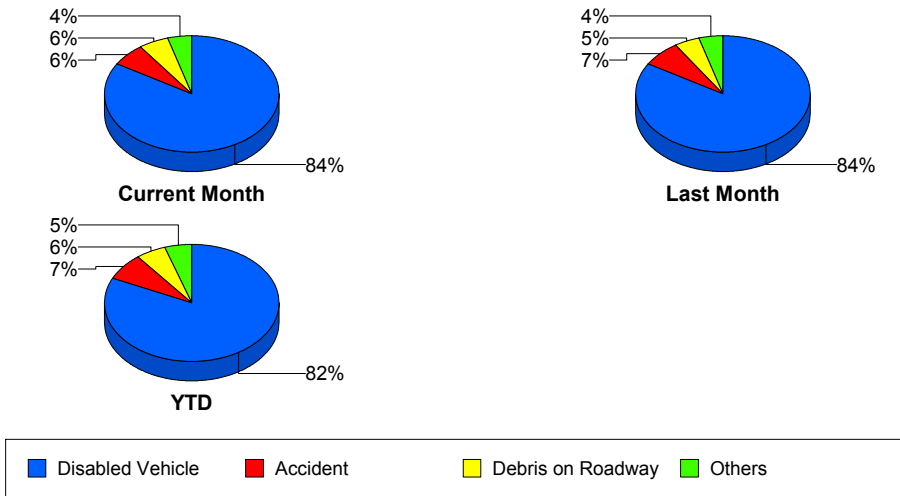
## Police Activity

	<u>Current Month</u>	<u>Last Month</u>	<u>YTD</u>
Number of Events	9	5	33
Number of Incidents	6	1	12
TMC Detection (min.)	0.79	0.00	0.22
TMC Verification (min.)	2.05	0.00	0.56
TMC Response (min.)	15.98	4.07	17.61
RR Dispatch Time (min.)	16.03	2.74	6.39
RR Response Time (min.)	11.51	0.17	15.00
Event Clearance (min.)	60.33	20.74	37.37
Roadway Clearance (min.)	73.95	14.55	51.01
Incident Clearance (min.)	75.09	16.30	52.66
# of Events w/ RR/SIRV	7	3	25
RR/SIRV Assists	7	3	25
RR/SIRV Activities	6	1	15

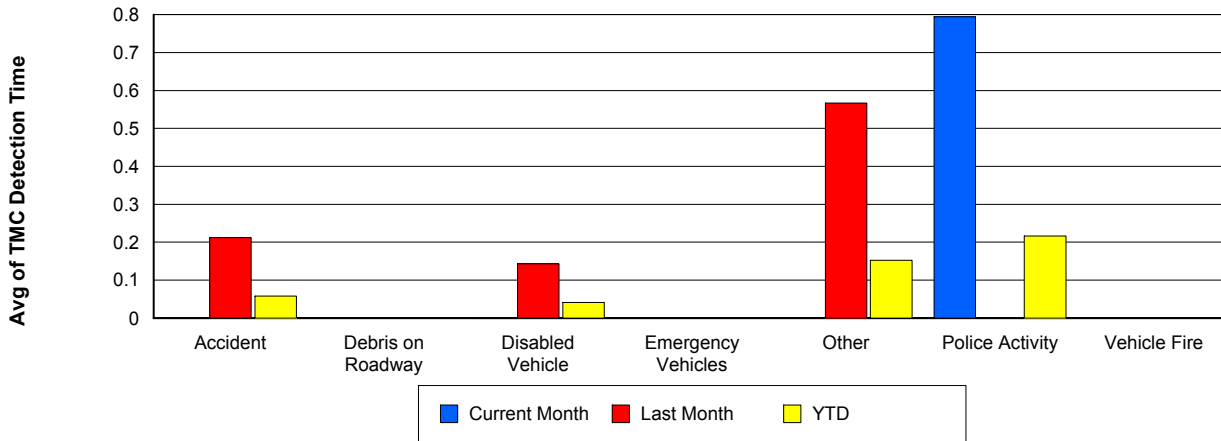
## Vehicle Fire

	<u>Current Month</u>	<u>Last Month</u>	<u>YTD</u>
Number of Events	5	4	17
Number of Incidents	4	1	9
TMC Detection (min.)	0.00	0.00	0.00
TMC Verification (min.)	2.27	5.17	3.42
TMC Response (min.)	21.10	5.14	8.82
RR Dispatch Time (min.)	5.81	1.68	2.80
RR Response Time (min.)	15.40	3.46	6.24
Event Clearance (min.)	46.20	22.35	38.73
Roadway Clearance (min.)	38.00	16.95	34.99
Incident Clearance (min.)	48.03	26.33	52.90
# of Events w/ RR/SIRV	5	4	16
RR/SIRV Assists	5	4	16
RR/SIRV Activities	6	4	17

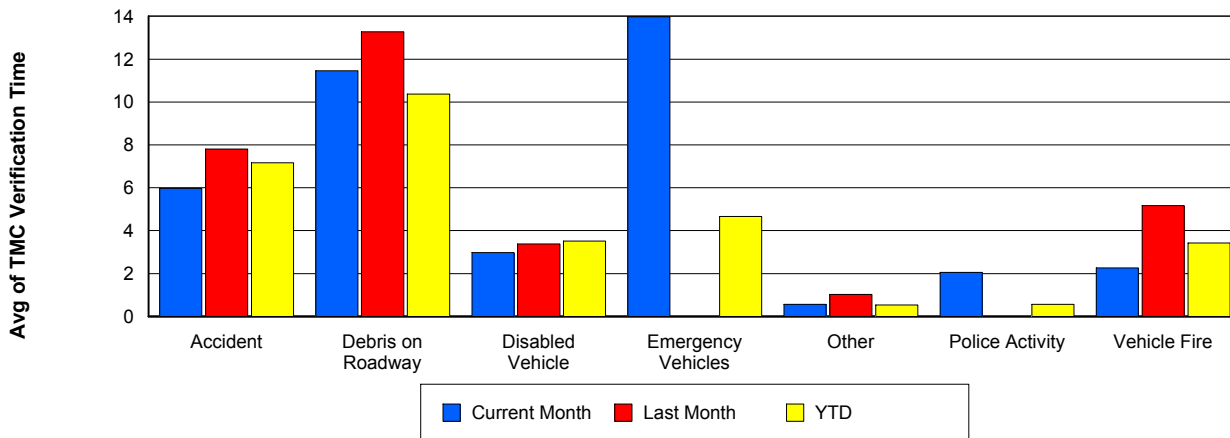
## Number of Events / Event Type



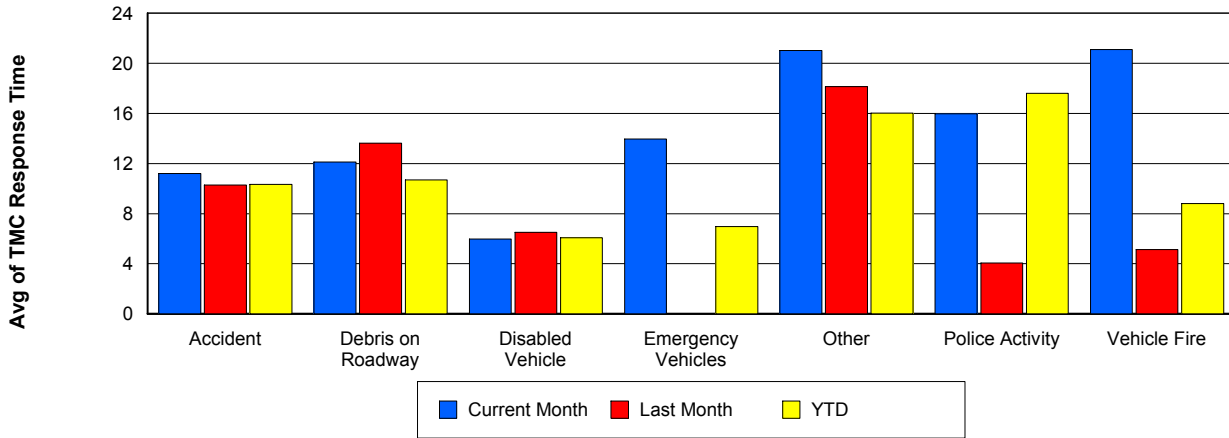
## TMC Detection Time



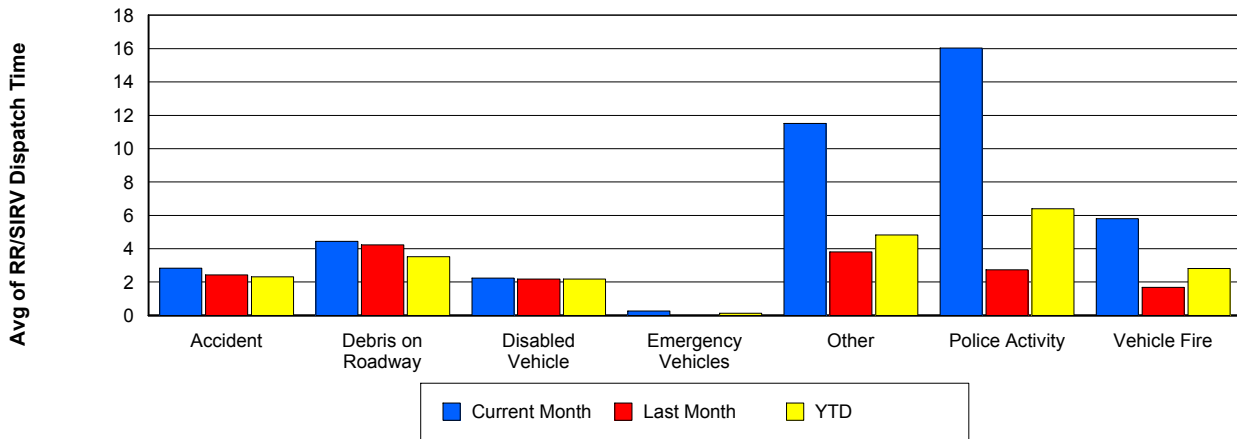
## TMC Verification Time



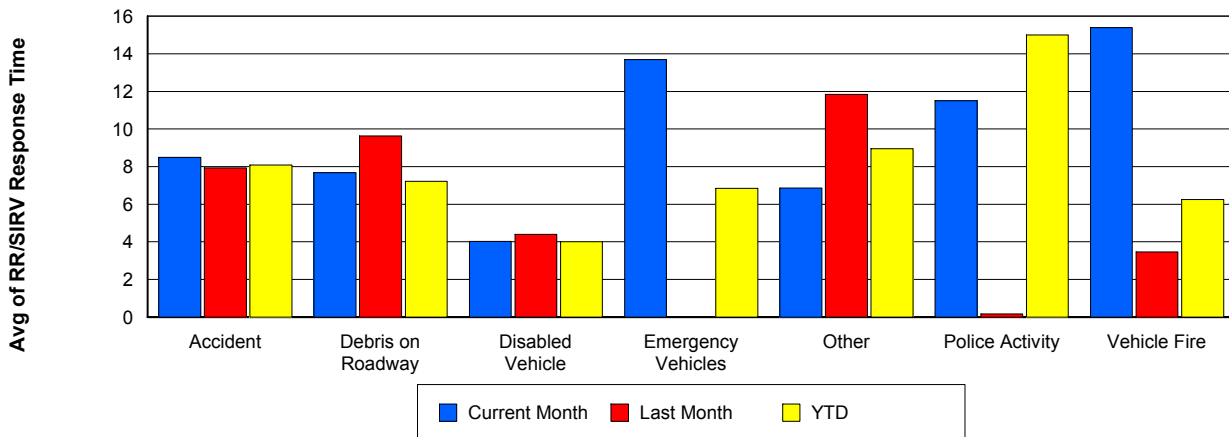
## TMC Response Time



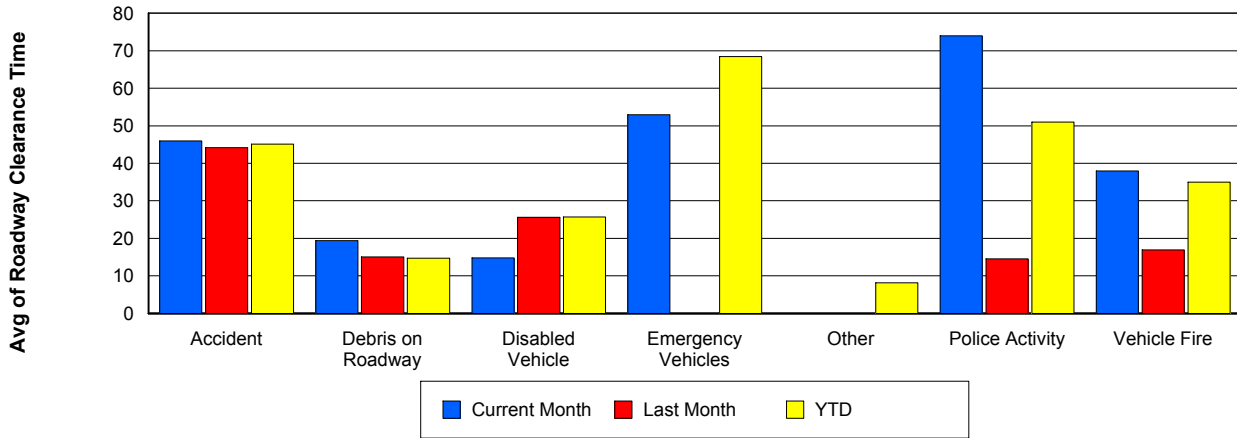
## Road Ranger / SIRV Dispatch Time



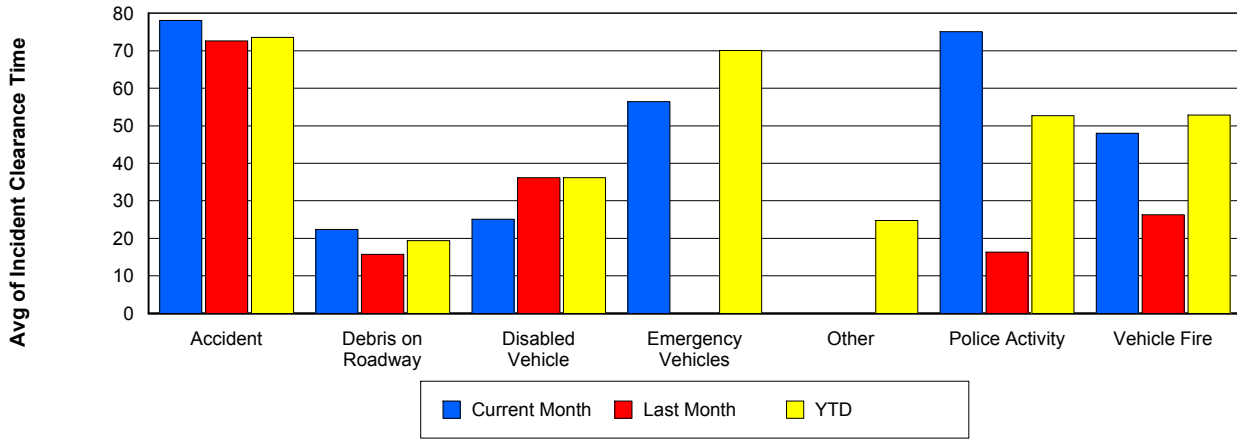
## Road Ranger / SIRV Response Time



## Roadway Clearance Time (2A)



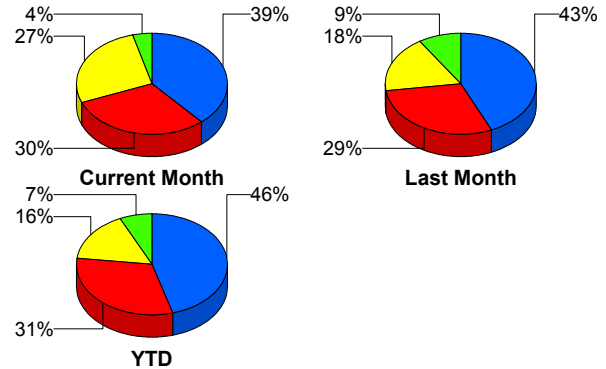
## Incident Clearance Time (3B)



## Incident Detection Methods

	Current Month	Last Month	YTD
Broward Road Ranger	0	3	5
Broward TMC	0	2	5
County Police	1	0	1
District 4	2	1	8
FDOT Maintenance	1	1	2
FHP	46	43	187
ITMS CCTV	32	18	67
Media	0	1	1
Motorist	1	1	6
Palm Beach Road Ran	36	29	128
<b>Total</b>	<b>119</b>	<b>99</b>	<b>410</b>

### Total Incidents by Detection Method

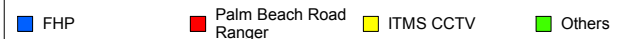
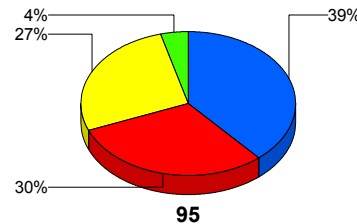


## Incident Detection Methods by Roadway

		Current Month	Last Month	YTD
95	Broward Road Ranger	0	3	5
	Broward TMC	0	2	5
	County Police	1	0	1
	District 4	2	1	8
	FDOT Maintenance	1	1	2
	FHP	46	43	187
	ITMS CCTV	32	18	67
	Media	0	1	1
	Motorist	1	1	6
	Palm Beach Road Ran	36	29	128
	<b>Total</b>	<b>119</b>	<b>99</b>	<b>410</b>
	<b>Total</b>	<b>119</b>	<b>99</b>	<b>410</b>

### Total Events by Roadway and Detection Method

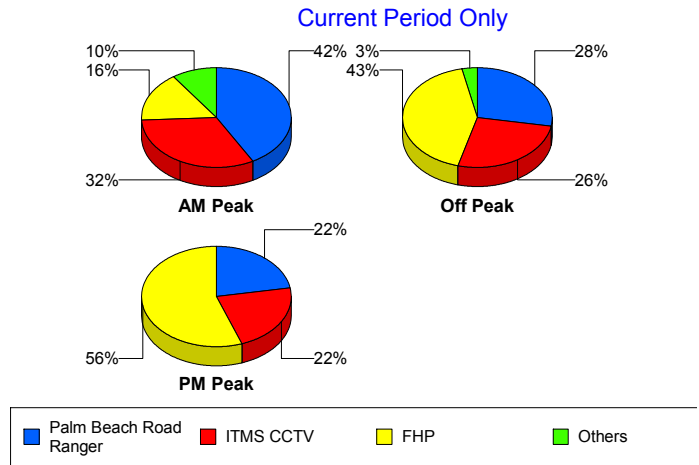
Current Period Only



### Incident Detection Methods by Peak Period

		Current Month	Last Month	YTD
AM Peak	Broward Road Ranger	0	3	4
	County Police	1	0	1
	District 4	1	0	2
	FHP	5	7	38
	ITMS CCTV	10	3	17
	Media	0	1	1
	Motorist	1	0	1
	Palm Beach Road Ran	13	11	40
	<b>Total</b>	<b>31</b>	<b>25</b>	<b>104</b>
Off Peak	Broward Road Ranger	0	0	1
	Broward TMC	0	1	2
	District 4	1	1	4
	FDOT Maintenance	1	1	2
	FHP	26	23	94
	ITMS CCTV	16	14	40
	Motorist	0	0	2
	Palm Beach Road Ran	17	14	62
	<b>Total</b>	<b>61</b>	<b>54</b>	<b>207</b>
PM Peak	Broward TMC	0	1	3
	District 4	0	0	2
	FHP	15	14	56
	ITMS CCTV	6	1	10
	Motorist	0	1	3
	Palm Beach Road Ran	6	4	26
	<b>Total</b>	<b>27</b>	<b>21</b>	<b>100</b>
<b>Total</b>	<b>119</b>	<b>99</b>	<b>410</b>	

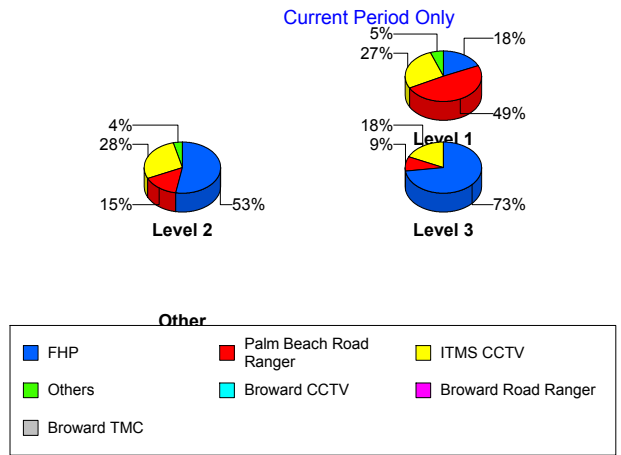
Total Events by Peak Period and Detection Method



## Incident Detection Methods by Severity

		Current Month	Last Month	YTD
	FHP	0	1	1
	Total	0	1	1
Level 1	Broward Road Ranger	0	3	5
	Broward TMC	0	2	3
	County Police	1	0	1
	District 4	2	1	6
	FHP	10	15	61
	ITMS CCTV	15	10	33
	Motorist	0	0	3
	Palm Beach Road Ran	27	17	88
	Total	55	48	200
	Level 2	Broward TMC	0	0
District 4		0	0	1
FDOT Maintenance		1	1	2
FHP		28	24	103
ITMS CCTV		15	7	29
Motorist		1	1	3
Palm Beach Road Ran		8	10	30
Total		53	43	170
Level 3	District 4	0	0	1
	FHP	8	4	23
	ITMS CCTV	2	1	5
	Media	0	1	1
	Palm Beach Road Ran	1	2	10
	Total	11	8	40
<b>Total</b>		<b>119</b>	<b>99</b>	<b>410</b>

Total Events by Severity and Detection Method



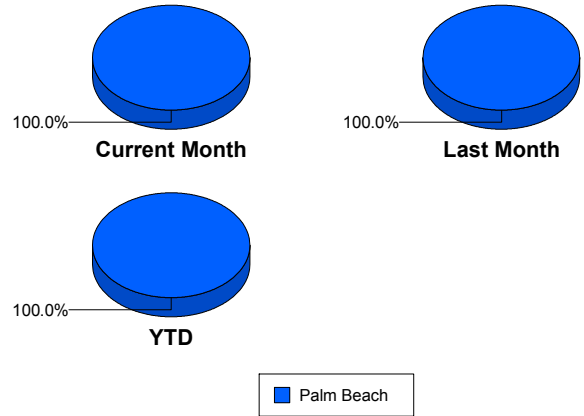
# Road Ranger / SIRV Performance Measures

## Road Ranger / SIRV Performance By County

Values presented are:  
 - Total Events with a RR/SIRV Response  
 - Total RR/SIRV Responses,  
 - Total Activities Performed

	Current Mo	Last Month	YTD
Palm Beach	2,832	2,773	10,244
	2,929	2,868	10,595
	3,128	3,022	11,234

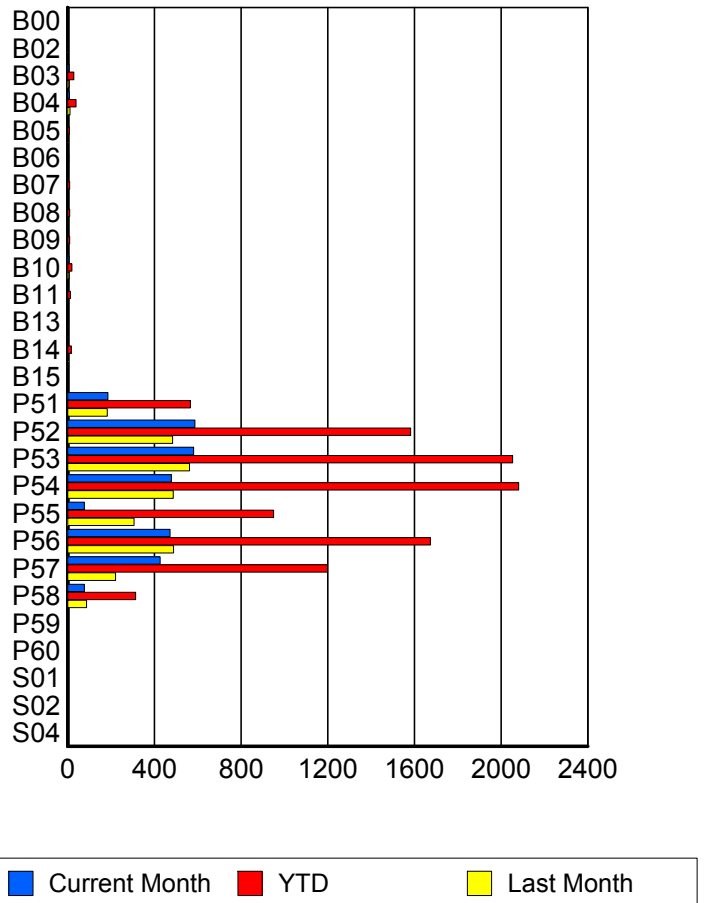
RR/SIRV Responses per County



## Road Ranger / SIRV Performance By Truck

	Current Mo	Last Month	YTD
B00	2	0	2
	2	0	2
	2	0	2
B02	2	0	2
	2	0	2
	2	0	2
B03	7	7	28
	7	7	28
	9	7	31
B04	8	10	38
	8	11	39
	8	13	42
B05	3	4	8
	3	4	8
	3	4	8
B06	4	0	5
	4	0	5
	4	0	7
B07	2	1	9
	2	1	9
	2	1	9
B08	0	1	9
	0	1	9
	0	1	9
B09	0	4	9
	0	4	9
	0	4	10

RR/SIRV Responses per Truck



	Current Mo	Last Month	YTD
B10	7	6	20
	7	6	20
	9	6	22
B11	4	1	12
	4	1	12
	5	1	13
B13	0	2	3
	0	2	3
	0	2	3
B14	0	4	17
	0	4	17
	0	4	17
B15	0	3	3
	0	3	3
	0	3	3
P51	180	180	557
	186	183	567
	201	190	599
P52	580	480	1,563
	587	485	1,583
	622	514	1,683
P53	575	557	2,030
	581	563	2,053
	631	594	2,185
P54	474	480	2,051
	479	488	2,081
	512	518	2,210
P55	77	304	942
	77	306	951
	77	321	992
P56	465	485	1,652
	473	489	1,674
	500	515	1,779
P57	423	221	1,183
	427	222	1,199
	456	234	1,266
P58	77	85	311
	77	87	314
	81	89	334
P59	1	0	1
	1	0	1
	1	0	1
P60	0	0	1
	0	0	1
	0	0	1

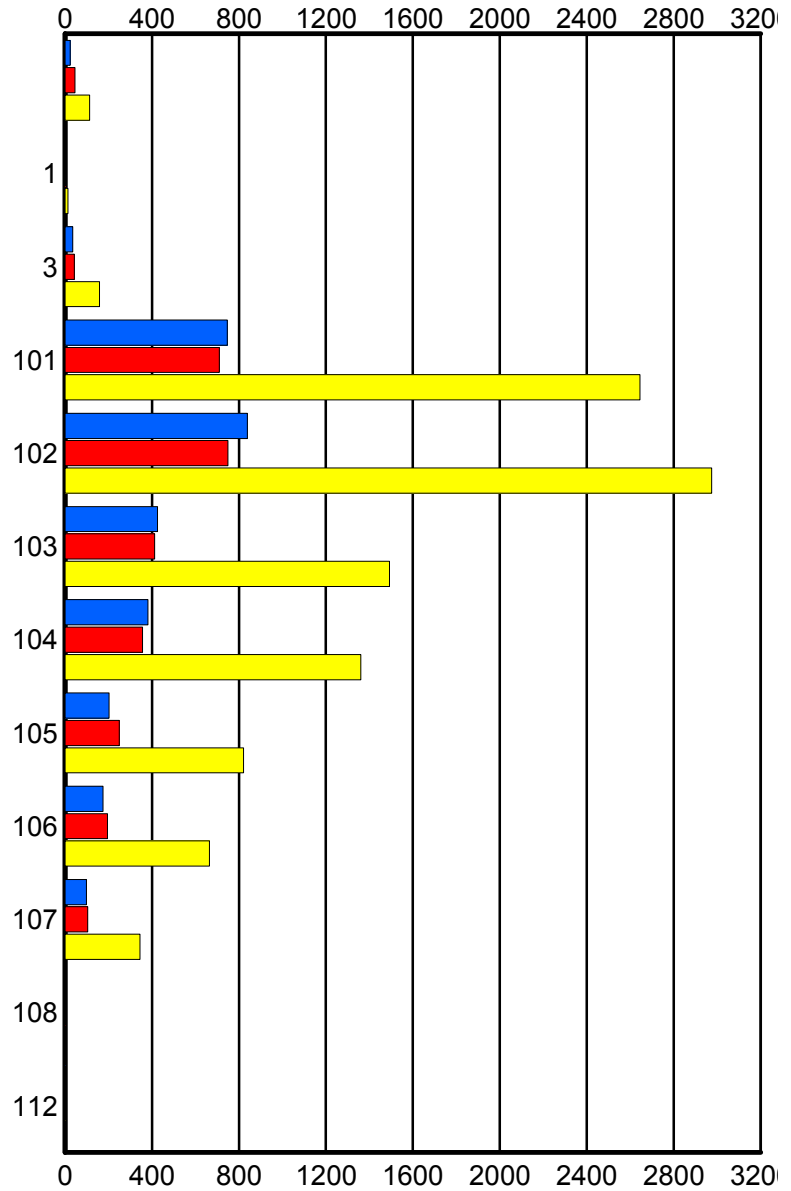
	Current Mo	Last Month	YTD
S01	1	0	3
	1	0	3
	2	0	4
S02	1	0	1
	1	0	1
	1	0	1
S04	0	1	1
	0	1	1
	0	1	1

### Road Ranger / SIRV Performance By Beat

	Current Mo	Last Month	YTD
	22	45	112
	23	45	113
	24	48	122
1	2	1	13
	2	1	14
	2	1	14
3	34	41	155
	36	42	159
	41	44	171
101	736	696	2,598
	746	709	2,645
	799	749	2,798
102	827	736	2,925
	838	750	2,974
	884	791	3,143
103	416	408	1,474
	426	412	1,492
	454	430	1,574
104	374	356	1,345
	382	356	1,361
	412	377	1,457
105	202	250	816
	202	250	821
	215	269	878
106	173	194	658
	174	195	665
	191	202	701
107	98	103	343
	98	104	345
	103	107	369
108	0	3	3
	0	4	4
	0	4	4
112	2	0	2
	2	0	2
	3	0	3

Values presented are:  
 - Total Events with a RR/SIRV Response  
 - Total RR/SIRV Responses,  
 - Total Activities Performed

### RR/SIRV Responses per Beat



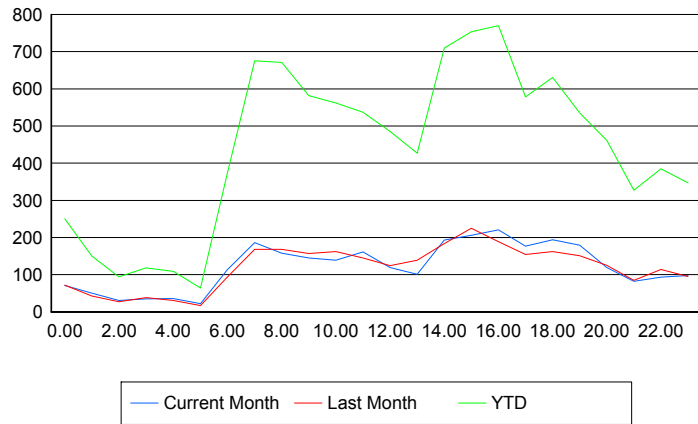
■ Current Month   
 ■ Last Month   
 ■ YTD

## Road Ranger / SIRV Performance By Time of Day

Values presented are:  
 - Total Events with a RR/SIRV Response  
 - Total RR/SIRV Responses,  
 - Total Activities Performed

	Current Mo	Last Month	YTD
12AM-1AM	70	68	244
	71	72	251
	80	77	275
1AM-2AM	49	42	147
	50	43	150
	52	44	154
2AM-3AM	30	26	91
	31	27	94
	34	27	99
3AM-4AM	34	35	114
	35	38	118
	37	42	127
4AM-5AM	34	29	105
	36	31	109
	37	31	114
5AM-6AM	21	15	55
	22	17	64
	23	19	68
6AM-7AM	106	88	349
	113	93	372
	117	96	392
7AM-8AM	178	162	654
	186	168	675
	193	175	709
8AM-9AM	155	160	643
	158	168	671
	169	174	704
9AM-10AM	140	151	564
	145	157	582
	153	167	618
10AM-11AM	137	155	542
	139	162	562
	147	165	590
11AM-12PM	156	144	524
	161	145	537
	167	153	566
12PM-1PM	113	121	462
	119	124	485
	126	128	506

## Number of Responses / Hour of the Day



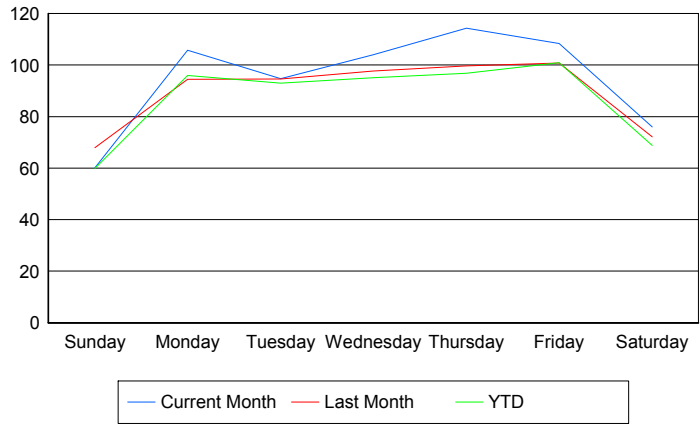
	Current Mo	Last Month	YTD
1PM-2PM	95	133	406
	101	139	427
	110	144	453
2PM-3PM	184	178	684
	193	184	710
	206	202	758
3PM-4PM	200	222	739
	206	225	754
	229	241	812
4PM-5PM	215	181	742
	221	189	770
	237	198	820
5PM-6PM	169	150	560
	177	154	578
	188	161	613
6PM-7PM	191	156	618
	194	162	631
	206	169	665
7PM-8PM	171	146	515
	179	151	535
	194	158	567
8PM-9PM	117	124	453
	119	125	461
	127	127	481
9PM-10PM	81	81	316
	82	85	327
	91	93	350
10PM-11PM	90	113	377
	93	114	385
	101	123	415
11PM-12AM	96	93	340
	98	95	347
	104	108	378

## Road Ranger / SIRV Performance By Day of Week

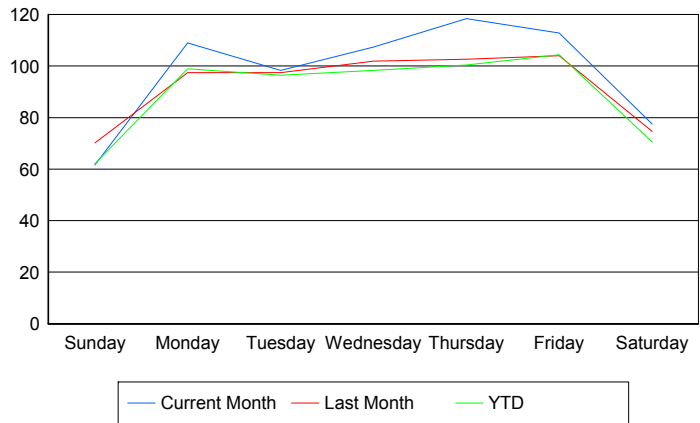
Values presented are:  
 - Total Events with a RR/SIRV Response  
 - Total RR/SIRV Responses,  
 - Total Activities Performed

	Current Mo	Last Month	YTD
Sunday	239	266	1,000
	245	275	1,034
	261	287	1,091
Monday	418	470	1,589
	431	485	1,639
	453	515	1,736
Tuesday	374	470	1,566
	388	484	1,623
	418	516	1,728
Wednesday	403	485	1,586
	416	505	1,637
	444	532	1,744
Thursday	560	395	1,591
	581	407	1,650
	622	428	1,763
Friday	536	401	1,774
	558	414	1,834
	592	432	1,924
Saturday	304	288	1,149
	310	298	1,178
	338	312	1,248

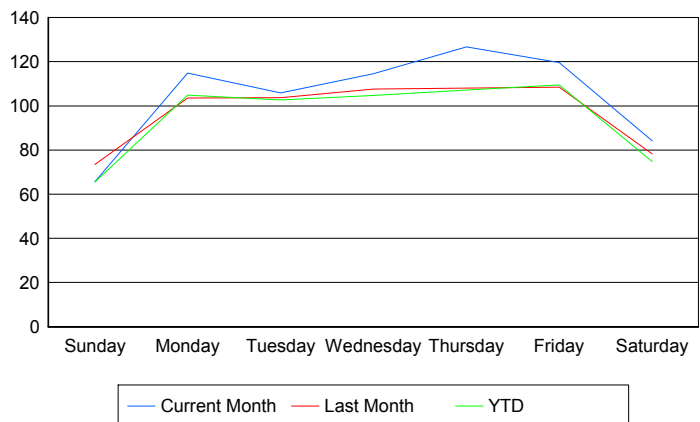
### Avg # of events with a RR/SIRV Response per Day of the Week



### Avg # of RR/SIRV Responses per Day of the Week



### Avg # of RR/SIRV Activities Performed per Day of the Week



### Road Ranger / SIRV Responses per Time of Day and Day of Week

