

Monthly Performance Measures Report Palm Beach County



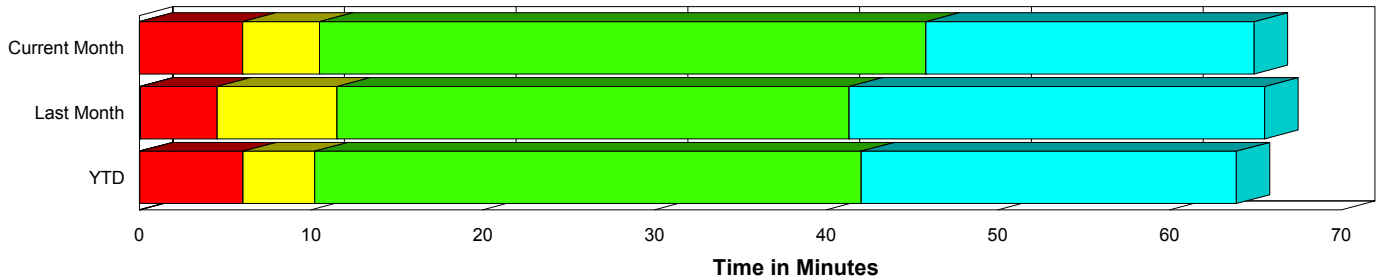
Created on:
June 01, 2010
11:09 am

Period From May 1, 2010 to May 31, 2010

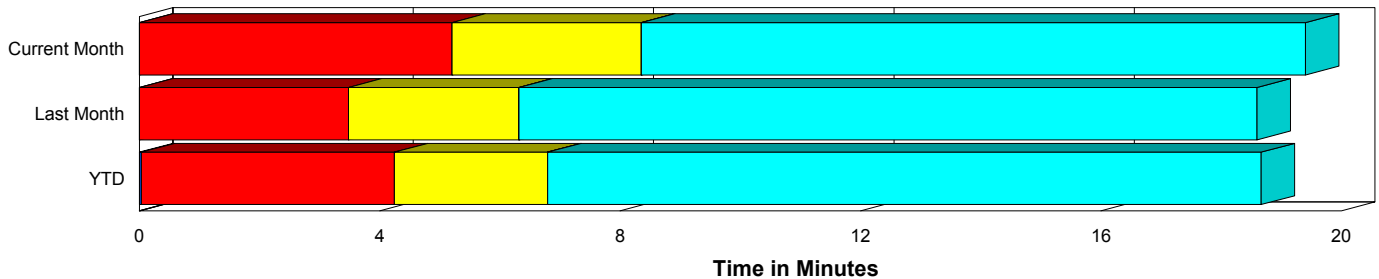
Performance Measures Summary

	Traffic Events (No Lanes Blocked)			Incidents (Lanes Blocked)		
	<u>This Month</u>	<u>Last Month</u>	<u>YTD</u>	<u>This Month</u>	<u>Last Month</u>	<u>YTD</u>
Number of Events	2,548	2,485	10,998	130	120	549
TMC Detection (min.)	0.00	0.00	0.04	0.01	0.06	0.03
TMC Verification (min.)	5.20	3.48	4.21	6.02	4.47	6.05
TMC Response (min.)	9.14	6.89	7.31	10.94	11.70	10.57
RR Dispatch Time (min.)	3.33	2.63	2.58	3.60	3.23	2.87
RR Response Time (min.)	5.92	4.54	4.84	7.37	8.46	7.72
Roadway Clearance (min.)				46.22	40.77	42.15
Event Clearance (min.)	20.19	19.17	19.22	65.31	64.64	64.34
# of Events w/ RR/SIRV	2,362	2,262	10,243	122	117	527
RR/SIRV Responses	2,362	2,262	10,243	122	117	527
RR/SIRV Activities	2,461	2,343	10,647	164	148	685

Incident Clearance Time-Line



Traffic Event (Non-Lane Blockage) Time-Line



■ Avg. TMC Detection Time	■ Avg. Time from TMC Response to Roadway Clearance*
■ Avg. Time from TMC Detection to TMC Verification	■ Avg. Time from Roadway Clearance to Incident/Event Clearance**
■ Avg. Time from TMC Verification to TMC Response	

* Roadway clearance equals all travel lanes open

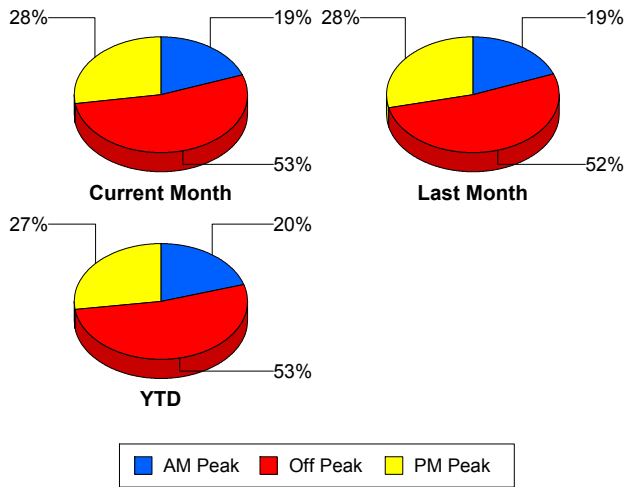
** Incident clearance equals time when last responder has left the scene

Performance Measures by Peak Period

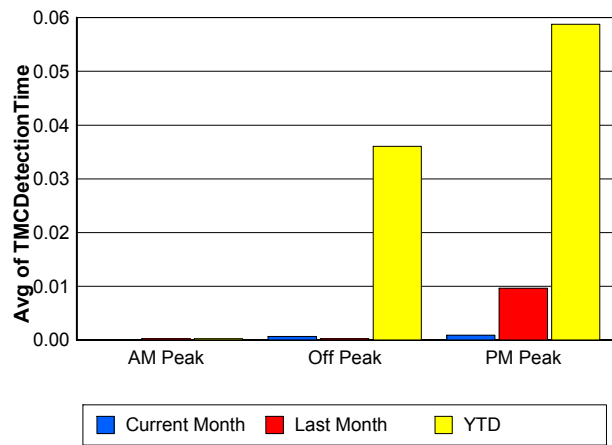
Note: AM peak period is defined as 6am to 10am and PM peak period is defined as 3pm to 7pm.

	AM Peak			Off Peak			PM Peak		
	<u>Current Month</u>	<u>Last Month</u>	<u>YTD</u>	<u>Current Month</u>	<u>Last Month</u>	<u>YTD</u>	<u>Current Month</u>	<u>Last Month</u>	<u>YTD</u>
Number of Events	518	502	2,338	1,423	1,361	6,063	737	742	3,146
Number of Incidents	24	32	129	71	61	284	35	27	136
TMC Detection (min.)	0.00	0.00	0.00	0.00	0.00	0.04	0.00	0.01	0.06
TMC Verification (min.)	4.02	2.53	3.00	5.42	3.71	4.49	5.76	3.85	4.88
TMC Response (min.)	8.55	6.37	6.29	9.68	7.44	8.01	8.92	7.10	7.36
RR Dispatch Time (min.)	2.63	1.93	1.77	3.72	2.75	2.82	3.17	2.98	2.78
RR Response Time (min.)	5.89	4.57	4.58	6.04	4.98	5.29	5.98	4.43	4.73
Event Clearance (min.)	22.13	21.85	21.13	23.23	22.03	22.18	20.93	19.47	19.97
Roadway Clearance (min.)	29.78	48.14	38.20	61.33	38.66	48.95	26.86	36.80	31.70
Incident Clearance (min.)	43.62	66.27	64.24	80.20	63.10	67.48	49.98	66.18	56.10
# of Events w/ RR/SIRV	500	464	2,200	1,286	1,226	5,597	698	689	2,973
RR/SIRV Responses	500	464	2,200	1,286	1,226	5,597	698	689	2,973
RR/SIRV Activities	532	489	2,328	1,361	1,288	5,897	732	714	3,107

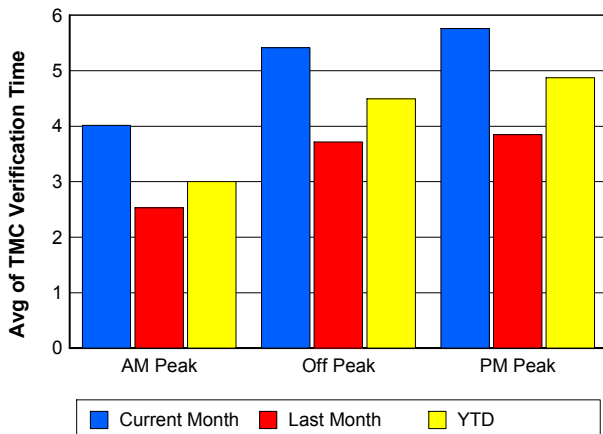
Number of Events / Peak Period



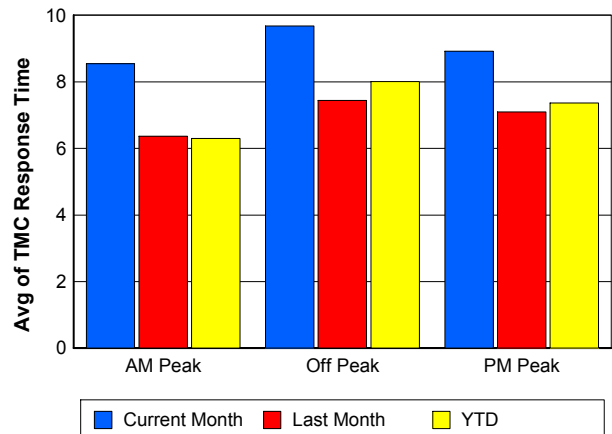
TMC Detection Time



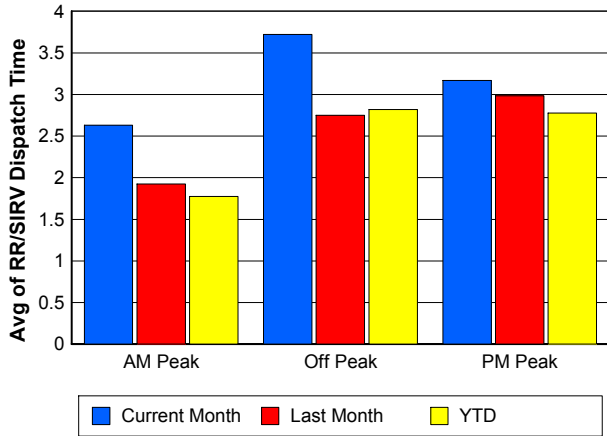
TMC Verification Time



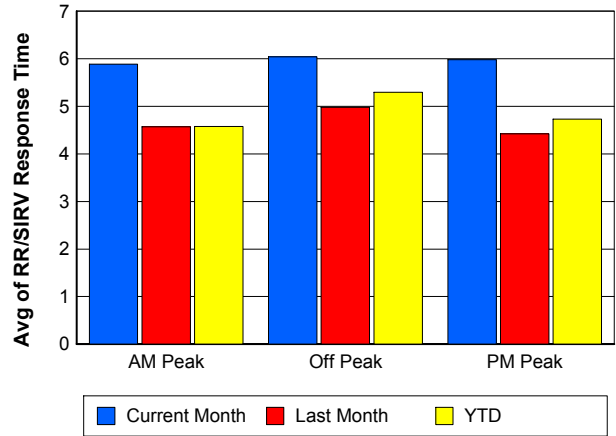
TMC Response Time



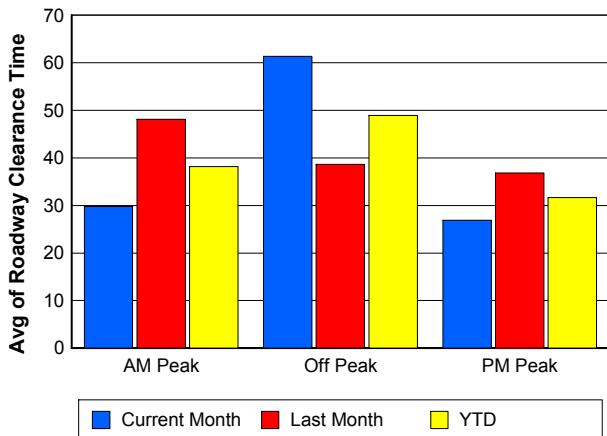
Road Ranger / SIRV Dispatch Time



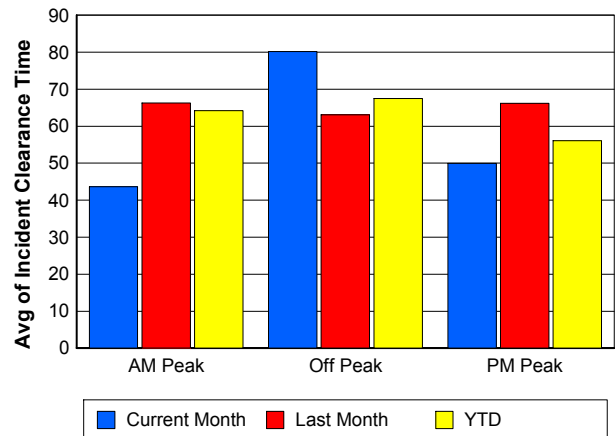
Road Ranger / SIRV Response Time



Roadway Clearance Time (2A)



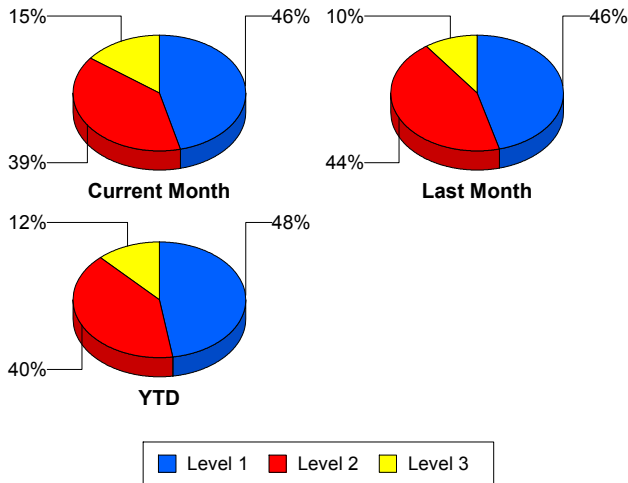
Incident Clearance Time (3B)



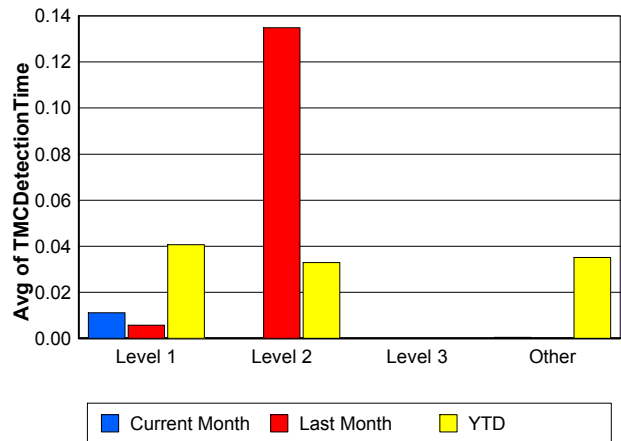
Performance Measures by Severity

	Level 1			Level 2			Level 3			Other		
	<u>This Month</u>	<u>Last Month</u>	<u>YTD</u>	<u>This Month</u>	<u>Last Month</u>	<u>YTD</u>	<u>This Month</u>	<u>Last Month</u>	<u>YTD</u>	<u>This Month</u>	<u>Last Month</u>	<u>YTD</u>
Number of Events	60	55	260	51	53	221	19	12	66	2,548	2,485	11,000
Number of Incidents	60	55	260	51	53	221	19	12	66	0	0	2
TMC Detection (min.)	0.01	0.01	0.04	0.00	0.13	0.03	0.00	0.00	0.00	0.00	0.00	0.04
TMC Verification (min.)	4.30	2.28	3.42	8.14	6.45	9.13	5.75	5.74	6.09	5.20	3.48	4.21
TMC Response (min.)	6.82	6.17	6.18	12.26	15.75	14.36	22.62	18.95	15.63	9.14	6.89	7.31
RR Dispatch Time (min.)	2.33	1.20	1.35	2.61	3.90	3.65	12.38	10.27	7.10	3.33	2.63	2.58
RR Resp. Time (min.)	4.57	5.11	4.88	9.64	11.83	10.77	10.24	8.69	8.53	5.92	4.54	4.84
Event Clearance (min.)	40.90	39.47	43.38	65.45	77.26	71.15	141.99	124.22	123.24	20.19	19.17	19.23
Roadway Clear. (min.)	15.76	15.11	15.34	52.44	51.83	54.72	125.73	109.57	107.59			-21.46
Incident Clearance (min.)	40.90	39.47	43.38	65.45	77.26	71.15	141.99	124.22	122.39			0.00
# of Events w/ RR/SIRV	57	55	254	51	51	219	14	11	52	2,362	2,262	10,245
RR/SIRV Responses	57	55	254	51	51	219	14	11	52	2,362	2,262	10,245
RR/SIRV Activities	72	59	304	68	74	297	24	15	79	2,461	2,343	10,652

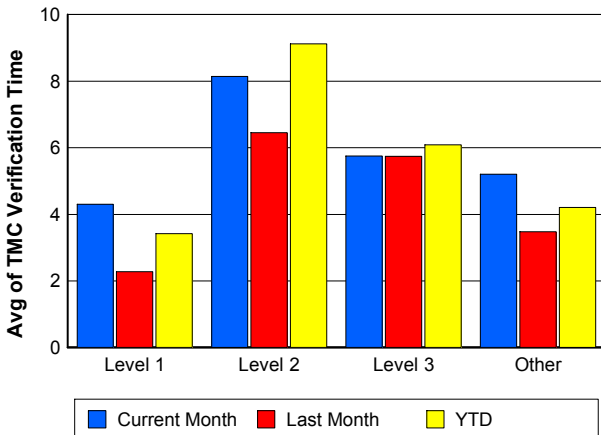
Number of Events / Severity



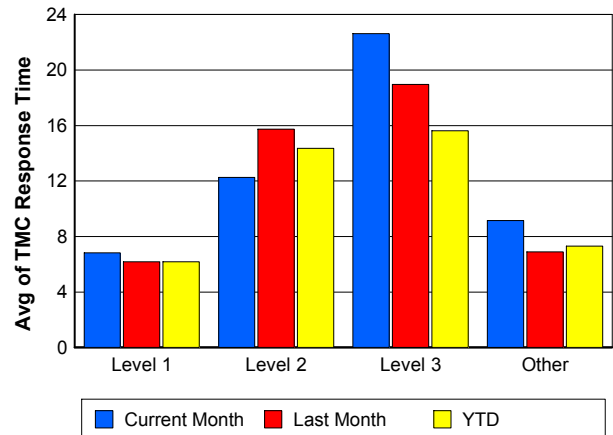
TMC Detection Time



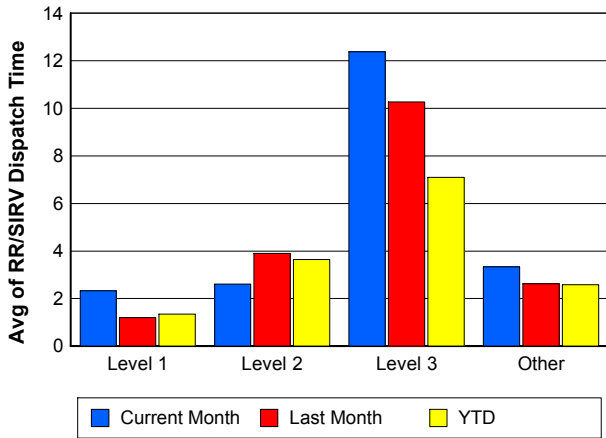
TMC Verification Time



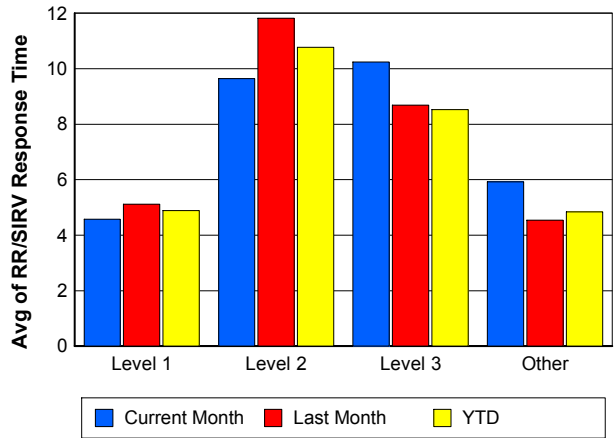
TMC Response Time



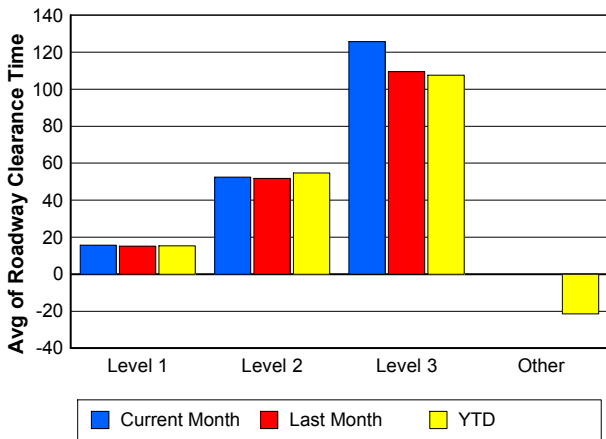
Road Ranger / SIRV Dispatch Time



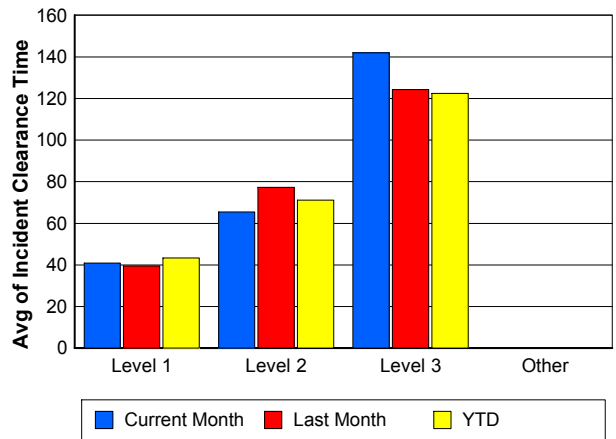
Road Ranger / SIRV Response Time



Roadway Clearance Time (2A)



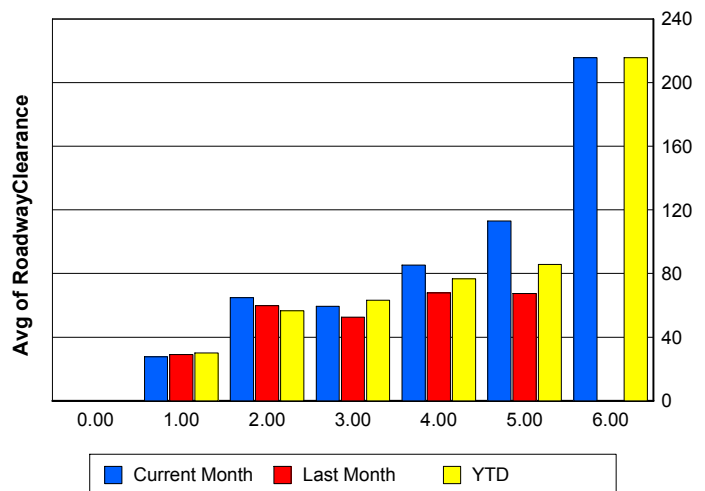
Incident Clearance Time (3B)



Roadway Clearance by Maximum Number of Lanes Blocked

	Current Month	Last Month	YTD
0			
1	27.67	28.97	30.03
2	64.83	59.81	56.52
3	59.46	52.55	63.11
4	85.28	67.82	76.68
5	112.97	67.40	85.63
6	215.67	0.00	215.67

Roadway Clearance Time (2A)



Performance Measures by Roadway

95

	<u>Current Month</u>	<u>Last Month</u>	<u>YTD</u>
Number of Events	2,675	2,604	11,536
Number of Incidents	127	119	539
TMC Detection (min.)	0.00	0.00	0.04
TMC Verification (min.)	5.25	3.53	4.30
TMC Response (min.)	9.24	7.13	7.48
RR Dispatch Time (min.)	3.35	2.66	2.60
RR Resp. Time (min.)	5.99	4.74	4.99
Event Clearance (min.)	22.32	21.24	21.33
Roadway Clear. (min.)	45.58	40.35	41.82
Incident Clearance (min.)	65.06	64.40	63.93
# of Events w/ RR/SIRV	2,484	2,379	10,769
RR/SIRV Responses	2,484	2,379	10,769
RR/SIRV Activities	2,625	2,491	11,331

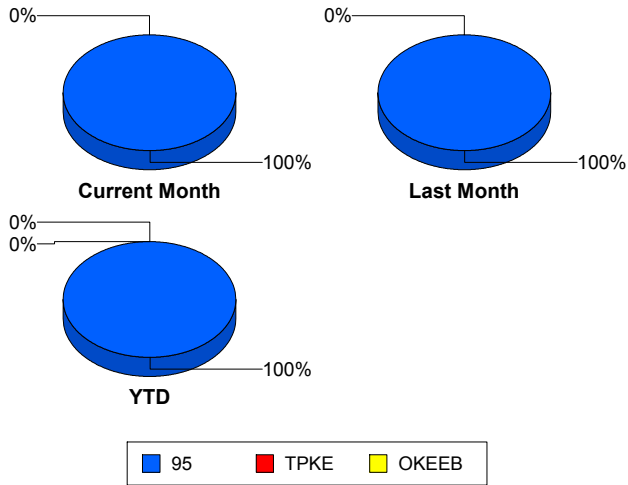
OKEEB

	<u>YTD</u>
Number of Events	1
Number of Incidents	0
TMC Detection (min.)	0.00
TMC Verification (min.)	0.00
TMC Response (min.)	0.00
RR Dispatch Time (min.)	0.00
RR Resp. Time (min.)	0.00
Event Clearance (min.)	18.45
Roadway Clear. (min.)	
Incident Clearance (min.)	
# of Events w/ RR/SIRV	1
RR/SIRV Responses	1
RR/SIRV Activities	1

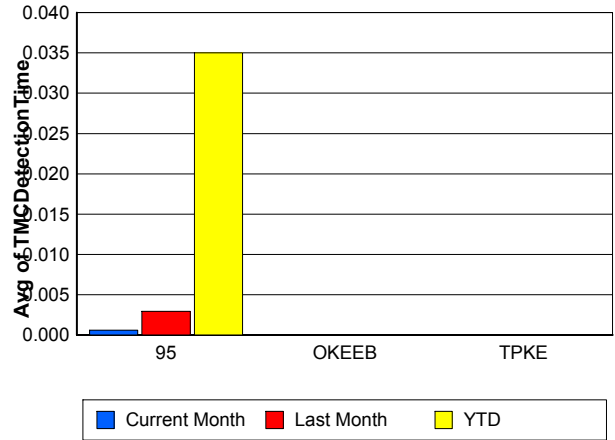
TPKE

	<u>Current Month</u>	<u>Last Month</u>	<u>YTD</u>
Number of Events	3	1	10
Number of Incidents	3	1	10
TMC Detection (min.)	0.00	0.00	0.00
TMC Verification (min.)	0.00	0.00	0.00
TMC Response (min.)			
RR Dispatch Time (min.)			
RR Resp. Time (min.)			
Event Clearance (min.)	76.01	92.35	62.29
Roadway Clear. (min.)	73.63	90.48	59.66
Incident Clearance (min.)	76.01	92.35	62.29
# of Events w/ RR/SIRV	0	0	0
RR/SIRV Responses	0	0	0
RR/SIRV Activities	0	0	0

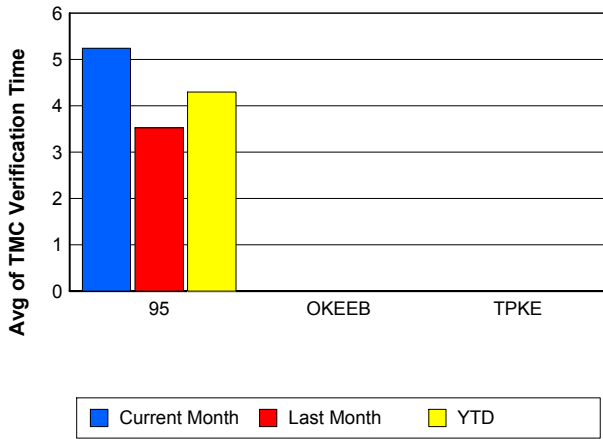
Number of Events / Roadway



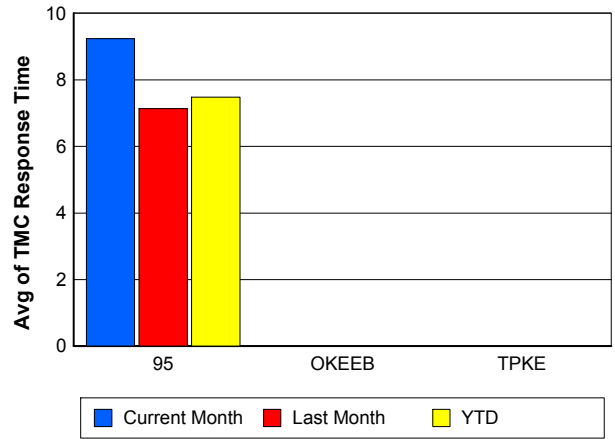
TMC Detection Time



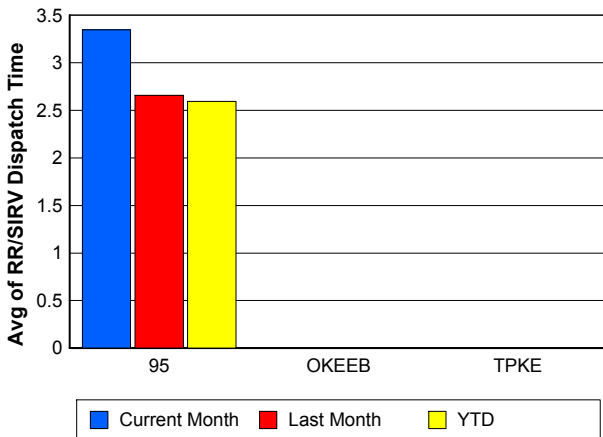
TMC Verification Time



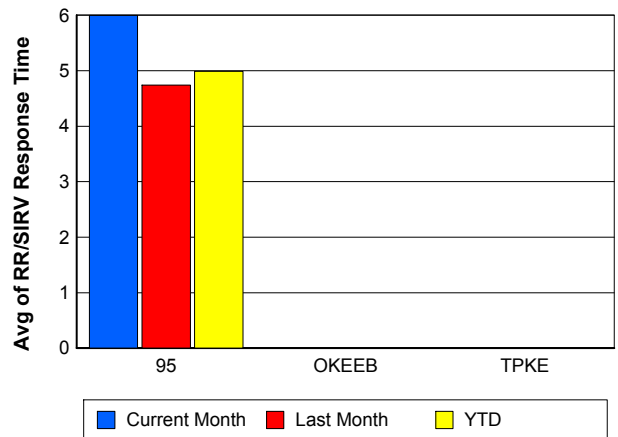
TMC Response Time



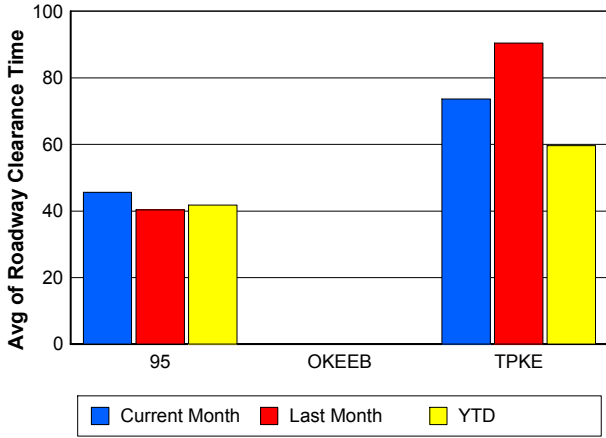
Road Ranger / SIRV Dispatch Time



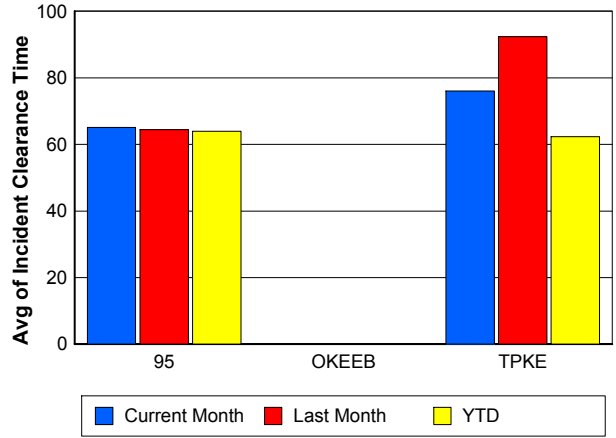
Road Ranger / SIRV Response Time



Roadway Clearance Time (2A)



Incident Clearance Time (3B)



Performance Measures by Event Type

Accident

	<u>Current Month</u>	<u>Last Month</u>	<u>YTD</u>
Number of Events	176	168	838
Number of Incidents	82	81	381
TMC Detection (min.)	0.00	0.00	0.05
TMC Verification (min.)	9.66	5.94	7.64
TMC Response (min.)	12.83	11.21	10.87
RR Dispatch Time (min.)	3.69	2.84	2.60
RR Response Time (min.)	9.16	8.50	8.31
Event Clearance (min.)	64.69	64.46	60.26
Roadway Clearance (min.)	48.09	46.52	46.03
Incident Clearance (min.)	73.54	78.22	73.40
# of Events w/ RR/SIRV	170	165	814
RR/SIRV Assists	170	165	814
RR/SIRV Activities	198	197	952

Debris on Roadway

	<u>Current Month</u>	<u>Last Month</u>	<u>YTD</u>
Number of Events	183	143	676
Number of Incidents	4	5	14
TMC Detection (min.)	0.00	0.00	0.00
TMC Verification (min.)	12.19	11.45	10.86
TMC Response (min.)	13.17	12.13	11.36
RR Dispatch Time (min.)	4.01	4.45	3.66
RR Response Time (min.)	9.12	7.68	7.73
Event Clearance (min.)	15.85	16.20	14.90
Roadway Clearance (min.)	27.50	19.42	18.37
Incident Clearance (min.)	33.88	22.36	23.54
# of Events w/ RR/SIRV	178	141	666
RR/SIRV Assists	178	141	666
RR/SIRV Activities	190	147	691

Disabled Vehicle

	<u>Current Month</u>	<u>Last Month</u>	<u>YTD</u>
Number of Events	2,186	2,169	9,419
Number of Incidents	27	22	109
TMC Detection (min.)	0.00	0.00	0.03
TMC Verification (min.)	4.57	2.98	3.76
TMC Response (min.)	8.28	5.99	6.58
RR Dispatch Time (min.)	3.04	2.23	2.39
RR Response Time (min.)	5.40	4.03	4.33
Event Clearance (min.)	18.71	17.63	18.06
Roadway Clearance (min.)	23.34	14.80	25.10
Incident Clearance (min.)	28.99	25.14	34.42
# of Events w/ RR/SIRV	2,053	1,994	8,862
RR/SIRV Assists	2,053	1,994	8,862
RR/SIRV Activities	2,168	2,081	9,377

Emergency Vehicles

	<u>Current Month</u>	<u>Last Month</u>	<u>YTD</u>
Number of Events	3	2	9
Number of Incidents	3	2	8
TMC Detection (min.)	0.00	0.00	0.00
TMC Verification (min.)	0.00	13.97	3.11
TMC Response (min.)	0.00	13.96	5.58
RR Dispatch Time (min.)	0.00	0.27	0.11
RR Response Time (min.)	0.00	13.69	5.48
Event Clearance (min.)	25.24	56.47	49.90
Roadway Clearance (min.)	21.42	52.94	50.79
Incident Clearance (min.)	25.24	56.47	53.24
# of Events w/ RR/SIRV	1	2	5
RR/SIRV Assists	1	2	5
RR/SIRV Activities	2	2	6

Other

	<u>Current Month</u>	<u>Last Month</u>	<u>YTD</u>
Number of Events	102	98	486
Number of Incidents	0	0	1
TMC Detection (min.)	0.00	0.00	0.12
TMC Verification (min.)	0.77	0.57	0.58
TMC Response (min.)	20.84	21.03	16.93
RR Dispatch Time (min.)	9.66	11.52	5.68
RR Response Time (min.)	6.90	6.86	8.58
Event Clearance (min.)	28.08	29.23	22.80
Roadway Clearance (min.)			8.12
Incident Clearance (min.)			24.77
# of Events w/ RR/SIRV	57	54	318
RR/SIRV Assists	57	54	318
RR/SIRV Activities	37	41	206

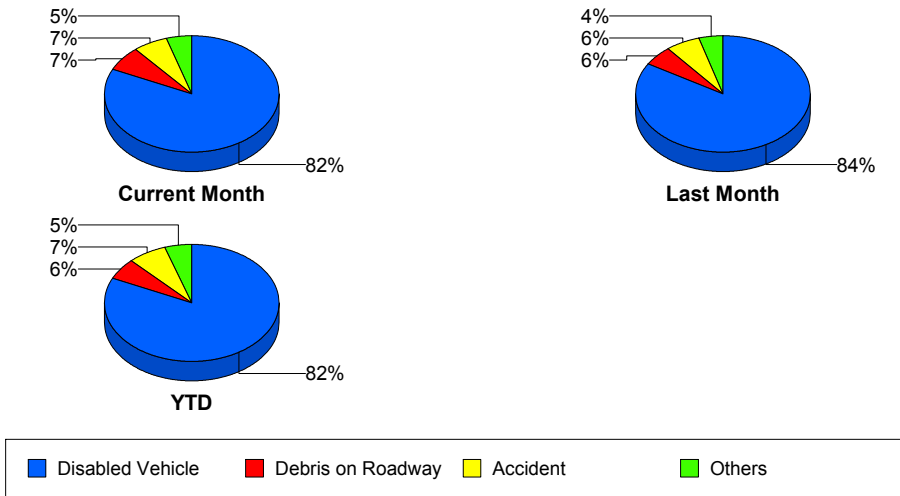
Police Activity

	<u>Current Month</u>	<u>Last Month</u>	<u>YTD</u>
Number of Events	13	9	46
Number of Incidents	8	6	20
TMC Detection (min.)	0.00	0.79	0.16
TMC Verification (min.)	1.11	2.05	0.71
TMC Response (min.)	26.63	15.98	20.99
RR Dispatch Time (min.)	14.56	16.03	8.89
RR Response Time (min.)	9.52	11.51	12.94
Event Clearance (min.)	91.94	60.33	52.79
Roadway Clearance (min.)	125.24	73.95	80.70
Incident Clearance (min.)	138.11	75.09	86.84
# of Events w/ RR/SIRV	11	7	36
RR/SIRV Assists	11	7	36
RR/SIRV Activities	13	6	28

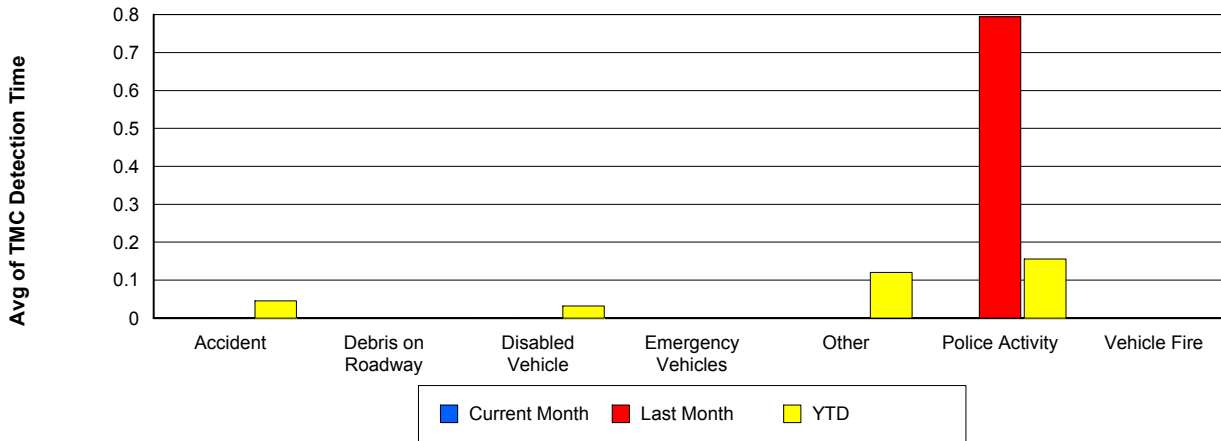
Vehicle Fire

	<u>Current Month</u>	<u>Last Month</u>	<u>YTD</u>
Number of Events	6	5	24
Number of Incidents	5	4	15
TMC Detection (min.)	0.00	0.00	0.00
TMC Verification (min.)	1.50	2.27	2.77
TMC Response (min.)	2.93	21.10	7.14
RR Dispatch Time (min.)	1.33	5.81	2.40
RR Response Time (min.)	1.60	15.40	4.92
Event Clearance (min.)	63.28	46.20	43.71
Roadway Clearance (min.)	41.62	38.00	35.46
Incident Clearance (min.)	61.79	48.03	53.07
# of Events w/ RR/SIRV	6	5	22
RR/SIRV Assists	6	5	22
RR/SIRV Activities	8	6	25

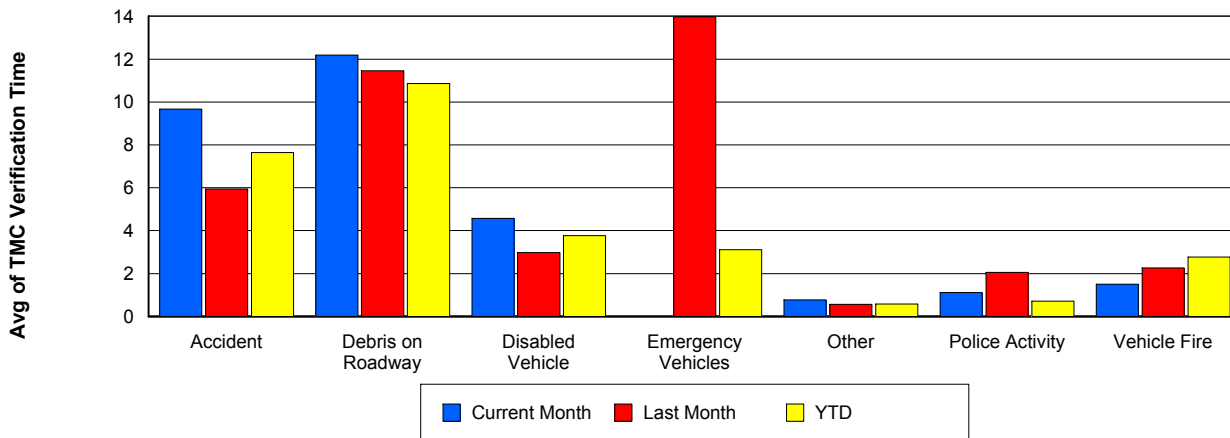
Number of Events / Event Type



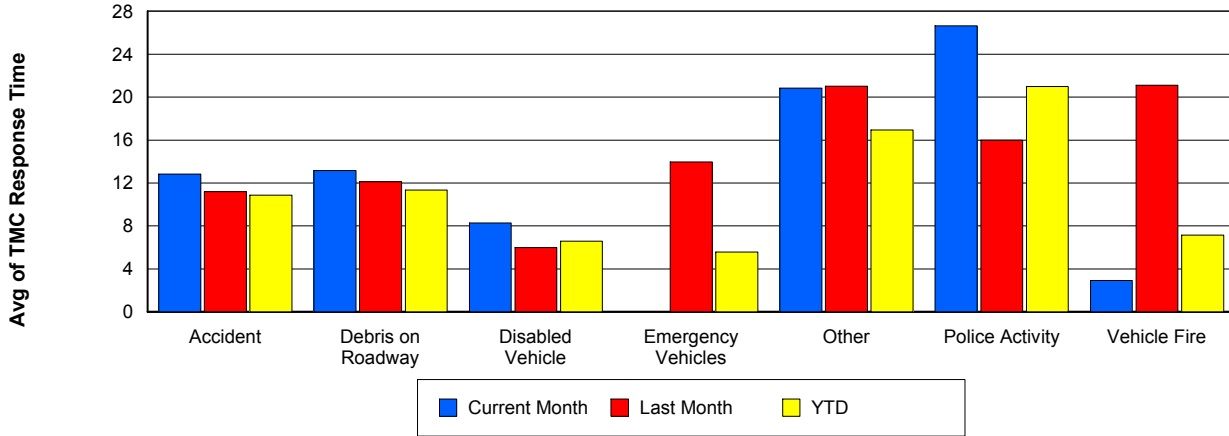
TMC Detection Time



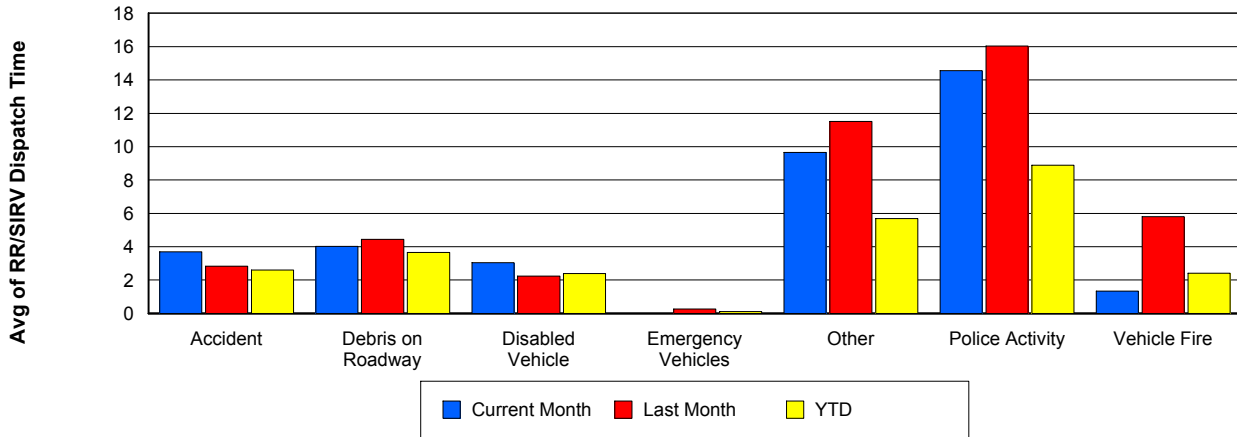
TMC Verification Time



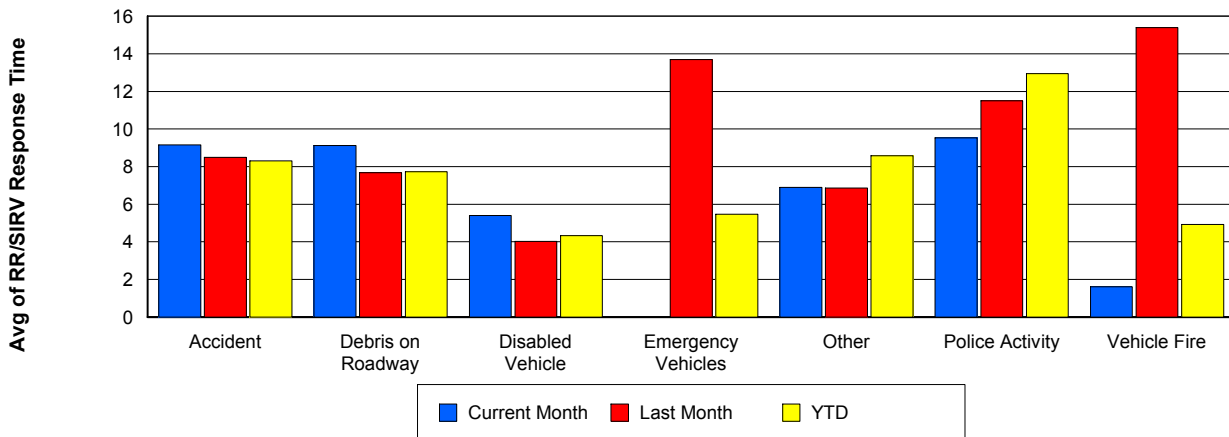
TMC Response Time



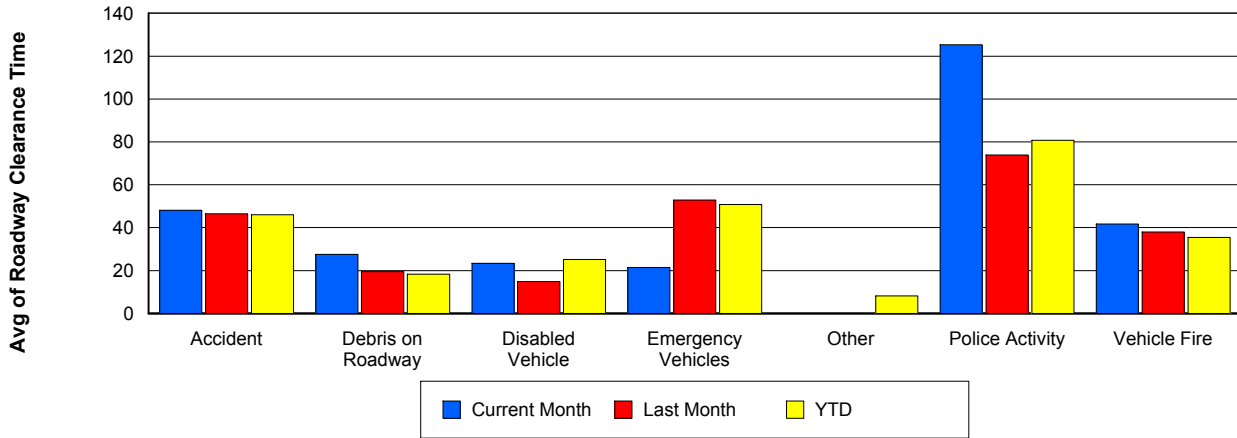
Road Ranger / SIRV Dispatch Time



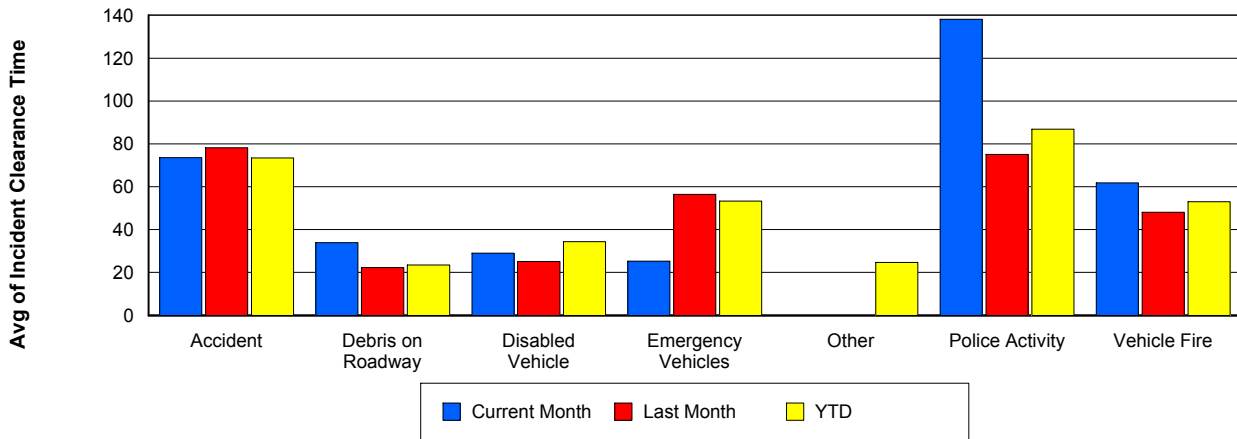
Road Ranger / SIRV Response Time



Roadway Clearance Time (2A)



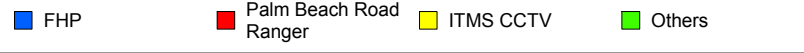
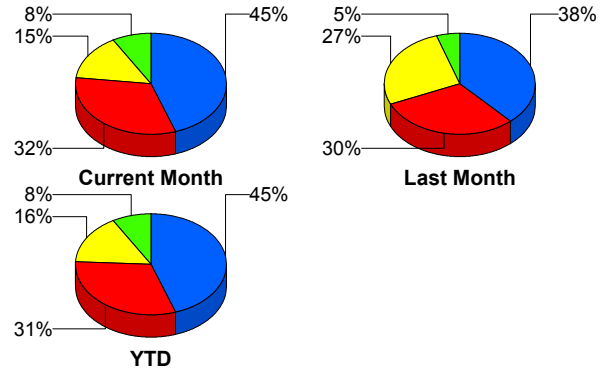
Incident Clearance Time (3B)



Incident Detection Methods

	Current Month	Last Month	YTD
Broward Road Ranger	0	0	5
Broward TMC	2	0	7
County Police	0	1	1
District 4	2	2	10
FDOT Maintenance	0	1	2
FHP	58	46	245
Florida's Turnpike	3	1	10
ITMS	1	0	1
ITMS CCTV	19	32	86
Media	0	0	1
Motorist	3	1	9
Palm Beach Road Ran	42	36	170
Total	130	120	547

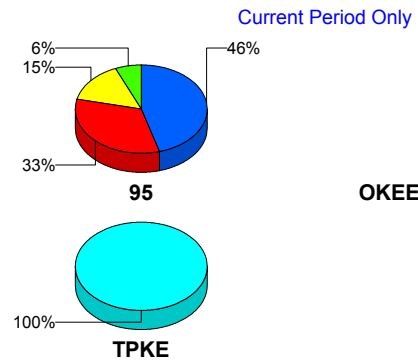
Total Incidents by Detection Method



Incident Detection Methods by Roadway

		Current Month	Last Month	YTD
95	Broward Road Ranger	0	0	5
	Broward TMC	2	0	7
	County Police	0	1	1
	District 4	2	2	10
	FDOT Maintenance	0	1	2
	FHP	58	46	245
	ITMS	1	0	1
	ITMS CCTV	19	32	86
	Media	0	0	1
	Motorist	3	1	9
	Palm Beach Road Ran	42	36	170
	Total	127	119	537
TPKE	Florida's Turnpike	3	1	10
	Total	3	1	10

Total Events by Roadway and Detection Method

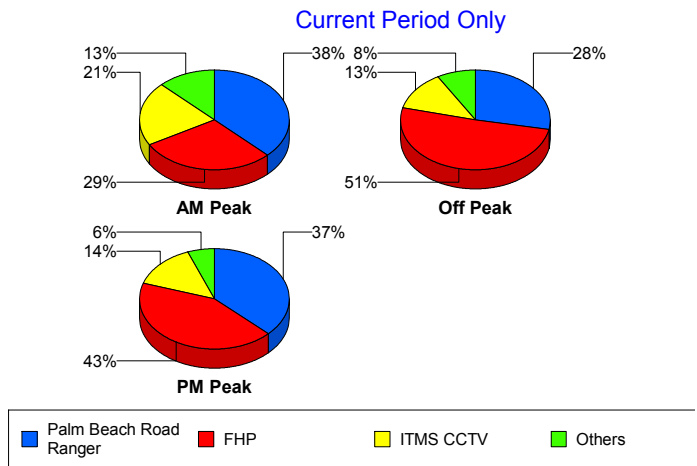


	Current Month	Last Month	YTD
Total	130	120	547

Incident Detection Methods by Peak Period

		Current Month	Last Month	YTD
AM Peak	Broward Road Ranger	0	0	4
	Broward TMC	2	0	2
	County Police	0	1	1
	District 4	0	1	2
	FHP	7	5	45
	Florida's Turnpike	1	1	2
	ITMS CCTV	5	10	22
	Media	0	0	1
	Motorist	0	1	1
	Palm Beach Road Ran	9	13	49
	Total	24	32	129
Off Peak	Broward Road Ranger	0	0	1
	Broward TMC	0	0	2
	District 4	1	1	5
	FDOT Maintenance	0	1	2
	FHP	36	26	130
	Florida's Turnpike	2	0	7
	ITMS	1	0	1
	ITMS CCTV	9	16	49
	Motorist	2	0	4
	Palm Beach Road Ran	20	17	82
	Total	71	61	283
PM Peak	Broward TMC	0	0	3
	District 4	1	0	3
	FHP	15	15	71
	Florida's Turnpike	0	0	1
	ITMS CCTV	5	6	15
	Motorist	1	0	4

Total Events by Peak Period and Detection Method

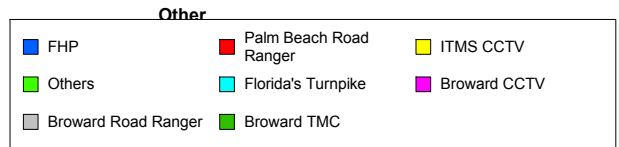
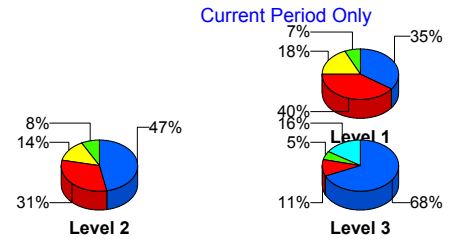


		Current Month	Last Month	YTD
PM Peak	Palm Beach Road Ran	13	6	39
	Total	35	27	136
Total		130	120	547

Incident Detection Methods by Severity

		Current Month	Last Month	YTD
	FHP	0	0	1
	Total	0	0	1
Level 1	Broward Road Ranger	0	0	5
	Broward TMC	2	0	5
	County Police	0	1	1
	District 4	2	2	8
	FHP	21	10	82
	ITMS CCTV	11	15	44
	Motorist	0	0	3
	Palm Beach Road Ran	24	27	112
	Total	60	55	260
	Level 2	Broward TMC	0	0
District 4		0	0	1
FDOT Maintenance		0	1	2
FHP		24	28	127
ITMS		1	0	1
ITMS CCTV		7	15	36
Motorist		3	1	6
Palm Beach Road Ran		16	8	46
Total		51	53	221
Level 3	District 4	0	0	1
	FHP	13	8	36
	Florida's Turnpike	3	1	10
	ITMS CCTV	1	2	6
	Media	0	0	1
	Palm Beach Road Ran	2	1	12

Total Events by Severity and Detection Method



		Current Month	Last Month	YTD
Level 3	Total	19	12	66
Total		130	120	547

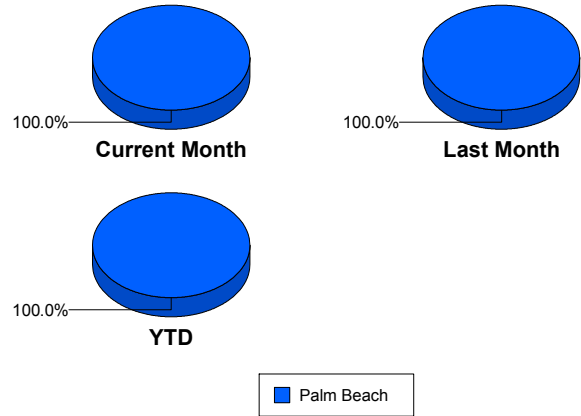
Road Ranger / SIRV Performance Measures

Road Ranger / SIRV Performance By County

Values presented are:
 - Total Events with a RR/SIRV Response
 - Total RR/SIRV Responses,
 - Total Activities Performed

	Current Mo	Last Month	YTD
Palm Beach	2,986	2,832	13,230
	3,077	2,929	13,670
	3,290	3,128	14,524

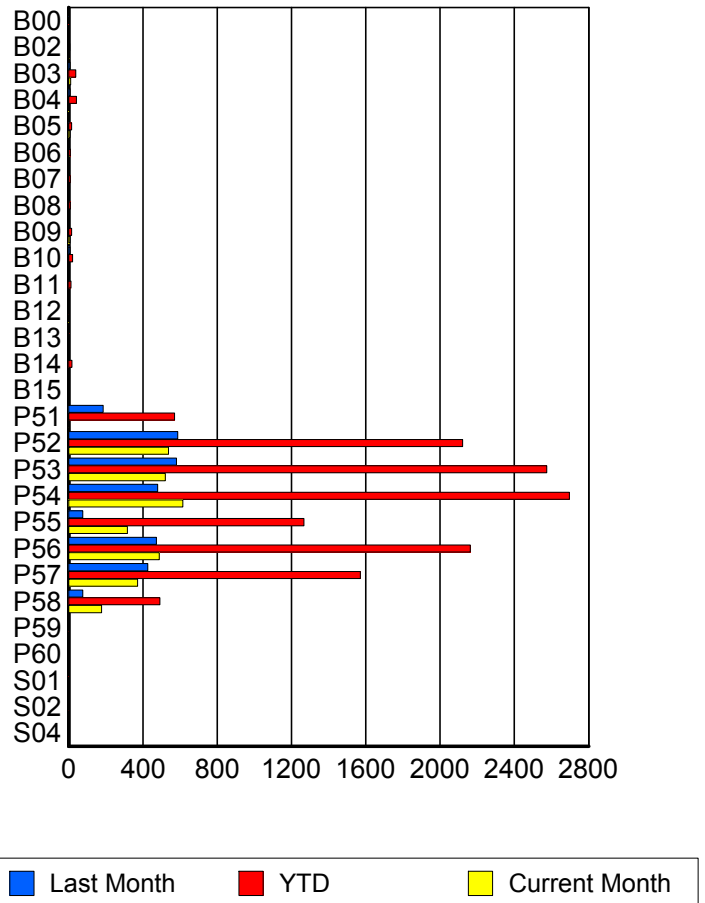
RR/SIRV Responses per County



Road Ranger / SIRV Performance By Truck

	Current Mo	Last Month	YTD
B00	0	2	2
	0	2	2
	0	2	2
B02	4	2	6
	4	2	6
	4	2	6
B03	11	7	39
	11	7	39
	11	9	42
B04	3	8	41
	3	8	42
	3	8	45
B05	8	3	16
	8	3	16
	8	3	16
B06	5	4	10
	5	4	10
	5	4	12
B07	0	2	9
	0	2	9
	0	2	9
B08	0	0	9
	0	0	9
	0	0	9
B09	7	0	16
	7	0	16
	7	0	17

RR/SIRV Responses per Truck



	Current Mo	Last Month	YTD
B10	1	7	21
	1	7	21
	1	9	23
B11	1	4	13
	1	4	13
	1	5	14
B12	2	0	2
	2	0	2
	2	0	2
B13	1	0	4
	1	0	4
	1	0	4
B14	1	0	18
	1	0	18
	1	0	18
B15	1	0	4
	1	0	4
	1	0	4
P51	3	180	560
	3	186	570
	3	201	602
P52	533	580	2,096
	538	587	2,121
	572	622	2,255
P53	515	575	2,545
	521	581	2,574
	556	631	2,741
P54	608	474	2,659
	615	479	2,696
	654	512	2,864
P55	316	77	1,258
	316	77	1,267
	334	77	1,326
P56	484	465	2,136
	488	473	2,162
	526	500	2,305
P57	369	423	1,552
	371	427	1,570
	410	456	1,676
P58	176	77	487
	178	77	492
	188	81	522
P59	1	1	2
	1	1	2
	1	1	2

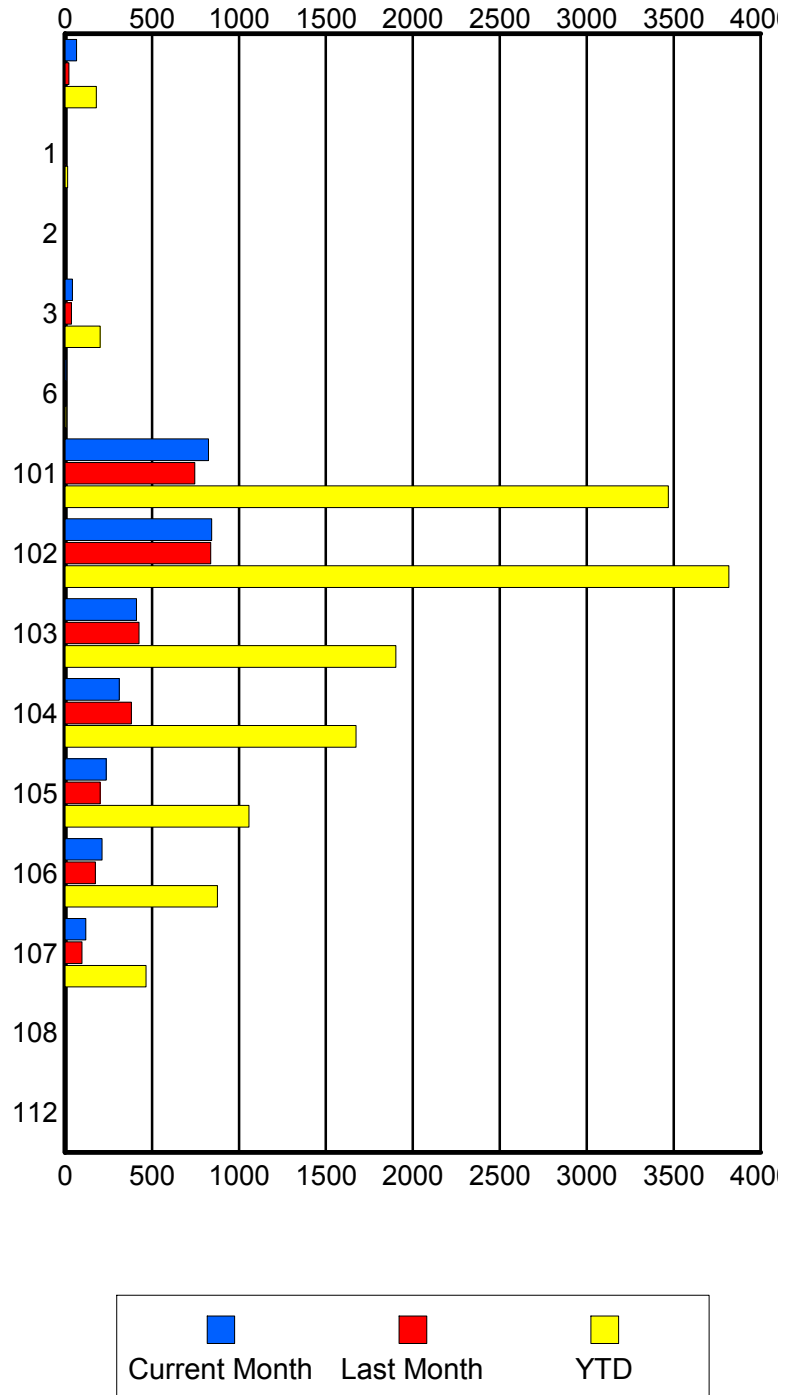
	Current Mo	Last Month	YTD
P60	0	0	1
	0	0	1
	0	0	1
S01	0	1	3
	0	1	3
	0	2	4
S02	1	1	2
	1	1	2
	1	1	2
S04	0	0	1
	0	0	1
	0	0	1

Road Ranger / SIRV Performance By Beat

	Current Mo	Last Month	YTD
	66	22	178
	66	23	179
	69	24	191
1	0	2	13
	0	2	14
	0	2	14
2	3	0	3
	3	0	3
	3	0	3
3	42	34	197
	42	36	201
	42	41	213
6	6	0	6
	7	0	7
	7	0	7
101	813	736	3,411
	825	746	3,470
	879	799	3,677
102	839	827	3,764
	844	838	3,818
	904	884	4,047
103	403	416	1,877
	410	426	1,902
	437	454	2,011
104	310	374	1,655
	312	382	1,673
	331	412	1,788
105	233	202	1,049
	236	202	1,057
	262	215	1,140
106	211	173	869
	212	174	877
	227	191	928
107	120	98	463
	120	98	465
	129	103	498
108	0	0	3
	0	0	4
	0	0	4
112	0	2	2
	0	2	2
	0	3	3

Values presented are:
 - Total Events with a RR/SIRV Response
 - Total RR/SIRV Responses,
 - Total Activities Performed

RR/SIRV Responses per Beat

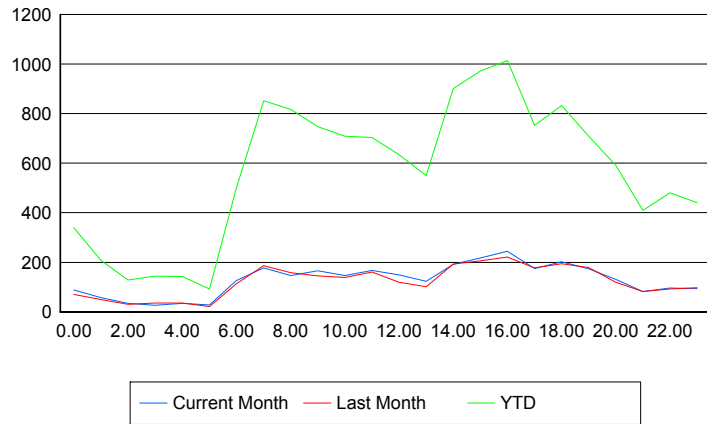


Road Ranger / SIRV Performance By Time of Day

Values presented are:
 - Total Events with a RR/SIRV Response
 - Total RR/SIRV Responses,
 - Total Activities Performed

	Current Mo	Last Month	YTD
12AM-1AM	86	70	330
	89	71	340
	94	80	369
1AM-2AM	57	49	204
	58	50	208
	61	52	215
2AM-3AM	33	30	124
	34	31	128
	37	34	136
3AM-4AM	24	34	138
	26	35	144
	27	37	154
4AM-5AM	30	34	135
	34	36	143
	35	37	149
5AM-6AM	28	21	83
	28	22	92
	29	23	97
6AM-7AM	125	106	474
	126	113	498
	133	117	525
7AM-8AM	172	178	826
	177	186	852
	195	193	904
8AM-9AM	140	155	783
	146	158	817
	165	169	869
9AM-10AM	160	140	724
	166	145	748
	174	153	792
10AM-11AM	143	137	685
	147	139	709
	154	147	744
11AM-12PM	164	156	688
	167	161	704
	178	167	744
12PM-1PM	142	113	604
	149	119	634
	157	126	663

Number of Responses / Hour of the Day



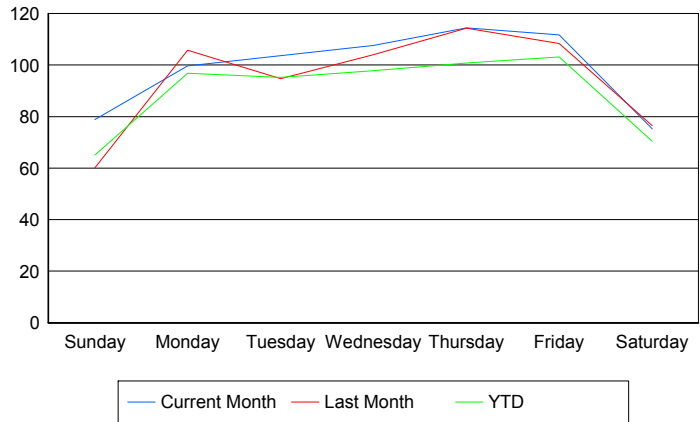
	Current Mo	Last Month	YTD
1PM-2PM	113	95	519
	123	101	550
	127	110	580
2PM-3PM	182	184	866
	191	193	901
	209	206	967
3PM-4PM	215	200	954
	218	206	972
	225	229	1,037
4PM-5PM	236	215	978
	244	221	1,014
	269	237	1,089
5PM-6PM	171	169	731
	175	177	753
	189	188	802
6PM-7PM	200	191	818
	202	194	833
	215	206	880
7PM-8PM	171	171	686
	174	179	709
	180	194	747
8PM-9PM	127	117	580
	131	119	592
	136	127	617
9PM-10PM	80	81	396
	82	82	409
	93	91	443
10PM-11PM	94	90	471
	96	93	481
	103	101	518
11PM-12AM	93	96	433
	94	98	441
	105	104	483

Road Ranger / SIRV Performance By Day of Week

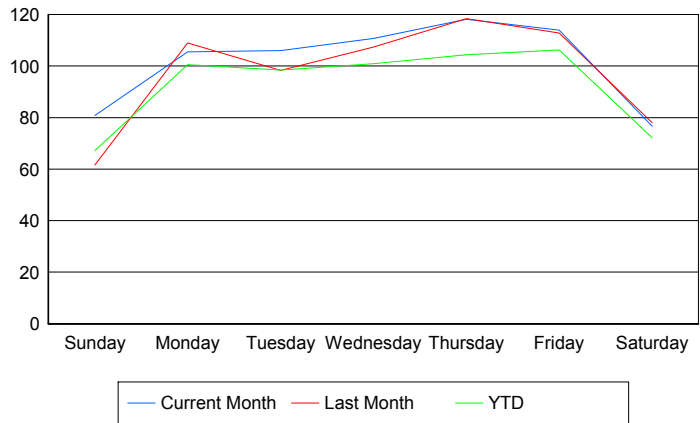
Values presented are:
 - Total Events with a RR/SIRV Response
 - Total RR/SIRV Responses,
 - Total Activities Performed

	Current Mo	Last Month	YTD
Sunday	382	239	1,382
	392	245	1,426
	409	261	1,500
Monday	485	418	2,074
	513	431	2,152
	554	453	2,290
Tuesday	416	374	1,982
	425	388	2,048
	450	418	2,178
Wednesday	429	403	2,015
	441	416	2,078
	480	444	2,224
Thursday	457	560	2,048
	472	581	2,122
	506	622	2,269
Friday	444	536	2,218
	453	558	2,287
	483	592	2,407
Saturday	374	304	1,523
	381	310	1,559
	408	338	1,656

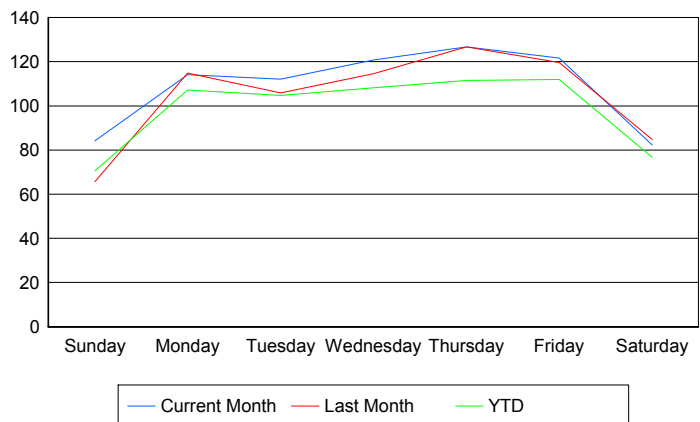
Avg # of events with a RR/SIRV Response per Day of the Week



Avg # of RR/SIRV Responses per Day of the Week



Avg # of RR/SIRV Activities Performed per Day of the Week



Road Ranger / SIRV Responses per Time of Day and Day of Week

