



Monthly Performance Measures Report Palm Beach County



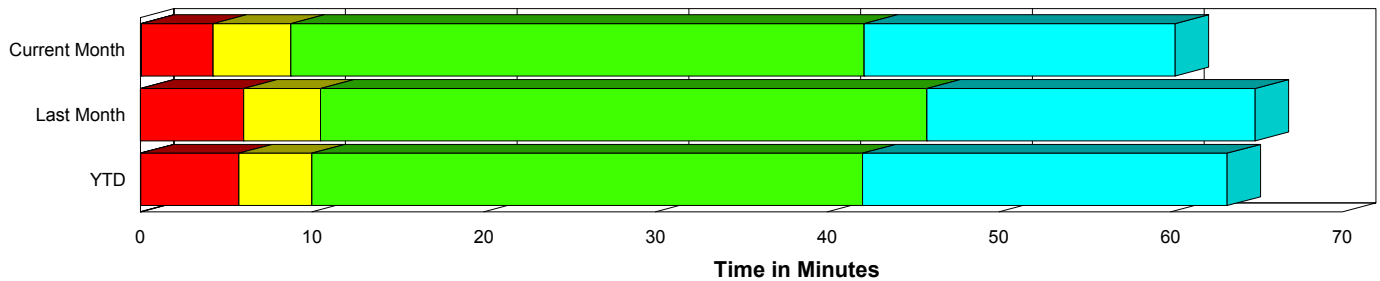
Created on:
July 01, 2010
9:31 am

Period From Jun 1, 2010 to Jun 30, 2010

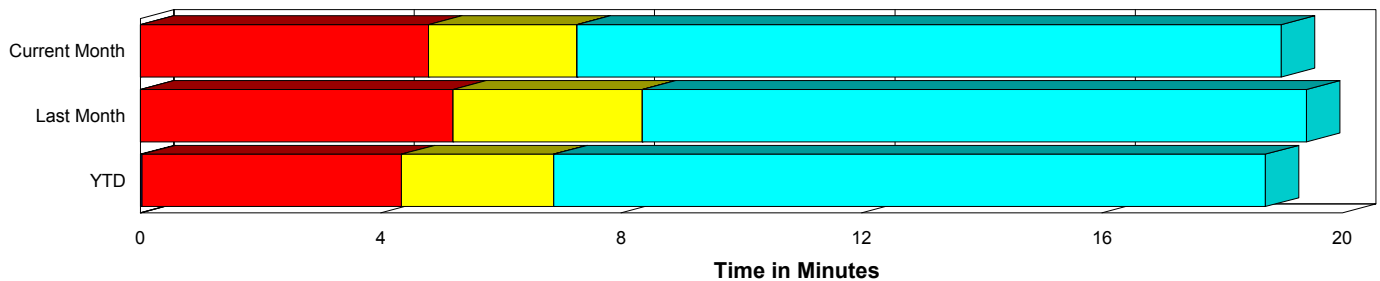
Performance Measures Summary

	Traffic Events (No Lanes Blocked)			Incidents (Lanes Blocked)		
	<u>This Month</u>	<u>Last Month</u>	<u>YTD</u>	<u>This Month</u>	<u>Last Month</u>	<u>YTD</u>
Number of Events	2,499	2,548	13,497	109	130	658
TMC Detection (min.)	0.00	0.00	0.03	0.06	0.01	0.04
TMC Verification (min.)	4.80	5.20	4.32	4.19	6.02	5.74
TMC Response (min.)	7.75	9.14	7.40	8.87	10.94	10.28
RR Dispatch Time (min.)	2.80	3.33	2.62	2.72	3.60	2.84
RR Response Time (min.)	5.02	5.92	4.88	6.24	7.37	7.47
Roadway Clearance (min.)				41.91	46.22	42.11
Event Clearance (min.)	19.47	20.19	19.26	59.95	65.31	63.61
# of Events w/ RR/SIRV	2,371	2,362	12,614	107	122	634
RR/SIRV Responses	2,371	2,362	12,614	107	122	634
RR/SIRV Activities	2,536	2,461	13,183	154	164	839

Incident Clearance Time-Line



Traffic Event (Non-Lane Blockage) Time-Line



■ Avg. TMC Detection Time	■ Avg. Time from TMC Response to Roadway Clearance*
■ Avg. Time from TMC Detection to TMC Verification	■ Avg. Time from Roadway Clearance to Incident/Event Clearance**
■ Avg. Time from TMC Verification to TMC Response	

* Roadway clearance equals all travel lanes open

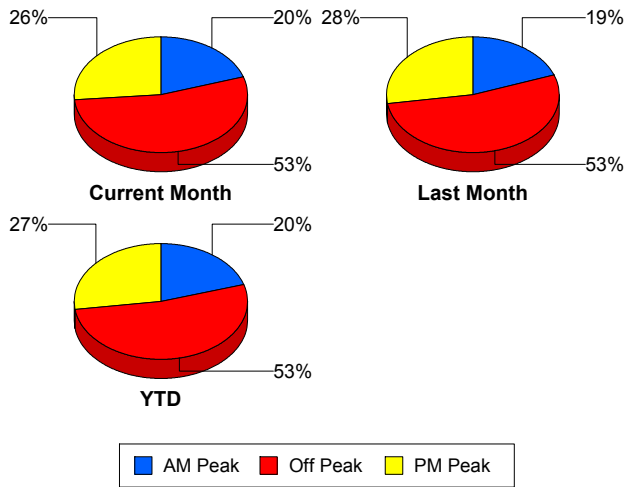
** Incident clearance equals time when last responder has left the scene

Performance Measures by Peak Period

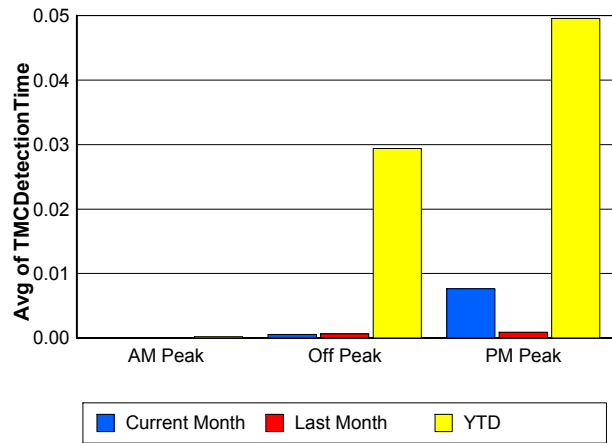
Note: AM peak period is defined as 6am to 10am and PM peak period is defined as 3pm to 7pm.

	AM Peak			Off Peak			PM Peak		
	<u>Current Month</u>	<u>Last Month</u>	<u>YTD</u>	<u>Current Month</u>	<u>Last Month</u>	<u>YTD</u>	<u>Current Month</u>	<u>Last Month</u>	<u>YTD</u>
Number of Events	525	518	2,863	1,393	1,423	7,456	690	737	3,836
Number of Incidents	20	24	149	65	71	349	24	35	160
TMC Detection (min.)	0.00	0.00	0.00	0.00	0.00	0.03	0.01	0.00	0.05
TMC Verification (min.)	2.49	4.02	2.91	5.37	5.42	4.66	5.30	5.76	4.95
TMC Response (min.)	5.97	8.55	6.23	8.40	9.68	8.08	7.97	8.92	7.48
RR Dispatch Time (min.)	1.91	2.63	1.80	3.03	3.72	2.86	3.02	3.17	2.82
RR Response Time (min.)	4.07	5.89	4.48	5.51	6.04	5.34	4.98	5.98	4.78
Event Clearance (min.)	17.45	22.13	20.46	22.86	23.23	22.30	20.55	20.93	20.07
Roadway Clearance (min.)	41.50	29.78	38.64	43.89	61.33	48.01	36.89	26.86	32.48
Incident Clearance (min.)	58.51	43.62	63.47	61.00	80.20	66.28	58.30	49.98	56.43
# of Events w/ RR/SIRV	503	500	2,703	1,312	1,286	6,909	663	698	3,636
RR/SIRV Responses	503	500	2,703	1,312	1,286	6,909	663	698	3,636
RR/SIRV Activities	525	532	2,853	1,423	1,361	7,320	742	732	3,849

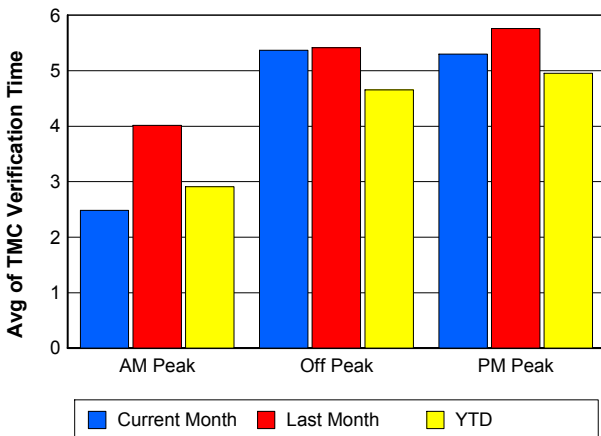
Number of Events / Peak Period



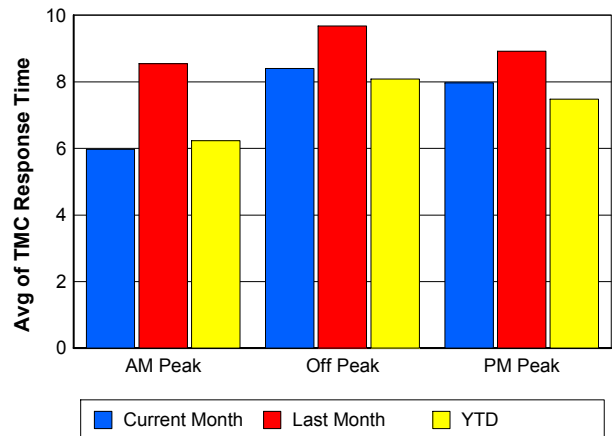
TMC Detection Time



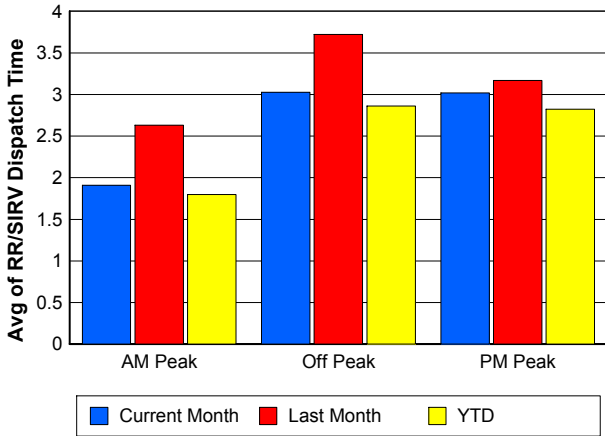
TMC Verification Time



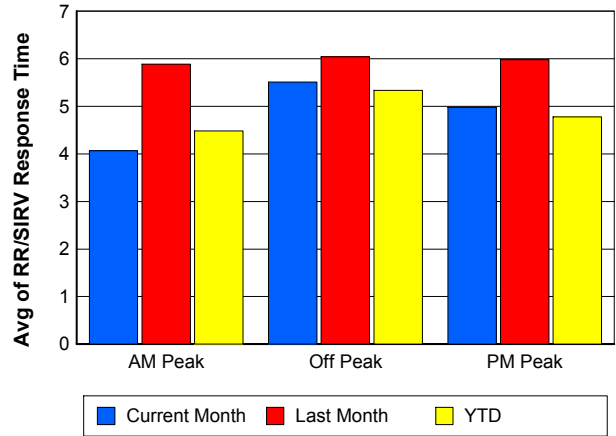
TMC Response Time



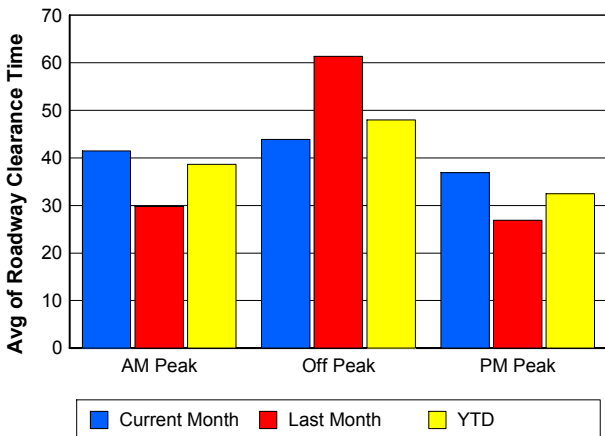
Road Ranger / SIRV Dispatch Time



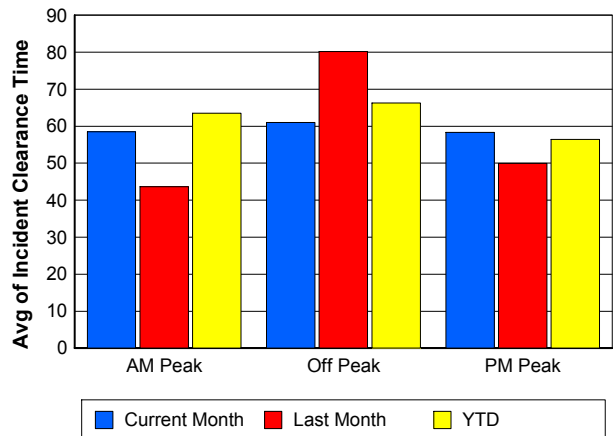
Road Ranger / SIRV Response Time



Roadway Clearance Time (2A)



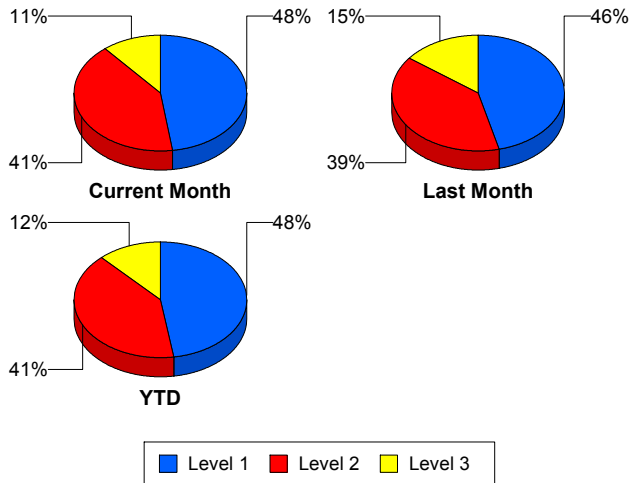
Incident Clearance Time (3B)



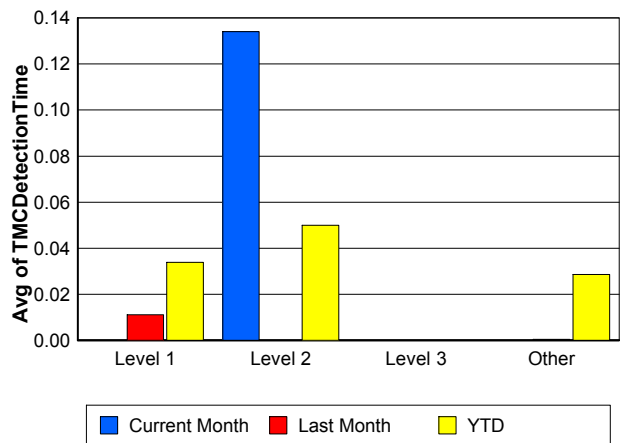
Performance Measures by Severity

	Level 1			Level 2			Level 3			Other		
	<u>This Month</u>	<u>Last Month</u>	<u>YTD</u>	<u>This Month</u>	<u>Last Month</u>	<u>YTD</u>	<u>This Month</u>	<u>Last Month</u>	<u>YTD</u>	<u>This Month</u>	<u>Last Month</u>	<u>YTD</u>
Number of Events	52	60	312	45	51	266	12	19	78	2,499	2,548	13,499
Number of Incidents	52	60	312	45	51	266	12	19	78	0	0	2
TMC Detection (min.)	0.00	0.01	0.03	0.13	0.00	0.05	0.00	0.00	0.00	0.00	0.00	0.03
TMC Verification (min.)	2.04	4.30	3.19	7.14	8.14	8.79	2.42	5.75	5.52	4.80	5.20	4.32
TMC Response (min.)	7.07	6.82	6.33	10.86	12.26	13.76	8.80	22.62	14.44	7.75	9.14	7.40
RR Dispatch Time (min.)	2.56	2.33	1.55	2.14	2.61	3.39	5.76	12.38	6.87	2.80	3.33	2.62
RR Resp. Time (min.)	4.69	4.57	4.85	8.71	9.64	10.42	3.04	10.24	7.57	5.02	5.92	4.88
Event Clearance (min.)	36.97	40.90	42.31	64.97	65.45	70.11	140.70	141.99	125.93	19.47	20.19	19.27
Roadway Clear. (min.)	13.29	15.76	15.00	53.24	52.44	54.47	123.43	125.73	110.03			-21.46
Incident Clearance (min.)	36.97	40.90	42.31	64.97	65.45	70.11	140.70	141.99	125.21			0.00
# of Events w/ RR/SIRV	51	57	305	45	51	264	11	14	63	2,371	2,362	12,616
RR/SIRV Responses	51	57	305	45	51	264	11	14	63	2,371	2,362	12,616
RR/SIRV Activities	63	72	367	71	68	368	20	24	99	2,536	2,461	13,188

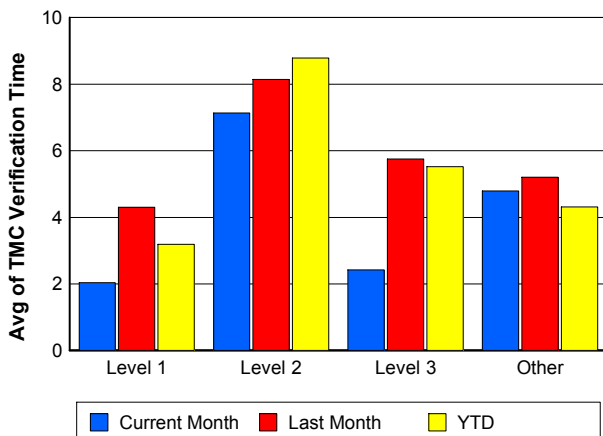
Number of Events / Severity



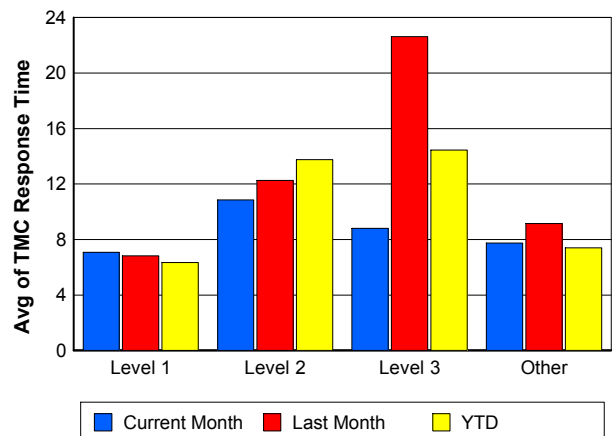
TMC Detection Time



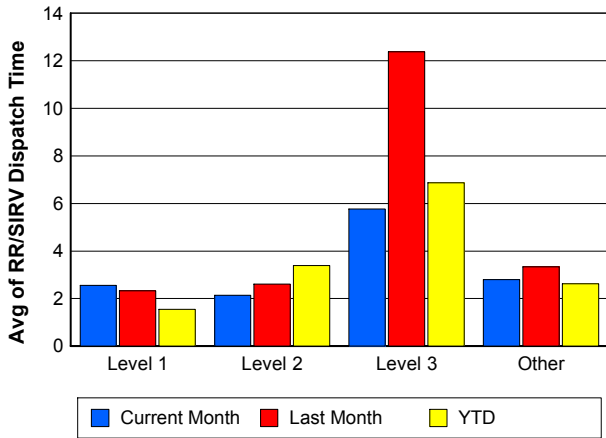
TMC Verification Time



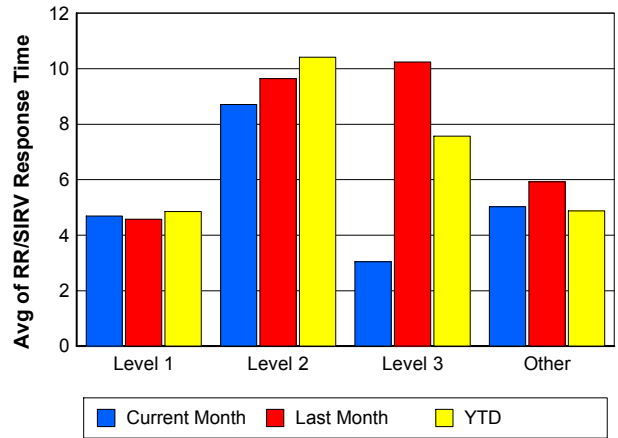
TMC Response Time



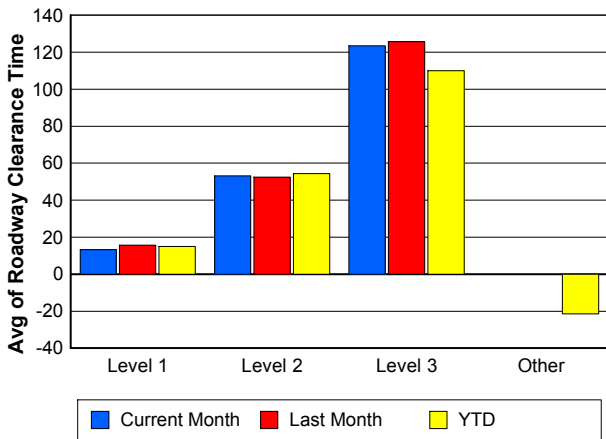
Road Ranger / SIRV Dispatch Time



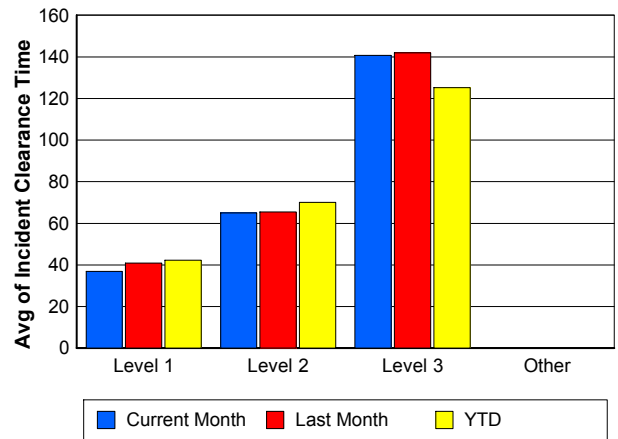
Road Ranger / SIRV Response Time



Roadway Clearance Time (2A)



Incident Clearance Time (3B)



Roadway Clearance by Maximum Number of Lanes Blocked

	Current Month	Last Month	YTD
0			
1	29.19	27.67	29.88
2	69.81	64.83	58.59
3	46.47	59.46	61.17
4	73.61	85.28	75.86
5	80.33	112.97	84.80
6	0.00	215.67	215.67

Roadway Clearance Time (2A)



Performance Measures by Roadway

95

	<u>Current Month</u>	<u>Last Month</u>	<u>YTD</u>
Number of Events	2,608	2,675	14,144
Number of Incidents	109	127	648
TMC Detection (min.)	0.00	0.00	0.03
TMC Verification (min.)	4.77	5.25	4.39
TMC Response (min.)	7.80	9.24	7.54
RR Dispatch Time (min.)	2.80	3.35	2.63
RR Resp. Time (min.)	5.08	5.99	5.01
Event Clearance (min.)	21.16	22.32	21.30
Roadway Clear. (min.)	41.91	45.58	41.84
Incident Clearance (min.)	59.95	65.06	63.26
# of Events w/ RR/SIRV	2,478	2,484	13,247
RR/SIRV Responses	2,478	2,484	13,247
RR/SIRV Activities	2,690	2,625	14,021

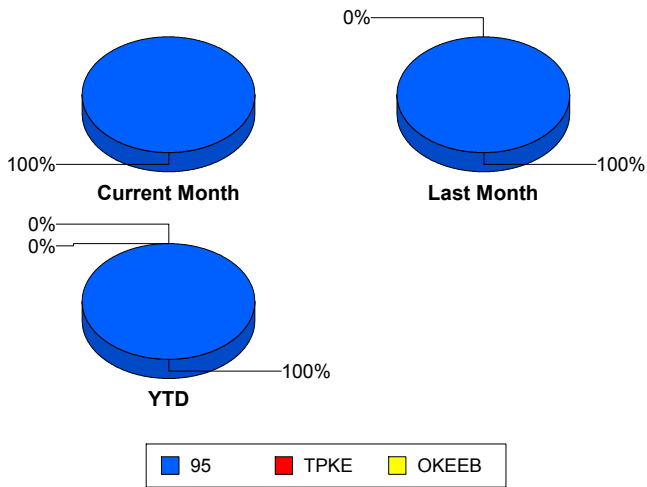
OKEEB

	<u>YTD</u>
Number of Events	1
Number of Incidents	0
TMC Detection (min.)	0.00
TMC Verification (min.)	0.00
TMC Response (min.)	0.00
RR Dispatch Time (min.)	0.00
RR Resp. Time (min.)	0.00
Event Clearance (min.)	18.45
Roadway Clear. (min.)	
Incident Clearance (min.)	
# of Events w/ RR/SIRV	1
RR/SIRV Responses	1
RR/SIRV Activities	1

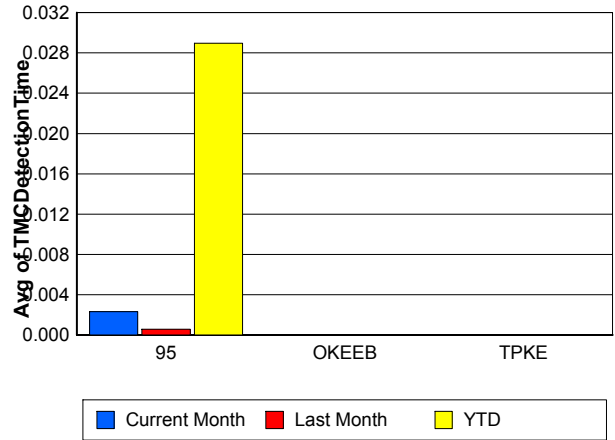
TPKE

	<u>Last Month</u>	<u>YTD</u>
Number of Events	3	10
Number of Incidents	3	10
TMC Detection (min.)	0.00	0.00
TMC Verification (min.)	0.00	0.00
TMC Response (min.)		
RR Dispatch Time (min.)		
RR Resp. Time (min.)		
Event Clearance (min.)	76.01	62.29
Roadway Clear. (min.)	73.63	59.66
Incident Clearance (min.)	76.01	62.29
# of Events w/ RR/SIRV	0	0
RR/SIRV Responses	0	0
RR/SIRV Activities	0	0

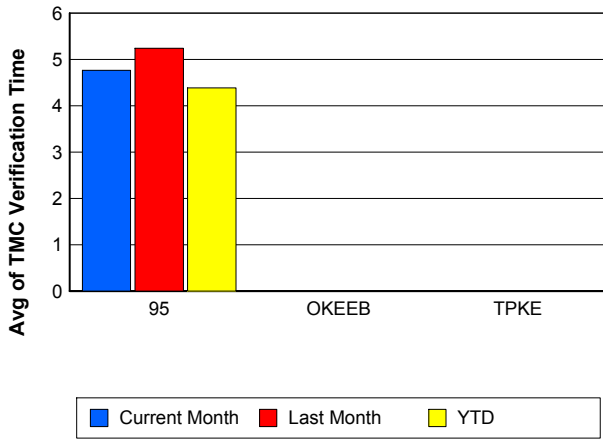
Number of Events / Roadway



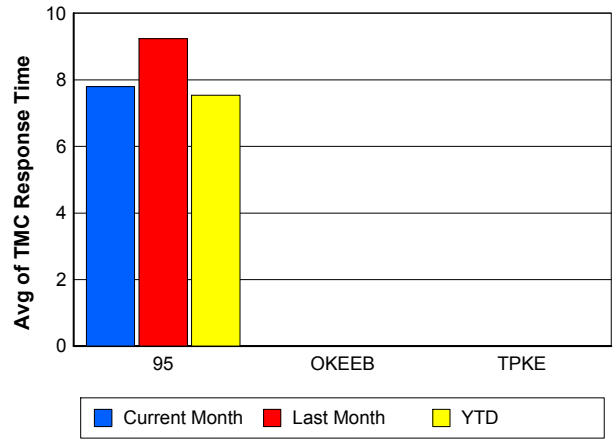
TMC Detection Time



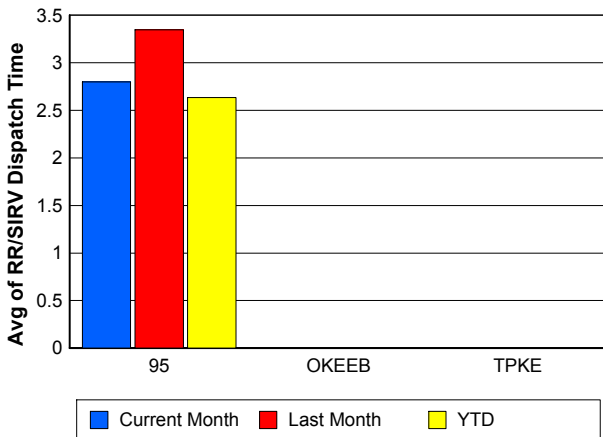
TMC Verification Time



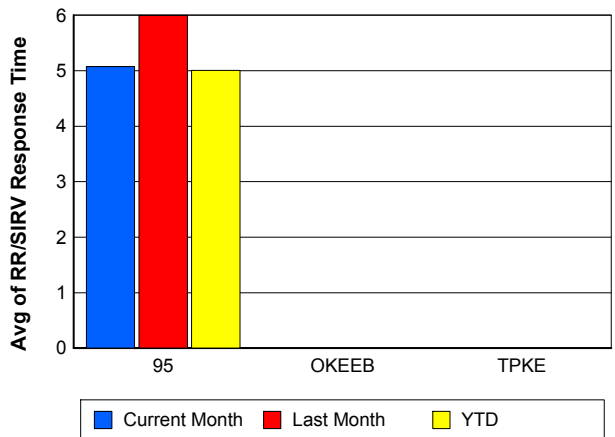
TMC Response Time



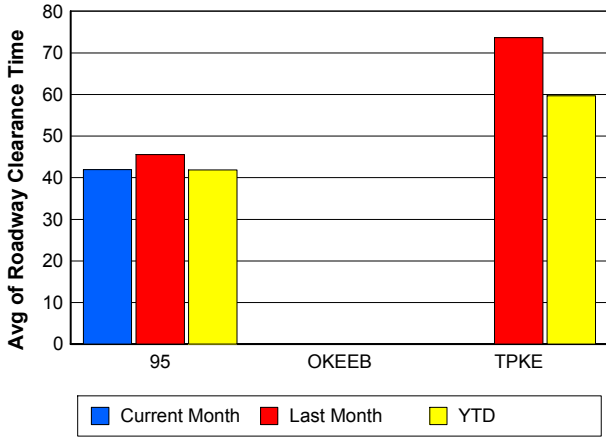
Road Ranger / SIRV Dispatch Time



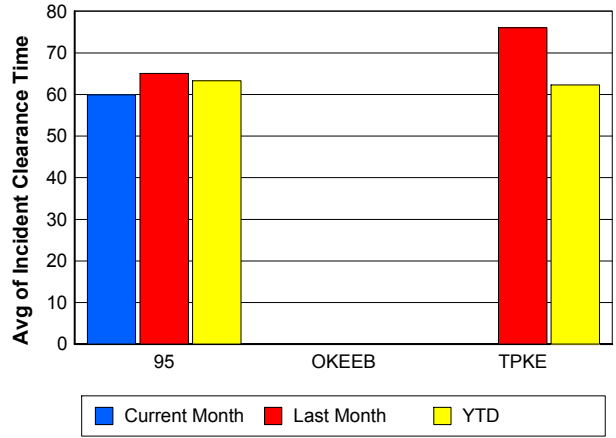
Road Ranger / SIRV Response Time



Roadway Clearance Time (2A)



Incident Clearance Time (3B)



Performance Measures by Event Type

Accident

	<u>Current Month</u>	<u>Last Month</u>	<u>YTD</u>
Number of Events	144	176	982
Number of Incidents	68	82	449
TMC Detection (min.)	0.04	0.00	0.04
TMC Verification (min.)	7.09	9.66	7.56
TMC Response (min.)	12.56	12.83	11.12
RR Dispatch Time (min.)	3.03	3.69	2.67
RR Response Time (min.)	9.56	9.16	8.50
Event Clearance (min.)	58.34	64.69	59.98
Roadway Clearance (min.)	50.77	48.09	46.74
Incident Clearance (min.)	75.55	73.54	73.73
# of Events w/ RR/SIRV	142	170	956
RR/SIRV Assists	142	170	956
RR/SIRV Activities	184	198	1,136

Debris on Roadway

	<u>Current Month</u>	<u>Last Month</u>	<u>YTD</u>
Number of Events	216	183	892
Number of Incidents	1	4	15
TMC Detection (min.)	0.00	0.00	0.00
TMC Verification (min.)	11.44	12.19	11.00
TMC Response (min.)	11.88	13.17	11.49
RR Dispatch Time (min.)	3.50	4.01	3.62
RR Response Time (min.)	8.43	9.12	7.90
Event Clearance (min.)	14.29	15.85	14.75
Roadway Clearance (min.)	12.85	27.50	18.00
Incident Clearance (min.)	18.27	33.88	23.19
# of Events w/ RR/SIRV	216	178	882
RR/SIRV Assists	216	178	882
RR/SIRV Activities	226	190	917

Disabled Vehicle

	<u>Current Month</u>	<u>Last Month</u>	<u>YTD</u>
Number of Events	2,160	2,186	11,579
Number of Incidents	30	27	139
TMC Detection (min.)	0.00	0.00	0.03
TMC Verification (min.)	4.05	4.57	3.81
TMC Response (min.)	6.98	8.28	6.66
RR Dispatch Time (min.)	2.69	3.04	2.44
RR Response Time (min.)	4.37	5.40	4.34
Event Clearance (min.)	19.22	18.71	18.28
Roadway Clearance (min.)	21.61	23.34	24.35
Incident Clearance (min.)	27.65	28.99	32.96
# of Events w/ RR/SIRV	2,056	2,053	10,918
RR/SIRV Assists	2,056	2,053	10,918
RR/SIRV Activities	2,225	2,168	11,602

Emergency Vehicles

	<u>Current Month</u>	<u>Last Month</u>	<u>YTD</u>
Number of Events	2	3	11
Number of Incidents	2	3	10
TMC Detection (min.)	0.00	0.00	0.00
TMC Verification (min.)	0.00	0.00	2.54
TMC Response (min.)	0.00	0.00	3.99
RR Dispatch Time (min.)	0.00	0.00	0.08
RR Response Time (min.)	0.00	0.00	3.91
Event Clearance (min.)	44.00	25.24	48.83
Roadway Clearance (min.)	41.02	21.42	48.84
Incident Clearance (min.)	44.00	25.24	51.39
# of Events w/ RR/SIRV	2	1	7
RR/SIRV Assists	2	1	7
RR/SIRV Activities	3	2	9

Other

	<u>Current Month</u>	<u>Last Month</u>	<u>YTD</u>
Number of Events	65	102	551
Number of Incidents	2	0	3
TMC Detection (min.)	0.00	0.00	0.11
TMC Verification (min.)	1.03	0.77	0.63
TMC Response (min.)	7.12	20.84	15.61
RR Dispatch Time (min.)	2.75	9.66	5.34
RR Response Time (min.)	4.67	6.90	8.05
Event Clearance (min.)	20.60	28.08	22.54
Roadway Clearance (min.)	18.72		15.18
Incident Clearance (min.)	24.23		24.41
# of Events w/ RR/SIRV	43	57	361
RR/SIRV Assists	43	57	361
RR/SIRV Activities	32	37	238

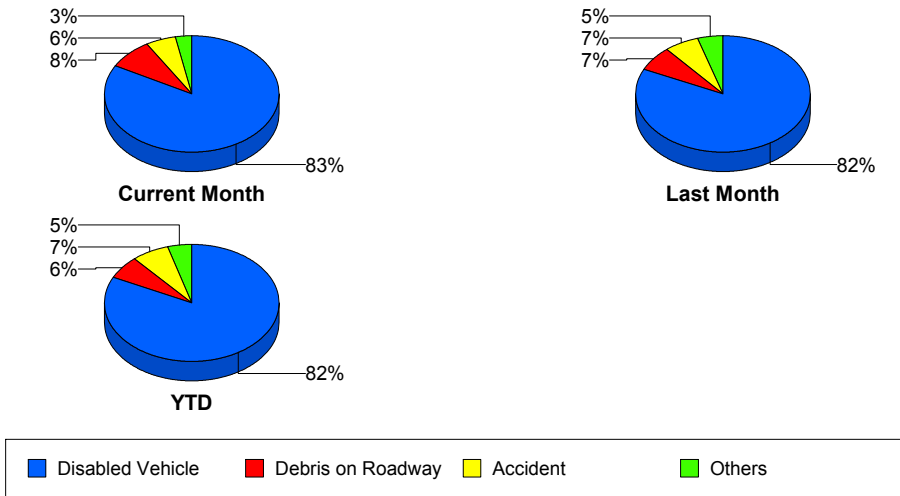
Police Activity

	<u>Current Month</u>	<u>Last Month</u>	<u>YTD</u>
Number of Events	6	13	52
Number of Incidents	4	8	24
TMC Detection (min.)	0.00	0.00	0.14
TMC Verification (min.)	0.34	1.11	0.67
TMC Response (min.)	8.54	26.63	18.84
RR Dispatch Time (min.)	7.35	14.56	8.70
RR Response Time (min.)	1.19	9.52	10.92
Event Clearance (min.)	57.04	91.94	53.28
Roadway Clearance (min.)	62.13	125.24	77.61
Incident Clearance (min.)	79.84	138.11	85.67
# of Events w/ RR/SIRV	5	11	41
RR/SIRV Assists	5	11	41
RR/SIRV Activities	5	13	33

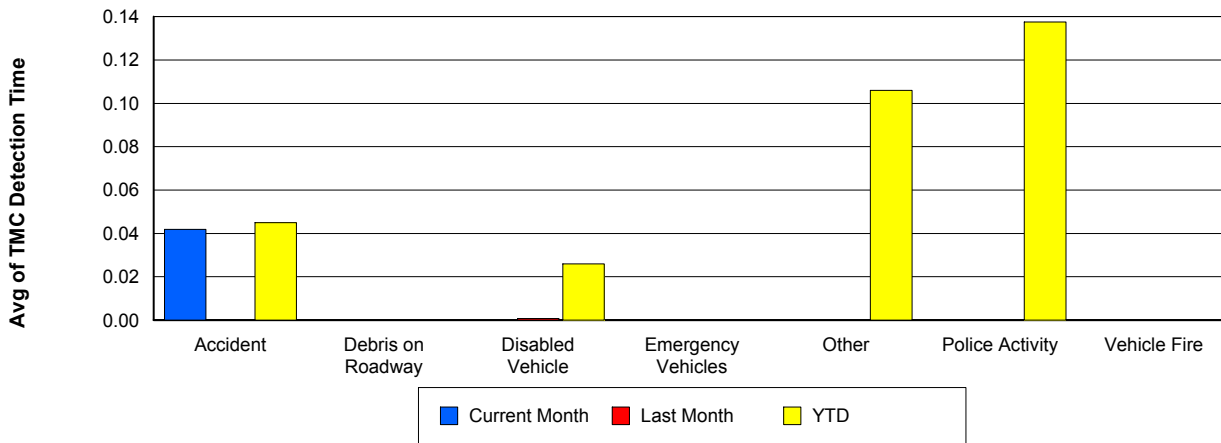
Vehicle Fire

	<u>Current Month</u>	<u>Last Month</u>	<u>YTD</u>
Number of Events	5	6	29
Number of Incidents	2	5	17
TMC Detection (min.)	0.00	0.00	0.00
TMC Verification (min.)	5.00	1.50	3.17
TMC Response (min.)	14.94	2.93	8.64
RR Dispatch Time (min.)	4.13	1.33	2.72
RR Response Time (min.)	10.81	1.60	6.05
Event Clearance (min.)	33.55	63.28	41.96
Roadway Clearance (min.)	43.27	41.62	36.38
Incident Clearance (min.)	46.74	61.79	52.33
# of Events w/ RR/SIRV	5	6	27
RR/SIRV Assists	5	6	27
RR/SIRV Activities	6	8	31

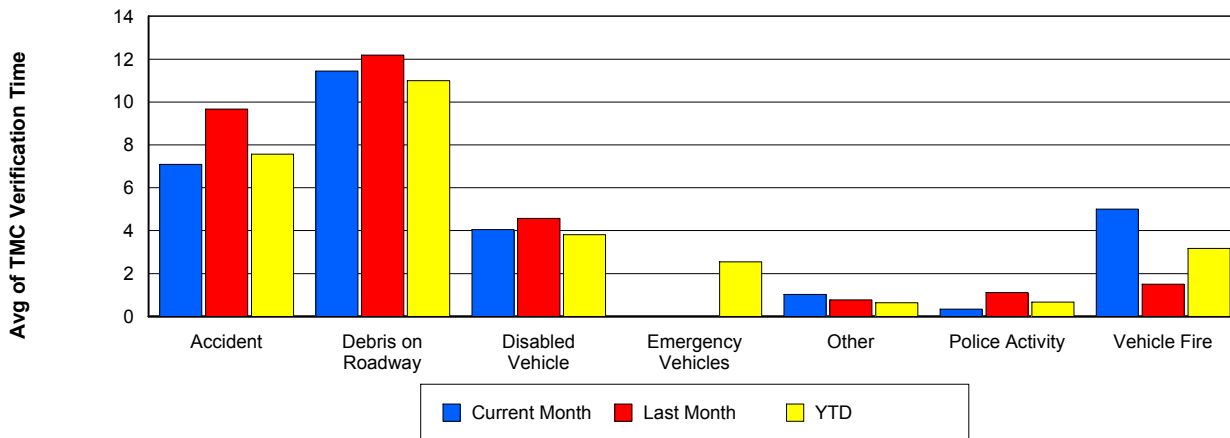
Number of Events / Event Type



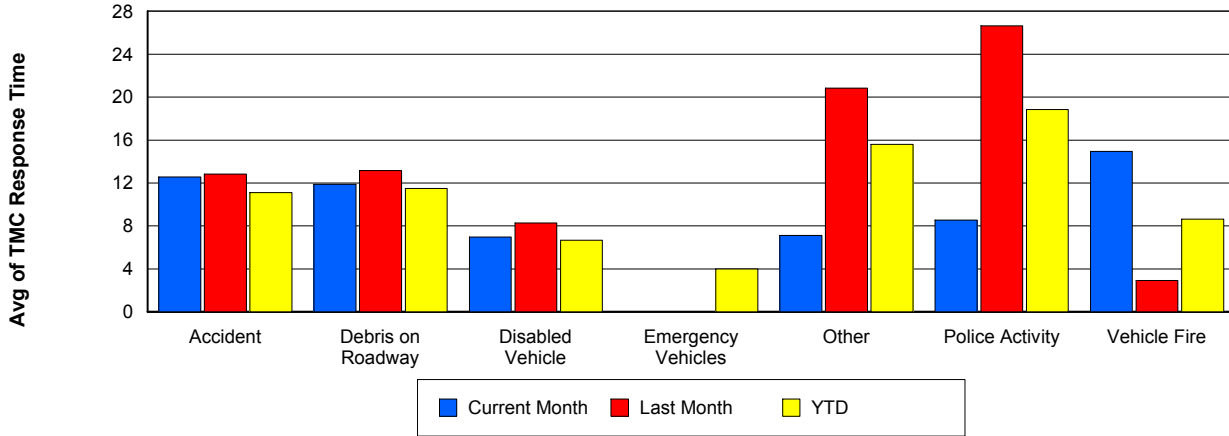
TMC Detection Time



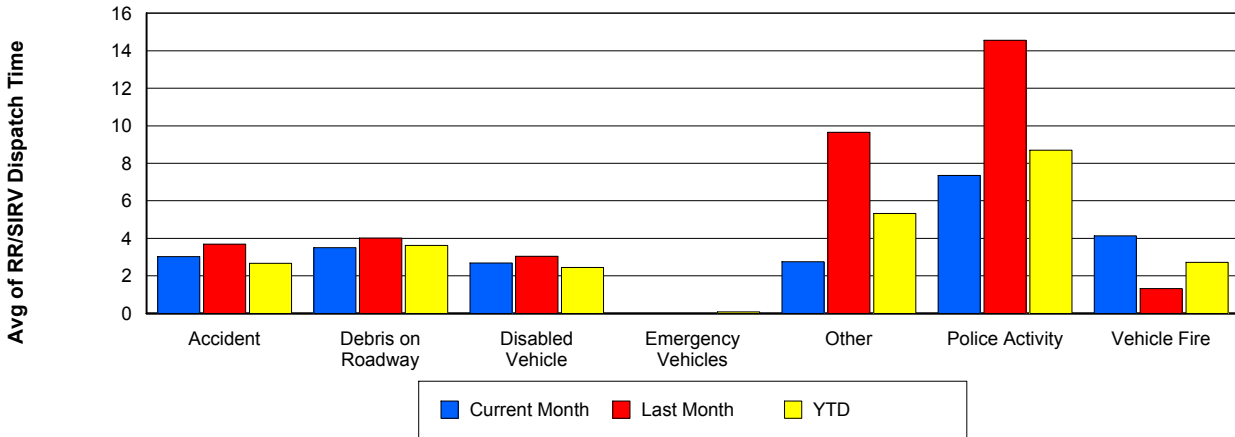
TMC Verification Time



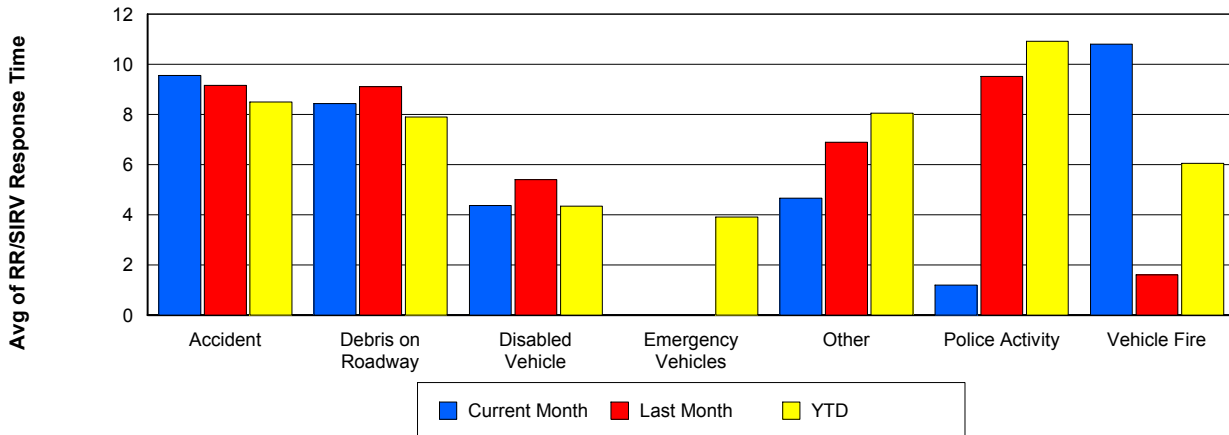
TMC Response Time



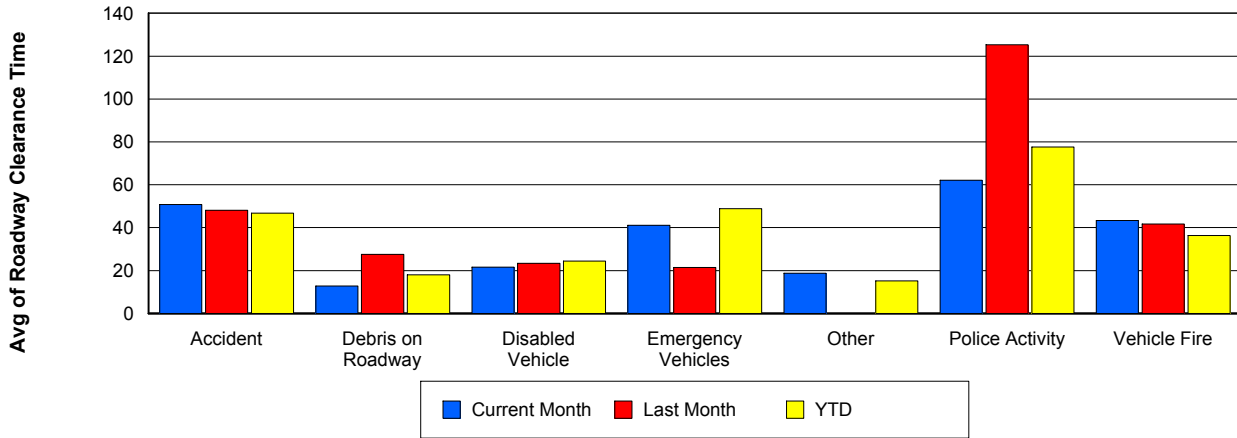
Road Ranger / SIRV Dispatch Time



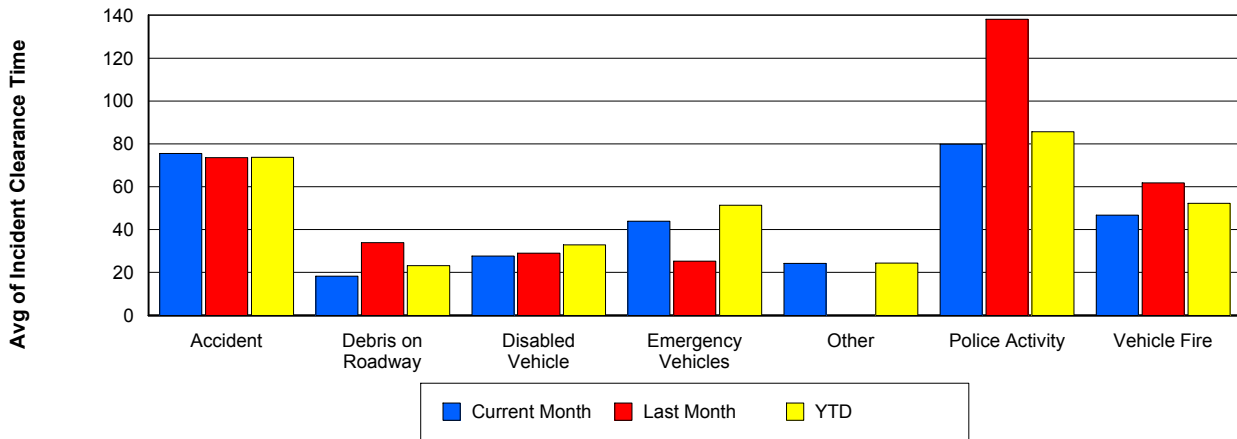
Road Ranger / SIRV Response Time



Roadway Clearance Time (2A)



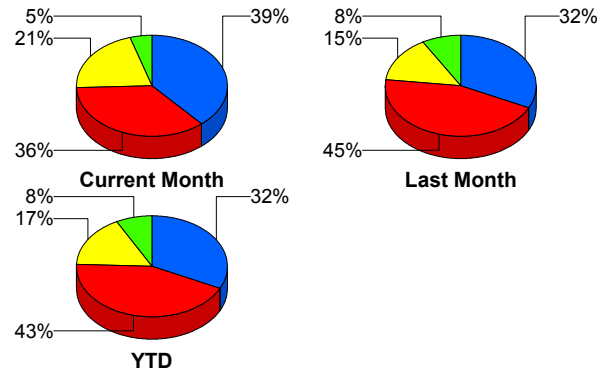
Incident Clearance Time (3B)



Incident Detection Methods

	Current Month	Last Month	YTD
Broward Road Ranger	0	0	5
Broward TMC	0	2	7
County Police	0	0	1
District 4	3	2	13
FDOT Maintenance	1	0	3
FHP	39	58	284
Florida's Turnpike	0	3	10
ITMS	0	1	1
ITMS CCTV	23	19	109
Media	0	0	1
Motorist	1	3	10
Palm Beach Road Ran	42	42	212
Total	109	130	656

Total Incidents by Detection Method

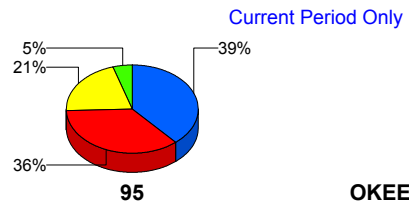


■ Palm Beach Road Ranger
 ■ FHP
 ■ ITMS CCTV
 ■ Others

Incident Detection Methods by Roadway

		Current Month	Last Month	YTD
95	Broward Road Ranger	0	0	5
	Broward TMC	0	2	7
	County Police	0	0	1
	District 4	3	2	13
	FDOT Maintenance	1	0	3
	FHP	39	58	284
	ITMS	0	1	1
	ITMS CCTV	23	19	109
	Media	0	0	1
	Motorist	1	3	10
	Palm Beach Road Ran	42	42	212
	Total	109	127	646
TPKE	Florida's Turnpike	0	3	10
	Total	0	3	10

Total Events by Roadway and Detection Method



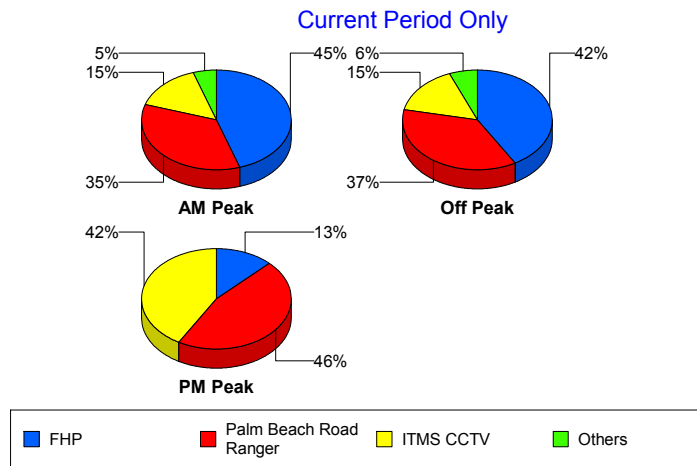
■ Palm Beach Road Ranger
 ■ FHP
 ■ ITMS CCTV
 ■ Others
■ Florida's Turnpike

	Current Month	Last Month	YTD
Total	109	130	656

Incident Detection Methods by Peak Period

		Current Month	Last Month	YTD
AM Peak	Broward Road Ranger	0	0	4
	Broward TMC	0	2	2
	County Police	0	0	1
	District 4	0	0	2
	FDOT Maintenance	1	0	1
	FHP	9	7	54
	Florida's Turnpike	0	1	2
	ITMS CCTV	3	5	25
	Media	0	0	1
	Motorist	0	0	1
	Palm Beach Road Ran	7	9	56
	Total	20	24	149
Off Peak	Broward Road Ranger	0	0	1
	Broward TMC	0	0	2
	District 4	3	1	8
	FDOT Maintenance	0	0	2
	FHP	27	36	157
	Florida's Turnpike	0	2	7
	ITMS	0	1	1
	ITMS CCTV	10	9	59
	Motorist	1	2	5
	Palm Beach Road Ran	24	20	106
	Total	65	71	348
PM Peak	Broward TMC	0	0	3
	District 4	0	1	3
	FHP	3	15	74
	Florida's Turnpike	0	0	1
	ITMS CCTV	10	5	25

Total Events by Peak Period and Detection Method

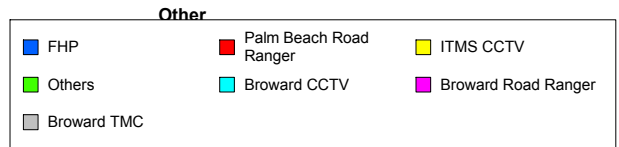
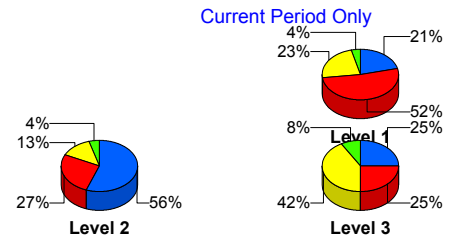


		Current Month	Last Month	YTD
PM Peak	Motorist	0	1	4
	Palm Beach Road Ran	11	13	50
	Total	24	35	160
Total		109	130	656

Incident Detection Methods by Severity

		Current Month	Last Month	YTD
	FHP	0	0	1
	Total	0	0	1
Level 1	Broward Road Ranger	0	0	5
	Broward TMC	0	2	5
	County Police	0	0	1
	District 4	1	2	9
	FDOT Maintenance	1	0	1
	FHP	11	21	93
	ITMS CCTV	12	11	56
	Motorist	0	0	3
	Palm Beach Road Ran	27	24	139
	Total	52	60	312
	Level 2	Broward TMC	0	0
District 4		1	0	2
FDOT Maintenance		0	0	2
FHP		25	24	152
ITMS		0	1	1
ITMS CCTV		6	7	42
Motorist		1	3	7
Palm Beach Road Ran		12	16	58
Total		45	51	266
Level 3	District 4	1	0	2
	FHP	3	13	39
	Florida's Turnpike	0	3	10
	ITMS CCTV	5	1	11

Total Events by Severity and Detection Method



		Current Month	Last Month	YTD
Level 3	Media	0	0	1
	Palm Beach Road Ran	3	2	15
	Total	12	19	78
Total		109	130	656

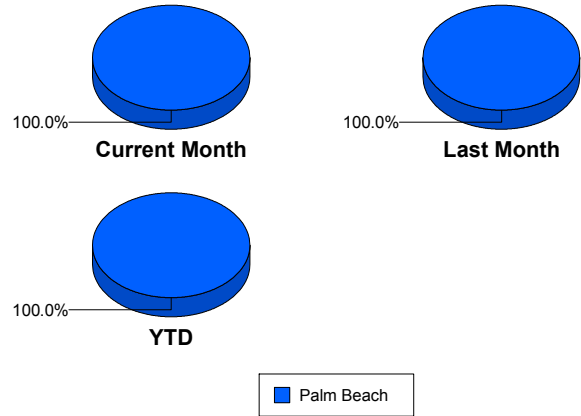
Road Ranger / SIRV Performance Measures

Road Ranger / SIRV Performance By County

Values presented are:
 - Total Events with a RR/SIRV Response
 - Total RR/SIRV Responses,
 - Total Activities Performed

	Current Mo	Last Month	YTD
Palm Beach	3,011	2,986	16,241
	3,112	3,077	16,764
	3,342	3,290	17,866

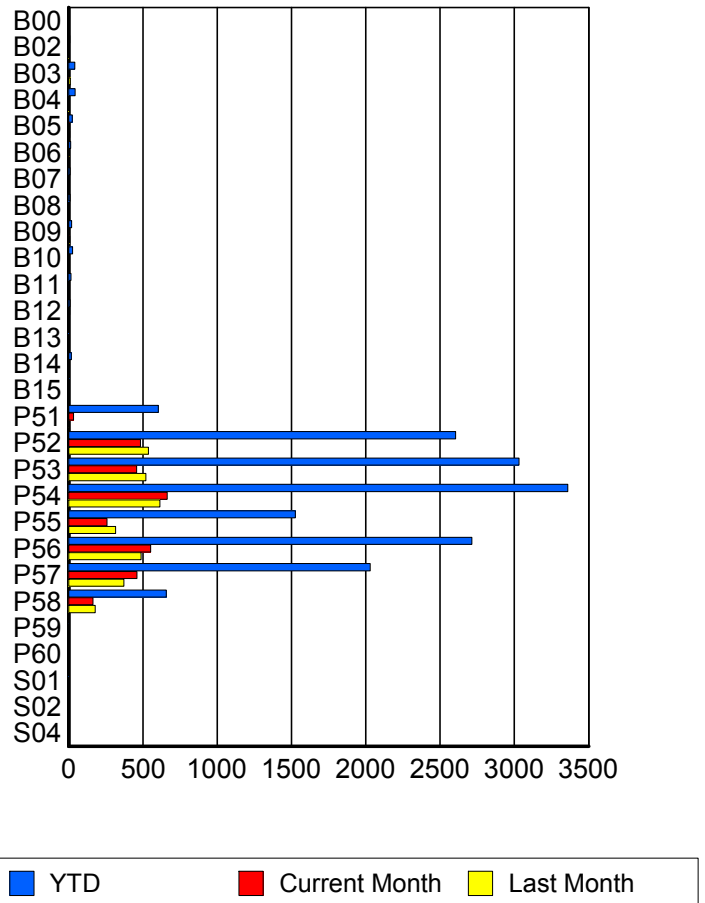
RR/SIRV Responses per County



Road Ranger / SIRV Performance By Truck

	Current Mo	Last Month	YTD
B00	0	0	2
	0	0	2
	0	0	2
B02	1	4	7
	1	4	7
	1	4	7
B03	3	11	42
	3	11	42
	4	11	46
B04	1	3	42
	1	3	43
	1	3	46
B05	8	8	24
	8	8	24
	9	8	25
B06	3	5	13
	3	5	13
	3	5	15
B07	1	0	10
	1	0	10
	1	0	10
B08	0	0	9
	0	0	9
	0	0	9
B09	5	7	21
	5	7	21
	5	7	22

RR/SIRV Responses per Truck



	Current Mo	Last Month	YTD
B10	5	1	26
	5	1	26
	5	1	28
B11	2	1	15
	2	1	15
	2	1	16
B12	8	2	10
	8	2	10
	8	2	10
B13	0	1	4
	0	1	4
	0	1	4
B14	1	1	19
	1	1	19
	1	1	19
B15	1	1	5
	1	1	5
	1	1	5
P51	33	3	593
	33	3	603
	35	3	637
P52	476	533	2,572
	483	538	2,604
	520	572	2,775
P53	457	515	3,002
	458	521	3,032
	486	556	3,227
P54	658	608	3,317
	663	615	3,359
	704	654	3,568
P55	258	316	1,516
	259	316	1,526
	293	334	1,619
P56	545	484	2,681
	552	488	2,714
	592	526	2,897
P57	454	369	2,006
	459	371	2,029
	498	410	2,174
P58	164	176	651
	165	178	657
	172	188	694
P59	1	1	3
	1	1	3
	1	1	3

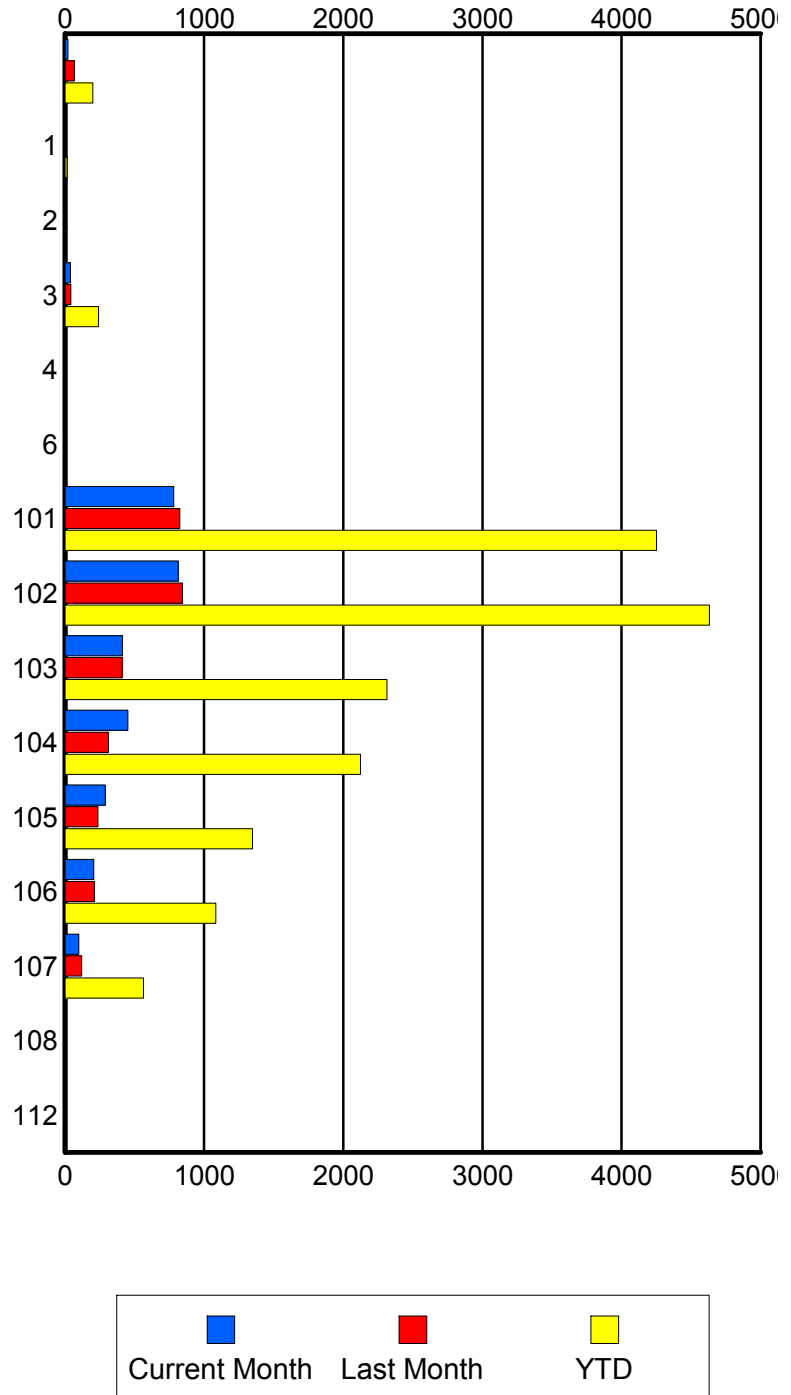
	Current Mo	Last Month	YTD
P60	0	0	1
	0	0	1
	0	0	1
S01	0	0	3
	0	0	3
	0	0	4
S02	0	1	2
	0	1	2
	0	1	2
S04	0	0	1
	0	0	1
	0	0	1

Road Ranger / SIRV Performance By Beat

	Current Mo	Last Month	YTD
	21	66	199
	21	66	200
	22	69	213
1	0	0	13
	0	0	14
	0	0	14
2	0	3	3
	0	3	3
	0	3	3
3	39	42	236
	39	42	240
	41	42	254
4	1	0	1
	1	0	1
	1	0	1
6	0	6	6
	0	7	7
	0	7	7
101	769	813	4,180
	781	825	4,251
	849	879	4,526
102	806	839	4,570
	813	844	4,631
	877	904	4,924
103	408	403	2,285
	412	410	2,314
	436	437	2,447
104	448	310	2,103
	451	312	2,124
	486	331	2,274
105	290	233	1,339
	290	236	1,347
	301	262	1,441
106	204	211	1,073
	206	212	1,083
	224	227	1,152
107	98	120	561
	98	120	563
	105	129	603
108	0	0	3
	0	0	4
	0	0	4
112	0	0	2
	0	0	2
	0	0	3

Values presented are:
 - Total Events with a RR/SIRV Response
 - Total RR/SIRV Responses,
 - Total Activities Performed

RR/SIRV Responses per Beat

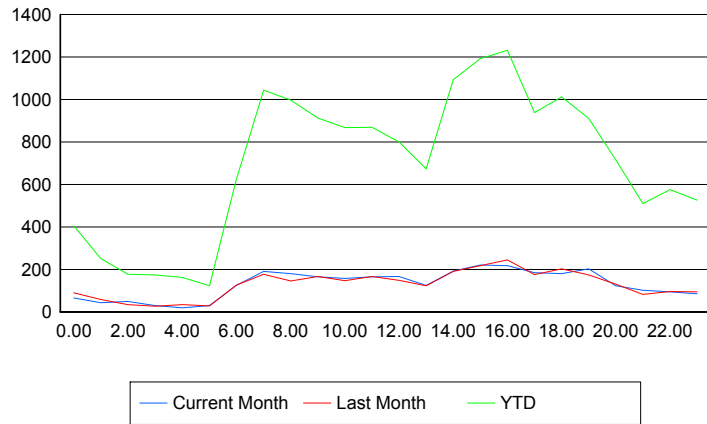


Road Ranger / SIRV Performance By Time of Day

Values presented are:
 - Total Events with a RR/SIRV Response
 - Total RR/SIRV Responses,
 - Total Activities Performed

	Current Mo	Last Month	YTD
12AM-1AM	64	86	394
	66	89	406
	71	94	440
1AM-2AM	43	57	247
	43	58	251
	46	61	261
2AM-3AM	47	33	171
	49	34	177
	53	37	189
3AM-4AM	28	24	166
	30	26	174
	33	27	187
4AM-5AM	19	30	154
	19	34	162
	19	35	168
5AM-6AM	25	28	108
	30	28	122
	32	29	129
6AM-7AM	123	125	597
	125	126	622
	133	133	658
7AM-8AM	183	172	1,009
	191	177	1,043
	202	195	1,106
8AM-9AM	173	140	956
	180	146	997
	190	165	1,059
9AM-10AM	160	160	884
	165	166	913
	171	174	963
10AM-11AM	153	143	838
	158	147	867
	169	154	913
11AM-12PM	160	164	848
	165	167	869
	175	178	919
12PM-1PM	160	142	764
	166	149	800
	175	157	838

Number of Responses / Hour of the Day



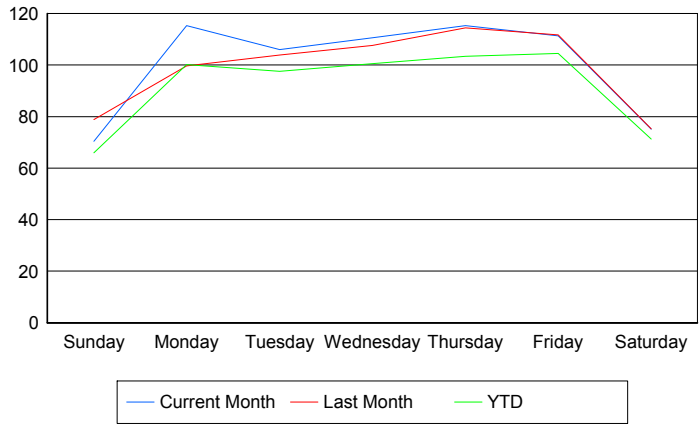
	Current Mo	Last Month	YTD
1PM-2PM	117	113	636
	124	123	674
	134	127	714
2PM-3PM	186	182	1,052
	192	191	1,093
	202	209	1,169
3PM-4PM	216	215	1,170
	221	218	1,193
	241	225	1,278
4PM-5PM	212	236	1,190
	218	244	1,232
	240	269	1,329
5PM-6PM	177	171	908
	185	175	938
	207	189	1,009
6PM-7PM	174	200	992
	180	202	1,012
	191	215	1,071
7PM-8PM	198	171	884
	202	174	911
	220	180	967
8PM-9PM	123	127	703
	123	131	715
	140	136	757
9PM-10PM	96	80	492
	101	82	510
	107	93	550
10PM-11PM	91	94	562
	94	96	575
	98	103	616
11PM-12AM	83	93	516
	85	94	526
	93	105	576

Road Ranger / SIRV Performance By Day of Week

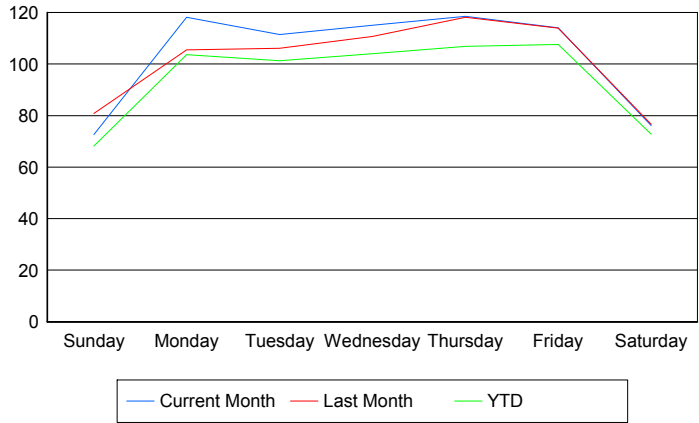
Values presented are: - Total Events with a RR/SIRV Response - Total RR/SIRV Responses, - Total Activities Performed

	Current Mo	Last Month	YTD
Sunday	281 290 314	382 392 409	1,663 1,716 1,814
Monday	457 468 492	485 513 554	2,531 2,620 2,782
Tuesday	525 552 593	416 425 450	2,507 2,599 2,771
Wednesday	549 571 613	429 441 480	2,564 2,649 2,837
Thursday	461 474 506	457 472 506	2,509 2,596 2,775
Friday	444 455 491	444 453 483	2,662 2,742 2,898
Saturday	298 302 333	374 381 408	1,821 1,861 1,989

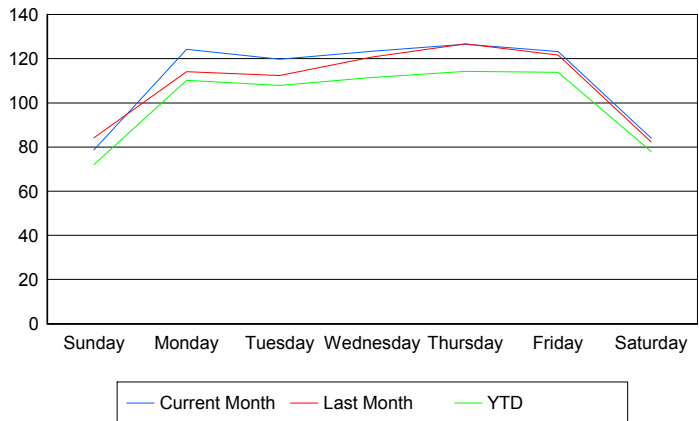
Avg # of events with a RR/SIRV Response per Day of the Week



Avg # of RR/SIRV Responses per Day of the Week



Avg # of RR/SIRV Activities Performed per Day of the Week



Road Ranger / SIRV Responses per Time of Day and Day of Week

