

Monthly Incident Duration Performance Measures Report Includes All Responders Palm Beach



Reporting from Dec 1, 2011 to Dec 31, 2011

Created on: January 10, 2012 11:56 am

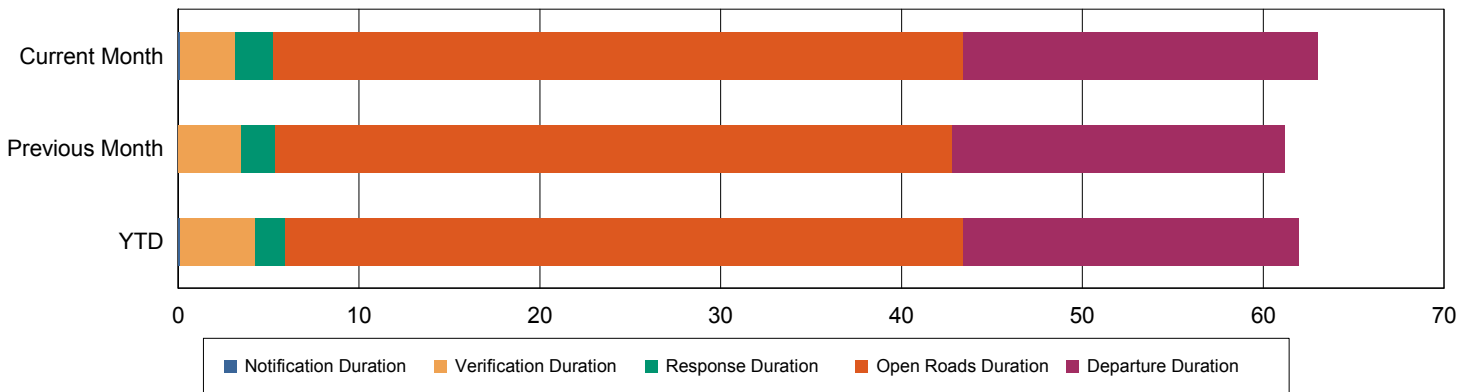
Report Template version 2.1.1

Performance Measures Summary

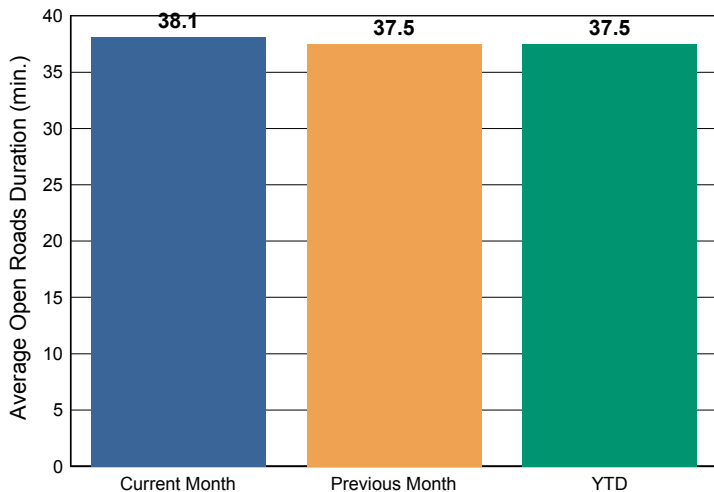
	Current Month	Previous Month	YTD
Events included in Performance Measures	122	100	1,391
Notification Duration (min.)*	0.1	0.0	0.1
Verification Duration (min.)	3.0	3.5	4.2
Response Duration (min.)	2.1	1.9	1.6
Open Roads Duration (min.)	38.1	37.5	37.5
Departure Duration (min.)	19.6	18.4	18.6
Roadway Clearance Duration (min.)	43.4	42.8	43.4
Incident Clearance Duration (min.)	63.0	61.2	62.0

*FHP Data is not available for Notification Duration

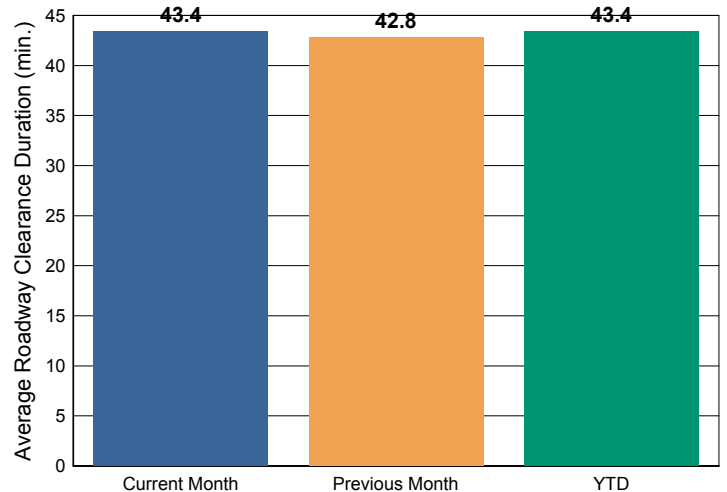
Incident Duration Summary



Open Roads Duration / Month



Roadway Clearance Duration / Month



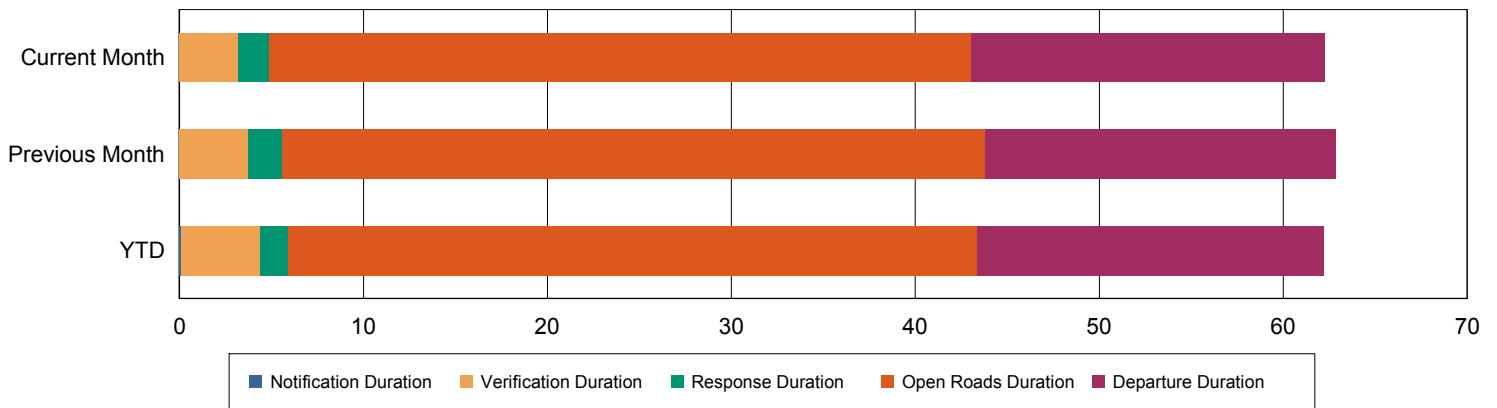
Performance Measures Summary

Incidents with Road Ranger Response

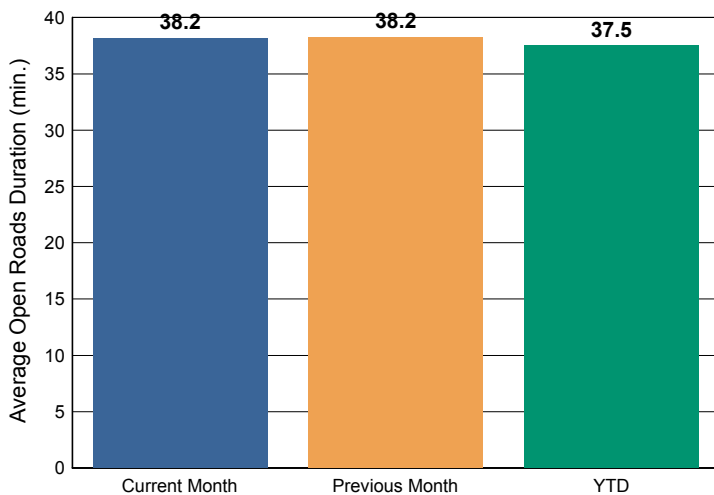
	Current Month	Previous Month	YTD
Events included in Performance Measures	114	94	1,343
A. Notification Duration (min.)*	0.0	0.0	0.1
B. Verification Duration (min.)	3.2	3.7	4.3
C. Response Duration (min.)	1.7	1.8	1.5
D. Open Roads Duration (min.)	38.2	38.2	37.5
E. Departure Duration (min.)	19.2	19.1	18.8
Roadway Clearance Duration (min.)	43.1	43.8	43.4
Incident Clearance Duration (min.)	62.3	62.9	62.2

*FHP Data is not available for Notification Duration

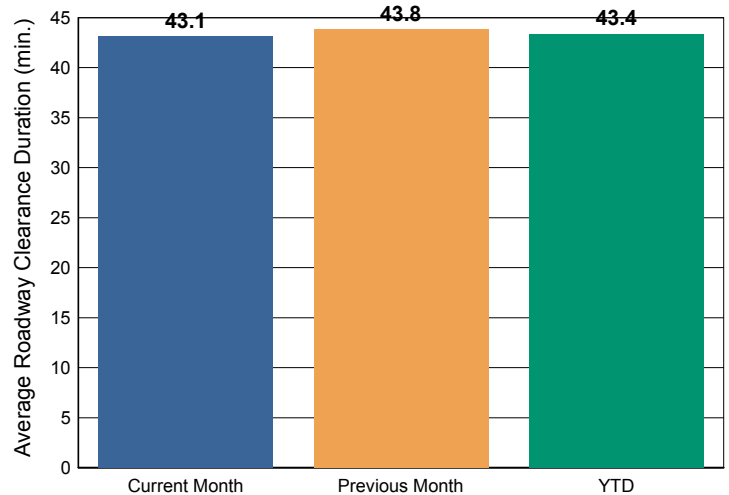
Incident Clearance Duration



Open Roads Duration / Month



Roadway Clearance Duration / Month



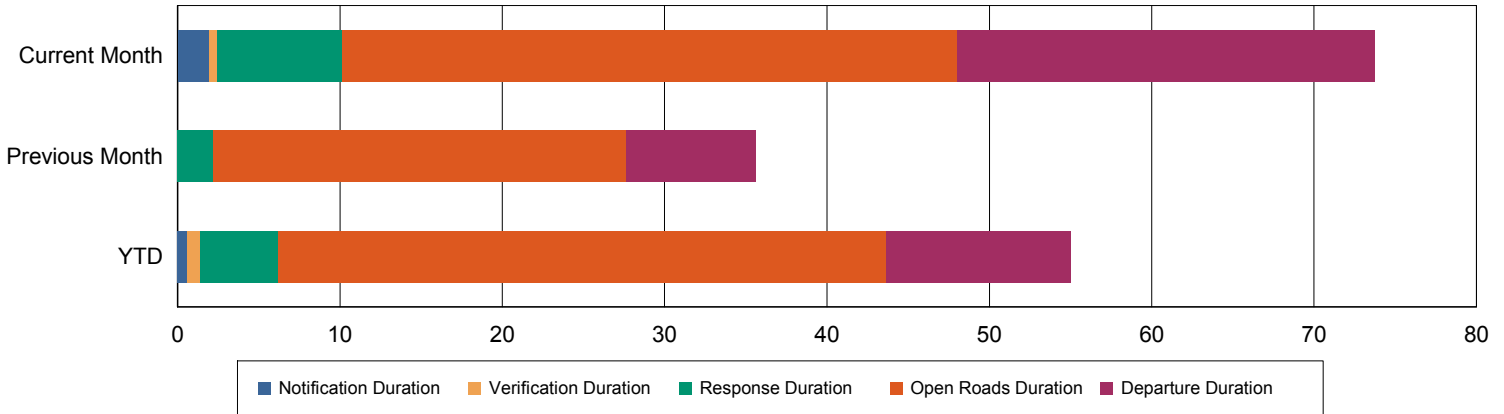
Performance Measures Summary

Incidents without Road Ranger Response

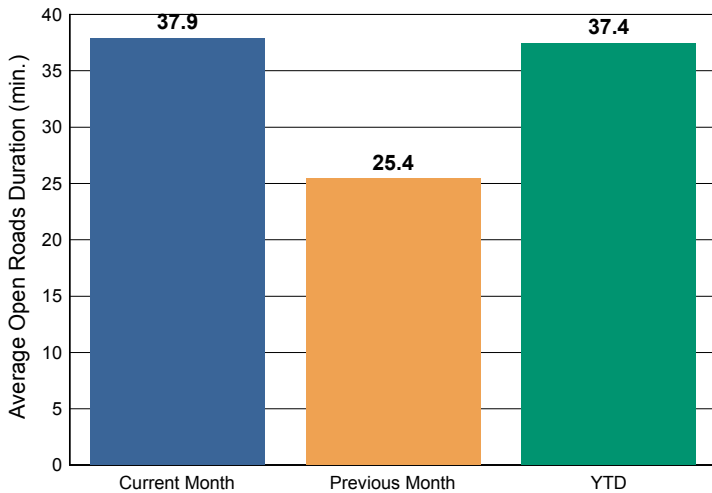
	Current Month	Previous Month	YTD
Events included in Performance Measures	8	6	48
A. Notification Duration (min.)*	2.0	0.0	0.6
B. Verification Duration (min.)	0.5	0.0	0.8
C. Response Duration (min.)	7.7	2.2	4.8
D. Open Roads Duration (min.)	37.9	25.4	37.4
E. Departure Duration (min.)	25.7	8.0	11.4
Roadway Clearance Duration (min.)	48.0	27.6	43.6
Incident Clearance Duration (min.)	73.7	35.6	55.0

*FHP Data is not available for Notification Duration

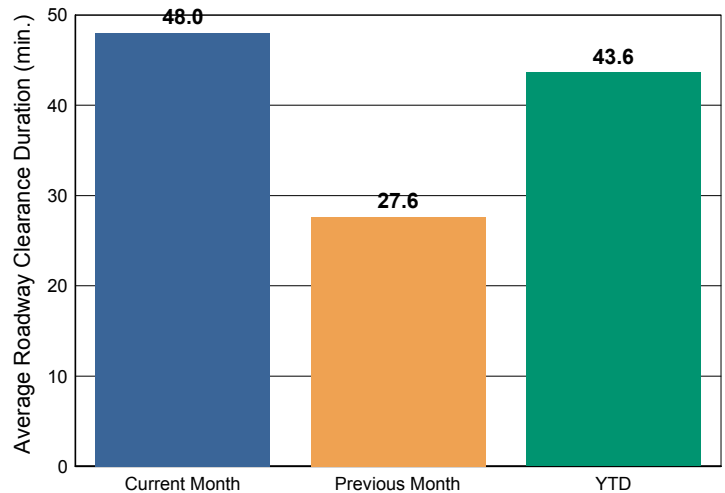
Incident Clearance Duration



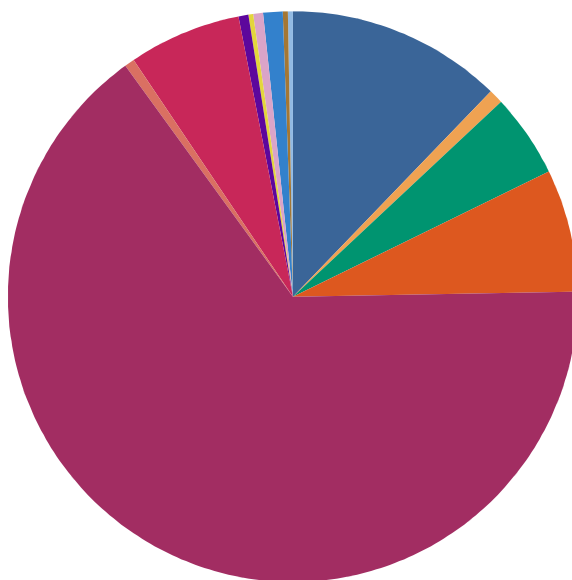
Open Roads Duration / Month



Roadway Clearance Duration / Month



Percentage of event types for all events in current month



Abandoned Vehicle	12.3%
Congestion	0.7%
Crash	4.7%
Debris on Roadway	7.1%
Disabled Vehicle	65.2%
Emergency Road Work	0.0%
Emergency Vehicles	0.1%
Interagency Coord	0.5%
Off Ramp Backup	0.0%
Other	6.3%
Pedestrian	0.7%
Police Activity	0.1%
PSA	0.6%
Scheduled Road Work	1.1%
Special Event	0.0%
Vehicle Alert	0.3%
Vehicle Fire	0.1%
Visibility	0.0%
Weather	0.0%
Total:	100.0%

Event Types for all Events

	Current Month	Previous Month	YTD	Total
Abandoned Vehicle	572	608	7,274	8,454
Congestion	76	83	335	494
Crash	238	207	2,765	3,210
Debris on Roadway	274	331	4,258	4,863
Disabled Vehicle	3,229	2,956	38,467	44,652
Emergency Road Work	0	0	6	6
Emergency Vehicles	6	5	56	67
Interagency Coord	15	8	347	370
Off Ramp Backup	0	0	4	4
Other	420	475	3,388	4,283
Pedestrian	30	28	409	467
Police Activity	6	6	84	96
PSA	30	30	332	392
Scheduled Road Work	39	50	694	783
Special Event	1	2	9	12
Vehicle Alert	14	23	185	222
Vehicle Fire	7	8	87	102
Visibility	1	0	24	25

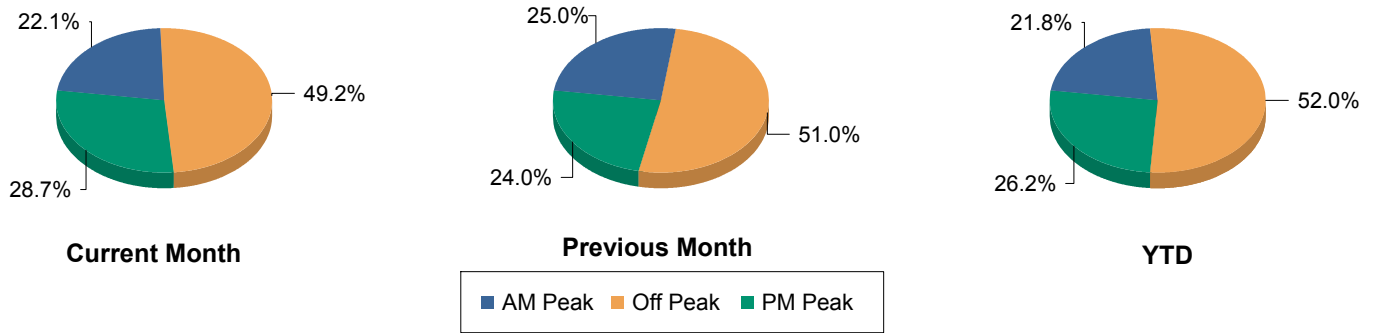
	Current Month	Previous Month	YTD	Total
Weather	2	0	22	24
Total	4,960	4,820	58,746	68,526

Performance Measures by Peak Period

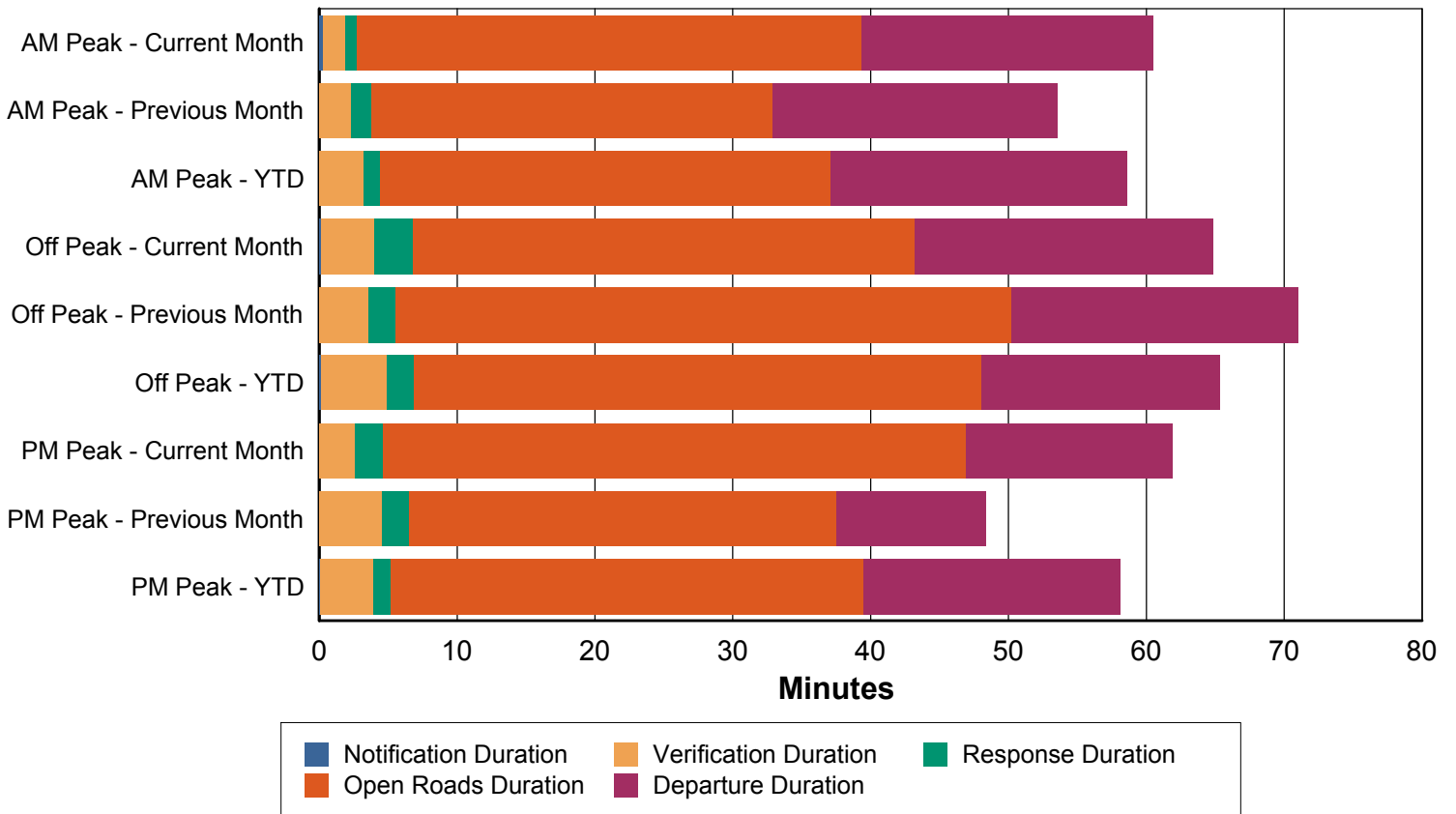
Note: AM peak period is defined as 6AM to 10AM and PM peak period is defined as 4PM to 8PM.

	AM Peak			Off Peak			PM Peak		
	Cur. Week	Last Week	YTD	Cur. Week	Last Week	YTD	Cur. Week	Last Week	YTD
Events included in Performance Measures	27	25	303	60	51	723	35	24	365
A. Notification Duration (min.)*	0.3	0.0	0.0	0.1	0.0	0.1	0.0	0.0	0.1
B. Verification Duration (min.)	1.7	2.3	3.2	3.9	3.6	4.8	2.6	4.6	3.9
C. Response Duration (min.)	0.8	1.5	1.2	2.8	2.0	2.0	2.0	1.9	1.2
D. Open Roads Duration (min.)	36.6	29.1	32.7	36.4	44.6	41.1	42.4	31.0	34.3
E. Departure Duration (min.)	21.2	20.7	21.5	21.6	20.8	17.3	15.0	10.9	18.6
Roadway Clearance Duration (min.)	39.3	32.9	37.1	43.2	50.2	48.0	47.0	37.5	39.5
Incident Clearance Duration (min.)	60.5	53.6	58.6	64.8	71.0	65.3	61.9	48.4	58.1

Number of Performance Measured Events / Peak Period



Incident Clearance Duration by Peak Period

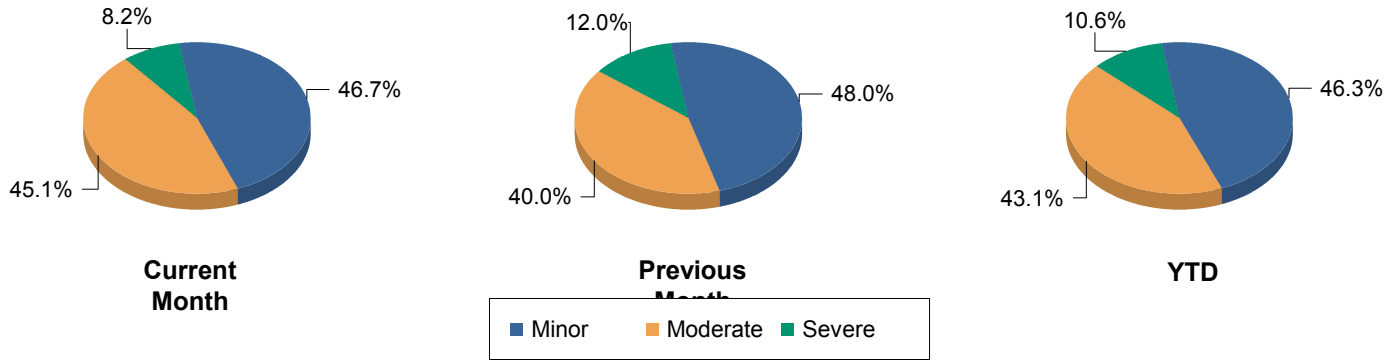


Performance Measures by Severity

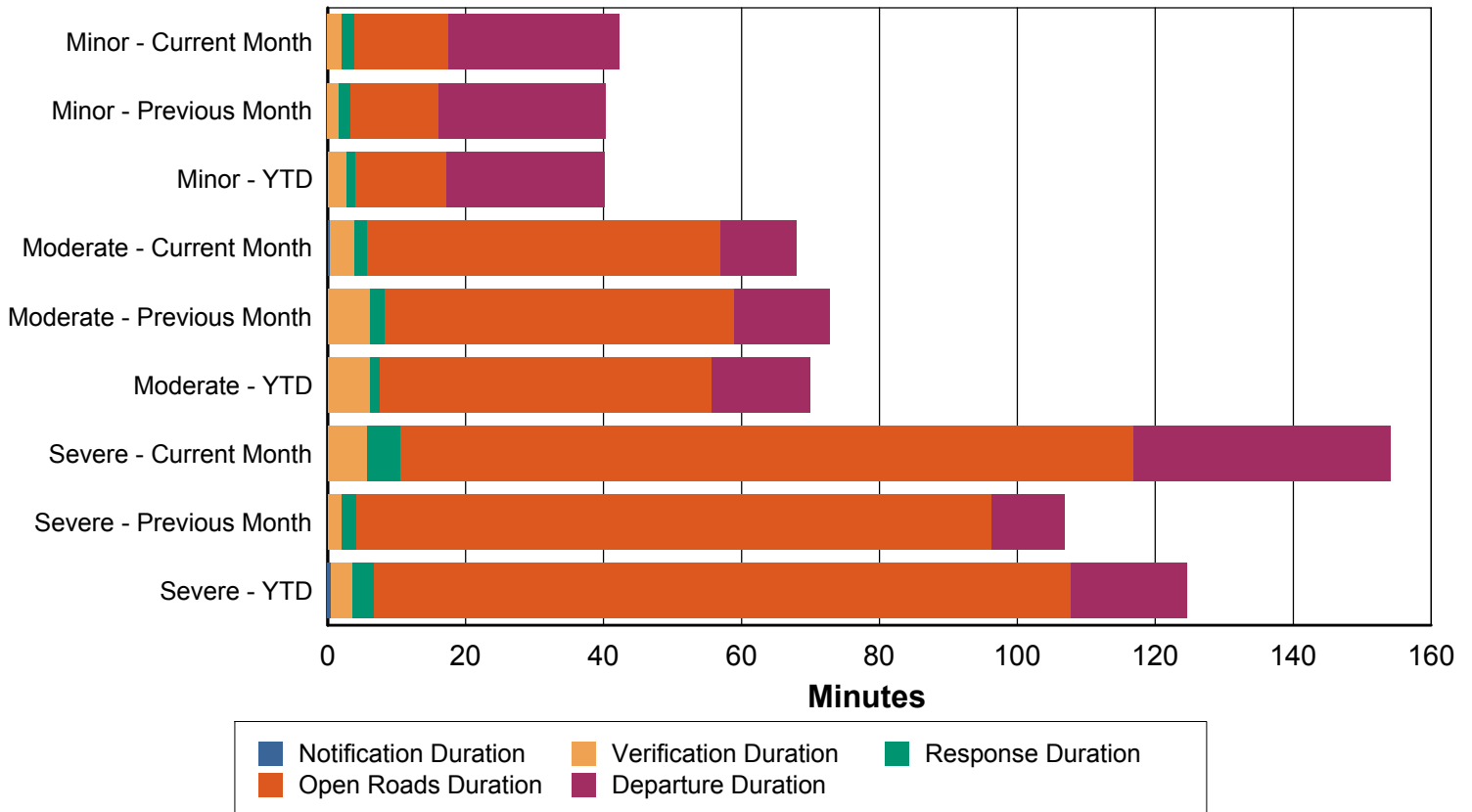
Severity:	Cur. Week			Last Week			YTD		
	Minor	Moderate	Severe	Minor	Moderate	Severe	Minor	Moderate	Severe
Events included in Perf. Meas.	57	55	10	48	40	12	644	599	148
A. Notification Duration (min.)*	0.0	0.3	0.0	0.0	0.0	0.0	0.0	0.1	0.5
B. Verification Duration (min.)	2.0	3.6	5.8	1.6	6.2	2.0	2.7	6.1	3.1
C. Response Duration (min.)	1.9	1.9	4.8	1.7	2.0	2.1	1.4	1.5	3.2
D. Open Roads Duration (min.)	13.7	51.1	106.3	12.8	50.7	92.2	13.1	48.0	101.0
E. Departure Duration (min.)	24.8	11.0	37.3	24.1	13.9	10.5	22.9	14.3	16.8
Roadway Clearance Dur. (min.)	17.5	56.9	116.8	16.1	58.9	96.3	17.2	55.7	107.8
Incident Clearance Dur. (min.)	42.3	67.9	154.1	40.2	72.7	106.8	40.1	69.9	124.6

*severity of 0 or other is not including is performance measures

Number of Performance Measured Events / Severity



Performance Measures Durations by Severity

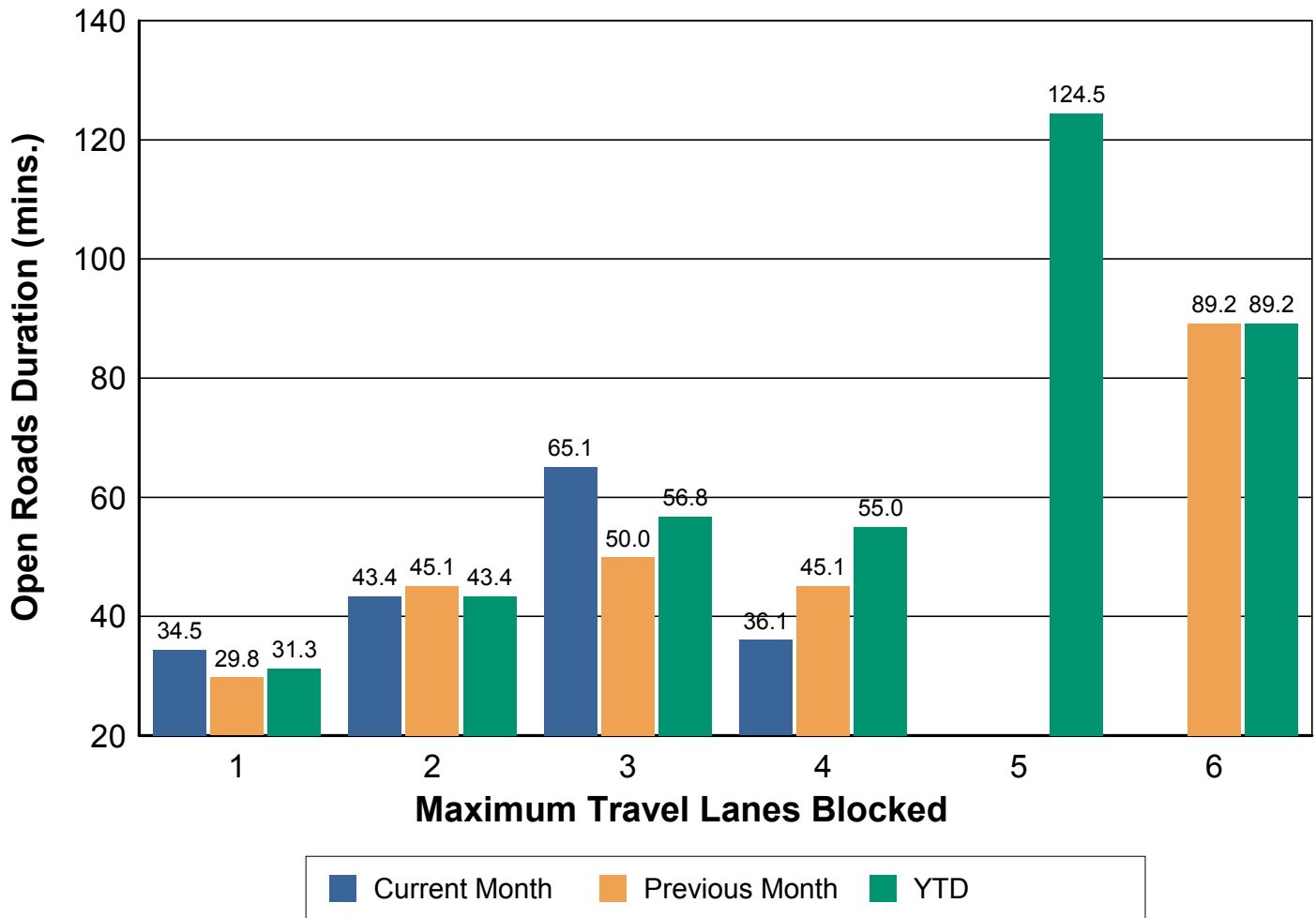


Performance Measures by Maximum Blocked Travel Lanes

**Number of Events and Open Roads Duration
by Maximum Blocked Travel Lanes**

Max travel lanes blocked	1	2	3	4	5	6
Current Month	83 34.5	29 43.4	6 65.1	4 36.1	0 0.0	0 0.0
Previous Month	58 29.8	28 45.1	8 50.0	4 45.1	0 0.0	2 89.2
YTD	914 31.3	325 43.4	106 56.8	32 55.0	12 124.5	2 89.2

Open Roads Duration / Max Travel Lanes Blocked

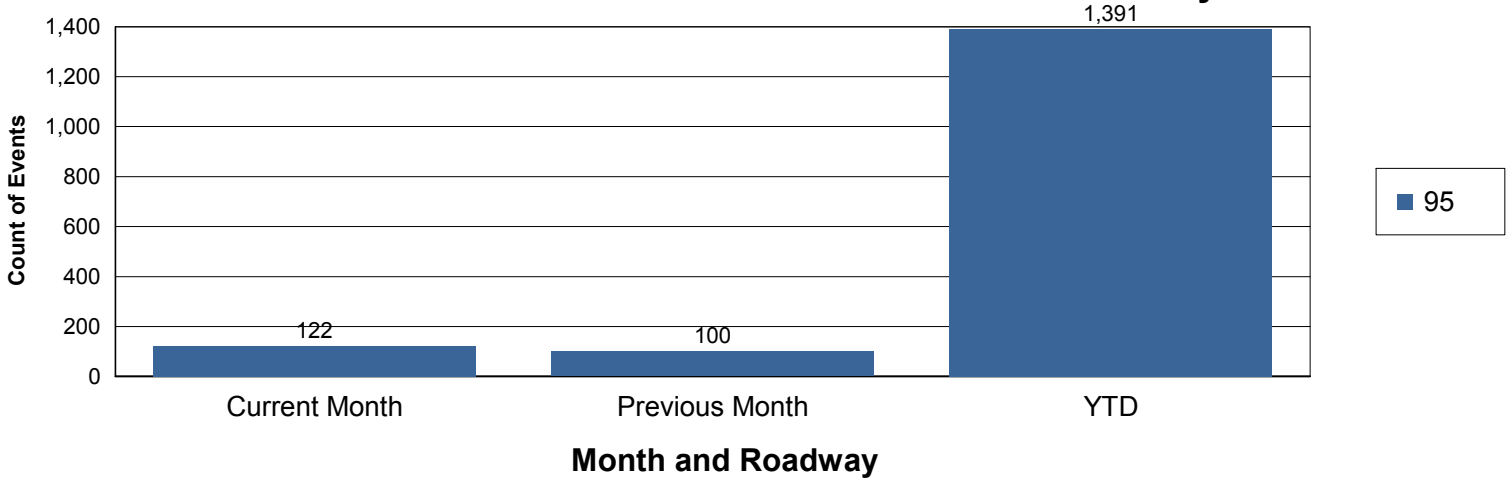


Performance Measures by Roadway

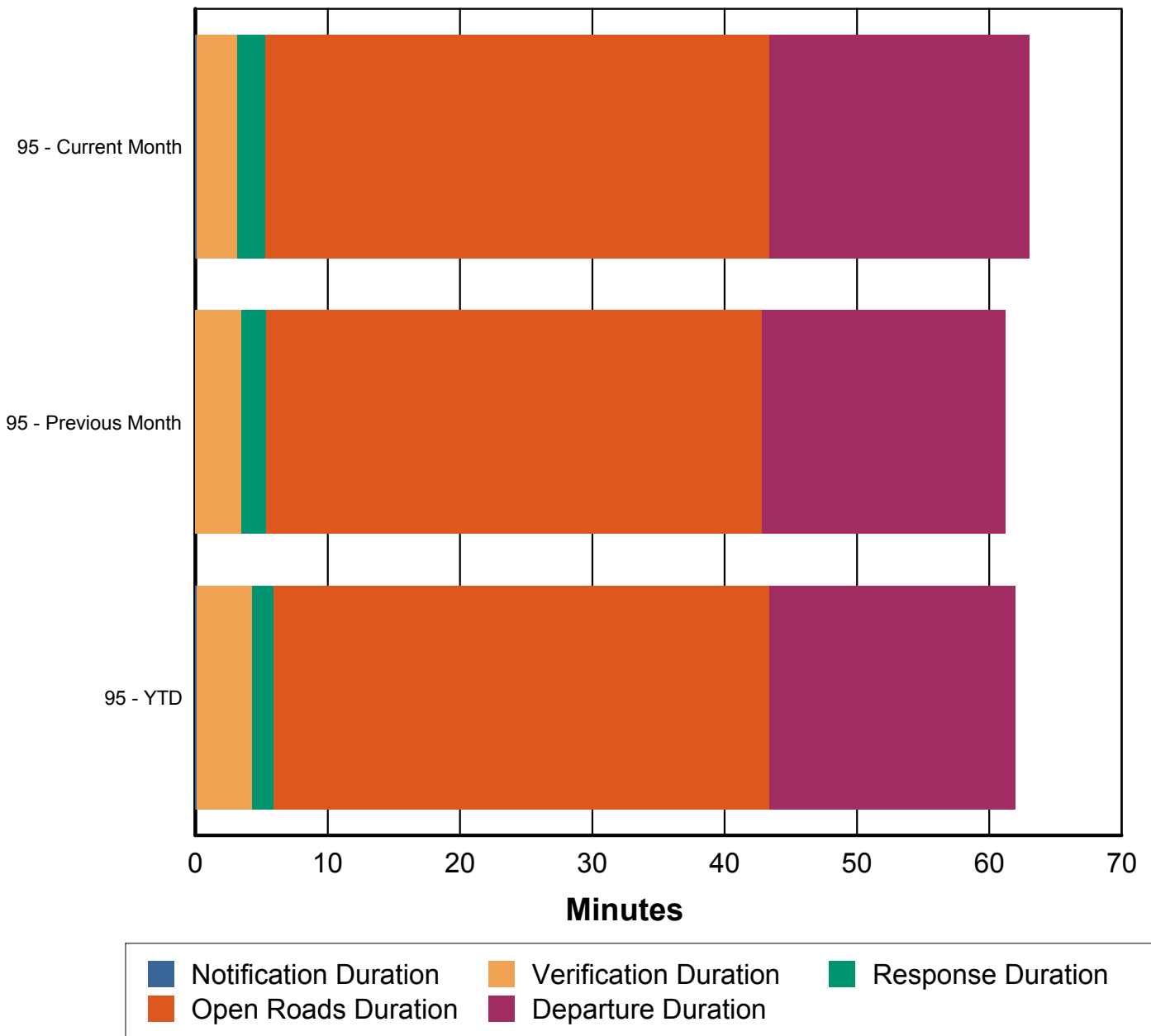
95

	Current Month	Previous Month	YTD
Events included in Performance Measures	122	100	1,391
A. Notification Duration (min.)	0.1	0.0	0.1
B. Verification Duration (min.)	3.0	3.5	4.2
C. Response Duration (min.)	2.1	1.9	1.6
D. Open Roads Duration (min.)	38.1	37.5	37.5
E. Departure Duration (min.)	19.6	18.4	18.6
Roadway Clearance Duration (min.)	43.4	42.8	43.4
Incident Clearance Duration (min.)	63.0	61.2	62.0

Number of Performance Measured Events / Roadway



Incident Clearance Duration by Roadway

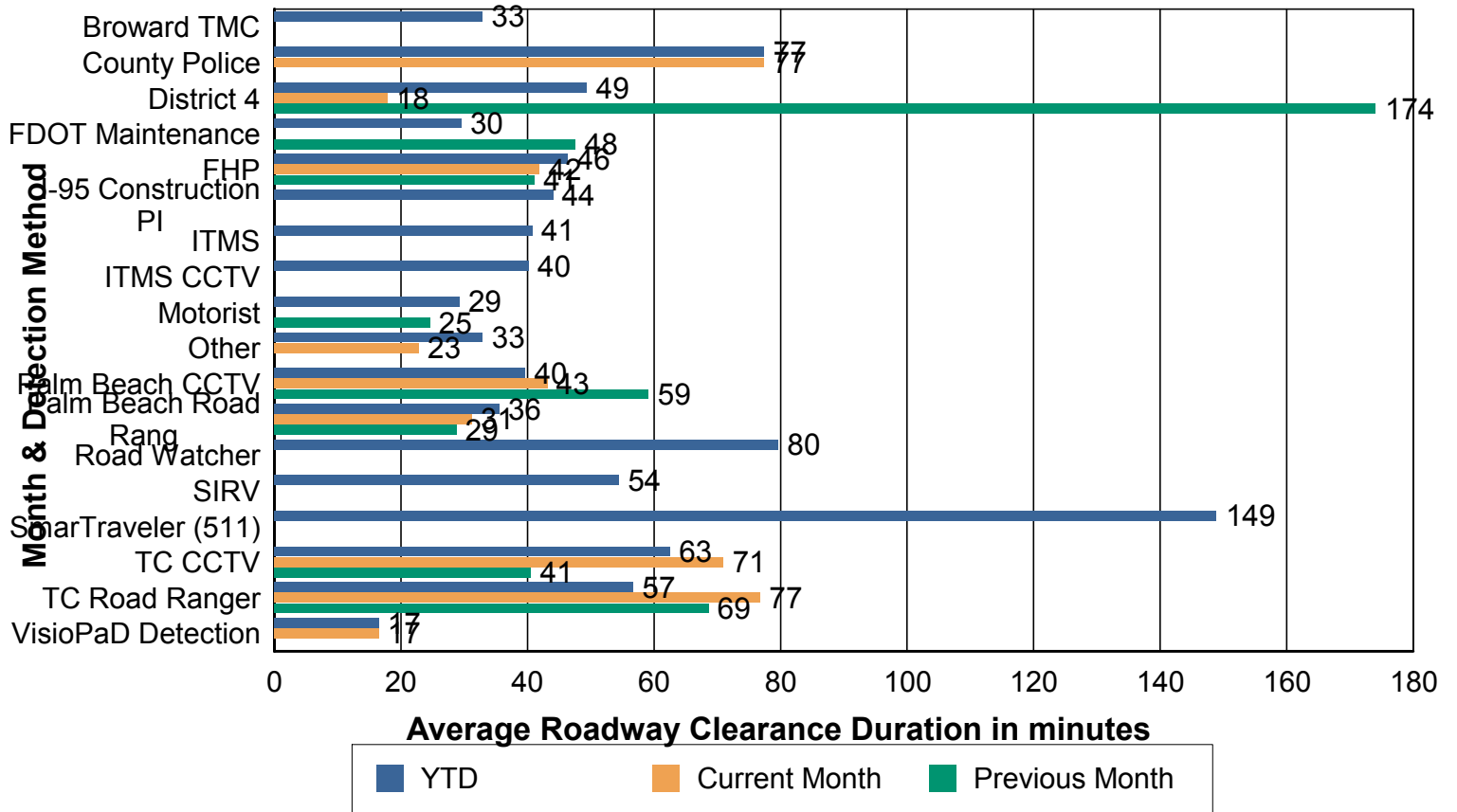


Incident Detection Methods

Number of Events by Detection Method

Detection Method	Current Month	Previous Month	YTD
Broward TMC	0	0	7
County Police	1	0	1
District 4	1	1	16
FDOT Maintenance	0	1	5
FHP	49	40	620
I-95 Construction PI	0	0	2
ITMS	0	0	1
ITMS CCTV	0	0	31
Motorist	0	1	11
Other	1	0	8
Palm Beach CCTV	19	15	106
Palm Beach Road Rang	32	29	434
Road Watcher	0	0	1
SIRV	0	0	4
SmarTraveler (511)	0	0	1
TC CCTV	6	8	48
TC Road Ranger	11	5	93
VisioPaD Detection	2	0	2
Total	122	100	1,391

Roadway Clearance Durations by Detection Method

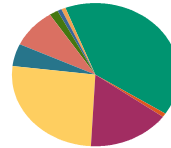


Count of Events by Detection Methods by Roadway

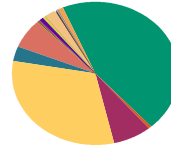
95

	Current Month	Previous Month	YTD
Broward TMC	0	0	7
County Police	1	0	1
District 4	1	1	16
FDOT Maintenance	0	1	5
FHP	49	40	620
I-95 Construction PI	0	0	2
ITMS	0	0	1
ITMS CCTV	0	0	31
Motorist	0	1	11
Other	1	0	8
Palm Beach CCTV	19	15	106
Palm Beach Road Ran	32	29	434
Road Watcher	0	0	1
SIRV	0	0	4
SmarTraveler (511)	0	0	1
TC CCTV	6	8	48
TC Road Ranger	11	5	93
VisioPaD Detection	2	0	2
Total	122	100	1,391

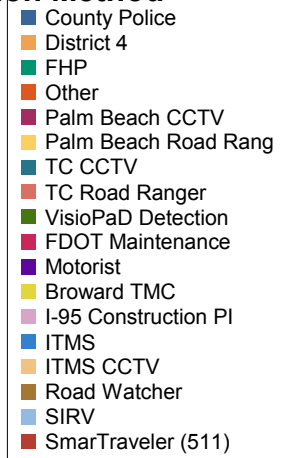
Event Count by Detection Method



Current Month



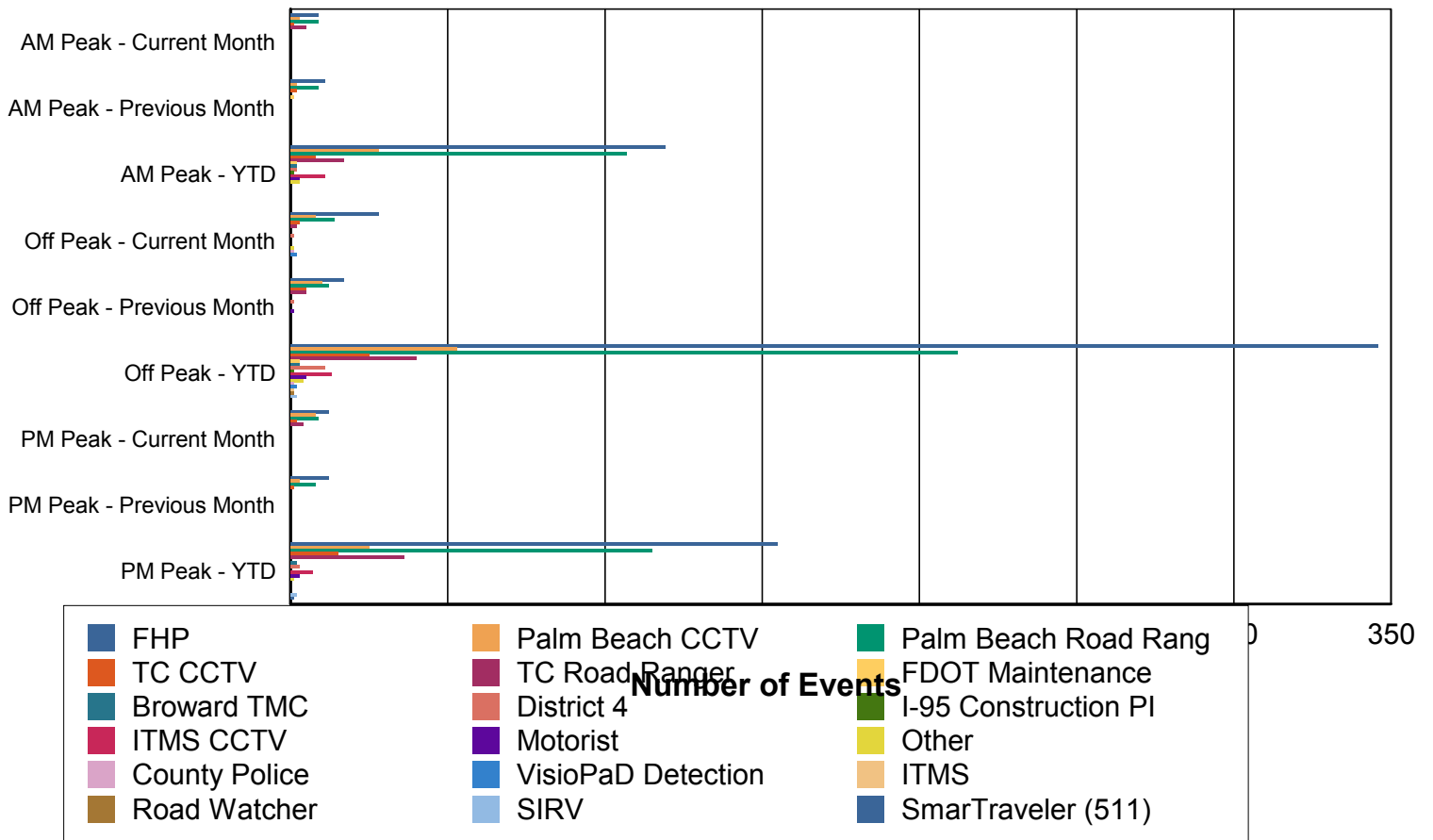
YTD



Count of Events by Detection Method and Peak Period

	AM Peak			Off Peak			PM Peak		
	Current Month	Previous Month	YTD	Current Month	Previous Month	YTD	Current Month	Previous Month	YTD
Broward TMC	0	0	2	0	0	3	0	0	2
County Police	0	0	0	1	0	1	0	0	0
District 4	0	0	2	1	1	11	0	0	3
FDOT Maintenance	0	1	2	0	0	3	0	0	0
FHP	9	11	119	28	17	346	12	12	155
I-95 Construction PI	0	0	1	0	0	1	0	0	0
ITMS	0	0	0	0	0	1	0	0	0
ITMS CCTV	0	0	11	0	0	13	0	0	7
Motorist	0	0	3	0	1	5	0	0	3
Other	0	0	3	1	0	4	0	0	1
Palm Beach CCTV	3	2	28	8	10	53	8	3	25
Palm Beach Road Ran	9	9	107	14	12	212	9	8	115
Road Watcher	0	0	0	0	0	1	0	0	0
SIRV	0	0	0	0	0	2	0	0	2
SmarTraveler (511)	0	0	0	0	0	0	0	0	1
TC CCTV	1	2	8	3	5	25	2	1	15
TC Road Ranger	5	0	17	2	5	40	4	0	36
VisioPaD Detection	0	0	0	2	0	2	0	0	0
Total	27	25	303	60	51	723	35	24	365

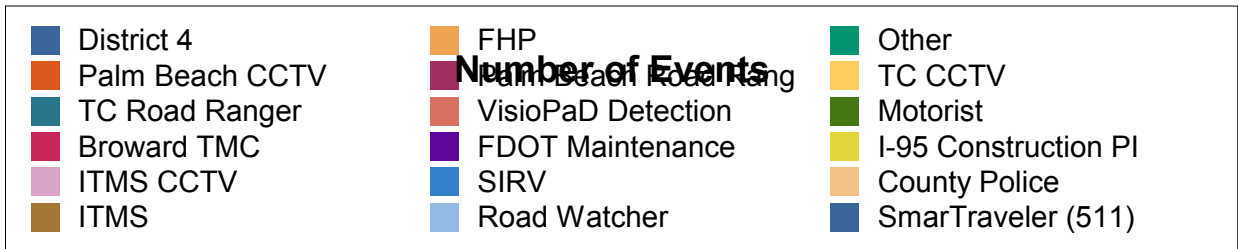
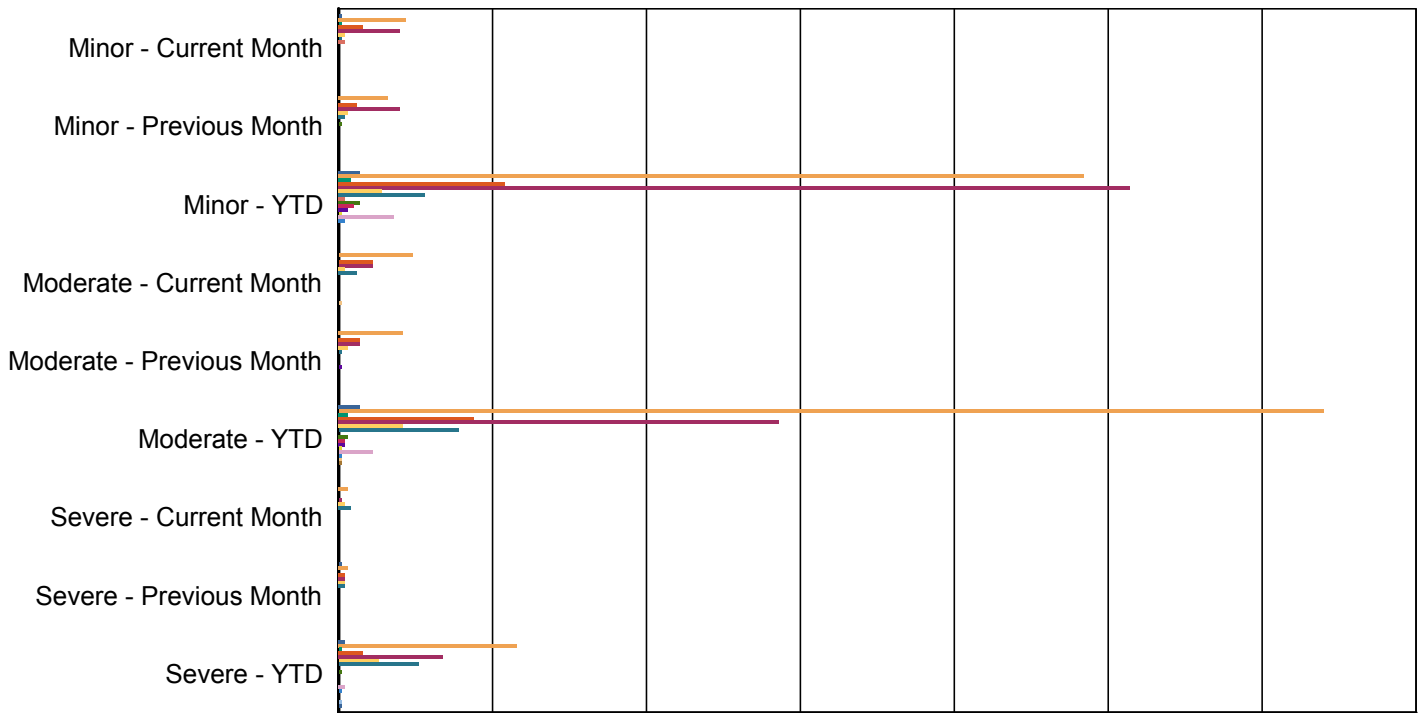
Count of Events by Detection Method and Peak Period



Count of Events by Detection Method by Severity

	Minor			Moderate			Severe		
	Current Month	Previous Month	YTD	Current Month	Previous Month	YTD	Current Month	Previous Month	YTD
Broward TMC	0	0	5	0	0	2	0	0	0
County Police	0	0	0	1	0	1	0	0	0
District 4	1	0	7	0	0	7	0	1	2
FDOT Maintenance	0	0	3	0	1	2	0	0	0
FHP	22	16	242	24	21	320	3	3	58
I-95 Construction PI	0	0	1	0	0	1	0	0	0
ITMS	0	0	0	0	0	1	0	0	0
ITMS CCTV	0	0	18	0	0	11	0	0	2
Motorist	0	1	7	0	0	3	0	0	1
Other	1	0	4	0	0	3	0	0	1
Palm Beach CCTV	8	6	54	11	7	44	0	2	8
Palm Beach Road Rang	20	20	257	11	7	143	1	2	34
Road Watcher	0	0	0	0	0	0	0	0	1
SIRV	0	0	2	0	0	1	0	0	1
SmarTraveler (511)	0	0	0	0	0	0	0	0	1
TC CCTV	2	3	14	2	3	21	2	2	13
TC Road Ranger	1	2	28	6	1	39	4	2	26
VisioPaD Detection	2	0	2	0	0	0	0	0	0
Total	57	48	644	55	40	599	10	12	148

Count of Events by Detection Method and Severity



Road Ranger / SIRV Performance Measures

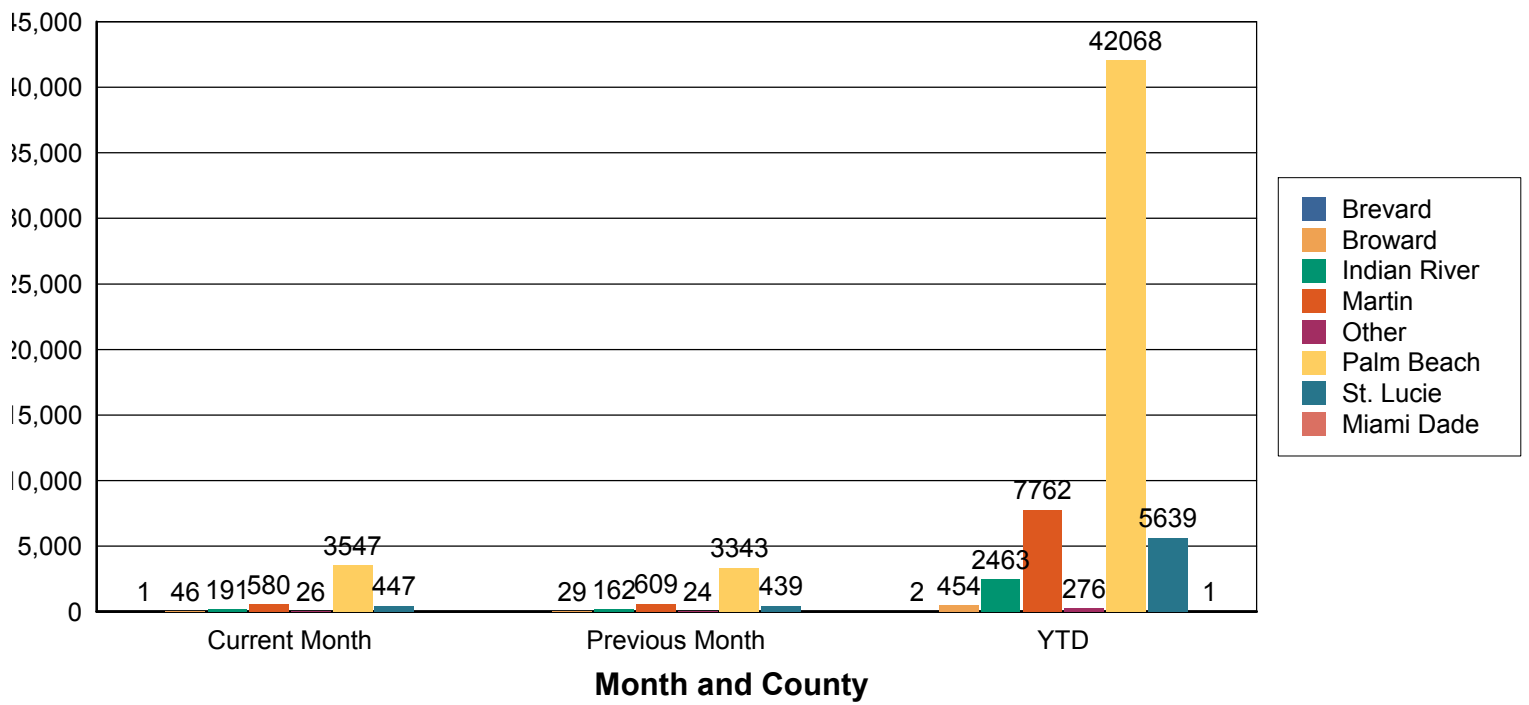
RR/SIRV Performance By County

	Current Month	Previous Month	YTD
Brevard	1	0	2
	1	0	2
	1	0	2
Broward	44	28	442
	46	29	454
	47	30	481
Indian River	171	157	2,325
	191	162	2,463
	199	172	2,570
Martin	544	580	7,370
	580	609	7,762
	599	629	8,057
Miami Dade	0	0	1
	0	0	1
	0	0	1
Other	26	24	273
	26	24	276
	27	25	283
Palm Beach	3,379	3,225	40,347
	3,547	3,343	42,068
	3,689	3,475	45,064
St. Lucie	409	410	5,306
	447	439	5,639
	465	456	5,869
Total	4,574	4,424	56,066
	4,838	4,606	58,665
	5,027	4,787	62,327

Values presented are:

- Total Events with a RR/SIRV Response
- Total RR/SIRV Responses,
- Total Activities Performed

Total RR / SIRV Responses by County

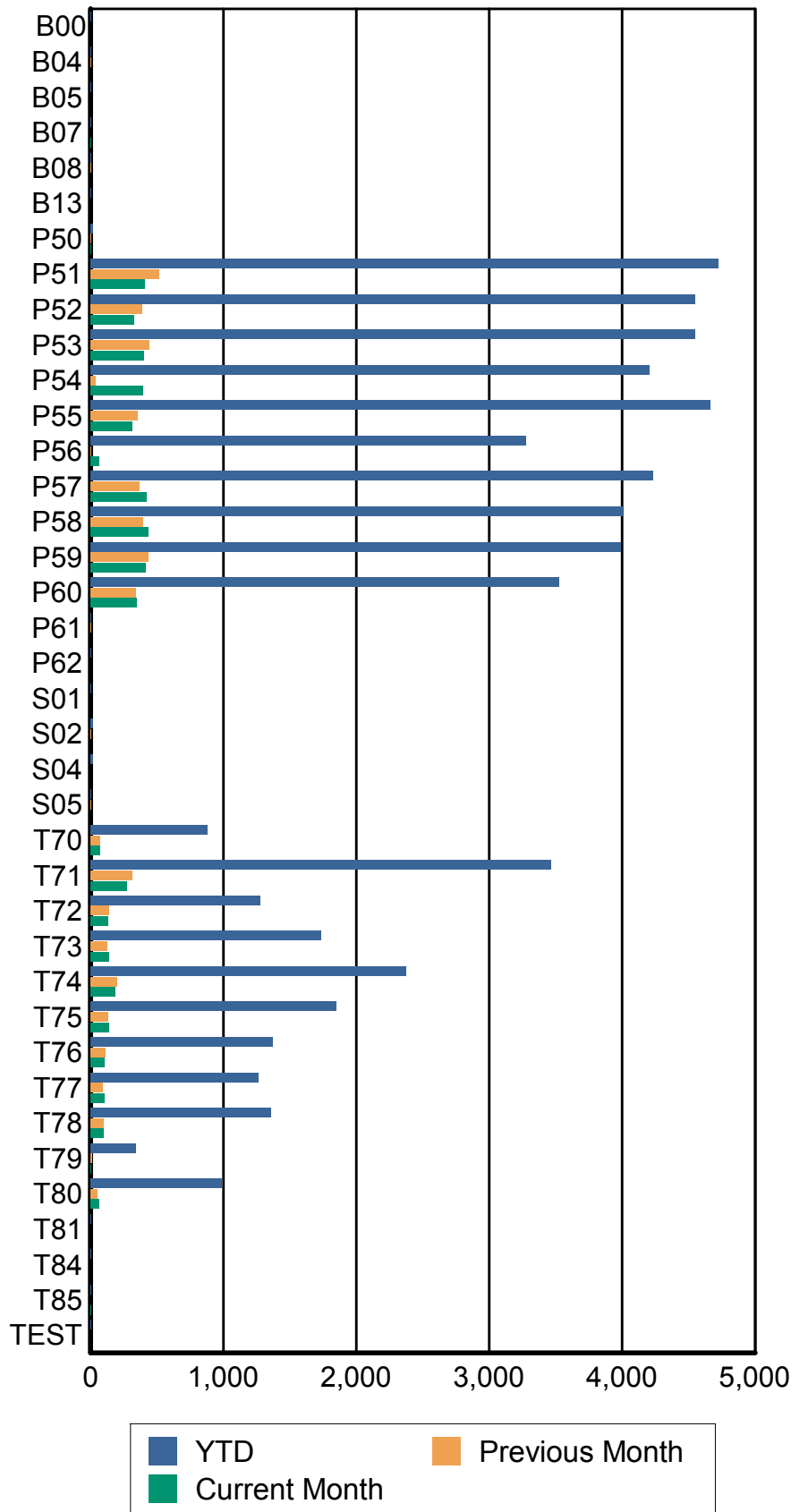


RR/SIRV Performance By Truck

Values presented are:
 - Total Events with a RR/SIRV Response
 - Total RR/SIRV Responses,
 - Total Activities Performed

Truck	Current Month	Previous Month	YTD
B00	0	0	2
	0	0	2
	0	0	2
B04	0	1	4
	0	1	4
	0	1	4
B05	0	0	1
	0	0	1
	0	0	1
B07	1	0	1
	1	0	1
	1	0	1
B08	0	1	2
	0	1	2
	0	1	2
B13	0	0	1
	0	0	1
	0	0	1
P50	5	4	16
	5	4	16
	6	5	18
P51	401	508	4,673
	405	512	4,721
	422	530	5,026
P52	322	378	4,474
	326	383	4,548
	343	398	4,915
P53	398	438	4,482
	404	442	4,547
	421	459	4,861
P54	396	36	4,145
	397	36	4,207
	404	39	4,499
P55	314	352	4,597
	316	354	4,663
	322	366	5,004
P56	64	4	3,234
	64	4	3,274
	66	4	3,560
P57	417	363	4,197
	419	364	4,234
	438	372	4,525

Total RR/SIRV Responses by Truck



	Current Month	Previous Month	YTD
P58	427 434 457	394 397 409	3,939 4,005 4,299
P59	410 416 436	432 434 458	3,930 3,990 4,265
P60	346 349 362	341 343 363	3,479 3,525 3,758
P61	0 0 0	1 1 1	2 2 2
P62	0 0 0	0 0 0	2 2 2
S01	0 0 0	0 0 0	1 1 3
S02	0 0 0	1 1 1	18 18 18
S04	0 0 0	0 0 0	16 16 18
S05	0 0 0	1 1 1	7 7 7
T70	71 73 77	71 72 76	865 878 909
T71	270 274 278	307 310 323	3,408 3,462 3,576
T72	125 128 133	139 140 140	1,254 1,276 1,314
T73	131 135 142	122 124 126	1,695 1,731 1,803
T74	181 183 190	192 199 208	2,327 2,370 2,488
T75	131 134 137	132 132 134	1,815 1,845 1,917
T76	104 105 112	109 110 118	1,354 1,368 1,422

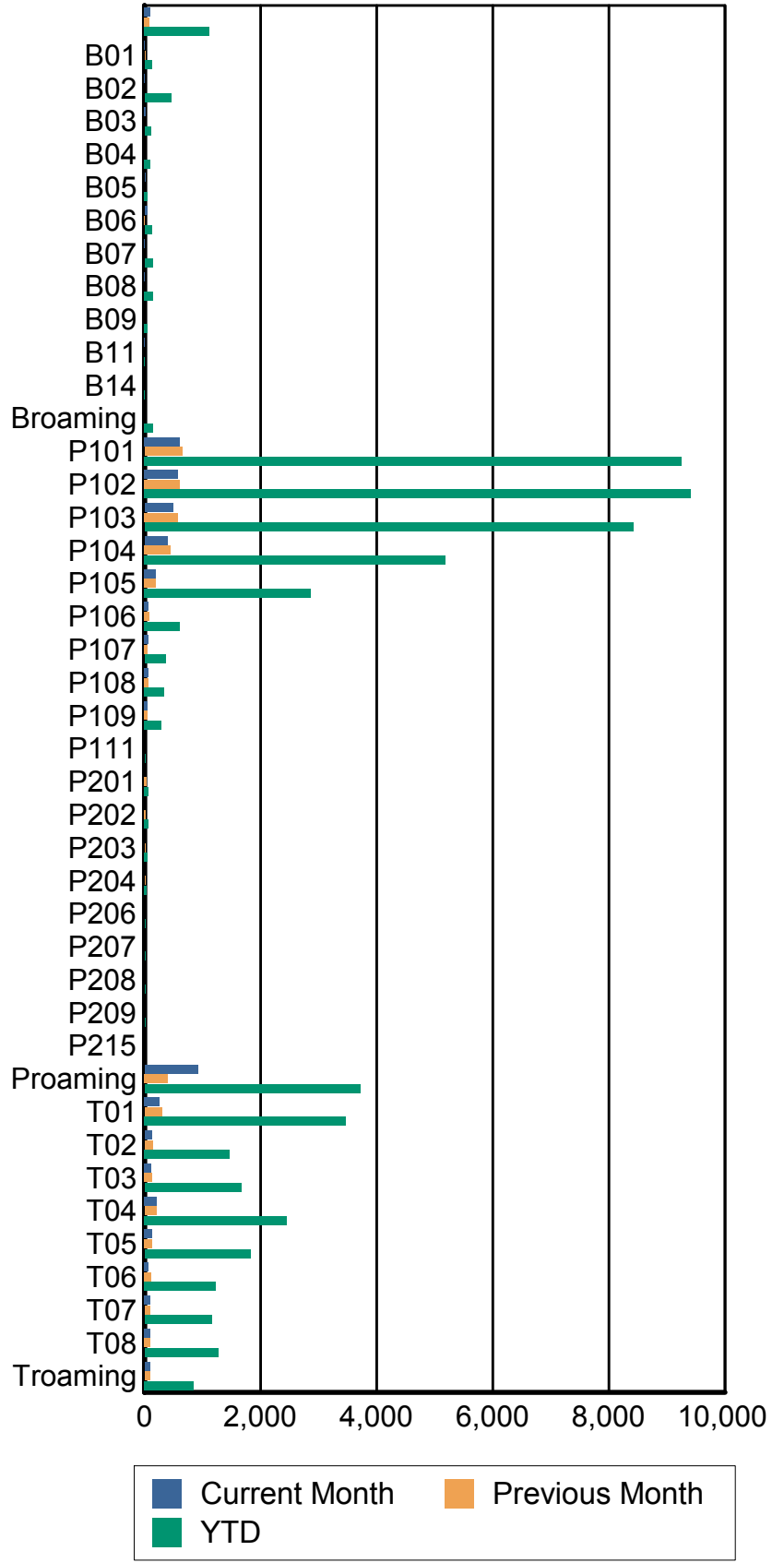
	Current Month	Previous Month	YTD
T77	102	89	1,243
	103	89	1,260
	109	96	1,316
T78	94	93	1,323
	97	94	1,356
	100	98	1,410
T79	7	9	340
	7	9	341
	7	9	359
T80	58	48	965
	62	49	986
	63	51	1,017
T81	0	0	1
	0	0	1
	0	0	1
T84	0	0	1
	0	0	1
	0	0	1
T85	1	0	2
	1	0	2
	1	0	2
TEST	0	0	1
	0	0	1
	0	0	1
Total	4,574	4,424	56,066
	4,838	4,606	58,665
	5,027	4,787	62,327

RR/SIRV Performance By Beat

Values presented are:
 - Total Events with a RR/SIRV Response
 - Total RR/SIRV Responses,
 - Total Activities Performed

Beat	Current Month	Previous Month	YTD
	102	79	1,106
	103	79	1,116
	108	82	1,177
B01	5	13	127
	5	13	127
	5	13	129
B02	6	0	448
	6	0	454
	7	0	467
B03	19	0	103
	19	0	104
	19	0	114
B04	2	2	97
	2	2	98
	2	2	105
B05	10	0	52
	11	0	54
	11	0	57
B06	45	4	127
	45	4	128
	50	4	135
B07	5	0	137
	5	0	139
	5	0	145
B08	3	0	147
	4	0	151
	4	0	159
B09	0	2	48
	0	2	49
	0	2	50
B11	5	0	5
	5	0	5
	6	0	6
B14	0	0	5
	0	0	5
	0	0	5
Broaming	0	0	145
	0	0	146
	0	0	156
P101	607	643	9,119
	614	646	9,258
	640	661	9,961

Total RR/SIRV Responses by Beat



	Current Month	Previous Month	YTD
P102	561 571 592	604 612 642	9,238 9,408 10,173
P103	488 492 510	570 574 600	8,276 8,422 9,036
P104	393 397 412	446 448 470	5,098 5,184 5,541
P105	196 199 212	191 193 202	2,814 2,865 3,097
P106	68 70 72	80 82 85	609 614 638
P107	63 63 64	53 53 53	356 358 364
P108	66 66 70	64 64 64	333 337 346
P109	50 50 53	53 55 55	284 288 301
P111	0 0 0	0 0 0	9 9 9
P201	0 0 0	39 39 46	68 68 76
P202	0 0 0	24 25 26	67 68 71
P203	0 0 0	11 11 11	47 48 51
P204	0 0 0	14 14 14	36 37 39
P206	0 0 0	0 0 0	8 8 8
P207	0 0 0	0 0 0	9 9 9
P208	0 0 0	0 0 0	12 12 12

	Current Month	Previous Month	YTD
P209	0	0	8
	0	0	8
	0	0	8
P215	0	0	1
	0	0	1
	0	0	1
Proaming	906	396	3,674
	919	400	3,716
	953	414	3,917
T01	259	296	3,417
	263	300	3,472
	267	313	3,586
T02	125	141	1,435
	128	142	1,461
	133	143	1,510
T03	109	127	1,624
	113	130	1,664
	120	132	1,734
T04	205	194	2,414
	207	201	2,456
	215	210	2,576
T05	125	132	1,789
	129	133	1,822
	133	135	1,893
T06	66	108	1,219
	67	109	1,230
	69	117	1,276
T07	98	91	1,138
	101	91	1,155
	105	98	1,201
T08	93	94	1,237
	95	95	1,268
	98	100	1,321
Troaming	86	88	830
	89	89	843
	92	93	867
Total	4,574	4,424	56,066
	4,838	4,606	58,665
	5,027	4,787	62,327

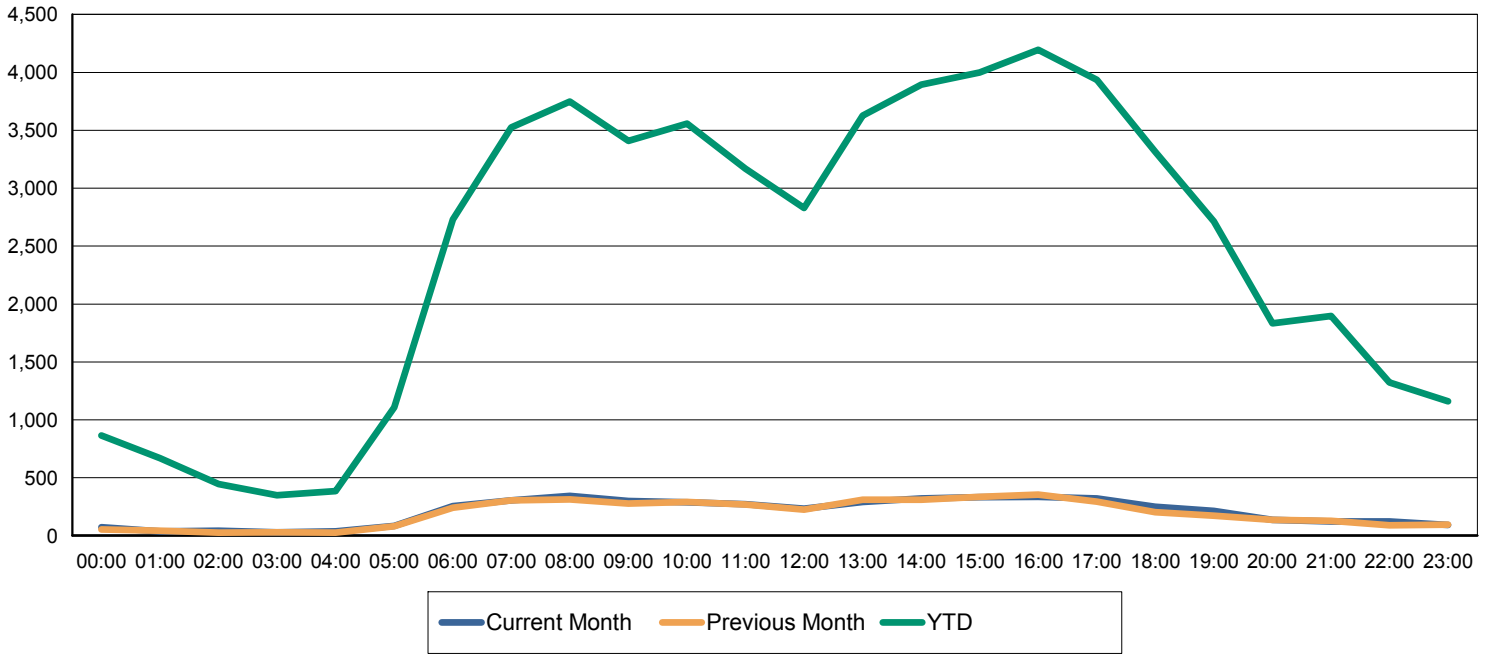
RR/SIRV Performance By Hour of Day

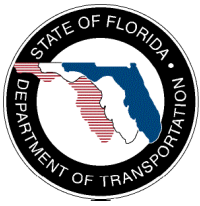
Values presented are:
 - Total Events with a RR/SIRV Response
 - Total RR/SIRV Responses,
 - Total Activities Performed

	Current Month	Previous Month	YTD
00:00	73	53	849
	73	53	864
	77	55	911
01:00	36	43	651
	38	43	668
	39	43	705
02:00	39	26	438
	42	26	445
	44	27	470
03:00	30	26	343
	30	28	349
	30	30	361
04:00	36	25	366
	37	26	384
	37	27	395
05:00	78	77	1,075
	83	81	1,107
	84	86	1,159
06:00	247	232	2,648
	254	241	2,731
	265	244	2,884
07:00	292	298	3,411
	306	304	3,523
	319	317	3,772
08:00	323	302	3,614
	344	312	3,747
	358	325	4,015
09:00	288	272	3,324
	299	278	3,407
	310	290	3,676
10:00	279	284	3,467
	289	292	3,558
	298	305	3,792
11:00	259	260	3,086
	272	268	3,169
	286	275	3,383
12:00	215	213	2,736
	233	224	2,829
	241	238	3,034
13:00	283	297	3,506
	290	310	3,627
	306	322	3,864

	Current Month	Previous Month	YTD
14:00	311 321 332	306 311 324	3,785 3,893 4,132
15:00	320 332 349	333 334 350	3,887 3,998 4,258
16:00	328 334 348	346 355 370	4,090 4,194 4,447
17:00	309 320 332	291 294 300	3,838 3,936 4,156
18:00	246 251 262	202 204 217	3,211 3,314 3,478
19:00	206 215 221	168 173 177	2,644 2,713 2,870
20:00	133 137 140	129 136 140	1,784 1,832 1,937
21:00	119 122 126	123 129 137	1,851 1,896 2,009
22:00	118 123 130	88 90 94	1,299 1,322 1,408
23:00	90 93 93	90 94 94	1,132 1,159 1,211

Count of Responses by Hour of Day





Monthly Performance Measures Report Palm Beach County



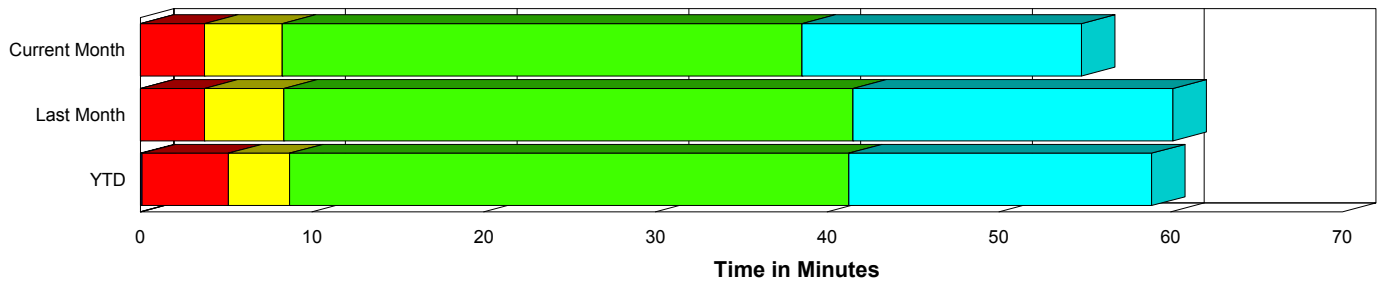
Created on:
January 10, 2012
12:50 pm

Period From Dec 1, 2011 to Dec 31, 2011

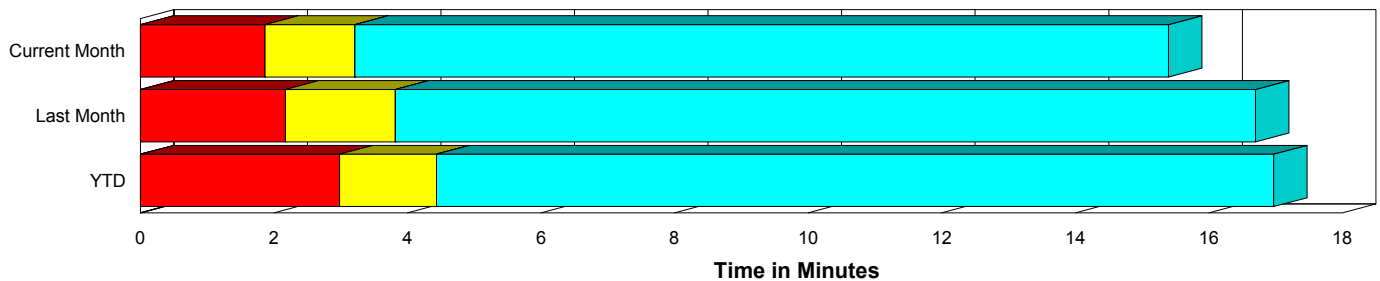
Performance Measures Summary

	Traffic Events (No Lanes Blocked)			Incidents (Lanes Blocked)		
	<u>This Month</u>	<u>Last Month</u>	<u>YTD</u>	<u>This Month</u>	<u>Last Month</u>	<u>YTD</u>
Number of Events	3,006	2,810	34,026	93	89	1,228
TMC Detection (min.)	0.00	0.00	0.00	0.00	0.00	0.10
TMC Verification (min.)	1.87	2.17	2.98	3.75	3.73	5.03
TMC Response (min.)	3.40	4.00	4.63	8.26	8.62	8.71
RR Dispatch Time (min.)	0.54	0.58	1.48	1.64	1.57	2.25
RR Response Time (min.)	2.97	3.48	3.19	6.62	7.03	6.47
Roadway Clearance (min.)				38.54	41.18	41.09
Event Clearance (min.)	15.58	16.88	17.16	54.77	59.64	58.21
# of Events w/ RR/SIRV	2,900	2,735	33,050	93	86	1,200
RR/SIRV Responses	2,900	2,735	33,050	93	86	1,200
RR/SIRV Activities	2,941	2,725	35,348	153	126	1,715

Incident Clearance Time-Line



Traffic Event (Non-Lane Blockage) Time-Line



<ul style="list-style-type: none"> ■ Avg. TMC Detection Time ■ Avg. Time from TMC Detection to TMC Verification ■ Avg. Time from TMC Verification to TMC Response 	<ul style="list-style-type: none"> ■ Avg. Time from TMC Response to Roadway Clearance* ■ Avg. Time from Roadway Clearance to Incident/Event Clearance**
---	--

* Roadway clearance equals all travel lanes open

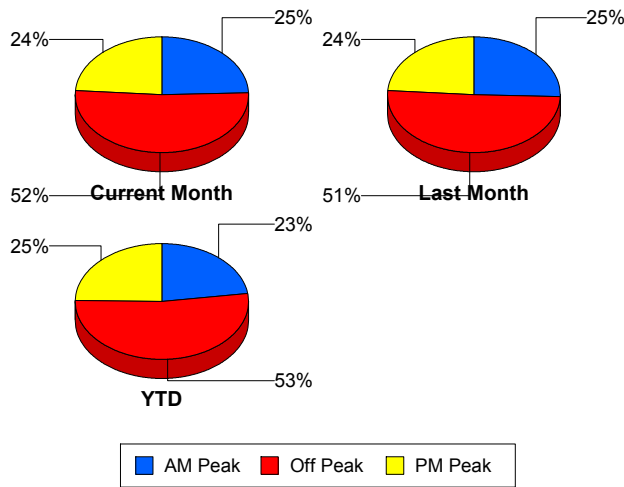
** Incident clearance equals time when last responder has left the scene

Performance Measures by Peak Period

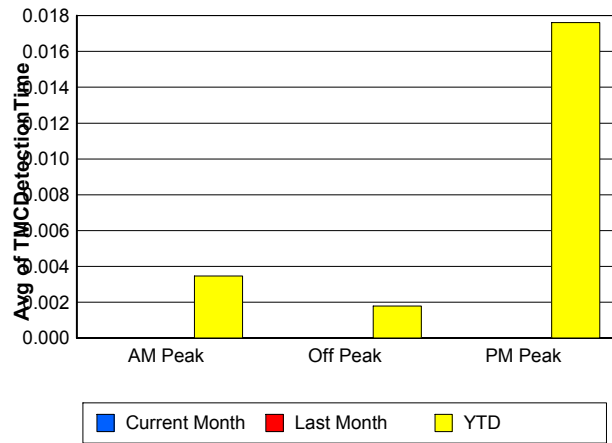
Note: AM peak period is defined as 6am to 10am and PM peak period is defined as 3pm to 7pm.

	AM Peak			Off Peak			PM Peak		
	<u>Current Month</u>	<u>Last Month</u>	<u>YTD</u>	<u>Current Month</u>	<u>Last Month</u>	<u>YTD</u>	<u>Current Month</u>	<u>Last Month</u>	<u>YTD</u>
Number of Events	761	739	8,001	1,599	1,467	18,511	739	693	8,742
Number of Incidents	18	24	278	47	41	637	28	24	313
TMC Detection (min.)	0.00	0.00	0.00	0.00	0.00	0.00	0.00	0.00	0.02
TMC Verification (min.)	1.20	1.66	1.99	2.19	2.55	3.43	2.09	2.11	3.23
TMC Response (min.)	2.50	3.52	3.59	4.09	4.64	5.13	3.55	3.79	5.09
RR Dispatch Time (min.)	0.33	0.39	0.86	0.66	0.78	1.73	0.63	0.50	1.64
RR Response Time (min.)	2.24	3.19	2.78	3.55	3.93	3.46	3.01	3.32	3.49
Event Clearance (min.)	14.30	16.47	17.16	17.42	19.31	19.04	17.84	17.61	18.95
Roadway Clearance (min.)	36.48	29.29	35.72	41.19	50.67	45.32	35.42	36.85	37.24
Incident Clearance (min.)	50.70	49.93	56.21	58.82	71.42	60.56	50.57	49.71	55.19
# of Events w/ RR/SIRV	748	722	7,811	1,518	1,412	17,918	727	687	8,521
RR/SIRV Responses	748	722	7,811	1,518	1,412	17,918	727	687	8,521
RR/SIRV Activities	776	710	8,548	1,578	1,440	19,346	740	701	9,169

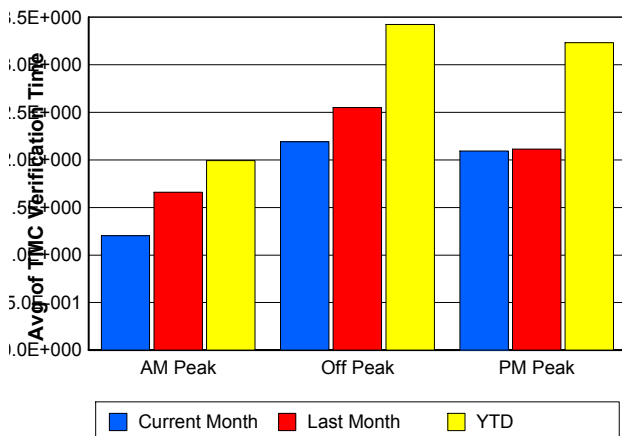
Number of Events / Peak Period



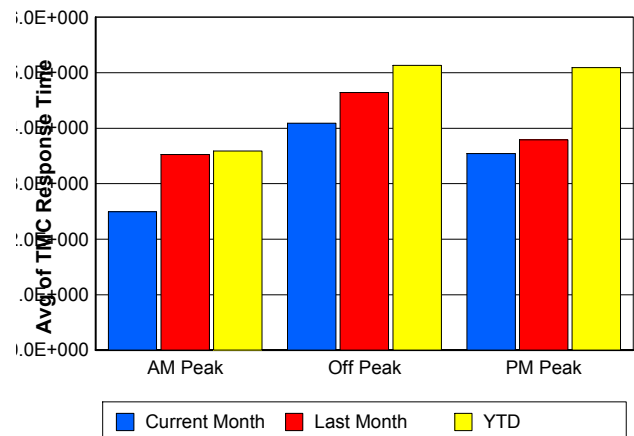
TMC Detection Time



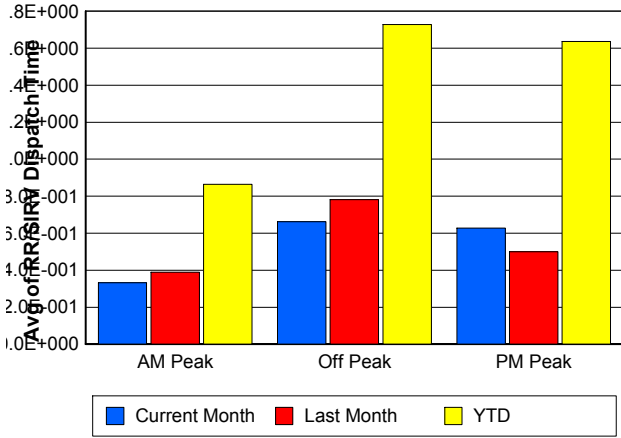
TMC Verification Time



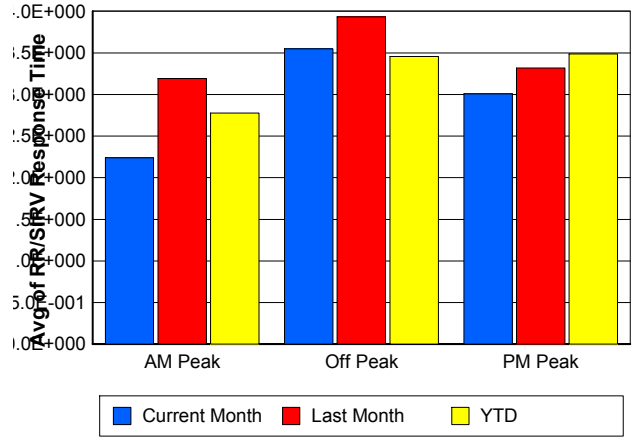
TMC Response Time



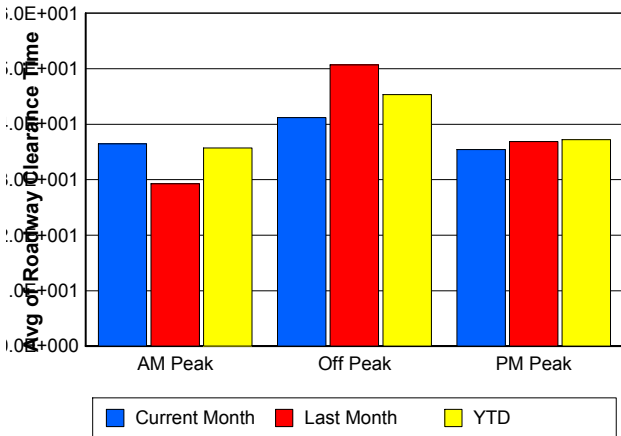
Road Ranger / SIRV Dispatch Time



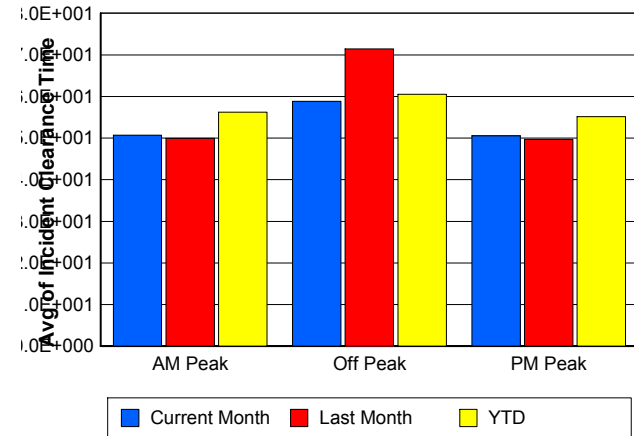
Road Ranger / SIRV Response Time



Roadway Clearance Time (2A)



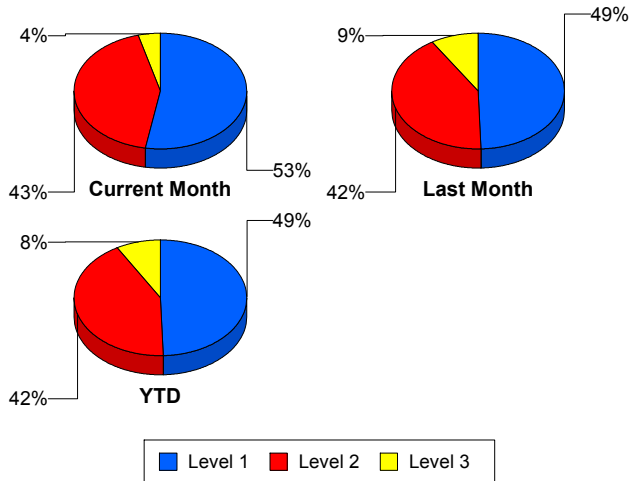
Incident Clearance Time (3B)



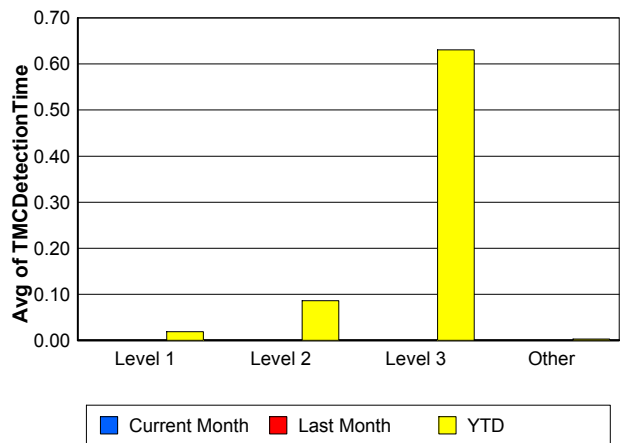
Performance Measures by Severity

	Level 1			Level 2			Level 3			Other		
	<u>This Month</u>	<u>Last Month</u>	<u>YTD</u>	<u>This Month</u>	<u>Last Month</u>	<u>YTD</u>	<u>This Month</u>	<u>Last Month</u>	<u>YTD</u>	<u>This Month</u>	<u>Last Month</u>	<u>YTD</u>
Number of Events	49	44	606	40	37	521	4	8	101	3,006	2,810	34,026
Number of Incidents	49	44	606	40	37	521	4	8	101	0	0	0
TMC Detection (min.)	0.00	0.00	0.02	0.00	0.00	0.09	0.00	0.00	0.63	0.00	0.00	0.00
TMC Verification (min.)	2.34	1.72	3.00	4.40	6.74	7.40	14.45	0.83	4.92	1.87	2.17	2.98
TMC Response (min.)	6.44	5.66	6.56	8.93	12.54	10.98	23.89	6.01	9.59	3.40	4.00	4.63
RR Dispatch Time (min.)	1.33	1.54	1.79	1.99	1.56	2.72	1.81	1.78	2.61	0.54	0.58	1.48
RR Resp. Time (min.)	5.11	4.07	4.81	6.93	10.98	8.26	22.08	4.23	6.99	2.97	3.48	3.19
Event Clearance (min.)	40.33	41.25	39.55	66.08	71.33	68.13	118.46	104.39	118.77	15.58	16.88	17.16
Roadway Clear. (min.)	17.48	15.69	16.93	56.67	59.38	55.45	115.15	97.17	111.96			
Incident Clearance (min.)	40.33	41.25	39.55	66.08	71.33	68.13	118.46	104.39	118.77			
# of Events w/ RR/SIRV	49	44	594	40	35	516	4	7	90	2,900	2,735	33,050
RR/SIRV Responses	49	44	594	40	35	516	4	7	90	2,900	2,735	33,050
RR/SIRV Activities	74	47	763	72	57	777	7	22	175	2,941	2,725	35,348

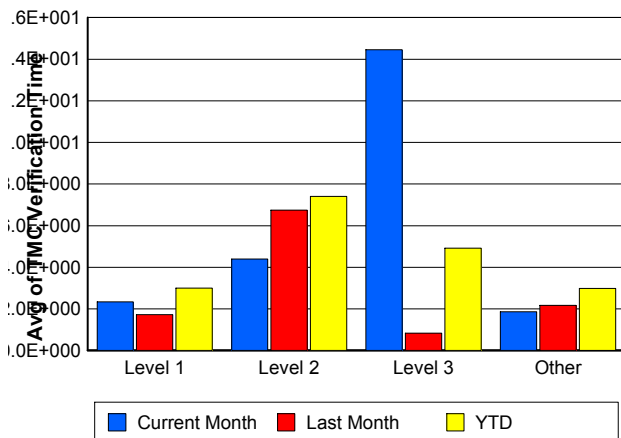
Number of Events / Severity



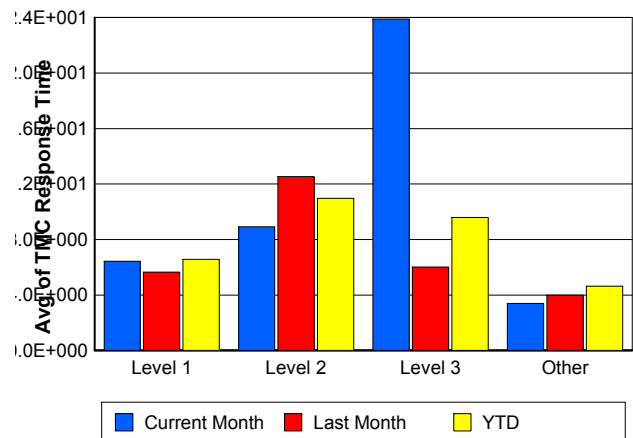
TMC Detection Time



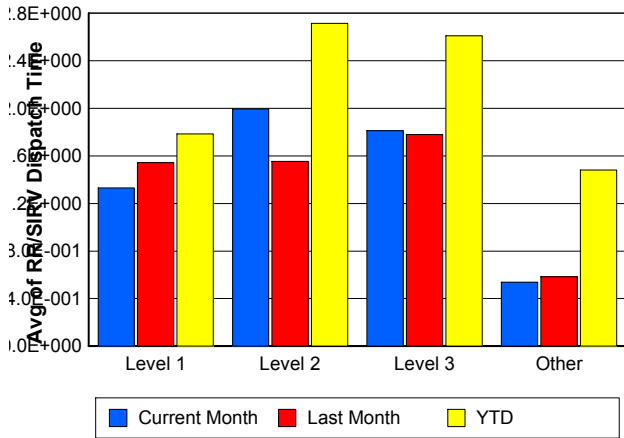
TMC Verification Time



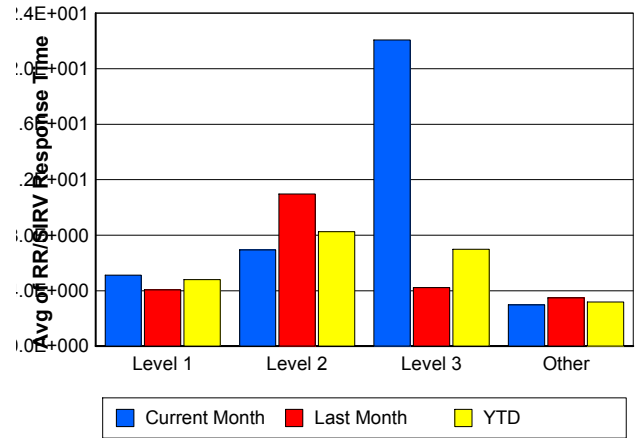
TMC Response Time



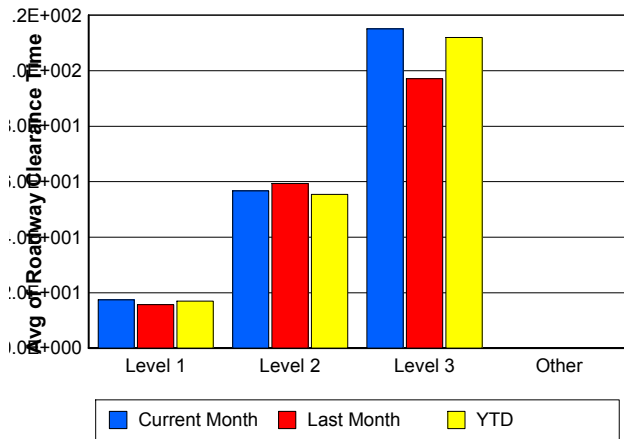
Road Ranger / SIRV Dispatch Time



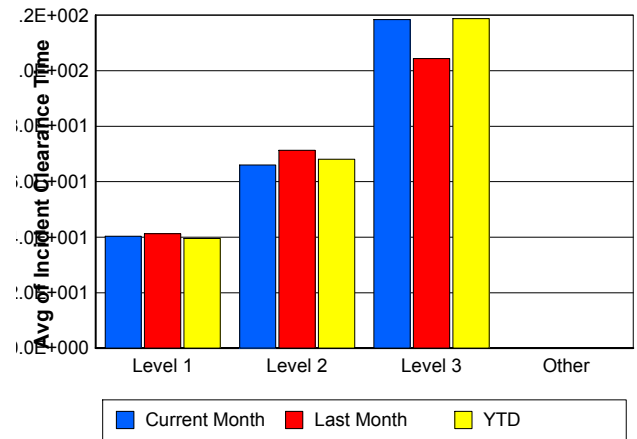
Road Ranger / SIRV Response Time



Roadway Clearance Time (2A)



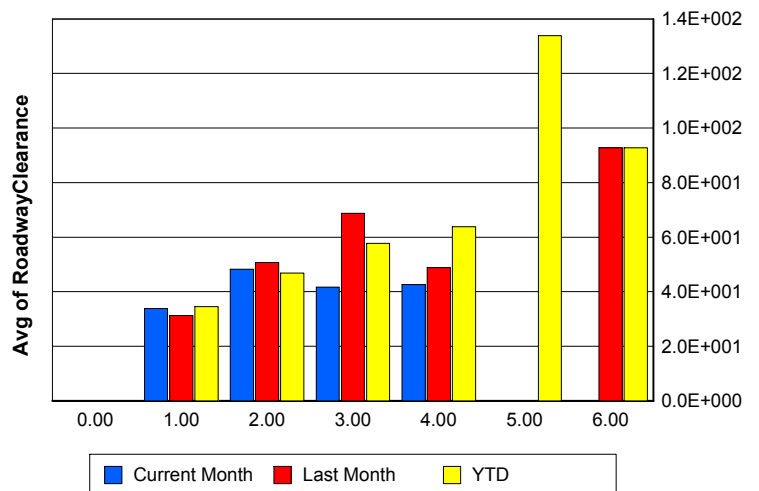
Incident Clearance Time (3B)



Roadway Clearance by Maximum Number of Lanes Blocked

	Current Month	Last Month	YTD
0			
1	33.77	31.21	34.55
2	48.24	50.74	46.84
3	41.67	68.71	57.75
4	42.59	48.86	63.78
5	0.00	0.00	133.90
6	0.00	92.72	92.72

Roadway Clearance Time (2A)



Performance Measures by Roadway

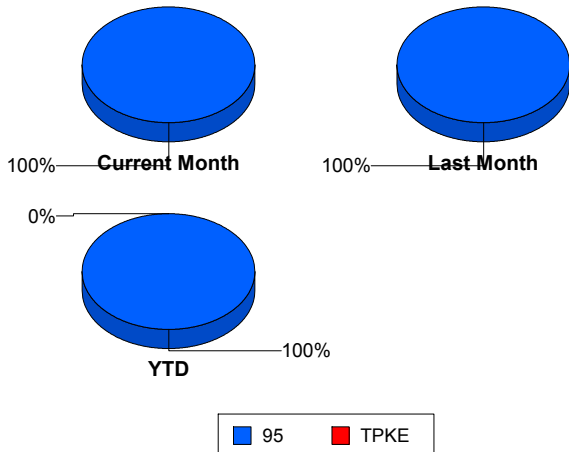
95

	<u>Current Month</u>	<u>Last Month</u>	<u>YTD</u>
Number of Events	3,099	2,899	35,245
Number of Incidents	93	89	1,220
TMC Detection (min.)	0.00	0.00	0.01
TMC Verification (min.)	1.92	2.22	3.05
TMC Response (min.)	3.56	4.15	4.77
RR Dispatch Time (min.)	0.57	0.61	1.51
RR Resp. Time (min.)	3.09	3.59	3.31
Event Clearance (min.)	16.76	18.18	18.58
Roadway Clear. (min.)	38.54	41.18	40.90
Incident Clearance (min.)	54.77	59.64	58.12
# of Events w/ RR/SIRV	2,993	2,821	34,250
RR/SIRV Responses	2,993	2,821	34,250
RR/SIRV Activities	3,094	2,851	37,063

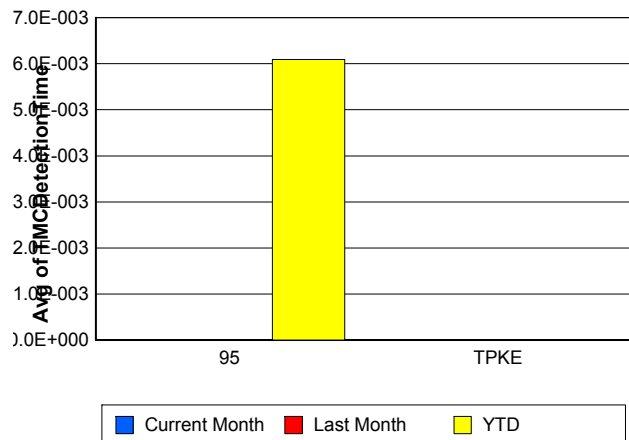
TPKE

	<u>YTD</u>
Number of Events	9
Number of Incidents	8
TMC Detection (min.)	0.00
TMC Verification (min.)	0.00
TMC Response (min.)	
RR Dispatch Time (min.)	
RR Resp. Time (min.)	
Event Clearance (min.)	65.09
Roadway Clear. (min.)	69.34
Incident Clearance (min.)	72.05
# of Events w/ RR/SIRV	0
RR/SIRV Responses	0
RR/SIRV Activities	0

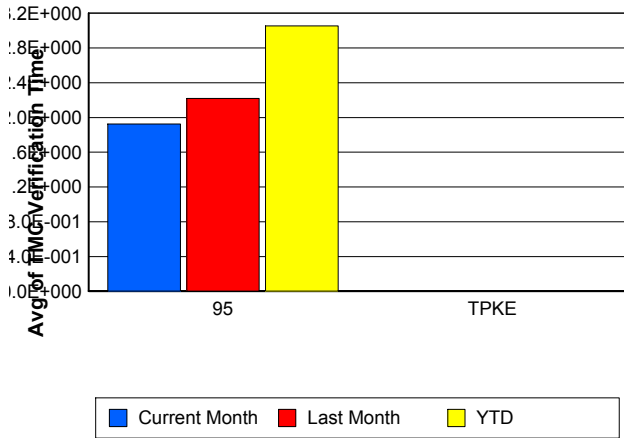
Number of Events / Roadway



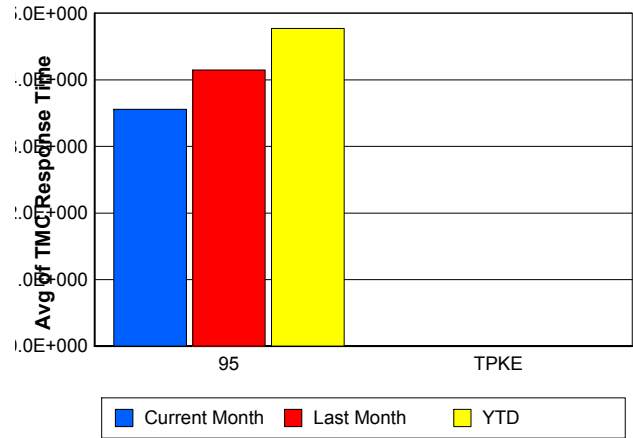
TMC Detection Time



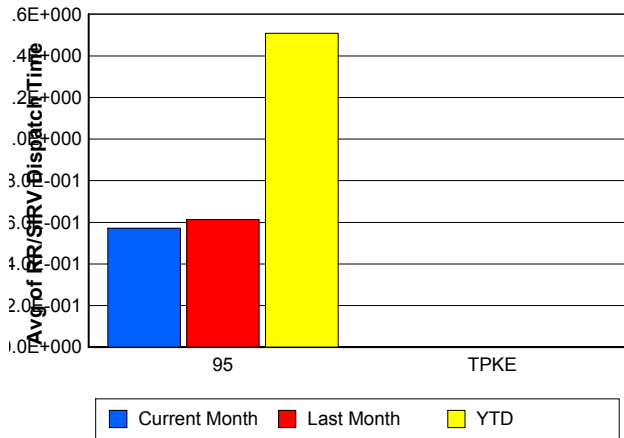
TMC Verification Time



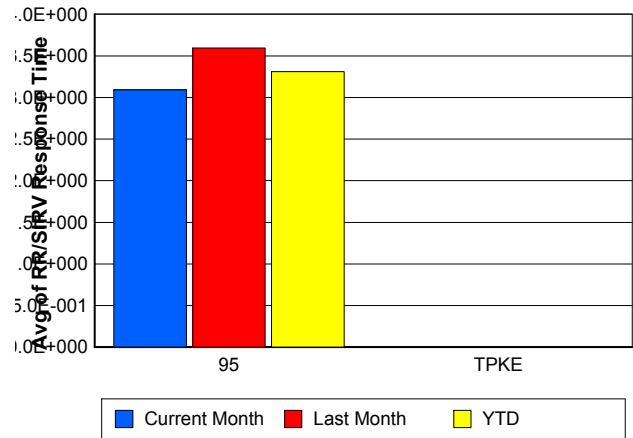
TMC Response Time



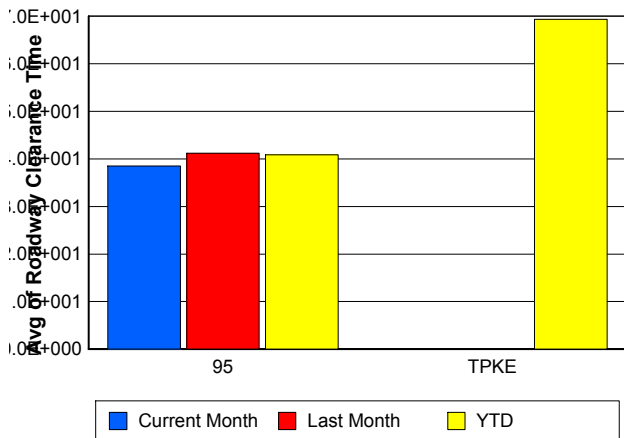
Road Ranger / SIRV Dispatch Time



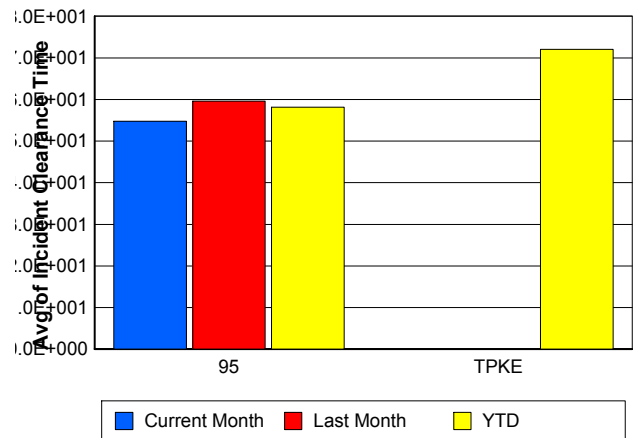
Road Ranger / SIRV Response Time



Roadway Clearance Time (2A)



Incident Clearance Time (3B)



Performance Measures by Event Type

Accident

	<u>Current Month</u>	<u>Last Month</u>	<u>YTD</u>
Number of Events	184	174	2,252
Number of Incidents	67	61	871
TMC Detection (min.)	0.00	0.00	0.10
TMC Verification (min.)	4.75	3.86	6.42
TMC Response (min.)	7.85	8.34	9.40
RR Dispatch Time (min.)	1.50	0.92	2.25
RR Response Time (min.)	6.45	7.43	7.17
Event Clearance (min.)	48.80	52.70	51.82
Roadway Clearance (min.)	38.82	45.37	42.10
Incident Clearance (min.)	58.68	67.12	63.33
# of Events w/ RR/SIRV	184	173	2,215
RR/SIRV Assists	184	173	2,215
RR/SIRV Activities	245	222	2,770

Disabled Vehicle

	<u>Current Month</u>	<u>Last Month</u>	<u>YTD</u>
Number of Events	2,401	2,201	28,063
Number of Incidents	14	16	207
TMC Detection (min.)	0.00	0.00	0.00
TMC Verification (min.)	1.63	2.09	2.48
TMC Response (min.)	3.09	3.76	4.02
RR Dispatch Time (min.)	0.42	0.53	1.17
RR Response Time (min.)	2.72	3.25	2.90
Event Clearance (min.)	15.49	16.88	16.70
Roadway Clearance (min.)	37.02	30.87	36.33
Incident Clearance (min.)	42.11	44.67	41.67
# of Events w/ RR/SIRV	2,379	2,188	27,656
RR/SIRV Assists	2,379	2,188	27,656
RR/SIRV Activities	2,487	2,277	30,327

Debris on Roadway

	<u>Current Month</u>	<u>Last Month</u>	<u>YTD</u>
Number of Events	175	186	2,389
Number of Incidents	1	1	24
TMC Detection (min.)	0.00	0.00	0.00
TMC Verification (min.)	6.08	5.43	6.16
TMC Response (min.)	6.21	5.79	6.51
RR Dispatch Time (min.)	0.75	0.69	1.75
RR Response Time (min.)	5.46	5.09	4.79
Event Clearance (min.)	10.42	8.82	10.60
Roadway Clearance (min.)	13.08	8.78	26.49
Incident Clearance (min.)	14.92	13.95	32.94
# of Events w/ RR/SIRV	175	183	2,372
RR/SIRV Assists	175	183	2,372
RR/SIRV Activities	184	191	2,545

Police Activity

	<u>Current Month</u>	<u>Last Month</u>	<u>YTD</u>
Number of Events	5	3	63
Number of Incidents	4	2	37
TMC Detection (min.)	0.00	0.00	0.00
TMC Verification (min.)	0.00	9.97	4.66
TMC Response (min.)	6.10	21.49	8.81
RR Dispatch Time (min.)	0.93	7.71	1.63
RR Response Time (min.)	5.17	13.78	7.26
Event Clearance (min.)	68.06	40.54	49.62
Roadway Clearance (min.)	65.59	37.52	55.27
Incident Clearance (min.)	75.95	41.79	60.00
# of Events w/ RR/SIRV	5	2	50
RR/SIRV Assists	5	2	50
RR/SIRV Activities	8	2	63

Other

	<u>Current Month</u>	<u>Last Month</u>	<u>YTD</u>
Number of Events	304	304	2,100
Number of Incidents	1	0	6
TMC Detection (min.)	0.00	0.00	0.00
TMC Verification (min.)	0.26	0.21	3.68
TMC Response (min.)	2.36	2.28	11.43
RR Dispatch Time (min.)	1.19	0.99	5.99
RR Response Time (min.)	1.96	1.98	2.40
Event Clearance (min.)	10.20	13.05	15.30
Roadway Clearance (min.)	7.80		26.56
Incident Clearance (min.)	9.10		30.96
# of Events w/ RR/SIRV	220	245	1,584
RR/SIRV Assists	220	245	1,584
RR/SIRV Activities	139	126	949

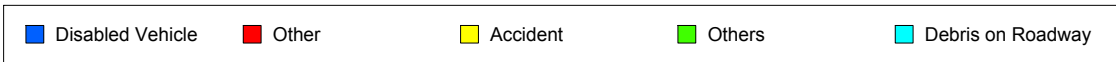
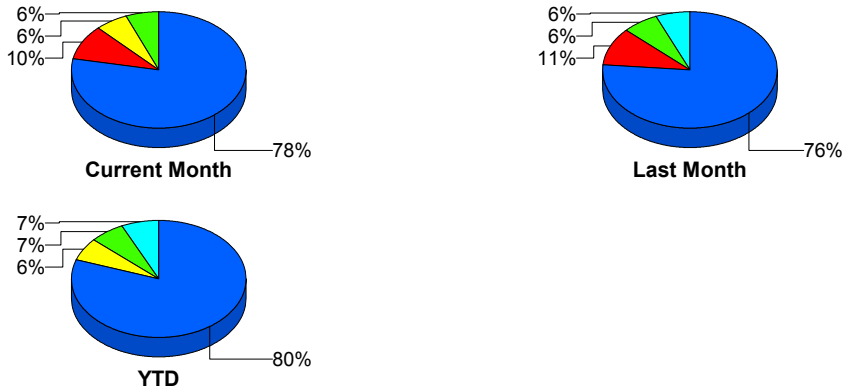
Emergency Vehicles

	<u>Current Month</u>	<u>Last Month</u>	<u>YTD</u>
Number of Events	4	3	44
Number of Incidents	3	2	34
TMC Detection (min.)	0.00	0.00	0.00
TMC Verification (min.)	2.16	0.00	2.68
TMC Response (min.)	6.70	0.00	8.25
RR Dispatch Time (min.)	4.91	0.71	5.03
RR Response Time (min.)	1.79	0.00	3.12
Event Clearance (min.)	24.10	23.17	44.78
Roadway Clearance (min.)	26.73	25.99	43.40
Incident Clearance (min.)	30.48	29.33	52.41
# of Events w/ RR/SIRV	4	2	37
RR/SIRV Assists	4	2	37
RR/SIRV Activities	4	1	42

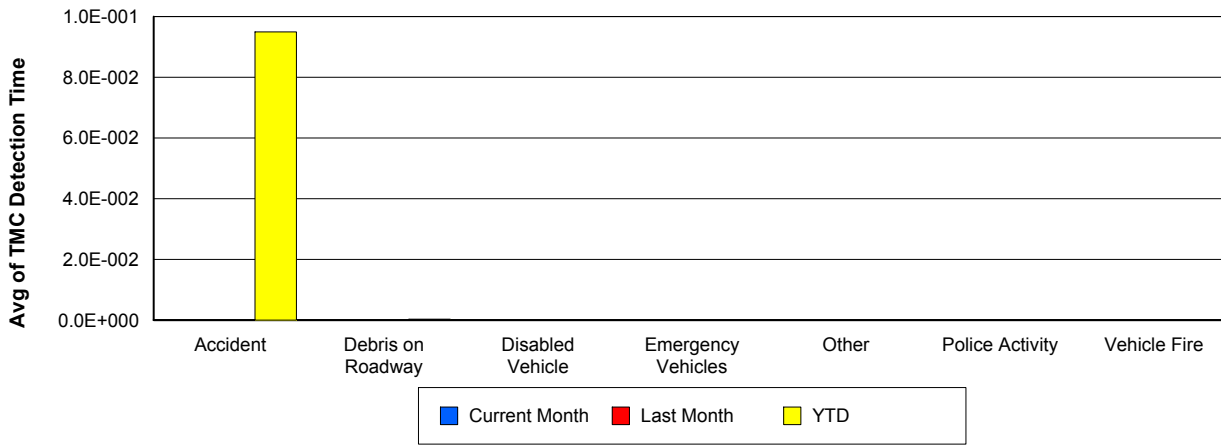
Vehicle Fire

	<u>Current Month</u>	<u>Last Month</u>	<u>YTD</u>
Number of Events	5	7	68
Number of Incidents	3	7	48
TMC Detection (min.)	0.00	0.00	0.00
TMC Verification (min.)	3.68	6.19	6.96
TMC Response (min.)	7.24	12.19	10.25
RR Dispatch Time (min.)	1.35	3.98	3.28
RR Response Time (min.)	5.89	8.22	6.97
Event Clearance (min.)	44.84	46.80	50.06
Roadway Clearance (min.)	33.66	38.24	40.25
Incident Clearance (min.)	50.93	46.80	55.86
# of Events w/ RR/SIRV	5	7	67
RR/SIRV Assists	5	7	67
RR/SIRV Activities	7	10	85

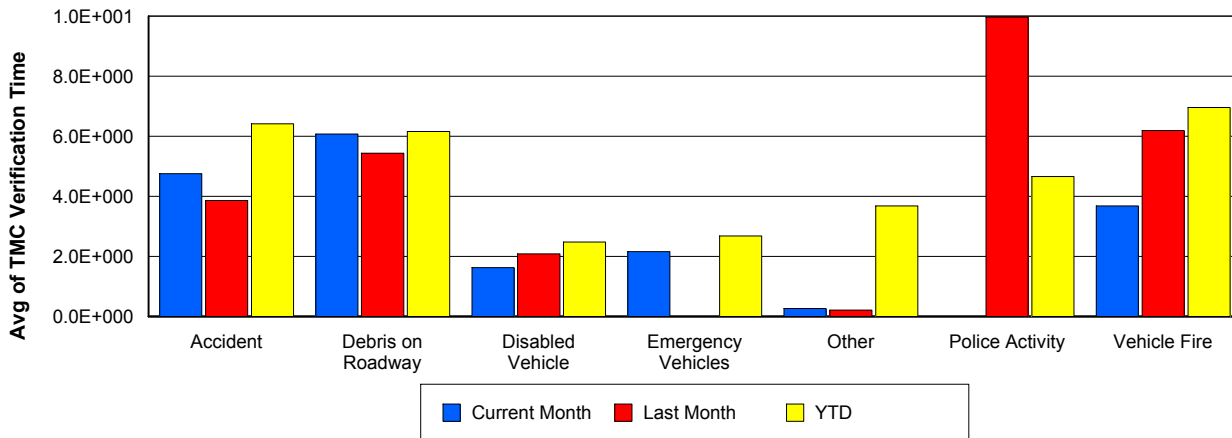
Number of Events / Event Type



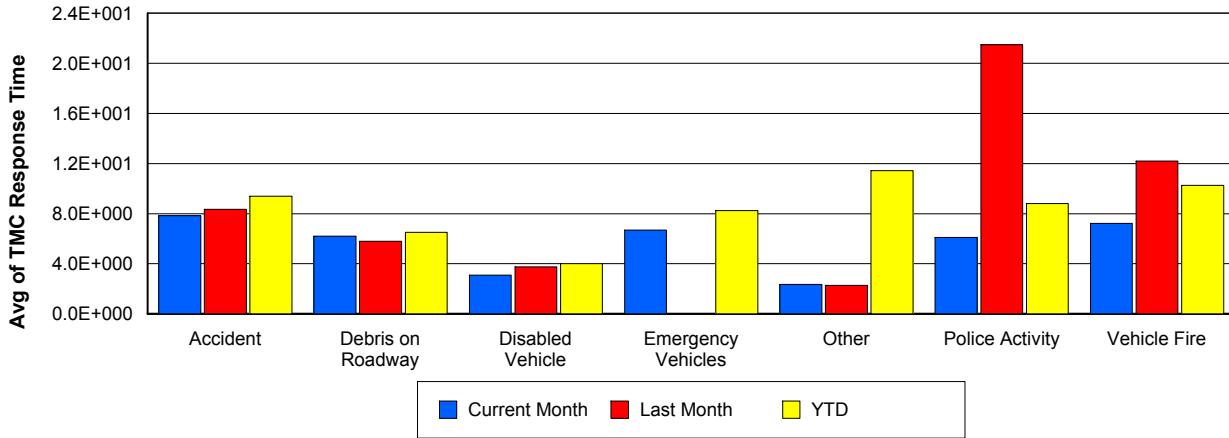
TMC Detection Time



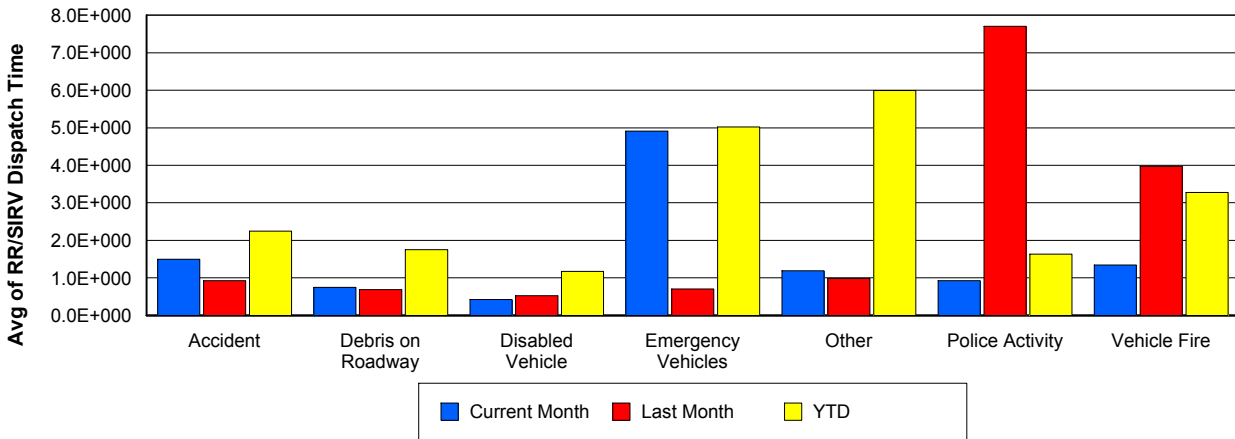
TMC Verification Time



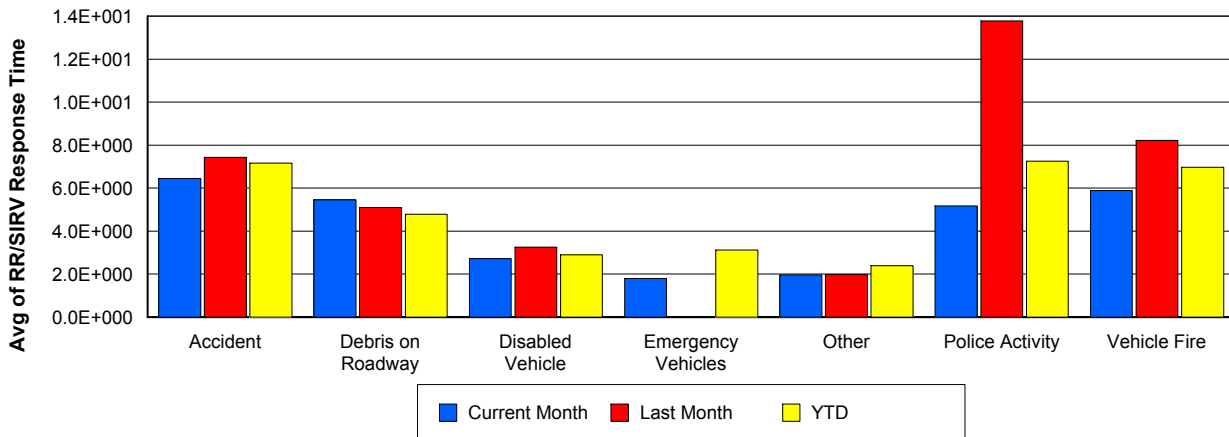
TMC Response Time



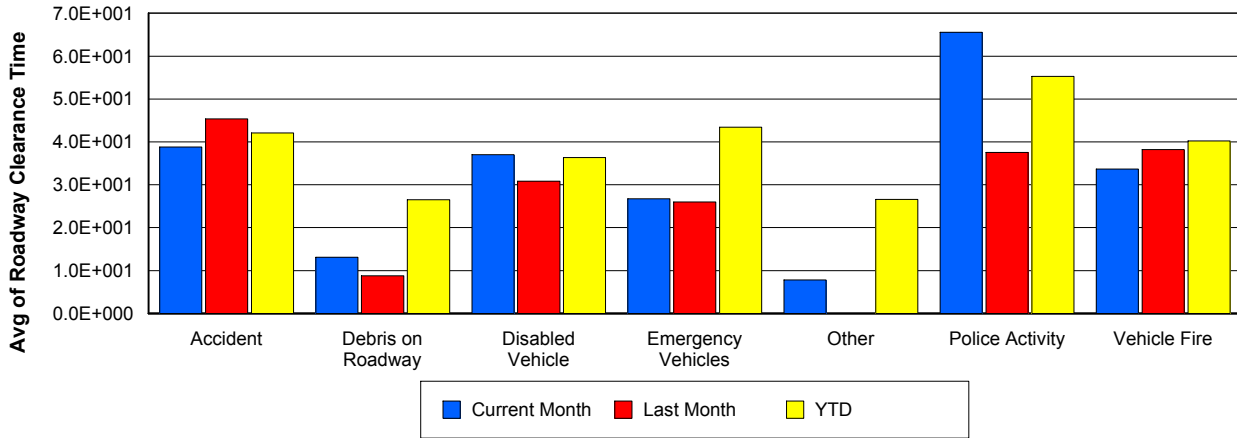
Road Ranger / SIRV Dispatch Time



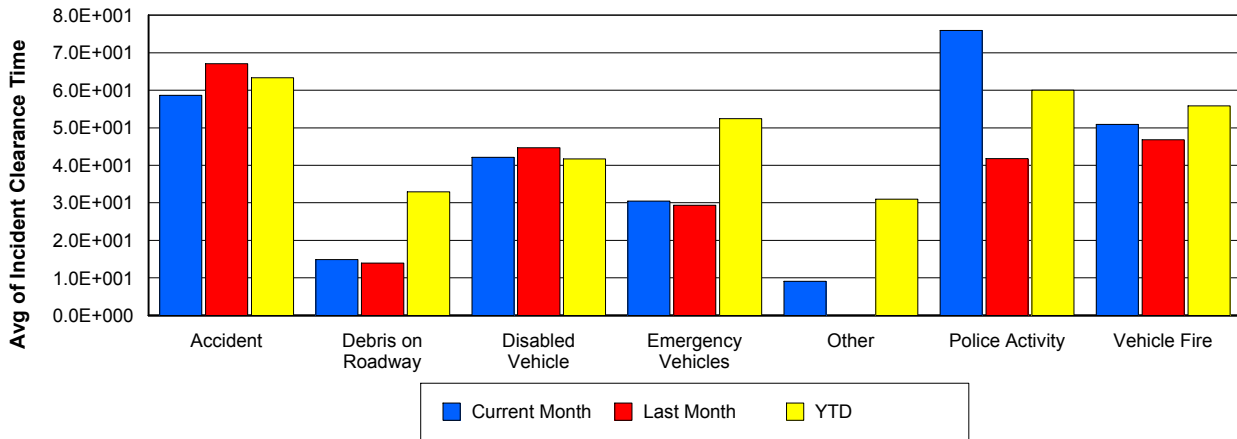
Road Ranger / SIRV Response Time



Roadway Clearance Time (2A)



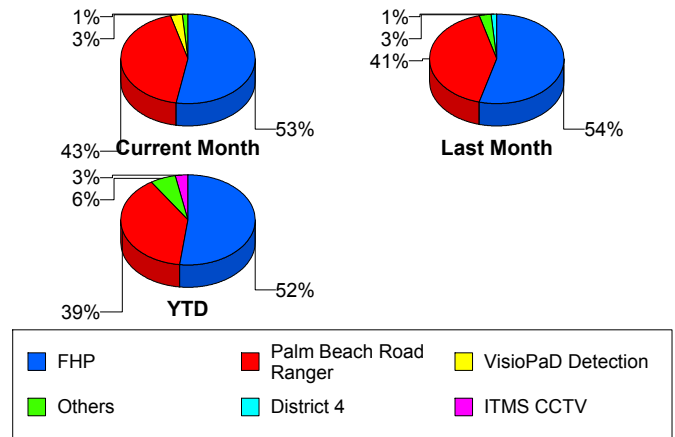
Incident Clearance Time (3B)



Incident Detection Methods

	Current Month	Last Month	YTD
Broward CCTV	0	0	1
Broward Road Ranger	0	0	2
Broward TMC	0	0	8
District 4	1	1	18
FDOT Maintenance	0	1	5
FHP	39	38	578
Florida's Turnpike	0	0	8
I-95 Construction PIO	0	0	2
ITMS	0	0	1
ITMS CCTV	0	0	34
Motorist	0	1	9
Other	0	0	6
Palm Beach Road Ran	32	29	432
Road Watcher	0	0	1
SIRV	0	0	3
SmarTraveler (511)	0	0	2
VisioPaD Detection	2	0	2
Total	74	70	1,112

Total Incidents by Detection Method

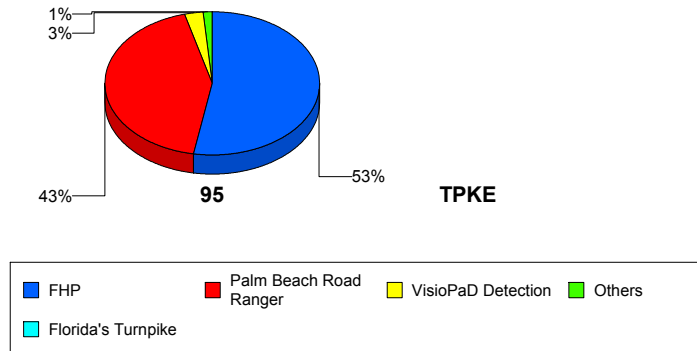


Incident Detection Methods by Roadway

		Current Month	Last Month	YTD
95	Broward CCTV	0	0	1
	Broward Road Ranger	0	0	2
	Broward TMC	0	0	8
	District 4	1	1	18
	FDOT Maintenance	0	1	5
	FHP	39	38	578
	I-95 Construction PIO	0	0	2
	ITMS	0	0	1
	ITMS CCTV	0	0	34
	Motorist	0	1	9
	Other	0	0	6
	Palm Beach Road Ran	32	29	432
	Road Watcher	0	0	1
	SIRV	0	0	3
	SmarTraveler (511)	0	0	2
	VisioPaD Detection	2	0	2
Total	74	70	1,104	
TPKE	Florida's Turnpike	0	0	8
	Total	0	0	8
Total		74	70	1,112

Total Events by Roadway and Detection Method

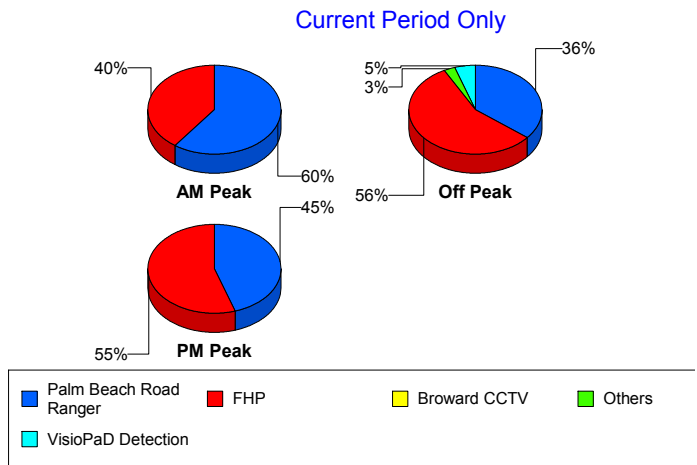
Current Period Only



Incident Detection Methods by Peak Period

		Current Month	Last Month	YTD
AM Peak	Broward Road Ranger	0	0	1
	Broward TMC	0	0	3
	District 4	0	0	2
	FDOT Maintenance	0	1	2
	FHP	6	11	111
	Florida's Turnpike	0	0	1
	I-95 Construction PIO	0	0	1
	ITMS CCTV	0	0	13
	Motorist	0	0	3
	Other	0	0	2
	Palm Beach Road Ran	9	9	107
	Total	15	21	246
Off Peak	Broward Road Ranger	0	0	1
	Broward TMC	0	0	2
	District 4	1	1	12
	FDOT Maintenance	0	0	3
	FHP	22	15	318
	Florida's Turnpike	0	0	5
	I-95 Construction PIO	0	0	1
	ITMS	0	0	1
	ITMS CCTV	0	0	14
	Motorist	0	1	4
	Other	0	0	3
	Palm Beach Road Ran	14	12	211
	Road Watcher	0	0	1
	SIRV	0	0	2
	VisioPaD Detection	2	0	2
Total	39	29	580	
PM Peak	Broward CCTV	0	0	1
	Broward TMC	0	0	3
	District 4	0	0	4

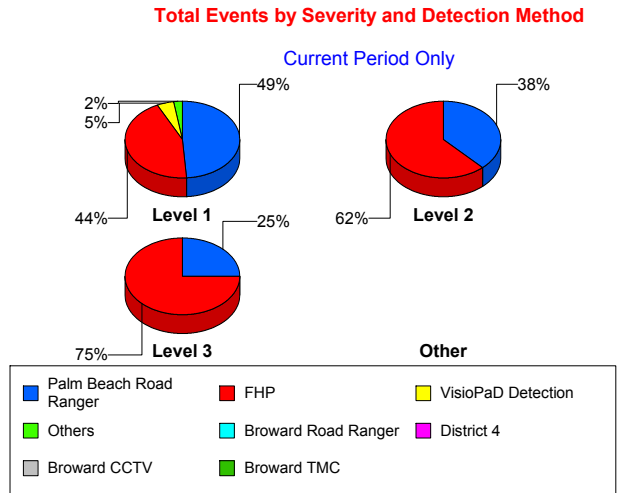
Total Events by Peak Period and Detection Method



		Current Month	Last Month	YTD
PM Peak	FHP	11	12	149
	Florida's Turnpike	0	0	2
	ITMS CCTV	0	0	7
	Motorist	0	0	2
	Other	0	0	1
	Palm Beach Road Ran	9	8	114
	SIRV	0	0	1
	SmarTraveler (511)	0	0	2
	Total	20	20	286
Total	74	70	1,112	

Incident Detection Methods by Severity

		Current Month	Last Month	YTD
Level 1	Broward CCTV	0	0	1
	Broward Road Ranger	0	0	1
	Broward TMC	0	0	7
	District 4	1	0	8
	FDOT Maintenance	0	0	3
	FHP	18	15	232
	I-95 Construction PIO	0	0	1
	ITMS CCTV	0	0	21
	Motorist	0	1	5
	Other	0	0	3
	Palm Beach Road Ran	20	20	257
	SIRV	0	0	2
	SmarTraveler (511)	0	0	1
	VisioPaD Detection	2	0	2
	Total	41	36	544
	Level 2	Broward Road Ranger	0	0
Broward TMC		0	0	1
District 4		0	0	8
FDOT Maintenance		0	1	2



		Current Month	Last Month	YTD
Level 2	FHP	18	21	304
	I-95 Construction PIO	0	0	1
	ITMS	0	0	1
	ITMS CCTV	0	0	11
	Motorist	0	0	3
	Other	0	0	3
	Palm Beach Road Ran	11	7	141
	Total	29	29	476
Level 3	District 4	0	1	2
	FHP	3	2	42
	Florida's Turnpike	0	0	8
	ITMS CCTV	0	0	2
	Motorist	0	0	1
	Palm Beach Road Ran	1	2	34
	Road Watcher	0	0	1
	SIRV	0	0	1
	SmarTraveler (511)	0	0	1
	Total	4	5	92
Total		74	70	1,112

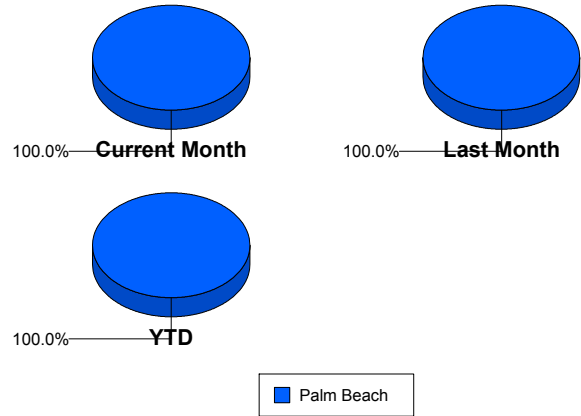
Road Ranger / SIRV Performance Measures

Road Ranger / SIRV Performance By County

Values presented are:
 - Total Events with a RR/SIRV Response
 - Total RR/SIRV Responses,
 - Total Activities Performed

	Current Mo	Last Month	YTD
Palm Beach	3,450	3,275	40,908
	3,619	3,395	42,570
	3,764	3,529	45,667

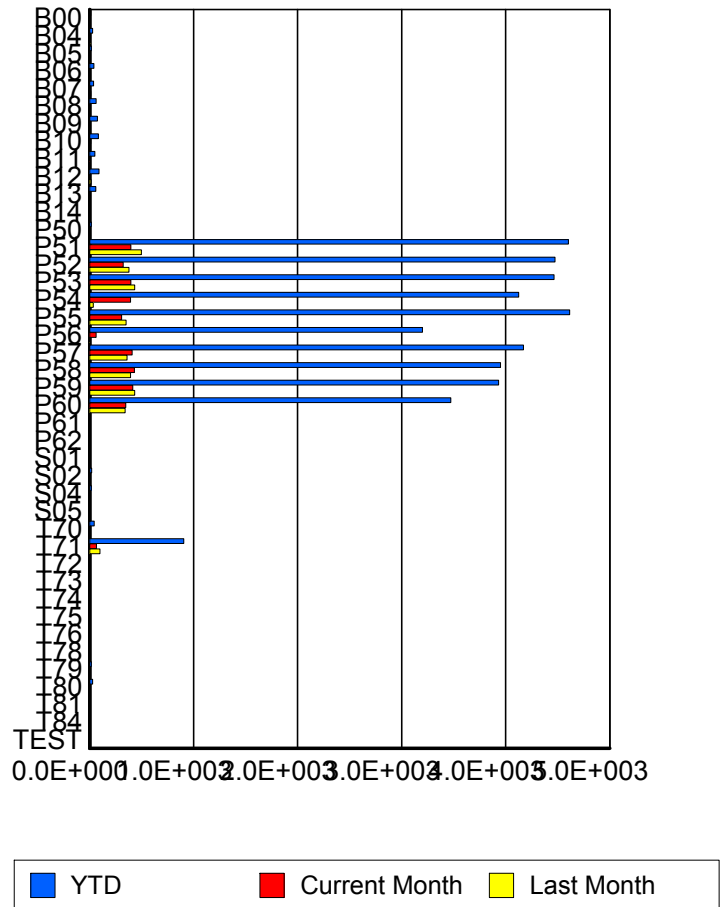
RR/SIRV Responses per County



Road Ranger / SIRV Performance By Truck

	Current Mo	Last Month	YTD
B00	0	0	12
	0	0	12
	0	0	12
B04	8	6	27
	8	7	28
	9	7	30
B05	6	4	18
	6	4	18
	7	4	19
B06	0	2	40
	0	2	41
	0	2	42
B07	8	12	39
	8	12	39
	8	12	39
B08	9	0	64
	9	0	64
	9	0	66
B09	5	3	74
	5	3	75
	5	3	77
B10	11	1	85
	11	1	85
	11	1	89
B11	5	7	48
	5	7	49
	5	8	51

**RR/SIRV
Responses per
Truck**



	Current Mo	Last Month	YTD
B12	2	13	89
	2	13	90
	3	14	96
B13	6	3	61
	6	3	61
	6	3	62
B14	0	0	3
	0	0	3
	0	0	7
P50	5	4	16
	5	4	16
	6	5	18
P51	392	494	4,554
	396	498	4,602
	413	515	4,902
P52	319	374	4,401
	323	379	4,475
	340	394	4,839
P53	390	430	4,401
	396	434	4,465
	413	451	4,776
P54	392	35	4,064
	393	35	4,124
	399	38	4,408
P55	307	348	4,548
	309	350	4,614
	315	362	4,953
P56	62	4	3,160
	62	4	3,200
	64	4	3,479
P57	407	358	4,134
	409	359	4,171
	428	367	4,460
P58	423	389	3,886
	429	392	3,950
	452	404	4,241
P59	409	431	3,874
	415	433	3,933
	434	457	4,201
P60	346	340	3,427
	349	342	3,471
	362	362	3,700
P61	0	1	2
	0	1	2
	0	1	2

	Current Mo	Last Month	YTD
P62	0 0 0	0 0 0	2 2 2
S01	0 0 0	0 0 0	1 1 3
S02	0 0 0	2 2 2	20 20 20
S04	0 0 0	0 0 0	17 17 20
S05	0 0 0	0 0 0	3 3 3
T70	3 3 4	7 7 7	45 45 46
T71	67 67 68	100 100 103	895 906 939
T72	0 0 0	2 2 2	6 6 6
T73	0 0 0	0 0 0	1 1 1
T74	0 0 0	0 0 0	2 2 2
T75	0 0 0	0 0 0	1 1 1
T76	1 1 1	1 1 1	3 3 3
T78	0 0 0	0 0 0	1 1 1
T79	0 0 0	0 0 0	16 16 17
T80	2 2 2	0 0 0	30 30 31

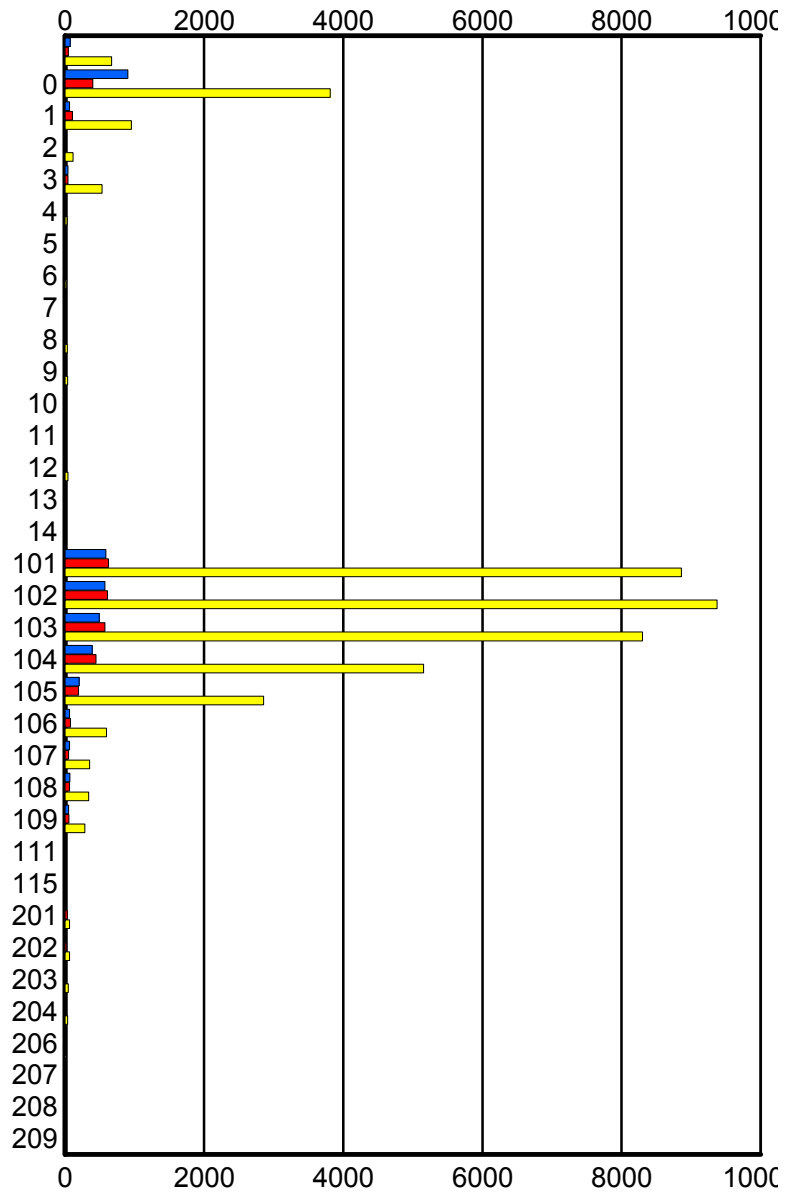
	Current Mo	Last Month	YTD
T81	0	0	1
	0	0	1
	0	0	1
T84	0	0	1
	0	0	1
	0	0	1
TEST	0	0	1
	0	0	1
	0	0	1

Road Ranger / SIRV Performance By Beat

	Current Mo	Last Month	YTD
	72	46	661
	72	46	668
	76	48	708
0	890	393	3,767
	903	397	3,811
	937	410	4,019
1	64	106	944
	64	106	955
	65	109	987
2	7	2	116
	7	2	116
	8	2	120
3	44	43	523
	44	44	531
	45	45	559
4	1	2	30
	1	2	30
	1	2	31
5	0	0	11
	0	0	11
	0	0	13
6	10	5	18
	10	5	18
	11	5	19
7	6	0	16
	6	0	16
	6	0	16
8	5	4	33
	5	4	34
	5	5	36
9	0	2	35
	0	2	36
	0	2	37
10	0	0	1
	0	0	1
	0	0	1
11	3	0	3
	3	0	3
	3	0	3
12	7	7	41
	7	7	41
	8	8	43
13	1	0	1
	1	0	1
	1	0	1

Values presented are:
 - Total Events with a RR/SIRV Response
 - Total RR/SIRV Responses,
 - Total Activities Performed

RR/SIRV Responses per Beat



■ Current Month
 ■ Last Month
 ■ YTD

	Current Mo	Last Month	YTD
14	0	0	2
	0	0	2
	0	0	2
101	581	621	8,725
	588	624	8,859
	614	639	9,538
102	561	602	9,204
	571	610	9,374
	592	640	10,139
103	489	570	8,160
	493	574	8,300
	510	600	8,900
104	388	445	5,067
	392	447	5,153
	407	469	5,510
105	199	189	2,803
	202	191	2,854
	215	200	3,086
106	66	77	593
	67	79	597
	69	82	621
107	63	53	352
	63	53	354
	64	53	360
108	69	64	335
	69	64	339
	73	64	348
109	50	53	282
	50	55	286
	53	55	299
111	0	0	9
	0	0	9
	0	0	9
115	1	0	1
	1	0	1
	1	0	1
201	0	34	63
	0	34	63
	0	41	71
202	0	24	65
	0	25	66
	0	26	69
203	0	10	44
	0	10	45
	0	10	48

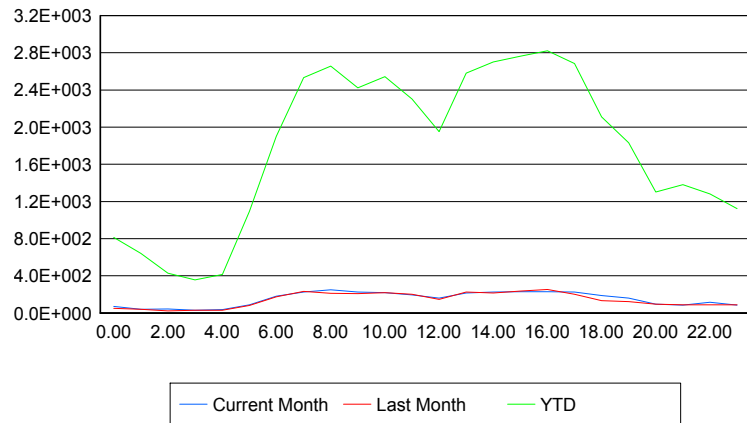
	Current Mo	Last Month	YTD
204	0	14	35
	0	14	36
	0	14	38
206	0	0	6
	0	0	6
	0	0	6
207	0	0	9
	0	0	9
	0	0	9
208	0	0	12
	0	0	12
	0	0	12
209	0	0	8
	0	0	8
	0	0	8

Road Ranger / SIRV Performance By Time of Day

Values presented are:
 - Total Events with a RR/SIRV Response
 - Total RR/SIRV Responses,
 - Total Activities Performed

	Current Mo	Last Month	YTD
12AM-1AM	71	50	784
	71	51	815
	75	53	864
1AM-2AM	37	40	618
	39	40	640
	40	40	673
2AM-3AM	41	24	418
	44	24	430
	46	25	455
3AM-4AM	27	26	340
	28	28	355
	28	30	366
4AM-5AM	35	26	382
	37	31	416
	37	32	433
5AM-6AM	81	74	1,038
	89	80	1,096
	90	85	1,153
6AM-7AM	175	170	1,825
	182	175	1,899
	191	178	2,025
7AM-8AM	218	223	2,397
	227	231	2,532
	239	242	2,747

Number of Responses / Hour of the Day



	Current Mo	Last Month	YTD
8AM-9AM	232	207	2,533
	249	213	2,656
	260	220	2,884
9AM-10AM	217	201	2,325
	225	210	2,424
	233	219	2,642
10AM-11AM	200	211	2,459
	219	219	2,544
	228	231	2,733
11AM-12PM	186	187	2,205
	194	201	2,303
	203	208	2,486
12PM-1PM	145	144	1,877
	160	147	1,953
	166	158	2,130
1PM-2PM	210	219	2,475
	217	225	2,580
	227	231	2,761
2PM-3PM	217	206	2,586
	227	214	2,701
	238	222	2,914
3PM-4PM	222	233	2,649
	229	235	2,763
	239	246	2,954
4PM-5PM	218	244	2,712
	229	254	2,823
	240	266	3,011
5PM-6PM	219	200	2,582
	224	203	2,684
	230	205	2,851
6PM-7PM	182	128	2,029
	188	132	2,110
	199	137	2,233
7PM-8PM	150	116	1,756
	160	121	1,830
	161	127	1,945
8PM-9PM	90	90	1,244
	95	96	1,302
	100	101	1,399
9PM-10PM	85	87	1,343
	86	89	1,382
	91	95	1,471
10PM-11PM	109	86	1,242
	115	88	1,280
	118	90	1,359

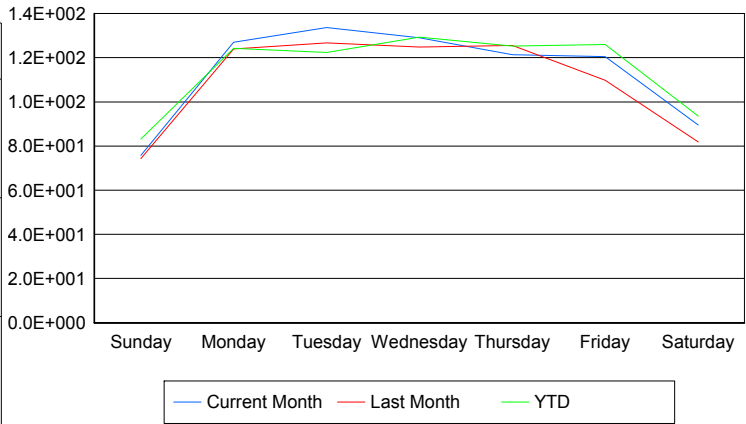
	Current Mo	Last Month	YTD
11PM-12AM	83	83	1,089
	85	88	1,124
	85	88	1,178

Road Ranger / SIRV Performance By Day of Week

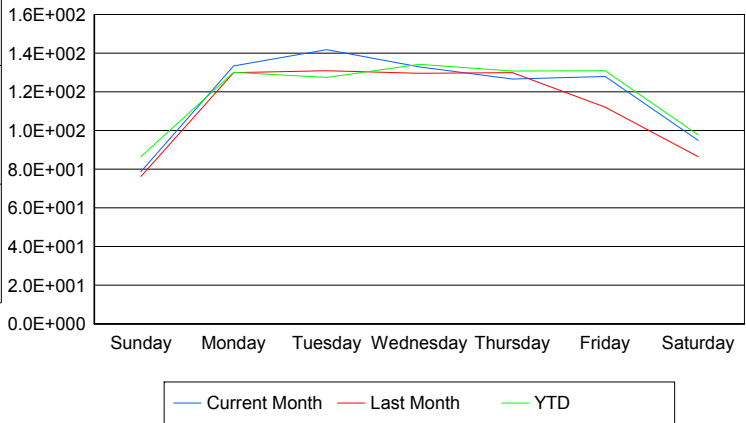
Values presented are:
 - Total Events with a RR/SIRV Response
 - Total RR/SIRV Responses,
 - Total Activities Performed

	Current Mo	Last Month	YTD
Sunday	299 310 323	297 304 316	4,246 4,413 4,688
Monday	492 516 539	495 519 542	6,298 6,583 7,101
Tuesday	533 565 597	631 652 684	6,248 6,500 6,972
Wednesday	501 517 545	617 641 664	6,551 6,794 7,297
Thursday	599 625 640	480 496 513	6,379 6,665 7,045
Friday	591 627 651	429 438 454	6,407 6,658 7,203
Saturday	435 459 469	327 345 356	4,827 5,030 5,361

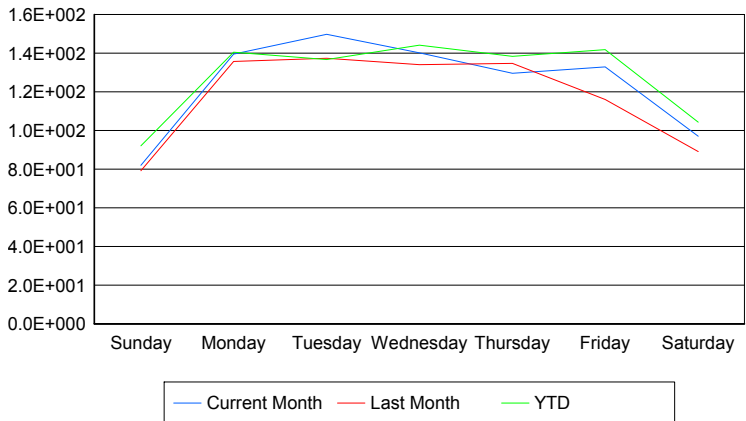
Avg # of events with a RR/SIRV Response per Day of the Week



Avg # of RR/SIRV Responses per Day of the Week



Avg # of RR/SIRV Activities Performed per Day of the Week



Road Ranger / SIRV Responses per Time of Day and Day of Week

