

# Quarterly Incident Duration Performance Measures Report

Includes All Responders  
**Broward**



Reporting Period: October 1, 2011 to December 31, 2011

Created on: January 06, 2012 9:22 am

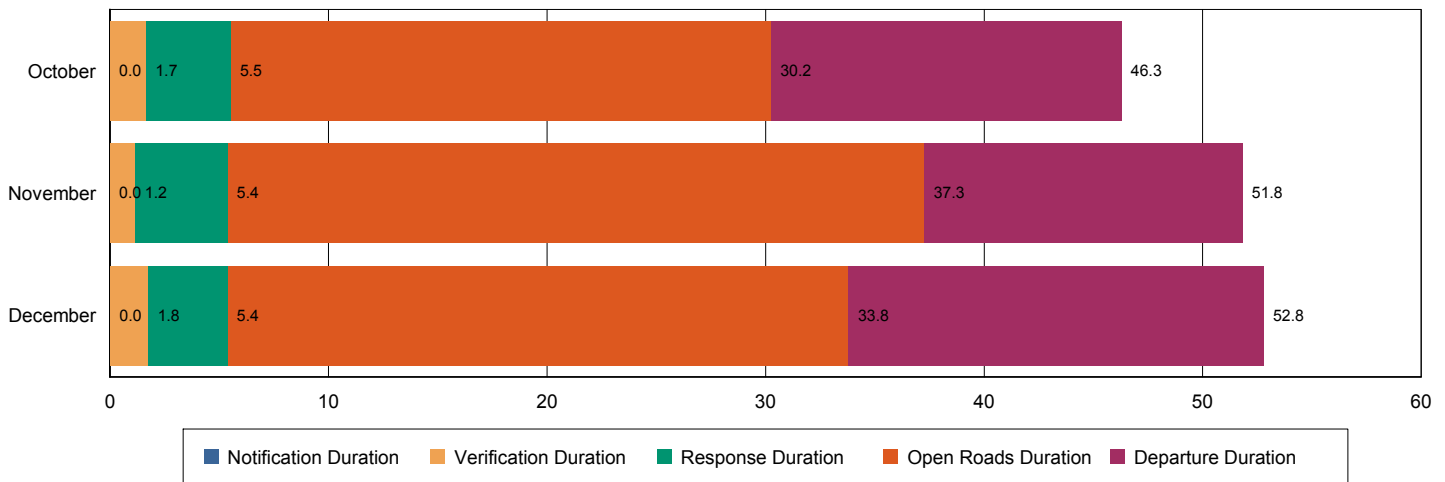
Report Template version 2.3.1

## Performance Measures Summary

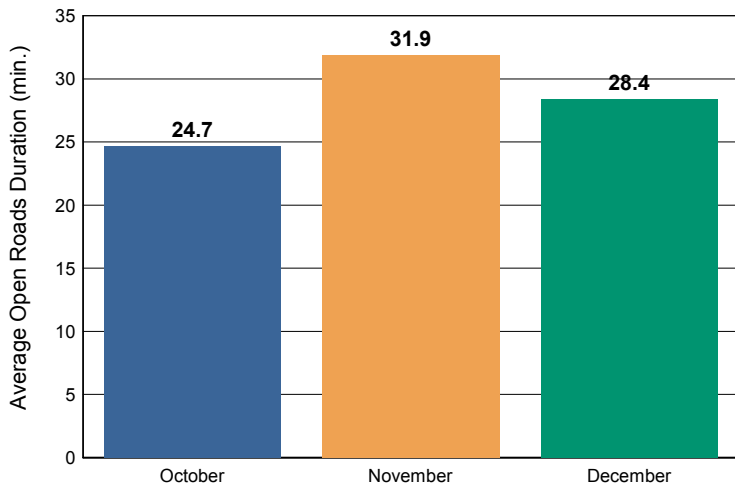
	October	November	December	Total
Events included in Performance Measures	237	185	202	624
Notification Duration (min.)*	0.0	0.0	0.0	0.0
Verification Duration (min.)	1.7	1.2	1.7	1.5
Response Duration (min.)	3.9	4.2	3.6	3.9
Open Roads Duration (min.)	24.7	31.9	28.4	28.0
Departure Duration (min.)	16.0	14.6	19.0	16.6
<b>Roadway Clearance Duration (min.)</b>	<b>30.2</b>	<b>37.3</b>	<b>33.8</b>	<b>33.5</b>
<b>Incident Clearance Duration (min.)</b>	<b>46.3</b>	<b>51.8</b>	<b>52.8</b>	<b>50.0</b>

\*FHP Data is not available for Notification Duration

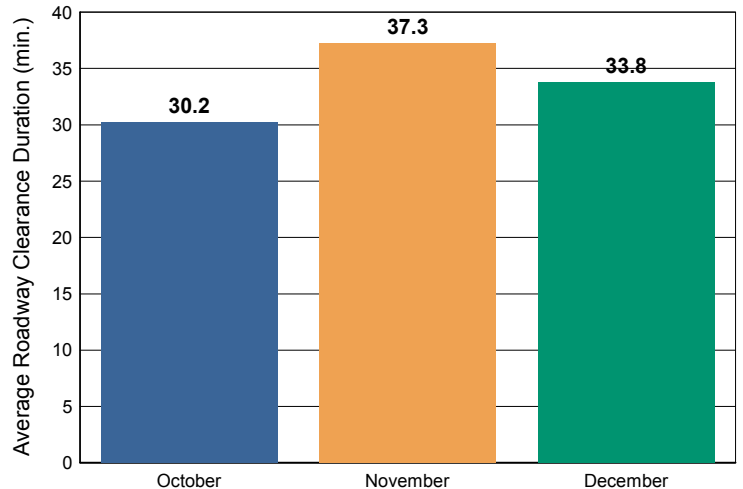
### Incident Clearance Duration



### Open Roads Duration / Month



### Roadway Clearance Duration / Month

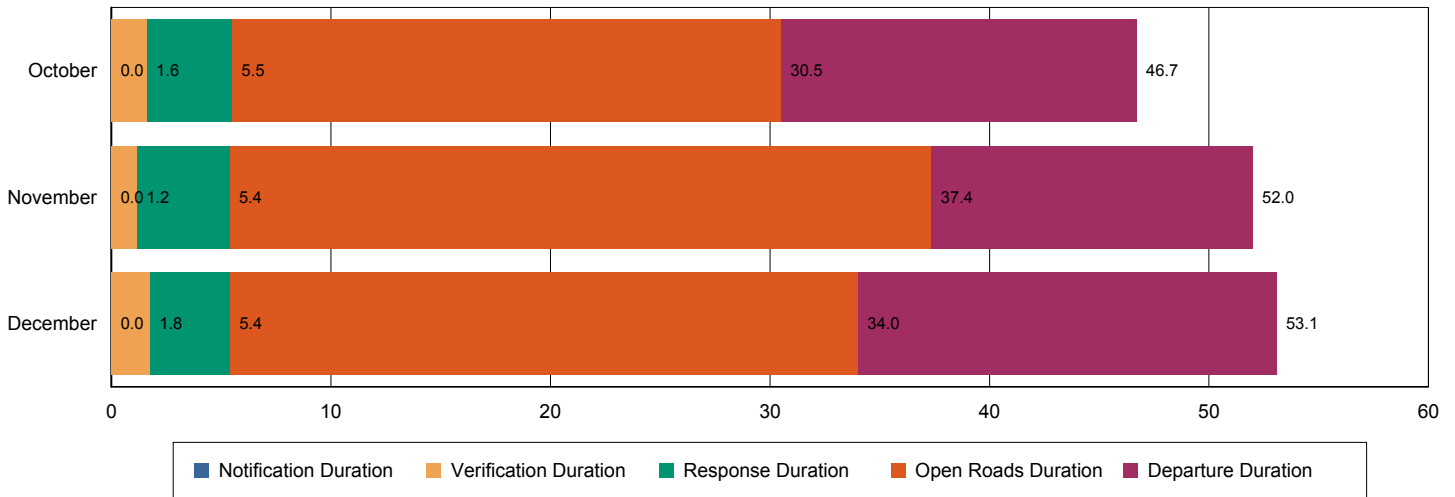


# Performance Measures Summary

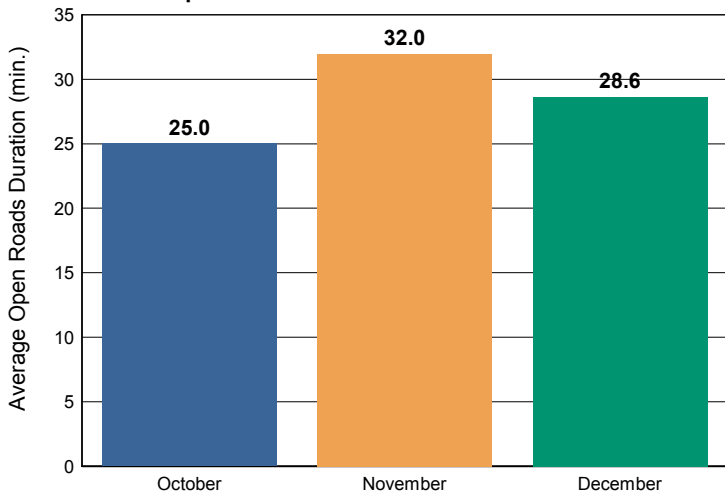
## Incidents with Road Ranger Response

	October	November	December	Total
Events included in Performance Measures	234	184	200	618
Notification Duration (min.)	0.0	0.0	0.0	0.0
Verification Duration (min.)	1.6	1.2	1.8	1.5
Response Duration (min.)	3.9	4.2	3.6	3.9
Open Roads Duration (min.)	25.0	32.0	28.6	28.2
Departure Duration (min.)	16.2	14.6	19.1	16.7
<b>Roadway Clearance Duration (min.)</b>	<b>30.5</b>	<b>37.4</b>	<b>34.0</b>	<b>33.7</b>
<b>Incident Clearance Duration (min.)</b>	<b>46.7</b>	<b>52.0</b>	<b>53.1</b>	<b>50.4</b>

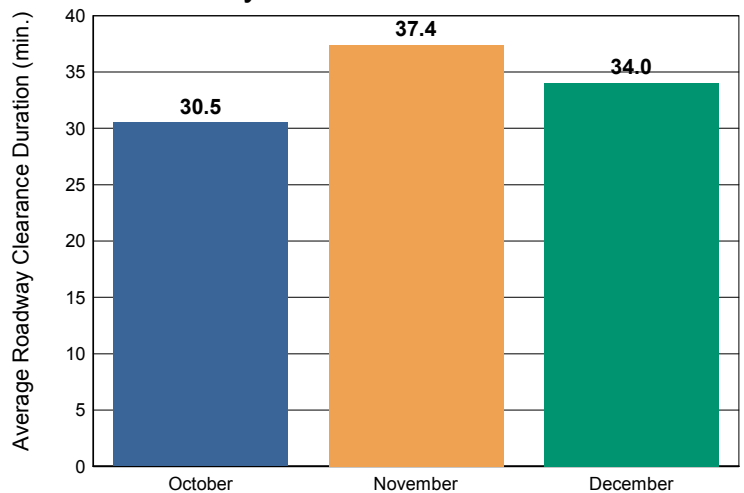
### Incident Clearance Duration



### Open Roads Duration / Month



### Roadway Clearance Duration / Month

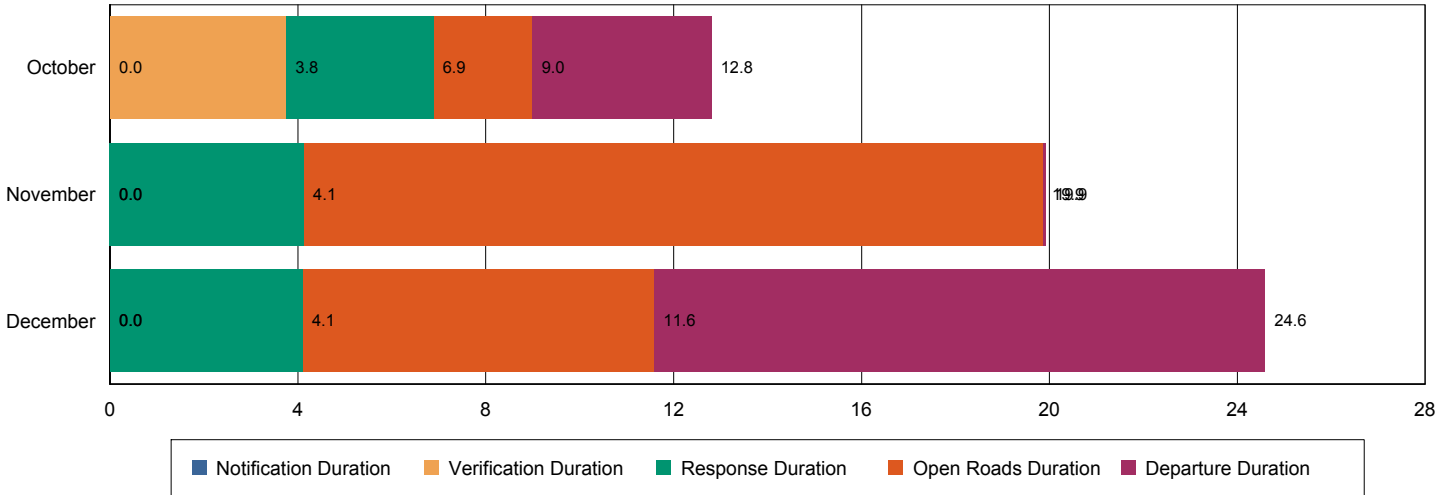


# Performance Measures Summary

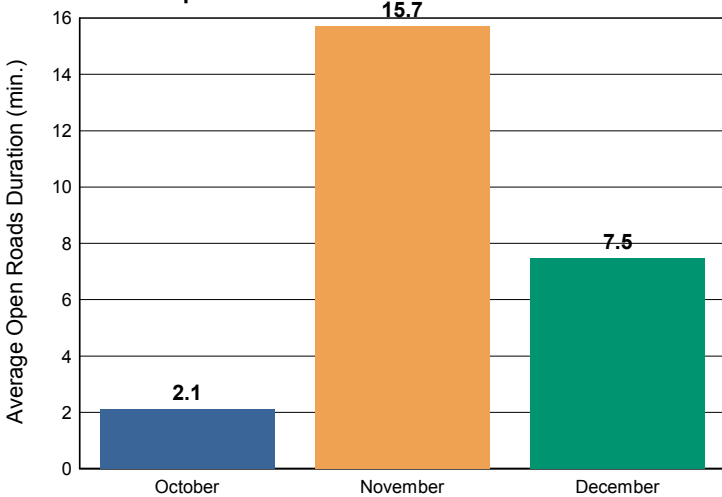
## Incidents without Road Ranger Response

	October	November	December	Total
Events included in Performance Measures	3	1	2	6
Notification Duration (min.)	0.0	0.0	0.0	0.0
Verification Duration (min.)	3.8	0.0	0.0	1.9
Response Duration (min.)	3.1	4.1	4.1	3.6
Open Roads Duration (min.)	2.1	15.7	7.5	6.2
Departure Duration (min.)	3.8	0.1	13.0	6.3
<b>Roadway Clearance Duration (min.)</b>	<b>9.0</b>	<b>19.9</b>	<b>11.6</b>	<b>11.7</b>
<b>Incident Clearance Duration (min.)</b>	<b>12.8</b>	<b>19.9</b>	<b>24.6</b>	<b>17.9</b>

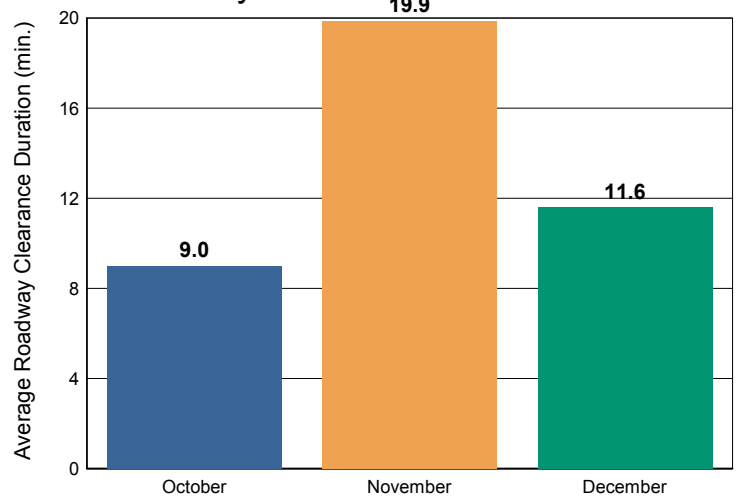
### Incident Clearance Duration



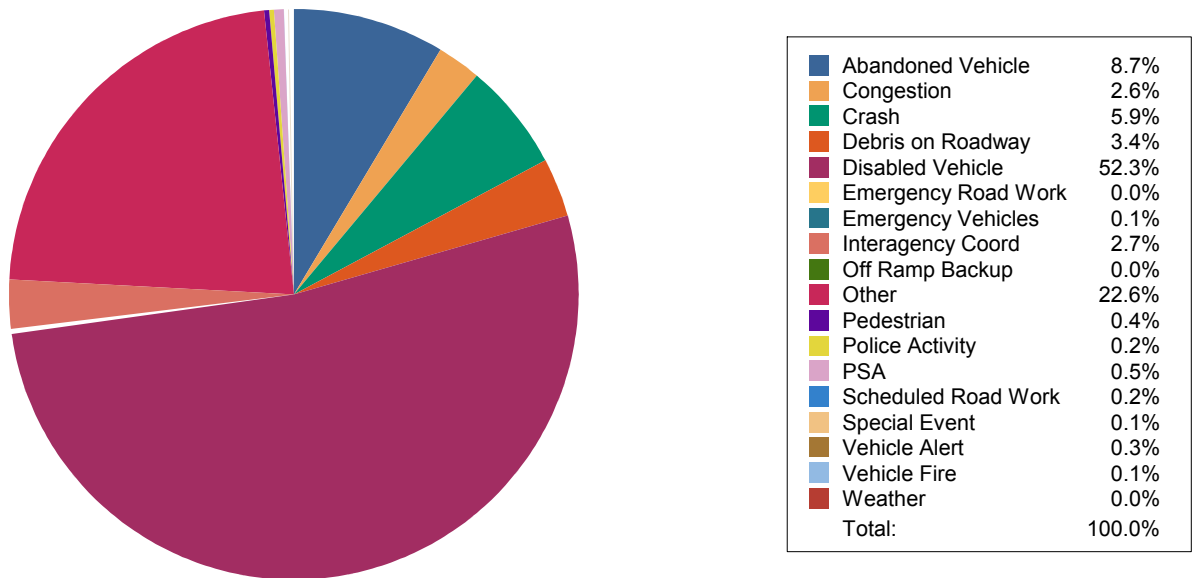
### Open Roads Duration / Month



### Roadway Clearance Duration / Month

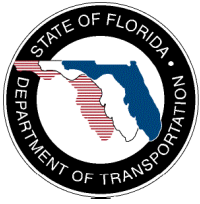


Percentage of event types for all events in current quarter



Event Types for all Events

	October	November	December	Total
Abandoned Vehicle	603	532	528	<b>1,663</b>
Congestion	150	188	151	<b>489</b>
Crash	438	336	355	<b>1,129</b>
Debris on Roadway	231	222	204	<b>657</b>
Disabled Vehicle	3,424	3,221	3,376	<b>10,021</b>
Emergency Road Work	1	0	0	<b>1</b>
Emergency Vehicles	8	11	6	<b>25</b>
Interagency Coord	179	178	160	<b>517</b>
Off Ramp Backup	1	0	0	<b>1</b>
Other	1,667	1,565	1,090	<b>4,322</b>
Pedestrian	24	31	23	<b>78</b>
Police Activity	10	15	9	<b>34</b>
PSA	30	30	29	<b>89</b>
Scheduled Road Work	2	5	25	<b>32</b>
Special Event	4	3	11	<b>18</b>
Vehicle Alert	12	22	15	<b>49</b>
Vehicle Fire	9	9	6	<b>24</b>
Weather	3	0	0	<b>3</b>
<b>Total</b>	<b>6,796</b>	<b>6,368</b>	<b>5,988</b>	<b>19,152</b>



# Quarterly Performance Measures Report Broward County

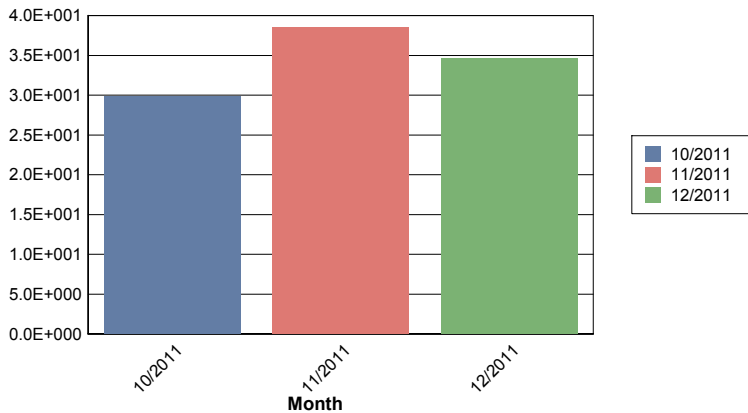
Period From Oct 1, 2011 to Dec 31, 2011



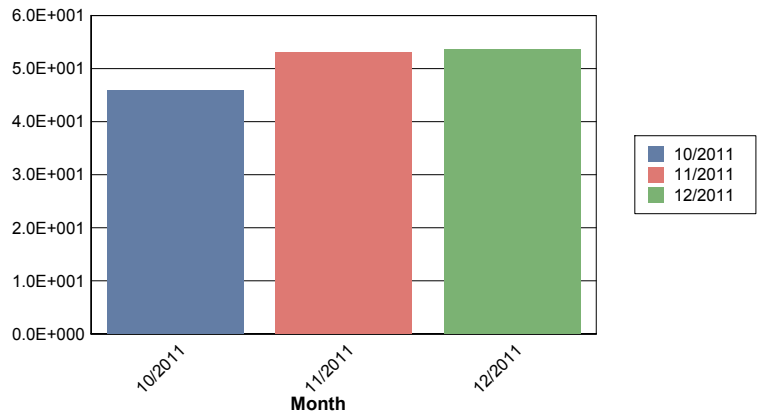
Created on:  
January 06, 2012  
9:22 am

	October	November	December	Total
Total # of Events (incl. incidents)	<b>5,708</b>	<b>5,305</b>	<b>4,845</b>	<b>15,858</b>
Number of Incidents	<b>242</b>	<b>202</b>	<b>205</b>	<b>649</b>
TMC Verification (mins.)	<b>1.41</b>	<b>1.12</b>	<b>1.60</b>	<b>1.37</b>
Roadway Clearance (2A) (mins.)	<b>29.84</b>	<b>38.57</b>	<b>34.57</b>	<b>34.05</b>
Incident Clearance (3B) (mins.)	<b>45.86</b>	<b>53.12</b>	<b>53.69</b>	<b>50.59</b>
Total Road Ranger Responses (stops)	<b>5,152</b>	<b>4,785</b>	<b>4,359</b>	<b>14,296</b>

### Roadway Clearance (2A)



### Incident Clearance (3B)





**Broward - October 1 to December 31**

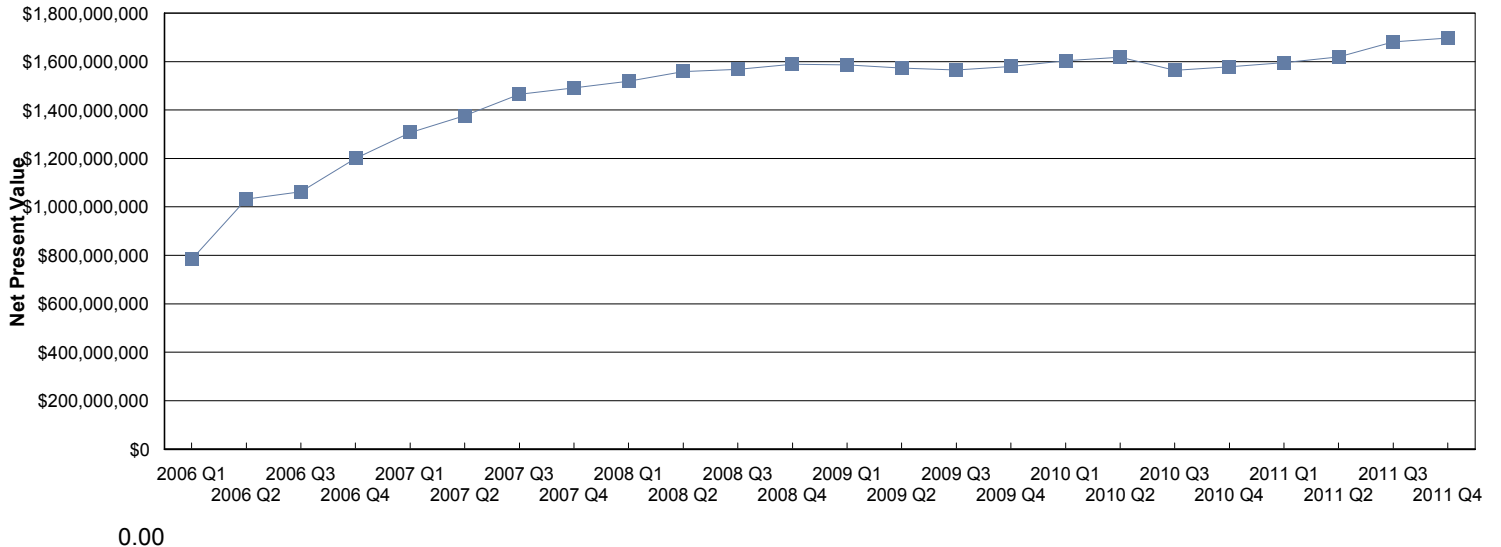
**Costs**

Emission Benefit	\$333,004.40
Delay Benefit	\$39,059,452.42
Safety Benefit	\$4,034,705.99
Dms Benefit	\$1,750,900.21
Fuel Benefit	\$6,116,195.98
Road Ranger Benefit	\$1,901,493.68
Total Benefit	\$53,195,752.68
Total Cost	\$0.00
<b>Benefit Cost Ratio</b>	<b>0.00</b>
<b>Cash Flow</b>	<b>\$53,195,752.68</b>

## Net Present Value

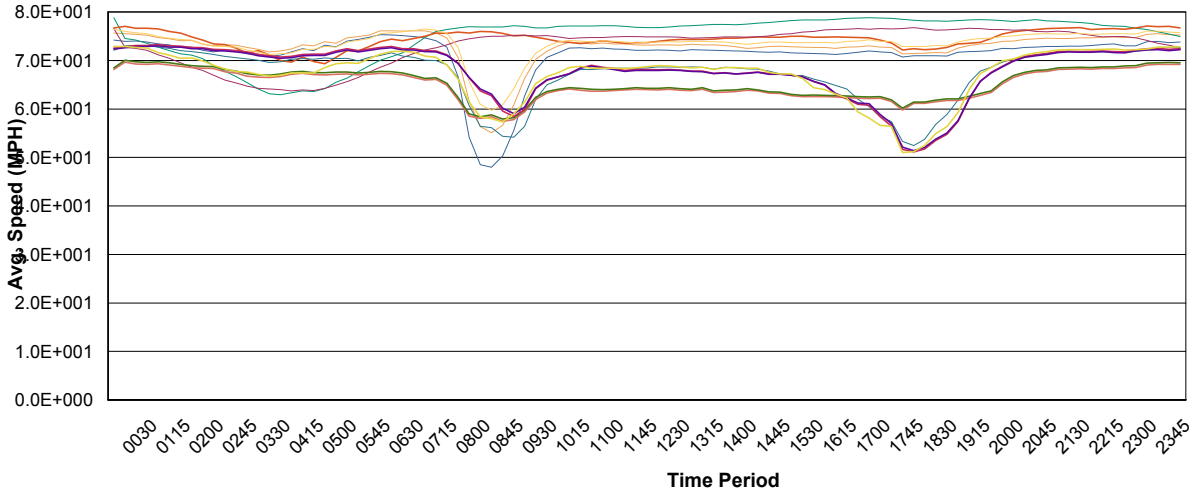
<u>Quarter</u>	<u>Cash Flow</u>	<u>Net Present Value</u>
2006 Q1	\$17,678,574.53	\$783,617,333.32
2006 Q2	\$31,019,351.82	\$1,032,863,198.58
2006 Q3	\$26,777,258.75	\$1,063,082,207.72
2006 Q4	\$39,885,451.30	\$1,200,359,724.53
2007 Q1	\$43,198,571.65	\$1,307,252,729.01
2007 Q2	\$42,995,763.41	\$1,377,111,678.87
2007 Q3	\$50,234,933.82	\$1,465,210,136.14
2007 Q4	\$41,489,390.75	\$1,490,703,551.67
2008 Q1	\$43,691,163.00	\$1,519,479,976.93
2008 Q2	\$48,271,179.00	\$1,559,230,727.98
2008 Q3	\$41,101,192.13	\$1,567,796,458.86
2008 Q4	\$45,506,377.00	\$1,588,270,579.26
2009 Q1	\$38,796,158.50	\$1,586,807,916.43
2009 Q2	\$34,187,327.75	\$1,573,685,803.56
2009 Q3	\$35,450,605.00	\$1,565,393,900.90
2009 Q4	\$45,143,549.00	\$1,579,799,277.47
2010 Q1	\$50,566,226.50	\$1,603,756,176.82
2010 Q2	\$47,140,583.75	\$1,618,210,239.69
2010 Q3	\$10,367,600.00	\$1,563,226,702.25
2010 Q4	\$47,242,581.00	\$1,578,263,281.39
2011 Q1	\$49,558,056.00	\$1,595,587,075.99
2011 Q2	\$55,067,808.00	\$1,619,821,786.48
2011 Q3	\$81,404,232.00	\$1,680,806,430.48
2011 Q4	\$53,195,752.00	\$1,696,534,030.43

### Net Present Value per Quarter



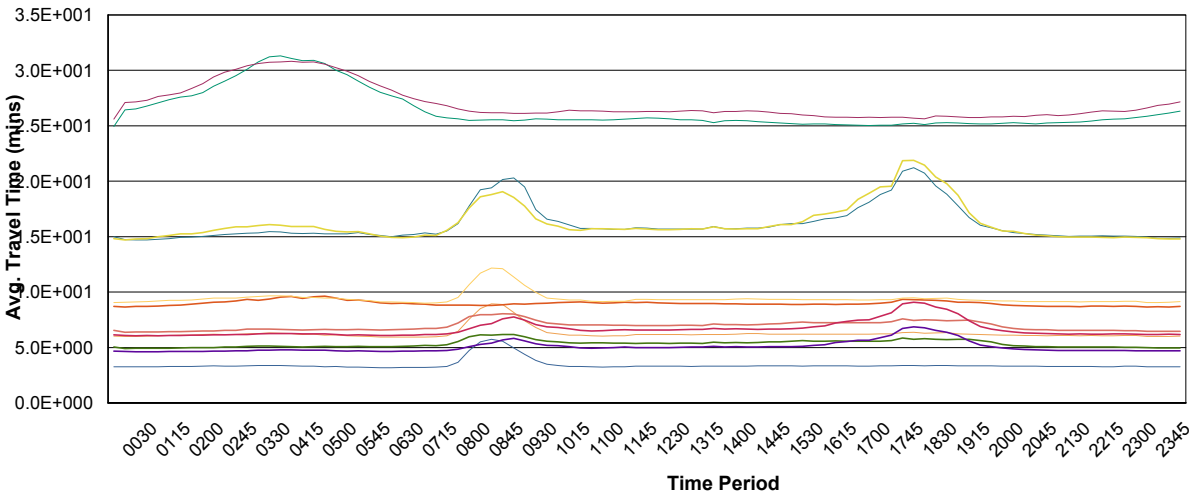
# Travel Reliability Data

## Average Speed by Segment on Weekdays



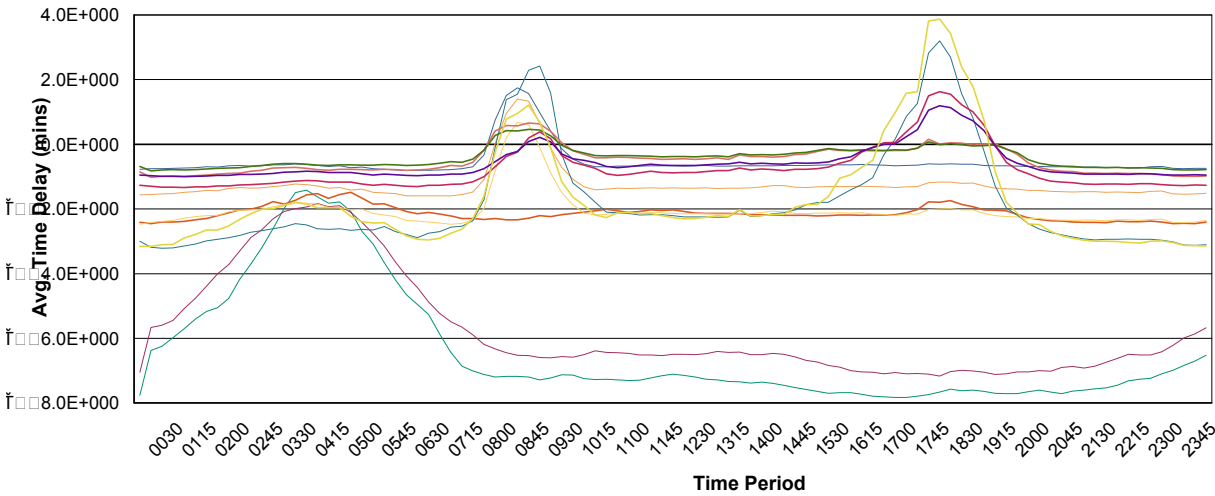
- BC 75SB10 to MDC
- DMS44
- BC 75SB14 to MDC
- DMS44
- BC I-75 NB I-595 to Col Ln
- BC I-75 NB MD Ln to I-595
- BC I-75 SB Col Ln to I-595
- BC I-75 SB I-595 to MD Ln
- BC I-95 NB I-595 to PB Ln
- BC I-95 NB MD Ln to I-595
- BC I-95 NB MDC GG to I-595
- BC I-95 SB I-595 to MD Ln
- BC I-95 SB I-595 to MDC GG
- BC I-95 SB PB Ln to I-595

## Average Travel Time by Segment on Weekdays



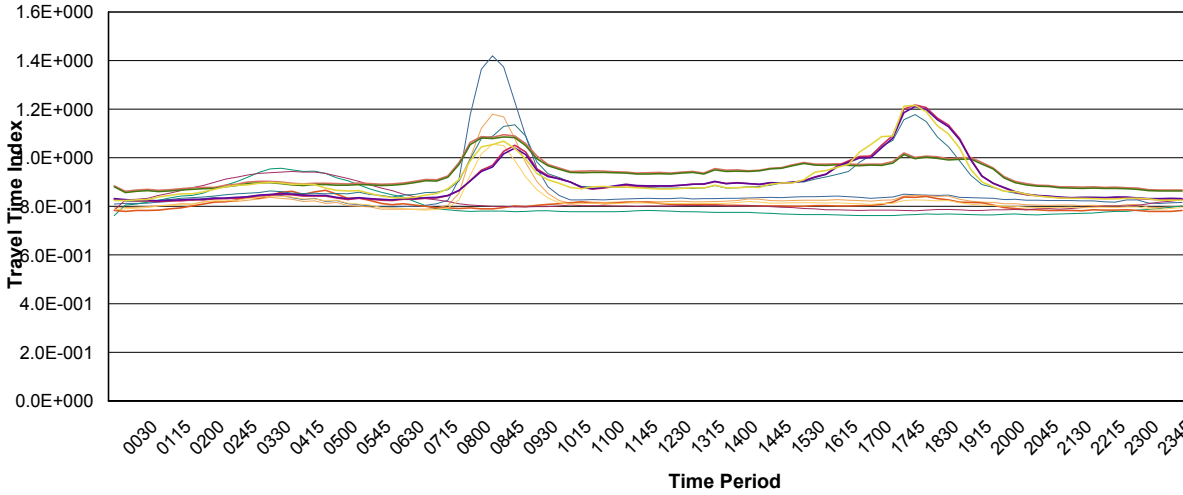
- BC 75SB10 to MDC
- DMS44
- BC 75SB14 to MDC
- DMS44
- BC I-75 NB I-595 to Col Ln
- BC I-75 NB MD Ln to I-595
- BC I-75 SB Col Ln to I-595
- BC I-75 SB I-595 to MD Ln
- BC I-95 NB I-595 to PB Ln
- BC I-95 NB MD Ln to I-595
- BC I-95 NB MDC GG to I-595
- BC I-95 SB I-595 to MD Ln
- BC I-95 SB I-595 to MDC GG
- BC I-95 SB PB Ln to I-595

## Average Time Delay by Segment on Weekdays



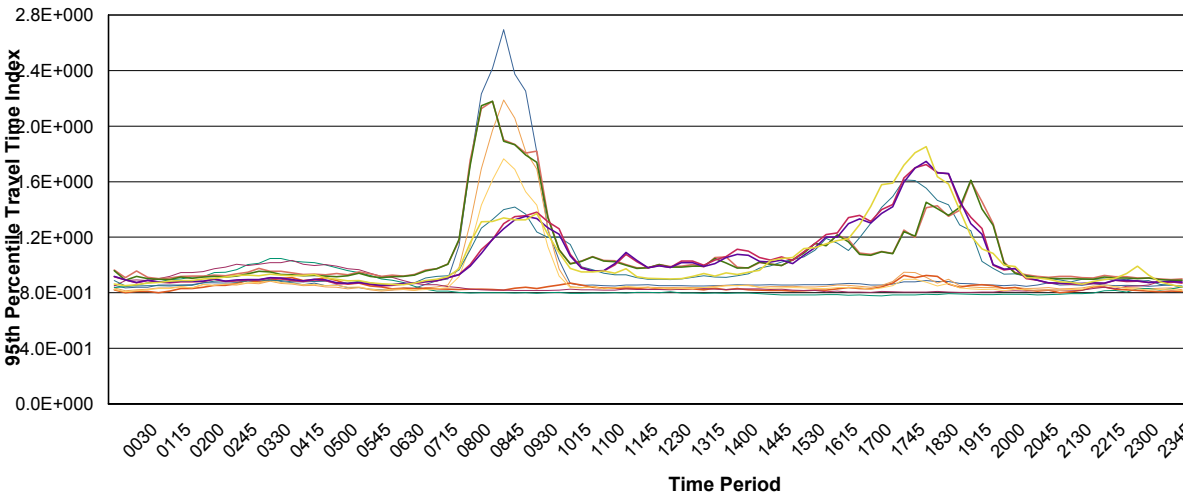
- BC 75SB10 to MDC
- DMS44
- BC 75SB14 to MDC
- DMS44
- BC I-75 NB I-595 to Col Ln
- BC I-75 NB MD Ln to I-595
- BC I-75 SB Col Ln to I-595
- BC I-75 SB I-595 to MD Ln
- BC I-95 NB I-595 to PB Ln
- BC I-95 NB MD Ln to I-595
- BC I-95 NB MDC GG to I-595
- BC I-95 SB I-595 to MD Ln
- BC I-95 SB I-595 to MDC GG
- BC I-95 SB PB Ln to I-595

## Travel Time Index by Segment on Weekdays



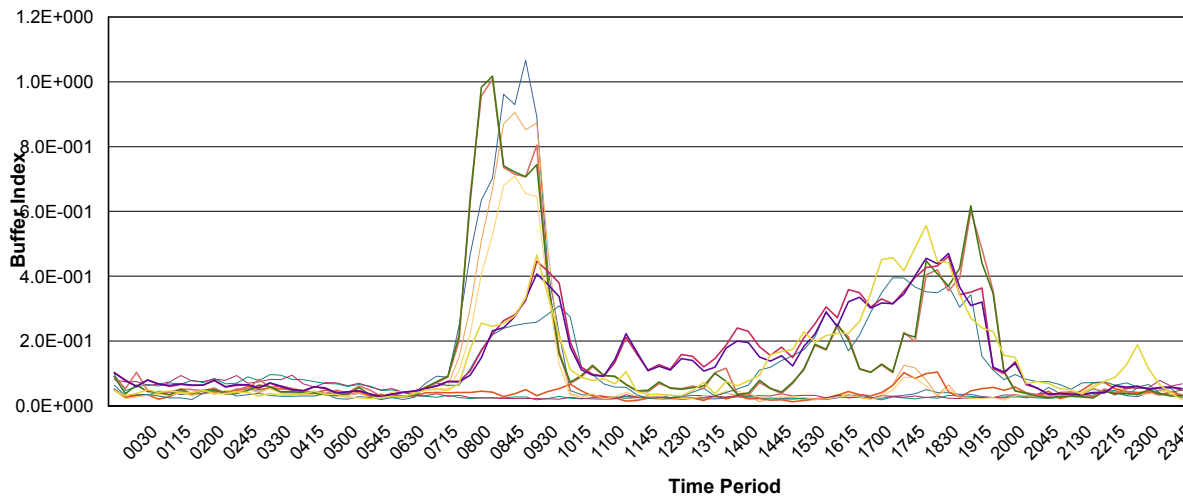
- BC 75SB10 to MDC DMS44
- BC 75SB14 to MDC DMS44
- BC I-75 NB I-595 to Col Ln
- BC I-75 NB MD Ln to I-595
- BC I-75 SB Col Ln to I-595
- BC I-75 SB I-595 to MD Ln
- BC I-95 NB I-595 to PB Ln
- BC I-95 NB MD Ln to I-595
- BC I-95 NB MDC GG to I-595
- BC I-95 SB I-595 to MD Ln
- BC I-95 SB I-595 to MDC GG
- BC I-95 SB PB Ln to I-595

## 95th Percentile Travel Time Index by Segment on Weekdays



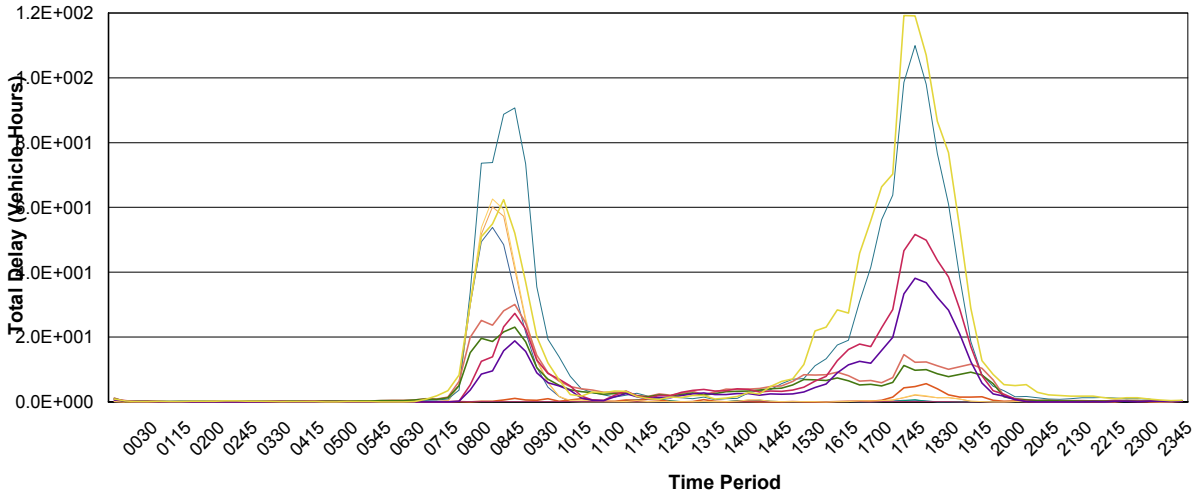
- BC 75SB10 to MDC DMS44
- BC 75SB14 to MDC DMS44
- BC I-75 NB I-595 to Col Ln
- BC I-75 NB MD Ln to I-595
- BC I-75 SB Col Ln to I-595
- BC I-75 SB I-595 to MD Ln
- BC I-95 NB I-595 to PB Ln
- BC I-95 NB MD Ln to I-595
- BC I-95 NB MDC GG to I-595
- BC I-95 SB I-595 to MD Ln
- BC I-95 SB I-595 to MDC GG
- BC I-95 SB PB Ln to I-595

## Buffer Index by Segment on Weekdays



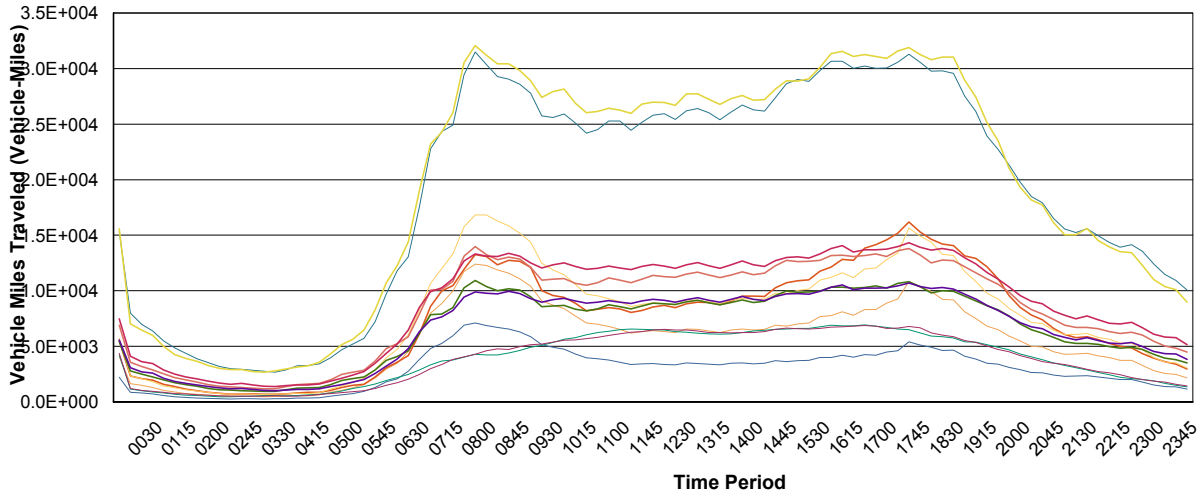
- BC 75SB10 to MDC DMS44
- BC 75SB14 to MDC DMS44
- BC I-75 NB I-595 to Col Ln
- BC I-75 NB MD Ln to I-595
- BC I-75 SB Col Ln to I-595
- BC I-75 SB I-595 to MD Ln
- BC I-95 NB I-595 to PB Ln
- BC I-95 NB MD Ln to I-595
- BC I-95 NB MDC GG to I-595
- BC I-95 SB I-595 to MD Ln
- BC I-95 SB I-595 to MDC GG
- BC I-95 SB PB Ln to I-595

### Total Delay by Segment per Weekday



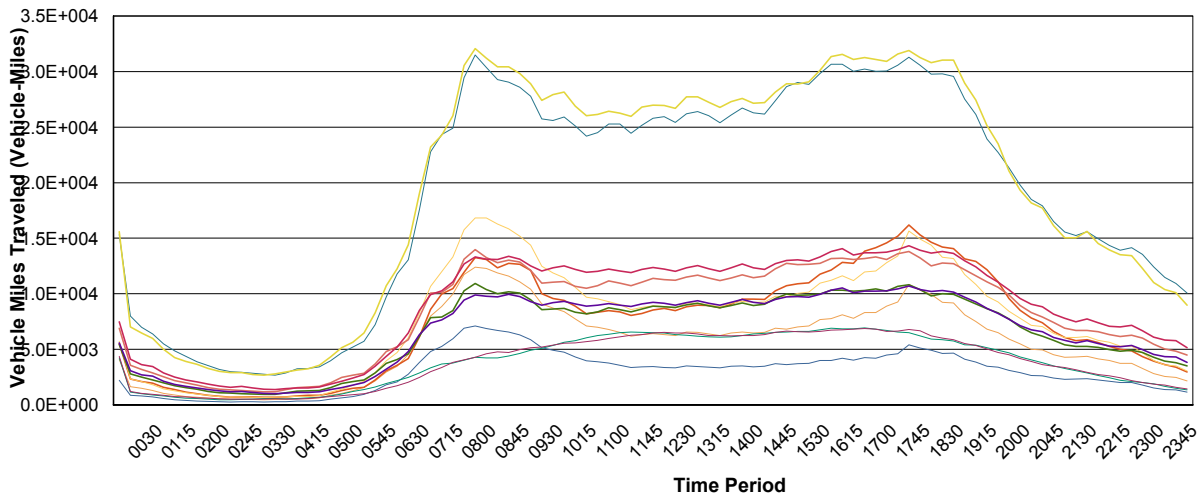
- BC 75SB10 to MDC
- DMS44
- BC 75SB14 to MDC
- DMS44
- BC I-75 NB I-595 to Col Ln
- BC I-75 NB MD Ln to I-595
- BC I-75 SB Col Ln to I-595
- BC I-75 SB I-595 to MD Ln
- BC I-95 NB I-595 to PB Ln
- BC I-95 NB MD Ln to I-595
- BC I-95 NB MDC GG to I-595
- BC I-95 SB I-595 to MD Ln
- BC I-95 SB I-595 to MDC GG
- BC I-95 SB PB Ln to I-595

### Vehicle Miles Traveled by Segment per Weekday



- BC 75SB10 to MDC
- DMS44
- BC 75SB14 to MDC
- DMS44
- BC I-75 NB I-595 to Col Ln
- BC I-75 NB MD Ln to I-595
- BC I-75 SB Col Ln to I-595
- BC I-75 SB I-595 to MD Ln
- BC I-95 NB I-595 to PB Ln
- BC I-95 NB MD Ln to I-595
- BC I-95 NB MDC GG to I-595
- BC I-95 SB I-595 to MD Ln
- BC I-95 SB I-595 to MDC GG
- BC I-95 SB PB Ln to I-595

### Vehicle Miles Traveled by Segment per Weekday



- BC 75SB10 to MDC
- DMS44
- BC 75SB14 to MDC
- DMS44
- BC I-75 NB I-595 to Col Ln
- BC I-75 NB MD Ln to I-595
- BC I-75 SB Col Ln to I-595
- BC I-75 SB I-595 to MD Ln
- BC I-95 NB I-595 to PB Ln
- BC I-95 NB MD Ln to I-595
- BC I-95 NB MDC GG to I-595
- BC I-95 SB I-595 to MD Ln
- BC I-95 SB I-595 to MDC GG
- BC I-95 SB PB Ln to I-595

**Travel Time Index, 95th Percentile Travel Time Index, and Buffer Index by Peak Period on Weekdays**

		BC 75SB10 to MDC DMS44	BC 75SB14 to MDC DMS44	BC I-75 NB I-595 to Col Ln	BC I-75 NB MD Ln to I-595	BC I-75 SB Col Ln to I-595	BC I-75 SB I-595 to MD Ln	BC I-95 NB I-595 to PB Ln	BC I-95 NB MD Ln to I-595	BC I-95 NB MDC GG to I-595	BC I-95 SB I-595 to MD Ln
<b>AM Peak</b>	Travel Time Index	1.12	0.99	0.78	0.80	0.80	0.93	1.01	1.02	1.01	0.95
	Peak TTI	6.98	12.72	1.02	0.90	1.05	18.90	2.35	1.65	1.57	24.86
	Planning Time Idx	1.98	1.59	0.80	0.83	0.84	1.36	1.30	1.58	1.58	1.23
	Buffer Index	0.57	0.50	0.03	0.04	0.02	0.39	0.19	0.56	0.56	0.24
	Peak Buffer Index	1.07	0.91	0.03	0.05	0.04	0.71	0.31	1.01	1.02	0.45
	Average VMT	6,015	10,523	4,512	11,457	4,650	14,343	27,697	12,089	9,455	12,443
	Peak VMT	9,140	15,155	11,372	15,302	6,823	20,432	35,286	15,963	12,477	15,305
<b>Off Peak</b>	Travel Time Index	0.82	0.80	0.76	0.79	0.78	0.79	0.84	0.90	0.89	0.84
	Peak TTI	1.64	2.12	2.31	2.45	51.22	2.92	1.80	1.51	1.36	1.58
	Planning Time Idx	0.86	0.85	0.95	0.87	0.95	0.85	0.89	0.95	0.94	0.90
	Buffer Index	0.05	0.04	0.08	0.05	0.07	0.04	0.07	0.10	0.10	0.10
	Peak Buffer Index	0.07	0.06	0.10	0.07	0.09	0.07	0.34	0.60	0.62	0.36
	Average VMT	1,843	3,380	2,975	4,612	3,010	4,736	12,693	5,732	4,491	6,208
	Peak VMT	6,319	10,309	12,434	15,507	14,977	13,584	30,086	14,176	11,073	14,417
<b>PM Peak</b>	Travel Time Index	0.84	0.83	0.76	0.82	0.78	0.82	1.01	0.98	0.98	1.05
	Peak TTI	4.45	2.07	1.30	1.60	1.34	1.86	2.22	1.16	1.20	1.38
	Planning Time Idx	0.87	0.86	0.78	0.85	0.81	0.84	1.35	1.18	1.17	1.50
	Buffer Index	0.03	0.05	0.03	0.05	0.03	0.04	0.29	0.21	0.22	0.33
	Peak Buffer Index	0.05	0.13	0.03	0.10	0.03	0.09	0.40	0.42	0.45	0.46
	Average VMT	4,371	8,608	6,448	13,529	6,500	12,396	29,902	12,984	10,162	13,626
	Peak VMT	6,467	12,424	13,485	18,191	13,748	17,702	34,193	16,139	12,593	15,728
<b>Weekday Mid Day</b>	Travel Time Index	0.83	0.82	0.77	0.81	0.80	0.81	0.88	0.94	0.94	0.89
	Peak TTI	6.52	12.12	1.41	0.88	1.44	18.36	1.86	1.09	1.13	1.02
	Planning Time Idx	0.85	0.84	0.80	0.83	0.82	0.83	0.93	1.00	0.99	1.01
	Buffer Index	0.03	0.03	0.03	0.03	0.03	0.03	0.07	0.07	0.07	0.16
	Peak Buffer Index	0.05	0.04	0.03	0.07	0.04	0.05	0.27	0.12	0.12	0.24
	Average VMT	3,558	6,597	6,305	8,918	6,235	9,225	25,829	11,326	8,855	12,272
	Peak VMT	5,238	8,975	15,188	12,621	13,242	12,128	32,600	14,953	11,704	15,015
<b>Total</b>	Travel Time Index	0.88	0.84	0.77	0.80	0.79	0.83	0.91	0.94	0.93	0.91
	Peak TTI	6.98	12.72	2.31	2.45	51.22	18.90	2.35	1.65	1.57	24.86
	Planning Time Idx	0.90	0.88	0.93	0.86	0.94	0.87	1.11	1.02	1.01	1.11
	Buffer Index	0.14	0.12	0.05	0.04	0.05	0.10	0.13	0.18	0.18	0.17
	Peak Buffer Index	1.07	0.91	0.10	0.10	0.09	0.71	0.40	1.01	1.02	0.46
	Average VMT	2,762	5,102	4,011	6,905	4,042	7,151	17,992	7,977	6,245	8,531
	Peak VMT	9,140	15,155	15,188	18,191	14,977	20,432	35,286	16,139	12,593	15,728

**Travel Time Index, 95th Percentile Travel Time Index, and Buffer Index by Time of Day on Weekdays**

		BC 75SB10 to MDC DMS44	BC 75SB14 to MDC DMS44	BC I-75 NB I-595 to Col Ln	BC I-75 NB MD Ln to I-595	BC I-75 SB Col Ln to I-595	BC I-75 SB I-595 to MD Ln	BC I-95 NB I-595 to PB Ln	BC I-95 NB MD Ln to I-595	BC I-95 NB MDC GG to I-595	BC I-95 SB I-595 to MD Ln	BC I-95 SB I-595 to MDC GG	BC I-95 SB PB Ln to I-595	Total
	Travel Time Idx	0.81	0.79	0.76	0.78	0.78	0.79	0.83	0.88	0.88	0.83	0.83	0.82	0.82
	Plan. Time Idx	0.85	0.83	0.84	0.82	0.85	0.82	0.89	0.96	0.96	0.91	0.92	0.86	0.90
	Buffer Index	0.05	0.05	0.10	0.05	0.08	0.05	0.06	0.09	0.09	0.10	0.10	0.05	0.07
	VMT	2,219	4,084	4,213	5,516	4,359	5,728	15,312	6,909	5,417	7,476	5,582	15,574	6,866
<b>0000</b>	Travel Time Idx	0.81	0.79	0.81	0.78	0.83	0.79	0.82	0.86	0.86	0.83	0.83	0.82	0.82
	Plan. Time Idx	0.84	0.81	0.84	0.80	0.89	0.81	0.85	0.91	0.89	0.89	0.89	0.85	0.88
	Buffer Index	0.03	0.02	0.05	0.03	0.07	0.02	0.03	0.05	0.04	0.08	0.08	0.03	0.04
	VMT	863	1,628	1,151	2,317	1,191	2,333	7,997	3,556	2,791	4,113	3,063	7,012	3,168
<b>0015</b>	Travel Time Idx	0.81	0.80	0.81	0.78	0.83	0.79	0.82	0.87	0.86	0.82	0.83	0.83	0.82
	Plan. Time Idx	0.84	0.82	0.86	0.81	0.89	0.81	0.85	0.96	0.92	0.87	0.87	0.86	0.88
	Buffer Index	0.03	0.03	0.06	0.03	0.07	0.03	0.03	0.10	0.06	0.06	0.06	0.04	0.05
	VMT	802	1,492	1,003	2,088	1,026	2,101	6,973	3,190	2,503	3,612	2,687	6,455	2,828
<b>0030</b>	Travel Time Idx	0.81	0.80	0.82	0.78	0.83	0.80	0.82	0.87	0.86	0.82	0.83	0.83	0.82
	Plan. Time Idx	0.84	0.82	0.87	0.81	0.89	0.82	0.85	0.91	0.90	0.89	0.89	0.87	0.89
	Buffer Index	0.03	0.03	0.07	0.03	0.06	0.03	0.04	0.05	0.04	0.08	0.08	0.05	0.05
	VMT	703	1,291	896	1,934	943	1,815	6,384	2,857	2,242	3,448	2,566	5,981	2,588
<b>0045</b>	Travel Time Idx	0.82	0.80	0.83	0.79	0.84	0.80	0.83	0.87	0.86	0.82	0.82	0.84	0.83
	Plan. Time Idx	0.85	0.84	0.88	0.80	0.90	0.83	0.85	0.90	0.90	0.88	0.88	0.87	0.88
	Buffer Index	0.05	0.04	0.06	0.02	0.07	0.03	0.03	0.04	0.04	0.07	0.07	0.04	0.05
	VMT	555	1,017	799	1,585	838	1,437	5,492	2,519	1,978	2,868	2,130	4,991	2,184
<b>0100</b>	Travel Time Idx	0.82	0.81	0.83	0.79	0.85	0.80	0.83	0.87	0.86	0.82	0.83	0.84	0.83
	Plan. Time Idx	0.85	0.83	0.89	0.81	0.92	0.83	0.85	0.91	0.89	0.87	0.88	0.88	0.89
	Buffer Index	0.04	0.03	0.07	0.03	0.07	0.03	0.02	0.04	0.03	0.06	0.06	0.05	0.05
	VMT	463	869	687	1,368	751	1,244	4,838	2,186	1,716	2,482	1,839	4,240	1,890
<b>0115</b>	Travel Time Idx	0.83	0.81	0.84	0.79	0.87	0.81	0.83	0.87	0.87	0.82	0.83	0.85	0.84
	Plan. Time Idx	0.85	0.84	0.90	0.83	0.95	0.84	0.85	0.92	0.91	0.88	0.88	0.89	0.90
	Buffer Index	0.03	0.04	0.07	0.05	0.09	0.04	0.02	0.05	0.05	0.07	0.07	0.04	0.05
	VMT	405	750	608	1,137	705	1,069	4,363	1,971	1,547	2,222	1,644	3,910	1,694
<b>0130</b>	Travel Time Idx	0.82	0.81	0.85	0.80	0.88	0.81	0.84	0.88	0.87	0.83	0.83	0.85	0.84
	Plan. Time Idx	0.86	0.84	0.91	0.83	0.94	0.83	0.85	0.92	0.90	0.88	0.88	0.89	0.91
	Buffer Index	0.04	0.03	0.08	0.04	0.08	0.03	0.02	0.05	0.04	0.06	0.06	0.04	0.05
	VMT	345	674	563	995	634	964	3,881	1,777	1,395	2,061	1,521	3,642	1,538
<b>0145</b>	Travel Time Idx	0.83	0.82	0.85	0.81	0.89	0.82	0.84	0.88	0.87	0.83	0.83	0.86	0.84
	Plan. Time Idx	0.87	0.86	0.92	0.84	0.95	0.86	0.87	0.92	0.91	0.88	0.88	0.90	0.91
	Buffer Index	0.05	0.05	0.07	0.04	0.07	0.05	0.04	0.05	0.05	0.06	0.06	0.05	0.05
	VMT	311	596	514	851	594	844	3,514	1,543	1,210	1,859	1,372	3,259	1,372
<b>0200</b>	Travel Time Idx	0.84	0.82	0.87	0.82	0.90	0.82	0.84	0.88	0.87	0.83	0.83	0.87	0.85
	Plan. Time Idx	0.87	0.85	0.95	0.85	0.97	0.85	0.88	0.93	0.92	0.90	0.90	0.90	0.92
	Buffer Index	0.04	0.04	0.08	0.04	0.08	0.04	0.05	0.05	0.05	0.08	0.08	0.04	0.06
	VMT	276	528	458	774	547	750	3,181	1,398	1,096	1,692	1,247	3,002	1,246
<b>0215</b>	Travel Time Idx	0.83	0.82	0.89	0.82	0.91	0.82	0.85	0.89	0.88	0.83	0.83	0.88	0.85
	Plan. Time Idx	0.87	0.86	0.95	0.85	0.98	0.86	0.88	0.92	0.91	0.88	0.88	0.91	0.93
	Buffer Index	0.04	0.05	0.07	0.04	0.08	0.05	0.04	0.04	0.04	0.06	0.06	0.04	0.05
	VMT	262	498	441	688	511	690	2,987	1,347	1,055	1,585	1,167	2,909	1,178

		BC 75SB10 to MDC DMS44	BC 75SB14 to MDC DMS44	BC I-75 NB I-595 to Col Ln	BC I-75 NB MD Ln to I-595	BC I-75 SB Col Ln to I-595	BC I-75 SB I-595 to MD Ln	BC I-95 NB I-595 to PB Ln	BC I-95 NB MD Ln to I-595	BC I-95 NB MDC GG to I-595	BC I-95 SB I-595 to MD Ln	BC I-95 SB I-595 to MDC GG	BC I-95 SB PB Ln to I-595	Total
<b>0230</b>	Travel Time Idx	0.83	0.82	0.90	0.83	0.92	0.82	0.85	0.89	0.89	0.83	0.84	0.89	0.86
	Plan. Time Idx	0.87	0.86	0.96	0.87	1.01	0.86	0.88	0.94	0.92	0.89	0.89	0.93	0.94
	Buffer Index	0.05	0.04	0.07	0.05	0.09	0.04	0.03	0.05	0.04	0.06	0.07	0.04	0.05
	VMT	273	516	470	701	511	712	2,934	1,275	999	1,644	1,210	2,899	1,179
<b>0245</b>	Travel Time Idx	0.84	0.83	0.92	0.84	0.93	0.83	0.85	0.90	0.89	0.84	0.84	0.89	0.87
	Plan. Time Idx	0.89	0.87	1.00	0.89	0.99	0.87	0.88	0.95	0.94	0.89	0.89	0.93	0.96
	Buffer Index	0.05	0.05	0.09	0.06	0.07	0.05	0.03	0.05	0.05	0.06	0.06	0.04	0.06
	VMT	270	493	519	714	504	681	2,838	1,226	961	1,513	1,112	2,721	1,129
<b>0300</b>	Travel Time Idx	0.84	0.83	0.94	0.83	0.94	0.84	0.86	0.90	0.90	0.84	0.85	0.89	0.87
	Plan. Time Idx	0.88	0.86	1.01	0.88	1.01	0.87	0.89	0.98	0.95	0.89	0.89	0.92	0.98
	Buffer Index	0.04	0.04	0.08	0.05	0.07	0.04	0.04	0.08	0.06	0.06	0.06	0.03	0.05
	VMT	248	463	561	681	518	656	2,762	1,183	927	1,401	1,027	2,658	1,090
<b>0315</b>	Travel Time Idx	0.85	0.84	0.95	0.84	0.94	0.84	0.86	0.90	0.90	0.85	0.85	0.90	0.88
	Plan. Time Idx	0.90	0.88	1.05	0.89	1.02	0.89	0.89	0.96	0.95	0.91	0.91	0.93	0.99
	Buffer Index	0.06	0.06	0.10	0.05	0.08	0.05	0.03	0.06	0.06	0.07	0.07	0.04	0.06
	VMT	277	483	554	668	528	668	2,674	1,183	928	1,381	1,011	2,772	1,094
<b>0330</b>	Travel Time Idx	0.84	0.83	0.96	0.86	0.94	0.84	0.86	0.90	0.89	0.85	0.85	0.90	0.88
	Plan. Time Idx	0.88	0.87	1.05	0.90	1.02	0.87	0.89	0.96	0.93	0.90	0.90	0.93	0.99
	Buffer Index	0.04	0.04	0.09	0.05	0.08	0.04	0.03	0.06	0.04	0.06	0.06	0.03	0.05
	VMT	292	507	543	705	510	703	2,862	1,381	1,084	1,457	1,066	2,943	1,171
<b>0345</b>	Travel Time Idx	0.84	0.83	0.95	0.86	0.94	0.84	0.85	0.90	0.89	0.85	0.85	0.89	0.87
	Plan. Time Idx	0.87	0.86	1.03	0.91	1.03	0.87	0.88	0.94	0.93	0.89	0.89	0.92	0.98
	Buffer Index	0.04	0.04	0.08	0.05	0.09	0.03	0.03	0.05	0.04	0.05	0.05	0.03	0.05
	VMT	328	559	555	792	506	756	3,235	1,557	1,221	1,503	1,099	3,136	1,271
<b>0400</b>	Travel Time Idx	0.83	0.82	0.94	0.85	0.94	0.83	0.85	0.89	0.89	0.84	0.85	0.89	0.87
	Plan. Time Idx	0.86	0.85	1.02	0.89	1.00	0.86	0.88	0.93	0.92	0.88	0.89	0.92	0.97
	Buffer Index	0.04	0.04	0.08	0.05	0.07	0.03	0.03	0.05	0.04	0.04	0.05	0.04	0.05
	VMT	324	548	614	858	569	750	3,274	1,598	1,253	1,507	1,102	3,245	1,304
<b>0415</b>	Travel Time Idx	0.83	0.82	0.95	0.86	0.94	0.83	0.85	0.90	0.89	0.84	0.85	0.89	0.87
	Plan. Time Idx	0.87	0.85	1.02	0.89	1.00	0.86	0.88	0.93	0.93	0.89	0.90	0.93	0.97
	Buffer Index	0.04	0.04	0.07	0.04	0.06	0.03	0.03	0.04	0.04	0.06	0.06	0.05	0.05
	VMT	367	609	682	840	640	830	3,407	1,653	1,295	1,594	1,166	3,548	1,386
<b>0430</b>	Travel Time Idx	0.82	0.81	0.94	0.87	0.94	0.82	0.85	0.90	0.89	0.84	0.85	0.88	0.87
	Plan. Time Idx	0.85	0.84	1.00	0.91	1.00	0.85	0.88	0.93	0.92	0.89	0.89	0.91	0.96
	Buffer Index	0.04	0.04	0.07	0.05	0.07	0.03	0.04	0.04	0.03	0.05	0.05	0.04	0.05
	VMT	518	841	788	1,026	746	1,126	3,948	1,982	1,551	1,869	1,372	4,299	1,672
<b>0445</b>	Travel Time Idx	0.82	0.82	0.92	0.85	0.93	0.83	0.85	0.89	0.89	0.83	0.84	0.87	0.86
	Plan. Time Idx	0.85	0.84	0.98	0.89	0.99	0.85	0.87	0.94	0.92	0.87	0.87	0.90	0.95
	Buffer Index	0.04	0.03	0.07	0.04	0.07	0.03	0.02	0.05	0.03	0.04	0.04	0.04	0.04
	VMT	610	1,024	976	1,274	824	1,392	4,684	2,466	1,928	2,119	1,556	5,130	1,999
<b>0500</b>	Travel Time Idx	0.81	0.80	0.91	0.83	0.92	0.81	0.85	0.89	0.89	0.83	0.83	0.86	0.85
	Plan. Time Idx	0.84	0.83	0.96	0.86	0.97	0.84	0.87	0.93	0.92	0.86	0.87	0.89	0.94
	Buffer Index	0.03	0.03	0.06	0.03	0.06	0.03	0.02	0.04	0.04	0.04	0.04	0.03	0.04
	VMT	733	1,260	1,185	1,474	899	1,745	5,205	2,672	2,086	2,414	1,776	5,633	2,257

		BC 75SB10 to MDC DMS44	BC 75SB14 to MDC DMS44	BC I-75 NB I-595 to Col Ln	BC I-75 NB MD Ln to I-595	BC I-75 SB Col Ln to I-595	BC I-75 SB I-595 to MD Ln	BC I-95 NB I-595 to PB Ln	BC I-95 NB MD Ln to I-595	BC I-95 NB MDC GG to I-595	BC I-95 SB I-595 to MD Ln	BC I-95 SB I-595 to MDC GG	BC I-95 SB PB Ln to I-595	Total
<b>0515</b>	Travel Time Idx	0.81	0.80	0.89	0.83	0.90	0.81	0.86	0.90	0.89	0.83	0.84	0.86	0.85
	Plan. Time Idx	0.84	0.84	0.95	0.87	0.97	0.84	0.88	0.95	0.94	0.87	0.87	0.89	0.93
	Buffer Index	0.04	0.04	0.07	0.04	0.07	0.04	0.03	0.06	0.06	0.05	0.05	0.03	0.05
	VMT	931	1,573	1,377	1,577	1,004	2,120	5,704	2,839	2,219	2,713	1,998	6,465	2,543
<b>0530</b>	Travel Time Idx	0.80	0.80	0.87	0.82	0.89	0.81	0.85	0.89	0.89	0.83	0.83	0.85	0.84
	Plan. Time Idx	0.83	0.82	0.92	0.85	0.94	0.82	0.87	0.94	0.92	0.86	0.86	0.87	0.91
	Buffer Index	0.03	0.03	0.06	0.03	0.06	0.02	0.03	0.05	0.03	0.04	0.04	0.02	0.04
	VMT	1,278	2,137	1,590	2,239	1,186	2,885	7,202	3,665	2,864	3,467	2,561	8,289	3,280
<b>0545</b>	Travel Time Idx	0.80	0.79	0.86	0.81	0.88	0.79	0.84	0.89	0.89	0.83	0.83	0.84	0.84
	Plan. Time Idx	0.82	0.81	0.90	0.84	0.92	0.82	0.86	0.92	0.91	0.85	0.85	0.86	0.90
	Buffer Index	0.03	0.03	0.05	0.03	0.05	0.03	0.02	0.03	0.02	0.03	0.03	0.03	0.03
	VMT	1,796	2,959	1,912	3,056	1,495	3,948	9,705	4,783	3,739	4,357	3,220	10,708	4,307
<b>0600</b>	Travel Time Idx	0.80	0.79	0.85	0.81	0.86	0.79	0.84	0.89	0.89	0.82	0.83	0.84	0.83
	Plan. Time Idx	0.82	0.82	0.89	0.83	0.91	0.83	0.86	0.93	0.92	0.85	0.86	0.86	0.90
	Buffer Index	0.03	0.04	0.05	0.03	0.05	0.04	0.02	0.04	0.03	0.04	0.04	0.03	0.04
	VMT	2,072	3,473	2,189	3,549	1,726	4,705	11,799	5,226	4,082	5,211	3,854	12,251	5,011
<b>0615</b>	Travel Time Idx	0.80	0.79	0.84	0.81	0.85	0.79	0.85	0.90	0.89	0.83	0.83	0.83	0.83
	Plan. Time Idx	0.83	0.82	0.87	0.83	0.89	0.83	0.86	0.92	0.92	0.86	0.87	0.86	0.90
	Buffer Index	0.04	0.04	0.04	0.03	0.04	0.04	0.02	0.03	0.03	0.04	0.04	0.03	0.04
	VMT	2,763	4,546	2,470	4,165	2,038	6,023	13,048	5,863	4,583	6,471	4,803	14,415	5,932
<b>0630</b>	Travel Time Idx	0.80	0.79	0.82	0.81	0.84	0.79	0.85	0.90	0.90	0.83	0.83	0.84	0.83
	Plan. Time Idx	0.83	0.82	0.85	0.83	0.87	0.82	0.87	0.93	0.93	0.87	0.87	0.87	0.91
	Buffer Index	0.04	0.04	0.03	0.03	0.03	0.04	0.03	0.03	0.03	0.05	0.04	0.04	0.04
	VMT	3,806	6,244	2,876	6,109	2,460	8,267	17,570	7,911	6,186	8,512	6,322	19,045	7,942
<b>0645</b>	Travel Time Idx	0.80	0.79	0.80	0.80	0.83	0.78	0.86	0.91	0.91	0.83	0.84	0.85	0.83
	Plan. Time Idx	0.86	0.83	0.83	0.83	0.86	0.82	0.91	0.96	0.96	0.88	0.88	0.89	0.92
	Buffer Index	0.07	0.06	0.03	0.04	0.03	0.05	0.06	0.06	0.06	0.05	0.05	0.05	0.05
	VMT	4,788	7,999	3,335	8,605	2,983	10,656	22,767	10,047	7,850	9,920	7,369	23,213	9,961
<b>0700</b>	Travel Time Idx	0.81	0.79	0.79	0.79	0.83	0.79	0.86	0.91	0.90	0.83	0.84	0.85	0.83
	Plan. Time Idx	0.88	0.84	0.81	0.83	0.86	0.83	0.92	0.97	0.97	0.89	0.89	0.90	0.92
	Buffer Index	0.09	0.06	0.03	0.04	0.04	0.05	0.07	0.07	0.07	0.06	0.06	0.05	0.06
	VMT	5,244	8,839	3,669	9,961	3,345	11,978	24,337	10,116	7,908	10,274	7,636	24,259	10,657
<b>0715</b>	Travel Time Idx	0.83	0.80	0.79	0.79	0.82	0.79	0.87	0.93	0.92	0.84	0.85	0.87	0.84
	Plan. Time Idx	0.90	0.85	0.81	0.83	0.84	0.84	0.92	1.01	1.00	0.91	0.91	0.91	0.93
	Buffer Index	0.09	0.06	0.03	0.04	0.03	0.05	0.06	0.09	0.09	0.08	0.07	0.05	0.06
	VMT	5,939	9,979	3,765	10,460	3,830	13,324	24,910	10,828	8,482	11,059	8,227	26,027	11,402
<b>0730</b>	Travel Time Idx	0.91	0.85	0.78	0.79	0.81	0.83	0.90	0.98	0.97	0.86	0.87	0.91	0.87
	Plan. Time Idx	1.14	0.98	0.80	0.82	0.84	0.92	0.96	1.18	1.18	0.93	0.93	0.97	0.98
	Buffer Index	0.25	0.15	0.02	0.04	0.03	0.11	0.06	0.20	0.22	0.08	0.07	0.07	0.11
	VMT	6,892	11,717	4,027	11,924	4,041	15,755	29,442	13,120	10,266	12,663	9,413	30,548	13,317
<b>0745</b>	Travel Time Idx	1.18	1.00	0.78	0.79	0.81	0.93	1.00	1.06	1.05	0.91	0.90	0.99	0.95
	Plan. Time Idx	1.73	1.30	0.80	0.83	0.83	1.13	1.11	1.76	1.72	1.00	0.99	1.16	1.27
	Buffer Index	0.47	0.30	0.02	0.04	0.03	0.22	0.11	0.65	0.63	0.11	0.09	0.18	0.24
	VMT	7,093	12,391	4,266	13,251	4,279	16,808	31,499	13,978	10,930	13,299	9,877	32,069	14,145

		BC 75SB10 to MDC DMS44	BC 75SB14 to MDC DMS44	BC I-75 NB I-595 to Col Ln	BC I-75 NB MD Ln to I-595	BC I-75 SB Col Ln to I-595	BC I-75 SB I-595 to MD Ln	BC I-95 NB I-595 to PB Ln	BC I-95 NB MD Ln to I-595	BC I-95 NB MDC GG to I-595	BC I-95 SB I-595 to MD Ln	BC I-95 SB I-595 to MDC GG	BC I-95 SB PB Ln to I-595	Total
<b>0800</b>	Travel Time Idx	1.36	1.12	0.78	0.79	0.80	1.02	1.08	1.09	1.08	0.95	0.94	1.04	1.01
	Plan. Time Idx	2.23	1.69	0.80	0.83	0.82	1.43	1.27	2.13	2.15	1.11	1.08	1.31	1.50
	Buffer Index	0.64	0.51	0.02	0.04	0.02	0.41	0.17	0.96	0.98	0.17	0.15	0.25	0.36
	VMT	6,875	12,268	4,231	13,092	4,586	16,825	30,372	13,262	10,373	13,121	9,758	31,219	13,832
<b>0815</b>	Travel Time Idx	1.42	1.18	0.78	0.79	0.80	1.06	1.09	1.09	1.08	0.97	0.96	1.05	1.02
	Plan. Time Idx	2.42	1.97	0.80	0.82	0.82	1.61	1.33	2.18	2.18	1.18	1.18	1.31	1.63
	Buffer Index	0.70	0.67	0.02	0.04	0.02	0.53	0.22	1.01	1.02	0.22	0.23	0.25	0.41
	VMT	6,682	11,871	4,216	12,328	4,773	16,280	29,266	12,792	10,016	13,066	9,724	30,437	13,454
<b>0830</b>	Travel Time Idx	1.37	1.17	0.78	0.79	0.80	1.05	1.13	1.09	1.09	1.03	1.02	1.07	1.03
	Plan. Time Idx	2.69	2.19	0.80	0.82	0.82	1.77	1.40	1.90	1.89	1.30	1.26	1.34	1.62
	Buffer Index	0.96	0.87	0.02	0.03	0.02	0.68	0.24	0.74	0.74	0.26	0.24	0.25	0.42
	VMT	6,555	11,574	4,390	12,721	4,718	15,838	29,058	13,025	10,188	13,363	9,936	30,439	13,484
<b>0845</b>	Travel Time Idx	1.23	1.08	0.78	0.80	0.80	0.99	1.14	1.09	1.08	1.05	1.04	1.04	1.01
	Plan. Time Idx	2.37	2.06	0.80	0.83	0.82	1.69	1.42	1.87	1.87	1.35	1.33	1.33	1.54
	Buffer Index	0.93	0.91	0.03	0.04	0.02	0.71	0.25	0.72	0.72	0.28	0.28	0.28	0.43
	VMT	6,287	11,070	4,616	12,651	4,963	15,194	28,598	12,849	10,047	13,124	9,754	29,812	13,247
<b>0900</b>	Travel Time Idx	1.09	0.98	0.78	0.80	0.80	0.92	1.09	1.06	1.05	1.02	1.01	0.99	0.97
	Plan. Time Idx	2.25	1.82	0.80	0.84	0.82	1.53	1.37	1.81	1.79	1.36	1.35	1.33	1.41
	Buffer Index	1.07	0.85	0.03	0.05	0.02	0.66	0.25	0.71	0.71	0.32	0.33	0.33	0.44
	VMT	5,852	10,399	4,915	12,101	5,153	14,378	27,790	12,093	9,455	12,498	9,287	28,909	12,731
<b>0915</b>	Travel Time Idx	0.96	0.90	0.78	0.80	0.80	0.87	0.98	1.01	1.00	0.95	0.95	0.94	0.91
	Plan. Time Idx	1.81	1.69	0.80	0.83	0.82	1.43	1.24	1.82	1.74	1.38	1.34	1.37	1.27
	Buffer Index	0.89	0.87	0.02	0.03	0.02	0.65	0.26	0.80	0.74	0.45	0.41	0.47	0.47
	VMT	5,142	9,095	5,077	10,016	5,200	12,465	25,738	10,945	8,554	12,056	8,972	27,408	11,753
<b>0930</b>	Travel Time Idx	0.88	0.85	0.78	0.81	0.80	0.83	0.93	0.97	0.97	0.93	0.92	0.91	0.88
	Plan. Time Idx	1.25	1.26	0.80	0.84	0.82	1.13	1.20	1.35	1.34	1.31	1.27	1.22	1.15
	Buffer Index	0.42	0.48	0.02	0.04	0.02	0.35	0.28	0.38	0.39	0.42	0.37	0.34	0.29
	VMT	4,906	8,703	5,346	9,576	5,373	11,864	25,603	11,031	8,622	12,335	9,195	27,937	11,727
<b>0945</b>	Travel Time Idx	0.85	0.82	0.78	0.81	0.80	0.81	0.92	0.96	0.95	0.91	0.91	0.89	0.87
	Plan. Time Idx	1.03	0.97	0.80	0.85	0.82	0.92	1.20	1.11	1.11	1.26	1.22	1.09	1.01
	Buffer Index	0.22	0.18	0.03	0.05	0.02	0.13	0.31	0.16	0.16	0.38	0.34	0.22	0.18
	VMT	4,733	8,393	5,630	9,405	5,542	11,443	25,898	11,107	8,680	12,505	9,323	28,158	11,767
<b>1000</b>	Travel Time Idx	0.83	0.81	0.78	0.82	0.81	0.81	0.90	0.94	0.94	0.90	0.90	0.88	0.86
	Plan. Time Idx	0.87	0.84	0.80	0.87	0.83	0.84	1.15	1.01	1.01	1.08	1.06	0.98	0.96
	Buffer Index	0.05	0.04	0.02	0.07	0.03	0.03	0.27	0.07	0.07	0.20	0.18	0.11	0.10
	VMT	4,306	7,726	5,778	8,892	5,562	10,583	25,110	10,672	8,338	12,186	9,085	26,884	11,292
<b>1015</b>	Travel Time Idx	0.83	0.82	0.78	0.82	0.80	0.81	0.88	0.94	0.94	0.88	0.88	0.87	0.85
	Plan. Time Idx	0.85	0.84	0.79	0.86	0.82	0.83	0.99	1.03	1.03	0.98	0.98	0.95	0.95
	Buffer Index	0.03	0.03	0.02	0.05	0.02	0.03	0.12	0.09	0.09	0.12	0.11	0.09	0.07
	VMT	3,952	7,087	6,032	8,203	5,681	9,690	24,195	10,488	8,192	11,934	8,889	26,025	10,896
<b>1030</b>	Travel Time Idx	0.83	0.82	0.78	0.81	0.80	0.81	0.88	0.95	0.94	0.87	0.87	0.88	0.85
	Plan. Time Idx	0.86	0.84	0.80	0.84	0.82	0.84	0.97	1.06	1.06	0.96	0.96	0.95	0.95
	Buffer Index	0.03	0.03	0.03	0.03	0.02	0.04	0.10	0.12	0.12	0.10	0.09	0.08	0.07
	VMT	3,886	6,974	6,238	8,335	5,813	9,528	24,509	10,722	8,374	12,026	8,961	26,148	10,976

		BC 75SB10 to MDC DMS44	BC 75SB14 to MDC DMS44	BC I-75 NB I-595 to Col Ln	BC I-75 NB MD Ln to I-595	BC I-75 SB Col Ln to I-595	BC I-75 SB I-595 to MD Ln	BC I-95 NB I-595 to PB Ln	BC I-95 NB MD Ln to I-595	BC I-95 NB MDC GG to I-595	BC I-95 SB I-595 to MD Ln	BC I-95 SB I-595 to MDC GG	BC I-95 SB PB Ln to I-595	Total
<b>1045</b>	Travel Time Idx	0.83	0.82	0.78	0.81	0.80	0.81	0.88	0.94	0.94	0.88	0.88	0.88	0.85
	Plan. Time Idx	0.85	0.83	0.80	0.83	0.82	0.83	0.94	1.03	1.03	0.96	0.96	0.96	0.95
	Buffer Index	0.03	0.02	0.02	0.03	0.02	0.02	0.07	0.09	0.09	0.09	0.09	0.08	0.06
	VMT	3,751	6,776	6,356	8,485	5,973	9,295	25,276	11,164	8,725	12,204	9,096	26,441	11,145
<b>1100</b>	Travel Time Idx	0.83	0.82	0.78	0.81	0.80	0.81	0.88	0.94	0.94	0.88	0.88	0.88	0.85
	Plan. Time Idx	0.85	0.84	0.80	0.83	0.82	0.83	0.93	1.03	1.02	1.00	1.01	0.94	0.94
	Buffer Index	0.02	0.02	0.03	0.02	0.02	0.03	0.06	0.09	0.09	0.13	0.14	0.07	0.06
	VMT	3,552	6,517	6,480	8,376	6,128	9,023	25,286	10,952	8,558	12,044	8,978	26,260	11,029
<b>1115</b>	Travel Time Idx	0.83	0.82	0.78	0.82	0.80	0.81	0.88	0.94	0.94	0.89	0.89	0.88	0.86
	Plan. Time Idx	0.85	0.84	0.80	0.83	0.83	0.85	0.93	1.00	1.00	1.08	1.09	0.97	0.94
	Buffer Index	0.03	0.02	0.02	0.01	0.03	0.04	0.06	0.07	0.07	0.21	0.22	0.10	0.07
	VMT	3,355	6,185	6,558	8,049	6,250	8,572	24,445	10,711	8,373	11,890	8,863	25,982	10,784
<b>1130</b>	Travel Time Idx	0.83	0.82	0.78	0.82	0.80	0.82	0.88	0.94	0.93	0.88	0.89	0.88	0.86
	Plan. Time Idx	0.85	0.84	0.80	0.83	0.82	0.84	0.91	0.98	0.98	1.02	1.03	0.92	0.95
	Buffer Index	0.03	0.02	0.03	0.02	0.03	0.03	0.03	0.05	0.05	0.16	0.17	0.04	0.05
	VMT	3,426	6,320	6,517	8,218	6,306	8,758	25,158	11,026	8,619	12,179	9,086	26,810	11,035
<b>1145</b>	Travel Time Idx	0.83	0.82	0.78	0.82	0.80	0.81	0.88	0.94	0.93	0.88	0.88	0.87	0.86
	Plan. Time Idx	0.86	0.84	0.80	0.84	0.82	0.84	0.90	0.98	0.98	0.98	0.98	0.90	0.95
	Buffer Index	0.03	0.02	0.02	0.02	0.03	0.03	0.02	0.04	0.05	0.11	0.11	0.04	0.04
	VMT	3,456	6,408	6,488	8,545	6,455	8,897	25,800	11,371	8,891	12,361	9,221	26,967	11,238
<b>1200</b>	Travel Time Idx	0.83	0.82	0.78	0.81	0.80	0.81	0.87	0.94	0.93	0.88	0.88	0.87	0.85
	Plan. Time Idx	0.85	0.84	0.80	0.83	0.82	0.83	0.90	1.00	1.00	1.00	0.99	0.90	0.94
	Buffer Index	0.02	0.02	0.02	0.02	0.03	0.02	0.03	0.07	0.07	0.13	0.12	0.03	0.05
	VMT	3,365	6,321	6,471	8,670	6,515	8,864	25,949	11,282	8,822	12,231	9,124	26,955	11,214
<b>1215</b>	Travel Time Idx	0.83	0.82	0.78	0.81	0.80	0.81	0.87	0.94	0.93	0.88	0.88	0.87	0.85
	Plan. Time Idx	0.85	0.84	0.81	0.83	0.82	0.83	0.90	0.99	0.98	0.98	0.98	0.90	0.95
	Buffer Index	0.02	0.02	0.03	0.02	0.02	0.02	0.02	0.06	0.05	0.11	0.11	0.03	0.04
	VMT	3,317	6,235	6,311	8,473	6,463	8,711	25,425	11,202	8,759	12,016	8,969	26,693	11,048
<b>1230</b>	Travel Time Idx	0.83	0.82	0.78	0.81	0.80	0.81	0.88	0.94	0.94	0.89	0.89	0.87	0.85
	Plan. Time Idx	0.85	0.84	0.80	0.83	0.82	0.83	0.90	0.99	0.98	1.03	1.02	0.90	0.95
	Buffer Index	0.02	0.02	0.02	0.02	0.03	0.02	0.03	0.05	0.05	0.16	0.15	0.03	0.05
	VMT	3,491	6,562	6,251	8,812	6,455	9,165	26,212	11,508	8,996	12,338	9,210	27,719	11,393
<b>1245</b>	Travel Time Idx	0.83	0.82	0.78	0.81	0.80	0.81	0.87	0.94	0.94	0.89	0.89	0.88	0.86
	Plan. Time Idx	0.85	0.84	0.80	0.83	0.83	0.83	0.91	1.00	0.99	1.03	1.02	0.92	0.94
	Buffer Index	0.02	0.02	0.02	0.02	0.03	0.02	0.04	0.06	0.06	0.15	0.14	0.05	0.05
	VMT	3,453	6,509	6,164	8,967	6,381	9,143	26,413	11,680	9,134	12,548	9,369	27,713	11,456
<b>1300</b>	Travel Time Idx	0.83	0.82	0.78	0.81	0.80	0.81	0.88	0.94	0.93	0.89	0.89	0.88	0.85
	Plan. Time Idx	0.85	0.84	0.80	0.82	0.83	0.84	0.92	0.99	0.99	1.00	0.99	0.94	0.95
	Buffer Index	0.02	0.02	0.03	0.02	0.03	0.03	0.05	0.05	0.06	0.12	0.11	0.07	0.05
	VMT	3,371	6,369	6,132	8,951	6,242	9,007	26,038	11,406	8,917	12,236	9,140	27,238	11,254
<b>1315</b>	Travel Time Idx	0.83	0.82	0.77	0.81	0.80	0.81	0.89	0.96	0.95	0.90	0.90	0.89	0.86
	Plan. Time Idx	0.85	0.85	0.80	0.83	0.82	0.84	0.91	1.05	1.05	1.03	1.01	0.92	0.96
	Buffer Index	0.02	0.03	0.03	0.03	0.03	0.03	0.03	0.10	0.10	0.15	0.12	0.04	0.06
	VMT	3,322	6,232	6,092	8,722	6,224	8,829	25,380	11,174	8,739	12,006	8,971	26,789	11,040

		BC 75SB10 to MDC DMS44	BC 75SB14 to MDC DMS44	BC I-75 NB I-595 to Col Ln	BC I-75 NB MD Ln to I-595	BC I-75 SB Col Ln to I-595	BC I-75 SB I-595 to MD Ln	BC I-95 NB I-595 to PB Ln	BC I-95 NB MD Ln to I-595	BC I-95 NB MDC GG to I-595	BC I-95 SB I-595 to MD Ln	BC I-95 SB I-595 to MDC GG	BC I-95 SB PB Ln to I-595	Total
<b>1330</b>	Travel Time Idx	0.83	0.82	0.78	0.80	0.80	0.81	0.88	0.95	0.94	0.89	0.89	0.88	0.86
	Plan. Time Idx	0.85	0.85	0.79	0.82	0.82	0.85	0.91	1.06	1.01	1.06	1.05	0.94	0.95
	Buffer Index	0.02	0.04	0.03	0.02	0.03	0.04	0.04	0.12	0.08	0.19	0.18	0.08	0.07
	VMT	3,461	6,472	6,131	9,061	6,211	9,147	26,088	11,410	8,924	12,325	9,212	27,289	11,311
<b>1345</b>	Travel Time Idx	0.83	0.82	0.78	0.80	0.80	0.82	0.88	0.95	0.95	0.90	0.90	0.88	0.86
	Plan. Time Idx	0.86	0.85	0.80	0.83	0.83	0.85	0.92	0.98	0.98	1.11	1.08	0.93	0.95
	Buffer Index	0.03	0.03	0.03	0.03	0.03	0.05	0.05	0.04	0.03	0.24	0.20	0.06	0.07
	VMT	3,497	6,549	6,237	9,511	6,246	9,310	26,731	11,705	9,160	12,672	9,471	27,577	11,556
<b>1400</b>	Travel Time Idx	0.83	0.83	0.77	0.80	0.80	0.82	0.88	0.95	0.94	0.89	0.89	0.88	0.86
	Plan. Time Idx	0.86	0.86	0.80	0.82	0.83	0.85	0.94	0.98	0.98	1.10	1.07	0.95	0.95
	Buffer Index	0.02	0.03	0.03	0.02	0.03	0.04	0.06	0.03	0.04	0.23	0.20	0.08	0.07
	VMT	3,419	6,459	6,365	9,501	6,238	9,224	26,291	11,442	8,951	12,339	9,221	27,141	11,383
<b>1415</b>	Travel Time Idx	0.84	0.83	0.77	0.80	0.80	0.82	0.88	0.95	0.95	0.89	0.89	0.88	0.86
	Plan. Time Idx	0.85	0.84	0.79	0.82	0.83	0.84	0.98	1.02	1.02	1.05	1.02	0.96	0.96
	Buffer Index	0.02	0.01	0.03	0.02	0.03	0.03	0.11	0.07	0.08	0.18	0.15	0.09	0.07
	VMT	3,472	6,517	6,441	9,488	6,331	9,255	26,184	11,581	9,058	12,178	9,101	27,216	11,402
<b>1430</b>	Travel Time Idx	0.84	0.82	0.77	0.80	0.80	0.81	0.89	0.96	0.95	0.90	0.90	0.89	0.86
	Plan. Time Idx	0.86	0.84	0.79	0.82	0.82	0.83	0.99	1.01	1.01	1.04	1.02	1.03	0.96
	Buffer Index	0.02	0.02	0.02	0.02	0.03	0.02	0.12	0.05	0.05	0.16	0.14	0.16	0.07
	VMT	3,702	6,907	6,511	10,252	6,533	9,762	27,372	12,242	9,574	12,700	9,488	28,157	11,933
<b>1445</b>	Travel Time Idx	0.84	0.82	0.77	0.80	0.80	0.81	0.90	0.96	0.96	0.90	0.90	0.90	0.86
	Plan. Time Idx	0.86	0.84	0.78	0.82	0.83	0.84	1.02	1.00	1.00	1.06	1.04	1.05	0.96
	Buffer Index	0.02	0.02	0.02	0.02	0.04	0.03	0.14	0.04	0.04	0.18	0.15	0.17	0.07
	VMT	3,619	6,822	6,541	10,715	6,650	9,730	28,643	12,741	9,968	13,007	9,716	28,892	12,254
<b>1500</b>	Travel Time Idx	0.84	0.82	0.77	0.80	0.79	0.81	0.90	0.97	0.97	0.90	0.90	0.90	0.86
	Plan. Time Idx	0.86	0.85	0.78	0.81	0.82	0.84	1.04	1.04	1.04	1.03	1.01	1.05	0.98
	Buffer Index	0.02	0.03	0.02	0.01	0.03	0.03	0.15	0.07	0.07	0.15	0.12	0.17	0.07
	VMT	3,708	7,007	6,593	10,881	6,581	10,037	29,007	12,606	9,860	13,047	9,753	28,875	12,330
<b>1515</b>	Travel Time Idx	0.84	0.83	0.77	0.80	0.79	0.81	0.90	0.98	0.98	0.91	0.90	0.91	0.87
	Plan. Time Idx	0.86	0.84	0.78	0.81	0.82	0.84	1.06	1.09	1.09	1.10	1.07	1.12	0.98
	Buffer Index	0.02	0.02	0.02	0.02	0.03	0.03	0.17	0.12	0.11	0.21	0.18	0.23	0.10
	VMT	3,717	7,090	6,619	10,986	6,542	10,134	28,850	12,641	9,889	12,946	9,680	29,065	12,347
<b>1530</b>	Travel Time Idx	0.84	0.83	0.77	0.80	0.79	0.81	0.91	0.97	0.97	0.92	0.92	0.94	0.87
	Plan. Time Idx	0.86	0.84	0.78	0.82	0.82	0.83	1.11	1.16	1.15	1.15	1.12	1.13	1.02
	Buffer Index	0.02	0.02	0.02	0.02	0.03	0.02	0.21	0.19	0.19	0.25	0.22	0.20	0.12
	VMT	3,992	7,660	6,746	11,745	6,622	10,944	29,818	12,739	9,962	13,301	9,943	30,115	12,799
<b>1545</b>	Travel Time Idx	0.84	0.83	0.77	0.80	0.79	0.81	0.92	0.97	0.97	0.93	0.93	0.95	0.88
	Plan. Time Idx	0.86	0.85	0.79	0.82	0.81	0.83	1.19	1.14	1.14	1.22	1.20	1.15	1.06
	Buffer Index	0.02	0.02	0.02	0.02	0.02	0.02	0.29	0.17	0.17	0.31	0.29	0.22	0.13
	VMT	3,992	7,769	6,893	12,136	6,724	11,205	30,648	13,174	10,304	13,792	10,312	31,351	13,192
<b>1600</b>	Travel Time Idx	0.84	0.83	0.76	0.80	0.79	0.82	0.93	0.98	0.97	0.97	0.96	0.96	0.88
	Plan. Time Idx	0.86	0.85	0.79	0.83	0.81	0.84	1.16	1.22	1.22	1.23	1.20	1.18	1.09
	Buffer Index	0.02	0.03	0.03	0.03	0.03	0.03	0.24	0.25	0.25	0.27	0.25	0.22	0.14
	VMT	4,201	8,113	6,850	12,821	6,744	11,619	30,670	13,186	10,315	14,071	10,527	31,542	13,388

		BC 75SB10 to MDC DMS44	BC 75SB14 to MDC DMS44	BC I-75 NB I-595 to Col Ln	BC I-75 NB MD Ln to I-595	BC I-75 SB Col Ln to I-595	BC I-75 SB I-595 to MD Ln	BC I-95 NB I-595 to PB Ln	BC I-95 NB MD Ln to I-595	BC I-95 NB MDC GG to I-595	BC I-95 SB I-595 to MD Ln	BC I-95 SB I-595 to MDC GG	BC I-95 SB PB Ln to I-595	Total
<b>1615</b>	Travel Time Idx	0.84	0.83	0.76	0.80	0.79	0.81	0.94	0.97	0.97	0.99	0.98	0.97	0.89
	Plan. Time Idx	0.87	0.85	0.78	0.84	0.80	0.84	1.10	1.18	1.17	1.34	1.30	1.19	1.11
	Buffer Index	0.03	0.03	0.03	0.04	0.02	0.03	0.17	0.21	0.20	0.36	0.32	0.22	0.14
	VMT	4,021	7,776	6,847	12,747	6,811	11,174	30,040	13,082	10,242	13,491	10,086	31,095	13,118
<b>1630</b>	Travel Time Idx	0.84	0.82	0.76	0.80	0.78	0.81	0.98	0.97	0.97	1.01	1.00	1.02	0.90
	Plan. Time Idx	0.86	0.85	0.78	0.83	0.80	0.83	1.20	1.09	1.08	1.36	1.33	1.29	1.13
	Buffer Index	0.03	0.03	0.03	0.03	0.03	0.03	0.22	0.12	0.11	0.35	0.33	0.26	0.13
	VMT	4,258	8,307	6,914	13,821	6,857	11,951	30,219	13,156	10,297	13,680	10,219	31,269	13,412
<b>1645</b>	Travel Time Idx	0.83	0.82	0.76	0.80	0.78	0.81	1.01	0.97	0.97	1.01	1.00	1.05	0.90
	Plan. Time Idx	0.86	0.84	0.78	0.83	0.80	0.82	1.30	1.08	1.07	1.31	1.30	1.42	1.17
	Buffer Index	0.03	0.02	0.02	0.03	0.02	0.02	0.29	0.10	0.10	0.30	0.30	0.35	0.13
	VMT	4,192	8,314	6,797	14,133	6,798	12,043	30,018	13,319	10,433	13,696	10,233	31,085	13,422
<b>1700</b>	Travel Time Idx	0.84	0.83	0.76	0.81	0.78	0.81	1.05	0.97	0.97	1.05	1.04	1.09	0.92
	Plan. Time Idx	0.86	0.85	0.78	0.84	0.81	0.84	1.41	1.10	1.09	1.40	1.37	1.58	1.21
	Buffer Index	0.02	0.03	0.02	0.04	0.03	0.03	0.35	0.13	0.13	0.33	0.32	0.45	0.16
	VMT	4,484	8,868	6,693	14,569	6,618	12,803	30,063	13,074	10,235	13,746	10,269	30,915	13,528
<b>1715</b>	Travel Time Idx	0.84	0.83	0.76	0.82	0.78	0.81	1.07	0.98	0.98	1.09	1.08	1.09	0.93
	Plan. Time Idx	0.86	0.88	0.78	0.87	0.81	0.85	1.49	1.08	1.08	1.43	1.42	1.59	1.27
	Buffer Index	0.03	0.07	0.03	0.06	0.03	0.05	0.40	0.10	0.10	0.31	0.32	0.46	0.16
	VMT	4,600	9,243	6,560	15,181	6,646	13,409	30,574	13,598	10,664	13,965	10,430	31,591	13,872
<b>1730</b>	Travel Time Idx	0.85	0.84	0.76	0.84	0.78	0.82	1.16	1.02	1.01	1.20	1.19	1.21	0.97
	Plan. Time Idx	0.88	0.95	0.78	0.93	0.80	0.90	1.61	1.25	1.24	1.63	1.60	1.72	1.42
	Buffer Index	0.03	0.13	0.02	0.10	0.03	0.09	0.39	0.23	0.22	0.35	0.35	0.42	0.20
	VMT	5,401	10,838	6,490	16,182	6,779	15,643	31,284	13,789	10,798	14,314	10,681	31,899	14,508
<b>1745</b>	Travel Time Idx	0.85	0.85	0.77	0.84	0.78	0.83	1.18	1.00	1.00	1.22	1.21	1.22	0.98
	Plan. Time Idx	0.88	0.95	0.78	0.91	0.81	0.90	1.61	1.20	1.21	1.70	1.70	1.81	1.48
	Buffer Index	0.04	0.12	0.02	0.08	0.03	0.09	0.37	0.20	0.21	0.40	0.40	0.49	0.20
	VMT	5,100	10,323	6,215	15,283	6,660	14,912	30,571	13,225	10,364	13,908	10,383	31,252	14,016
<b>1800</b>	Travel Time Idx	0.85	0.84	0.77	0.84	0.78	0.83	1.15	1.01	1.00	1.21	1.20	1.19	0.97
	Plan. Time Idx	0.89	0.91	0.79	0.92	0.80	0.88	1.55	1.41	1.45	1.72	1.75	1.85	1.50
	Buffer Index	0.05	0.08	0.03	0.10	0.02	0.06	0.35	0.40	0.45	0.43	0.46	0.56	0.25
	VMT	4,908	9,942	5,918	14,637	6,203	14,366	29,777	12,514	9,798	13,663	10,201	30,816	13,562
<b>1815</b>	Travel Time Idx	0.85	0.84	0.77	0.83	0.79	0.82	1.09	1.00	1.00	1.16	1.16	1.13	0.95
	Plan. Time Idx	0.88	0.87	0.79	0.92	0.81	0.85	1.46	1.43	1.40	1.66	1.66	1.64	1.44
	Buffer Index	0.04	0.03	0.02	0.10	0.03	0.03	0.35	0.42	0.41	0.43	0.44	0.45	0.23
	VMT	4,628	9,224	5,855	14,190	6,013	13,277	29,802	12,766	9,989	13,799	10,299	31,033	13,406
<b>1830</b>	Travel Time Idx	0.85	0.84	0.77	0.83	0.79	0.82	1.05	1.00	0.99	1.13	1.13	1.10	0.94
	Plan. Time Idx	0.88	0.90	0.79	0.86	0.80	0.87	1.43	1.35	1.36	1.66	1.66	1.58	1.33
	Buffer Index	0.04	0.06	0.03	0.04	0.02	0.05	0.37	0.36	0.37	0.46	0.47	0.44	0.23
	VMT	4,636	9,179	5,752	14,053	5,872	13,159	29,561	12,710	9,935	13,626	10,159	31,028	13,306
<b>1845</b>	Travel Time Idx	0.84	0.83	0.77	0.82	0.79	0.81	0.99	1.00	0.99	1.08	1.07	1.04	0.92
	Plan. Time Idx	0.87	0.85	0.79	0.84	0.80	0.83	1.29	1.39	1.42	1.45	1.47	1.40	1.30
	Buffer Index	0.03	0.03	0.03	0.03	0.02	0.02	0.30	0.39	0.43	0.34	0.37	0.34	0.20
	VMT	4,116	8,111	5,410	13,129	5,521	11,716	27,535	12,161	9,511	12,975	9,675	28,957	12,402

		BC 75SB10 to MDC DMS44	BC 75SB14 to MDC DMS44	BC I-75 NB I-595 to Col Ln	BC I-75 NB MD Ln to I-595	BC I-75 SB Col Ln to I-595	BC I-75 SB I-595 to MD Ln	BC I-95 NB I-595 to PB Ln	BC I-95 NB MD Ln to I-595	BC I-95 NB MDC GG to I-595	BC I-95 SB I-595 to MD Ln	BC I-95 SB I-595 to MDC GG	BC I-95 SB PB Ln to I-595	Total
<b>1900</b>	Travel Time Idx	0.84	0.82	0.77	0.82	0.78	0.81	0.93	1.00	1.00	0.99	0.99	0.95	0.89
	Plan. Time Idx	0.86	0.84	0.79	0.85	0.80	0.83	1.25	1.60	1.61	1.34	1.30	1.21	1.14
	Buffer Index	0.03	0.02	0.03	0.05	0.02	0.02	0.34	0.60	0.62	0.35	0.31	0.27	0.22
	VMT	3,844	7,505	5,376	12,897	5,351	10,835	26,156	11,599	9,067	12,410	9,252	27,445	11,811
<b>1915</b>	Travel Time Idx	0.83	0.82	0.77	0.81	0.78	0.81	0.89	0.98	0.97	0.93	0.92	0.90	0.87
	Plan. Time Idx	0.86	0.84	0.79	0.86	0.81	0.82	1.03	1.46	1.40	1.26	1.22	1.12	1.00
	Buffer Index	0.03	0.02	0.03	0.05	0.03	0.02	0.15	0.48	0.44	0.36	0.32	0.24	0.18
	VMT	3,480	6,805	5,152	12,147	5,024	9,769	23,933	11,065	8,655	11,653	8,689	25,122	10,958
<b>1930</b>	Travel Time Idx	0.83	0.82	0.77	0.81	0.79	0.80	0.88	0.96	0.95	0.90	0.90	0.88	0.86
	Plan. Time Idx	0.85	0.84	0.79	0.85	0.81	0.82	0.97	1.30	1.29	1.00	1.00	1.08	0.96
	Buffer Index	0.03	0.03	0.03	0.06	0.02	0.03	0.11	0.35	0.35	0.11	0.12	0.23	0.12
	VMT	3,372	6,496	4,918	11,065	4,713	9,263	22,724	10,575	8,270	11,025	8,217	23,491	10,344
<b>1945</b>	Travel Time Idx	0.83	0.81	0.77	0.80	0.79	0.80	0.86	0.92	0.92	0.88	0.88	0.86	0.84
	Plan. Time Idx	0.85	0.83	0.79	0.83	0.81	0.81	0.93	1.02	1.01	0.96	0.97	1.00	0.93
	Buffer Index	0.03	0.02	0.03	0.05	0.03	0.02	0.08	0.11	0.11	0.10	0.10	0.16	0.07
	VMT	3,091	5,928	4,666	9,578	4,506	8,410	21,342	9,895	7,740	10,333	7,702	21,058	9,521
<b>2000</b>	Travel Time Idx	0.83	0.81	0.77	0.79	0.79	0.80	0.85	0.90	0.90	0.86	0.86	0.86	0.84
	Plan. Time Idx	0.86	0.84	0.79	0.84	0.81	0.82	0.94	0.95	0.94	0.98	0.97	0.99	0.92
	Buffer Index	0.03	0.03	0.03	0.06	0.03	0.03	0.10	0.05	0.05	0.14	0.13	0.15	0.07
	VMT	2,896	5,486	4,300	8,513	4,159	7,774	19,794	8,950	7,003	9,559	7,123	19,320	8,740
<b>2015</b>	Travel Time Idx	0.83	0.81	0.77	0.79	0.79	0.80	0.85	0.89	0.89	0.85	0.85	0.85	0.83
	Plan. Time Idx	0.85	0.83	0.79	0.82	0.81	0.82	0.92	0.93	0.92	0.90	0.91	0.91	0.90
	Buffer Index	0.02	0.03	0.03	0.04	0.03	0.03	0.08	0.04	0.04	0.06	0.07	0.07	0.05
	VMT	2,645	5,008	4,059	7,811	3,893	7,144	18,503	8,293	6,497	9,067	6,765	18,169	8,154
<b>2030</b>	Travel Time Idx	0.83	0.81	0.77	0.79	0.79	0.80	0.84	0.89	0.88	0.84	0.85	0.84	0.83
	Plan. Time Idx	0.85	0.83	0.78	0.81	0.82	0.82	0.91	0.92	0.91	0.89	0.89	0.91	0.90
	Buffer Index	0.03	0.03	0.02	0.03	0.04	0.03	0.07	0.03	0.03	0.05	0.05	0.07	0.04
	VMT	2,607	4,945	3,783	7,383	3,623	7,042	17,909	7,898	6,187	8,830	6,587	17,714	7,876
<b>2045</b>	Travel Time Idx	0.82	0.80	0.77	0.78	0.79	0.79	0.84	0.89	0.88	0.84	0.84	0.84	0.82
	Plan. Time Idx	0.87	0.84	0.79	0.82	0.82	0.82	0.90	0.91	0.90	0.87	0.87	0.90	0.89
	Buffer Index	0.06	0.04	0.02	0.04	0.04	0.03	0.07	0.03	0.02	0.04	0.03	0.07	0.04
	VMT	2,397	4,520	3,487	6,617	3,460	6,432	16,510	7,414	5,810	8,148	6,075	16,129	7,250
<b>2100</b>	Travel Time Idx	0.82	0.81	0.77	0.78	0.79	0.80	0.84	0.88	0.88	0.84	0.84	0.83	0.82
	Plan. Time Idx	0.86	0.83	0.79	0.80	0.82	0.82	0.89	0.92	0.90	0.87	0.87	0.88	0.89
	Buffer Index	0.04	0.03	0.03	0.02	0.04	0.03	0.07	0.04	0.03	0.04	0.04	0.05	0.04
	VMT	2,294	4,281	3,270	6,051	3,366	6,062	15,551	6,894	5,401	7,777	5,800	15,042	6,816
<b>2115</b>	Travel Time Idx	0.82	0.81	0.77	0.78	0.79	0.80	0.84	0.88	0.88	0.83	0.84	0.83	0.82
	Plan. Time Idx	0.86	0.83	0.79	0.81	0.82	0.82	0.88	0.92	0.90	0.86	0.87	0.87	0.89
	Buffer Index	0.04	0.03	0.03	0.03	0.03	0.04	0.05	0.04	0.03	0.03	0.04	0.05	0.04
	VMT	2,316	4,310	3,061	5,783	3,155	6,069	15,233	6,688	5,244	7,479	5,581	15,043	6,664
<b>2130</b>	Travel Time Idx	0.82	0.80	0.77	0.78	0.79	0.79	0.84	0.88	0.87	0.84	0.84	0.83	0.82
	Plan. Time Idx	0.85	0.83	0.79	0.82	0.82	0.83	0.90	0.91	0.90	0.87	0.87	0.86	0.89
	Buffer Index	0.04	0.04	0.03	0.05	0.03	0.04	0.07	0.03	0.03	0.04	0.03	0.04	0.04
	VMT	2,356	4,355	2,861	5,852	2,912	6,153	15,578	6,701	5,255	7,741	5,776	15,602	6,762

		BC 75SB10 to MDC DMS44	BC 75SB14 to MDC DMS44	BC I-75 NB I-595 to Col Ln	BC I-75 NB MD Ln to I-595	BC I-75 SB Col Ln to I-595	BC I-75 SB I-595 to MD Ln	BC I-95 NB I-595 to PB Ln	BC I-95 NB MD Ln to I-595	BC I-95 NB MDC GG to I-595	BC I-95 SB I-595 to MD Ln	BC I-95 SB I-595 to MDC GG	BC I-95 SB PB Ln to I-595	Total
<b>2145</b>	Travel Time Idx	0.82	0.80	0.77	0.79	0.80	0.80	0.84	0.88	0.88	0.83	0.84	0.83	0.82
	Plan. Time Idx	0.87	0.85	0.80	0.84	0.83	0.85	0.90	0.91	0.90	0.87	0.87	0.88	0.89
	Buffer Index	0.05	0.05	0.03	0.07	0.04	0.06	0.07	0.03	0.02	0.04	0.04	0.06	0.05
	VMT	2,223	4,130	2,631	5,590	2,730	5,815	14,965	6,590	5,165	7,377	5,504	14,520	6,437
<b>2200</b>	Travel Time Idx	0.82	0.80	0.78	0.78	0.80	0.80	0.84	0.88	0.87	0.83	0.84	0.83	0.82
	Plan. Time Idx	0.85	0.84	0.81	0.84	0.84	0.86	0.90	0.92	0.91	0.87	0.87	0.89	0.89
	Buffer Index	0.04	0.04	0.05	0.07	0.05	0.07	0.07	0.05	0.04	0.04	0.04	0.08	0.05
	VMT	2,123	3,977	2,447	5,243	2,601	5,644	14,346	6,325	4,959	7,075	5,278	13,950	6,164
<b>2215</b>	Travel Time Idx	0.82	0.80	0.78	0.78	0.80	0.80	0.84	0.88	0.87	0.84	0.84	0.83	0.82
	Plan. Time Idx	0.85	0.84	0.82	0.83	0.83	0.84	0.89	0.92	0.91	0.89	0.89	0.90	0.89
	Buffer Index	0.04	0.05	0.05	0.05	0.03	0.06	0.06	0.04	0.04	0.06	0.06	0.09	0.05
	VMT	2,002	3,719	2,195	4,984	2,442	5,277	13,919	6,153	4,825	7,001	5,225	13,515	5,938
<b>2230</b>	Travel Time Idx	0.83	0.81	0.78	0.79	0.80	0.80	0.84	0.88	0.87	0.84	0.84	0.83	0.82
	Plan. Time Idx	0.85	0.84	0.80	0.82	0.85	0.83	0.90	0.92	0.91	0.88	0.89	0.94	0.89
	Buffer Index	0.03	0.04	0.03	0.04	0.06	0.04	0.07	0.04	0.04	0.05	0.06	0.13	0.05
	VMT	1,992	3,730	2,085	4,860	2,186	5,297	14,137	6,248	4,895	7,163	5,343	13,433	5,947
<b>2245</b>	Travel Time Idx	0.83	0.81	0.78	0.78	0.80	0.80	0.84	0.88	0.87	0.83	0.83	0.83	0.82
	Plan. Time Idx	0.85	0.83	0.83	0.82	0.85	0.83	0.88	0.91	0.90	0.88	0.88	0.99	0.89
	Buffer Index	0.03	0.03	0.06	0.04	0.05	0.04	0.06	0.03	0.04	0.06	0.06	0.19	0.06
	VMT	1,762	3,283	2,011	4,324	1,993	4,675	13,541	6,006	4,704	6,663	4,968	12,285	5,518
<b>2300</b>	Travel Time Idx	0.81	0.80	0.79	0.78	0.81	0.79	0.83	0.87	0.86	0.83	0.83	0.83	0.82
	Plan. Time Idx	0.85	0.83	0.83	0.81	0.86	0.82	0.89	0.91	0.91	0.87	0.87	0.93	0.88
	Buffer Index	0.04	0.04	0.05	0.04	0.06	0.04	0.07	0.04	0.05	0.05	0.05	0.11	0.05
	VMT	1,511	2,800	1,889	3,932	1,867	3,981	12,432	5,462	4,278	6,098	4,544	11,019	4,985
<b>2315</b>	Travel Time Idx	0.81	0.79	0.79	0.78	0.82	0.79	0.83	0.87	0.86	0.83	0.83	0.83	0.82
	Plan. Time Idx	0.85	0.83	0.82	0.81	0.88	0.82	0.86	0.90	0.90	0.88	0.88	0.88	0.88
	Buffer Index	0.05	0.05	0.04	0.03	0.08	0.04	0.04	0.04	0.04	0.06	0.05	0.06	0.05
	VMT	1,377	2,550	1,656	3,604	1,783	3,588	11,475	5,029	3,942	5,819	4,342	10,367	4,628
<b>2330</b>	Travel Time Idx	0.81	0.80	0.80	0.78	0.82	0.79	0.83	0.87	0.86	0.83	0.83	0.83	0.82
	Plan. Time Idx	0.86	0.83	0.83	0.81	0.87	0.83	0.85	0.90	0.89	0.88	0.88	0.86	0.88
	Buffer Index	0.05	0.05	0.04	0.04	0.06	0.04	0.03	0.03	0.03	0.06	0.06	0.04	0.04
	VMT	1,333	2,476	1,476	3,388	1,581	3,492	10,912	4,818	3,778	5,783	4,312	10,099	4,454
<b>2345</b>	Travel Time Idx	0.82	0.80	0.80	0.78	0.83	0.80	0.83	0.87	0.86	0.83	0.83	0.83	0.82
	Plan. Time Idx	0.84	0.82	0.84	0.81	0.88	0.81	0.85	0.90	0.89	0.87	0.88	0.84	0.88
	Buffer Index	0.03	0.03	0.05	0.03	0.07	0.02	0.03	0.03	0.03	0.05	0.05	0.02	0.04
	VMT	1,152	2,142	1,339	2,958	1,422	3,043	10,046	4,473	3,507	5,130	3,821	8,975	4,001
<b>Total</b>	Travel Time Idx	0.84	0.82	0.79	0.80	0.81	0.81	0.88	0.92	0.92	0.88	0.88	0.88	0.85
	Plan. Time Idx	0.90	0.88	0.93	0.86	0.94	0.87	1.11	1.02	1.01	1.11	1.10	1.11	1.00
	Buffer Index	0.09	0.08	0.06	0.04	0.05	0.07	0.10	0.14	0.13	0.14	0.13	0.11	0.09
	VMT	2,762	5,102	4,011	6,905	4,042	7,151	17,992	7,977	6,245	8,531	6,361	18,434	7,961

## Regional Buffer Index

<u>Segment Name</u>	<u>Overall BI</u>	<u>Overall VMT</u>	<u>AM Peak BI</u>	<u>AM Peak VMT</u>	<u>PM Peak BI</u>	<u>PM Peak VMT</u>
BC 75SB10 to MDC DMS44	0.55	8,435	1.07	4,137	0.05	4,298
BC 75SB14 to MDC DMS44	0.49	16,740	0.91	7,884	0.13	8,856
BC I-75 NB I-595 to Col Ln	0.03	11,889	0.03	3,226	0.03	8,663
BC I-75 NB MD Ln to I-595	0.08	20,016	0.05	8,524	0.10	11,492
BC I-75 SB Col Ln to I-595	0.03	12,156	0.04	1,882	0.03	10,274
BC I-75 SB I-595 to MD Ln	0.38	23,718	0.71	10,987	0.09	12,731
BC I-95 NB I-595 to PB Ln	0.35	55,009	0.31	25,838	0.40	29,171
BC I-95 NB MD Ln to I-595	0.76	18,679	1.01	10,814	0.42	7,865
BC I-95 NB MDC GG to I-595	0.77	15,001	1.02	8,456	0.45	6,545
BC I-95 SB I-595 to MD Ln	0.45	24,096	0.45	10,952	0.46	13,143
BC I-95 SB I-595 to MDC GG	0.44	17,912	0.41	8,135	0.47	9,777
BC I-95 SB PB Ln to I-595	0.52	56,640	0.47	24,201	0.56	32,439

**Regional Buffer Index: 0.420**

## RegionalBufferIndexReport

<u>QUARTER</u>	<u>BUFFERINDEX</u>
2008 Q3	0.415
2008 Q4	0.406
2009 Q1	0.468
2009 Q2	0.406
2009 Q3	0.417
2009 Q4	0.406
2010 Q1	0.429
2010 Q2	0.407
2010 Q3	0.397
2010 Q4	0.338
2010Q3	0.000
2011 Q1	0.373
2011 Q2	0.340
2011 Q4	0.420

### RegionalBufferIndex per Quarter

