

Quarterly Incident Duration Performance Measures Report Includes All Responders Palm Beach



Reporting Period: October 1, 2011 to December 31, 2011

Created on: January 04, 2012 2:56 pm

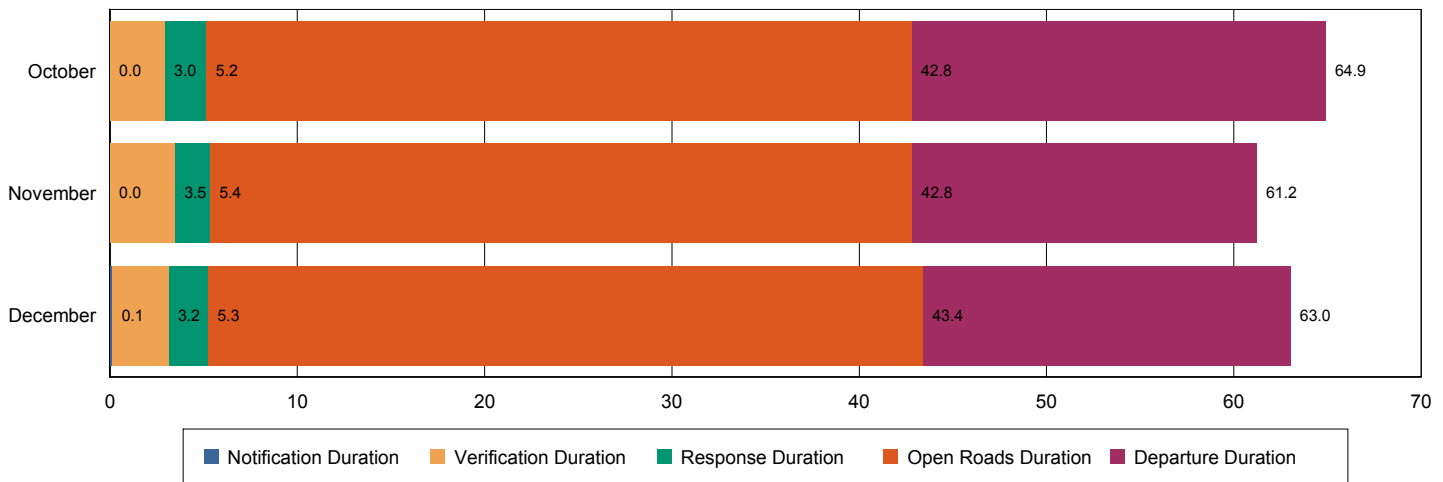
Report Template version 2.3.1

Performance Measures Summary

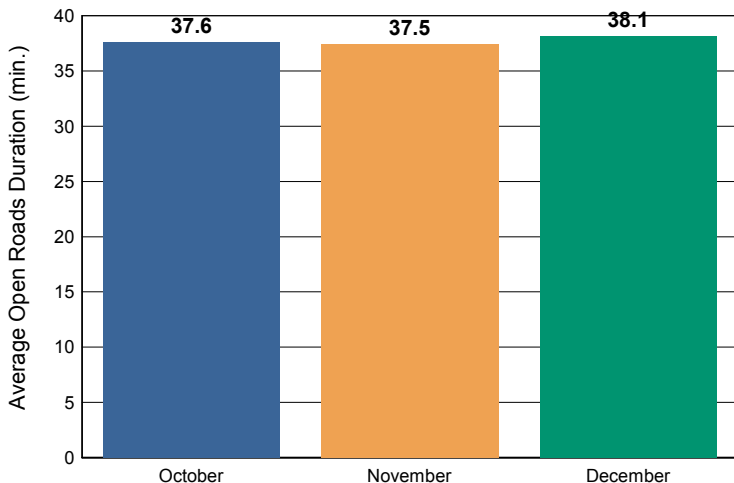
	October	November	December	Total
Events included in Performance Measures	123	100	122	345
Notification Duration (min.)*	0.0	0.0	0.1	0.0
Verification Duration (min.)	3.0	3.5	3.0	3.1
Response Duration (min.)	2.2	1.9	2.1	2.1
Open Roads Duration (min.)	37.6	37.5	38.1	37.8
Departure Duration (min.)	22.1	18.4	19.6	20.2
Roadway Clearance Duration (min.)	42.8	42.8	43.4	43.0
Incident Clearance Duration (min.)	64.9	61.2	63.0	63.2

*FHP Data is not available for Notification Duration

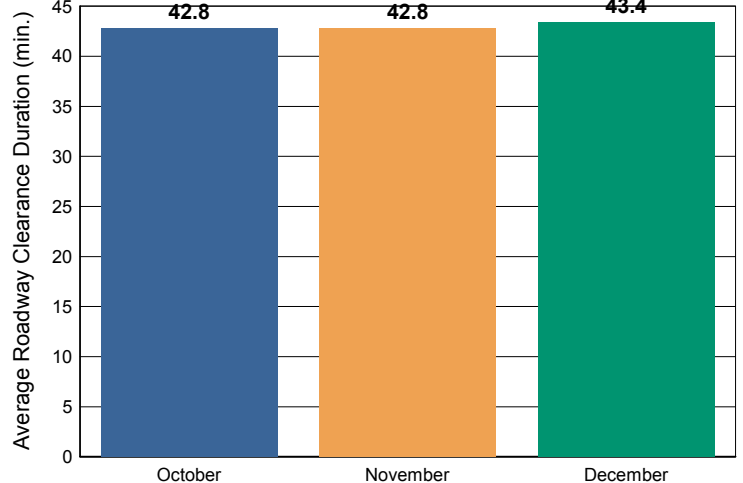
Incident Clearance Duration



Open Roads Duration / Month



Roadway Clearance Duration / Month

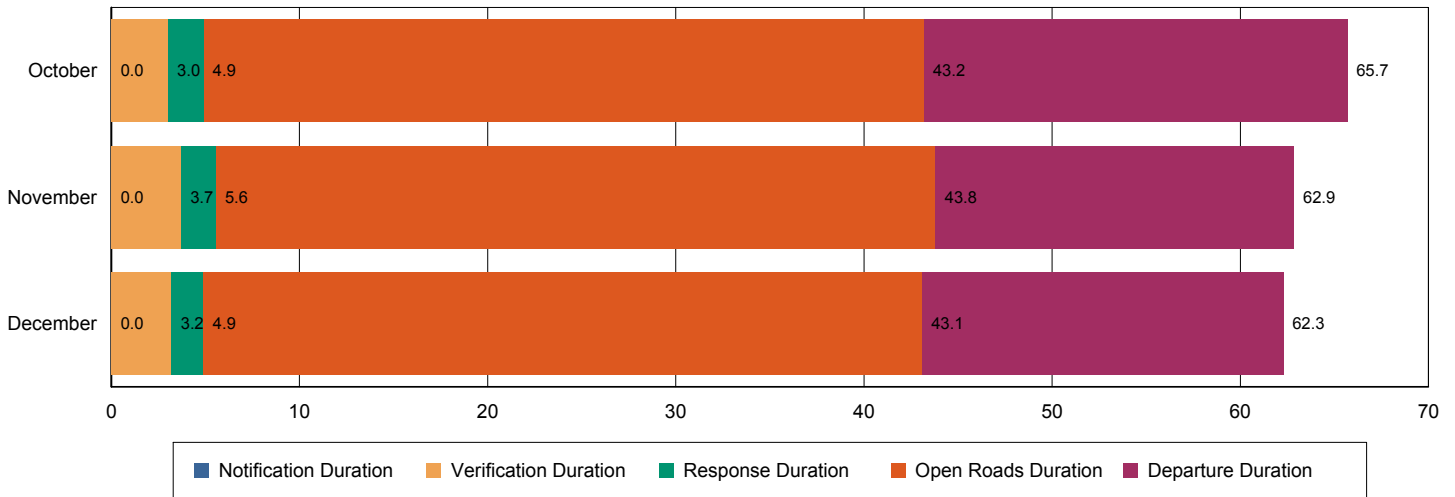


Performance Measures Summary

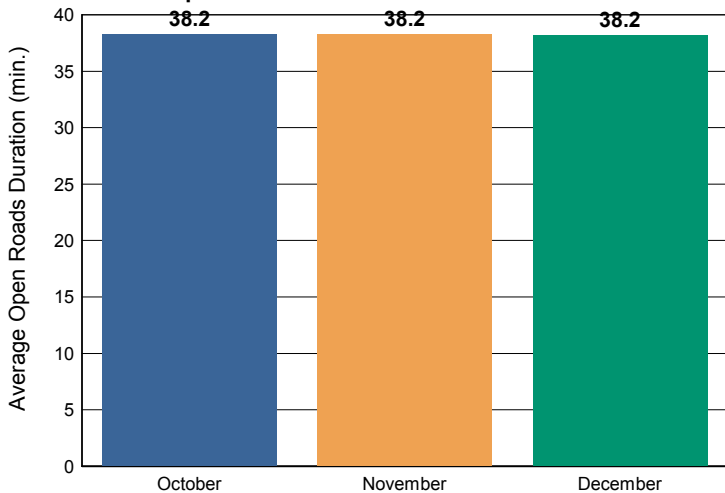
Incidents with Road Ranger Response

	October	November	December	Total
Events included in Performance Measures	120	94	114	328
Notification Duration (min.)	0.0	0.0	0.0	0.0
Verification Duration (min.)	3.0	3.7	3.2	3.3
Response Duration (min.)	1.9	1.8	1.7	1.8
Open Roads Duration (min.)	38.2	38.2	38.2	38.2
Departure Duration (min.)	22.5	19.1	19.2	20.4
Roadway Clearance Duration (min.)	43.2	43.8	43.1	43.3
Incident Clearance Duration (min.)	65.7	62.9	62.3	63.7

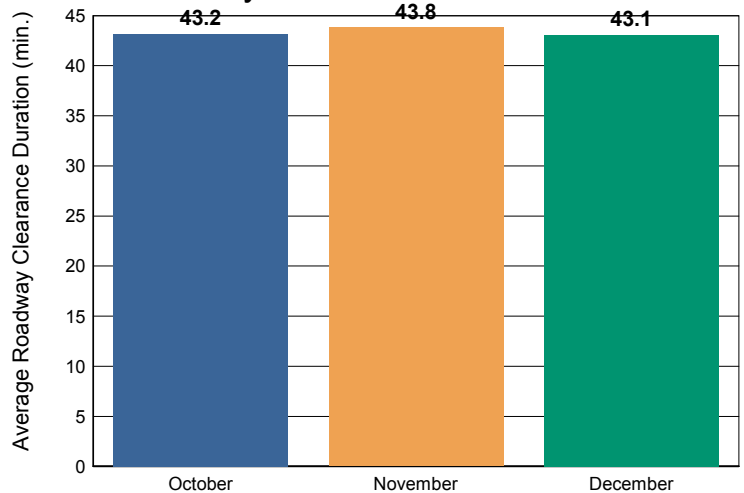
Incident Clearance Duration



Open Roads Duration / Month



Roadway Clearance Duration / Month

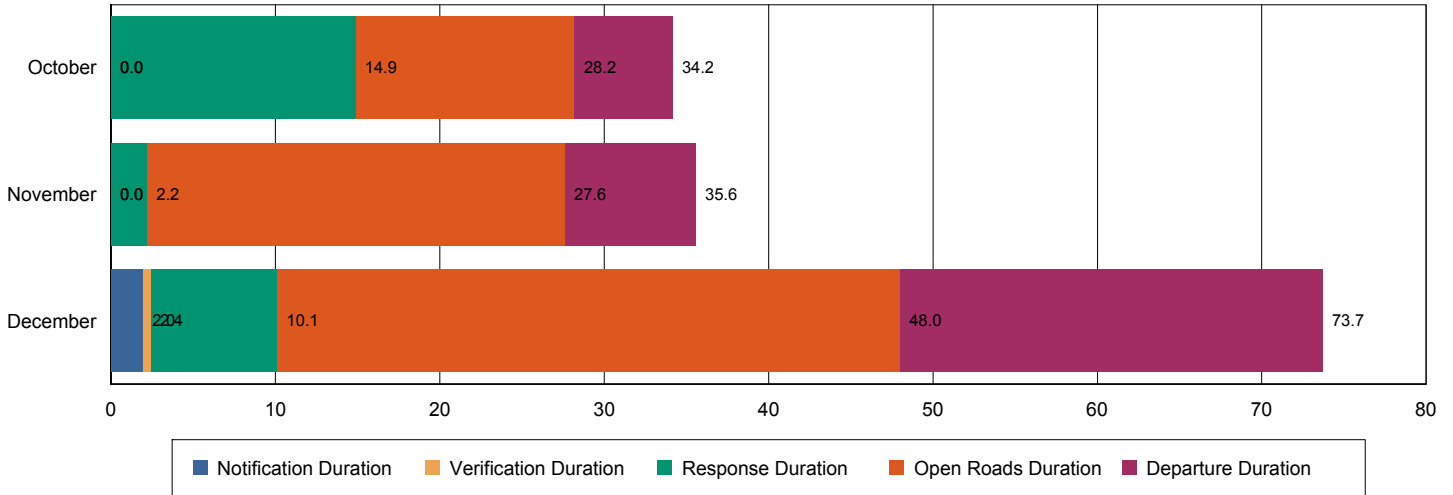


Performance Measures Summary

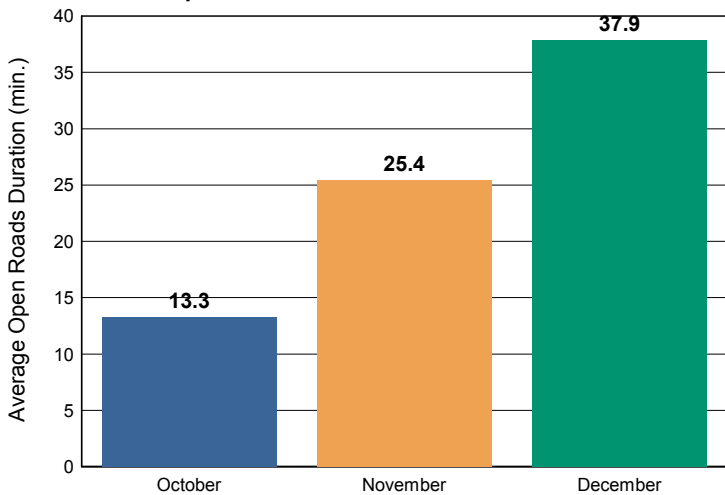
Incidents without Road Ranger Response

	October	November	December	Total
Events included in Performance Measures	3	6	8	17
Notification Duration (min.)	0.0	0.0	2.0	0.9
Verification Duration (min.)	0.0	0.0	0.5	0.2
Response Duration (min.)	14.9	2.2	7.7	7.0
Open Roads Duration (min.)	13.3	25.4	37.9	29.1
Departure Duration (min.)	6.0	8.0	25.7	16.0
Roadway Clearance Duration (min.)	28.2	27.6	48.0	37.3
Incident Clearance Duration (min.)	34.2	35.6	73.7	53.3

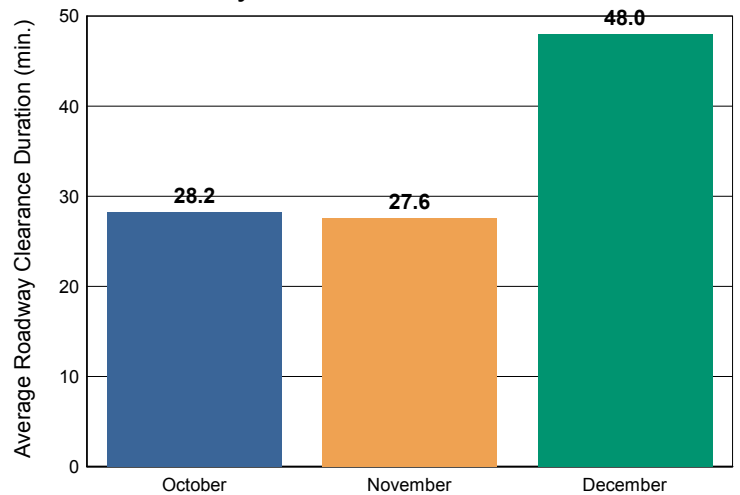
Incident Clearance Duration



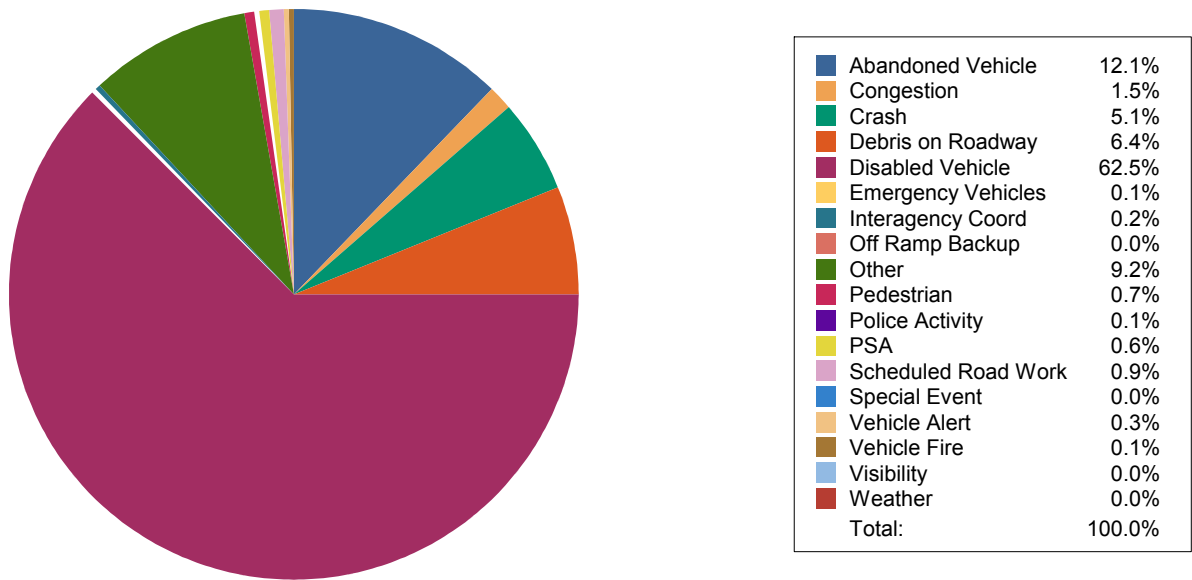
Open Roads Duration / Month



Roadway Clearance Duration / Month

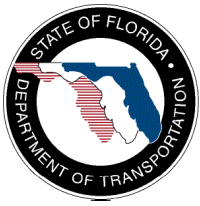


Percentage of event types for all events in current quarter



Event Types for all Events

	October	November	December	Total
Abandoned Vehicle	630	608	572	1,810
Congestion	65	83	76	224
Crash	318	207	238	763
Debris on Roadway	342	331	274	947
Disabled Vehicle	3,120	2,956	3,233	9,309
Emergency Vehicles	4	5	6	15
Interagency Coord	14	8	15	37
Off Ramp Backup	1	0	0	1
Other	477	475	420	1,372
Pedestrian	43	28	30	101
Police Activity	6	6	6	18
PSA	30	30	30	90
Scheduled Road Work	45	50	39	134
Special Event	3	2	1	6
Vehicle Alert	12	23	14	49
Vehicle Fire	6	8	7	21
Visibility	1	0	1	2
Weather	5	0	2	7
Total	5,122	4,820	4,964	14,906



Quarterly Performance Measures Report Palm Beach County

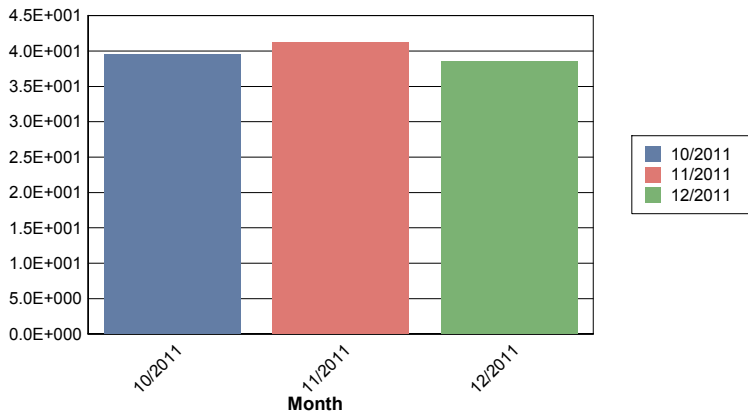
Period From Oct 1, 2011 to Dec 31, 2011



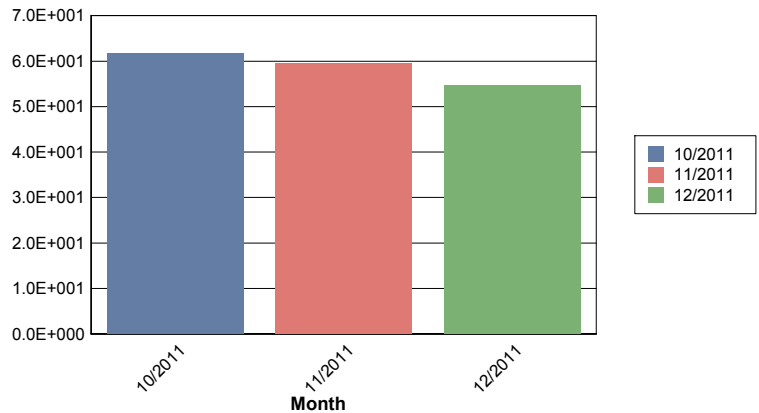
Created on:
January 04, 2012
2:58 pm

	October	November	December	Total
Total # of Events (incl. incidents)	3,233	2,899	3,099	9,231
Number of Incidents	112	89	93	294
TMC Verification (mins.)	2.34	2.22	1.92	2.16
Roadway Clearance (2A) (mins.)	39.49	41.18	38.54	39.70
Incident Clearance (3B) (mins.)	61.80	59.64	54.77	58.92
Total Road Ranger Responses (stops)	3,132	2,821	2,993	8,946

Roadway Clearance (2A)



Incident Clearance (3B)



Palm Beach - October 1 to December 31

Costs

Emission Benefit	\$33,960.81
Delay Benefit	\$5,140,443.21
Safety Benefit	\$2,719,727.30
Dms Benefit	\$401,446.80
Fuel Benefit	\$671,964.76
Road Ranger Benefit	\$1,196,509.07
Total Benefit	\$10,164,051.95
Total Cost	\$0.00
Benefit Cost Ratio	0.00
Cash Flow	\$10,164,051.95

Net Present Value

<u>Quarter</u>	<u>Cash Flow</u>	<u>Net Present Value</u>
2007 Q1	\$11,470,945.25	\$428,812,628.99
2007 Q2	\$9,216,589.63	\$386,693,267.16
2007 Q3	\$10,606,329.99	\$389,961,015.80
2007 Q4	\$9,266,537.78	\$379,102,011.09
2008 Q1	\$10,230,754.38	\$379,777,082.99
2008 Q2	\$6,132,288.88	\$354,842,032.80
2008 Q3	\$6,268,261.38	\$337,792,192.53
2008 Q4	\$5,075,233.88	\$319,523,768.72
2009 Q1	\$5,103,690.38	\$305,473,639.63
2009 Q2	\$1,360,904.38	\$280,516,247.25
2009 Q3	\$5,663,576.38	\$274,492,612.26
2009 Q4	\$8,273,374.88	\$277,424,837.96
2010 Q1	\$7,606,068.88	\$278,031,176.36
2010 Q2	\$8,920,441.38	\$281,943,034.26
2010 Q3	\$8,536,277.88	\$284,395,519.19
2010 Q4	\$21,574,026.88	\$315,703,095.95
2011 Q1	\$8,415,615.00	\$315,617,284.83
2011 Q2	\$9,612,984.00	\$317,896,900.47
2011 Q3	\$11,078,796.00	\$322,640,304.40
2011 Q4	\$10,164,052.00	\$325,283,037.78

Net Present Value per Quarter

