



# Weekly Performance Measures Report Palm Beach County



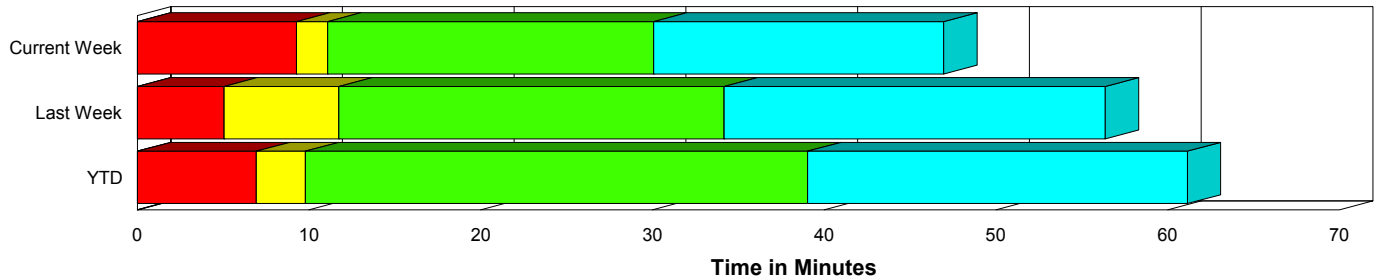
Created on:  
April 12, 2010  
6:18 pm

Period From Mar 14, 2010 to Mar 20, 2010

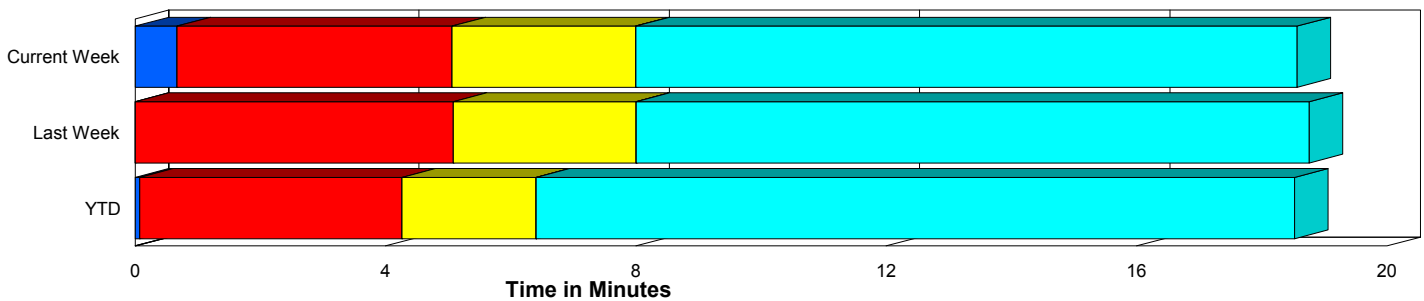
## Performance Measures Summary

	Traffic Events (No Lanes Blocked)			Incidents (Lanes Blocked)		
	<u>This Week</u>	<u>Last Week</u>	<u>YTD</u>	<u>This Week</u>	<u>Last Week</u>	<u>YTD</u>
Number of Events	573	495	5,105	21	30	261
TMC Detection (min.)	0.67	0.00	0.08	0.00	0.00	0.00
TMC Verification (min.)	4.39	5.08	4.19	10.32	5.05	7.02
TMC Response (min.)	7.67	8.68	6.75	12.20	11.91	10.09
RR Dispatch Time (min.)	2.44	2.89	2.26	3.22	4.10	2.56
RR Response Time (min.)	4.88	5.82	4.50	8.98	8.23	7.57
Roadway Clearance (min.)				30.06	34.32	39.16
Event Clearance (min.)	18.90	19.44	18.94	58.27	56.50	62.16
# of Events w/ RR/SIRV	525	454	4,828	21	30	256
RR/SIRV Responses	525	454	4,828	21	30	256
RR/SIRV Activities	525	476	5,027	31	34	331

### Incident Clearance Time-Line



### Traffic Event (Non-Lane Blockage) Time-Line



<span style="color: blue;">■</span> Avg. TMC Detection Time	<span style="color: green;">■</span> Avg. Time from TMC Response to Roadway Clearance*
<span style="color: red;">■</span> Avg. Time from TMC Detection to TMC Verification	<span style="color: cyan;">■</span> Avg. Time from Roadway Clearance to Incident/Event Clearance**
<span style="color: yellow;">■</span> Avg. Time from TMC Verification to TMC Response	

\* Roadway clearance equals all travel lanes open

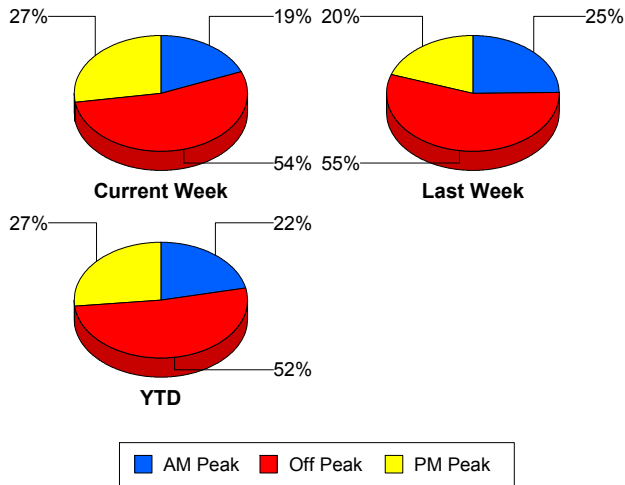
\*\* Incident clearance equals time when last responder has left the scene

## Performance Measures by Peak Period

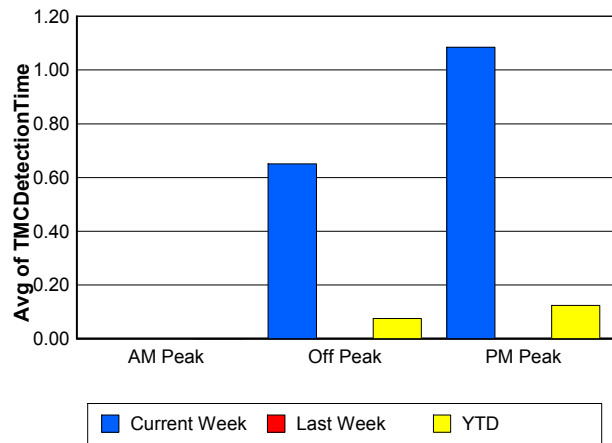
Note: AM peak period is defined as 6am to 10am and PM peak period is defined as 3pm to 7pm.

	AM Peak			Off Peak			PM Peak		
	Current Week	Last Week	YTD	Current Week	Last Week	YTD	Current Week	Last Week	YTD
Number of Events	112	130	1,160	319	291	2,775	163	104	1,431
Number of Incidents	7	5	64	9	21	130	5	4	67
TMC Detection (min.)	0.00	0.00	0.00	0.65	0.00	0.07	1.09	0.00	0.12
TMC Verification (min.)	2.70	2.50	2.84	4.84	4.72	4.59	5.46	9.33	5.03
TMC Response (min.)	5.74	6.95	5.33	8.99	8.42	7.65	7.24	12.40	6.80
RR Dispatch Time (min.)	1.97	1.69	1.28	2.55	2.22	2.57	2.67	6.55	2.49
RR Response Time (min.)	3.96	5.24	4.10	5.92	6.28	5.08	4.17	5.98	4.31
Event Clearance (min.)	17.72	20.19	20.37	22.23	21.14	21.94	18.27	24.40	19.85
Roadway Clearance (min.)	35.58	21.08	36.96	33.56	34.62	44.40	16.04	49.31	31.10
Incident Clearance (min.)	44.85	80.88	68.99	47.13	46.10	60.82	49.54	80.60	54.70
# of Events w/ RR/SIRV	106	118	1,091	292	268	2,629	148	98	1,364
RR/SIRV Responses	106	118	1,091	292	268	2,629	148	98	1,364
RR/SIRV Activities	112	121	1,155	290	285	2,770	154	104	1,433

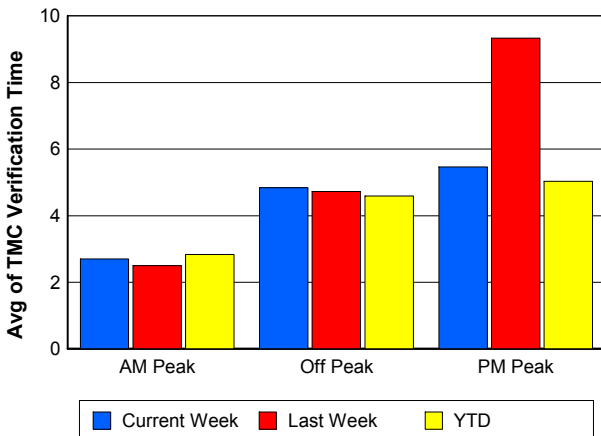
### Number of Events / Peak Period



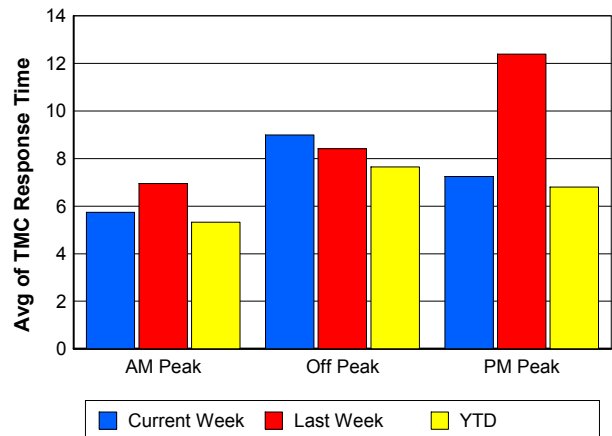
### TMC Detection Time



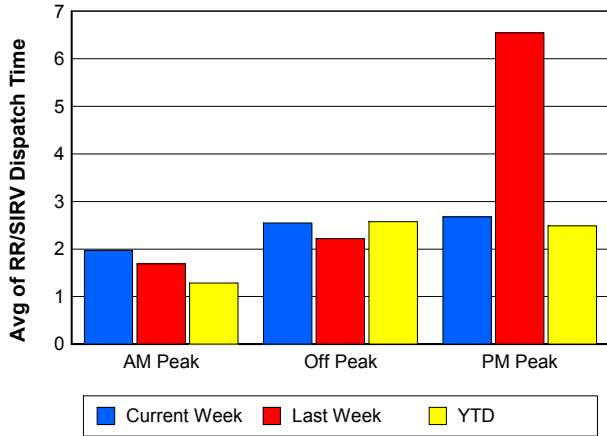
### TMC Verification Time



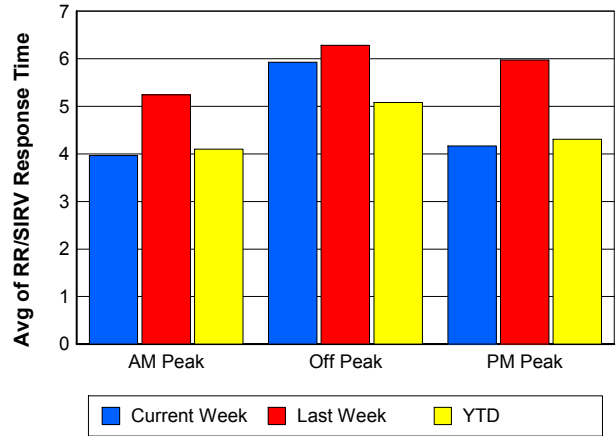
### TMC Response Time



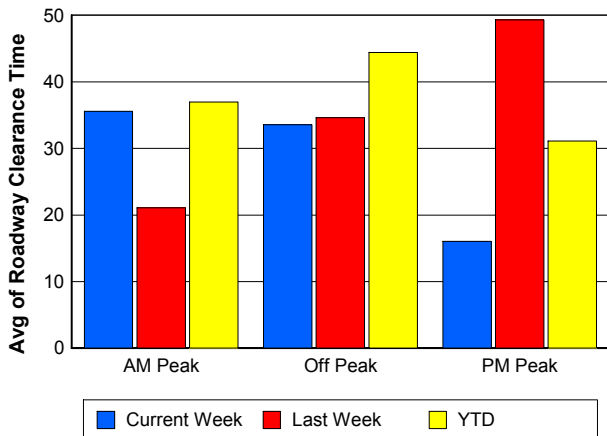
## Road Ranger / SIRV Dispatch Time



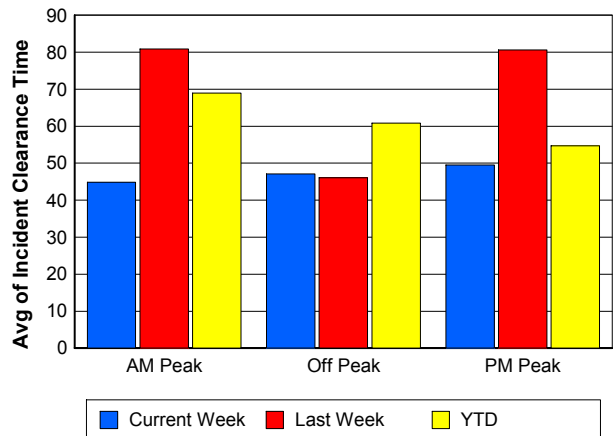
## Road Ranger / SIRV Response Time



## Roadway Clearance Time (2A)



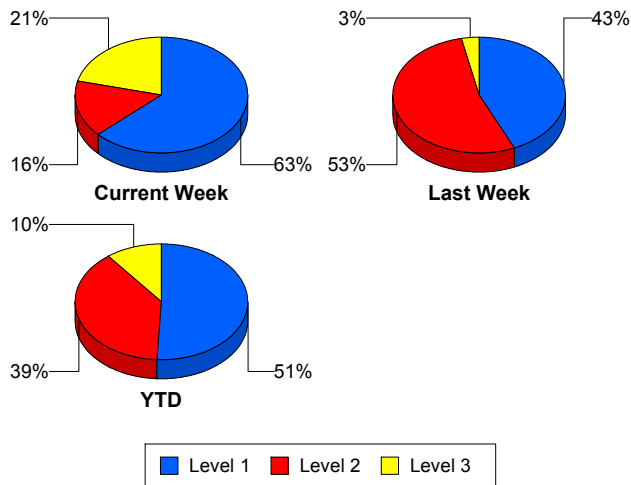
## Incident Clearance Time (3B)



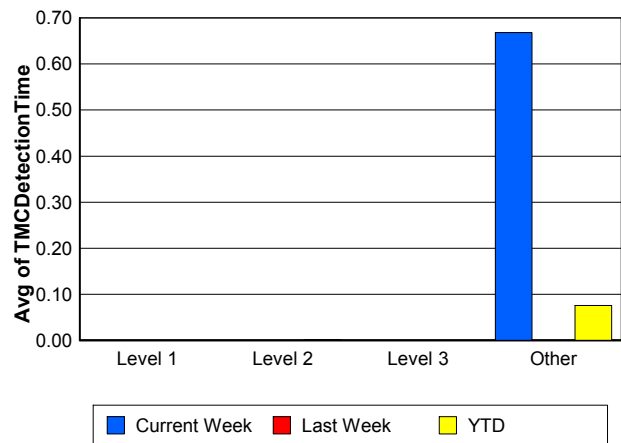
## Performance Measures by Severity

	Level 1			Level 2			Level 3			Other		
	<u>This Week</u>	<u>Last Week</u>	<u>YTD</u>	<u>This Week</u>	<u>Last Week</u>	<u>YTD</u>	<u>This Week</u>	<u>Last Week</u>	<u>YTD</u>	<u>This Week</u>	<u>Last Week</u>	<u>YTD</u>
Number of Events	12	13	132	3	16	100	4	1	27	575	495	5,107
Number of Incidents	12	13	132	3	16	100	4	1	27	2	0	2
TMC Detection (min.)	0.00	0.00	0.00	0.00	0.00	0.00	0.00	0.00	0.00	0.67	0.00	0.08
TMC Verification (min.)	7.05	1.33	3.54	24.18	7.42	11.40	11.93	15.25	7.85	4.40	5.08	4.19
TMC Response (min.)	8.75	5.32	5.87	26.72	17.39	15.34	14.81	15.25	11.05	7.66	8.68	6.75
RR Dispatch Time (min.)	1.94	1.47	1.01	8.13	6.36	4.41	4.62	2.08	3.31	2.43	2.89	2.26
RR Resp. Time (min.)	6.81	3.85	4.86	18.59	11.69	11.05	10.19	13.17	7.74	4.88	5.82	4.50
Event Clearance (min.)	32.85	32.50	44.36	92.14	71.29	70.52	92.78	131.73	116.11	19.15	19.44	18.97
Roadway Clear. (min.)	14.21	15.53	15.24	81.00	44.37	56.39	65.17	117.90	96.76	-21.46		-21.46
Incident Clearance (min.)	32.85	32.50	44.36	92.14	71.29	70.52	78.78	131.73	114.04	0.00		0.00
# of Events w/ RR/SIRV	12	13	129	3	16	100	4	1	25	527	454	4,830
RR/SIRV Responses	12	13	129	3	16	100	4	1	25	527	454	4,830
RR/SIRV Activities	16	15	154	4	17	135	6	2	37	530	476	5,032

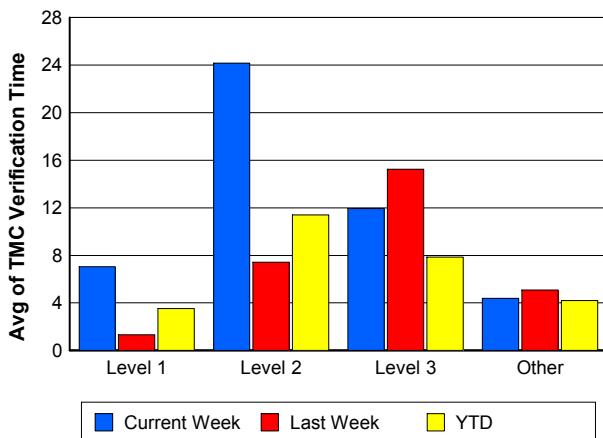
### Number of Events / Severity



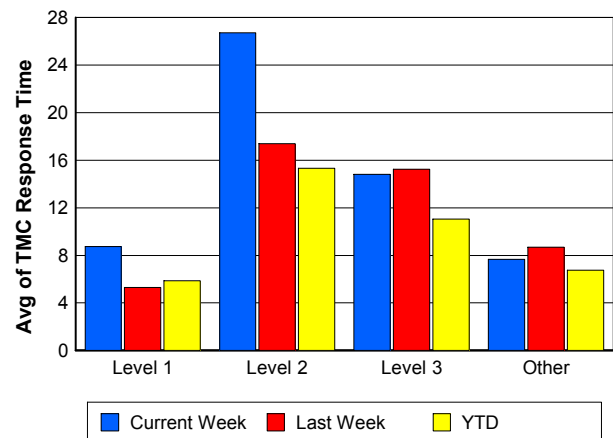
### TMC Detection Time



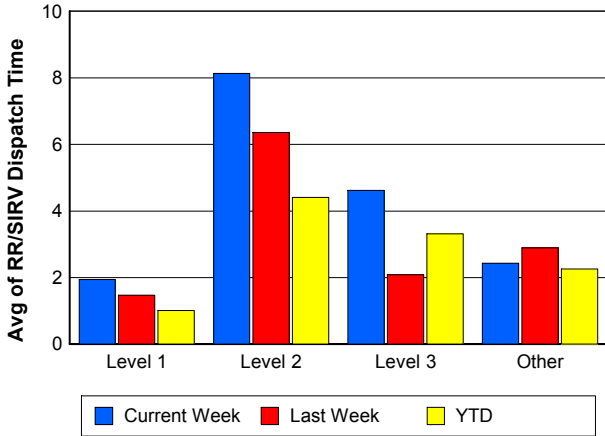
### TMC Verification Time



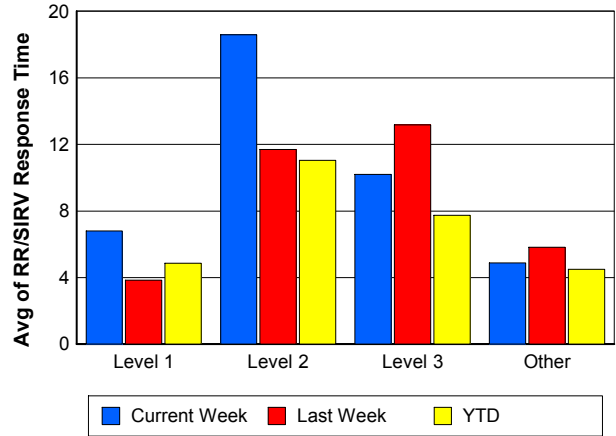
### TMC Response Time



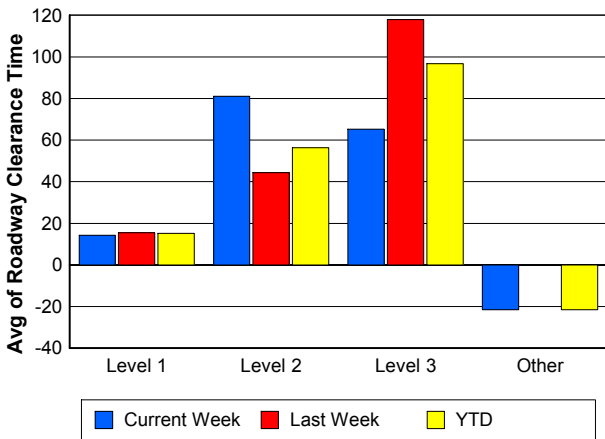
## Road Ranger / SIRV Dispatch Time



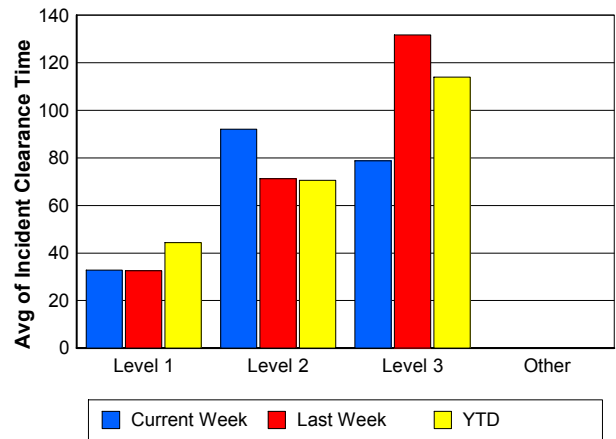
## Road Ranger / SIRV Response Time



## Roadway Clearance Time (2A)



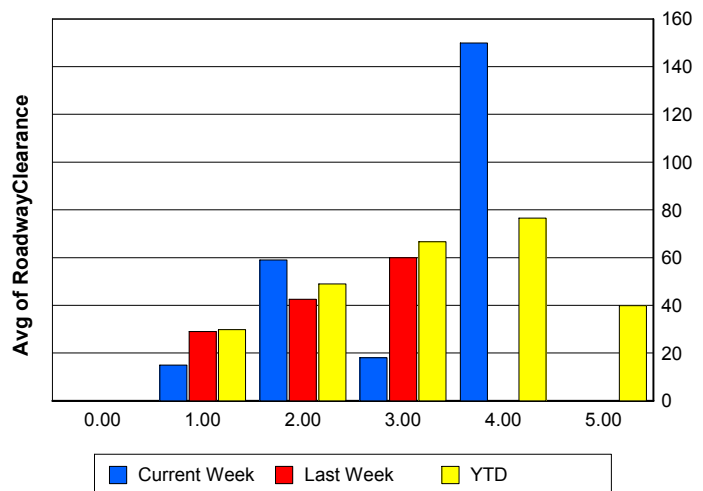
## Incident Clearance Time (3B)



## Roadway Clearance by Maximum Number of Lanes Blocked

	Current Week	Last Week	YTD
0			
1	14.95	28.96	29.88
2	59.03	42.56	48.99
3	18.02	59.92	66.67
4	149.88	0.00	76.49
5	0.00	0.00	39.83

## Roadway Clearance Time (2A)



## Performance Measures by Roadway

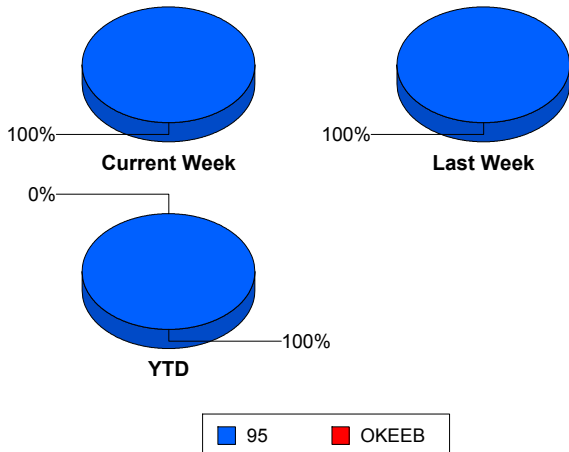
95

	<u>Current Week</u>	<u>Last Week</u>	<u>YTD</u>
Number of Events	594	525	5,365
Number of Incidents	21	30	261
TMC Detection (min.)	0.65	0.00	0.07
TMC Verification (min.)	4.60	5.08	4.33
TMC Response (min.)	7.85	8.88	6.92
RR Dispatch Time (min.)	2.47	2.96	2.27
RR Resp. Time (min.)	5.05	5.97	4.67
Event Clearance (min.)	20.29	21.55	21.05
Roadway Clear. (min.)	30.06	34.32	39.16
Incident Clearance (min.)	46.94	56.50	61.25
# of Events w/ RR/SIRV	546	484	5,083
RR/SIRV Responses	546	484	5,083
RR/SIRV Activities	556	510	5,357

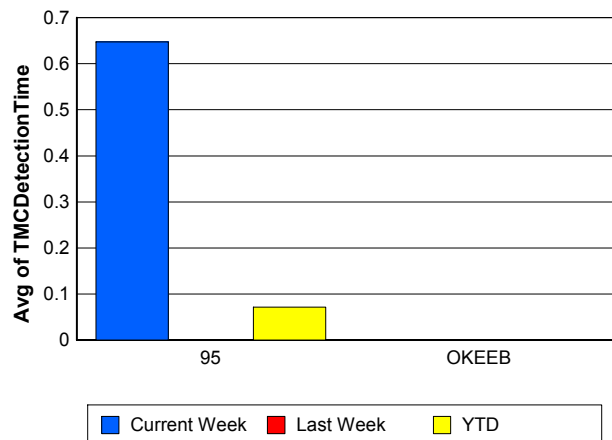
OKEEB

	<u>YTD</u>
Number of Events	1
Number of Incidents	0
TMC Detection (min.)	0.00
TMC Verification (min.)	0.00
TMC Response (min.)	0.00
RR Dispatch Time (min.)	0.00
RR Resp. Time (min.)	0.00
Event Clearance (min.)	18.45
Roadway Clear. (min.)	
Incident Clearance (min.)	
# of Events w/ RR/SIRV	1
RR/SIRV Responses	1
RR/SIRV Activities	1

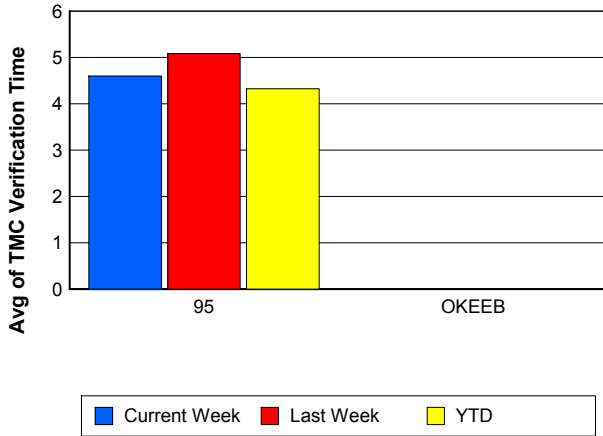
### Number of Events / Roadway



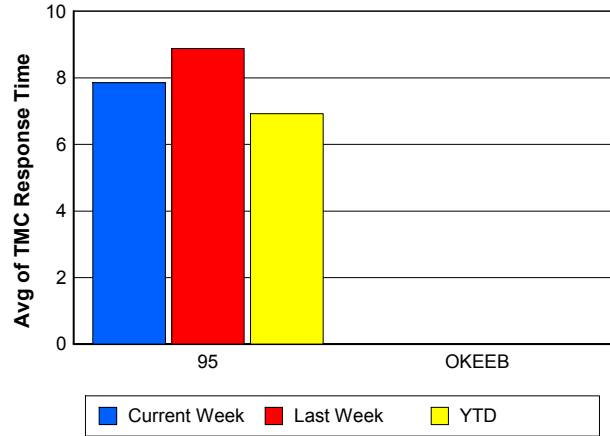
### TMC Detection Time



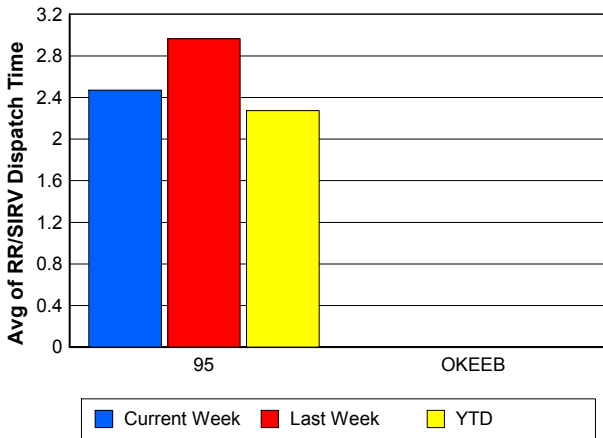
### TMC Verification Time



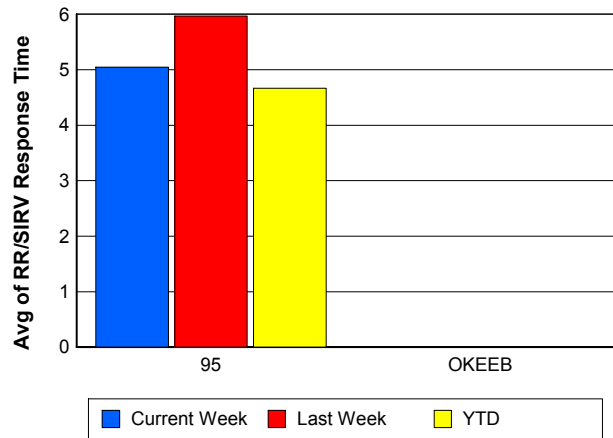
### TMC Response Time



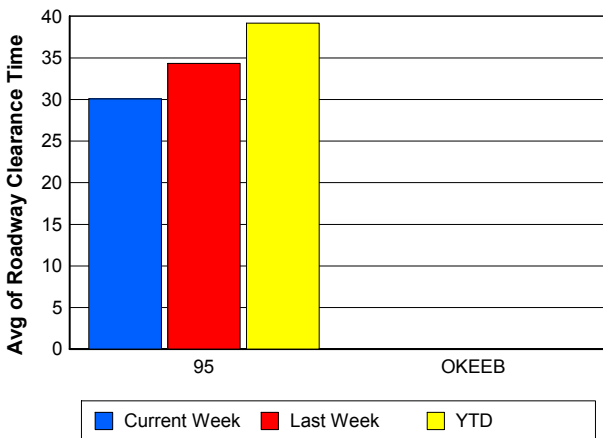
### Road Ranger / SIRV Dispatch Time



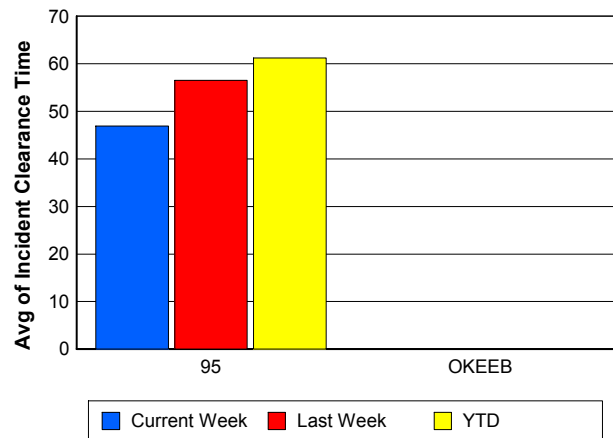
### Road Ranger / SIRV Response Time



### Roadway Clearance Time (2A)



### Incident Clearance Time (3B)



## Performance Measures by Event Type

### Accident

	<u>Current Week</u>	<u>Last Week</u>	<u>YTD</u>
Number of Events	37	54	430
Number of Incidents	13	26	184
TMC Detection (min.)	1.01	0.00	0.09
TMC Verification (min.)	14.04	6.65	7.79
TMC Response (min.)	13.72	11.82	10.31
RR Dispatch Time (min.)	2.57	4.65	2.27
RR Response Time (min.)	11.15	7.39	8.07
Event Clearance (min.)	60.73	50.13	56.80
Roadway Clearance (min.)	39.51	36.81	42.67
Incident Clearance (min.)	62.87	62.06	69.76
# of Events w/ RR/SIRV	36	52	420
RR/SIRV Assists	36	52	420
RR/SIRV Activities	42	59	489

### Debris on Roadway

	<u>Current Week</u>	<u>Last Week</u>	<u>YTD</u>
Number of Events	26	27	306
Number of Incidents	0	1	5
TMC Detection (min.)	0.00	0.00	0.00
TMC Verification (min.)	8.19	20.03	9.52
TMC Response (min.)	8.62	21.39	9.72
RR Dispatch Time (min.)	5.04	7.71	3.17
RR Response Time (min.)	4.67	13.39	6.62
Event Clearance (min.)	13.17	24.99	13.33
Roadway Clearance (min.)		15.07	10.01
Incident Clearance (min.)		15.70	16.45
# of Events w/ RR/SIRV	26	26	303
RR/SIRV Assists	26	26	303
RR/SIRV Activities	26	26	310

### Disabled Vehicle

	<u>Current Week</u>	<u>Last Week</u>	<u>YTD</u>
Number of Events	503	415	4,310
Number of Incidents	7	3	57
TMC Detection (min.)	0.57	0.00	0.07
TMC Verification (min.)	3.67	4.25	3.88
TMC Response (min.)	7.07	7.29	6.16
RR Dispatch Time (min.)	2.39	2.31	2.18
RR Response Time (min.)	4.39	5.06	4.02
Event Clearance (min.)	17.46	17.87	18.08
Roadway Clearance (min.)	14.39	19.18	30.60
Incident Clearance (min.)	20.31	21.93	41.09
# of Events w/ RR/SIRV	464	385	4,126
RR/SIRV Assists	464	385	4,126
RR/SIRV Activities	476	408	4,410

## Emergency Vehicles

	<u>YTD</u>
Number of Events	4
Number of Incidents	3
TMC Detection (min.)	0.00
TMC Verification (min.)	0.00
TMC Response (min.)	0.00
RR Dispatch Time (min.)	0.00
RR Response Time (min.)	0.00
Event Clearance (min.)	65.10
Roadway Clearance (min.)	78.74
Incident Clearance (min.)	79.08
# of Events w/ RR/SIRV	2
RR/SIRV Assists	2
RR/SIRV Activities	2

## Other

	<u>Current Week</u>	<u>Last Week</u>	<u>YTD</u>
Number of Events	22	25	256
Number of Incidents	0	0	1
TMC Detection (min.)	2.66	0.00	0.23
TMC Verification (min.)	4.80	0.00	0.58
TMC Response (min.)	23.70	18.16	14.02
RR Dispatch Time (min.)	0.77	5.77	3.02
RR Response Time (min.)	14.39	11.18	9.25
Event Clearance (min.)	24.80	17.71	18.60
Roadway Clearance (min.)			8.12
Incident Clearance (min.)			24.77
# of Events w/ RR/SIRV	15	17	181
RR/SIRV Assists	15	17	181
RR/SIRV Activities	7	14	106

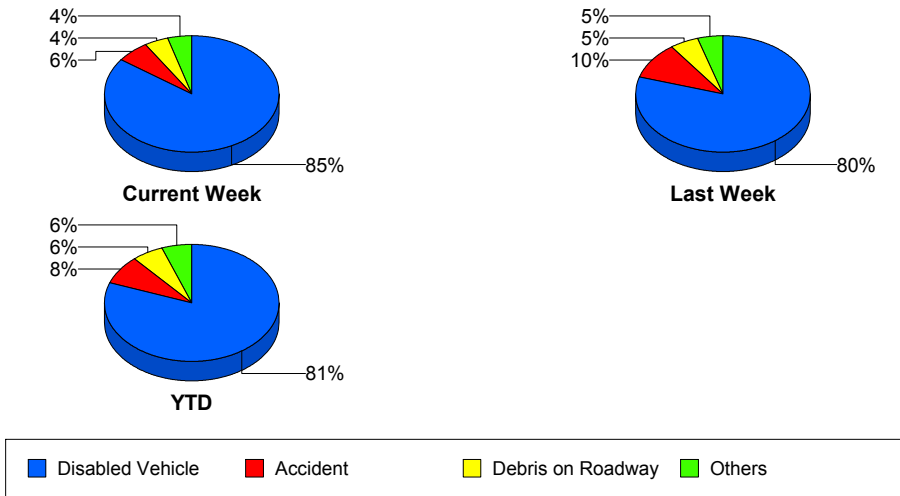
## Police Activity

	<u>YTD</u>
Number of Events	24
Number of Incidents	6
TMC Detection (min.)	0.00
TMC Verification (min.)	0.00
TMC Response (min.)	18.69
RR Dispatch Time (min.)	2.64
RR Response Time (min.)	17.32
Event Clearance (min.)	28.76
Roadway Clearance (min.)	28.07
Incident Clearance (min.)	30.24
# of Events w/ RR/SIRV	18
RR/SIRV Assists	18
RR/SIRV Activities	9

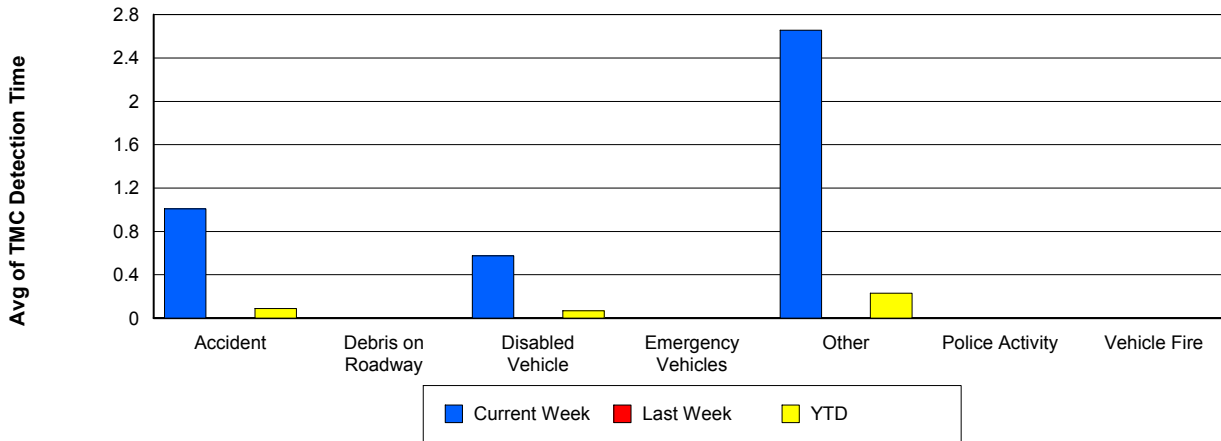
## Vehicle Fire

	<u>Current Week</u>	<u>YTD</u>
Number of Events	4	12
Number of Incidents	1	5
TMC Detection (min.)	0.00	0.00
TMC Verification (min.)	5.17	3.94
TMC Response (min.)	5.14	4.35
RR Dispatch Time (min.)	1.68	1.44
RR Response Time (min.)	3.46	2.91
Event Clearance (min.)	22.35	35.61
Roadway Clearance (min.)	16.95	32.58
Incident Clearance (min.)	26.33	56.80
# of Events w/ RR/SIRV	4	11
RR/SIRV Assists	4	11
RR/SIRV Activities	4	11

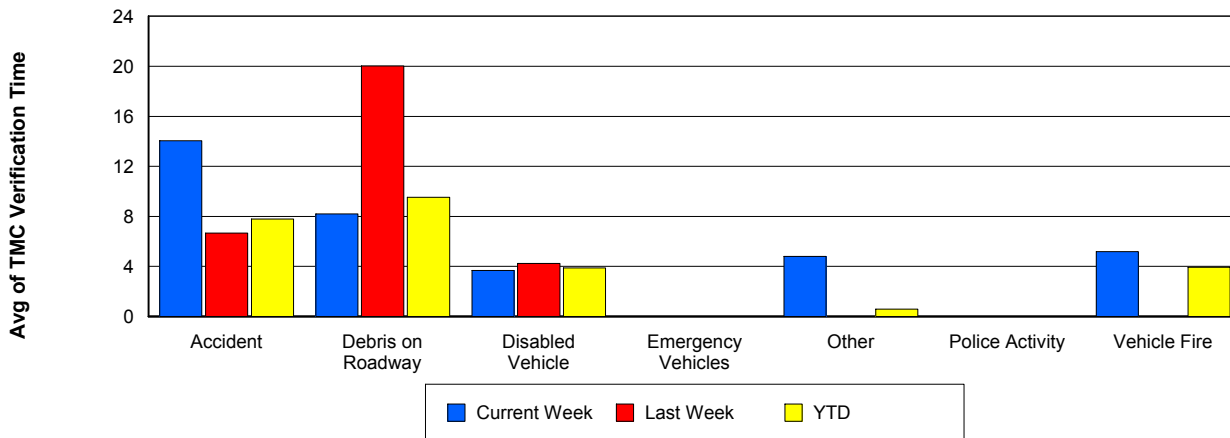
## Number of Events / Event Type



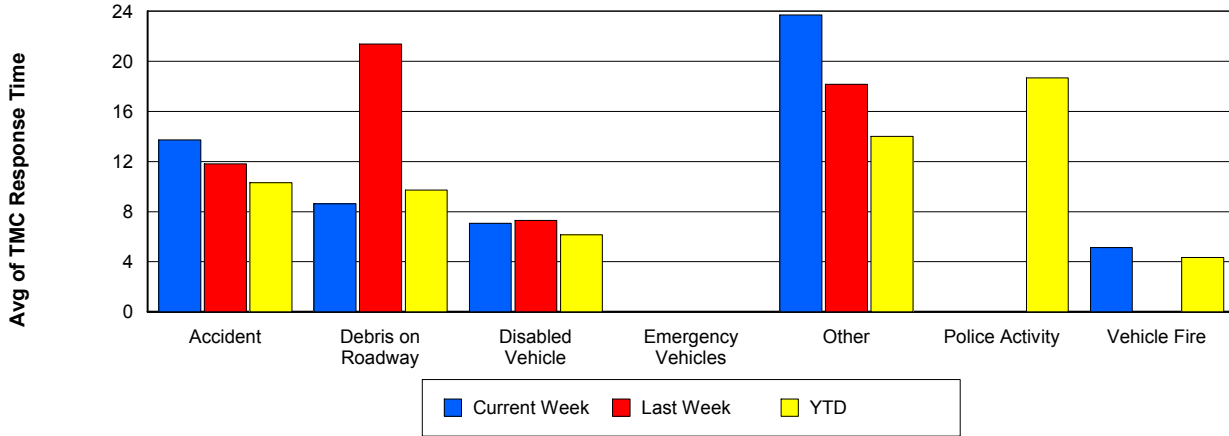
## TMC Detection Time



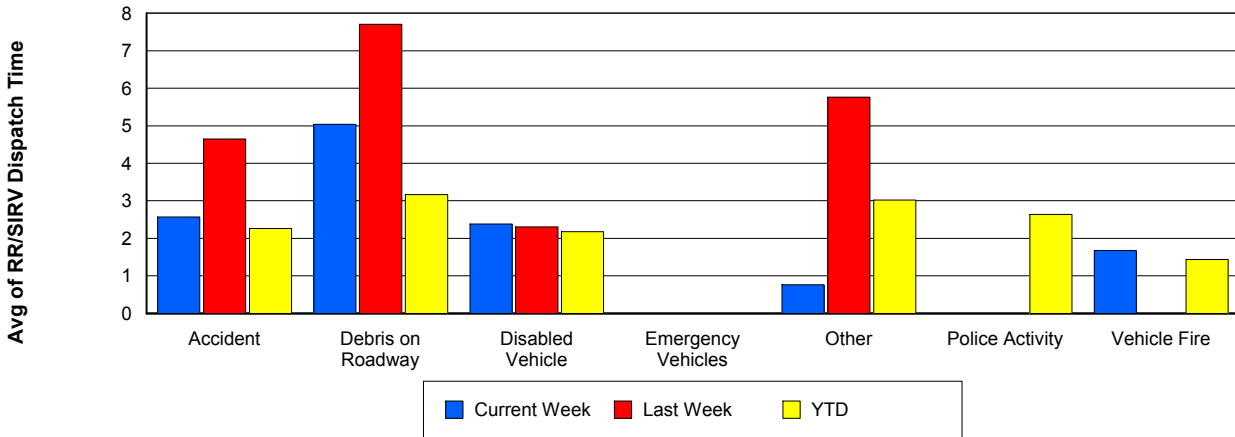
## TMC Verification Time



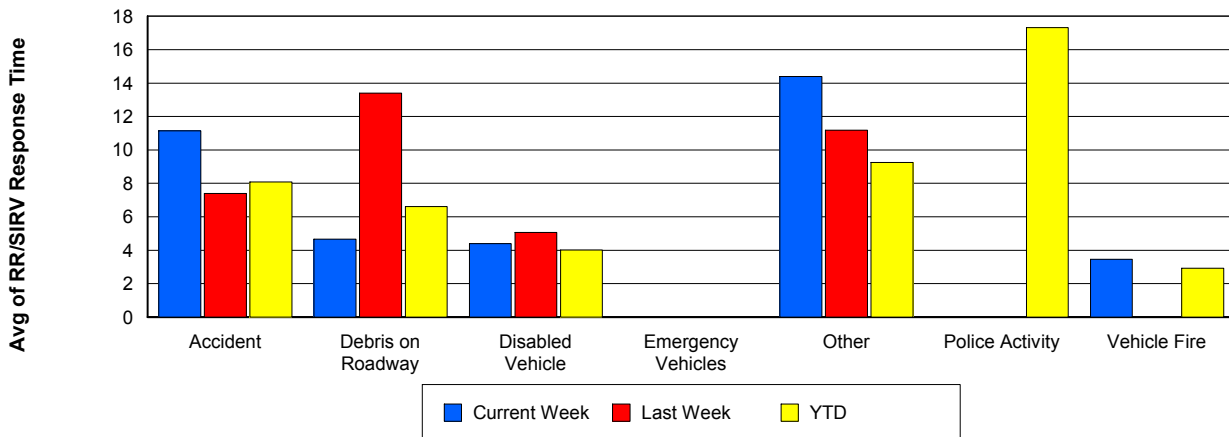
## TMC Response Time



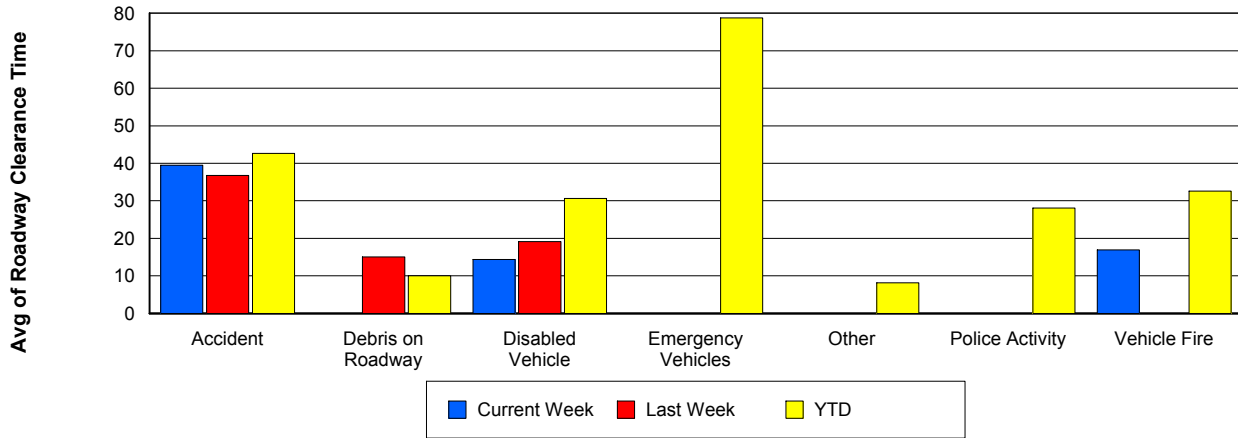
## Road Ranger / SIRV Dispatch Time



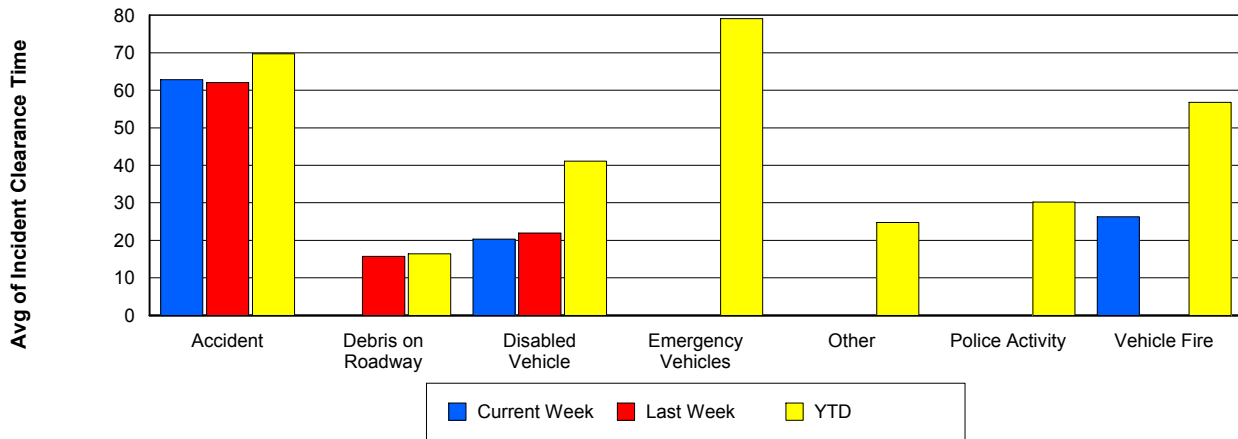
## Road Ranger / SIRV Response Time



## Roadway Clearance Time (2A)



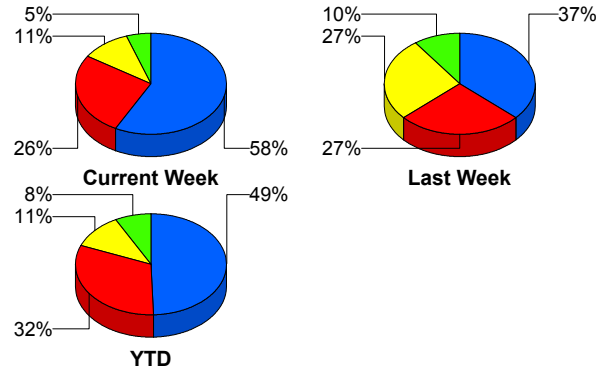
## Incident Clearance Time (3B)



## Incident Detection Methods

	Current Week	Last Week	YTD
Broward Road Ranger	1	1	4
Broward TMC	0	1	4
District 4	0	1	6
FDOT Maintenance	0	0	1
FHP	11	11	128
ITMS CCTV	2	8	29
Media	0	0	1
Motorist	0	0	4
Palm Beach Road Ran	5	8	82
<b>Total</b>	<b>19</b>	<b>30</b>	<b>259</b>

### Total Incidents by Detection Method



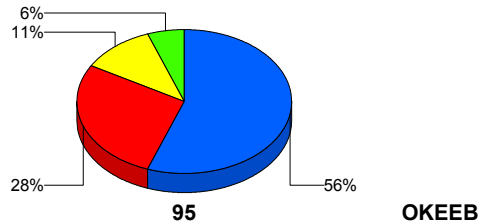
■ FHP     
 ■ Palm Beach Road Ranger     
 ■ ITMS CCTV     
 ■ Others

## Incident Detection Methods by Roadway

		Current Week	Last Week	YTD
95	Broward Road Ranger	1	1	4
	Broward TMC	0	1	4
	District 4	0	1	6
	FDOT Maintenance	0	0	1
	FHP	11	11	128
	ITMS CCTV	2	8	29
	Media	0	0	1
	Motorist	0	0	4
	Palm Beach Road Ran	5	8	82
	<b>Total</b>	<b>19</b>	<b>30</b>	<b>259</b>
	<b>Total</b>	<b>19</b>	<b>30</b>	<b>259</b>

### Total Events by Roadway and Detection Method

Current Period Only



■ FHP     
 ■ Palm Beach Road Ranger     
 ■ ITMS CCTV     
 ■ Others

## Incident Detection Methods by Peak Period

		Current Week	Last Week	YTD
AM Peak	Broward Road Ranger	1	1	3
	District 4	0	0	1
	FHP	4	0	31
	ITMS CCTV	0	1	5
	Media	0	0	1
	Palm Beach Road Ran	2	3	23
	<b>Total</b>	<b>7</b>	<b>5</b>	<b>64</b>
Off Peak	Broward Road Ranger	0	0	1
	Broward TMC	0	1	2
	District 4	0	1	3
	FDOT Maintenance	0	0	1
	FHP	3	8	61
	ITMS CCTV	2	7	20
	Motorist	0	0	2
	Palm Beach Road Ran	3	4	39
	<b>Total</b>	<b>8</b>	<b>21</b>	<b>129</b>
PM Peak	Broward TMC	0	0	2
	District 4	0	0	2
	FHP	5	3	37
	ITMS CCTV	0	0	4
	Motorist	0	0	2
	Palm Beach Road Ran	0	1	20
	<b>Total</b>	<b>5</b>	<b>4</b>	<b>67</b>
<b>Total</b>	<b>19</b>	<b>30</b>	<b>259</b>	

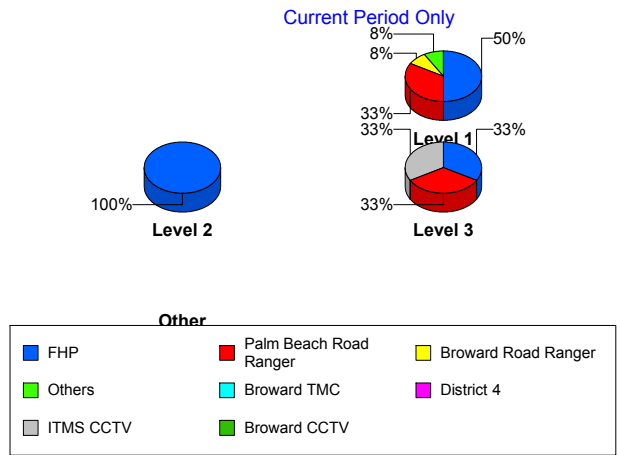
**Total Events by Peak Period and Detection Method**



## Incident Detection Methods by Severity

		Current Week	Last Week	YTD
	FHP	1	0	1
	Total	1	0	1
Level 1	Broward Road Ranger	1	1	4
	Broward TMC	0	1	2
	District 4	0	1	4
	FHP	6	2	48
	ITMS CCTV	1	3	14
	Motorist	0	0	3
	Palm Beach Road Ran	4	5	57
	Total	12	13	132
Level 2	Broward TMC	0	0	2
	District 4	0	0	1
	FDOT Maintenance	0	0	1
	FHP	3	8	66
	ITMS CCTV	0	5	12
	Motorist	0	0	1
	Palm Beach Road Ran	0	3	17
	Total	3	16	100
Level 3	District 4	0	0	1
	FHP	2	1	14
	ITMS CCTV	1	0	3
	Media	0	0	1
	Palm Beach Road Ran	1	0	8
	Total	4	1	27
<b>Total</b>		<b>19</b>	<b>30</b>	<b>259</b>

Total Events by Severity and Detection Method



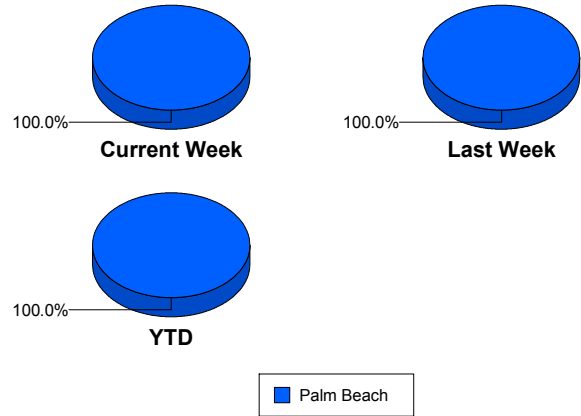
# Road Ranger / SIRV Performance Measures

## Road Ranger / SIRV Performance By County

Values presented are:  
 - Total Events with a RR/SIRV Response  
 - Total RR/SIRV Responses,  
 - Total Activities Performed

	Current We	Last Week	YTD
Palm Beach	<b>639</b>	<b>593</b>	<b>6,417</b>
	<b>664</b>	<b>609</b>	<b>6,633</b>
	<b>694</b>	<b>642</b>	<b>7,009</b>

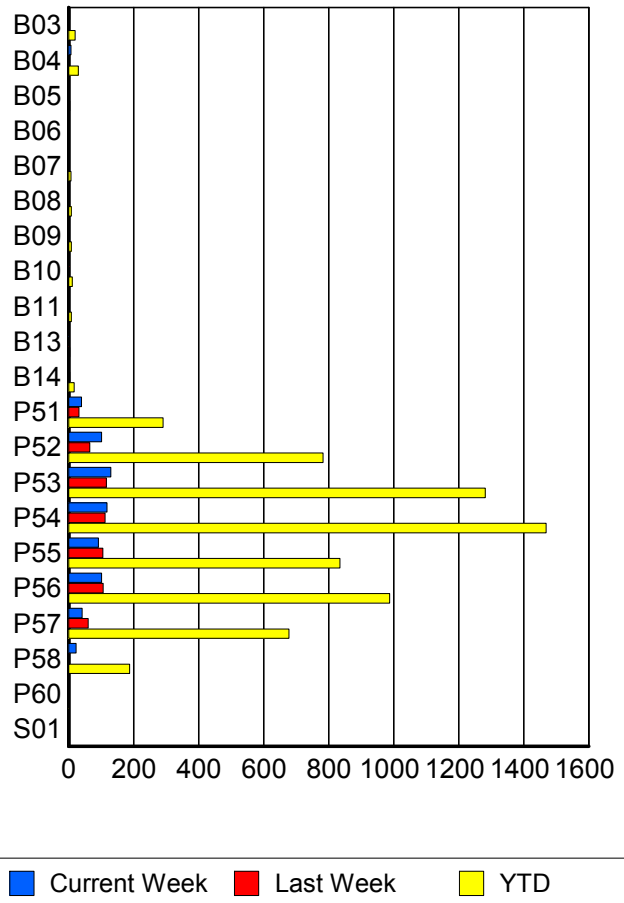
RR/SIRV Responses per County



## Road Ranger / SIRV Performance By Truck

	Current We	Last Week	YTD
B03	3	2	20
	3	2	20
	3	2	21
B04	6	2	29
	7	2	30
	9	2	33
B05	1	0	3
	1	0	3
	1	0	3
B06	0	0	1
	0	0	1
	0	0	3
B07	0	0	7
	0	0	7
	0	0	7
B08	0	0	8
	0	0	8
	0	0	8
B09	2	1	8
	2	1	8
	2	1	9
B10	2	2	11
	2	2	11
	2	2	11
B11	1	0	8
	1	0	8
	1	0	8

**RR/SIRV  
Responses per  
Truck**



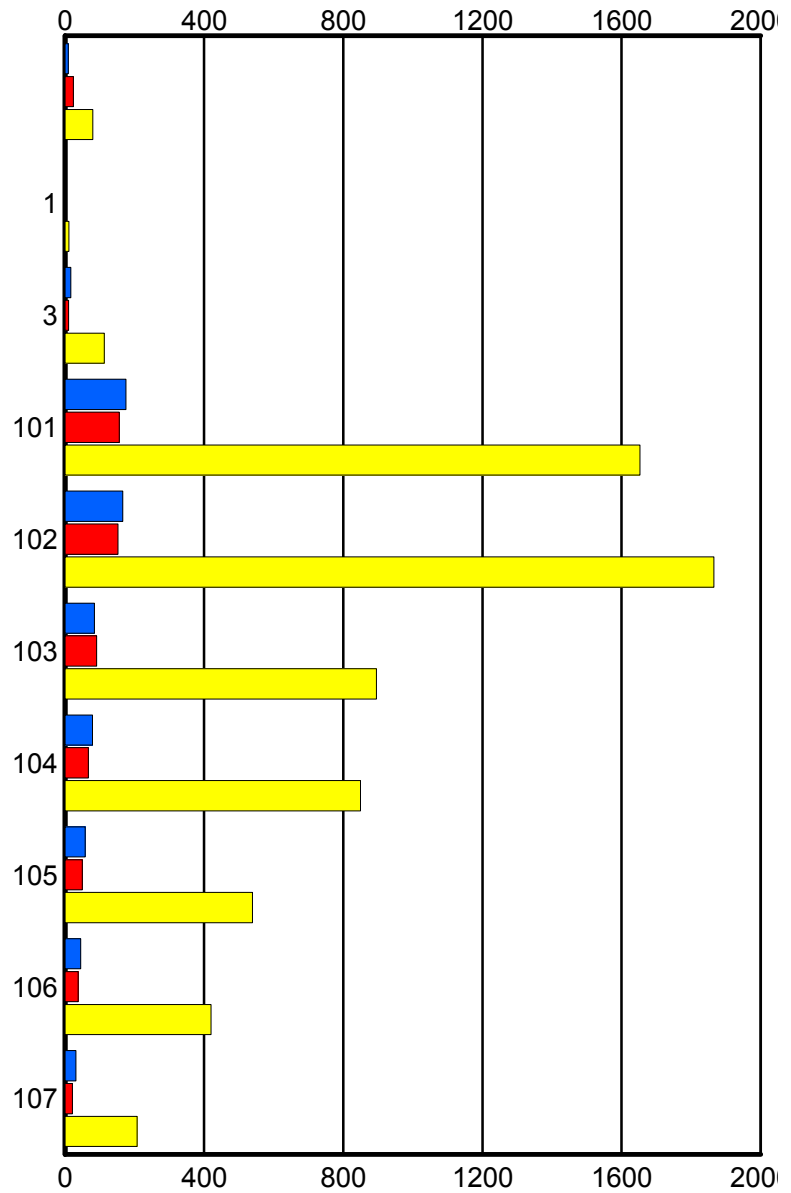
	Current We	Last Week	YTD
B13	1	1	3
	1	1	3
	1	1	3
B14	0	3	17
	0	3	17
	0	3	17
P51	39	32	288
	40	32	291
	40	32	302
P52	99	65	773
	101	65	783
	107	68	833
P53	129	116	1,268
	130	116	1,282
	137	126	1,354
P54	117	111	1,448
	118	112	1,469
	125	119	1,551
P55	91	105	826
	92	105	835
	97	110	875
P56	99	106	976
	101	106	988
	102	111	1,053
P57	42	59	666
	42	60	678
	44	63	712
P58	23	2	186
	23	2	188
	23	2	203
P60	0	0	1
	0	0	1
	0	0	1
S01	0	0	2
	0	0	2
	0	0	2

### Road Ranger / SIRV Performance By Beat

	Current We	Last Week	YTD
	9	24	80
	9	24	80
	10	26	88
1	0	0	10
	0	0	11
	0	0	11
3	16	10	111
	17	10	113
	19	10	120
101	171	155	1,622
	175	156	1,653
	183	166	1,737
102	162	150	1,834
	166	152	1,866
	172	160	1,970
103	83	91	888
	84	91	895
	86	96	940
104	79	67	841
	79	67	849
	86	70	910
105	58	50	534
	58	50	539
	61	54	575
106	45	38	415
	45	38	420
	46	38	433
107	31	21	205
	31	21	207
	31	22	225

Values presented are:  
 - Total Events with a RR/SIRV Response  
 - Total RR/SIRV Responses,  
 - Total Activities Performed

### RR/SIRV Responses per Beat

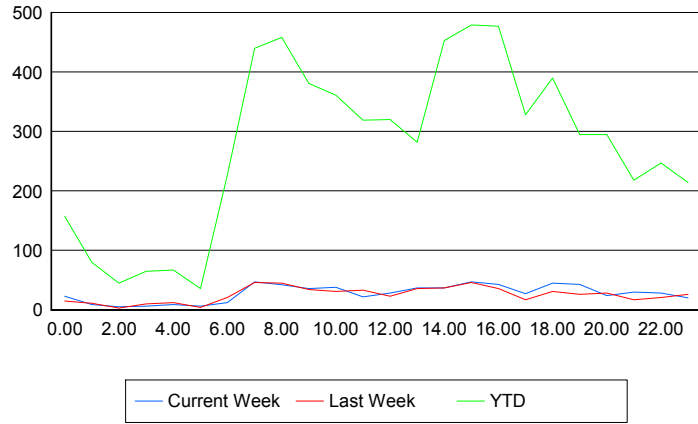


## Road Ranger / SIRV Performance By Time of Day

Values presented are:  
 - Total Events with a RR/SIRV Response  
 - Total RR/SIRV Responses,  
 - Total Activities Performed

	Current We	Last Week	YTD
12AM-1AM	22	15	152
	23	15	157
	24	17	172
1AM-2AM	9	11	78
	9	11	80
	9	11	82
2AM-3AM	5	3	44
	5	3	45
	5	3	47
3AM-4AM	6	10	65
	6	10	65
	6	11	69
4AM-5AM	8	11	65
	9	12	67
	9	12	71
5AM-6AM	5	4	29
	6	4	36
	7	4	38
6AM-7AM	12	21	213
	12	21	226
	12	21	241
7AM-8AM	46	44	429
	47	46	440
	49	48	465
8AM-9AM	39	44	436
	42	45	458
	43	47	478
9AM-10AM	35	33	371
	36	34	381
	38	36	404
10AM-11AM	35	31	346
	38	31	361
	39	32	381
11AM-12PM	22	32	311
	22	33	319
	22	35	336
12PM-1PM	28	22	305
	28	23	320
	29	24	332

## Number of Responses / Hour of the Day



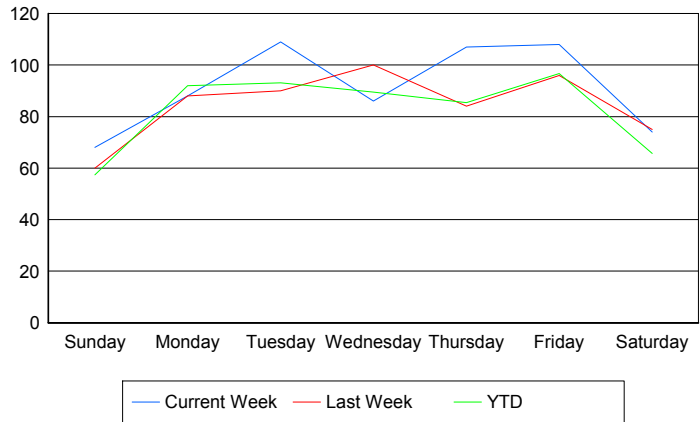
	Current We	Last Week	YTD
1PM-2PM	36	34	268
	37	36	282
	38	36	297
2PM-3PM	34	37	438
	37	37	453
	39	41	480
3PM-4PM	46	45	471
	47	46	479
	52	48	508
4PM-5PM	41	35	459
	43	36	477
	47	38	509
5PM-6PM	26	17	320
	27	17	328
	27	19	350
6PM-7PM	43	30	382
	45	31	390
	49	31	411
7PM-8PM	43	24	286
	43	26	295
	46	27	309
8PM-9PM	24	27	289
	24	28	295
	24	29	306
9PM-10PM	28	16	208
	30	17	218
	30	21	230
10PM-11PM	27	21	242
	28	21	247
	29	22	262
11PM-12AM	19	26	210
	20	26	214
	21	29	231

## Road Ranger / SIRV Performance By Day of Week

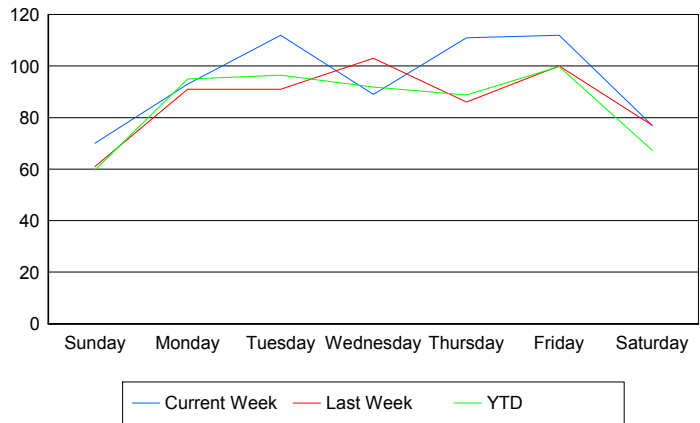
Values presented are:  
 - Total Events with a RR/SIRV Response  
 - Total RR/SIRV Responses,  
 - Total Activities Performed

	Current We	Last Week	YTD
Sunday	68 70 75	60 61 64	623 645 682
Monday	88 93 99	88 91 95	981 1,013 1,075
Tuesday	109 112 114	90 91 96	1,015 1,051 1,108
Wednesday	86 89 92	100 103 107	975 1,001 1,064
Thursday	107 111 118	84 86 90	926 962 1,029
Friday	108 112 115	96 100 108	1,130 1,167 1,220
Saturday	74 77 81	75 77 82	775 794 831

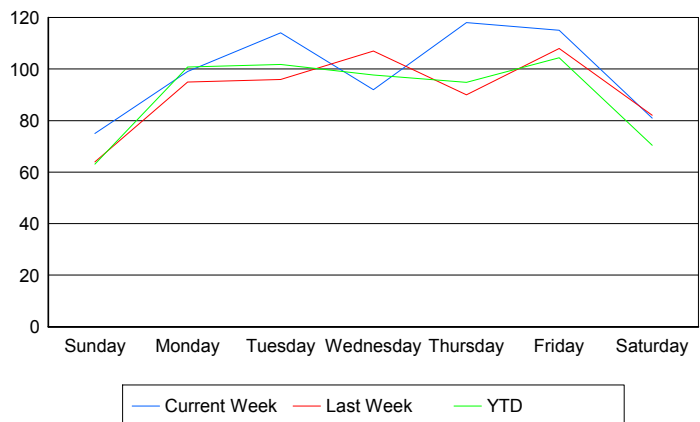
### Avg # of events with a RR/SIRV Response per Day of the Week



### Avg # of RR/SIRV Responses per Day of the Week



### Avg # of RR/SIRV Activities Performed per Day of the Week



### Road Ranger / SIRV Responses per Time of Day and Day of Week

