

Weekly Performance Measures Report Palm Beach County



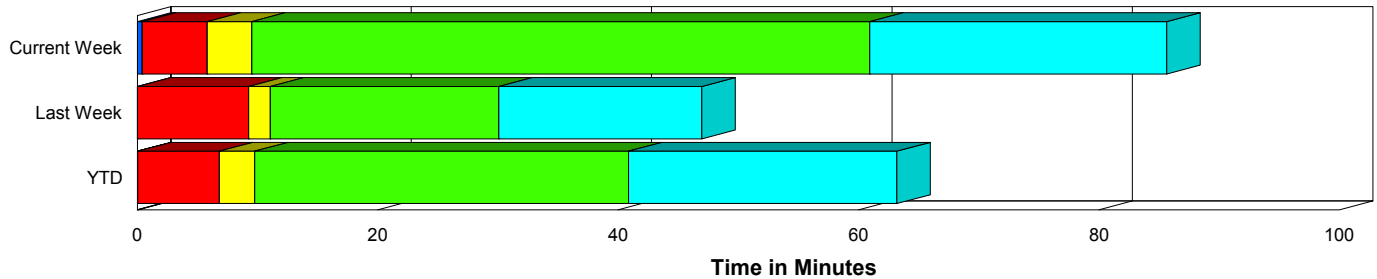
Created on:
April 12, 2010
6:24 pm

Period From Mar 21, 2010 to Mar 27, 2010

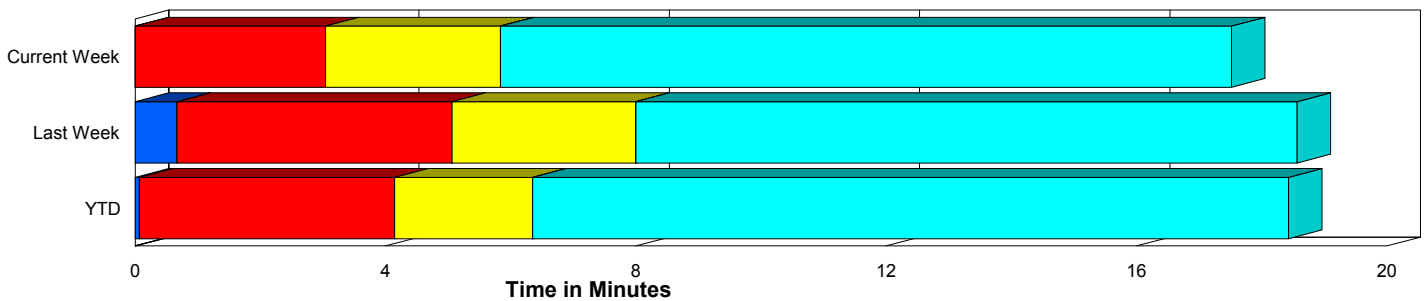
Performance Measures Summary

	Traffic Events (No Lanes Blocked)			Incidents (Lanes Blocked)		
	<u>This Week</u>	<u>Last Week</u>	<u>YTD</u>	<u>This Week</u>	<u>Last Week</u>	<u>YTD</u>
Number of Events	544	573	5,649	24	21	285
TMC Detection (min.)	0.00	0.67	0.07	0.40	0.00	0.03
TMC Verification (min.)	3.04	4.39	4.08	5.41	10.32	6.88
TMC Response (min.)	6.32	7.67	6.71	8.93	12.20	9.99
RR Dispatch Time (min.)	2.25	2.44	2.26	1.20	3.22	2.44
RR Response Time (min.)	4.35	4.88	4.49	7.78	8.98	7.59
Roadway Clearance (min.)				58.50	30.06	40.79
Event Clearance (min.)	18.00	18.90	18.85	83.16	58.27	63.93
# of Events w/ RR/SIRV	503	525	5,331	24	21	280
RR/SIRV Responses	503	525	5,331	24	21	280
RR/SIRV Activities	513	525	5,540	31	31	362

Incident Clearance Time-Line



Traffic Event (Non-Lane Blockage) Time-Line



■ Avg. TMC Detection Time	■ Avg. Time from TMC Response to Roadway Clearance*
■ Avg. Time from TMC Detection to TMC Verification	■ Avg. Time from Roadway Clearance to Incident/Event Clearance**
■ Avg. Time from TMC Verification to TMC Response	

* Roadway clearance equals all travel lanes open

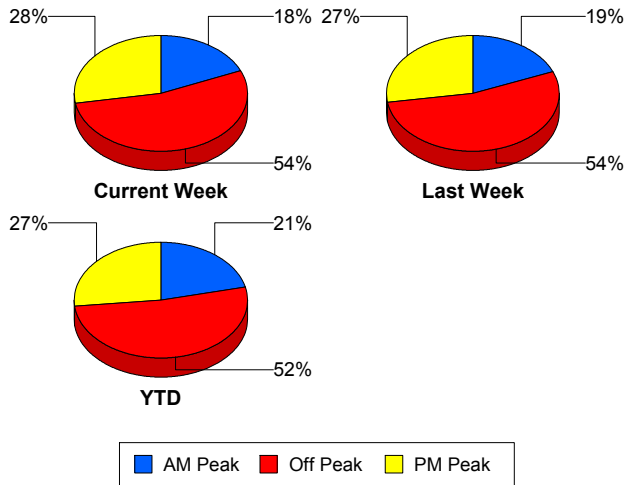
** Incident clearance equals time when last responder has left the scene

Performance Measures by Peak Period

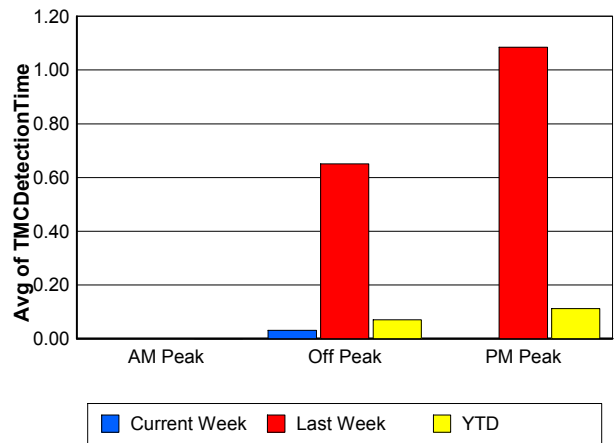
Note: AM peak period is defined as 6am to 10am and PM peak period is defined as 3pm to 7pm.

	AM Peak			Off Peak			PM Peak		
	Current Week	Last Week	YTD	Current Week	Last Week	YTD	Current Week	Last Week	YTD
Number of Events	105	112	1,265	306	319	3,081	157	163	1,588
Number of Incidents	6	7	70	14	9	144	4	5	71
TMC Detection (min.)	0.00	0.00	0.00	0.03	0.65	0.07	0.00	1.09	0.11
TMC Verification (min.)	1.59	2.70	2.73	3.43	4.84	4.48	3.63	5.46	4.89
TMC Response (min.)	4.53	5.74	5.26	7.11	8.99	7.59	6.37	7.24	6.76
RR Dispatch Time (min.)	1.73	1.97	1.32	2.21	2.55	2.54	2.51	2.67	2.49
RR Response Time (min.)	2.87	3.96	4.01	5.18	5.92	5.09	4.26	4.17	4.30
Event Clearance (min.)	19.17	17.72	20.27	22.00	22.23	21.95	19.37	18.27	19.81
Roadway Clearance (min.)	32.89	35.58	36.61	72.02	33.56	47.08	49.59	16.04	32.14
Incident Clearance (min.)	78.52	44.85	69.80	87.23	47.13	63.39	75.89	49.54	55.90
# of Events w/ RR/SIRV	96	106	1,187	283	292	2,912	148	148	1,512
RR/SIRV Responses	96	106	1,187	283	292	2,912	148	148	1,512
RR/SIRV Activities	96	112	1,251	300	290	3,070	148	154	1,581

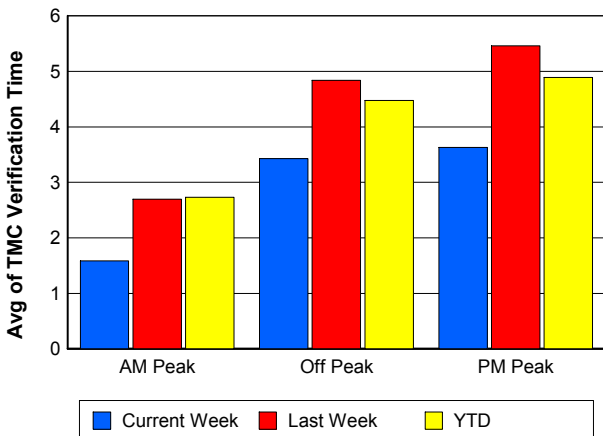
Number of Events / Peak Period



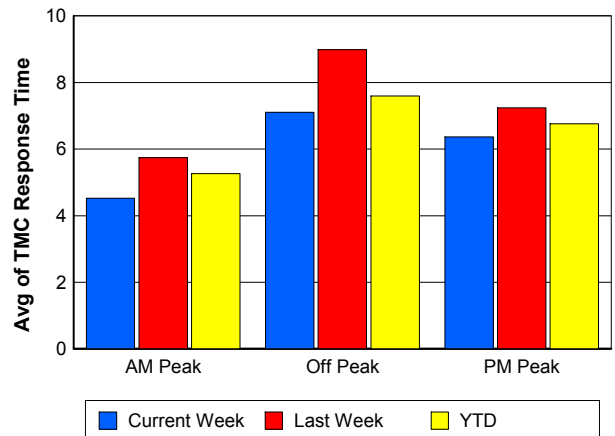
TMC Detection Time



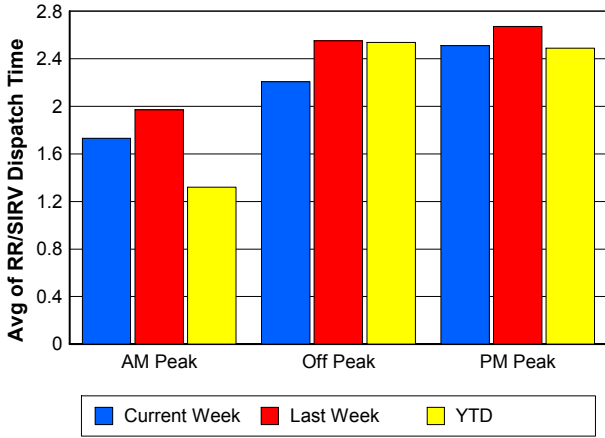
TMC Verification Time



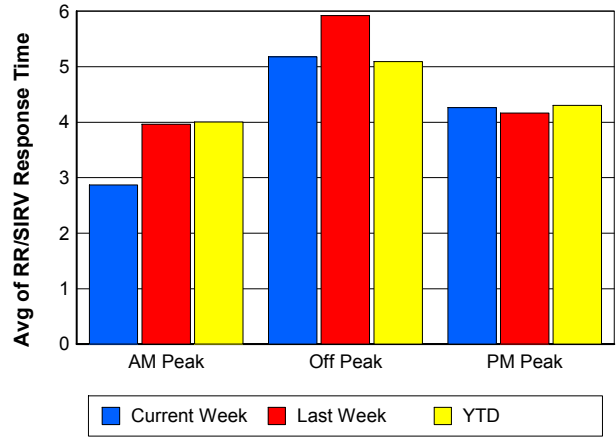
TMC Response Time



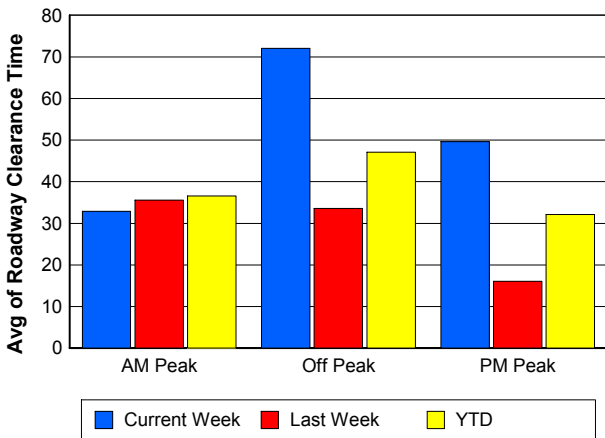
Road Ranger / SIRV Dispatch Time



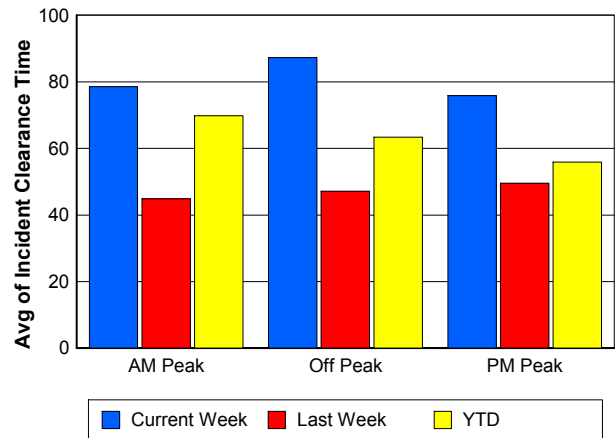
Road Ranger / SIRV Response Time



Roadway Clearance Time (2A)



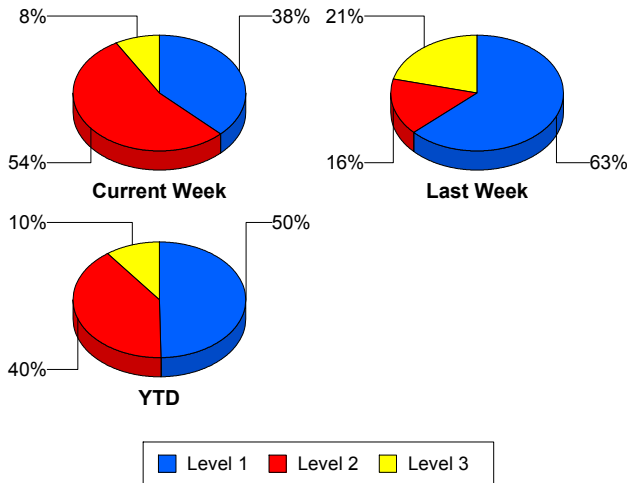
Incident Clearance Time (3B)



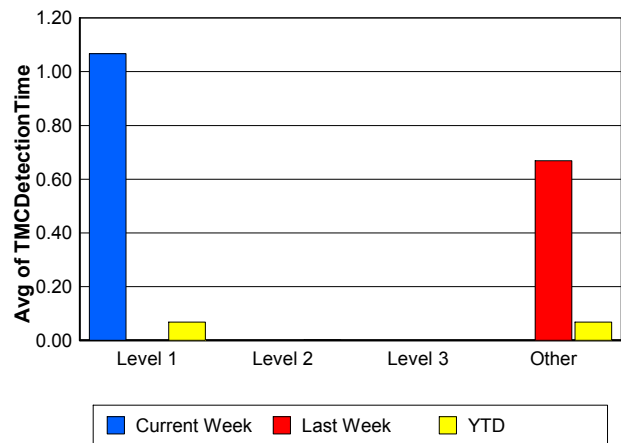
Performance Measures by Severity

	Level 1			Level 2			Level 3			Other		
	<u>This Week</u>	<u>Last Week</u>	<u>YTD</u>	<u>This Week</u>	<u>Last Week</u>	<u>YTD</u>	<u>This Week</u>	<u>Last Week</u>	<u>YTD</u>	<u>This Week</u>	<u>Last Week</u>	<u>YTD</u>
Number of Events	9	12	141	13	3	113	2	4	29	544	575	5,651
Number of Incidents	9	12	141	13	3	113	2	4	29	0	2	2
TMC Detection (min.)	1.07	0.00	0.07	0.00	0.00	0.00	0.00	0.00	0.00	0.00	0.67	0.07
TMC Verification (min.)	3.39	7.05	3.53	6.77	24.18	10.87	5.65	11.93	7.70	3.04	4.40	4.08
TMC Response (min.)	6.09	8.75	5.88	11.19	26.72	14.86	5.64	14.81	10.65	6.32	7.66	6.71
RR Dispatch Time (min.)	0.74	1.94	0.99	1.67	8.13	4.10	0.18	4.62	3.08	2.25	2.43	2.26
RR Resp. Time (min.)	5.53	6.81	4.90	9.52	18.59	10.87	5.47	10.19	7.57	4.35	4.88	4.49
Event Clearance (min.)	56.50	32.85	45.14	75.36	92.14	71.08	253.89	92.78	125.62	18.00	19.15	18.88
Roadway Clear. (min.)	13.02	14.21	15.10	60.57	81.00	56.87	249.64	65.17	107.31		-21.46	-21.46
Incident Clearance (min.)	56.50	32.85	45.14	75.36	92.14	71.08	253.89	78.78	123.69		0.00	0.00
# of Events w/ RR/SIRV	9	12	138	13	3	113	2	4	27	503	527	5,333
RR/SIRV Responses	9	12	138	13	3	113	2	4	27	503	527	5,333
RR/SIRV Activities	12	16	166	16	4	151	3	6	40	513	530	5,545

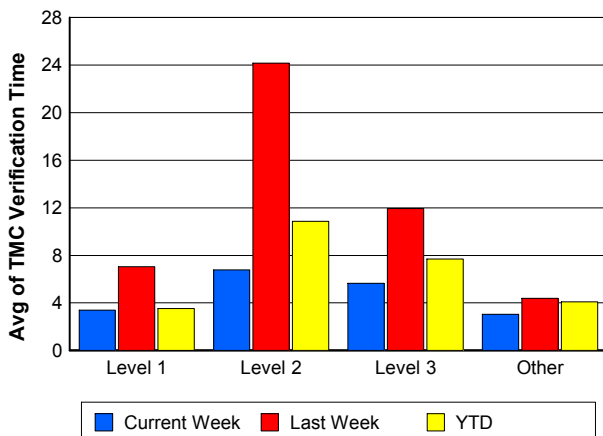
Number of Events / Severity



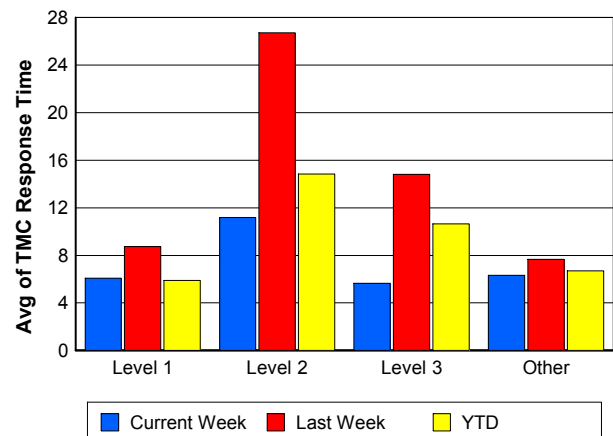
TMC Detection Time



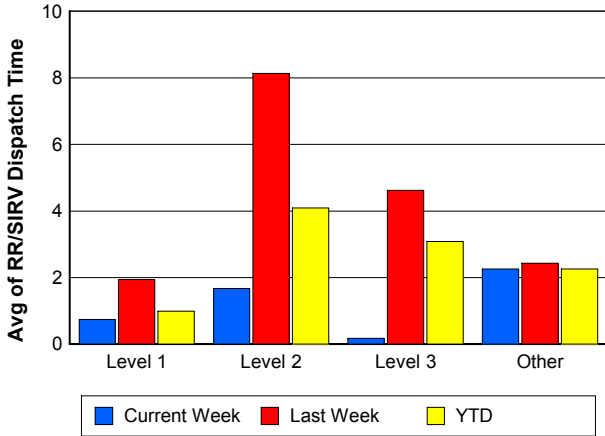
TMC Verification Time



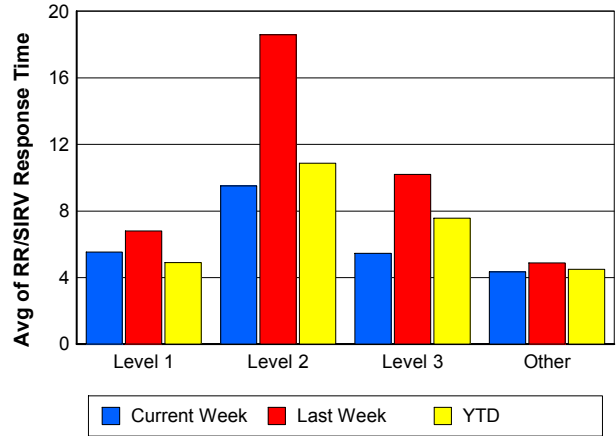
TMC Response Time



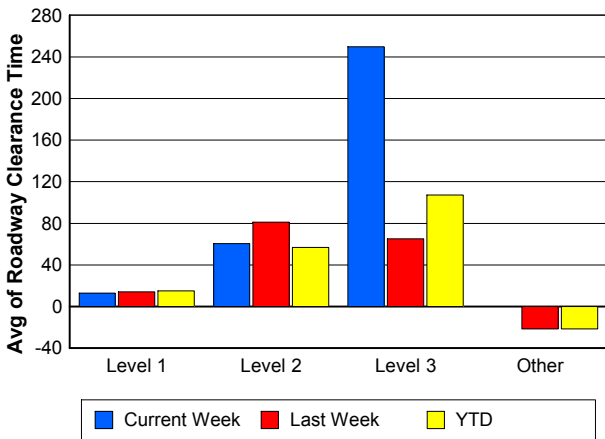
Road Ranger / SIRV Dispatch Time



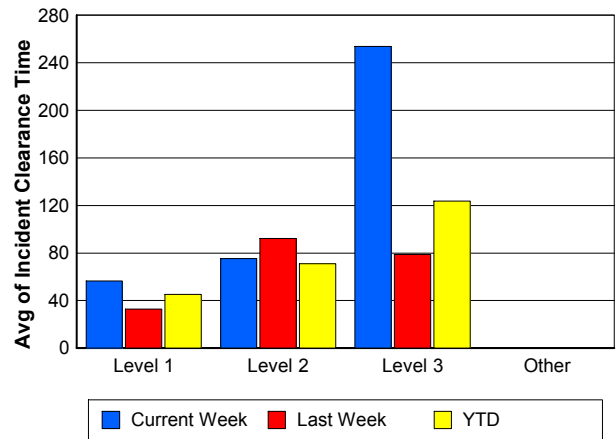
Road Ranger / SIRV Response Time



Roadway Clearance Time (2A)



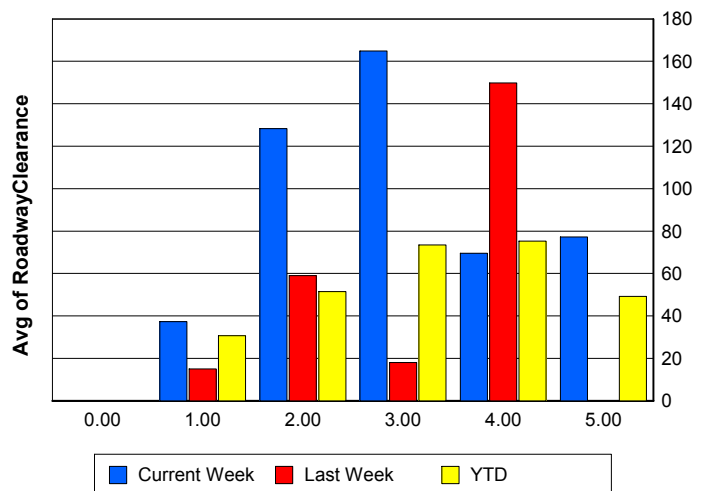
Incident Clearance Time (3B)



Roadway Clearance by Maximum Number of Lanes Blocked

	Current Week	Last Week	YTD
0			
1	37.26	14.95	30.61
2	128.27	59.03	51.50
3	164.90	18.02	73.44
4	69.50	149.88	75.33
5	77.28	0.00	49.19

Roadway Clearance Time (2A)



Performance Measures by Roadway

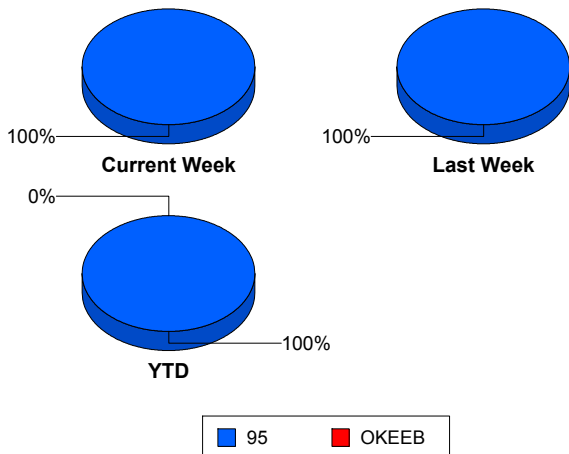
95

	<u>Current Week</u>	<u>Last Week</u>	<u>YTD</u>
Number of Events	568	594	5,933
Number of Incidents	24	21	285
TMC Detection (min.)	0.02	0.65	0.07
TMC Verification (min.)	3.14	4.60	4.22
TMC Response (min.)	6.44	7.85	6.88
RR Dispatch Time (min.)	2.21	2.47	2.27
RR Resp. Time (min.)	4.51	5.05	4.65
Event Clearance (min.)	20.75	20.29	21.02
Roadway Clear. (min.)	58.50	30.06	40.79
Incident Clearance (min.)	83.16	46.94	63.10
# of Events w/ RR/SIRV	527	546	5,610
RR/SIRV Responses	527	546	5,610
RR/SIRV Activities	544	556	5,901

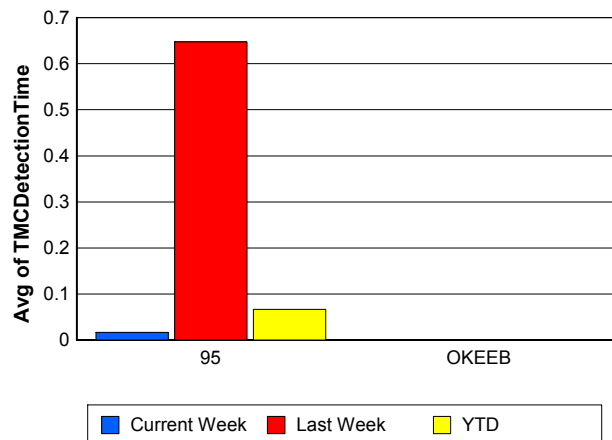
OKEEB

	<u>YTD</u>
Number of Events	1
Number of Incidents	0
TMC Detection (min.)	0.00
TMC Verification (min.)	0.00
TMC Response (min.)	0.00
RR Dispatch Time (min.)	0.00
RR Resp. Time (min.)	0.00
Event Clearance (min.)	18.45
Roadway Clear. (min.)	
Incident Clearance (min.)	
# of Events w/ RR/SIRV	1
RR/SIRV Responses	1
RR/SIRV Activities	1

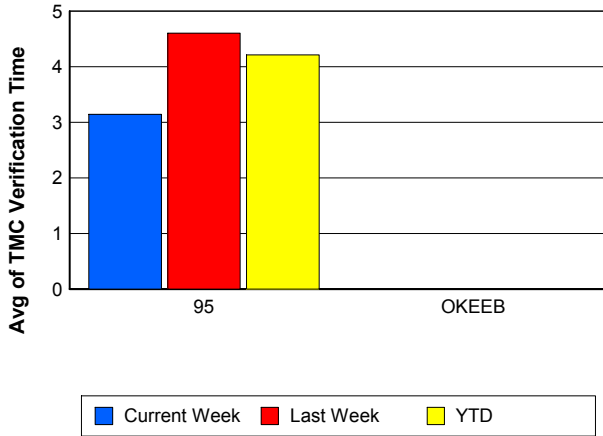
Number of Events / Roadway



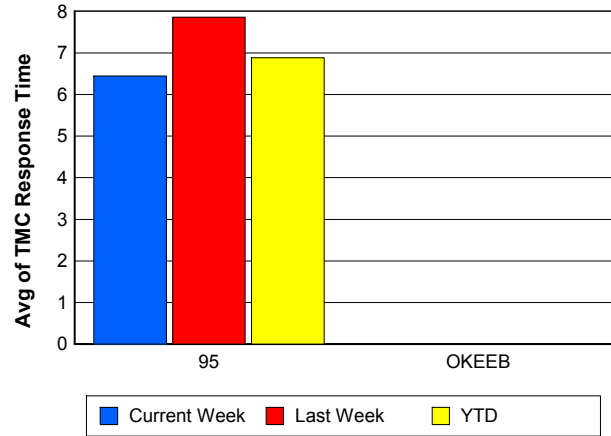
TMC Detection Time



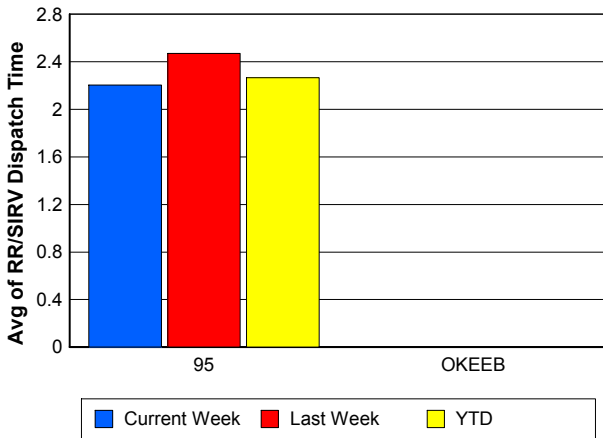
TMC Verification Time



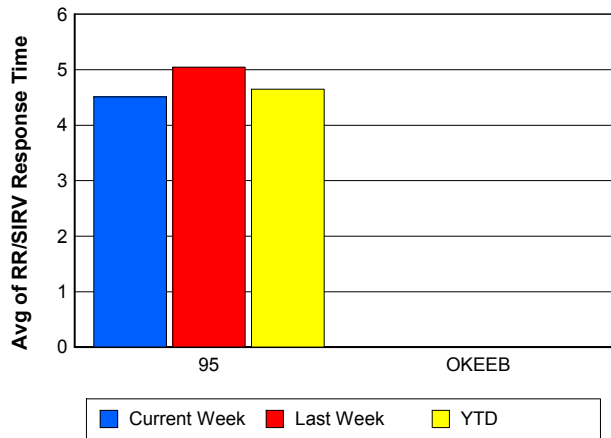
TMC Response Time



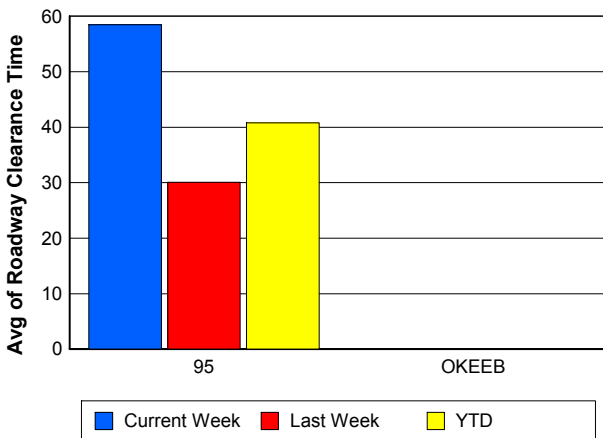
Road Ranger / SIRV Dispatch Time



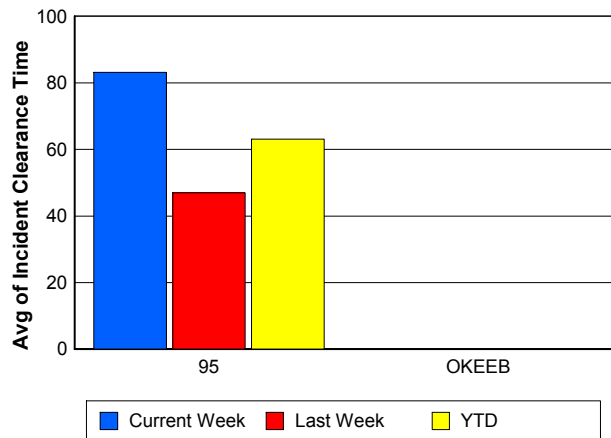
Road Ranger / SIRV Response Time



Roadway Clearance Time (2A)



Incident Clearance Time (3B)



Performance Measures by Event Type

Accident

	<u>Current Week</u>	<u>Last Week</u>	<u>YTD</u>
Number of Events	43	37	473
Number of Incidents	21	13	205
TMC Detection (min.)	0.00	1.01	0.08
TMC Verification (min.)	4.39	14.04	7.48
TMC Response (min.)	7.51	13.72	10.05
RR Dispatch Time (min.)	0.92	2.57	2.14
RR Response Time (min.)	6.60	11.15	7.94
Event Clearance (min.)	62.39	60.73	57.30
Roadway Clearance (min.)	65.17	39.51	44.97
Incident Clearance (min.)	91.53	62.87	71.99
# of Events w/ RR/SIRV	43	36	463
RR/SIRV Assists	43	36	463
RR/SIRV Activities	48	42	537

Debris on Roadway

	<u>Current Week</u>	<u>Last Week</u>	<u>YTD</u>
Number of Events	27	26	333
Number of Incidents	0	0	5
TMC Detection (min.)	0.00	0.00	0.00
TMC Verification (min.)	13.38	8.19	9.82
TMC Response (min.)	13.36	8.62	10.00
RR Dispatch Time (min.)	2.76	5.04	3.13
RR Response Time (min.)	10.77	4.67	6.94
Event Clearance (min.)	19.15	13.17	13.80
Roadway Clearance (min.)			10.01
Incident Clearance (min.)			16.45
# of Events w/ RR/SIRV	27	26	330
RR/SIRV Assists	27	26	330
RR/SIRV Activities	27	26	337

Disabled Vehicle

	<u>Current Week</u>	<u>Last Week</u>	<u>YTD</u>
Number of Events	468	503	4,778
Number of Incidents	3	7	60
TMC Detection (min.)	0.02	0.57	0.06
TMC Verification (min.)	2.66	3.67	3.76
TMC Response (min.)	5.76	7.07	6.12
RR Dispatch Time (min.)	2.25	2.39	2.18
RR Response Time (min.)	3.83	4.39	4.00
Event Clearance (min.)	17.24	17.46	18.00
Roadway Clearance (min.)	11.79	14.39	29.66
Incident Clearance (min.)	24.57	20.31	40.26
# of Events w/ RR/SIRV	431	464	4,557
RR/SIRV Assists	431	464	4,557
RR/SIRV Activities	446	476	4,856

Emergency Vehicles

	<u>YTD</u>
Number of Events	4
Number of Incidents	3
TMC Detection (min.)	0.00
TMC Verification (min.)	0.00
TMC Response (min.)	0.00
RR Dispatch Time (min.)	0.00
RR Response Time (min.)	0.00
Event Clearance (min.)	65.10
Roadway Clearance (min.)	78.74
Incident Clearance (min.)	79.08
# of Events w/ RR/SIRV	2
RR/SIRV Assists	2
RR/SIRV Activities	2

Other

	<u>Current Week</u>	<u>Last Week</u>	<u>YTD</u>
Number of Events	26	22	282
Number of Incidents	0	0	1
TMC Detection (min.)	0.00	2.66	0.21
TMC Verification (min.)	0.00	4.80	0.52
TMC Response (min.)	10.70	23.70	13.55
RR Dispatch Time (min.)	3.55	0.77	3.08
RR Response Time (min.)	6.54	14.39	8.87
Event Clearance (min.)	15.98	24.80	18.36
Roadway Clearance (min.)			8.12
Incident Clearance (min.)			24.77
# of Events w/ RR/SIRV	22	15	203
RR/SIRV Assists	22	15	203
RR/SIRV Activities	19	7	125

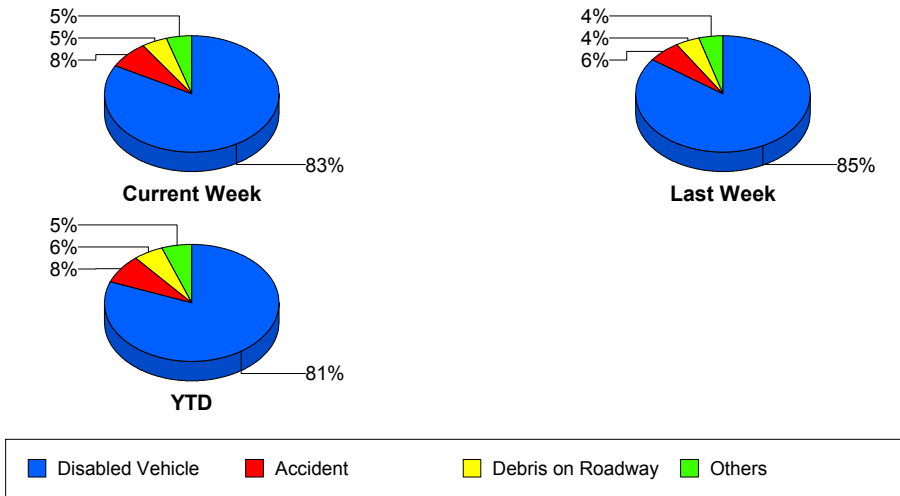
Police Activity

	<u>YTD</u>
Number of Events	24
Number of Incidents	6
TMC Detection (min.)	0.00
TMC Verification (min.)	0.00
TMC Response (min.)	18.69
RR Dispatch Time (min.)	2.64
RR Response Time (min.)	17.32
Event Clearance (min.)	28.76
Roadway Clearance (min.)	28.07
Incident Clearance (min.)	30.24
# of Events w/ RR/SIRV	18
RR/SIRV Assists	18
RR/SIRV Activities	9

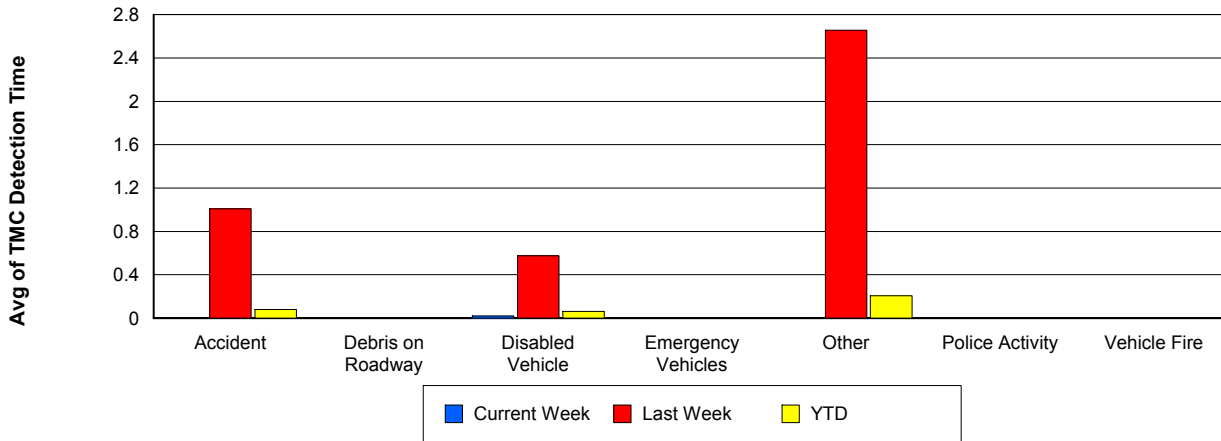
Vehicle Fire

	<u>Last Week</u>	<u>YTD</u>
Number of Events	4	12
Number of Incidents	1	5
TMC Detection (min.)	0.00	0.00
TMC Verification (min.)	5.17	3.94
TMC Response (min.)	5.14	4.35
RR Dispatch Time (min.)	1.68	1.44
RR Response Time (min.)	3.46	2.91
Event Clearance (min.)	22.35	35.61
Roadway Clearance (min.)	16.95	32.58
Incident Clearance (min.)	26.33	56.80
# of Events w/ RR/SIRV	4	11
RR/SIRV Assists	4	11
RR/SIRV Activities	4	11

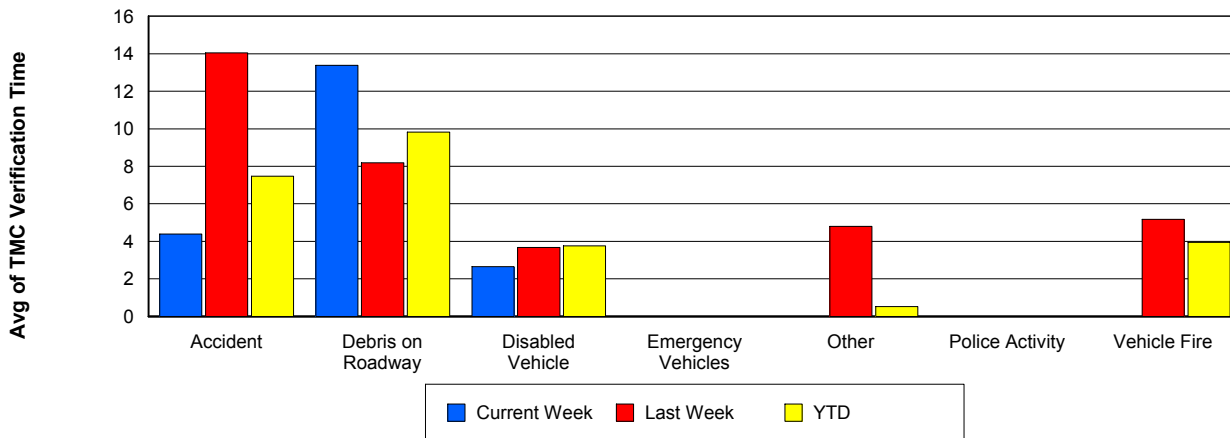
Number of Events / Event Type



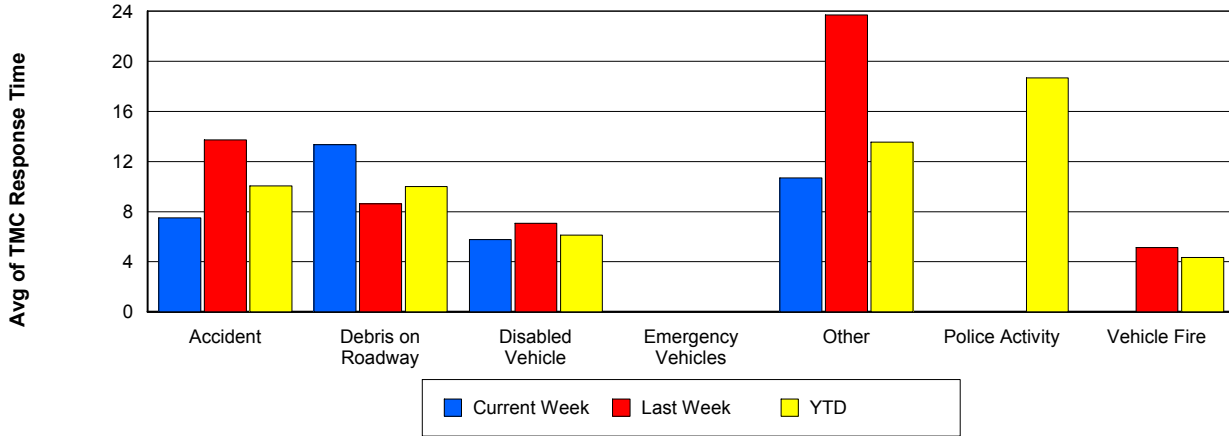
TMC Detection Time



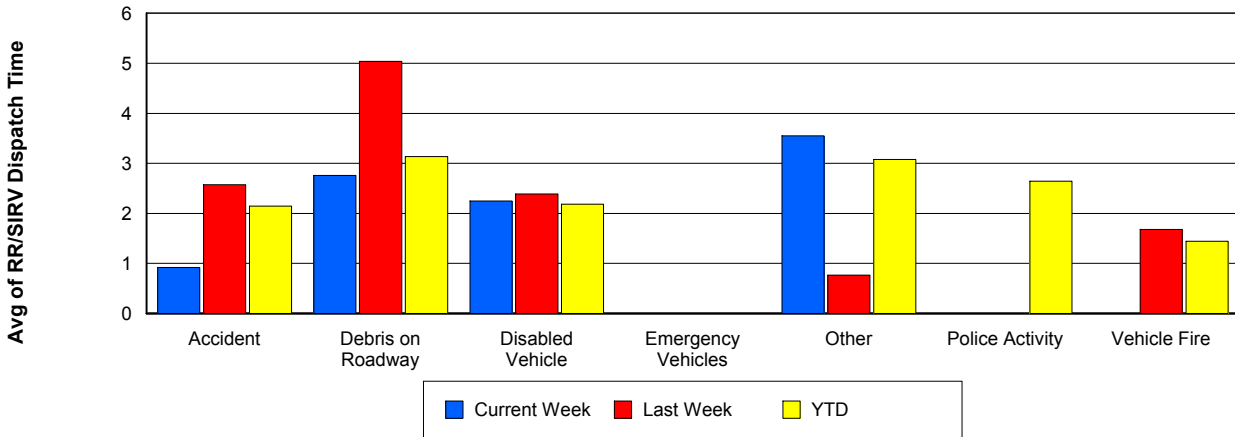
TMC Verification Time



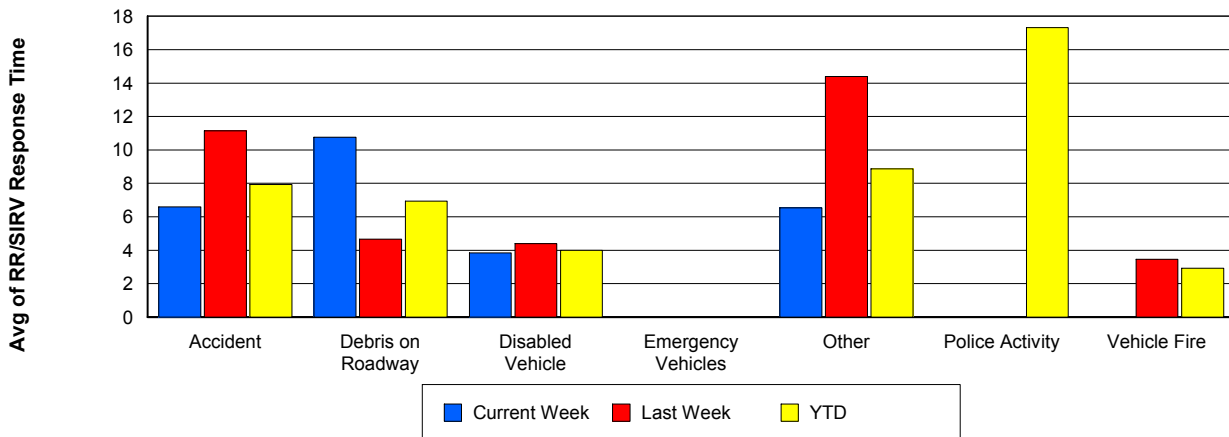
TMC Response Time



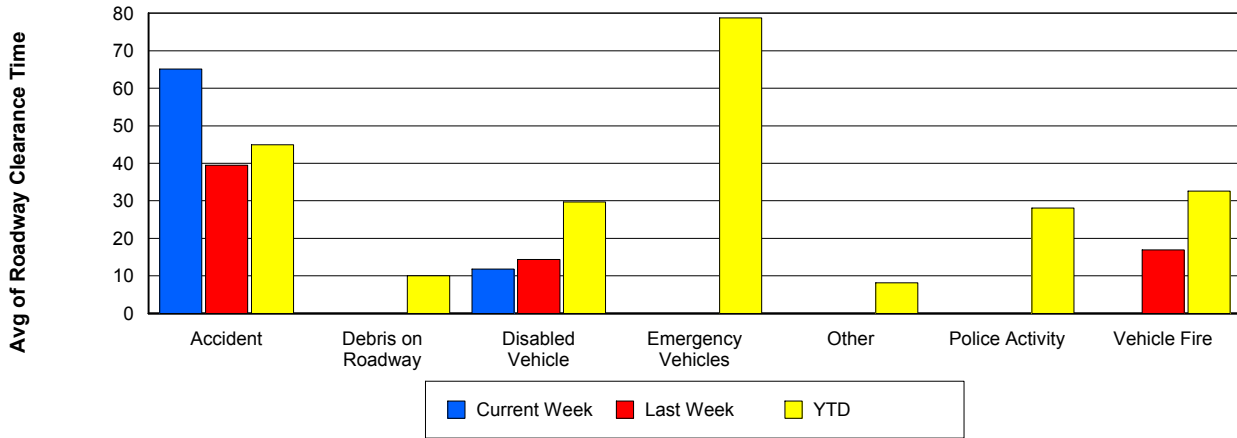
Road Ranger / SIRV Dispatch Time



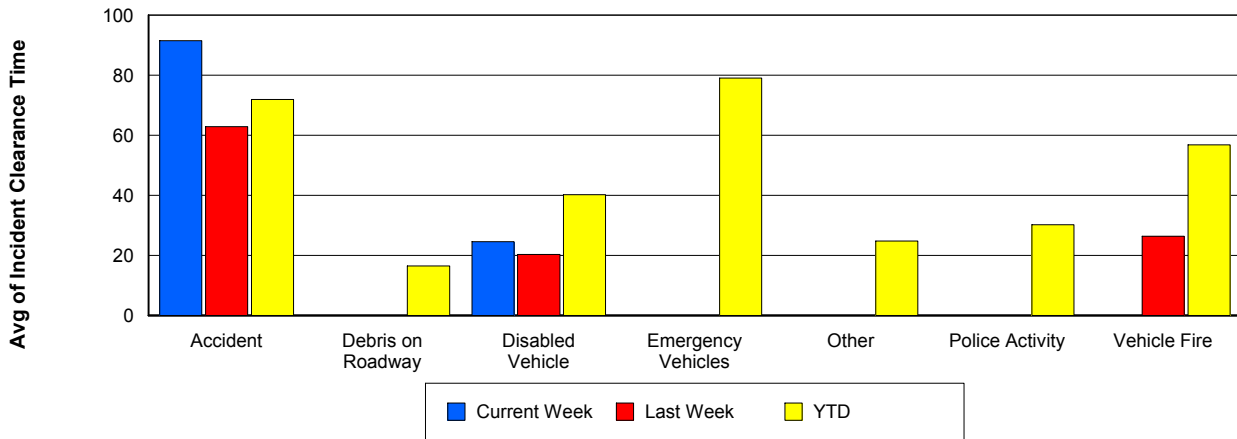
Road Ranger / SIRV Response Time



Roadway Clearance Time (2A)



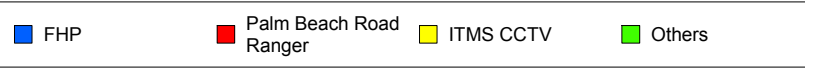
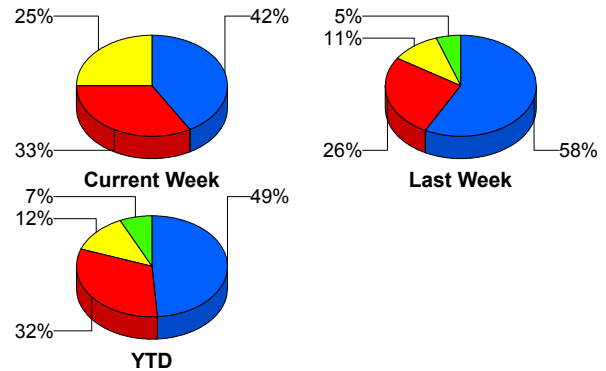
Incident Clearance Time (3B)



Incident Detection Methods

	Current Week	Last Week	YTD
Broward Road Ranger	0	1	4
Broward TMC	0	0	4
District 4	0	0	6
FDOT Maintenance	0	0	1
FHP	10	11	138
ITMS CCTV	6	2	35
Media	0	0	1
Motorist	0	0	4
Palm Beach Road Ran	8	5	90
Total	24	19	283

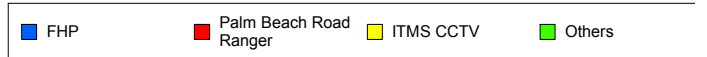
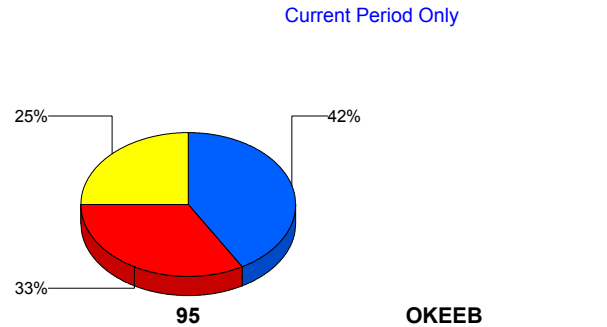
Total Incidents by Detection Method



Incident Detection Methods by Roadway

		Current Week	Last Week	YTD
95	Broward Road Ranger	0	1	4
	Broward TMC	0	0	4
	District 4	0	0	6
	FDOT Maintenance	0	0	1
	FHP	10	11	138
	ITMS CCTV	6	2	35
	Media	0	0	1
	Motorist	0	0	4
	Palm Beach Road Ran	8	5	90
	Total	24	19	283
Total	24	19	283	

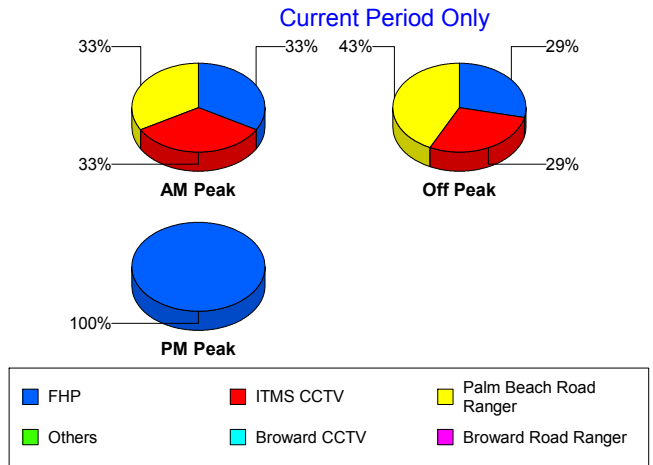
Total Events by Roadway and Detection Method



Incident Detection Methods by Peak Period

		Current Week	Last Week	YTD
AM Peak	Broward Road Ranger	0	1	3
	District 4	0	0	1
	FHP	2	4	33
	ITMS CCTV	2	0	7
	Media	0	0	1
	Palm Beach Road Ran	2	2	25
	Total	6	7	70
Off Peak	Broward Road Ranger	0	0	1
	Broward TMC	0	0	2
	District 4	0	0	3
	FDOT Maintenance	0	0	1
	FHP	4	3	65
	ITMS CCTV	4	2	24
	Motorist	0	0	2
	Palm Beach Road Ran	6	3	45
	Total	14	8	143
PM Peak	Broward TMC	0	0	2
	District 4	0	0	2
	FHP	4	5	41
	ITMS CCTV	0	0	4
	Motorist	0	0	2
	Palm Beach Road Ran	0	0	20
	Total	4	5	71
Total	24	19	283	

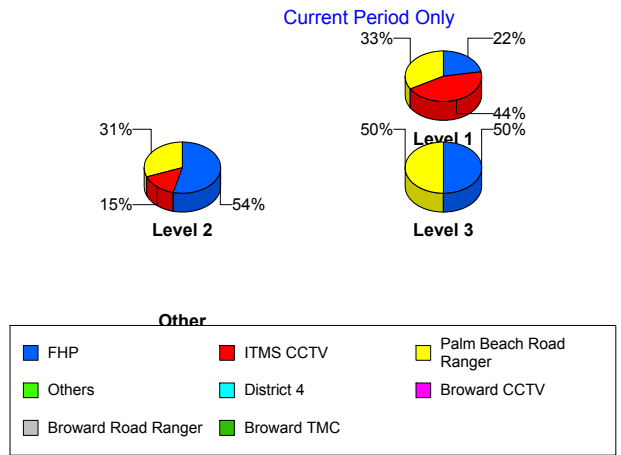
Total Events by Peak Period and Detection Method



Incident Detection Methods by Severity

		Current Week	Last Week	YTD
	FHP	0	1	1
	Total	0	1	1
Level 1	Broward Road Ranger	0	1	4
	Broward TMC	0	0	2
	District 4	0	0	4
	FHP	2	6	50
	ITMS CCTV	4	1	18
	Motorist	0	0	3
	Palm Beach Road Ran	3	4	60
	Total	9	12	141
Level 2	Broward TMC	0	0	2
	District 4	0	0	1
	FDOT Maintenance	0	0	1
	FHP	7	3	73
	ITMS CCTV	2	0	14
	Motorist	0	0	1
	Palm Beach Road Ran	4	0	21
	Total	13	3	113
Level 3	District 4	0	0	1
	FHP	1	2	15
	ITMS CCTV	0	1	3
	Media	0	0	1
	Palm Beach Road Ran	1	1	9
	Total	2	4	29
Total	24	19	283	

Total Events by Severity and Detection Method



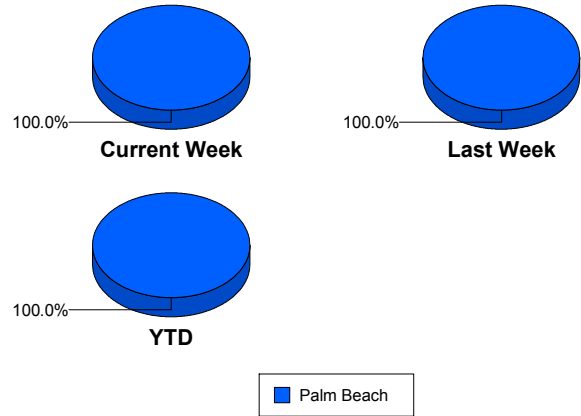
Road Ranger / SIRV Performance Measures

Road Ranger / SIRV Performance By County

Values presented are:
 - Total Events with a RR/SIRV Response
 - Total RR/SIRV Responses,
 - Total Activities Performed

	Current We	Last Week	YTD
Palm Beach	632	639	7,049
	656	664	7,289
	693	694	7,702

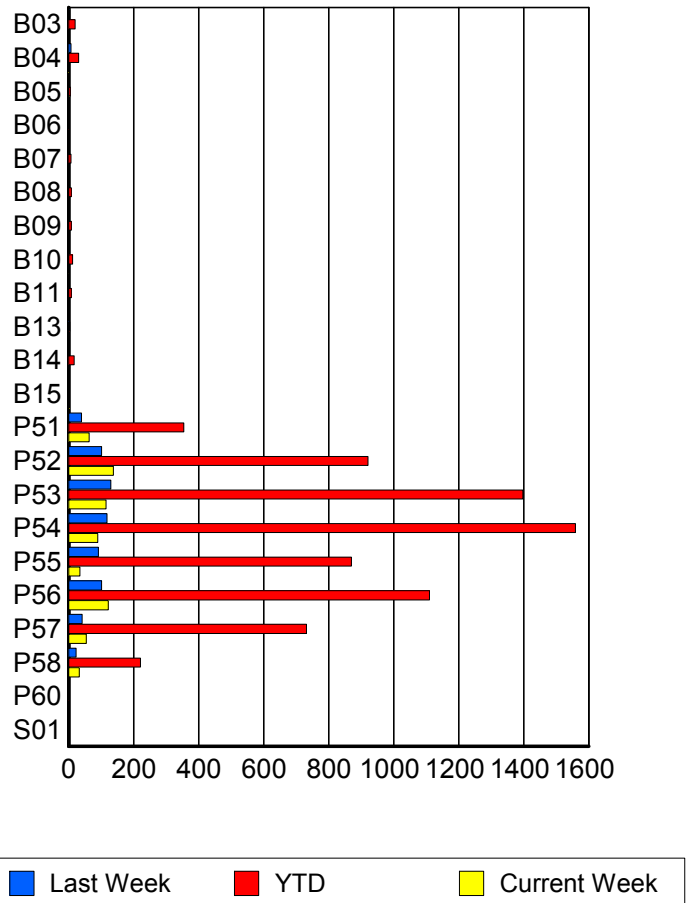
RR/SIRV Responses per County



Road Ranger / SIRV Performance By Truck

	Current We	Last Week	YTD
B03	0	3	20
	0	3	20
	0	3	21
B04	1	6	30
	1	7	31
	1	9	34
B05	2	1	5
	2	1	5
	2	1	5
B06	0	0	1
	0	0	1
	0	0	3
B07	0	0	7
	0	0	7
	0	0	7
B08	0	0	8
	0	0	8
	0	0	8
B09	0	2	8
	0	2	8
	0	2	9
B10	1	2	12
	1	2	12
	1	2	12
B11	0	1	8
	0	1	8
	0	1	8

RR/SIRV Responses per Truck



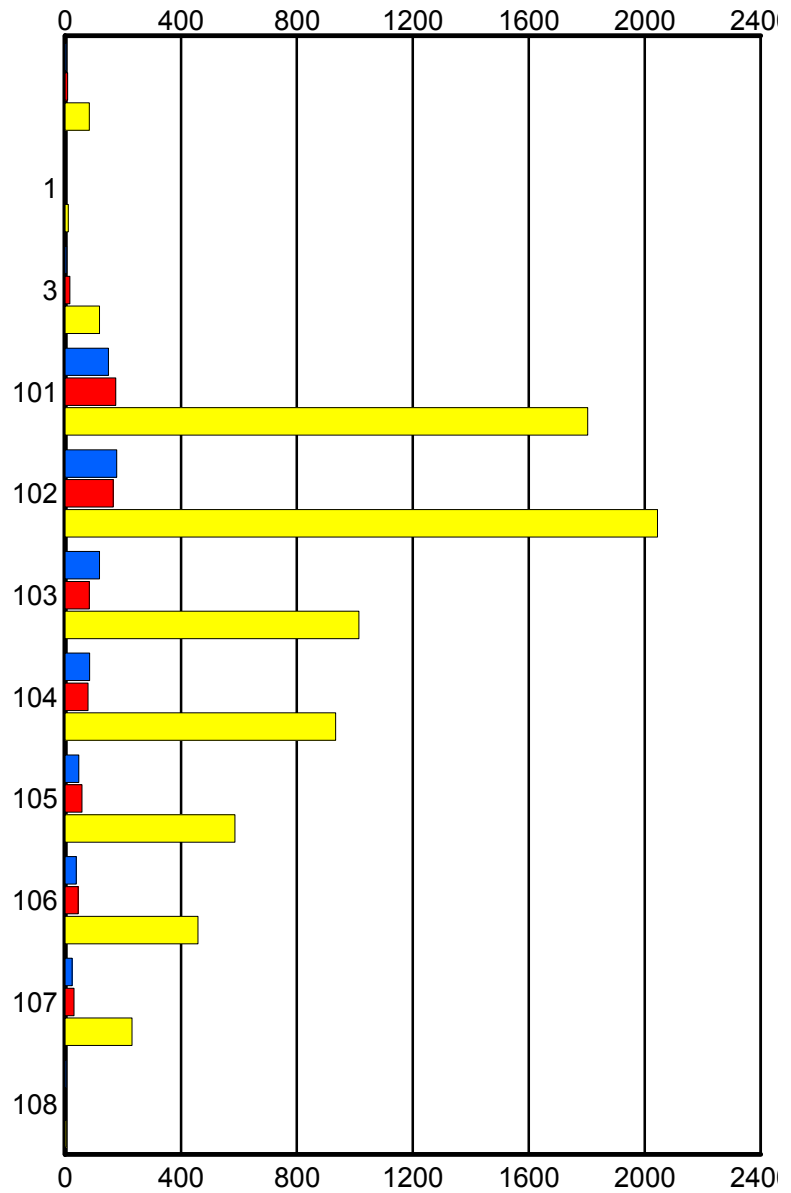
	Current We	Last Week	YTD
B13	0	1	3
	0	1	3
	0	1	3
B14	0	0	17
	0	0	17
	0	0	17
B15	2	0	2
	2	0	2
	2	0	2
P51	63	39	351
	63	40	354
	69	40	371
P52	136	99	909
	138	101	921
	148	107	981
P53	112	129	1,380
	115	130	1,397
	119	137	1,473
P54	87	117	1,535
	90	118	1,559
	99	125	1,650
P55	35	91	861
	35	92	870
	36	97	911
P56	122	99	1,098
	122	101	1,110
	128	102	1,181
P57	54	42	720
	54	42	732
	54	44	766
P58	32	23	218
	33	23	221
	34	23	237
P60	0	0	1
	0	0	1
	0	0	1
S01	0	0	2
	0	0	2
	0	0	2

Road Ranger / SIRV Performance By Beat

	Current We	Last Week	YTD
	4	9	84
	4	9	84
	4	10	92
1	0	0	10
	0	0	11
	0	0	11
3	6	16	117
	6	17	119
	6	19	126
101	145	171	1,767
	150	175	1,803
	160	183	1,897
102	174	162	2,008
	178	166	2,044
	190	172	2,160
103	119	83	1,007
	119	84	1,014
	127	86	1,067
104	85	79	926
	85	79	934
	88	86	998
105	47	58	581
	47	58	586
	49	61	624
106	39	45	454
	39	45	459
	40	46	473
107	24	31	229
	24	31	231
	25	31	250
108	3	0	3
	4	0	4
	4	0	4

Values presented are:
 - Total Events with a RR/SIRV Response
 - Total RR/SIRV Responses,
 - Total Activities Performed

RR/SIRV Responses per Beat



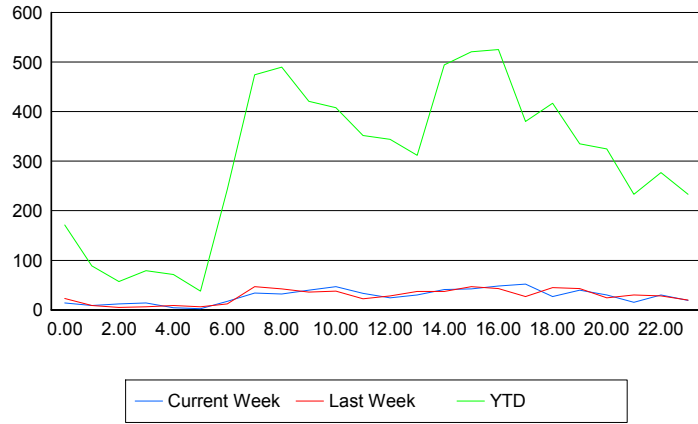
■ Current Week
 ■ Last Week
 ■ YTD

Road Ranger / SIRV Performance By Time of Day

Values presented are:
 - Total Events with a RR/SIRV Response
 - Total RR/SIRV Responses,
 - Total Activities Performed

	Current We	Last Week	YTD
12AM-1AM	13 14 14	22 23 24	165 171 186
1AM-2AM	9 9 9	9 9 9	87 89 91
2AM-3AM	11 12 12	5 5 5	55 57 59
3AM-4AM	11 14 17	6 6 6	76 79 86
4AM-5AM	4 4 4	8 9 9	69 71 75
5AM-6AM	1 2 2	5 6 7	30 38 40
6AM-7AM	17 17 17	12 12 12	230 243 258
7AM-8AM	33 34 36	46 47 49	462 474 501
8AM-9AM	31 32 34	39 42 43	467 490 512
9AM-10AM	38 40 43	35 36 38	409 421 447
10AM-11AM	44 47 47	35 38 39	390 408 428
11AM-12PM	33 33 35	22 22 22	344 352 371
12PM-1PM	23 24 24	28 28 29	328 344 356

Number of Responses / Hour of the Day



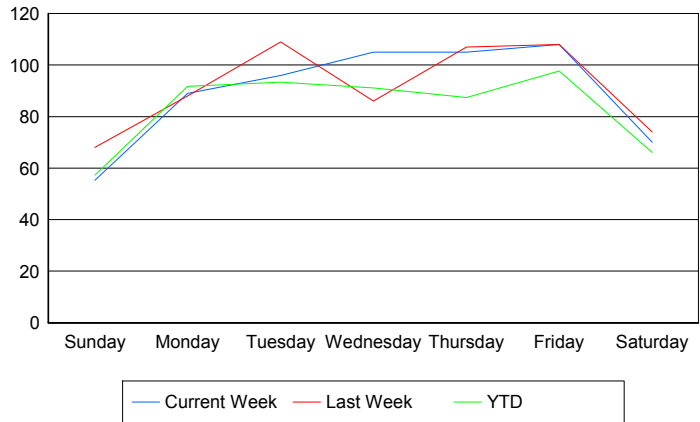
	Current We	Last Week	YTD
1PM-2PM	29 30 31	36 37 38	297 312 328
2PM-3PM	40 41 47	34 37 39	478 494 527
3PM-4PM	41 42 44	46 47 52	512 521 552
4PM-5PM	46 48 50	41 43 47	505 525 559
5PM-6PM	50 52 53	26 27 27	370 380 403
6PM-7PM	26 27 27	43 45 49	408 417 438
7PM-8PM	38 40 43	43 43 46	324 335 352
8PM-9PM	30 30 30	24 24 24	319 325 336
9PM-10PM	15 15 16	28 30 30	223 233 246
10PM-11PM	30 30 33	27 28 29	272 277 295
11PM-12AM	19 19 25	19 20 21	229 233 256

Road Ranger / SIRV Performance By Day of Week

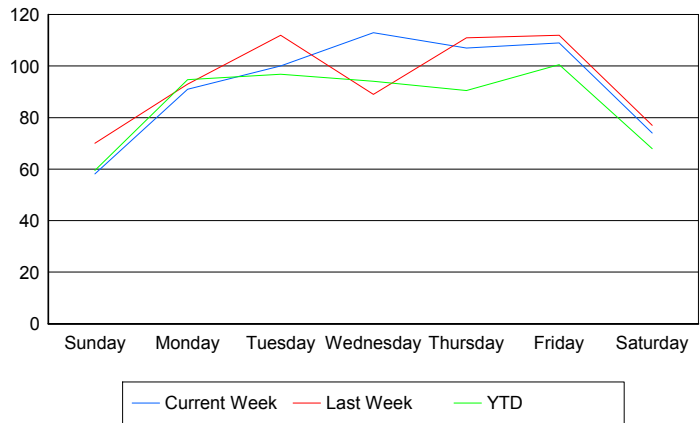
Values presented are:
 - Total Events with a RR/SIRV Response
 - Total RR/SIRV Responses,
 - Total Activities Performed

	Current We	Last Week	YTD
Sunday	59	68	682
	62	70	707
	62	75	744
Monday	89	88	1,070
	91	93	1,104
	98	99	1,173
Tuesday	96	109	1,111
	100	112	1,151
	107	114	1,215
Wednesday	105	86	1,080
	113	89	1,114
	123	92	1,187
Thursday	105	107	1,031
	107	111	1,069
	112	118	1,141
Friday	108	108	1,238
	109	112	1,276
	112	115	1,332
Saturday	70	74	845
	74	77	868
	79	81	910

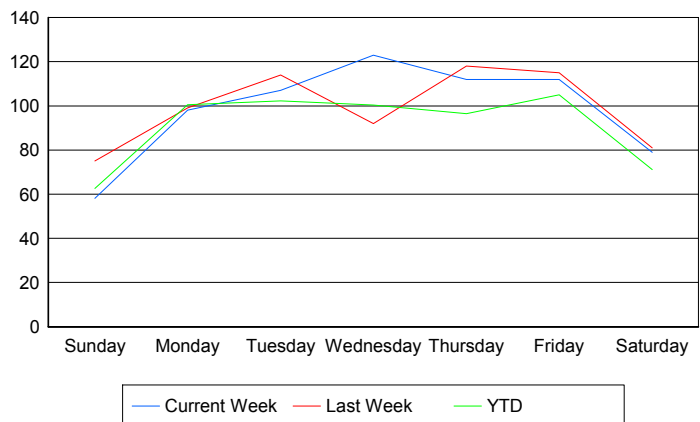
Avg # of events with a RR/SIRV Response per Day of the Week



Avg # of RR/SIRV Responses per Day of the Week



Avg # of RR/SIRV Activities Performed per Day of the Week



Road Ranger / SIRV Responses per Time of Day and Day of Week

