



# Weekly Performance Measures Report Palm Beach County



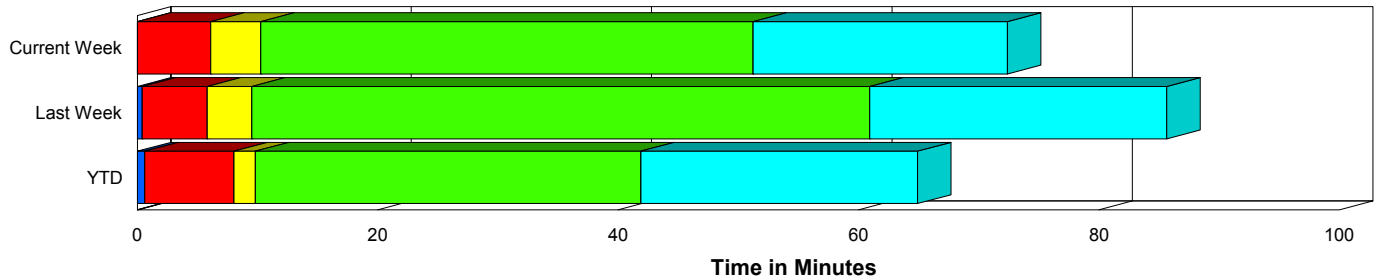
Created on:  
April 09, 2010  
10:07 am

Period From Mar 28, 2010 to Apr 3, 2010

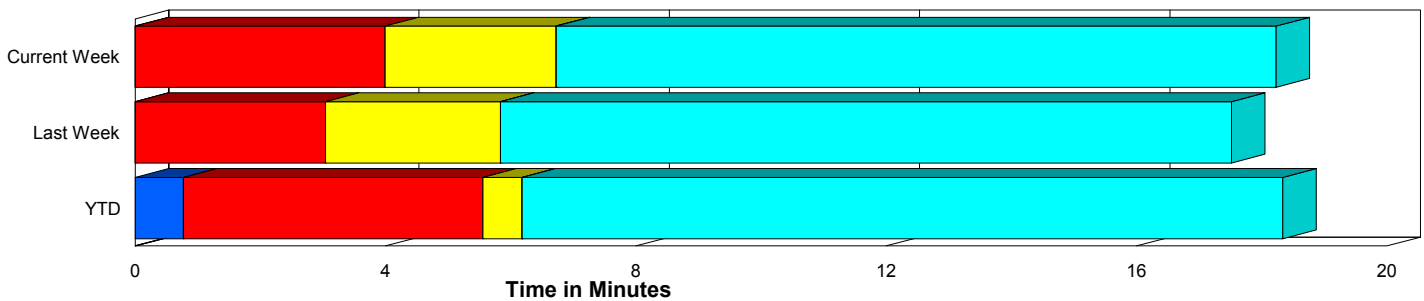
## Performance Measures Summary

	Traffic Events (No Lanes Blocked)			Incidents (Lanes Blocked)		
	<u>This Week</u>	<u>Last Week</u>	<u>YTD</u>	<u>This Week</u>	<u>Last Week</u>	<u>YTD</u>
Number of Events	592	544	6,241	13	24	298
TMC Detection (min.)	0.00	0.00	0.77	0.00	0.40	0.62
TMC Verification (min.)	3.99	3.04	4.79	6.11	5.41	7.43
TMC Response (min.)	7.50	6.32	5.96	10.26	8.93	9.38
RR Dispatch Time (min.)	2.40	2.25	1.49	1.97	1.20	1.81
RR Response Time (min.)	5.16	4.35	4.55	8.29	7.78	7.62
Roadway Clearance (min.)				51.24	58.50	41.83
Event Clearance (min.)	19.00	18.00	18.88	72.38	83.16	64.83
# of Events w/ RR/SIRV	542	503	5,873	13	24	293
RR/SIRV Responses	542	503	5,873	13	24	293
RR/SIRV Activities	573	513	6,113	16	31	378

### Incident Clearance Time-Line



### Traffic Event (Non-Lane Blockage) Time-Line



<span style="color: blue;">■</span> Avg. TMC Detection Time	<span style="color: green;">■</span> Avg. Time from TMC Response to Roadway Clearance*
<span style="color: red;">■</span> Avg. Time from TMC Detection to TMC Verification	<span style="color: cyan;">■</span> Avg. Time from Roadway Clearance to Incident/Event Clearance**
<span style="color: yellow;">■</span> Avg. Time from TMC Verification to TMC Response	

\* Roadway clearance equals all travel lanes open

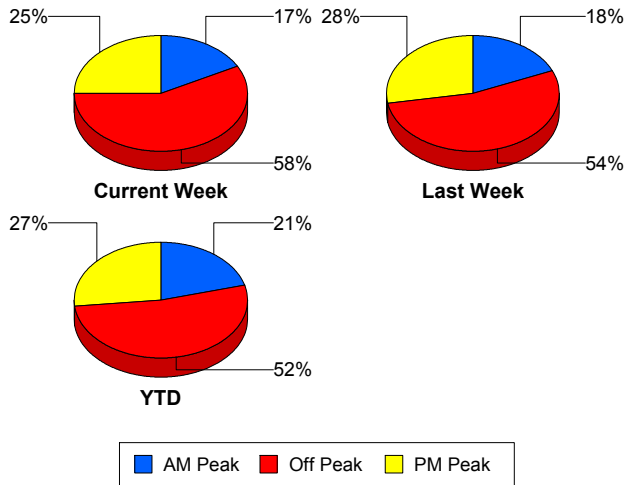
\*\* Incident clearance equals time when last responder has left the scene

## Performance Measures by Peak Period

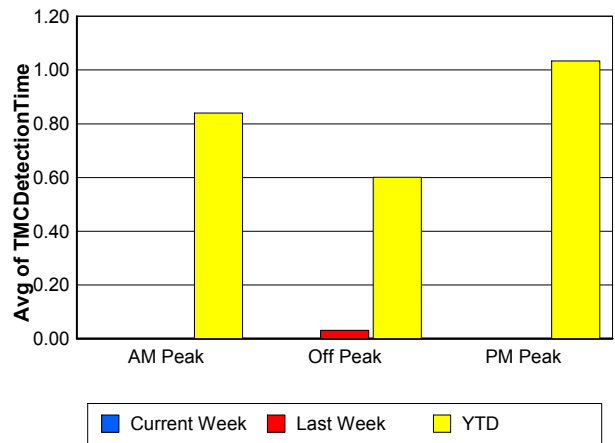
Note: AM peak period is defined as 6am to 10am and PM peak period is defined as 3pm to 7pm.

	AM Peak			Off Peak			PM Peak		
	<u>Current Week</u>	<u>Last Week</u>	<u>YTD</u>	<u>Current Week</u>	<u>Last Week</u>	<u>YTD</u>	<u>Current Week</u>	<u>Last Week</u>	<u>YTD</u>
Number of Events	105	105	1,370	349	306	3,430	151	157	1,739
Number of Incidents	4	6	74	7	14	151	2	4	73
TMC Detection (min.)	0.00	0.00	0.84	0.00	0.03	0.60	0.00	0.00	1.03
TMC Verification (min.)	3.52	1.59	3.64	3.60	3.43	4.93	5.41	3.63	5.87
TMC Response (min.)	7.67	4.53	4.46	7.24	7.11	6.95	8.24	6.37	5.82
RR Dispatch Time (min.)	2.24	1.73	0.46	1.89	2.21	1.90	3.63	2.51	1.57
RR Response Time (min.)	5.37	2.87	4.11	5.47	5.18	5.13	4.61	4.26	4.33
Event Clearance (min.)	22.36	19.17	20.48	19.48	22.00	21.75	20.18	19.37	19.84
Roadway Clearance (min.)	35.61	32.89	37.35	62.50	72.02	48.56	43.06	49.59	32.44
Incident Clearance (min.)	68.28	78.52	71.22	79.23	87.23	66.00	56.63	75.89	55.92
# of Events w/ RR/SIRV	100	96	1,287	315	283	3,227	140	148	1,652
RR/SIRV Responses	100	96	1,287	315	283	3,227	140	148	1,652
RR/SIRV Activities	112	96	1,363	329	300	3,399	148	148	1,729

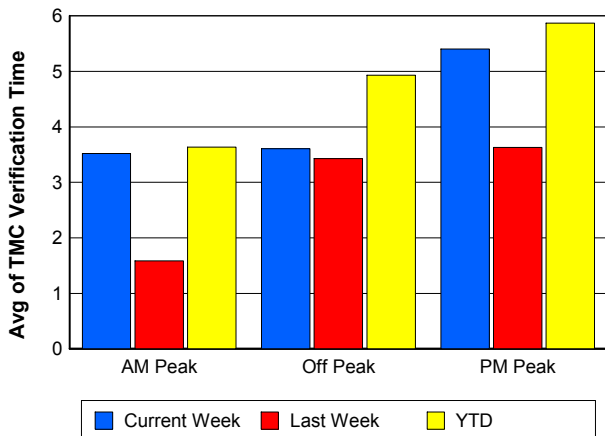
### Number of Events / Peak Period



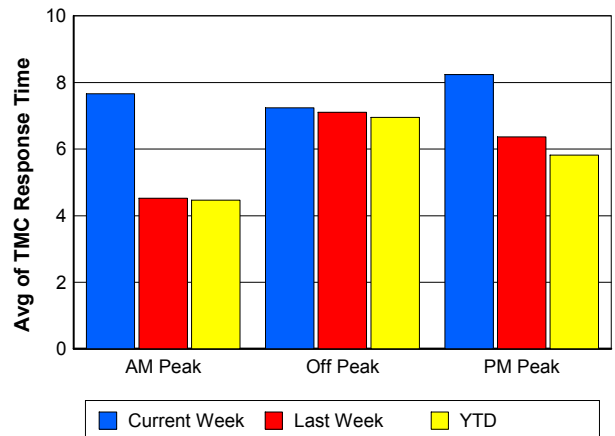
### TMC Detection Time



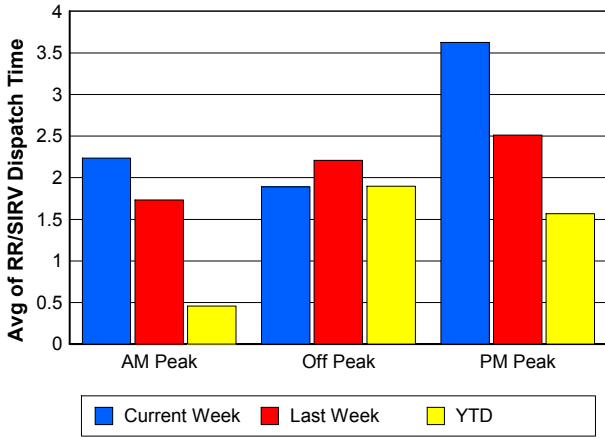
### TMC Verification Time



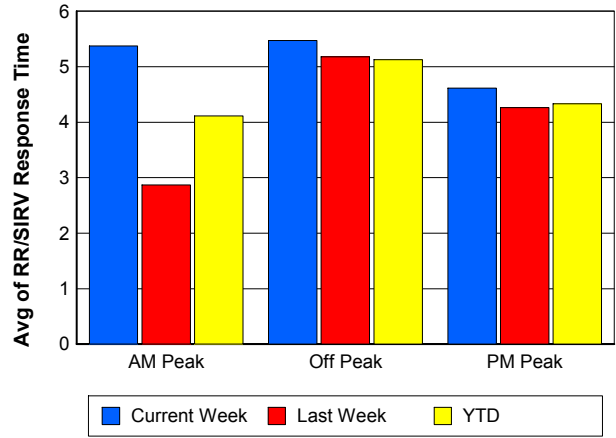
### TMC Response Time



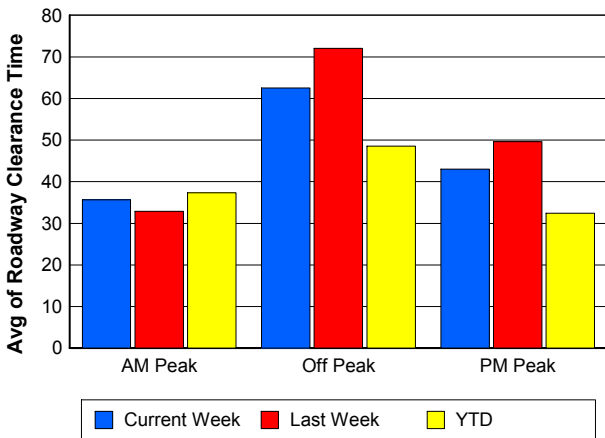
## Road Ranger / SIRV Dispatch Time



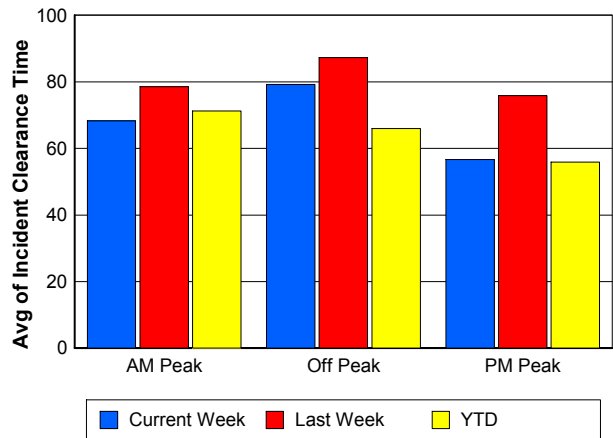
## Road Ranger / SIRV Response Time



## Roadway Clearance Time (2A)



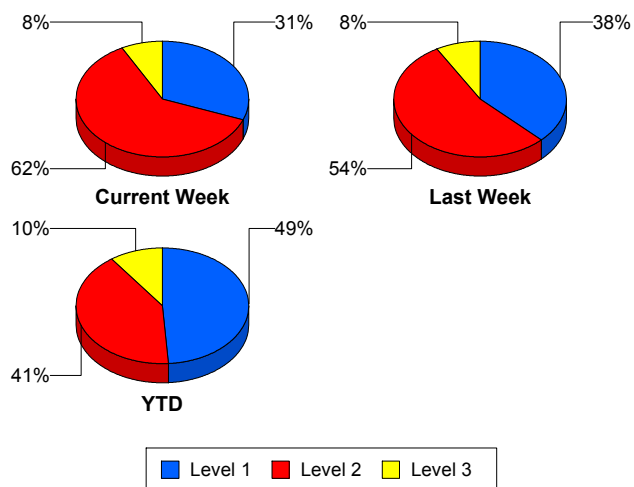
## Incident Clearance Time (3B)



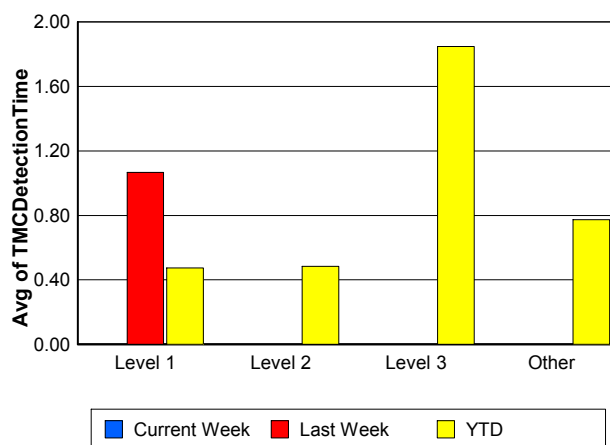
## Performance Measures by Severity

	Level 1			Level 2			Level 3			Other		
	<u>This Week</u>	<u>Last Week</u>	<u>YTD</u>	<u>This Week</u>	<u>Last Week</u>	<u>YTD</u>	<u>This Week</u>	<u>Last Week</u>	<u>YTD</u>	<u>This Week</u>	<u>Last Week</u>	<u>YTD</u>
Number of Events	4	9	146	8	13	122	1	2	30	592	544	6,241
Number of Incidents	4	9	146	8	13	122	1	2	30	0	0	0
TMC Detection (min.)	0.00	1.07	0.47	0.00	0.00	0.48	0.00	0.00	1.85	0.00	0.00	0.77
TMC Verification (min.)	2.18	3.39	3.88	7.49	6.77	11.13	10.87	5.65	9.65	3.99	3.04	4.79
TMC Response (min.)	7.48	6.09	5.46	11.58	11.19	14.11	10.82	5.64	8.52	7.50	6.32	5.96
RR Dispatch Time (min.)	1.93	0.74	0.59	2.16	1.67	3.45	0.57	0.18	0.85	2.40	2.25	1.49
RR Resp. Time (min.)	5.55	5.53	4.89	9.42	9.52	10.77	10.25	5.47	7.67	5.16	4.35	4.55
Event Clearance (min.)	72.27	56.50	46.80	68.37	75.36	71.23	104.97	253.89	126.54	19.00	18.00	18.88
Roadway Clear. (min.)	21.00	13.02	15.33	60.41	60.57	57.05	98.75	249.64	108.87			
Incident Clearance (min.)	72.27	56.50	46.80	68.37	75.36	71.23	104.97	253.89	126.54			
# of Events w/ RR/SIRV	4	9	143	8	13	122	1	2	28	542	503	5,873
RR/SIRV Responses	4	9	143	8	13	122	1	2	28	542	503	5,873
RR/SIRV Activities	7	12	175	8	16	162	1	3	41	573	513	6,113

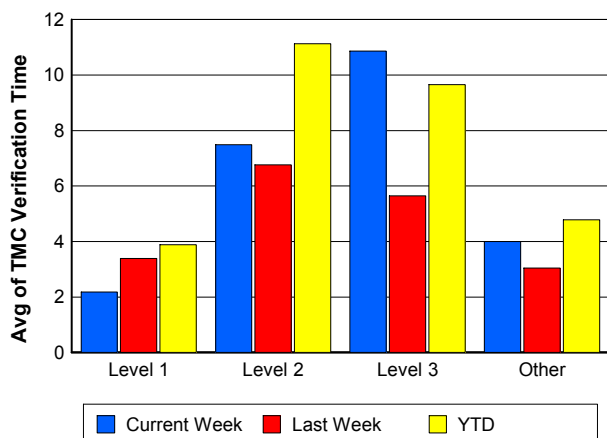
### Number of Events / Severity



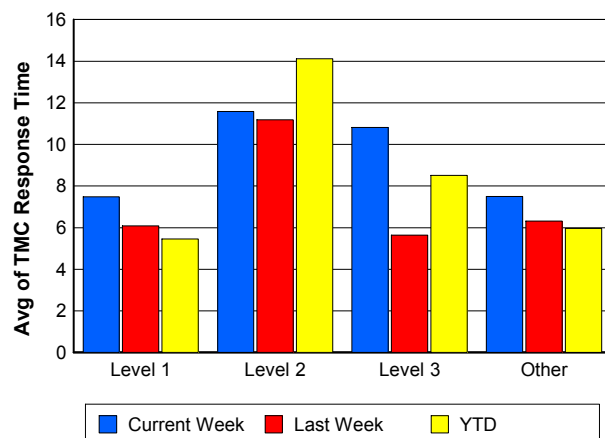
### TMC Detection Time



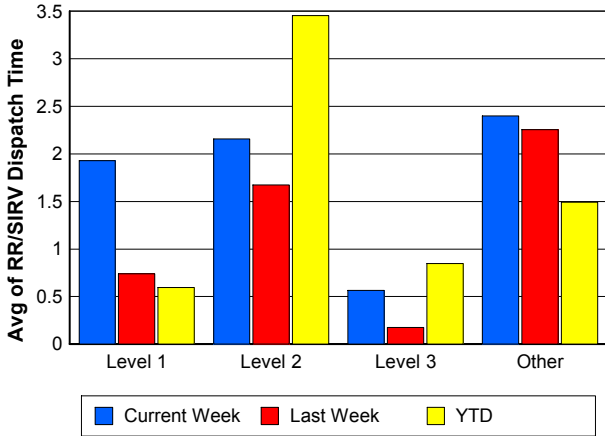
### TMC Verification Time



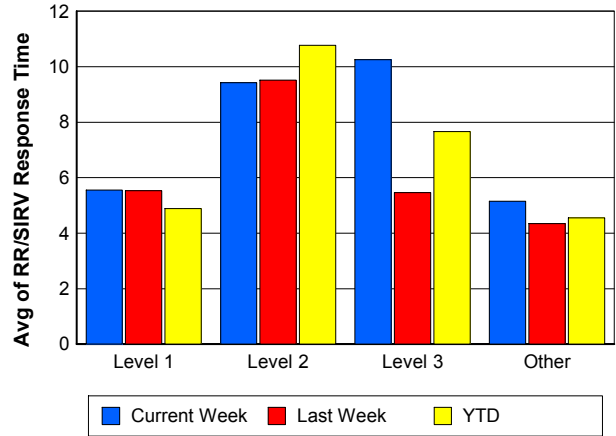
### TMC Response Time



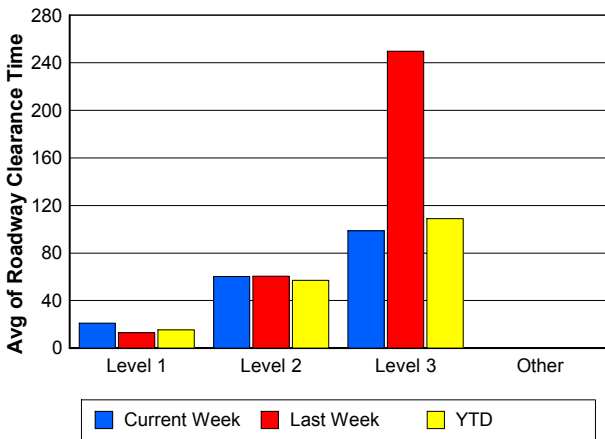
## Road Ranger / SIRV Dispatch Time



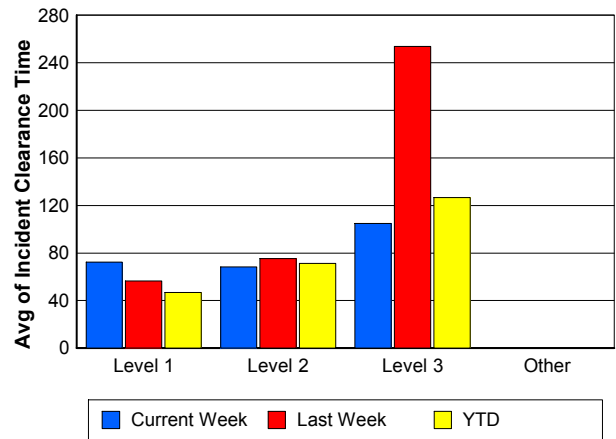
## Road Ranger / SIRV Response Time



## Roadway Clearance Time (2A)



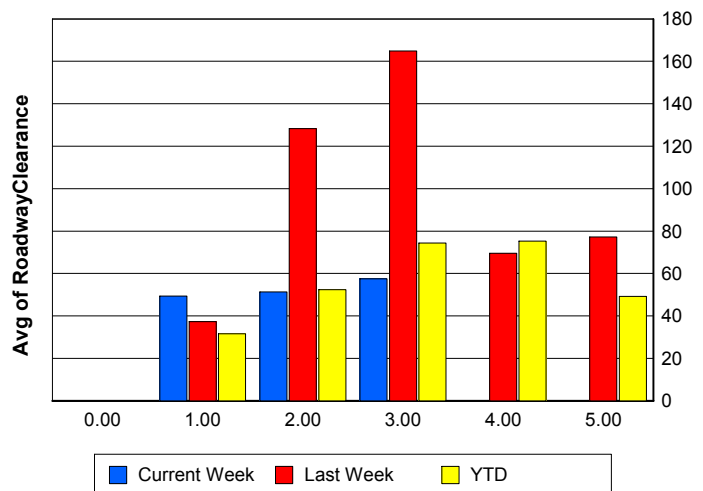
## Incident Clearance Time (3B)



## Roadway Clearance by Maximum Number of Lanes Blocked

	Current Week	Last Week	YTD
0			
1	49.37	37.26	31.61
2	51.34	128.27	52.32
3	57.56	164.90	74.34
4	0.00	69.50	75.33
5	0.00	77.28	49.19

## Roadway Clearance Time (2A)



## Performance Measures by Roadway

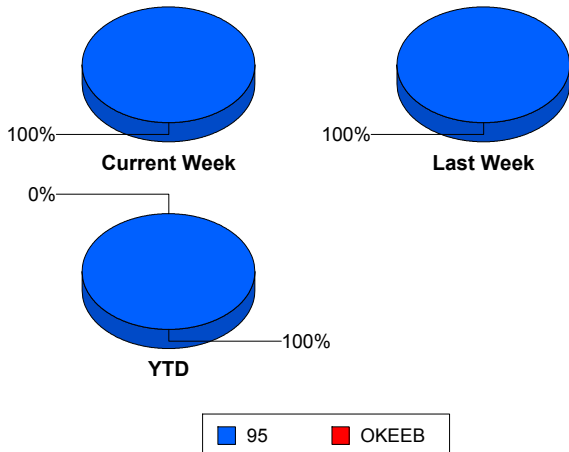
95

	<u>Current Week</u>	<u>Last Week</u>	<u>YTD</u>
Number of Events	605	568	6,538
Number of Incidents	13	24	298
TMC Detection (min.)	0.00	0.02	0.77
TMC Verification (min.)	4.04	3.14	4.91
TMC Response (min.)	7.57	6.44	6.13
RR Dispatch Time (min.)	2.39	2.21	1.51
RR Resp. Time (min.)	5.23	4.51	4.70
Event Clearance (min.)	20.15	20.75	20.98
Roadway Clear. (min.)	51.24	58.50	41.83
Incident Clearance (min.)	72.38	83.16	64.83
# of Events w/ RR/SIRV	555	527	6,165
RR/SIRV Responses	555	527	6,165
RR/SIRV Activities	589	544	6,490

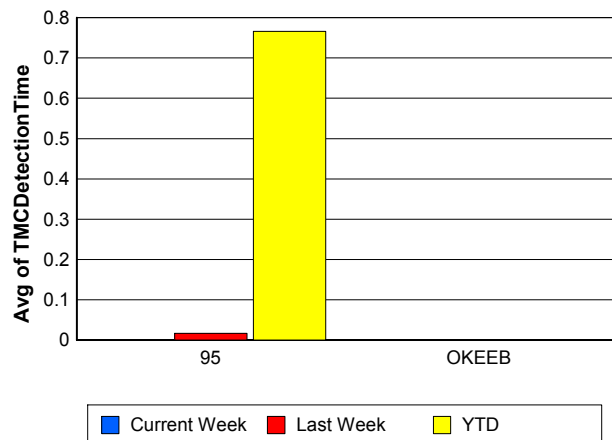
OKEEB

	<u>YTD</u>
Number of Events	1
Number of Incidents	0
TMC Detection (min.)	0.00
TMC Verification (min.)	0.00
TMC Response (min.)	0.00
RR Dispatch Time (min.)	0.00
RR Resp. Time (min.)	0.00
Event Clearance (min.)	18.45
Roadway Clear. (min.)	
Incident Clearance (min.)	
# of Events w/ RR/SIRV	1
RR/SIRV Responses	1
RR/SIRV Activities	1

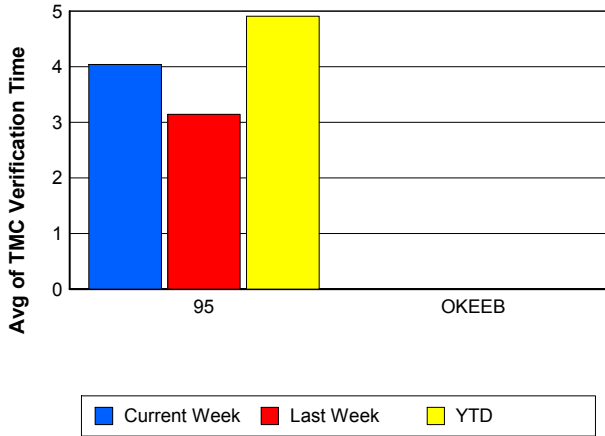
### Number of Events / Roadway



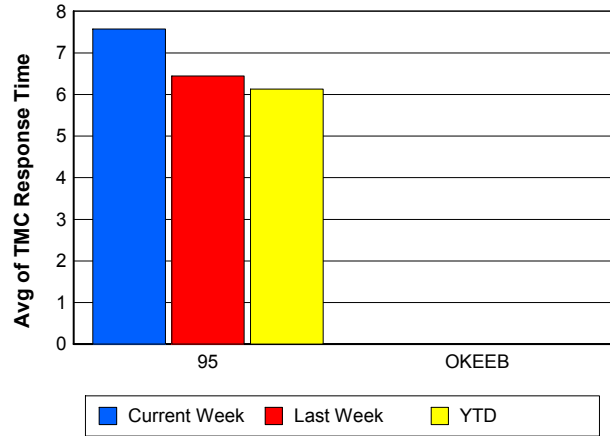
### TMC Detection Time



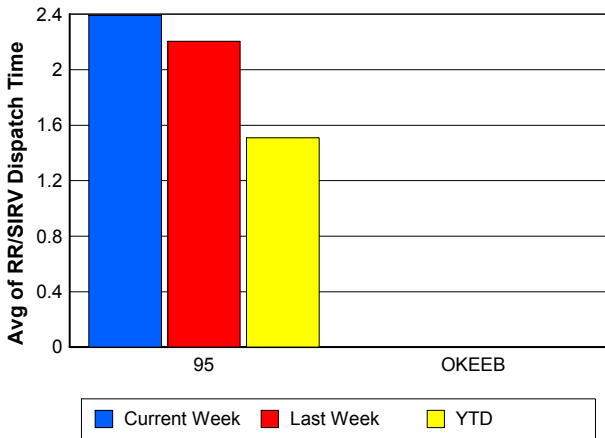
### TMC Verification Time



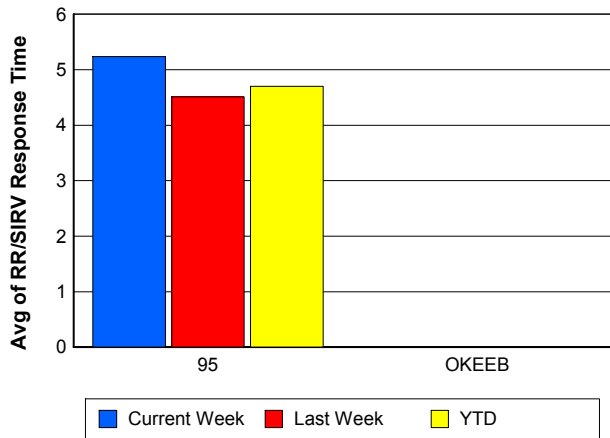
### TMC Response Time



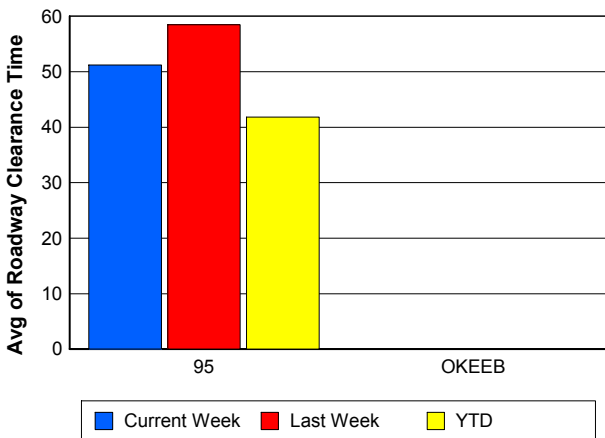
### Road Ranger / SIRV Dispatch Time



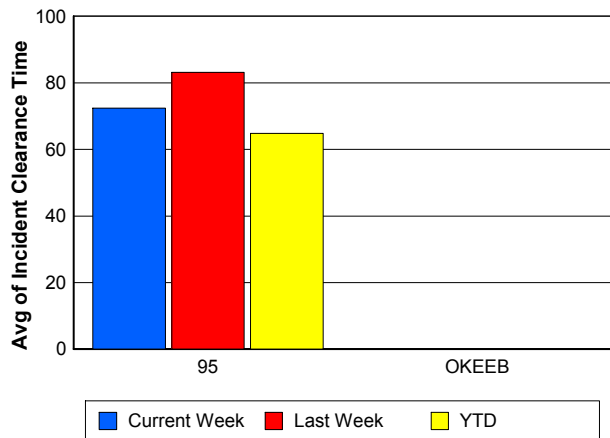
### Road Ranger / SIRV Response Time



### Roadway Clearance Time (2A)



### Incident Clearance Time (3B)



## Performance Measures by Event Type

### Accident

	<u>Current Week</u>	<u>Last Week</u>	<u>YTD</u>
Number of Events	27	43	500
Number of Incidents	11	21	216
TMC Detection (min.)	0.00	0.00	0.85
TMC Verification (min.)	8.34	4.39	8.30
TMC Response (min.)	9.06	7.51	9.12
RR Dispatch Time (min.)	1.81	0.92	1.27
RR Response Time (min.)	7.25	6.60	7.90
Event Clearance (min.)	52.51	62.39	57.63
Roadway Clearance (min.)	49.28	65.17	46.00
Incident Clearance (min.)	73.30	91.53	73.88
# of Events w/ RR/SIRV	27	43	490
RR/SIRV Assists	27	43	490
RR/SIRV Activities	32	48	569

### Debris on Roadway

	<u>Current Week</u>	<u>Last Week</u>	<u>YTD</u>
Number of Events	33	27	366
Number of Incidents	0	0	5
TMC Detection (min.)	0.00	0.00	0.66
TMC Verification (min.)	12.46	13.38	10.73
TMC Response (min.)	12.44	13.36	9.56
RR Dispatch Time (min.)	4.51	2.76	2.60
RR Response Time (min.)	7.93	10.77	7.03
Event Clearance (min.)	15.29	19.15	13.93
Roadway Clearance (min.)			10.01
Incident Clearance (min.)			16.45
# of Events w/ RR/SIRV	33	27	363
RR/SIRV Assists	33	27	363
RR/SIRV Activities	34	27	371

### Disabled Vehicle

	<u>Current Week</u>	<u>Last Week</u>	<u>YTD</u>
Number of Events	524	468	5,302
Number of Incidents	0	3	60
TMC Detection (min.)	0.00	0.02	0.81
TMC Verification (min.)	3.37	2.66	4.48
TMC Response (min.)	6.75	5.76	5.33
RR Dispatch Time (min.)	2.29	2.25	1.38
RR Response Time (min.)	4.54	3.83	4.05
Event Clearance (min.)	18.40	17.24	18.03
Roadway Clearance (min.)		11.79	29.66
Incident Clearance (min.)		24.57	40.26
# of Events w/ RR/SIRV	477	431	5,034
RR/SIRV Assists	477	431	5,034
RR/SIRV Activities	505	446	5,361

## Emergency Vehicles

	<u>Current Week</u>	<u>YTD</u>
Number of Events	1	5
Number of Incidents	1	4
TMC Detection (min.)	0.00	0.00
TMC Verification (min.)	27.95	5.59
TMC Response (min.)	27.92	9.31
RR Dispatch Time (min.)	0.53	0.18
RR Response Time (min.)	27.38	9.13
Event Clearance (min.)	95.43	71.17
Roadway Clearance (min.)	91.58	81.95
Incident Clearance (min.)	95.43	83.17
# of Events w/ RR/SIRV	1	3
RR/SIRV Assists	1	3
RR/SIRV Activities	1	3

## Other

	<u>Current Week</u>	<u>Last Week</u>	<u>YTD</u>
Number of Events	15	26	297
Number of Incidents	0	0	1
TMC Detection (min.)	0.00	0.00	0.20
TMC Verification (min.)	0.65	0.00	0.53
TMC Response (min.)	20.74	10.70	14.13
RR Dispatch Time (min.)	2.62	3.55	3.05
RR Response Time (min.)	17.66	6.54	9.58
Event Clearance (min.)	28.47	15.98	18.87
Roadway Clearance (min.)			8.12
Incident Clearance (min.)			24.77
# of Events w/ RR/SIRV	13	22	216
RR/SIRV Assists	13	22	216
RR/SIRV Activities	11	19	136

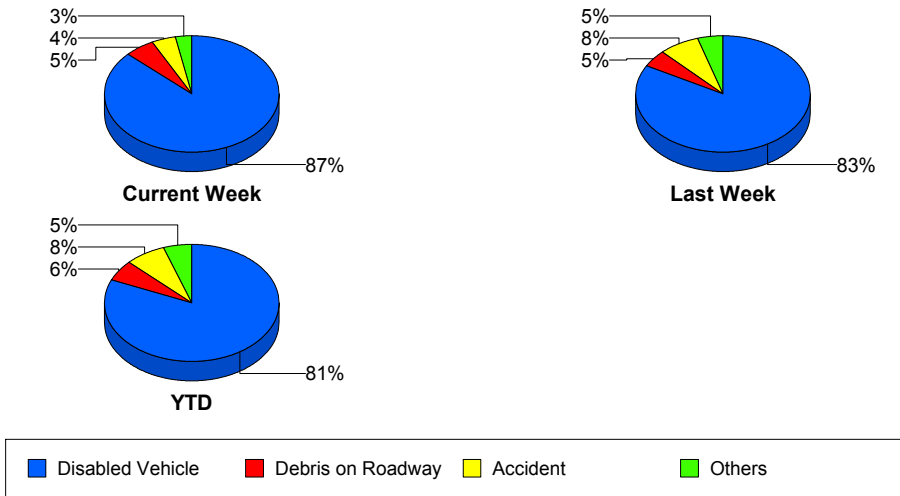
## Police Activity

	<u>Current Week</u>	<u>YTD</u>
Number of Events	2	26
Number of Incidents	1	7
TMC Detection (min.)	0.00	0.00
TMC Verification (min.)	0.00	0.00
TMC Response (min.)	0.00	16.82
RR Dispatch Time (min.)	0.00	2.50
RR Response Time (min.)	0.00	15.59
Event Clearance (min.)	20.59	28.13
Roadway Clearance (min.)	32.37	28.69
Incident Clearance (min.)	39.25	31.52
# of Events w/ RR/SIRV	1	19
RR/SIRV Assists	1	19
RR/SIRV Activities	1	10

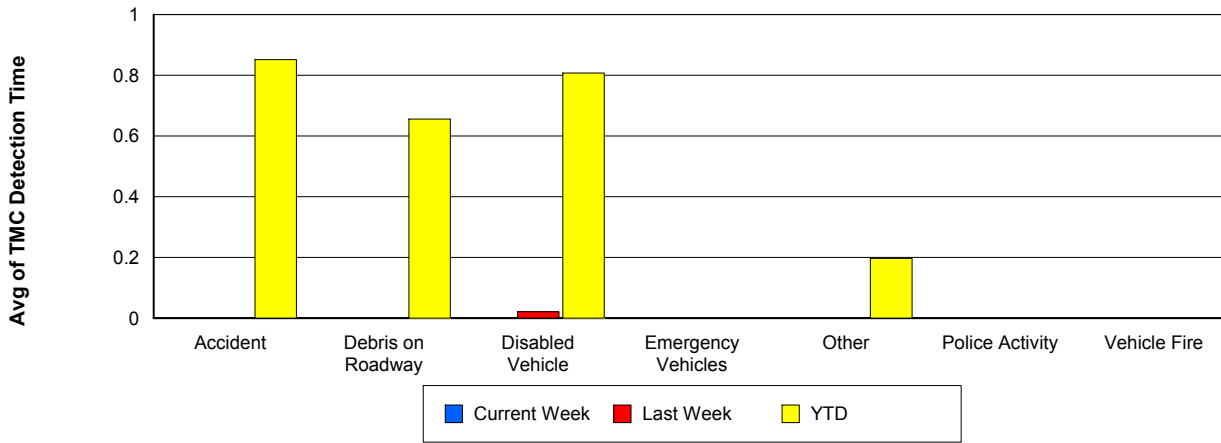
## Vehicle Fire

	<u>YTD</u>
Number of Events	12
Number of Incidents	5
TMC Detection (min.)	0.00
TMC Verification (min.)	3.94
TMC Response (min.)	4.35
RR Dispatch Time (min.)	1.44
RR Response Time (min.)	2.91
Event Clearance (min.)	35.61
Roadway Clearance (min.)	32.58
Incident Clearance (min.)	56.80
# of Events w/ RR/SIRV	11
RR/SIRV Assists	11
RR/SIRV Activities	11

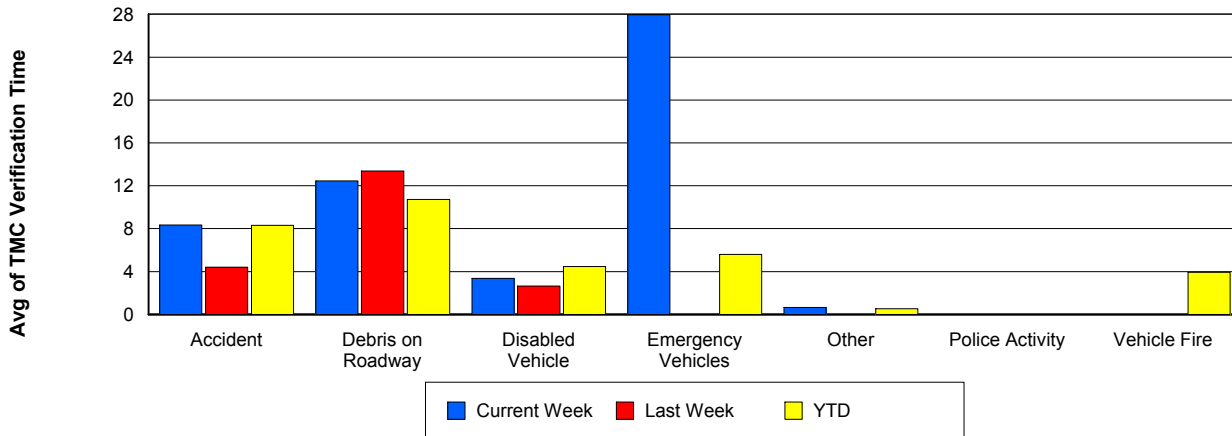
## Number of Events / Event Type



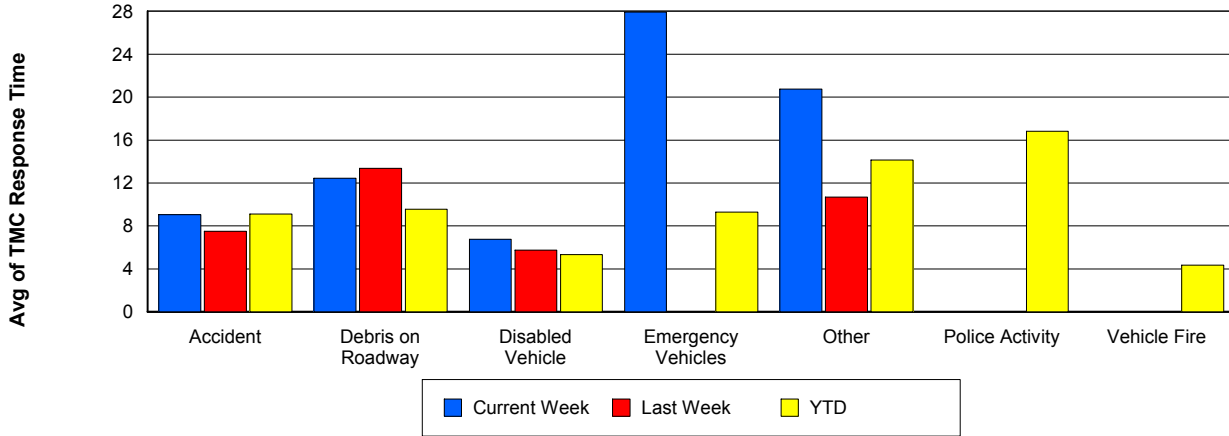
## TMC Detection Time



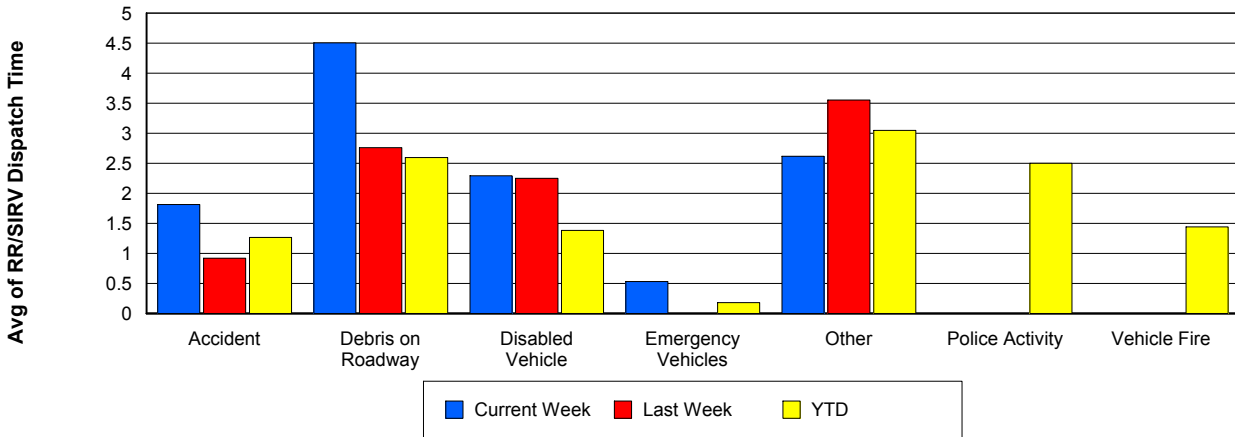
## TMC Verification Time



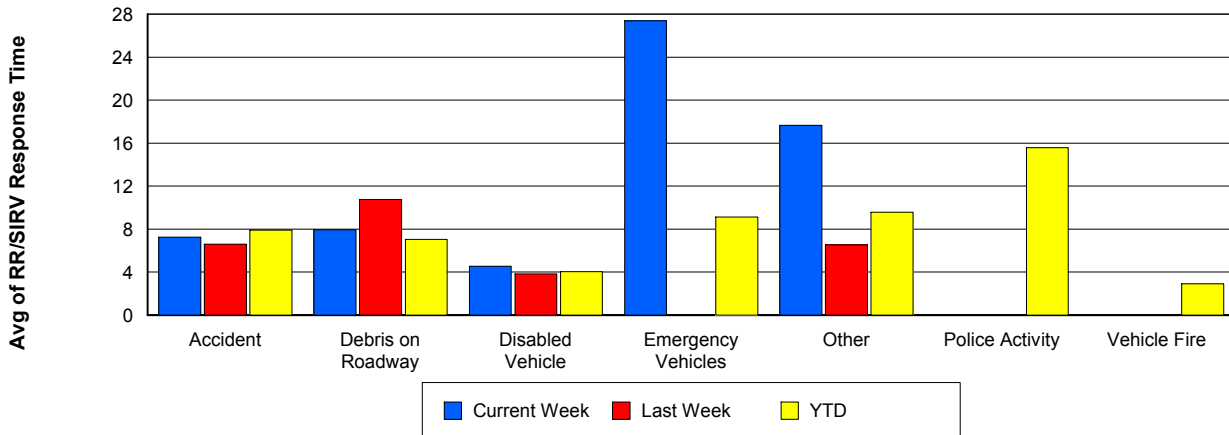
## TMC Response Time



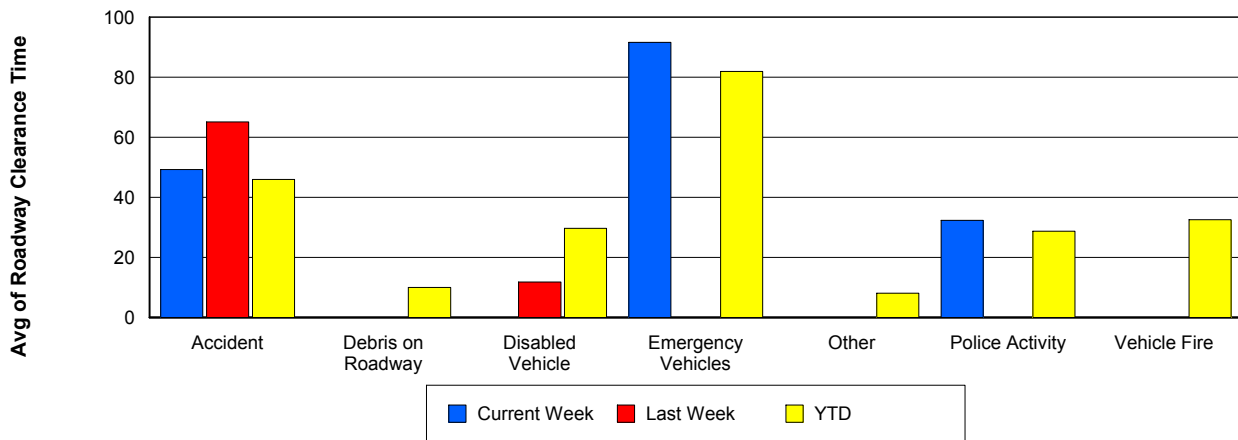
## Road Ranger / SIRV Dispatch Time



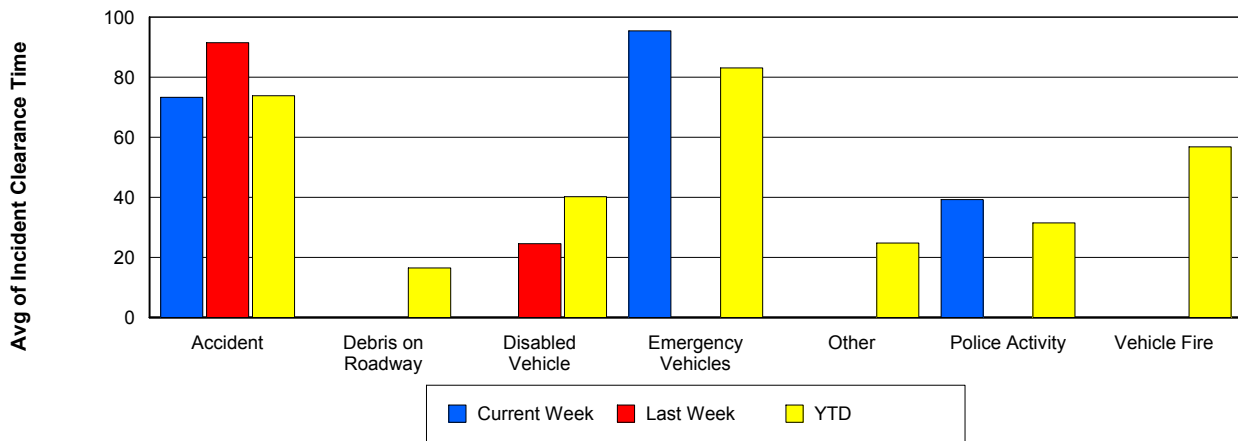
## Road Ranger / SIRV Response Time



## Roadway Clearance Time (2A)



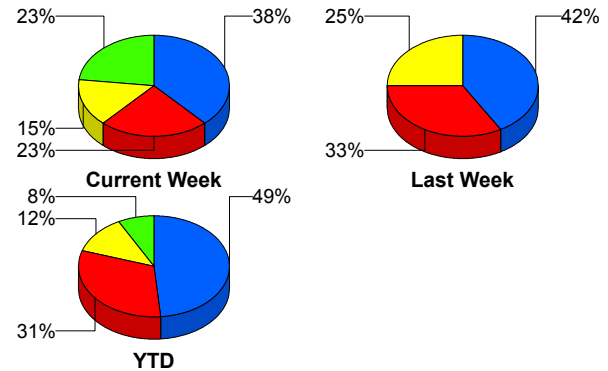
## Incident Clearance Time (3B)



## Incident Detection Methods

	Current Week	Last Week	YTD
Broward Road Ranger	1	0	5
Broward TMC	1	0	5
District 4	0	0	6
FDOT Maintenance	0	0	1
FHP	5	10	145
ITMS CCTV	2	6	37
Media	0	0	1
Motorist	1	0	5
Palm Beach Road Ran	3	8	93
<b>Total</b>	<b>13</b>	<b>24</b>	<b>298</b>

### Total Incidents by Detection Method

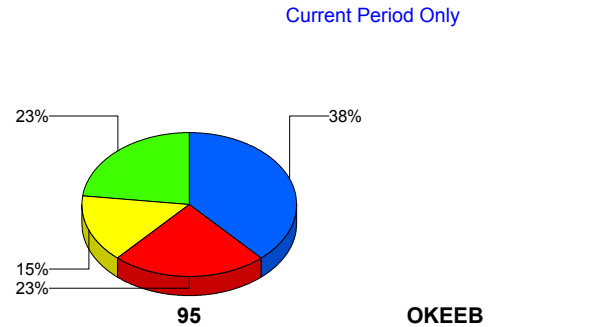


■ FHP     
 ■ Palm Beach Road Ranger     
 ■ ITMS CCTV     
 ■ Others

## Incident Detection Methods by Roadway

		Current Week	Last Week	YTD
95	Broward Road Ranger	1	0	5
	Broward TMC	1	0	5
	District 4	0	0	6
	FDOT Maintenance	0	0	1
	FHP	5	10	145
	ITMS CCTV	2	6	37
	Media	0	0	1
	Motorist	1	0	5
	Palm Beach Road Ran	3	8	93
	<b>Total</b>	<b>13</b>	<b>24</b>	<b>298</b>
<b>Total</b>	<b>13</b>	<b>24</b>	<b>298</b>	

### Total Events by Roadway and Detection Method

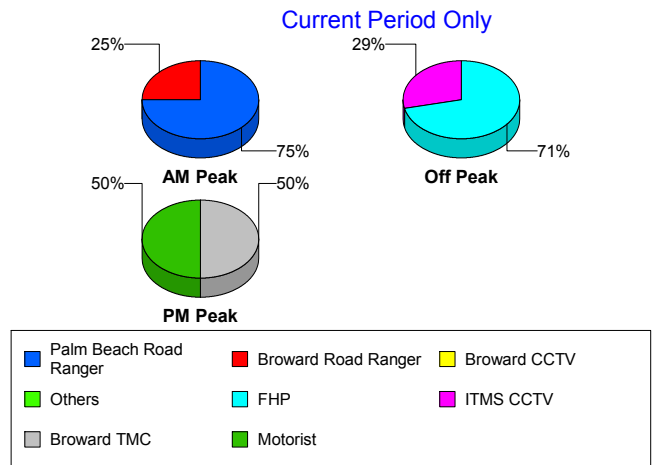


■ FHP     
 ■ Palm Beach Road Ranger     
 ■ ITMS CCTV     
 ■ Others

## Incident Detection Methods by Peak Period

		Current Week	Last Week	YTD
AM Peak	Broward Road Ranger	1	0	4
	District 4	0	0	1
	FHP	0	2	33
	ITMS CCTV	0	2	7
	Media	0	0	1
	Palm Beach Road Ran	3	2	28
	<b>Total</b>	<b>4</b>	<b>6</b>	<b>74</b>
Off Peak	Broward Road Ranger	0	0	1
	Broward TMC	0	0	2
	District 4	0	0	3
	FDOT Maintenance	0	0	1
	FHP	5	4	71
	ITMS CCTV	2	4	26
	Motorist	0	0	2
	Palm Beach Road Ran	0	6	45
	<b>Total</b>	<b>7</b>	<b>14</b>	<b>151</b>
PM Peak	Broward TMC	1	0	3
	District 4	0	0	2
	FHP	0	4	41
	ITMS CCTV	0	0	4
	Motorist	1	0	3
	Palm Beach Road Ran	0	0	20
	<b>Total</b>	<b>2</b>	<b>4</b>	<b>73</b>
<b>Total</b>	<b>13</b>	<b>24</b>	<b>298</b>	

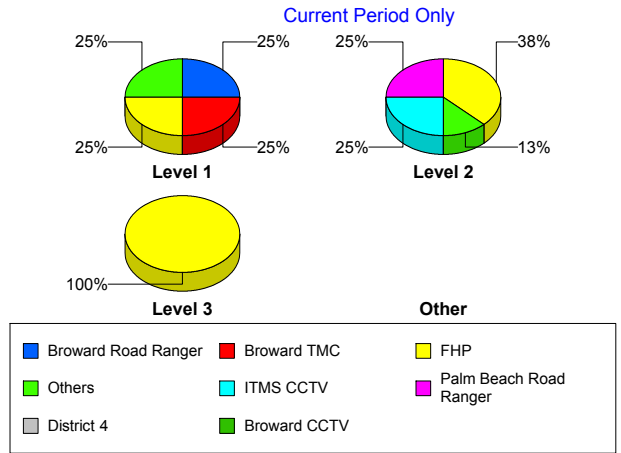
Total Events by Peak Period and Detection Method



## Incident Detection Methods by Severity

		Current Week	Last Week	YTD
Level 1	Broward Road Ranger	1	0	5
	Broward TMC	1	0	3
	District 4	0	0	4
	FHP	1	2	52
	ITMS CCTV	0	4	18
	Motorist	0	0	3
	Palm Beach Road Ran	1	3	61
	<b>Total</b>	<b>4</b>	<b>9</b>	<b>146</b>
Level 2	Broward TMC	0	0	2
	District 4	0	0	1
	FDOT Maintenance	0	0	1
	FHP	3	7	77
	ITMS CCTV	2	2	16
	Motorist	1	0	2
	Palm Beach Road Ran	2	4	23
	<b>Total</b>	<b>8</b>	<b>13</b>	<b>122</b>
Level 3	District 4	0	0	1
	FHP	1	1	16
	ITMS CCTV	0	0	3
	Media	0	0	1
	Palm Beach Road Ran	0	1	9
	<b>Total</b>	<b>1</b>	<b>2</b>	<b>30</b>
<b>Total</b>	<b>13</b>	<b>24</b>	<b>298</b>	

**Total Events by Severity and Detection Method**



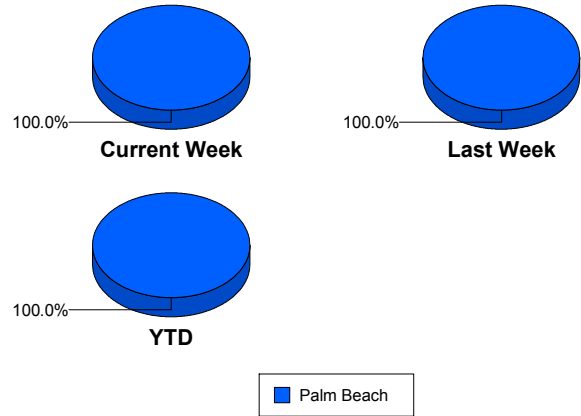
# Road Ranger / SIRV Performance Measures

## Road Ranger / SIRV Performance By County

RR/SIRV Responses per County

Values presented are: - Total Events with a RR/SIRV Response - Total RR/SIRV Responses, - Total Activities Performed
---

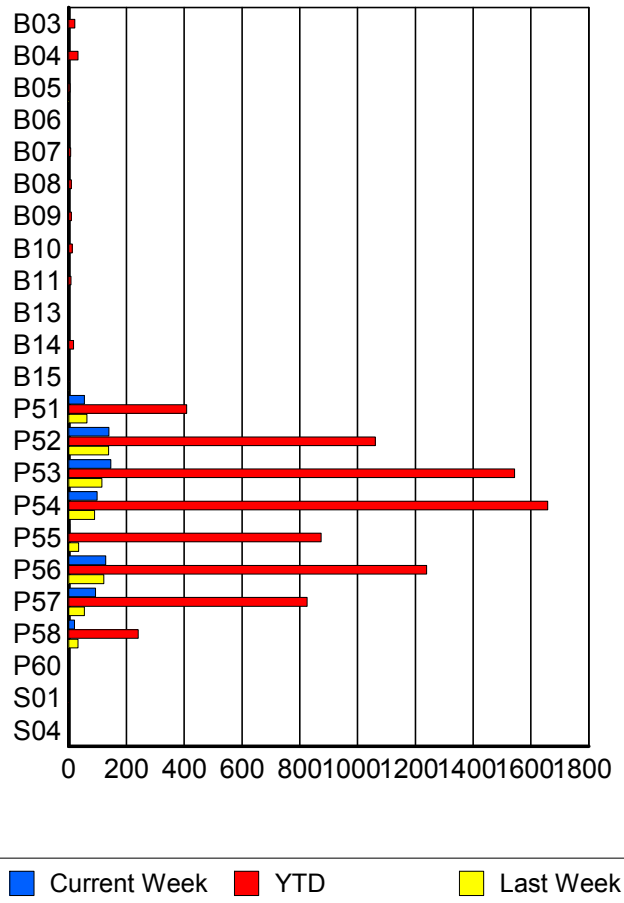
	Current We	Last Week	YTD
Palm Beach	<b>668</b>	<b>632</b>	<b>7,717</b>
	<b>694</b>	<b>656</b>	<b>7,983</b>
	<b>743</b>	<b>693</b>	<b>8,445</b>



## Road Ranger / SIRV Performance By Truck

	Current We	Last Week	YTD
B03	1	0	21
	1	0	21
	1	0	22
B04	2	1	32
	2	1	33
	2	1	36
B05	0	2	5
	0	2	5
	0	2	5
B06	0	0	1
	0	0	1
	0	0	3
B07	0	0	7
	0	0	7
	0	0	7
B08	1	0	9
	1	0	9
	1	0	9
B09	1	0	9
	1	0	9
	1	0	10
B10	1	1	13
	1	1	13
	1	1	13
B11	0	0	8
	0	0	8
	0	0	8

**RR/SIRV Responses per Truck**



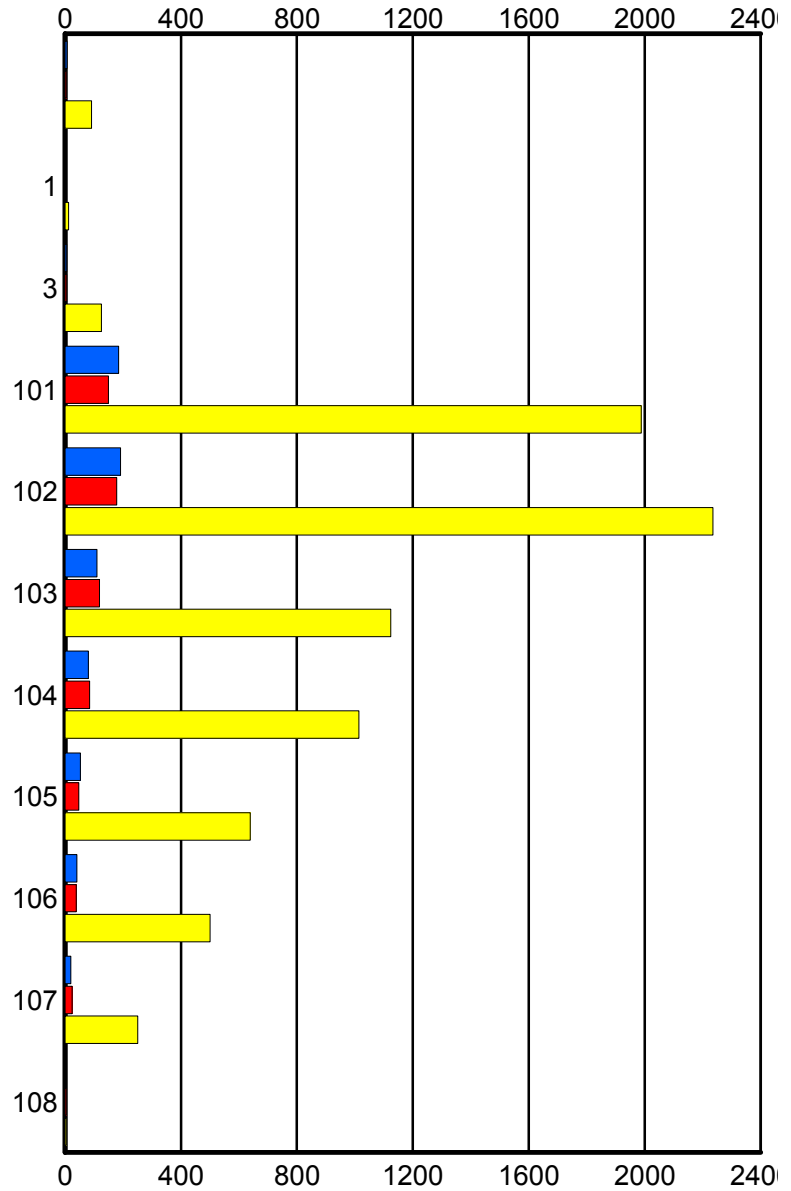
	Current We	Last Week	YTD
B13	0 0 0	0 0 0	3 3 3
B14	0 0 0	0 0 0	17 17 17
B15	1 1 1	2 2 2	3 3 3
P51	52 55 56	63 63 69	403 409 427
P52	136 140 150	136 138 148	1,045 1,061 1,131
P53	145 146 160	112 115 119	1,525 1,543 1,633
P54	98 99 106	87 90 99	1,633 1,658 1,756
P55	4 4 4	35 35 36	865 874 915
P56	126 129 136	122 122 128	1,224 1,239 1,317
P57	92 93 103	54 54 54	812 825 869
P58	20 20 20	32 33 34	238 241 257
P60	0 0 0	0 0 0	1 1 1
S01	0 0 0	0 0 0	2 2 2
S04	1 1 1	0 0 0	1 1 1

### Road Ranger / SIRV Performance By Beat

	Current We	Last Week	YTD
	7	4	91
	7	4	91
	7	4	99
1	1	0	11
	1	0	12
	1	0	12
3	6	6	123
	6	6	125
	6	6	132
101	181	145	1,948
	185	150	1,988
	198	160	2,095
102	187	174	2,195
	191	178	2,235
	207	190	2,367
103	107	119	1,114
	110	119	1,124
	113	127	1,180
104	79	85	1,005
	80	85	1,014
	84	88	1,082
105	53	47	634
	53	47	639
	61	49	685
106	39	39	493
	41	39	500
	46	40	519
107	20	24	249
	20	24	251
	20	25	270
108	0	3	3
	0	4	4
	0	4	4

Values presented are:  
 - Total Events with a RR/SIRV Response  
 - Total RR/SIRV Responses,  
 - Total Activities Performed

### RR/SIRV Responses per Beat



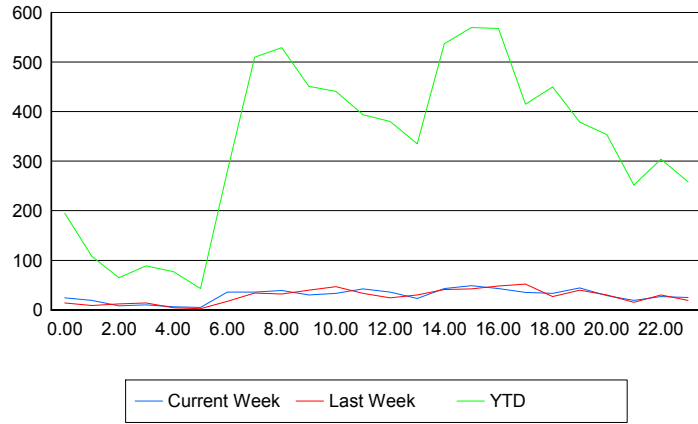
■ Current Week   
 ■ Last Week   
 ■ YTD

## Road Ranger / SIRV Performance By Time of Day

Values presented are:  
 - Total Events with a RR/SIRV Response  
 - Total RR/SIRV Responses,  
 - Total Activities Performed

	Current We	Last Week	YTD
12AM-1AM	24	13	189
	24	14	195
	26	14	212
1AM-2AM	19	9	106
	19	9	108
	19	9	110
2AM-3AM	8	11	63
	8	12	65
	8	12	67
3AM-4AM	10	11	86
	10	14	89
	11	17	97
4AM-5AM	6	4	75
	6	4	77
	6	4	81
5AM-6AM	5	1	35
	5	2	43
	6	2	46
6AM-7AM	31	17	261
	36	17	279
	37	17	295
7AM-8AM	33	33	495
	36	34	510
	36	36	537
8AM-9AM	37	31	504
	39	32	529
	40	34	552
9AM-10AM	29	38	438
	30	40	451
	33	43	480
10AM-11AM	31	44	421
	33	47	441
	33	47	461
11AM-12PM	41	33	385
	42	33	394
	49	35	420
12PM-1PM	35	23	363
	36	24	380
	38	24	394

## Number of Responses / Hour of the Day



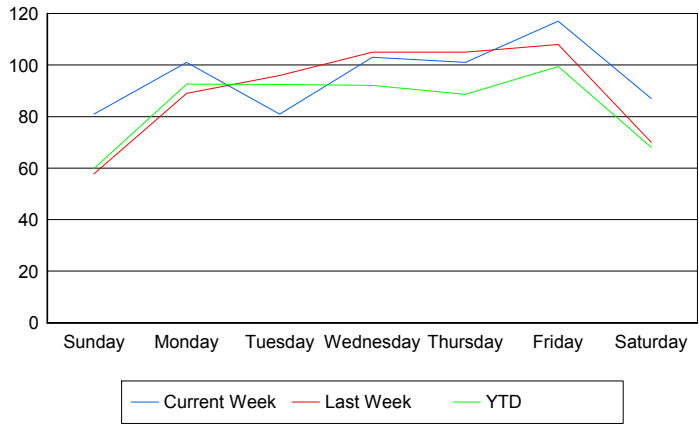
	Current We	Last Week	YTD
1PM-2PM	23	29	320
	23	30	335
	25	31	353
2PM-3PM	41	40	519
	43	41	537
	46	47	573
3PM-4PM	48	41	560
	49	42	570
	56	44	608
4PM-5PM	40	46	545
	43	48	568
	44	50	603
5PM-6PM	35	50	405
	35	52	415
	37	53	440
6PM-7PM	32	26	440
	33	27	450
	35	27	473
7PM-8PM	42	38	366
	44	40	379
	46	43	398
8PM-9PM	29	30	348
	29	30	354
	31	30	367
9PM-10PM	19	15	242
	19	15	252
	20	16	266
10PM-11PM	26	30	298
	27	30	304
	33	33	328
11PM-12AM	24	19	253
	25	19	258
	28	25	284

## Road Ranger / SIRV Performance By Day of Week

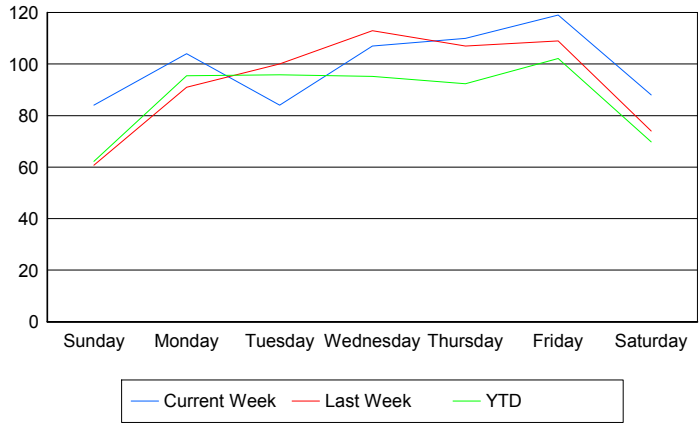
Values presented are:  
 - Total Events with a RR/SIRV Response  
 - Total RR/SIRV Responses,  
 - Total Activities Performed

	Current We	Last Week	YTD
Sunday	79	59	761
	82	62	789
	86	62	830
Monday	101	89	1,171
	104	91	1,208
	110	98	1,283
Tuesday	81	96	1,192
	84	100	1,235
	95	107	1,310
Wednesday	103	105	1,183
	107	113	1,221
	113	123	1,300
Thursday	101	105	1,132
	110	107	1,179
	116	112	1,257
Friday	117	108	1,355
	119	109	1,395
	128	112	1,460
Saturday	87	70	932
	88	74	956
	95	79	1,005

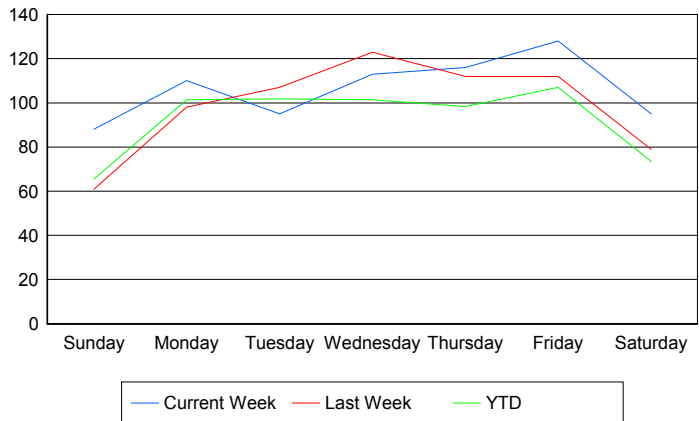
### Avg # of events with a RR/SIRV Response per Day of the Week



### Avg # of RR/SIRV Responses per Day of the Week



### Avg # of RR/SIRV Activities Performed per Day of the Week



### Road Ranger / SIRV Responses per Time of Day and Day of Week

