



Weekly Performance Measures Report Palm Beach County



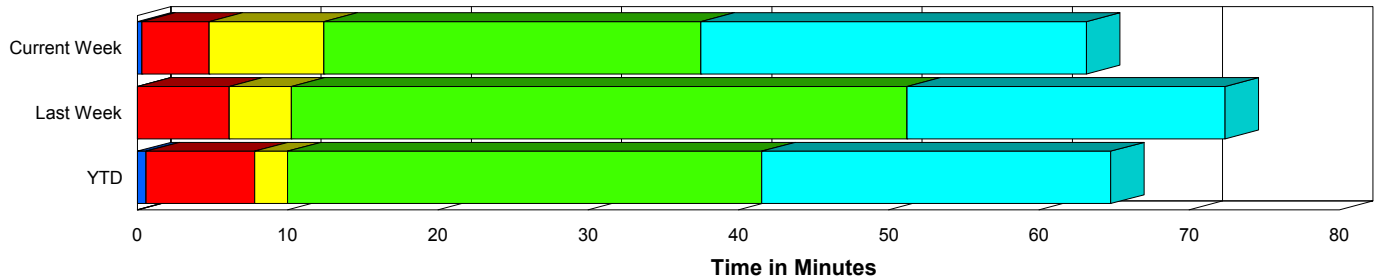
Created on:
April 12, 2010
4:09 pm

Period From Apr 4, 2010 to Apr 10, 2010

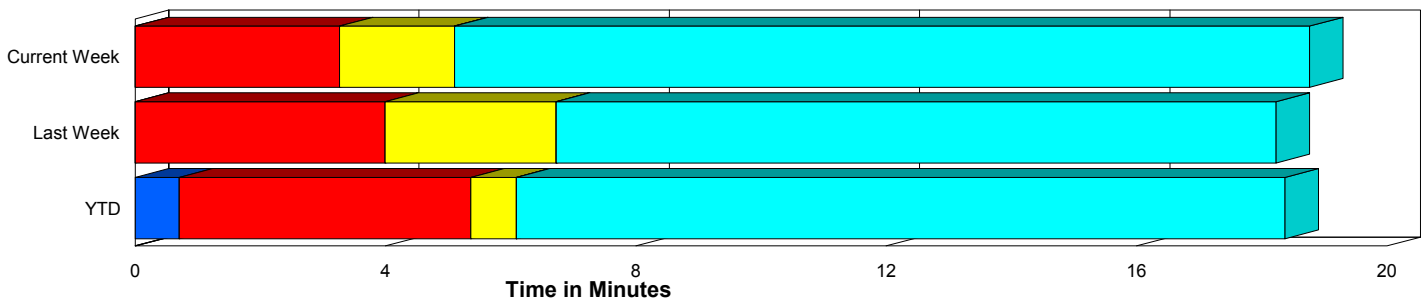
Performance Measures Summary

	Traffic Events (No Lanes Blocked)			Incidents (Lanes Blocked)		
	<u>This Week</u>	<u>Last Week</u>	<u>YTD</u>	<u>This Week</u>	<u>Last Week</u>	<u>YTD</u>
Number of Events	585	592	6,826	24	13	322
TMC Detection (min.)	0.00	0.00	0.71	0.30	0.00	0.59
TMC Verification (min.)	3.27	3.99	4.66	4.48	6.11	7.21
TMC Response (min.)	5.45	7.50	5.91	12.19	10.26	9.58
RR Dispatch Time (min.)	2.03	2.40	1.54	2.24	1.97	1.84
RR Response Time (min.)	3.83	5.16	4.49	9.95	8.29	7.78
Roadway Clearance (min.)				38.02	51.24	41.54
Event Clearance (min.)	19.11	19.00	18.90	63.68	72.38	64.74
# of Events w/ RR/SIRV	548	542	6,421	22	13	315
RR/SIRV Responses	548	542	6,421	22	13	315
RR/SIRV Activities	584	573	6,697	30	16	408

Incident Clearance Time-Line



Traffic Event (Non-Lane Blockage) Time-Line



■ Avg. TMC Detection Time	■ Avg. Time from TMC Response to Roadway Clearance*
■ Avg. Time from TMC Detection to TMC Verification	■ Avg. Time from Roadway Clearance to Incident/Event Clearance**
■ Avg. Time from TMC Verification to TMC Response	

* Roadway clearance equals all travel lanes open

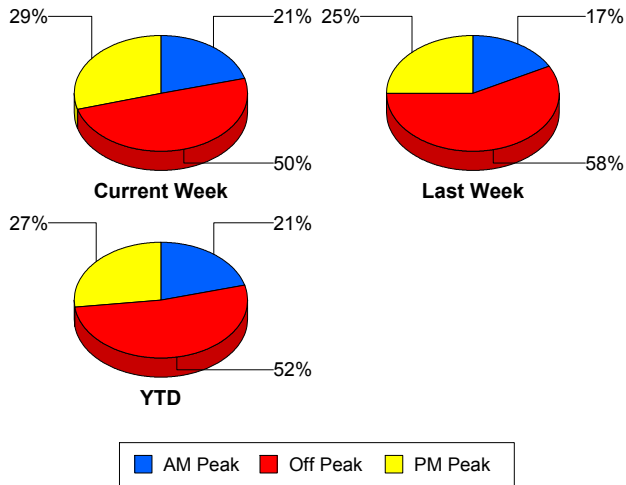
** Incident clearance equals time when last responder has left the scene

Performance Measures by Peak Period

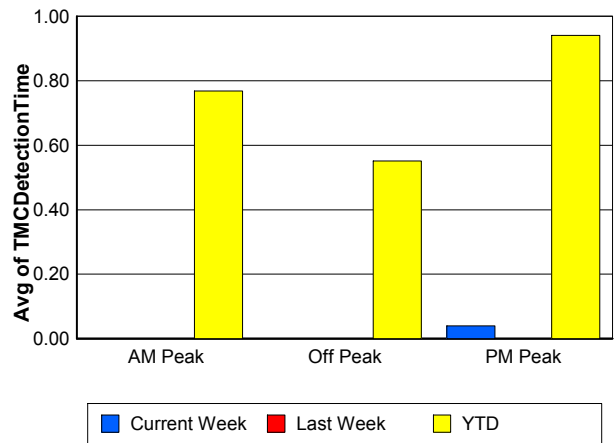
Note: AM peak period is defined as 6am to 10am and PM peak period is defined as 3pm to 7pm.

	AM Peak			Off Peak			PM Peak		
	<u>Current Week</u>	<u>Last Week</u>	<u>YTD</u>	<u>Current Week</u>	<u>Last Week</u>	<u>YTD</u>	<u>Current Week</u>	<u>Last Week</u>	<u>YTD</u>
Number of Events	127	105	1,497	303	349	3,733	179	151	1,918
Number of Incidents	7	4	81	10	7	161	7	2	80
TMC Detection (min.)	0.00	0.00	0.77	0.00	0.00	0.55	0.04	0.00	0.94
TMC Verification (min.)	3.13	3.52	3.59	3.61	3.60	4.82	2.94	5.41	5.60
TMC Response (min.)	6.23	7.67	4.61	5.45	7.24	6.83	5.81	8.24	5.82
RR Dispatch Time (min.)	1.92	2.24	0.58	1.86	1.89	1.89	2.41	3.63	1.65
RR Response Time (min.)	4.54	5.37	4.15	4.16	5.47	5.05	3.62	4.61	4.26
Event Clearance (min.)	24.08	22.36	20.79	20.56	19.48	21.65	19.10	20.18	19.77
Roadway Clearance (min.)	52.11	35.61	38.63	34.47	62.50	47.69	29.01	43.06	32.14
Incident Clearance (min.)	69.61	68.28	71.08	52.44	79.23	65.16	73.80	56.63	57.48
# of Events w/ RR/SIRV	120	100	1,407	282	315	3,509	168	140	1,820
RR/SIRV Responses	120	100	1,407	282	315	3,509	168	140	1,820
RR/SIRV Activities	133	112	1,496	299	329	3,698	182	148	1,911

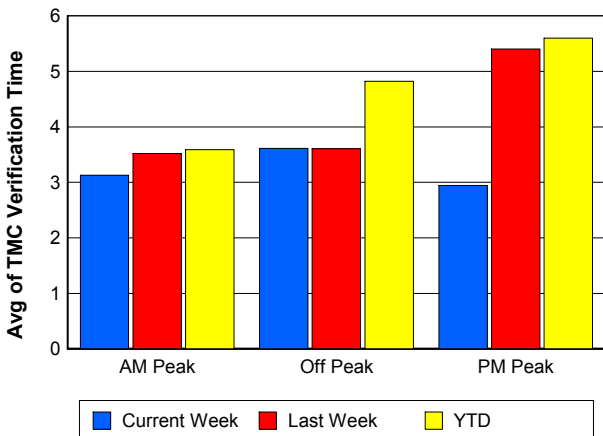
Number of Events / Peak Period



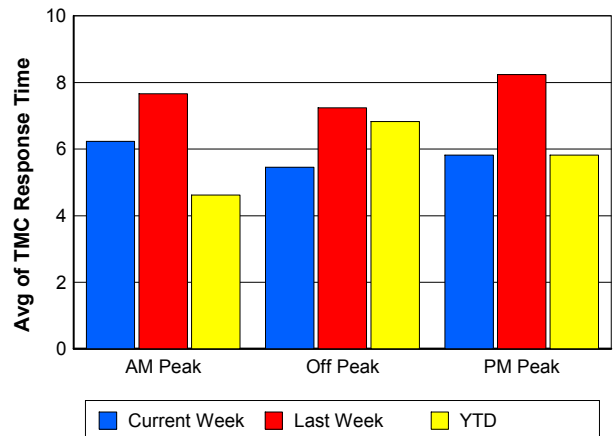
TMC Detection Time



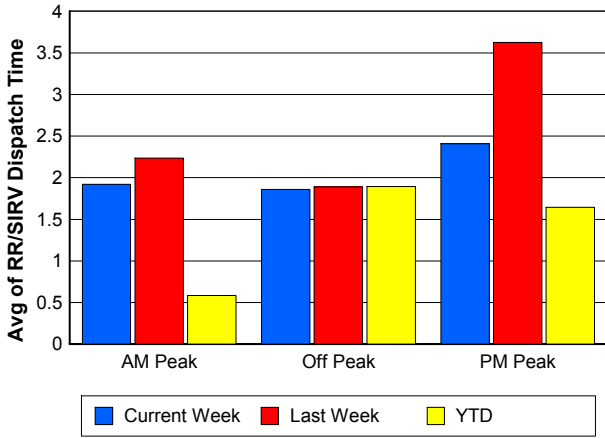
TMC Verification Time



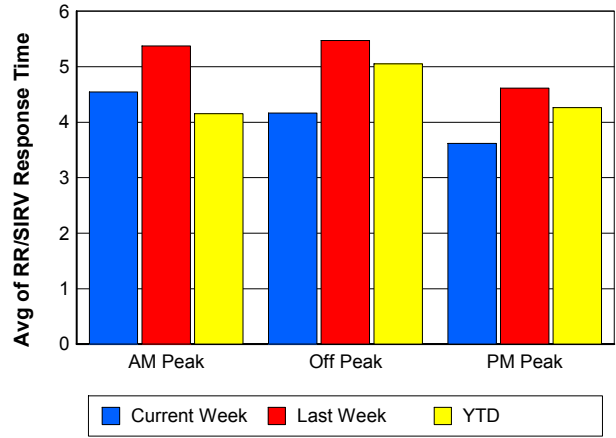
TMC Response Time



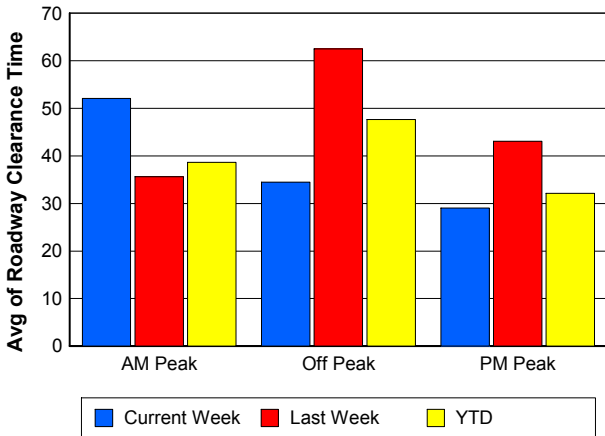
Road Ranger / SIRV Dispatch Time



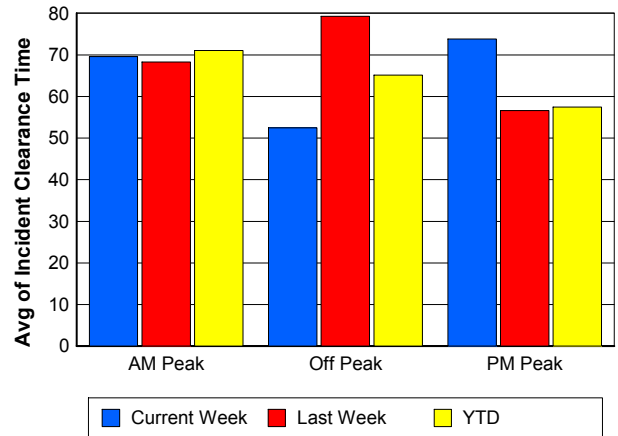
Road Ranger / SIRV Response Time



Roadway Clearance Time (2A)



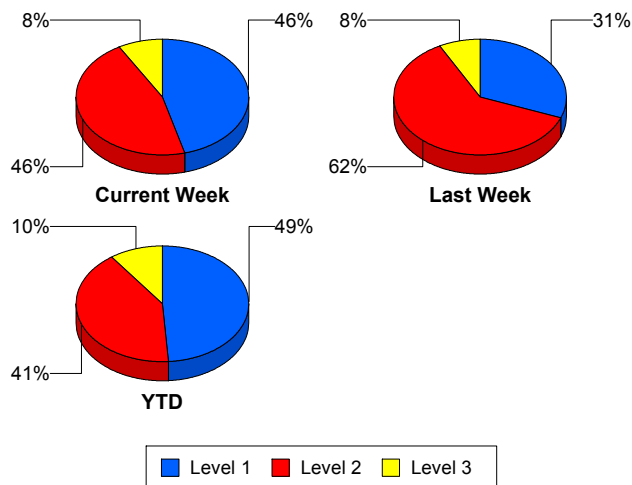
Incident Clearance Time (3B)



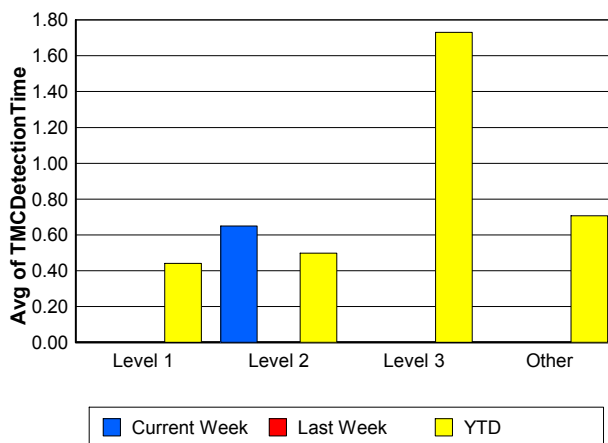
Performance Measures by Severity

	Level 1			Level 2			Level 3			Other		
	<u>This Week</u>	<u>Last Week</u>	<u>YTD</u>	<u>This Week</u>	<u>Last Week</u>	<u>YTD</u>	<u>This Week</u>	<u>Last Week</u>	<u>YTD</u>	<u>This Week</u>	<u>Last Week</u>	<u>YTD</u>
Number of Events	11	4	157	11	8	133	2	1	32	585	592	6,826
Number of Incidents	11	4	157	11	8	133	2	1	32	0	0	0
TMC Detection (min.)	0.00	0.00	0.44	0.65	0.00	0.50	0.00	0.00	1.73	0.00	0.00	0.71
TMC Verification (min.)	3.70	2.18	3.87	5.36	7.49	10.65	3.88	10.87	9.29	3.27	3.99	4.66
TMC Response (min.)	10.40	7.48	5.82	15.21	11.58	14.19	8.47	10.82	8.51	5.45	7.50	5.91
RR Dispatch Time (min.)	2.00	1.93	0.69	2.01	2.16	3.35	4.67	0.57	1.10	2.03	2.40	1.54
RR Resp. Time (min.)	8.41	5.55	5.14	13.19	9.42	10.94	3.81	10.25	7.41	3.83	5.16	4.49
Event Clearance (min.)	46.55	72.27	46.79	72.37	68.37	71.32	110.07	104.97	125.51	19.11	19.00	18.90
Roadway Clear. (min.)	17.58	21.00	15.49	48.31	60.41	56.33	93.87	98.75	107.93			
Incident Clearance (min.)	46.55	72.27	46.79	72.37	68.37	71.32	110.07	104.97	125.51			
# of Events w/ RR/SIRV	11	4	154	9	8	131	2	1	30	548	542	6,421
RR/SIRV Responses	11	4	154	9	8	131	2	1	30	548	542	6,421
RR/SIRV Activities	11	7	186	14	8	176	5	1	46	584	573	6,697

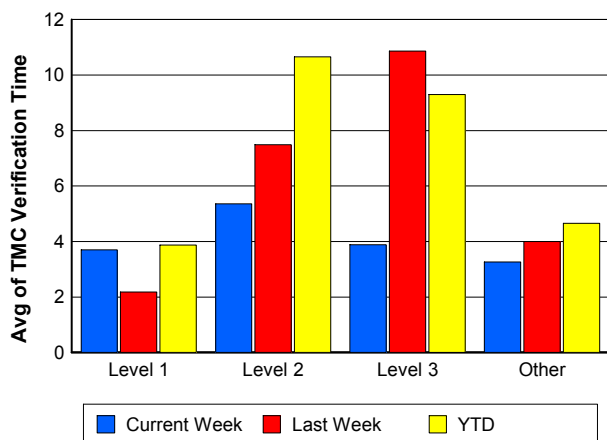
Number of Events / Severity



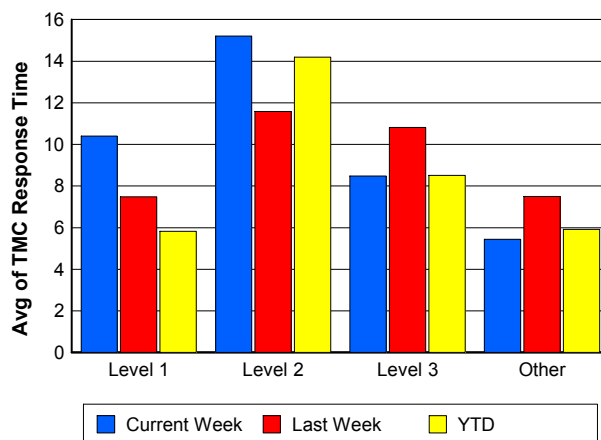
TMC Detection Time



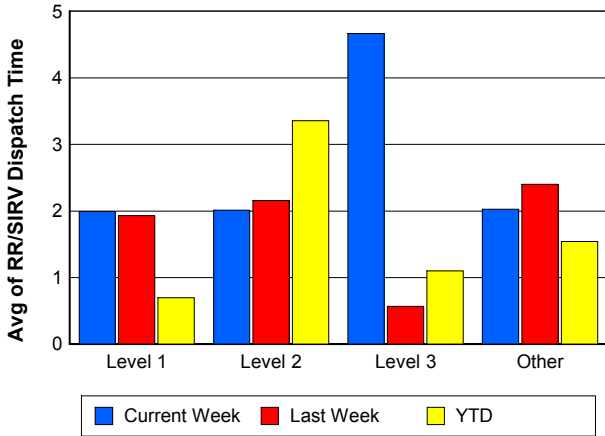
TMC Verification Time



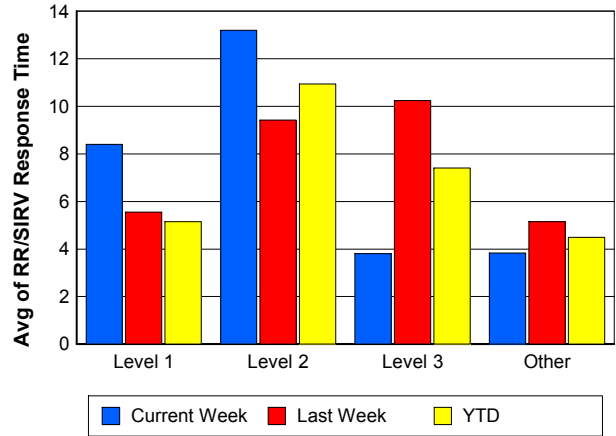
TMC Response Time



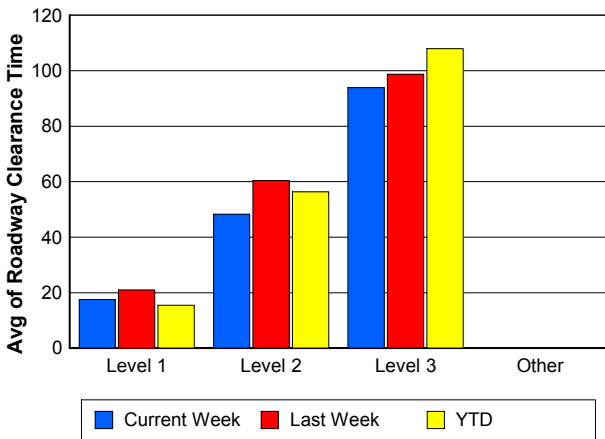
Road Ranger / SIRV Dispatch Time



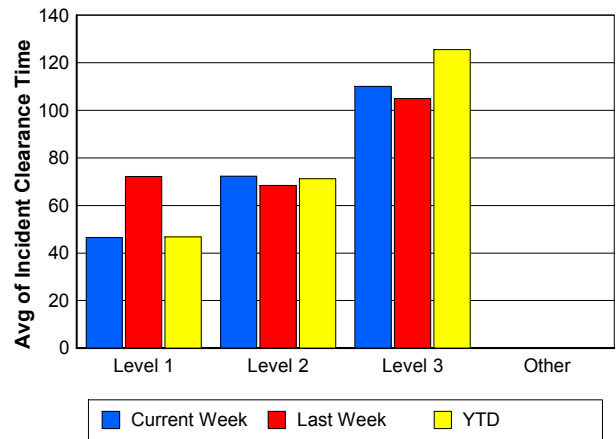
Road Ranger / SIRV Response Time



Roadway Clearance Time (2A)



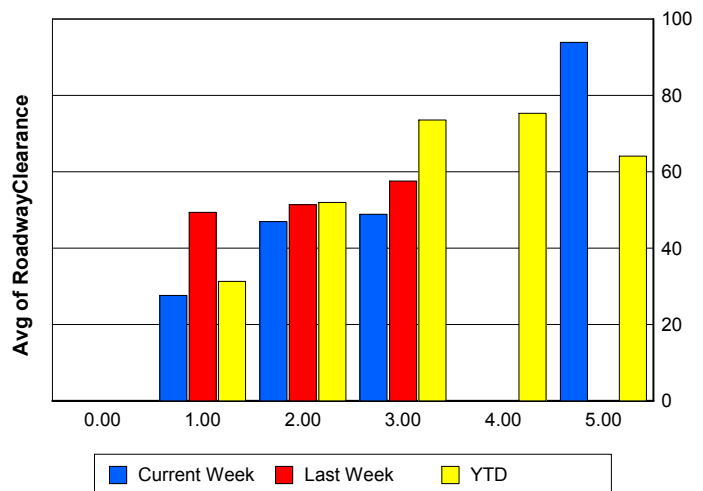
Incident Clearance Time (3B)



Roadway Clearance by Maximum Number of Lanes Blocked

	Current Week	Last Week	YTD
0			
1	27.59	49.37	31.30
2	46.93	51.34	51.95
3	48.82	57.56	73.54
4	0.00	0.00	75.33
5	93.87	0.00	64.08

Roadway Clearance Time (2A)



Performance Measures by Roadway

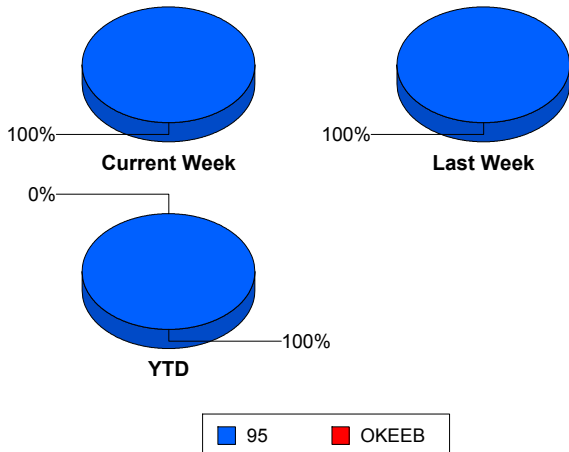
95

	<u>Current Week</u>	<u>Last Week</u>	<u>YTD</u>
Number of Events	609	605	7,147
Number of Incidents	24	13	322
TMC Detection (min.)	0.01	0.00	0.70
TMC Verification (min.)	3.31	4.04	4.77
TMC Response (min.)	5.72	7.57	6.09
RR Dispatch Time (min.)	2.03	2.39	1.55
RR Resp. Time (min.)	4.08	5.23	4.65
Event Clearance (min.)	20.87	20.15	20.97
Roadway Clear. (min.)	38.02	51.24	41.54
Incident Clearance (min.)	63.68	72.38	64.74
# of Events w/ RR/SIRV	570	555	6,735
RR/SIRV Responses	570	555	6,735
RR/SIRV Activities	614	589	7,104

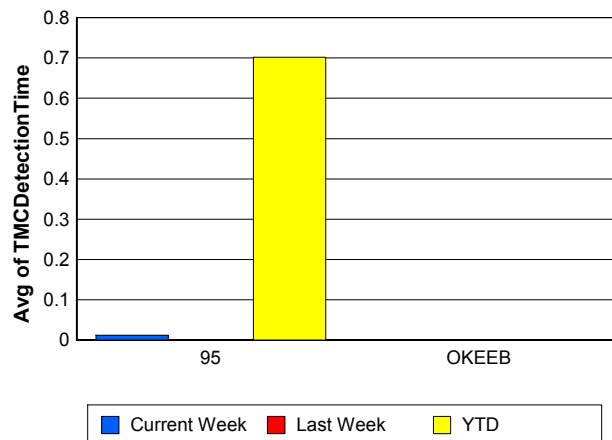
OKEEB

	<u>YTD</u>
Number of Events	1
Number of Incidents	0
TMC Detection (min.)	0.00
TMC Verification (min.)	0.00
TMC Response (min.)	0.00
RR Dispatch Time (min.)	0.00
RR Resp. Time (min.)	0.00
Event Clearance (min.)	18.45
Roadway Clear. (min.)	
Incident Clearance (min.)	
# of Events w/ RR/SIRV	1
RR/SIRV Responses	1
RR/SIRV Activities	1

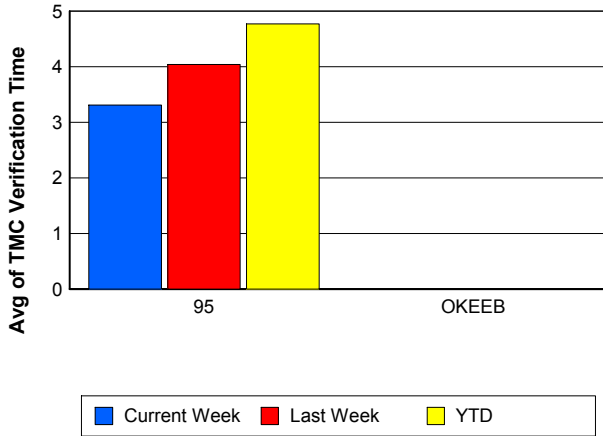
Number of Events / Roadway



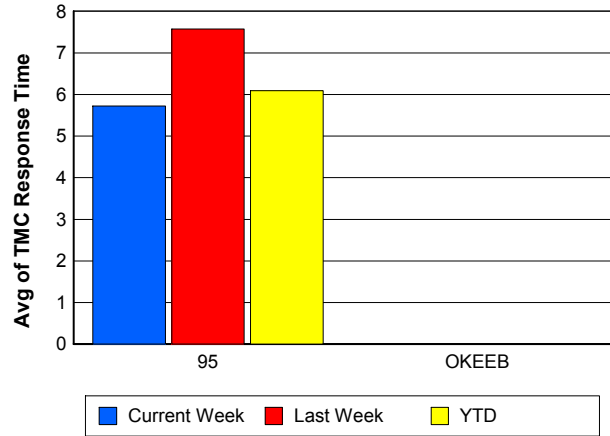
TMC Detection Time



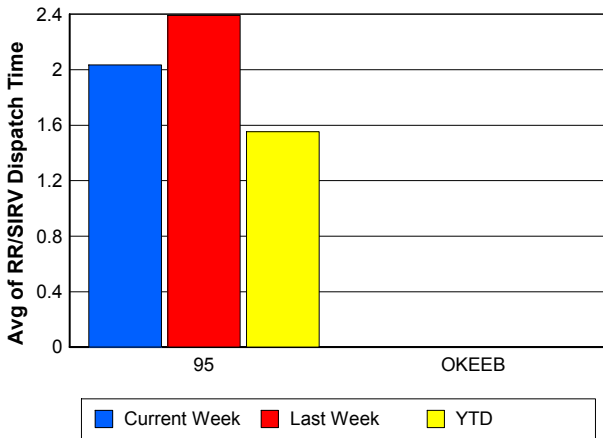
TMC Verification Time



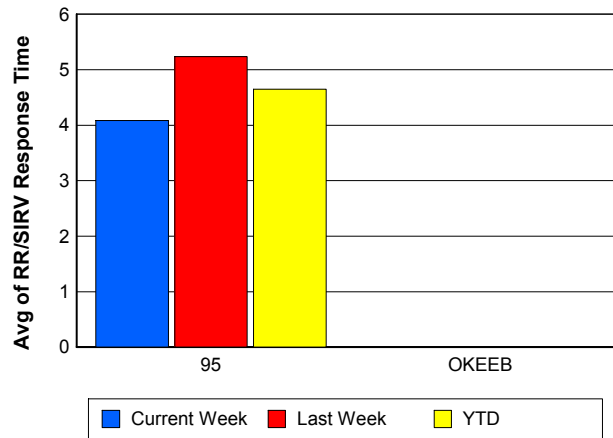
TMC Response Time



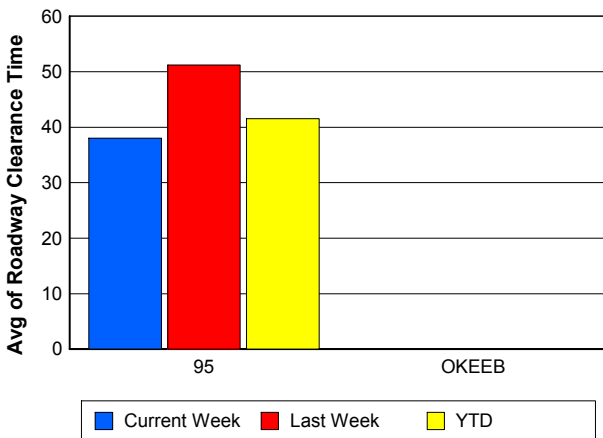
Road Ranger / SIRV Dispatch Time



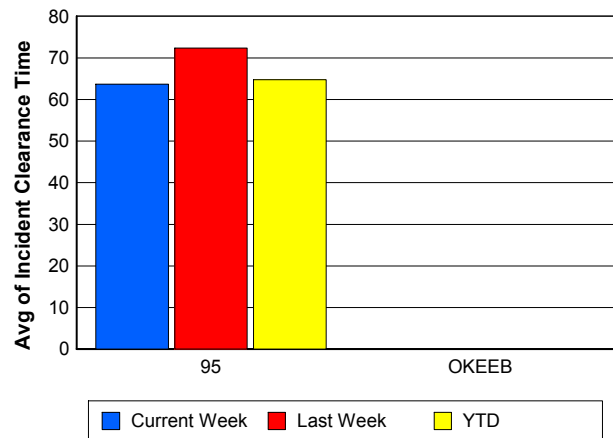
Road Ranger / SIRV Response Time



Roadway Clearance Time (2A)



Incident Clearance Time (3B)



Performance Measures by Event Type

Accident

	<u>Current Week</u>	<u>Last Week</u>	<u>YTD</u>
Number of Events	36	27	536
Number of Incidents	18	11	234
TMC Detection (min.)	0.00	0.00	0.79
TMC Verification (min.)	4.39	8.34	8.04
TMC Response (min.)	10.09	9.06	9.19
RR Dispatch Time (min.)	1.28	1.81	1.27
RR Response Time (min.)	8.80	7.25	7.96
Event Clearance (min.)	76.29	52.51	58.89
Roadway Clearance (min.)	41.41	49.28	45.64
Incident Clearance (min.)	73.27	73.30	73.84
# of Events w/ RR/SIRV	34	27	524
RR/SIRV Assists	34	27	524
RR/SIRV Activities	42	32	611

Debris on Roadway

	<u>Current Week</u>	<u>Last Week</u>	<u>YTD</u>
Number of Events	37	33	403
Number of Incidents	1	0	6
TMC Detection (min.)	0.00	0.00	0.60
TMC Verification (min.)	11.79	12.46	10.82
TMC Response (min.)	12.52	12.44	9.80
RR Dispatch Time (min.)	3.39	4.51	2.67
RR Response Time (min.)	9.34	7.93	7.22
Event Clearance (min.)	16.64	15.29	14.18
Roadway Clearance (min.)	14.90		10.82
Incident Clearance (min.)	14.80		16.17
# of Events w/ RR/SIRV	36	33	399
RR/SIRV Assists	36	33	399
RR/SIRV Activities	35	34	406

Disabled Vehicle

	<u>Current Week</u>	<u>Last Week</u>	<u>YTD</u>
Number of Events	507	524	5,809
Number of Incidents	3	0	63
TMC Detection (min.)	0.00	0.00	0.74
TMC Verification (min.)	2.82	3.37	4.33
TMC Response (min.)	4.82	6.75	5.29
RR Dispatch Time (min.)	1.79	2.29	1.42
RR Response Time (min.)	3.29	4.54	3.98
Event Clearance (min.)	16.90	18.40	17.93
Roadway Clearance (min.)	18.08		29.11
Incident Clearance (min.)	18.17		39.21
# of Events w/ RR/SIRV	483	477	5,517
RR/SIRV Assists	483	477	5,517
RR/SIRV Activities	526	505	5,887

Emergency Vehicles

	<u>Last Week</u>	<u>YTD</u>
Number of Events	1	5
Number of Incidents	1	4
TMC Detection (min.)	0.00	0.00
TMC Verification (min.)	27.95	5.59
TMC Response (min.)	27.92	9.31
RR Dispatch Time (min.)	0.53	0.18
RR Response Time (min.)	27.38	9.13
Event Clearance (min.)	95.43	71.17
Roadway Clearance (min.)	91.58	81.95
Incident Clearance (min.)	95.43	83.17
# of Events w/ RR/SIRV	1	3
RR/SIRV Assists	1	3
RR/SIRV Activities	1	3

Other

	<u>Current Week</u>	<u>Last Week</u>	<u>YTD</u>
Number of Events	25	15	322
Number of Incidents	0	0	1
TMC Detection (min.)	0.00	0.00	0.18
TMC Verification (min.)	0.90	0.65	0.56
TMC Response (min.)	10.19	20.74	13.86
RR Dispatch Time (min.)	2.91	2.62	3.04
RR Response Time (min.)	7.11	17.66	9.41
Event Clearance (min.)	21.41	28.47	19.07
Roadway Clearance (min.)			8.12
Incident Clearance (min.)			24.77
# of Events w/ RR/SIRV	14	13	230
RR/SIRV Assists	14	13	230
RR/SIRV Activities	9	11	145

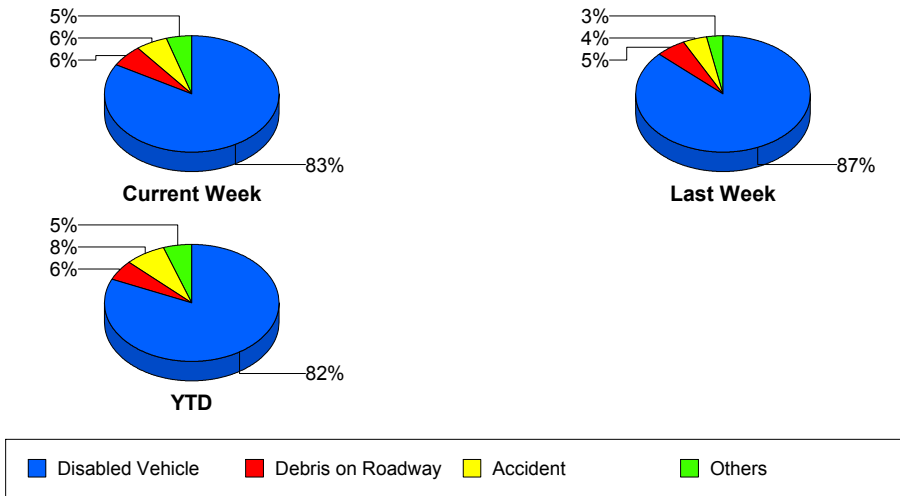
Police Activity

	<u>Current Week</u>	<u>Last Week</u>	<u>YTD</u>
Number of Events	2	2	28
Number of Incidents	1	1	8
TMC Detection (min.)	3.58	0.00	0.26
TMC Verification (min.)	0.61	0.00	0.04
TMC Response (min.)		0.00	16.82
RR Dispatch Time (min.)	85.38	0.00	6.65
RR Response Time (min.)		0.00	15.59
Event Clearance (min.)	77.62	20.59	31.67
Roadway Clearance (min.)	56.93	32.37	32.22
Incident Clearance (min.)	67.28	39.25	35.99
# of Events w/ RR/SIRV	1	1	20
RR/SIRV Assists	1	1	20
RR/SIRV Activities	0	1	10

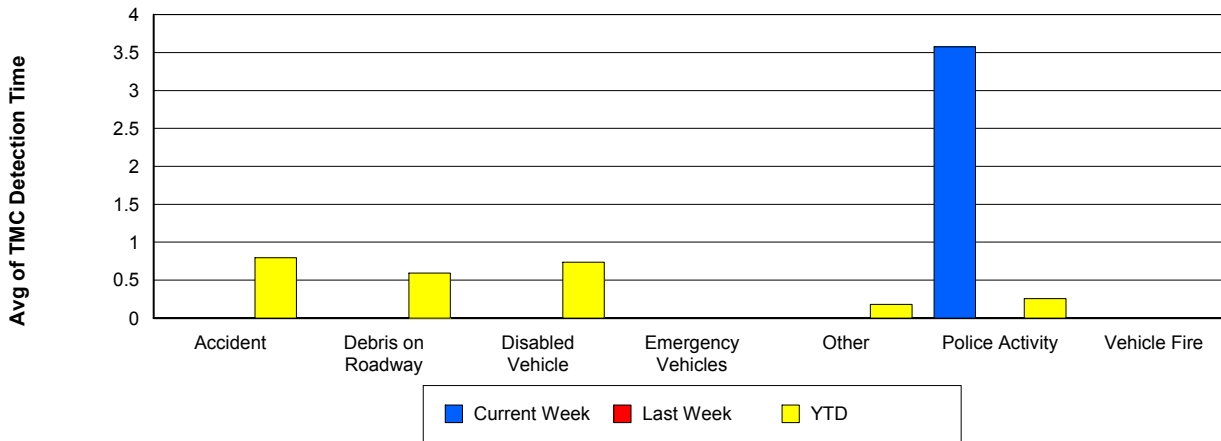
Vehicle Fire

	<u>Current Week</u>	<u>YTD</u>
Number of Events	1	13
Number of Incidents	1	6
TMC Detection (min.)	0.00	0.00
TMC Verification (min.)	0.00	3.61
TMC Response (min.)	24.12	6.00
RR Dispatch Time (min.)	3.27	1.59
RR Response Time (min.)	20.85	4.41
Event Clearance (min.)	72.85	38.48
Roadway Clearance (min.)	41.15	34.01
Incident Clearance (min.)	72.85	59.47
# of Events w/ RR/SIRV	1	12
RR/SIRV Assists	1	12
RR/SIRV Activities	2	13

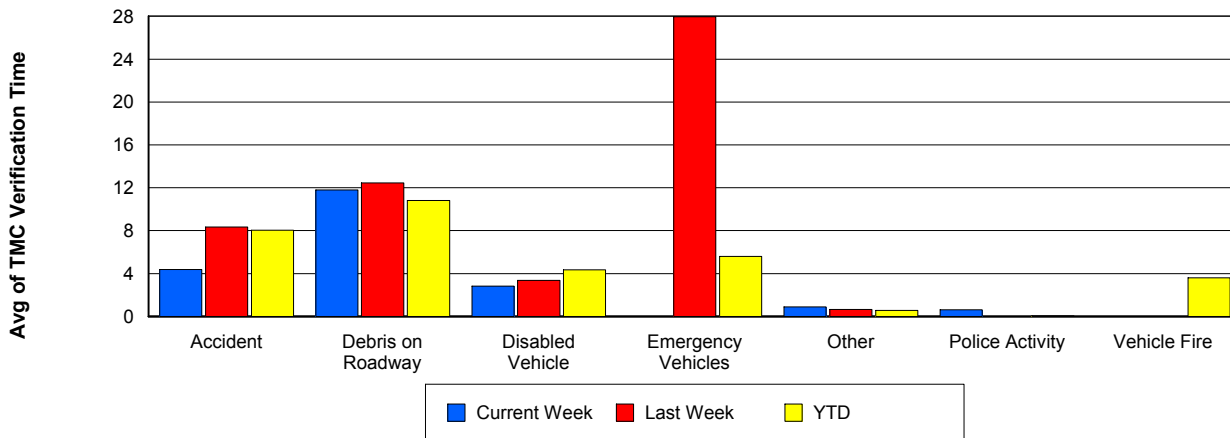
Number of Events / Event Type



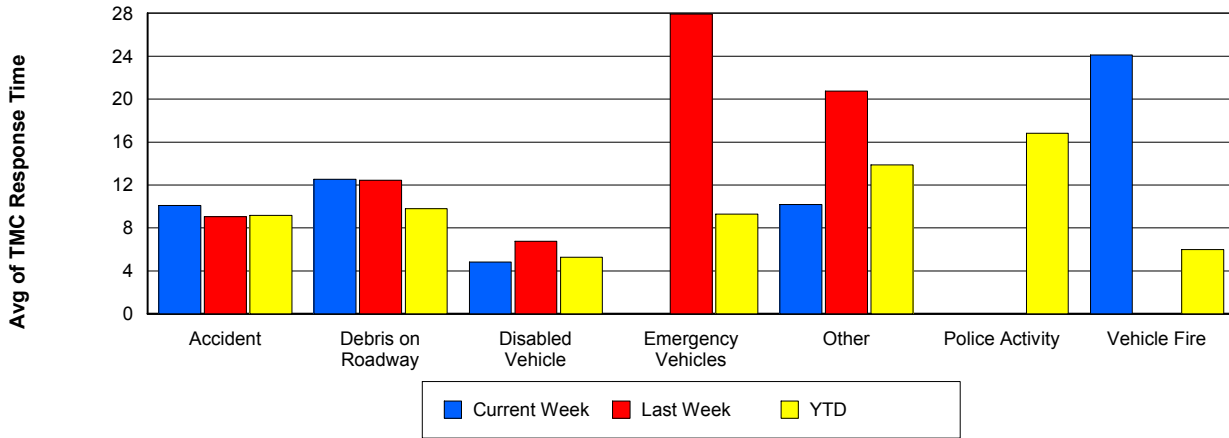
TMC Detection Time



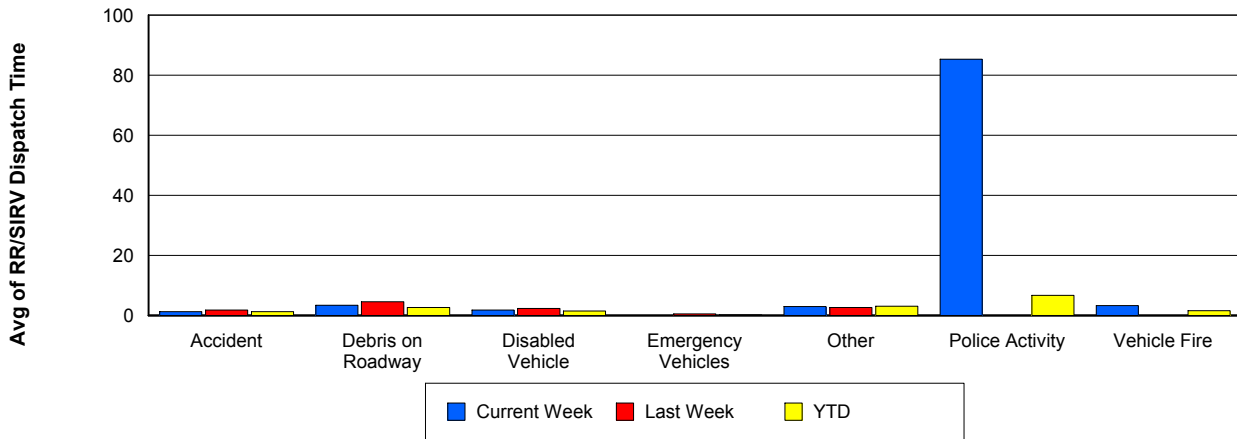
TMC Verification Time



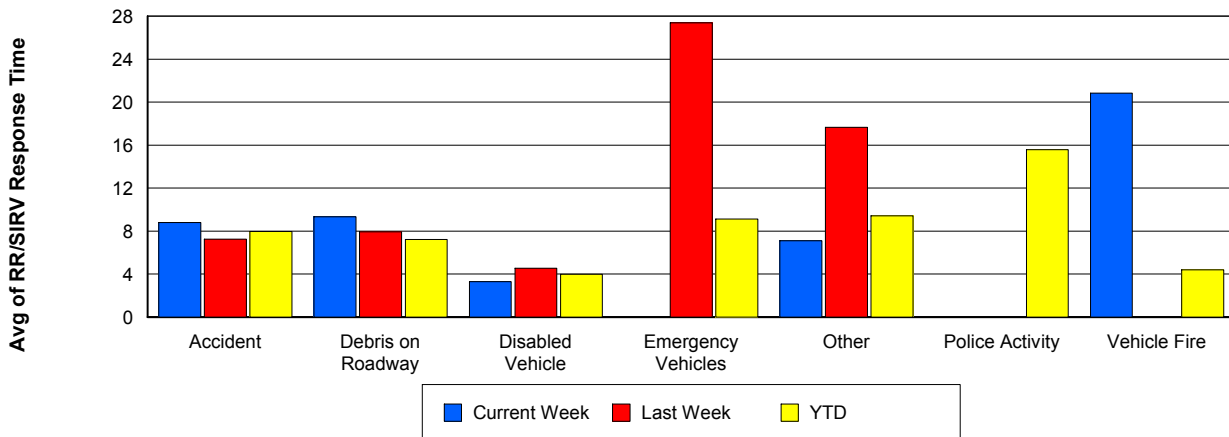
TMC Response Time



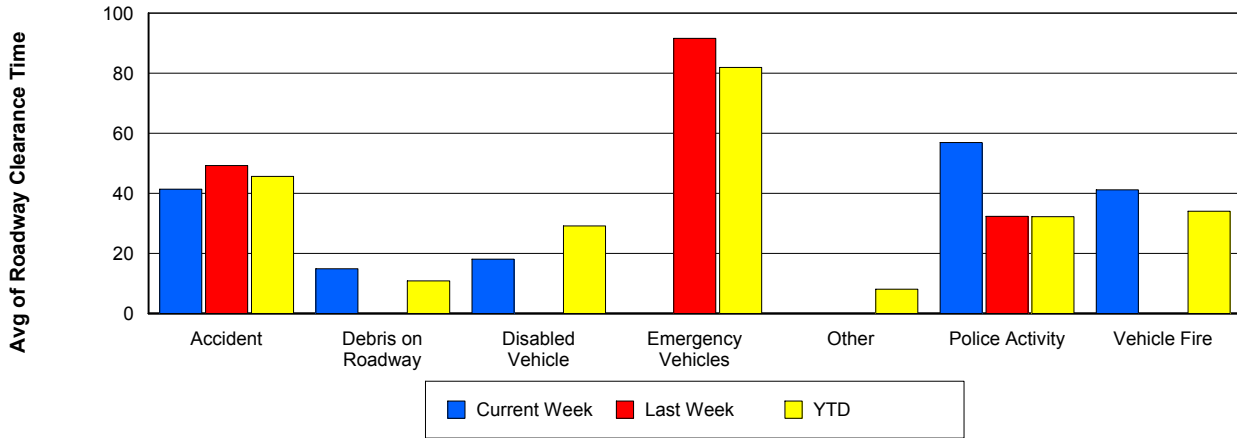
Road Ranger / SIRV Dispatch Time



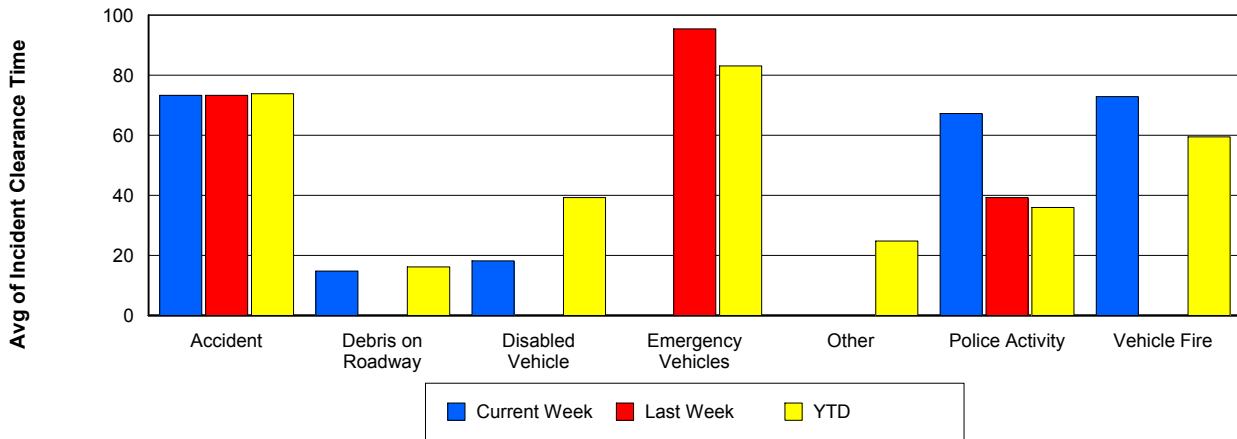
Road Ranger / SIRV Response Time



Roadway Clearance Time (2A)



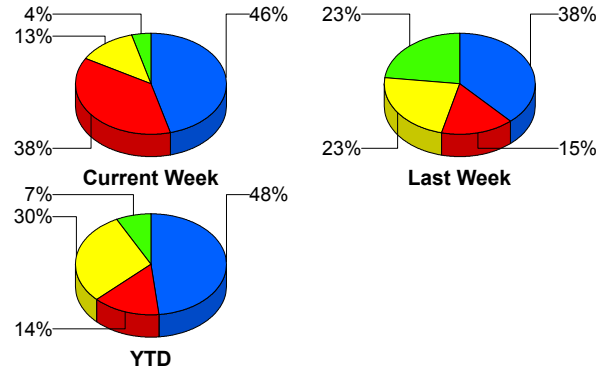
Incident Clearance Time (3B)



Incident Detection Methods

	Current Week	Last Week	YTD
Broward Road Ranger	0	1	5
Broward TMC	0	1	5
District 4	1	0	7
FDOT Maintenance	0	0	1
FHP	11	5	156
ITMS CCTV	9	2	46
Media	0	0	1
Motorist	0	1	5
Palm Beach Road Ran	3	3	96
Total	24	13	322

Total Incidents by Detection Method

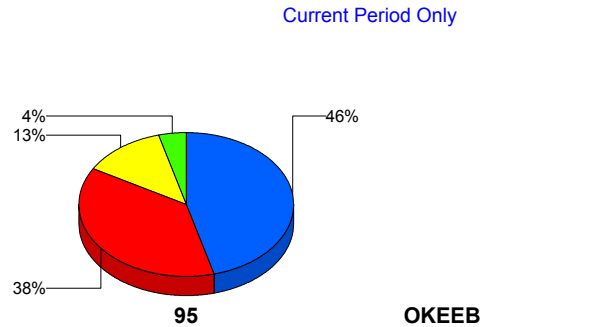


■ FHP
 ■ ITMS CCTV
 ■ Palm Beach Road Ranger
 ■ Others

Incident Detection Methods by Roadway

		Current Week	Last Week	YTD
95	Broward Road Ranger	0	1	5
	Broward TMC	0	1	5
	District 4	1	0	7
	FDOT Maintenance	0	0	1
	FHP	11	5	156
	ITMS CCTV	9	2	46
	Media	0	0	1
	Motorist	0	1	5
	Palm Beach Road Ran	3	3	96
	Total	24	13	322
Total	24	13	322	

Total Events by Roadway and Detection Method

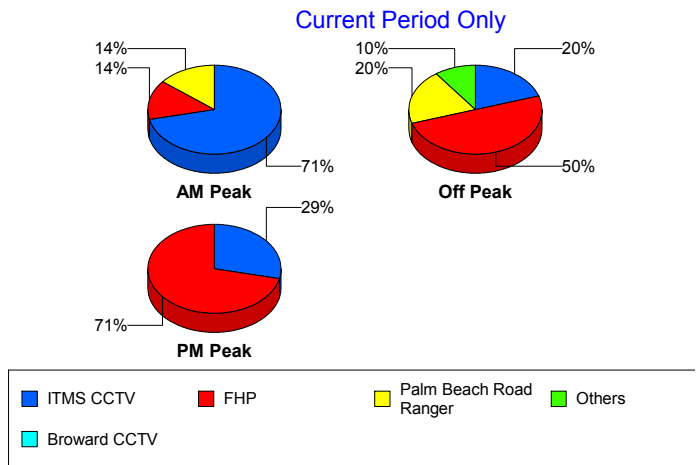


■ FHP
 ■ ITMS CCTV
 ■ Palm Beach Road Ranger
 ■ Others

Incident Detection Methods by Peak Period

		Current Week	Last Week	YTD
AM Peak	Broward Road Ranger	0	1	4
	District 4	0	0	1
	FHP	1	0	34
	ITMS CCTV	5	0	12
	Media	0	0	1
	Palm Beach Road Ran	1	3	29
	Total	7	4	81
Off Peak	Broward Road Ranger	0	0	1
	Broward TMC	0	0	2
	District 4	1	0	4
	FDOT Maintenance	0	0	1
	FHP	5	5	76
	ITMS CCTV	2	2	28
	Motorist	0	0	2
	Palm Beach Road Ran	2	0	47
	Total	10	7	161
PM Peak	Broward TMC	0	1	3
	District 4	0	0	2
	FHP	5	0	46
	ITMS CCTV	2	0	6
	Motorist	0	1	3
	Palm Beach Road Ran	0	0	20
	Total	7	2	80
Total	24	13	322	

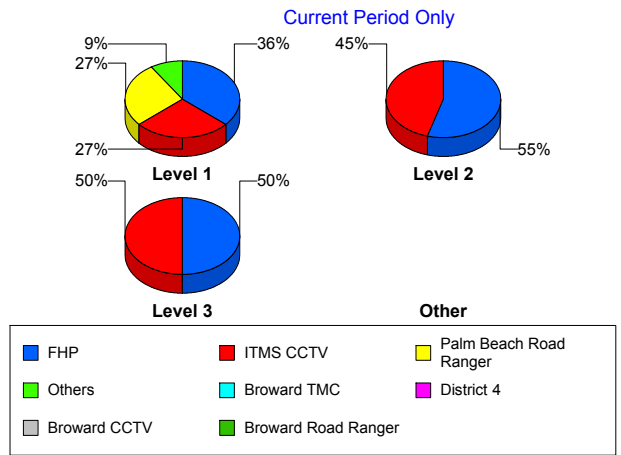
Total Events by Peak Period and Detection Method



Incident Detection Methods by Severity

		Current Week	Last Week	YTD
Level 1	Broward Road Ranger	0	1	5
	Broward TMC	0	1	3
	District 4	1	0	5
	FHP	4	1	56
	ITMS CCTV	3	0	21
	Motorist	0	0	3
	Palm Beach Road Ran	3	1	64
	Total	11	4	157
Level 2	Broward TMC	0	0	2
	District 4	0	0	1
	FDOT Maintenance	0	0	1
	FHP	6	3	83
	ITMS CCTV	5	2	21
	Motorist	0	1	2
	Palm Beach Road Ran	0	2	23
	Total	11	8	133
Level 3	District 4	0	0	1
	FHP	1	1	17
	ITMS CCTV	1	0	4
	Media	0	0	1
	Palm Beach Road Ran	0	0	9
	Total	2	1	32
Total	24	13	322	

Total Events by Severity and Detection Method



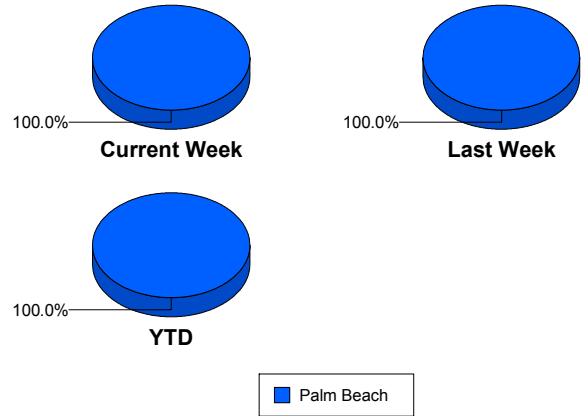
Road Ranger / SIRV Performance Measures

Road Ranger / SIRV Performance By County

RR/SIRV Responses per County

Values presented are: - Total Events with a RR/SIRV Response - Total RR/SIRV Responses, - Total Activities Performed

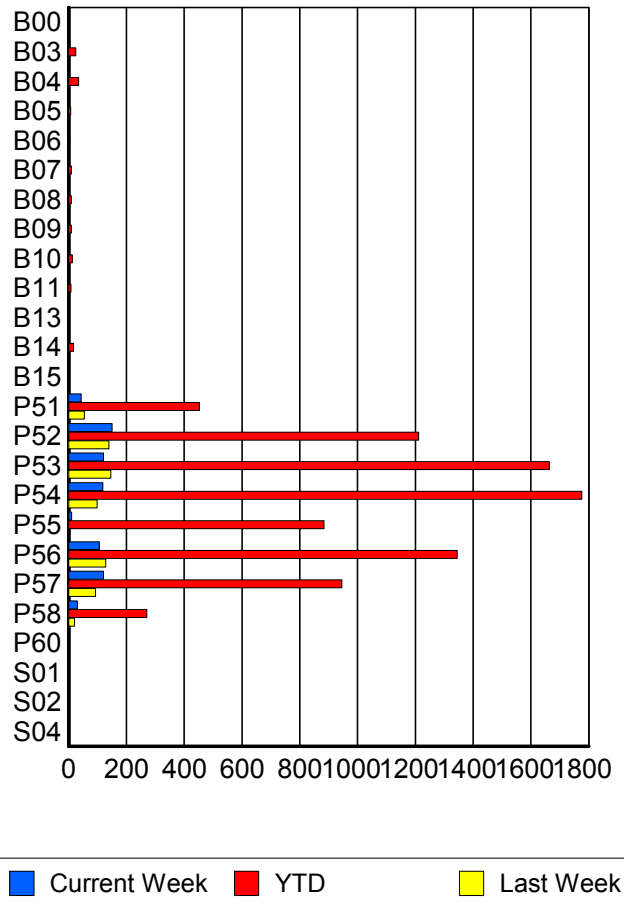
	Current We	Last Week	YTD
Palm Beach	692	668	8,409
	717	694	8,700
	778	743	9,223



Road Ranger / SIRV Performance By Truck

	Current We	Last Week	YTD
B00	1	0	1
	1	0	1
	1	0	1
B03	4	1	25
	4	1	25
	4	1	26
B04	2	2	34
	2	2	35
	2	2	38
B05	2	0	7
	2	0	7
	2	0	7
B06	3	0	4
	3	0	4
	3	0	6
B07	2	0	9
	2	0	9
	2	0	9
B08	0	1	9
	0	1	9
	0	1	9
B09	0	1	9
	0	1	9
	0	1	10
B10	0	1	13
	0	1	13
	0	1	13

RR/SIRV Responses per Truck



	Current We	Last Week	YTD
B11	0 0 0	0 0 0	8 8 8
B13	0 0 0	0 0 0	3 3 3
B14	0 0 0	0 0 0	17 17 17
B15	0 0 0	1 1 1	3 3 3
P51	44 44 47	52 55 56	447 453 474
P52	149 151 159	136 140 150	1,194 1,212 1,290
P53	119 121 136	145 146 160	1,644 1,664 1,769
P54	117 118 129	98 99 106	1,750 1,776 1,885
P55	10 10 10	4 4 4	875 884 925
P56	105 106 114	126 129 136	1,329 1,345 1,431
P57	120 121 133	92 93 103	932 946 1,002
P58	30 30 33	20 20 20	268 271 290
P60	0 0 0	0 0 0	1 1 1
S01	1 1 2	0 0 0	3 3 4
S02	1 1 1	0 0 0	1 1 1

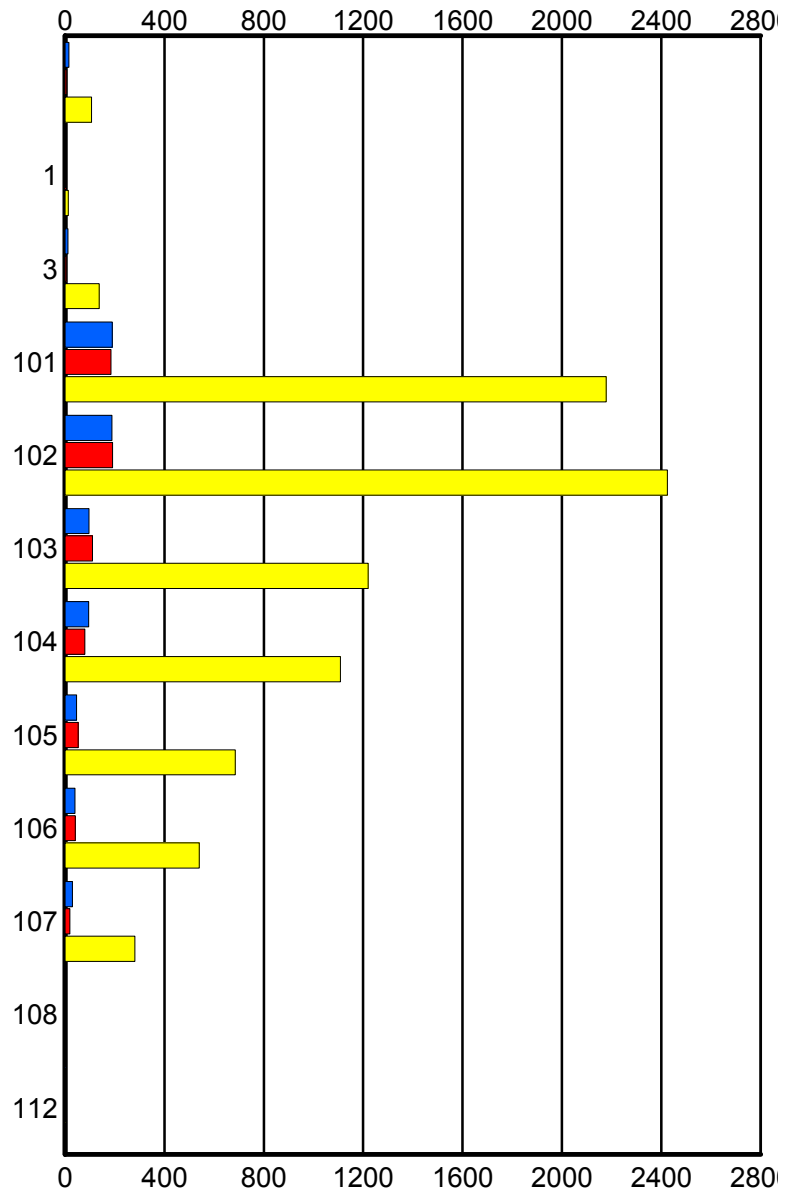
	Current We	Last Week	YTD
S04	0	1	1
	0	1	1
	0	1	1

Road Ranger / SIRV Performance By Beat

	Current We	Last Week	YTD
	15	7	106
	16	7	107
	17	7	116
1	1	1	12
	1	1	13
	1	1	13
3	11	6	134
	12	6	137
	12	6	144
101	189	181	2,137
	190	185	2,178
	202	198	2,297
102	187	187	2,382
	189	191	2,424
	206	207	2,573
103	94	107	1,208
	96	110	1,220
	102	113	1,282
104	93	79	1,098
	95	80	1,109
	105	84	1,187
105	46	53	680
	46	53	685
	49	61	734
106	40	39	533
	40	41	540
	48	46	567
107	30	20	279
	30	20	281
	33	20	303
108	0	0	3
	0	0	4
	0	0	4
112	2	0	2
	2	0	2
	3	0	3

Values presented are:
 - Total Events with a RR/SIRV Response
 - Total RR/SIRV Responses,
 - Total Activities Performed

RR/SIRV Responses per Beat



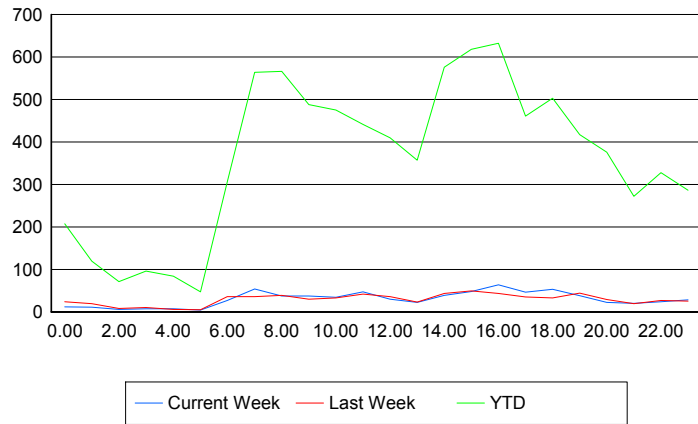
■ Current Week
 ■ Last Week
 ■ YTD

Road Ranger / SIRV Performance By Time of Day

Values presented are:
 - Total Events with a RR/SIRV Response
 - Total RR/SIRV Responses,
 - Total Activities Performed

	Current We	Last Week	YTD
12AM-1AM	12	24	201
	12	24	207
	17	26	229
1AM-2AM	11	19	117
	11	19	119
	11	19	121
2AM-3AM	6	8	69
	6	8	71
	7	8	74
3AM-4AM	7	10	93
	7	10	96
	7	11	104
4AM-5AM	6	6	81
	7	6	84
	7	6	88
5AM-6AM	4	5	39
	4	5	47
	5	6	51
6AM-7AM	25	31	286
	27	36	306
	29	37	324
7AM-8AM	52	33	547
	54	36	564
	55	36	592
8AM-9AM	36	37	540
	37	39	566
	43	40	595
9AM-10AM	32	29	470
	37	30	488
	39	33	519
10AM-11AM	34	31	455
	34	33	475
	34	33	495
11AM-12PM	46	41	431
	47	42	441
	48	49	468
12PM-1PM	30	35	393
	30	36	410
	33	38	427

Number of Responses / Hour of the Day



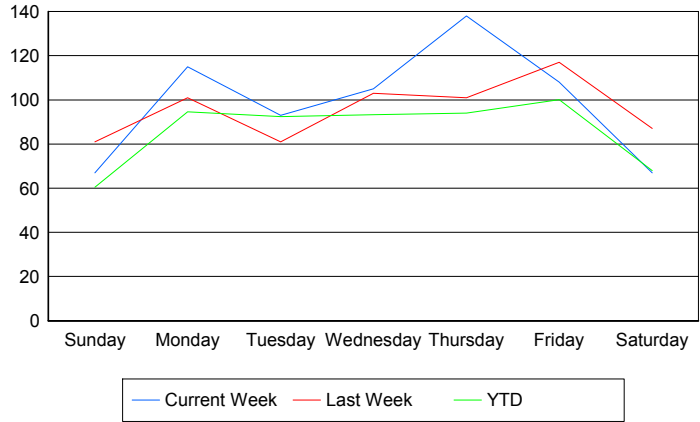
	Current We	Last Week	YTD
1PM-2PM	22	23	342
	22	23	357
	25	25	378
2PM-3PM	37	41	556
	39	43	576
	42	46	615
3PM-4PM	45	48	605
	48	49	618
	54	56	662
4PM-5PM	62	40	607
	64	43	632
	70	44	673
5PM-6PM	44	35	449
	46	35	461
	49	37	489
6PM-7PM	51	32	491
	53	33	503
	58	35	531
7PM-8PM	37	42	403
	38	44	417
	43	46	441
8PM-9PM	22	29	370
	22	29	376
	25	31	392
9PM-10PM	20	19	262
	20	19	272
	22	20	288
10PM-11PM	24	26	322
	24	27	328
	27	33	355
11PM-12AM	27	24	280
	28	25	286
	28	28	312

Road Ranger / SIRV Performance By Day of Week

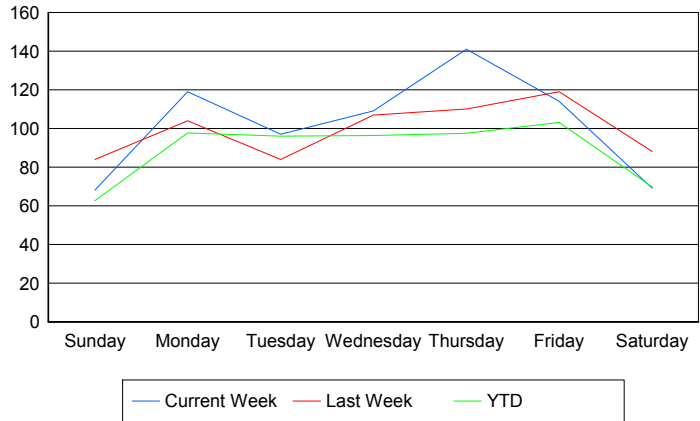
Values presented are:
 - Total Events with a RR/SIRV Response
 - Total RR/SIRV Responses,
 - Total Activities Performed

	Current We	Last Week	YTD
Sunday	67	79	828
	68	82	857
	71	86	901
Monday	115	101	1,286
	119	104	1,327
	130	110	1,413
Tuesday	93	81	1,285
	97	84	1,332
	105	95	1,415
Wednesday	105	103	1,288
	109	107	1,330
	125	113	1,425
Thursday	138	101	1,270
	141	110	1,320
	152	116	1,409
Friday	108	117	1,463
	114	119	1,509
	119	128	1,579
Saturday	67	87	999
	69	88	1,025
	76	95	1,081

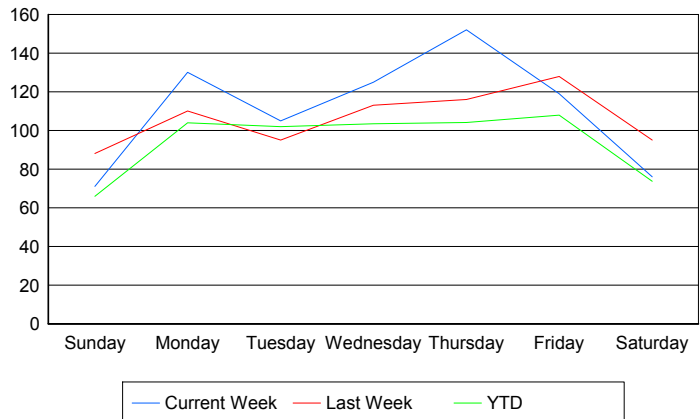
Avg # of events with a RR/SIRV Response per Day of the Week



Avg # of RR/SIRV Responses per Day of the Week



Avg # of RR/SIRV Activities Performed per Day of the Week



Road Ranger / SIRV Responses per Time of Day and Day of Week

