



Weekly Performance Measures Report Palm Beach County



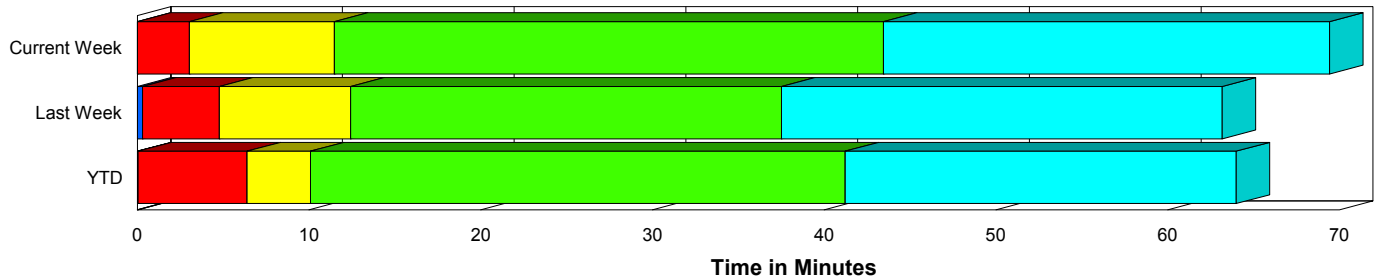
Created on:
April 20, 2010
8:42 pm

Period From Apr 11, 2010 to Apr 17, 2010

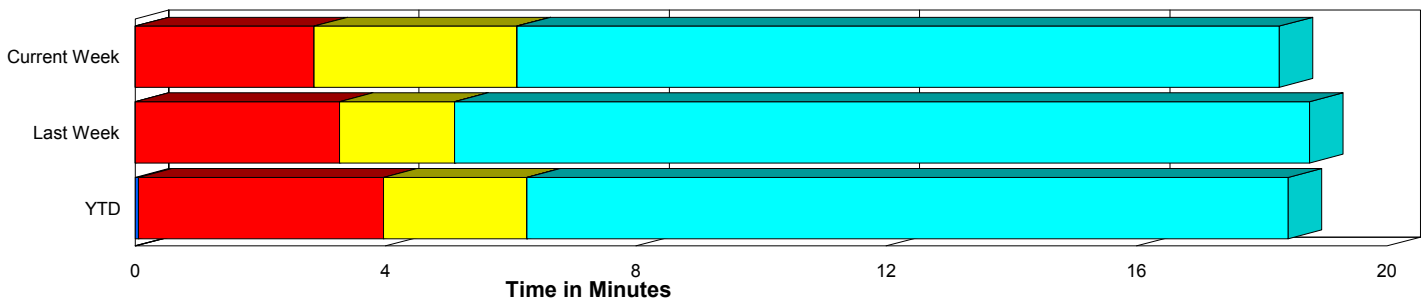
Performance Measures Summary

	Traffic Events (No Lanes Blocked)			Incidents (Lanes Blocked)		
	<u>This Week</u>	<u>Last Week</u>	<u>YTD</u>	<u>This Week</u>	<u>Last Week</u>	<u>YTD</u>
Number of Events	546	585	7,372	25	24	347
TMC Detection (min.)	0.00	0.00	0.05	0.01	0.30	0.05
TMC Verification (min.)	2.86	3.27	3.92	3.03	4.48	6.41
TMC Response (min.)	6.66	5.45	6.67	11.58	12.19	10.26
RR Dispatch Time (min.)	2.90	2.03	2.30	3.75	2.24	2.51
RR Response Time (min.)	4.14	3.83	4.46	8.02	9.95	7.80
Roadway Clearance (min.)				42.42	38.02	41.11
Event Clearance (min.)	18.83	19.11	18.88	68.37	63.68	64.55
# of Events w/ RR/SIRV	484	548	6,905	25	22	340
RR/SIRV Responses	484	548	6,905	25	22	340
RR/SIRV Activities	496	584	7,193	31	30	439

Incident Clearance Time-Line



Traffic Event (Non-Lane Blockage) Time-Line



■ Avg. TMC Detection Time	■ Avg. Time from TMC Response to Roadway Clearance*
■ Avg. Time from TMC Detection to TMC Verification	■ Avg. Time from Roadway Clearance to Incident/Event Clearance**
■ Avg. Time from TMC Verification to TMC Response	

* Roadway clearance equals all travel lanes open

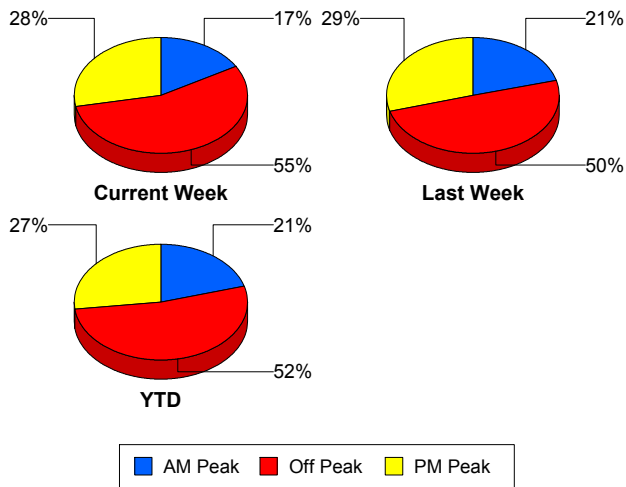
** Incident clearance equals time when last responder has left the scene

Performance Measures by Peak Period

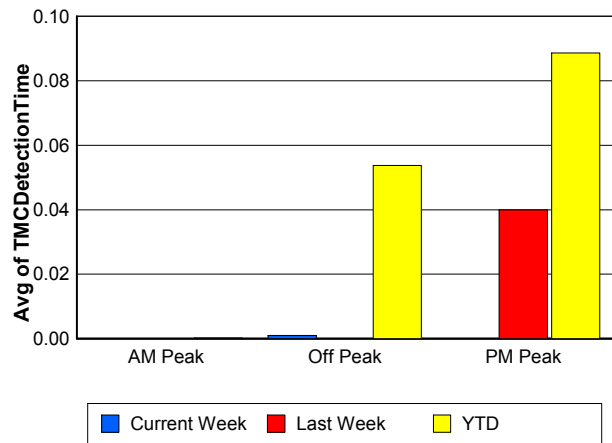
Note: AM peak period is defined as 6am to 10am and PM peak period is defined as 3pm to 7pm.

	AM Peak			Off Peak			PM Peak		
	<u>Current Week</u>	<u>Last Week</u>	<u>YTD</u>	<u>Current Week</u>	<u>Last Week</u>	<u>YTD</u>	<u>Current Week</u>	<u>Last Week</u>	<u>YTD</u>
Number of Events	95	127	1,592	316	303	4,049	160	179	2,078
Number of Incidents	5	7	86	12	10	173	8	7	88
TMC Detection (min.)	0.00	0.00	0.00	0.00	0.00	0.05	0.00	0.04	0.09
TMC Verification (min.)	3.59	3.13	2.87	3.05	3.61	4.23	2.09	2.94	4.54
TMC Response (min.)	7.93	6.23	5.66	8.11	5.45	7.44	4.10	5.81	6.59
RR Dispatch Time (min.)	2.86	1.92	1.52	3.83	1.86	2.53	1.33	2.41	2.48
RR Response Time (min.)	5.09	4.54	4.21	4.79	4.16	5.03	3.07	3.62	4.18
Event Clearance (min.)	27.65	24.08	21.15	21.87	20.56	21.62	15.33	19.10	19.43
Roadway Clearance (min.)	89.22	52.11	40.88	35.93	34.47	46.21	22.92	29.01	31.30
Incident Clearance (min.)	107.79	69.61	71.93	61.30	52.44	63.25	54.33	73.80	57.20
# of Events w/ RR/SIRV	87	120	1,494	274	282	3,783	148	168	1,968
RR/SIRV Responses	87	120	1,494	274	282	3,783	148	168	1,968
RR/SIRV Activities	87	133	1,583	288	299	3,986	152	182	2,063

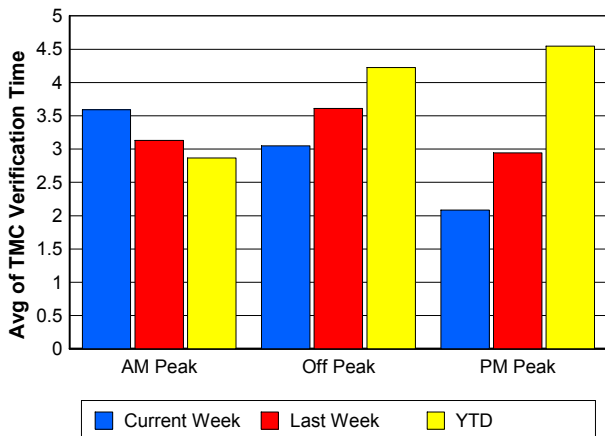
Number of Events / Peak Period



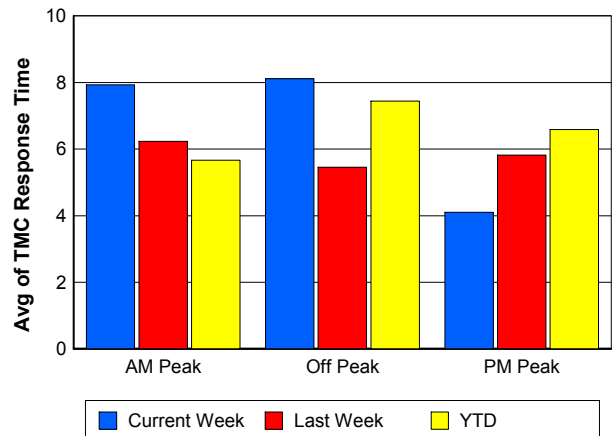
TMC Detection Time



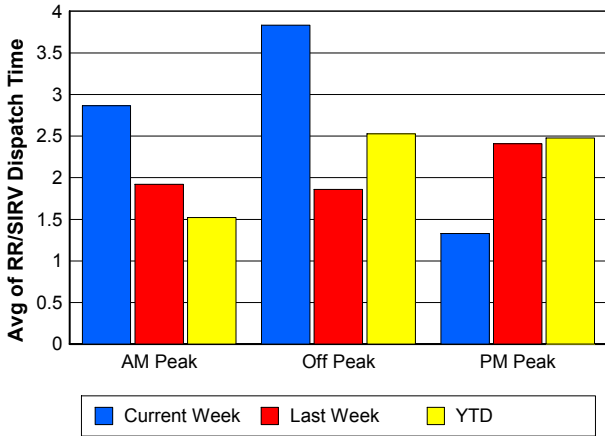
TMC Verification Time



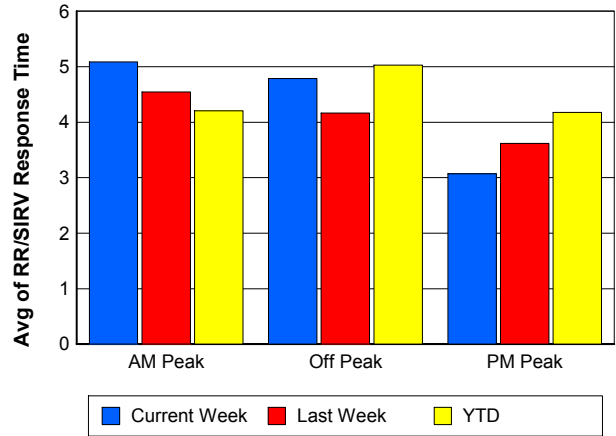
TMC Response Time



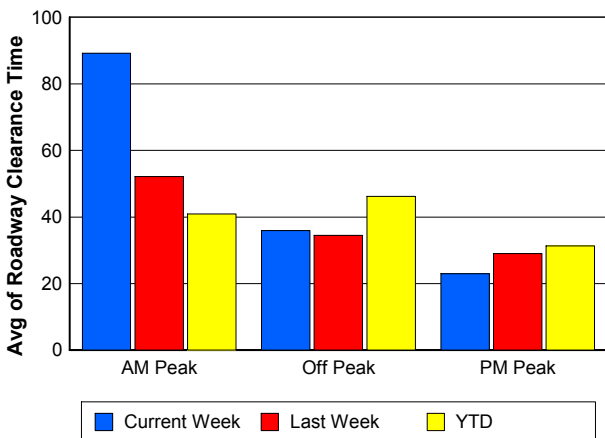
Road Ranger / SIRV Dispatch Time



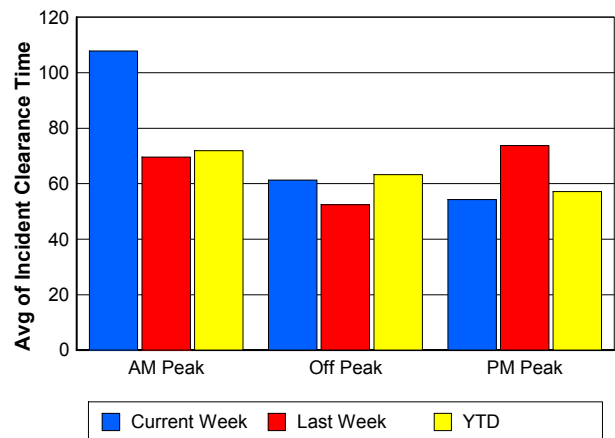
Road Ranger / SIRV Response Time



Roadway Clearance Time (2A)



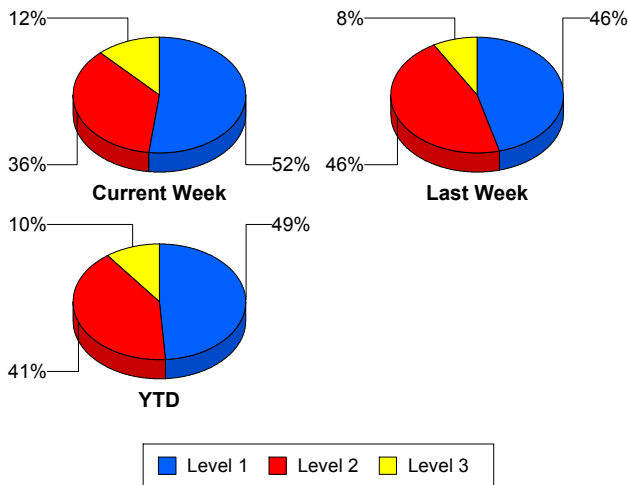
Incident Clearance Time (3B)



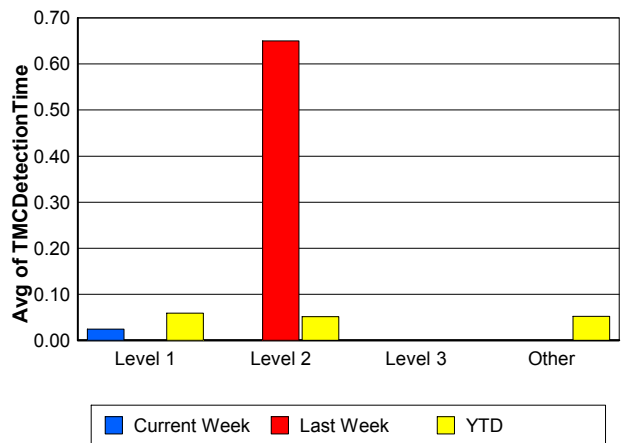
Performance Measures by Severity

	Level 1			Level 2			Level 3			Other		
	<u>This Week</u>	<u>Last Week</u>	<u>YTD</u>	<u>This Week</u>	<u>Last Week</u>	<u>YTD</u>	<u>This Week</u>	<u>Last Week</u>	<u>YTD</u>	<u>This Week</u>	<u>Last Week</u>	<u>YTD</u>
Number of Events	13	11	169	9	11	141	3	2	35	546	585	7,374
Number of Incidents	13	11	169	9	11	141	3	2	35	0	0	2
TMC Detection (min.)	0.02	0.00	0.06	0.00	0.65	0.05	0.00	0.00	0.00	0.00	0.00	0.05
TMC Verification (min.)	2.79	3.70	3.45	2.46	5.36	9.71	5.75	3.88	7.41	2.86	3.27	3.92
TMC Response (min.)	2.99	10.40	6.02	19.54	15.21	14.99	22.06	8.47	11.56	6.66	5.45	6.67
RR Dispatch Time (min.)	0.92	2.00	1.08	7.27	2.01	4.06	5.43	4.67	3.31	2.90	2.03	2.29
RR Resp. Time (min.)	2.68	8.41	4.99	12.27	13.19	11.03	16.63	3.81	8.25	4.14	3.83	4.46
Event Clearance (min.)	42.80	46.55	45.69	70.90	72.37	71.01	171.53	110.07	128.07	18.83	19.11	18.90
Roadway Clear. (min.)	14.89	17.58	15.39	44.49	48.31	55.61	155.54	93.87	110.43			-21.46
Incident Clearance (min.)	42.80	46.55	45.69	70.90	72.37	71.01	171.53	110.07	126.47			0.00
# of Events w/ RR/SIRV	13	11	166	9	9	139	3	2	33	484	548	6,907
RR/SIRV Responses	13	11	166	9	9	139	3	2	33	484	548	6,907
RR/SIRV Activities	14	11	198	13	14	186	4	5	50	496	584	7,198

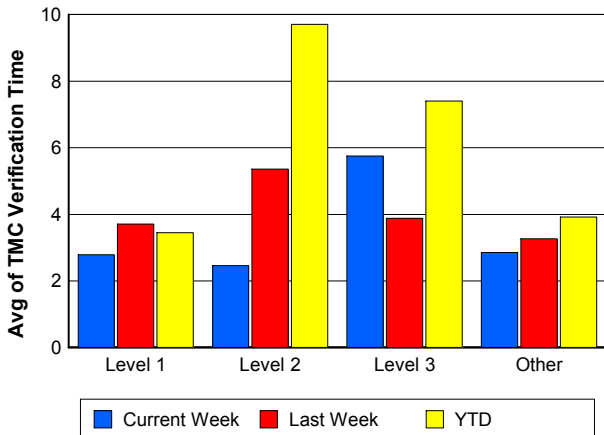
Number of Events / Severity



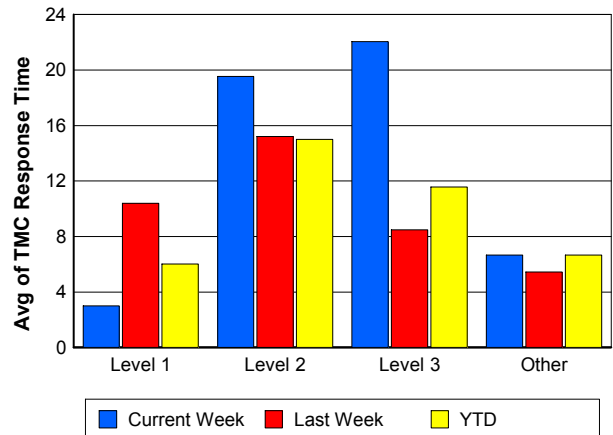
TMC Detection Time



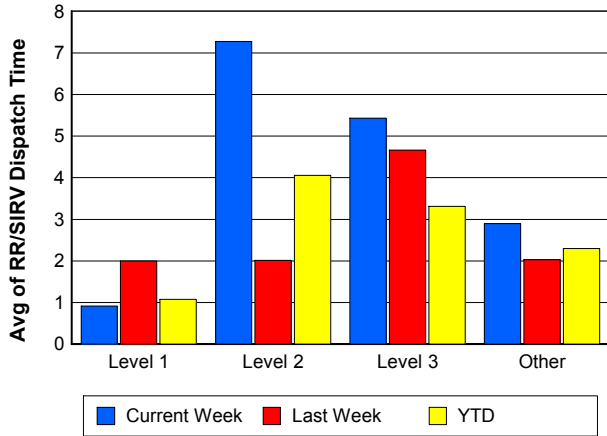
TMC Verification Time



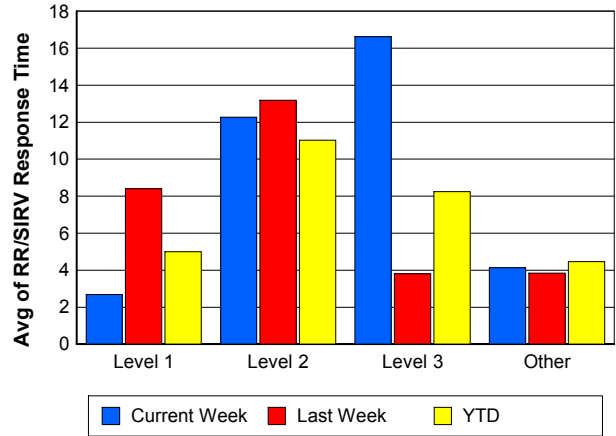
TMC Response Time



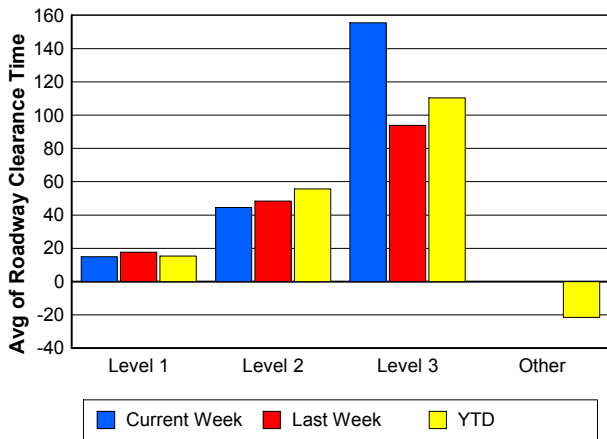
Road Ranger / SIRV Dispatch Time



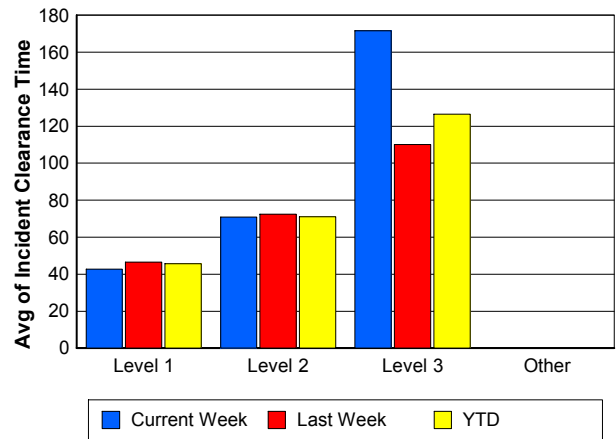
Road Ranger / SIRV Response Time



Roadway Clearance Time (2A)



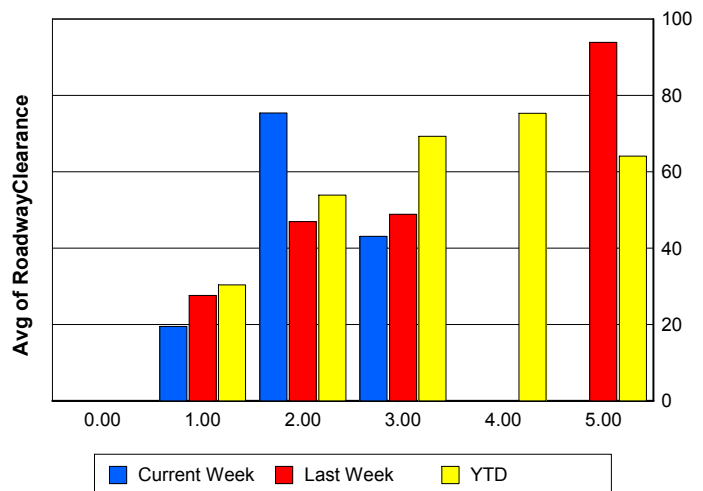
Incident Clearance Time (3B)



Roadway Clearance by Maximum Number of Lanes Blocked

	Current Week	Last Week	YTD
0			
1	19.49	27.59	30.33
2	75.35	46.93	53.86
3	43.06	48.82	69.23
4	0.00	0.00	75.33
5	0.00	93.87	64.08

Roadway Clearance Time (2A)



Performance Measures by Roadway

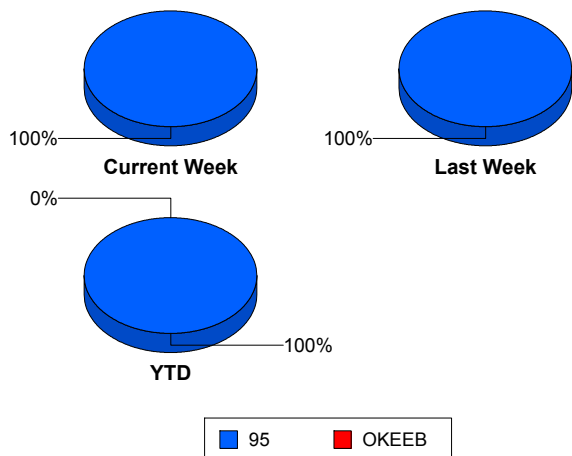
95

	<u>Current Week</u>	<u>Last Week</u>	<u>YTD</u>
Number of Events	571	609	7,718
Number of Incidents	25	24	347
TMC Detection (min.)	0.00	0.01	0.05
TMC Verification (min.)	2.86	3.31	4.03
TMC Response (min.)	6.90	5.72	6.84
RR Dispatch Time (min.)	2.94	2.03	2.31
RR Resp. Time (min.)	4.34	4.08	4.63
Event Clearance (min.)	21.00	20.87	20.94
Roadway Clear. (min.)	42.42	38.02	41.11
Incident Clearance (min.)	68.37	63.68	63.87
# of Events w/ RR/SIRV	509	570	7,244
RR/SIRV Responses	509	570	7,244
RR/SIRV Activities	527	614	7,631

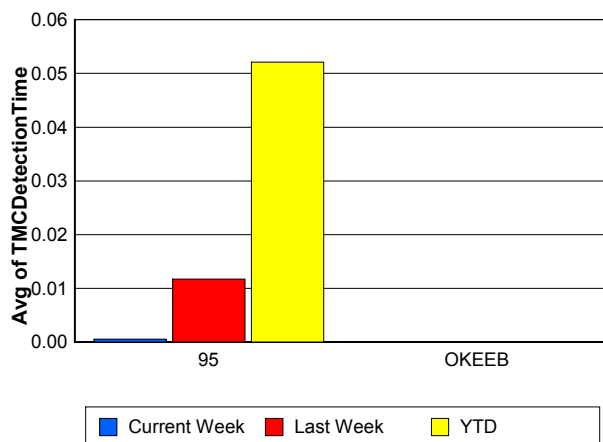
OKEEB

	<u>YTD</u>
Number of Events	1
Number of Incidents	0
TMC Detection (min.)	0.00
TMC Verification (min.)	0.00
TMC Response (min.)	0.00
RR Dispatch Time (min.)	0.00
RR Resp. Time (min.)	0.00
Event Clearance (min.)	18.45
Roadway Clear. (min.)	
Incident Clearance (min.)	
# of Events w/ RR/SIRV	1
RR/SIRV Responses	1
RR/SIRV Activities	1

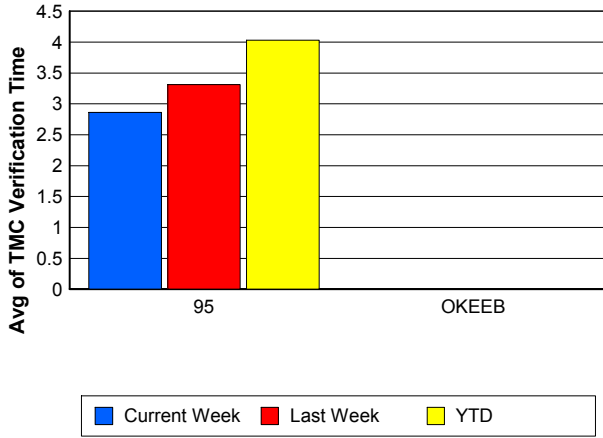
Number of Events / Roadway



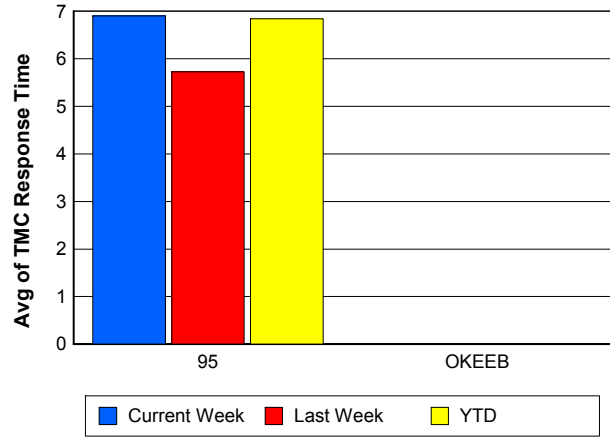
TMC Detection Time



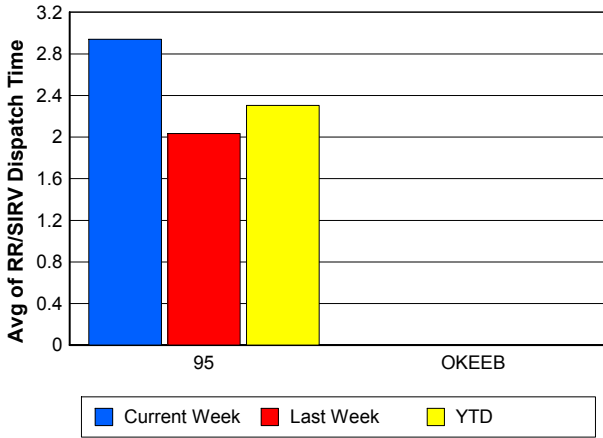
TMC Verification Time



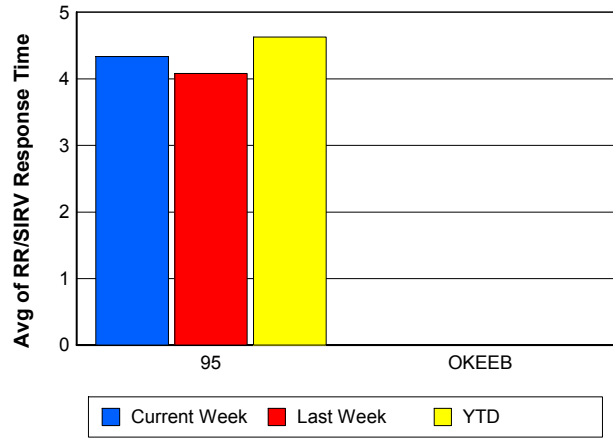
TMC Response Time



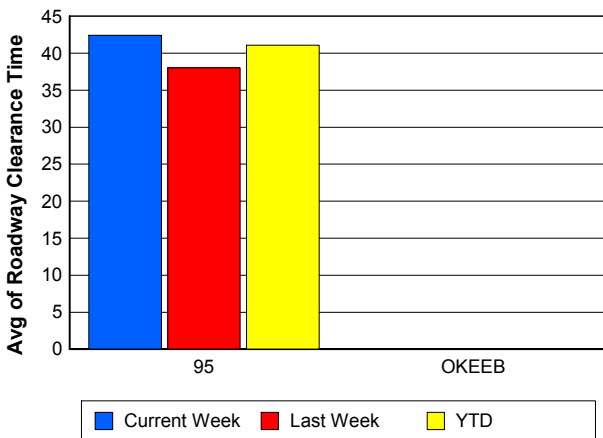
Road Ranger / SIRV Dispatch Time



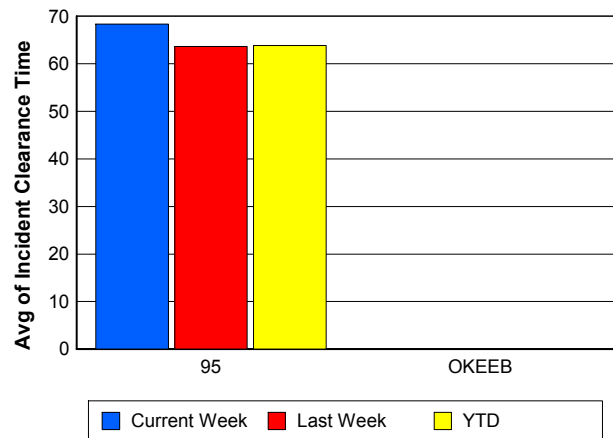
Road Ranger / SIRV Response Time



Roadway Clearance Time (2A)



Incident Clearance Time (3B)



Performance Measures by Event Type

Accident

	<u>Current Week</u>	<u>Last Week</u>	<u>YTD</u>
Number of Events	44	36	580
Number of Incidents	17	18	251
TMC Detection (min.)	0.00	0.00	0.07
TMC Verification (min.)	5.49	4.39	7.17
TMC Response (min.)	10.88	10.09	10.07
RR Dispatch Time (min.)	3.31	1.28	2.16
RR Response Time (min.)	7.69	8.80	7.93
Event Clearance (min.)	65.52	76.29	58.88
Roadway Clearance (min.)	55.02	41.41	45.59
Incident Clearance (min.)	89.54	73.27	73.33
# of Events w/ RR/SIRV	44	34	568
RR/SIRV Assists	44	34	568
RR/SIRV Activities	52	42	663

Debris on Roadway

	<u>Current Week</u>	<u>Last Week</u>	<u>YTD</u>
Number of Events	27	37	430
Number of Incidents	1	1	7
TMC Detection (min.)	0.00	0.00	0.00
TMC Verification (min.)	13.29	11.79	10.39
TMC Response (min.)	13.27	12.52	10.60
RR Dispatch Time (min.)	5.24	3.39	3.39
RR Response Time (min.)	8.04	9.34	7.27
Event Clearance (min.)	19.49	16.64	14.51
Roadway Clearance (min.)	9.23	14.90	10.60
Incident Clearance (min.)	12.18	14.80	15.60
# of Events w/ RR/SIRV	26	36	425
RR/SIRV Assists	26	36	425
RR/SIRV Activities	26	35	432

Disabled Vehicle

	<u>Current Week</u>	<u>Last Week</u>	<u>YTD</u>
Number of Events	470	507	6,279
Number of Incidents	5	3	68
TMC Detection (min.)	0.00	0.00	0.05
TMC Verification (min.)	2.21	2.82	3.54
TMC Response (min.)	4.97	4.82	5.98
RR Dispatch Time (min.)	2.01	1.79	2.15
RR Response Time (min.)	3.47	3.29	3.95
Event Clearance (min.)	15.94	16.90	17.79
Roadway Clearance (min.)	4.60	18.08	27.31
Incident Clearance (min.)	13.14	18.17	37.29
# of Events w/ RR/SIRV	424	483	5,941
RR/SIRV Assists	424	483	5,941
RR/SIRV Activities	435	526	6,322

Emergency Vehicles

	<u>YTD</u>
Number of Events	5
Number of Incidents	4
TMC Detection (min.)	0.00
TMC Verification (min.)	5.59
TMC Response (min.)	9.31
RR Dispatch Time (min.)	0.18
RR Response Time (min.)	9.13
Event Clearance (min.)	71.17
Roadway Clearance (min.)	81.95
Incident Clearance (min.)	83.17
# of Events w/ RR/SIRV	3
RR/SIRV Assists	3
RR/SIRV Activities	3

Other

	<u>Current Week</u>	<u>Last Week</u>	<u>YTD</u>
Number of Events	25	25	347
Number of Incidents	0	0	1
TMC Detection (min.)	0.00	0.00	0.17
TMC Verification (min.)	0.00	0.90	0.52
TMC Response (min.)	41.56	10.19	15.62
RR Dispatch Time (min.)	34.40	2.91	4.35
RR Response Time (min.)	3.53	7.11	9.04
Event Clearance (min.)	37.13	21.41	20.37
Roadway Clearance (min.)			8.12
Incident Clearance (min.)			24.77
# of Events w/ RR/SIRV	10	14	240
RR/SIRV Assists	10	14	240
RR/SIRV Activities	9	9	154

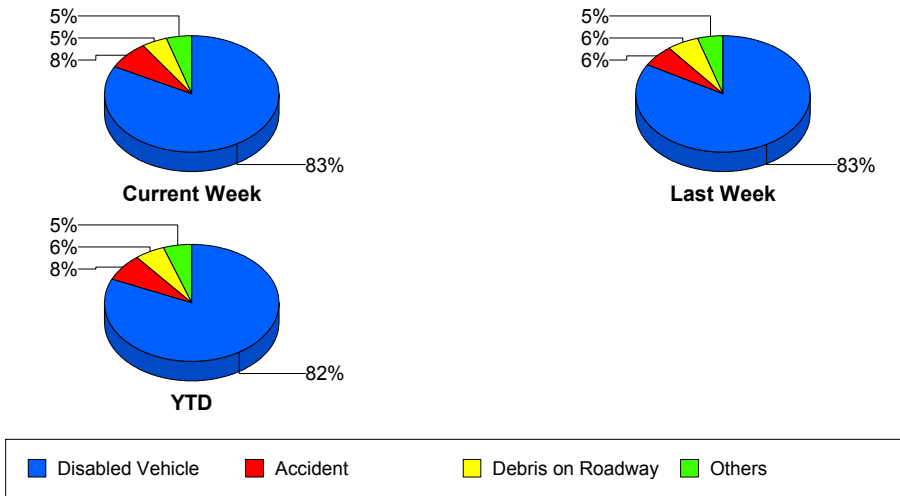
Police Activity

	<u>Current Week</u>	<u>Last Week</u>	<u>YTD</u>
Number of Events	1	2	29
Number of Incidents	1	1	9
TMC Detection (min.)	0.00	3.58	0.25
TMC Verification (min.)	0.00	0.61	0.04
TMC Response (min.)	59.67		20.72
RR Dispatch Time (min.)	8.98	85.38	6.76
RR Response Time (min.)	50.68		18.78
Event Clearance (min.)	59.92	77.62	32.64
Roadway Clearance (min.)	46.13	56.93	33.76
Incident Clearance (min.)	59.92	67.28	38.65
# of Events w/ RR/SIRV	1	1	21
RR/SIRV Assists	1	1	21
RR/SIRV Activities	1	0	11

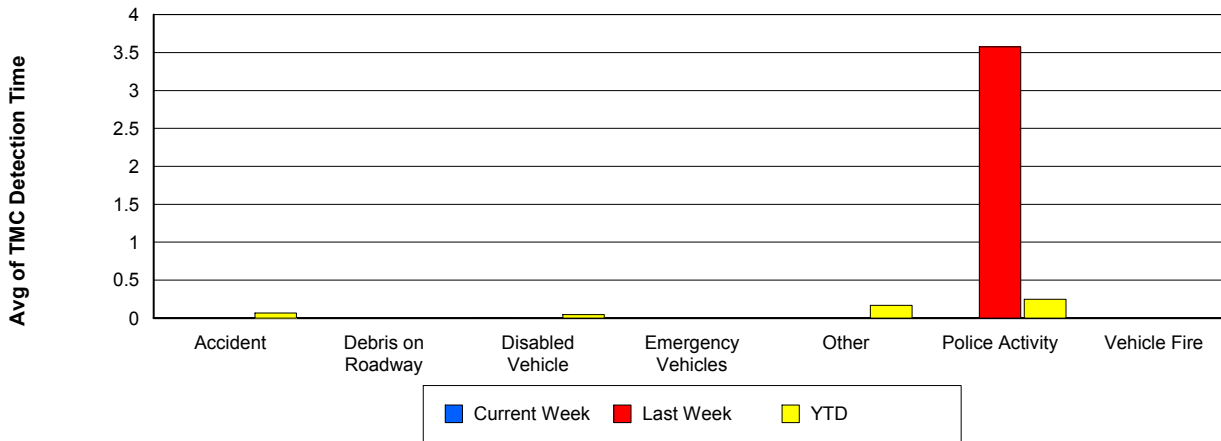
Vehicle Fire

	<u>Current Week</u>	<u>Last Week</u>	<u>YTD</u>
Number of Events	1	1	14
Number of Incidents	1	1	7
TMC Detection (min.)	0.00	0.00	0.00
TMC Verification (min.)	0.00	0.00	3.33
TMC Response (min.)	48.97	24.12	9.31
RR Dispatch Time (min.)	8.42	3.27	2.12
RR Response Time (min.)	40.55	20.85	7.19
Event Clearance (min.)	49.20	72.85	39.24
Roadway Clearance (min.)	46.87	41.15	35.85
Incident Clearance (min.)	49.20	72.85	58.01
# of Events w/ RR/SIRV	1	1	13
RR/SIRV Assists	1	1	13
RR/SIRV Activities	1	2	14

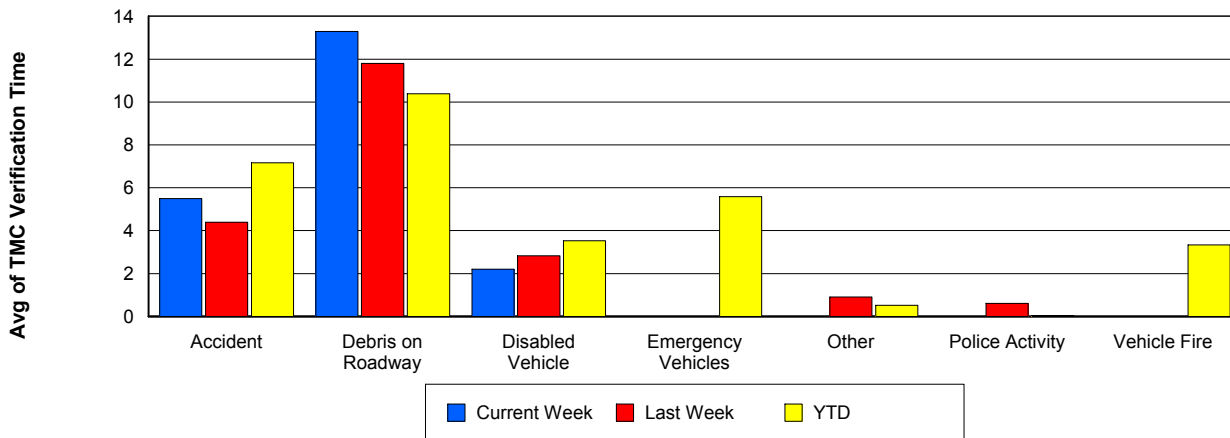
Number of Events / Event Type



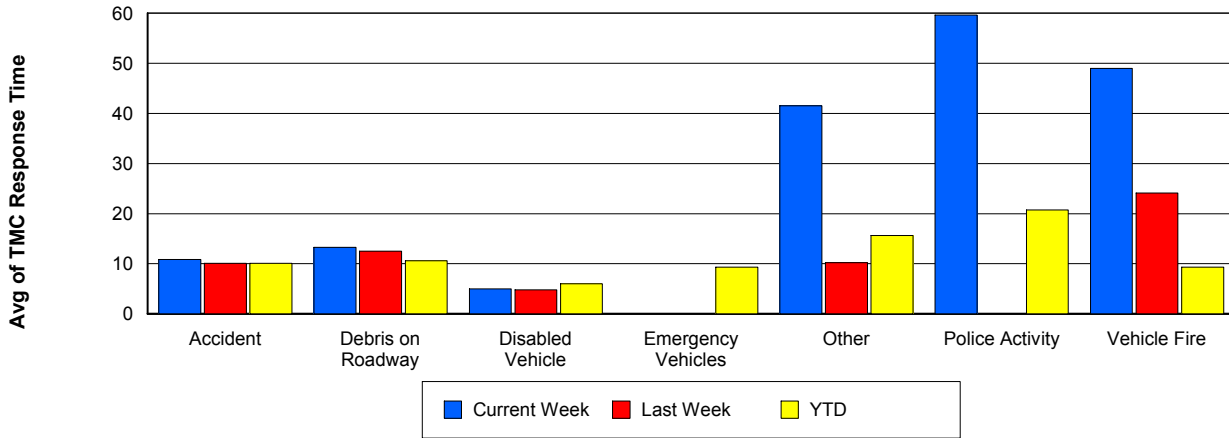
TMC Detection Time



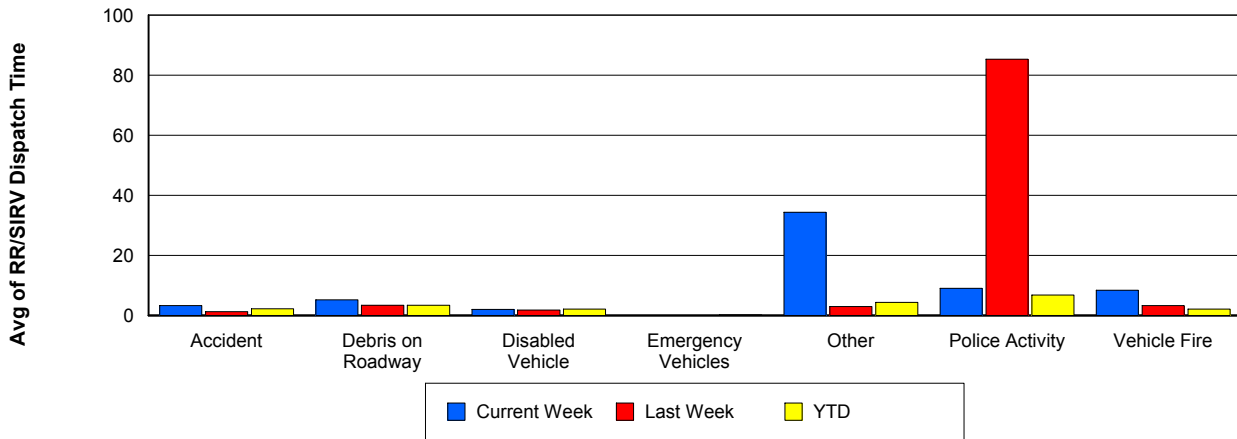
TMC Verification Time



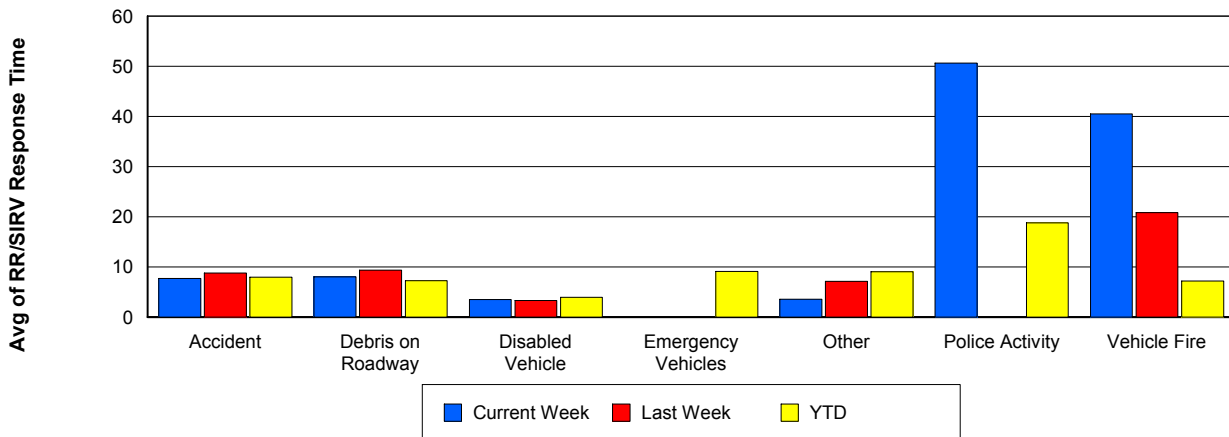
TMC Response Time



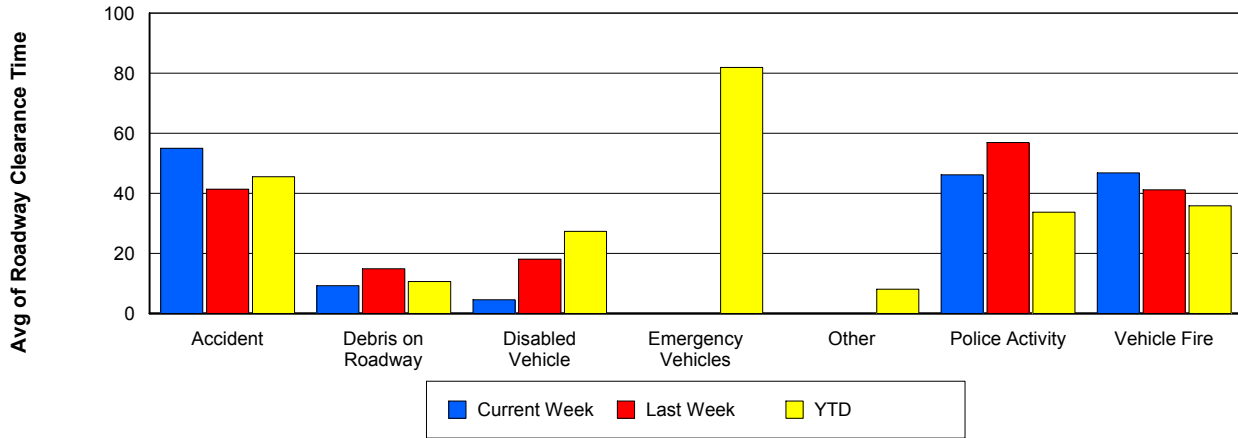
Road Ranger / SIRV Dispatch Time



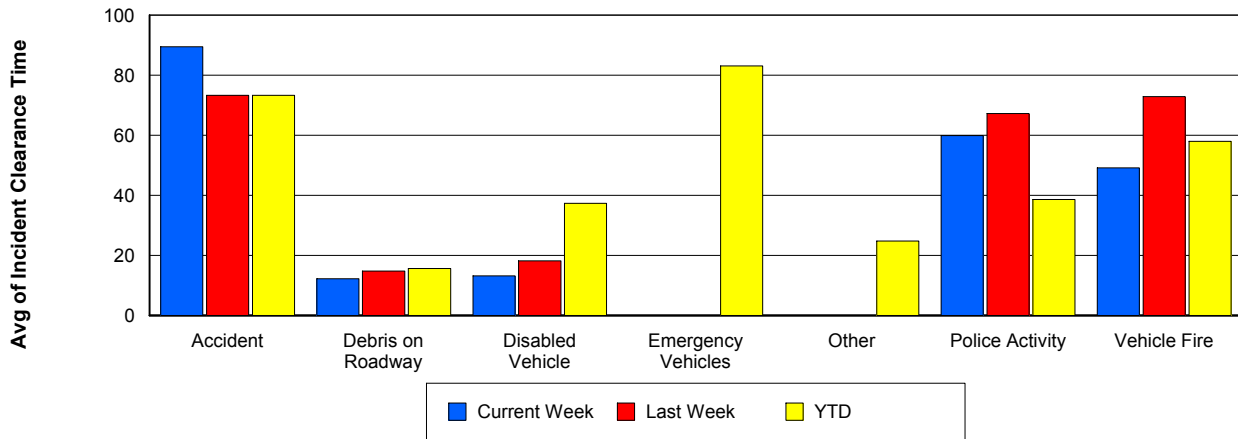
Road Ranger / SIRV Response Time



Roadway Clearance Time (2A)



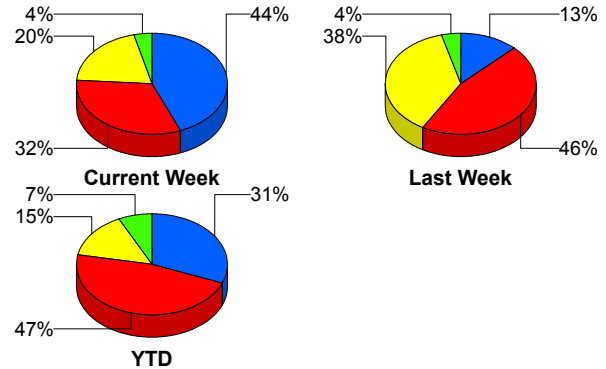
Incident Clearance Time (3B)



Incident Detection Methods

	Current Week	Last Week	YTD
Broward Road Ranger	0	0	5
Broward TMC	0	0	5
District 4	1	1	8
FDOT Maintenance	0	0	1
FHP	8	11	162
ITMS CCTV	5	9	51
Media	0	0	1
Motorist	0	0	5
Palm Beach Road Ran	11	3	107
Total	25	24	345

Total Incidents by Detection Method



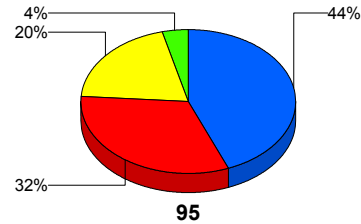
■ Palm Beach Road Ranger
 ■ FHP
 ■ ITMS CCTV
 ■ Others

Incident Detection Methods by Roadway

		Current Week	Last Week	YTD
95	Broward Road Ranger	0	0	5
	Broward TMC	0	0	5
	District 4	1	1	8
	FDOT Maintenance	0	0	1
	FHP	8	11	162
	ITMS CCTV	5	9	51
	Media	0	0	1
	Motorist	0	0	5
	Palm Beach Road Ran	11	3	107
	Total	25	24	345
Total	25	24	345	

Total Events by Roadway and Detection Method

Current Period Only

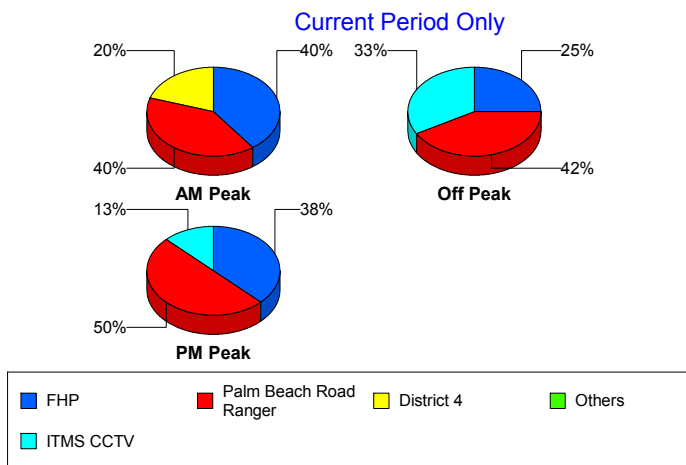


■ Palm Beach Road Ranger
 ■ FHP
 ■ ITMS CCTV
 ■ Others

Incident Detection Methods by Peak Period

		Current Week	Last Week	YTD
AM Peak	Broward Road Ranger	0	0	4
	District 4	1	0	2
	FHP	2	1	36
	ITMS CCTV	0	5	12
	Media	0	0	1
	Palm Beach Road Ran	2	1	31
	Total	5	7	86
Off Peak	Broward Road Ranger	0	0	1
	Broward TMC	0	0	2
	District 4	0	1	4
	FDOT Maintenance	0	0	1
	FHP	3	5	78
	ITMS CCTV	4	2	32
	Motorist	0	0	2
	Palm Beach Road Ran	5	2	52
	Total	12	10	172
PM Peak	Broward TMC	0	0	3
	District 4	0	0	2
	FHP	3	5	49
	ITMS CCTV	1	2	7
	Motorist	0	0	3
	Palm Beach Road Ran	4	0	24
	Total	8	7	88
Total	25	24	345	

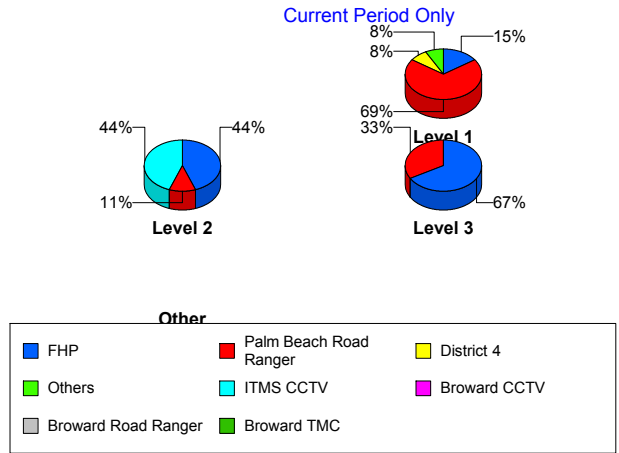
Total Events by Peak Period and Detection Method



Incident Detection Methods by Severity

		Current Week	Last Week	YTD
	FHP	0	0	1
	Total	0	0	1
Level 1	Broward Road Ranger	0	0	5
	Broward TMC	0	0	3
	District 4	1	1	6
	FHP	2	4	57
	ITMS CCTV	1	3	22
	Motorist	0	0	3
	Palm Beach Road Ran	9	3	73
	Total	13	11	169
Level 2	Broward TMC	0	0	2
	District 4	0	0	1
	FDOT Maintenance	0	0	1
	FHP	4	6	86
	ITMS CCTV	4	5	25
	Motorist	0	0	2
	Palm Beach Road Ran	1	0	24
	Total	9	11	141
Level 3	District 4	0	0	1
	FHP	2	1	19
	ITMS CCTV	0	1	4
	Media	0	0	1
	Palm Beach Road Ran	1	0	10
	Total	3	2	35
Total		25	24	345

Total Events by Severity and Detection Method



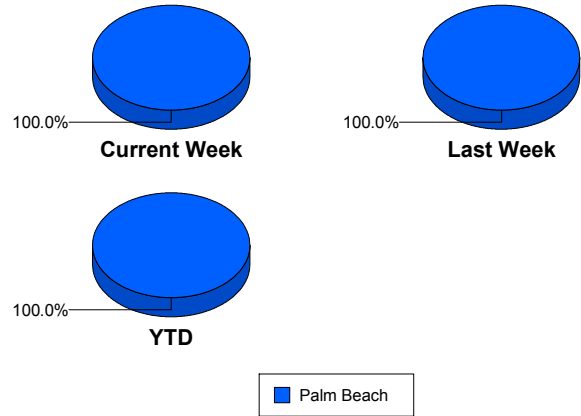
Road Ranger / SIRV Performance Measures

Road Ranger / SIRV Performance By County

Values presented are:
 - Total Events with a RR/SIRV Response
 - Total RR/SIRV Responses,
 - Total Activities Performed

	Current We	Last Week	YTD
Palm Beach	634	692	9,043
	652	717	9,352
	689	778	9,912

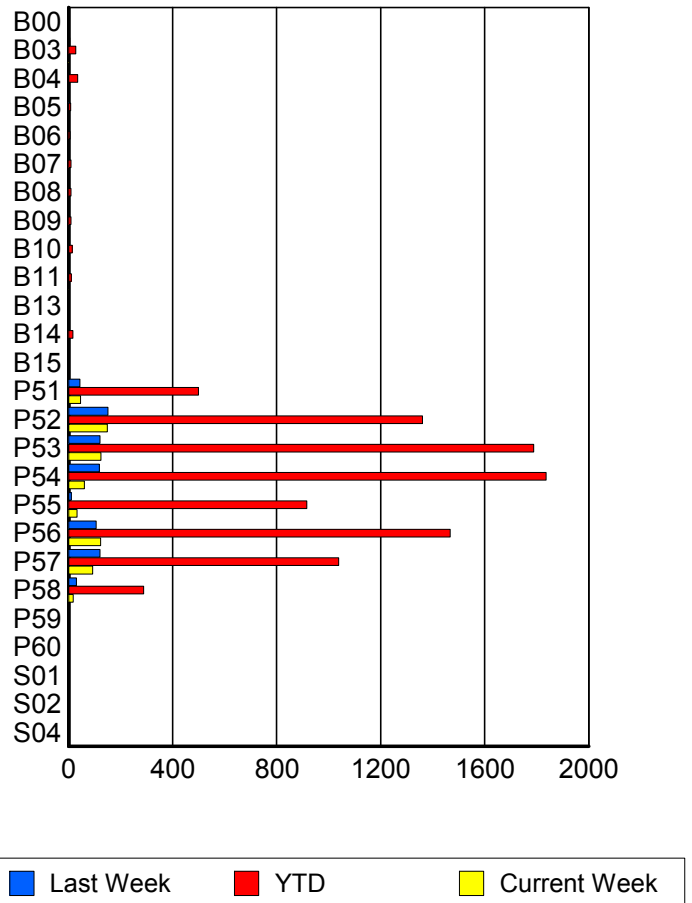
RR/SIRV Responses per County



Road Ranger / SIRV Performance By Truck

	Current We	Last Week	YTD
B00	0	1	1
	0	1	1
	0	1	1
B03	2	4	27
	2	4	27
	4	4	30
B04	0	2	34
	0	2	35
	0	2	38
B05	1	2	8
	1	2	8
	1	2	8
B06	1	3	5
	1	3	5
	1	3	7
B07	0	2	9
	0	2	9
	0	2	9
B08	0	0	9
	0	0	9
	0	0	9
B09	0	0	9
	0	0	9
	0	0	10
B10	1	0	14
	1	0	14
	3	0	16

**RR/SIRV
Responses per
Truck**



	Current We	Last Week	YTD
B11	2	0	10
	2	0	10
	2	0	10
B13	0	0	3
	0	0	3
	0	0	3
B14	0	0	17
	0	0	17
	0	0	17
B15	0	0	3
	0	0	3
	0	0	3
P51	45	44	492
	46	44	499
	49	47	523
P52	148	149	1,342
	149	151	1,361
	158	159	1,448
P53	122	119	1,766
	124	121	1,788
	131	136	1,900
P54	60	117	1,810
	60	118	1,836
	64	129	1,949
P55	32	10	907
	32	10	916
	32	10	957
P56	120	105	1,449
	123	106	1,468
	128	114	1,559
P57	92	120	1,024
	92	121	1,038
	97	133	1,099
P58	18	30	286
	18	30	289
	18	33	308
P59	1	0	1
	1	0	1
	1	0	1
P60	0	0	1
	0	0	1
	0	0	1
S01	0	1	3
	0	1	3
	0	2	4

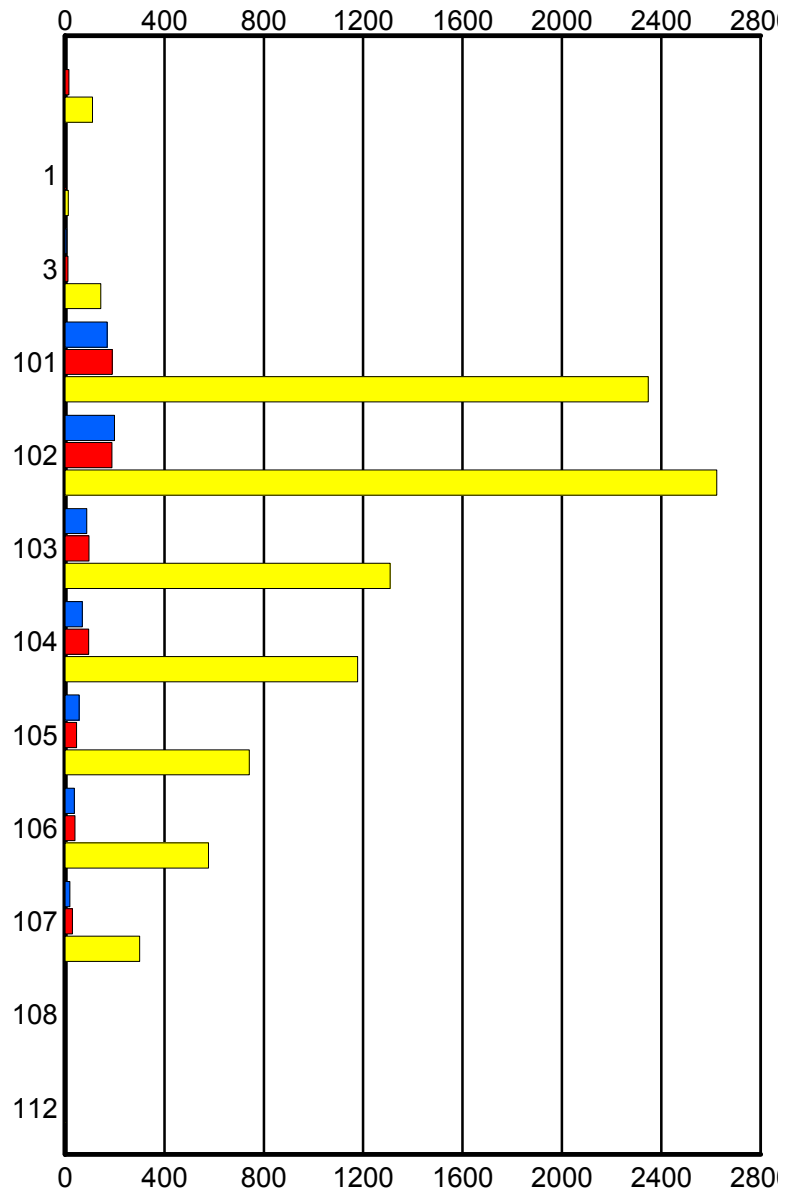
	Current We	Last Week	YTD
S02	0	1	1
	0	1	1
	0	1	1
S04	0	0	1
	0	0	1
	0	0	1

Road Ranger / SIRV Performance By Beat

	Current We	Last Week	YTD
	4	15	110
	4	16	111
	4	17	120
1	0	1	12
	0	1	13
	0	1	13
3	6	11	140
	7	12	144
	11	12	155
101	168	189	2,305
	170	190	2,348
	185	202	2,482
102	198	187	2,580
	199	189	2,623
	208	206	2,781
103	85	94	1,293
	88	96	1,308
	92	102	1,374
104	68	93	1,166
	69	95	1,178
	70	105	1,257
105	57	46	737
	57	46	742
	61	49	795
106	38	40	571
	38	40	578
	38	48	605
107	20	30	299
	20	30	301
	20	33	323
108	0	0	3
	0	0	4
	0	0	4
112	0	2	2
	0	2	2
	0	3	3

Values presented are:
 - Total Events with a RR/SIRV Response
 - Total RR/SIRV Responses,
 - Total Activities Performed

RR/SIRV Responses per Beat



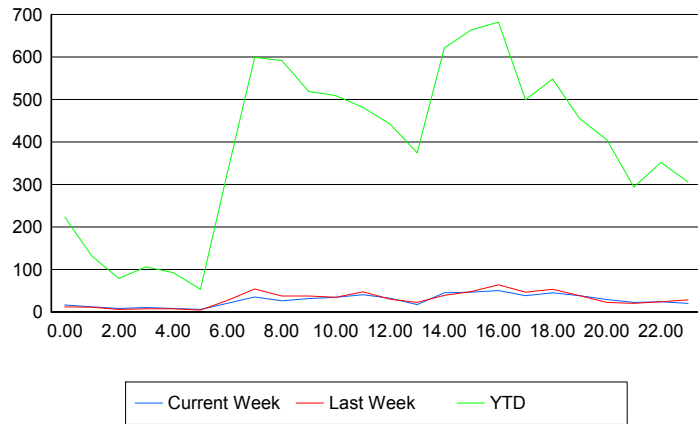
■ Current Week
 ■ Last Week
 ■ YTD

Road Ranger / SIRV Performance By Time of Day

Values presented are:
 - Total Events with a RR/SIRV Response
 - Total RR/SIRV Responses,
 - Total Activities Performed

	Current We	Last Week	YTD
12AM-1AM	15	12	216
	16	12	223
	16	17	245
1AM-2AM	12	11	129
	12	11	131
	12	11	133
2AM-3AM	8	6	77
	8	6	79
	10	7	84
3AM-4AM	9	7	102
	10	7	106
	10	7	114
4AM-5AM	8	6	89
	8	7	92
	9	7	97
5AM-6AM	6	4	45
	6	4	53
	6	5	57
6AM-7AM	20	25	306
	20	27	326
	20	29	344
7AM-8AM	34	52	581
	35	54	599
	36	55	628
8AM-9AM	26	36	566
	26	37	592
	27	43	622
9AM-10AM	31	32	501
	31	37	519
	34	39	553
10AM-11AM	34	34	489
	34	34	509
	39	34	534
11AM-12PM	38	46	469
	40	47	481
	41	48	509
12PM-1PM	28	30	421
	32	30	442
	33	33	460

Number of Responses / Hour of the Day



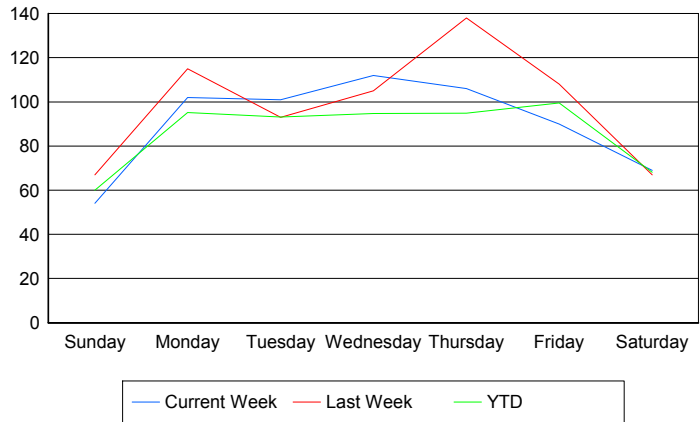
	Current We	Last Week	YTD
1PM-2PM	16	22	358
	17	22	374
	17	25	395
2PM-3PM	44	37	600
	45	39	621
	47	42	662
3PM-4PM	46	45	651
	46	48	664
	50	54	712
4PM-5PM	50	62	657
	50	64	682
	51	70	724
5PM-6PM	37	44	486
	38	46	499
	39	49	528
6PM-7PM	45	51	536
	45	53	548
	49	58	580
7PM-8PM	34	37	437
	38	38	455
	39	43	480
8PM-9PM	29	22	399
	29	22	405
	29	25	421
9PM-10PM	21	20	283
	22	20	294
	28	22	316
10PM-11PM	23	24	345
	24	24	352
	25	27	380
11PM-12AM	20	27	300
	20	28	306
	22	28	334

Road Ranger / SIRV Performance By Day of Week

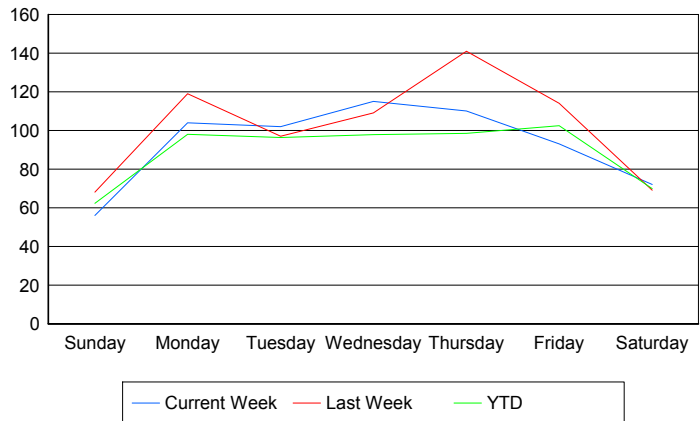
Values presented are:
 - Total Events with a RR/SIRV Response
 - Total RR/SIRV Responses,
 - Total Activities Performed

	Current We	Last Week	YTD
Sunday	54	67	882
	56	68	913
	58	71	959
Monday	102	115	1,388
	104	119	1,431
	106	130	1,519
Tuesday	101	93	1,386
	102	97	1,434
	113	105	1,528
Wednesday	112	105	1,400
	115	109	1,445
	119	125	1,544
Thursday	106	138	1,376
	110	141	1,430
	118	152	1,527
Friday	90	108	1,553
	93	114	1,602
	97	119	1,676
Saturday	69	67	1,068
	72	69	1,097
	78	76	1,159

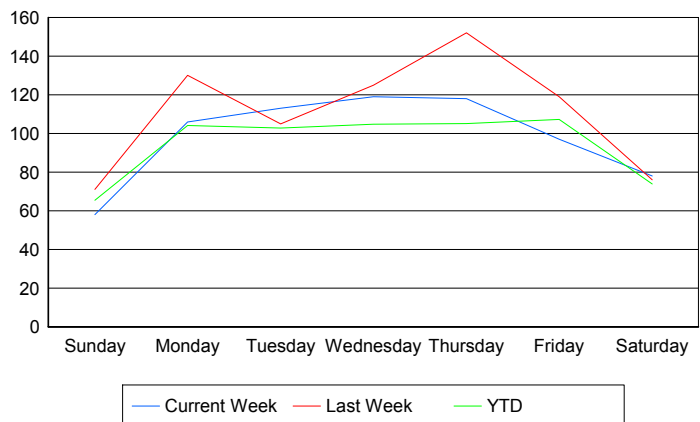
Avg # of events with a RR/SIRV Response per Day of the Week



Avg # of RR/SIRV Responses per Day of the Week



Avg # of RR/SIRV Activities Performed per Day of the Week



Road Ranger / SIRV Responses per Time of Day and Day of Week

