



# Weekly Performance Measures Report Palm Beach County



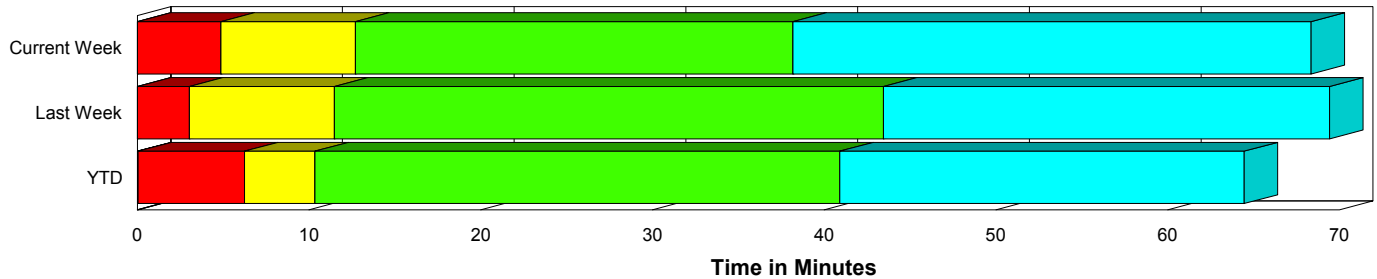
Created on:  
April 29, 2010  
10:12 am

Period From Apr 18, 2010 to Apr 24, 2010

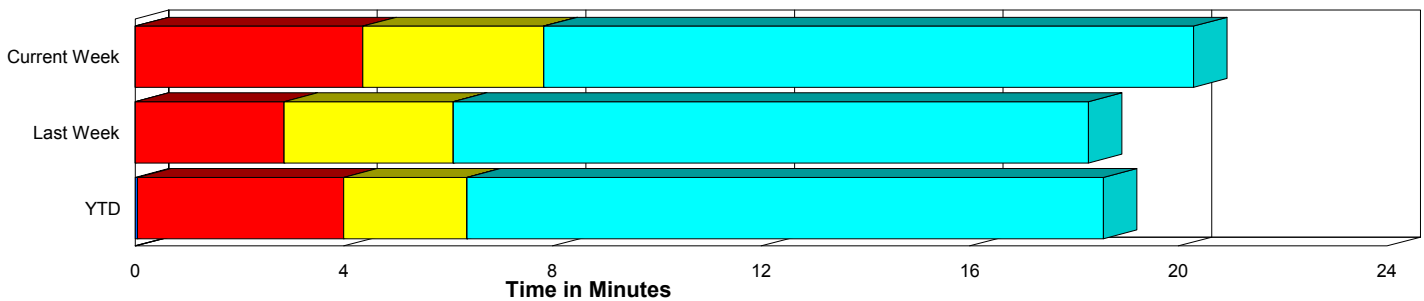
## Performance Measures Summary

	Traffic Events (No Lanes Blocked)			Incidents (Lanes Blocked)		
	<u>This Week</u>	<u>Last Week</u>	<u>YTD</u>	<u>This Week</u>	<u>Last Week</u>	<u>YTD</u>
Number of Events	569	546	7,941	40	25	387
TMC Detection (min.)	0.00	0.00	0.05	0.00	0.01	0.04
TMC Verification (min.)	4.37	2.86	3.95	4.87	3.03	6.25
TMC Response (min.)	8.82	6.66	6.81	12.95	11.58	10.53
RR Dispatch Time (min.)	3.07	2.90	2.35	3.22	3.75	2.58
RR Response Time (min.)	5.92	4.14	4.56	9.66	8.02	7.99
Roadway Clearance (min.)				37.42	42.42	40.72
Event Clearance (min.)	21.27	18.83	19.05	67.49	68.37	64.85
# of Events w/ RR/SIRV	501	484	7,406	40	25	380
RR/SIRV Responses	501	484	7,406	40	25	380
RR/SIRV Activities	514	496	7,707	45	31	484

### Incident Clearance Time-Line



### Traffic Event (Non-Lane Blockage) Time-Line



<span style="color: blue;">■</span> Avg. TMC Detection Time	<span style="color: green;">■</span> Avg. Time from TMC Response to Roadway Clearance*
<span style="color: red;">■</span> Avg. Time from TMC Detection to TMC Verification	<span style="color: cyan;">■</span> Avg. Time from Roadway Clearance to Incident/Event Clearance**
<span style="color: yellow;">■</span> Avg. Time from TMC Verification to TMC Response	

\* Roadway clearance equals all travel lanes open

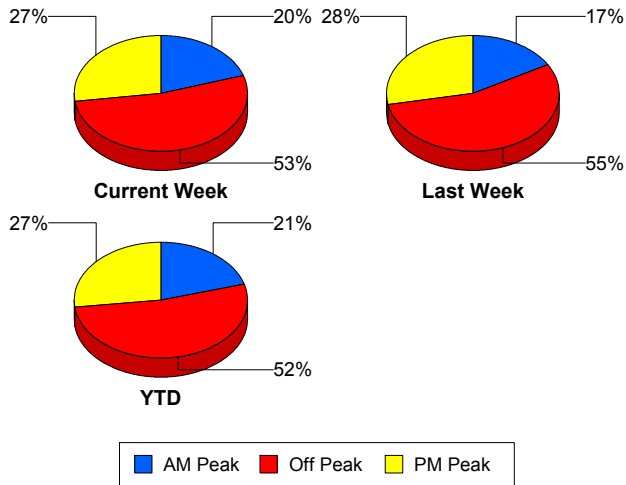
\*\* Incident clearance equals time when last responder has left the scene

## Performance Measures by Peak Period

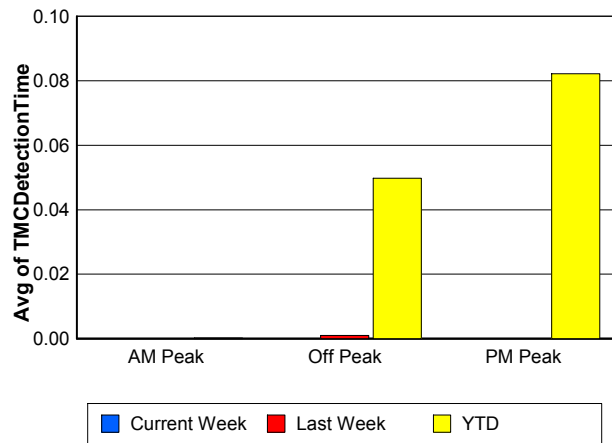
Note: AM peak period is defined as 6am to 10am and PM peak period is defined as 3pm to 7pm.

	AM Peak			Off Peak			PM Peak		
	<u>Current Week</u>	<u>Last Week</u>	<u>YTD</u>	<u>Current Week</u>	<u>Last Week</u>	<u>YTD</u>	<u>Current Week</u>	<u>Last Week</u>	<u>YTD</u>
Number of Events	122	95	1,714	322	316	4,371	165	160	2,243
Number of Incidents	8	5	94	28	12	201	4	8	92
TMC Detection (min.)	0.00	0.00	0.00	0.00	0.00	0.05	0.00	0.00	0.08
TMC Verification (min.)	1.02	3.59	2.73	4.77	3.05	4.27	6.22	2.09	4.67
TMC Response (min.)	6.68	7.93	5.73	8.39	8.11	7.51	12.60	4.10	6.97
RR Dispatch Time (min.)	1.99	2.86	1.55	2.55	3.83	2.53	4.86	1.33	2.64
RR Response Time (min.)	4.87	5.09	4.25	5.86	4.79	5.09	7.98	3.07	4.42
Event Clearance (min.)	20.08	27.65	21.08	25.63	21.87	21.92	24.86	15.33	19.83
Roadway Clearance (min.)	40.97	89.22	40.89	36.15	35.93	44.80	39.20	22.92	31.64
Incident Clearance (min.)	68.41	107.79	71.63	67.47	61.30	63.84	65.75	54.33	57.57
# of Events w/ RR/SIRV	106	87	1,600	285	274	4,068	150	148	2,118
RR/SIRV Responses	106	87	1,600	285	274	4,068	150	148	2,118
RR/SIRV Activities	107	87	1,690	309	288	4,295	143	152	2,206

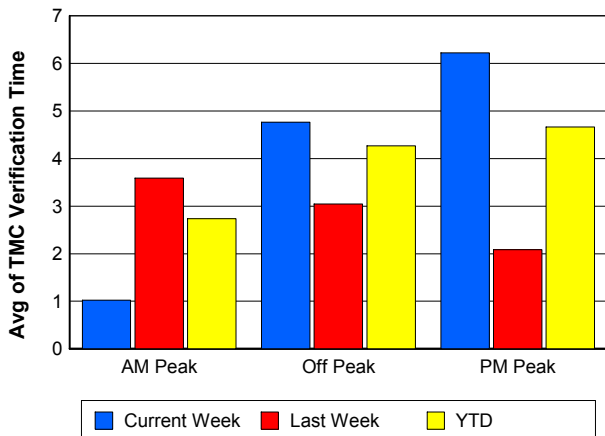
### Number of Events / Peak Period



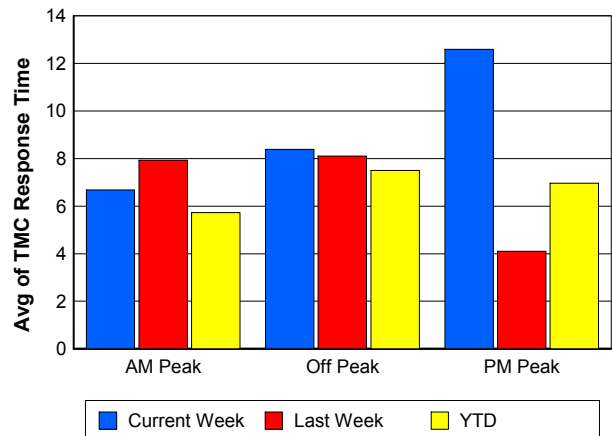
### TMC Detection Time



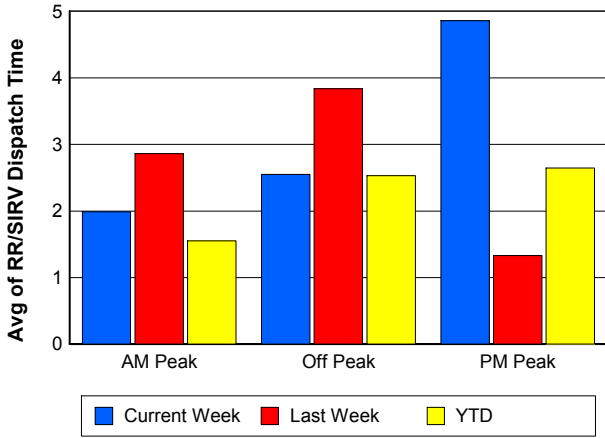
### TMC Verification Time



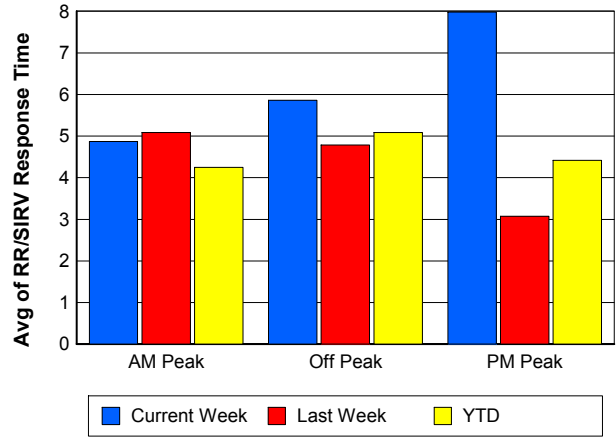
### TMC Response Time



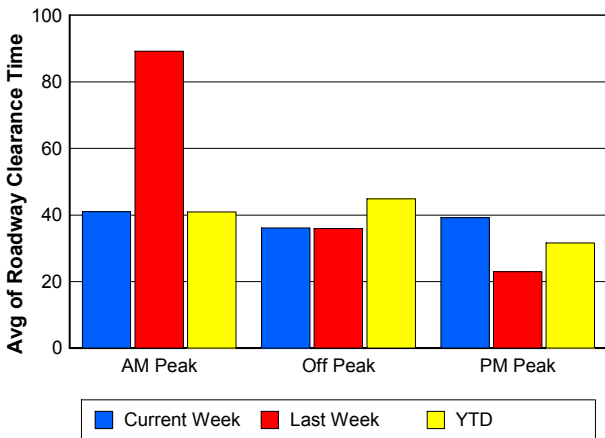
### Road Ranger / SIRV Dispatch Time



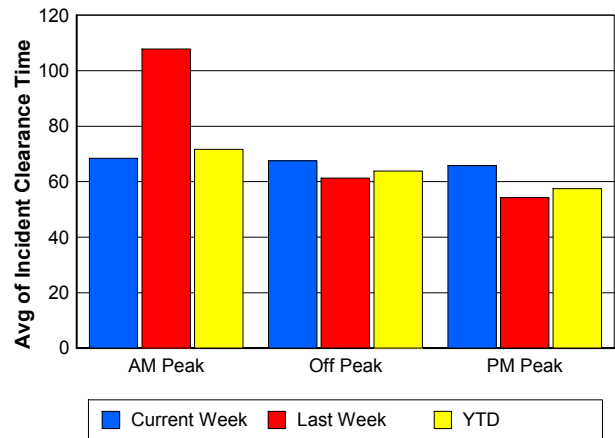
### Road Ranger / SIRV Response Time



### Roadway Clearance Time (2A)



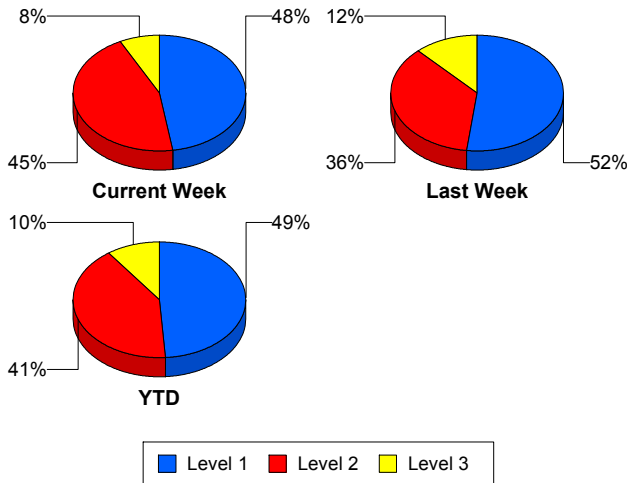
### Incident Clearance Time (3B)



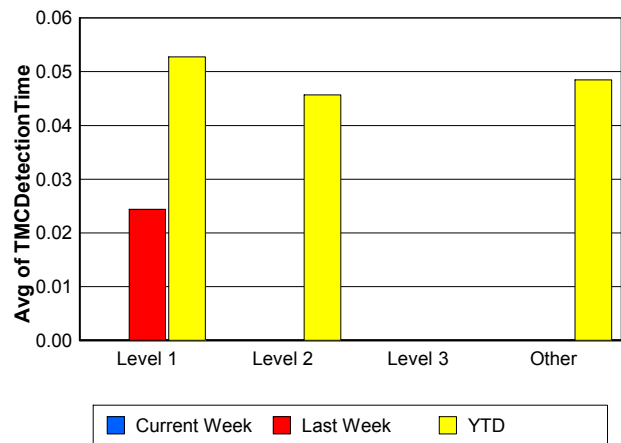
## Performance Measures by Severity

	Level 1			Level 2			Level 3			Other		
	<u>This Week</u>	<u>Last Week</u>	<u>YTD</u>	<u>This Week</u>	<u>Last Week</u>	<u>YTD</u>	<u>This Week</u>	<u>Last Week</u>	<u>YTD</u>	<u>This Week</u>	<u>Last Week</u>	<u>YTD</u>
Number of Events	19	13	188	18	9	159	3	3	38	569	546	7,943
Number of Incidents	19	13	188	18	9	159	3	3	38	0	0	2
TMC Detection (min.)	0.00	0.02	0.05	0.00	0.00	0.05	0.00	0.00	0.00	0.00	0.00	0.05
TMC Verification (min.)	2.10	2.79	3.32	7.73	2.46	9.48	5.27	5.75	7.24	4.37	2.86	3.95
TMC Response (min.)	8.19	2.99	6.23	14.95	19.54	14.99	30.18	22.06	13.11	8.82	6.66	6.81
RR Dispatch Time (min.)	1.30	0.92	1.10	2.10	7.27	3.83	22.06	5.43	4.88	3.07	2.90	2.35
RR Resp. Time (min.)	6.88	2.68	5.18	12.88	12.27	11.23	8.12	16.63	8.24	5.92	4.14	4.56
Event Clearance (min.)	40.86	42.80	45.20	91.33	70.90	73.31	93.08	171.53	125.31	21.27	18.83	19.07
Roadway Clear. (min.)	15.75	14.89	15.42	52.44	44.49	55.25	84.58	155.54	108.39			-21.46
Incident Clearance (min.)	40.86	42.80	45.20	91.33	70.90	73.31	93.08	171.53	123.84			0.00
# of Events w/ RR/SIRV	19	13	185	18	9	157	3	3	36	501	484	7,408
RR/SIRV Responses	19	13	185	18	9	157	3	3	36	501	484	7,408
RR/SIRV Activities	22	14	220	20	13	206	3	4	53	514	496	7,712

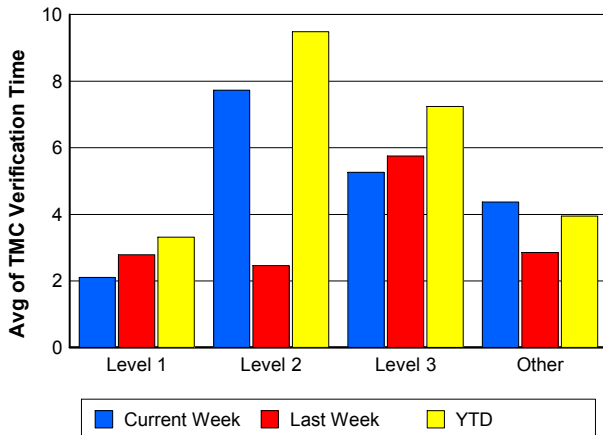
### Number of Events / Severity



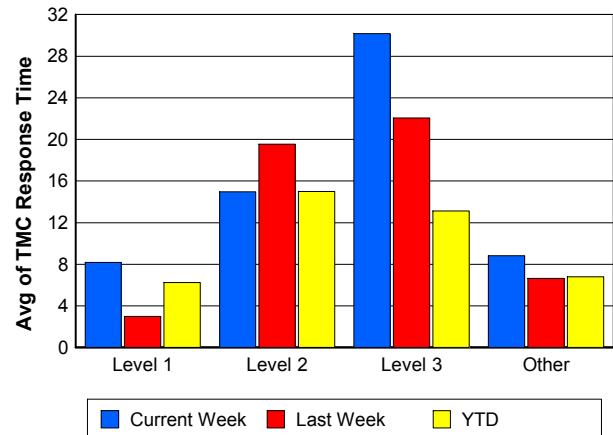
### TMC Detection Time



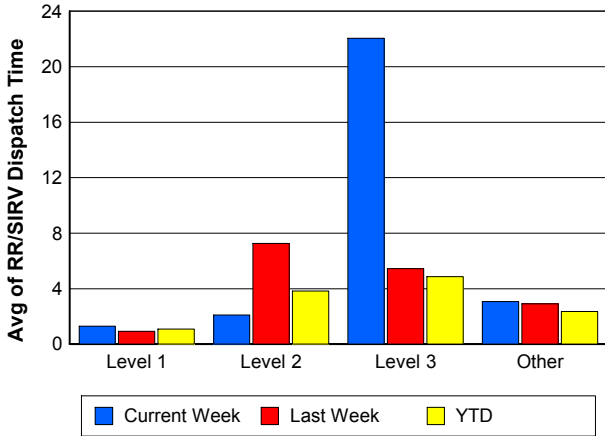
### TMC Verification Time



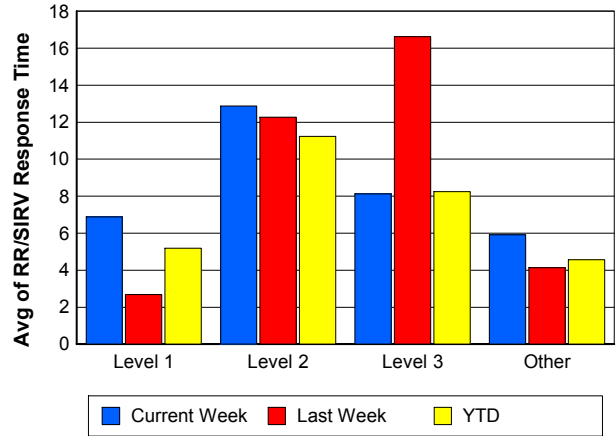
### TMC Response Time



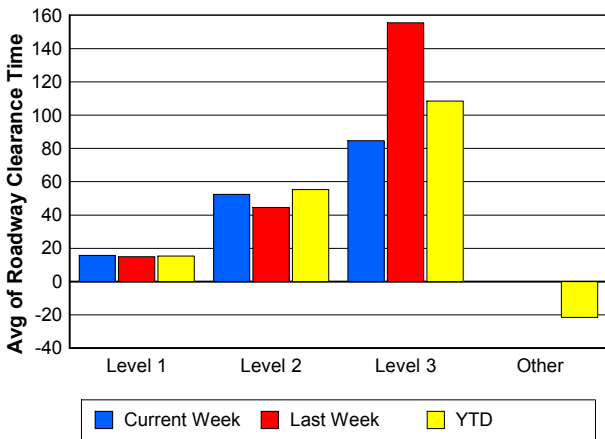
## Road Ranger / SIRV Dispatch Time



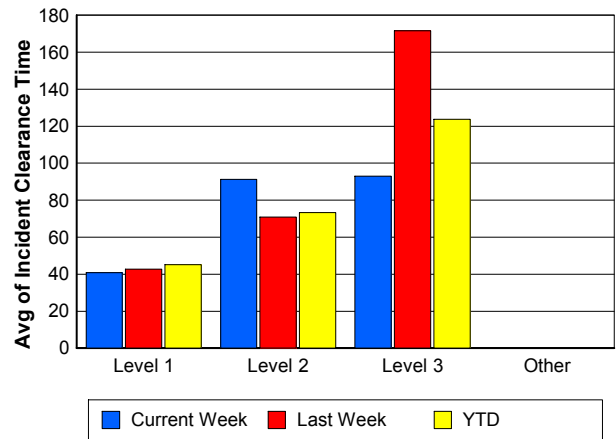
## Road Ranger / SIRV Response Time



## Roadway Clearance Time (2A)



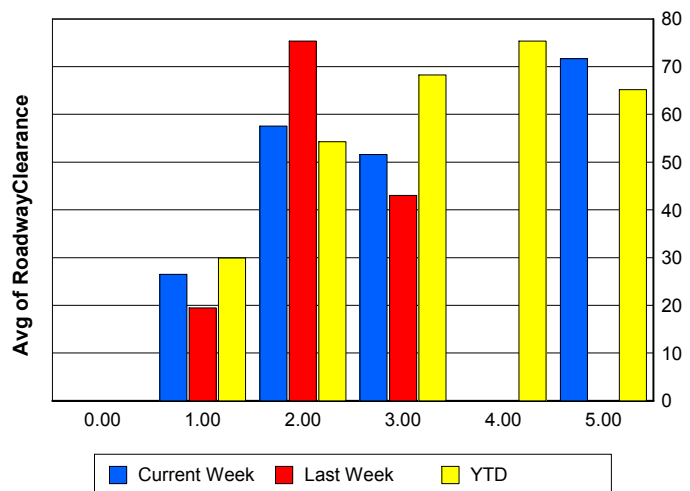
## Incident Clearance Time (3B)



## Roadway Clearance by Maximum Number of Lanes Blocked

	Current Week	Last Week	YTD
0			
1	26.48	19.49	29.92
2	57.59	75.35	54.31
3	51.57	43.06	68.27
4	0.00	0.00	75.33
5	71.65	0.00	65.16

## Roadway Clearance Time (2A)



## Performance Measures by Roadway

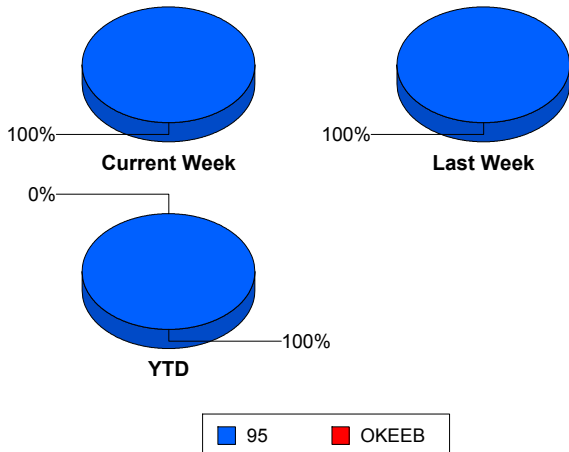
95

	<u>Current Week</u>	<u>Last Week</u>	<u>YTD</u>
Number of Events	609	571	8,327
Number of Incidents	40	25	387
TMC Detection (min.)	0.00	0.00	0.05
TMC Verification (min.)	4.40	2.86	4.06
TMC Response (min.)	9.14	6.90	7.00
RR Dispatch Time (min.)	3.08	2.94	2.36
RR Resp. Time (min.)	6.21	4.34	4.74
Event Clearance (min.)	24.31	21.00	21.18
Roadway Clear. (min.)	37.42	42.42	40.72
Incident Clearance (min.)	67.49	68.37	64.24
# of Events w/ RR/SIRV	541	509	7,785
RR/SIRV Responses	541	509	7,785
RR/SIRV Activities	559	527	8,190

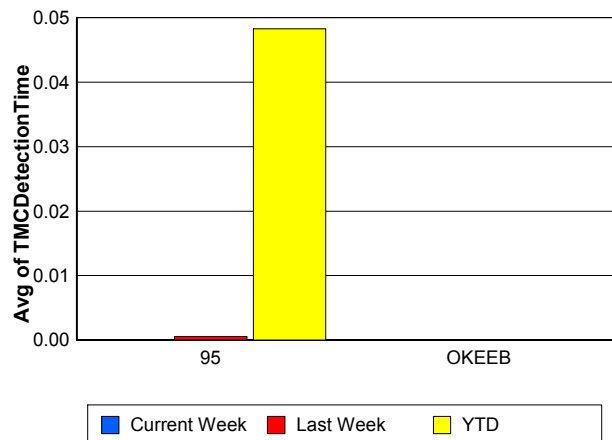
OKEEB

	<u>YTD</u>
Number of Events	1
Number of Incidents	0
TMC Detection (min.)	0.00
TMC Verification (min.)	0.00
TMC Response (min.)	0.00
RR Dispatch Time (min.)	0.00
RR Resp. Time (min.)	0.00
Event Clearance (min.)	18.45
Roadway Clear. (min.)	
Incident Clearance (min.)	
# of Events w/ RR/SIRV	1
RR/SIRV Responses	1
RR/SIRV Activities	1

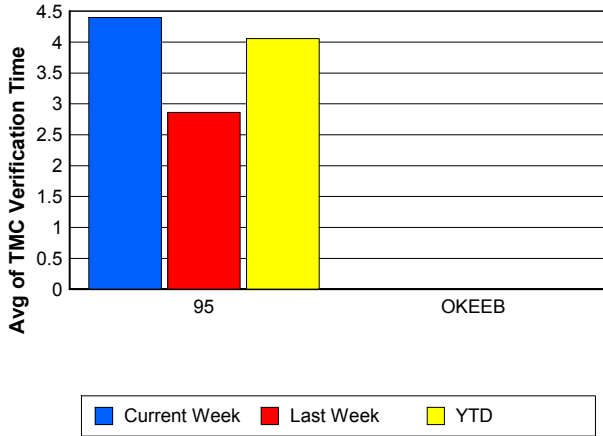
### Number of Events / Roadway



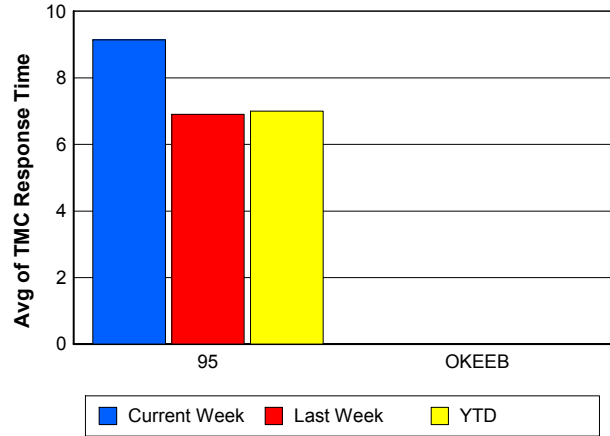
### TMC Detection Time



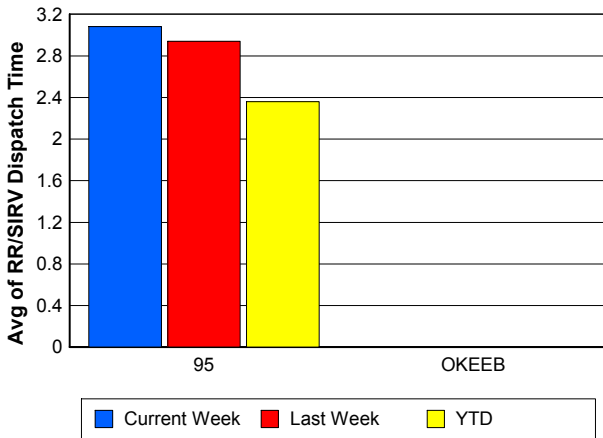
### TMC Verification Time



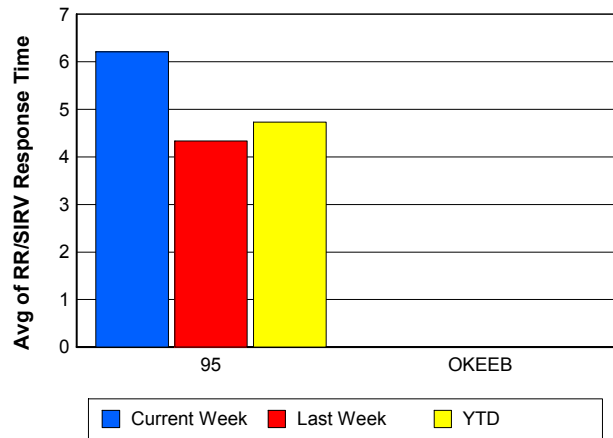
### TMC Response Time



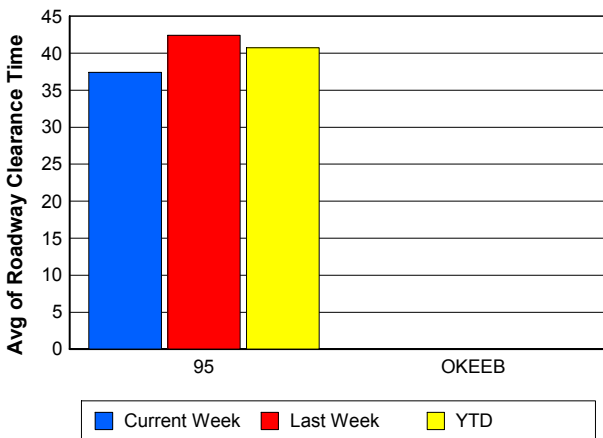
### Road Ranger / SIRV Dispatch Time



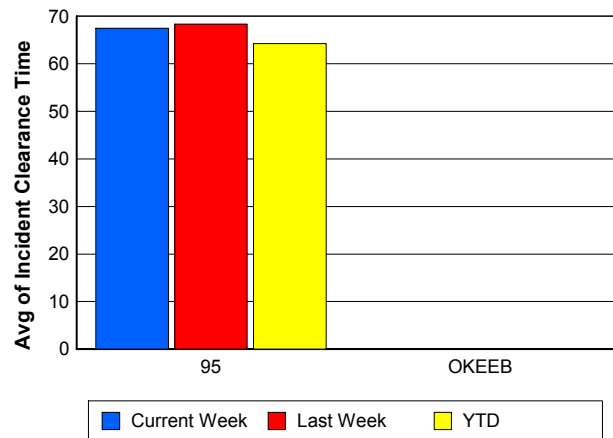
### Road Ranger / SIRV Response Time



### Roadway Clearance Time (2A)



### Incident Clearance Time (3B)



## Performance Measures by Event Type

### Accident

	<u>Current Week</u>	<u>Last Week</u>	<u>YTD</u>
Number of Events	51	44	631
Number of Incidents	30	17	281
TMC Detection (min.)	0.00	0.00	0.06
TMC Verification (min.)	7.97	5.49	7.24
TMC Response (min.)	14.63	10.88	10.43
RR Dispatch Time (min.)	3.42	3.31	2.27
RR Response Time (min.)	11.51	7.69	8.22
Event Clearance (min.)	66.45	65.52	59.49
Roadway Clearance (min.)	43.54	55.02	45.37
Incident Clearance (min.)	80.83	89.54	74.13
# of Events w/ RR/SIRV	51	44	619
RR/SIRV Assists	51	44	619
RR/SIRV Activities	53	52	716

### Debris on Roadway

	<u>Current Week</u>	<u>Last Week</u>	<u>YTD</u>
Number of Events	30	27	460
Number of Incidents	1	1	8
TMC Detection (min.)	0.00	0.00	0.00
TMC Verification (min.)	12.76	13.29	10.55
TMC Response (min.)	13.71	13.27	10.81
RR Dispatch Time (min.)	5.68	5.24	3.54
RR Response Time (min.)	8.04	8.04	7.33
Event Clearance (min.)	17.56	19.49	14.71
Roadway Clearance (min.)	16.93	9.23	11.39
Incident Clearance (min.)	17.58	12.18	15.85
# of Events w/ RR/SIRV	30	26	455
RR/SIRV Assists	30	26	455
RR/SIRV Activities	36	26	468

### Disabled Vehicle

	<u>Current Week</u>	<u>Last Week</u>	<u>YTD</u>
Number of Events	500	470	6,779
Number of Incidents	7	5	75
TMC Detection (min.)	0.00	0.00	0.04
TMC Verification (min.)	3.75	2.21	3.55
TMC Response (min.)	7.85	4.97	6.11
RR Dispatch Time (min.)	2.77	2.01	2.19
RR Response Time (min.)	5.24	3.47	4.03
Event Clearance (min.)	20.66	15.94	18.00
Roadway Clearance (min.)	16.79	4.60	26.33
Incident Clearance (min.)	28.00	13.14	36.42
# of Events w/ RR/SIRV	442	424	6,383
RR/SIRV Assists	442	424	6,383
RR/SIRV Activities	456	435	6,778

## Emergency Vehicles

	<u>YTD</u>
Number of Events	5
Number of Incidents	4
TMC Detection (min.)	0.00
TMC Verification (min.)	5.59
TMC Response (min.)	9.31
RR Dispatch Time (min.)	0.18
RR Response Time (min.)	9.13
Event Clearance (min.)	71.17
Roadway Clearance (min.)	81.95
Incident Clearance (min.)	83.17
# of Events w/ RR/SIRV	3
RR/SIRV Assists	3
RR/SIRV Activities	3

## Other

	<u>Current Week</u>	<u>Last Week</u>	<u>YTD</u>
Number of Events	21	25	368
Number of Incidents	0	0	1
TMC Detection (min.)	0.00	0.00	0.16
TMC Verification (min.)	0.00	0.00	0.49
TMC Response (min.)	13.30	41.56	15.50
RR Dispatch Time (min.)	7.00	34.40	4.46
RR Response Time (min.)	5.42	3.53	8.85
Event Clearance (min.)	16.18	37.13	20.13
Roadway Clearance (min.)			8.12
Incident Clearance (min.)			24.77
# of Events w/ RR/SIRV	11	10	251
RR/SIRV Assists	11	10	251
RR/SIRV Activities	8	9	162

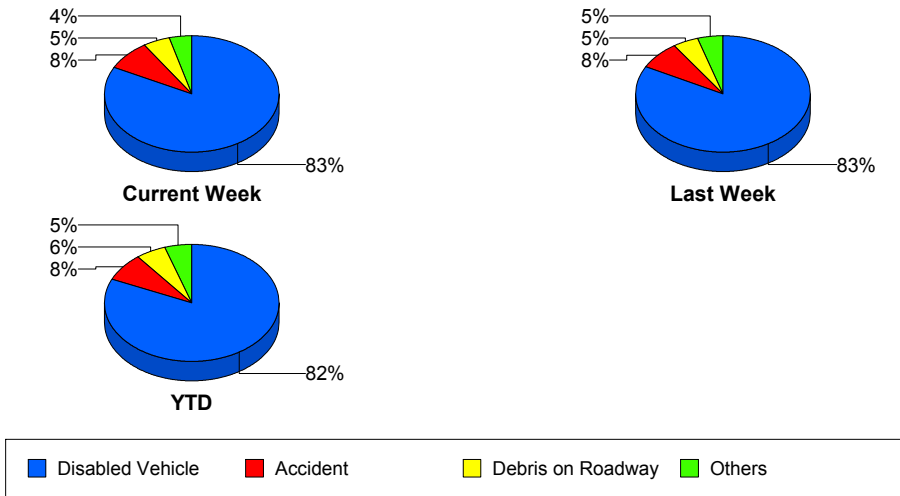
## Police Activity

	<u>Current Week</u>	<u>Last Week</u>	<u>YTD</u>
Number of Events	2	1	31
Number of Incidents	1	1	10
TMC Detection (min.)	0.00	0.00	0.23
TMC Verification (min.)	0.00	0.00	0.04
TMC Response (min.)	9.38	59.67	18.97
RR Dispatch Time (min.)	0.24	8.98	6.19
RR Response Time (min.)	9.14	50.68	17.30
Event Clearance (min.)	14.57	59.92	31.47
Roadway Clearance (min.)	27.85	46.13	33.17
Incident Clearance (min.)	26.60	59.92	37.45
# of Events w/ RR/SIRV	2	1	23
RR/SIRV Assists	2	1	23
RR/SIRV Activities	2	1	13

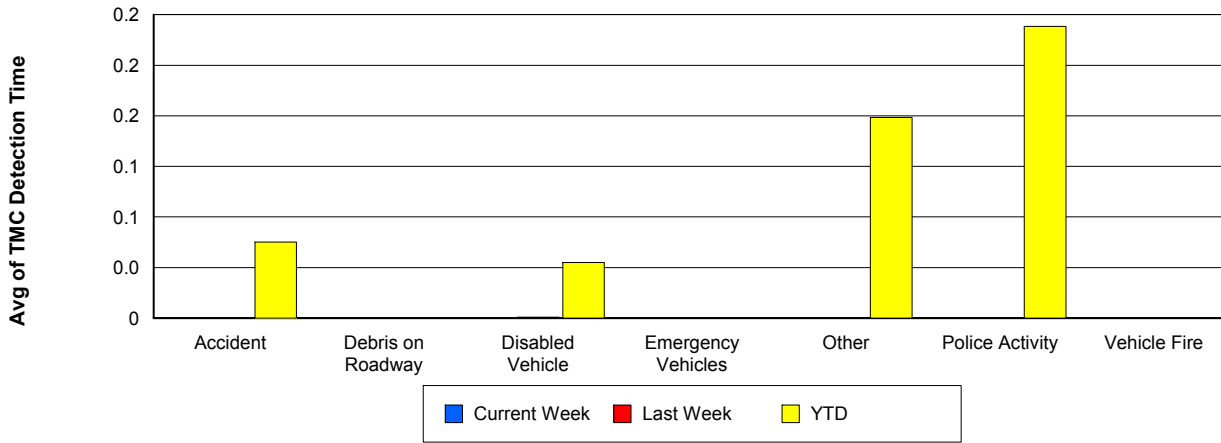
## Vehicle Fire

	<u>Current Week</u>	<u>Last Week</u>	<u>YTD</u>
Number of Events	2	1	16
Number of Incidents	1	1	8
TMC Detection (min.)	0.00	0.00	0.00
TMC Verification (min.)	5.67	0.00	3.65
TMC Response (min.)	11.30	48.97	9.45
RR Dispatch Time (min.)	8.67	8.42	2.99
RR Response Time (min.)	0.20	40.55	6.69
Event Clearance (min.)	36.67	49.20	38.92
Roadway Clearance (min.)	28.22	46.87	34.89
Incident Clearance (min.)	34.43	49.20	55.06
# of Events w/ RR/SIRV	2	1	15
RR/SIRV Assists	2	1	15
RR/SIRV Activities	1	1	15

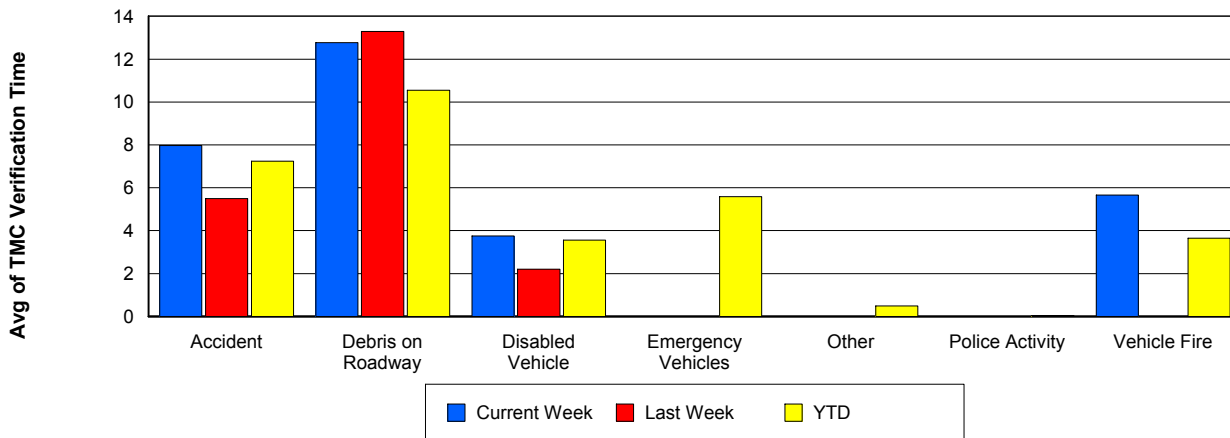
## Number of Events / Event Type



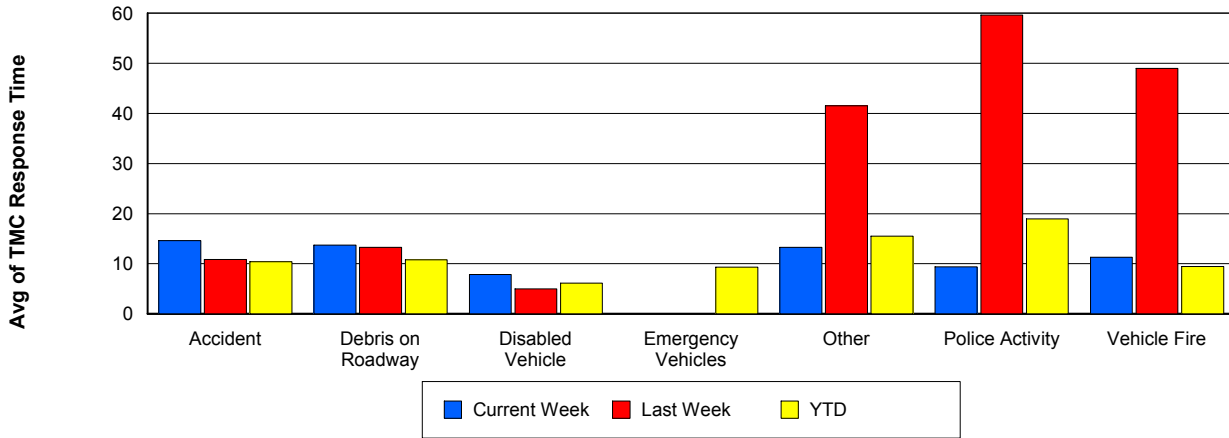
## TMC Detection Time



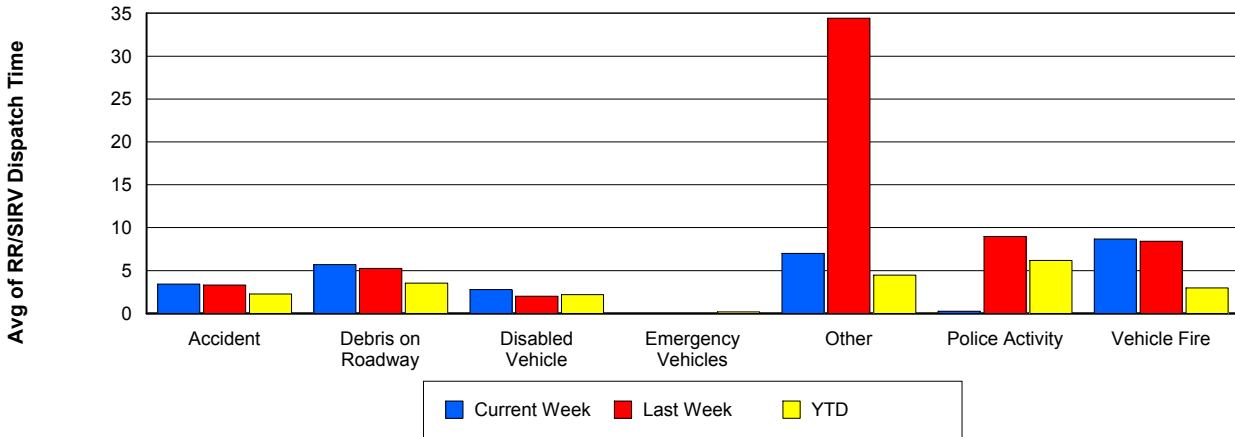
## TMC Verification Time



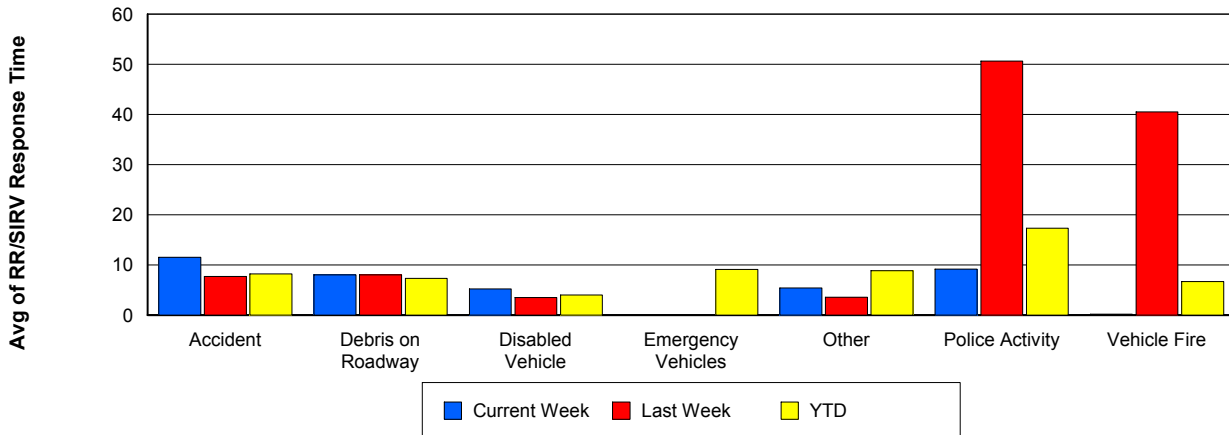
## TMC Response Time



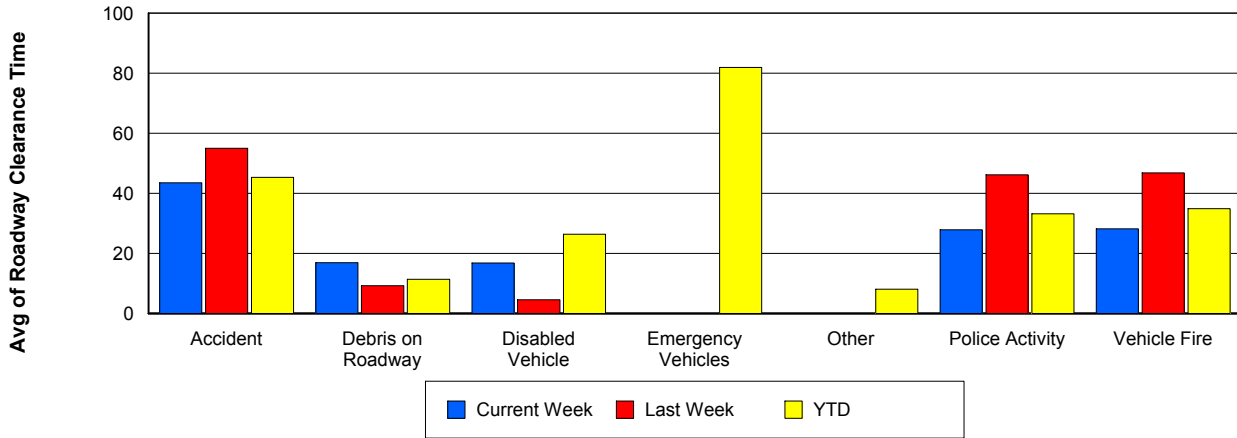
## Road Ranger / SIRV Dispatch Time



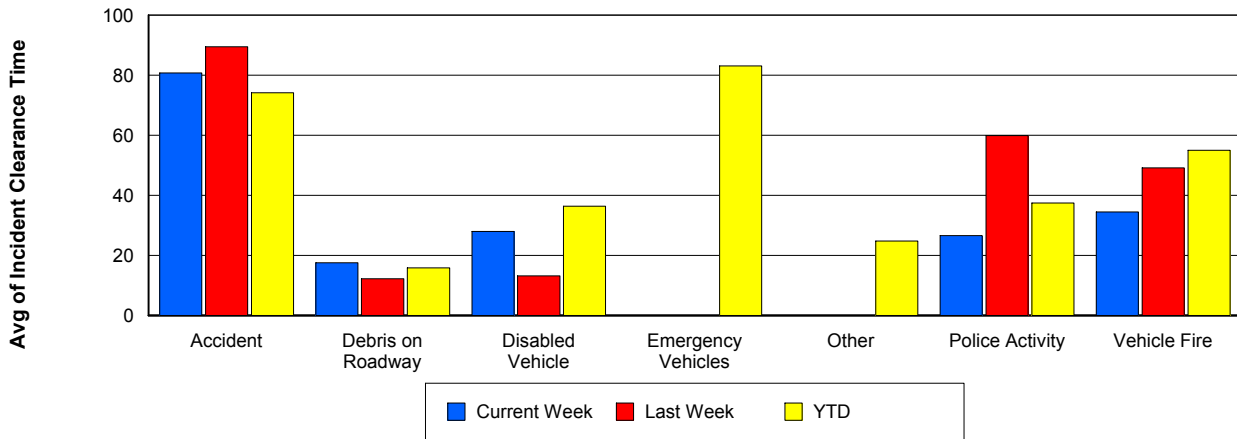
## Road Ranger / SIRV Response Time



## Roadway Clearance Time (2A)



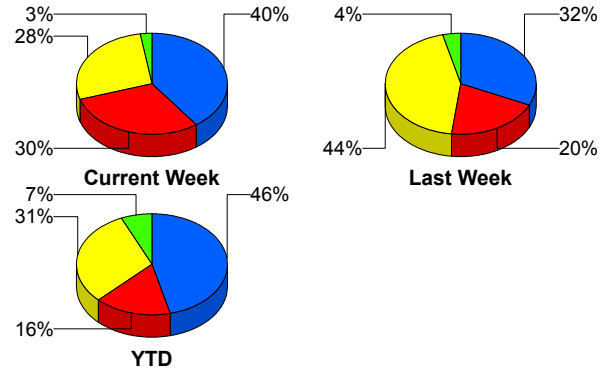
## Incident Clearance Time (3B)



## Incident Detection Methods

	Current Week	Last Week	YTD
Broward Road Ranger	0	0	5
Broward TMC	0	0	5
District 4	0	1	8
FDOT Maintenance	1	0	2
FHP	16	8	178
ITMS CCTV	12	5	63
Media	0	0	1
Motorist	0	0	5
Palm Beach Road Ran	11	11	118
<b>Total</b>	<b>40</b>	<b>25</b>	<b>385</b>

### Total Incidents by Detection Method

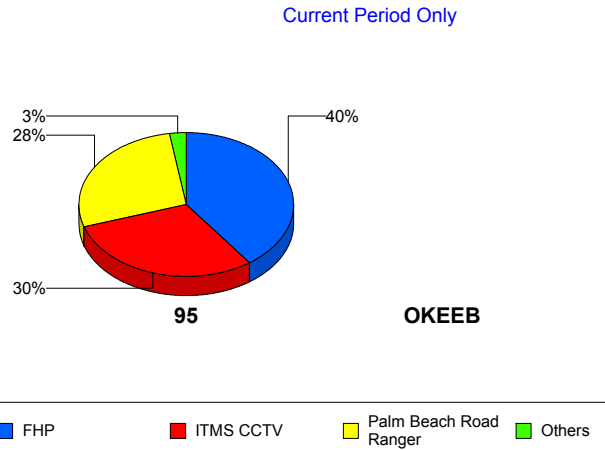


■ FHP     
 ■ ITMS CCTV     
 ■ Palm Beach Road Ranger     
 ■ Others

## Incident Detection Methods by Roadway

		Current Week	Last Week	YTD
95	Broward Road Ranger	0	0	5
	Broward TMC	0	0	5
	District 4	0	1	8
	FDOT Maintenance	1	0	2
	FHP	16	8	178
	ITMS CCTV	12	5	63
	Media	0	0	1
	Motorist	0	0	5
	Palm Beach Road Ran	11	11	118
	<b>Total</b>	<b>40</b>	<b>25</b>	<b>385</b>
<b>Total</b>	<b>40</b>	<b>25</b>	<b>385</b>	

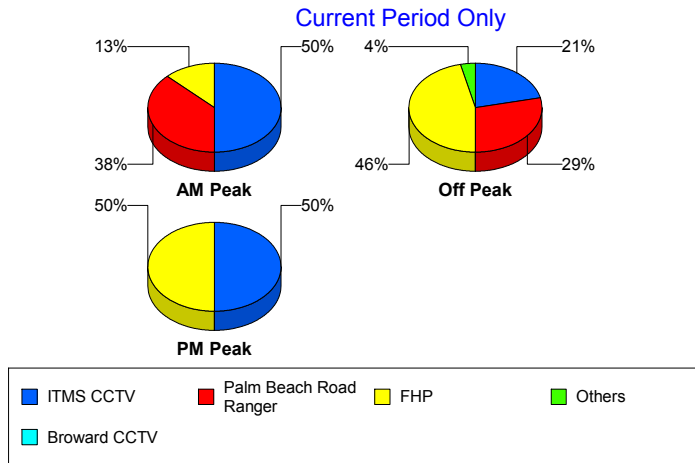
### Total Events by Roadway and Detection Method



## Incident Detection Methods by Peak Period

		Current Week	Last Week	YTD
AM Peak	Broward Road Ranger	0	0	4
	District 4	0	1	2
	FHP	1	2	37
	ITMS CCTV	4	0	16
	Media	0	0	1
	Palm Beach Road Ran	3	2	34
	<b>Total</b>	<b>8</b>	<b>5</b>	<b>94</b>
Off Peak	Broward Road Ranger	0	0	1
	Broward TMC	0	0	2
	District 4	0	0	4
	FDOT Maintenance	1	0	2
	FHP	13	3	91
	ITMS CCTV	6	4	38
	Motorist	0	0	2
	Palm Beach Road Ran	8	5	60
	<b>Total</b>	<b>28</b>	<b>12</b>	<b>200</b>
PM Peak	Broward TMC	0	0	3
	District 4	0	0	2
	FHP	2	3	51
	ITMS CCTV	2	1	9
	Motorist	0	0	3
	Palm Beach Road Ran	0	4	24
	<b>Total</b>	<b>4</b>	<b>8</b>	<b>92</b>
<b>Total</b>	<b>40</b>	<b>25</b>	<b>385</b>	

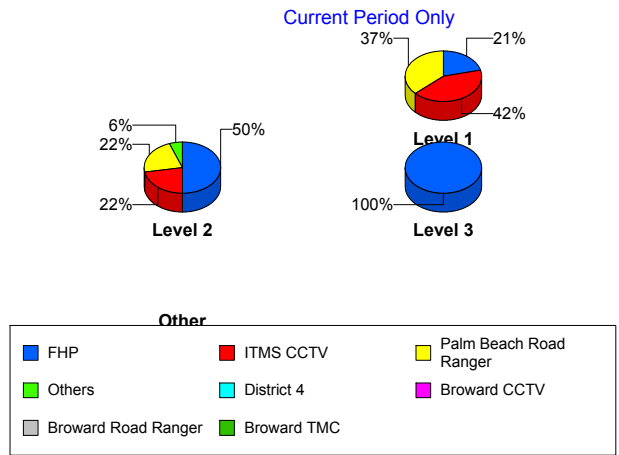
Total Events by Peak Period and Detection Method



## Incident Detection Methods by Severity

		Current Week	Last Week	YTD
	FHP	0	0	1
	Total	0	0	1
Level 1	Broward Road Ranger	0	0	5
	Broward TMC	0	0	3
	District 4	0	1	6
	FHP	4	2	61
	ITMS CCTV	8	1	30
	Motorist	0	0	3
	Palm Beach Road Ran	7	9	80
	Total	19	13	188
Level 2	Broward TMC	0	0	2
	District 4	0	0	1
	FDOT Maintenance	1	0	2
	FHP	9	4	95
	ITMS CCTV	4	4	29
	Motorist	0	0	2
	Palm Beach Road Ran	4	1	28
	Total	18	9	159
Level 3	District 4	0	0	1
	FHP	3	2	22
	ITMS CCTV	0	0	4
	Media	0	0	1
	Palm Beach Road Ran	0	1	10
	Total	3	3	38
<b>Total</b>	<b>40</b>	<b>25</b>	<b>385</b>	

Total Events by Severity and Detection Method



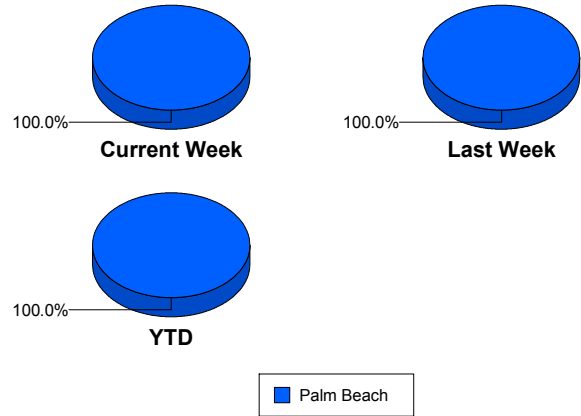
# Road Ranger / SIRV Performance Measures

## Road Ranger / SIRV Performance By County

Values presented are:  
 - Total Events with a RR/SIRV Response  
 - Total RR/SIRV Responses,  
 - Total Activities Performed

	Current We	Last Week	YTD
Palm Beach	620	634	9,663
	639	652	9,991
	687	689	10,599

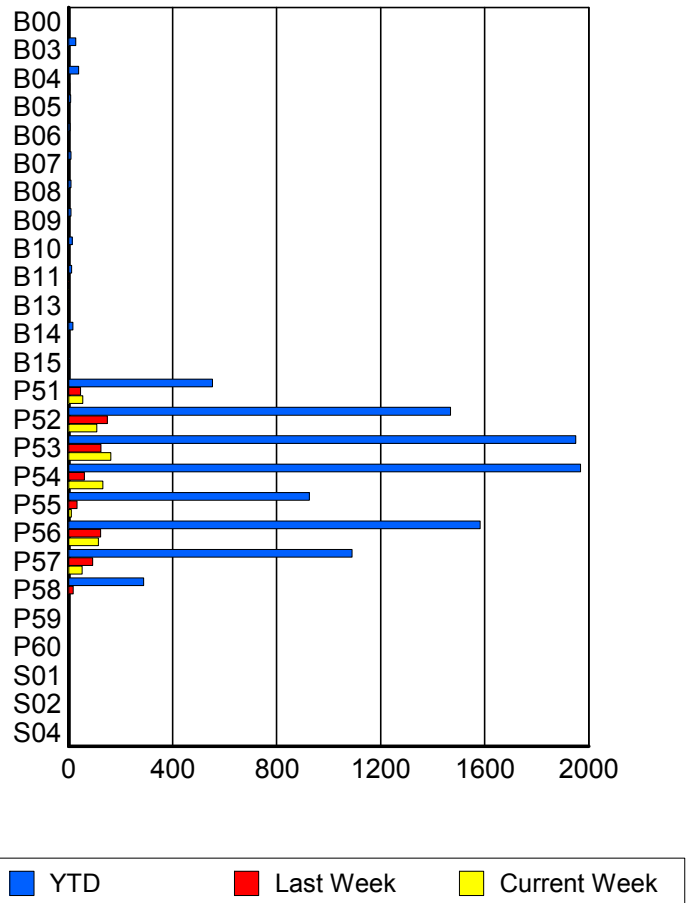
RR/SIRV Responses per County



## Road Ranger / SIRV Performance By Truck

	Current We	Last Week	YTD
B00	0	0	1
	0	0	1
	0	0	1
B03	0	2	27
	0	2	27
	0	4	30
B04	4	0	38
	4	0	39
	4	0	42
B05	0	1	8
	0	1	8
	0	1	8
B06	0	1	5
	0	1	5
	0	1	7
B07	0	0	9
	0	0	9
	0	0	9
B08	0	0	9
	0	0	9
	0	0	9
B09	0	0	9
	0	0	9
	0	0	10
B10	0	1	14
	0	1	14
	0	3	16

RR/SIRV Responses per Truck



	Current We	Last Week	YTD
B11	2 2 3	2 2 2	12 12 13
B13	0 0 0	0 0 0	3 3 3
B14	0 0 0	0 0 0	17 17 17
B15	0 0 0	0 0 0	3 3 3
P51	53 54 62	45 46 49	545 553 585
P52	107 108 119	148 149 158	1,449 1,469 1,567
P53	162 162 170	122 124 131	1,928 1,950 2,070
P54	130 132 140	60 60 64	1,940 1,968 2,089
P55	10 10 10	32 32 32	917 926 967
P56	113 115 125	120 123 128	1,562 1,583 1,684
P57	52 52 54	92 92 97	1,076 1,090 1,153
P58	0 0 0	18 18 18	286 289 308
P59	0 0 0	1 1 1	1 1 1
P60	0 0 0	0 0 0	1 1 1
S01	0 0 0	0 0 0	3 3 4

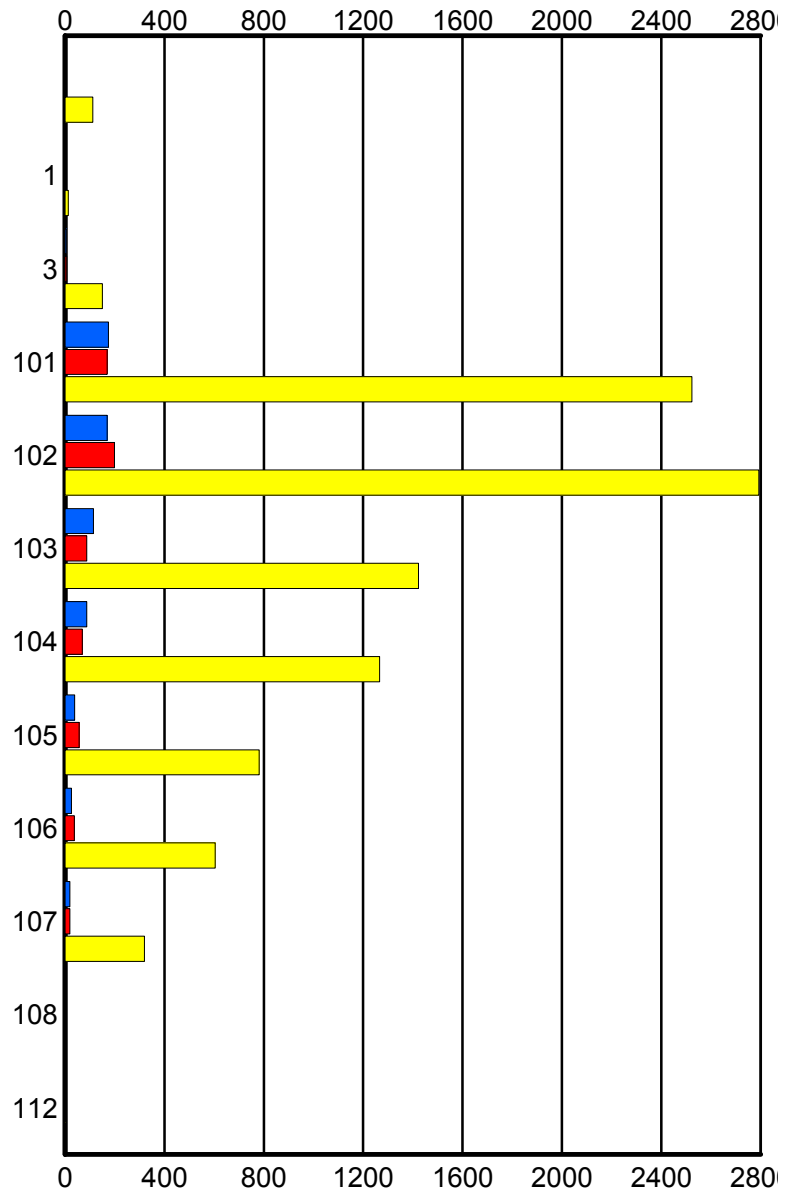
	Current We	Last Week	YTD
S02	0	0	1
	0	0	1
	0	0	1
S04	0	0	1
	0	0	1
	0	0	1

### Road Ranger / SIRV Performance By Beat

	Current We	Last Week	YTD
	1	4	111
	1	4	112
	1	4	121
1	0	0	12
	0	0	13
	0	0	13
3	6	6	146
	6	7	150
	7	11	162
101	173	168	2,478
	175	170	2,523
	183	185	2,665
102	167	198	2,747
	170	199	2,793
	175	208	2,956
103	114	85	1,407
	115	88	1,423
	126	92	1,500
104	85	68	1,251
	88	69	1,266
	100	70	1,357
105	39	57	776
	39	57	781
	41	61	836
106	26	38	597
	26	38	604
	33	38	638
107	19	20	318
	19	20	320
	21	20	344
108	0	0	3
	0	0	4
	0	0	4
112	0	0	2
	0	0	2
	0	0	3

Values presented are:  
 - Total Events with a RR/SIRV Response  
 - Total RR/SIRV Responses,  
 - Total Activities Performed

### RR/SIRV Responses per Beat



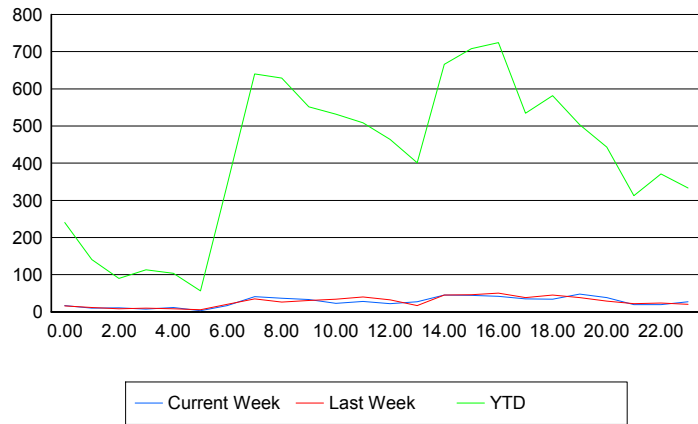
■ Current Week   
 ■ Last Week   
 ■ YTD

## Road Ranger / SIRV Performance By Time of Day

Values presented are:  
 - Total Events with a RR/SIRV Response  
 - Total RR/SIRV Responses,  
 - Total Activities Performed

	Current We	Last Week	YTD
12AM-1AM	17	15	233
	17	16	240
	17	16	262
1AM-2AM	10	12	139
	10	12	141
	10	12	143
2AM-3AM	10	8	87
	11	8	90
	11	10	95
3AM-4AM	7	9	109
	7	10	113
	8	10	122
4AM-5AM	11	8	100
	12	8	104
	12	9	109
5AM-6AM	3	6	48
	3	6	56
	3	6	60
6AM-7AM	16	20	322
	17	20	343
	19	20	363
7AM-8AM	40	34	621
	41	35	640
	44	36	672
8AM-9AM	37	26	603
	37	26	629
	39	27	661
9AM-10AM	33	31	534
	33	31	552
	33	34	586
10AM-11AM	23	34	512
	23	34	532
	24	39	558
11AM-12PM	28	38	497
	28	40	509
	28	41	537
12PM-1PM	20	28	441
	22	32	464
	23	33	483

## Number of Responses / Hour of the Day



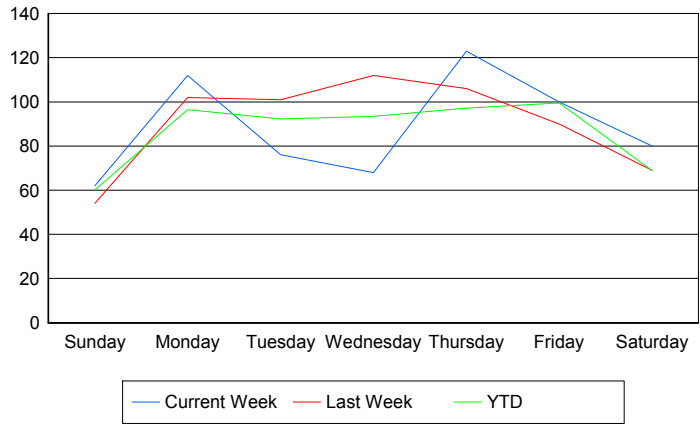
	Current We	Last Week	YTD
1PM-2PM	26	16	384
	27	17	401
	32	17	427
2PM-3PM	42	44	642
	45	45	666
	51	47	713
3PM-4PM	43	46	694
	44	46	708
	50	50	762
4PM-5PM	41	50	698
	42	50	724
	46	51	770
5PM-6PM	34	37	520
	35	38	534
	38	39	566
6PM-7PM	34	45	570
	34	45	582
	34	49	614
7PM-8PM	46	34	483
	48	38	503
	54	39	534
8PM-9PM	36	29	435
	38	29	443
	42	29	463
9PM-10PM	19	21	302
	19	22	313
	20	28	336
10PM-11PM	18	23	363
	19	24	371
	20	25	400
11PM-12AM	26	20	326
	27	20	333
	29	22	363

## Road Ranger / SIRV Performance By Day of Week

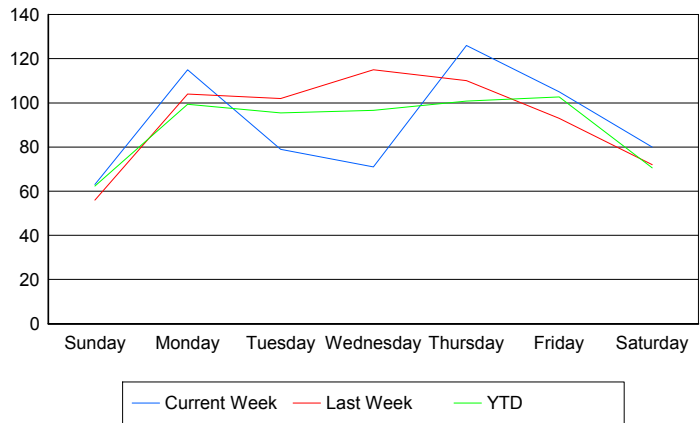
Values presented are:  
 - Total Events with a RR/SIRV Response  
 - Total RR/SIRV Responses,  
 - Total Activities Performed

	Current We	Last Week	YTD
Sunday	62 63 66	54 56 58	944 976 1,025
Monday	112 115 122	102 104 106	1,500 1,546 1,641
Tuesday	76 79 85	101 102 113	1,462 1,513 1,613
Wednesday	68 71 77	112 115 119	1,468 1,516 1,621
Thursday	123 126 134	106 110 118	1,499 1,556 1,661
Friday	100 105 116	90 93 97	1,653 1,707 1,792
Saturday	80 80 87	69 72 78	1,148 1,177 1,246

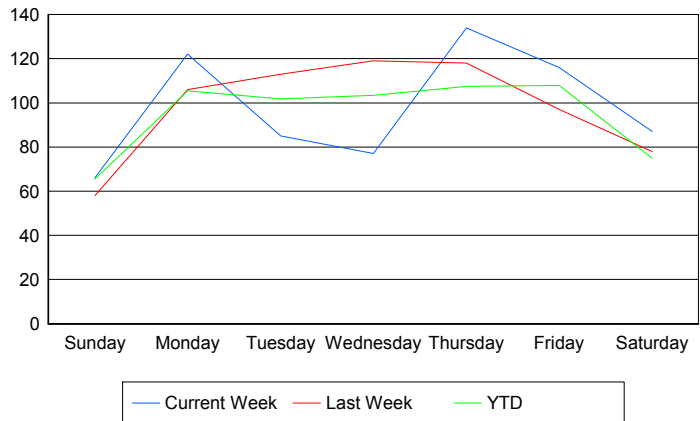
### Avg # of events with a RR/SIRV Response per Day of the Week



### Avg # of RR/SIRV Responses per Day of the Week



### Avg # of RR/SIRV Activities Performed per Day of the Week



### Road Ranger / SIRV Responses per Time of Day and Day of Week

