



Weekly Performance Measures Report Palm Beach County



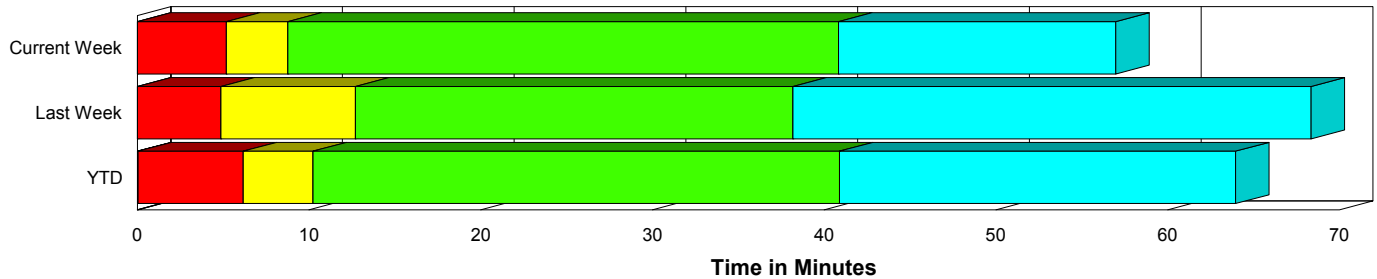
Created on:
May 05, 2010
11:41 am

Period From Apr 25, 2010 to May 1, 2010

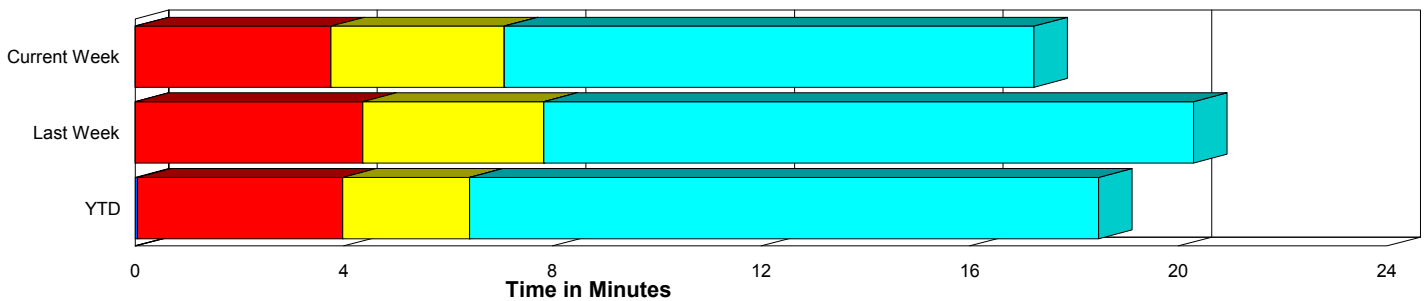
Performance Measures Summary

	Traffic Events (No Lanes Blocked)			Incidents (Lanes Blocked)		
	<u>This Week</u>	<u>Last Week</u>	<u>YTD</u>	<u>This Week</u>	<u>Last Week</u>	<u>YTD</u>
Number of Events	575	569	8,516	27	40	414
TMC Detection (min.)	0.00	0.00	0.05	0.00	0.00	0.04
TMC Verification (min.)	3.75	4.37	3.94	5.19	4.87	6.18
TMC Response (min.)	7.62	8.82	6.86	9.19	12.95	10.45
RR Dispatch Time (min.)	3.34	3.07	2.41	3.43	3.22	2.64
RR Response Time (min.)	4.52	5.92	4.56	5.58	9.66	7.84
Roadway Clearance (min.)				38.51	37.42	40.58
Event Clearance (min.)	17.77	21.27	18.97	53.34	67.49	64.10
# of Events w/ RR/SIRV	530	501	7,936	27	40	407
RR/SIRV Responses	530	501	7,936	27	40	407
RR/SIRV Activities	538	514	8,245	39	45	523

Incident Clearance Time-Line



Traffic Event (Non-Lane Blockage) Time-Line



<ul style="list-style-type: none"> ■ Avg. TMC Detection Time ■ Avg. Time from TMC Detection to TMC Verification ■ Avg. Time from TMC Verification to TMC Response 	<ul style="list-style-type: none"> ■ Avg. Time from TMC Response to Roadway Clearance* ■ Avg. Time from Roadway Clearance to Incident/Event Clearance**
---	--

* Roadway clearance equals all travel lanes open

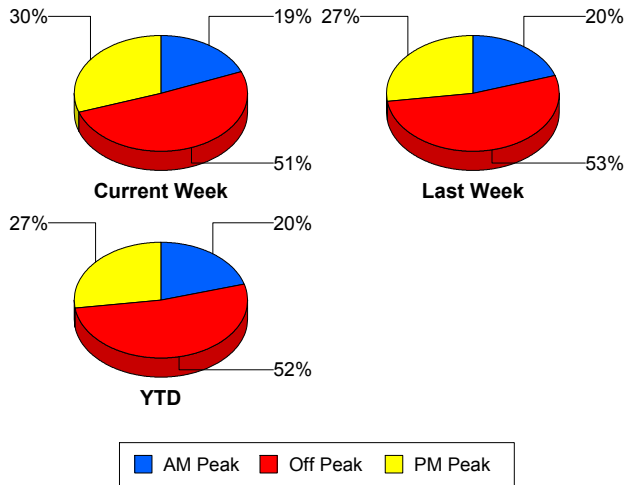
** Incident clearance equals time when last responder has left the scene

Performance Measures by Peak Period

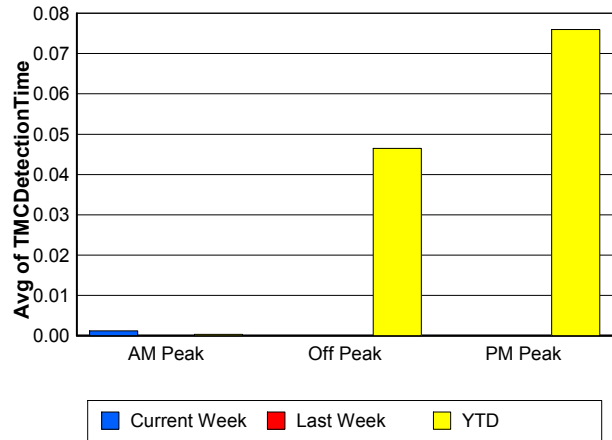
Note: AM peak period is defined as 6am to 10am and PM peak period is defined as 3pm to 7pm.

	AM Peak			Off Peak			PM Peak		
	<u>Current Week</u>	<u>Last Week</u>	<u>YTD</u>	<u>Current Week</u>	<u>Last Week</u>	<u>YTD</u>	<u>Current Week</u>	<u>Last Week</u>	<u>YTD</u>
Number of Events	113	122	1,827	307	322	4,678	182	165	2,425
Number of Incidents	10	8	104	9	28	210	8	4	100
TMC Detection (min.)	0.00	0.00	0.00	0.00	0.00	0.05	0.00	0.00	0.08
TMC Verification (min.)	2.59	1.02	2.73	4.11	4.77	4.26	4.07	6.22	4.62
TMC Response (min.)	4.38	6.68	5.64	10.04	8.39	7.67	6.15	12.60	6.91
RR Dispatch Time (min.)	1.14	1.99	1.53	4.47	2.55	2.65	2.90	4.86	2.66
RR Response Time (min.)	3.37	4.87	4.19	5.60	5.86	5.12	3.74	7.98	4.37
Event Clearance (min.)	16.39	20.08	20.79	21.43	25.63	21.89	17.74	24.86	19.67
Roadway Clearance (min.)	27.89	40.97	39.64	34.48	36.15	44.36	56.31	39.20	33.62
Incident Clearance (min.)	41.55	68.41	68.73	50.24	67.47	63.26	71.57	65.75	58.69
# of Events w/ RR/SIRV	107	106	1,707	277	285	4,345	173	150	2,291
RR/SIRV Responses	107	106	1,707	277	285	4,345	173	150	2,291
RR/SIRV Activities	113	107	1,803	279	309	4,574	185	143	2,391

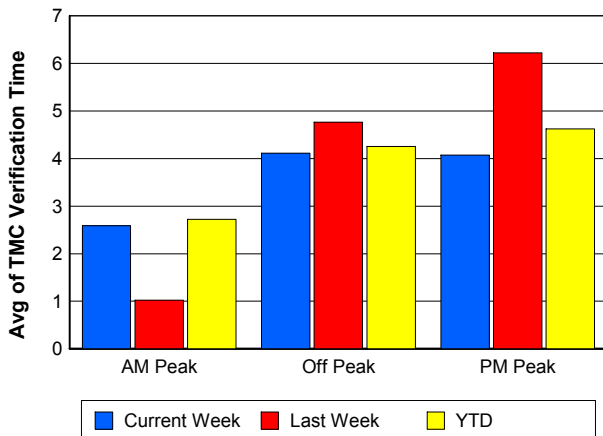
Number of Events / Peak Period



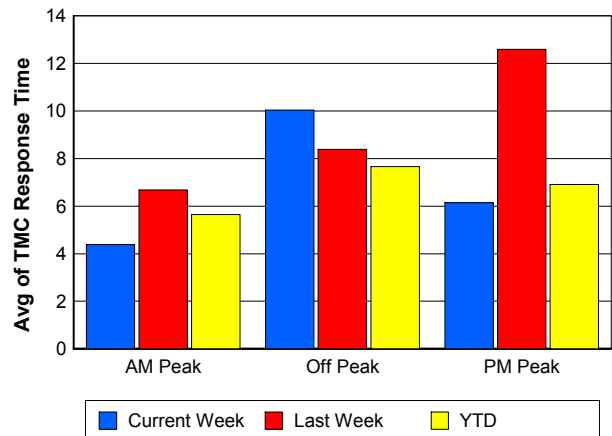
TMC Detection Time



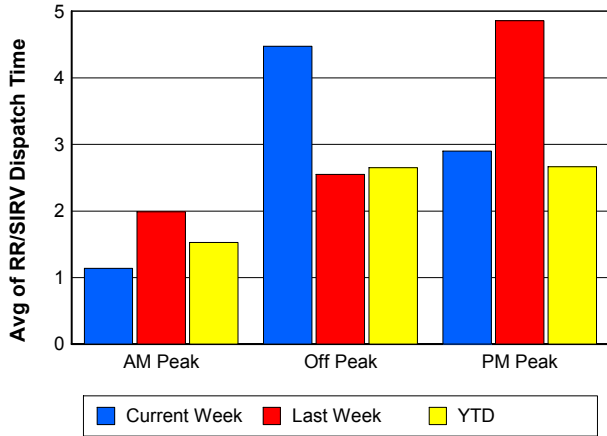
TMC Verification Time



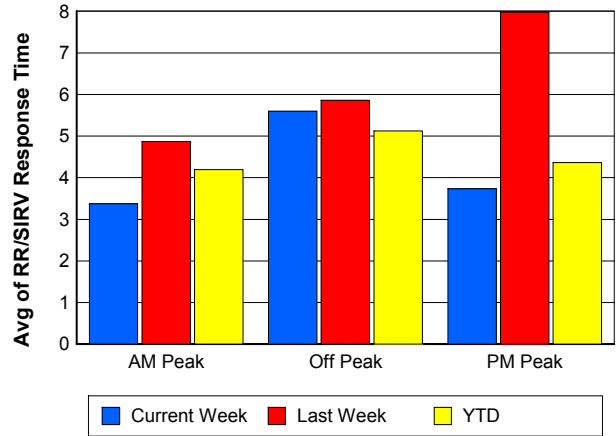
TMC Response Time



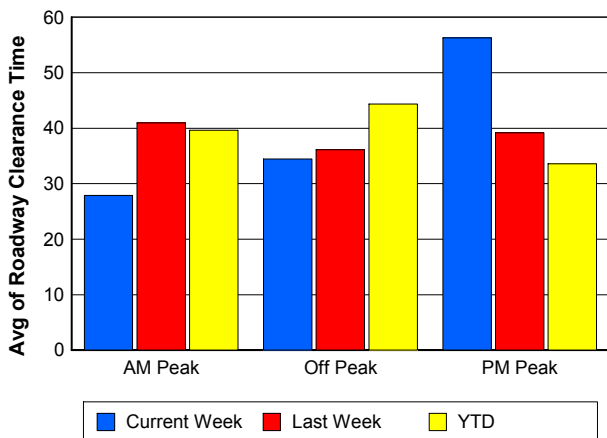
Road Ranger / SIRV Dispatch Time



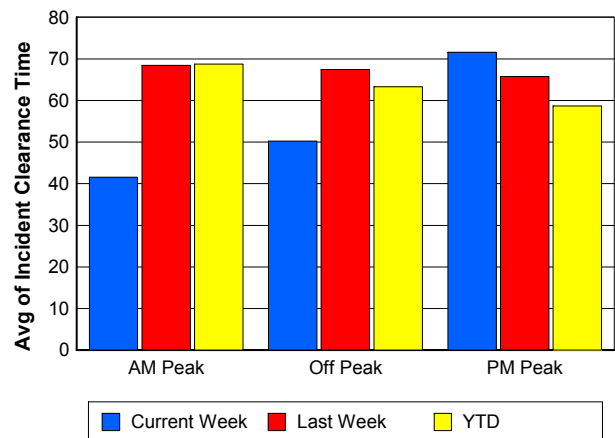
Road Ranger / SIRV Response Time



Roadway Clearance Time (2A)



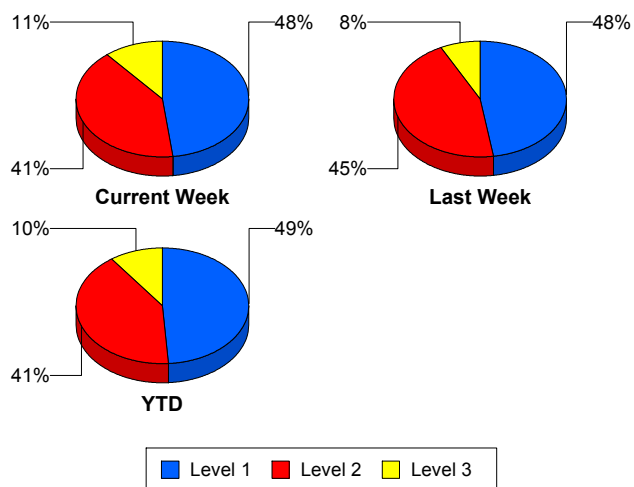
Incident Clearance Time (3B)



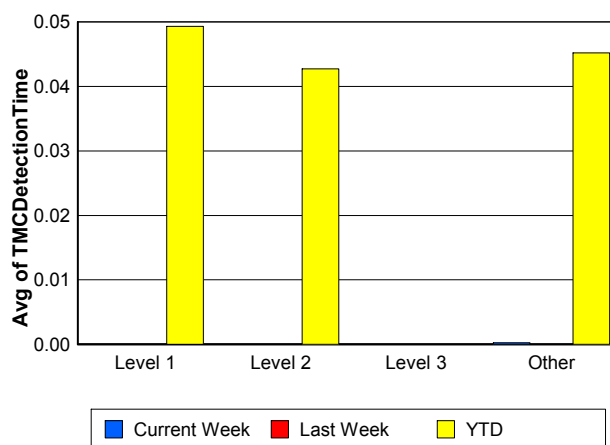
Performance Measures by Severity

	Level 1			Level 2			Level 3			Other		
	<u>This Week</u>	<u>Last Week</u>	<u>YTD</u>	<u>This Week</u>	<u>Last Week</u>	<u>YTD</u>	<u>This Week</u>	<u>Last Week</u>	<u>YTD</u>	<u>This Week</u>	<u>Last Week</u>	<u>YTD</u>
Number of Events	13	19	201	11	18	170	3	3	41	575	569	8,518
Number of Incidents	13	19	201	11	18	170	3	3	41	0	0	2
TMC Detection (min.)	0.00	0.00	0.05	0.00	0.00	0.04	0.00	0.00	0.00	0.00	0.00	0.05
TMC Verification (min.)	0.66	2.10	3.14	8.52	7.73	9.42	12.59	5.27	7.63	3.75	4.37	3.94
TMC Response (min.)	1.57	8.19	5.96	15.27	14.95	15.01	14.84	30.18	13.25	7.62	8.82	6.86
RR Dispatch Time (min.)	0.57	1.30	1.06	5.80	2.10	3.96	7.08	22.06	5.05	3.34	3.07	2.41
RR Resp. Time (min.)	1.11	6.88	4.95	9.46	12.88	11.11	7.76	8.12	8.20	4.52	5.92	4.56
Event Clearance (min.)	26.06	40.86	43.97	66.43	91.33	72.87	123.53	93.08	125.18	17.77	21.27	18.98
Roadway Clear. (min.)	11.83	15.75	15.19	57.47	52.44	55.40	84.59	84.58	106.65			-21.46
Incident Clearance (min.)	26.06	40.86	43.97	66.43	91.33	72.87	123.53	93.08	123.81			0.00
# of Events w/ RR/SIRV	13	19	198	11	18	168	3	3	39	530	501	7,938
RR/SIRV Responses	13	19	198	11	18	168	3	3	39	530	501	7,938
RR/SIRV Activities	13	22	233	23	20	229	3	3	56	538	514	8,250

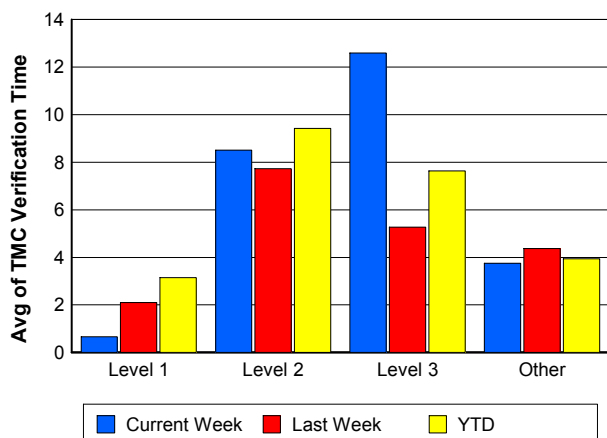
Number of Events / Severity



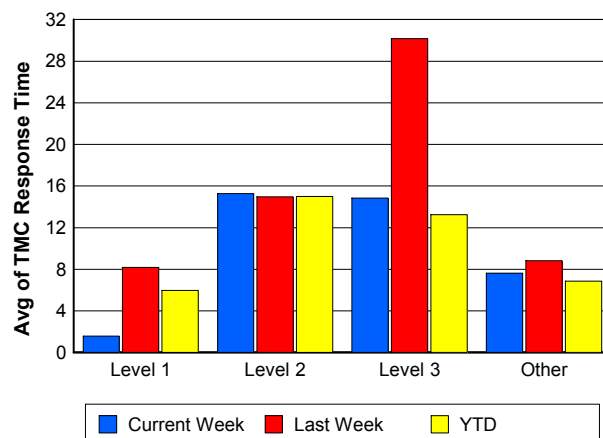
TMC Detection Time



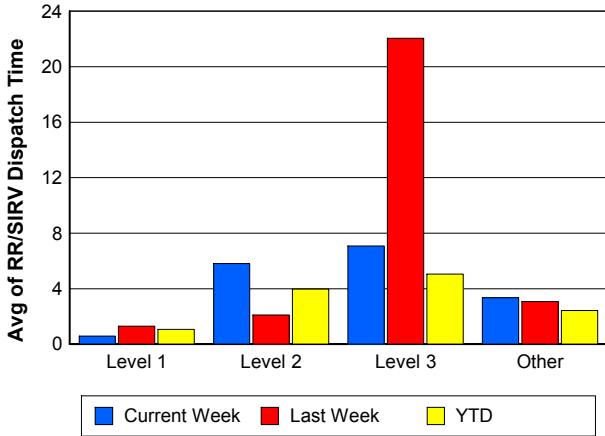
TMC Verification Time



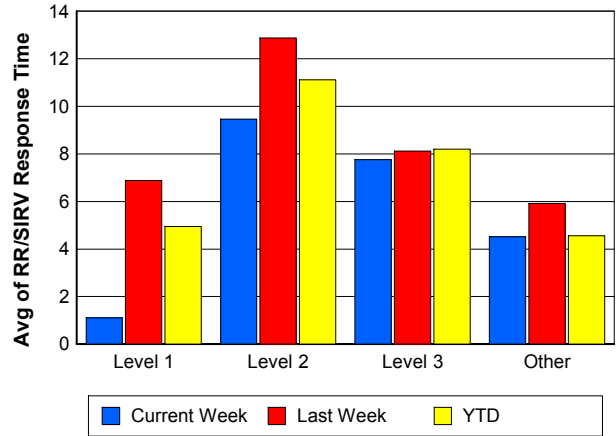
TMC Response Time



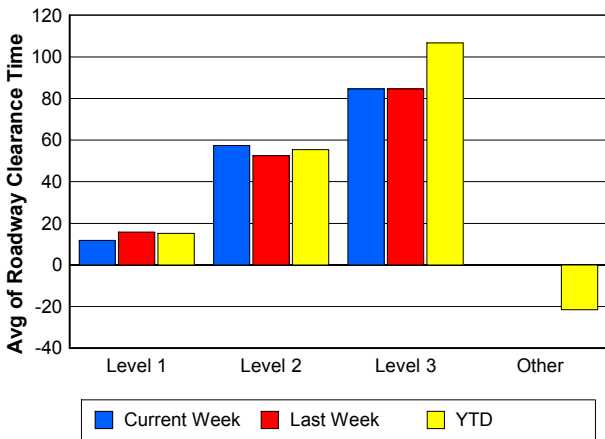
Road Ranger / SIRV Dispatch Time



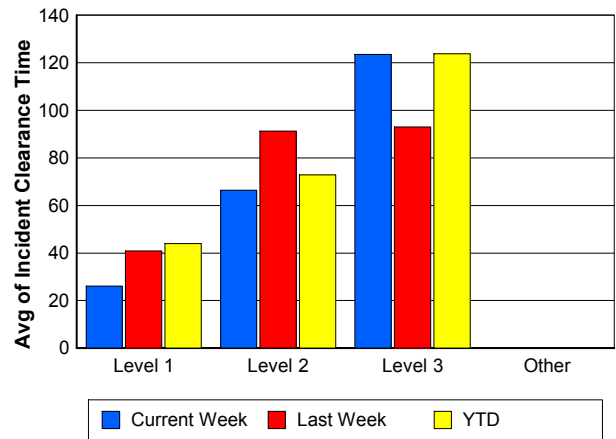
Road Ranger / SIRV Response Time



Roadway Clearance Time (2A)



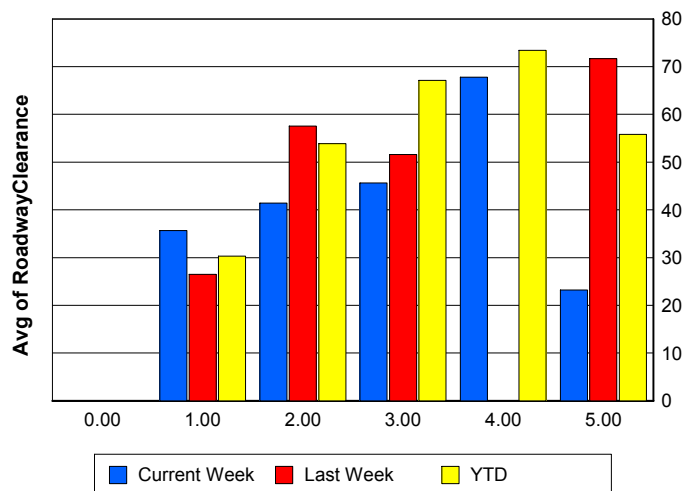
Incident Clearance Time (3B)



Roadway Clearance by Maximum Number of Lanes Blocked

	Current Week	Last Week	YTD
0			
1	35.67	26.48	30.31
2	41.39	57.59	53.90
3	45.66	51.57	67.11
4	67.82	0.00	73.45
5	23.22	71.65	55.84

Roadway Clearance Time (2A)



Performance Measures by Roadway

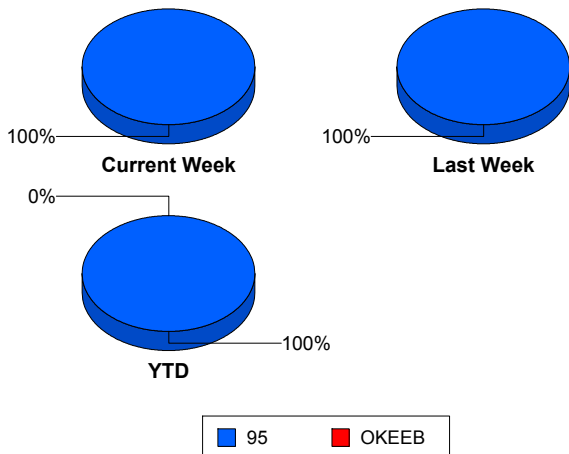
95

	<u>Current Week</u>	<u>Last Week</u>	<u>YTD</u>
Number of Events	602	609	8,929
Number of Incidents	27	40	414
TMC Detection (min.)	0.00	0.00	0.05
TMC Verification (min.)	3.82	4.40	4.04
TMC Response (min.)	7.69	9.14	7.04
RR Dispatch Time (min.)	3.35	3.08	2.43
RR Resp. Time (min.)	4.57	6.21	4.72
Event Clearance (min.)	19.37	24.31	21.06
Roadway Clear. (min.)	38.51	37.42	40.58
Incident Clearance (min.)	53.34	67.49	63.53
# of Events w/ RR/SIRV	557	541	8,342
RR/SIRV Responses	557	541	8,342
RR/SIRV Activities	577	559	8,767

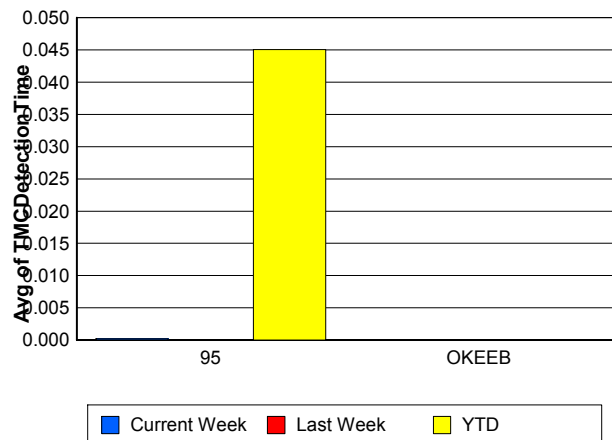
OKEEB

	<u>YTD</u>
Number of Events	1
Number of Incidents	0
TMC Detection (min.)	0.00
TMC Verification (min.)	0.00
TMC Response (min.)	0.00
RR Dispatch Time (min.)	0.00
RR Resp. Time (min.)	0.00
Event Clearance (min.)	18.45
Roadway Clear. (min.)	
Incident Clearance (min.)	
# of Events w/ RR/SIRV	1
RR/SIRV Responses	1
RR/SIRV Activities	1

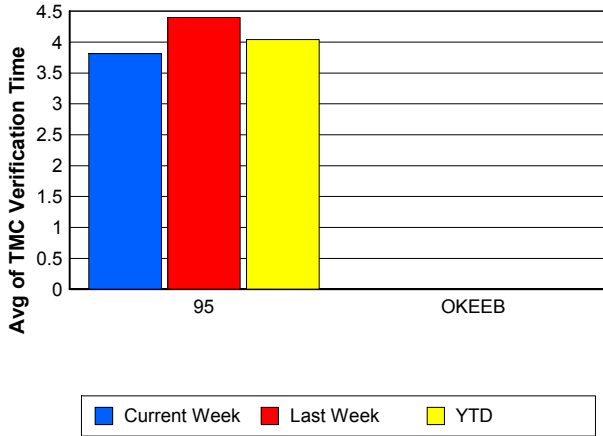
Number of Events / Roadway



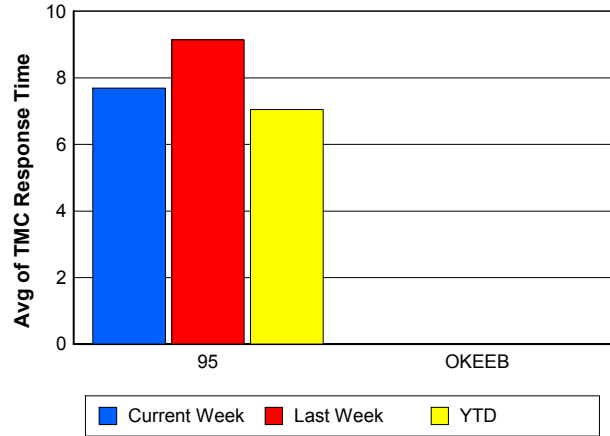
TMC Detection Time



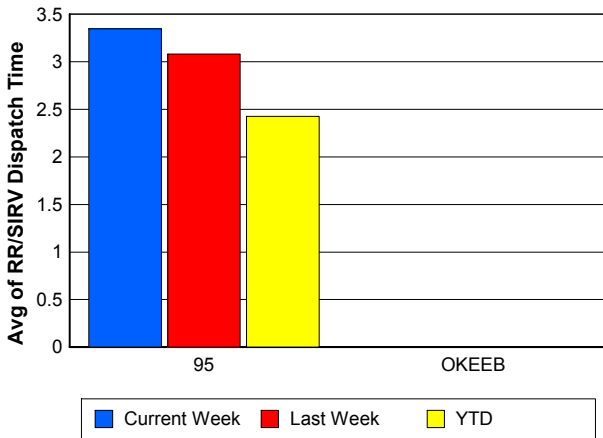
TMC Verification Time



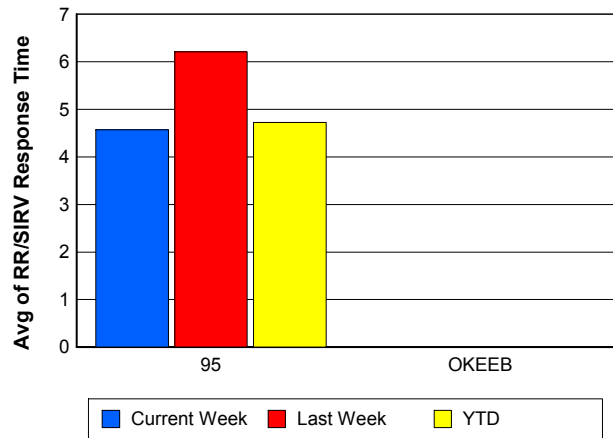
TMC Response Time



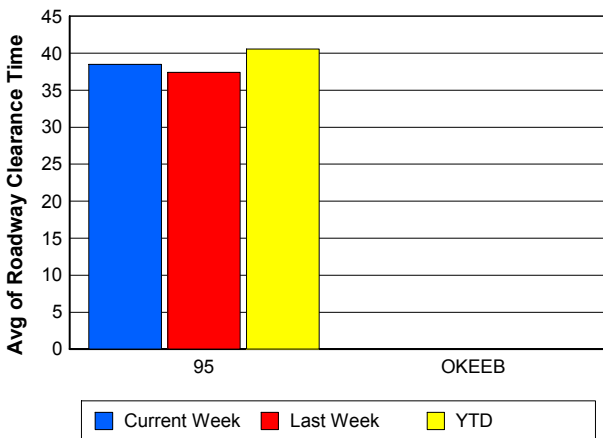
Road Ranger / SIRV Dispatch Time



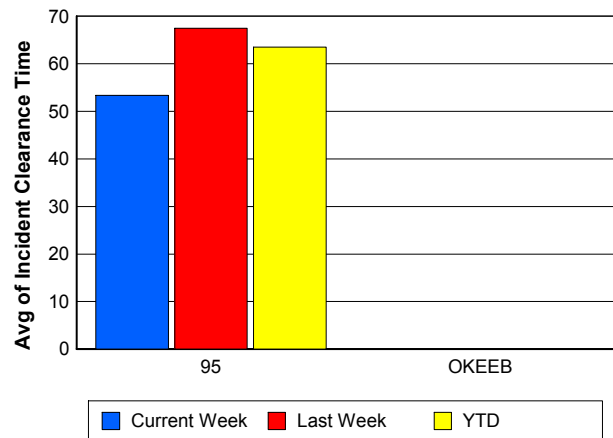
Road Ranger / SIRV Response Time



Roadway Clearance Time (2A)



Incident Clearance Time (3B)



Performance Measures by Event Type

Accident

	<u>Current Week</u>	<u>Last Week</u>	<u>YTD</u>
Number of Events	27	51	658
Number of Incidents	13	30	294
TMC Detection (min.)	0.00	0.00	0.06
TMC Verification (min.)	6.08	7.97	7.19
TMC Response (min.)	8.87	14.63	10.37
RR Dispatch Time (min.)	3.38	3.42	2.31
RR Response Time (min.)	5.48	11.51	8.10
Event Clearance (min.)	48.21	66.45	59.03
Roadway Clearance (min.)	39.48	43.54	45.11
Incident Clearance (min.)	62.53	80.83	73.61
# of Events w/ RR/SIRV	27	51	646
RR/SIRV Assists	27	51	646
RR/SIRV Activities	39	53	755

Debris on Roadway

	<u>Current Week</u>	<u>Last Week</u>	<u>YTD</u>
Number of Events	38	30	498
Number of Incidents	2	1	10
TMC Detection (min.)	0.00	0.00	0.00
TMC Verification (min.)	8.04	12.76	10.36
TMC Response (min.)	9.12	13.71	10.68
RR Dispatch Time (min.)	3.27	5.68	3.52
RR Response Time (min.)	5.79	8.04	7.21
Event Clearance (min.)	12.26	17.56	14.53
Roadway Clearance (min.)	28.02	16.93	14.71
Incident Clearance (min.)	33.61	17.58	19.40
# of Events w/ RR/SIRV	38	30	493
RR/SIRV Assists	38	30	493
RR/SIRV Activities	38	36	506

Disabled Vehicle

	<u>Current Week</u>	<u>Last Week</u>	<u>YTD</u>
Number of Events	513	500	7,292
Number of Incidents	8	7	83
TMC Detection (min.)	0.00	0.00	0.04
TMC Verification (min.)	3.49	3.75	3.55
TMC Response (min.)	7.27	7.85	6.19
RR Dispatch Time (min.)	3.14	2.77	2.26
RR Response Time (min.)	4.38	5.24	4.06
Event Clearance (min.)	17.05	20.66	17.93
Roadway Clearance (min.)	17.48	16.79	25.48
Incident Clearance (min.)	31.19	28.00	35.92
# of Events w/ RR/SIRV	474	442	6,857
RR/SIRV Assists	474	442	6,857
RR/SIRV Activities	485	456	7,263

Emergency Vehicles

	<u>Current Week</u>	<u>YTD</u>
Number of Events	1	6
Number of Incidents	1	5
TMC Detection (min.)	0.00	0.00
TMC Verification (min.)	0.00	4.66
TMC Response (min.)	0.00	6.98
RR Dispatch Time (min.)	0.00	0.13
RR Response Time (min.)	0.00	6.85
Event Clearance (min.)	17.52	62.23
Roadway Clearance (min.)	14.30	68.42
Incident Clearance (min.)	17.52	70.04
# of Events w/ RR/SIRV	1	4
RR/SIRV Assists	1	4
RR/SIRV Activities	1	4

Other

	<u>Current Week</u>	<u>Last Week</u>	<u>YTD</u>
Number of Events	18	21	386
Number of Incidents	0	0	1
TMC Detection (min.)	0.00	0.00	0.15
TMC Verification (min.)	1.28	0.00	0.53
TMC Response (min.)	24.16	13.30	15.93
RR Dispatch Time (min.)	11.68	7.00	4.79
RR Response Time (min.)	10.02	5.42	8.91
Event Clearance (min.)	45.55	16.18	21.32
Roadway Clearance (min.)			8.12
Incident Clearance (min.)			24.77
# of Events w/ RR/SIRV	12	11	263
RR/SIRV Assists	12	11	263
RR/SIRV Activities	8	8	170

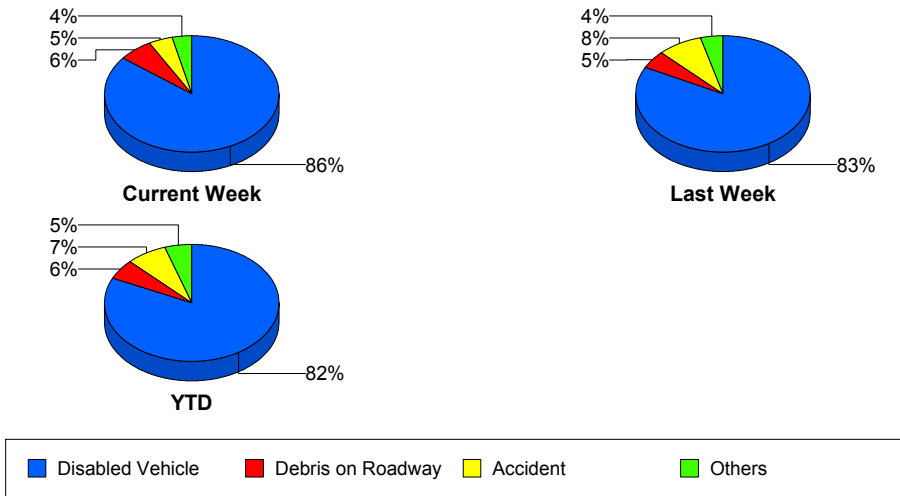
Police Activity

	<u>Current Week</u>	<u>Last Week</u>	<u>YTD</u>
Number of Events	2	2	33
Number of Incidents	2	1	12
TMC Detection (min.)	0.00	0.00	0.22
TMC Verification (min.)	8.62	0.00	0.56
TMC Response (min.)	8.72	9.38	17.61
RR Dispatch Time (min.)	8.67	0.24	6.39
RR Response Time (min.)	0.04	9.14	15.00
Event Clearance (min.)	128.73	14.57	37.37
Roadway Clearance (min.)	140.22	27.85	51.01
Incident Clearance (min.)	128.73	26.60	52.66
# of Events w/ RR/SIRV	2	2	25
RR/SIRV Assists	2	2	25
RR/SIRV Activities	2	2	15

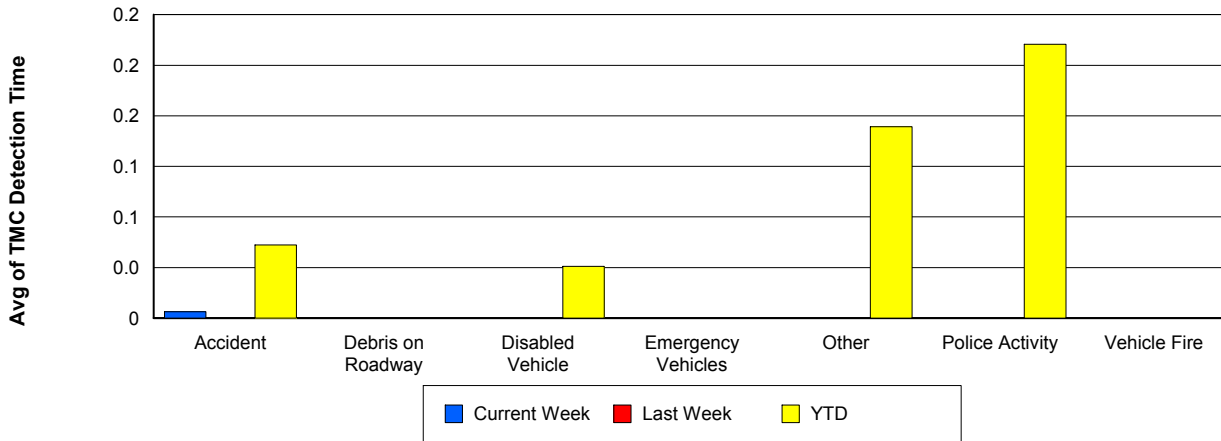
Vehicle Fire

	<u>Current Week</u>	<u>Last Week</u>	<u>YTD</u>
Number of Events	1	2	17
Number of Incidents	1	1	9
TMC Detection (min.)	0.00	0.00	0.00
TMC Verification (min.)	0.00	5.67	3.42
TMC Response (min.)	0.00	11.30	8.82
RR Dispatch Time (min.)	0.00	8.67	2.80
RR Response Time (min.)	0.00	0.20	6.24
Event Clearance (min.)	35.63	36.67	38.73
Roadway Clearance (min.)	35.78	28.22	34.99
Incident Clearance (min.)	35.63	34.43	52.90
# of Events w/ RR/SIRV	1	2	16
RR/SIRV Assists	1	2	16
RR/SIRV Activities	2	1	17

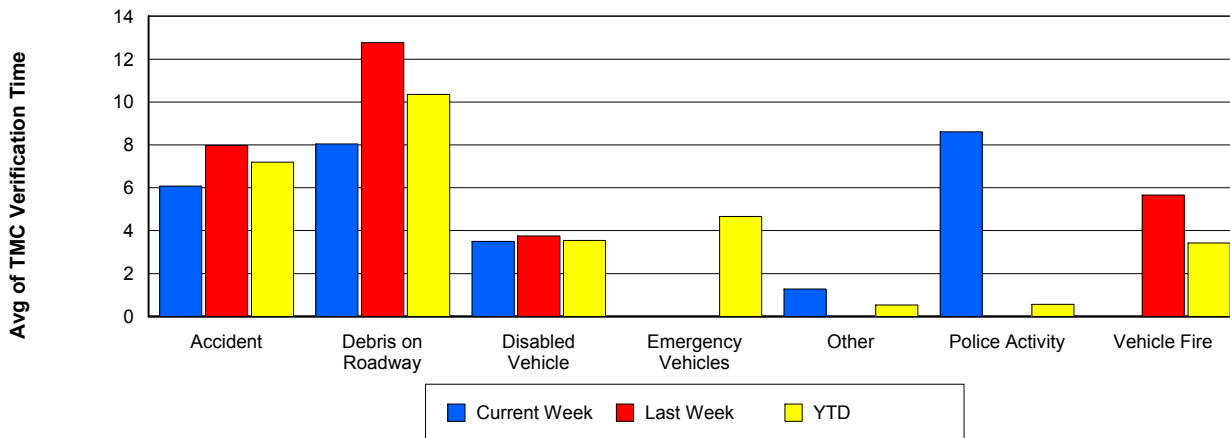
Number of Events / Event Type



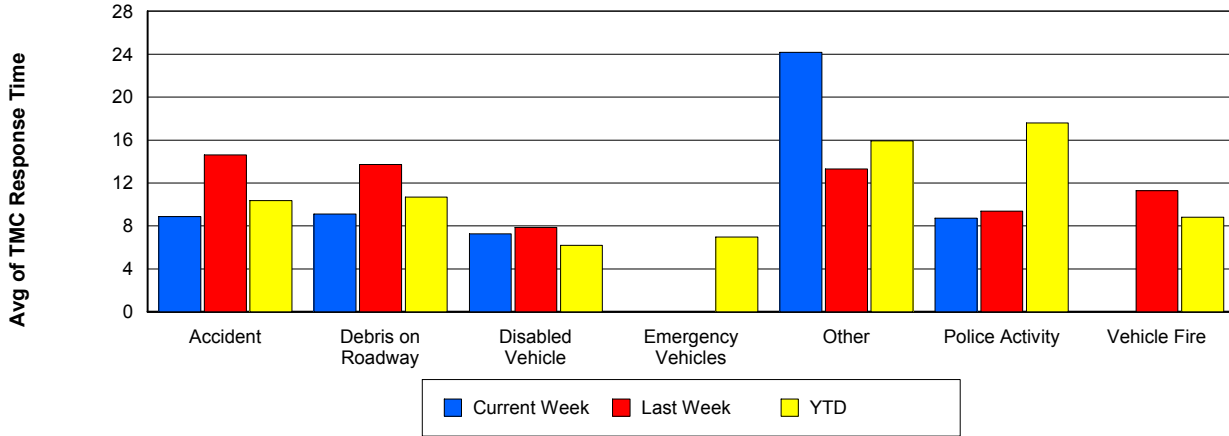
TMC Detection Time



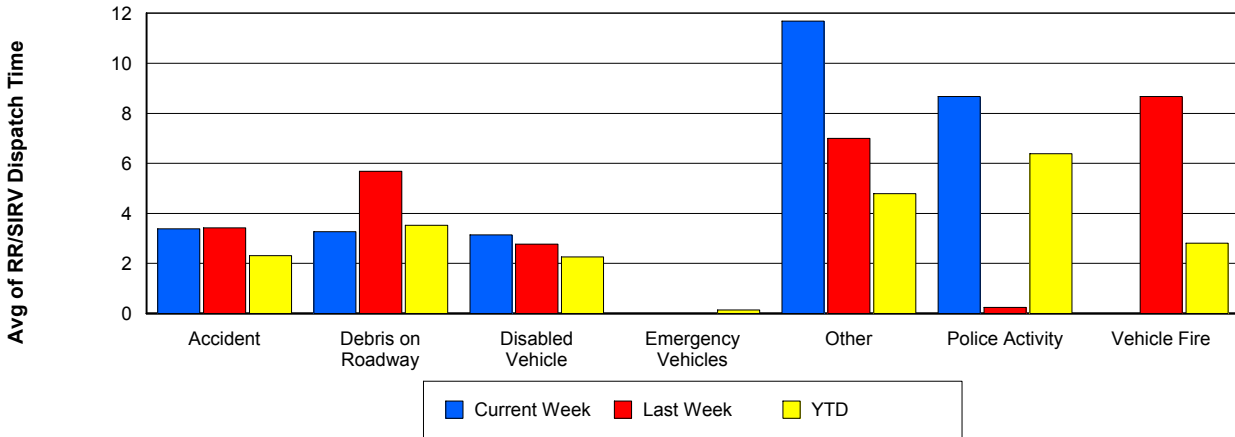
TMC Verification Time



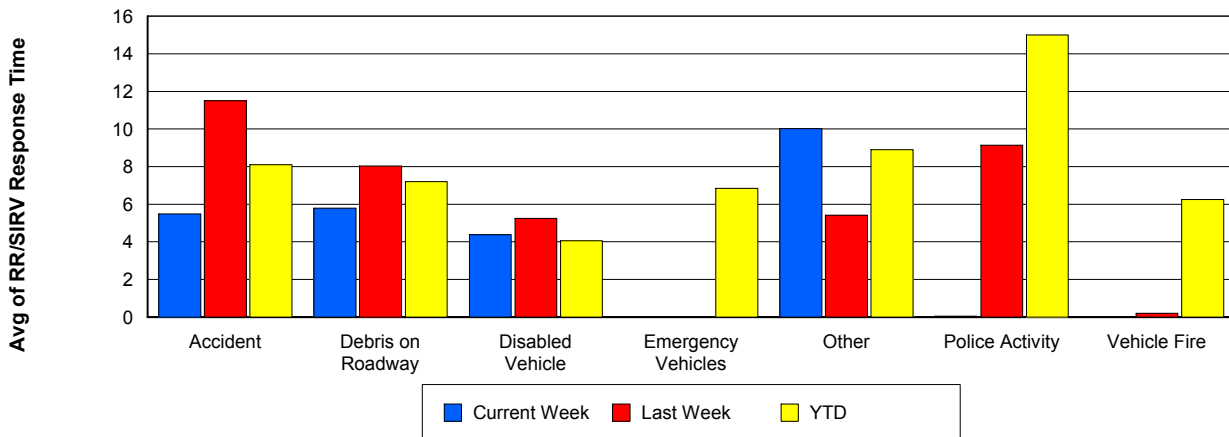
TMC Response Time



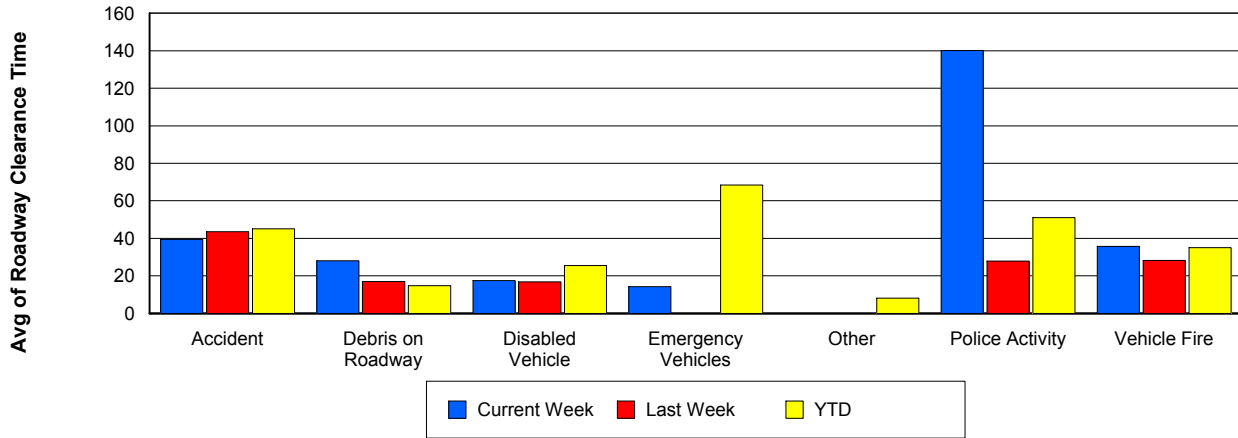
Road Ranger / SIRV Dispatch Time



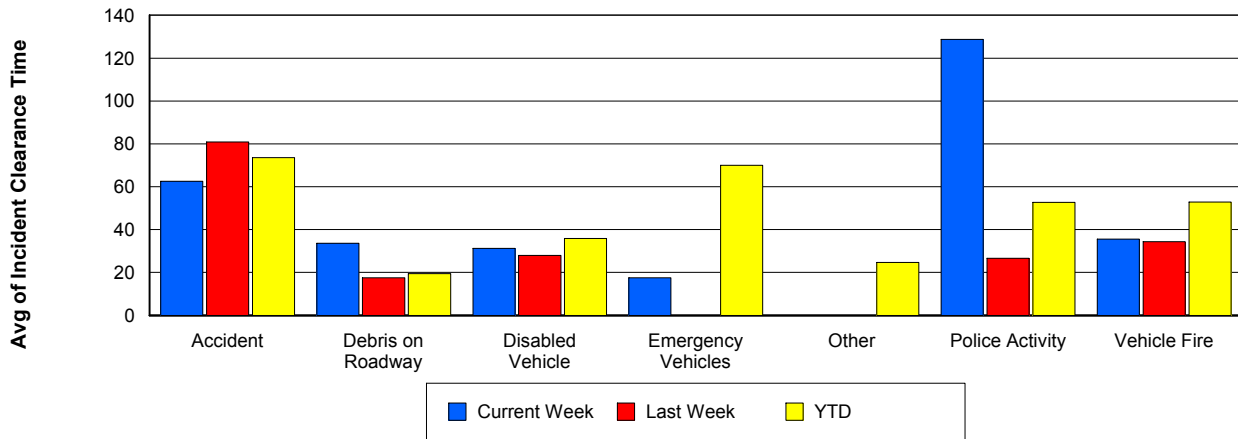
Road Ranger / SIRV Response Time



Roadway Clearance Time (2A)



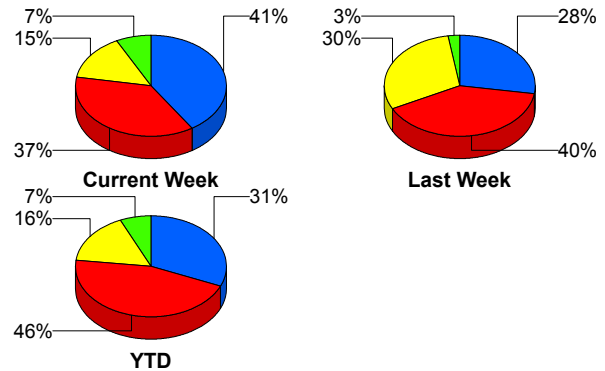
Incident Clearance Time (3B)



Incident Detection Methods

	Current Week	Last Week	YTD
Broward Road Ranger	0	0	5
Broward TMC	0	0	5
County Police	1	0	1
District 4	0	0	8
FDOT Maintenance	0	1	2
FHP	10	16	188
ITMS CCTV	4	12	67
Media	0	0	1
Motorist	1	0	6
Palm Beach Road Ran	11	11	129
Total	27	40	412

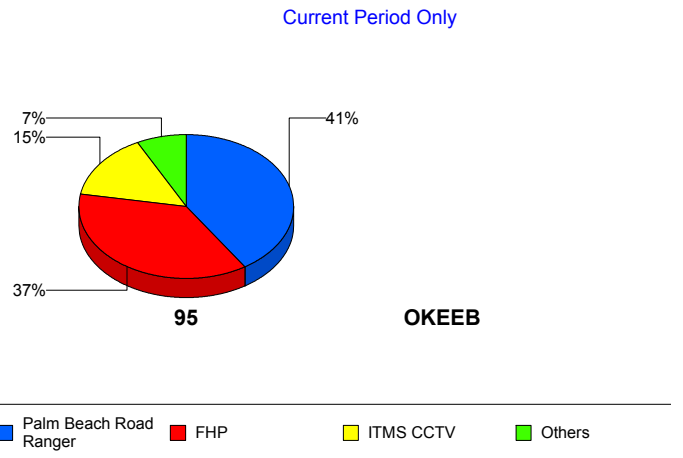
Total Incidents by Detection Method



Incident Detection Methods by Roadway

		Current Week	Last Week	YTD
95	Broward Road Ranger	0	0	5
	Broward TMC	0	0	5
	County Police	1	0	1
	District 4	0	0	8
	FDOT Maintenance	0	1	2
	FHP	10	16	188
	ITMS CCTV	4	12	67
	Media	0	0	1
	Motorist	1	0	6
	Palm Beach Road Ran	11	11	129
	Total	27	40	412
	Total	27	40	412

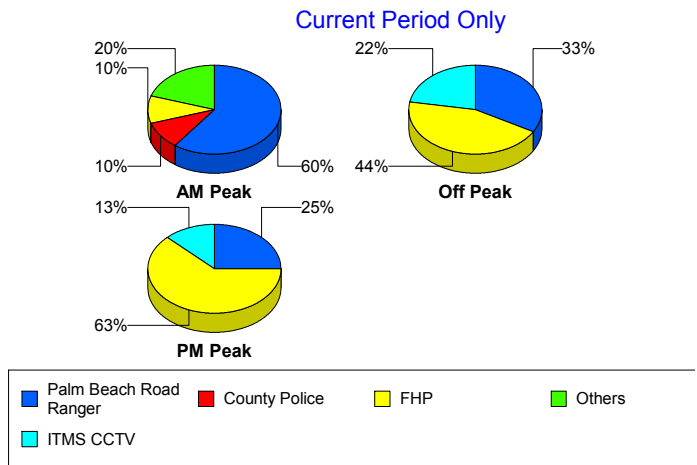
Total Events by Roadway and Detection Method



Incident Detection Methods by Peak Period

		Current Week	Last Week	YTD
AM Peak	Broward Road Ranger	0	0	4
	County Police	1	0	1
	District 4	0	0	2
	FHP	1	1	38
	ITMS CCTV	1	4	17
	Media	0	0	1
	Motorist	1	0	1
	Palm Beach Road Ran	6	3	40
	Total	10	8	104
Off Peak	Broward Road Ranger	0	0	1
	Broward TMC	0	0	2
	District 4	0	0	4
	FDOT Maintenance	0	1	2
	FHP	4	13	95
	ITMS CCTV	2	6	40
	Motorist	0	0	2
	Palm Beach Road Ran	3	8	63
	Total	9	28	209
PM Peak	Broward TMC	0	0	3
	District 4	0	0	2
	FHP	5	2	56
	ITMS CCTV	1	2	10
	Motorist	0	0	3
	Palm Beach Road Ran	2	0	26
	Total	8	4	100
Total	27	40	412	

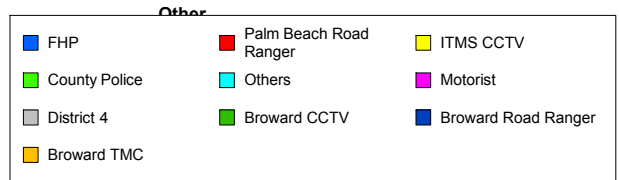
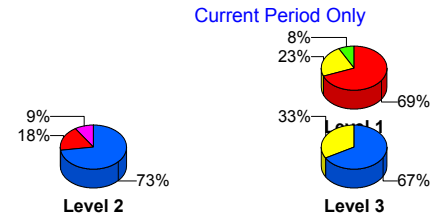
Total Events by Peak Period and Detection Method



Incident Detection Methods by Severity

		Current Week	Last Week	YTD
	FHP	0	0	1
	Total	0	0	1
Level 1	Broward Road Ranger	0	0	5
	Broward TMC	0	0	3
	County Police	1	0	1
	District 4	0	0	6
	FHP	0	4	61
	ITMS CCTV	3	8	33
	Motorist	0	0	3
	Palm Beach Road Ran	9	7	89
	Total	13	19	201
	Level 2	Broward TMC	0	0
District 4		0	0	1
FDOT Maintenance		0	1	2
FHP		8	9	103
ITMS CCTV		0	4	29
Motorist		1	0	3
Palm Beach Road Ran		2	4	30
Total		11	18	170
Level 3	District 4	0	0	1
	FHP	2	3	24
	ITMS CCTV	1	0	5
	Media	0	0	1
	Palm Beach Road Ran	0	0	10
	Total	3	3	41
Total		27	40	412

Total Events by Severity and Detection Method



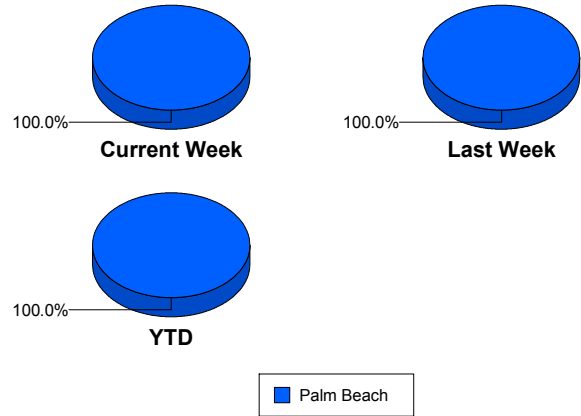
Road Ranger / SIRV Performance Measures

Road Ranger / SIRV Performance By County

Values presented are:
 - Total Events with a RR/SIRV Response
 - Total RR/SIRV Responses,
 - Total Activities Performed

	Current We	Last Week	YTD
Palm Beach	655	620	10,318
	681	639	10,672
	718	687	11,317

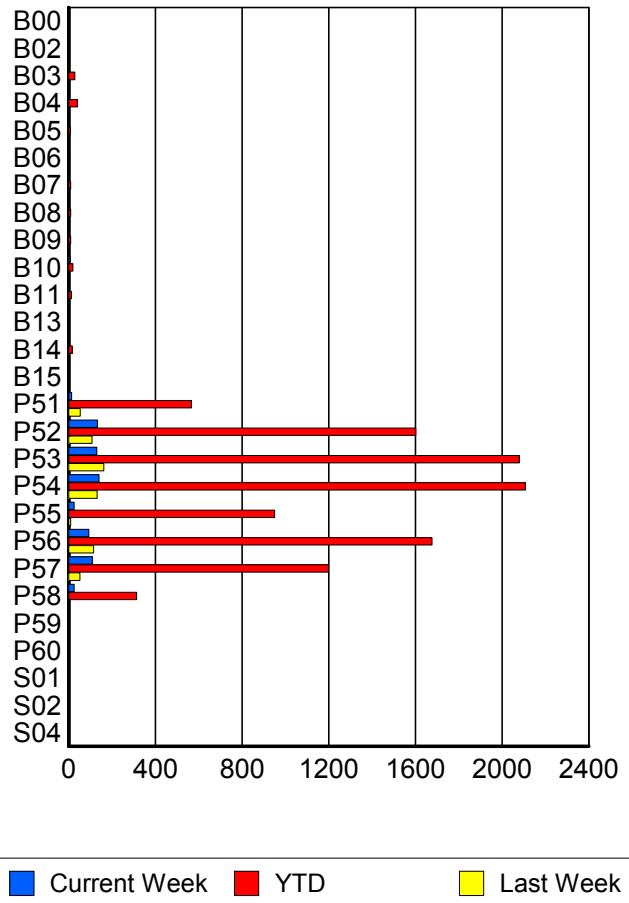
RR/SIRV Responses per County



Road Ranger / SIRV Performance By Truck

	Current We	Last Week	YTD
B00	1	0	2
	1	0	2
	1	0	2
B02	2	0	2
	2	0	2
	2	0	2
B03	1	0	28
	1	0	28
	1	0	31
B04	1	4	39
	1	4	40
	1	4	43
B05	0	0	8
	0	0	8
	0	0	8
B06	0	0	5
	0	0	5
	0	0	7
B07	0	0	9
	0	0	9
	0	0	9
B08	0	0	9
	0	0	9
	0	0	9
B09	0	0	9
	0	0	9
	0	0	10

**RR/SIRV
Responses per
Truck**



	Current We	Last Week	YTD
B10	6	0	20
	6	0	20
	6	0	22
B11	0	2	12
	0	2	12
	0	3	13
B13	0	0	3
	0	0	3
	0	0	3
B14	0	0	17
	0	0	17
	0	0	17
B15	0	0	3
	0	0	3
	0	0	3
P51	12	53	557
	14	54	567
	14	62	599
P52	133	107	1,582
	133	108	1,602
	136	119	1,703
P53	128	162	2,056
	130	162	2,080
	146	170	2,216
P54	138	130	2,078
	140	132	2,108
	149	140	2,238
P55	25	10	942
	25	10	951
	25	10	992
P56	93	113	1,655
	94	115	1,677
	98	125	1,782
P57	107	52	1,183
	109	52	1,199
	113	54	1,266
P58	25	0	311
	25	0	314
	26	0	334
P59	0	0	1
	0	0	1
	0	0	1
P60	0	0	1
	0	0	1
	0	0	1

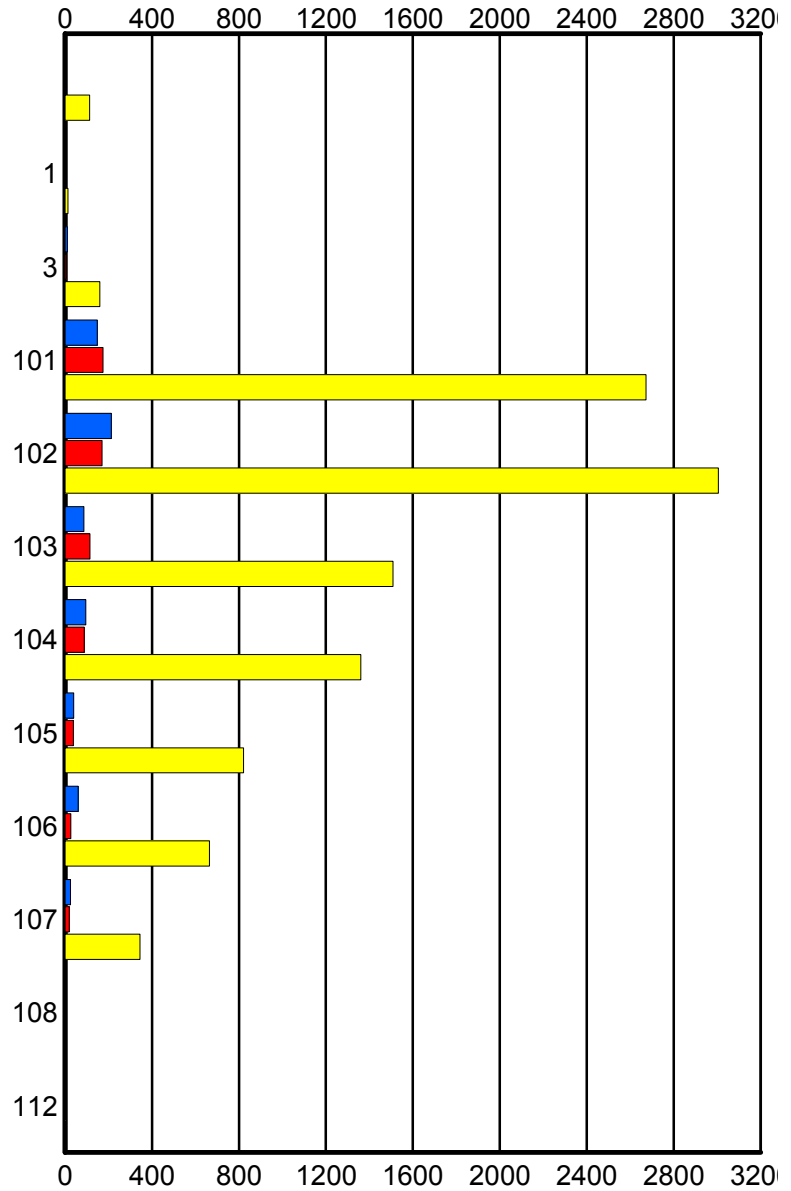
	Current We	Last Week	YTD
S01	0	0	3
	0	0	3
	0	0	4
S02	0	0	1
	0	0	1
	0	0	1
S04	0	0	1
	0	0	1
	0	0	1

Road Ranger / SIRV Performance By Beat

	Current We	Last Week	YTD
	1	1	112
	1	1	113
	1	1	122
1	1	0	13
	1	0	14
	1	0	14
3	10	6	156
	10	6	160
	10	7	172
101	146	173	2,624
	149	175	2,672
	164	183	2,829
102	210	167	2,957
	213	170	3,006
	221	175	3,177
103	84	114	1,491
	86	115	1,509
	91	126	1,591
104	94	85	1,345
	95	88	1,361
	100	100	1,457
105	40	39	816
	40	39	821
	42	41	878
106	61	26	658
	61	26	665
	63	33	701
107	25	19	343
	25	19	345
	25	21	369
108	0	0	3
	0	0	4
	0	0	4
112	0	0	2
	0	0	2
	0	0	3

Values presented are:
 - Total Events with a RR/SIRV Response
 - Total RR/SIRV Responses,
 - Total Activities Performed

RR/SIRV Responses per Beat



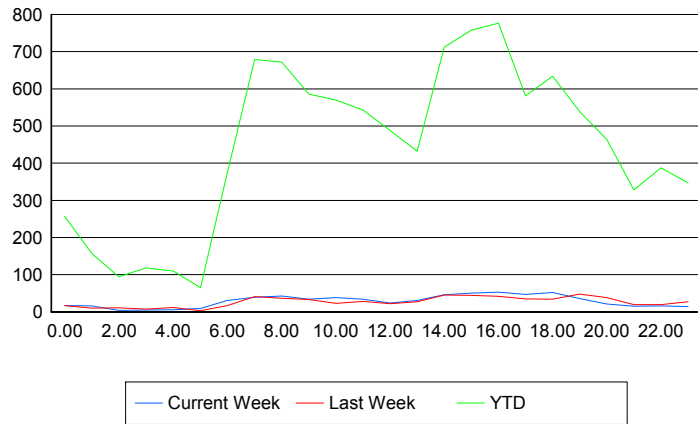
■ Current Week
 ■ Last Week
 ■ YTD

Road Ranger / SIRV Performance By Time of Day

Values presented are:
 - Total Events with a RR/SIRV Response
 - Total RR/SIRV Responses,
 - Total Activities Performed

	Current We	Last Week	YTD
12AM-1AM	16	17	249
	17	17	257
	21	17	283
1AM-2AM	15	10	154
	16	10	157
	18	10	161
2AM-3AM	4	10	91
	4	11	94
	4	11	99
3AM-4AM	5	7	114
	5	7	118
	5	8	127
4AM-5AM	6	11	106
	6	12	110
	6	12	115
5AM-6AM	8	3	56
	9	3	65
	9	3	69
6AM-7AM	29	16	351
	31	17	374
	31	19	394
7AM-8AM	37	40	658
	39	41	679
	41	44	713
8AM-9AM	41	37	644
	43	37	672
	44	39	705
9AM-10AM	34	33	568
	34	33	586
	37	33	623
10AM-11AM	36	23	548
	38	23	570
	40	24	598
11AM-12PM	33	28	530
	34	28	543
	35	28	572
12PM-1PM	24	20	465
	24	22	488
	26	23	509

Number of Responses / Hour of the Day



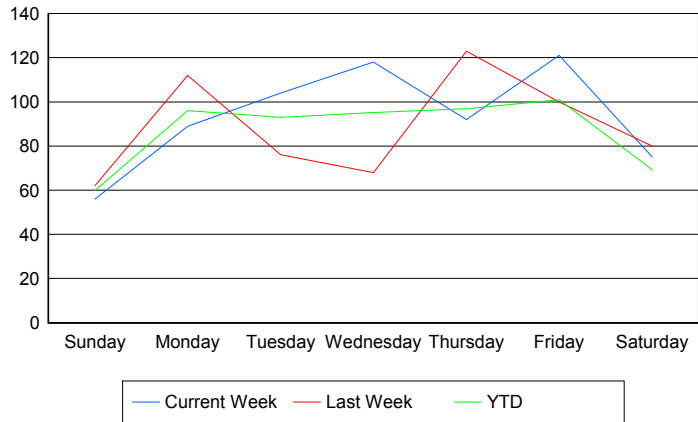
	Current We	Last Week	YTD
1PM-2PM	27	26	411
	31	27	432
	31	32	458
2PM-3PM	44	42	686
	46	45	712
	47	51	760
3PM-4PM	49	43	743
	50	44	758
	54	50	816
4PM-5PM	51	41	749
	53	42	777
	57	46	827
5PM-6PM	43	34	563
	47	35	581
	52	38	618
6PM-7PM	51	34	621
	52	34	634
	54	34	668
7PM-8PM	36	46	519
	36	48	539
	37	54	571
8PM-9PM	21	36	456
	21	38	464
	21	42	484
9PM-10PM	15	19	317
	15	19	328
	16	20	352
10PM-11PM	16	18	379
	16	19	387
	17	20	417
11PM-12AM	14	26	340
	14	27	347
	15	29	378

Road Ranger / SIRV Performance By Day of Week

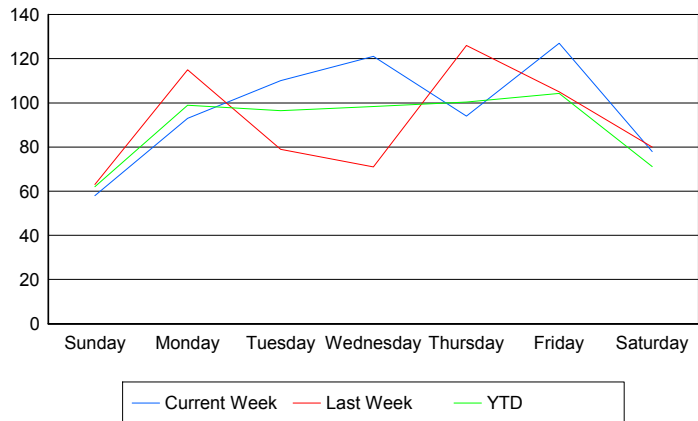
Values presented are:
 - Total Events with a RR/SIRV Response
 - Total RR/SIRV Responses,
 - Total Activities Performed

	Current We	Last Week	YTD
Sunday	56	62	1,000
	58	63	1,034
	66	66	1,091
Monday	89	112	1,589
	93	115	1,639
	95	122	1,736
Tuesday	104	76	1,566
	110	79	1,623
	115	85	1,728
Wednesday	118	68	1,586
	121	71	1,637
	123	77	1,744
Thursday	92	123	1,591
	94	126	1,650
	102	134	1,763
Friday	121	100	1,774
	127	105	1,834
	132	116	1,924
Saturday	75	80	1,223
	78	80	1,255
	85	87	1,331

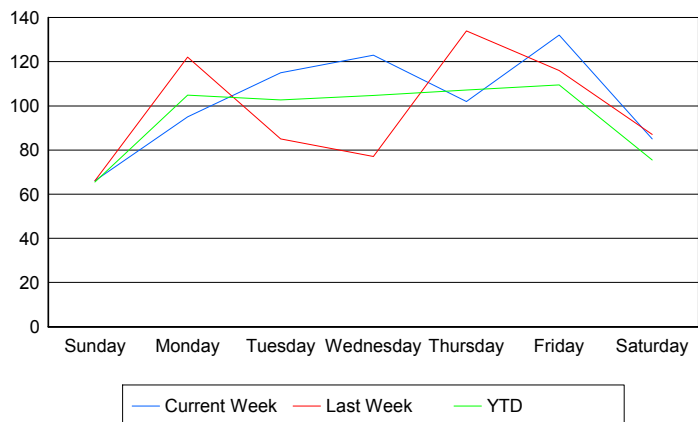
Avg # of events with a RR/SIRV Response per Day of the Week



Avg # of RR/SIRV Responses per Day of the Week



Avg # of RR/SIRV Activities Performed per Day of the Week



Road Ranger / SIRV Responses per Time of Day and Day of Week

