



# Weekly Performance Measures Report Palm Beach County



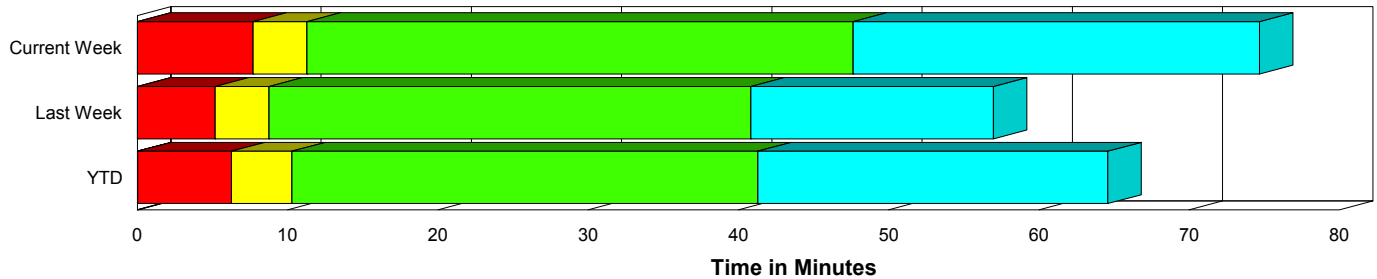
Created on:  
May 10, 2010  
10:33 am

Period From May 2, 2010 to May 8, 2010

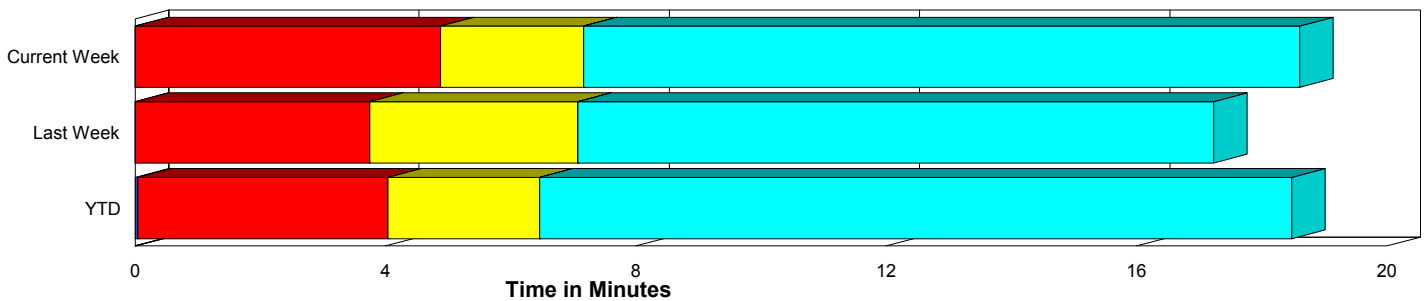
## Performance Measures Summary

	Traffic Events (No Lanes Blocked)			Incidents (Lanes Blocked)		
	<u>This Week</u>	<u>Last Week</u>	<u>YTD</u>	<u>This Week</u>	<u>Last Week</u>	<u>YTD</u>
Number of Events	593	575	9,109	26	27	440
TMC Detection (min.)	0.00	0.00	0.04	0.00	0.00	0.04
TMC Verification (min.)	4.88	3.75	4.00	7.70	5.19	6.27
TMC Response (min.)	7.90	7.62	6.93	11.60	9.19	10.52
RR Dispatch Time (min.)	2.42	3.34	2.41	2.34	3.43	2.62
RR Response Time (min.)	5.73	4.52	4.63	9.26	5.58	7.92
Roadway Clearance (min.)				47.48	38.51	40.99
Event Clearance (min.)	19.35	17.77	18.99	74.49	53.34	64.72
# of Events w/ RR/SIRV	563	530	8,499	25	27	432
RR/SIRV Responses	563	530	8,499	25	27	432
RR/SIRV Activities	580	538	8,825	39	39	562

### Incident Clearance Time-Line



### Traffic Event (Non-Lane Blockage) Time-Line



<span style="color: blue;">■</span> Avg. TMC Detection Time	<span style="color: green;">■</span> Avg. Time from TMC Response to Roadway Clearance*
<span style="color: red;">■</span> Avg. Time from TMC Detection to TMC Verification	<span style="color: cyan;">■</span> Avg. Time from Roadway Clearance to Incident/Event Clearance**
<span style="color: yellow;">■</span> Avg. Time from TMC Verification to TMC Response	

\* Roadway clearance equals all travel lanes open

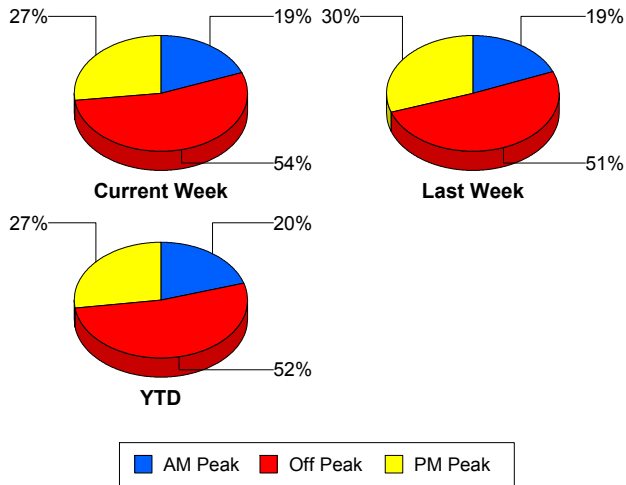
\*\* Incident clearance equals time when last responder has left the scene

## Performance Measures by Peak Period

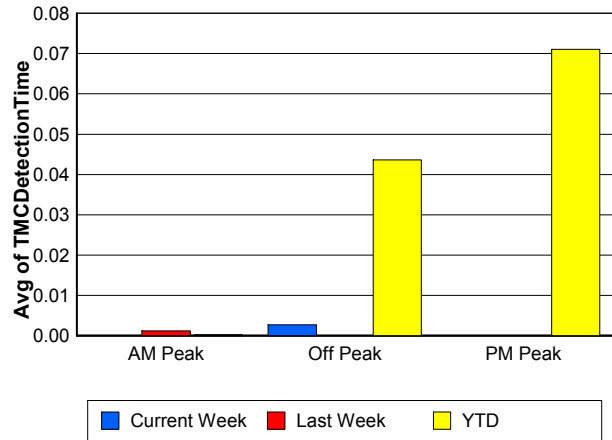
Note: AM peak period is defined as 6am to 10am and PM peak period is defined as 3pm to 7pm.

	AM Peak			Off Peak			PM Peak		
	<u>Current Week</u>	<u>Last Week</u>	<u>YTD</u>	<u>Current Week</u>	<u>Last Week</u>	<u>YTD</u>	<u>Current Week</u>	<u>Last Week</u>	<u>YTD</u>
Number of Events	119	113	1,946	333	307	5,011	167	182	2,592
Number of Incidents	4	10	108	14	9	224	8	8	108
TMC Detection (min.)	0.00	0.00	0.00	0.00	0.00	0.04	0.00	0.00	0.07
TMC Verification (min.)	2.42	2.59	2.71	4.98	4.11	4.30	6.88	4.07	4.77
TMC Response (min.)	5.14	4.38	5.61	7.93	10.04	7.68	10.51	6.15	7.14
RR Dispatch Time (min.)	1.40	1.14	1.52	2.61	4.47	2.65	2.79	2.90	2.67
RR Response Time (min.)	3.70	3.37	4.16	5.65	5.60	5.16	7.98	3.74	4.60
Event Clearance (min.)	18.46	16.39	20.65	21.54	21.43	21.86	24.18	17.74	19.96
Roadway Clearance (min.)	33.29	27.89	39.41	62.26	34.48	45.48	28.72	56.31	33.25
Incident Clearance (min.)	49.58	41.55	68.03	85.77	50.24	64.66	67.19	71.57	59.32
# of Events w/ RR/SIRV	117	107	1,824	313	277	4,658	158	173	2,449
RR/SIRV Responses	117	107	1,824	313	277	4,658	158	173	2,449
RR/SIRV Activities	124	113	1,927	337	279	4,911	158	185	2,549

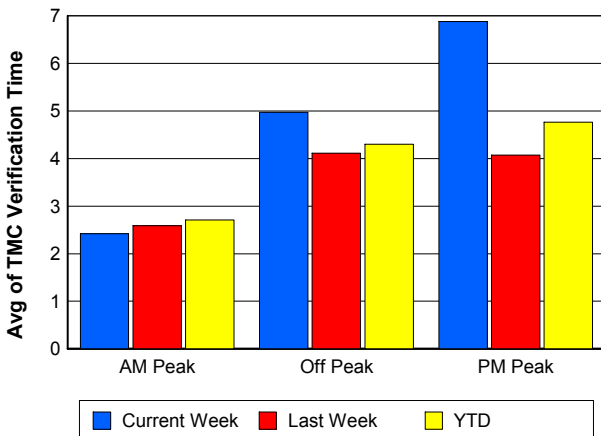
### Number of Events / Peak Period



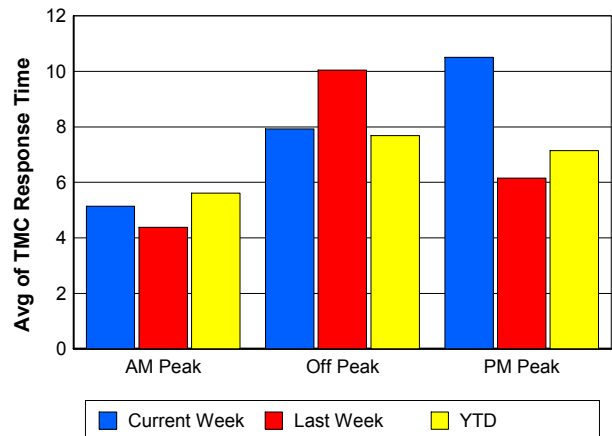
### TMC Detection Time



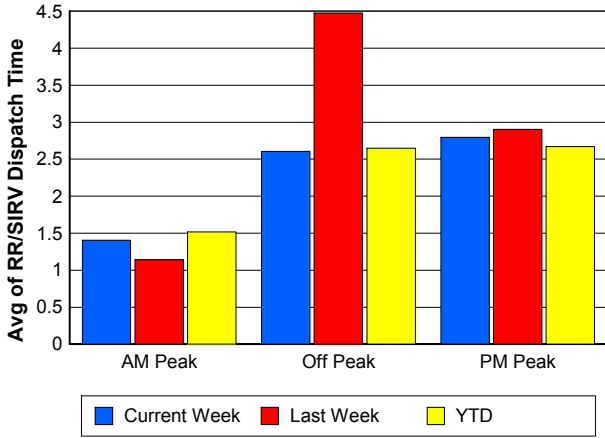
### TMC Verification Time



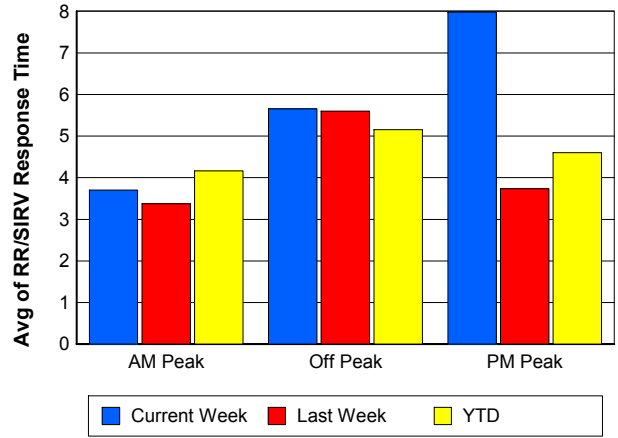
### TMC Response Time



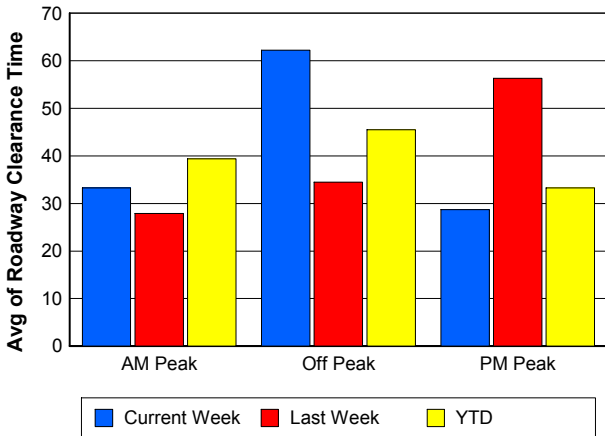
### Road Ranger / SIRV Dispatch Time



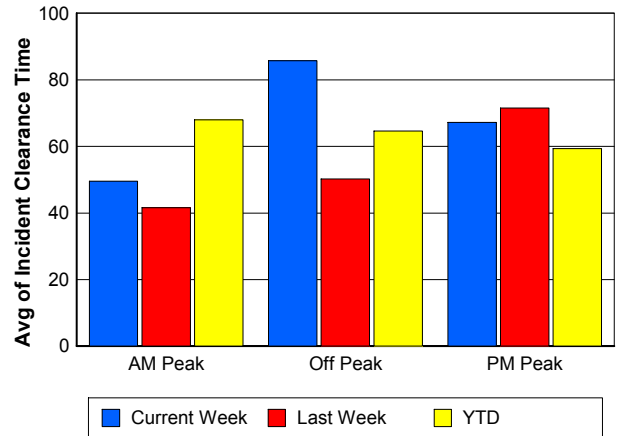
### Road Ranger / SIRV Response Time



### Roadway Clearance Time (2A)



### Incident Clearance Time (3B)

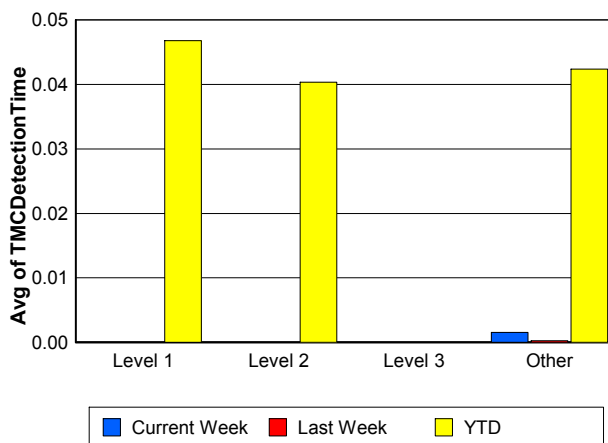
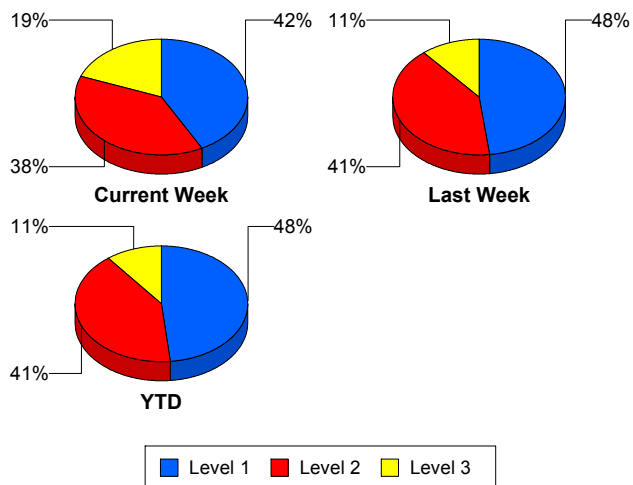


## Performance Measures by Severity

	Level 1			Level 2			Level 3			Other		
	<u>This Week</u>	<u>Last Week</u>	<u>YTD</u>	<u>This Week</u>	<u>Last Week</u>	<u>YTD</u>	<u>This Week</u>	<u>Last Week</u>	<u>YTD</u>	<u>This Week</u>	<u>Last Week</u>	<u>YTD</u>
Number of Events	11	13	212	10	11	180	5	3	46	593	575	9,111
Number of Incidents	11	13	212	10	11	180	5	3	46	0	0	2
TMC Detection (min.)	0.00	0.00	0.05	0.00	0.00	0.04	0.00	0.00	0.00	0.00	0.00	0.04
TMC Verification (min.)	5.76	0.66	3.28	10.04	8.52	9.46	7.33	12.59	7.60	4.88	3.75	4.00
TMC Response (min.)	10.83	1.57	6.23	11.63	15.27	14.82	13.66	14.84	13.29	7.90	7.62	6.93
RR Dispatch Time (min.)	1.46	0.57	1.09	1.41	5.80	3.82	7.07	7.08	5.23	2.42	3.34	2.41
RR Resp. Time (min.)	9.37	1.11	5.19	10.22	9.46	11.06	6.59	7.76	8.05	5.73	4.52	4.64
Event Clearance (min.)	50.22	26.06	44.29	73.48	66.43	72.90	129.88	123.53	125.69	19.35	17.77	19.01
Roadway Clear. (min.)	19.19	11.83	15.40	45.69	57.47	54.86	113.30	84.59	107.37			-21.46
Incident Clearance (min.)	50.22	26.06	44.29	73.48	66.43	72.90	129.88	123.53	124.47			0.00
# of Events w/ RR/SIRV	11	13	209	10	11	178	4	3	43	563	530	8,501
RR/SIRV Responses	11	13	209	10	11	178	4	3	43	563	530	8,501
RR/SIRV Activities	16	13	249	16	23	245	7	3	63	580	538	8,830

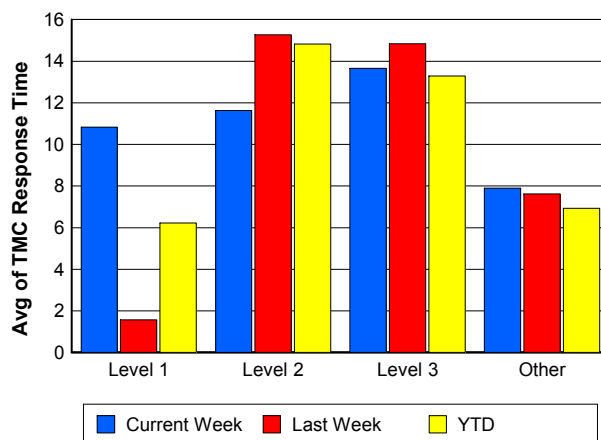
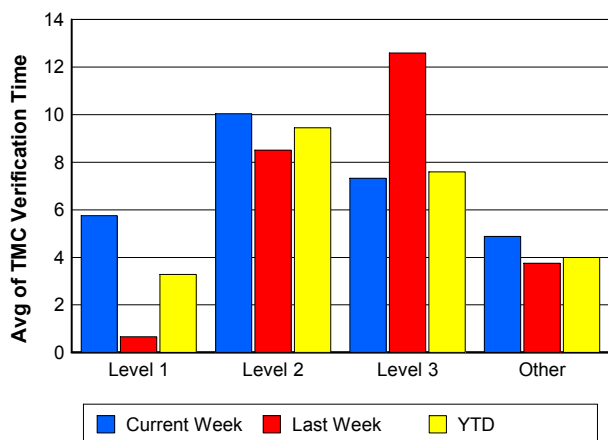
### Number of Events / Severity

### TMC Detection Time

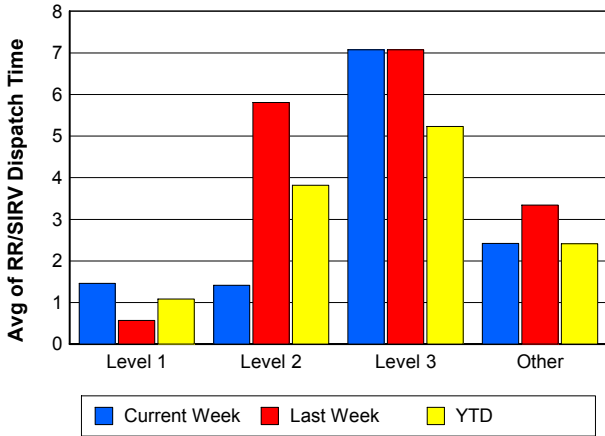


### TMC Verification Time

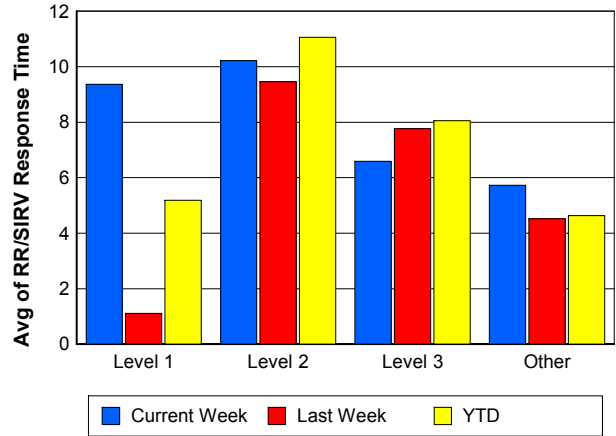
### TMC Response Time



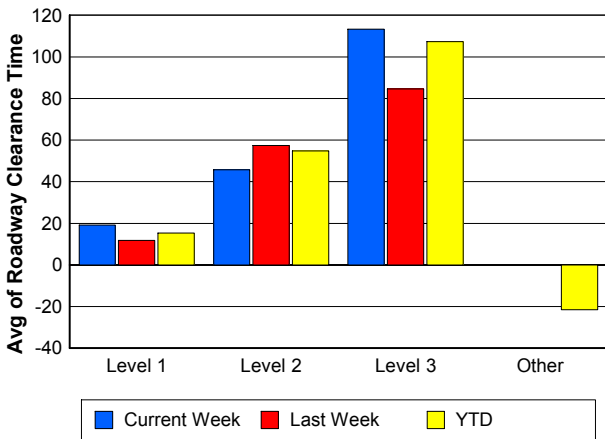
## Road Ranger / SIRV Dispatch Time



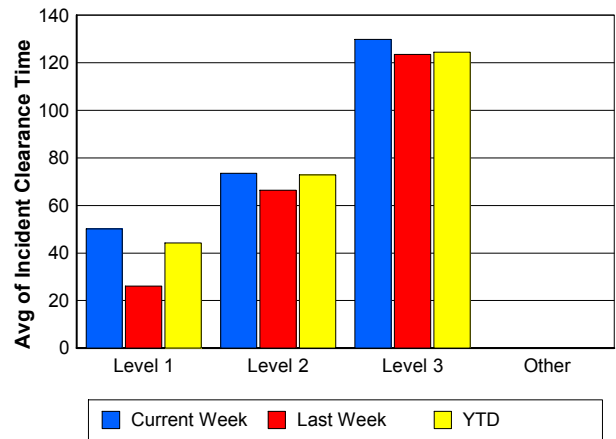
## Road Ranger / SIRV Response Time



## Roadway Clearance Time (2A)



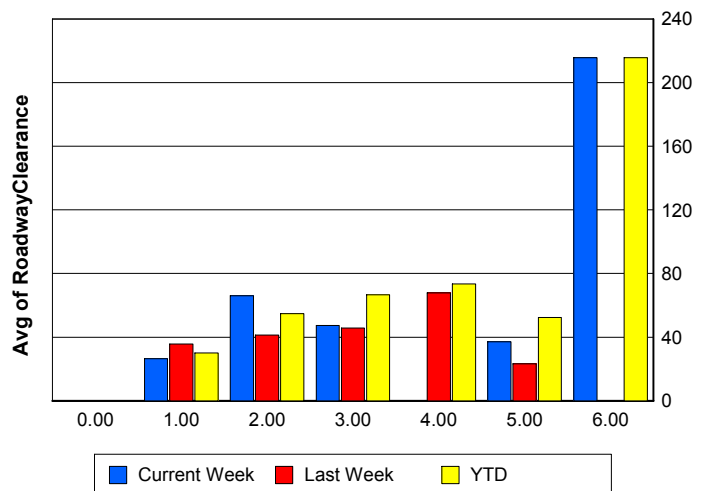
## Incident Clearance Time (3B)



## Roadway Clearance by Maximum Number of Lanes Blocked

	Current Week	Last Week	YTD
0			
1	26.37	35.67	30.11
2	66.00	41.39	54.84
3	47.37	45.66	66.62
4	0.00	67.82	73.45
5	37.14	23.22	52.44
6	215.67	0.00	215.67

## Roadway Clearance Time (2A)



## Performance Measures by Roadway

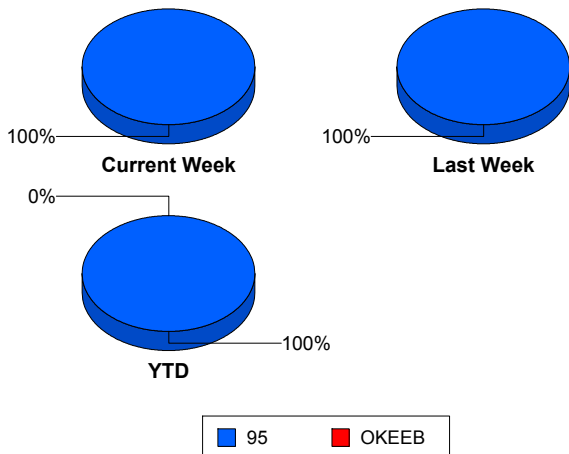
95

	<u>Current Week</u>	<u>Last Week</u>	<u>YTD</u>
Number of Events	619	602	9,548
Number of Incidents	26	27	440
TMC Detection (min.)	0.00	0.00	0.04
TMC Verification (min.)	5.00	3.82	4.10
TMC Response (min.)	8.07	7.69	7.11
RR Dispatch Time (min.)	2.42	3.35	2.42
RR Resp. Time (min.)	5.89	4.57	4.80
Event Clearance (min.)	21.66	19.37	21.10
Roadway Clear. (min.)	47.48	38.51	40.99
Incident Clearance (min.)	74.49	53.34	64.18
# of Events w/ RR/SIRV	588	557	8,930
RR/SIRV Responses	588	557	8,930
RR/SIRV Activities	619	577	9,386

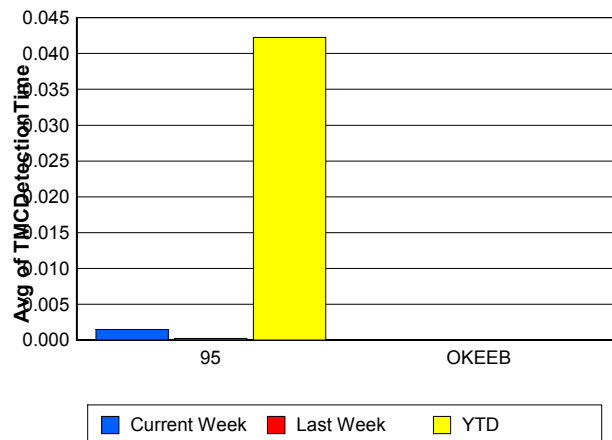
OKEEB

	<u>YTD</u>
Number of Events	1
Number of Incidents	0
TMC Detection (min.)	0.00
TMC Verification (min.)	0.00
TMC Response (min.)	0.00
RR Dispatch Time (min.)	0.00
RR Resp. Time (min.)	0.00
Event Clearance (min.)	18.45
Roadway Clear. (min.)	
Incident Clearance (min.)	
# of Events w/ RR/SIRV	1
RR/SIRV Responses	1
RR/SIRV Activities	1

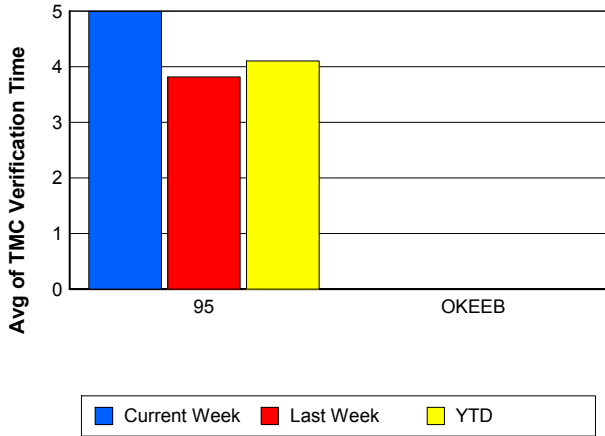
### Number of Events / Roadway



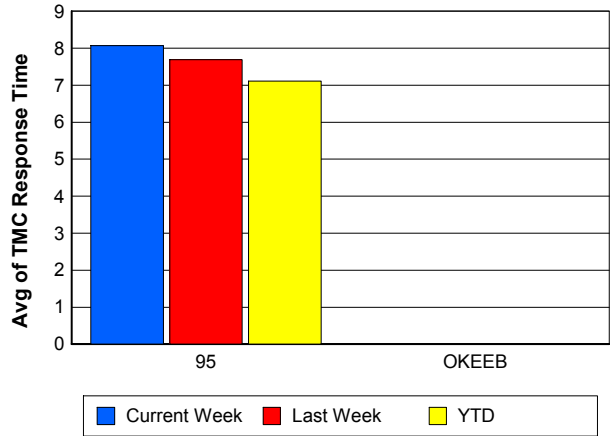
### TMC Detection Time



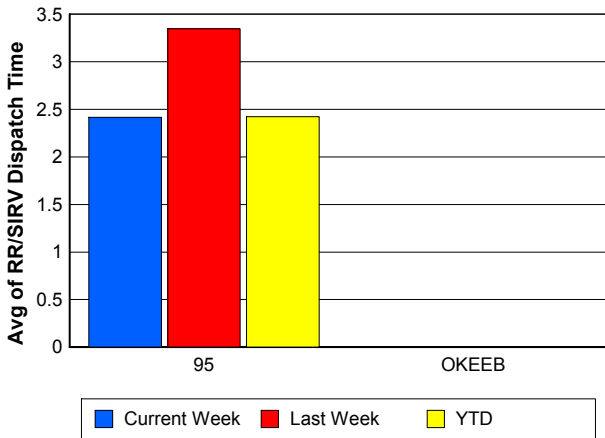
### TMC Verification Time



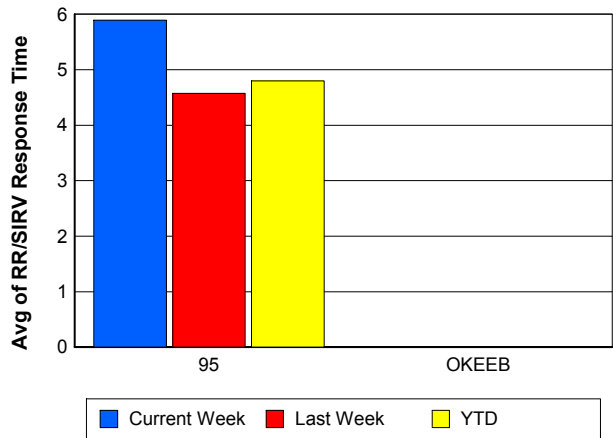
### TMC Response Time



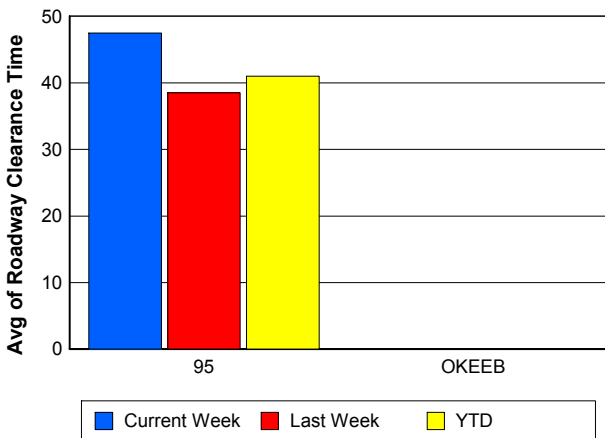
### Road Ranger / SIRV Dispatch Time



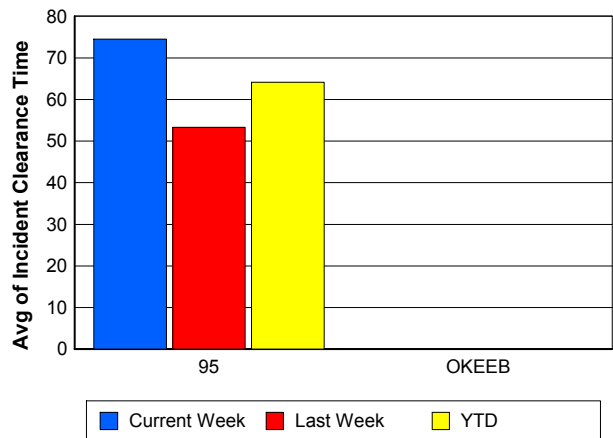
### Road Ranger / SIRV Response Time



### Roadway Clearance Time (2A)



### Incident Clearance Time (3B)



## Performance Measures by Event Type

### Accident

	<u>Current Week</u>	<u>Last Week</u>	<u>YTD</u>
Number of Events	38	27	696
Number of Incidents	15	13	309
TMC Detection (min.)	0.00	0.00	0.05
TMC Verification (min.)	7.91	6.08	7.23
TMC Response (min.)	10.93	8.87	10.40
RR Dispatch Time (min.)	4.31	3.38	2.42
RR Response Time (min.)	6.63	5.48	8.02
Event Clearance (min.)	72.52	48.21	59.77
Roadway Clearance (min.)	51.61	39.48	45.42
Incident Clearance (min.)	88.94	62.53	74.36
# of Events w/ RR/SIRV	37	27	683
RR/SIRV Assists	37	27	683
RR/SIRV Activities	44	39	799

### Debris on Roadway

	<u>Current Week</u>	<u>Last Week</u>	<u>YTD</u>
Number of Events	38	38	536
Number of Incidents	3	2	13
TMC Detection (min.)	0.00	0.00	0.00
TMC Verification (min.)	10.00	8.04	10.33
TMC Response (min.)	10.66	9.12	10.68
RR Dispatch Time (min.)	1.57	3.27	3.38
RR Response Time (min.)	9.09	5.79	7.35
Event Clearance (min.)	14.44	12.26	14.52
Roadway Clearance (min.)	35.59	28.02	19.53
Incident Clearance (min.)	44.05	33.61	25.09
# of Events w/ RR/SIRV	38	38	531
RR/SIRV Assists	38	38	531
RR/SIRV Activities	41	38	547

### Disabled Vehicle

	<u>Current Week</u>	<u>Last Week</u>	<u>YTD</u>
Number of Events	526	513	7,818
Number of Incidents	5	8	88
TMC Detection (min.)	0.00	0.00	0.04
TMC Verification (min.)	4.54	3.49	3.61
TMC Response (min.)	7.52	7.27	6.28
RR Dispatch Time (min.)	2.33	3.14	2.26
RR Response Time (min.)	5.48	4.38	4.15
Event Clearance (min.)	17.93	17.05	17.93
Roadway Clearance (min.)	27.63	17.48	25.60
Incident Clearance (min.)	36.17	31.19	35.93
# of Events w/ RR/SIRV	498	474	7,355
RR/SIRV Assists	498	474	7,355
RR/SIRV Activities	522	485	7,785

## Emergency Vehicles

	<u>Current Week</u>	<u>Last Week</u>	<u>YTD</u>
Number of Events	1	1	7
Number of Incidents	1	1	6
TMC Detection (min.)	0.00	0.00	0.00
TMC Verification (min.)	0.00	0.00	3.99
TMC Response (min.)		0.00	6.98
RR Dispatch Time (min.)		0.00	0.13
RR Response Time (min.)		0.00	6.85
Event Clearance (min.)	40.63	17.52	59.14
Roadway Clearance (min.)	35.93	14.30	63.01
Incident Clearance (min.)	40.63	17.52	65.14
# of Events w/ RR/SIRV	0	1	4
RR/SIRV Assists	0	1	4
RR/SIRV Activities	0	1	4

## Other

	<u>Current Week</u>	<u>Last Week</u>	<u>YTD</u>
Number of Events	12	18	398
Number of Incidents	0	0	1
TMC Detection (min.)	0.00	0.00	0.15
TMC Verification (min.)	2.33	1.28	0.58
TMC Response (min.)	11.68	24.16	15.75
RR Dispatch Time (min.)	2.58	11.68	4.70
RR Response Time (min.)	8.40	10.02	8.88
Event Clearance (min.)	22.37	45.55	21.35
Roadway Clearance (min.)			8.12
Incident Clearance (min.)			24.77
# of Events w/ RR/SIRV	11	12	274
RR/SIRV Assists	11	12	274
RR/SIRV Activities	7	8	177

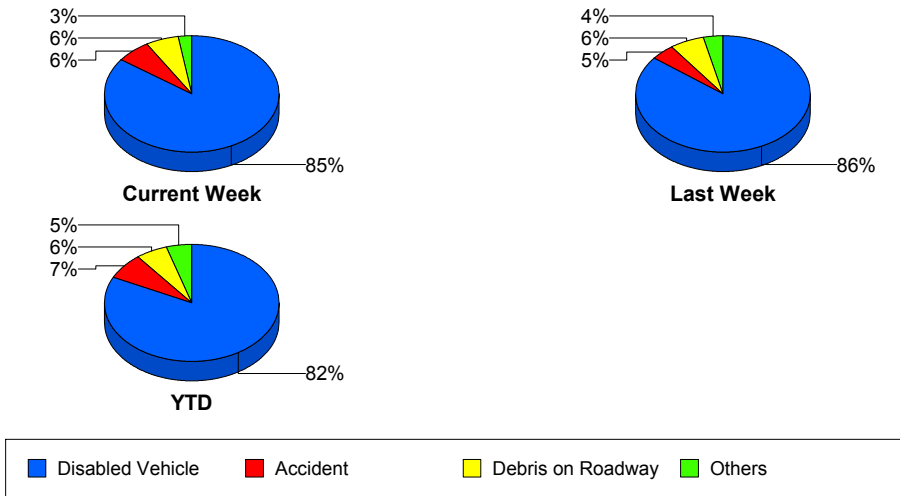
## Police Activity

	<u>Current Week</u>	<u>Last Week</u>	<u>YTD</u>
Number of Events	1	2	34
Number of Incidents	1	2	13
TMC Detection (min.)	0.00	0.00	0.21
TMC Verification (min.)	0.00	8.62	0.54
TMC Response (min.)	14.58	8.72	17.42
RR Dispatch Time (min.)	1.32	8.67	6.19
RR Response Time (min.)	13.27	0.04	14.89
Event Clearance (min.)	138.98	128.73	40.36
Roadway Clearance (min.)	132.68	140.22	57.29
Incident Clearance (min.)	138.98	128.73	59.30
# of Events w/ RR/SIRV	1	2	26
RR/SIRV Assists	1	2	26
RR/SIRV Activities	1	2	16

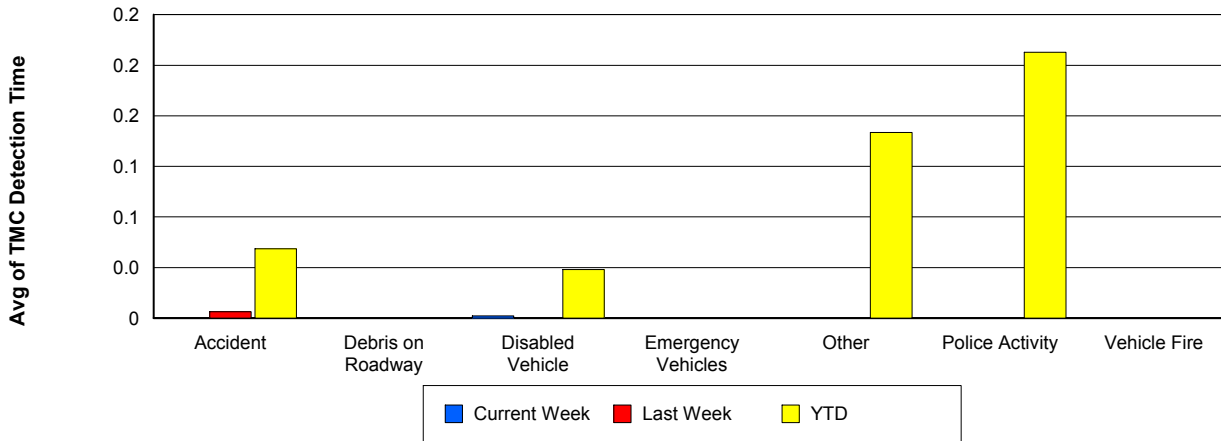
## Vehicle Fire

	<u>Current Week</u>	<u>Last Week</u>	<u>YTD</u>
Number of Events	2	1	19
Number of Incidents	1	1	10
TMC Detection (min.)	0.00	0.00	0.00
TMC Verification (min.)	0.00	0.00	3.04
TMC Response (min.)	0.00	0.00	7.78
RR Dispatch Time (min.)	0.00	0.00	2.49
RR Response Time (min.)	0.00	0.00	5.51
Event Clearance (min.)	90.27	35.63	44.15
Roadway Clearance (min.)	46.85	35.78	36.18
Incident Clearance (min.)	109.83	35.63	58.59
# of Events w/ RR/SIRV	2	1	18
RR/SIRV Assists	2	1	18
RR/SIRV Activities	3	2	20

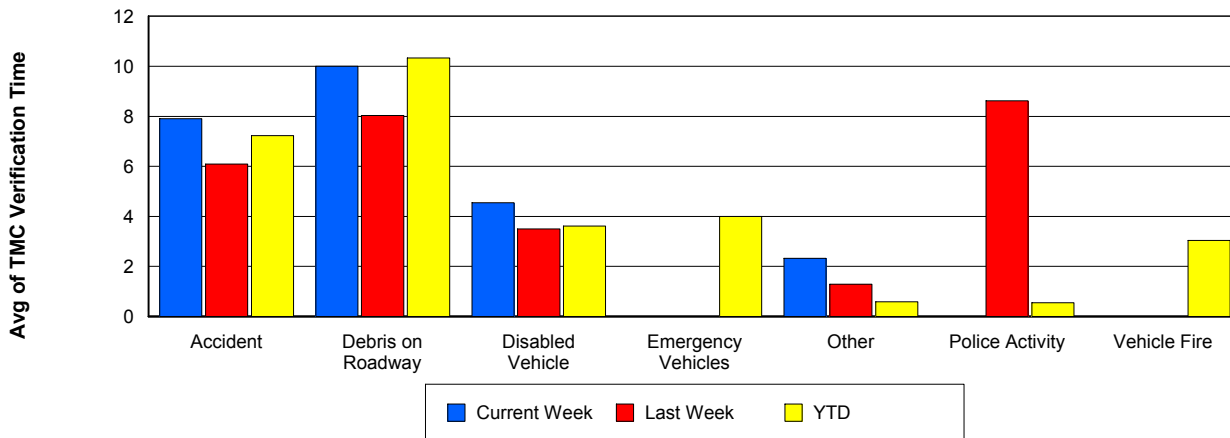
## Number of Events / Event Type



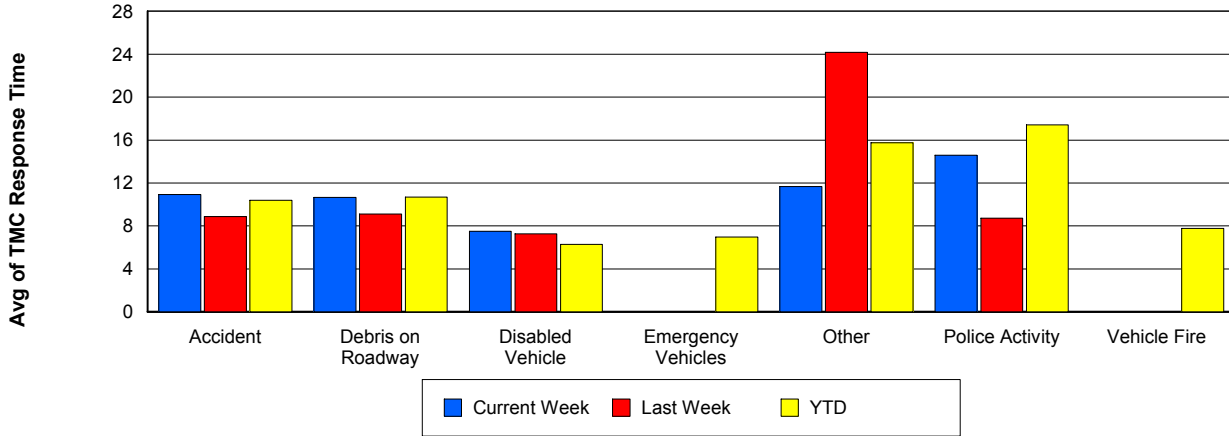
## TMC Detection Time



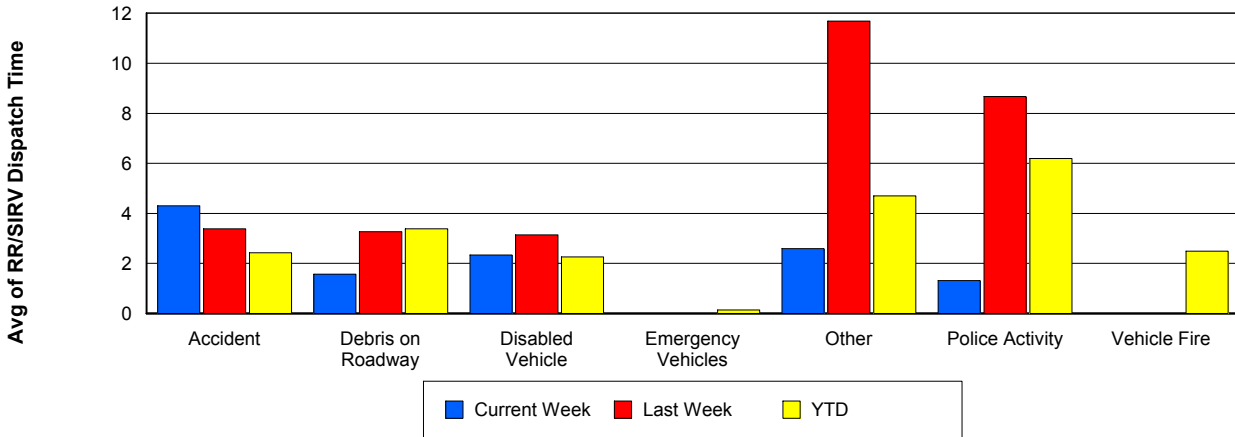
## TMC Verification Time



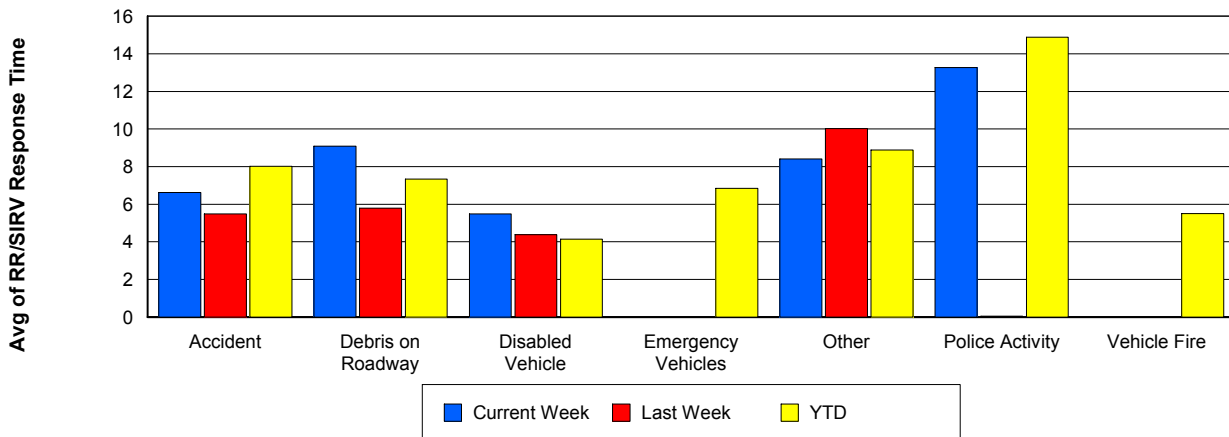
## TMC Response Time



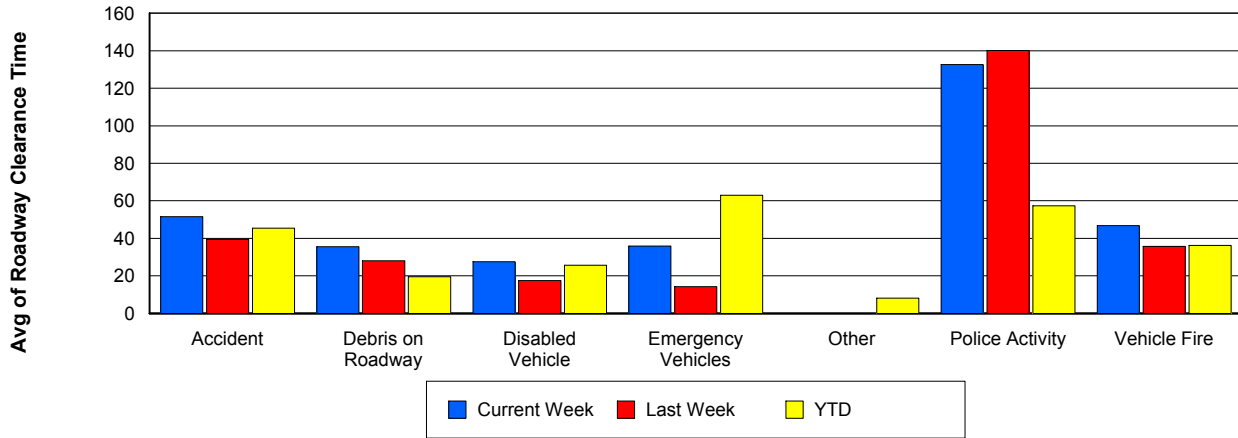
## Road Ranger / SIRV Dispatch Time



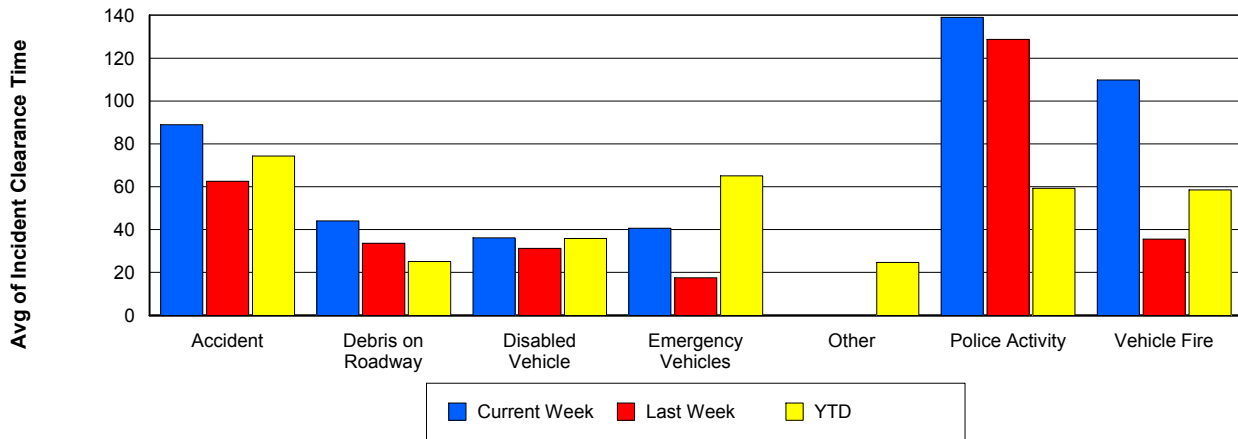
## Road Ranger / SIRV Response Time



## Roadway Clearance Time (2A)



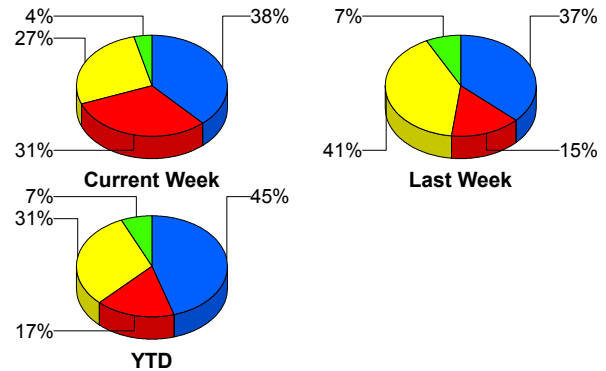
## Incident Clearance Time (3B)



## Incident Detection Methods

	Current Week	Last Week	YTD
Broward Road Ranger	0	0	5
Broward TMC	0	0	5
County Police	0	1	1
District 4	0	0	8
FDOT Maintenance	0	0	2
FHP	10	10	198
ITMS CCTV	8	4	75
Media	0	0	1
Motorist	1	1	7
Palm Beach Road Ran	7	11	136
<b>Total</b>	<b>26</b>	<b>27</b>	<b>438</b>

### Total Incidents by Detection Method

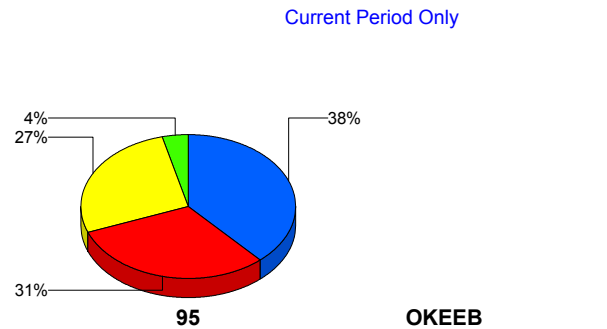


■ FHP     
 ■ ITMS CCTV     
 ■ Palm Beach Road Ranger     
 ■ Others

## Incident Detection Methods by Roadway

		Current Week	Last Week	YTD
95	Broward Road Ranger	0	0	5
	Broward TMC	0	0	5
	County Police	0	1	1
	District 4	0	0	8
	FDOT Maintenance	0	0	2
	FHP	10	10	198
	ITMS CCTV	8	4	75
	Media	0	0	1
	Motorist	1	1	7
	Palm Beach Road Ran	7	11	136
	<b>Total</b>	<b>26</b>	<b>27</b>	<b>438</b>
	<b>Total</b>	<b>26</b>	<b>27</b>	<b>438</b>

### Total Events by Roadway and Detection Method

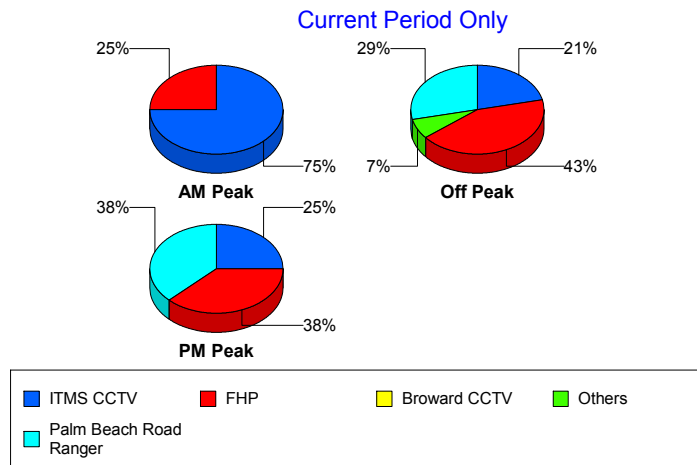


■ FHP     
 ■ ITMS CCTV     
 ■ Palm Beach Road Ranger     
 ■ Others

## Incident Detection Methods by Peak Period

		Current Week	Last Week	YTD
AM Peak	Broward Road Ranger	0	0	4
	County Police	0	1	1
	District 4	0	0	2
	FHP	1	1	39
	ITMS CCTV	3	1	20
	Media	0	0	1
	Motorist	0	1	1
	Palm Beach Road Ran	0	6	40
	<b>Total</b>	<b>4</b>	<b>10</b>	<b>108</b>
Off Peak	Broward Road Ranger	0	0	1
	Broward TMC	0	0	2
	District 4	0	0	4
	FDOT Maintenance	0	0	2
	FHP	6	4	101
	ITMS CCTV	3	2	43
	Motorist	1	0	3
	Palm Beach Road Ran	4	3	67
	<b>Total</b>	<b>14</b>	<b>9</b>	<b>223</b>
PM Peak	Broward TMC	0	0	3
	District 4	0	0	2
	FHP	3	5	59
	ITMS CCTV	2	1	12
	Motorist	0	0	3
	Palm Beach Road Ran	3	2	29
	<b>Total</b>	<b>8</b>	<b>8</b>	<b>108</b>
<b>Total</b>	<b>26</b>	<b>27</b>	<b>438</b>	

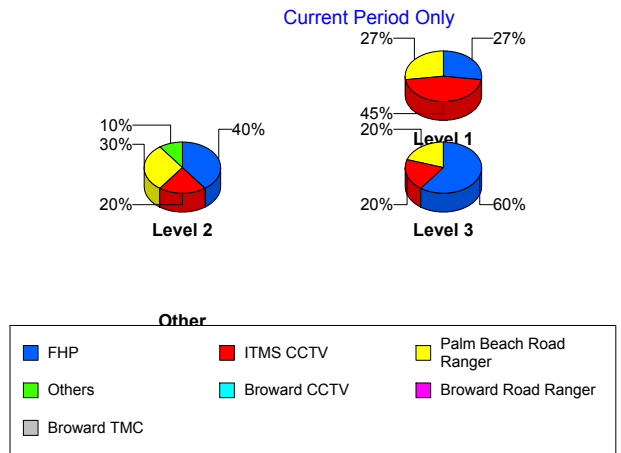
Total Events by Peak Period and Detection Method



## Incident Detection Methods by Severity

		Current Week	Last Week	YTD
	FHP	0	0	1
	Total	0	0	1
Level 1	Broward Road Ranger	0	0	5
	Broward TMC	0	0	3
	County Police	0	1	1
	District 4	0	0	6
	FHP	3	0	64
	ITMS CCTV	5	3	38
	Motorist	0	0	3
	Palm Beach Road Ran	3	9	92
	Total	11	13	212
Level 2	Broward TMC	0	0	2
	District 4	0	0	1
	FDOT Maintenance	0	0	2
	FHP	4	8	107
	ITMS CCTV	2	0	31
	Motorist	1	1	4
	Palm Beach Road Ran	3	2	33
	Total	10	11	180
Level 3	District 4	0	0	1
	FHP	3	2	27
	ITMS CCTV	1	1	6
	Media	0	0	1
	Palm Beach Road Ran	1	0	11
	Total	5	3	46
<b>Total</b>	<b>26</b>	<b>27</b>	<b>438</b>	

Total Events by Severity and Detection Method



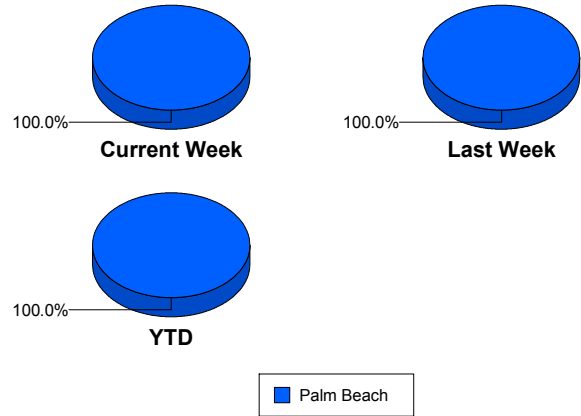
# Road Ranger / SIRV Performance Measures

## Road Ranger / SIRV Performance By County

Values presented are:  
 - Total Events with a RR/SIRV Response  
 - Total RR/SIRV Responses,  
 - Total Activities Performed

	Current We	Last Week	YTD
Palm Beach	<b>727</b>	<b>655</b>	<b>11,045</b>
	<b>746</b>	<b>681</b>	<b>11,418</b>
	<b>796</b>	<b>718</b>	<b>12,113</b>

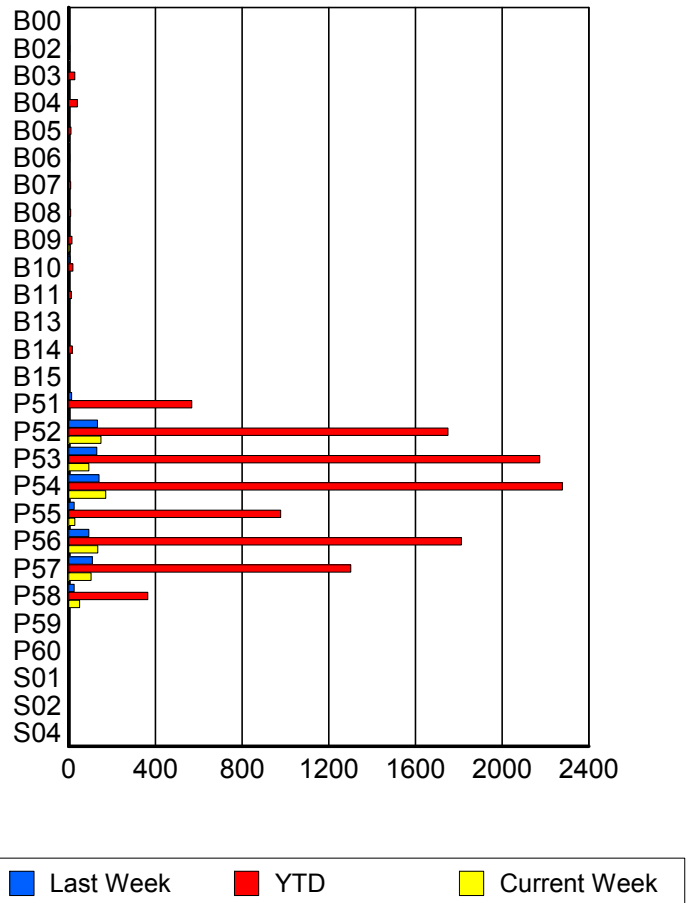
RR/SIRV Responses per County



## Road Ranger / SIRV Performance By Truck

	Current We	Last Week	YTD
B00	0	1	2
	0	1	2
	0	1	2
B02	3	2	5
	3	2	5
	3	2	5
B03	1	1	29
	1	1	29
	1	1	32
B04	0	1	39
	0	1	40
	0	1	43
B05	3	0	11
	3	0	11
	3	0	11
B06	0	0	5
	0	0	5
	0	0	7
B07	0	0	9
	0	0	9
	0	0	9
B08	0	0	9
	0	0	9
	0	0	9
B09	7	0	16
	7	0	16
	7	0	17

**RR/SIRV  
Responses per  
Truck**



	Current We	Last Week	YTD
B10	0 0 0	6 6 6	20 20 22
B11	0 0 0	0 0 0	12 12 13
B13	0 0 0	0 0 0	3 3 3
B14	0 0 0	0 0 0	17 17 17
B15	0 0 0	0 0 0	3 3 3
P51	1 1 1	12 14 14	558 568 600
P52	147 149 157	133 133 136	1,729 1,751 1,860
P53	94 94 98	128 130 146	2,150 2,174 2,314
P54	170 171 185	138 140 149	2,248 2,279 2,423
P55	28 28 29	25 25 25	970 979 1,021
P56	135 135 146	93 94 98	1,790 1,812 1,928
P57	103 103 113	107 109 113	1,286 1,302 1,379
P58	51 51 53	25 25 26	362 365 387
P59	0 0 0	0 0 0	1 1 1
P60	0 0 0	0 0 0	1 1 1

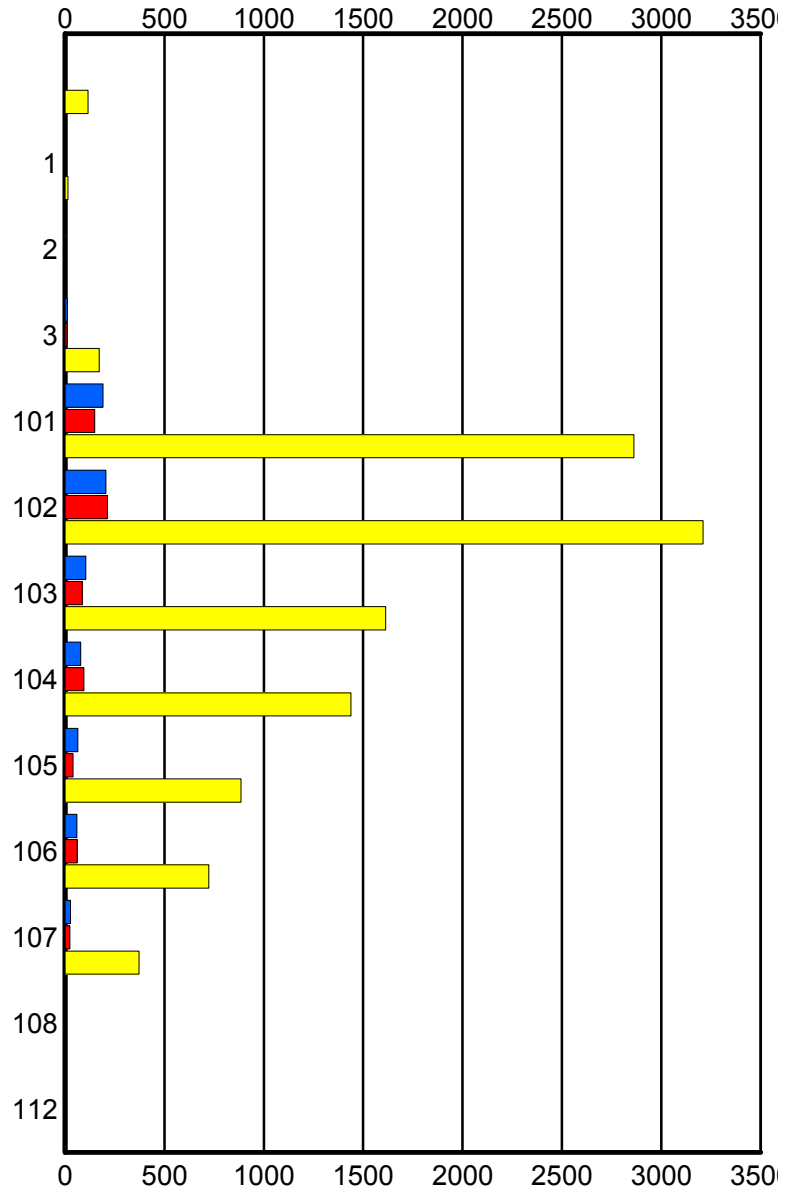
	Current We	Last Week	YTD
S01	0	0	3
	0	0	3
	0	0	4
S02	0	0	1
	0	0	1
	0	0	1
S04	0	0	1
	0	0	1
	0	0	1

### Road Ranger / SIRV Performance By Beat

	Current We	Last Week	YTD
	2	1	114
	2	1	115
	2	1	124
1	0	1	13
	0	1	14
	0	1	14
2	2	0	2
	2	0	2
	2	0	2
3	12	10	168
	12	10	172
	12	10	184
101	188	146	2,812
	191	149	2,863
	205	164	3,034
102	204	210	3,161
	205	213	3,211
	217	221	3,394
103	104	84	1,595
	105	86	1,614
	116	91	1,707
104	78	94	1,423
	78	95	1,439
	78	100	1,535
105	64	40	880
	64	40	885
	72	42	950
106	59	61	717
	59	61	724
	63	63	764
107	28	25	371
	28	25	373
	29	25	398
108	0	0	3
	0	0	4
	0	0	4
112	0	0	2
	0	0	2
	0	0	3

Values presented are:  
 - Total Events with a RR/SIRV Response  
 - Total RR/SIRV Responses,  
 - Total Activities Performed

### RR/SIRV Responses per Beat



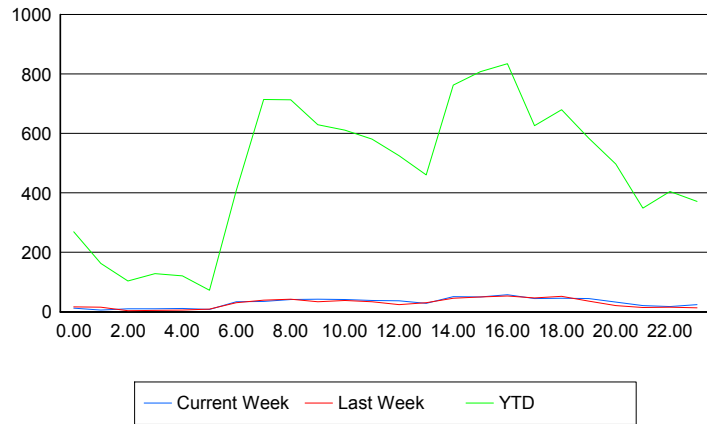
■ Current Week   
 ■ Last Week   
 ■ YTD

## Road Ranger / SIRV Performance By Time of Day

Values presented are:  
 - Total Events with a RR/SIRV Response  
 - Total RR/SIRV Responses,  
 - Total Activities Performed

	Current We	Last Week	YTD
12AM-1AM	12	16	261
	12	17	269
	13	21	296
1AM-2AM	6	15	160
	6	16	163
	7	18	168
2AM-3AM	9	4	100
	10	4	104
	13	4	112
3AM-4AM	9	5	123
	10	5	128
	10	5	137
4AM-5AM	8	6	114
	11	6	121
	12	6	127
5AM-6AM	8	8	64
	8	9	73
	9	9	78
6AM-7AM	33	29	384
	34	31	408
	37	31	431
7AM-8AM	34	37	692
	35	39	714
	38	41	751
8AM-9AM	39	41	683
	41	43	713
	45	44	750
9AM-10AM	42	34	610
	43	34	629
	44	37	667
10AM-11AM	41	36	589
	41	38	611
	43	40	641
11AM-12PM	38	33	568
	38	34	581
	39	35	611
12PM-1PM	35	24	500
	37	24	525
	38	26	547

## Number of Responses / Hour of the Day



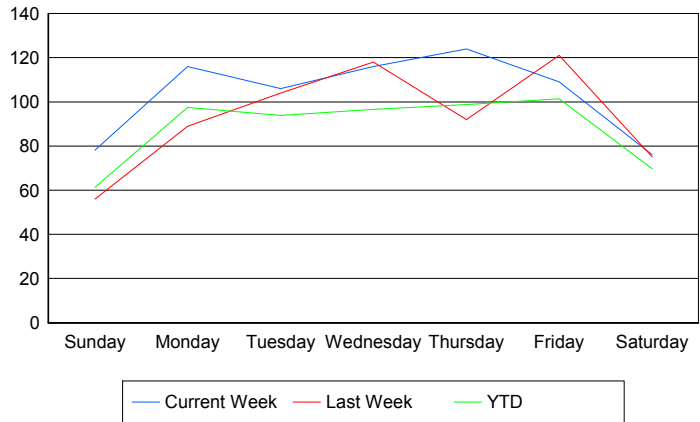
	Current We	Last Week	YTD
1PM-2PM	26	27	437
	29	31	461
	29	31	487
2PM-3PM	49	44	735
	51	46	763
	54	47	814
3PM-4PM	50	49	793
	50	50	808
	51	54	867
4PM-5PM	58	51	807
	58	53	835
	62	57	889
5PM-6PM	44	43	607
	45	47	626
	47	52	665
6PM-7PM	46	51	667
	46	52	680
	48	54	716
7PM-8PM	45	36	564
	45	36	584
	47	37	618
8PM-9PM	33	21	489
	33	21	497
	35	21	519
9PM-10PM	20	15	337
	21	15	349
	25	16	377
10PM-11PM	18	16	397
	18	16	405
	19	17	436
11PM-12AM	24	14	364
	24	14	371
	31	15	409

## Road Ranger / SIRV Performance By Day of Week

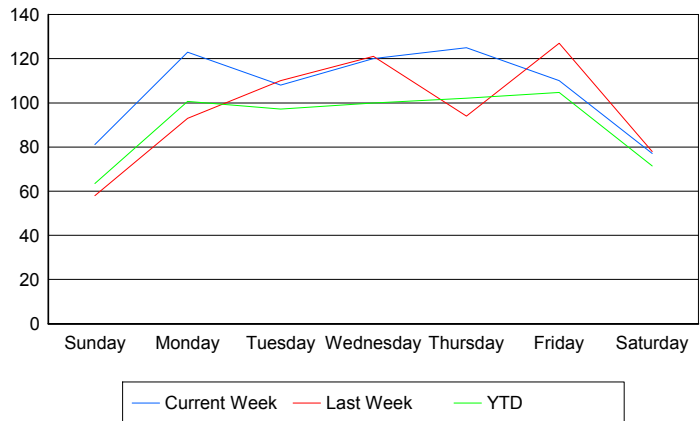
Values presented are:  
 - Total Events with a RR/SIRV Response  
 - Total RR/SIRV Responses,  
 - Total Activities Performed

	Current We	Last Week	YTD
Sunday	80	56	1,080
	83	58	1,117
	85	66	1,176
Monday	116	89	1,705
	123	93	1,762
	131	95	1,867
Tuesday	106	104	1,672
	108	110	1,731
	115	115	1,843
Wednesday	116	118	1,702
	120	121	1,757
	136	123	1,880
Thursday	124	92	1,715
	125	94	1,775
	131	102	1,894
Friday	109	121	1,883
	110	127	1,944
	113	132	2,037
Saturday	76	75	1,299
	77	78	1,332
	85	85	1,416

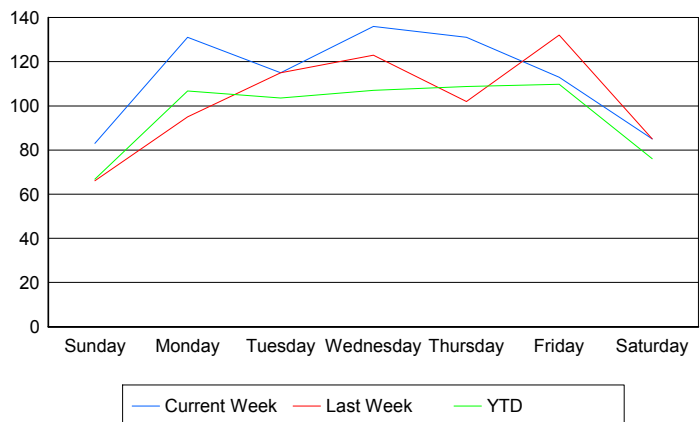
### Avg # of events with a RR/SIRV Response per Day of the Week



### Avg # of RR/SIRV Responses per Day of the Week



### Avg # of RR/SIRV Activities Performed per Day of the Week



### Road Ranger / SIRV Responses per Time of Day and Day of Week

