



Weekly Performance Measures Report Palm Beach County



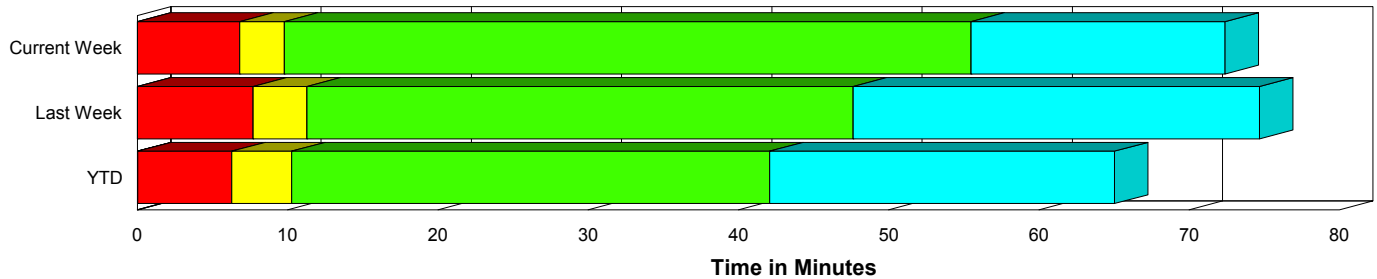
Created on:
May 17, 2010
9:10 am

Period From May 9, 2010 to May 15, 2010

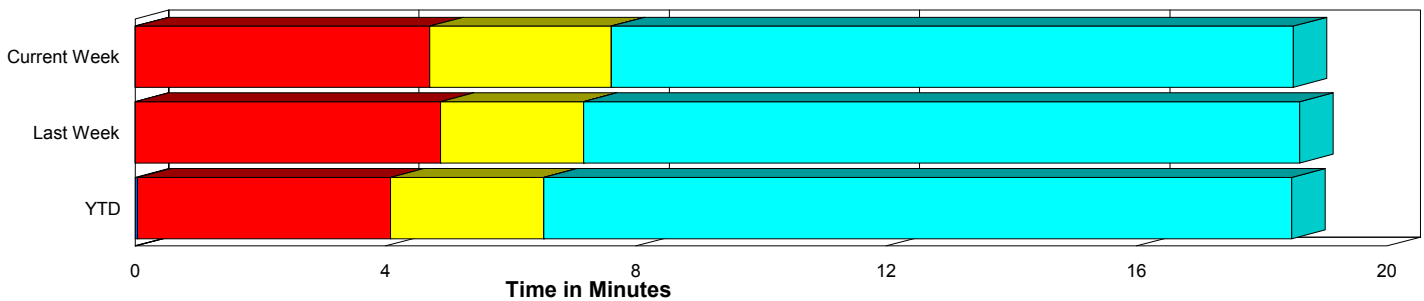
Performance Measures Summary

	Traffic Events (No Lanes Blocked)			Incidents (Lanes Blocked)		
	<u>This Week</u>	<u>Last Week</u>	<u>YTD</u>	<u>This Week</u>	<u>Last Week</u>	<u>YTD</u>
Number of Events	589	593	9,698	26	26	466
TMC Detection (min.)	0.00	0.00	0.04	0.00	0.00	0.04
TMC Verification (min.)	4.71	4.88	4.04	6.81	7.70	6.30
TMC Response (min.)	8.20	7.90	7.01	10.07	11.60	10.49
RR Dispatch Time (min.)	3.16	2.42	2.46	3.98	2.34	2.70
RR Response Time (min.)	5.12	5.73	4.66	6.09	9.26	7.82
Roadway Clearance (min.)				57.63	47.48	41.92
Event Clearance (min.)	19.09	19.35	19.00	74.47	74.49	65.26
# of Events w/ RR/SIRV	554	563	9,053	25	25	457
RR/SIRV Responses	554	563	9,053	25	25	457
RR/SIRV Activities	579	580	9,404	37	39	599

Incident Clearance Time-Line



Traffic Event (Non-Lane Blockage) Time-Line



<ul style="list-style-type: none"> ■ Avg. TMC Detection Time ■ Avg. Time from TMC Detection to TMC Verification ■ Avg. Time from TMC Verification to TMC Response 	<ul style="list-style-type: none"> ■ Avg. Time from TMC Response to Roadway Clearance* ■ Avg. Time from Roadway Clearance to Incident/Event Clearance**
---	--

* Roadway clearance equals all travel lanes open

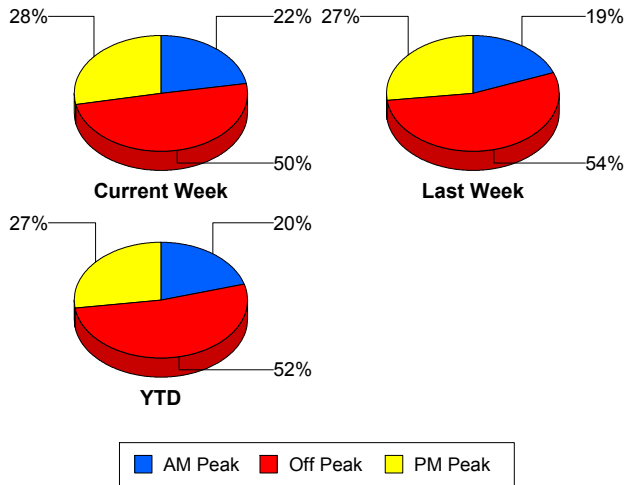
** Incident clearance equals time when last responder has left the scene

Performance Measures by Peak Period

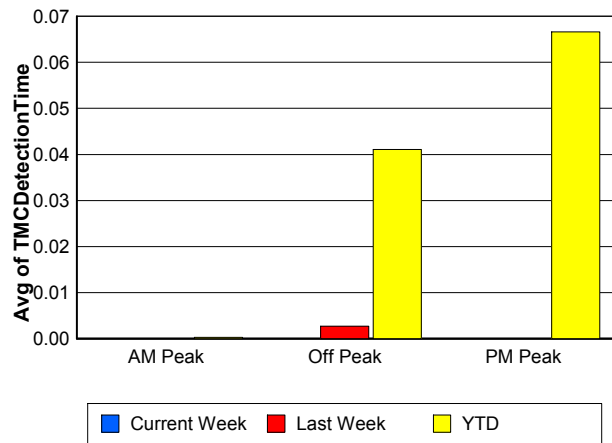
Note: AM peak period is defined as 6am to 10am and PM peak period is defined as 3pm to 7pm.

	AM Peak			Off Peak			PM Peak		
	<u>Current Week</u>	<u>Last Week</u>	<u>YTD</u>	<u>Current Week</u>	<u>Last Week</u>	<u>YTD</u>	<u>Current Week</u>	<u>Last Week</u>	<u>YTD</u>
Number of Events	136	119	2,082	306	333	5,317	173	167	2,765
Number of Incidents	6	4	114	14	14	238	6	8	114
TMC Detection (min.)	0.00	0.00	0.00	0.00	0.00	0.04	0.00	0.00	0.07
TMC Verification (min.)	4.26	2.42	2.81	5.48	4.98	4.37	3.99	6.88	4.72
TMC Response (min.)	8.61	5.14	5.81	8.71	7.93	7.74	7.26	10.51	7.15
RR Dispatch Time (min.)	2.86	1.40	1.61	3.77	2.61	2.71	2.48	2.79	2.66
RR Response Time (min.)	5.84	3.70	4.27	5.03	5.65	5.15	4.84	7.98	4.61
Event Clearance (min.)	23.45	18.46	20.83	23.02	21.54	21.93	17.04	24.18	19.78
Roadway Clearance (min.)	44.14	33.29	39.66	81.22	62.26	47.58	16.07	28.72	32.35
Incident Clearance (min.)	53.72	49.58	67.27	102.70	85.77	66.90	29.35	67.19	57.74
# of Events w/ RR/SIRV	131	117	1,955	284	313	4,942	164	158	2,613
RR/SIRV Responses	131	117	1,955	284	313	4,942	164	158	2,613
RR/SIRV Activities	138	124	2,065	305	337	5,216	173	158	2,722

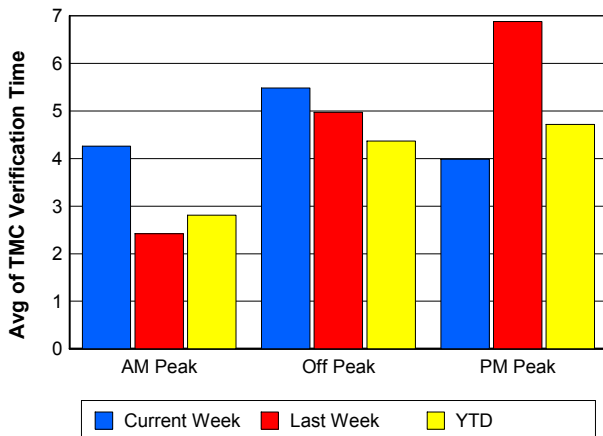
Number of Events / Peak Period



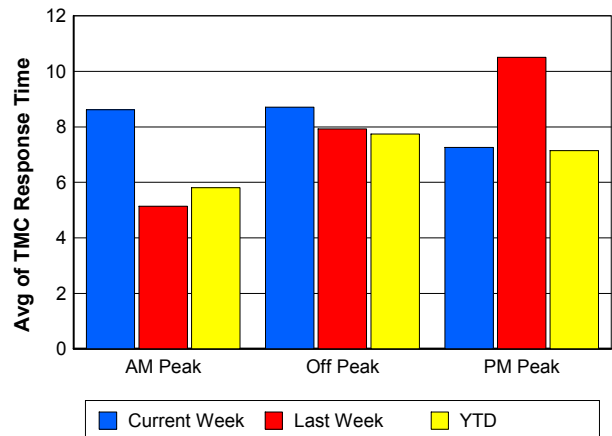
TMC Detection Time



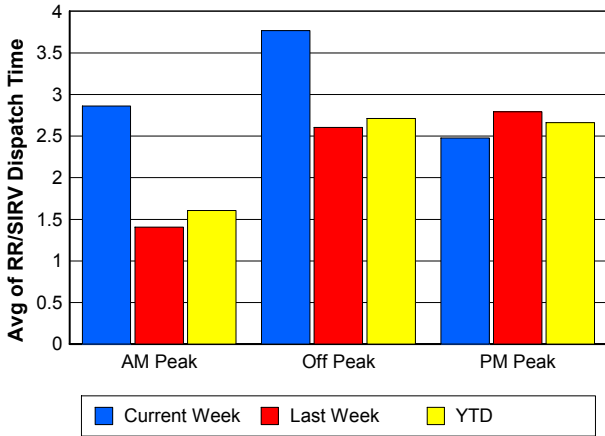
TMC Verification Time



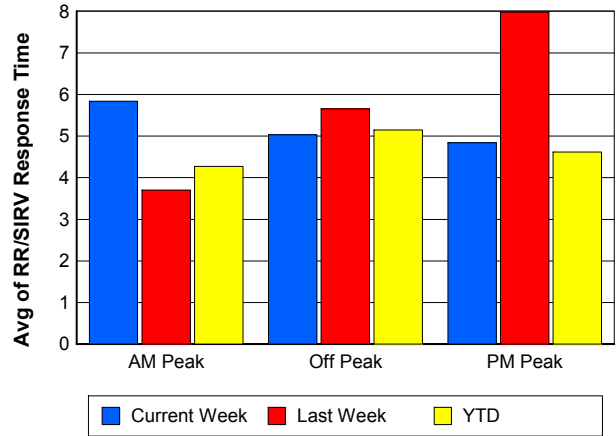
TMC Response Time



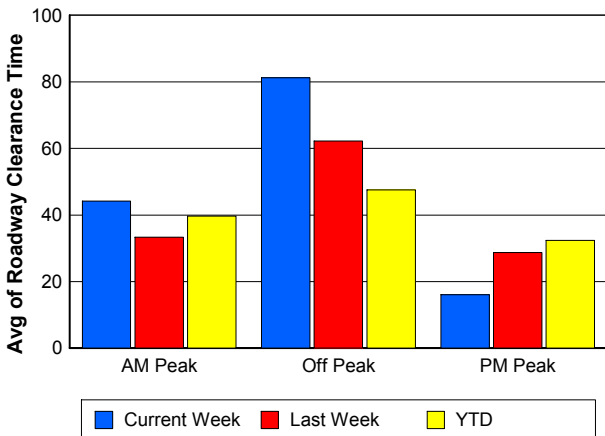
Road Ranger / SIRV Dispatch Time



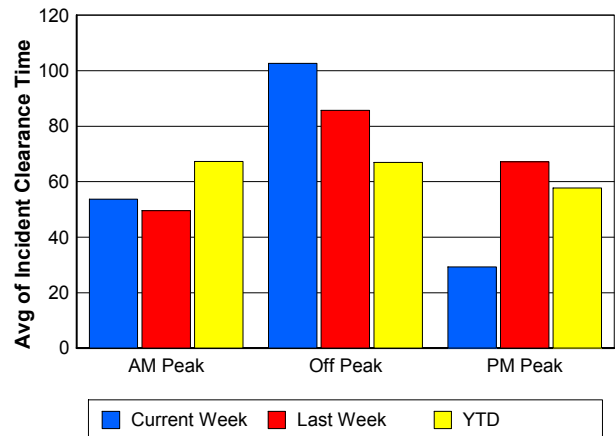
Road Ranger / SIRV Response Time



Roadway Clearance Time (2A)



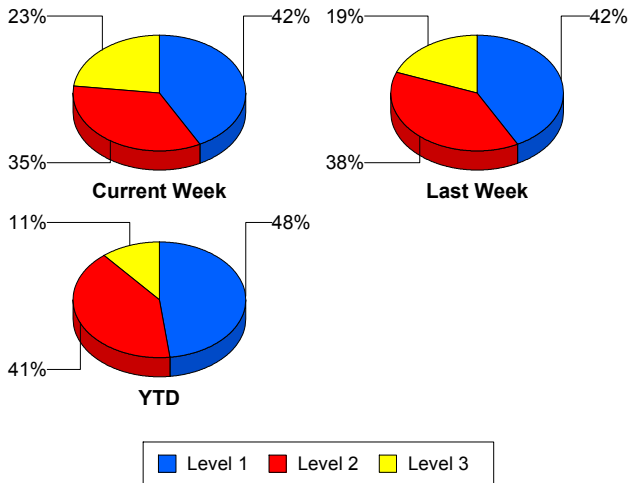
Incident Clearance Time (3B)



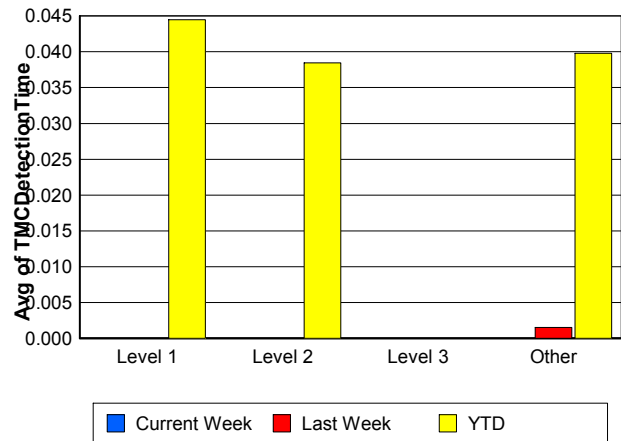
Performance Measures by Severity

	Level 1			Level 2			Level 3			Other		
	<u>This Week</u>	<u>Last Week</u>	<u>YTD</u>	<u>This Week</u>	<u>Last Week</u>	<u>YTD</u>	<u>This Week</u>	<u>Last Week</u>	<u>YTD</u>	<u>This Week</u>	<u>Last Week</u>	<u>YTD</u>
Number of Events	11	11	223	9	10	189	6	5	52	589	593	9,700
Number of Incidents	11	11	223	9	10	189	6	5	52	0	0	2
TMC Detection (min.)	0.00	0.00	0.04	0.00	0.00	0.04	0.00	0.00	0.00	0.00	0.00	0.04
TMC Verification (min.)	4.66	5.76	3.35	10.91	10.04	9.52	4.60	7.33	7.25	4.71	4.88	4.04
TMC Response (min.)	5.12	10.83	6.17	12.77	11.63	14.72	16.09	13.66	13.58	8.20	7.90	7.01
RR Dispatch Time (min.)	1.85	1.46	1.12	1.82	1.41	3.72	12.55	7.07	6.00	3.16	2.42	2.46
RR Resp. Time (min.)	3.28	9.37	5.09	10.95	10.22	11.06	3.55	6.59	7.58	5.12	5.73	4.66
Event Clearance (min.)	32.56	50.22	43.71	66.70	73.48	72.61	162.96	129.88	129.99	19.09	19.35	19.01
Roadway Clear. (min.)	12.07	19.19	15.23	52.44	45.69	54.74	148.94	113.30	112.17			-21.46
Incident Clearance (min.)	32.56	50.22	43.71	66.70	73.48	72.61	162.96	129.88	128.91			0.00
# of Events w/ RR/SIRV	11	11	220	9	10	187	5	4	48	554	563	9,055
RR/SIRV Responses	11	11	220	9	10	187	5	4	48	554	563	9,055
RR/SIRV Activities	14	16	263	13	16	258	10	7	73	579	580	9,409

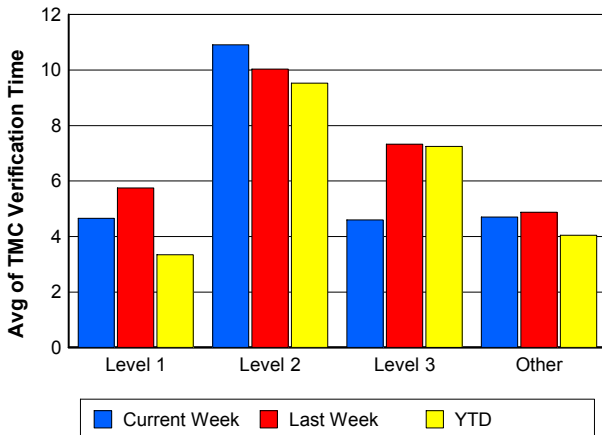
Number of Events / Severity



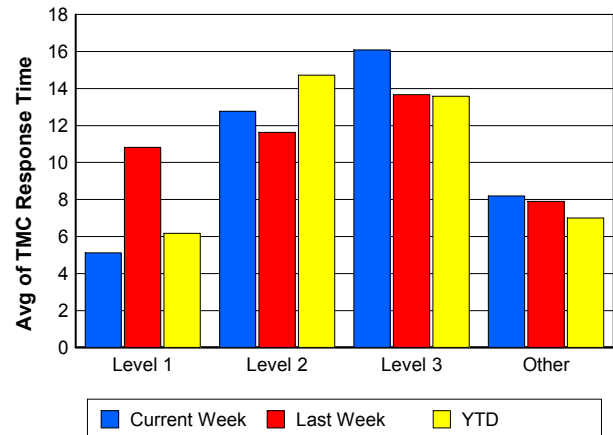
TMC Detection Time



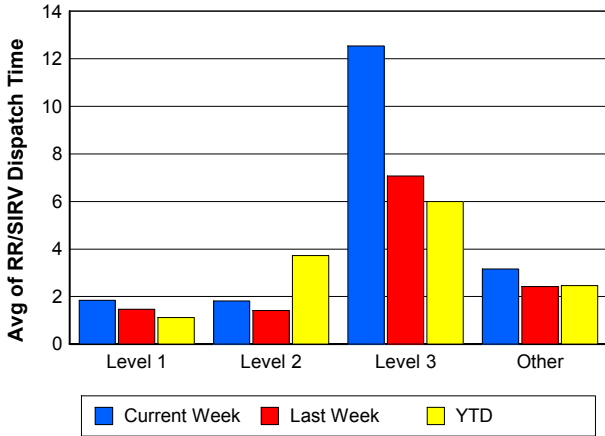
TMC Verification Time



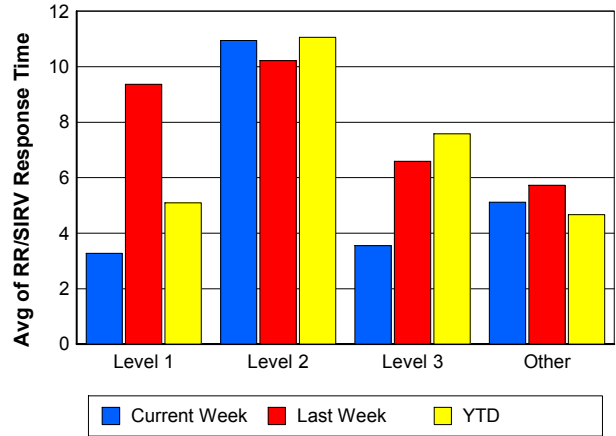
TMC Response Time



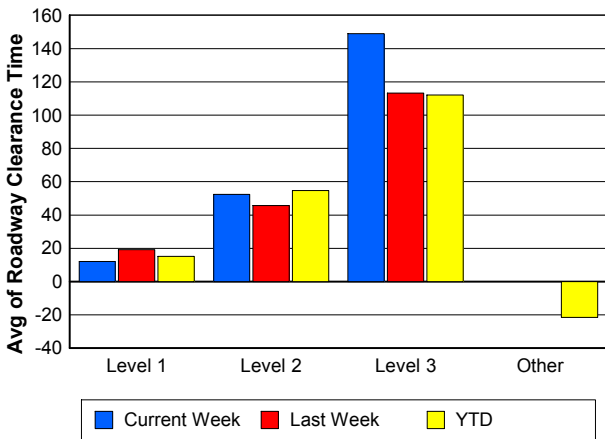
Road Ranger / SIRV Dispatch Time



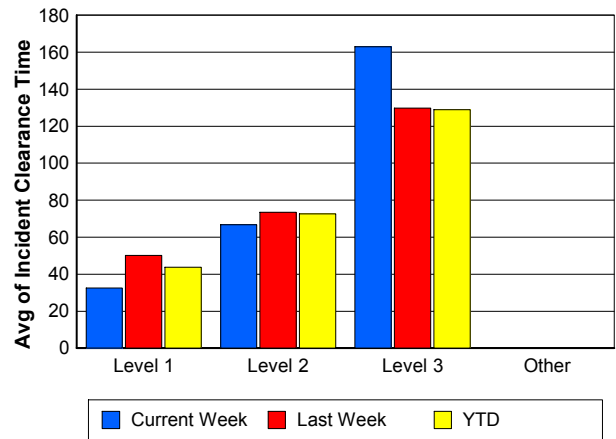
Road Ranger / SIRV Response Time



Roadway Clearance Time (2A)



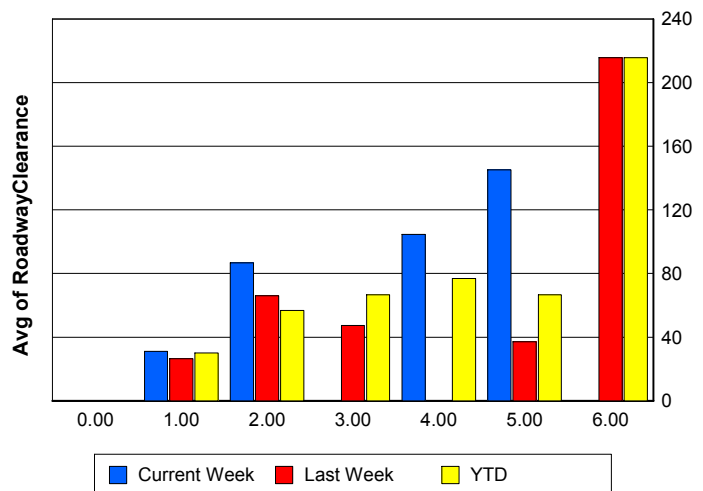
Incident Clearance Time (3B)



Roadway Clearance by Maximum Number of Lanes Blocked

	Current Week	Last Week	YTD
0			
1	31.05	26.37	30.16
2	86.67	66.00	56.86
3	0.00	47.37	66.62
4	104.62	0.00	76.91
5	145.15	37.14	66.71
6	0.00	215.67	215.67

Roadway Clearance Time (2A)



Performance Measures by Roadway

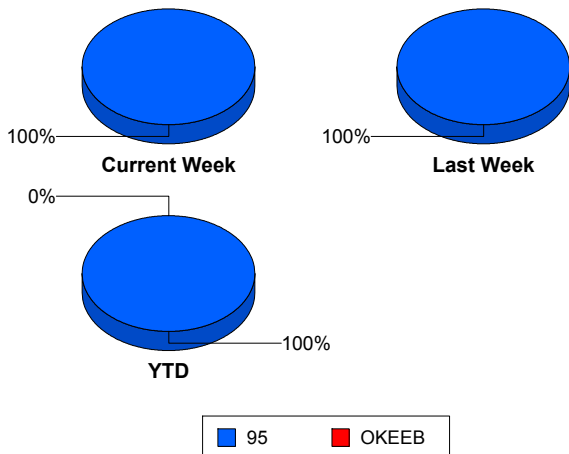
95

	<u>Current Week</u>	<u>Last Week</u>	<u>YTD</u>
Number of Events	615	619	10,163
Number of Incidents	26	26	466
TMC Detection (min.)	0.00	0.00	0.04
TMC Verification (min.)	4.80	5.00	4.15
TMC Response (min.)	8.28	8.07	7.18
RR Dispatch Time (min.)	3.20	2.42	2.47
RR Resp. Time (min.)	5.16	5.89	4.82
Event Clearance (min.)	21.43	21.66	21.12
Roadway Clear. (min.)	57.63	47.48	41.92
Incident Clearance (min.)	74.47	74.49	64.75
# of Events w/ RR/SIRV	579	588	9,509
RR/SIRV Responses	579	588	9,509
RR/SIRV Activities	616	619	10,002

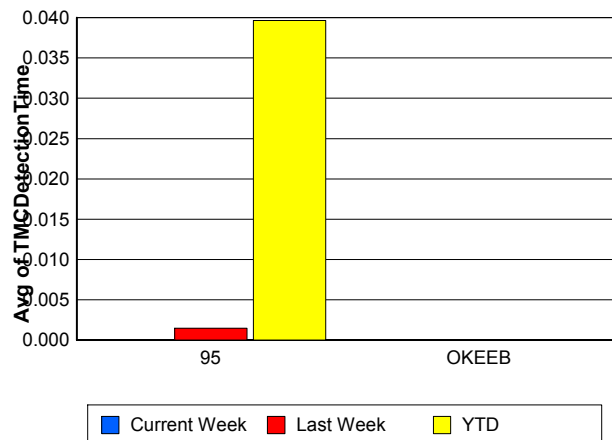
OKEEB

	<u>YTD</u>
Number of Events	1
Number of Incidents	0
TMC Detection (min.)	0.00
TMC Verification (min.)	0.00
TMC Response (min.)	0.00
RR Dispatch Time (min.)	0.00
RR Resp. Time (min.)	0.00
Event Clearance (min.)	18.45
Roadway Clear. (min.)	
Incident Clearance (min.)	
# of Events w/ RR/SIRV	1
RR/SIRV Responses	1
RR/SIRV Activities	1

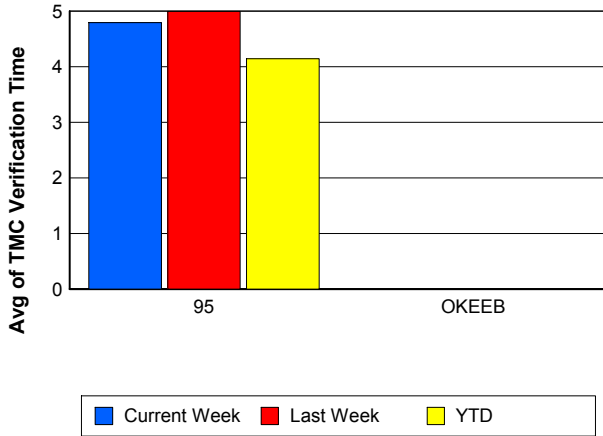
Number of Events / Roadway



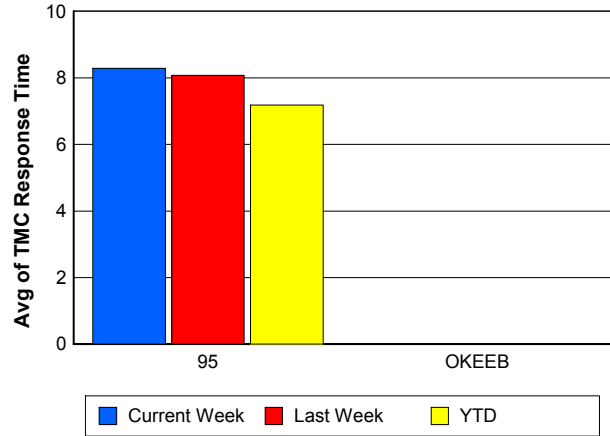
TMC Detection Time



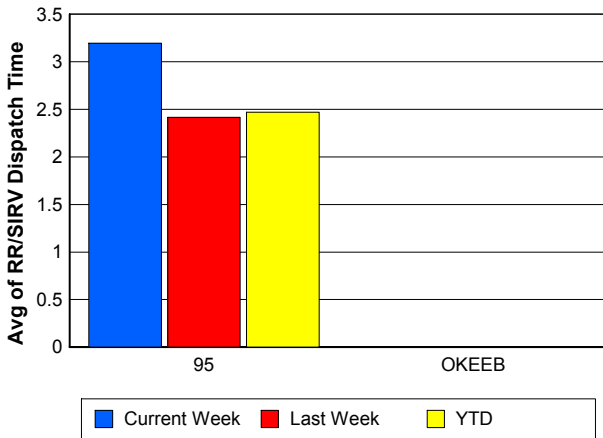
TMC Verification Time



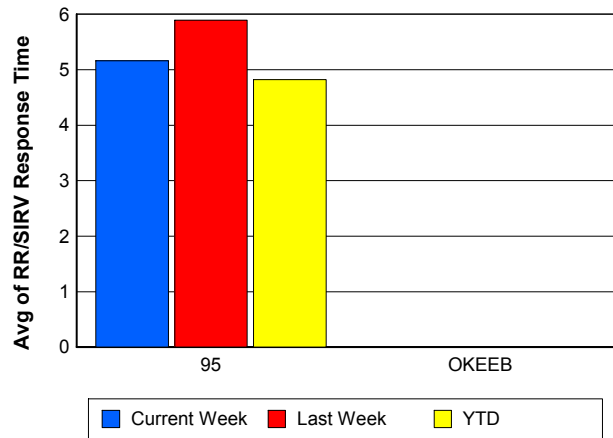
TMC Response Time



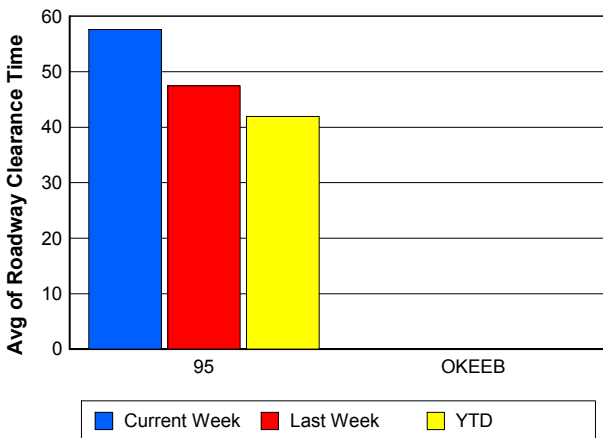
Road Ranger / SIRV Dispatch Time



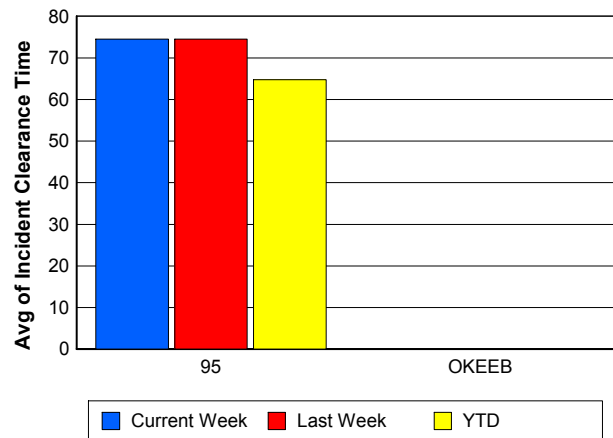
Road Ranger / SIRV Response Time



Roadway Clearance Time (2A)



Incident Clearance Time (3B)



Performance Measures by Event Type

Accident

	<u>Current Week</u>	<u>Last Week</u>	<u>YTD</u>
Number of Events	38	38	734
Number of Incidents	18	15	327
TMC Detection (min.)	0.00	0.00	0.05
TMC Verification (min.)	8.97	7.91	7.32
TMC Response (min.)	10.52	10.93	10.40
RR Dispatch Time (min.)	3.56	4.31	2.48
RR Response Time (min.)	7.02	6.63	7.97
Event Clearance (min.)	53.72	72.52	59.46
Roadway Clearance (min.)	42.03	51.61	45.24
Incident Clearance (min.)	62.53	88.94	73.71
# of Events w/ RR/SIRV	38	37	721
RR/SIRV Assists	38	37	721
RR/SIRV Activities	47	44	846

Debris on Roadway

	<u>Current Week</u>	<u>Last Week</u>	<u>YTD</u>
Number of Events	39	38	575
Number of Incidents	0	3	13
TMC Detection (min.)	0.00	0.00	0.00
TMC Verification (min.)	14.04	10.00	10.58
TMC Response (min.)	14.12	10.66	10.91
RR Dispatch Time (min.)	5.02	1.57	3.49
RR Response Time (min.)	9.00	9.09	7.46
Event Clearance (min.)	16.52	14.44	14.66
Roadway Clearance (min.)		35.59	19.53
Incident Clearance (min.)		44.05	25.09
# of Events w/ RR/SIRV	38	38	569
RR/SIRV Assists	38	38	569
RR/SIRV Activities	40	41	587

Disabled Vehicle

	<u>Current Week</u>	<u>Last Week</u>	<u>YTD</u>
Number of Events	509	526	8,327
Number of Incidents	5	5	93
TMC Detection (min.)	0.00	0.00	0.04
TMC Verification (min.)	4.02	4.54	3.64
TMC Response (min.)	7.58	7.52	6.36
RR Dispatch Time (min.)	2.89	2.33	2.30
RR Response Time (min.)	4.75	5.48	4.19
Event Clearance (min.)	17.82	17.93	17.92
Roadway Clearance (min.)	21.52	27.63	25.38
Incident Clearance (min.)	26.92	36.17	35.45
# of Events w/ RR/SIRV	487	498	7,842
RR/SIRV Assists	487	498	7,842
RR/SIRV Activities	513	522	8,298

Emergency Vehicles

	<u>Last Week</u>	<u>YTD</u>
Number of Events	1	7
Number of Incidents	1	6
TMC Detection (min.)	0.00	0.00
TMC Verification (min.)	0.00	3.99
TMC Response (min.)		6.98
RR Dispatch Time (min.)		0.13
RR Response Time (min.)		6.85
Event Clearance (min.)	40.63	59.14
Roadway Clearance (min.)	35.93	63.01
Incident Clearance (min.)	40.63	65.14
# of Events w/ RR/SIRV	0	4
RR/SIRV Assists	0	4
RR/SIRV Activities	0	4

Other

	<u>Current Week</u>	<u>Last Week</u>	<u>YTD</u>
Number of Events	24	12	422
Number of Incidents	0	0	1
TMC Detection (min.)	0.00	0.00	0.14
TMC Verification (min.)	0.72	2.33	0.59
TMC Response (min.)	6.24	11.68	15.37
RR Dispatch Time (min.)	4.77	2.58	4.71
RR Response Time (min.)	2.33	8.40	8.62
Event Clearance (min.)	28.98	22.37	21.78
Roadway Clearance (min.)			8.12
Incident Clearance (min.)			24.77
# of Events w/ RR/SIRV	12	11	286
RR/SIRV Assists	12	11	286
RR/SIRV Activities	7	7	184

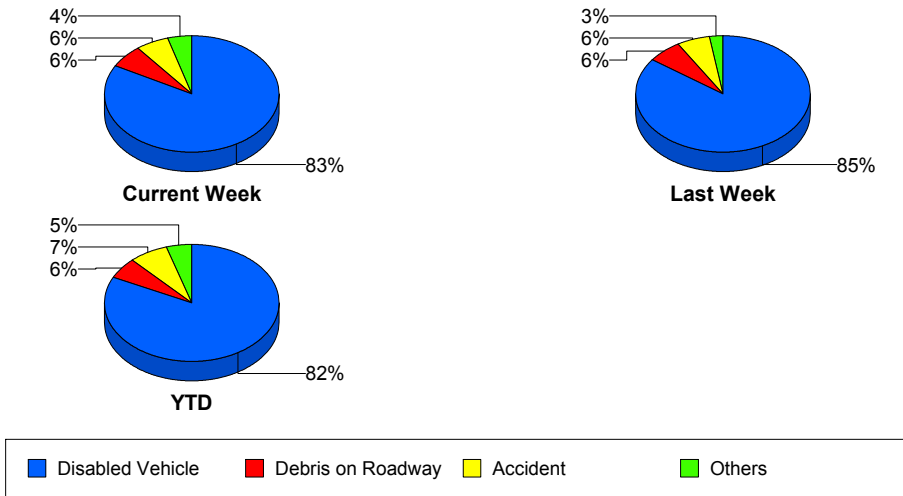
Police Activity

	<u>Current Week</u>	<u>Last Week</u>	<u>YTD</u>
Number of Events	3	1	37
Number of Incidents	3	1	16
TMC Detection (min.)	0.00	0.00	0.19
TMC Verification (min.)	4.81	0.00	0.89
TMC Response (min.)	31.66	14.58	19.00
RR Dispatch Time (min.)	28.97	1.32	7.82
RR Response Time (min.)	2.69	13.27	13.53
Event Clearance (min.)	225.38	138.98	55.36
Roadway Clearance (min.)	211.42	132.68	86.19
Incident Clearance (min.)	225.38	138.98	90.44
# of Events w/ RR/SIRV	2	1	28
RR/SIRV Assists	2	1	28
RR/SIRV Activities	6	1	22

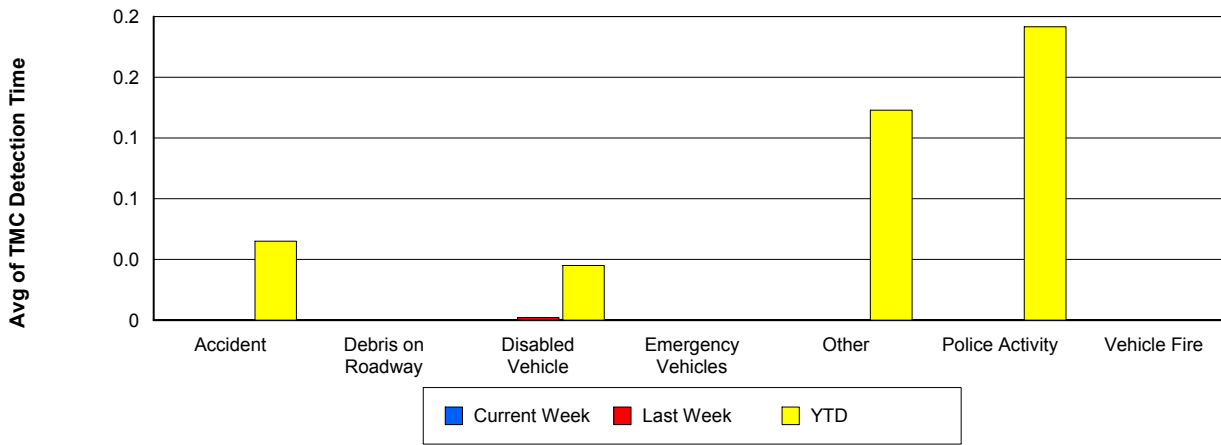
Vehicle Fire

	<u>Last Week</u>	<u>YTD</u>
Number of Events	2	19
Number of Incidents	1	10
TMC Detection (min.)	0.00	0.00
TMC Verification (min.)	0.00	3.04
TMC Response (min.)	0.00	7.78
RR Dispatch Time (min.)	0.00	2.49
RR Response Time (min.)	0.00	5.51
Event Clearance (min.)	90.27	44.15
Roadway Clearance (min.)	46.85	36.18
Incident Clearance (min.)	109.83	58.59
# of Events w/ RR/SIRV	2	18
RR/SIRV Assists	2	18
RR/SIRV Activities	3	20

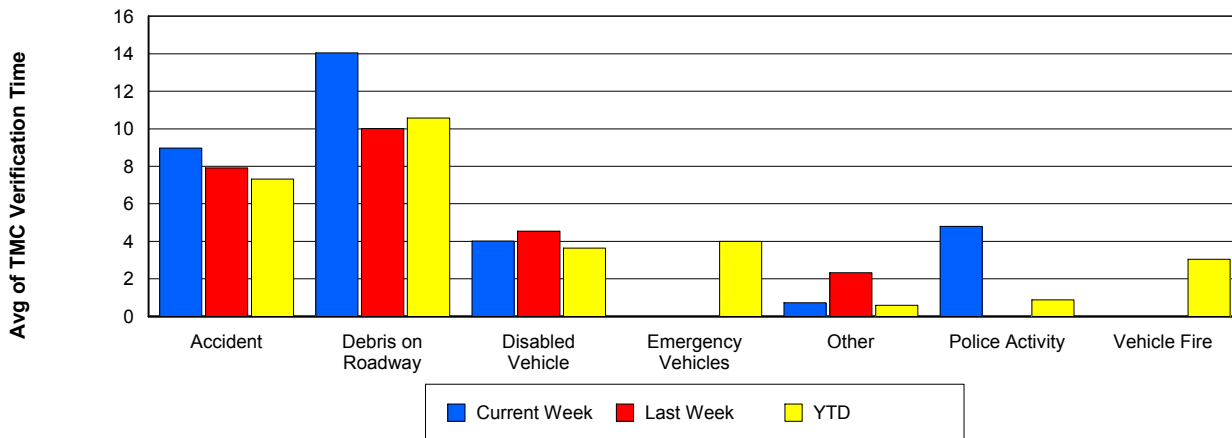
Number of Events / Event Type



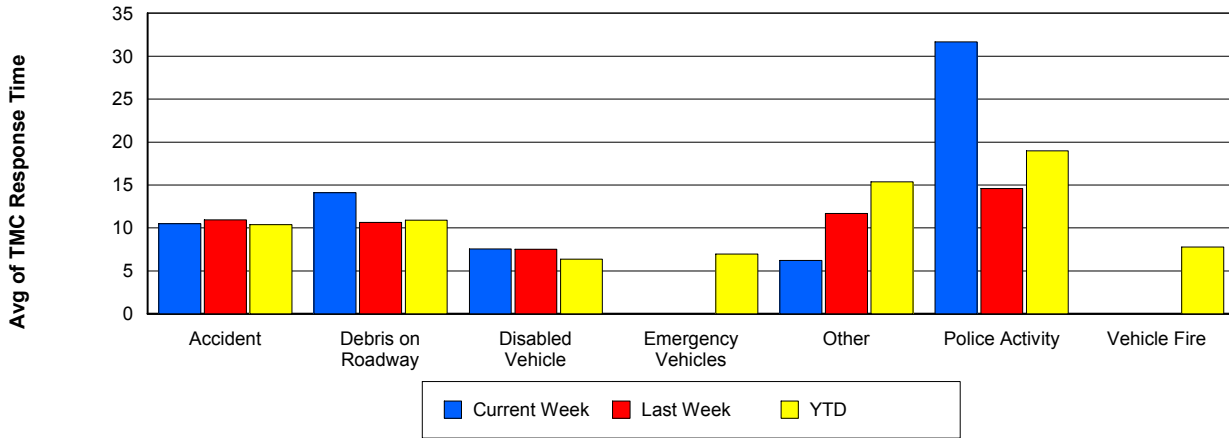
TMC Detection Time



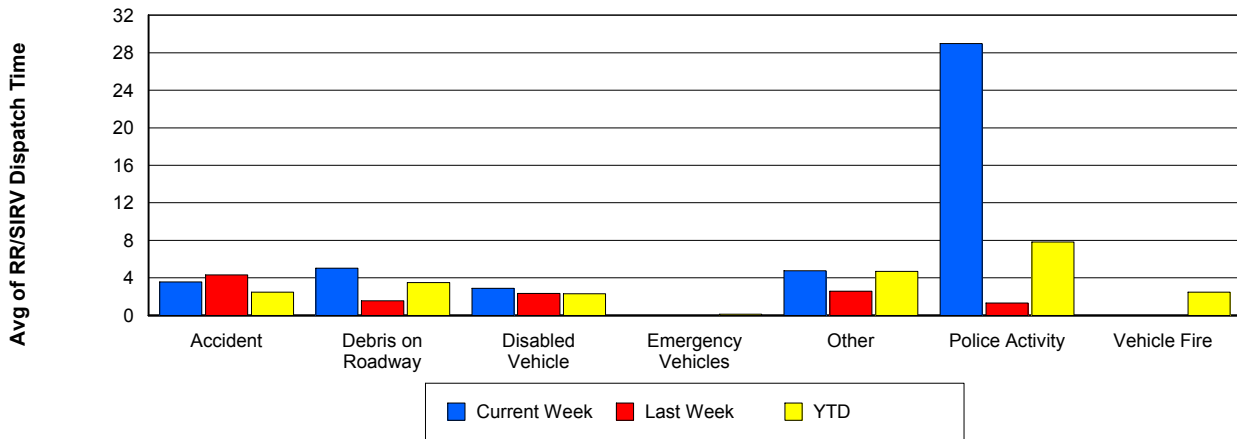
TMC Verification Time



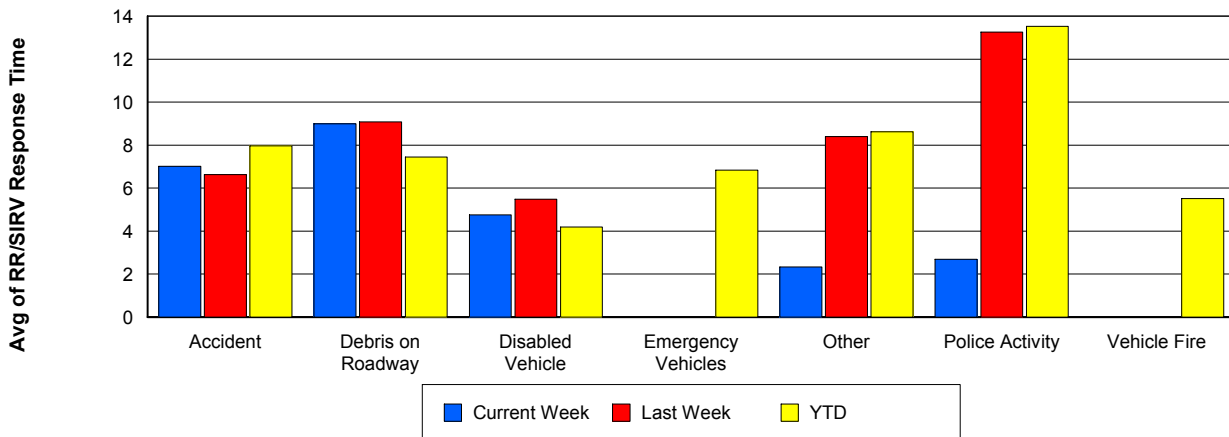
TMC Response Time



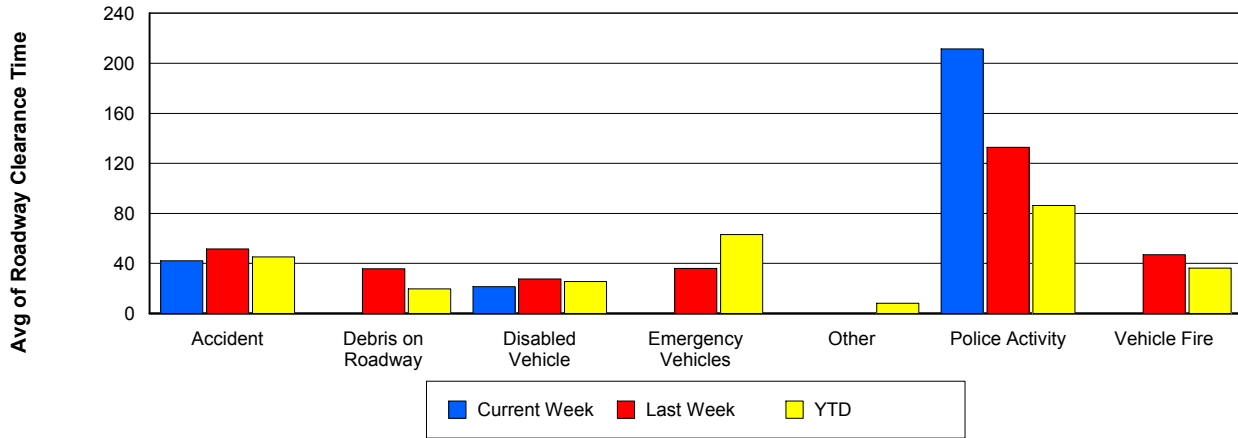
Road Ranger / SIRV Dispatch Time



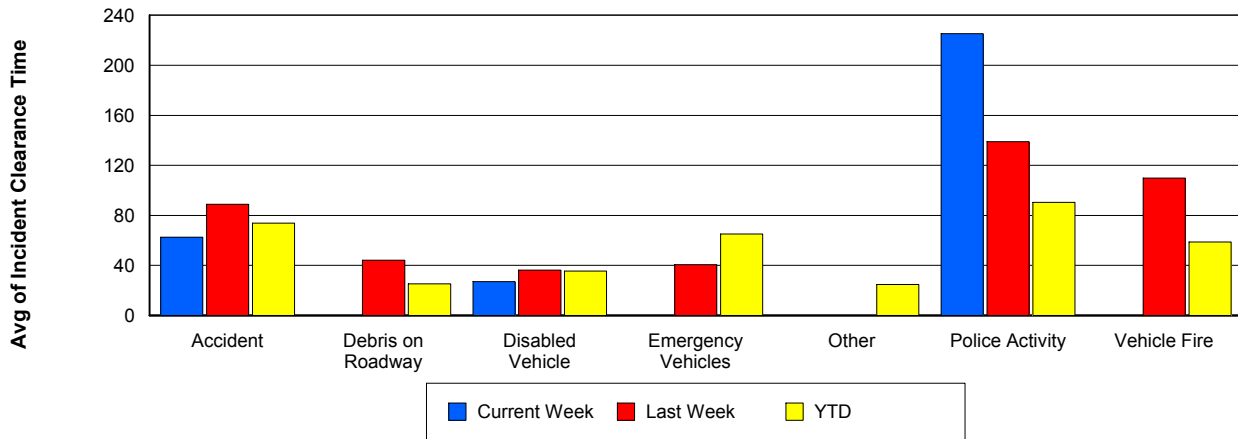
Road Ranger / SIRV Response Time



Roadway Clearance Time (2A)



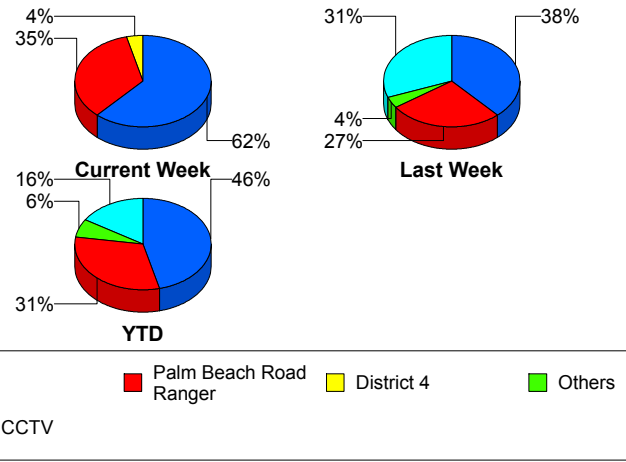
Incident Clearance Time (3B)



Incident Detection Methods

	Current Week	Last Week	YTD
Broward Road Ranger	0	0	5
Broward TMC	0	0	5
County Police	0	0	1
District 4	1	0	9
FDOT Maintenance	0	0	2
FHP	16	10	214
ITMS CCTV	0	8	75
Media	0	0	1
Motorist	0	1	7
Palm Beach Road Ran	9	7	145
Total	26	26	464

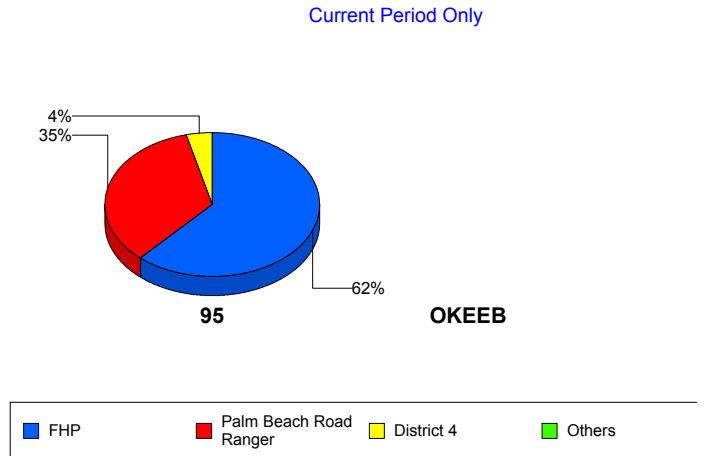
Total Incidents by Detection Method



Incident Detection Methods by Roadway

		Current Week	Last Week	YTD
95	Broward Road Ranger	0	0	5
	Broward TMC	0	0	5
	County Police	0	0	1
	District 4	1	0	9
	FDOT Maintenance	0	0	2
	FHP	16	10	214
	ITMS CCTV	0	8	75
	Media	0	0	1
	Motorist	0	1	7
	Palm Beach Road Ran	9	7	145
	Total	26	26	464
	Total	26	26	464

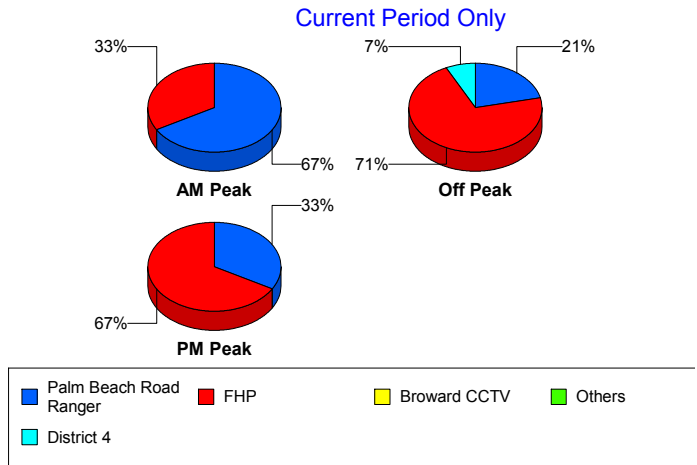
Total Events by Roadway and Detection Method



Incident Detection Methods by Peak Period

		Current Week	Last Week	YTD
AM Peak	Broward Road Ranger	0	0	4
	County Police	0	0	1
	District 4	0	0	2
	FHP	2	1	41
	ITMS CCTV	0	3	20
	Media	0	0	1
	Motorist	0	0	1
	Palm Beach Road Ran	4	0	44
	Total	6	4	114
Off Peak	Broward Road Ranger	0	0	1
	Broward TMC	0	0	2
	District 4	1	0	5
	FDOT Maintenance	0	0	2
	FHP	10	6	111
	ITMS CCTV	0	3	43
	Motorist	0	1	3
	Palm Beach Road Ran	3	4	70
	Total	14	14	237
PM Peak	Broward TMC	0	0	3
	District 4	0	0	2
	FHP	4	3	63
	ITMS CCTV	0	2	12
	Motorist	0	0	3
	Palm Beach Road Ran	2	3	31
	Total	6	8	114
Total	26	26	464	

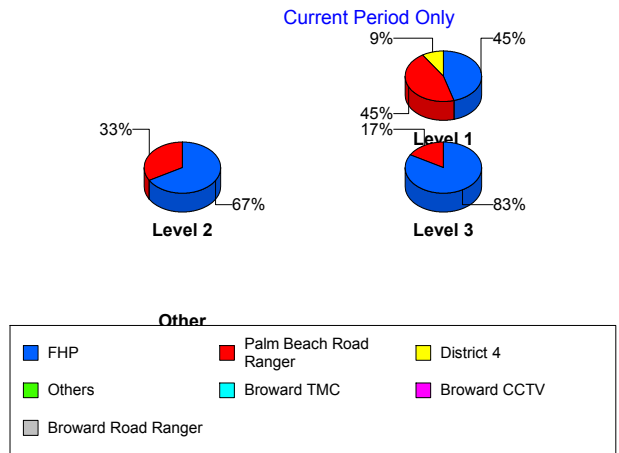
Total Events by Peak Period and Detection Method



Incident Detection Methods by Severity

		Current Week	Last Week	YTD
	FHP	0	0	1
	Total	0	0	1
Level 1	Broward Road Ranger	0	0	5
	Broward TMC	0	0	3
	County Police	0	0	1
	District 4	1	0	7
	FHP	5	3	69
	ITMS CCTV	0	5	38
	Motorist	0	0	3
	Palm Beach Road Ran	5	3	97
	Total	11	11	223
	Level 2	Broward TMC	0	0
District 4		0	0	1
FDOT Maintenance		0	0	2
FHP		6	4	113
ITMS CCTV		0	2	31
Motorist		0	1	4
Palm Beach Road Ran		3	3	36
Total		9	10	189
Level 3	District 4	0	0	1
	FHP	5	3	32
	ITMS CCTV	0	1	6
	Media	0	0	1
	Palm Beach Road Ran	1	1	12
	Total	6	5	52
Total	26	26	464	

Total Events by Severity and Detection Method



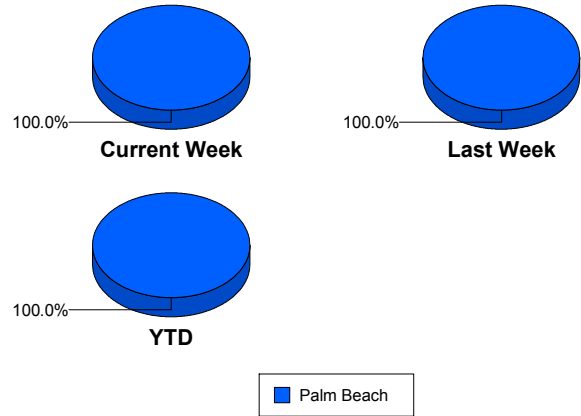
Road Ranger / SIRV Performance Measures

Road Ranger / SIRV Performance By County

Values presented are:
 - Total Events with a RR/SIRV Response
 - Total RR/SIRV Responses,
 - Total Activities Performed

	Current We	Last Week	YTD
Palm Beach	681	727	11,726
	708	746	12,126
	751	796	12,864

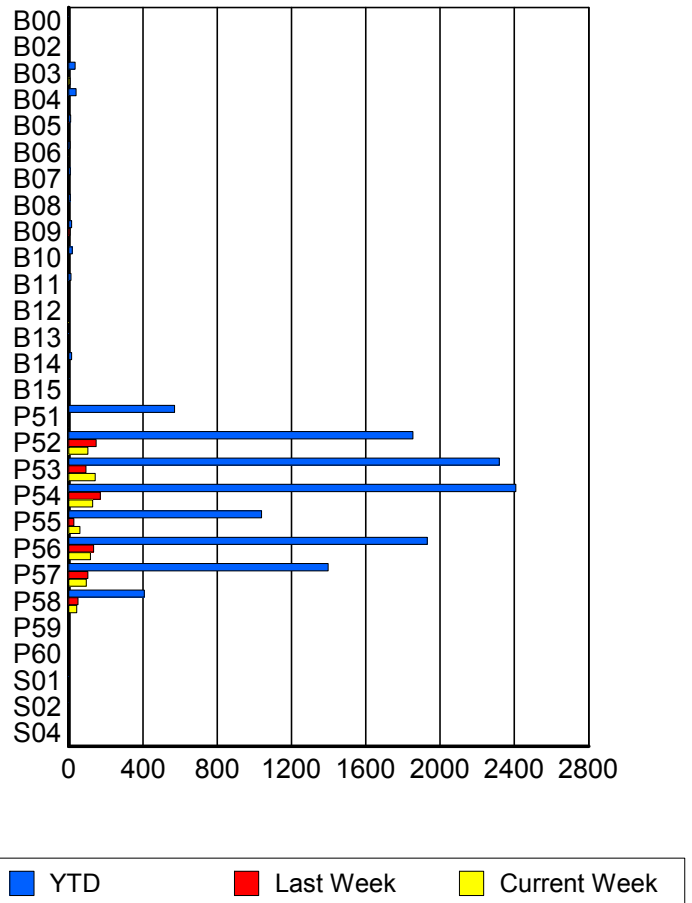
RR/SIRV Responses per County



Road Ranger / SIRV Performance By Truck

	Current We	Last Week	YTD
B00	0	0	2
	0	0	2
	0	0	2
B02	0	3	5
	0	3	5
	0	3	5
B03	7	1	36
	7	1	36
	7	1	39
B04	0	0	39
	0	0	40
	0	0	43
B05	0	3	11
	0	3	11
	0	3	11
B06	2	0	7
	2	0	7
	2	0	9
B07	0	0	9
	0	0	9
	0	0	9
B08	0	0	9
	0	0	9
	0	0	9
B09	0	7	16
	0	7	16
	0	7	17

RR/SIRV Responses per Truck



	Current We	Last Week	YTD
B10	0	0	20
	0	0	20
	0	0	22
B11	1	0	13
	1	0	13
	1	0	14
B12	2	0	2
	2	0	2
	2	0	2
B13	0	0	3
	0	0	3
	0	0	3
B14	0	0	17
	0	0	17
	0	0	17
B15	1	0	4
	1	0	4
	1	0	4
P51	2	1	560
	2	1	570
	2	1	602
P52	103	147	1,832
	103	149	1,854
	108	157	1,968
P53	143	94	2,293
	144	94	2,318
	153	98	2,467
P54	127	170	2,375
	129	171	2,408
	132	185	2,555
P55	60	28	1,030
	60	28	1,039
	62	29	1,083
P56	114	135	1,904
	118	135	1,930
	125	146	2,053
P57	94	103	1,380
	95	103	1,397
	109	113	1,488
P58	43	51	405
	43	51	408
	46	53	433
P59	0	0	1
	0	0	1
	0	0	1

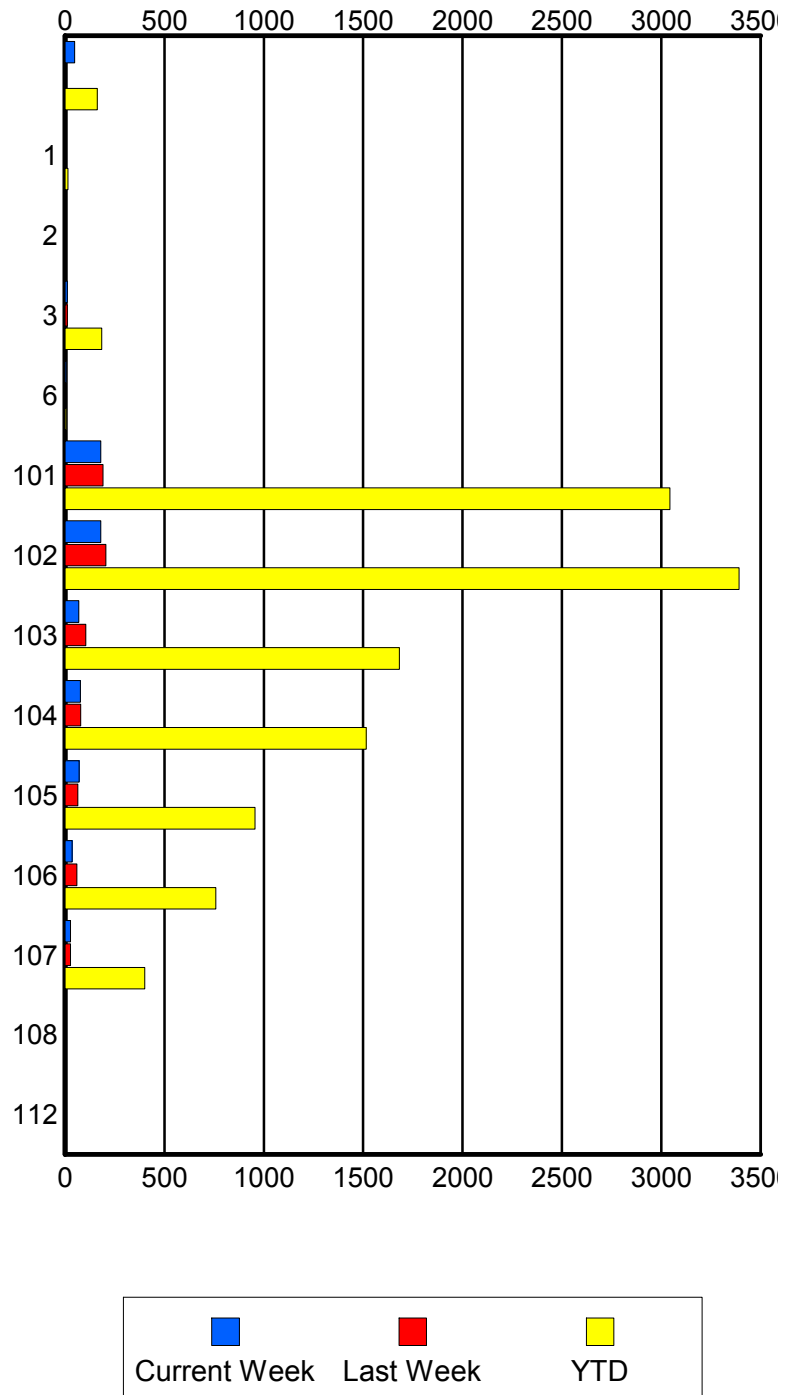
	Current We	Last Week	YTD
P60	0	0	1
	0	0	1
	0	0	1
S01	0	0	3
	0	0	3
	0	0	4
S02	1	0	2
	1	0	2
	1	0	2
S04	0	0	1
	0	0	1
	0	0	1

Road Ranger / SIRV Performance By Beat

	Current We	Last Week	YTD
	48	2	162
	48	2	163
	51	2	175
1	0	0	13
	0	0	14
	0	0	14
2	1	2	3
	1	2	3
	1	2	3
3	12	12	180
	12	12	184
	12	12	196
6	6	0	6
	7	0	7
	7	0	7
101	176	188	2,988
	180	191	3,043
	190	205	3,224
102	179	204	3,340
	180	205	3,391
	196	217	3,590
103	67	104	1,662
	69	105	1,683
	74	116	1,781
104	75	78	1,498
	77	78	1,516
	79	78	1,614
105	70	64	950
	71	64	956
	77	72	1,027
106	35	59	752
	35	59	759
	36	63	800
107	28	28	399
	28	28	401
	28	29	426
108	0	0	3
	0	0	4
	0	0	4
112	0	0	2
	0	0	2
	0	0	3

Values presented are:
 - Total Events with a RR/SIRV Response
 - Total RR/SIRV Responses,
 - Total Activities Performed

RR/SIRV Responses per Beat

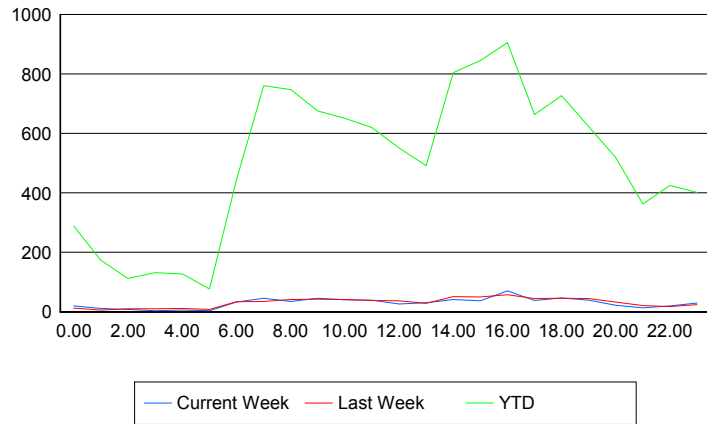


Road Ranger / SIRV Performance By Time of Day

Values presented are:
 - Total Events with a RR/SIRV Response
 - Total RR/SIRV Responses,
 - Total Activities Performed

	Current We	Last Week	YTD
12AM-1AM	18	12	279
	20	12	289
	22	13	318
1AM-2AM	10	6	170
	11	6	174
	13	7	181
2AM-3AM	8	9	108
	8	10	112
	8	13	120
3AM-4AM	4	9	127
	4	10	132
	4	10	141
4AM-5AM	6	8	120
	6	11	127
	6	12	133
5AM-6AM	4	8	68
	4	8	77
	4	9	82
6AM-7AM	33	33	417
	33	34	441
	35	37	466
7AM-8AM	45	34	737
	46	35	760
	47	38	798
8AM-9AM	33	39	716
	35	41	748
	38	45	788
9AM-10AM	42	42	652
	46	43	675
	47	44	714
10AM-11AM	39	41	628
	40	41	651
	40	43	681
11AM-12PM	38	38	606
	39	38	620
	40	39	651
12PM-1PM	26	35	526
	26	37	551
	28	38	575

Number of Responses / Hour of the Day



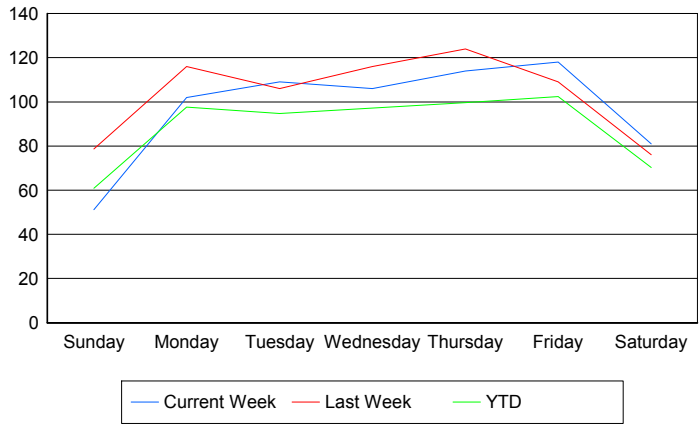
	Current We	Last Week	YTD
1PM-2PM	27	26	464
	31	29	492
	33	29	520
2PM-3PM	40	49	775
	42	51	805
	44	54	858
3PM-4PM	36	50	829
	37	50	845
	40	51	907
4PM-5PM	66	58	873
	70	58	905
	77	62	966
5PM-6PM	38	44	645
	38	45	664
	41	47	706
6PM-7PM	47	46	714
	47	46	727
	51	48	767
7PM-8PM	36	45	600
	39	45	623
	40	47	658
8PM-9PM	22	33	511
	22	33	519
	23	35	542
9PM-10PM	14	20	351
	14	21	363
	17	25	394
10PM-11PM	20	18	417
	20	18	425
	22	19	458
11PM-12AM	29	24	393
	30	24	401
	31	31	440

Road Ranger / SIRV Performance By Day of Week

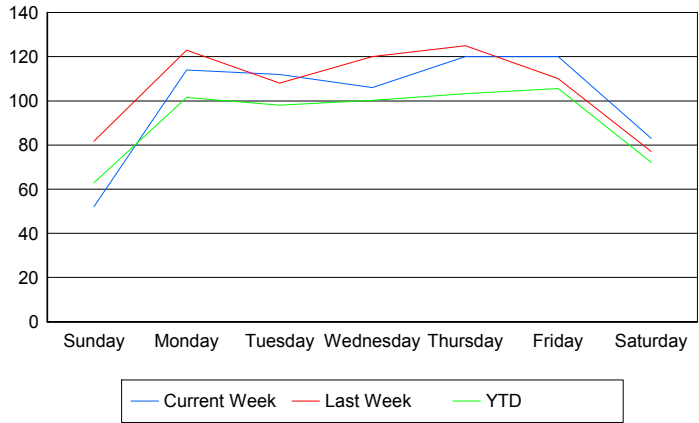
Values presented are: - Total Events with a RR/SIRV Response - Total RR/SIRV Responses, - Total Activities Performed

	Current We	Last Week	YTD
Sunday	52	80	1,132
	53	83	1,170
	58	85	1,234
Monday	102	116	1,807
	114	123	1,876
	117	131	1,984
Tuesday	109	106	1,781
	112	108	1,843
	116	115	1,959
Wednesday	106	116	1,808
	106	120	1,863
	114	136	1,994
Thursday	114	124	1,829
	120	125	1,895
	130	131	2,024
Friday	118	109	2,001
	120	110	2,064
	129	113	2,166
Saturday	81	76	1,380
	83	77	1,415
	87	85	1,503

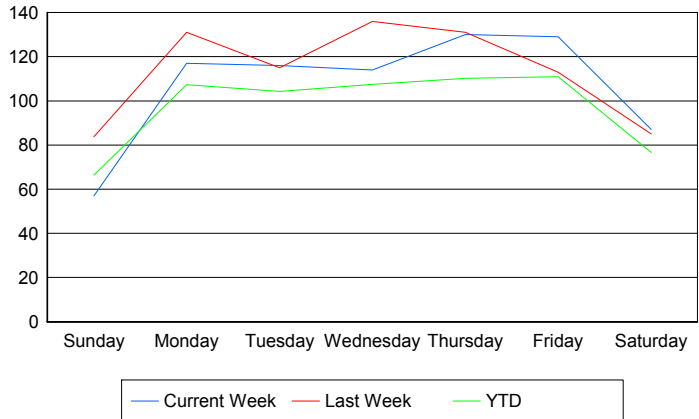
Avg # of events with a RR/SIRV Response per Day of the Week



Avg # of RR/SIRV Responses per Day of the Week



Avg # of RR/SIRV Activities Performed per Day of the Week



Road Ranger / SIRV Responses per Time of Day and Day of Week

