



# Weekly Performance Measures Report Palm Beach County



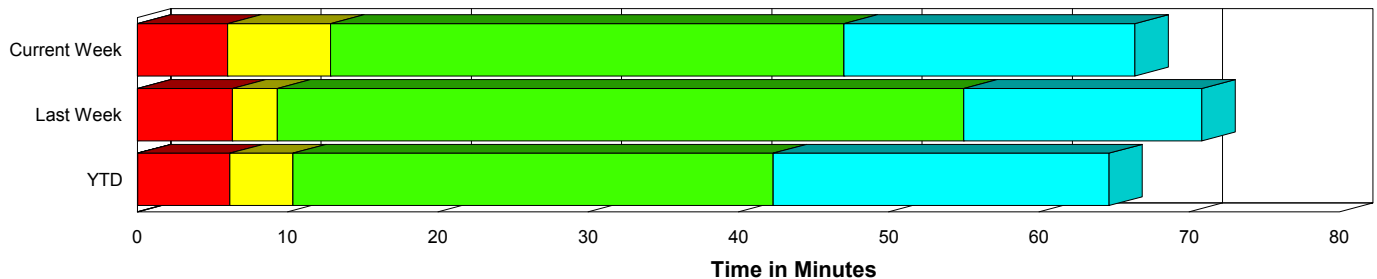
Created on:  
May 24, 2010  
8:55 am

Period From May 16, 2010 to May 22, 2010

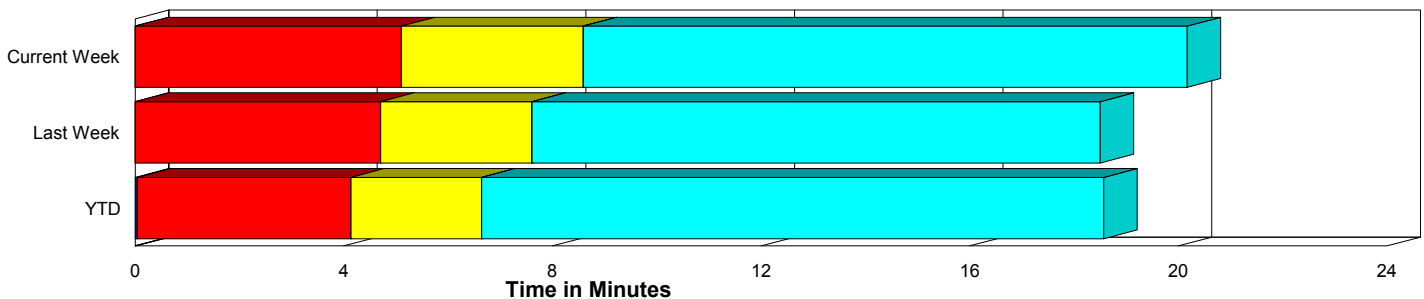
## Performance Measures Summary

	Traffic Events (No Lanes Blocked)			Incidents (Lanes Blocked)		
	<u>This Week</u>	<u>Last Week</u>	<u>YTD</u>	<u>This Week</u>	<u>Last Week</u>	<u>YTD</u>
Number of Events	553	589	10,251	35	28	510
TMC Detection (min.)	0.00	0.00	0.04	0.02	0.00	0.03
TMC Verification (min.)	5.10	4.71	4.10	5.99	6.32	6.17
TMC Response (min.)	9.37	8.20	7.13	13.03	10.07	10.67
RR Dispatch Time (min.)	2.79	3.16	2.48	3.79	3.98	2.77
RR Response Time (min.)	6.54	5.12	4.76	9.24	6.09	7.92
Roadway Clearance (min.)				46.87	60.13	42.62
Event Clearance (min.)	20.95	19.09	19.10	66.19	75.93	65.32
# of Events w/ RR/SIRV	515	554	9,568	34	25	491
RR/SIRV Responses	515	554	9,568	34	25	491
RR/SIRV Activities	537	579	9,941	45	37	644

### Incident Clearance Time-Line



### Traffic Event (Non-Lane Blockage) Time-Line



<span style="color: blue;">■</span> Avg. TMC Detection Time	<span style="color: green;">■</span> Avg. Time from TMC Response to Roadway Clearance*
<span style="color: red;">■</span> Avg. Time from TMC Detection to TMC Verification	<span style="color: cyan;">■</span> Avg. Time from Roadway Clearance to Incident/Event Clearance**
<span style="color: yellow;">■</span> Avg. Time from TMC Verification to TMC Response	

\* Roadway clearance equals all travel lanes open

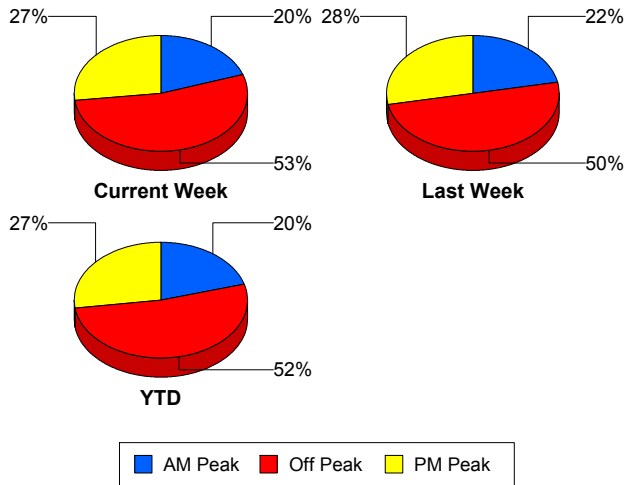
\*\* Incident clearance equals time when last responder has left the scene

## Performance Measures by Peak Period

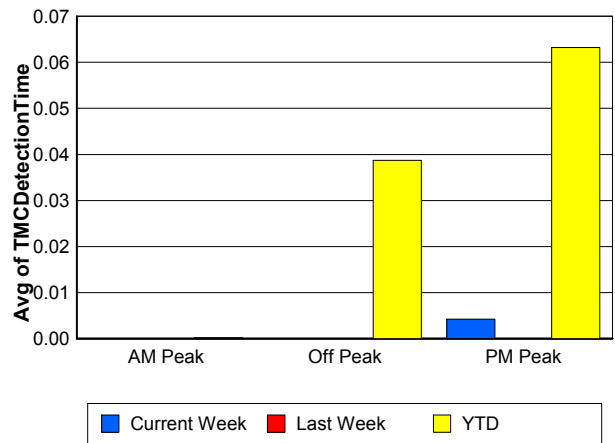
Note: AM peak period is defined as 6am to 10am and PM peak period is defined as 3pm to 7pm.

	AM Peak			Off Peak			PM Peak		
	<u>Current Week</u>	<u>Last Week</u>	<u>YTD</u>	<u>Current Week</u>	<u>Last Week</u>	<u>YTD</u>	<u>Current Week</u>	<u>Last Week</u>	<u>YTD</u>
Number of Events	116	136	2,199	314	308	5,638	158	173	2,924
Number of Incidents	6	6	121	18	16	263	11	6	126
TMC Detection (min.)	0.00	0.00	0.00	0.00	0.00	0.04	0.00	0.00	0.06
TMC Verification (min.)	2.87	4.26	2.81	5.58	5.45	4.43	6.00	3.99	4.79
TMC Response (min.)	9.32	8.61	6.00	10.22	8.71	7.88	8.74	7.26	7.24
RR Dispatch Time (min.)	2.32	2.86	1.65	3.31	3.77	2.75	2.38	2.48	2.64
RR Response Time (min.)	6.96	5.84	4.42	6.84	5.03	5.24	6.35	4.84	4.71
Event Clearance (min.)	23.99	23.45	21.03	25.53	23.49	22.19	19.64	17.04	19.77
Roadway Clearance (min.)	24.72	44.14	39.33	69.08	82.65	49.54	22.60	16.07	31.31
Incident Clearance (min.)	27.09	53.72	65.49	94.78	101.72	68.86	40.74	29.35	55.88
# of Events w/ RR/SIRV	113	131	2,068	286	284	5,228	150	164	2,763
RR/SIRV Responses	113	131	2,068	286	284	5,228	150	164	2,763
RR/SIRV Activities	122	138	2,187	298	305	5,514	162	173	2,884

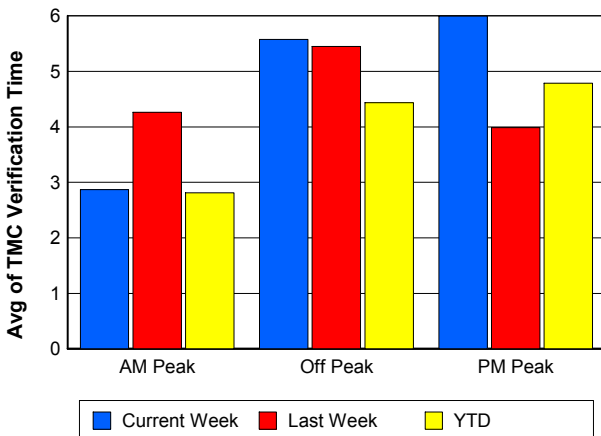
### Number of Events / Peak Period



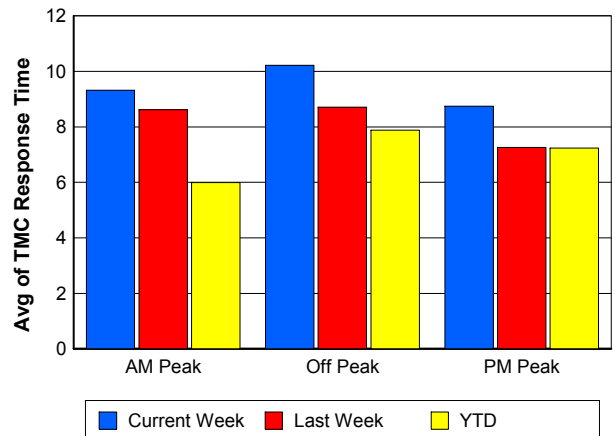
### TMC Detection Time



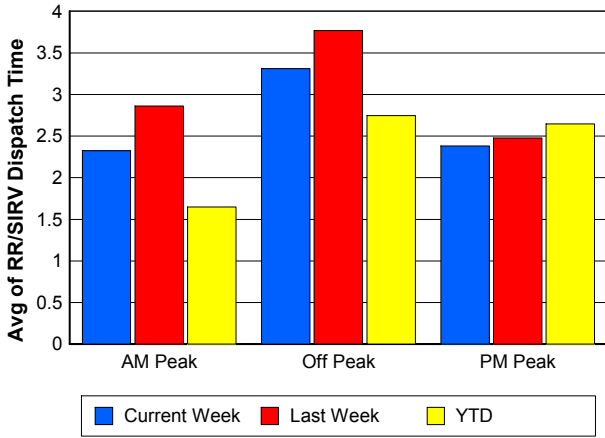
### TMC Verification Time



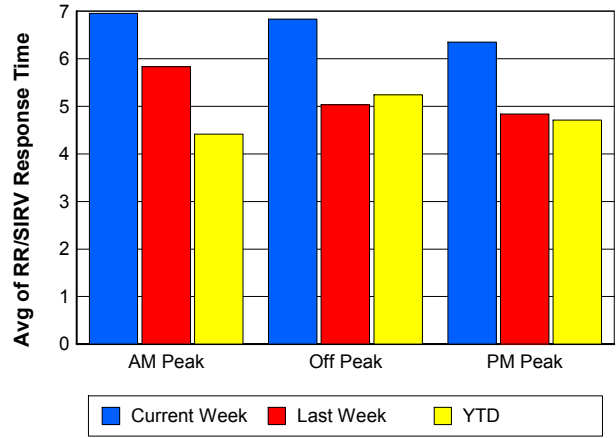
### TMC Response Time



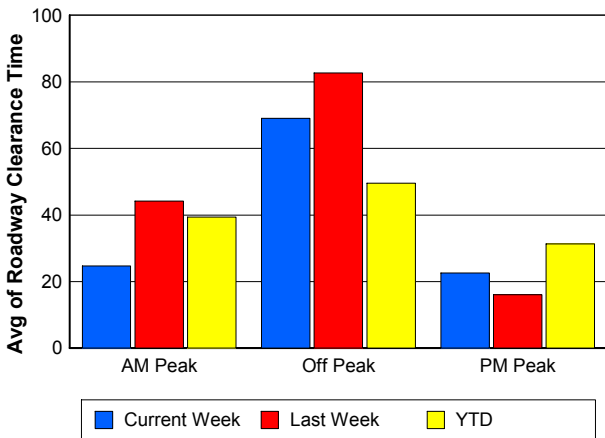
## Road Ranger / SIRV Dispatch Time



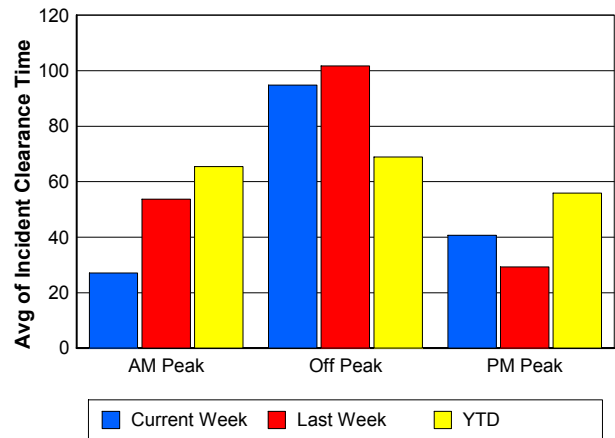
## Road Ranger / SIRV Response Time



## Roadway Clearance Time (2A)



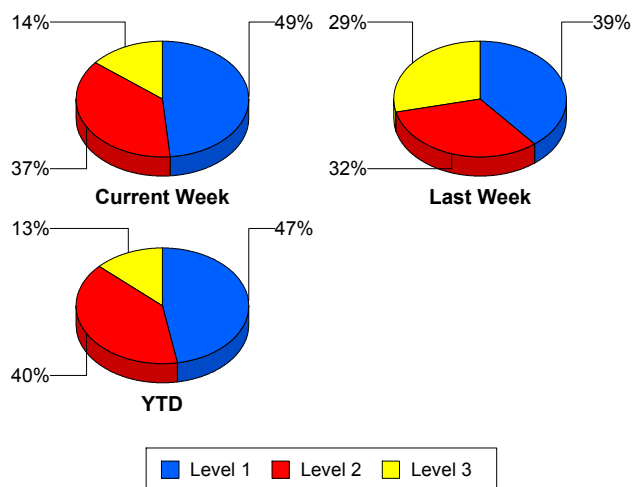
## Incident Clearance Time (3B)



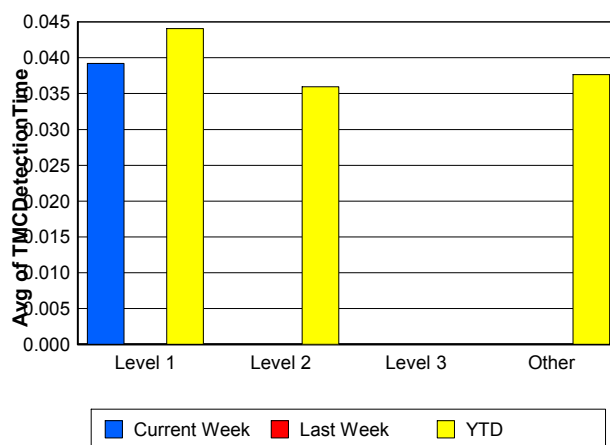
## Performance Measures by Severity

	Level 1			Level 2			Level 3			Other		
	<u>This Week</u>	<u>Last Week</u>	<u>YTD</u>	<u>This Week</u>	<u>Last Week</u>	<u>YTD</u>	<u>This Week</u>	<u>Last Week</u>	<u>YTD</u>	<u>This Week</u>	<u>Last Week</u>	<u>YTD</u>
Number of Events	17	11	240	13	9	202	5	8	66	553	589	10,253
Number of Incidents	17	11	240	13	9	202	5	8	66	0	0	2
TMC Detection (min.)	0.04	0.00	0.04	0.00	0.00	0.04	0.00	0.00	0.00	0.00	0.00	0.04
TMC Verification (min.)	3.35	4.66	3.35	9.85	10.91	9.55	4.91	3.45	6.09	5.10	4.71	4.10
TMC Response (min.)	5.68	5.12	6.14	14.25	12.77	14.69	40.26	16.09	15.63	9.37	8.20	7.13
RR Dispatch Time (min.)	1.48	1.85	1.15	1.70	1.82	3.59	20.40	12.55	7.10	2.79	3.16	2.48
RR Resp. Time (min.)	4.21	3.28	5.02	12.56	10.95	11.16	19.86	3.55	8.53	6.54	5.12	4.76
Event Clearance (min.)	48.13	32.56	44.03	54.52	66.70	71.44	157.96	145.93	123.24	20.95	19.09	19.12
Roadway Clear. (min.)	17.41	12.07	15.39	49.02	52.44	54.37	141.46	134.86	107.59			-21.46
Incident Clearance (min.)	48.13	32.56	44.03	54.52	66.70	71.44	157.96	145.93	122.39			0.00
# of Events w/ RR/SIRV	17	11	237	13	9	200	4	5	52	515	554	9,570
RR/SIRV Responses	17	11	237	13	9	200	4	5	52	515	554	9,570
RR/SIRV Activities	22	14	285	17	13	275	6	10	79	537	579	9,946

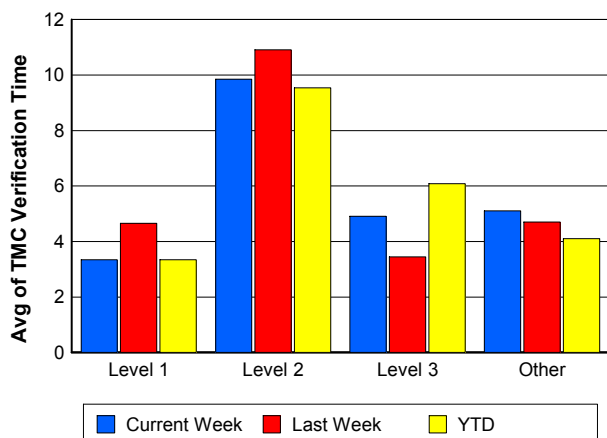
### Number of Events / Severity



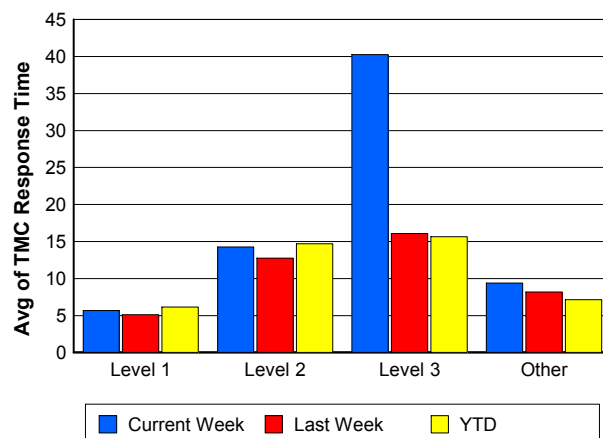
### TMC Detection Time



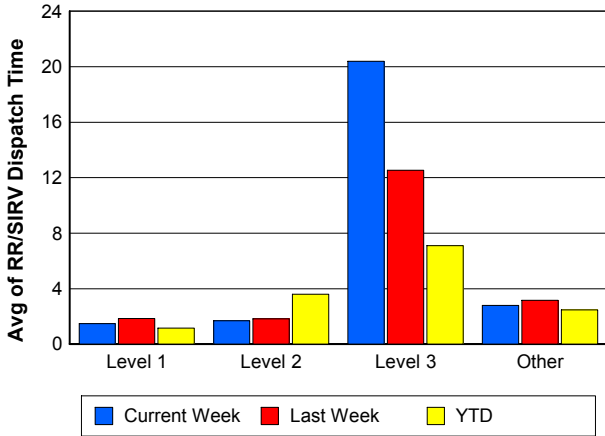
### TMC Verification Time



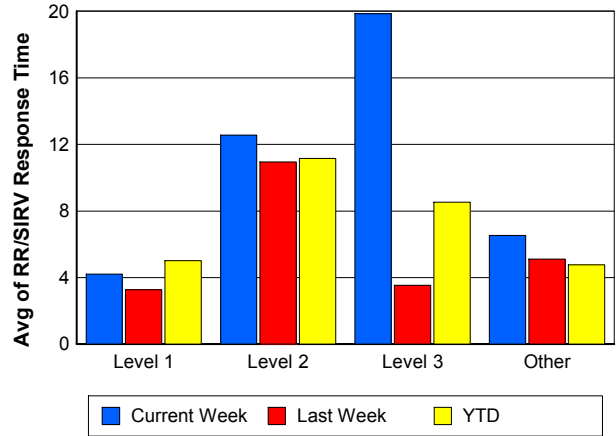
### TMC Response Time



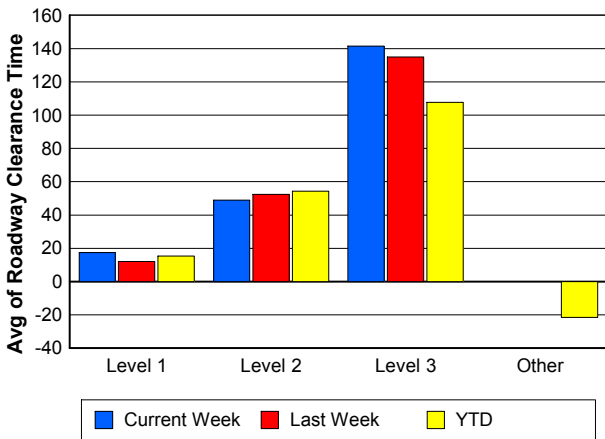
## Road Ranger / SIRV Dispatch Time



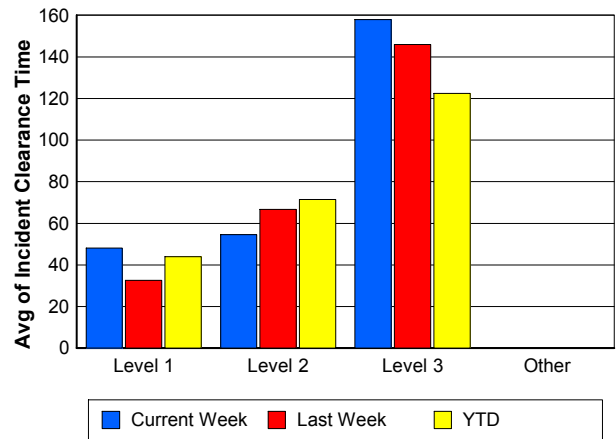
## Road Ranger / SIRV Response Time



## Roadway Clearance Time (2A)



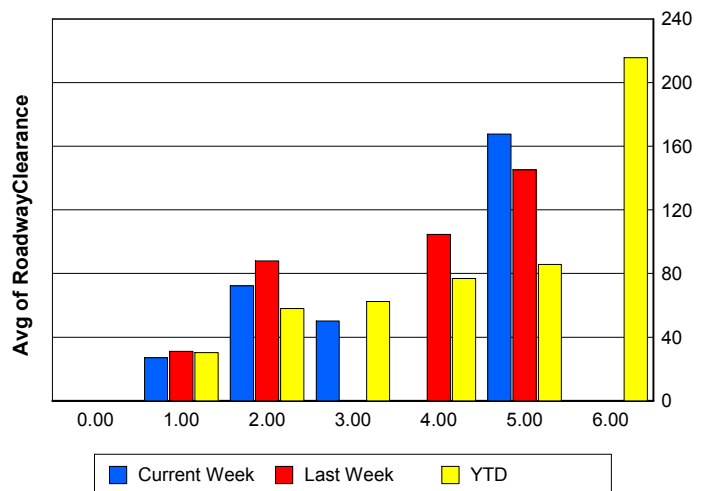
## Incident Clearance Time (3B)



## Roadway Clearance by Maximum Number of Lanes Blocked

	Current Week	Last Week	YTD
0			
1	27.00	31.05	30.22
2	72.19	87.99	58.01
3	50.21	0.00	62.35
4	0.00	104.62	76.91
5	167.66	145.15	85.63
6	0.00	0.00	215.67

## Roadway Clearance Time (2A)



## Performance Measures by Roadway

**95**

	<u>Current Week</u>	<u>Last Week</u>	<u>YTD</u>
Number of Events	587	615	10,750
Number of Incidents	34	26	500
TMC Detection (min.)	0.00	0.00	0.04
TMC Verification (min.)	5.16	4.80	4.20
TMC Response (min.)	9.61	8.28	7.32
RR Dispatch Time (min.)	2.85	3.20	2.49
RR Resp. Time (min.)	6.72	5.16	4.93
Event Clearance (min.)	23.62	21.43	21.26
Roadway Clear. (min.)	47.20	57.63	42.28
Incident Clearance (min.)	67.01	74.47	64.90
# of Events w/ RR/SIRV	549	579	10,058
RR/SIRV Responses	549	579	10,058
RR/SIRV Activities	582	616	10,584

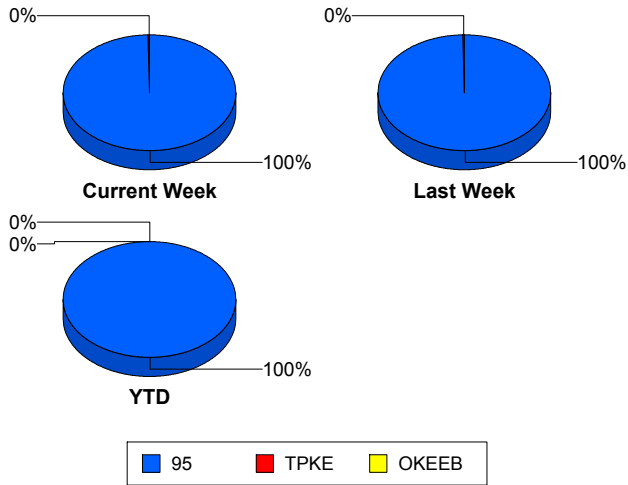
**OKEEB**

	<u>YTD</u>
Number of Events	1
Number of Incidents	0
TMC Detection (min.)	0.00
TMC Verification (min.)	0.00
TMC Response (min.)	0.00
RR Dispatch Time (min.)	0.00
RR Resp. Time (min.)	0.00
Event Clearance (min.)	18.45
Roadway Clear. (min.)	
Incident Clearance (min.)	
# of Events w/ RR/SIRV	1
RR/SIRV Responses	1
RR/SIRV Activities	1

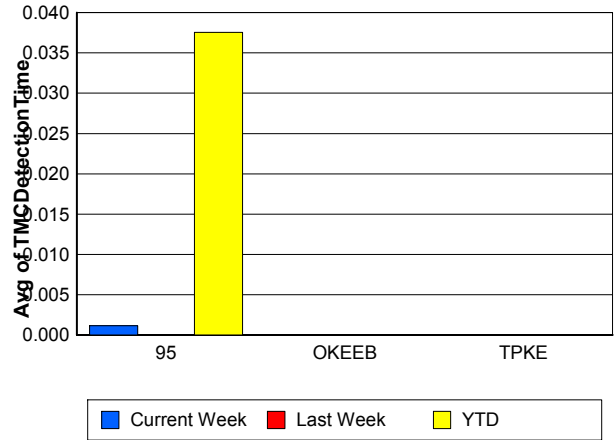
**TPKE**

	<u>Current Week</u>	<u>Last Week</u>	<u>YTD</u>
Number of Events	1	2	10
Number of Incidents	1	2	10
TMC Detection (min.)	0.00	0.00	0.00
TMC Verification (min.)	0.00	0.00	0.00
TMC Response (min.)			
RR Dispatch Time (min.)			
RR Resp. Time (min.)			
Event Clearance (min.)	38.33	94.85	62.29
Roadway Clear. (min.)	35.63	92.63	59.66
Incident Clearance (min.)	38.33	94.85	62.29
# of Events w/ RR/SIRV	0	0	0
RR/SIRV Responses	0	0	0
RR/SIRV Activities	0	0	0

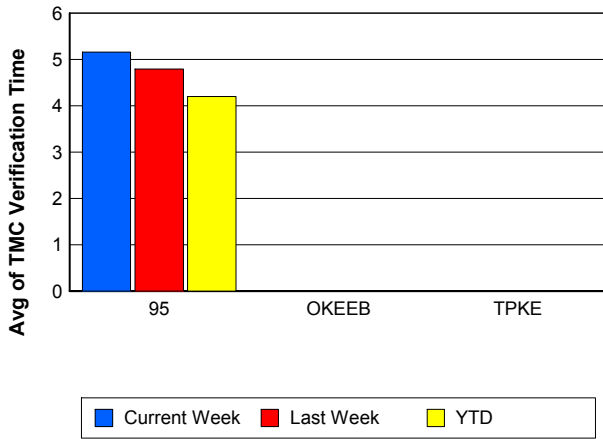
## Number of Events / Roadway



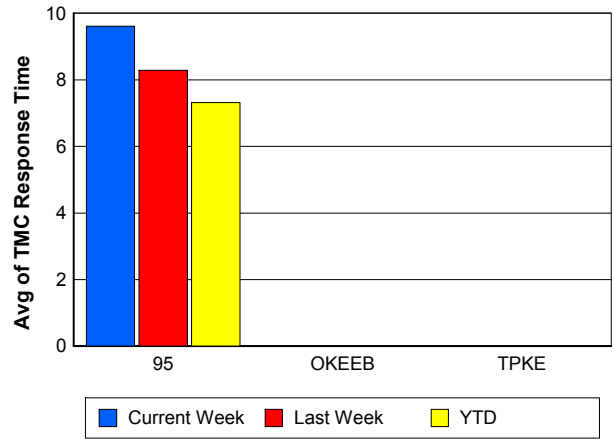
## TMC Detection Time



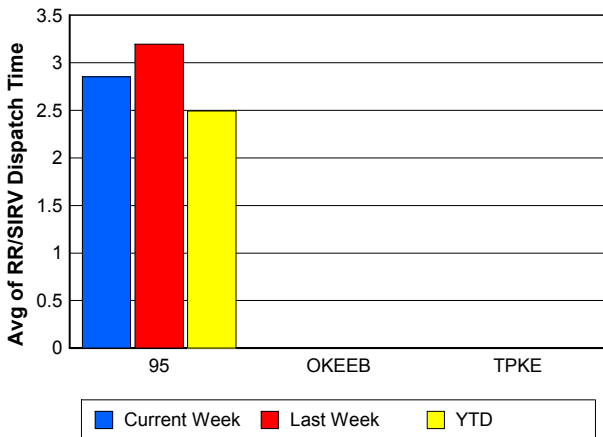
## TMC Verification Time



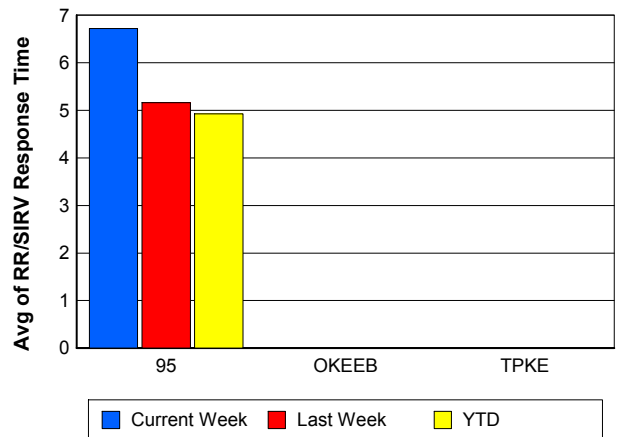
## TMC Response Time



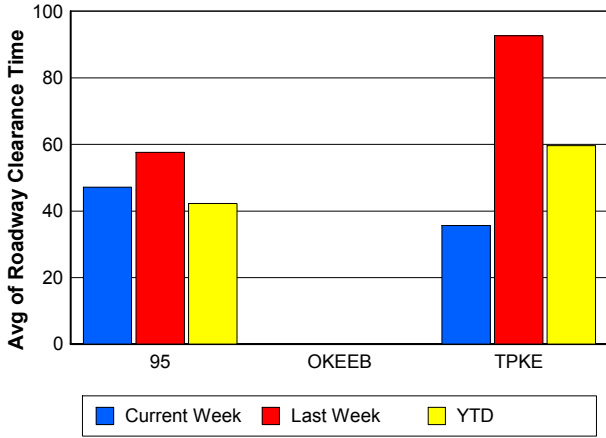
## Road Ranger / SIRV Dispatch Time



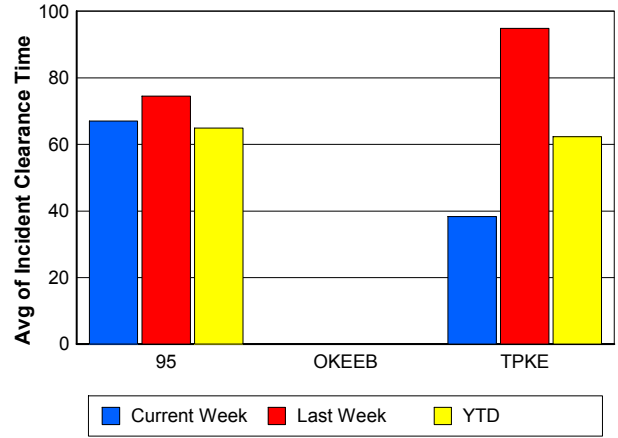
## Road Ranger / SIRV Response Time



## Roadway Clearance Time (2A)



## Incident Clearance Time (3B)



## Performance Measures by Event Type

### Accident

	<u>Current Week</u>	<u>Last Week</u>	<u>YTD</u>
Number of Events	51	40	793
Number of Incidents	24	20	359
TMC Detection (min.)	0.00	0.00	0.05
TMC Verification (min.)	12.08	8.52	7.55
TMC Response (min.)	14.06	10.52	10.64
RR Dispatch Time (min.)	2.55	3.56	2.49
RR Response Time (min.)	11.50	7.02	8.20
Event Clearance (min.)	67.68	55.78	60.11
Roadway Clearance (min.)	51.75	47.09	46.20
Incident Clearance (min.)	76.50	65.76	73.85
# of Events w/ RR/SIRV	48	38	769
RR/SIRV Assists	48	38	769
RR/SIRV Activities	58	47	904

### Debris on Roadway

	<u>Current Week</u>	<u>Last Week</u>	<u>YTD</u>
Number of Events	49	39	624
Number of Incidents	1	0	14
TMC Detection (min.)	0.00	0.00	0.00
TMC Verification (min.)	12.51	14.04	10.73
TMC Response (min.)	14.44	14.12	11.18
RR Dispatch Time (min.)	4.82	5.02	3.59
RR Response Time (min.)	9.53	9.00	7.62
Event Clearance (min.)	16.62	16.52	14.81
Roadway Clearance (min.)	3.20		18.37
Incident Clearance (min.)	3.37		23.54
# of Events w/ RR/SIRV	48	38	617
RR/SIRV Assists	48	38	617
RR/SIRV Activities	51	40	638

### Disabled Vehicle

	<u>Current Week</u>	<u>Last Week</u>	<u>YTD</u>
Number of Events	461	509	8,788
Number of Incidents	7	5	100
TMC Detection (min.)	0.00	0.00	0.03
TMC Verification (min.)	3.79	4.02	3.65
TMC Response (min.)	8.23	7.58	6.45
RR Dispatch Time (min.)	2.55	2.89	2.31
RR Response Time (min.)	5.66	4.75	4.26
Event Clearance (min.)	19.28	17.82	18.00
Roadway Clearance (min.)	30.00	21.52	25.70
Incident Clearance (min.)	37.45	26.92	35.59
# of Events w/ RR/SIRV	435	487	8,277
RR/SIRV Assists	435	487	8,277
RR/SIRV Activities	456	513	8,754

## Emergency Vehicles

	<u>Current Week</u>	<u>YTD</u>
Number of Events	1	8
Number of Incidents	1	7
TMC Detection (min.)	0.00	0.00
TMC Verification (min.)	0.00	3.49
TMC Response (min.)	0.00	5.58
RR Dispatch Time (min.)	0.00	0.11
RR Response Time (min.)	0.00	5.48
Event Clearance (min.)	18.98	54.12
Roadway Clearance (min.)	13.23	55.90
Incident Clearance (min.)	18.98	58.54
# of Events w/ RR/SIRV	1	5
RR/SIRV Assists	1	5
RR/SIRV Activities	2	6

## Other

	<u>Current Week</u>	<u>Last Week</u>	<u>YTD</u>
Number of Events	20	24	442
Number of Incidents	0	0	1
TMC Detection (min.)	0.00	0.00	0.13
TMC Verification (min.)	1.64	0.72	0.64
TMC Response (min.)	12.91	6.24	15.24
RR Dispatch Time (min.)	3.08	4.77	4.65
RR Response Time (min.)	9.42	2.33	8.66
Event Clearance (min.)	21.91	28.98	21.79
Roadway Clearance (min.)			8.12
Incident Clearance (min.)			24.77
# of Events w/ RR/SIRV	11	12	297
RR/SIRV Assists	11	12	297
RR/SIRV Activities	10	7	194

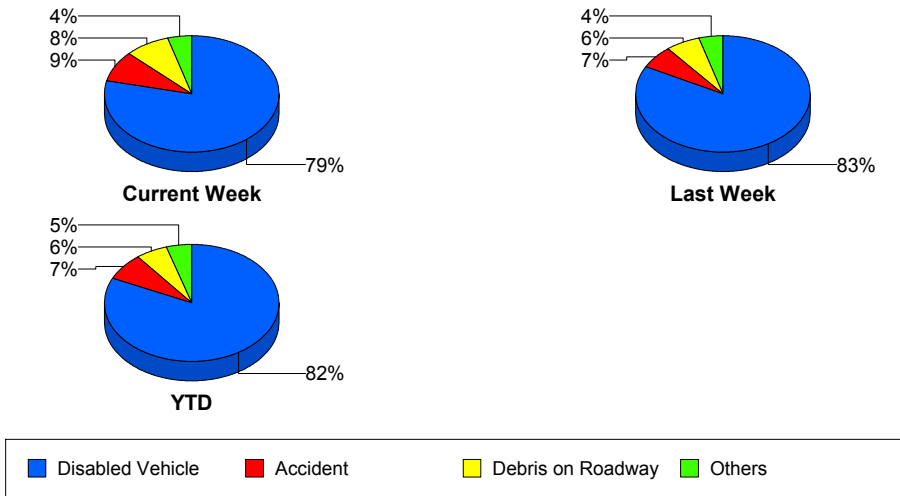
## Police Activity

	<u>Current Week</u>	<u>Last Week</u>	<u>YTD</u>
Number of Events	4	3	41
Number of Incidents	1	3	17
TMC Detection (min.)	0.00	0.00	0.17
TMC Verification (min.)	0.00	4.81	0.80
TMC Response (min.)	35.48	31.66	21.35
RR Dispatch Time (min.)	16.38	28.97	8.89
RR Response Time (min.)	15.52	2.69	13.82
Event Clearance (min.)	59.34	225.38	55.75
Roadway Clearance (min.)	168.70	211.42	91.05
Incident Clearance (min.)	178.02	225.38	95.59
# of Events w/ RR/SIRV	4	2	32
RR/SIRV Assists	4	2	32
RR/SIRV Activities	3	6	25

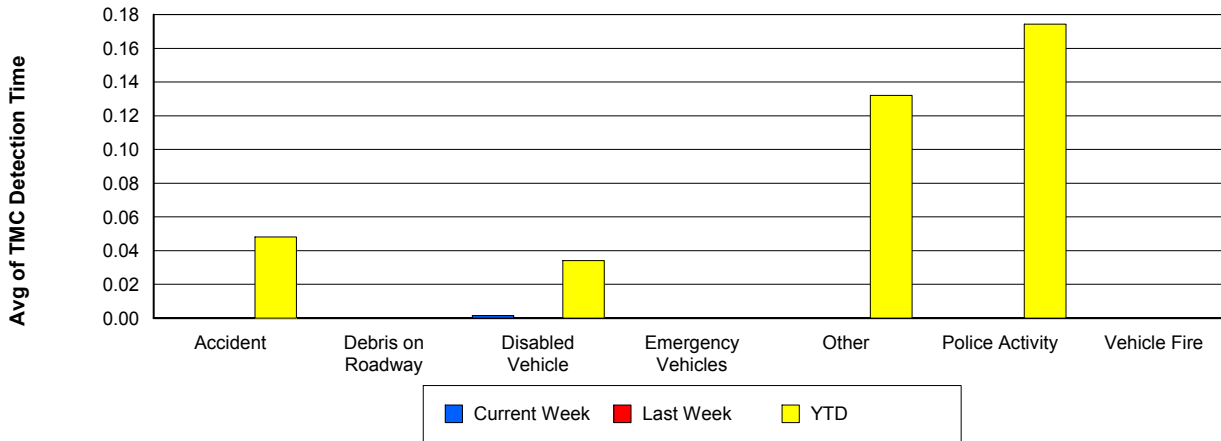
## Vehicle Fire

	<u>Current Week</u>	<u>YTD</u>
Number of Events	1	21
Number of Incidents	1	12
TMC Detection (min.)	0.00	0.00
TMC Verification (min.)	0.00	2.73
TMC Response (min.)	8.62	7.83
RR Dispatch Time (min.)	4.15	2.58
RR Response Time (min.)	4.47	5.45
Event Clearance (min.)	18.35	41.35
Roadway Clearance (min.)	3.28	31.16
Incident Clearance (min.)	18.35	51.27
# of Events w/ RR/SIRV	1	19
RR/SIRV Assists	1	19
RR/SIRV Activities	1	21

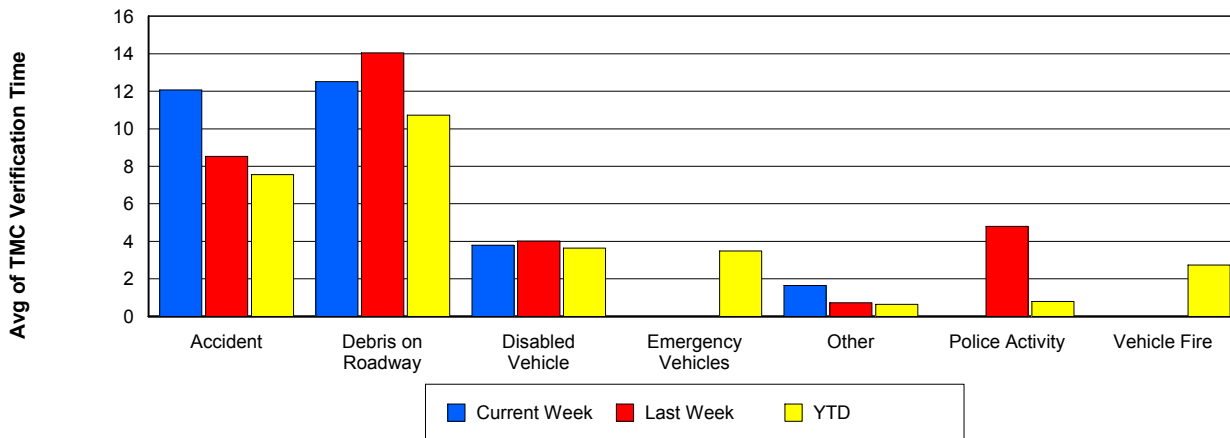
## Number of Events / Event Type



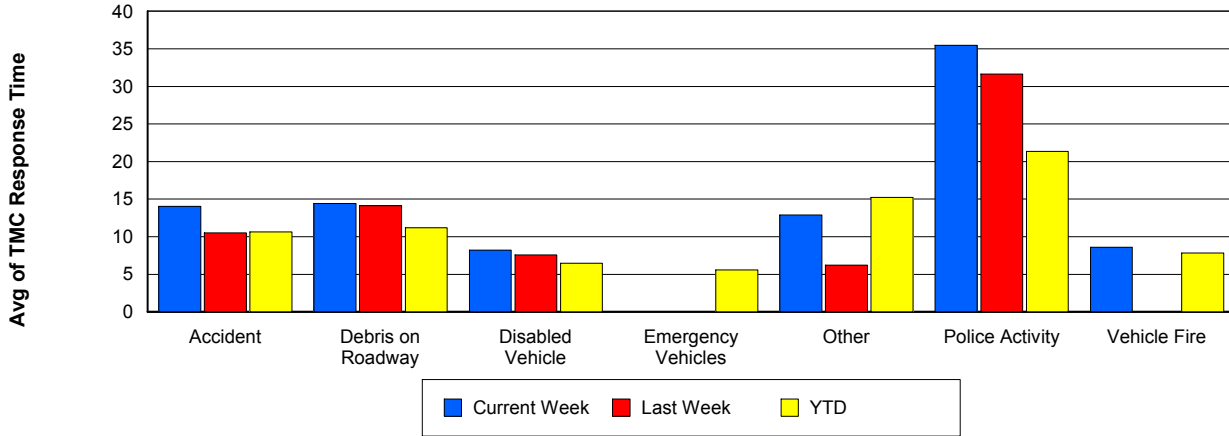
## TMC Detection Time



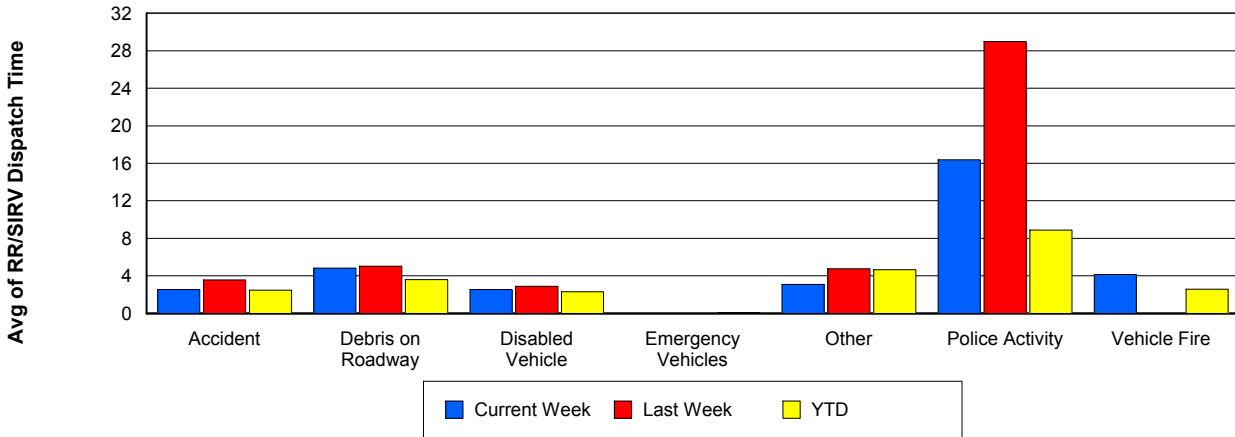
## TMC Verification Time



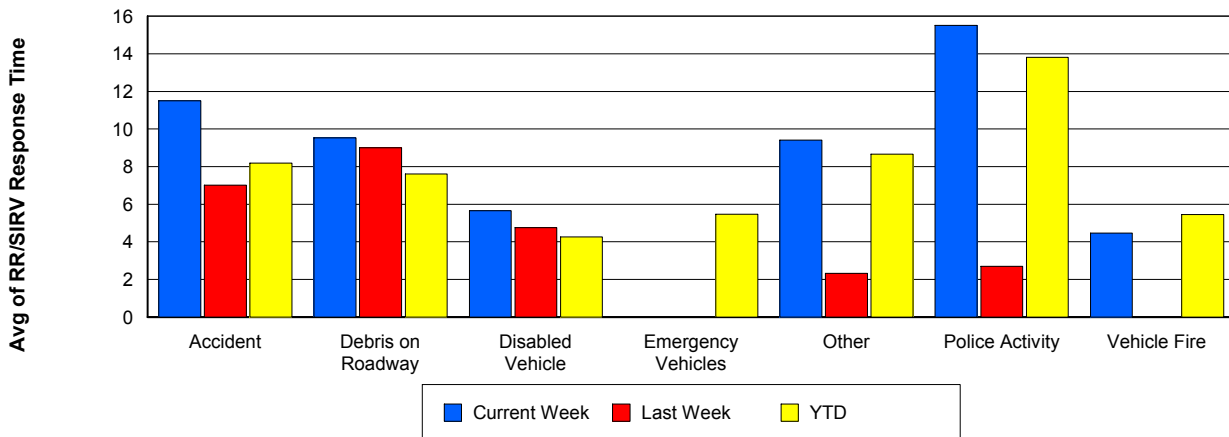
## TMC Response Time



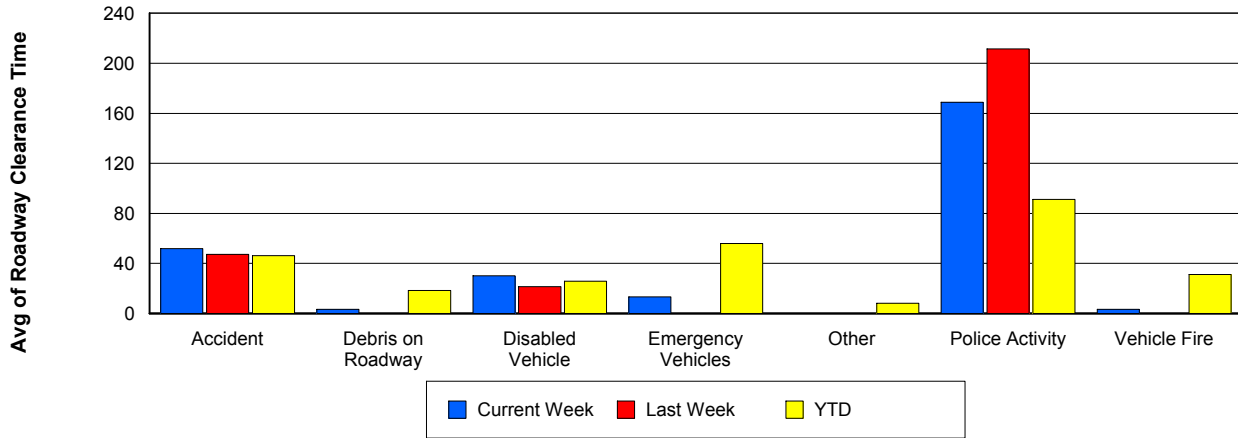
## Road Ranger / SIRV Dispatch Time



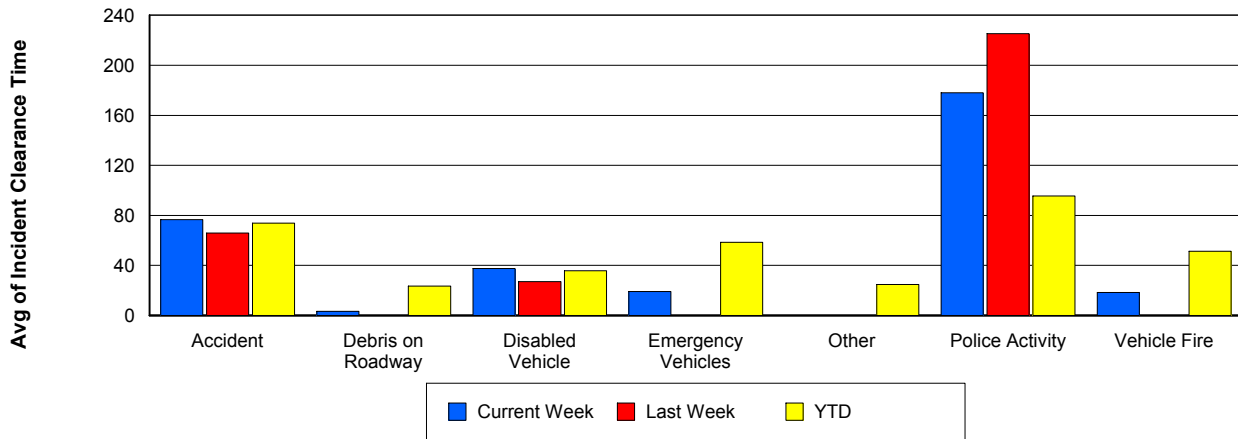
## Road Ranger / SIRV Response Time



## Roadway Clearance Time (2A)



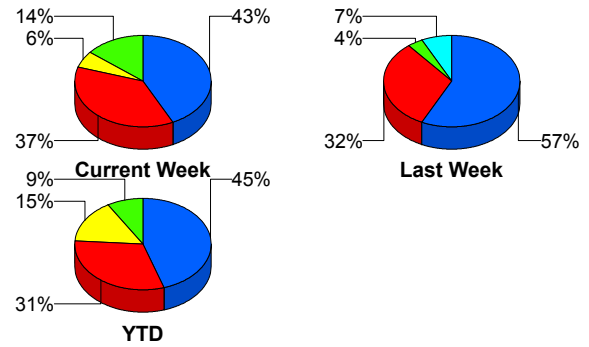
## Incident Clearance Time (3B)



## Incident Detection Methods

	Current Week	Last Week	YTD
Broward Road Ranger	0	0	5
Broward TMC	0	0	5
County Police	0	0	1
District 4	1	1	10
FDOT Maintenance	0	0	2
FHP	15	16	229
Florida's Turnpike	1	2	10
ITMS	1	0	1
ITMS CCTV	2	0	77
Media	0	0	1
Motorist	2	0	9
Palm Beach Road Ran	13	9	158
<b>Total</b>	<b>35</b>	<b>28</b>	<b>508</b>

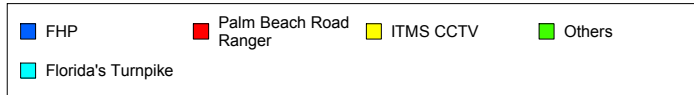
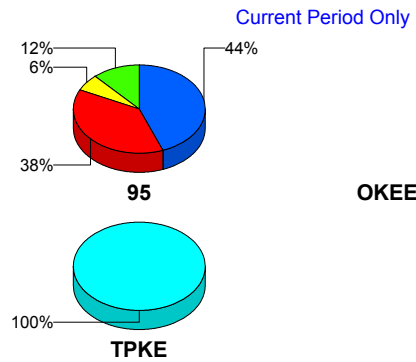
### Total Incidents by Detection Method



## Incident Detection Methods by Roadway

		Current Week	Last Week	YTD
95	Broward Road Ranger	0	0	5
	Broward TMC	0	0	5
	County Police	0	0	1
	District 4	1	1	10
	FDOT Maintenance	0	0	2
	FHP	15	16	229
	ITMS	1	0	1
	ITMS CCTV	2	0	77
	Media	0	0	1
	Motorist	2	0	9
	Palm Beach Road Ran	13	9	158
	<b>Total</b>	<b>34</b>	<b>26</b>	<b>498</b>
TPKE	Florida's Turnpike	1	2	10
	<b>Total</b>	<b>1</b>	<b>2</b>	<b>10</b>

### Total Events by Roadway and Detection Method

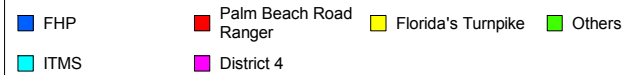
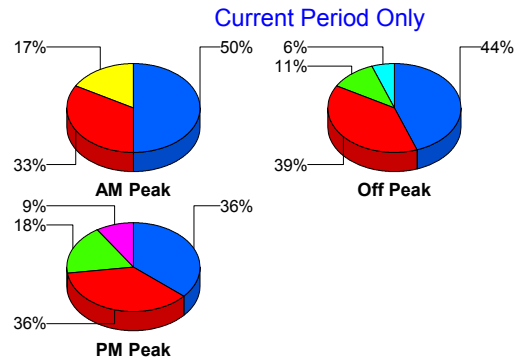


	Current Week	Last Week	YTD
Total	35	28	508

### Incident Detection Methods by Peak Period

		Current Week	Last Week	YTD
AM Peak	Broward Road Ranger	0	0	4
	County Police	0	0	1
	District 4	0	0	2
	FHP	3	2	44
	Florida's Turnpike	1	0	2
	ITMS CCTV	0	0	20
	Media	0	0	1
	Motorist	0	0	1
	Palm Beach Road Ran	2	4	46
	Total	6	6	121
	Off Peak	Broward Road Ranger	0	0
Broward TMC		0	0	2
District 4		0	1	5
FDOT Maintenance		0	0	2
FHP		8	10	119
Florida's Turnpike		0	2	7
ITMS		1	0	1
ITMS CCTV		1	0	44
Motorist		1	0	4
Palm Beach Road Ran		7	3	77
Total		18	16	262
PM Peak	Broward TMC	0	0	3
	District 4	1	0	3
	FHP	4	4	67
	Florida's Turnpike	0	0	1
	ITMS CCTV	1	0	13
	Motorist	1	0	4
	Palm Beach Road Ran	4	2	35

Total Events by Peak Period and Detection Method

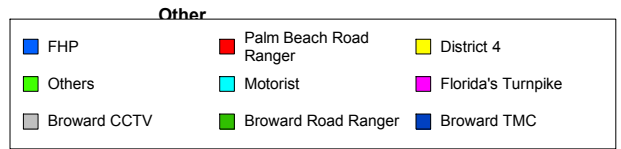
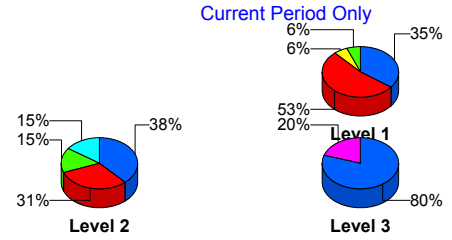


		Current Week	Last Week	YTD
PM Peak	Total	11	6	126
Total		35	28	508

### Incident Detection Methods by Severity

		Current Week	Last Week	YTD
	FHP	0	0	1
	Total	0	0	1
Level 1	Broward Road Ranger	0	0	5
	Broward TMC	0	0	3
	County Police	0	0	1
	District 4	1	1	8
	FHP	6	5	75
	ITMS CCTV	1	0	39
	Motorist	0	0	3
	Palm Beach Road Ran	9	5	106
	Total	17	11	240
Level 2	Broward TMC	0	0	2
	District 4	0	0	1
	FDOT Maintenance	0	0	2
	FHP	5	6	118
	ITMS	1	0	1
	ITMS CCTV	1	0	32
	Motorist	2	0	6
	Palm Beach Road Ran	4	3	40
	Total	13	9	202
Level 3	District 4	0	0	1
	FHP	4	5	36
	Florida's Turnpike	1	2	10
	ITMS CCTV	0	0	6
	Media	0	0	1
	Palm Beach Road Ran	0	1	12
	Total	5	8	66

### Total Events by Severity and Detection Method



	Current Week	Last Week	YTD
Total	35	28	508

# Road Ranger / SIRV Performance Measures

## Road Ranger / SIRV Performance By County

Values presented are:  
 - Total Events with a RR/SIRV Response  
 - Total RR/SIRV Responses,  
 - Total Activities Performed

	Current We	Last Week	YTD
Palm Beach	679	681	12,405
	696	708	12,822
	748	751	13,612

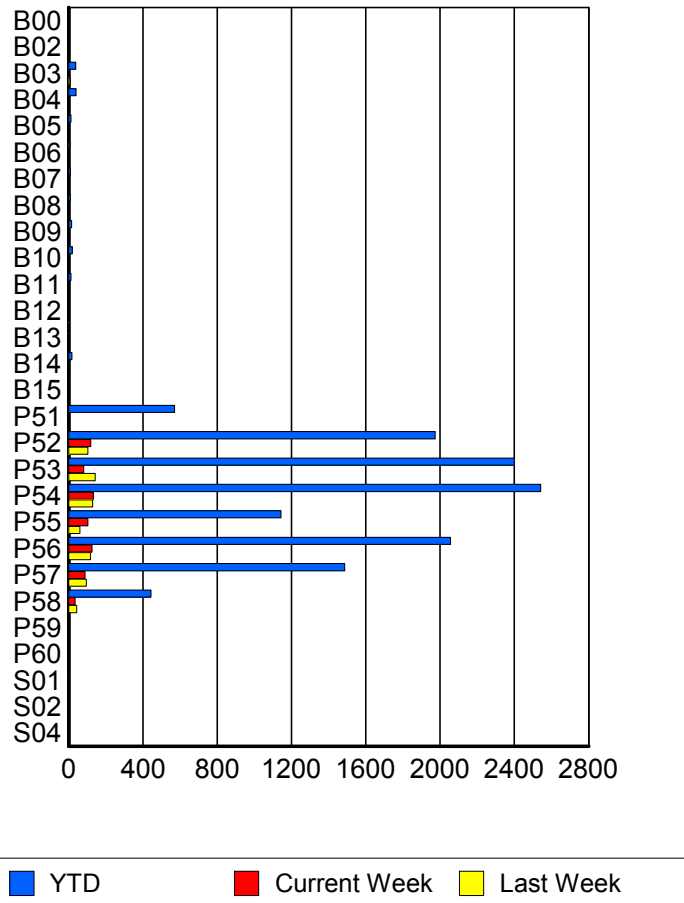
RR/SIRV Responses per County



## Road Ranger / SIRV Performance By Truck

	Current We	Last Week	YTD
B00	0	0	2
	0	0	2
	0	0	2
B02	0	0	5
	0	0	5
	0	0	5
B03	3	7	39
	3	7	39
	3	7	42
B04	0	0	39
	0	0	40
	0	0	43
B05	2	0	13
	2	0	13
	2	0	13
B06	1	2	8
	1	2	8
	1	2	10
B07	0	0	9
	0	0	9
	0	0	9
B08	0	0	9
	0	0	9
	0	0	9
B09	0	0	16
	0	0	16
	0	0	17

RR/SIRV Responses per Truck



	Current We	Last Week	YTD
B10	0	0	20
	0	0	20
	0	0	22
B11	0	1	13
	0	1	13
	0	1	14
B12	0	2	2
	0	2	2
	0	2	2
B13	0	0	3
	0	0	3
	0	0	3
B14	1	0	18
	1	0	18
	1	0	18
B15	0	1	4
	0	1	4
	0	1	4
P51	0	2	560
	0	2	570
	0	2	602
P52	118	103	1,950
	119	103	1,973
	126	108	2,094
P53	82	143	2,375
	82	144	2,400
	92	153	2,559
P54	132	127	2,507
	133	129	2,541
	141	132	2,696
P55	104	60	1,134
	104	60	1,143
	111	62	1,194
P56	126	114	2,030
	126	118	2,056
	138	125	2,191
P57	89	94	1,469
	89	95	1,486
	94	109	1,582
P58	34	43	439
	35	43	443
	38	46	471
P59	1	0	2
	1	0	2
	1	0	2

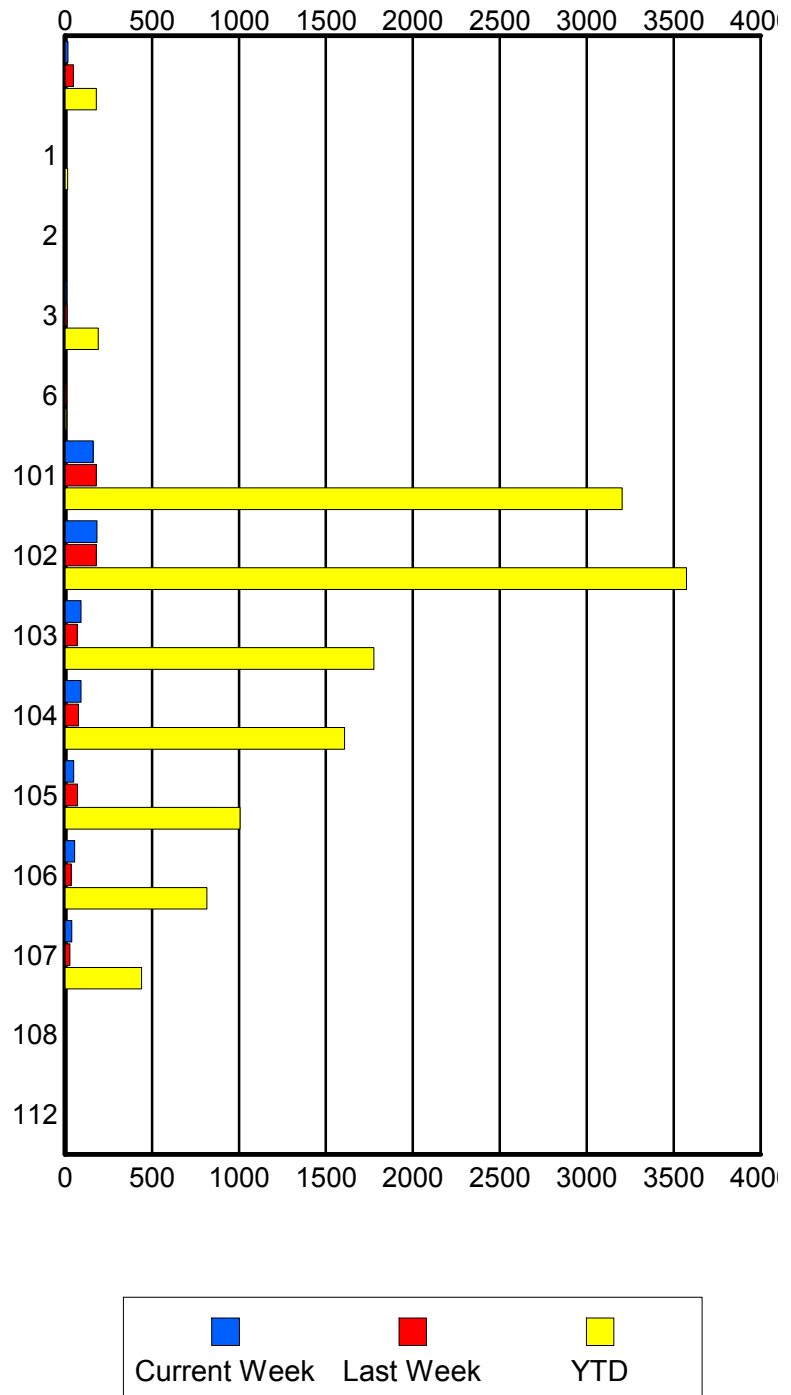
	Current We	Last Week	YTD
P60	0	0	1
	0	0	1
	0	0	1
S01	0	0	3
	0	0	3
	0	0	4
S02	0	1	2
	0	1	2
	0	1	2
S04	0	0	1
	0	0	1
	0	0	1

### Road Ranger / SIRV Performance By Beat

	Current We	Last Week	YTD
	16	48	178
	16	48	179
	16	51	191
1	0	0	13
	0	0	14
	0	0	14
2	0	1	3
	0	1	3
	0	1	3
3	7	12	187
	7	12	191
	7	12	203
6	0	6	6
	0	7	7
	0	7	7
101	160	176	3,148
	161	180	3,204
	169	190	3,393
102	182	179	3,522
	183	180	3,574
	193	196	3,783
103	91	67	1,753
	92	69	1,775
	95	74	1,876
104	92	75	1,590
	92	77	1,608
	105	79	1,719
105	50	70	1,000
	50	71	1,006
	57	77	1,084
106	56	35	808
	56	35	815
	62	36	862
107	39	28	438
	39	28	440
	44	28	470
108	0	0	3
	0	0	4
	0	0	4
112	0	0	2
	0	0	2
	0	0	3

Values presented are:  
 - Total Events with a RR/SIRV Response  
 - Total RR/SIRV Responses,  
 - Total Activities Performed

### RR/SIRV Responses per Beat

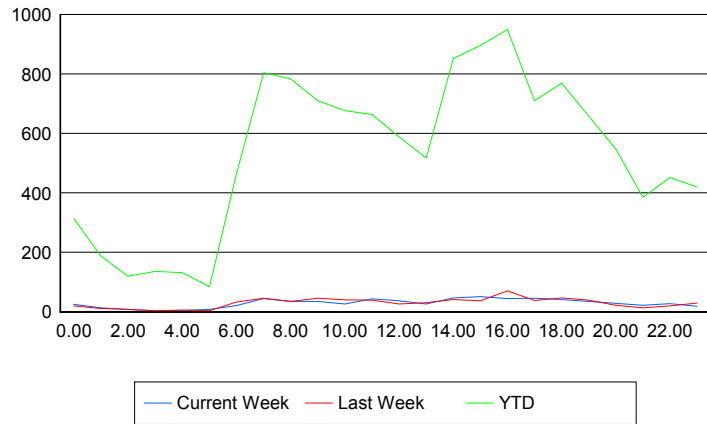


## Road Ranger / SIRV Performance By Time of Day

Values presented are:  
 - Total Events with a RR/SIRV Response  
 - Total RR/SIRV Responses,  
 - Total Activities Performed

	Current We	Last Week	YTD
12AM-1AM	25	18	304
	25	20	314
	25	22	343
1AM-2AM	14	10	184
	14	11	188
	14	13	195
2AM-3AM	8	8	116
	8	8	120
	8	8	128
3AM-4AM	4	4	131
	4	4	136
	5	4	146
4AM-5AM	5	6	125
	5	6	132
	5	6	138
5AM-6AM	8	4	76
	8	4	85
	8	4	90
6AM-7AM	21	33	438
	21	33	462
	22	35	488
7AM-8AM	43	45	780
	45	46	805
	53	47	851
8AM-9AM	35	33	751
	35	35	783
	40	38	828
9AM-10AM	34	42	686
	35	46	710
	38	47	752
10AM-11AM	26	39	654
	26	40	677
	30	40	711
11AM-12PM	42	38	648
	44	39	664
	48	40	699
12PM-1PM	34	26	560
	37	26	588
	39	28	614

## Number of Responses / Hour of the Day



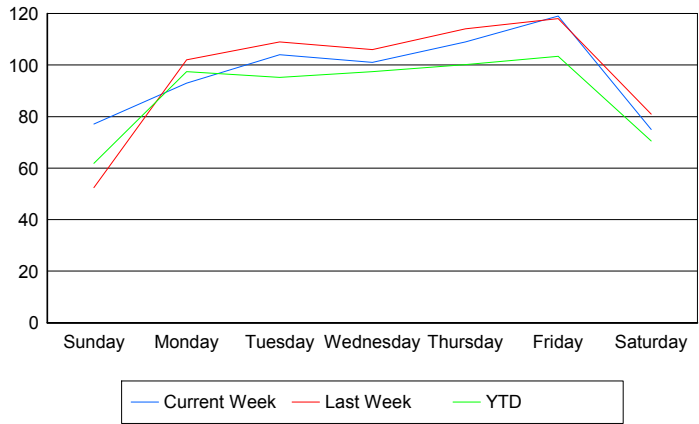
	Current We	Last Week	YTD
1PM-2PM	24	27	488
	26	31	518
	27	33	547
2PM-3PM	46	40	821
	47	42	852
	52	44	910
3PM-4PM	50	36	879
	51	37	896
	51	40	958
4PM-5PM	44	66	917
	45	70	950
	51	77	1,017
5PM-6PM	45	38	690
	46	38	710
	49	41	755
6PM-7PM	42	47	756
	42	47	769
	44	51	811
7PM-8PM	35	36	635
	35	39	658
	37	40	695
8PM-9PM	28	22	539
	29	22	548
	31	23	573
9PM-10PM	21	14	372
	22	14	385
	23	17	417
10PM-11PM	26	20	443
	27	20	452
	27	22	485
11PM-12AM	19	29	412
	19	30	420
	21	31	461

**Road Ranger / SIRV Performance By Day of Week**

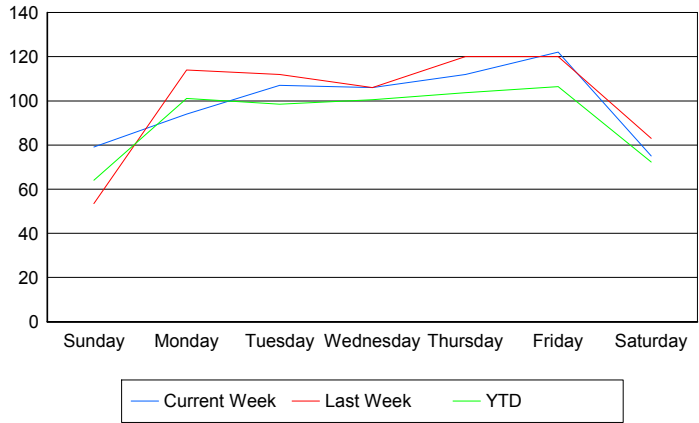
Values presented are: - Total Events with a RR/SIRV Response - Total RR/SIRV Responses, - Total Activities Performed
---

	Current We	Last Week	YTD
Sunday	78	52	1,210
	80	53	1,250
	84	58	1,318
Monday	93	102	1,900
	94	114	1,970
	105	117	2,089
Tuesday	104	109	1,885
	107	112	1,950
	112	116	2,071
Wednesday	101	106	1,909
	106	106	1,969
	117	114	2,111
Thursday	109	114	1,938
	112	120	2,007
	120	130	2,144
Friday	119	118	2,120
	122	120	2,186
	132	129	2,298
Saturday	75	81	1,455
	75	83	1,490
	78	87	1,581

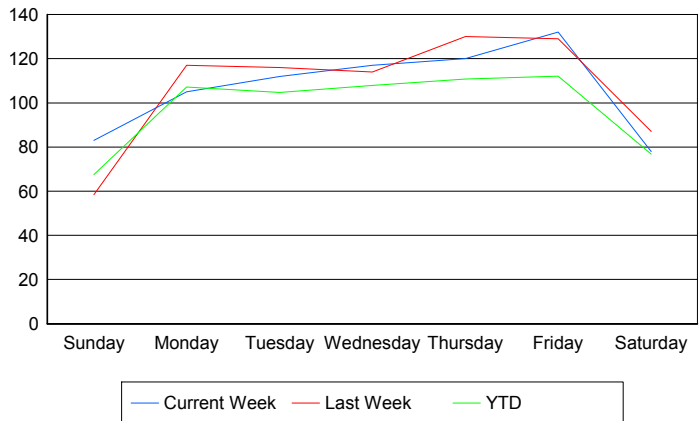
**Avg # of events with a RR/SIRV Response per Day of the Week**



**Avg # of RR/SIRV Responses per Day of the Week**



**Avg # of RR/SIRV Activities Performed per Day of the Week**



### Road Ranger / SIRV Responses per Time of Day and Day of Week

