



Weekly Performance Measures Report Palm Beach County



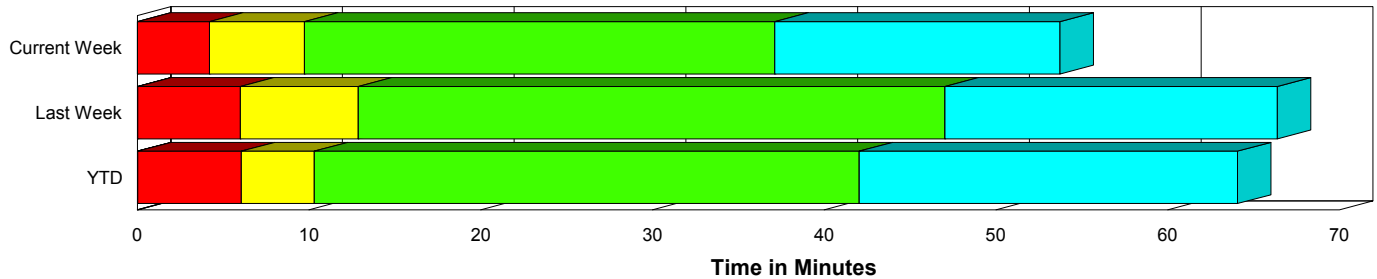
Created on:
June 01, 2010
9:10 am

Period From May 23, 2010 to May 29, 2010

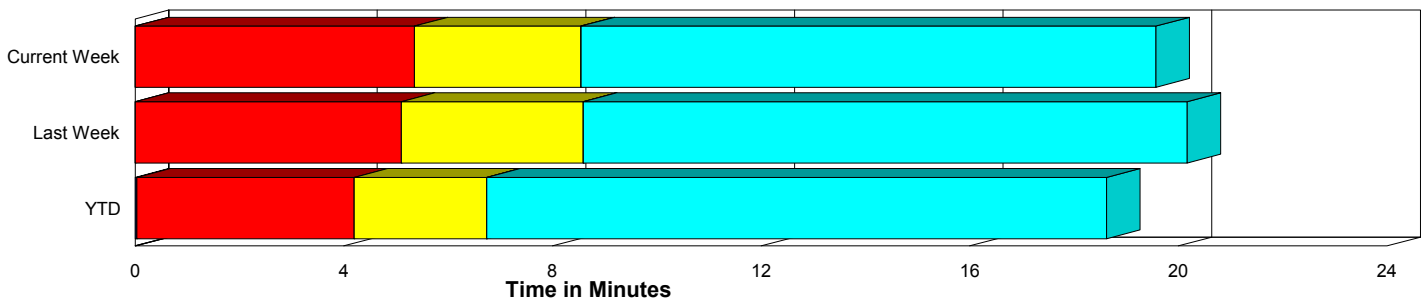
Performance Measures Summary

	Traffic Events (No Lanes Blocked)			Incidents (Lanes Blocked)		
	<u>This Week</u>	<u>Last Week</u>	<u>YTD</u>	<u>This Week</u>	<u>Last Week</u>	<u>YTD</u>
Number of Events	587	553	10,838	30	35	540
TMC Detection (min.)	0.00	0.00	0.04	0.00	0.02	0.03
TMC Verification (min.)	5.36	5.10	4.17	4.20	5.99	6.06
TMC Response (min.)	9.32	9.37	7.25	10.37	13.03	10.66
RR Dispatch Time (min.)	3.61	2.79	2.54	4.67	3.79	2.87
RR Response Time (min.)	5.59	6.54	4.81	5.78	9.24	7.81
Roadway Clearance (min.)				34.44	46.87	42.16
Event Clearance (min.)	20.34	20.95	19.17	51.06	66.19	64.53
# of Events w/ RR/SIRV	534	515	10,102	27	34	518
RR/SIRV Responses	534	515	10,102	27	34	518
RR/SIRV Activities	571	537	10,512	30	45	674

Incident Clearance Time-Line



Traffic Event (Non-Lane Blockage) Time-Line



■ Avg. TMC Detection Time	■ Avg. Time from TMC Response to Roadway Clearance*
■ Avg. Time from TMC Detection to TMC Verification	■ Avg. Time from Roadway Clearance to Incident/Event Clearance**
■ Avg. Time from TMC Verification to TMC Response	

* Roadway clearance equals all travel lanes open

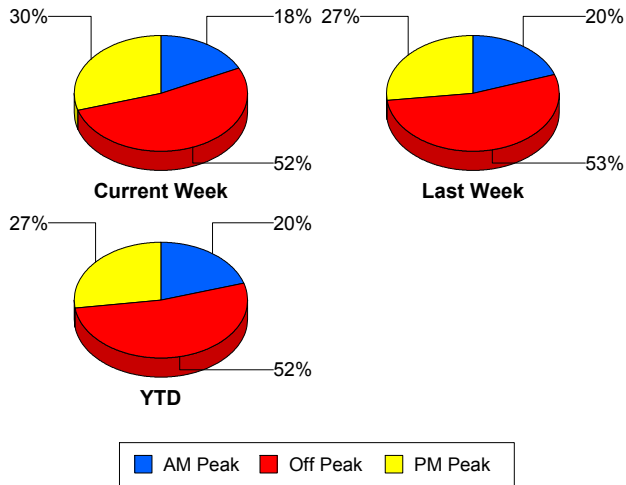
** Incident clearance equals time when last responder has left the scene

Performance Measures by Peak Period

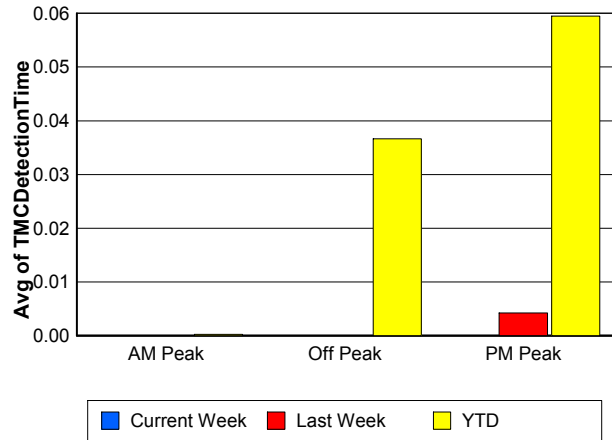
Note: AM peak period is defined as 6am to 10am and PM peak period is defined as 3pm to 7pm.

	AM Peak			Off Peak			PM Peak		
	Current Week	Last Week	YTD	Current Week	Last Week	YTD	Current Week	Last Week	YTD
Number of Events	110	116	2,309	323	314	5,961	184	158	3,108
Number of Incidents	7	6	128	15	18	278	8	11	134
TMC Detection (min.)	0.00	0.00	0.00	0.00	0.00	0.04	0.00	0.00	0.06
TMC Verification (min.)	4.16	2.87	2.88	5.39	5.58	4.49	5.82	6.00	4.85
TMC Response (min.)	8.14	9.32	6.10	10.32	10.22	8.00	8.58	8.74	7.32
RR Dispatch Time (min.)	2.67	2.32	1.70	4.21	3.31	2.82	3.38	2.38	2.69
RR Response Time (min.)	5.44	6.96	4.46	5.97	6.84	5.28	5.11	6.35	4.74
Event Clearance (min.)	21.12	23.99	21.03	22.02	25.53	22.18	21.93	19.64	19.90
Roadway Clearance (min.)	17.30	24.72	38.13	39.53	69.08	49.00	39.89	22.60	31.82
Incident Clearance (min.)	43.40	27.09	64.28	48.52	94.78	67.76	62.52	40.74	56.28
# of Events w/ RR/SIRV	105	113	2,173	282	286	5,510	174	150	2,937
RR/SIRV Responses	105	113	2,173	282	286	5,510	174	150	2,937
RR/SIRV Activities	112	122	2,299	297	298	5,811	192	162	3,076

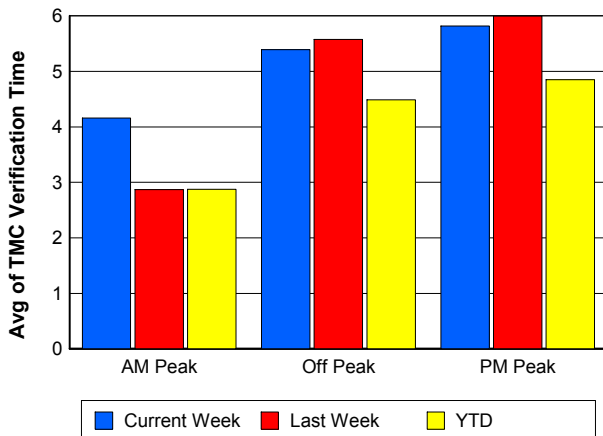
Number of Events / Peak Period



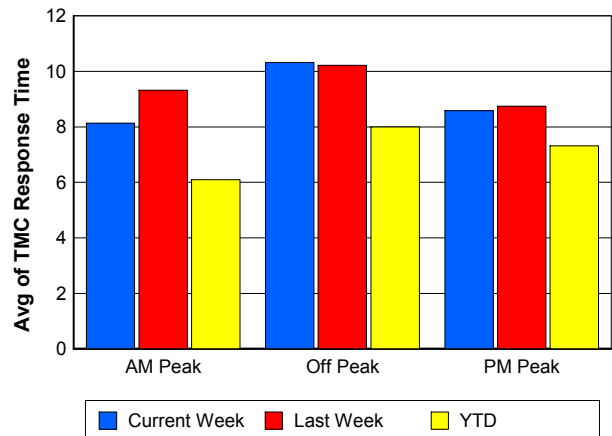
TMC Detection Time



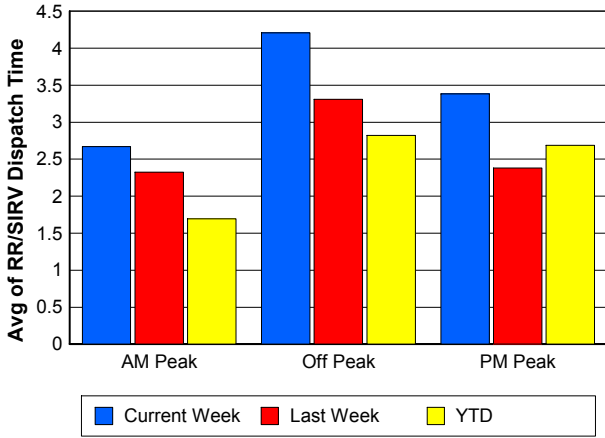
TMC Verification Time



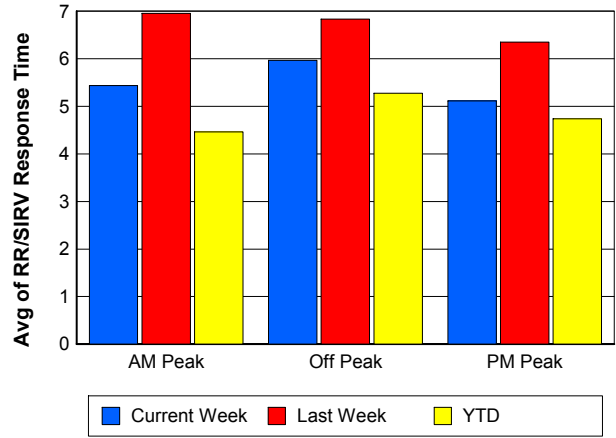
TMC Response Time



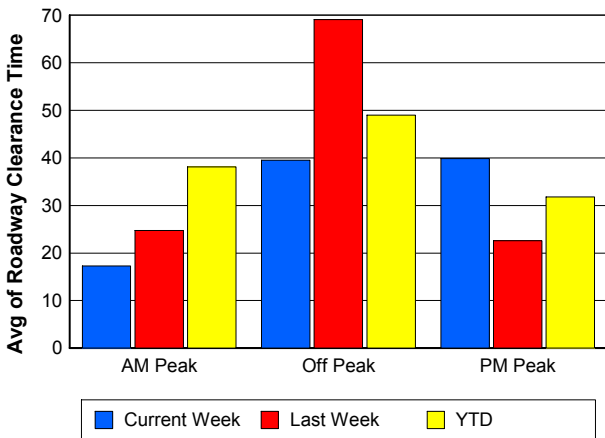
Road Ranger / SIRV Dispatch Time



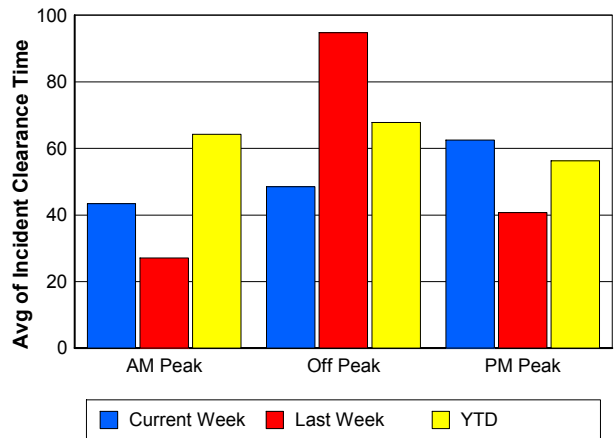
Road Ranger / SIRV Response Time



Roadway Clearance Time (2A)



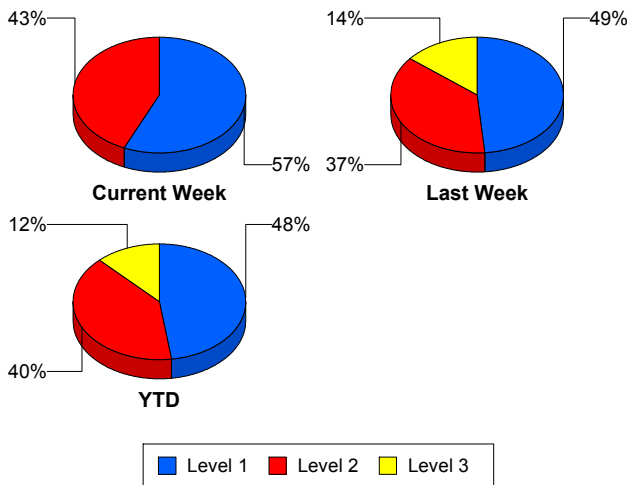
Incident Clearance Time (3B)



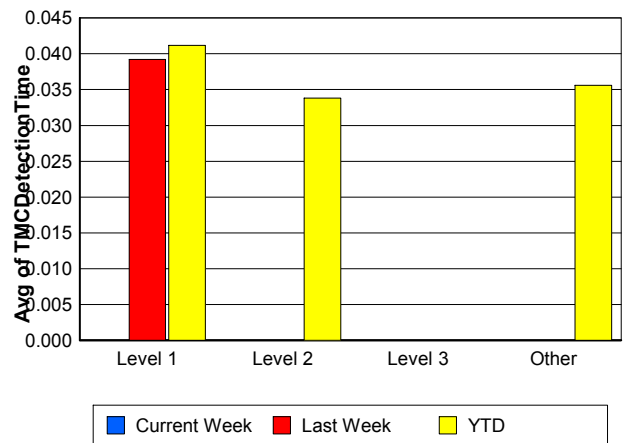
Performance Measures by Severity

	Level 1			Level 2			Level 3		Other		
	<u>This Week</u>	<u>Last Week</u>	<u>YTD</u>	<u>This Week</u>	<u>Last Week</u>	<u>YTD</u>	<u>Last Week</u>	<u>YTD</u>	<u>This Week</u>	<u>Last Week</u>	<u>YTD</u>
Number of Events	17	17	257	13	13	215	5	66	587	553	10,840
Number of Incidents	17	17	257	13	13	215	5	66	0	0	2
TMC Detection (min.)	0.00	0.04	0.04	0.00	0.00	0.03	0.00	0.00	0.00	0.00	0.04
TMC Verification (min.)	3.13	3.35	3.33	5.60	9.85	9.31	4.91	6.09	5.36	5.10	4.17
TMC Response (min.)	5.89	5.68	6.12	14.85	14.25	14.70	40.26	15.63	9.32	9.37	7.25
RR Dispatch Time (min.)	3.50	1.48	1.28	5.93	1.70	3.73	20.40	7.10	3.61	2.79	2.54
RR Resp. Time (min.)	2.63	4.21	4.90	8.92	12.56	11.02	19.86	8.53	5.59	6.54	4.81
Event Clearance (min.)	36.35	48.13	43.52	70.28	54.52	71.37	157.96	123.24	20.34	20.95	19.18
Roadway Clear. (min.)	14.38	17.41	15.32	60.67	49.02	54.76	141.46	107.59			-21.46
Incident Clearance (min.)	36.35	48.13	43.52	70.28	54.52	71.37	157.96	122.39			0.00
# of Events w/ RR/SIRV	14	17	251	13	13	213	4	52	534	515	10,104
RR/SIRV Responses	14	17	251	13	13	213	4	52	534	515	10,104
RR/SIRV Activities	15	22	300	15	17	290	6	79	571	537	10,517

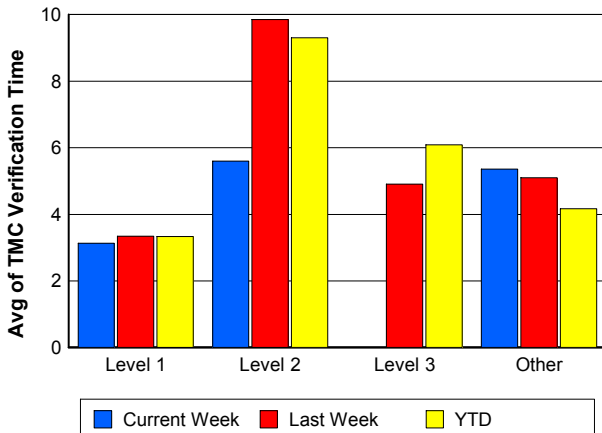
Number of Events / Severity



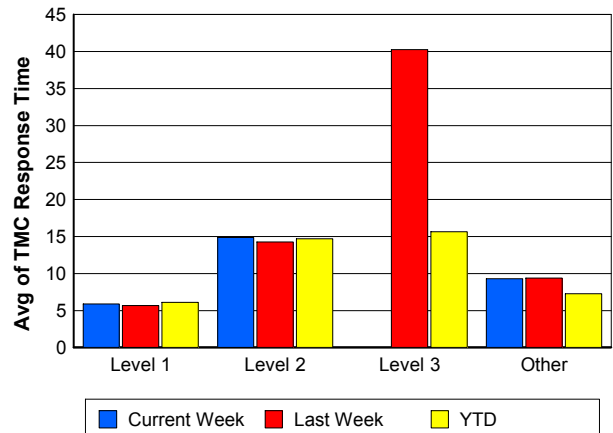
TMC Detection Time



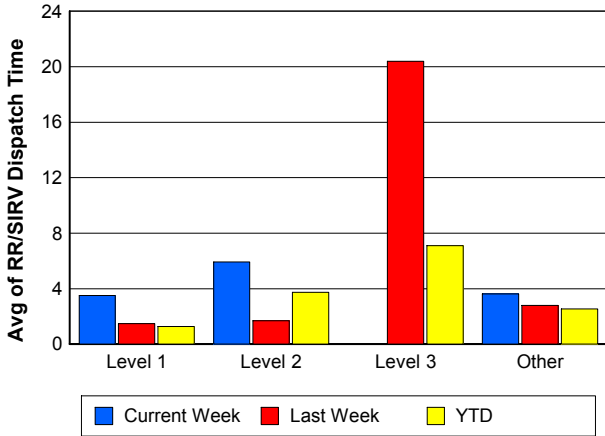
TMC Verification Time



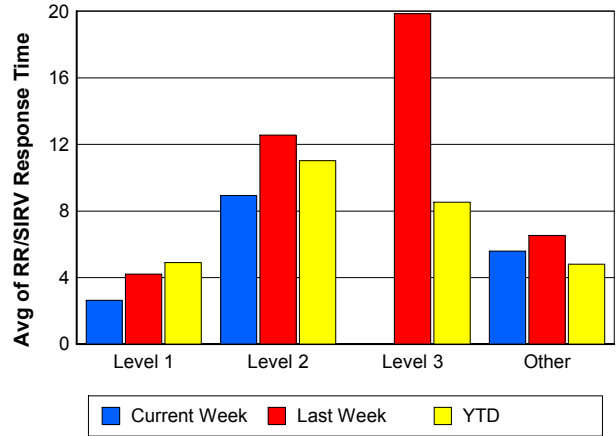
TMC Response Time



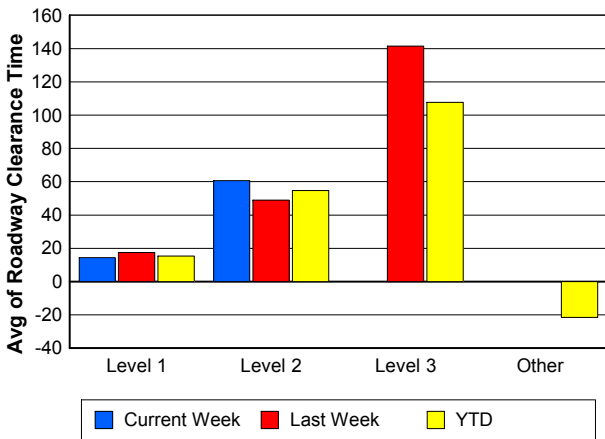
Road Ranger / SIRV Dispatch Time



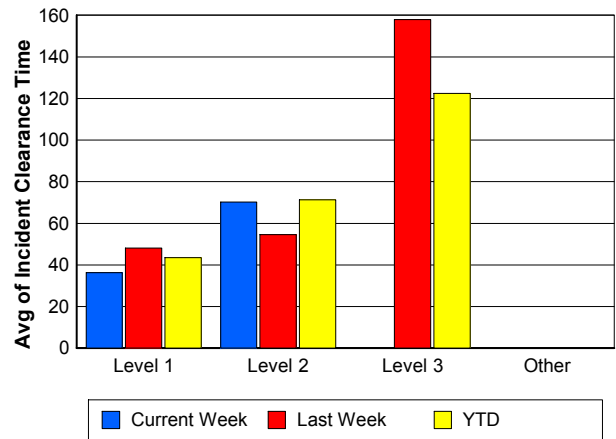
Road Ranger / SIRV Response Time



Roadway Clearance Time (2A)



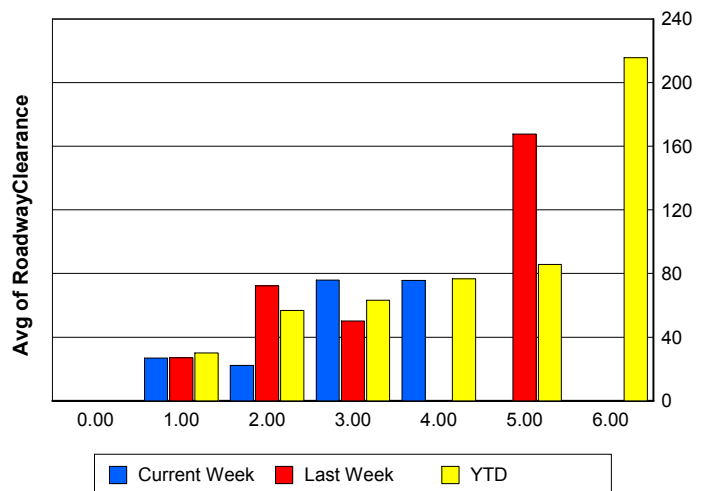
Incident Clearance Time (3B)



Roadway Clearance by Maximum Number of Lanes Blocked

	Current Week	Last Week	YTD
0			
1	26.92	27.00	30.02
2	22.25	72.19	56.82
3	75.83	50.21	63.11
4	75.62	0.00	76.68
5	0.00	167.66	85.63
6	0.00	0.00	215.67

Roadway Clearance Time (2A)



Performance Measures by Roadway

95

	<u>Current Week</u>	<u>Last Week</u>	<u>YTD</u>
Number of Events	617	587	11,367
Number of Incidents	30	34	530
TMC Detection (min.)	0.00	0.00	0.04
TMC Verification (min.)	5.30	5.16	4.26
TMC Response (min.)	9.37	9.61	7.42
RR Dispatch Time (min.)	3.66	2.85	2.55
RR Resp. Time (min.)	5.60	6.72	4.96
Event Clearance (min.)	21.84	23.62	21.29
Roadway Clear. (min.)	34.44	47.20	41.83
Incident Clearance (min.)	51.06	67.01	64.12
# of Events w/ RR/SIRV	561	549	10,619
RR/SIRV Responses	561	549	10,619
RR/SIRV Activities	601	582	11,185

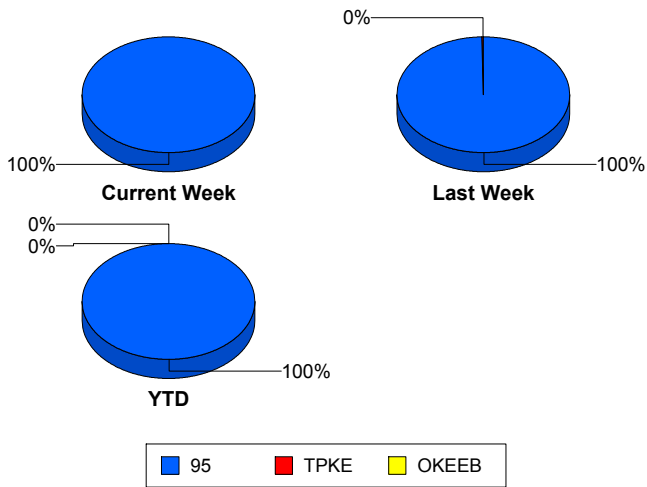
OKEEB

	<u>YTD</u>
Number of Events	1
Number of Incidents	0
TMC Detection (min.)	0.00
TMC Verification (min.)	0.00
TMC Response (min.)	0.00
RR Dispatch Time (min.)	0.00
RR Resp. Time (min.)	0.00
Event Clearance (min.)	18.45
Roadway Clear. (min.)	
Incident Clearance (min.)	
# of Events w/ RR/SIRV	1
RR/SIRV Responses	1
RR/SIRV Activities	1

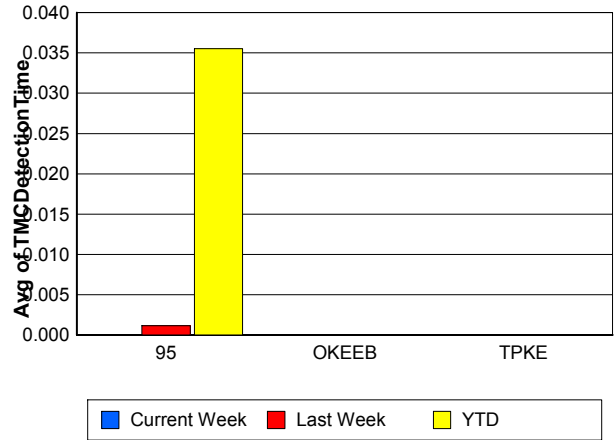
TPKE

	<u>Last Week</u>	<u>YTD</u>
Number of Events	1	10
Number of Incidents	1	10
TMC Detection (min.)	0.00	0.00
TMC Verification (min.)	0.00	0.00
TMC Response (min.)		
RR Dispatch Time (min.)		
RR Resp. Time (min.)		
Event Clearance (min.)	38.33	62.29
Roadway Clear. (min.)	35.63	59.66
Incident Clearance (min.)	38.33	62.29
# of Events w/ RR/SIRV	0	0
RR/SIRV Responses	0	0
RR/SIRV Activities	0	0

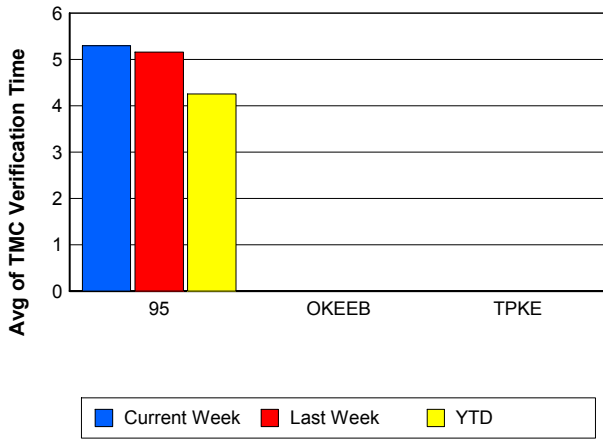
Number of Events / Roadway



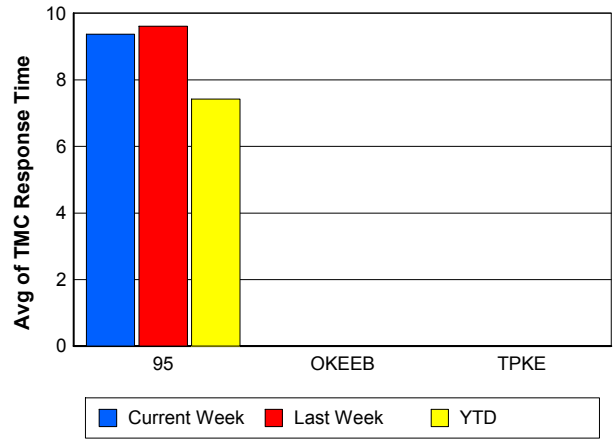
TMC Detection Time



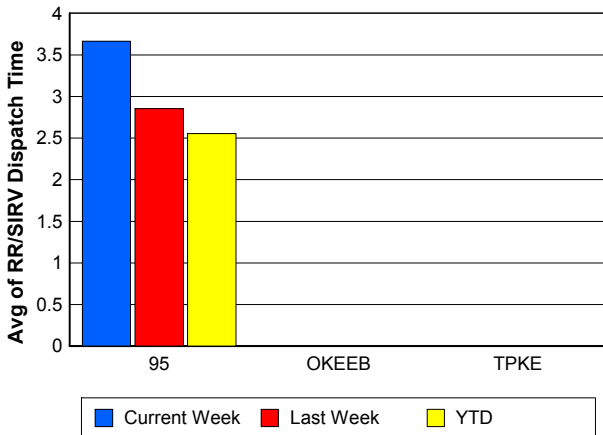
TMC Verification Time



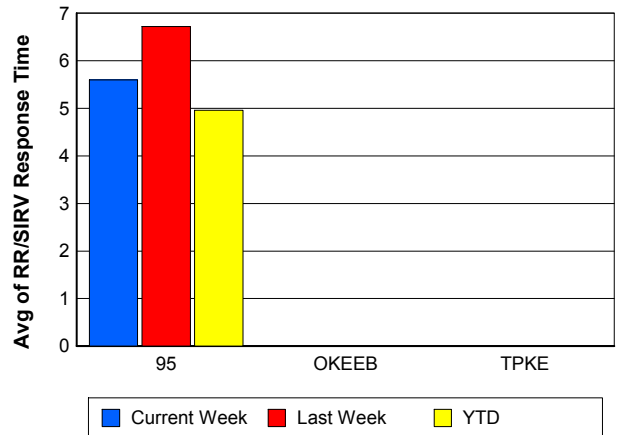
TMC Response Time



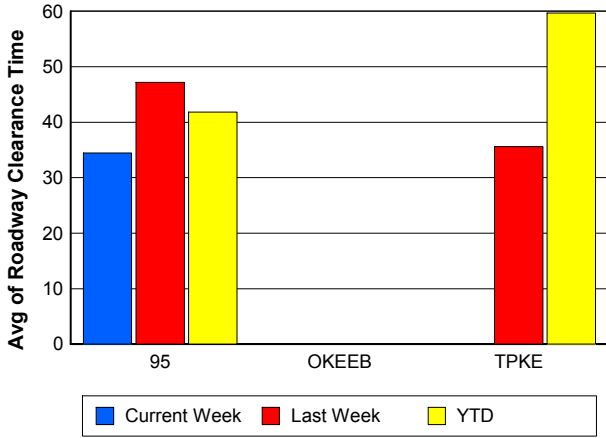
Road Ranger / SIRV Dispatch Time



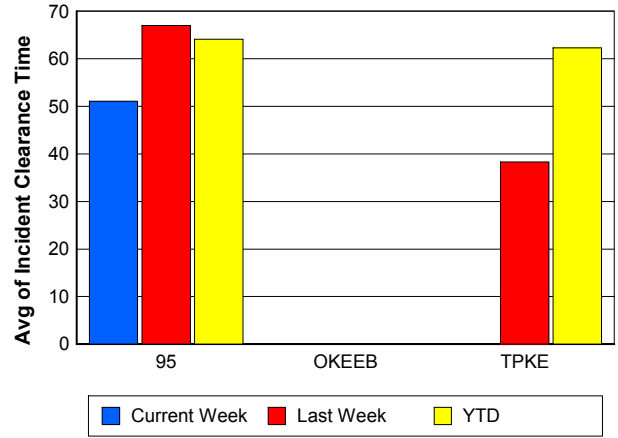
Road Ranger / SIRV Response Time



Roadway Clearance Time (2A)



Incident Clearance Time (3B)



Performance Measures by Event Type

Accident

	<u>Current Week</u>	<u>Last Week</u>	<u>YTD</u>
Number of Events	32	51	825
Number of Incidents	15	24	374
TMC Detection (min.)	0.00	0.00	0.05
TMC Verification (min.)	9.02	12.08	7.61
TMC Response (min.)	15.48	14.06	10.82
RR Dispatch Time (min.)	5.45	2.55	2.61
RR Response Time (min.)	9.96	11.50	8.26
Event Clearance (min.)	62.77	67.68	60.21
Roadway Clearance (min.)	40.73	51.75	45.98
Incident Clearance (min.)	67.79	76.50	73.61
# of Events w/ RR/SIRV	32	48	801
RR/SIRV Assists	32	48	801
RR/SIRV Activities	34	58	938

Debris on Roadway

	<u>Current Week</u>	<u>Last Week</u>	<u>YTD</u>
Number of Events	41	49	665
Number of Incidents	0	1	14
TMC Detection (min.)	0.00	0.00	0.00
TMC Verification (min.)	11.02	12.51	10.75
TMC Response (min.)	11.87	14.44	11.22
RR Dispatch Time (min.)	4.55	4.82	3.65
RR Response Time (min.)	7.32	9.53	7.60
Event Clearance (min.)	14.90	16.62	14.82
Roadway Clearance (min.)		3.20	18.37
Incident Clearance (min.)		3.37	23.54
# of Events w/ RR/SIRV	38	48	655
RR/SIRV Assists	38	48	655
RR/SIRV Activities	42	51	680

Disabled Vehicle

	<u>Current Week</u>	<u>Last Week</u>	<u>YTD</u>
Number of Events	498	461	9,286
Number of Incidents	7	7	107
TMC Detection (min.)	0.00	0.00	0.03
TMC Verification (min.)	5.06	3.79	3.72
TMC Response (min.)	7.95	8.23	6.53
RR Dispatch Time (min.)	2.77	2.55	2.34
RR Response Time (min.)	5.13	5.66	4.31
Event Clearance (min.)	18.52	19.28	18.02
Roadway Clearance (min.)	18.84	30.00	25.25
Incident Clearance (min.)	22.06	37.45	34.70
# of Events w/ RR/SIRV	467	435	8,744
RR/SIRV Assists	467	435	8,744
RR/SIRV Activities	506	456	9,260

Emergency Vehicles

	<u>Current Week</u>	<u>Last Week</u>	<u>YTD</u>
Number of Events	1	1	9
Number of Incidents	1	1	8
TMC Detection (min.)	0.00	0.00	0.00
TMC Verification (min.)	0.00	0.00	3.11
TMC Response (min.)		0.00	5.58
RR Dispatch Time (min.)		0.00	0.11
RR Response Time (min.)		0.00	5.48
Event Clearance (min.)	16.12	18.98	49.90
Roadway Clearance (min.)	15.08	13.23	50.79
Incident Clearance (min.)	16.12	18.98	53.24
# of Events w/ RR/SIRV	0	1	5
RR/SIRV Assists	0	1	5
RR/SIRV Activities	0	2	6

Other

	<u>Current Week</u>	<u>Last Week</u>	<u>YTD</u>
Number of Events	34	20	476
Number of Incidents	0	0	1
TMC Detection (min.)	0.00	0.00	0.12
TMC Verification (min.)	0.00	1.64	0.59
TMC Response (min.)	56.08	12.91	16.97
RR Dispatch Time (min.)	26.69	3.08	5.64
RR Response Time (min.)	9.94	9.42	8.71
Event Clearance (min.)	35.13	21.91	22.74
Roadway Clearance (min.)			8.12
Incident Clearance (min.)			24.77
# of Events w/ RR/SIRV	14	11	311
RR/SIRV Assists	14	11	311
RR/SIRV Activities	8	10	202

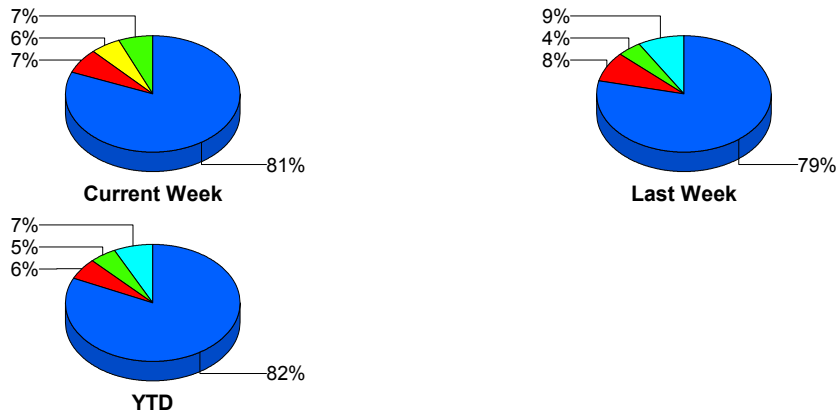
Police Activity

	<u>Current Week</u>	<u>Last Week</u>	<u>YTD</u>
Number of Events	4	4	45
Number of Incidents	3	1	20
TMC Detection (min.)	0.00	0.00	0.16
TMC Verification (min.)	0.00	0.00	0.73
TMC Response (min.)	18.44	35.48	20.99
RR Dispatch Time (min.)	11.61	16.38	9.12
RR Response Time (min.)	6.83	15.52	12.94
Event Clearance (min.)	34.48	59.34	53.86
Roadway Clearance (min.)	22.11	168.70	80.70
Incident Clearance (min.)	37.25	178.02	86.84
# of Events w/ RR/SIRV	3	4	35
RR/SIRV Assists	3	4	35
RR/SIRV Activities	3	3	28

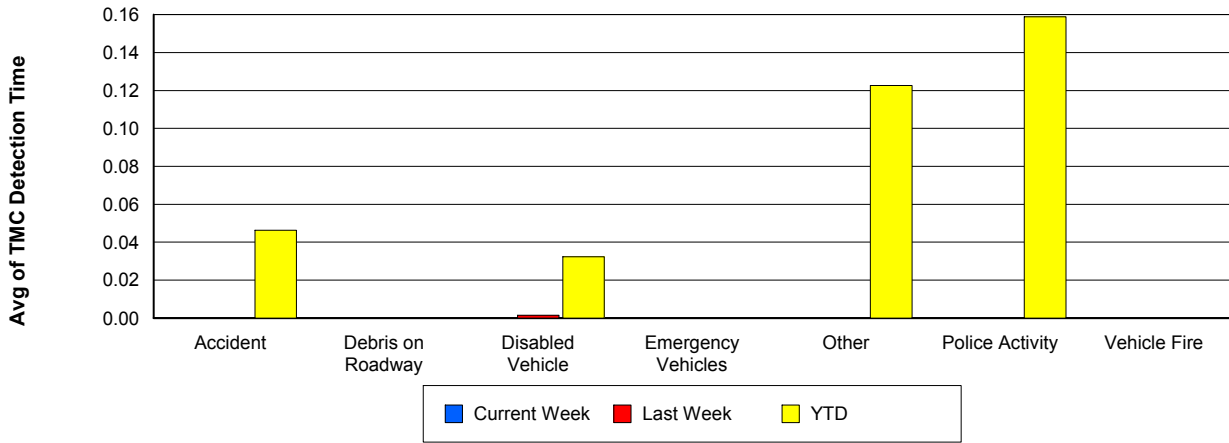
Vehicle Fire

	<u>Current Week</u>	<u>Last Week</u>	<u>YTD</u>
Number of Events	3	1	24
Number of Incidents	3	1	15
TMC Detection (min.)	0.00	0.00	0.00
TMC Verification (min.)	3.00	0.00	2.77
TMC Response (min.)	2.99	8.62	7.14
RR Dispatch Time (min.)	1.27	4.15	2.40
RR Response Time (min.)	1.72	4.47	4.92
Event Clearance (min.)	60.26	18.35	43.71
Roadway Clearance (min.)	52.66	3.28	35.46
Incident Clearance (min.)	60.26	18.35	53.07
# of Events w/ RR/SIRV	3	1	22
RR/SIRV Assists	3	1	22
RR/SIRV Activities	4	1	25

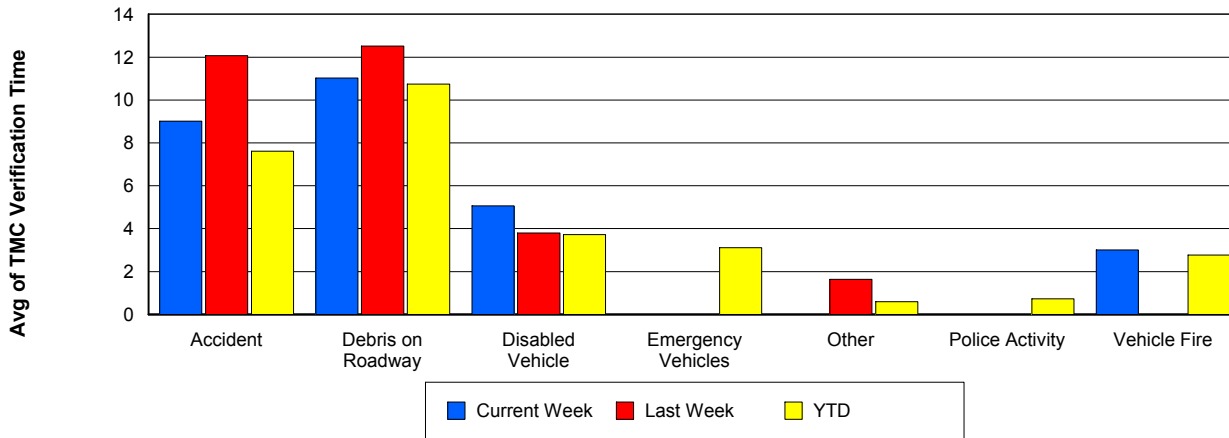
Number of Events / Event Type



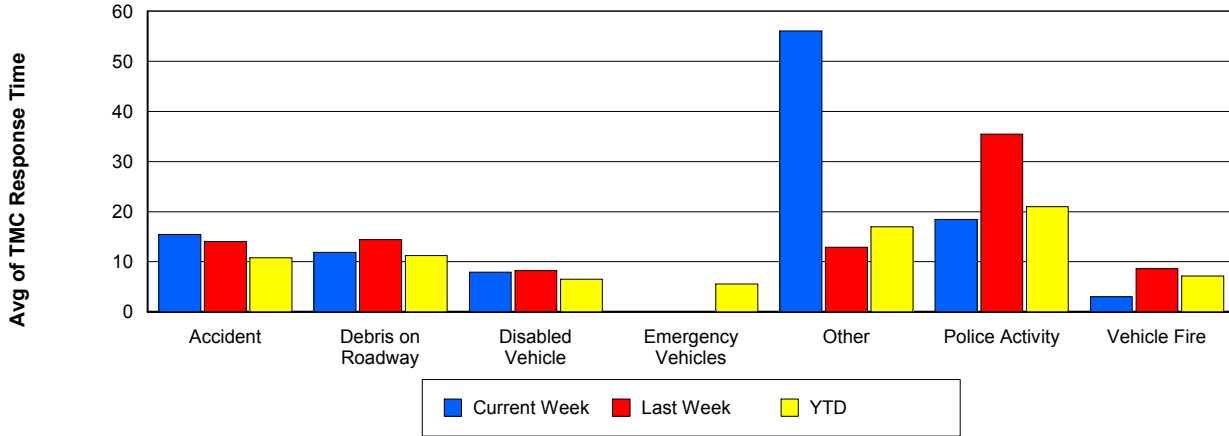
TMC Detection Time



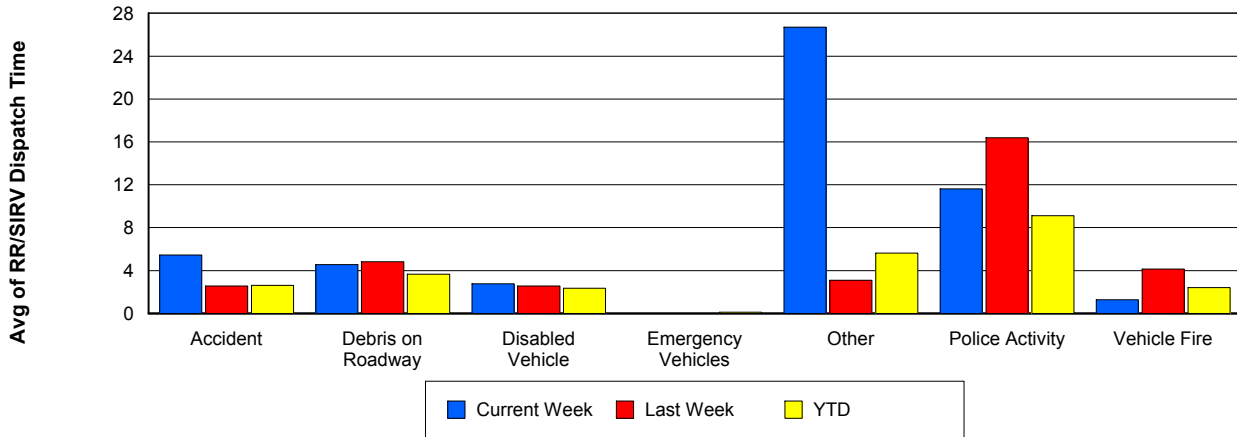
TMC Verification Time



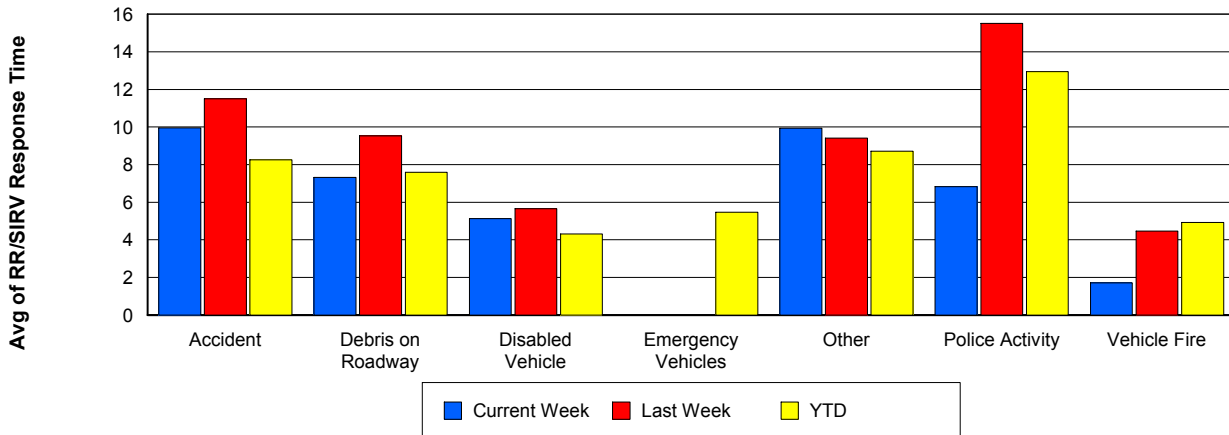
TMC Response Time



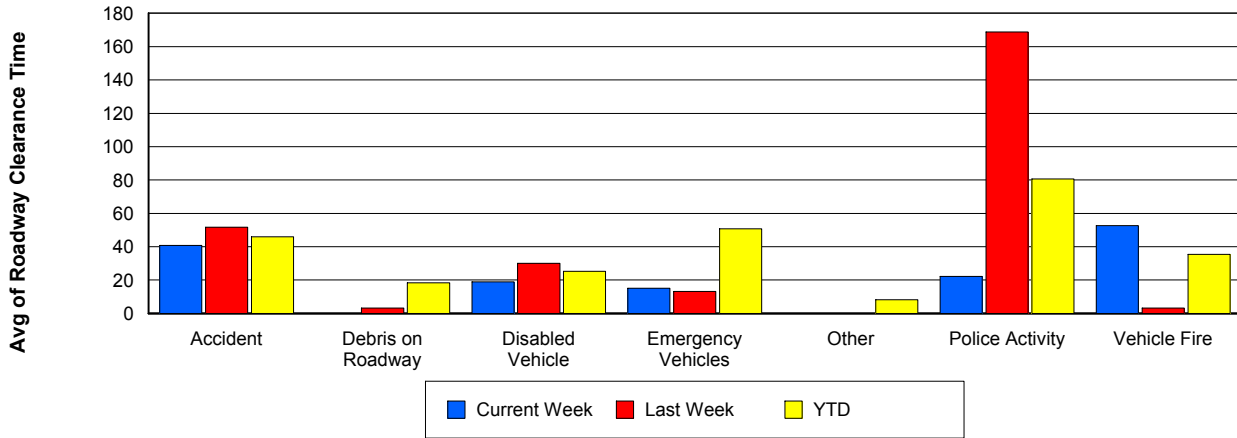
Road Ranger / SIRV Dispatch Time



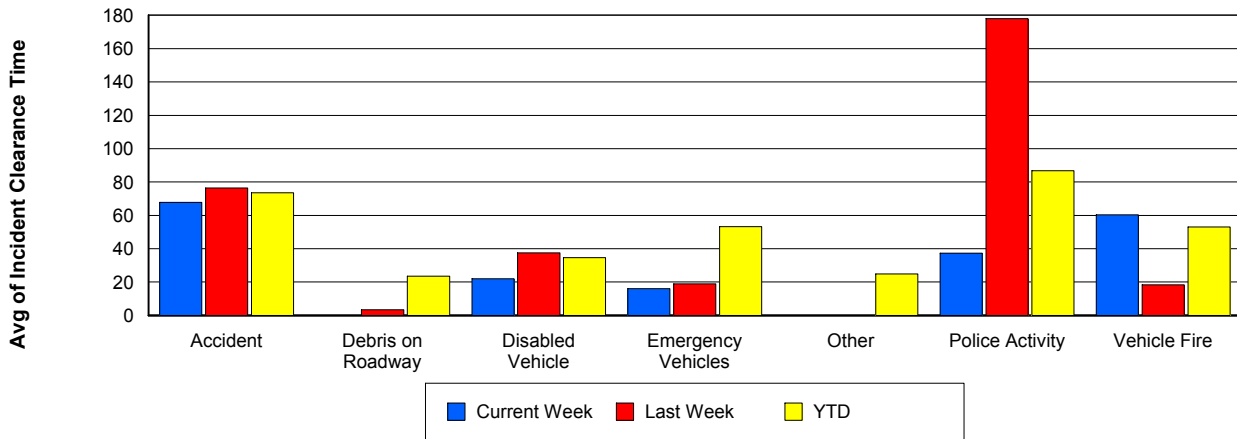
Road Ranger / SIRV Response Time



Roadway Clearance Time (2A)



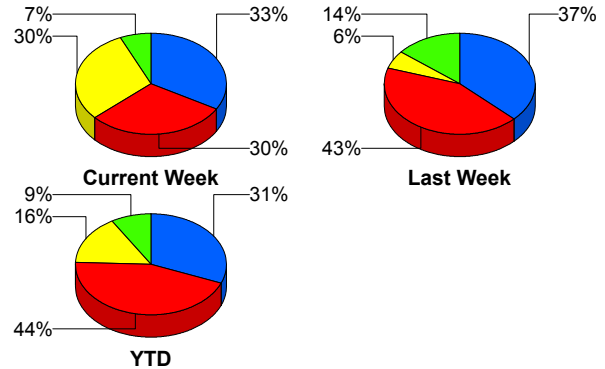
Incident Clearance Time (3B)



Incident Detection Methods

	Current Week	Last Week	YTD
Broward Road Ranger	0	0	5
Broward TMC	2	0	7
County Police	0	0	1
District 4	0	1	10
FDOT Maintenance	0	0	2
FHP	9	15	238
Florida's Turnpike	0	1	10
ITMS	0	1	1
ITMS CCTV	9	2	86
Media	0	0	1
Motorist	0	2	9
Palm Beach Road Ran	10	13	168
Total	30	35	538

Total Incidents by Detection Method

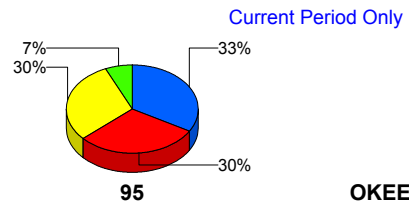


■ Palm Beach Road Ranger
 ■ FHP
 ■ ITMS CCTV
 ■ Others

Incident Detection Methods by Roadway

		Current Week	Last Week	YTD
95	Broward Road Ranger	0	0	5
	Broward TMC	2	0	7
	County Police	0	0	1
	District 4	0	1	10
	FDOT Maintenance	0	0	2
	FHP	9	15	238
	ITMS	0	1	1
	ITMS CCTV	9	2	86
	Media	0	0	1
	Motorist	0	2	9
	Palm Beach Road Ran	10	13	168
	Total	30	34	528
TPKE	Florida's Turnpike	0	1	10
	Total	0	1	10

Total Events by Roadway and Detection Method



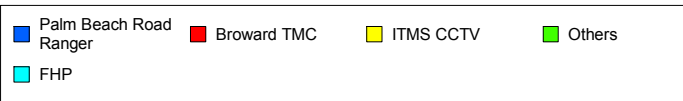
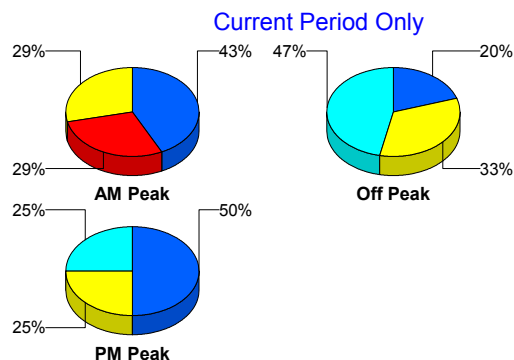
■ Palm Beach Road Ranger
 ■ FHP
 ■ ITMS CCTV
 ■ Others
■ Florida's Turnpike

	Current Week	Last Week	YTD
Total	30	35	538

Incident Detection Methods by Peak Period

		Current Week	Last Week	YTD
AM Peak	Broward Road Ranger	0	0	4
	Broward TMC	2	0	2
	County Police	0	0	1
	District 4	0	0	2
	FHP	0	3	44
	Florida's Turnpike	0	1	2
	ITMS CCTV	2	0	22
	Media	0	0	1
	Motorist	0	0	1
	Palm Beach Road Ran	3	2	49
	Total	7	6	128
Off Peak	Broward Road Ranger	0	0	1
	Broward TMC	0	0	2
	District 4	0	0	5
	FDOT Maintenance	0	0	2
	FHP	7	8	126
	Florida's Turnpike	0	0	7
	ITMS	0	1	1
	ITMS CCTV	5	1	49
	Motorist	0	1	4
	Palm Beach Road Ran	3	7	80
	Total	15	18	277
PM Peak	Broward TMC	0	0	3
	District 4	0	1	3
	FHP	2	4	69
	Florida's Turnpike	0	0	1
	ITMS CCTV	2	1	15
	Motorist	0	1	4

Total Events by Peak Period and Detection Method

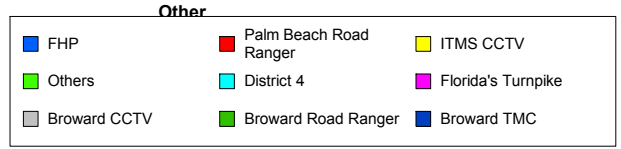
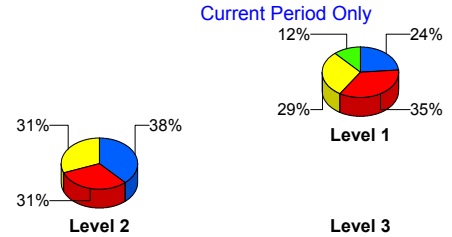


		Current Week	Last Week	YTD
PM Peak	Palm Beach Road Ran	4	4	39
	Total	8	11	134
Total		30	35	538

Incident Detection Methods by Severity

		Current Week	Last Week	YTD
	FHP	0	0	1
	Total	0	0	1
Level 1	Broward Road Ranger	0	0	5
	Broward TMC	2	0	5
	County Police	0	0	1
	District 4	0	1	8
	FHP	4	6	79
	ITMS CCTV	5	1	44
	Motorist	0	0	3
	Palm Beach Road Ran	6	9	112
	Total	17	17	257
	Level 2	Broward TMC	0	0
District 4		0	0	1
FDOT Maintenance		0	0	2
FHP		5	5	123
ITMS		0	1	1
ITMS CCTV		4	1	36
Motorist		0	2	6
Palm Beach Road Ran		4	4	44
Total		13	13	215
Level 3	District 4	0	0	1
	FHP	0	4	36
	Florida's Turnpike	0	1	10
	ITMS CCTV	0	0	6
	Media	0	0	1
	Palm Beach Road Ran	0	0	12

Total Events by Severity and Detection Method



		Current Week	Last Week	YTD
Level 3	Total	0	5	66
Total		30	35	538

Road Ranger / SIRV Performance Measures

Road Ranger / SIRV Performance By County

Values presented are:
 - Total Events with a RR/SIRV Response
 - Total RR/SIRV Responses,
 - Total Activities Performed

	Current We	Last Week	YTD
Palm Beach	658	679	13,063
	679	696	13,501
	732	748	14,344

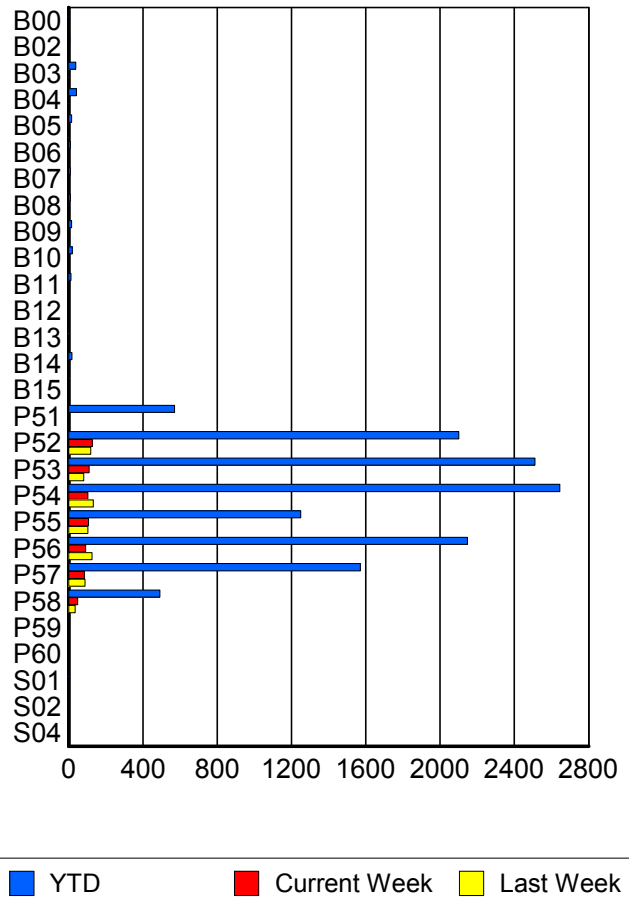
RR/SIRV Responses per County



Road Ranger / SIRV Performance By Truck

	Current We	Last Week	YTD
B00	0	0	2
	0	0	2
	0	0	2
B02	1	0	6
	1	0	6
	1	0	6
B03	0	3	39
	0	3	39
	0	3	42
B04	2	0	41
	2	0	42
	2	0	45
B05	3	2	16
	3	2	16
	3	2	16
B06	2	1	10
	2	1	10
	2	1	12
B07	0	0	9
	0	0	9
	0	0	9
B08	0	0	9
	0	0	9
	0	0	9
B09	0	0	16
	0	0	16
	0	0	17

RR/SIRV Responses per Truck



	Current We	Last Week	YTD
B10	0	0	20
	0	0	20
	0	0	22
B11	0	0	13
	0	0	13
	0	0	14
B12	0	0	2
	0	0	2
	0	0	2
B13	0	0	3
	0	0	3
	0	0	3
B14	0	1	18
	0	1	18
	0	1	18
B15	0	0	4
	0	0	4
	0	0	4
P51	0	0	560
	0	0	570
	0	0	602
P52	125	118	2,075
	127	119	2,100
	140	126	2,234
P53	107	82	2,482
	110	82	2,510
	113	92	2,672
P54	101	132	2,608
	103	133	2,644
	114	141	2,810
P55	107	104	1,241
	107	104	1,250
	113	111	1,307
P56	91	126	2,121
	91	126	2,147
	99	138	2,290
P57	83	89	1,552
	84	89	1,570
	94	94	1,676
P58	48	34	487
	49	35	492
	51	38	522
P59	0	1	2
	0	1	2
	0	1	2

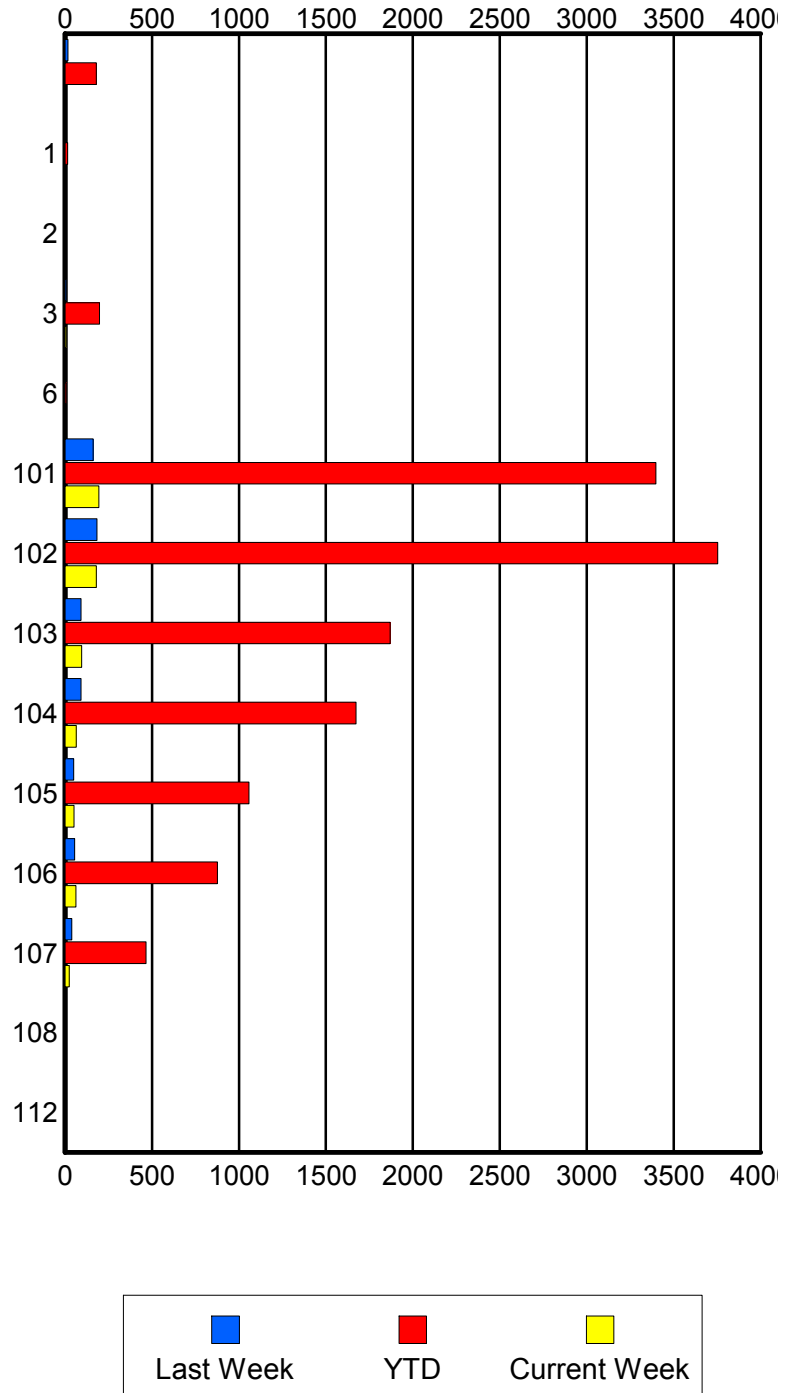
	Current We	Last Week	YTD
P60	0	0	1
	0	0	1
	0	0	1
S01	0	0	3
	0	0	3
	0	0	4
S02	0	0	2
	0	0	2
	0	0	2
S04	0	0	1
	0	0	1
	0	0	1

Road Ranger / SIRV Performance By Beat

	Current We	Last Week	YTD
	0	16	178
	0	16	179
	0	16	191
1	0	0	13
	0	0	14
	0	0	14
2	0	0	3
	0	0	3
	0	0	3
3	8	7	195
	8	7	199
	8	7	211
6	0	0	6
	0	0	7
	0	0	7
101	193	160	3,341
	194	161	3,398
	208	169	3,601
102	177	182	3,699
	179	183	3,753
	196	193	3,979
103	92	91	1,845
	95	92	1,870
	101	95	1,977
104	65	92	1,655
	65	92	1,673
	69	105	1,788
105	49	50	1,049
	51	50	1,057
	56	57	1,140
106	61	56	869
	62	56	877
	66	62	928
107	25	39	463
	25	39	465
	28	44	498
108	0	0	3
	0	0	4
	0	0	4
112	0	0	2
	0	0	2
	0	0	3

Values presented are:
 - Total Events with a RR/SIRV Response
 - Total RR/SIRV Responses,
 - Total Activities Performed

RR/SIRV Responses per Beat

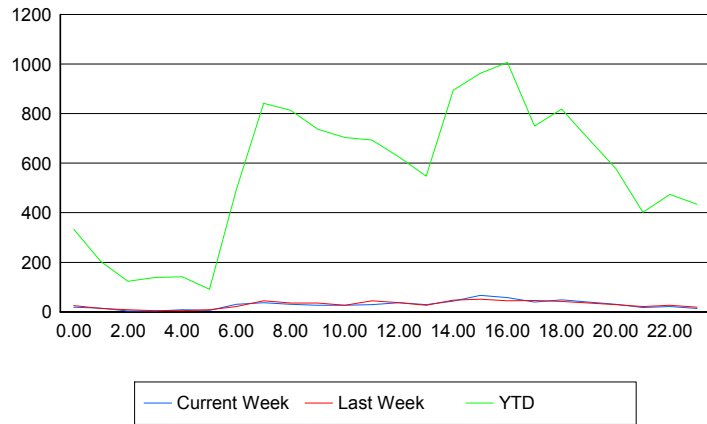


Road Ranger / SIRV Performance By Time of Day

Values presented are:
 - Total Events with a RR/SIRV Response
 - Total RR/SIRV Responses,
 - Total Activities Performed

	Current We	Last Week	YTD
12AM-1AM	19	25	323
	19	25	333
	19	25	362
1AM-2AM	15	14	199
	15	14	203
	15	14	210
2AM-3AM	3	8	119
	3	8	123
	3	8	131
3AM-4AM	3	4	134
	3	4	139
	3	5	149
4AM-5AM	8	5	133
	9	5	141
	9	5	147
5AM-6AM	6	8	82
	6	8	91
	6	8	96
6AM-7AM	30	21	468
	30	21	492
	31	22	519
7AM-8AM	37	43	817
	37	45	842
	43	53	894
8AM-9AM	28	35	779
	30	35	813
	36	40	864
9AM-10AM	27	34	713
	27	35	737
	28	38	780
10AM-11AM	25	26	679
	26	26	703
	27	30	738
11AM-12PM	29	42	677
	29	44	693
	32	48	731
12PM-1PM	35	34	595
	37	37	625
	40	39	654

Number of Responses / Hour of the Day



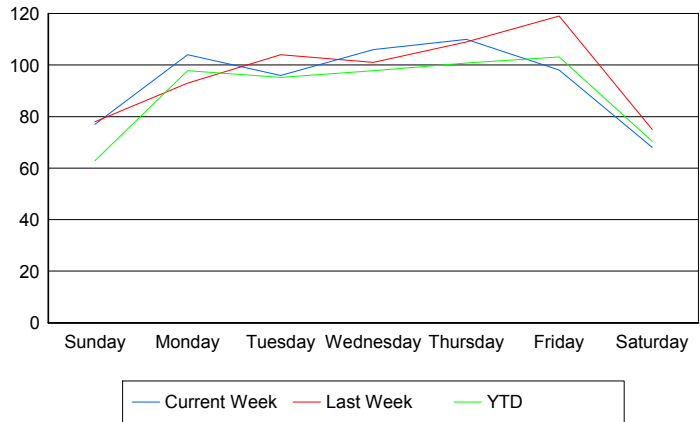
	Current We	Last Week	YTD
1PM-2PM	28	24	516
	29	26	547
	29	27	576
2PM-3PM	39	46	860
	43	47	895
	50	52	960
3PM-4PM	66	50	945
	67	51	963
	70	51	1,028
4PM-5PM	54	44	971
	57	45	1,007
	63	51	1,080
5PM-6PM	38	45	728
	40	46	750
	44	49	799
6PM-7PM	47	42	803
	49	42	818
	53	44	864
7PM-8PM	39	35	674
	39	35	697
	40	37	735
8PM-9PM	30	28	569
	31	29	579
	31	31	604
9PM-10PM	17	21	389
	17	22	402
	19	23	436
10PM-11PM	21	26	464
	22	27	474
	26	27	511
11PM-12AM	14	19	426
	14	19	434
	15	21	476

Road Ranger / SIRV Performance By Day of Week

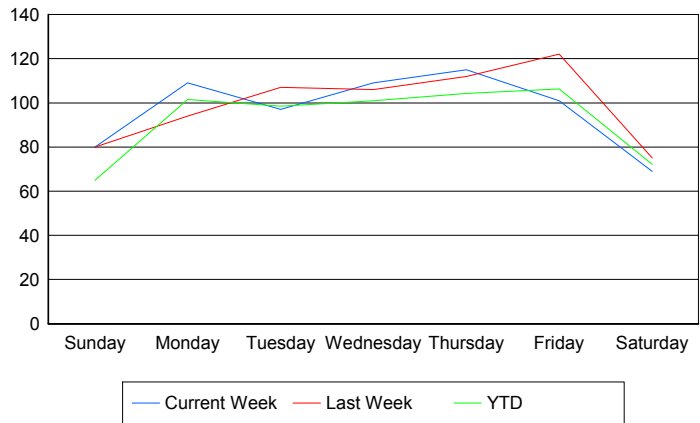
Values presented are:
 - Total Events with a RR/SIRV Response
 - Total RR/SIRV Responses,
 - Total Activities Performed

	Current We	Last Week	YTD
Sunday	76	78	1,286
	79	80	1,329
	80	84	1,398
Monday	104	93	2,004
	109	94	2,079
	124	105	2,213
Tuesday	96	104	1,981
	97	107	2,047
	106	112	2,177
Wednesday	106	101	2,015
	109	106	2,078
	113	117	2,224
Thursday	110	109	2,048
	115	112	2,122
	125	120	2,269
Friday	98	119	2,218
	101	122	2,287
	109	132	2,407
Saturday	68	75	1,523
	69	75	1,559
	75	78	1,656

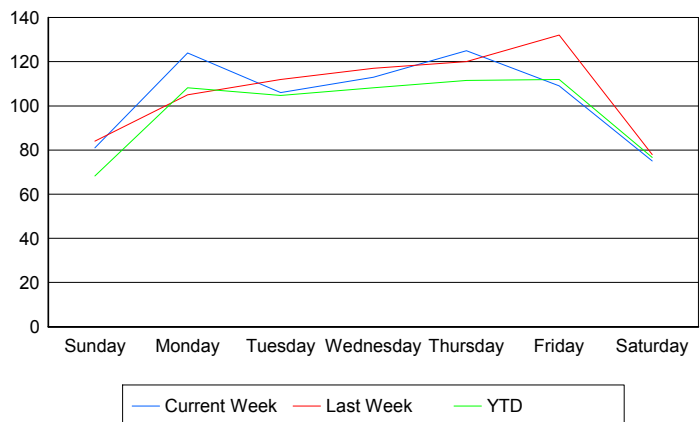
Avg # of events with a RR/SIRV Response per Day of the Week



Avg # of RR/SIRV Responses per Day of the Week



Avg # of RR/SIRV Activities Performed per Day of the Week



Road Ranger / SIRV Responses per Time of Day and Day of Week

