



# Weekly Performance Measures Report Palm Beach County



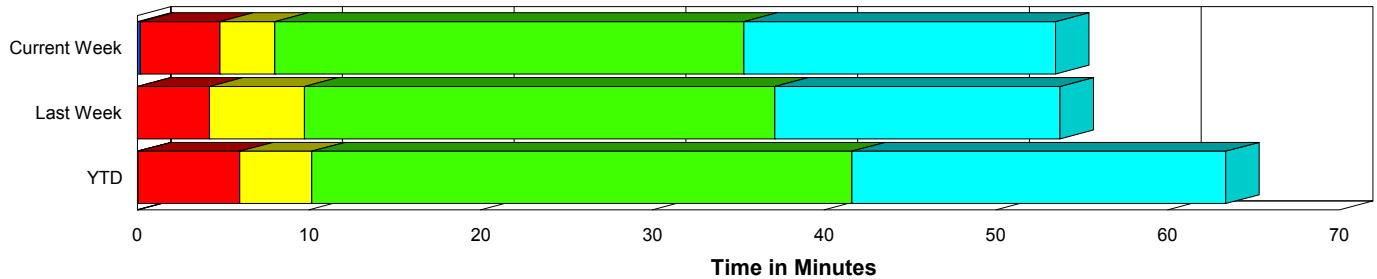
Created on:  
June 07, 2010  
9:17 am

Period From May 30, 2010 to Jun 5, 2010

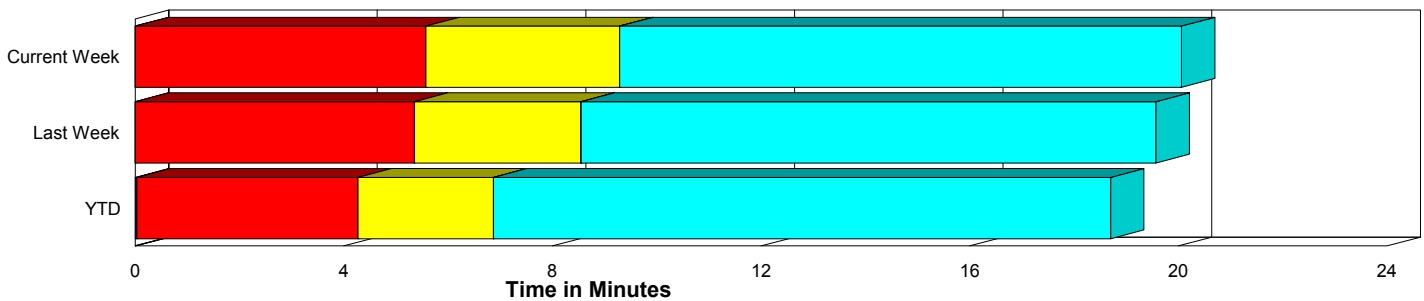
## Performance Measures Summary

	Traffic Events (No Lanes Blocked)			Incidents (Lanes Blocked)		
	<u>This Week</u>	<u>Last Week</u>	<u>YTD</u>	<u>This Week</u>	<u>Last Week</u>	<u>YTD</u>
Number of Events	573	587	11,411	36	30	576
TMC Detection (min.)	0.00	0.00	0.03	0.17	0.00	0.04
TMC Verification (min.)	5.58	5.36	4.24	4.64	4.20	5.97
TMC Response (min.)	10.22	9.32	7.40	7.84	10.37	10.47
RR Dispatch Time (min.)	3.52	3.61	2.59	2.12	4.67	2.82
RR Response Time (min.)	7.08	5.59	4.92	5.72	5.78	7.67
Roadway Clearance (min.)				35.32	34.44	41.73
Event Clearance (min.)	20.99	20.34	19.26	53.41	51.06	63.83
# of Events w/ RR/SIRV	524	534	10,626	36	27	554
RR/SIRV Responses	524	534	10,626	36	27	554
RR/SIRV Activities	555	571	11,067	46	30	720

### Incident Clearance Time-Line



### Traffic Event (Non-Lane Blockage) Time-Line



<span style="color: blue;">■</span> Avg. TMC Detection Time	<span style="color: green;">■</span> Avg. Time from TMC Response to Roadway Clearance*
<span style="color: red;">■</span> Avg. Time from TMC Detection to TMC Verification	<span style="color: cyan;">■</span> Avg. Time from Roadway Clearance to Incident/Event Clearance**
<span style="color: yellow;">■</span> Avg. Time from TMC Verification to TMC Response	

\* Roadway clearance equals all travel lanes open

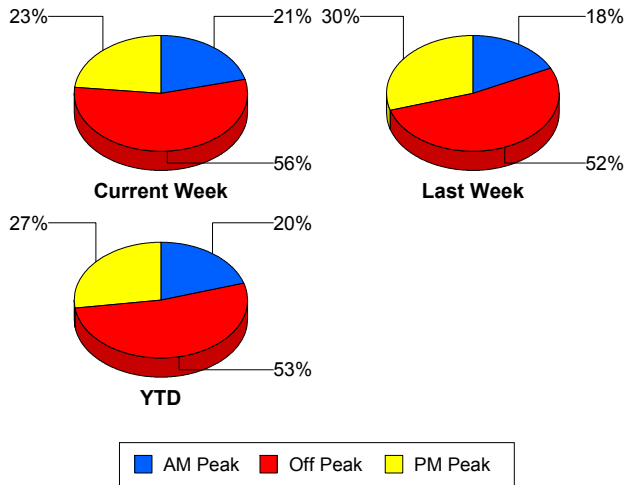
\*\* Incident clearance equals time when last responder has left the scene

## Performance Measures by Peak Period

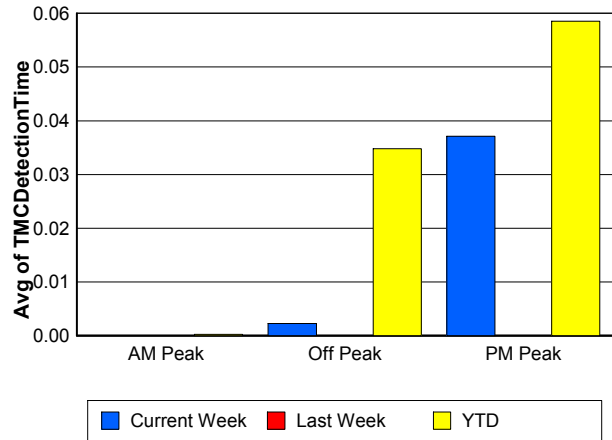
Note: AM peak period is defined as 6am to 10am and PM peak period is defined as 3pm to 7pm.

	AM Peak			Off Peak			PM Peak		
	Current Week	Last Week	YTD	Current Week	Last Week	YTD	Current Week	Last Week	YTD
Number of Events	128	110	2,437	339	323	6,300	142	184	3,250
Number of Incidents	5	7	133	22	15	300	9	8	143
TMC Detection (min.)	0.00	0.00	0.00	0.00	0.00	0.03	0.04	0.00	0.06
TMC Verification (min.)	5.28	4.16	3.00	5.83	5.39	4.56	5.00	5.82	4.85
TMC Response (min.)	9.76	8.14	6.29	10.75	10.32	8.15	8.72	8.58	7.38
RR Dispatch Time (min.)	2.88	2.67	1.76	3.82	4.21	2.87	3.06	3.38	2.71
RR Response Time (min.)	6.84	5.44	4.59	7.22	5.97	5.38	6.61	5.11	4.82
Event Clearance (min.)	21.79	21.12	21.07	23.95	22.02	22.28	21.41	21.93	19.96
Roadway Clearance (min.)	39.19	17.30	38.17	41.72	39.53	48.47	17.54	39.89	30.92
Incident Clearance (min.)	48.54	43.40	63.69	56.43	48.52	66.93	48.74	62.52	55.81
# of Events w/ RR/SIRV	119	105	2,292	304	282	5,814	137	174	3,074
RR/SIRV Responses	119	105	2,292	304	282	5,814	137	174	3,074
RR/SIRV Activities	128	112	2,427	327	297	6,138	146	192	3,222

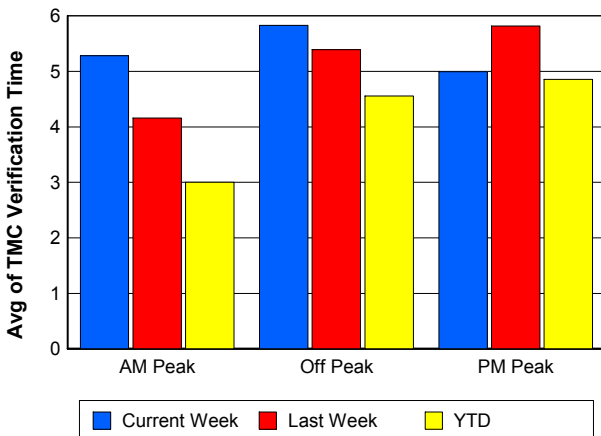
### Number of Events / Peak Period



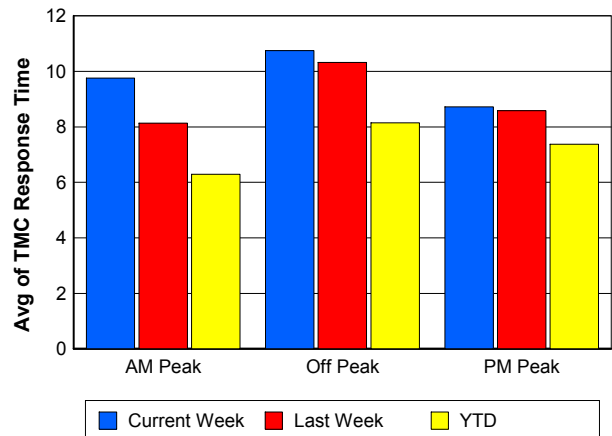
### TMC Detection Time



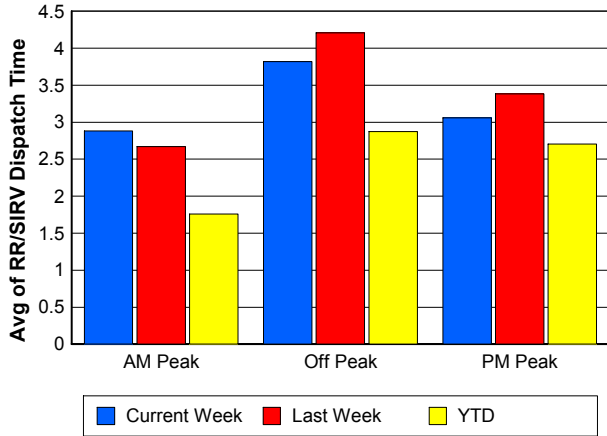
### TMC Verification Time



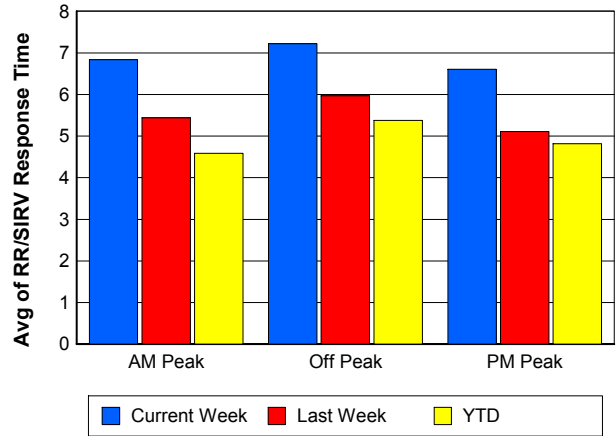
### TMC Response Time



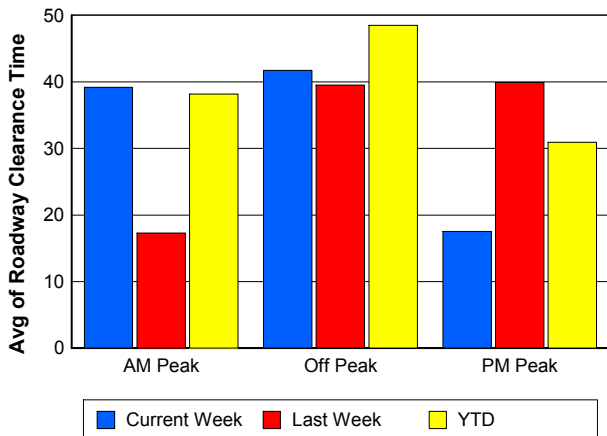
## Road Ranger / SIRV Dispatch Time



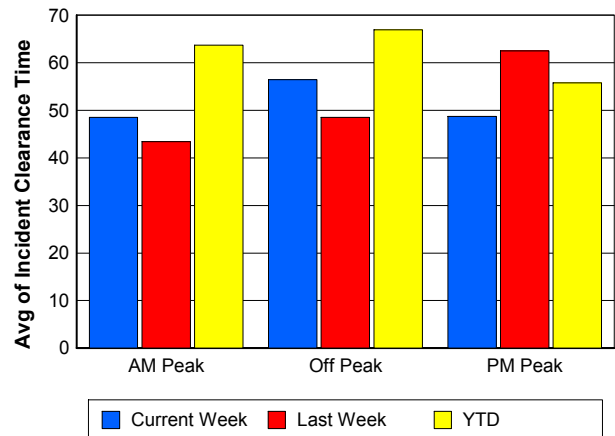
## Road Ranger / SIRV Response Time



## Roadway Clearance Time (2A)



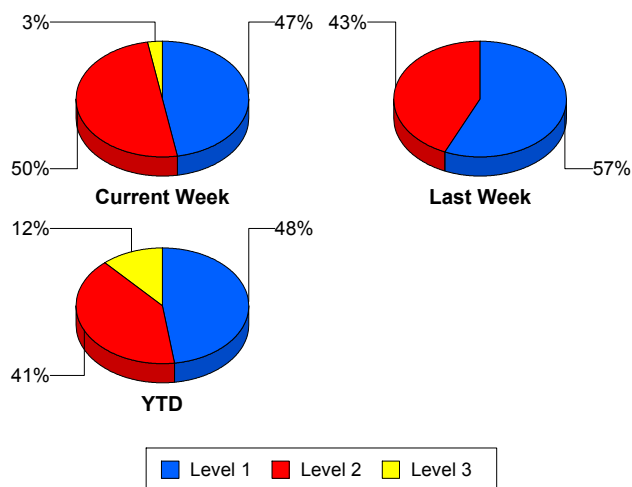
## Incident Clearance Time (3B)



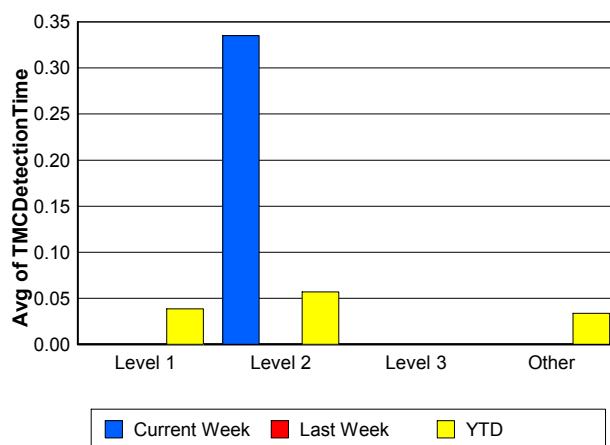
## Performance Measures by Severity

	Level 1			Level 2			Level 3		Other		
	<u>This Week</u>	<u>Last Week</u>	<u>YTD</u>	<u>This Week</u>	<u>Last Week</u>	<u>YTD</u>	<u>This Week</u>	<u>YTD</u>	<u>This Week</u>	<u>Last Week</u>	<u>YTD</u>
Number of Events	17	17	274	18	13	233	1	67	573	587	11,413
Number of Incidents	17	17	274	18	13	233	1	67	0	0	2
TMC Detection (min.)	0.00	0.00	0.04	0.34	0.00	0.06	0.00	0.00	0.00	0.00	0.03
TMC Verification (min.)	3.92	3.13	3.37	5.58	5.60	9.02	0.00	5.99	5.58	5.36	4.24
TMC Response (min.)	9.20	5.89	6.32	6.45	14.85	14.05	9.95	15.52	10.22	9.32	7.40
RR Dispatch Time (min.)	2.94	3.50	1.39	1.36	5.93	3.55	2.08	7.01	3.52	3.61	2.59
RR Resp. Time (min.)	6.26	2.63	4.99	5.09	8.92	10.55	7.87	8.51	7.08	5.59	4.92
Event Clearance (min.)	41.51	36.35	43.39	61.06	70.28	70.58	117.88	123.16	20.99	20.34	19.27
Roadway Clear. (min.)	14.55	14.38	15.27	51.23	60.67	54.48	102.12	107.51			-21.46
Incident Clearance (min.)	41.51	36.35	43.39	61.06	70.28	70.58	117.88	122.33			0.00
# of Events w/ RR/SIRV	17	14	268	18	13	231	1	53	524	534	10,628
RR/SIRV Responses	17	14	268	18	13	231	1	53	524	534	10,628
RR/SIRV Activities	22	15	322	23	15	313	1	80	555	571	11,072

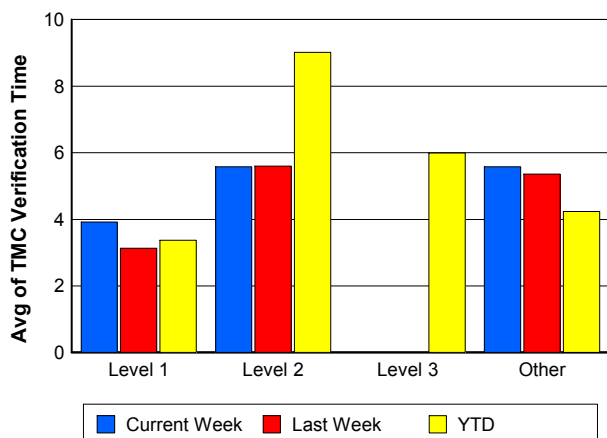
### Number of Events / Severity



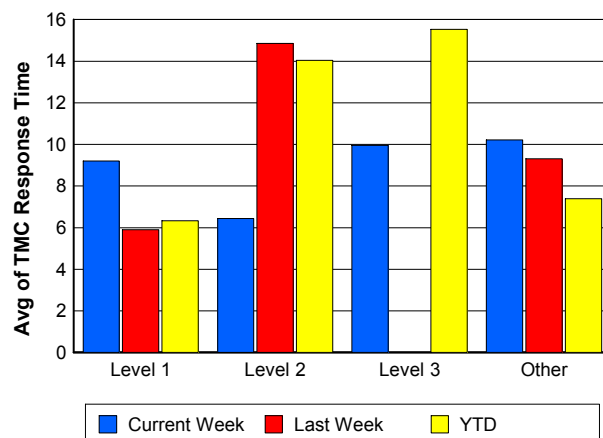
### TMC Detection Time



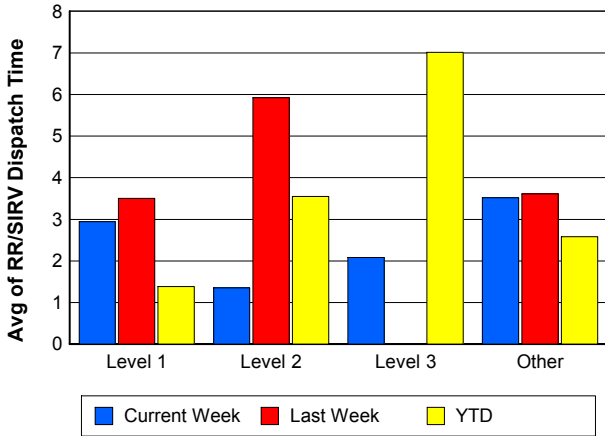
### TMC Verification Time



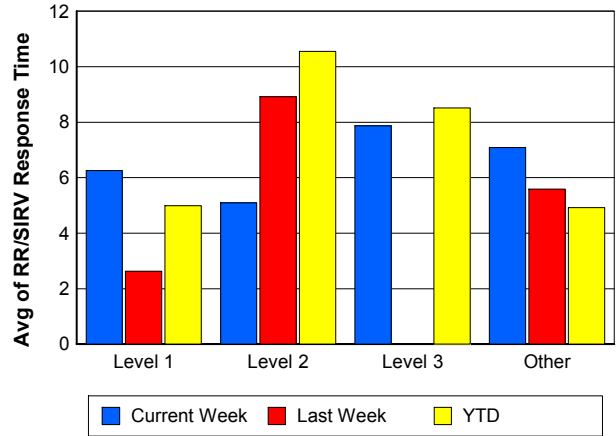
### TMC Response Time



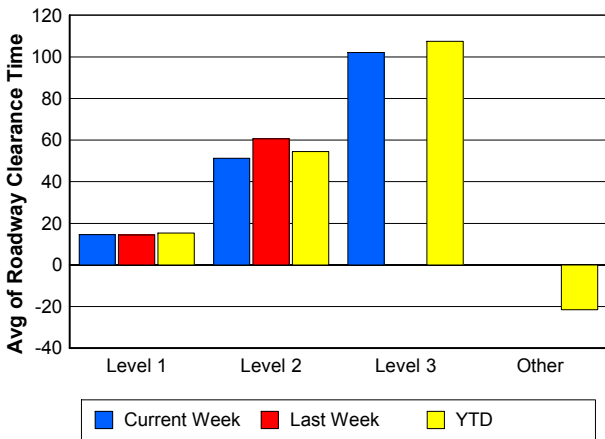
### Road Ranger / SIRV Dispatch Time



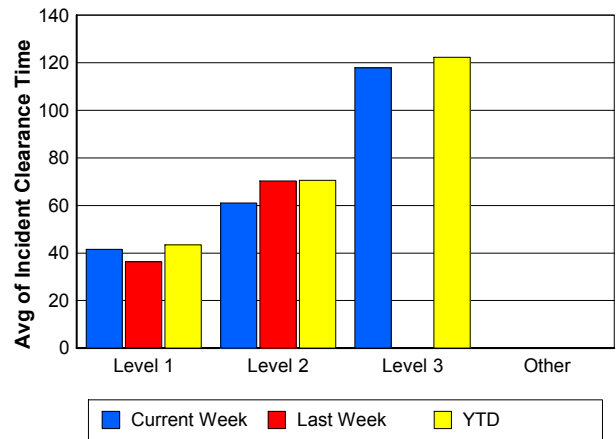
### Road Ranger / SIRV Response Time



### Roadway Clearance Time (2A)



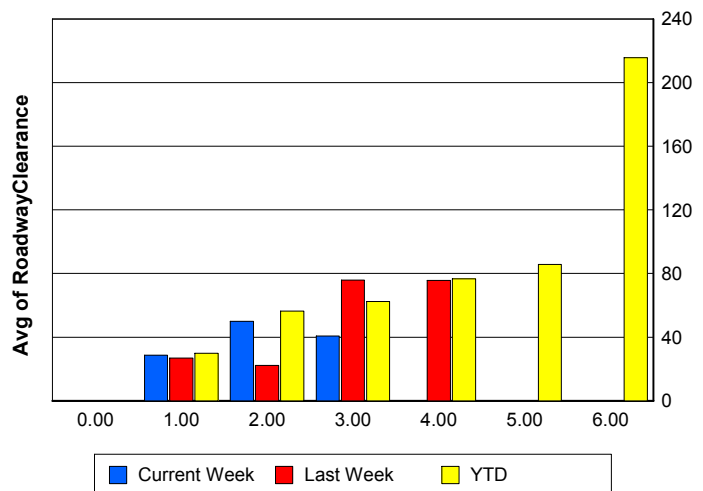
### Incident Clearance Time (3B)



### Roadway Clearance by Maximum Number of Lanes Blocked

	Current Week	Last Week	YTD
0			
1	28.75	26.92	29.93
2	49.99	22.25	56.29
3	40.79	75.83	62.30
4	0.00	75.62	76.68
5	0.00	0.00	85.63
6	0.00	0.00	215.67

### Roadway Clearance Time (2A)



## Performance Measures by Roadway

**95**

	<u>Current Week</u>	<u>Last Week</u>	<u>YTD</u>
Number of Events	609	617	11,976
Number of Incidents	36	30	566
TMC Detection (min.)	0.01	0.00	0.03
TMC Verification (min.)	5.52	5.30	4.33
TMC Response (min.)	10.05	9.37	7.56
RR Dispatch Time (min.)	3.43	3.66	2.60
RR Resp. Time (min.)	6.99	5.60	5.06
Event Clearance (min.)	22.90	21.84	21.37
Roadway Clear. (min.)	35.32	34.44	41.42
Incident Clearance (min.)	53.41	51.06	63.44
# of Events w/ RR/SIRV	560	561	11,179
RR/SIRV Responses	560	561	11,179
RR/SIRV Activities	601	601	11,786

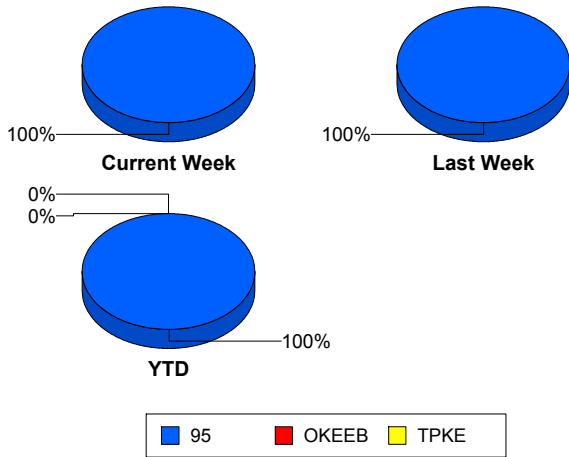
**OKEEB**

	<u>YTD</u>
Number of Events	1
Number of Incidents	0
TMC Detection (min.)	0.00
TMC Verification (min.)	0.00
TMC Response (min.)	0.00
RR Dispatch Time (min.)	0.00
RR Resp. Time (min.)	0.00
Event Clearance (min.)	18.45
Roadway Clear. (min.)	
Incident Clearance (min.)	
# of Events w/ RR/SIRV	1
RR/SIRV Responses	1
RR/SIRV Activities	1

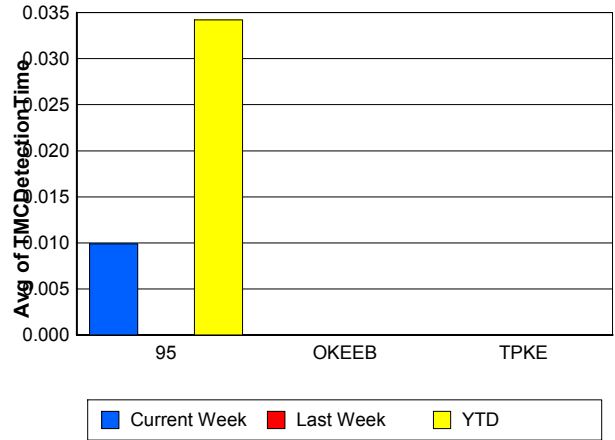
**TPKE**

	<u>YTD</u>
Number of Events	10
Number of Incidents	10
TMC Detection (min.)	0.00
TMC Verification (min.)	0.00
TMC Response (min.)	
RR Dispatch Time (min.)	
RR Resp. Time (min.)	
Event Clearance (min.)	62.29
Roadway Clear. (min.)	59.66
Incident Clearance (min.)	62.29
# of Events w/ RR/SIRV	0
RR/SIRV Responses	0
RR/SIRV Activities	0

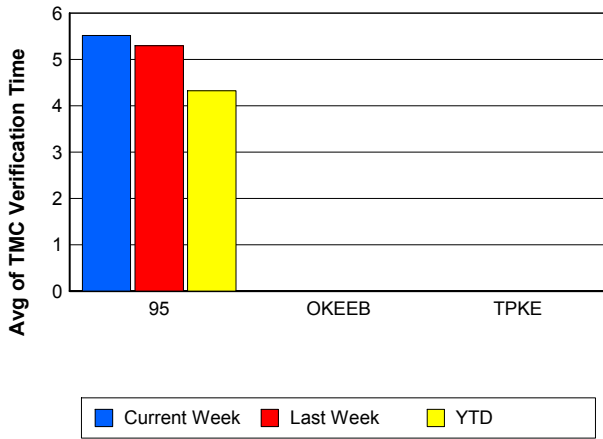
## Number of Events / Roadway



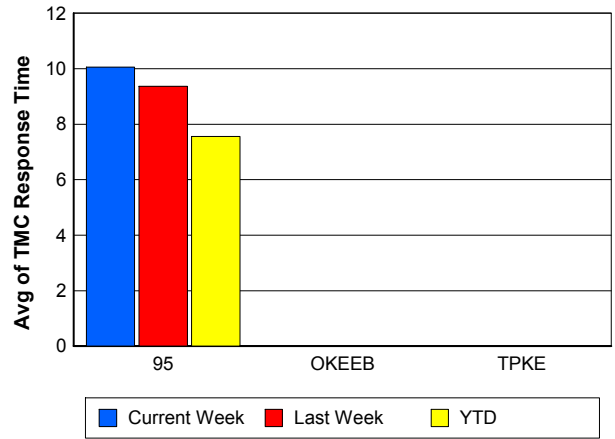
## TMC Detection Time



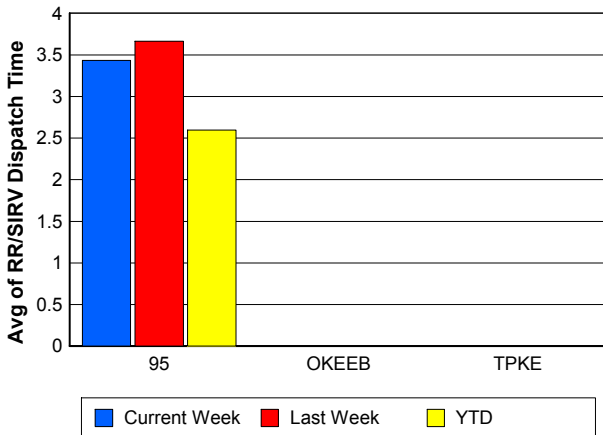
## TMC Verification Time



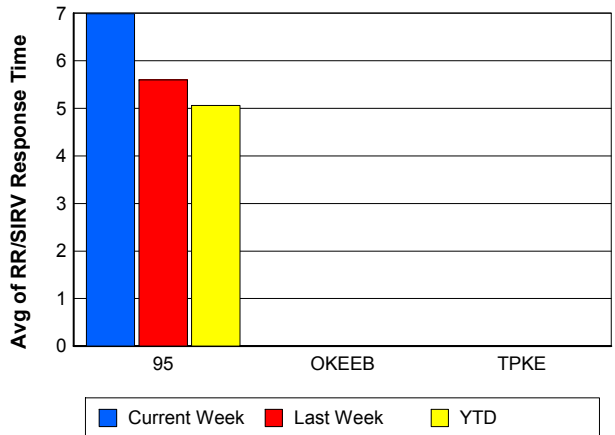
## TMC Response Time



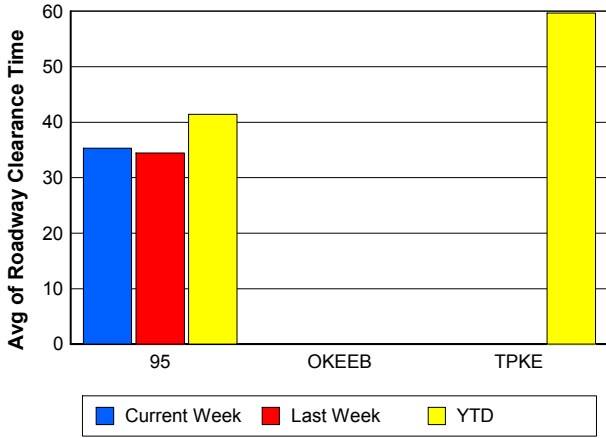
## Road Ranger / SIRV Dispatch Time



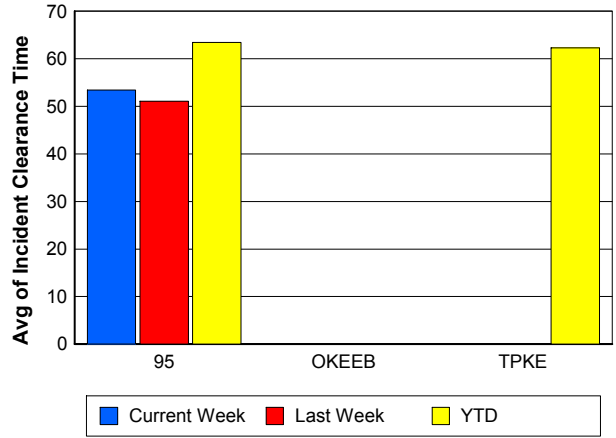
## Road Ranger / SIRV Response Time



## Roadway Clearance Time (2A)



## Incident Clearance Time (3B)



## Performance Measures by Event Type

### Accident

	<u>Current Week</u>	<u>Last Week</u>	<u>YTD</u>
Number of Events	60	32	885
Number of Incidents	27	15	401
TMC Detection (min.)	0.10	0.00	0.05
TMC Verification (min.)	8.50	9.02	7.67
TMC Response (min.)	16.51	15.48	11.21
RR Dispatch Time (min.)	2.06	5.45	2.57
RR Response Time (min.)	14.53	9.96	8.69
Event Clearance (min.)	51.52	62.77	59.62
Roadway Clearance (min.)	39.14	40.73	45.52
Incident Clearance (min.)	62.43	67.79	72.85
# of Events w/ RR/SIRV	59	32	860
RR/SIRV Assists	59	32	860
RR/SIRV Activities	66	34	1,004

### Debris on Roadway

	<u>Current Week</u>	<u>Last Week</u>	<u>YTD</u>
Number of Events	48	41	713
Number of Incidents	0	0	14
TMC Detection (min.)	0.00	0.00	0.00
TMC Verification (min.)	18.31	11.02	11.25
TMC Response (min.)	19.16	11.87	11.78
RR Dispatch Time (min.)	4.31	4.55	3.70
RR Response Time (min.)	14.85	7.32	8.10
Event Clearance (min.)	21.08	14.90	15.24
Roadway Clearance (min.)			18.37
Incident Clearance (min.)			23.54
# of Events w/ RR/SIRV	48	38	703
RR/SIRV Assists	48	38	703
RR/SIRV Activities	51	42	731

### Disabled Vehicle

	<u>Current Week</u>	<u>Last Week</u>	<u>YTD</u>
Number of Events	471	498	9,757
Number of Incidents	6	7	113
TMC Detection (min.)	0.00	0.00	0.03
TMC Verification (min.)	4.18	5.06	3.74
TMC Response (min.)	7.93	7.95	6.60
RR Dispatch Time (min.)	3.42	2.77	2.39
RR Response Time (min.)	5.02	5.13	4.34
Event Clearance (min.)	19.26	18.52	18.08
Roadway Clearance (min.)	22.52	18.84	25.11
Incident Clearance (min.)	24.75	22.06	34.18
# of Events w/ RR/SIRV	434	467	9,178
RR/SIRV Assists	434	467	9,178
RR/SIRV Activities	471	506	9,731

## Emergency Vehicles

	<u>Last Week</u>	<u>YTD</u>
Number of Events	1	9
Number of Incidents	1	8
TMC Detection (min.)	0.00	0.00
TMC Verification (min.)	0.00	3.11
TMC Response (min.)		5.58
RR Dispatch Time (min.)		0.11
RR Response Time (min.)		5.48
Event Clearance (min.)	16.12	49.90
Roadway Clearance (min.)	15.08	50.79
Incident Clearance (min.)	16.12	53.24
# of Events w/ RR/SIRV	0	5
RR/SIRV Assists	0	5
RR/SIRV Activities	0	6

## Other

	<u>Current Week</u>	<u>Last Week</u>	<u>YTD</u>
Number of Events	26	34	502
Number of Incidents	1	0	2
TMC Detection (min.)	0.00	0.00	0.12
TMC Verification (min.)	0.80	0.00	0.60
TMC Response (min.)	17.43	56.08	17.00
RR Dispatch Time (min.)	6.77	26.69	5.69
RR Response Time (min.)	7.17	9.94	8.63
Event Clearance (min.)	27.20	35.13	22.97
Roadway Clearance (min.)	30.48		19.30
Incident Clearance (min.)	34.95		29.86
# of Events w/ RR/SIRV	16	14	327
RR/SIRV Assists	16	14	327
RR/SIRV Activities	11	8	213

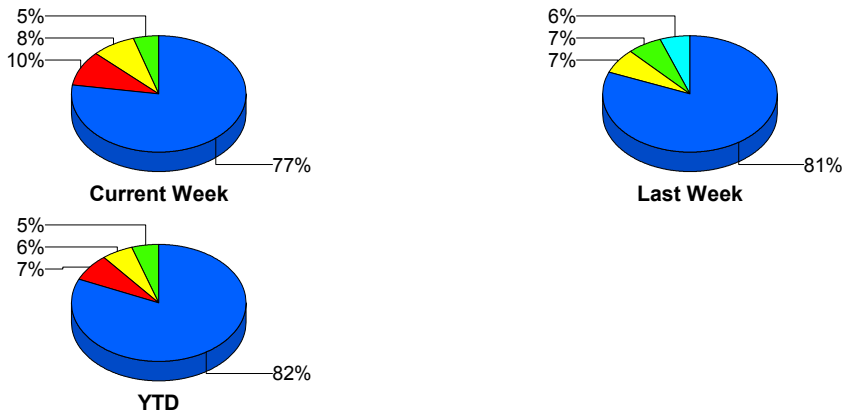
## Police Activity

	<u>Current Week</u>	<u>Last Week</u>	<u>YTD</u>
Number of Events	2	4	47
Number of Incidents	1	3	21
TMC Detection (min.)	0.00	0.00	0.15
TMC Verification (min.)	1.02	0.00	0.74
TMC Response (min.)	2.03	18.44	20.23
RR Dispatch Time (min.)	0.37	11.61	8.65
RR Response Time (min.)	1.83	6.83	12.50
Event Clearance (min.)	11.10	34.48	52.04
Roadway Clearance (min.)	16.28	22.11	77.64
Incident Clearance (min.)	17.35	37.25	83.53
# of Events w/ RR/SIRV	2	3	37
RR/SIRV Assists	2	3	37
RR/SIRV Activities	1	3	29

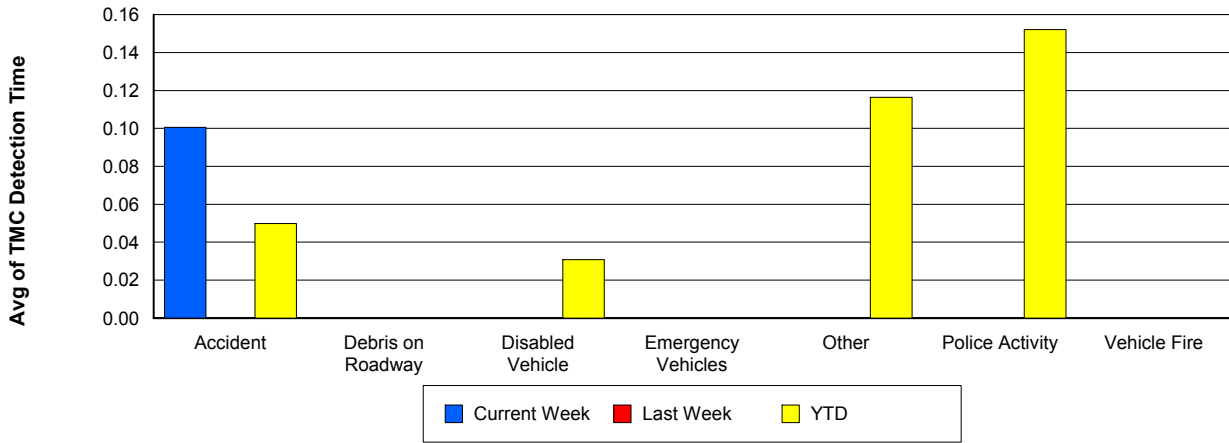
## Vehicle Fire

	<u>Current Week</u>	<u>Last Week</u>	<u>YTD</u>
Number of Events	1	3	25
Number of Incidents	1	3	16
TMC Detection (min.)	0.00	0.00	0.00
TMC Verification (min.)	4.65	3.00	2.85
TMC Response (min.)	4.63	2.99	7.02
RR Dispatch Time (min.)	0.32	1.27	2.31
RR Response Time (min.)	4.32	1.72	4.89
Event Clearance (min.)	36.37	60.26	43.42
Roadway Clearance (min.)	32.95	52.66	35.31
Incident Clearance (min.)	36.37	60.26	52.03
# of Events w/ RR/SIRV	1	3	23
RR/SIRV Assists	1	3	23
RR/SIRV Activities	1	4	26

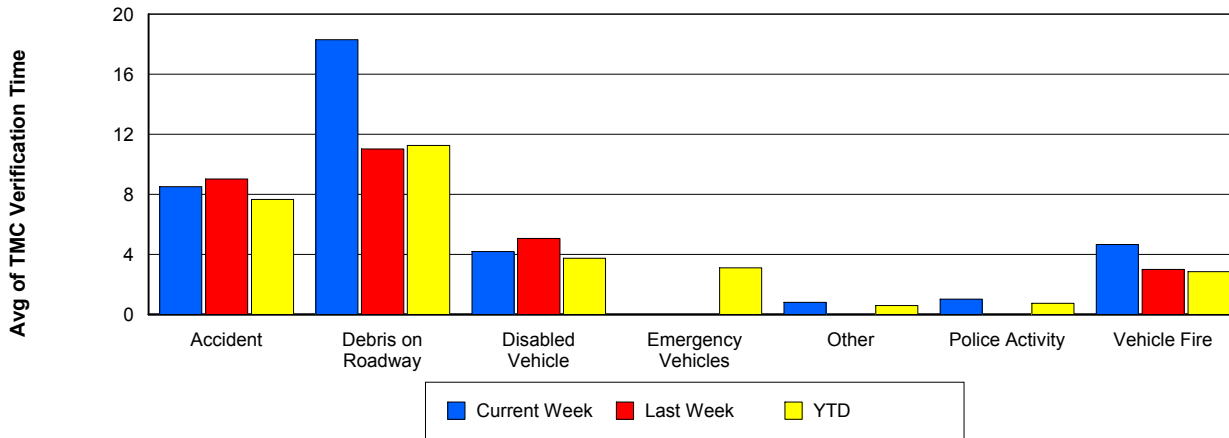
## Number of Events / Event Type



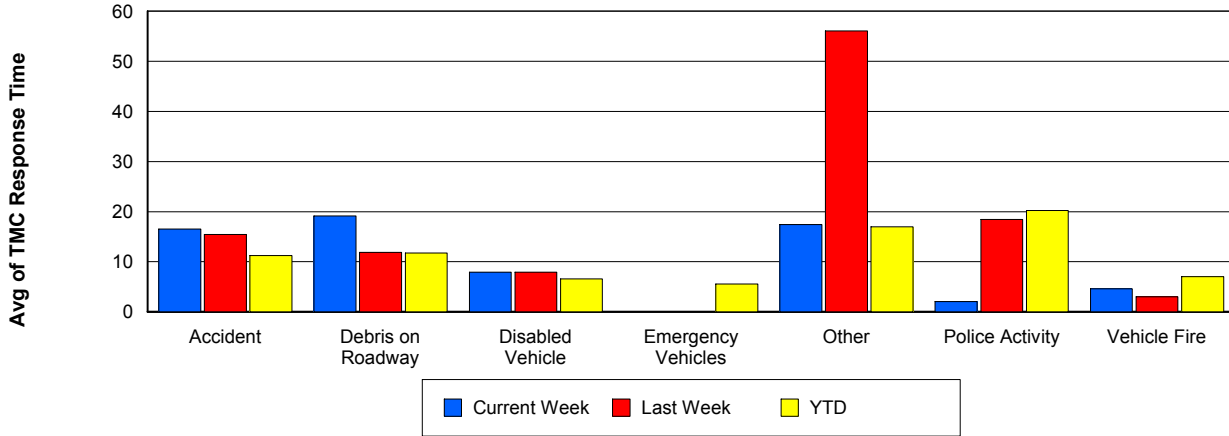
## TMC Detection Time



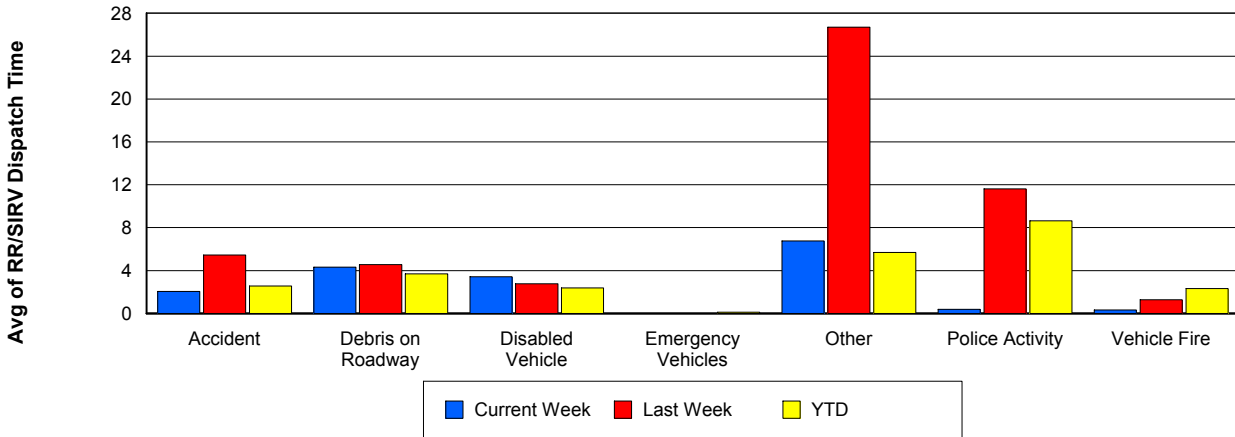
## TMC Verification Time



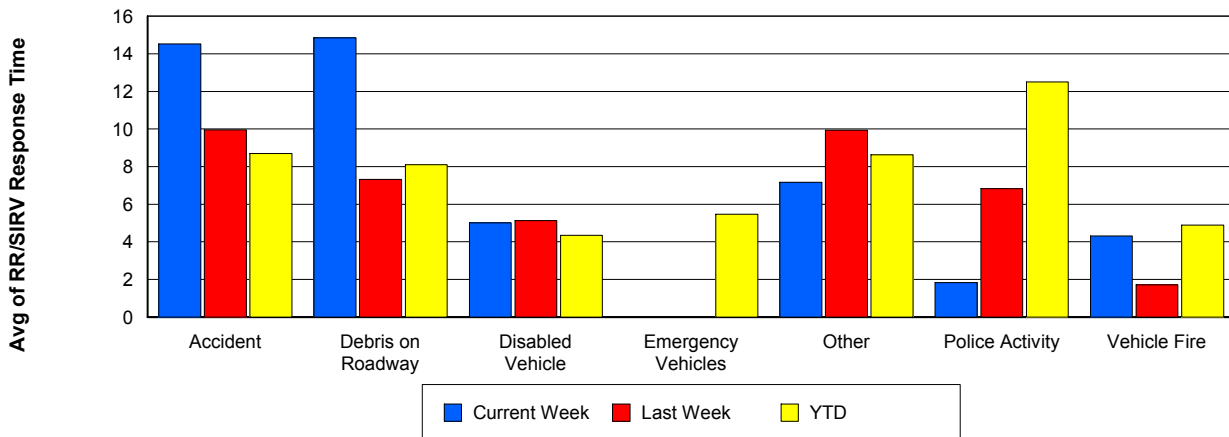
## TMC Response Time



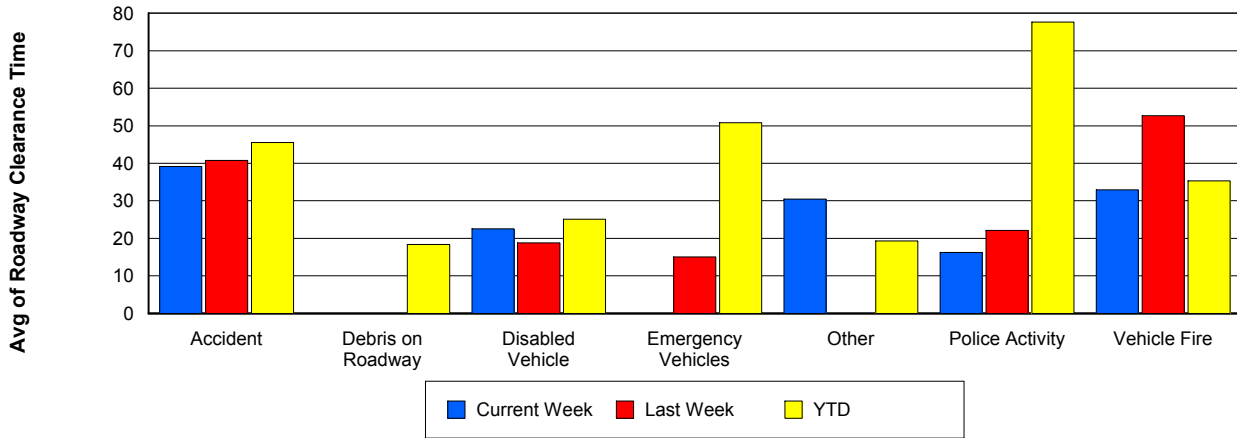
## Road Ranger / SIRV Dispatch Time



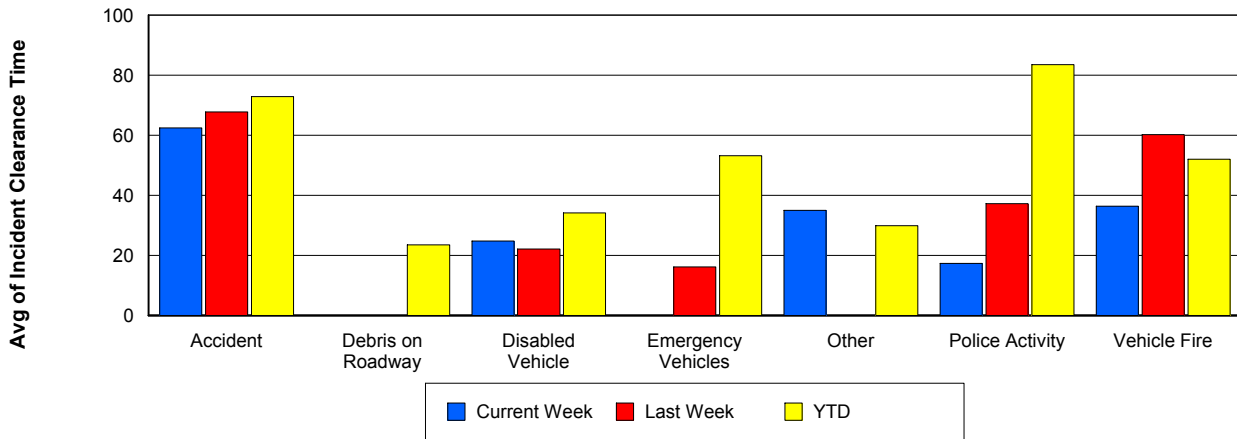
## Road Ranger / SIRV Response Time



## Roadway Clearance Time (2A)



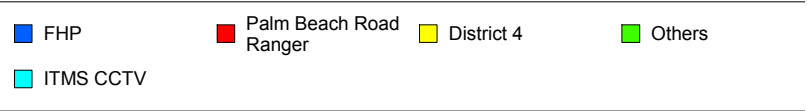
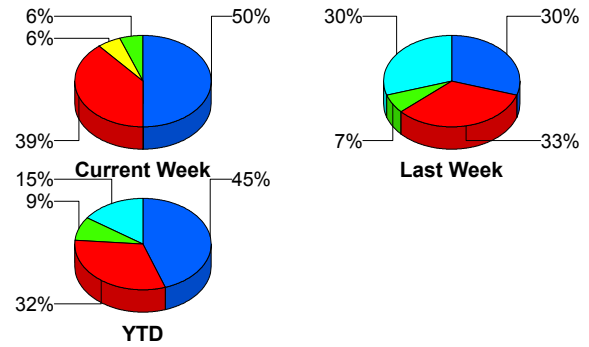
## Incident Clearance Time (3B)



## Incident Detection Methods

	Current Week	Last Week	YTD
Broward Road Ranger	0	0	5
Broward TMC	0	2	7
County Police	0	0	1
District 4	2	0	12
FDOT Maintenance	1	0	3
FHP	18	9	256
Florida's Turnpike	0	0	10
ITMS	0	0	1
ITMS CCTV	1	9	87
Media	0	0	1
Motorist	0	0	9
Palm Beach Road Ran	14	10	182
<b>Total</b>	<b>36</b>	<b>30</b>	<b>574</b>

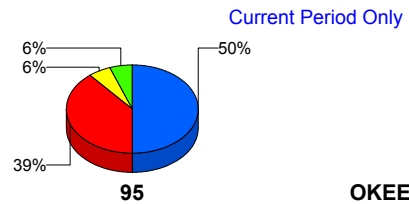
### Total Incidents by Detection Method



## Incident Detection Methods by Roadway

		Current Week	Last Week	YTD
95	Broward Road Ranger	0	0	5
	Broward TMC	0	2	7
	County Police	0	0	1
	District 4	2	0	12
	FDOT Maintenance	1	0	3
	FHP	18	9	256
	ITMS	0	0	1
	ITMS CCTV	1	9	87
	Media	0	0	1
	Motorist	0	0	9
	Palm Beach Road Ran	14	10	182
	<b>Total</b>	<b>36</b>	<b>30</b>	<b>564</b>
TPKE	Florida's Turnpike	0	0	10
	<b>Total</b>	<b>0</b>	<b>0</b>	<b>10</b>

### Total Events by Roadway and Detection Method



OKEEB

#### TPKE

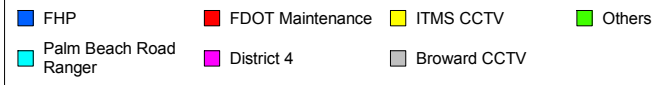
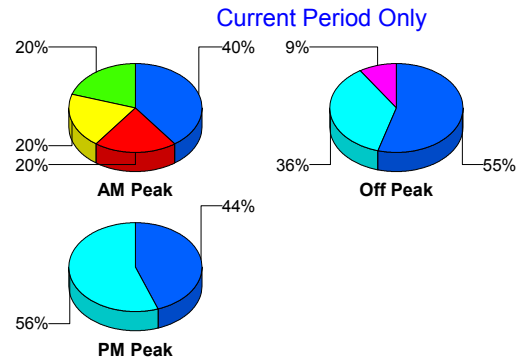


	Current Week	Last Week	YTD
Total	36	30	574

### Incident Detection Methods by Peak Period

		Current Week	Last Week	YTD
AM Peak	Broward Road Ranger	0	0	4
	Broward TMC	0	2	2
	County Police	0	0	1
	District 4	0	0	2
	FDOT Maintenance	1	0	1
	FHP	2	0	46
	Florida's Turnpike	0	0	2
	ITMS CCTV	1	2	23
	Media	0	0	1
	Motorist	0	0	1
	Palm Beach Road Ran	1	3	50
	Total	5	7	133
	Off Peak	Broward Road Ranger	0	0
Broward TMC		0	0	2
District 4		2	0	7
FDOT Maintenance		0	0	2
FHP		12	7	138
Florida's Turnpike		0	0	7
ITMS		0	0	1
ITMS CCTV		0	5	49
Motorist		0	0	4
Palm Beach Road Ran		8	3	88
Total		22	15	299
PM Peak	Broward TMC	0	0	3
	District 4	0	0	3
	FHP	4	2	73
	Florida's Turnpike	0	0	1
	ITMS CCTV	0	2	15

Total Events by Peak Period and Detection Method

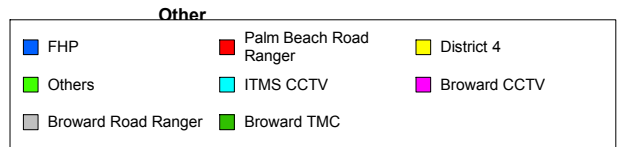
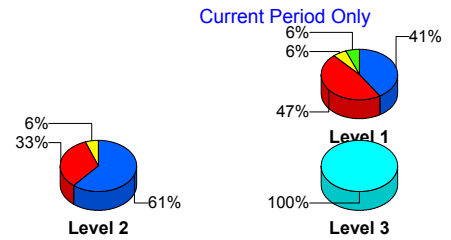


		Current Week	Last Week	YTD
PM Peak	Motorist	0	0	4
	Palm Beach Road Ran	5	4	44
	Total	9	8	143
Total		36	30	574

### Incident Detection Methods by Severity

		Current Week	Last Week	YTD
	FHP	0	0	1
	Total	0	0	1
Level 1	Broward Road Ranger	0	0	5
	Broward TMC	0	2	5
	County Police	0	0	1
	District 4	1	0	9
	FDOT Maintenance	1	0	1
	FHP	7	4	86
	ITMS CCTV	0	5	44
	Motorist	0	0	3
	Palm Beach Road Ran	8	6	120
	Total	17	17	274
	Level 2	Broward TMC	0	0
District 4		1	0	2
FDOT Maintenance		0	0	2
FHP		11	5	134
ITMS		0	0	1
ITMS CCTV		0	4	36
Motorist		0	0	6
Palm Beach Road Ran		6	4	50
Total		18	13	233
Level 3	District 4	0	0	1
	FHP	0	0	36
	Florida's Turnpike	0	0	10
	ITMS CCTV	1	0	7

### Total Events by Severity and Detection Method



		Current Week	Last Week	YTD
Level 3	Media	0	0	1
	Palm Beach Road Ran	0	0	12
	Total	1	0	67
Total		36	30	574

# Road Ranger / SIRV Performance Measures

## Road Ranger / SIRV Performance By County

Values presented are:  
 - Total Events with a RR/SIRV Response  
 - Total RR/SIRV Responses,  
 - Total Activities Performed

	Current We	Last Week	YTD
Palm Beach	<b>661</b>	<b>658</b>	<b>13,724</b>
	<b>680</b>	<b>679</b>	<b>14,175</b>
	<b>737</b>	<b>732</b>	<b>15,081</b>

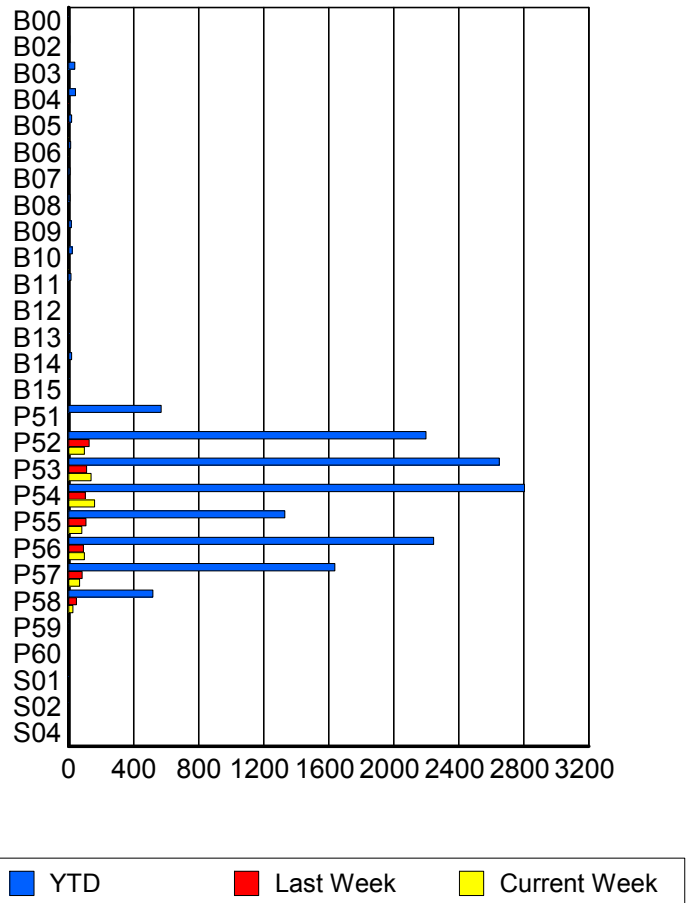
RR/SIRV Responses per County



## Road Ranger / SIRV Performance By Truck

	Current We	Last Week	YTD
B00	0	0	2
	0	0	2
	0	0	2
B02	0	1	6
	0	1	6
	0	1	6
B03	0	0	39
	0	0	39
	0	0	42
B04	0	2	41
	0	2	42
	0	2	45
B05	2	3	18
	2	3	18
	2	3	18
B06	2	2	12
	2	2	12
	2	2	14
B07	0	0	9
	0	0	9
	0	0	9
B08	0	0	9
	0	0	9
	0	0	9
B09	1	0	17
	1	0	17
	1	0	18

RR/SIRV Responses per Truck



	Current We	Last Week	YTD
B10	2	0	22
	2	0	22
	2	0	24
B11	1	0	14
	1	0	14
	1	0	15
B12	0	0	2
	0	0	2
	0	0	2
B13	1	0	4
	1	0	4
	1	0	4
B14	0	0	18
	0	0	18
	0	0	18
B15	0	0	4
	0	0	4
	0	0	4
P51	0	0	560
	0	0	570
	0	0	602
P52	98	125	2,173
	98	127	2,198
	105	140	2,339
P53	138	107	2,620
	139	110	2,649
	153	113	2,825
P54	159	101	2,767
	160	103	2,804
	172	114	2,982
P55	81	107	1,322
	81	107	1,331
	89	113	1,396
P56	97	91	2,218
	98	91	2,245
	107	99	2,397
P57	67	83	1,619
	68	84	1,638
	74	94	1,750
P58	27	48	514
	27	49	519
	28	51	550
P59	0	0	2
	0	0	2
	0	0	2

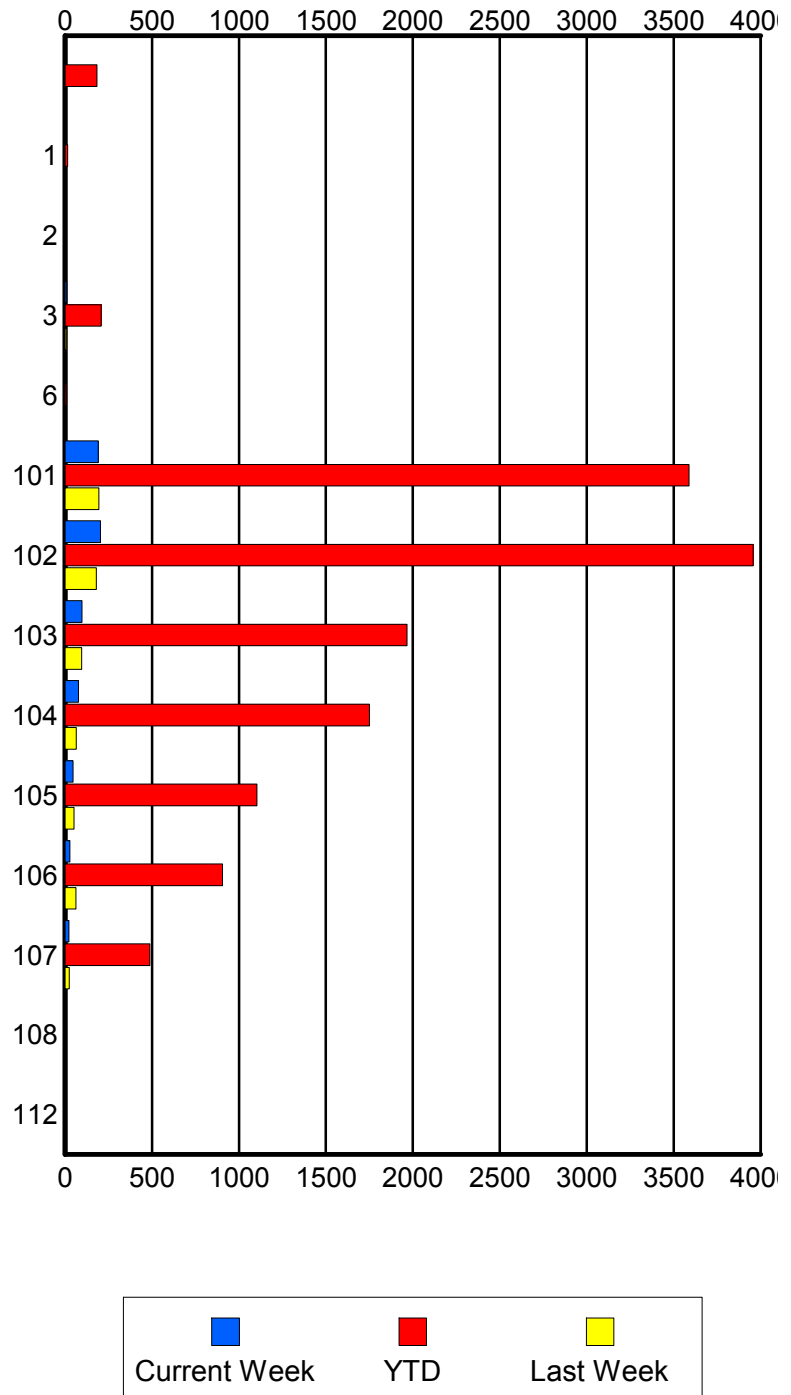
	Current We	Last Week	YTD
P60	0	0	1
	0	0	1
	0	0	1
S01	0	0	3
	0	0	3
	0	0	4
S02	0	0	2
	0	0	2
	0	0	2
S04	0	0	1
	0	0	1
	0	0	1

### Road Ranger / SIRV Performance By Beat

	Current We	Last Week	YTD
	5	0	183
	5	0	184
	5	0	196
1	0	0	13
	0	0	14
	0	0	14
2	0	0	3
	0	0	3
	0	0	3
3	9	8	204
	9	8	208
	9	8	220
6	0	0	6
	0	0	7
	0	0	7
101	189	193	3,530
	191	194	3,589
	210	208	3,811
102	202	177	3,901
	203	179	3,956
	219	196	4,198
103	95	92	1,940
	97	95	1,967
	103	101	2,080
104	78	65	1,733
	78	65	1,751
	83	69	1,871
105	46	49	1,095
	46	51	1,103
	50	56	1,190
106	28	61	897
	28	62	905
	33	66	961
107	23	25	486
	23	25	488
	25	28	523
108	0	0	3
	0	0	4
	0	0	4
112	0	0	2
	0	0	2
	0	0	3

Values presented are:  
 - Total Events with a RR/SIRV Response  
 - Total RR/SIRV Responses,  
 - Total Activities Performed

### RR/SIRV Responses per Beat

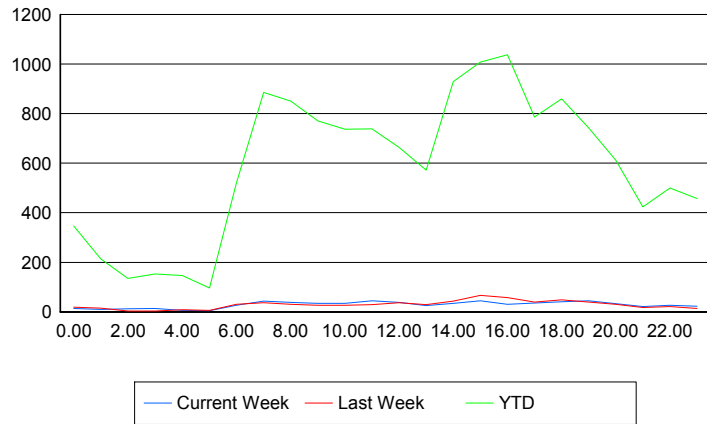


## Road Ranger / SIRV Performance By Time of Day

Values presented are:  
 - Total Events with a RR/SIRV Response  
 - Total RR/SIRV Responses,  
 - Total Activities Performed

	Current We	Last Week	YTD
12AM-1AM	14	19	337
	14	19	347
	15	19	377
1AM-2AM	10	15	209
	10	15	213
	11	15	221
2AM-3AM	12	3	131
	12	3	135
	12	3	143
3AM-4AM	12	3	146
	14	3	153
	15	3	164
4AM-5AM	6	8	139
	6	9	147
	6	9	153
5AM-6AM	5	6	87
	5	6	96
	5	6	101
6AM-7AM	25	30	493
	26	30	518
	27	31	546
7AM-8AM	42	37	859
	43	37	885
	46	43	940
8AM-9AM	38	28	817
	38	30	851
	45	36	909
9AM-10AM	32	27	745
	34	27	771
	37	28	817
10AM-11AM	33	25	712
	34	26	737
	36	27	774
11AM-12PM	43	29	720
	45	29	738
	50	32	781
12PM-1PM	38	35	633
	38	37	663
	39	40	693

## Number of Responses / Hour of the Day



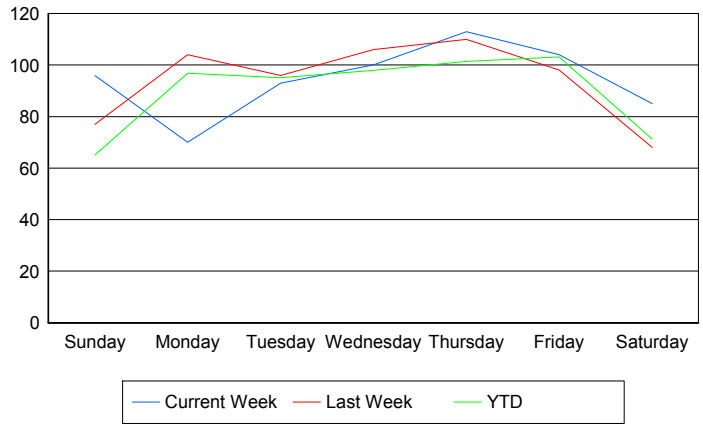
	Current We	Last Week	YTD
1PM-2PM	22	28	538
	25	29	572
	27	29	603
2PM-3PM	33	39	893
	34	43	929
	36	50	996
3PM-4PM	45	66	990
	45	67	1,008
	51	70	1,079
4PM-5PM	30	54	1,001
	31	57	1,038
	37	63	1,117
5PM-6PM	35	38	763
	36	40	786
	39	44	838
6PM-7PM	41	47	844
	41	49	859
	44	53	908
7PM-8PM	44	39	718
	45	39	742
	49	40	784
8PM-9PM	31	30	600
	33	31	612
	36	31	640
9PM-10PM	21	17	410
	22	17	424
	23	19	459
10PM-11PM	26	21	490
	26	22	500
	28	26	539
11PM-12AM	23	14	449
	23	14	457
	23	15	499

## Road Ranger / SIRV Performance By Day of Week

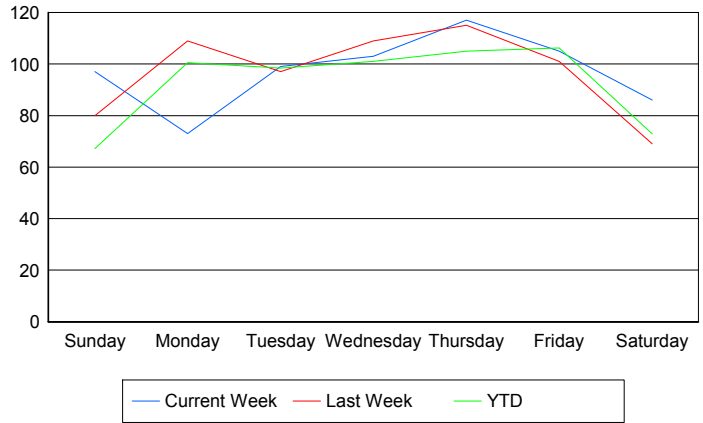
Values presented are:  
 - Total Events with a RR/SIRV Response  
 - Total RR/SIRV Responses,  
 - Total Activities Performed

	Current We	Last Week	YTD
Sunday	96	76	1,382
	97	79	1,426
	102	80	1,500
Monday	70	104	2,074
	73	109	2,152
	77	124	2,290
Tuesday	93	96	2,074
	99	97	2,146
	110	106	2,287
Wednesday	100	106	2,115
	103	109	2,181
	115	113	2,339
Thursday	113	110	2,161
	117	115	2,239
	127	125	2,396
Friday	104	98	2,322
	105	101	2,392
	109	109	2,516
Saturday	85	68	1,608
	86	69	1,645
	97	75	1,753

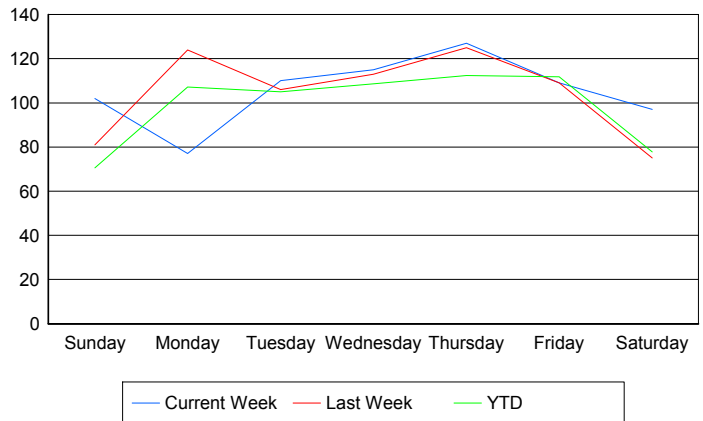
### Avg # of events with a RR/SIRV Response per Day of the Week



### Avg # of RR/SIRV Responses per Day of the Week



### Avg # of RR/SIRV Activities Performed per Day of the Week



### Road Ranger / SIRV Responses per Time of Day and Day of Week

