



Weekly Performance Measures Report Palm Beach County



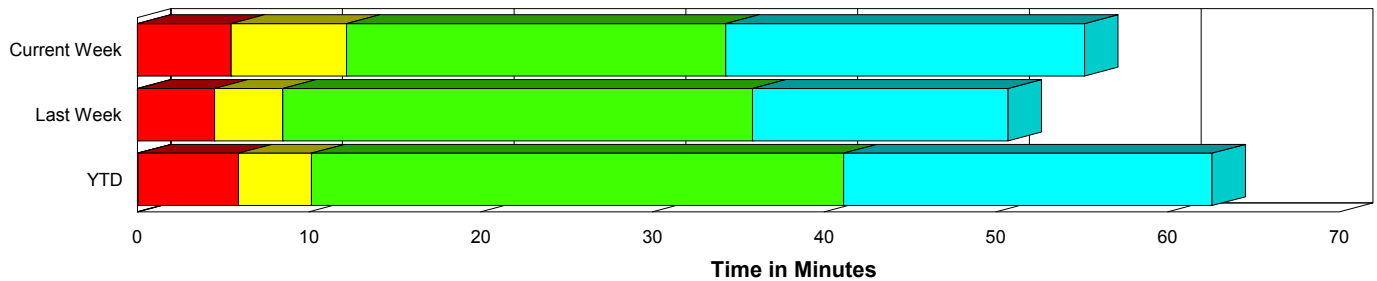
Created on:
June 22, 2010
9:19 am

Period From Jun 13, 2010 to Jun 19, 2010

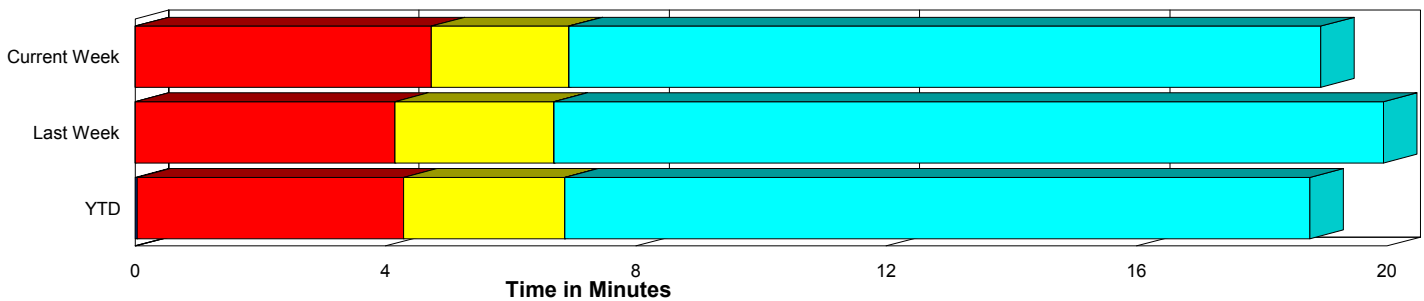
Performance Measures Summary

	Traffic Events (No Lanes Blocked)			Incidents (Lanes Blocked)		
	<u>This Week</u>	<u>Last Week</u>	<u>YTD</u>	<u>This Week</u>	<u>Last Week</u>	<u>YTD</u>
Number of Events	595	561	12,567	17	28	621
TMC Detection (min.)	0.00	0.00	0.03	0.00	0.00	0.04
TMC Verification (min.)	4.73	4.15	4.26	5.47	4.51	5.89
TMC Response (min.)	7.30	7.00	7.37	12.18	8.63	10.44
RR Dispatch Time (min.)	2.53	2.74	2.59	4.18	3.26	2.88
RR Response Time (min.)	4.88	4.37	4.89	8.00	5.71	7.59
Roadway Clearance (min.)				34.26	35.16	41.23
Event Clearance (min.)	19.31	20.25	19.31	54.85	50.01	62.96
# of Events w/ RR/SIRV	571	539	11,736	17	28	599
RR/SIRV Responses	571	539	11,736	17	28	599
RR/SIRV Activities	616	577	12,260	27	43	790

Incident Clearance Time-Line



Traffic Event (Non-Lane Blockage) Time-Line



■ Avg. TMC Detection Time	■ Avg. Time from TMC Response to Roadway Clearance*
■ Avg. Time from TMC Detection to TMC Verification	■ Avg. Time from Roadway Clearance to Incident/Event Clearance**
■ Avg. Time from TMC Verification to TMC Response	

* Roadway clearance equals all travel lanes open

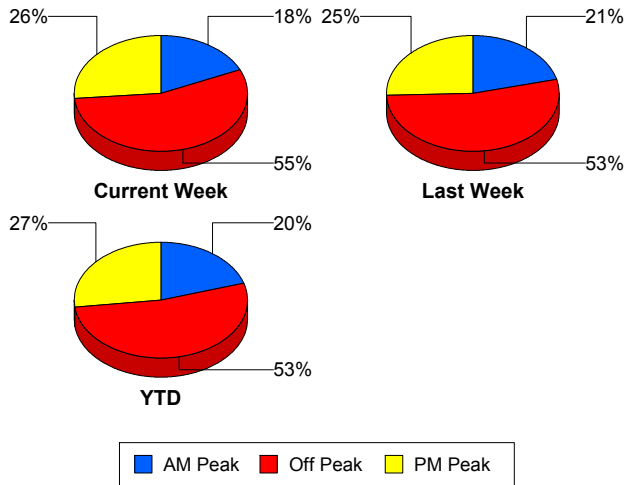
** Incident clearance equals time when last responder has left the scene

Performance Measures by Peak Period

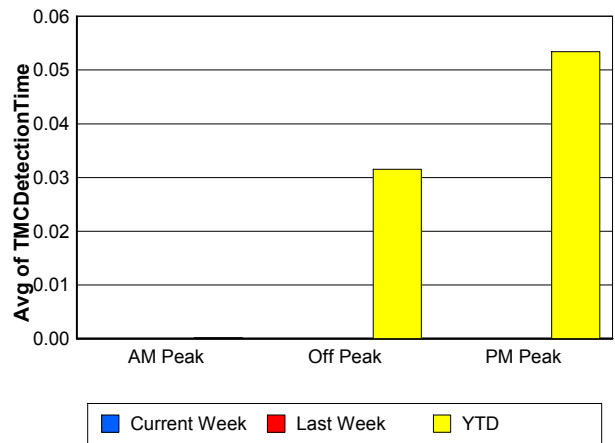
Note: AM peak period is defined as 6am to 10am and PM peak period is defined as 3pm to 7pm.

	AM Peak			Off Peak			PM Peak		
	<u>Current Week</u>	<u>Last Week</u>	<u>YTD</u>	<u>Current Week</u>	<u>Last Week</u>	<u>YTD</u>	<u>Current Week</u>	<u>Last Week</u>	<u>YTD</u>
Number of Events	112	125	2,674	338	314	6,952	162	150	3,562
Number of Incidents	3	5	141	10	19	329	4	4	151
TMC Detection (min.)	0.00	0.00	0.00	0.00	0.00	0.03	0.00	0.00	0.05
TMC Verification (min.)	3.91	2.08	2.99	4.85	5.52	4.62	5.15	3.09	4.79
TMC Response (min.)	6.73	6.96	6.34	7.17	8.05	8.09	8.44	5.22	7.34
RR Dispatch Time (min.)	1.40	3.00	1.80	2.61	2.92	2.86	3.34	2.24	2.71
RR Response Time (min.)	5.41	3.92	4.59	4.76	5.32	5.35	5.11	3.05	4.75
Event Clearance (min.)	16.24	18.50	20.75	21.35	25.46	22.37	20.90	16.37	19.85
Roadway Clearance (min.)	8.51	42.40	37.69	42.32	34.23	47.46	33.44	30.53	30.98
Incident Clearance (min.)	32.66	62.71	62.99	66.45	48.43	65.85	42.50	41.64	55.08
# of Events w/ RR/SIRV	109	121	2,522	321	300	6,435	158	146	3,378
RR/SIRV Responses	109	121	2,522	321	300	6,435	158	146	3,378
RR/SIRV Activities	107	133	2,667	356	325	6,819	180	162	3,564

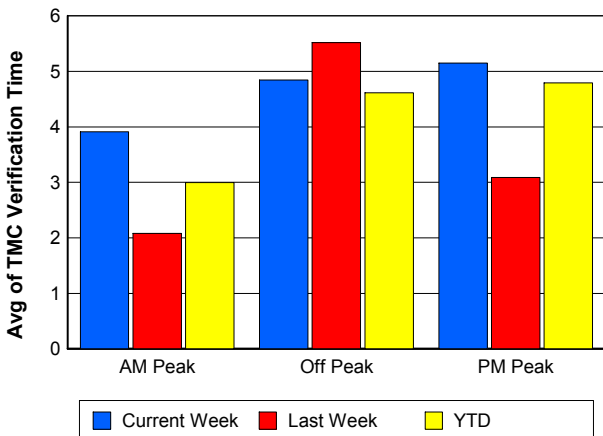
Number of Events / Peak Period



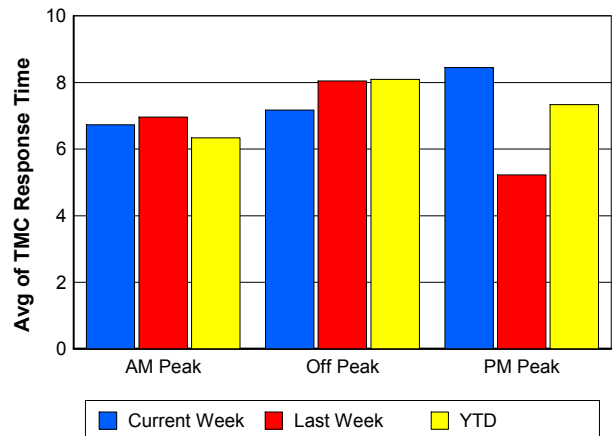
TMC Detection Time



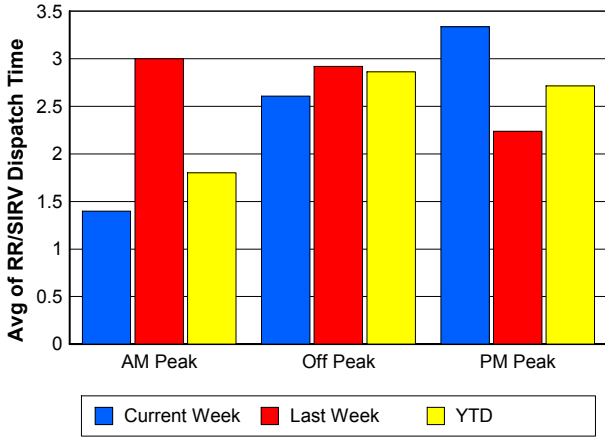
TMC Verification Time



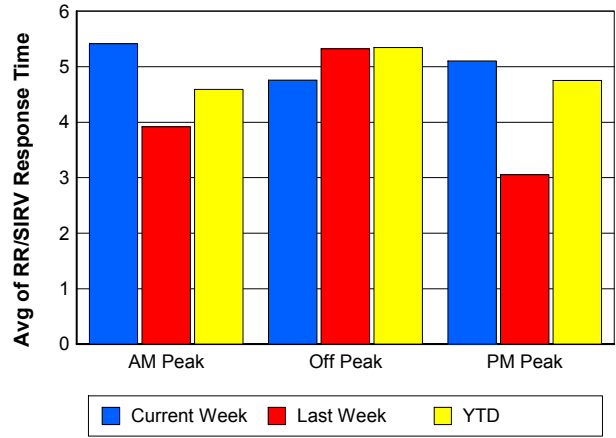
TMC Response Time



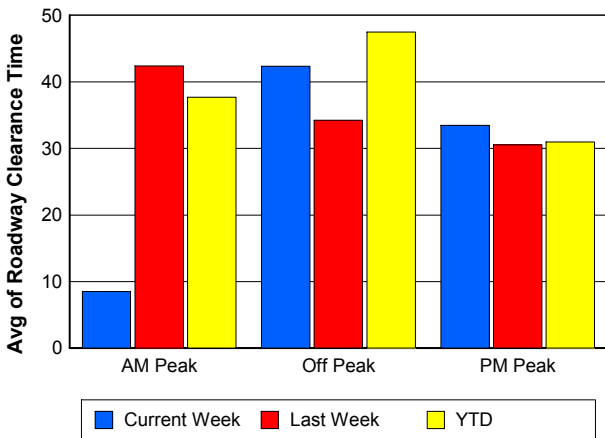
Road Ranger / SIRV Dispatch Time



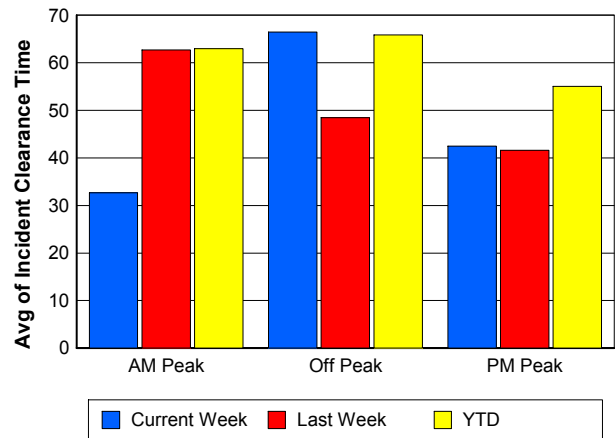
Road Ranger / SIRV Response Time



Roadway Clearance Time (2A)



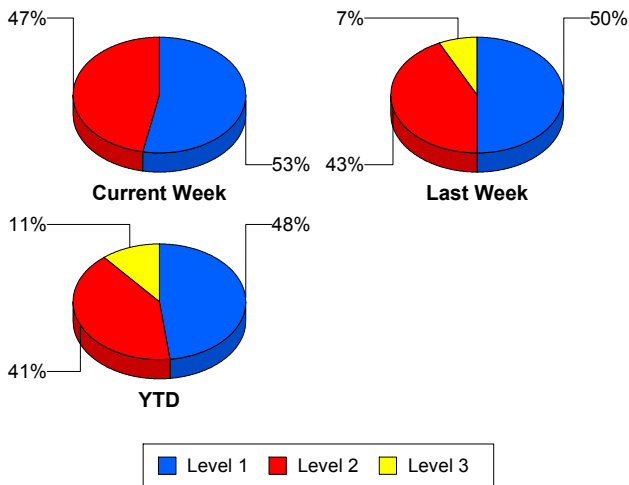
Incident Clearance Time (3B)



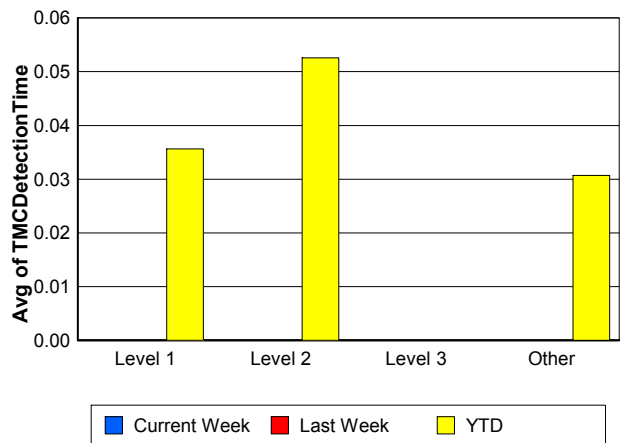
Performance Measures by Severity

	Level 1			Level 2			Level 3		Other		
	<u>This Week</u>	<u>Last Week</u>	<u>YTD</u>	<u>This Week</u>	<u>Last Week</u>	<u>YTD</u>	<u>Last Week</u>	<u>YTD</u>	<u>This Week</u>	<u>Last Week</u>	<u>YTD</u>
Number of Events	9	14	297	8	12	253	2	69	595	561	12,569
Number of Incidents	9	14	297	8	12	253	2	69	0	0	2
TMC Detection (min.)	0.00	0.00	0.04	0.00	0.00	0.05	0.00	0.00	0.00	0.00	0.03
TMC Verification (min.)	3.81	2.44	3.34	7.34	6.74	8.86	5.58	5.98	4.73	4.15	4.26
TMC Response (min.)	8.84	7.72	6.47	15.94	10.12	13.92	5.54	15.16	7.30	7.00	7.37
RR Dispatch Time (min.)	3.62	4.32	1.60	4.82	1.90	3.51	3.92	6.90	2.53	2.74	2.59
RR Resp. Time (min.)	5.22	4.03	4.95	11.13	8.22	10.46	1.62	8.26	4.88	4.37	4.89
Event Clearance (min.)	45.26	31.10	42.87	65.64	68.63	70.33	70.67	121.64	19.31	20.25	19.32
Roadway Clear. (min.)	12.79	16.61	15.26	58.42	54.58	54.61	48.50	105.80			-21.46
Incident Clearance (min.)	45.26	31.10	42.87	65.64	68.63	70.33	70.67	120.83			0.00
# of Events w/ RR/SIRV	9	14	291	8	12	251	2	55	571	539	11,738
RR/SIRV Responses	9	14	291	8	12	251	2	55	571	539	11,738
RR/SIRV Activities	14	15	351	13	25	351	3	83	616	577	12,265

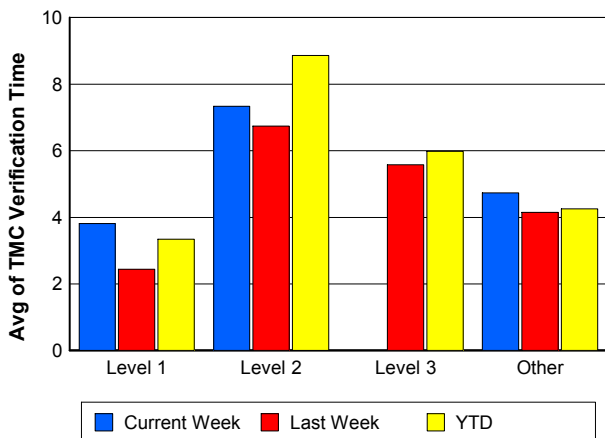
Number of Events / Severity



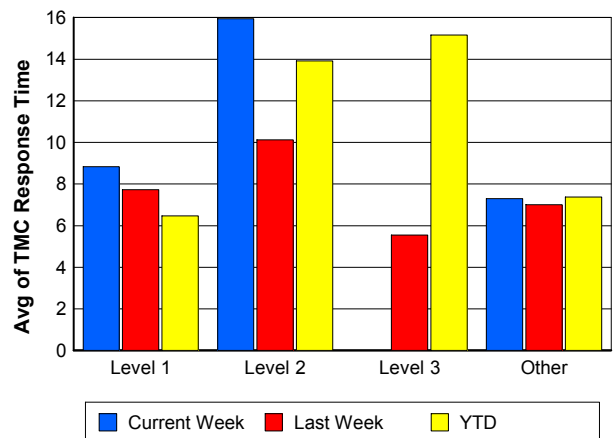
TMC Detection Time



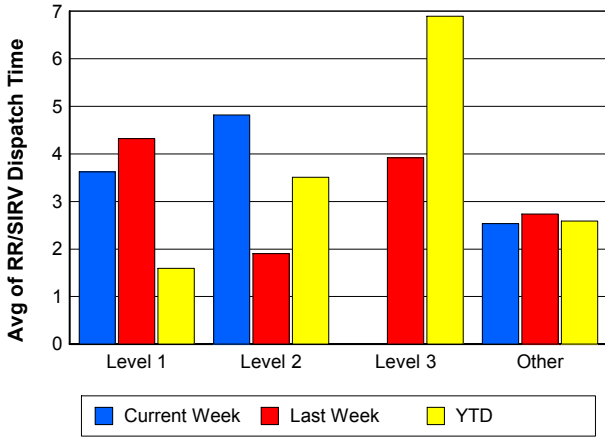
TMC Verification Time



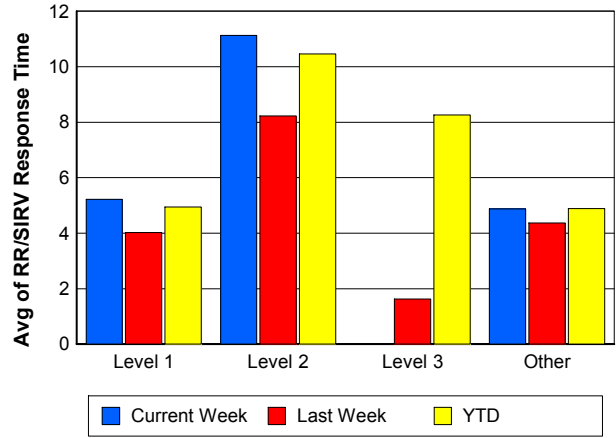
TMC Response Time



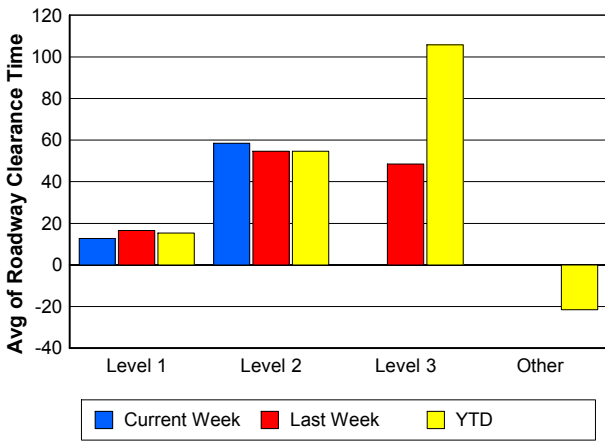
Road Ranger / SIRV Dispatch Time



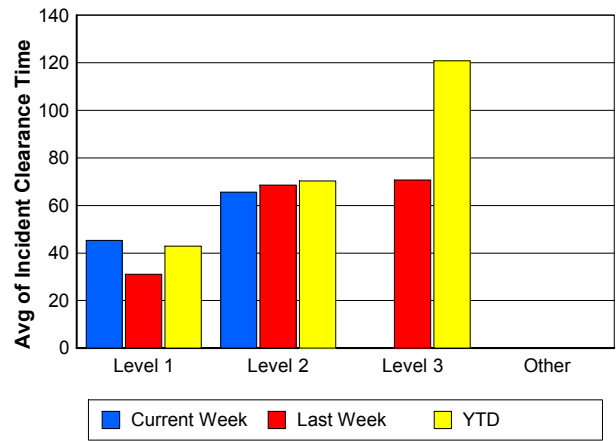
Road Ranger / SIRV Response Time



Roadway Clearance Time (2A)



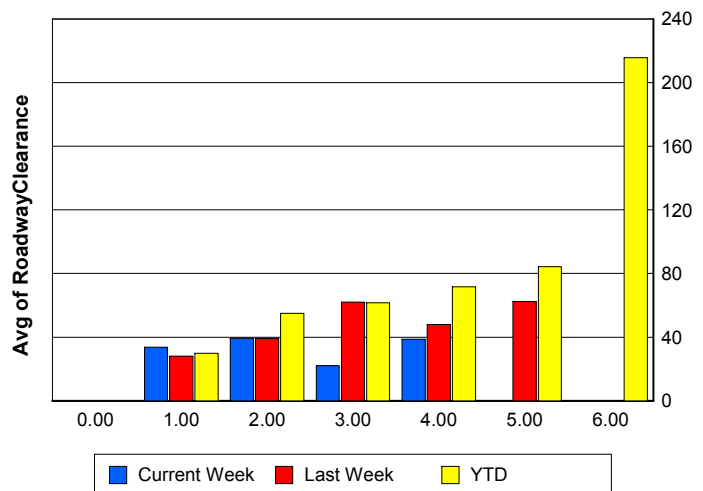
Incident Clearance Time (3B)



Roadway Clearance by Maximum Number of Lanes Blocked

	Current Week	Last Week	YTD
0			
1	33.66	28.07	29.97
2	39.32	39.00	55.06
3	21.95	61.93	61.59
4	38.63	47.98	71.54
5	0.00	62.37	84.27
6	0.00	0.00	215.67

Roadway Clearance Time (2A)



Performance Measures by Roadway

95

	<u>Current Week</u>	<u>Last Week</u>	<u>YTD</u>
Number of Events	612	589	13,177
Number of Incidents	17	28	611
TMC Detection (min.)	0.00	0.00	0.03
TMC Verification (min.)	4.75	4.17	4.34
TMC Response (min.)	7.45	7.08	7.53
RR Dispatch Time (min.)	2.58	2.76	2.60
RR Resp. Time (min.)	4.97	4.43	5.03
Event Clearance (min.)	20.29	21.67	21.33
Roadway Clear. (min.)	34.26	35.16	40.93
Incident Clearance (min.)	54.85	50.01	62.59
# of Events w/ RR/SIRV	588	567	12,334
RR/SIRV Responses	588	567	12,334
RR/SIRV Activities	643	620	13,049

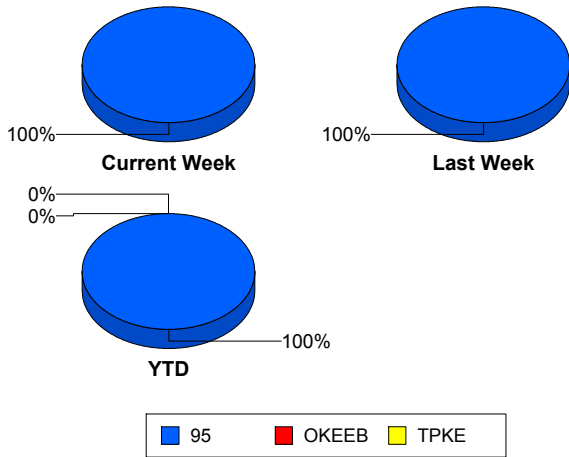
OKEEB

	<u>YTD</u>
Number of Events	1
Number of Incidents	0
TMC Detection (min.)	0.00
TMC Verification (min.)	0.00
TMC Response (min.)	0.00
RR Dispatch Time (min.)	0.00
RR Resp. Time (min.)	0.00
Event Clearance (min.)	18.45
Roadway Clear. (min.)	
Incident Clearance (min.)	
# of Events w/ RR/SIRV	1
RR/SIRV Responses	1
RR/SIRV Activities	1

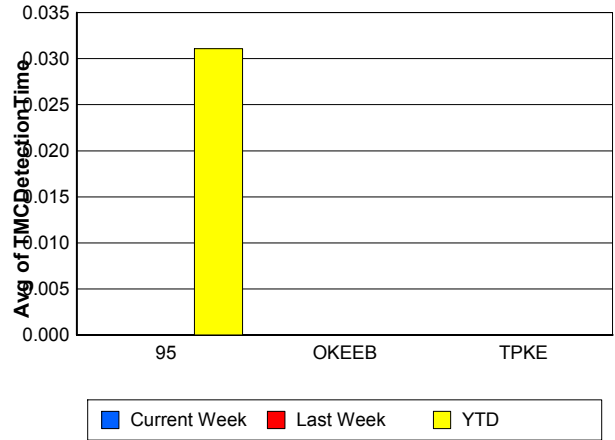
TPKE

	<u>YTD</u>
Number of Events	10
Number of Incidents	10
TMC Detection (min.)	0.00
TMC Verification (min.)	0.00
TMC Response (min.)	
RR Dispatch Time (min.)	
RR Resp. Time (min.)	
Event Clearance (min.)	62.29
Roadway Clear. (min.)	59.66
Incident Clearance (min.)	62.29
# of Events w/ RR/SIRV	0
RR/SIRV Responses	0
RR/SIRV Activities	0

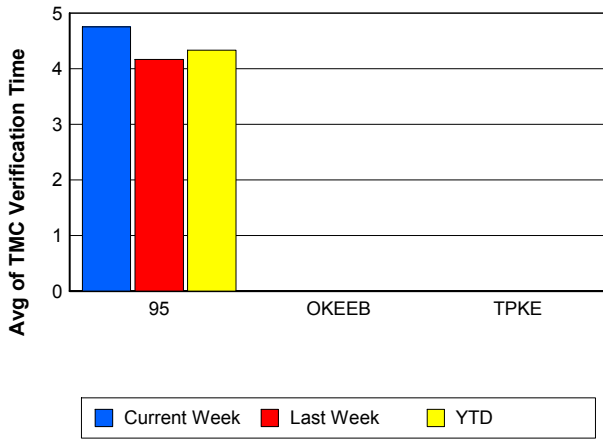
Number of Events / Roadway



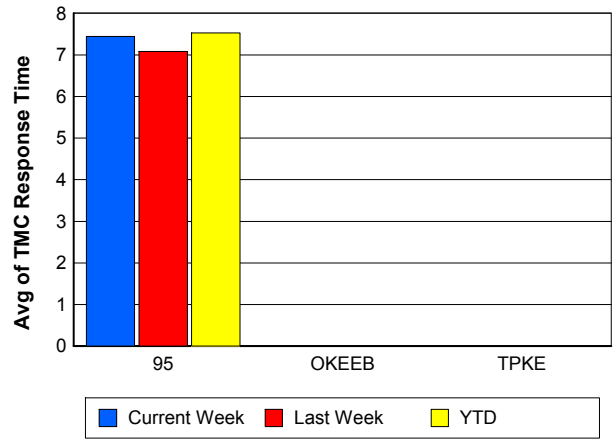
TMC Detection Time



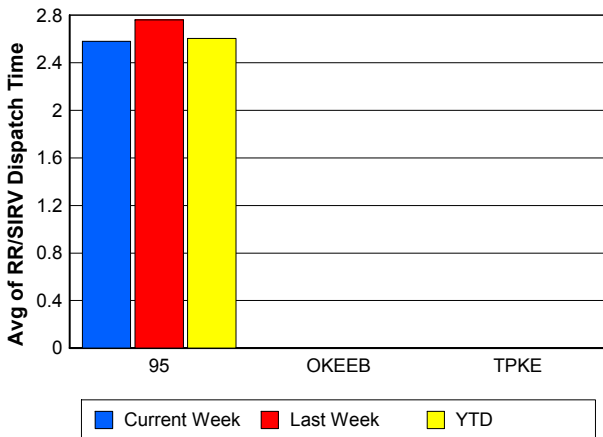
TMC Verification Time



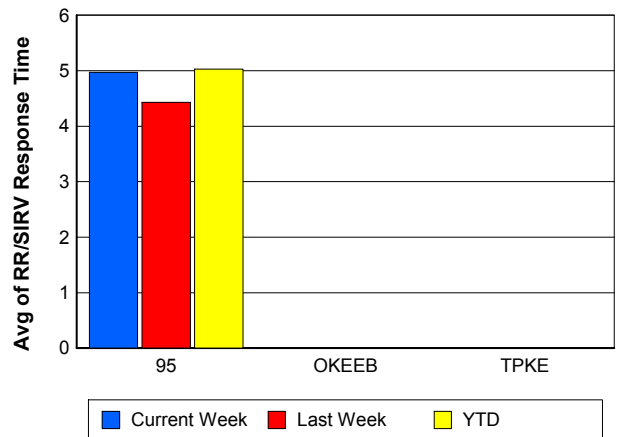
TMC Response Time



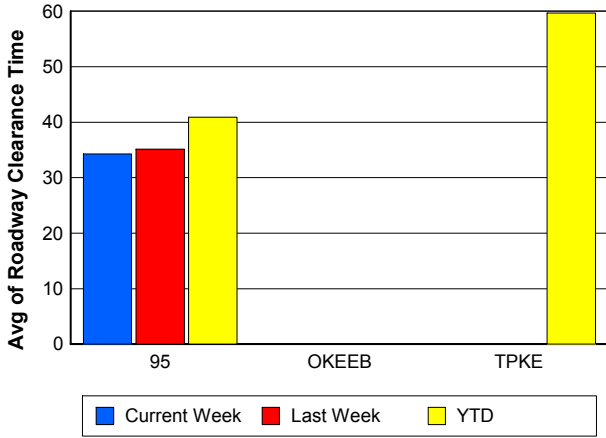
Road Ranger / SIRV Dispatch Time



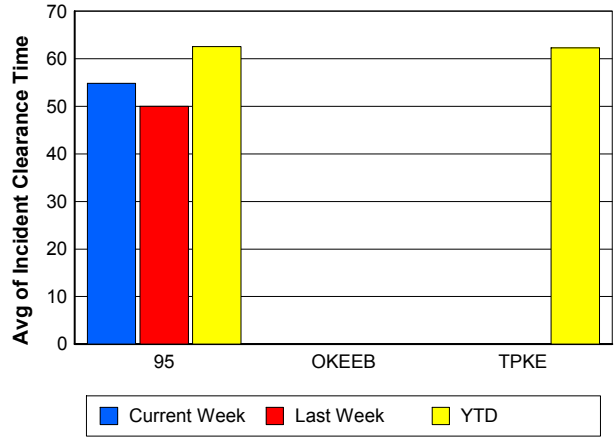
Road Ranger / SIRV Response Time



Roadway Clearance Time (2A)



Incident Clearance Time (3B)



Performance Measures by Event Type

Accident

	<u>Current Week</u>	<u>Last Week</u>	<u>YTD</u>
Number of Events	22	32	939
Number of Incidents	10	18	429
TMC Detection (min.)	0.00	0.00	0.05
TMC Verification (min.)	6.12	6.84	7.60
TMC Response (min.)	12.97	9.78	11.21
RR Dispatch Time (min.)	1.92	3.14	2.57
RR Response Time (min.)	11.05	6.64	8.68
Event Clearance (min.)	58.72	53.87	59.41
Roadway Clearance (min.)	33.33	42.48	45.11
Incident Clearance (min.)	63.26	61.59	72.16
# of Events w/ RR/SIRV	22	31	913
RR/SIRV Assists	22	31	913
RR/SIRV Activities	29	45	1,078

Debris on Roadway

	<u>Current Week</u>	<u>Last Week</u>	<u>YTD</u>
Number of Events	56	47	816
Number of Incidents	0	1	15
TMC Detection (min.)	0.00	0.00	0.00
TMC Verification (min.)	8.32	6.42	10.76
TMC Response (min.)	9.18	6.57	11.29
RR Dispatch Time (min.)	2.47	2.80	3.56
RR Response Time (min.)	6.71	3.98	7.77
Event Clearance (min.)	11.86	8.96	14.64
Roadway Clearance (min.)		12.85	18.00
Incident Clearance (min.)		18.27	23.19
# of Events w/ RR/SIRV	56	47	806
RR/SIRV Assists	56	47	806
RR/SIRV Activities	60	49	840

Disabled Vehicle

	<u>Current Week</u>	<u>Last Week</u>	<u>YTD</u>
Number of Events	513	491	10,761
Number of Incidents	6	7	126
TMC Detection (min.)	0.00	0.00	0.03
TMC Verification (min.)	4.39	3.91	3.78
TMC Response (min.)	7.06	6.92	6.64
RR Dispatch Time (min.)	2.63	2.72	2.42
RR Response Time (min.)	4.50	4.33	4.35
Event Clearance (min.)	19.86	20.99	18.30
Roadway Clearance (min.)	32.68	22.13	25.30
Incident Clearance (min.)	40.57	25.49	34.00
# of Events w/ RR/SIRV	493	475	10,146
RR/SIRV Assists	493	475	10,146
RR/SIRV Activities	540	516	10,787

Emergency Vehicles

	<u>Current Week</u>	<u>Last Week</u>	<u>YTD</u>
Number of Events	1	1	11
Number of Incidents	1	1	10
TMC Detection (min.)	0.00	0.00	0.00
TMC Verification (min.)	0.00	0.00	2.54
TMC Response (min.)	0.00	0.00	3.99
RR Dispatch Time (min.)	0.00	0.00	0.08
RR Response Time (min.)	0.00	0.00	3.91
Event Clearance (min.)	56.42	31.58	48.83
Roadway Clearance (min.)	53.08	28.97	48.84
Incident Clearance (min.)	56.42	31.58	51.39
# of Events w/ RR/SIRV	1	1	7
RR/SIRV Assists	1	1	7
RR/SIRV Activities	2	1	9

Other

	<u>Current Week</u>	<u>Last Week</u>	<u>YTD</u>
Number of Events	16	12	530
Number of Incidents	0	0	2
TMC Detection (min.)	0.00	0.00	0.11
TMC Verification (min.)	2.00	0.00	0.63
TMC Response (min.)	3.98	1.72	16.35
RR Dispatch Time (min.)	2.89	1.27	5.51
RR Response Time (min.)	3.74	1.45	8.38
Event Clearance (min.)	9.81	7.76	22.23
Roadway Clearance (min.)			19.30
Incident Clearance (min.)			29.86
# of Events w/ RR/SIRV	12	7	346
RR/SIRV Assists	12	7	346
RR/SIRV Activities	8	2	223

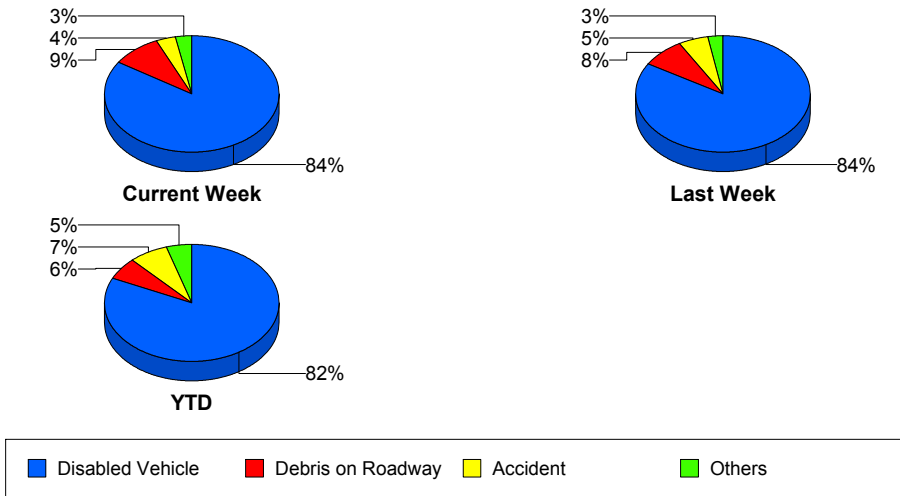
Police Activity

	<u>Last Week</u>	<u>YTD</u>
Number of Events	2	49
Number of Incidents	1	22
TMC Detection (min.)	0.00	0.15
TMC Verification (min.)	0.00	0.71
TMC Response (min.)	12.02	19.62
RR Dispatch Time (min.)	10.00	8.72
RR Response Time (min.)	2.02	11.72
Event Clearance (min.)	40.57	51.57
Roadway Clearance (min.)	23.15	75.16
Incident Clearance (min.)	63.42	82.62
# of Events w/ RR/SIRV	2	39
RR/SIRV Assists	2	39
RR/SIRV Activities	2	31

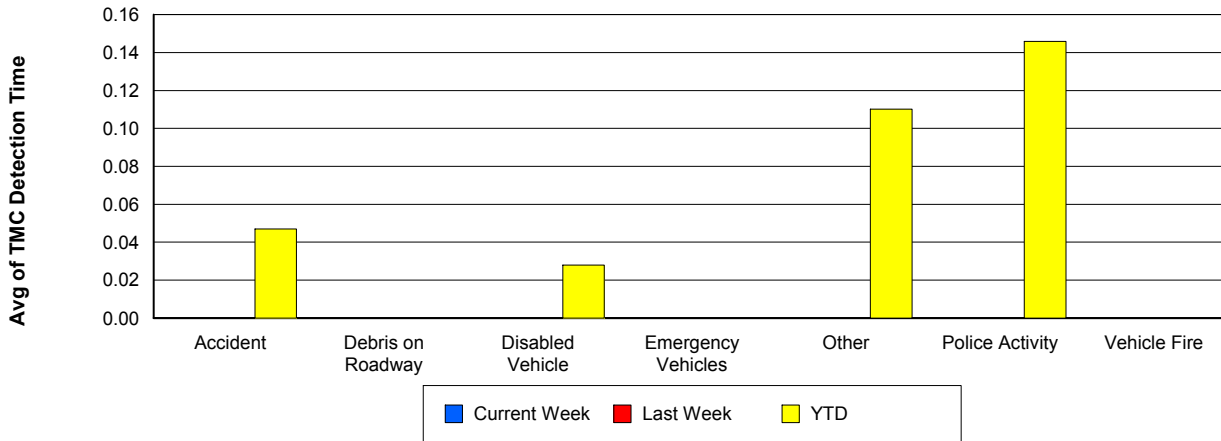
Vehicle Fire

	<u>Current Week</u>	<u>Last Week</u>	<u>YTD</u>
Number of Events	1	2	28
Number of Incidents	0	0	16
TMC Detection (min.)	0.00	0.00	0.00
TMC Verification (min.)	8.77	5.79	3.28
TMC Response (min.)	8.73	25.19	8.54
RR Dispatch Time (min.)	2.88	8.44	2.80
RR Response Time (min.)	5.85	16.75	5.88
Event Clearance (min.)	16.90	28.68	41.42
Roadway Clearance (min.)			35.31
Incident Clearance (min.)			52.03
# of Events w/ RR/SIRV	1	2	26
RR/SIRV Assists	1	2	26
RR/SIRV Activities	1	3	30

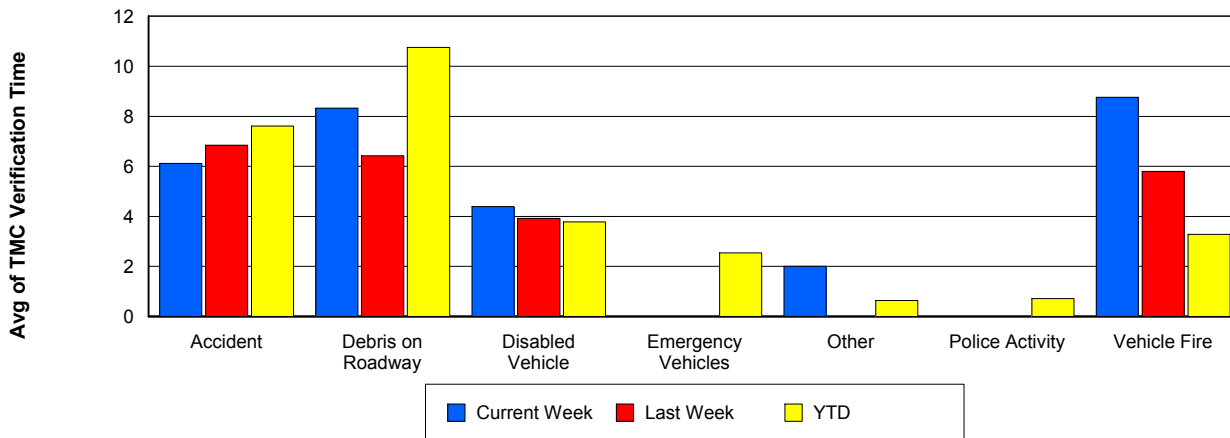
Number of Events / Event Type



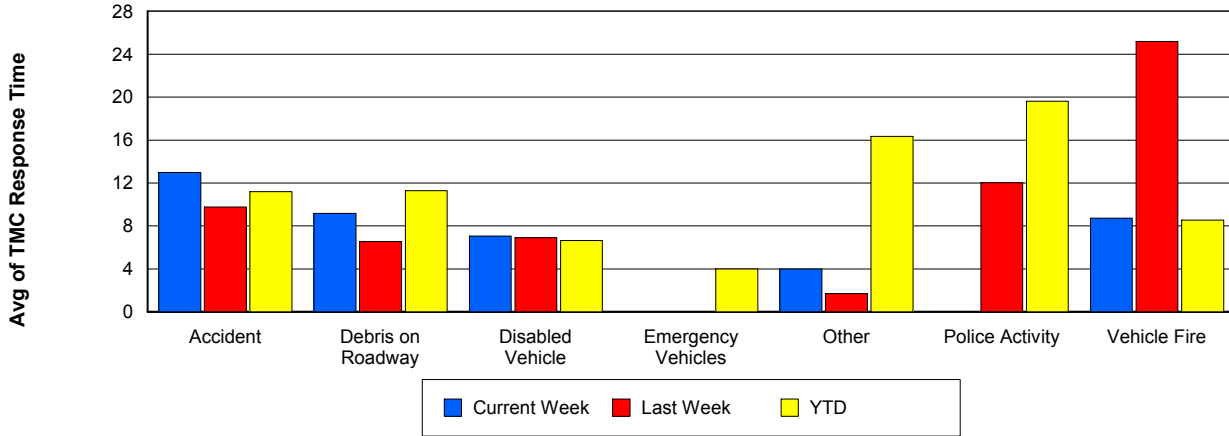
TMC Detection Time



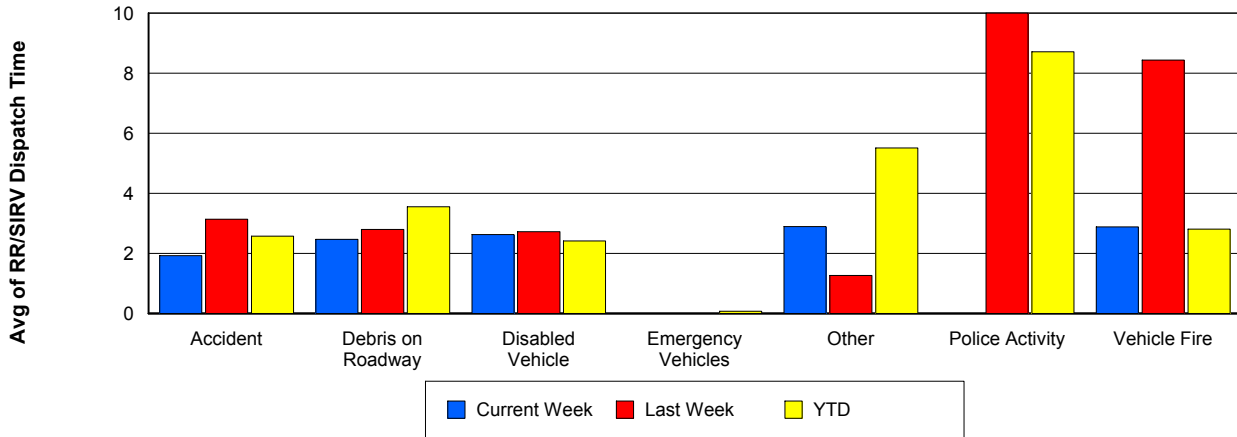
TMC Verification Time



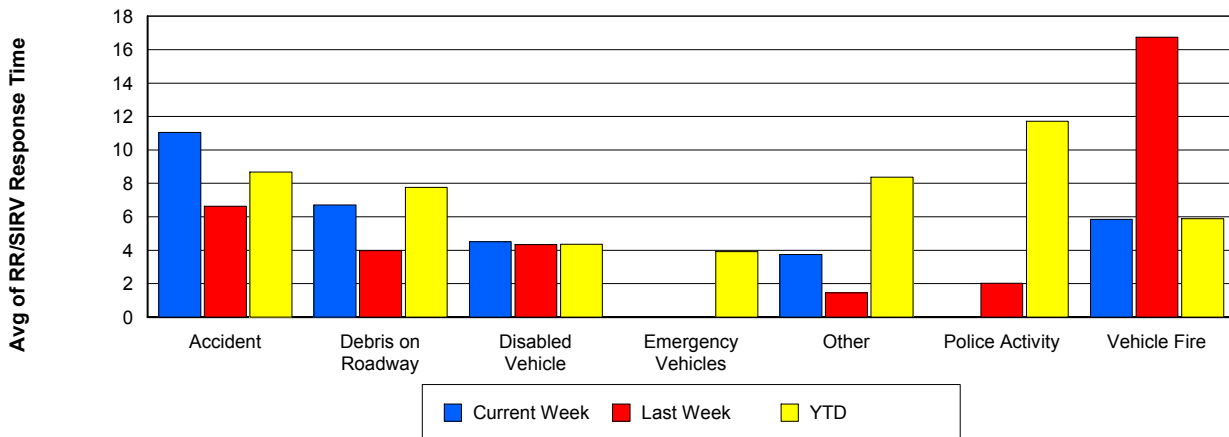
TMC Response Time



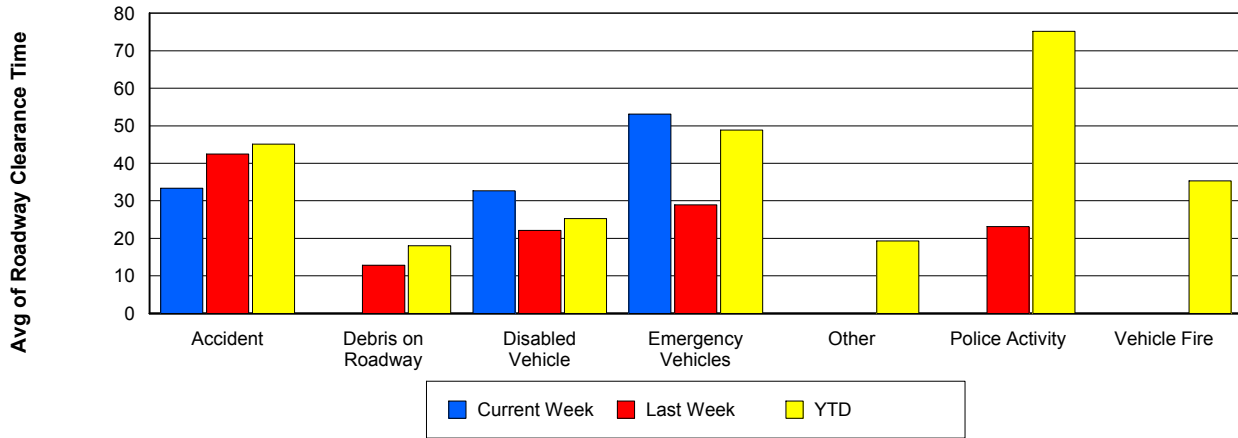
Road Ranger / SIRV Dispatch Time



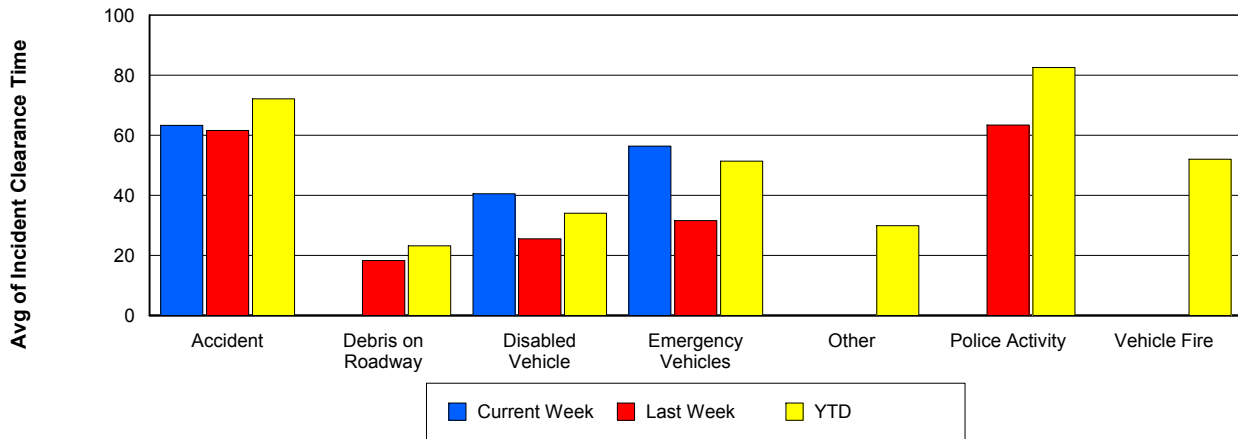
Road Ranger / SIRV Response Time



Roadway Clearance Time (2A)



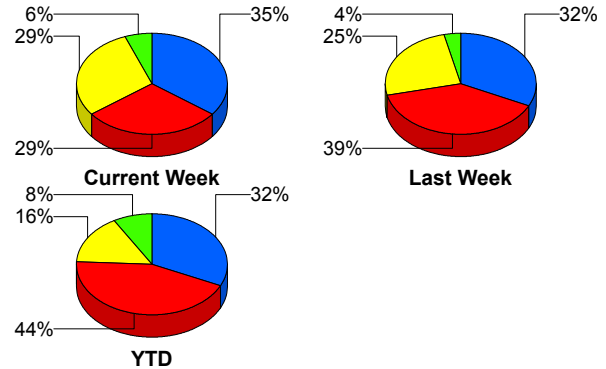
Incident Clearance Time (3B)



Incident Detection Methods

	Current Week	Last Week	YTD
Broward Road Ranger	0	0	5
Broward TMC	0	0	7
County Police	0	0	1
District 4	0	1	13
FDOT Maintenance	0	0	3
FHP	5	11	272
Florida's Turnpike	0	0	10
ITMS	0	0	1
ITMS CCTV	5	7	99
Media	0	0	1
Motorist	1	0	10
Palm Beach Road Ran	6	9	197
Total	17	28	619

Total Incidents by Detection Method

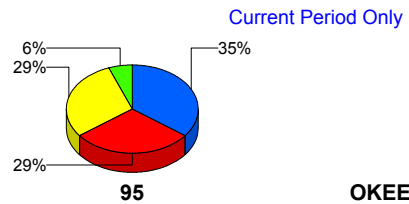


■ Palm Beach Road Ranger
 ■ FHP
 ■ ITMS CCTV
 ■ Others

Incident Detection Methods by Roadway

		Current Week	Last Week	YTD
95	Broward Road Ranger	0	0	5
	Broward TMC	0	0	7
	County Police	0	0	1
	District 4	0	1	13
	FDOT Maintenance	0	0	3
	FHP	5	11	272
	ITMS	0	0	1
	ITMS CCTV	5	7	99
	Media	0	0	1
	Motorist	1	0	10
	Palm Beach Road Ran	6	9	197
	Total	17	28	609
TPKE	Florida's Turnpike	0	0	10
	Total	0	0	10

Total Events by Roadway and Detection Method



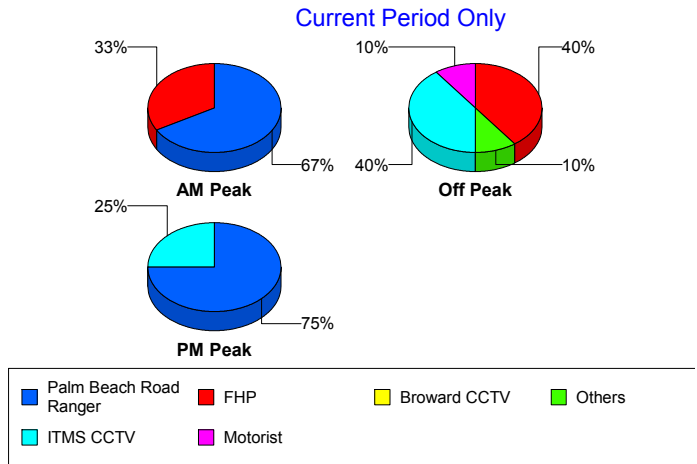
■ Palm Beach Road Ranger
 ■ FHP
 ■ ITMS CCTV
 ■ Others
■ Florida's Turnpike

	Current Week	Last Week	YTD
Total	17	28	619

Incident Detection Methods by Peak Period

		Current Week	Last Week	YTD
AM Peak	Broward Road Ranger	0	0	4
	Broward TMC	0	0	2
	County Police	0	0	1
	District 4	0	0	2
	FDOT Maintenance	0	0	1
	FHP	1	3	50
	Florida's Turnpike	0	0	2
	ITMS CCTV	0	1	24
	Media	0	0	1
	Motorist	0	0	1
	Palm Beach Road Ran	2	1	53
	Total	3	5	141
Off Peak	Broward Road Ranger	0	0	1
	Broward TMC	0	0	2
	District 4	0	1	8
	FDOT Maintenance	0	0	2
	FHP	4	7	149
	Florida's Turnpike	0	0	7
	ITMS	0	0	1
	ITMS CCTV	4	4	57
	Motorist	1	0	5
	Palm Beach Road Ran	1	7	96
	Total	10	19	328
PM Peak	Broward TMC	0	0	3
	District 4	0	0	3
	FHP	0	1	74
	Florida's Turnpike	0	0	1
	ITMS CCTV	1	2	18

Total Events by Peak Period and Detection Method

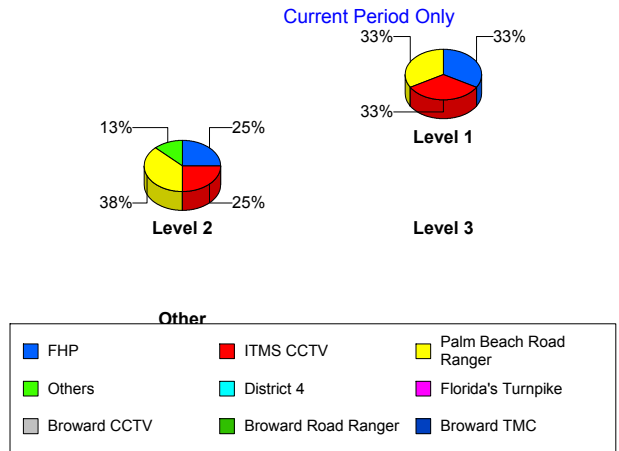


		Current Week	Last Week	YTD
PM Peak	Motorist	0	0	4
	Palm Beach Road Ran	3	1	48
	Total	4	4	151
Total		17	28	619

Incident Detection Methods by Severity

		Current Week	Last Week	YTD
	FHP	0	0	1
	Total	0	0	1
Level 1	Broward Road Ranger	0	0	5
	Broward TMC	0	0	5
	County Police	0	0	1
	District 4	0	0	9
	FDOT Maintenance	0	0	1
	FHP	3	2	91
	ITMS CCTV	3	5	52
	Motorist	0	0	3
	Palm Beach Road Ran	3	7	130
	Total	9	14	297
Level 2	Broward TMC	0	0	2
	District 4	0	0	2
	FDOT Maintenance	0	0	2
	FHP	2	8	144
	ITMS	0	0	1
	ITMS CCTV	2	2	40
	Motorist	1	0	7
	Palm Beach Road Ran	3	2	55
Total	8	12	253	
Level 3	District 4	0	1	2
	FHP	0	1	37
	Florida's Turnpike	0	0	10
	ITMS CCTV	0	0	7

Total Events by Severity and Detection Method



		Current Week	Last Week	YTD
Level 3	Media	0	0	1
	Palm Beach Road Ran	0	0	12
	Total	0	2	69
Total		17	28	619

Road Ranger / SIRV Performance Measures

Road Ranger / SIRV Performance By County

Values presented are:
 - Total Events with a RR/SIRV Response
 - Total RR/SIRV Responses,
 - Total Activities Performed

	Current We	Last Week	YTD
Palm Beach	722	689	15,135
	745	709	15,620
	799	765	16,645

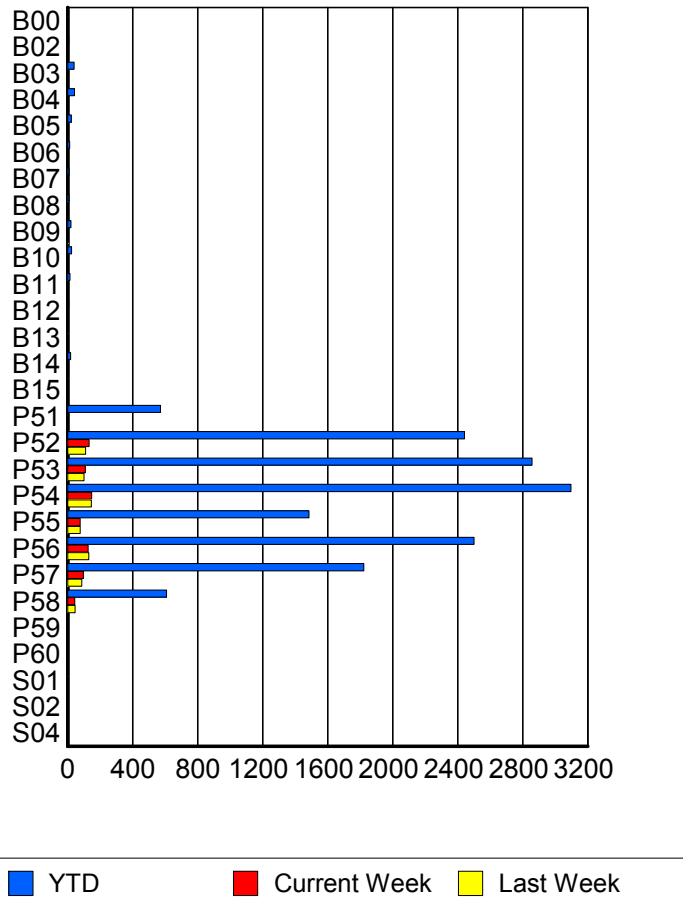
RR/SIRV Responses per County



Road Ranger / SIRV Performance By Truck

	Current We	Last Week	YTD
B00	0	0	2
	0	0	2
	0	0	2
B02	0	0	6
	0	0	6
	0	0	6
B03	1	1	41
	1	1	41
	1	1	44
B04	0	1	42
	0	1	43
	0	1	46
B05	1	4	23
	1	4	23
	2	4	24
B06	0	1	13
	0	1	13
	0	1	15
B07	0	0	9
	0	0	9
	0	0	9
B08	0	0	9
	0	0	9
	0	0	9
B09	0	4	21
	0	4	21
	0	4	22

RR/SIRV Responses per Truck



	Current We	Last Week	YTD
B10	2	1	25
	2	1	25
	2	1	27
B11	0	0	14
	0	0	14
	0	0	15
B12	5	0	7
	5	0	7
	5	0	7
B13	0	0	4
	0	0	4
	0	0	4
B14	0	0	18
	0	0	18
	0	0	18
B15	1	0	5
	1	0	5
	1	0	5
P51	1	0	561
	1	0	571
	1	0	603
P52	130	109	2,412
	133	111	2,442
	142	120	2,601
P53	108	100	2,828
	108	100	2,857
	118	105	3,048
P54	147	145	3,059
	148	145	3,097
	155	152	3,289
P55	77	77	1,476
	78	77	1,486
	84	89	1,569
P56	122	130	2,470
	126	130	2,501
	136	141	2,674
P57	95	88	1,802
	97	88	1,823
	107	95	1,952
P58	43	46	603
	44	46	609
	45	51	646
P59	0	0	2
	0	0	2
	0	0	2

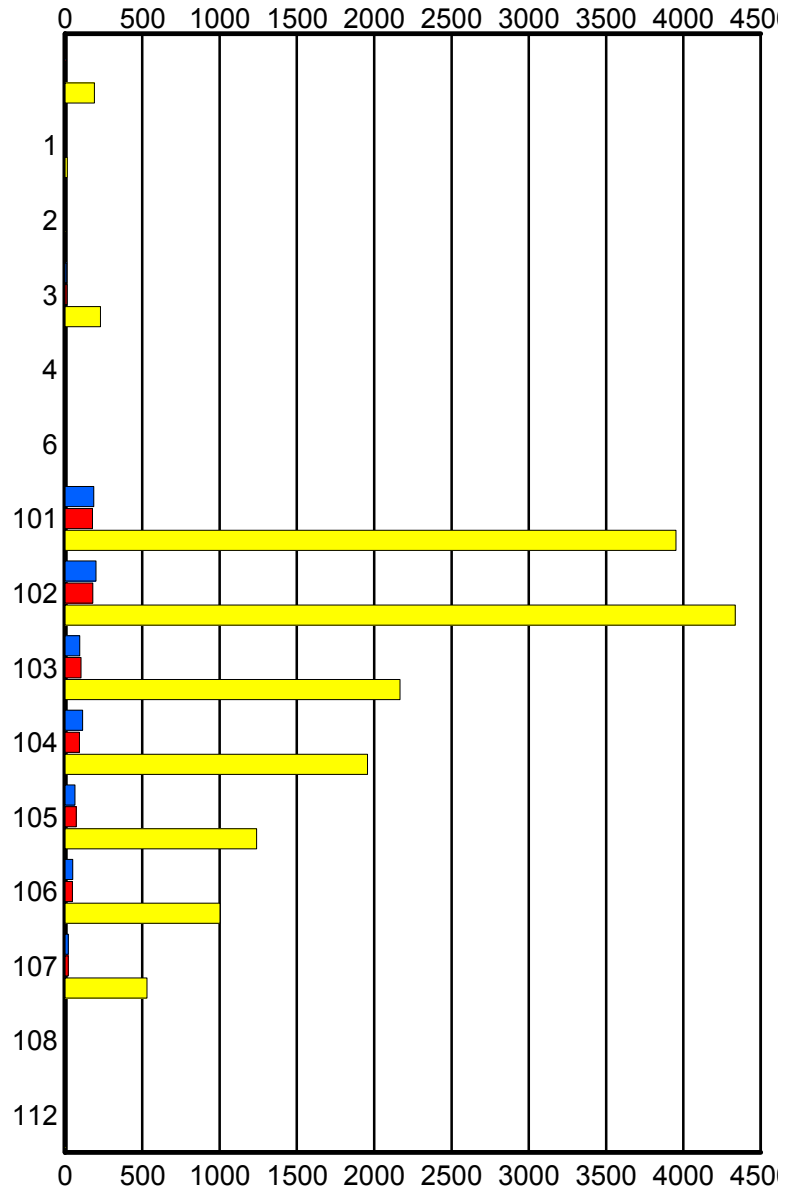
	Current We	Last Week	YTD
P60	0	0	1
	0	0	1
	0	0	1
S01	0	0	3
	0	0	3
	0	0	4
S02	0	0	2
	0	0	2
	0	0	2
S04	0	0	1
	0	0	1
	0	0	1

Road Ranger / SIRV Performance By Beat

	Current We	Last Week	YTD
	5	2	190
	5	2	191
	5	2	203
1	0	0	13
	0	0	14
	0	0	14
2	0	0	3
	0	0	3
	0	0	3
3	10	12	226
	10	12	230
	11	12	243
4	0	1	1
	0	1	1
	0	1	1
6	0	0	6
	0	0	7
	0	0	7
101	182	176	3,888
	186	178	3,953
	196	201	4,208
102	199	178	4,278
	201	179	4,336
	214	195	4,607
103	93	104	2,137
	95	104	2,166
	103	112	2,295
104	111	93	1,937
	113	93	1,957
	123	99	2,093
105	64	72	1,231
	64	72	1,239
	67	72	1,329
106	50	47	994
	50	47	1,002
	57	49	1,067
107	21	21	528
	21	21	530
	23	22	568
108	0	0	3
	0	0	4
	0	0	4
112	0	0	2
	0	0	2
	0	0	3

Values presented are:
 - Total Events with a RR/SIRV Response
 - Total RR/SIRV Responses,
 - Total Activities Performed

RR/SIRV Responses per Beat



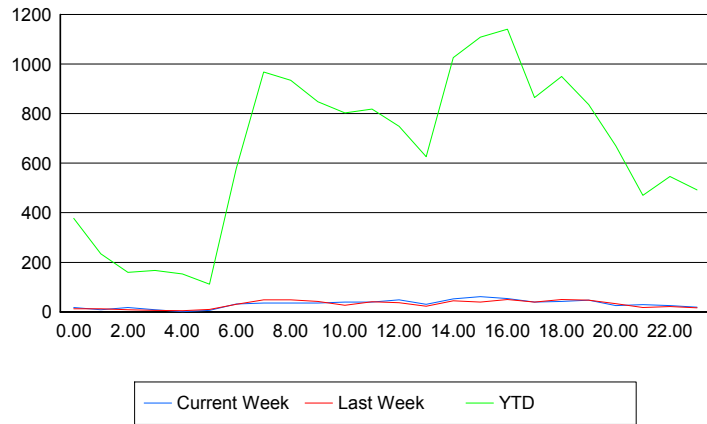
■ Current Week
 ■ Last Week
 ■ YTD

Road Ranger / SIRV Performance By Time of Day

Values presented are:
 - Total Events with a RR/SIRV Response
 - Total RR/SIRV Responses,
 - Total Activities Performed

	Current We	Last Week	YTD
12AM-1AM	17	12	366
	18	12	377
	18	14	409
1AM-2AM	8	13	230
	8	13	234
	8	15	244
2AM-3AM	16	8	155
	17	8	160
	20	9	172
3AM-4AM	7	6	159
	8	6	167
	8	7	179
4AM-5AM	1	5	145
	1	5	153
	1	5	159
5AM-6AM	6	6	99
	6	10	112
	6	12	119
6AM-7AM	32	29	554
	32	30	579
	34	33	613
7AM-8AM	34	47	940
	35	48	968
	36	51	1,027
8AM-9AM	34	44	895
	35	49	935
	35	52	996
9AM-10AM	35	41	821
	35	42	848
	35	44	896
10AM-11AM	38	27	777
	39	27	803
	42	28	844
11AM-12PM	38	41	799
	39	41	818
	40	44	865
12PM-1PM	47	35	715
	49	37	749
	54	40	787

Number of Responses / Hour of the Day



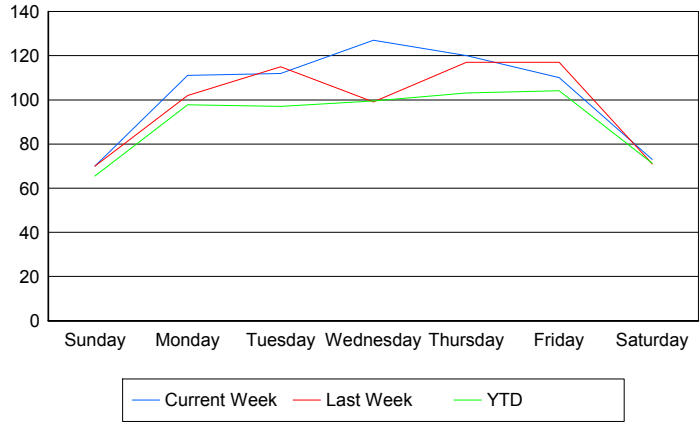
	Current We	Last Week	YTD
1PM-2PM	30	23	591
	31	23	626
	36	26	665
2PM-3PM	50	44	987
	52	45	1,026
	57	47	1,100
3PM-4PM	60	38	1,088
	61	39	1,108
	65	42	1,186
4PM-5PM	50	49	1,100
	53	50	1,141
	59	56	1,232
5PM-6PM	38	39	840
	39	40	865
	45	43	926
6PM-7PM	40	50	934
	42	50	950
	44	55	1,007
7PM-8PM	46	47	811
	47	47	836
	52	52	888
8PM-9PM	25	33	658
	25	33	670
	28	35	703
9PM-10PM	27	16	453
	29	17	470
	29	18	506
10PM-11PM	25	20	535
	25	21	546
	26	21	586
11PM-12AM	18	16	483
	19	16	492
	21	16	536

Road Ranger / SIRV Performance By Day of Week

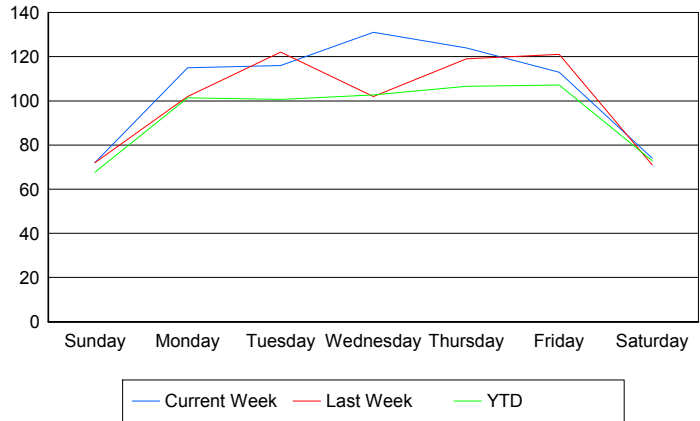
Values presented are:
 - Total Events with a RR/SIRV Response
 - Total RR/SIRV Responses,
 - Total Activities Performed

	Current We	Last Week	YTD
Sunday	70	70	1,522
	72	72	1,570
	79	78	1,657
Monday	111	102	2,287
	115	102	2,369
	125	107	2,522
Tuesday	112	115	2,301
	116	122	2,384
	126	134	2,547
Wednesday	127	99	2,341
	131	102	2,414
	135	108	2,582
Thursday	120	117	2,398
	124	119	2,482
	129	128	2,653
Friday	110	117	2,549
	113	121	2,626
	127	130	2,773
Saturday	73	71	1,752
	74	71	1,790
	78	80	1,911

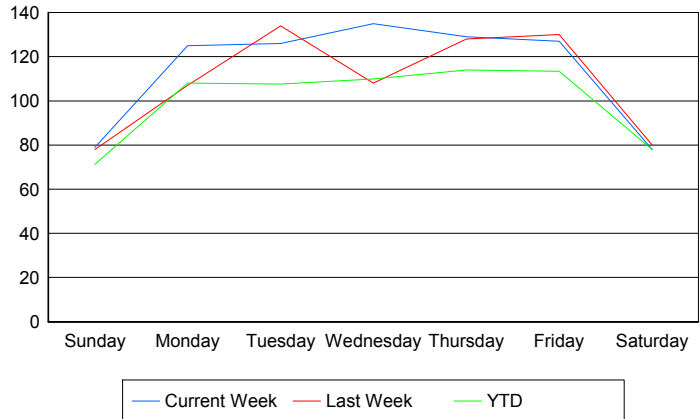
Avg # of events with a RR/SIRV Response per Day of the Week



Avg # of RR/SIRV Responses per Day of the Week



Avg # of RR/SIRV Activities Performed per Day of the Week



Road Ranger / SIRV Responses per Time of Day and Day of Week

