



# Weekly Performance Measures Report Palm Beach County



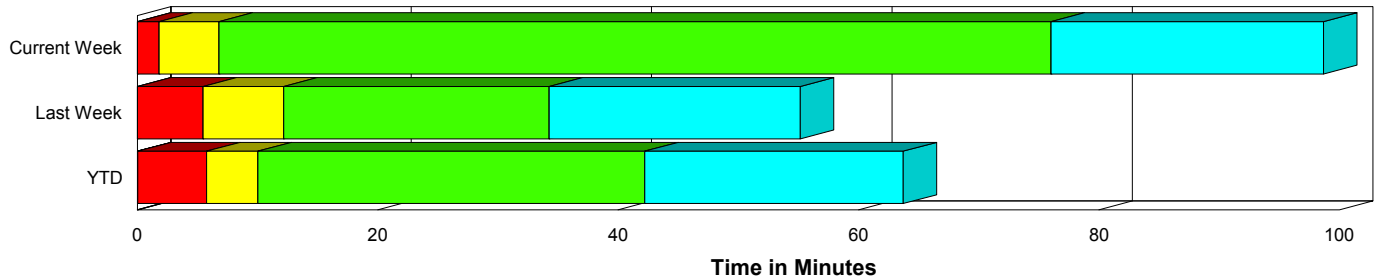
Created on:  
June 28, 2010  
10:05 am

Period From Jun 20, 2010 to Jun 26, 2010

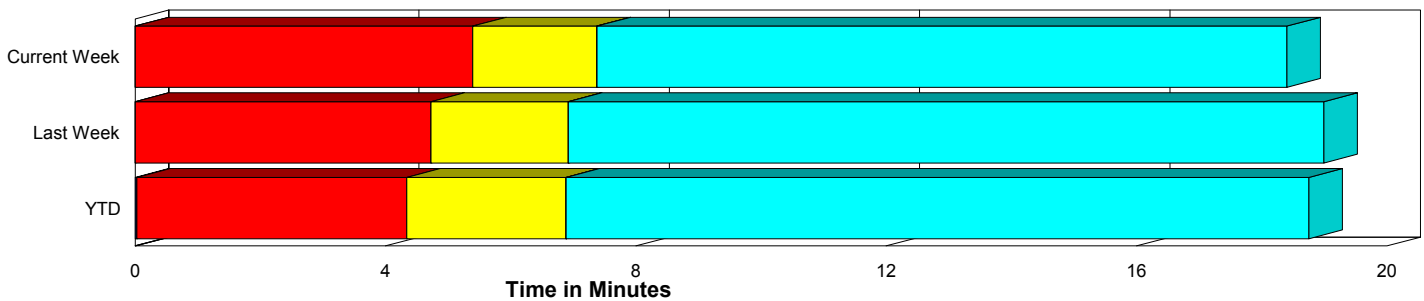
## Performance Measures Summary

	Traffic Events (No Lanes Blocked)			Incidents (Lanes Blocked)		
	<u>This Week</u>	<u>Last Week</u>	<u>YTD</u>	<u>This Week</u>	<u>Last Week</u>	<u>YTD</u>
Number of Events	611	596	13,179	21	17	642
TMC Detection (min.)	0.00	0.00	0.03	0.00	0.00	0.04
TMC Verification (min.)	5.40	4.73	4.31	1.80	5.47	5.76
TMC Response (min.)	8.10	7.29	7.41	6.98	12.18	10.33
RR Dispatch Time (min.)	3.12	2.53	2.62	3.41	4.18	2.90
RR Response Time (min.)	5.01	4.87	4.90	3.47	8.00	7.46
Roadway Clearance (min.)				73.97	34.26	42.30
Event Clearance (min.)	19.12	19.36	19.30	96.63	54.85	64.06
# of Events w/ RR/SIRV	576	572	12,313	20	17	619
RR/SIRV Responses	576	572	12,313	20	17	619
RR/SIRV Activities	598	617	12,859	32	27	822

### Incident Clearance Time-Line



### Traffic Event (Non-Lane Blockage) Time-Line



<span style="color: blue;">■</span> Avg. TMC Detection Time	<span style="color: green;">■</span> Avg. Time from TMC Response to Roadway Clearance*
<span style="color: red;">■</span> Avg. Time from TMC Detection to TMC Verification	<span style="color: cyan;">■</span> Avg. Time from Roadway Clearance to Incident/Event Clearance**
<span style="color: yellow;">■</span> Avg. Time from TMC Verification to TMC Response	

\* Roadway clearance equals all travel lanes open

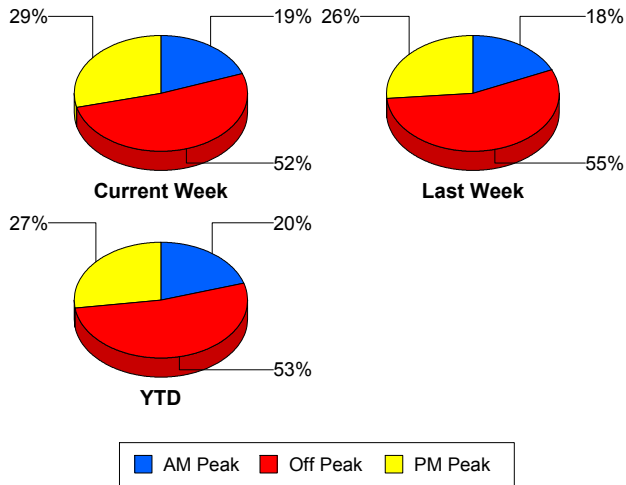
\*\* Incident clearance equals time when last responder has left the scene

## Performance Measures by Peak Period

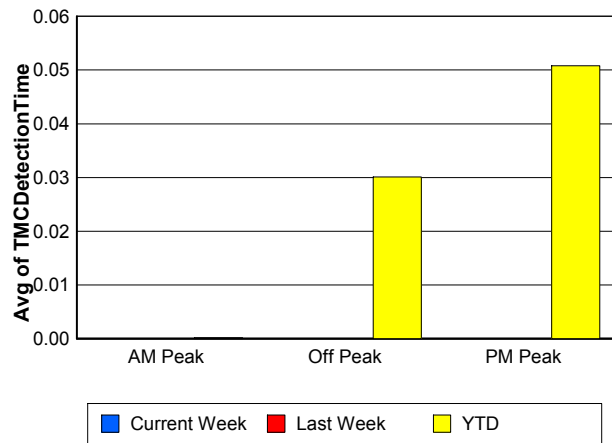
Note: AM peak period is defined as 6am to 10am and PM peak period is defined as 3pm to 7pm.

	AM Peak			Off Peak			PM Peak		
	<u>Current Week</u>	<u>Last Week</u>	<u>YTD</u>	<u>Current Week</u>	<u>Last Week</u>	<u>YTD</u>	<u>Current Week</u>	<u>Last Week</u>	<u>YTD</u>
Number of Events	123	112	2,797	326	339	7,279	183	162	3,745
Number of Incidents	4	3	145	10	10	339	7	4	158
TMC Detection (min.)	0.00	0.00	0.00	0.00	0.00	0.03	0.00	0.00	0.05
TMC Verification (min.)	2.01	3.91	2.95	5.21	4.83	4.64	7.61	5.15	4.93
TMC Response (min.)	3.85	6.73	6.23	8.43	7.15	8.11	10.34	8.44	7.48
RR Dispatch Time (min.)	1.71	1.40	1.80	2.99	2.60	2.87	4.39	3.34	2.79
RR Response Time (min.)	2.11	5.41	4.48	5.53	4.74	5.35	5.95	5.11	4.81
Event Clearance (min.)	15.72	16.24	20.53	22.59	21.43	22.39	24.11	20.90	20.06
Roadway Clearance (min.)	77.99	8.51	38.80	74.71	42.32	48.26	70.62	33.44	32.74
Incident Clearance (min.)	108.01	32.66	64.24	91.64	66.45	66.61	97.24	42.50	56.95
# of Events w/ RR/SIRV	119	109	2,641	307	322	6,743	170	158	3,548
RR/SIRV Responses	119	109	2,641	307	322	6,743	170	158	3,548
RR/SIRV Activities	120	107	2,787	325	357	7,145	185	180	3,749

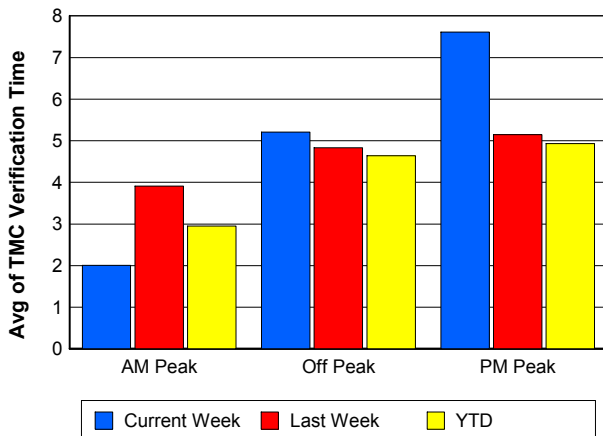
### Number of Events / Peak Period



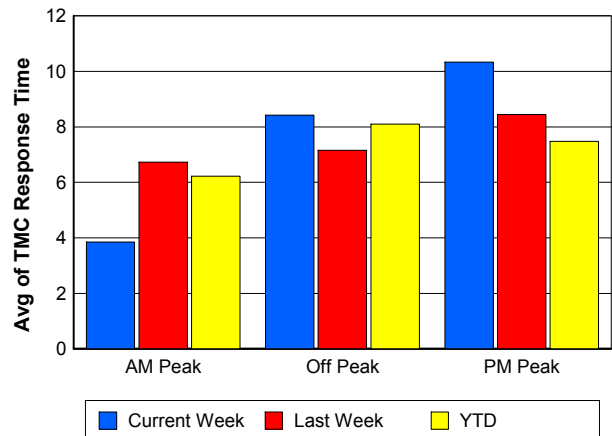
### TMC Detection Time



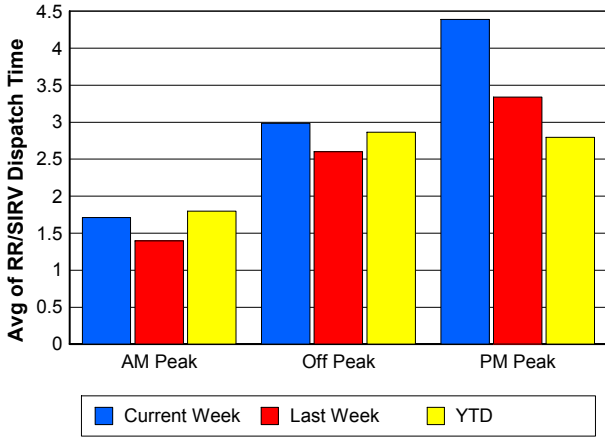
### TMC Verification Time



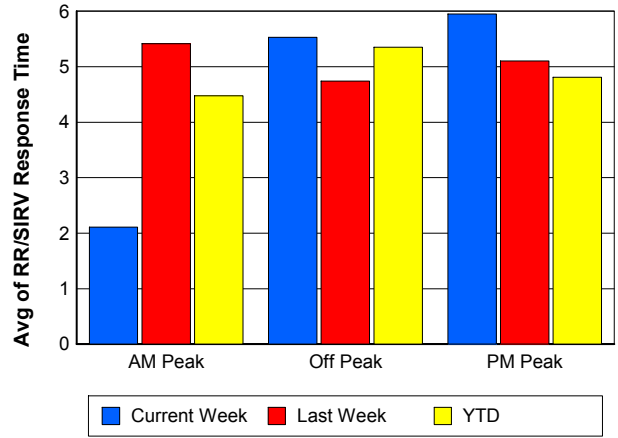
### TMC Response Time



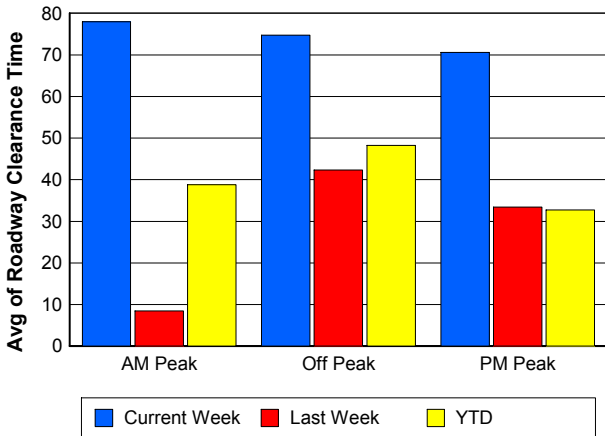
### Road Ranger / SIRV Dispatch Time



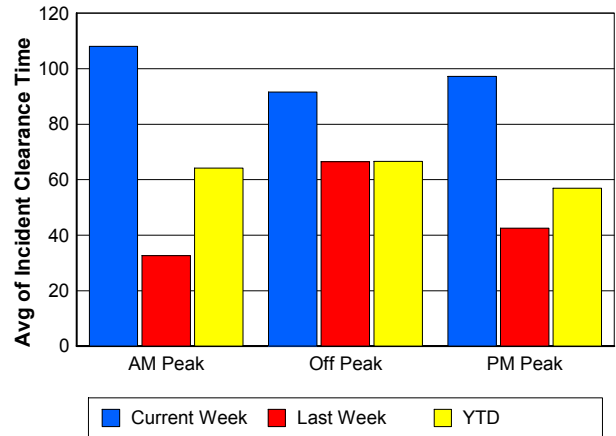
### Road Ranger / SIRV Response Time



### Roadway Clearance Time (2A)



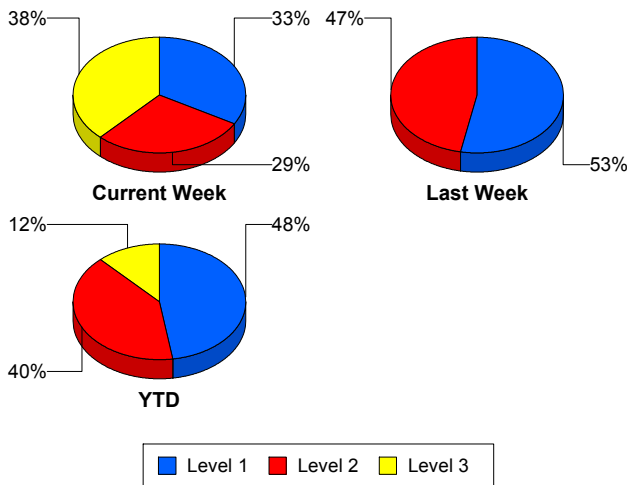
### Incident Clearance Time (3B)



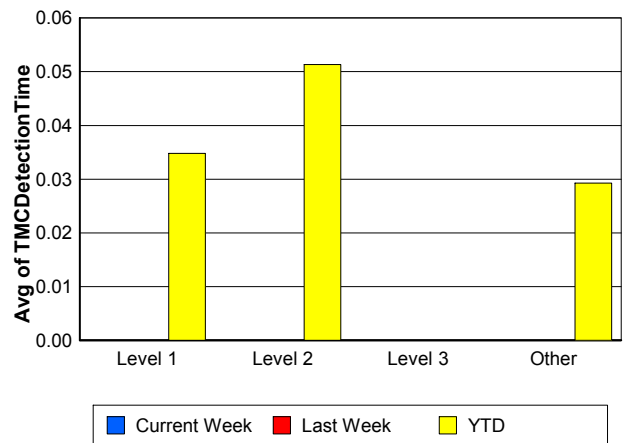
## Performance Measures by Severity

	Level 1			Level 2			Level 3		Other		
	<u>This Week</u>	<u>Last Week</u>	<u>YTD</u>	<u>This Week</u>	<u>Last Week</u>	<u>YTD</u>	<u>This Week</u>	<u>YTD</u>	<u>This Week</u>	<u>Last Week</u>	<u>YTD</u>
Number of Events	7	9	304	6	8	259	8	77	611	596	13,181
Number of Incidents	7	9	304	6	8	259	8	77	0	0	2
TMC Detection (min.)	0.00	0.00	0.03	0.00	0.00	0.05	0.00	0.00	0.00	0.00	0.03
TMC Verification (min.)	0.62	3.81	3.28	3.26	7.34	8.73	1.76	5.54	5.40	4.73	4.31
TMC Response (min.)	1.61	8.84	6.37	8.49	15.94	13.79	10.29	14.61	8.10	7.29	7.41
RR Dispatch Time (min.)	1.14	3.62	1.59	1.28	4.82	3.46	7.50	6.97	3.12	2.53	2.61
RR Resp. Time (min.)	0.53	5.22	4.86	7.21	11.13	10.38	2.78	7.64	5.01	4.87	4.90
Event Clearance (min.)	40.06	45.26	42.81	64.46	65.64	70.19	170.25	126.69	19.12	19.36	19.31
Roadway Clear. (min.)	10.17	12.79	15.14	44.17	58.42	54.37	152.15	110.61			-21.46
Incident Clearance (min.)	40.06	45.26	42.81	64.46	65.64	70.19	170.25	125.96			0.00
# of Events w/ RR/SIRV	7	9	298	6	8	257	7	62	576	572	12,315
RR/SIRV Responses	7	9	298	6	8	257	7	62	576	572	12,315
RR/SIRV Activities	9	14	360	9	13	360	14	97	598	617	12,864

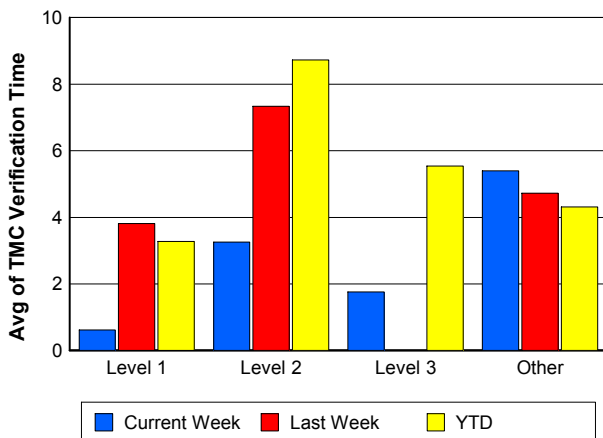
### Number of Events / Severity



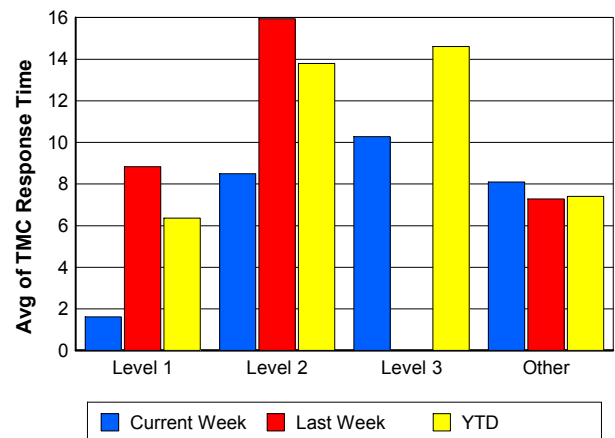
### TMC Detection Time



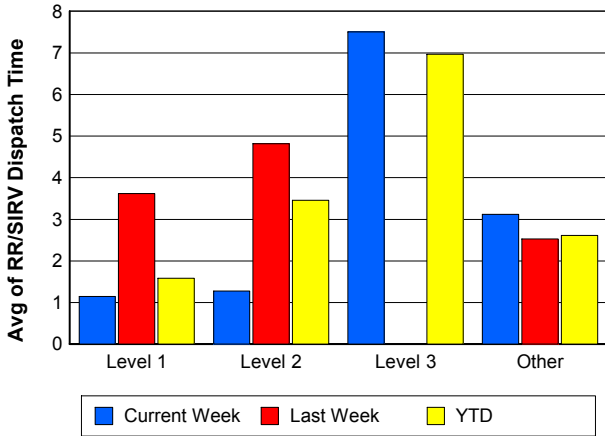
### TMC Verification Time



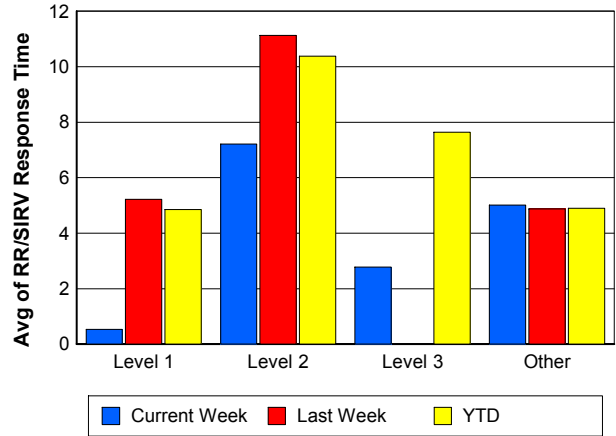
### TMC Response Time



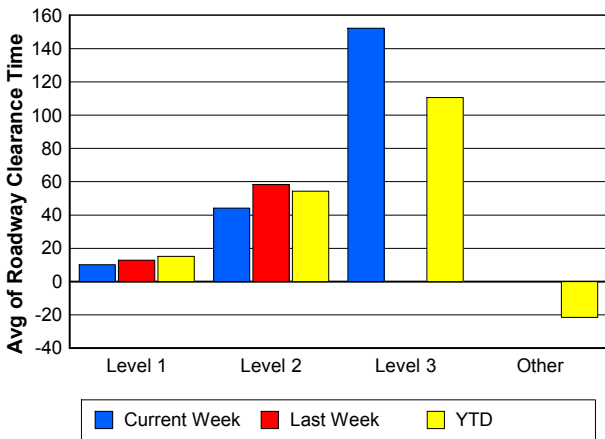
## Road Ranger / SIRV Dispatch Time



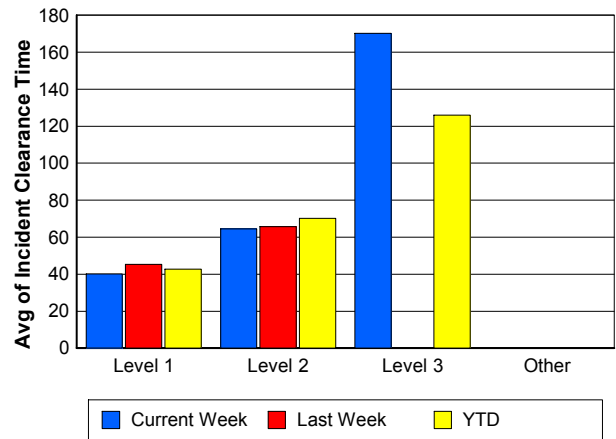
## Road Ranger / SIRV Response Time



## Roadway Clearance Time (2A)



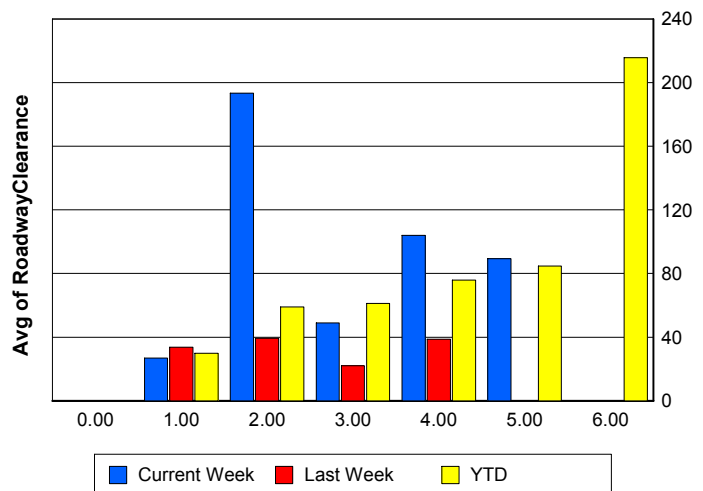
## Incident Clearance Time (3B)



## Roadway Clearance by Maximum Number of Lanes Blocked

	Current Week	Last Week	YTD
0			
1	26.87	33.66	29.88
2	193.38	39.32	58.91
3	48.95	21.95	61.17
4	103.92	38.63	75.86
5	89.32	0.00	84.80
6	0.00	0.00	215.67

## Roadway Clearance Time (2A)



## Performance Measures by Roadway

**95**

	<u>Current Week</u>	<u>Last Week</u>	<u>YTD</u>
Number of Events	632	613	13,810
Number of Incidents	21	17	632
TMC Detection (min.)	0.00	0.00	0.03
TMC Verification (min.)	5.27	4.75	4.38
TMC Response (min.)	8.06	7.43	7.55
RR Dispatch Time (min.)	3.13	2.58	2.63
RR Resp. Time (min.)	4.96	4.96	5.03
Event Clearance (min.)	21.69	20.34	21.35
Roadway Clear. (min.)	73.97	34.26	42.03
Incident Clearance (min.)	96.63	54.85	63.72
# of Events w/ RR/SIRV	596	589	12,931
RR/SIRV Responses	596	589	12,931
RR/SIRV Activities	630	644	13,680

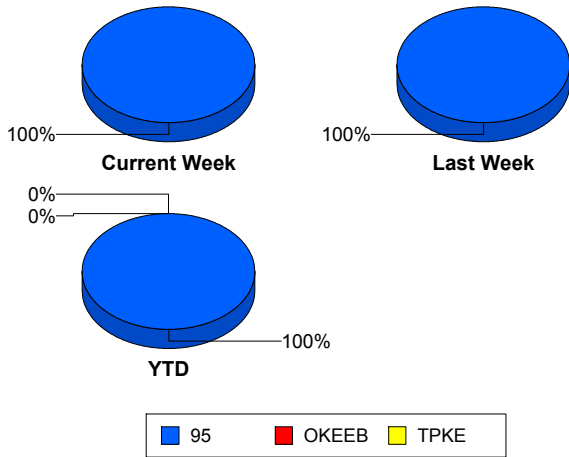
**OKEEB**

	<u>YTD</u>
Number of Events	1
Number of Incidents	0
TMC Detection (min.)	0.00
TMC Verification (min.)	0.00
TMC Response (min.)	0.00
RR Dispatch Time (min.)	0.00
RR Resp. Time (min.)	0.00
Event Clearance (min.)	18.45
Roadway Clear. (min.)	
Incident Clearance (min.)	
# of Events w/ RR/SIRV	1
RR/SIRV Responses	1
RR/SIRV Activities	1

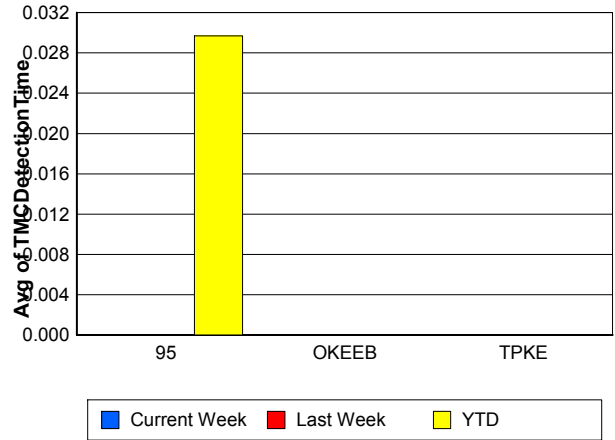
**TPKE**

	<u>YTD</u>
Number of Events	10
Number of Incidents	10
TMC Detection (min.)	0.00
TMC Verification (min.)	0.00
TMC Response (min.)	
RR Dispatch Time (min.)	
RR Resp. Time (min.)	
Event Clearance (min.)	62.29
Roadway Clear. (min.)	59.66
Incident Clearance (min.)	62.29
# of Events w/ RR/SIRV	0
RR/SIRV Responses	0
RR/SIRV Activities	0

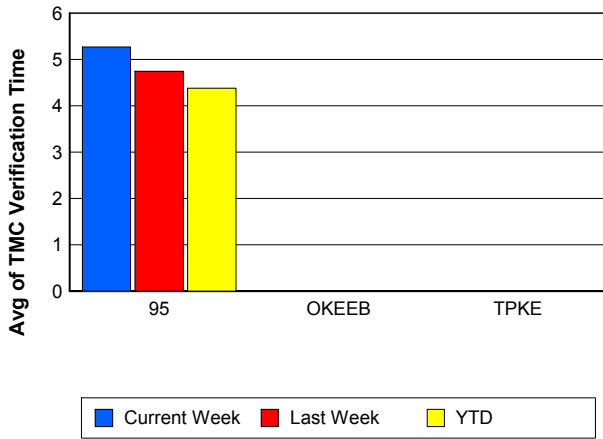
## Number of Events / Roadway



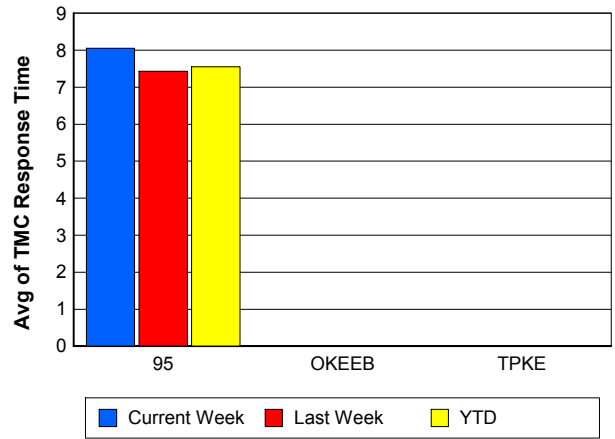
## TMC Detection Time



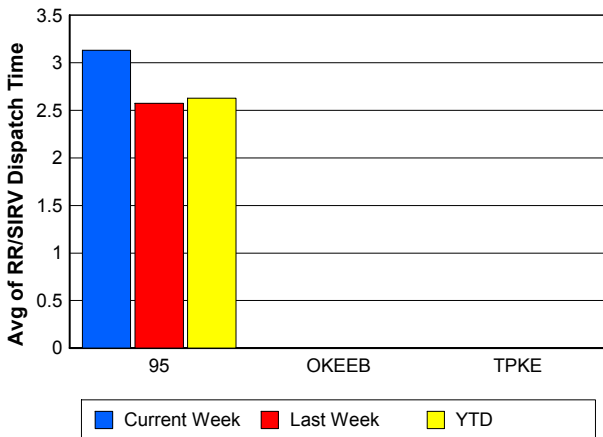
## TMC Verification Time



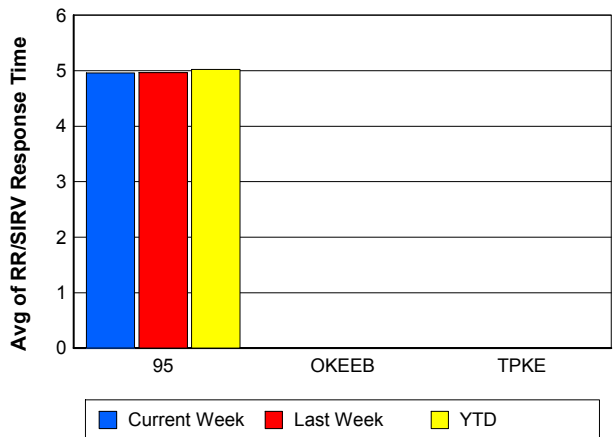
## TMC Response Time



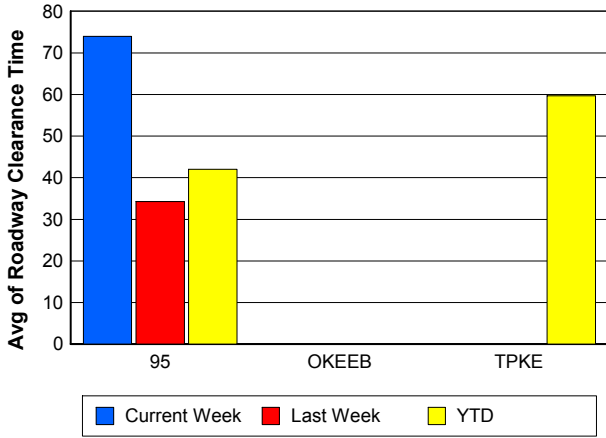
## Road Ranger / SIRV Dispatch Time



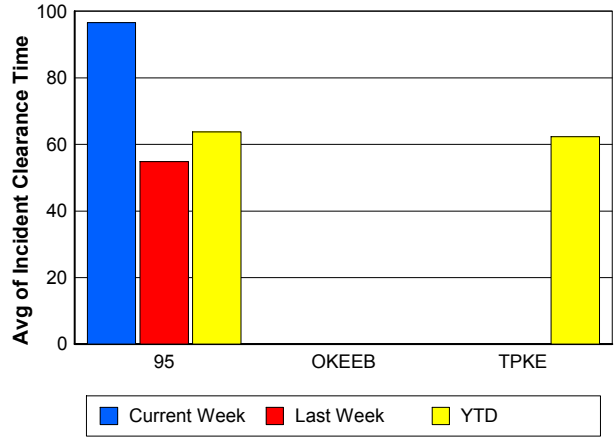
## Road Ranger / SIRV Response Time



## Roadway Clearance Time (2A)



## Incident Clearance Time (3B)



## Performance Measures by Event Type

### Accident

	<u>Current Week</u>	<u>Last Week</u>	<u>YTD</u>
Number of Events	31	22	970
Number of Incidents	13	10	442
TMC Detection (min.)	0.00	0.00	0.05
TMC Verification (min.)	6.36	6.12	7.56
TMC Response (min.)	9.60	12.97	11.15
RR Dispatch Time (min.)	5.76	1.92	2.68
RR Response Time (min.)	3.83	11.05	8.52
Event Clearance (min.)	76.97	58.72	59.97
Roadway Clearance (min.)	96.94	33.33	46.63
Incident Clearance (min.)	127.72	63.26	73.79
# of Events w/ RR/SIRV	31	22	944
RR/SIRV Assists	31	22	944
RR/SIRV Activities	42	29	1,120

### Debris on Roadway

	<u>Current Week</u>	<u>Last Week</u>	<u>YTD</u>
Number of Events	54	56	870
Number of Incidents	0	0	15
TMC Detection (min.)	0.00	0.00	0.00
TMC Verification (min.)	16.57	8.32	11.11
TMC Response (min.)	16.55	9.18	11.61
RR Dispatch Time (min.)	5.29	2.47	3.67
RR Response Time (min.)	11.24	6.71	7.98
Event Clearance (min.)	18.87	11.86	14.91
Roadway Clearance (min.)			18.00
Incident Clearance (min.)			23.19
# of Events w/ RR/SIRV	54	56	860
RR/SIRV Assists	54	56	860
RR/SIRV Activities	55	60	895

### Disabled Vehicle

	<u>Current Week</u>	<u>Last Week</u>	<u>YTD</u>
Number of Events	528	514	11,290
Number of Incidents	6	6	132
TMC Detection (min.)	0.00	0.00	0.03
TMC Verification (min.)	4.25	4.38	3.80
TMC Response (min.)	7.10	7.04	6.66
RR Dispatch Time (min.)	2.76	2.63	2.43
RR Response Time (min.)	4.40	4.49	4.35
Event Clearance (min.)	18.38	19.92	18.31
Roadway Clearance (min.)	14.02	32.68	24.79
Incident Clearance (min.)	21.70	40.57	33.44
# of Events w/ RR/SIRV	498	494	10,645
RR/SIRV Assists	498	494	10,645
RR/SIRV Activities	521	541	11,309

## Emergency Vehicles

	<u>Last Week</u>	<u>YTD</u>
Number of Events	1	11
Number of Incidents	1	10
TMC Detection (min.)	0.00	0.00
TMC Verification (min.)	0.00	2.54
TMC Response (min.)	0.00	3.99
RR Dispatch Time (min.)	0.00	0.08
RR Response Time (min.)	0.00	3.91
Event Clearance (min.)	56.42	48.83
Roadway Clearance (min.)	53.08	48.84
Incident Clearance (min.)	56.42	51.39
# of Events w/ RR/SIRV	1	7
RR/SIRV Assists	1	7
RR/SIRV Activities	2	9

## Other

	<u>Current Week</u>	<u>Last Week</u>	<u>YTD</u>
Number of Events	14	16	544
Number of Incidents	0	0	2
TMC Detection (min.)	0.00	0.00	0.11
TMC Verification (min.)	0.00	2.00	0.61
TMC Response (min.)	3.30	3.98	15.81
RR Dispatch Time (min.)	0.88	2.89	5.38
RR Response Time (min.)	2.45	3.74	8.13
Event Clearance (min.)	23.27	9.81	22.26
Roadway Clearance (min.)			19.30
Incident Clearance (min.)			29.86
# of Events w/ RR/SIRV	10	12	356
RR/SIRV Assists	10	12	356
RR/SIRV Activities	9	8	232

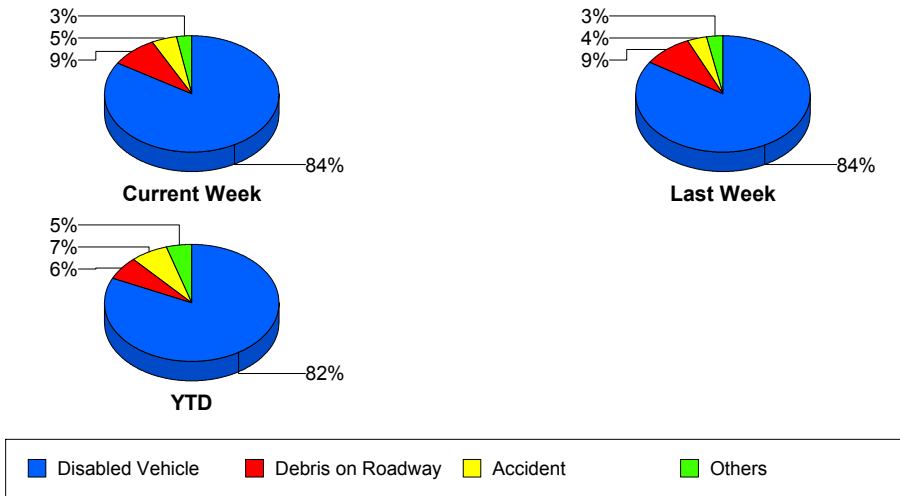
## Police Activity

	<u>Current Week</u>	<u>YTD</u>
Number of Events	3	52
Number of Incidents	2	24
TMC Detection (min.)	0.00	0.14
TMC Verification (min.)	0.00	0.67
TMC Response (min.)	8.30	18.84
RR Dispatch Time (min.)	8.27	8.70
RR Response Time (min.)	0.03	10.92
Event Clearance (min.)	81.24	53.28
Roadway Clearance (min.)	104.55	77.61
Incident Clearance (min.)	119.29	85.67
# of Events w/ RR/SIRV	2	41
RR/SIRV Assists	2	41
RR/SIRV Activities	2	33

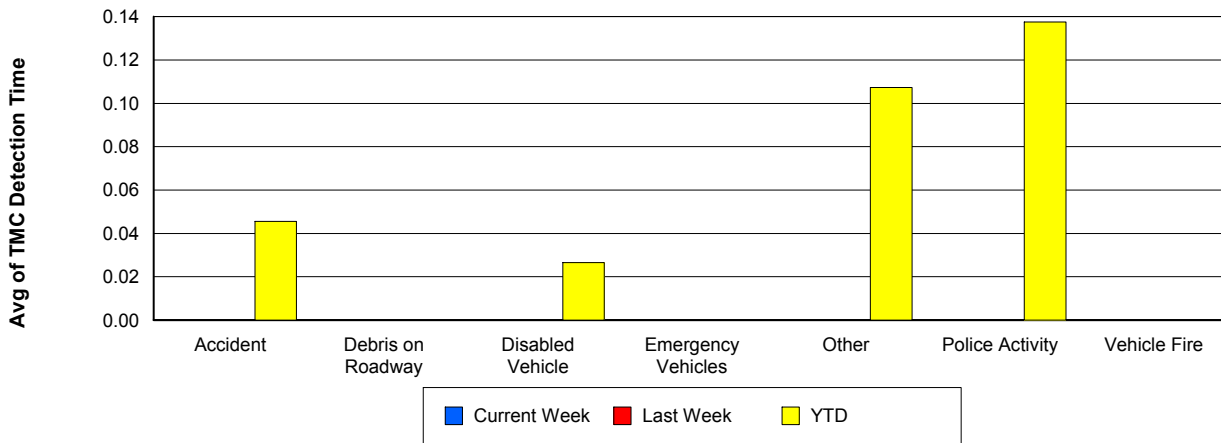
## Vehicle Fire

	<u>Last Week</u>	<u>YTD</u>
Number of Events	1	28
Number of Incidents	0	16
TMC Detection (min.)	0.00	0.00
TMC Verification (min.)	8.77	3.28
TMC Response (min.)	8.73	8.54
RR Dispatch Time (min.)	2.88	2.80
RR Response Time (min.)	5.85	5.88
Event Clearance (min.)	16.90	41.42
Roadway Clearance (min.)		35.31
Incident Clearance (min.)		52.03
# of Events w/ RR/SIRV	1	26
RR/SIRV Assists	1	26
RR/SIRV Activities	1	30

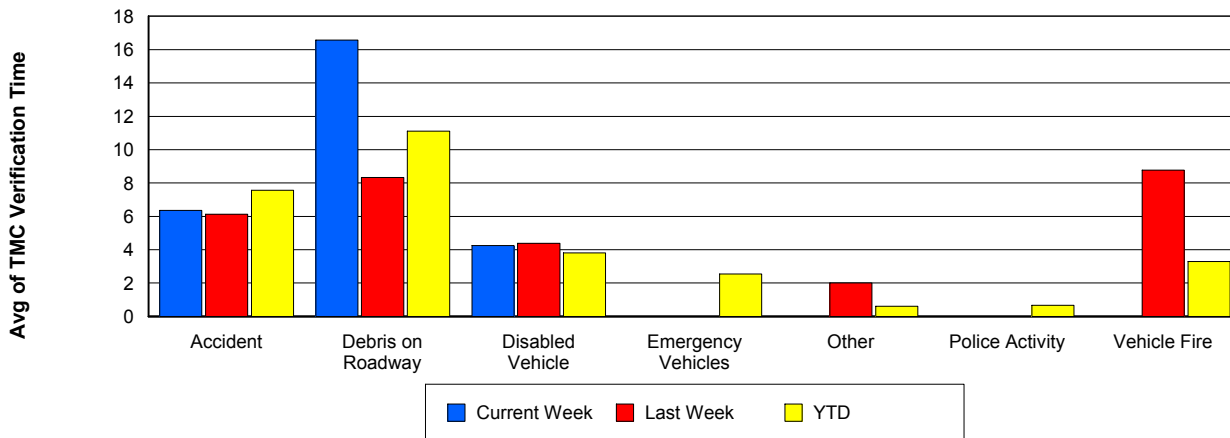
## Number of Events / Event Type



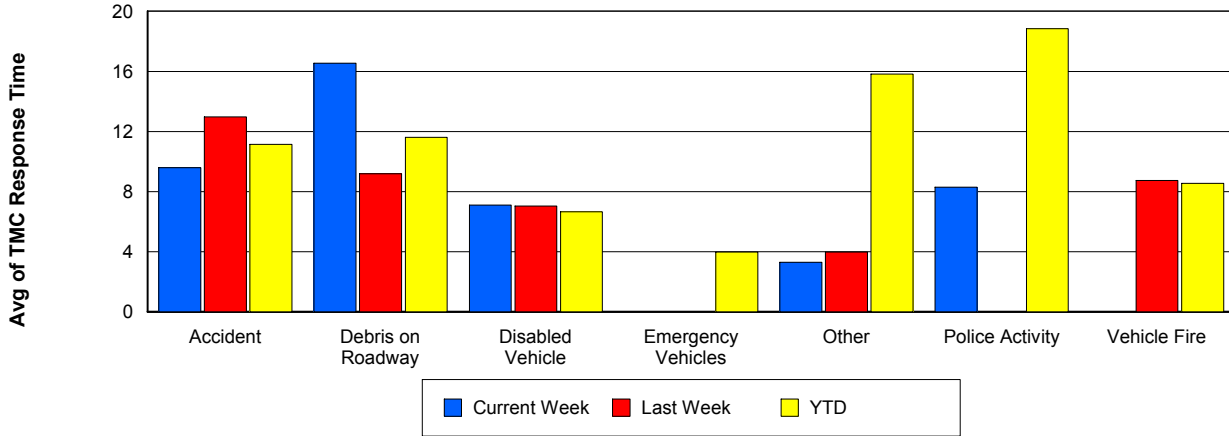
## TMC Detection Time



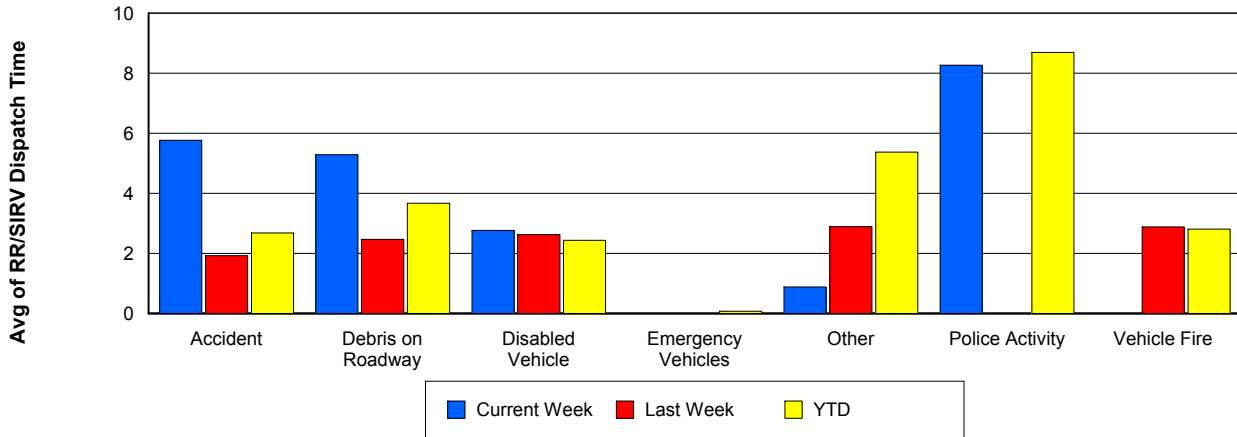
## TMC Verification Time



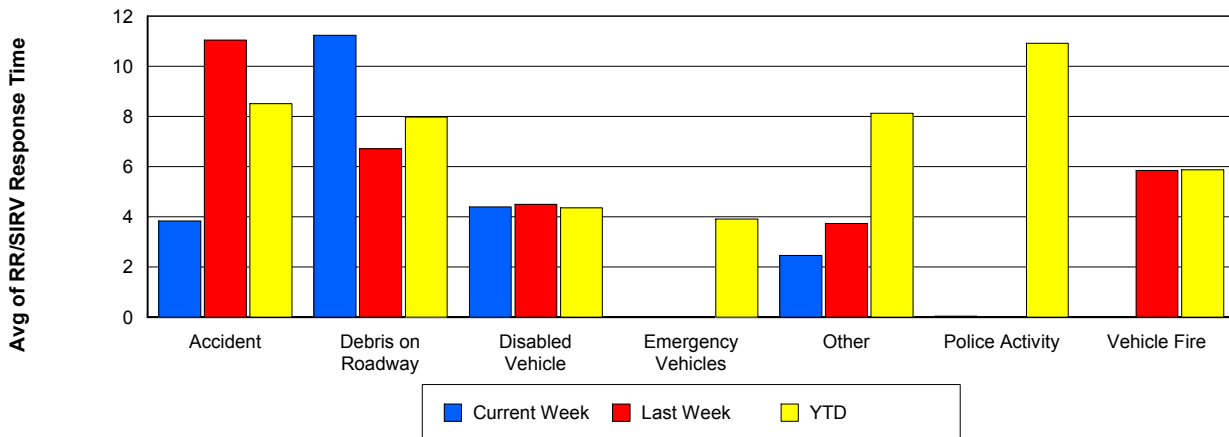
## TMC Response Time



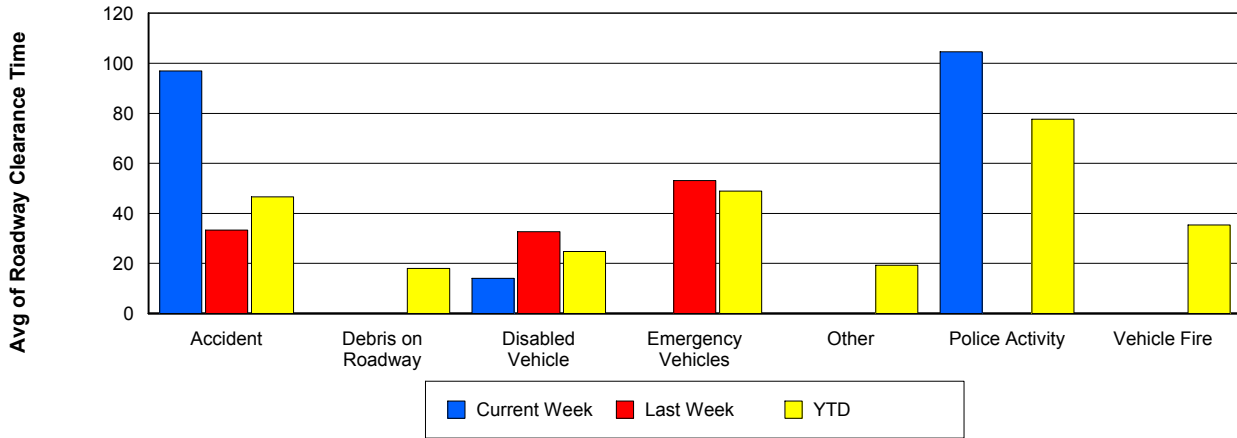
## Road Ranger / SIRV Dispatch Time



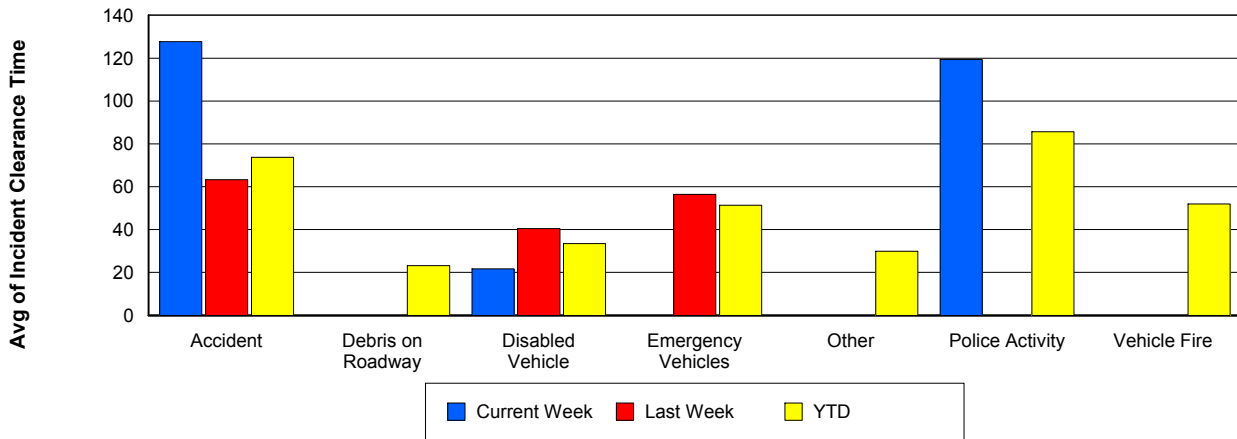
## Road Ranger / SIRV Response Time



## Roadway Clearance Time (2A)



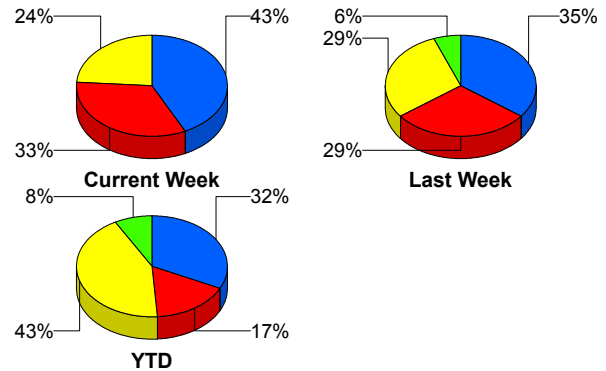
## Incident Clearance Time (3B)



## Incident Detection Methods

	Current Week	Last Week	YTD
Broward Road Ranger	0	0	5
Broward TMC	0	0	7
County Police	0	0	1
District 4	0	0	13
FDOT Maintenance	0	0	3
FHP	5	5	277
Florida's Turnpike	0	0	10
ITMS	0	0	1
ITMS CCTV	7	5	106
Media	0	0	1
Motorist	0	1	10
Palm Beach Road Ran	9	6	206
<b>Total</b>	<b>21</b>	<b>17</b>	<b>640</b>

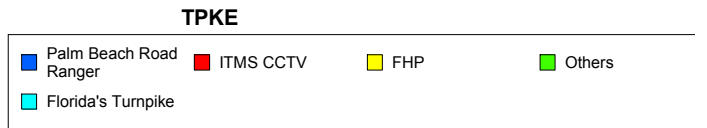
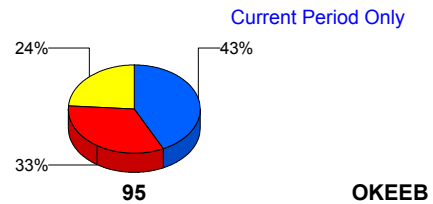
### Total Incidents by Detection Method



## Incident Detection Methods by Roadway

		Current Week	Last Week	YTD
95	Broward Road Ranger	0	0	5
	Broward TMC	0	0	7
	County Police	0	0	1
	District 4	0	0	13
	FDOT Maintenance	0	0	3
	FHP	5	5	277
	ITMS	0	0	1
	ITMS CCTV	7	5	106
	Media	0	0	1
	Motorist	0	1	10
	Palm Beach Road Ran	9	6	206
	<b>Total</b>	<b>21</b>	<b>17</b>	<b>630</b>
TPKE	Florida's Turnpike	0	0	10
	<b>Total</b>	<b>0</b>	<b>0</b>	<b>10</b>

### Total Events by Roadway and Detection Method

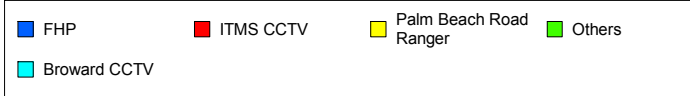
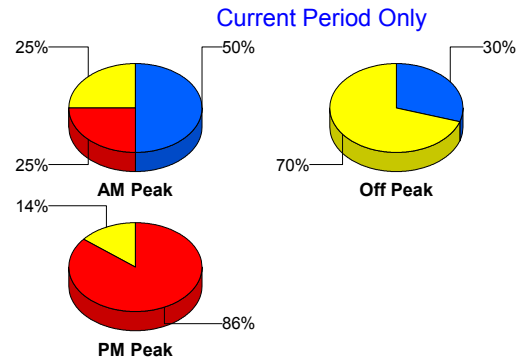


	Current Week	Last Week	YTD
Total	21	17	640

### Incident Detection Methods by Peak Period

		Current Week	Last Week	YTD
AM Peak	Broward Road Ranger	0	0	4
	Broward TMC	0	0	2
	County Police	0	0	1
	District 4	0	0	2
	FDOT Maintenance	0	0	1
	FHP	2	1	52
	Florida's Turnpike	0	0	2
	ITMS CCTV	1	0	25
	Media	0	0	1
	Motorist	0	0	1
	Palm Beach Road Ran	1	2	54
	<b>Total</b>	<b>4</b>	<b>3</b>	<b>145</b>
Off Peak	Broward Road Ranger	0	0	1
	Broward TMC	0	0	2
	District 4	0	0	8
	FDOT Maintenance	0	0	2
	FHP	3	4	152
	Florida's Turnpike	0	0	7
	ITMS	0	0	1
	ITMS CCTV	0	4	57
	Motorist	0	1	5
	Palm Beach Road Ran	7	1	103
	<b>Total</b>	<b>10</b>	<b>10</b>	<b>338</b>
PM Peak	Broward TMC	0	0	3
	District 4	0	0	3
	FHP	0	0	74
	Florida's Turnpike	0	0	1
	ITMS CCTV	6	1	24

Total Events by Peak Period and Detection Method

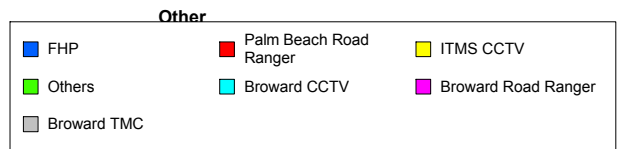
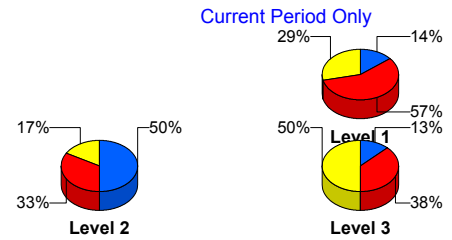


		Current Week	Last Week	YTD
PM Peak	Motorist	0	0	4
	Palm Beach Road Ran	1	3	49
	Total	7	4	158
Total		21	17	640

### Incident Detection Methods by Severity

		Current Week	Last Week	YTD
	FHP	0	0	1
	Total	0	0	1
Level 1	Broward Road Ranger	0	0	5
	Broward TMC	0	0	5
	County Police	0	0	1
	District 4	0	0	9
	FDOT Maintenance	0	0	1
	FHP	1	3	92
	ITMS CCTV	2	3	54
	Motorist	0	0	3
	Palm Beach Road Ran	4	3	134
	Total	7	9	304
	Level 2	Broward TMC	0	0
District 4		0	0	2
FDOT Maintenance		0	0	2
FHP		3	2	147
ITMS		0	0	1
ITMS CCTV		1	2	41
Motorist		0	1	7
Palm Beach Road Ran		2	3	57
Total		6	8	259
Level 3	District 4	0	0	2
	FHP	1	0	38
	Florida's Turnpike	0	0	10
	ITMS CCTV	4	0	11

### Total Events by Severity and Detection Method



		Current Week	Last Week	YTD
Level 3	Media	0	0	1
	Palm Beach Road Ran	3	0	15
	Total	8	0	77
Total		21	17	640

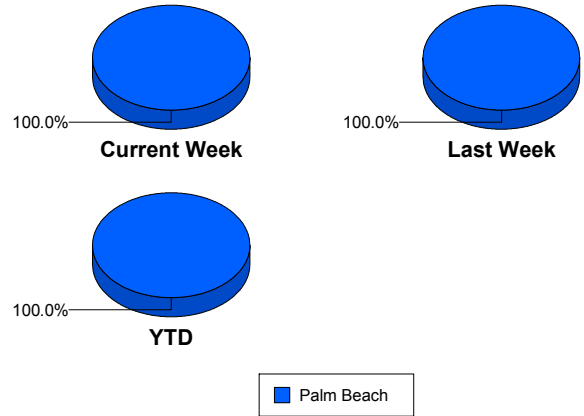
# Road Ranger / SIRV Performance Measures

## Road Ranger / SIRV Performance By County

Values presented are:  
 - Total Events with a RR/SIRV Response  
 - Total RR/SIRV Responses,  
 - Total Activities Performed

	Current We	Last Week	YTD
Palm Beach	713	722	15,848
	739	745	16,356
	788	799	17,433

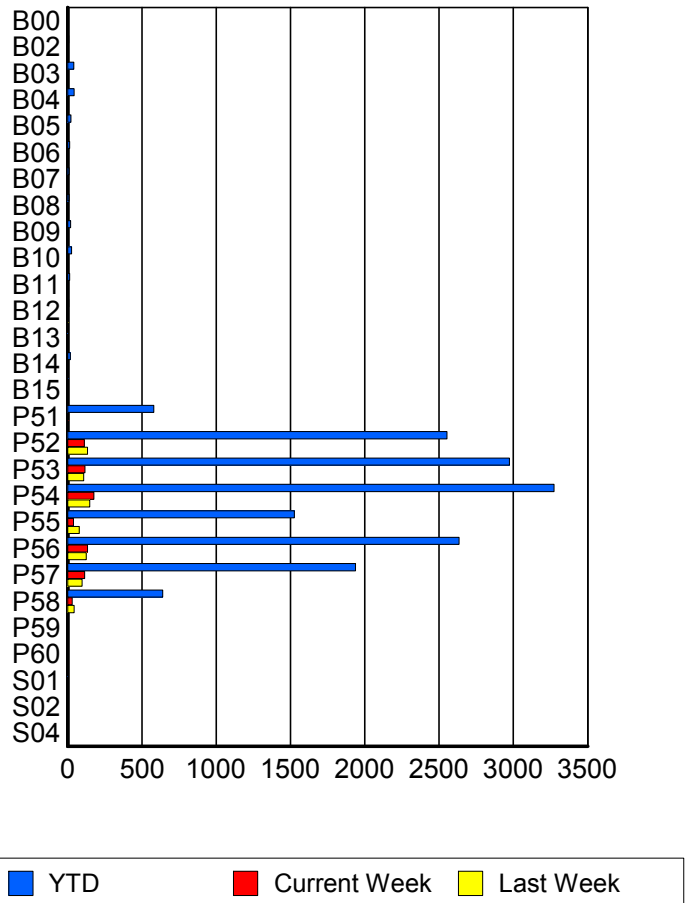
RR/SIRV Responses per County



## Road Ranger / SIRV Performance By Truck

	Current We	Last Week	YTD
B00	0	0	2
	0	0	2
	0	0	2
B02	1	0	7
	1	0	7
	1	0	7
B03	1	1	42
	1	1	42
	2	1	46
B04	0	0	42
	0	0	43
	0	0	46
B05	0	1	23
	0	1	23
	0	2	24
B06	0	0	13
	0	0	13
	0	0	15
B07	1	0	10
	1	0	10
	1	0	10
B08	0	0	9
	0	0	9
	0	0	9
B09	0	0	21
	0	0	21
	0	0	22

RR/SIRV Responses per Truck



	Current We	Last Week	YTD
B10	1	2	26
	1	2	26
	1	2	28
B11	0	0	14
	0	0	14
	0	0	15
B12	1	5	8
	1	5	8
	1	5	8
B13	0	0	4
	0	0	4
	0	0	4
B14	1	0	19
	1	0	19
	1	0	19
B15	0	1	5
	0	1	5
	0	1	5
P51	8	1	569
	8	1	579
	8	1	611
P52	110	130	2,522
	112	133	2,554
	123	142	2,724
P53	115	108	2,943
	116	108	2,973
	119	118	3,167
P54	173	147	3,232
	177	148	3,274
	188	155	3,477
P55	39	77	1,515
	39	78	1,525
	49	84	1,618
P56	133	122	2,603
	134	126	2,635
	139	136	2,813
P57	115	95	1,917
	115	97	1,938
	123	107	2,075
P58	32	43	635
	32	44	641
	32	45	678
P59	0	0	2
	0	0	2
	0	0	2

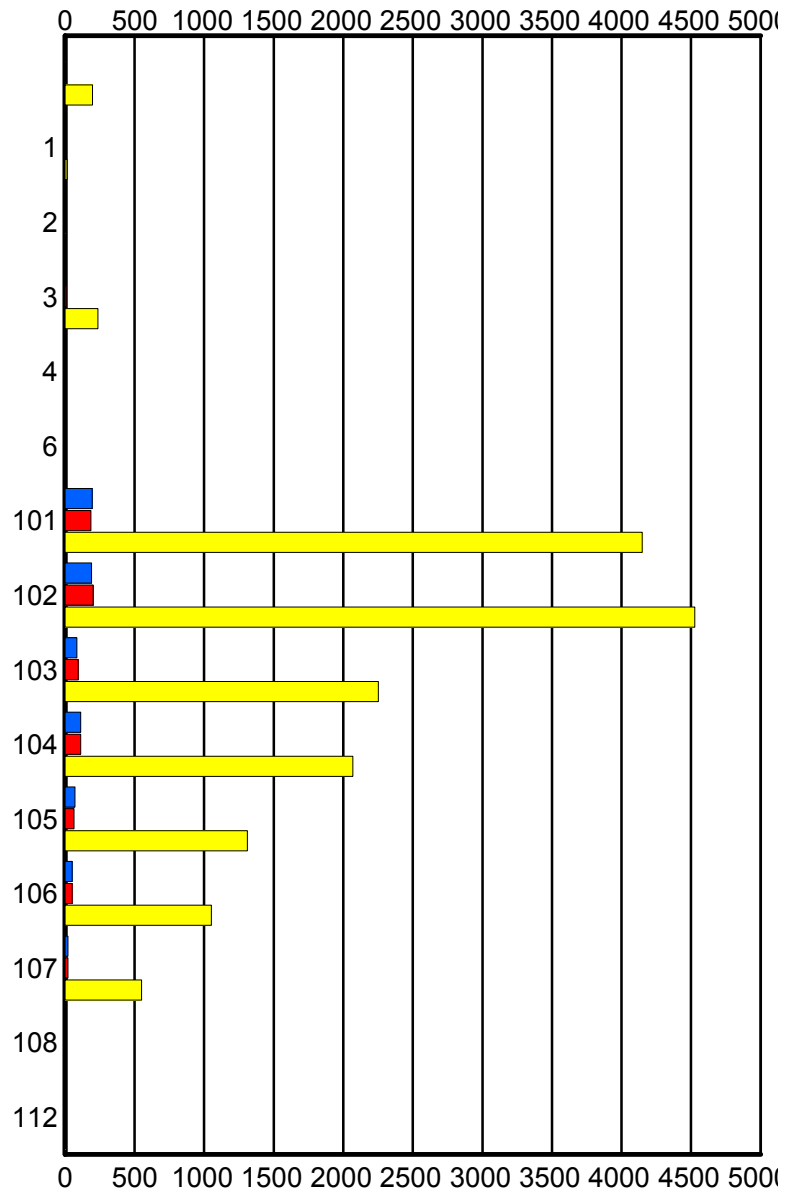
	Current We	Last Week	YTD
P60	0	0	1
	0	0	1
	0	0	1
S01	0	0	3
	0	0	3
	0	0	4
S02	0	0	2
	0	0	2
	0	0	2
S04	0	0	1
	0	0	1
	0	0	1

### Road Ranger / SIRV Performance By Beat

	Current We	Last Week	YTD
	7	5	197
	7	5	198
	8	5	211
1	0	0	13
	0	0	14
	0	0	14
2	0	0	3
	0	0	3
	0	0	3
3	6	10	232
	6	10	236
	7	11	250
4	0	0	1
	0	0	1
	0	0	1
6	0	0	6
	0	0	7
	0	0	7
101	191	182	4,079
	196	186	4,149
	212	196	4,420
102	189	199	4,467
	190	201	4,526
	205	214	4,812
103	86	93	2,223
	86	95	2,252
	88	103	2,383
104	111	111	2,048
	112	113	2,069
	122	123	2,215
105	72	64	1,303
	72	64	1,311
	73	67	1,402
106	48	50	1,042
	50	50	1,052
	51	57	1,118
107	20	21	548
	20	21	550
	22	23	590
108	0	0	3
	0	0	4
	0	0	4
112	0	0	2
	0	0	2
	0	0	3

Values presented are:  
 - Total Events with a RR/SIRV Response  
 - Total RR/SIRV Responses,  
 - Total Activities Performed

### RR/SIRV Responses per Beat



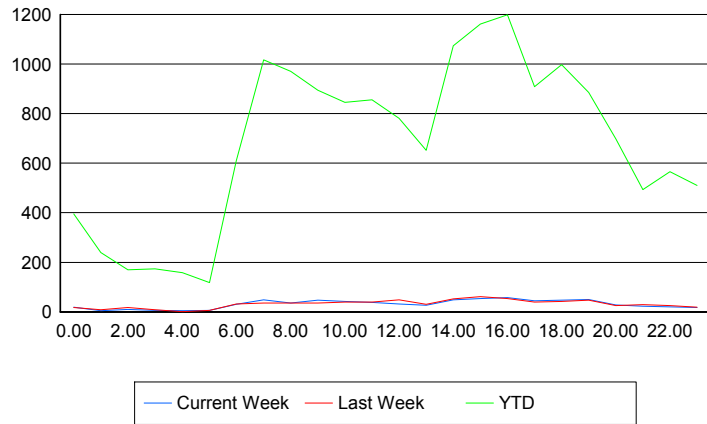
■ Current Week   
 ■ Last Week   
 ■ YTD

## Road Ranger / SIRV Performance By Time of Day

Values presented are:  
 - Total Events with a RR/SIRV Response  
 - Total RR/SIRV Responses,  
 - Total Activities Performed

	Current We	Last Week	YTD
12AM-1AM	18	17	384
	19	18	396
	21	18	430
1AM-2AM	5	8	235
	5	8	239
	5	8	249
2AM-3AM	9	16	164
	10	17	170
	10	20	182
3AM-4AM	6	7	165
	6	8	173
	7	8	186
4AM-5AM	5	1	150
	5	1	158
	5	1	164
5AM-6AM	6	6	105
	6	6	118
	6	6	125
6AM-7AM	30	32	584
	30	32	609
	32	34	645
7AM-8AM	47	34	987
	49	35	1,017
	52	36	1,079
8AM-9AM	35	34	930
	35	35	970
	35	35	1,031
9AM-10AM	46	35	867
	47	35	895
	49	35	945
10AM-11AM	39	38	816
	42	39	845
	46	42	890
11AM-12PM	37	38	836
	38	39	856
	40	40	905
12PM-1PM	32	47	747
	32	49	781
	32	54	819

## Number of Responses / Hour of the Day



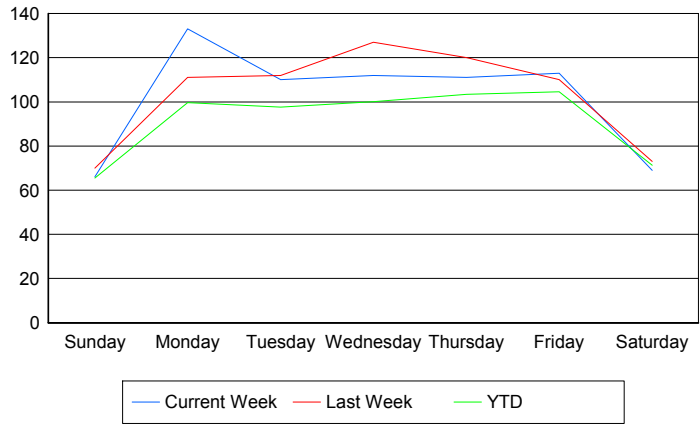
	Current We	Last Week	YTD
1PM-2PM	23	30	614
	26	31	652
	26	36	691
2PM-3PM	46	50	1,033
	48	52	1,074
	49	57	1,149
3PM-4PM	50	60	1,138
	53	61	1,161
	56	65	1,242
4PM-5PM	58	50	1,158
	58	53	1,199
	62	59	1,294
5PM-6PM	40	38	880
	44	39	909
	49	45	975
6PM-7PM	45	40	979
	47	42	997
	48	44	1,055
7PM-8PM	49	46	860
	50	47	886
	52	52	940
8PM-9PM	28	25	686
	28	25	698
	35	28	738
9PM-10PM	23	27	476
	23	29	493
	26	29	532
10PM-11PM	18	25	553
	20	25	566
	21	26	607
11PM-12AM	18	18	501
	18	19	510
	24	21	560

## Road Ranger / SIRV Performance By Day of Week

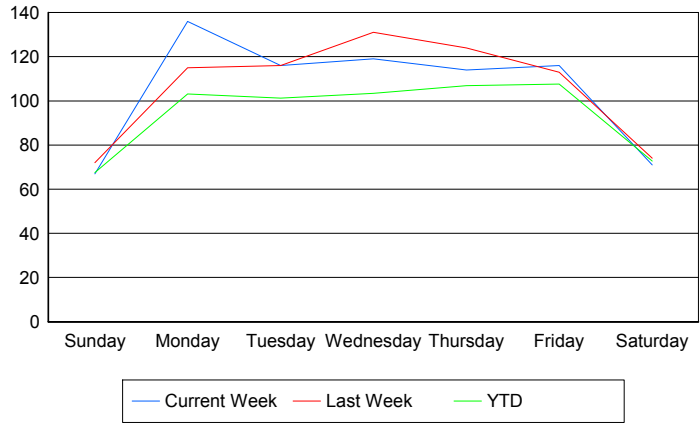
Values presented are:  
 - Total Events with a RR/SIRV Response  
 - Total RR/SIRV Responses,  
 - Total Activities Performed

	Current We	Last Week	YTD
Sunday	66	70	1,588
	67	72	1,637
	74	79	1,731
Monday	133	111	2,420
	136	115	2,505
	141	125	2,663
Tuesday	110	112	2,411
	116	116	2,500
	119	126	2,666
Wednesday	112	127	2,453
	119	131	2,533
	129	135	2,711
Thursday	111	120	2,509
	114	124	2,596
	122	129	2,775
Friday	113	110	2,662
	116	113	2,742
	125	127	2,898
Saturday	69	73	1,821
	71	74	1,861
	78	78	1,989

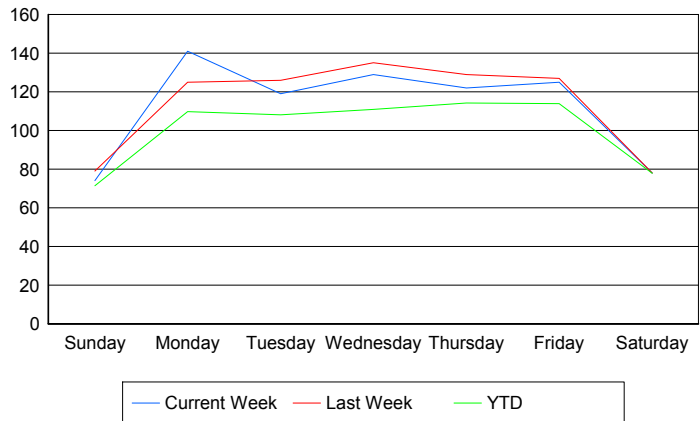
### Avg # of events with a RR/SIRV Response per Day of the Week



### Avg # of RR/SIRV Responses per Day of the Week



### Avg # of RR/SIRV Activities Performed per Day of the Week



### Road Ranger / SIRV Responses per Time of Day and Day of Week

