



Weekly Performance Measures Report Palm Beach County



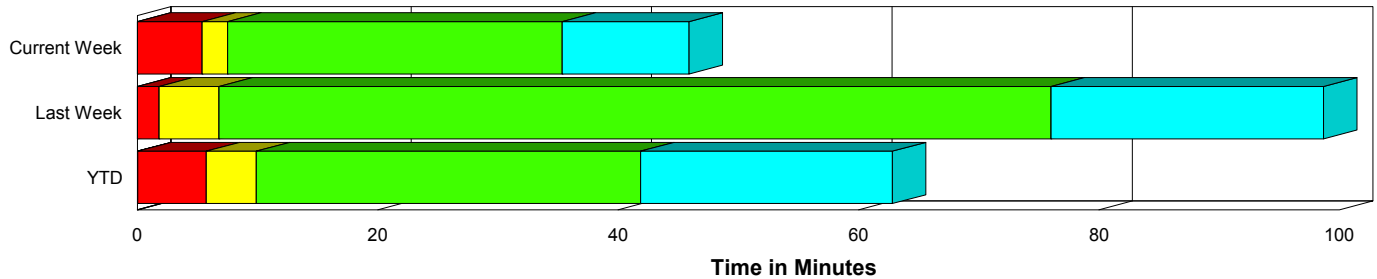
Created on:
July 06, 2010
9:12 am

Period From Jun 27, 2010 to Jul 3, 2010

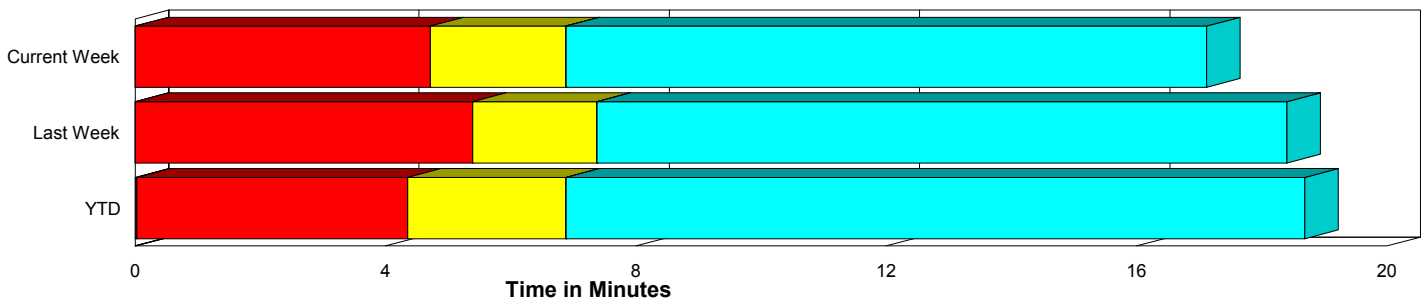
Performance Measures Summary

	Traffic Events (No Lanes Blocked)			Incidents (Lanes Blocked)		
	<u>This Week</u>	<u>Last Week</u>	<u>YTD</u>	<u>This Week</u>	<u>Last Week</u>	<u>YTD</u>
Number of Events	551	611	13,730	33	21	675
TMC Detection (min.)	0.00	0.00	0.03	0.00	0.00	0.04
TMC Verification (min.)	4.72	5.40	4.33	5.39	1.80	5.74
TMC Response (min.)	7.30	8.10	7.40	7.69	6.98	10.20
RR Dispatch Time (min.)	2.73	3.12	2.62	1.71	3.41	2.84
RR Response Time (min.)	4.58	5.01	4.88	5.98	3.47	7.39
Roadway Clearance (min.)				34.65	73.97	41.93
Event Clearance (min.)	17.54	19.12	19.23	45.17	96.63	63.14
# of Events w/ RR/SIRV	518	576	12,831	32	20	651
RR/SIRV Responses	518	576	12,831	32	20	651
RR/SIRV Activities	554	598	13,413	36	32	858

Incident Clearance Time-Line



Traffic Event (Non-Lane Blockage) Time-Line



■ Avg. TMC Detection Time	■ Avg. Time from TMC Response to Roadway Clearance*
■ Avg. Time from TMC Detection to TMC Verification	■ Avg. Time from Roadway Clearance to Incident/Event Clearance**
■ Avg. Time from TMC Verification to TMC Response	

* Roadway clearance equals all travel lanes open

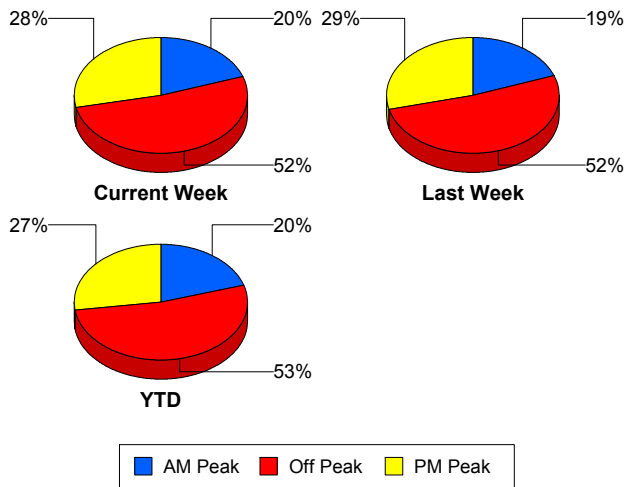
** Incident clearance equals time when last responder has left the scene

Performance Measures by Peak Period

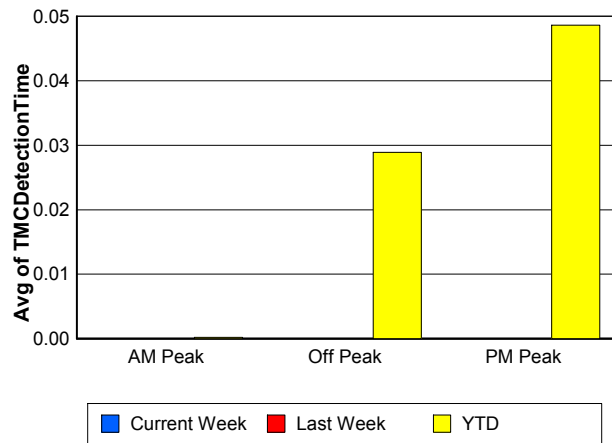
Note: AM peak period is defined as 6am to 10am and PM peak period is defined as 3pm to 7pm.

	AM Peak			Off Peak			PM Peak		
	<u>Current Week</u>	<u>Last Week</u>	<u>YTD</u>	<u>Current Week</u>	<u>Last Week</u>	<u>YTD</u>	<u>Current Week</u>	<u>Last Week</u>	<u>YTD</u>
Number of Events	115	123	2,912	303	326	7,582	166	183	3,911
Number of Incidents	8	4	153	20	10	359	5	7	163
TMC Detection (min.)	0.00	0.00	0.00	0.00	0.00	0.03	0.00	0.00	0.05
TMC Verification (min.)	2.18	2.01	2.92	5.35	5.21	4.67	5.45	7.61	4.95
TMC Response (min.)	7.29	3.85	6.27	7.67	8.43	8.09	6.75	10.34	7.45
RR Dispatch Time (min.)	1.97	1.71	1.80	2.79	2.99	2.86	2.93	4.39	2.80
RR Response Time (min.)	5.35	2.11	4.51	4.90	5.53	5.33	3.80	5.95	4.77
Event Clearance (min.)	18.00	15.72	20.43	19.81	22.59	22.28	18.58	24.11	20.00
Roadway Clearance (min.)	33.56	77.99	38.53	37.00	74.71	47.64	27.02	70.62	32.56
Incident Clearance (min.)	40.49	108.01	62.99	50.55	91.64	65.71	31.16	97.24	56.16
# of Events w/ RR/SIRV	107	119	2,748	284	307	7,027	159	170	3,707
RR/SIRV Responses	107	119	2,748	284	307	7,027	159	170	3,707
RR/SIRV Activities	112	120	2,899	305	325	7,450	173	185	3,922

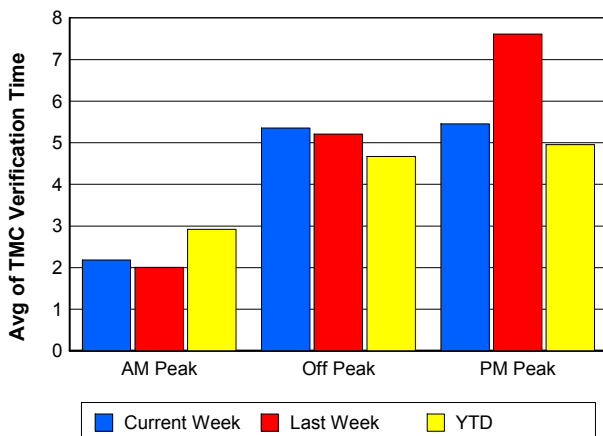
Number of Events / Peak Period



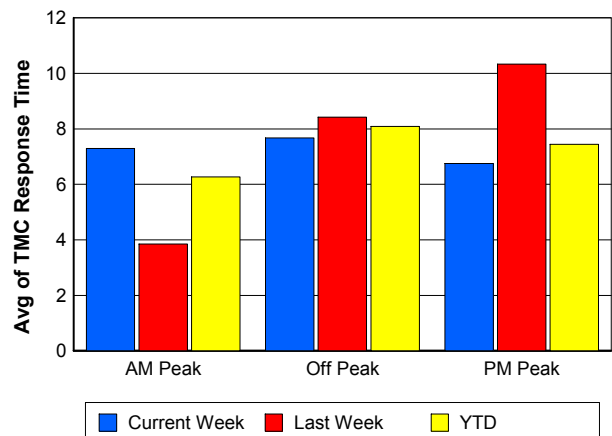
TMC Detection Time



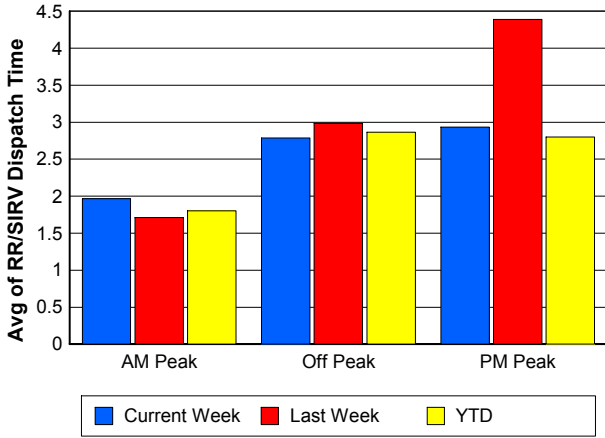
TMC Verification Time



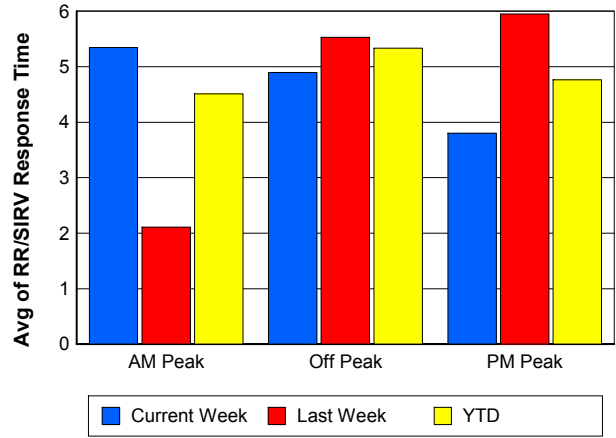
TMC Response Time



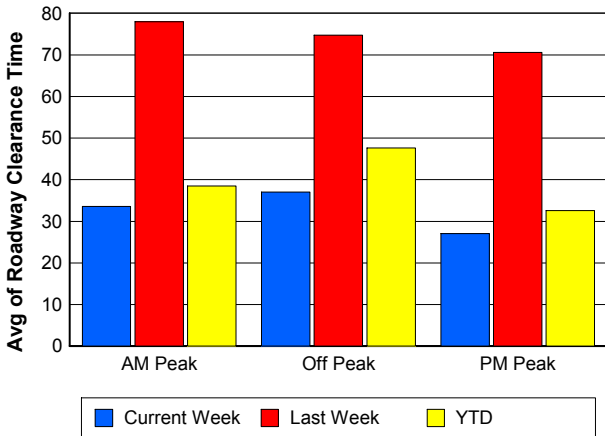
Road Ranger / SIRV Dispatch Time



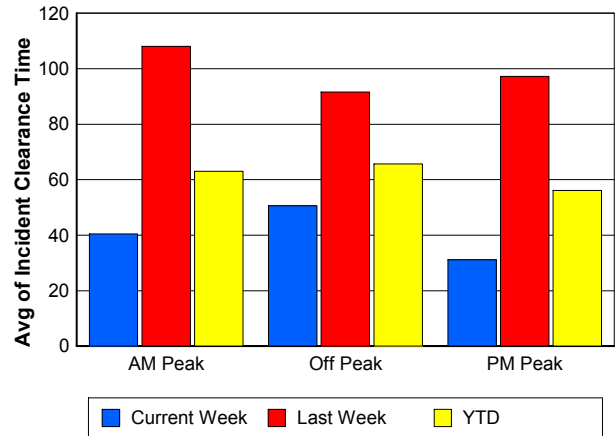
Road Ranger / SIRV Response Time



Roadway Clearance Time (2A)



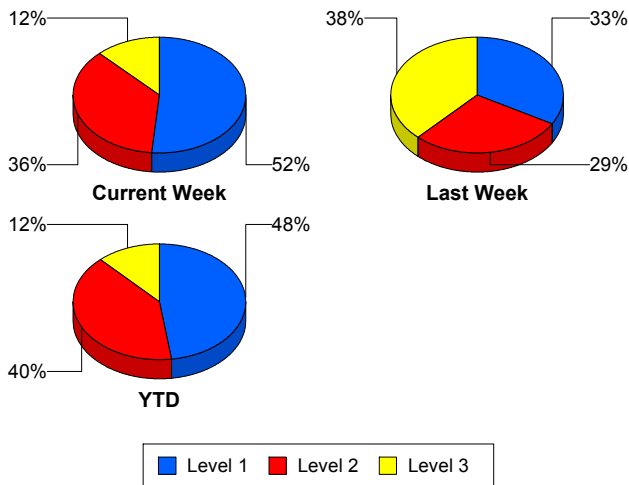
Incident Clearance Time (3B)



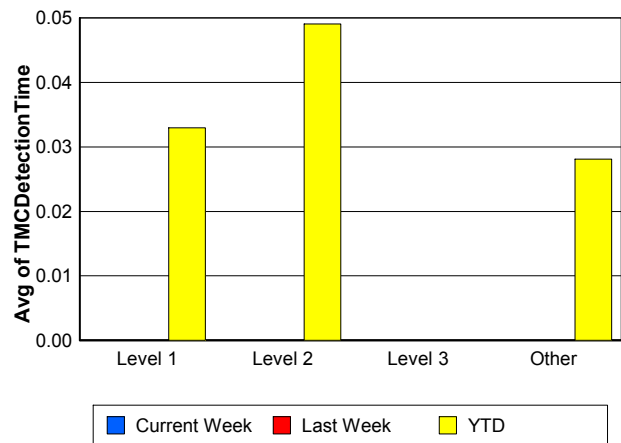
Performance Measures by Severity

	Level 1			Level 2			Level 3			Other		
	<u>This Week</u>	<u>Last Week</u>	<u>YTD</u>	<u>This Week</u>	<u>Last Week</u>	<u>YTD</u>	<u>This Week</u>	<u>Last Week</u>	<u>YTD</u>	<u>This Week</u>	<u>Last Week</u>	<u>YTD</u>
Number of Events	17	7	321	12	6	271	4	8	81	551	611	13,732
Number of Incidents	17	7	321	12	6	271	4	8	81	0	0	2
TMC Detection (min.)	0.00	0.00	0.03	0.00	0.00	0.05	0.00	0.00	0.00	0.00	0.00	0.03
TMC Verification (min.)	1.71	0.62	3.19	12.08	3.26	8.88	0.96	1.76	5.32	4.72	5.40	4.33
TMC Response (min.)	5.42	1.61	6.32	12.97	8.49	13.76	0.95	10.29	13.78	7.30	8.10	7.40
RR Dispatch Time (min.)	0.63	1.14	1.54	3.65	1.28	3.47	0.24	7.50	6.56	2.73	3.12	2.62
RR Resp. Time (min.)	4.79	0.53	4.85	9.32	7.21	10.33	0.72	2.78	7.22	4.58	5.01	4.88
Event Clearance (min.)	25.14	40.06	41.87	65.21	64.46	69.97	70.20	170.25	123.90	17.54	19.12	19.24
Roadway Clear. (min.)	12.86	10.17	15.02	55.87	44.17	54.44	63.64	152.15	108.29			-21.46
Incident Clearance (min.)	25.14	40.06	41.87	65.21	64.46	69.97	70.20	170.25	123.21			0.00
# of Events w/ RR/SIRV	16	7	314	12	6	269	4	7	66	518	576	12,833
RR/SIRV Responses	16	7	314	12	6	269	4	7	66	518	576	12,833
RR/SIRV Activities	18	9	378	13	9	373	5	14	102	554	598	13,418

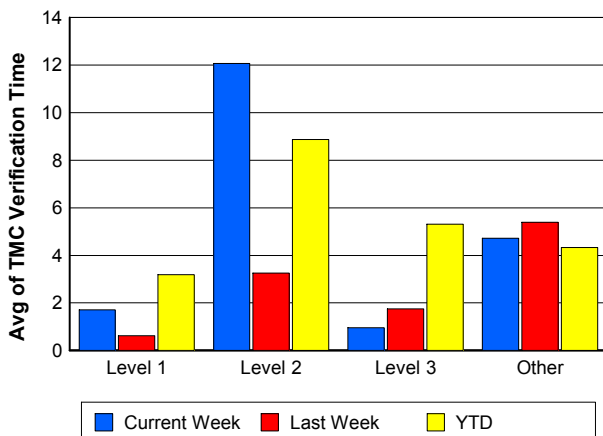
Number of Events / Severity



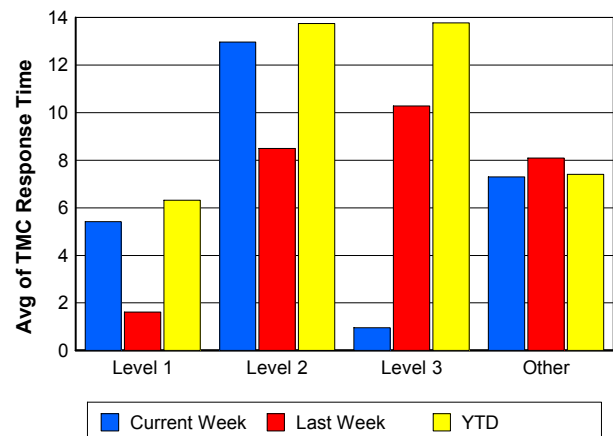
TMC Detection Time



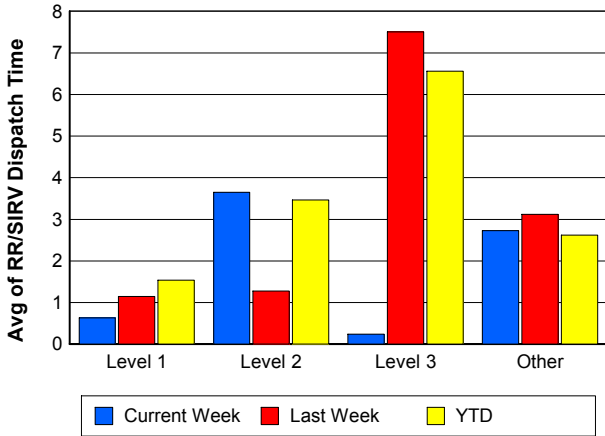
TMC Verification Time



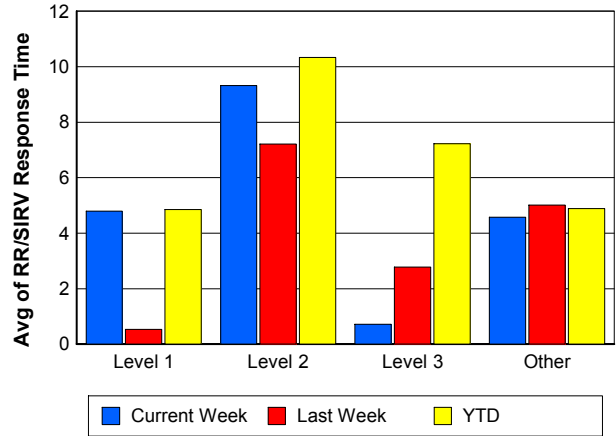
TMC Response Time



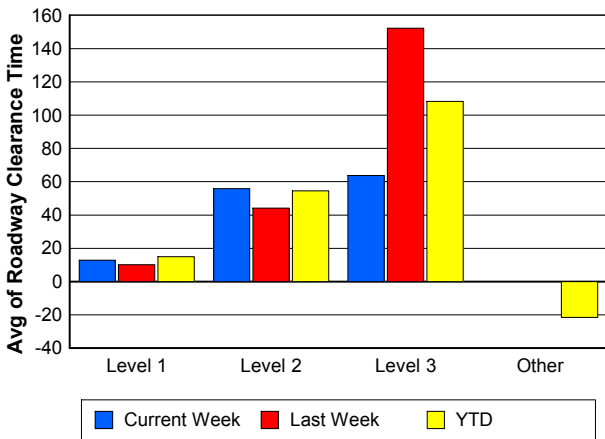
Road Ranger / SIRV Dispatch Time



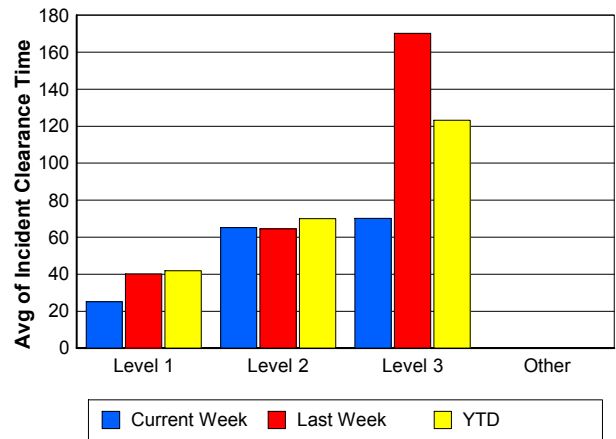
Road Ranger / SIRV Response Time



Roadway Clearance Time (2A)



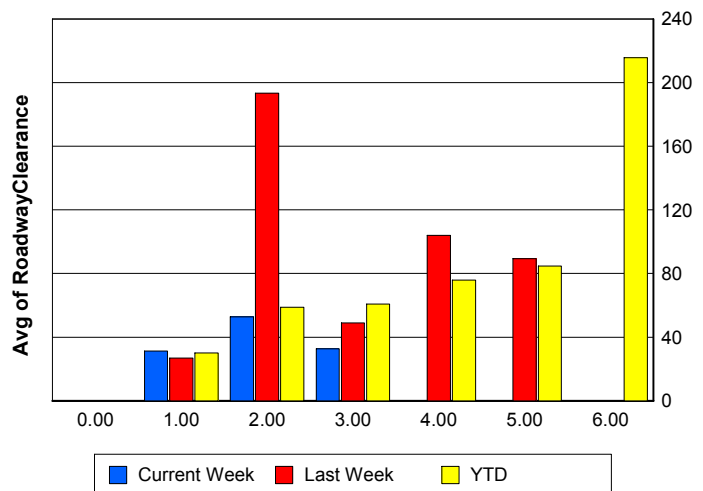
Incident Clearance Time (3B)



Roadway Clearance by Maximum Number of Lanes Blocked

	Current Week	Last Week	YTD
0			
1	31.37	26.87	29.97
2	52.78	193.38	58.70
3	32.77	48.95	60.70
4	0.00	103.92	75.86
5	0.00	89.32	84.80
6	0.00	0.00	215.67

Roadway Clearance Time (2A)



Performance Measures by Roadway

95

	<u>Current Week</u>	<u>Last Week</u>	<u>YTD</u>
Number of Events	584	632	14,394
Number of Incidents	33	21	665
TMC Detection (min.)	0.00	0.00	0.03
TMC Verification (min.)	4.76	5.27	4.40
TMC Response (min.)	7.33	8.06	7.54
RR Dispatch Time (min.)	2.67	3.13	2.63
RR Resp. Time (min.)	4.66	4.96	5.01
Event Clearance (min.)	19.10	21.69	21.26
Roadway Clear. (min.)	34.65	73.97	41.66
Incident Clearance (min.)	45.17	96.63	62.80
# of Events w/ RR/SIRV	550	596	13,481
RR/SIRV Responses	550	596	13,481
RR/SIRV Activities	590	630	14,270

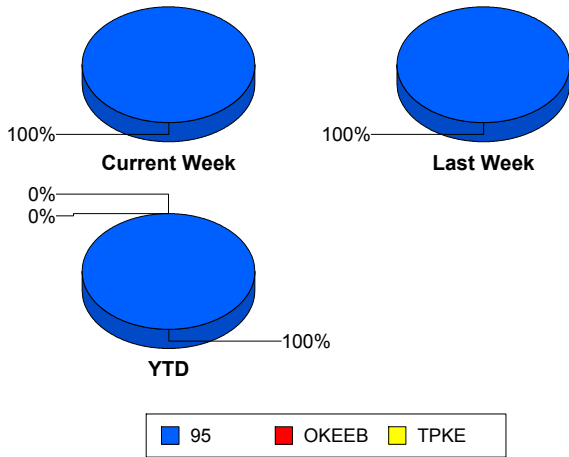
OKEEB

	<u>YTD</u>
Number of Events	1
Number of Incidents	0
TMC Detection (min.)	0.00
TMC Verification (min.)	0.00
TMC Response (min.)	0.00
RR Dispatch Time (min.)	0.00
RR Resp. Time (min.)	0.00
Event Clearance (min.)	18.45
Roadway Clear. (min.)	
Incident Clearance (min.)	
# of Events w/ RR/SIRV	1
RR/SIRV Responses	1
RR/SIRV Activities	1

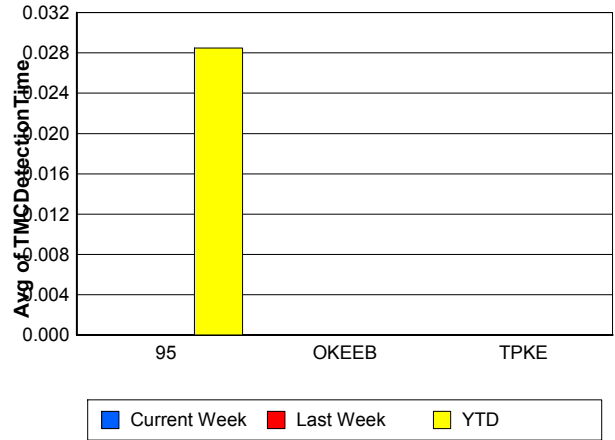
TPKE

	<u>YTD</u>
Number of Events	10
Number of Incidents	10
TMC Detection (min.)	0.00
TMC Verification (min.)	0.00
TMC Response (min.)	
RR Dispatch Time (min.)	
RR Resp. Time (min.)	
Event Clearance (min.)	62.29
Roadway Clear. (min.)	59.66
Incident Clearance (min.)	62.29
# of Events w/ RR/SIRV	0
RR/SIRV Responses	0
RR/SIRV Activities	0

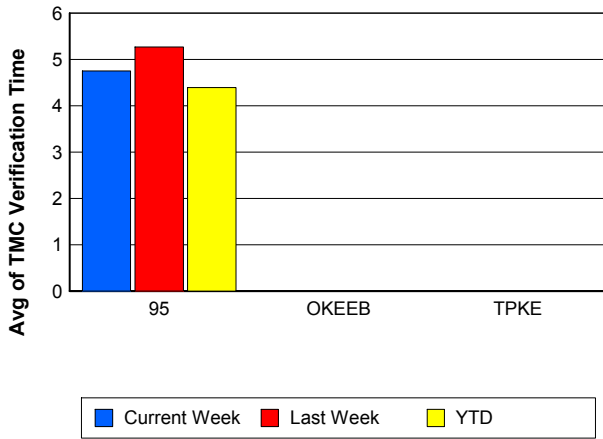
Number of Events / Roadway



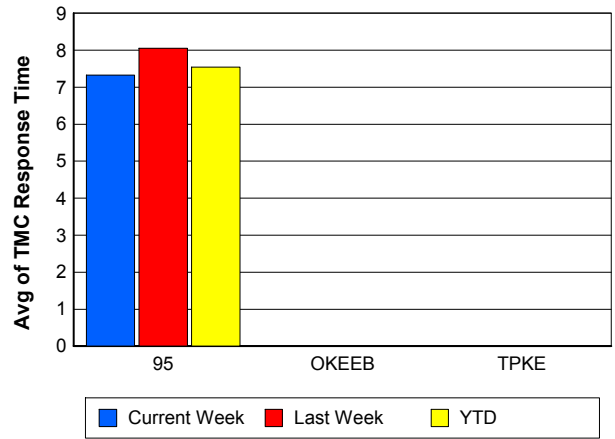
TMC Detection Time



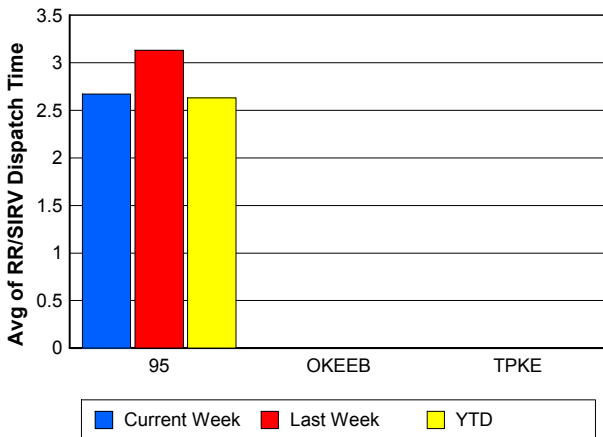
TMC Verification Time



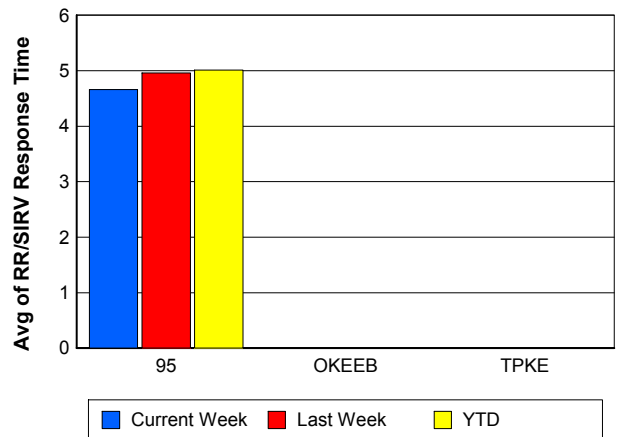
TMC Response Time



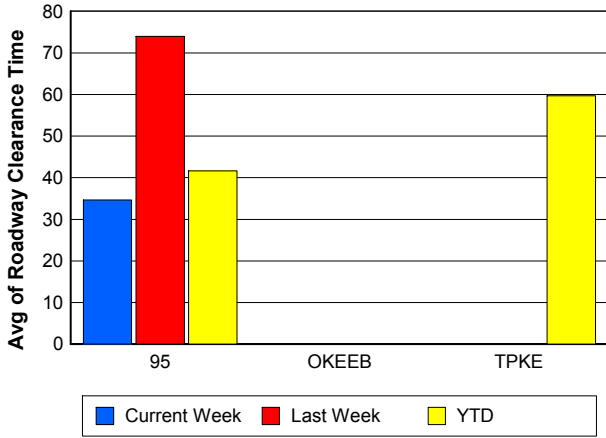
Road Ranger / SIRV Dispatch Time



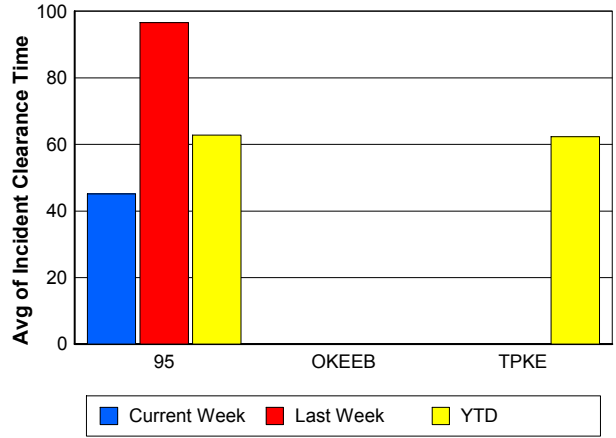
Road Ranger / SIRV Response Time



Roadway Clearance Time (2A)



Incident Clearance Time (3B)



Performance Measures by Event Type

Accident

	<u>Current Week</u>	<u>Last Week</u>	<u>YTD</u>
Number of Events	34	31	1,004
Number of Incidents	16	13	458
TMC Detection (min.)	0.00	0.00	0.04
TMC Verification (min.)	7.73	6.36	7.57
TMC Response (min.)	10.45	9.60	11.13
RR Dispatch Time (min.)	2.02	5.76	2.65
RR Response Time (min.)	8.42	3.83	8.52
Event Clearance (min.)	49.92	76.97	59.63
Roadway Clearance (min.)	42.56	96.94	46.49
Incident Clearance (min.)	57.41	127.72	73.22
# of Events w/ RR/SIRV	33	31	977
RR/SIRV Assists	33	31	977
RR/SIRV Activities	37	42	1,157

Debris on Roadway

	<u>Current Week</u>	<u>Last Week</u>	<u>YTD</u>
Number of Events	41	54	911
Number of Incidents	0	0	15
TMC Detection (min.)	0.00	0.00	0.00
TMC Verification (min.)	7.45	16.57	10.94
TMC Response (min.)	7.89	16.55	11.44
RR Dispatch Time (min.)	2.52	5.29	3.61
RR Response Time (min.)	5.37	11.24	7.86
Event Clearance (min.)	11.57	18.87	14.76
Roadway Clearance (min.)			18.00
Incident Clearance (min.)			23.19
# of Events w/ RR/SIRV	41	54	901
RR/SIRV Assists	41	54	901
RR/SIRV Activities	45	55	940

Disabled Vehicle

	<u>Current Week</u>	<u>Last Week</u>	<u>YTD</u>
Number of Events	480	528	11,770
Number of Incidents	11	6	143
TMC Detection (min.)	0.00	0.00	0.03
TMC Verification (min.)	4.37	4.25	3.83
TMC Response (min.)	6.66	7.10	6.66
RR Dispatch Time (min.)	2.59	2.76	2.44
RR Response Time (min.)	4.07	4.40	4.34
Event Clearance (min.)	16.79	18.38	18.25
Roadway Clearance (min.)	22.79	14.02	24.64
Incident Clearance (min.)	29.52	21.70	33.14
# of Events w/ RR/SIRV	454	498	11,099
RR/SIRV Assists	454	498	11,099
RR/SIRV Activities	487	521	11,796

Emergency Vehicles

	<u>Current Week</u>	<u>YTD</u>
Number of Events	1	12
Number of Incidents	1	11
TMC Detection (min.)	0.00	0.00
TMC Verification (min.)	0.00	2.33
TMC Response (min.)	0.00	3.49
RR Dispatch Time (min.)	0.00	0.07
RR Response Time (min.)	0.00	3.42
Event Clearance (min.)	10.62	45.64
Roadway Clearance (min.)	4.12	44.77
Incident Clearance (min.)	10.62	47.68
# of Events w/ RR/SIRV	1	8
RR/SIRV Assists	1	8
RR/SIRV Activities	1	10

Other

	<u>Current Week</u>	<u>Last Week</u>	<u>YTD</u>
Number of Events	20	14	564
Number of Incidents	1	0	3
TMC Detection (min.)	0.00	0.00	0.10
TMC Verification (min.)	0.74	0.00	0.62
TMC Response (min.)	15.52	3.30	15.80
RR Dispatch Time (min.)	5.49	0.88	5.38
RR Response Time (min.)	9.69	2.45	8.21
Event Clearance (min.)	26.92	23.27	22.42
Roadway Clearance (min.)	6.95		15.18
Incident Clearance (min.)	13.52		24.41
# of Events w/ RR/SIRV	13	10	369
RR/SIRV Assists	13	10	369
RR/SIRV Activities	12	9	244

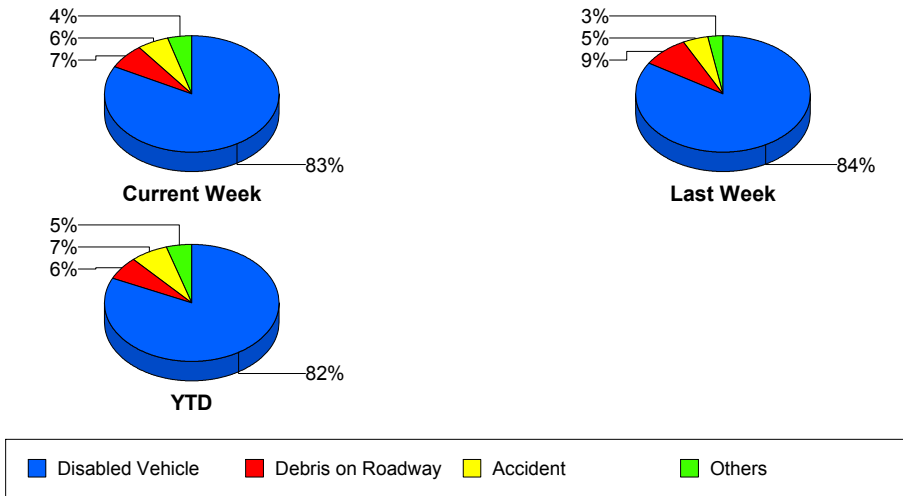
Police Activity

	<u>Current Week</u>	<u>Last Week</u>	<u>YTD</u>
Number of Events	3	3	55
Number of Incidents	3	2	27
TMC Detection (min.)	0.00	0.00	0.13
TMC Verification (min.)	0.00	0.00	0.63
TMC Response (min.)	0.00	8.30	17.08
RR Dispatch Time (min.)	0.00	8.27	8.10
RR Response Time (min.)	0.00	0.03	9.89
Event Clearance (min.)	55.40	81.24	53.40
Roadway Clearance (min.)	49.11	104.55	74.44
Incident Clearance (min.)	55.40	119.29	82.31
# of Events w/ RR/SIRV	3	2	44
RR/SIRV Assists	3	2	44
RR/SIRV Activities	3	2	36

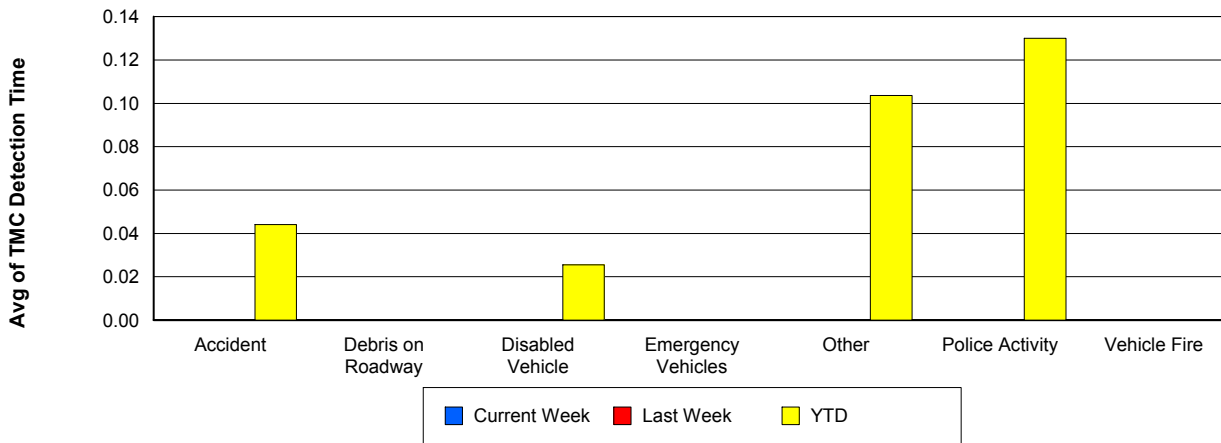
Vehicle Fire

	<u>Current Week</u>	<u>YTD</u>
Number of Events	1	29
Number of Incidents	1	17
TMC Detection (min.)	0.00	0.00
TMC Verification (min.)	0.00	3.17
TMC Response (min.)	10.93	8.64
RR Dispatch Time (min.)	0.57	2.72
RR Response Time (min.)	10.37	6.05
Event Clearance (min.)	57.12	41.96
Roadway Clearance (min.)	53.58	36.38
Incident Clearance (min.)	57.12	52.33
# of Events w/ RR/SIRV	1	27
RR/SIRV Assists	1	27
RR/SIRV Activities	1	31

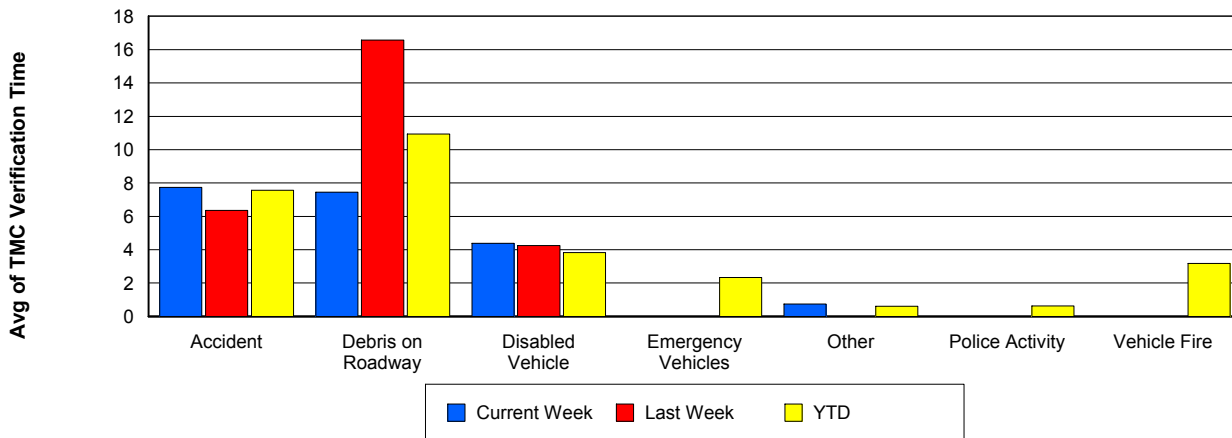
Number of Events / Event Type



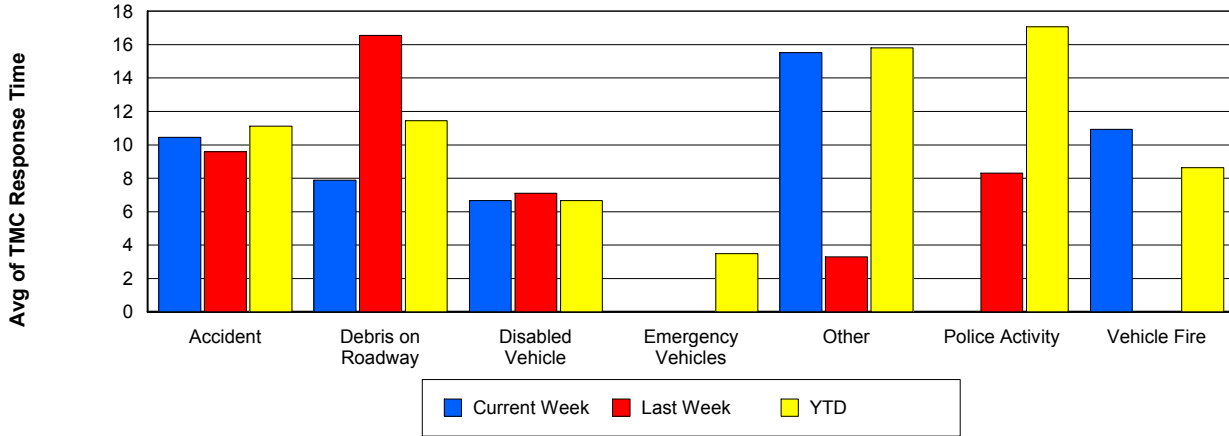
TMC Detection Time



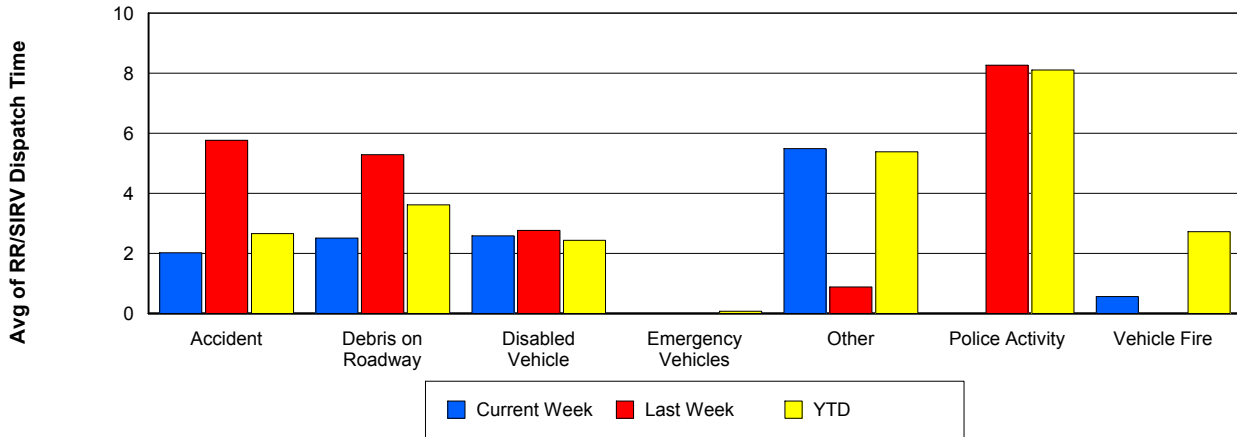
TMC Verification Time



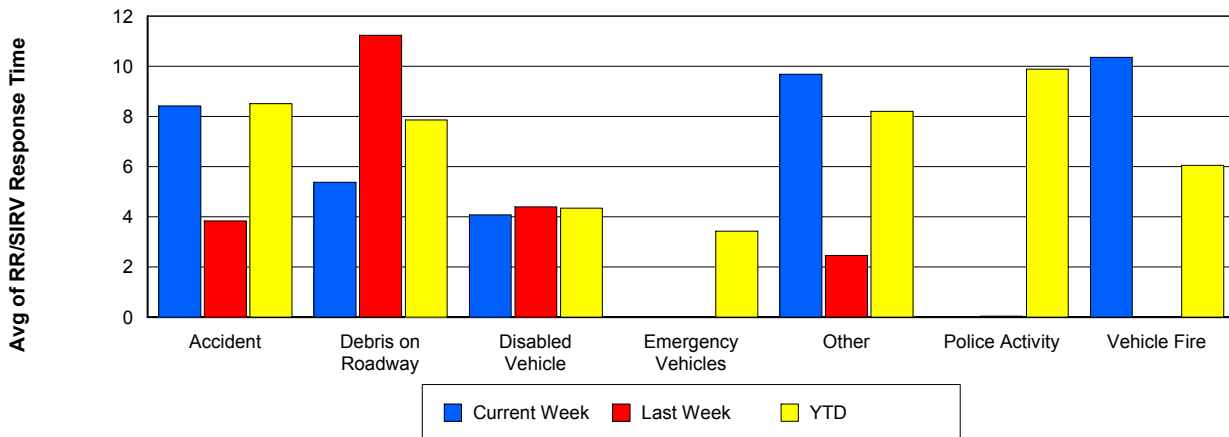
TMC Response Time



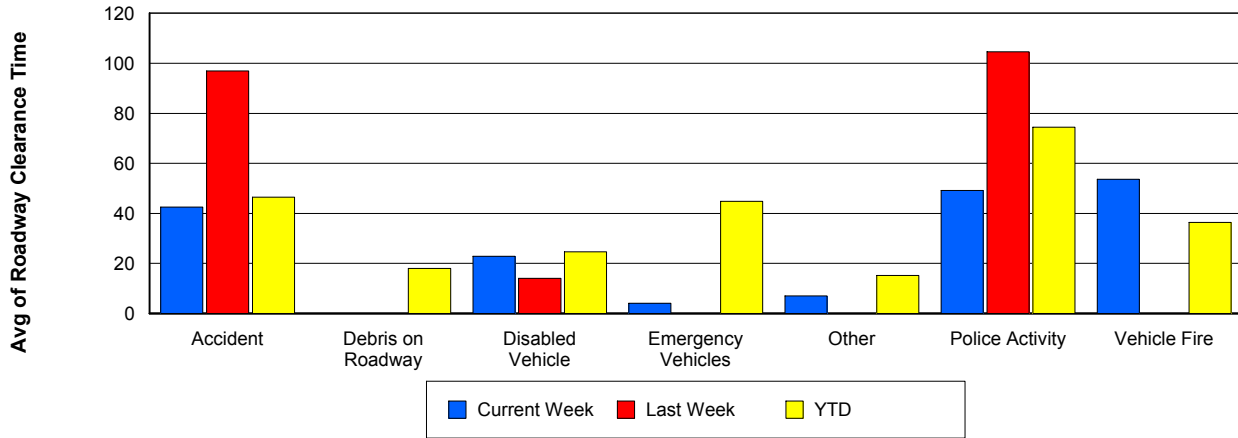
Road Ranger / SIRV Dispatch Time



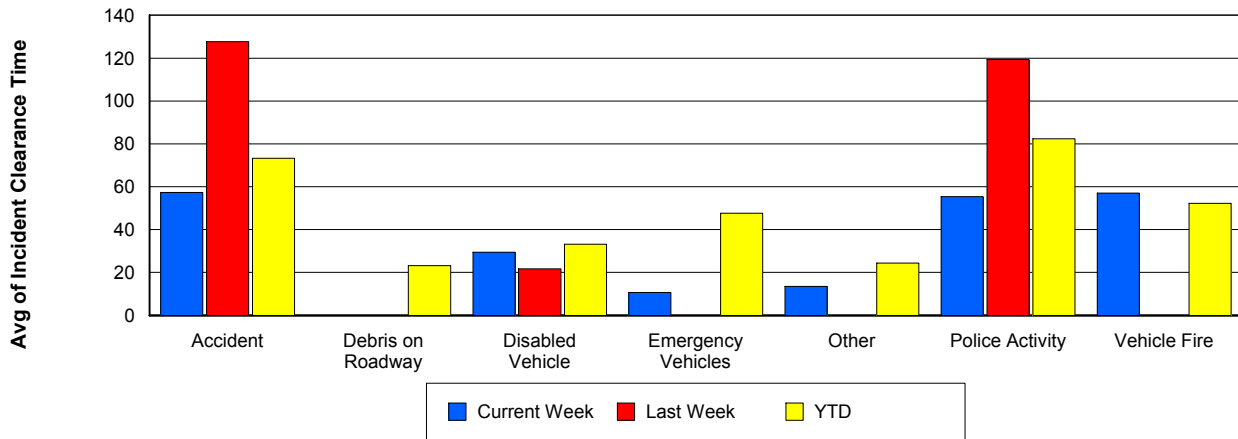
Road Ranger / SIRV Response Time



Roadway Clearance Time (2A)



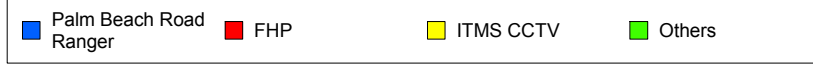
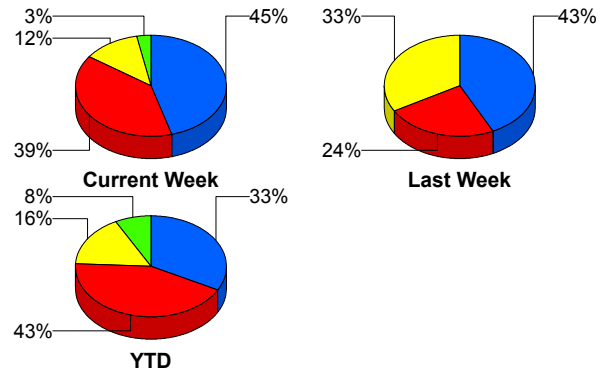
Incident Clearance Time (3B)



Incident Detection Methods

	Current Week	Last Week	YTD
Broward CCTV	1	0	1
Broward Road Ranger	0	0	5
Broward TMC	0	0	7
County Police	0	0	1
District 4	0	0	13
FDOT Maintenance	0	0	3
FHP	13	5	290
Florida's Turnpike	0	0	10
ITMS	0	0	1
ITMS CCTV	4	7	110
Media	0	0	1
Motorist	0	0	10
Palm Beach Road Ran	15	9	221
Total	33	21	673

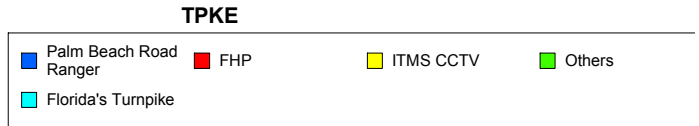
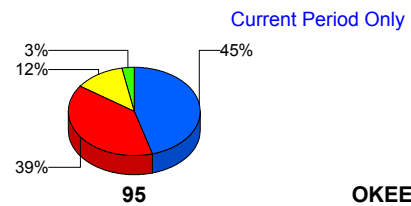
Total Incidents by Detection Method



Incident Detection Methods by Roadway

		Current Week	Last Week	YTD
95	Broward CCTV	1	0	1
	Broward Road Ranger	0	0	5
	Broward TMC	0	0	7
	County Police	0	0	1
	District 4	0	0	13
	FDOT Maintenance	0	0	3
	FHP	13	5	290
	ITMS	0	0	1
	ITMS CCTV	4	7	110
	Media	0	0	1
	Motorist	0	0	10
	Palm Beach Road Ran	15	9	221
	Total	33	21	663

Total Events by Roadway and Detection Method

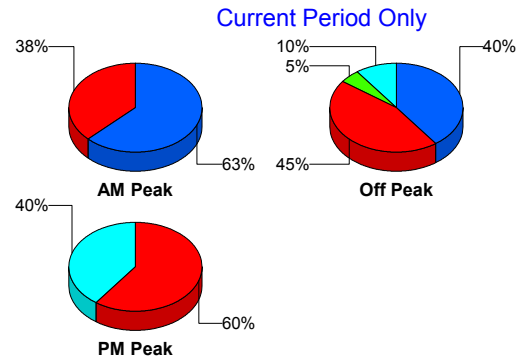


		Current Week	Last Week	YTD
TPKE	Florida's Turnpike	0	0	10
	Total	0	0	10
Total		33	21	673

Incident Detection Methods by Peak Period

		Current Week	Last Week	YTD
AM Peak	Broward Road Ranger	0	0	4
	Broward TMC	0	0	2
	County Police	0	0	1
	District 4	0	0	2
	FDOT Maintenance	0	0	1
	FHP	5	2	57
	Florida's Turnpike	0	0	2
	ITMS CCTV	0	1	25
	Media	0	0	1
	Motorist	0	0	1
	Palm Beach Road Ran	3	1	57
	Total	8	4	153
Off Peak	Broward CCTV	1	0	1
	Broward Road Ranger	0	0	1
	Broward TMC	0	0	2
	District 4	0	0	8
	FDOT Maintenance	0	0	2
	FHP	8	3	160
	Florida's Turnpike	0	0	7
	ITMS	0	0	1
	ITMS CCTV	2	0	59
	Motorist	0	0	5
	Palm Beach Road Ran	9	7	112
Total	20	10	358	
PM Peak	Broward TMC	0	0	3
	District 4	0	0	3

Total Events by Peak Period and Detection Method

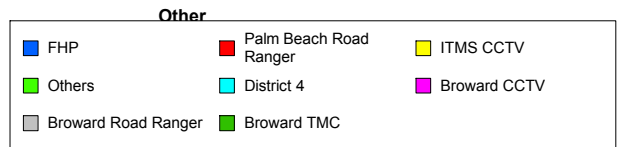
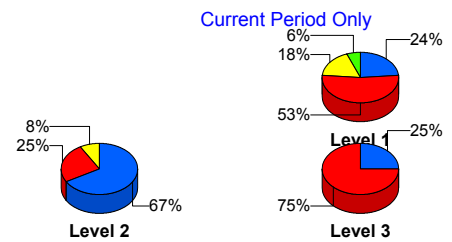


		Current Week	Last Week	YTD
PM Peak	FHP	0	0	74
	Florida's Turnpike	0	0	1
	ITMS CCTV	2	6	26
	Motorist	0	0	4
	Palm Beach Road Ran	3	1	52
	Total	5	7	163
Total		33	21	673

Incident Detection Methods by Severity

		Current Week	Last Week	YTD
	FHP	0	0	1
	Total	0	0	1
Level 1	Broward CCTV	1	0	1
	Broward Road Ranger	0	0	5
	Broward TMC	0	0	5
	County Police	0	0	1
	District 4	0	0	9
	FDOT Maintenance	0	0	1
	FHP	4	1	96
	ITMS CCTV	3	2	57
	Motorist	0	0	3
	Palm Beach Road Ran	9	4	143
	Total	17	7	321
	Level 2	Broward TMC	0	0
District 4		0	0	2
FDOT Maintenance		0	0	2
FHP		8	3	155
ITMS		0	0	1
ITMS CCTV		1	1	42
Motorist		0	0	7
Palm Beach Road Ran		3	2	60
Total	12	6	271	

Total Events by Severity and Detection Method



		Current Week	Last Week	YTD
Level 3	District 4	0	0	2
	FHP	1	1	39
	Florida's Turnpike	0	0	10
	ITMS CCTV	0	4	11
	Media	0	0	1
	Palm Beach Road Ran	3	3	18
	Total	4	8	81
Total		33	21	673

Road Ranger / SIRV Performance Measures

Road Ranger / SIRV Performance By County

Values presented are:
 - Total Events with a RR/SIRV Response
 - Total RR/SIRV Responses,
 - Total Activities Performed

	Current We	Last Week	YTD
Palm Beach	680	713	16,528
	705	739	17,057
	740	788	18,173

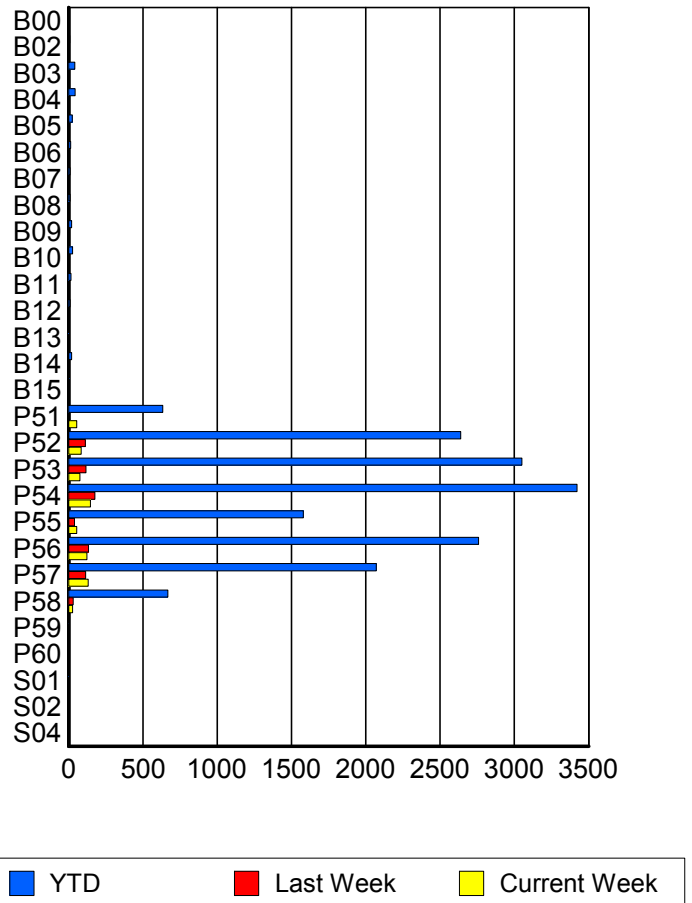
RR/SIRV Responses per County



Road Ranger / SIRV Performance By Truck

	Current We	Last Week	YTD
B00	0	0	2
	0	0	2
	0	0	2
B02	0	1	7
	0	1	7
	0	1	7
B03	0	1	42
	0	1	42
	0	2	46
B04	0	0	42
	0	0	43
	0	0	46
B05	2	0	25
	2	0	25
	2	0	26
B06	0	0	13
	0	0	13
	0	0	15
B07	0	1	10
	0	1	10
	0	1	10
B08	0	0	9
	0	0	9
	0	0	9
B09	0	0	21
	0	0	21
	0	0	22

**RR/SIRV
Responses per
Truck**



	Current We	Last Week	YTD
B10	0	1	26
	0	1	26
	0	1	28
B11	1	0	15
	1	0	15
	1	0	16
B12	2	1	10
	2	1	10
	2	1	10
B13	0	0	4
	0	0	4
	0	0	4
B14	1	1	20
	1	1	20
	1	1	20
B15	0	0	5
	0	0	5
	0	0	5
P51	54	8	623
	54	8	633
	57	8	668
P52	83	110	2,605
	84	112	2,638
	86	123	2,810
P53	77	115	3,020
	77	116	3,050
	79	119	3,246
P54	146	173	3,378
	147	177	3,421
	156	188	3,633
P55	54	39	1,569
	54	39	1,579
	57	49	1,675
P56	121	133	2,724
	123	134	2,758
	131	139	2,944
P57	130	115	2,047
	132	115	2,070
	140	123	2,215
P58	27	32	662
	27	32	668
	27	32	705
P59	1	0	3
	1	0	3
	1	0	3

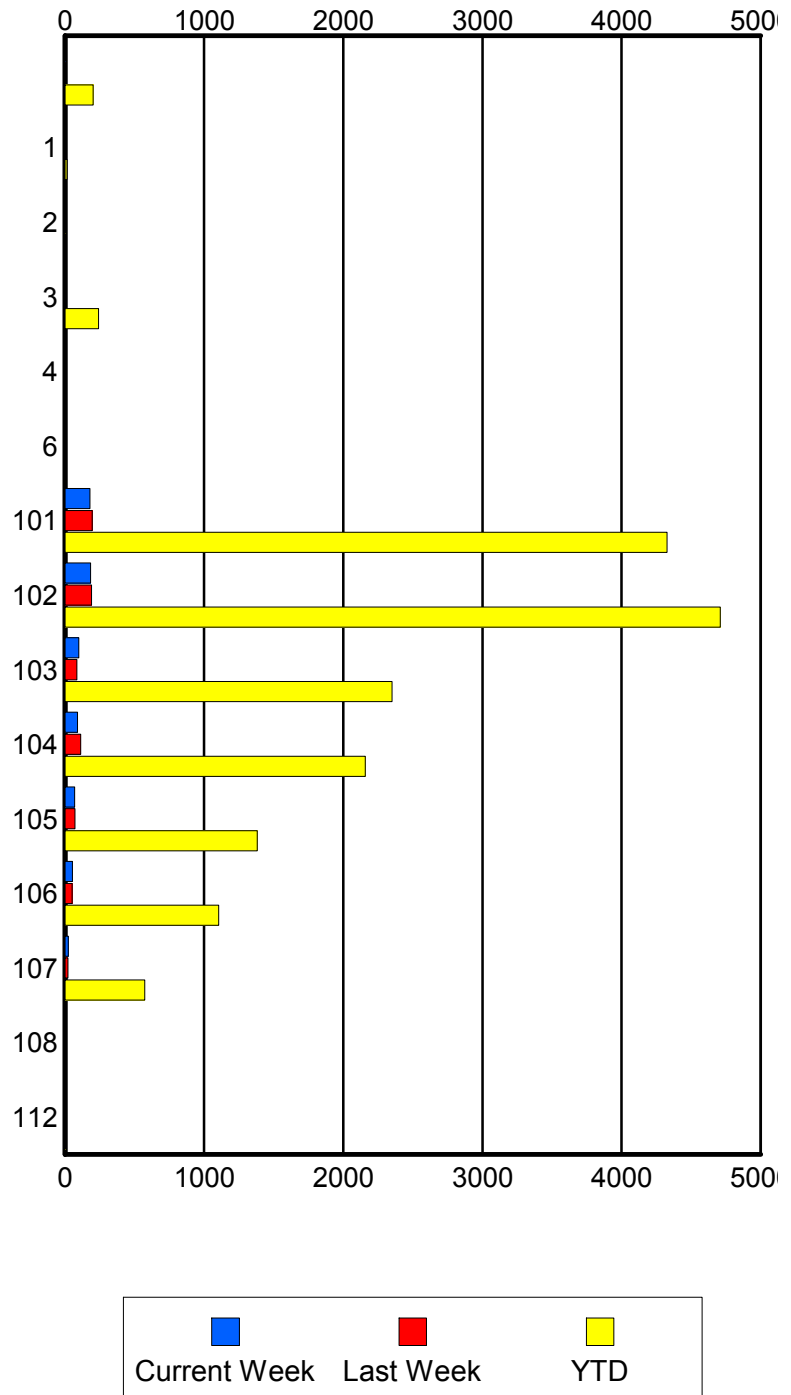
	Current We	Last Week	YTD
P60	0	0	1
	0	0	1
	0	0	1
S01	0	0	3
	0	0	3
	0	0	4
S02	0	0	2
	0	0	2
	0	0	2
S04	0	0	1
	0	0	1
	0	0	1

Road Ranger / SIRV Performance By Beat

	Current We	Last Week	YTD
	4	7	201
	4	7	202
	5	8	216
1	0	0	13
	0	0	14
	0	0	14
2	0	0	3
	0	0	3
	0	0	3
3	6	6	238
	6	6	242
	6	7	256
4	0	0	1
	0	0	1
	0	0	1
6	0	0	6
	0	0	7
	0	0	7
101	176	191	4,255
	178	196	4,327
	184	212	4,604
102	180	189	4,647
	183	190	4,709
	193	205	5,005
103	97	86	2,320
	98	86	2,350
	102	88	2,485
104	89	111	2,137
	89	112	2,158
	94	122	2,309
105	70	72	1,373
	70	72	1,381
	74	73	1,476
106	53	48	1,095
	53	50	1,105
	58	51	1,176
107	24	20	572
	24	20	574
	24	22	614
108	0	0	3
	0	0	4
	0	0	4
112	0	0	2
	0	0	2
	0	0	3

Values presented are:
 - Total Events with a RR/SIRV Response
 - Total RR/SIRV Responses,
 - Total Activities Performed

RR/SIRV Responses per Beat

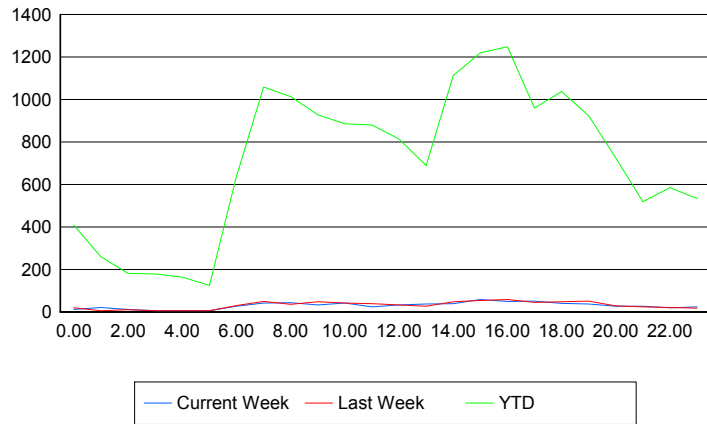


Road Ranger / SIRV Performance By Time of Day

Values presented are:
 - Total Events with a RR/SIRV Response
 - Total RR/SIRV Responses,
 - Total Activities Performed

	Current We	Last Week	YTD
12AM-1AM	12	18	396
	12	19	408
	12	21	442
1AM-2AM	19	5	254
	20	5	259
	20	5	269
2AM-3AM	11	9	175
	11	10	181
	11	10	193
3AM-4AM	5	6	170
	5	6	178
	5	7	191
4AM-5AM	5	5	155
	5	5	163
	5	5	169
5AM-6AM	5	6	110
	6	6	124
	6	6	131
6AM-7AM	25	30	609
	26	30	635
	27	32	672
7AM-8AM	38	47	1,025
	42	49	1,059
	43	52	1,122
8AM-9AM	41	35	971
	43	35	1,013
	44	35	1,075
9AM-10AM	31	46	898
	32	47	927
	32	49	977
10AM-11AM	41	39	857
	41	42	886
	43	46	933
11AM-12PM	23	37	859
	24	38	880
	26	40	931
12PM-1PM	29	32	776
	33	32	814
	34	32	853

Number of Responses / Hour of the Day



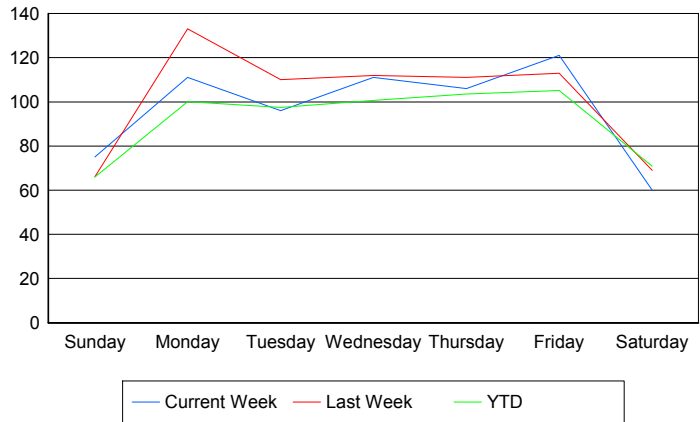
	Current We	Last Week	YTD
1PM-2PM	36	23	650
	37	26	689
	38	26	729
2PM-3PM	38	46	1,071
	39	48	1,113
	41	49	1,190
3PM-4PM	57	50	1,195
	58	53	1,219
	62	56	1,304
4PM-5PM	48	58	1,206
	49	58	1,248
	51	62	1,345
5PM-6PM	49	40	929
	50	44	959
	56	49	1,031
6PM-7PM	38	45	1,017
	40	47	1,037
	41	48	1,096
7PM-8PM	36	49	896
	37	50	923
	39	52	979
8PM-9PM	27	28	713
	27	28	725
	32	35	770
9PM-10PM	25	23	501
	26	23	519
	28	26	560
10PM-11PM	19	18	572
	19	20	585
	20	21	627
11PM-12AM	22	18	523
	23	18	533
	24	24	584

Road Ranger / SIRV Performance By Day of Week

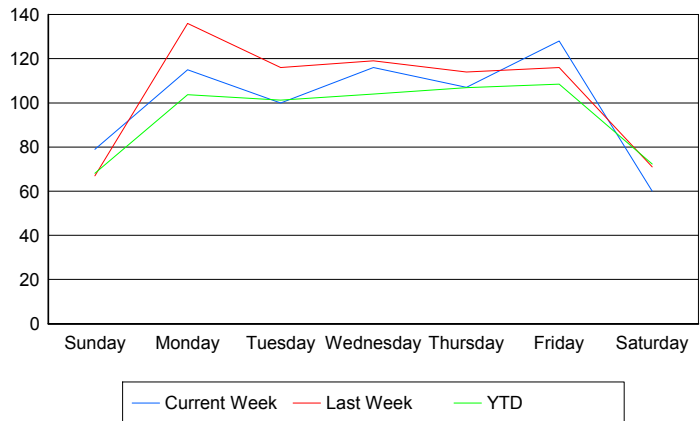
Values presented are:
 - Total Events with a RR/SIRV Response
 - Total RR/SIRV Responses,
 - Total Activities Performed

	Current We	Last Week	YTD
Sunday	75	66	1,663
	79	67	1,716
	83	74	1,814
Monday	111	133	2,531
	115	136	2,620
	119	141	2,782
Tuesday	96	110	2,507
	100	116	2,599
	105	119	2,771
Wednesday	111	112	2,564
	116	119	2,649
	126	129	2,837
Thursday	106	111	2,615
	107	114	2,703
	113	122	2,888
Friday	121	113	2,783
	128	116	2,870
	131	125	3,029
Saturday	60	69	1,881
	60	71	1,921
	63	78	2,052

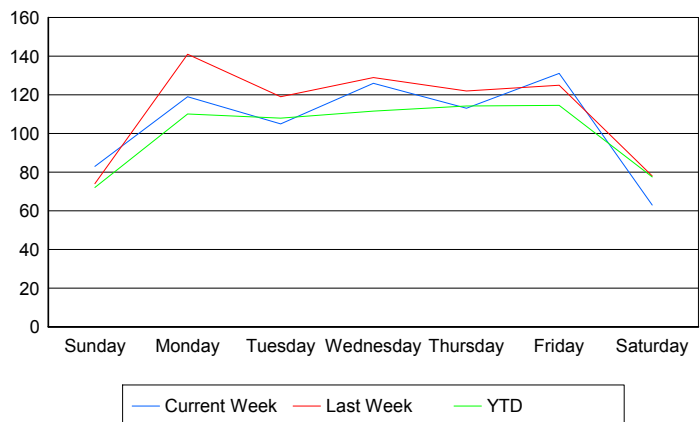
Avg # of events with a RR/SIRV Response per Day of the Week



Avg # of RR/SIRV Responses per Day of the Week



Avg # of RR/SIRV Activities Performed per Day of the Week



Road Ranger / SIRV Responses per Time of Day and Day of Week

