



Weekly Performance Measures Report Palm Beach County



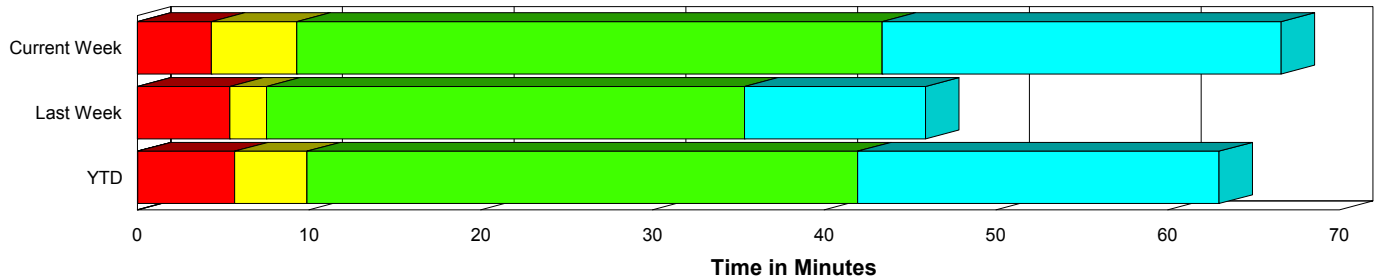
Created on:
July 12, 2010
9:15 am

Period From Jul 4, 2010 to Jul 10, 2010

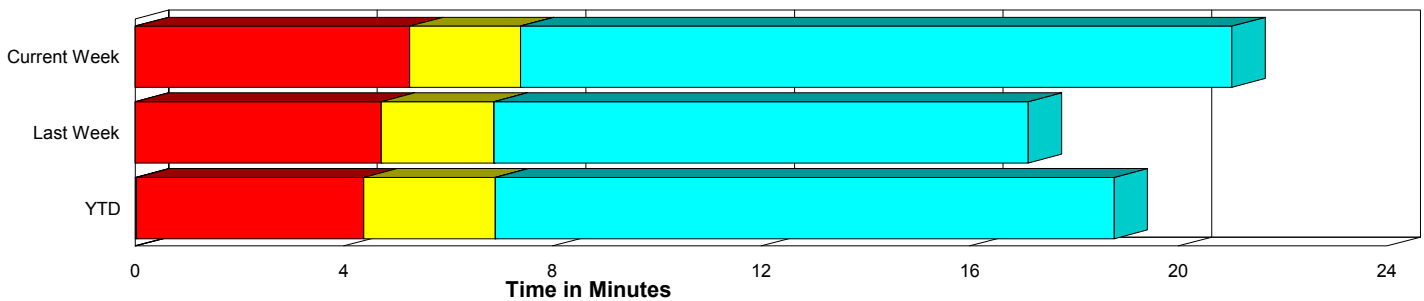
Performance Measures Summary

	Traffic Events (No Lanes Blocked)			Incidents (Lanes Blocked)		
	<u>This Week</u>	<u>Last Week</u>	<u>YTD</u>	<u>This Week</u>	<u>Last Week</u>	<u>YTD</u>
Number of Events	500	551	14,230	31	33	706
TMC Detection (min.)	0.00	0.00	0.03	0.00	0.00	0.03
TMC Verification (min.)	5.26	4.72	4.36	4.32	5.39	5.68
TMC Response (min.)	7.92	7.30	7.42	9.28	7.69	10.15
RR Dispatch Time (min.)	2.82	2.73	2.63	2.06	1.71	2.80
RR Response Time (min.)	5.20	4.58	4.90	7.23	5.98	7.38
Roadway Clearance (min.)				43.38	34.65	41.99
Event Clearance (min.)	21.56	17.54	19.31	66.60	45.17	63.29
# of Events w/ RR/SIRV	463	518	13,294	31	32	682
RR/SIRV Responses	463	518	13,294	31	32	682
RR/SIRV Activities	481	554	13,894	41	36	899

Incident Clearance Time-Line



Traffic Event (Non-Lane Blockage) Time-Line



■ Avg. TMC Detection Time	■ Avg. Time from TMC Response to Roadway Clearance*
■ Avg. Time from TMC Detection to TMC Verification	■ Avg. Time from Roadway Clearance to Incident/Event Clearance**
■ Avg. Time from TMC Verification to TMC Response	

* Roadway clearance equals all travel lanes open

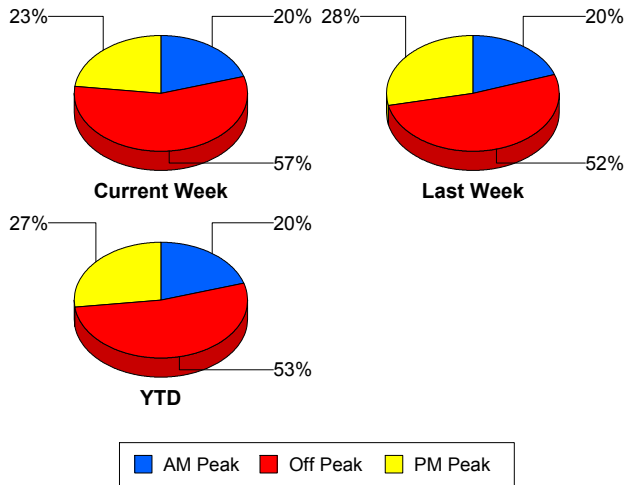
** Incident clearance equals time when last responder has left the scene

Performance Measures by Peak Period

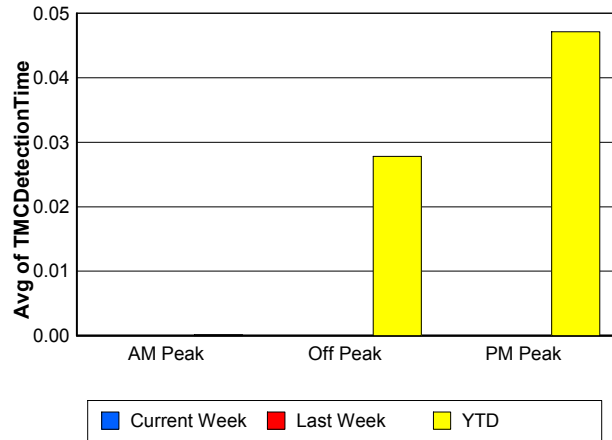
Note: AM peak period is defined as 6am to 10am and PM peak period is defined as 3pm to 7pm.

	AM Peak			Off Peak			PM Peak		
	<u>Current Week</u>	<u>Last Week</u>	<u>YTD</u>	<u>Current Week</u>	<u>Last Week</u>	<u>YTD</u>	<u>Current Week</u>	<u>Last Week</u>	<u>YTD</u>
Number of Events	107	115	3,019	301	303	7,883	123	166	4,034
Number of Incidents	1	8	154	24	20	383	6	5	169
TMC Detection (min.)	0.00	0.00	0.00	0.00	0.00	0.03	0.00	0.00	0.05
TMC Verification (min.)	5.19	2.18	3.00	5.87	5.35	4.71	3.62	5.45	4.91
TMC Response (min.)	8.63	7.29	6.36	9.00	7.67	8.12	5.12	6.75	7.38
RR Dispatch Time (min.)	2.12	1.97	1.82	3.26	2.79	2.88	2.22	2.93	2.78
RR Response Time (min.)	6.48	5.35	4.58	5.75	4.90	5.35	3.36	3.80	4.72
Event Clearance (min.)	18.29	18.00	20.35	28.60	19.81	22.53	18.53	18.58	19.95
Roadway Clearance (min.)	31.58	33.56	38.48	50.67	37.00	47.83	16.18	27.02	31.98
Incident Clearance (min.)	55.22	40.49	62.94	74.56	50.55	66.27	36.66	31.16	55.46
# of Events w/ RR/SIRV	104	107	2,852	272	284	7,299	118	159	3,825
RR/SIRV Responses	104	107	2,852	272	284	7,299	118	159	3,825
RR/SIRV Activities	109	112	3,008	284	305	7,734	129	173	4,051

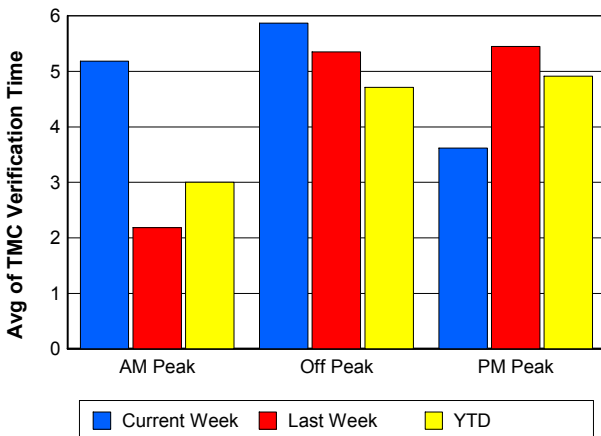
Number of Events / Peak Period



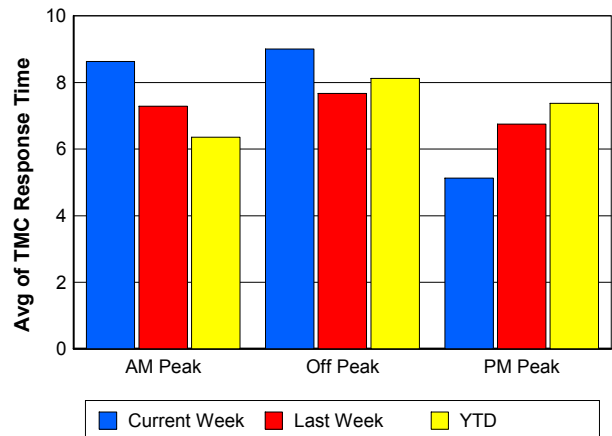
TMC Detection Time



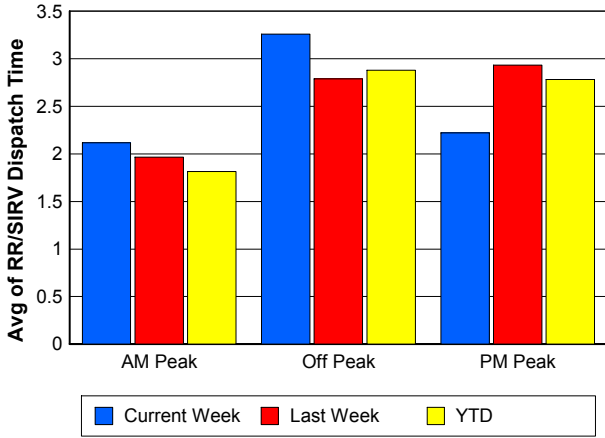
TMC Verification Time



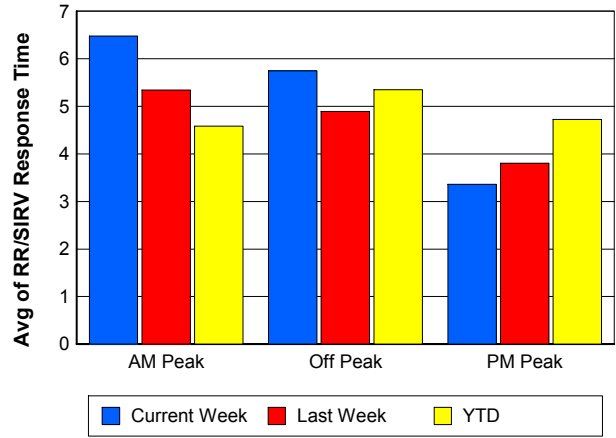
TMC Response Time



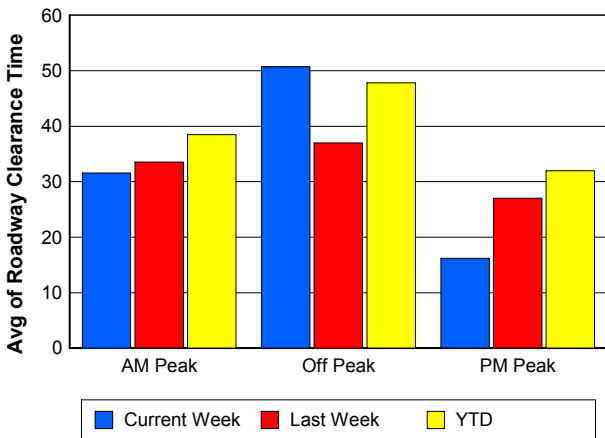
Road Ranger / SIRV Dispatch Time



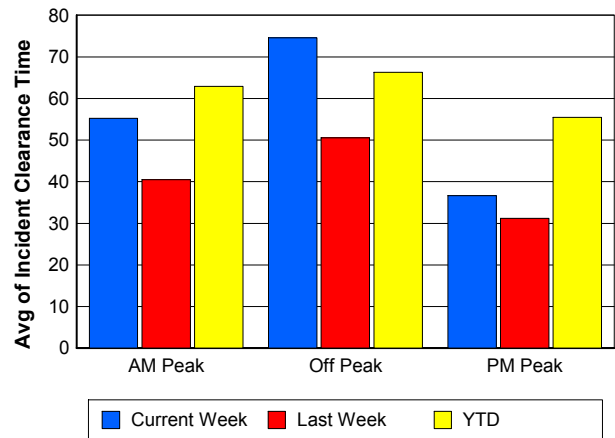
Road Ranger / SIRV Response Time



Roadway Clearance Time (2A)



Incident Clearance Time (3B)

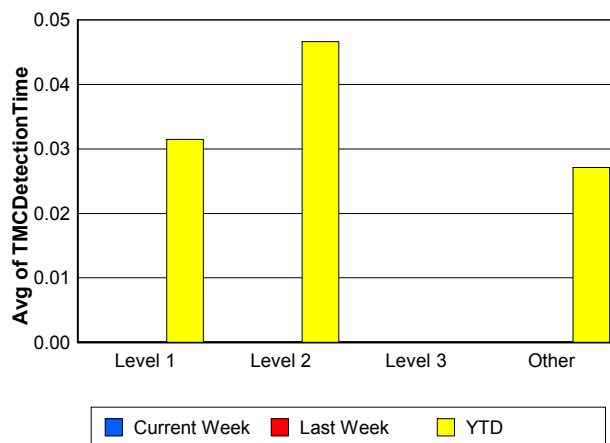
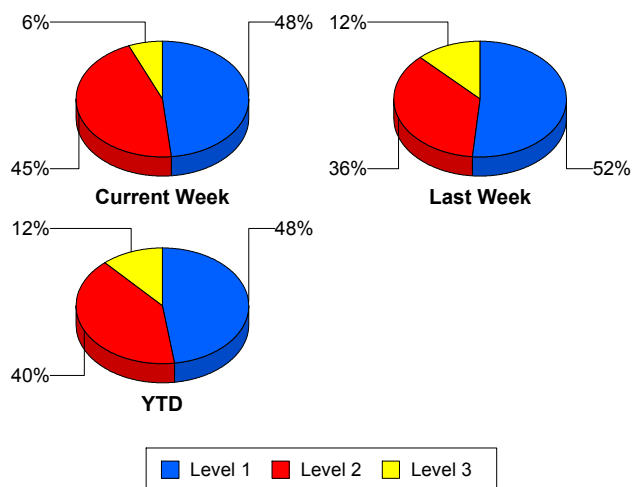


Performance Measures by Severity

	Level 1			Level 2			Level 3			Other		
	<u>This Week</u>	<u>Last Week</u>	<u>YTD</u>	<u>This Week</u>	<u>Last Week</u>	<u>YTD</u>	<u>This Week</u>	<u>Last Week</u>	<u>YTD</u>	<u>This Week</u>	<u>Last Week</u>	<u>YTD</u>
Number of Events	15	17	336	14	12	285	2	4	83	500	551	14,232
Number of Incidents	15	17	336	14	12	285	2	4	83	0	0	2
TMC Detection (min.)	0.00	0.00	0.03	0.00	0.00	0.05	0.00	0.00	0.00	0.00	0.00	0.03
TMC Verification (min.)	5.07	1.71	3.28	3.06	12.08	8.59	7.46	0.96	5.37	5.26	4.72	4.36
TMC Response (min.)	5.85	5.42	6.30	12.75	12.97	13.71	10.81	0.95	13.70	7.92	7.30	7.42
RR Dispatch Time (min.)	0.86	0.63	1.51	3.60	3.65	3.47	0.18	0.24	6.37	2.82	2.73	2.63
RR Resp. Time (min.)	4.98	4.79	4.86	9.14	9.32	10.27	10.63	0.72	7.32	5.20	4.58	4.90
Event Clearance (min.)	42.34	25.14	41.89	73.43	65.21	70.14	200.76	70.20	125.75	21.56	17.54	19.32
Roadway Clear. (min.)	14.36	12.86	14.99	53.34	55.87	54.38	191.36	63.64	110.29			-21.46
Incident Clearance (min.)	42.34	25.14	41.89	73.43	65.21	70.14	200.76	70.20	125.08			0.00
# of Events w/ RR/SIRV	15	16	329	14	12	283	2	4	68	463	518	13,296
RR/SIRV Responses	15	16	329	14	12	283	2	4	68	463	518	13,296
RR/SIRV Activities	22	18	400	16	13	389	3	5	105	481	554	13,899

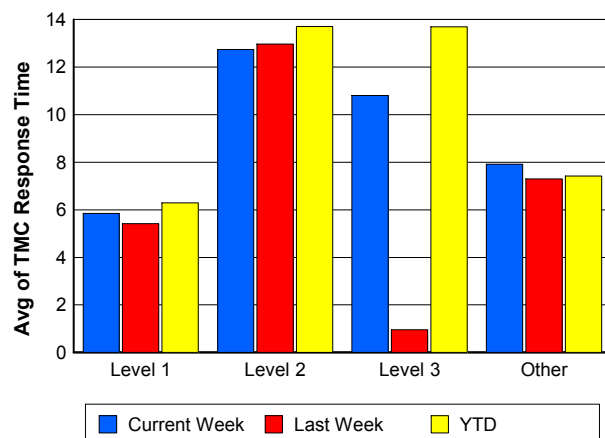
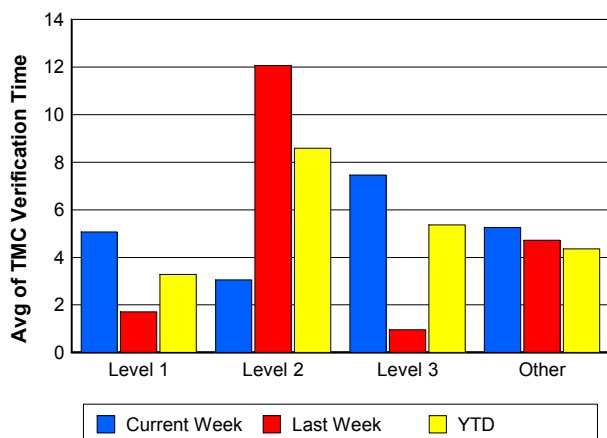
Number of Events / Severity

TMC Detection Time

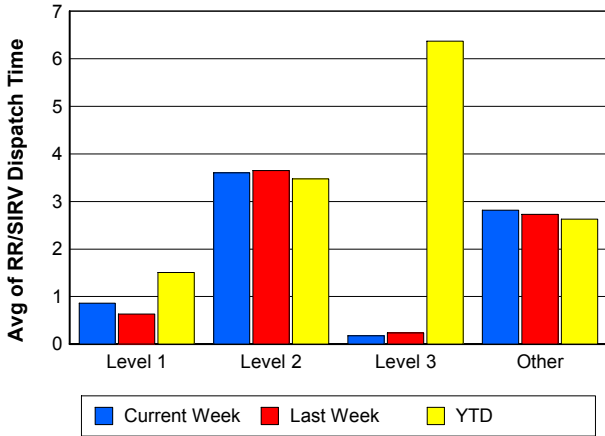


TMC Verification Time

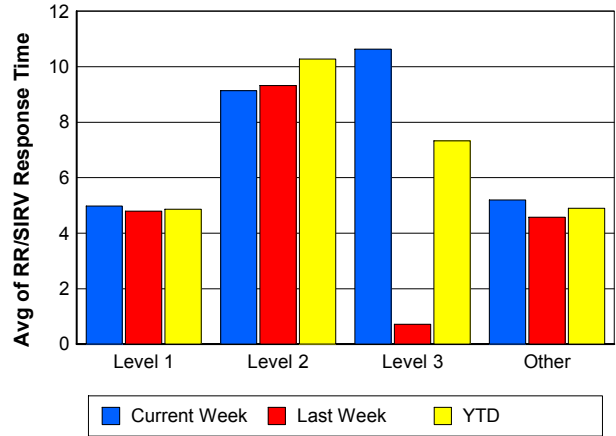
TMC Response Time



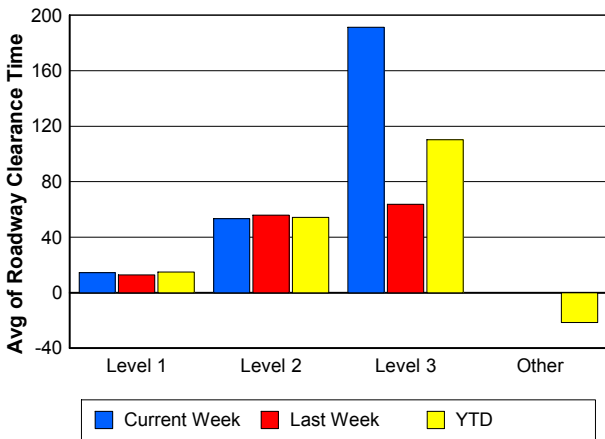
Road Ranger / SIRV Dispatch Time



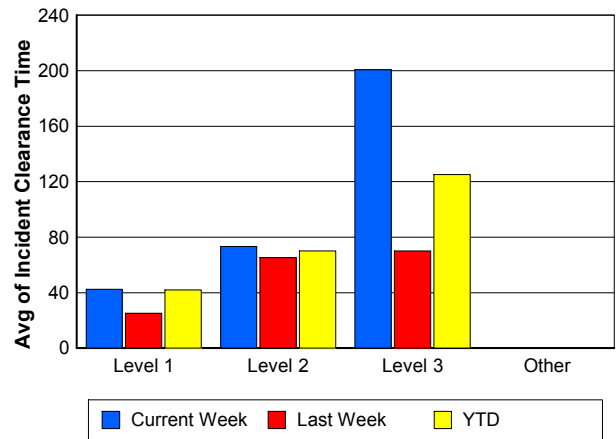
Road Ranger / SIRV Response Time



Roadway Clearance Time (2A)



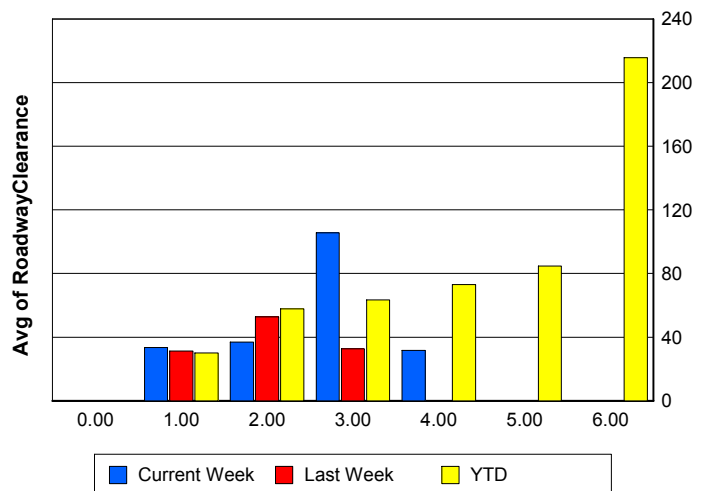
Incident Clearance Time (3B)



Roadway Clearance by Maximum Number of Lanes Blocked

	Current Week	Last Week	YTD
0			
1	33.45	31.37	30.13
2	36.93	52.78	57.86
3	105.68	32.77	63.47
4	31.58	0.00	73.09
5	0.00	0.00	84.80
6	0.00	0.00	215.67

Roadway Clearance Time (2A)



Performance Measures by Roadway

95

	<u>Current Week</u>	<u>Last Week</u>	<u>YTD</u>
Number of Events	531	584	14,925
Number of Incidents	31	33	696
TMC Detection (min.)	0.00	0.00	0.03
TMC Verification (min.)	5.21	4.76	4.42
TMC Response (min.)	8.01	7.33	7.56
RR Dispatch Time (min.)	2.77	2.67	2.64
RR Resp. Time (min.)	5.33	4.66	5.02
Event Clearance (min.)	24.19	19.10	21.36
Roadway Clear. (min.)	43.38	34.65	41.74
Incident Clearance (min.)	66.60	45.17	62.97
# of Events w/ RR/SIRV	494	550	13,975
RR/SIRV Responses	494	550	13,975
RR/SIRV Activities	522	590	14,792

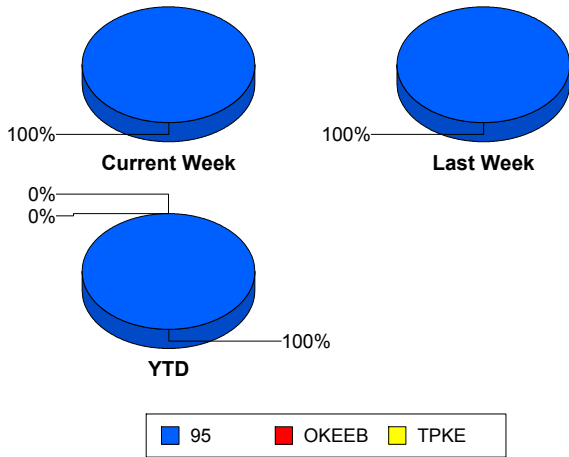
OKEEB

	<u>YTD</u>
Number of Events	1
Number of Incidents	0
TMC Detection (min.)	0.00
TMC Verification (min.)	0.00
TMC Response (min.)	0.00
RR Dispatch Time (min.)	0.00
RR Resp. Time (min.)	0.00
Event Clearance (min.)	18.45
Roadway Clear. (min.)	
Incident Clearance (min.)	
# of Events w/ RR/SIRV	1
RR/SIRV Responses	1
RR/SIRV Activities	1

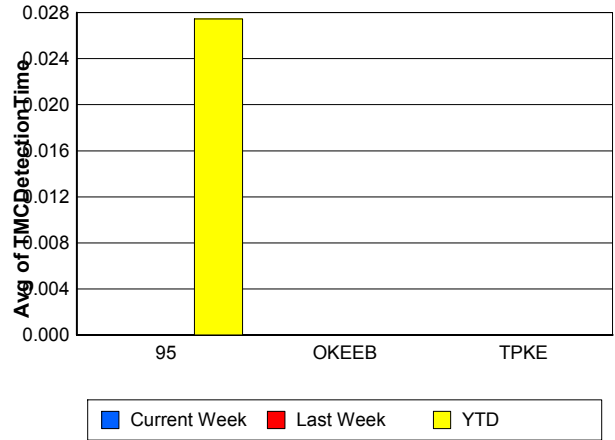
TPKE

	<u>YTD</u>
Number of Events	10
Number of Incidents	10
TMC Detection (min.)	0.00
TMC Verification (min.)	0.00
TMC Response (min.)	
RR Dispatch Time (min.)	
RR Resp. Time (min.)	
Event Clearance (min.)	62.29
Roadway Clear. (min.)	59.66
Incident Clearance (min.)	62.29
# of Events w/ RR/SIRV	0
RR/SIRV Responses	0
RR/SIRV Activities	0

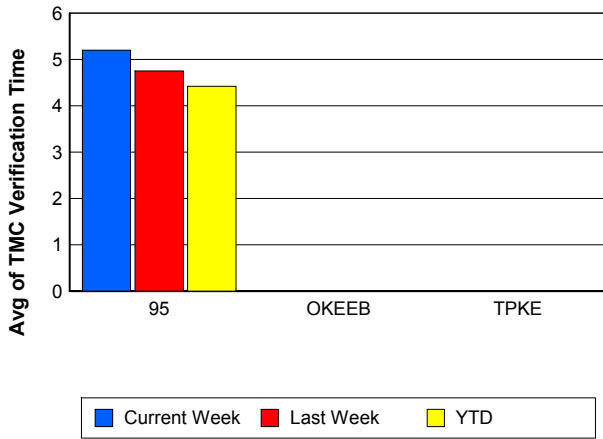
Number of Events / Roadway



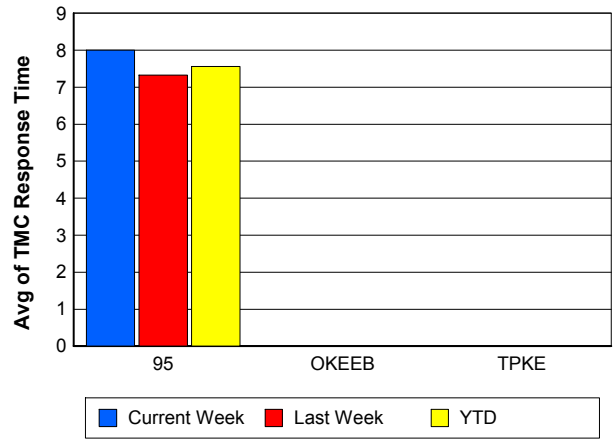
TMC Detection Time



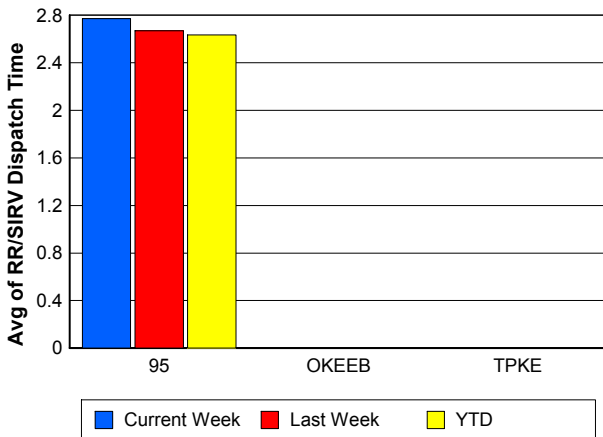
TMC Verification Time



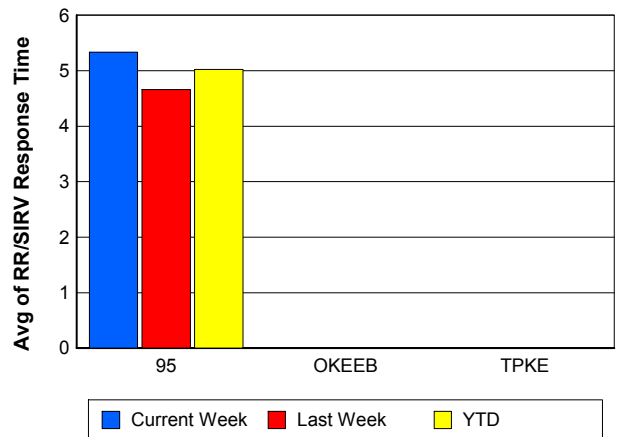
TMC Response Time



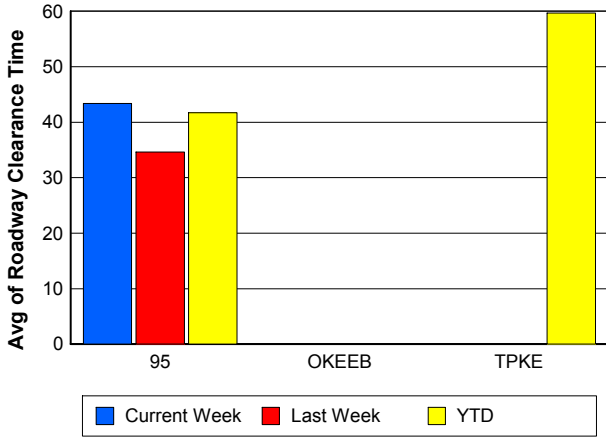
Road Ranger / SIRV Dispatch Time



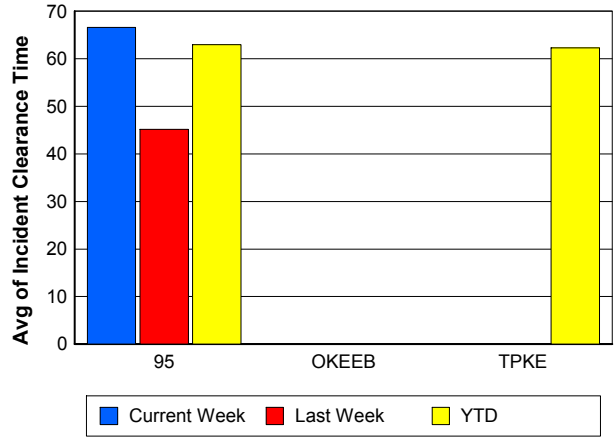
Road Ranger / SIRV Response Time



Roadway Clearance Time (2A)



Incident Clearance Time (3B)



Performance Measures by Event Type

Accident

	<u>Current Week</u>	<u>Last Week</u>	<u>YTD</u>
Number of Events	35	34	1,039
Number of Incidents	19	16	477
TMC Detection (min.)	0.00	0.00	0.04
TMC Verification (min.)	7.49	7.73	7.57
TMC Response (min.)	12.61	10.45	11.18
RR Dispatch Time (min.)	4.29	2.02	2.71
RR Response Time (min.)	8.33	8.42	8.51
Event Clearance (min.)	59.57	49.92	59.62
Roadway Clearance (min.)	51.97	42.56	46.71
Incident Clearance (min.)	78.49	57.41	73.43
# of Events w/ RR/SIRV	35	33	1,012
RR/SIRV Assists	35	33	1,012
RR/SIRV Activities	40	37	1,197

Debris on Roadway

	<u>Current Week</u>	<u>Last Week</u>	<u>YTD</u>
Number of Events	26	41	937
Number of Incidents	2	0	17
TMC Detection (min.)	0.00	0.00	0.00
TMC Verification (min.)	12.03	7.45	10.97
TMC Response (min.)	12.01	7.89	11.46
RR Dispatch Time (min.)	4.51	2.52	3.64
RR Response Time (min.)	7.50	5.37	7.85
Event Clearance (min.)	24.00	11.57	15.01
Roadway Clearance (min.)	25.39		18.87
Incident Clearance (min.)	50.02		26.34
# of Events w/ RR/SIRV	24	41	925
RR/SIRV Assists	24	41	925
RR/SIRV Activities	25	45	965

Disabled Vehicle

	<u>Current Week</u>	<u>Last Week</u>	<u>YTD</u>
Number of Events	453	480	12,223
Number of Incidents	8	11	151
TMC Detection (min.)	0.00	0.00	0.02
TMC Verification (min.)	4.78	4.37	3.86
TMC Response (min.)	7.45	6.66	6.69
RR Dispatch Time (min.)	2.56	2.59	2.44
RR Response Time (min.)	5.02	4.07	4.37
Event Clearance (min.)	19.47	16.79	18.29
Roadway Clearance (min.)	19.79	22.79	24.38
Incident Clearance (min.)	39.07	29.52	33.45
# of Events w/ RR/SIRV	426	454	11,525
RR/SIRV Assists	426	454	11,525
RR/SIRV Activities	449	487	12,245

Emergency Vehicles

	<u>Last Week</u>	<u>YTD</u>
Number of Events	1	12
Number of Incidents	1	11
TMC Detection (min.)	0.00	0.00
TMC Verification (min.)	0.00	2.33
TMC Response (min.)	0.00	3.49
RR Dispatch Time (min.)	0.00	0.07
RR Response Time (min.)	0.00	3.42
Event Clearance (min.)	10.62	45.64
Roadway Clearance (min.)	4.12	44.77
Incident Clearance (min.)	10.62	47.68
# of Events w/ RR/SIRV	1	8
RR/SIRV Assists	1	8
RR/SIRV Activities	1	10

Other

	<u>Current Week</u>	<u>Last Week</u>	<u>YTD</u>
Number of Events	13	20	577
Number of Incidents	0	1	3
TMC Detection (min.)	0.00	0.00	0.10
TMC Verification (min.)	1.41	0.74	0.64
TMC Response (min.)	4.56	15.52	15.61
RR Dispatch Time (min.)	3.99	5.49	5.36
RR Response Time (min.)	0.05	9.69	8.07
Event Clearance (min.)	87.59	26.92	23.89
Roadway Clearance (min.)		6.95	15.18
Incident Clearance (min.)		13.52	24.41
# of Events w/ RR/SIRV	5	13	374
RR/SIRV Assists	5	13	374
RR/SIRV Activities	4	12	248

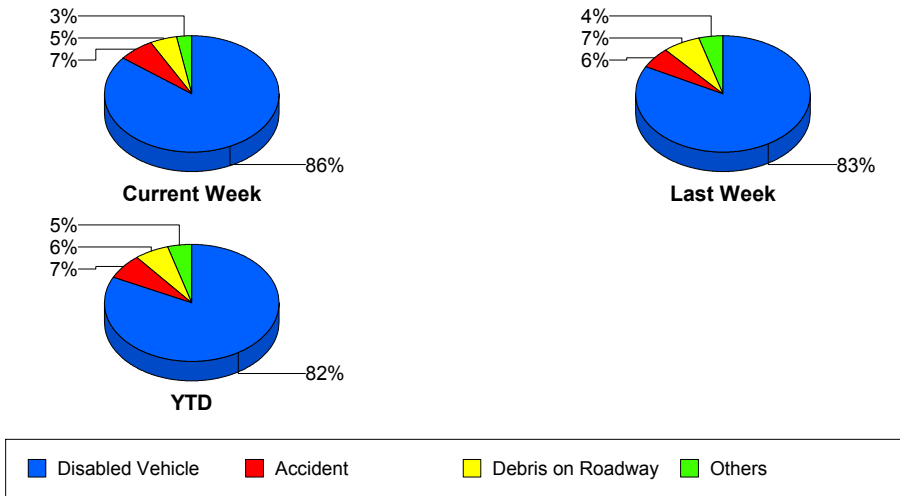
Police Activity

	<u>Current Week</u>	<u>Last Week</u>	<u>YTD</u>
Number of Events	2	3	57
Number of Incidents	2	3	29
TMC Detection (min.)	0.00	0.00	0.13
TMC Verification (min.)	4.73	0.00	0.78
TMC Response (min.)	4.71	0.00	16.35
RR Dispatch Time (min.)	0.67	0.00	7.78
RR Response Time (min.)	4.03	0.00	9.55
Event Clearance (min.)	80.43	55.40	54.35
Roadway Clearance (min.)	74.18	49.11	74.42
Incident Clearance (min.)	80.43	55.40	82.18
# of Events w/ RR/SIRV	2	3	46
RR/SIRV Assists	2	3	46
RR/SIRV Activities	2	3	38

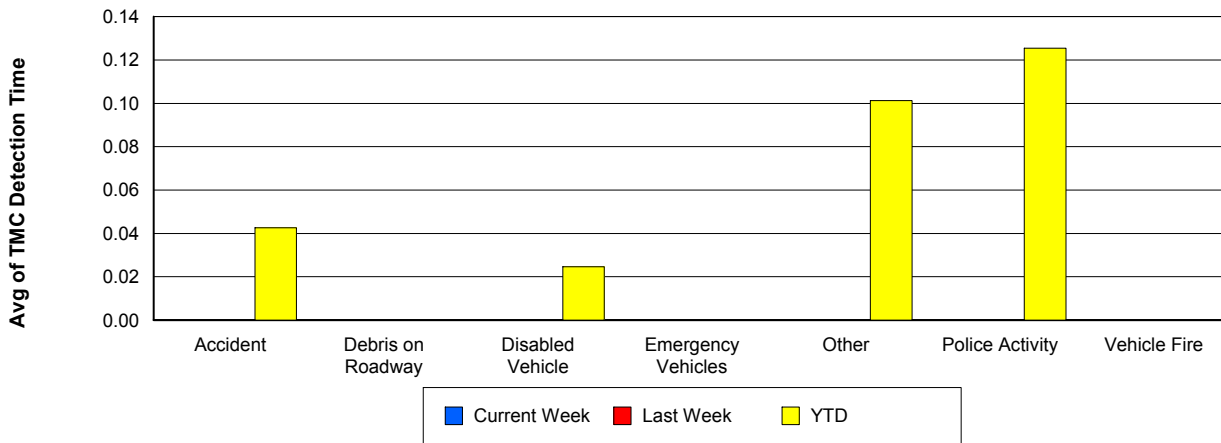
Vehicle Fire

	<u>Last Week</u>	<u>YTD</u>
Number of Events	1	29
Number of Incidents	1	17
TMC Detection (min.)	0.00	0.00
TMC Verification (min.)	0.00	3.17
TMC Response (min.)	10.93	8.64
RR Dispatch Time (min.)	0.57	2.72
RR Response Time (min.)	10.37	6.05
Event Clearance (min.)	57.12	41.96
Roadway Clearance (min.)	53.58	36.38
Incident Clearance (min.)	57.12	52.33
# of Events w/ RR/SIRV	1	27
RR/SIRV Assists	1	27
RR/SIRV Activities	1	31

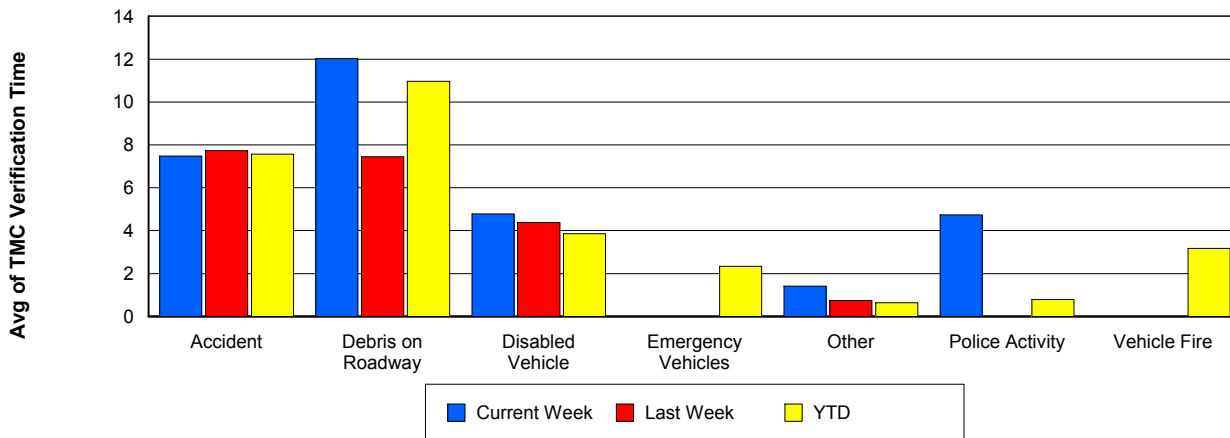
Number of Events / Event Type



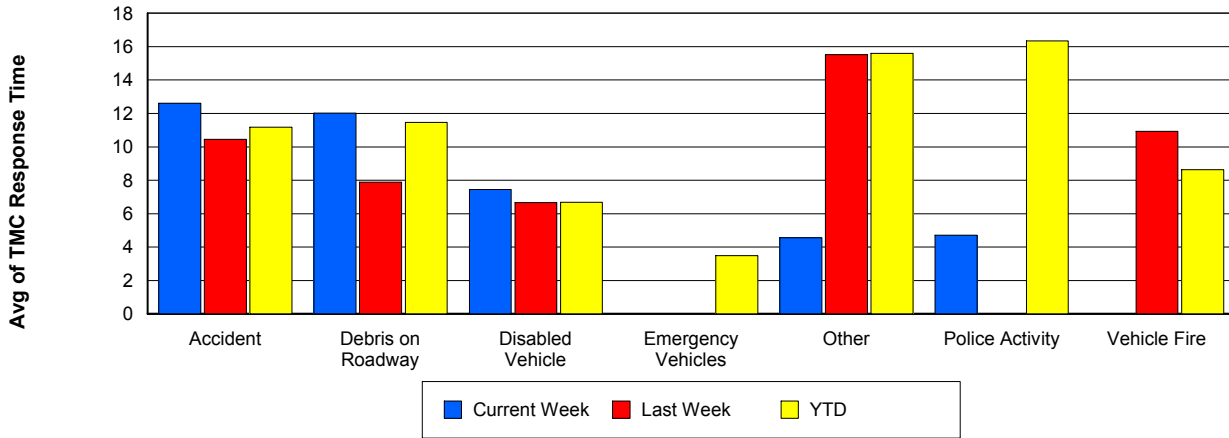
TMC Detection Time



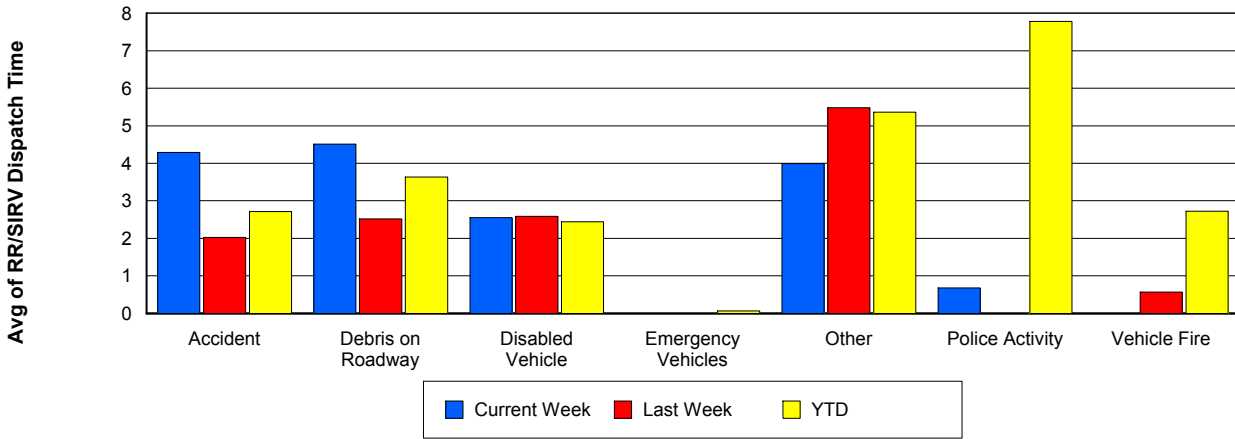
TMC Verification Time



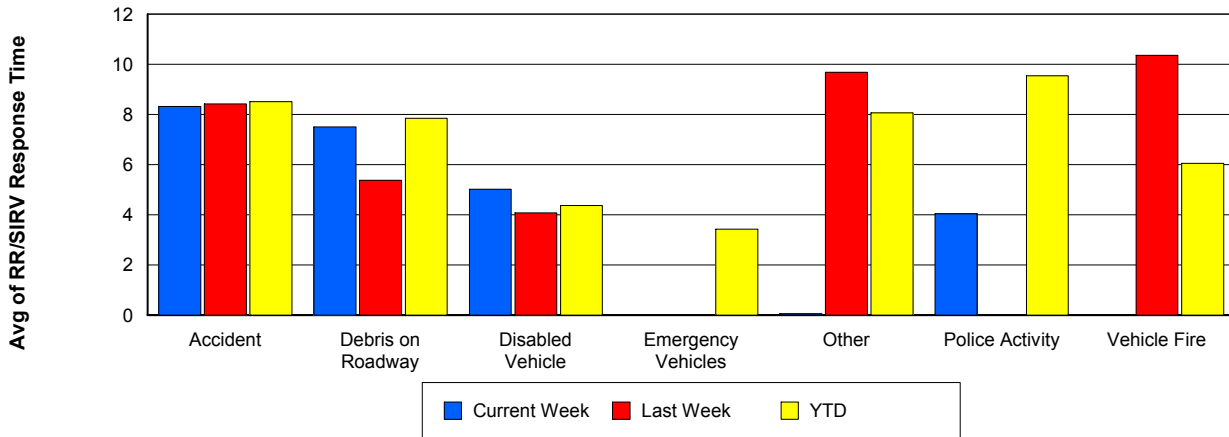
TMC Response Time



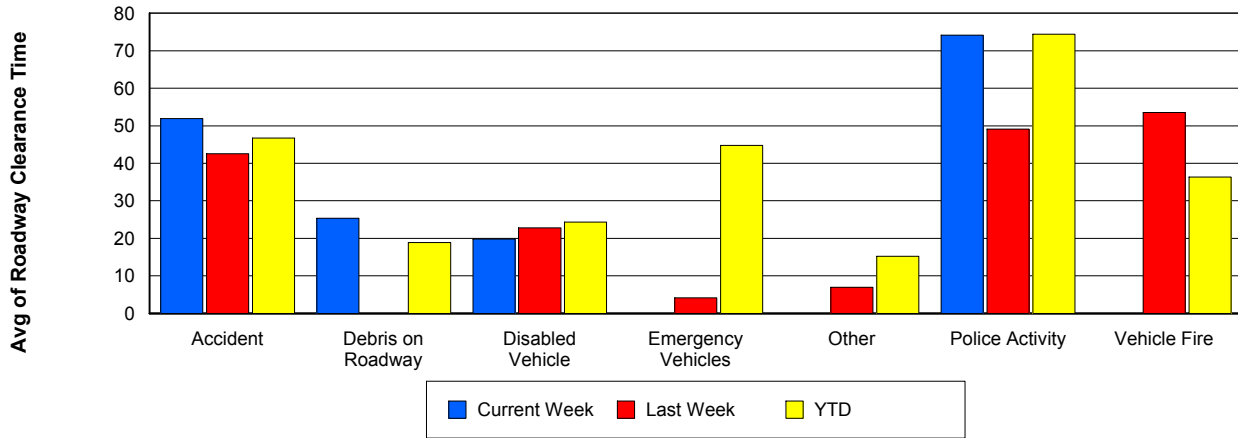
Road Ranger / SIRV Dispatch Time



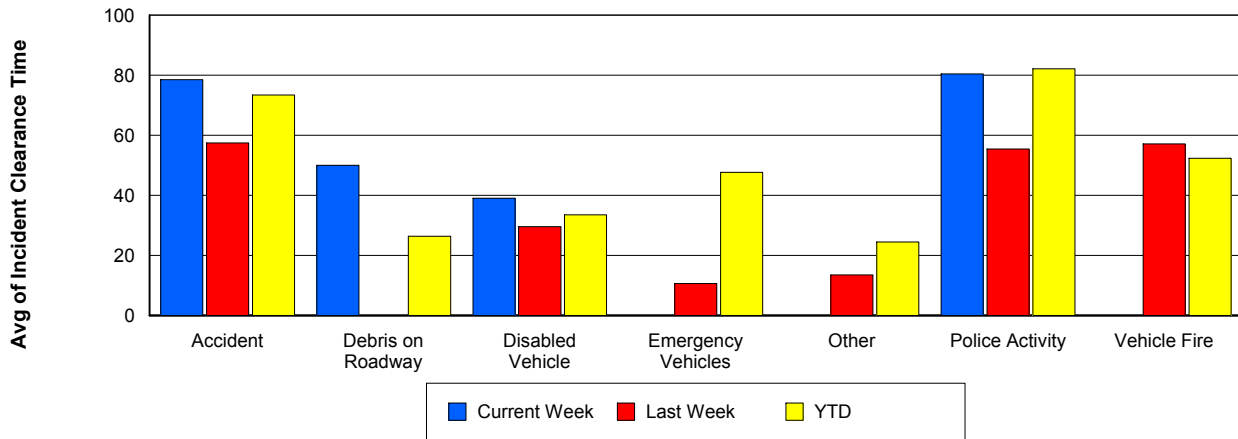
Road Ranger / SIRV Response Time



Roadway Clearance Time (2A)



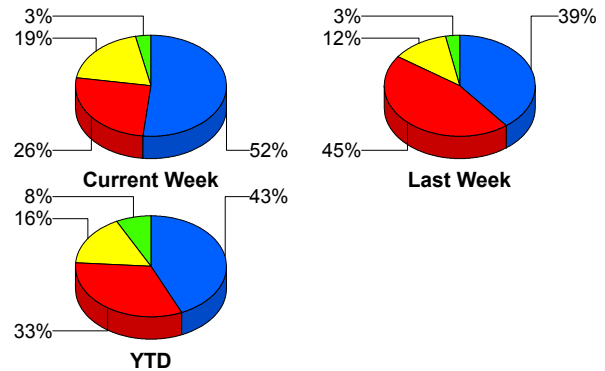
Incident Clearance Time (3B)



Incident Detection Methods

	Current Week	Last Week	YTD
Broward CCTV	0	1	1
Broward Road Ranger	0	0	5
Broward TMC	0	0	7
County Police	0	0	1
District 4	1	0	14
FDOT Maintenance	0	0	3
FHP	16	13	306
Florida's Turnpike	0	0	10
ITMS	0	0	1
ITMS CCTV	6	4	116
Media	0	0	1
Motorist	0	0	10
Palm Beach Road Ran	8	15	229
Total	31	33	704

Total Incidents by Detection Method



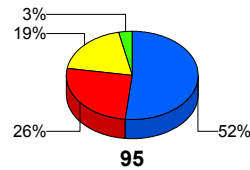
■ FHP
 ■ Palm Beach Road Ranger
 ■ ITMS CCTV
 ■ Others

Incident Detection Methods by Roadway

		Current Week	Last Week	YTD
95	Broward CCTV	0	1	1
	Broward Road Ranger	0	0	5
	Broward TMC	0	0	7
	County Police	0	0	1
	District 4	1	0	14
	FDOT Maintenance	0	0	3
	FHP	16	13	306
	ITMS	0	0	1
	ITMS CCTV	6	4	116
	Media	0	0	1
	Motorist	0	0	10
	Palm Beach Road Ran	8	15	229
	Total	31	33	694

Total Events by Roadway and Detection Method

Current Period Only



95 **OKEEB**

TPKE

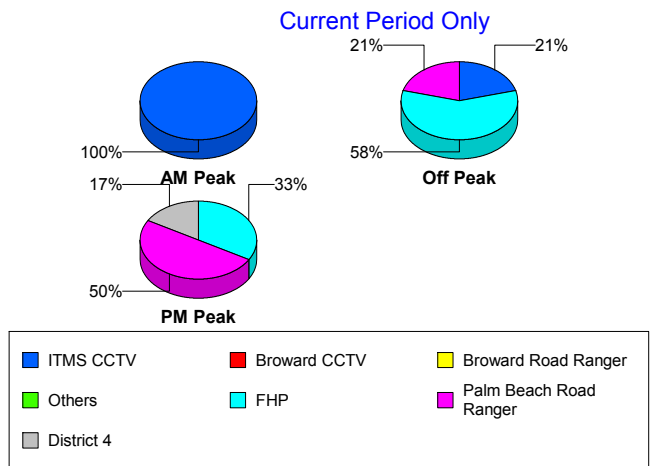
■ FHP
 ■ Palm Beach Road Ranger
 ■ ITMS CCTV
 ■ Others
 ■ Florida's Turnpike

		Current Week	Last Week	YTD
TPKE	Florida's Turnpike	0	0	10
	Total	0	0	10
Total		31	33	704

Incident Detection Methods by Peak Period

		Current Week	Last Week	YTD
AM Peak	Broward Road Ranger	0	0	4
	Broward TMC	0	0	2
	County Police	0	0	1
	District 4	0	0	2
	FDOT Maintenance	0	0	1
	FHP	0	5	57
	Florida's Turnpike	0	0	2
	ITMS CCTV	1	0	26
	Media	0	0	1
	Motorist	0	0	1
	Palm Beach Road Ran	0	3	57
	Total	1	8	154
	Off Peak	Broward CCTV	0	1
Broward Road Ranger		0	0	1
Broward TMC		0	0	2
District 4		0	0	8
FDOT Maintenance		0	0	2
FHP		14	8	174
Florida's Turnpike		0	0	7
ITMS		0	0	1
ITMS CCTV		5	2	64
Motorist		0	0	5
Palm Beach Road Ran		5	9	117
Total		24	20	382
PM Peak	Broward TMC	0	0	3
	District 4	1	0	4

Total Events by Peak Period and Detection Method

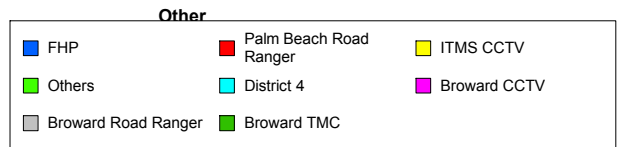
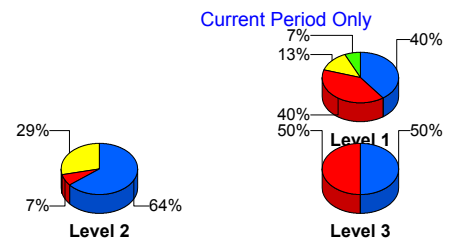


		Current Week	Last Week	YTD
PM Peak	FHP	2	0	76
	Florida's Turnpike	0	0	1
	ITMS CCTV	0	2	26
	Motorist	0	0	4
	Palm Beach Road Ran	3	3	55
	Total	6	5	169
Total		31	33	704

Incident Detection Methods by Severity

		Current Week	Last Week	YTD
	FHP	0	0	1
	Total	0	0	1
Level 1	Broward CCTV	0	1	1
	Broward Road Ranger	0	0	5
	Broward TMC	0	0	5
	County Police	0	0	1
	District 4	1	0	10
	FDOT Maintenance	0	0	1
	FHP	6	4	102
	ITMS CCTV	2	3	59
	Motorist	0	0	3
	Palm Beach Road Ran	6	9	149
	Total	15	17	336
	Level 2	Broward TMC	0	0
District 4		0	0	2
FDOT Maintenance		0	0	2
FHP		9	8	164
ITMS		0	0	1
ITMS CCTV		4	1	46
Motorist		0	0	7
Palm Beach Road Ran		1	3	61
Total		14	12	285

Total Events by Severity and Detection Method



		Current Week	Last Week	YTD
Level 3	District 4	0	0	2
	FHP	1	1	40
	Florida's Turnpike	0	0	10
	ITMS CCTV	0	0	11
	Media	0	0	1
	Palm Beach Road Ran	1	3	19
	Total	2	4	83
Total		31	33	704

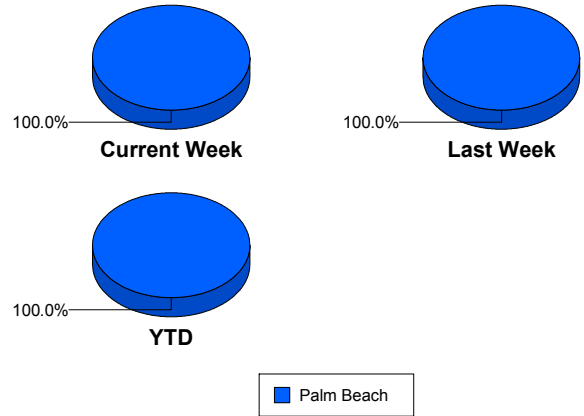
Road Ranger / SIRV Performance Measures

Road Ranger / SIRV Performance By County

Values presented are:
 - Total Events with a RR/SIRV Response
 - Total RR/SIRV Responses,
 - Total Activities Performed

	Current We	Last Week	YTD
Palm Beach	633	680	17,161
	657	705	17,709
	685	740	18,858

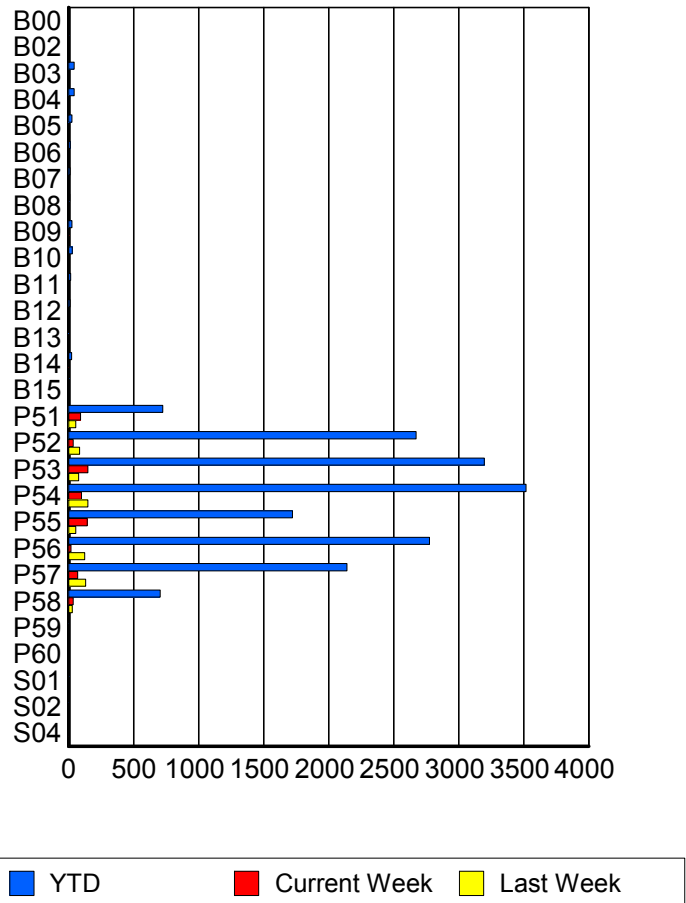
RR/SIRV Responses per County



Road Ranger / SIRV Performance By Truck

	Current We	Last Week	YTD
B00	0	0	2
	0	0	2
	0	0	2
B02	0	0	7
	0	0	7
	0	0	7
B03	1	0	43
	1	0	43
	1	0	47
B04	0	0	42
	0	0	43
	0	0	46
B05	0	2	25
	0	2	25
	0	2	26
B06	0	0	13
	0	0	13
	0	0	15
B07	1	0	11
	1	0	11
	1	0	11
B08	0	0	9
	0	0	9
	0	0	9
B09	5	0	26
	5	0	26
	6	0	28

**RR/SIRV
Responses per
Truck**



	Current We	Last Week	YTD
B10	1	0	27
	1	0	27
	1	0	29
B11	0	1	15
	0	1	15
	0	1	16
B12	0	2	10
	0	2	10
	0	2	10
B13	0	0	4
	0	0	4
	0	0	4
B14	4	1	24
	4	1	24
	4	1	24
B15	0	0	5
	0	0	5
	0	0	5
P51	91	54	714
	91	54	724
	97	57	765
P52	35	83	2,640
	35	84	2,673
	37	86	2,847
P53	145	77	3,165
	148	77	3,198
	154	79	3,400
P54	96	146	3,474
	98	147	3,519
	100	156	3,733
P55	143	54	1,712
	143	54	1,722
	150	57	1,825
P56	18	121	2,742
	18	123	2,776
	20	131	2,964
P57	69	130	2,116
	70	132	2,140
	72	140	2,287
P58	36	27	698
	36	27	704
	36	27	741
P59	0	1	3
	0	1	3
	0	1	3

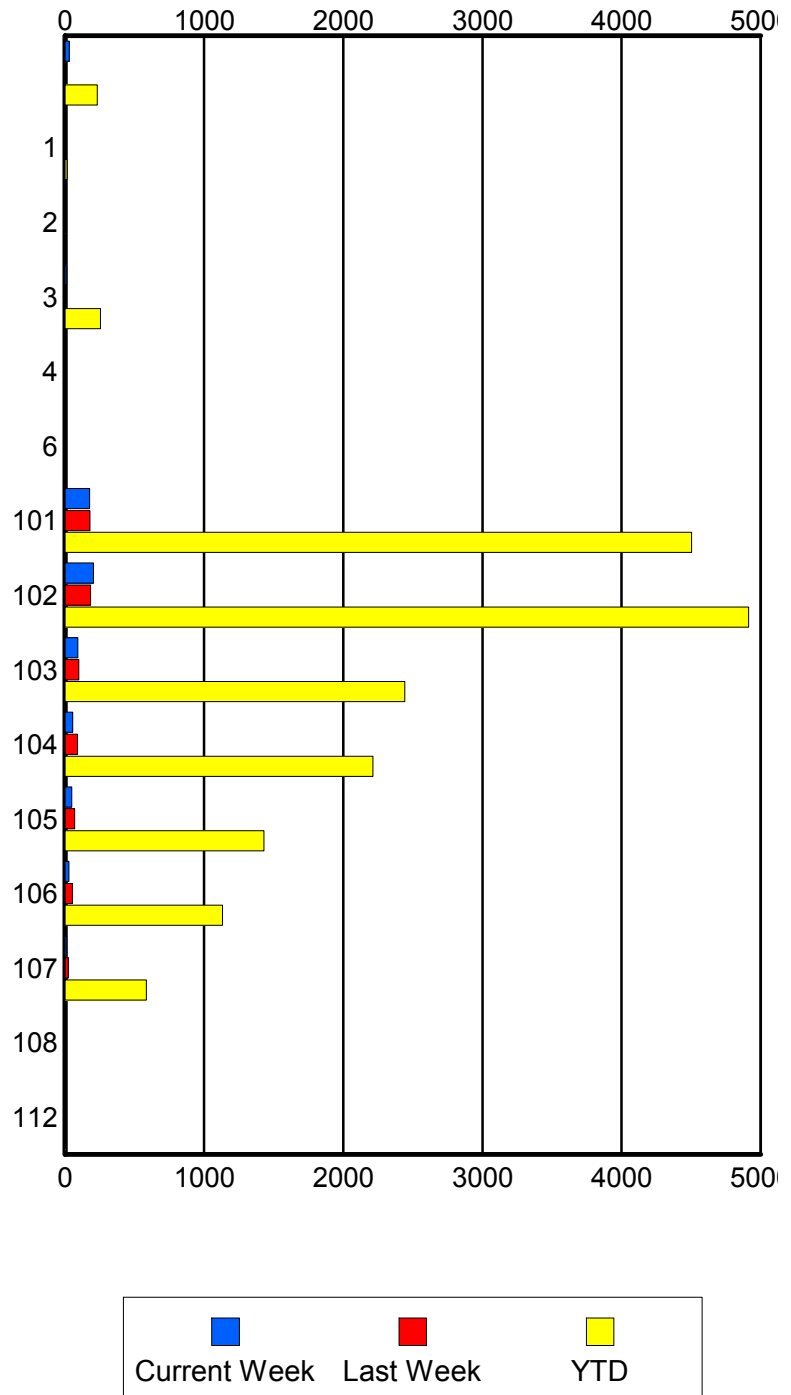
	Current We	Last Week	YTD
P60	0	0	1
	0	0	1
	0	0	1
S01	2	0	5
	2	0	5
	2	0	6
S02	1	0	3
	1	0	3
	1	0	3
S04	3	0	4
	3	0	4
	3	0	4

Road Ranger / SIRV Performance By Beat

	Current We	Last Week	YTD
	29	4	230
	29	4	231
	32	5	248
1	0	0	13
	0	0	14
	0	0	14
2	0	0	3
	0	0	3
	0	0	3
3	11	6	249
	12	6	254
	13	6	269
4	0	0	1
	0	0	1
	0	0	1
6	0	0	6
	0	0	7
	0	0	7
101	172	176	4,427
	177	178	4,504
	184	184	4,788
102	201	180	4,848
	205	183	4,914
	212	193	5,217
103	91	97	2,411
	92	98	2,442
	96	102	2,581
104	56	89	2,193
	56	89	2,214
	56	94	2,365
105	48	70	1,421
	48	70	1,429
	51	74	1,527
106	27	53	1,122
	27	53	1,132
	30	58	1,206
107	11	24	583
	11	24	585
	11	24	625
108	0	0	3
	0	0	4
	0	0	4
112	0	0	2
	0	0	2
	0	0	3

Values presented are:
 - Total Events with a RR/SIRV Response
 - Total RR/SIRV Responses,
 - Total Activities Performed

RR/SIRV Responses per Beat

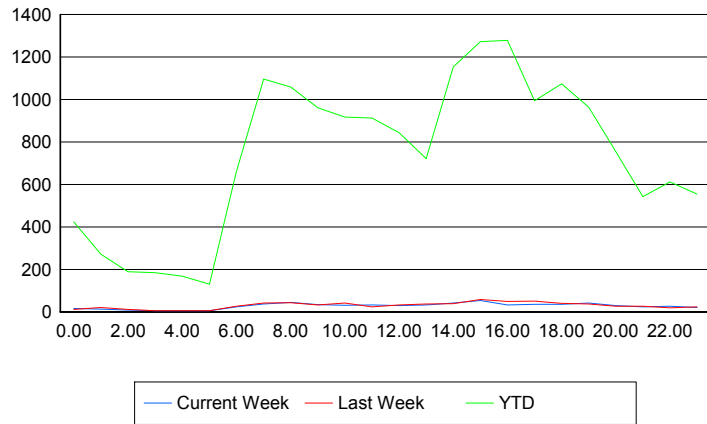


Road Ranger / SIRV Performance By Time of Day

Values presented are:
 - Total Events with a RR/SIRV Response
 - Total RR/SIRV Responses,
 - Total Activities Performed

	Current We	Last Week	YTD
12AM-1AM	15	12	411
	16	12	424
	18	12	460
1AM-2AM	13	19	267
	13	20	272
	15	20	284
2AM-3AM	8	11	183
	8	11	189
	8	11	201
3AM-4AM	5	5	175
	6	5	184
	6	5	197
4AM-5AM	5	5	160
	5	5	168
	5	5	174
5AM-6AM	4	5	114
	6	6	130
	6	6	137
6AM-7AM	23	25	632
	24	26	659
	25	27	697
7AM-8AM	36	38	1,061
	37	42	1,096
	39	43	1,161
8AM-9AM	43	41	1,014
	45	43	1,058
	47	44	1,122
9AM-10AM	34	31	932
	34	32	961
	36	32	1,013
10AM-11AM	30	41	887
	31	41	917
	33	43	966
11AM-12PM	31	23	890
	32	24	912
	33	26	964
12PM-1PM	29	29	805
	29	33	843
	29	34	882

Number of Responses / Hour of the Day



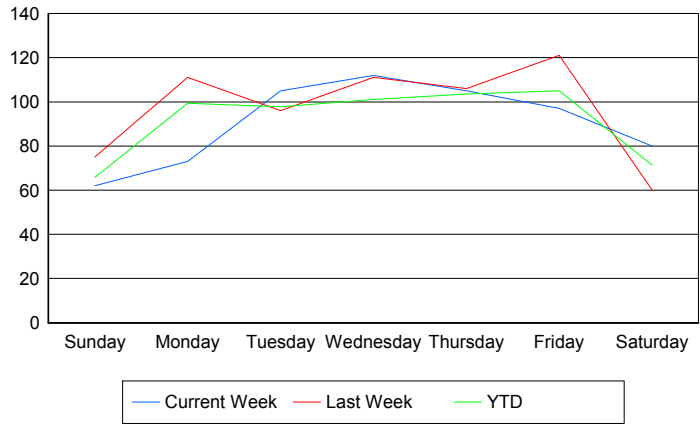
	Current We	Last Week	YTD
1PM-2PM	33	36	683
	33	37	722
	33	38	762
2PM-3PM	41	38	1,112
	41	39	1,154
	43	41	1,233
3PM-4PM	50	57	1,245
	53	58	1,272
	56	62	1,360
4PM-5PM	28	48	1,234
	32	49	1,278
	35	51	1,380
5PM-6PM	35	49	964
	35	50	994
	36	56	1,067
6PM-7PM	34	38	1,051
	36	40	1,073
	37	41	1,133
7PM-8PM	39	36	935
	41	37	964
	44	39	1,023
8PM-9PM	29	27	742
	30	27	755
	30	32	800
9PM-10PM	23	25	524
	23	26	542
	23	28	583
10PM-11PM	25	19	597
	26	19	611
	26	20	653
11PM-12AM	20	22	543
	21	23	554
	22	24	606

Road Ranger / SIRV Performance By Day of Week

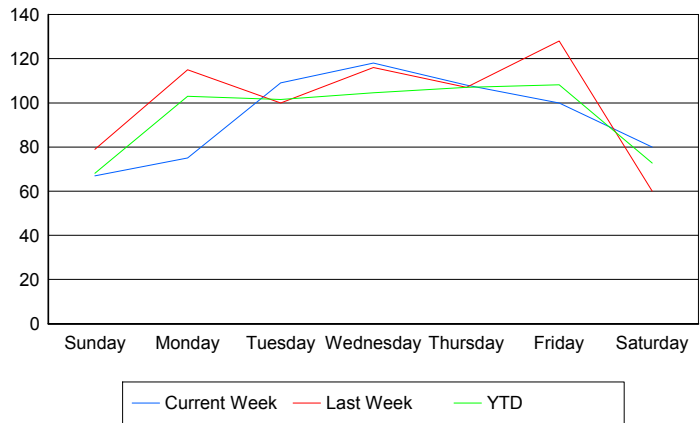
Values presented are:
 - Total Events with a RR/SIRV Response
 - Total RR/SIRV Responses,
 - Total Activities Performed

	Current We	Last Week	YTD
Sunday	62	75	1,725
	67	79	1,783
	72	83	1,886
Monday	73	111	2,604
	75	115	2,695
	76	119	2,858
Tuesday	105	96	2,612
	109	100	2,708
	112	105	2,883
Wednesday	112	111	2,676
	118	116	2,767
	123	126	2,960
Thursday	105	106	2,720
	108	107	2,811
	113	113	3,001
Friday	97	121	2,880
	100	128	2,970
	105	131	3,134
Saturday	80	60	1,961
	80	60	2,001
	84	63	2,136

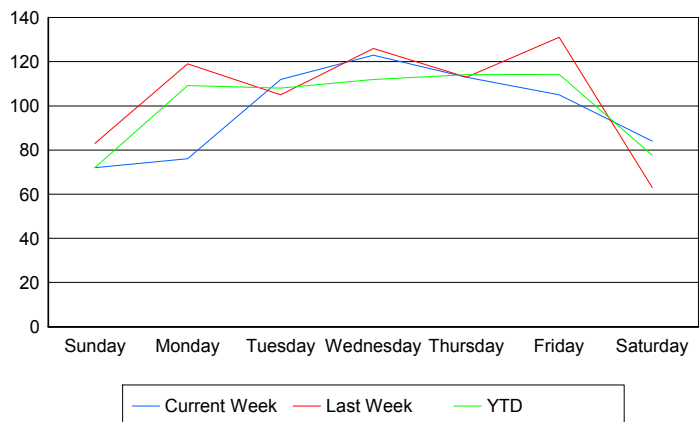
Avg # of events with a RR/SIRV Response per Day of the Week



Avg # of RR/SIRV Responses per Day of the Week



Avg # of RR/SIRV Activities Performed per Day of the Week



Road Ranger / SIRV Responses per Time of Day and Day of Week

