



# Weekly Performance Measures Report Palm Beach County



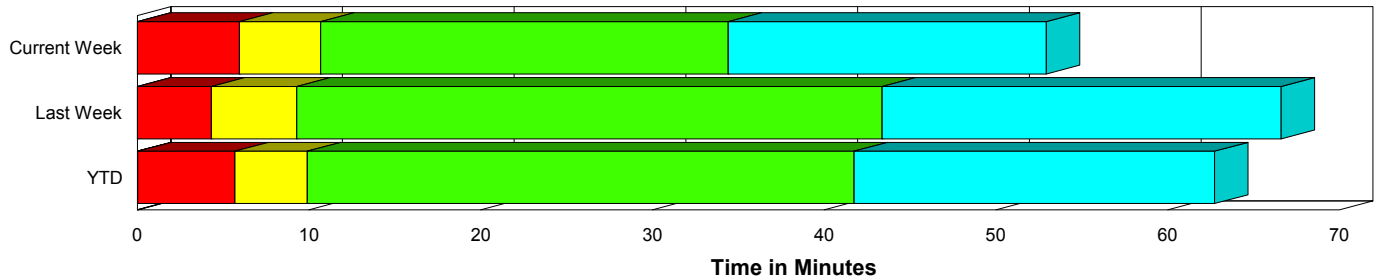
Created on:  
July 19, 2010  
9:11 am

Period From Jul 11, 2010 to Jul 17, 2010

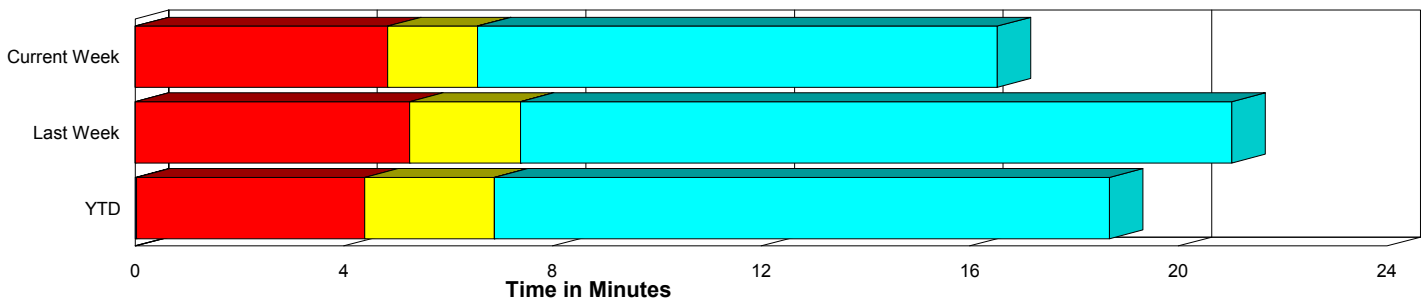
## Performance Measures Summary

	Traffic Events (No Lanes Blocked)			Incidents (Lanes Blocked)		
	<u>This Week</u>	<u>Last Week</u>	<u>YTD</u>	<u>This Week</u>	<u>Last Week</u>	<u>YTD</u>
Number of Events	601	500	14,831	19	31	725
TMC Detection (min.)	0.00	0.00	0.03	0.00	0.00	0.03
TMC Verification (min.)	4.84	5.26	4.38	5.95	4.32	5.68
TMC Response (min.)	7.05	7.92	7.41	10.69	9.28	10.17
RR Dispatch Time (min.)	2.19	2.82	2.61	3.05	2.06	2.81
RR Response Time (min.)	5.20	5.20	4.91	7.64	7.23	7.39
Roadway Clearance (min.)				34.41	43.38	41.80
Event Clearance (min.)	17.03	21.56	19.22	52.92	66.60	63.02
# of Events w/ RR/SIRV	573	463	13,867	19	31	701
RR/SIRV Responses	573	463	13,867	19	31	701
RR/SIRV Activities	610	481	14,504	26	41	925

### Incident Clearance Time-Line



### Traffic Event (Non-Lane Blockage) Time-Line



<span style="color: blue;">■</span> Avg. TMC Detection Time	<span style="color: green;">■</span> Avg. Time from TMC Response to Roadway Clearance*
<span style="color: red;">■</span> Avg. Time from TMC Detection to TMC Verification	<span style="color: cyan;">■</span> Avg. Time from Roadway Clearance to Incident/Event Clearance**
<span style="color: yellow;">■</span> Avg. Time from TMC Verification to TMC Response	

\* Roadway clearance equals all travel lanes open

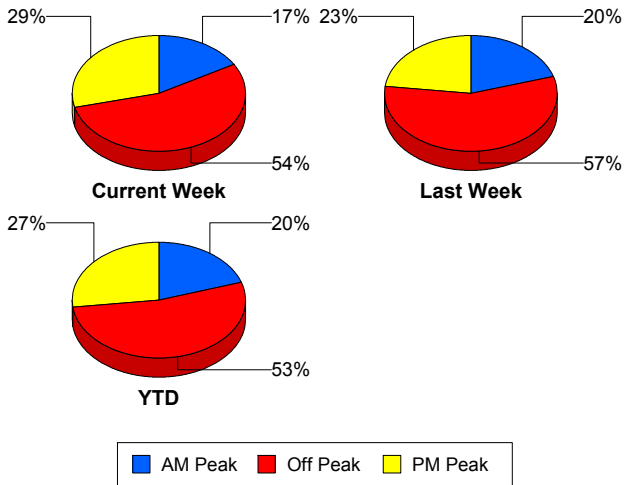
\*\* Incident clearance equals time when last responder has left the scene

## Performance Measures by Peak Period

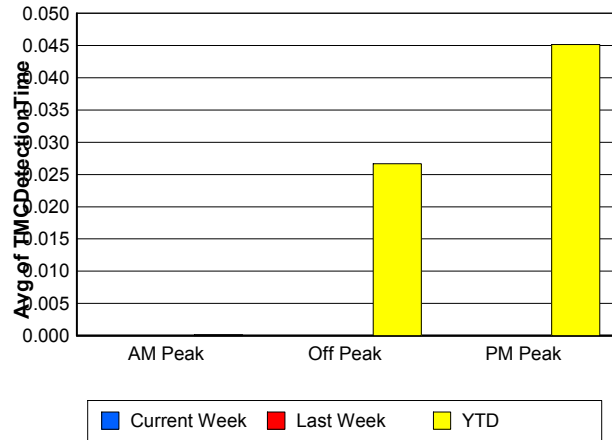
Note: AM peak period is defined as 6am to 10am and PM peak period is defined as 3pm to 7pm.

	AM Peak			Off Peak			PM Peak		
	<u>Current Week</u>	<u>Last Week</u>	<u>YTD</u>	<u>Current Week</u>	<u>Last Week</u>	<u>YTD</u>	<u>Current Week</u>	<u>Last Week</u>	<u>YTD</u>
Number of Events	104	107	3,123	337	301	8,220	179	123	4,213
Number of Incidents	2	1	156	9	24	392	8	6	177
TMC Detection (min.)	0.00	0.00	0.00	0.00	0.00	0.03	0.00	0.00	0.05
TMC Verification (min.)	3.45	5.19	3.02	5.32	5.87	4.74	4.87	3.62	4.91
TMC Response (min.)	5.86	8.63	6.34	7.74	9.00	8.11	6.87	5.12	7.35
RR Dispatch Time (min.)	1.87	2.12	1.82	2.48	3.26	2.86	1.93	2.22	2.75
RR Response Time (min.)	4.03	6.48	4.56	5.84	5.75	5.37	4.96	3.36	4.73
Event Clearance (min.)	16.35	18.29	20.22	18.54	28.60	22.36	18.40	18.53	19.89
Roadway Clearance (min.)	29.02	31.58	38.36	43.55	50.67	47.73	25.46	16.18	31.69
Incident Clearance (min.)	65.97	55.22	62.98	55.41	74.56	66.02	46.87	36.66	55.07
# of Events w/ RR/SIRV	101	104	2,953	320	272	7,619	171	118	3,996
RR/SIRV Responses	101	104	2,953	320	272	7,619	171	118	3,996
RR/SIRV Activities	104	109	3,112	340	284	8,074	192	129	4,243

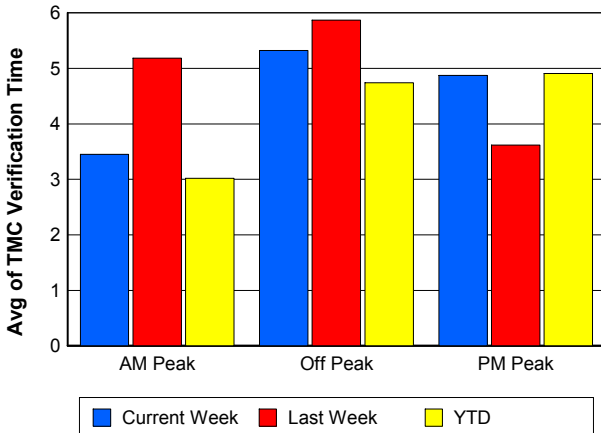
### Number of Events / Peak Period



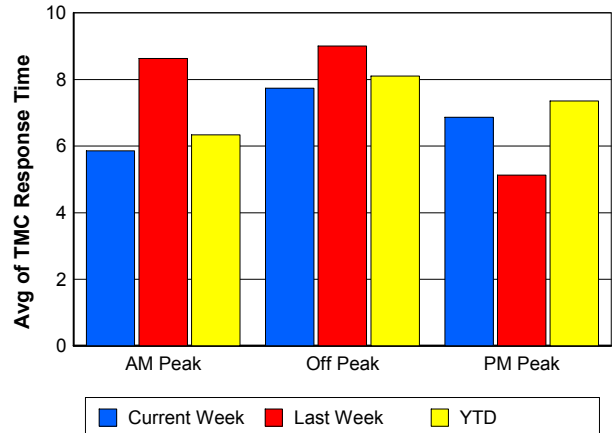
### TMC Detection Time



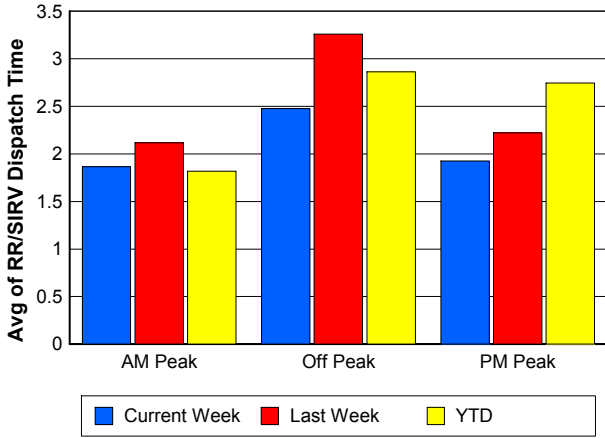
### TMC Verification Time



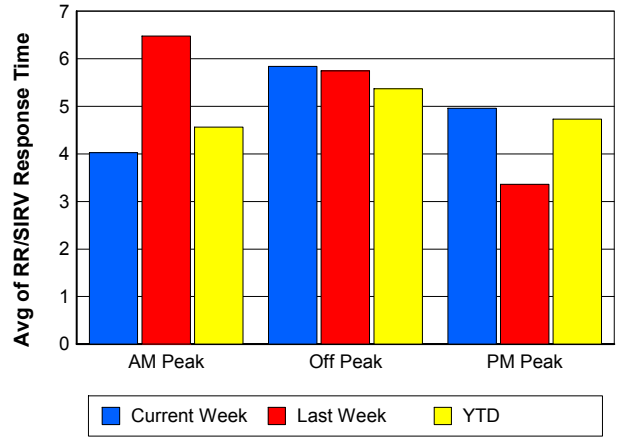
### TMC Response Time



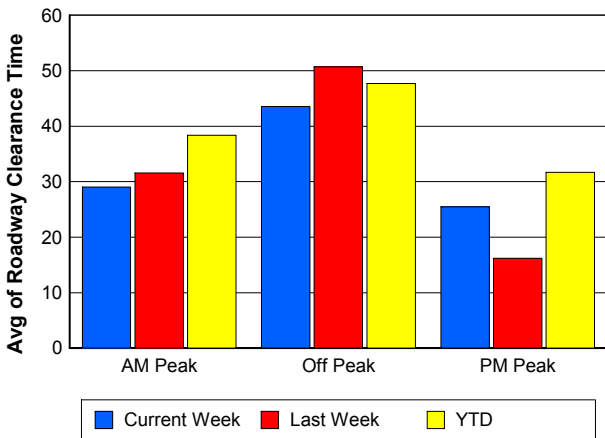
### Road Ranger / SIRV Dispatch Time



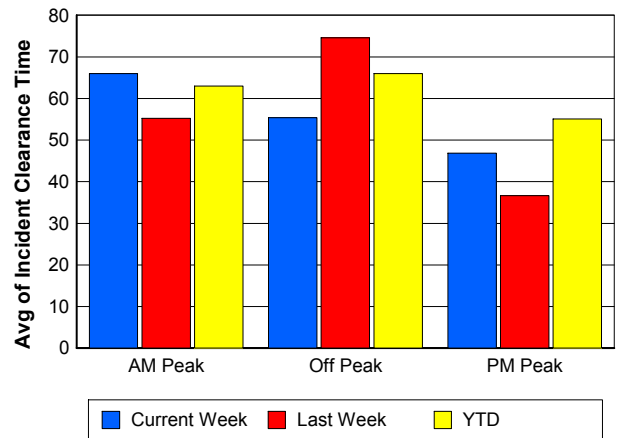
### Road Ranger / SIRV Response Time



### Roadway Clearance Time (2A)



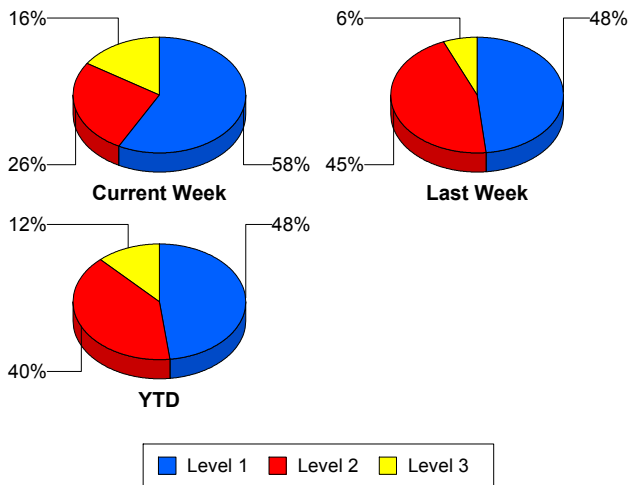
### Incident Clearance Time (3B)



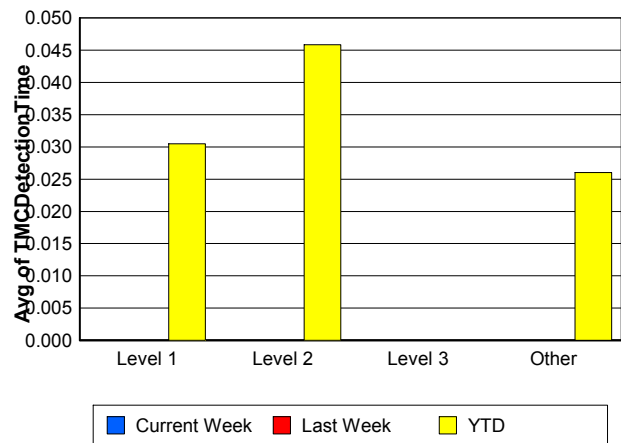
## Performance Measures by Severity

	Level 1			Level 2			Level 3			Other		
	<u>This Week</u>	<u>Last Week</u>	<u>YTD</u>	<u>This Week</u>	<u>Last Week</u>	<u>YTD</u>	<u>This Week</u>	<u>Last Week</u>	<u>YTD</u>	<u>This Week</u>	<u>Last Week</u>	<u>YTD</u>
Number of Events	11	15	347	5	14	290	3	2	86	601	500	14,833
Number of Incidents	11	15	347	5	14	290	3	2	86	0	0	2
TMC Detection (min.)	0.00	0.00	0.03	0.00	0.00	0.05	0.00	0.00	0.00	0.00	0.00	0.03
TMC Verification (min.)	3.61	5.07	3.29	8.13	3.06	8.58	10.88	7.46	5.56	4.84	5.26	4.38
TMC Response (min.)	9.67	5.85	6.41	11.12	12.75	13.66	13.68	10.81	13.69	7.05	7.92	7.40
RR Dispatch Time (min.)	2.71	0.86	1.54	3.49	3.60	3.47	3.57	0.18	6.25	2.19	2.82	2.61
RR Resp. Time (min.)	6.97	4.98	4.93	7.63	9.14	10.23	10.11	10.63	7.44	5.20	5.20	4.91
Event Clearance (min.)	40.87	42.34	41.86	57.15	73.43	69.92	90.07	200.76	124.51	17.03	21.56	19.23
Roadway Clear. (min.)	15.03	14.36	14.99	51.88	53.34	54.34	76.32	191.36	109.11			-21.46
Incident Clearance (min.)	40.87	42.34	41.86	57.15	73.43	69.92	90.07	200.76	123.86			0.00
# of Events w/ RR/SIRV	11	15	340	5	14	288	3	2	71	573	463	13,869
RR/SIRV Responses	11	15	340	5	14	288	3	2	71	573	463	13,869
RR/SIRV Activities	14	22	414	6	16	395	6	3	111	610	481	14,509

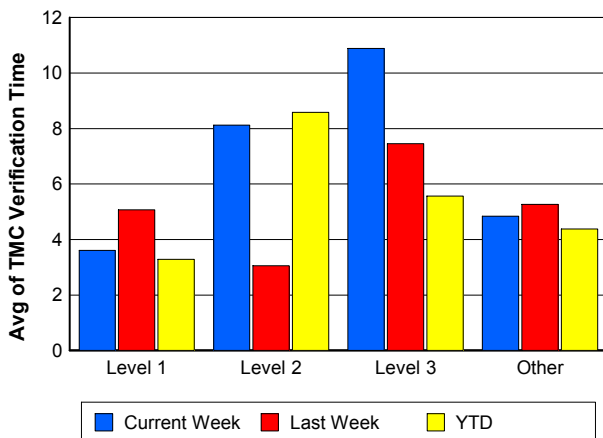
### Number of Events / Severity



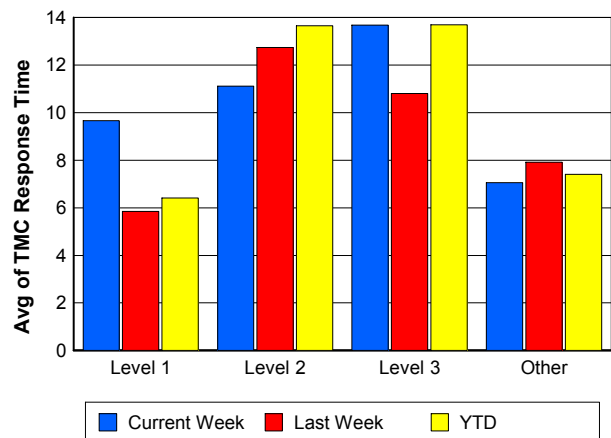
### TMC Detection Time



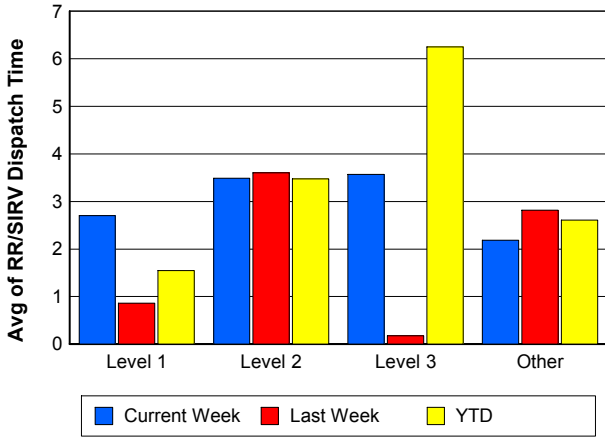
### TMC Verification Time



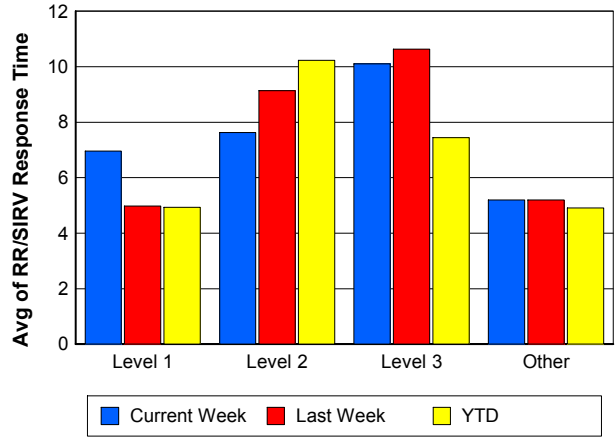
### TMC Response Time



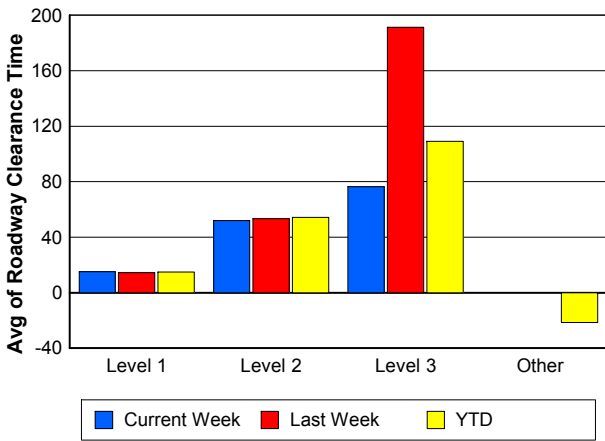
### Road Ranger / SIRV Dispatch Time



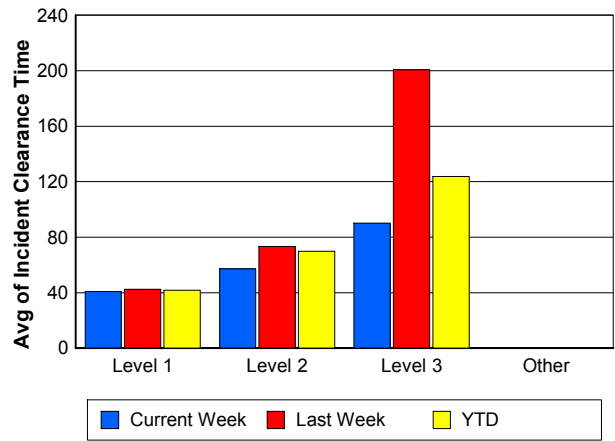
### Road Ranger / SIRV Response Time



### Roadway Clearance Time (2A)



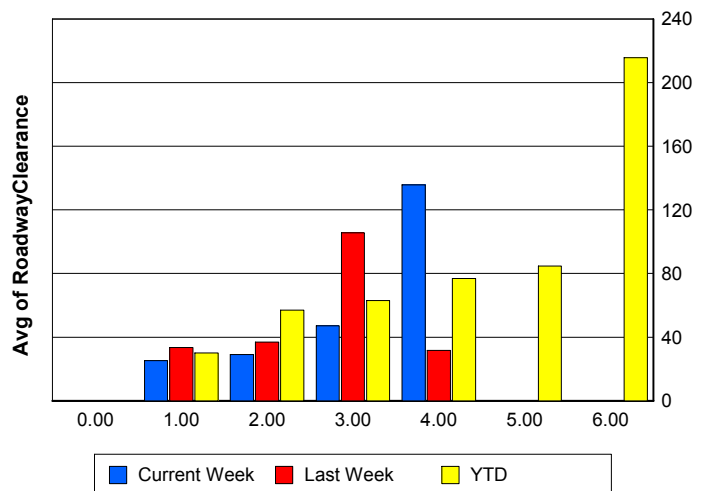
### Incident Clearance Time (3B)



### Roadway Clearance by Maximum Number of Lanes Blocked

	Current Week	Last Week	YTD
0			
1	25.31	33.45	30.01
2	29.07	36.93	56.96
3	47.07	105.68	62.98
4	135.78	31.58	76.78
5	0.00	0.00	84.80
6	0.00	0.00	215.67

### Roadway Clearance Time (2A)



## Performance Measures by Roadway

**95**

	<u>Current Week</u>	<u>Last Week</u>	<u>YTD</u>
Number of Events	620	531	15,545
Number of Incidents	19	31	715
TMC Detection (min.)	0.00	0.00	0.03
TMC Verification (min.)	4.88	5.21	4.44
TMC Response (min.)	7.17	8.01	7.54
RR Dispatch Time (min.)	2.21	2.77	2.62
RR Resp. Time (min.)	5.28	5.33	5.03
Event Clearance (min.)	18.13	24.19	21.24
Roadway Clear. (min.)	34.41	43.38	41.55
Incident Clearance (min.)	52.92	66.60	62.70
# of Events w/ RR/SIRV	592	494	14,567
RR/SIRV Responses	592	494	14,567
RR/SIRV Activities	636	522	15,428

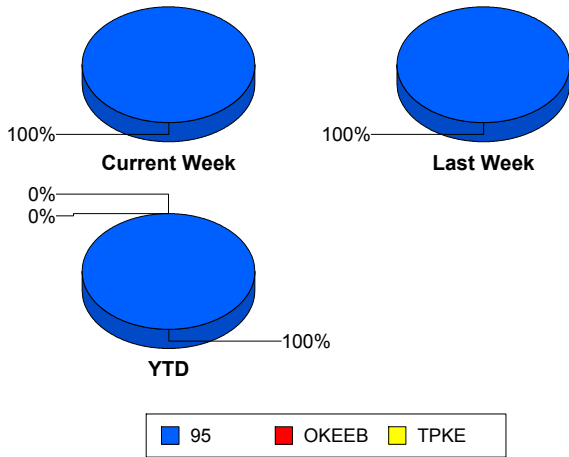
**OKEEB**

	<u>YTD</u>
Number of Events	1
Number of Incidents	0
TMC Detection (min.)	0.00
TMC Verification (min.)	0.00
TMC Response (min.)	0.00
RR Dispatch Time (min.)	0.00
RR Resp. Time (min.)	0.00
Event Clearance (min.)	18.45
Roadway Clear. (min.)	
Incident Clearance (min.)	
# of Events w/ RR/SIRV	1
RR/SIRV Responses	1
RR/SIRV Activities	1

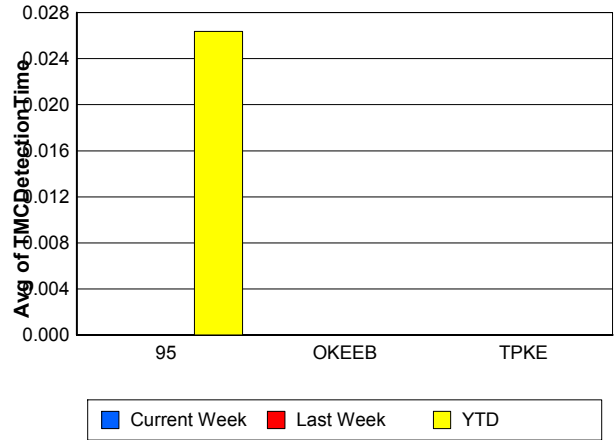
**TPKE**

	<u>YTD</u>
Number of Events	10
Number of Incidents	10
TMC Detection (min.)	0.00
TMC Verification (min.)	0.00
TMC Response (min.)	
RR Dispatch Time (min.)	
RR Resp. Time (min.)	
Event Clearance (min.)	62.29
Roadway Clear. (min.)	59.66
Incident Clearance (min.)	62.29
# of Events w/ RR/SIRV	0
RR/SIRV Responses	0
RR/SIRV Activities	0

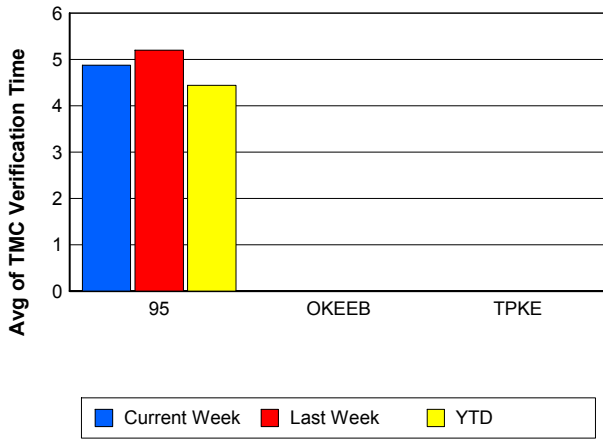
## Number of Events / Roadway



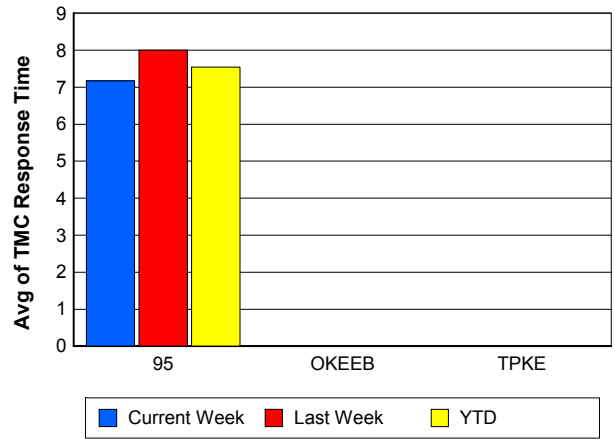
## TMC Detection Time



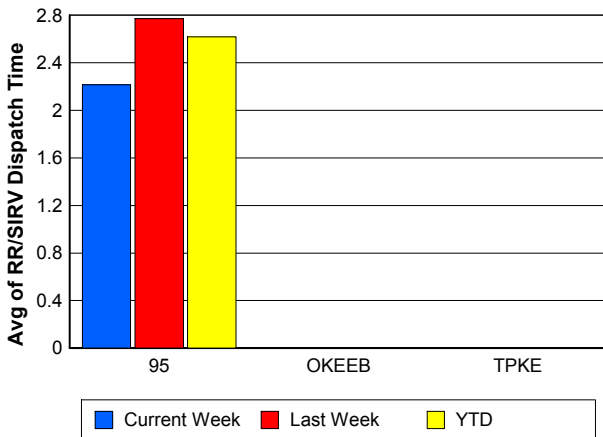
## TMC Verification Time



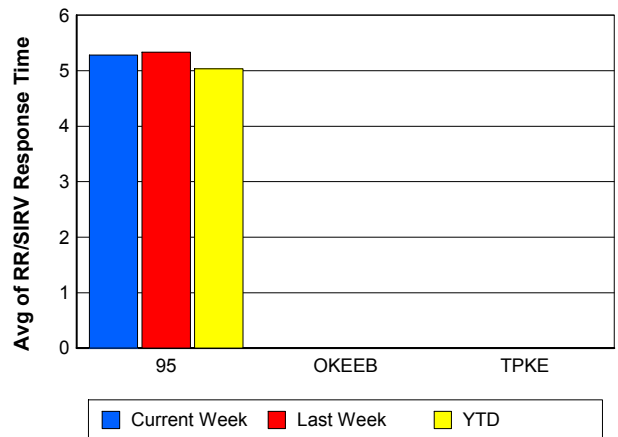
## TMC Response Time



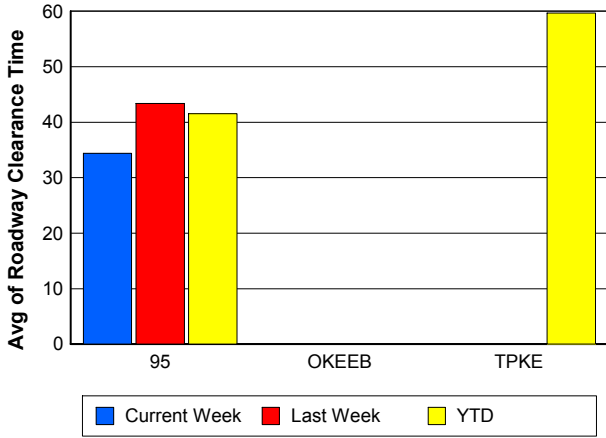
## Road Ranger / SIRV Dispatch Time



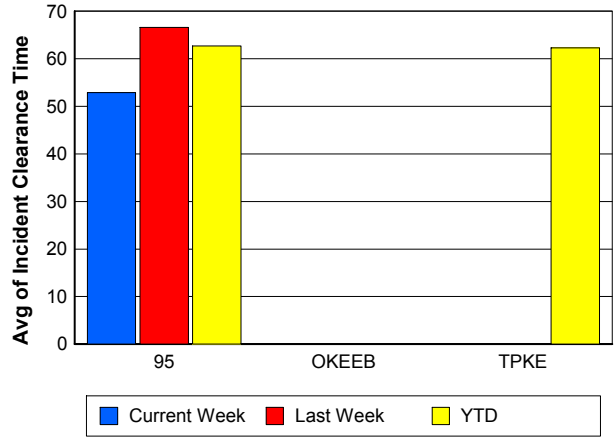
## Road Ranger / SIRV Response Time



## Roadway Clearance Time (2A)



## Incident Clearance Time (3B)



## Performance Measures by Event Type

### Accident

	<u>Current Week</u>	<u>Last Week</u>	<u>YTD</u>
Number of Events	28	35	1,067
Number of Incidents	13	19	490
TMC Detection (min.)	0.00	0.00	0.04
TMC Verification (min.)	10.97	7.49	7.66
TMC Response (min.)	15.77	12.61	11.31
RR Dispatch Time (min.)	4.50	4.29	2.76
RR Response Time (min.)	11.27	8.33	8.58
Event Clearance (min.)	54.78	59.57	59.50
Roadway Clearance (min.)	40.23	51.97	46.54
Incident Clearance (min.)	66.31	78.49	73.24
# of Events w/ RR/SIRV	28	35	1,040
RR/SIRV Assists	28	35	1,040
RR/SIRV Activities	35	40	1,232

### Debris on Roadway

	<u>Current Week</u>	<u>Last Week</u>	<u>YTD</u>
Number of Events	51	26	988
Number of Incidents	1	2	18
TMC Detection (min.)	0.00	0.00	0.00
TMC Verification (min.)	9.58	12.03	10.90
TMC Response (min.)	9.57	12.01	11.36
RR Dispatch Time (min.)	2.21	4.51	3.56
RR Response Time (min.)	7.31	7.50	7.82
Event Clearance (min.)	11.96	24.00	14.85
Roadway Clearance (min.)	3.87	25.39	18.04
Incident Clearance (min.)	5.07	50.02	25.16
# of Events w/ RR/SIRV	51	24	976
RR/SIRV Assists	51	24	976
RR/SIRV Activities	59	25	1,024

### Disabled Vehicle

	<u>Current Week</u>	<u>Last Week</u>	<u>YTD</u>
Number of Events	528	453	12,751
Number of Incidents	5	8	156
TMC Detection (min.)	0.00	0.00	0.02
TMC Verification (min.)	4.14	4.78	3.87
TMC Response (min.)	6.43	7.45	6.68
RR Dispatch Time (min.)	2.11	2.56	2.43
RR Response Time (min.)	4.70	5.02	4.38
Event Clearance (min.)	16.93	19.47	18.23
Roadway Clearance (min.)	25.38	19.79	24.41
Incident Clearance (min.)	27.69	39.07	33.27
# of Events w/ RR/SIRV	503	426	12,028
RR/SIRV Assists	503	426	12,028
RR/SIRV Activities	534	449	12,779

## Emergency Vehicles

	<u>YTD</u>
Number of Events	12
Number of Incidents	11
TMC Detection (min.)	0.00
TMC Verification (min.)	2.33
TMC Response (min.)	3.49
RR Dispatch Time (min.)	0.07
RR Response Time (min.)	3.42
Event Clearance (min.)	45.64
Roadway Clearance (min.)	44.77
Incident Clearance (min.)	47.68
# of Events w/ RR/SIRV	8
RR/SIRV Assists	8
RR/SIRV Activities	10

## Other

	<u>Current Week</u>	<u>Last Week</u>	<u>YTD</u>
Number of Events	7	13	584
Number of Incidents	0	0	3
TMC Detection (min.)	0.00	0.00	0.10
TMC Verification (min.)	0.00	1.41	0.63
TMC Response (min.)	0.00	4.56	15.54
RR Dispatch Time (min.)	1.35	3.99	5.32
RR Response Time (min.)	0.00	0.05	8.03
Event Clearance (min.)	7.21	87.59	23.69
Roadway Clearance (min.)			15.18
Incident Clearance (min.)			24.41
# of Events w/ RR/SIRV	4	5	378
RR/SIRV Assists	4	5	378
RR/SIRV Activities	2	4	250

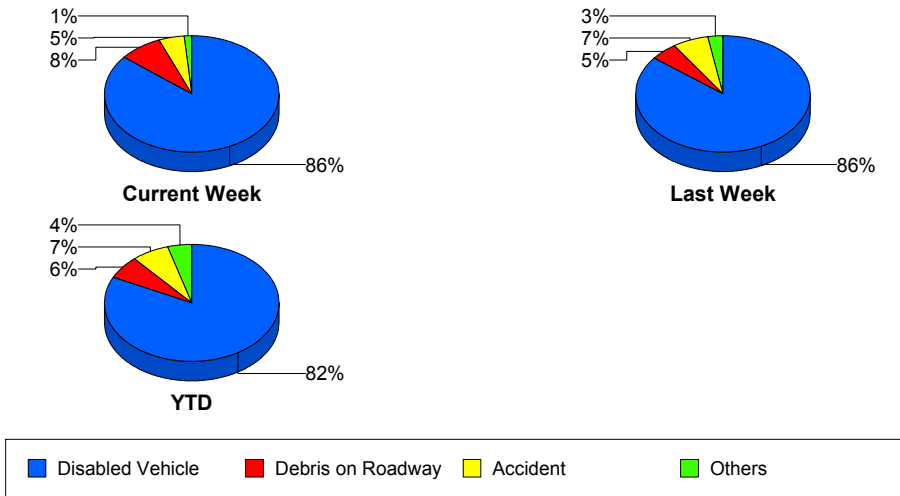
## Police Activity

	<u>Last Week</u>	<u>YTD</u>
Number of Events	2	57
Number of Incidents	2	29
TMC Detection (min.)	0.00	0.13
TMC Verification (min.)	4.73	0.78
TMC Response (min.)	4.71	16.35
RR Dispatch Time (min.)	0.67	7.78
RR Response Time (min.)	4.03	9.55
Event Clearance (min.)	80.43	54.35
Roadway Clearance (min.)	74.18	74.42
Incident Clearance (min.)	80.43	82.18
# of Events w/ RR/SIRV	2	46
RR/SIRV Assists	2	46
RR/SIRV Activities	2	38

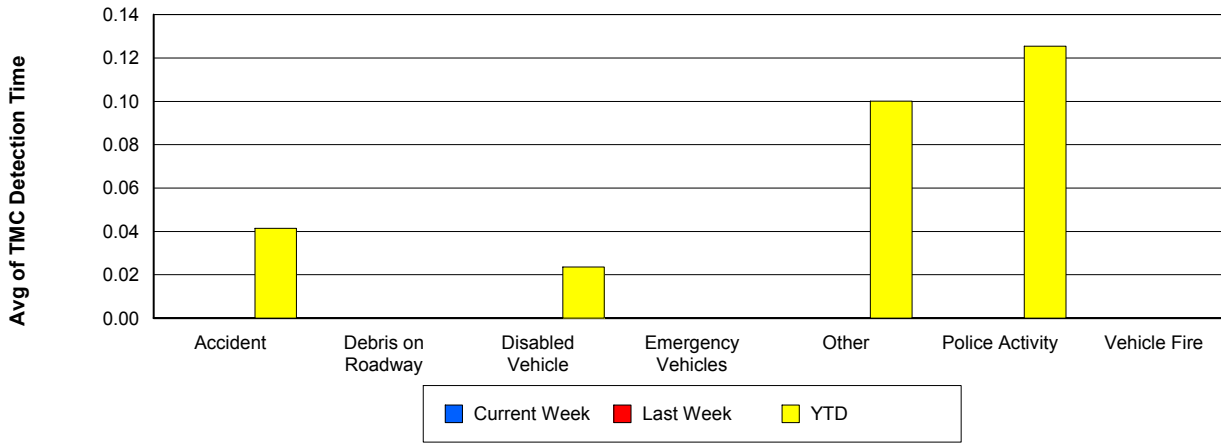
## Vehicle Fire

	<u>Current Week</u>	<u>YTD</u>
Number of Events	2	31
Number of Incidents	0	17
TMC Detection (min.)	0.00	0.00
TMC Verification (min.)	13.68	3.87
TMC Response (min.)	13.64	8.99
RR Dispatch Time (min.)	0.28	2.55
RR Response Time (min.)	13.36	6.57
Event Clearance (min.)	28.38	41.08
Roadway Clearance (min.)		36.38
Incident Clearance (min.)		52.33
# of Events w/ RR/SIRV	2	29
RR/SIRV Assists	2	29
RR/SIRV Activities	2	33

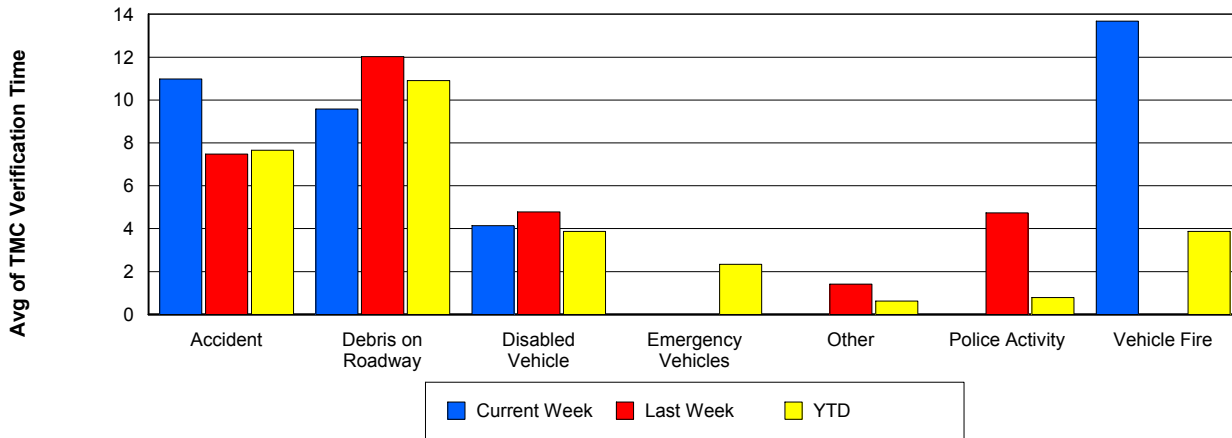
## Number of Events / Event Type



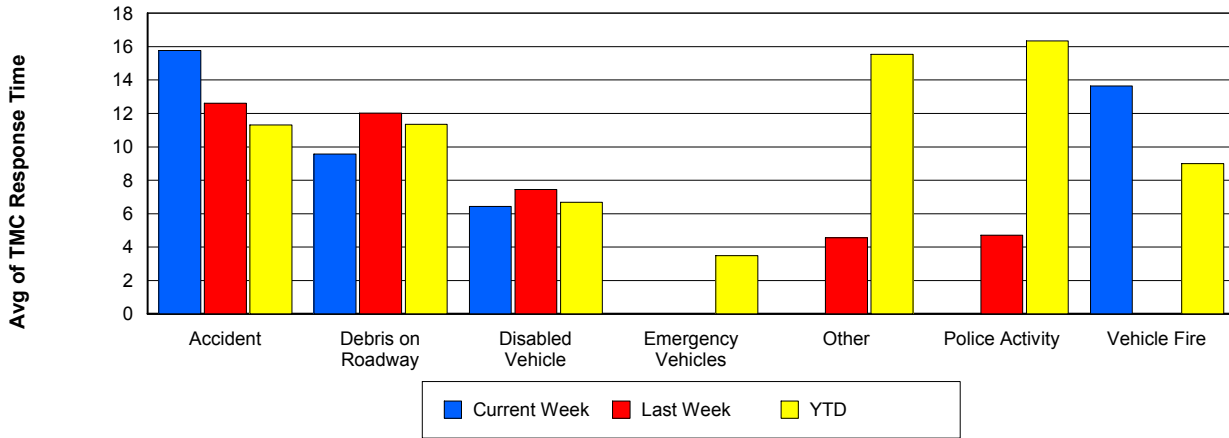
## TMC Detection Time



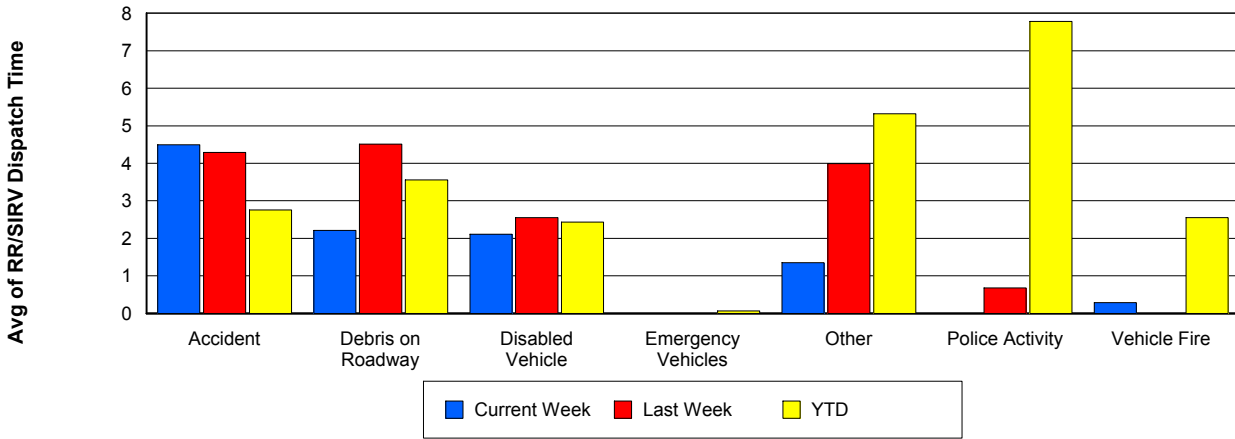
## TMC Verification Time



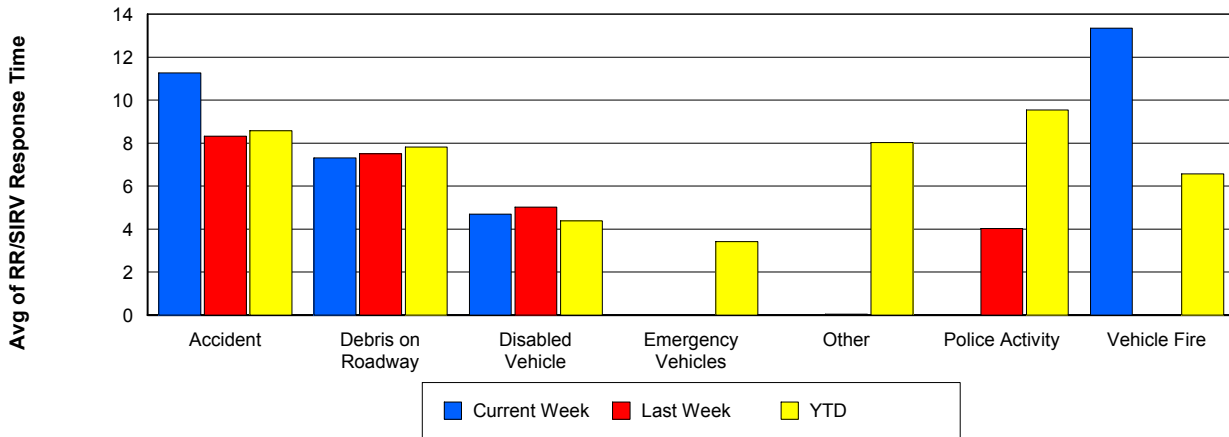
## TMC Response Time



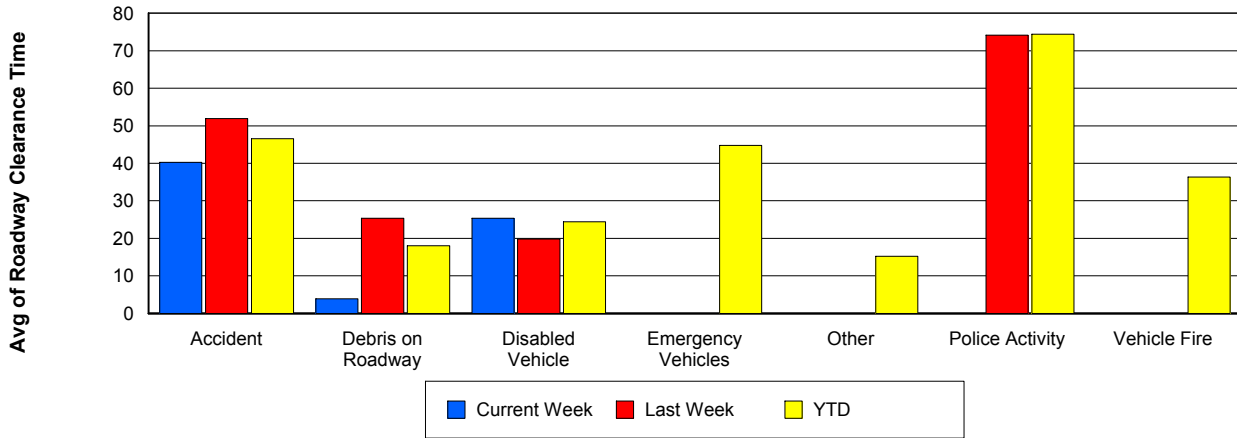
## Road Ranger / SIRV Dispatch Time



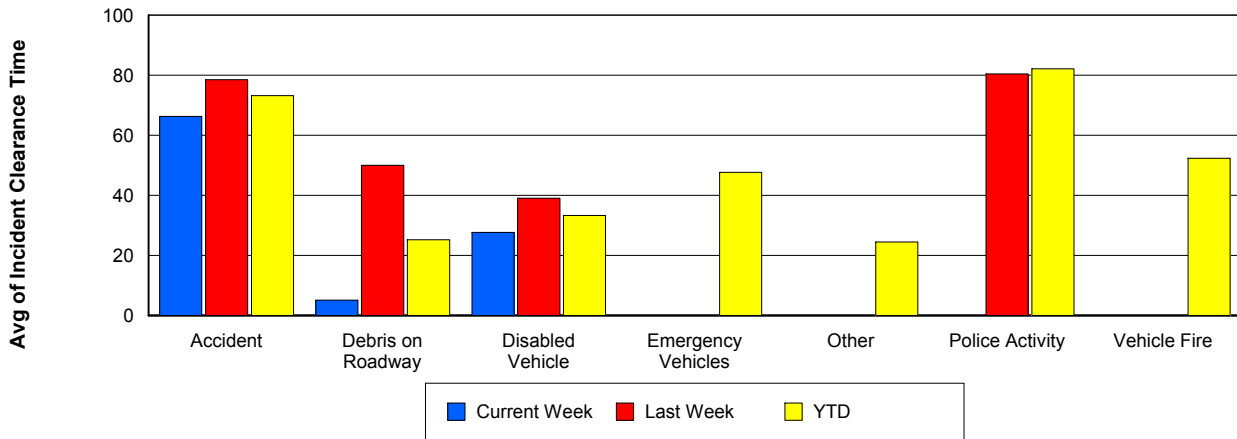
## Road Ranger / SIRV Response Time



## Roadway Clearance Time (2A)



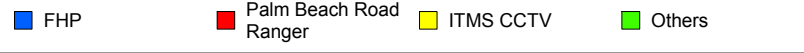
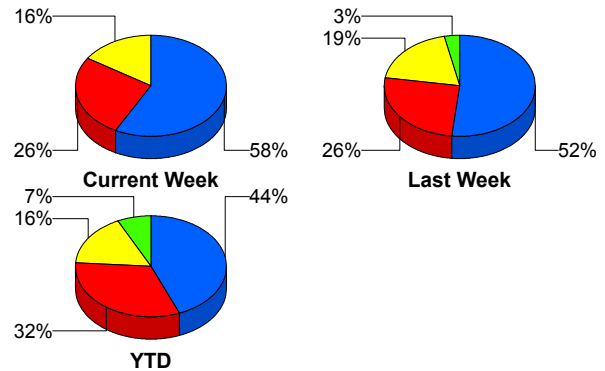
## Incident Clearance Time (3B)



## Incident Detection Methods

	Current Week	Last Week	YTD
Broward CCTV	0	0	1
Broward Road Ranger	0	0	5
Broward TMC	0	0	7
County Police	0	0	1
District 4	0	1	14
FDOT Maintenance	0	0	3
FHP	11	16	317
Florida's Turnpike	0	0	10
ITMS	0	0	1
ITMS CCTV	3	6	119
Media	0	0	1
Motorist	0	0	10
Palm Beach Road Ran	5	8	234
<b>Total</b>	<b>19</b>	<b>31</b>	<b>723</b>

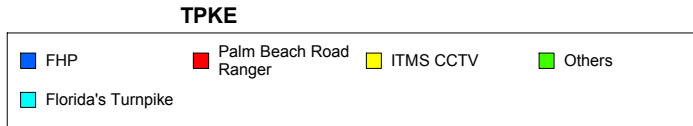
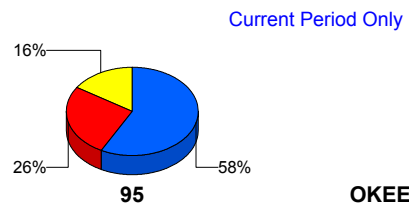
### Total Incidents by Detection Method



## Incident Detection Methods by Roadway

		Current Week	Last Week	YTD
95	Broward CCTV	0	0	1
	Broward Road Ranger	0	0	5
	Broward TMC	0	0	7
	County Police	0	0	1
	District 4	0	1	14
	FDOT Maintenance	0	0	3
	FHP	11	16	317
	ITMS	0	0	1
	ITMS CCTV	3	6	119
	Media	0	0	1
	Motorist	0	0	10
	Palm Beach Road Ran	5	8	234
	<b>Total</b>	<b>19</b>	<b>31</b>	<b>713</b>

### Total Events by Roadway and Detection Method

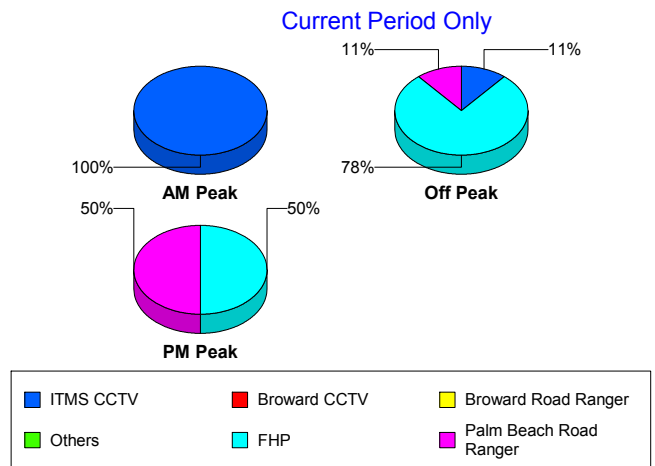


		Current Week	Last Week	YTD
TPKE	Florida's Turnpike	0	0	10
	Total	0	0	10
Total		19	31	723

### Incident Detection Methods by Peak Period

		Current Week	Last Week	YTD
AM Peak	Broward Road Ranger	0	0	4
	Broward TMC	0	0	2
	County Police	0	0	1
	District 4	0	0	2
	FDOT Maintenance	0	0	1
	FHP	0	0	57
	Florida's Turnpike	0	0	2
	ITMS CCTV	2	1	28
	Media	0	0	1
	Motorist	0	0	1
	Palm Beach Road Ran	0	0	57
	Total	2	1	156
Off Peak	Broward CCTV	0	0	1
	Broward Road Ranger	0	0	1
	Broward TMC	0	0	2
	District 4	0	0	8
	FDOT Maintenance	0	0	2
	FHP	7	14	181
	Florida's Turnpike	0	0	7
	ITMS	0	0	1
	ITMS CCTV	1	5	65
	Motorist	0	0	5
	Palm Beach Road Ran	1	5	118
	Total	9	24	391
PM Peak	Broward TMC	0	0	3
	District 4	0	1	4

Total Events by Peak Period and Detection Method

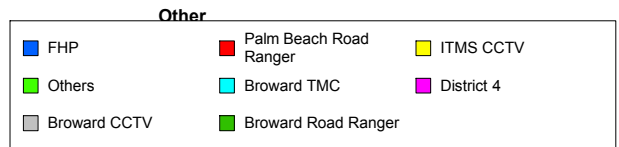
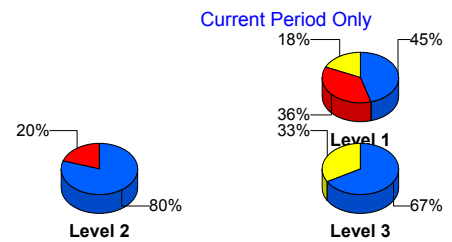


		Current Week	Last Week	YTD
PM Peak	FHP	4	2	80
	Florida's Turnpike	0	0	1
	ITMS CCTV	0	0	26
	Motorist	0	0	4
	Palm Beach Road Ran	4	3	59
	Total	8	6	177
Total		19	31	723

### Incident Detection Methods by Severity

		Current Week	Last Week	YTD
	FHP	0	0	1
	Total	0	0	1
Level 1	Broward CCTV	0	0	1
	Broward Road Ranger	0	0	5
	Broward TMC	0	0	5
	County Police	0	0	1
	District 4	0	1	10
	FDOT Maintenance	0	0	1
	FHP	5	6	107
	ITMS CCTV	2	2	61
	Motorist	0	0	3
	Palm Beach Road Ran	4	6	153
	Total	11	15	347
	Level 2	Broward TMC	0	0
District 4		0	0	2
FDOT Maintenance		0	0	2
FHP		4	9	168
ITMS		0	0	1
ITMS CCTV		0	4	46
Motorist		0	0	7
Palm Beach Road Ran		1	1	62
Total		5	14	290

Total Events by Severity and Detection Method



		Current Week	Last Week	YTD
Level 3	District 4	0	0	2
	FHP	2	1	42
	Florida's Turnpike	0	0	10
	ITMS CCTV	1	0	12
	Media	0	0	1
	Palm Beach Road Ran	0	1	19
	Total	3	2	86
Total		19	31	723

# Road Ranger / SIRV Performance Measures

## Road Ranger / SIRV Performance By County

Values presented are:  
 - Total Events with a RR/SIRV Response  
 - Total RR/SIRV Responses,  
 - Total Activities Performed

	Current We	Last Week	YTD
Palm Beach	736	633	17,897
	771	657	18,474
	816	685	19,674

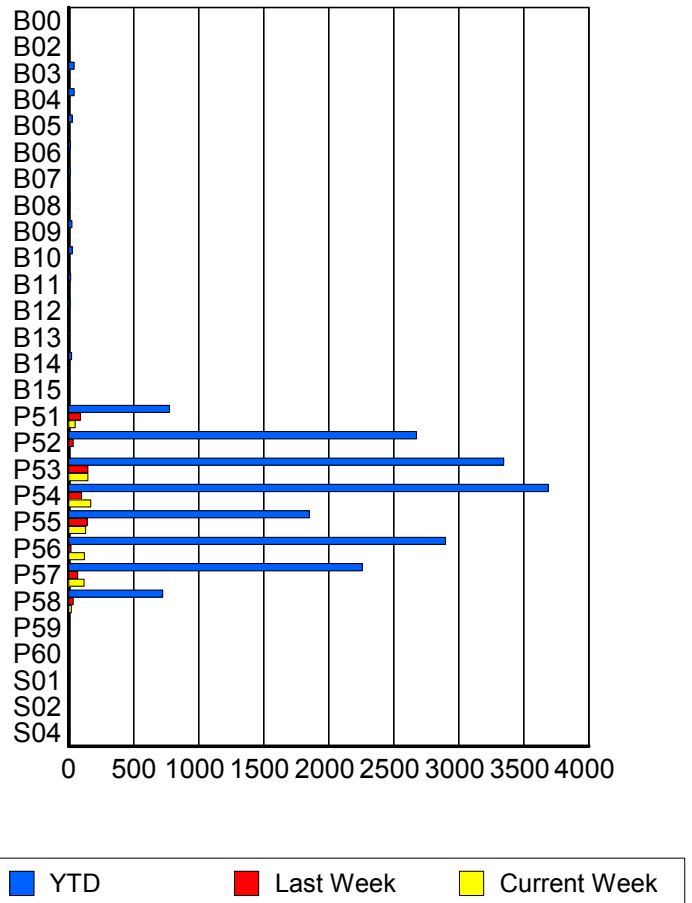
RR/SIRV Responses per County



## Road Ranger / SIRV Performance By Truck

	Current We	Last Week	YTD
B00	0	0	2
	0	0	2
	0	0	2
B02	0	0	7
	0	0	7
	0	0	7
B03	0	1	43
	0	1	43
	0	1	47
B04	0	0	42
	0	0	43
	0	0	46
B05	3	0	28
	3	0	28
	4	0	30
B06	0	0	13
	0	0	13
	0	0	15
B07	2	1	13
	2	1	13
	2	1	13
B08	0	0	9
	0	0	9
	0	0	9
B09	0	5	26
	0	5	26
	0	6	28

RR/SIRV Responses per Truck



	Current We	Last Week	YTD
B10	0	1	27
	0	1	27
	0	1	29
B11	1	0	16
	1	0	16
	1	0	17
B12	0	0	10
	0	0	10
	0	0	10
B13	0	0	4
	0	0	4
	0	0	4
B14	0	4	24
	0	4	24
	0	4	24
B15	1	0	6
	1	0	6
	2	0	7
P51	51	91	765
	51	91	775
	54	97	819
P52	2	35	2,642
	2	35	2,675
	3	37	2,850
P53	147	145	3,312
	149	148	3,347
	157	154	3,557
P54	169	96	3,643
	171	98	3,690
	178	100	3,911
P55	127	143	1,839
	130	143	1,852
	136	150	1,961
P56	120	18	2,862
	121	18	2,897
	131	20	3,095
P57	114	69	2,230
	118	70	2,258
	126	72	2,413
P58	20	36	718
	20	36	724
	20	36	761
P59	0	0	3
	0	0	3
	0	0	3

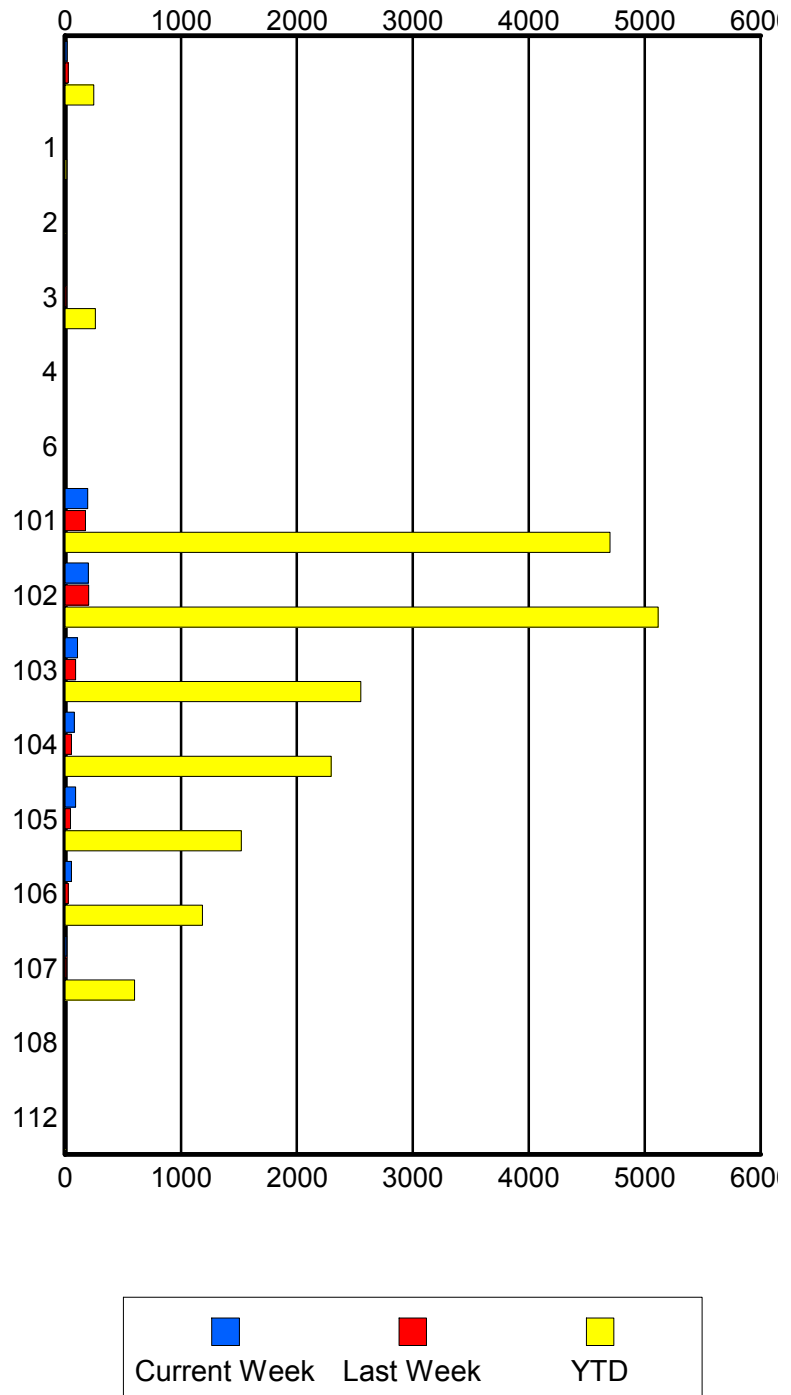
	Current We	Last Week	YTD
P60	0	0	1
	0	0	1
	0	0	1
S01	0	2	5
	0	2	5
	0	2	6
S02	0	1	3
	0	1	3
	0	1	3
S04	2	3	6
	2	3	6
	2	3	6

### Road Ranger / SIRV Performance By Beat

	Current We	Last Week	YTD
	17	29	247
	17	29	248
	20	32	268
1	0	0	13
	0	0	14
	0	0	14
2	0	0	3
	0	0	3
	0	0	3
3	7	11	256
	7	12	261
	9	13	278
4	0	0	1
	0	0	1
	0	0	1
6	0	0	6
	0	0	7
	0	0	7
101	194	172	4,621
	197	177	4,701
	208	184	4,996
102	195	201	5,043
	201	205	5,115
	214	212	5,431
103	107	91	2,518
	108	92	2,550
	115	96	2,696
104	81	56	2,274
	81	56	2,295
	84	56	2,449
105	90	48	1,511
	91	48	1,520
	95	51	1,622
106	53	27	1,175
	54	27	1,186
	56	30	1,262
107	15	11	598
	15	11	600
	15	11	640
108	0	0	3
	0	0	4
	0	0	4
112	0	0	2
	0	0	2
	0	0	3

Values presented are:  
 - Total Events with a RR/SIRV Response  
 - Total RR/SIRV Responses,  
 - Total Activities Performed

### RR/SIRV Responses per Beat

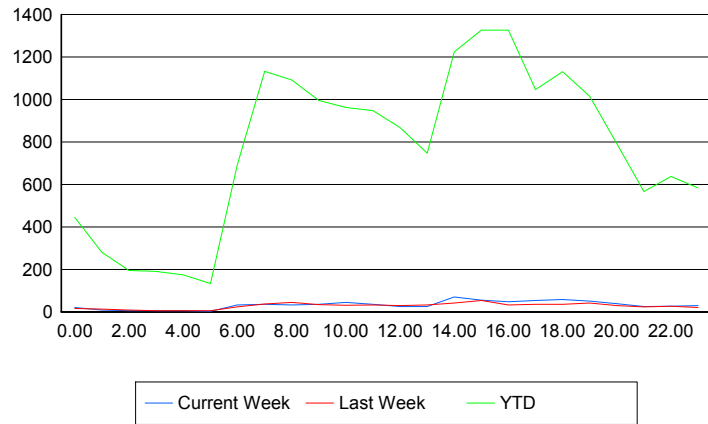


## Road Ranger / SIRV Performance By Time of Day

Values presented are:  
 - Total Events with a RR/SIRV Response  
 - Total RR/SIRV Responses,  
 - Total Activities Performed

	Current We	Last Week	YTD
12AM-1AM	20	15	431
	20	16	444
	21	18	481
1AM-2AM	9	13	276
	9	13	281
	9	15	293
2AM-3AM	6	8	189
	6	8	195
	6	8	207
3AM-4AM	6	5	181
	6	6	190
	6	6	203
4AM-5AM	6	5	166
	6	5	174
	11	5	185
5AM-6AM	2	4	116
	3	6	133
	3	6	140
6AM-7AM	31	23	663
	33	24	692
	34	25	731
7AM-8AM	36	36	1,097
	36	37	1,132
	37	39	1,198
8AM-9AM	31	43	1,045
	33	45	1,091
	36	47	1,158
9AM-10AM	35	34	967
	35	34	996
	36	36	1,049
10AM-11AM	43	30	930
	45	31	962
	50	33	1,016
11AM-12PM	35	31	925
	35	32	947
	38	33	1,002
12PM-1PM	25	29	830
	25	29	868
	26	29	908

## Number of Responses / Hour of the Day



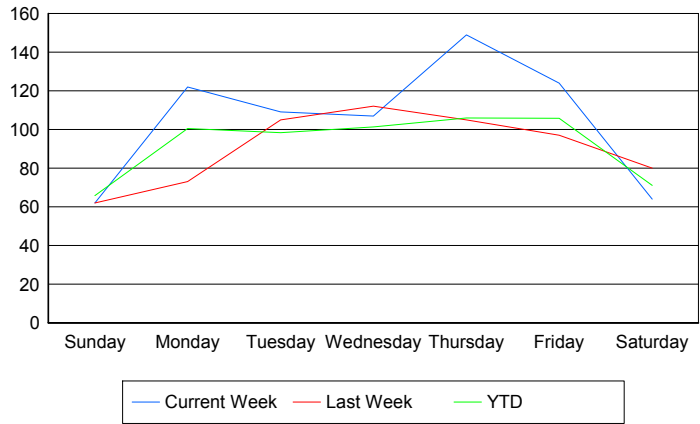
	Current We	Last Week	YTD
1PM-2PM	23	33	706
	25	33	747
	27	33	789
2PM-3PM	65	41	1,177
	70	41	1,224
	73	43	1,306
3PM-4PM	54	50	1,299
	55	53	1,327
	59	56	1,419
4PM-5PM	45	28	1,279
	48	32	1,326
	48	35	1,428
5PM-6PM	48	35	1,012
	53	35	1,047
	60	36	1,127
6PM-7PM	52	34	1,103
	58	36	1,131
	61	37	1,194
7PM-8PM	51	39	986
	51	41	1,015
	54	44	1,077
8PM-9PM	35	29	777
	38	30	793
	39	30	839
9PM-10PM	24	23	548
	25	23	567
	25	23	608
10PM-11PM	26	25	623
	27	26	638
	27	26	680
11PM-12AM	28	20	571
	29	21	583
	30	22	636

## Road Ranger / SIRV Performance By Day of Week

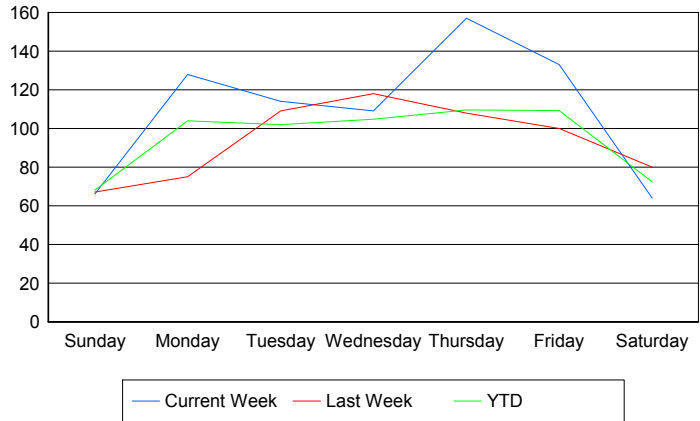
Values presented are:  
 - Total Events with a RR/SIRV Response  
 - Total RR/SIRV Responses,  
 - Total Activities Performed

	Current We	Last Week	YTD
Sunday	62	62	1,787
	66	67	1,849
	73	72	1,959
Monday	122	73	2,726
	128	75	2,823
	132	76	2,990
Tuesday	109	105	2,721
	114	109	2,822
	123	112	3,006
Wednesday	107	112	2,783
	109	118	2,876
	119	123	3,079
Thursday	149	105	2,869
	157	108	2,968
	165	113	3,166
Friday	124	97	3,004
	133	100	3,101
	137	105	3,271
Saturday	64	80	2,025
	64	80	2,065
	67	84	2,203

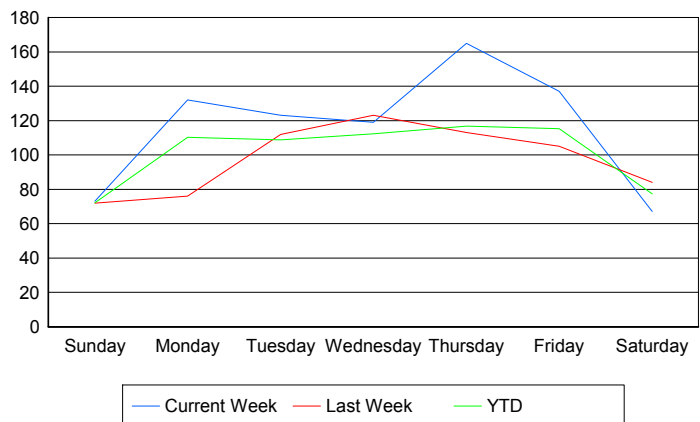
### Avg # of events with a RR/SIRV Response per Day of the Week



### Avg # of RR/SIRV Responses per Day of the Week



### Avg # of RR/SIRV Activities Performed per Day of the Week



### Road Ranger / SIRV Responses per Time of Day and Day of Week

