



# Monthly Performance Measures Report Palm Beach County



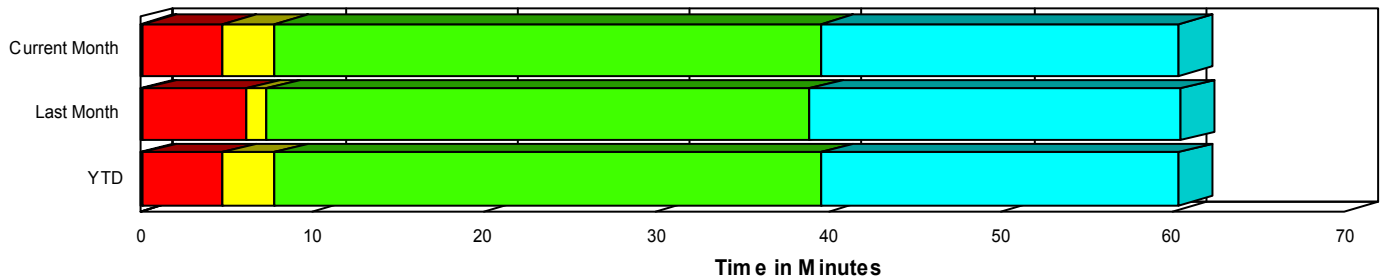
Period From Jan 1, 2008 to Jan 31, 2008

Created on:  
February 04, 2008  
10:13 am

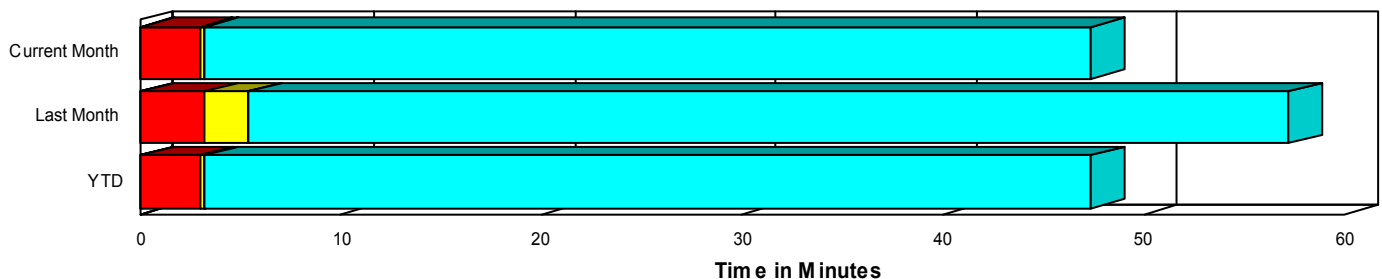
## Performance Measures Summary

	Traffic Events (No Lanes Blocked)			Incidents (Lanes Blocked)		
	<u>This Month</u>	<u>Last Month</u>	<u>YTD</u>	<u>This Month</u>	<u>Last Month</u>	<u>YTD</u>
Number of Events	2,560	2,637	2,560	132	162	132
TMC Detection (min.)	0.06	0.05	0.06	0.18	0.21	0.18
TMC Verification (min.)	2.93	3.14	2.93	4.60	6.02	4.60
TMC Response (min.)	3.21	5.37	3.21	7.76	7.20	7.76
RR Dispatch Time (min.)	0.80	2.59	0.80	1.74	1.14	1.74
RR Response Time (min.)	2.46	2.80	2.46	6.01	6.17	6.01
Roadway Clearance (min.)				38.60	39.71	38.60
Event Clearance (min.)	47.42	57.25	47.42	58.06	60.45	58.06
# of Events w/ RR/SIRV	2,445	2,497	2,445	128	160	128
RR/SIRV Responses	2,514	2,569	2,514	178	229	178
RR/SIRV Activities	2,638	2,666	2,638	190	250	190

### Incident Clearance TimeLine



### Traffic Event(Non-Lane Blockage) Time-Line



<span style="color: blue;">■</span> Avg. TMC Detection Time	<span style="color: green;">■</span> Avg. Time from TMC Response to Roadway Clearance*
<span style="color: red;">■</span> Avg. Time from TMC Detection to TMC Verification	<span style="color: cyan;">■</span> Avg. Time from Roadway Clearance to Incident/Event Clearance**
<span style="color: yellow;">■</span> Avg. Time from TMC Verification to TMC Response	

\* Roadway clearance equals all travel lanes open

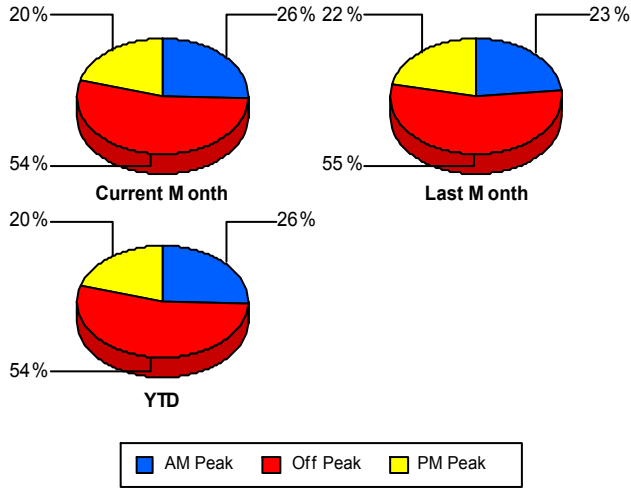
\*\* Incident clearance equals time when last responder has left the scene

## Performance Measures by Peak Period

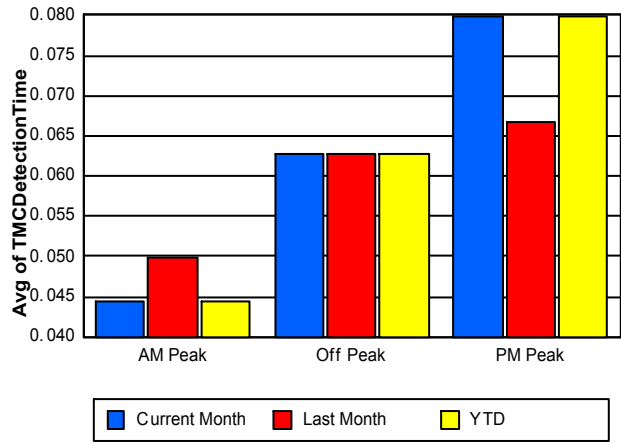
Note: AM peak period is defined as 6am to 10am and PM peak period is defined as 3pm to 7pm.

	AM Peak			Off Peak			PM Peak		
	<u>Current Month</u>	<u>Last Month</u>	<u>YTD</u>	<u>Current Month</u>	<u>Last Month</u>	<u>YTD</u>	<u>Current Month</u>	<u>Last Month</u>	<u>YTD</u>
Number of Events	691	650	691	1,450	1,537	1,450	551	612	551
Number of Incidents	41	35	41	63	101	63	28	26	28
TMC Detection (min.)	0.04	0.05	0.04	0.06	0.06	0.06	0.08	0.07	0.08
TMC Verification (min.)	2.49	3.19	2.49	3.11	3.40	3.11	3.43	3.19	3.43
TMC Response (min.)	2.76	3.38	2.76	3.54	7.24	3.54	4.02	3.36	4.02
RR Dispatch Time (min.)	0.87	0.80	0.87	0.84	4.08	0.84	0.81	0.40	0.81
RR Response Time (min.)	1.89	2.59	1.89	2.78	3.19	2.78	3.21	2.97	3.21
Event Clearance (min.)	40.24	44.13	40.24	59.22	68.81	59.22	27.92	43.00	27.92
Roadway Clearance (min.)	31.98	34.65	31.98	43.32	44.45	43.32	37.69	28.12	37.69
Incident Clearance (min.)	61.78	55.44	61.78	60.42	63.98	60.42	47.30	53.52	47.30
# of Events w/ RR/SIRV	664	617	664	1,376	1,451	1,376	533	589	533
RR/SIRV Responses	698	652	698	1,440	1,537	1,440	554	609	554
RR/SIRV Activities	734	681	734	1,527	1,612	1,527	567	623	567

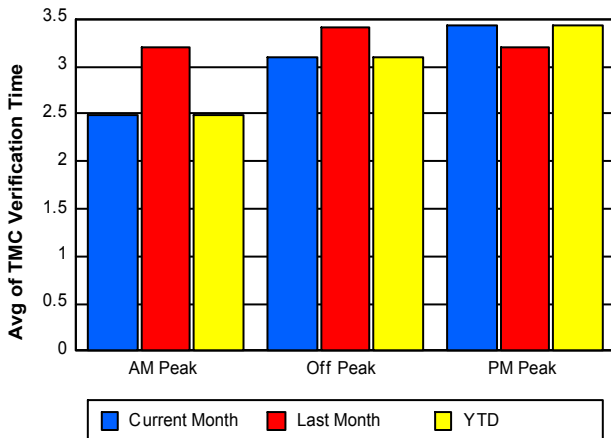
### Number of Events / Peak Period



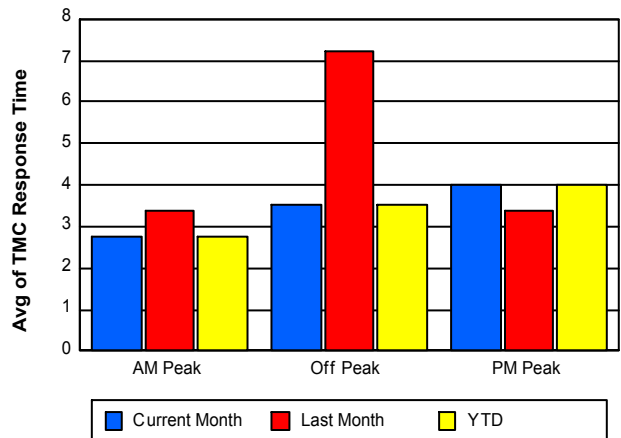
### TMC Detection Time



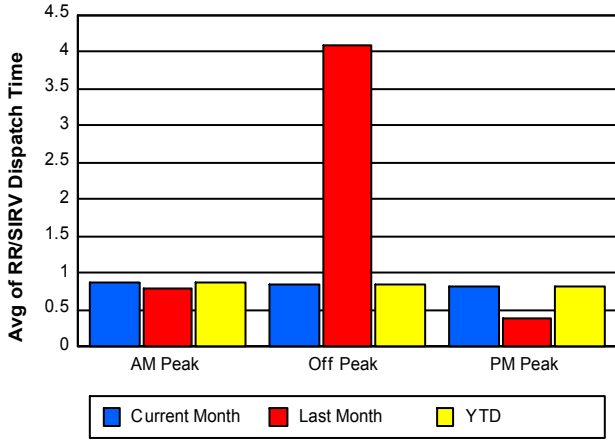
### TMC Verification Time



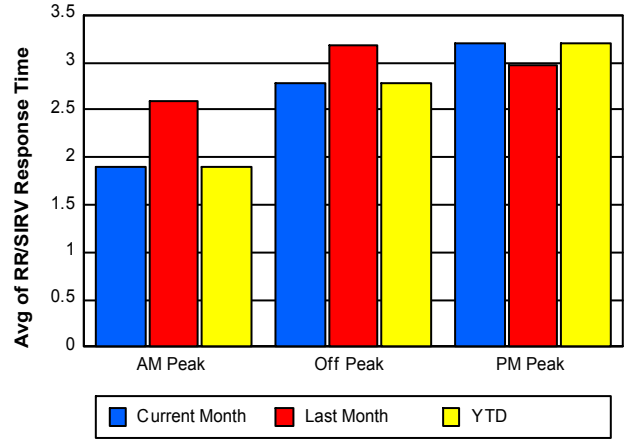
### TMC Response Time



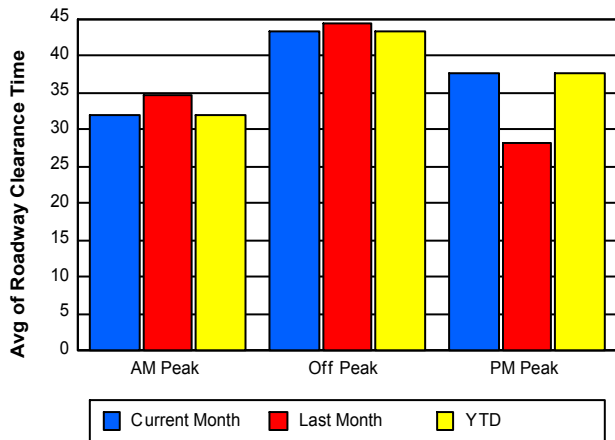
## Road Ranger / SIRV Dispatch Time



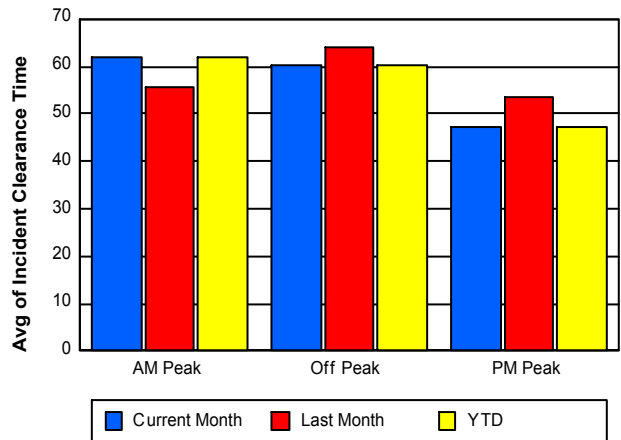
## Road Ranger / SIRV Response Time



## Roadway Clearance Time (2A)



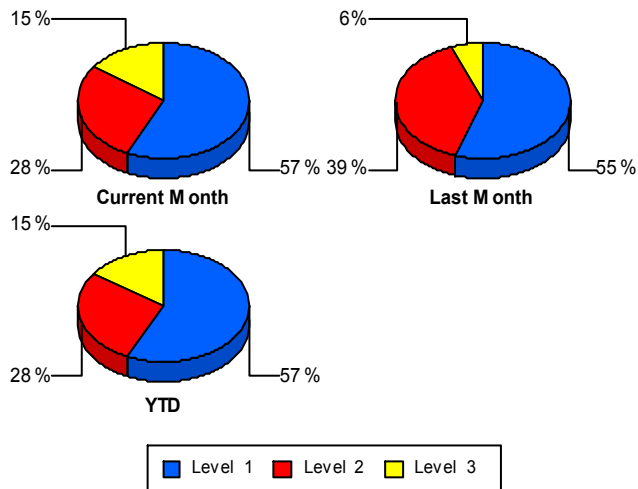
## Incident Clearance Time (3B)



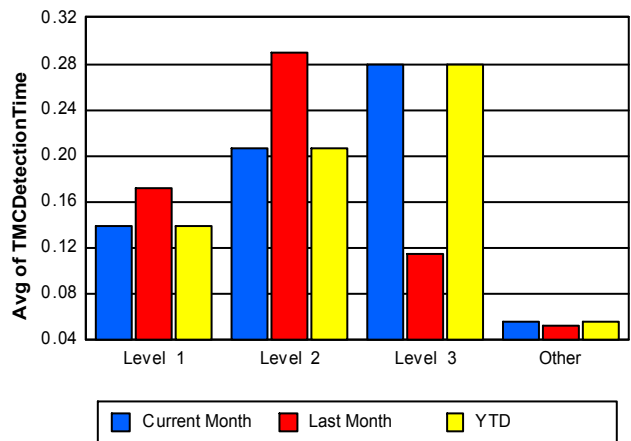
## Performance Measures by Severity

	Level 1			Level 2			Level 3			Other		
	<u>This Month</u>	<u>Last Month</u>	<u>YTD</u>	<u>This Month</u>	<u>Last Month</u>	<u>YTD</u>	<u>This Month</u>	<u>Last Month</u>	<u>YTD</u>	<u>This Month</u>	<u>Last Month</u>	<u>YTD</u>
Number of Events	75	89	75	37	63	37	20	10	20	2,560	2,637	2,560
Number of Incidents	75	89	75	37	63	37	20	10	20	0	0	0
TMC Detection (min.)	0.14	0.17	0.14	0.21	0.29	0.21	0.28	0.11	0.28	0.06	0.05	0.06
TMC Verification (min.)	3.14	3.63	3.14	7.19	9.40	7.19	5.27	5.95	5.27	2.93	3.14	2.93
TMC Response (min.)	4.40	4.69	4.40	11.48	10.70	11.48	13.28	7.25	13.28	3.21	5.37	3.21
RR Dispatch Time (min.)	1.08	1.06	1.08	2.74	0.93	2.74	2.35	3.12	2.35	0.80	2.59	0.80
RR Resp. Time (min.)	3.31	3.62	3.31	8.75	9.77	8.75	10.93	5.96	10.93	2.46	2.80	2.46
Event Clearance (min.)	34.89	37.64	34.89	68.52	77.18	68.52	125.62	158.15	125.62	47.42	57.25	47.42
Roadway Clear. (min.)	13.60	14.96	13.60	53.32	56.49	53.32	105.15	154.29	105.15			
Incident Clearance (min.)	34.89	37.64	34.89	68.52	77.18	68.52	125.62	158.15	125.62			
# of Events w/ RR/SIRV	72	88	72	37	63	37	19	9	19	2,445	2,497	2,445
RR/SIRV Responses	86	110	86	50	96	50	42	23	42	2,514	2,569	2,514
RR/SIRV Activities	93	122	93	55	105	55	42	23	42	2,638	2,666	2,638

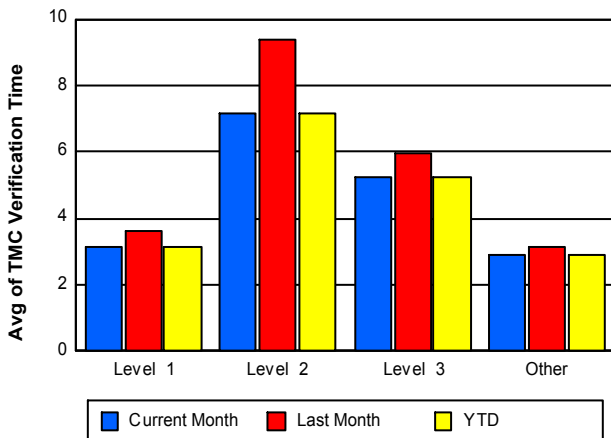
### Number of Events / Severity



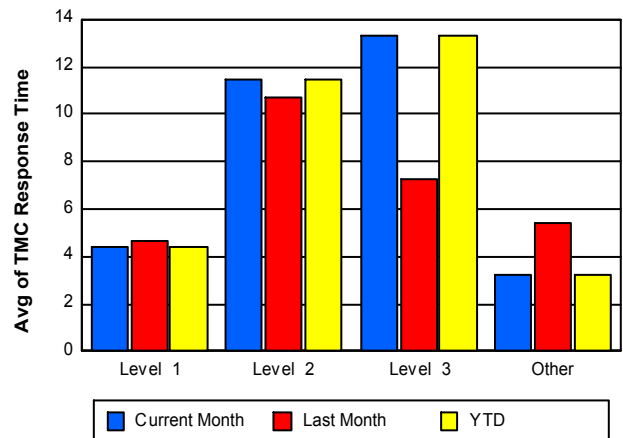
### TMC Detection Time



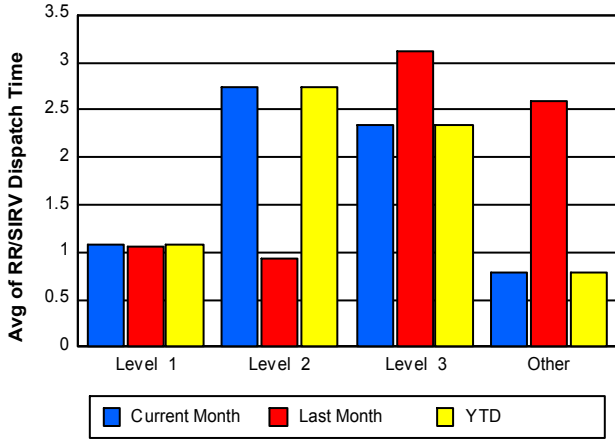
### TMC Verification Time



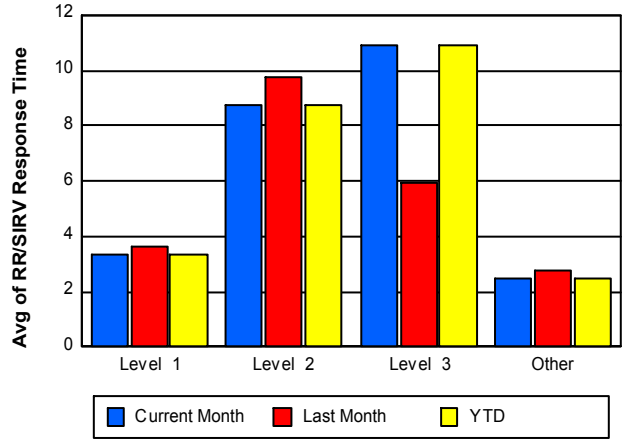
### TMC Response Time



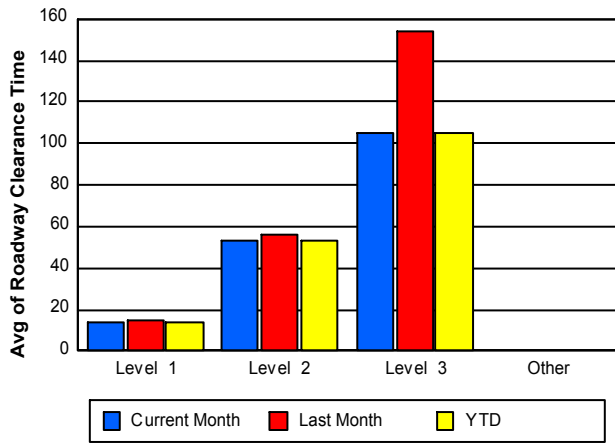
## Road Ranger / SIRV Dispatch Time



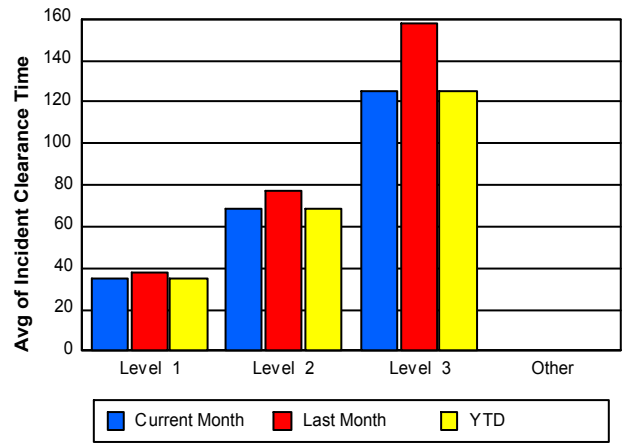
## Road Ranger / SIRV Response Time



## Roadway Clearance Time (2A)



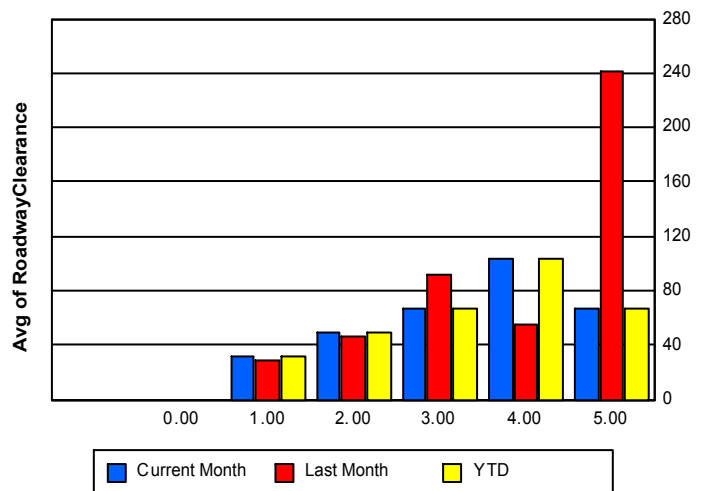
## Incident Clearance Time (3B)



## Roadway Clearance by Maximum Number of Lanes Blocked

	Current Month	Last Month	YTD
0			
1	31.31	29.03	31.31
2	49.22	46.19	49.22
3	66.78	91.26	66.78
4	104.05	55.33	104.05
5	66.50	241.94	66.50

## Roadway Clearance Time(2A)

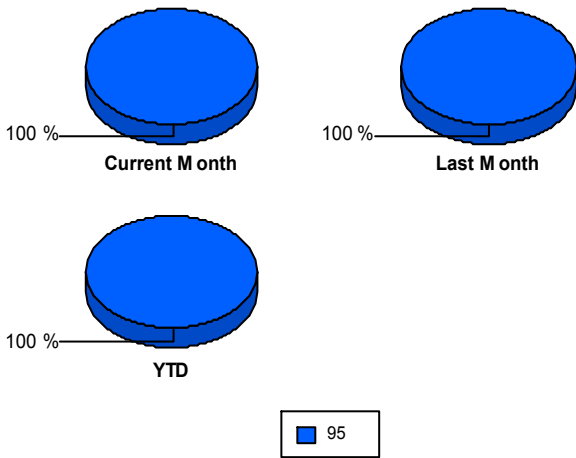


## Performance Measures by Roadway

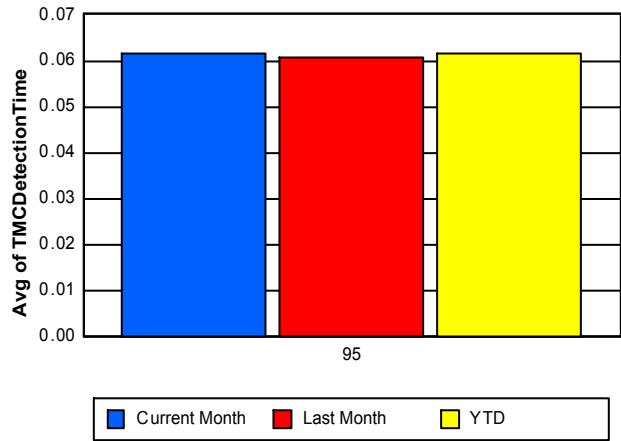
95

	<u>Current Month</u>	<u>Last Month</u>	<u>YTD</u>
Number of Events	2,692	2,799	2,692
Number of Incidents	132	162	132
TMC Detection (min.)	0.06	0.06	0.06
TMC Verification (min.)	3.02	3.31	3.02
TMC Response (min.)	3.44	5.48	3.44
RR Dispatch Time (min.)	0.84	2.50	0.84
RR Resp. Time (min.)	2.64	3.00	2.64
Event Clearance (min.)	47.94	57.43	47.94
Roadway Clear. (min.)	38.60	39.71	38.60
Incident Clearance (min.)	58.06	60.45	58.06
# of Events w/ RR/SIRV	2,573	2,657	2,573
RR/SIRV Responses	2,692	2,798	2,692
RR/SIRV Activities	2,828	2,916	2,828

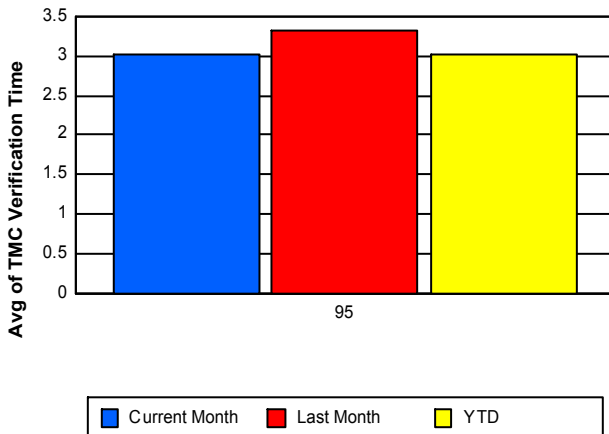
### Number of Events / Roadway



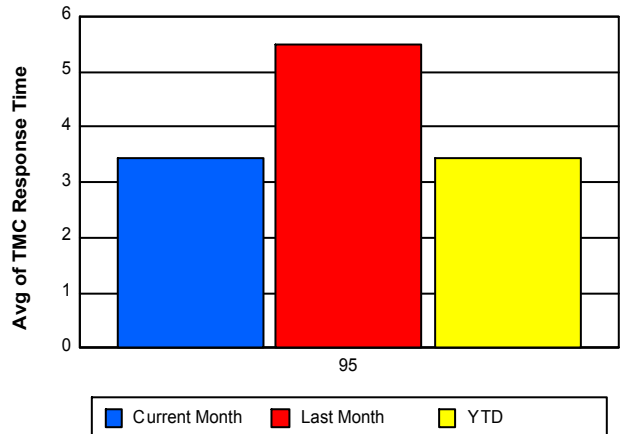
### TMC Detection Time



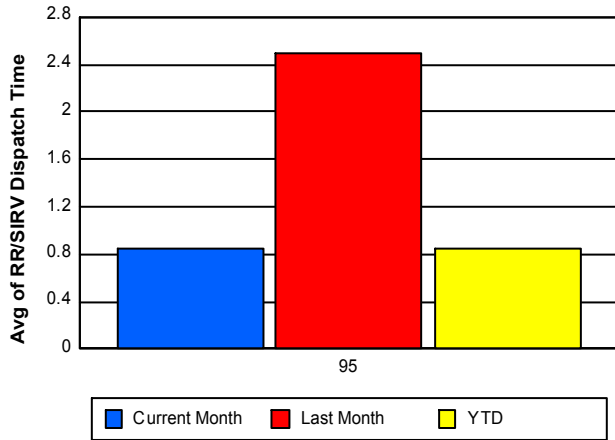
### TMC Verification Time



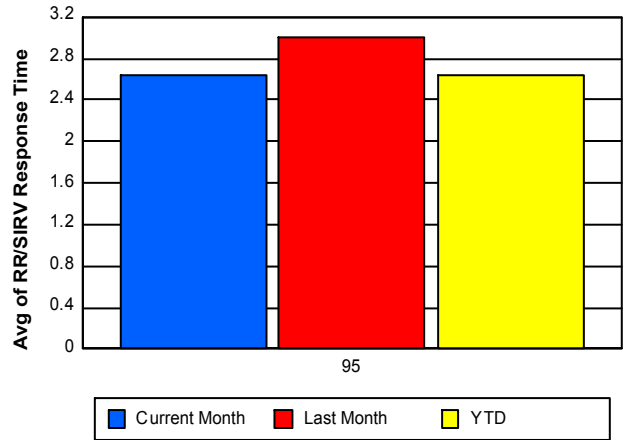
### TMC Response Time



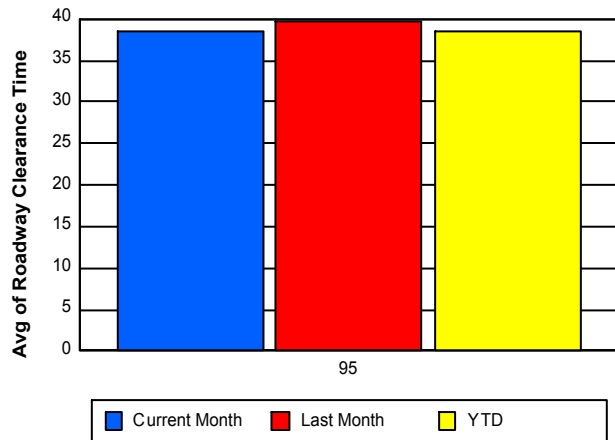
## Road Ranger / SIRV Dispatch Time



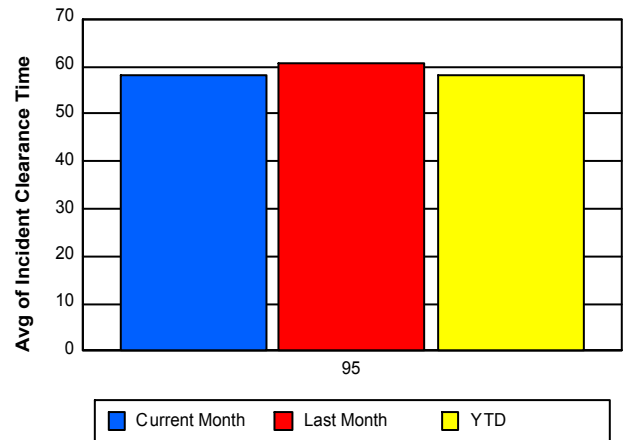
## Road Ranger / SIRV Response Time



## Roadway Clearance Time (2A)



## Incident Clearance Time (3B)



## Performance Measures by Event Type

### Abandoned Vehicle

	<u>Current Month</u>	<u>Last Month</u>	<u>YTD</u>
Number of Events	488	524	488
Number of Incidents	1	7	1
TMC Detection (min.)	0.01	0.00	0.01
TMC Verification (min.)	0.60	0.52	0.60
TMC Response (min.)	0.74	12.63	0.74
RR Dispatch Time (min.)	0.38	11.50	0.38
RR Response Time (min.)	0.60	1.13	0.60
Event Clearance (min.)	175.80	213.59	175.80
Roadway Clearance (min.)	17.73	45.37	17.73
Incident Clearance (min.)	20.93	45.63	20.93
# of Events w/ RR/SIRV	402	424	402
RR/SIRV Assists	411	433	411
RR/SIRV Activities	417	442	417

### Accident

	<u>Current Month</u>	<u>Last Month</u>	<u>YTD</u>
Number of Events	200	225	200
Number of Incidents	88	107	88
TMC Detection (min.)	0.20	0.24	0.20
TMC Verification (min.)	5.87	7.01	5.87
TMC Response (min.)	7.49	7.97	7.49
RR Dispatch Time (min.)	1.51	1.20	1.51
RR Response Time (min.)	5.97	6.85	5.97
Event Clearance (min.)	60.78	62.11	60.78
Roadway Clearance (min.)	41.39	44.75	41.39
Incident Clearance (min.)	69.77	72.15	69.77
# of Events w/ RR/SIRV	197	220	197
RR/SIRV Assists	243	286	243
RR/SIRV Activities	254	304	254

### Congestion

	<u>Current Month</u>	<u>Last Month</u>	<u>YTD</u>
Number of Events	9	4	9
Number of Incidents	0	0	0
TMC Detection (min.)	0.00	0.23	0.00
TMC Verification (min.)	0.00	8.01	0.00
TMC Response (min.)	0.00	22.82	0.00
RR Dispatch Time (min.)	4.26	4.23	4.26
RR Response Time (min.)	0.00	18.59	0.00
Event Clearance (min.)	45.01	22.85	45.01
Roadway Clearance (min.)			
Incident Clearance (min.)			
# of Events w/ RR/SIRV	1	2	1
RR/SIRV Assists	1	2	1
RR/SIRV Activities	1	2	1

## Debris on Roadway

	<u>Current Month</u>	<u>Last Month</u>	<u>YTD</u>
Number of Events	127	136	127
Number of Incidents	15	18	15
TMC Detection (min.)	0.19	0.19	0.19
TMC Verification (min.)	7.76	7.39	7.76
TMC Response (min.)	7.80	7.27	7.80
RR Dispatch Time (min.)	1.22	0.81	1.22
RR Response Time (min.)	6.58	6.45	6.58
Event Clearance (min.)	12.16	22.04	12.16
Roadway Clearance (min.)	15.60	10.31	15.60
Incident Clearance (min.)	21.74	11.97	21.74
# of Events w/ RR/SIRV	124	132	124
RR/SIRV Assists	130	138	130
RR/SIRV Activities	134	138	134

## Disabled Vehicle

	<u>Current Month</u>	<u>Last Month</u>	<u>YTD</u>
Number of Events	1,812	1,867	1,812
Number of Incidents	19	27	19
TMC Detection (min.)	0.05	0.05	0.05
TMC Verification (min.)	3.00	3.28	3.00
TMC Response (min.)	3.18	3.34	3.18
RR Dispatch Time (min.)	0.81	0.74	0.81
RR Response Time (min.)	2.37	2.62	2.37
Event Clearance (min.)	15.30	16.32	15.30
Roadway Clearance (min.)	19.32	23.99	19.32
Incident Clearance (min.)	23.89	40.43	23.89
# of Events w/ RR/SIRV	1,799	1,843	1,799
RR/SIRV Assists	1,844	1,896	1,844
RR/SIRV Activities	1,956	1,986	1,956

## Other

	<u>Current Month</u>	<u>Last Month</u>	<u>YTD</u>
Number of Events	19	20	19
Number of Incidents	0	0	0
TMC Detection (min.)	0.05	0.09	0.05
TMC Verification (min.)	5.05	6.91	5.05
TMC Response (min.)	10.07	13.46	10.07
RR Dispatch Time (min.)	2.55	2.52	2.55
RR Response Time (min.)	7.04	12.28	7.04
Event Clearance (min.)	12.06	27.88	12.06
Roadway Clearance (min.)			
Incident Clearance (min.)			
# of Events w/ RR/SIRV	15	13	15
RR/SIRV Assists	16	15	16
RR/SIRV Activities	17	15	17

## Pedestrian

	<u>Current Month</u>	<u>Last Month</u>	<u>YTD</u>
Number of Events	23	18	23
Number of Incidents	0	0	0
TMC Detection (min.)	0.06	0.02	0.06
TMC Verification (min.)	1.22	2.60	1.22
TMC Response (min.)	1.21	3.41	1.21
RR Dispatch Time (min.)	0.02	0.89	0.02
RR Response Time (min.)	1.19	2.52	1.19
Event Clearance (min.)	16.77	14.59	16.77
Roadway Clearance (min.)			
Incident Clearance (min.)			
# of Events w/ RR/SIRV	23	18	23
RR/SIRV Assists	23	19	23
RR/SIRV Activities	24	20	24

## Police Activity

	<u>Current Month</u>	<u>Last Month</u>	<u>YTD</u>
Number of Events	9	3	9
Number of Incidents	5	1	5
TMC Detection (min.)	0.26	0.21	0.26
TMC Verification (min.)	1.89	11.64	1.89
TMC Response (min.)	15.46	11.78	15.46
RR Dispatch Time (min.)	5.20	1.06	5.20
RR Response Time (min.)	10.26	10.72	10.26
Event Clearance (min.)	41.15	121.37	41.15
Roadway Clearance (min.)	48.74	308.97	48.74
Incident Clearance (min.)	60.22	324.20	60.22
# of Events w/ RR/SIRV	7	3	7
RR/SIRV Assists	12	6	12
RR/SIRV Activities	13	6	13

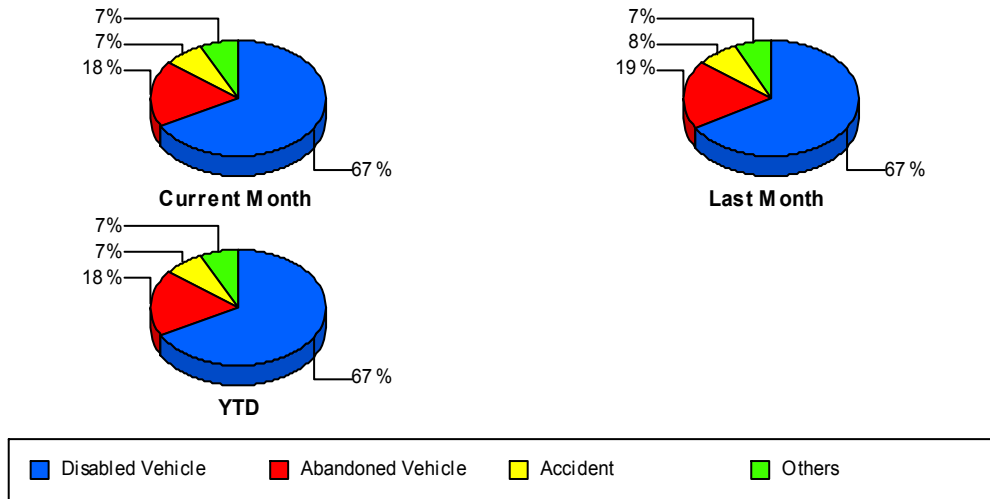
## Road Work - Emergency

	<u>Current Month</u>	<u>Last Month</u>	<u>YTD</u>
Number of Events	3	2	3
Number of Incidents	3	2	3
TMC Detection (min.)	0.68	0.00	0.68
TMC Verification (min.)	16.08	14.27	16.08
TMC Response (min.)	19.97	14.22	19.97
RR Dispatch Time (min.)	4.29	0.53	4.29
RR Response Time (min.)	15.68	13.68	15.68
Event Clearance (min.)	75.42	61.72	75.42
Roadway Clearance (min.)	108.24	92.52	108.24
Incident Clearance (min.)	75.42	61.72	75.42
# of Events w/ RR/SIRV	3	2	3
RR/SIRV Assists	6	3	6
RR/SIRV Activities	6	3	6

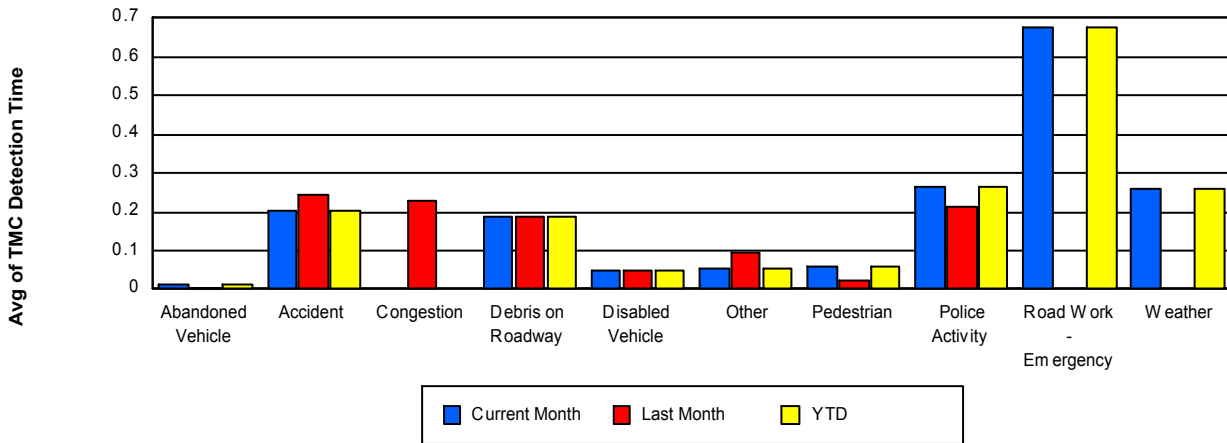
## Weather

	<u>Current Month</u>	<u>YTD</u>
Number of Events	2	2
Number of Incidents	1	1
TMC Detection (min.)	0.26	0.26
TMC Verification (min.)	18.82	18.82
TMC Response (min.)	18.52	18.52
RR Dispatch Time (min.)	2.63	2.63
RR Response Time (min.)	15.89	15.89
Event Clearance (min.)	115.27	115.27
Roadway Clearance (min.)	265.73	265.73
Incident Clearance (min.)	196.32	196.32
# of Events w/ RR/SIRV	2	2
RR/SIRV Assists	6	6
RR/SIRV Activities	6	6

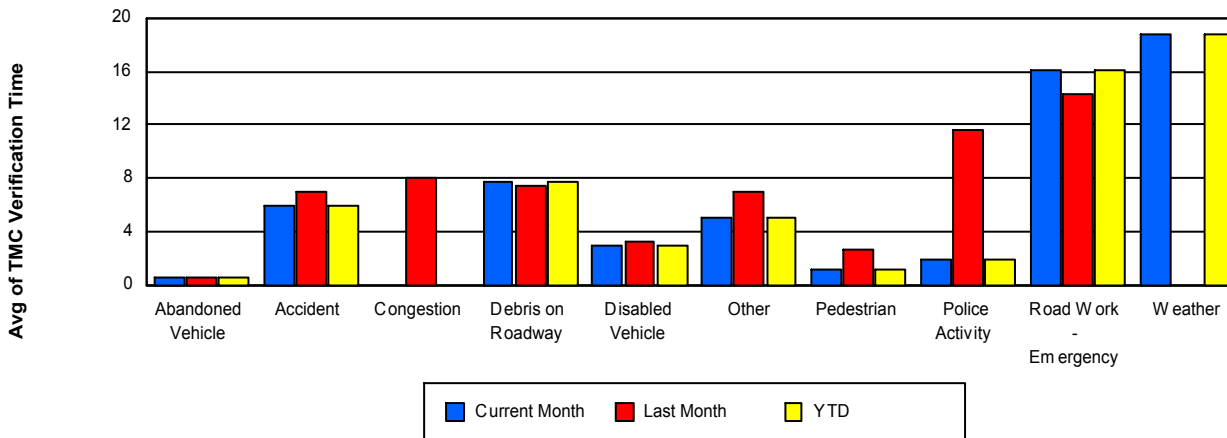
## Number of Events / Event Type



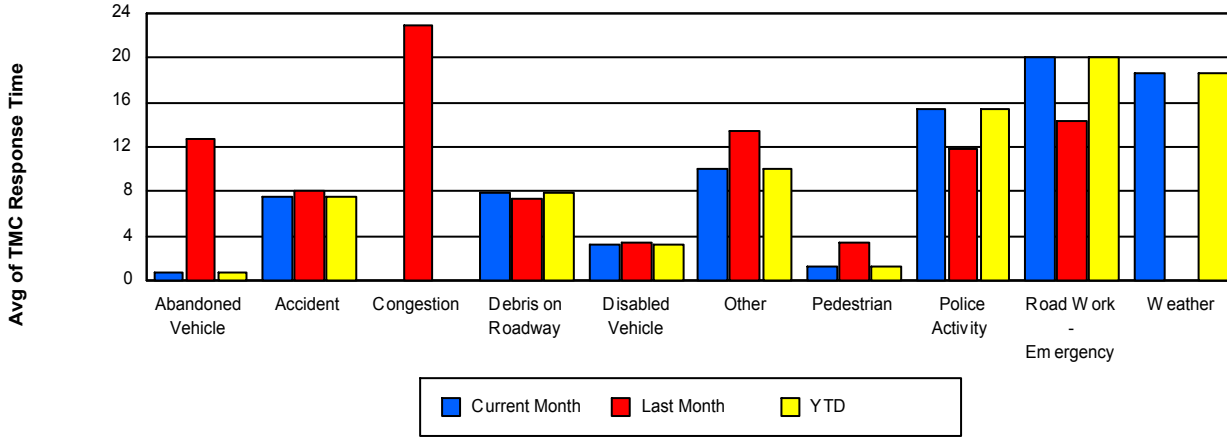
## TMC Detection Time



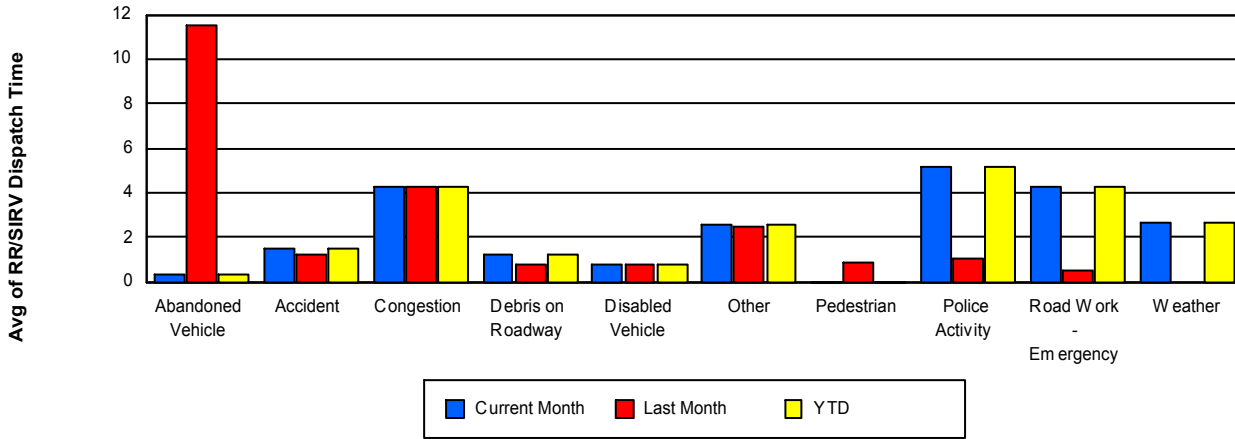
## TMC Verification Time



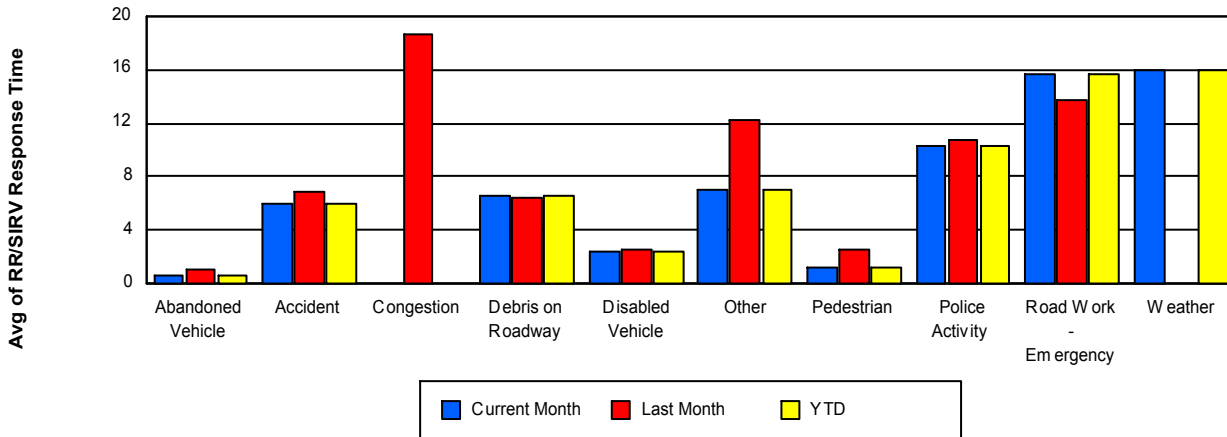
## TMC Response Time



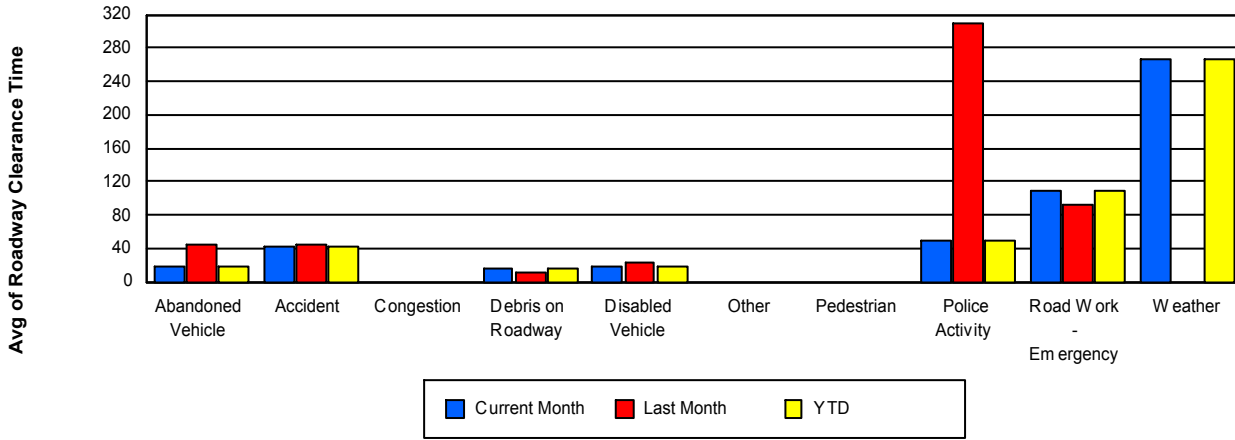
## Road Ranger / SIRV Dispatch Time



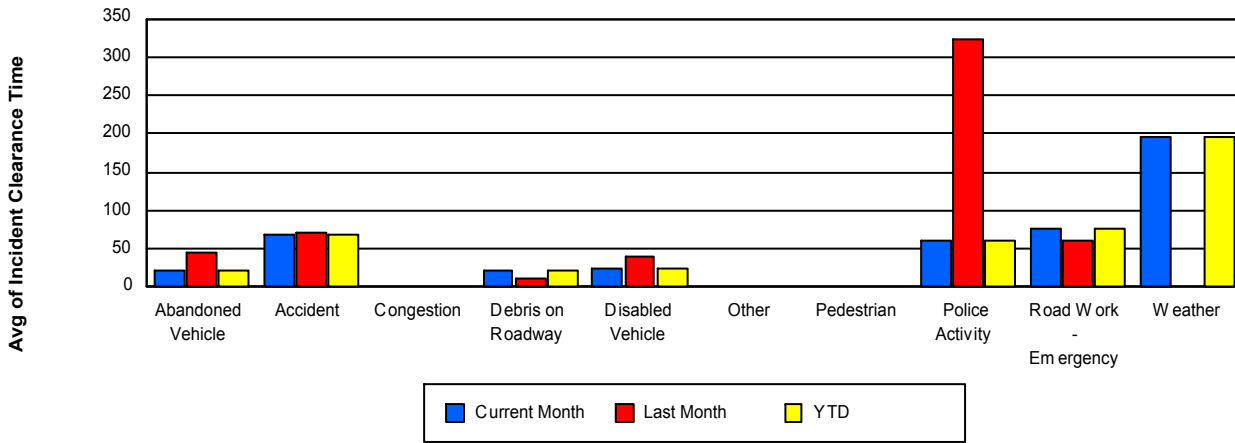
## Road Ranger / SIRV Response Time



## Roadway Clearance Time (2A)



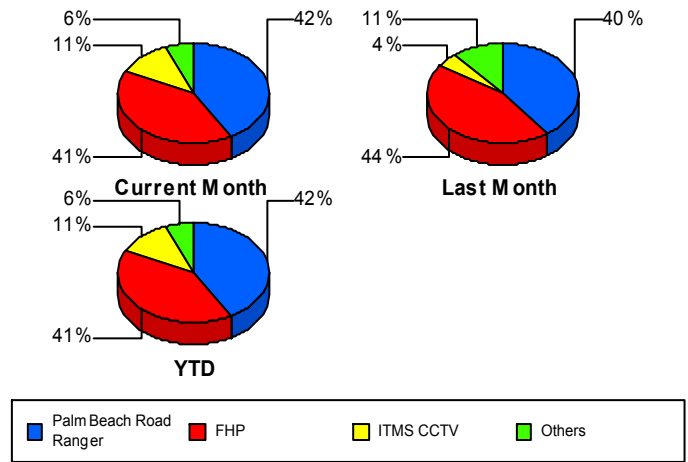
## Incident Clearance Time (3B)



## Incident Detection Methods

	Current Month	Last Month	YTD
Broward Road Ranger	0	1	0
Construction CEI	0	2	0
District 4	7	4	7
FHP	54	72	54
I-95 Construction PIO	0	1	0
ITMS	0	3	0
ITMS CCTV	15	7	15
Motorist	1	6	1
Palm Beach Road Rang	55	65	55
Road Watcher	0	1	0
<b>Total</b>	<b>132</b>	<b>162</b>	<b>132</b>

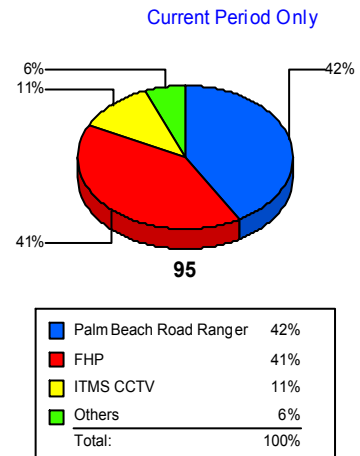
### Total Incidents by Detection Method



## Incident Detection Methods by Roadway

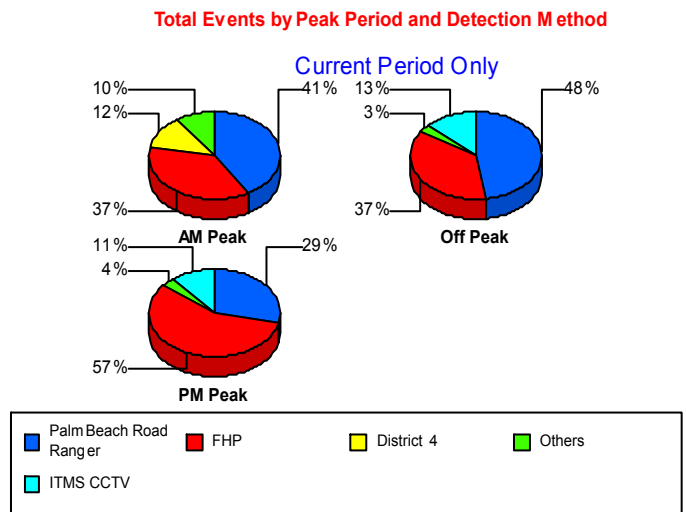
		Current Month	Last Month	YTD
95	Broward Road Ranger	0	1	0
	Construction CEI	0	2	0
	District 4	7	4	7
	FHP	54	72	54
	I-95 Construction PIO	0	1	0
	ITMS	0	3	0
	ITMS CCTV	15	7	15
	Motorist	1	6	1
	Palm Beach Road Rang	55	65	55
	Road Watcher	0	1	0
	<b>Total</b>	<b>132</b>	<b>162</b>	<b>132</b>
<b>Total</b>	<b>132</b>	<b>162</b>	<b>132</b>	

### Total Events by Roadway and Detection Method



## Incident Detection Methods by Peak Period

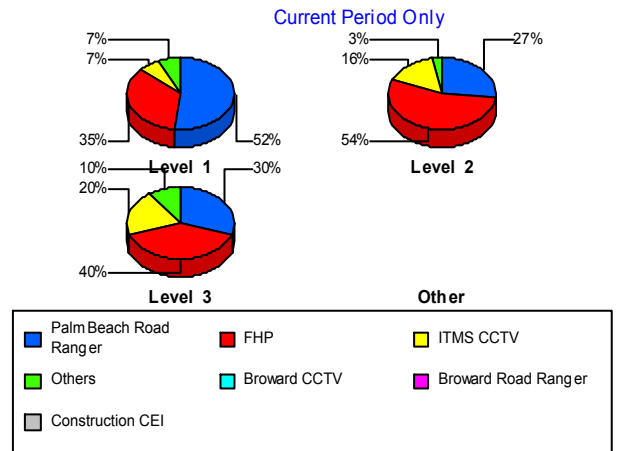
		Current Month	Last Month	YTD
AM Peak	District 4	5	1	5
	FHP	15	15	15
	ITMS	0	1	0
	ITMS CCTV	4	1	4
	Motorist	0	3	0
	Palm Beach Road Rang	17	13	17
	Road Watcher	0	1	0
	<b>Total</b>	<b>41</b>	<b>35</b>	<b>41</b>
Off Peak	Broward Road Ranger	0	1	0
	Construction CEI	0	2	0
	District 4	1	2	1
	FHP	23	49	23
	I-95 Construction PIO	0	1	0
	ITMS	0	1	0
	ITMS CCTV	8	4	8
	Motorist	1	3	1
	Palm Beach Road Rang	30	38	30
	<b>Total</b>	<b>63</b>	<b>101</b>	<b>63</b>
PM Peak	District 4	1	1	1
	FHP	16	8	16
	ITMS	0	1	0
	ITMS CCTV	3	2	3
	Palm Beach Road Rang	8	14	8
	<b>Total</b>	<b>28</b>	<b>26</b>	<b>28</b>
<b>Total</b>	<b>132</b>	<b>162</b>	<b>132</b>	



## Incident Detection Methods by Severity

		Current Month	Last Month	YTD
Level 1	Broward Road Ranger	0	1	0
	Construction CEI	0	2	0
	District 4	4	1	4
	FHP	26	33	26
	ITMS	0	3	0
	ITMS CCTV	5	3	5
	Motorist	1	2	1
	Palm Beach Road Rang	39	44	39
	<b>Total</b>	<b>75</b>	<b>89</b>	<b>75</b>
Level 2	District 4	1	3	1
	FHP	20	32	20
	I-95 Construction PIO	0	1	0
	ITMS CCTV	6	4	6
	Motorist	0	4	0
	Palm Beach Road Rang	10	18	10
	Road Watcher	0	1	0
	<b>Total</b>	<b>37</b>	<b>63</b>	<b>37</b>
Level 3	District 4	2	0	2
	FHP	8	7	8
	ITMS CCTV	4	0	4
	Palm Beach Road Rang	6	3	6
	<b>Total</b>	<b>20</b>	<b>10</b>	<b>20</b>
<b>Total</b>	<b>132</b>	<b>162</b>	<b>132</b>	

**Total Events by Severity and Detection Method**



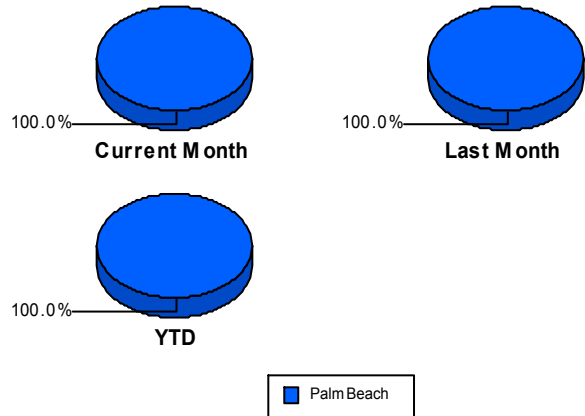
# Road Ranger / SIRV Performance Measures

## Road Ranger / SIRV Performance By County

RR/SIRV Responses per County

Values presented are:  
 - Total Events with a RR/SIRV Response  
 - Total RR/SIRV Responses,  
 - Total Activities Performed

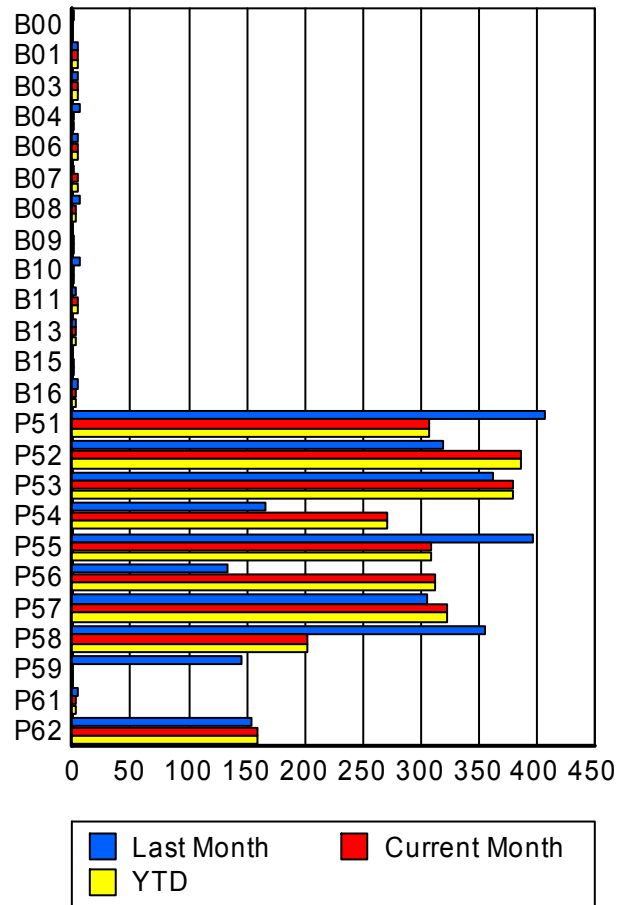
	Current Mo	Last Month	YTD
Palm Beach	2,573	2,656	2,573
	2,692	2,797	2,692
	2,828	2,915	2,828



## Road Ranger / SIRV Performance By Truck

	Current Mo	Last Month	YTD
B00	0	1	0
	0	1	0
	0	1	0
B01	5	5	5
	5	5	5
	5	5	5
B03	5	5	5
	5	5	5
	5	5	5
B04	1	6	1
	1	6	1
	1	6	1
B06	4	5	4
	4	5	4
	4	5	4
B07	4	1	4
	4	1	4
	4	1	4
B08	2	6	2
	2	6	2
	2	6	2
B09	1	0	1
	1	0	1
	1	0	1
B10	1	5	1
	1	6	1
	1	6	1

RR/SIRV Responses per Truck



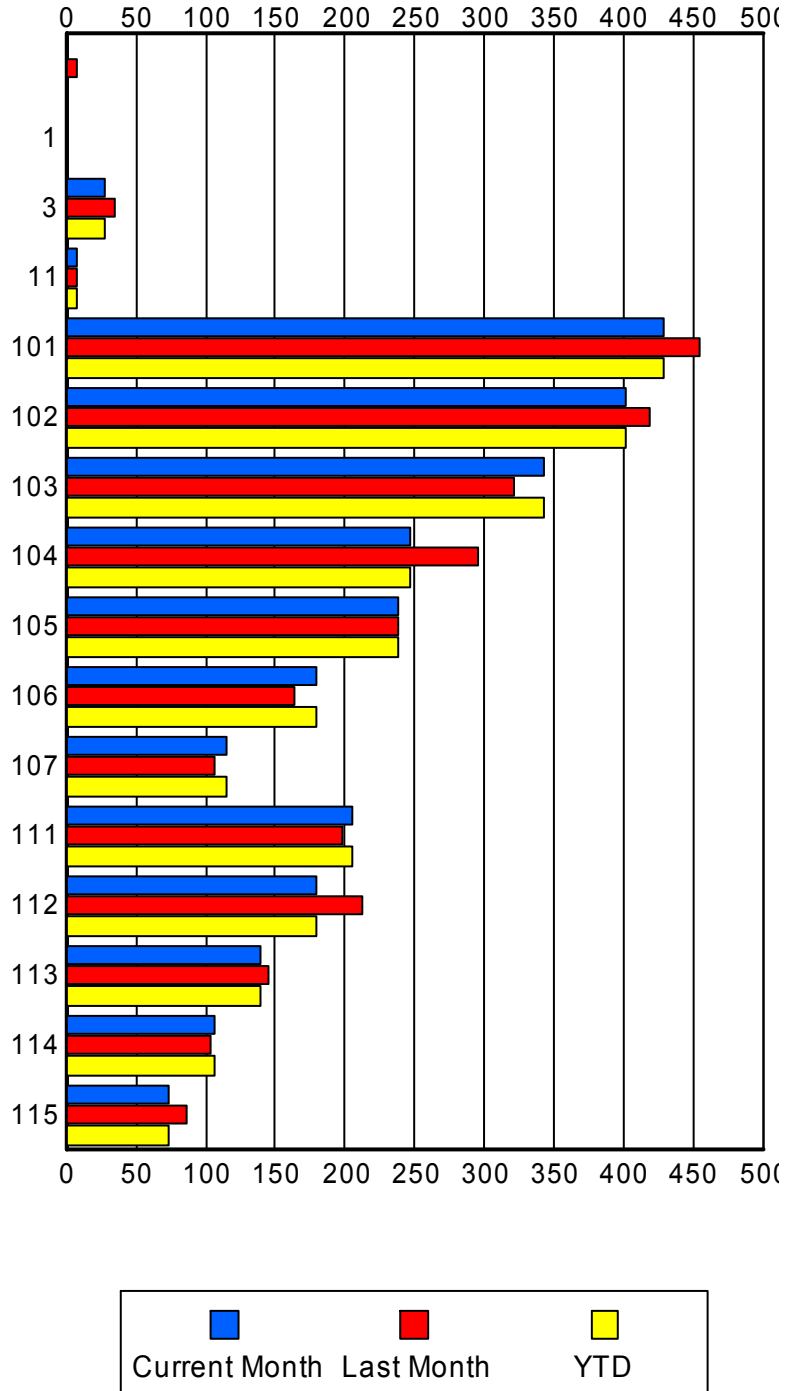
	Current Mo	Last Month	YTD
B11	5 5 5	3 3 3	5 5 5
B13	3 3 3	2 2 3	3 3 3
B15	1 1 1	0 0 0	1 1 1
B16	3 3 3	5 5 6	3 3 3
P51	307 308 330	404 408 424	307 308 330
P52	384 387 407	316 319 335	384 387 407
P53	378 380 399	355 362 374	378 380 399
P54	270 272 288	166 166 175	270 272 288
P55	307 309 320	391 397 410	307 309 320
P56	310 313 329	133 134 140	310 313 329
P57	319 324 346	304 306 318	319 324 346
P58	199 202 211	348 356 376	199 202 211
P59	0 0 0	143 146 154	0 0 0
P61	2 2 2	4 4 4	2 2 2
P62	157 160 161	151 154 158	157 160 161

### Road Ranger / SIRV Performance By Beat

	Current Mo	Last Month	YTD
	1	7	1
	1	7	1
	1	7	1
1	0	1	0
	0	1	0
	0	1	0
3	28	35	28
	28	35	28
	28	37	28
11	7	7	7
	7	8	7
	7	8	7
101	423	448	423
	428	455	428
	448	471	448
102	398	409	398
	402	419	402
	421	429	421
103	338	314	338
	342	321	342
	359	331	359
104	245	293	245
	247	295	247
	265	311	265
105	234	237	234
	238	238	238
	249	251	249
106	178	162	178
	179	164	179
	188	170	188
107	114	103	114
	115	107	115
	115	108	115
111	202	197	202
	205	198	205
	218	210	218
112	178	210	178
	179	213	179
	190	220	190
113	139	144	139
	140	145	140
	150	155	150
114	107	101	107
	107	104	107
	113	112	113

Values presented are:  
 - Total Events with a RR/SIRV Response  
 - Total RR/SIRV Responses,  
 - Total Activities Performed

### RR/SIRV Responses per Beat



	Current Mo	Last Month	YTD
115	73	85	73
	74	87	74
	76	94	76

**Road Ranger / SIRV Performance By Time of Day**

*Values presented are:*  
 - Total Events with a RR/SIRV Response  
 - Total RR/SIRV Responses,  
 - Total Activities Performed

	Current Mo	Last Month	YTD
12AM-1AM	63	85	63
	65	94	65
	70	103	70
1AM-2AM	50	45	50
	57	47	57
	63	53	63
2AM-3AM	30	43	30
	33	54	33
	35	56	35
3AM-4AM	27	25	27
	29	29	29
	30	31	30
4AM-5AM	31	32	31
	35	36	35
	39	38	39
5AM-6AM	17	27	17
	18	30	18
	20	30	20
6AM-7AM	147	134	147
	150	144	150
	156	152	156
7AM-8AM	183	190	183
	198	201	198
	209	212	209
8AM-9AM	183	157	183
	192	164	192
	200	167	200
9AM-10AM	151	136	151
	158	143	158
	169	150	169
10AM-11AM	134	148	134
	137	153	137
	152	160	152
11AM-12PM	140	152	140
	144	164	144
	154	169	154

**Number of Responses / Hour of the Day**



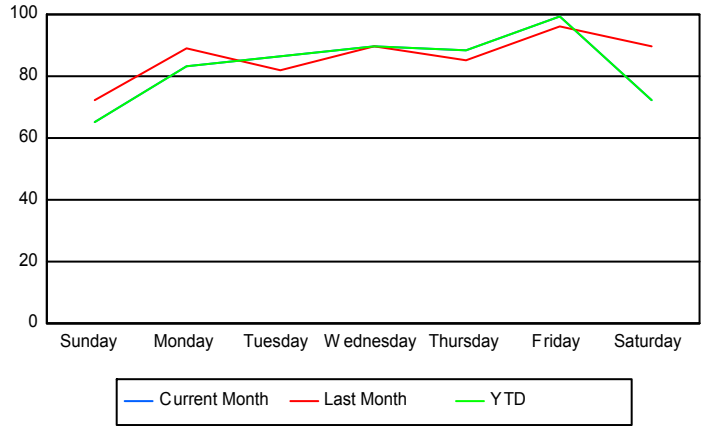
	Current Mo	Last Month	YTD
12PM-1PM	124 127 136	131 137 143	124 127 136
1PM-2PM	124 132 138	123 130 139	124 132 138
2PM-3PM	158 164 168	168 171 175	158 164 168
3PM-4PM	144 147 150	163 172 177	144 147 150
4PM-5PM	146 148 151	164 166 170	146 148 151
5PM-6PM	149 155 158	147 154 159	149 155 158
6PM-7PM	94 104 108	115 117 117	94 104 108
7PM-8PM	104 107 108	116 119 122	104 107 108
8PM-9PM	93 97 100	83 87 90	93 97 100
9PM-10PM	85 89 91	82 85 86	85 89 91
10PM-11PM	106 110 118	95 101 112	106 110 118
11PM-12AM	90 96 105	95 99 104	90 96 105

## Road Ranger / SIRV Performance By Day of Week

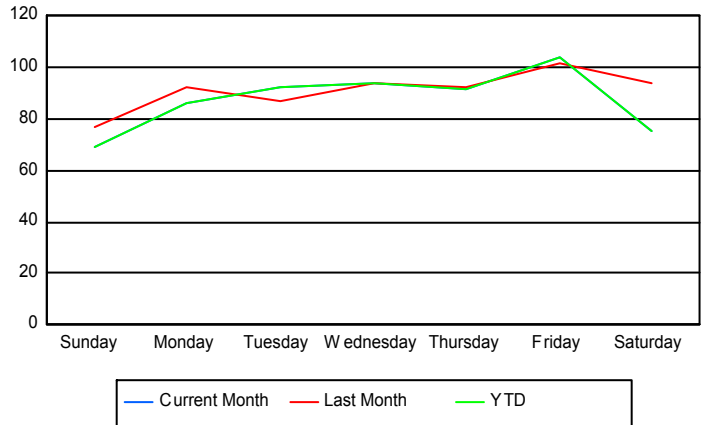
Values presented are:  
 - Total Events with a RR/SIRV Response  
 - Total RR/SIRV Responses,  
 - Total Activities Performed

	Current Mo	Last Month	YTD
Sunday	258	361	258
	272	383	272
	283	394	283
Monday	331	441	331
	342	457	342
	358	477	358
Tuesday	426	321	426
	454	341	454
	483	360	483
Wednesday	440	359	440
	457	374	457
	481	385	481
Thursday	436	341	436
	453	368	453
	470	383	470
Friday	395	384	395
	413	404	413
	439	424	439
Saturday	290	450	290
	301	470	301
	314	492	314

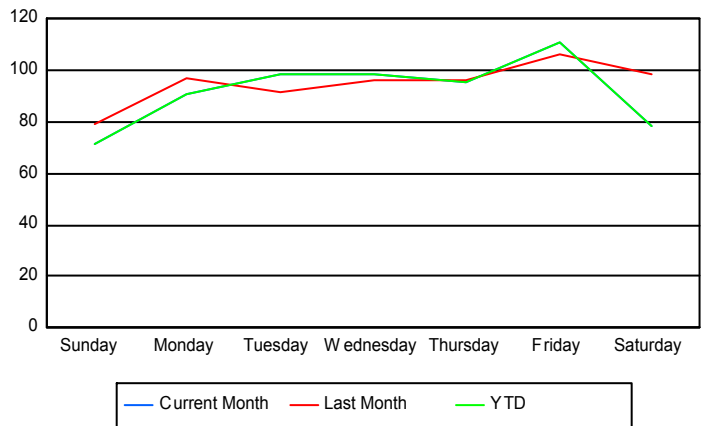
### Avg # of events with a RR/SIRV Response per Day of the Week



### Avg # of RR/SIRV Responses per Day of the Week



### Avg # of RR/SIRV Activities Performed per Day of the Week



### Road Ranger/ SIRV Responses per Time of Day and Day of Week

