



Monthly Performance Measures Report Palm Beach County



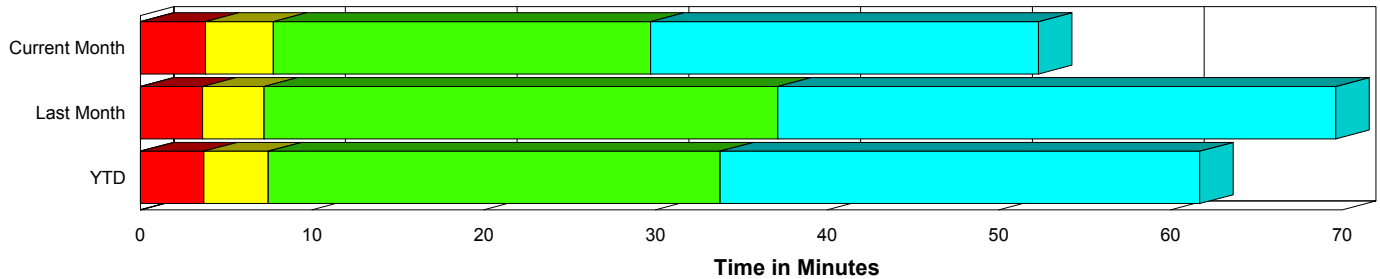
Created on:
March 02, 2009
9:00 am

Period From Feb 1, 2009 to Feb 28, 2009

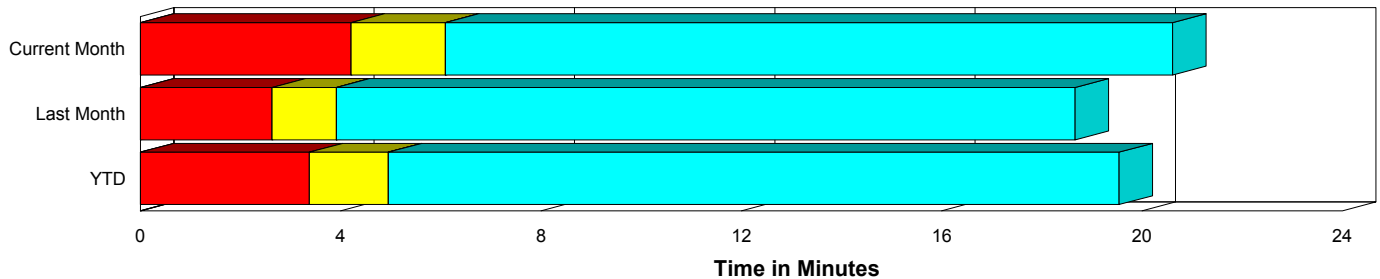
Performance Measures Summary

	Traffic Events (No Lanes Blocked)			Incidents (Lanes Blocked)		
	<u>This Month</u>	<u>Last Month</u>	<u>YTD</u>	<u>This Month</u>	<u>Last Month</u>	<u>YTD</u>
Number of Events	1,128	1,259	2,387	70	82	152
TMC Detection (min.)	0.00	0.00	0.00	0.00	0.00	0.00
TMC Verification (min.)	4.21	2.63	3.37	3.79	3.63	3.70
TMC Response (min.)	7.32	4.98	6.14	8.37	7.66	7.99
RR Dispatch Time (min.)	2.60	1.67	2.13	2.70	4.43	3.65
RR Response Time (min.)	4.74	3.40	4.07	5.67	3.23	4.34
Roadway Clearance (min.)				33.90	39.60	36.97
Event Clearance (min.)	21.84	19.73	20.73	56.43	72.06	64.86
# of Events w/ RR/SIRV	899	920	1,819	60	72	132
RR/SIRV Responses	899	920	1,819	60	72	132
RR/SIRV Activities	972	977	1,949	90	118	208

Incident Clearance Time-Line



Traffic Event (Non-Lane Blockage) Time-Line



■ Avg. TMC Detection Time	■ Avg. Time from TMC Response to Roadway Clearance*
■ Avg. Time from TMC Detection to TMC Verification	■ Avg. Time from Roadway Clearance to Incident/Event Clearance**
■ Avg. Time from TMC Verification to TMC Response	

* Roadway clearance equals all travel lanes open

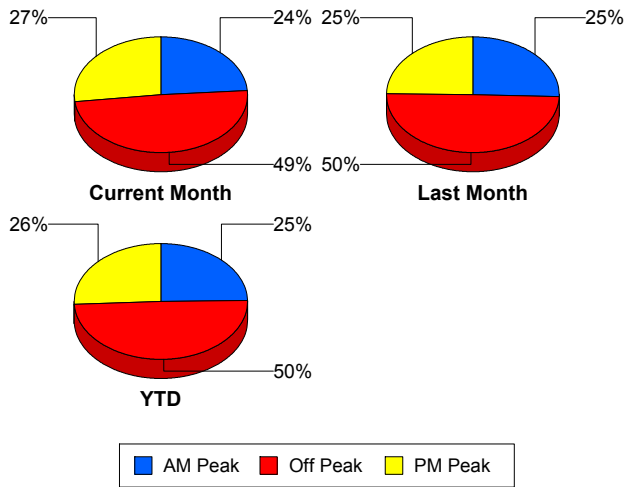
** Incident clearance equals time when last responder has left the scene

Performance Measures by Peak Period

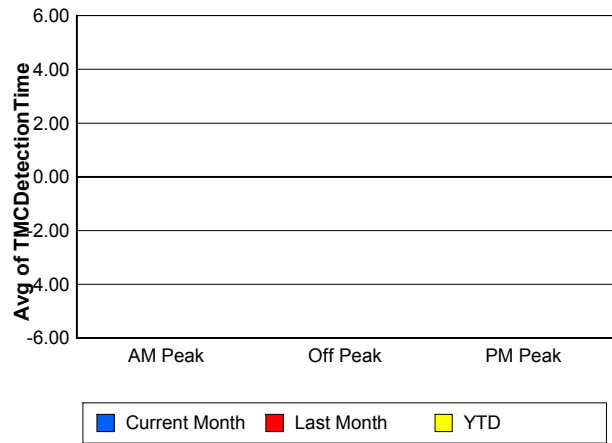
Note: AM peak period is defined as 6am to 10am and PM peak period is defined as 3pm to 7pm.

	AM Peak			Off Peak			PM Peak		
	<u>Current Month</u>	<u>Last Month</u>	<u>YTD</u>	<u>Current Month</u>	<u>Last Month</u>	<u>YTD</u>	<u>Current Month</u>	<u>Last Month</u>	<u>YTD</u>
Number of Events	287	341	628	588	669	1,257	323	331	654
Number of Incidents	18	23	41	31	36	67	21	23	44
TMC Detection (min.)	0.00	0.00	0.00	0.00	0.00	0.00	0.00	0.00	0.00
TMC Verification (min.)	3.35	2.73	3.01	4.00	1.98	2.93	5.26	4.08	4.66
TMC Response (min.)	4.85	3.97	4.38	10.34	6.07	8.20	6.12	5.34	5.74
RR Dispatch Time (min.)	0.98	0.98	0.98	4.35	3.08	3.71	1.95	1.26	1.61
RR Response Time (min.)	3.95	2.99	3.44	5.94	3.18	4.55	4.20	4.07	4.14
Event Clearance (min.)	20.78	20.24	20.49	28.36	24.52	26.32	18.41	22.47	20.47
Roadway Clearance (min.)	28.38	48.94	39.92	41.06	41.82	41.47	28.05	26.77	27.38
Incident Clearance (min.)	52.40	82.64	69.36	64.68	80.44	73.15	47.69	48.37	48.05
# of Events w/ RR/SIRV	278	316	594	374	378	752	307	298	605
RR/SIRV Responses	278	316	594	374	378	752	307	298	605
RR/SIRV Activities	319	367	686	418	409	827	325	319	644

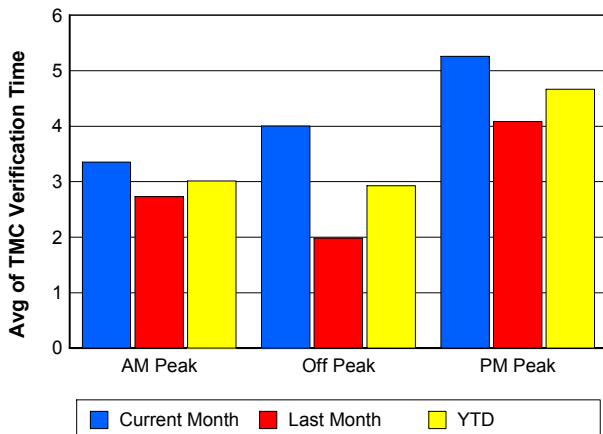
Number of Events / Peak Period



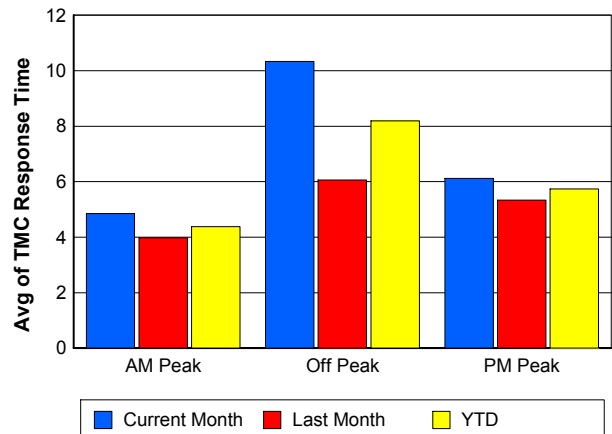
TMC Detection Time



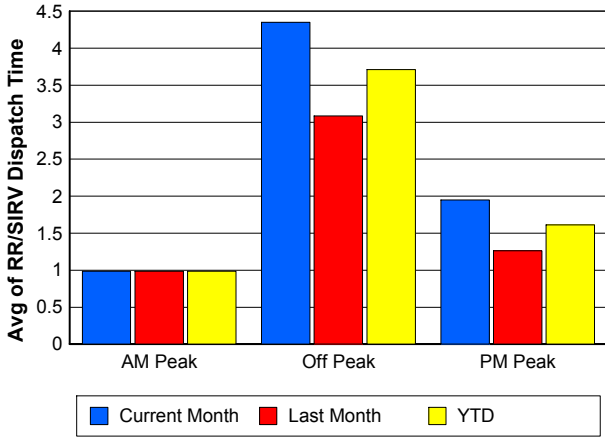
TMC Verification Time



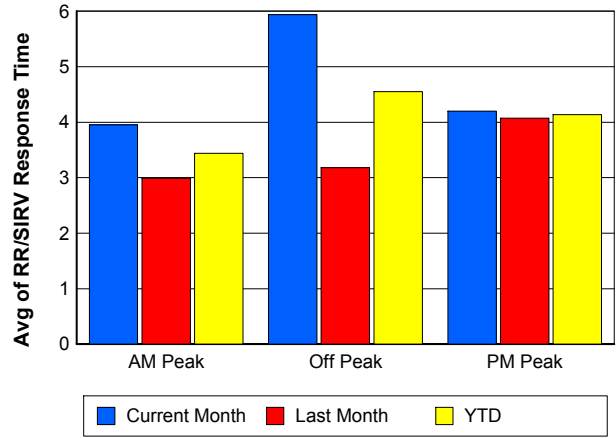
TMC Response Time



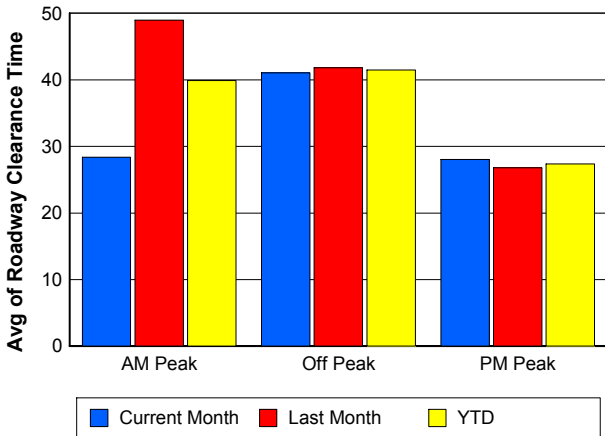
Road Ranger / SIRV Dispatch Time



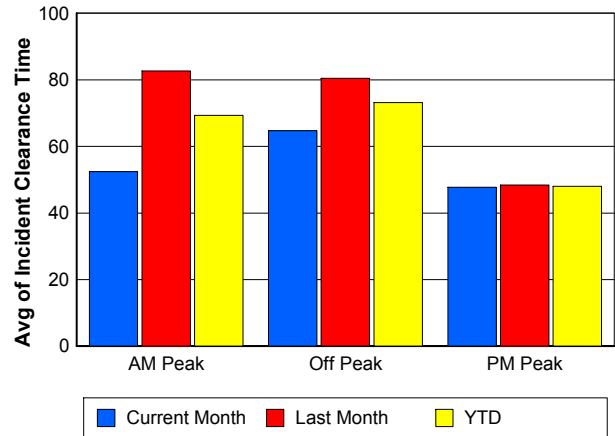
Road Ranger / SIRV Response Time



Roadway Clearance Time (2A)



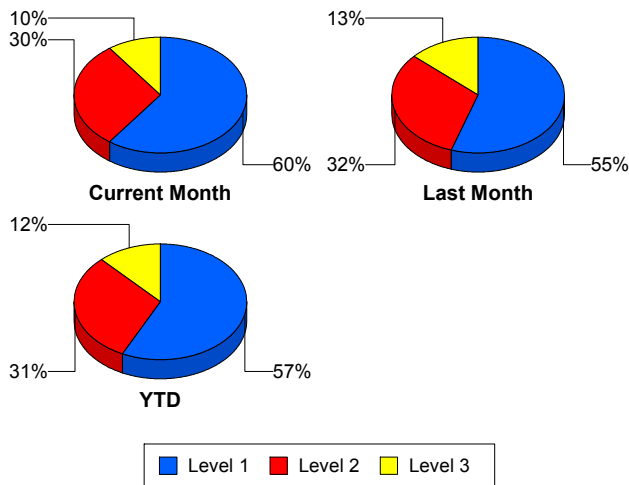
Incident Clearance Time (3B)



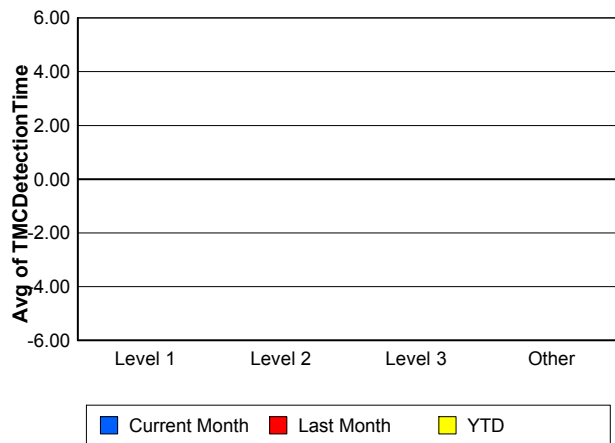
Performance Measures by Severity

	Level 1			Level 2			Level 3			Other		
	<u>This Month</u>	<u>Last Month</u>	<u>YTD</u>	<u>This Month</u>	<u>Last Month</u>	<u>YTD</u>	<u>This Month</u>	<u>Last Month</u>	<u>YTD</u>	<u>This Month</u>	<u>Last Month</u>	<u>YTD</u>
Number of Events	42	45	87	21	26	47	7	11	18	1,128	1,259	2,387
Number of Incidents	42	45	87	21	26	47	7	11	18	0	0	0
TMC Detection (min.)	0.00	0.00	0.00	0.00	0.00	0.00	0.00	0.00	0.00	0.00	0.00	0.00
TMC Verification (min.)	2.10	1.64	1.86	8.43	2.55	5.18	0.00	15.39	9.05	4.21	2.63	3.37
TMC Response (min.)	4.10	3.44	3.76	12.60	7.63	9.76	24.74	32.50	29.27	7.32	4.98	6.14
RR Dispatch Time (min.)	0.70	0.85	0.78	3.09	3.89	3.54	16.17	27.29	22.66	2.60	1.67	2.13
RR Resp. Time (min.)	3.41	2.60	2.98	9.51	3.74	6.22	8.57	5.20	6.61	4.74	3.40	4.07
Event Clearance (min.)	37.73	54.85	46.58	66.27	73.62	70.34	139.07	138.80	138.90	21.84	19.73	20.73
Roadway Clear. (min.)	12.73	15.82	14.33	53.96	45.30	49.17	100.69	123.38	114.55			
Incident Clearance (min.)	37.73	54.85	46.58	66.27	73.62	70.34	139.07	138.80	138.90			
# of Events w/ RR/SIRV	37	41	78	18	24	42	5	7	12	899	920	1,819
RR/SIRV Responses	37	41	78	18	24	42	5	7	12	899	920	1,819
RR/SIRV Activities	51	54	105	31	49	80	8	15	23	972	977	1,949

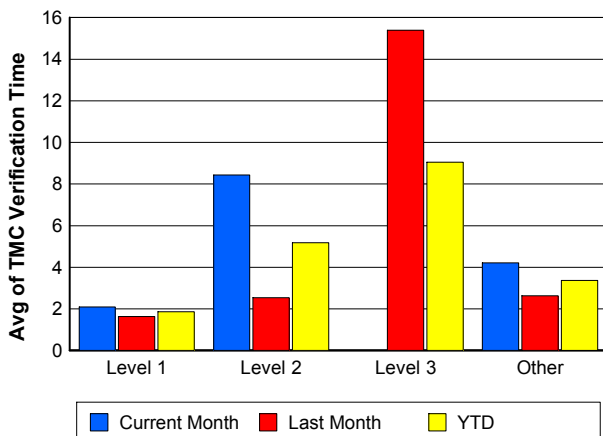
Number of Events / Severity



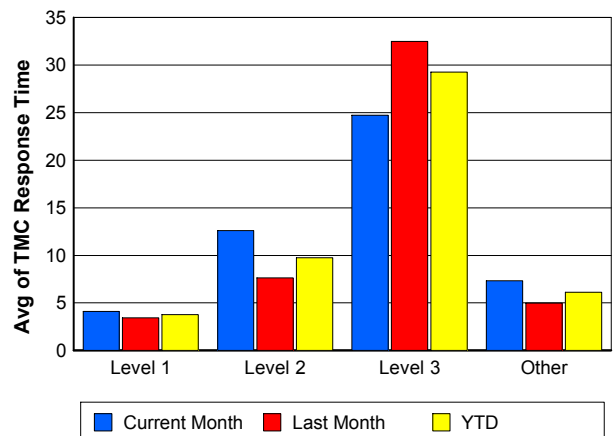
TMC Detection Time



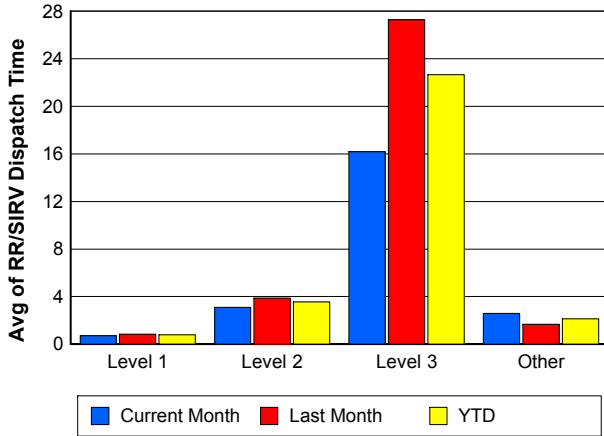
TMC Verification Time



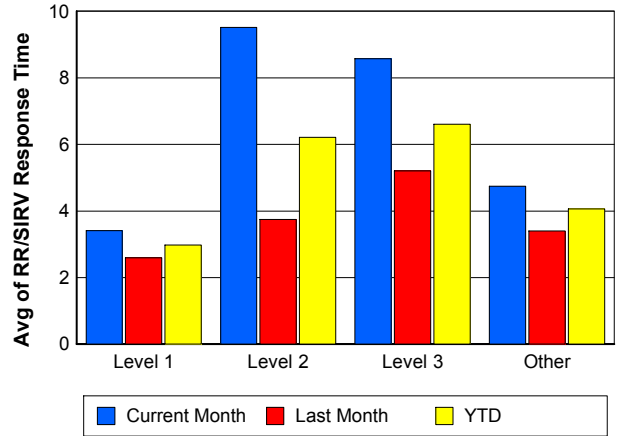
TMC Response Time



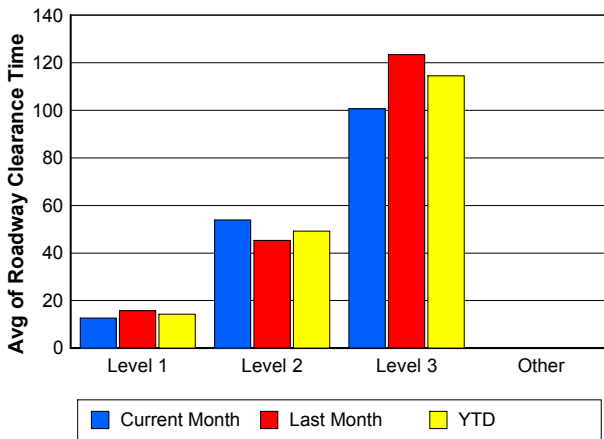
Road Ranger / SIRV Dispatch Time



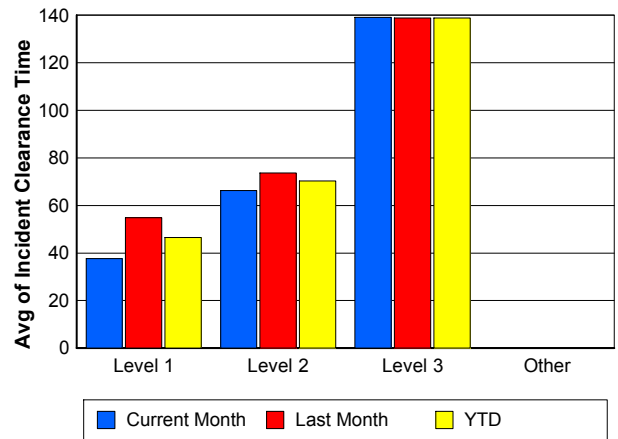
Road Ranger / SIRV Response Time



Roadway Clearance Time (2A)



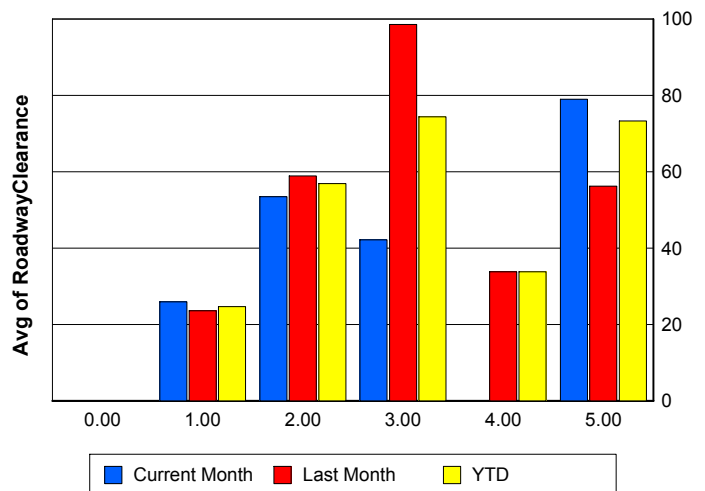
Incident Clearance Time (3B)



Roadway Clearance by Maximum Number of Lanes Blocked

	Current Month	Last Month	YTD
0			
1	25.90	23.57	24.70
2	53.42	58.93	56.91
3	42.16	98.54	74.38
4	0.00	33.80	33.80
5	78.96	56.20	73.27

Roadway Clearance Time (2A)



Performance Measures by Roadway

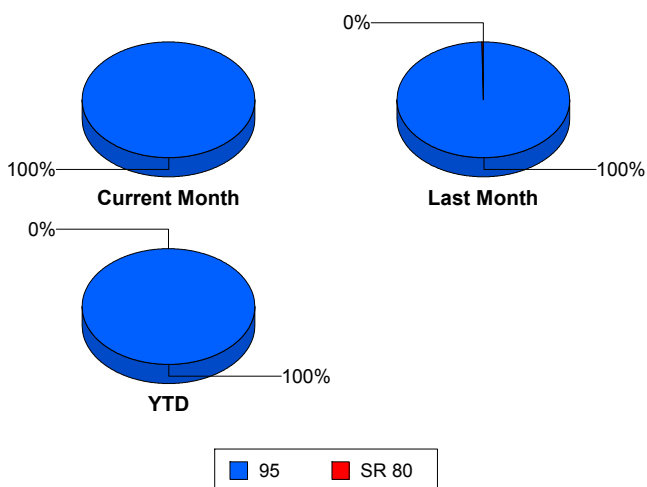
95

	<u>Current Month</u>	<u>Last Month</u>	<u>YTD</u>
Number of Events	1,198	1,339	2,537
Number of Incidents	70	81	151
TMC Detection (min.)	0.00	0.00	0.00
TMC Verification (min.)	4.18	2.69	3.39
TMC Response (min.)	7.39	5.18	6.27
RR Dispatch Time (min.)	2.61	1.87	2.23
RR Resp. Time (min.)	4.80	3.39	4.08
Event Clearance (min.)	23.86	22.85	23.33
Roadway Clear. (min.)	33.90	39.66	36.99
Incident Clearance (min.)	56.43	72.41	65.00
# of Events w/ RR/SIRV	959	992	1,951
RR/SIRV Responses	959	992	1,951
RR/SIRV Activities	1,062	1,095	2,157

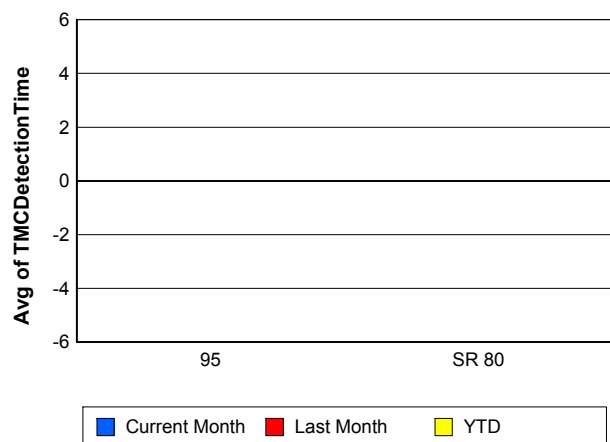
SR 80

	<u>Last Month</u>	<u>YTD</u>
Number of Events	2	2
Number of Incidents	1	1
TMC Detection (min.)	0.00	0.00
TMC Verification (min.)		
TMC Response (min.)		
RR Dispatch Time (min.)		
RR Resp. Time (min.)		
Event Clearance (min.)	71.17	71.17
Roadway Clear. (min.)	34.23	34.23
Incident Clearance (min.)	43.68	43.68
# of Events w/ RR/SIRV	0	0
RR/SIRV Responses	0	0
RR/SIRV Activities	0	0

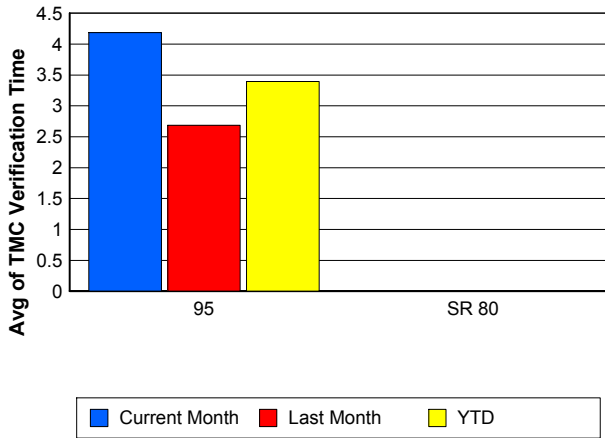
Number of Events / Roadway



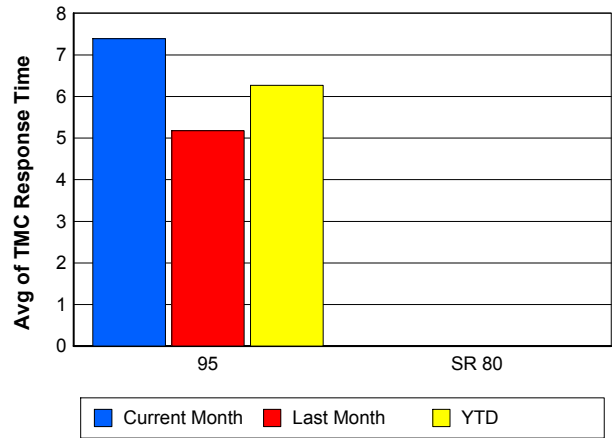
TMC Detection Time



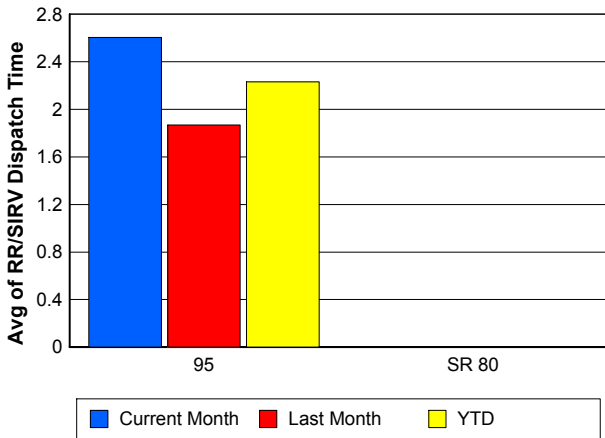
TMC Verification Time



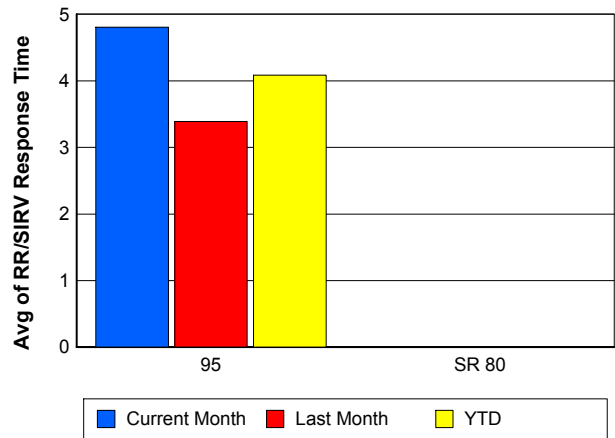
TMC Response Time



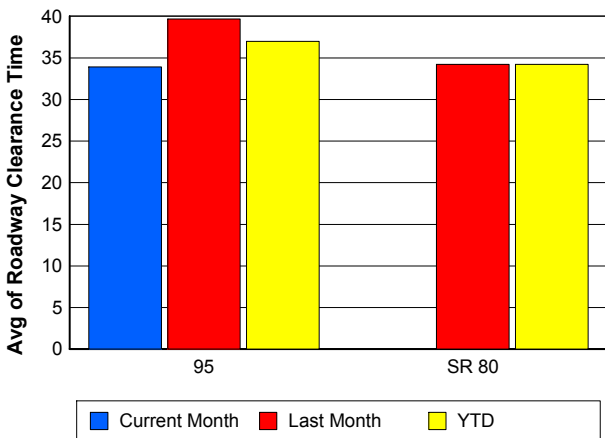
Road Ranger / SIRV Dispatch Time



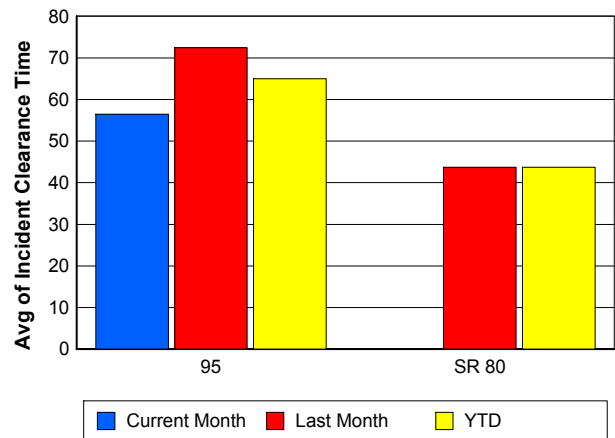
Road Ranger / SIRV Response Time



Roadway Clearance Time (2A)



Incident Clearance Time (3B)



Performance Measures by Event Type

Accident

	<u>Current Month</u>	<u>Last Month</u>	<u>YTD</u>
Number of Events	100	106	206
Number of Incidents	42	54	96
TMC Detection (min.)	0.00	0.00	0.00
TMC Verification (min.)	4.79	4.52	4.66
TMC Response (min.)	8.12	8.56	8.35
RR Dispatch Time (min.)	2.15	4.11	3.17
RR Response Time (min.)	5.98	4.45	5.18
Event Clearance (min.)	52.98	61.94	57.59
Roadway Clearance (min.)	42.64	44.19	43.51
Incident Clearance (min.)	70.79	83.51	77.95
# of Events w/ RR/SIRV	84	92	176
RR/SIRV Assists	84	92	176
RR/SIRV Activities	111	130	241

Debris on Roadway

	<u>Current Month</u>	<u>Last Month</u>	<u>YTD</u>
Number of Events	74	91	165
Number of Incidents	4	4	8
TMC Detection (min.)	0.00	0.00	0.00
TMC Verification (min.)	11.99	6.88	9.13
TMC Response (min.)	12.72	7.35	9.75
RR Dispatch Time (min.)	2.88	1.73	2.25
RR Response Time (min.)	9.81	5.60	7.48
Event Clearance (min.)	15.12	11.39	13.07
Roadway Clearance (min.)	18.70	18.00	18.35
Incident Clearance (min.)	18.89	20.01	19.45
# of Events w/ RR/SIRV	73	90	163
RR/SIRV Assists	73	90	163
RR/SIRV Activities	79	94	173

Disabled Vehicle

	<u>Current Month</u>	<u>Last Month</u>	<u>YTD</u>
Number of Events	831	881	1,712
Number of Incidents	16	17	33
TMC Detection (min.)	0.00	0.00	0.00
TMC Verification (min.)	4.14	2.74	3.42
TMC Response (min.)	6.19	4.07	5.13
RR Dispatch Time (min.)	2.15	1.21	1.68
RR Response Time (min.)	4.09	2.99	3.53
Event Clearance (min.)	19.61	17.96	18.76
Roadway Clearance (min.)	14.06	22.41	18.36
Incident Clearance (min.)	25.02	38.23	31.82
# of Events w/ RR/SIRV	762	773	1,535
RR/SIRV Assists	762	773	1,535
RR/SIRV Activities	835	834	1,669

Emergency Vehicles

	<u>Current Month</u>	<u>Last Month</u>	<u>YTD</u>
Number of Events	1	1	2
Number of Incidents	1	0	1
TMC Detection (min.)	0.00	0.00	0.00
TMC Verification (min.)	0.00	0.00	0.00
TMC Response (min.)		0.00	0.00
RR Dispatch Time (min.)		0.00	0.00
RR Response Time (min.)		0.00	0.00
Event Clearance (min.)	3.28	20.57	11.92
Roadway Clearance (min.)	3.75		3.75
Incident Clearance (min.)	3.28		3.28
# of Events w/ RR/SIRV	0	1	1
RR/SIRV Assists	0	1	1
RR/SIRV Activities	0	1	1

Other

	<u>Current Month</u>	<u>Last Month</u>	<u>YTD</u>
Number of Events	109	174	283
Number of Incidents	3	1	4
TMC Detection (min.)	0.00	0.00	0.00
TMC Verification (min.)	1.62	0.49	0.93
TMC Response (min.)	24.23	22.49	23.46
RR Dispatch Time (min.)	14.29	13.82	14.07
RR Response Time (min.)	7.80	5.32	6.70
Event Clearance (min.)	38.22	30.65	33.56
Roadway Clearance (min.)	57.74	5.98	44.80
Incident Clearance (min.)	82.63	12.12	65.00
# of Events w/ RR/SIRV	28	24	52
RR/SIRV Assists	28	24	52
RR/SIRV Activities	25	20	45

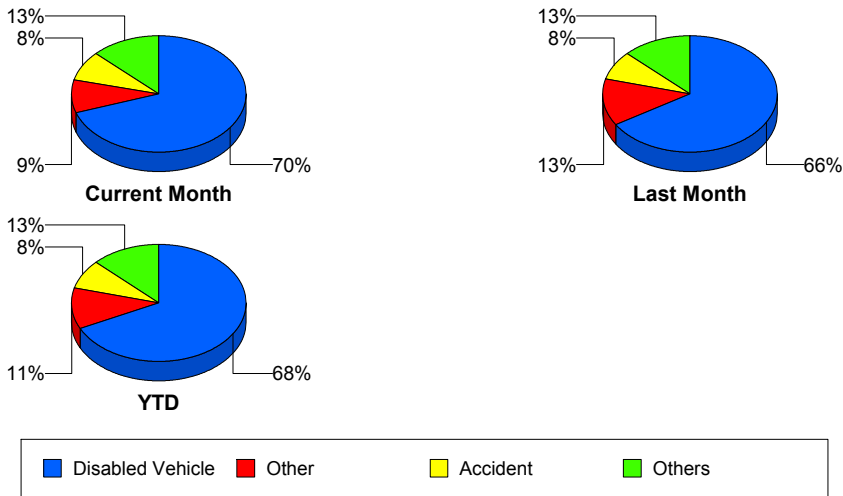
Police Activity

	<u>Current Month</u>	<u>Last Month</u>	<u>YTD</u>
Number of Events	76	75	151
Number of Incidents	3	3	6
TMC Detection (min.)	0.00	0.00	0.00
TMC Verification (min.)	0.00	0.00	0.00
TMC Response (min.)	13.21	14.63	13.68
RR Dispatch Time (min.)	10.31	14.58	11.73
RR Response Time (min.)	2.90	0.05	1.95
Event Clearance (min.)	18.94	20.40	19.67
Roadway Clearance (min.)	21.74	86.13	53.94
Incident Clearance (min.)	61.33	113.89	87.61
# of Events w/ RR/SIRV	6	3	9
RR/SIRV Assists	6	3	9
RR/SIRV Activities	6	4	10

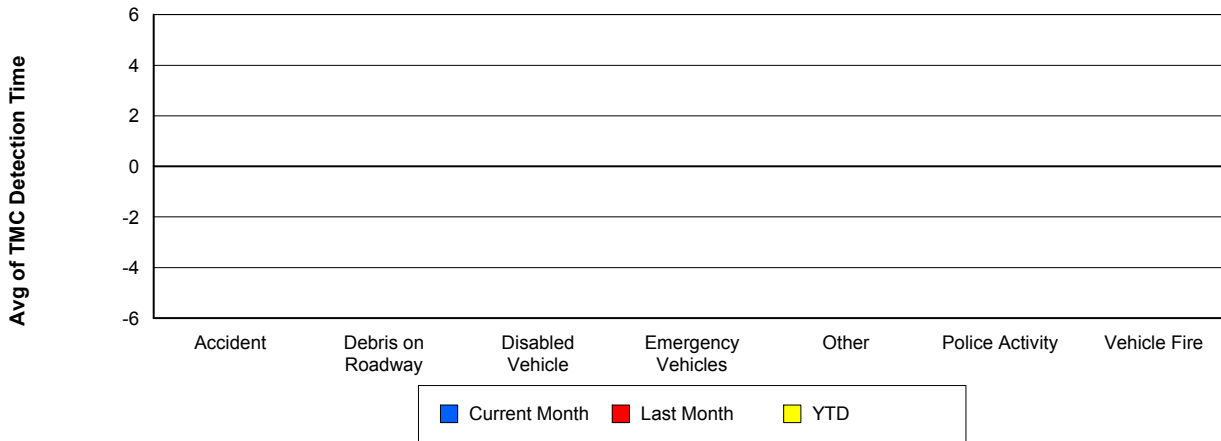
Vehicle Fire

	<u>Current Month</u>	<u>Last Month</u>	<u>YTD</u>
Number of Events	1	4	5
Number of Incidents	1	3	4
TMC Detection (min.)	0.00	0.00	0.00
TMC Verification (min.)	0.00	2.39	1.91
TMC Response (min.)	0.00	7.00	5.25
RR Dispatch Time (min.)	0.00	1.82	1.36
RR Response Time (min.)	0.00	5.18	3.89
Event Clearance (min.)	65.65	83.83	80.19
Roadway Clearance (min.)	39.93	47.72	45.77
Incident Clearance (min.)	65.65	105.22	95.33
# of Events w/ RR/SIRV	1	3	4
RR/SIRV Assists	1	3	4
RR/SIRV Activities	1	5	6

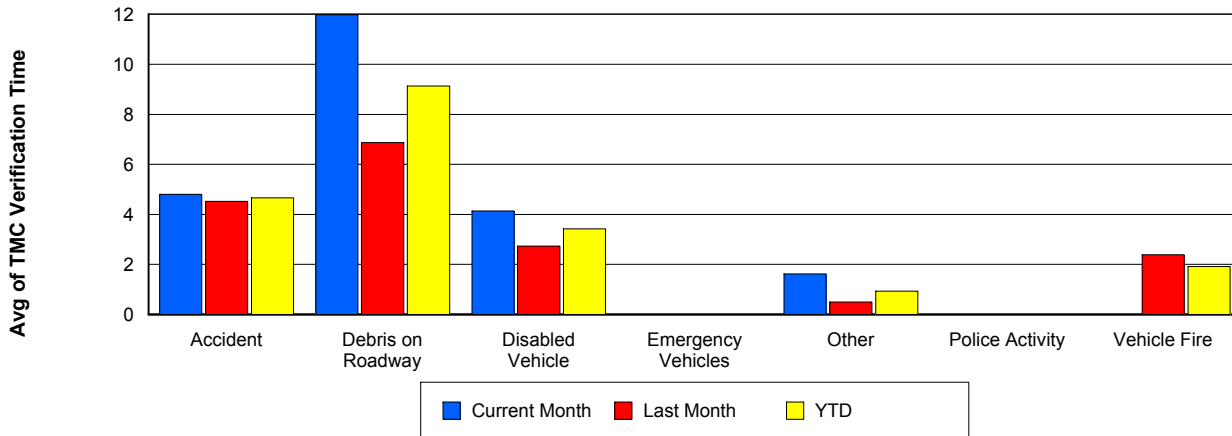
Number of Events / Event Type



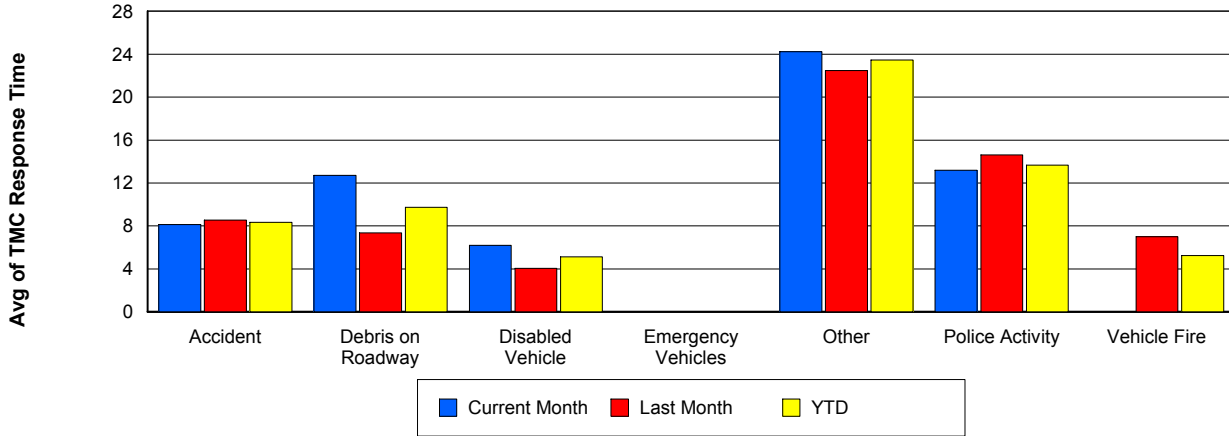
TMC Detection Time



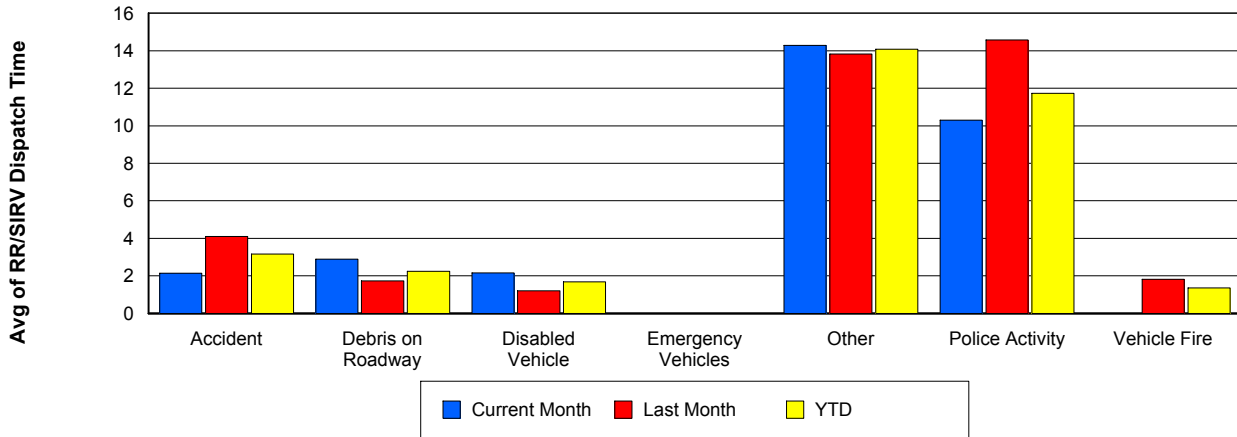
TMC Verification Time



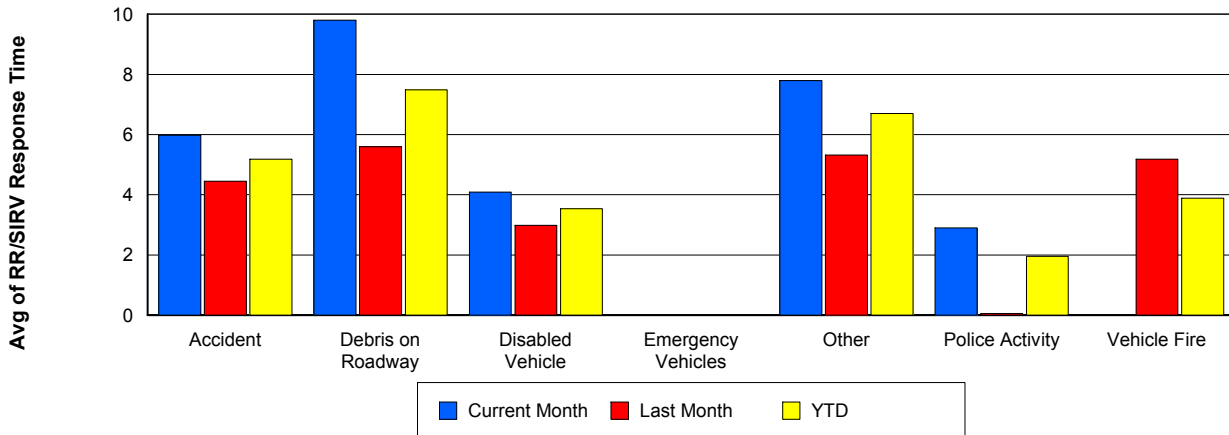
TMC Response Time



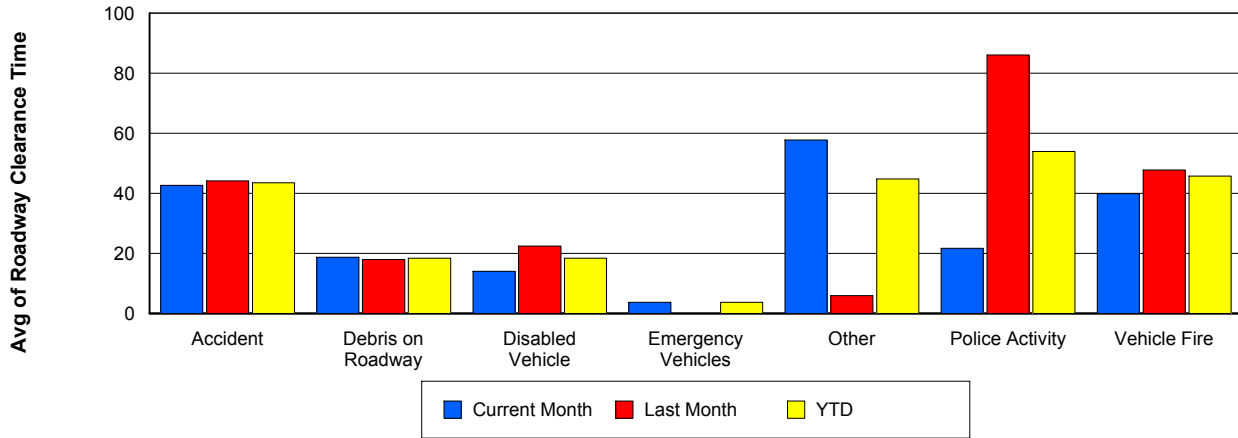
Road Ranger / SIRV Dispatch Time



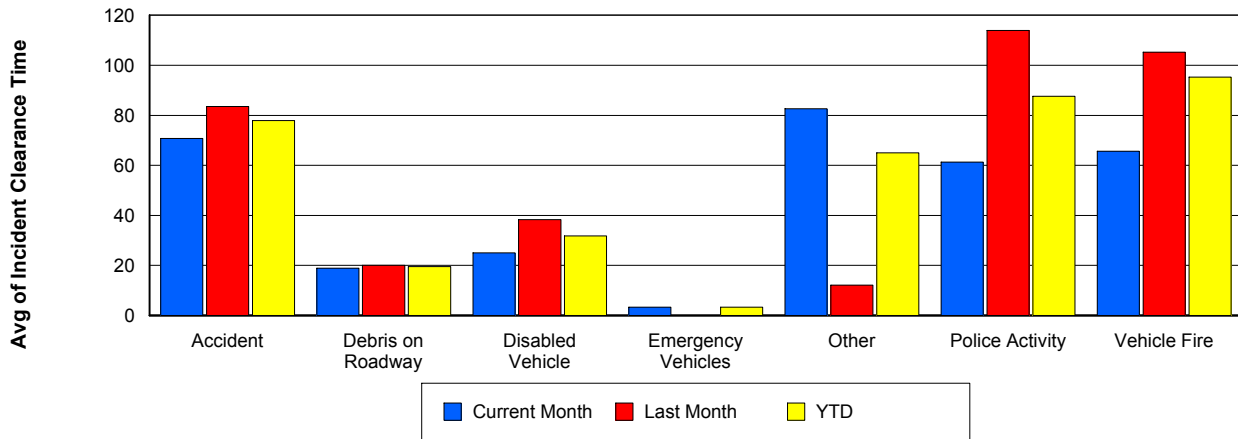
Road Ranger / SIRV Response Time



Roadway Clearance Time (2A)



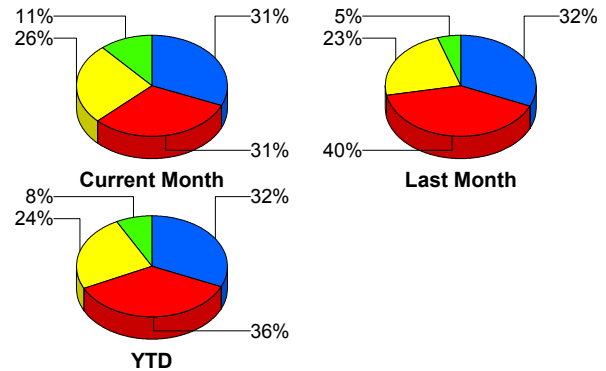
Incident Clearance Time (3B)



Incident Detection Methods

	Current Month	Last Month	YTD
Broward CCTV	3	0	3
District 4	0	2	2
FHP	18	19	37
I-95 Construction PIO	2	0	2
ITMS	2	0	2
ITMS CCTV	22	26	48
Motorist	1	1	2
Palm Beach Road Ran	22	33	55
SmarTraveler (511)	0	1	1
Total	70	82	152

Total Incidents by Detection Method



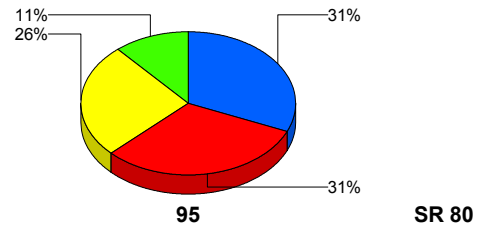
■ ITMS CCTV
 ■ Palm Beach Road Ranger
 ■ FHP
 ■ Others

Incident Detection Methods by Roadway

		Current Month	Last Month	YTD
95	Broward CCTV	3	0	3
	District 4	0	2	2
	FHP	18	18	36
	I-95 Construction PIO	2	0	2
	ITMS	2	0	2
	ITMS CCTV	22	26	48
	Motorist	1	1	2
	Palm Beach Road Ran	22	33	55
	SmarTraveler (511)	0	1	1
	Total	70	81	151
SR 80	FHP	0	1	1
	Total	0	1	1
Total		70	82	152

Total Events by Roadway and Detection Method

Current Period Only

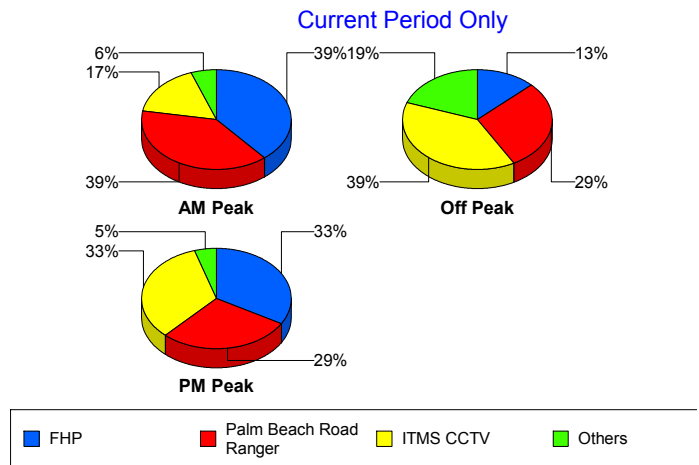


■ ITMS CCTV
 ■ Palm Beach Road Ranger
 ■ FHP
 ■ Others
■ Broward TMC

Incident Detection Methods by Peak Period

		Current Month	Last Month	YTD
AM Peak	District 4	0	2	2
	FHP	7	8	15
	ITMS	1	0	1
	ITMS CCTV	3	6	9
	Palm Beach Road Ran	7	6	13
	SmarTraveler (511)	0	1	1
	Total	18	23	41
Off Peak	Broward CCTV	3	0	3
	FHP	4	7	11
	I-95 Construction PIO	2	0	2
	ITMS	1	0	1
	ITMS CCTV	12	12	24
	Palm Beach Road Ran	9	17	26
	Total	31	36	67
PM Peak	FHP	7	4	11
	ITMS CCTV	7	8	15
	Motorist	1	1	2
	Palm Beach Road Ran	6	10	16
	Total	21	23	44
Total	70	82	152	

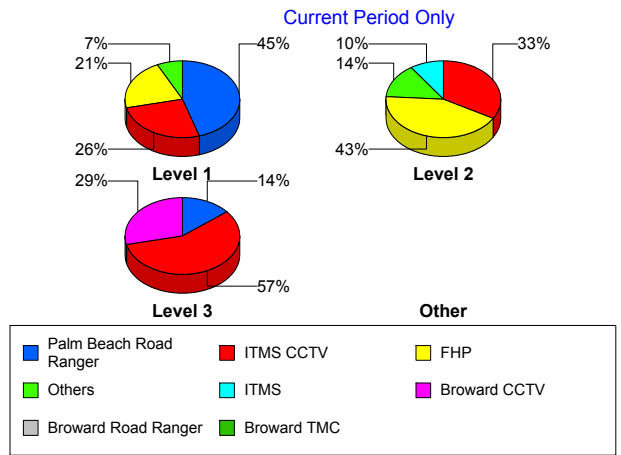
Total Events by Peak Period and Detection Method



Incident Detection Methods by Severity

		Current Month	Last Month	YTD
Level 1	Broward CCTV	1	0	1
	District 4	0	2	2
	FHP	9	5	14
	I-95 Construction PIO	1	0	1
	ITMS CCTV	11	10	21
	Motorist	1	1	2
	Palm Beach Road Ran	19	26	45
	SmarTraveler (511)	0	1	1
	Total	42	45	87
Level 2	FHP	9	8	17
	I-95 Construction PIO	1	0	1
	ITMS	2	0	2
	ITMS CCTV	7	12	19
	Palm Beach Road Ran	2	6	8
	Total	21	26	47
Level 3	Broward CCTV	2	0	2
	FHP	0	6	6
	ITMS CCTV	4	4	8
	Palm Beach Road Ran	1	1	2
	Total	7	11	18
Total	70	82	152	

Total Events by Severity and Detection Method



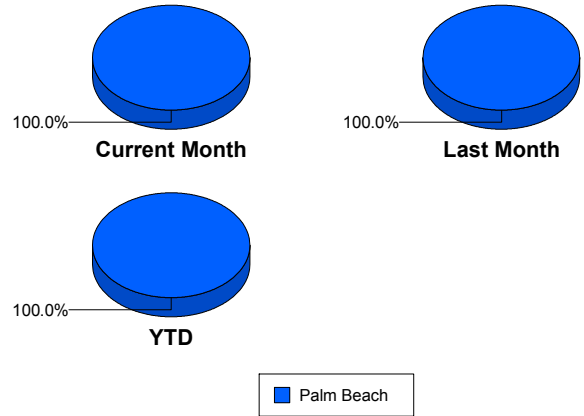
Road Ranger / SIRV Performance Measures

Road Ranger / SIRV Performance By County

Values presented are:
 - Total Events with a RR/SIRV Response
 - Total RR/SIRV Responses,
 - Total Activities Performed

	Current Mo	Last Month	YTD
Palm Beach	1,234	1,305	2,539
	1,282	1,357	2,639
	1,366	1,443	2,809

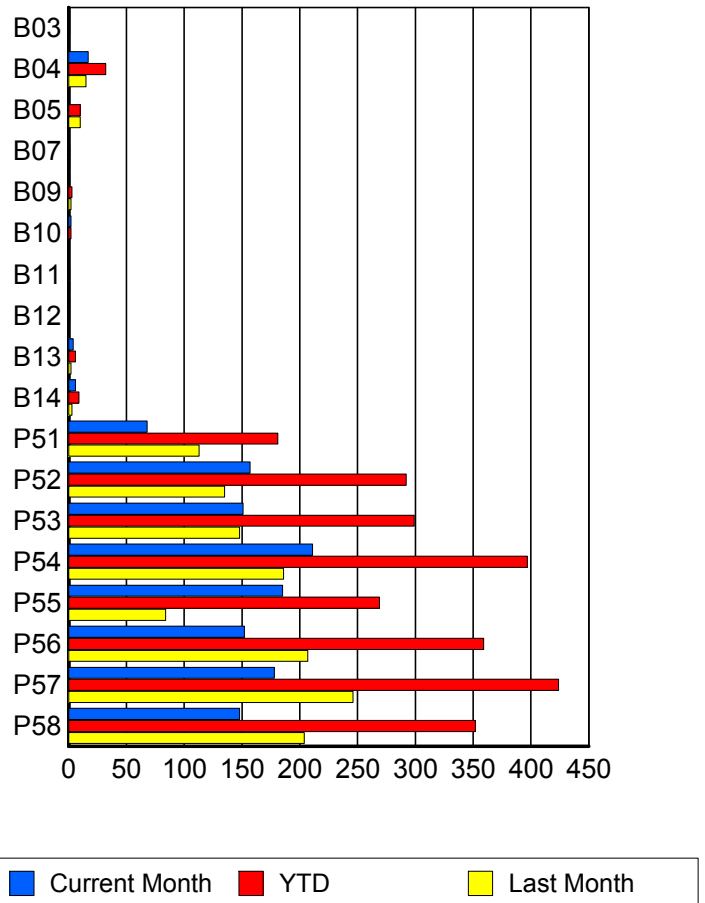
RR/SIRV Responses per County



Road Ranger / SIRV Performance By Truck

	Current Mo	Last Month	YTD
B03	1	0	1
	1	0	1
	1	0	1
B04	17	15	32
	17	15	32
	20	16	36
B05	0	9	9
	0	10	10
	0	10	10
B07	0	1	1
	0	1	1
	0	1	1
B09	1	2	3
	1	2	3
	1	2	3
B10	2	0	2
	2	0	2
	2	0	2
B11	0	1	1
	0	1	1
	0	1	1
B12	1	0	1
	1	0	1
	1	0	1
B13	4	2	6
	4	2	6
	4	2	6

RR/SIRV Responses per Truck



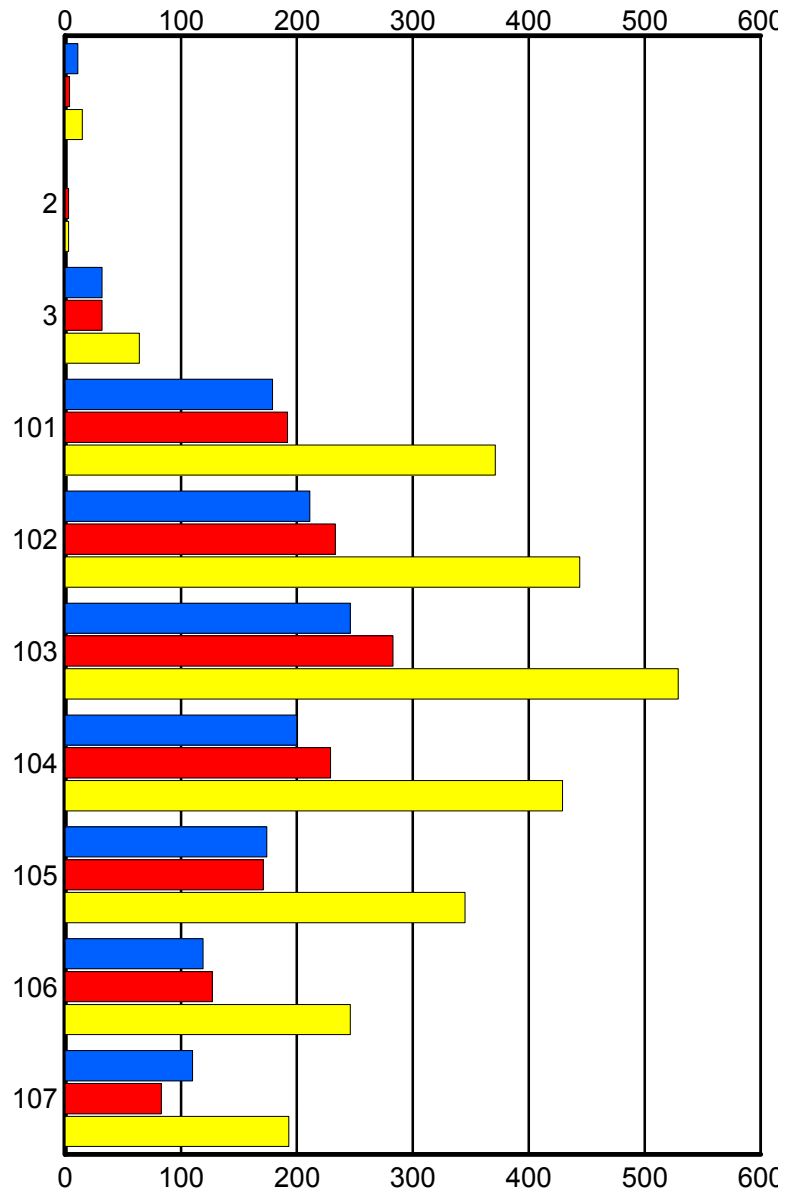
	Current Mo	Last Month	YTD
B14	6	3	9
	6	3	9
	6	3	9
P51	67	112	179
	68	113	181
	70	122	192
P52	156	132	288
	157	135	292
	165	142	307
P53	150	145	295
	151	148	299
	160	157	317
P54	209	183	392
	211	186	397
	228	199	427
P55	184	82	266
	185	84	269
	199	85	284
P56	150	203	353
	152	207	359
	164	221	385
P57	177	245	422
	178	246	424
	194	265	459
P58	146	203	349
	148	204	352
	151	217	368

Road Ranger / SIRV Performance By Beat

	Current Mo	Last Month	YTD
	11	4	15
	11	4	15
	11	4	15
2	0	3	3
	0	3	3
	0	4	4
3	32	31	63
	32	32	64
	35	32	67
101	178	190	368
	179	192	371
	192	202	394
102	208	232	440
	211	233	444
	226	246	472
103	242	278	520
	246	283	529
	266	306	572
104	198	225	423
	200	229	429
	215	240	455
105	173	170	343
	174	171	345
	185	182	367
106	118	122	240
	119	127	246
	124	136	260
107	108	83	191
	110	83	193
	112	91	203

Values presented are:
 - Total Events with a RR/SIRV Response
 - Total RR/SIRV Responses,
 - Total Activities Performed

RR/SIRV Responses per Beat



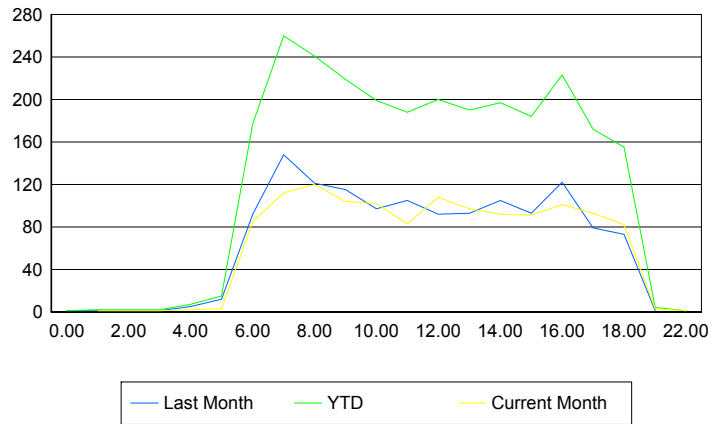
■ Current Month
 ■ Last Month
 ■ YTD

Road Ranger / SIRV Performance By Time of Day

Values presented are:
 - Total Events with a RR/SIRV Response
 - Total RR/SIRV Responses,
 - Total Activities Performed

	Current Mo	Last Month	YTD
12AM-1AM	0 0 0	1 1 1	1 1 1
1AM-2AM	1 1 1	1 1 1	2 2 2
2AM-3AM	1 1 1	1 1 1	2 2 2
3AM-4AM	1 1 1	1 1 1	2 2 2
4AM-5AM	2 2 2	2 5 6	4 7 8
5AM-6AM	3 3 3	10 12 12	13 15 15
6AM-7AM	84 85 87	83 92 100	167 177 187
7AM-8AM	106 112 121	141 148 163	247 260 284
8AM-9AM	113 120 129	118 121 127	231 241 256
9AM-10AM	100 104 117	113 115 126	213 219 243
10AM-11AM	99 102 106	92 97 105	191 199 211
11AM-12PM	79 83 88	103 105 115	182 188 203
12PM-1PM	104 108 113	91 92 97	195 200 210

Number of Responses / Hour of the Day



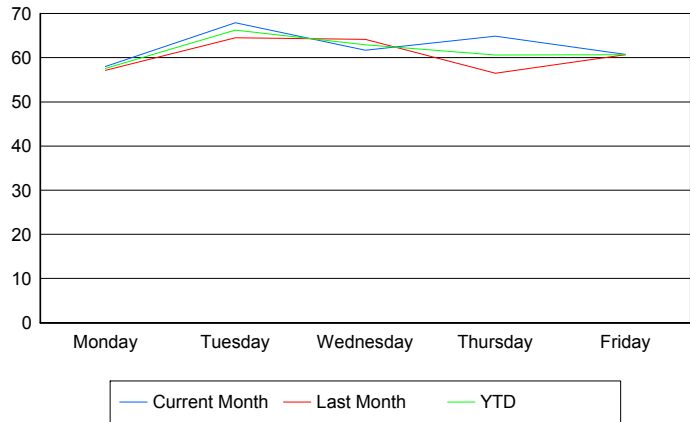
	Current Mo	Last Month	YTD
1PM-2PM	93	91	184
	97	93	190
	111	99	210
2PM-3PM	85	103	188
	92	105	197
	99	107	206
3PM-4PM	87	90	177
	91	93	184
	95	95	190
4PM-5PM	99	116	215
	101	122	223
	104	127	231
5PM-6PM	93	75	168
	93	79	172
	99	84	183
6PM-7PM	80	72	152
	82	73	155
	84	75	159
7PM-8PM	3	1	4
	3	1	4
	4	1	5
10PM-11PM	1	0	1
	1	0	1
	1	0	1

Road Ranger / SIRV Performance By Day of Week

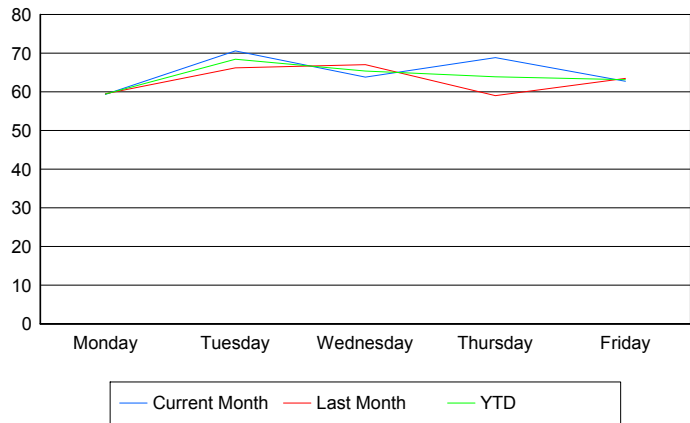
Values presented are:
 - Total Events with a RR/SIRV Response
 - Total RR/SIRV Responses,
 - Total Activities Performed

	Current Mo	Last Month	YTD
Monday	229	224	453
	234	233	467
	244	250	494
Tuesday	265	254	519
	275	260	535
	290	276	566
Wednesday	244	254	498
	252	265	517
	273	282	555
Thursday	258	272	530
	274	285	559
	294	303	597
Friday	240	301	541
	247	314	561
	265	332	597

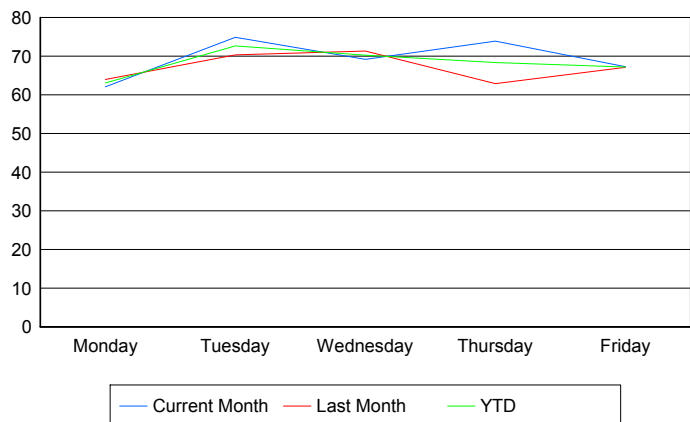
Avg # of events with a RR/SIRV Response per Day of the Week



Avg # of RR/SIRV Responses per Day of the Week



Avg # of RR/SIRV Activities Performed per Day of the Week



Road Ranger / SIRV Responses per Time of Day and Day of Week

