



Monthly Performance Measures Report Palm Beach County



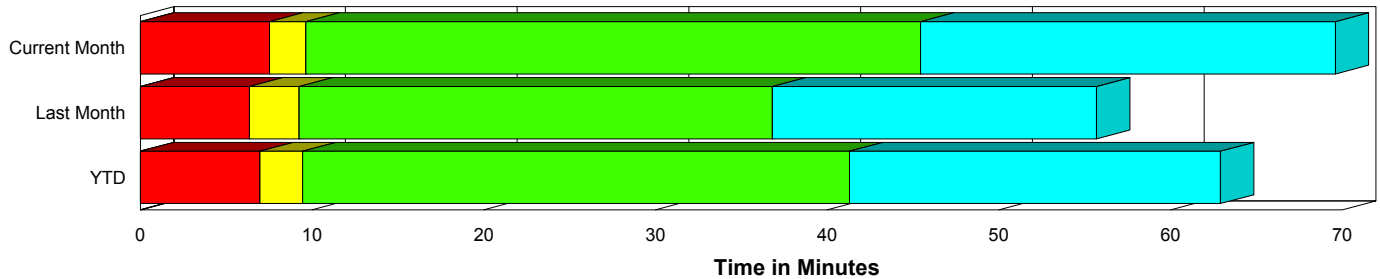
Created on:
March 01, 2010
9:17 am

Period From Feb 1, 2010 to Feb 28, 2010

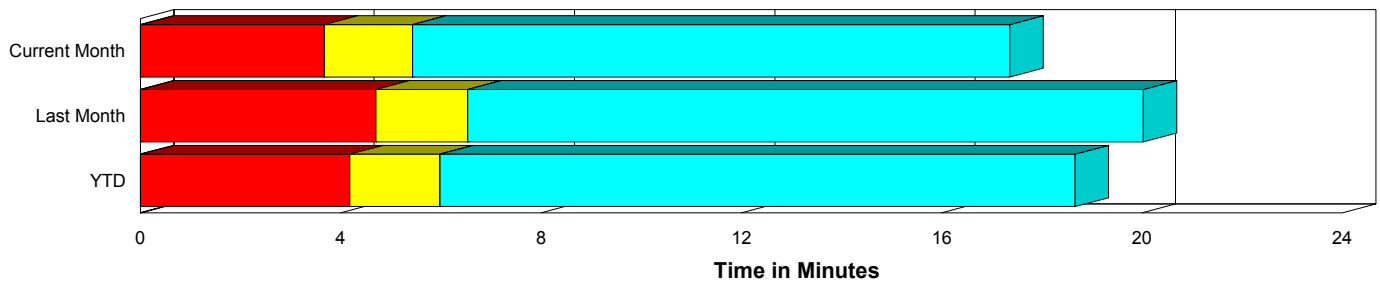
Performance Measures Summary

	Traffic Events (No Lanes Blocked)			Incidents (Lanes Blocked)		
	<u>This Month</u>	<u>Last Month</u>	<u>YTD</u>	<u>This Month</u>	<u>Last Month</u>	<u>YTD</u>
Number of Events	1,797	1,759	3,556	100	92	192
TMC Detection (min.)	0.00	0.00	0.00	0.00	0.00	0.00
TMC Verification (min.)	3.67	4.71	4.18	7.52	6.36	6.97
TMC Response (min.)	5.88	6.80	6.34	9.95	9.40	9.69
RR Dispatch Time (min.)	1.77	2.61	2.19	2.70	1.78	2.26
RR Response Time (min.)	4.19	4.21	4.20	7.23	7.62	7.42
Roadway Clearance (min.)				44.28	38.22	41.38
Event Clearance (min.)	17.80	20.29	19.03	68.39	57.07	62.97
# of Events w/ RR/SIRV	1,701	1,710	3,411	97	90	187
RR/SIRV Responses	1,701	1,710	3,411	97	90	187
RR/SIRV Activities	1,764	1,831	3,595	125	117	242

Incident Clearance Time-Line



Traffic Event (Non-Lane Blockage) Time-Line



■ Avg. TMC Detection Time	■ Avg. Time from TMC Response to Roadway Clearance*
■ Avg. Time from TMC Detection to TMC Verification	■ Avg. Time from Roadway Clearance to Incident/Event Clearance**
■ Avg. Time from TMC Verification to TMC Response	

* Roadway clearance equals all travel lanes open

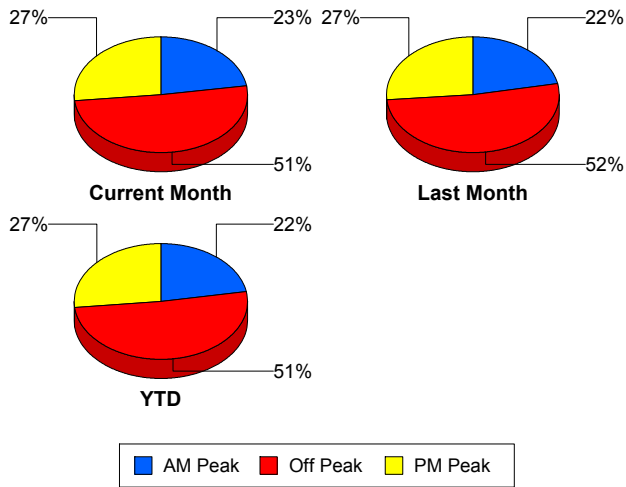
** Incident clearance equals time when last responder has left the scene

Performance Measures by Peak Period

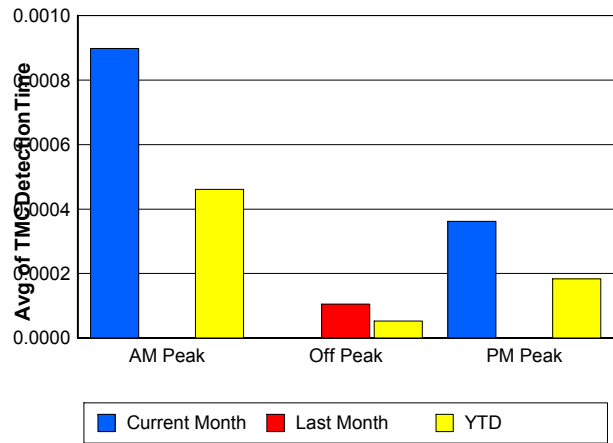
Note: AM peak period is defined as 6am to 10am and PM peak period is defined as 3pm to 7pm.

	AM Peak			Off Peak			PM Peak		
	<u>Current Month</u>	<u>Last Month</u>	<u>YTD</u>	<u>Current Month</u>	<u>Last Month</u>	<u>YTD</u>	<u>Current Month</u>	<u>Last Month</u>	<u>YTD</u>
Number of Events	427	404	831	964	956	1,920	506	491	997
Number of Incidents	22	26	48	49	43	92	29	23	52
TMC Detection (min.)	0.00	0.00	0.00	0.00	0.00	0.00	0.00	0.00	0.00
TMC Verification (min.)	2.34	3.74	3.02	4.03	5.16	4.59	4.89	4.93	4.91
TMC Response (min.)	4.14	5.99	5.07	6.53	7.88	7.23	6.88	5.83	6.36
RR Dispatch Time (min.)	1.11	1.16	1.14	1.75	3.54	2.66	2.50	1.82	2.17
RR Response Time (min.)	3.14	4.84	3.99	4.87	4.41	4.63	4.40	3.99	4.19
Event Clearance (min.)	21.08	20.86	20.97	20.55	23.57	22.05	19.77	20.33	20.04
Roadway Clearance (min.)	37.67	39.74	38.79	55.47	38.85	47.70	30.40	35.34	32.58
Incident Clearance (min.)	78.08	60.65	68.64	71.85	58.08	65.42	55.20	51.12	53.40
# of Events w/ RR/SIRV	397	392	789	908	933	1,841	493	475	968
RR/SIRV Responses	397	392	789	908	933	1,841	493	475	968
RR/SIRV Activities	421	419	840	954	1,013	1,967	514	516	1,030

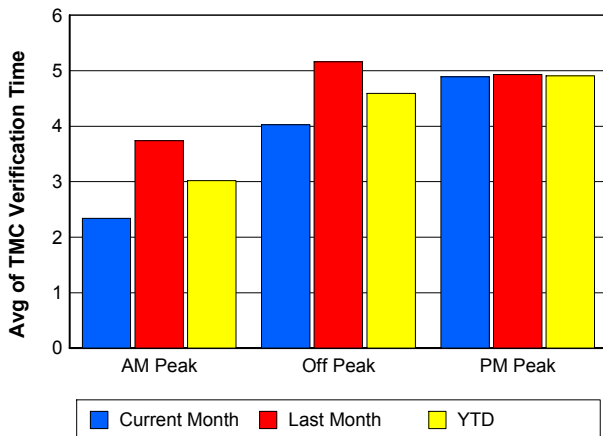
Number of Events / Peak Period



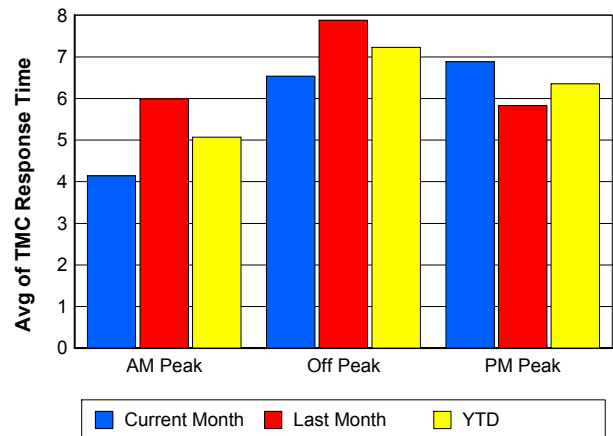
TMC Detection Time



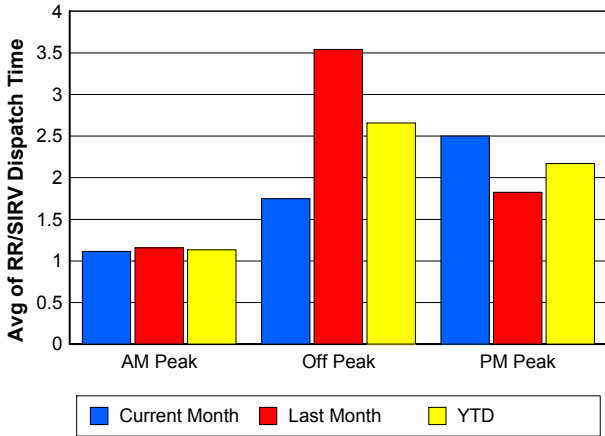
TMC Verification Time



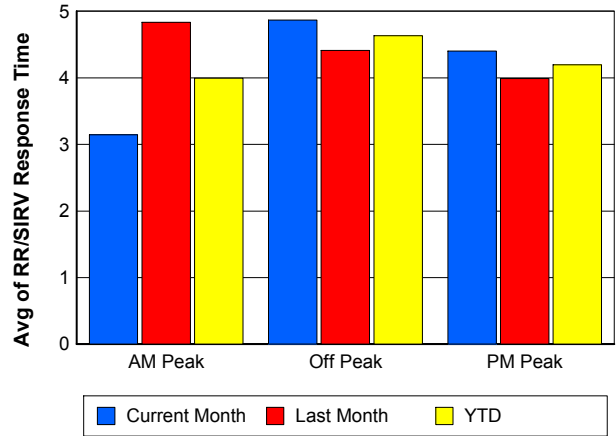
TMC Response Time



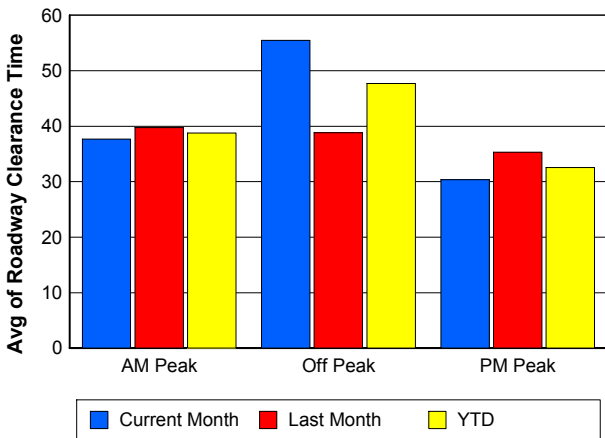
Road Ranger / SIRV Dispatch Time



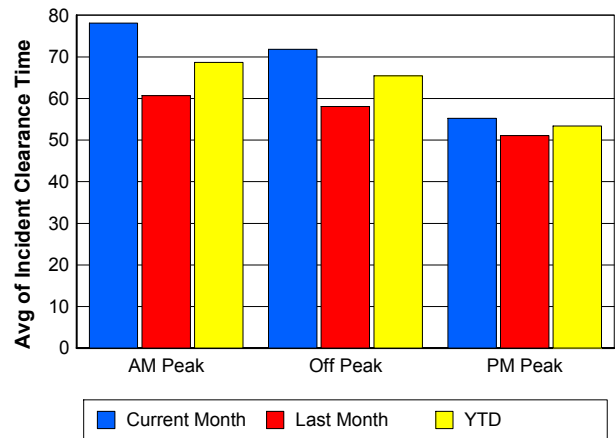
Road Ranger / SIRV Response Time



Roadway Clearance Time (2A)



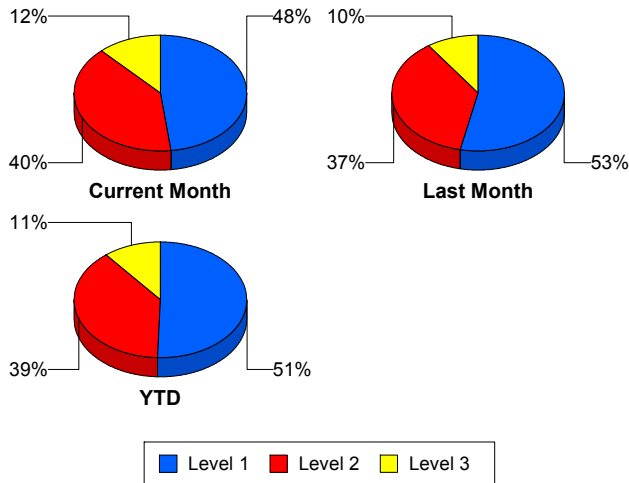
Incident Clearance Time (3B)



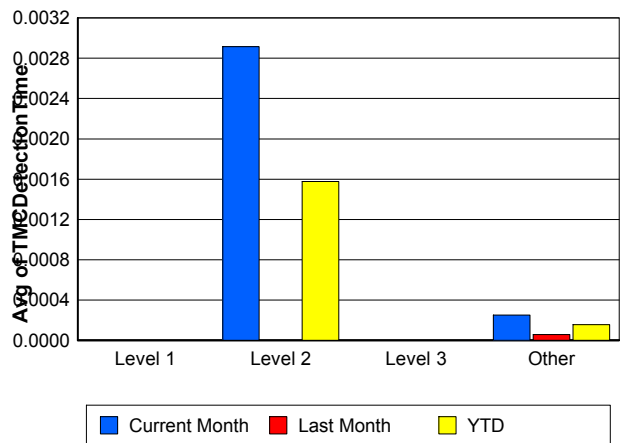
Performance Measures by Severity

	Level 1			Level 2			Level 3			Other		
	<u>This Month</u>	<u>Last Month</u>	<u>YTD</u>	<u>This Month</u>	<u>Last Month</u>	<u>YTD</u>	<u>This Month</u>	<u>Last Month</u>	<u>YTD</u>	<u>This Month</u>	<u>Last Month</u>	<u>YTD</u>
Number of Events	48	49	97	40	34	74	12	9	21	1,797	1,759	3,556
Number of Incidents	48	49	97	40	34	74	12	9	21	0	0	0
TMC Detection (min.)	0.00	0.00	0.00	0.00	0.00	0.00	0.00	0.00	0.00	0.00	0.00	0.00
TMC Verification (min.)	3.51	3.30	3.41	12.21	11.22	11.75	7.97	4.64	6.54	3.67	4.71	4.18
TMC Response (min.)	5.74	5.40	5.57	14.42	15.10	14.73	10.96	8.70	10.01	5.88	6.80	6.34
RR Dispatch Time (min.)	0.77	0.84	0.81	4.36	3.25	3.85	4.75	1.11	3.22	1.77	2.61	2.19
RR Resp. Time (min.)	4.97	4.57	4.77	10.05	11.85	10.88	6.20	7.58	6.78	4.19	4.21	4.20
Event Clearance (min.)	49.91	41.18	45.50	72.24	67.33	69.99	129.51	104.82	118.93	17.80	20.29	19.03
Roadway Clear. (min.)	13.96	15.94	14.96	59.87	55.78	57.99	113.65	93.20	104.89			
Incident Clearance (min.)	49.91	41.18	45.50	72.24	67.33	69.99	129.51	104.82	118.93			
# of Events w/ RR/SIRV	46	48	94	40	34	74	11	8	19	1,701	1,710	3,411
RR/SIRV Responses	46	48	94	40	34	74	11	8	19	1,701	1,710	3,411
RR/SIRV Activities	55	55	110	55	50	105	15	12	27	1,764	1,831	3,595

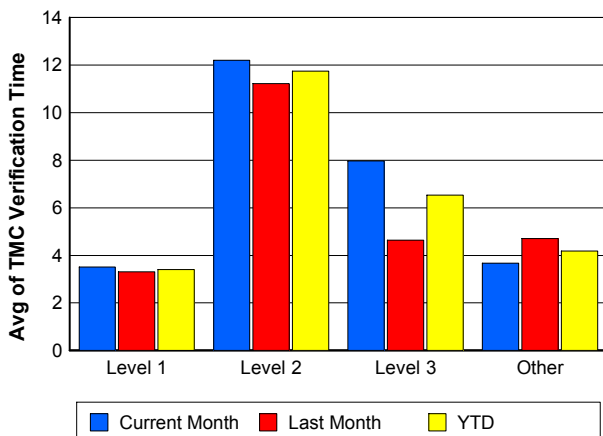
Number of Events / Severity



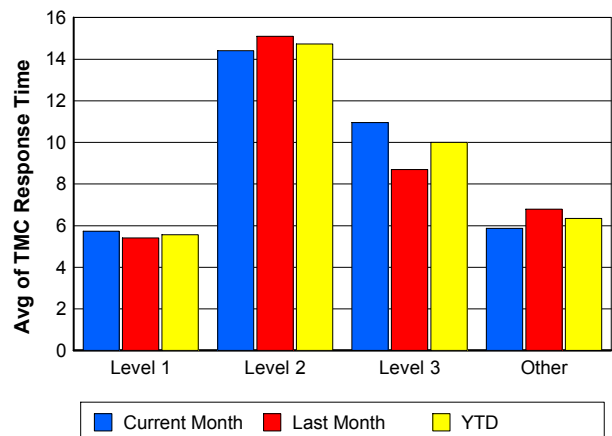
TMC Detection Time



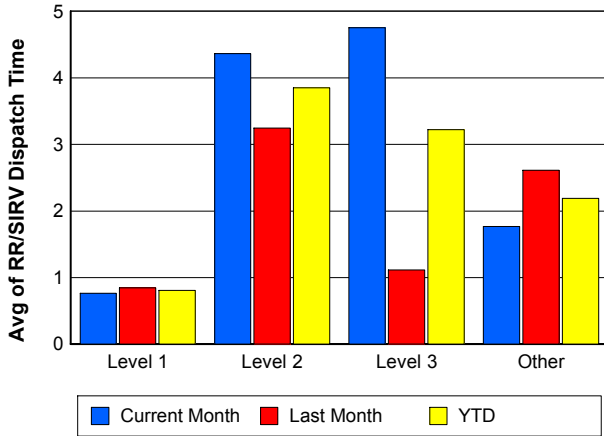
TMC Verification Time



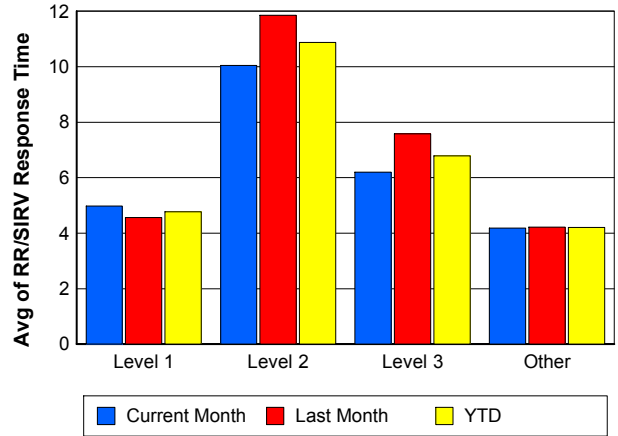
TMC Response Time



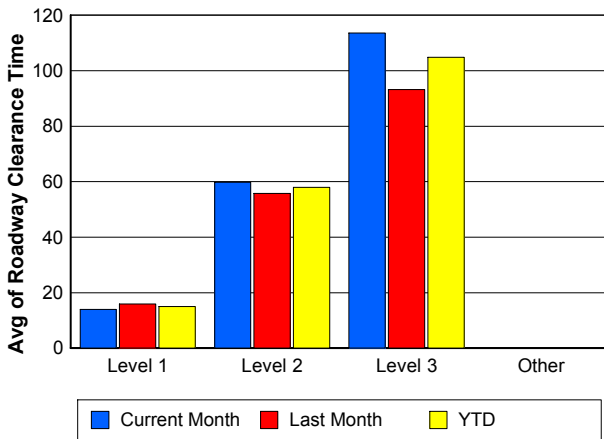
Road Ranger / SIRV Dispatch Time



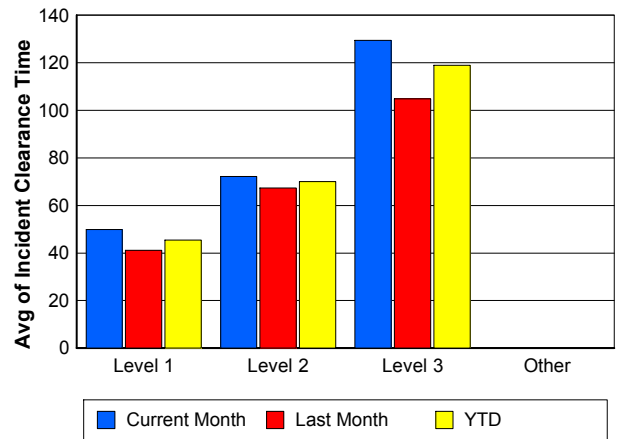
Road Ranger / SIRV Response Time



Roadway Clearance Time (2A)



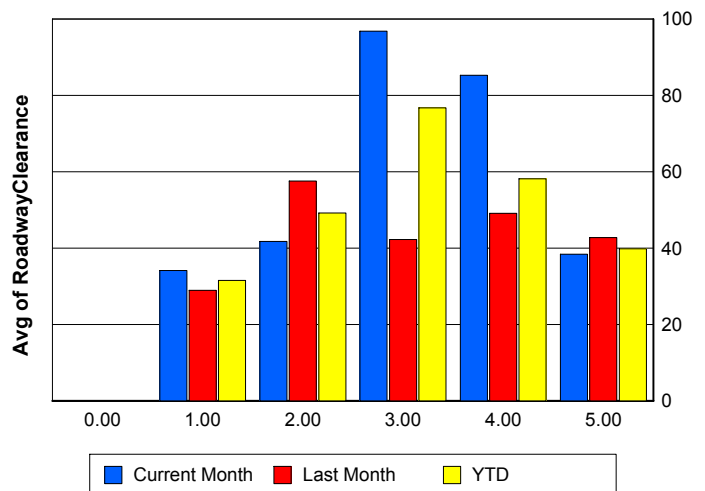
Incident Clearance Time (3B)



Roadway Clearance by Maximum Number of Lanes Blocked

	Current Month	Last Month	YTD
0			
1	34.10	28.94	31.55
2	41.74	57.55	49.18
3	96.79	42.23	76.69
4	85.27	49.11	58.15
5	38.37	42.75	39.83

Roadway Clearance Time (2A)



Performance Measures by Roadway

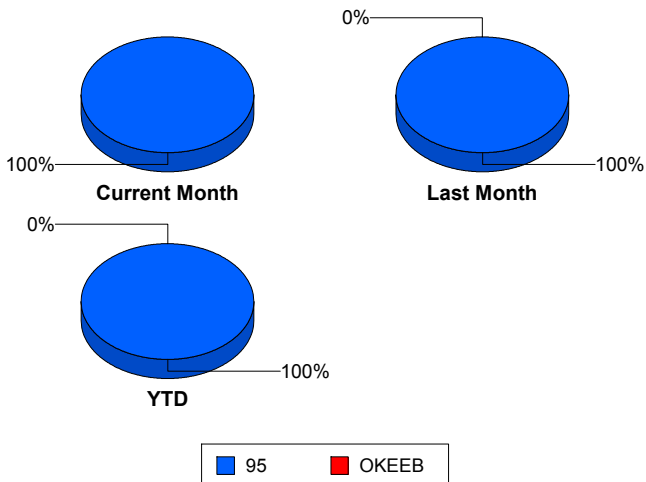
95

	<u>Current Month</u>	<u>Last Month</u>	<u>YTD</u>
Number of Events	1,897	1,850	3,747
Number of Incidents	100	92	192
TMC Detection (min.)	0.00	0.00	0.00
TMC Verification (min.)	3.88	4.79	4.33
TMC Response (min.)	6.11	6.93	6.53
RR Dispatch Time (min.)	1.82	2.57	2.19
RR Resp. Time (min.)	4.36	4.39	4.38
Event Clearance (min.)	20.46	22.12	21.28
Roadway Clear. (min.)	44.28	38.22	41.38
Incident Clearance (min.)	68.39	57.07	62.97
# of Events w/ RR/SIRV	1,798	1,799	3,597
RR/SIRV Responses	1,798	1,799	3,597
RR/SIRV Activities	1,889	1,947	3,836

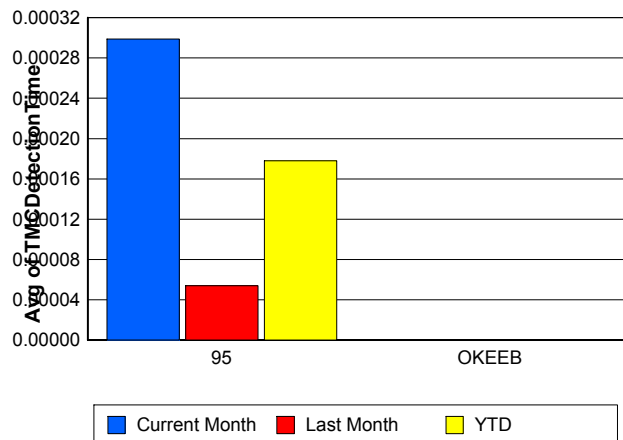
OKEEB

	<u>Last Month</u>	<u>YTD</u>
Number of Events	1	1
Number of Incidents	0	0
TMC Detection (min.)	0.00	0.00
TMC Verification (min.)	0.00	0.00
TMC Response (min.)	0.00	0.00
RR Dispatch Time (min.)	0.00	0.00
RR Resp. Time (min.)	0.00	0.00
Event Clearance (min.)	18.45	18.45
Roadway Clear. (min.)		
Incident Clearance (min.)		
# of Events w/ RR/SIRV	1	1
RR/SIRV Responses	1	1
RR/SIRV Activities	1	1

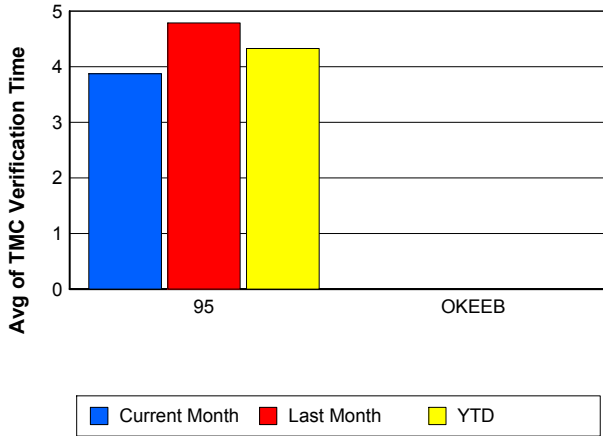
Number of Events / Roadway



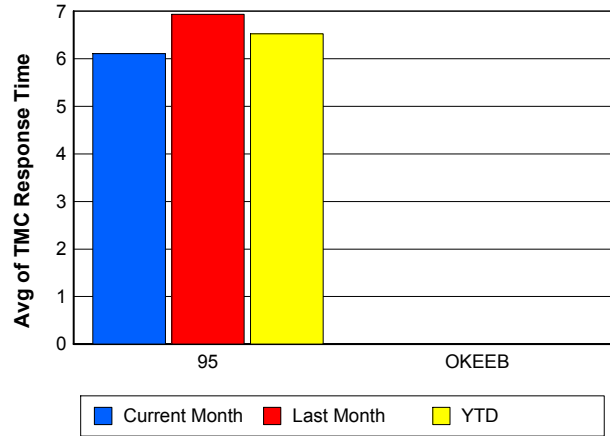
TMC Detection Time



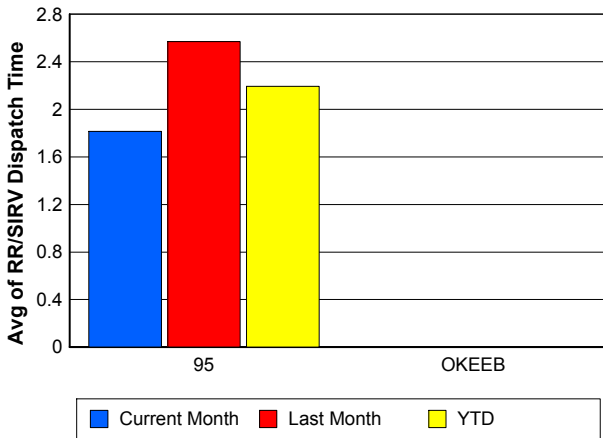
TMC Verification Time



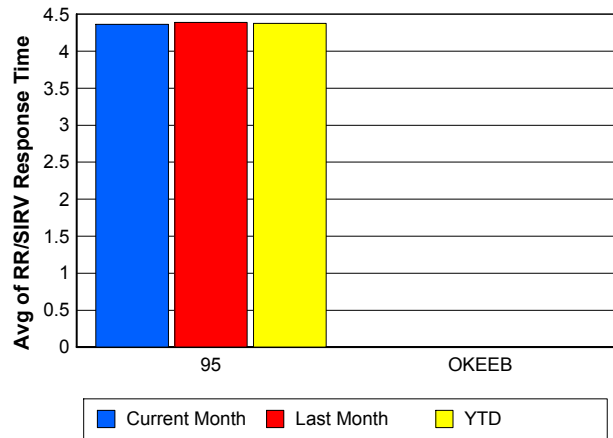
TMC Response Time



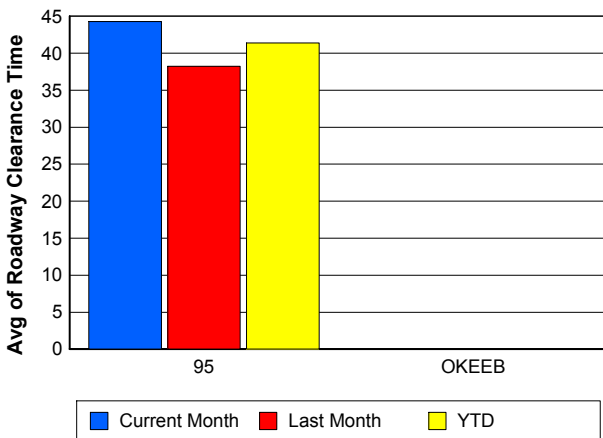
Road Ranger / SIRV Dispatch Time



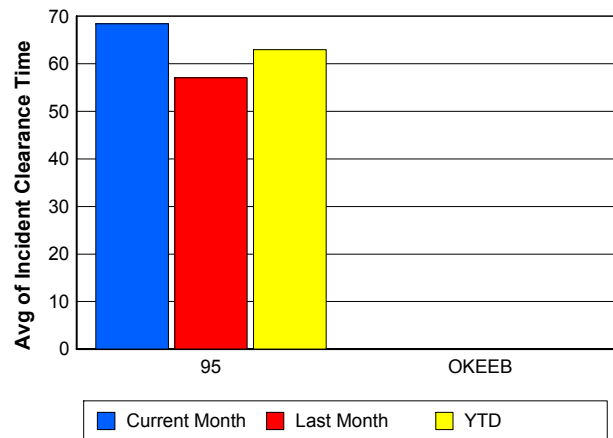
Road Ranger / SIRV Response Time



Roadway Clearance Time (2A)



Incident Clearance Time (3B)



Performance Measures by Event Type

Accident

	<u>Current Month</u>	<u>Last Month</u>	<u>YTD</u>
Number of Events	171	142	313
Number of Incidents	73	62	135
TMC Detection (min.)	0.00	0.00	0.00
TMC Verification (min.)	6.83	8.19	7.45
TMC Response (min.)	9.11	10.90	9.93
RR Dispatch Time (min.)	1.93	2.03	1.97
RR Response Time (min.)	7.20	8.86	7.95
Event Clearance (min.)	59.43	56.01	57.88
Roadway Clearance (min.)	48.36	41.42	45.17
Incident Clearance (min.)	76.68	65.30	71.45
# of Events w/ RR/SIRV	167	139	306
RR/SIRV Assists	167	139	306
RR/SIRV Activities	193	165	358

Debris on Roadway

	<u>Current Month</u>	<u>Last Month</u>	<u>YTD</u>
Number of Events	118	113	231
Number of Incidents	1	3	4
TMC Detection (min.)	0.00	0.00	0.00
TMC Verification (min.)	9.22	7.20	8.23
TMC Response (min.)	9.28	7.33	8.33
RR Dispatch Time (min.)	2.98	2.20	2.60
RR Response Time (min.)	6.27	5.11	5.71
Event Clearance (min.)	13.11	10.47	11.82
Roadway Clearance (min.)	15.02	6.66	8.75
Incident Clearance (min.)	15.60	16.98	16.64
# of Events w/ RR/SIRV	118	111	229
RR/SIRV Assists	118	111	229
RR/SIRV Activities	125	111	236

Disabled Vehicle

	<u>Current Month</u>	<u>Last Month</u>	<u>YTD</u>
Number of Events	1,472	1,506	2,978
Number of Incidents	19	21	40
TMC Detection (min.)	0.00	0.00	0.00
TMC Verification (min.)	3.45	4.53	4.00
TMC Response (min.)	5.35	6.35	5.87
RR Dispatch Time (min.)	1.67	2.64	2.17
RR Response Time (min.)	3.76	3.76	3.76
Event Clearance (min.)	16.76	19.67	18.23
Roadway Clearance (min.)	37.32	26.59	31.69
Incident Clearance (min.)	48.47	36.75	42.32
# of Events w/ RR/SIRV	1,414	1,483	2,897
RR/SIRV Assists	1,414	1,483	2,897
RR/SIRV Activities	1,514	1,625	3,139

Emergency Vehicles

	<u>Current Month</u>	<u>Last Month</u>	<u>YTD</u>
Number of Events	1	3	4
Number of Incidents	1	2	3
TMC Detection (min.)	0.00	0.00	0.00
TMC Verification (min.)	0.00	0.00	0.00
TMC Response (min.)		0.00	0.00
RR Dispatch Time (min.)		0.00	0.00
RR Response Time (min.)		0.00	0.00
Event Clearance (min.)	7.37	84.35	65.10
Roadway Clearance (min.)	7.97	114.12	78.74
Incident Clearance (min.)	7.37	114.93	79.08
# of Events w/ RR/SIRV	0	2	2
RR/SIRV Assists	0	2	2
RR/SIRV Activities	0	2	2

Other

	<u>Current Month</u>	<u>Last Month</u>	<u>YTD</u>
Number of Events	112	71	183
Number of Incidents	1	0	1
TMC Detection (min.)	0.00	0.00	0.00
TMC Verification (min.)	0.00	0.59	0.23
TMC Response (min.)	10.50	13.18	11.67
RR Dispatch Time (min.)	2.36	3.04	2.63
RR Response Time (min.)	7.38	9.20	8.17
Event Clearance (min.)	16.75	19.91	17.98
Roadway Clearance (min.)	8.12		8.12
Incident Clearance (min.)	24.77		24.77
# of Events w/ RR/SIRV	79	51	130
RR/SIRV Assists	79	51	130
RR/SIRV Activities	43	31	74

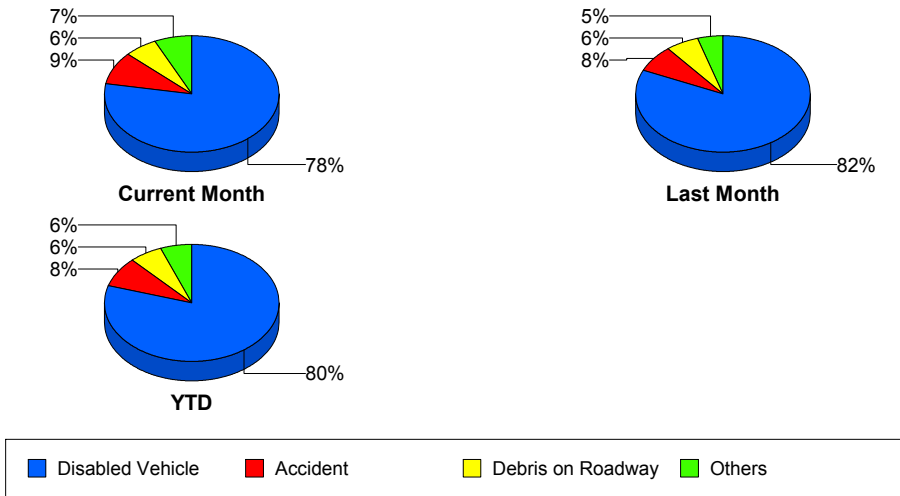
Police Activity

	<u>Current Month</u>	<u>Last Month</u>	<u>YTD</u>
Number of Events	10	9	19
Number of Incidents	1	4	5
TMC Detection (min.)	0.00	0.00	0.00
TMC Verification (min.)	0.00	0.00	0.00
TMC Response (min.)	16.83	21.75	20.52
RR Dispatch Time (min.)	4.19	0.82	2.62
RR Response Time (min.)	15.00	20.96	19.47
Event Clearance (min.)	17.13	46.13	30.87
Roadway Clearance (min.)	11.72	35.54	30.78
Incident Clearance (min.)	15.80	37.33	33.02
# of Events w/ RR/SIRV	8	7	15
RR/SIRV Assists	8	7	15
RR/SIRV Activities	2	6	8

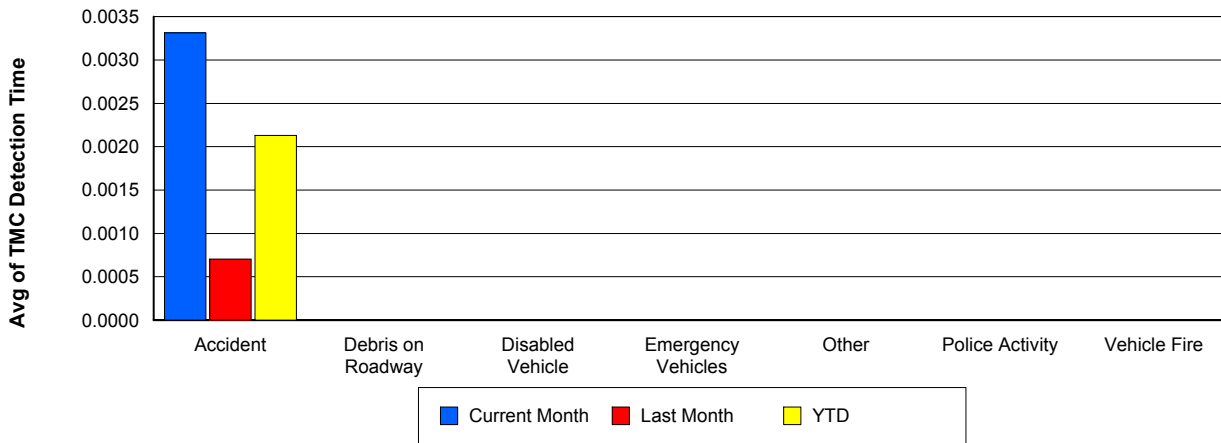
Vehicle Fire

	<u>Current Month</u>	<u>Last Month</u>	<u>YTD</u>
Number of Events	6	2	8
Number of Incidents	4	0	4
TMC Detection (min.)	0.00	0.00	0.00
TMC Verification (min.)	0.70	9.57	3.24
TMC Response (min.)	1.64	9.55	3.90
RR Dispatch Time (min.)	0.69	2.83	1.30
RR Response Time (min.)	0.95	6.72	2.60
Event Clearance (min.)	48.52	23.39	42.24
Roadway Clearance (min.)	36.49		36.49
Incident Clearance (min.)	64.42		64.42
# of Events w/ RR/SIRV	5	2	7
RR/SIRV Assists	5	2	7
RR/SIRV Activities	5	2	7

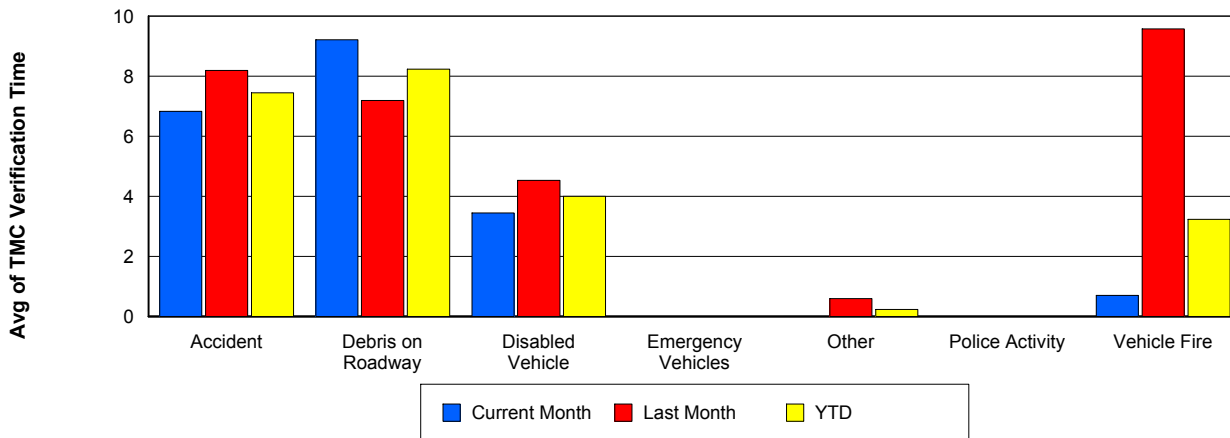
Number of Events / Event Type



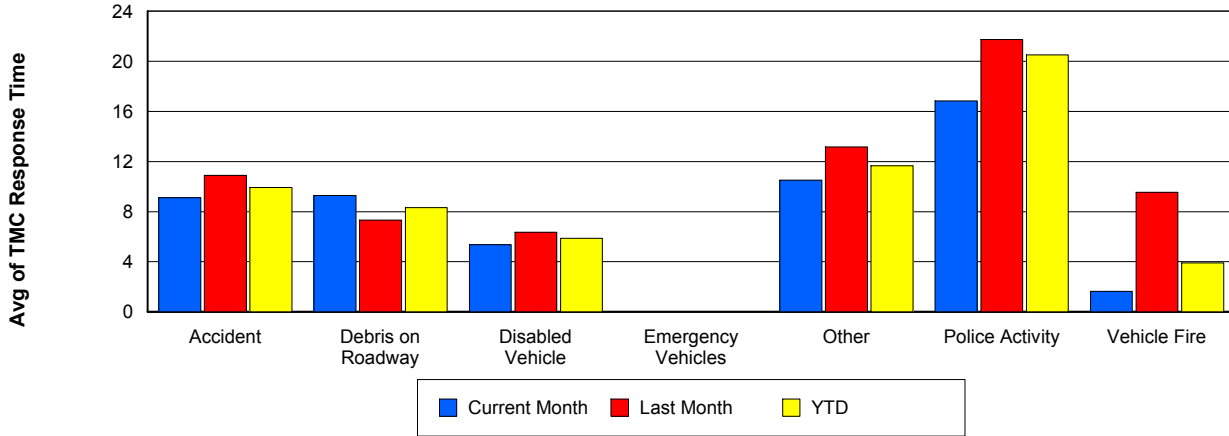
TMC Detection Time



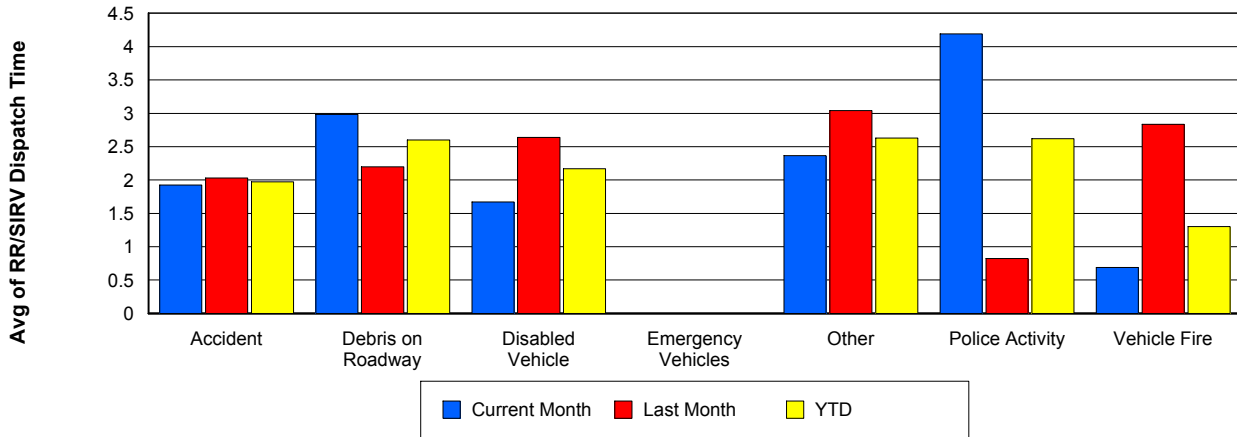
TMC Verification Time



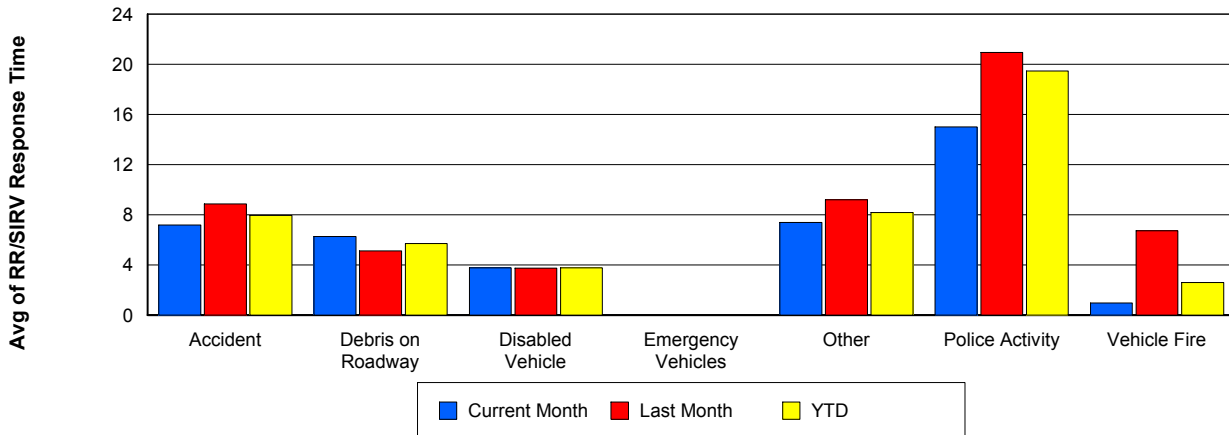
TMC Response Time



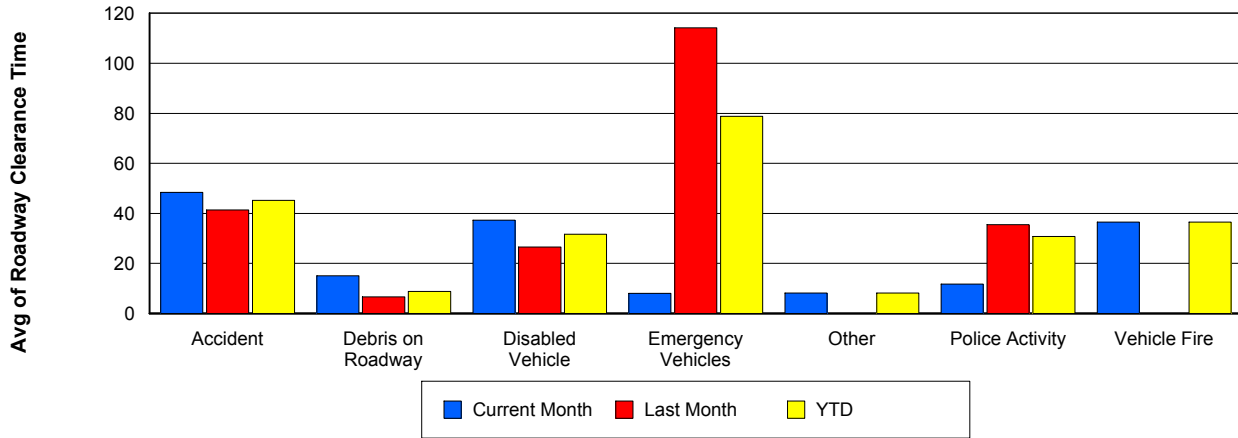
Road Ranger / SIRV Dispatch Time



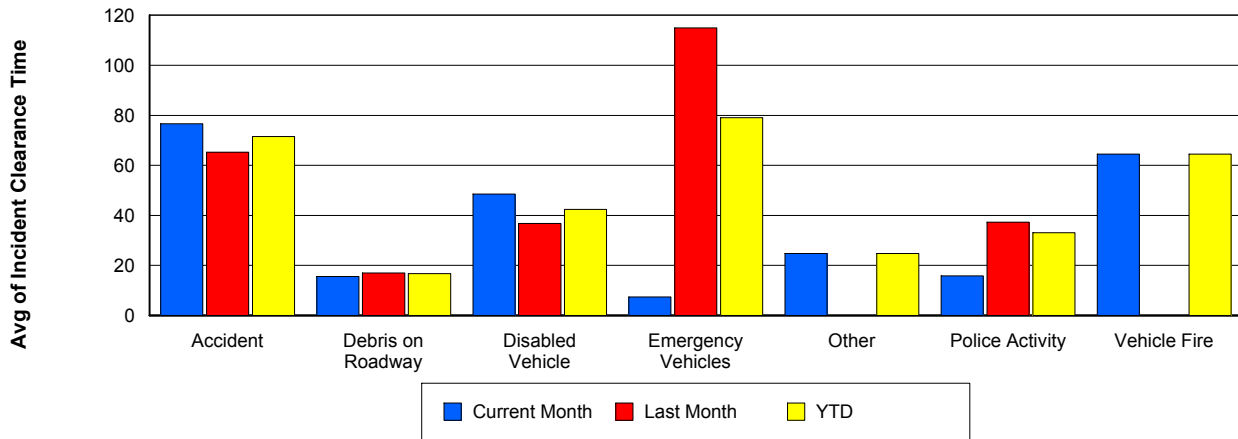
Road Ranger / SIRV Response Time



Roadway Clearance Time (2A)



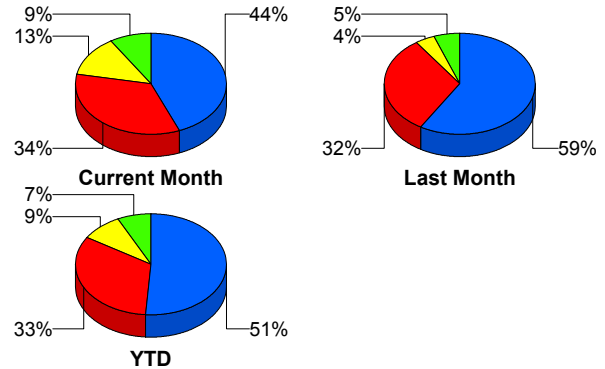
Incident Clearance Time (3B)



Incident Detection Methods

	Current Month	Last Month	YTD
Broward Road Ranger	0	2	2
Broward TMC	3	0	3
District 4	4	1	5
FHP	44	54	98
ITMS CCTV	13	4	17
Motorist	2	2	4
Palm Beach Road Ran	34	29	63
Total	100	92	192

Total Incidents by Detection Method

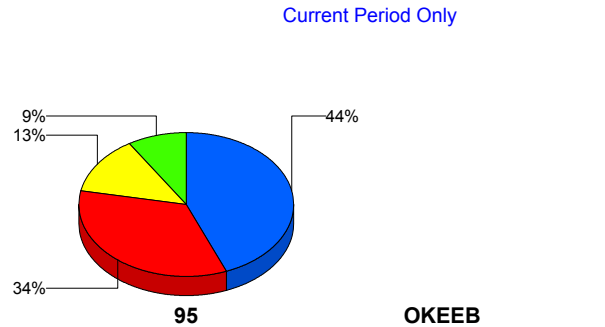


■ FHP
 ■ Palm Beach Road Ranger
 ■ ITMS CCTV
 ■ Others

Incident Detection Methods by Roadway

		Current Month	Last Month	YTD
95	Broward Road Ranger	0	2	2
	Broward TMC	3	0	3
	District 4	4	1	5
	FHP	44	54	98
	ITMS CCTV	13	4	17
	Motorist	2	2	4
	Palm Beach Road Ran	34	29	63
	Total	100	92	192
Total		100	92	192

Total Events by Roadway and Detection Method

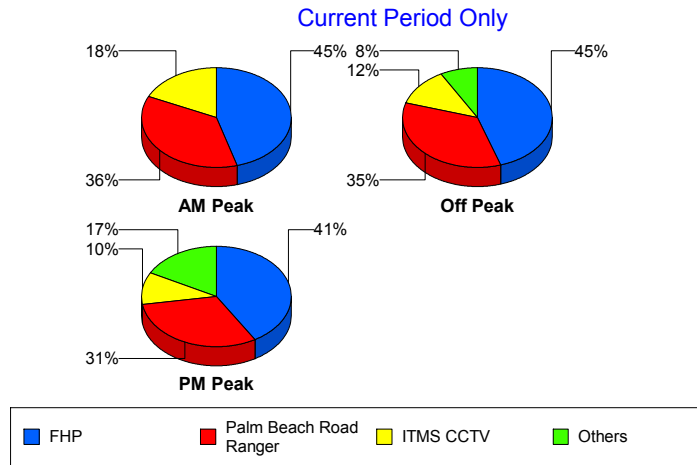


■ FHP
 ■ Palm Beach Road Ranger
 ■ ITMS CCTV
 ■ Others

Incident Detection Methods by Peak Period

		Current Month	Last Month	YTD
AM Peak	Broward Road Ranger	0	1	1
	District 4	0	1	1
	FHP	10	16	26
	ITMS CCTV	4	0	4
	Palm Beach Road Ran	8	8	16
	Total	22	26	48
Off Peak	Broward Road Ranger	0	1	1
	Broward TMC	1	0	1
	District 4	2	0	2
	FHP	22	23	45
	ITMS CCTV	6	4	10
	Motorist	1	1	2
	Palm Beach Road Ran	17	14	31
	Total	49	43	92
PM Peak	Broward TMC	2	0	2
	District 4	2	0	2
	FHP	12	15	27
	ITMS CCTV	3	0	3
	Motorist	1	1	2
	Palm Beach Road Ran	9	7	16
	Total	29	23	52
Total	100	92	192	

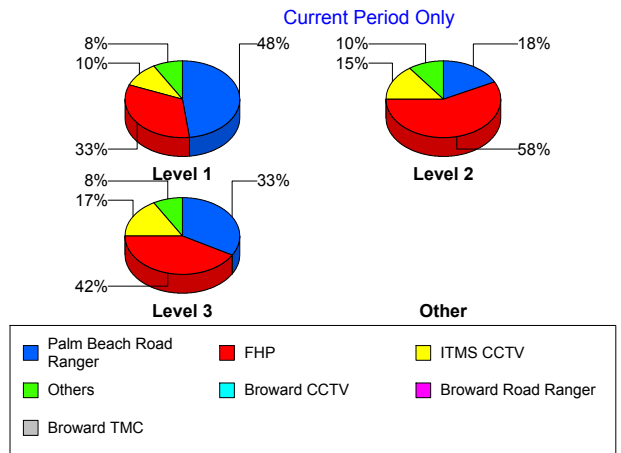
Total Events by Peak Period and Detection Method



Incident Detection Methods by Severity

		Current Month	Last Month	YTD
Level 1	Broward Road Ranger	0	2	2
	Broward TMC	1	0	1
	District 4	2	1	3
	FHP	16	20	36
	ITMS CCTV	5	3	8
	Motorist	1	2	3
	Palm Beach Road Ran	23	21	44
	Total	48	49	97
Level 2	Broward TMC	2	0	2
	District 4	1	0	1
	FHP	23	28	51
	ITMS CCTV	6	1	7
	Motorist	1	0	1
	Palm Beach Road Ran	7	5	12
	Total	40	34	74
Level 3	District 4	1	0	1
	FHP	5	6	11
	ITMS CCTV	2	0	2
	Palm Beach Road Ran	4	3	7
	Total	12	9	21
Total	100	92	192	

Total Events by Severity and Detection Method



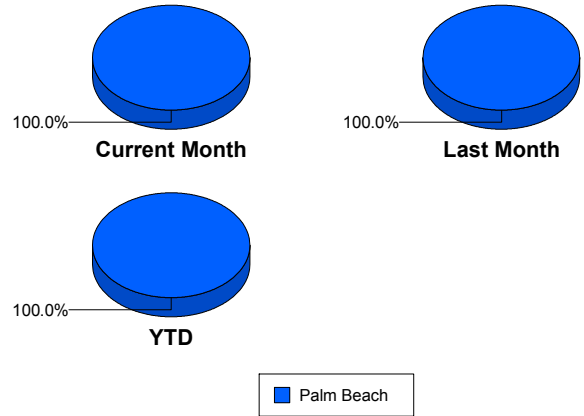
Road Ranger / SIRV Performance Measures

Road Ranger / SIRV Performance By County

Values presented are:
 - Total Events with a RR/SIRV Response
 - Total RR/SIRV Responses,
 - Total Activities Performed

	Current Mo	Last Month	YTD
Palm Beach	2,248	2,391	4,639
	2,332	2,466	4,798
	2,465	2,619	5,084

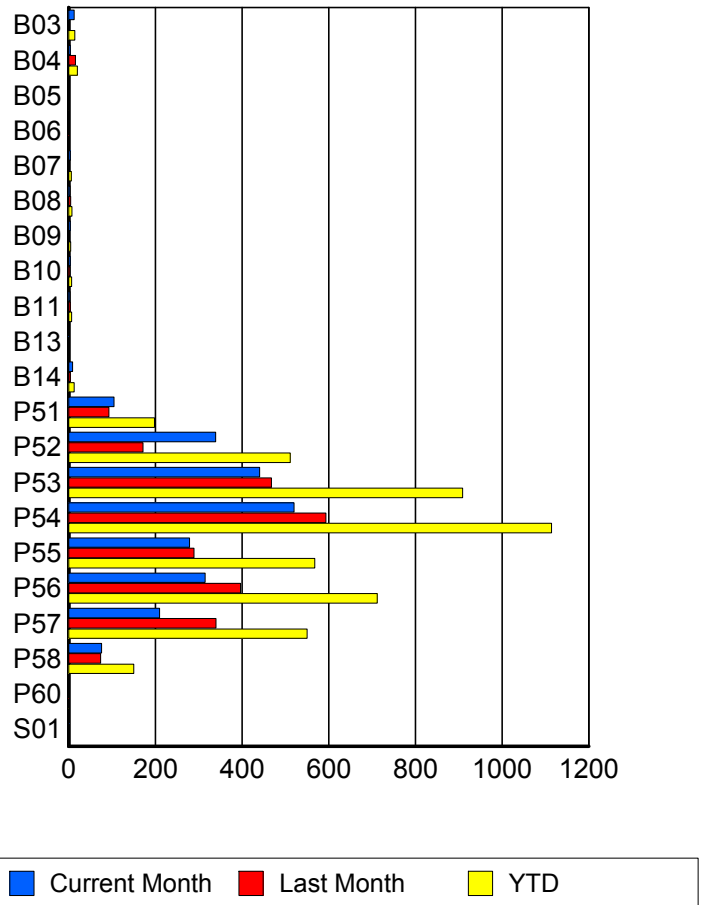
RR/SIRV Responses per County



Road Ranger / SIRV Performance By Truck

	Current Mo	Last Month	YTD
B03	13	1	14
	13	1	14
	14	1	15
B04	4	16	20
	4	16	20
	4	17	21
B05	0	1	1
	0	1	1
	0	1	1
B06	0	1	1
	0	1	1
	0	3	3
B07	4	2	6
	4	2	6
	4	2	6
B08	3	5	8
	3	5	8
	3	5	8
B09	4	1	5
	4	1	5
	5	1	6
B10	4	3	7
	4	3	7
	4	3	7
B11	3	4	7
	3	4	7
	3	4	7

RR/SIRV Responses per Truck



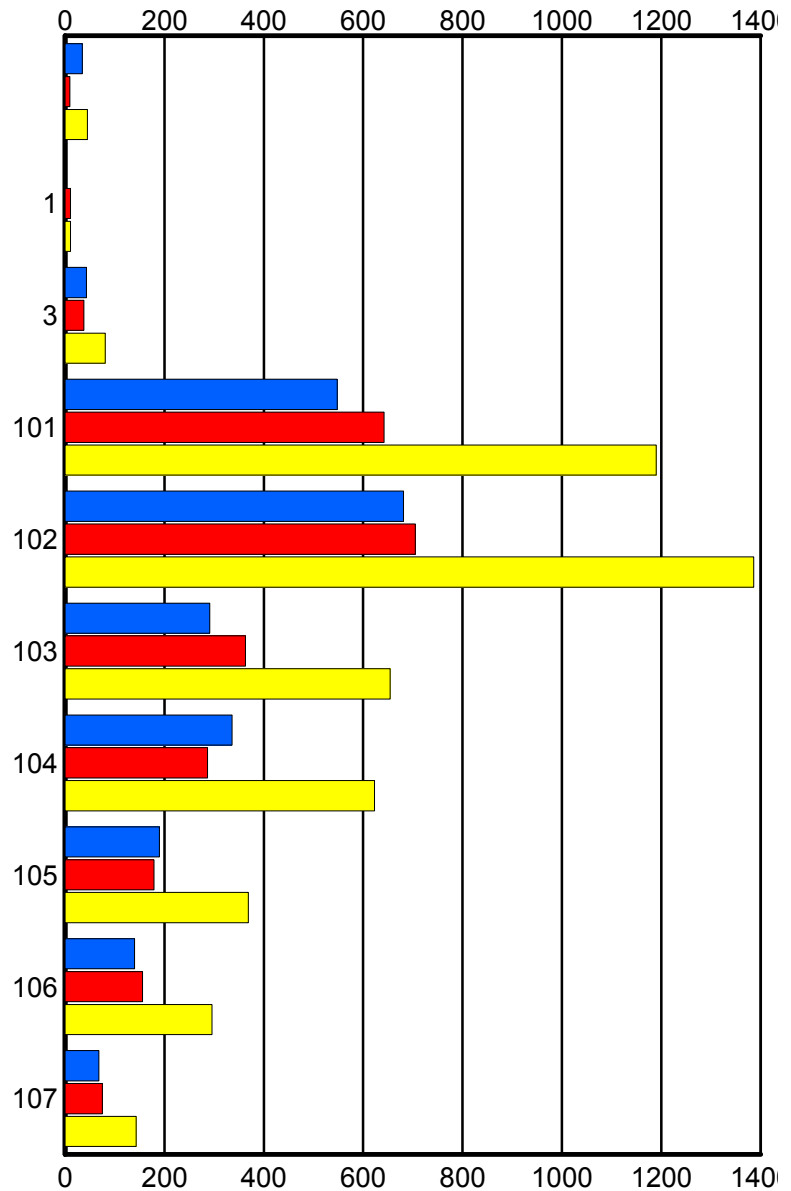
	Current Mo	Last Month	YTD
B13	1	0	1
	1	0	1
	1	0	1
B14	9	4	13
	9	4	13
	9	4	13
P51	104	93	197
	105	93	198
	110	98	208
P52	333	170	503
	339	172	511
	363	184	547
P53	434	464	898
	441	468	909
	458	502	960
P54	516	581	1,097
	520	594	1,114
	558	622	1,180
P55	274	287	561
	279	289	568
	290	304	594
P56	310	392	702
	315	397	712
	337	427	764
P57	208	331	539
	210	340	550
	221	355	576
P58	75	74	149
	76	74	150
	79	85	164
P60	0	1	1
	0	1	1
	0	1	1
S01	2	0	2
	2	0	2
	2	0	2

Road Ranger / SIRV Performance By Beat

	Current Mo	Last Month	YTD
	35	10	45
	35	10	45
	40	10	50
1	0	10	10
	0	11	11
	0	11	11
3	43	37	80
	43	38	81
	45	41	86
101	535	631	1,166
	548	642	1,190
	572	678	1,250
102	671	691	1,362
	681	705	1,386
	716	752	1,468
103	290	360	650
	291	363	654
	311	379	690
104	332	283	615
	336	287	623
	365	303	668
105	187	177	364
	190	179	369
	201	193	394
106	139	152	291
	140	156	296
	144	164	308
107	67	75	142
	68	75	143
	71	88	159

Values presented are:
 - Total Events with a RR/SIRV Response
 - Total RR/SIRV Responses,
 - Total Activities Performed

RR/SIRV Responses per Beat



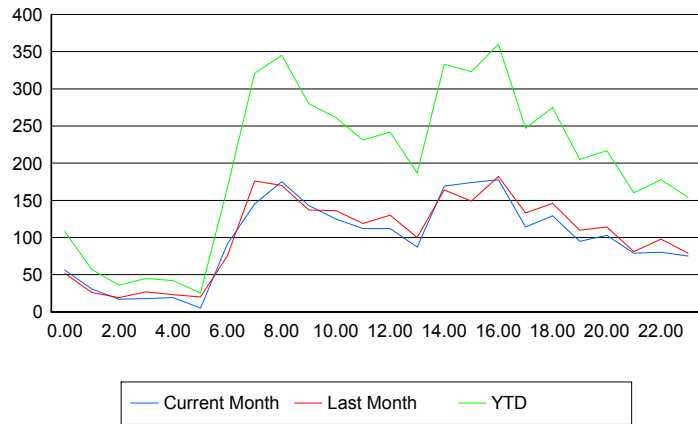
■ Current Month
 ■ Last Month
 ■ YTD

Road Ranger / SIRV Performance By Time of Day

Values presented are:
 - Total Events with a RR/SIRV Response
 - Total RR/SIRV Responses,
 - Total Activities Performed

	Current Mo	Last Month	YTD
12AM-1AM	55	51	106
	56	52	108
	60	58	118
1AM-2AM	30	26	56
	31	26	57
	31	27	58
2AM-3AM	17	18	35
	17	19	36
	18	20	38
3AM-4AM	18	27	45
	18	27	45
	19	29	48
4AM-5AM	19	23	42
	19	23	42
	20	26	46
5AM-6AM	5	14	19
	5	20	25
	5	21	26
6AM-7AM	85	70	155
	91	75	166
	98	81	179
7AM-8AM	142	172	314
	145	176	321
	154	187	341
8AM-9AM	164	164	328
	175	170	345
	181	180	361
9AM-10AM	140	133	273
	143	137	280
	155	143	298
10AM-11AM	119	131	250
	125	136	261
	135	143	278
11AM-12PM	110	114	224
	112	119	231
	120	126	246
12PM-1PM	102	126	228
	112	130	242
	117	135	252

Number of Responses / Hour of the Day



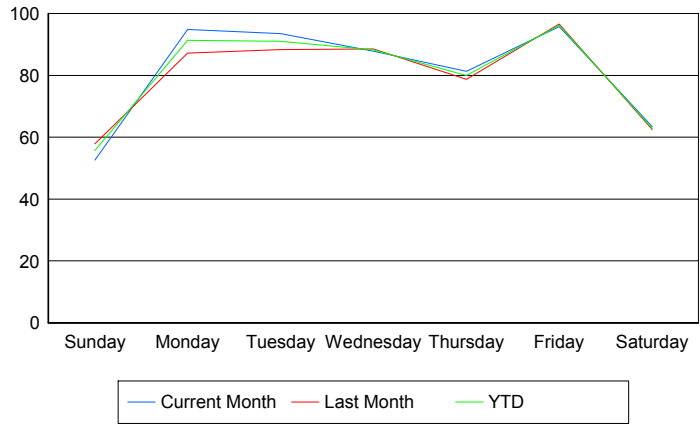
	Current Mo	Last Month	YTD
1PM-2PM	84	94	178
	87	100	187
	90	109	199
2PM-3PM	162	160	322
	169	164	333
	178	172	350
3PM-4PM	170	147	317
	174	149	323
	184	158	342
4PM-5PM	172	174	346
	178	182	360
	191	194	385
5PM-6PM	110	131	241
	114	133	247
	119	145	264
6PM-7PM	127	144	271
	129	146	275
	134	156	290
7PM-8PM	90	108	198
	95	110	205
	97	118	215
8PM-9PM	99	113	212
	103	114	217
	109	118	227
9PM-10PM	76	78	154
	79	81	160
	82	84	166
10PM-11PM	79	95	174
	80	98	178
	87	104	191
11PM-12AM	73	78	151
	75	79	154
	81	85	166

Road Ranger / SIRV Performance By Day of Week

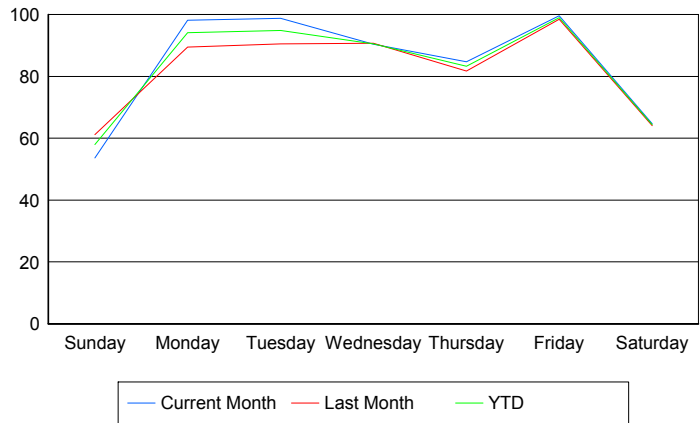
Values presented are:
 - Total Events with a RR/SIRV Response
 - Total RR/SIRV Responses,
 - Total Activities Performed

	Current Mo	Last Month	YTD
Sunday	210	285	495
	214	300	514
	228	315	543
Monday	373	328	701
	386	337	723
	412	356	768
Tuesday	371	351	722
	391	360	751
	416	378	794
Wednesday	349	349	698
	359	357	716
	386	382	768
Thursday	323	313	636
	337	325	662
	354	359	713
Friday	379	458	837
	394	468	862
	405	495	900
Saturday	246	311	557
	251	319	570
	264	334	598

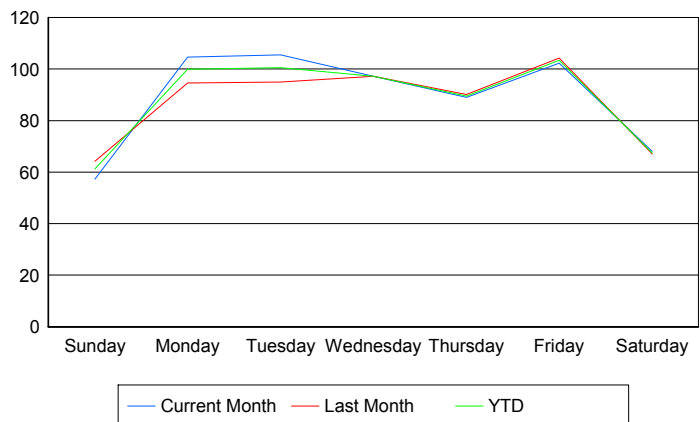
Avg # of events with a RR/SIRV Response per Day of the Week



Avg # of RR/SIRV Responses per Day of the Week



Avg # of RR/SIRV Activities Performed per Day of the Week



Road Ranger / SIRV Responses per Time of Day and Day of Week

