



Monthly Performance Measures Report Palm Beach County



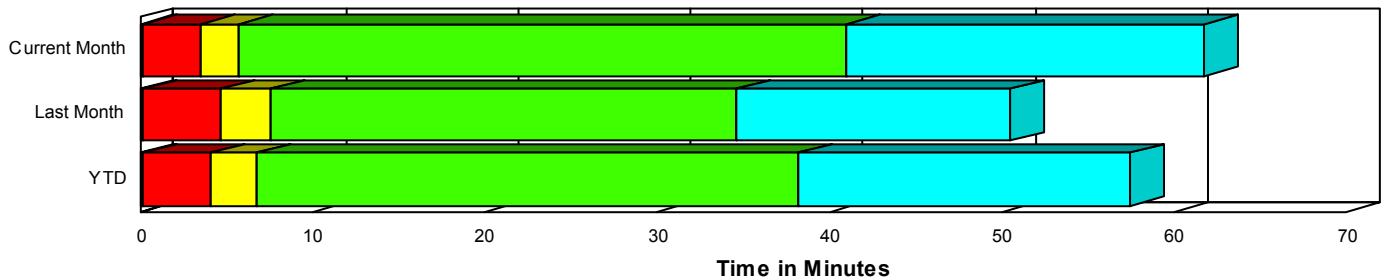
Created on:
April 09, 2008
8:44 am

Period From Mar 1, 2008 to Mar 31, 2008

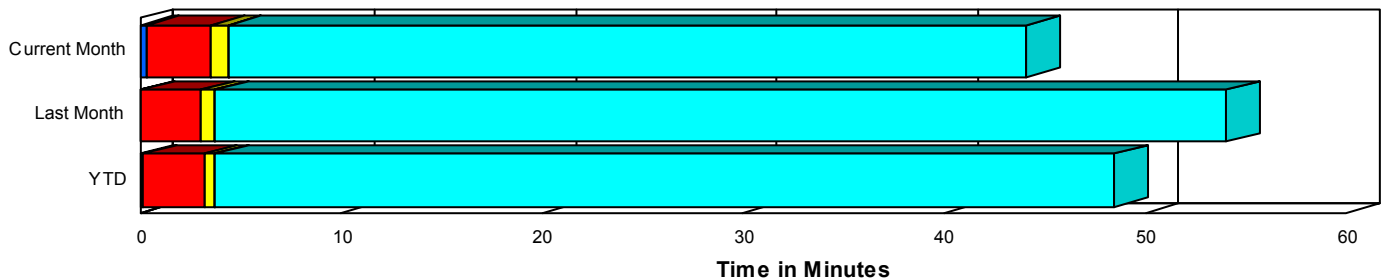
Performance Measures Summary

	Traffic Events (No Lanes Blocked)			Incidents (Lanes Blocked)		
	<u>This Month</u>	<u>Last Month</u>	<u>YTD</u>	<u>This Month</u>	<u>Last Month</u>	<u>YTD</u>
Number of Events	2,506	2,471	7,537	283	195	607
TMC Detection (min.)	0.29	0.08	0.14	0.20	0.16	0.18
TMC Verification (min.)	3.26	2.94	3.05	3.34	4.54	3.94
TMC Response (min.)	4.21	3.82	3.74	5.89	7.57	6.81
RR Dispatch Time (min.)	1.69	1.43	1.30	2.43	2.21	2.18
RR Response Time (min.)	2.55	2.43	2.48	3.60	5.78	4.82
Roadway Clearance (min.)				40.45	33.22	37.39
Event Clearance (min.)	44.22	54.17	48.57	61.17	47.85	56.15
# of Events w/ RR/SIRV	2,421	2,352	7,218	239	176	540
RR/SIRV Responses	2,421	2,390	7,325	239	206	617
RR/SIRV Activities	2,671	2,558	7,867	316	245	745

Incident Clearance TimeLine



Traffic Event (Non-Lane Blockage) Time-Line



■ Avg. TMC Detection Time	■ Avg. Time from TMC Response to Roadway Clearance*
■ Avg. Time from TMC Detection to TMC Verification	■ Avg. Time from Roadway Clearance to Incident/Event Clearance**
■ Avg. Time from TMC Verification to TMC Response	

* Roadway clearance equals all travel lanes open

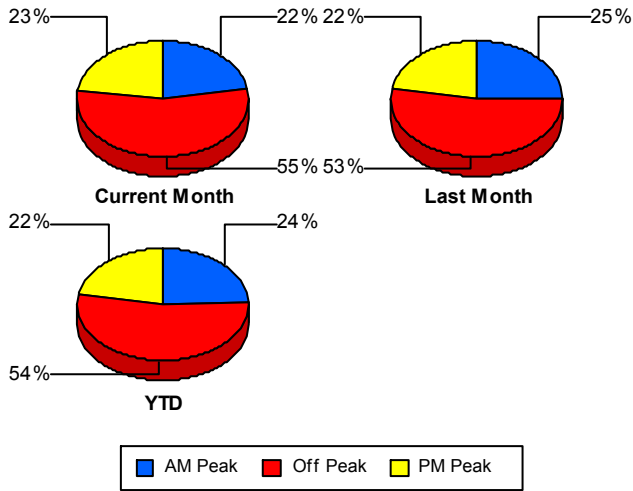
** Incident clearance equals time when last responder has left the scene

Performance Measures by Peak Period

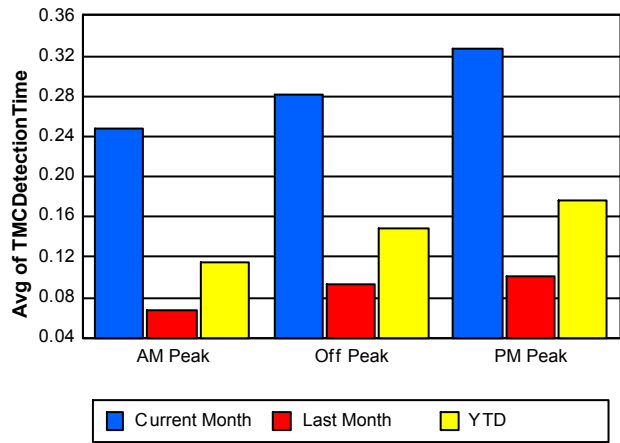
Note: AM peak period is defined as 6am to 10am and PM peak period is defined as 3pm to 7pm.

	AM Peak			Off Peak			PM Peak		
	Current Month	Last Month	YTD	Current Month	Last Month	YTD	Current Month	Last Month	YTD
Number of Events	623	669	1,981	1,525	1,400	4,374	641	597	1,789
Number of Incidents	70	51	160	156	98	316	57	46	131
TMC Detection (min.)	0.25	0.07	0.11	0.28	0.09	0.15	0.33	0.10	0.18
TMC Verification (min.)	3.07	2.17	2.54	3.67	3.40	3.40	2.53	3.26	3.05
TMC Response (min.)	4.53	3.02	3.37	4.75	4.49	4.27	3.31	4.30	3.86
RR Dispatch Time (min.)	2.02	1.44	1.41	1.79	1.36	1.34	1.42	1.84	1.37
RR Response Time (min.)	2.55	1.65	1.99	2.98	3.14	2.96	1.94	2.70	2.58
Event Clearance (min.)	50.17	58.92	49.61	51.24	55.40	55.23	29.20	43.90	33.71
Roadway Clearance (min.)	34.03	23.52	29.30	45.75	36.20	42.07	33.86	37.62	36.00
Incident Clearance (min.)	57.93	39.61	52.48	65.18	52.28	60.39	54.19	47.56	50.39
# of Events w/ RR/SIRV	585	630	1,877	1,450	1,323	4,148	625	575	1,733
RR/SIRV Responses	585	643	1,922	1,450	1,363	4,251	625	590	1,769
RR/SIRV Activities	637	699	2,066	1,664	1,481	4,670	686	623	1,876

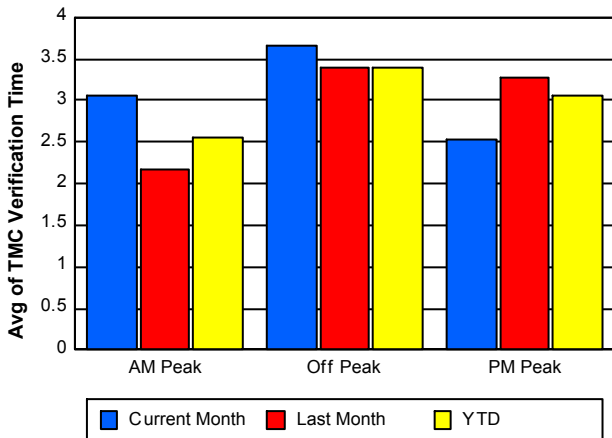
Number of Events / Peak Period



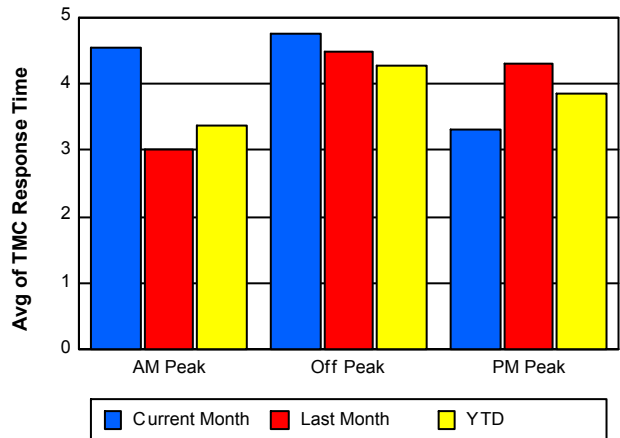
TMC Detection Time



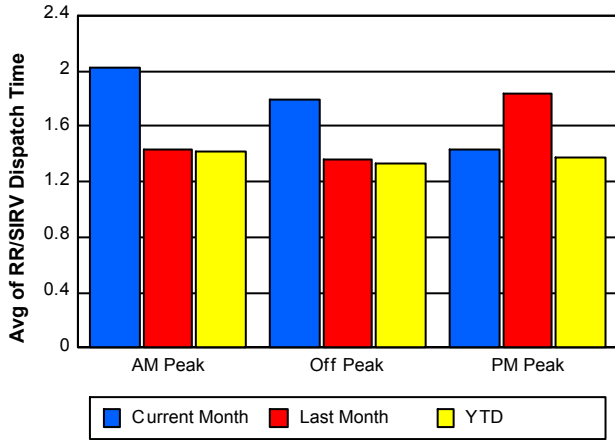
TMC Verification Time



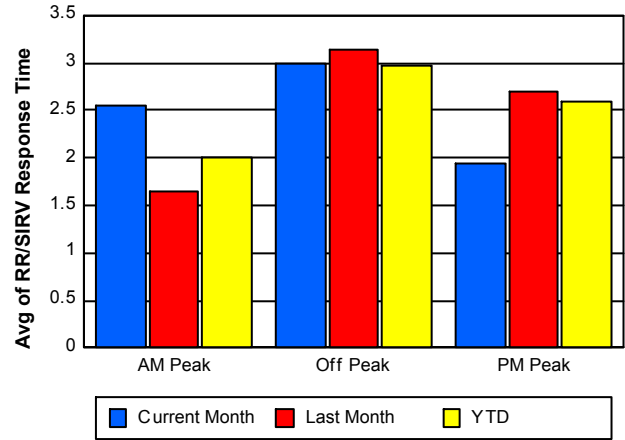
TMC Response Time



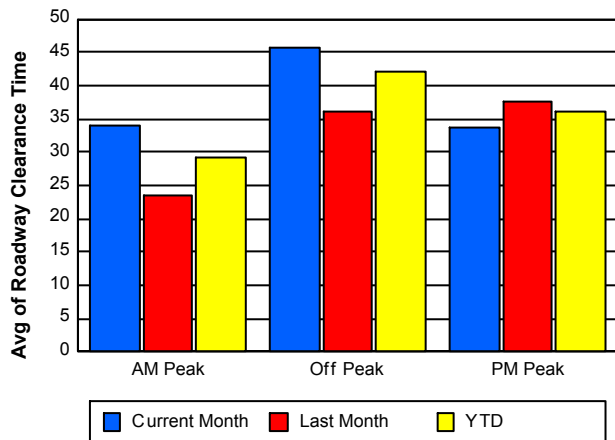
Road Ranger / SIRV Dispatch Time



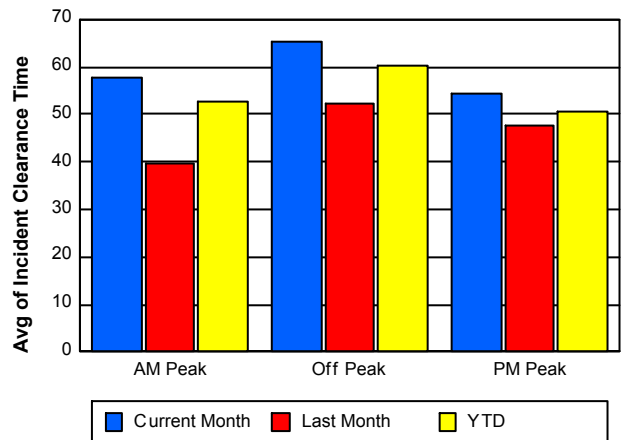
Road Ranger / SIRV Response Time



Roadway Clearance Time (2A)



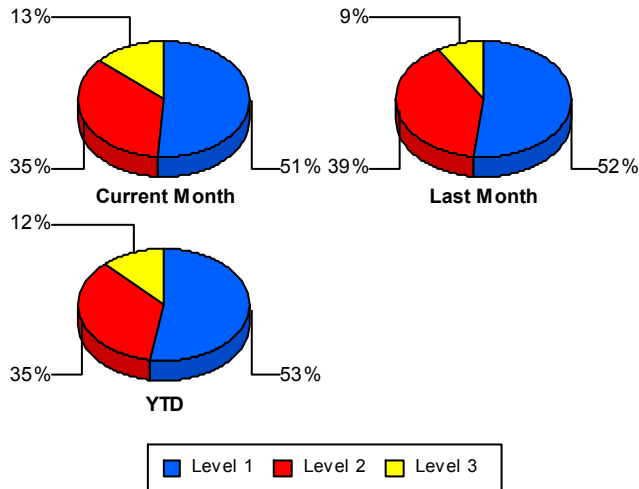
Incident Clearance Time (3B)



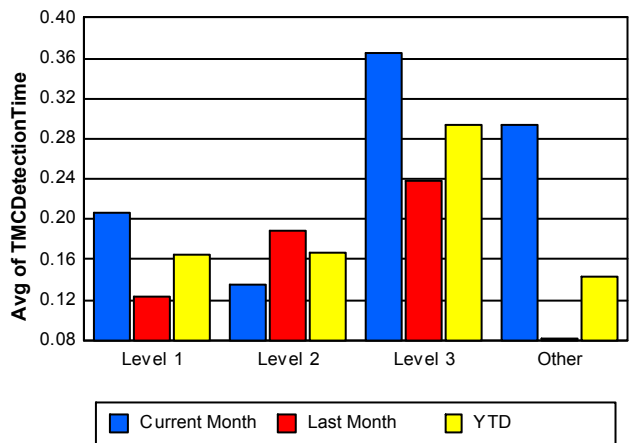
Performance Measures by Severity

	Level 1			Level 2			Level 3			Other		
	<u>This Month</u>	<u>Last Month</u>	<u>YTD</u>	<u>This Month</u>	<u>Last Month</u>	<u>YTD</u>	<u>This Month</u>	<u>Last Month</u>	<u>YTD</u>	<u>This Month</u>	<u>Last Month</u>	<u>YTD</u>
Number of Events	145	101	321	100	77	213	38	17	73	2,506	2,471	7,537
Number of Incidents	145	101	321	100	77	213	38	17	73	0	0	0
TMC Detection (min.)	0.21	0.12	0.16	0.13	0.19	0.17	0.36	0.24	0.29	0.29	0.08	0.14
TMC Verification (min.)	1.54	2.31	2.16	5.84	7.41	6.67	3.62	4.84	3.80	3.26	2.94	3.05
TMC Response (min.)	3.37	3.99	3.84	8.08	10.20	9.54	9.04	15.36	11.16	4.21	3.82	3.74
RR Dispatch Time (min.)	1.98	1.27	1.52	2.96	1.66	2.45	2.62	9.90	4.24	1.69	1.43	1.30
RR Resp. Time (min.)	1.68	2.74	2.44	5.12	8.54	7.09	6.42	9.78	8.04	2.55	2.43	2.48
Event Clearance (min.)	36.81	28.51	33.75	74.92	63.32	69.90	117.98	92.73	114.53	44.22	54.17	48.57
Roadway Clear. (min.)	13.65	11.86	13.07	57.28	54.71	55.37	98.44	62.78	91.86			
Incident Clearance (min.)	36.81	28.51	33.75	74.92	63.32	69.90	117.98	92.73	114.53			
# of Events w/ RR/SIRV	119	87	278	89	74	199	31	15	63	2,421	2,352	7,218
RR/SIRV Responses	119	93	298	89	90	227	31	23	92	2,421	2,390	7,325
RR/SIRV Activities	140	106	339	124	111	288	52	28	118	2,671	2,558	7,867

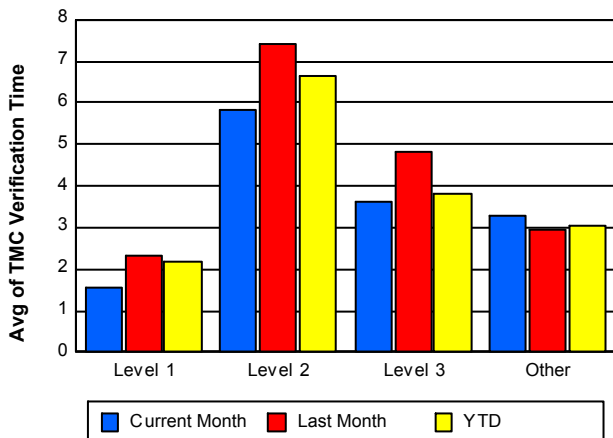
Number of Events / Severity



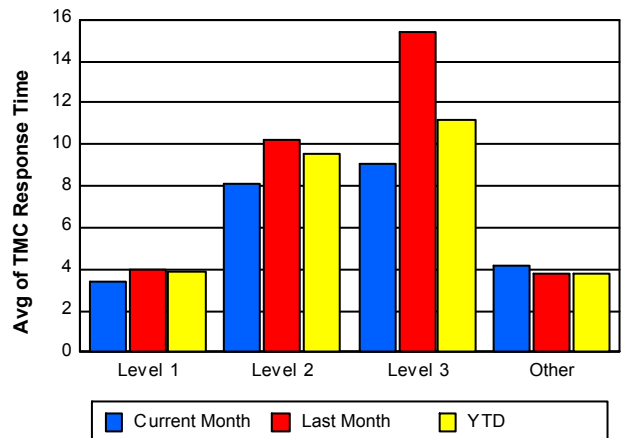
TMC Detection Time



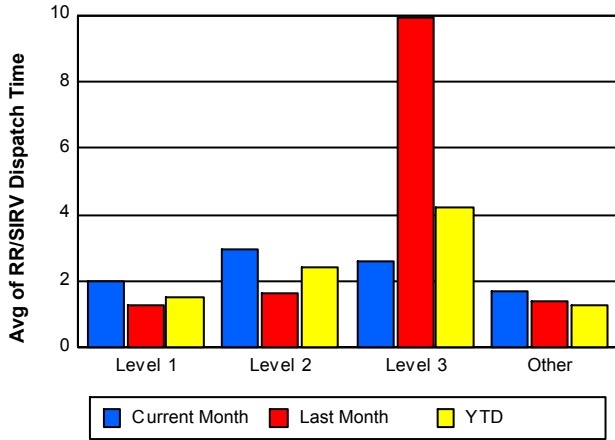
TMC Verification Time



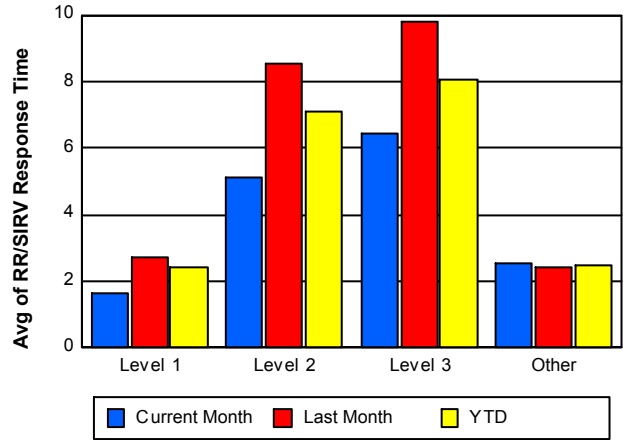
TMC Response Time



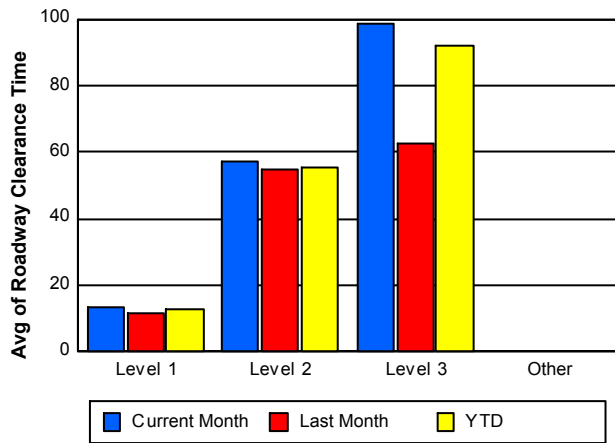
Road Ranger / SIRV Dispatch Time



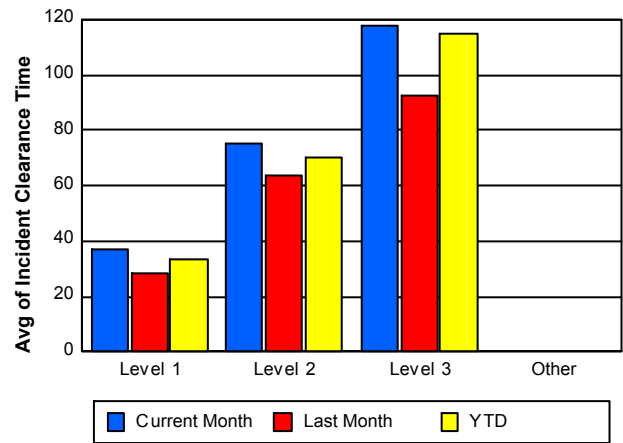
Road Ranger / SIRV Response Time



Roadway Clearance Time (2A)



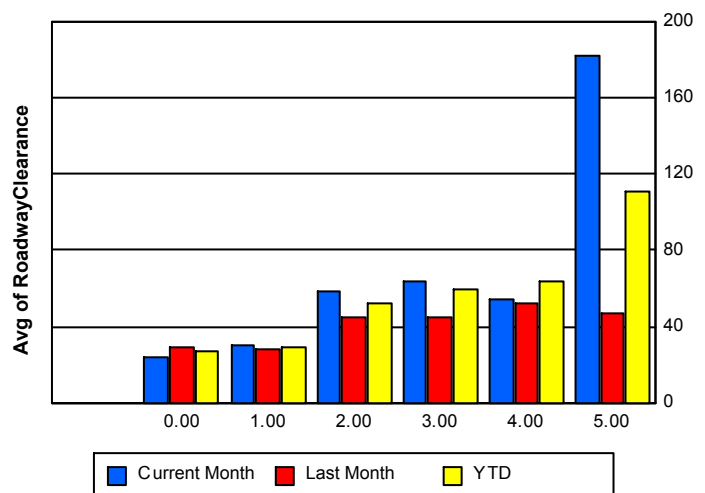
Incident Clearance Time (3B)



Roadway Clearance by Maximum Number of Lanes Blocked

	Current Month	Last Month	YTD
0	23.65	29.18	26.42
1	29.71	27.80	28.97
2	58.12	44.93	51.91
3	63.49	44.59	59.29
4	54.62	51.73	63.93
5	181.77	46.63	111.11

Roadway Clearance Time (2A)

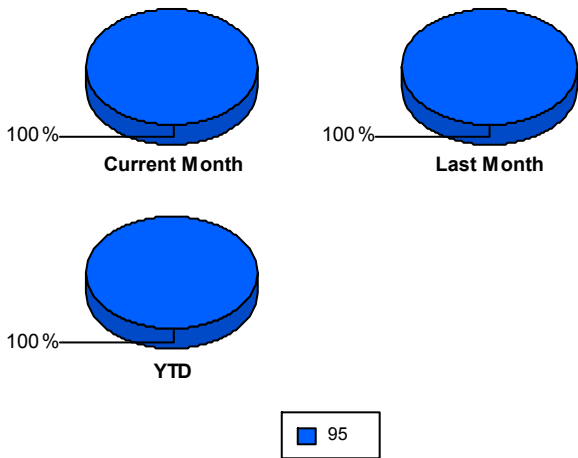


Performance Measures by Roadway

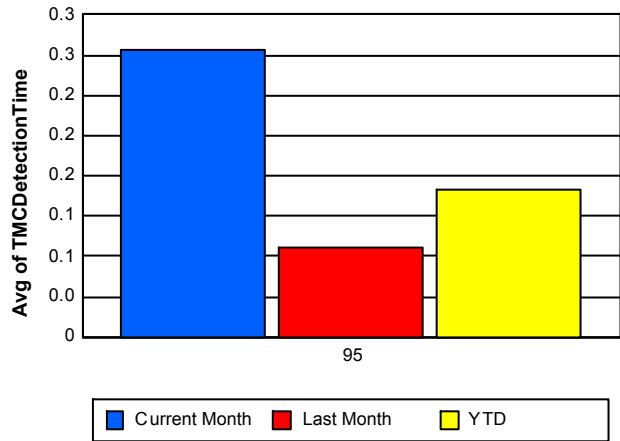
95

	<u>Current Month</u>	<u>Last Month</u>	<u>YTD</u>
Number of Events	2,789	2,666	8,144
Number of Incidents	283	195	607
TMC Detection (min.)	0.28	0.09	0.15
TMC Verification (min.)	3.27	3.06	3.11
TMC Response (min.)	4.36	4.08	3.96
RR Dispatch Time (min.)	1.75	1.49	1.36
RR Resp. Time (min.)	2.65	2.67	2.65
Event Clearance (min.)	45.94	53.71	49.13
Roadway Clear. (min.)	40.45	33.22	37.39
Incident Clearance (min.)	61.17	47.85	56.15
# of Events w/ RR/SIRV	2,660	2,528	7,758
RR/SIRV Responses	2,660	2,596	7,942
RR/SIRV Activities	2,987	2,803	8,612

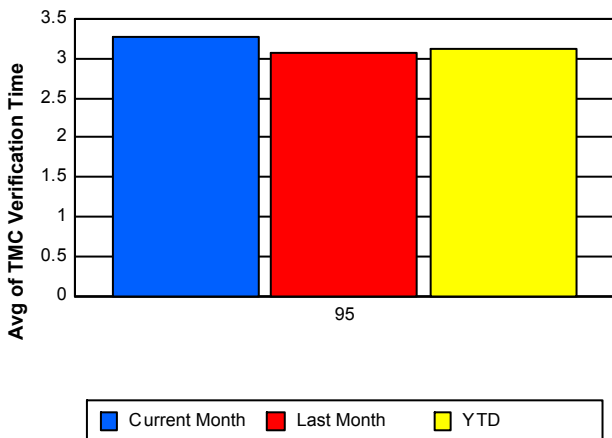
Number of Events / Roadway



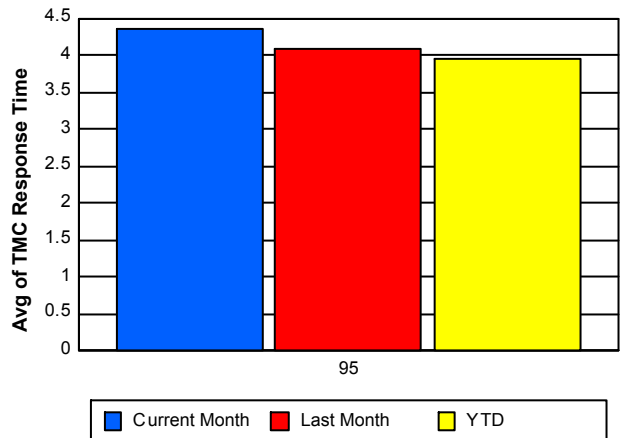
TMC Detection Time



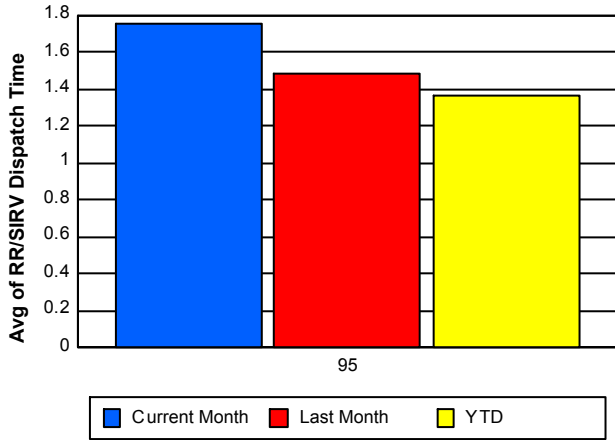
TMC Verification Time



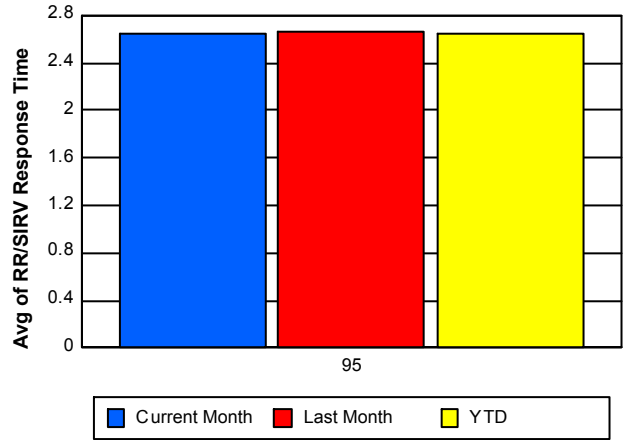
TMC Response Time



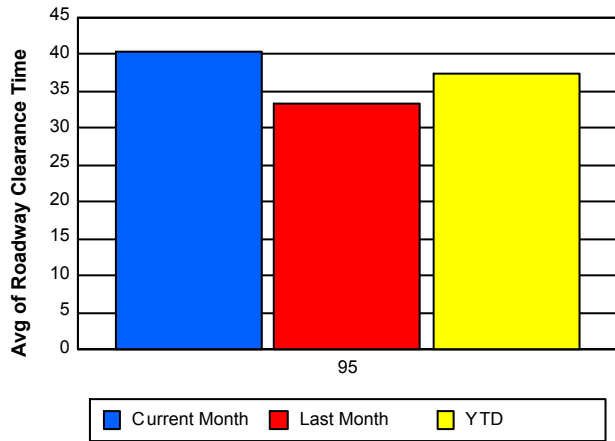
Road Ranger / SIRV Dispatch Time



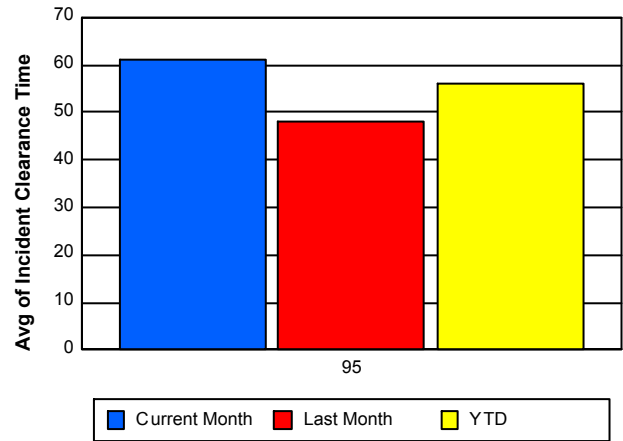
Road Ranger / SIRV Response Time



Roadway Clearance Time (2A)



Incident Clearance Time (3B)



Performance Measures by Event Type

Abandoned Vehicle

	<u>Current Month</u>	<u>Last Month</u>	<u>YTD</u>
Number of Events	475	501	1,464
Number of Incidents	4	1	6
TMC Detection (min.)	0.30	0.06	0.12
TMC Verification (min.)	1.22	0.47	0.75
TMC Response (min.)	1.91	1.12	1.26
RR Dispatch Time (min.)	0.93	0.63	0.65
RR Response Time (min.)	0.99	0.49	0.70
Event Clearance (min.)	151.43	195.49	174.63
Roadway Clearance (min.)	42.39	18.88	34.36
Incident Clearance (min.)	46.95	23.03	38.62
# of Events w/ RR/SIRV	412	405	1,219
RR/SIRV Assists	412	411	1,234
RR/SIRV Activities	433	431	1,281

Accident

	<u>Current Month</u>	<u>Last Month</u>	<u>YTD</u>
Number of Events	310	263	773
Number of Incidents	184	132	404
TMC Detection (min.)	0.28	0.17	0.22
TMC Verification (min.)	4.38	5.89	5.28
TMC Response (min.)	6.54	7.87	7.25
RR Dispatch Time (min.)	2.29	2.17	2.04
RR Response Time (min.)	4.36	6.14	5.41
Event Clearance (min.)	61.80	52.55	58.39
Roadway Clearance (min.)	46.89	37.04	42.48
Incident Clearance (min.)	72.61	56.46	66.71
# of Events w/ RR/SIRV	282	248	727
RR/SIRV Assists	282	281	806
RR/SIRV Activities	369	320	943

Congestion

	<u>Current Month</u>	<u>Last Month</u>	<u>YTD</u>
Number of Events	6	4	19
Number of Incidents	0	0	0
TMC Detection (min.)	0.00	0.07	0.01
TMC Verification (min.)	0.00	1.91	0.42
TMC Response (min.)	18.05	20.93	12.99
RR Dispatch Time (min.)	1.63	2.78	3.14
RR Response Time (min.)	15.62	18.15	11.26
Event Clearance (min.)	35.11	26.65	38.02
Roadway Clearance (min.)			
Incident Clearance (min.)			
# of Events w/ RR/SIRV	2	1	4
RR/SIRV Assists	2	1	4
RR/SIRV Activities	2	1	4

Debris on Roadway

	<u>Current Month</u>	<u>Last Month</u>	<u>YTD</u>
Number of Events	115	98	340
Number of Incidents	13	13	41
TMC Detection (min.)	0.31	0.20	0.23
TMC Verification (min.)	7.21	6.36	7.17
TMC Response (min.)	7.93	7.59	7.78
RR Dispatch Time (min.)	2.66	1.74	1.85
RR Response Time (min.)	5.27	5.85	5.93
Event Clearance (min.)	11.73	17.68	13.61
Roadway Clearance (min.)	13.20	18.91	15.89
Incident Clearance (min.)	15.33	21.56	19.65
# of Events w/ RR/SIRV	110	96	330
RR/SIRV Assists	110	101	341
RR/SIRV Activities	116	106	356

Disabled Vehicle

	<u>Current Month</u>	<u>Last Month</u>	<u>YTD</u>
Number of Events	1,817	1,758	5,387
Number of Incidents	55	41	115
TMC Detection (min.)	0.28	0.08	0.14
TMC Verification (min.)	3.41	3.19	3.20
TMC Response (min.)	4.30	3.94	3.80
RR Dispatch Time (min.)	1.77	1.53	1.37
RR Response Time (min.)	2.56	2.45	2.46
Event Clearance (min.)	18.05	16.07	16.48
Roadway Clearance (min.)	23.35	23.52	22.75
Incident Clearance (min.)	33.91	27.31	29.90
# of Events w/ RR/SIRV	1,796	1,741	5,336
RR/SIRV Assists	1,796	1,763	5,403
RR/SIRV Activities	2,003	1,903	5,862

Emergency Vehicles

	<u>Current Month</u>	<u>Last Month</u>	<u>YTD</u>
Number of Events	3	1	4
Number of Incidents	2	0	2
TMC Detection (min.)	0.24	0.87	0.40
TMC Verification (min.)	0.24	3.18	0.98
TMC Response (min.)	-0.23	3.15	0.62
RR Dispatch Time (min.)	-0.24	1.85	0.28
RR Response Time (min.)	0.01	1.30	0.33
Event Clearance (min.)	14.23	26.75	17.36
Roadway Clearance (min.)	9.12		9.12
Incident Clearance (min.)	18.47		18.47
# of Events w/ RR/SIRV	3	1	4
RR/SIRV Assists	3	1	4
RR/SIRV Activities	3	1	4

Other

	<u>Current Month</u>	<u>Last Month</u>	<u>YTD</u>
Number of Events	23	18	60
Number of Incidents	4	1	5
TMC Detection (min.)	0.12	0.09	0.09
TMC Verification (min.)	4.11	5.73	4.89
TMC Response (min.)	10.29	15.03	11.46
RR Dispatch Time (min.)	3.53	3.33	3.15
RR Response Time (min.)	6.77	11.33	8.03
Event Clearance (min.)	24.13	41.06	25.39
Roadway Clearance (min.)	7.47	59.97	17.97
Incident Clearance (min.)	10.82	62.17	21.09
# of Events w/ RR/SIRV	22	13	50
RR/SIRV Assists	22	14	52
RR/SIRV Activities	26	15	58

Pedestrian

	<u>Last Month</u>	<u>YTD</u>
Number of Events	9	32
Number of Incidents	0	0
TMC Detection (min.)	0.00	0.04
TMC Verification (min.)	1.82	1.39
TMC Response (min.)	1.79	1.38
RR Dispatch Time (min.)	0.90	0.27
RR Response Time (min.)	0.89	1.11
Event Clearance (min.)	10.96	15.13
Roadway Clearance (min.)		
Incident Clearance (min.)		
# of Events w/ RR/SIRV	9	32
RR/SIRV Assists	9	32
RR/SIRV Activities	9	33

Police Activity

	<u>Current Month</u>	<u>Last Month</u>	<u>YTD</u>
Number of Events	22	5	36
Number of Incidents	19	5	29
TMC Detection (min.)	0.44	0.00	0.33
TMC Verification (min.)	1.58	0.00	1.44
TMC Response (min.)	5.03	10.62	8.64
RR Dispatch Time (min.)	3.36	10.54	5.11
RR Response Time (min.)	1.67	0.08	3.53
Event Clearance (min.)	57.84	61.55	54.18
Roadway Clearance (min.)	41.64	43.67	43.21
Incident Clearance (min.)	65.85	61.55	64.14
# of Events w/ RR/SIRV	16	5	28
RR/SIRV Assists	16	6	34
RR/SIRV Activities	16	8	37

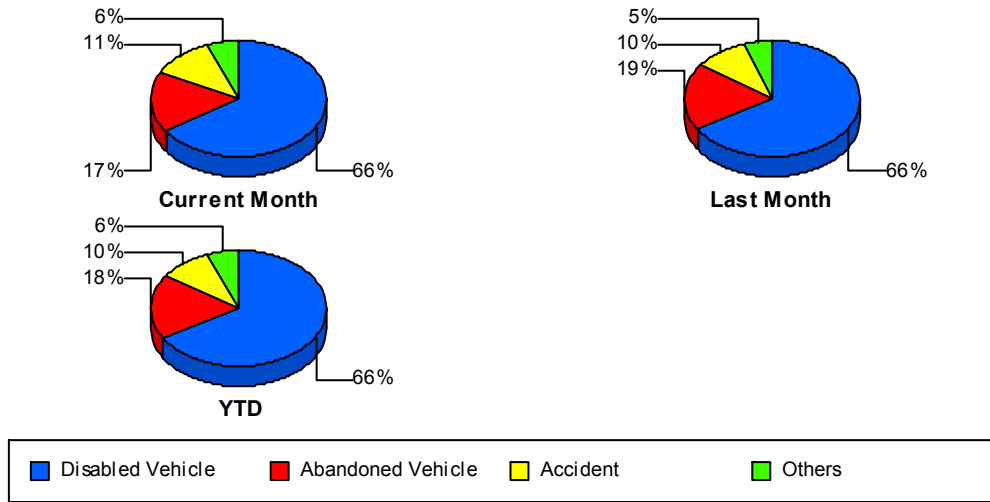
Visibility

	<u>Last Month</u>	<u>YTD</u>
Number of Events	2	2
Number of Incidents	2	2
TMC Detection (min.)	0.00	0.00
TMC Verification (min.)	0.00	0.00
TMC Response (min.)	1.15	1.15
RR Dispatch Time (min.)	1.14	1.14
RR Response Time (min.)	0.01	0.01
Event Clearance (min.)	43.00	43.00
Roadway Clearance (min.)	40.23	40.23
Incident Clearance (min.)	43.00	43.00
# of Events w/ RR/SIRV	2	2
RR/SIRV Assists	2	2
RR/SIRV Activities	2	2

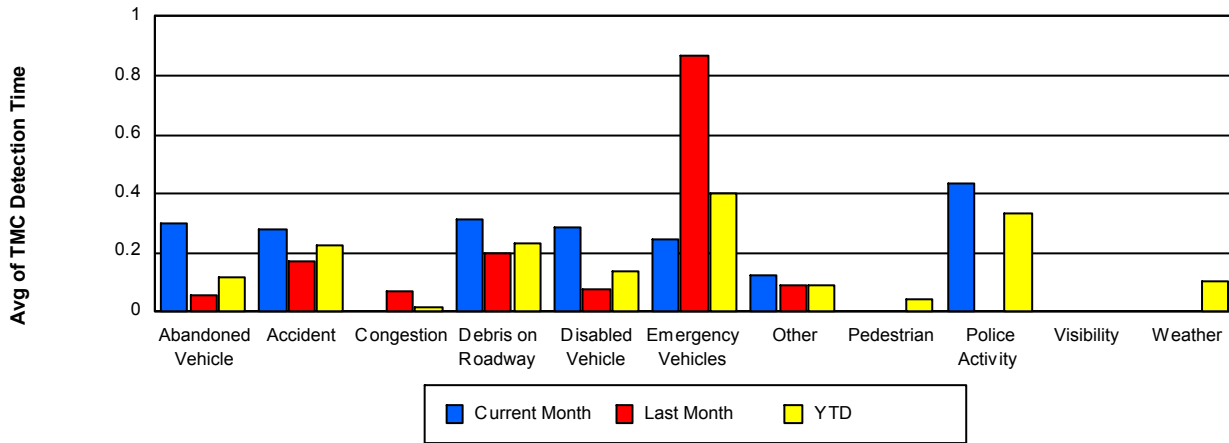
Weather

	<u>Current Month</u>	<u>YTD</u>
Number of Events	3	5
Number of Incidents	2	3
TMC Detection (min.)	0.00	0.10
TMC Verification (min.)	6.89	11.66
TMC Response (min.)	10.84	14.68
RR Dispatch Time (min.)	5.28	3.96
RR Response Time (min.)	5.56	10.72
Event Clearance (min.)	173.72	150.34
Roadway Clearance (min.)	177.49	206.91
Incident Clearance (min.)	184.59	188.50
# of Events w/ RR/SIRV	2	4
RR/SIRV Assists	2	8
RR/SIRV Activities	3	9

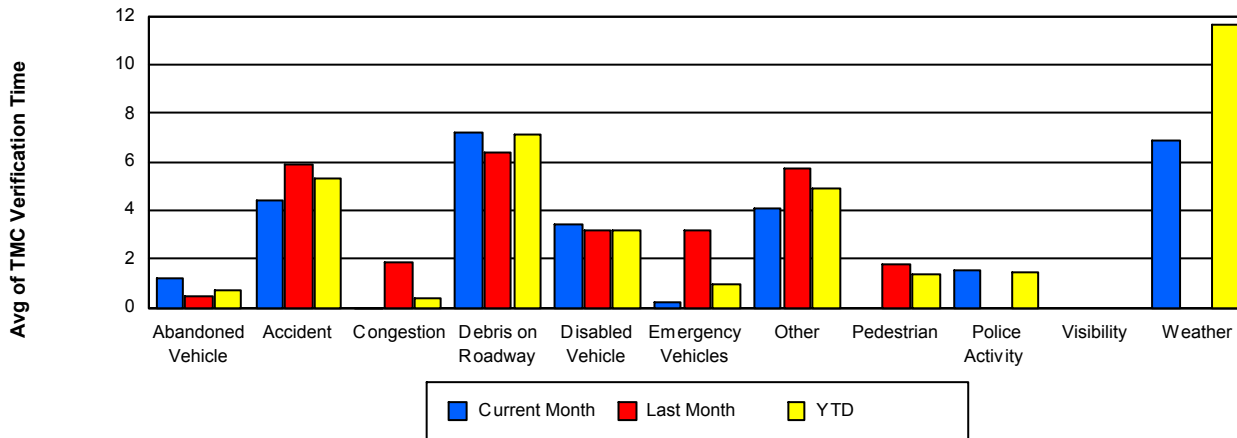
Number of Events / Event Type



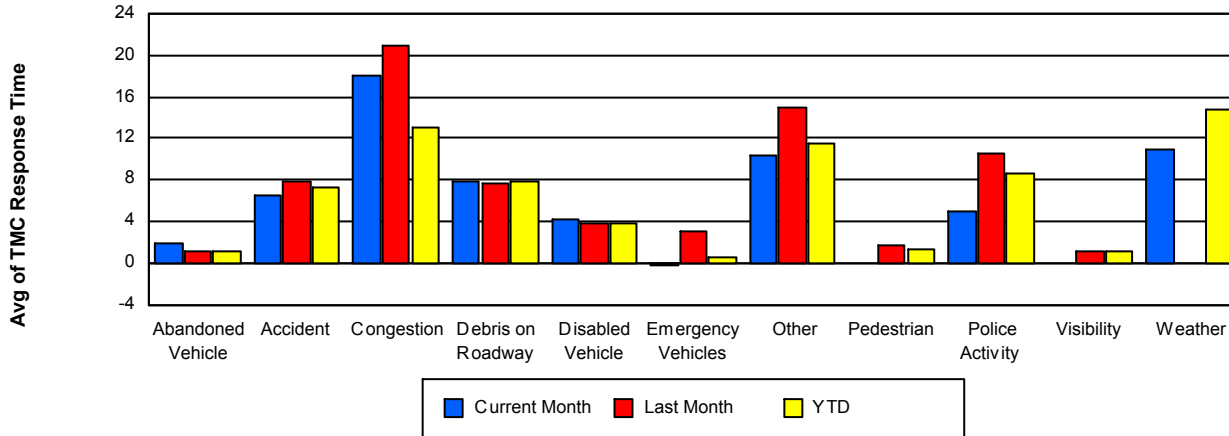
TMC Detection Time



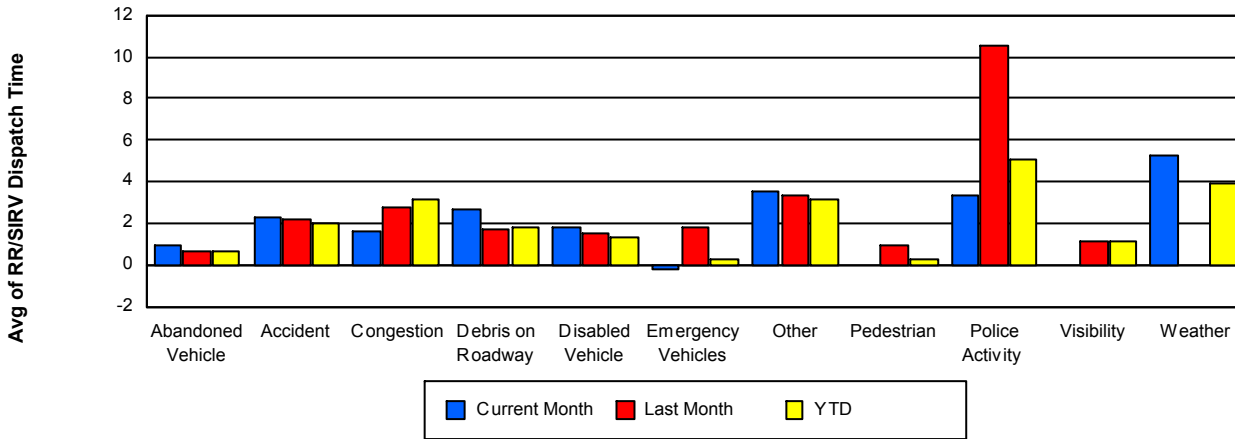
TMC Verification Time



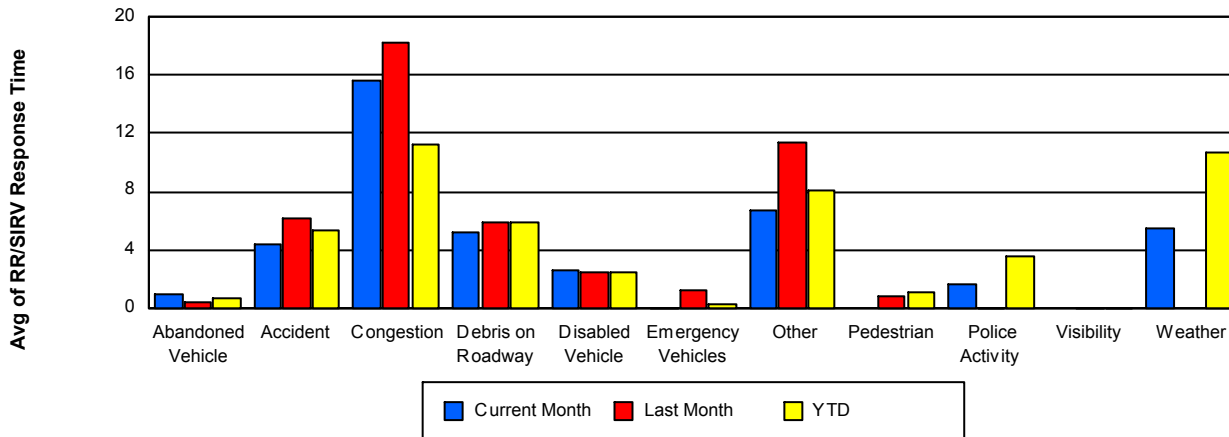
TMC Response Time



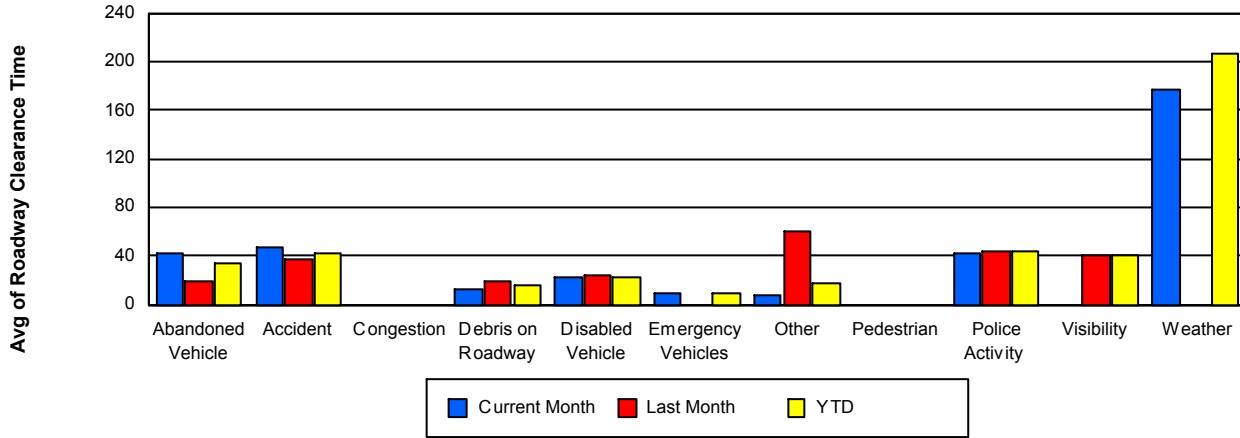
Road Ranger / SIRV Dispatch Time



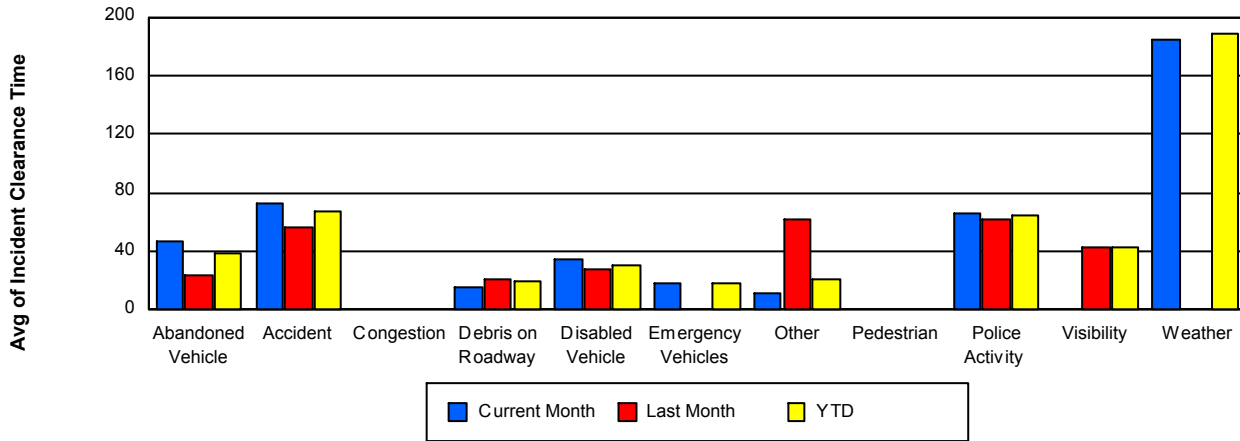
Road Ranger / SIRV Response Time



Roadway Clearance Time (2A)



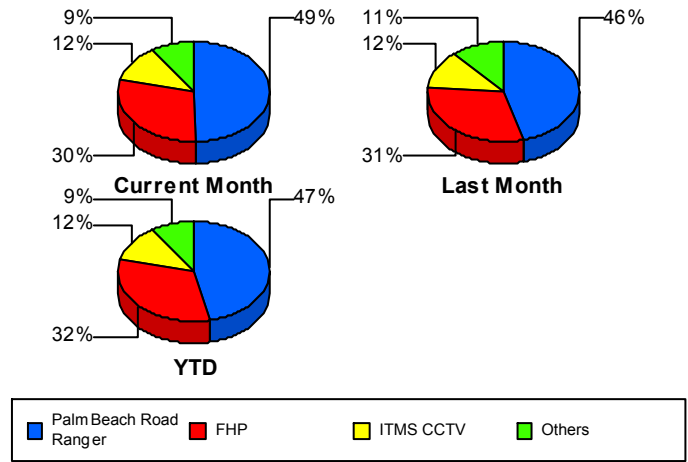
Incident Clearance Time (3B)



Incident Detection Methods

	Current Month	Last Month	YTD
Broward Road Ranger	3	1	4
Broward TMC	1	0	1
Construction CEI	1	3	4
District 4	18	12	36
FHP	84	60	197
ITMS	1	2	3
ITMS CCTV	33	24	72
Motorist	2	2	5
Palm Beach Road Rang	140	89	283
SmarTraveler (511)	0	2	2
Total	283	195	607

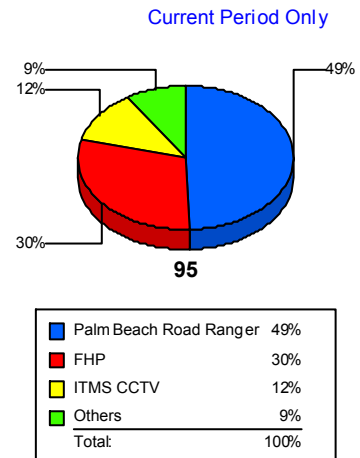
Total Incidents by Detection Method



Incident Detection Methods by Roadway

		Current Month	Last Month	YTD
95	Broward Road Ranger	3	1	4
	Broward TMC	1	0	1
	Construction CEI	1	3	4
	District 4	18	12	36
	FHP	84	60	197
	ITMS	1	2	3
	ITMS CCTV	33	24	72
	Motorist	2	2	5
	Palm Beach Road Rang	140	89	283
	SmarTraveler (511)	0	2	2
	Total	283	195	607
Total	283	195	607	

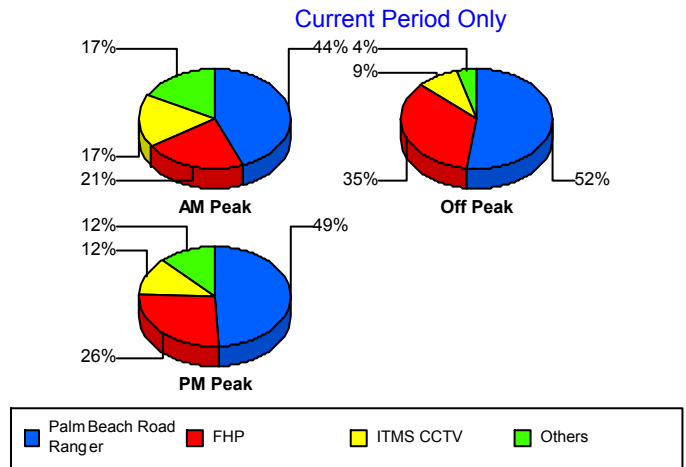
Total Events by Roadway and Detection Method



Incident Detection Methods by Peak Period

		Current Month	Last Month	YTD
AM Peak	Broward Road Ranger	0	1	1
	Broward TMC	1	0	1
	Construction CEI	1	0	1
	District 4	8	3	15
	FHP	15	10	39
	ITMS	1	0	1
	ITMS CCTV	12	8	24
	Motorist	1	1	2
	Palm Beach Road Rang	31	27	75
	SmarTraveler (511)	0	1	1
	Total	70	51	160
Off Peak	Construction CEI	0	3	3
	District 4	6	9	16
	FHP	54	39	116
	ITMS CCTV	14	7	29
	Motorist	1	0	2
	Palm Beach Road Rang	81	40	150
	Total	156	98	316
PM Peak	Broward Road Ranger	3	0	3
	District 4	4	0	5
	FHP	15	11	42
	ITMS	0	2	2
	ITMS CCTV	7	9	19
	Motorist	0	1	1
	Palm Beach Road Rang	28	22	58
	SmarTraveler (511)	0	1	1
	Total	57	46	131
Total	283	195	607	

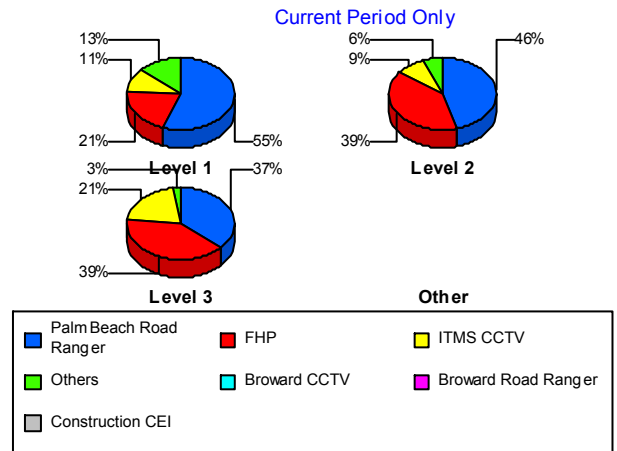
Total Events by Peak Period and Detection Method



Incident Detection Methods by Severity

		Current Month	Last Month	YTD
Level 1	Broward Road Ranger	2	1	3
	Broward TMC	1	0	1
	Construction CEI	1	1	2
	District 4	14	9	27
	FHP	30	23	79
	ITMS CCTV	16	12	33
	Motorist	1	0	2
	Palm Beach Road Rang	80	54	173
	SmarTraveler (511)	0	1	1
	Total	145	101	321
	Level 2	Broward Road Ranger	1	0
Construction CEI		0	2	2
District 4		3	3	7
FHP		39	29	88
ITMS		1	2	3
ITMS CCTV		9	9	24
Motorist		1	2	3
Palm Beach Road Rang		46	29	84
SmarTraveler (511)		0	1	1
Total		100	77	213
Level 3	District 4	1	0	2
	FHP	15	8	30
	ITMS CCTV	8	3	15
	Palm Beach Road Rang	14	6	26
	Total	38	17	73
Total		283	195	607

Total Events by Severity and Detection Method



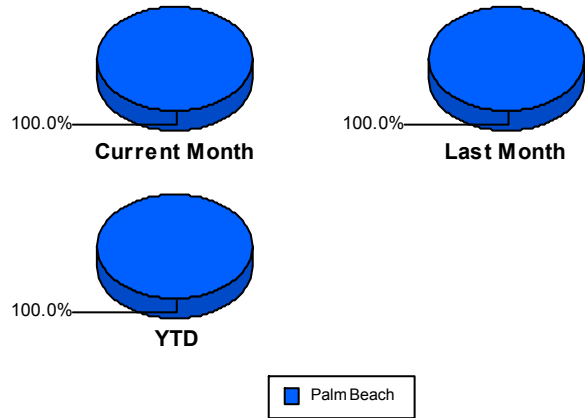
Road Ranger / SIRV Performance Measures

Road Ranger / SIRV Performance By County

RR/SIRV Responses per County

Values presented are:
 - Total Events with a RR/SIRV Response
 - Total RR/SIRV Responses,
 - Total Activities Performed

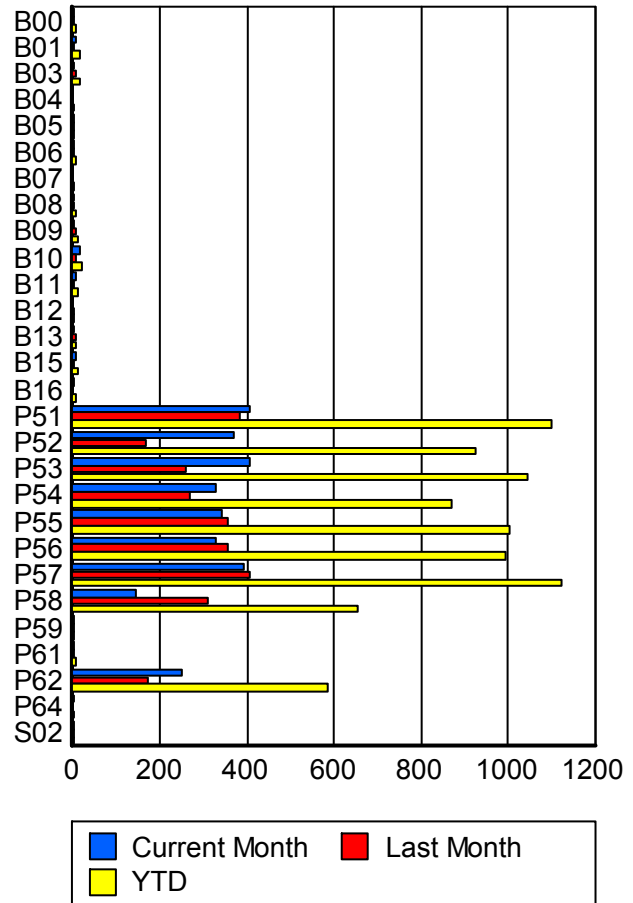
	Current Mo	Last Month	YTD
Palm Beach	2,904	2,617	8,091
	3,032	2,721	8,439
	3,263	2,903	8,988



Road Ranger / SIRV Performance By Truck

	Current Mo	Last Month	YTD
B00	2	3	5
	2	3	5
	2	4	6
B01	7	3	15
	7	3	15
	8	4	17
B03	4	4	13
	4	5	14
	4	5	14
B04	0	0	1
	0	0	1
	0	0	1
B05	1	3	4
	1	3	4
	1	3	4
B06	1	1	6
	1	1	6
	1	1	6
B07	0	0	4
	0	0	4
	0	0	4
B08	1	2	5
	1	2	5
	1	2	5
B09	3	6	10
	3	6	10
	4	6	11

**RR/SIRV
Responses per
Truck**



	Current Mo	Last Month	YTD
B10	14	5	20
	14	5	20
	17	5	23
B11	7	1	13
	7	1	13
	8	1	14
B12	0	1	1
	0	1	1
	0	1	1
B13	1	5	9
	1	5	9
	1	5	9
B15	8	4	13
	8	4	13
	9	4	14
B16	2	0	5
	2	0	5
	2	0	5
P51	407	379	1,092
	409	383	1,099
	438	408	1,175
P52	366	169	918
	370	169	925
	404	174	984
P53	401	260	1,039
	405	261	1,046
	435	271	1,105
P54	327	268	865
	330	268	870
	364	283	935
P55	340	352	997
	342	354	1,003
	362	383	1,063
P56	323	353	984
	329	354	994
	353	380	1,060
P57	392	401	1,112
	395	405	1,124
	423	436	1,205
P58	144	309	652
	144	311	657
	154	332	697
P59	1	1	2
	1	1	2
	1	1	2

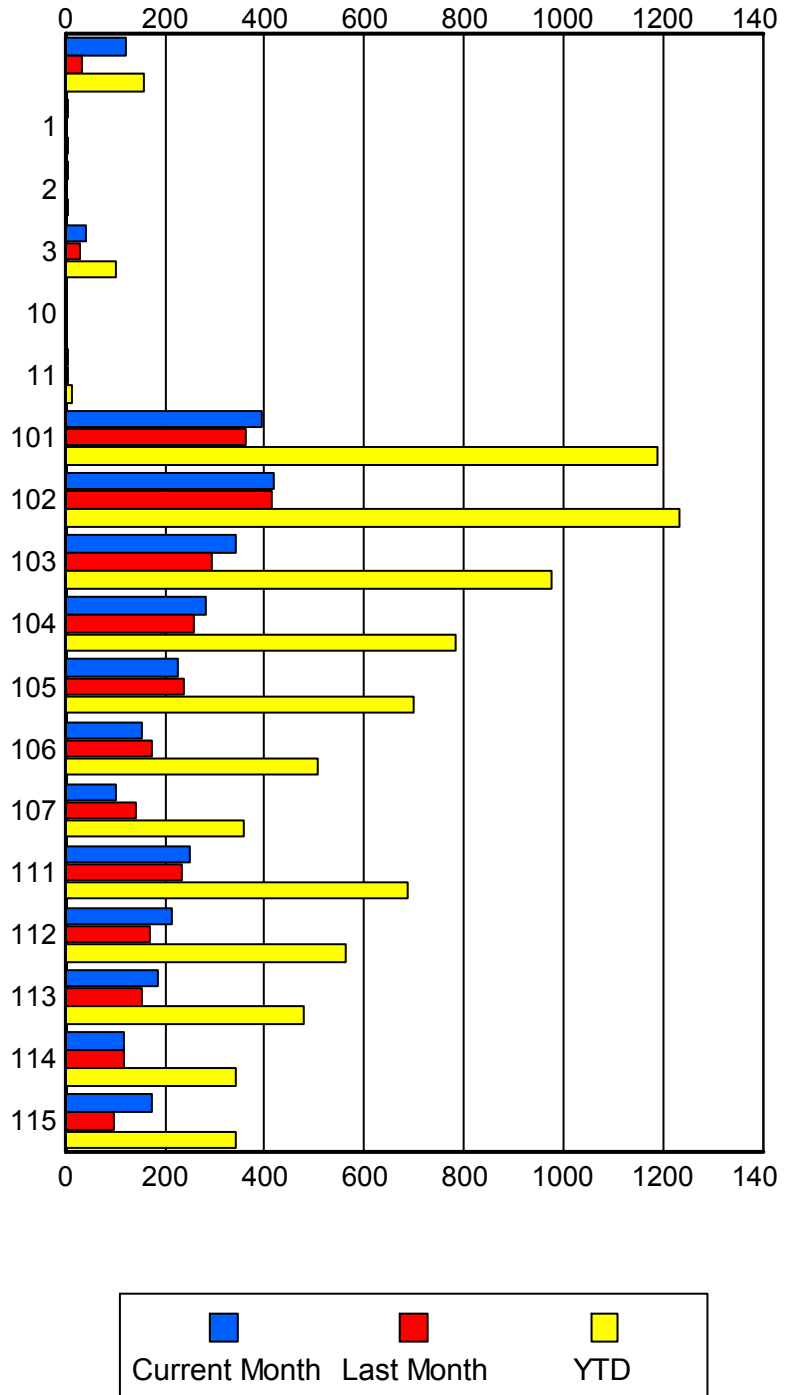
	Current Mo	Last Month	YTD
P61	2	1	5
	2	1	5
	2	1	5
P62	249	174	580
	251	174	585
	266	192	619
P64	2	0	2
	2	0	2
	2	0	2
S02	1	1	2
	1	1	2
	1	1	2

Road Ranger / SIRV Performance By Beat

	Current Mo	Last Month	YTD
	121	33	155
	122	33	156
	126	34	161
1	4	3	7
	4	3	7
	4	4	8
2	4	0	4
	4	0	4
	4	0	4
3	42	29	99
	43	31	102
	50	31	109
10	0	1	1
	0	1	1
	0	1	1
11	4	4	15
	4	4	15
	4	5	16
101	392	363	1,177
	396	364	1,187
	425	383	1,255
102	416	412	1,225
	417	413	1,231
	450	444	1,314
103	342	291	970
	342	293	976
	370	315	1,043
104	278	253	775
	281	257	784
	315	277	856
105	224	235	691
	227	237	700
	240	254	741
106	149	174	501
	152	174	505
	161	184	533
107	102	138	354
	102	141	358
	107	151	373
111	249	230	681
	251	232	688
	279	243	740
112	210	170	558
	213	171	563
	222	176	588

Values presented are:
 - Total Events with a RR/SIRV Response
 - Total RR/SIRV Responses,
 - Total Activities Performed

RR/SIRV Responses per Beat



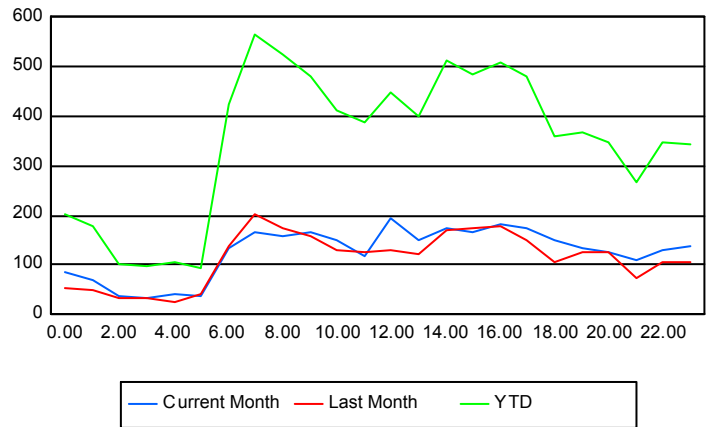
	Current Mo	Last Month	YTD
113	183	149	471
	185	153	478
	195	168	513
114	116	118	341
	117	118	342
	127	124	364
115	170	96	339
	172	96	342
	184	109	369

Road Ranger / SIRV Performance By Time of Day

Values presented are:
- Total Events with a RR/SIRV Response
- Total RR/SIRV Responses,
- Total Activities Performed

	Current Mo	Last Month	YTD
12AM-1AM	81	52	196
	86	53	204
	94	54	218
1AM-2AM	66	48	164
	70	50	177
	79	54	196
2AM-3AM	36	31	97
	36	32	101
	37	33	105
3AM-4AM	28	35	90
	32	35	96
	35	40	105
4AM-5AM	36	24	91
	43	26	104
	45	29	113
5AM-6AM	29	33	79
	36	41	95
	42	43	105
6AM-7AM	132	132	411
	136	139	425
	143	157	456
7AM-8AM	165	196	543
	166	202	564
	176	212	595
8AM-9AM	156	165	503
	160	173	523
	173	185	556
9AM-10AM	157	152	460
	165	157	480
	177	163	509

Number of Responses / Hour of the Day



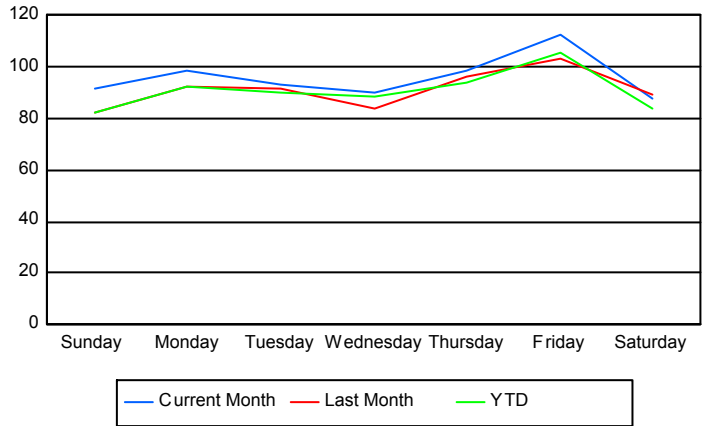
	Current Mo	Last Month	YTD
10AM-11AM	144	123	400
	151	128	414
	160	140	450
11AM-12PM	111	119	370
	118	125	387
	123	132	409
12PM-1PM	183	120	427
	193	130	450
	210	144	490
1PM-2PM	147	116	387
	150	120	402
	165	135	438
2PM-3PM	173	168	499
	176	171	511
	194	183	545
3PM-4PM	161	169	474
	165	173	485
	178	177	505
4PM-5PM	178	166	490
	184	177	509
	197	183	531
5PM-6PM	170	141	460
	175	150	480
	187	158	503
6PM-7PM	144	105	343
	151	106	361
	159	113	380
7PM-8PM	131	121	356
	135	124	366
	141	131	380
8PM-9PM	122	122	337
	127	124	348
	140	129	369
9PM-10PM	98	71	254
	108	72	269
	114	75	280
10PM-11PM	124	103	333
	130	106	346
	140	111	369
11PM-12AM	132	105	327
	139	107	342
	154	122	381

Road Ranger / SIRV Performance By Day of Week

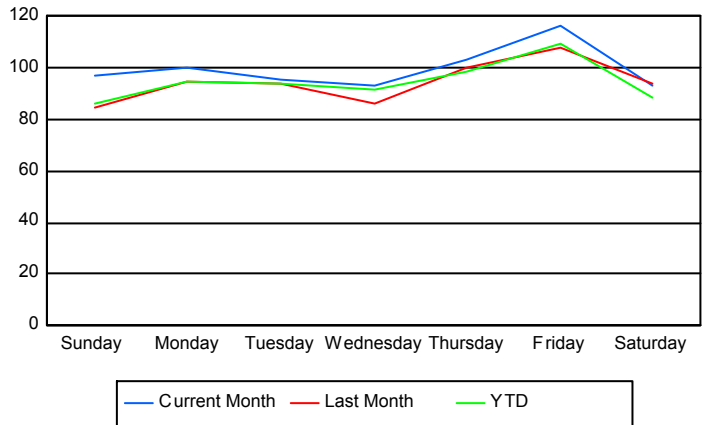
Values presented are:
 - Total Events with a RR/SIRV Response
 - Total RR/SIRV Responses,
 - Total Activities Performed

	Current Mo	Last Month	YTD
Sunday	445	326	1,028
	469	336	1,075
	499	361	1,141
Monday	484	366	1,181
	495	378	1,215
	525	408	1,291
Tuesday	370	353	1,148
	378	364	1,194
	402	383	1,266
Wednesday	357	333	1,130
	369	342	1,168
	407	363	1,251
Thursday	382	383	1,201
	403	400	1,256
	437	429	1,336
Friday	445	512	1,351
	460	533	1,404
	501	574	1,512
Saturday	431	347	1,068
	458	368	1,127
	492	385	1,191

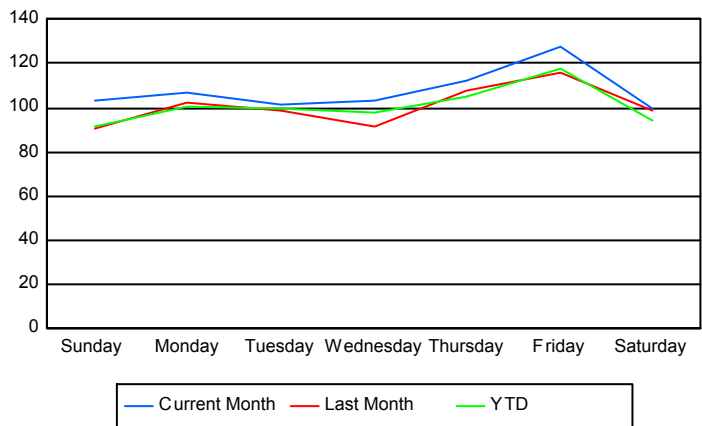
Avg # of events with a RR/SIRV Response per Day of the Week



Avg # of RR/SIRV Responses per Day of the Week



Avg # of RR/SIRV Activities Performed per Day of the Week



Road Ranger / SIRV Responses per Time of Day and Day of Week

