



Monthly Performance Measures Report Palm Beach County



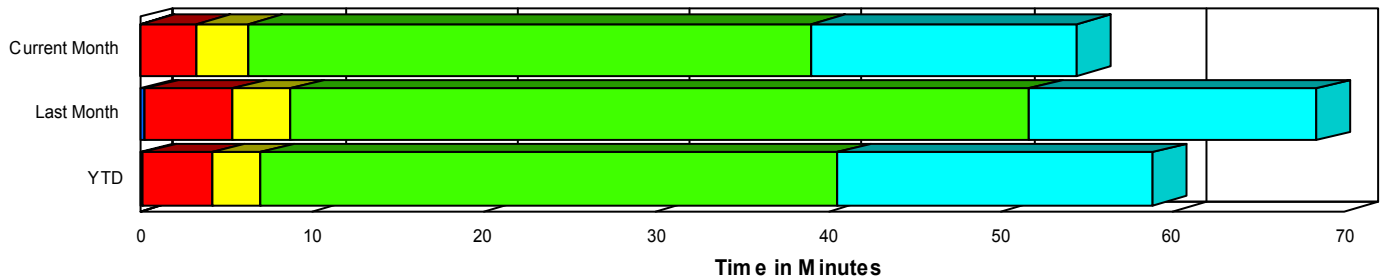
Created on:
June 02, 2008
9:37 am

Period From May 1, 2008 to May 31, 2008

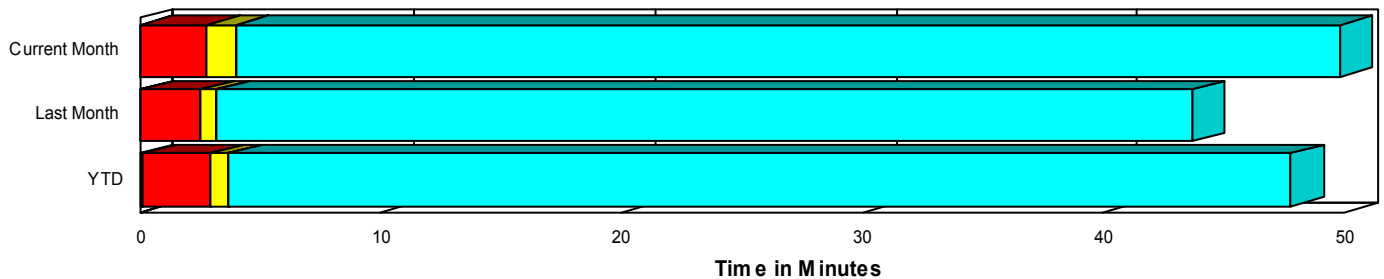
Performance Measures Summary

	Traffic Events (No Lanes Blocked)			Incidents (Lanes Blocked)		
	<u>This Month</u>	<u>Last Month</u>	<u>YTD</u>	<u>This Month</u>	<u>Last Month</u>	<u>YTD</u>
Number of Events	2,624	2,619	12,780	139	138	884
TMC Detection (min.)	0.00	0.07	0.10	0.02	0.29	0.17
TMC Verification (min.)	2.77	2.47	2.87	3.26	5.07	4.01
TMC Response (min.)	4.10	3.20	3.71	6.44	8.58	7.05
RR Dispatch Time (min.)	1.80	1.11	1.36	2.94	2.41	2.34
RR Response Time (min.)	2.34	2.15	2.39	3.57	6.18	4.84
Roadway Clearance (min.)				40.77	52.46	40.28
Event Clearance (min.)	49.93	43.75	47.86	56.21	69.08	58.18
# of Events w/ RR/SIRV	2,521	2,529	12,268	134	136	810
RR/SIRV Responses	2,521	2,529	12,375	134	136	887
RR/SIRV Activities	2,741	2,775	13,383	200	212	1,157

Incident Clearance TimeLine



Traffic Event(Non-Lane Blockage) Time-Line



<ul style="list-style-type: none"> ■ Avg. TMC Detection Time ■ Avg. Time from TMC Detection to TMC Verification ■ Avg. Time from TMC Verification to TMC Response 	<ul style="list-style-type: none"> ■ Avg. Time from TMC Response to Roadway Clearance* ■ Avg. Time from Roadway Clearance to Incident/Event Clearance**
---	--

* Roadway clearance equals all travel lanes open

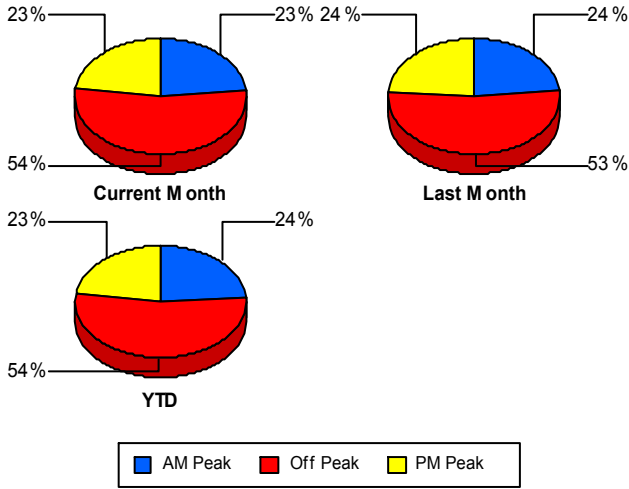
** Incident clearance equals time when last responder has left the scene

Performance Measures by Peak Period

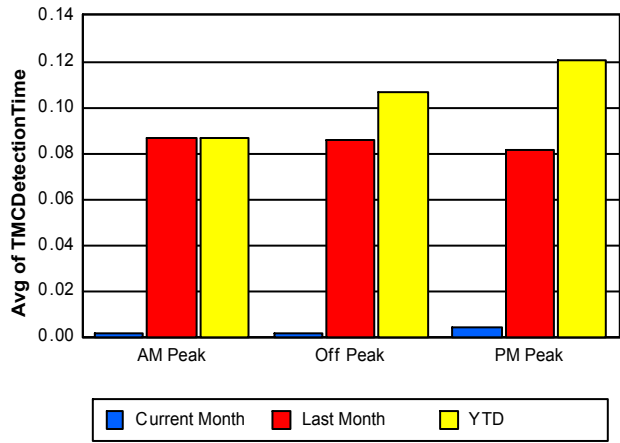
Note: AM peak period is defined as 6am to 10am and PM peak period is defined as 3pm to 7pm.

	AM Peak			Off Peak			PM Peak		
	<u>Current Month</u>	<u>Last Month</u>	<u>YTD</u>	<u>Current Month</u>	<u>Last Month</u>	<u>YTD</u>	<u>Current Month</u>	<u>Last Month</u>	<u>YTD</u>
Number of Events	645	648	3,274	1,488	1,451	7,313	630	658	3,077
Number of Incidents	29	35	224	71	83	470	39	20	190
TMC Detection (min.)	0.00	0.09	0.09	0.00	0.09	0.11	0.00	0.08	0.12
TMC Verification (min.)	2.46	1.90	2.40	2.76	2.96	3.18	3.23	2.49	2.97
TMC Response (min.)	3.49	2.65	3.25	4.72	4.22	4.35	3.80	2.66	3.59
RR Dispatch Time (min.)	1.26	1.03	1.31	2.45	1.52	1.60	1.07	0.55	1.14
RR Response Time (min.)	2.25	1.78	2.00	2.33	2.70	2.78	2.74	2.17	2.53
Event Clearance (min.)	59.57	42.76	50.21	46.67	43.10	51.08	49.15	51.46	40.67
Roadway Clearance (min.)	50.76	41.82	34.03	47.42	60.40	46.11	21.24	38.17	33.20
Incident Clearance (min.)	71.37	59.06	55.95	59.92	75.47	62.98	38.20	60.08	48.91
# of Events w/ RR/SIRV	613	623	3,113	1,429	1,403	6,980	613	639	2,985
RR/SIRV Responses	613	623	3,158	1,429	1,403	7,083	613	639	3,021
RR/SIRV Activities	684	692	3,442	1,576	1,591	7,837	681	704	3,261

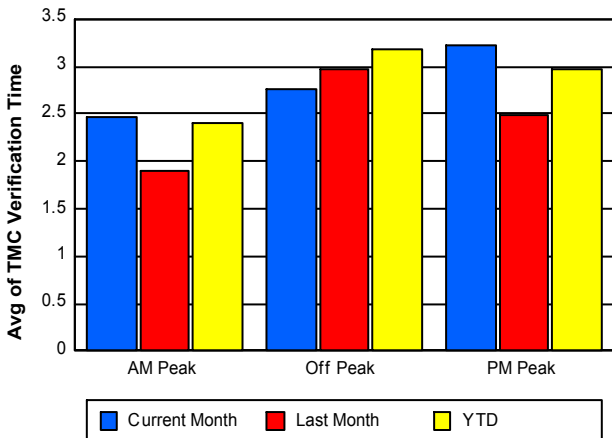
Number of Events / Peak Period



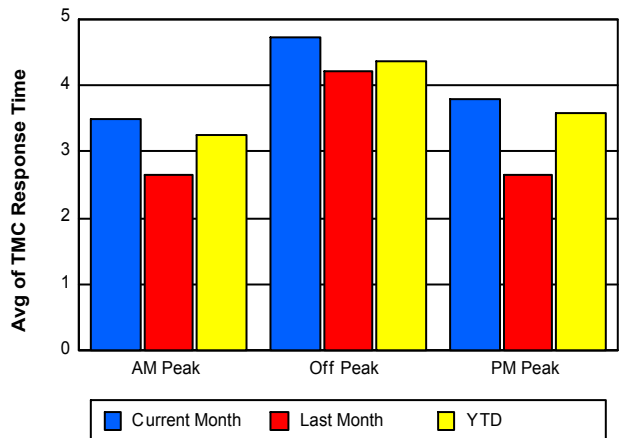
TMC Detection Time



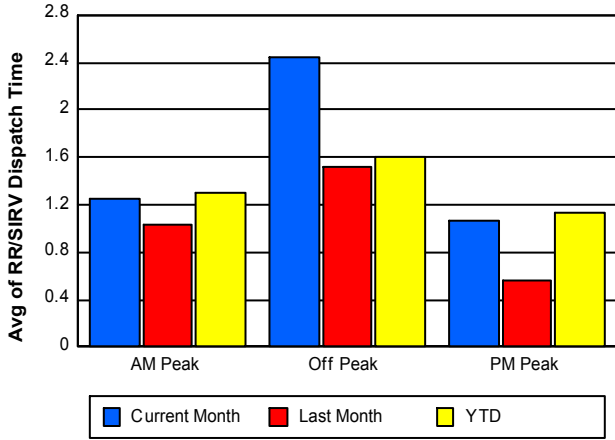
TMC Verification Time



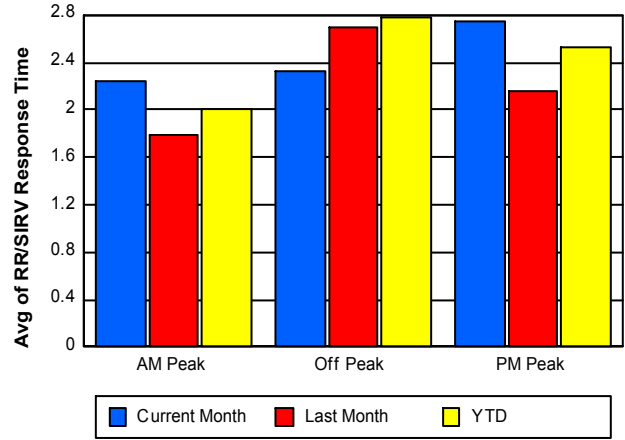
TMC Response Time



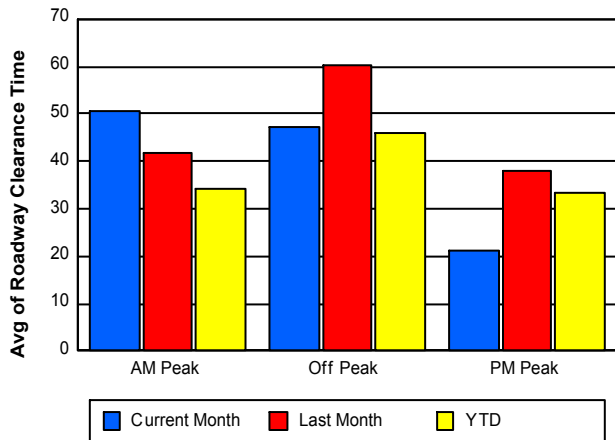
Road Ranger / SIRV Dispatch Time



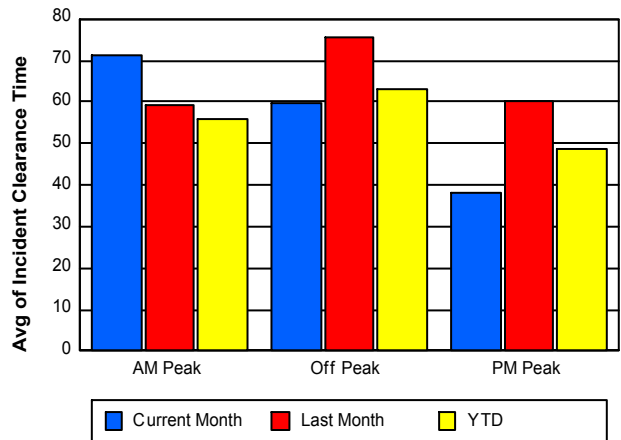
Road Ranger / SIRV Response Time



Roadway Clearance Time (2A)



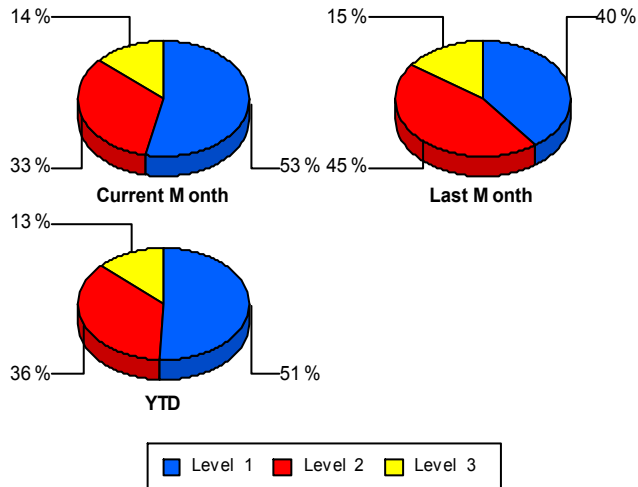
Incident Clearance Time (3B)



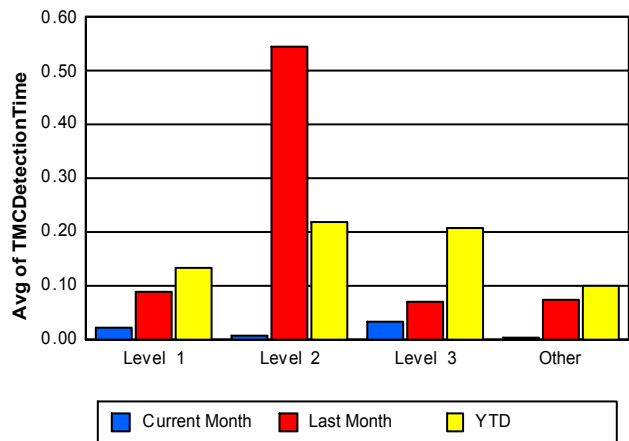
Performance Measures by Severity

	Level 1			Level 2			Level 3			Other		
	<u>This Month</u>	<u>Last Month</u>	<u>YTD</u>	<u>This Month</u>	<u>Last Month</u>	<u>YTD</u>	<u>This Month</u>	<u>Last Month</u>	<u>YTD</u>	<u>This Month</u>	<u>Last Month</u>	<u>YTD</u>
Number of Events	74	55	450	46	62	321	19	21	113	2,624	2,619	12,780
Number of Incidents	74	55	450	46	62	321	19	21	113	0	0	0
TMC Detection (min.)	0.02	0.09	0.13	0.01	0.54	0.22	0.03	0.07	0.21	0.00	0.07	0.10
TMC Verification (min.)	2.57	1.68	2.17	4.91	7.38	6.55	1.96	7.12	4.10	2.77	2.47	2.87
TMC Response (min.)	4.58	6.48	4.33	8.13	9.75	9.37	10.42	10.70	10.95	4.10	3.20	3.71
RR Dispatch Time (min.)	1.69	1.41	1.54	3.28	2.15	2.51	7.66	5.96	5.13	1.80	1.11	1.36
RR Resp. Time (min.)	2.89	5.10	2.88	4.85	7.60	6.86	3.07	4.74	6.60	2.34	2.15	2.39
Event Clearance (min.)	33.06	31.90	33.41	65.37	73.31	69.91	124.24	153.97	123.49	49.93	43.75	47.86
Roadway Clear. (min.)	14.53	12.18	13.21	56.35	57.76	55.97	105.25	142.32	103.49			
Incident Clearance (min.)	33.06	31.90	33.41	65.37	73.31	69.91	124.24	153.97	123.49			
# of Events w/ RR/SIRV	73	55	406	45	61	305	16	20	99	2,521	2,529	12,268
RR/SIRV Responses	73	55	426	45	61	333	16	20	128	2,521	2,529	12,375
RR/SIRV Activities	103	66	508	69	97	454	28	49	195	2,741	2,775	13,383

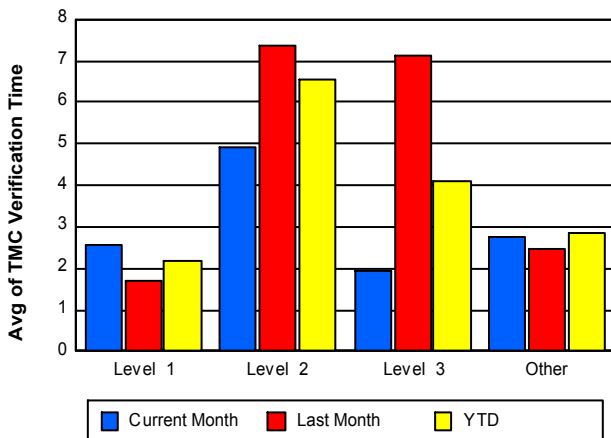
Number of Events / Severity



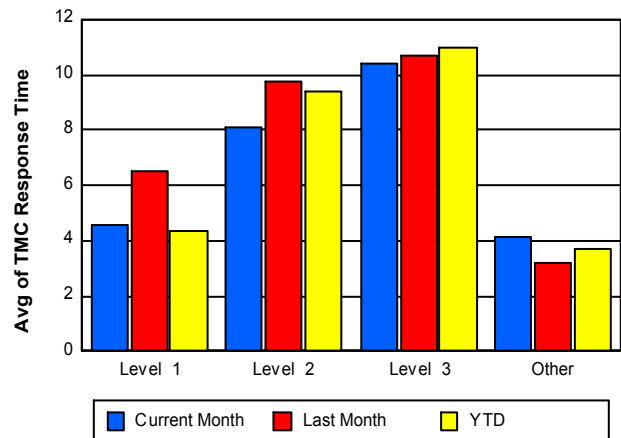
TMC Detection Time



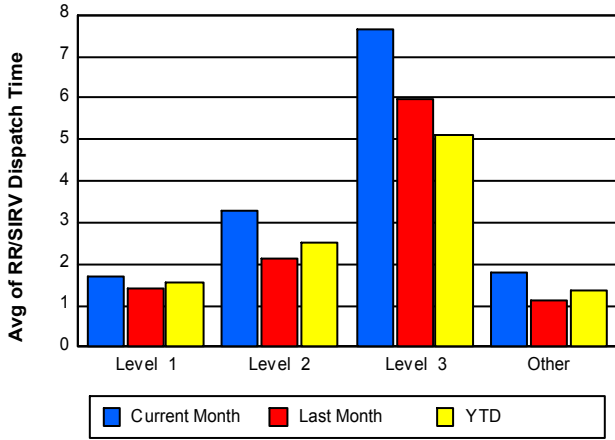
TMC Verification Time



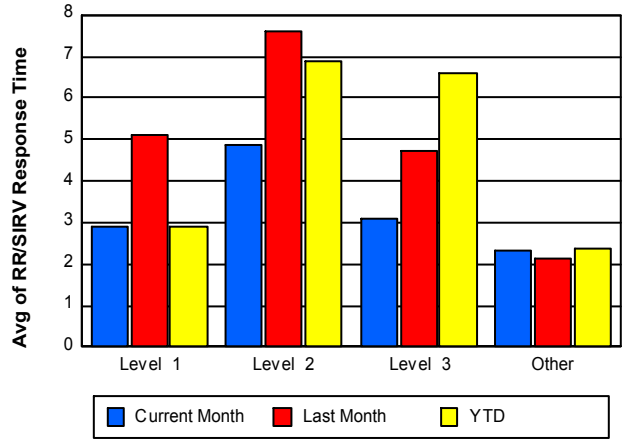
TMC Response Time



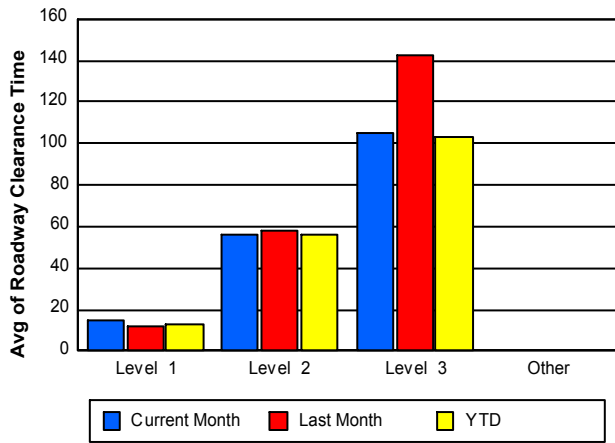
Road Ranger / SIRV Dispatch Time



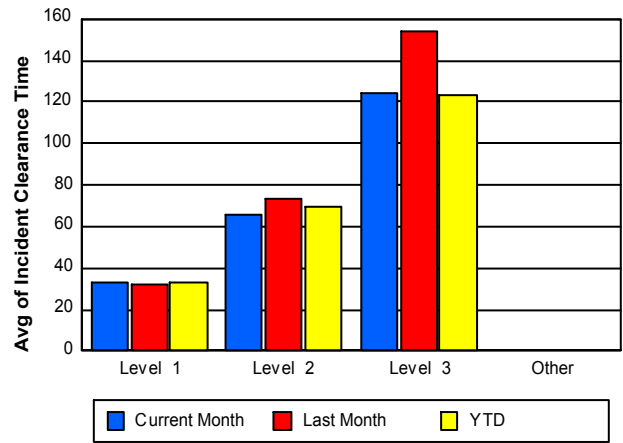
Road Ranger / SIRV Response Time



Roadway Clearance Time (2A)



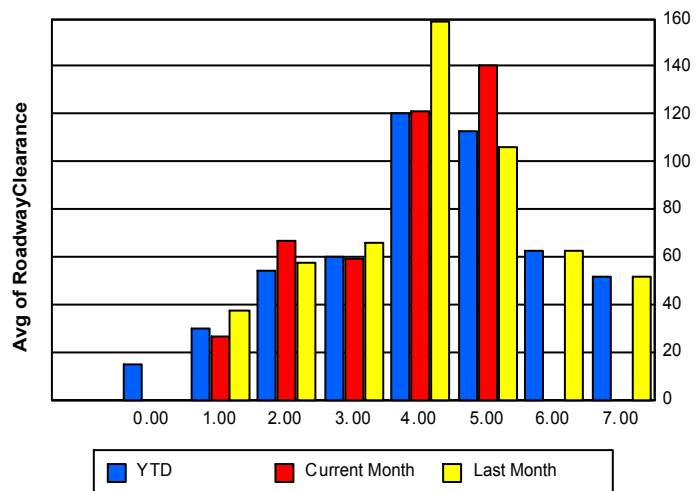
Incident Clearance Time (3B)



Roadway Clearance by Maximum Number of Lanes Blocked

	Current Month	Last Month	YTD
	0.00	0.00	
0			14.70
1	26.41	37.68	29.79
2	67.12	57.59	54.48
3	58.91	65.84	60.27
4	120.85	159.10	119.96
5	140.54	105.91	113.16
6	0.00	62.63	62.63

Roadway Clearance Time(2A)



	Current Month	Last Month	YTD
7	0.00	51.40	51.40

Performance Measures by Roadway

95

	<u>Current Month</u>	<u>Last Month</u>	<u>YTD</u>
Number of Events	2,761	2,757	13,662
Number of Incidents	138	138	883
TMC Detection (min.)	0.00	0.08	0.10
TMC Verification (min.)	2.80	2.60	2.95
TMC Response (min.)	4.22	3.47	3.91
RR Dispatch Time (min.)	1.85	1.18	1.42
RR Resp. Time (min.)	2.40	2.36	2.54
Event Clearance (min.)	50.22	45.02	48.52
Roadway Clear. (min.)	40.84	52.46	40.29
Incident Clearance (min.)	56.39	69.08	58.21
# of Events w/ RR/SIRV	2,654	2,665	13,077
RR/SIRV Responses	2,654	2,665	13,261
RR/SIRV Activities	2,940	2,987	14,539

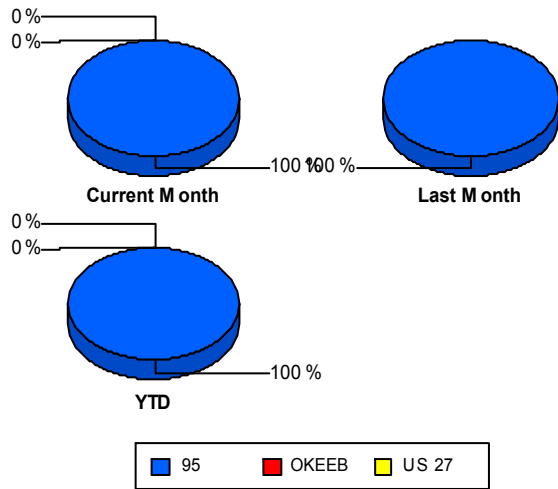
OKEEB

	<u>Current Month</u>	<u>YTD</u>
Number of Events	1	1
Number of Incidents	1	1
TMC Detection (min.)	0.00	0.00
TMC Verification (min.)	0.00	0.00
TMC Response (min.)	7.78	7.78
RR Dispatch Time (min.)	5.15	5.15
RR Resp. Time (min.)	2.63	2.63
Event Clearance (min.)	31.75	31.75
Roadway Clear. (min.)	31.62	31.62
Incident Clearance (min.)	31.75	31.75
# of Events w/ RR/SIRV	1	1
RR/SIRV Responses	1	1
RR/SIRV Activities	1	1

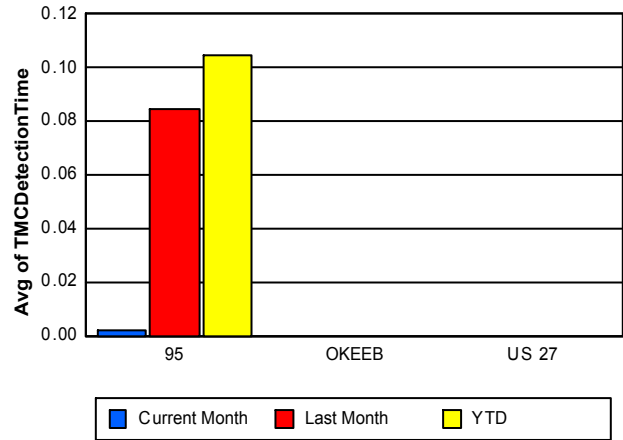
US 27

	<u>Current Month</u>	<u>YTD</u>
Number of Events	1	1
Number of Incidents	0	0
TMC Detection (min.)	0.00	0.00
TMC Verification (min.)		
TMC Response (min.)		
RR Dispatch Time (min.)		
RR Resp. Time (min.)		
Event Clearance (min.)	125.57	125.57
Roadway Clear. (min.)		
Incident Clearance (min.)		
# of Events w/ RR/SIRV	0	0
RR/SIRV Responses	0	0
RR/SIRV Activities	0	0

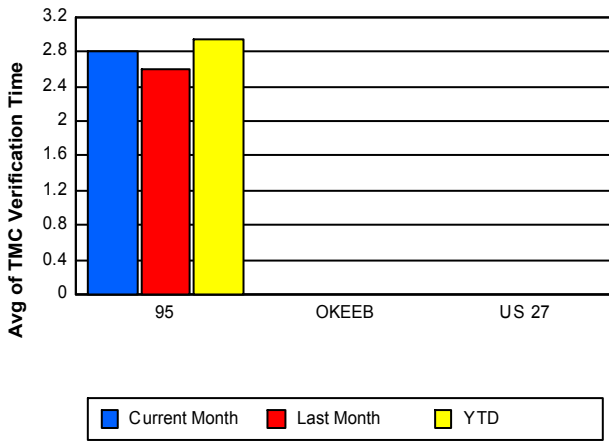
Number of Events / Roadway



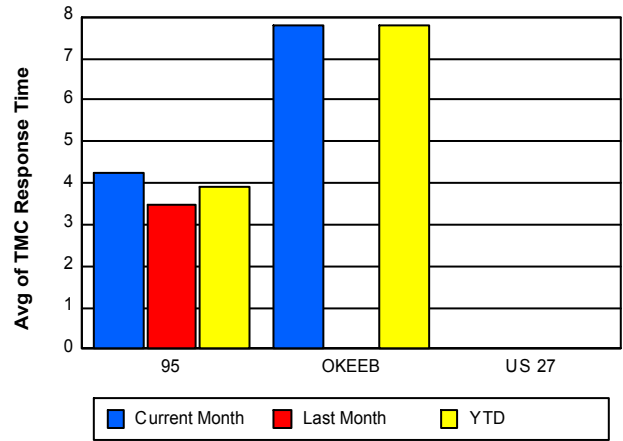
TMC Detection Time



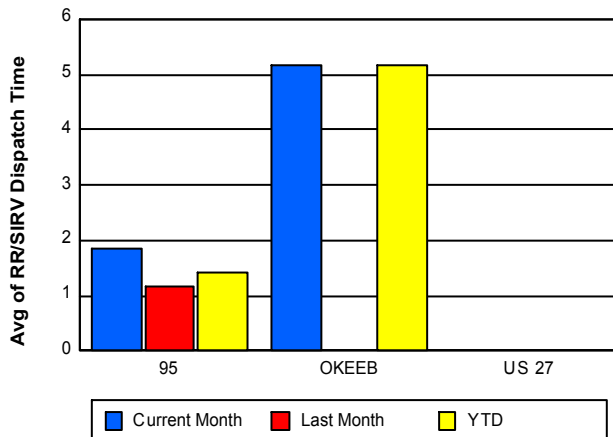
TMC Verification Time



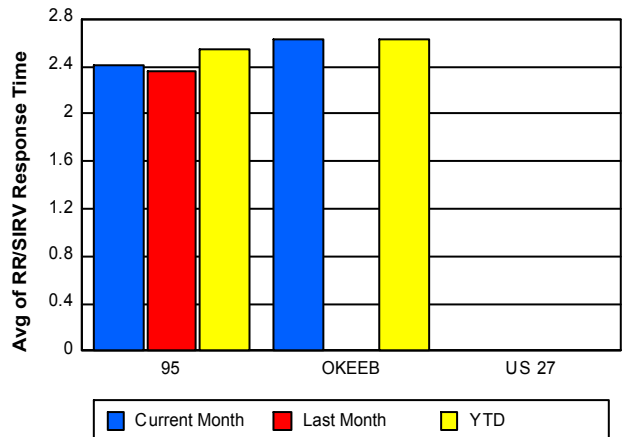
TMC Response Time



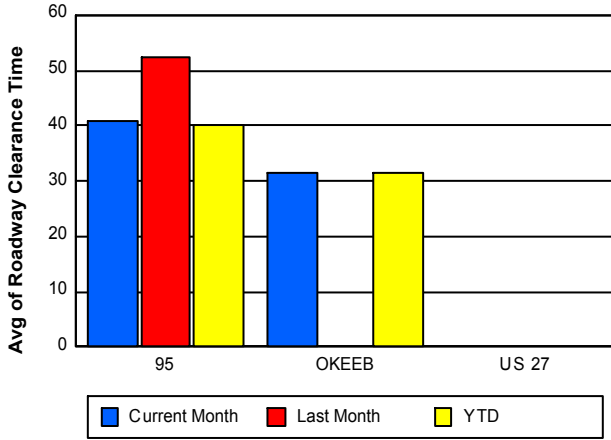
Road Ranger / SIRV Dispatch Time



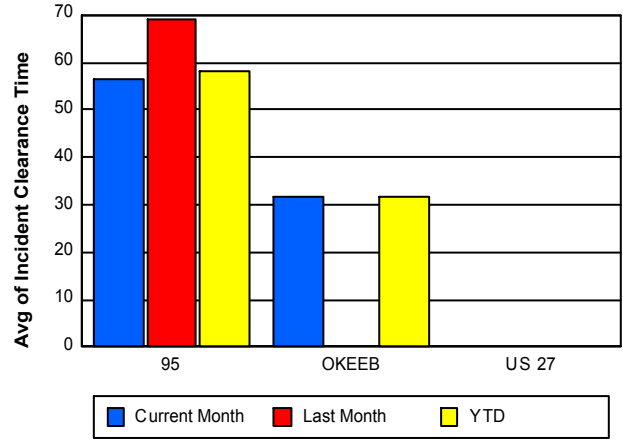
Road Ranger / SIRV Response Time



Roadway Clearance Time (2A)



Incident Clearance Time (3B)



Performance Measures by Event Type

Abandoned Vehicle

	<u>Current Month</u>	<u>Last Month</u>	<u>YTD</u>
Number of Events	471	455	2,390
Number of Incidents	1	1	8
TMC Detection (min.)	0.00	0.07	0.09
TMC Verification (min.)	0.15	0.50	0.59
TMC Response (min.)	5.23	3.40	2.47
RR Dispatch Time (min.)	4.93	2.78	1.91
RR Response Time (min.)	0.30	0.77	0.63
Event Clearance (min.)	182.79	173.02	175.93
Roadway Clearance (min.)	4.02	2.57	26.60
Incident Clearance (min.)	3.62	9.28	30.58
# of Events w/ RR/SIRV	399	389	2,007
RR/SIRV Assists	399	389	2,022
RR/SIRV Activities	415	398	2,094

Accident

	<u>Current Month</u>	<u>Last Month</u>	<u>YTD</u>
Number of Events	177	190	1,140
Number of Incidents	79	90	573
TMC Detection (min.)	0.02	0.20	0.19
TMC Verification (min.)	3.32	4.51	4.85
TMC Response (min.)	5.09	7.18	6.90
RR Dispatch Time (min.)	1.90	2.11	2.03
RR Response Time (min.)	3.27	5.08	5.02
Event Clearance (min.)	59.89	65.68	59.84
Roadway Clearance (min.)	54.64	62.31	47.27
Incident Clearance (min.)	75.40	82.99	70.47
# of Events w/ RR/SIRV	170	184	1,081
RR/SIRV Assists	170	184	1,160
RR/SIRV Activities	227	258	1,428

Congestion

	<u>Current Month</u>	<u>Last Month</u>	<u>YTD</u>
Number of Events	4	2	25
Number of Incidents	0	0	0
TMC Detection (min.)	0.00	0.00	0.01
TMC Verification (min.)	0.00	0.00	0.32
TMC Response (min.)	15.22		13.55
RR Dispatch Time (min.)	3.92		3.25
RR Response Time (min.)	11.30		11.27
Event Clearance (min.)	32.27	61.20	38.95
Roadway Clearance (min.)			
Incident Clearance (min.)			
# of Events w/ RR/SIRV	1	0	5
RR/SIRV Assists	1	0	5
RR/SIRV Activities	1	0	5

Debris on Roadway

	<u>Current Month</u>	<u>Last Month</u>	<u>YTD</u>
Number of Events	175	138	653
Number of Incidents	14	13	68
TMC Detection (min.)	0.00	0.08	0.14
TMC Verification (min.)	5.10	7.94	6.78
TMC Response (min.)	5.38	8.43	7.27
RR Dispatch Time (min.)	1.41	1.63	1.68
RR Response Time (min.)	3.97	6.79	5.58
Event Clearance (min.)	9.75	13.11	12.47
Roadway Clearance (min.)	14.04	16.80	15.68
Incident Clearance (min.)	16.88	25.04	20.11
# of Events w/ RR/SIRV	174	138	642
RR/SIRV Assists	174	138	653
RR/SIRV Activities	197	155	708

Disabled Vehicle

	<u>Current Month</u>	<u>Last Month</u>	<u>YTD</u>
Number of Events	1,892	1,926	9,205
Number of Incidents	37	29	181
TMC Detection (min.)	0.00	0.07	0.10
TMC Verification (min.)	3.09	2.23	2.97
TMC Response (min.)	3.69	2.44	3.50
RR Dispatch Time (min.)	1.19	0.65	1.18
RR Response Time (min.)	2.56	1.84	2.35
Event Clearance (min.)	16.17	15.20	16.15
Roadway Clearance (min.)	23.31	37.01	25.15
Incident Clearance (min.)	34.12	47.00	33.50
# of Events w/ RR/SIRV	1,871	1,910	9,117
RR/SIRV Assists	1,871	1,910	9,184
RR/SIRV Activities	2,051	2,129	10,042

Emergency Vehicles

	<u>Last Month</u>	<u>YTD</u>
Number of Events	1	5
Number of Incidents	1	3
TMC Detection (min.)	18.47	4.01
TMC Verification (min.)	18.47	4.48
TMC Response (min.)	0.07	0.51
RR Dispatch Time (min.)	0.07	0.24
RR Response Time (min.)	0.00	0.27
Event Clearance (min.)	77.67	29.42
Roadway Clearance (min.)	70.73	29.66
Incident Clearance (min.)	77.67	38.21
# of Events w/ RR/SIRV	1	5
RR/SIRV Assists	1	5
RR/SIRV Activities	1	5

Other

	<u>Current Month</u>	<u>Last Month</u>	<u>YTD</u>
Number of Events	24	31	115
Number of Incidents	1	1	7
TMC Detection (min.)	0.01	0.07	0.07
TMC Verification (min.)	11.87	22.47	10.89
TMC Response (min.)	12.87	23.42	15.10
RR Dispatch Time (min.)	4.69	4.98	3.98
RR Response Time (min.)	8.18	18.34	10.92
Event Clearance (min.)	35.39	35.06	30.08
Roadway Clearance (min.)	16.65	14.95	17.35
Incident Clearance (min.)	24.35	17.48	21.04
# of Events w/ RR/SIRV	23	29	102
RR/SIRV Assists	23	29	104
RR/SIRV Activities	26	29	113

Pedestrian

	<u>YTD</u>
Number of Events	32
Number of Incidents	0
TMC Detection (min.)	0.04
TMC Verification (min.)	1.39
TMC Response (min.)	1.38
RR Dispatch Time (min.)	0.27
RR Response Time (min.)	1.11
Event Clearance (min.)	15.13
Roadway Clearance (min.)	
Incident Clearance (min.)	
# of Events w/ RR/SIRV	32
RR/SIRV Assists	32
RR/SIRV Activities	33

Police Activity

	<u>Current Month</u>	<u>Last Month</u>	<u>YTD</u>
Number of Events	3	3	42
Number of Incidents	2	2	33
TMC Detection (min.)	0.00	0.00	0.29
TMC Verification (min.)	6.63	0.00	1.71
TMC Response (min.)	12.75	14.87	9.45
RR Dispatch Time (min.)	5.24	12.16	5.76
RR Response Time (min.)	7.51	2.71	3.70
Event Clearance (min.)	47.61	68.22	54.72
Roadway Clearance (min.)	56.54	95.94	47.22
Incident Clearance (min.)	63.53	100.25	66.29
# of Events w/ RR/SIRV	2	3	33
RR/SIRV Assists	2	3	39
RR/SIRV Activities	4	5	46

Vehicle Fire

	<u>Current Month</u>	<u>Last Month</u>	<u>YTD</u>
Number of Events	4	2	6
Number of Incidents	2	0	2
TMC Detection (min.)	0.00	0.00	0.00
TMC Verification (min.)	3.09	9.12	5.10
TMC Response (min.)	4.10	9.14	6.12
RR Dispatch Time (min.)	0.94	0.93	0.94
RR Response Time (min.)	3.16	8.21	5.18
Event Clearance (min.)	2,125.71	34.21	1,428.54
Roadway Clearance (min.)	44.20		44.20
Incident Clearance (min.)	54.73		54.73
# of Events w/ RR/SIRV	3	2	5
RR/SIRV Assists	3	2	5
RR/SIRV Activities	3	2	5

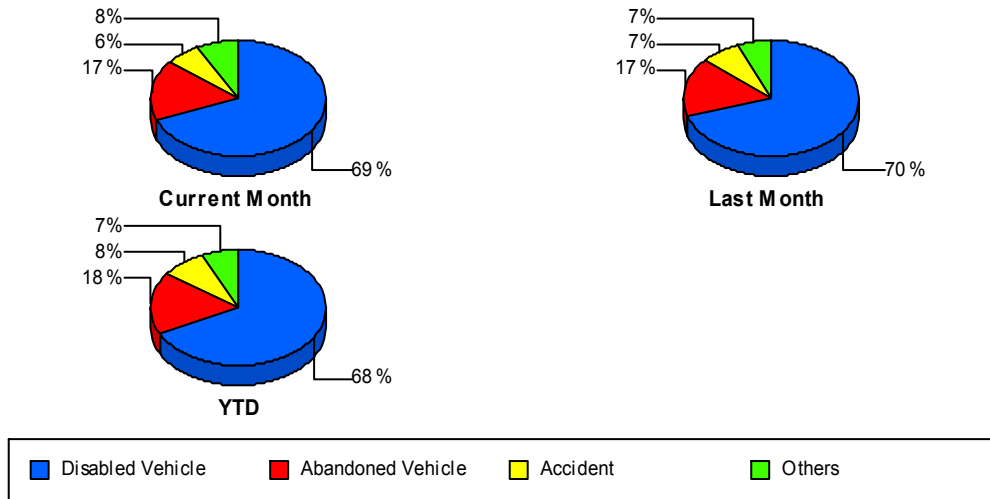
Visibility

	<u>Current Month</u>	<u>Last Month</u>	<u>YTD</u>
Number of Events	3	1	6
Number of Incidents	3	0	5
TMC Detection (min.)	0.00	0.00	0.00
TMC Verification (min.)	2.94	0.00	1.47
TMC Response (min.)	18.39	49.05	17.63
RR Dispatch Time (min.)	15.97	1.57	7.16
RR Response Time (min.)	2.42	47.48	10.47
Event Clearance (min.)	31.24	49.48	38.20
Roadway Clearance (min.)	22.99		29.89
Incident Clearance (min.)	31.24		35.95
# of Events w/ RR/SIRV	2	1	5
RR/SIRV Assists	2	1	5
RR/SIRV Activities	4	1	7

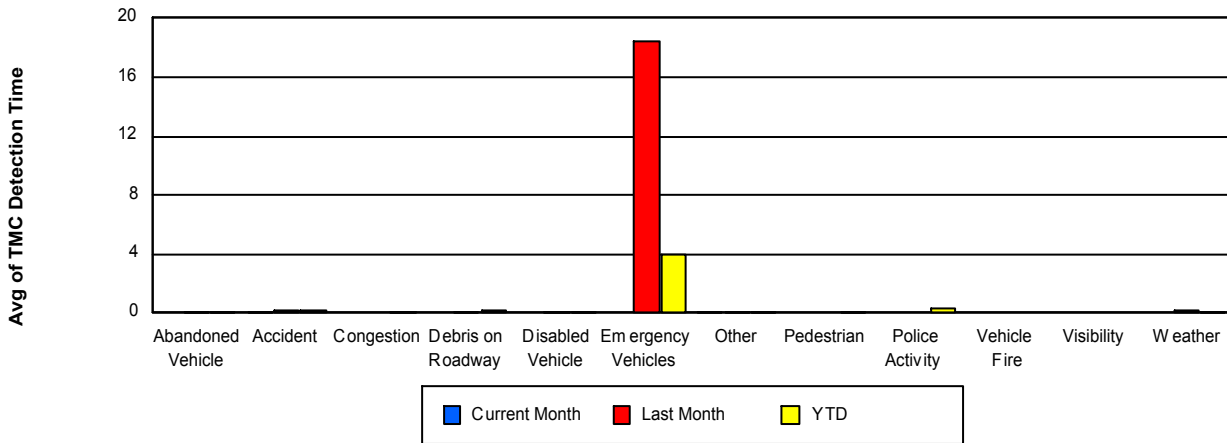
Weather

	<u>Last Month</u>	<u>YTD</u>
Number of Events	1	6
Number of Incidents	1	4
TMC Detection (min.)	0.13	0.11
TMC Verification (min.)	0.13	9.74
TMC Response (min.)	2.85	12.32
RR Dispatch Time (min.)	1.77	3.52
RR Response Time (min.)	1.08	8.80
Event Clearance (min.)	70.68	137.06
Roadway Clearance (min.)	60.20	170.23
Incident Clearance (min.)	70.68	159.05
# of Events w/ RR/SIRV	1	5
RR/SIRV Assists	1	9
RR/SIRV Activities	2	11

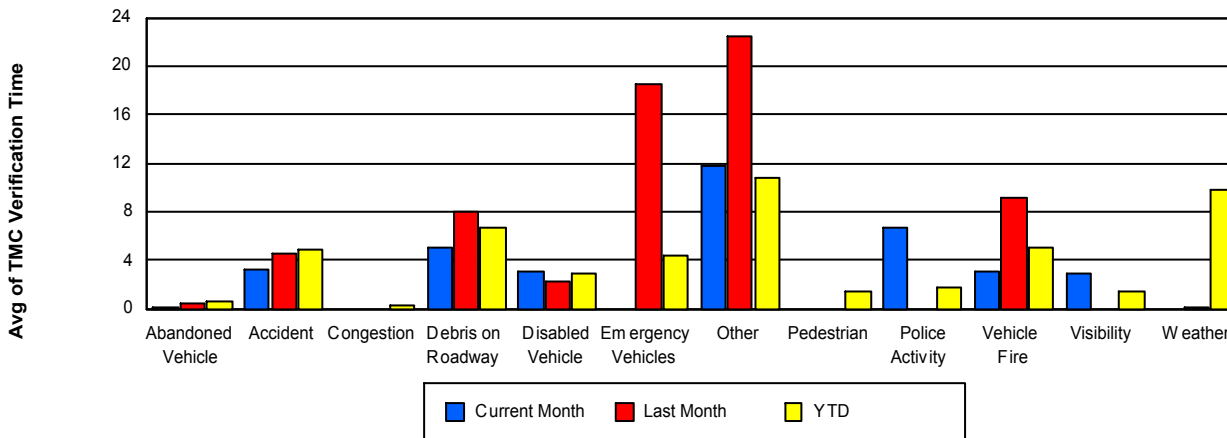
Number of Events / Event Type



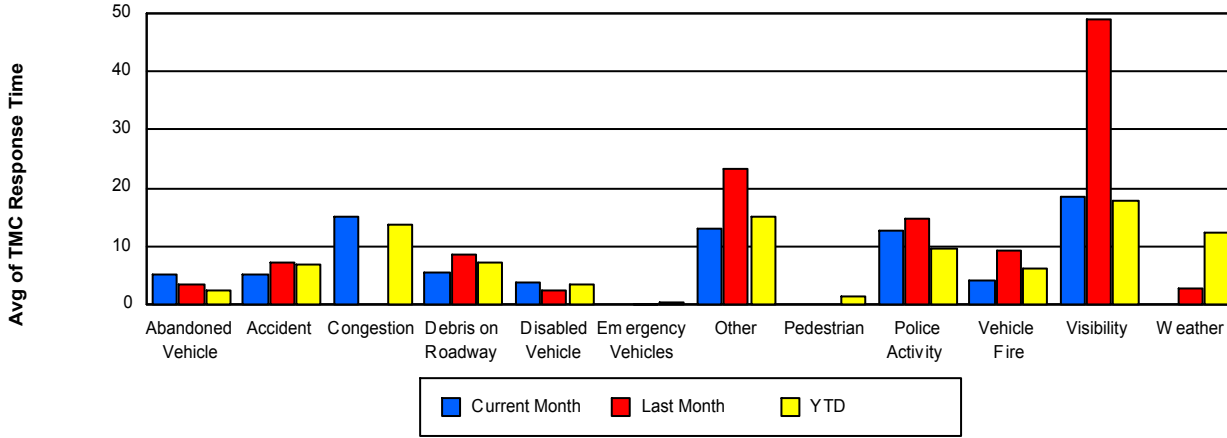
TMC Detection Time



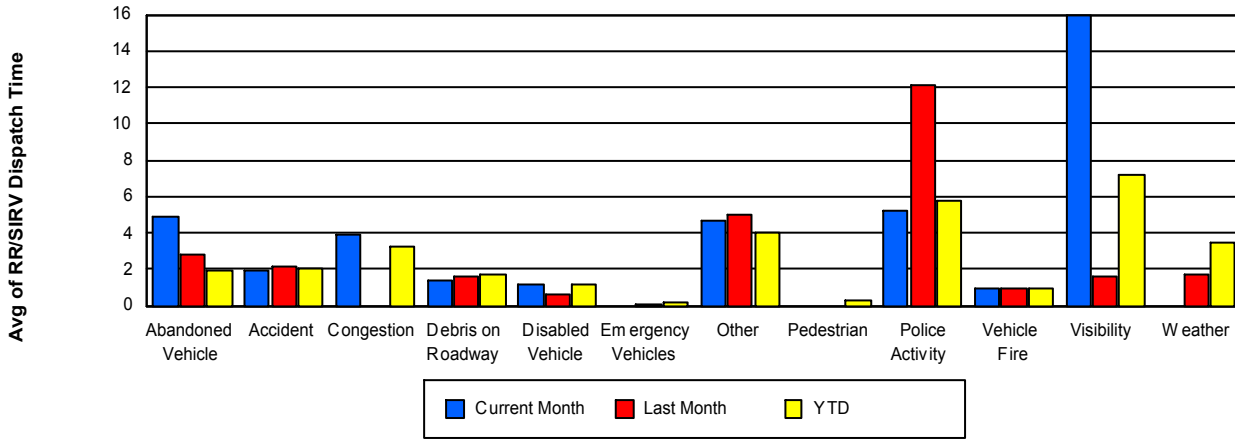
TMC Verification Time



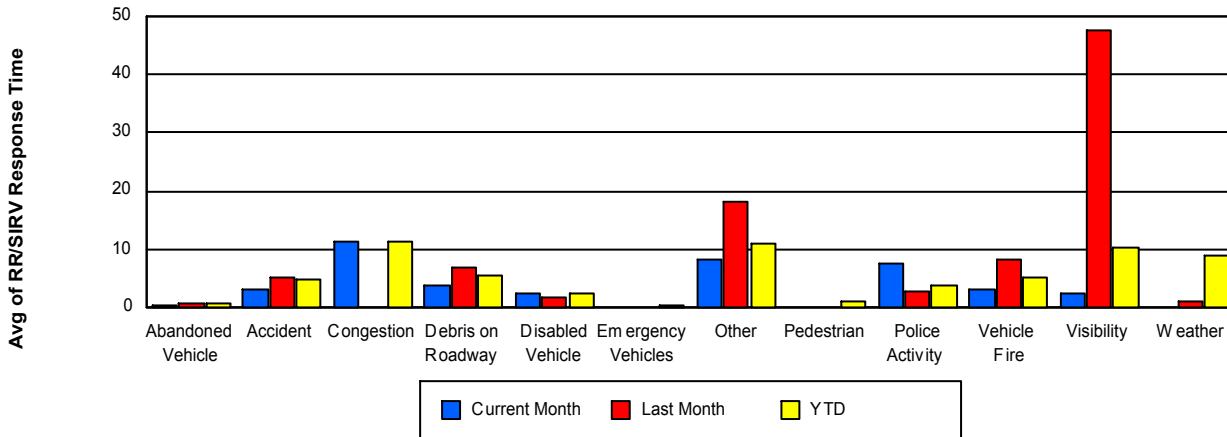
TMC Response Time



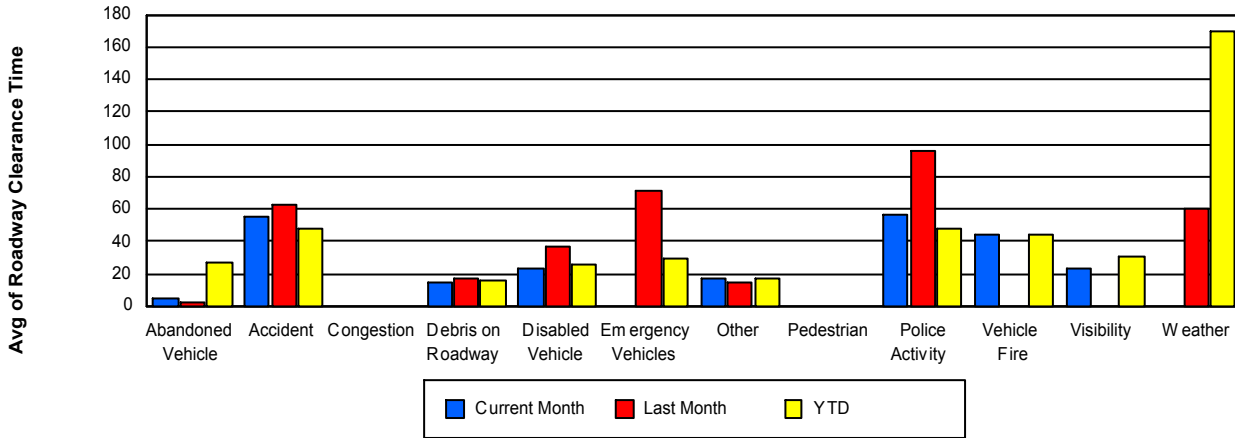
Road Ranger / SIRV Dispatch Time



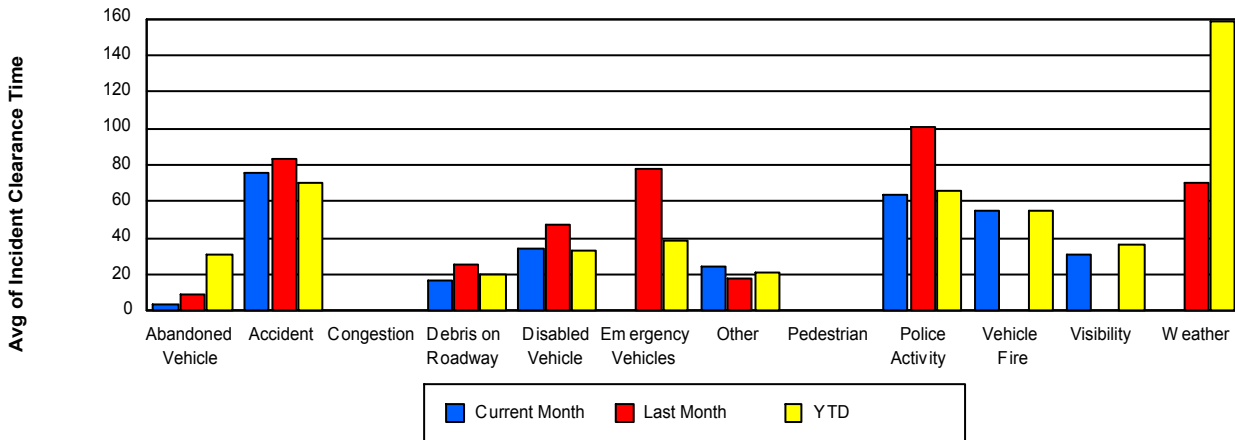
Road Ranger / SIRV Response Time



Roadway Clearance Time (2A)



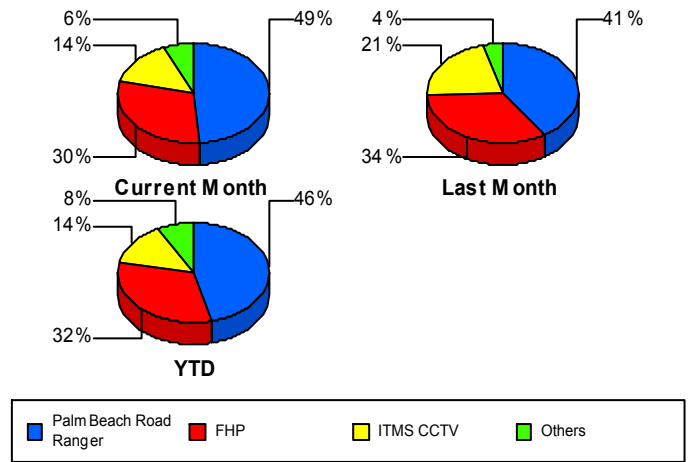
Incident Clearance Time (3B)



Incident Detection Methods

	Current Month	Last Month	YTD
Broward Road Ranger	1	1	6
Broward TMC	0	0	1
Construction CEI	2	0	6
District 4	1	3	40
FHP	42	47	286
ITMS	0	0	3
ITMS CCTV	20	29	121
Motorist	2	2	9
Palm Beach Road Rang	68	56	407
Road Watcher	2	0	2
SmarTraveler (511)	1	0	3
Total	139	138	884

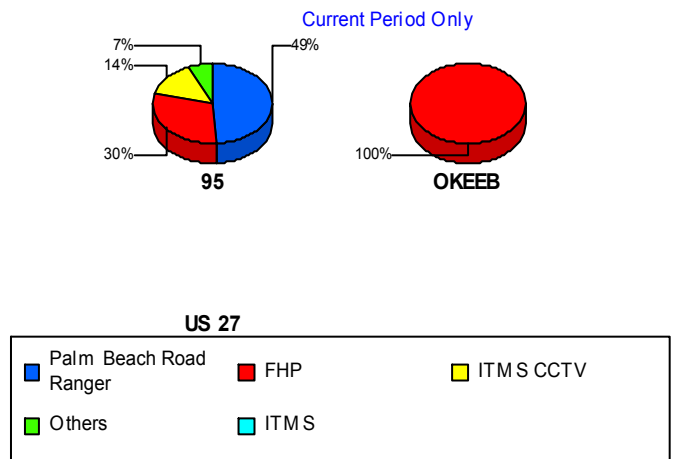
Total Incidents by Detection Method



Incident Detection Methods by Roadway

		Current Month	Last Month	YTD
95	Broward Road Ranger	1	1	6
	Broward TMC	0	0	1
	Construction CEI	2	0	6
	District 4	1	3	40
	FHP	41	47	285
	ITMS	0	0	3
	ITMS CCTV	20	29	121
	Motorist	2	2	9
	Palm Beach Road Rang	68	56	407
	Road Watcher	2	0	2
	SmarTraveler (511)	1	0	3
	Total	138	138	883
OKEEB	FHP	1	0	1
	Total	1	0	1
Total	139	138	884	

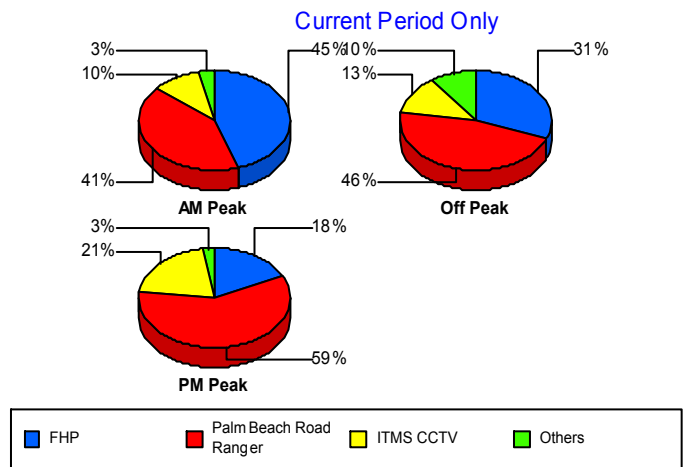
Total Events by Roadway and Detection Method



Incident Detection Methods by Peak Period

		Current Month	Last Month	YTD
AM Peak	Broward Road Ranger	1	0	2
	Broward TMC	0	0	1
	Construction CEI	0	0	1
	District 4	0	1	16
	FHP	13	13	65
	ITMS	0	0	1
	ITMS CCTV	3	6	33
	Motorist	0	1	3
	Palm Beach Road Rang	12	14	101
	SmarTraveler (511)	0	0	1
	Total	29	35	224
Off Peak	Broward Road Ranger	0	1	1
	Construction CEI	2	0	5
	District 4	1	2	19
	FHP	22	29	167
	ITMS CCTV	9	18	56
	Motorist	1	1	4
	Palm Beach Road Rang	33	32	215
	Road Watcher	2	0	2
	SmarTraveler (511)	1	0	1
	Total	71	83	470
PM Peak	Broward Road Ranger	0	0	3
	District 4	0	0	5
	FHP	7	5	54
	ITMS	0	0	2
	ITMS CCTV	8	5	32
	Motorist	1	0	2
	Palm Beach Road Rang	23	10	91
	SmarTraveler (511)	0	0	1
	Total	39	20	190
Total	139	138	884	

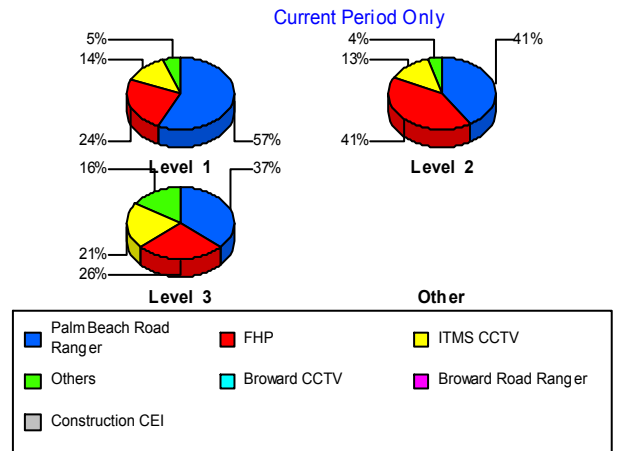
Total Events by Peak Period and Detection Method



Incident Detection Methods by Severity

		Current Month	Last Month	YTD
Level 1	Broward Road Ranger	1	1	5
	Broward TMC	0	0	1
	Construction CEI	0	0	2
	District 4	1	2	30
	FHP	18	9	106
	ITMS CCTV	10	16	59
	Motorist	1	1	4
	Palm Beach Road Rang	42	26	241
	SmarTraveler (511)	1	0	2
	Total	74	55	450
Level 2	Broward Road Ranger	0	0	1
	Construction CEI	0	0	2
	District 4	0	1	8
	FHP	19	27	134
	ITMS	0	0	3
	ITMS CCTV	6	10	40
	Motorist	1	1	5
	Palm Beach Road Rang	19	23	126
	Road Watcher	1	0	1
	Total	46	62	321
Level 3	Construction CEI	2	0	2
	District 4	0	0	2
	FHP	5	11	46
	ITMS CCTV	4	3	22
	Palm Beach Road Rang	7	7	40
	Road Watcher	1	0	1
	Total	19	21	113
Total	139	138	884	

Total Events by Severity and Detection Method



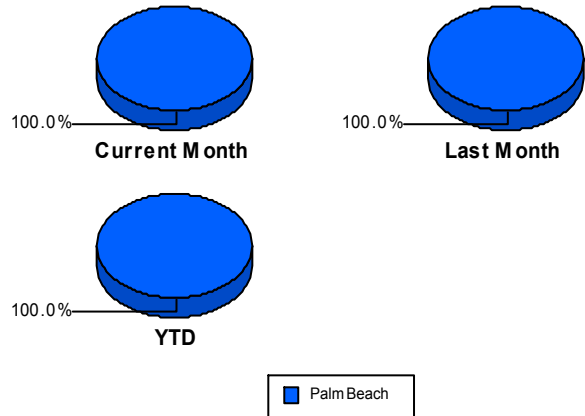
Road Ranger / SIRV Performance Measures

Road Ranger / SIRV Performance By County

RR/SIRV Responses per County

Values presented are:
 - Total Events with a RR/SIRV Response
 - Total RR/SIRV Responses,
 - Total Activities Performed

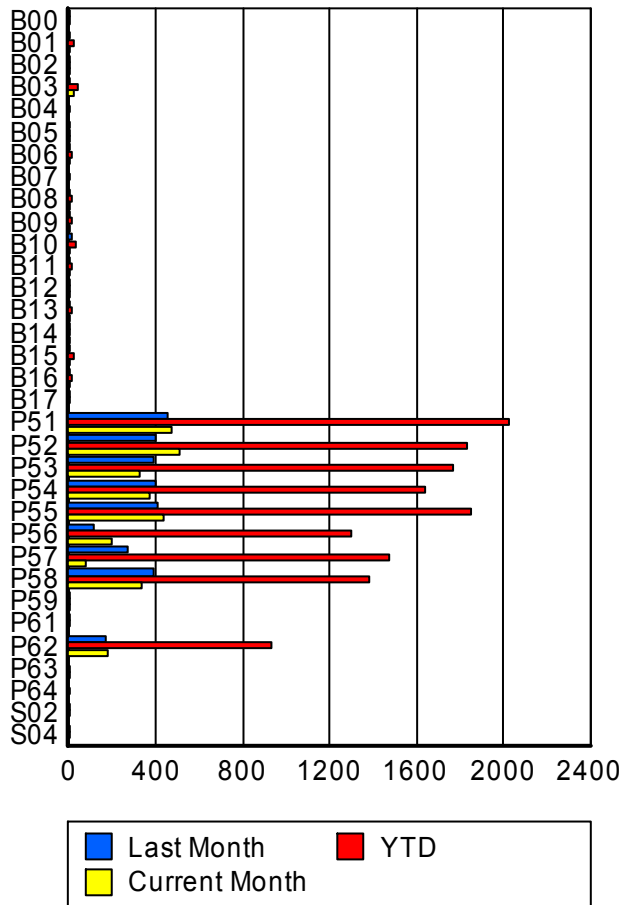
	Current Mo	Last Month	YTD
Palm Beach	2,870	2,938	13,899
	2,974	3,058	14,471
	3,193	3,313	15,494



Road Ranger / SIRV Performance By Truck

	Current Mo	Last Month	YTD
B00	0	1	6
	0	1	6
	0	1	7
B01	1	3	19
	1	3	19
	2	3	22
B02	1	1	2
	1	1	2
	1	1	2
B03	21	5	39
	22	5	41
	23	5	42
B04	0	0	1
	0	0	1
	0	0	1
B05	2	1	7
	2	1	7
	2	1	7
B06	3	2	11
	3	2	11
	4	2	12
B07	0	0	4
	0	0	4
	0	0	4
B08	1	6	12
	1	7	13
	1	7	13

**RR/SIRV
Responses per
Truck**



	Current Mo	Last Month	YTD
B09	3	1	14
	3	2	15
	3	2	16
B10	5	11	36
	5	11	36
	6	14	43
B11	2	2	17
	2	2	17
	2	2	18
B12	2	3	6
	2	3	6
	2	3	6
B13	3	4	16
	3	4	16
	3	4	16
B14	3	1	4
	3	1	4
	4	1	5
B15	7	1	21
	7	1	21
	8	1	23
B16	2	4	11
	2	4	11
	2	5	12
B17	0	2	2
	0	2	2
	0	2	2
P51	476	447	2,015
	478	451	2,028
	507	486	2,168
P52	505	401	1,824
	510	403	1,838
	552	446	1,982
P53	328	387	1,754
	329	391	1,766
	357	419	1,881
P54	372	395	1,632
	376	399	1,645
	401	429	1,765
P55	431	408	1,836
	437	409	1,849
	475	439	1,977
P56	198	111	1,293
	199	112	1,305
	218	126	1,404

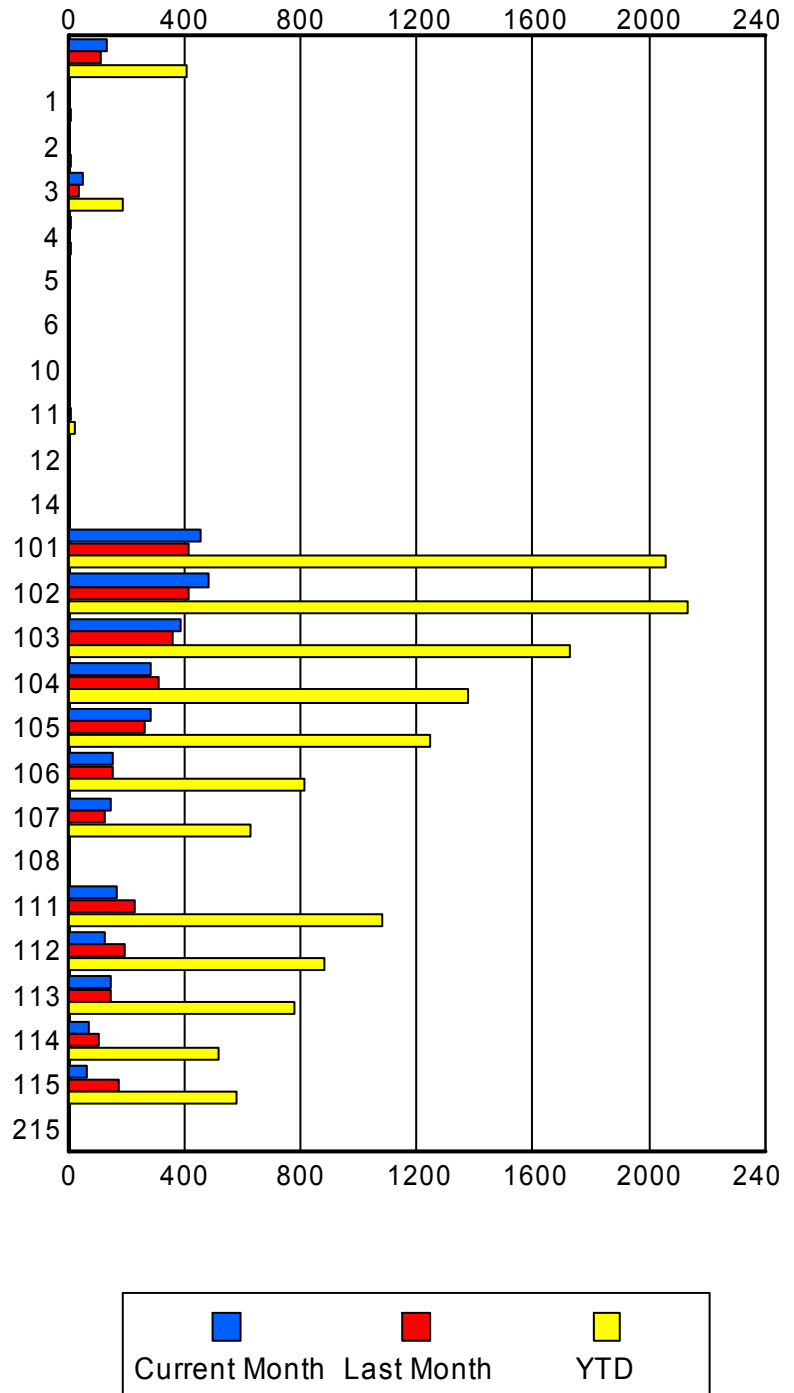
	Current Mo	Last Month	YTD
P57	76	267	1,455
	76	271	1,471
	80	299	1,584
P58	324	393	1,369
	331	393	1,381
	349	425	1,471
P59	3	1	6
	3	1	6
	3	1	6
P61	0	2	7
	0	2	7
	0	2	7
P62	174	172	926
	176	174	935
	186	185	990
P63	2	0	2
	2	0	2
	2	0	2
P64	0	0	2
	0	0	2
	0	0	2
S02	0	1	3
	0	1	3
	0	1	3
S04	0	1	1
	0	1	1
	0	1	1

Road Ranger / SIRV Performance By Beat

	Current Mo	Last Month	YTD
	134	113	402
	135	114	405
	145	121	427
1	0	1	8
	0	1	8
	0	1	9
2	1	2	7
	1	2	7
	1	2	7
3	49	38	186
	50	39	191
	54	43	206
4	8	0	8
	8	0	8
	10	0	10
5	1	0	1
	1	0	1
	1	0	1
6	1	1	2
	1	1	2
	1	1	2
10	1	0	2
	1	0	2
	1	0	2
11	3	5	23
	3	6	24
	4	6	26
12	0	2	2
	0	2	2
	0	2	2
14	1	0	1
	1	0	1
	2	0	2
101	453	412	2,042
	458	413	2,058
	482	453	2,190
102	481	415	2,121
	485	416	2,132
	537	460	2,311
103	379	359	1,708
	386	362	1,724
	405	394	1,842
104	281	307	1,363
	284	309	1,377
	311	332	1,499

Values presented are:
 - Total Events with a RR/SIRV Response
 - Total RR/SIRV Responses,
 - Total Activities Performed

RR/SIRV Responses per Beat



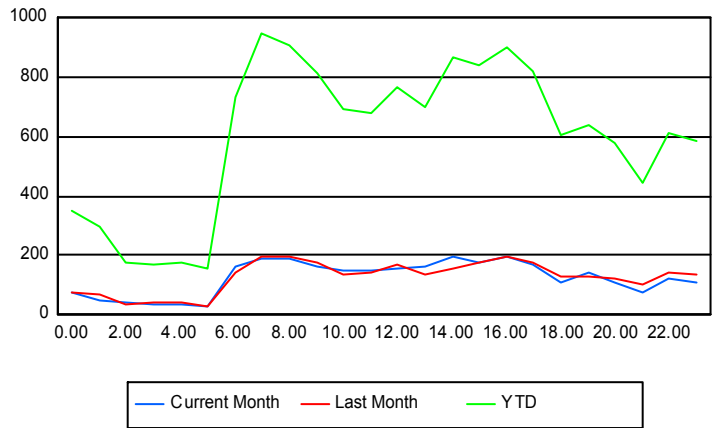
	Current Mo	Last Month	YTD
105	278 281 299	259 264 279	1,228 1,245 1,319
106	151 152 164	153 154 164	805 811 861
107	144 145 151	126 127 137	624 630 661
108	0 0 0	1 1 1	1 1 1
111	167 167 172	226 229 247	1,074 1,084 1,159
112	125 126 138	192 193 216	875 882 942
113	146 150 162	145 149 163	762 777 838
114	72 73 76	100 102 105	513 517 545
115	66 66 77	171 172 184	576 580 630
215	0 0 0	2 2 2	2 2 2

Road Ranger / SIRV Performance By Time of Day

Values presented are:
 - Total Events with a RR/SIRV Response
 - Total RR/SIRV Responses,
 - Total Activities Performed

	Current Mo	Last Month	YTD
12AM-1AM	70	71	337
	74	74	352
	80	78	376
1AM-2AM	49	67	280
	50	72	299
	54	84	334
2AM-3AM	37	33	167
	39	37	177
	40	42	187
3AM-4AM	30	38	158
	32	39	167
	37	41	183
4AM-5AM	32	34	157
	34	39	177
	37	42	192
5AM-6AM	23	30	132
	27	31	153
	29	34	168
6AM-7AM	153	140	704
	160	146	731
	170	158	784
7AM-8AM	188	193	924
	190	196	950
	207	206	1,008
8AM-9AM	180	186	869
	188	195	906
	201	210	967
9AM-10AM	154	169	783
	161	175	816
	179	196	884
10AM-11AM	145	129	674
	148	133	695
	156	149	755
11AM-12PM	145	138	653
	149	144	680
	162	154	725
12PM-1PM	148	156	731
	153	167	770
	163	178	831

Number of Responses / Hour of the Day



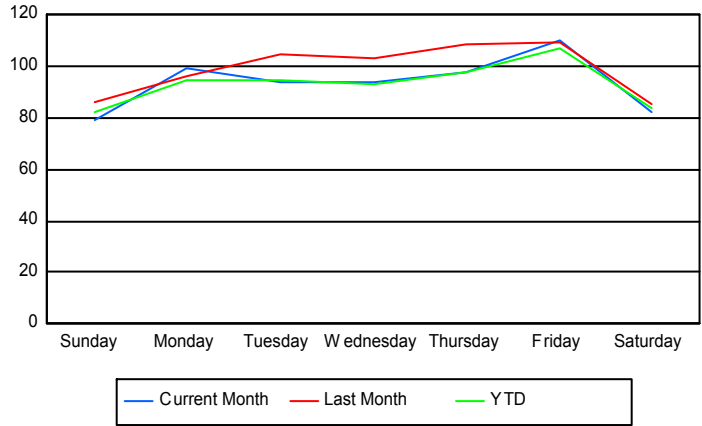
	Current Mo	Last Month	YTD
1PM-2PM	149	130	666
	160	136	698
	173	147	758
2PM-3PM	190	154	843
	197	159	867
	209	178	932
3PM-4PM	169	173	816
	178	175	838
	193	186	884
4PM-5PM	193	195	878
	196	199	904
	211	223	965
5PM-6PM	166	168	794
	169	174	823
	182	191	876
6PM-7PM	109	128	580
	112	131	604
	122	136	638
7PM-8PM	138	130	624
	142	132	640
	153	145	678
8PM-9PM	109	112	558
	112	120	580
	118	125	612
9PM-10PM	71	95	420
	76	101	446
	78	107	465
10PM-11PM	117	138	588
	120	146	612
	128	155	652
11PM-12AM	105	131	563
	107	137	586
	111	148	640

Road Ranger / SIRV Performance By Day of Week

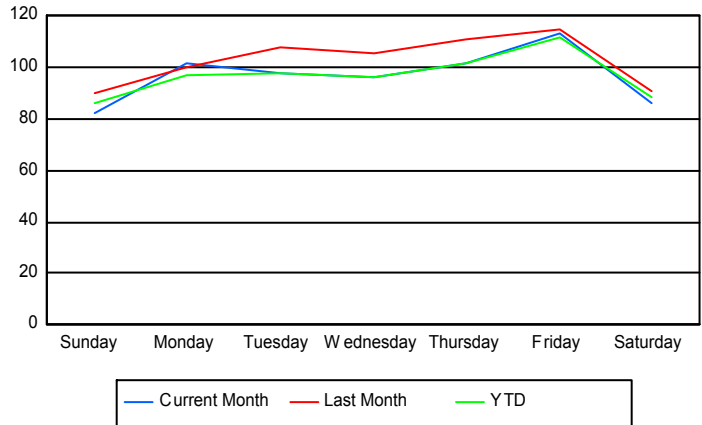
Values presented are:
 - Total Events with a RR/SIRV Response
 - Total RR/SIRV Responses,
 - Total Activities Performed

	Current Mo	Last Month	YTD
Sunday	314	343	1,685
	326	358	1,759
	348	395	1,884
Monday	382	378	1,941
	391	395	2,001
	415	421	2,127
Tuesday	370	518	2,036
	386	535	2,115
	404	575	2,245
Wednesday	369	505	2,004
	381	520	2,069
	422	558	2,231
Thursday	487	425	2,113
	505	433	2,194
	544	465	2,345
Friday	544	436	2,331
	561	456	2,421
	610	506	2,628
Saturday	404	338	1,810
	424	361	1,912
	450	393	2,034

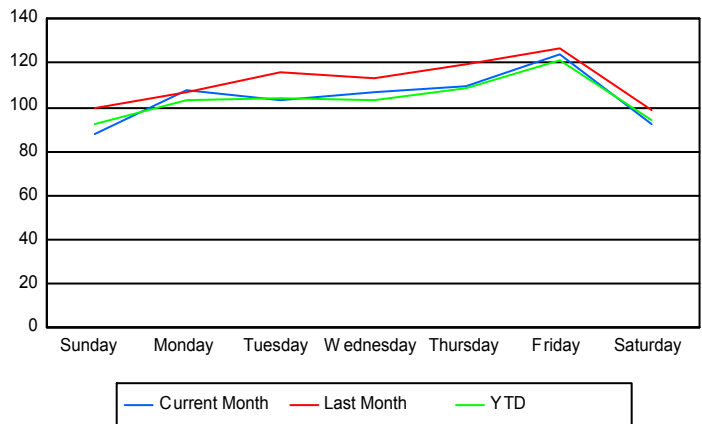
Avg # of events with a RR/SIRV Response per Day of the Week



Avg # of RR/SIRV Responses per Day of the Week



Avg # of RR/SIRV Activities Performed per Day of the Week



Road Ranger/ SIRV Responses per Time of Day and Day of Week

