



Monthly Performance Measures Report Palm Beach County



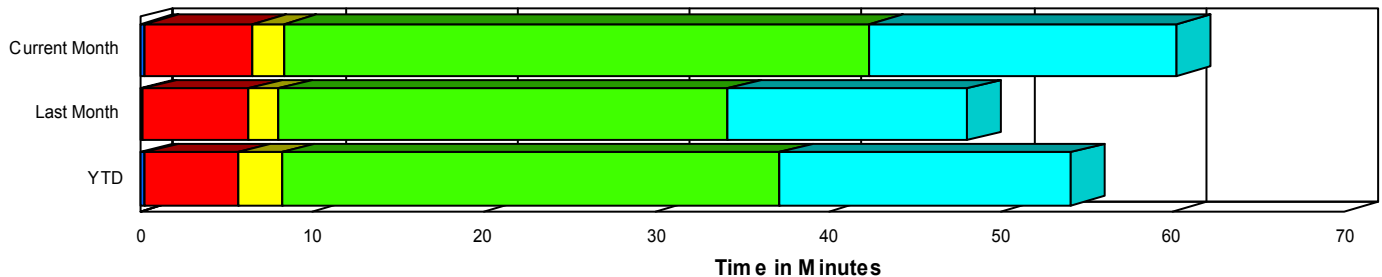
Created on:
September 28, 2007
3:07 pm

Period From Jun 1, 2007 to Jun 30, 2007

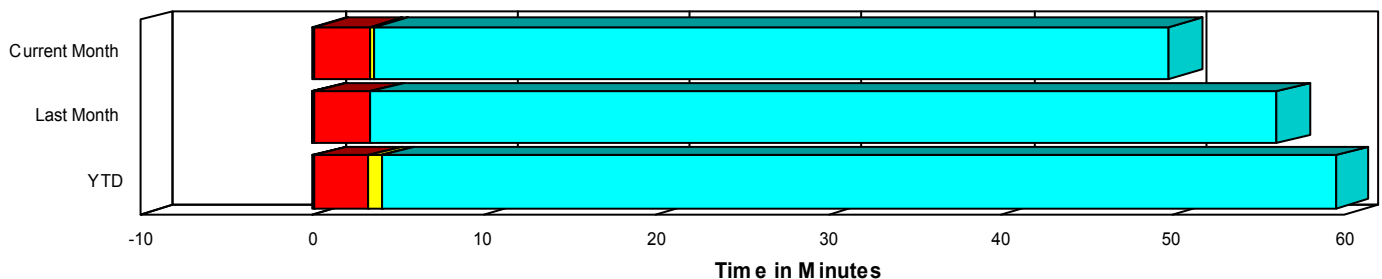
Performance Measures Summary

	Traffic Events (No Lanes Blocked)			Incidents (Lanes Blocked)		
	<u>This Month</u>	<u>Last Month</u>	<u>YTD</u>	<u>This Month</u>	<u>Last Month</u>	<u>YTD</u>
Number of Events	2,515	2,612	15,366	175	138	1,104
TMC Detection (min.)	0.13	0.09	0.10	0.33	0.21	0.31
TMC Verification (min.)	3.22	3.34	3.14	6.26	6.10	5.38
TMC Response (min.)	3.56	3.41	4.12	8.08	7.95	8.04
RR Dispatch Time (min.)	0.85	0.55	1.16	1.14	0.89	1.20
RR Response Time (min.)	2.76	2.88	2.97	6.93	7.06	6.84
Roadway Clearance (min.)				42.90	33.75	37.51
Event Clearance (min.)	49.86	56.17	59.64	56.49	46.80	52.35
# of Events w/ RR/SIRV	2,416	2,510	14,638	173	135	1,081
RR/SIRV Responses	2,491	2,567	15,137	224	166	1,352
RR/SIRV Activities	2,628	2,725	16,064	260	199	1,593

Incident Clearance TimeLine



Traffic Event(Non-Lane Blockage) Time-Line



<ul style="list-style-type: none"> ■ Avg. TMC Detection Time ■ Avg. Time from TMC Detection to TMC Verification ■ Avg. Time from TMC Verification to TMC Response 	<ul style="list-style-type: none"> ■ Avg. Time from TMC Response to Roadway Clearance* ■ Avg. Time from Roadway Clearance to Incident/Event Clearance**
---	--

* Roadway clearance equals all travel lanes open

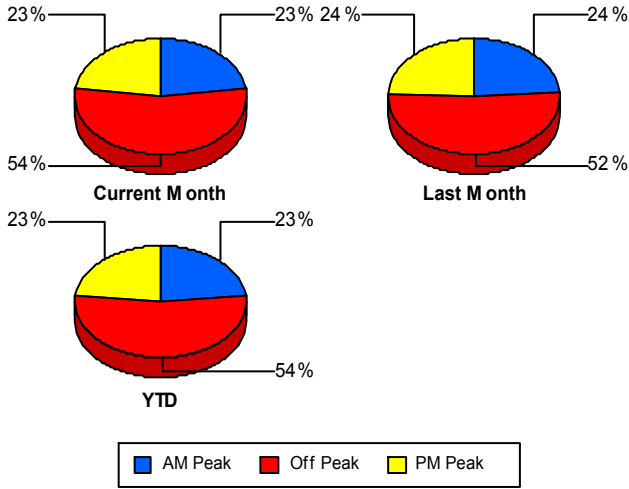
** Incident clearance equals time when last responder has left the scene

Performance Measures by Peak Period

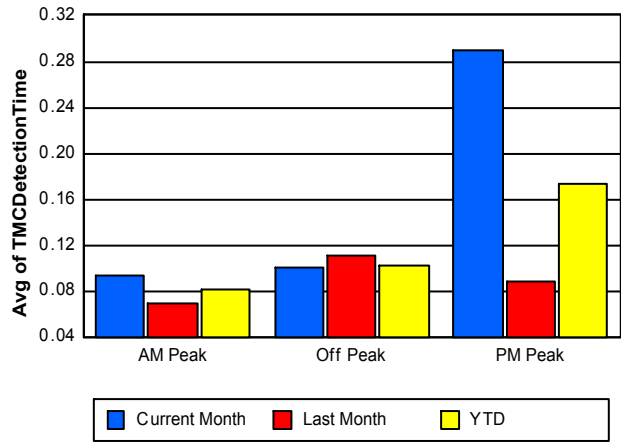
Note: AM peak period is defined as 6am to 10am and PM peak period is defined as 3pm to 7pm.

	AM Peak			Off Peak			PM Peak		
	<u>Current Month</u>	<u>Last Month</u>	<u>YTD</u>	<u>Current Month</u>	<u>Last Month</u>	<u>YTD</u>	<u>Current Month</u>	<u>Last Month</u>	<u>YTD</u>
Number of Events	622	662	3,778	1,459	1,418	8,883	609	670	3,809
Number of Incidents	50	33	281	90	75	543	35	30	280
TMC Detection (min.)	0.09	0.07	0.08	0.10	0.11	0.10	0.29	0.09	0.17
TMC Verification (min.)	2.54	2.26	2.10	3.65	3.86	3.51	3.73	3.86	3.94
TMC Response (min.)	3.12	2.52	3.15	3.89	3.94	4.89	4.54	4.14	4.49
RR Dispatch Time (min.)	0.43	0.38	0.55	0.77	0.57	1.53	1.56	0.74	0.96
RR Response Time (min.)	2.70	2.14	2.60	3.13	3.37	3.37	3.18	3.46	3.58
Event Clearance (min.)	27.04	48.26	48.64	61.24	62.57	71.69	47.80	48.51	40.34
Roadway Clearance (min.)	31.56	28.32	34.66	51.80	37.95	42.82	36.19	29.20	30.09
Incident Clearance (min.)	50.09	44.05	50.72	59.72	50.56	57.45	57.33	40.42	44.11
# of Events w/ RR/SIRV	606	638	3,657	1,394	1,358	8,378	589	649	3,684
RR/SIRV Responses	640	659	3,843	1,463	1,412	8,812	612	662	3,834
RR/SIRV Activities	675	684	4,069	1,572	1,544	9,509	641	696	4,079

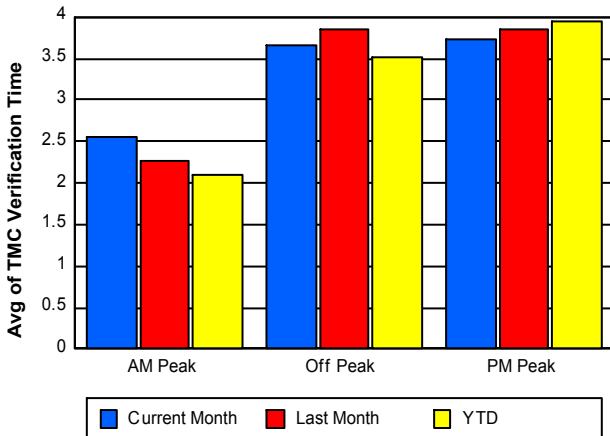
Number of Events / Peak Period



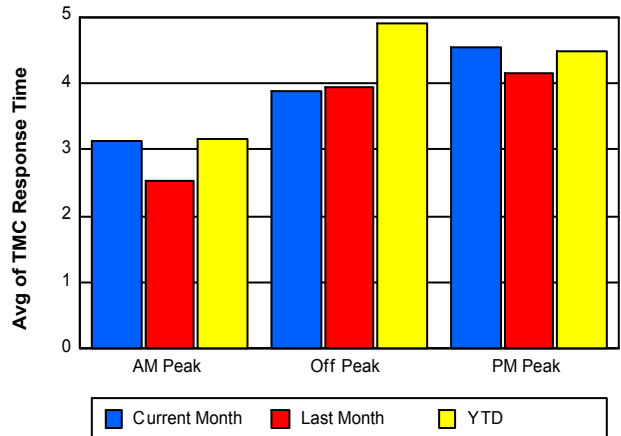
TMC Detection Time



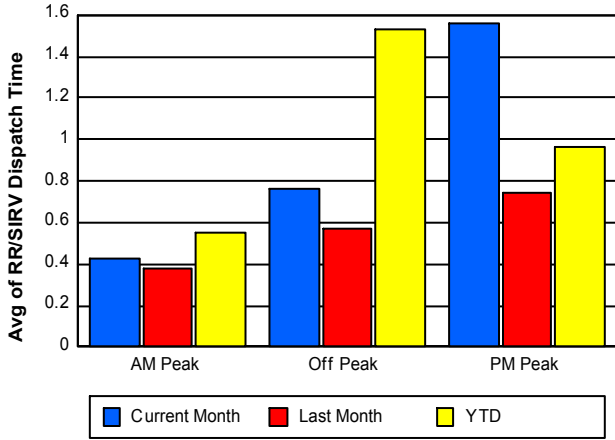
TMC Verification Time



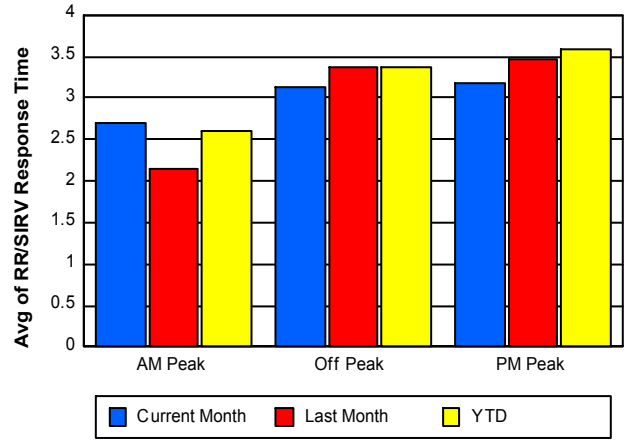
TMC Response Time



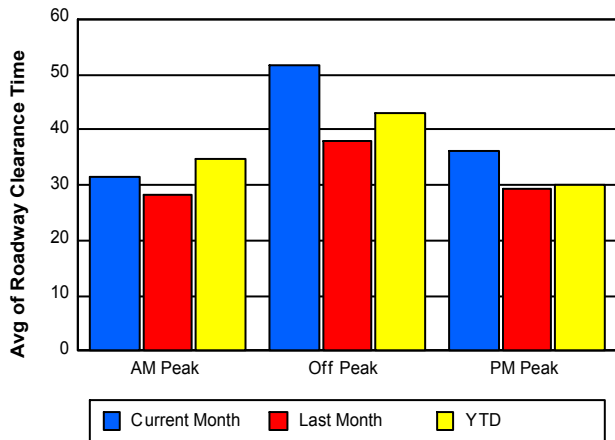
Road Ranger / SIRV Dispatch Time



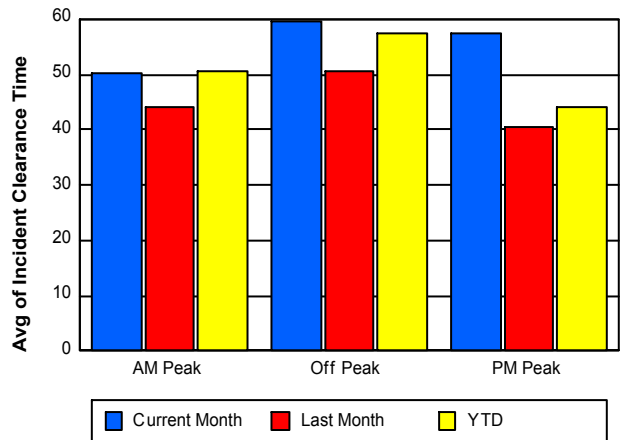
Road Ranger / SIRV Response Time



Roadway Clearance Time (2A)



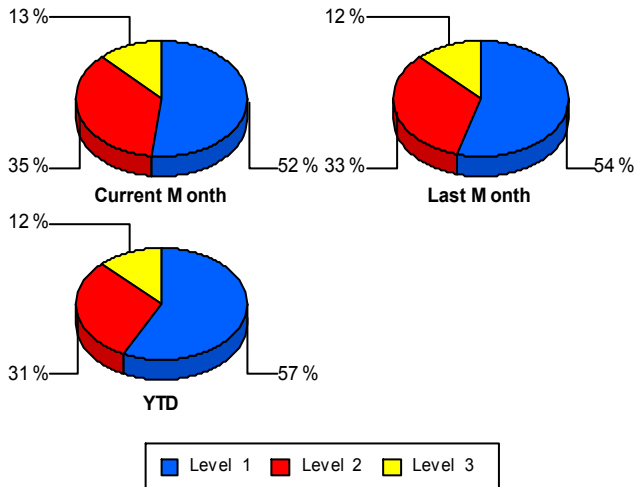
Incident Clearance Time (3B)



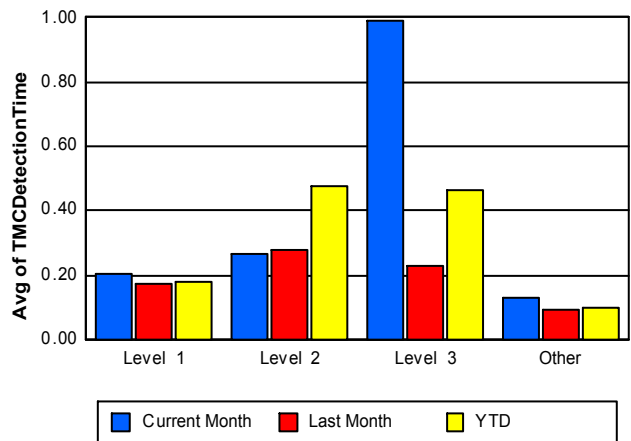
Performance Measures by Severity

	Level 1			Level 2			Level 3			Other		
	<u>This Month</u>	<u>Last Month</u>	<u>YTD</u>	<u>This Month</u>	<u>Last Month</u>	<u>YTD</u>	<u>This Month</u>	<u>Last Month</u>	<u>YTD</u>	<u>This Month</u>	<u>Last Month</u>	<u>YTD</u>
Number of Events	91	75	631	62	46	337	22	17	136	2,515	2,612	15,366
Number of Incidents	91	75	631	62	46	337	22	17	136	0	0	0
TMC Detection (min.)	0.21	0.17	0.18	0.26	0.28	0.48	0.99	0.23	0.47	0.13	0.09	0.10
TMC Verification (min.)	3.87	4.08	3.53	9.84	8.64	8.63	6.02	8.19	5.95	3.22	3.34	3.14
TMC Response (min.)	5.96	4.65	5.45	10.95	12.04	11.00	8.65	11.75	12.95	3.56	3.41	4.12
RR Dispatch Time (min.)	1.00	0.45	0.92	1.26	1.37	1.31	1.40	1.66	2.36	0.85	0.55	1.16
RR Resp. Time (min.)	4.95	4.20	4.55	9.70	10.66	9.68	7.25	10.10	10.58	2.76	2.88	2.97
Event Clearance (min.)	37.04	27.80	32.34	67.77	66.89	69.05	105.15	76.27	103.83	49.86	56.17	59.64
Roadway Clear. (min.)	14.10	12.66	12.65	56.26	55.46	56.83	124.34	68.02	105.02			
Incident Clearance (min.)	37.04	27.80	32.34	67.77	66.89	69.05	105.15	76.27	103.83			
# of Events w/ RR/SIRV	90	74	621	62	46	336	21	15	124	2,416	2,510	14,638
RR/SIRV Responses	102	81	693	87	63	462	35	22	197	2,491	2,567	15,137
RR/SIRV Activities	119	96	811	102	76	549	39	27	233	2,628	2,725	16,064

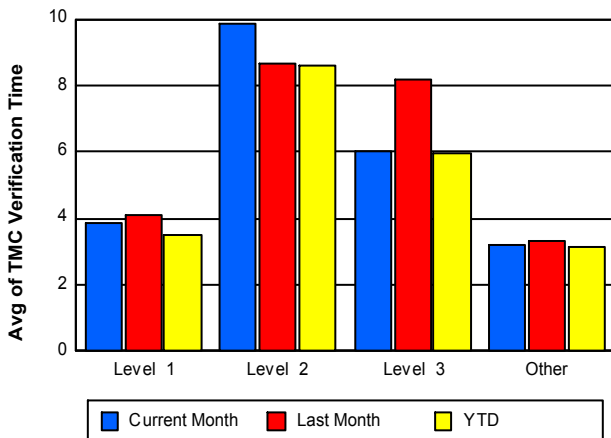
Number of Events / Severity



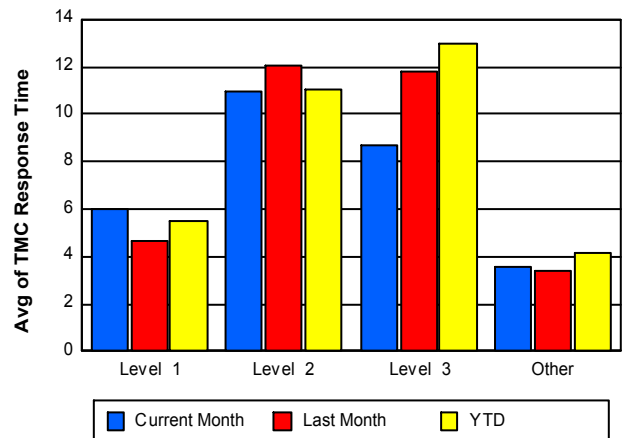
TMC Detection Time



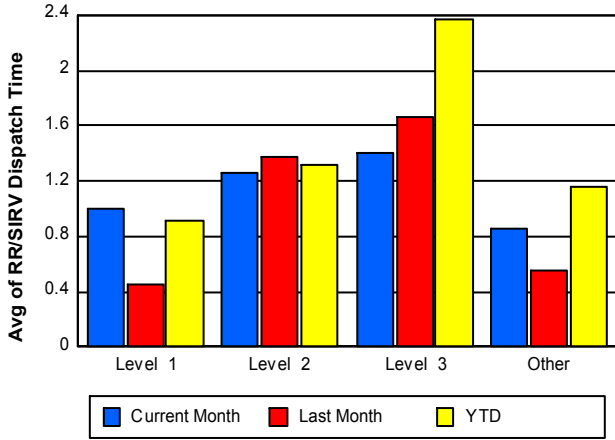
TMC Verification Time



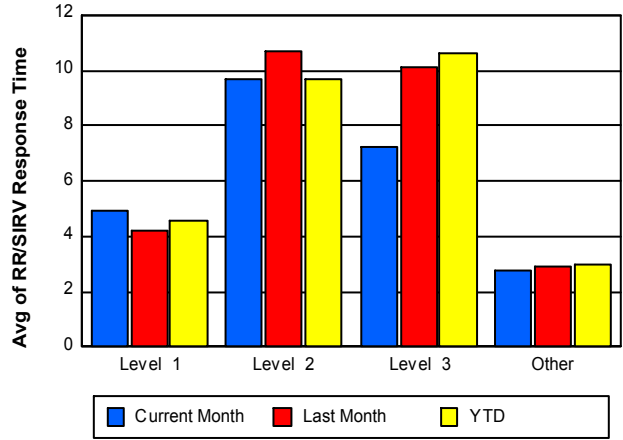
TMC Response Time



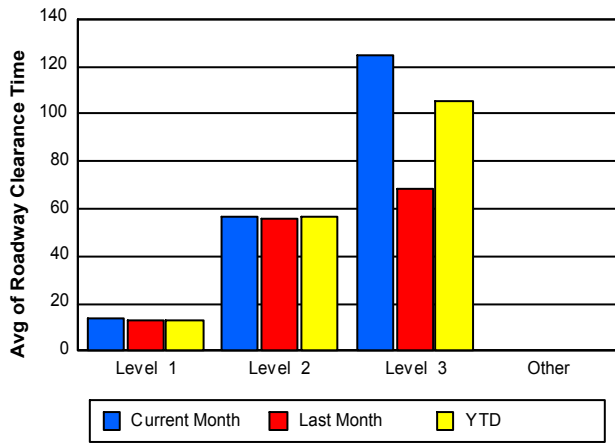
Road Ranger / SIRV Dispatch Time



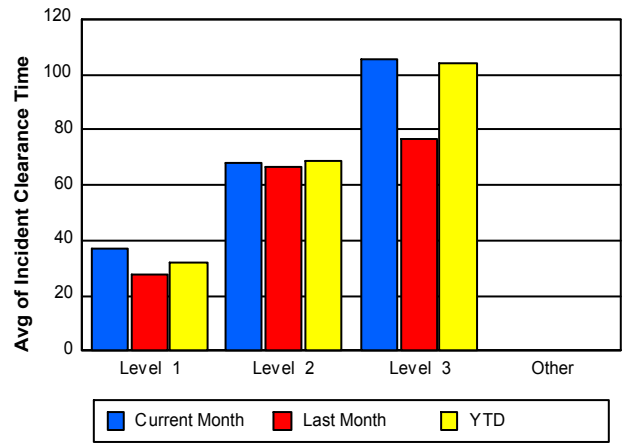
Road Ranger / SIRV Response Time



Roadway Clearance Time (2A)



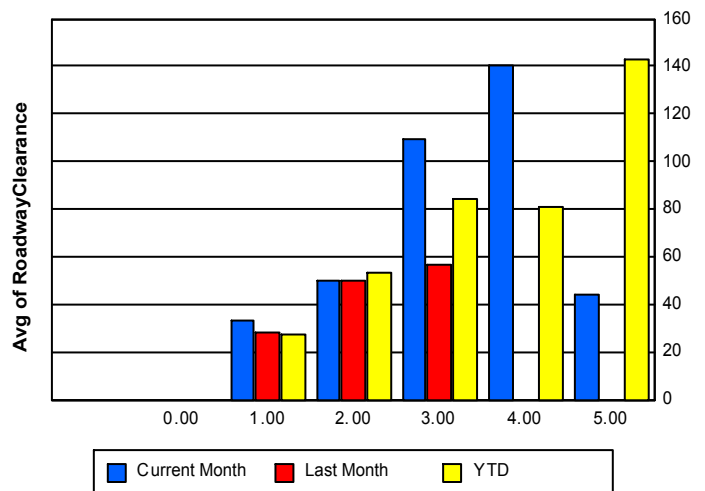
Incident Clearance Time (3B)



Roadway Clearance by Maximum Number of Lanes Blocked

	Current Month	Last Month	YTD
0			
1	33.29	28.05	27.62
2	50.17	50.06	53.33
3	109.80	56.90	83.99
4	140.14	0.00	80.60
5	43.97	0.00	142.88

Roadway Clearance Time(2A)

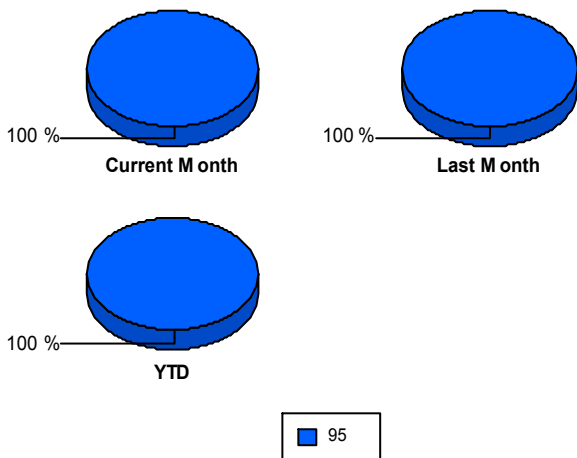


Performance Measures by Roadway

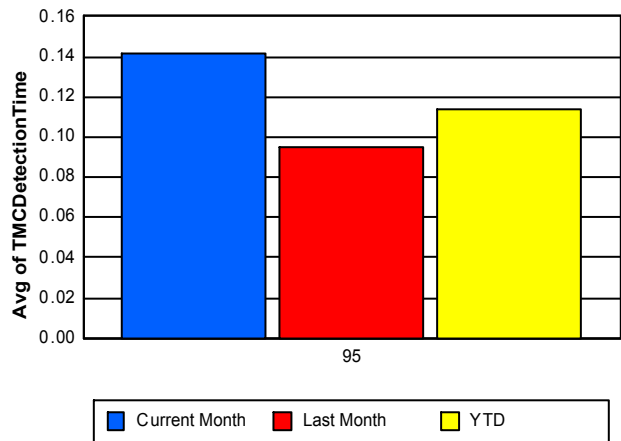
95

	<u>Current Month</u>	<u>Last Month</u>	<u>YTD</u>
Number of Events	2,690	2,750	16,470
Number of Incidents	175	138	1,104
TMC Detection (min.)	0.14	0.10	0.11
TMC Verification (min.)	3.41	3.47	3.29
TMC Response (min.)	3.86	3.65	4.39
RR Dispatch Time (min.)	0.87	0.57	1.17
RR Resp. Time (min.)	3.04	3.10	3.24
Event Clearance (min.)	50.29	55.70	59.15
Roadway Clear. (min.)	42.90	33.75	37.51
Incident Clearance (min.)	56.49	46.80	52.35
# of Events w/ RR/SIRV	2,589	2,645	15,719
RR/SIRV Responses	2,715	2,733	16,489
RR/SIRV Activities	2,888	2,924	17,657

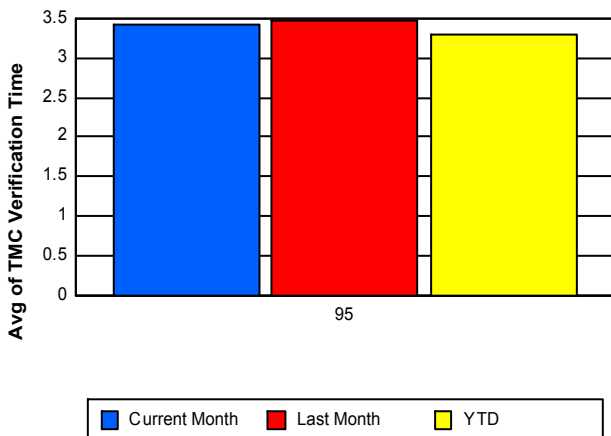
Number of Events / Roadway



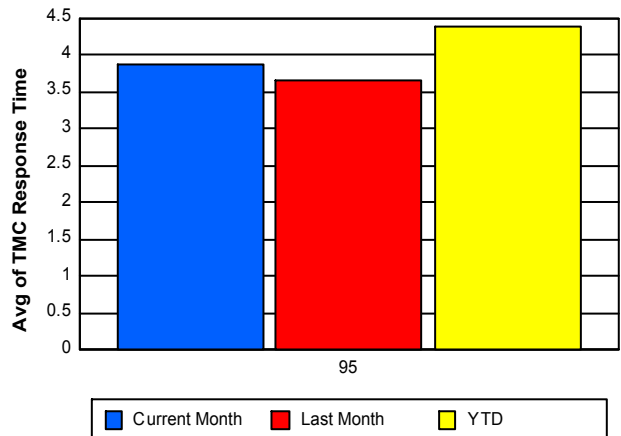
TMC Detection Time



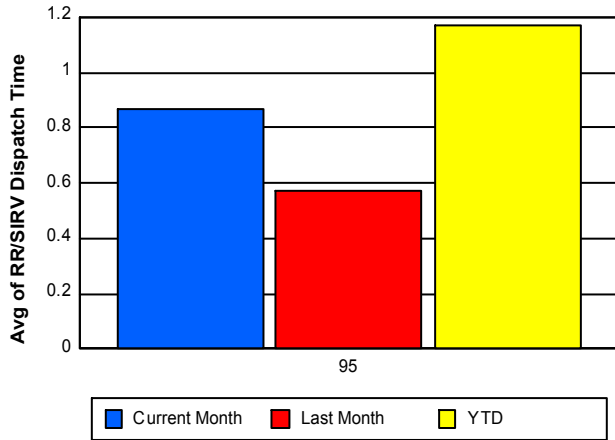
TMC Verification Time



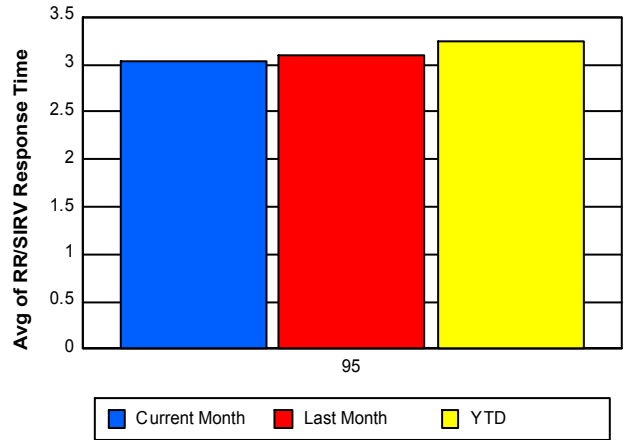
TMC Response Time



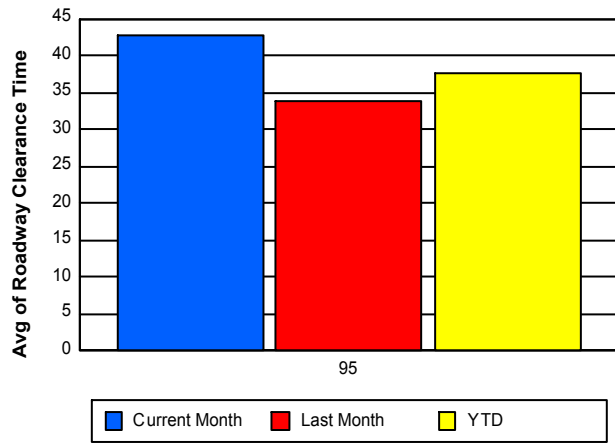
Road Ranger / SIRV Dispatch Time



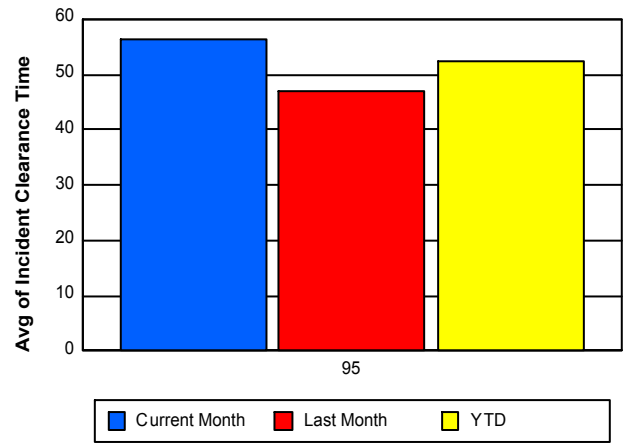
Road Ranger / SIRV Response Time



Roadway Clearance Time (2A)



Incident Clearance Time (3B)



Performance Measures by Event Type

Abandoned Vehicle

	<u>Current Month</u>	<u>Last Month</u>	<u>YTD</u>
Number of Events	514	517	3,217
Number of Incidents	2	2	16
TMC Detection (min.)	0.02	0.01	0.01
TMC Verification (min.)	0.77	0.74	0.15
TMC Response (min.)	1.84	0.85	4.40
RR Dispatch Time (min.)	1.21	0.23	3.62
RR Response Time (min.)	0.63	0.62	0.77
Event Clearance (min.)	179.19	220.41	221.48
Roadway Clearance (min.)	17.67	14.61	18.31
Incident Clearance (min.)	33.20	14.92	139.75
# of Events w/ RR/SIRV	434	429	2,596
RR/SIRV Assists	449	436	2,717
RR/SIRV Activities	460	461	2,811

Accident

	<u>Current Month</u>	<u>Last Month</u>	<u>YTD</u>
Number of Events	212	227	1,410
Number of Incidents	96	81	589
TMC Detection (min.)	0.80	0.28	0.41
TMC Verification (min.)	7.24	6.95	6.22
TMC Response (min.)	8.51	8.26	8.11
RR Dispatch Time (min.)	1.03	1.43	1.13
RR Response Time (min.)	7.53	6.83	6.99
Event Clearance (min.)	54.90	45.75	50.41
Roadway Clearance (min.)	45.29	42.51	47.35
Incident Clearance (min.)	71.32	60.28	67.66
# of Events w/ RR/SIRV	208	224	1,381
RR/SIRV Assists	248	258	1,639
RR/SIRV Activities	278	294	1,845

Congestion

	<u>Current Month</u>	<u>Last Month</u>	<u>YTD</u>
Number of Events	6	4	30
Number of Incidents	0	0	2
TMC Detection (min.)	0.00	0.00	0.02
TMC Verification (min.)	3.20	0.00	3.49
TMC Response (min.)	9.55	6.03	11.72
RR Dispatch Time (min.)	37.53	0.11	7.87
RR Response Time (min.)	9.33	5.92	9.89
Event Clearance (min.)	67.74	53.23	46.35
Roadway Clearance (min.)			76.90
Incident Clearance (min.)			97.58
# of Events w/ RR/SIRV	2	2	16
RR/SIRV Assists	2	2	20
RR/SIRV Activities	2	2	21

Debris on Roadway

	<u>Current Month</u>	<u>Last Month</u>	<u>YTD</u>
Number of Events	192	184	1,170
Number of Incidents	18	13	160
TMC Detection (min.)	0.18	0.21	0.21
TMC Verification (min.)	6.89	6.69	7.05
TMC Response (min.)	6.76	6.79	7.27
RR Dispatch Time (min.)	1.43	0.75	1.14
RR Response Time (min.)	5.33	6.04	6.14
Event Clearance (min.)	9.83	9.48	11.25
Roadway Clearance (min.)	13.05	6.03	11.92
Incident Clearance (min.)	15.72	7.19	12.64
# of Events w/ RR/SIRV	192	184	1,165
RR/SIRV Assists	200	188	1,208
RR/SIRV Activities	203	192	1,236

Disabled Vehicle

	<u>Current Month</u>	<u>Last Month</u>	<u>YTD</u>
Number of Events	1,734	1,782	10,352
Number of Incidents	51	38	289
TMC Detection (min.)	0.09	0.09	0.09
TMC Verification (min.)	3.35	3.47	3.41
TMC Response (min.)	3.47	3.38	3.49
RR Dispatch Time (min.)	0.63	0.53	0.55
RR Response Time (min.)	2.84	2.88	2.95
Event Clearance (min.)	16.35	14.69	16.34
Roadway Clearance (min.)	32.13	21.47	24.45
Incident Clearance (min.)	41.62	30.21	35.54
# of Events w/ RR/SIRV	1,727	1,775	10,298
RR/SIRV Assists	1,783	1,816	10,611
RR/SIRV Activities	1,912	1,941	11,443

Emergency Vehicles

	<u>Last Month</u>	<u>YTD</u>
Number of Events	1	5
Number of Incidents	1	3
TMC Detection (min.)	0.00	0.17
TMC Verification (min.)	0.00	4.74
TMC Response (min.)	0.00	5.90
RR Dispatch Time (min.)	0.00	0.32
RR Response Time (min.)	0.00	5.57
Event Clearance (min.)	26.03	16.73
Roadway Clearance (min.)	23.43	15.64
Incident Clearance (min.)	26.03	17.21
# of Events w/ RR/SIRV	1	4
RR/SIRV Assists	1	4
RR/SIRV Activities	1	4

Off Ramp Backup

	<u>YTD</u>
Number of Events	2
Number of Incidents	0
TMC Detection (min.)	0.00
TMC Verification (min.)	0.00
TMC Response (min.)	5.67
RR Dispatch Time (min.)	0.40
RR Response Time (min.)	5.27
Event Clearance (min.)	19.78
Roadway Clearance (min.)	
Incident Clearance (min.)	
# of Events w/ RR/SIRV	1
RR/SIRV Assists	2
RR/SIRV Activities	2

Other

	<u>Current Month</u>	<u>Last Month</u>	<u>YTD</u>
Number of Events	18	20	153
Number of Incidents	0	2	5
TMC Detection (min.)	0.06	0.05	0.05
TMC Verification (min.)	4.68	5.10	5.85
TMC Response (min.)	6.48	6.37	8.96
RR Dispatch Time (min.)	1.03	0.42	1.00
RR Response Time (min.)	5.71	6.10	7.99
Event Clearance (min.)	15.36	14.51	17.58
Roadway Clearance (min.)		48.36	74.52
Incident Clearance (min.)		53.22	83.42
# of Events w/ RR/SIRV	13	15	138
RR/SIRV Assists	13	15	144
RR/SIRV Activities	13	16	148

Pedestrian

	<u>Current Month</u>	<u>Last Month</u>	<u>YTD</u>
Number of Events	5	13	81
Number of Incidents	0	0	1
TMC Detection (min.)	0.17	0.12	0.13
TMC Verification (min.)	1.34	2.28	2.04
TMC Response (min.)	1.29	2.27	2.91
RR Dispatch Time (min.)	0.04	0.13	0.17
RR Response Time (min.)	1.26	2.14	2.71
Event Clearance (min.)	8.77	14.39	13.71
Roadway Clearance (min.)			18.32
Incident Clearance (min.)			19.55
# of Events w/ RR/SIRV	5	13	78
RR/SIRV Assists	5	13	79
RR/SIRV Activities	5	13	81

Police Activity

	<u>Current Month</u>	<u>YTD</u>
Number of Events	3	31
Number of Incidents	2	23
TMC Detection (min.)	0.05	0.14
TMC Verification (min.)	1.98	2.11
TMC Response (min.)	1.97	7.64
RR Dispatch Time (min.)	0.06	2.72
RR Response Time (min.)	1.92	5.01
Event Clearance (min.)	29.18	60.23
Roadway Clearance (min.)	31.19	65.85
Incident Clearance (min.)	35.77	76.72
# of Events w/ RR/SIRV	3	27
RR/SIRV Assists	3	39
RR/SIRV Activities	3	40

Road Work - Emergency

	<u>Current Month</u>	<u>Last Month</u>	<u>YTD</u>
Number of Events	4	1	15
Number of Incidents	4	1	14
TMC Detection (min.)	0.44	0.13	0.19
TMC Verification (min.)	0.00	44.15	5.48
TMC Response (min.)	6.50	44.10	10.22
RR Dispatch Time (min.)	6.33	0.15	3.48
RR Response Time (min.)	0.17	43.95	6.74
Event Clearance (min.)	74.59	172.12	60.60
Roadway Clearance (min.)	212.05	170.07	129.42
Incident Clearance (min.)	74.59	172.12	55.03
# of Events w/ RR/SIRV	4	1	13
RR/SIRV Assists	11	3	24
RR/SIRV Activities	11	3	24

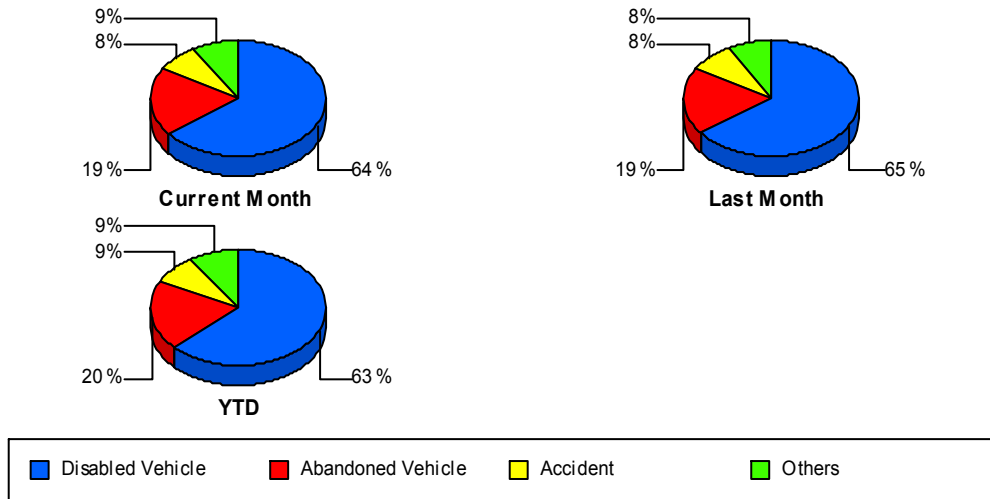
Visibility

	<u>Last Month</u>	<u>YTD</u>
Number of Events	1	2
Number of Incidents	0	0
TMC Detection (min.)	0.00	0.00
TMC Verification (min.)	0.00	0.00
TMC Response (min.)	0.00	0.00
RR Dispatch Time (min.)	0.00	0.00
RR Response Time (min.)	0.00	0.00
Event Clearance (min.)	32.43	22.63
Roadway Clearance (min.)		
Incident Clearance (min.)		
# of Events w/ RR/SIRV	1	1
RR/SIRV Assists	1	1
RR/SIRV Activities	1	1

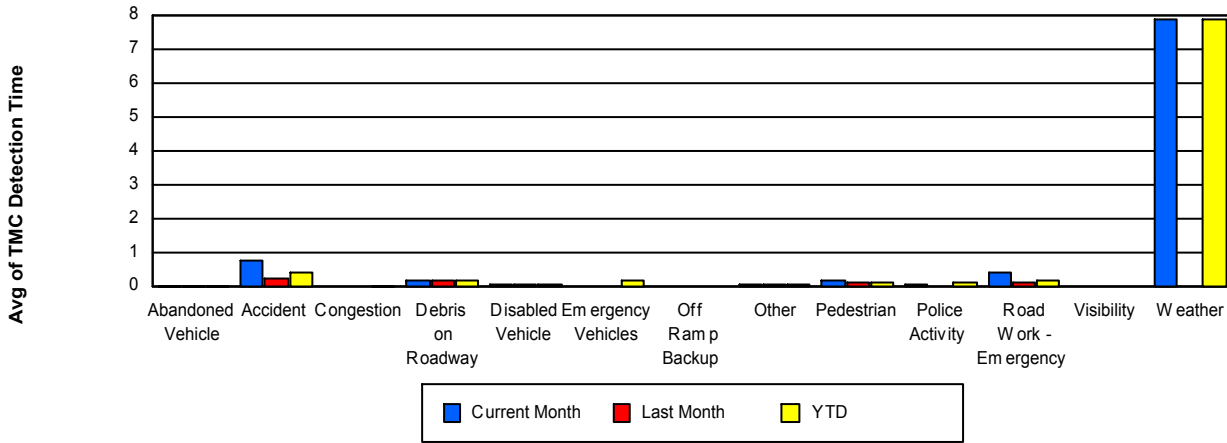
Weather

	<u>Current Month</u>	<u>YTD</u>
Number of Events	2	2
Number of Incidents	2	2
TMC Detection (min.)	7.89	7.89
TMC Verification (min.)	0.00	0.00
TMC Response (min.)	0.00	0.00
RR Dispatch Time (min.)	0.00	0.00
RR Response Time (min.)	0.00	0.00
Event Clearance (min.)	98.70	98.70
Roadway Clearance (min.)	169.62	169.62
Incident Clearance (min.)	98.70	98.70
# of Events w/ RR/SIRV	1	1
RR/SIRV Assists	1	1
RR/SIRV Activities	1	1

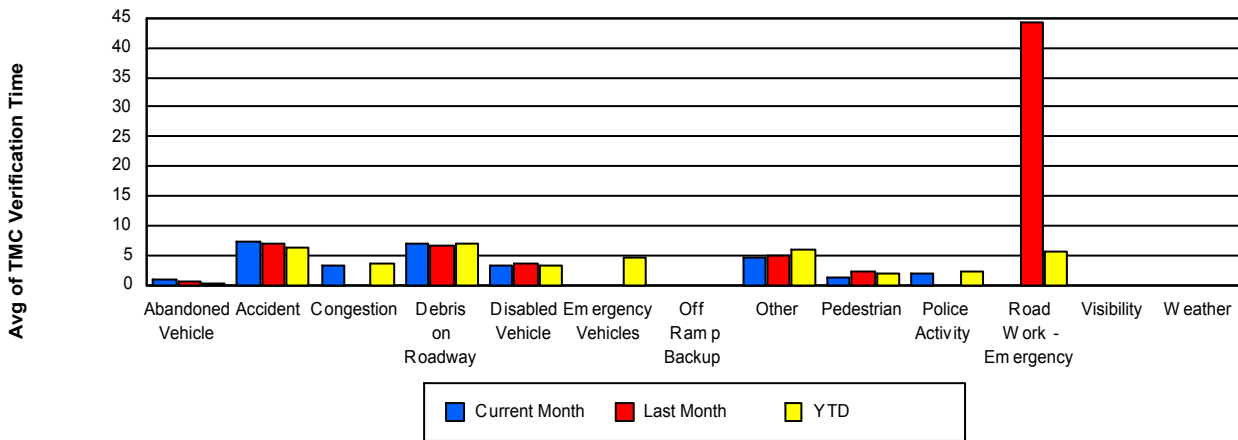
Number of Events / Event Type



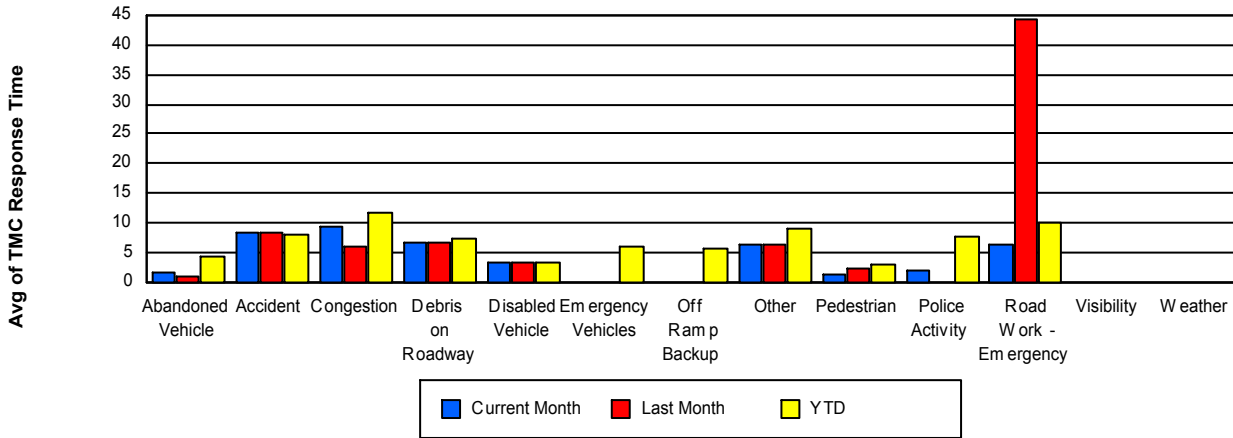
TMC Detection Time



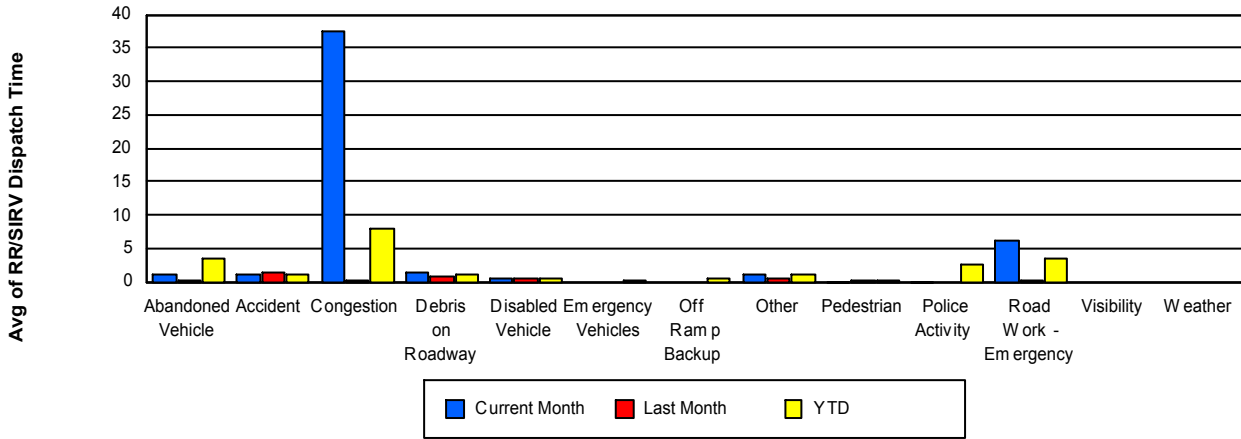
TMC Verification Time



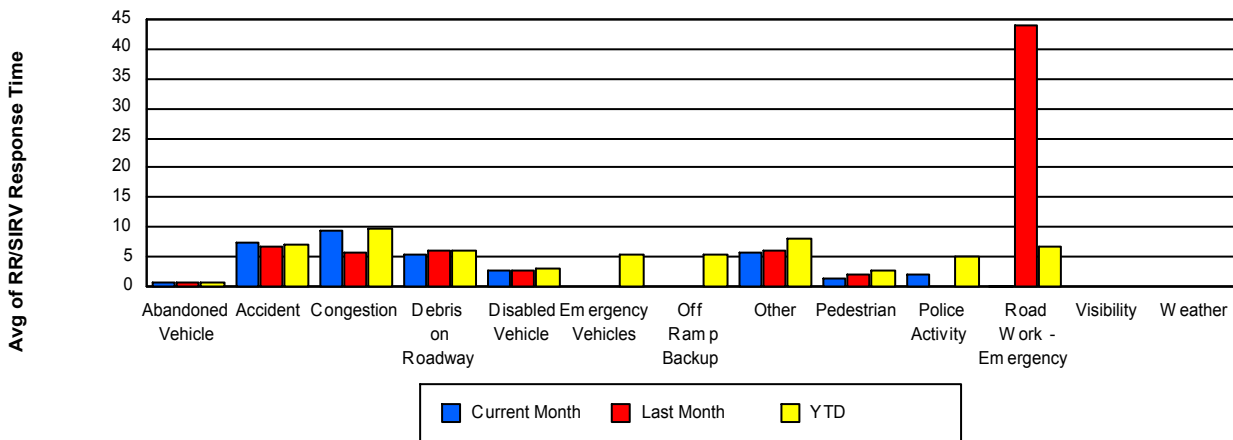
TMC Response Time



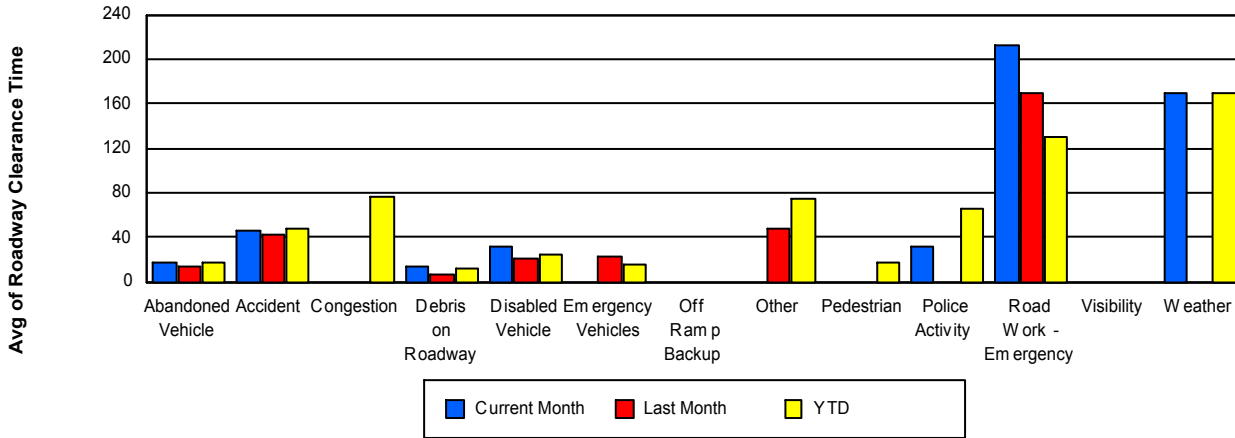
Road Ranger / SIRV Dispatch Time



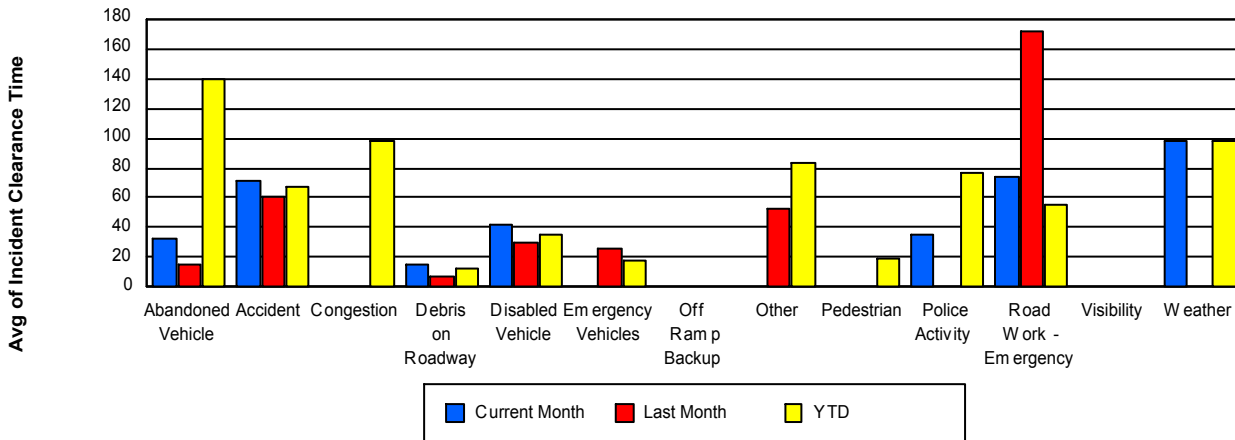
Road Ranger / SIRV Response Time



Roadway Clearance Time (2A)



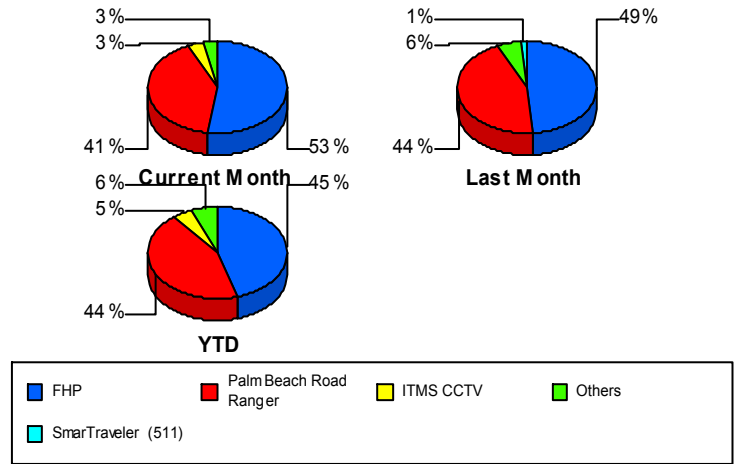
Incident Clearance Time (3B)



Incident Detection Methods

	Current Month	Last Month	YTD
Broward CCTV	0	1	1
Broward Road Ranger	0	1	3
Broward TMC	1	0	3
Construction CEI	0	1	3
FHP	92	67	499
I-95 Construction PIO	0	1	4
ITMS	0	1	12
ITMS CCTV	6	1	53
Media	2	0	15
Motorist	1	0	4
Other	1	0	6
Palm Beach County Sc	0	1	1
Palm Beach Road Rang	71	61	487
SIRV	0	1	1
SmarTraveler (511)	1	2	12
Total	175	138	1,104

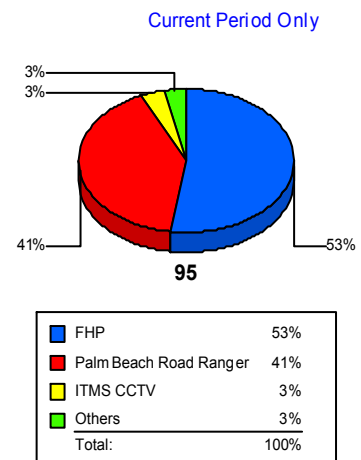
Total Incidents by Detection Method



Incident Detection Methods by Roadway

		Current Month	Last Month	YTD
95	Broward CCTV	0	1	1
	Broward Road Ranger	0	1	3
	Broward TMC	1	0	3
	Construction CEI	0	1	3
	FHP	92	67	499
	I-95 Construction PIO	0	1	4
	ITMS	0	1	12
	ITMS CCTV	6	1	53
	Media	2	0	15
	Motorist	1	0	4
	Other	1	0	6

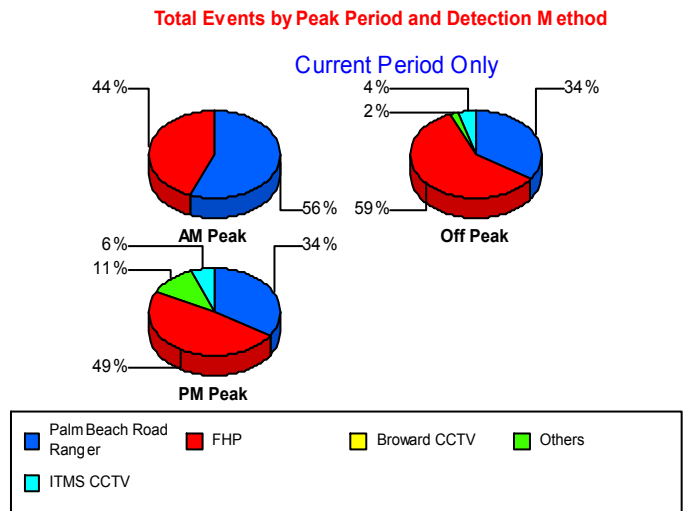
Total Events by Roadway and Detection Method



		Current Month	Last Month	YTD
95	Palm Beach County Sc	0	1	1
	Palm Beach Road Rang	71	61	487
	SIRV	0	1	1
	SmarTraveler (511)	1	2	12
	Total	175	138	1,104
Total		175	138	1,104

Incident Detection Methods by Peak Period

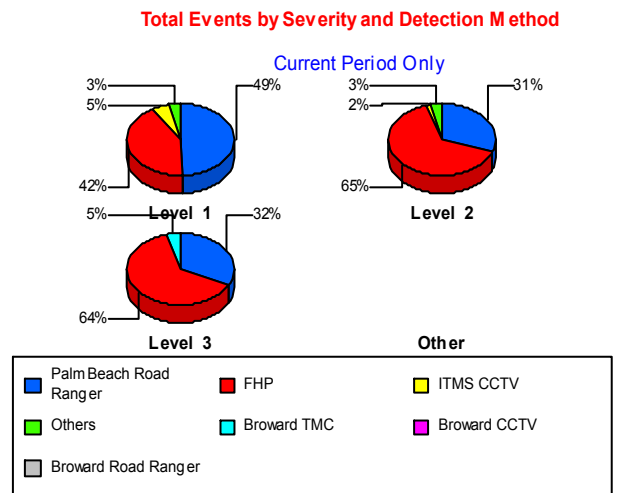
		Current Month	Last Month	YTD
AM Peak	Construction CEI	0	1	1
	FHP	22	14	111
	I-95 Construction PIO	0	1	2
	ITMS	0	0	2
	ITMS CCTV	0	0	17
	Media	0	0	2
	Palm Beach Road Rang	28	16	143
	SmarTraveler (511)	0	1	3
	Total	50	33	281
	Off Peak	Broward Road Ranger	0	0
Broward TMC		0	0	1
Construction CEI		0	0	1
FHP		53	42	283
I-95 Construction PIO		0	0	2
ITMS		0	1	8
ITMS CCTV		4	1	21
Media		1	0	3
Motorist		0	0	3
Other		0	0	3
Palm Beach County Sc		0	1	1
Palm Beach Road Rang		31	29	210
SIRV		0	1	1
SmarTraveler (511)		1	0	4



		Current Month	Last Month	YTD
Off Peak	Total	90	75	543
PM Peak	Broward CCTV	0	1	1
	Broward Road Ranger	0	1	1
	Broward TMC	1	0	2
	Construction CEI	0	0	1
	FHP	17	11	105
	ITMS	0	0	2
	ITMS CCTV	2	0	15
	Media	1	0	10
	Motorist	1	0	1
	Other	1	0	3
	Palm Beach Road Rang	12	16	134
	SmarTraveler (511)	0	1	5
	Total	35	30	280
Total	175	138	1,104	

Incident Detection Methods by Severity

		Current Month	Last Month	YTD
Level 1	Broward CCTV	0	1	1
	Broward Road Ranger	0	1	3
	Broward TMC	0	0	2
	FHP	38	28	224
	I-95 Construction PIO	0	0	1
	ITMS	0	0	6
	ITMS CCTV	5	0	31
	Media	1	0	7
	Motorist	0	0	2
	Other	1	0	4
	Palm Beach Road Rang	45	44	343
	SmarTraveler (511)	1	1	7
	Total	91	75	631
Level 2	Construction CEI	0	0	2



		Current Month	Last Month	YTD
Level 2	FHP	40	29	192
	I-95 Construction PIO	0	1	3
	ITMS	0	1	5
	ITMS CCTV	1	0	14
	Media	1	0	6
	Motorist	1	0	2
	Other	0	0	2
	Palm Beach County Sc	0	1	1
	Palm Beach Road Rang	19	12	104
	SIRV	0	1	1
	SmarTraveler (511)	0	1	5
	Total	62	46	337
Level 3	Broward TMC	1	0	1
	Construction CEI	0	1	1
	FHP	14	10	83
	ITMS	0	0	1
	ITMS CCTV	0	1	8
	Media	0	0	2
	Palm Beach Road Rang	7	5	40
	Total	22	17	136
Total	175	138	1,104	

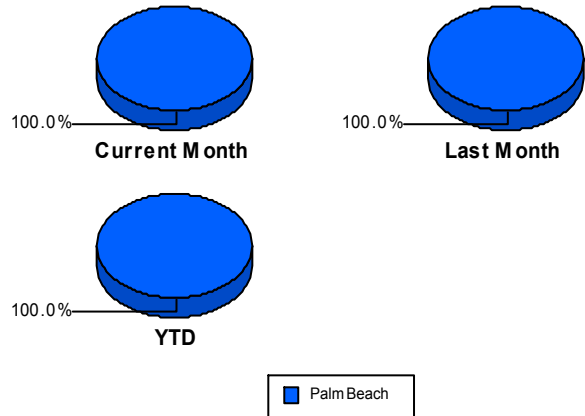
Road Ranger / SIRV Performance Measures

Road Ranger / SIRV Performance By County

RR/SIRV Responses per County

Values presented are:
 - Total Events with a RR/SIRV Response
 - Total RR/SIRV Responses,
 - Total Activities Performed

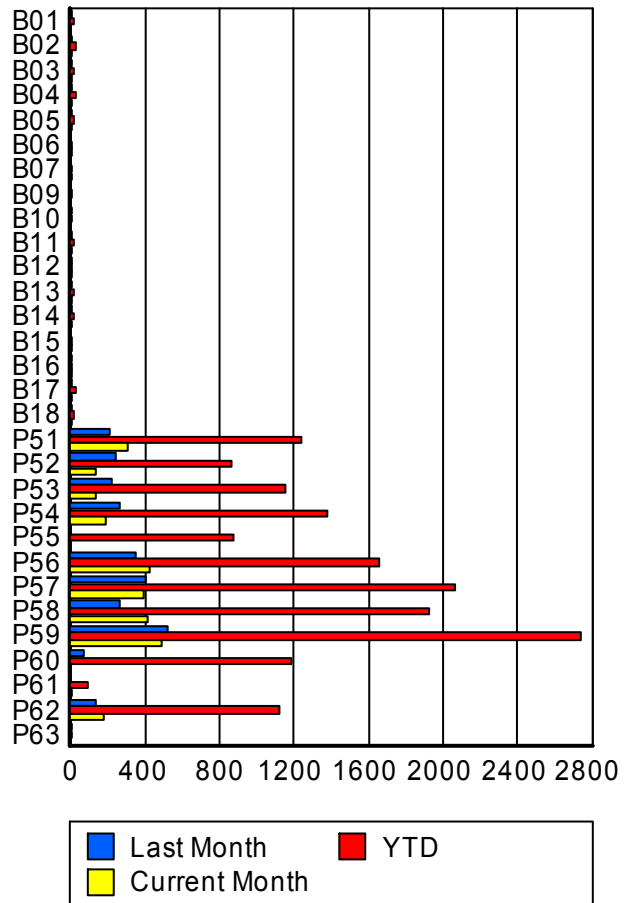
	Current Mo	Last Month	YTD
Palm Beach	2,589	2,645	15,719
	2,715	2,733	16,489
	2,888	2,924	17,657



Road Ranger / SIRV Performance By Truck

	Current Mo	Last Month	YTD
B01	0	7	16
	0	7	16
	0	7	18
B02	4	7	23
	4	7	23
	4	7	23
B03	3	1	12
	3	1	12
	3	1	12
B04	5	10	32
	5	10	32
	5	10	32
B05	5	6	14
	5	6	14
	5	6	14
B06	4	0	10
	4	0	10
	4	0	10
B07	3	0	8
	3	0	8
	4	0	9
B09	0	0	1
	0	0	1
	0	0	1
B10	0	2	5
	0	2	5
	0	2	5

**RR/SIRV
Responses per
Truck**



	Current Mo	Last Month	YTD
B11	5	3	15
	5	3	15
	6	3	16
B12	2	4	6
	2	4	6
	2	4	6
B13	5	5	17
	5	5	17
	5	5	18
B14	1	1	11
	1	1	11
	1	1	11
B15	4	0	10
	4	0	10
	4	0	10
B16	2	2	6
	2	2	6
	2	2	6
B17	5	6	26
	5	6	26
	5	6	26
B18	6	2	19
	6	2	19
	6	2	19
P51	303	207	1,220
	304	213	1,235
	320	227	1,320
P52	132	244	853
	134	245	859
	143	258	931
P53	135	224	1,145
	137	225	1,157
	139	243	1,236
P54	185	258	1,359
	188	259	1,375
	191	278	1,475
P55	0	0	854
	0	0	870
	0	0	950
P56	423	345	1,641
	429	346	1,654
	454	376	1,763
P57	385	403	2,039
	387	404	2,062
	418	427	2,206

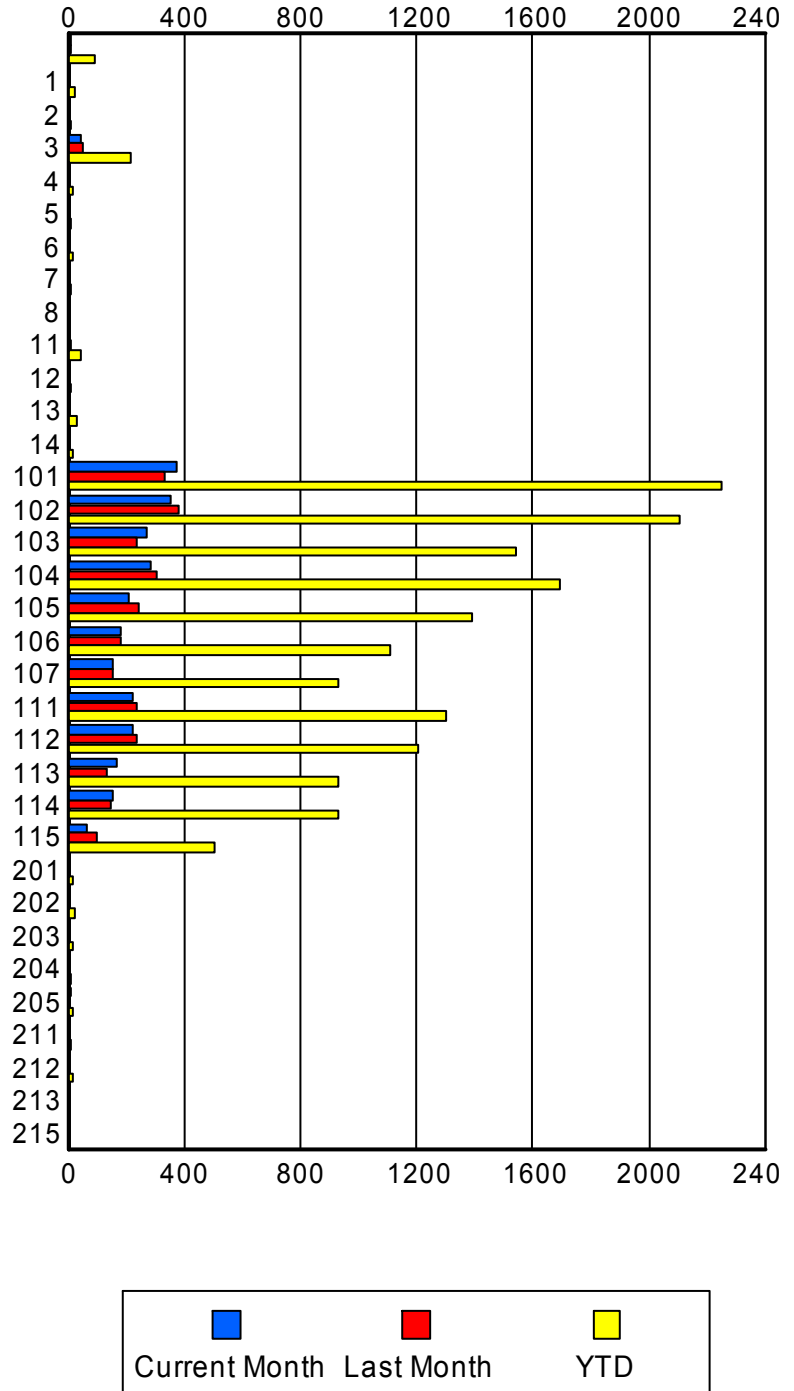
	Current Mo	Last Month	YTD
P58	402	259	1,893
	409	261	1,920
	441	278	2,050
P59	486	513	2,705
	490	517	2,735
	527	567	2,929
P60	0	74	1,162
	0	75	1,180
	0	76	1,270
P61	9	0	89
	10	0	90
	10	0	95
P62	173	129	1,108
	173	131	1,120
	189	137	1,195
P63	0	1	1
	0	1	1
	0	1	1

Road Ranger / SIRV Performance By Beat

	Current Mo	Last Month	YTD
	6	6	89
	6	6	91
	6	6	97
1	0	0	25
	0	0	26
	0	0	26
2	2	0	12
	2	0	12
	3	0	14
3	46	49	214
	47	49	215
	48	49	220
4	0	0	13
	0	0	14
	0	0	14
5	0	0	8
	0	0	8
	0	0	11
6	0	0	13
	0	0	13
	0	0	15
7	0	0	12
	0	0	12
	0	0	12
8	1	0	1
	1	0	1
	1	0	1
11	4	7	44
	4	7	44
	4	7	45
12	0	0	12
	0	0	12
	0	0	15
13	0	0	24
	0	0	27
	0	0	28
14	0	0	16
	0	0	16
	0	0	18
101	370	329	2,224
	375	332	2,247
	392	359	2,385
102	349	376	2,085
	353	377	2,106
	370	390	2,204

Values presented are:
 - Total Events with a RR/SIRV Response
 - Total RR/SIRV Responses,
 - Total Activities Performed

RR/SIRV Responses per Beat



	Current Mo	Last Month	YTD
103	265	234	1,511
	268	236	1,541
	288	249	1,664
104	281	299	1,663
	285	303	1,694
	296	315	1,821
105	205	238	1,373
	207	241	1,388
	218	258	1,471
106	177	184	1,094
	178	184	1,106
	191	193	1,173
107	155	150	923
	156	152	931
	161	157	968
111	219	231	1,289
	220	235	1,302
	241	269	1,412
112	219	230	1,192
	223	233	1,206
	242	257	1,309
113	166	133	917
	167	134	931
	182	149	1,039
114	153	148	915
	154	148	927
	167	158	1,014
115	61	96	502
	62	96	507
	71	108	561
201	0	0	18
	0	0	18
	0	0	18
202	0	0	20
	0	0	20
	0	0	20
203	0	0	15
	0	0	15
	0	0	17
204	0	0	10
	0	0	10
	0	0	13
205	7	0	16
	7	0	16
	7	0	18

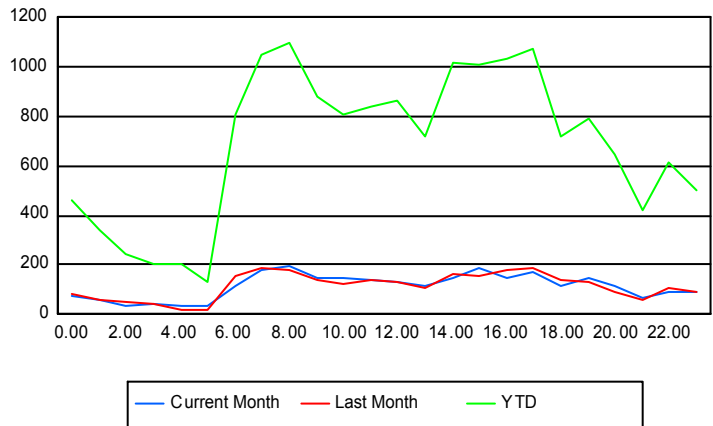
	Current Mo	Last Month	YTD
211	0	0	10
	0	0	10
	0	0	10
212	0	0	17
	0	0	17
	0	0	17
213	0	0	5
	0	0	5
	0	0	6
215	0	0	1
	0	0	1
	0	0	1

Road Ranger / SIRV Performance By Time of Day

Values presented are:
 - Total Events with a RR/SIRV Response
 - Total RR/SIRV Responses,
 - Total Activities Performed

	Current Mo	Last Month	YTD
12AM-1AM	71	78	434
	74	85	459
	89	92	501
1AM-2AM	53	59	324
	59	61	343
	66	70	380
2AM-3AM	30	46	233
	32	48	243
	34	51	260
3AM-4AM	37	38	191
	39	40	204
	43	44	218
4AM-5AM	29	20	182
	37	21	202
	41	24	220
5AM-6AM	26	17	114
	31	17	131
	38	20	148
6AM-7AM	114	147	760
	117	153	810
	119	164	864
7AM-8AM	170	176	1,008
	179	185	1,053
	197	192	1,118
8AM-9AM	180	174	1,042
	195	179	1,098
	197	186	1,155

Number of Responses / Hour of the Day



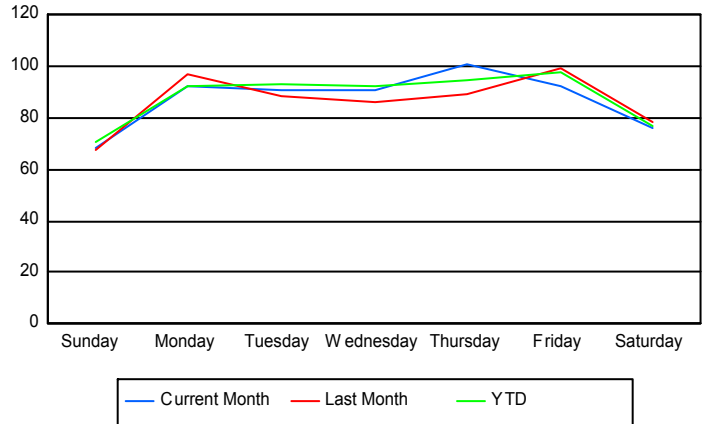
	Current Mo	Last Month	YTD
9AM-10AM	142	141	847
	149	142	882
	162	142	932
10AM-11AM	138	119	779
	145	119	810
	155	127	867
11AM-12PM	136	135	806
	142	139	843
	146	142	885
12PM-1PM	130	122	825
	134	129	865
	140	139	929
1PM-2PM	113	100	685
	118	104	717
	128	109	768
2PM-3PM	138	155	964
	144	162	1,020
	148	176	1,087
3PM-4PM	175	155	968
	184	159	1,008
	190	170	1,067
4PM-5PM	140	179	994
	145	180	1,037
	149	192	1,104
5PM-6PM	160	179	1,031
	168	185	1,071
	175	191	1,128
6PM-7PM	114	136	691
	115	138	718
	127	143	780
7PM-8PM	140	132	757
	147	135	788
	153	153	857
8PM-9PM	113	93	621
	115	94	648
	122	103	703
9PM-10PM	63	55	398
	63	62	422
	68	71	454
10PM-11PM	89	101	583
	92	106	614
	100	127	693
11PM-12AM	88	88	482
	91	90	503
	101	96	539

Road Ranger / SIRV Performance By Day of Week

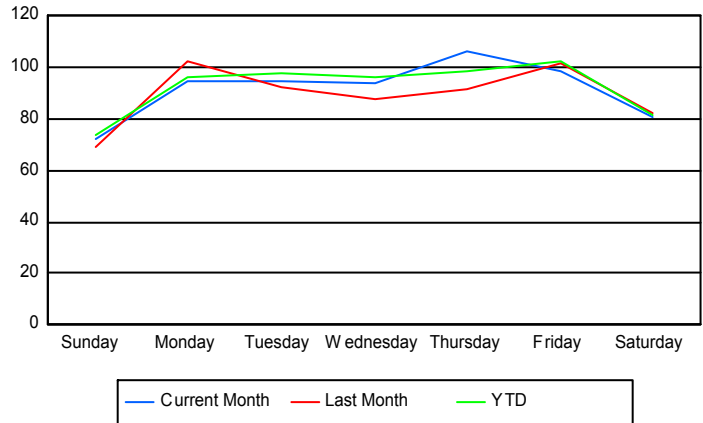
Values presented are:
 - Total Events with a RR/SIRV Response
 - Total RR/SIRV Responses,
 - Total Activities Performed

	Current Mo	Last Month	YTD
Sunday	271	262	1,733
	286	268	1,812
	312	285	1,964
Monday	368	375	2,366
	378	393	2,468
	390	423	2,643
Tuesday	362	440	2,400
	377	458	2,499
	399	489	2,660
Wednesday	359	428	2,370
	373	437	2,467
	392	459	2,608
Thursday	402	443	2,427
	423	454	2,536
	454	487	2,706
Friday	456	391	2,518
	484	401	2,639
	507	422	2,823
Saturday	373	308	1,963
	394	322	2,068
	434	359	2,253

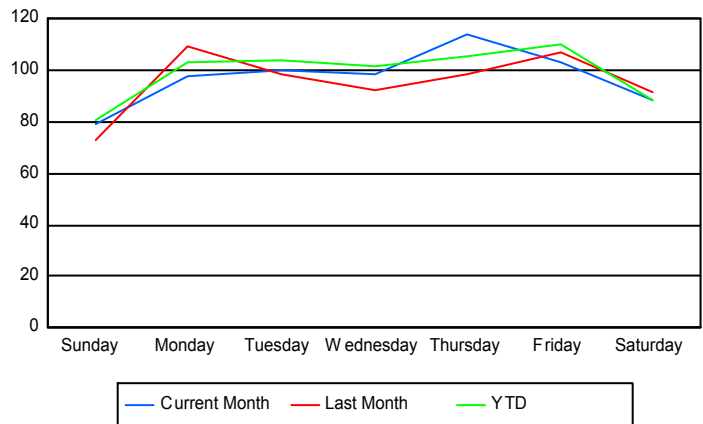
Avg # of events with a RR/SIRV Response per Day of the Week



Avg # of RR/SIRV Responses per Day of the Week



Avg # of RR/SIRV Activities Performed per Day of the Week



Road Ranger/ SIRV Responses per Time of Day and Day of Week

