



# Monthly Performance Measures Report Palm Beach County



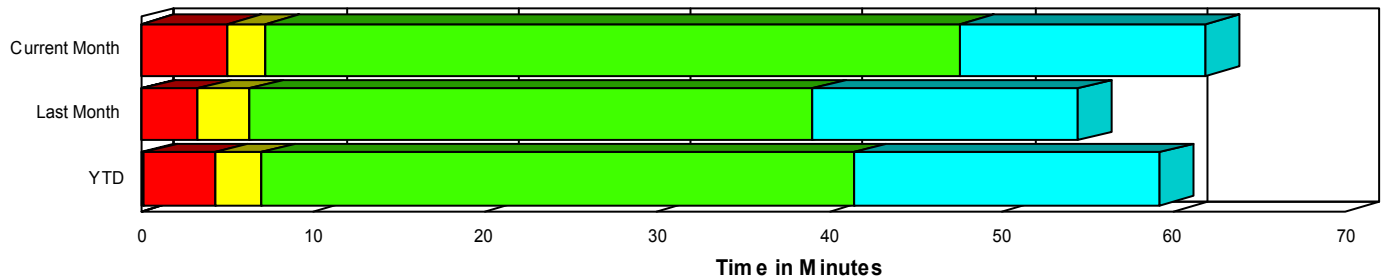
Created on:  
July 01, 2008  
8:54 am

Period From Jun 1, 2008 to Jun 30, 2008

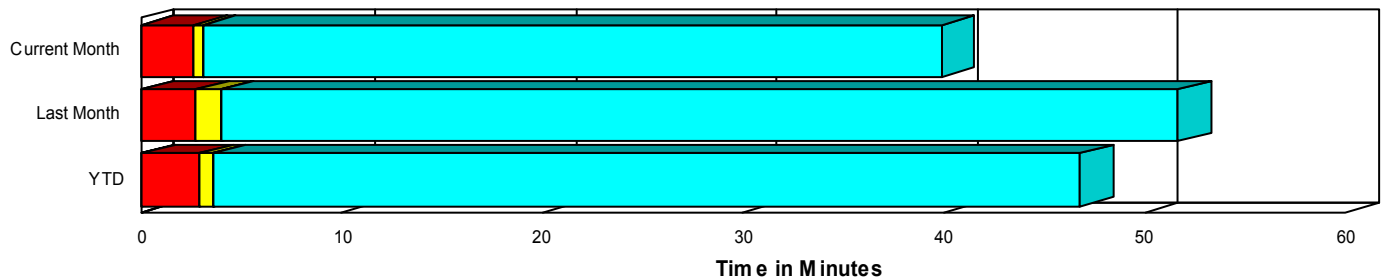
## Performance Measures Summary

	Traffic Events (No Lanes Blocked)			Incidents (Lanes Blocked)		
	<u>This Month</u>	<u>Last Month</u>	<u>YTD</u>	<u>This Month</u>	<u>Last Month</u>	<u>YTD</u>
Number of Events	2,452	2,624	15,232	114	139	998
TMC Detection (min.)	0.00	0.00	0.08	0.01	0.02	0.15
TMC Verification (min.)	2.64	2.77	2.83	5.08	3.26	4.13
TMC Response (min.)	3.18	4.10	3.62	7.40	6.44	7.09
RR Dispatch Time (min.)	0.95	1.80	1.30	2.38	2.94	2.35
RR Response Time (min.)	2.25	2.34	2.36	5.03	3.57	4.86
Roadway Clearance (min.)				47.34	40.77	41.08
Event Clearance (min.)	39.96	51.81	46.91	53.44	56.21	57.64
# of Events w/ RR/SIRV	2,370	2,521	14,638	111	134	921
RR/SIRV Responses	2,370	2,521	14,745	111	134	998
RR/SIRV Activities	2,547	2,741	15,930	161	200	1,318

### Incident Clearance TimeLine



### Traffic Event(Non-Lane Blockage) Time-Line



<span style="color: blue;">■</span> Avg. TMC Detection Time	<span style="color: green;">■</span> Avg. Time from TMC Response to Roadway Clearance*
<span style="color: red;">■</span> Avg. Time from TMC Detection to TMC Verification	<span style="color: cyan;">■</span> Avg. Time from Roadway Clearance to Incident/Event Clearance**
<span style="color: yellow;">■</span> Avg. Time from TMC Verification to TMC Response	

\* Roadway clearance equals all travel lanes open

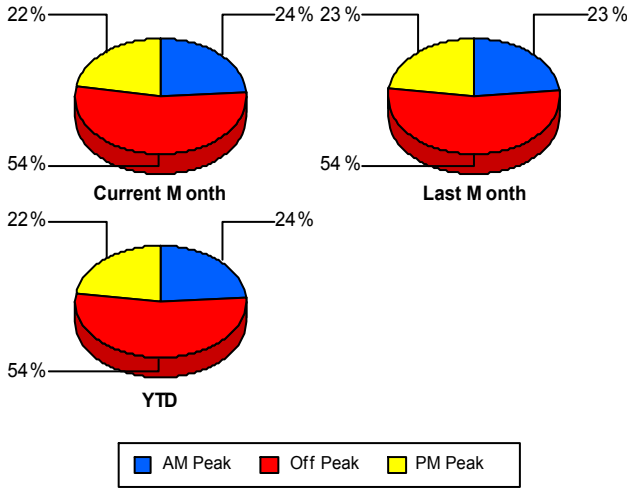
\*\* Incident clearance equals time when last responder has left the scene

## Performance Measures by Peak Period

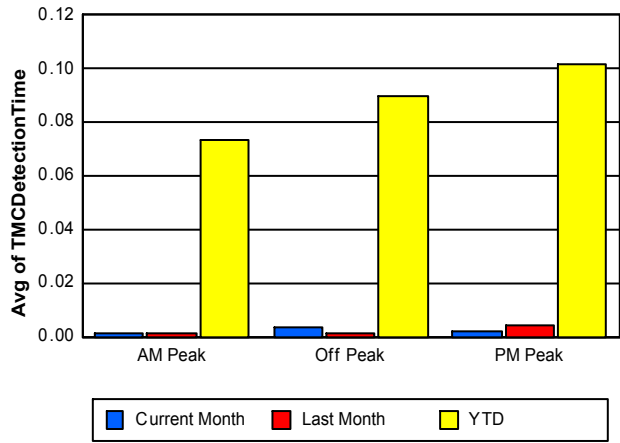
Note: AM peak period is defined as 6am to 10am and PM peak period is defined as 3pm to 7pm.

	AM Peak			Off Peak			PM Peak		
	<u>Current Month</u>	<u>Last Month</u>	<u>YTD</u>	<u>Current Month</u>	<u>Last Month</u>	<u>YTD</u>	<u>Current Month</u>	<u>Last Month</u>	<u>YTD</u>
Number of Events	612	645	3,886	1,385	1,488	8,698	569	630	3,646
Number of Incidents	29	29	253	66	71	536	19	39	209
TMC Detection (min.)	0.00	0.00	0.07	0.00	0.00	0.09	0.00	0.00	0.10
TMC Verification (min.)	2.53	2.46	2.42	3.08	2.76	3.16	2.16	3.23	2.84
TMC Response (min.)	3.12	3.49	3.23	3.94	4.72	4.28	2.30	3.80	3.38
RR Dispatch Time (min.)	0.88	1.26	1.24	1.27	2.45	1.55	0.54	1.07	1.04
RR Response Time (min.)	2.26	2.25	2.04	2.69	2.33	2.77	1.77	2.74	2.41
Event Clearance (min.)	40.45	59.57	48.68	47.92	50.00	51.14	22.77	49.15	37.87
Roadway Clearance (min.)	59.35	50.76	36.94	42.64	47.42	45.69	45.31	21.24	34.30
Incident Clearance (min.)	43.11	71.37	54.48	55.86	59.92	62.11	60.81	38.20	49.99
# of Events w/ RR/SIRV	589	613	3,702	1,329	1,429	8,309	563	613	3,548
RR/SIRV Responses	589	613	3,747	1,329	1,429	8,412	563	613	3,584
RR/SIRV Activities	637	684	4,079	1,461	1,576	9,298	610	681	3,871

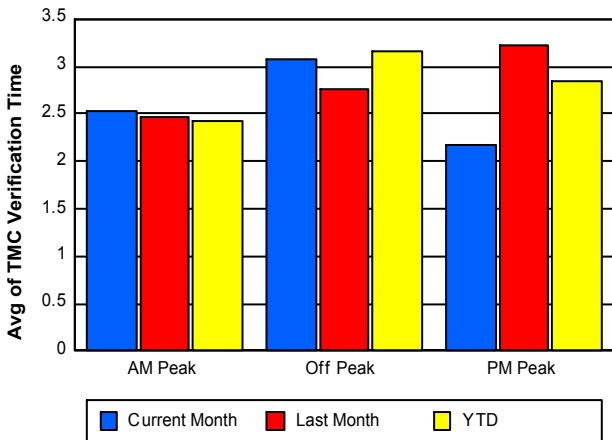
### Number of Events / Peak Period



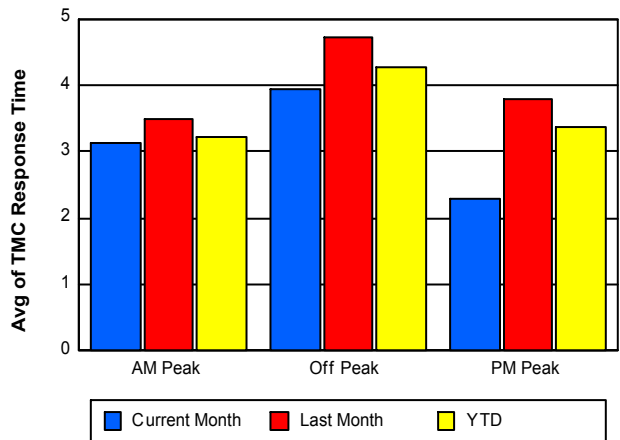
### TMC Detection Time



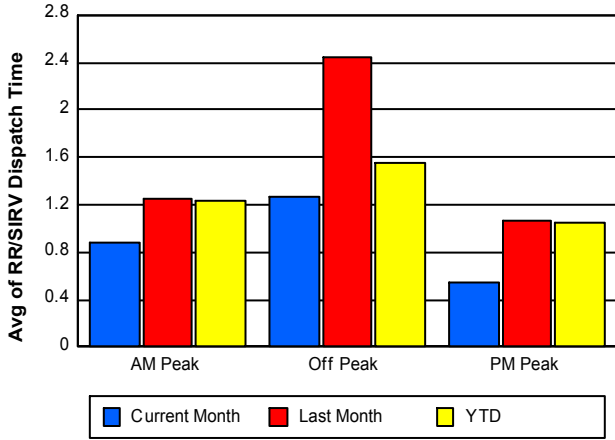
### TMC Verification Time



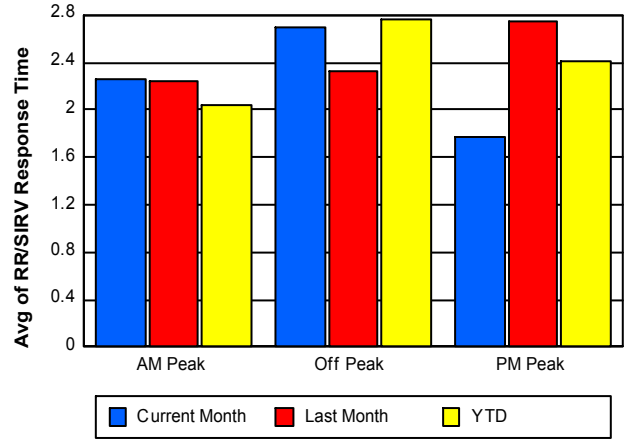
### TMC Response Time



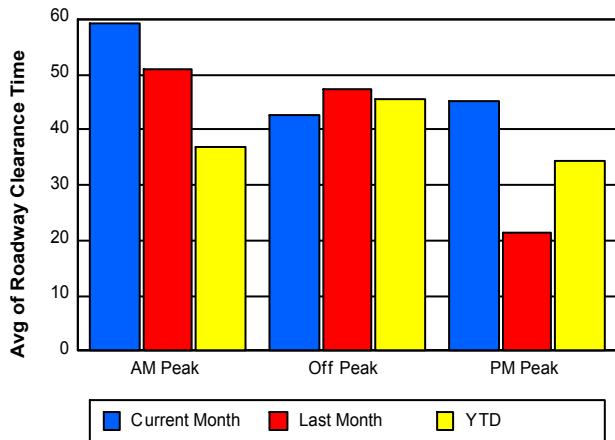
### Road Ranger / SIRV Dispatch Time



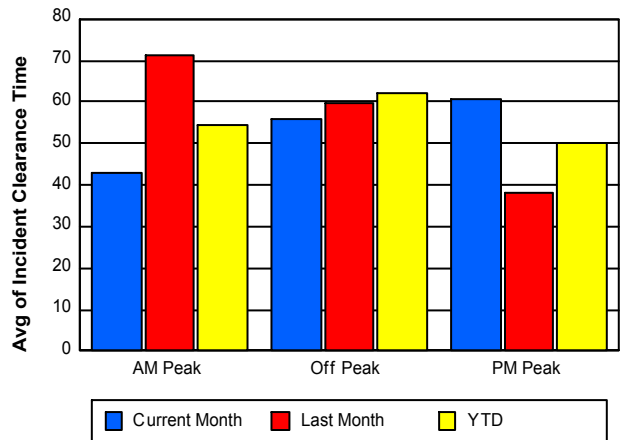
### Road Ranger / SIRV Response Time



### Roadway Clearance Time (2A)



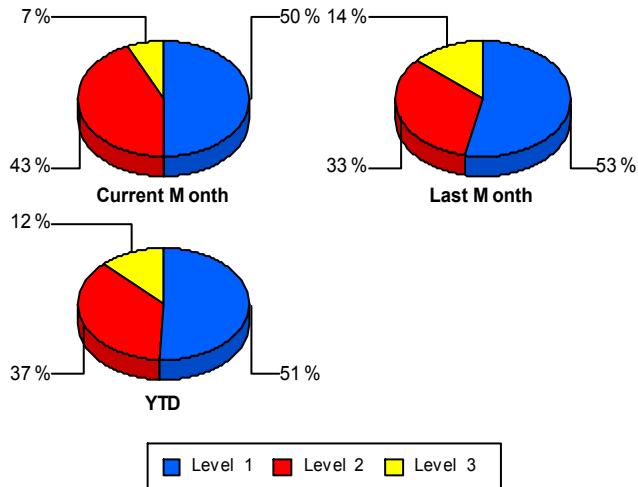
### Incident Clearance Time (3B)



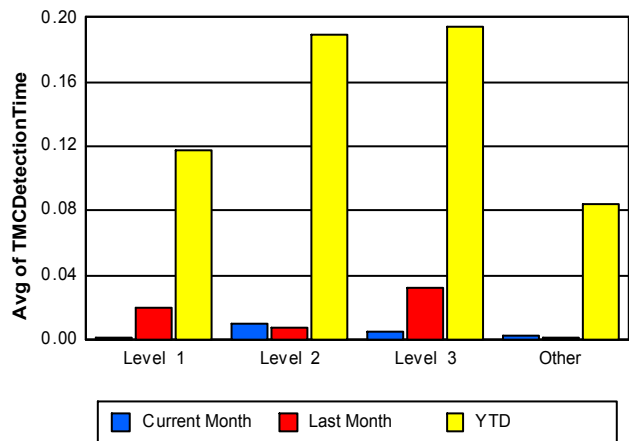
## Performance Measures by Severity

	Level 1			Level 2			Level 3			Other		
	<u>This Month</u>	<u>Last Month</u>	<u>YTD</u>	<u>This Month</u>	<u>Last Month</u>	<u>YTD</u>	<u>This Month</u>	<u>Last Month</u>	<u>YTD</u>	<u>This Month</u>	<u>Last Month</u>	<u>YTD</u>
Number of Events	57	74	507	49	46	370	8	19	121	2,452	2,624	15,232
Number of Incidents	57	74	507	49	46	370	8	19	121	0	0	0
TMC Detection (min.)	0.00	0.02	0.12	0.01	0.01	0.19	0.00	0.03	0.19	0.00	0.00	0.08
TMC Verification (min.)	2.15	2.57	2.17	7.75	4.91	6.71	9.65	1.96	4.47	2.64	2.77	2.83
TMC Response (min.)	4.61	4.58	4.36	9.86	8.13	9.44	11.44	10.42	10.99	3.18	4.10	3.62
RR Dispatch Time (min.)	1.61	1.69	1.54	3.48	3.28	2.64	1.16	7.66	4.84	0.95	1.80	1.30
RR Resp. Time (min.)	3.04	2.89	2.90	6.39	4.85	6.80	10.27	3.07	6.88	2.25	2.34	2.36
Event Clearance (min.)	28.77	33.06	32.89	70.26	65.37	69.96	126.23	124.24	123.67	39.96	51.81	46.91
Roadway Clear. (min.)	11.62	14.53	13.03	60.14	56.35	56.53	223.44	105.25	111.42			
Incident Clearance (min.)	28.77	33.06	32.89	70.26	65.37	69.96	126.23	124.24	123.67			
# of Events w/ RR/SIRV	55	73	461	48	45	353	8	16	107	2,370	2,521	14,638
RR/SIRV Responses	55	73	481	48	45	381	8	16	136	2,370	2,521	14,745
RR/SIRV Activities	73	103	581	74	69	528	14	28	209	2,547	2,741	15,930

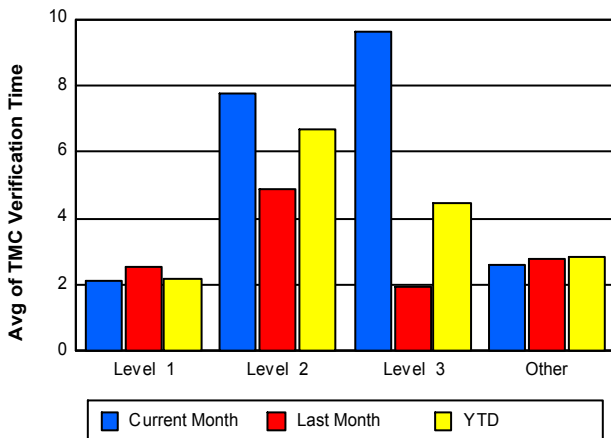
### Number of Events / Severity



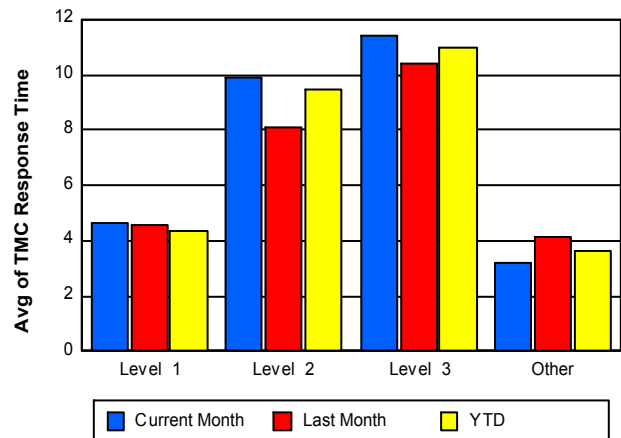
### TMC Detection Time



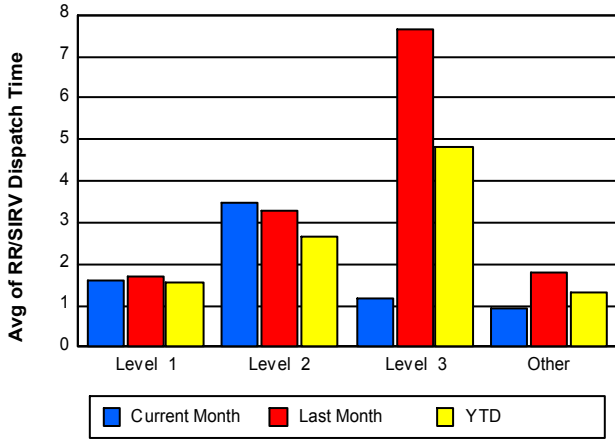
### TMC Verification Time



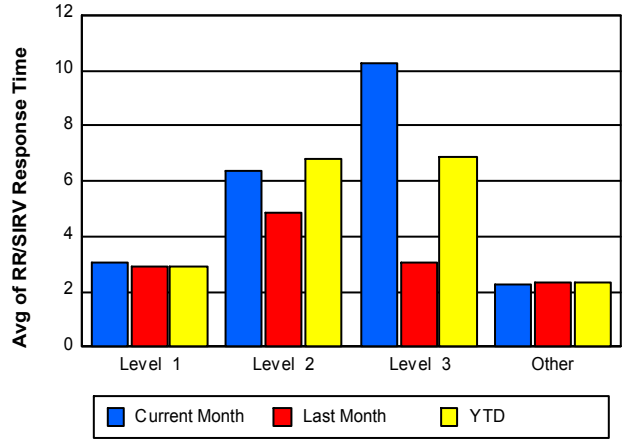
### TMC Response Time



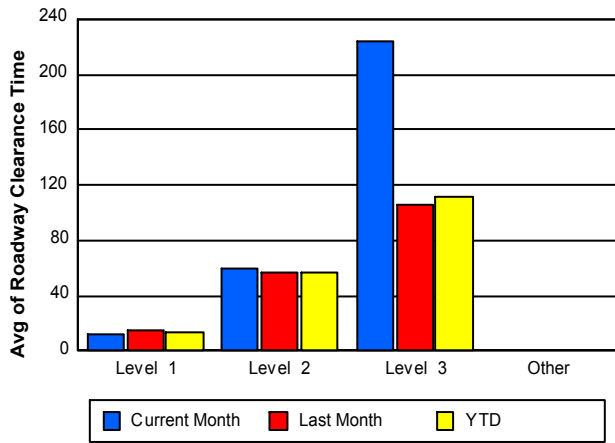
## Road Ranger / SIRV Dispatch Time



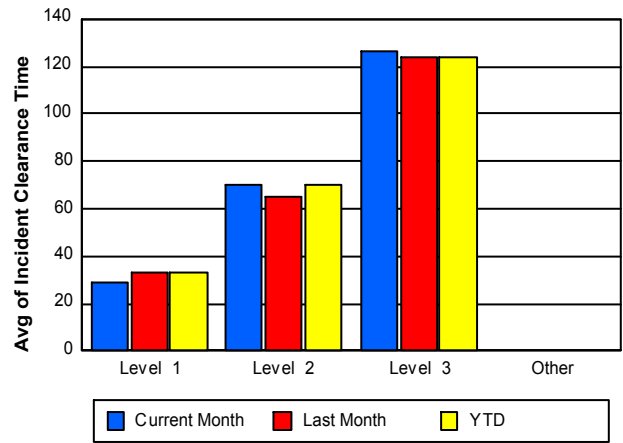
## Road Ranger / SIRV Response Time



## Roadway Clearance Time (2A)



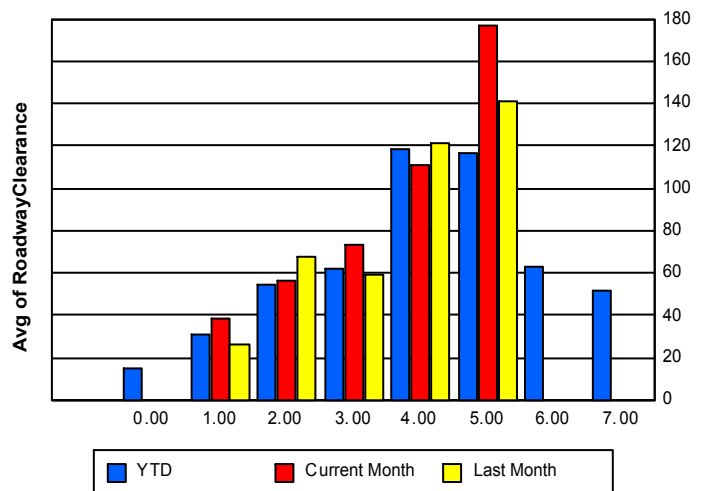
## Incident Clearance Time (3B)



## Roadway Clearance by Maximum Number of Lanes Blocked

	Current Month	Last Month	YTD
	0.00	0.00	
0			14.70
1	38.70	26.41	30.83
2	56.35	67.12	54.70
3	73.02	58.91	61.48
4	111.14	120.85	118.76
5	176.77	140.54	116.91
6	0.00	0.00	62.63

## Roadway Clearance Time(2A)



	Current Month	Last Month	YTD
7	0.00	0.00	51.40

## Performance Measures by Roadway

**95**

	<u>Current Month</u>	<u>Last Month</u>	<u>YTD</u>
Number of Events	2,566	2,761	16,228
Number of Incidents	114	138	997
TMC Detection (min.)	0.00	0.00	0.09
TMC Verification (min.)	2.74	2.80	2.91
TMC Response (min.)	3.37	4.22	3.83
RR Dispatch Time (min.)	1.01	1.85	1.36
RR Resp. Time (min.)	2.38	2.40	2.51
Event Clearance (min.)	40.56	52.02	47.57
Roadway Clear. (min.)	47.34	40.84	41.09
Incident Clearance (min.)	53.44	56.39	57.66
# of Events w/ RR/SIRV	2,481	2,654	15,558
RR/SIRV Responses	2,481	2,654	15,742
RR/SIRV Activities	2,708	2,940	17,247

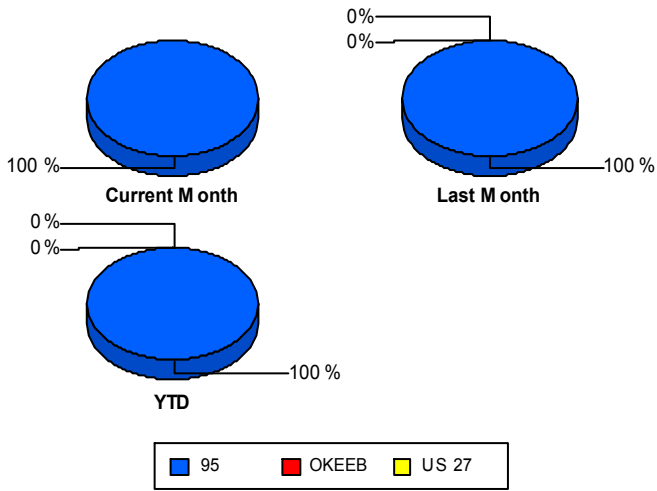
**OKEEB**

	<u>Last Month</u>	<u>YTD</u>
Number of Events	1	1
Number of Incidents	1	1
TMC Detection (min.)	0.00	0.00
TMC Verification (min.)	0.00	0.00
TMC Response (min.)	7.78	7.78
RR Dispatch Time (min.)	5.15	5.15
RR Resp. Time (min.)	2.63	2.63
Event Clearance (min.)	31.75	31.75
Roadway Clear. (min.)	31.62	31.62
Incident Clearance (min.)	31.75	31.75
# of Events w/ RR/SIRV	1	1
RR/SIRV Responses	1	1
RR/SIRV Activities	1	1

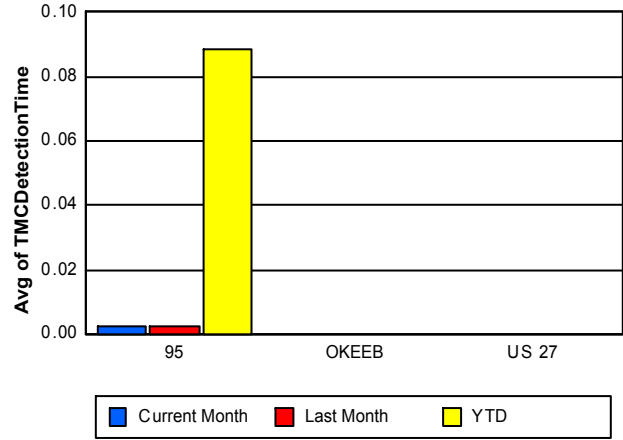
**US 27**

	<u>Last Month</u>	<u>YTD</u>
Number of Events	1	1
Number of Incidents	0	0
TMC Detection (min.)	0.00	0.00
TMC Verification (min.)		
TMC Response (min.)		
RR Dispatch Time (min.)		
RR Resp. Time (min.)		
Event Clearance (min.)	125.57	125.57
Roadway Clear. (min.)		
Incident Clearance (min.)		
# of Events w/ RR/SIRV	0	0
RR/SIRV Responses	0	0
RR/SIRV Activities	0	0

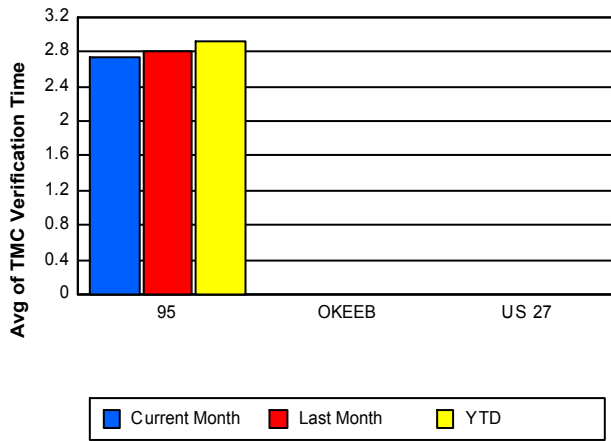
## Number of Events / Roadway



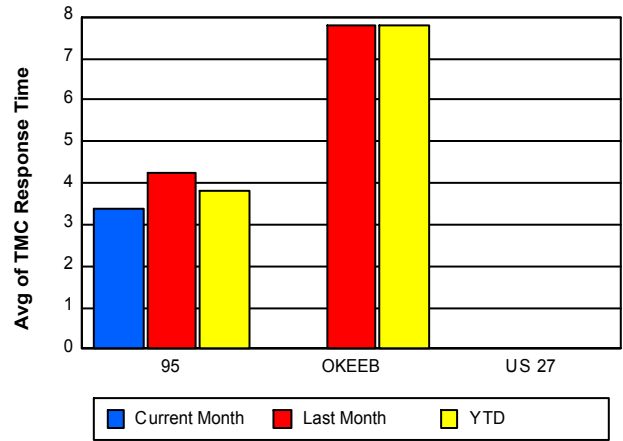
## TMC Detection Time



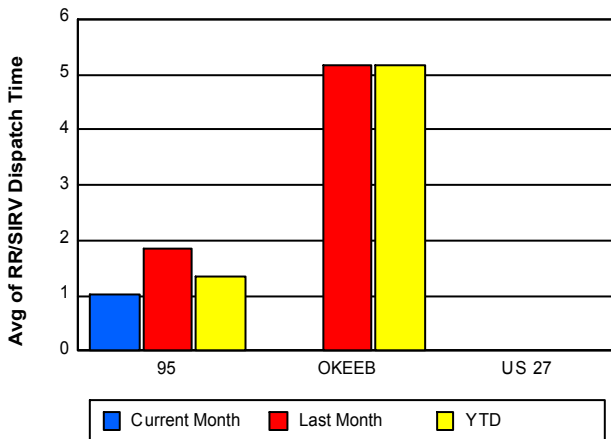
## TMC Verification Time



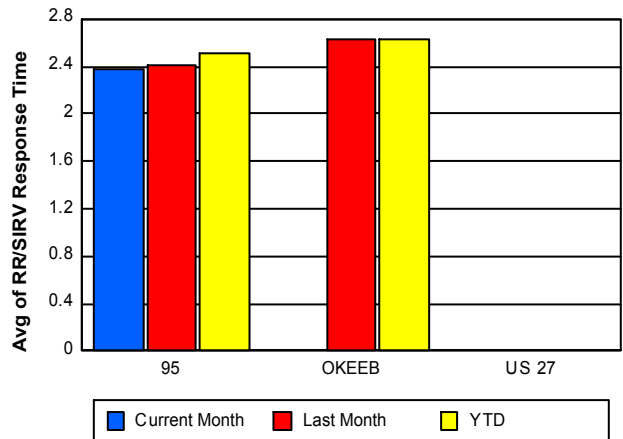
## TMC Response Time



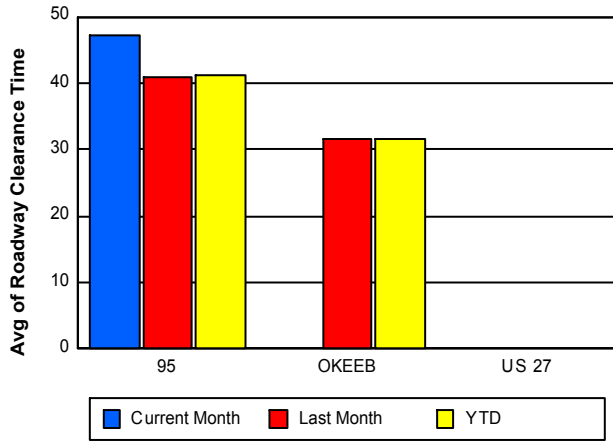
## Road Ranger / SIRV Dispatch Time



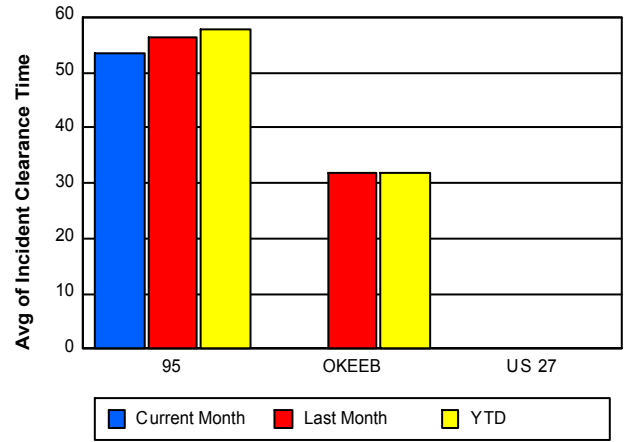
## Road Ranger / SIRV Response Time



## Roadway Clearance Time (2A)



## Incident Clearance Time (3B)



## Performance Measures by Event Type

### Abandoned Vehicle

	<u>Current Month</u>	<u>Last Month</u>	<u>YTD</u>
Number of Events	459	471	2,849
Number of Incidents	1	1	9
TMC Detection (min.)	0.00	0.00	0.07
TMC Verification (min.)	0.34	0.15	0.55
TMC Response (min.)	0.82	5.23	2.20
RR Dispatch Time (min.)	0.60	4.93	1.70
RR Response Time (min.)	0.22	0.30	0.56
Event Clearance (min.)	145.43	193.02	172.71
Roadway Clearance (min.)	927.68	4.02	126.72
Incident Clearance (min.)	1.83	3.62	27.39
# of Events w/ RR/SIRV	393	399	2,400
RR/SIRV Assists	393	399	2,415
RR/SIRV Activities	406	415	2,500

### Accident

	<u>Current Month</u>	<u>Last Month</u>	<u>YTD</u>
Number of Events	158	177	1,298
Number of Incidents	73	79	646
TMC Detection (min.)	0.02	0.02	0.17
TMC Verification (min.)	5.79	3.32	4.96
TMC Response (min.)	7.32	5.09	6.95
RR Dispatch Time (min.)	1.84	1.90	2.00
RR Response Time (min.)	5.56	3.27	5.08
Event Clearance (min.)	53.87	59.89	59.11
Roadway Clearance (min.)	48.30	54.64	47.39
Incident Clearance (min.)	65.42	75.40	69.90
# of Events w/ RR/SIRV	154	170	1,235
RR/SIRV Assists	154	170	1,314
RR/SIRV Activities	187	227	1,615

### Congestion

	<u>Current Month</u>	<u>Last Month</u>	<u>YTD</u>
Number of Events	1	4	26
Number of Incidents	0	0	0
TMC Detection (min.)	0.00	0.00	0.01
TMC Verification (min.)	0.00	0.00	0.31
TMC Response (min.)	25.45	15.22	15.93
RR Dispatch Time (min.)	11.07	3.92	4.22
RR Response Time (min.)	14.38	11.30	11.89
Event Clearance (min.)	27.70	32.27	38.52
Roadway Clearance (min.)			
Incident Clearance (min.)			
# of Events w/ RR/SIRV	1	1	6
RR/SIRV Assists	1	1	6
RR/SIRV Activities	1	1	6

## Debris on Roadway

	<u>Current Month</u>	<u>Last Month</u>	<u>YTD</u>
Number of Events	170	175	823
Number of Incidents	12	14	80
TMC Detection (min.)	0.01	0.00	0.11
TMC Verification (min.)	4.84	5.10	6.38
TMC Response (min.)	5.76	5.38	6.96
RR Dispatch Time (min.)	1.19	1.41	1.58
RR Response Time (min.)	4.57	3.97	5.37
Event Clearance (min.)	10.04	9.75	11.97
Roadway Clearance (min.)	13.01	14.04	15.28
Incident Clearance (min.)	14.91	16.88	19.33
# of Events w/ RR/SIRV	170	174	812
RR/SIRV Assists	170	174	823
RR/SIRV Activities	181	197	889

## Disabled Vehicle

	<u>Current Month</u>	<u>Last Month</u>	<u>YTD</u>
Number of Events	1,735	1,892	10,940
Number of Incidents	23	37	204
TMC Detection (min.)	0.00	0.00	0.08
TMC Verification (min.)	2.84	3.09	2.95
TMC Response (min.)	3.20	3.69	3.45
RR Dispatch Time (min.)	0.96	1.19	1.15
RR Response Time (min.)	2.27	2.56	2.34
Event Clearance (min.)	15.05	16.17	15.97
Roadway Clearance (min.)	25.70	23.31	25.21
Incident Clearance (min.)	37.34	34.12	33.93
# of Events w/ RR/SIRV	1,725	1,871	10,842
RR/SIRV Assists	1,725	1,871	10,909
RR/SIRV Activities	1,892	2,051	11,934

## Emergency Vehicles

	<u>YTD</u>
Number of Events	5
Number of Incidents	3
TMC Detection (min.)	4.01
TMC Verification (min.)	4.48
TMC Response (min.)	0.51
RR Dispatch Time (min.)	0.24
RR Response Time (min.)	0.27
Event Clearance (min.)	29.42
Roadway Clearance (min.)	29.66
Incident Clearance (min.)	38.21
# of Events w/ RR/SIRV	5
RR/SIRV Assists	5
RR/SIRV Activities	5

## Other

	<u>Current Month</u>	<u>Last Month</u>	<u>YTD</u>
Number of Events	23	24	138
Number of Incidents	0	1	7
TMC Detection (min.)	0.00	0.01	0.06
TMC Verification (min.)	5.92	11.87	10.05
TMC Response (min.)	14.80	12.87	15.05
RR Dispatch Time (min.)	5.31	4.69	4.17
RR Response Time (min.)	9.26	8.18	10.68
Event Clearance (min.)	19.49	35.39	28.32
Roadway Clearance (min.)		16.65	17.35
Incident Clearance (min.)		24.35	21.04
# of Events w/ RR/SIRV	18	23	120
RR/SIRV Assists	18	23	122
RR/SIRV Activities	20	26	133

## Pedestrian

	<u>YTD</u>
Number of Events	32
Number of Incidents	0
TMC Detection (min.)	0.04
TMC Verification (min.)	1.39
TMC Response (min.)	1.38
RR Dispatch Time (min.)	0.27
RR Response Time (min.)	1.11
Event Clearance (min.)	15.13
Roadway Clearance (min.)	
Incident Clearance (min.)	
# of Events w/ RR/SIRV	32
RR/SIRV Assists	32
RR/SIRV Activities	33

## Police Activity

	<u>Current Month</u>	<u>Last Month</u>	<u>YTD</u>
Number of Events	1	3	43
Number of Incidents	1	2	34
TMC Detection (min.)	0.00	0.00	0.28
TMC Verification (min.)	0.00	6.63	1.67
TMC Response (min.)	19.35	12.75	9.75
RR Dispatch Time (min.)	5.62	5.24	5.75
RR Response Time (min.)	13.73	7.51	3.99
Event Clearance (min.)	88.35	47.61	55.50
Roadway Clearance (min.)	65.55	56.54	47.76
Incident Clearance (min.)	88.35	63.53	66.94
# of Events w/ RR/SIRV	1	2	34
RR/SIRV Assists	1	2	40
RR/SIRV Activities	2	4	48

## Vehicle Fire

	<u>Current Month</u>	<u>Last Month</u>	<u>YTD</u>
Number of Events	6	4	12
Number of Incidents	4	2	6
TMC Detection (min.)	0.00	0.00	0.00
TMC Verification (min.)	4.78	3.09	4.94
TMC Response (min.)	7.10	4.10	6.65
RR Dispatch Time (min.)	2.84	0.94	1.97
RR Response Time (min.)	4.27	3.16	4.68
Event Clearance (min.)	45.97	2,125.71	737.26
Roadway Clearance (min.)	32.49	44.20	36.39
Incident Clearance (min.)	47.24	54.73	49.74
# of Events w/ RR/SIRV	6	3	11
RR/SIRV Assists	6	3	11
RR/SIRV Activities	6	3	11

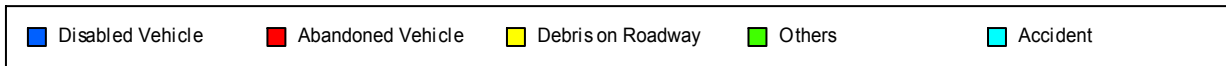
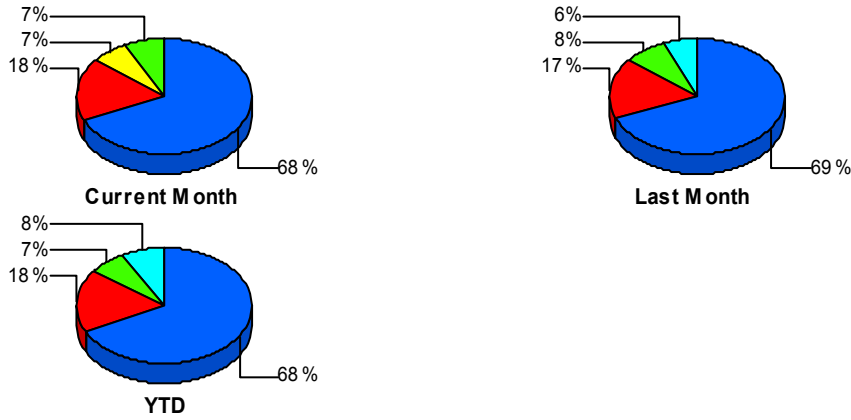
## Visibility

	<u>Last Month</u>	<u>YTD</u>
Number of Events	3	6
Number of Incidents	3	5
TMC Detection (min.)	0.00	0.00
TMC Verification (min.)	2.94	1.47
TMC Response (min.)	18.39	17.63
RR Dispatch Time (min.)	15.97	7.16
RR Response Time (min.)	2.42	10.47
Event Clearance (min.)	31.24	38.20
Roadway Clearance (min.)	22.99	29.89
Incident Clearance (min.)	31.24	35.95
# of Events w/ RR/SIRV	2	5
RR/SIRV Assists	2	5
RR/SIRV Activities	4	7

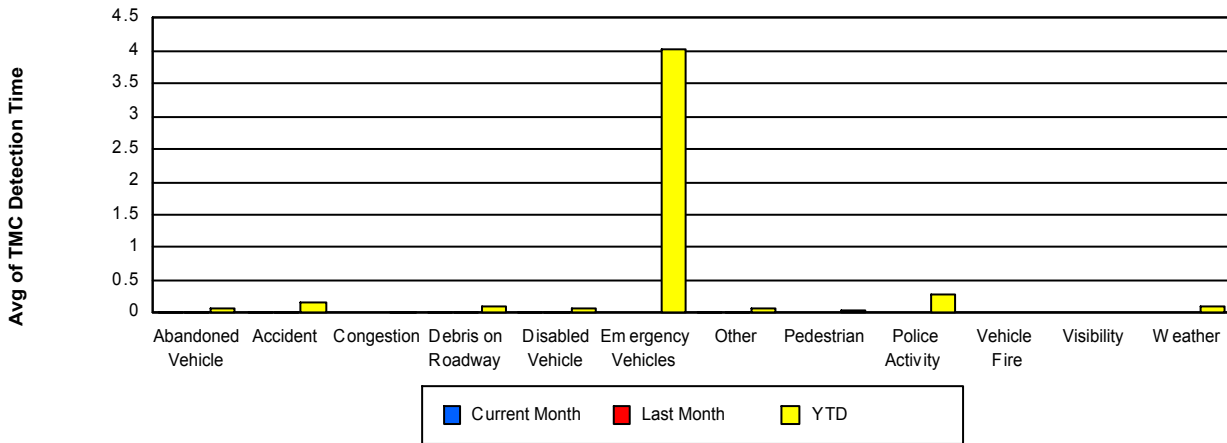
## Weather

	<u>YTD</u>
Number of Events	6
Number of Incidents	4
TMC Detection (min.)	0.11
TMC Verification (min.)	9.74
TMC Response (min.)	12.32
RR Dispatch Time (min.)	3.52
RR Response Time (min.)	8.80
Event Clearance (min.)	137.06
Roadway Clearance (min.)	170.23
Incident Clearance (min.)	159.05
# of Events w/ RR/SIRV	5
RR/SIRV Assists	9
RR/SIRV Activities	11

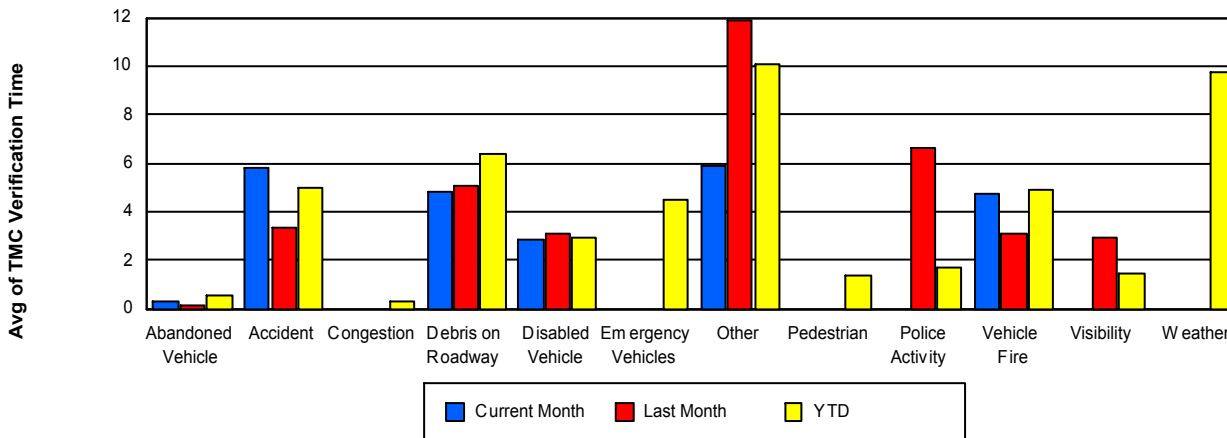
## Number of Events / Event Type



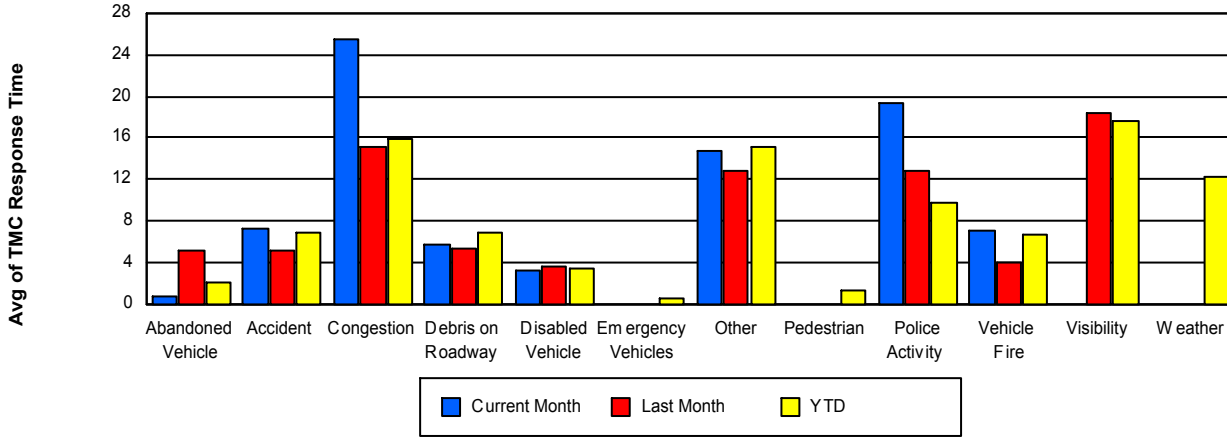
## TMC Detection Time



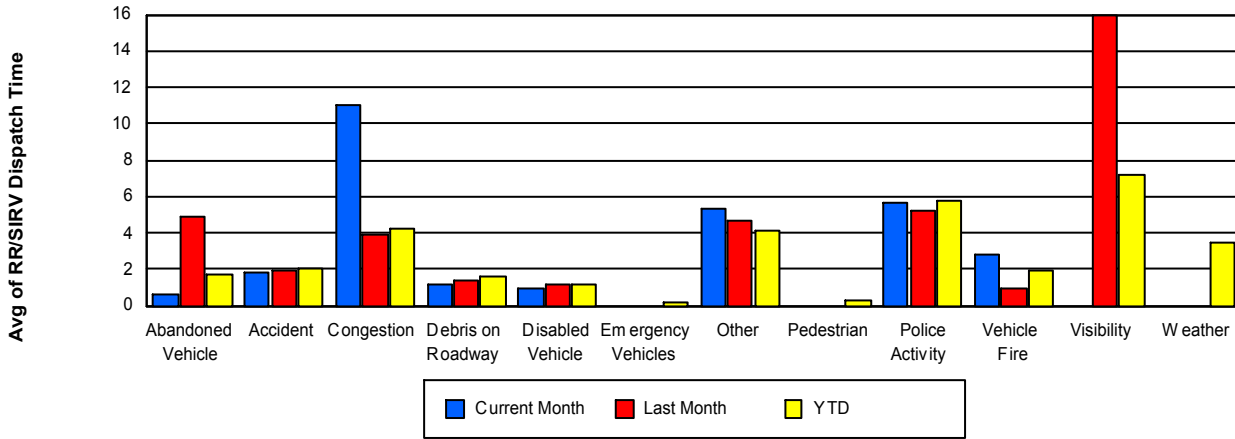
## TMC Verification Time



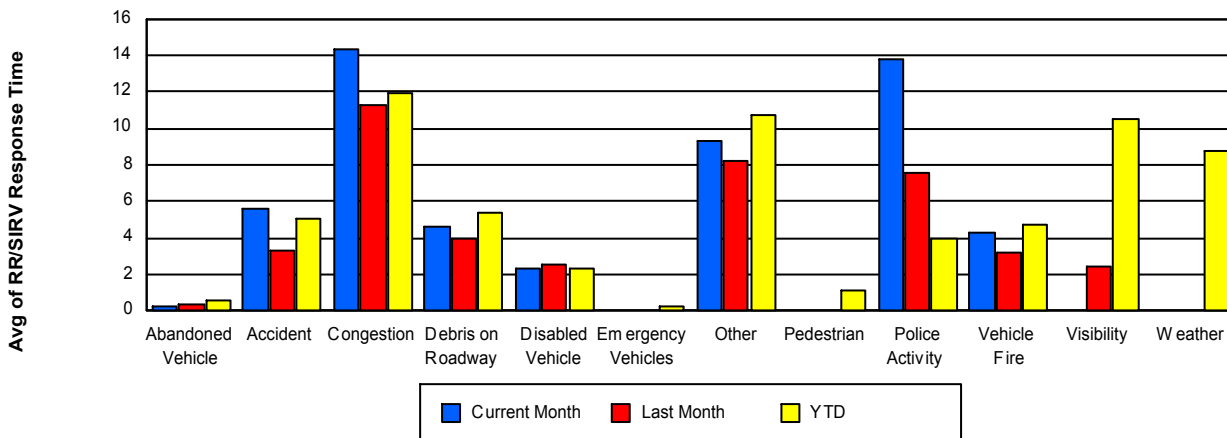
## TMC Response Time



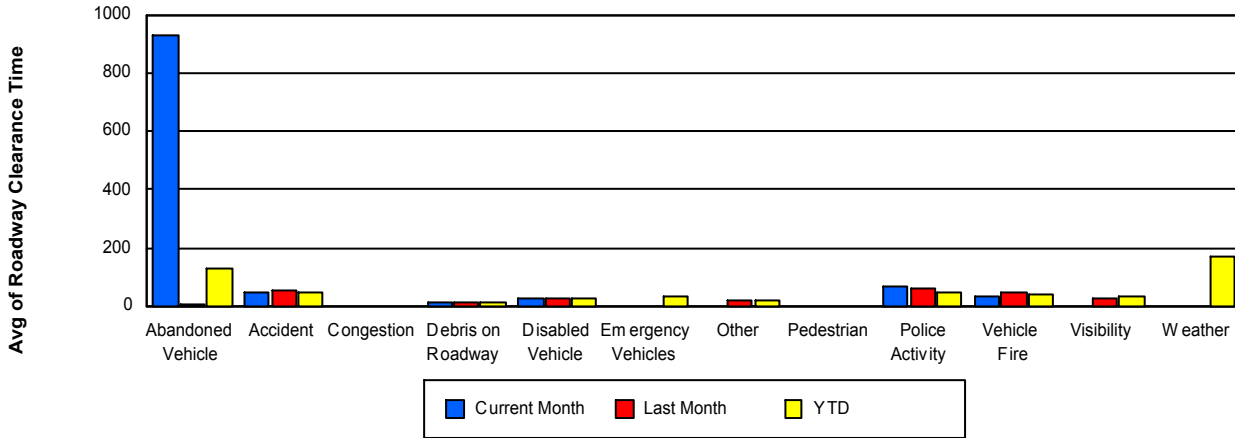
## Road Ranger / SIRV Dispatch Time



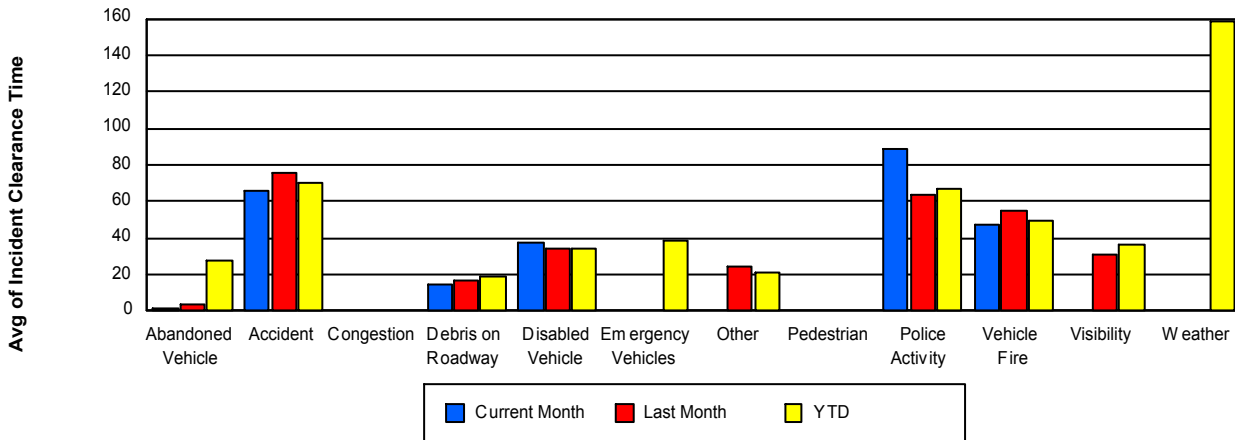
## Road Ranger / SIRV Response Time



## Roadway Clearance Time (2A)



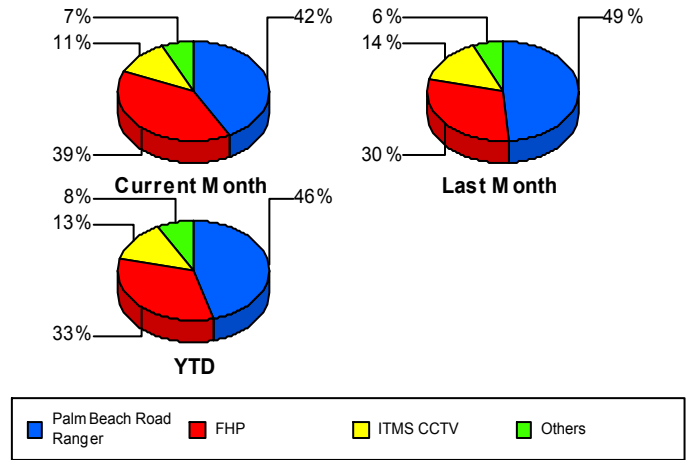
## Incident Clearance Time (3B)



## Incident Detection Methods

	Current Month	Last Month	YTD
Broward Road Ranger	0	1	6
Broward TMC	0	0	1
Construction CEI	0	2	6
District 4	2	1	42
FDOT Maintenance	1	0	1
FHP	45	42	331
ITMS	1	0	4
ITMS CCTV	13	20	134
Motorist	4	2	13
Palm Beach Road Rang	48	68	455
Road Watcher	0	2	2
SmarTraveler (511)	0	1	3
<b>Total</b>	<b>114</b>	<b>139</b>	<b>998</b>

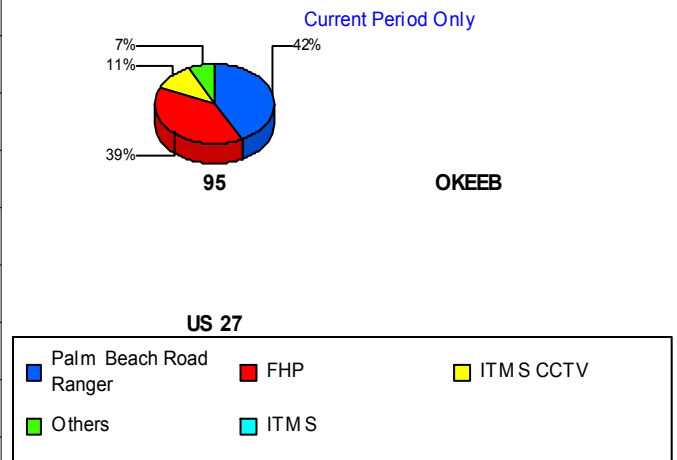
### Total Incidents by Detection Method



## Incident Detection Methods by Roadway

		Current Month	Last Month	YTD
95	Broward Road Ranger	0	1	6
	Broward TMC	0	0	1
	Construction CEI	0	2	6
	District 4	2	1	42
	FDOT Maintenance	1	0	1
	FHP	45	41	330
	ITMS	1	0	4
	ITMS CCTV	13	20	134
	Motorist	4	2	13
	Palm Beach Road Rang	48	68	455
	Road Watcher	0	2	2
	SmarTraveler (511)	0	1	3
<b>Total</b>	<b>114</b>	<b>138</b>	<b>997</b>	
OKEEB	FHP	0	1	1

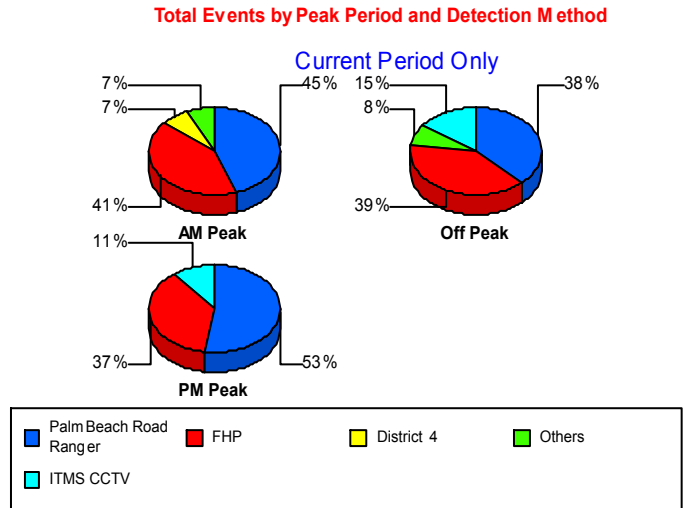
### Total Events by Roadway and Detection Method



		Current Month	Last Month	YTD
OKEEB	Total	0	1	1
Total		114	139	998

### Incident Detection Methods by Peak Period

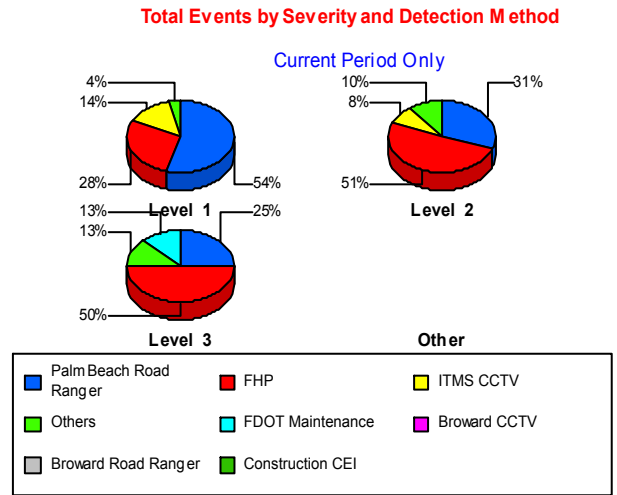
		Current Month	Last Month	YTD
AM Peak	Broward Road Ranger	0	1	2
	Broward TMC	0	0	1
	Construction CEI	0	0	1
	District 4	2	0	18
	FHP	12	13	77
	ITMS	0	0	1
	ITMS CCTV	1	3	34
	Motorist	1	0	4
	Palm Beach Road Rang	13	12	114
	SmarTraveler (511)	0	0	1
	Total	29	29	253
	Off Peak	Broward Road Ranger	0	0
Construction CEI		0	2	5
District 4		0	1	19
FDOT Maintenance		1	0	1
FHP		26	22	193
ITMS		1	0	1
ITMS CCTV		10	9	66
Motorist		3	1	7
Palm Beach Road Rang		25	33	240
Road Watcher		0	2	2
SmarTraveler (511)		0	1	1
Total		66	71	536
PM Peak	Broward Road Ranger	0	0	3
	District 4	0	0	5
	FHP	7	7	61
	ITMS	0	0	2



		Current Month	Last Month	YTD
PM Peak	ITMS CCTV	2	8	34
	Motorist	0	1	2
	Palm Beach Road Rang	10	23	101
	SmarTraveler (511)	0	0	1
	Total	19	39	209
Total		114	139	998

### Incident Detection Methods by Severity

		Current Month	Last Month	YTD
Level 1	Broward Road Ranger	0	1	5
	Broward TMC	0	0	1
	Construction CEI	0	0	2
	District 4	0	1	30
	FHP	16	18	122
	ITMS	1	0	1
	ITMS CCTV	8	10	67
	Motorist	1	1	5
	Palm Beach Road Rang	31	42	272
	SmarTraveler (511)	0	1	2
	Total	57	74	507
	Level 2	Broward Road Ranger	0	0
Construction CEI		0	0	2
District 4		2	0	10
FHP		25	19	159
ITMS		0	0	3
ITMS CCTV		4	6	44
Motorist		3	1	8
Palm Beach Road Rang		15	19	141
Road Watcher		0	1	1
SmarTraveler (511)		0	0	1
Total	49	46	370	
Level 3	Construction CEI	0	2	2



		Current Month	Last Month	YTD
Level 3	District 4	0	0	2
	FDOT Maintenance	1	0	1
	FHP	4	5	50
	ITMS CCTV	1	4	23
	Palm Beach Road Rang	2	7	42
	Road Watcher	0	1	1
	Total	8	19	121
Total		114	139	998

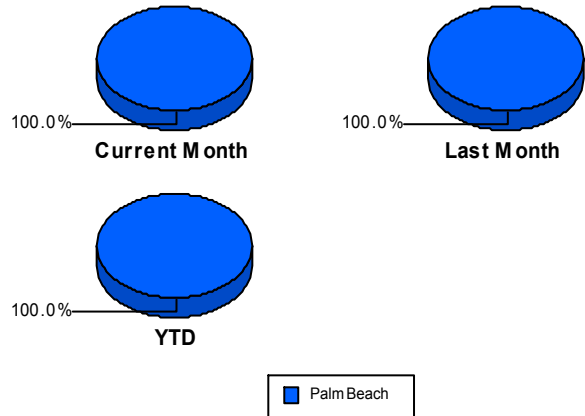
# Road Ranger / SIRV Performance Measures

## Road Ranger / SIRV Performance By County

RR/SIRV Responses per County

Values presented are:  
 - Total Events with a RR/SIRV Response  
 - Total RR/SIRV Responses,  
 - Total Activities Performed

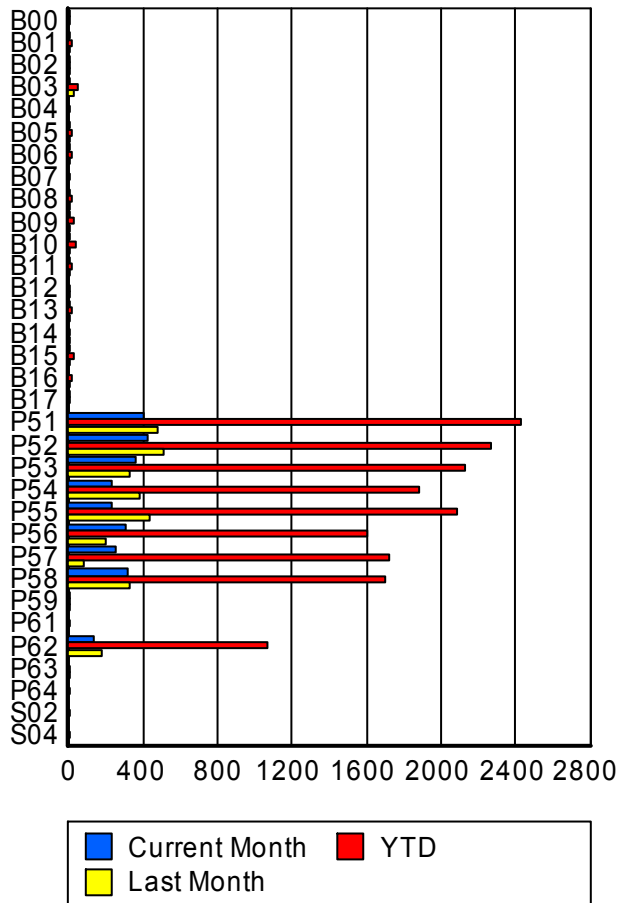
	Current Mo	Last Month	YTD
Palm Beach	<b>2,631</b>	<b>2,870</b>	<b>16,530</b>
	<b>2,711</b>	<b>2,974</b>	<b>17,182</b>
	<b>2,898</b>	<b>3,193</b>	<b>18,392</b>



## Road Ranger / SIRV Performance By Truck

	Current Mo	Last Month	YTD
B00	2	0	8
	2	0	8
	2	0	9
B01	2	1	21
	2	1	21
	2	2	24
B02	1	1	3
	1	1	3
	1	1	3
B03	4	21	43
	4	22	45
	5	23	47
B04	0	0	1
	0	0	1
	0	0	1
B05	4	2	11
	4	2	11
	4	2	11
B06	2	3	13
	2	3	13
	2	4	14
B07	0	0	4
	0	0	4
	0	0	4
B08	3	1	15
	3	1	16
	3	1	16

**RR/SIRV  
Responses per  
Truck**



	Current Mo	Last Month	YTD
B09	10	3	24
	10	3	25
	10	3	26
B10	4	5	40
	4	5	40
	5	6	48
B11	1	2	18
	1	2	18
	1	2	19
B12	0	2	6
	0	2	6
	0	2	6
B13	2	3	18
	2	3	18
	2	3	18
B14	0	3	4
	0	3	4
	0	4	5
B15	8	7	29
	9	7	30
	9	8	32
B16	0	2	11
	0	2	11
	0	2	12
B17	2	0	4
	2	0	4
	2	0	4
P51	404	476	2,419
	406	478	2,434
	428	507	2,596
P52	422	505	2,246
	428	510	2,266
	462	552	2,444
P53	357	328	2,111
	359	329	2,125
	388	357	2,269
P54	230	372	1,862
	232	376	1,877
	243	401	2,008
P55	232	431	2,068
	232	437	2,081
	253	475	2,230
P56	302	198	1,595
	302	199	1,607
	320	218	1,724

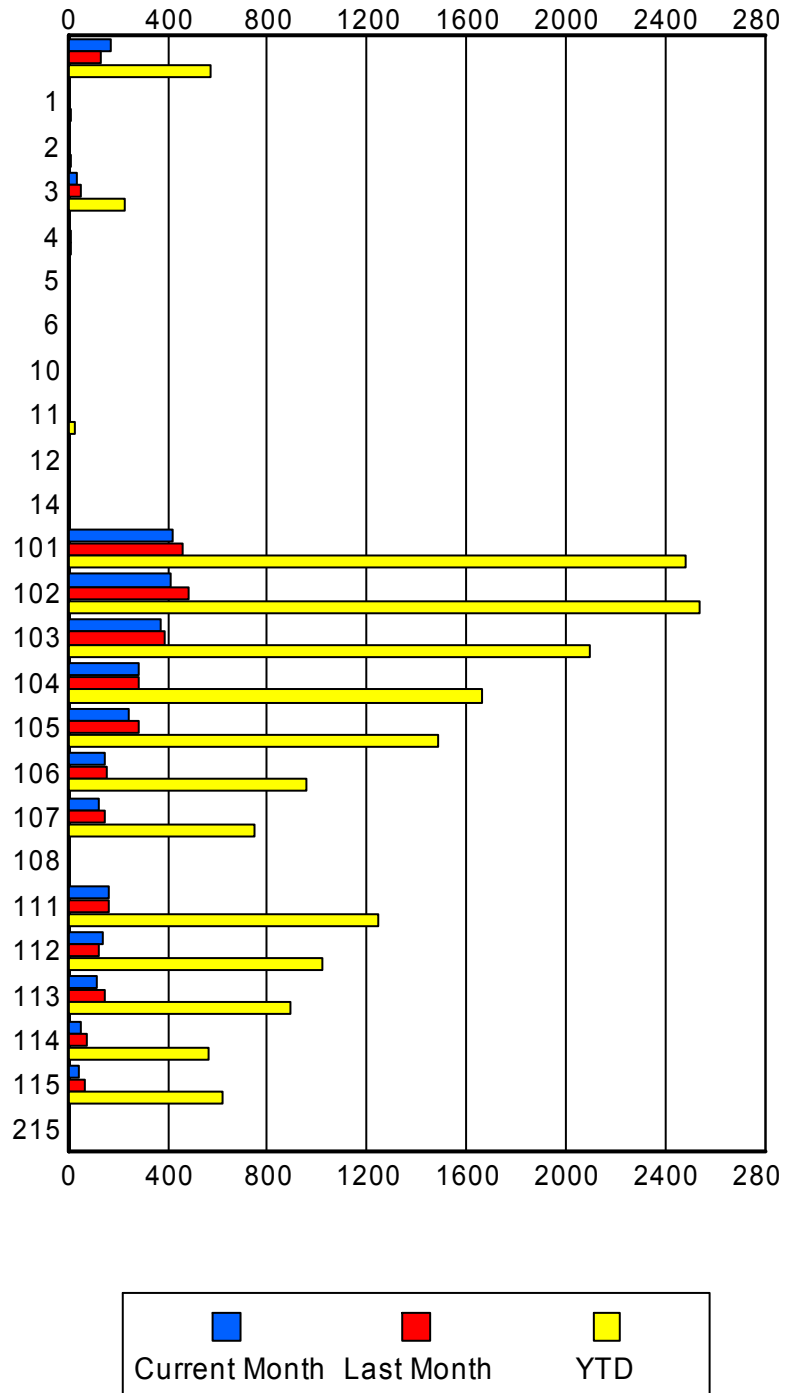
	Current Mo	Last Month	YTD
P57	253	76	1,708
	254	76	1,725
	280	80	1,864
P58	319	324	1,688
	320	331	1,701
	334	349	1,805
P59	1	3	7
	1	3	7
	1	3	7
P61	0	0	7
	0	0	7
	0	0	7
P62	129	174	1,055
	131	176	1,066
	141	186	1,131
P63	0	2	2
	0	2	2
	0	2	2
P64	0	0	2
	0	0	2
	0	0	2
S02	0	0	3
	0	0	3
	0	0	3
S04	0	0	1
	0	0	1
	0	0	1

### Road Ranger / SIRV Performance By Beat

	Current Mo	Last Month	YTD
	168 169 177	134 135 145	570 574 604
1	2 2 2	0 0 0	10 10 11
2	1 1 1	1 1 1	8 8 8
3	35 36 38	49 50 54	221 227 244
4	0 0 0	8 8 10	8 8 10
5	0 0 0	1 1 1	1 1 1
6	0 0 0	1 1 1	2 2 2
10	1 1 1	1 1 1	3 3 3
11	5 5 5	3 3 4	28 29 31
12	0 0 0	0 0 0	2 2 2
14	2 2 2	1 1 2	3 3 4
101	416 419 445	453 458 482	2,458 2,477 2,635
102	407 408 436	481 485 537	2,528 2,540 2,747
103	373 374 410	379 386 405	2,081 2,098 2,252
104	282 284 303	281 284 311	1,645 1,661 1,802

Values presented are:  
 - Total Events with a RR/SIRV Response  
 - Total RR/SIRV Responses,  
 - Total Activities Performed

### RR/SIRV Responses per Beat



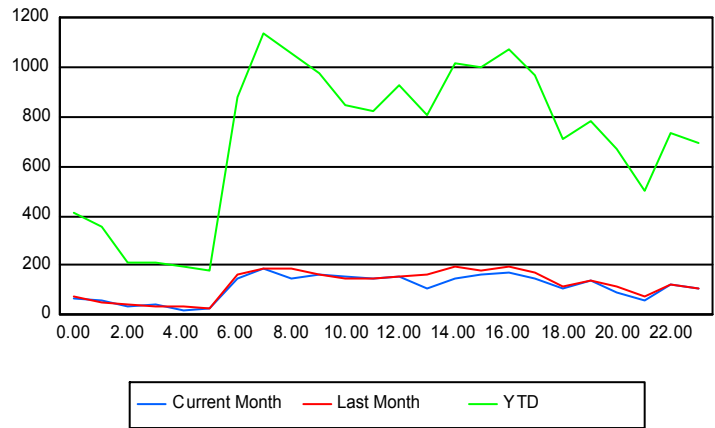
	Current Mo	Last Month	YTD
105	239	278	1,467
	240	281	1,485
	260	299	1,579
106	145	151	950
	145	152	956
	156	164	1,017
107	120	144	744
	121	145	751
	127	151	788
108	0	0	1
	0	0	1
	0	0	1
111	163	167	1,237
	164	167	1,248
	174	172	1,333
112	134	125	1,009
	136	126	1,018
	144	138	1,086
113	114	146	876
	114	150	891
	117	162	955
114	49	72	562
	49	73	566
	55	76	600
115	39	66	615
	41	66	621
	45	77	675
215	0	0	2
	0	0	2
	0	0	2

## Road Ranger / SIRV Performance By Time of Day

Values presented are:  
 - Total Events with a RR/SIRV Response  
 - Total RR/SIRV Responses,  
 - Total Activities Performed

	Current Mo	Last Month	YTD
12AM-1AM	62	70	399
	65	74	417
	69	80	445
1AM-2AM	52	49	332
	55	50	354
	60	54	394
2AM-3AM	30	37	197
	32	39	209
	33	40	220
3AM-4AM	38	30	196
	42	32	209
	47	37	230
4AM-5AM	19	32	176
	20	34	197
	21	37	213
5AM-6AM	22	23	154
	25	27	178
	25	29	193
6AM-7AM	145	153	849
	147	160	878
	159	170	943
7AM-8AM	184	188	1,108
	188	190	1,138
	200	207	1,208
8AM-9AM	149	180	1,018
	151	188	1,057
	161	201	1,128
9AM-10AM	158	154	941
	163	161	979
	177	179	1,061
10AM-11AM	151	145	825
	155	148	850
	170	156	925
11AM-12PM	138	145	791
	145	149	825
	155	162	880
12PM-1PM	152	148	883
	157	153	927
	167	163	998

## Number of Responses / Hour of the Day



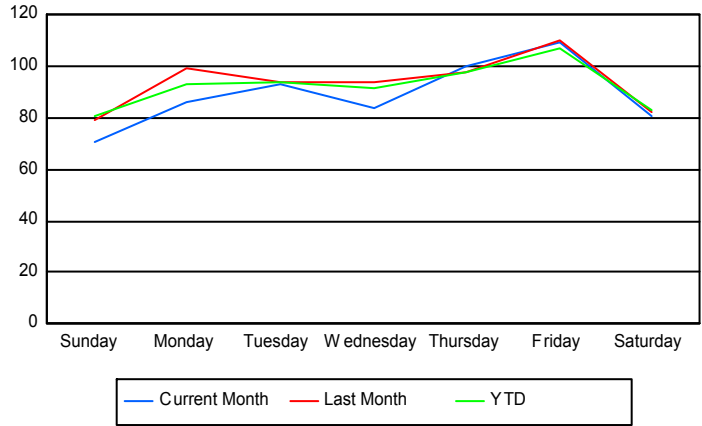
	Current Mo	Last Month	YTD
1PM-2PM	106	149	772
	110	160	808
	121	173	879
2PM-3PM	147	190	990
	147	197	1,014
	159	209	1,091
3PM-4PM	159	169	975
	162	178	1,000
	167	193	1,051
4PM-5PM	168	193	1,046
	171	196	1,075
	191	211	1,156
5PM-6PM	143	166	937
	147	169	970
	151	182	1,027
6PM-7PM	106	109	686
	109	112	713
	115	122	753
7PM-8PM	133	138	757
	142	142	782
	147	153	825
8PM-9PM	91	109	649
	92	112	672
	100	118	712
9PM-10PM	59	71	479
	59	76	505
	61	78	526
10PM-11PM	118	117	706
	121	120	733
	129	128	781
11PM-12AM	101	105	664
	106	107	692
	113	111	753

## Road Ranger / SIRV Performance By Day of Week

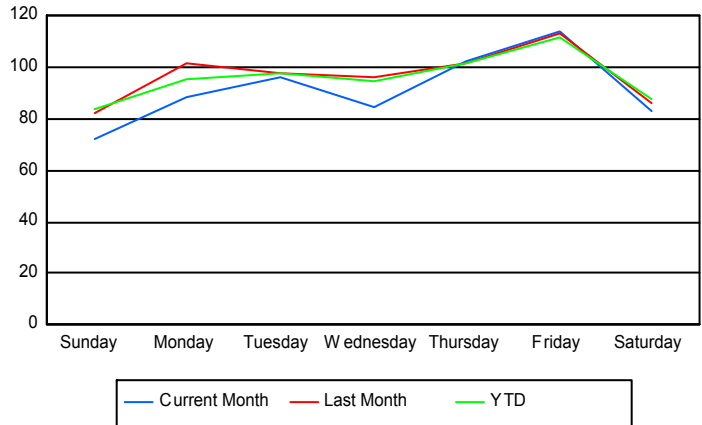
Values presented are:  
 - Total Events with a RR/SIRV Response  
 - Total RR/SIRV Responses,  
 - Total Activities Performed

	Current Mo	Last Month	YTD
Sunday	350	314	2,035
	359	326	2,118
	388	348	2,272
Monday	430	382	2,371
	441	391	2,442
	471	415	2,598
Tuesday	371	370	2,407
	384	386	2,499
	405	404	2,650
Wednesday	328	369	2,332
	334	381	2,403
	349	422	2,580
Thursday	400	487	2,513
	408	505	2,602
	445	544	2,790
Friday	434	544	2,765
	454	561	2,875
	486	610	3,114
Saturday	322	404	2,132
	331	424	2,243
	354	450	2,388

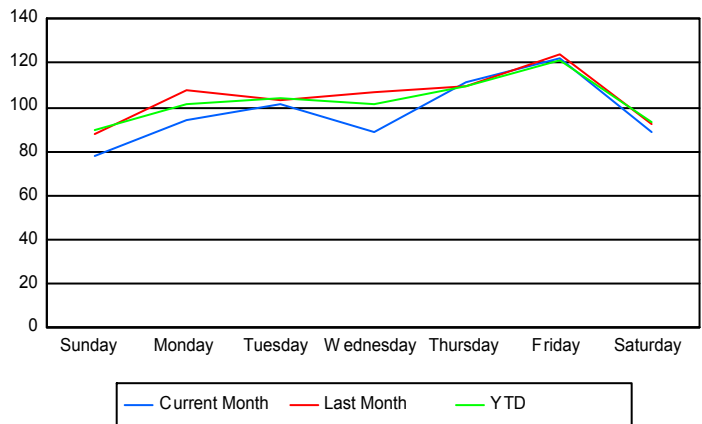
### Avg # of events with a RR/SIRV Response per Day of the Week



### Avg # of RR/SIRV Responses per Day of the Week



### Avg # of RR/SIRV Activities Performed per Day of the Week



### Road Ranger/ SIRV Responses per Time of Day and Day of Week

