



Monthly Performance Measures Report Palm Beach County



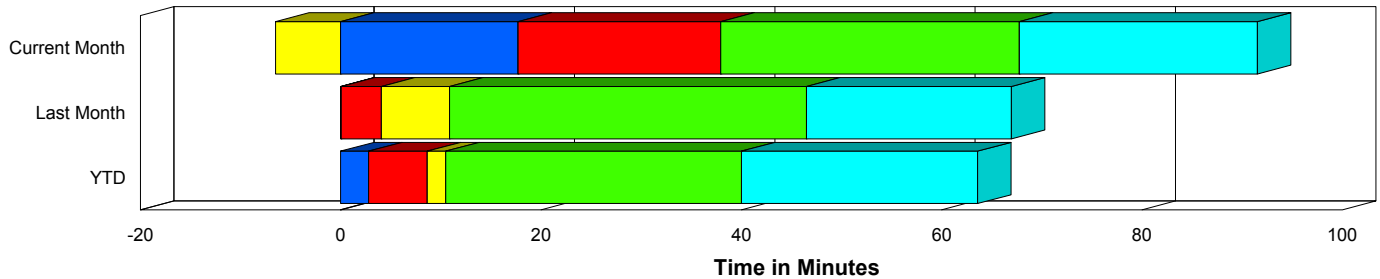
Created on:
July 01, 2009
1:50 pm

Period From Jun 1, 2009 to Jun 30, 2009

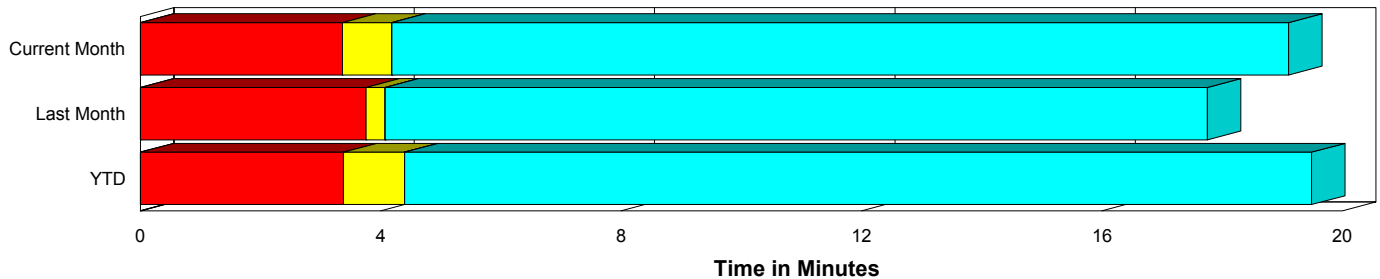
Performance Measures Summary

	Traffic Events (No Lanes Blocked)			Incidents (Lanes Blocked)		
	<u>This Month</u>	<u>Last Month</u>	<u>YTD</u>	<u>This Month</u>	<u>Last Month</u>	<u>YTD</u>
Number of Events	1,278	1,230	7,363	81	90	519
TMC Detection (min.)	0.00	0.00	0.00	17.72	0.07	2.78
TMC Verification (min.)	3.36	3.75	3.38	20.22	3.99	5.85
TMC Response (min.)	4.72	4.73	5.20	20.79	12.21	9.36
RR Dispatch Time (min.)	1.83	1.24	1.72	15.14	5.83	4.94
RR Response Time (min.)	3.33	3.51	3.59	5.41	6.35	4.39
Roadway Clearance (min.)				74.93	104.99	55.16
Event Clearance (min.)	19.64	18.42	20.29	98.64	123.58	78.28
# of Events w/ RR/SIRV	1,115	1,052	6,067	61	60	399
RR/SIRV Responses	1,115	1,052	6,067	61	60	399
RR/SIRV Activities	1,208	1,138	6,577	81	86	581

Incident Clearance Time-Line



Traffic Event (Non-Lane Blockage) Time-Line



■ Avg. TMC Detection Time	■ Avg. Time from TMC Response to Roadway Clearance*
■ Avg. Time from TMC Detection to TMC Verification	■ Avg. Time from Roadway Clearance to Incident/Event Clearance**
■ Avg. Time from TMC Verification to TMC Response	

* Roadway clearance equals all travel lanes open

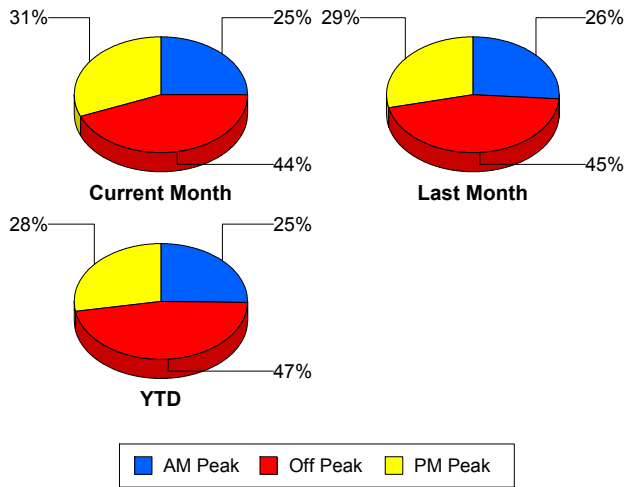
** Incident clearance equals time when last responder has left the scene

Performance Measures by Peak Period

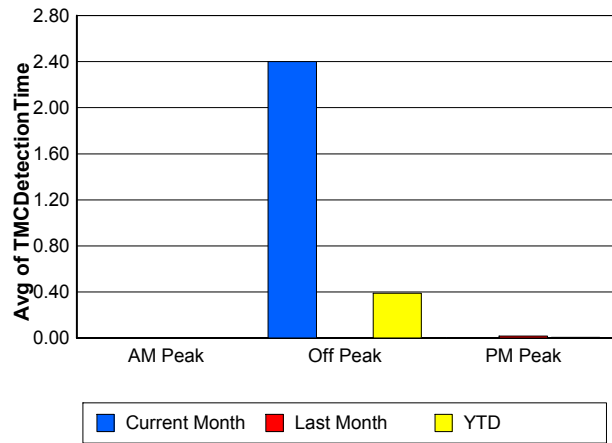
Note: AM peak period is defined as 6am to 10am and PM peak period is defined as 3pm to 7pm.

	AM Peak			Off Peak			PM Peak		
	<u>Current Month</u>	<u>Last Month</u>	<u>YTD</u>	<u>Current Month</u>	<u>Last Month</u>	<u>YTD</u>	<u>Current Month</u>	<u>Last Month</u>	<u>YTD</u>
Number of Events	340	344	1,987	598	598	3,695	421	378	2,200
Number of Incidents	19	36	157	42	31	221	20	23	141
TMC Detection (min.)	0.00	0.00	0.00	2.40	0.00	0.39	0.00	0.02	0.01
TMC Verification (min.)	2.82	4.11	3.12	4.90	3.48	3.26	4.88	3.91	4.40
TMC Response (min.)	3.47	5.18	4.22	7.07	5.72	6.56	5.58	4.38	5.25
RR Dispatch Time (min.)	0.80	1.37	1.04	5.05	1.95	3.11	1.12	1.02	1.26
RR Response Time (min.)	2.70	3.82	3.22	3.05	3.79	3.66	4.48	3.36	4.00
Event Clearance (min.)	20.43	25.60	22.01	31.28	21.94	26.86	17.67	31.35	21.37
Roadway Clearance (min.)	48.31	46.23	40.08	109.63	58.11	57.92	27.34	260.16	67.63
Incident Clearance (min.)	70.53	72.92	64.16	133.92	69.62	83.29	51.26	275.61	86.16
# of Events w/ RR/SIRV	331	321	1,890	445	439	2,525	400	352	2,051
RR/SIRV Responses	331	321	1,890	445	439	2,525	400	352	2,051
RR/SIRV Activities	365	370	2,145	497	473	2,791	427	381	2,222

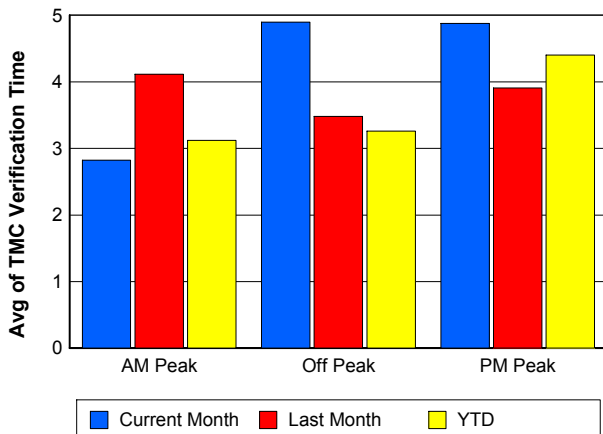
Number of Events / Peak Period



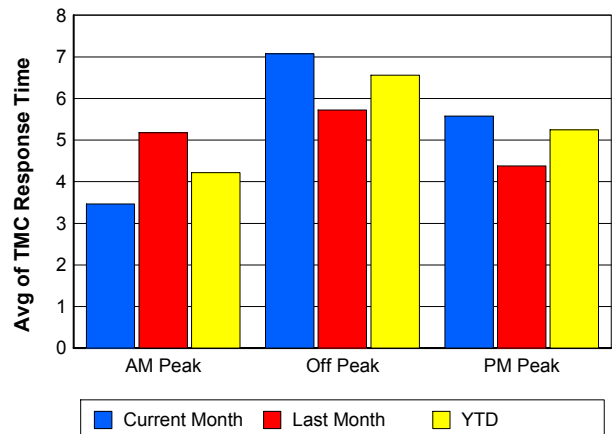
TMC Detection Time



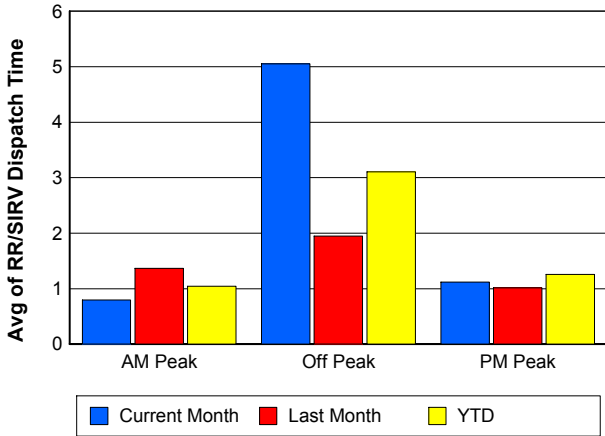
TMC Verification Time



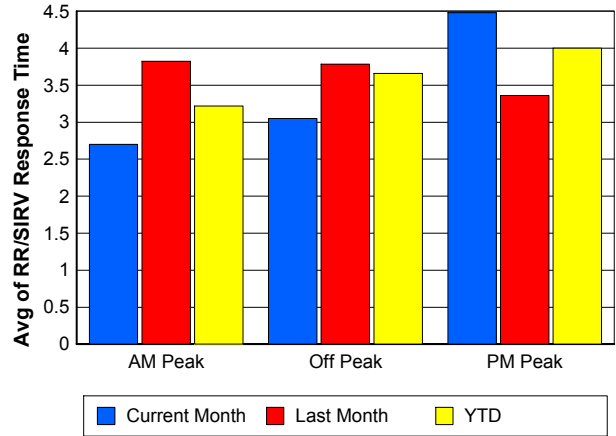
TMC Response Time



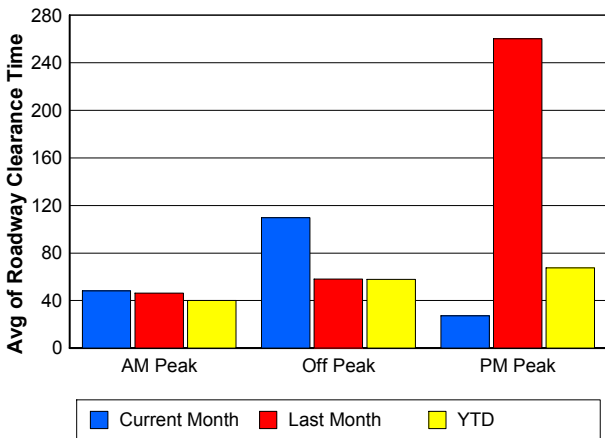
Road Ranger / SIRV Dispatch Time



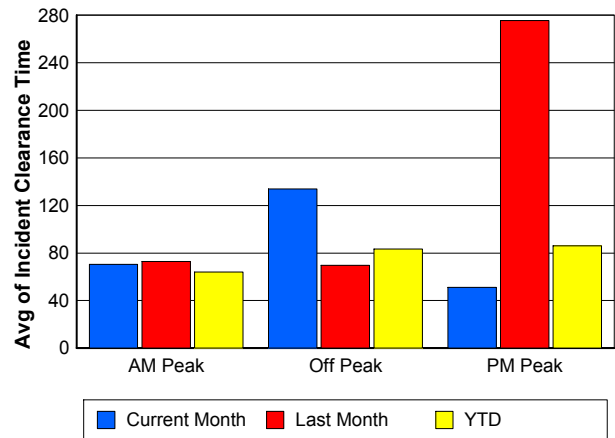
Road Ranger / SIRV Response Time



Roadway Clearance Time (2A)



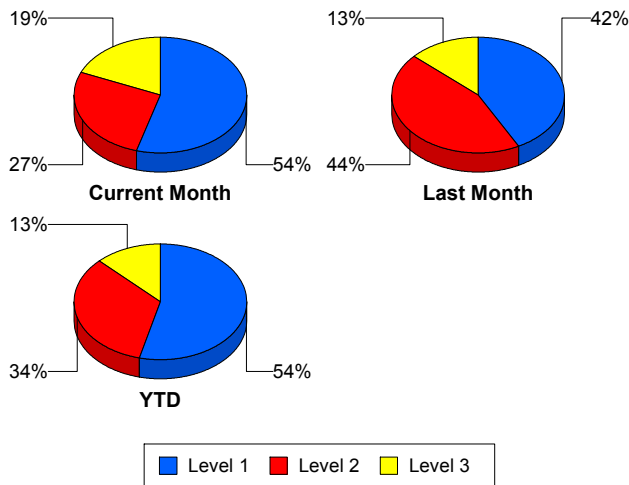
Incident Clearance Time (3B)



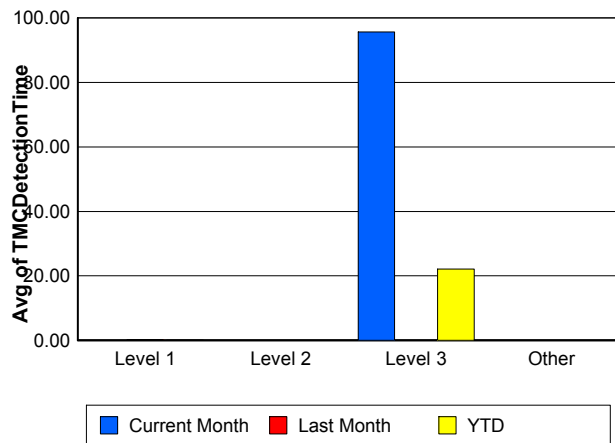
Performance Measures by Severity

	Level 1			Level 2			Level 3			Other		
	<u>This Month</u>	<u>Last Month</u>	<u>YTD</u>	<u>This Month</u>	<u>Last Month</u>	<u>YTD</u>	<u>This Month</u>	<u>Last Month</u>	<u>YTD</u>	<u>This Month</u>	<u>Last Month</u>	<u>YTD</u>
Number of Events	44	38	280	22	40	174	15	12	65	1,278	1,230	7,363
Number of Incidents	44	38	280	22	40	174	15	12	65	0	0	0
TMC Detection (min.)	0.00	0.16	0.02	0.00	0.00	0.00	95.68	0.00	22.11	0.00	0.00	0.00
TMC Verification (min.)	2.29	4.55	2.36	3.55	3.35	3.82	97.27	4.37	26.67	3.36	3.75	3.38
TMC Response (min.)	4.41	7.52	4.25	10.28	8.53	8.68	116.26	39.21	39.81	4.72	4.73	5.20
RR Dispatch Time (min.)	1.10	1.61	1.07	3.91	2.29	2.95	102.88	31.25	32.53	1.83	1.24	1.72
RR Resp. Time (min.)	3.30	5.99	3.19	6.37	6.24	5.74	13.38	7.96	7.27	3.33	3.51	3.59
Event Clearance (min.)	37.03	42.91	39.63	66.31	76.80	74.89	326.79	535.00	253.86	19.64	18.42	20.29
Roadway Clear. (min.)	13.68	16.97	14.46	46.39	58.89	53.17	296.43	537.38	235.80			
Incident Clearance (min.)	37.03	42.91	39.63	66.31	76.80	74.89	326.79	535.00	253.86			
# of Events w/ RR/SIRV	38	29	238	15	23	119	8	8	42	1,115	1,052	6,067
RR/SIRV Responses	38	29	238	15	23	119	8	8	42	1,115	1,052	6,067
RR/SIRV Activities	46	39	310	24	34	199	11	13	72	1,208	1,138	6,577

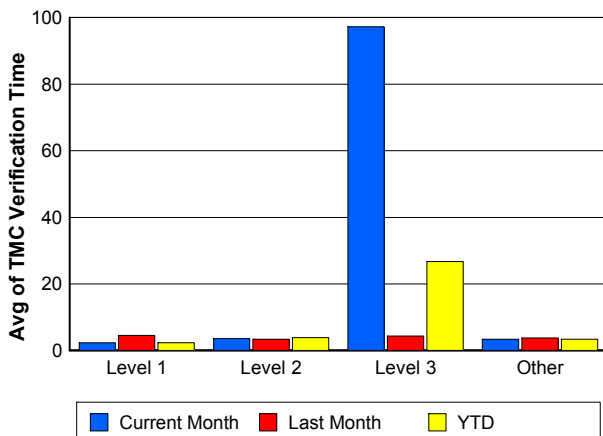
Number of Events / Severity



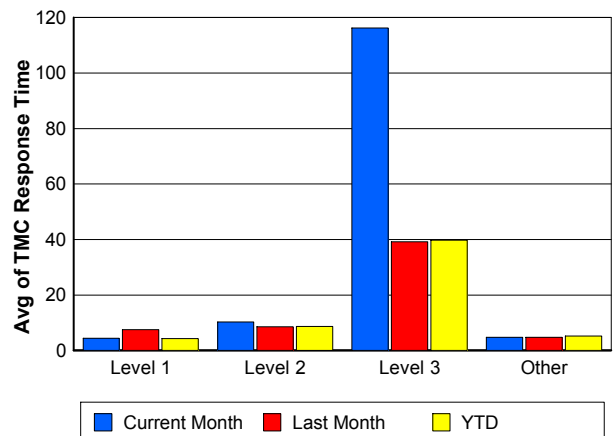
TMC Detection Time



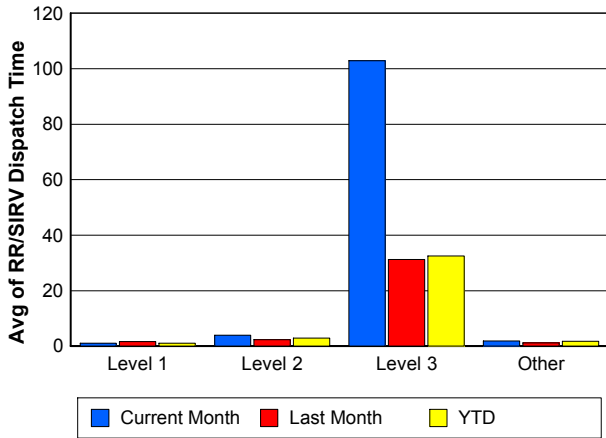
TMC Verification Time



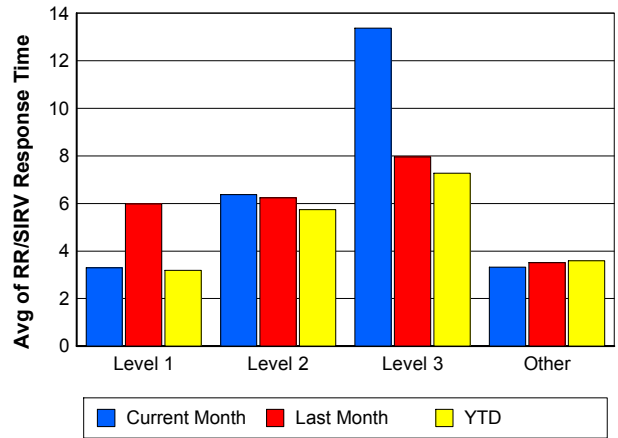
TMC Response Time



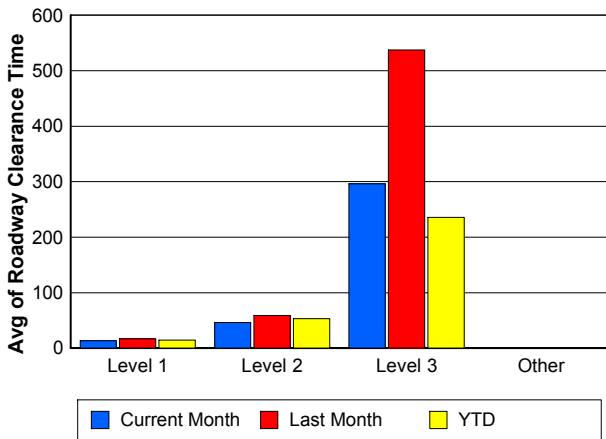
Road Ranger / SIRV Dispatch Time



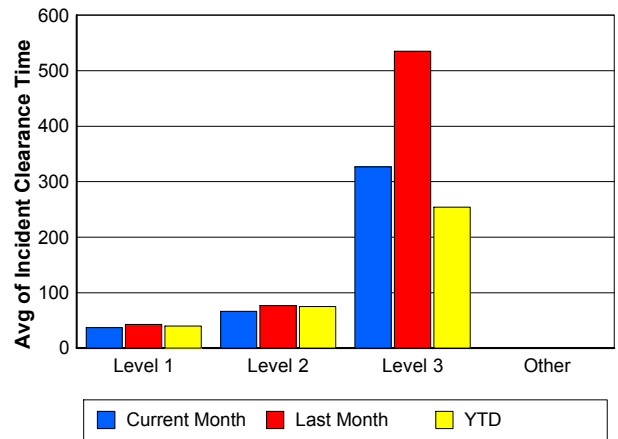
Road Ranger / SIRV Response Time



Roadway Clearance Time (2A)



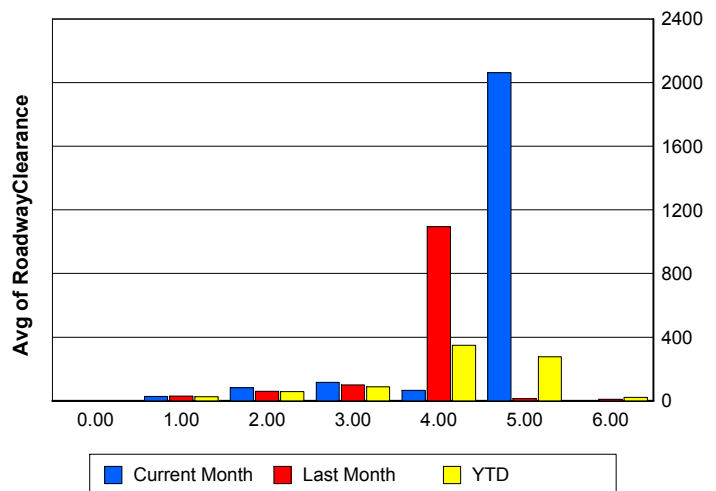
Incident Clearance Time (3B)



Roadway Clearance by Maximum Number of Lanes Blocked

	Current Month	Last Month	YTD
0			
1	28.26	29.49	25.85
2	82.04	59.87	57.76
3	116.13	99.66	87.43
4	66.22	1,093.67	349.47
5	2,062.62	12.75	277.11
6	0.00	9.83	22.35

Roadway Clearance Time (2A)



Performance Measures by Roadway

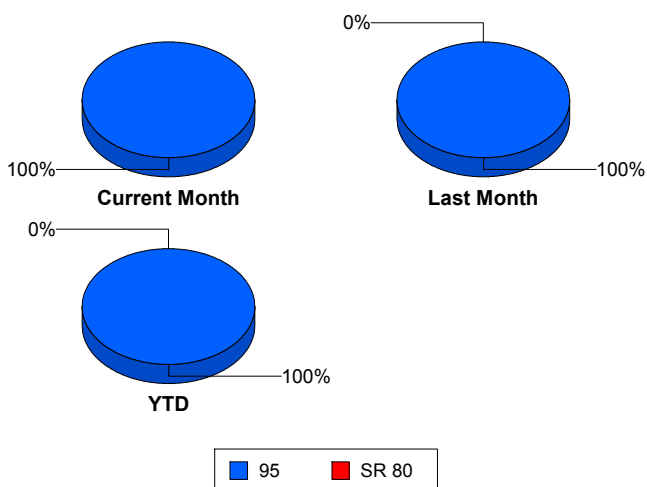
95

	<u>Current Month</u>	<u>Last Month</u>	<u>YTD</u>
Number of Events	1,359	1,319	7,879
Number of Incidents	81	89	517
TMC Detection (min.)	1.06	0.01	0.18
TMC Verification (min.)	4.37	3.77	3.54
TMC Response (min.)	5.55	5.13	5.46
RR Dispatch Time (min.)	2.52	1.48	1.92
RR Resp. Time (min.)	3.44	3.66	3.64
Event Clearance (min.)	24.35	21.59	23.42
Roadway Clear. (min.)	74.93	46.69	45.07
Incident Clearance (min.)	98.64	65.44	68.25
# of Events w/ RR/SIRV	1,176	1,112	6,466
RR/SIRV Responses	1,176	1,112	6,466
RR/SIRV Activities	1,289	1,224	7,158

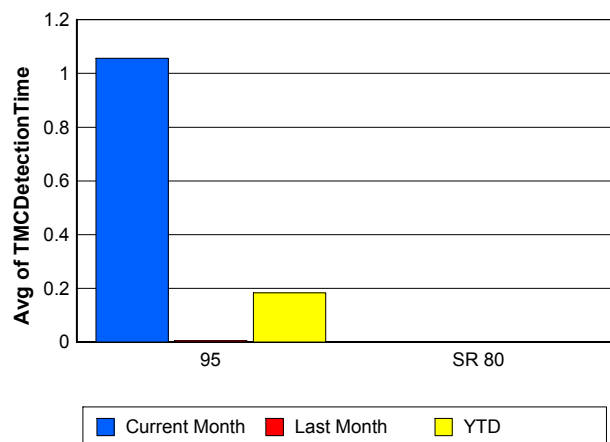
SR 80

	<u>Last Month</u>	<u>YTD</u>
Number of Events	1	3
Number of Incidents	1	2
TMC Detection (min.)	0.00	0.00
TMC Verification (min.)	0.00	0.00
TMC Response (min.)		
RR Dispatch Time (min.)		
RR Resp. Time (min.)		
Event Clearance (min.)	5,298.37	1,813.57
Roadway Clear. (min.)	5,293.37	2,663.80
Incident Clearance (min.)	5,298.37	2,671.02
# of Events w/ RR/SIRV	0	0
RR/SIRV Responses	0	0
RR/SIRV Activities	0	0

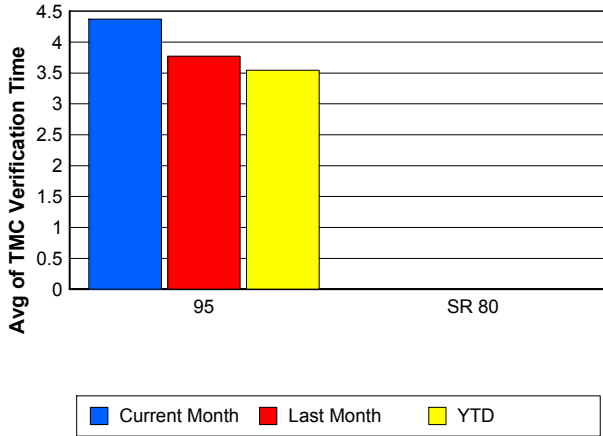
Number of Events / Roadway



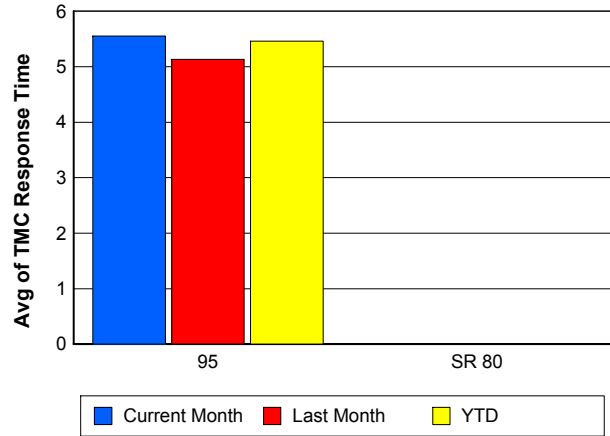
TMC Detection Time



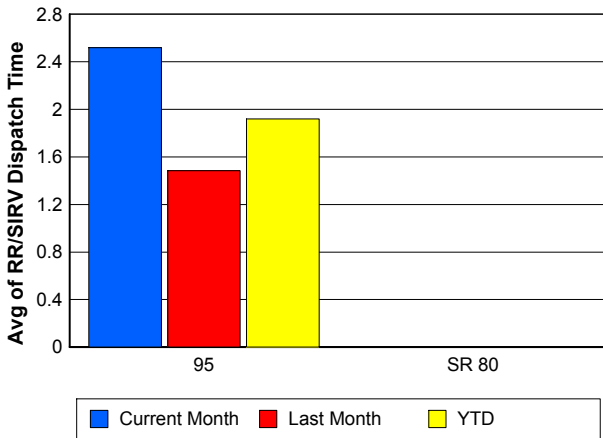
TMC Verification Time



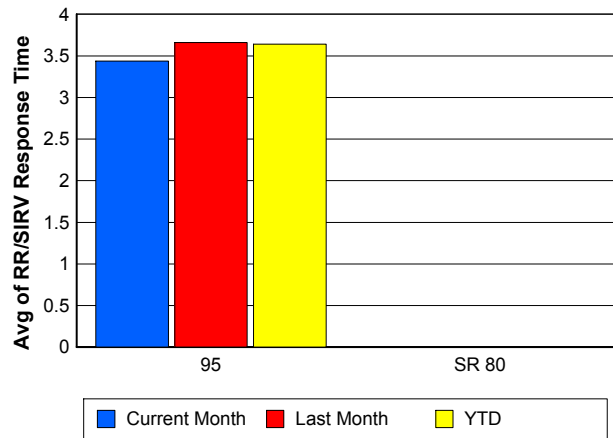
TMC Response Time



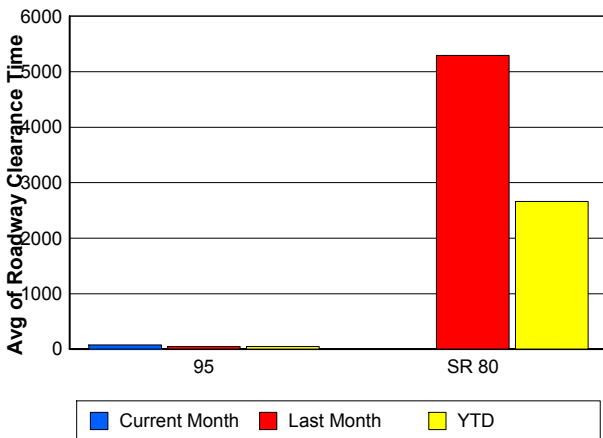
Road Ranger / SIRV Dispatch Time



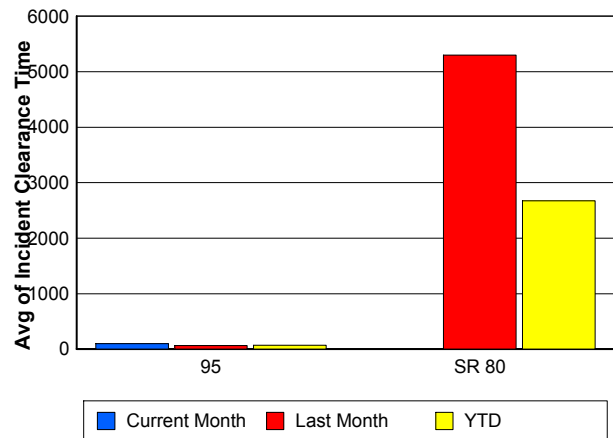
Road Ranger / SIRV Response Time



Roadway Clearance Time (2A)



Incident Clearance Time (3B)



Performance Measures by Event Type

Accident

	<u>Current Month</u>	<u>Last Month</u>	<u>YTD</u>
Number of Events	107	126	704
Number of Incidents	51	65	335
TMC Detection (min.)	0.00	0.01	0.01
TMC Verification (min.)	2.69	3.89	3.55
TMC Response (min.)	12.99	11.03	8.38
RR Dispatch Time (min.)	8.08	5.14	3.51
RR Response Time (min.)	4.83	5.90	4.87
Event Clearance (min.)	55.05	59.24	57.87
Roadway Clearance (min.)	44.89	49.95	45.06
Incident Clearance (min.)	73.62	71.96	72.61
# of Events w/ RR/SIRV	82	86	549
RR/SIRV Assists	82	86	549
RR/SIRV Activities	99	108	706

Debris on Roadway

	<u>Current Month</u>	<u>Last Month</u>	<u>YTD</u>
Number of Events	111	93	573
Number of Incidents	4	2	24
TMC Detection (min.)	0.00	0.00	0.00
TMC Verification (min.)	6.60	7.86	8.08
TMC Response (min.)	6.74	7.97	8.46
RR Dispatch Time (min.)	1.22	2.27	1.72
RR Response Time (min.)	5.52	5.70	6.74
Event Clearance (min.)	10.33	11.24	12.12
Roadway Clearance (min.)	31.33	24.94	17.36
Incident Clearance (min.)	34.06	42.36	21.31
# of Events w/ RR/SIRV	107	90	562
RR/SIRV Assists	107	90	562
RR/SIRV Activities	112	102	603

Disabled Vehicle

	<u>Current Month</u>	<u>Last Month</u>	<u>YTD</u>
Number of Events	1,034	984	5,634
Number of Incidents	15	13	107
TMC Detection (min.)	0.00	0.00	0.00
TMC Verification (min.)	3.30	3.59	3.29
TMC Response (min.)	4.36	4.16	4.42
RR Dispatch Time (min.)	1.85	1.05	1.49
RR Response Time (min.)	3.01	3.12	3.07
Event Clearance (min.)	18.39	16.73	17.99
Roadway Clearance (min.)	33.72	21.08	23.12
Incident Clearance (min.)	44.78	29.06	33.84
# of Events w/ RR/SIRV	955	907	5,146
RR/SIRV Assists	955	907	5,146
RR/SIRV Activities	1,045	983	5,646

Emergency Vehicles

	<u>Current Month</u>	<u>Last Month</u>	<u>YTD</u>
Number of Events	2	4	12
Number of Incidents	2	1	6
TMC Detection (min.)	0.00	0.00	0.00
TMC Verification (min.)	0.00	3.46	1.15
TMC Response (min.)		13.82	9.08
RR Dispatch Time (min.)	0.82	2.60	3.89
RR Response Time (min.)		11.22	4.43
Event Clearance (min.)	7.81	58.46	36.63
Roadway Clearance (min.)	4.90	16.28	21.83
Incident Clearance (min.)	7.81	20.00	25.97
# of Events w/ RR/SIRV	1	1	5
RR/SIRV Assists	1	1	5
RR/SIRV Activities	0	2	6

Other

	<u>Current Month</u>	<u>Last Month</u>	<u>YTD</u>
Number of Events	65	67	590
Number of Incidents	0	0	6
TMC Detection (min.)	0.00	0.00	0.00
TMC Verification (min.)	0.69	2.93	1.19
TMC Response (min.)	14.61	13.01	20.42
RR Dispatch Time (min.)	6.77	2.57	10.60
RR Response Time (min.)	7.17	10.33	8.07
Event Clearance (min.)	47.78	27.28	39.17
Roadway Clearance (min.)			38.11
Incident Clearance (min.)			52.15
# of Events w/ RR/SIRV	18	16	132
RR/SIRV Assists	18	16	132
RR/SIRV Activities	17	16	116

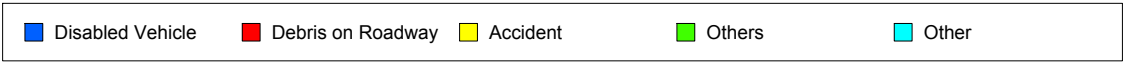
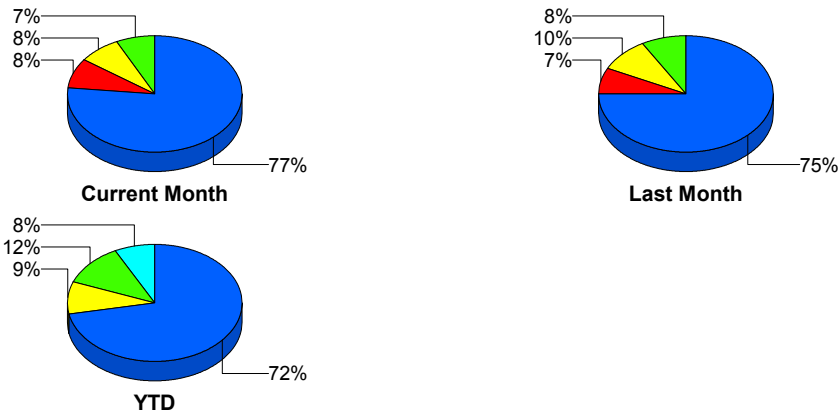
Police Activity

	<u>Current Month</u>	<u>Last Month</u>	<u>YTD</u>
Number of Events	22	34	299
Number of Incidents	3	6	27
TMC Detection (min.)	0.30	0.17	0.04
TMC Verification (min.)	0.00	0.44	0.16
TMC Response (min.)	0.00	6.35	9.89
RR Dispatch Time (min.)	0.00	0.50	6.36
RR Response Time (min.)	0.00	5.85	3.54
Event Clearance (min.)	50.39	32.53	26.65
Roadway Clearance (min.)	237.40	83.21	84.78
Incident Clearance (min.)	253.07	93.66	118.54
# of Events w/ RR/SIRV	1	4	23
RR/SIRV Assists	1	4	23
RR/SIRV Activities	1	5	26

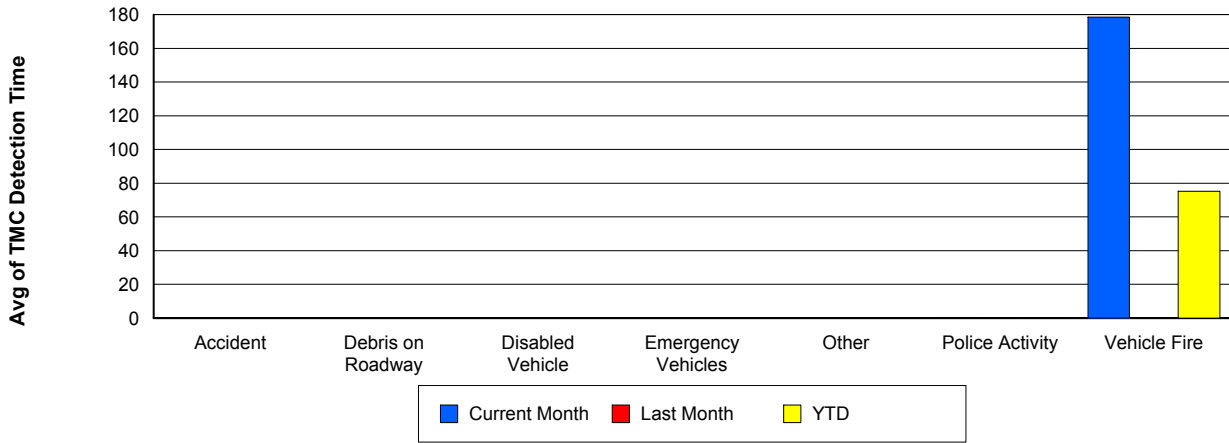
Vehicle Fire

	<u>Current Month</u>	<u>Last Month</u>	<u>YTD</u>
Number of Events	8	3	19
Number of Incidents	6	2	13
TMC Detection (min.)	178.59	0.00	75.20
TMC Verification (min.)	180.54	0.00	77.39
TMC Response (min.)	51.39		31.43
RR Dispatch Time (min.)	45.97		25.64
RR Response Time (min.)	5.42		5.80
Event Clearance (min.)	335.59	82.96	182.40
Roadway Clearance (min.)	404.43	34.74	207.76
Incident Clearance (min.)	442.09	51.06	246.33
# of Events w/ RR/SIRV	6	0	11
RR/SIRV Assists	6	0	11
RR/SIRV Activities	9	0	16

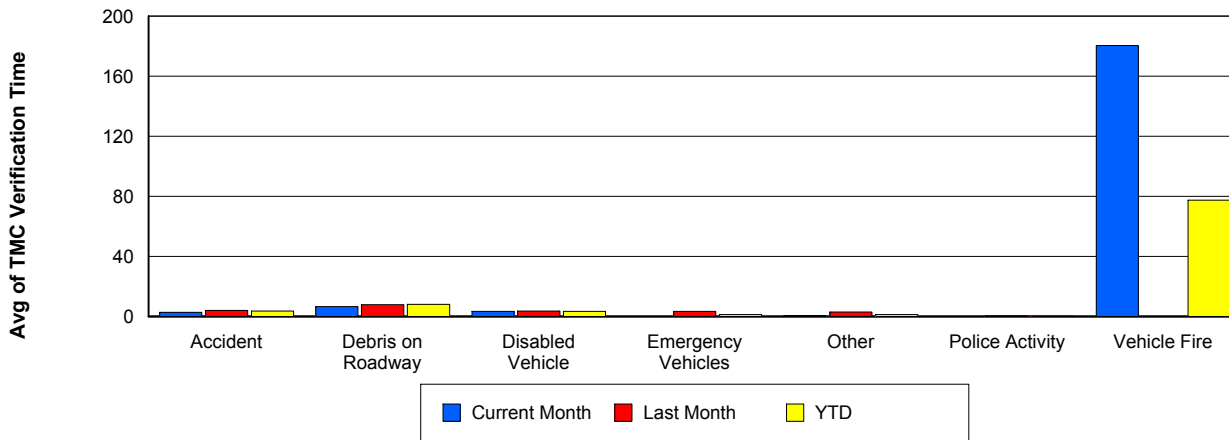
Number of Events / Event Type



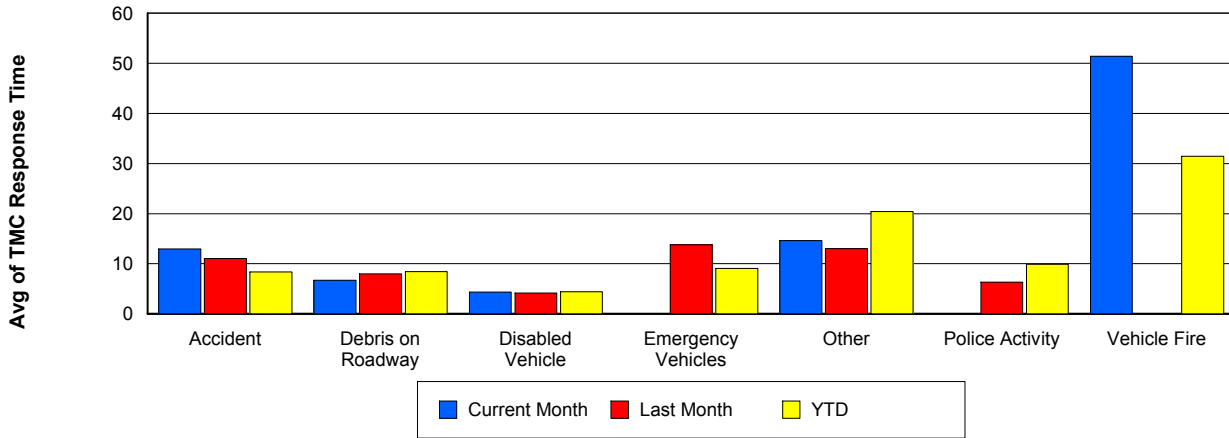
TMC Detection Time



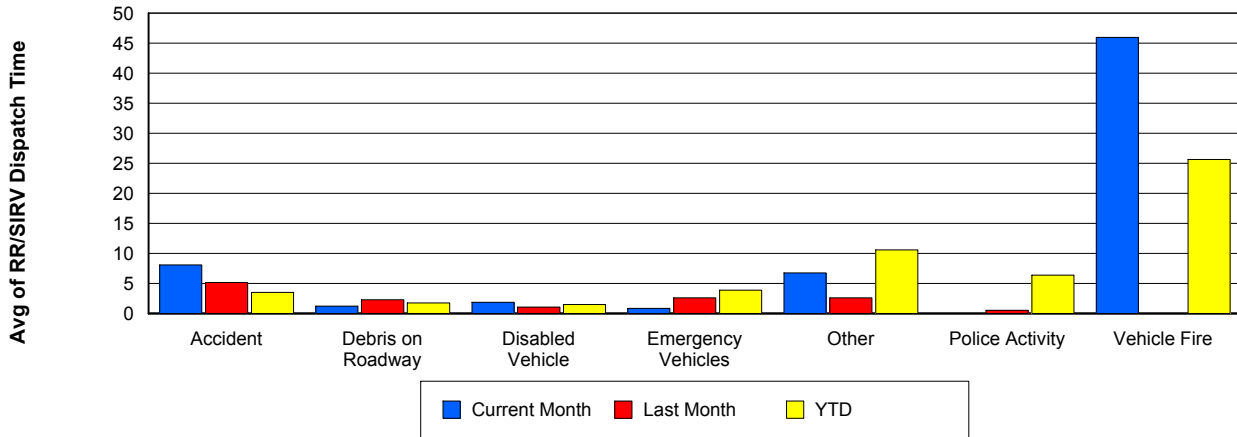
TMC Verification Time



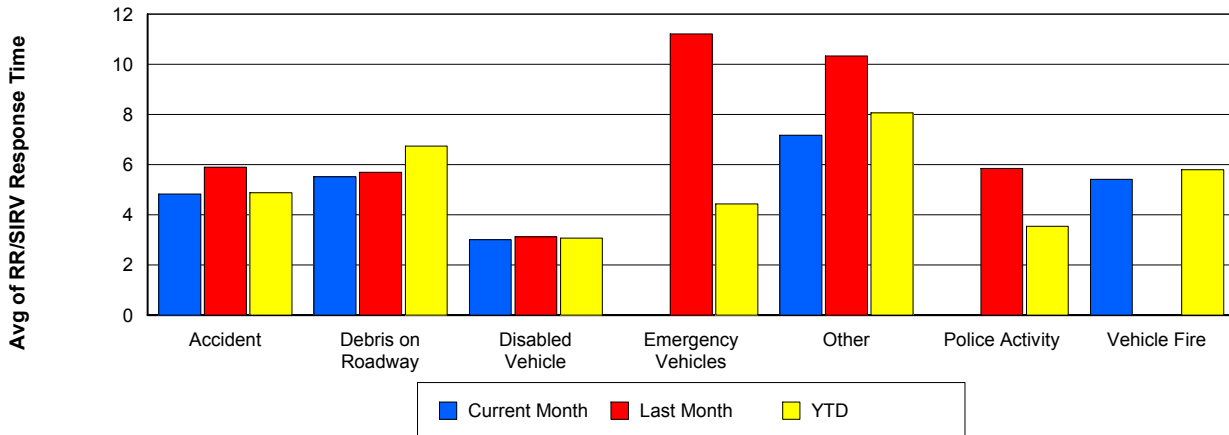
TMC Response Time



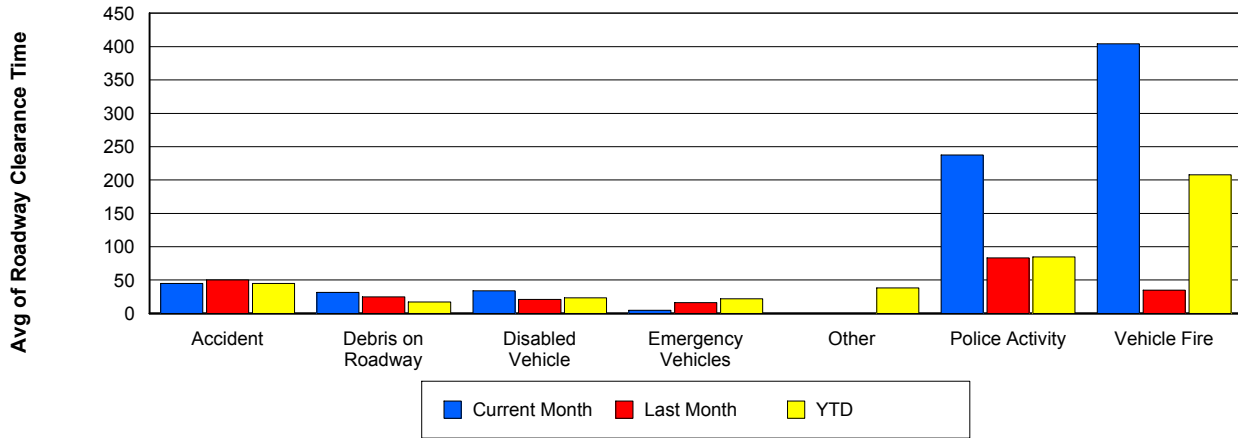
Road Ranger / SIRV Dispatch Time



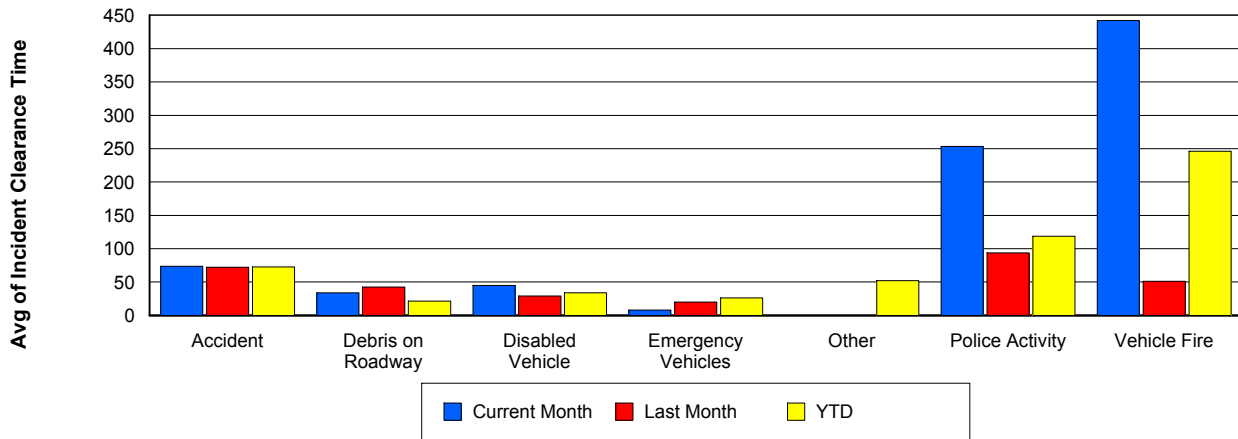
Road Ranger / SIRV Response Time



Roadway Clearance Time (2A)



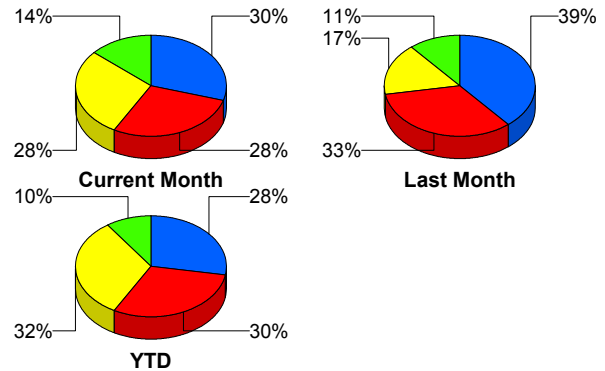
Incident Clearance Time (3B)



Incident Detection Methods

	Current Month	Last Month	YTD
Broward CCTV	1	0	6
Broward Road Ranger	1	2	6
Construction CEI	1	0	1
District 4	4	2	13
Emergency Operations	0	1	1
FHP	24	35	144
I-95 Construction PIO	0	0	2
ITMS	1	0	4
ITMS CCTV	23	30	158
Local Police	0	0	1
Media	2	0	2
Motorist	1	3	10
Palm Beach Road Ran	23	15	166
Road Watcher	0	0	1
SmarTraveler (511)	0	2	4
Total	81	90	519

Total Incidents by Detection Method

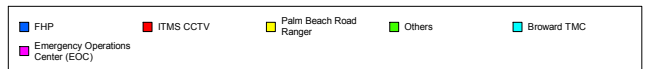
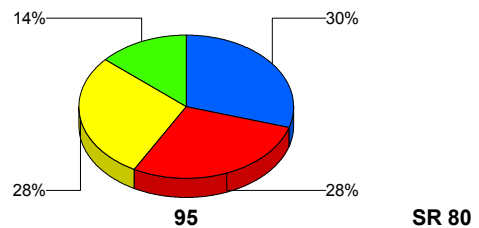


Incident Detection Methods by Roadway

		Current Month	Last Month	YTD
95	Broward CCTV	1	0	6
	Broward Road Ranger	1	2	6
	Construction CEI	1	0	1
	District 4	4	2	13
	FHP	24	35	143
	I-95 Construction PIO	0	0	2
	ITMS	1	0	4
	ITMS CCTV	23	30	158
	Local Police	0	0	1
	Media	2	0	2
	Motorist	1	3	10

Total Events by Roadway and Detection Method

Current Period Only

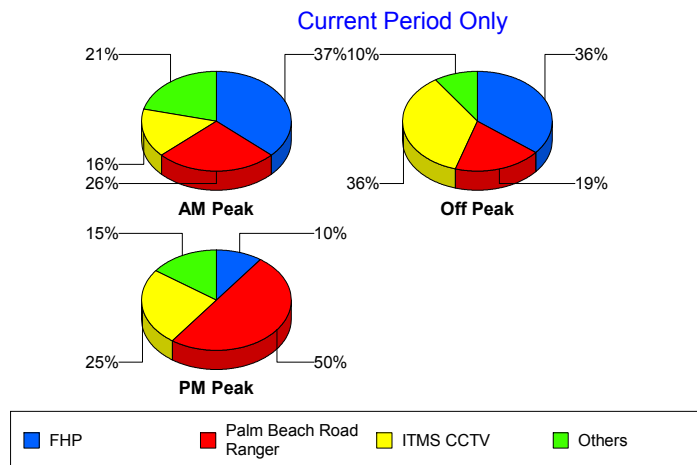


		Current Month	Last Month	YTD
95	Palm Beach Road Ran	23	15	166
	Road Watcher	0	0	1
	SmarTraveler (511)	0	2	4
	Total	81	89	517
SR 80	Emergency Operations	0	1	1
	FHP	0	0	1
	Total	0	1	2
Total		81	90	519

Incident Detection Methods by Peak Period

		Current Month	Last Month	YTD
AM Peak	Broward CCTV	1	0	2
	Broward Road Ranger	0	1	3
	District 4	2	1	8
	FHP	7	16	53
	ITMS	0	0	2
	ITMS CCTV	3	6	24
	Motorist	1	2	5
	Palm Beach Road Ran	5	9	56
	Road Watcher	0	0	1
	SmarTraveler (511)	0	1	3
	Total	19	36	157
	Off Peak	Broward CCTV	0	0
Broward Road Ranger		0	0	1
Construction CEI		1	0	1
District 4		2	1	5
FHP		15	15	65
I-95 Construction PIO		0	0	2
ITMS		1	0	2
ITMS CCTV		15	11	78
Motorist		0	1	2
Palm Beach Road Ran		8	2	60

Total Events by Peak Period and Detection Method

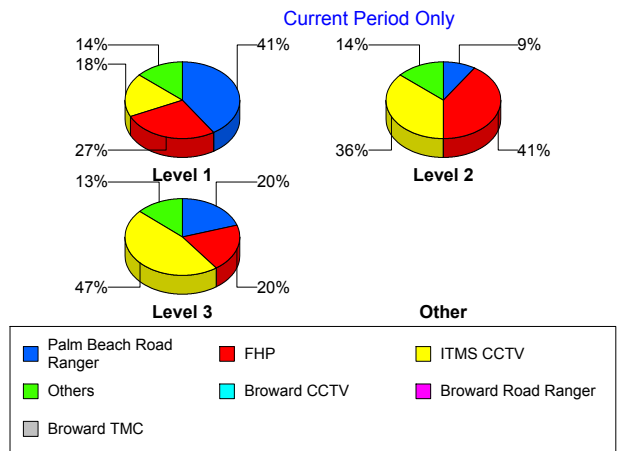


		Current Month	Last Month	YTD
Off Peak	SmarTraveler (511)	0	1	1
	Total	42	31	221
PM Peak	Broward Road Ranger	1	1	2
	Emergency Operations	0	1	1
	FHP	2	4	26
	ITMS CCTV	5	13	56
	Local Police	0	0	1
	Media	2	0	2
	Motorist	0	0	3
	Palm Beach Road Ran	10	4	50
	Total	20	23	141
	Total	81	90	519

Incident Detection Methods by Severity

		Current Month	Last Month	YTD
Level 1	Broward CCTV	1	0	4
	Broward Road Ranger	1	1	4
	District 4	3	1	10
	FHP	12	13	64
	I-95 Construction PIO	0	0	1
	ITMS	0	0	1
	ITMS CCTV	8	13	65
	Local Police	0	0	1
	Motorist	1	2	7
	Palm Beach Road Ran	18	8	121
	Road Watcher	0	0	1
	SmarTraveler (511)	0	0	1
	Total	44	38	280
	Level 2	Broward Road Ranger	0	1
District 4		1	1	3
FHP		9	16	60
I-95 Construction PIO		0	0	1

Total Events by Severity and Detection Method



		Current Month	Last Month	YTD
Level 2	ITMS	1	0	3
	ITMS CCTV	8	14	64
	Media	1	0	1
	Motorist	0	1	2
	Palm Beach Road Ran	2	5	35
	SmarTraveler (511)	0	2	3
	Total	22	40	174
Level 3	Broward CCTV	0	0	2
	Construction CEI	1	0	1
	Emergency Operations	0	1	1
	FHP	3	6	20
	ITMS CCTV	7	3	29
	Media	1	0	1
	Motorist	0	0	1
	Palm Beach Road Ran	3	2	10
	Total	15	12	65
Total		81	90	519

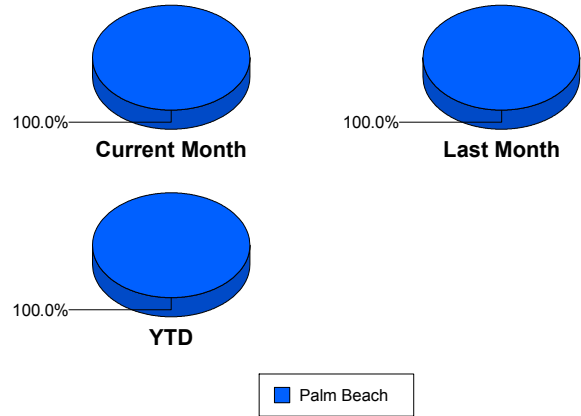
Road Ranger / SIRV Performance Measures

Road Ranger / SIRV Performance By County

Values presented are:
 - Total Events with a RR/SIRV Response
 - Total RR/SIRV Responses,
 - Total Activities Performed

	Current Mo	Last Month	YTD
Palm Beach	1,517	1,441	8,413
	1,564	1,487	8,692
	1,660	1,576	9,269

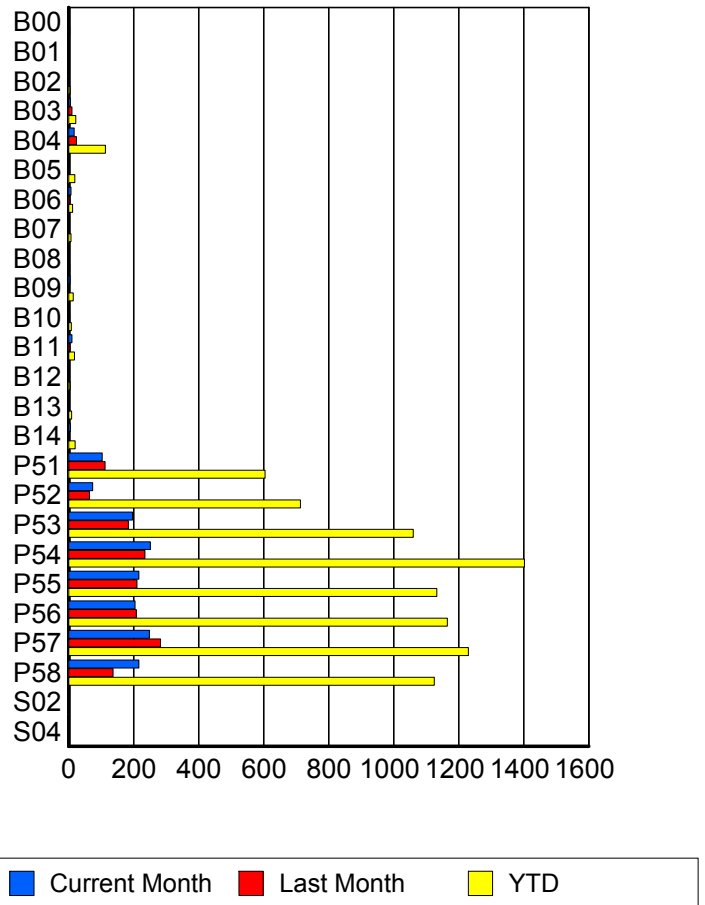
RR/SIRV Responses per County



Road Ranger / SIRV Performance By Truck

	Current Mo	Last Month	YTD
B00	1	1	3
	1	1	3
	1	1	3
B01	0	0	1
	0	0	1
	0	0	1
B02	1	1	4
	1	1	4
	1	1	4
B03	5	10	22
	5	10	22
	5	11	23
B04	17	24	112
	17	24	113
	19	30	130
B05	2	1	18
	2	1	19
	2	1	20
B06	7	4	12
	7	4	12
	7	4	12
B07	0	2	7
	0	2	7
	0	2	7
B08	0	0	3
	0	0	3
	0	0	3

RR/SIRV Responses per Truck



	Current Mo	Last Month	YTD
B09	4	2	14
	4	2	14
	4	2	14
B10	0	3	8
	0	3	8
	0	3	8
B11	10	4	18
	10	4	18
	10	5	19
B12	2	0	4
	2	0	4
	2	0	4
B13	1	0	9
	1	0	9
	1	0	10
B14	5	1	20
	5	1	20
	5	1	21
P51	101	112	598
	103	112	604
	108	116	633
P52	74	64	709
	74	64	713
	75	68	754
P53	195	183	1,048
	197	184	1,060
	203	194	1,127
P54	246	233	1,387
	251	235	1,402
	273	248	1,503
P55	216	208	1,124
	216	210	1,133
	235	219	1,207
P56	200	206	1,149
	204	208	1,165
	216	220	1,253
P57	244	280	1,220
	248	283	1,230
	263	301	1,319
P58	214	133	1,111
	216	137	1,125
	230	148	1,191
S02	0	0	1
	0	0	1
	0	0	1

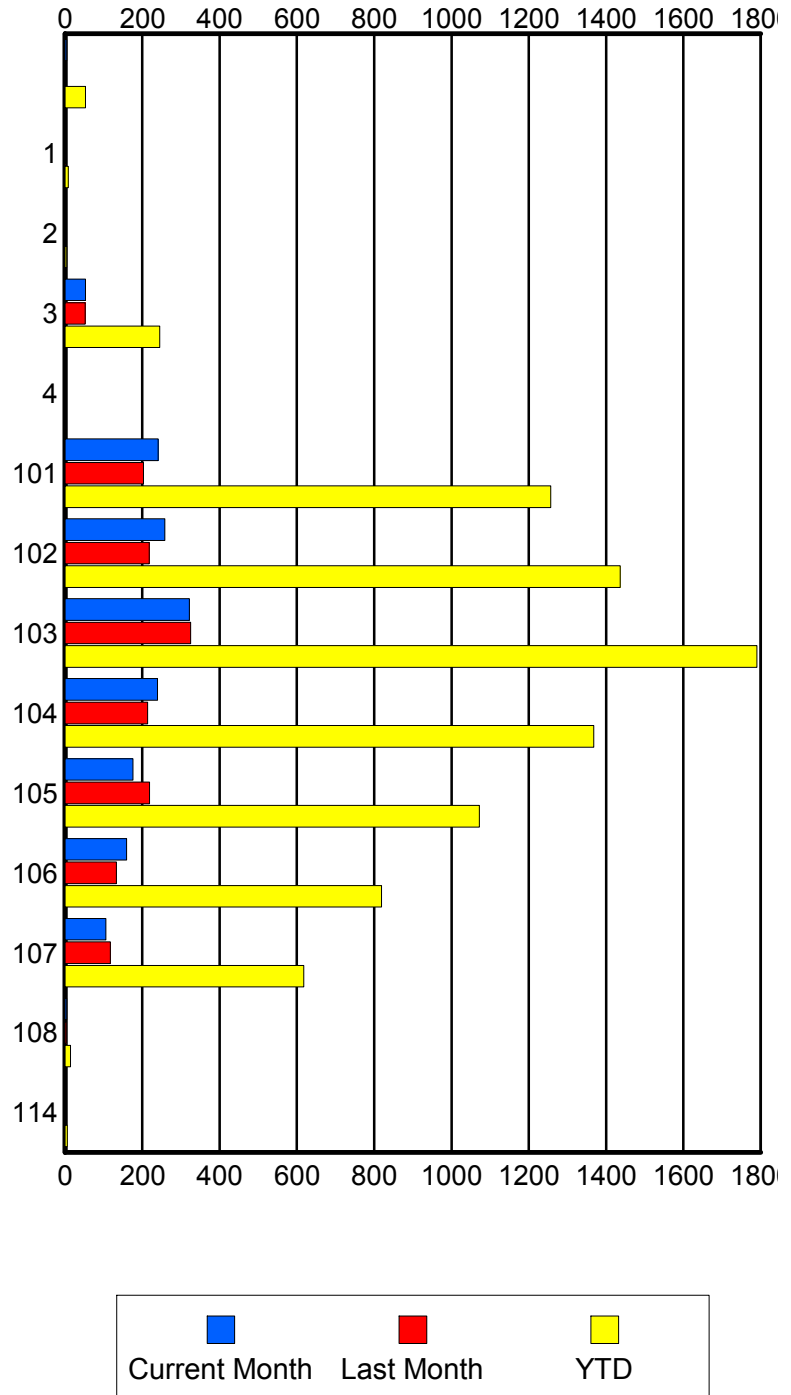
	Current Mo	Last Month	YTD
S04	0	1	2
	0	1	2
	0	1	2

Road Ranger / SIRV Performance By Beat

	Current Mo	Last Month	YTD
	4	2	53
	4	2	53
	4	2	53
1	1	1	8
	1	1	8
	1	1	9
2	1	0	4
	1	0	4
	1	0	5
3	52	52	242
	53	52	245
	55	60	265
4	0	0	1
	0	0	1
	0	0	1
101	237	202	1,242
	241	203	1,257
	259	211	1,351
102	256	214	1,422
	258	218	1,437
	275	233	1,525
103	317	321	1,768
	322	325	1,790
	347	342	1,923
104	233	213	1,354
	239	214	1,368
	247	229	1,461
105	175	216	1,063
	176	219	1,072
	189	233	1,141
106	156	132	808
	159	133	819
	167	141	871
107	104	117	612
	106	117	618
	111	121	644
108	4	3	13
	4	3	14
	4	3	14
114	0	0	6
	0	0	6
	0	0	6

Values presented are:
 - Total Events with a RR/SIRV Response
 - Total RR/SIRV Responses,
 - Total Activities Performed

RR/SIRV Responses per Beat

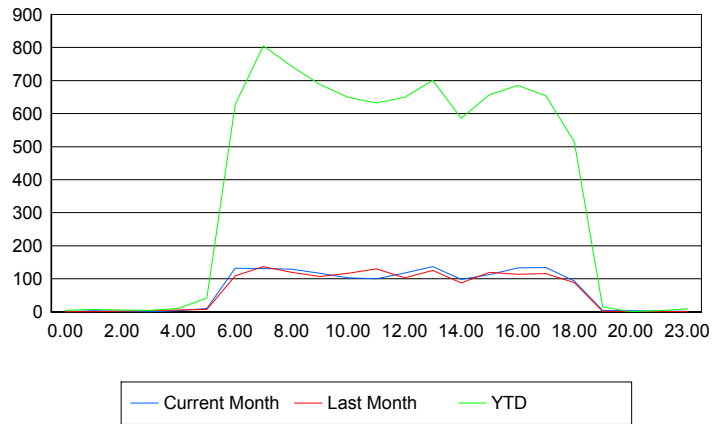


Road Ranger / SIRV Performance By Time of Day

Values presented are:
 - Total Events with a RR/SIRV Response
 - Total RR/SIRV Responses,
 - Total Activities Performed

	Current Mo	Last Month	YTD
12AM-1AM	1	1	4
	1	1	4
	1	1	4
1AM-2AM	1	1	5
	3	1	7
	3	1	7
2AM-3AM	2	0	5
	2	0	5
	3	0	6
3AM-4AM	1	0	4
	1	0	4
	1	0	4
4AM-5AM	3	0	7
	3	0	10
	3	0	11
5AM-6AM	10	7	40
	10	7	42
	12	7	44
6AM-7AM	130	101	603
	132	109	627
	138	113	658
7AM-8AM	123	131	770
	131	137	805
	139	148	861
8AM-9AM	128	115	718
	129	120	743
	136	134	798
9AM-10AM	113	103	666
	117	107	688
	125	112	752
10AM-11AM	99	114	628
	103	117	650
	110	118	687
11AM-12PM	96	127	612
	100	130	632
	104	137	682
12PM-1PM	113	99	628
	118	103	650
	126	110	695

Number of Responses / Hour of the Day



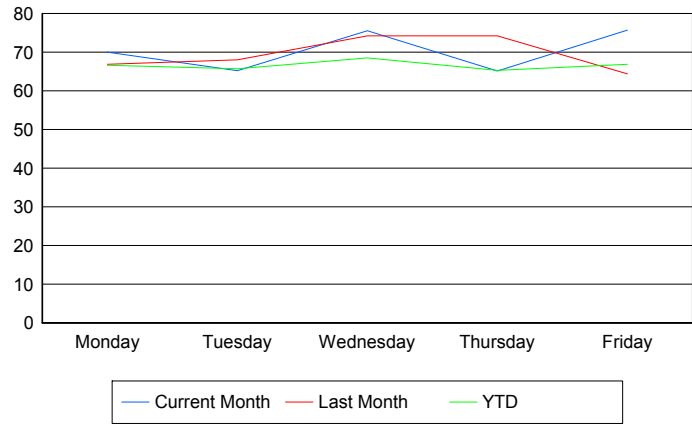
	Current Mo	Last Month	YTD
1PM-2PM	134	124	685
	137	125	701
	148	137	759
2PM-3PM	93	85	564
	98	88	586
	104	93	618
3PM-4PM	110	116	636
	113	120	657
	125	129	704
4PM-5PM	133	111	667
	133	114	685
	141	117	719
5PM-6PM	128	114	633
	134	116	653
	137	120	686
6PM-7PM	93	89	511
	93	89	515
	98	96	545
7PM-8PM	4	2	15
	4	2	15
	4	2	16
8PM-9PM	0	0	1
	0	0	1
	0	0	1
10PM-11PM	0	0	3
	0	0	3
	0	0	3
11PM-12AM	2	1	8
	2	1	9
	2	1	9

Road Ranger / SIRV Performance By Day of Week

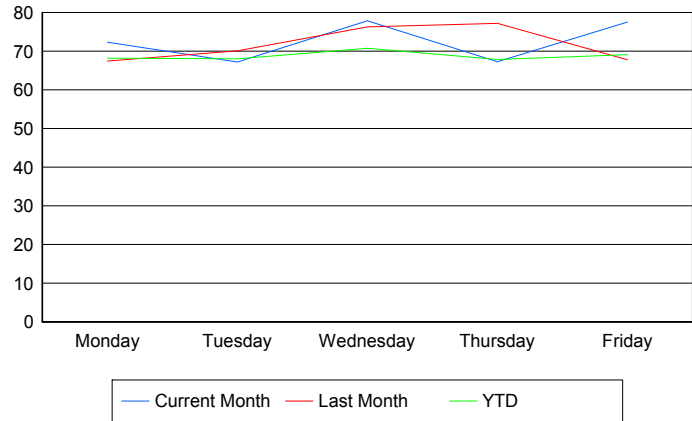
Values presented are:
 - Total Events with a RR/SIRV Response
 - Total RR/SIRV Responses,
 - Total Activities Performed

	Current Mo	Last Month	YTD
Monday	341	261	1,690
	353	263	1,731
	368	282	1,829
Tuesday	318	270	1,675
	328	278	1,734
	341	295	1,841
Wednesday	301	296	1,689
	310	304	1,743
	337	326	1,875
Thursday	256	296	1,659
	264	308	1,725
	284	326	1,851
Friday	302	318	1,703
	309	334	1,759
	330	347	1,873

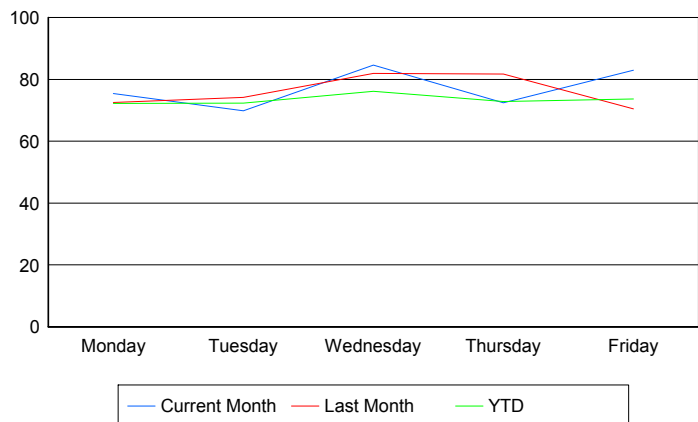
Avg # of events with a RR/SIRV Response per Day of the Week



Avg # of RR/SIRV Responses per Day of the Week



Avg # of RR/SIRV Activities Performed per Day of the Week



Road Ranger / SIRV Responses per Time of Day and Day of Week

