



Monthly Performance Measures Report Palm Beach County



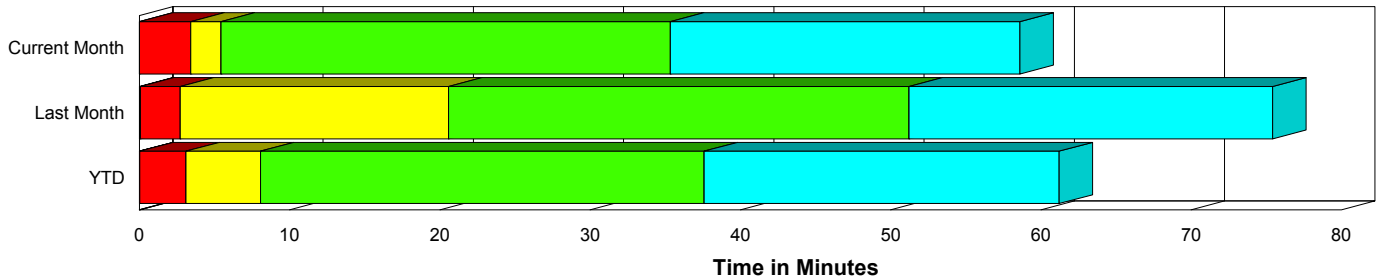
Created on:
August 03, 2009
9:59 am

Period From Jul 1, 2009 to Jul 31, 2009

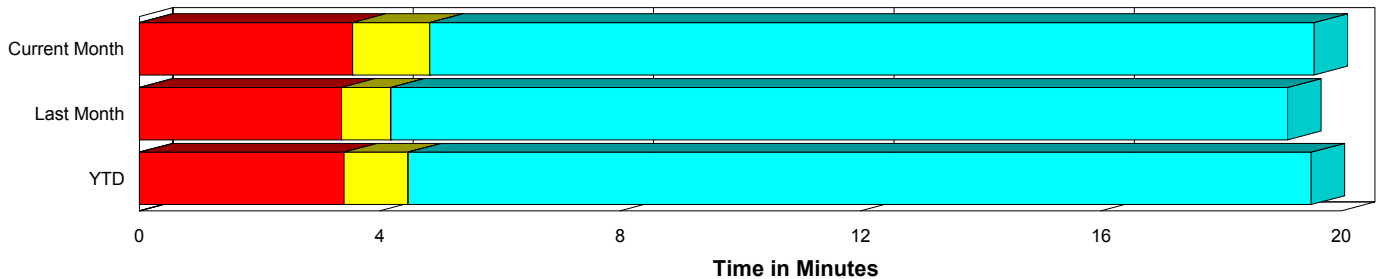
Performance Measures Summary

	Traffic Events (No Lanes Blocked)			Incidents (Lanes Blocked)		
	<u>This Month</u>	<u>Last Month</u>	<u>YTD</u>	<u>This Month</u>	<u>Last Month</u>	<u>YTD</u>
Number of Events	1,367	1,278	8,730	106	79	620
TMC Detection (min.)	0.00	0.00	0.00	0.00	0.08	0.02
TMC Verification (min.)	3.55	3.36	3.41	3.43	2.65	3.08
TMC Response (min.)	5.24	4.72	5.21	5.88	21.45	8.75
RR Dispatch Time (min.)	1.85	1.83	1.74	1.66	15.62	4.45
RR Response Time (min.)	3.41	3.33	3.56	4.23	5.58	4.29
Roadway Clearance (min.)				44.00	58.53	51.01
Event Clearance (min.)	19.95	19.64	20.23	67.22	82.69	74.25
# of Events w/ RR/SIRV	1,207	1,115	7,274	76	59	470
RR/SIRV Responses	1,207	1,115	7,274	76	59	470
RR/SIRV Activities	1,342	1,208	7,919	116	78	689

Incident Clearance Time-Line



Traffic Event (Non-Lane Blockage) Time-Line



■ Avg. TMC Detection Time	■ Avg. Time from TMC Response to Roadway Clearance*
■ Avg. Time from TMC Detection to TMC Verification	■ Avg. Time from Roadway Clearance to Incident/Event Clearance**
■ Avg. Time from TMC Verification to TMC Response	

* Roadway clearance equals all travel lanes open

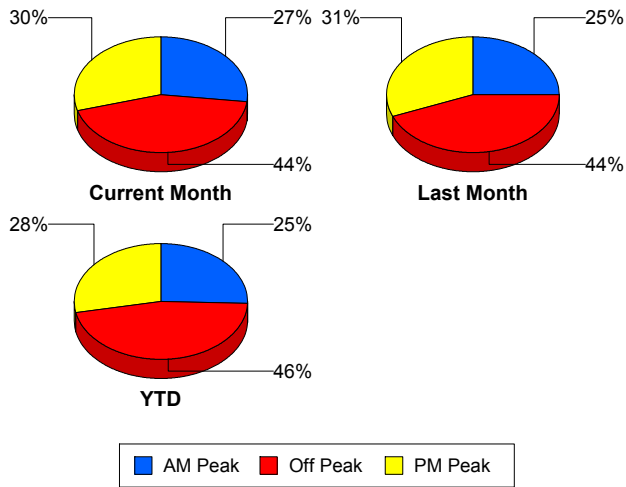
** Incident clearance equals time when last responder has left the scene

Performance Measures by Peak Period

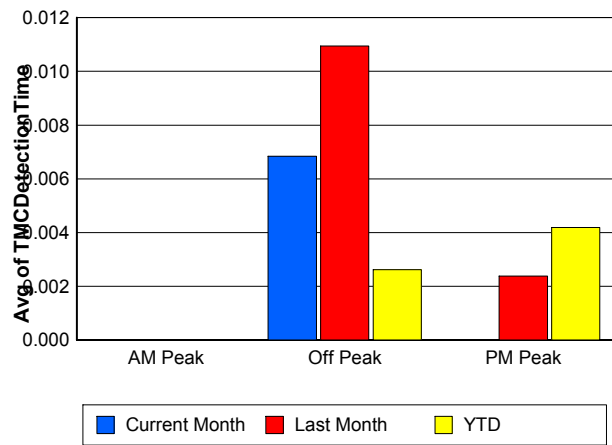
Note: AM peak period is defined as 6am to 10am and PM peak period is defined as 3pm to 7pm.

	AM Peak			Off Peak			PM Peak		
	<u>Current Month</u>	<u>Last Month</u>	<u>YTD</u>	<u>Current Month</u>	<u>Last Month</u>	<u>YTD</u>	<u>Current Month</u>	<u>Last Month</u>	<u>YTD</u>
Number of Events	397	339	2,381	641	597	4,334	435	421	2,635
Number of Incidents	37	18	191	44	41	263	25	20	166
TMC Detection (min.)	0.00	0.00	0.00	0.01	0.01	0.00	0.00	0.00	0.00
TMC Verification (min.)	2.61	2.83	3.04	3.75	2.51	2.99	4.07	4.88	4.35
TMC Response (min.)	4.27	3.47	4.23	6.29	7.09	6.50	5.01	5.58	5.21
RR Dispatch Time (min.)	1.66	0.80	1.15	2.15	5.06	2.95	1.63	1.12	1.32
RR Response Time (min.)	2.62	2.71	3.12	4.17	3.06	3.72	3.40	4.48	3.90
Event Clearance (min.)	20.95	20.46	21.77	25.11	28.91	26.27	22.97	17.67	21.64
Roadway Clearance (min.)	32.92	50.47	38.28	54.43	77.29	52.20	42.03	27.34	63.77
Incident Clearance (min.)	64.78	73.96	64.17	73.76	101.85	76.60	59.32	51.26	82.11
# of Events w/ RR/SIRV	385	330	2,272	493	444	3,016	405	400	2,456
RR/SIRV Responses	385	330	2,272	493	444	3,016	405	400	2,456
RR/SIRV Activities	451	363	2,590	554	496	3,343	453	427	2,675

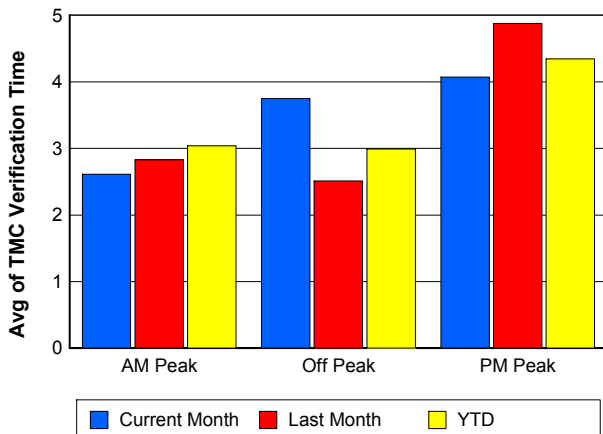
Number of Events / Peak Period



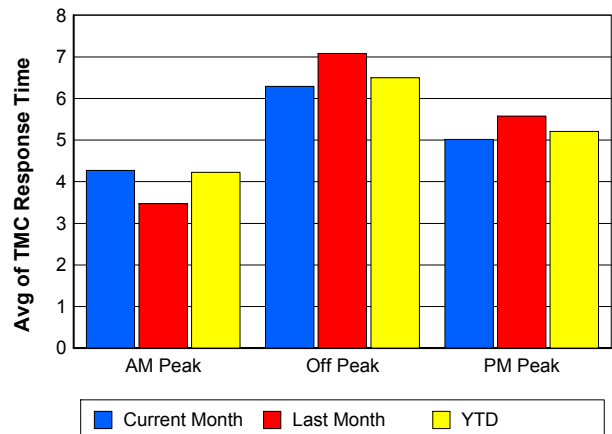
TMC Detection Time



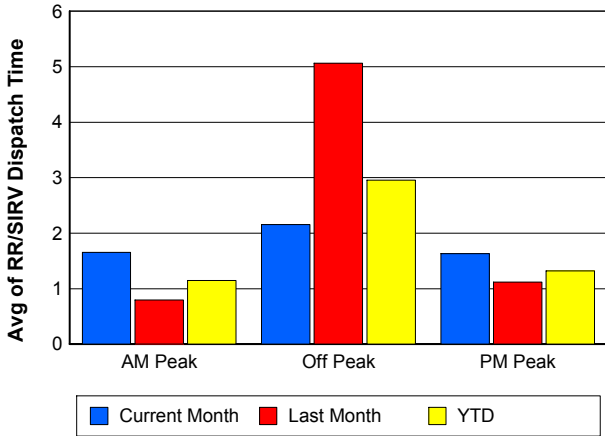
TMC Verification Time



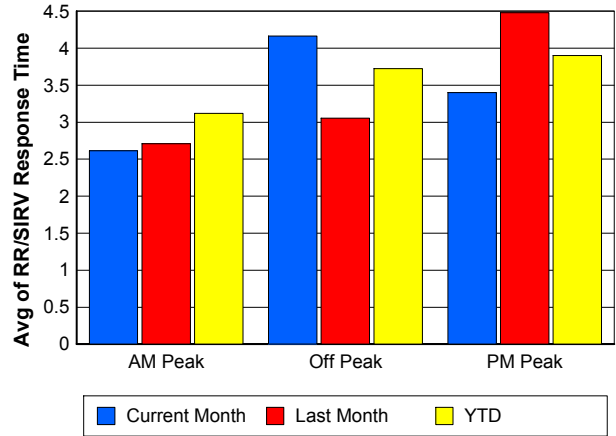
TMC Response Time



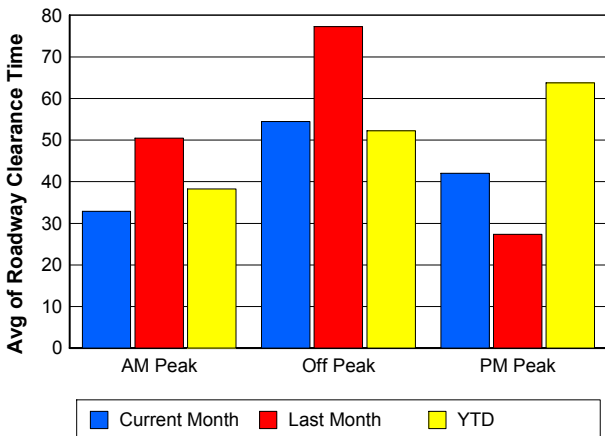
Road Ranger / SIRV Dispatch Time



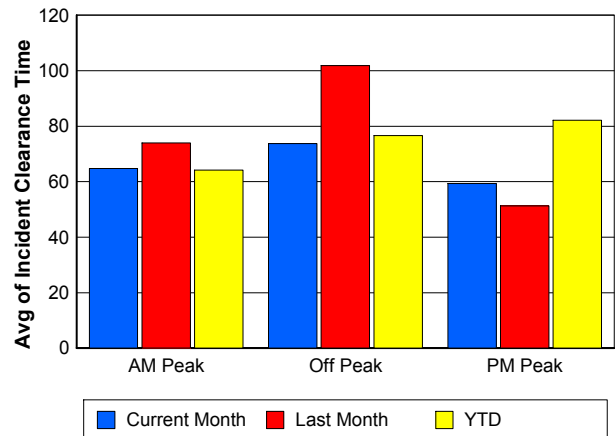
Road Ranger / SIRV Response Time



Roadway Clearance Time (2A)



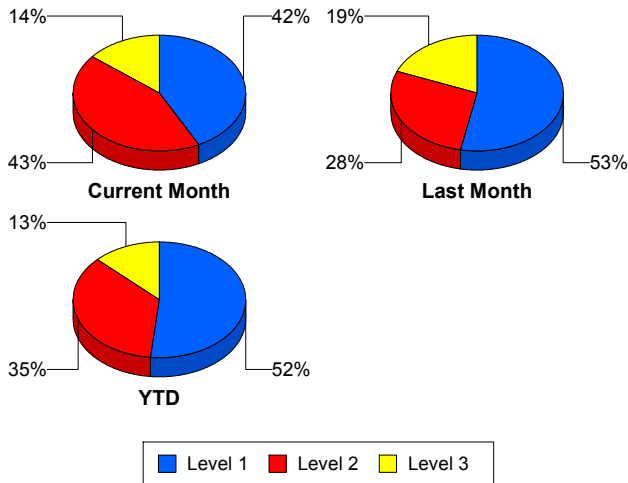
Incident Clearance Time (3B)



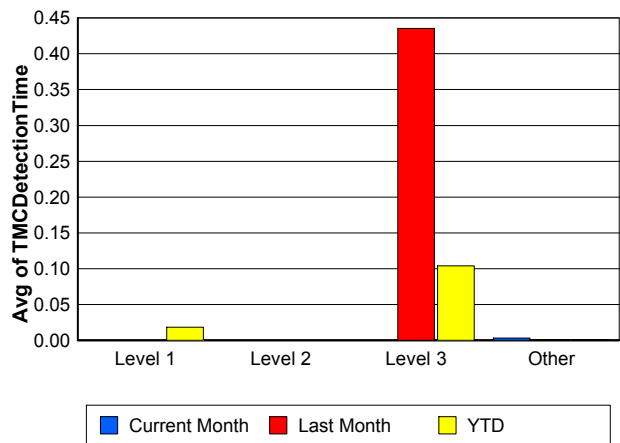
Performance Measures by Severity

	Level 1			Level 2			Level 3			Other		
	<u>This Month</u>	<u>Last Month</u>	<u>YTD</u>	<u>This Month</u>	<u>Last Month</u>	<u>YTD</u>	<u>This Month</u>	<u>Last Month</u>	<u>YTD</u>	<u>This Month</u>	<u>Last Month</u>	<u>YTD</u>
Number of Events	45	42	321	46	22	220	15	15	79	1,367	1,278	8,730
Number of Incidents	45	42	321	46	22	220	15	15	79	0	0	0
TMC Detection (min.)	0.00	0.00	0.02	0.00	0.00	0.00	0.00	0.44	0.10	0.00	0.00	0.00
TMC Verification (min.)	1.93	2.40	2.14	4.71	3.55	4.01	4.04	2.02	4.35	3.55	3.36	3.41
TMC Response (min.)	3.88	4.56	4.02	8.09	10.28	8.57	8.50	116.26	36.63	5.24	4.72	5.21
RR Dispatch Time (min.)	1.06	1.10	1.06	2.55	3.91	2.87	1.46	102.88	29.24	1.85	1.83	1.74
RR Resp. Time (min.)	2.85	3.45	2.97	5.54	6.37	5.70	7.04	13.38	7.40	3.41	3.33	3.56
Event Clearance (min.)	38.30	38.10	39.57	72.07	66.31	74.30	139.07	231.54	214.98	19.95	19.64	20.23
Roadway Clear. (min.)	13.82	13.95	14.32	54.25	46.39	53.40	103.08	201.18	193.45			
Incident Clearance (min.)	38.30	38.10	39.57	72.07	66.31	74.30	139.07	231.54	214.98			
# of Events w/ RR/SIRV	41	36	275	29	15	148	6	8	47	1,207	1,115	7,274
RR/SIRV Responses	41	36	275	29	15	148	6	8	47	1,207	1,115	7,274
RR/SIRV Activities	51	43	355	56	24	255	9	11	79	1,342	1,208	7,919

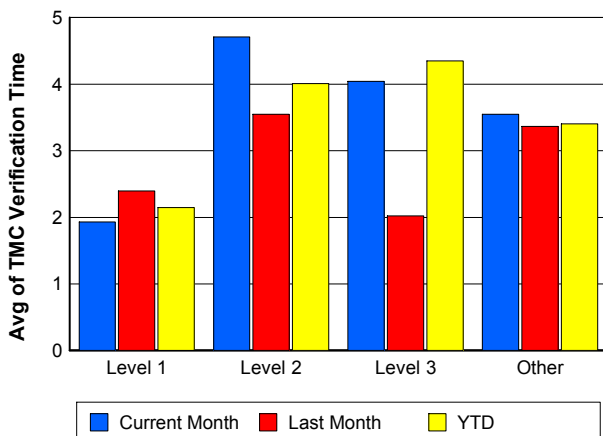
Number of Events / Severity



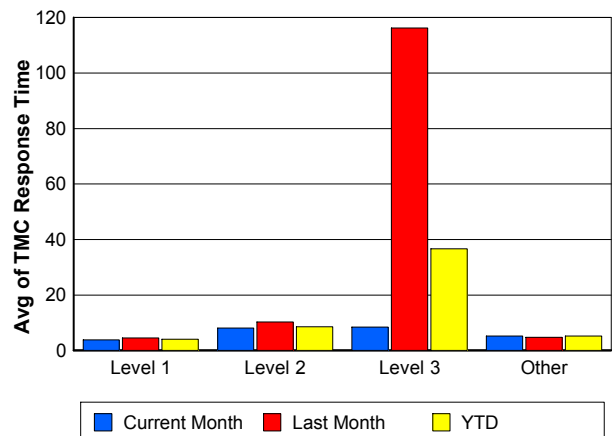
TMC Detection Time



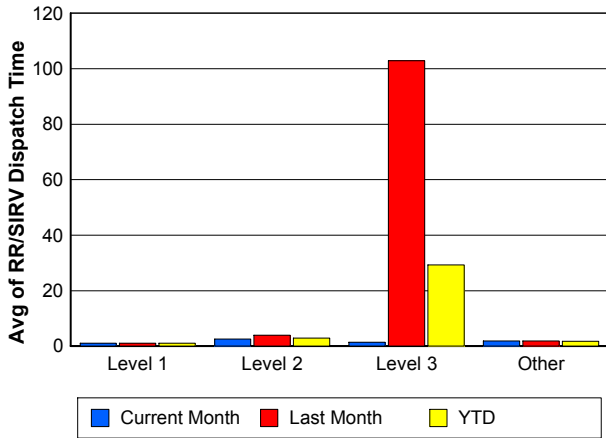
TMC Verification Time



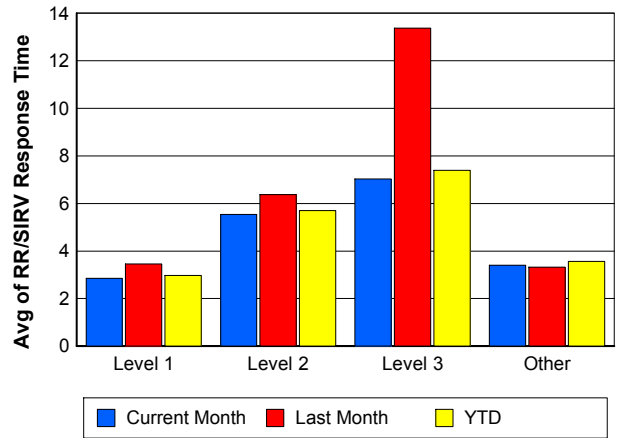
TMC Response Time



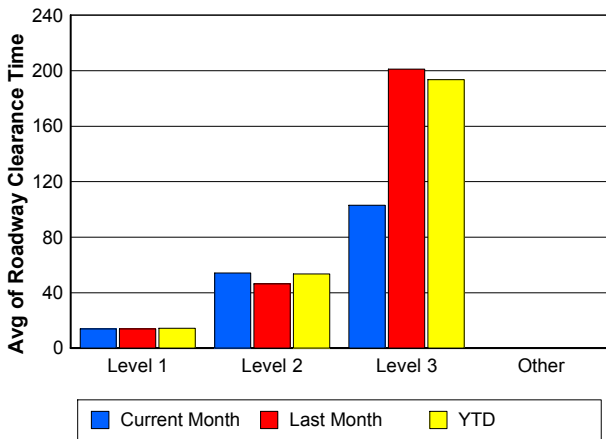
Road Ranger / SIRV Dispatch Time



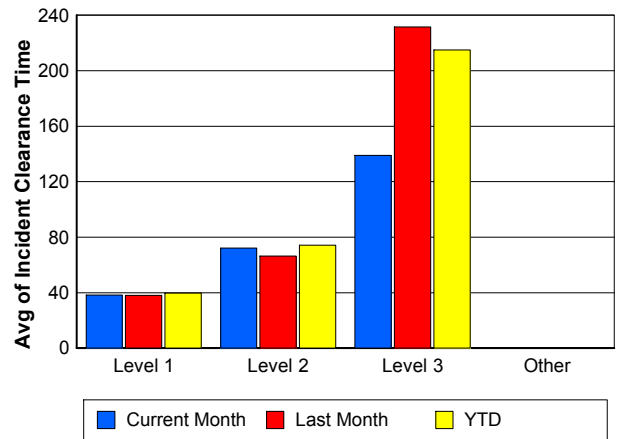
Road Ranger / SIRV Response Time



Roadway Clearance Time (2A)



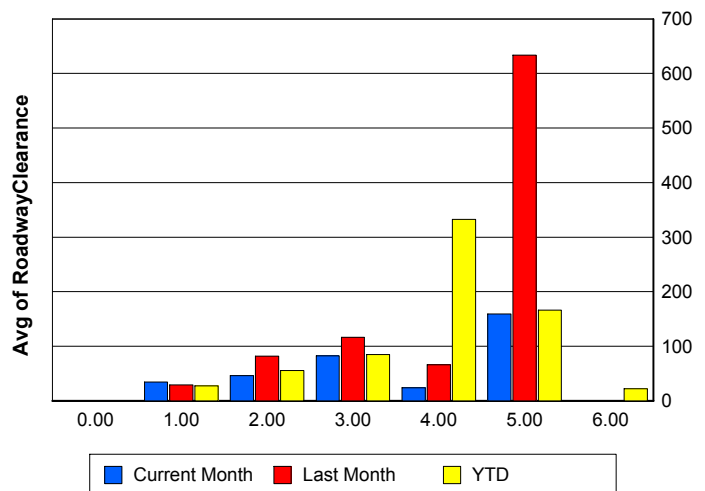
Incident Clearance Time (3B)



Roadway Clearance by Maximum Number of Lanes Blocked

	Current Month	Last Month	YTD
0			
1	34.25	29.05	27.34
2	46.25	82.04	55.58
3	82.42	116.13	84.99
4	23.90	66.22	332.33
5	159.02	633.90	166.12
6	0.00	0.00	22.35

Roadway Clearance Time (2A)



Performance Measures by Roadway

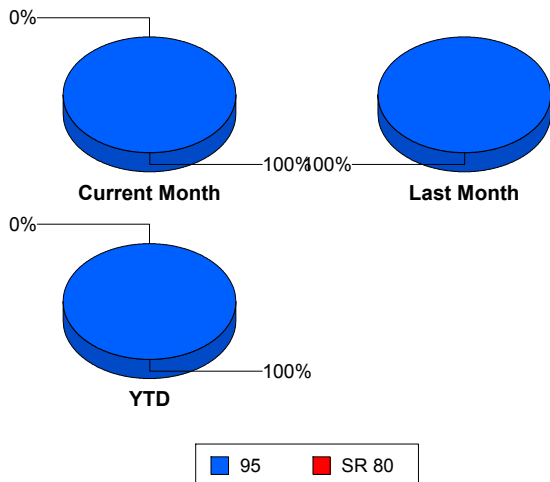
95

	<u>Current Month</u>	<u>Last Month</u>	<u>YTD</u>
Number of Events	1,472	1,357	9,346
Number of Incidents	105	79	617
TMC Detection (min.)	0.00	0.01	0.00
TMC Verification (min.)	3.54	3.32	3.38
TMC Response (min.)	5.28	5.56	5.42
RR Dispatch Time (min.)	1.84	2.52	1.91
RR Resp. Time (min.)	3.46	3.44	3.60
Event Clearance (min.)	23.24	23.31	23.22
Roadway Clear. (min.)	44.03	58.53	42.56
Incident Clearance (min.)	65.96	82.69	65.63
# of Events w/ RR/SIRV	1,283	1,174	7,744
RR/SIRV Responses	1,283	1,174	7,744
RR/SIRV Activities	1,458	1,286	8,608

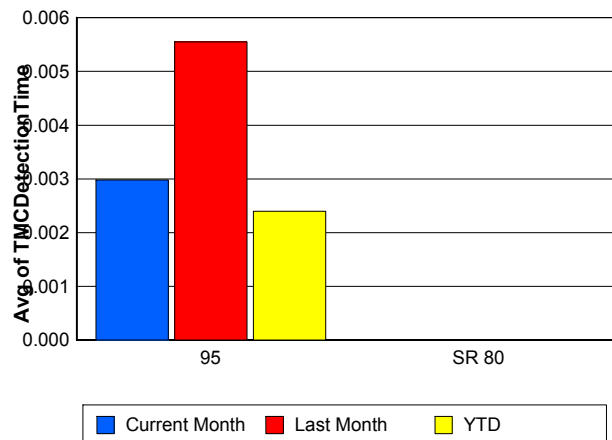
SR 80

	<u>Current Month</u>	<u>YTD</u>
Number of Events	1	4
Number of Incidents	1	3
TMC Detection (min.)	0.00	0.00
TMC Verification (min.)		0.00
TMC Response (min.)		
RR Dispatch Time (min.)		
RR Resp. Time (min.)		
Event Clearance (min.)	199.22	1,409.98
Roadway Clear. (min.)	40.90	1,789.50
Incident Clearance (min.)	199.22	1,847.09
# of Events w/ RR/SIRV	0	0
RR/SIRV Responses	0	0
RR/SIRV Activities	0	0

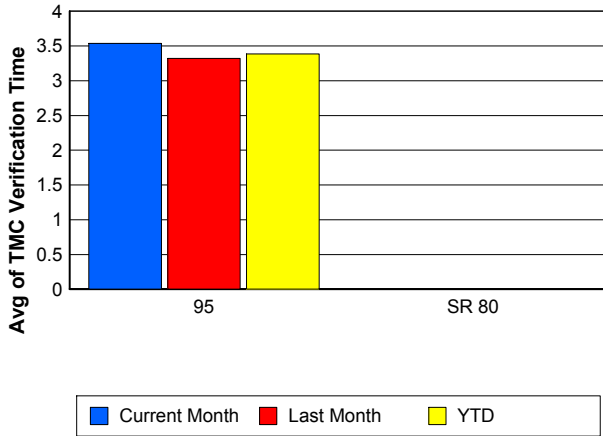
Number of Events / Roadway



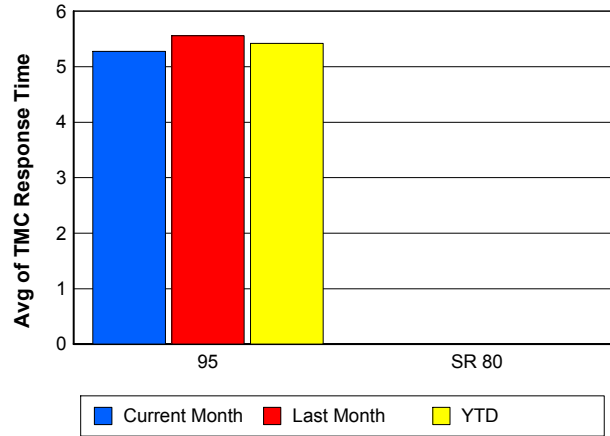
TMC Detection Time



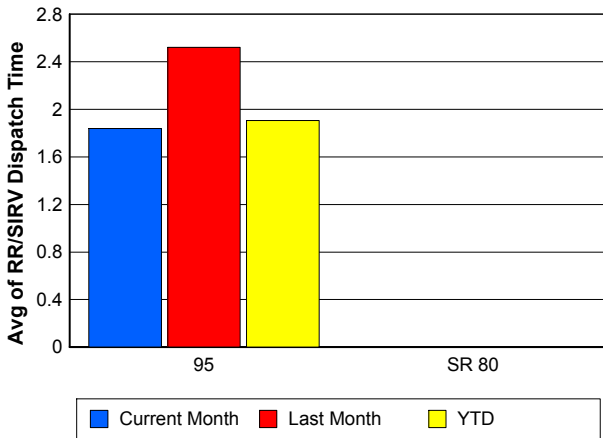
TMC Verification Time



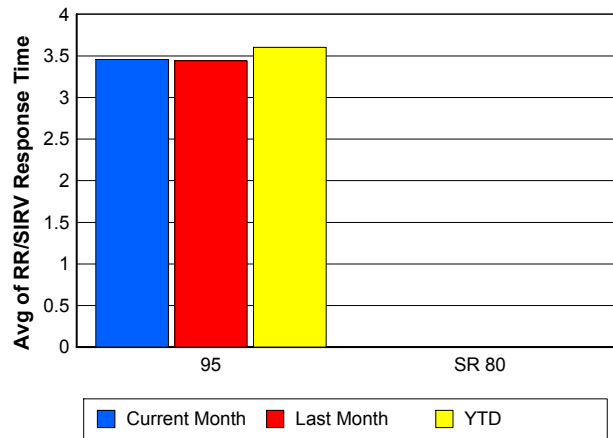
TMC Response Time



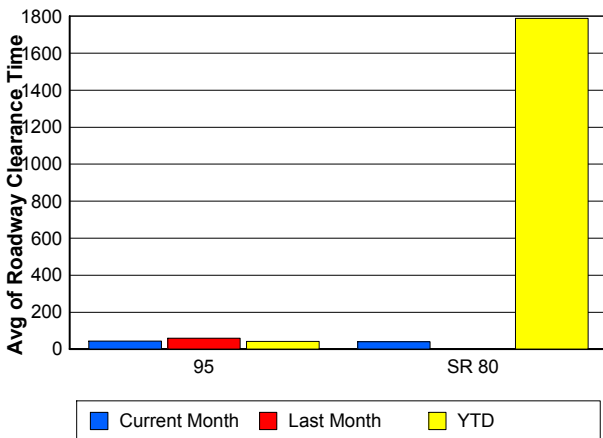
Road Ranger / SIRV Dispatch Time



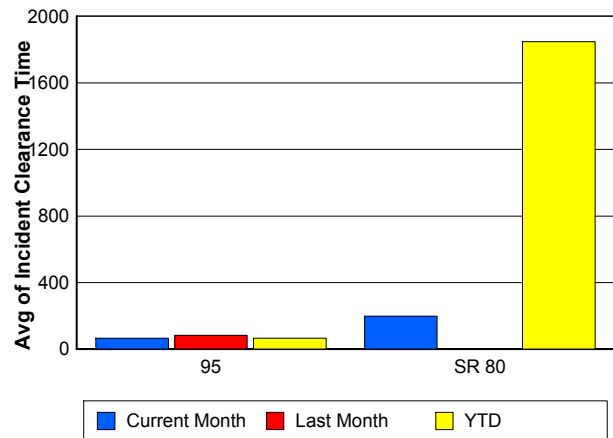
Road Ranger / SIRV Response Time



Roadway Clearance Time (2A)



Incident Clearance Time (3B)



Performance Measures by Event Type

Accident

	<u>Current Month</u>	<u>Last Month</u>	<u>YTD</u>
Number of Events	128	107	832
Number of Incidents	70	51	405
TMC Detection (min.)	0.00	0.00	0.00
TMC Verification (min.)	4.82	2.69	3.75
TMC Response (min.)	6.93	12.99	8.17
RR Dispatch Time (min.)	1.43	8.08	3.20
RR Response Time (min.)	5.50	4.83	4.97
Event Clearance (min.)	60.05	55.05	58.21
Roadway Clearance (min.)	51.94	44.89	46.25
Incident Clearance (min.)	81.33	73.62	74.12
# of Events w/ RR/SIRV	94	82	643
RR/SIRV Assists	94	82	643
RR/SIRV Activities	119	99	825

Debris on Roadway

	<u>Current Month</u>	<u>Last Month</u>	<u>YTD</u>
Number of Events	122	111	694
Number of Incidents	6	4	29
TMC Detection (min.)	0.00	0.00	0.00
TMC Verification (min.)	7.27	6.60	7.86
TMC Response (min.)	7.10	6.74	8.14
RR Dispatch Time (min.)	1.89	1.22	1.75
RR Response Time (min.)	5.20	5.52	6.40
Event Clearance (min.)	12.77	10.33	12.17
Roadway Clearance (min.)	35.81	31.33	20.75
Incident Clearance (min.)	38.31	34.06	23.53
# of Events w/ RR/SIRV	120	107	681
RR/SIRV Assists	120	107	681
RR/SIRV Activities	132	112	734

Disabled Vehicle

	<u>Current Month</u>	<u>Last Month</u>	<u>YTD</u>
Number of Events	1,116	1,032	6,747
Number of Incidents	20	13	124
TMC Detection (min.)	0.00	0.00	0.00
TMC Verification (min.)	3.19	3.31	3.27
TMC Response (min.)	4.35	4.36	4.41
RR Dispatch Time (min.)	1.43	1.85	1.48
RR Response Time (min.)	2.94	3.02	3.05
Event Clearance (min.)	18.06	18.40	18.00
Roadway Clearance (min.)	25.70	37.66	23.73
Incident Clearance (min.)	33.92	49.45	34.21
# of Events w/ RR/SIRV	1,013	953	6,156
RR/SIRV Assists	1,013	953	6,156
RR/SIRV Activities	1,151	1,042	6,792

Emergency Vehicles

	<u>Current Month</u>	<u>Last Month</u>	<u>YTD</u>
Number of Events	1	2	13
Number of Incidents	1	2	7
TMC Detection (min.)	0.00	0.00	0.00
TMC Verification (min.)	0.00	0.00	1.06
TMC Response (min.)	0.00		7.27
RR Dispatch Time (min.)	0.00	0.82	3.24
RR Response Time (min.)	0.00		3.54
Event Clearance (min.)	23.37	7.81	35.61
Roadway Clearance (min.)	12.00	4.90	20.43
Incident Clearance (min.)	23.37	7.81	25.60
# of Events w/ RR/SIRV	1	1	6
RR/SIRV Assists	1	1	6
RR/SIRV Activities	1	0	7

Other

	<u>Current Month</u>	<u>Last Month</u>	<u>YTD</u>
Number of Events	70	65	660
Number of Incidents	0	0	6
TMC Detection (min.)	0.00	0.00	0.00
TMC Verification (min.)	0.83	0.69	1.15
TMC Response (min.)	23.74	14.61	21.13
RR Dispatch Time (min.)	14.07	6.77	11.37
RR Response Time (min.)	6.75	7.17	7.79
Event Clearance (min.)	57.15	47.78	41.08
Roadway Clearance (min.)			38.11
Incident Clearance (min.)			52.15
# of Events w/ RR/SIRV	38	18	170
RR/SIRV Assists	38	18	170
RR/SIRV Activities	34	17	150

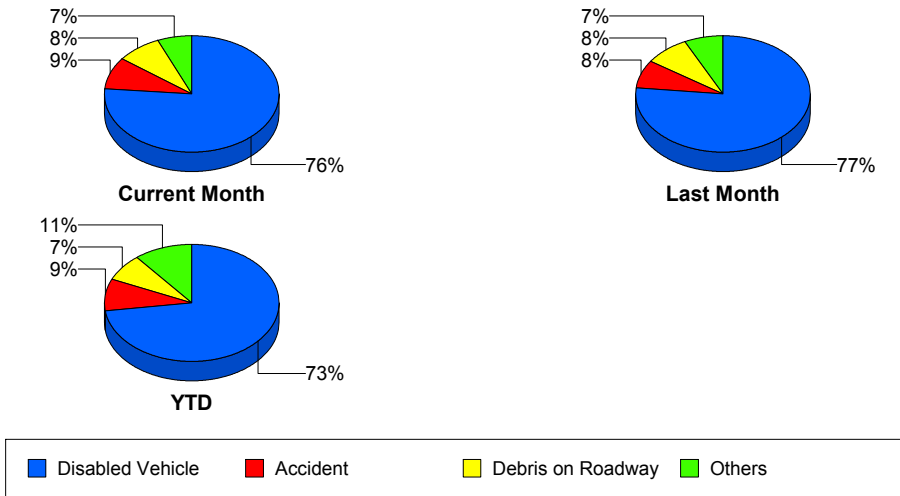
Police Activity

	<u>Current Month</u>	<u>Last Month</u>	<u>YTD</u>
Number of Events	19	22	317
Number of Incidents	4	3	30
TMC Detection (min.)	0.00	0.30	0.04
TMC Verification (min.)	2.59	0.00	0.31
TMC Response (min.)	24.58	0.00	11.49
RR Dispatch Time (min.)	3.22	0.00	6.32
RR Response Time (min.)	21.37	0.00	5.17
Event Clearance (min.)	28.68	50.39	26.30
Roadway Clearance (min.)	27.42	237.40	74.56
Incident Clearance (min.)	63.67	253.07	109.35
# of Events w/ RR/SIRV	2	1	24
RR/SIRV Assists	2	1	24
RR/SIRV Activities	2	1	26

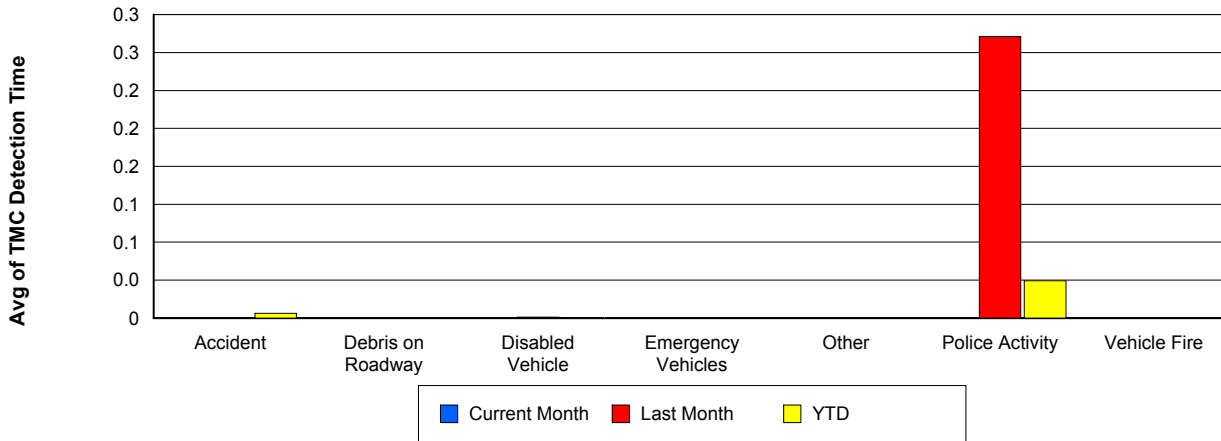
Vehicle Fire

	<u>Current Month</u>	<u>Last Month</u>	<u>YTD</u>
Number of Events	5	8	24
Number of Incidents	5	6	18
TMC Detection (min.)	0.00	0.00	0.00
TMC Verification (min.)	4.17	1.95	2.60
TMC Response (min.)	8.87	51.39	25.42
RR Dispatch Time (min.)	1.42	45.97	19.18
RR Response Time (min.)	7.45	5.42	6.24
Event Clearance (min.)	49.13	157.00	95.11
Roadway Clearance (min.)	35.53	166.31	80.54
Incident Clearance (min.)	49.13	203.97	112.18
# of Events w/ RR/SIRV	4	6	15
RR/SIRV Assists	4	6	15
RR/SIRV Activities	7	9	23

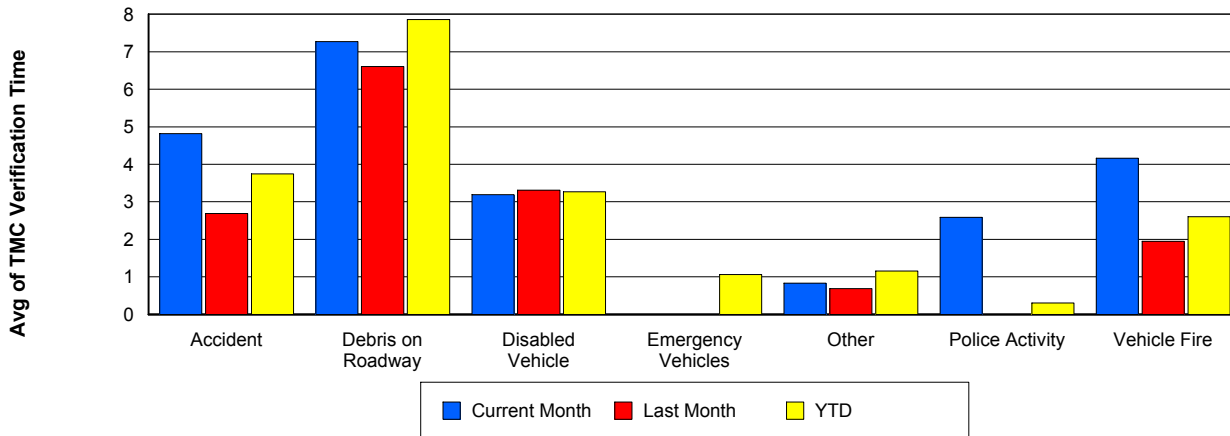
Number of Events / Event Type



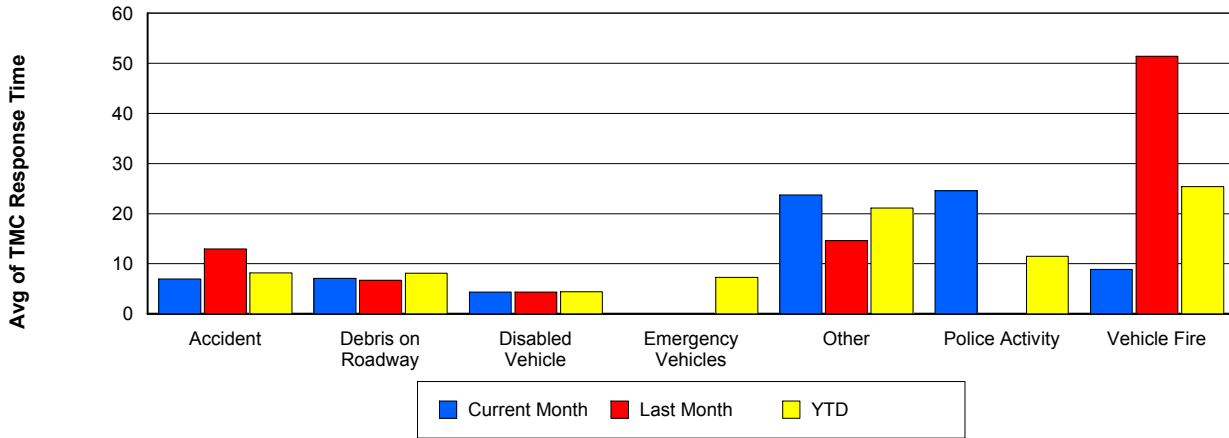
TMC Detection Time



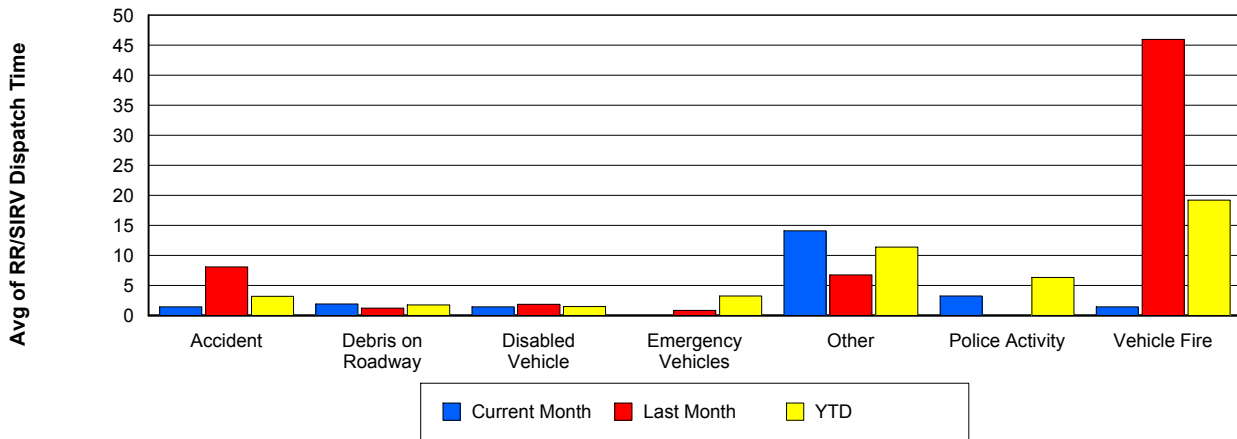
TMC Verification Time



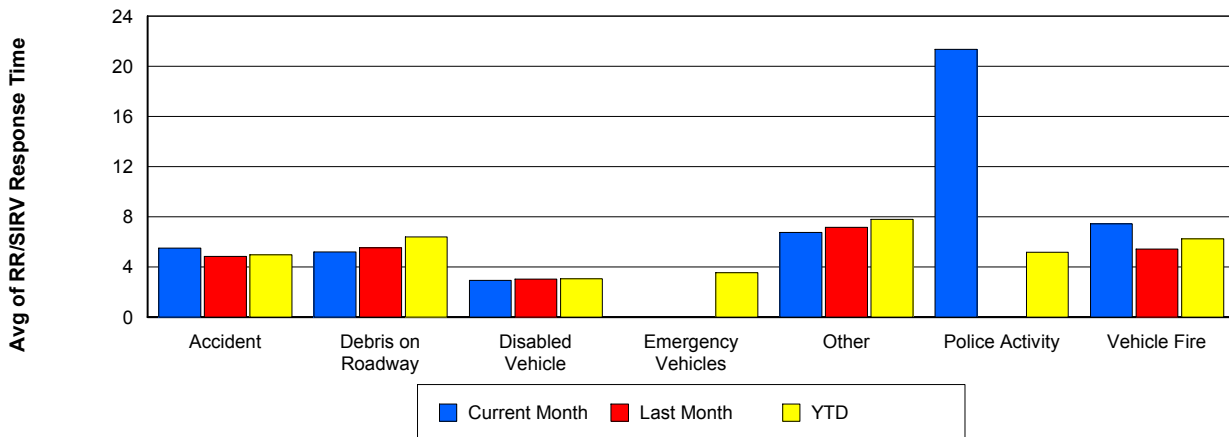
TMC Response Time



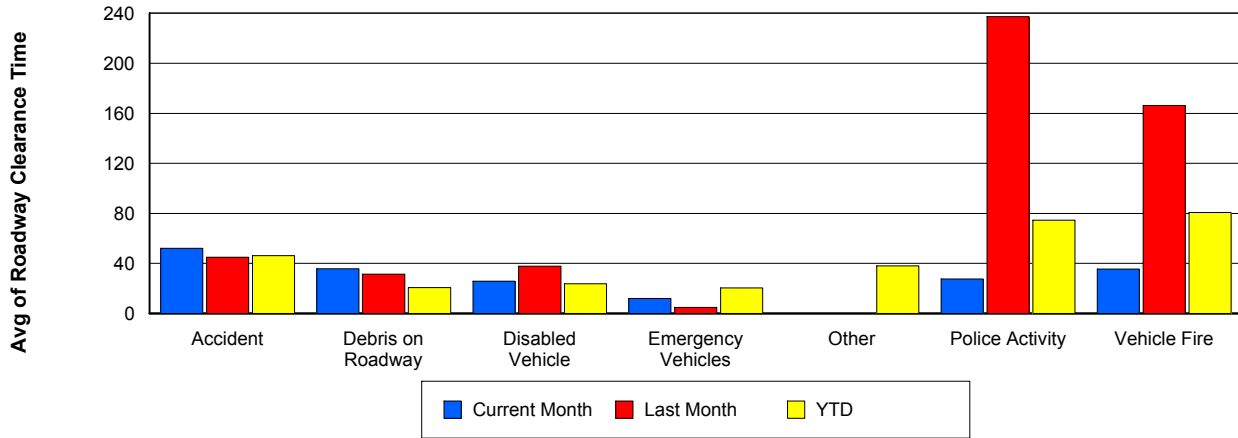
Road Ranger / SIRV Dispatch Time



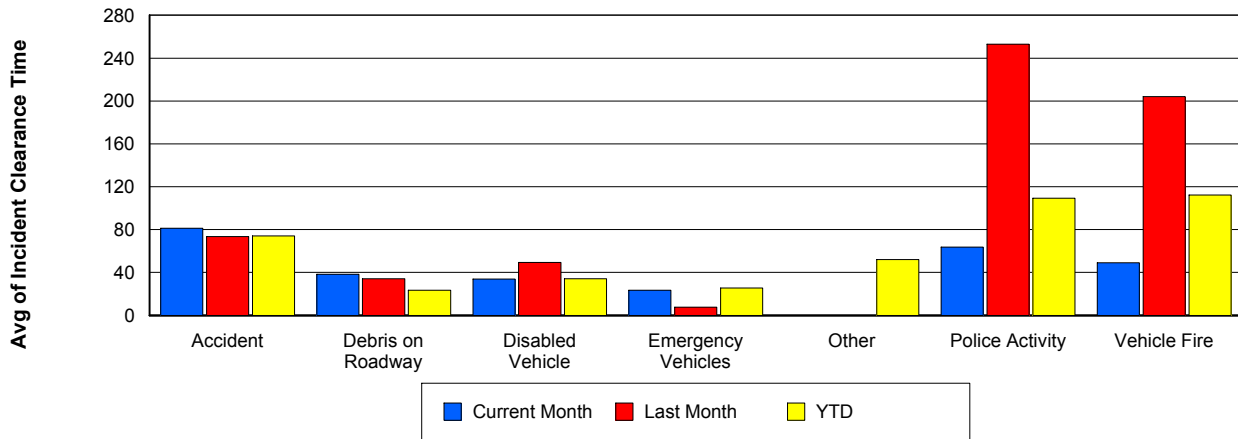
Road Ranger / SIRV Response Time



Roadway Clearance Time (2A)



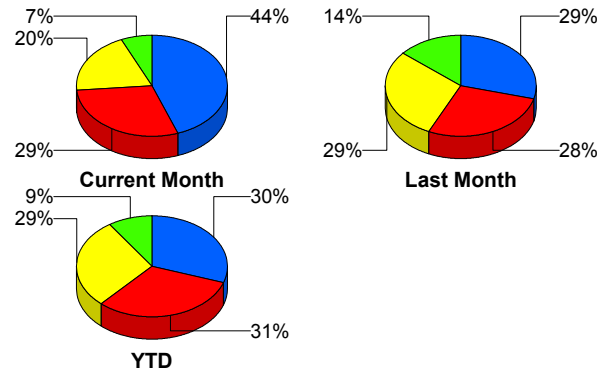
Incident Clearance Time (3B)



Incident Detection Methods

	Current Month	Last Month	YTD
Broward CCTV	1	1	7
Broward Road Ranger	0	1	6
Broward VideoWall	1	0	1
Construction CEI	0	1	1
District 4	2	4	15
Emergency Operations	0	0	1
FHP	47	23	188
I-95 Construction PIO	0	0	2
ITMS	3	1	7
ITMS CCTV	21	23	179
Local Police	0	0	1
Media	0	2	2
Motorist	0	1	10
Palm Beach Road Ran	31	22	195
Road Watcher	0	0	1
SmarTraveler (511)	0	0	4
Total	106	79	620

Total Incidents by Detection Method



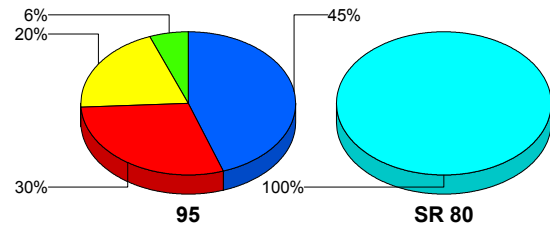
■ FHP
 ■ Palm Beach Road Ranger
 ■ ITMS CCTV
 ■ Others

Incident Detection Methods by Roadway

		Current Month	Last Month	YTD
95	Broward CCTV	1	1	7
	Broward Road Ranger	0	1	6
	Broward VideoWall	1	0	1
	Construction CEI	0	1	1
	District 4	2	4	15
	FHP	47	23	187
	I-95 Construction PIO	0	0	2
	ITMS	2	1	6
	ITMS CCTV	21	23	179
	Local Police	0	0	1
	Media	0	2	2
	Motorist	0	1	10
	Palm Beach Road Ran	31	22	195
	Road Watcher	0	0	1
	SmarTraveler (511)	0	0	4
Total	105	79	617	
SR 80	Emergency Operations	0	0	1
	FHP	0	0	1
	ITMS	1	0	1
	Total	1	0	3
Total	106	79	620	

Total Events by Roadway and Detection Method

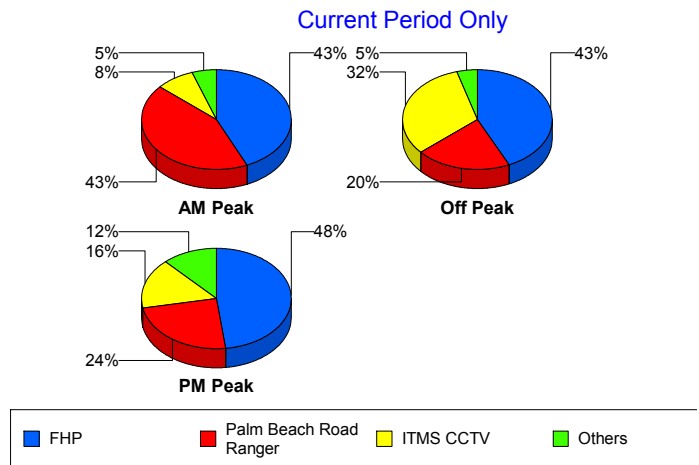
Current Period Only



Incident Detection Methods by Peak Period

		Current Month	Last Month	YTD
AM Peak	Broward CCTV	0	1	2
	Broward Road Ranger	0	0	3
	District 4	1	2	9
	FHP	16	7	68
	ITMS	1	0	3
	ITMS CCTV	3	3	27
	Motorist	0	1	5
	Palm Beach Road Ran	16	4	70
	Road Watcher	0	0	1
	SmarTraveler (511)	0	0	3
	Total	37	18	191
Off Peak	Broward CCTV	0	0	4
	Broward Road Ranger	0	0	1
	Broward VideoWall	1	0	1
	Construction CEI	0	1	1
	District 4	0	2	5
	FHP	19	14	82
	I-95 Construction PIO	0	0	2
	ITMS	1	1	3
	ITMS CCTV	14	15	92
	Motorist	0	0	2
	Palm Beach Road Ran	9	8	69
	SmarTraveler (511)	0	0	1
	Total	44	41	263
PM Peak	Broward CCTV	1	0	1
	Broward Road Ranger	0	1	2
	District 4	1	0	1
	Emergency Operations	0	0	1
	FHP	12	2	38
	ITMS	1	0	1
	ITMS CCTV	4	5	60

Total Events by Peak Period and Detection Method

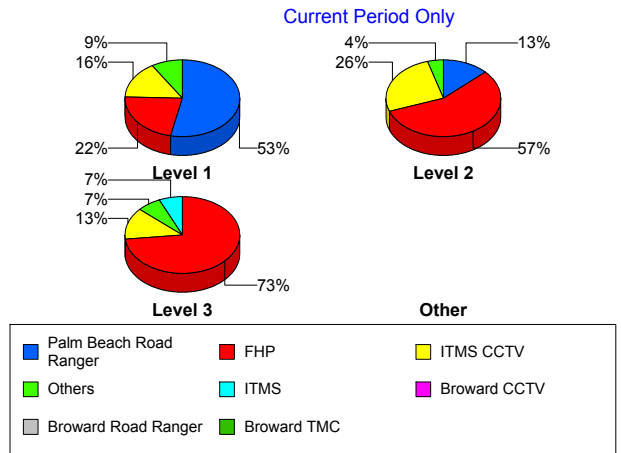


		Current Month	Last Month	YTD
PM Peak	Local Police	0	0	1
	Media	0	2	2
	Motorist	0	0	3
	Palm Beach Road Ran	6	10	56
	Total	25	20	166
Total		106	79	620

Incident Detection Methods by Severity

		Current Month	Last Month	YTD
Level 1	Broward CCTV	1	1	5
	Broward Road Ranger	0	1	4
	District 4	2	3	12
	FHP	10	11	72
	I-95 Construction PIO	0	0	1
	ITMS	1	0	2
	ITMS CCTV	7	8	72
	Local Police	0	0	1
	Motorist	0	1	7
	Palm Beach Road Ran	24	17	143
	Road Watcher	0	0	1
	SmarTraveler (511)	0	0	1
	Total	45	42	321
	Level 2	Broward Road Ranger	0	0
Broward VideoWall		1	0	1
District 4		0	1	3
FHP		26	9	86
I-95 Construction PIO		0	0	1
ITMS		1	1	4
ITMS CCTV		12	8	76
Media		0	1	1
Motorist		0	0	2
Palm Beach Road Ran		6	2	41

Total Events by Severity and Detection Method



		Current Month	Last Month	YTD
Level 2	SmarTraveler (511)	0	0	3
	Total	46	22	220
Level 3	Broward CCTV	0	0	2
	Construction CEI	0	1	1
	Emergency Operations	0	0	1
	FHP	11	3	30
	ITMS	1	0	1
	ITMS CCTV	2	7	31
	Media	0	1	1
	Motorist	0	0	1
	Palm Beach Road Ran	1	3	11
	Total	15	15	79
Total		106	79	620

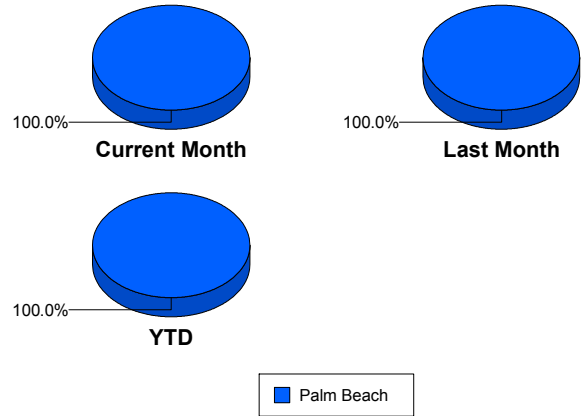
Road Ranger / SIRV Performance Measures

Road Ranger / SIRV Performance By County

RR/SIRV Responses per County

Values presented are:
 - Total Events with a RR/SIRV Response
 - Total RR/SIRV Responses,
 - Total Activities Performed

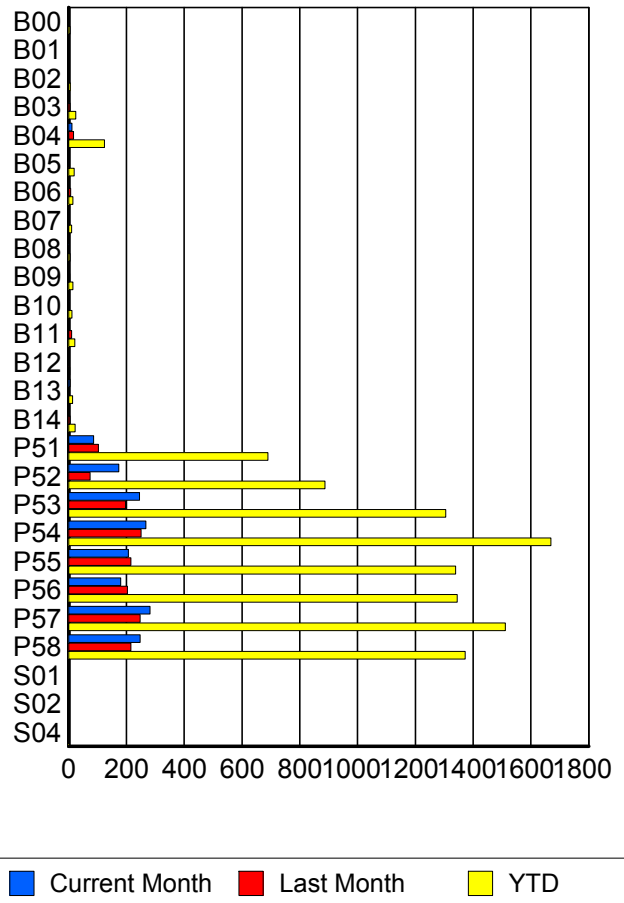
	Current Mo	Last Month	YTD
Palm Beach	1,649	1,517	10,062
	1,730	1,564	10,422
	1,862	1,660	11,131



Road Ranger / SIRV Performance By Truck

	Current Mo	Last Month	YTD
B00	2	1	5
	2	1	5
	2	1	5
B01	0	0	1
	0	0	1
	0	0	1
B02	2	1	6
	2	1	6
	2	1	6
B03	3	5	25
	3	5	25
	3	5	26
B04	11	17	123
	11	17	124
	15	19	145
B05	0	2	18
	0	2	19
	0	2	20
B06	3	7	15
	3	7	15
	3	7	15
B07	3	0	10
	3	0	10
	3	0	10
B08	2	0	5
	2	0	5
	2	0	5

**RR/SIRV
Responses per
Truck**



	Current Mo	Last Month	YTD
B09	1	4	15
	1	4	15
	1	4	15
B10	2	0	10
	3	0	11
	3	0	11
B11	3	10	21
	3	10	21
	3	10	22
B12	0	2	4
	0	2	4
	0	2	4
B13	5	1	14
	5	1	14
	5	1	15
B14	3	5	23
	3	5	23
	3	5	24
P51	82	101	680
	86	103	690
	89	108	722
P52	171	74	880
	174	74	887
	194	75	948
P53	241	195	1,289
	245	197	1,305
	256	203	1,383
P54	262	246	1,649
	267	251	1,669
	287	273	1,790
P55	204	216	1,328
	207	216	1,340
	228	235	1,435
P56	177	200	1,326
	180	204	1,345
	198	216	1,451
P57	276	244	1,496
	282	248	1,512
	299	263	1,618
P58	240	214	1,351
	247	216	1,372
	265	230	1,456
S01	1	0	1
	1	0	1
	1	0	1

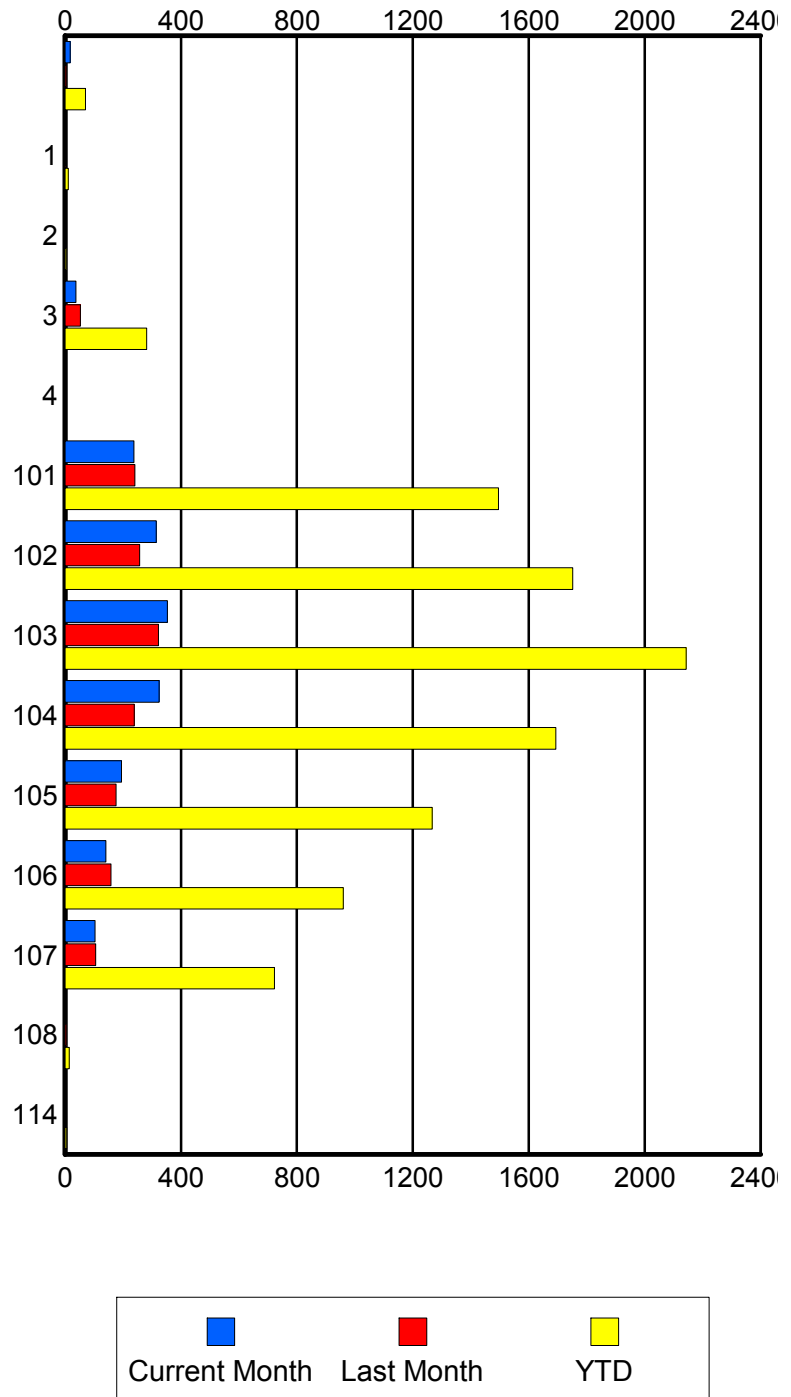
	Current Mo	Last Month	YTD
S02	0	0	1
	0	0	1
	0	0	1
S04	0	0	2
	0	0	2
	0	0	2

Road Ranger / SIRV Performance By Beat

	Current Mo	Last Month	YTD
	18	4	71
	18	4	71
	18	4	71
1	3	1	11
	3	1	11
	3	1	12
2	0	1	4
	0	1	4
	0	1	5
3	36	52	278
	37	53	282
	41	55	306
4	1	0	2
	1	0	2
	1	0	2
101	234	237	1,476
	238	241	1,495
	254	259	1,605
102	308	256	1,730
	315	258	1,752
	339	275	1,864
103	345	317	2,113
	353	322	2,143
	376	347	2,299
104	320	233	1,674
	325	239	1,693
	350	247	1,811
105	193	175	1,256
	195	176	1,267
	213	189	1,354
106	137	156	945
	141	159	960
	159	167	1,030
107	99	104	711
	104	106	722
	108	111	752
108	0	4	13
	0	4	14
	0	4	14
114	0	0	6
	0	0	6
	0	0	6

Values presented are:
 - Total Events with a RR/SIRV Response
 - Total RR/SIRV Responses,
 - Total Activities Performed

RR/SIRV Responses per Beat

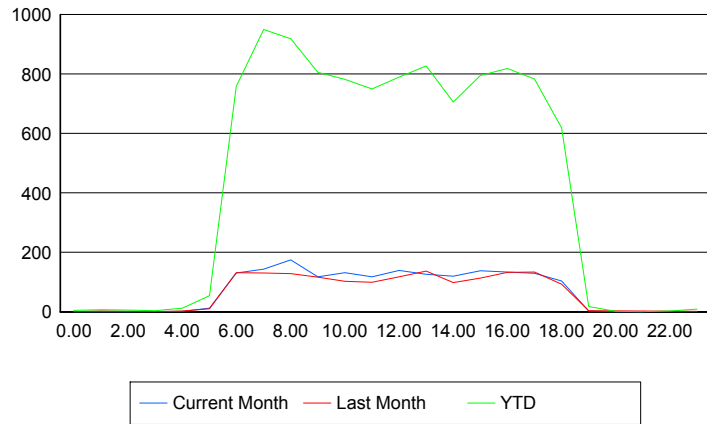


Road Ranger / SIRV Performance By Time of Day

Values presented are:
 - Total Events with a RR/SIRV Response
 - Total RR/SIRV Responses,
 - Total Activities Performed

	Current Mo	Last Month	YTD
12AM-1AM	1 1 1	1 1 1	5 5 5
1AM-2AM	0 0 0	1 3 3	5 7 7
2AM-3AM	1 1 1	2 2 3	6 6 7
3AM-4AM	0 0 0	1 1 1	4 4 4
4AM-5AM	2 2 2	3 3 3	9 12 13
5AM-6AM	10 12 13	10 10 12	50 54 57
6AM-7AM	125 131 140	130 132 138	728 758 798
7AM-8AM	137 144 156	123 131 139	907 949 1,017
8AM-9AM	165 175 190	128 129 136	883 918 988
9AM-10AM	114 118 133	113 117 125	780 806 885
10AM-11AM	123 132 140	99 103 110	751 782 827
11AM-12PM	112 118 131	96 100 104	724 750 813
12PM-1PM	132 139 148	113 118 126	760 789 843

Number of Responses / Hour of the Day



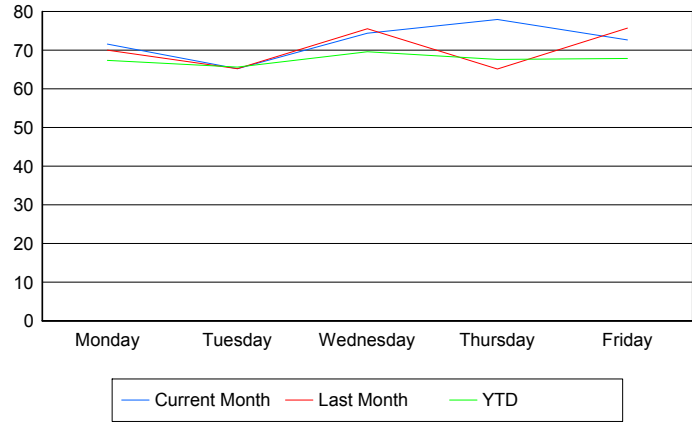
	Current Mo	Last Month	YTD
1PM-2PM	124	134	809
	126	137	827
	136	148	895
2PM-3PM	118	93	682
	120	98	706
	129	104	747
3PM-4PM	130	110	766
	138	113	795
	149	125	853
4PM-5PM	125	133	792
	134	133	819
	142	141	861
5PM-6PM	124	128	757
	130	134	783
	138	137	824
6PM-7PM	101	93	612
	104	93	619
	108	98	653
7PM-8PM	3	4	18
	3	4	18
	3	4	19
8PM-9PM	1	0	2
	1	0	2
	1	0	2
9PM-10PM	1	0	1
	1	0	1
	1	0	1
10PM-11PM	0	0	3
	0	0	3
	0	0	3
11PM-12AM	0	2	8
	0	2	9
	0	2	9

Road Ranger / SIRV Performance By Day of Week

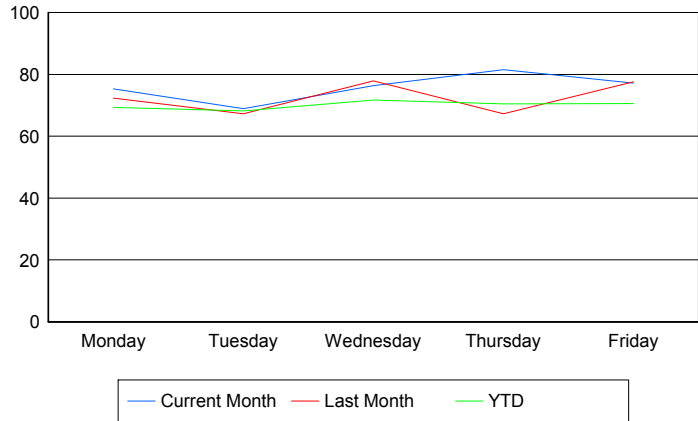
Values presented are:
 - Total Events with a RR/SIRV Response
 - Total RR/SIRV Responses,
 - Total Activities Performed

	Current Mo	Last Month	YTD
Monday	284	341	1,974
	299	353	2,030
	319	368	2,148
Tuesday	257	318	1,932
	271	328	2,005
	295	341	2,136
Wednesday	370	301	2,059
	380	310	2,123
	411	337	2,286
Thursday	382	256	2,041
	399	264	2,124
	426	284	2,277
Friday	357	302	2,060
	381	309	2,140
	411	330	2,284

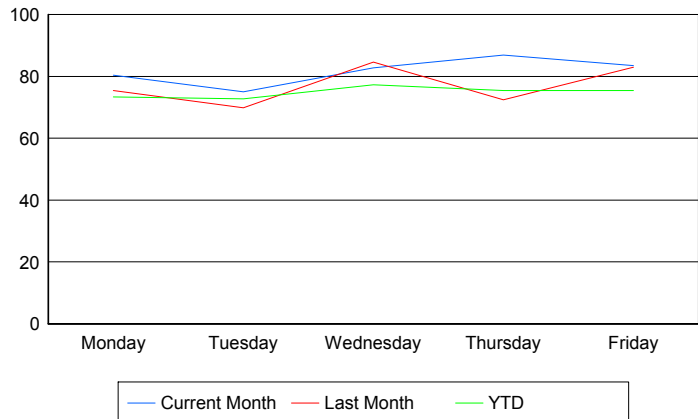
Avg # of events with a RR/SIRV Response per Day of the Week



Avg # of RR/SIRV Responses per Day of the Week



Avg # of RR/SIRV Activities Performed per Day of the Week



Road Ranger / SIRV Responses per Time of Day and Day of Week

