



Monthly Performance Measures Report Palm Beach County



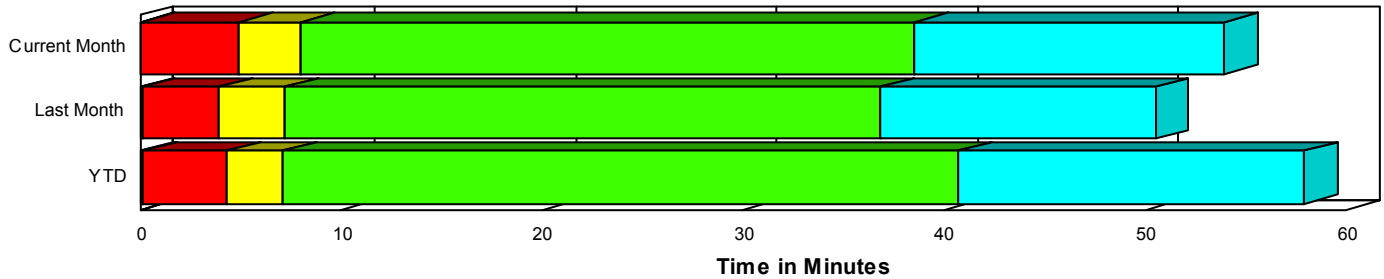
Created on:
September 02, 2008
10:54 am

Period From Aug 1, 2008 to Aug 31, 2008

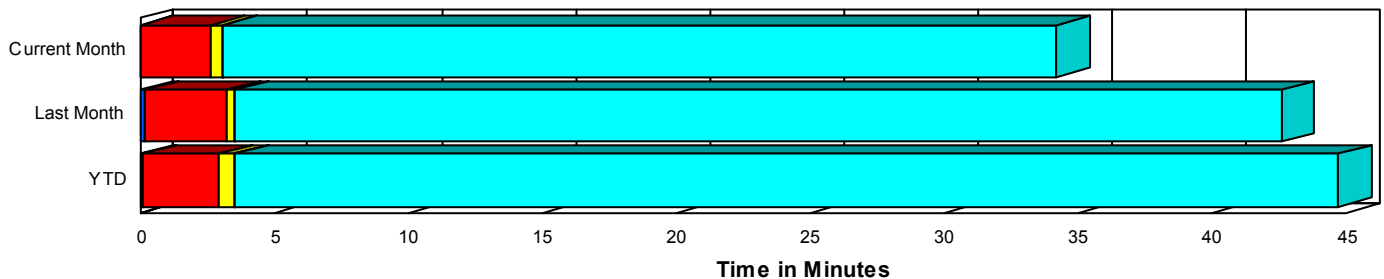
Performance Measures Summary

	Traffic Events (No Lanes Blocked)			Incidents (Lanes Blocked)		
	<u>This Month</u>	<u>Last Month</u>	<u>YTD</u>	<u>This Month</u>	<u>Last Month</u>	<u>YTD</u>
Number of Events	2,576	2,612	20,420	118	112	1,228
TMC Detection (min.)	0.00	0.19	0.09	0.07	0.10	0.14
TMC Verification (min.)	2.65	3.07	2.84	4.83	3.83	4.17
TMC Response (min.)	3.10	3.51	3.54	8.04	6.90	7.17
RR Dispatch Time (min.)	0.86	1.00	1.20	2.59	2.73	2.41
RR Response Time (min.)	2.27	2.52	2.37	5.45	4.16	4.86
Roadway Clearance (min.)				38.90	36.10	40.42
Event Clearance (min.)	34.23	42.71	44.78	54.29	49.72	56.59
# of Events w/ RR/SIRV	2,501	2,519	19,658	116	108	1,145
RR/SIRV Responses	2,501	2,519	19,765	116	108	1,222
RR/SIRV Activities	2,675	2,679	21,284	166	162	1,646

Incident Clearance TimeLine



Traffic Event (Non-Lane Blockage) Time-Line



■ Avg. TMC Detection Time	■ Avg. Time from TMC Response to Roadway Clearance*
■ Avg. Time from TMC Detection to TMC Verification	■ Avg. Time from Roadway Clearance to Incident/Event Clearance**
■ Avg. Time from TMC Verification to TMC Response	

* Roadway clearance equals all travel lanes open

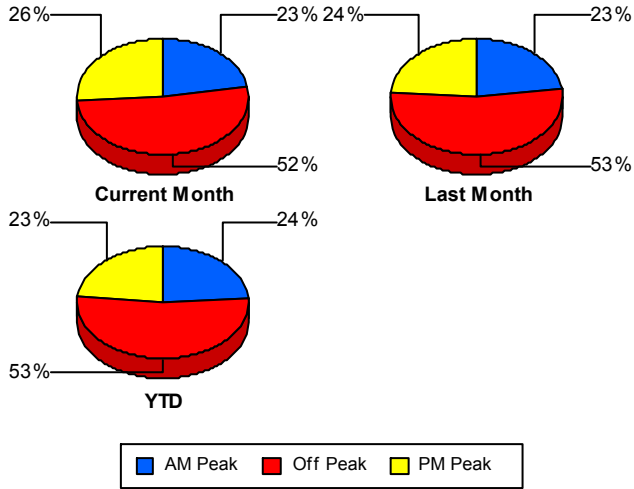
** Incident clearance equals time when last responder has left the scene

Performance Measures by Peak Period

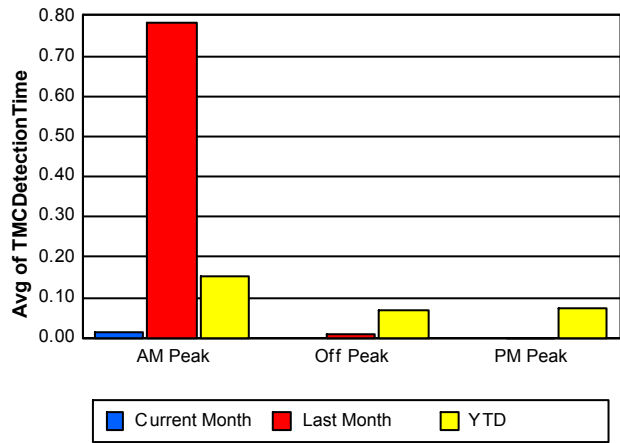
Note: AM peak period is defined as 6am to 10am and PM peak period is defined as 3pm to 7pm.

	AM Peak			Off Peak			PM Peak		
	Current Month	Last Month	YTD	Current Month	Last Month	YTD	Current Month	Last Month	YTD
Number of Events	608	627	5,121	1,393	1,449	11,540	693	648	4,987
Number of Incidents	25	27	305	62	63	661	31	22	262
TMC Detection (min.)	0.01	0.78	0.15	0.00	0.01	0.07	0.00	0.00	0.07
TMC Verification (min.)	2.12	2.57	2.40	3.47	3.54	3.25	1.82	2.63	2.67
TMC Response (min.)	3.18	2.67	3.16	3.95	4.34	4.25	2.17	3.05	3.17
RR Dispatch Time (min.)	0.94	0.76	1.15	1.07	1.34	1.46	0.67	0.79	0.96
RR Response Time (min.)	2.27	1.97	2.06	2.92	3.01	2.82	1.52	2.26	2.26
Event Clearance (min.)	42.51	53.95	48.59	40.35	48.76	49.54	18.07	19.52	32.74
Roadway Clearance (min.)	32.59	33.98	36.32	42.96	37.27	44.63	35.86	35.35	34.57
Incident Clearance (min.)	48.72	43.48	53.03	58.93	50.59	60.71	49.53	54.88	50.35
# of Events w/ RR/SIRV	580	597	4,879	1,353	1,390	11,052	684	640	4,872
RR/SIRV Responses	580	597	4,924	1,353	1,390	11,155	684	640	4,908
RR/SIRV Activities	622	649	5,350	1,476	1,512	12,286	743	680	5,294

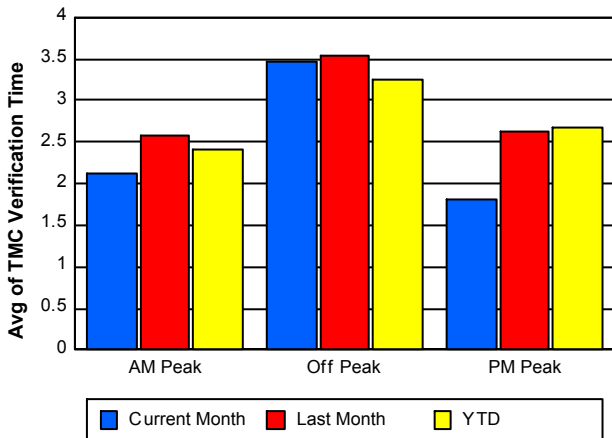
Number of Events / Peak Period



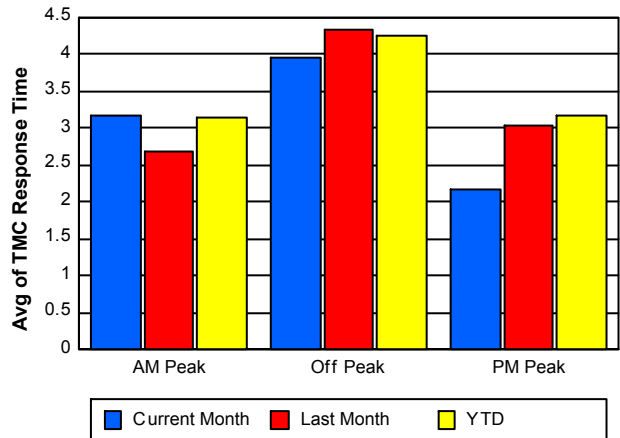
TMC Detection Time



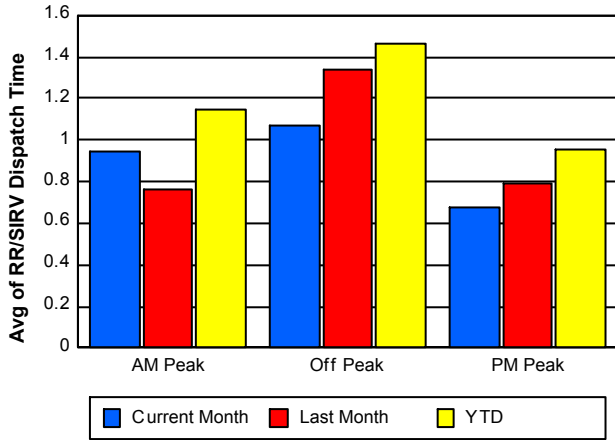
TMC Verification Time



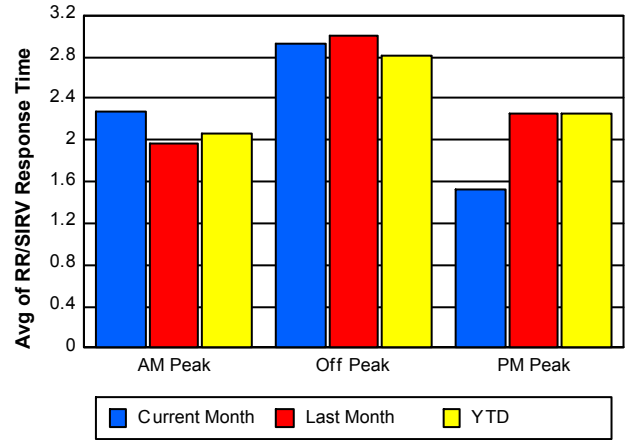
TMC Response Time



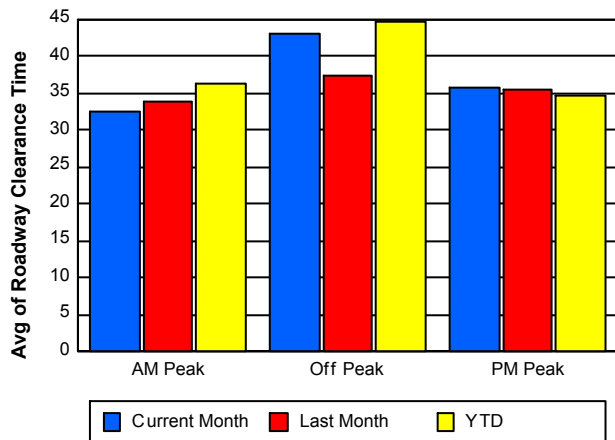
Road Ranger / SIRV Dispatch Time



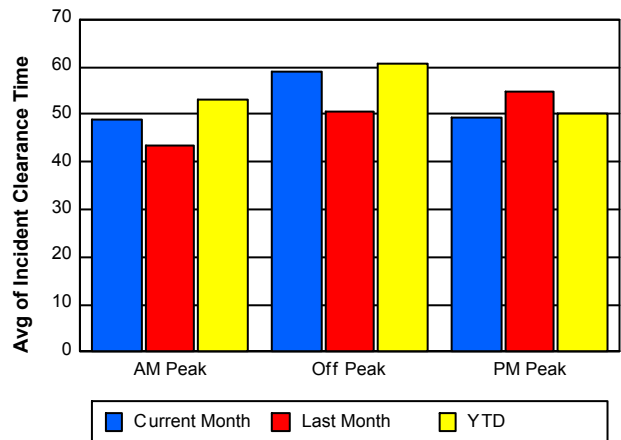
Road Ranger / SIRV Response Time



Roadway Clearance Time (2A)



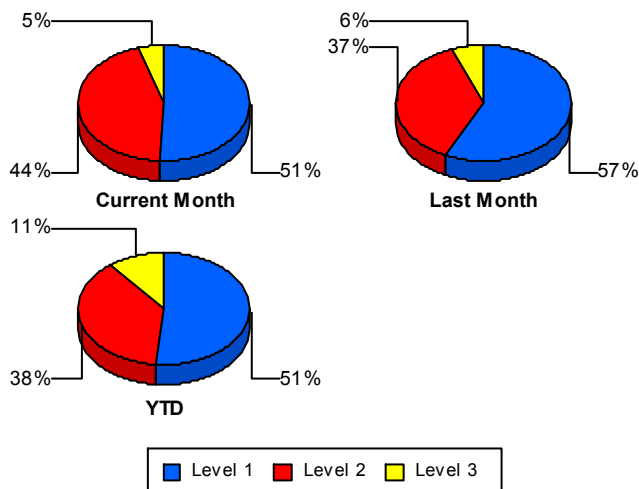
Incident Clearance Time (3B)



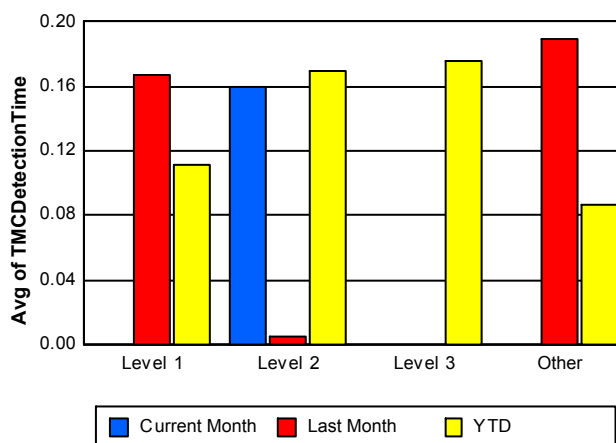
Performance Measures by Severity

	Level 1			Level 2			Level 3			Other		
	<u>This Month</u>	<u>Last Month</u>	<u>YTD</u>	<u>This Month</u>	<u>Last Month</u>	<u>YTD</u>	<u>This Month</u>	<u>Last Month</u>	<u>YTD</u>	<u>This Month</u>	<u>Last Month</u>	<u>YTD</u>
Number of Events	60	64	631	52	41	463	6	7	134	2,576	2,612	20,420
Number of Incidents	60	64	631	52	41	463	6	7	134	0	0	0
TMC Detection (min.)	0.00	0.17	0.11	0.16	0.01	0.17	0.00	0.00	0.18	0.00	0.19	0.09
TMC Verification (min.)	2.94	2.44	2.27	5.91	5.72	6.53	14.29	5.49	4.96	2.65	3.07	2.84
TMC Response (min.)	4.50	4.80	4.42	11.18	10.01	9.70	17.18	7.12	11.06	3.10	3.51	3.54
RR Dispatch Time (min.)	1.52	1.54	1.54	3.93	4.43	2.95	1.37	3.45	4.61	0.86	1.00	1.20
RR Resp. Time (min.)	2.98	3.27	2.95	7.26	5.58	6.74	15.81	3.72	7.10	2.27	2.52	2.37
Event Clearance (min.)	31.30	27.77	32.22	67.20	69.01	69.56	172.39	137.35	126.57	34.23	42.71	44.78
Roadway Clear. (min.)	13.75	13.37	13.13	53.76	57.84	56.33	161.57	116.62	113.93			
Incident Clearance (min.)	31.30	27.77	32.22	67.20	69.01	69.56	172.39	137.35	126.57			
# of Events w/ RR/SIRV	59	61	581	52	40	445	5	7	119	2,501	2,519	19,658
RR/SIRV Responses	59	61	601	52	40	473	5	7	148	2,501	2,519	19,765
RR/SIRV Activities	77	87	745	73	63	664	16	12	237	2,675	2,679	21,284

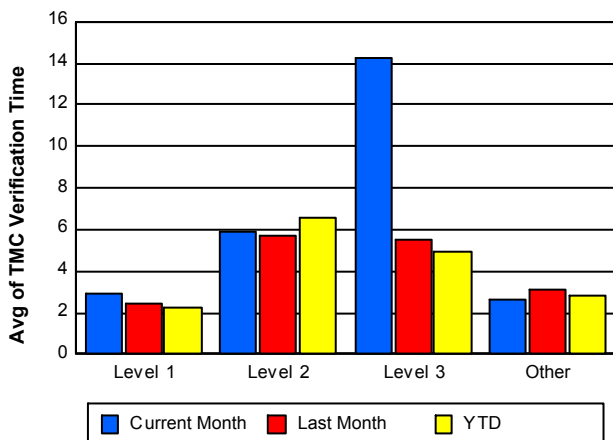
Number of Events / Severity



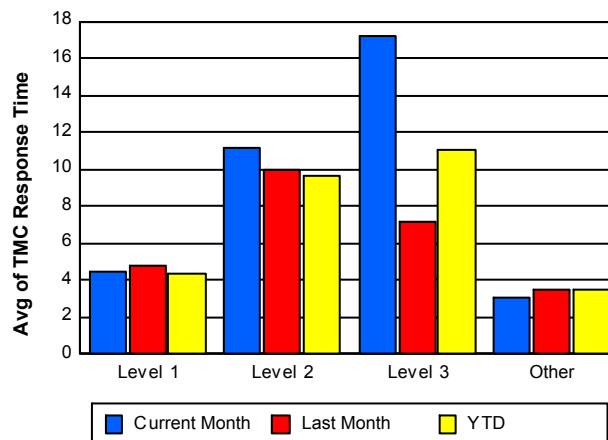
TMC Detection Time



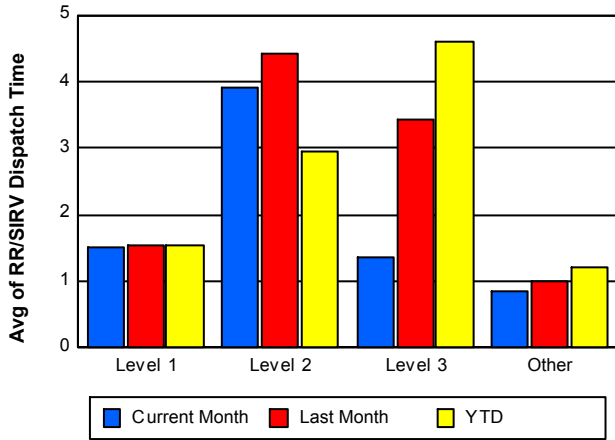
TMC Verification Time



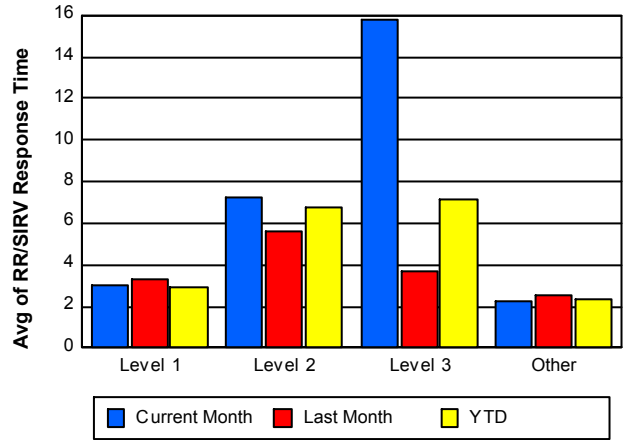
TMC Response Time



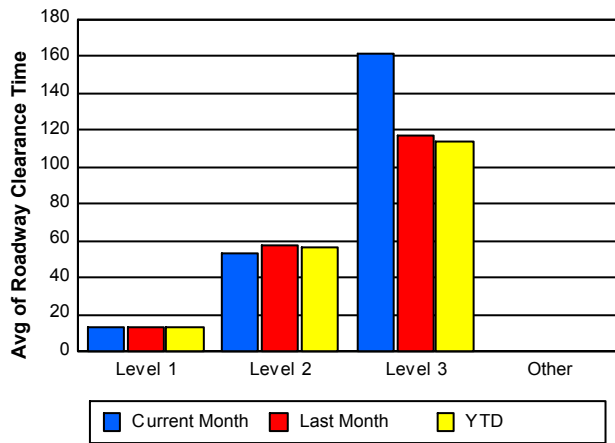
Road Ranger / SIRV Dispatch Time



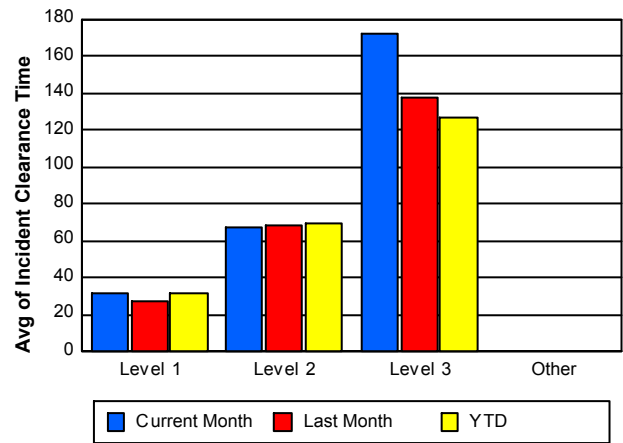
Road Ranger / SIRV Response Time



Roadway Clearance Time (2A)



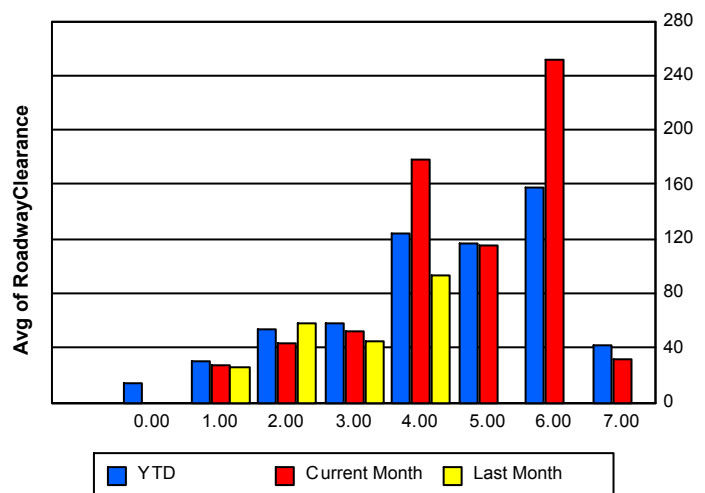
Incident Clearance Time (3B)



Roadway Clearance by Maximum Number of Lanes Blocked

	Current Month	Last Month	YTD
	0.00	0.00	
0			14.70
1	27.40	26.43	30.09
2	43.01	58.57	54.20
3	51.71	45.58	58.31
4	178.70	92.94	123.51
5	114.79	0.00	116.68
6	251.67	0.00	157.15

Roadway Clearance Time (2A)



	Current Month	Last Month	YTD
7	31.48	0.00	41.44

Performance Measures by Roadway

95

	<u>Current Month</u>	<u>Last Month</u>	<u>YTD</u>
Number of Events	2,694	2,723	21,645
Number of Incidents	118	111	1,226
TMC Detection (min.)	0.00	0.19	0.09
TMC Verification (min.)	2.74	3.09	2.92
TMC Response (min.)	3.32	3.65	3.74
RR Dispatch Time (min.)	0.94	1.07	1.27
RR Resp. Time (min.)	2.41	2.59	2.51
Event Clearance (min.)	35.11	42.99	45.44
Roadway Clear. (min.)	38.90	35.81	40.40
Incident Clearance (min.)	54.29	49.47	56.60
# of Events w/ RR/SIRV	2,617	2,626	20,801
RR/SIRV Responses	2,617	2,626	20,985
RR/SIRV Activities	2,841	2,841	22,929

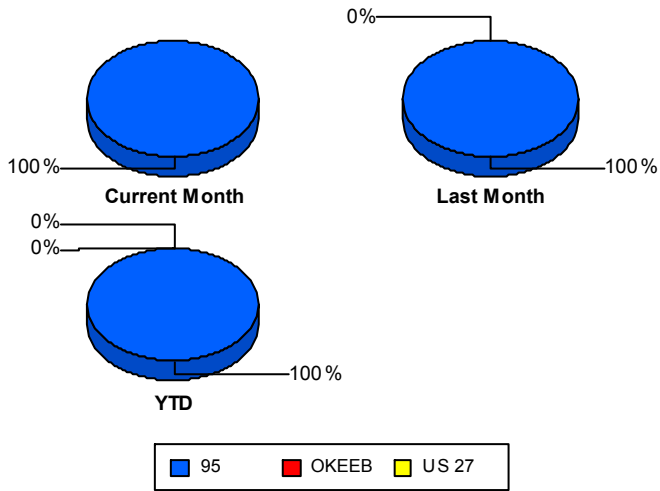
OKEEB

	<u>Last Month</u>	<u>YTD</u>
Number of Events	1	2
Number of Incidents	1	2
TMC Detection (min.)	0.00	0.00
TMC Verification (min.)	24.95	12.48
TMC Response (min.)		7.78
RR Dispatch Time (min.)	3.70	4.42
RR Resp. Time (min.)		2.63
Event Clearance (min.)	76.95	54.35
Roadway Clear. (min.)	68.67	50.14
Incident Clearance (min.)	76.95	54.35
# of Events w/ RR/SIRV	1	2
RR/SIRV Responses	1	2
RR/SIRV Activities	0	1

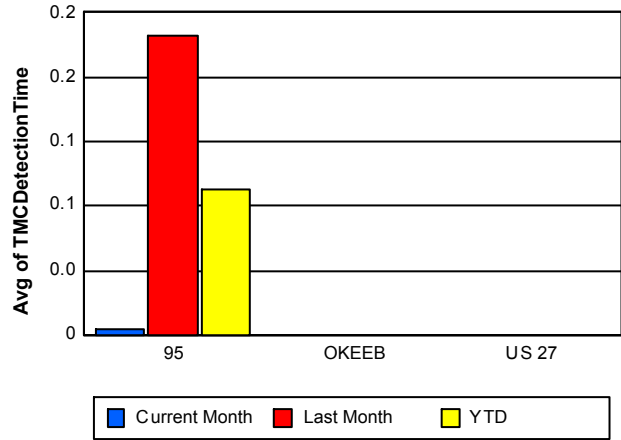
US 27

	<u>YTD</u>
Number of Events	1
Number of Incidents	0
TMC Detection (min.)	0.00
TMC Verification (min.)	
TMC Response (min.)	
RR Dispatch Time (min.)	
RR Resp. Time (min.)	
Event Clearance (min.)	125.57
Roadway Clear. (min.)	
Incident Clearance (min.)	
# of Events w/ RR/SIRV	0
RR/SIRV Responses	0
RR/SIRV Activities	0

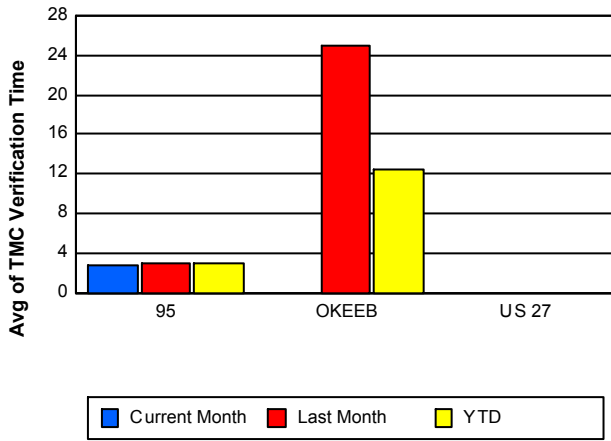
Number of Events / Roadway



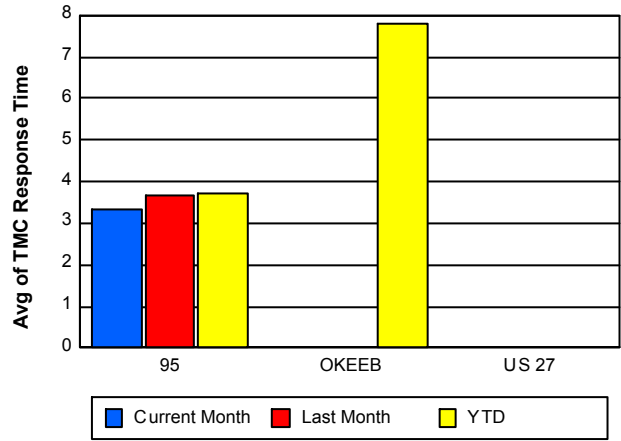
TMC Detection Time



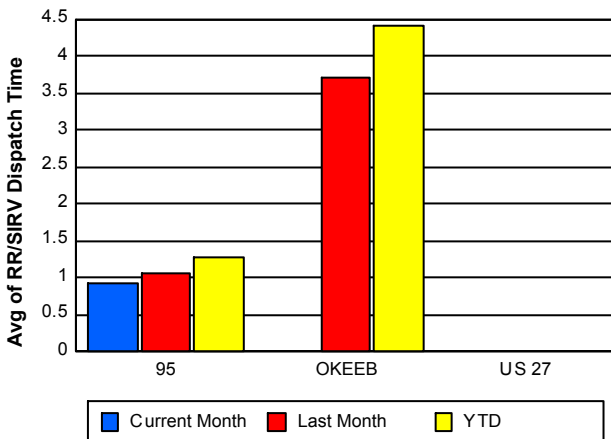
TMC Verification Time



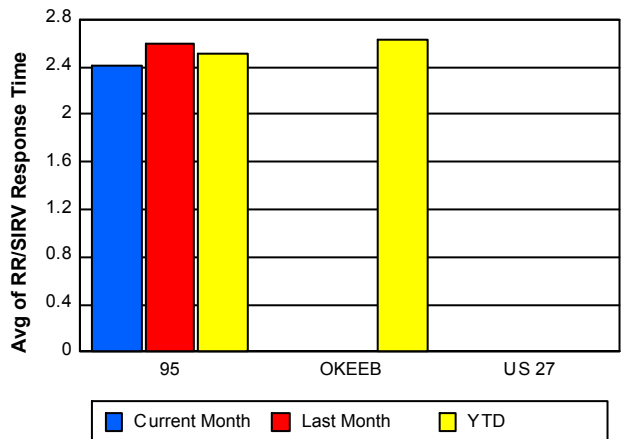
TMC Response Time



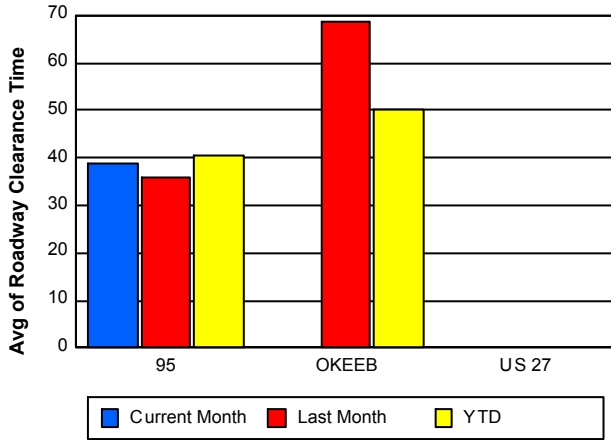
Road Ranger / SIRV Dispatch Time



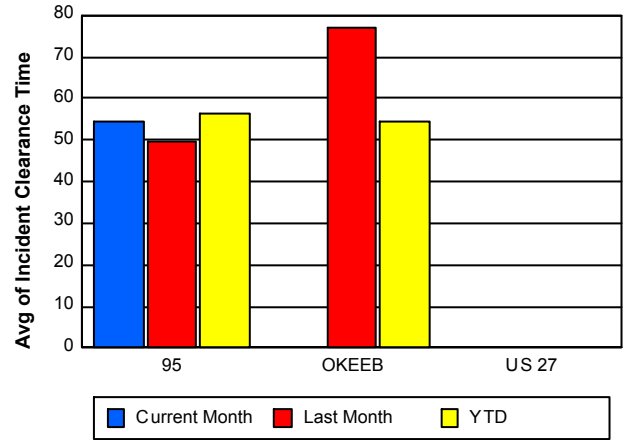
Road Ranger / SIRV Response Time



Roadway Clearance Time (2A)



Incident Clearance Time (3B)



Performance Measures by Event Type

Abandoned Vehicle

	<u>Current Month</u>	<u>Last Month</u>	<u>YTD</u>
Number of Events	470	495	3,814
Number of Incidents	3	4	16
TMC Detection (min.)	0.00	0.00	0.05
TMC Verification (min.)	0.30	0.70	0.54
TMC Response (min.)	0.67	1.51	1.91
RR Dispatch Time (min.)	0.20	0.43	1.34
RR Response Time (min.)	0.47	1.07	0.62
Event Clearance (min.)	113.85	152.61	162.86
Roadway Clearance (min.)	44.87	52.39	92.79
Incident Clearance (min.)	56.62	56.96	40.26
# of Events w/ RR/SIRV	413	419	3,232
RR/SIRV Assists	413	419	3,247
RR/SIRV Activities	418	431	3,349

Accident

	<u>Current Month</u>	<u>Last Month</u>	<u>YTD</u>
Number of Events	175	157	1,630
Number of Incidents	76	65	787
TMC Detection (min.)	0.05	0.07	0.14
TMC Verification (min.)	5.90	4.81	5.05
TMC Response (min.)	8.22	7.38	7.14
RR Dispatch Time (min.)	2.09	2.36	2.05
RR Response Time (min.)	6.13	5.00	5.19
Event Clearance (min.)	58.62	52.11	58.39
Roadway Clearance (min.)	48.53	43.43	47.17
Incident Clearance (min.)	68.59	62.24	69.14
# of Events w/ RR/SIRV	174	153	1,562
RR/SIRV Assists	174	153	1,641
RR/SIRV Activities	233	198	2,046

Congestion

	<u>Current Month</u>	<u>YTD</u>
Number of Events	2	28
Number of Incidents	0	0
TMC Detection (min.)	0.00	0.01
TMC Verification (min.)	0.00	0.28
TMC Response (min.)		15.93
RR Dispatch Time (min.)		4.22
RR Response Time (min.)		11.89
Event Clearance (min.)	64.32	40.36
Roadway Clearance (min.)		
Incident Clearance (min.)		
# of Events w/ RR/SIRV	0	6
RR/SIRV Assists	0	6
RR/SIRV Activities	0	6

Debris on Roadway

	<u>Current Month</u>	<u>Last Month</u>	<u>YTD</u>
Number of Events	164	138	1,125
Number of Incidents	9	14	103
TMC Detection (min.)	0.00	0.00	0.08
TMC Verification (min.)	8.02	5.68	6.53
TMC Response (min.)	7.33	5.72	6.86
RR Dispatch Time (min.)	1.66	1.16	1.54
RR Response Time (min.)	5.67	4.57	5.32
Event Clearance (min.)	11.68	11.02	11.81
Roadway Clearance (min.)	12.20	24.58	16.28
Incident Clearance (min.)	14.54	25.79	19.79
# of Events w/ RR/SIRV	162	138	1,112
RR/SIRV Assists	162	138	1,123
RR/SIRV Activities	170	145	1,204

Disabled Vehicle

	<u>Current Month</u>	<u>Last Month</u>	<u>YTD</u>
Number of Events	1,851	1,898	14,689
Number of Incidents	26	25	255
TMC Detection (min.)	0.00	0.26	0.09
TMC Verification (min.)	2.54	3.41	2.96
TMC Response (min.)	3.02	3.65	3.42
RR Dispatch Time (min.)	0.92	1.11	1.11
RR Response Time (min.)	2.14	2.56	2.34
Event Clearance (min.)	14.99	16.47	15.91
Roadway Clearance (min.)	18.05	21.02	24.07
Incident Clearance (min.)	23.33	29.59	32.43
# of Events w/ RR/SIRV	1,841	1,882	14,565
RR/SIRV Assists	1,841	1,882	14,632
RR/SIRV Activities	1,989	2,033	15,956

Emergency Vehicles

	<u>YTD</u>
Number of Events	5
Number of Incidents	3
TMC Detection (min.)	4.01
TMC Verification (min.)	4.48
TMC Response (min.)	0.51
RR Dispatch Time (min.)	0.24
RR Response Time (min.)	0.27
Event Clearance (min.)	29.42
Roadway Clearance (min.)	29.66
Incident Clearance (min.)	38.21
# of Events w/ RR/SIRV	5
RR/SIRV Assists	5
RR/SIRV Activities	5

Off Ramp Backup

	<u>Current Month</u>	<u>YTD</u>
Number of Events	4	4
Number of Incidents	0	0
TMC Detection (min.)	0.00	0.00
TMC Verification (min.)	0.00	0.00
TMC Response (min.)		
RR Dispatch Time (min.)		
RR Response Time (min.)		
Event Clearance (min.)	50.16	50.16
Roadway Clearance (min.)		
Incident Clearance (min.)		
# of Events w/ RR/SIRV	0	0
RR/SIRV Assists	0	0
RR/SIRV Activities	0	0

Other

	<u>Current Month</u>	<u>Last Month</u>	<u>YTD</u>
Number of Events	13	9	160
Number of Incidents	0	0	7
TMC Detection (min.)	0.00	0.01	0.05
TMC Verification (min.)	13.35	5.48	10.04
TMC Response (min.)	13.83	12.70	14.83
RR Dispatch Time (min.)	2.51	1.15	3.86
RR Response Time (min.)	11.20	11.50	10.77
Event Clearance (min.)	16.69	17.41	26.76
Roadway Clearance (min.)			17.35
Incident Clearance (min.)			21.04
# of Events w/ RR/SIRV	13	8	141
RR/SIRV Assists	13	8	143
RR/SIRV Activities	12	7	152

Pedestrian

	<u>YTD</u>
Number of Events	32
Number of Incidents	0
TMC Detection (min.)	0.04
TMC Verification (min.)	1.39
TMC Response (min.)	1.38
RR Dispatch Time (min.)	0.27
RR Response Time (min.)	1.11
Event Clearance (min.)	15.13
Roadway Clearance (min.)	
Incident Clearance (min.)	
# of Events w/ RR/SIRV	32
RR/SIRV Assists	32
RR/SIRV Activities	33

Police Activity

	<u>Current Month</u>	<u>Last Month</u>	<u>YTD</u>
Number of Events	4	3	50
Number of Incidents	2	2	38
TMC Detection (min.)	0.00	0.00	0.24
TMC Verification (min.)	2.70	8.32	2.15
TMC Response (min.)	9.80	17.33	9.95
RR Dispatch Time (min.)	2.43	3.54	5.27
RR Response Time (min.)	7.37	12.25	4.55
Event Clearance (min.)	53.60	52.92	55.19
Roadway Clearance (min.)	41.73	40.56	47.06
Incident Clearance (min.)	85.43	53.93	67.23
# of Events w/ RR/SIRV	4	3	41
RR/SIRV Assists	4	3	47
RR/SIRV Activities	4	1	53

Vehicle Fire

	<u>Current Month</u>	<u>Last Month</u>	<u>YTD</u>
Number of Events	3	3	18
Number of Incidents	2	2	10
TMC Detection (min.)	0.00	0.00	0.00
TMC Verification (min.)	0.00	0.82	3.43
TMC Response (min.)	0.92	2.06	4.83
RR Dispatch Time (min.)	0.46	1.66	1.65
RR Response Time (min.)	0.46	0.40	3.18
Event Clearance (min.)	43.73	34.83	504.60
Roadway Clearance (min.)	52.37	29.91	38.29
Incident Clearance (min.)	57.77	43.11	50.02
# of Events w/ RR/SIRV	3	3	17
RR/SIRV Assists	3	3	17
RR/SIRV Activities	5	5	21

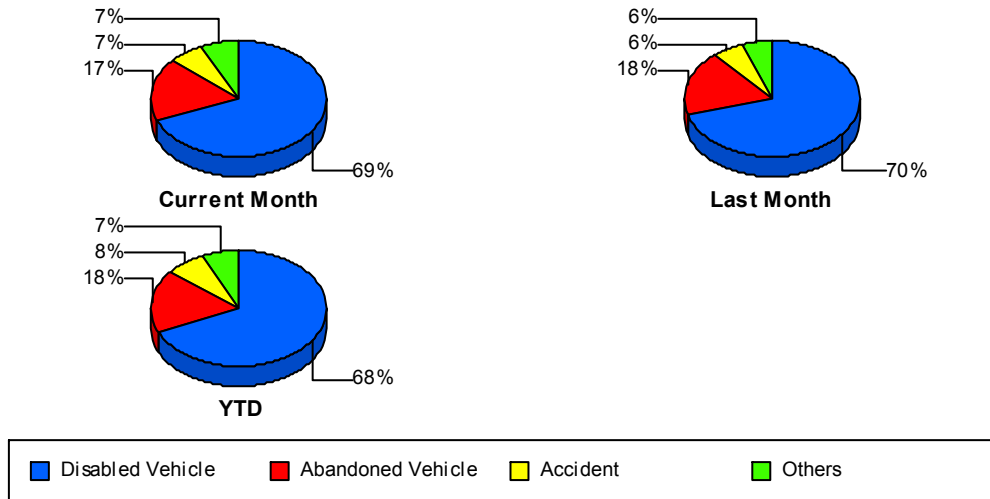
Visibility

	<u>Current Month</u>	<u>YTD</u>
Number of Events	1	7
Number of Incidents	0	5
TMC Detection (min.)	0.00	0.00
TMC Verification (min.)	0.00	1.26
TMC Response (min.)		17.63
RR Dispatch Time (min.)		7.16
RR Response Time (min.)		10.47
Event Clearance (min.)	32.23	37.35
Roadway Clearance (min.)		29.89
Incident Clearance (min.)		35.95
# of Events w/ RR/SIRV	0	5
RR/SIRV Assists	0	5
RR/SIRV Activities	0	7

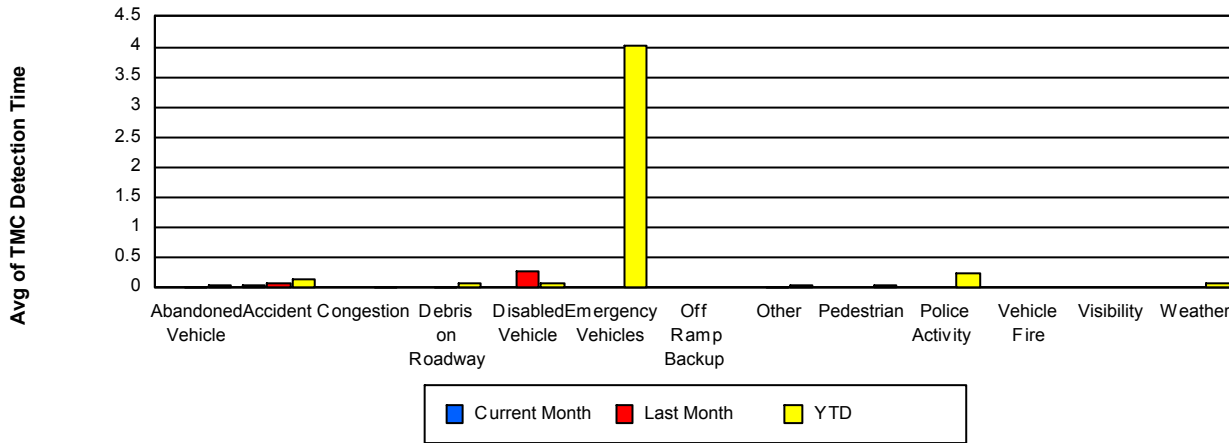
Weather

	<u>Current Month</u>	<u>YTD</u>
Number of Events	1	7
Number of Incidents	0	4
TMC Detection (min.)	0.00	0.09
TMC Verification (min.)	0.00	8.35
TMC Response (min.)	0.00	10.26
RR Dispatch Time (min.)	0.00	2.93
RR Response Time (min.)	0.00	7.33
Event Clearance (min.)	249.55	153.13
Roadway Clearance (min.)		170.23
Incident Clearance (min.)		159.05
# of Events w/ RR/SIRV	1	6
RR/SIRV Assists	1	10
RR/SIRV Activities	4	15

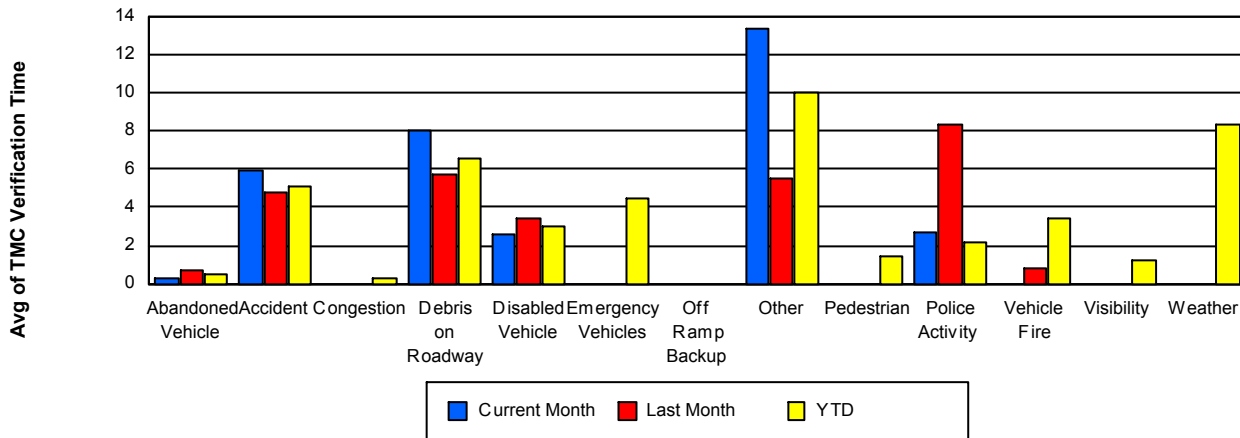
Number of Events / Event Type



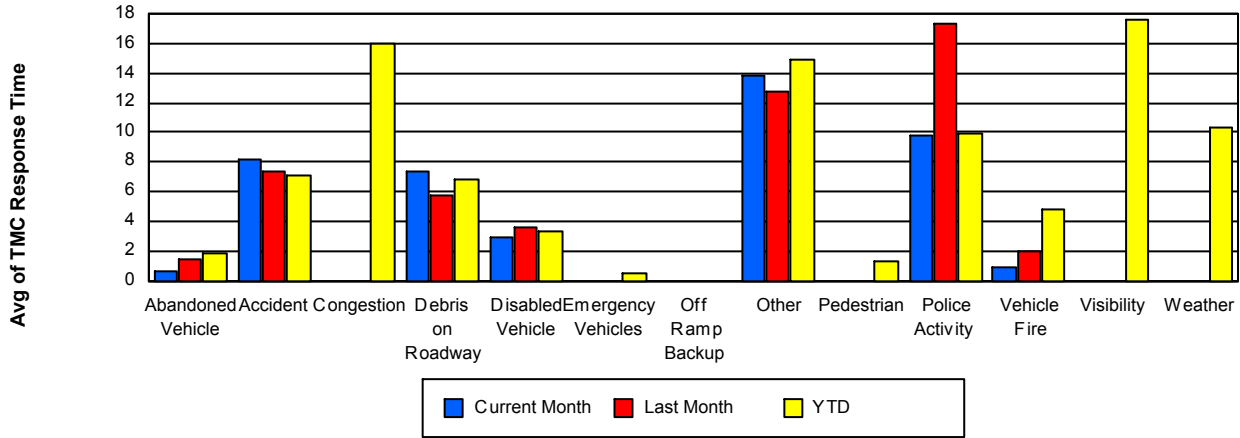
TMC Detection Time



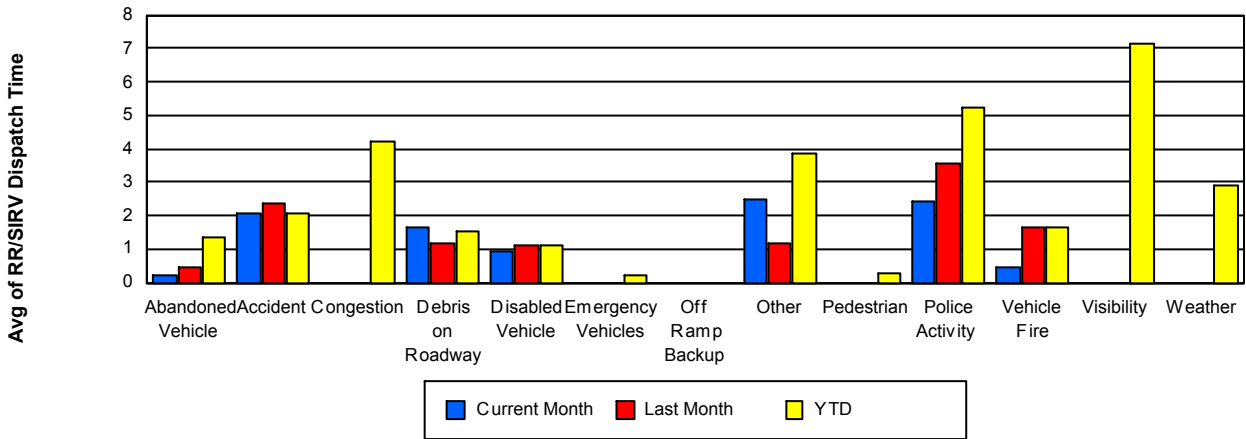
TMC Verification Time



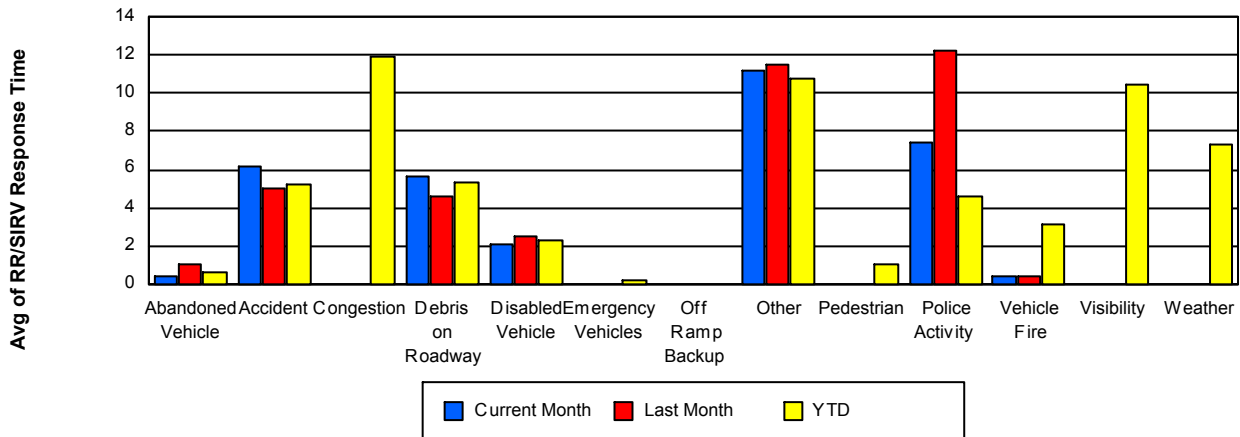
TMC Response Time



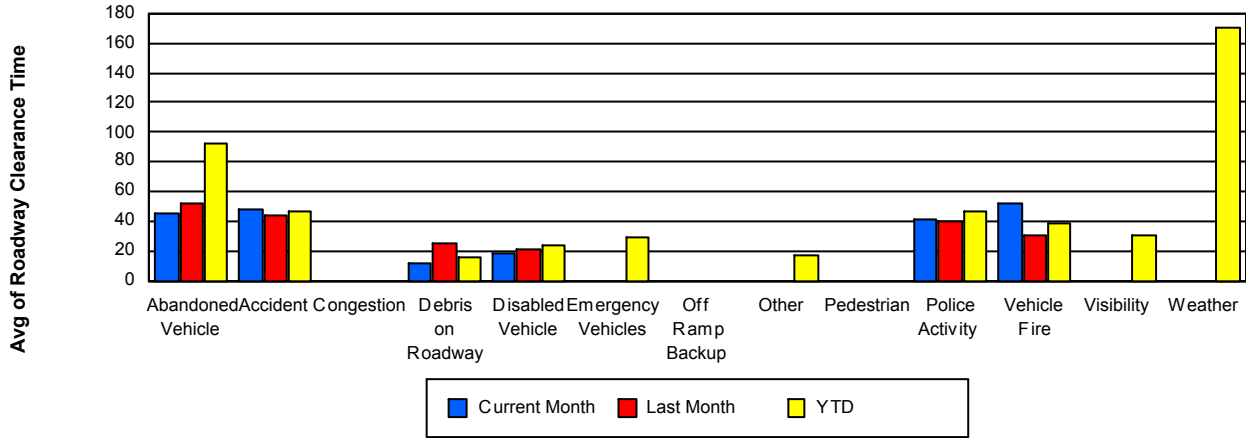
Road Ranger / SIRV Dispatch Time



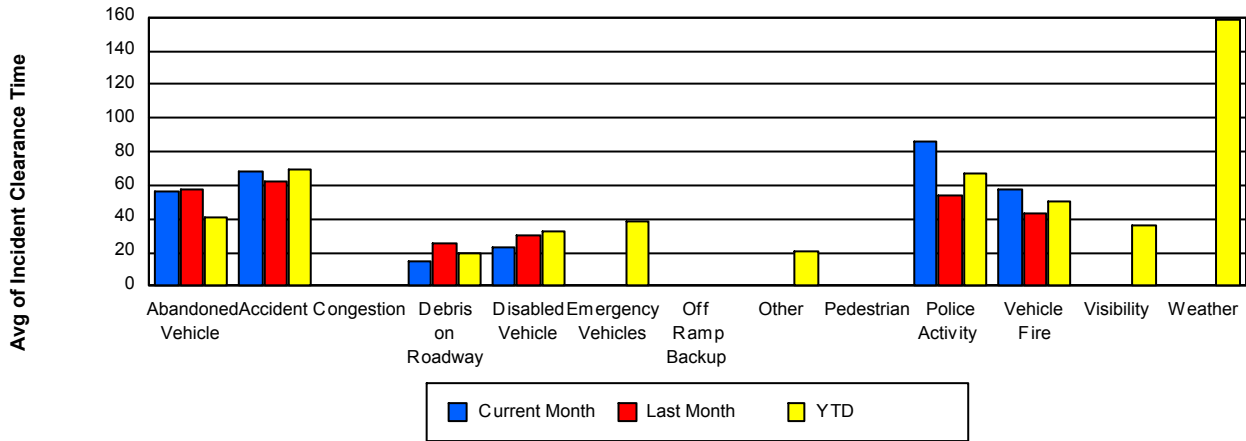
Road Ranger / SIRV Response Time



Roadway Clearance Time (2A)



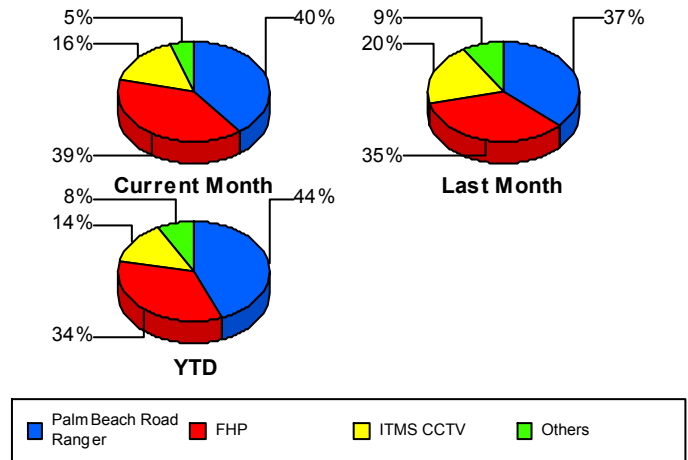
Incident Clearance Time (3B)



Incident Detection Methods

	Current Month	Last Month	YTD
Broward CCTV	0	1	1
Broward Road Ranger	0	2	8
Broward TMC	0	0	1
Construction CEI	0	0	6
District 4	1	3	46
FDOT Maintenance	1	0	2
FHP	46	39	416
ITMS	1	1	6
ITMS CCTV	19	22	175
Motorist	3	3	19
Palm Beach Road Rang	47	41	543
Road Watcher	0	0	2
SmarTraveler (511)	0	0	3
Total	118	112	1,228

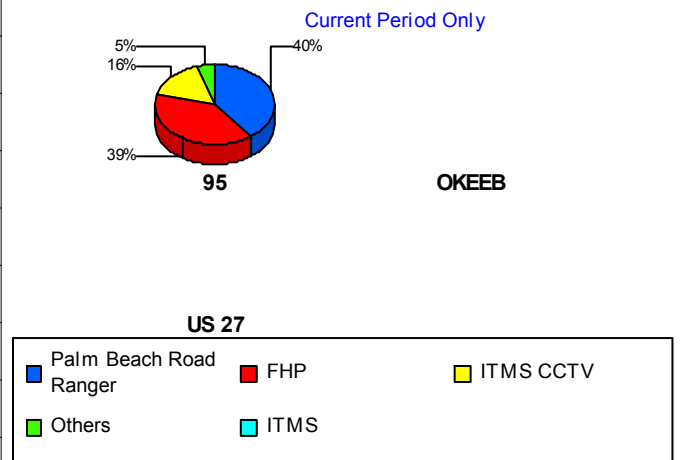
Total Incidents by Detection Method



Incident Detection Methods by Roadway

		Current Month	Last Month	YTD
95	Broward CCTV	0	1	1
	Broward Road Ranger	0	2	8
	Broward TMC	0	0	1
	Construction CEI	0	0	6
	District 4	1	3	46
	FDOT Maintenance	1	0	2
	FHP	46	38	414
	ITMS	1	1	6
	ITMS CCTV	19	22	175
	Motorist	3	3	19
	Palm Beach Road Rang	47	41	543
	Road Watcher	0	0	2
	SmarTraveler (511)	0	0	3

Total Events by Roadway and Detection Method

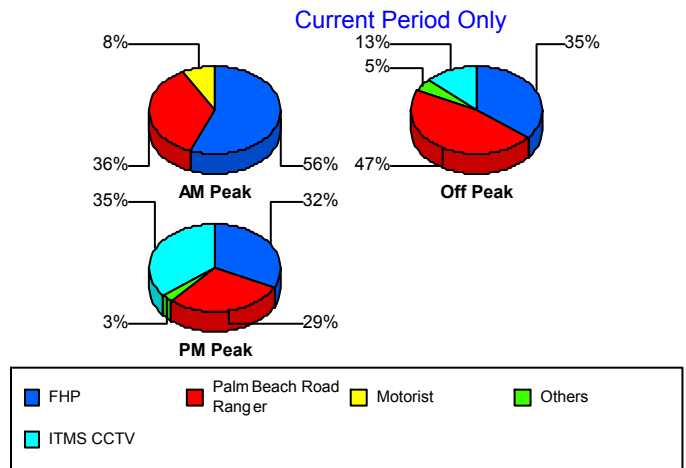


		Current Month	Last Month	YTD
95	Total	118	111	1,226
OKEEB	FHP	0	1	2
	Total	0	1	2
Total		118	112	1,228

Incident Detection Methods by Peak Period

		Current Month	Last Month	YTD
AM Peak	Broward Road Ranger	0	1	3
	Broward TMC	0	0	1
	Construction CEI	0	0	1
	District 4	0	1	19
	FHP	14	12	103
	ITMS	0	0	1
	ITMS CCTV	0	4	38
	Motorist	2	0	6
	Palm Beach Road Rang	9	9	132
	SmarTraveler (511)	0	0	1
	Total	25	27	305
Off Peak	Broward CCTV	0	1	1
	Broward Road Ranger	0	1	2
	Construction CEI	0	0	5
	District 4	1	2	22
	FDOT Maintenance	1	0	2
	FHP	22	24	239
	ITMS	1	0	2
	ITMS CCTV	8	8	82
	Motorist	0	3	10
	Palm Beach Road Rang	29	24	293
	Road Watcher	0	0	2
	SmarTraveler (511)	0	0	1
	Total	62	63	661
PM Peak	Broward Road Ranger	0	0	3

Total Events by Peak Period and Detection Method

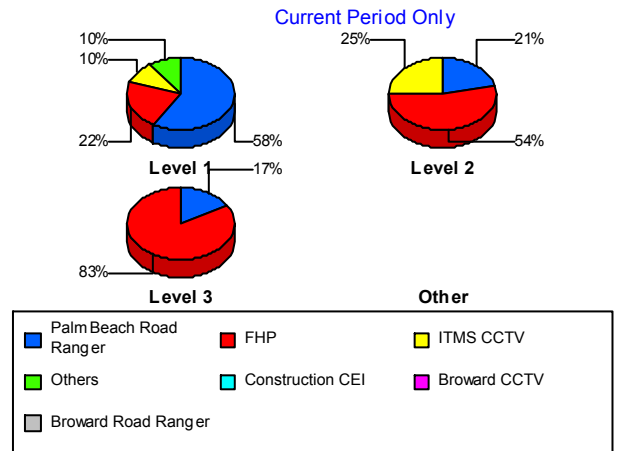


		Current Month	Last Month	YTD
PM Peak	District 4	0	0	5
	FHP	10	3	74
	ITMS	0	1	3
	ITMS CCTV	11	10	55
	Motorist	1	0	3
	Palm Beach Road Rang	9	8	118
	SmarTraveler (511)	0	0	1
	Total	31	22	262
Total	118	112	1,228	

Incident Detection Methods by Severity

		Current Month	Last Month	YTD
Level 1	Broward CCTV	0	1	1
	Broward Road Ranger	0	2	7
	Broward TMC	0	0	1
	Construction CEI	0	0	2
	District 4	1	1	32
	FDOT Maintenance	1	0	1
	FHP	13	14	149
	ITMS	1	1	3
	ITMS CCTV	6	12	85
	Motorist	3	2	10
	Palm Beach Road Rang	35	31	338
	SmarTraveler (511)	0	0	2
	Total	60	64	631
	Level 2	Broward Road Ranger	0	0
Construction CEI		0	0	2
District 4		0	2	12
FHP		28	21	208
ITMS		0	0	3
ITMS CCTV		13	7	64
Motorist		0	1	9

Total Events by Severity and Detection Method



		Current Month	Last Month	YTD
Level 2	Palm Beach Road Rang	11	10	162
	Road Watcher	0	0	1
	SmarTraveler (511)	0	0	1
	Total	52	41	463
Level 3	Construction CEI	0	0	2
	District 4	0	0	2
	FDOT Maintenance	0	0	1
	FHP	5	4	59
	ITMS CCTV	0	3	26
	Palm Beach Road Rang	1	0	43
	Road Watcher	0	0	1
	Total	6	7	134
Total		118	112	1,228

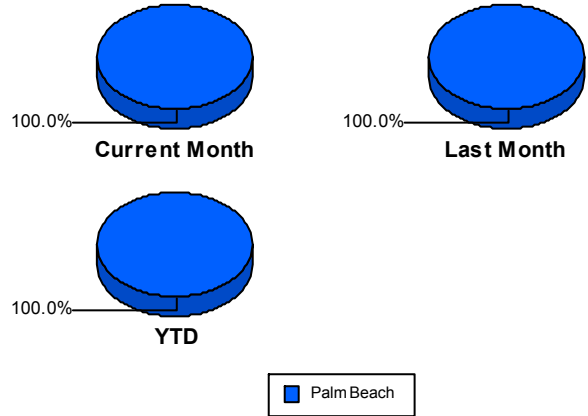
Road Ranger / SIRV Performance Measures

Road Ranger / SIRV Performance By County

RR/SIRV Responses per County

Values presented are:
 - Total Events with a RR/SIRV Response
 - Total RR/SIRV Responses,
 - Total Activities Performed

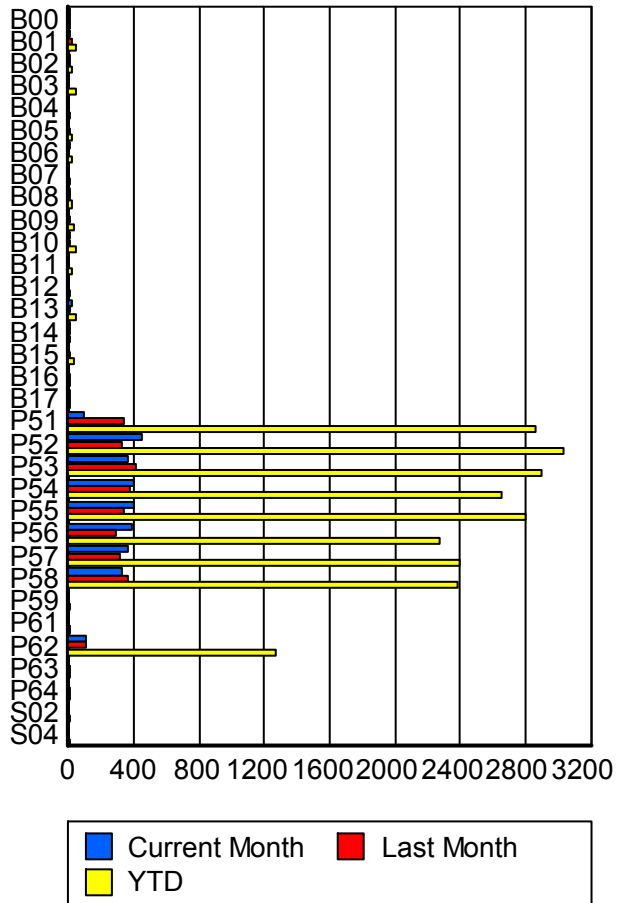
	Current Mo	Last Month	YTD
Palm Beach	2,810	2,794	22,134
	2,911	2,891	22,984
	3,077	3,049	24,518



Road Ranger / SIRV Performance By Truck

	Current Mo	Last Month	YTD
B00	3	1	12
	3	1	12
	3	1	13
B01	12	15	48
	12	15	48
	12	15	51
B02	8	6	17
	9	6	18
	10	6	19
B03	0	0	43
	0	0	45
	0	0	47
B04	0	0	1
	0	0	1
	0	0	1
B05	0	4	15
	0	4	15
	0	5	16
B06	2	0	15
	2	0	15
	2	0	16
B07	0	0	4
	0	0	4
	0	0	4
B08	3	3	21
	3	3	22
	3	3	22

RR/SIRV Responses per Truck



	Current Mo	Last Month	YTD
B09	0	1	25
	0	1	26
	0	1	27
B10	1	7	48
	1	7	48
	1	7	56
B11	0	0	18
	0	0	18
	0	0	19
B12	0	0	6
	0	0	6
	0	0	6
B13	15	8	41
	15	8	41
	16	8	42
B14	1	3	8
	1	3	8
	1	3	9
B15	0	3	32
	0	3	33
	0	3	35
B16	0	1	12
	0	1	12
	0	1	13
B17	1	3	8
	1	3	8
	1	3	8
P51	87	338	2,844
	88	340	2,862
	92	364	3,052
P52	445	317	3,008
	452	321	3,039
	488	343	3,275
P53	355	410	2,876
	356	414	2,895
	373	432	3,074
P54	397	368	2,627
	403	373	2,653
	424	398	2,830
P55	392	330	2,790
	393	332	2,806
	416	347	2,993
P56	378	281	2,254
	382	284	2,273
	411	297	2,432

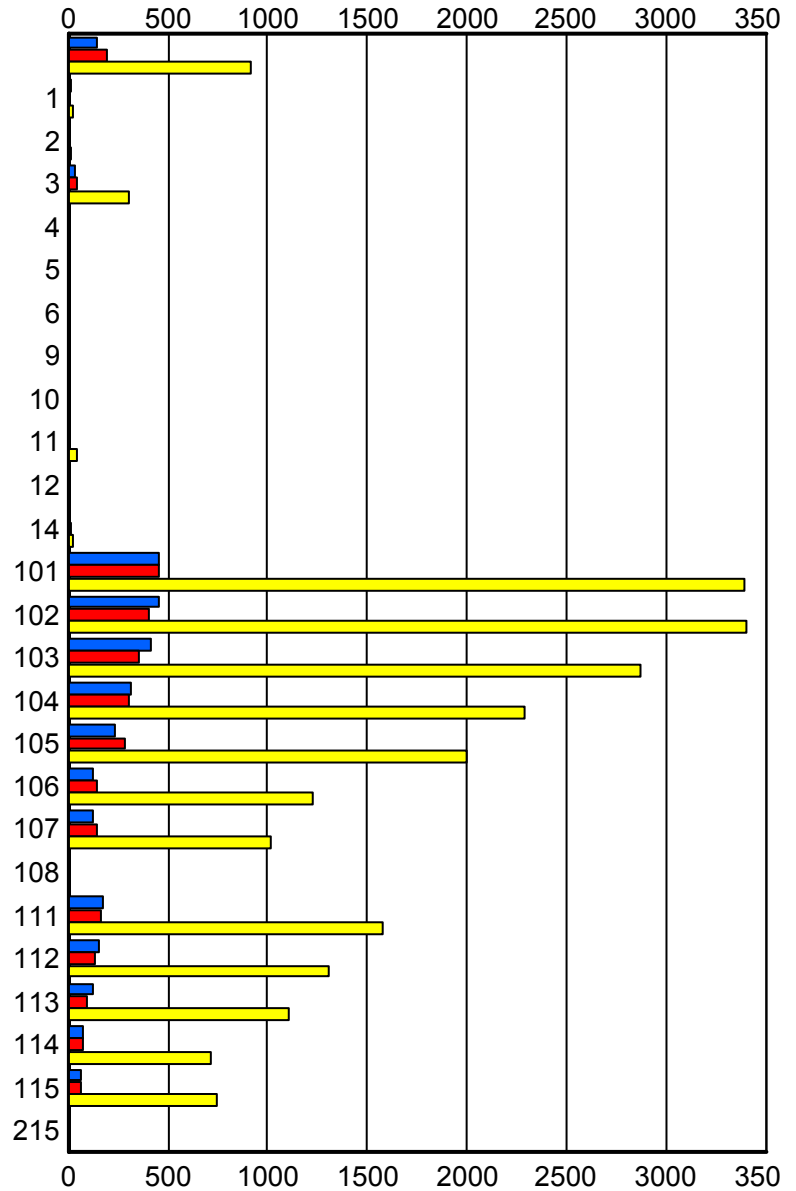
	Current Mo	Last Month	YTD
P57	361	310	2,379
	365	310	2,400
	385	329	2,578
P58	320	349	2,357
	322	357	2,380
	334	373	2,512
P59	0	0	7
	0	0	7
	0	0	7
P61	0	0	7
	0	0	7
	0	0	7
P62	99	101	1,255
	103	102	1,271
	105	107	1,343
P63	0	2	4
	0	2	4
	0	2	4
P64	0	1	3
	0	1	3
	0	1	3
S02	0	0	3
	0	0	3
	0	0	3
S04	0	0	1
	0	0	1
	0	0	1

Road Ranger / SIRV Performance By Beat

	Current Mo	Last Month	YTD
	147	195	912
	148	198	920
	154	214	972
1	9	2	21
	9	2	21
	9	2	22
2	1	1	10
	1	1	10
	1	1	10
3	36	44	301
	37	45	309
	39	46	329
4	0	0	8
	0	0	8
	0	0	10
5	1	0	2
	1	0	2
	1	0	2
6	0	0	2
	0	0	2
	0	0	2
9	1	0	1
	1	0	1
	1	0	1
10	0	0	3
	0	0	3
	0	0	3
11	5	6	39
	5	6	40
	5	6	42
12	0	0	2
	0	0	2
	0	0	2
14	0	15	18
	0	16	19
	0	17	21
101	447	457	3,362
	452	459	3,388
	486	480	3,601
102	452	398	3,378
	455	407	3,402
	482	432	3,661
103	410	353	2,844
	412	355	2,865
	434	379	3,065

Values presented are:
 - Total Events with a RR/SIRV Response
 - Total RR/SIRV Responses,
 - Total Activities Performed

RR/SIRV Responses per Beat



■ Current Month
 ■ Last Month
 ■ YTD

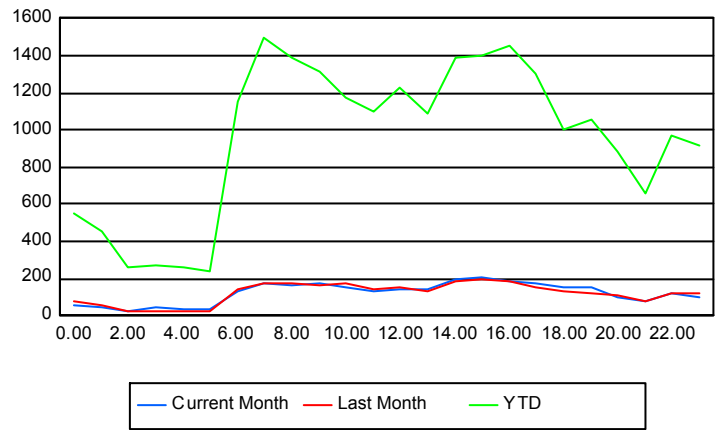
	Current Mo	Last Month	YTD
104	317 318 334	306 308 329	2,268 2,287 2,465
105	227 230 248	281 283 292	1,975 1,998 2,119
106	121 122 128	143 147 154	1,214 1,225 1,299
107	122 126 130	138 139 147	1,004 1,016 1,065
108	0 0 0	0 0 0	1 1 1
111	170 173 180	159 160 167	1,566 1,581 1,680
112	153 156 162	133 134 141	1,295 1,308 1,389
113	116 120 124	96 98 101	1,088 1,109 1,180
114	76 77 83	72 73 75	710 716 758
115	68 68 76	59 60 66	742 749 817
215	0 0 0	0 0 0	2 2 2

Road Ranger / SIRV Performance By Time of Day

Values presented are:
 - Total Events with a RR/SIRV Response
 - Total RR/SIRV Responses,
 - Total Activities Performed

	Current Mo	Last Month	YTD
12AM-1AM	59	72	530
	59	75	551
	61	78	584
1AM-2AM	42	56	430
	44	56	454
	45	56	495
2AM-3AM	26	22	245
	27	22	258
	28	22	270
3AM-4AM	35	25	256
	41	26	276
	44	26	300
4AM-5AM	31	24	231
	34	25	256
	35	29	277
5AM-6AM	30	23	207
	33	26	237
	33	28	254
6AM-7AM	133	136	1,118
	135	139	1,152
	146	145	1,234
7AM-8AM	172	174	1,454
	177	180	1,495
	187	193	1,588
8AM-9AM	152	167	1,337
	159	175	1,391
	163	184	1,475
9AM-10AM	168	159	1,268
	171	163	1,313
	183	176	1,420
10AM-11AM	146	169	1,140
	151	176	1,177
	163	179	1,267
11AM-12PM	126	142	1,059
	131	145	1,101
	134	155	1,169
12PM-1PM	141	145	1,169
	146	150	1,223
	156	156	1,310

Number of Responses / Hour of the Day



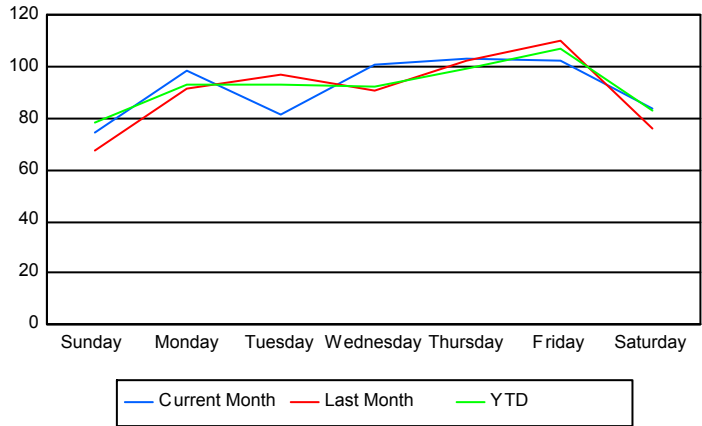
	Current Mo	Last Month	YTD
1PM-2PM	131	126	1,029
	139	137	1,084
	148	147	1,174
2PM-3PM	187	178	1,355
	192	181	1,387
	203	194	1,488
3PM-4PM	206	191	1,372
	211	193	1,404
	234	200	1,485
4PM-5PM	188	183	1,417
	190	187	1,452
	202	199	1,557
5PM-6PM	164	155	1,256
	172	157	1,299
	181	166	1,374
6PM-7PM	144	131	961
	150	134	997
	154	138	1,045
7PM-8PM	147	119	1,023
	154	123	1,059
	160	128	1,113
8PM-9PM	99	101	849
	103	106	881
	110	111	933
9PM-10PM	72	70	621
	73	76	654
	77	86	689
10PM-11PM	112	115	933
	117	121	971
	126	131	1,038
11PM-12AM	99	111	874
	102	118	912
	104	122	979

Road Ranger / SIRV Performance By Day of Week

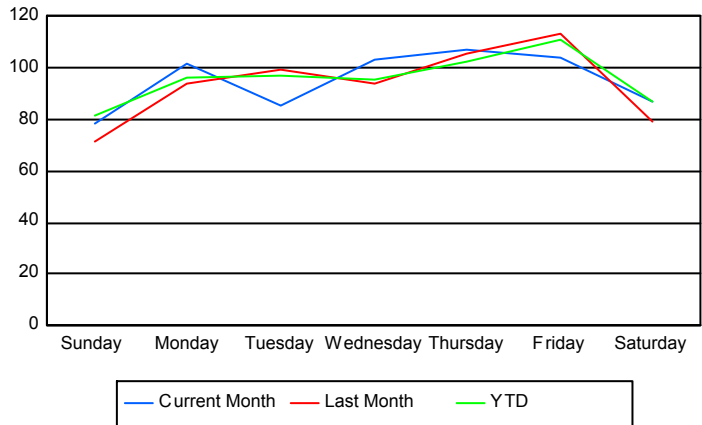
Values presented are:
 - Total Events with a RR/SIRV Response
 - Total RR/SIRV Responses,
 - Total Activities Performed

	Current Mo	Last Month	YTD
Sunday	369	271	2,675
	389	285	2,792
	422	311	3,005
Monday	388	361	3,120
	400	371	3,213
	417	379	3,394
Tuesday	319	480	3,206
	334	492	3,325
	348	513	3,511
Wednesday	403	447	3,182
	413	462	3,278
	431	479	3,490
Thursday	410	506	3,429
	427	522	3,551
	452	554	3,796
Friday	508	432	3,705
	516	446	3,837
	551	477	4,142
Saturday	416	302	2,850
	432	313	2,988
	456	336	3,180

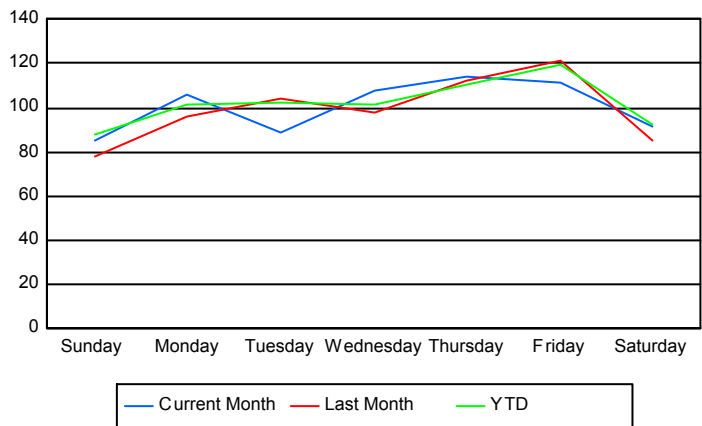
Avg # of events with a RR/SIRV Response per Day of the Week



Avg # of RR/SIRV Responses per Day of the Week



Avg # of RR/SIRV Activities Performed per Day of the Week



Road Ranger / SIRV Responses per Time of Day and Day of Week

