



Monthly Performance Measures Report Palm Beach County



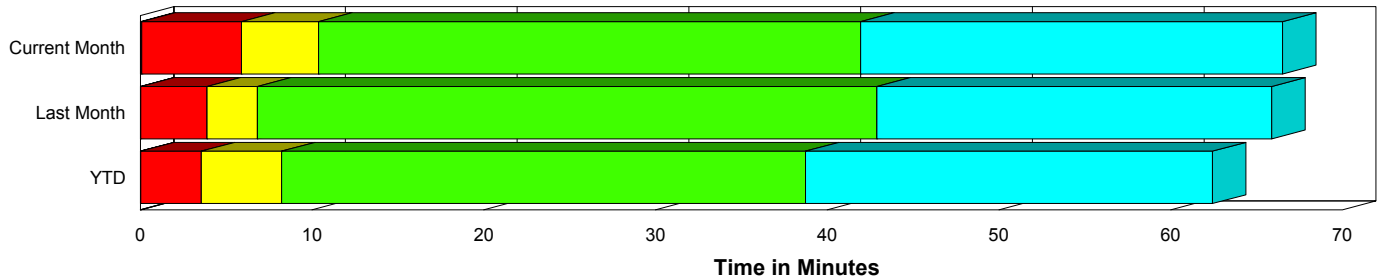
Created on:
October 05, 2009
5:59 pm

Period From Sep 1, 2009 to Sep 30, 2009

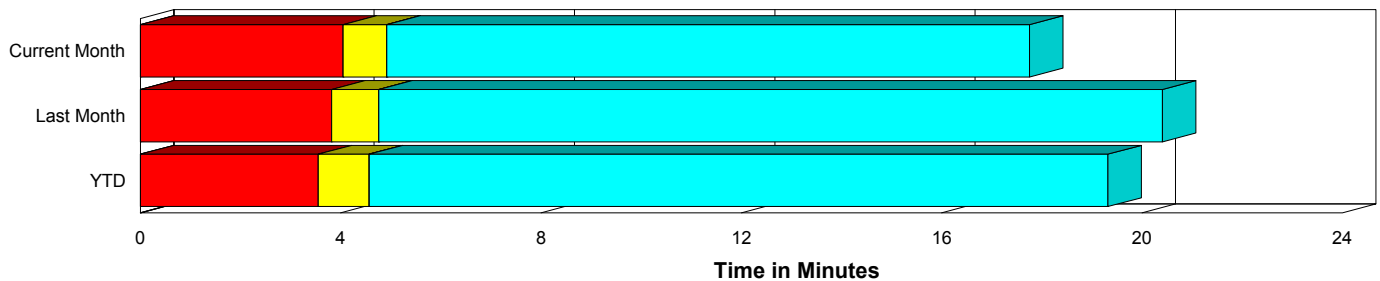
Performance Measures Summary

	Traffic Events (No Lanes Blocked)			Incidents (Lanes Blocked)		
	<u>This Month</u>	<u>Last Month</u>	<u>YTD</u>	<u>This Month</u>	<u>Last Month</u>	<u>YTD</u>
Number of Events	1,926	1,333	11,989	106	92	818
TMC Detection (min.)	0.00	0.00	0.00	0.08	0.02	0.03
TMC Verification (min.)	4.04	3.82	3.55	5.81	3.86	3.53
TMC Response (min.)	5.10	5.29	5.20	10.59	7.49	8.92
RR Dispatch Time (min.)	1.43	1.85	1.70	2.93	2.76	4.03
RR Response Time (min.)	3.77	3.49	3.59	7.62	4.73	4.86
Roadway Clearance (min.)				41.16	42.55	48.78
Event Clearance (min.)	17.93	20.94	19.94	65.71	65.35	72.14
# of Events w/ RR/SIRV	1,883	1,144	10,301	104	64	638
RR/SIRV Responses	1,883	1,144	10,301	104	64	638
RR/SIRV Activities	2,030	1,252	11,201	145	90	924

Incident Clearance Time-Line



Traffic Event (Non-Lane Blockage) Time-Line



■ Avg. TMC Detection Time	■ Avg. Time from TMC Response to Roadway Clearance*
■ Avg. Time from TMC Detection to TMC Verification	■ Avg. Time from Roadway Clearance to Incident/Event Clearance**
■ Avg. Time from TMC Verification to TMC Response	

* Roadway clearance equals all travel lanes open

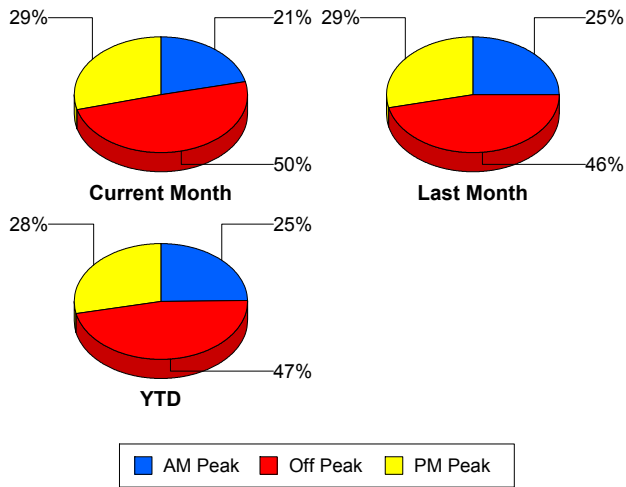
** Incident clearance equals time when last responder has left the scene

Performance Measures by Peak Period

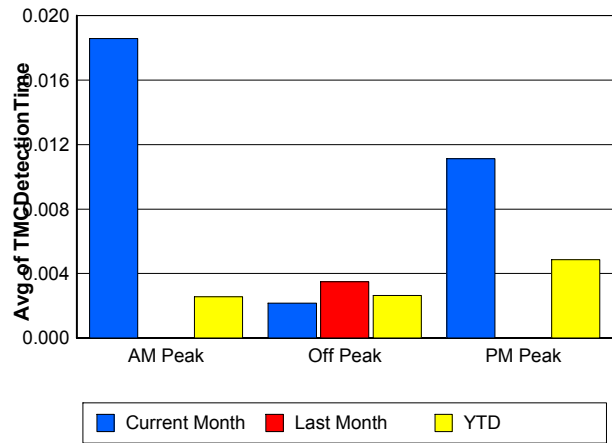
Note: AM peak period is defined as 6am to 10am and PM peak period is defined as 3pm to 7pm.

	AM Peak			Off Peak			PM Peak		
	<u>Current Month</u>	<u>Last Month</u>	<u>YTD</u>	<u>Current Month</u>	<u>Last Month</u>	<u>YTD</u>	<u>Current Month</u>	<u>Last Month</u>	<u>YTD</u>
Number of Events	436	358	3,175	1,006	659	5,999	590	408	3,633
Number of Incidents	30	22	243	55	47	365	21	23	210
TMC Detection (min.)	0.02	0.00	0.00	0.00	0.00	0.00	0.01	0.00	0.00
TMC Verification (min.)	3.68	2.89	3.11	4.23	3.37	3.24	4.32	5.39	4.46
TMC Response (min.)	6.24	3.91	4.47	5.44	5.68	6.18	4.70	6.37	5.25
RR Dispatch Time (min.)	1.76	0.97	1.21	1.42	2.45	2.56	1.46	2.01	1.42
RR Response Time (min.)	4.55	3.00	3.30	4.17	3.27	3.77	3.24	4.42	3.85
Event Clearance (min.)	24.98	24.09	22.47	19.49	24.58	24.95	18.66	22.29	21.23
Roadway Clearance (min.)	43.89	45.22	39.60	44.67	45.98	50.27	28.07	33.00	56.83
Incident Clearance (min.)	89.47	73.43	68.13	57.48	64.10	72.11	53.32	60.15	76.83
# of Events w/ RR/SIRV	422	336	3,030	983	494	4,493	582	378	3,416
RR/SIRV Responses	422	336	3,030	983	494	4,493	582	378	3,416
RR/SIRV Activities	460	377	3,427	1,078	554	4,975	637	411	3,723

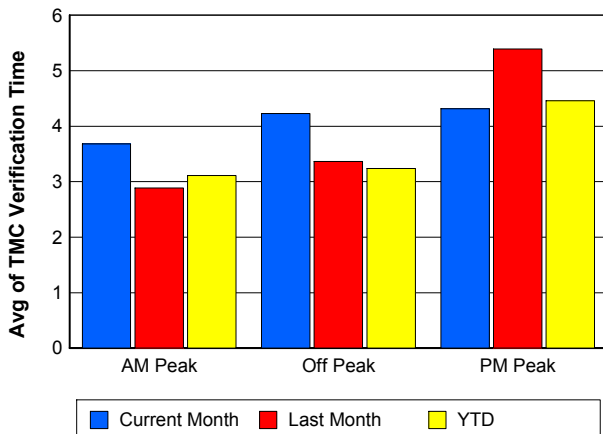
Number of Events / Peak Period



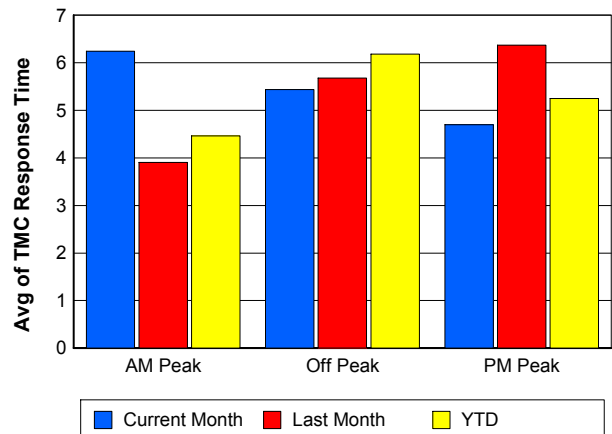
TMC Detection Time



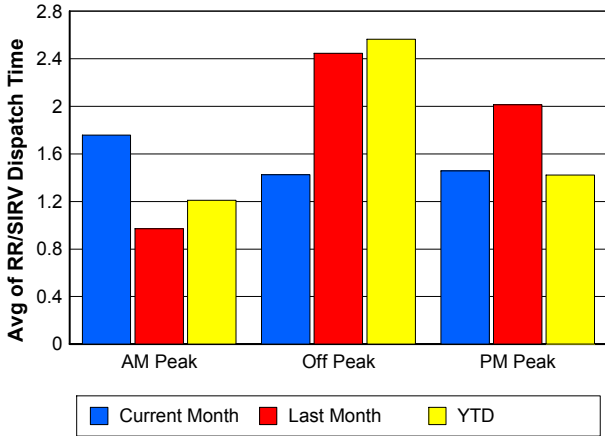
TMC Verification Time



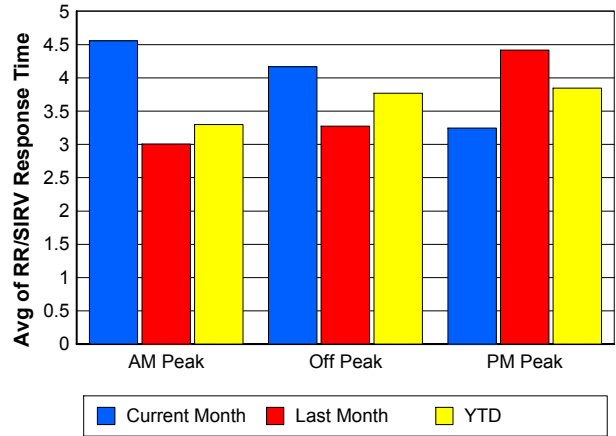
TMC Response Time



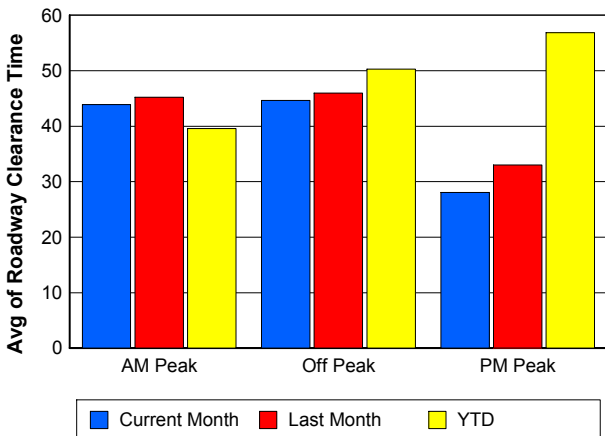
Road Ranger / SIRV Dispatch Time



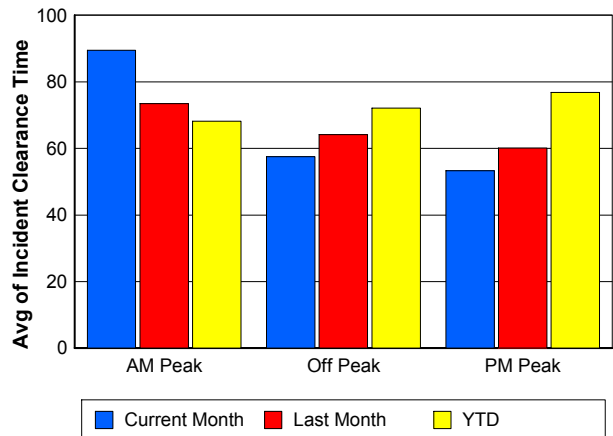
Road Ranger / SIRV Response Time



Roadway Clearance Time (2A)



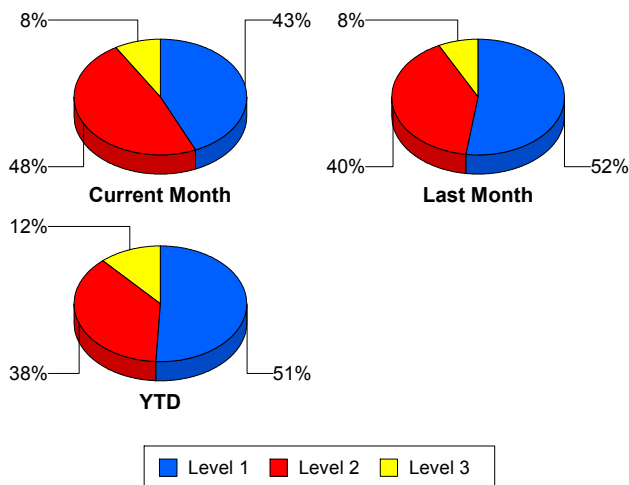
Incident Clearance Time (3B)



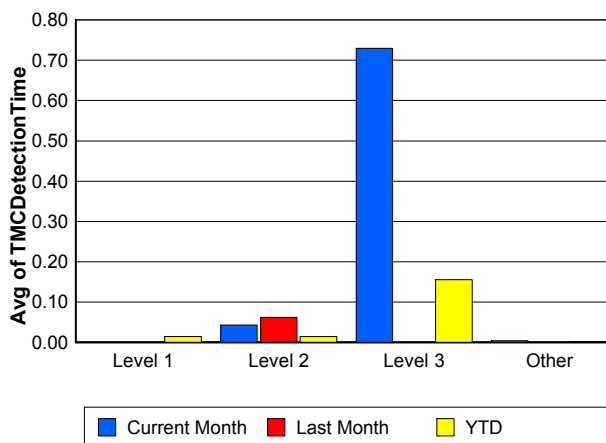
Performance Measures by Severity

	Level 1			Level 2			Level 3			Other		
	<u>This Month</u>	<u>Last Month</u>	<u>YTD</u>	<u>This Month</u>	<u>Last Month</u>	<u>YTD</u>	<u>This Month</u>	<u>Last Month</u>	<u>YTD</u>	<u>This Month</u>	<u>Last Month</u>	<u>YTD</u>
Number of Events	46	48	415	51	37	308	9	7	95	1,926	1,333	11,989
Number of Incidents	46	48	415	51	37	308	9	7	95	0	0	0
TMC Detection (min.)	0.00	0.00	0.01	0.04	0.06	0.01	0.73	0.00	0.16	0.00	0.00	0.00
TMC Verification (min.)	2.89	1.72	2.18	7.95	6.61	4.97	8.62	4.02	4.74	4.04	3.82	3.55
TMC Response (min.)	5.84	5.14	4.34	12.36	9.62	9.54	22.97	10.50	33.22	5.10	5.29	5.20
RR Dispatch Time (min.)	1.29	1.75	1.15	3.08	3.59	3.01	10.08	4.86	25.08	1.43	1.85	1.70
RR Resp. Time (min.)	4.58	3.39	3.21	9.22	6.03	6.52	12.89	5.64	8.15	3.77	3.49	3.59
Event Clearance (min.)	53.89	50.80	42.46	68.37	66.02	72.32	111.05	161.50	201.20	17.93	20.94	19.94
Roadway Clear. (min.)	14.41	17.08	14.65	54.35	55.90	53.86	103.09	146.67	181.45			
Incident Clearance (min.)	53.89	50.80	42.46	68.37	66.02	72.32	111.05	161.50	201.20			
# of Events w/ RR/SIRV	44	31	350	51	30	229	9	3	59	1,883	1,144	10,301
RR/SIRV Responses	44	31	350	51	30	229	9	3	59	1,883	1,144	10,301
RR/SIRV Activities	54	38	447	75	46	376	16	6	101	2,030	1,252	11,201

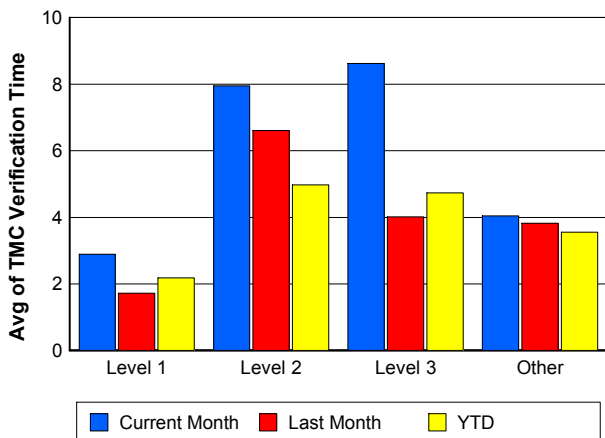
Number of Events / Severity



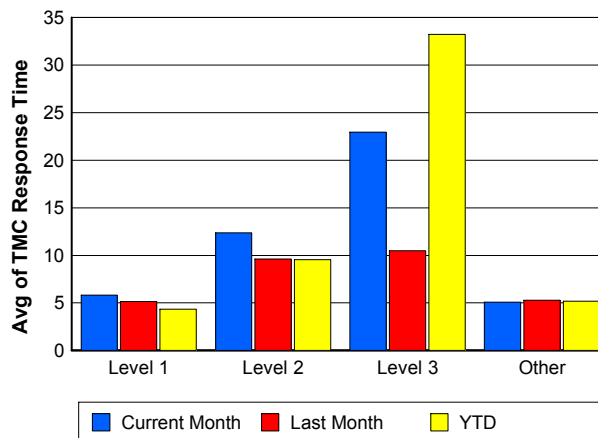
TMC Detection Time



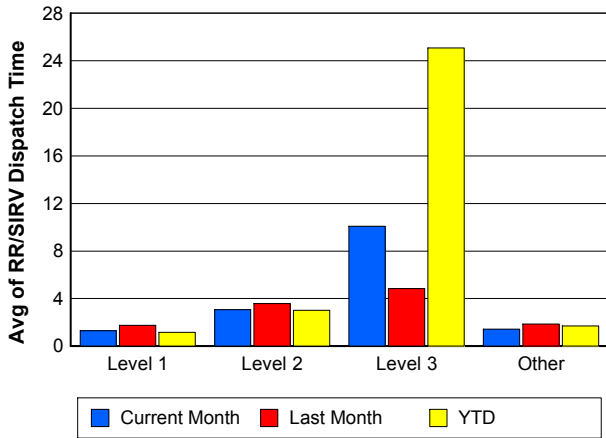
TMC Verification Time



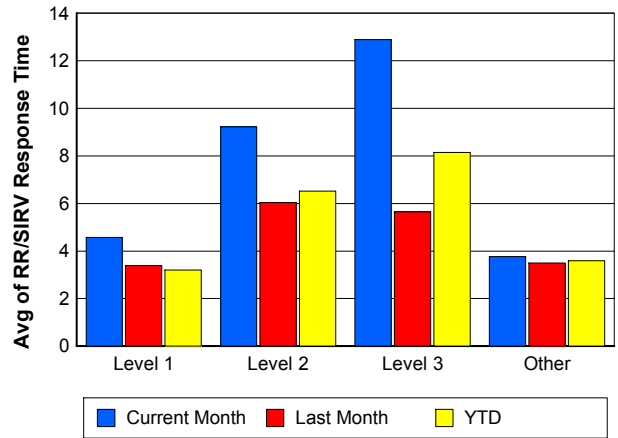
TMC Response Time



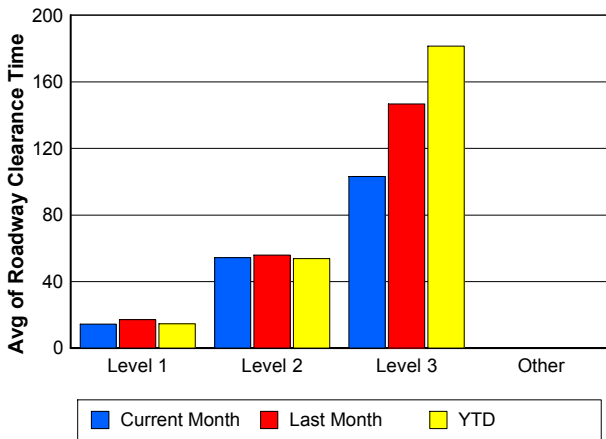
Road Ranger / SIRV Dispatch Time



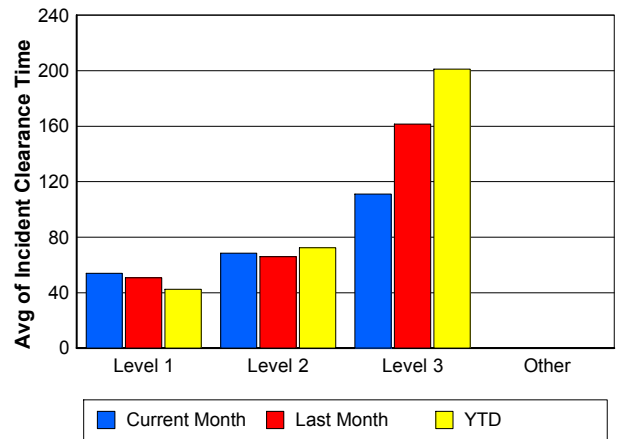
Road Ranger / SIRV Response Time



Roadway Clearance Time (2A)



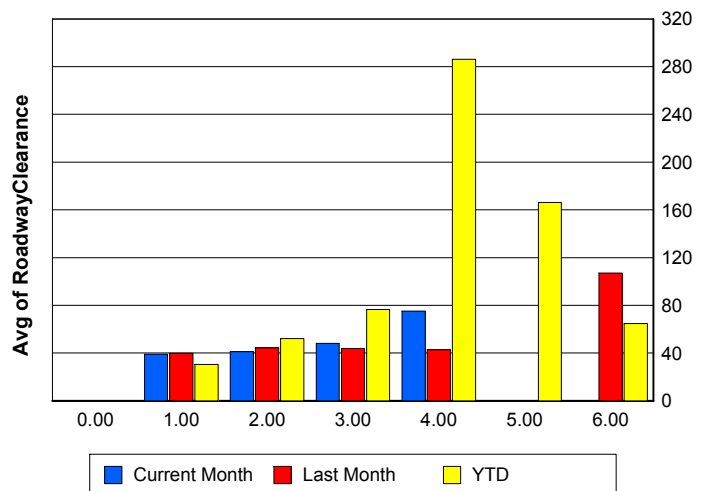
Incident Clearance Time (3B)



Roadway Clearance by Maximum Number of Lanes Blocked

	Current Month	Last Month	YTD
0			
1	38.97	39.81	30.33
2	41.09	44.40	52.22
3	48.18	43.86	76.60
4	75.04	42.63	286.18
5	0.00	0.00	166.12
6	0.00	107.04	64.70

Roadway Clearance Time (2A)



Performance Measures by Roadway

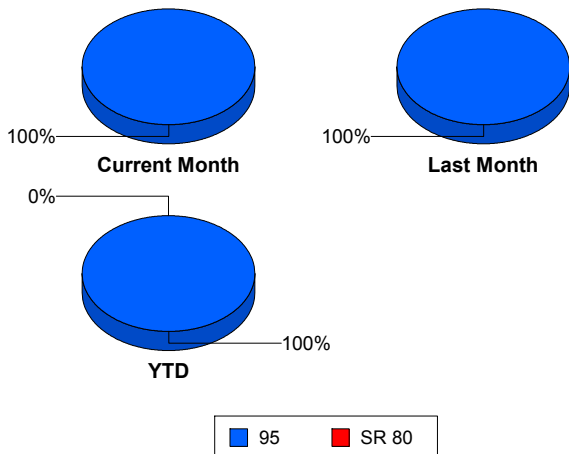
95

	<u>Current Month</u>	<u>Last Month</u>	<u>YTD</u>
Number of Events	2,032	1,425	12,803
Number of Incidents	106	92	815
TMC Detection (min.)	0.01	0.00	0.00
TMC Verification (min.)	4.14	3.83	3.55
TMC Response (min.)	5.39	5.41	5.42
RR Dispatch Time (min.)	1.50	1.90	1.83
RR Resp. Time (min.)	3.97	3.56	3.66
Event Clearance (min.)	20.43	23.80	22.84
Roadway Clear. (min.)	41.16	42.55	42.38
Incident Clearance (min.)	65.71	65.35	65.61
# of Events w/ RR/SIRV	1,987	1,208	10,939
RR/SIRV Responses	1,987	1,208	10,939
RR/SIRV Activities	2,175	1,342	12,125

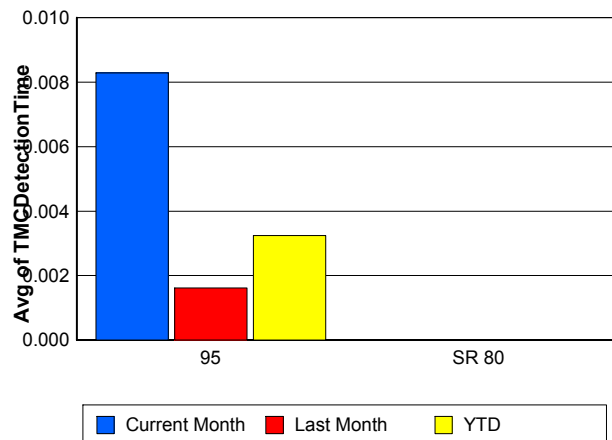
SR 80

	<u>YTD</u>
Number of Events	4
Number of Incidents	3
TMC Detection (min.)	0.00
TMC Verification (min.)	0.00
TMC Response (min.)	
RR Dispatch Time (min.)	
RR Resp. Time (min.)	
Event Clearance (min.)	1,409.98
Roadway Clear. (min.)	1,789.50
Incident Clearance (min.)	1,847.09
# of Events w/ RR/SIRV	0
RR/SIRV Responses	0
RR/SIRV Activities	0

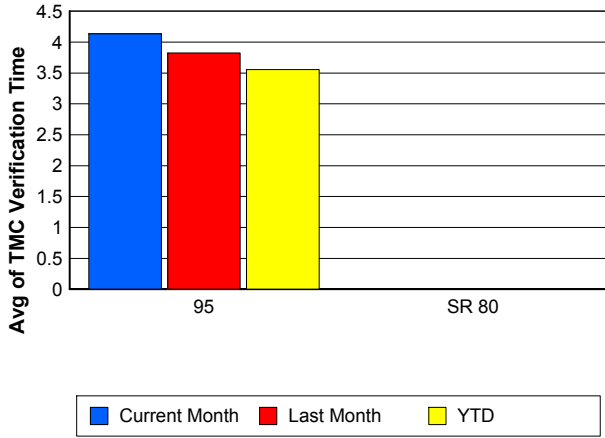
Number of Events / Roadway



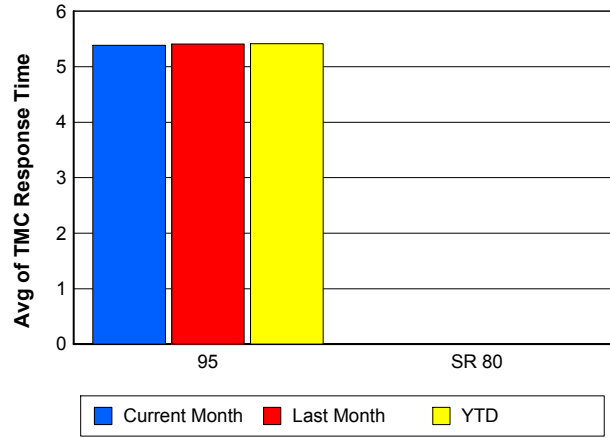
TMC Detection Time



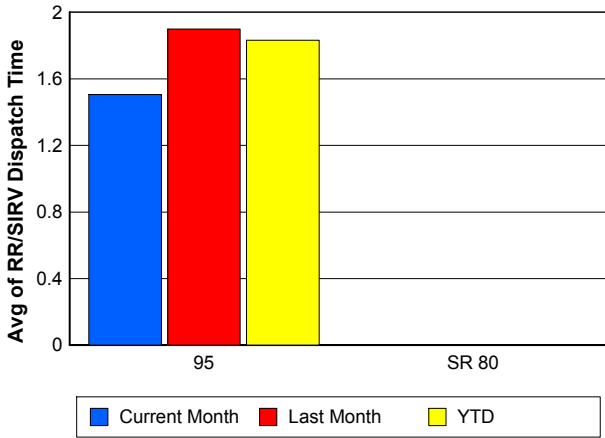
TMC Verification Time



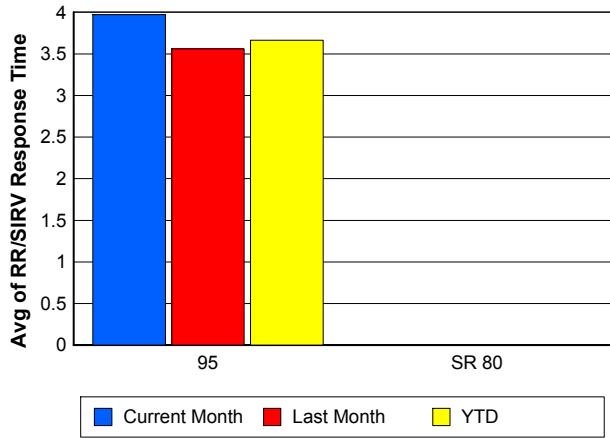
TMC Response Time



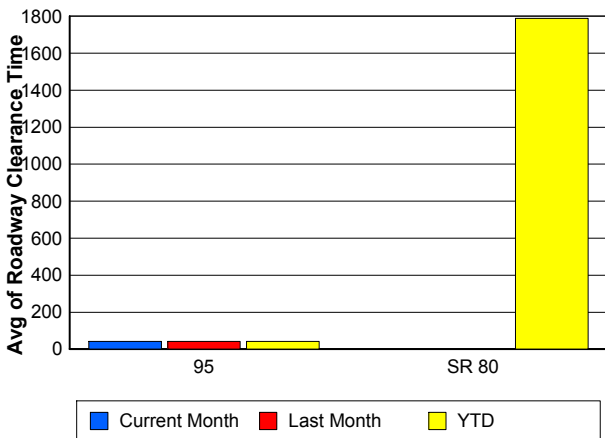
Road Ranger / SIRV Dispatch Time



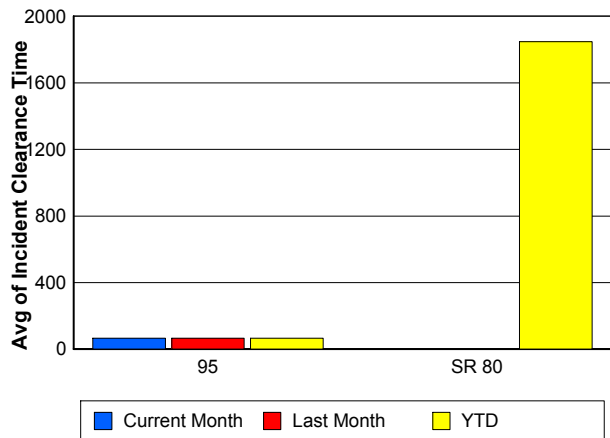
Road Ranger / SIRV Response Time



Roadway Clearance Time (2A)



Incident Clearance Time (3B)



Performance Measures by Event Type

Accident

	<u>Current Month</u>	<u>Last Month</u>	<u>YTD</u>
Number of Events	171	125	1,128
Number of Incidents	62	70	537
TMC Detection (min.)	0.06	0.02	0.01
TMC Verification (min.)	7.72	4.38	4.42
TMC Response (min.)	9.35	6.88	8.26
RR Dispatch Time (min.)	1.76	2.02	2.82
RR Response Time (min.)	7.56	4.84	5.43
Event Clearance (min.)	55.69	67.65	58.87
Roadway Clearance (min.)	42.01	42.88	45.32
Incident Clearance (min.)	75.23	68.96	73.57
# of Events w/ RR/SIRV	168	90	901
RR/SIRV Assists	168	90	901
RR/SIRV Activities	200	112	1,137

Debris on Roadway

	<u>Current Month</u>	<u>Last Month</u>	<u>YTD</u>
Number of Events	125	109	928
Number of Incidents	2	2	33
TMC Detection (min.)	0.00	0.00	0.00
TMC Verification (min.)	7.50	6.42	7.64
TMC Response (min.)	7.55	6.80	7.90
RR Dispatch Time (min.)	2.76	1.36	1.84
RR Response Time (min.)	4.80	5.44	6.07
Event Clearance (min.)	13.16	10.48	12.10
Roadway Clearance (min.)	15.92	25.85	20.76
Incident Clearance (min.)	30.52	26.05	24.10
# of Events w/ RR/SIRV	123	108	912
RR/SIRV Assists	123	108	912
RR/SIRV Activities	129	115	978

Disabled Vehicle

	<u>Current Month</u>	<u>Last Month</u>	<u>YTD</u>
Number of Events	1,651	1,083	9,481
Number of Incidents	32	13	169
TMC Detection (min.)	0.00	0.00	0.00
TMC Verification (min.)	3.64	3.64	3.38
TMC Response (min.)	4.75	5.05	4.55
RR Dispatch Time (min.)	1.30	1.96	1.50
RR Response Time (min.)	3.51	3.16	3.15
Event Clearance (min.)	17.35	19.55	18.07
Roadway Clearance (min.)	34.95	35.72	26.78
Incident Clearance (min.)	47.32	43.97	37.44
# of Events w/ RR/SIRV	1,632	965	8,753
RR/SIRV Assists	1,632	965	8,753
RR/SIRV Activities	1,785	1,072	9,649

Emergency Vehicles

	<u>Last Month</u>	<u>YTD</u>
Number of Events	1	14
Number of Incidents	1	8
TMC Detection (min.)	0.00	0.00
TMC Verification (min.)	17.90	2.27
TMC Response (min.)	17.88	9.04
RR Dispatch Time (min.)	2.37	3.11
RR Response Time (min.)	15.52	5.54
Event Clearance (min.)	238.73	50.12
Roadway Clearance (min.)	229.17	46.52
Incident Clearance (min.)	238.73	52.24
# of Events w/ RR/SIRV	1	7
RR/SIRV Assists	1	7
RR/SIRV Activities	2	9

Other

	<u>Current Month</u>	<u>Last Month</u>	<u>YTD</u>
Number of Events	67	92	819
Number of Incidents	0	1	7
TMC Detection (min.)	0.00	0.00	0.00
TMC Verification (min.)	1.01	2.37	1.28
TMC Response (min.)	3.42	7.13	15.86
RR Dispatch Time (min.)	3.24	1.70	8.43
RR Response Time (min.)	2.43	5.42	6.47
Event Clearance (min.)	8.99	25.79	36.73
Roadway Clearance (min.)		53.73	40.35
Incident Clearance (min.)		57.65	52.93
# of Events w/ RR/SIRV	47	38	255
RR/SIRV Assists	47	38	255
RR/SIRV Activities	40	35	225

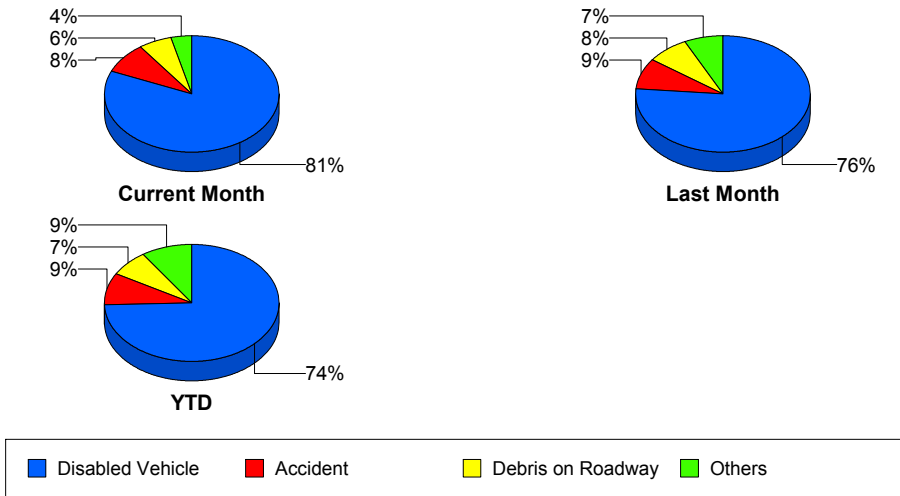
Police Activity

	<u>Current Month</u>	<u>Last Month</u>	<u>YTD</u>
Number of Events	7	6	330
Number of Incidents	6	2	38
TMC Detection (min.)	0.94	0.00	0.06
TMC Verification (min.)	3.39	0.00	0.37
TMC Response (min.)	27.83	3.06	14.02
RR Dispatch Time (min.)	11.81	0.68	7.00
RR Response Time (min.)	16.02	2.38	7.03
Event Clearance (min.)	90.49	44.69	28.00
Roadway Clearance (min.)	76.78	33.41	72.75
Incident Clearance (min.)	92.56	42.34	103.17
# of Events w/ RR/SIRV	6	2	32
RR/SIRV Assists	6	2	32
RR/SIRV Activities	8	3	37

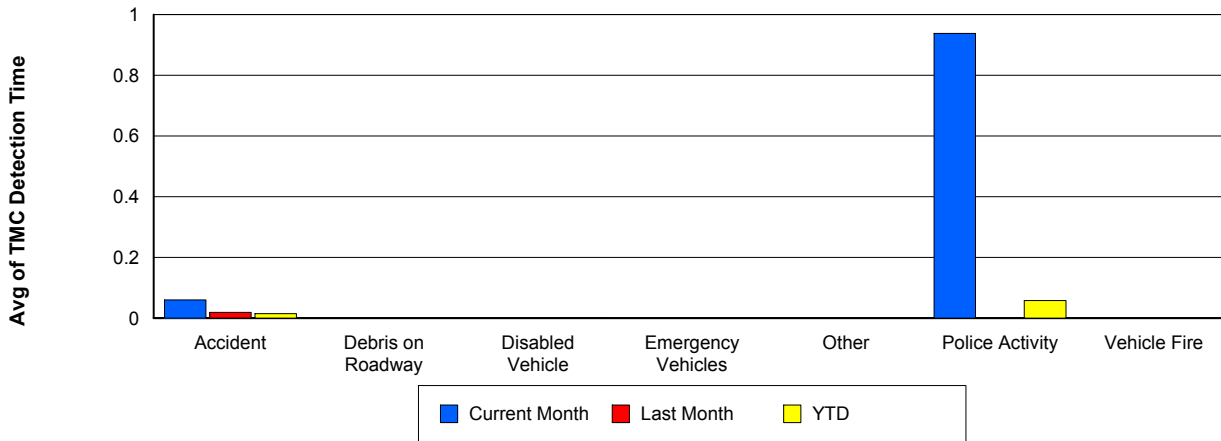
Vehicle Fire

	<u>Current Month</u>	<u>Last Month</u>	<u>YTD</u>
Number of Events	5	4	33
Number of Incidents	4	3	25
TMC Detection (min.)	0.00	0.00	0.00
TMC Verification (min.)	7.14	3.07	3.35
TMC Response (min.)	9.47		21.43
RR Dispatch Time (min.)	2.33		14.97
RR Response Time (min.)	7.14		6.46
Event Clearance (min.)	72.54	48.59	86.05
Roadway Clearance (min.)	36.83	15.92	65.80
Incident Clearance (min.)	42.60	60.03	94.79
# of Events w/ RR/SIRV	5	0	20
RR/SIRV Assists	5	0	20
RR/SIRV Activities	6	0	29

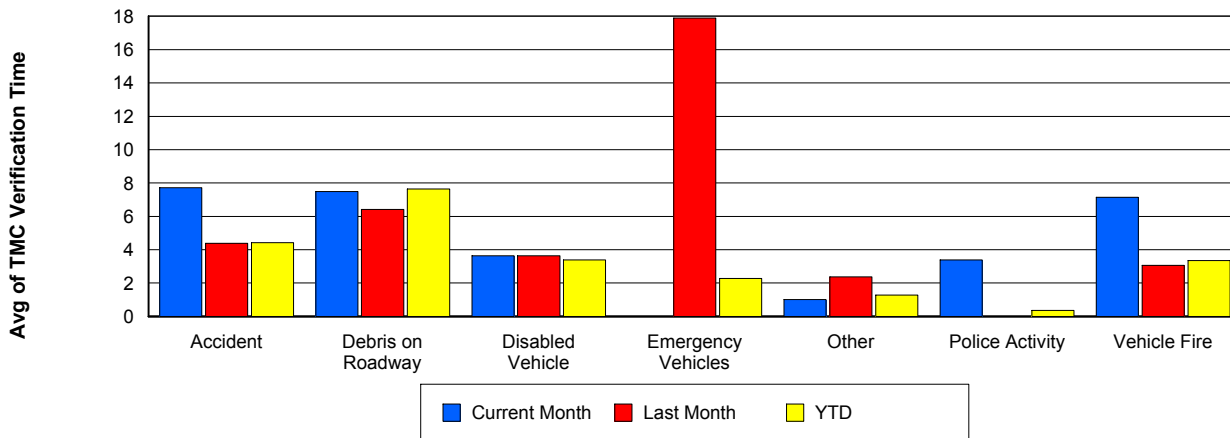
Number of Events / Event Type



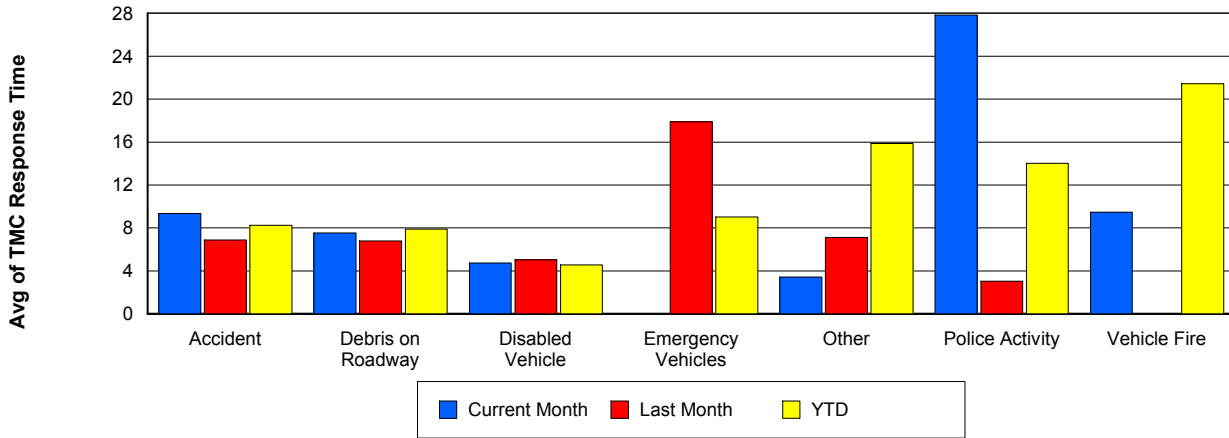
TMC Detection Time



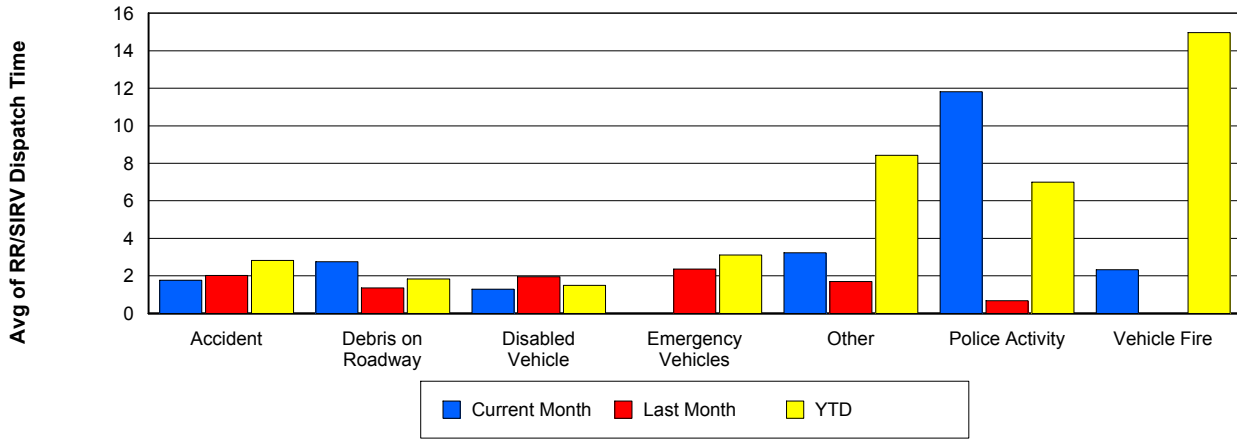
TMC Verification Time



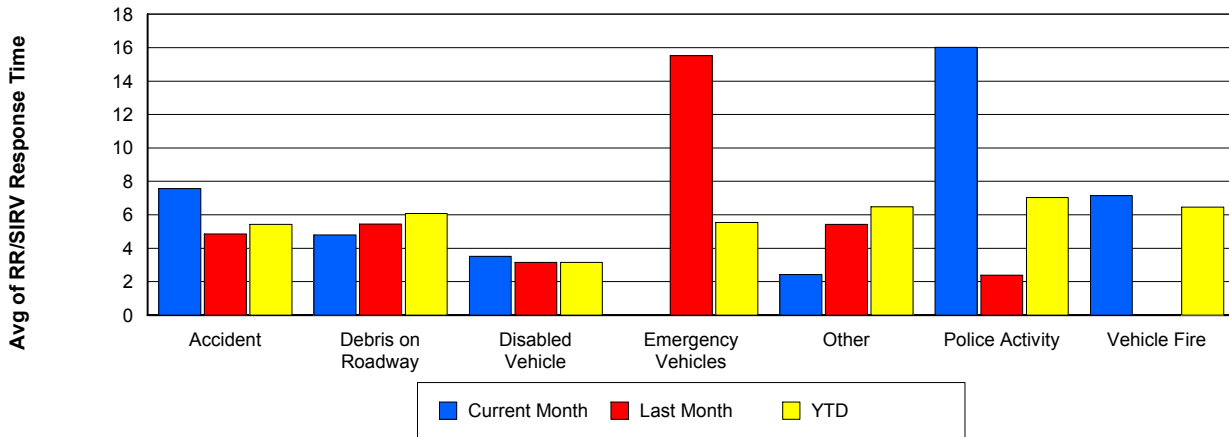
TMC Response Time



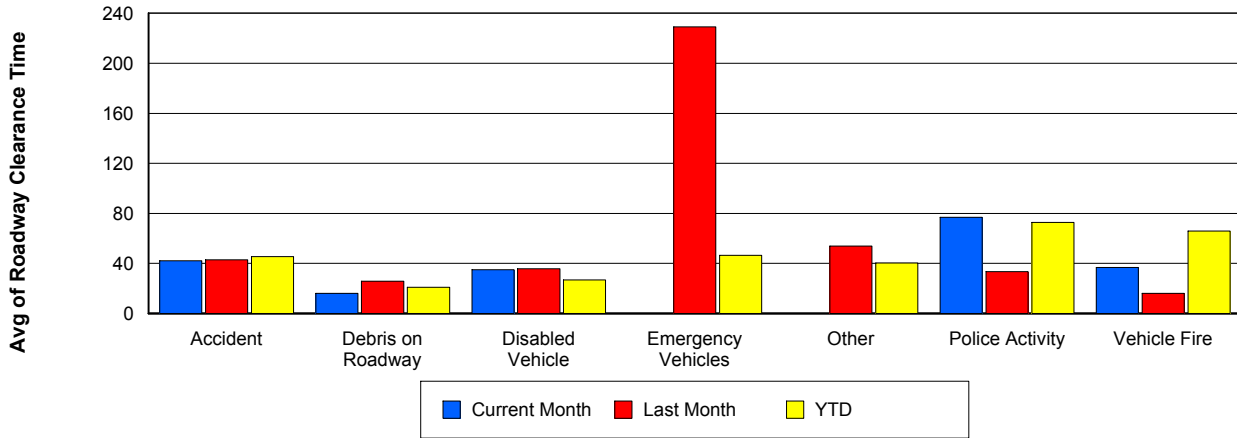
Road Ranger / SIRV Dispatch Time



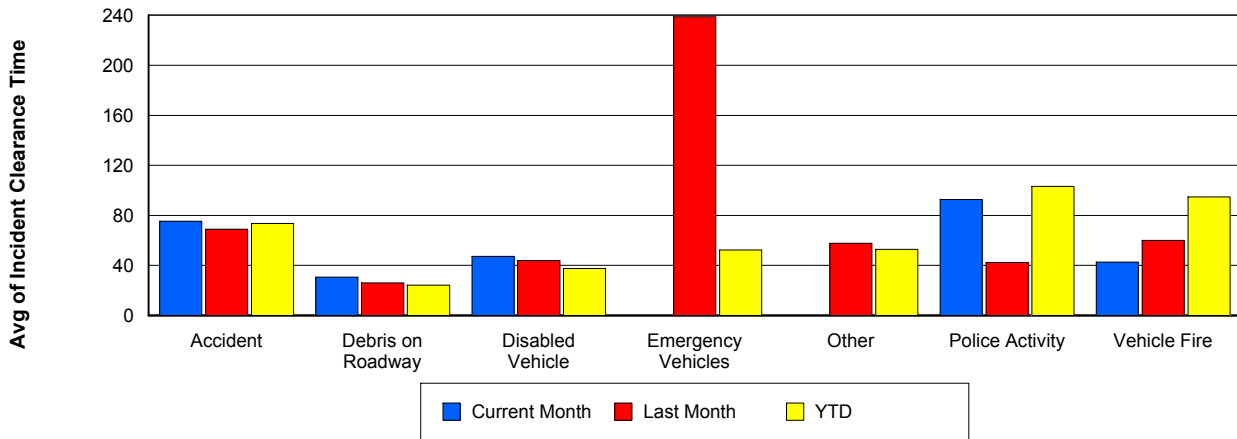
Road Ranger / SIRV Response Time



Roadway Clearance Time (2A)



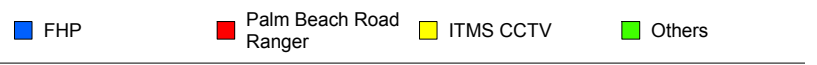
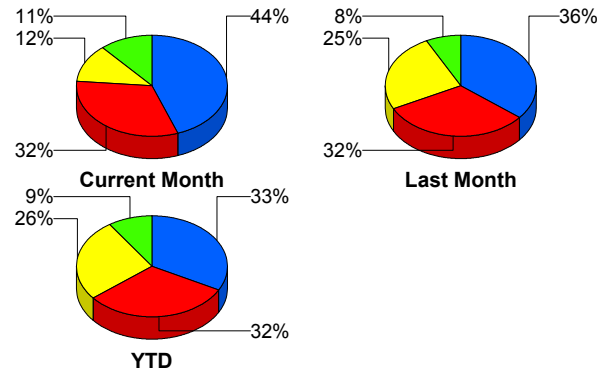
Incident Clearance Time (3B)



Incident Detection Methods

	Current Month	Last Month	YTD
Broward CCTV	0	0	7
Broward Road Ranger	0	0	6
Broward TMC	2	0	2
Broward VideoWall	0	0	1
Construction CEI	0	0	1
District 4	4	3	22
Emergency Operations	0	0	1
FHP	47	33	268
I-95 Construction PIO	0	0	2
ITMS	4	1	12
ITMS CCTV	13	23	215
Local Police	0	0	1
Media	0	0	2
Motorist	2	3	15
Palm Beach Road Ran	34	29	258
Road Watcher	0	0	1
SmarTraveler (511)	0	0	4
Total	106	92	818

Total Incidents by Detection Method

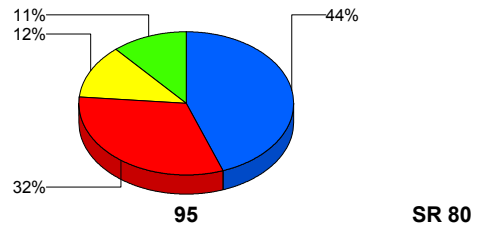


Incident Detection Methods by Roadway

		Current Month	Last Month	YTD
95	Broward CCTV	0	0	7
	Broward Road Ranger	0	0	6
	Broward TMC	2	0	2
	Broward VideoWall	0	0	1
	Construction CEI	0	0	1
	District 4	4	3	22
	FHP	47	33	267
	I-95 Construction PIO	0	0	2
	ITMS	4	1	11
	ITMS CCTV	13	23	215
	Local Police	0	0	1
	Media	0	0	2
	Motorist	2	3	15
	Palm Beach Road Ran	34	29	258
	Road Watcher	0	0	1
	SmarTraveler (511)	0	0	4
Total	106	92	815	
SR 80	Emergency Operations	0	0	1
	FHP	0	0	1
	ITMS	0	0	1
	Total	0	0	3
Total	106	92	818	

Total Events by Roadway and Detection Method

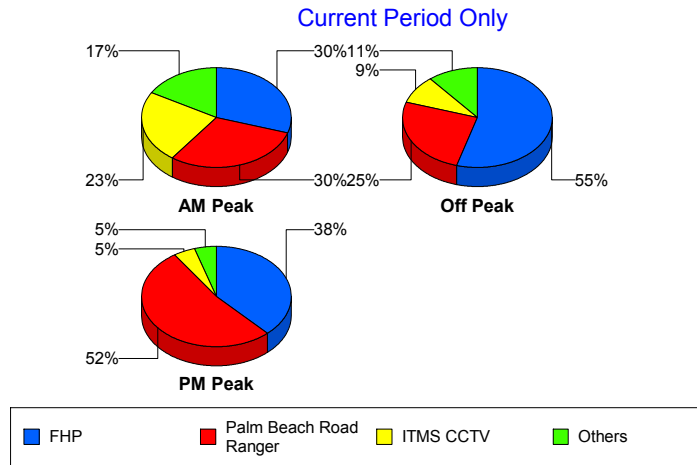
Current Period Only



Incident Detection Methods by Peak Period

		Current Month	Last Month	YTD
AM Peak	Broward CCTV	0	0	2
	Broward Road Ranger	0	0	3
	Broward TMC	2	0	2
	District 4	2	0	11
	FHP	9	9	86
	ITMS	1	1	5
	ITMS CCTV	7	3	37
	Motorist	0	1	6
	Palm Beach Road Ran	9	8	87
	Road Watcher	0	0	1
	SmarTraveler (511)	0	0	3
	Total	30	22	243
Off Peak	Broward CCTV	0	0	4
	Broward Road Ranger	0	0	1
	Broward VideoWall	0	0	1
	Construction CEI	0	0	1
	District 4	2	1	8
	FHP	30	19	131
	I-95 Construction PIO	0	0	2
	ITMS	3	0	6
	ITMS CCTV	5	16	113
	Motorist	1	2	5
	Palm Beach Road Ran	14	9	92
	SmarTraveler (511)	0	0	1
	Total	55	47	365
PM Peak	Broward CCTV	0	0	1
	Broward Road Ranger	0	0	2
	District 4	0	2	3
	Emergency Operations	0	0	1
	FHP	8	5	51
	ITMS	0	0	1

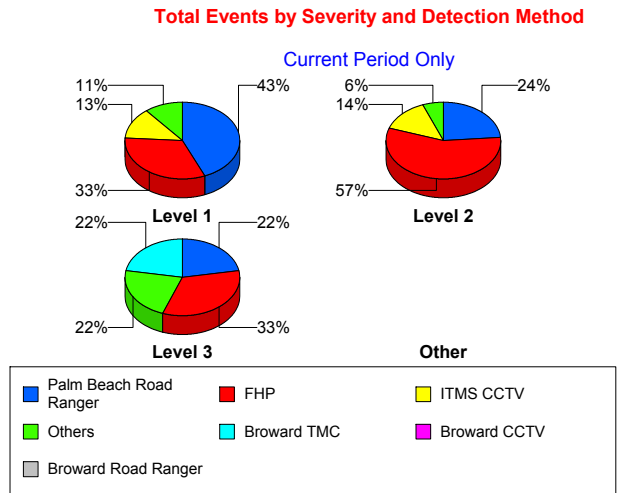
Total Events by Peak Period and Detection Method



		Current Month	Last Month	YTD
PM Peak	ITMS CCTV	1	4	65
	Local Police	0	0	1
	Media	0	0	2
	Motorist	1	0	4
	Palm Beach Road Ran	11	12	79
	Total	21	23	210
Total		106	92	818

Incident Detection Methods by Severity

		Current Month	Last Month	YTD
Level 1	Broward CCTV	0	0	5
	Broward Road Ranger	0	0	4
	District 4	2	1	15
	FHP	15	8	95
	I-95 Construction PIO	0	0	1
	ITMS	2	0	4
	ITMS CCTV	6	17	95
	Local Police	0	0	1
	Motorist	1	2	10
	Palm Beach Road Ran	20	20	183
	Road Watcher	0	0	1
	SmarTraveler (511)	0	0	1
	Total	46	48	415
	Level 2	Broward Road Ranger	0	0
Broward VideoWall		0	0	1
District 4		1	2	6
FHP		29	18	133
I-95 Construction PIO		0	0	1
ITMS		1	1	6
ITMS CCTV		7	6	89
Media		0	0	1
Motorist		1	1	4



		Current Month	Last Month	YTD
Level 2	Palm Beach Road Ran	12	9	62
	SmarTraveler (511)	0	0	3
	Total	51	37	308
Level 3	Broward CCTV	0	0	2
	Broward TMC	2	0	2
	Construction CEI	0	0	1
	District 4	1	0	1
	Emergency Operations	0	0	1
	FHP	3	7	40
	ITMS	1	0	2
	ITMS CCTV	0	0	31
	Media	0	0	1
	Motorist	0	0	1
	Palm Beach Road Ran	2	0	13
	Total	9	7	95
Total		106	92	818

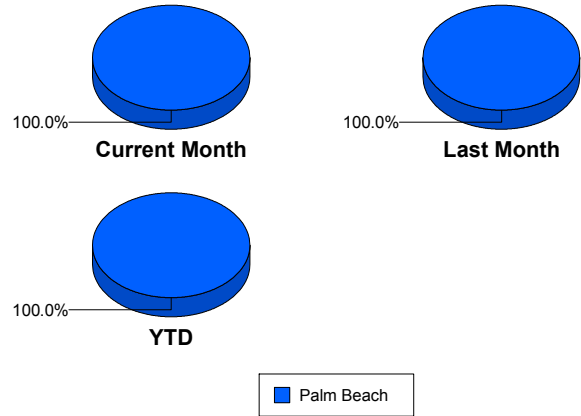
Road Ranger / SIRV Performance Measures

Road Ranger / SIRV Performance By County

Values presented are:
 - Total Events with a RR/SIRV Response
 - Total RR/SIRV Responses,
 - Total Activities Performed

	Current Mo	Last Month	YTD
Palm Beach	2,603	1,593	14,258
	2,697	1,525	14,468
	2,882	1,773	15,787

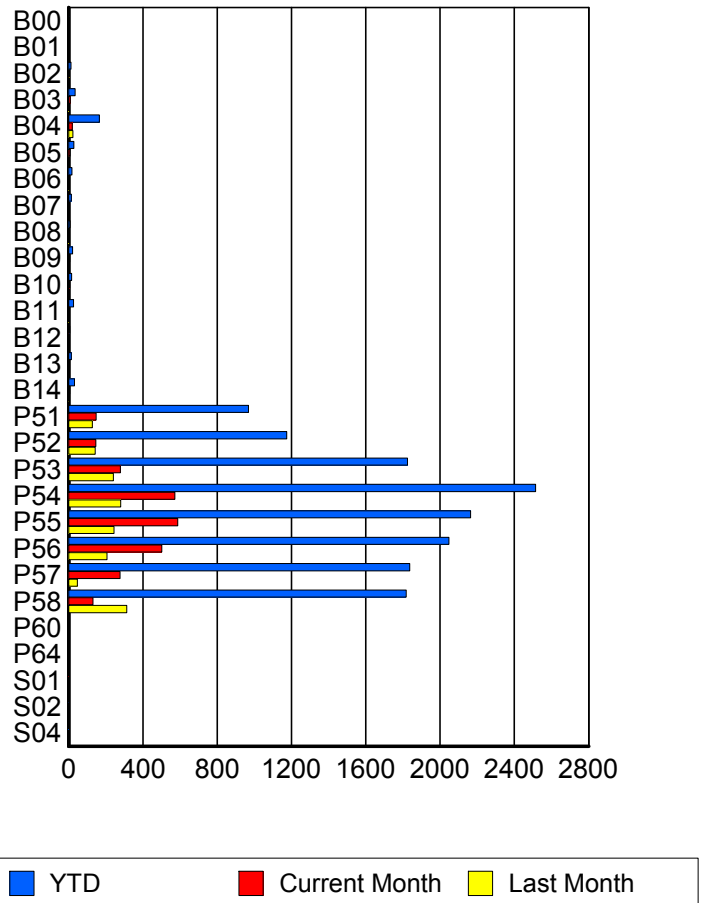
RR/SIRV Responses per County



Road Ranger / SIRV Performance By Truck

	Current Mo	Last Month	YTD
B00	0	0	5
	0	0	5
	0	0	5
B01	0	0	1
	0	0	1
	0	0	1
B02	3	4	13
	3	4	13
	4	4	14
B03	9	2	36
	9	2	36
	9	2	37
B04	19	23	165
	19	23	166
	19	25	189
B05	7	2	27
	7	2	28
	7	2	29
B06	1	2	18
	1	2	18
	1	2	18
B07	1	3	14
	1	3	14
	1	3	14
B08	1	2	8
	1	2	8
	1	3	9

RR/SIRV Responses per Truck



	Current Mo	Last Month	YTD
B09	5	0	20
	6	0	21
	6	0	21
B10	6	0	16
	6	0	17
	6	0	17
B11	4	2	27
	4	2	27
	4	2	28
B12	2	0	6
	2	0	6
	3	0	7
B13	0	0	14
	0	0	14
	0	0	15
B14	5	3	31
	6	3	32
	7	3	34
P51	148	129	958
	149	128	968
	155	136	1,014
P52	145	146	1,171
	146	143	1,175
	157	155	1,260
P53	276	239	1,804
	279	241	1,824
	297	255	1,935
P54	566	280	2,495
	573	280	2,514
	605	305	2,700
P55	581	243	2,152
	588	244	2,164
	621	264	2,320
P56	495	205	2,026
	501	207	2,047
	538	222	2,211
P57	275	47	1,818
	277	47	1,836
	292	55	1,965
P58	129	311	1,791
	132	313	1,817
	145	334	1,935
P60	1	0	1
	1	0	1
	1	0	1

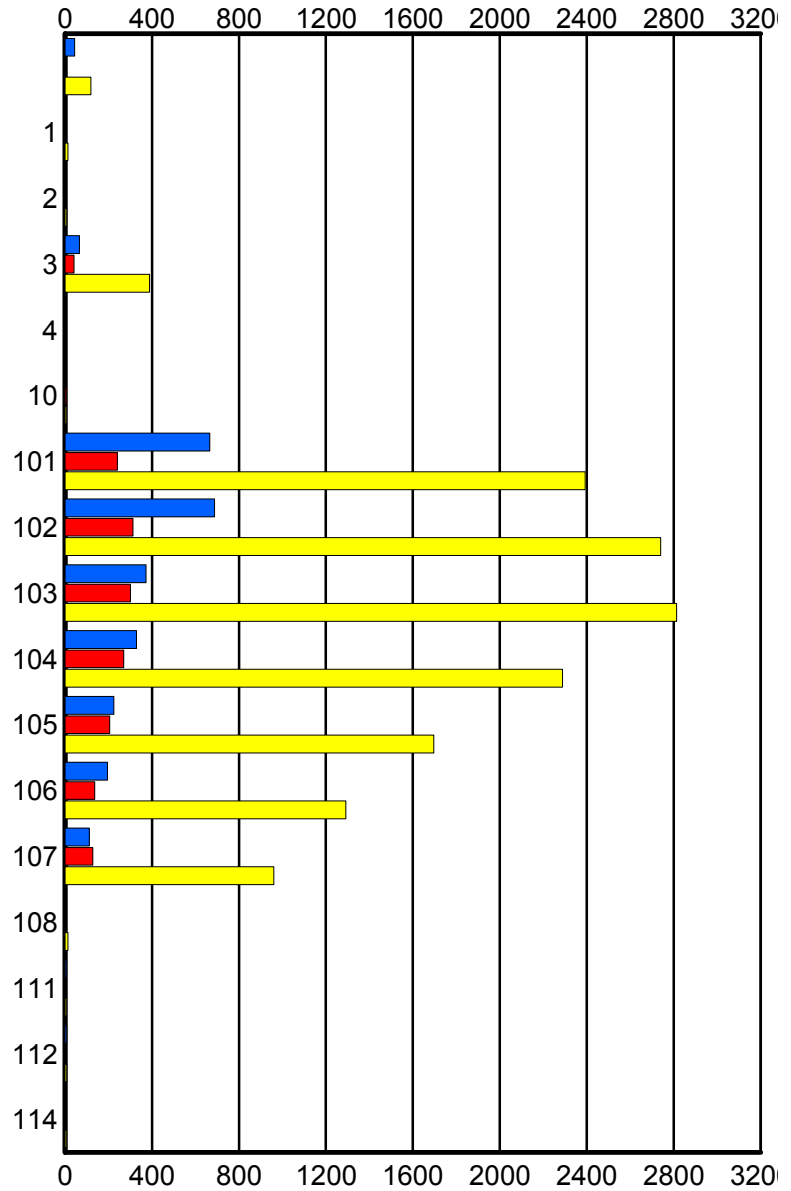
	Current Mo	Last Month	YTD
P64	1	0	1
	1	0	1
	1	0	1
S01	2	0	3
	2	0	3
	2	0	3
S02	0	1	2
	0	1	2
	0	1	2
S04	0	0	2
	0	0	2
	0	0	2

Road Ranger / SIRV Performance By Beat

	Current Mo	Last Month	YTD
	44	4	119
	44	4	119
	48	4	123
1	2	0	13
	2	0	13
	2	0	14
2	2	2	8
	2	2	8
	2	2	9
3	63	39	380
	66	41	389
	69	44	419
4	0	0	2
	0	0	2
	0	0	2
10	0	6	6
	0	6	6
	0	9	9
101	661	239	2,376
	666	241	2,393
	713	263	2,581
102	677	310	2,717
	688	312	2,740
	720	333	2,917
103	370	300	2,783
	373	301	2,813
	403	329	3,031
104	323	269	2,266
	328	270	2,289
	349	291	2,451
105	224	204	1,684
	225	206	1,697
	235	216	1,805
106	189	140	1,274
	195	137	1,291
	206	146	1,382
107	109	129	950
	111	128	961
	119	136	1,008
108	0	0	13
	0	0	14
	0	0	14
111	6	0	6
	6	0	6
	7	0	7

Values presented are:
 - Total Events with a RR/SIRV Response
 - Total RR/SIRV Responses,
 - Total Activities Performed

RR/SIRV Responses per Beat



■ Current Month
 ■ Last Month
 ■ YTD

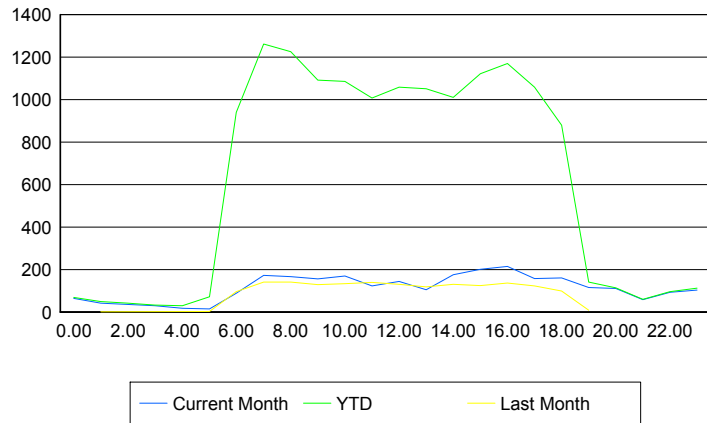
	Current Mo	Last Month	YTD
112	7	0	7
	8	0	8
	9	0	9
114	0	0	6
	0	0	6
	0	0	6

Road Ranger / SIRV Performance By Time of Day

Values presented are:
 - Total Events with a RR/SIRV Response
 - Total RR/SIRV Responses,
 - Total Activities Performed

	Current Mo	Last Month	YTD
12AM-1AM	62	0	67
	64	0	69
	66	0	71
1AM-2AM	40	1	46
	41	1	49
	43	1	51
2AM-3AM	34	0	40
	35	0	41
	38	0	45
3AM-4AM	26	0	30
	29	0	33
	30	0	34
4AM-5AM	18	0	27
	18	0	30
	18	0	31
5AM-6AM	13	3	66
	14	3	71
	15	3	75
6AM-7AM	82	89	899
	88	95	940
	91	101	990
7AM-8AM	161	136	1,204
	172	141	1,262
	185	151	1,353
8AM-9AM	158	134	1,175
	167	141	1,226
	175	149	1,312
9AM-10AM	151	122	1,053
	156	129	1,091
	165	139	1,189
10AM-11AM	165	131	1,047
	169	134	1,085
	177	141	1,145

Number of Responses / Hour of the Day



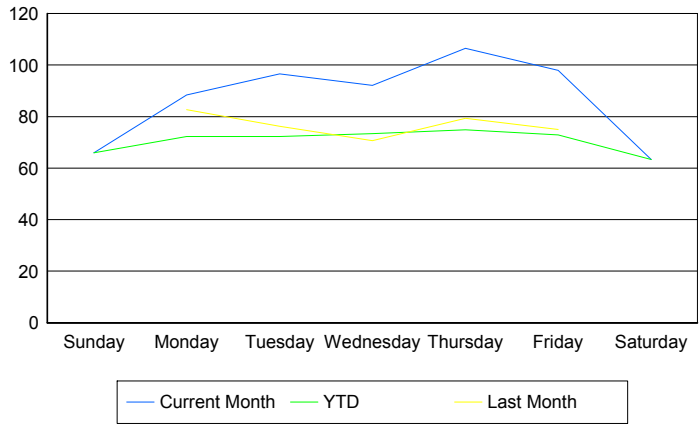
	Current Mo	Last Month	YTD
11AM-12PM	121	136	981
	122	139	1,008
	133	154	1,100
12PM-1PM	136	122	1,018
	144	130	1,059
	153	140	1,136
1PM-2PM	99	109	1,017
	105	119	1,051
	113	126	1,134
2PM-3PM	168	122	972
	175	130	1,010
	183	140	1,070
3PM-4PM	194	124	1,084
	201	125	1,121
	211	132	1,196
4PM-5PM	206	139	1,137
	215	137	1,170
	231	154	1,246
5PM-6PM	153	119	1,029
	157	123	1,059
	168	127	1,119
6PM-7PM	158	98	868
	161	99	879
	170	106	929
7PM-8PM	111	8	137
	115	8	141
	122	9	150
8PM-9PM	105	0	107
	111	0	113
	116	0	118
9PM-10PM	55	0	56
	58	0	60
	62	0	64
10PM-11PM	85	0	88
	92	0	95
	102	0	105
11PM-12AM	102	0	110
	103	0	112
	115	0	124

Road Ranger / SIRV Performance By Day of Week

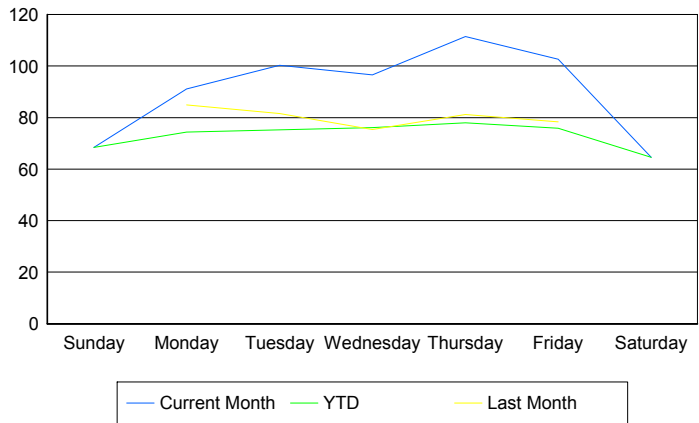
Values presented are: - Total Events with a RR/SIRV Response - Total RR/SIRV Responses, - Total Activities Performed

	Current Mo	Last Month	YTD
Sunday	263 273 293	0 0 0	263 273 293
Monday	345 355 382	406 395 439	2,726 2,781 2,970
Tuesday	476 495 521	302 302 341	2,710 2,802 2,998
Wednesday	458 480 509	277 295 307	2,794 2,896 3,102
Thursday	425 441 476	313 320 347	2,779 2,851 3,100
Friday	390 409 428	297 312 339	2,747 2,860 3,051
Saturday	253 258 273	0 0 0	253 258 273

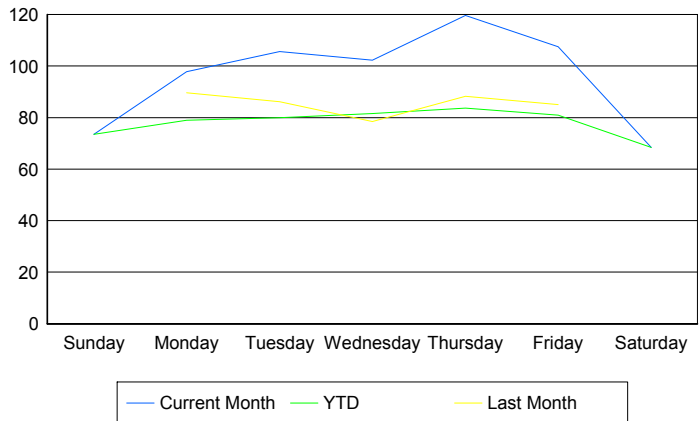
Avg # of events with a RR/SIRV Response per Day of the Week



Avg # of RR/SIRV Responses per Day of the Week



Avg # of RR/SIRV Activities Performed per Day of the Week



Road Ranger / SIRV Responses per Time of Day and Day of Week

