



# Monthly Performance Measures Report Palm Beach County



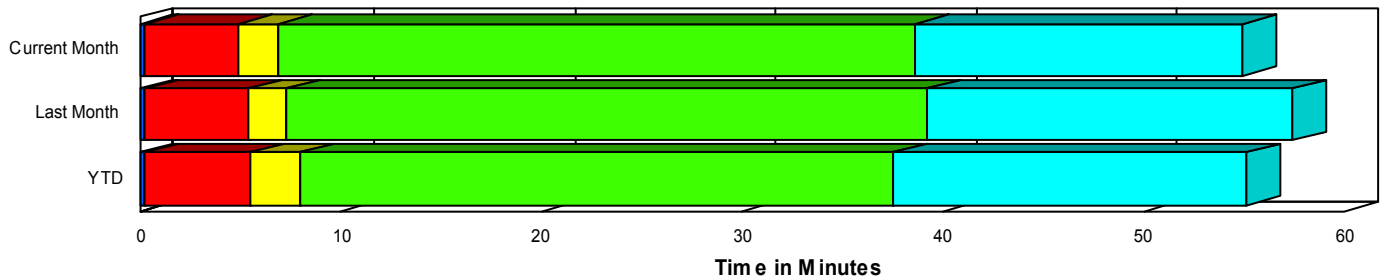
Created on:  
December 03, 2007  
9:26 am

Period From Nov 1, 2007 to Nov 30, 2007

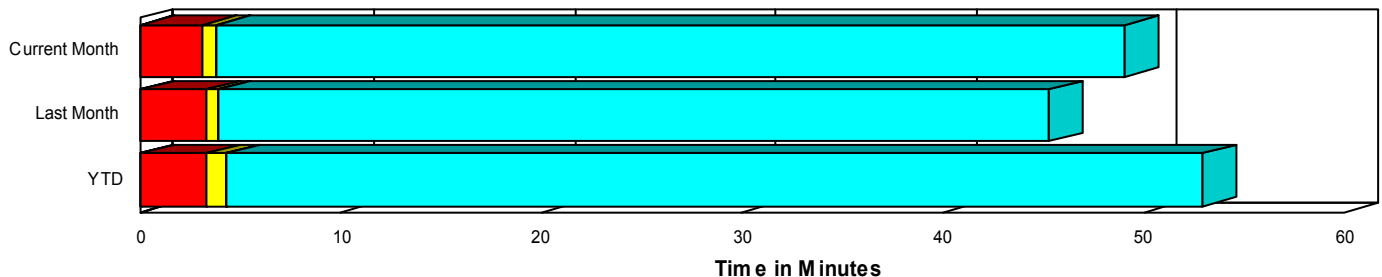
## Performance Measures Summary

	Traffic Events (No Lanes Blocked)			Incidents (Lanes Blocked)		
	<u>This Month</u>	<u>Last Month</u>	<u>YTD</u>	<u>This Month</u>	<u>Last Month</u>	<u>YTD</u>
Number of Events	2,568	2,699	29,241	188	212	2,083
TMC Detection (min.)	0.06	0.06	0.08	0.26	0.21	0.26
TMC Verification (min.)	3.03	3.27	3.23	4.64	5.24	5.24
TMC Response (min.)	3.83	3.92	4.38	6.73	7.23	7.81
RR Dispatch Time (min.)	1.09	0.83	1.39	0.99	1.32	1.34
RR Response Time (min.)	2.76	3.09	2.99	5.74	5.91	6.48
Roadway Clearance (min.)				38.61	38.90	37.63
Event Clearance (min.)	49.13	45.42	53.06	54.66	56.82	54.01
# of Events w/ RR/SIRV	2,431	2,584	27,869	186	206	2,040
RR/SIRV Responses	2,489	2,661	28,776	252	272	2,606
RR/SIRV Activities	2,636	2,813	30,538	271	302	2,984

## Incident Clearance TimeLine



## Traffic Event(Non-Lane Blockage) Time-Line



<ul style="list-style-type: none"> <li><span style="display: inline-block; width: 15px; height: 15px; background-color: blue; margin-right: 5px;"></span> Avg. TMC Detection Time</li> <li><span style="display: inline-block; width: 15px; height: 15px; background-color: red; margin-right: 5px;"></span> Avg. Time from TMC Detection to TMC Verification</li> <li><span style="display: inline-block; width: 15px; height: 15px; background-color: yellow; margin-right: 5px;"></span> Avg. Time from TMC Verification to TMC Response</li> </ul>	<ul style="list-style-type: none"> <li><span style="display: inline-block; width: 15px; height: 15px; background-color: green; margin-right: 5px;"></span> Avg. Time from TMC Response to Roadway Clearance*</li> <li><span style="display: inline-block; width: 15px; height: 15px; background-color: cyan; margin-right: 5px;"></span> Avg. Time from Roadway Clearance to Incident/Event Clearance**</li> </ul>
--	--

\* Roadway clearance equals all travel lanes open

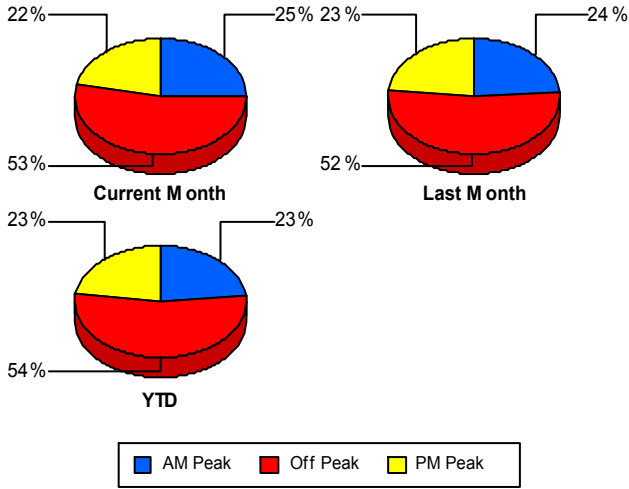
\*\* Incident clearance equals time when last responder has left the scene

## Performance Measures by Peak Period

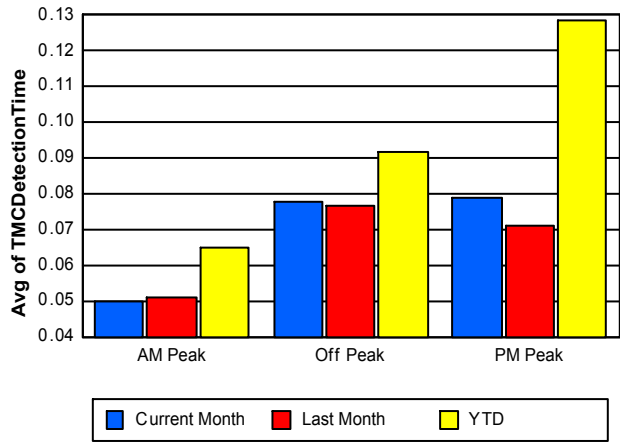
Note: AM peak period is defined as 6am to 10am and PM peak period is defined as 3pm to 7pm.

	AM Peak			Off Peak			PM Peak		
	<u>Current Month</u>	<u>Last Month</u>	<u>YTD</u>	<u>Current Month</u>	<u>Last Month</u>	<u>YTD</u>	<u>Current Month</u>	<u>Last Month</u>	<u>YTD</u>
Number of Events	688	707	7,348	1,469	1,527	16,817	599	677	7,159
Number of Incidents	43	58	527	104	104	1,062	41	50	494
TMC Detection (min.)	0.05	0.05	0.07	0.08	0.08	0.09	0.08	0.07	0.13
TMC Verification (min.)	2.55	2.64	2.57	3.21	3.74	3.55	3.66	3.50	3.76
TMC Response (min.)	3.39	3.47	3.37	4.32	4.50	4.68	4.09	4.14	5.72
RR Dispatch Time (min.)	0.79	0.81	0.72	1.49	0.98	1.32	0.43	0.69	2.22
RR Response Time (min.)	2.61	2.67	2.65	2.86	3.53	3.37	3.66	3.45	3.51
Event Clearance (min.)	41.34	40.38	44.86	56.98	56.70	62.06	40.55	28.81	40.63
Roadway Clearance (min.)	34.58	34.58	33.58	42.12	41.45	41.89	33.93	38.61	32.78
Incident Clearance (min.)	54.25	51.94	50.22	56.75	58.20	57.93	49.80	59.63	49.63
# of Events w/ RR/SIRV	661	683	7,087	1,379	1,453	15,922	577	654	6,900
RR/SIRV Responses	680	720	7,416	1,467	1,537	16,801	594	676	7,165
RR/SIRV Activities	715	770	7,884	1,570	1,652	18,091	622	693	7,547

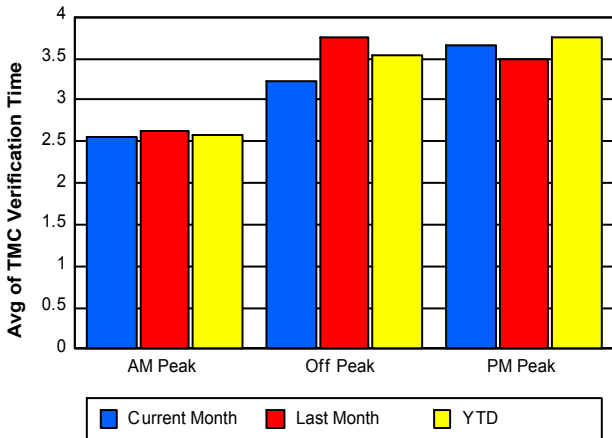
### Number of Events / Peak Period



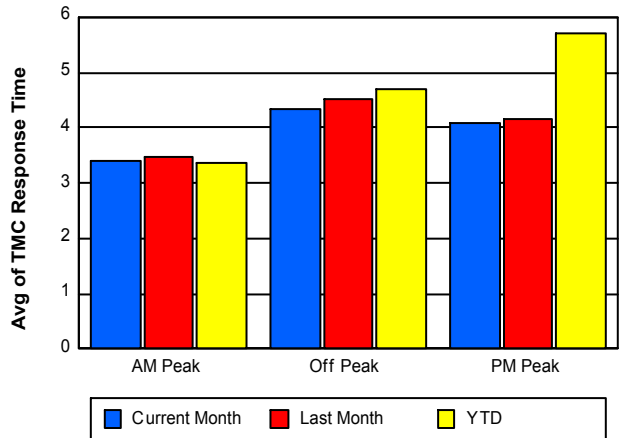
### TMC Detection Time



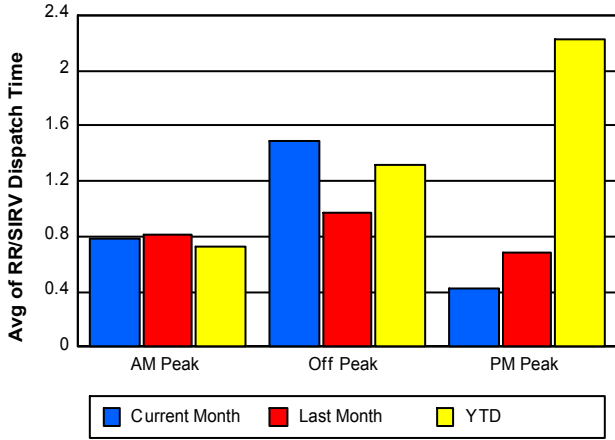
### TMC Verification Time



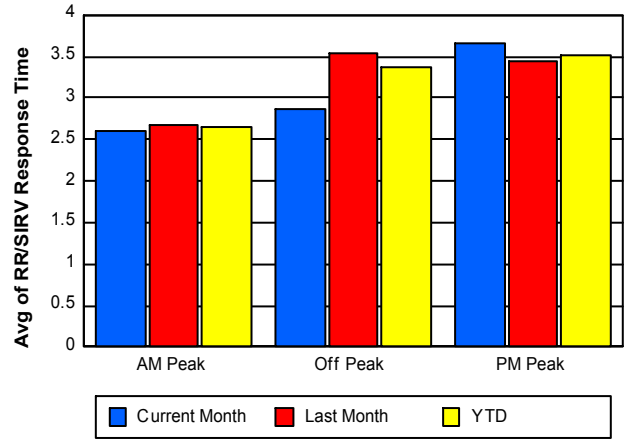
### TMC Response Time



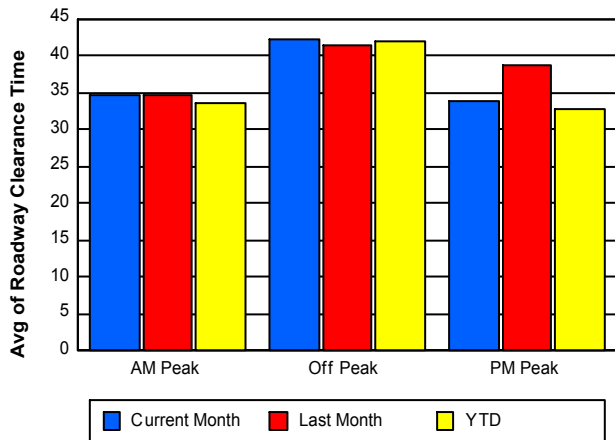
### Road Ranger / SIRV Dispatch Time



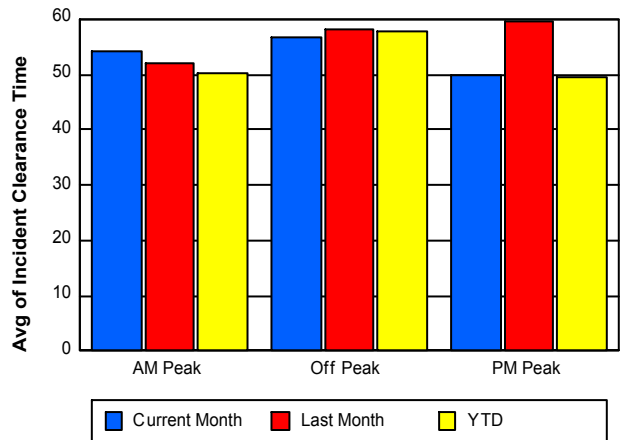
### Road Ranger / SIRV Response Time



### Roadway Clearance Time (2A)



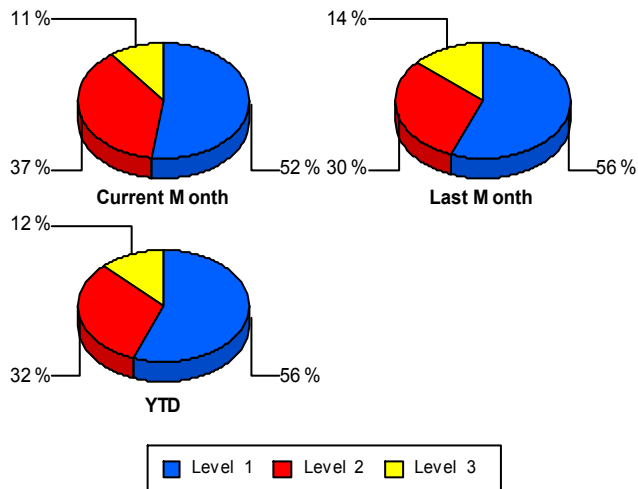
### Incident Clearance Time (3B)



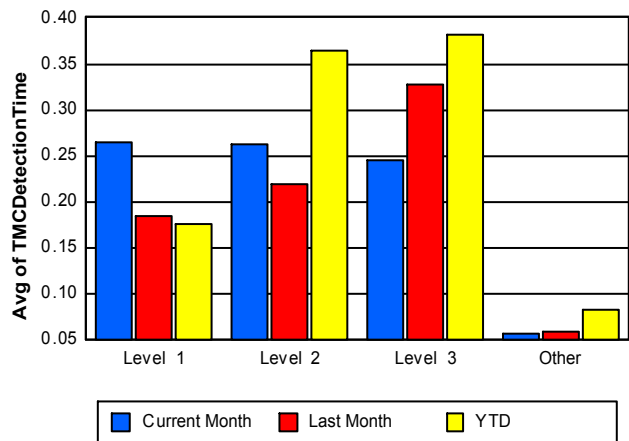
## Performance Measures by Severity

	Level 1			Level 2			Level 3			Other		
	<u>This Month</u>	<u>Last Month</u>	<u>YTD</u>	<u>This Month</u>	<u>Last Month</u>	<u>YTD</u>	<u>This Month</u>	<u>Last Month</u>	<u>YTD</u>	<u>This Month</u>	<u>Last Month</u>	<u>YTD</u>
Number of Events	98	119	1,162	70	64	666	20	29	255	2,568	2,699	29,241
Number of Incidents	98	119	1,162	70	64	666	20	29	255	0	0	0
TMC Detection (min.)	0.26	0.19	0.18	0.26	0.22	0.36	0.25	0.33	0.38	0.06	0.06	0.08
TMC Verification (min.)	2.58	3.56	3.21	6.85	7.06	8.07	7.00	8.15	7.11	3.03	3.27	3.23
TMC Response (min.)	5.38	5.50	5.18	8.43	9.04	10.75	7.33	10.64	12.25	3.83	3.92	4.38
RR Dispatch Time (min.)	0.97	1.23	1.04	0.96	1.31	1.51	1.21	1.76	2.35	1.09	0.83	1.39
RR Resp. Time (min.)	4.41	4.27	4.16	7.47	7.73	9.25	6.12	8.88	9.90	2.76	3.09	2.99
Event Clearance (min.)	30.88	37.02	32.86	71.99	67.09	69.32	110.54	115.43	110.37	49.13	45.42	53.06
Roadway Clear. (min.)	14.25	14.57	13.04	54.41	57.86	56.22	102.69	96.89	101.10			
Incident Clearance (min.)	30.88	37.02	32.86	71.99	67.09	69.32	110.54	115.43	110.37			
# of Events w/ RR/SIRV	97	117	1,142	70	63	663	19	26	235	2,431	2,584	27,869
RR/SIRV Responses	121	135	1,298	101	90	928	30	47	380	2,489	2,661	28,776
RR/SIRV Activities	128	152	1,494	111	97	1,052	32	53	438	2,636	2,813	30,538

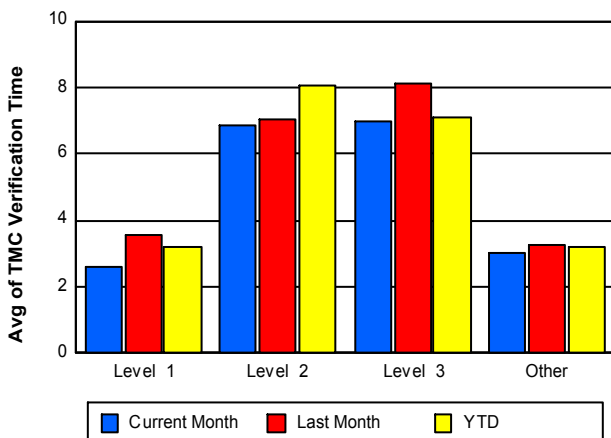
### Number of Events / Severity



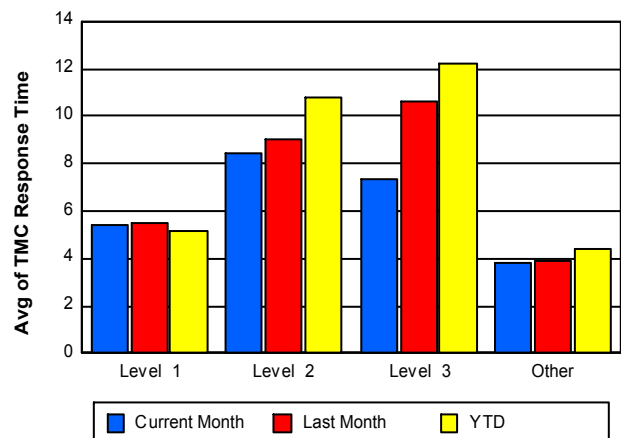
### TMC Detection Time



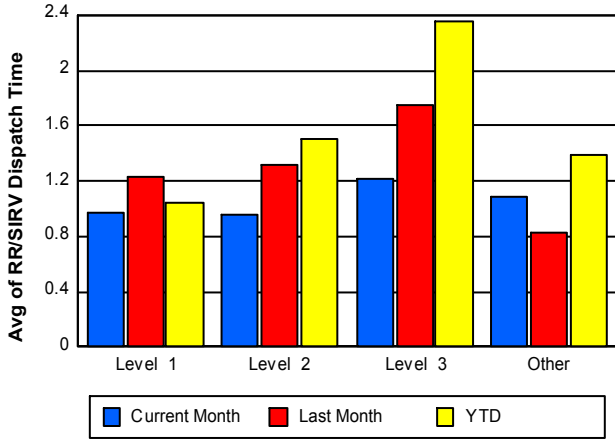
### TMC Verification Time



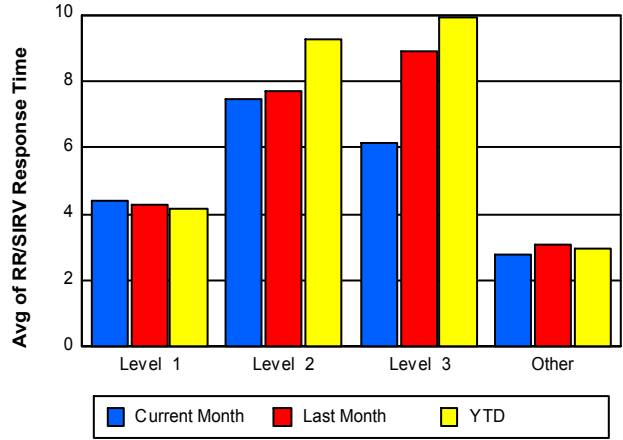
### TMC Response Time



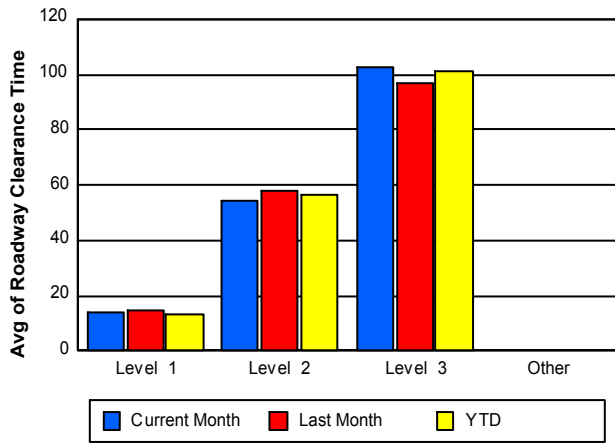
## Road Ranger / SIRV Dispatch Time



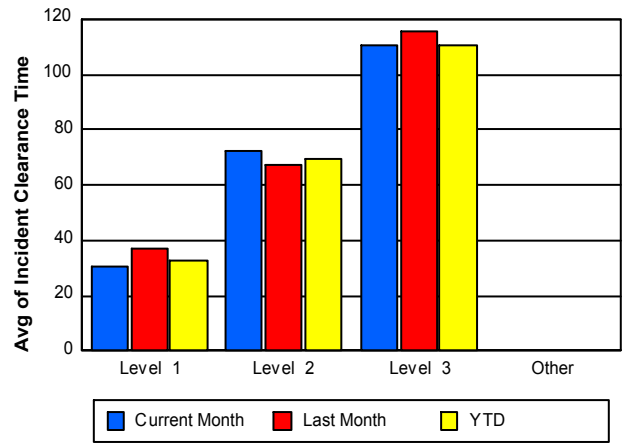
## Road Ranger / SIRV Response Time



## Roadway Clearance Time (2A)



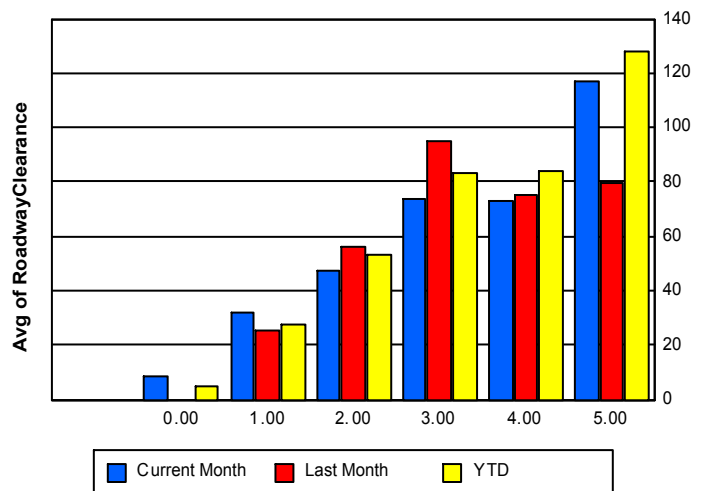
## Incident Clearance Time (3B)



## Roadway Clearance by Maximum Number of Lanes Blocked

	Current Month	Last Month	YTD
0	8.28		4.99
1	31.99	25.73	27.89
2	47.58	55.98	53.38
3	73.64	94.87	83.49
4	72.99	75.23	84.12
5	116.85	79.30	127.60

## Roadway Clearance Time(2A)

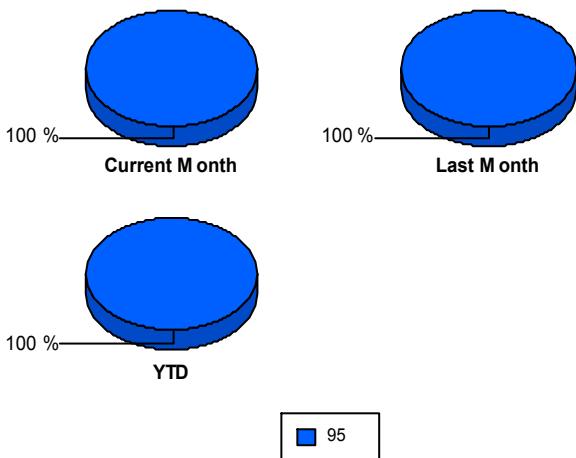


## Performance Measures by Roadway

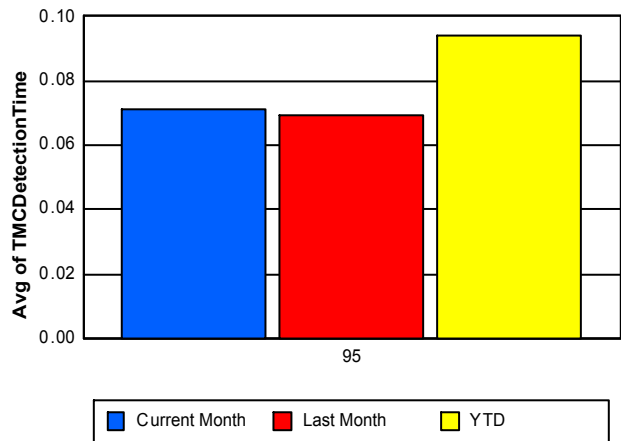
95

	<u>Current Month</u>	<u>Last Month</u>	<u>YTD</u>
Number of Events	2,756	2,911	31,324
Number of Incidents	188	212	2,083
TMC Detection (min.)	0.07	0.07	0.09
TMC Verification (min.)	3.14	3.42	3.37
TMC Response (min.)	4.04	4.16	4.61
RR Dispatch Time (min.)	1.08	0.87	1.39
RR Resp. Time (min.)	2.97	3.30	3.23
Event Clearance (min.)	49.50	46.25	53.13
Roadway Clear. (min.)	38.61	38.90	37.63
Incident Clearance (min.)	54.66	56.82	54.01
# of Events w/ RR/SIRV	2,617	2,790	29,909
RR/SIRV Responses	2,741	2,933	31,382
RR/SIRV Activities	2,907	3,115	33,522

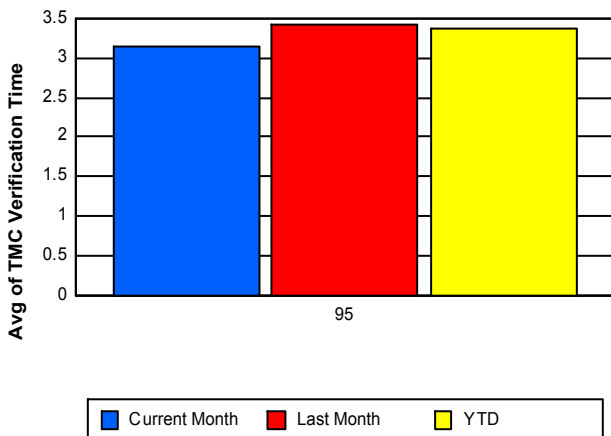
### Number of Events / Roadway



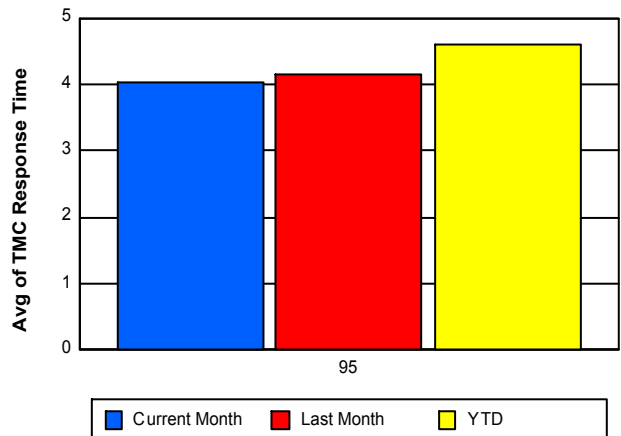
### TMC Detection Time



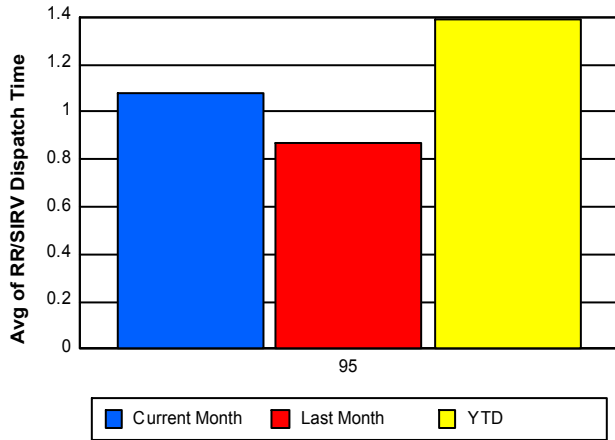
### TMC Verification Time



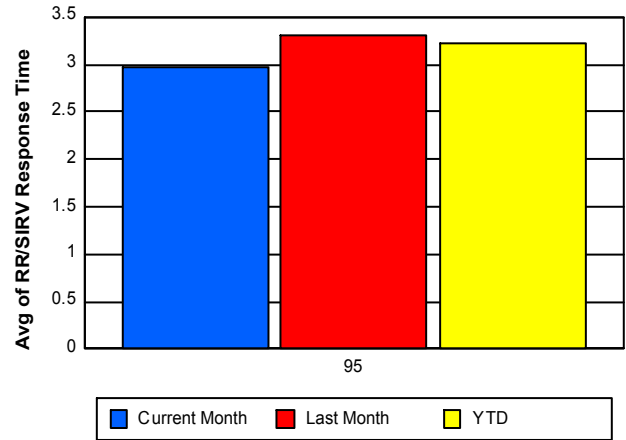
### TMC Response Time



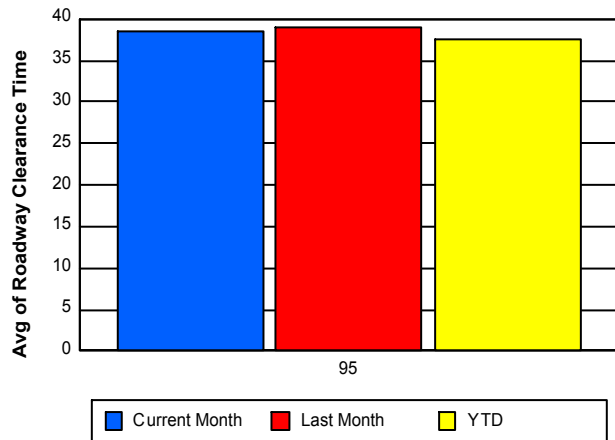
## Road Ranger / SIRV Dispatch Time



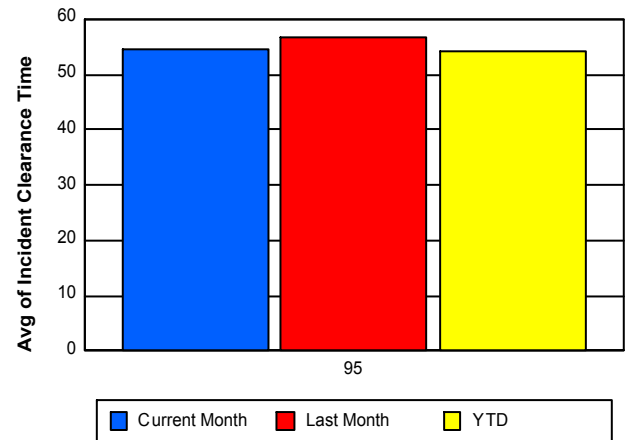
## Road Ranger / SIRV Response Time



## Roadway Clearance Time (2A)



## Incident Clearance Time (3B)



## Performance Measures by Event Type

### Abandoned Vehicle

	<u>Current Month</u>	<u>Last Month</u>	<u>YTD</u>
Number of Events	481	515	5,827
Number of Incidents	1	2	22
TMC Detection (min.)	0.01	0.01	0.01
TMC Verification (min.)	1.14	0.79	0.79
TMC Response (min.)	4.40	1.35	5.37
RR Dispatch Time (min.)	3.10	0.24	4.40
RR Response Time (min.)	1.30	1.11	0.97
Event Clearance (min.)	188.19	162.51	196.26
Roadway Clearance (min.)	47.82	68.50	23.82
Incident Clearance (min.)	49.22	70.29	112.33
# of Events w/ RR/SIRV	388	446	4,805
RR/SIRV Assists	392	465	4,984
RR/SIRV Activities	398	473	5,134

### Accident

	<u>Current Month</u>	<u>Last Month</u>	<u>YTD</u>
Number of Events	245	294	2,748
Number of Incidents	133	136	1,206
TMC Detection (min.)	0.25	0.22	0.32
TMC Verification (min.)	5.09	5.42	5.89
TMC Response (min.)	6.72	6.78	7.70
RR Dispatch Time (min.)	1.04	1.38	1.26
RR Response Time (min.)	5.68	5.39	6.45
Event Clearance (min.)	63.63	59.01	54.01
Roadway Clearance (min.)	46.50	48.07	46.62
Incident Clearance (min.)	66.23	72.44	68.96
# of Events w/ RR/SIRV	241	284	2,691
RR/SIRV Assists	305	354	3,242
RR/SIRV Activities	326	387	3,586

### Congestion

	<u>Current Month</u>	<u>Last Month</u>	<u>YTD</u>
Number of Events	7	4	71
Number of Incidents	0	0	3
TMC Detection (min.)	0.00	0.00	0.03
TMC Verification (min.)	0.00	0.00	2.73
TMC Response (min.)	2.65	8.97	15.15
RR Dispatch Time (min.)	2.58	0.30	5.68
RR Response Time (min.)	2.57	8.67	12.43
Event Clearance (min.)	32.27	10.98	36.87
Roadway Clearance (min.)			52.32
Incident Clearance (min.)			79.64
# of Events w/ RR/SIRV	2	3	33
RR/SIRV Assists	2	3	37
RR/SIRV Activities	2	3	38

## Debris on Roadway

	<u>Current Month</u>	<u>Last Month</u>	<u>YTD</u>
Number of Events	130	131	2,005
Number of Incidents	15	17	249
TMC Detection (min.)	0.25	0.20	0.21
TMC Verification (min.)	7.12	7.18	7.18
TMC Response (min.)	7.60	8.38	7.42
RR Dispatch Time (min.)	1.57	1.28	1.27
RR Response Time (min.)	6.04	7.09	6.15
Event Clearance (min.)	12.68	12.69	11.81
Roadway Clearance (min.)	11.95	15.17	12.72
Incident Clearance (min.)	14.04	17.68	14.83
# of Events w/ RR/SIRV	130	129	1,996
RR/SIRV Assists	134	137	2,073
RR/SIRV Activities	138	139	2,114

## Disabled Vehicle

	<u>Current Month</u>	<u>Last Month</u>	<u>YTD</u>
Number of Events	1,839	1,910	20,075
Number of Incidents	36	51	523
TMC Detection (min.)	0.05	0.05	0.07
TMC Verification (min.)	3.13	3.50	3.35
TMC Response (min.)	3.32	4.04	3.64
RR Dispatch Time (min.)	0.62	0.89	0.70
RR Response Time (min.)	2.73	3.16	2.96
Event Clearance (min.)	15.11	16.03	16.55
Roadway Clearance (min.)	20.34	19.36	23.64
Incident Clearance (min.)	31.19	27.96	33.75
# of Events w/ RR/SIRV	1,812	1,881	19,862
RR/SIRV Assists	1,863	1,924	20,476
RR/SIRV Activities	1,998	2,061	22,062

## Emergency Vehicles

	<u>YTD</u>
Number of Events	10
Number of Incidents	6
TMC Detection (min.)	0.22
TMC Verification (min.)	3.15
TMC Response (min.)	3.90
RR Dispatch Time (min.)	0.99
RR Response Time (min.)	3.34
Event Clearance (min.)	24.29
Roadway Clearance (min.)	15.56
Incident Clearance (min.)	26.48
# of Events w/ RR/SIRV	8
RR/SIRV Assists	8
RR/SIRV Activities	9

## Off Ramp Backup

	<u>YTD</u>
Number of Events	2
Number of Incidents	0
TMC Detection (min.)	0.00
TMC Verification (min.)	0.00
TMC Response (min.)	5.67
RR Dispatch Time (min.)	0.40
RR Response Time (min.)	5.27
Event Clearance (min.)	19.78
Roadway Clearance (min.)	
Incident Clearance (min.)	
# of Events w/ RR/SIRV	1
RR/SIRV Assists	2
RR/SIRV Activities	2

## Other

	<u>Current Month</u>	<u>Last Month</u>	<u>YTD</u>
Number of Events	25	35	325
Number of Incidents	0	0	7
TMC Detection (min.)	0.01	0.01	0.12
TMC Verification (min.)	7.06	8.02	5.74
TMC Response (min.)	14.70	10.88	8.92
RR Dispatch Time (min.)	2.21	2.10	1.17
RR Response Time (min.)	11.91	8.67	7.81
Event Clearance (min.)	13.17	17.70	17.06
Roadway Clearance (min.)			57.86
Incident Clearance (min.)			63.85
# of Events w/ RR/SIRV	15	27	268
RR/SIRV Assists	15	28	278
RR/SIRV Activities	15	29	289

## Pedestrian

	<u>Current Month</u>	<u>Last Month</u>	<u>YTD</u>
Number of Events	22	13	167
Number of Incidents	0	0	1
TMC Detection (min.)	0.04	0.22	0.11
TMC Verification (min.)	0.24	0.56	2.18
TMC Response (min.)	0.24	2.42	2.85
RR Dispatch Time (min.)	0.22	0.27	0.46
RR Response Time (min.)	0.01	2.15	2.38
Event Clearance (min.)	8.80	13.18	13.48
Roadway Clearance (min.)			18.32
Incident Clearance (min.)			19.55
# of Events w/ RR/SIRV	22	13	163
RR/SIRV Assists	22	13	166
RR/SIRV Activities	22	14	169

## Police Activity

	<u>Current Month</u>	<u>Last Month</u>	<u>YTD</u>
Number of Events	6	1	51
Number of Incidents	2	1	34
TMC Detection (min.)	0.00	0.00	0.16
TMC Verification (min.)	0.00	0.00	2.74
TMC Response (min.)	0.00	6.25	8.28
RR Dispatch Time (min.)	0.00	5.98	2.34
RR Response Time (min.)	0.00	0.27	6.00
Event Clearance (min.)	21.96	30.52	57.52
Roadway Clearance (min.)	37.47	28.78	65.86
Incident Clearance (min.)	42.13	30.52	77.47
# of Events w/ RR/SIRV	6	1	45
RR/SIRV Assists	7	1	61
RR/SIRV Activities	7	1	64

## Road Work - Emergency

	<u>Current Month</u>	<u>Last Month</u>	<u>YTD</u>
Number of Events	1	6	29
Number of Incidents	1	5	26
TMC Detection (min.)	0.00	0.00	0.11
TMC Verification (min.)	0.00	1.84	3.46
TMC Response (min.)	0.00	8.00	8.83
RR Dispatch Time (min.)	0.00	2.40	2.36
RR Response Time (min.)	0.00	5.61	6.46
Event Clearance (min.)	0.50	50.28	56.29
Roadway Clearance (min.)	40.50	59.67	94.74
Incident Clearance (min.)	0.50	59.50	56.04
# of Events w/ RR/SIRV	1	4	25
RR/SIRV Assists	1	6	43
RR/SIRV Activities	1	6	43

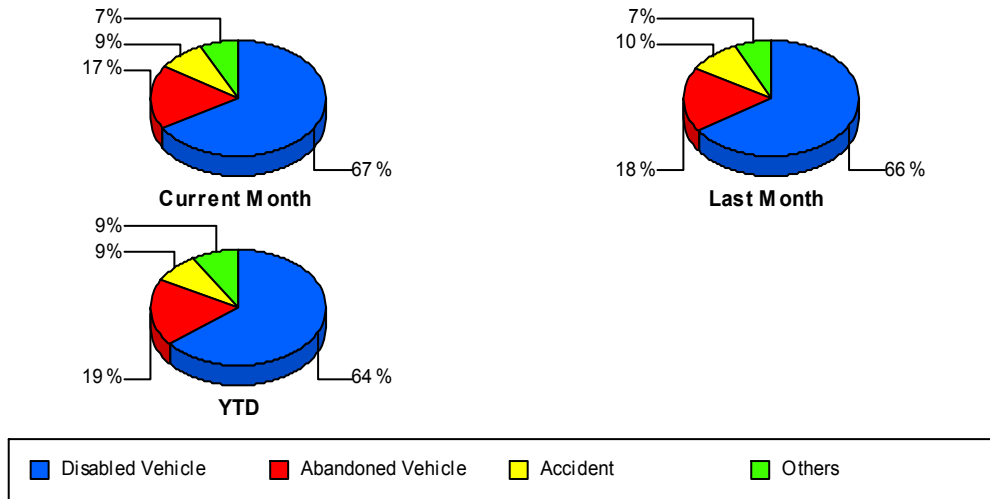
## Visibility

	<u>YTD</u>
Number of Events	2
Number of Incidents	0
TMC Detection (min.)	0.00
TMC Verification (min.)	0.00
TMC Response (min.)	0.00
RR Dispatch Time (min.)	0.00
RR Response Time (min.)	0.00
Event Clearance (min.)	22.63
Roadway Clearance (min.)	
Incident Clearance (min.)	
# of Events w/ RR/SIRV	1
RR/SIRV Assists	1
RR/SIRV Activities	1

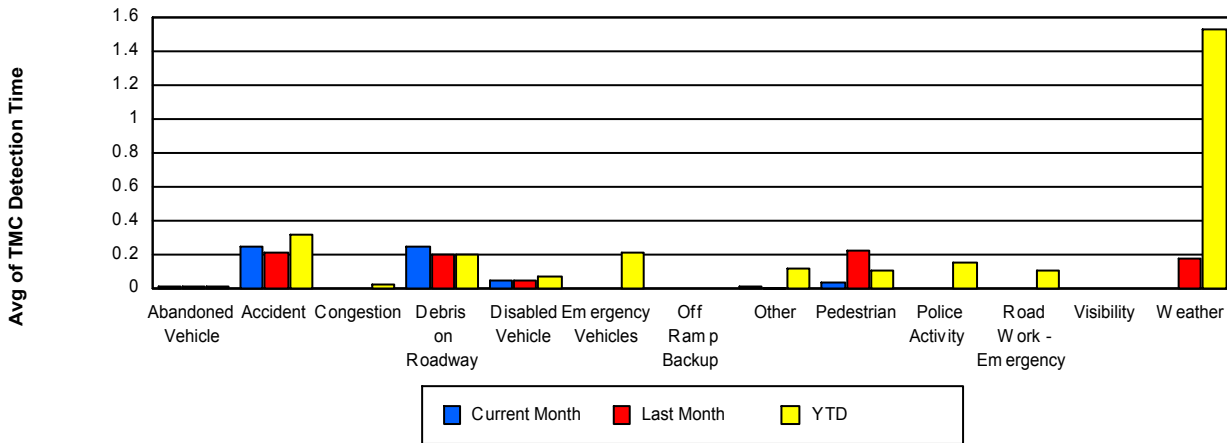
## Weather

	<u>Last Month</u>	<u>YTD</u>
Number of Events	2	12
Number of Incidents	0	6
TMC Detection (min.)	0.18	1.53
TMC Verification (min.)	9.86	14.41
TMC Response (min.)	9.82	20.54
RR Dispatch Time (min.)	0.10	2.09
RR Response Time (min.)	9.72	18.45
Event Clearance (min.)	72.18	77.31
Roadway Clearance (min.)		120.43
Incident Clearance (min.)		95.04
# of Events w/ RR/SIRV	2	11
RR/SIRV Assists	2	11
RR/SIRV Activities	2	11

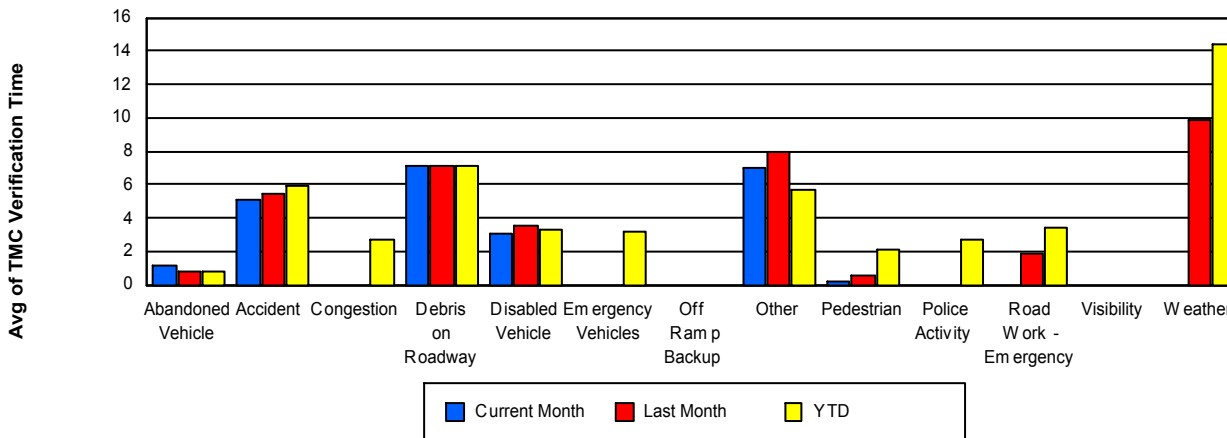
## Number of Events / Event Type



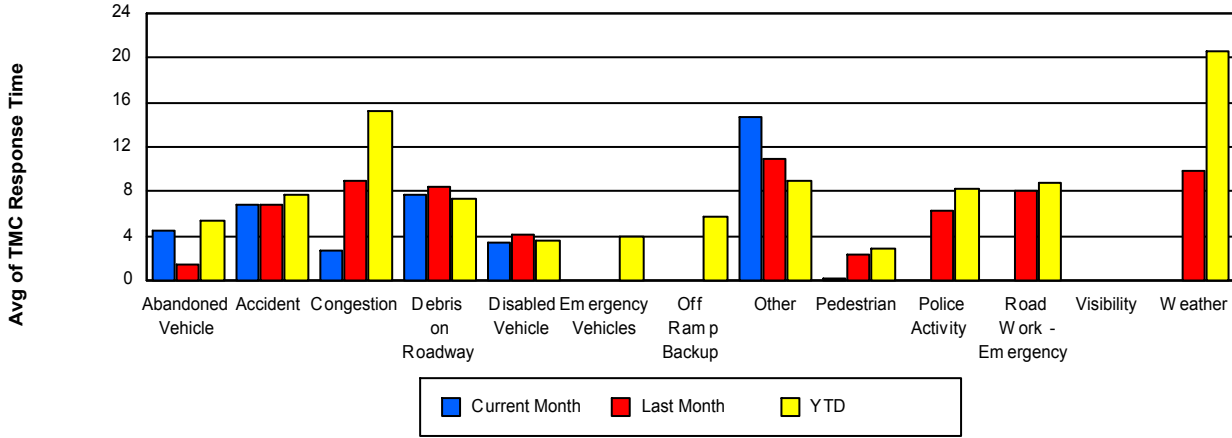
## TMC Detection Time



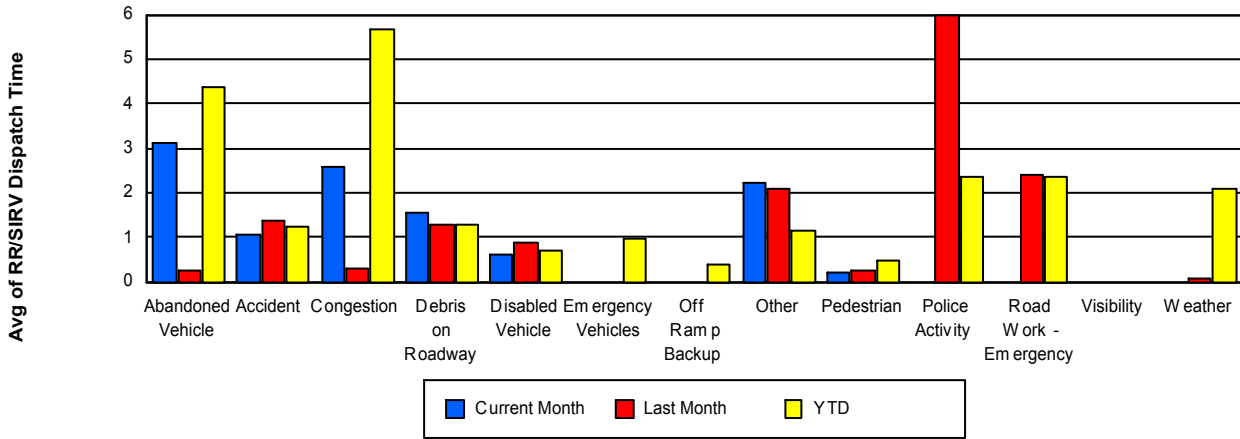
## TMC Verification Time



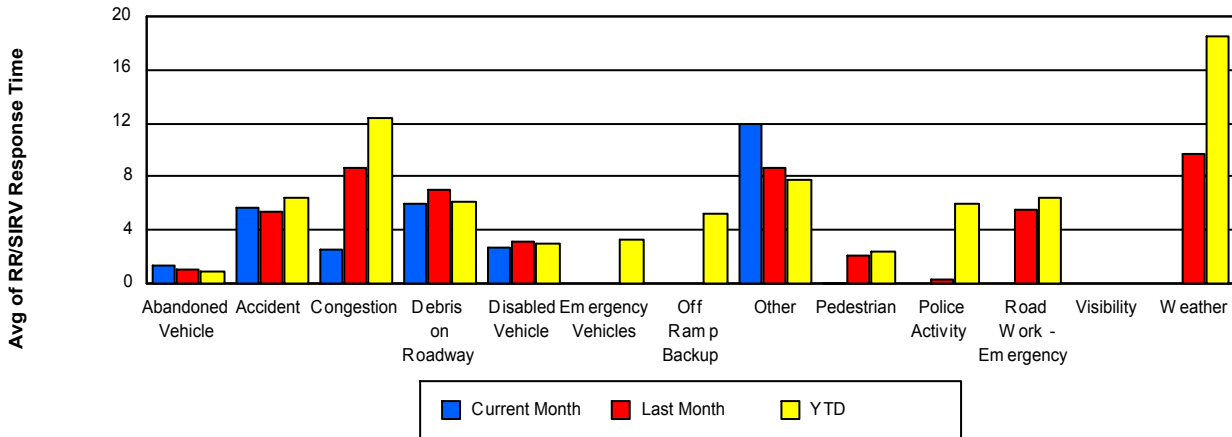
## TMC Response Time



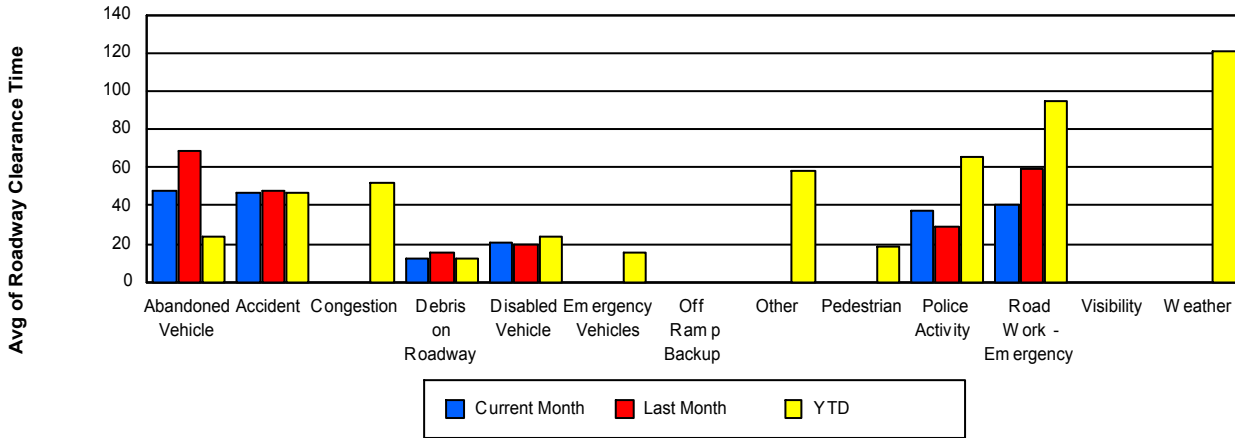
## Road Ranger / SIRV Dispatch Time



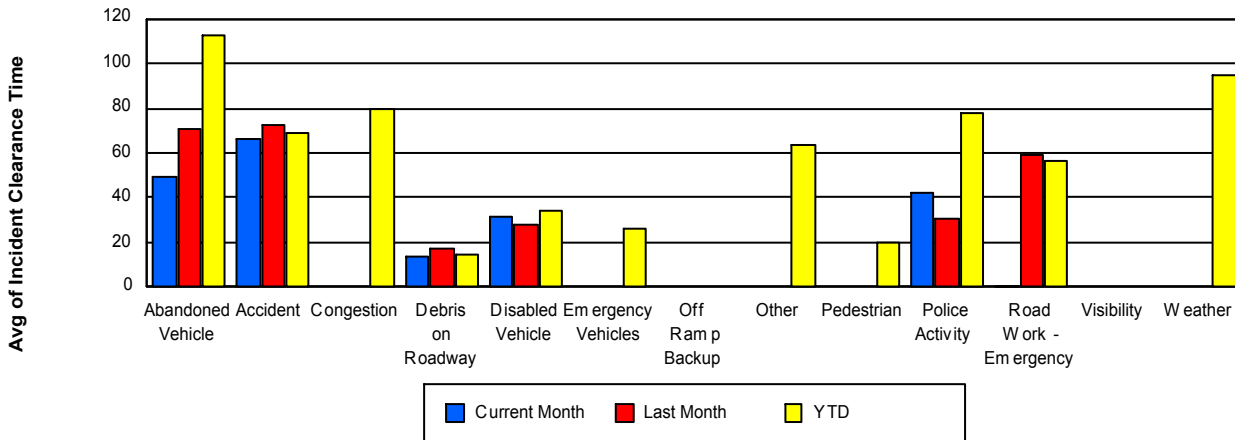
## Road Ranger / SIRV Response Time



## Roadway Clearance Time (2A)



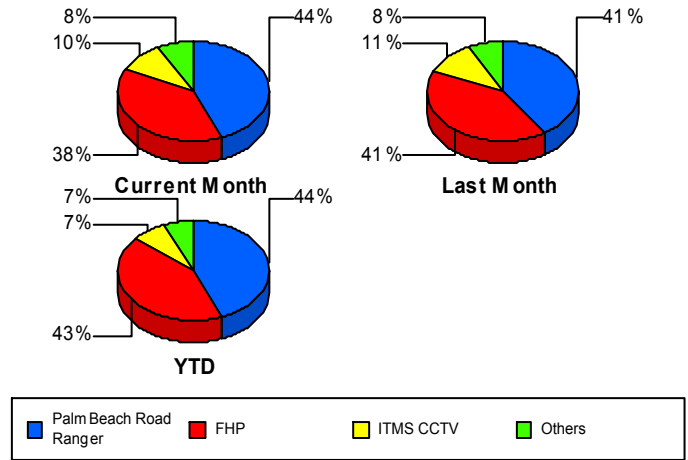
## Incident Clearance Time (3B)



## Incident Detection Methods

	Current Month	Last Month	YTD
Broward CCTV	0	0	1
Broward Road Ranger	3	0	10
Broward TMC	0	0	3
Construction CEI	0	1	6
District 4	6	3	19
FDOT Maintenance	0	1	2
FHP	72	87	887
I-95 Construction PIO	0	1	6
ITMS	2	3	20
ITMS CCTV	18	23	145
Media	0	0	15
MIST Map RTMS Alert	0	0	1
Motorist	3	6	29
Other	0	0	8
Palm Beach County Sc	0	0	1
Palm Beach Road Rang	83	86	913
Road Watcher	0	0	1
SIRV	0	0	1
SmarTraveler (511)	1	1	15
<b>Total</b>	<b>188</b>	<b>212</b>	<b>2,083</b>

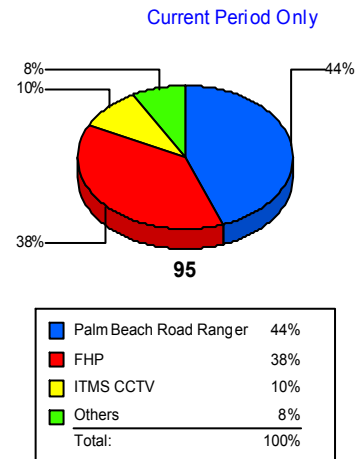
### Total Incidents by Detection Method



## Incident Detection Methods by Roadway

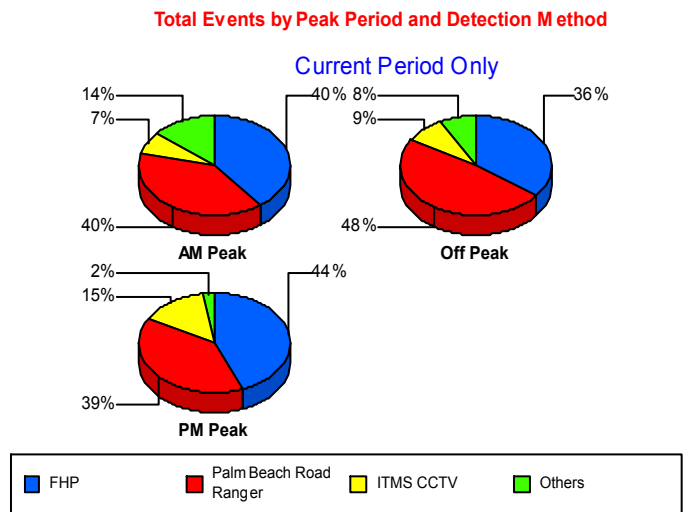
		Current Month	Last Month	YTD
95	Broward CCTV	0	0	1
	Broward Road Ranger	3	0	10
	Broward TMC	0	0	3
	Construction CEI	0	1	6
	District 4	6	3	19
	FDOT Maintenance	0	1	2
	FHP	72	87	887
	I-95 Construction PIO	0	1	6
	ITMS	2	3	20
	ITMS CCTV	18	23	145
	Media	0	0	15
	MIST Map RTMS Alert	0	0	1
	Motorist	3	6	29
	Other	0	0	8
	Palm Beach County Sc	0	0	1
	Palm Beach Road Rang	83	86	913
	Road Watcher	0	0	1
	SIRV	0	0	1
	SmarTraveler (511)	1	1	15
<b>Total</b>	<b>188</b>	<b>212</b>	<b>2,083</b>	
<b>Total</b>	<b>188</b>	<b>212</b>	<b>2,083</b>	

**Total Events by Roadway and Detection Method**



### Incident Detection Methods by Peak Period

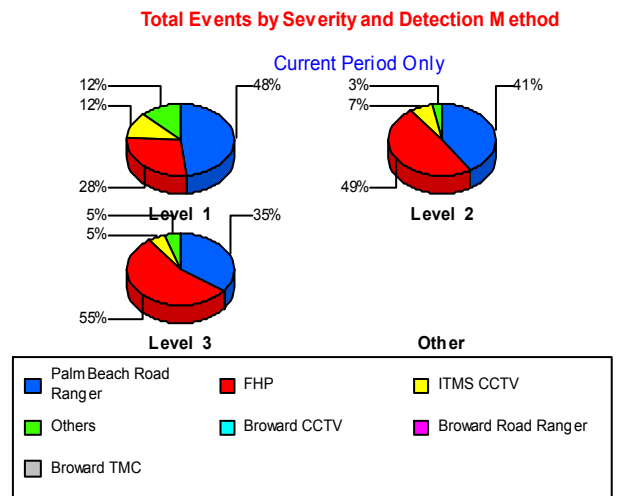
		Current Month	Last Month	YTD
AM Peak	Broward Road Ranger	0	0	1
	Construction CEI	0	1	3
	District 4	2	1	5
	FHP	17	17	187
	I-95 Construction PIO	0	0	2
	ITMS	2	3	8
	ITMS CCTV	3	6	36
	Media	0	0	2
	Motorist	2	0	6
	Palm Beach Road Rang	17	30	273
	SmarTraveler (511)	0	0	4
	Total	43	58	527
	Off Peak	Broward Road Ranger	3	0
Broward TMC		0	0	1
Construction CEI		0	0	2
District 4		4	2	9
FDOT Maintenance		0	0	1
FHP		37	53	515
I-95 Construction PIO		0	1	4
ITMS		0	0	8
ITMS CCTV		9	10	64
Media		0	0	3
MIST Map RTMS Alert		0	0	1
Motorist		1	5	16
Other		0	0	5
Palm Beach County Sc		0	0	1
Palm Beach Road Rang		50	33	420
SIRV		0	0	1
SmarTraveler (511)		0	0	4
Total		104	104	1,062
PM Peak	Broward CCTV	0	0	1



		Current Month	Last Month	YTD
PM Peak	Broward Road Ranger	0	0	2
	Broward TMC	0	0	2
	Construction CEI	0	0	1
	District 4	0	0	5
	FDOT Maintenance	0	1	1
	FHP	18	17	185
	ITMS	0	0	4
	ITMS CCTV	6	7	45
	Media	0	0	10
	Motorist	0	1	7
	Other	0	0	3
	Palm Beach Road Rang	16	23	220
	Road Watcher	0	0	1
	SmarTraveler (511)	1	1	7
<b>Total</b>	<b>41</b>	<b>50</b>	<b>494</b>	
<b>Total</b>	<b>188</b>	<b>212</b>	<b>2,083</b>	

### Incident Detection Methods by Severity

		Current Month	Last Month	YTD
Level 1	Broward CCTV	0	0	1
	Broward Road Ranger	3	0	7
	Broward TMC	0	0	2
	District 4	5	1	9
	FDOT Maintenance	0	1	2
	FHP	27	37	375
	I-95 Construction PIO	0	1	2
	ITMS	1	1	10
	ITMS CCTV	12	15	92
	Media	0	0	7
	Motorist	3	4	16
	Other	0	0	6
	Palm Beach Road Rang	47	59	625



		Current Month	Last Month	YTD
Level 1	SmarTraveler (511)	0	0	8
	Total	98	119	1,162
Level 2	Broward Road Ranger	0	0	2
	Construction CEI	0	1	5
	District 4	1	1	5
	FHP	34	31	367
	I-95 Construction PIO	0	0	3
	ITMS	1	0	7
	ITMS CCTV	5	7	38
	Media	0	0	6
	MIST Map RTMS Alert	0	0	1
	Motorist	0	2	12
	Other	0	0	2
	Palm Beach County Sc	0	0	1
	Palm Beach Road Rang	29	21	210
	SIRV	0	0	1
	SmarTraveler (511)	0	1	6
	Total	70	64	666
Level 3	Broward Road Ranger	0	0	1
	Broward TMC	0	0	1
	Construction CEI	0	0	1
	District 4	0	1	5
	FHP	11	19	145
	I-95 Construction PIO	0	0	1
	ITMS	0	2	3
	ITMS CCTV	1	1	15
	Media	0	0	2
	Motorist	0	0	1
	Palm Beach Road Rang	7	6	78
	Road Watcher	0	0	1
	SmarTraveler (511)	1	0	1
	Total	20	29	255

	Current Month	Last Month	YTD
Total	188	212	2,083

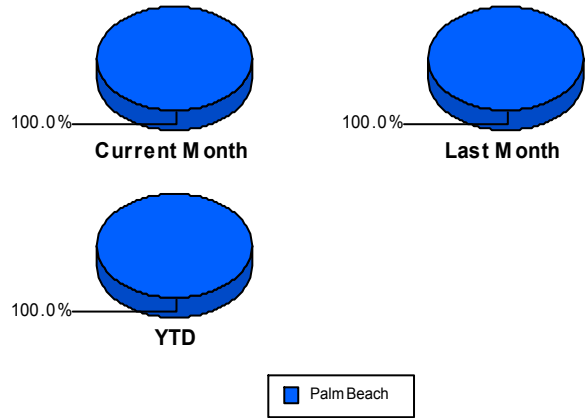
# Road Ranger / SIRV Performance Measures

## Road Ranger / SIRV Performance By County

Values presented are:  
 - Total Events with a RR/SIRV Response  
 - Total RR/SIRV Responses,  
 - Total Activities Performed

	Current Mo	Last Month	YTD
Palm Beach	2,617	2,790	29,909
	2,741	2,933	31,382
	2,907	3,115	33,522

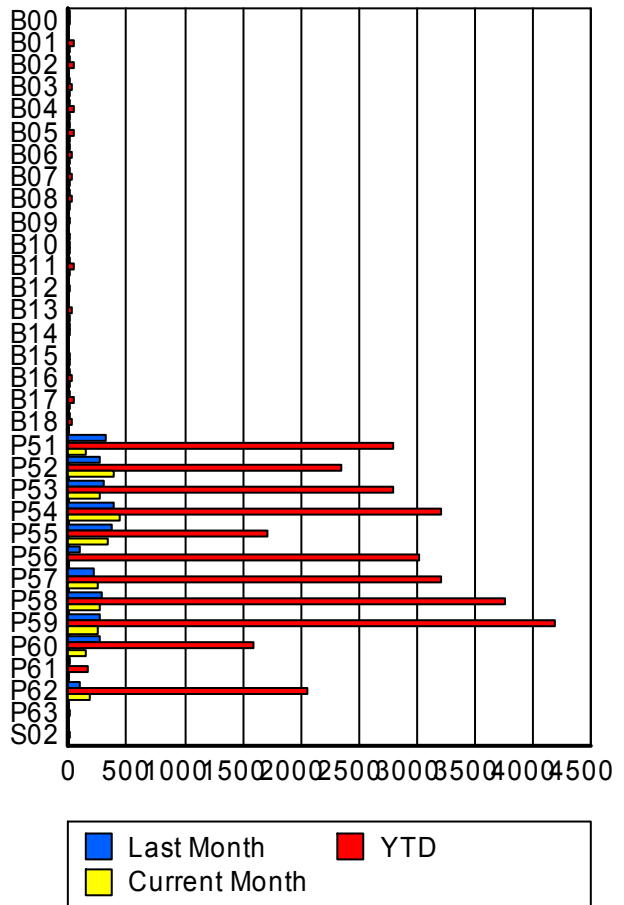
RR/SIRV Responses per County



## Road Ranger / SIRV Performance By Truck

	Current Mo	Last Month	YTD
B00	0	1	8
	0	1	8
	0	1	9
B01	8	0	46
	8	0	46
	8	0	48
B02	0	7	46
	0	7	46
	0	8	48
B03	13	3	34
	13	3	34
	13	3	34
B04	5	1	40
	5	1	40
	5	1	40
B05	5	5	38
	5	5	38
	6	5	39
B06	4	3	27
	4	3	27
	4	3	27
B07	6	6	24
	6	6	24
	6	6	25
B08	3	4	22
	3	4	23
	3	4	24

RR/SIRV Responses per Truck



	Current Mo	Last Month	YTD
B09	0 0 0	0 0 0	1 1 1
B10	4 4 4	2 2 2	13 13 13
B11	7 7 7	7 7 7	47 47 50
B12	0 0 0	0 0 0	11 12 12
B13	1 1 1	0 0 0	23 23 24
B14	0 0 0	2 2 2	15 15 16
B15	3 3 3	0 0 0	13 13 13
B16	1 1 1	3 3 4	18 18 20
B17	3 3 3	3 3 3	45 45 47
B18	0 0 0	5 5 6	32 32 33
P51	146 146 151	314 317 338	2,776 2,802 2,987
P52	388 393 410	262 269 279	2,318 2,349 2,499
P53	273 274 292	295 296 312	2,778 2,806 2,999
P54	431 434 465	382 388 415	3,171 3,209 3,426
P55	324 329 356	366 368 389	1,691 1,715 1,851

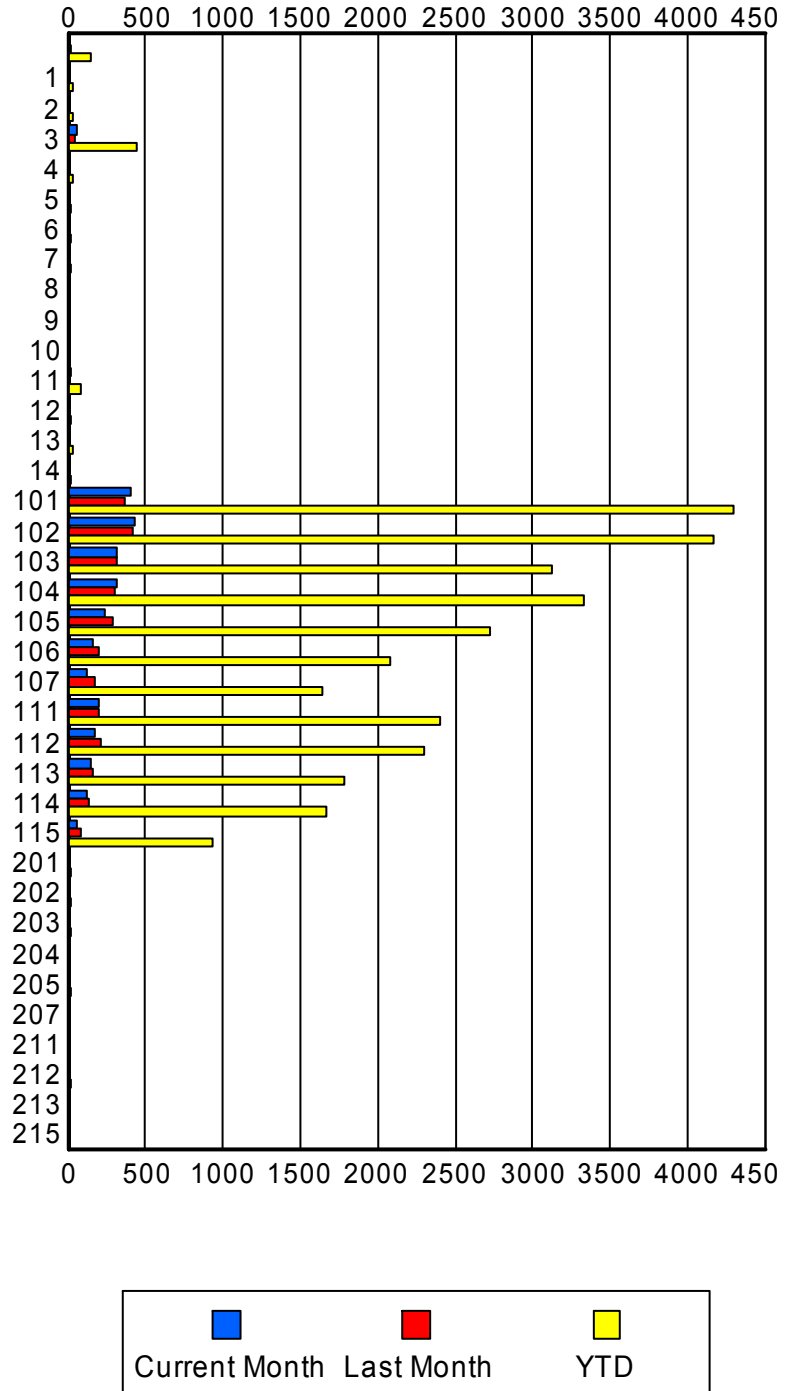
	Current Mo	Last Month	YTD
P56	0	87	2,994
	0	88	3,021
	0	93	3,216
P57	247	222	3,180
	252	223	3,213
	270	248	3,458
P58	270	280	3,714
	274	282	3,763
	293	295	4,017
P59	249	271	4,142
	251	274	4,188
	268	282	4,468
P60	138	273	1,573
	141	275	1,596
	150	301	1,721
P61	0	2	155
	0	2	156
	0	2	168
P62	183	98	2,037
	184	99	2,056
	188	106	2,186
P63	0	0	2
	0	0	2
	0	0	2
S02	0	0	1
	0	0	1
	0	0	1

### Road Ranger / SIRV Performance By Beat

	Current Mo	Last Month	YTD
	4	23	141
	4	23	144
	4	23	153
1	0	0	25
	0	0	26
	0	0	26
2	0	0	24
	0	0	24
	0	0	26
3	52	39	438
	52	39	442
	53	42	459
4	0	1	23
	0	1	24
	0	1	24
5	0	0	15
	0	0	15
	0	0	19
6	0	0	13
	0	0	13
	0	0	15
7	0	0	12
	0	0	12
	0	0	12
8	0	1	3
	0	1	3
	0	1	3
9	0	1	1
	0	1	1
	0	1	1
10	0	0	3
	0	0	3
	0	0	3
11	11	8	85
	11	8	85
	11	8	86
12	0	0	12
	0	0	12
	0	0	15
13	0	0	24
	0	0	27
	0	0	28
14	0	0	16
	0	0	16
	0	0	18

Values presented are:  
 - Total Events with a RR/SIRV Response  
 - Total RR/SIRV Responses,  
 - Total Activities Performed

### RR/SIRV Responses per Beat



	Current Mo	Last Month	YTD
101	406 408 426	367 370 393	4,251 4,289 4,526
102	423 427 449	405 412 429	4,111 4,162 4,370
103	317 319 335	311 313 322	3,079 3,125 3,353
104	310 310 326	302 306 325	3,276 3,323 3,548
105	235 238 251	292 294 312	2,690 2,722 2,874
106	158 161 167	196 200 211	2,046 2,073 2,197
107	119 121 124	175 178 192	1,632 1,647 1,723
111	190 197 225	201 203 224	2,369 2,398 2,608
112	172 175 195	212 215 231	2,265 2,294 2,488
113	142 143 155	162 163 174	1,756 1,778 1,966
114	119 120 127	128 129 140	1,646 1,670 1,826
115	53 55 59	77 77 86	925 935 1,028
201	0 0 0	0 0 0	18 18 18
202	0 0 0	0 0 0	20 20 20
203	0 0 0	0 0 0	15 15 17

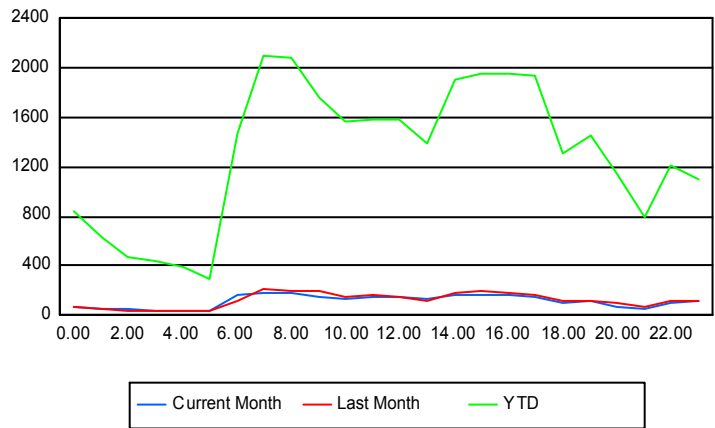
	Current Mo	Last Month	YTD
204	0	0	10
	0	0	10
	0	0	13
205	0	0	16
	0	0	16
	0	0	18
207	0	0	5
	0	0	5
	0	0	5
211	0	0	10
	0	0	10
	0	0	10
212	0	0	17
	0	0	17
	0	0	17
213	0	0	7
	0	0	7
	0	0	8
215	0	0	1
	0	0	1
	0	0	1

**Road Ranger / SIRV Performance By Time of Day**

Values presented are:  
 - Total Events with a RR/SIRV Response  
 - Total RR/SIRV Responses,  
 - Total Activities Performed

	Current Mo	Last Month	YTD
12AM-1AM	65	75	797
	74	75	849
	80	88	935
1AM-2AM	41	53	589
	46	59	638
	52	63	705
2AM-3AM	43	30	452
	46	31	471
	52	34	510
3AM-4AM	35	34	399
	37	41	433
	42	46	478
4AM-5AM	29	34	354
	33	35	392
	40	36	438
5AM-6AM	26	25	242
	31	33	291
	39	38	332

**Number of Responses / Hour of the Day**



	Current Mo	Last Month	YTD
6AM-7AM	159	114	1,388
	163	122	1,470
	174	129	1,564
7AM-8AM	183	196	2,024
	186	208	2,101
	197	222	2,236
8AM-9AM	176	190	1,985
	182	198	2,080
	189	215	2,207
9AM-10AM	143	183	1,690
	149	192	1,765
	155	204	1,877
10AM-11AM	128	138	1,497
	132	142	1,562
	134	151	1,672
11AM-12PM	143	154	1,512
	149	163	1,581
	157	170	1,666
12PM-1PM	139	135	1,498
	148	149	1,577
	158	161	1,683
1PM-2PM	134	108	1,327
	140	111	1,394
	144	118	1,475
2PM-3PM	160	169	1,821
	164	176	1,907
	169	188	2,021
3PM-4PM	160	192	1,881
	162	199	1,952
	168	202	2,042
4PM-5PM	165	179	1,892
	168	186	1,960
	175	192	2,074
5PM-6PM	150	163	1,871
	156	168	1,937
	165	172	2,031
6PM-7PM	102	120	1,256
	108	123	1,316
	114	127	1,400
7PM-8PM	109	115	1,407
	112	119	1,458
	116	120	1,553
8PM-9PM	70	101	1,105
	73	103	1,147
	77	110	1,224

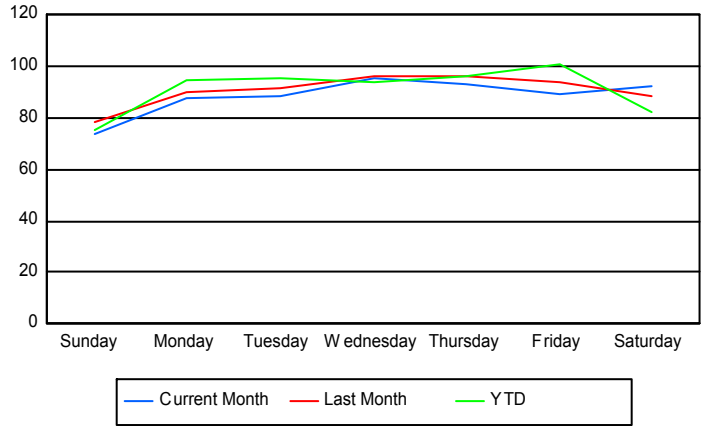
	Current Mo	Last Month	YTD
9PM-10PM	<b>53</b>	<b>65</b>	<b>742</b>
	<b>58</b>	<b>70</b>	<b>791</b>
	<b>61</b>	<b>74</b>	<b>844</b>
10PM-11PM	<b>103</b>	<b>101</b>	<b>1,137</b>
	<b>107</b>	<b>110</b>	<b>1,210</b>
	<b>124</b>	<b>116</b>	<b>1,341</b>
11PM-12AM	<b>101</b>	<b>116</b>	<b>1,043</b>
	<b>117</b>	<b>120</b>	<b>1,100</b>
	<b>125</b>	<b>139</b>	<b>1,214</b>

## Road Ranger / SIRV Performance By Day of Week

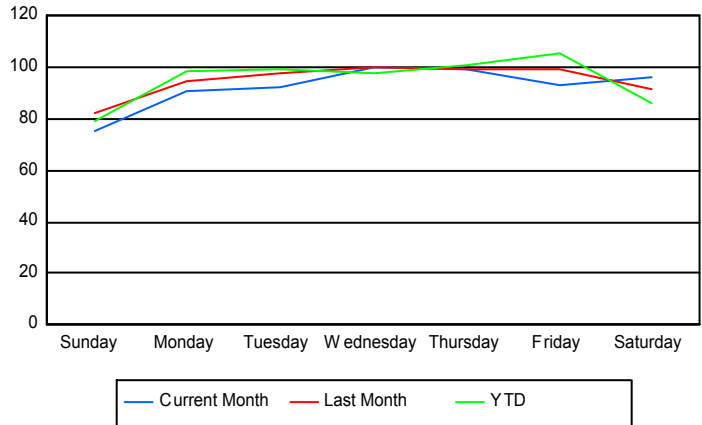
Values presented are:  
 - Total Events with a RR/SIRV Response  
 - Total RR/SIRV Responses,  
 - Total Activities Performed

	Current Mo	Last Month	YTD
Sunday	294	315	3,474
	300	330	3,642
	322	344	3,914
Monday	347	449	4,483
	360	470	4,678
	379	503	5,000
Tuesday	352	457	4,529
	368	489	4,725
	387	531	5,043
Wednesday	375	473	4,442
	392	495	4,632
	410	525	4,888
Thursday	458	378	4,535
	487	392	4,754
	526	416	5,082
Friday	439	373	4,755
	457	393	4,976
	486	420	5,321
Saturday	360	350	3,778
	377	364	3,975
	397	376	4,274

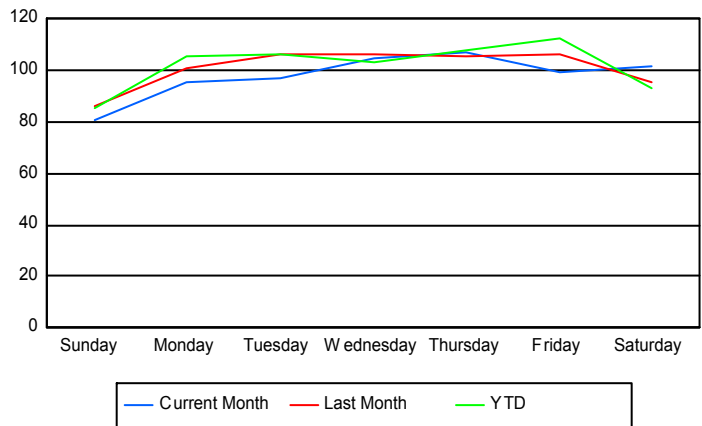
### Avg # of events with a RR/SIRV Response per Day of the Week



### Avg # of RR/SIRV Responses per Day of the Week



### Avg # of RR/SIRV Activities Performed per Day of the Week



### Road Ranger/ SIRV Responses per Time of Day and Day of Week

