



# Monthly Performance Measures Report Palm Beach County



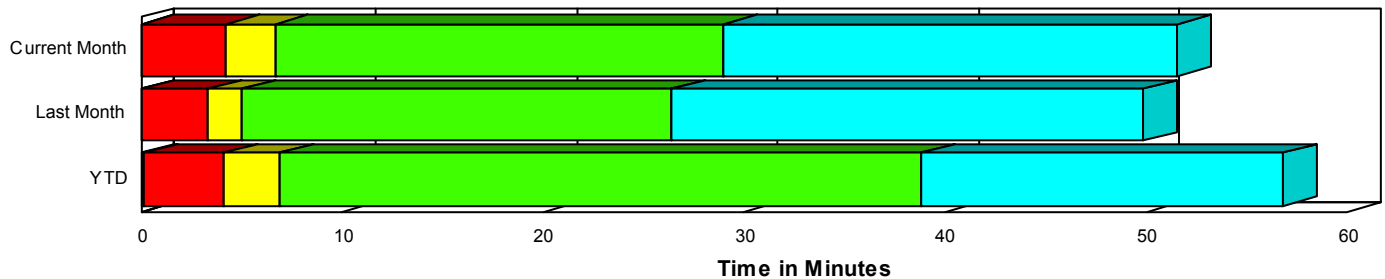
Created on:  
December 08, 2008  
8:52 am

Period From Nov 1, 2008 to Nov 30, 2008

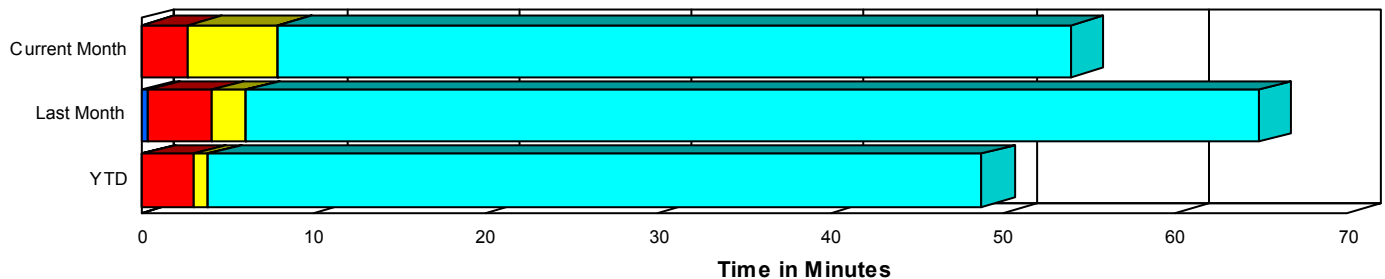
## Performance Measures Summary

	Traffic Events (No Lanes Blocked)			Incidents (Lanes Blocked)		
	<u>This Month</u>	<u>Last Month</u>	<u>YTD</u>	<u>This Month</u>	<u>Last Month</u>	<u>YTD</u>
Number of Events	1,309	1,542	24,887	85	80	1,487
TMC Detection (min.)	0.00	0.36	0.09	0.01	0.01	0.12
TMC Verification (min.)	2.77	3.70	2.91	4.20	3.33	4.04
TMC Response (min.)	8.94	6.28	3.95	7.33	5.03	6.99
RR Dispatch Time (min.)	5.47	2.82	1.49	1.83	1.74	2.29
RR Response Time (min.)	3.87	3.73	2.55	5.50	3.29	4.78
Roadway Clearance (min.)				29.88	36.89	39.43
Event Clearance (min.)	54.95	65.33	48.97	52.36	60.32	56.51
# of Events w/ RR/SIRV	971	1,265	23,267	73	66	1,355
RR/SIRV Responses	971	1,265	23,374	73	66	1,432
RR/SIRV Activities	1,004	1,341	25,056	111	86	1,941

### Incident Clearance TimeLine



### Traffic Event (Non-Lane Blockage) Time-Line



<ul style="list-style-type: none"> <li><span style="display: inline-block; width: 15px; height: 15px; background-color: blue; margin-right: 5px;"></span> Avg. TMC Detection Time</li> <li><span style="display: inline-block; width: 15px; height: 15px; background-color: red; margin-right: 5px;"></span> Avg. Time from TMC Detection to TMC Verification</li> <li><span style="display: inline-block; width: 15px; height: 15px; background-color: yellow; margin-right: 5px;"></span> Avg. Time from TMC Verification to TMC Response</li> </ul>	<ul style="list-style-type: none"> <li><span style="display: inline-block; width: 15px; height: 15px; background-color: green; margin-right: 5px;"></span> Avg. Time from TMC Response to Roadway Clearance*</li> <li><span style="display: inline-block; width: 15px; height: 15px; background-color: cyan; margin-right: 5px;"></span> Avg. Time from Roadway Clearance to Incident/Event Clearance**</li> </ul>
--	--

\* Roadway clearance equals all travel lanes open

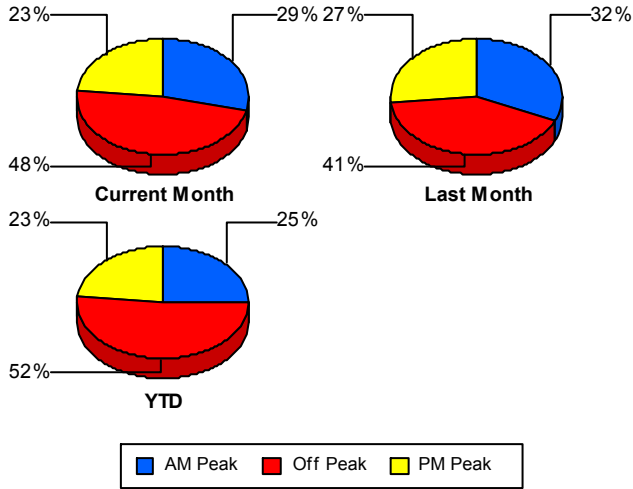
\*\* Incident clearance equals time when last responder has left the scene

## Performance Measures by Peak Period

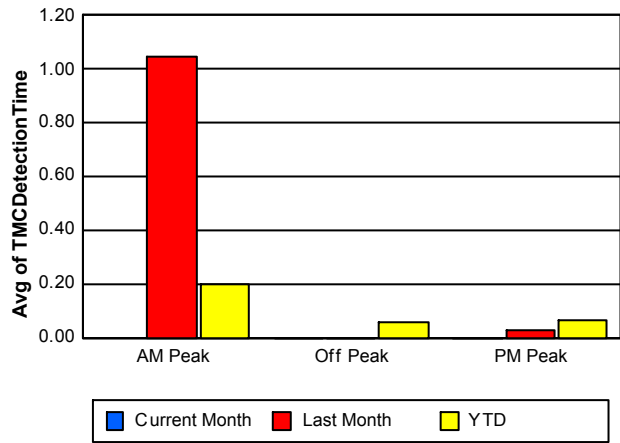
Note: AM peak period is defined as 6am to 10am and PM peak period is defined as 3pm to 7pm.

	AM Peak			Off Peak			PM Peak		
	<u>Current Month</u>	<u>Last Month</u>	<u>YTD</u>	<u>Current Month</u>	<u>Last Month</u>	<u>YTD</u>	<u>Current Month</u>	<u>Last Month</u>	<u>YTD</u>
Number of Events	402	515	6,601	665	673	13,599	327	434	6,174
Number of Incidents	19	28	382	32	25	764	34	27	341
TMC Detection (min.)	0.00	1.04	0.20	0.00	0.00	0.06	0.00	0.03	0.06
TMC Verification (min.)	2.73	4.08	2.58	2.26	3.02	3.20	4.24	4.24	2.90
TMC Response (min.)	3.99	4.59	3.38	16.56	8.48	4.78	5.32	5.63	3.52
RR Dispatch Time (min.)	0.77	2.06	1.19	12.60	4.30	1.94	1.39	1.85	1.04
RR Response Time (min.)	3.23	3.28	2.29	4.77	4.09	2.94	3.97	3.79	2.52
Event Clearance (min.)	50.20	34.61	53.73	65.04	81.99	52.67	39.60	75.03	37.54
Roadway Clearance (min.)	36.83	31.34	36.68	32.09	30.10	43.01	23.92	48.92	34.49
Incident Clearance (min.)	81.44	57.66	56.06	45.97	50.39	59.19	42.14	72.29	51.01
# of Events w/ RR/SIRV	369	483	6,228	377	455	12,451	298	393	5,943
RR/SIRV Responses	369	483	6,273	377	455	12,554	298	393	5,979
RR/SIRV Activities	393	517	6,792	398	489	13,769	324	421	6,436

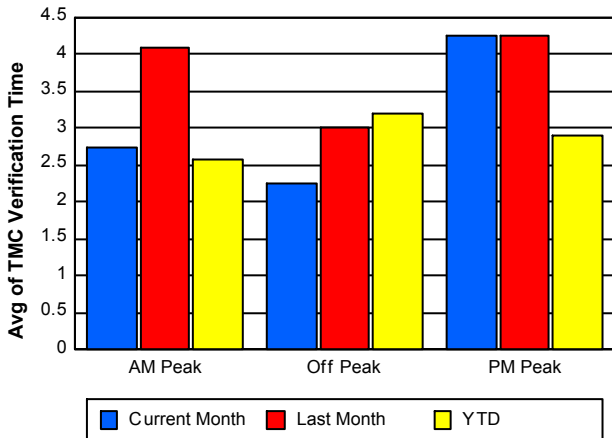
### Number of Events / Peak Period



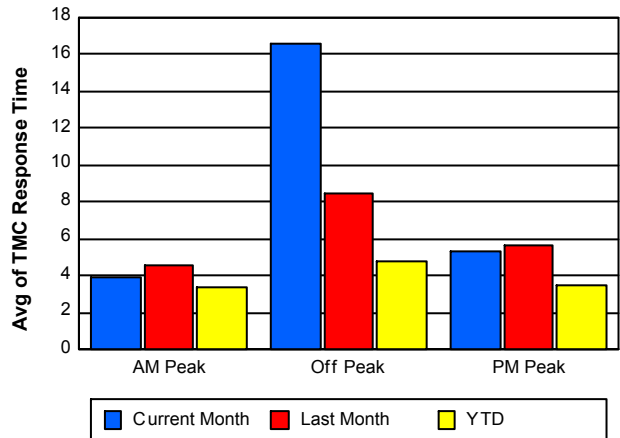
### TMC Detection Time



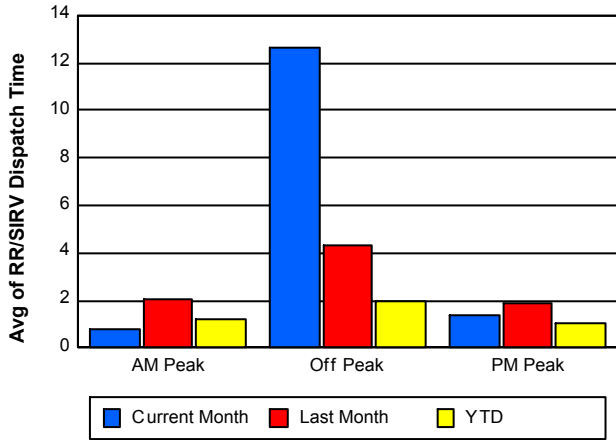
### TMC Verification Time



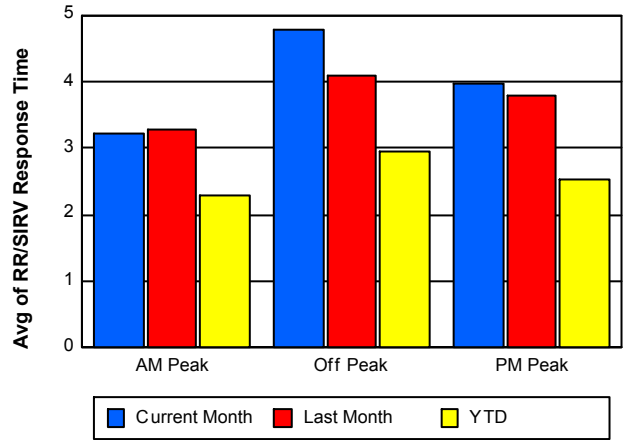
### TMC Response Time



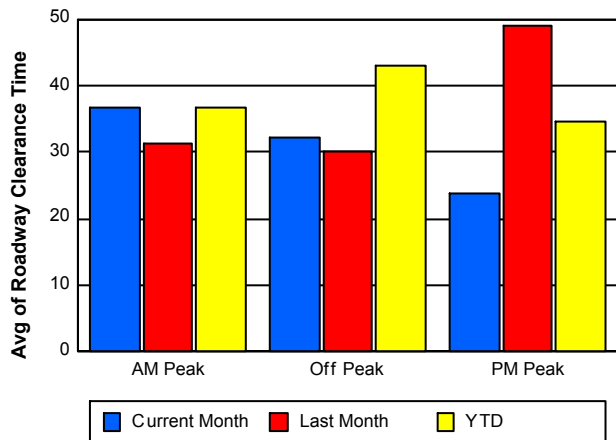
### Road Ranger / SIRV Dispatch Time



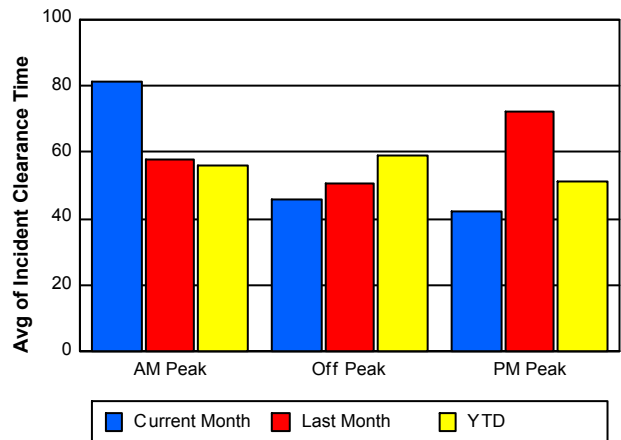
### Road Ranger / SIRV Response Time



### Roadway Clearance Time (2A)



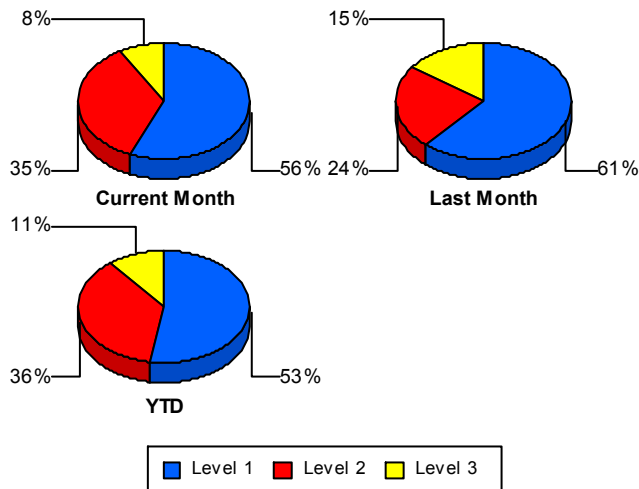
### Incident Clearance Time (3B)



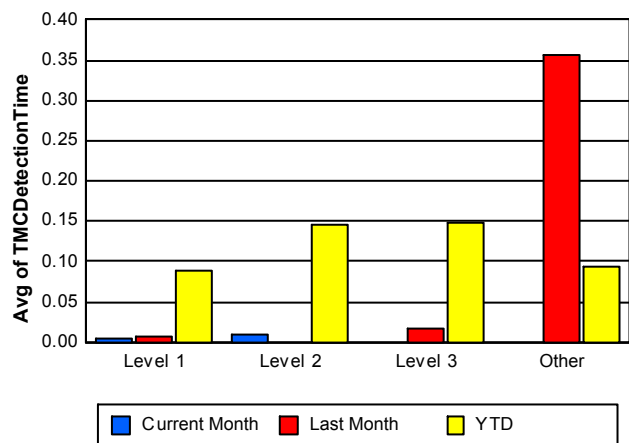
## Performance Measures by Severity

	Level 1			Level 2			Level 3			Other		
	<u>This Month</u>	<u>Last Month</u>	<u>YTD</u>	<u>This Month</u>	<u>Last Month</u>	<u>YTD</u>	<u>This Month</u>	<u>Last Month</u>	<u>YTD</u>	<u>This Month</u>	<u>Last Month</u>	<u>YTD</u>
Number of Events	48	49	786	30	19	541	7	12	160	1,309	1,542	24,887
Number of Incidents	48	49	786	30	19	541	7	12	160	0	0	0
TMC Detection (min.)	0.00	0.01	0.09	0.01	0.00	0.15	0.00	0.02	0.15	0.00	0.36	0.09
TMC Verification (min.)	2.91	2.24	2.30	6.61	5.75	6.37	2.72	3.93	4.74	2.77	3.70	2.91
TMC Response (min.)	4.90	3.73	4.47	12.11	7.22	9.56	6.05	9.46	10.91	8.94	6.28	3.95
RR Dispatch Time (min.)	1.28	1.46	1.50	2.97	1.40	2.84	1.13	6.45	4.58	5.47	2.82	1.49
RR Resp. Time (min.)	3.62	2.27	3.03	9.13	5.82	6.71	4.92	3.01	6.93	3.87	3.73	2.55
Event Clearance (min.)	45.69	40.26	33.59	58.92	74.46	69.24	70.06	119.86	126.07	54.95	65.33	48.97
Roadway Clear. (min.)	16.05	13.67	13.28	43.84	57.76	55.45	64.88	98.64	113.73			
Incident Clearance (min.)	45.69	40.26	33.59	58.92	74.46	69.24	70.06	119.86	126.07			
# of Events w/ RR/SIRV	45	44	720	24	18	505	4	4	130	971	1,265	23,267
RR/SIRV Responses	45	44	740	24	18	533	4	4	159	971	1,265	23,374
RR/SIRV Activities	67	51	932	38	27	755	6	8	254	1,004	1,341	25,056

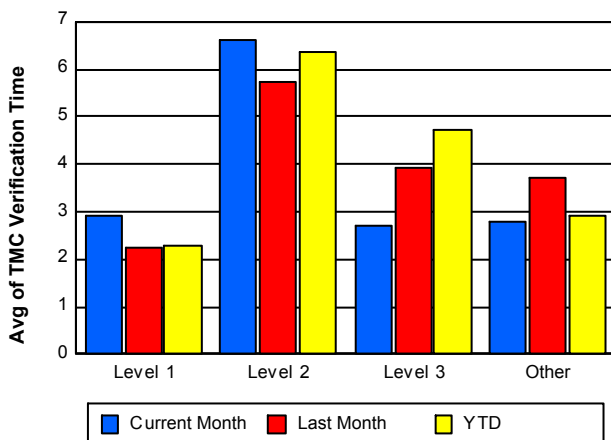
### Number of Events / Severity



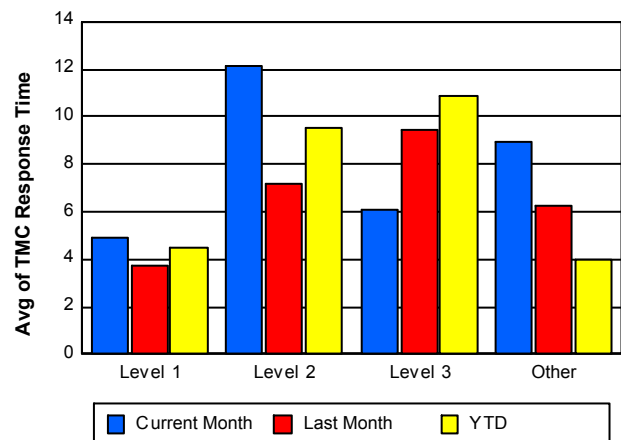
### TMC Detection Time



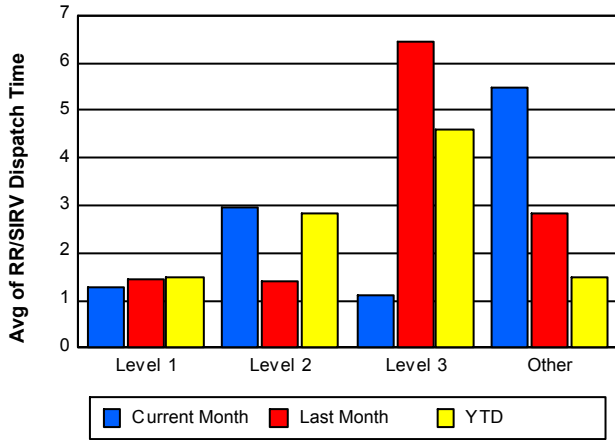
### TMC Verification Time



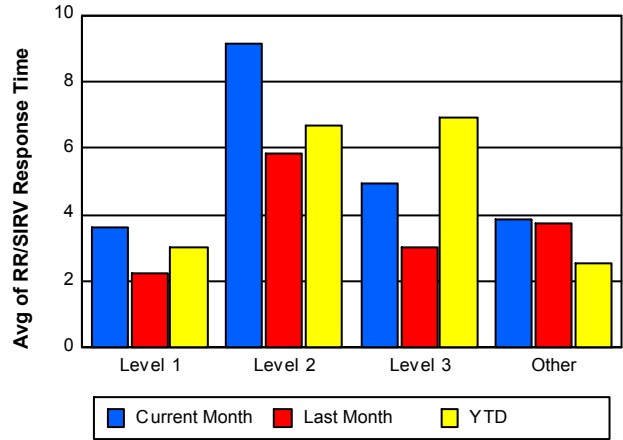
### TMC Response Time



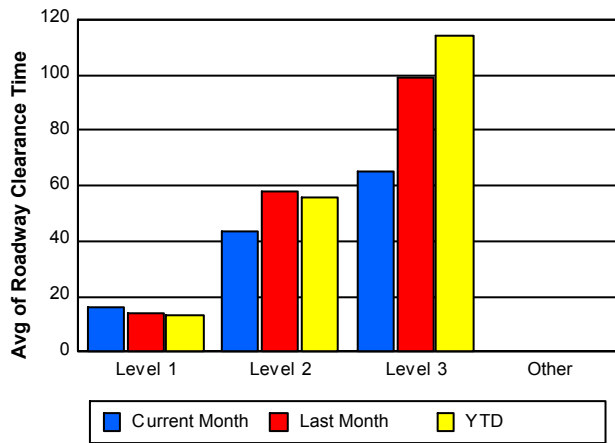
## Road Ranger / SIRV Dispatch Time



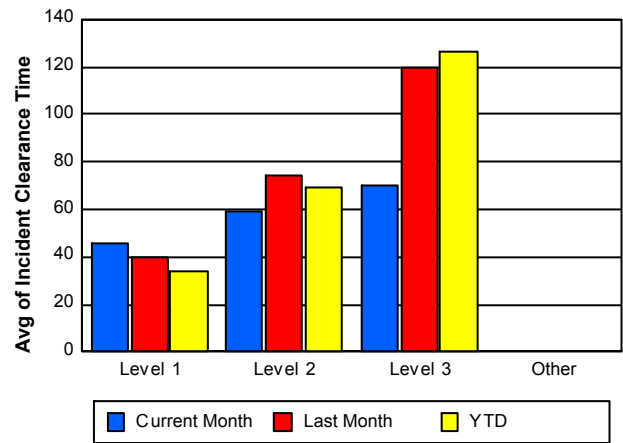
## Road Ranger / SIRV Response Time



## Roadway Clearance Time (2A)



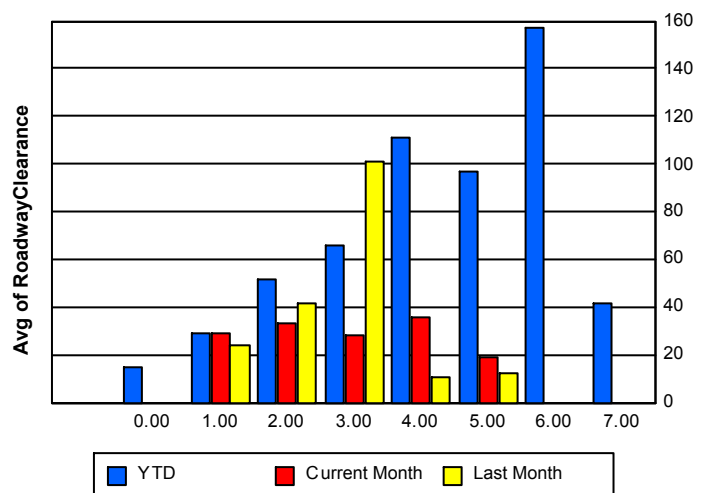
## Incident Clearance Time (3B)



## Roadway Clearance by Maximum Number of Lanes Blocked

	Current Month	Last Month	YTD
	0.00	0.00	
0			14.70
1	28.69	23.85	29.41
2	33.08	41.41	51.49
3	28.63	101.34	66.28
4	35.81	10.62	111.34
5	19.07	12.18	96.77
6	0.00	0.00	157.15

## Roadway Clearance Time (2A)



	Current Month	Last Month	YTD
7	0.00	0.00	41.44

## Performance Measures by Roadway

**95**

	<u>Current Month</u>	<u>Last Month</u>	<u>YTD</u>
Number of Events	1,394	1,621	26,370
Number of Incidents	85	79	1,484
TMC Detection (min.)	0.00	0.34	0.10
TMC Verification (min.)	2.86	3.66	2.97
TMC Response (min.)	8.83	6.22	4.12
RR Dispatch Time (min.)	5.22	2.76	1.53
RR Resp. Time (min.)	3.99	3.71	2.68
Event Clearance (min.)	54.79	64.68	49.36
Roadway Clear. (min.)	29.88	28.34	38.96
Incident Clearance (min.)	52.36	51.84	56.06
# of Events w/ RR/SIRV	1,044	1,331	24,620
RR/SIRV Responses	1,044	1,331	24,804
RR/SIRV Activities	1,115	1,427	26,996

**OKEEB**

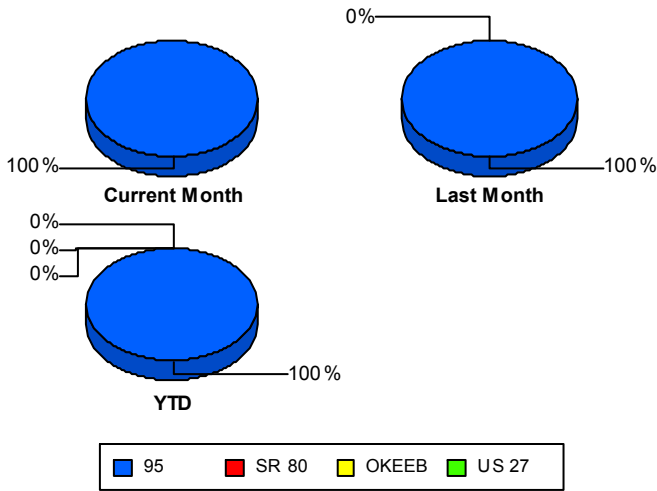
	<u>YTD</u>
Number of Events	2
Number of Incidents	2
TMC Detection (min.)	0.00
TMC Verification (min.)	12.48
TMC Response (min.)	7.78
RR Dispatch Time (min.)	4.42
RR Resp. Time (min.)	2.63
Event Clearance (min.)	54.35
Roadway Clear. (min.)	50.14
Incident Clearance (min.)	54.35
# of Events w/ RR/SIRV	2
RR/SIRV Responses	2
RR/SIRV Activities	1

**SR 80**

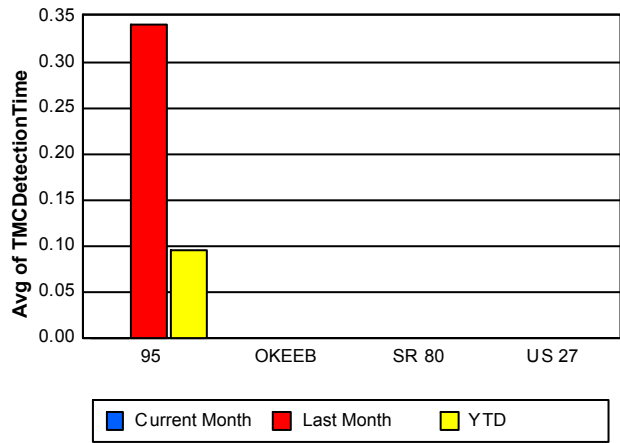
	<u>Last Month</u>	<u>YTD</u>
Number of Events	1	1
Number of Incidents	1	1
TMC Detection (min.)	0.00	0.00
TMC Verification (min.)	40.52	40.52
TMC Response (min.)		
RR Dispatch Time (min.)		
RR Resp. Time (min.)		
Event Clearance (min.)	730.37	730.37
Roadway Clear. (min.)	712.33	712.33
Incident Clearance (min.)	730.37	730.37
# of Events w/ RR/SIRV	0	0
RR/SIRV Responses	0	0
RR/SIRV Activities	0	0

	<u>YTD</u>
Number of Events	<b>1</b>
Number of Incidents	<b>0</b>
TMC Detection (min.)	<b>0.00</b>
TMC Verification (min.)	
TMC Response (min.)	
RR Dispatch Time (min.)	
RR Resp. Time (min.)	
Event Clearance (min.)	<b>125.57</b>
Roadway Clear. (min.)	
Incident Clearance (min.)	
# of Events w/ RR/SIRV	<b>0</b>
RR/SIRV Responses	<b>0</b>
RR/SIRV Activities	<b>0</b>

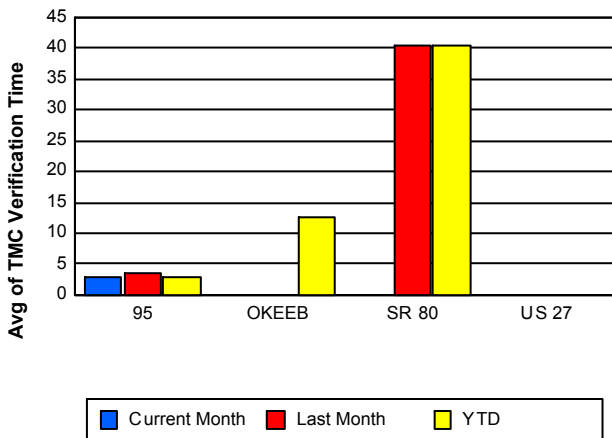
### Number of Events / Roadway



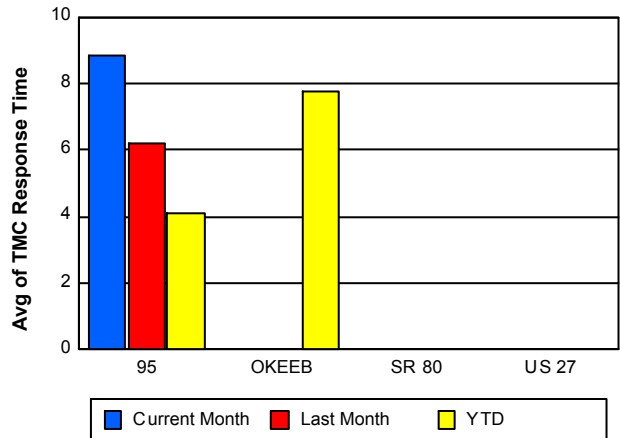
### TMC Detection Time



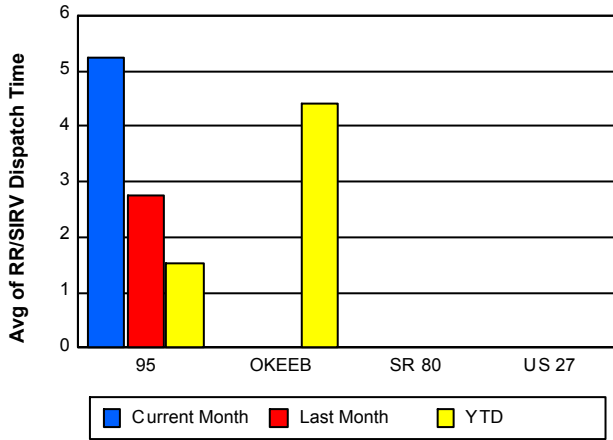
### TMC Verification Time



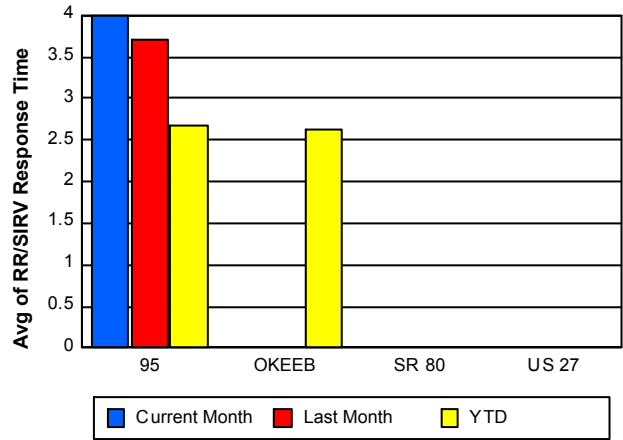
### TMC Response Time



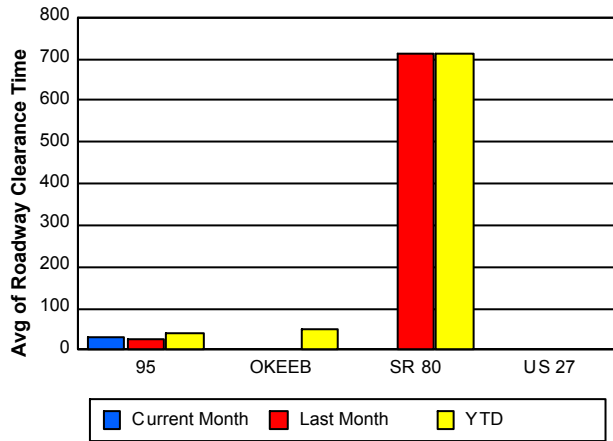
## Road Ranger / SIRV Dispatch Time



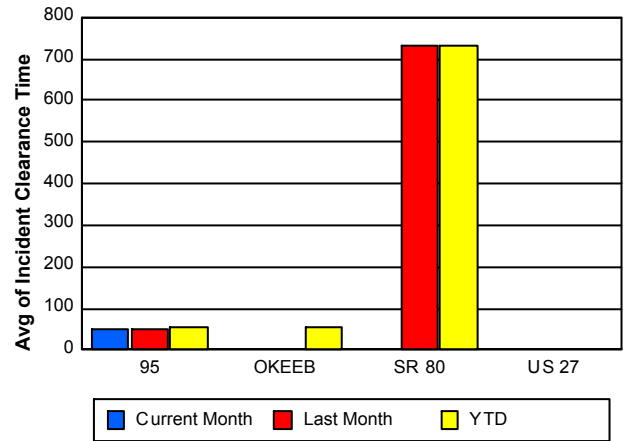
## Road Ranger / SIRV Response Time



## Roadway Clearance Time (2A)



## Incident Clearance Time (3B)



## Performance Measures by Event Type

### Abandoned Vehicle

	<u>Current Month</u>	<u>Last Month</u>	<u>YTD</u>
Number of Events	269	316	4,720
Number of Incidents	2	1	20
TMC Detection (min.)	0.00	0.00	0.04
TMC Verification (min.)	0.45	0.85	0.54
TMC Response (min.)	19.50	5.62	3.02
RR Dispatch Time (min.)	20.51	6.02	2.72
RR Response Time (min.)	0.97	1.09	0.65
Event Clearance (min.)	181.52	227.00	178.51
Roadway Clearance (min.)	14.56	27.80	77.41
Incident Clearance (min.)	16.29	27.63	35.86
# of Events w/ RR/SIRV	213	243	3,932
RR/SIRV Assists	213	243	3,947
RR/SIRV Activities	222	251	4,067

### Accident

	<u>Current Month</u>	<u>Last Month</u>	<u>YTD</u>
Number of Events	96	100	1,956
Number of Incidents	53	48	935
TMC Detection (min.)	0.00	0.11	0.13
TMC Verification (min.)	3.75	4.28	4.98
TMC Response (min.)	6.87	6.18	7.09
RR Dispatch Time (min.)	1.91	1.74	2.03
RR Response Time (min.)	4.96	4.45	5.16
Event Clearance (min.)	52.02	66.28	58.72
Roadway Clearance (min.)	28.25	48.33	45.97
Incident Clearance (min.)	58.43	79.17	69.24
# of Events w/ RR/SIRV	84	85	1,831
RR/SIRV Assists	84	85	1,910
RR/SIRV Activities	107	106	2,388

### Congestion

	<u>Last Month</u>	<u>YTD</u>
Number of Events	4	37
Number of Incidents	0	0
TMC Detection (min.)	134.36	14.53
TMC Verification (min.)	134.36	15.14
TMC Response (min.)	23.35	14.71
RR Dispatch Time (min.)	22.02	5.69
RR Response Time (min.)	1.33	8.68
Event Clearance (min.)	166.90	52.41
Roadway Clearance (min.)		
Incident Clearance (min.)		
# of Events w/ RR/SIRV	1	9
RR/SIRV Assists	1	9
RR/SIRV Activities	1	8

## Debris on Roadway

	<u>Current Month</u>	<u>Last Month</u>	<u>YTD</u>
Number of Events	69	99	1,397
Number of Incidents	5	3	123
TMC Detection (min.)	0.00	0.00	0.07
TMC Verification (min.)	11.97	9.10	7.10
TMC Response (min.)	11.96	9.48	7.42
RR Dispatch Time (min.)	1.46	3.04	1.68
RR Response Time (min.)	10.49	6.41	5.74
Event Clearance (min.)	16.72	12.69	12.21
Roadway Clearance (min.)	46.81	15.02	17.31
Incident Clearance (min.)	50.70	16.92	20.70
# of Events w/ RR/SIRV	69	99	1,381
RR/SIRV Assists	69	99	1,392
RR/SIRV Activities	79	100	1,486

## Disabled Vehicle

	<u>Current Month</u>	<u>Last Month</u>	<u>YTD</u>
Number of Events	743	952	17,449
Number of Incidents	18	15	311
TMC Detection (min.)	0.00	0.00	0.08
TMC Verification (min.)	3.52	3.93	3.06
TMC Response (min.)	5.21	6.00	3.67
RR Dispatch Time (min.)	1.20	1.93	1.16
RR Response Time (min.)	4.08	4.07	2.55
Event Clearance (min.)	23.79	23.42	17.08
Roadway Clearance (min.)	27.52	19.40	24.23
Incident Clearance (min.)	41.78	39.56	33.30
# of Events w/ RR/SIRV	644	845	17,013
RR/SIRV Assists	644	845	17,080
RR/SIRV Activities	681	926	18,584

## Emergency Vehicles

	<u>Current Month</u>	<u>YTD</u>
Number of Events	2	10
Number of Incidents	2	8
TMC Detection (min.)	0.00	2.01
TMC Verification (min.)	2.34	2.71
TMC Response (min.)	2.33	1.33
RR Dispatch Time (min.)	0.45	0.80
RR Response Time (min.)	1.88	0.53
Event Clearance (min.)	73.42	35.03
Roadway Clearance (min.)	70.63	32.77
Incident Clearance (min.)	73.42	39.72
# of Events w/ RR/SIRV	2	10
RR/SIRV Assists	2	10
RR/SIRV Activities	3	11

## Off Ramp Backup

	<u>YTD</u>
Number of Events	6
Number of Incidents	0
TMC Detection (min.)	0.00
TMC Verification (min.)	0.00
TMC Response (min.)	
RR Dispatch Time (min.)	
RR Response Time (min.)	
Event Clearance (min.)	45.29
Roadway Clearance (min.)	
Incident Clearance (min.)	
# of Events w/ RR/SIRV	0
RR/SIRV Assists	0
RR/SIRV Activities	0

## Other

	<u>Current Month</u>	<u>Last Month</u>	<u>YTD</u>
Number of Events	153	121	493
Number of Incidents	0	0	7
TMC Detection (min.)	0.00	0.00	0.02
TMC Verification (min.)	0.35	0.68	3.59
TMC Response (min.)	10.93	8.75	13.19
RR Dispatch Time (min.)	1.74	2.26	3.14
RR Response Time (min.)	9.28	6.10	9.63
Event Clearance (min.)	15.01	19.32	19.71
Roadway Clearance (min.)			17.35
Incident Clearance (min.)			21.04
# of Events w/ RR/SIRV	25	40	233
RR/SIRV Assists	25	40	235
RR/SIRV Activities	15	23	205

## Pedestrian

	<u>YTD</u>
Number of Events	32
Number of Incidents	0
TMC Detection (min.)	0.04
TMC Verification (min.)	1.39
TMC Response (min.)	1.38
RR Dispatch Time (min.)	0.27
RR Response Time (min.)	1.11
Event Clearance (min.)	15.13
Roadway Clearance (min.)	
Incident Clearance (min.)	
# of Events w/ RR/SIRV	32
RR/SIRV Assists	32
RR/SIRV Activities	33

## Police Activity

	<u>Current Month</u>	<u>Last Month</u>	<u>YTD</u>
Number of Events	57	18	136
Number of Incidents	4	9	56
TMC Detection (min.)	0.00	0.10	0.10
TMC Verification (min.)	0.00	0.43	0.85
TMC Response (min.)	6.17	3.86	8.41
RR Dispatch Time (min.)	0.62	2.11	4.35
RR Response Time (min.)	5.55	1.74	4.00
Event Clearance (min.)	21.38	21.84	35.82
Roadway Clearance (min.)	26.38	13.27	41.44
Incident Clearance (min.)	31.21	19.43	57.21
# of Events w/ RR/SIRV	3	8	54
RR/SIRV Assists	3	8	60
RR/SIRV Activities	4	8	67

## Vehicle Fire

	<u>Current Month</u>	<u>Last Month</u>	<u>YTD</u>
Number of Events	1	5	28
Number of Incidents	1	4	18
TMC Detection (min.)	0.00	0.00	0.00
TMC Verification (min.)	0.00	3.33	2.90
TMC Response (min.)	0.00	3.32	4.29
RR Dispatch Time (min.)	0.00	0.76	1.39
RR Response Time (min.)	0.00	2.56	2.91
Event Clearance (min.)	44.48	42.45	350.86
Roadway Clearance (min.)	37.20	36.94	50.55
Incident Clearance (min.)	44.48	44.77	66.05
# of Events w/ RR/SIRV	1	5	23
RR/SIRV Assists	1	5	23
RR/SIRV Activities	1	7	29

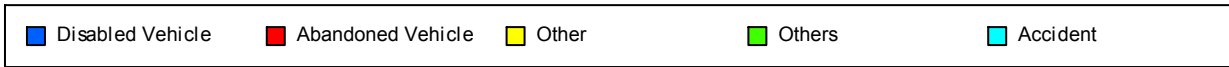
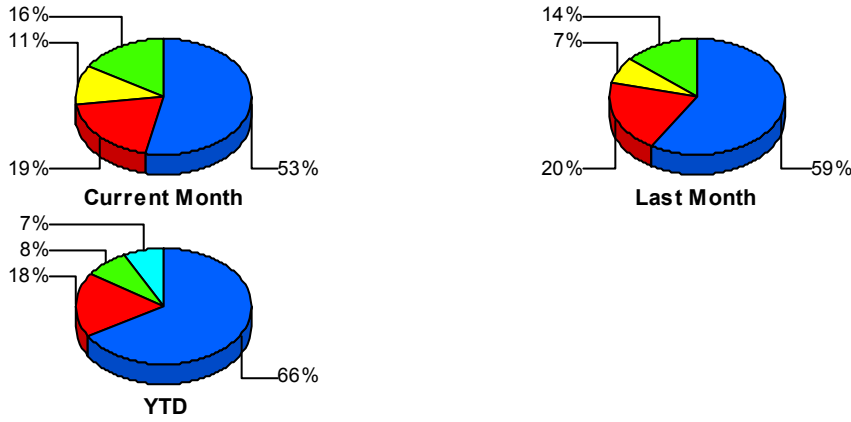
## Visibility

	<u>YTD</u>
Number of Events	7
Number of Incidents	5
TMC Detection (min.)	0.00
TMC Verification (min.)	1.26
TMC Response (min.)	17.63
RR Dispatch Time (min.)	7.16
RR Response Time (min.)	10.47
Event Clearance (min.)	37.35
Roadway Clearance (min.)	29.89
Incident Clearance (min.)	35.95
# of Events w/ RR/SIRV	5
RR/SIRV Assists	5
RR/SIRV Activities	7

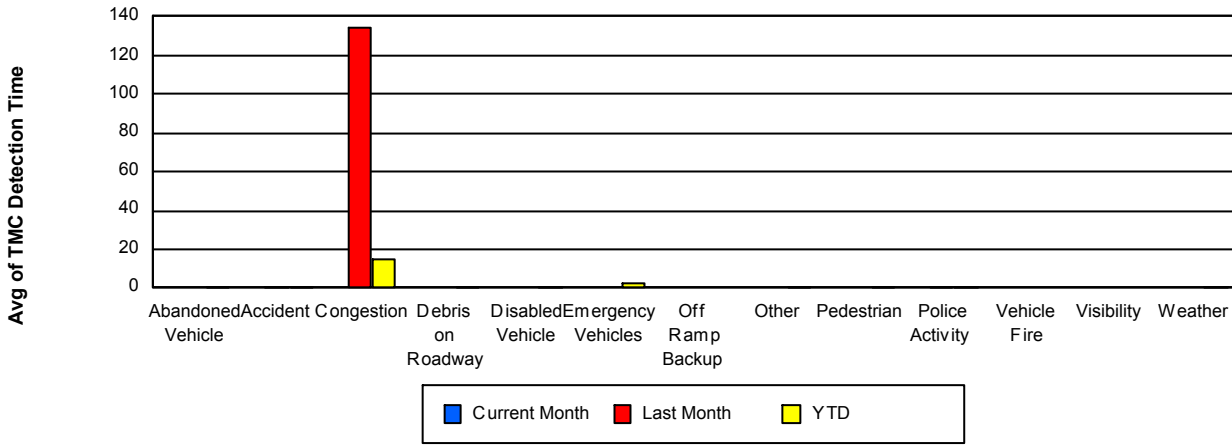
## Weather

	<u>YTD</u>
Number of Events	7
Number of Incidents	4
TMC Detection (min.)	<b>0.09</b>
TMC Verification (min.)	<b>8.35</b>
TMC Response (min.)	<b>10.26</b>
RR Dispatch Time (min.)	<b>2.93</b>
RR Response Time (min.)	<b>7.33</b>
Event Clearance (min.)	<b>153.13</b>
Roadway Clearance (min.)	<b>170.23</b>
Incident Clearance (min.)	<b>159.05</b>
# of Events w/ RR/SIRV	6
RR/SIRV Assists	10
RR/SIRV Activities	15

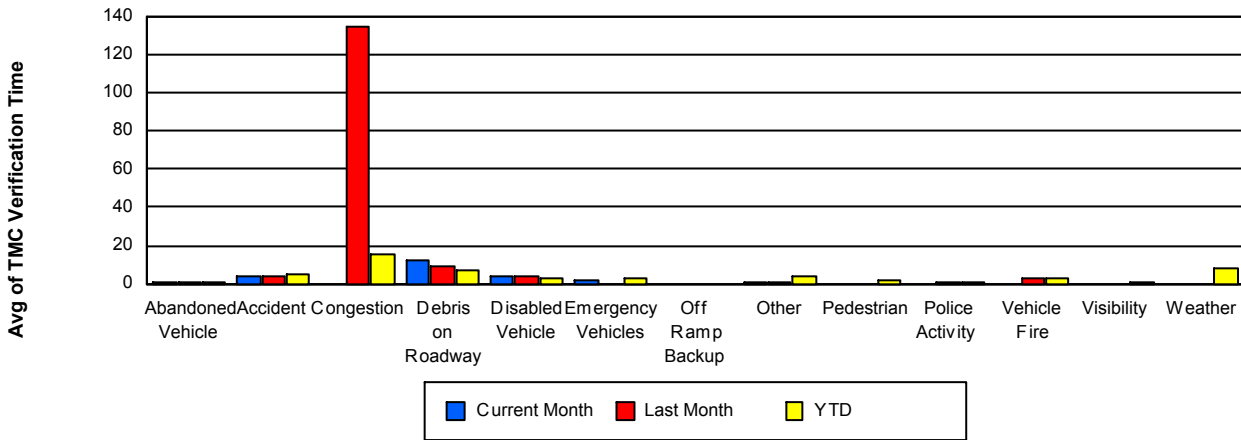
## Number of Events / Event Type



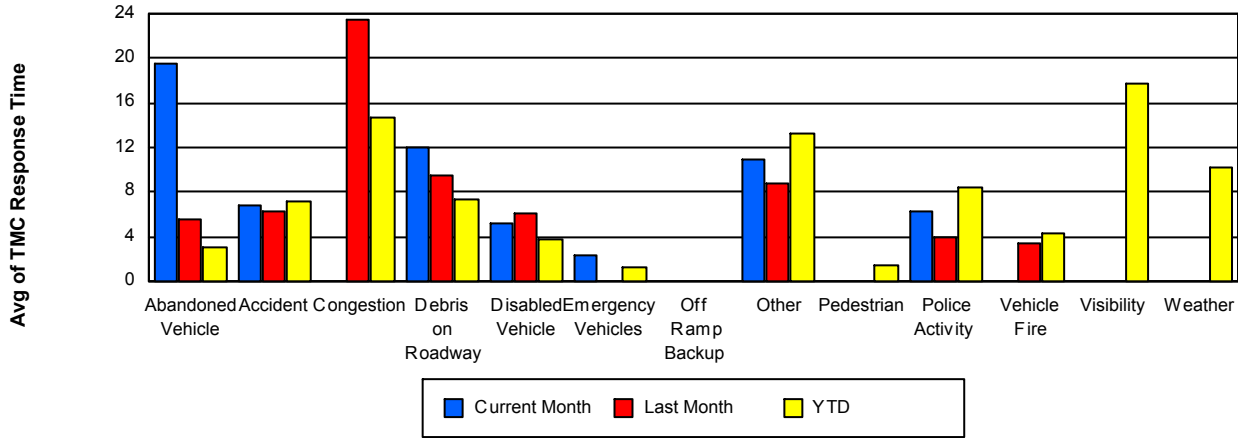
## TMC Detection Time



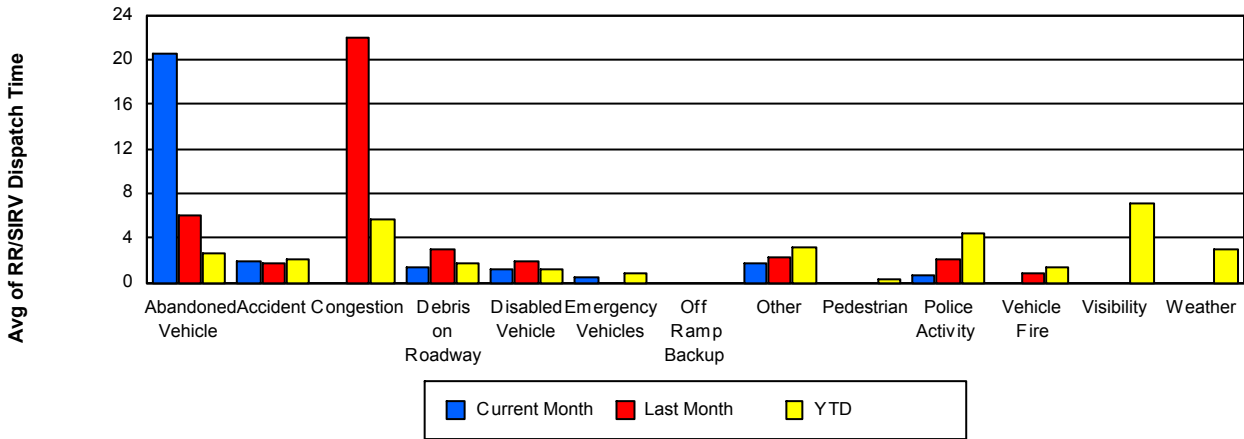
## TMC Verification Time



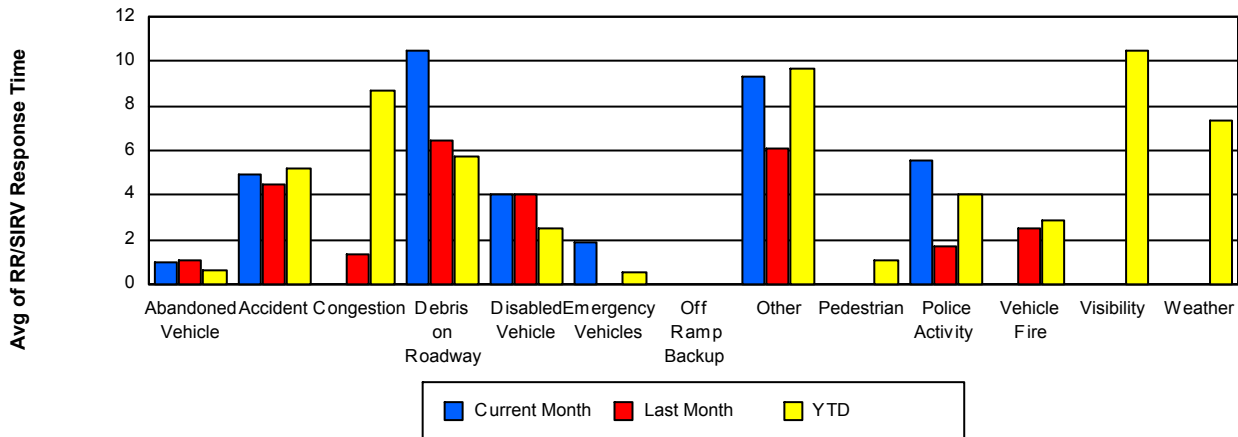
## TMC Response Time



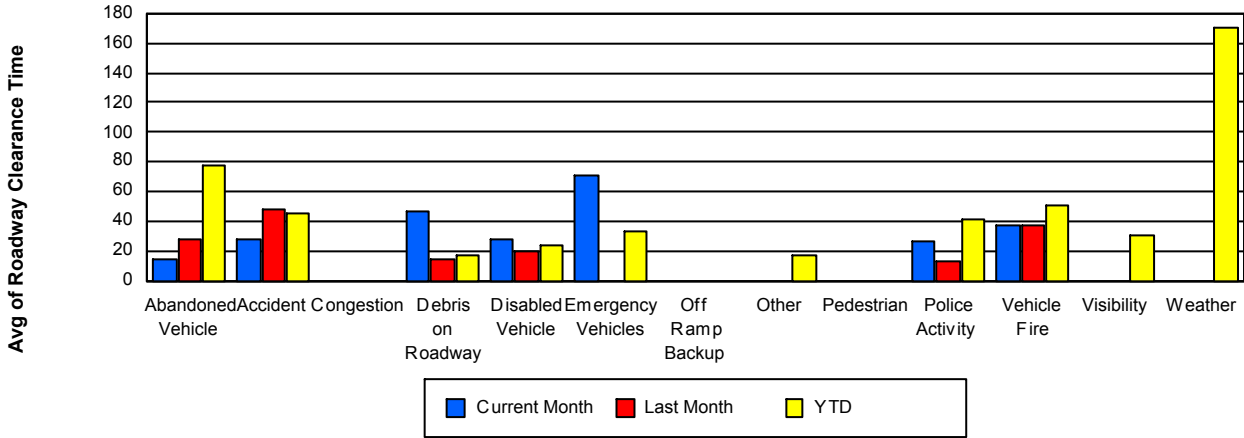
## Road Ranger / SIRV Dispatch Time



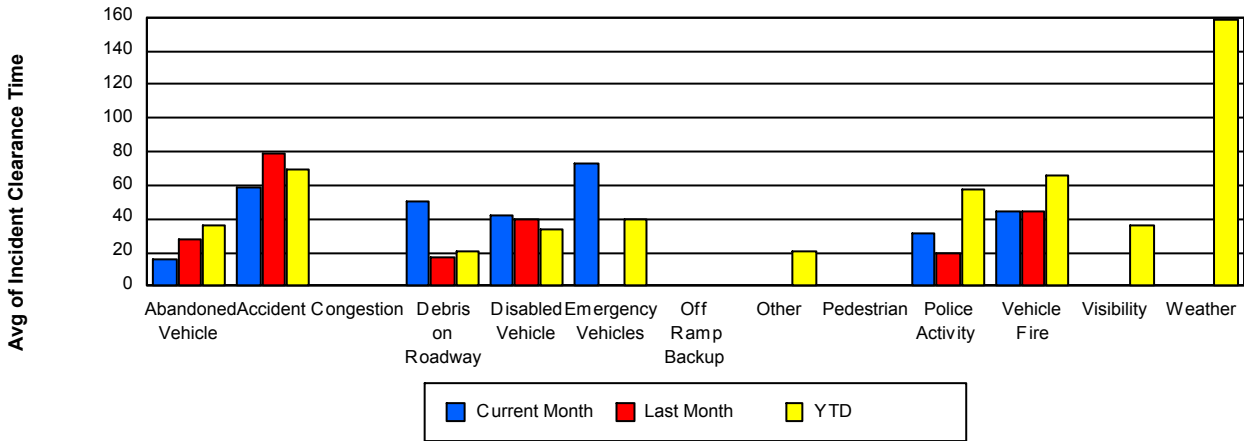
## Road Ranger / SIRV Response Time



## Roadway Clearance Time (2A)



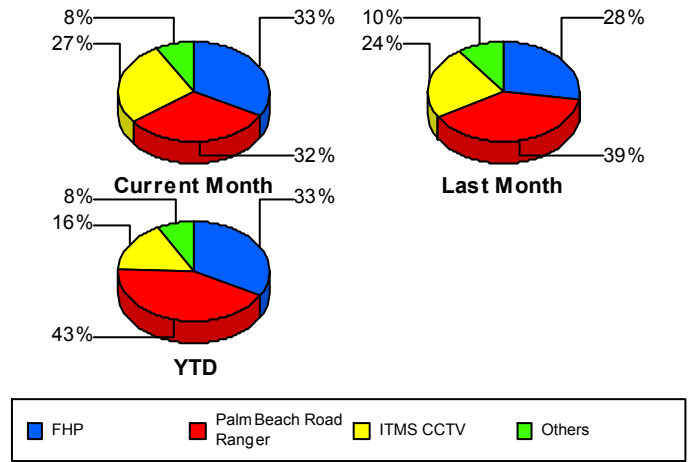
## Incident Clearance Time (3B)



## Incident Detection Methods

	Current Month	Last Month	YTD
Broward CCTV	0	0	4
Broward Road Ranger	0	0	9
Broward TMC	0	0	1
Construction CEI	0	0	6
District 4	1	4	54
FDOT Maintenance	1	1	4
FHP	28	22	491
ITMS	2	2	11
ITMS CCTV	23	19	243
Media	0	0	1
Motorist	2	1	22
Palm Beach Road Rang	27	31	634
Road Watcher	0	0	2
SmarTraveler (511)	1	0	5
<b>Total</b>	<b>85</b>	<b>80</b>	<b>1,487</b>

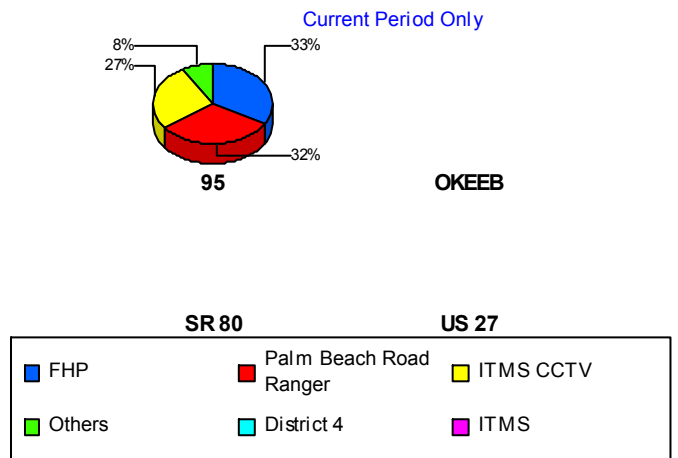
### Total Incidents by Detection Method



## Incident Detection Methods by Roadway

		Current Month	Last Month	YTD
95	Broward CCTV	0	0	4
	Broward Road Ranger	0	0	9
	Broward TMC	0	0	1
	Construction CEI	0	0	6
	District 4	1	3	53
	FDOT Maintenance	1	1	4
	FHP	28	22	489
	ITMS	2	2	11
	ITMS CCTV	23	19	243
	Media	0	0	1
	Motorist	2	1	22
	Palm Beach Road Rang	27	31	634

### Total Events by Roadway and Detection Method

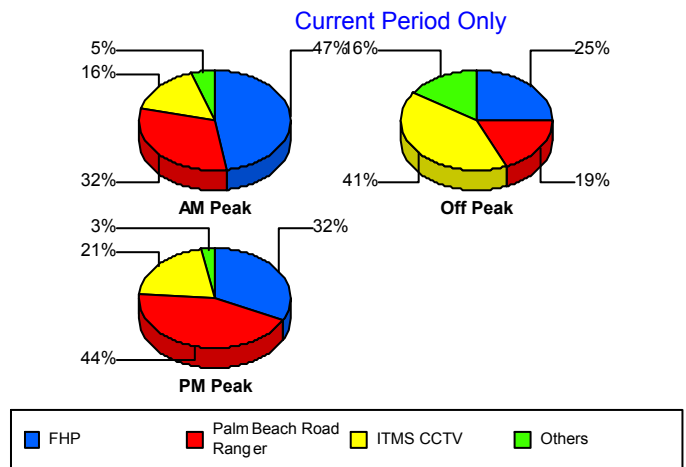


		Current Month	Last Month	YTD
95	Road Watcher	0	0	2
	SmarTraveler (511)	1	0	5
	<b>Total</b>	<b>85</b>	<b>79</b>	<b>1,484</b>
OKEEB	FHP	0	0	2
	<b>Total</b>	<b>0</b>	<b>0</b>	<b>2</b>
SR 80	District 4	0	1	1
	<b>Total</b>	<b>0</b>	<b>1</b>	<b>1</b>
<b>Total</b>		<b>85</b>	<b>80</b>	<b>1,487</b>

### Incident Detection Methods by Peak Period

		Current Month	Last Month	YTD
AM Peak	Broward CCTV	0	0	1
	Broward Road Ranger	0	0	3
	Broward TMC	0	0	1
	Construction CEI	0	0	1
	District 4	0	2	23
	FDOT Maintenance	0	1	1
	FHP	9	12	133
	ITMS	1	1	3
	ITMS CCTV	3	5	53
	Media	0	0	1
	Motorist	0	0	6
	Palm Beach Road Rang	6	7	155
	SmarTraveler (511)	0	0	1
	<b>Total</b>	<b>19</b>	<b>28</b>	<b>382</b>
	Off Peak	Broward CCTV	0	0
Broward Road Ranger		0	0	3
Construction CEI		0	0	5
District 4		1	0	24
FDOT Maintenance		1	0	3
FHP		8	5	264
ITMS		1	0	4

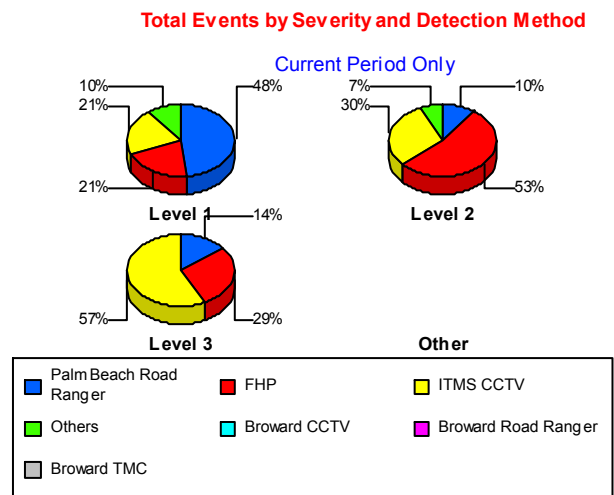
Total Events by Peak Period and Detection Method



		Current Month	Last Month	YTD
Off Peak	ITMS CCTV	13	11	120
	Motorist	1	0	11
	Palm Beach Road Rang	6	9	325
	Road Watcher	0	0	2
	SmarTraveler (511)	1	0	2
	Total	32	25	764
PM Peak	Broward CCTV	0	0	2
	Broward Road Ranger	0	0	3
	District 4	0	2	7
	FHP	11	5	94
	ITMS	0	1	4
	ITMS CCTV	7	3	70
	Motorist	1	1	5
	Palm Beach Road Rang	15	15	154
	SmarTraveler (511)	0	0	2
	Total	34	27	341
Total	85	80	1,487	

### Incident Detection Methods by Severity

		Current Month	Last Month	YTD
Level 1	Broward CCTV	0	0	4
	Broward Road Ranger	0	0	7
	Broward TMC	0	0	1
	Construction CEI	0	0	2
	District 4	1	1	36
	FDOT Maintenance	1	0	2
	FHP	10	13	184
	ITMS	1	0	5
	ITMS CCTV	10	8	114
	Media	0	0	1
	Motorist	2	0	12
	Palm Beach Road Rang	23	27	415



		Current Month	Last Month	YTD
Level 1	SmarTraveler (511)	0	0	3
	Total	48	49	786
Level 2	Broward Road Ranger	0	0	2
	Construction CEI	0	0	2
	District 4	0	2	15
	FDOT Maintenance	0	1	1
	FHP	16	8	243
	ITMS	1	1	5
	ITMS CCTV	9	3	86
	Motorist	0	1	10
	Palm Beach Road Rang	3	3	174
	Road Watcher	0	0	1
	SmarTraveler (511)	1	0	2
	Total	30	19	541
	Level 3	Construction CEI	0	0
District 4		0	1	3
FDOT Maintenance		0	0	1
FHP		2	1	64
ITMS		0	1	1
ITMS CCTV		4	8	43
Palm Beach Road Rang		1	1	45
Road Watcher		0	0	1
Total		7	12	160
Total		85	80	1,487

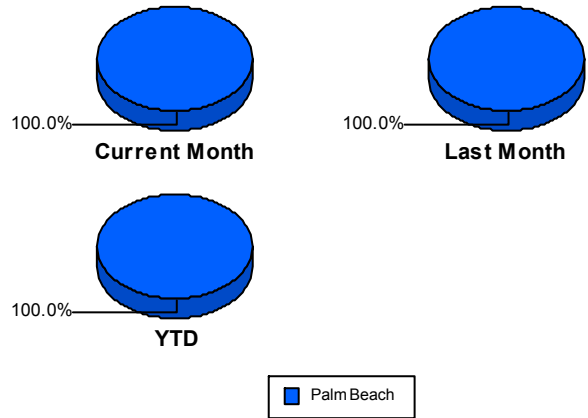
## Road Ranger / SIRV Performance Measures

### Road Ranger / SIRV Performance By County

Values presented are:  
 - Total Events with a RR/SIRV Response  
 - Total RR/SIRV Responses,  
 - Total Activities Performed

	Current Mo	Last Month	YTD
Palm Beach	<b>1,108</b>	<b>1,442</b>	<b>26,217</b>
	<b>1,148</b>	<b>1,489</b>	<b>27,194</b>
	<b>1,208</b>	<b>1,595</b>	<b>28,987</b>

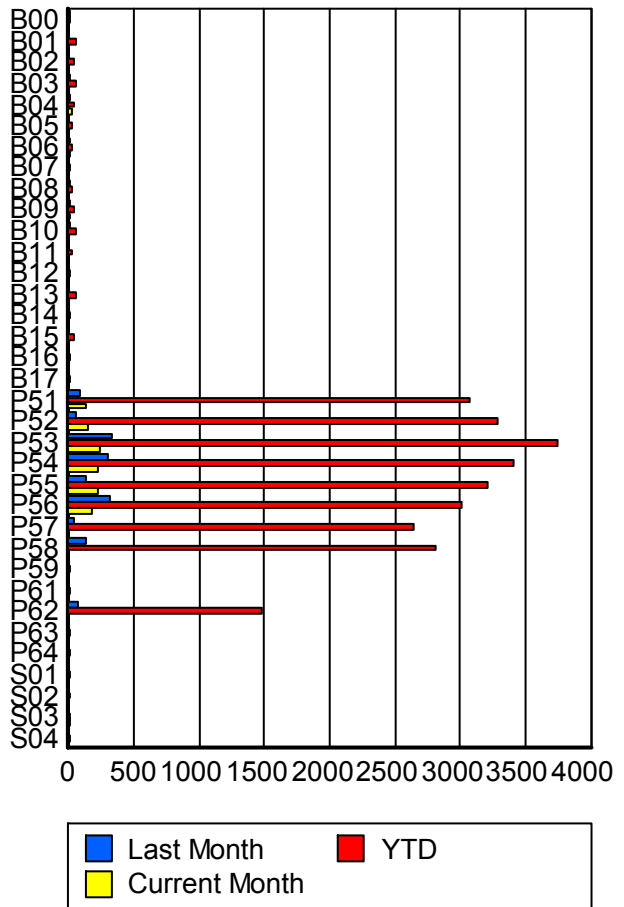
RR/SIRV Responses per County



### Road Ranger / SIRV Performance By Truck

	Current Mo	Last Month	YTD
B00	0	1	13
	0	1	13
	0	1	14
B01	0	0	52
	0	0	52
	0	0	55
B02	0	0	39
	0	0	41
	0	0	43
B03	0	3	49
	0	3	51
	0	3	53
B04	17	14	32
	17	14	32
	17	15	33
B05	0	0	19
	0	0	19
	0	0	20
B06	1	7	23
	1	7	23
	1	9	26
B07	0	0	4
	0	0	4
	0	0	4
B08	0	1	25
	0	1	26
	0	1	26

RR/SIRV Responses per Truck



	Current Mo	Last Month	YTD
B09	2	10	37
	2	10	38
	3	11	41
B10	0	4	55
	0	4	55
	0	4	63
B11	0	0	18
	0	0	18
	0	0	19
B12	0	0	6
	0	0	6
	0	0	6
B13	0	0	56
	0	0	56
	0	0	59
B14	0	0	9
	0	0	9
	0	0	10
B15	0	0	33
	0	0	34
	0	0	36
B16	0	0	14
	0	0	14
	0	0	15
B17	0	0	12
	0	0	12
	0	0	12
P51	124	86	3,054
	125	87	3,074
	134	90	3,276
P52	143	55	3,249
	146	55	3,283
	151	56	3,526
P53	240	322	3,721
	240	325	3,745
	252	349	3,973
P54	226	290	3,370
	228	292	3,402
	238	315	3,626
P55	217	130	3,198
	218	131	3,216
	229	137	3,426
P56	169	308	2,980
	170	313	3,009
	182	332	3,217

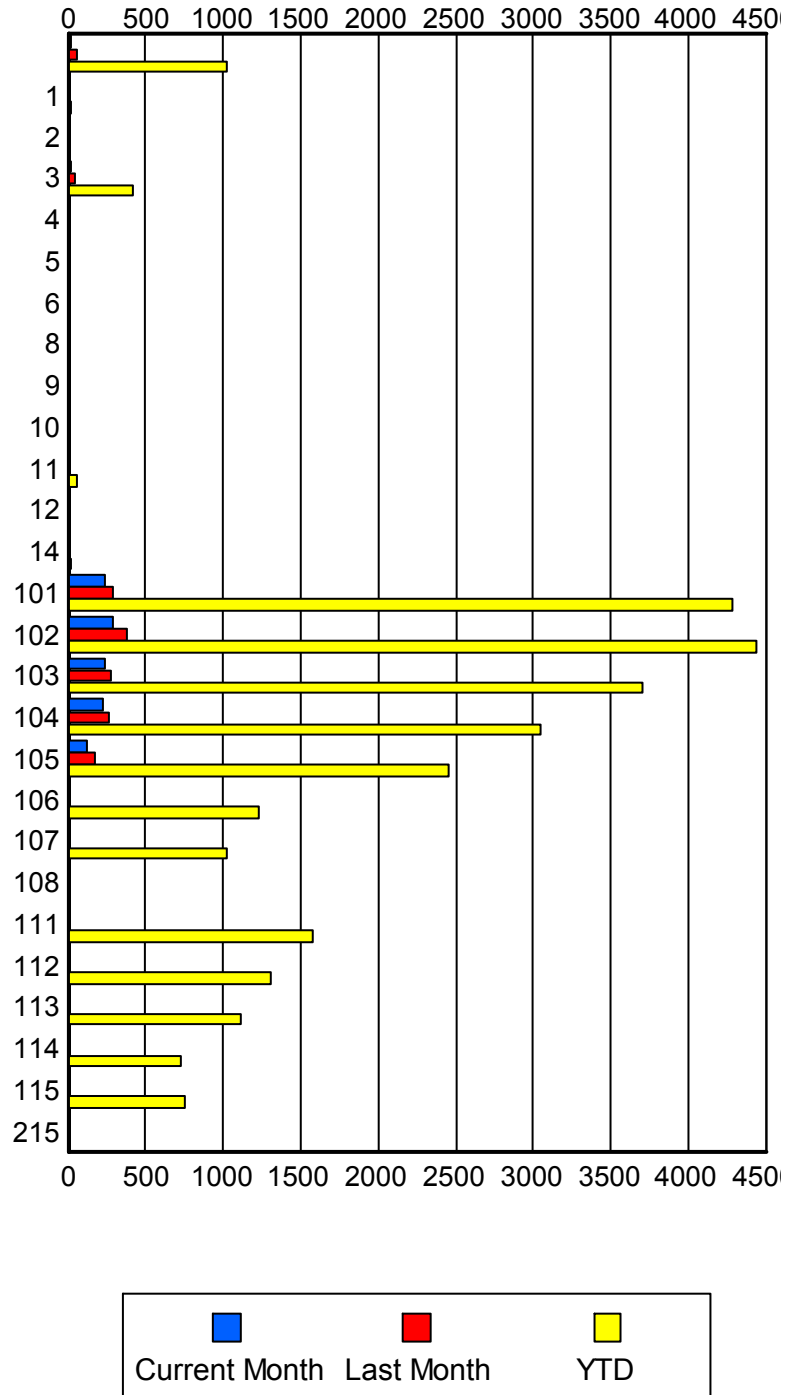
	Current Mo	Last Month	YTD
P57	0	33	2,613
	0	35	2,636
	0	35	2,835
P58	0	135	2,787
	0	136	2,814
	0	149	2,968
P59	0	0	7
	0	0	7
	0	0	7
P61	0	0	7
	0	0	7
	0	0	7
P62	0	74	1,466
	0	75	1,485
	0	88	1,578
P63	0	0	4
	0	0	4
	0	0	4
P64	0	0	3
	0	0	3
	0	0	3
S01	0	0	1
	0	0	1
	0	0	1
S02	0	0	3
	0	0	3
	0	0	3
S03	1	0	1
	1	0	1
	1	0	1
S04	0	0	1
	0	0	1
	0	0	1

### Road Ranger / SIRV Performance By Beat

	Current Mo	Last Month	YTD
	15	54	1,016
	15	55	1,025
	16	59	1,082
1	0	0	21
	0	0	21
	0	0	22
2	0	0	10
	0	0	10
	0	0	10
3	20	38	410
	20	38	420
	21	42	448
4	0	1	9
	0	1	9
	0	1	11
5	0	0	2
	0	0	2
	0	0	2
6	0	0	2
	0	0	2
	0	0	2
8	0	1	1
	0	1	1
	0	1	1
9	0	0	1
	0	0	1
	0	0	1
10	0	0	3
	0	0	3
	0	0	3
11	0	0	49
	0	0	50
	0	0	52
12	0	0	2
	0	0	2
	0	0	2
14	0	0	18
	0	0	19
	0	0	21
101	242	289	4,248
	242	293	4,285
	252	312	4,545
102	283	374	4,398
	284	379	4,431
	295	405	4,750

Values presented are:  
 - Total Events with a RR/SIRV Response  
 - Total RR/SIRV Responses,  
 - Total Activities Performed

### RR/SIRV Responses per Beat



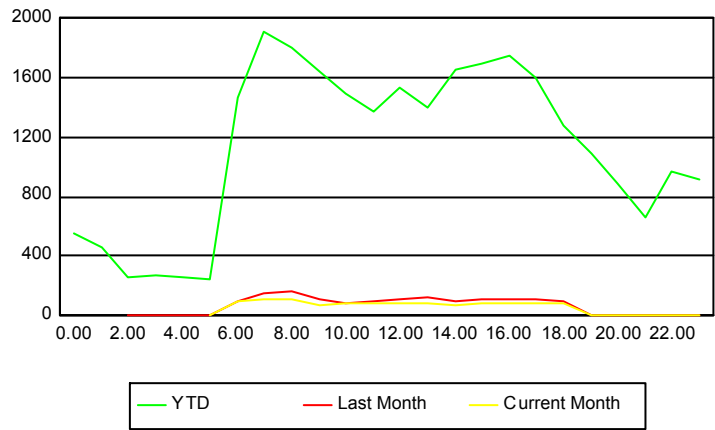
	Current Mo	Last Month	YTD
103	229 231 244	280 281 306	3,674 3,700 3,967
104	218 222 235	262 266 278	3,012 3,039 3,253
105	124 125 134	171 174 190	2,419 2,448 2,602
106	0 0 0	1 1 1	1,215 1,226 1,300
107	0 0 0	0 0 0	1,005 1,017 1,067
108	0 0 0	0 0 0	1 1 1
111	0 0 0	0 0 0	1,566 1,581 1,680
112	0 0 0	0 0 0	1,295 1,308 1,389
113	0 0 0	0 0 0	1,088 1,109 1,180
114	9 9 11	0 0 0	719 725 769
115	0 0 0	0 0 0	750 757 825
215	0 0 0	0 0 0	2 2 2

## Road Ranger / SIRV Performance By Time of Day

Values presented are:  
 - Total Events with a RR/SIRV Response  
 - Total RR/SIRV Responses,  
 - Total Activities Performed

	Current Mo	Last Month	YTD
12AM-1AM	0	0	533
	0	0	554
	0	0	587
1AM-2AM	0	0	431
	0	0	455
	0	0	496
2AM-3AM	0	2	249
	0	2	262
	0	2	274
3AM-4AM	0	0	257
	0	0	277
	0	0	301
4AM-5AM	0	1	232
	0	1	257
	0	1	278
5AM-6AM	3	4	217
	4	4	248
	4	5	266
6AM-7AM	95	89	1,418
	101	92	1,462
	106	98	1,562
7AM-8AM	109	153	1,864
	114	157	1,914
	120	166	2,033
8AM-9AM	113	158	1,742
	114	164	1,804
	118	181	1,921
9AM-10AM	69	110	1,578
	70	114	1,636
	73	120	1,761
10AM-11AM	87	83	1,445
	88	85	1,494
	95	91	1,602
11AM-12PM	79	95	1,327
	84	98	1,378
	91	108	1,469
12PM-1PM	81	108	1,468
	85	114	1,537
	87	122	1,641

## Number of Responses / Hour of the Day



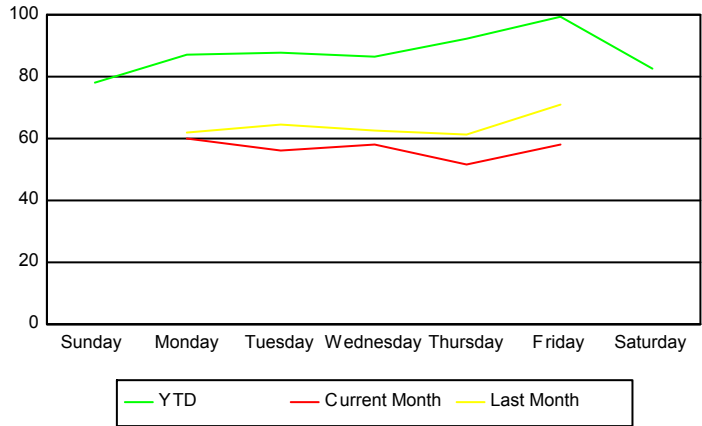
	Current Mo	Last Month	YTD
1PM-2PM	76	117	1,339
	80	121	1,406
	85	129	1,514
2PM-3PM	65	91	1,622
	66	91	1,658
	68	97	1,774
3PM-4PM	79	104	1,653
	82	109	1,696
	83	114	1,790
4PM-5PM	84	109	1,715
	87	111	1,756
	91	118	1,874
5PM-6PM	83	114	1,553
	88	117	1,605
	95	122	1,702
6PM-7PM	79	95	1,239
	79	99	1,281
	86	110	1,352
7PM-8PM	1	8	1,048
	1	9	1,086
	1	9	1,140
8PM-9PM	0	0	852
	0	0	884
	0	0	936
9PM-10PM	1	0	622
	1	0	655
	1	0	690
10PM-11PM	2	0	936
	2	0	974
	2	0	1,041
11PM-12AM	2	1	877
	2	1	915
	2	2	983

## Road Ranger / SIRV Performance By Day of Week

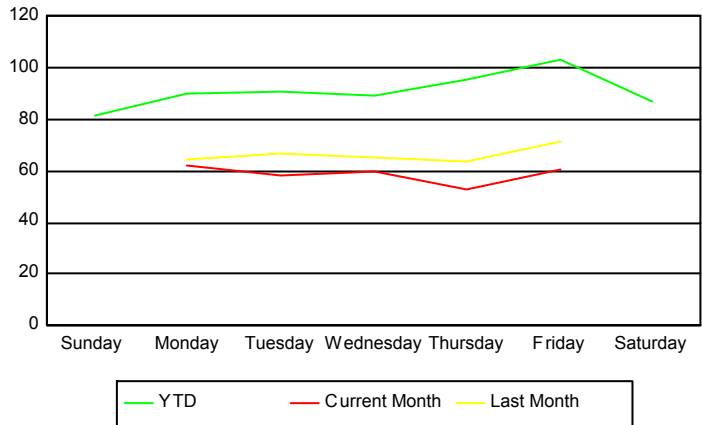
Values presented are: - Total Events with a RR/SIRV Response - Total RR/SIRV Responses, - Total Activities Performed
---

	Current Mo	Last Month	YTD
Sunday	0 0 0	0 0 0	2,676 2,793 3,006
Monday	239 247 253	241 250 267	3,949 4,070 4,298
Tuesday	220 228 238	253 260 275	4,044 4,182 4,414
Wednesday	227 234 245	308 321 351	3,991 4,115 4,380
Thursday	197 203 218	301 314 335	4,200 4,349 4,651
Friday	226 236 254	341 344 367	4,537 4,690 5,051
Saturday	0 0 0	0 0 0	2,857 2,995 3,187

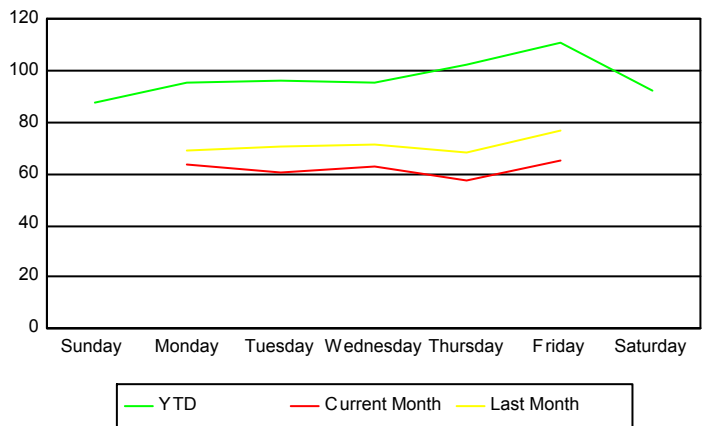
### Avg # of events with a RR/SIRV Response per Day of the Week



### Avg # of RR/SIRV Responses per Day of the Week



### Avg # of RR/SIRV Activities Performed per Day of the Week



### Road Ranger / SIRV Responses per Time of Day and Day of Week

