



Monthly Performance Measures Report Palm Beach County



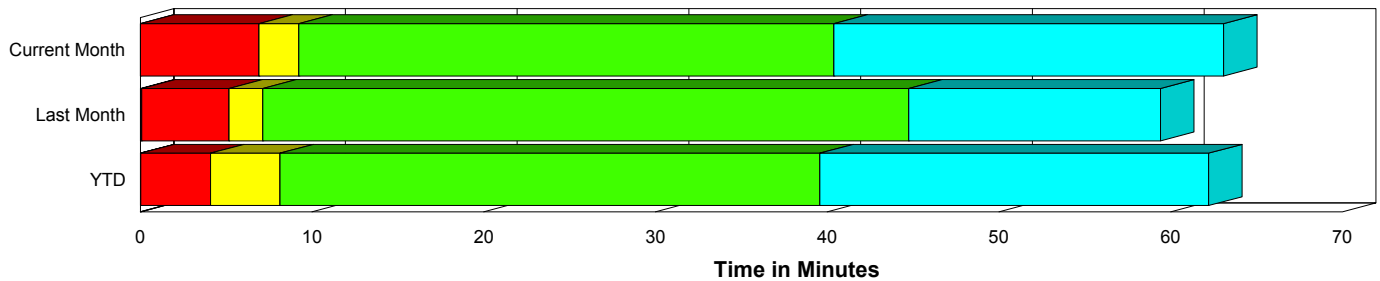
Created on:
December 01, 2009
8:53 am

Period From Nov 1, 2009 to Nov 30, 2009

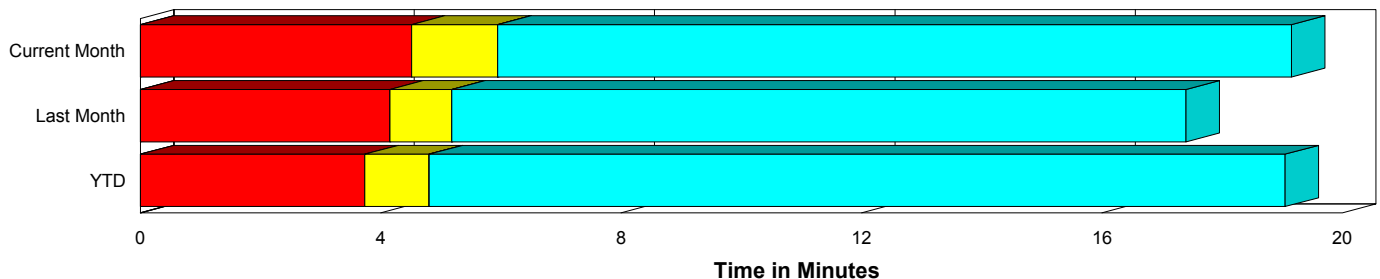
Performance Measures Summary

	Traffic Events (No Lanes Blocked)			Incidents (Lanes Blocked)		
	<u>This Month</u>	<u>Last Month</u>	<u>YTD</u>	<u>This Month</u>	<u>Last Month</u>	<u>YTD</u>
Number of Events	1,829	2,007	15,821	115	108	1,041
TMC Detection (min.)	0.00	0.00	0.00	0.00	0.08	0.03
TMC Verification (min.)	4.51	4.15	3.73	6.91	5.09	4.06
TMC Response (min.)	6.20	5.34	5.33	9.18	7.51	8.79
RR Dispatch Time (min.)	1.85	1.51	1.69	1.70	1.80	3.45
RR Response Time (min.)	4.43	3.93	3.74	7.57	5.74	5.32
Roadway Clearance (min.)				42.13	43.46	47.50
Event Clearance (min.)	19.40	17.56	19.58	64.55	54.70	69.49
# of Events w/ RR/SIRV	1,783	1,980	14,060	114	103	855
RR/SIRV Responses	1,783	1,980	14,060	114	103	855
RR/SIRV Activities	1,910	2,147	15,254	149	144	1,217

Incident Clearance Time-Line



Traffic Event (Non-Lane Blockage) Time-Line



■ Avg. TMC Detection Time	■ Avg. Time from TMC Response to Roadway Clearance*
■ Avg. Time from TMC Detection to TMC Verification	■ Avg. Time from Roadway Clearance to Incident/Event Clearance**
■ Avg. Time from TMC Verification to TMC Response	

* Roadway clearance equals all travel lanes open

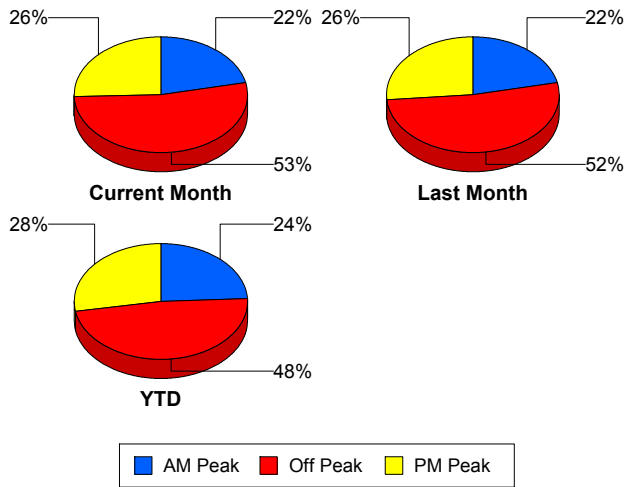
** Incident clearance equals time when last responder has left the scene

Performance Measures by Peak Period

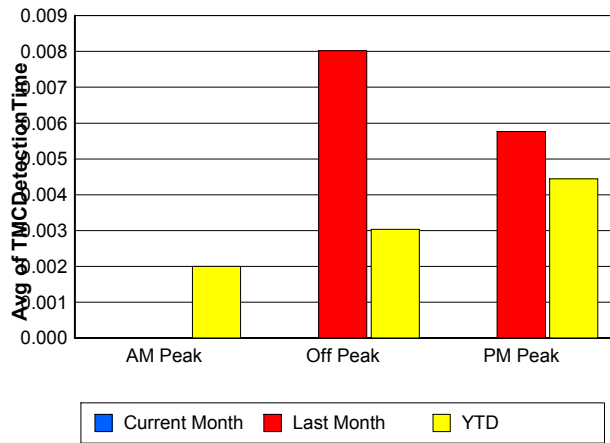
Note: AM peak period is defined as 6am to 10am and PM peak period is defined as 3pm to 7pm.

	AM Peak			Off Peak			PM Peak		
	<u>Current Month</u>	<u>Last Month</u>	<u>YTD</u>	<u>Current Month</u>	<u>Last Month</u>	<u>YTD</u>	<u>Current Month</u>	<u>Last Month</u>	<u>YTD</u>
Number of Events	423	456	4,054	1,022	1,101	8,120	499	558	4,688
Number of Incidents	37	23	303	61	66	492	17	19	246
TMC Detection (min.)	0.00	0.00	0.00	0.00	0.01	0.00	0.00	0.01	0.00
TMC Verification (min.)	3.37	3.24	3.15	4.72	4.16	3.54	5.61	5.05	4.64
TMC Response (min.)	5.20	5.22	4.63	6.76	5.46	6.14	6.56	5.61	5.42
RR Dispatch Time (min.)	1.29	1.51	1.25	2.05	1.59	2.32	1.87	1.41	1.47
RR Response Time (min.)	3.95	3.75	3.42	4.83	4.03	3.97	4.74	4.20	3.97
Event Clearance (min.)	20.74	19.97	22.01	22.13	19.44	23.84	23.08	19.06	21.16
Roadway Clearance (min.)	31.56	37.97	38.49	40.86	47.44	48.72	69.70	36.30	56.14
Incident Clearance (min.)	55.58	55.13	65.61	55.99	55.78	67.92	114.81	50.41	77.41
# of Events w/ RR/SIRV	412	448	3,890	998	1,087	6,576	487	548	4,449
RR/SIRV Responses	412	448	3,890	998	1,087	6,576	487	548	4,449
RR/SIRV Activities	436	496	4,359	1,099	1,189	7,261	524	606	4,851

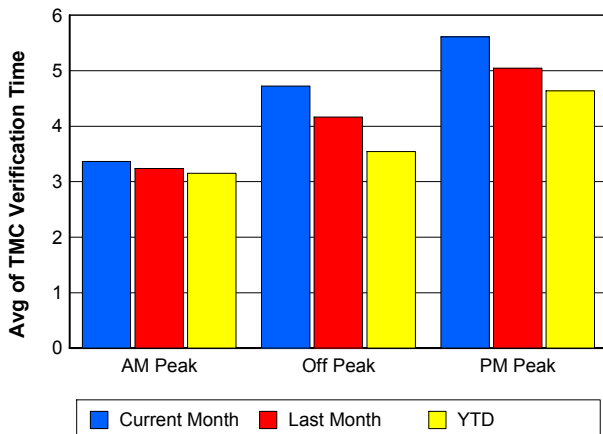
Number of Events / Peak Period



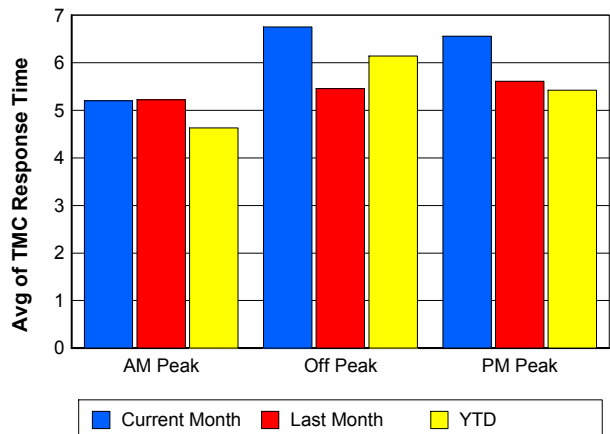
TMC Detection Time



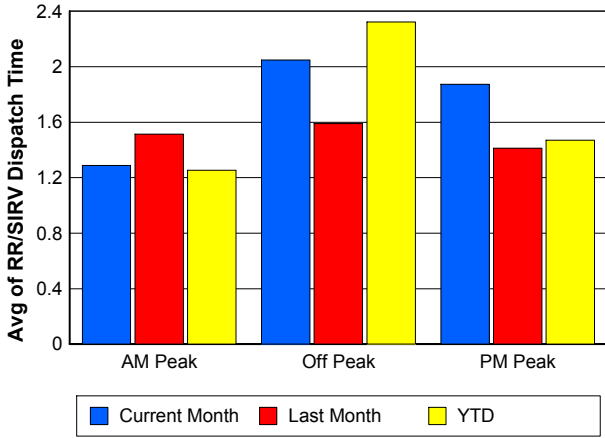
TMC Verification Time



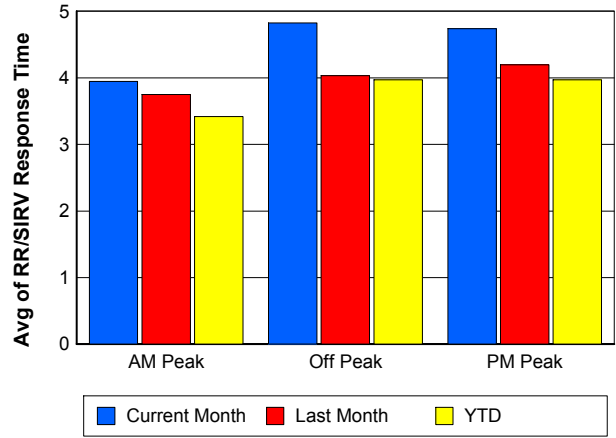
TMC Response Time



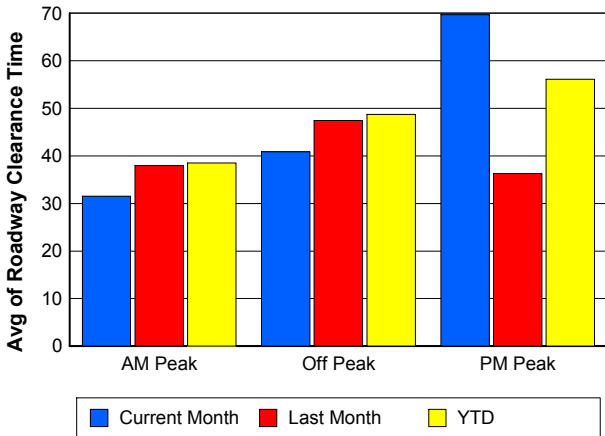
Road Ranger / SIRV Dispatch Time



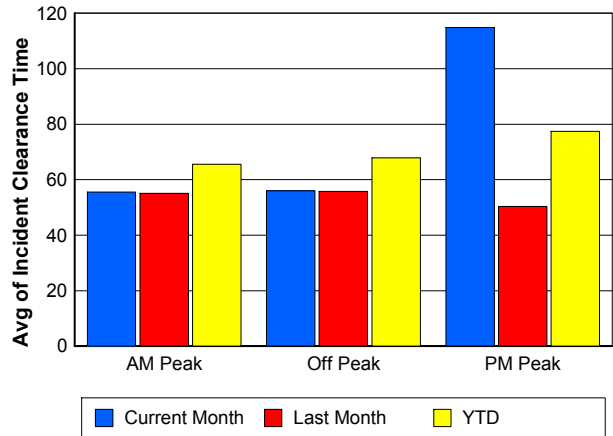
Road Ranger / SIRV Response Time



Roadway Clearance Time (2A)



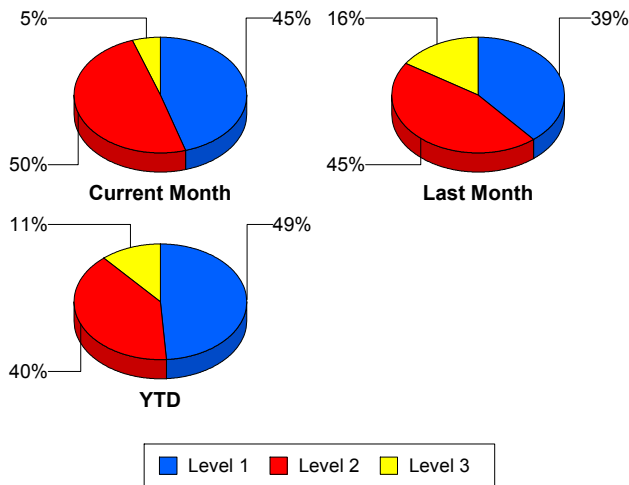
Incident Clearance Time (3B)



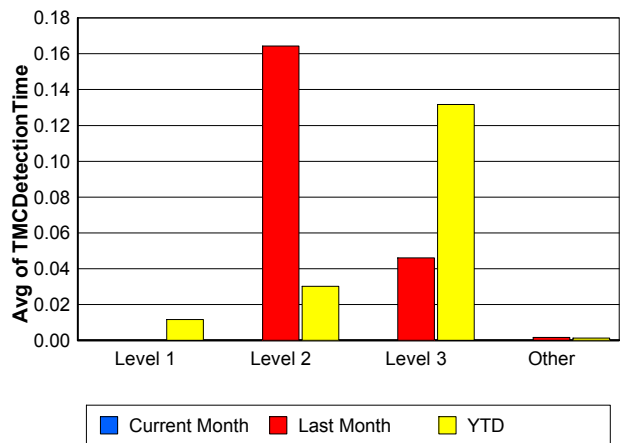
Performance Measures by Severity

	Level 1			Level 2			Level 3			Other		
	<u>This Month</u>	<u>Last Month</u>	<u>YTD</u>	<u>This Month</u>	<u>Last Month</u>	<u>YTD</u>	<u>This Month</u>	<u>Last Month</u>	<u>YTD</u>	<u>This Month</u>	<u>Last Month</u>	<u>YTD</u>
Number of Events	52	42	509	57	49	414	6	17	118	1,829	2,007	15,821
Number of Incidents	52	42	509	57	49	414	6	17	118	0	0	0
TMC Detection (min.)	0.00	0.00	0.01	0.00	0.16	0.03	0.00	0.05	0.13	0.00	0.00	0.00
TMC Verification (min.)	5.35	2.70	2.55	8.53	7.86	5.80	5.35	2.99	4.51	4.51	4.15	3.73
TMC Response (min.)	7.36	3.63	4.63	11.16	10.26	9.91	6.40	8.97	26.69	6.20	5.34	5.33
RR Dispatch Time (min.)	1.24	1.05	1.15	2.15	1.47	2.64	1.41	4.65	19.29	1.85	1.51	1.69
RR Resp. Time (min.)	6.12	2.61	3.50	9.20	8.90	7.29	4.91	4.31	7.18	4.43	3.93	3.74
Event Clearance (min.)	45.42	32.89	41.97	71.07	63.27	71.08	168.43	83.85	182.63	19.40	17.56	19.58
Roadway Clear. (min.)	15.21	15.07	14.74	53.74	49.74	53.35	165.13	95.53	168.24			
Incident Clearance (min.)	45.42	32.89	41.97	71.07	63.27	71.08	168.43	83.85	182.63			
# of Events w/ RR/SIRV	51	39	440	57	48	334	6	16	81	1,783	1,980	14,060
RR/SIRV Responses	51	39	440	57	48	334	6	16	81	1,783	1,980	14,060
RR/SIRV Activities	65	52	564	77	69	522	7	23	131	1,910	2,147	15,254

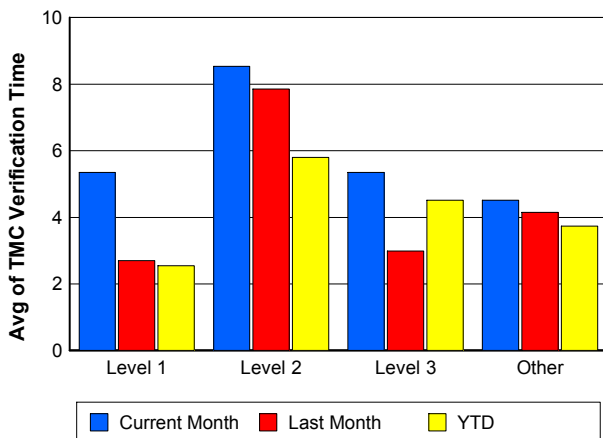
Number of Events / Severity



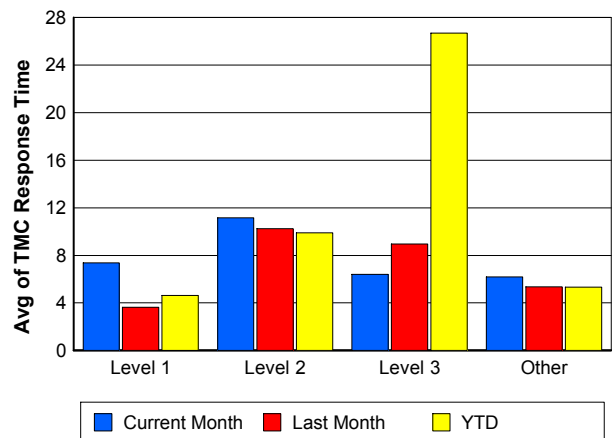
TMC Detection Time



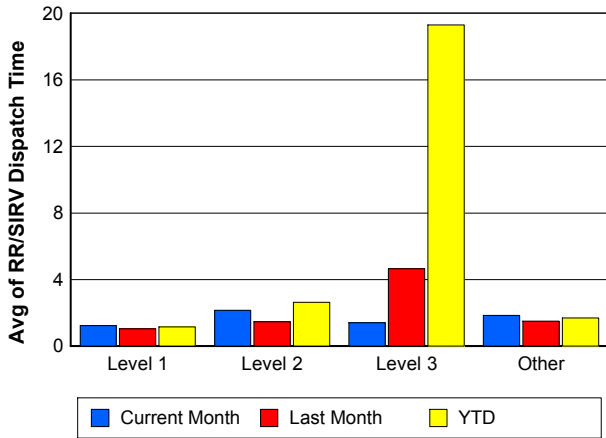
TMC Verification Time



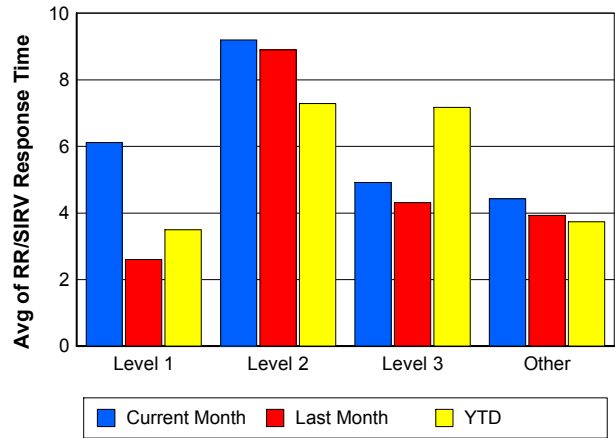
TMC Response Time



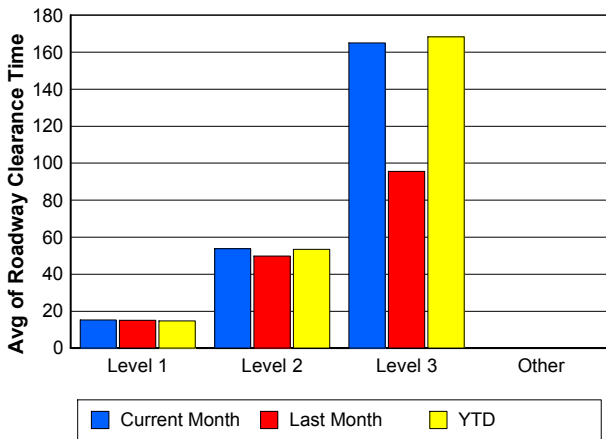
Road Ranger / SIRV Dispatch Time



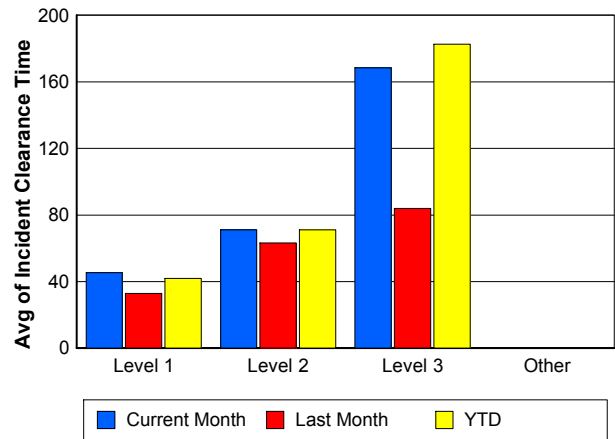
Road Ranger / SIRV Response Time



Roadway Clearance Time (2A)



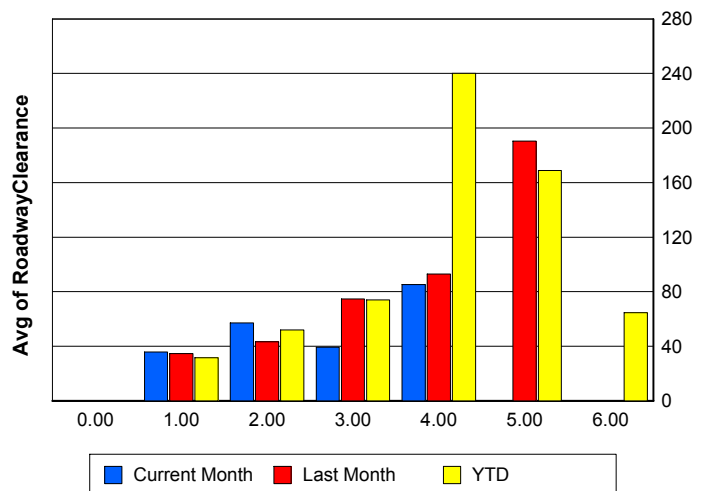
Incident Clearance Time (3B)



Roadway Clearance by Maximum Number of Lanes Blocked

	Current Month	Last Month	YTD
0			
1	35.79	34.61	31.45
2	57.22	43.24	51.88
3	39.20	74.57	73.99
4	85.32	92.86	240.06
5	0.00	190.35	168.97
6	0.00	0.00	64.70

Roadway Clearance Time (2A)



Performance Measures by Roadway

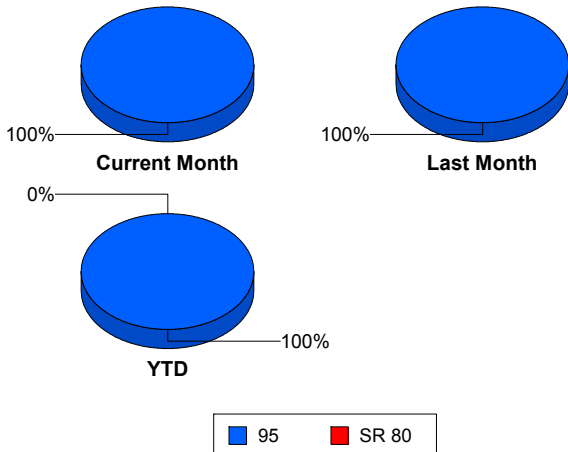
95

	<u>Current Month</u>	<u>Last Month</u>	<u>YTD</u>
Number of Events	1,944	2,115	16,858
Number of Incidents	115	108	1,038
TMC Detection (min.)	0.00	0.01	0.00
TMC Verification (min.)	4.65	4.20	3.75
TMC Response (min.)	6.37	5.45	5.53
RR Dispatch Time (min.)	1.84	1.53	1.79
RR Resp. Time (min.)	4.62	4.02	3.83
Event Clearance (min.)	22.07	19.45	22.33
Roadway Clear. (min.)	42.13	43.46	42.46
Incident Clearance (min.)	64.55	54.70	64.35
# of Events w/ RR/SIRV	1,897	2,083	14,915
RR/SIRV Responses	1,897	2,083	14,915
RR/SIRV Activities	2,059	2,291	16,471

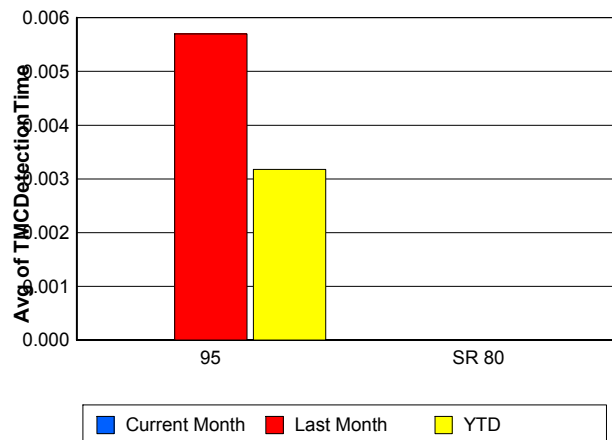
SR 80

	<u>YTD</u>
Number of Events	4
Number of Incidents	3
TMC Detection (min.)	0.00
TMC Verification (min.)	0.00
TMC Response (min.)	
RR Dispatch Time (min.)	
RR Resp. Time (min.)	
Event Clearance (min.)	1,409.98
Roadway Clear. (min.)	1,789.50
Incident Clearance (min.)	1,847.09
# of Events w/ RR/SIRV	0
RR/SIRV Responses	0
RR/SIRV Activities	0

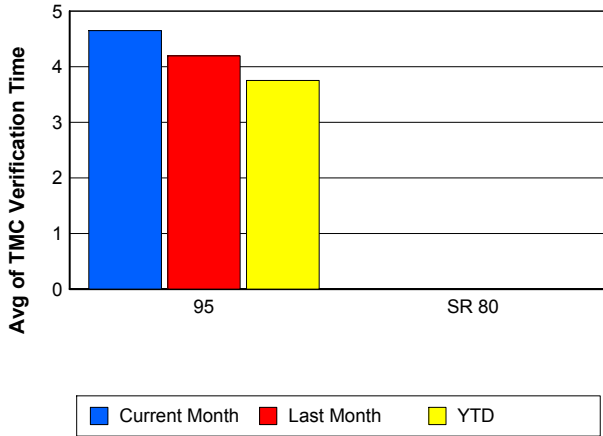
Number of Events / Roadway



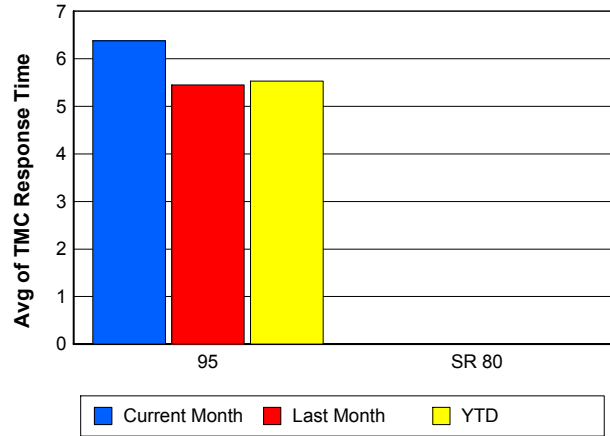
TMC Detection Time



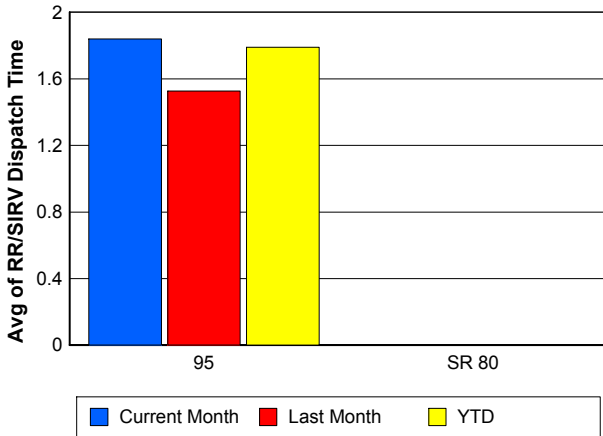
TMC Verification Time



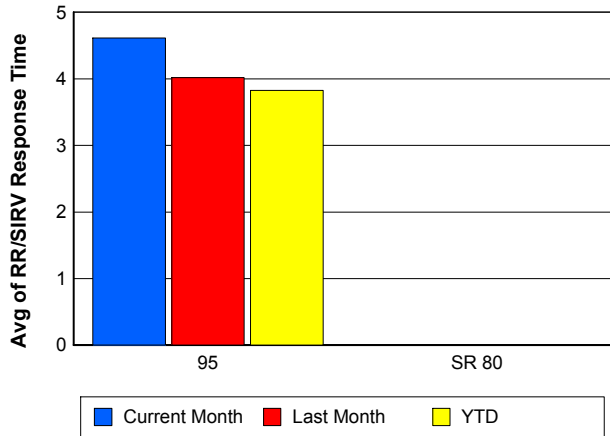
TMC Response Time



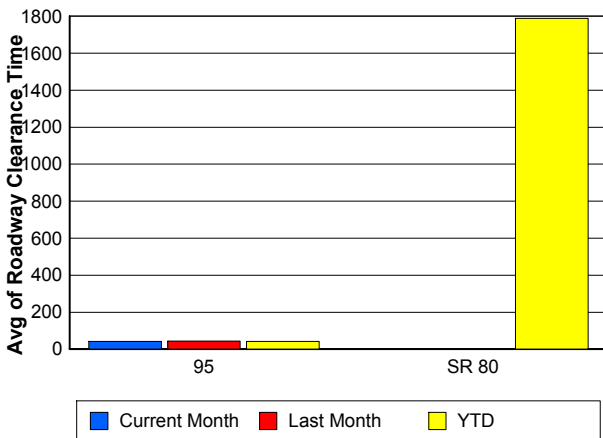
Road Ranger / SIRV Dispatch Time



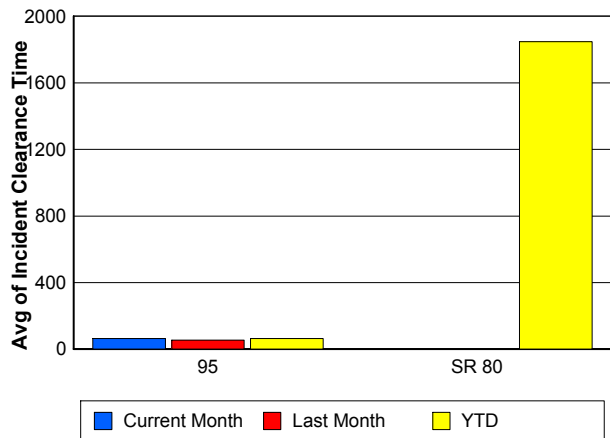
Road Ranger / SIRV Response Time



Roadway Clearance Time (2A)



Incident Clearance Time (3B)



Performance Measures by Event Type

Accident

	<u>Current Month</u>	<u>Last Month</u>	<u>YTD</u>
Number of Events	165	132	1,425
Number of Incidents	77	61	675
TMC Detection (min.)	0.00	0.02	0.01
TMC Verification (min.)	7.49	6.21	4.94
TMC Response (min.)	10.02	7.73	8.43
RR Dispatch Time (min.)	2.30	1.47	2.60
RR Response Time (min.)	7.75	6.26	5.83
Event Clearance (min.)	60.66	57.32	58.94
Roadway Clearance (min.)	50.31	46.70	46.01
Incident Clearance (min.)	78.48	69.01	73.72
# of Events w/ RR/SIRV	164	132	1,197
RR/SIRV Assists	164	132	1,197
RR/SIRV Activities	192	180	1,509

Debris on Roadway

	<u>Current Month</u>	<u>Last Month</u>	<u>YTD</u>
Number of Events	108	145	1,179
Number of Incidents	2	3	38
TMC Detection (min.)	0.00	0.00	0.00
TMC Verification (min.)	8.36	8.28	7.74
TMC Response (min.)	8.63	8.35	7.99
RR Dispatch Time (min.)	2.57	2.05	1.92
RR Response Time (min.)	6.04	6.29	6.07
Event Clearance (min.)	14.93	12.21	12.34
Roadway Clearance (min.)	33.68	19.06	21.31
Incident Clearance (min.)	33.69	20.17	24.30
# of Events w/ RR/SIRV	106	144	1,160
RR/SIRV Assists	106	144	1,160
RR/SIRV Activities	113	152	1,241

Disabled Vehicle

	<u>Current Month</u>	<u>Last Month</u>	<u>YTD</u>
Number of Events	1,564	1,764	12,807
Number of Incidents	26	25	220
TMC Detection (min.)	0.00	0.00	0.00
TMC Verification (min.)	4.30	3.83	3.55
TMC Response (min.)	5.80	4.97	4.76
RR Dispatch Time (min.)	1.76	1.46	1.53
RR Response Time (min.)	4.13	3.59	3.33
Event Clearance (min.)	18.92	17.05	18.03
Roadway Clearance (min.)	20.39	23.66	25.67
Incident Clearance (min.)	27.85	29.20	35.37
# of Events w/ RR/SIRV	1,542	1,744	12,037
RR/SIRV Assists	1,542	1,744	12,037
RR/SIRV Activities	1,693	1,908	13,248

Emergency Vehicles

	<u>Current Month</u>	<u>Last Month</u>	<u>YTD</u>
Number of Events	1	1	16
Number of Incidents	0	1	9
TMC Detection (min.)	0.00	0.00	0.00
TMC Verification (min.)	0.00	0.00	1.98
TMC Response (min.)	0.40		7.80
RR Dispatch Time (min.)	0.35		2.77
RR Response Time (min.)	0.05		4.75
Event Clearance (min.)	2.45	10.95	44.69
Roadway Clearance (min.)		5.03	41.91
Incident Clearance (min.)		10.95	47.66
# of Events w/ RR/SIRV	1	0	8
RR/SIRV Assists	1	0	8
RR/SIRV Activities	1	0	10

Other

	<u>Current Month</u>	<u>Last Month</u>	<u>YTD</u>
Number of Events	86	40	945
Number of Incidents	0	0	7
TMC Detection (min.)	0.00	0.00	0.00
TMC Verification (min.)	1.16	0.41	1.23
TMC Response (min.)	7.73	10.53	14.37
RR Dispatch Time (min.)	1.73	1.96	6.59
RR Response Time (min.)	6.22	9.92	6.71
Event Clearance (min.)	10.36	14.65	33.40
Roadway Clearance (min.)			40.35
Incident Clearance (min.)			52.93
# of Events w/ RR/SIRV	65	33	353
RR/SIRV Assists	65	33	353
RR/SIRV Activities	37	21	283

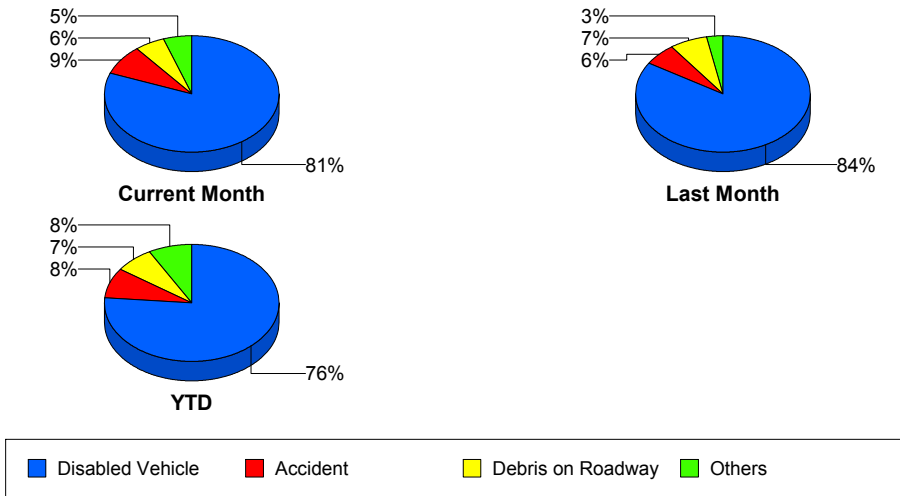
Police Activity

	<u>Current Month</u>	<u>Last Month</u>	<u>YTD</u>
Number of Events	7	20	357
Number of Incidents	4	15	57
TMC Detection (min.)	0.00	0.44	0.08
TMC Verification (min.)	2.17	3.27	0.56
TMC Response (min.)	6.37	9.36	11.99
RR Dispatch Time (min.)	0.64	3.63	5.26
RR Response Time (min.)	5.73	5.60	6.51
Event Clearance (min.)	34.65	37.49	28.66
Roadway Clearance (min.)	46.45	63.90	68.57
Incident Clearance (min.)	48.03	43.70	83.65
# of Events w/ RR/SIRV	6	17	55
RR/SIRV Assists	6	17	55
RR/SIRV Activities	10	17	64

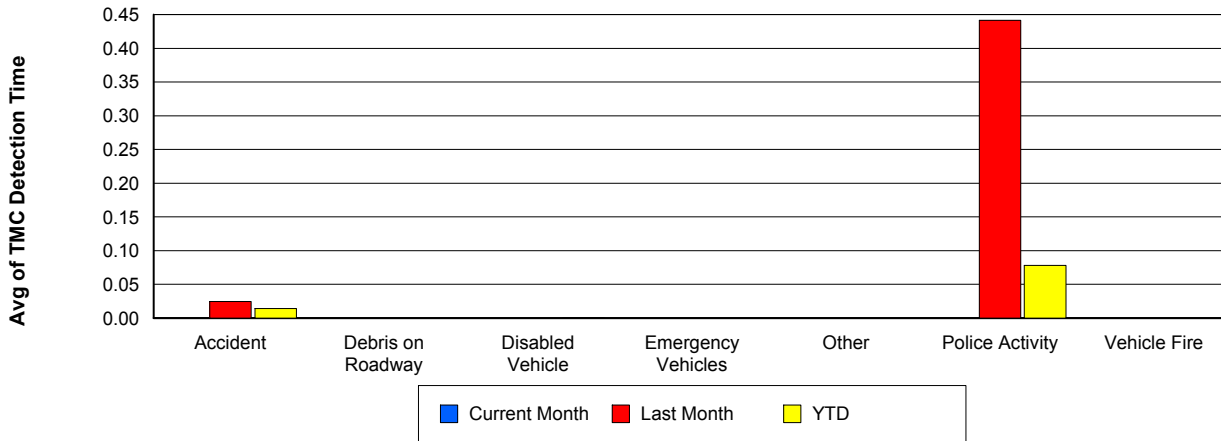
Vehicle Fire

	<u>Current Month</u>	<u>Last Month</u>	<u>YTD</u>
Number of Events	7	3	43
Number of Incidents	6	3	34
TMC Detection (min.)	0.00	0.00	0.00
TMC Verification (min.)	10.85	1.54	4.44
TMC Response (min.)	13.21	1.52	17.52
RR Dispatch Time (min.)	0.90	0.86	10.28
RR Response Time (min.)	12.31	0.66	7.25
Event Clearance (min.)	61.91	80.22	81.71
Roadway Clearance (min.)	31.30	77.80	60.77
Incident Clearance (min.)	66.17	80.22	88.45
# of Events w/ RR/SIRV	7	3	30
RR/SIRV Assists	7	3	30
RR/SIRV Activities	7	4	40

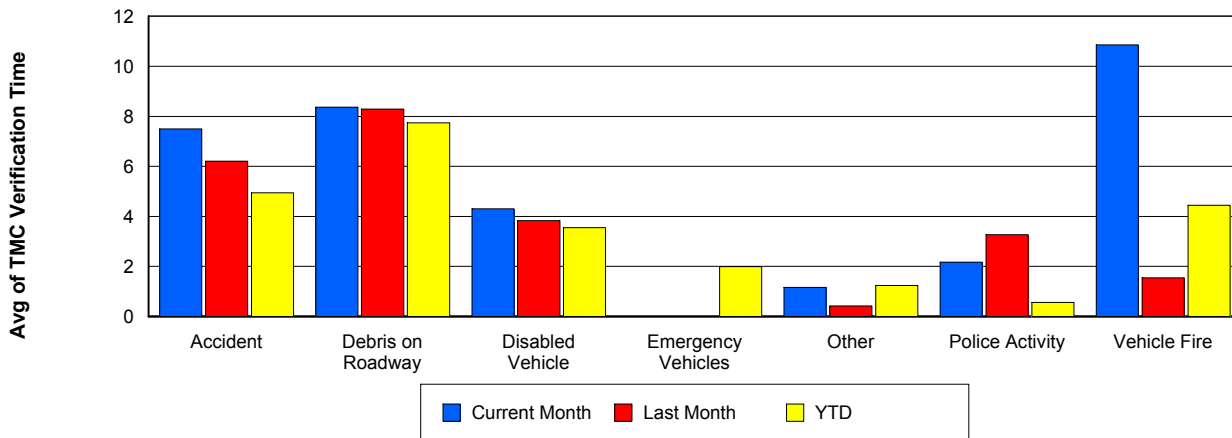
Number of Events / Event Type



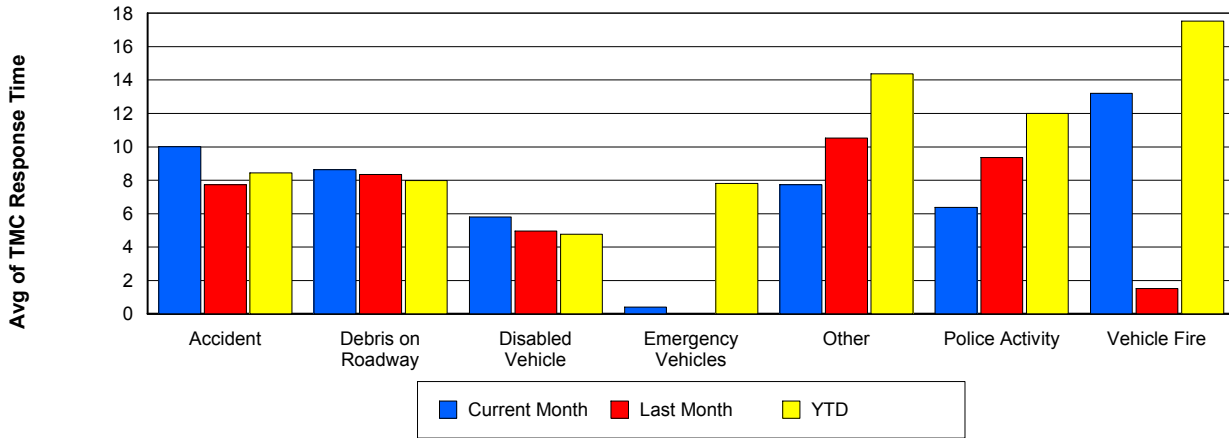
TMC Detection Time



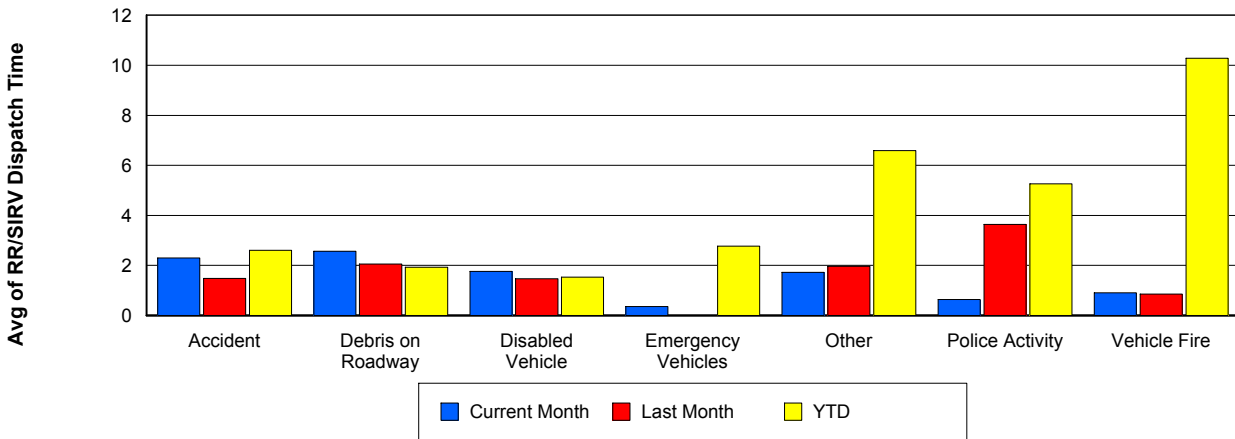
TMC Verification Time



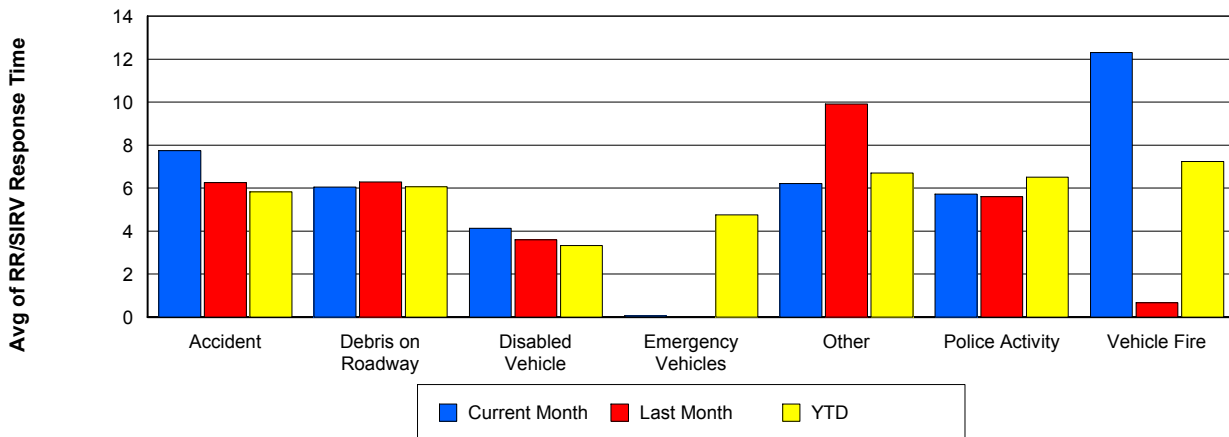
TMC Response Time



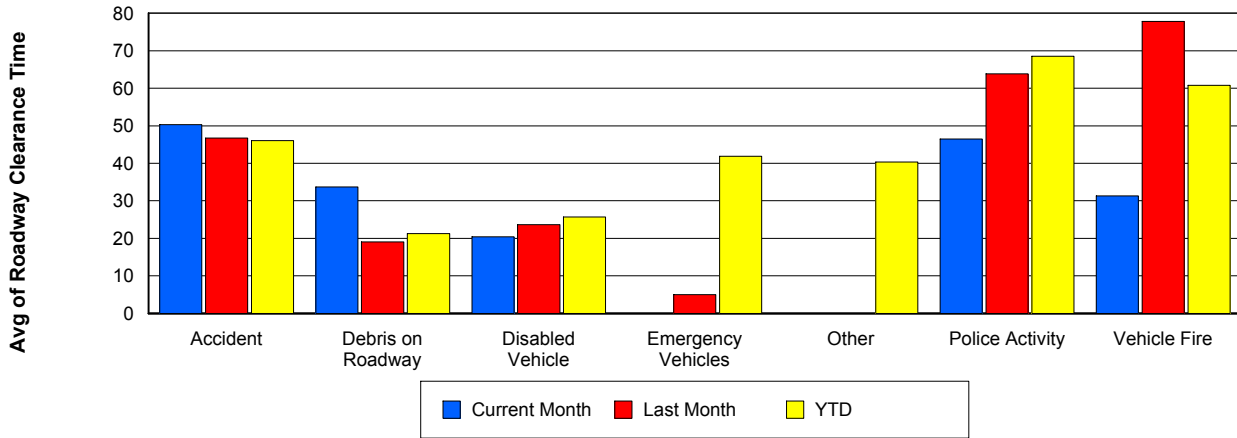
Road Ranger / SIRV Dispatch Time



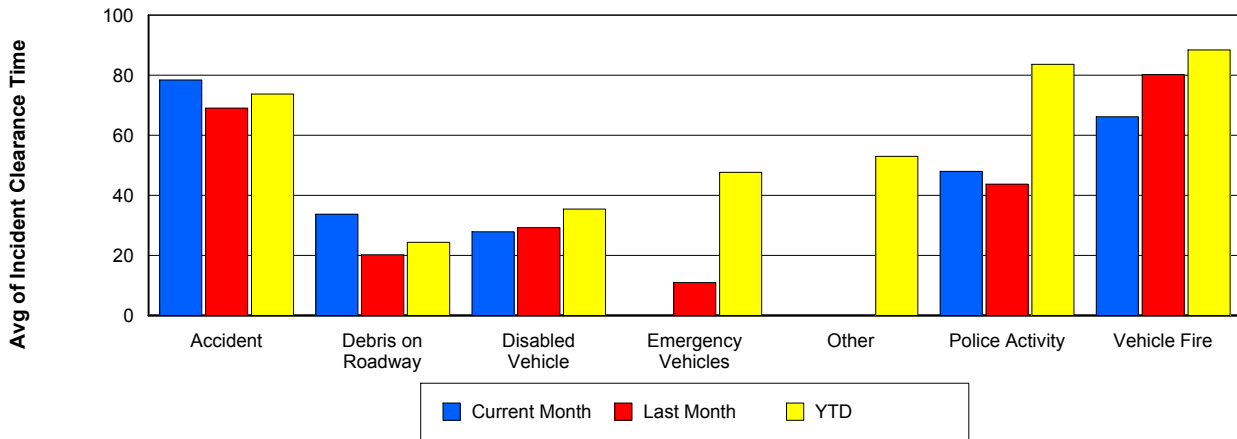
Road Ranger / SIRV Response Time



Roadway Clearance Time (2A)



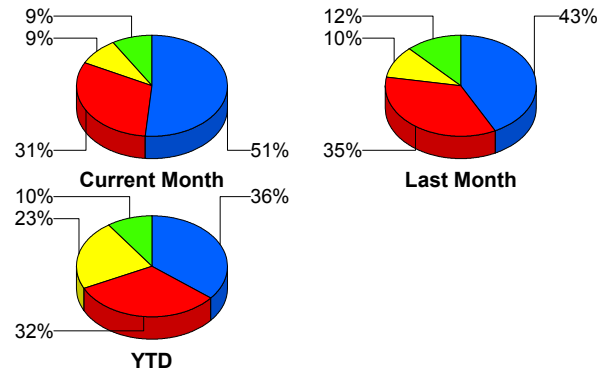
Incident Clearance Time (3B)



Incident Detection Methods

	Current Month	Last Month	YTD
Broward CCTV	2	1	10
Broward Road Ranger	0	2	8
Broward TMC	1	3	6
Broward VideoWall	0	0	1
Construction CEI	0	1	2
District 4	0	1	23
Emergency Operations	0	0	1
FDOT Maintenance	1	1	2
FHP	59	46	373
I-95 Construction PIO	1	1	4
ITMS	1	1	14
ITMS CCTV	10	11	236
Local Police	0	0	1
Media	1	0	3
Motorist	1	2	18
Other	1	0	1
Palm Beach Road Ran	36	38	332
Road Watcher	1	0	2
SmarTraveler (511)	0	0	4
Total	115	108	1,041

Total Incidents by Detection Method



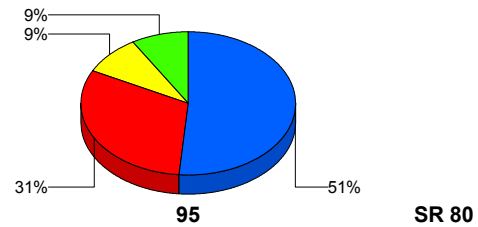
■ FHP
 ■ Palm Beach Road Ranger
 ■ ITMS CCTV
 ■ Others

Incident Detection Methods by Roadway

		Current Month	Last Month	YTD
95	Broward CCTV	2	1	10
	Broward Road Ranger	0	2	8
	Broward TMC	1	3	6
	Broward VideoWall	0	0	1
	Construction CEI	0	1	2
	District 4	0	1	23
	FDOT Maintenance	1	1	2
	FHP	59	46	372
	I-95 Construction PIO	1	1	4
	ITMS	1	1	13
	ITMS CCTV	10	11	236
	Local Police	0	0	1
	Media	1	0	3
	Motorist	1	2	18
	Other	1	0	1
	Palm Beach Road Ran	36	38	332
	Road Watcher	1	0	2
	SmarTraveler (511)	0	0	4
	Total	115	108	1,038
SR 80	Emergency Operations	0	0	1
	FHP	0	0	1
	ITMS	0	0	1
	Total	0	0	3
Total	115	108	1,041	

Total Events by Roadway and Detection Method

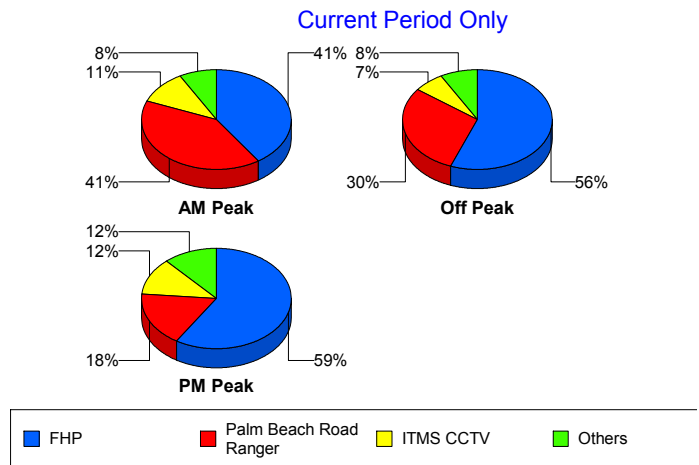
Current Period Only



Incident Detection Methods by Peak Period

		Current Month	Last Month	YTD
AM Peak	Broward CCTV	0	0	2
	Broward Road Ranger	0	0	3
	Broward TMC	0	0	2
	Construction CEI	0	1	1
	District 4	0	0	11
	FHP	15	7	108
	I-95 Construction PIO	1	1	2
	ITMS	1	0	6
	ITMS CCTV	4	3	44
	Motorist	1	2	9
	Palm Beach Road Ran	15	9	111
	Road Watcher	0	0	1
	SmarTraveler (511)	0	0	3
	Total	37	23	303
	Off Peak	Broward CCTV	1	0
Broward Road Ranger		0	1	2
Broward TMC		1	3	4
Broward VideoWall		0	0	1
Construction CEI		0	0	1
District 4		0	1	9
FDOT Maintenance		1	1	2
FHP		34	26	191
I-95 Construction PIO		0	0	2
ITMS		0	1	7
ITMS CCTV		4	8	125
Motorist		0	0	5
Other		1	0	1
Palm Beach Road Ran		18	25	135
Road Watcher		1	0	1
SmarTraveler (511)	0	0	1	
Total	61	66	492	

Total Events by Peak Period and Detection Method

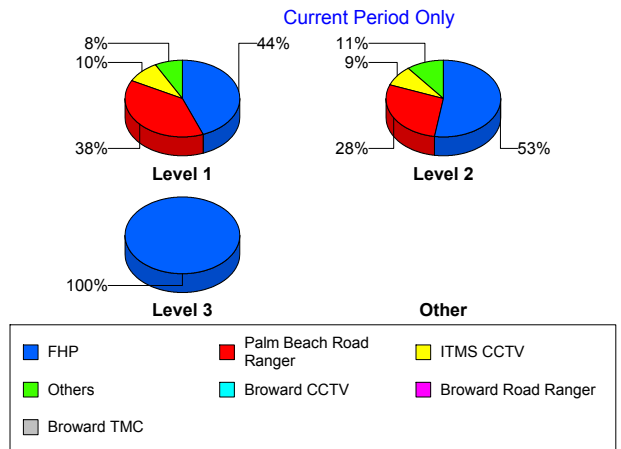


		Current Month	Last Month	YTD
PM Peak	Broward CCTV	1	1	3
	Broward Road Ranger	0	1	3
	District 4	0	0	3
	Emergency Operations	0	0	1
	FHP	10	13	74
	ITMS	0	0	1
	ITMS CCTV	2	0	67
	Local Police	0	0	1
	Media	1	0	3
	Motorist	0	0	4
	Palm Beach Road Ran	3	4	86
	Total	17	19	246
Total	115	108	1,041	

Incident Detection Methods by Severity

		Current Month	Last Month	YTD
Level 1	Broward CCTV	1	1	7
	Broward Road Ranger	0	0	4
	Broward TMC	1	1	2
	District 4	0	1	16
	FHP	23	11	129
	I-95 Construction PIO	1	1	3
	ITMS	0	1	5
	ITMS CCTV	5	3	103
	Local Police	0	0	1
	Motorist	0	1	11
	Other	1	0	1
	Palm Beach Road Ran	20	22	225
	Road Watcher	0	0	1
	SmarTraveler (511)	0	0	1
	Total	52	42	509
Level 2	Broward CCTV	1	0	1

Total Events by Severity and Detection Method



		Current Month	Last Month	YTD
Level 2	Broward Road Ranger	0	1	3
	Broward TMC	0	2	2
	Broward VideoWall	0	0	1
	Construction CEI	0	1	1
	District 4	0	0	6
	FDOT Maintenance	1	1	2
	FHP	30	24	187
	I-95 Construction PIO	0	0	1
	ITMS	1	0	7
	ITMS CCTV	5	6	100
	Media	1	0	2
	Motorist	1	1	6
	Palm Beach Road Ran	16	13	91
	Road Watcher	1	0	1
	SmarTraveler (511)	0	0	3
	Total	57	49	414
Level 3	Broward CCTV	0	0	2
	Broward Road Ranger	0	1	1
	Broward TMC	0	0	2
	Construction CEI	0	0	1
	District 4	0	0	1
	Emergency Operations	0	0	1
	FHP	6	11	57
	ITMS	0	0	2
	ITMS CCTV	0	2	33
	Media	0	0	1
	Motorist	0	0	1
	Palm Beach Road Ran	0	3	16
	Total	6	17	118
Total	115	108	1,041	

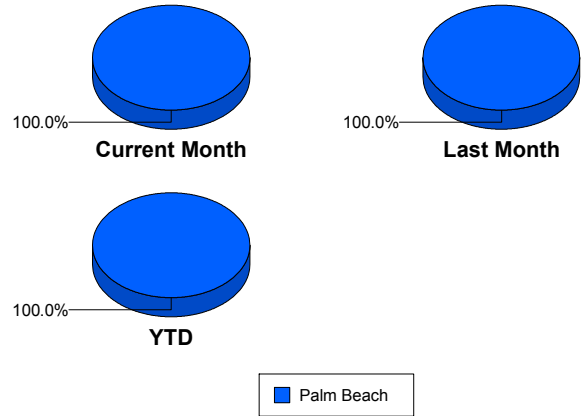
Road Ranger / SIRV Performance Measures

Road Ranger / SIRV Performance By County

RR/SIRV Responses per County

Values presented are:
 - Total Events with a RR/SIRV Response
 - Total RR/SIRV Responses,
 - Total Activities Performed

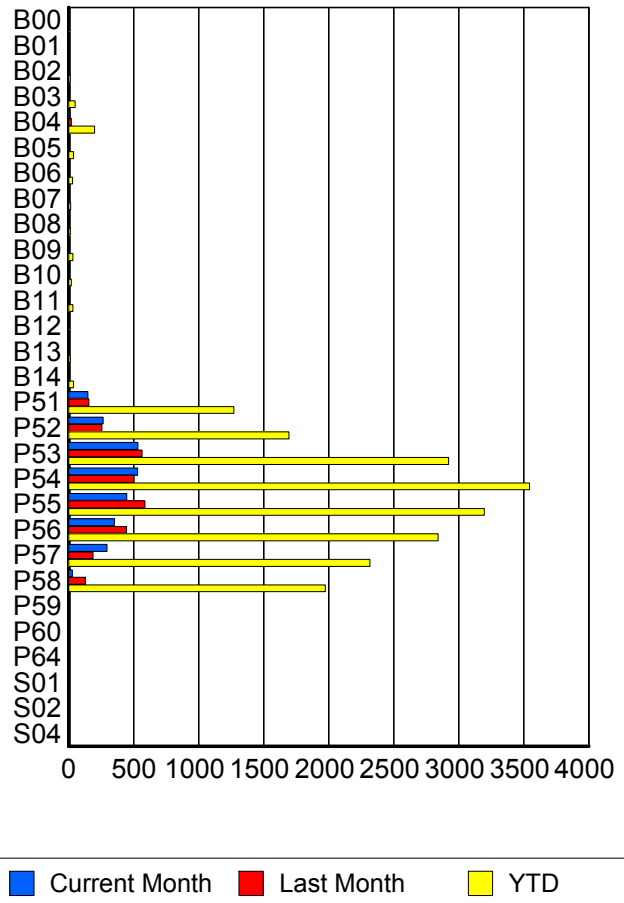
	Current Mo	Last Month	YTD
Palm Beach	2,536	2,768	19,562
	2,644	2,884	19,945
	2,793	3,063	21,643



Road Ranger / SIRV Performance By Truck

	Current Mo	Last Month	YTD
B00	1	1	7
	1	1	7
	1	1	7
B01	0	0	1
	0	0	1
	0	0	1
B02	0	1	14
	0	1	14
	0	1	15
B03	8	7	51
	8	7	51
	8	7	52
B04	11	22	198
	11	22	199
	11	23	223
B05	6	2	35
	7	2	37
	7	2	38
B06	6	6	30
	6	7	31
	6	9	33
B07	1	0	15
	1	0	15
	1	0	15
B08	2	3	13
	2	3	13
	2	5	16

RR/SIRV Responses per Truck



	Current Mo	Last Month	YTD
B09	7	4	31
	7	4	32
	8	5	34
B10	3	2	21
	3	2	22
	3	2	22
B11	1	6	34
	1	6	34
	1	6	35
B12	0	0	6
	0	0	6
	0	0	7
B13	0	0	14
	0	0	14
	0	0	15
B14	3	3	37
	3	3	38
	3	3	40
P51	146	155	1,259
	147	156	1,271
	151	162	1,327
P52	263	253	1,687
	265	255	1,695
	279	276	1,815
P53	523	554	2,881
	532	566	2,922
	552	597	3,084
P54	520	490	3,505
	531	500	3,545
	579	536	3,815
P55	443	578	3,173
	446	586	3,196
	467	625	3,412
P56	348	438	2,812
	351	445	2,843
	378	470	3,059
P57	293	185	2,296
	295	187	2,318
	308	192	2,465
P58	27	126	1,944
	27	129	1,973
	28	138	2,101
P59	0	1	1
	0	1	1
	0	2	2

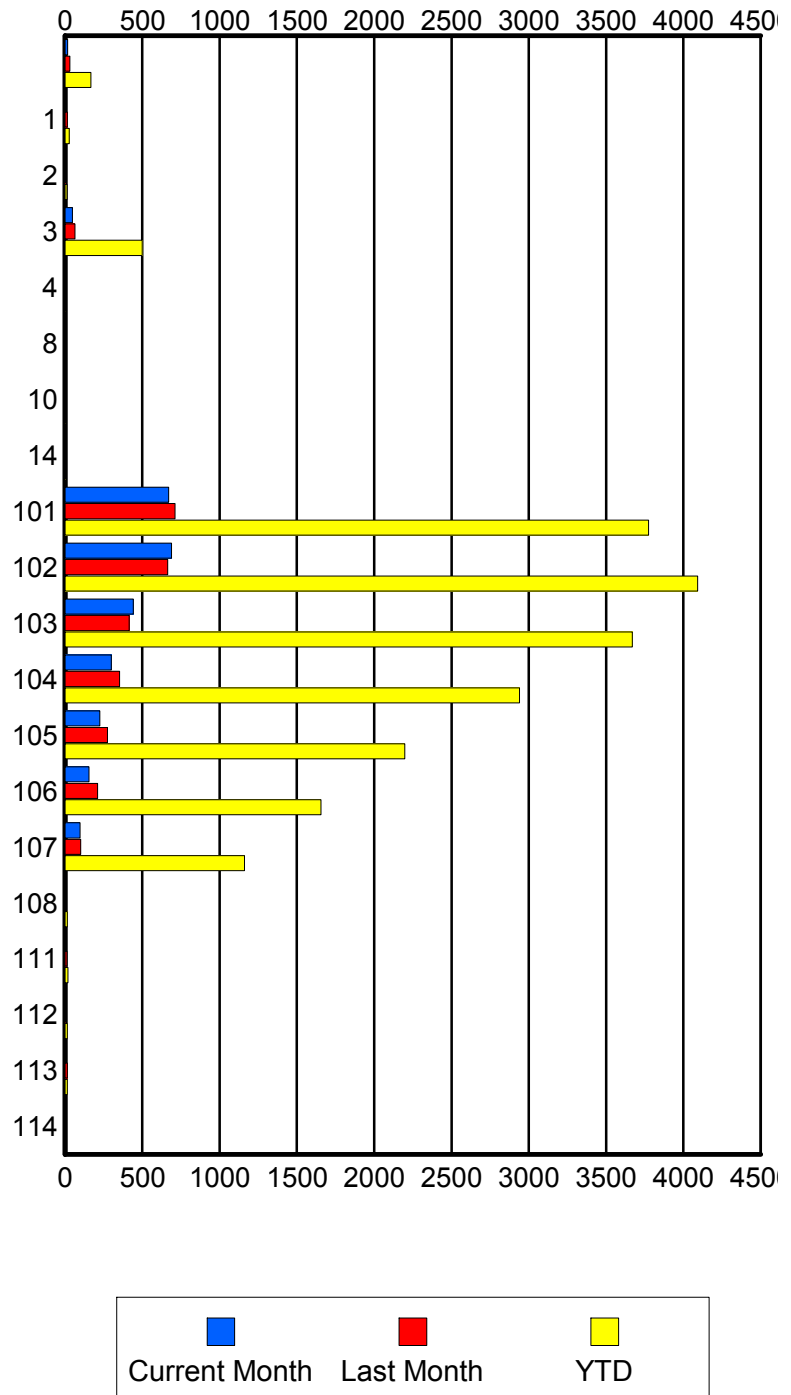
	Current Mo	Last Month	YTD
P60	0	0	1
	0	0	1
	0	0	1
P64	0	0	1
	0	0	1
	0	0	1
S01	0	0	3
	0	0	3
	0	0	3
S02	0	1	3
	0	1	3
	0	1	3
S04	0	0	2
	0	0	2
	0	0	2

Road Ranger / SIRV Performance By Beat

	Current Mo	Last Month	YTD
	17	31	167
	17	32	168
	17	33	173
1	1	13	27
	1	14	28
	1	14	29
2	1	3	12
	1	3	12
	1	4	14
3	46	60	486
	47	64	500
	48	71	538
4	0	0	2
	0	0	2
	0	0	2
8	1	0	1
	1	0	1
	1	0	1
10	0	0	6
	0	0	6
	0	0	9
14	0	7	7
	0	7	7
	0	7	7
101	660	697	3,733
	670	712	3,775
	704	755	4,040
102	671	654	4,042
	688	664	4,092
	721	701	4,339
103	437	408	3,628
	442	415	3,670
	466	445	3,942
104	297	345	2,908
	300	352	2,941
	324	378	3,153
105	222	272	2,178
	226	275	2,198
	241	291	2,337
106	154	209	1,637
	154	210	1,655
	168	222	1,772
107	96	100	1,146
	97	102	1,160
	101	108	1,217

Values presented are:
 - Total Events with a RR/SIRV Response
 - Total RR/SIRV Responses,
 - Total Activities Performed

RR/SIRV Responses per Beat



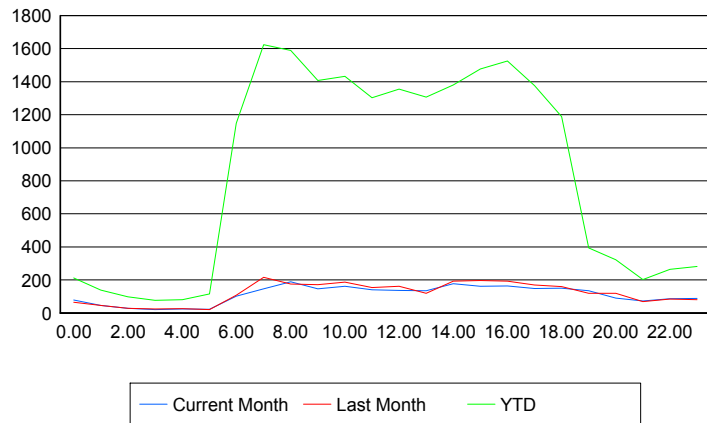
	Current Mo	Last Month	YTD
108	0	0	13
	0	0	14
	0	0	14
111	0	12	18
	0	13	19
	0	13	20
112	0	7	14
	0	7	15
	0	7	16
113	0	13	13
	0	14	14
	0	14	14
114	0	0	6
	0	0	6
	0	0	6

Road Ranger / SIRV Performance By Time of Day

Values presented are:
- Total Events with a RR/SIRV Response
- Total RR/SIRV Responses,
- Total Activities Performed

	Current Mo	Last Month	YTD
12AM-1AM	75	62	204
	78	65	212
	79	74	224
1AM-2AM	42	44	132
	45	45	139
	46	50	147
2AM-3AM	28	28	96
	28	29	98
	31	29	105
3AM-4AM	20	24	74
	20	24	77
	20	24	78
4AM-5AM	23	24	74
	25	26	81
	26	31	88
5AM-6AM	18	19	103
	23	21	115
	23	21	119
6AM-7AM	98	103	1,100
	101	108	1,149
	107	113	1,210
7AM-8AM	143	202	1,549
	146	216	1,624
	155	233	1,741

Number of Responses / Hour of the Day



	Current Mo	Last Month	YTD
8AM-9AM	177	166	1,518
	188	175	1,589
	197	183	1,692
9AM-10AM	141	168	1,362
	146	172	1,408
	151	181	1,521
10AM-11AM	158	179	1,384
	161	186	1,432
	170	199	1,514
11AM-12PM	135	148	1,264
	140	154	1,302
	152	160	1,412
12PM-1PM	133	154	1,305
	137	161	1,355
	149	170	1,455
1PM-2PM	125	116	1,258
	135	120	1,306
	141	125	1,400
2PM-3PM	168	182	1,322
	177	193	1,380
	188	208	1,466
3PM-4PM	155	188	1,427
	161	196	1,478
	175	209	1,580
4PM-5PM	157	188	1,482
	163	193	1,526
	176	203	1,625
5PM-6PM	145	163	1,337
	148	169	1,376
	153	184	1,456
6PM-7PM	143	156	1,167
	150	159	1,188
	154	166	1,249
7PM-8PM	127	116	380
	134	119	394
	147	127	424
8PM-9PM	86	115	308
	90	119	322
	93	125	336
9PM-10PM	70	64	190
	73	69	202
	79	74	217
10PM-11PM	81	80	249
	86	84	265
	87	89	281

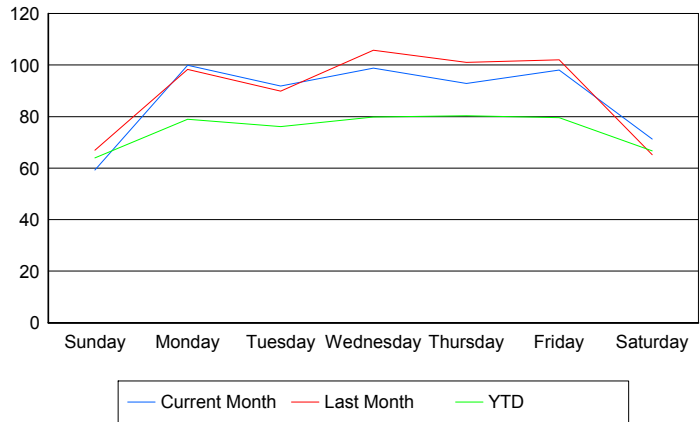
	Current Mo	Last Month	YTD
11PM-12AM	88	79	277
	89	81	282
	94	85	303

Road Ranger / SIRV Performance By Day of Week

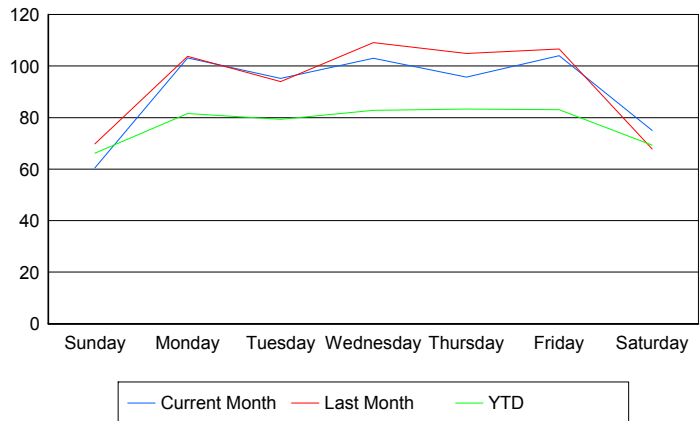
Values presented are: - Total Events with a RR/SIRV Response - Total RR/SIRV Responses, - Total Activities Performed

	Current Mo	Last Month	YTD
Sunday	285 290 306	266 277 299	814 840 898
Monday	494 510 546	388 407 433	3,608 3,698 3,949
Tuesday	366 380 399	356 372 401	3,432 3,554 3,798
Wednesday	381 397 423	423 436 463	3,598 3,727 3,988
Thursday	362 373 392	503 522 555	3,644 3,743 4,047
Friday	378 401 422	509 532 556	3,634 3,785 4,029
Saturday	279 293 305	325 338 356	857 889 934

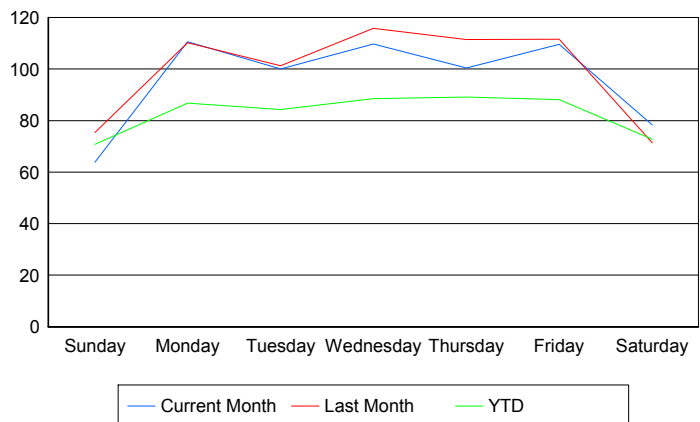
Avg # of events with a RR/SIRV Response per Day of the Week



Avg # of RR/SIRV Responses per Day of the Week



Avg # of RR/SIRV Activities Performed per Day of the Week



Road Ranger / SIRV Responses per Time of Day and Day of Week

