



Weekly Performance Measures Report Palm Beach County



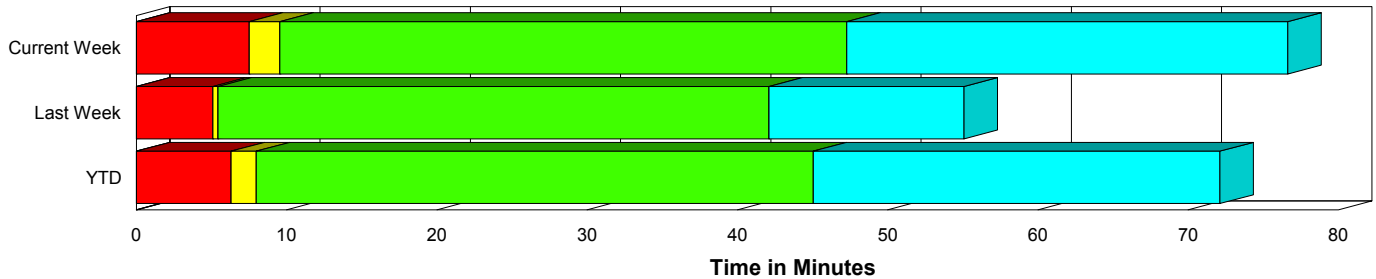
Created on:
January 11, 2010
8:55 am

Period From Jan 3, 2010 to Jan 9, 2010

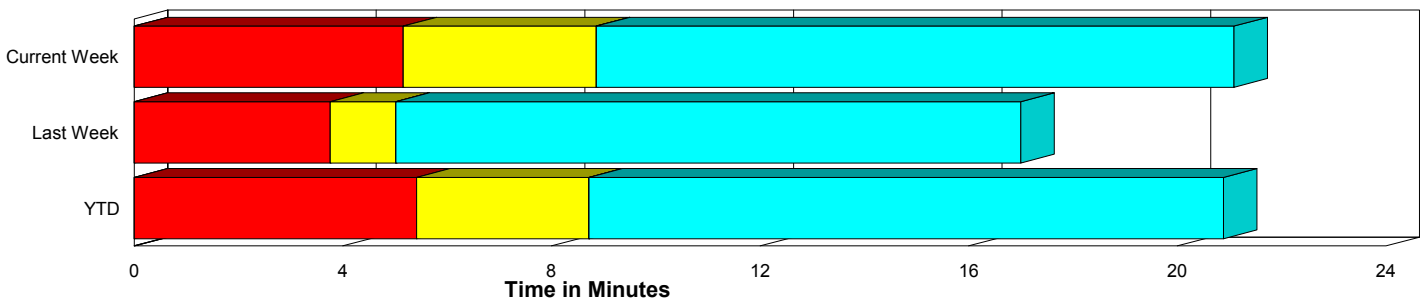
Performance Measures Summary

	Traffic Events (No Lanes Blocked)			Incidents (Lanes Blocked)		
	<u>This Week</u>	<u>Last Week</u>	<u>YTD</u>	<u>This Week</u>	<u>Last Week</u>	<u>YTD</u>
Number of Events	418	385	501	23	19	29
TMC Detection (min.)	0.00	0.00	0.00	0.00	0.00	0.00
TMC Verification (min.)	5.16	3.76	5.42	7.52	5.10	6.31
TMC Response (min.)	9.14	5.22	9.02	10.02	5.72	8.26
RR Dispatch Time (min.)	5.00	1.65	4.74	1.23	0.62	1.03
RR Response Time (min.)	4.06	3.66	4.22	8.80	5.10	7.24
Roadway Clearance (min.)				53.12	44.32	49.74
Event Clearance (min.)	21.37	17.20	21.18	82.47	57.28	76.82
# of Events w/ RR/SIRV	407	373	487	22	18	28
RR/SIRV Responses	407	373	487	22	18	28
RR/SIRV Activities	439	400	522	25	24	35

Incident Clearance Time-Line



Traffic Event (Non-Lane Blockage) Time-Line



■ Avg. TMC Detection Time	■ Avg. Time from TMC Response to Roadway Clearance*
■ Avg. Time from TMC Detection to TMC Verification	■ Avg. Time from Roadway Clearance to Incident/Event Clearance**
■ Avg. Time from TMC Verification to TMC Response	

* Roadway clearance equals all travel lanes open

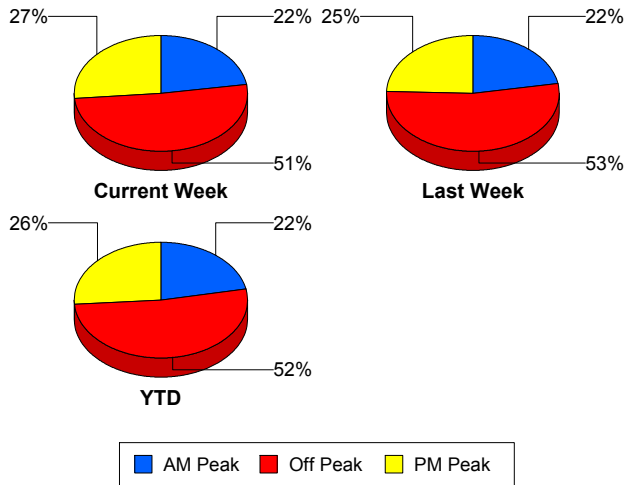
** Incident clearance equals time when last responder has left the scene

Performance Measures by Peak Period

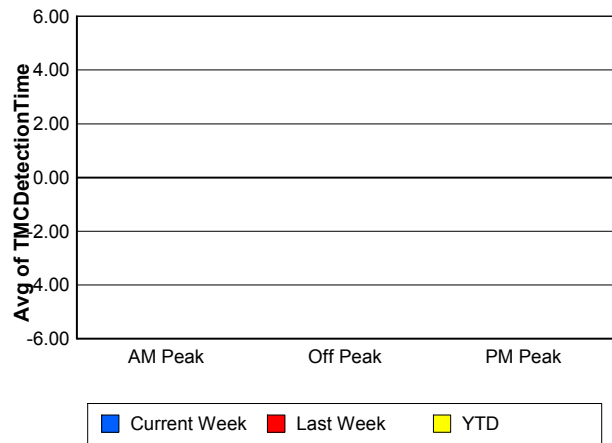
Note: AM peak period is defined as 6am to 10am and PM peak period is defined as 3pm to 7pm.

	AM Peak			Off Peak			PM Peak		
	<u>Current Week</u>	<u>Last Week</u>	<u>YTD</u>	<u>Current Week</u>	<u>Last Week</u>	<u>YTD</u>	<u>Current Week</u>	<u>Last Week</u>	<u>YTD</u>
Number of Events	99	90	116	225	215	275	117	99	139
Number of Incidents	5	3	7	12	13	14	6	3	8
TMC Detection (min.)	0.00	0.00	0.00	0.00	0.00	0.00	0.00	0.00	0.00
TMC Verification (min.)	2.45	2.36	2.51	6.68	3.92	6.50	5.01	4.96	5.91
TMC Response (min.)	4.75	4.32	4.83	13.09	5.45	11.87	5.35	5.60	6.58
RR Dispatch Time (min.)	1.15	0.86	1.06	8.16	1.49	7.06	1.49	2.53	2.47
RR Response Time (min.)	3.60	3.51	3.78	4.83	4.13	4.78	3.86	3.04	4.08
Event Clearance (min.)	22.35	16.44	22.47	27.48	20.25	25.79	20.79	18.94	22.60
Roadway Clearance (min.)	95.46	22.12	73.70	36.56	53.90	39.57	50.94	25.00	46.58
Incident Clearance (min.)	127.66	33.04	99.04	73.31	62.87	71.76	63.11	57.28	66.25
# of Events w/ RR/SIRV	96	87	112	218	208	267	115	96	136
RR/SIRV Responses	96	87	112	218	208	267	115	96	136
RR/SIRV Activities	105	96	122	234	221	287	125	107	148

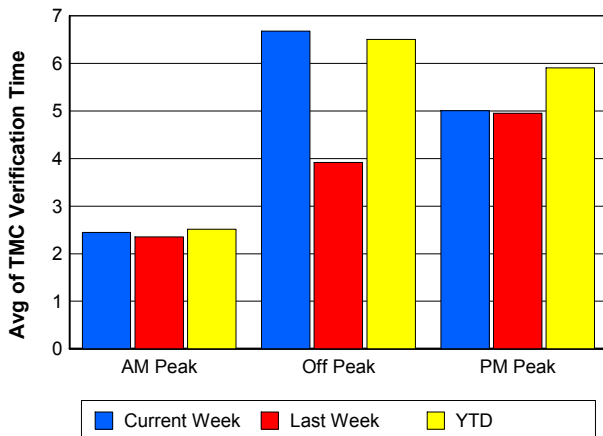
Number of Events / Peak Period



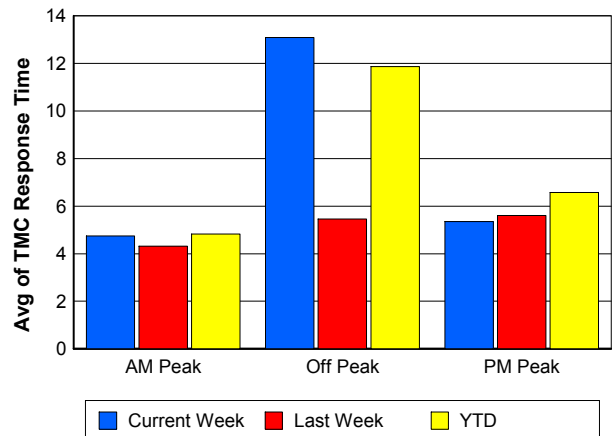
TMC Detection Time



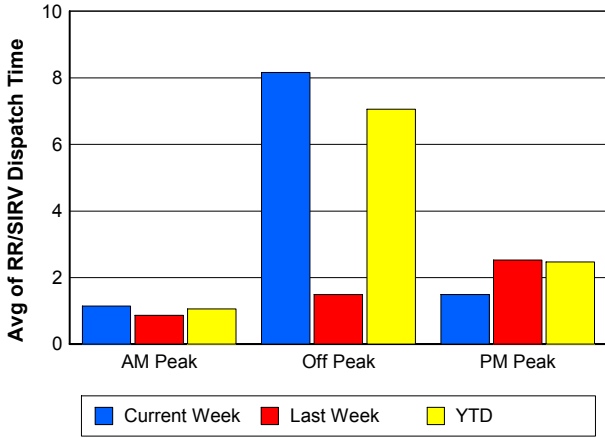
TMC Verification Time



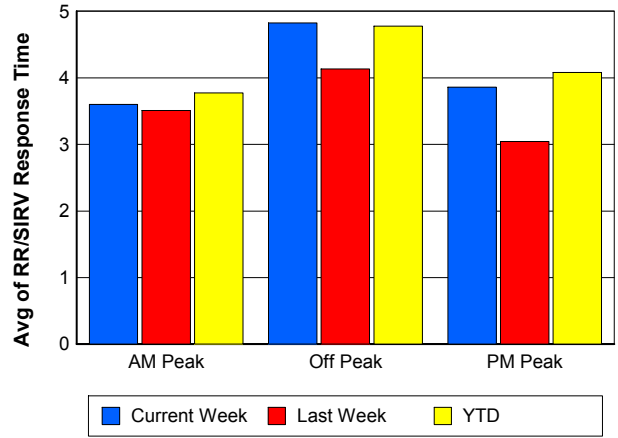
TMC Response Time



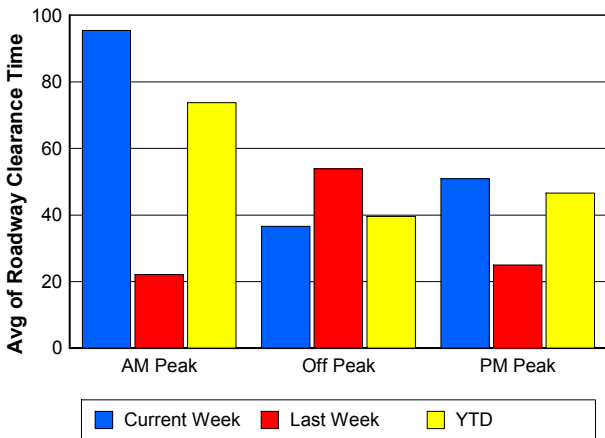
Road Ranger / SIRV Dispatch Time



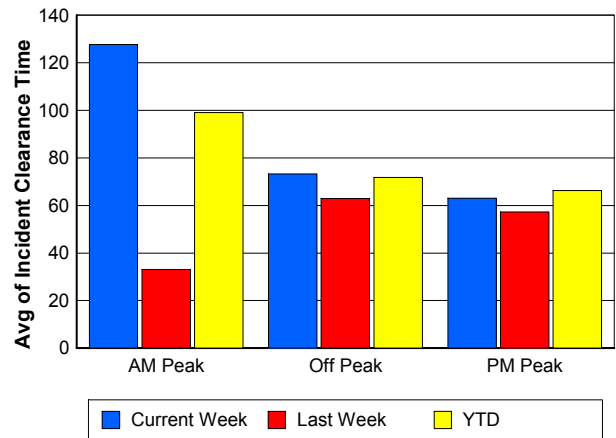
Road Ranger / SIRV Response Time



Roadway Clearance Time (2A)



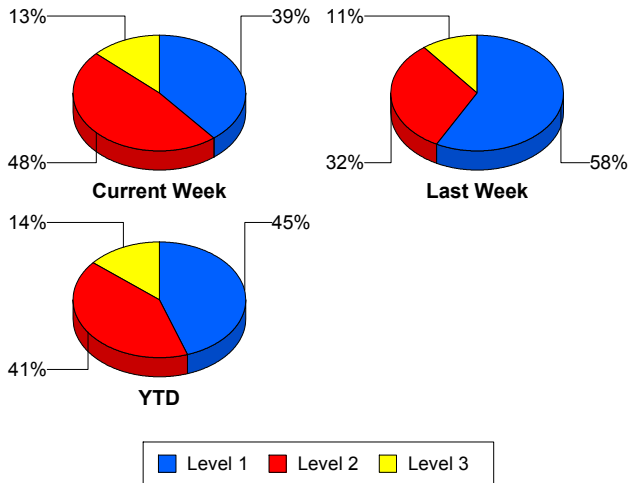
Incident Clearance Time (3B)



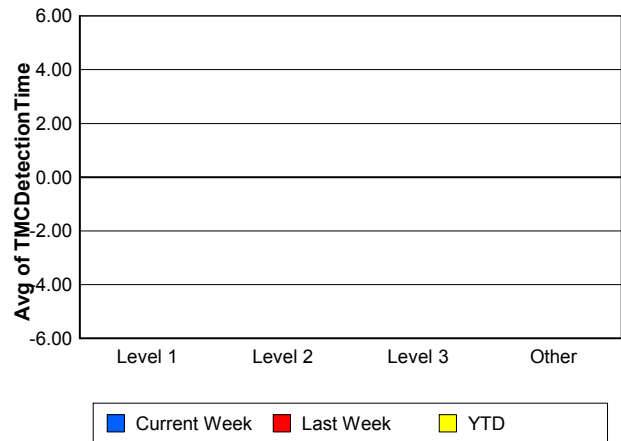
Performance Measures by Severity

	Level 1			Level 2			Level 3			Other		
	<u>This Week</u>	<u>Last Week</u>	<u>YTD</u>	<u>This Week</u>	<u>Last Week</u>	<u>YTD</u>	<u>This Week</u>	<u>Last Week</u>	<u>YTD</u>	<u>This Week</u>	<u>Last Week</u>	<u>YTD</u>
Number of Events	9	11	13	11	6	12	3	2	4	418	385	501
Number of Incidents	9	11	13	11	6	12	3	2	4	0	0	0
TMC Detection (min.)	0.00	0.00	0.00	0.00	0.00	0.00	0.00	0.00	0.00	0.00	0.00	0.00
TMC Verification (min.)	6.45	3.36	5.23	10.46	6.47	9.58	0.00	10.61	0.00	5.16	3.76	5.42
TMC Response (min.)	6.59	3.60	5.44	12.22	8.50	11.20	11.69	10.48	7.79	9.14	5.22	9.02
RR Dispatch Time (min.)	0.70	0.69	0.63	1.81	0.64	1.66	0.42	0.18	0.28	5.00	1.65	4.74
RR Resp. Time (min.)	5.96	2.90	4.88	10.41	7.86	9.54	11.27	10.30	7.52	4.06	3.66	4.22
Event Clearance (min.)	83.55	24.79	65.54	63.20	93.22	69.22	149.84	128.13	136.30	21.37	17.20	21.18
Roadway Clear. (min.)	18.27	15.51	18.25	55.39	69.61	55.36	149.32	126.93	135.25			
Incident Clearance (min.)	83.55	24.79	65.54	63.20	93.22	69.22	149.84	128.13	136.30			
# of Events w/ RR/SIRV	9	11	13	11	5	12	2	2	3	407	373	487
RR/SIRV Responses	9	11	13	11	5	12	2	2	3	407	373	487
RR/SIRV Activities	9	15	16	14	7	16	2	2	3	439	400	522

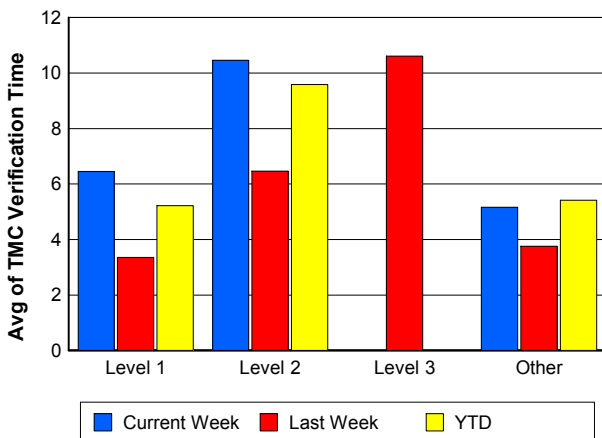
Number of Events / Severity



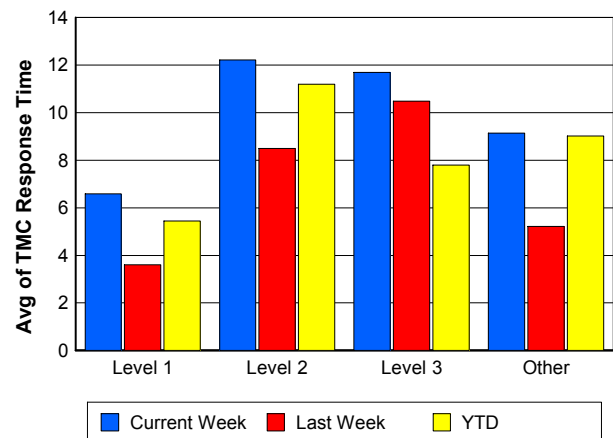
TMC Detection Time



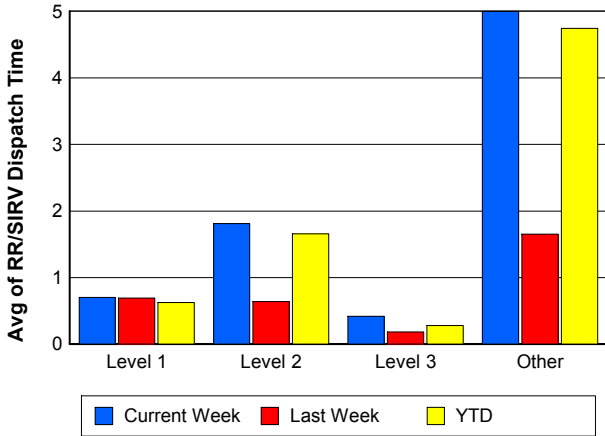
TMC Verification Time



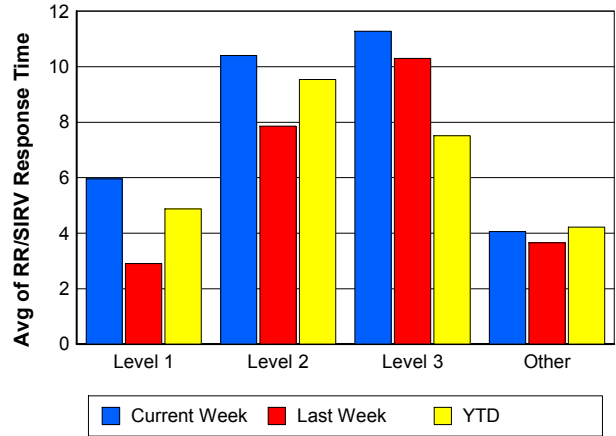
TMC Response Time



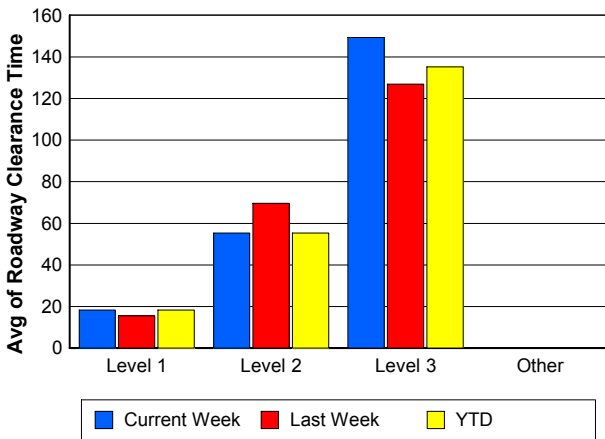
Road Ranger / SIRV Dispatch Time



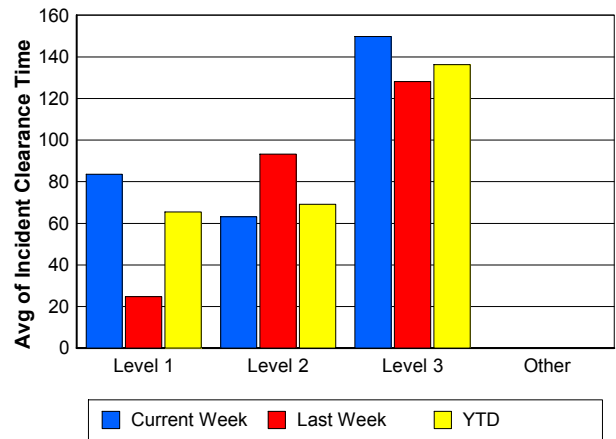
Road Ranger / SIRV Response Time



Roadway Clearance Time (2A)



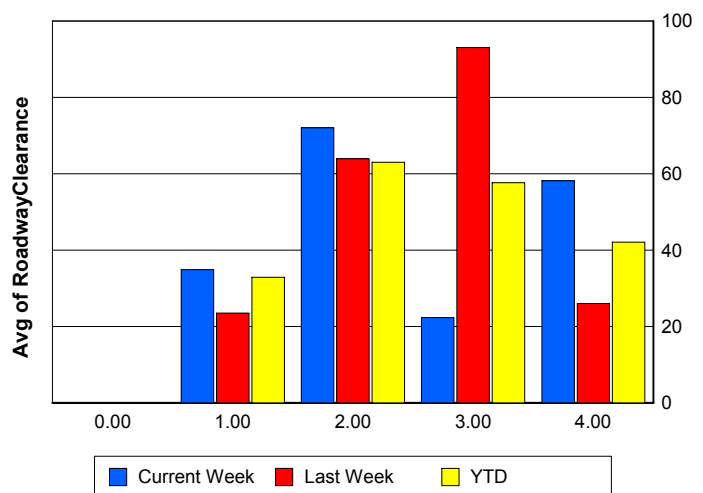
Incident Clearance Time (3B)



Roadway Clearance by Maximum Number of Lanes Blocked

	Current Week	Last Week	YTD
0			
1	34.87	23.51	32.85
2	72.05	63.94	62.98
3	22.28	93.05	57.67
4	58.17	26.00	42.08

Roadway Clearance Time (2A)

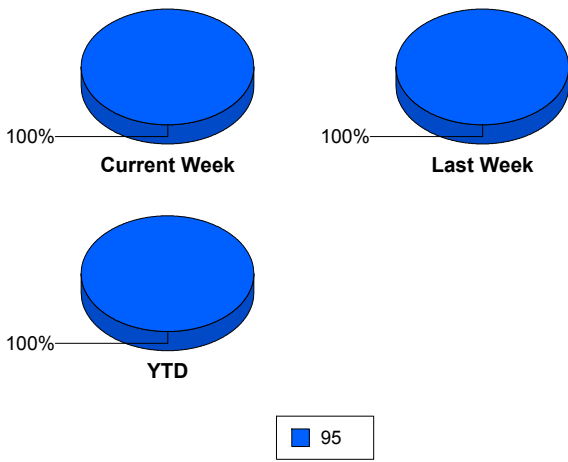


Performance Measures by Roadway

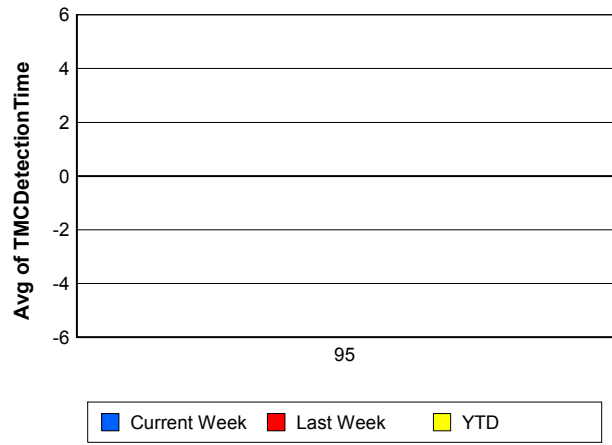
95

	<u>Current Week</u>	<u>Last Week</u>	<u>YTD</u>
Number of Events	441	404	530
Number of Incidents	23	19	29
TMC Detection (min.)	0.00	0.00	0.00
TMC Verification (min.)	5.28	3.82	5.47
TMC Response (min.)	9.19	5.24	8.97
RR Dispatch Time (min.)	4.80	1.60	4.54
RR Resp. Time (min.)	4.30	3.73	4.38
Event Clearance (min.)	24.55	19.08	24.22
Roadway Clear. (min.)	53.12	44.32	49.74
Incident Clearance (min.)	82.47	57.28	76.82
# of Events w/ RR/SIRV	429	391	515
RR/SIRV Responses	429	391	515
RR/SIRV Activities	464	424	557

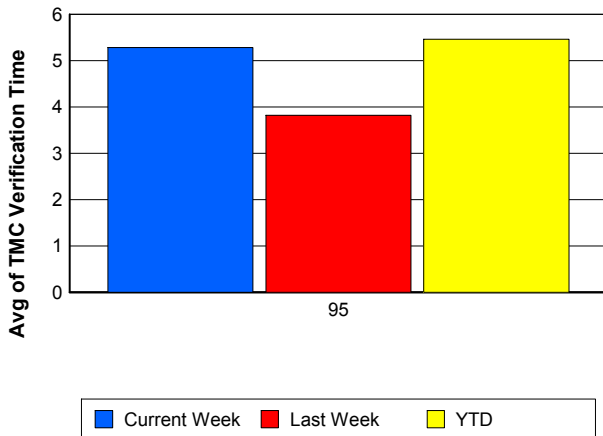
Number of Events / Roadway



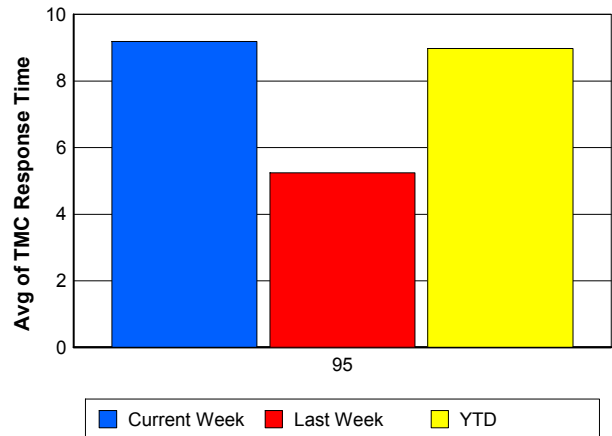
TMC Detection Time



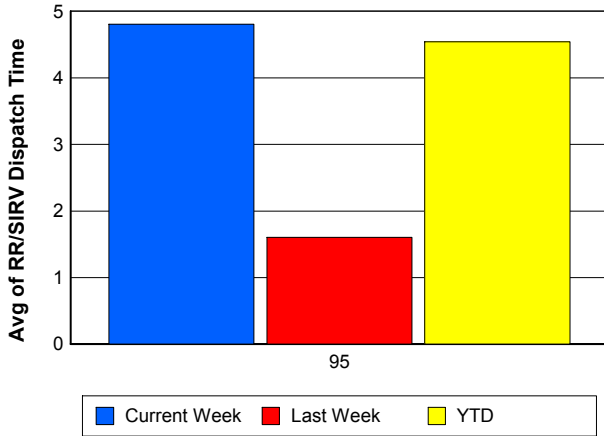
TMC Verification Time



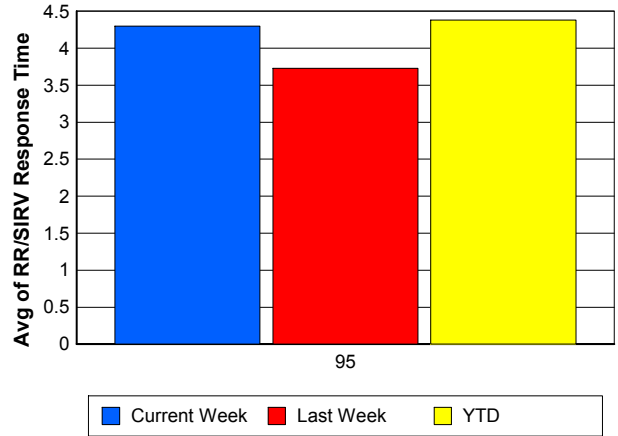
TMC Response Time



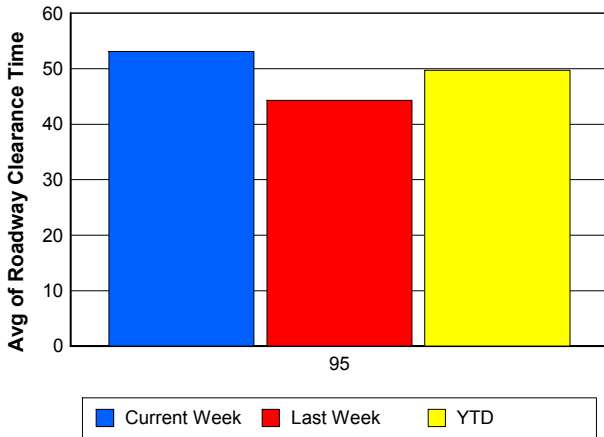
Road Ranger / SIRV Dispatch Time



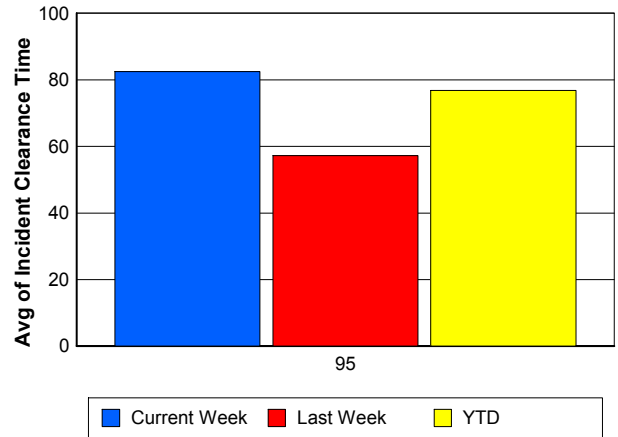
Road Ranger / SIRV Response Time



Roadway Clearance Time (2A)



Incident Clearance Time (3B)



Performance Measures by Event Type

Accident

	<u>Current Week</u>	<u>Last Week</u>	<u>YTD</u>
Number of Events	35	25	44
Number of Incidents	18	14	23
TMC Detection (min.)	0.00	0.00	0.00
TMC Verification (min.)	10.61	8.87	10.23
TMC Response (min.)	12.04	11.22	12.21
RR Dispatch Time (min.)	1.97	4.08	2.80
RR Response Time (min.)	10.01	7.14	9.32
Event Clearance (min.)	71.41	53.01	65.55
Roadway Clearance (min.)	50.79	46.69	45.30
Incident Clearance (min.)	87.69	61.64	78.86
# of Events w/ RR/SIRV	35	24	44
RR/SIRV Assists	35	24	44
RR/SIRV Activities	36	30	49

Debris on Roadway

	<u>Current Week</u>	<u>Last Week</u>	<u>YTD</u>
Number of Events	26	24	35
Number of Incidents	0	0	0
TMC Detection (min.)	0.00	0.00	0.00
TMC Verification (min.)	10.74	6.44	11.11
TMC Response (min.)	10.73	6.43	11.10
RR Dispatch Time (min.)	4.19	4.07	5.28
RR Response Time (min.)	6.54	2.36	5.82
Event Clearance (min.)	14.69	9.71	14.14
Roadway Clearance (min.)			
Incident Clearance (min.)			
# of Events w/ RR/SIRV	26	23	34
RR/SIRV Assists	26	23	34
RR/SIRV Activities	26	23	34

Disabled Vehicle

	<u>Current Week</u>	<u>Last Week</u>	<u>YTD</u>
Number of Events	363	326	426
Number of Incidents	4	3	4
TMC Detection (min.)	0.00	0.00	0.00
TMC Verification (min.)	4.59	3.54	4.81
TMC Response (min.)	8.89	4.80	8.55
RR Dispatch Time (min.)	5.24	1.24	4.80
RR Response Time (min.)	3.59	3.62	3.74
Event Clearance (min.)	20.63	17.22	20.61
Roadway Clearance (min.)	24.44	18.07	24.44
Incident Clearance (min.)	26.90	24.16	26.90
# of Events w/ RR/SIRV	358	320	421
RR/SIRV Assists	358	320	421
RR/SIRV Activities	394	354	462

Emergency Vehicles

	<u>Current Week</u>	<u>YTD</u>
Number of Events	1	1
Number of Incidents	1	1
TMC Detection (min.)	0.00	0.00
TMC Verification (min.)	0.00	0.00
TMC Response (min.)		
RR Dispatch Time (min.)		
RR Response Time (min.)		
Event Clearance (min.)	210.75	210.75
Roadway Clearance (min.)	209.83	209.83
Incident Clearance (min.)	210.75	210.75
# of Events w/ RR/SIRV	0	0
RR/SIRV Assists	0	0
RR/SIRV Activities	0	0

Other

	<u>Current Week</u>	<u>Last Week</u>	<u>YTD</u>
Number of Events	14	23	19
Number of Incidents	0	0	0
TMC Detection (min.)	0.00	0.00	0.00
TMC Verification (min.)	0.00	0.00	0.00
TMC Response (min.)	5.25	1.30	4.38
RR Dispatch Time (min.)	0.82	1.87	0.97
RR Response Time (min.)	4.71	0.91	3.93
Event Clearance (min.)	16.76	9.49	13.88
Roadway Clearance (min.)			
Incident Clearance (min.)			
# of Events w/ RR/SIRV	8	19	11
RR/SIRV Assists	8	19	11
RR/SIRV Activities	5	12	6

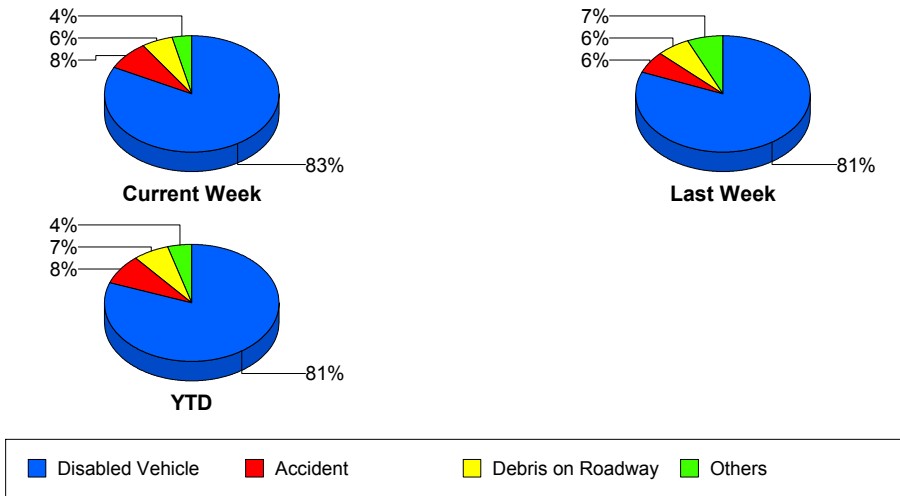
Police Activity

	<u>Last Week</u>	<u>YTD</u>
Number of Events	3	2
Number of Incidents	1	1
TMC Detection (min.)	0.00	0.00
TMC Verification (min.)	0.00	0.00
TMC Response (min.)	8.43	8.43
RR Dispatch Time (min.)	0.36	0.36
RR Response Time (min.)	8.07	8.07
Event Clearance (min.)	77.80	85.10
Roadway Clearance (min.)	93.05	93.05
Incident Clearance (min.)	95.68	95.68
# of Events w/ RR/SIRV	2	2
RR/SIRV Assists	2	2
RR/SIRV Activities	2	2

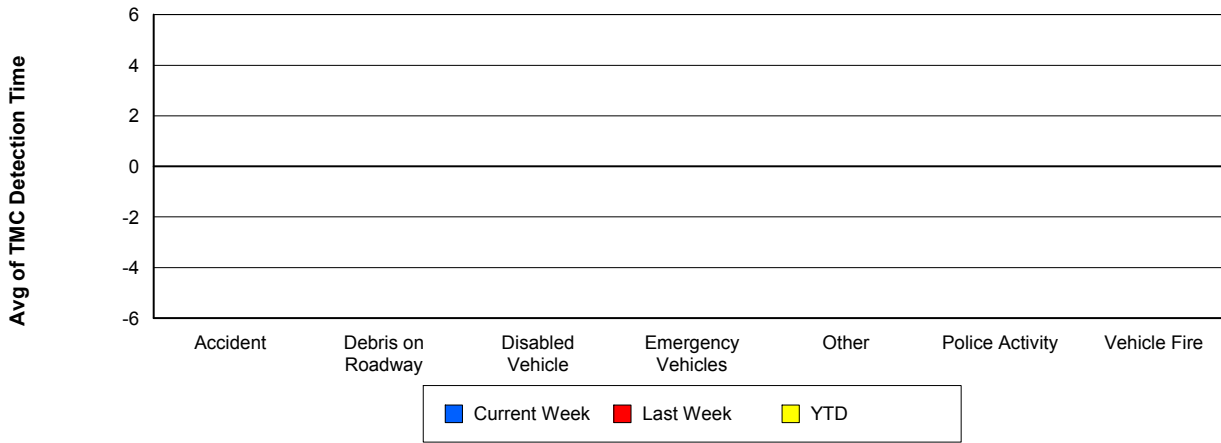
Vehicle Fire

	<u>Current Week</u>	<u>Last Week</u>	<u>YTD</u>
Number of Events	1	1	1
Number of Incidents	0	1	0
TMC Detection (min.)	0.00	0.00	0.00
TMC Verification (min.)	6.95	10.55	6.95
TMC Response (min.)	6.93	10.50	6.93
RR Dispatch Time (min.)	2.13	0.38	2.13
RR Response Time (min.)	4.80	10.12	4.80
Event Clearance (min.)	8.37	57.10	8.37
Roadway Clearance (min.)		41.23	
Incident Clearance (min.)		57.10	
# of Events w/ RR/SIRV	1	1	1
RR/SIRV Assists	1	1	1
RR/SIRV Activities	1	1	1

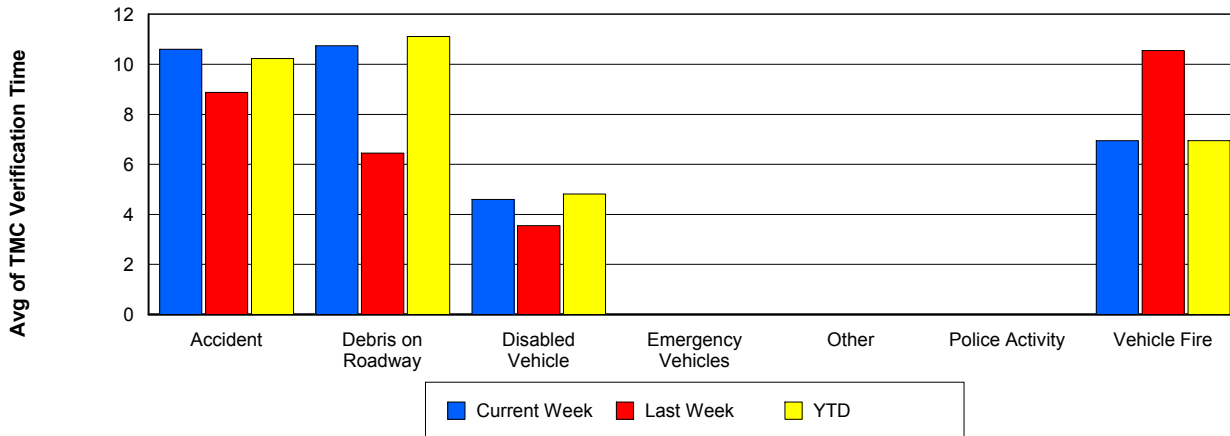
Number of Events / Event Type



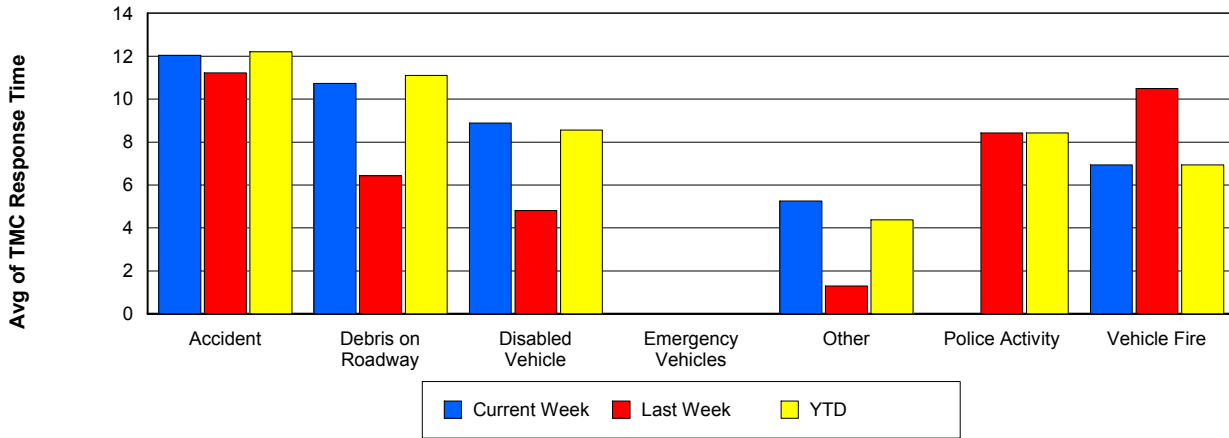
TMC Detection Time



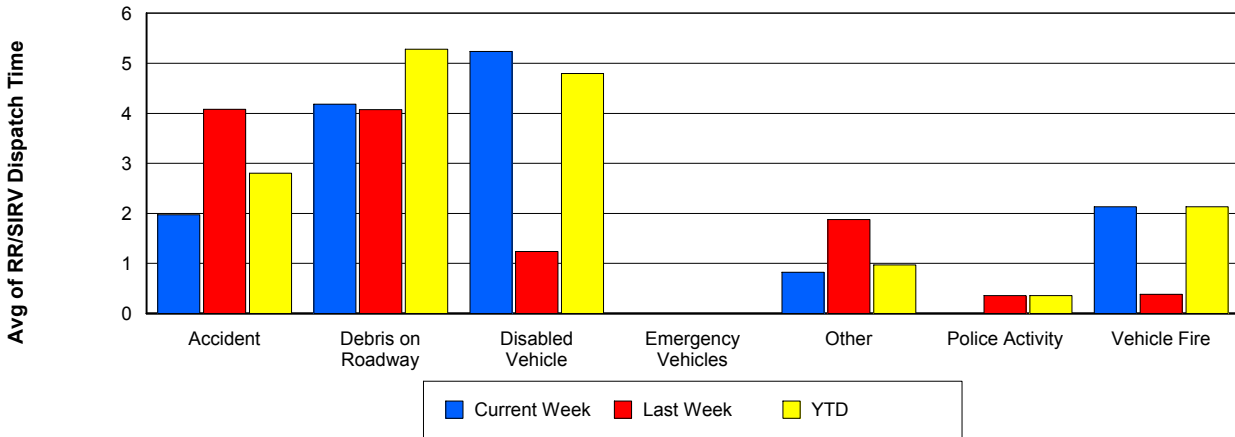
TMC Verification Time



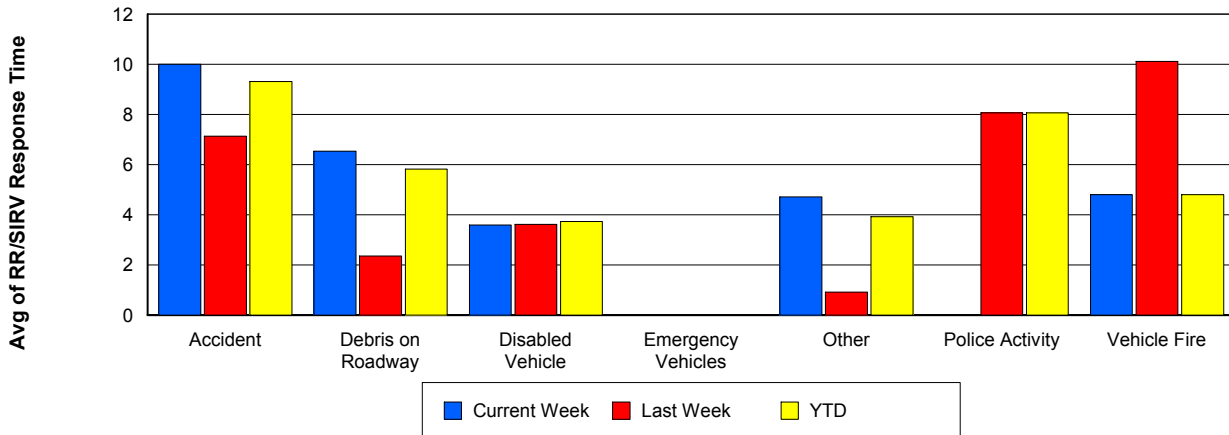
TMC Response Time



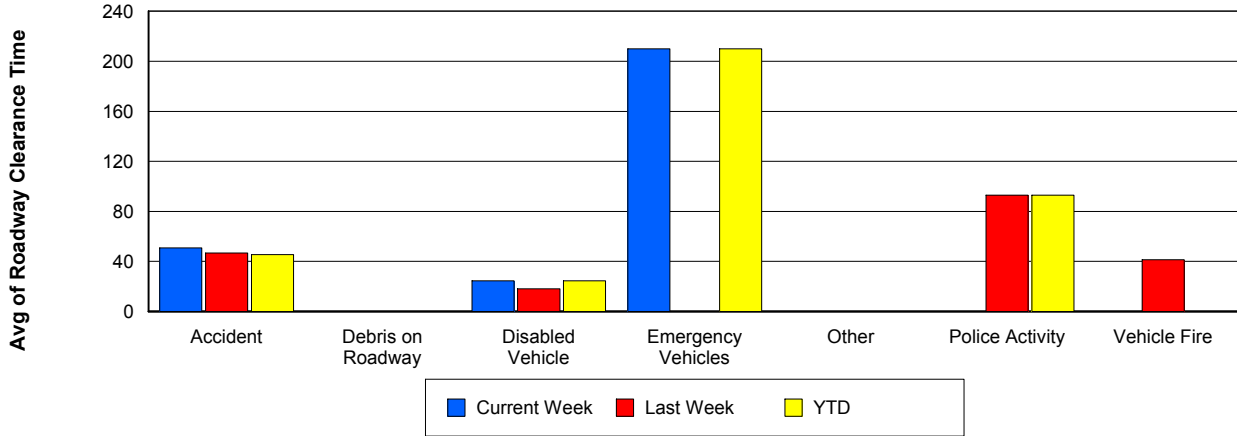
Road Ranger / SIRV Dispatch Time



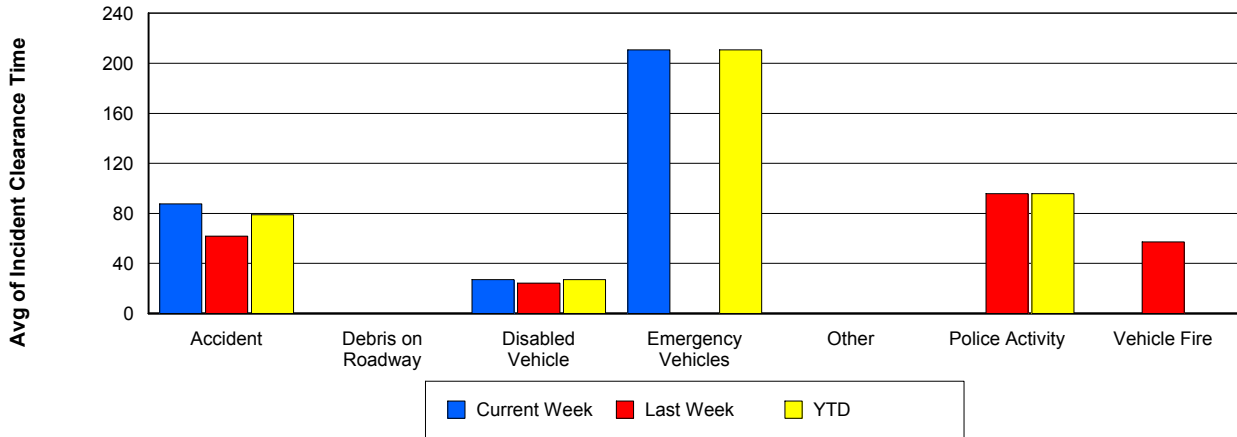
Road Ranger / SIRV Response Time



Roadway Clearance Time (2A)



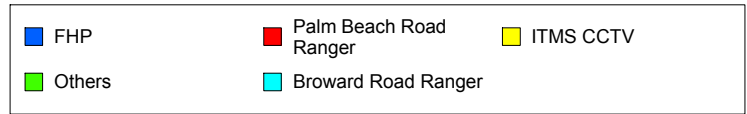
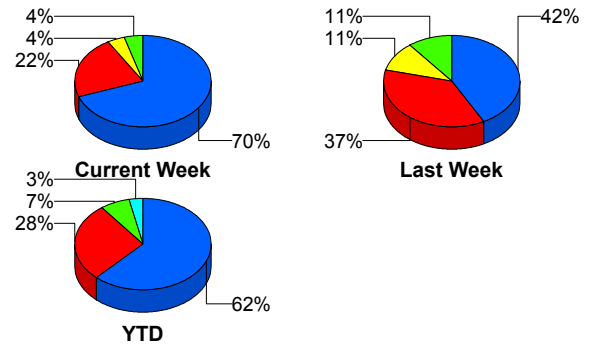
Incident Clearance Time (3B)



Incident Detection Methods

	Current Week	Last Week	YTD
Broward Road Ranger	0	1	1
FHP	16	8	18
ITMS CCTV	1	2	1
Motorist	1	1	1
Palm Beach Road Ran	5	7	8
Total	23	19	29

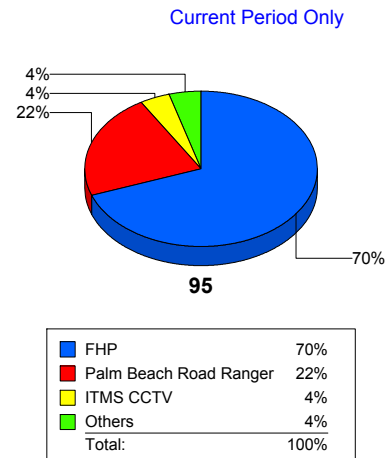
Total Incidents by Detection Method



Incident Detection Methods by Roadway

		Current Week	Last Week	YTD
95	Broward Road Ranger	0	1	1
	FHP	16	8	18
	ITMS CCTV	1	2	1
	Motorist	1	1	1
	Palm Beach Road Ran	5	7	8
	Total	23	19	29
Total		23	19	29

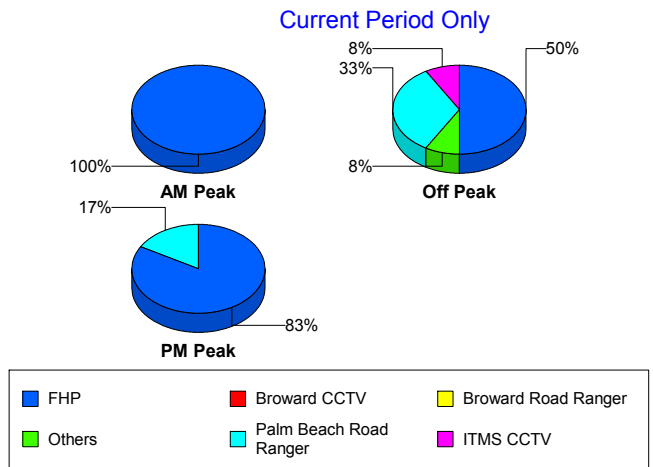
Total Events by Roadway and Detection Method



Incident Detection Methods by Peak Period

		Current Week	Last Week	YTD
AM Peak	FHP	5	1	6
	Motorist	0	1	0
	Palm Beach Road Ran	0	1	1
	Total	5	3	7
Off Peak	Broward Road Ranger	0	1	1
	FHP	6	6	6
	ITMS CCTV	1	2	1
	Motorist	1	0	1
	Palm Beach Road Ran	4	4	5
	Total	12	13	14
PM Peak	FHP	5	1	6
	Palm Beach Road Ran	1	2	2
	Total	6	3	8
Total		23	19	29

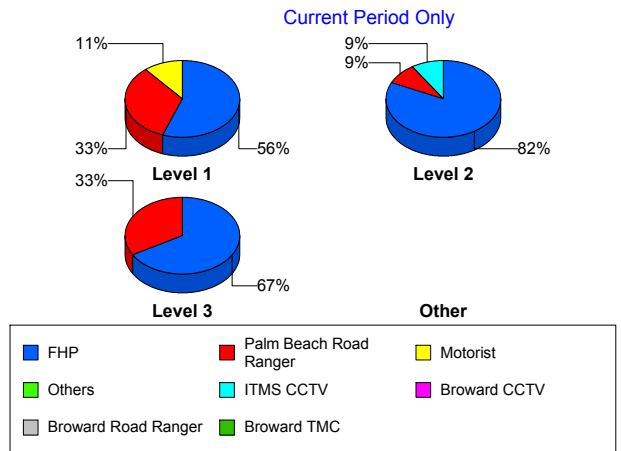
Total Events by Peak Period and Detection Method



Incident Detection Methods by Severity

		Current Week	Last Week	YTD
Level 1	Broward Road Ranger	0	1	1
	FHP	5	4	7
	Motorist	1	1	1
	Palm Beach Road Ran	3	5	4
	Total	9	11	13
Level 2	FHP	9	3	9
	ITMS CCTV	1	2	1
	Palm Beach Road Ran	1	1	2
	Total	11	6	12
Level 3	FHP	2	1	2
	Palm Beach Road Ran	1	1	2
	Total	3	2	4
Total		23	19	29

Total Events by Severity and Detection Method



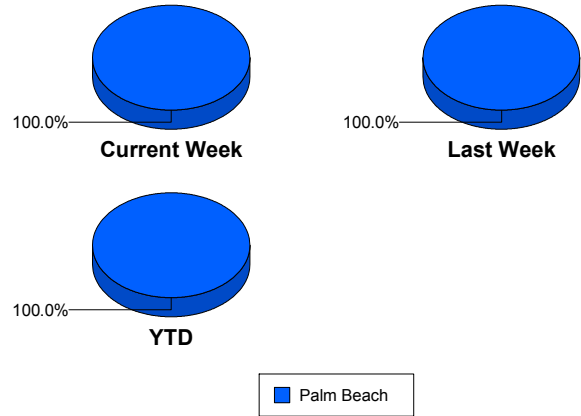
Road Ranger / SIRV Performance Measures

Road Ranger / SIRV Performance By County

Values presented are:
 - Total Events with a RR/SIRV Response
 - Total RR/SIRV Responses,
 - Total Activities Performed

	Current We	Last Week	YTD
Palm Beach	587	498	701
	600	519	718
	642	546	768

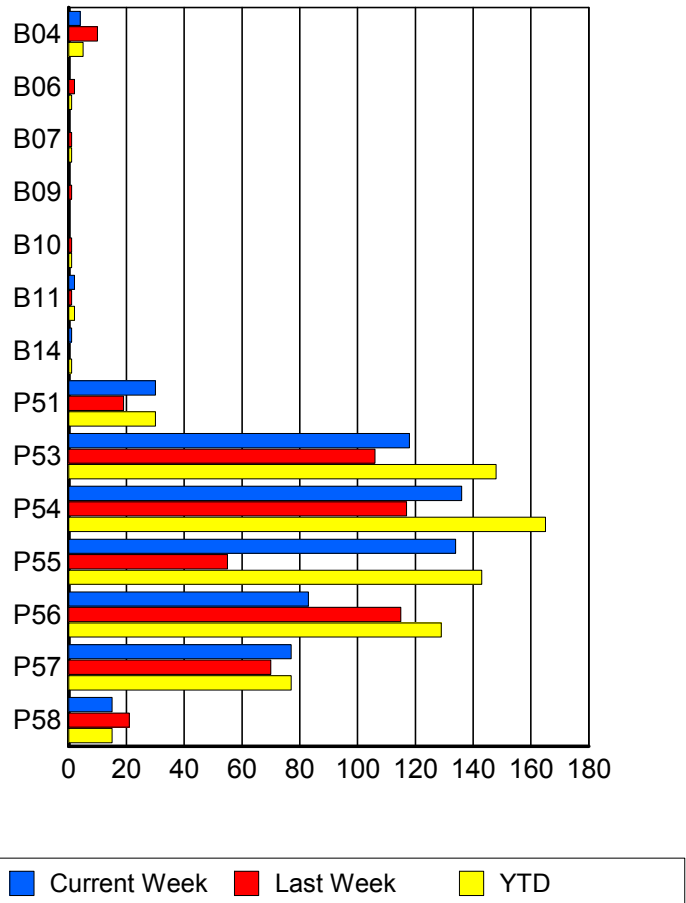
RR/SIRV Responses per County



Road Ranger / SIRV Performance By Truck

	Current We	Last Week	YTD
B04	4	10	5
	4	10	5
	5	10	6
B06	0	2	1
	0	2	1
	0	4	3
B07	0	1	1
	0	1	1
	0	1	1
B09	0	1	0
	0	1	0
	0	1	0
B10	0	1	1
	0	1	1
	0	1	1
B11	2	1	2
	2	1	2
	2	1	2
B14	1	0	1
	1	0	1
	1	0	1
P51	30	19	30
	30	19	30
	33	20	33
P53	116	104	146
	118	106	148
	127	107	158

RR/SIRV Responses per Truck



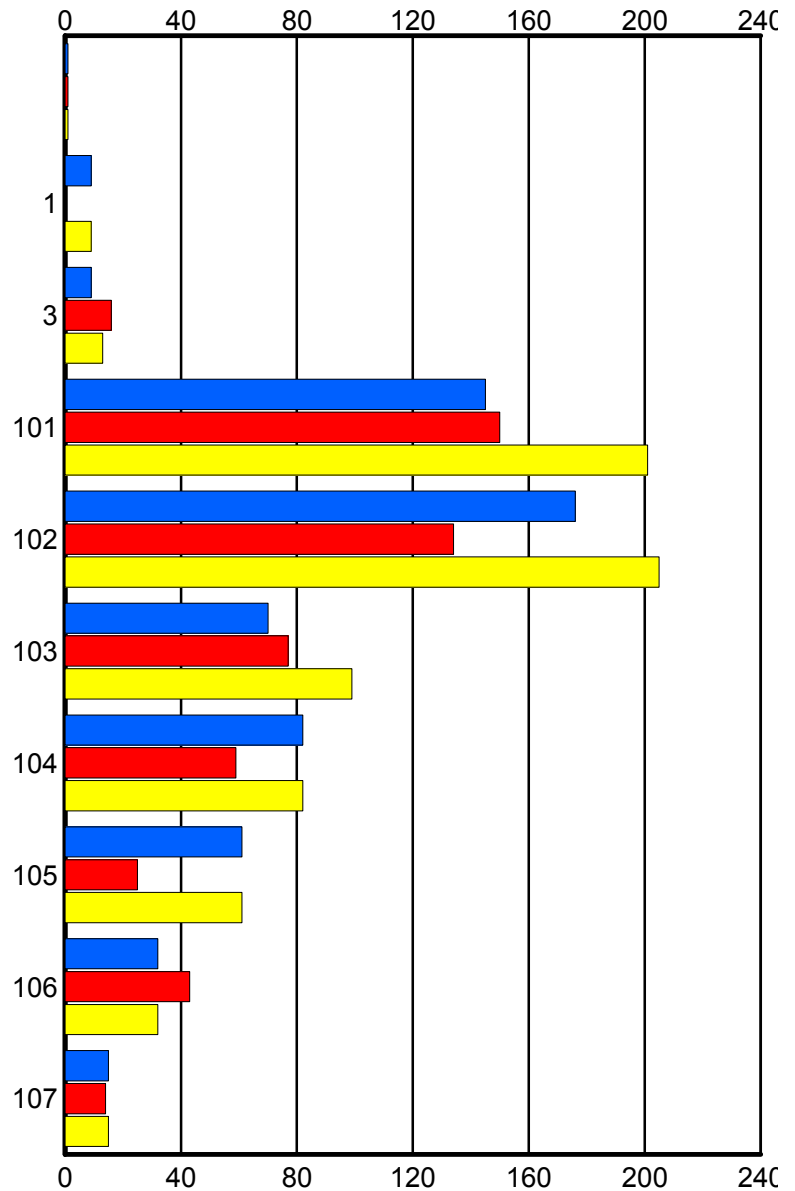
	Current We	Last Week	YTD
P54	134	114	163
	136	117	165
	144	125	174
P55	133	54	142
	134	55	143
	141	61	152
P56	82	112	127
	83	115	129
	89	121	137
P57	75	68	75
	77	70	77
	80	72	80
P58	15	21	15
	15	21	15
	20	22	20

Road Ranger / SIRV Performance By Beat

	Current We	Last Week	YTD
	1	1	1
	1	1	1
	1	1	1
1	8	0	8
	9	0	9
	9	0	9
3	9	15	12
	9	16	13
	10	18	16
101	143	148	198
	145	150	201
	151	161	212
102	173	133	202
	176	134	205
	190	135	220
103	69	76	98
	70	77	99
	74	80	103
104	82	56	82
	82	59	82
	88	65	88
105	59	25	59
	61	25	61
	66	27	66
106	32	40	32
	32	43	32
	33	44	33
107	15	14	15
	15	14	15
	20	15	20

Values presented are:
 - Total Events with a RR/SIRV Response
 - Total RR/SIRV Responses,
 - Total Activities Performed

RR/SIRV Responses per Beat



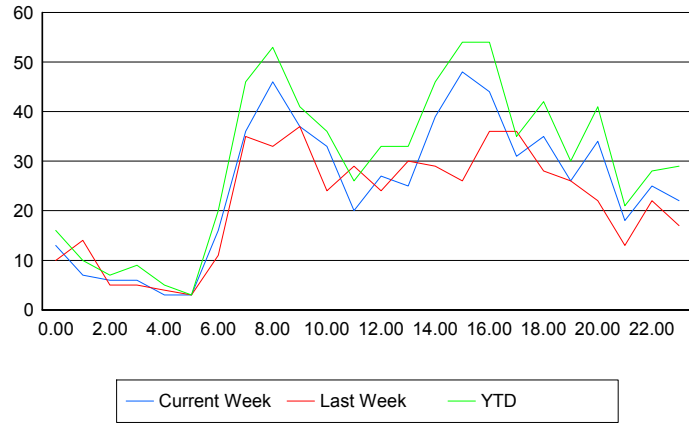
■ Current Week
 ■ Last Week
 ■ YTD

Road Ranger / SIRV Performance By Time of Day

Values presented are:
 - Total Events with a RR/SIRV Response
 - Total RR/SIRV Responses,
 - Total Activities Performed

	Current We	Last Week	YTD
12AM-1AM	13 13 15	9 10 11	15 16 19
1AM-2AM	7 7 7	13 14 14	10 10 10
2AM-3AM	6 6 6	5 5 7	7 7 7
3AM-4AM	6 6 7	5 5 5	9 9 10
4AM-5AM	3 3 3	4 4 4	5 5 5
5AM-6AM	3 3 3	2 3 3	3 3 3
6AM-7AM	16 16 18	11 11 11	20 20 22
7AM-8AM	36 36 44	35 35 37	46 46 54
8AM-9AM	45 46 49	31 33 39	51 53 57
9AM-10AM	36 37 39	36 37 39	40 41 43
10AM-11AM	33 33 35	24 24 26	36 36 39
11AM-12PM	19 20 21	28 29 29	25 26 27
12PM-1PM	25 27 28	23 24 25	31 33 34

Number of Responses / Hour of the Day



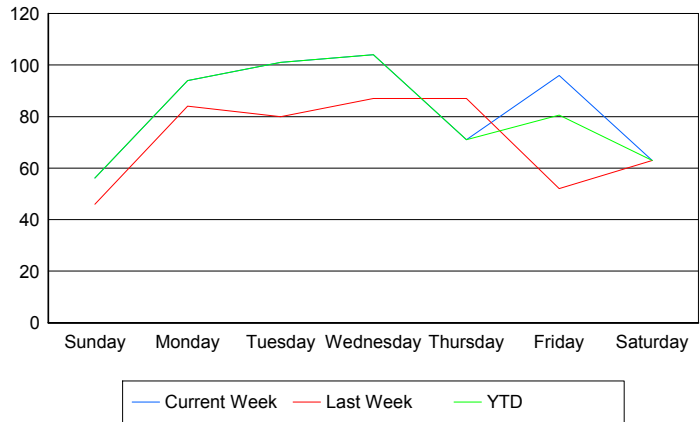
	Current We	Last Week	YTD
1PM-2PM	24	28	32
	25	30	33
	28	30	36
2PM-3PM	38	29	45
	39	29	46
	39	29	46
3PM-4PM	48	25	53
	48	26	54
	50	28	57
4PM-5PM	43	35	52
	44	36	54
	47	37	57
5PM-6PM	30	32	34
	31	36	35
	35	39	39
6PM-7PM	34	26	41
	35	28	42
	37	29	45
7PM-8PM	24	25	28
	26	26	30
	28	26	32
8PM-9PM	34	21	41
	34	22	41
	34	24	43
9PM-10PM	17	12	20
	18	13	21
	18	14	21
10PM-11PM	25	22	28
	25	22	28
	28	22	31
11PM-12AM	22	17	29
	22	17	29
	23	18	31

Road Ranger / SIRV Performance By Day of Week

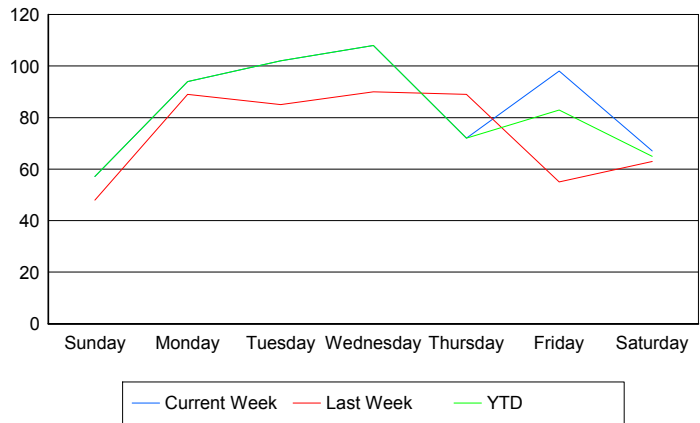
Values presented are:
 - Total Events with a RR/SIRV Response
 - Total RR/SIRV Responses,
 - Total Activities Performed

	Current We	Last Week	YTD
Sunday	58 59 61	46 48 50	58 59 61
Monday	94 94 100	84 89 94	94 94 100
Tuesday	101 102 105	80 85 88	101 102 105
Wednesday	104 108 117	87 90 95	104 108 117
Thursday	71 72 86	87 89 93	71 72 86
Friday	96 98 105	52 55 57	148 153 162
Saturday	63 67 68	63 63 69	126 130 137

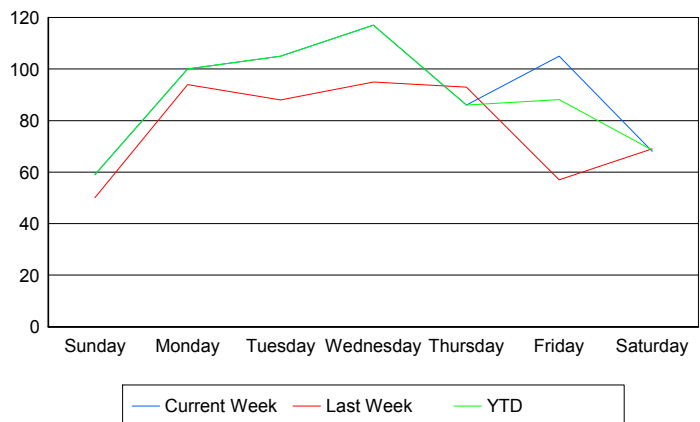
Avg # of events with a RR/SIRV Response per Day of the Week



Avg # of RR/SIRV Responses per Day of the Week



Avg # of RR/SIRV Activities Performed per Day of the Week



Road Ranger / SIRV Responses per Time of Day and Day of Week

