



Weekly Performance Measures Report Palm Beach County



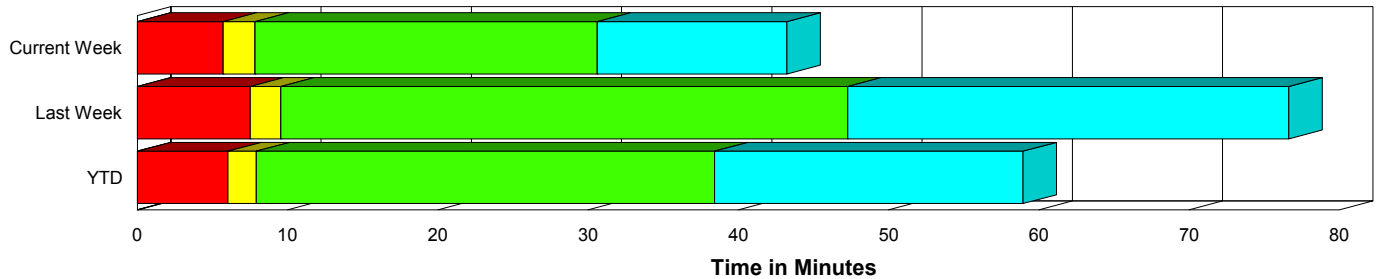
Created on:
January 18, 2010
8:53 am

Period From Jan 10, 2010 to Jan 16, 2010

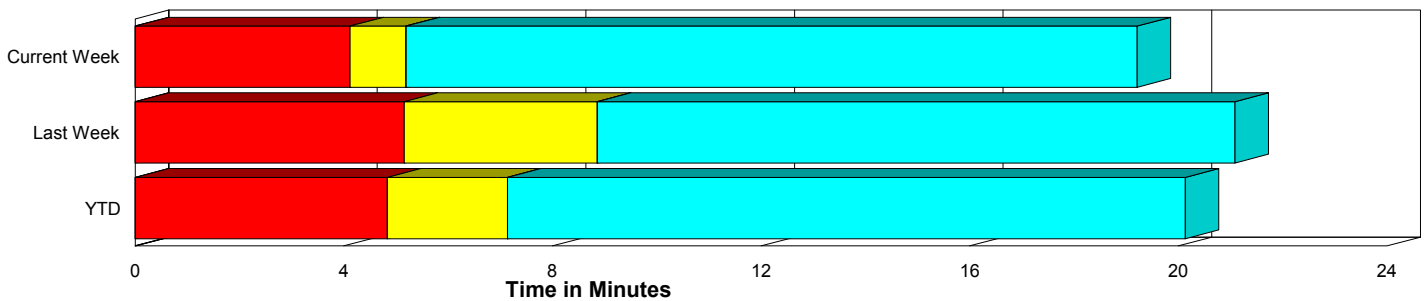
Performance Measures Summary

	Traffic Events (No Lanes Blocked)			Incidents (Lanes Blocked)		
	<u>This Week</u>	<u>Last Week</u>	<u>YTD</u>	<u>This Week</u>	<u>Last Week</u>	<u>YTD</u>
Number of Events	407	418	908	24	23	53
TMC Detection (min.)	0.00	0.00	0.00	0.00	0.00	0.00
TMC Verification (min.)	4.12	5.16	4.84	5.72	7.52	6.04
TMC Response (min.)	5.45	9.14	7.41	8.08	10.02	8.18
RR Dispatch Time (min.)	1.51	5.00	3.29	1.38	1.23	1.19
RR Response Time (min.)	3.93	4.06	4.09	6.70	8.80	6.99
Roadway Clearance (min.)				29.89	53.12	40.75
Event Clearance (min.)	19.46	21.37	20.41	42.46	82.47	61.26
# of Events w/ RR/SIRV	395	407	882	23	22	51
RR/SIRV Responses	395	407	882	23	22	51
RR/SIRV Activities	425	439	947	29	25	64

Incident Clearance Time-Line



Traffic Event (Non-Lane Blockage) Time-Line



■ Avg. TMC Detection Time	■ Avg. Time from TMC Response to Roadway Clearance*
■ Avg. Time from TMC Detection to TMC Verification	■ Avg. Time from Roadway Clearance to Incident/Event Clearance**
■ Avg. Time from TMC Verification to TMC Response	

* Roadway clearance equals all travel lanes open

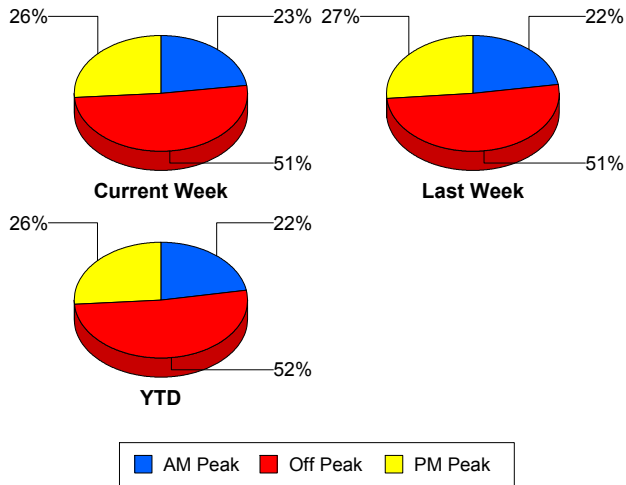
** Incident clearance equals time when last responder has left the scene

Performance Measures by Peak Period

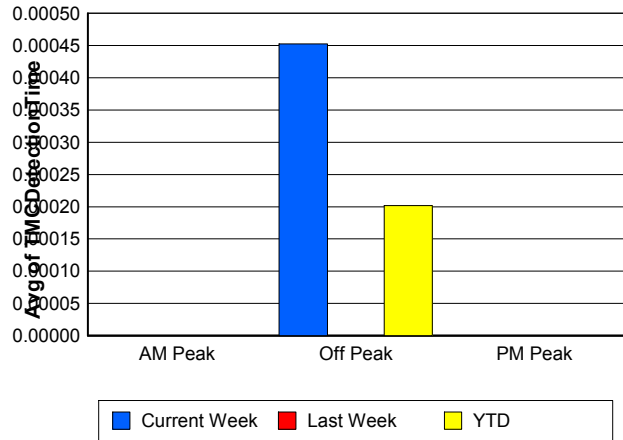
Note: AM peak period is defined as 6am to 10am and PM peak period is defined as 3pm to 7pm.

	AM Peak			Off Peak			PM Peak		
	<u>Current Week</u>	<u>Last Week</u>	<u>YTD</u>	<u>Current Week</u>	<u>Last Week</u>	<u>YTD</u>	<u>Current Week</u>	<u>Last Week</u>	<u>YTD</u>
Number of Events	98	99	214	221	225	496	112	117	251
Number of Incidents	10	5	17	6	12	20	8	6	16
TMC Detection (min.)	0.00	0.00	0.00	0.00	0.00	0.00	0.00	0.00	0.00
TMC Verification (min.)	3.54	2.45	2.98	4.36	6.68	5.54	4.50	5.01	5.28
TMC Response (min.)	5.82	4.75	5.29	5.66	13.09	9.09	5.28	5.35	6.00
RR Dispatch Time (min.)	0.96	1.15	1.01	1.73	8.16	4.69	1.50	1.49	2.04
RR Response Time (min.)	4.85	3.60	4.27	3.93	4.83	4.40	3.76	3.86	3.94
Event Clearance (min.)	19.19	22.35	20.97	22.24	27.48	24.21	19.13	20.79	21.05
Roadway Clearance (min.)	34.25	95.46	50.49	23.40	36.56	34.72	29.31	50.94	37.95
Incident Clearance (min.)	45.52	127.66	67.56	46.61	73.31	64.21	35.51	63.11	50.88
# of Events w/ RR/SIRV	94	96	206	214	218	481	110	115	246
RR/SIRV Responses	94	96	206	214	218	481	110	115	246
RR/SIRV Activities	98	105	220	235	234	522	121	125	269

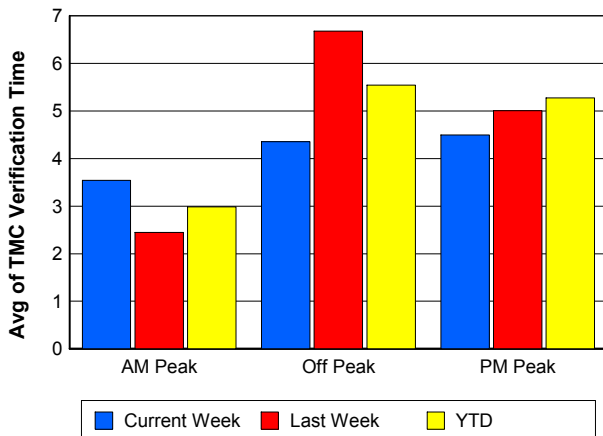
Number of Events / Peak Period



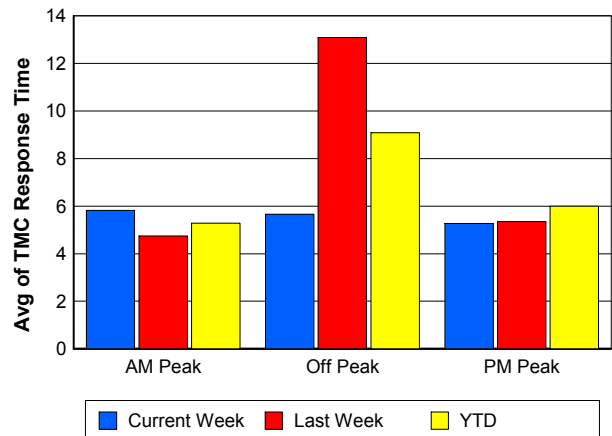
TMC Detection Time



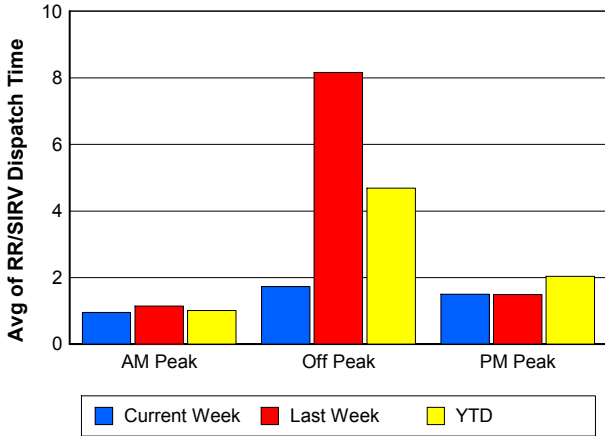
TMC Verification Time



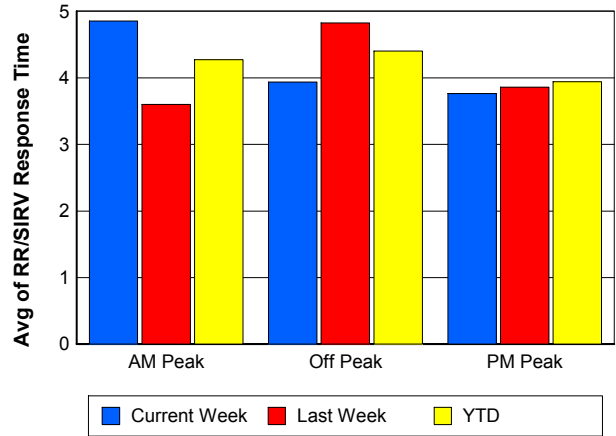
TMC Response Time



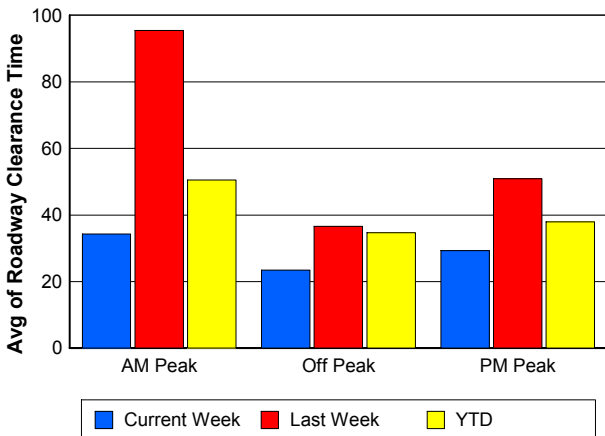
Road Ranger / SIRV Dispatch Time



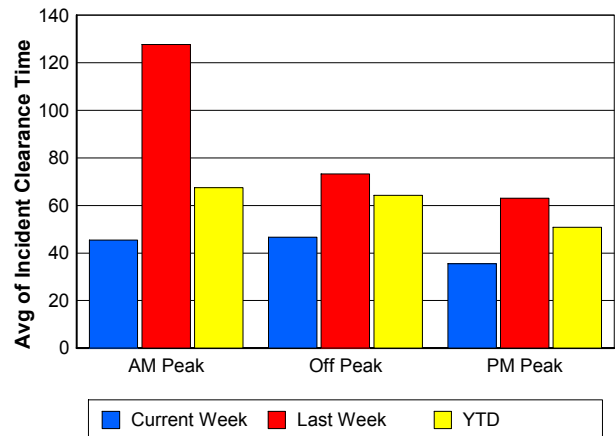
Road Ranger / SIRV Response Time



Roadway Clearance Time (2A)



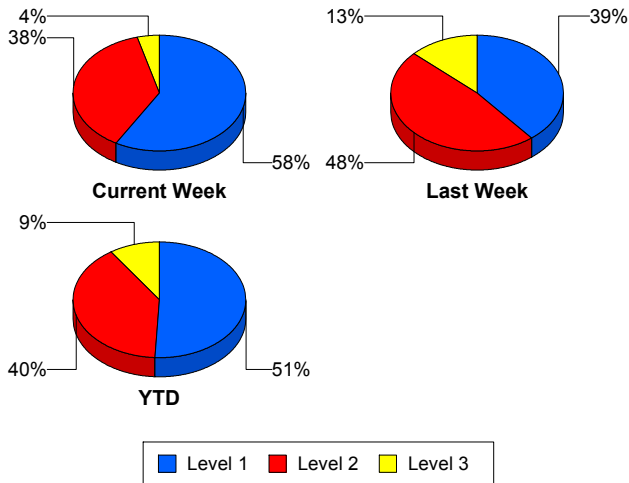
Incident Clearance Time (3B)



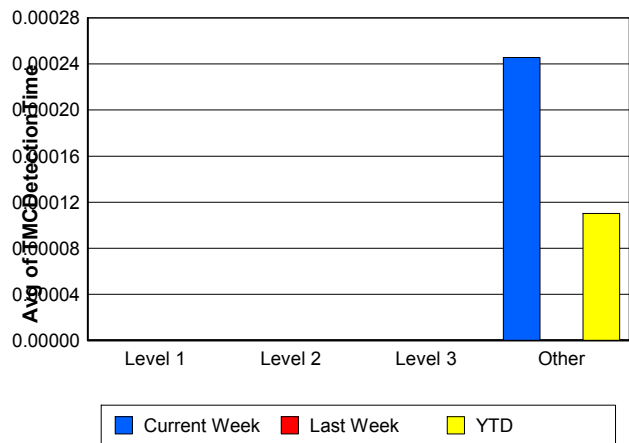
Performance Measures by Severity

	Level 1			Level 2			Level 3			Other		
	<u>This Week</u>	<u>Last Week</u>	<u>YTD</u>	<u>This Week</u>	<u>Last Week</u>	<u>YTD</u>	<u>This Week</u>	<u>Last Week</u>	<u>YTD</u>	<u>This Week</u>	<u>Last Week</u>	<u>YTD</u>
Number of Events	14	9	27	9	11	21	1	3	5	407	418	908
Number of Incidents	14	9	27	9	11	21	1	3	5	0	0	0
TMC Detection (min.)	0.00	0.00	0.00	0.00	0.00	0.00	0.00	0.00	0.00	0.00	0.00	0.00
TMC Verification (min.)	4.53	6.45	4.87	6.54	10.46	8.28	14.95	0.00	2.99	4.12	5.16	4.84
TMC Response (min.)	7.27	6.59	6.40	8.48	12.22	10.03	14.92	11.69	9.57	5.45	9.14	7.41
RR Dispatch Time (min.)	1.40	0.70	1.01	1.06	1.81	1.40	3.97	0.42	1.20	1.51	5.00	3.29
RR Resp. Time (min.)	5.88	5.96	5.40	7.42	10.41	8.63	10.95	11.27	8.37	3.93	4.06	4.09
Event Clearance (min.)	32.50	83.55	48.41	56.28	63.20	63.67	57.45	149.84	120.53	19.46	21.37	20.41
Roadway Clear. (min.)	15.75	18.27	16.95	50.46	55.39	53.26	42.75	149.32	116.75			
Incident Clearance (min.)	32.50	83.55	48.41	56.28	63.20	63.67	57.45	149.84	120.53			
# of Events w/ RR/SIRV	13	9	26	9	11	21	1	2	4	395	407	882
RR/SIRV Responses	13	9	26	9	11	21	1	2	4	395	407	882
RR/SIRV Activities	15	9	31	12	14	28	2	2	5	425	439	947

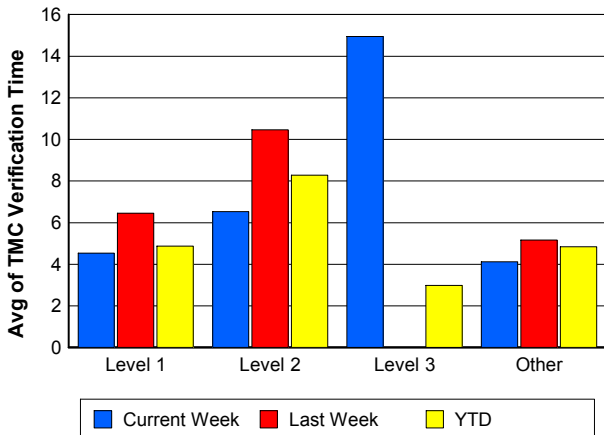
Number of Events / Severity



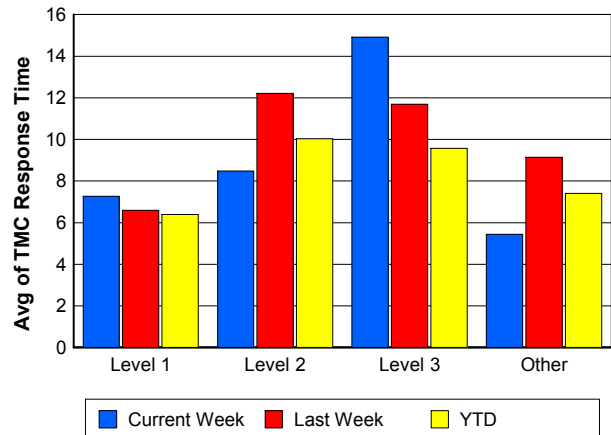
TMC Detection Time



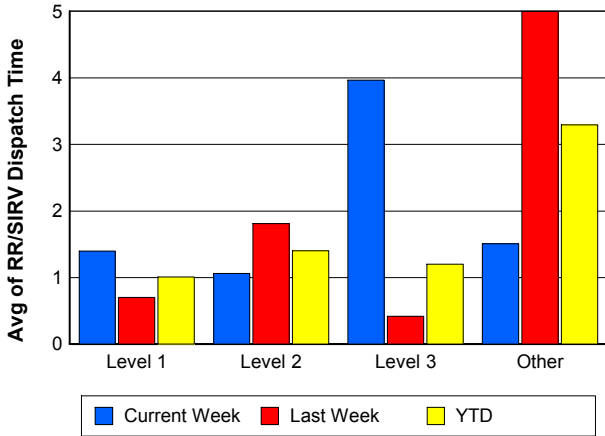
TMC Verification Time



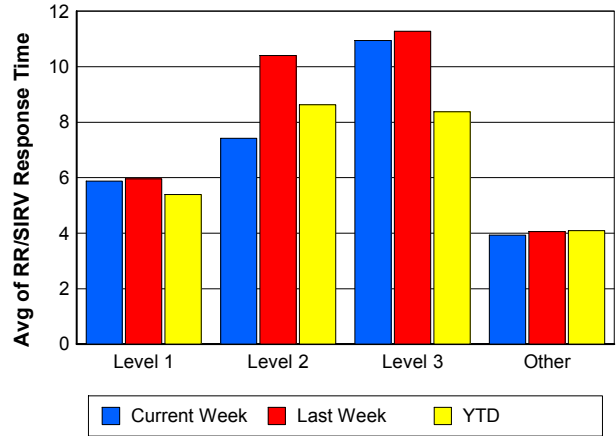
TMC Response Time



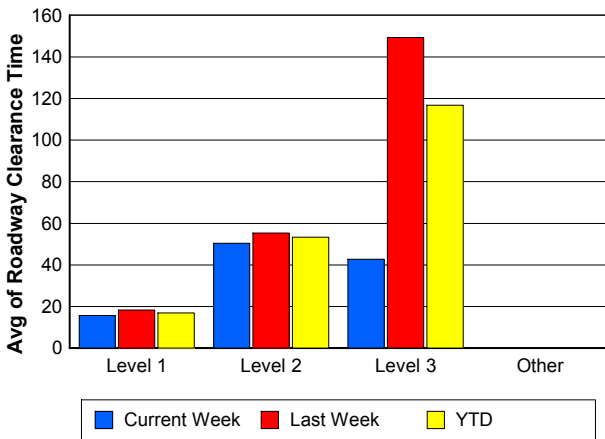
Road Ranger / SIRV Dispatch Time



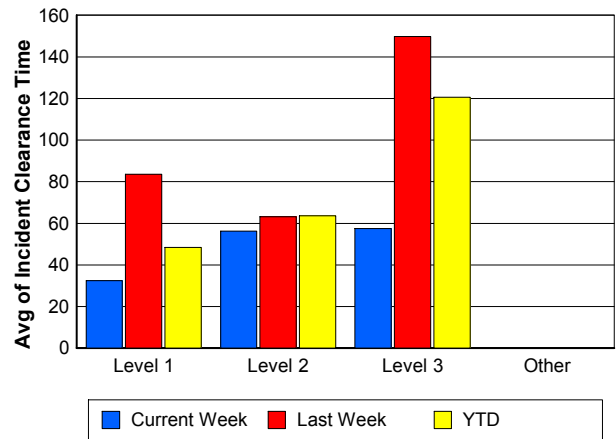
Road Ranger / SIRV Response Time



Roadway Clearance Time (2A)



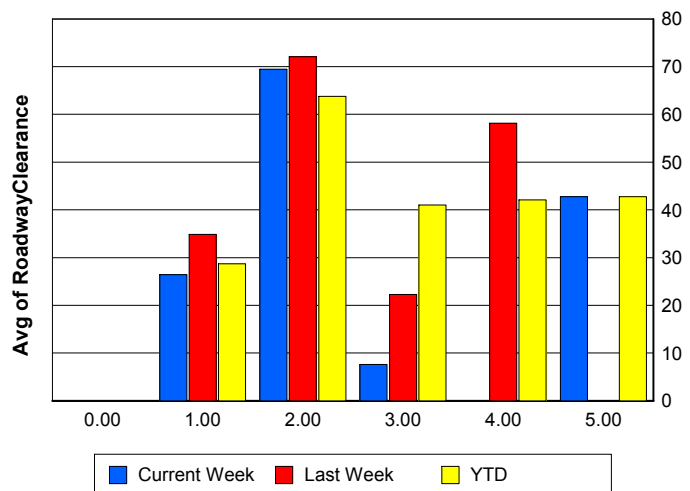
Incident Clearance Time (3B)



Roadway Clearance by Maximum Number of Lanes Blocked

	Current Week	Last Week	YTD
0			
1	26.41	34.87	28.69
2	69.46	72.05	63.79
3	7.63	22.28	40.99
4	0.00	58.17	42.08
5	42.75	0.00	42.75

Roadway Clearance Time (2A)

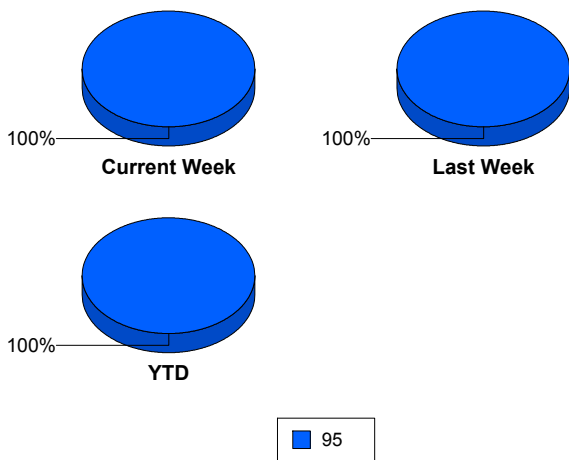


Performance Measures by Roadway

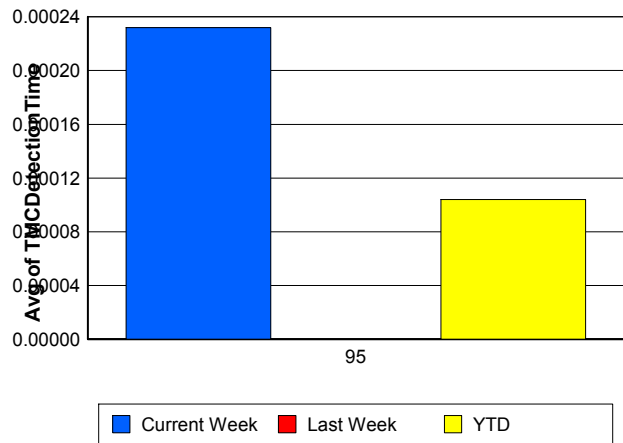
95

	<u>Current Week</u>	<u>Last Week</u>	<u>YTD</u>
Number of Events	431	441	961
Number of Incidents	24	23	53
TMC Detection (min.)	0.00	0.00	0.00
TMC Verification (min.)	4.21	5.28	4.90
TMC Response (min.)	5.60	9.19	7.46
RR Dispatch Time (min.)	1.50	4.80	3.18
RR Resp. Time (min.)	4.09	4.30	4.25
Event Clearance (min.)	20.74	24.55	22.66
Roadway Clear. (min.)	29.89	53.12	40.75
Incident Clearance (min.)	42.46	82.47	61.26
# of Events w/ RR/SIRV	418	429	933
RR/SIRV Responses	418	429	933
RR/SIRV Activities	454	464	1,011

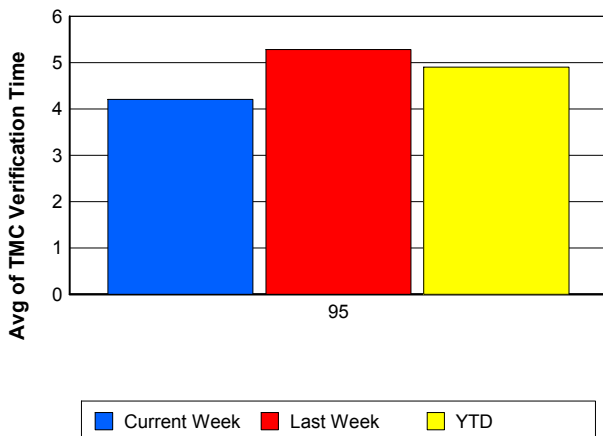
Number of Events / Roadway



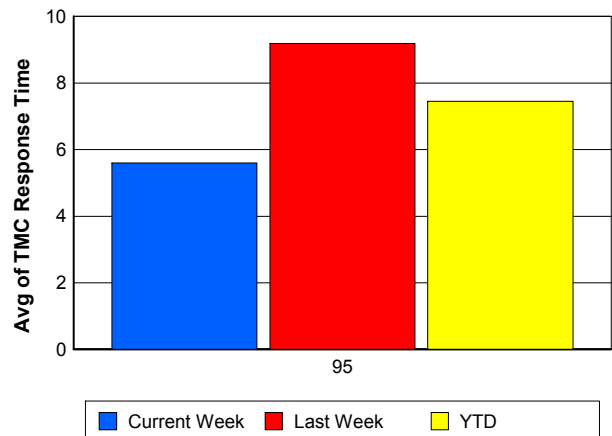
TMC Detection Time



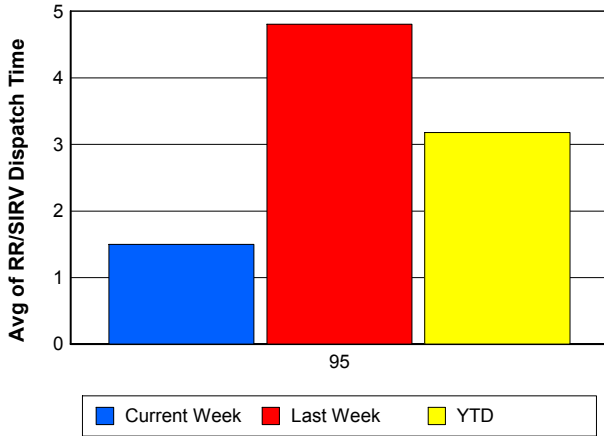
TMC Verification Time



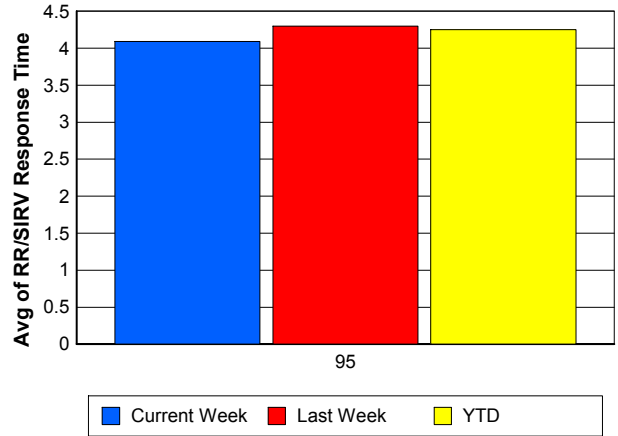
TMC Response Time



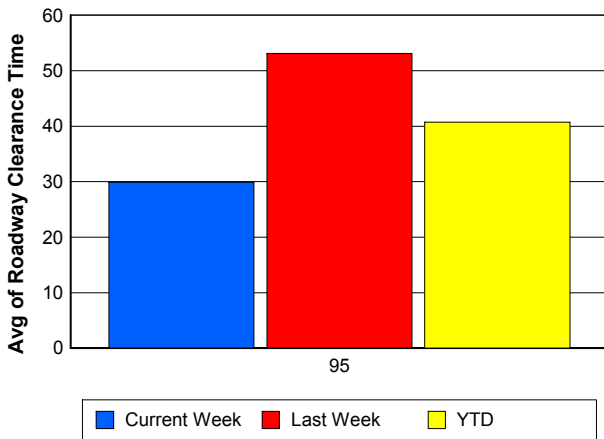
Road Ranger / SIRV Dispatch Time



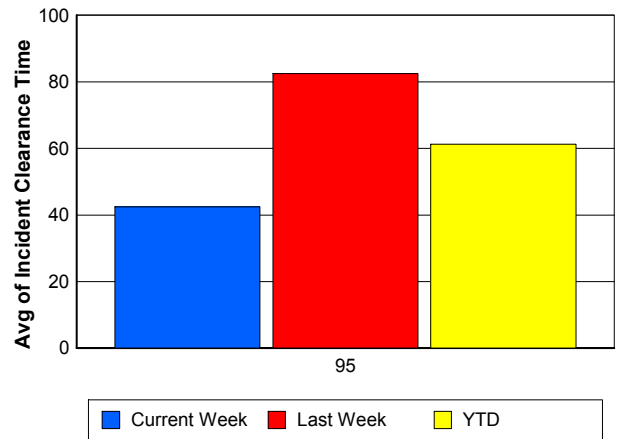
Road Ranger / SIRV Response Time



Roadway Clearance Time (2A)



Incident Clearance Time (3B)



Performance Measures by Event Type

Accident

	<u>Current Week</u>	<u>Last Week</u>	<u>YTD</u>
Number of Events	31	35	75
Number of Incidents	13	18	36
TMC Detection (min.)	0.00	0.00	0.00
TMC Verification (min.)	8.17	10.61	9.38
TMC Response (min.)	10.28	12.04	11.41
RR Dispatch Time (min.)	1.25	1.97	2.18
RR Response Time (min.)	9.03	10.01	9.20
Event Clearance (min.)	51.37	71.41	59.69
Roadway Clearance (min.)	41.06	50.79	43.77
Incident Clearance (min.)	53.94	87.69	69.86
# of Events w/ RR/SIRV	30	35	74
RR/SIRV Assists	30	35	74
RR/SIRV Activities	37	36	86

Debris on Roadway

	<u>Current Week</u>	<u>Last Week</u>	<u>YTD</u>
Number of Events	24	26	59
Number of Incidents	0	0	0
TMC Detection (min.)	0.00	0.00	0.00
TMC Verification (min.)	3.88	10.74	8.19
TMC Response (min.)	3.87	10.73	8.18
RR Dispatch Time (min.)	0.28	4.19	3.21
RR Response Time (min.)	3.59	6.54	4.92
Event Clearance (min.)	7.60	14.69	11.48
Roadway Clearance (min.)			
Incident Clearance (min.)			
# of Events w/ RR/SIRV	24	26	58
RR/SIRV Assists	24	26	58
RR/SIRV Activities	23	26	57

Disabled Vehicle

	<u>Current Week</u>	<u>Last Week</u>	<u>YTD</u>
Number of Events	356	363	782
Number of Incidents	10	4	14
TMC Detection (min.)	0.00	0.00	0.00
TMC Verification (min.)	4.12	4.59	4.50
TMC Response (min.)	5.33	8.89	7.07
RR Dispatch Time (min.)	1.62	5.24	3.35
RR Response Time (min.)	3.70	3.59	3.72
Event Clearance (min.)	19.72	20.63	20.20
Roadway Clearance (min.)	17.61	24.44	19.56
Incident Clearance (min.)	30.91	26.90	29.77
# of Events w/ RR/SIRV	351	358	772
RR/SIRV Assists	351	358	772
RR/SIRV Activities	388	394	850

Emergency Vehicles

	<u>Last Week</u>	<u>YTD</u>
Number of Events	1	1
Number of Incidents	1	1
TMC Detection (min.)	0.00	0.00
TMC Verification (min.)	0.00	0.00
TMC Response (min.)		
RR Dispatch Time (min.)		
RR Response Time (min.)		
Event Clearance (min.)	210.75	210.75
Roadway Clearance (min.)	209.83	209.83
Incident Clearance (min.)	210.75	210.75
# of Events w/ RR/SIRV	0	0
RR/SIRV Assists	0	0
RR/SIRV Activities	0	0

Other

	<u>Current Week</u>	<u>Last Week</u>	<u>YTD</u>
Number of Events	17	14	36
Number of Incidents	0	0	0
TMC Detection (min.)	0.00	0.00	0.00
TMC Verification (min.)	0.00	0.00	0.00
TMC Response (min.)	6.50	5.25	5.23
RR Dispatch Time (min.)	1.21	0.82	1.09
RR Response Time (min.)	6.19	4.71	4.83
Event Clearance (min.)	7.54	16.76	10.89
Roadway Clearance (min.)			
Incident Clearance (min.)			
# of Events w/ RR/SIRV	11	8	22
RR/SIRV Assists	11	8	22
RR/SIRV Activities	4	5	10

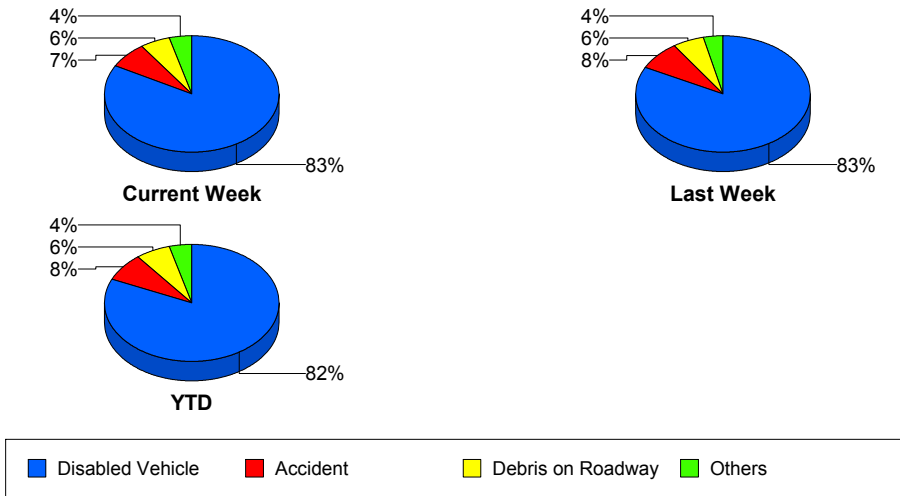
Police Activity

	<u>Current Week</u>	<u>YTD</u>
Number of Events	1	3
Number of Incidents	1	2
TMC Detection (min.)	0.00	0.00
TMC Verification (min.)	0.00	0.00
TMC Response (min.)		8.43
RR Dispatch Time (min.)		0.36
RR Response Time (min.)		8.07
Event Clearance (min.)	8.62	59.61
Roadway Clearance (min.)	7.63	50.34
Incident Clearance (min.)	8.62	52.15
# of Events w/ RR/SIRV	0	2
RR/SIRV Assists	0	2
RR/SIRV Activities	0	2

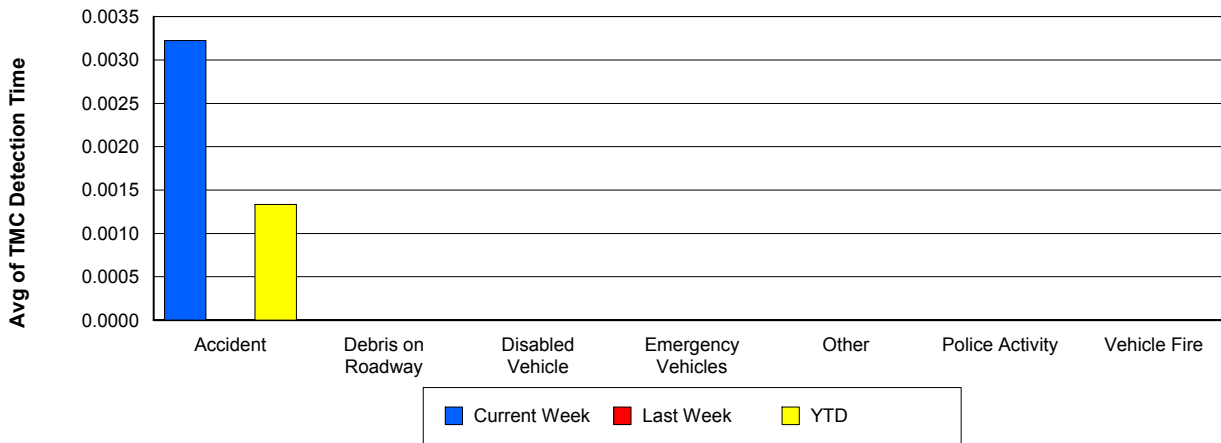
Vehicle Fire

	<u>Last Week</u>	<u>YTD</u>
Number of Events	1	1
Number of Incidents	0	0
TMC Detection (min.)	0.00	0.00
TMC Verification (min.)	6.95	6.95
TMC Response (min.)	6.93	6.93
RR Dispatch Time (min.)	2.13	2.13
RR Response Time (min.)	4.80	4.80
Event Clearance (min.)	8.37	8.37
Roadway Clearance (min.)		
Incident Clearance (min.)		
# of Events w/ RR/SIRV	1	1
RR/SIRV Assists	1	1
RR/SIRV Activities	1	1

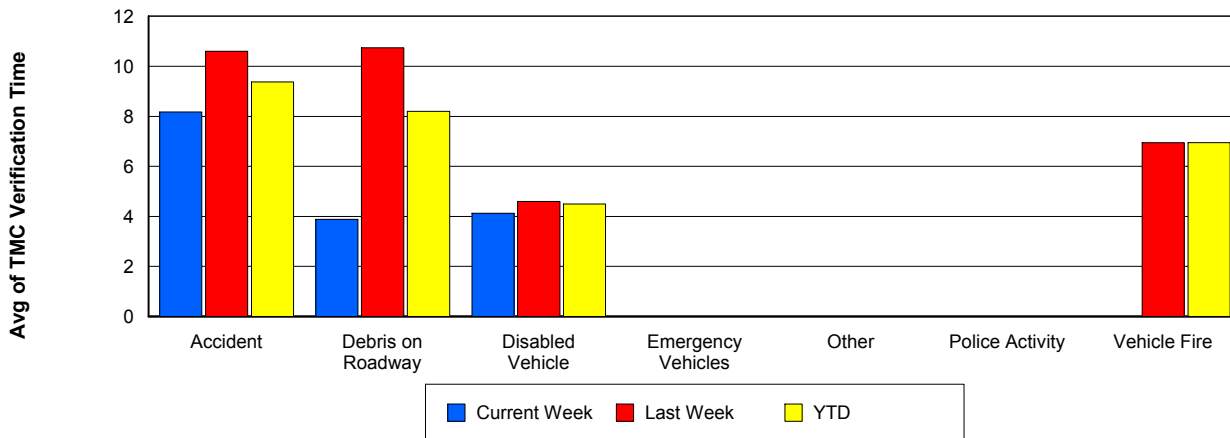
Number of Events / Event Type



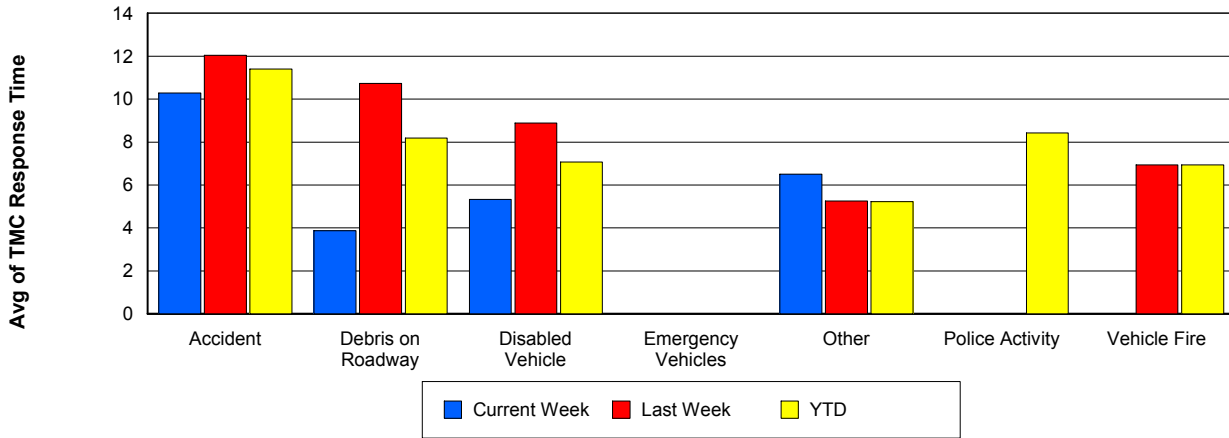
TMC Detection Time



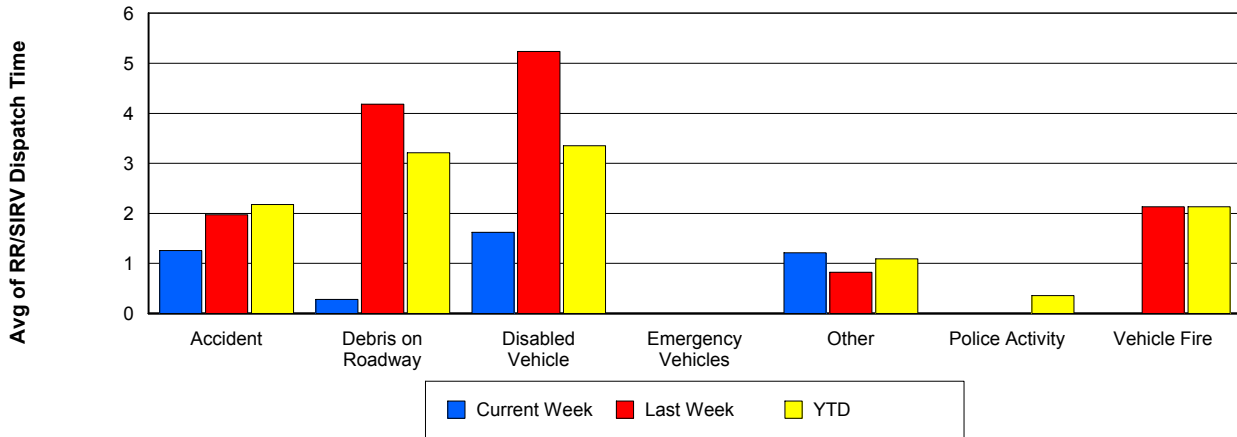
TMC Verification Time



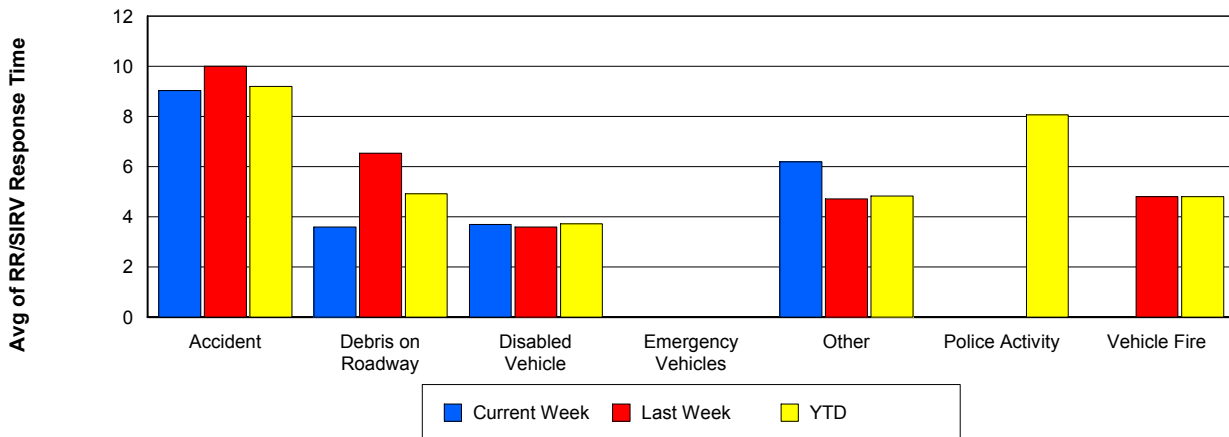
TMC Response Time



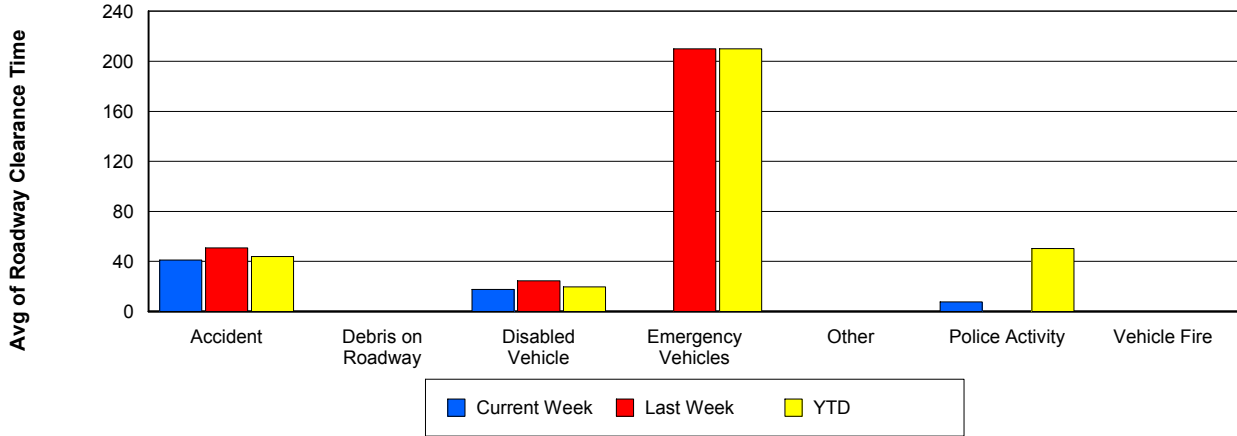
Road Ranger / SIRV Dispatch Time



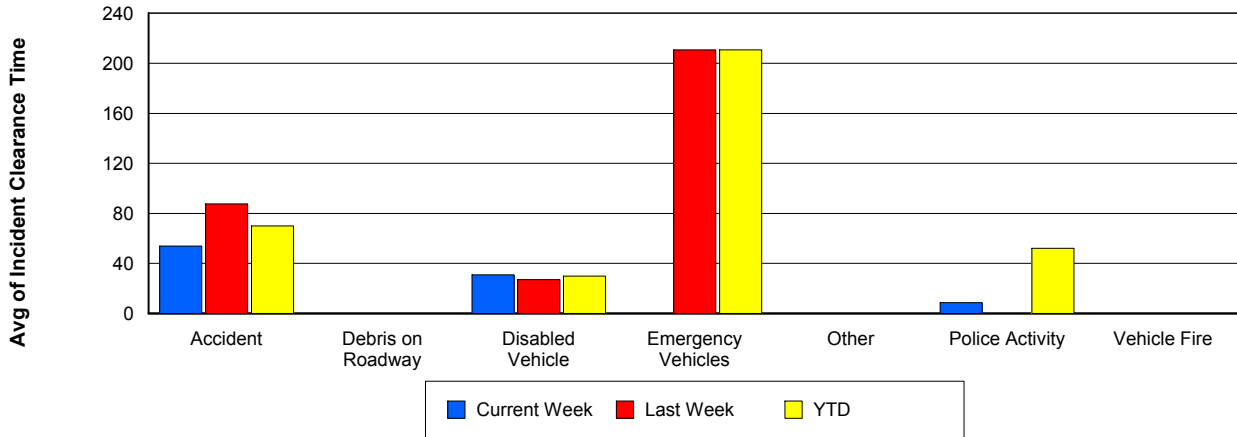
Road Ranger / SIRV Response Time



Roadway Clearance Time (2A)



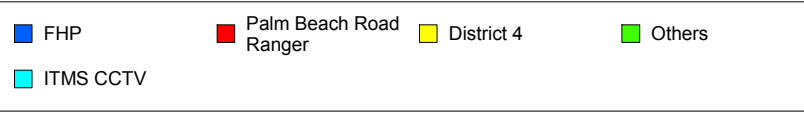
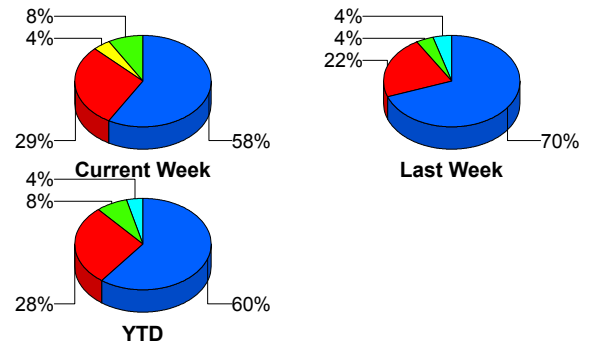
Incident Clearance Time (3B)



Incident Detection Methods

	Current Week	Last Week	YTD
Broward Road Ranger	0	0	1
District 4	1	0	1
FHP	14	16	32
ITMS CCTV	1	1	2
Motorist	1	1	2
Palm Beach Road Ran	7	5	15
Total	24	23	53

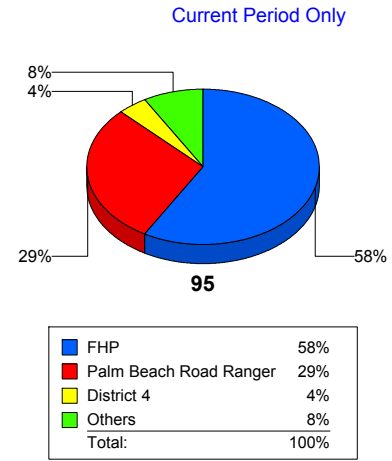
Total Incidents by Detection Method



Incident Detection Methods by Roadway

		Current Week	Last Week	YTD
95	Broward Road Ranger	0	0	1
	District 4	1	0	1
	FHP	14	16	32
	ITMS CCTV	1	1	2
	Motorist	1	1	2
	Palm Beach Road Ran	7	5	15
	Total	24	23	53
Total		24	23	53

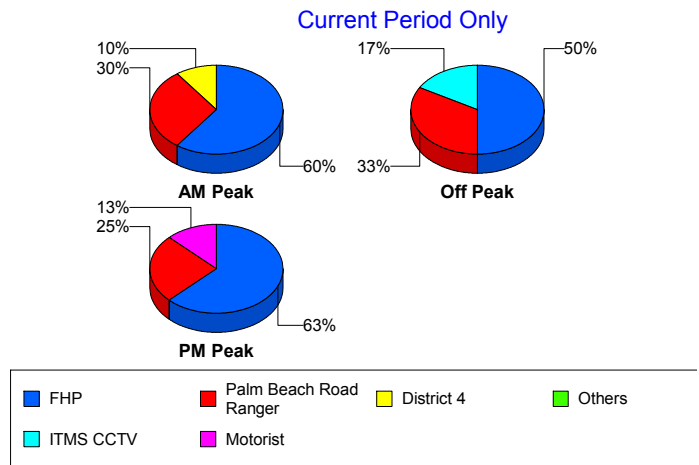
Total Events by Roadway and Detection Method



Incident Detection Methods by Peak Period

		Current Week	Last Week	YTD
AM Peak	District 4	1	0	1
	FHP	6	5	12
	Palm Beach Road Ran	3	0	4
	Total	10	5	17
Off Peak	Broward Road Ranger	0	0	1
	FHP	3	6	9
	ITMS CCTV	1	1	2
	Motorist	0	1	1
	Palm Beach Road Ran	2	4	7
	Total	6	12	20
PM Peak	FHP	5	5	11
	Motorist	1	0	1
	Palm Beach Road Ran	2	1	4
	Total	8	6	16
Total	24	23	53	

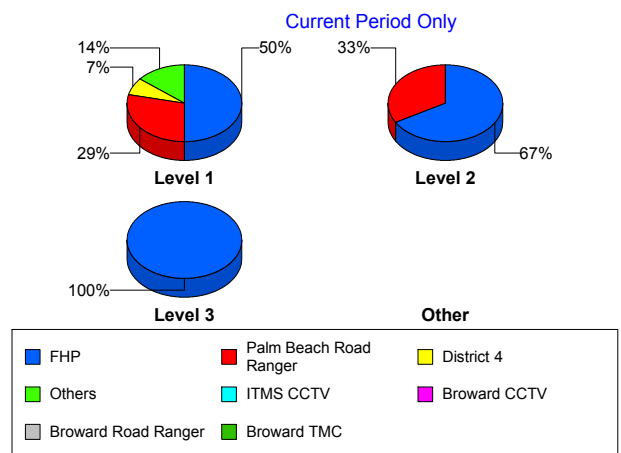
Total Events by Peak Period and Detection Method



Incident Detection Methods by Severity

		Current Week	Last Week	YTD
Level 1	Broward Road Ranger	0	0	1
	District 4	1	0	1
	FHP	7	5	14
	ITMS CCTV	1	0	1
	Motorist	1	1	2
	Palm Beach Road Ran	4	3	8
	Total	14	9	27
Level 2	FHP	6	9	15
	ITMS CCTV	0	1	1
	Palm Beach Road Ran	3	1	5
	Total	9	11	21
Level 3	FHP	1	2	3
	Palm Beach Road Ran	0	1	2

Total Events by Severity and Detection Method



		Current Week	Last Week	YTD
Level 3	Total	1	3	5
Total		24	23	53

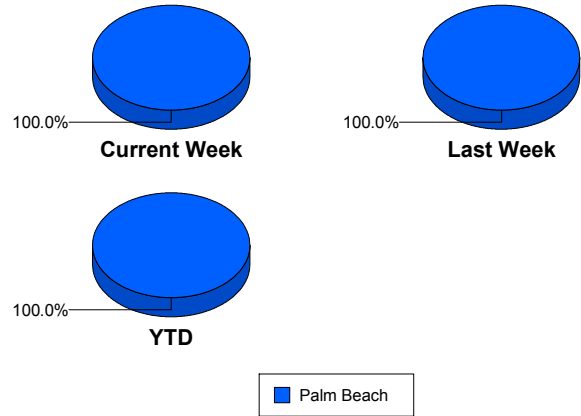
Road Ranger / SIRV Performance Measures

Road Ranger / SIRV Performance By County

Values presented are:
 - Total Events with a RR/SIRV Response
 - Total RR/SIRV Responses,
 - Total Activities Performed

	Current We	Last Week	YTD
Palm Beach	550	587	1,251
	566	600	1,284
	607	642	1,375

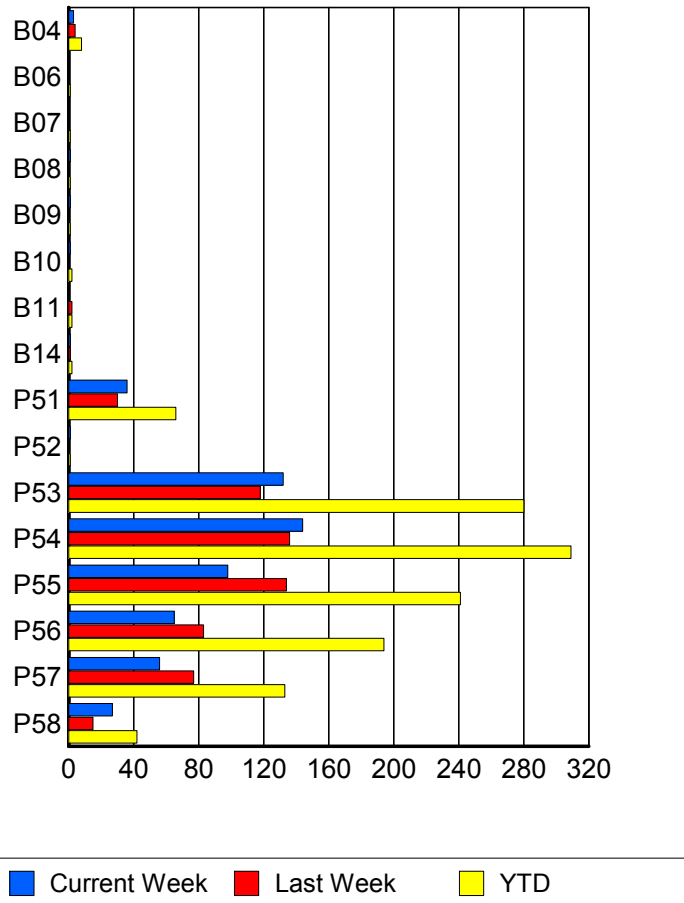
RR/SIRV Responses per County



Road Ranger / SIRV Performance By Truck

	Current We	Last Week	YTD
B04	3	4	8
	3	4	8
	3	5	9
B06	0	0	1
	0	0	1
	0	0	3
B07	0	0	1
	0	0	1
	0	0	1
B08	1	0	1
	1	0	1
	1	0	1
B09	1	0	1
	1	0	1
	1	0	1
B10	1	0	2
	1	0	2
	1	0	2
B11	0	2	2
	0	2	2
	0	2	2
B14	1	1	2
	1	1	2
	1	1	2
P51	36	30	66
	36	30	66
	37	33	70

RR/SIRV Responses per Truck



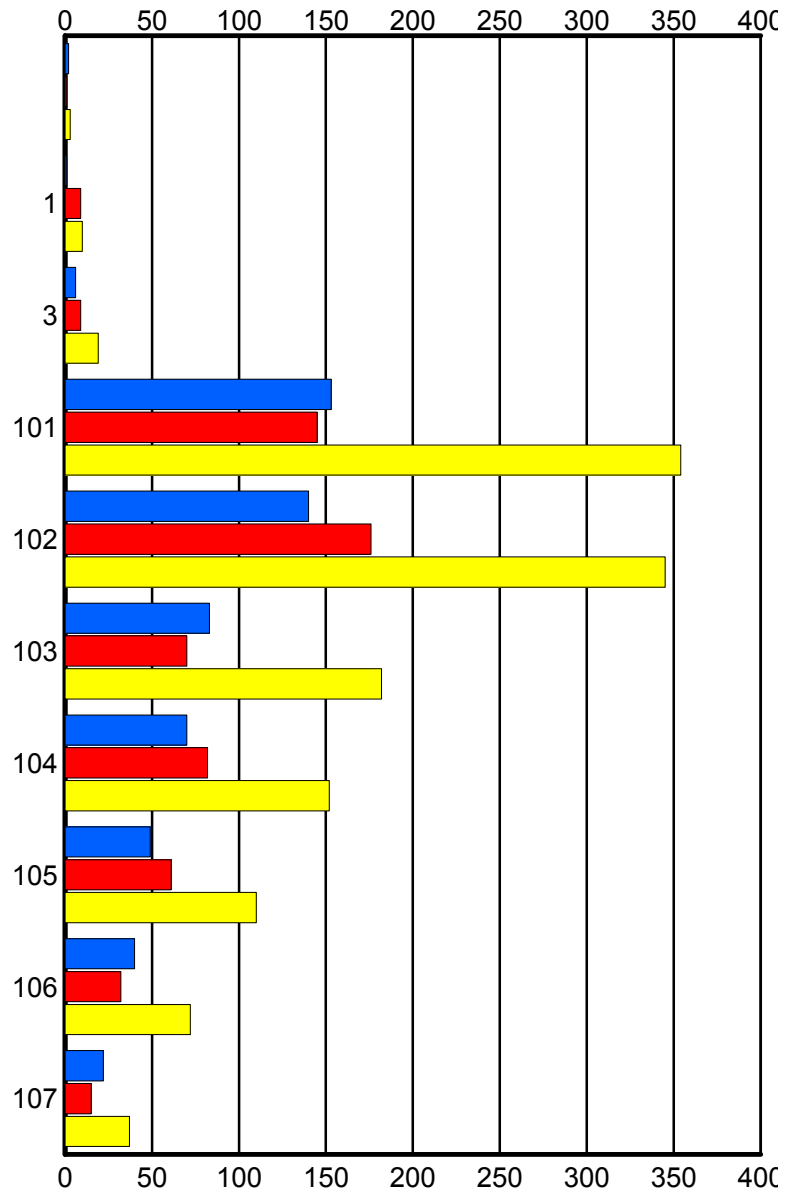
	Current We	Last Week	YTD
P52	1	0	1
	1	0	1
	1	0	1
P53	131	116	277
	132	118	280
	147	127	305
P54	141	134	304
	144	136	309
	151	144	325
P55	98	133	240
	98	134	241
	101	141	253
P56	65	82	192
	65	83	194
	72	89	209
P57	55	75	130
	56	77	133
	61	80	141
P58	27	15	42
	27	15	42
	30	20	50

Road Ranger / SIRV Performance By Beat

	Current We	Last Week	YTD
	2	1	3
	2	1	3
	2	1	3
1	1	8	9
	1	9	10
	1	9	10
3	6	9	18
	6	9	19
	6	10	22
101	151	143	349
	153	145	354
	167	151	379
102	138	173	340
	140	176	345
	148	190	368
103	83	69	181
	83	70	182
	85	74	188
104	69	82	151
	70	82	152
	76	88	164
105	49	59	108
	49	61	110
	53	66	119
106	40	32	72
	40	32	72
	44	33	77
107	22	15	37
	22	15	37
	25	20	45

Values presented are:
 - Total Events with a RR/SIRV Response
 - Total RR/SIRV Responses,
 - Total Activities Performed

RR/SIRV Responses per Beat



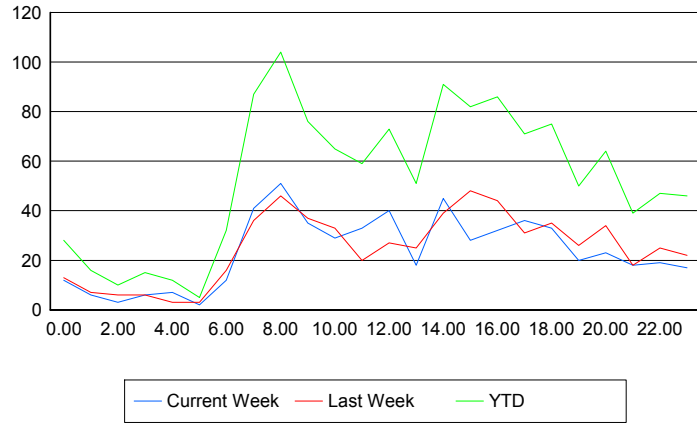
■ Current Week
 ■ Last Week
 ■ YTD

Road Ranger / SIRV Performance By Time of Day

Values presented are:
 - Total Events with a RR/SIRV Response
 - Total RR/SIRV Responses,
 - Total Activities Performed

	Current We	Last Week	YTD
12AM-1AM	12 12 13	13 13 15	27 28 32
1AM-2AM	6 6 6	7 7 7	16 16 16
2AM-3AM	3 3 3	6 6 6	10 10 10
3AM-4AM	6 6 6	6 6 7	15 15 16
4AM-5AM	7 7 7	3 3 3	12 12 12
5AM-6AM	2 2 2	3 3 3	5 5 5
6AM-7AM	10 12 15	16 16 18	30 32 37
7AM-8AM	40 41 41	36 36 44	86 87 95
8AM-9AM	49 51 54	45 46 49	100 104 111
9AM-10AM	35 35 35	36 37 39	75 76 78
10AM-11AM	27 29 29	33 33 35	63 65 68
11AM-12PM	32 33 35	19 20 21	57 59 62
12PM-1PM	39 40 41	25 27 28	70 73 75

Number of Responses / Hour of the Day



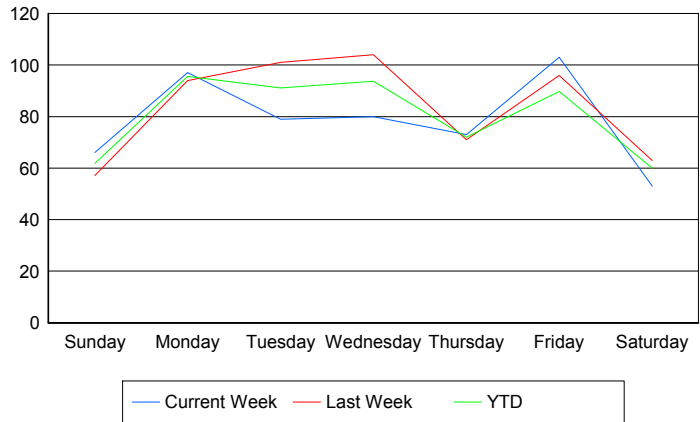
	Current We	Last Week	YTD
1PM-2PM	16	24	48
	18	25	51
	20	28	56
2PM-3PM	43	38	88
	45	39	91
	49	39	95
3PM-4PM	27	48	80
	28	48	82
	29	50	86
4PM-5PM	31	43	83
	32	44	86
	38	47	95
5PM-6PM	36	30	70
	36	31	71
	42	35	81
6PM-7PM	33	34	74
	33	35	75
	35	37	80
7PM-8PM	20	24	48
	20	26	50
	25	28	57
8PM-9PM	23	34	64
	23	34	64
	25	34	68
9PM-10PM	18	17	38
	18	18	39
	19	18	40
10PM-11PM	18	25	46
	19	25	47
	21	28	52
11PM-12AM	17	22	46
	17	22	46
	17	23	48

Road Ranger / SIRV Performance By Day of Week

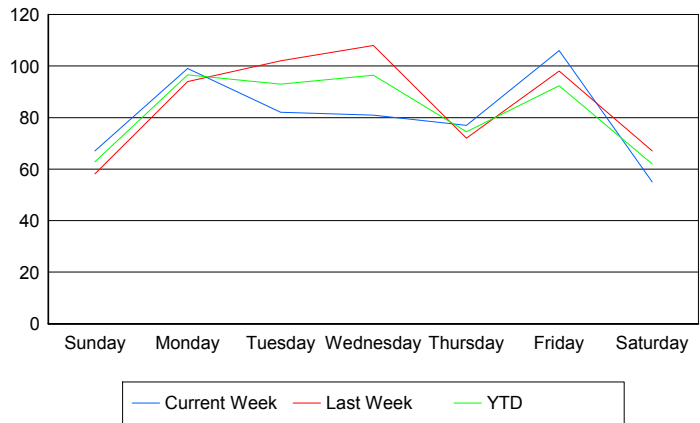
Values presented are:
 - Total Events with a RR/SIRV Response
 - Total RR/SIRV Responses,
 - Total Activities Performed

	Current We	Last Week	YTD
Sunday	65	58	123
	66	59	125
	67	61	128
Monday	97	94	191
	99	94	193
	108	100	208
Tuesday	79	101	180
	82	102	184
	86	105	191
Wednesday	80	104	184
	81	108	189
	88	117	205
Thursday	73	71	144
	77	72	149
	86	86	172
Friday	103	96	251
	106	98	259
	113	105	275
Saturday	53	63	179
	55	67	185
	59	68	196

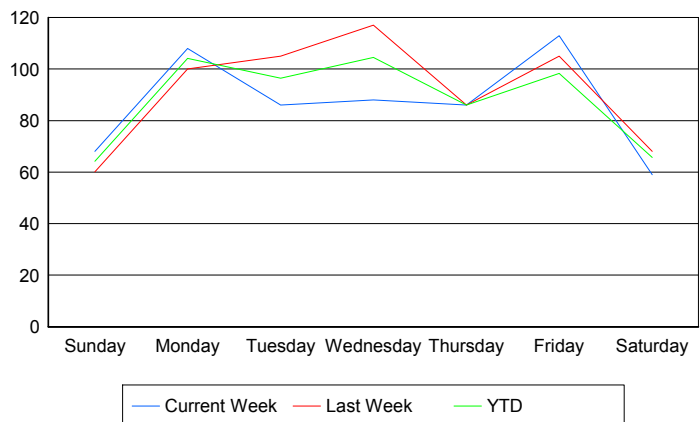
Avg # of events with a RR/SIRV Response per Day of the Week



Avg # of RR/SIRV Responses per Day of the Week



Avg # of RR/SIRV Activities Performed per Day of the Week



Road Ranger / SIRV Responses per Time of Day and Day of Week

