



Weekly Performance Measures Report Palm Beach County



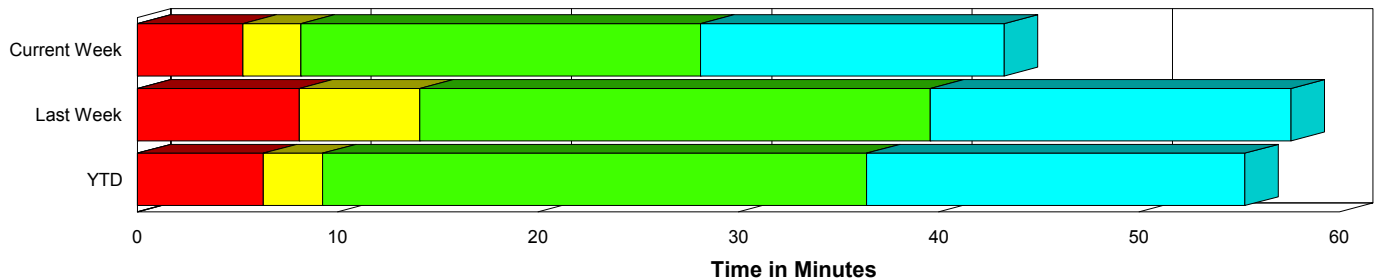
Period From Jan 24, 2010 to Jan 30, 2010

Created on:
February 01, 2010
9:06 am

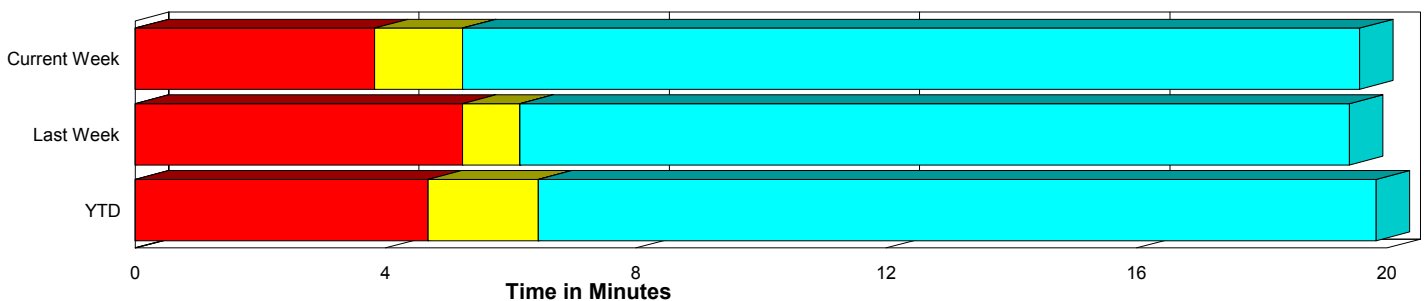
Performance Measures Summary

	Traffic Events (No Lanes Blocked)			Incidents (Lanes Blocked)		
	<u>This Week</u>	<u>Last Week</u>	<u>YTD</u>	<u>This Week</u>	<u>Last Week</u>	<u>YTD</u>
Number of Events	418	395	1,721	19	18	90
TMC Detection (min.)	0.00	0.00	0.00	0.00	0.00	0.00
TMC Verification (min.)	3.82	5.23	4.68	5.28	8.08	6.29
TMC Response (min.)	5.44	6.41	6.70	8.17	14.09	9.40
RR Dispatch Time (min.)	1.54	2.07	2.58	1.80	3.46	1.78
RR Response Time (min.)	3.90	4.43	4.12	6.38	10.63	7.61
Roadway Clearance (min.)				28.12	39.58	37.85
Event Clearance (min.)	19.77	19.66	20.08	43.27	57.57	56.72
# of Events w/ RR/SIRV	408	384	1,674	19	18	88
RR/SIRV Responses	408	384	1,674	19	18	88
RR/SIRV Activities	438	407	1,792	23	24	111

Incident Clearance Time-Line



Traffic Event (Non-Lane Blockage) Time-Line



■ Avg. TMC Detection Time	■ Avg. Time from TMC Response to Roadway Clearance*
■ Avg. Time from TMC Detection to TMC Verification	■ Avg. Time from Roadway Clearance to Incident/Event Clearance**
■ Avg. Time from TMC Verification to TMC Response	

* Roadway clearance equals all travel lanes open

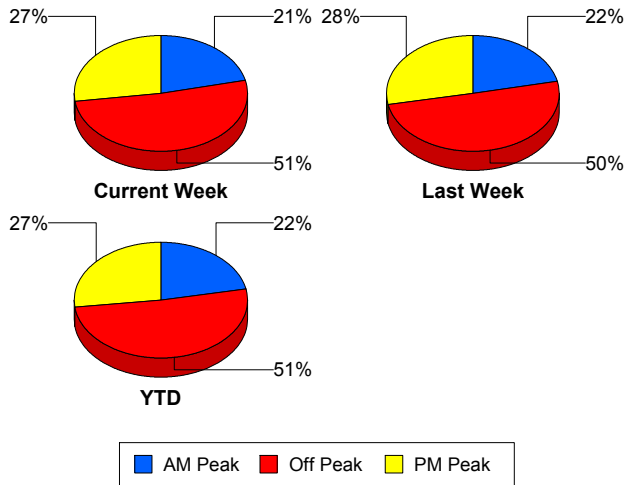
** Incident clearance equals time when last responder has left the scene

Performance Measures by Peak Period

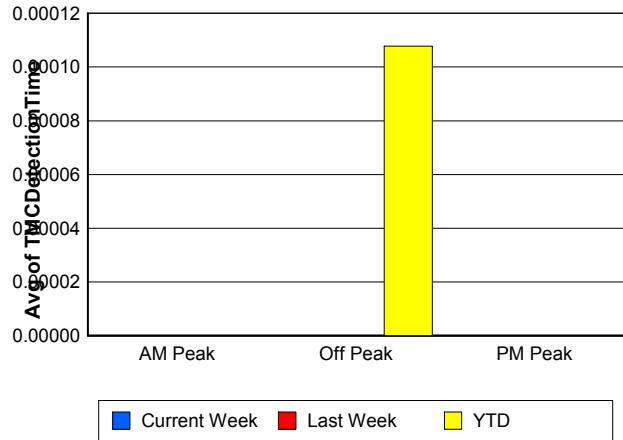
Note: AM peak period is defined as 6am to 10am and PM peak period is defined as 3pm to 7pm.

	AM Peak			Off Peak			PM Peak		
	Current Week	Last Week	YTD	Current Week	Last Week	YTD	Current Week	Last Week	YTD
Number of Events	93	90	397	225	207	928	119	116	486
Number of Incidents	4	5	26	9	12	41	6	1	23
TMC Detection (min.)	0.00	0.00	0.00	0.00	0.00	0.00	0.00	0.00	0.00
TMC Verification (min.)	4.85	4.68	3.81	3.59	5.48	5.06	3.69	5.66	4.98
TMC Response (min.)	6.97	6.08	5.87	5.15	7.36	7.73	5.27	6.22	5.88
RR Dispatch Time (min.)	1.24	1.16	1.10	1.75	2.73	3.53	1.41	1.80	1.83
RR Response Time (min.)	5.76	4.90	4.77	3.40	4.80	4.24	3.85	4.42	4.03
Event Clearance (min.)	23.75	17.60	20.86	20.70	23.43	23.18	18.64	20.43	20.31
Roadway Clearance (min.)	16.51	21.77	39.74	31.54	48.53	38.07	30.72	21.28	35.34
Incident Clearance (min.)	27.95	63.34	60.65	41.34	58.01	57.38	56.36	23.50	51.12
# of Events w/ RR/SIRV	91	89	386	222	203	906	114	110	470
RR/SIRV Responses	91	89	386	222	203	906	114	110	470
RR/SIRV Activities	99	94	413	240	218	980	122	119	510

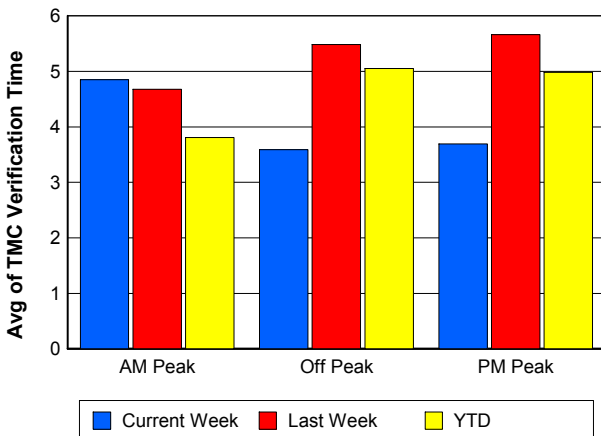
Number of Events / Peak Period



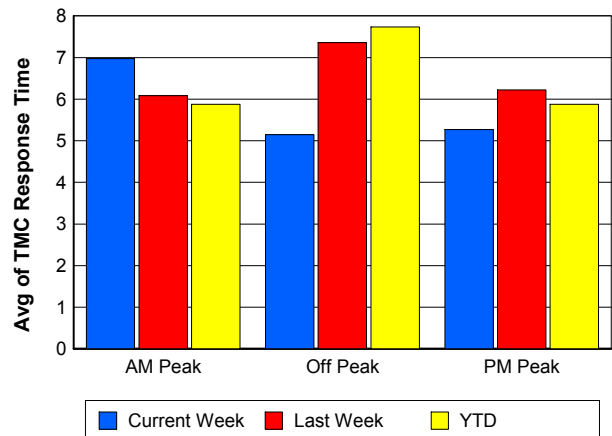
TMC Detection Time



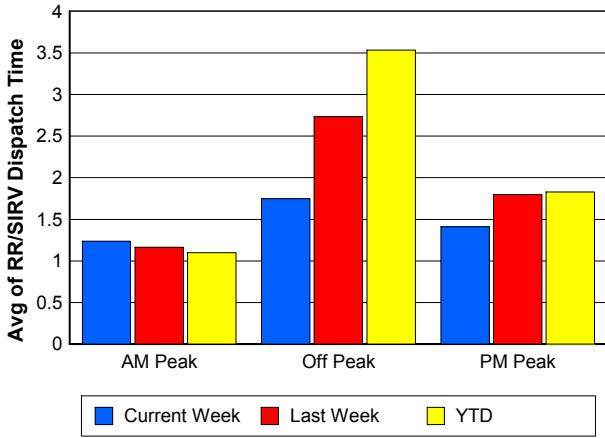
TMC Verification Time



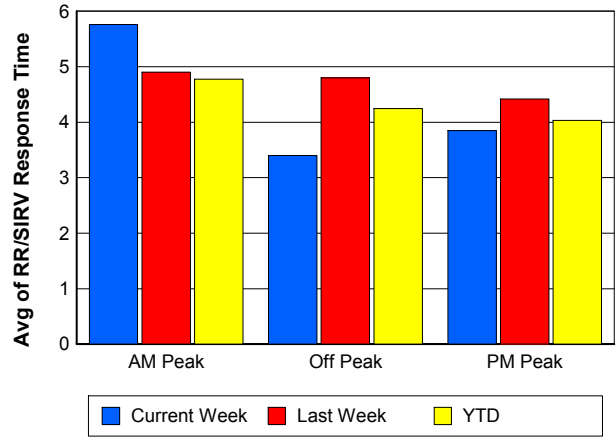
TMC Response Time



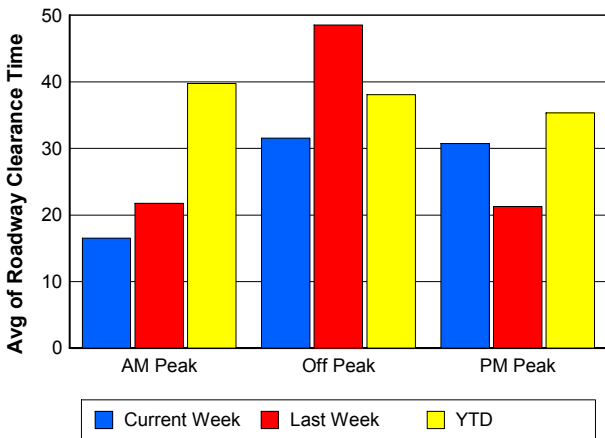
Road Ranger / SIRV Dispatch Time



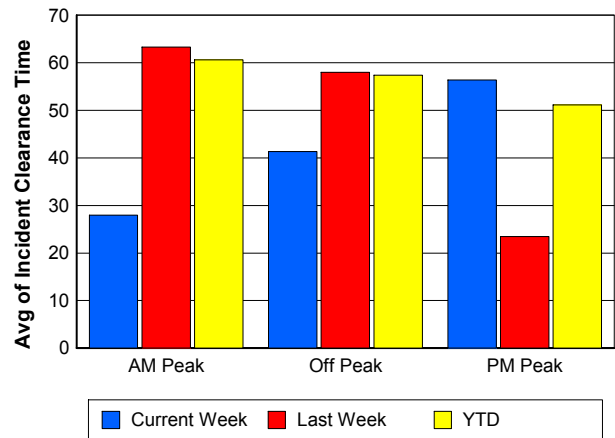
Road Ranger / SIRV Response Time



Roadway Clearance Time (2A)



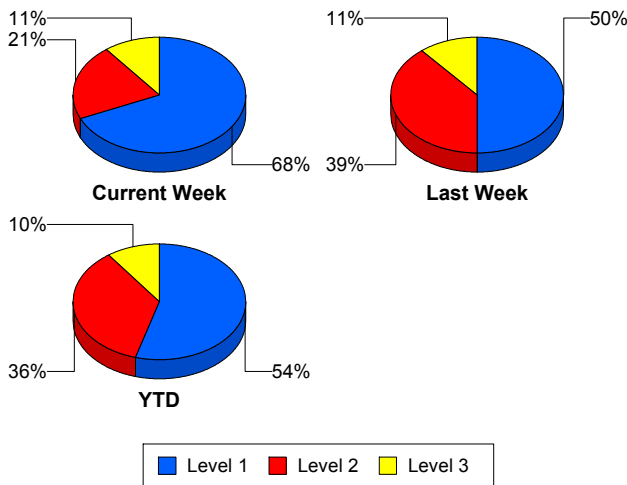
Incident Clearance Time (3B)



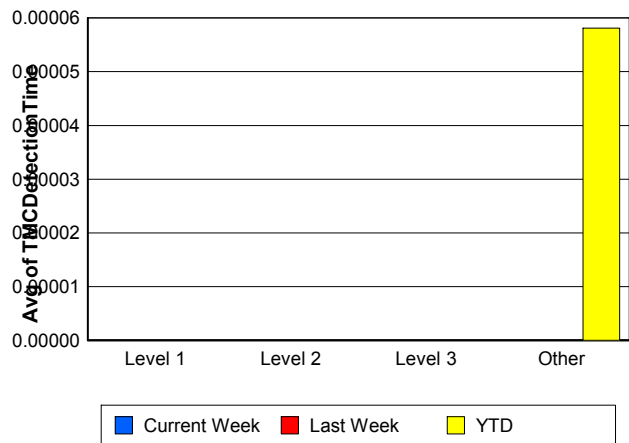
Performance Measures by Severity

	Level 1			Level 2			Level 3			Other		
	<u>This Week</u>	<u>Last Week</u>	<u>YTD</u>	<u>This Week</u>	<u>Last Week</u>	<u>YTD</u>	<u>This Week</u>	<u>Last Week</u>	<u>YTD</u>	<u>This Week</u>	<u>Last Week</u>	<u>YTD</u>
Number of Events	13	9	49	4	7	32	2	2	9	418	395	1,721
Number of Incidents	13	9	49	4	7	32	2	2	9	0	0	0
TMC Detection (min.)	0.00	0.00	0.00	0.00	0.00	0.00	0.00	0.00	0.00	0.00	0.00	0.00
TMC Verification (min.)	2.13	0.31	3.30	16.05	17.75	11.32	4.20	9.19	4.64	3.82	5.23	4.68
TMC Response (min.)	5.09	3.09	5.40	20.18	28.99	15.45	4.18	11.45	8.70	5.44	6.41	6.70
RR Dispatch Time (min.)	0.58	0.74	0.84	6.39	7.50	3.36	0.51	1.55	1.11	1.54	2.07	2.58
RR Resp. Time (min.)	4.51	2.35	4.57	13.79	21.49	12.09	3.68	9.90	7.58	3.90	4.43	4.12
Event Clearance (min.)	31.56	33.37	41.18	60.06	80.96	67.00	85.77	84.61	104.82	19.77	19.66	20.08
Roadway Clear. (min.)	14.20	15.42	15.94	46.96	68.63	55.84	80.89	46.65	93.20			
Incident Clearance (min.)	31.56	33.37	41.18	60.06	80.96	67.00	85.77	84.61	104.82			
# of Events w/ RR/SIRV	13	9	48	4	7	32	2	2	8	408	384	1,674
RR/SIRV Responses	13	9	48	4	7	32	2	2	8	408	384	1,674
RR/SIRV Activities	15	9	55	6	10	44	2	5	12	438	407	1,792

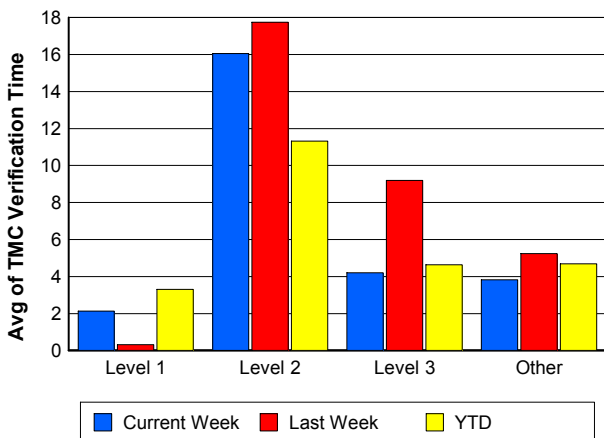
Number of Events / Severity



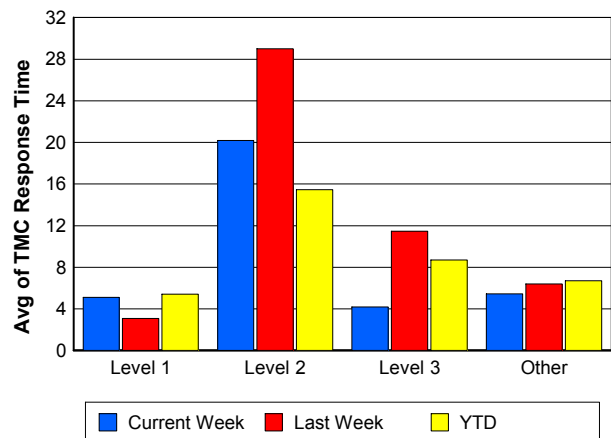
TMC Detection Time



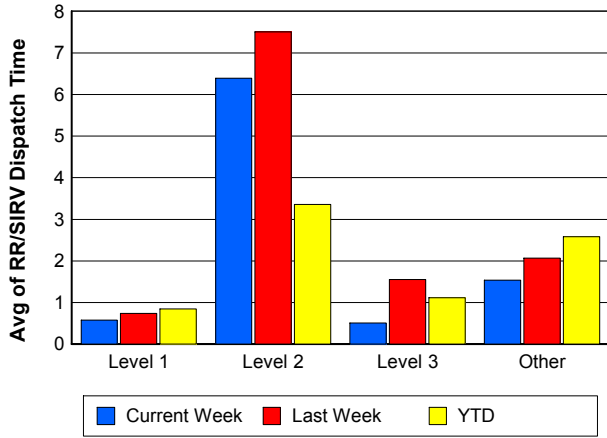
TMC Verification Time



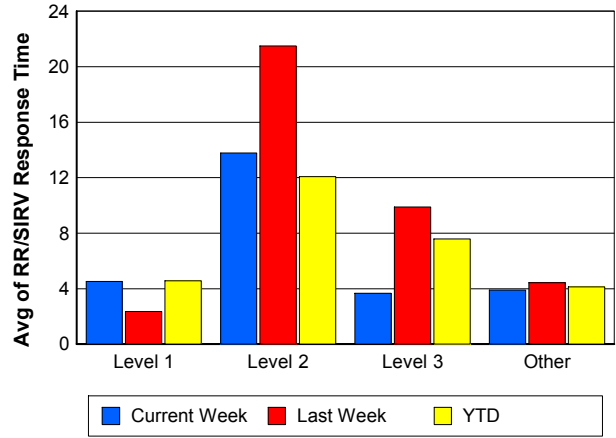
TMC Response Time



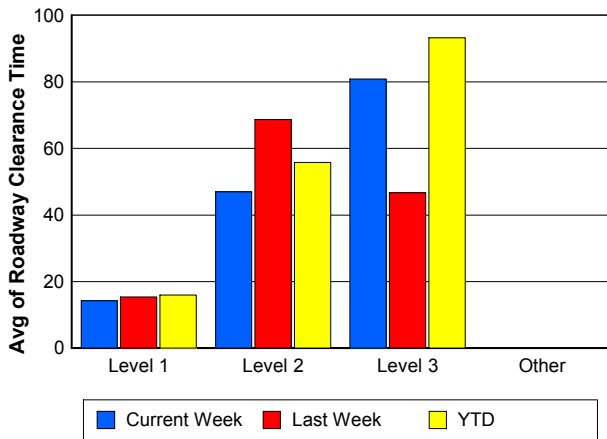
Road Ranger / SIRV Dispatch Time



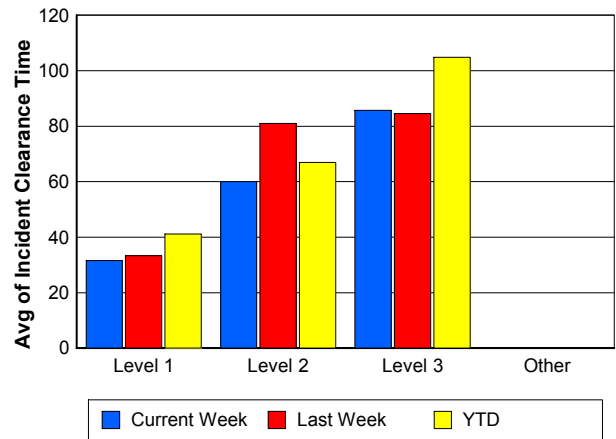
Road Ranger / SIRV Response Time



Roadway Clearance Time (2A)



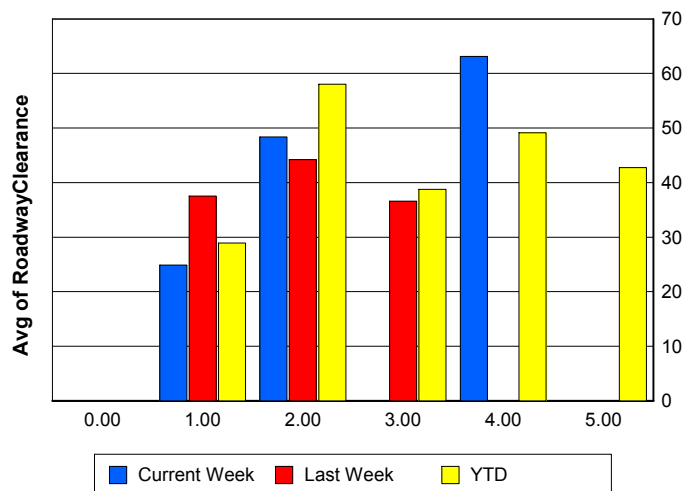
Incident Clearance Time (3B)



Roadway Clearance by Maximum Number of Lanes Blocked

	Current Week	Last Week	YTD
0			
1	24.87	37.51	28.94
2	48.35	44.18	58.01
3	0.00	36.59	38.79
4	63.15	0.00	49.11
5	0.00	0.00	42.75

Roadway Clearance Time (2A)

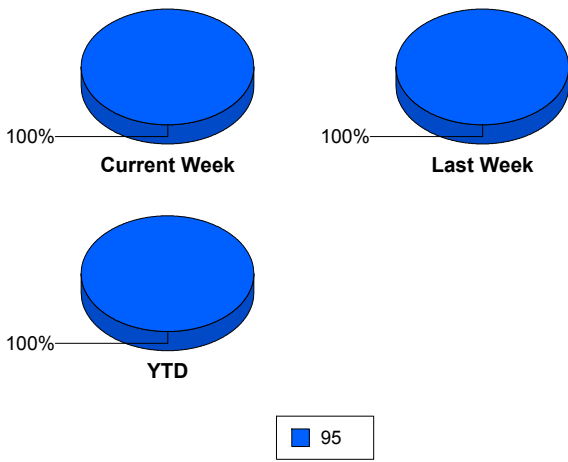


Performance Measures by Roadway

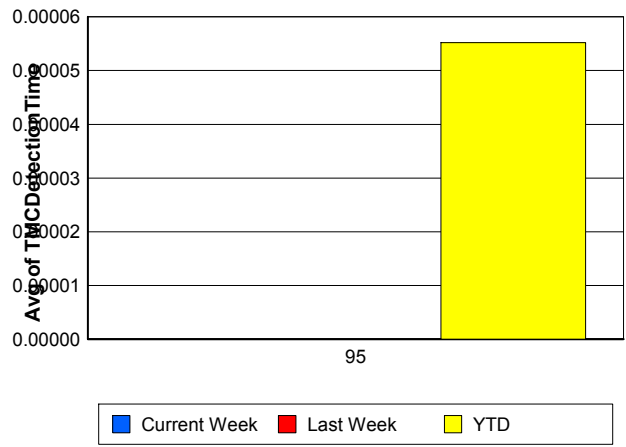
95

	<u>Current Week</u>	<u>Last Week</u>	<u>YTD</u>
Number of Events	437	413	1,811
Number of Incidents	19	18	90
TMC Detection (min.)	0.00	0.00	0.00
TMC Verification (min.)	3.89	5.36	4.76
TMC Response (min.)	5.56	6.76	6.84
RR Dispatch Time (min.)	1.55	2.13	2.54
RR Resp. Time (min.)	4.01	4.72	4.30
Event Clearance (min.)	20.79	21.32	21.90
Roadway Clear. (min.)	28.12	39.58	37.85
Incident Clearance (min.)	43.27	57.57	56.72
# of Events w/ RR/SIRV	427	402	1,762
RR/SIRV Responses	427	402	1,762
RR/SIRV Activities	461	431	1,903

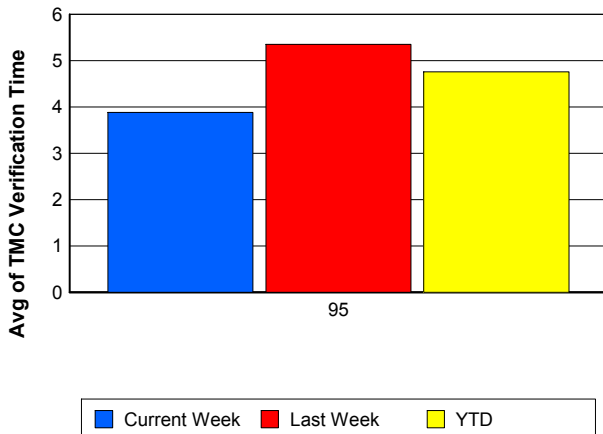
Number of Events / Roadway



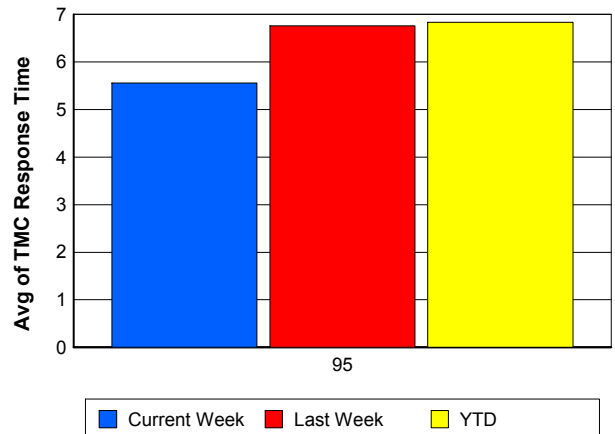
TMC Detection Time



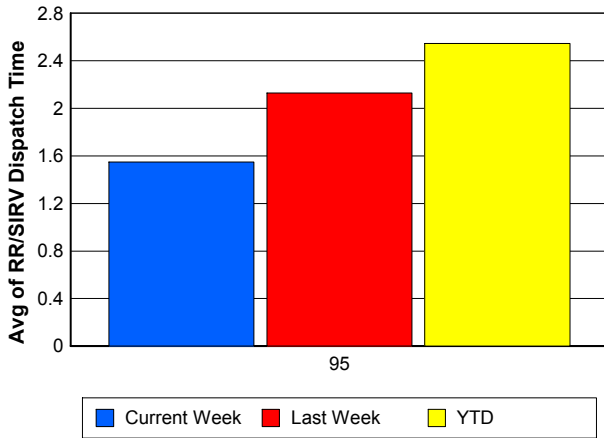
TMC Verification Time



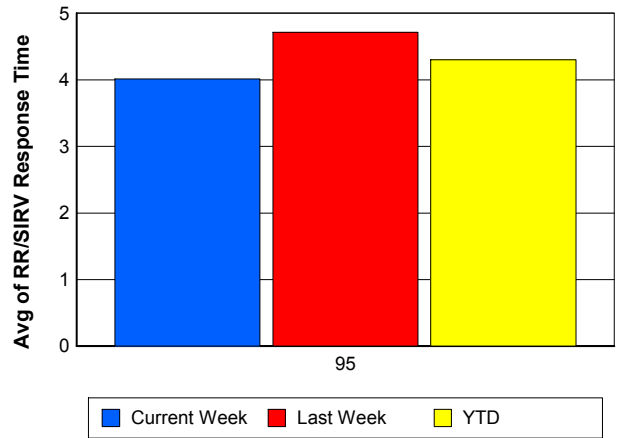
TMC Response Time



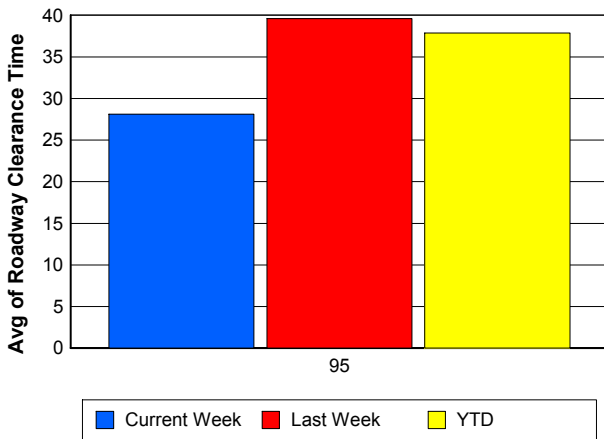
Road Ranger / SIRV Dispatch Time



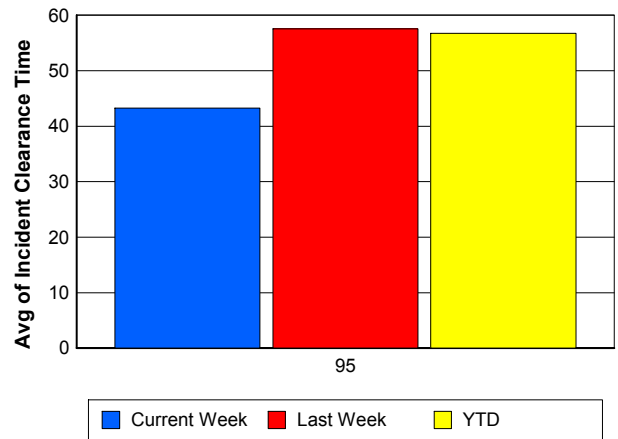
Road Ranger / SIRV Response Time



Roadway Clearance Time (2A)



Incident Clearance Time (3B)



Performance Measures by Event Type

Accident

	<u>Current Week</u>	<u>Last Week</u>	<u>YTD</u>
Number of Events	33	29	137
Number of Incidents	13	11	60
TMC Detection (min.)	0.00	0.00	0.00
TMC Verification (min.)	6.50	7.41	8.27
TMC Response (min.)	8.68	10.65	10.58
RR Dispatch Time (min.)	1.50	2.46	2.07
RR Response Time (min.)	7.18	8.19	8.49
Event Clearance (min.)	48.88	53.94	55.87
Roadway Clearance (min.)	24.97	50.70	40.97
Incident Clearance (min.)	45.86	72.00	65.05
# of Events w/ RR/SIRV	32	28	134
RR/SIRV Assists	32	28	134
RR/SIRV Activities	35	34	155

Debris on Roadway

	<u>Current Week</u>	<u>Last Week</u>	<u>YTD</u>
Number of Events	24	26	109
Number of Incidents	1	2	3
TMC Detection (min.)	0.00	0.00	0.00
TMC Verification (min.)	7.45	3.79	6.96
TMC Response (min.)	7.43	4.28	7.09
RR Dispatch Time (min.)	1.00	0.76	2.14
RR Response Time (min.)	6.44	3.52	4.93
Event Clearance (min.)	10.47	7.56	10.32
Roadway Clearance (min.)	5.60	7.18	6.66
Incident Clearance (min.)	7.08	21.93	16.98
# of Events w/ RR/SIRV	24	25	107
RR/SIRV Assists	24	25	107
RR/SIRV Activities	25	25	107

Disabled Vehicle

	<u>Current Week</u>	<u>Last Week</u>	<u>YTD</u>
Number of Events	355	341	1,478
Number of Incidents	4	3	21
TMC Detection (min.)	0.00	0.00	0.00
TMC Verification (min.)	3.56	5.53	4.51
TMC Response (min.)	4.84	6.10	6.31
RR Dispatch Time (min.)	1.49	2.10	2.62
RR Response Time (min.)	3.35	4.10	3.72
Event Clearance (min.)	18.25	19.13	19.48
Roadway Clearance (min.)	46.39	32.99	26.59
Incident Clearance (min.)	49.92	51.80	36.75
# of Events w/ RR/SIRV	349	335	1,456
RR/SIRV Assists	349	335	1,456
RR/SIRV Activities	384	361	1,595

Emergency Vehicles

	<u>Current Week</u>	<u>YTD</u>
Number of Events	2	3
Number of Incidents	1	2
TMC Detection (min.)	0.00	0.00
TMC Verification (min.)	0.00	0.00
TMC Response (min.)	0.00	0.00
RR Dispatch Time (min.)	0.00	0.00
RR Response Time (min.)	0.00	0.00
Event Clearance (min.)	21.15	84.35
Roadway Clearance (min.)	18.42	114.12
Incident Clearance (min.)	19.12	114.93
# of Events w/ RR/SIRV	2	2
RR/SIRV Assists	2	2
RR/SIRV Activities	2	2

Other

	<u>Current Week</u>	<u>Last Week</u>	<u>YTD</u>
Number of Events	21	12	69
Number of Incidents	0	0	0
TMC Detection (min.)	0.00	0.00	0.00
TMC Verification (min.)	1.96	0.00	0.61
TMC Response (min.)	13.90	20.17	12.21
RR Dispatch Time (min.)	3.09	6.40	2.80
RR Response Time (min.)	10.33	11.54	8.69
Event Clearance (min.)	32.29	24.00	19.68
Roadway Clearance (min.)			
Incident Clearance (min.)			
# of Events w/ RR/SIRV	18	9	49
RR/SIRV Assists	18	9	49
RR/SIRV Activities	14	6	30

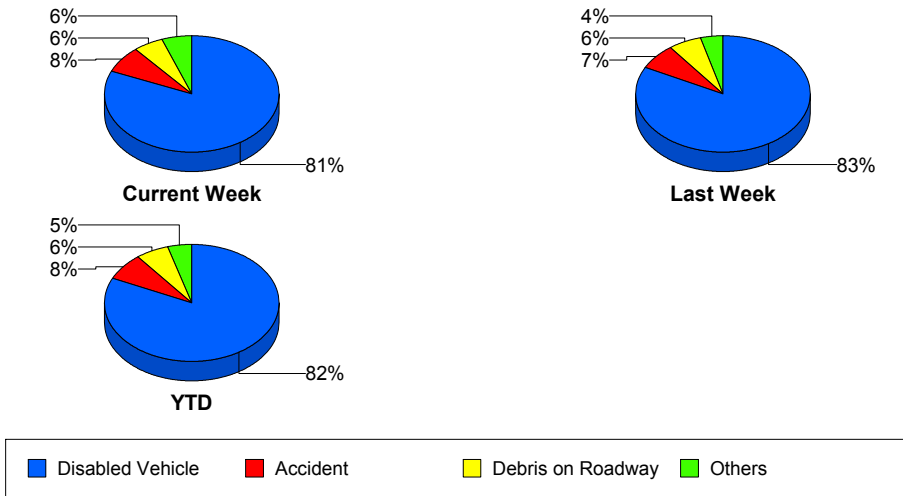
Police Activity

	<u>Current Week</u>	<u>Last Week</u>	<u>YTD</u>
Number of Events	1	4	8
Number of Incidents	0	2	4
TMC Detection (min.)	0.00	0.00	0.00
TMC Verification (min.)	0.00	0.00	0.00
TMC Response (min.)		28.41	21.75
RR Dispatch Time (min.)	1.02	1.01	0.82
RR Response Time (min.)		27.40	20.96
Event Clearance (min.)	6.67	48.59	47.48
Roadway Clearance (min.)		20.74	35.54
Incident Clearance (min.)		22.51	37.33
# of Events w/ RR/SIRV	1	4	7
RR/SIRV Assists	1	4	7
RR/SIRV Activities	0	4	6

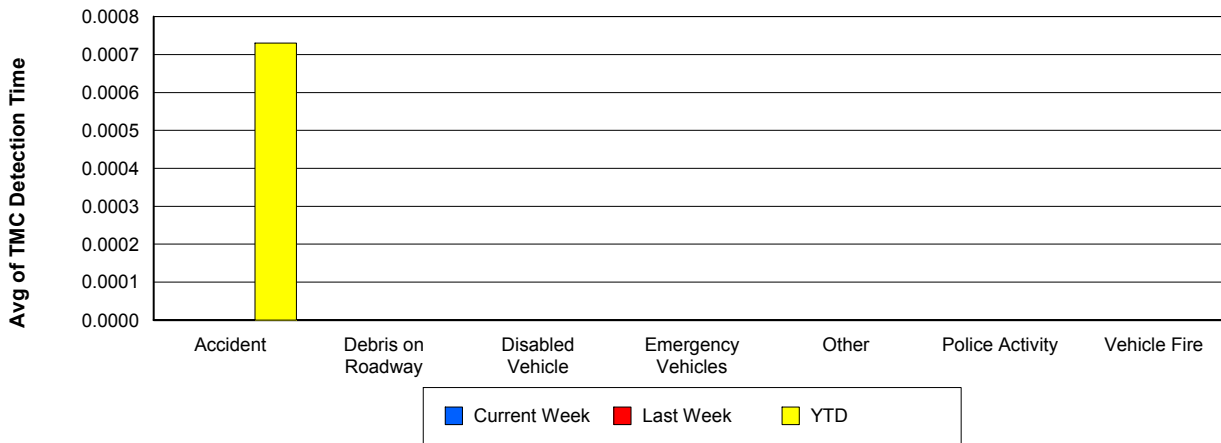
Vehicle Fire

	<u>Last Week</u>	<u>YTD</u>
Number of Events	1	2
Number of Incidents	0	0
TMC Detection (min.)	0.00	0.00
TMC Verification (min.)	12.20	9.57
TMC Response (min.)	12.17	9.55
RR Dispatch Time (min.)	3.53	2.83
RR Response Time (min.)	8.63	6.72
Event Clearance (min.)	38.42	23.39
Roadway Clearance (min.)		
Incident Clearance (min.)		
# of Events w/ RR/SIRV	1	2
RR/SIRV Assists	1	2
RR/SIRV Activities	1	2

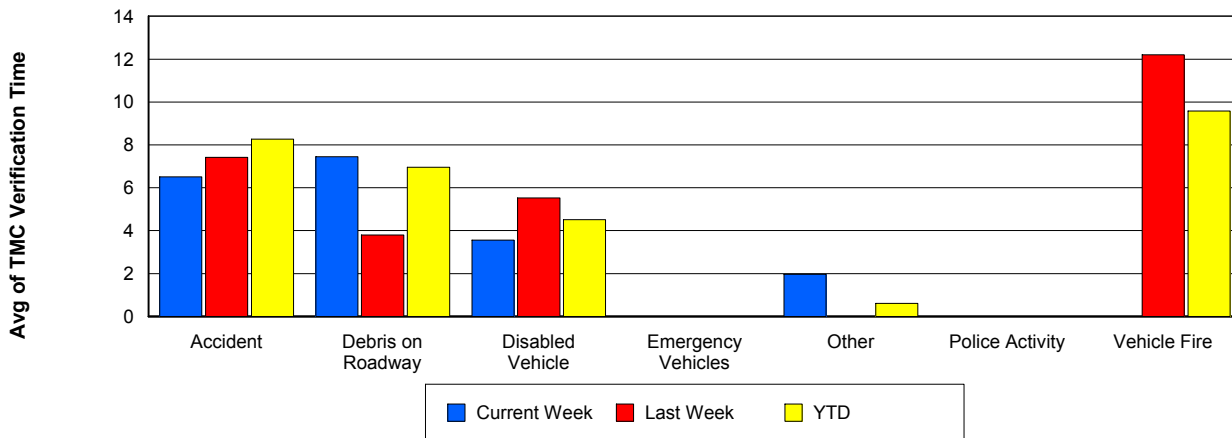
Number of Events / Event Type



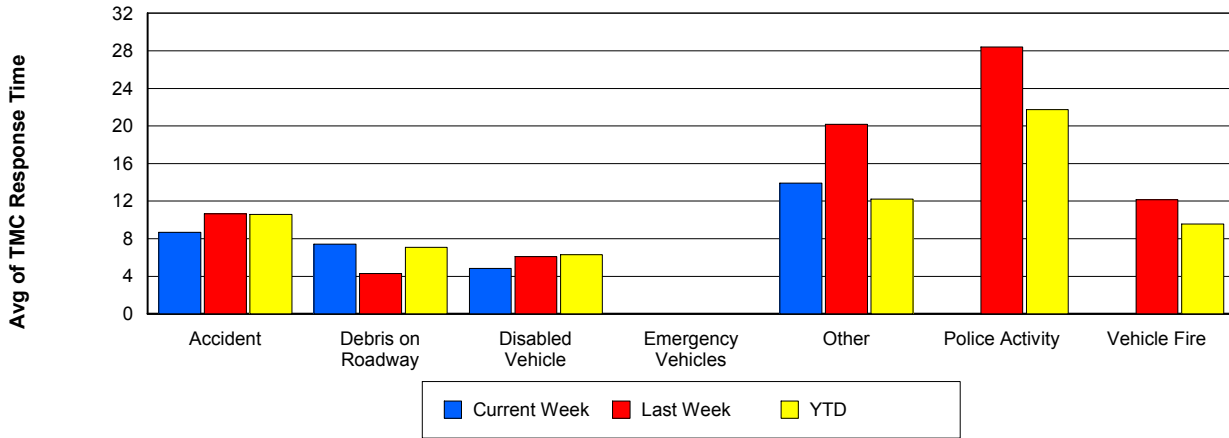
TMC Detection Time



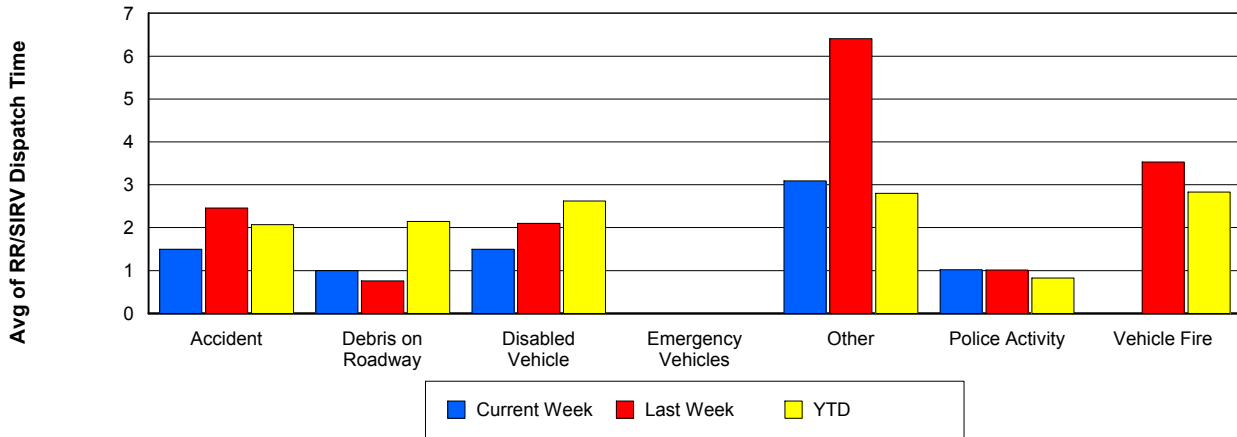
TMC Verification Time



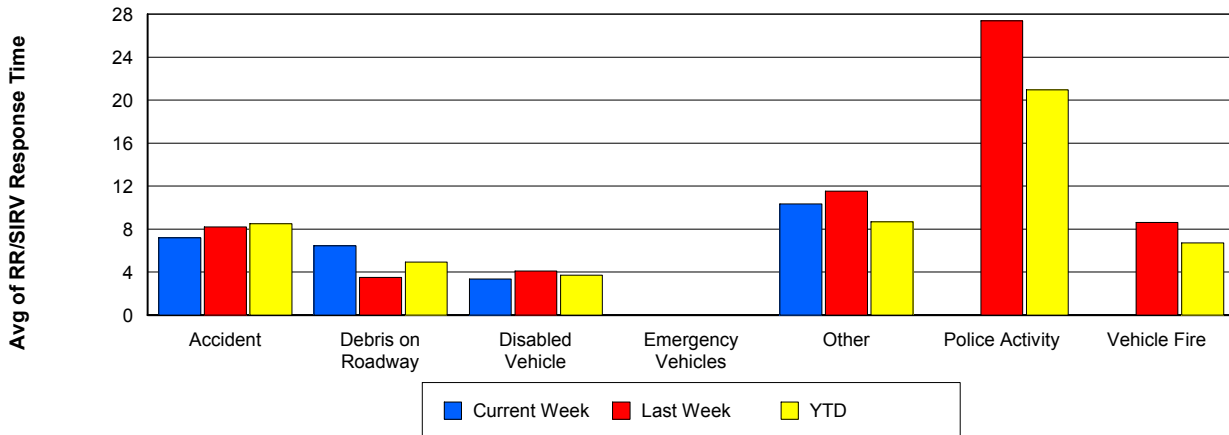
TMC Response Time



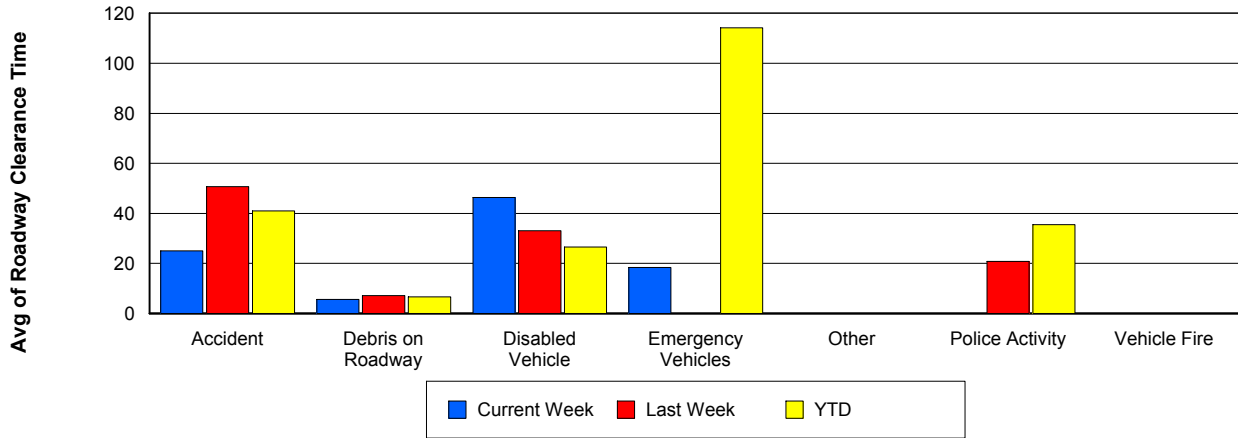
Road Ranger / SIRV Dispatch Time



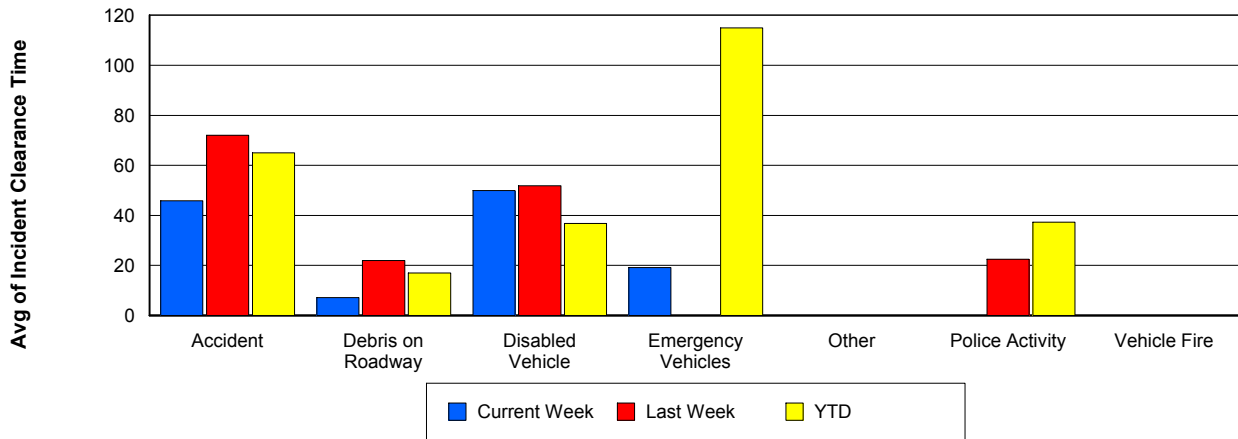
Road Ranger / SIRV Response Time



Roadway Clearance Time (2A)



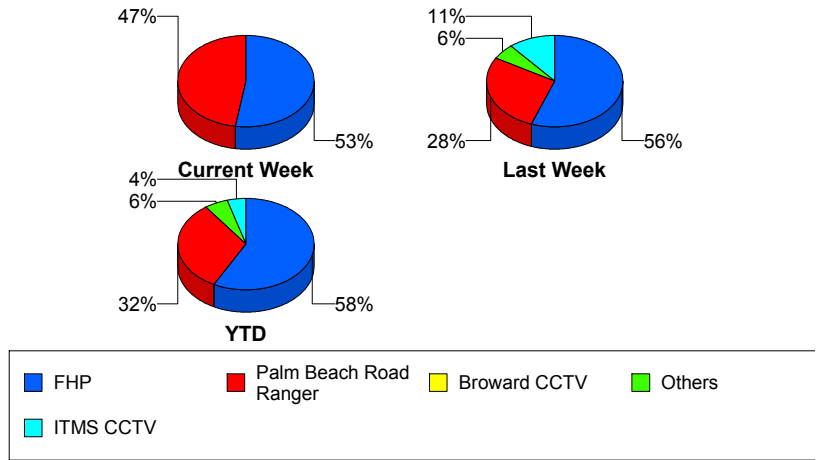
Incident Clearance Time (3B)



Incident Detection Methods

	Current Week	Last Week	YTD
Broward Road Ranger	0	1	2
District 4	0	0	1
FHP	10	10	52
ITMS CCTV	0	2	4
Motorist	0	0	2
Palm Beach Road Ran	9	5	29
Total	19	18	90

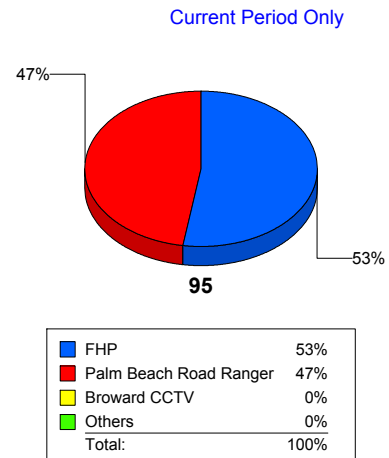
Total Incidents by Detection Method



Incident Detection Methods by Roadway

		Current Week	Last Week	YTD
95	Broward Road Ranger	0	1	2
	District 4	0	0	1
	FHP	10	10	52
	ITMS CCTV	0	2	4
	Motorist	0	0	2
	Palm Beach Road Ran	9	5	29
	Total	19	18	90
Total		19	18	90

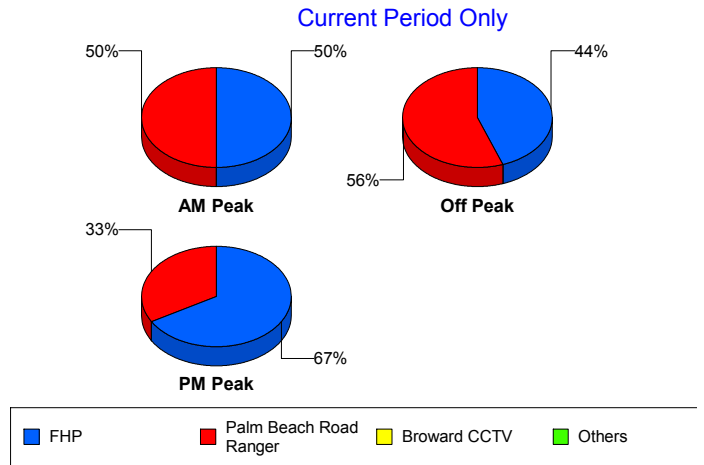
Total Events by Roadway and Detection Method



Incident Detection Methods by Peak Period

		Current Week	Last Week	YTD
AM Peak	Broward Road Ranger	0	1	1
	District 4	0	0	1
	FHP	2	2	16
	Palm Beach Road Ran	2	2	8
	Total	4	5	26
Off Peak	Broward Road Ranger	0	0	1
	FHP	4	8	21
	ITMS CCTV	0	2	4
	Motorist	0	0	1
	Palm Beach Road Ran	5	2	14
	Total	9	12	41
PM Peak	FHP	4	0	15
	Motorist	0	0	1
	Palm Beach Road Ran	2	1	7
	Total	6	1	23
Total	19	18	90	

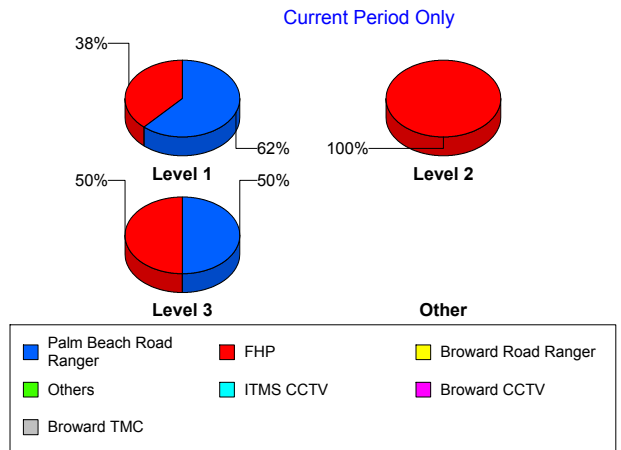
Total Events by Peak Period and Detection Method



Incident Detection Methods by Severity

		Current Week	Last Week	YTD
Level 1	Broward Road Ranger	0	1	2
	District 4	0	0	1
	FHP	5	1	20
	ITMS CCTV	0	2	3
	Motorist	0	0	2
	Palm Beach Road Ran	8	5	21
	Total	13	9	49
Level 2	FHP	4	7	26
	ITMS CCTV	0	0	1
	Palm Beach Road Ran	0	0	5
	Total	4	7	32
Level 3	FHP	1	2	6

Total Events by Severity and Detection Method



		Current Week	Last Week	YTD
Level 3	Palm Beach Road Ran	1	0	3
	Total	2	2	9
Total		19	18	90

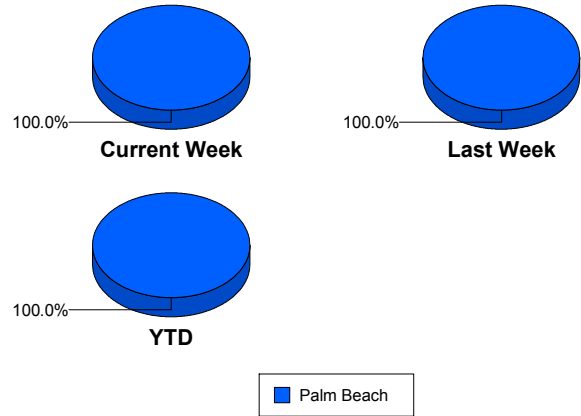
Road Ranger / SIRV Performance Measures

Road Ranger / SIRV Performance By County

Values presented are:
 - Total Events with a RR/SIRV Response
 - Total RR/SIRV Responses,
 - Total Activities Performed

	Current We	Last Week	YTD
Palm Beach	550	540	2,341
	575	551	2,410
	605	578	2,558

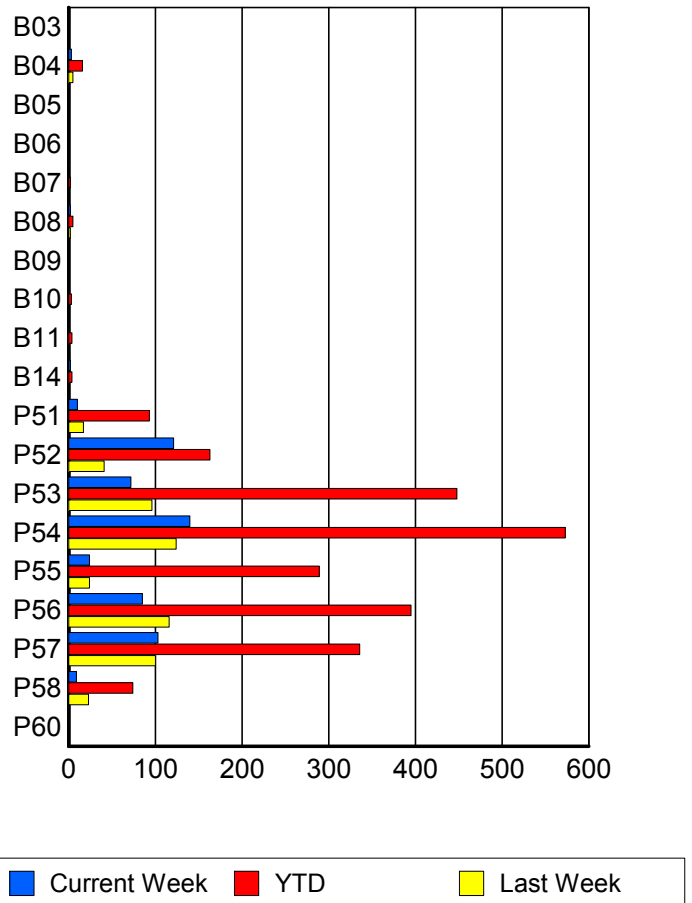
RR/SIRV Responses per County



Road Ranger / SIRV Performance By Truck

	Current We	Last Week	YTD
B03	1	0	1
	1	0	1
	1	0	1
B04	3	5	16
	3	5	16
	3	5	17
B05	1	0	1
	1	0	1
	1	0	1
B06	0	0	1
	0	0	1
	0	0	3
B07	1	0	2
	1	0	2
	1	0	2
B08	2	2	5
	2	2	5
	2	2	5
B09	0	0	1
	0	0	1
	0	0	1
B10	0	1	3
	0	1	3
	0	1	3
B11	1	1	4
	1	1	4
	1	1	4

RR/SIRV Responses per Truck



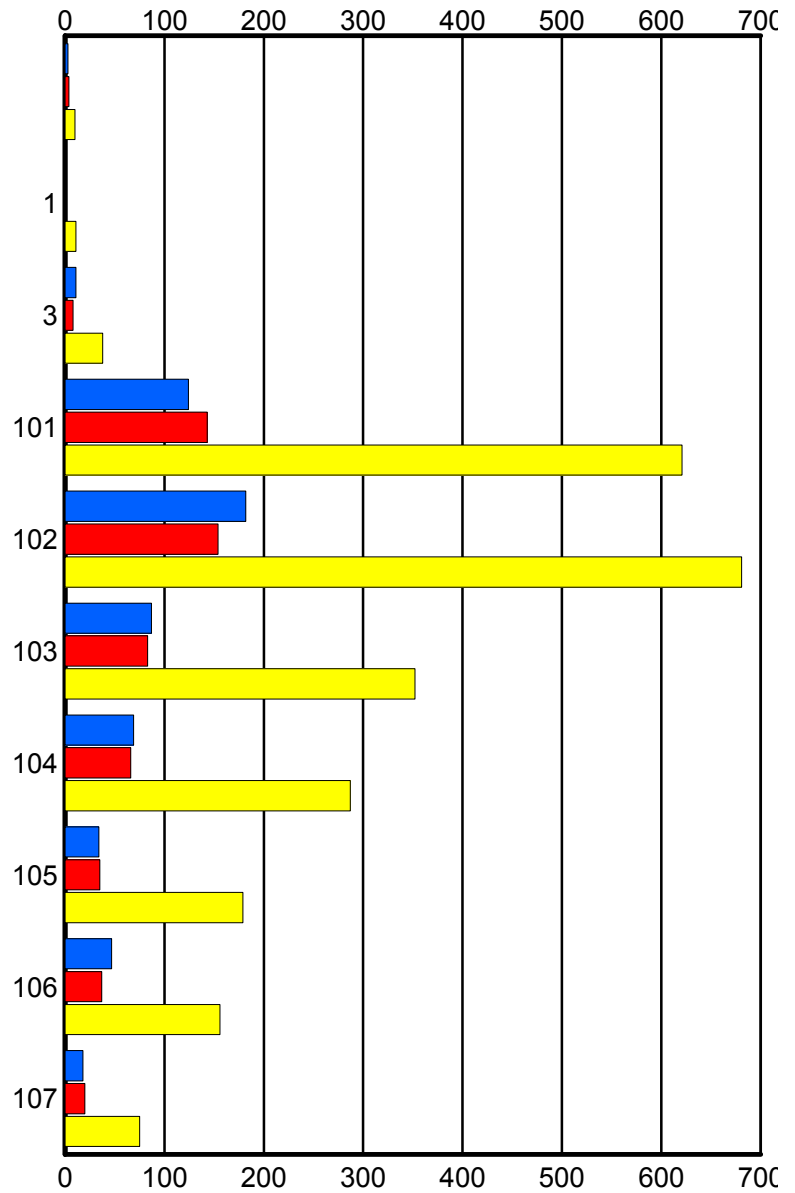
	Current We	Last Week	YTD
B14	2	0	4
	2	0	4
	2	0	4
P51	10	17	93
	10	17	93
	10	18	98
P52	119	41	161
	121	41	163
	131	42	174
P53	72	96	445
	72	96	448
	73	101	479
P54	136	123	563
	140	124	573
	146	129	600
P55	23	24	287
	24	24	289
	26	25	304
P56	84	114	390
	85	116	395
	93	123	425
P57	98	100	328
	103	100	336
	105	105	351
P58	9	23	74
	9	23	74
	10	25	85
P60	0	1	1
	0	1	1
	0	1	1

Road Ranger / SIRV Performance By Beat

	Current We	Last Week	YTD
	3	4	10
	3	4	10
	3	4	10
1	0	1	10
	0	1	11
	0	1	11
3	11	8	37
	11	8	38
	11	8	41
101	124	141	614
	124	143	621
	127	150	656
102	175	153	668
	182	154	681
	197	159	724
103	85	83	349
	87	83	352
	91	89	368
104	66	66	283
	69	66	287
	71	68	303
105	34	35	177
	34	35	179
	35	39	193
106	43	37	152
	47	37	156
	49	38	164
107	18	20	75
	18	20	75
	21	22	88

Values presented are:
 - Total Events with a RR/SIRV Response
 - Total RR/SIRV Responses,
 - Total Activities Performed

RR/SIRV Responses per Beat



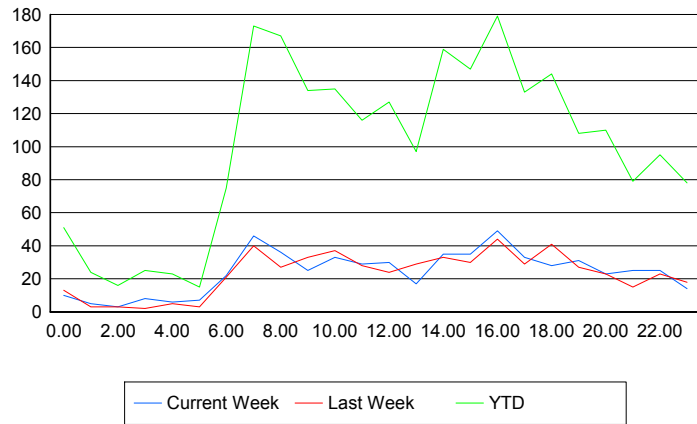
■ Current Week
 ■ Last Week
 ■ YTD

Road Ranger / SIRV Performance By Time of Day

Values presented are:
 - Total Events with a RR/SIRV Response
 - Total RR/SIRV Responses,
 - Total Activities Performed

	Current We	Last Week	YTD
12AM-1AM	10 10 11	13 13 14	50 51 57
1AM-2AM	5 5 6	3 3 3	24 24 25
2AM-3AM	3 3 3	3 3 3	16 16 16
3AM-4AM	8 8 9	2 2 2	25 25 27
4AM-5AM	6 6 9	5 5 5	23 23 26
5AM-6AM	4 7 8	3 3 3	12 15 16
6AM-7AM	19 22 23	21 21 21	70 75 81
7AM-8AM	44 46 47	39 40 42	169 173 184
8AM-9AM	34 36 38	27 27 28	161 167 177
9AM-10AM	22 25 26	33 33 36	130 134 140
10AM-11AM	32 33 34	35 37 40	130 135 142
11AM-12PM	29 29 30	26 28 29	112 116 121
12PM-1PM	30 30 32	23 24 25	123 127 132

Number of Responses / Hour of the Day



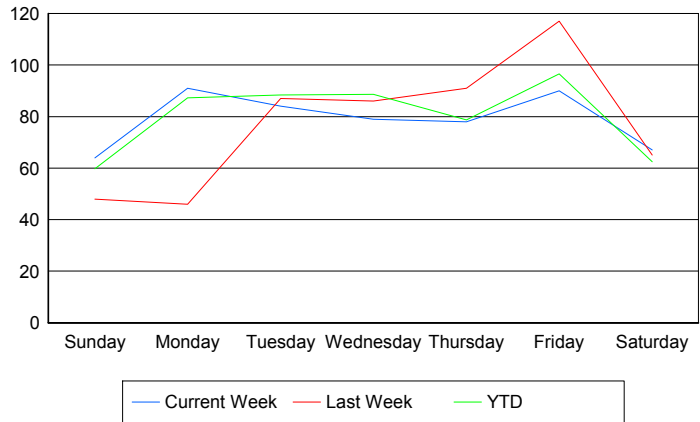
	Current We	Last Week	YTD
1PM-2PM	16 17 18	27 29 31	91 97 105
2PM-3PM	35 35 38	32 33 33	155 159 166
3PM-4PM	35 35 37	30 30 33	145 147 156
4PM-5PM	46 49 50	42 44 46	171 179 191
5PM-6PM	32 33 34	29 29 30	131 133 145
6PM-7PM	28 28 31	41 41 43	143 144 154
7PM-8PM	31 31 31	27 27 28	106 108 116
8PM-9PM	22 23 23	23 23 23	109 110 114
9PM-10PM	23 25 26	15 15 16	76 79 82
10PM-11PM	23 25 25	23 23 24	92 95 101
11PM-12AM	13 14 16	18 18 20	77 78 84

Road Ranger / SIRV Performance By Day of Week

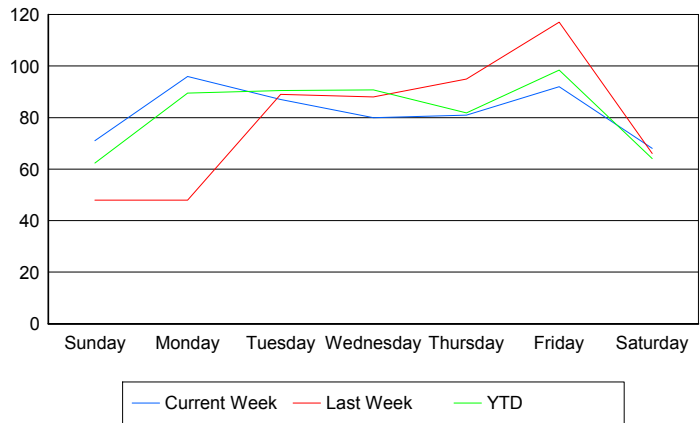
Values presented are:
 - Total Events with a RR/SIRV Response
 - Total RR/SIRV Responses,
 - Total Activities Performed

	Current We	Last Week	YTD
Sunday	64	48	235
	71	48	244
	76	50	254
Monday	91	46	328
	96	48	337
	97	51	356
Tuesday	84	87	351
	87	89	360
	92	95	378
Wednesday	79	86	349
	80	88	357
	85	92	382
Thursday	78	91	313
	81	95	325
	88	99	359
Friday	90	117	458
	92	117	468
	97	123	495
Saturday	67	65	311
	68	66	319
	70	68	334

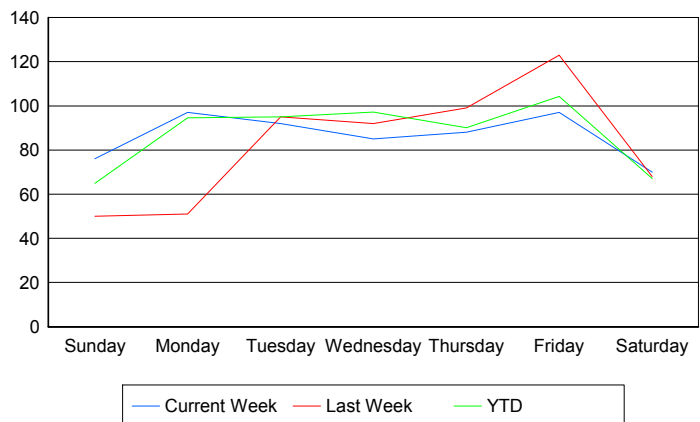
Avg # of events with a RR/SIRV Response per Day of the Week



Avg # of RR/SIRV Responses per Day of the Week



Avg # of RR/SIRV Activities Performed per Day of the Week



Road Ranger / SIRV Responses per Time of Day and Day of Week

