



# Weekly Performance Measures Report Palm Beach County



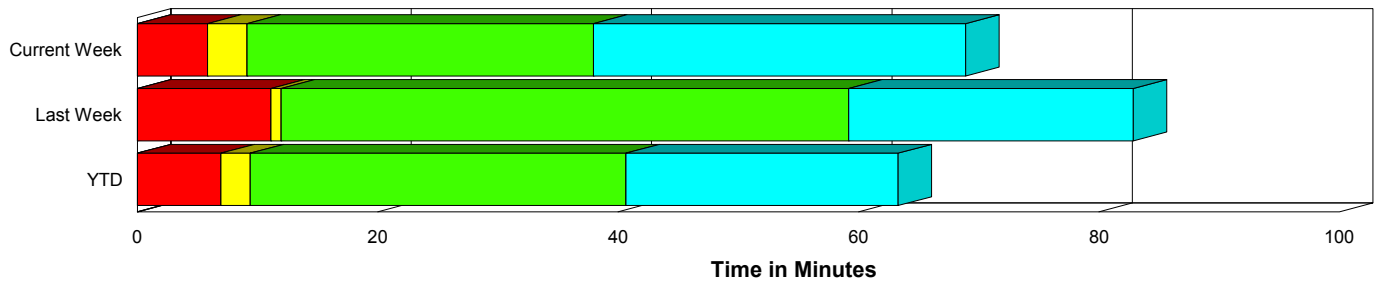
Created on:  
March 08, 2010  
8:54 am

Period From Feb 28, 2010 to Mar 6, 2010

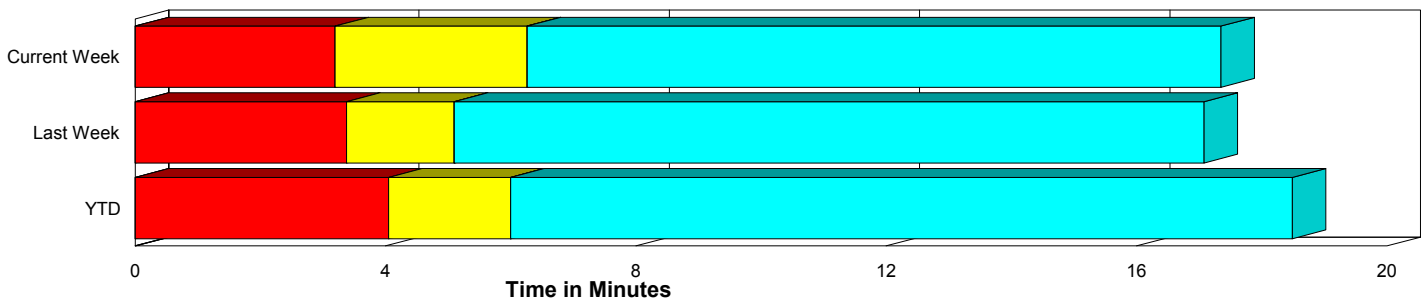
## Performance Measures Summary

	Traffic Events (No Lanes Blocked)			Incidents (Lanes Blocked)		
	<u>This Week</u>	<u>Last Week</u>	<u>YTD</u>	<u>This Week</u>	<u>Last Week</u>	<u>YTD</u>
Number of Events	518	489	4,037	22	26	210
TMC Detection (min.)	0.00	0.00	0.00	0.00	0.00	0.00
TMC Verification (min.)	3.19	3.38	4.05	5.84	11.13	6.97
TMC Response (min.)	6.88	5.62	6.40	9.12	12.88	9.61
RR Dispatch Time (min.)	1.93	1.69	2.16	2.19	4.78	2.27
RR Response Time (min.)	5.15	4.02	4.30	6.93	7.95	7.33
Roadway Clearance (min.)				37.96	56.11	40.76
Event Clearance (min.)	17.96	17.60	18.89	68.92	79.69	63.36
# of Events w/ RR/SIRV	470	465	3,849	22	25	205
RR/SIRV Responses	470	465	3,849	22	25	205
RR/SIRV Activities	466	474	4,026	31	31	266

### Incident Clearance Time-Line



### Traffic Event (Non-Lane Blockage) Time-Line



<span style="color: blue;">■</span> Avg. TMC Detection Time	<span style="color: green;">■</span> Avg. Time from TMC Response to Roadway Clearance*
<span style="color: red;">■</span> Avg. Time from TMC Detection to TMC Verification	<span style="color: cyan;">■</span> Avg. Time from Roadway Clearance to Incident/Event Clearance**
<span style="color: yellow;">■</span> Avg. Time from TMC Verification to TMC Response	

\* Roadway clearance equals all travel lanes open

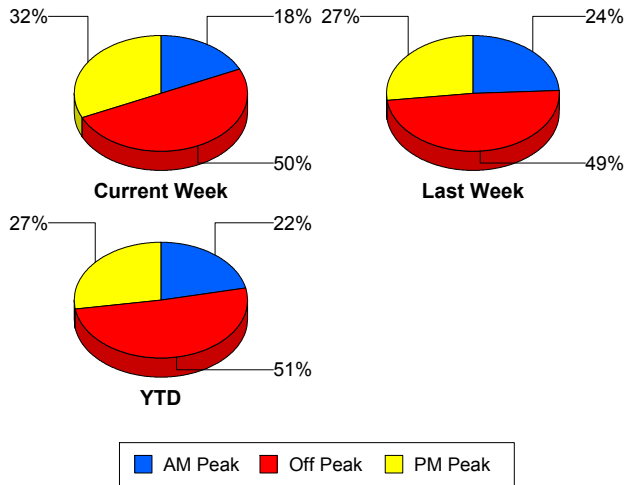
\*\* Incident clearance equals time when last responder has left the scene

## Performance Measures by Peak Period

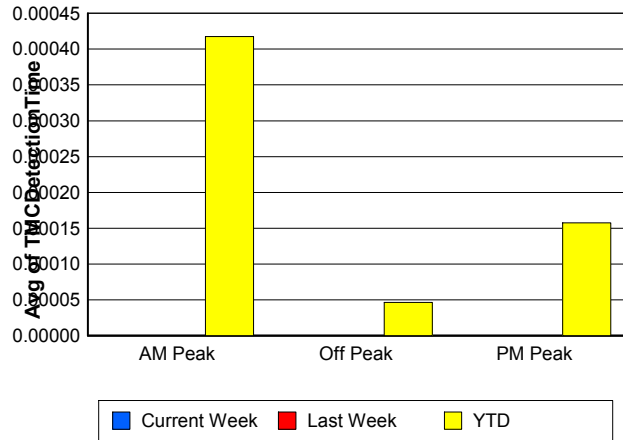
Note: AM peak period is defined as 6am to 10am and PM peak period is defined as 3pm to 7pm.

	AM Peak			Off Peak			PM Peak		
	<u>Current Week</u>	<u>Last Week</u>	<u>YTD</u>	<u>Current Week</u>	<u>Last Week</u>	<u>YTD</u>	<u>Current Week</u>	<u>Last Week</u>	<u>YTD</u>
Number of Events	97	125	918	270	251	2,165	173	139	1,164
Number of Incidents	6	3	52	9	15	100	7	8	58
TMC Detection (min.)	0.00	0.00	0.00	0.00	0.00	0.00	0.00	0.00	0.00
TMC Verification (min.)	1.59	2.51	2.90	4.24	4.42	4.54	2.78	3.74	4.59
TMC Response (min.)	4.56	4.06	5.05	8.60	7.07	7.37	5.64	5.85	6.25
RR Dispatch Time (min.)	1.24	1.40	1.15	2.34	1.99	2.62	1.69	2.00	2.11
RR Response Time (min.)	3.44	2.77	3.96	6.46	5.11	4.81	4.19	3.97	4.18
Event Clearance (min.)	18.59	21.76	20.72	21.98	21.57	22.00	17.82	18.31	19.67
Roadway Clearance (min.)	38.33	21.03	38.67	51.05	79.09	47.43	20.79	26.17	31.14
Incident Clearance (min.)	82.10	86.71	71.09	66.82	93.72	65.14	60.32	50.77	53.36
# of Events w/ RR/SIRV	84	119	867	252	235	2,069	156	136	1,118
RR/SIRV Responses	84	119	867	252	235	2,069	156	136	1,118
RR/SIRV Activities	89	121	922	255	248	2,195	153	136	1,175

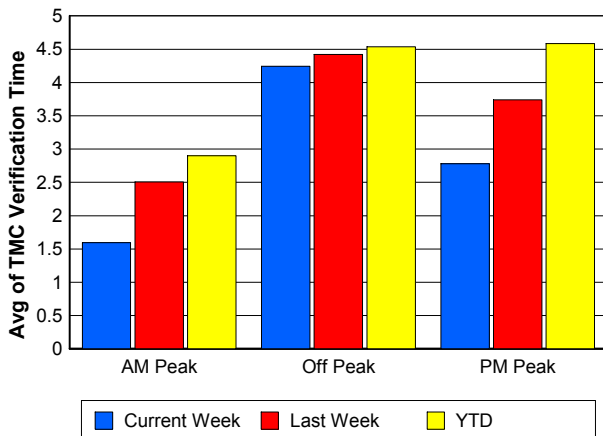
### Number of Events / Peak Period



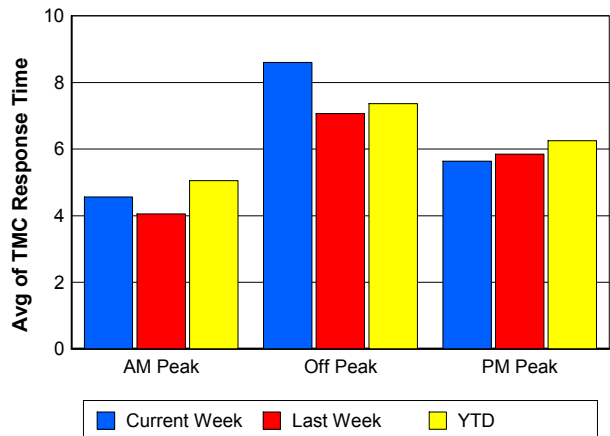
### TMC Detection Time



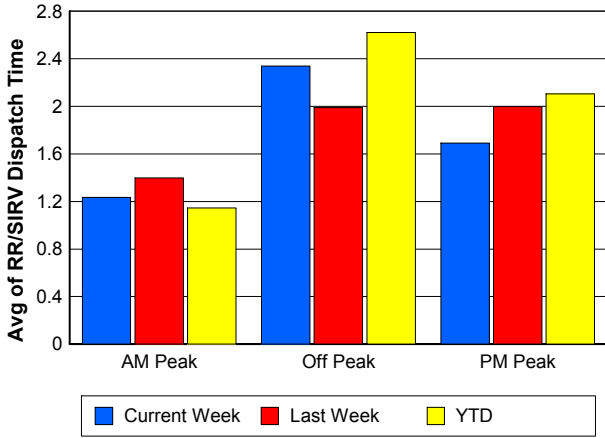
### TMC Verification Time



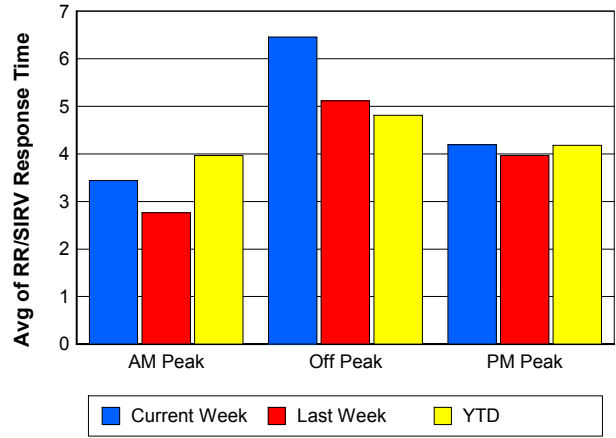
### TMC Response Time



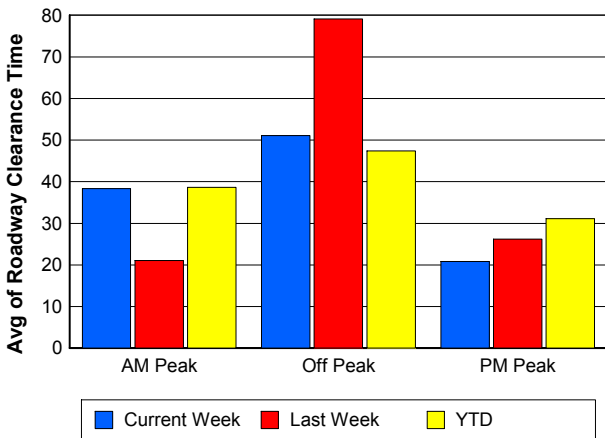
## Road Ranger / SIRV Dispatch Time



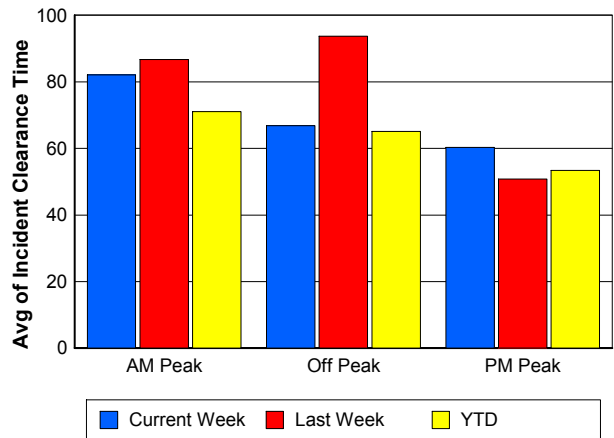
## Road Ranger / SIRV Response Time



## Roadway Clearance Time (2A)



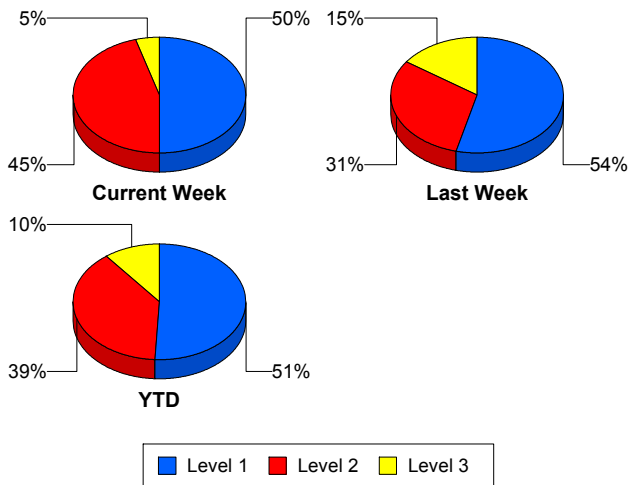
## Incident Clearance Time (3B)



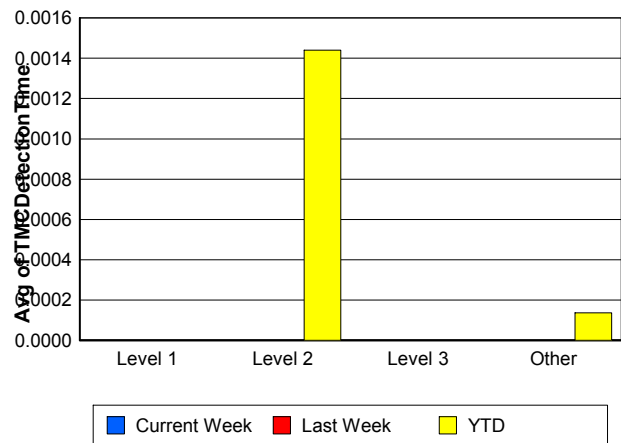
## Performance Measures by Severity

	Level 1			Level 2			Level 3			Other		
	<u>This Week</u>	<u>Last Week</u>	<u>YTD</u>	<u>This Week</u>	<u>Last Week</u>	<u>YTD</u>	<u>This Week</u>	<u>Last Week</u>	<u>YTD</u>	<u>This Week</u>	<u>Last Week</u>	<u>YTD</u>
Number of Events	11	14	107	10	8	81	1	4	22	518	489	4,037
Number of Incidents	11	14	107	10	8	81	1	4	22	0	0	0
TMC Detection (min.)	0.00	0.00	0.00	0.00	0.00	0.00	0.00	0.00	0.00	0.00	0.00	0.00
TMC Verification (min.)	3.16	3.85	3.41	8.19	22.35	11.71	11.77	14.15	6.78	3.19	3.38	4.05
TMC Response (min.)	5.41	5.55	5.60	12.95	22.32	14.53	11.75	16.02	10.09	6.88	5.62	6.40
RR Dispatch Time (min.)	1.10	1.29	0.85	3.51	8.95	3.89	1.03	7.77	3.11	1.93	1.69	2.16
RR Resp. Time (min.)	4.31	4.23	4.76	9.43	13.37	10.65	10.72	8.26	6.98	5.15	4.02	4.30
Event Clearance (min.)	60.04	48.66	47.10	72.11	65.92	69.56	134.68	215.87	119.65	17.96	17.60	18.89
Roadway Clear. (min.)	19.51	9.76	15.32	58.91	57.49	57.85	31.35	215.55	101.54			
Incident Clearance (min.)	60.04	48.66	47.10	72.11	65.92	69.56	134.68	215.87	119.65			
# of Events w/ RR/SIRV	11	13	104	10	8	81	1	4	20	470	465	3,849
RR/SIRV Responses	11	13	104	10	8	81	1	4	20	470	465	3,849
RR/SIRV Activities	14	16	123	15	9	114	2	6	29	466	474	4,026

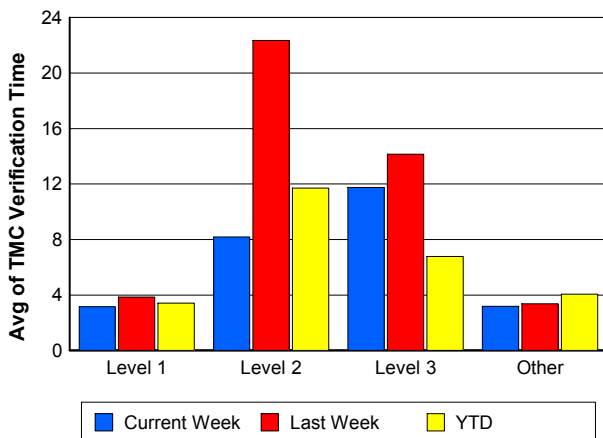
### Number of Events / Severity



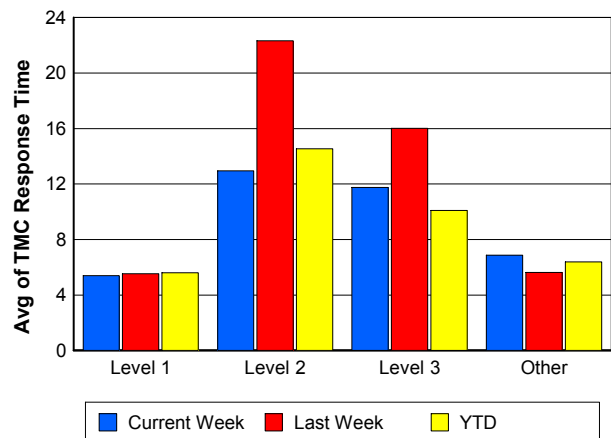
### TMC Detection Time



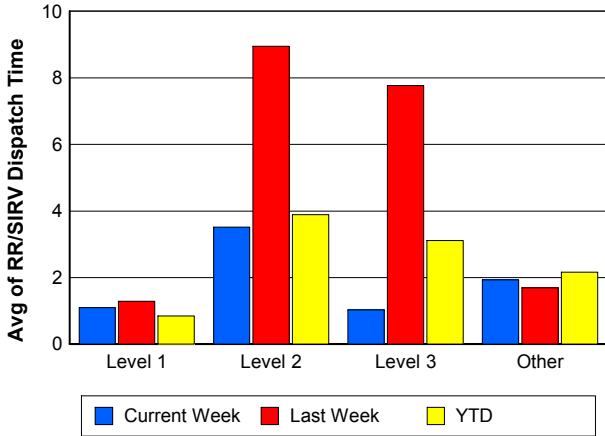
### TMC Verification Time



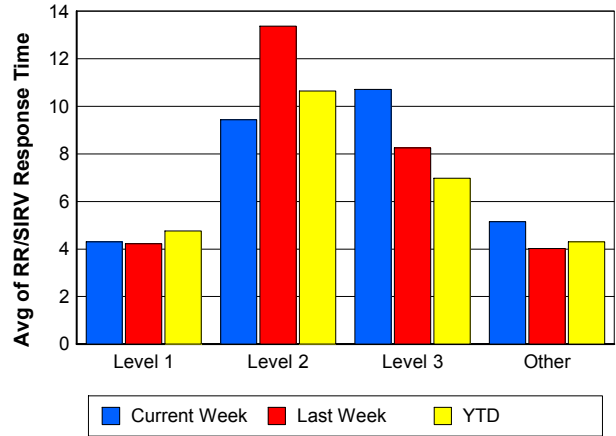
### TMC Response Time



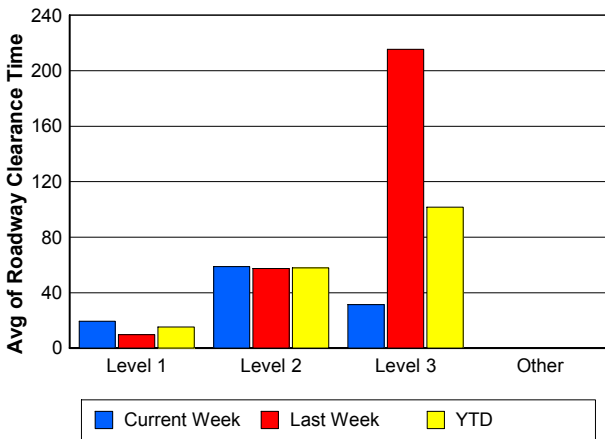
## Road Ranger / SIRV Dispatch Time



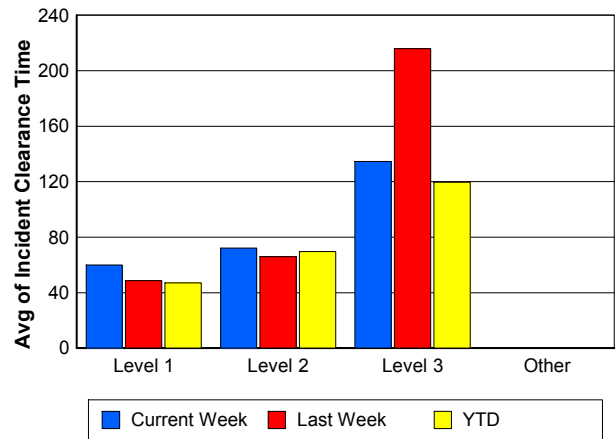
## Road Ranger / SIRV Response Time



## Roadway Clearance Time (2A)



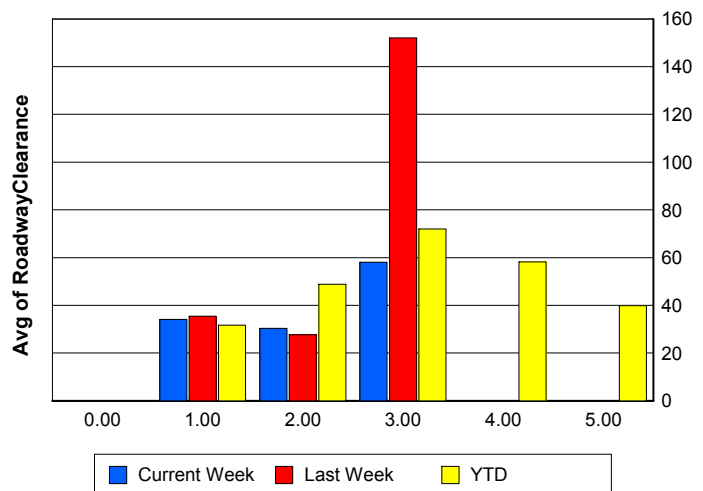
## Incident Clearance Time (3B)



## Roadway Clearance by Maximum Number of Lanes Blocked

	Current Week	Last Week	YTD
0			
1	34.12	35.46	31.66
2	30.32	27.72	48.83
3	58.08	152.09	72.01
4	0.00	0.00	58.15
5	0.00	0.00	39.83

## Roadway Clearance Time (2A)



## Performance Measures by Roadway

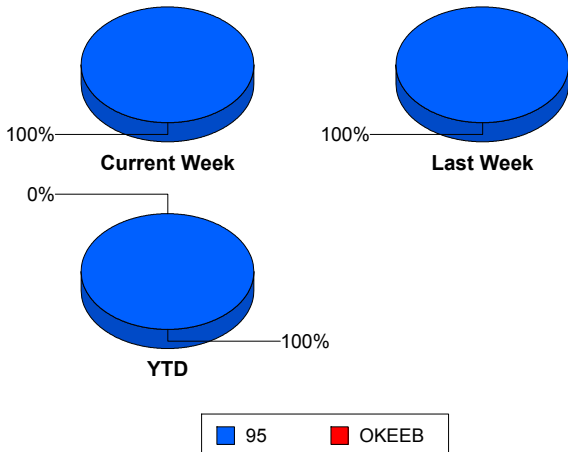
95

	<u>Current Week</u>	<u>Last Week</u>	<u>YTD</u>
Number of Events	540	515	4,246
Number of Incidents	22	26	210
TMC Detection (min.)	0.00	0.00	0.00
TMC Verification (min.)	3.30	3.77	4.20
TMC Response (min.)	6.99	6.01	6.57
RR Dispatch Time (min.)	1.95	1.85	2.16
RR Resp. Time (min.)	5.24	4.23	4.46
Event Clearance (min.)	20.04	20.74	21.09
Roadway Clear. (min.)	37.96	56.11	40.76
Incident Clearance (min.)	68.92	79.69	63.36
# of Events w/ RR/SIRV	492	490	4,053
RR/SIRV Responses	492	490	4,053
RR/SIRV Activities	497	505	4,291

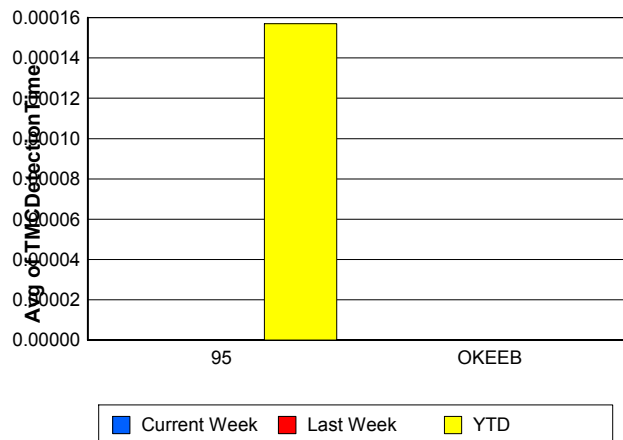
OKEEB

	<u>YTD</u>
Number of Events	1
Number of Incidents	0
TMC Detection (min.)	0.00
TMC Verification (min.)	0.00
TMC Response (min.)	0.00
RR Dispatch Time (min.)	0.00
RR Resp. Time (min.)	0.00
Event Clearance (min.)	18.45
Roadway Clear. (min.)	
Incident Clearance (min.)	
# of Events w/ RR/SIRV	1
RR/SIRV Responses	1
RR/SIRV Activities	1

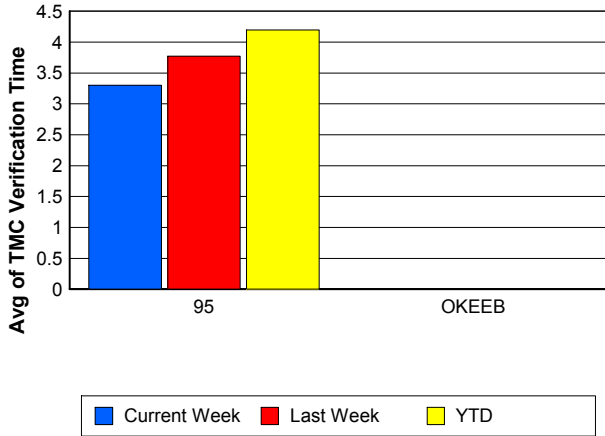
### Number of Events / Roadway



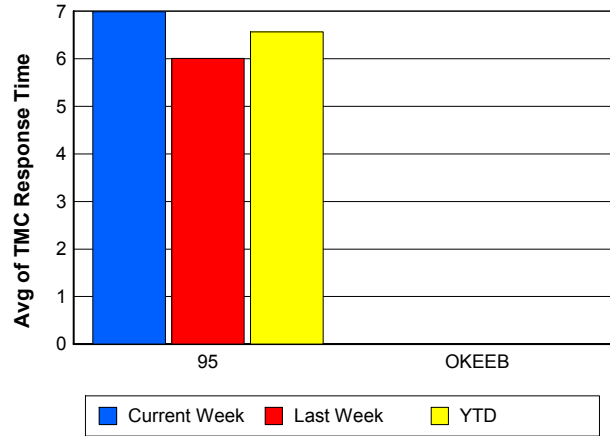
### TMC Detection Time



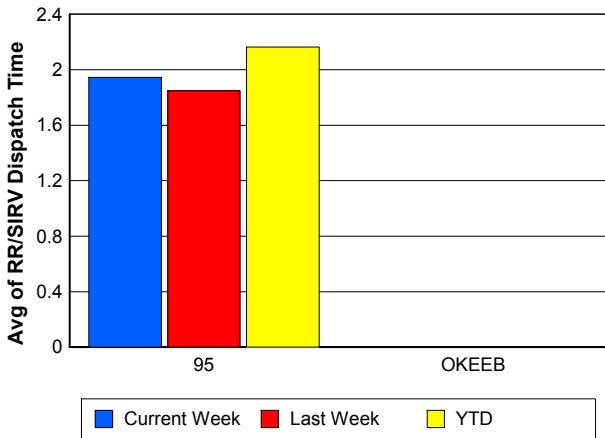
### TMC Verification Time



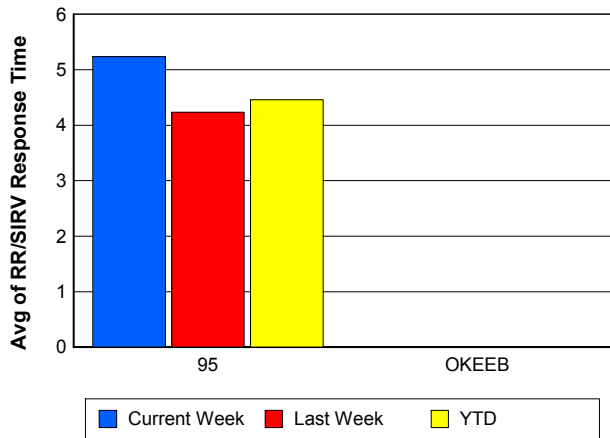
### TMC Response Time



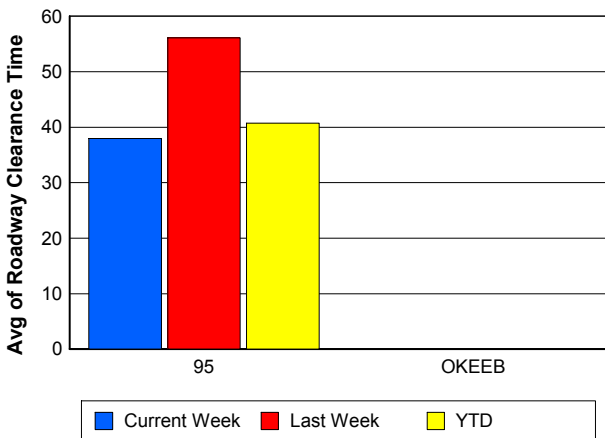
### Road Ranger / SIRV Dispatch Time



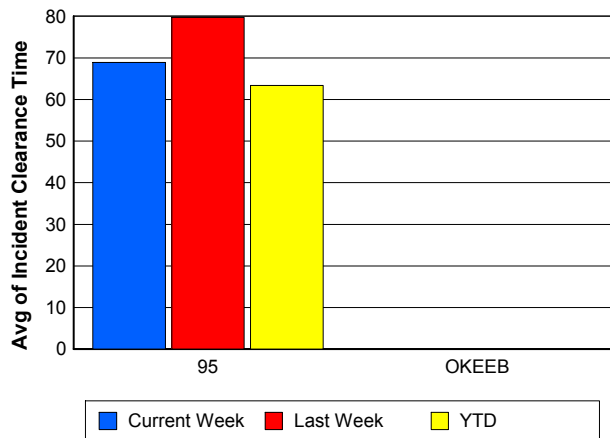
### Road Ranger / SIRV Response Time



### Roadway Clearance Time (2A)



### Incident Clearance Time (3B)



## Performance Measures by Event Type

### Accident

	<u>Current Week</u>	<u>Last Week</u>	<u>YTD</u>
Number of Events	32	43	339
Number of Incidents	14	17	145
TMC Detection (min.)	0.00	0.00	0.00
TMC Verification (min.)	5.12	7.92	7.28
TMC Response (min.)	7.74	9.00	9.70
RR Dispatch Time (min.)	0.62	2.27	1.86
RR Response Time (min.)	7.19	6.68	7.84
Event Clearance (min.)	53.40	73.20	57.43
Roadway Clearance (min.)	35.85	69.63	44.00
Incident Clearance (min.)	75.62	99.02	71.76
# of Events w/ RR/SIRV	32	42	332
RR/SIRV Assists	32	42	332
RR/SIRV Activities	39	47	388

### Debris on Roadway

	<u>Current Week</u>	<u>Last Week</u>	<u>YTD</u>
Number of Events	24	39	253
Number of Incidents	0	0	4
TMC Detection (min.)	0.00	0.00	0.00
TMC Verification (min.)	11.82	6.93	8.57
TMC Response (min.)	11.80	7.11	8.66
RR Dispatch Time (min.)	1.59	2.71	2.50
RR Response Time (min.)	10.21	4.31	6.13
Event Clearance (min.)	14.77	12.76	12.10
Roadway Clearance (min.)			8.75
Incident Clearance (min.)			16.64
# of Events w/ RR/SIRV	24	39	251
RR/SIRV Assists	24	39	251
RR/SIRV Activities	24	43	258

### Disabled Vehicle

	<u>Current Week</u>	<u>Last Week</u>	<u>YTD</u>
Number of Events	441	380	3,392
Number of Incidents	7	7	47
TMC Detection (min.)	0.00	0.00	0.00
TMC Verification (min.)	3.03	3.49	3.87
TMC Response (min.)	6.24	5.31	5.90
RR Dispatch Time (min.)	1.89	1.62	2.13
RR Response Time (min.)	4.58	3.78	3.84
Event Clearance (min.)	18.00	16.53	18.19
Roadway Clearance (min.)	45.52	29.09	33.75
Incident Clearance (min.)	63.05	43.02	45.40
# of Events w/ RR/SIRV	406	366	3,277
RR/SIRV Assists	406	366	3,277
RR/SIRV Activities	417	398	3,526

## Emergency Vehicles

	<u>YTD</u>
Number of Events	4
Number of Incidents	3
TMC Detection (min.)	0.00
TMC Verification (min.)	0.00
TMC Response (min.)	0.00
RR Dispatch Time (min.)	0.00
RR Response Time (min.)	0.00
Event Clearance (min.)	65.10
Roadway Clearance (min.)	78.74
Incident Clearance (min.)	79.08
# of Events w/ RR/SIRV	2
RR/SIRV Assists	2
RR/SIRV Activities	2

## Other

	<u>Current Week</u>	<u>Last Week</u>	<u>YTD</u>
Number of Events	32	48	209
Number of Incidents	0	1	1
TMC Detection (min.)	0.00	0.00	0.00
TMC Verification (min.)	0.00	0.00	0.20
TMC Response (min.)	17.39	12.54	12.60
RR Dispatch Time (min.)	4.77	2.64	2.93
RR Response Time (min.)	10.14	8.35	8.54
Event Clearance (min.)	19.10	13.26	18.06
Roadway Clearance (min.)		8.12	8.12
Incident Clearance (min.)		24.77	24.77
# of Events w/ RR/SIRV	21	38	149
RR/SIRV Assists	21	38	149
RR/SIRV Activities	12	14	85

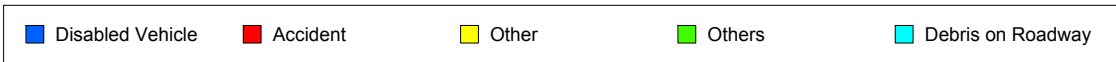
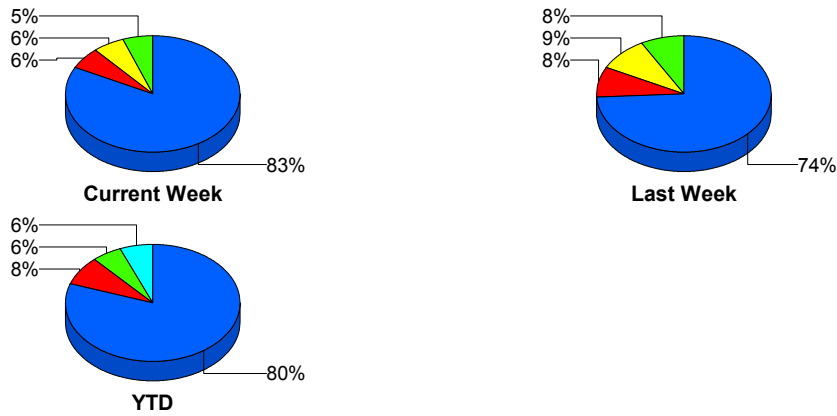
## Police Activity

	<u>Current Week</u>	<u>Last Week</u>	<u>YTD</u>
Number of Events	5	2	24
Number of Incidents	1	0	6
TMC Detection (min.)	0.00	0.00	0.00
TMC Verification (min.)	0.00	0.00	0.00
TMC Response (min.)	4.07		18.69
RR Dispatch Time (min.)	2.74	4.95	2.64
RR Response Time (min.)	0.17		17.32
Event Clearance (min.)	20.74	15.67	28.76
Roadway Clearance (min.)	14.55		28.07
Incident Clearance (min.)	16.30		30.24
# of Events w/ RR/SIRV	3	2	18
RR/SIRV Assists	3	2	18
RR/SIRV Activities	1	0	9

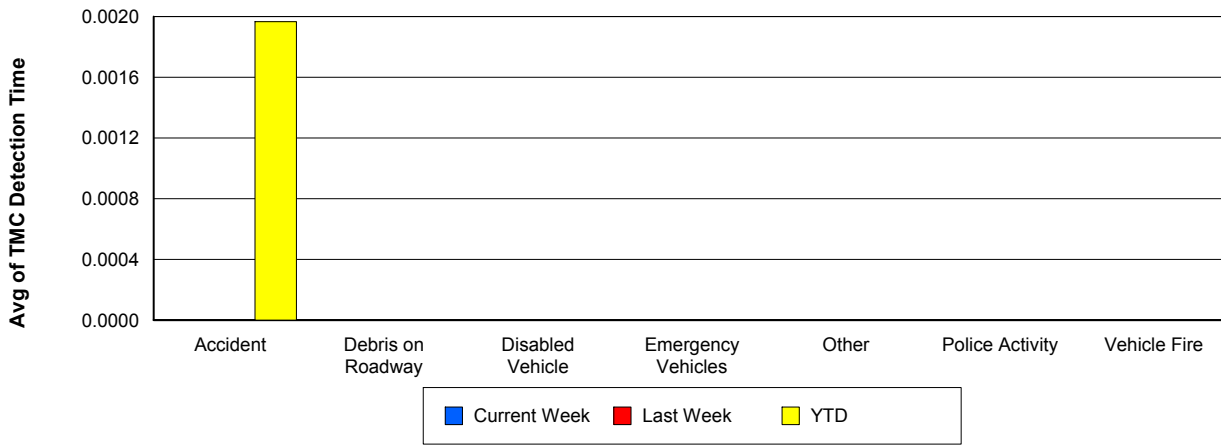
## Vehicle Fire

	<u>Last Week</u>	<u>YTD</u>
Number of Events	1	8
Number of Incidents	1	4
TMC Detection (min.)	0.00	0.00
TMC Verification (min.)	3.50	3.24
TMC Response (min.)	3.48	3.90
RR Dispatch Time (min.)	0.53	1.30
RR Response Time (min.)	2.95	2.60
Event Clearance (min.)	62.85	42.24
Roadway Clearance (min.)	63.22	36.49
Incident Clearance (min.)	62.85	64.42
# of Events w/ RR/SIRV	1	7
RR/SIRV Assists	1	7
RR/SIRV Activities	1	7

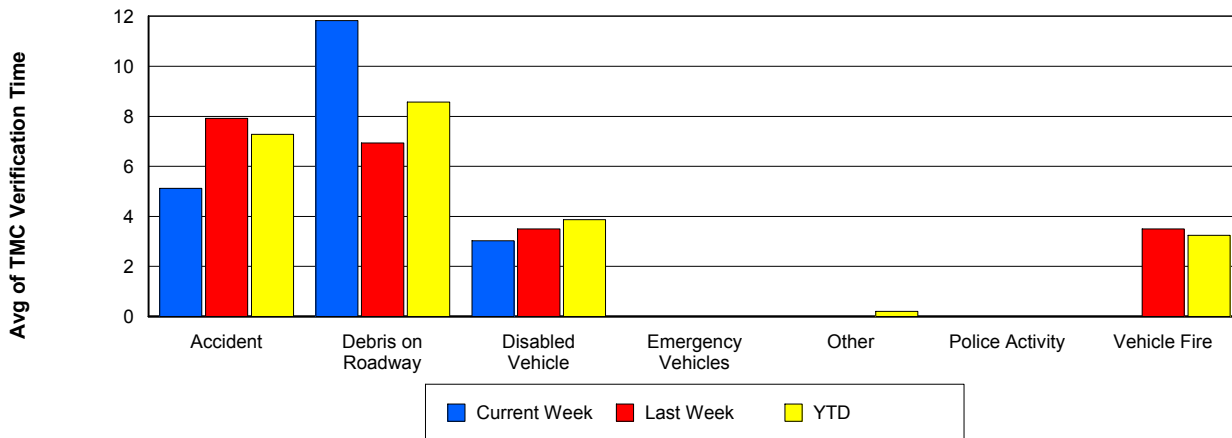
## Number of Events / Event Type



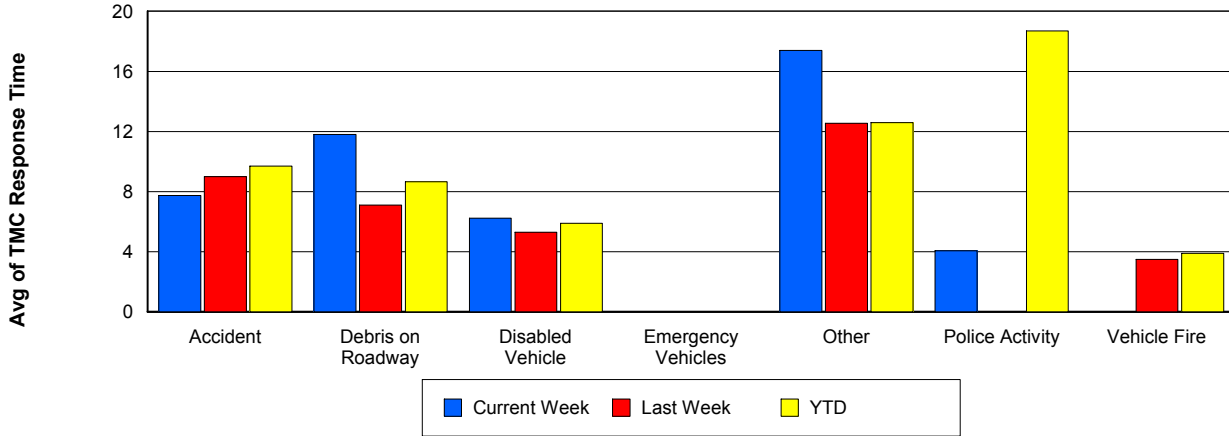
## TMC Detection Time



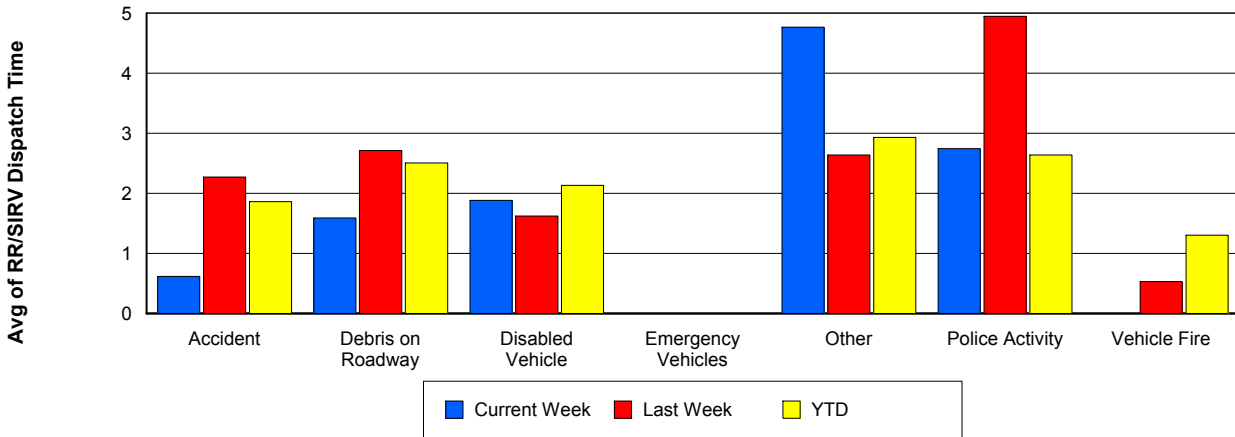
## TMC Verification Time



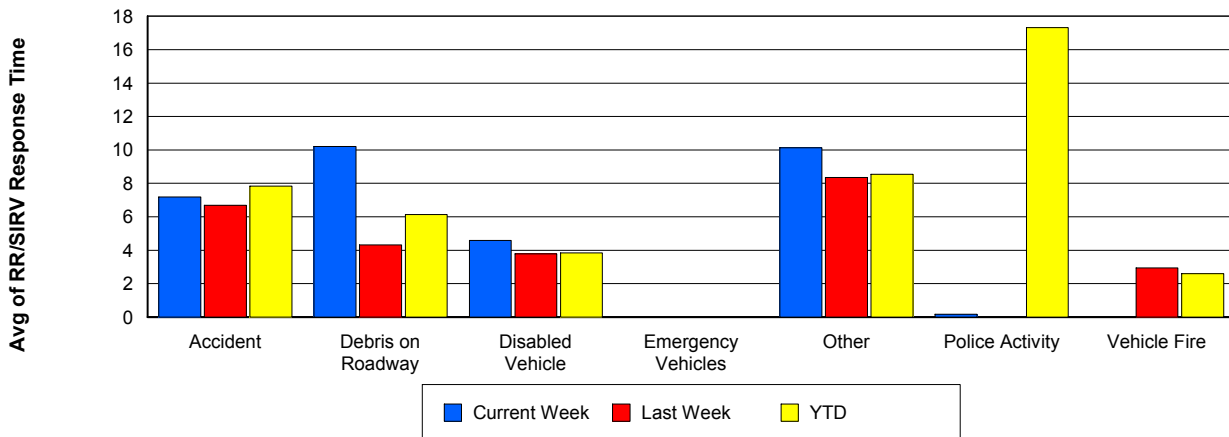
## TMC Response Time



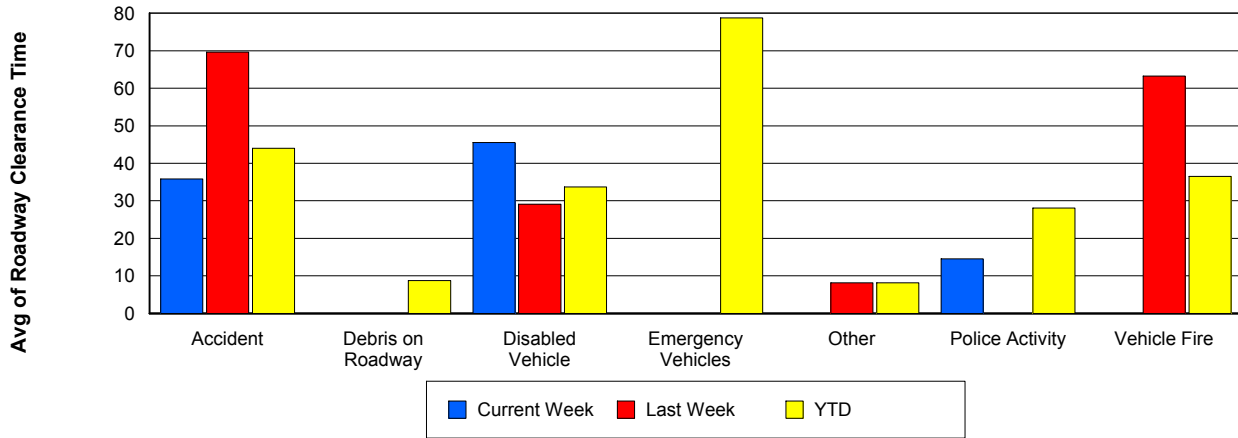
## Road Ranger / SIRV Dispatch Time



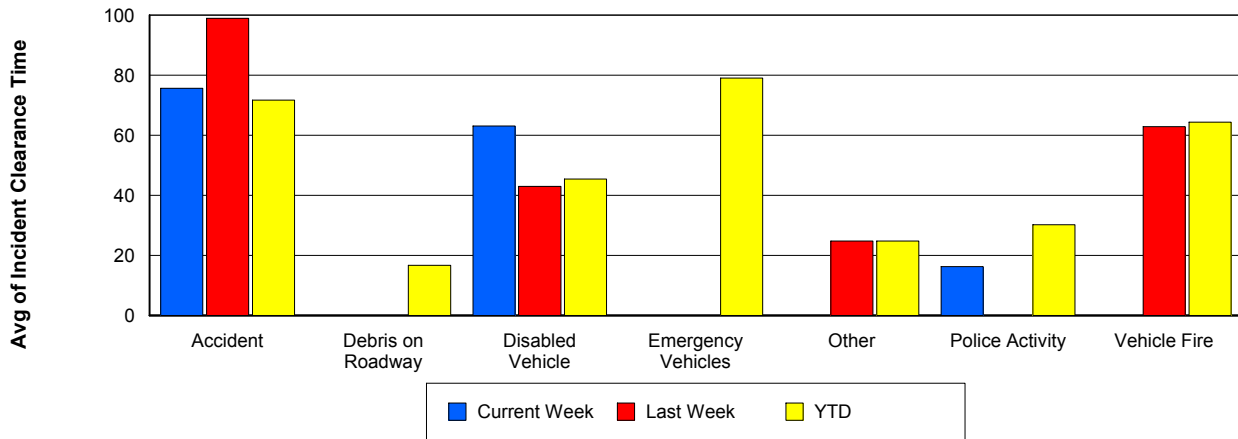
## Road Ranger / SIRV Response Time



## Roadway Clearance Time (2A)



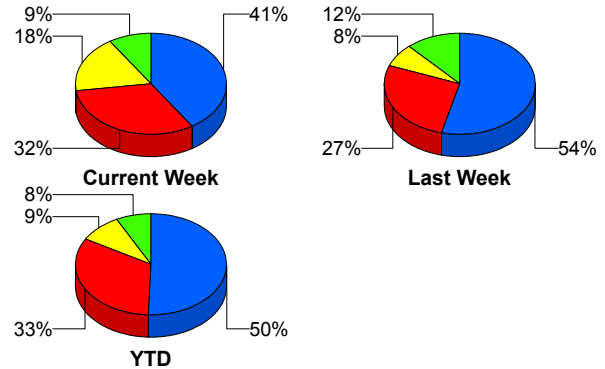
## Incident Clearance Time (3B)



## Incident Detection Methods

	Current Week	Last Week	YTD
Broward Road Ranger	0	0	2
Broward TMC	0	0	3
District 4	0	1	5
FDOT Maintenance	1	0	1
FHP	9	14	106
ITMS CCTV	4	2	19
Media	1	0	1
Motorist	0	2	4
Palm Beach Road Ran	7	7	69
<b>Total</b>	<b>22</b>	<b>26</b>	<b>210</b>

### Total Incidents by Detection Method

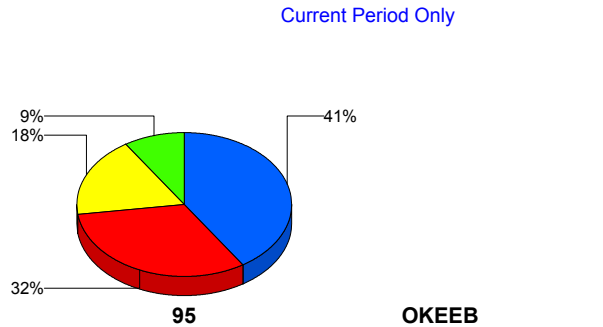


■ FHP     
 ■ Palm Beach Road Ranger     
 ■ ITMS CCTV     
 ■ Others

## Incident Detection Methods by Roadway

		Current Week	Last Week	YTD
95	Broward Road Ranger	0	0	2
	Broward TMC	0	0	3
	District 4	0	1	5
	FDOT Maintenance	1	0	1
	FHP	9	14	106
	ITMS CCTV	4	2	19
	Media	1	0	1
	Motorist	0	2	4
	Palm Beach Road Ran	7	7	69
	<b>Total</b>	<b>22</b>	<b>26</b>	<b>210</b>
<b>Total</b>	<b>22</b>	<b>26</b>	<b>210</b>	

### Total Events by Roadway and Detection Method

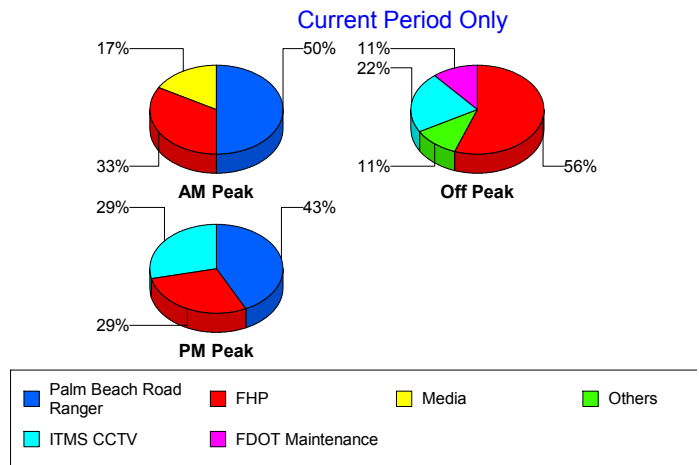


■ FHP     
 ■ Palm Beach Road Ranger     
 ■ ITMS CCTV     
 ■ Others

## Incident Detection Methods by Peak Period

		Current Week	Last Week	YTD
AM Peak	Broward Road Ranger	0	0	1
	District 4	0	0	1
	FHP	2	2	27
	ITMS CCTV	0	0	4
	Media	1	0	1
	Palm Beach Road Ran	3	1	18
	<b>Total</b>	<b>6</b>	<b>3</b>	<b>52</b>
Off Peak	Broward Road Ranger	0	0	1
	Broward TMC	0	0	1
	District 4	0	0	2
	FDOT Maintenance	1	0	1
	FHP	5	8	50
	ITMS CCTV	2	1	11
	Motorist	0	1	2
	Palm Beach Road Ran	1	5	32
	<b>Total</b>	<b>9</b>	<b>15</b>	<b>100</b>
PM Peak	Broward TMC	0	0	2
	District 4	0	1	2
	FHP	2	4	29
	ITMS CCTV	2	1	4
	Motorist	0	1	2
	Palm Beach Road Ran	3	1	19
	<b>Total</b>	<b>7</b>	<b>8</b>	<b>58</b>
<b>Total</b>	<b>22</b>	<b>26</b>	<b>210</b>	

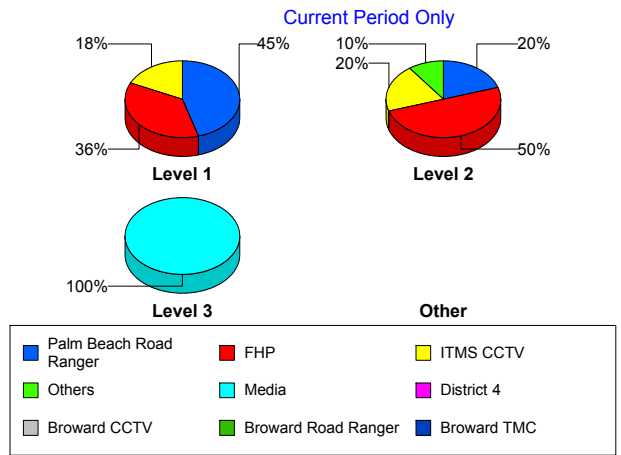
Total Events by Peak Period and Detection Method



## Incident Detection Methods by Severity

		Current Week	Last Week	YTD
Level 1	Broward Road Ranger	0	0	2
	Broward TMC	0	0	1
	District 4	0	1	3
	FHP	4	4	40
	ITMS CCTV	2	2	10
	Motorist	0	1	3
	Palm Beach Road Ran	5	6	48
	<b>Total</b>	<b>11</b>	<b>14</b>	<b>107</b>
Level 2	Broward TMC	0	0	2
	District 4	0	0	1
	FDOT Maintenance	1	0	1
	FHP	5	7	55
	ITMS CCTV	2	0	7
	Motorist	0	1	1
	Palm Beach Road Ran	2	0	14
	<b>Total</b>	<b>10</b>	<b>8</b>	<b>81</b>
Level 3	District 4	0	0	1
	FHP	0	3	11
	ITMS CCTV	0	0	2
	Media	1	0	1
	Palm Beach Road Ran	0	1	7
	<b>Total</b>	<b>1</b>	<b>4</b>	<b>22</b>
<b>Total</b>	<b>22</b>	<b>26</b>	<b>210</b>	

**Total Events by Severity and Detection Method**



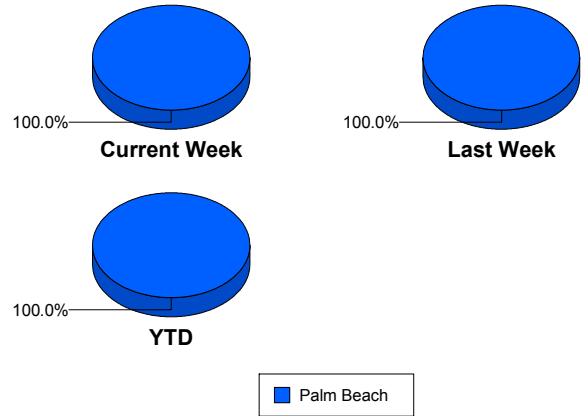
# Road Ranger / SIRV Performance Measures

## Road Ranger / SIRV Performance By County

RR/SIRV Responses per County

Values presented are: - Total Events with a RR/SIRV Response - Total RR/SIRV Responses, - Total Activities Performed
---

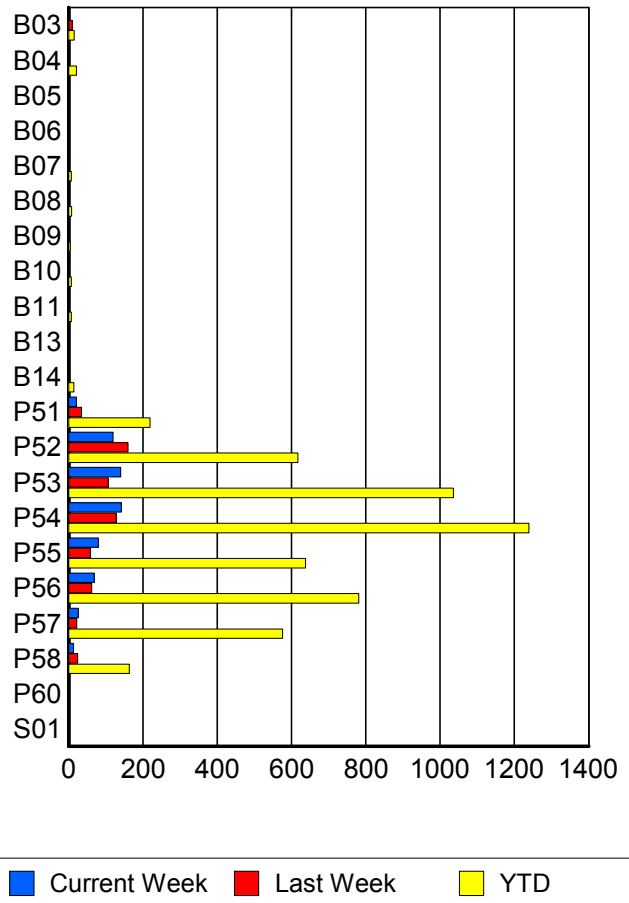
	Current We	Last Week	YTD
Palm Beach	<b>598</b>	<b>585</b>	<b>5,185</b>
	<b>616</b>	<b>614</b>	<b>5,360</b>
	<b>650</b>	<b>651</b>	<b>5,673</b>



## Road Ranger / SIRV Performance By Truck

	Current We	Last Week	YTD
B03	1	10	15
	1	10	15
	1	10	16
B04	1	0	21
	1	0	21
	1	0	22
B05	1	0	2
	1	0	2
	1	0	2
B06	0	0	1
	0	0	1
	0	0	3
B07	1	0	7
	1	0	7
	1	0	7
B08	0	0	8
	0	0	8
	0	0	8
B09	0	0	5
	0	0	5
	0	0	6
B10	0	2	7
	0	2	7
	0	2	7
B11	0	0	7
	0	0	7
	0	0	7

**RR/SIRV  
Responses per  
Truck**



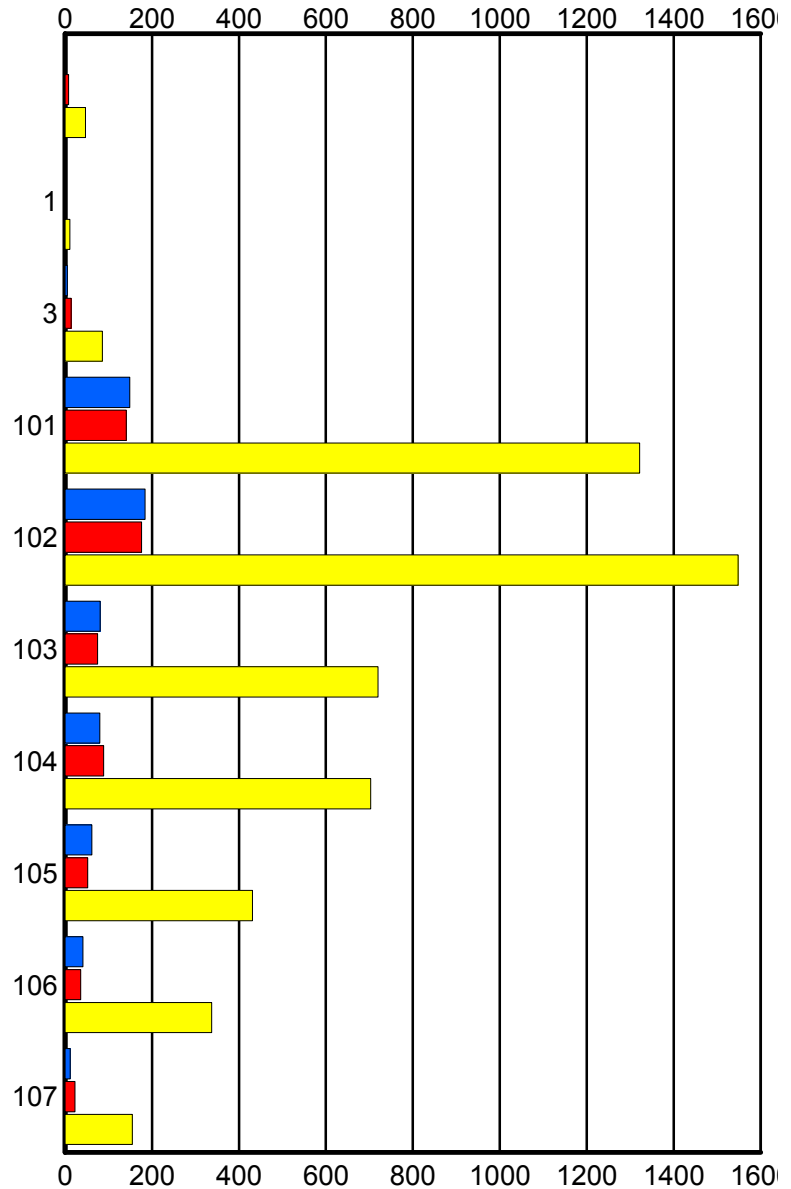
	Current We	Last Week	YTD
B13	0 0 0	0 0 0	1 1 1
B14	1 1 1	3 3 3	14 14 14
P51	20 21 22	35 35 37	217 219 230
P52	119 120 129	156 160 168	609 617 658
P53	138 140 144	104 107 112	1,023 1,036 1,091
P54	140 142 145	127 128 139	1,220 1,239 1,307
P55	79 80 86	59 59 63	630 638 668
P56	69 69 76	60 62 68	771 781 840
P57	26 26 29	22 22 22	565 576 605
P58	12 13 14	23 24 25	161 163 178
P60	0 0 0	0 0 0	1 1 1
S01	0 0 0	2 2 2	2 2 2

### Road Ranger / SIRV Performance By Beat

	Current We	Last Week	YTD
	2	8	47
	2	8	47
	2	9	52
1	0	0	10
	0	0	11
	0	0	11
3	5	14	85
	5	14	86
	5	14	91
101	147	136	1,296
	149	141	1,322
	155	150	1,388
102	181	172	1,522
	184	176	1,548
	196	181	1,638
103	79	75	714
	81	75	720
	86	82	758
104	80	88	695
	80	89	703
	86	99	754
105	62	52	426
	62	52	431
	66	55	460
106	41	36	332
	41	36	337
	41	37	349
107	11	22	153
	12	23	155
	13	24	172

Values presented are:  
 - Total Events with a RR/SIRV Response  
 - Total RR/SIRV Responses,  
 - Total Activities Performed

### RR/SIRV Responses per Beat

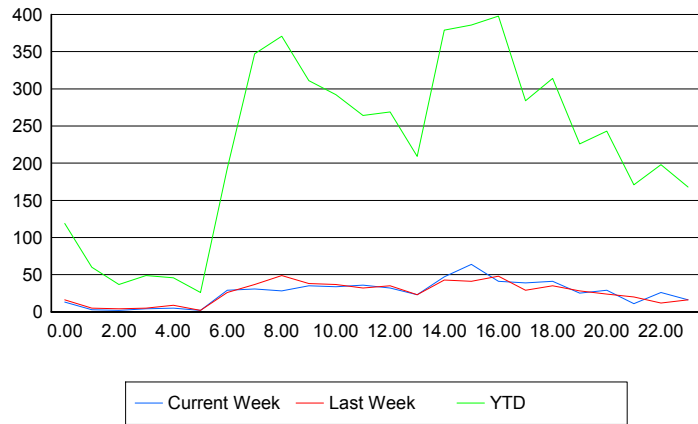


## Road Ranger / SIRV Performance By Time of Day

Values presented are:  
 - Total Events with a RR/SIRV Response  
 - Total RR/SIRV Responses,  
 - Total Activities Performed

	Current We	Last Week	YTD
12AM-1AM	11	16	115
	13	16	119
	17	17	131
1AM-2AM	2	5	58
	3	5	60
	4	5	62
2AM-3AM	2	4	36
	2	4	37
	2	4	39
3AM-4AM	4	5	49
	4	5	49
	4	5	52
4AM-5AM	5	9	46
	5	9	46
	5	9	50
5AM-6AM	2	2	20
	2	2	26
	2	2	27
6AM-7AM	27	25	180
	29	26	193
	32	29	208
7AM-8AM	30	35	339
	31	37	347
	33	39	368
8AM-9AM	27	47	353
	28	49	371
	29	49	388
9AM-10AM	34	37	303
	35	38	311
	37	40	330
10AM-11AM	33	33	280
	34	37	292
	35	41	310
11AM-12PM	36	31	257
	36	32	264
	36	33	279
12PM-1PM	30	32	255
	32	35	269
	32	36	279

## Number of Responses / Hour of the Day



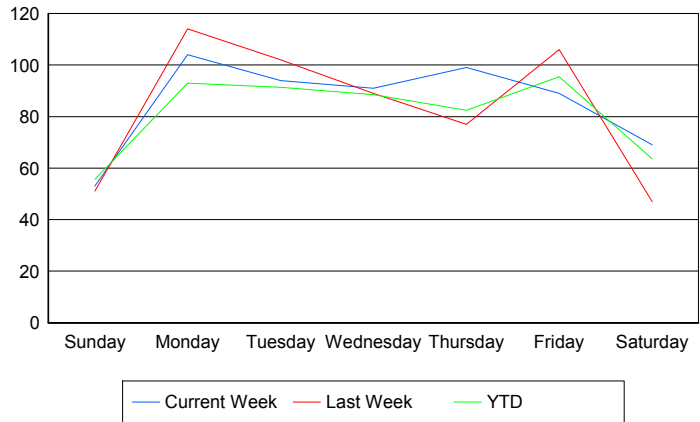
	Current We	Last Week	YTD
1PM-2PM	21	22	198
	23	23	209
	25	25	223
2PM-3PM	46	43	367
	47	43	379
	51	48	400
3PM-4PM	64	41	380
	64	41	386
	67	44	408
4PM-5PM	40	46	383
	41	48	398
	44	53	424
5PM-6PM	38	27	277
	39	29	284
	42	32	304
6PM-7PM	40	33	309
	41	35	314
	43	35	331
7PM-8PM	25	27	219
	25	28	226
	25	28	236
8PM-9PM	29	21	238
	29	24	243
	29	25	253
9PM-10PM	10	19	164
	11	20	171
	13	21	179
10PM-11PM	26	11	194
	26	12	198
	26	12	211
11PM-12AM	16	14	165
	16	16	168
	17	19	181

## Road Ranger / SIRV Performance By Day of Week

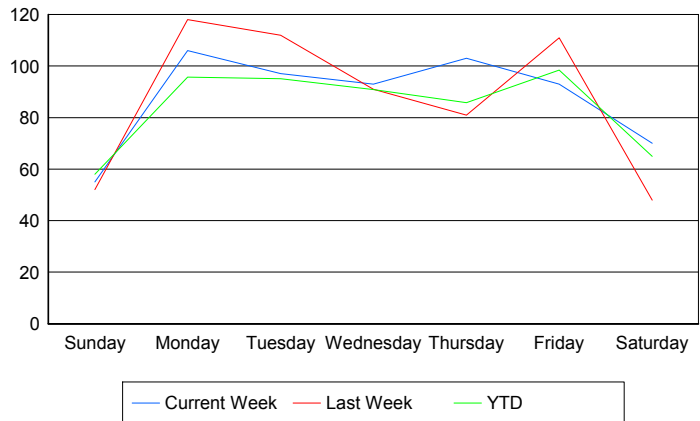
Values presented are:  
 - Total Events with a RR/SIRV Response  
 - Total RR/SIRV Responses,  
 - Total Activities Performed

	Current We	Last Week	YTD
Sunday	52	52	495
	54	53	514
	61	56	543
Monday	104	114	805
	106	118	829
	113	124	881
Tuesday	94	102	816
	97	112	848
	104	123	898
Wednesday	91	89	789
	93	91	809
	97	96	865
Thursday	99	77	735
	103	81	765
	108	88	821
Friday	89	106	926
	93	111	955
	97	114	997
Saturday	69	47	626
	70	48	640
	70	50	668

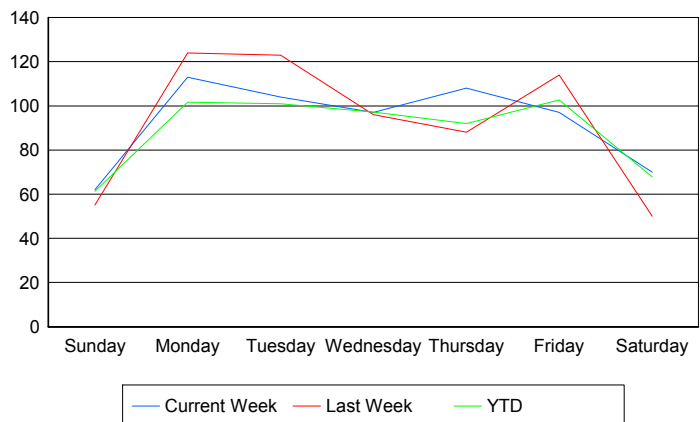
### Avg # of events with a RR/SIRV Response per Day of the Week



### Avg # of RR/SIRV Responses per Day of the Week



### Avg # of RR/SIRV Activities Performed per Day of the Week



### Road Ranger / SIRV Responses per Time of Day and Day of Week

