



# Weekly Performance Measures Report Palm Beach County



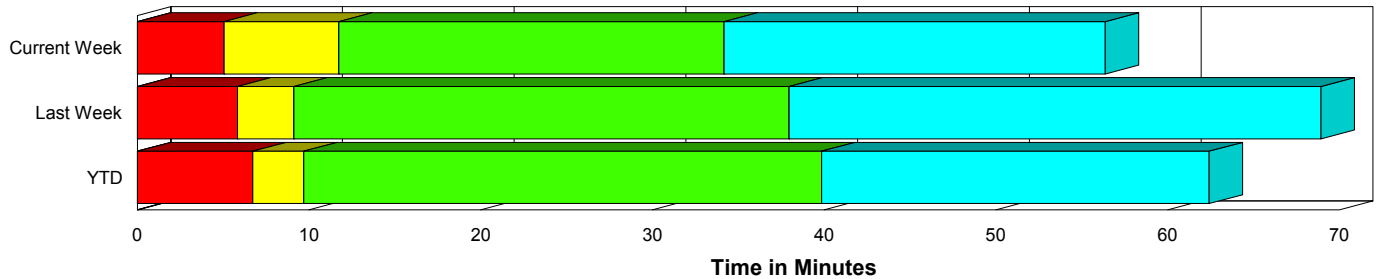
Created on:  
March 15, 2010  
12:05 pm

Period From Mar 7, 2010 to Mar 13, 2010

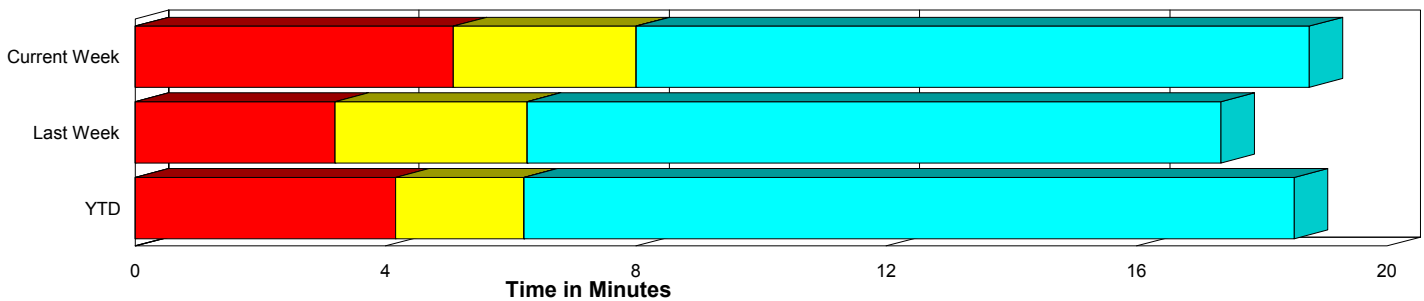
## Performance Measures Summary

	Traffic Events (No Lanes Blocked)			Incidents (Lanes Blocked)		
	<u>This Week</u>	<u>Last Week</u>	<u>YTD</u>	<u>This Week</u>	<u>Last Week</u>	<u>YTD</u>
Number of Events	495	518	4,532	30	22	240
TMC Detection (min.)	0.00	0.00	0.00	0.00	0.00	0.00
TMC Verification (min.)	5.08	3.19	4.16	5.05	5.84	6.73
TMC Response (min.)	8.68	6.88	6.64	11.91	9.12	9.90
RR Dispatch Time (min.)	2.89	1.93	2.24	4.10	2.19	2.50
RR Response Time (min.)	5.82	5.15	4.46	8.23	6.93	7.44
Roadway Clearance (min.)				34.32	37.96	39.96
Event Clearance (min.)	19.44	17.96	18.95	56.50	68.92	62.51
# of Events w/ RR/SIRV	454	470	4,303	30	22	235
RR/SIRV Responses	454	470	4,303	30	22	235
RR/SIRV Activities	476	466	4,502	34	31	300

### Incident Clearance Time-Line



### Traffic Event (Non-Lane Blockage) Time-Line



<span style="color: blue;">■</span> Avg. TMC Detection Time	<span style="color: green;">■</span> Avg. Time from TMC Response to Roadway Clearance*
<span style="color: red;">■</span> Avg. Time from TMC Detection to TMC Verification	<span style="color: cyan;">■</span> Avg. Time from Roadway Clearance to Incident/Event Clearance**
<span style="color: yellow;">■</span> Avg. Time from TMC Verification to TMC Response	

\* Roadway clearance equals all travel lanes open

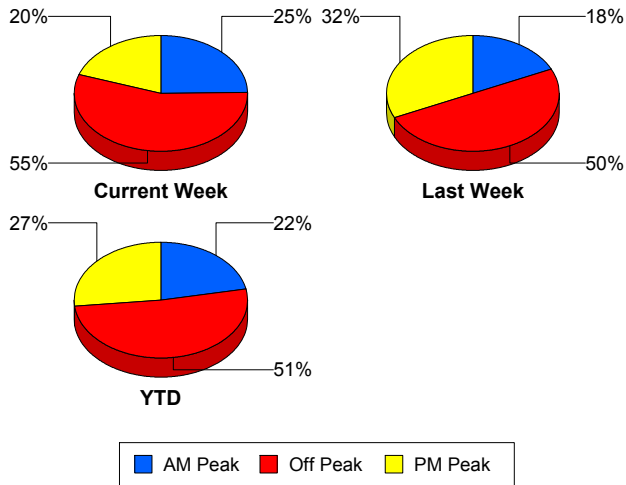
\*\* Incident clearance equals time when last responder has left the scene

## Performance Measures by Peak Period

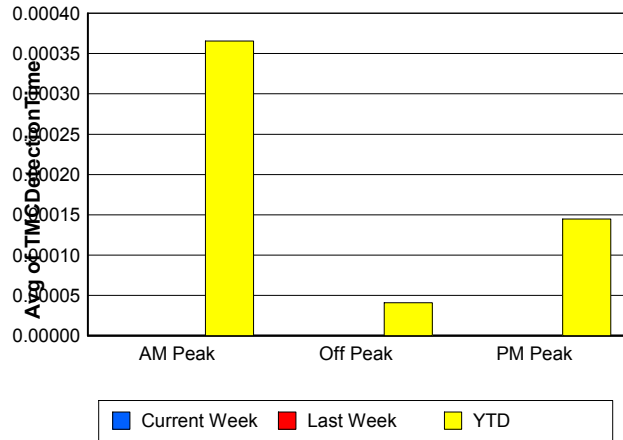
Note: AM peak period is defined as 6am to 10am and PM peak period is defined as 3pm to 7pm.

	AM Peak			Off Peak			PM Peak		
	<u>Current Week</u>	<u>Last Week</u>	<u>YTD</u>	<u>Current Week</u>	<u>Last Week</u>	<u>YTD</u>	<u>Current Week</u>	<u>Last Week</u>	<u>YTD</u>
Number of Events	130	97	1,048	291	270	2,456	104	173	1,268
Number of Incidents	5	6	57	21	9	121	4	7	62
TMC Detection (min.)	0.00	0.00	0.00	0.00	0.00	0.00	0.00	0.00	0.00
TMC Verification (min.)	2.50	1.59	2.85	4.72	4.24	4.56	9.33	2.78	4.97
TMC Response (min.)	6.95	4.56	5.28	8.42	8.60	7.49	12.40	5.64	6.75
RR Dispatch Time (min.)	1.69	1.24	1.21	2.22	2.34	2.57	6.55	1.69	2.46
RR Response Time (min.)	5.24	3.44	4.12	6.28	6.46	4.98	5.98	4.19	4.33
Event Clearance (min.)	20.19	18.59	20.66	21.14	21.98	21.90	24.40	17.82	20.06
Roadway Clearance (min.)	21.08	38.33	37.13	34.62	51.05	45.21	49.31	20.79	32.31
Incident Clearance (min.)	80.88	82.10	71.95	46.10	66.82	61.84	80.60	60.32	55.12
# of Events w/ RR/SIRV	118	84	985	268	252	2,337	98	156	1,216
RR/SIRV Responses	118	84	985	268	252	2,337	98	156	1,216
RR/SIRV Activities	121	89	1,043	285	255	2,480	104	153	1,279

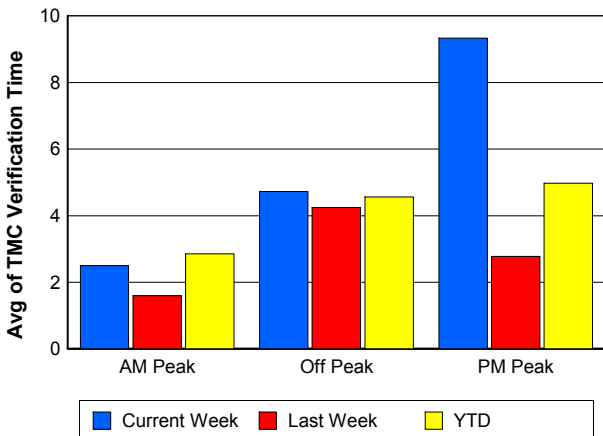
### Number of Events / Peak Period



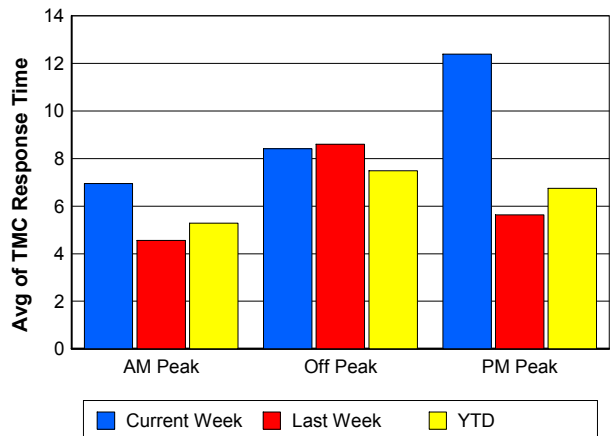
### TMC Detection Time



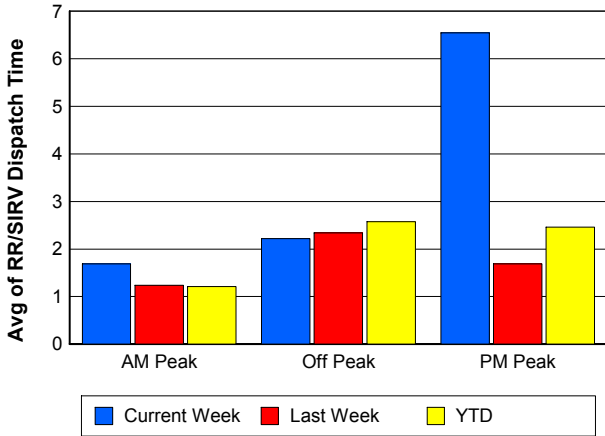
### TMC Verification Time



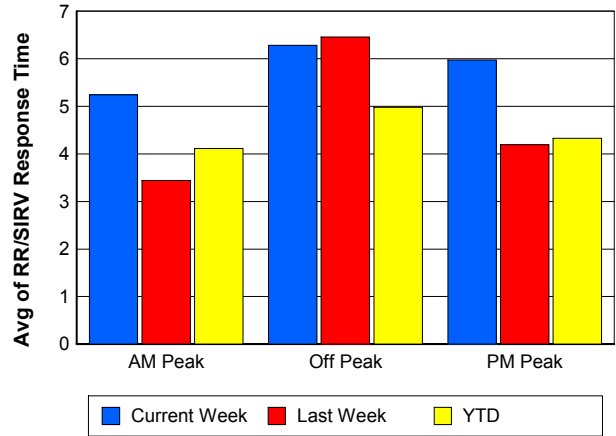
### TMC Response Time



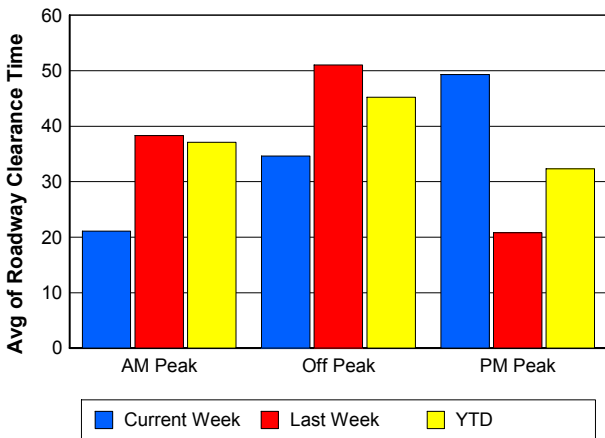
## Road Ranger / SIRV Dispatch Time



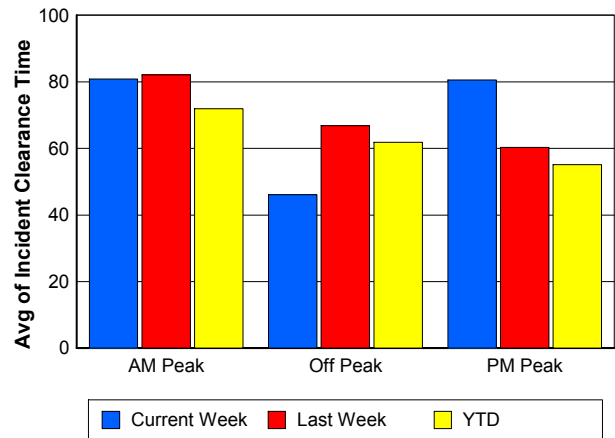
## Road Ranger / SIRV Response Time



## Roadway Clearance Time (2A)



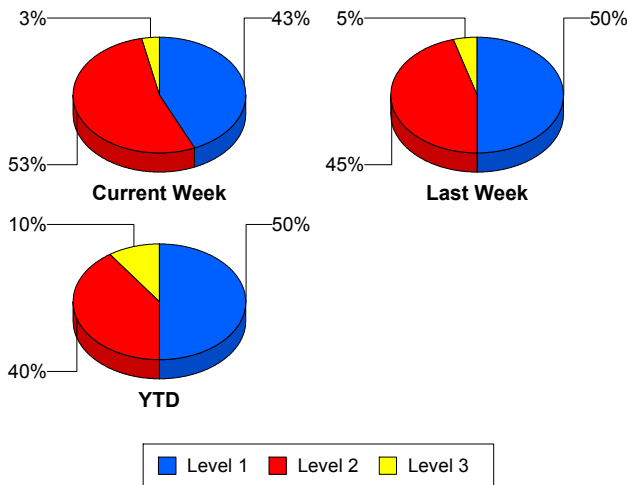
## Incident Clearance Time (3B)



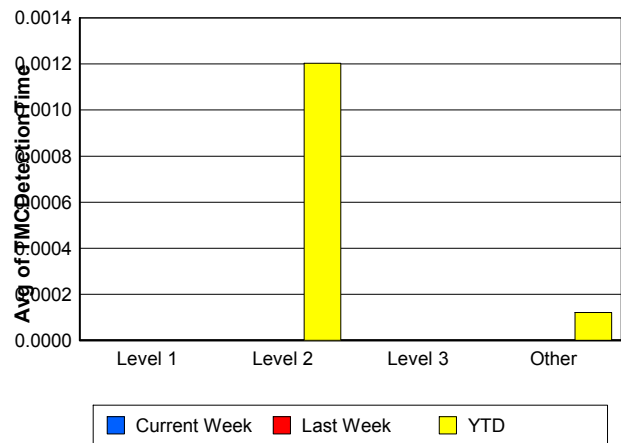
## Performance Measures by Severity

	Level 1			Level 2			Level 3			Other		
	<u>This Week</u>	<u>Last Week</u>	<u>YTD</u>	<u>This Week</u>	<u>Last Week</u>	<u>YTD</u>	<u>This Week</u>	<u>Last Week</u>	<u>YTD</u>	<u>This Week</u>	<u>Last Week</u>	<u>YTD</u>
Number of Events	13	11	120	16	10	97	1	1	23	495	518	4,532
Number of Incidents	13	11	120	16	10	97	1	1	23	0	0	0
TMC Detection (min.)	0.00	0.00	0.00	0.00	0.00	0.00	0.00	0.00	0.00	0.00	0.00	0.00
TMC Verification (min.)	1.33	3.16	3.19	7.42	8.19	11.00	15.25	11.77	7.15	5.08	3.19	4.16
TMC Response (min.)	5.32	5.41	5.57	17.39	12.95	14.98	15.25	11.75	10.34	8.68	6.88	6.64
RR Dispatch Time (min.)	1.47	1.10	0.91	6.36	3.51	4.30	2.08	1.03	3.06	2.89	1.93	2.24
RR Resp. Time (min.)	3.85	4.31	4.66	11.69	9.43	10.81	13.17	10.72	7.27	5.82	5.15	4.46
Event Clearance (min.)	32.50	60.04	45.52	71.29	72.11	69.85	131.73	134.68	120.17	19.44	17.96	18.95
Roadway Clear. (min.)	15.53	19.51	15.35	44.37	58.91	55.63	117.90	31.35	102.26			
Incident Clearance (min.)	32.50	60.04	45.52	71.29	72.11	69.85	131.73	134.68	120.17			
# of Events w/ RR/SIRV	13	11	117	16	10	97	1	1	21	454	470	4,303
RR/SIRV Responses	13	11	117	16	10	97	1	1	21	454	470	4,303
RR/SIRV Activities	15	14	138	17	15	131	2	2	31	476	466	4,502

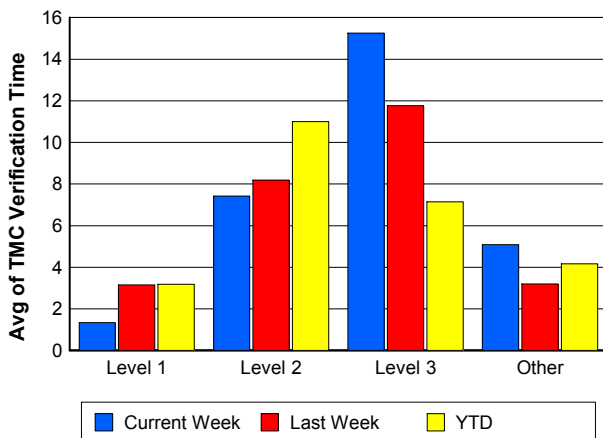
### Number of Events / Severity



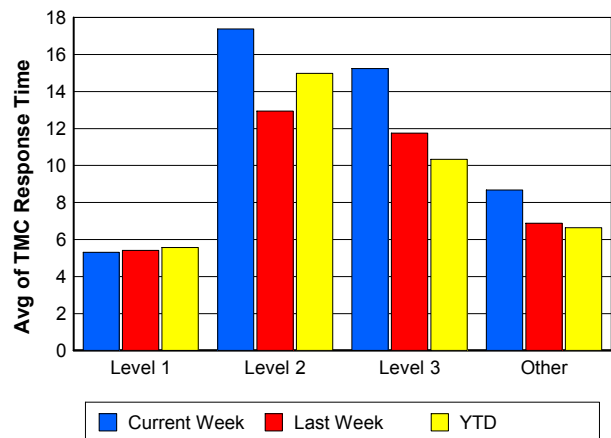
### TMC Detection Time



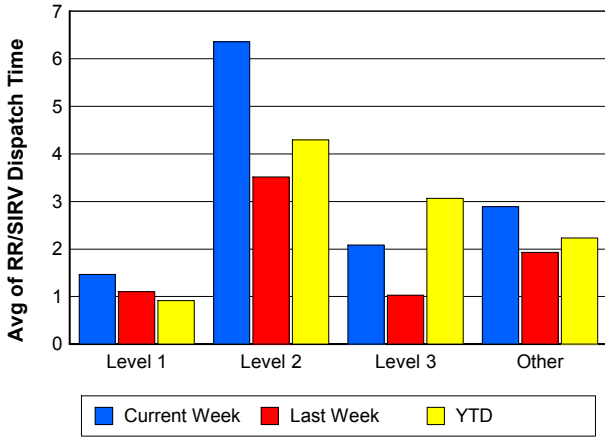
### TMC Verification Time



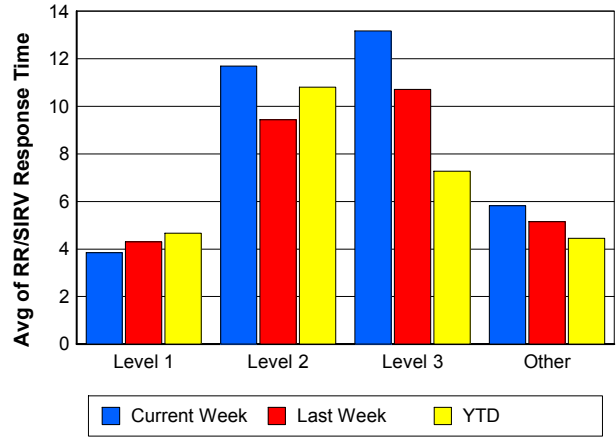
### TMC Response Time



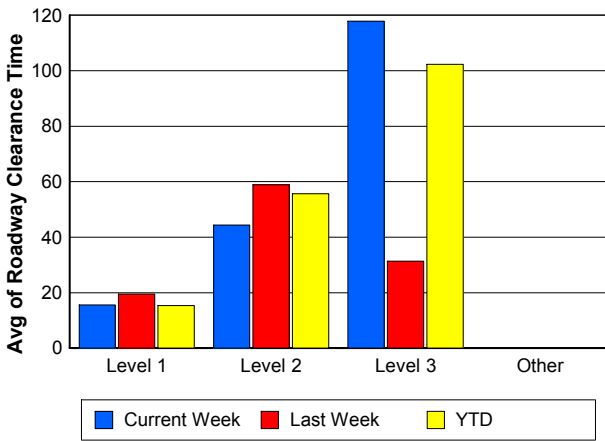
### Road Ranger / SIRV Dispatch Time



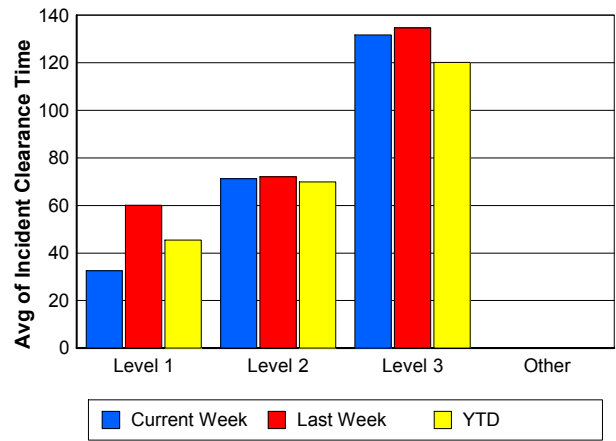
### Road Ranger / SIRV Response Time



### Roadway Clearance Time (2A)



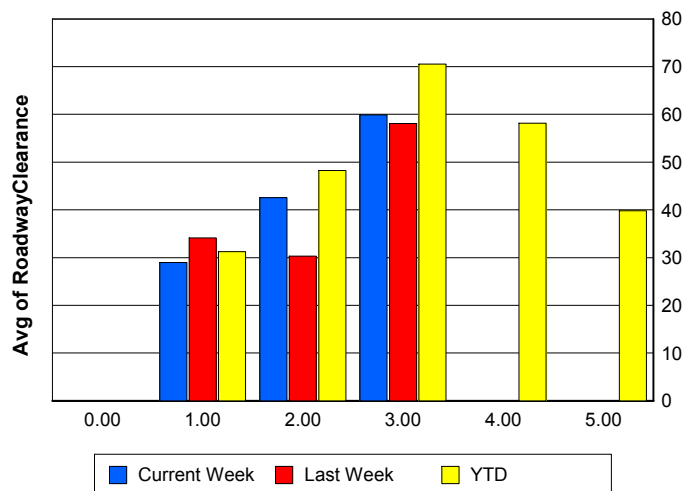
### Incident Clearance Time (3B)



### Roadway Clearance by Maximum Number of Lanes Blocked

	Current Week	Last Week	YTD
0			
1	28.96	34.12	31.27
2	42.56	30.32	48.28
3	59.92	58.08	70.56
4	0.00	0.00	58.15
5	0.00	0.00	39.83

### Roadway Clearance Time (2A)



## Performance Measures by Roadway

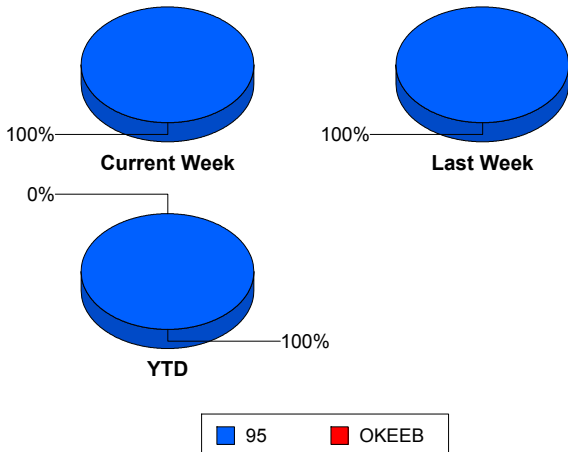
95

	<u>Current Week</u>	<u>Last Week</u>	<u>YTD</u>
Number of Events	525	540	4,771
Number of Incidents	30	22	240
TMC Detection (min.)	0.00	0.00	0.00
TMC Verification (min.)	5.08	3.30	4.29
TMC Response (min.)	8.88	6.99	6.82
RR Dispatch Time (min.)	2.96	1.95	2.25
RR Resp. Time (min.)	5.97	5.24	4.62
Event Clearance (min.)	21.55	20.04	21.14
Roadway Clear. (min.)	34.32	37.96	39.96
Incident Clearance (min.)	56.50	68.92	62.51
# of Events w/ RR/SIRV	484	492	4,537
RR/SIRV Responses	484	492	4,537
RR/SIRV Activities	510	497	4,801

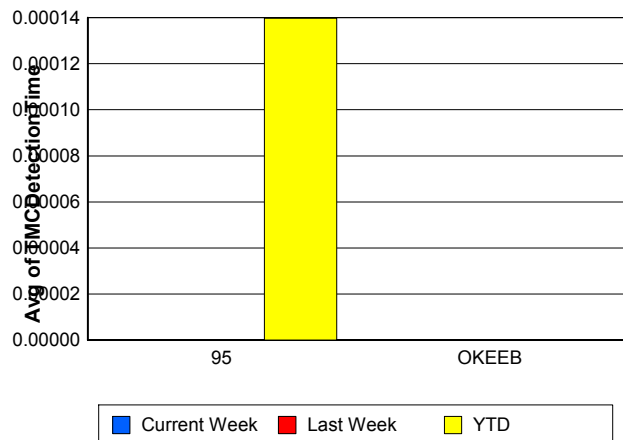
OKEEB

	<u>YTD</u>
Number of Events	1
Number of Incidents	0
TMC Detection (min.)	0.00
TMC Verification (min.)	0.00
TMC Response (min.)	0.00
RR Dispatch Time (min.)	0.00
RR Resp. Time (min.)	0.00
Event Clearance (min.)	18.45
Roadway Clear. (min.)	
Incident Clearance (min.)	
# of Events w/ RR/SIRV	1
RR/SIRV Responses	1
RR/SIRV Activities	1

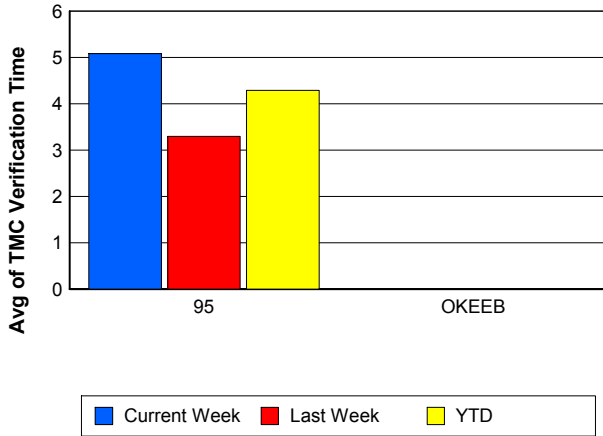
### Number of Events / Roadway



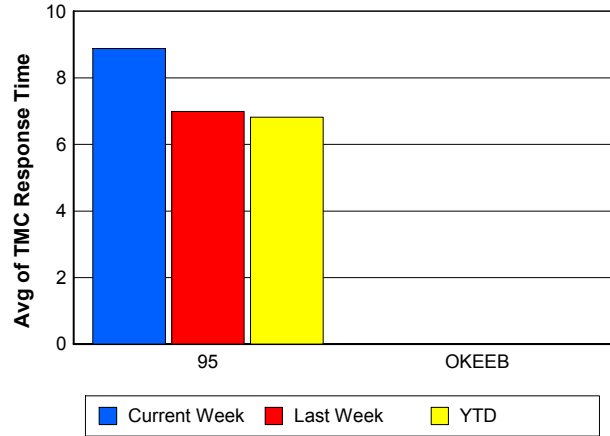
### TMC Detection Time



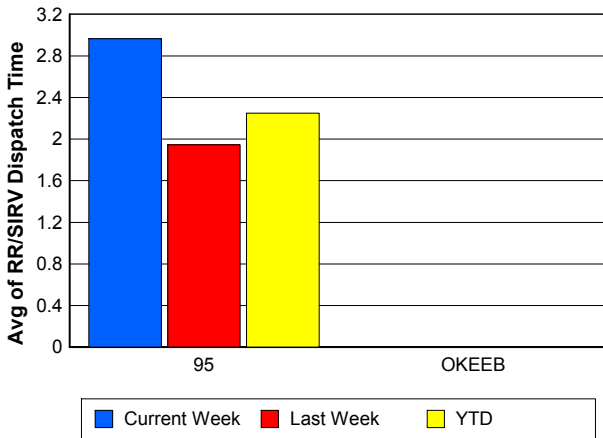
### TMC Verification Time



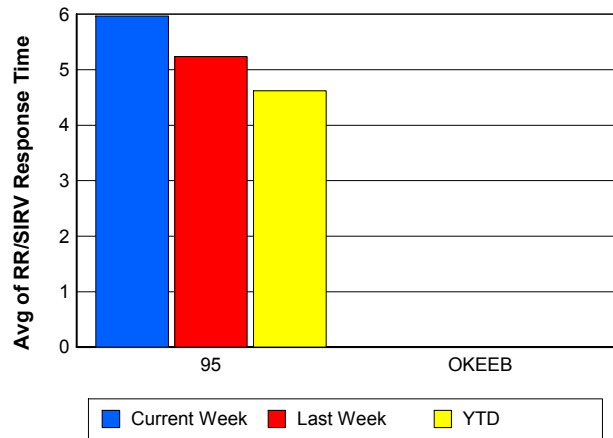
### TMC Response Time



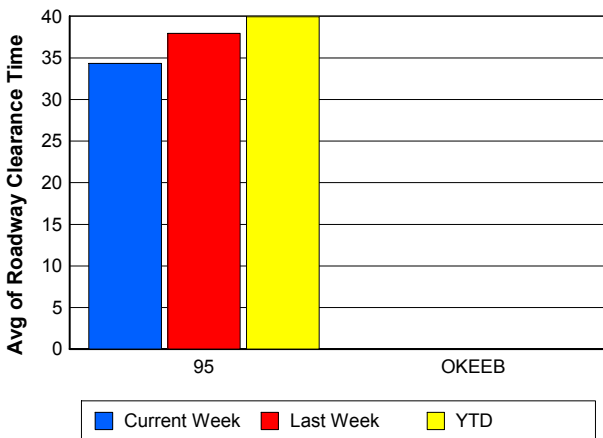
### Road Ranger / SIRV Dispatch Time



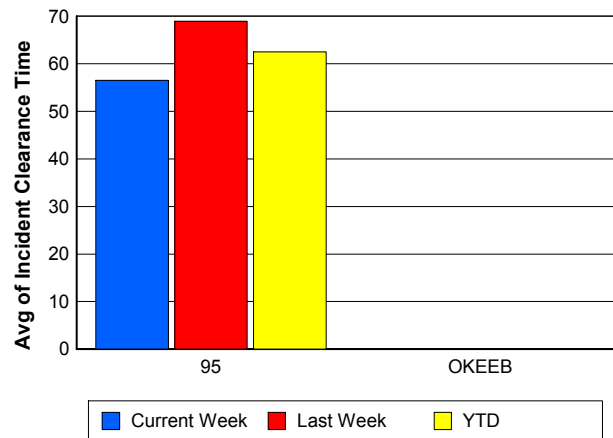
### Road Ranger / SIRV Response Time



### Roadway Clearance Time (2A)



### Incident Clearance Time (3B)



## Performance Measures by Event Type

### Accident

	<u>Current Week</u>	<u>Last Week</u>	<u>YTD</u>
Number of Events	54	32	393
Number of Incidents	26	14	171
TMC Detection (min.)	0.00	0.00	0.00
TMC Verification (min.)	6.65	5.12	7.19
TMC Response (min.)	11.82	7.74	9.99
RR Dispatch Time (min.)	4.65	0.62	2.24
RR Response Time (min.)	7.39	7.19	7.78
Event Clearance (min.)	50.13	53.40	56.42
Roadway Clearance (min.)	36.81	35.85	42.91
Incident Clearance (min.)	62.06	75.62	70.28
# of Events w/ RR/SIRV	52	32	384
RR/SIRV Assists	52	32	384
RR/SIRV Activities	59	39	447

### Debris on Roadway

	<u>Current Week</u>	<u>Last Week</u>	<u>YTD</u>
Number of Events	27	24	280
Number of Incidents	1	0	5
TMC Detection (min.)	0.00	0.00	0.00
TMC Verification (min.)	20.03	11.82	9.65
TMC Response (min.)	21.39	11.80	9.82
RR Dispatch Time (min.)	7.71	1.59	2.99
RR Response Time (min.)	13.39	10.21	6.80
Event Clearance (min.)	24.99	14.77	13.34
Roadway Clearance (min.)	15.07		10.01
Incident Clearance (min.)	15.70		16.45
# of Events w/ RR/SIRV	26	24	277
RR/SIRV Assists	26	24	277
RR/SIRV Activities	26	24	284

### Disabled Vehicle

	<u>Current Week</u>	<u>Last Week</u>	<u>YTD</u>
Number of Events	415	441	3,807
Number of Incidents	3	7	50
TMC Detection (min.)	0.00	0.00	0.00
TMC Verification (min.)	4.25	3.03	3.91
TMC Response (min.)	7.29	6.24	6.05
RR Dispatch Time (min.)	2.31	1.89	2.15
RR Response Time (min.)	5.06	4.58	3.97
Event Clearance (min.)	17.87	18.00	18.16
Roadway Clearance (min.)	19.18	45.52	32.87
Incident Clearance (min.)	21.93	63.05	44.00
# of Events w/ RR/SIRV	385	406	3,662
RR/SIRV Assists	385	406	3,662
RR/SIRV Activities	408	417	3,934

## Emergency Vehicles

	<u>YTD</u>
Number of Events	4
Number of Incidents	3
TMC Detection (min.)	0.00
TMC Verification (min.)	0.00
TMC Response (min.)	0.00
RR Dispatch Time (min.)	0.00
RR Response Time (min.)	0.00
Event Clearance (min.)	65.10
Roadway Clearance (min.)	78.74
Incident Clearance (min.)	79.08
# of Events w/ RR/SIRV	2
RR/SIRV Assists	2
RR/SIRV Activities	2

## Other

	<u>Current Week</u>	<u>Last Week</u>	<u>YTD</u>
Number of Events	25	32	234
Number of Incidents	0	0	1
TMC Detection (min.)	0.00	0.00	0.00
TMC Verification (min.)	0.00	0.00	0.18
TMC Response (min.)	18.16	17.39	13.38
RR Dispatch Time (min.)	5.77	4.77	3.22
RR Response Time (min.)	11.18	10.14	8.91
Event Clearance (min.)	17.71	19.10	18.02
Roadway Clearance (min.)			8.12
Incident Clearance (min.)			24.77
# of Events w/ RR/SIRV	17	21	166
RR/SIRV Assists	17	21	166
RR/SIRV Activities	14	12	99

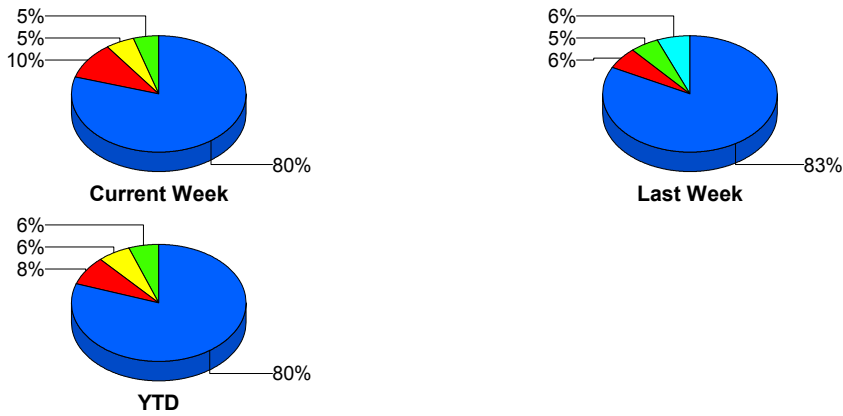
## Police Activity

	<u>Last Week</u>	<u>YTD</u>
Number of Events	5	24
Number of Incidents	1	6
TMC Detection (min.)	0.00	0.00
TMC Verification (min.)	0.00	0.00
TMC Response (min.)	4.07	18.69
RR Dispatch Time (min.)	2.74	2.64
RR Response Time (min.)	0.17	17.32
Event Clearance (min.)	20.74	28.76
Roadway Clearance (min.)	14.55	28.07
Incident Clearance (min.)	16.30	30.24
# of Events w/ RR/SIRV	3	18
RR/SIRV Assists	3	18
RR/SIRV Activities	1	9

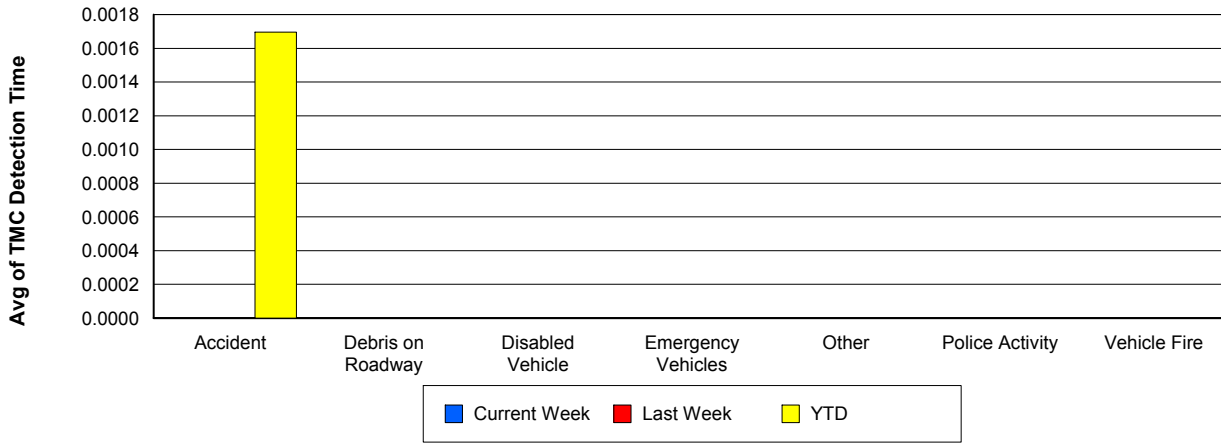
## Vehicle Fire

	<u>YTD</u>
Number of Events	8
Number of Incidents	4
TMC Detection (min.)	0.00
TMC Verification (min.)	3.24
TMC Response (min.)	3.90
RR Dispatch Time (min.)	1.30
RR Response Time (min.)	2.60
Event Clearance (min.)	42.24
Roadway Clearance (min.)	36.49
Incident Clearance (min.)	64.42
# of Events w/ RR/SIRV	7
RR/SIRV Assists	7
RR/SIRV Activities	7

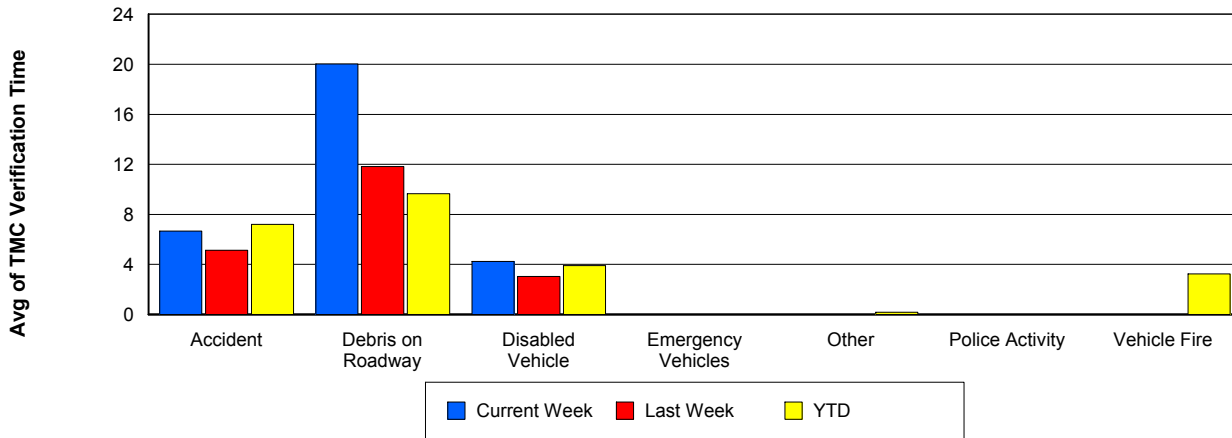
## Number of Events / Event Type



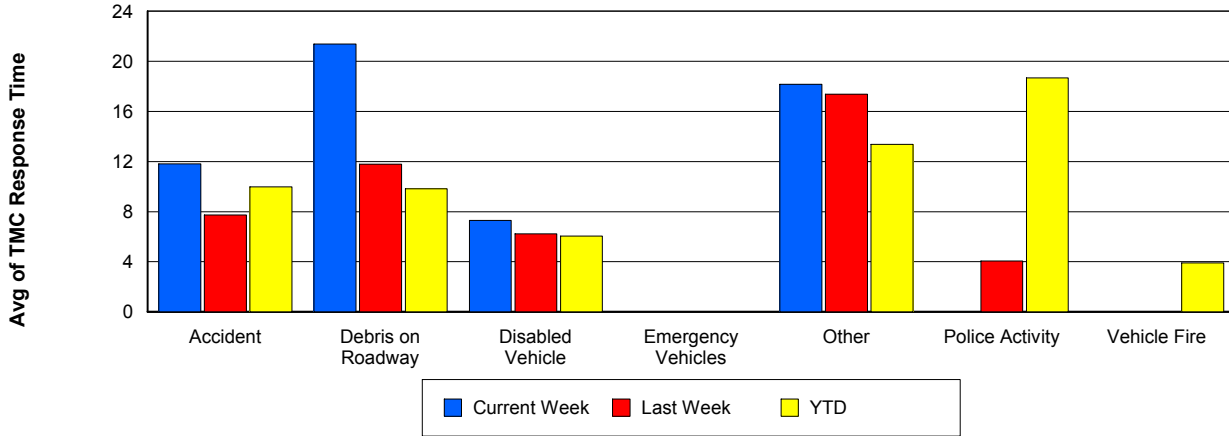
## TMC Detection Time



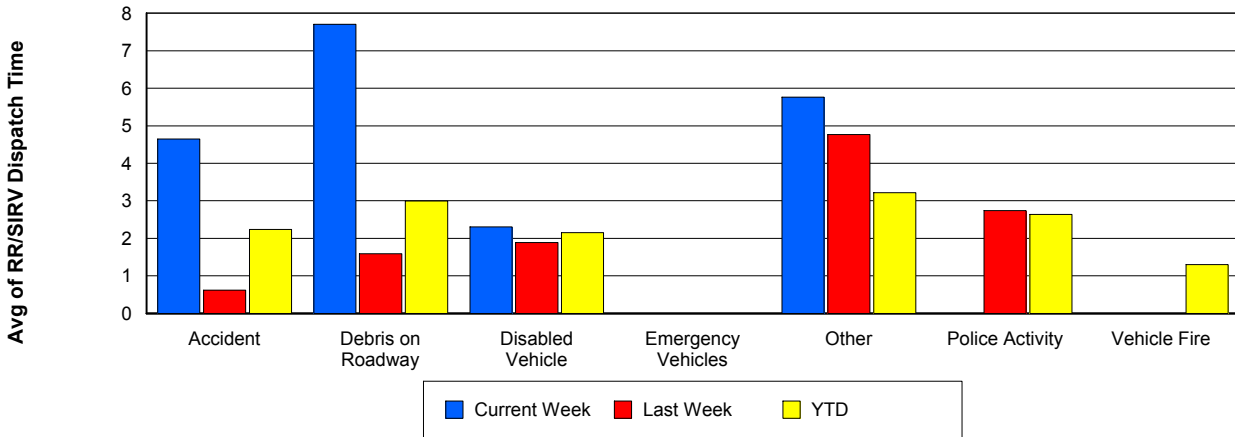
## TMC Verification Time



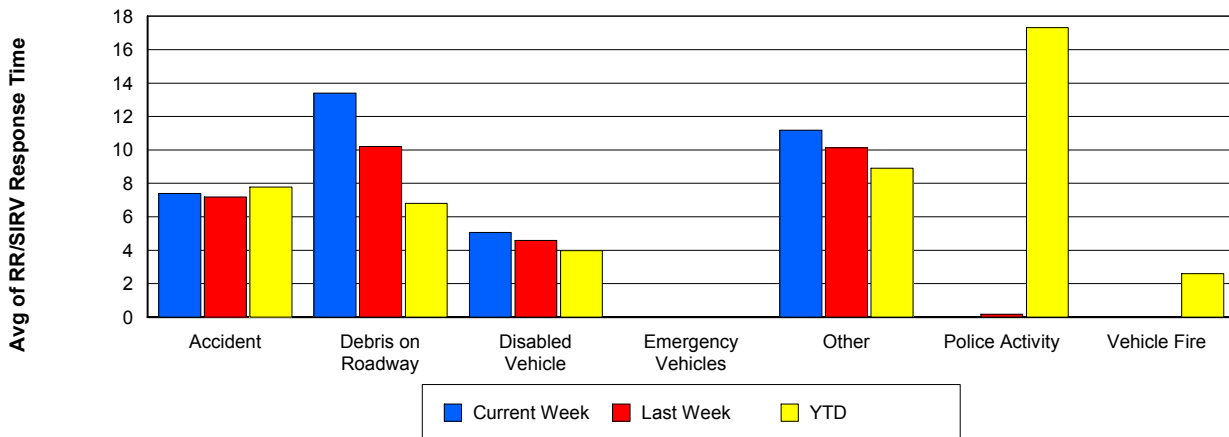
## TMC Response Time



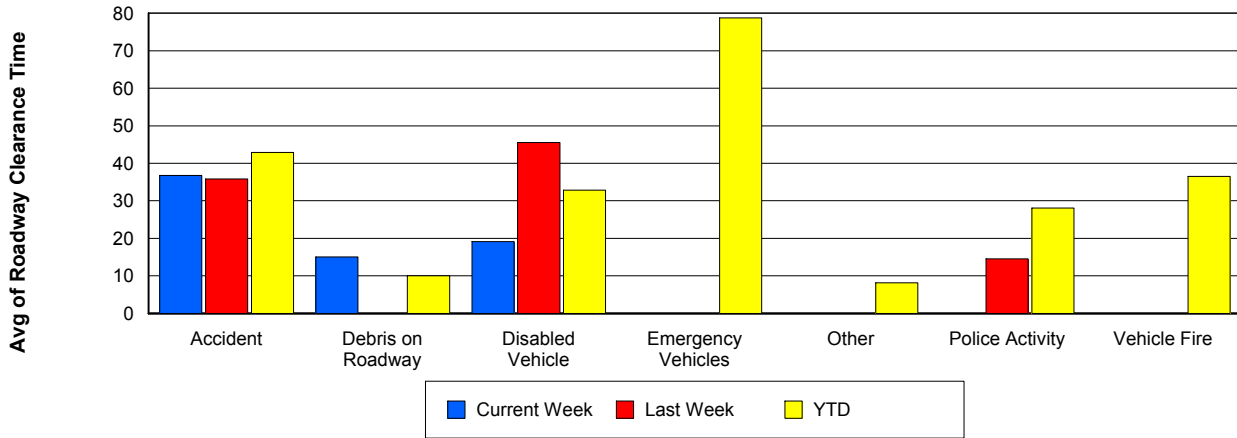
## Road Ranger / SIRV Dispatch Time



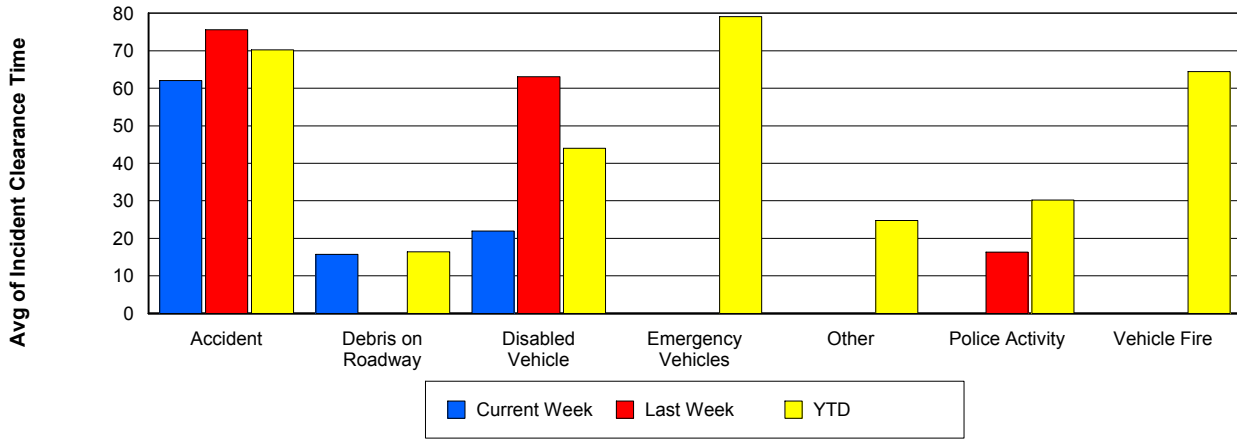
## Road Ranger / SIRV Response Time



## Roadway Clearance Time (2A)



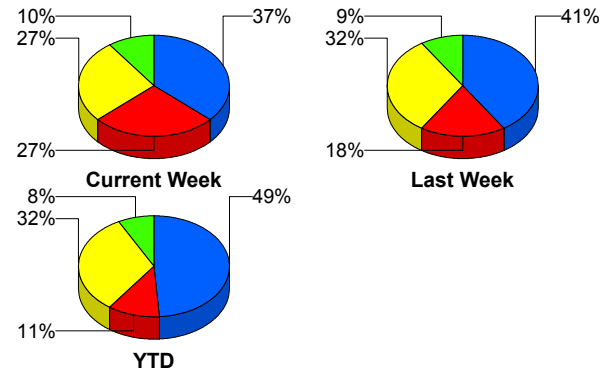
## Incident Clearance Time (3B)



## Incident Detection Methods

	Current Week	Last Week	YTD
Broward Road Ranger	1	0	3
Broward TMC	1	0	4
District 4	1	0	6
FDOT Maintenance	0	1	1
FHP	11	9	117
ITMS CCTV	8	4	27
Media	0	1	1
Motorist	0	0	4
Palm Beach Road Ran	8	7	77
<b>Total</b>	<b>30</b>	<b>22</b>	<b>240</b>

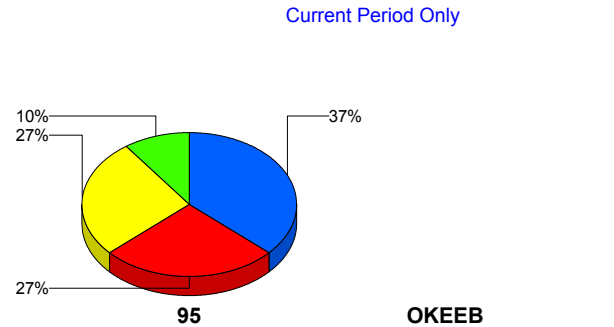
### Total Incidents by Detection Method



## Incident Detection Methods by Roadway

		Current Week	Last Week	YTD
95	Broward Road Ranger	1	0	3
	Broward TMC	1	0	4
	District 4	1	0	6
	FDOT Maintenance	0	1	1
	FHP	11	9	117
	ITMS CCTV	8	4	27
	Media	0	1	1
	Motorist	0	0	4
	Palm Beach Road Ran	8	7	77
	<b>Total</b>	<b>30</b>	<b>22</b>	<b>240</b>
<b>Total</b>	<b>30</b>	<b>22</b>	<b>240</b>	

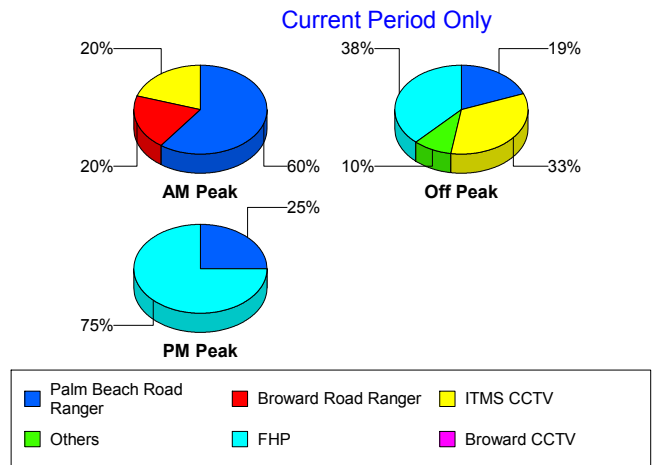
### Total Events by Roadway and Detection Method



## Incident Detection Methods by Peak Period

		Current Week	Last Week	YTD
AM Peak	Broward Road Ranger	1	0	2
	District 4	0	0	1
	FHP	0	2	27
	ITMS CCTV	1	0	5
	Media	0	1	1
	Palm Beach Road Ran	3	3	21
	<b>Total</b>	<b>5</b>	<b>6</b>	<b>57</b>
Off Peak	Broward Road Ranger	0	0	1
	Broward TMC	1	0	2
	District 4	1	0	3
	FDOT Maintenance	0	1	1
	FHP	8	5	58
	ITMS CCTV	7	2	18
	Motorist	0	0	2
	Palm Beach Road Ran	4	1	36
	<b>Total</b>	<b>21</b>	<b>9</b>	<b>121</b>
PM Peak	Broward TMC	0	0	2
	District 4	0	0	2
	FHP	3	2	32
	ITMS CCTV	0	2	4
	Motorist	0	0	2
	Palm Beach Road Ran	1	3	20
	<b>Total</b>	<b>4</b>	<b>7</b>	<b>62</b>
<b>Total</b>	<b>30</b>	<b>22</b>	<b>240</b>	

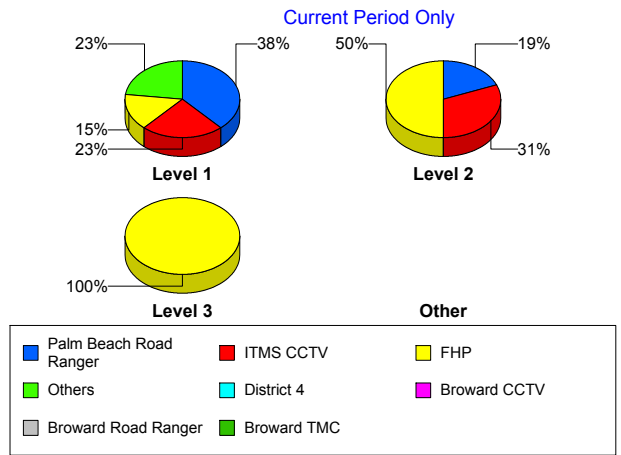
Total Events by Peak Period and Detection Method



## Incident Detection Methods by Severity

		Current Week	Last Week	YTD
Level 1	Broward Road Ranger	1	0	3
	Broward TMC	1	0	2
	District 4	1	0	4
	FHP	2	4	42
	ITMS CCTV	3	2	13
	Motorist	0	0	3
	Palm Beach Road Ran	5	5	53
	<b>Total</b>	<b>13</b>	<b>11</b>	<b>120</b>
Level 2	Broward TMC	0	0	2
	District 4	0	0	1
	FDOT Maintenance	0	1	1
	FHP	8	5	63
	ITMS CCTV	5	2	12
	Motorist	0	0	1
	Palm Beach Road Ran	3	2	17
	<b>Total</b>	<b>16</b>	<b>10</b>	<b>97</b>
Level 3	District 4	0	0	1
	FHP	1	0	12
	ITMS CCTV	0	0	2
	Media	0	1	1
	Palm Beach Road Ran	0	0	7
	<b>Total</b>	<b>1</b>	<b>1</b>	<b>23</b>
<b>Total</b>	<b>30</b>	<b>22</b>	<b>240</b>	

**Total Events by Severity and Detection Method**



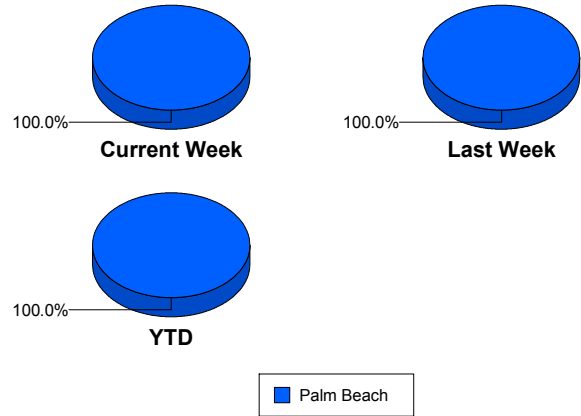
# Road Ranger / SIRV Performance Measures

## Road Ranger / SIRV Performance By County

Values presented are:  
 - Total Events with a RR/SIRV Response  
 - Total RR/SIRV Responses,  
 - Total Activities Performed

	Current We	Last Week	YTD
Palm Beach	593	598	5,778
	609	616	5,969
	642	650	6,315

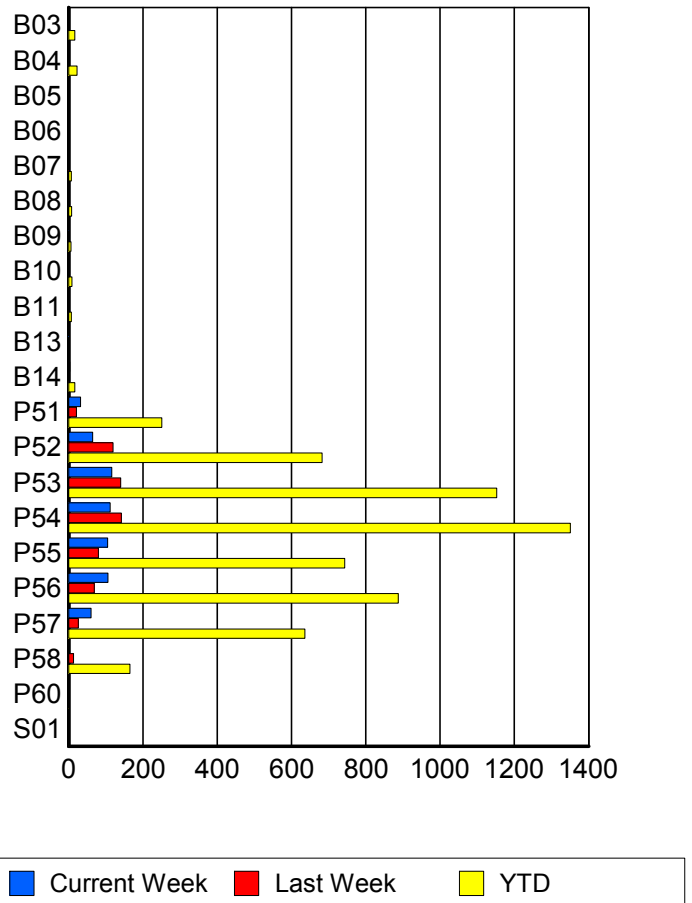
RR/SIRV Responses per County



## Road Ranger / SIRV Performance By Truck

	Current We	Last Week	YTD
B03	2	1	17
	2	1	17
	2	1	18
B04	2	1	23
	2	1	23
	2	1	24
B05	0	1	2
	0	1	2
	0	1	2
B06	0	0	1
	0	0	1
	0	0	3
B07	0	1	7
	0	1	7
	0	1	7
B08	0	0	8
	0	0	8
	0	0	8
B09	1	0	6
	1	0	6
	1	0	7
B10	2	0	9
	2	0	9
	2	0	9
B11	0	0	7
	0	0	7
	0	0	7

RR/SIRV Responses per Truck



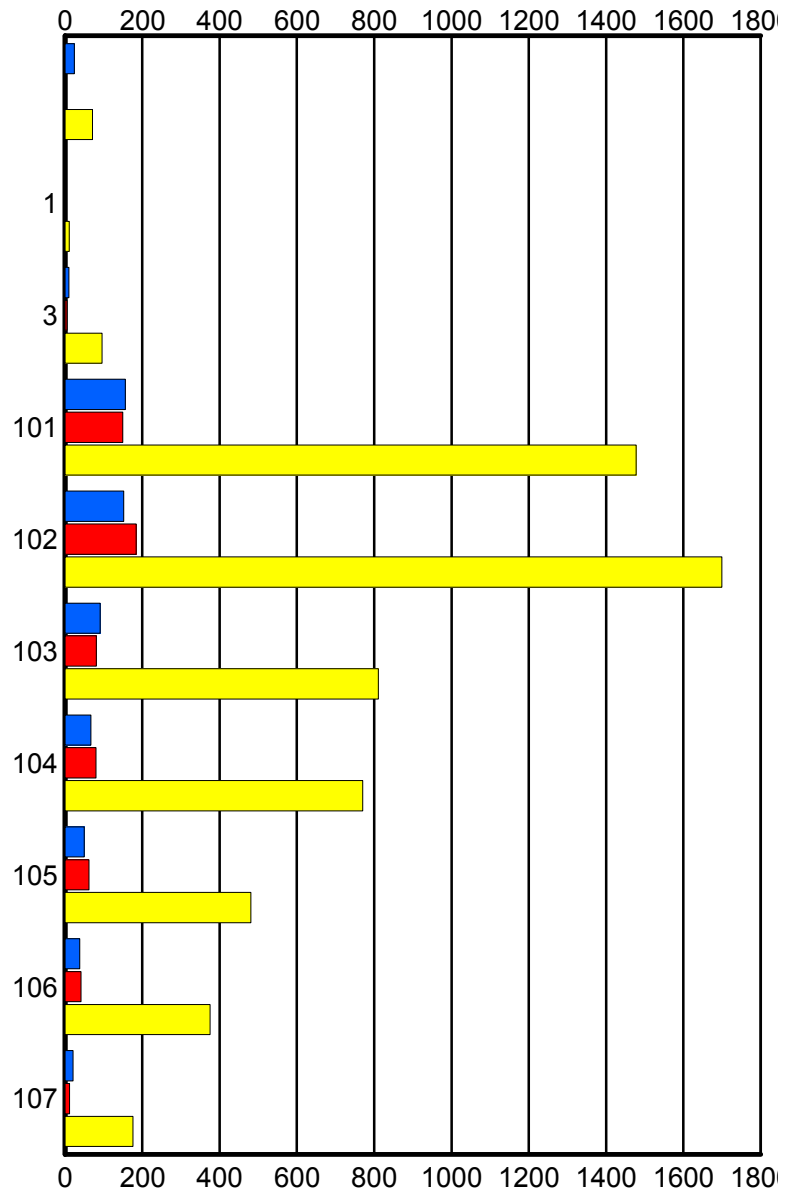
	Current We	Last Week	YTD
B13	1	0	2
	1	0	2
	1	0	2
B14	3	1	17
	3	1	17
	3	1	17
P51	32	20	249
	32	21	251
	32	22	262
P52	65	119	674
	65	120	682
	68	129	726
P53	116	138	1,139
	116	140	1,152
	126	144	1,217
P54	111	140	1,331
	112	142	1,351
	119	145	1,426
P55	105	79	735
	105	80	743
	110	86	778
P56	106	69	877
	106	69	887
	111	76	951
P57	59	26	624
	60	26	636
	63	29	668
P58	2	12	163
	2	13	165
	2	14	180
P60	0	0	1
	0	0	1
	0	0	1
S01	0	0	2
	0	0	2
	0	0	2

### Road Ranger / SIRV Performance By Beat

	Current We	Last Week	YTD
	24	2	71
	24	2	71
	26	2	78
1	0	0	10
	0	0	11
	0	0	11
3	10	5	95
	10	5	96
	10	5	101
101	155	147	1,451
	156	149	1,478
	166	155	1,554
102	150	181	1,672
	152	184	1,700
	160	196	1,798
103	91	79	805
	91	81	811
	96	86	854
104	67	80	762
	67	80	770
	70	86	824
105	50	62	476
	50	62	481
	54	66	514
106	38	41	370
	38	41	375
	38	41	387
107	21	11	174
	21	12	176
	22	13	194

Values presented are:  
 - Total Events with a RR/SIRV Response  
 - Total RR/SIRV Responses,  
 - Total Activities Performed

### RR/SIRV Responses per Beat

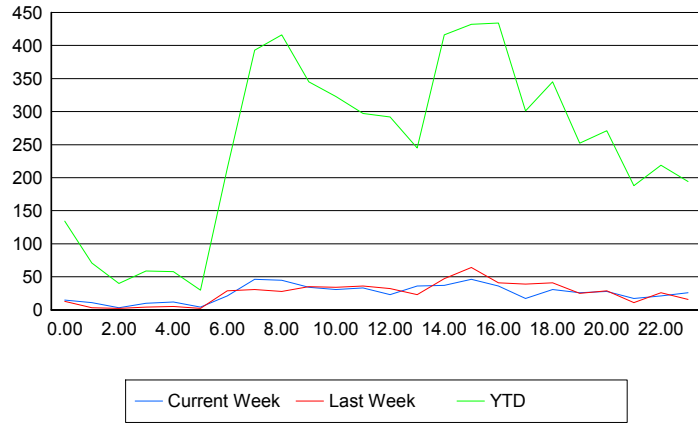


## Road Ranger / SIRV Performance By Time of Day

Values presented are:  
 - Total Events with a RR/SIRV Response  
 - Total RR/SIRV Responses,  
 - Total Activities Performed

	Current We	Last Week	YTD
12AM-1AM	15 15 17	11 13 17	130 134 148
1AM-2AM	11 11 11	2 3 4	69 71 73
2AM-3AM	3 3 3	2 2 2	39 40 42
3AM-4AM	10 10 11	4 4 4	59 59 63
4AM-5AM	11 12 12	5 5 5	57 58 62
5AM-6AM	4 4 4	2 2 2	24 30 31
6AM-7AM	21 21 21	27 29 32	201 214 229
7AM-8AM	44 46 48	30 31 33	383 393 416
8AM-9AM	44 45 47	27 28 29	397 416 435
9AM-10AM	33 34 36	34 35 37	336 345 366
10AM-11AM	31 31 32	33 34 35	311 323 342
11AM-12PM	32 33 35	36 36 36	289 297 314
12PM-1PM	22 23 24	30 32 32	277 292 303

## Number of Responses / Hour of the Day



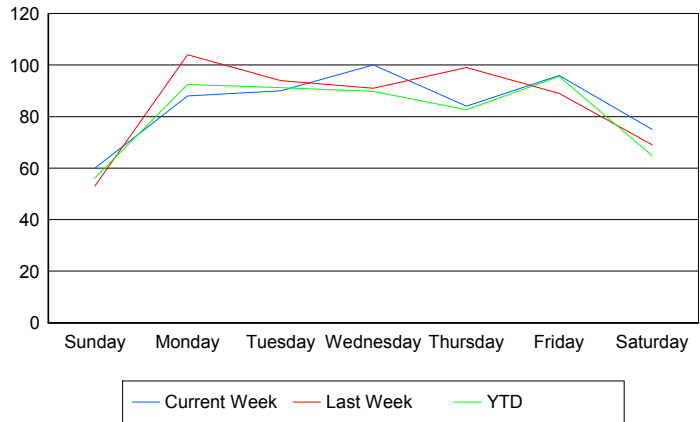
	Current We	Last Week	YTD
1PM-2PM	34	21	232
	36	23	245
	36	25	259
2PM-3PM	37	46	404
	37	47	416
	41	51	441
3PM-4PM	45	64	425
	46	64	432
	48	67	456
4PM-5PM	35	40	418
	36	41	434
	38	44	462
5PM-6PM	17	38	294
	17	39	301
	19	42	323
6PM-7PM	30	40	339
	31	41	345
	31	43	362
7PM-8PM	24	25	243
	26	25	252
	27	25	263
8PM-9PM	27	29	265
	28	29	271
	29	29	282
9PM-10PM	16	10	180
	17	11	188
	21	13	200
10PM-11PM	21	26	215
	21	26	219
	22	26	233
11PM-12AM	26	16	191
	26	16	194
	29	17	210

## Road Ranger / SIRV Performance By Day of Week

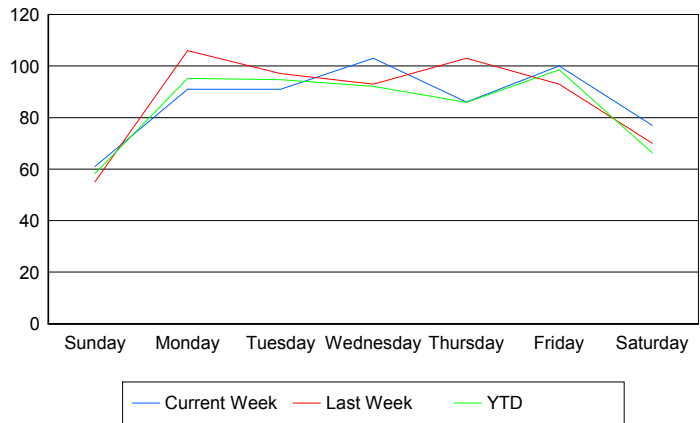
Values presented are:  
 - Total Events with a RR/SIRV Response  
 - Total RR/SIRV Responses,  
 - Total Activities Performed

	Current We	Last Week	YTD
Sunday	60	52	555
	61	54	575
	64	61	607
Monday	88	104	893
	91	106	920
	95	113	976
Tuesday	90	94	906
	91	97	939
	96	104	994
Wednesday	100	91	889
	103	93	912
	107	97	972
Thursday	84	99	819
	86	103	851
	90	108	911
Friday	96	89	1,022
	100	93	1,055
	108	97	1,105
Saturday	75	69	701
	77	70	717
	82	70	750

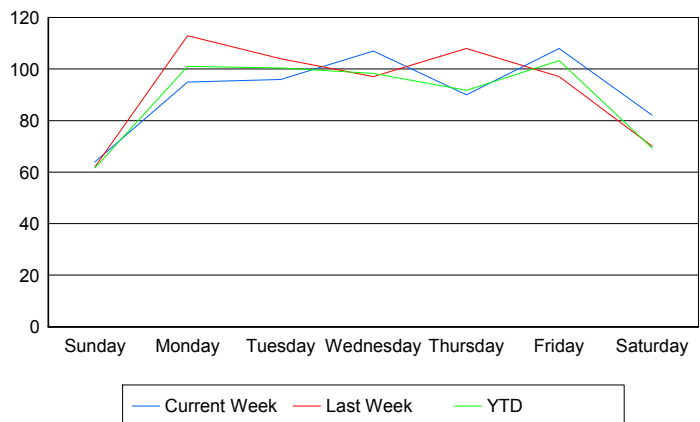
### Avg # of events with a RR/SIRV Response per Day of the Week



### Avg # of RR/SIRV Responses per Day of the Week



### Avg # of RR/SIRV Activities Performed per Day of the Week



### Road Ranger / SIRV Responses per Time of Day and Day of Week

