



Weekly Performance Measures Report Palm Beach County



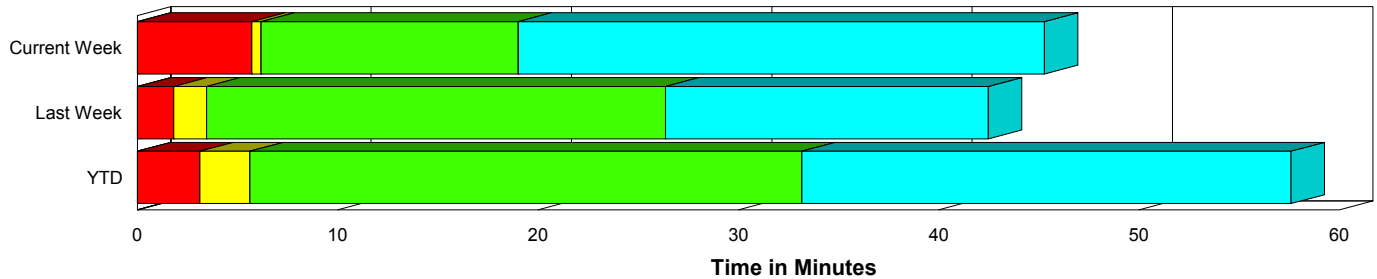
Created on:
May 11, 2009
8:57 am

Period From May 3, 2009 to May 9, 2009

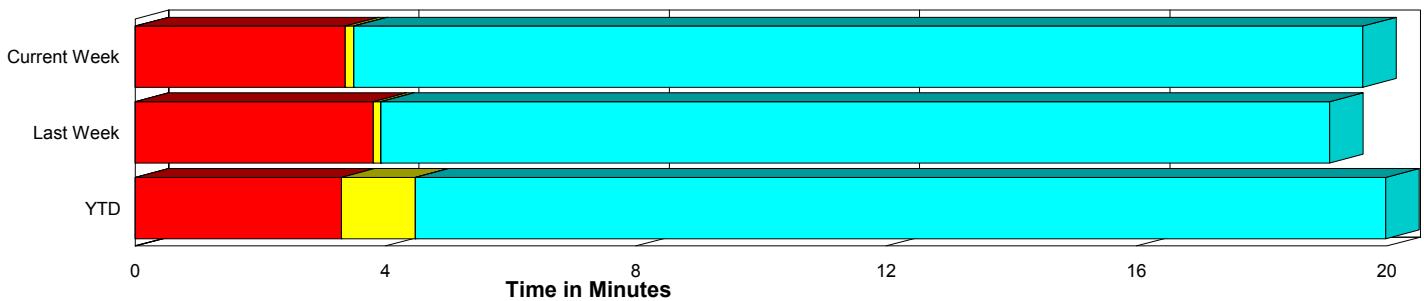
Performance Measures Summary

	Traffic Events (No Lanes Blocked)			Incidents (Lanes Blocked)		
	<u>This Week</u>	<u>Last Week</u>	<u>YTD</u>	<u>This Week</u>	<u>Last Week</u>	<u>YTD</u>
Number of Events	301	282	5,215	17	16	370
TMC Detection (min.)	0.00	0.00	0.00	0.00	0.00	0.00
TMC Verification (min.)	3.35	3.81	3.29	5.71	1.82	3.12
TMC Response (min.)	4.03	4.44	5.36	8.57	4.89	6.36
RR Dispatch Time (min.)	0.76	1.26	1.75	1.26	0.96	2.45
RR Response Time (min.)	3.27	3.19	3.66	7.31	3.93	3.91
Roadway Clearance (min.)				30.58	36.42	37.36
Event Clearance (min.)	20.15	19.60	20.87	56.79	52.43	61.58
# of Events w/ RR/SIRV	253	247	4,198	12	9	293
RR/SIRV Responses	253	247	4,198	12	9	293
RR/SIRV Activities	274	269	4,552	16	10	434

Incident Clearance Time-Line



Traffic Event (Non-Lane Blockage) Time-Line



■ Avg. TMC Detection Time	■ Avg. Time from TMC Response to Roadway Clearance*
■ Avg. Time from TMC Detection to TMC Verification	■ Avg. Time from Roadway Clearance to Incident/Event Clearance**
■ Avg. Time from TMC Verification to TMC Response	

* Roadway clearance equals all travel lanes open

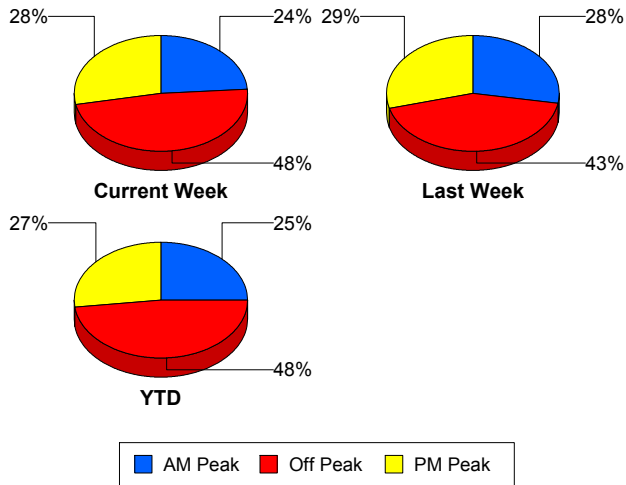
** Incident clearance equals time when last responder has left the scene

Performance Measures by Peak Period

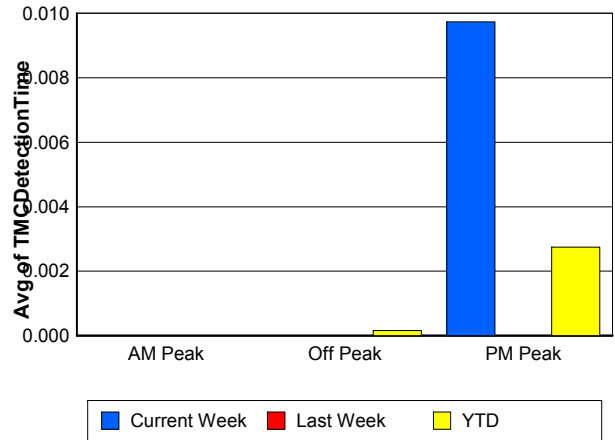
Note: AM peak period is defined as 6am to 10am and PM peak period is defined as 3pm to 7pm.

	AM Peak			Off Peak			PM Peak		
	<u>Current Week</u>	<u>Last Week</u>	<u>YTD</u>	<u>Current Week</u>	<u>Last Week</u>	<u>YTD</u>	<u>Current Week</u>	<u>Last Week</u>	<u>YTD</u>
Number of Events	76	83	1,393	153	128	2,681	89	87	1,511
Number of Incidents	4	4	107	8	7	158	5	5	105
TMC Detection (min.)	0.00	0.00	0.00	0.00	0.00	0.00	0.01	0.00	0.00
TMC Verification (min.)	2.53	3.38	2.92	3.79	4.56	2.88	3.75	2.75	4.33
TMC Response (min.)	2.88	3.81	4.09	5.23	6.23	6.55	4.05	2.95	5.28
RR Dispatch Time (min.)	0.61	0.58	0.99	0.88	2.19	2.75	0.78	0.76	1.33
RR Response Time (min.)	2.27	3.26	3.15	4.35	4.04	3.83	3.27	2.19	3.97
Event Clearance (min.)	24.83	18.57	21.63	22.54	26.15	26.76	19.05	17.00	19.69
Roadway Clearance (min.)	28.74	21.92	36.30	34.78	37.42	42.92	25.33	46.61	30.10
Incident Clearance (min.)	67.65	35.44	60.43	58.56	64.42	71.36	45.26	49.24	48.03
# of Events w/ RR/SIRV	70	78	1,322	112	97	1,768	83	81	1,401
RR/SIRV Responses	70	78	1,322	112	97	1,768	83	81	1,401
RR/SIRV Activities	76	84	1,501	123	108	1,960	91	87	1,525

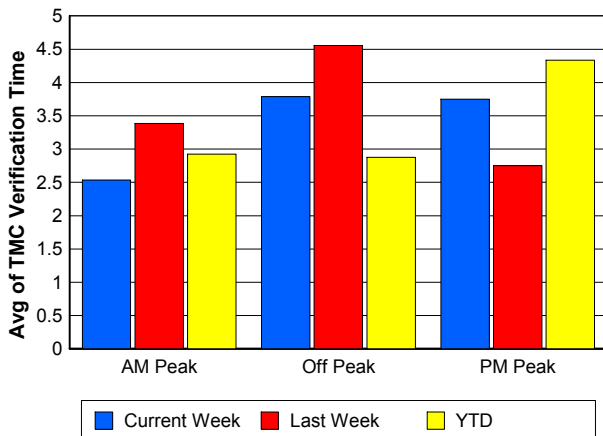
Number of Events / Peak Period



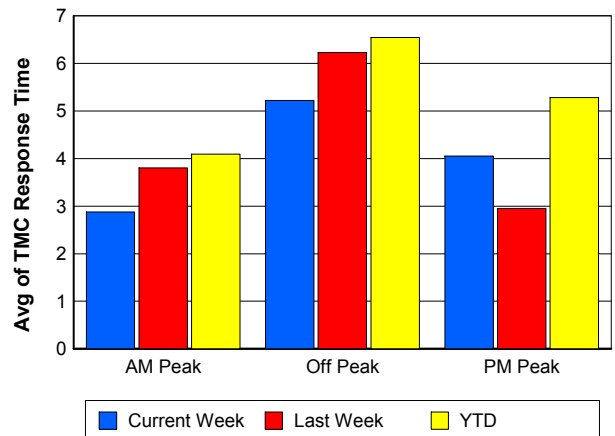
TMC Detection Time



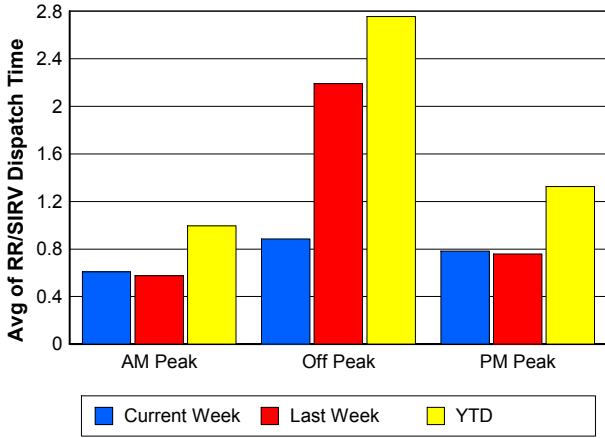
TMC Verification Time



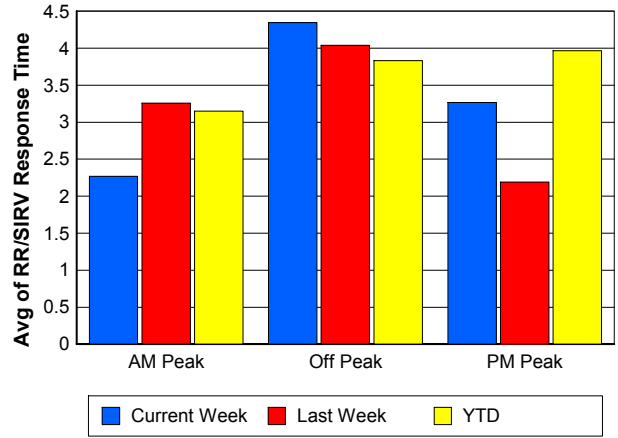
TMC Response Time



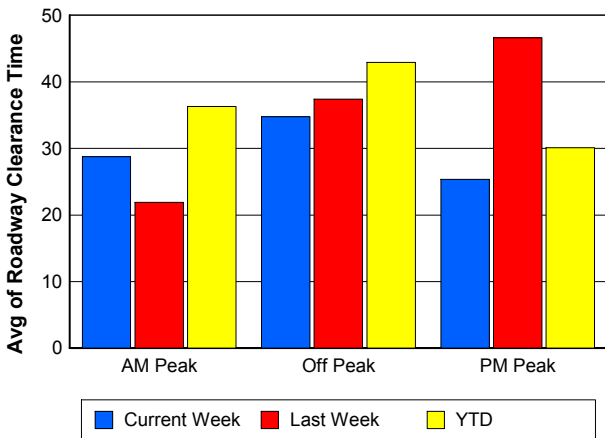
Road Ranger / SIRV Dispatch Time



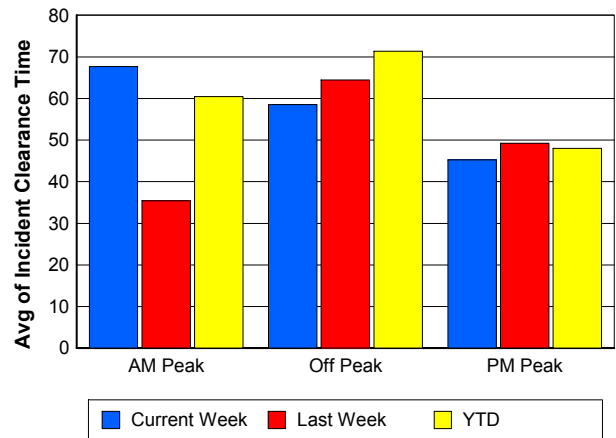
Road Ranger / SIRV Response Time



Roadway Clearance Time (2A)



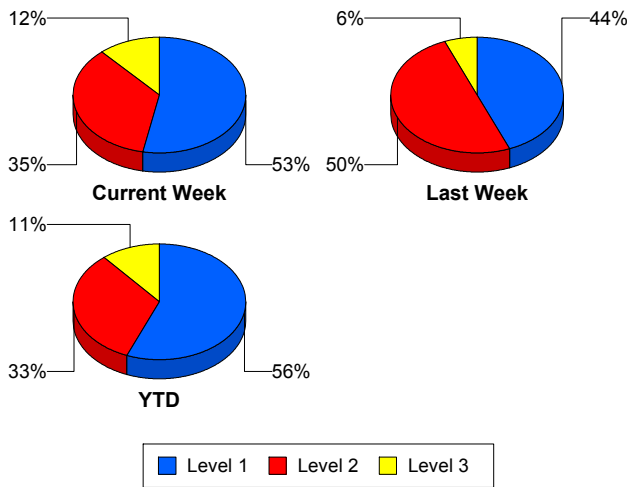
Incident Clearance Time (3B)



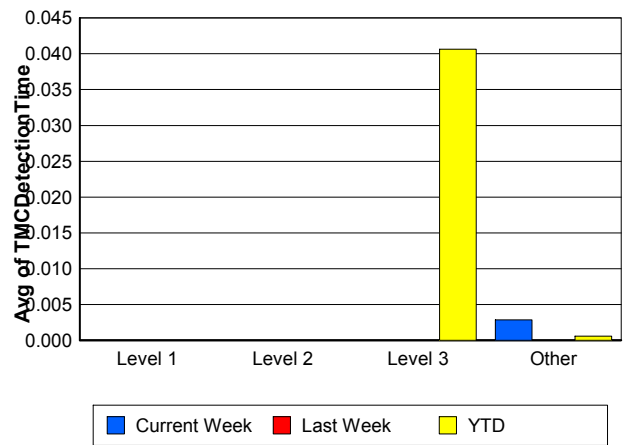
Performance Measures by Severity

	Level 1			Level 2			Level 3			Other		
	<u>This Week</u>	<u>Last Week</u>	<u>YTD</u>	<u>This Week</u>	<u>Last Week</u>	<u>YTD</u>	<u>This Week</u>	<u>Last Week</u>	<u>YTD</u>	<u>This Week</u>	<u>Last Week</u>	<u>YTD</u>
Number of Events	9	7	208	6	8	121	2	1	41	301	282	5,215
Number of Incidents	9	7	208	6	8	121	2	1	41	0	0	0
TMC Detection (min.)	0.00	0.00	0.00	0.00	0.00	0.00	0.00	0.00	0.04	0.00	0.00	0.00
TMC Verification (min.)	10.13	1.68	2.30	0.99	2.18	3.94	0.00	0.00	4.89	3.35	3.81	3.29
TMC Response (min.)	12.11	4.42	4.04	2.96	5.81	8.31	0.00		15.29	4.03	4.44	5.36
RR Dispatch Time (min.)	1.41	1.01	0.99	1.88	0.87	2.89	0.00		10.47	0.76	1.26	1.75
RR Resp. Time (min.)	10.70	3.42	3.05	1.08	4.94	5.42	0.00		4.81	3.27	3.19	3.66
Event Clearance (min.)	39.48	30.76	39.50	90.07	76.86	76.95	34.83	8.72	128.24	20.15	19.60	20.87
Roadway Clear. (min.)	17.71	17.96	14.33	51.28	55.88	52.48	26.41	9.83	109.63			
Incident Clearance (min.)	39.48	30.76	39.50	90.07	76.86	76.95	34.83	8.72	128.24			
# of Events w/ RR/SIRV	8	6	180	2	3	85	2	0	28	253	247	4,198
RR/SIRV Responses	8	6	180	2	3	85	2	0	28	253	247	4,198
RR/SIRV Activities	12	6	238	2	4	146	2	0	50	274	269	4,552

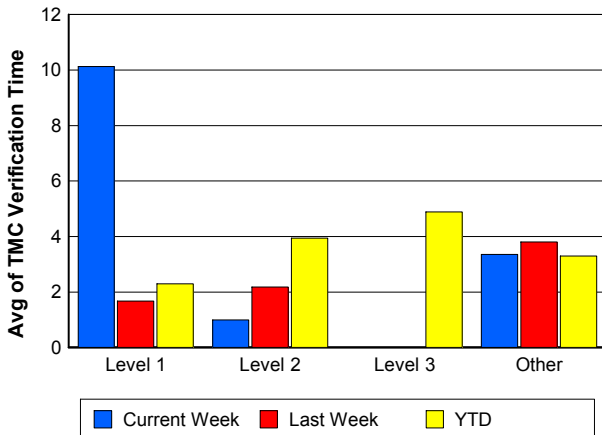
Number of Events / Severity



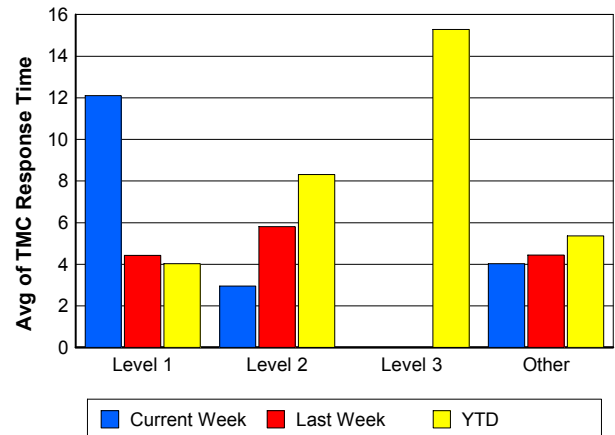
TMC Detection Time



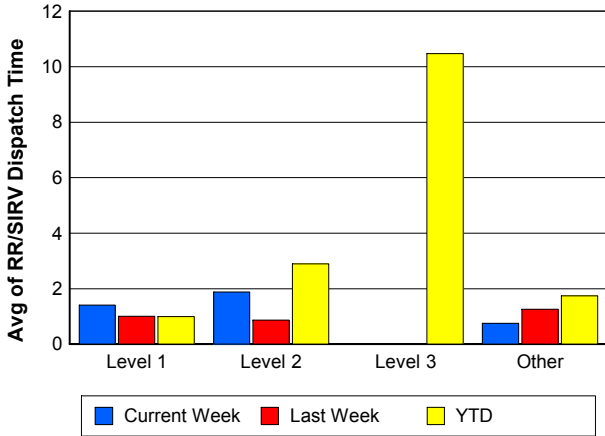
TMC Verification Time



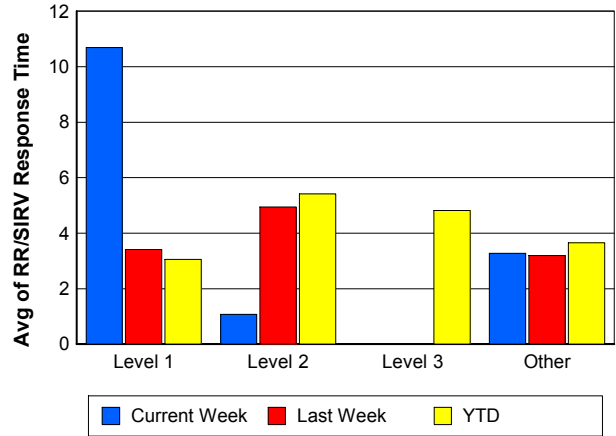
TMC Response Time



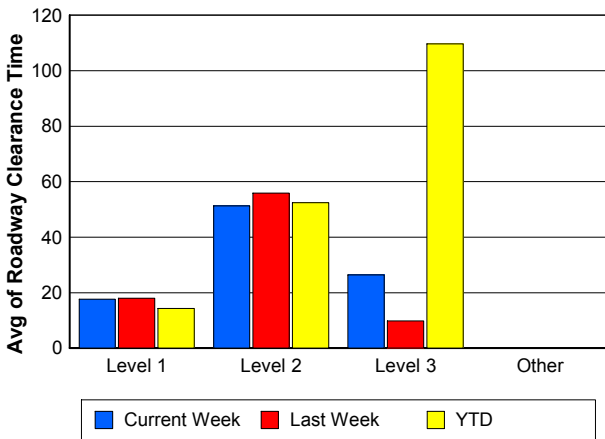
Road Ranger / SIRV Dispatch Time



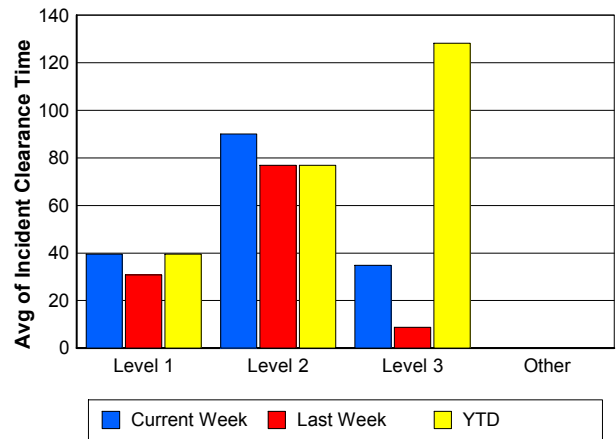
Road Ranger / SIRV Response Time



Roadway Clearance Time (2A)



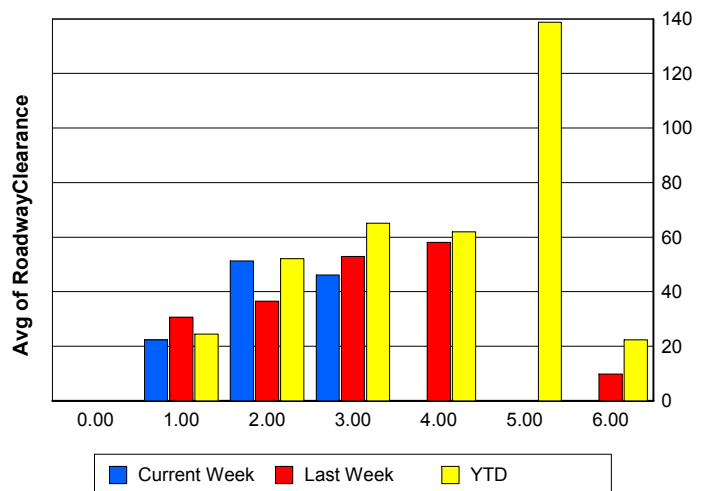
Incident Clearance Time (3B)



Roadway Clearance by Maximum Number of Lanes Blocked

	Current Week	Last Week	YTD
0			
1	22.38	30.71	24.47
2	51.30	36.48	52.12
3	46.08	52.88	65.14
4	0.00	58.10	61.95
5	0.00	0.00	138.82
6	0.00	9.83	22.35

Roadway Clearance Time (2A)



Performance Measures by Roadway

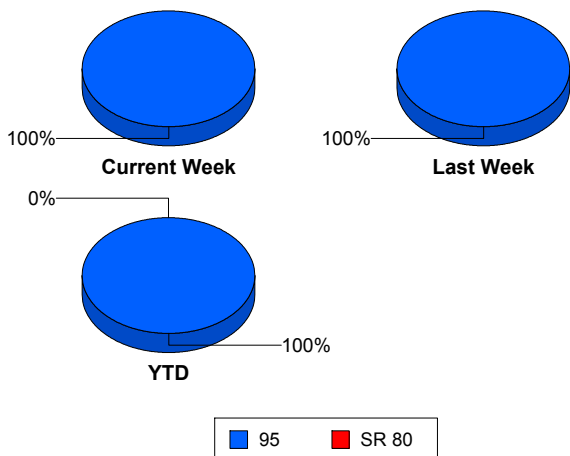
95

	<u>Current Week</u>	<u>Last Week</u>	<u>YTD</u>
Number of Events	318	298	5,583
Number of Incidents	17	16	369
TMC Detection (min.)	0.00	0.00	0.00
TMC Verification (min.)	3.48	3.70	3.28
TMC Response (min.)	4.23	4.46	5.43
RR Dispatch Time (min.)	0.78	1.25	1.79
RR Resp. Time (min.)	3.46	3.22	3.67
Event Clearance (min.)	22.11	21.36	23.55
Roadway Clear. (min.)	30.58	36.42	37.37
Incident Clearance (min.)	56.79	52.43	61.63
# of Events w/ RR/SIRV	265	256	4,491
RR/SIRV Responses	265	256	4,491
RR/SIRV Activities	290	279	4,986

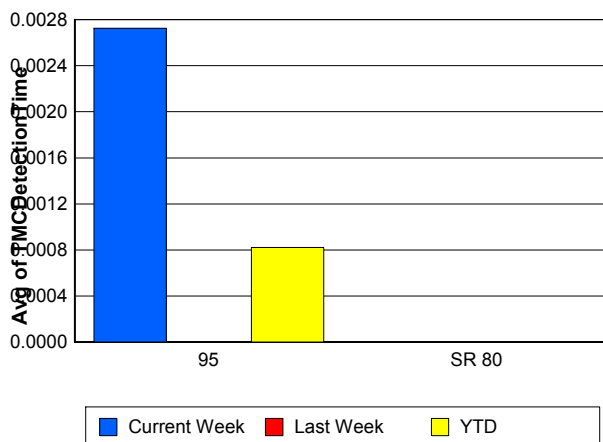
SR 80

	<u>YTD</u>
Number of Events	2
Number of Incidents	1
TMC Detection (min.)	0.00
TMC Verification (min.)	
TMC Response (min.)	
RR Dispatch Time (min.)	
RR Resp. Time (min.)	
Event Clearance (min.)	71.17
Roadway Clear. (min.)	34.23
Incident Clearance (min.)	43.68
# of Events w/ RR/SIRV	0
RR/SIRV Responses	0
RR/SIRV Activities	0

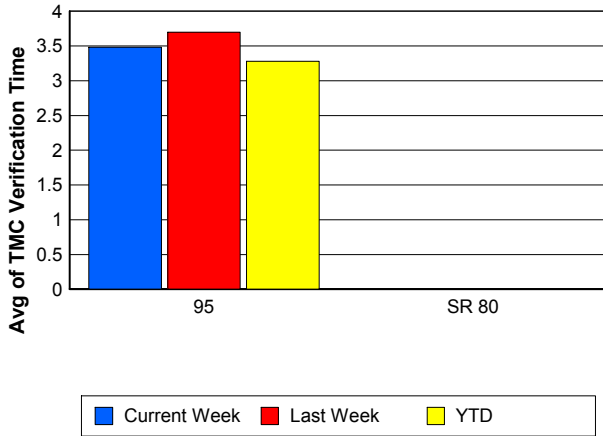
Number of Events / Roadway



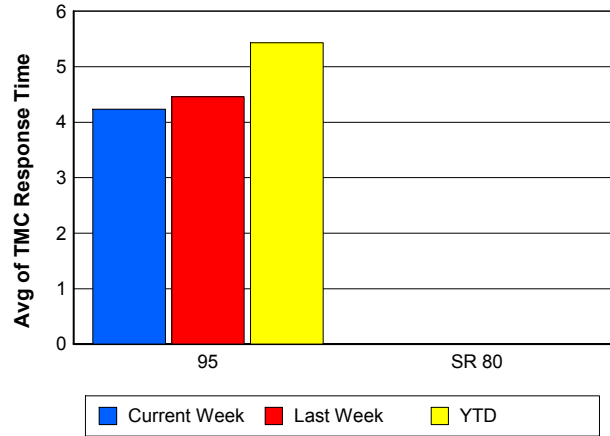
TMC Detection Time



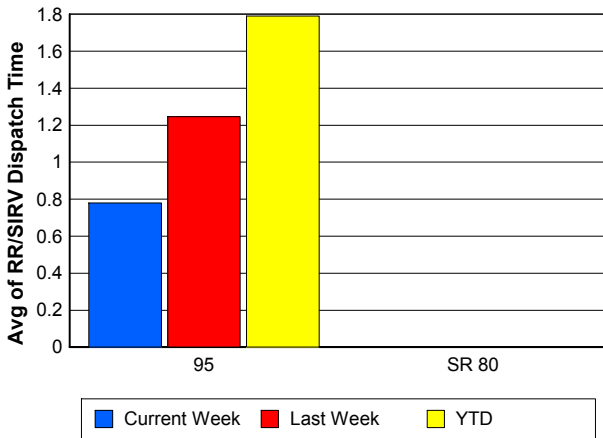
TMC Verification Time



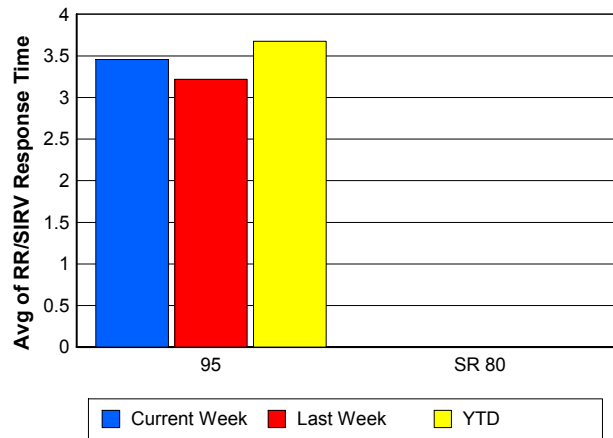
TMC Response Time



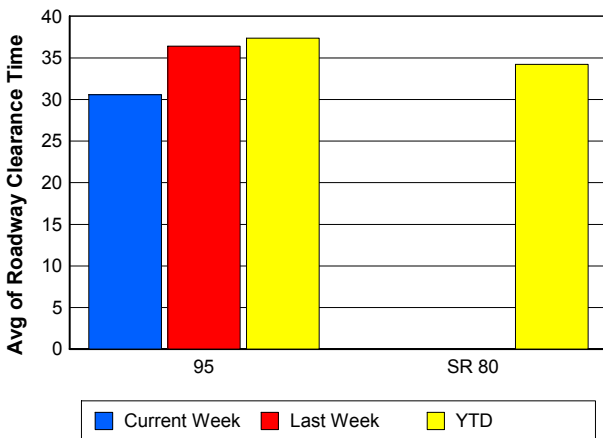
Road Ranger / SIRV Dispatch Time



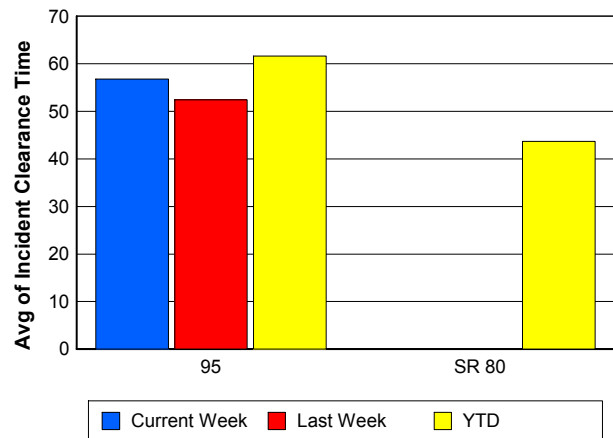
Road Ranger / SIRV Response Time



Roadway Clearance Time (2A)



Incident Clearance Time (3B)



Performance Measures by Event Type

Accident

	<u>Current Week</u>	<u>Last Week</u>	<u>YTD</u>
Number of Events	22	21	498
Number of Incidents	11	12	234
TMC Detection (min.)	0.04	0.00	0.01
TMC Verification (min.)	1.94	1.56	3.58
TMC Response (min.)	3.36	2.36	6.69
RR Dispatch Time (min.)	1.10	0.97	2.11
RR Response Time (min.)	2.25	1.38	4.58
Event Clearance (min.)	67.60	61.60	58.72
Roadway Clearance (min.)	40.36	45.27	43.54
Incident Clearance (min.)	73.59	64.67	72.64
# of Events w/ RR/SIRV	13	11	397
RR/SIRV Assists	13	11	397
RR/SIRV Activities	16	13	519

Debris on Roadway

	<u>Current Week</u>	<u>Last Week</u>	<u>YTD</u>
Number of Events	27	29	402
Number of Incidents	2	1	20
TMC Detection (min.)	0.00	0.00	0.00
TMC Verification (min.)	6.61	7.63	8.37
TMC Response (min.)	6.61	7.95	8.84
RR Dispatch Time (min.)	0.46	1.30	1.63
RR Response Time (min.)	6.15	6.65	7.22
Event Clearance (min.)	9.82	11.27	12.60
Roadway Clearance (min.)	24.94	9.62	14.56
Incident Clearance (min.)	42.36	11.68	18.76
# of Events w/ RR/SIRV	27	28	398
RR/SIRV Assists	27	28	398
RR/SIRV Activities	32	31	427

Disabled Vehicle

	<u>Current Week</u>	<u>Last Week</u>	<u>YTD</u>
Number of Events	242	226	3,904
Number of Incidents	4	1	83
TMC Detection (min.)	0.00	0.00	0.00
TMC Verification (min.)	3.44	3.59	3.22
TMC Response (min.)	3.87	4.05	4.48
RR Dispatch Time (min.)	0.69	1.28	1.44
RR Response Time (min.)	3.18	2.78	3.09
Event Clearance (min.)	17.51	19.16	18.21
Roadway Clearance (min.)	6.50	14.07	20.72
Incident Clearance (min.)	17.78	14.55	31.84
# of Events w/ RR/SIRV	220	207	3,543
RR/SIRV Assists	220	207	3,543
RR/SIRV Activities	236	225	3,895

Emergency Vehicles

	<u>YTD</u>
Number of Events	6
Number of Incidents	3
TMC Detection (min.)	0.00
TMC Verification (min.)	0.00
TMC Response (min.)	7.51
RR Dispatch Time (min.)	5.34
RR Response Time (min.)	2.17
Event Clearance (min.)	31.68
Roadway Clearance (min.)	34.97
Incident Clearance (min.)	40.08
# of Events w/ RR/SIRV	3
RR/SIRV Assists	3
RR/SIRV Activities	4

Other

	<u>Current Week</u>	<u>Last Week</u>	<u>YTD</u>
Number of Events	19	12	481
Number of Incidents	0	0	6
TMC Detection (min.)	0.00	0.00	0.00
TMC Verification (min.)	2.63	3.37	1.06
TMC Response (min.)	11.82	7.47	22.45
RR Dispatch Time (min.)	6.85	0.96	12.38
RR Response Time (min.)	4.96	6.52	7.69
Event Clearance (min.)	47.06	23.94	39.78
Roadway Clearance (min.)			38.11
Incident Clearance (min.)			52.15
# of Events w/ RR/SIRV	4	6	102
RR/SIRV Assists	4	6	102
RR/SIRV Activities	5	6	88

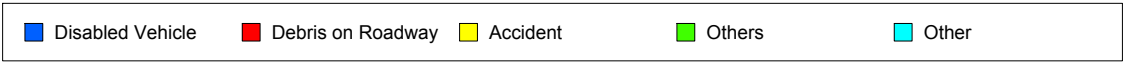
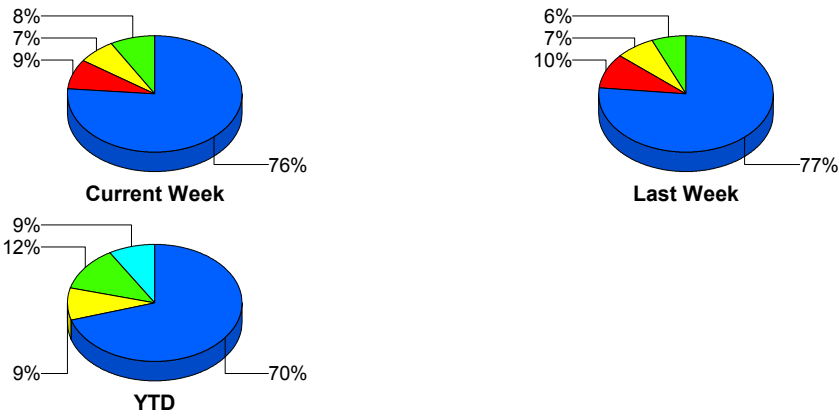
Police Activity

	<u>Current Week</u>	<u>Last Week</u>	<u>YTD</u>
Number of Events	7	7	253
Number of Incidents	0	2	19
TMC Detection (min.)	0.00	0.00	0.00
TMC Verification (min.)	0.00	0.00	0.13
TMC Response (min.)		8.35	11.23
RR Dispatch Time (min.)		2.13	8.01
RR Response Time (min.)		6.22	3.22
Event Clearance (min.)	20.78	15.16	23.41
Roadway Clearance (min.)		7.87	57.23
Incident Clearance (min.)		18.29	99.38
# of Events w/ RR/SIRV	0	1	18
RR/SIRV Assists	0	1	18
RR/SIRV Activities	0	1	20

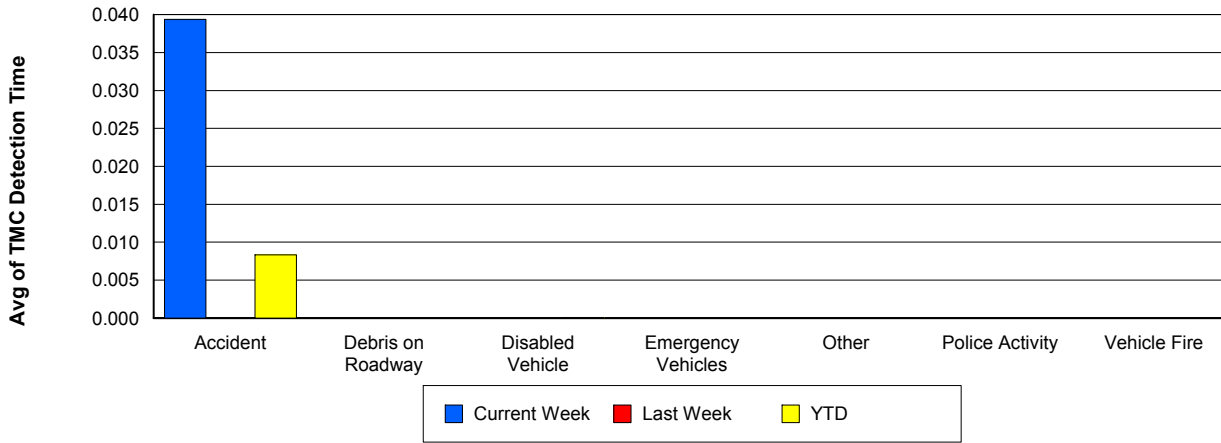
Vehicle Fire

	<u>YTD</u>
Number of Events	8
Number of Incidents	5
TMC Detection (min.)	0.00
TMC Verification (min.)	3.25
TMC Response (min.)	7.49
RR Dispatch Time (min.)	1.24
RR Response Time (min.)	6.25
Event Clearance (min.)	66.51
Roadway Clearance (min.)	40.97
Incident Clearance (min.)	89.54
# of Events w/ RR/SIRV	5
RR/SIRV Assists	5
RR/SIRV Activities	7

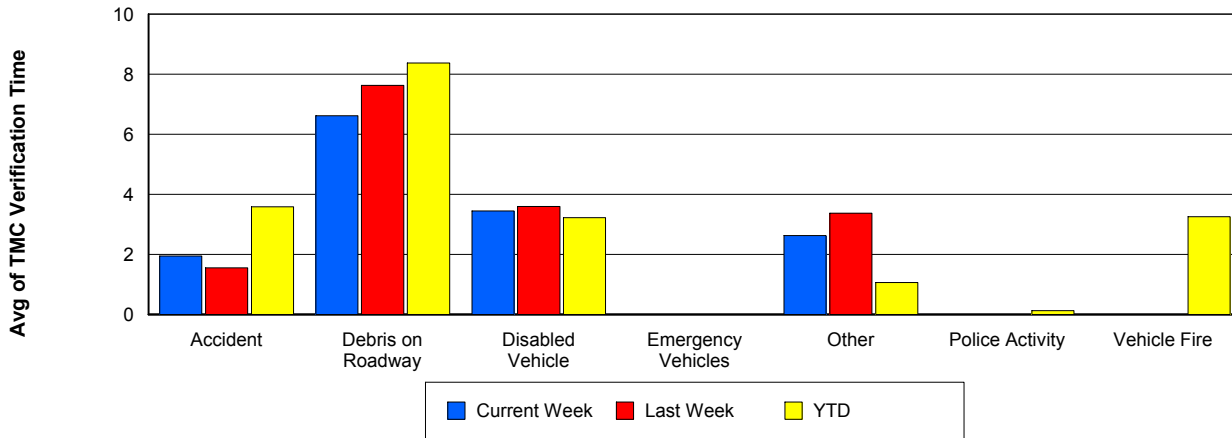
Number of Events / Event Type



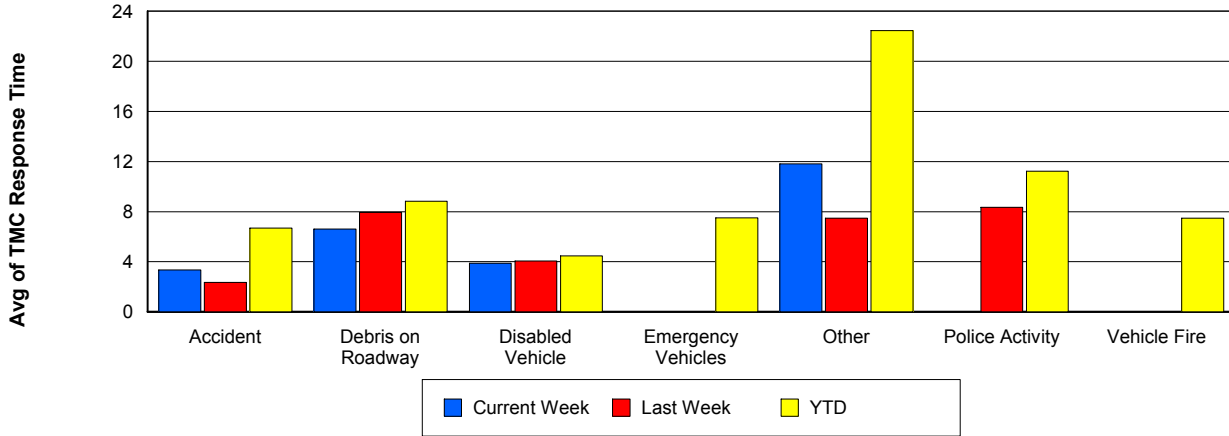
TMC Detection Time



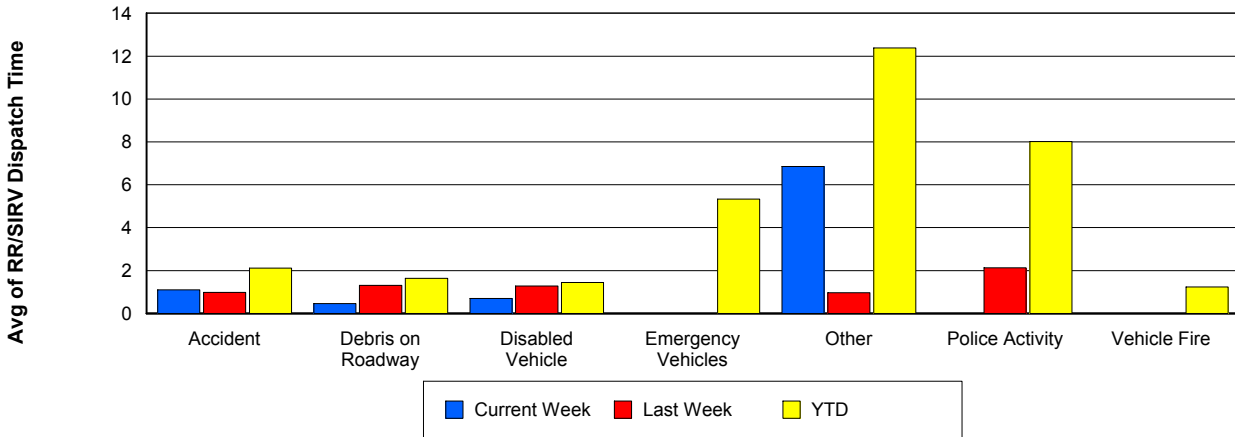
TMC Verification Time



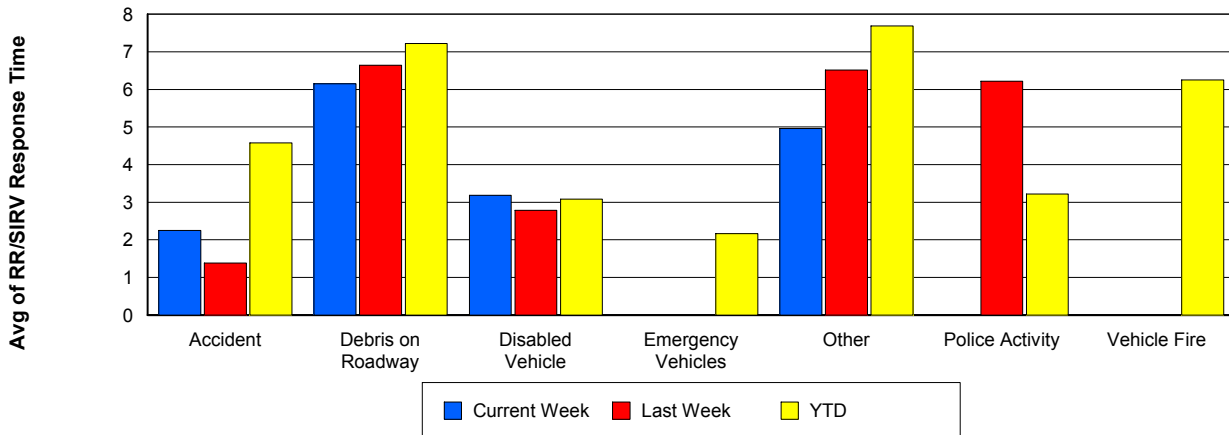
TMC Response Time



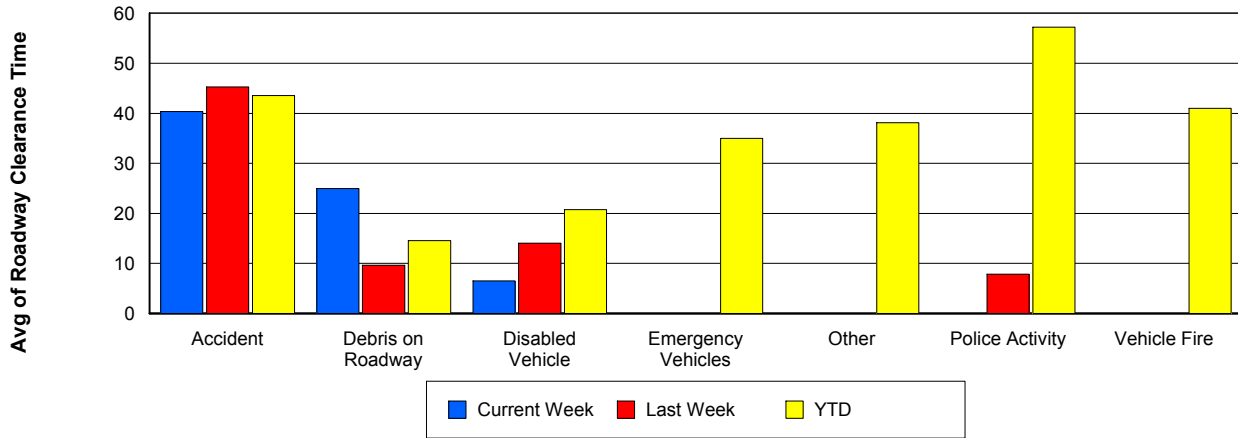
Road Ranger / SIRV Dispatch Time



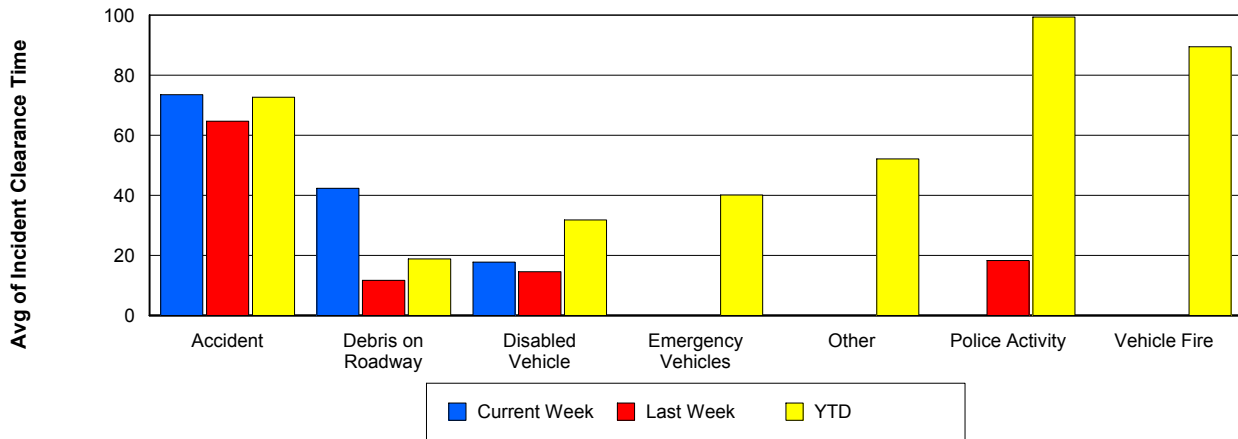
Road Ranger / SIRV Response Time



Roadway Clearance Time (2A)



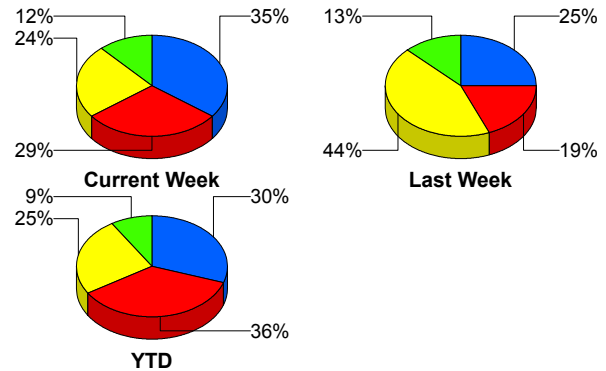
Incident Clearance Time (3B)



Incident Detection Methods

	Current Week	Last Week	YTD
Broward CCTV	0	0	5
Broward Road Ranger	0	1	4
District 4	1	1	8
FHP	4	7	92
I-95 Construction PIO	0	0	2
ITMS	0	0	3
ITMS CCTV	6	4	112
Local Police	0	0	1
Motorist	1	0	7
Palm Beach Road Ran	5	3	133
Road Watcher	0	0	1
SmarTraveler (511)	0	0	2
Total	17	16	370

Total Incidents by Detection Method

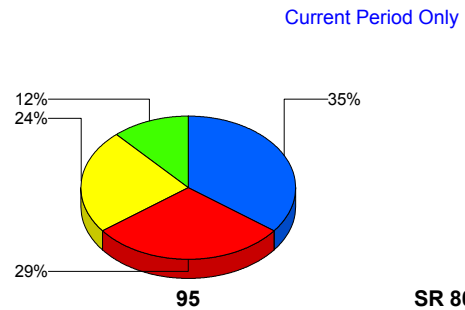


■ ITMS CCTV
 ■ Palm Beach Road Ranger
 ■ FHP
 ■ Others

Incident Detection Methods by Roadway

		Current Week	Last Week	YTD
95	Broward CCTV	0	0	5
	Broward Road Ranger	0	1	4
	District 4	1	1	8
	FHP	4	7	91
	I-95 Construction PIO	0	0	2
	ITMS	0	0	3
	ITMS CCTV	6	4	112
	Local Police	0	0	1
	Motorist	1	0	7
	Palm Beach Road Ran	5	3	133
	Road Watcher	0	0	1
	SmarTraveler (511)	0	0	2
	Total		17	16
SR 80	FHP	0	0	1

Total Events by Roadway and Detection Method



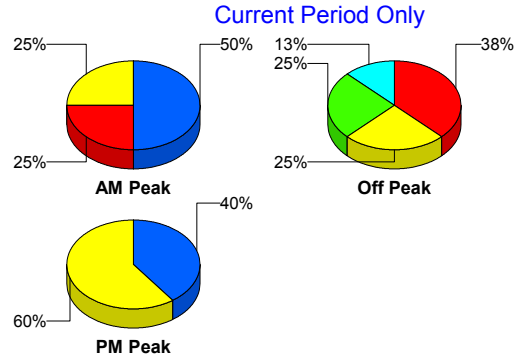
■ ITMS CCTV
 ■ Palm Beach Road Ranger
 ■ FHP
 ■ Others
■ Broward TMC

		Current Week	Last Week	YTD
SR 80	Total	0	0	1
Total		17	16	370

Incident Detection Methods by Peak Period

		Current Week	Last Week	YTD
AM Peak	Broward CCTV	0	0	1
	Broward Road Ranger	0	0	2
	District 4	0	1	5
	FHP	1	2	32
	ITMS	0	0	2
	ITMS CCTV	1	1	16
	Motorist	0	0	2
	Palm Beach Road Ran	2	0	44
	Road Watcher	0	0	1
	SmarTraveler (511)	0	0	2
	Total	4	4	107
	Off Peak	Broward CCTV	0	0
Broward Road Ranger		0	0	1
District 4		1	0	3
FHP		3	5	40
I-95 Construction PIO		0	0	2
ITMS		0	0	1
ITMS CCTV		2	1	54
Motorist		1	0	2
Palm Beach Road Ran		1	1	51
Total		8	7	158
PM Peak		Broward Road Ranger	0	1
	FHP	0	0	20
	ITMS CCTV	3	2	42
	Local Police	0	0	1
	Motorist	0	0	3
	Palm Beach Road Ran	2	2	38

Total Events by Peak Period and Detection Method

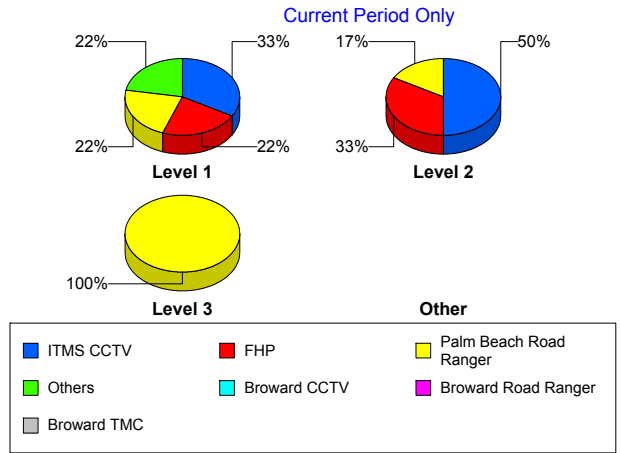


		Current Week	Last Week	YTD
PM Peak	Total	5	5	105
Total		17	16	370

Incident Detection Methods by Severity

		Current Week	Last Week	YTD
Level 1	Broward CCTV	0	0	3
	Broward Road Ranger	0	1	3
	District 4	1	1	7
	FHP	2	3	41
	I-95 Construction PIO	0	0	1
	ITMS	0	0	1
	ITMS CCTV	3	1	47
	Local Police	0	0	1
	Motorist	1	0	5
	Palm Beach Road Ran	2	1	97
	Road Watcher	0	0	1
	SmarTraveler (511)	0	0	1
	Total	9	7	208
	Level 2	Broward Road Ranger	0	0
District 4		0	0	1
FHP		2	4	40
I-95 Construction PIO		0	0	1
ITMS		0	0	2
ITMS CCTV		3	2	45
Motorist		0	0	1
Palm Beach Road Ran		1	2	29
SmarTraveler (511)		0	0	1
Total		6	8	121
Level 3	Broward CCTV	0	0	2
	FHP	0	0	11
	ITMS CCTV	0	1	20
	Motorist	0	0	1

Total Events by Severity and Detection Method



		Current Week	Last Week	YTD
Level 3	Palm Beach Road Ran	2	0	7
	Total	2	1	41
Total		17	16	370

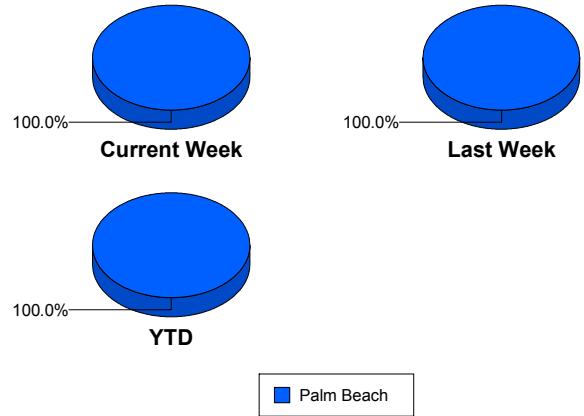
Road Ranger / SIRV Performance Measures

Road Ranger / SIRV Performance By County

RR/SIRV Responses per County

Values presented are:
 - Total Events with a RR/SIRV Response
 - Total RR/SIRV Responses,
 - Total Activities Performed

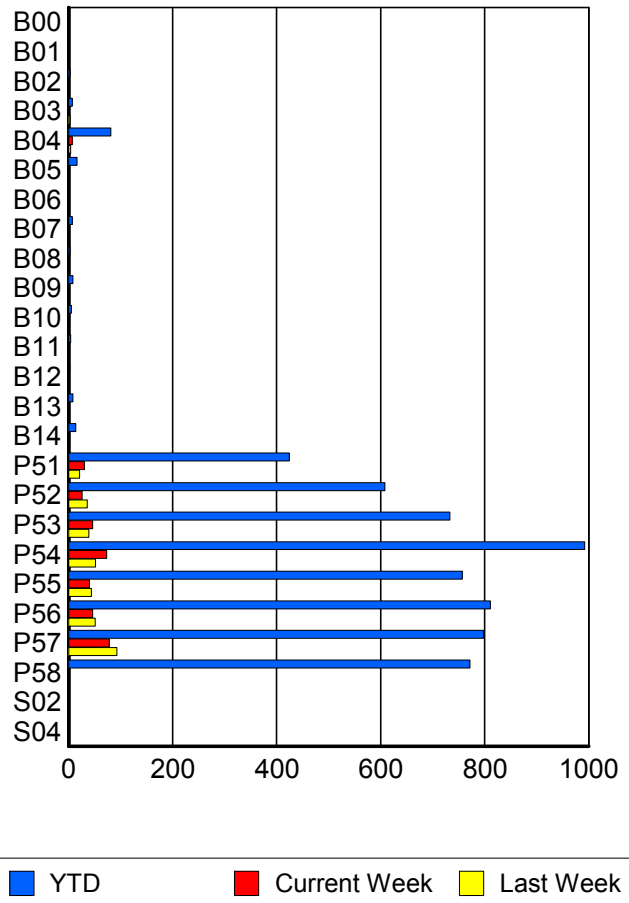
	Current We	Last Week	YTD
Palm Beach	339	340	5,862
	348	346	6,058
	365	365	6,469



Road Ranger / SIRV Performance By Truck

	Current We	Last Week	YTD
B00	0	0	1
	0	0	1
	0	0	1
B01	0	0	1
	0	0	1
	0	0	1
B02	1	0	3
	1	0	3
	1	0	3
B03	0	3	7
	0	3	7
	0	3	7
B04	7	4	80
	7	4	81
	11	4	94
B05	0	0	15
	0	0	16
	0	0	17
B06	0	0	1
	0	0	1
	0	0	1
B07	1	1	7
	1	1	7
	1	1	7
B08	0	1	3
	0	1	3
	0	1	3

RR/SIRV Responses per Truck



	Current We	Last Week	YTD
B09	0 0 0	0 0 0	8 8 8
B10	0 0 0	0 0 0	5 5 5
B11	0 0 0	0 0 0	4 4 4
B12	0 0 0	0 0 0	2 2 2
B13	0 0 0	1 1 2	8 8 9
B14	0 0 0	0 0 0	14 14 15
P51	30 30 31	21 21 21	420 424 445
P52	26 26 28	36 36 36	604 608 646
P53	45 46 47	39 39 42	723 733 785
P54	73 73 77	52 52 58	984 992 1,062
P55	40 40 40	44 44 45	750 757 803
P56	45 46 47	51 51 53	800 811 876
P57	77 78 82	92 93 99	794 798 860
P58	0 0 0	0 0 0	764 772 813
S02	0 0 0	0 0 0	1 1 1

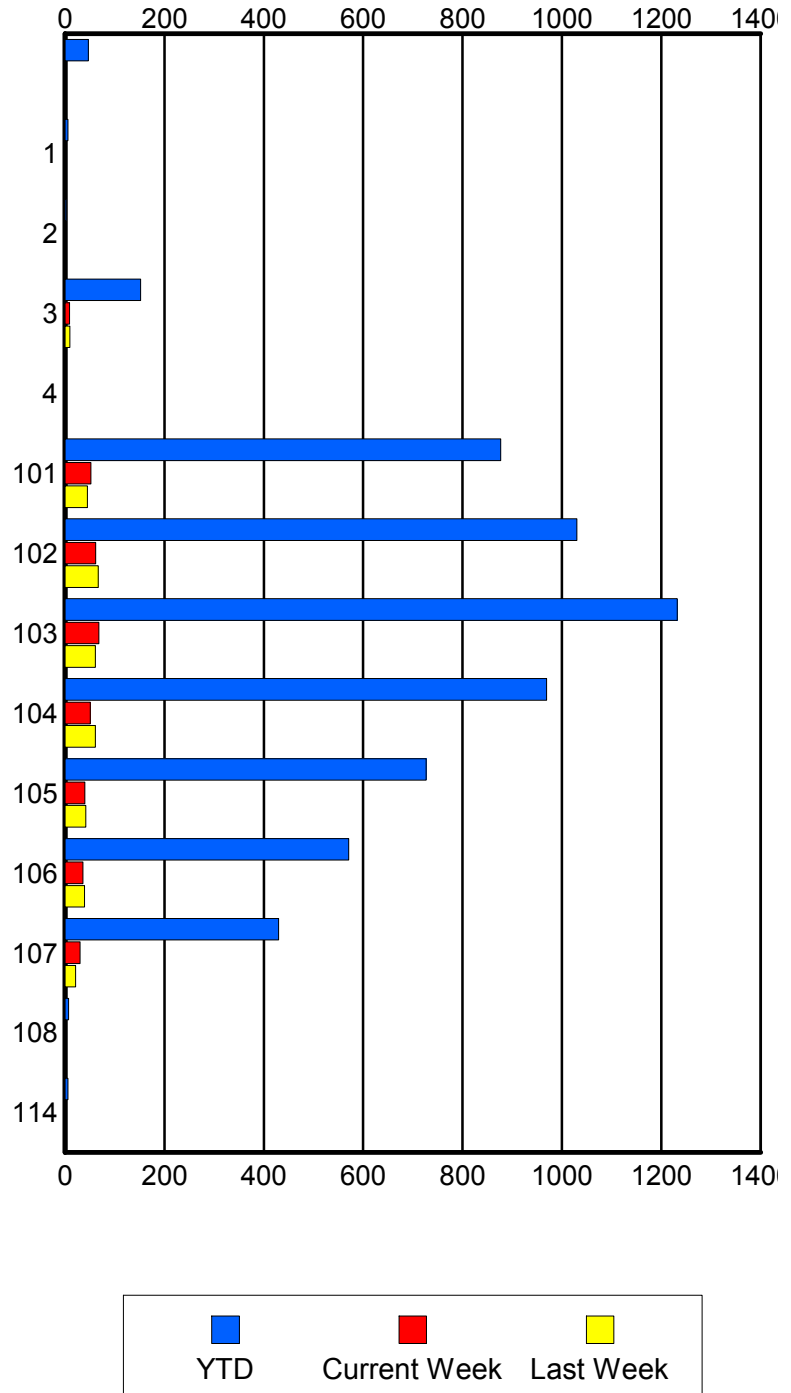
	Current We	Last Week	YTD
S04	0	0	1
	0	0	1
	0	0	1

Road Ranger / SIRV Performance By Beat

	Current We	Last Week	YTD
	0	0	47
	0	0	47
	0	0	47
1	0	0	6
	0	0	6
	0	0	7
2	0	0	3
	0	0	3
	0	0	4
3	9	10	150
	9	10	152
	13	11	166
4	0	0	1
	0	0	1
	0	0	1
101	52	45	867
	52	45	877
	53	48	946
102	62	66	1,021
	62	67	1,030
	66	68	1,090
103	66	61	1,217
	68	61	1,232
	70	64	1,327
104	51	61	962
	51	61	969
	56	68	1,044
105	40	42	722
	40	42	727
	40	44	769
106	35	39	563
	36	39	571
	36	41	607
107	30	21	426
	30	21	430
	31	21	448
108	0	0	6
	0	0	7
	0	0	7
114	0	0	6
	0	0	6
	0	0	6

Values presented are:
 - Total Events with a RR/SIRV Response
 - Total RR/SIRV Responses,
 - Total Activities Performed

RR/SIRV Responses per Beat

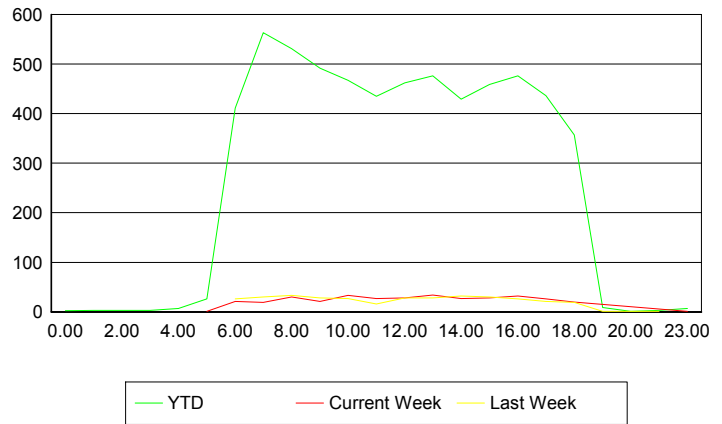


Road Ranger / SIRV Performance By Time of Day

Values presented are:
 - Total Events with a RR/SIRV Response
 - Total RR/SIRV Responses,
 - Total Activities Performed

	Current We	Last Week	YTD
12AM-1AM	0 0 0	0 0 0	2 2 2
1AM-2AM	0 0 0	0 0 0	3 3 3
2AM-3AM	0 0 0	0 0 0	3 3 3
3AM-4AM	0 0 0	0 0 0	3 3 3
4AM-5AM	0 0 0	0 0 0	4 7 8
5AM-6AM	1 1 1	0 0 0	24 26 26
6AM-7AM	21 21 21	26 26 26	397 411 432
7AM-8AM	19 19 22	30 30 31	542 563 603
8AM-9AM	30 30 32	31 33 34	511 531 567
9AM-10AM	21 21 22	27 28 30	478 492 544
10AM-11AM	32 33 33	26 27 28	451 467 496
11AM-12PM	27 27 28	16 16 18	422 435 475
12PM-1PM	28 28 30	28 28 30	449 462 495

Number of Responses / Hour of the Day



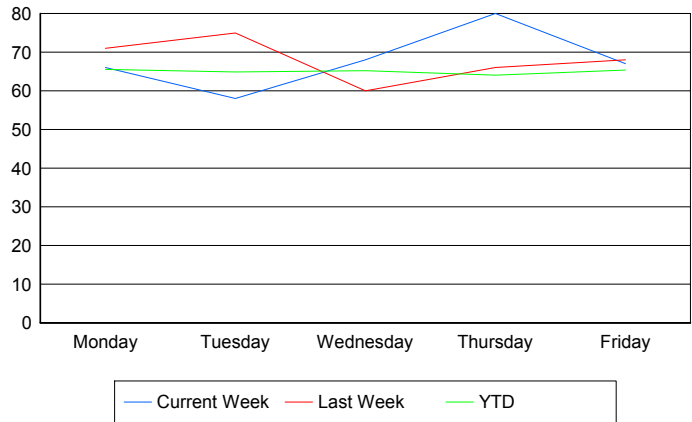
	Current We	Last Week	YTD
1PM-2PM	33	28	463
	34	28	476
	36	30	513
2PM-3PM	24	31	412
	27	32	429
	29	34	452
3PM-4PM	27	29	444
	28	30	459
	30	31	487
4PM-5PM	30	26	459
	32	26	476
	32	26	499
5PM-6PM	25	21	423
	26	21	436
	27	21	463
6PM-7PM	20	19	353
	20	19	357
	21	24	377
7PM-8PM	0	1	9
	0	1	9
	0	1	10
8PM-9PM	0	0	1
	0	0	1
	0	0	1
10PM-11PM	0	1	3
	0	1	3
	0	1	3
11PM-12AM	1	0	6
	1	0	7
	1	0	7

Road Ranger / SIRV Performance By Day of Week

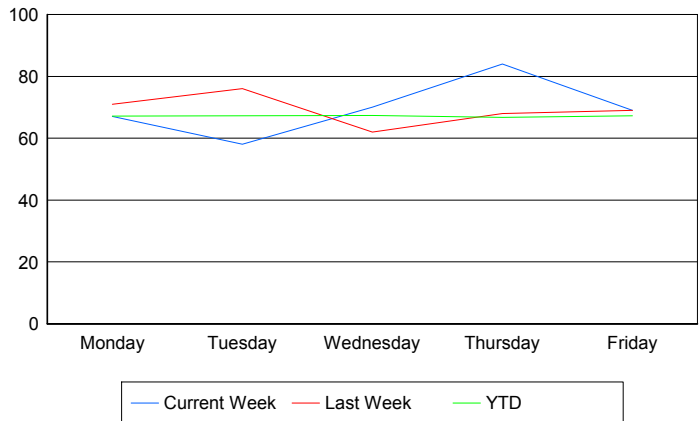
Values presented are:
 - Total Events with a RR/SIRV Response
 - Total RR/SIRV Responses,
 - Total Activities Performed

	Current We	Last Week	YTD
Monday	66	71	1,154
	67	71	1,182
	71	77	1,250
Tuesday	58	75	1,145
	58	76	1,186
	65	82	1,270
Wednesday	68	60	1,160
	70	62	1,199
	72	63	1,284
Thursday	80	66	1,187
	84	68	1,237
	88	72	1,329
Friday	67	68	1,218
	69	69	1,254
	69	71	1,336

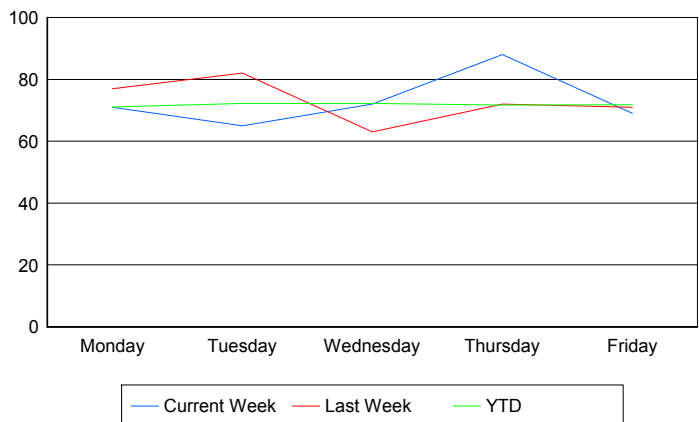
Avg # of events with a RR/SIRV Response per Day of the Week



Avg # of RR/SIRV Responses per Day of the Week



Avg # of RR/SIRV Activities Performed per Day of the Week



Road Ranger / SIRV Responses per Time of Day and Day of Week

