



# Weekly Performance Measures Report Palm Beach County



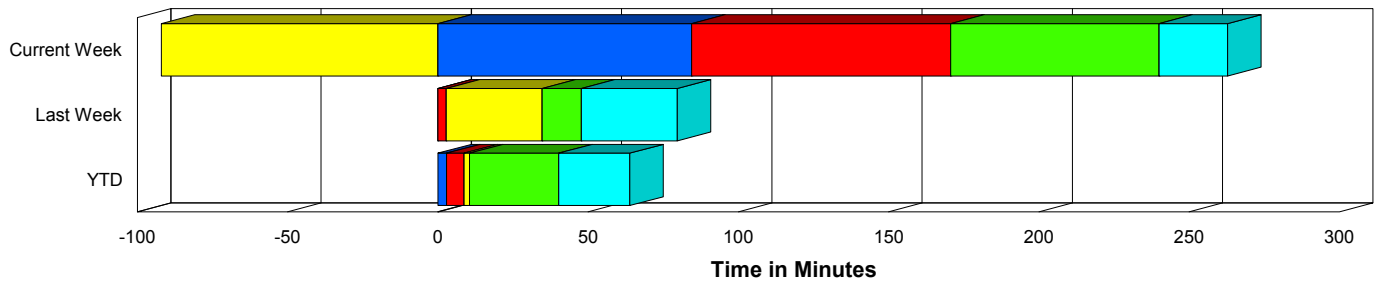
Created on:  
June 29, 2009  
4:54 pm

Period From Jun 21, 2009 to Jun 27, 2009

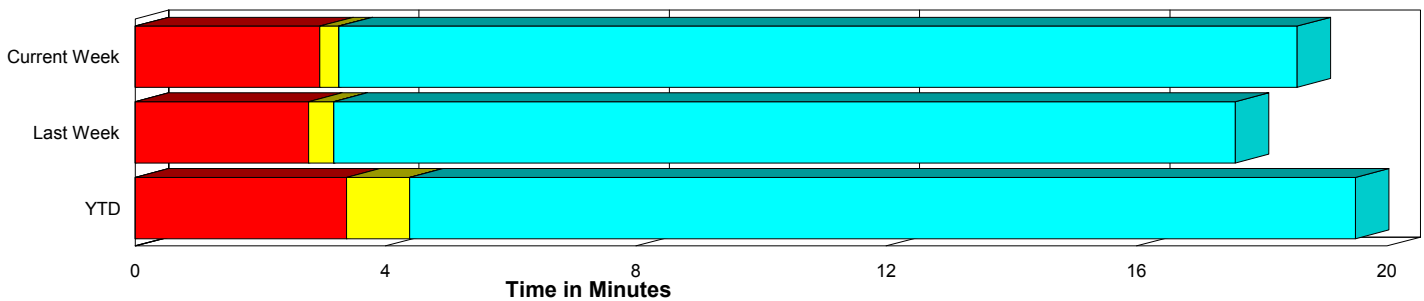
## Performance Measures Summary

	Traffic Events (No Lanes Blocked)			Incidents (Lanes Blocked)		
	<u>This Week</u>	<u>Last Week</u>	<u>YTD</u>	<u>This Week</u>	<u>Last Week</u>	<u>YTD</u>
Number of Events	302	293	7,285	17	17	503
TMC Detection (min.)	0.00	0.00	0.00	84.43	0.00	2.87
TMC Verification (min.)	2.95	2.77	3.38	86.28	2.80	5.92
TMC Response (min.)	3.73	3.50	5.19	30.27	35.54	9.29
RR Dispatch Time (min.)	2.72	1.21	1.72	24.71	26.28	4.95
RR Response Time (min.)	2.82	2.33	3.58	5.56	7.30	4.32
Roadway Clearance (min.)				201.62	43.64	55.25
Event Clearance (min.)	19.05	17.91	20.30	224.45	75.48	78.42
# of Events w/ RR/SIRV	261	264	6,003	12	14	387
RR/SIRV Responses	261	264	6,003	12	14	387
RR/SIRV Activities	285	286	6,505	16	19	565

### Incident Clearance Time-Line



### Traffic Event (Non-Lane Blockage) Time-Line



<span style="color: blue;">■</span> Avg. TMC Detection Time	<span style="color: green;">■</span> Avg. Time from TMC Response to Roadway Clearance*
<span style="color: red;">■</span> Avg. Time from TMC Detection to TMC Verification	<span style="color: cyan;">■</span> Avg. Time from Roadway Clearance to Incident/Event Clearance**
<span style="color: yellow;">■</span> Avg. Time from TMC Verification to TMC Response	

\* Roadway clearance equals all travel lanes open

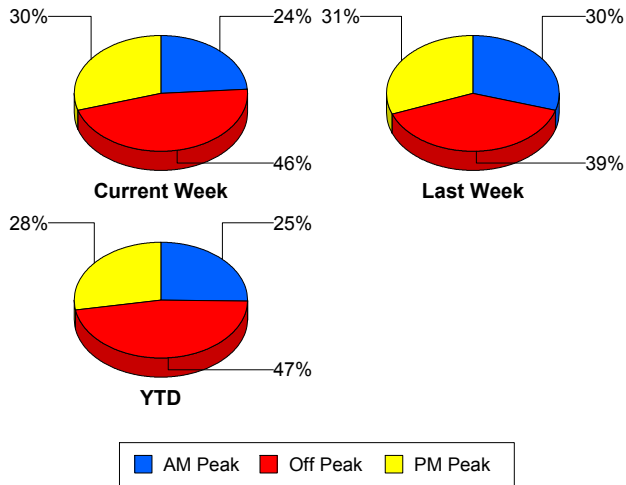
\*\* Incident clearance equals time when last responder has left the scene

## Performance Measures by Peak Period

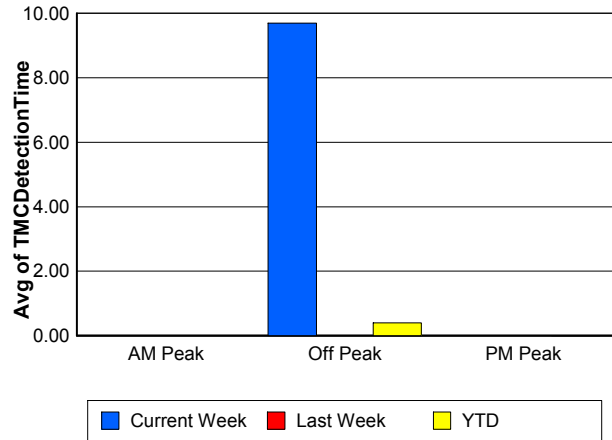
Note: AM peak period is defined as 6am to 10am and PM peak period is defined as 3pm to 7pm.

	AM Peak			Off Peak			PM Peak		
	<u>Current Week</u>	<u>Last Week</u>	<u>YTD</u>	<u>Current Week</u>	<u>Last Week</u>	<u>YTD</u>	<u>Current Week</u>	<u>Last Week</u>	<u>YTD</u>
Number of Events	76	92	1,962	148	122	3,652	95	96	2,174
Number of Incidents	2	6	152	11	8	213	4	3	138
TMC Detection (min.)	0.00	0.00	0.00	9.70	0.00	0.39	0.00	0.00	0.01
TMC Verification (min.)	3.02	2.22	3.12	11.93	2.59	3.27	3.91	3.54	4.38
TMC Response (min.)	3.51	2.72	4.21	6.19	8.32	6.54	4.58	3.91	5.21
RR Dispatch Time (min.)	0.61	0.70	1.04	7.90	5.12	3.11	1.20	1.57	1.26
RR Response Time (min.)	2.90	2.13	3.22	2.60	3.20	3.65	3.37	2.35	3.97
Event Clearance (min.)	16.41	21.86	21.80	46.92	24.18	26.87	14.49	16.34	21.36
Roadway Clearance (min.)	27.27	21.42	38.13	301.20	65.29	58.96	14.93	30.34	68.38
Incident Clearance (min.)	39.03	61.19	62.43	323.80	93.83	84.33	43.97	55.13	86.89
# of Events w/ RR/SIRV	75	91	1,868	108	93	2,495	90	94	2,027
RR/SIRV Responses	75	91	1,868	108	93	2,495	90	94	2,027
RR/SIRV Activities	83	101	2,120	122	105	2,757	96	99	2,193

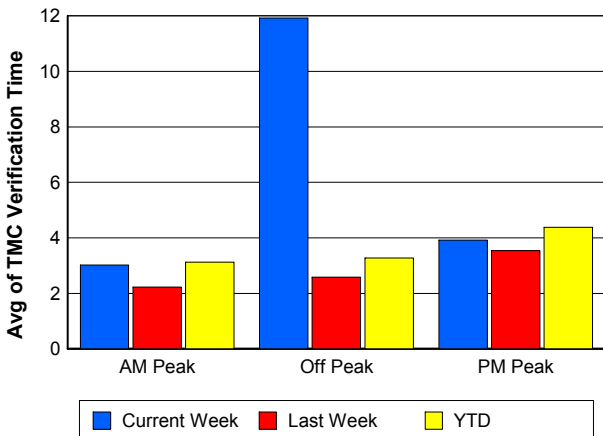
### Number of Events / Peak Period



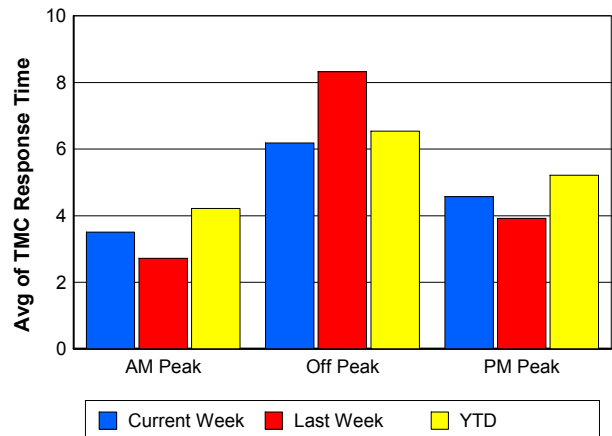
### TMC Detection Time



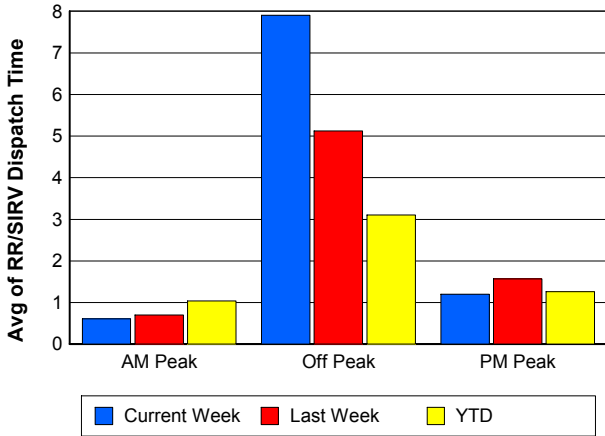
### TMC Verification Time



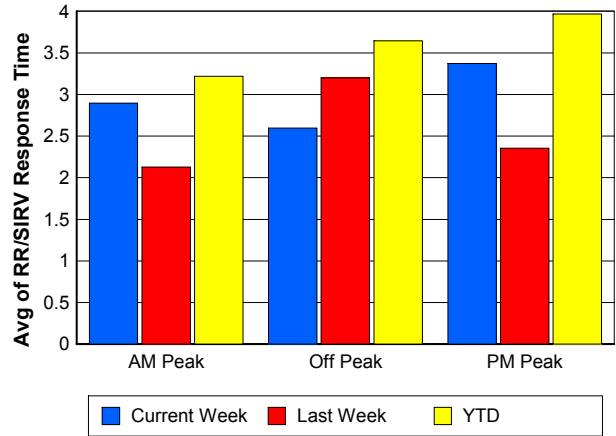
### TMC Response Time



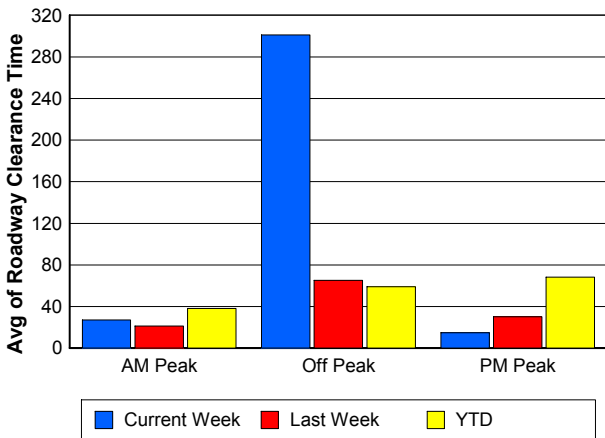
## Road Ranger / SIRV Dispatch Time



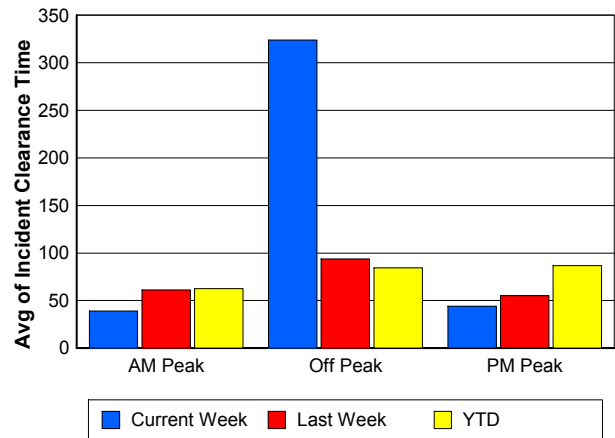
## Road Ranger / SIRV Response Time



## Roadway Clearance Time (2A)



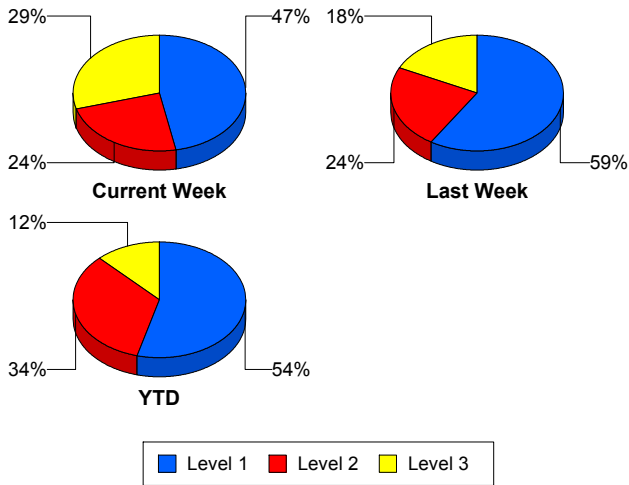
## Incident Clearance Time (3B)



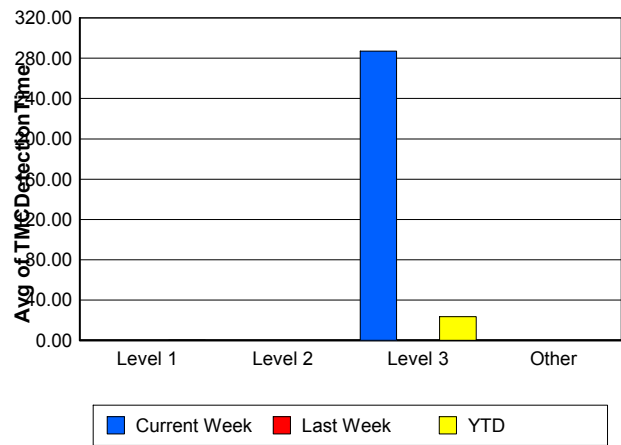
## Performance Measures by Severity

	Level 1			Level 2			Level 3			Other		
	<u>This Week</u>	<u>Last Week</u>	<u>YTD</u>	<u>This Week</u>	<u>Last Week</u>	<u>YTD</u>	<u>This Week</u>	<u>Last Week</u>	<u>YTD</u>	<u>This Week</u>	<u>Last Week</u>	<u>YTD</u>
Number of Events	8	10	273	4	4	169	5	3	61	302	293	7,285
Number of Incidents	8	10	273	4	4	169	5	3	61	0	0	0
TMC Detection (min.)	0.00	0.00	0.02	0.00	0.00	0.00	287.05	0.00	23.56	0.00	0.00	0.00
TMC Verification (min.)	1.74	1.83	2.35	6.04	3.52	3.77	285.74	5.07	28.20	2.95	2.77	3.38
TMC Response (min.)	6.08	5.04	4.27	11.50	7.66	8.64	143.11	199.37	39.15	3.73	3.50	5.19
RR Dispatch Time (min.)	2.10	1.34	1.09	3.07	0.63	2.98	136.33	176.96	32.24	2.72	1.21	1.72
RR Resp. Time (min.)	3.98	3.63	3.19	8.43	7.03	5.66	6.78	22.41	6.90	2.82	2.33	3.58
Event Clearance (min.)	31.77	40.40	39.43	59.46	84.27	75.51	664.73	180.71	260.96	19.05	17.91	20.30
Roadway Clear. (min.)	12.44	15.67	14.48	45.00	47.28	53.27	629.58	132.02	243.20			
Incident Clearance (min.)	31.77	40.40	39.43	59.46	84.27	75.51	664.73	180.71	260.96			
# of Events w/ RR/SIRV	7	9	232	3	3	114	2	2	41	261	264	6,003
RR/SIRV Responses	7	9	232	3	3	114	2	2	41	261	264	6,003
RR/SIRV Activities	8	11	302	4	5	192	4	3	71	285	286	6,505

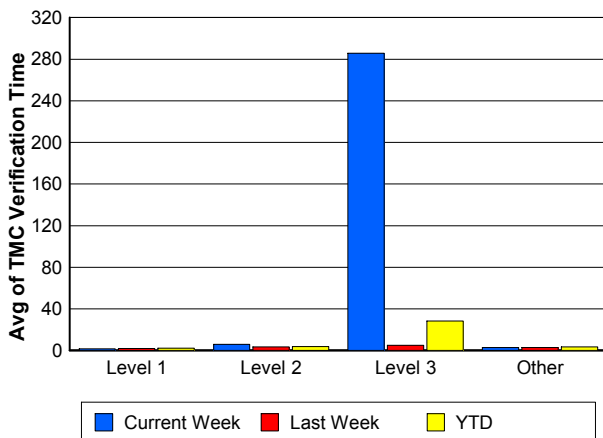
### Number of Events / Severity



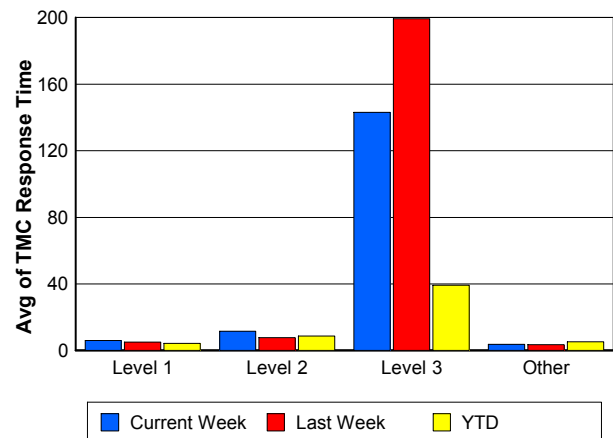
### TMC Detection Time



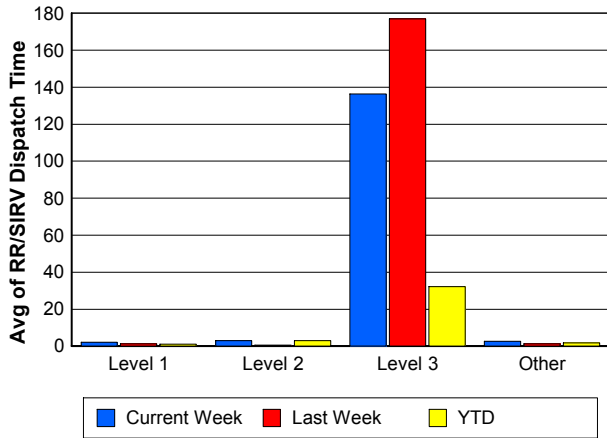
### TMC Verification Time



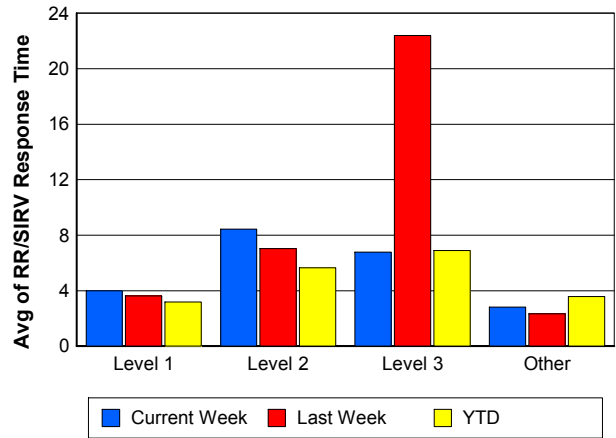
### TMC Response Time



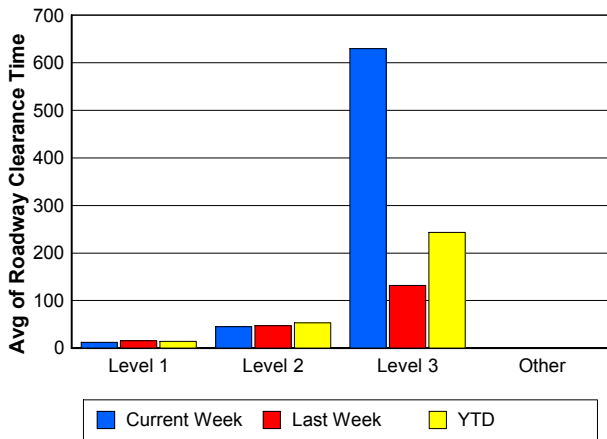
## Road Ranger / SIRV Dispatch Time



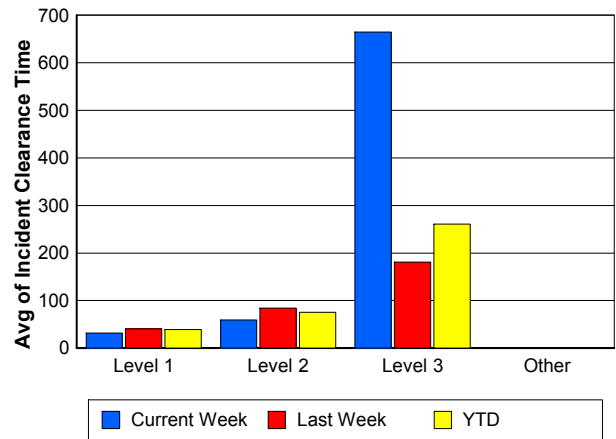
## Road Ranger / SIRV Response Time



## Roadway Clearance Time (2A)



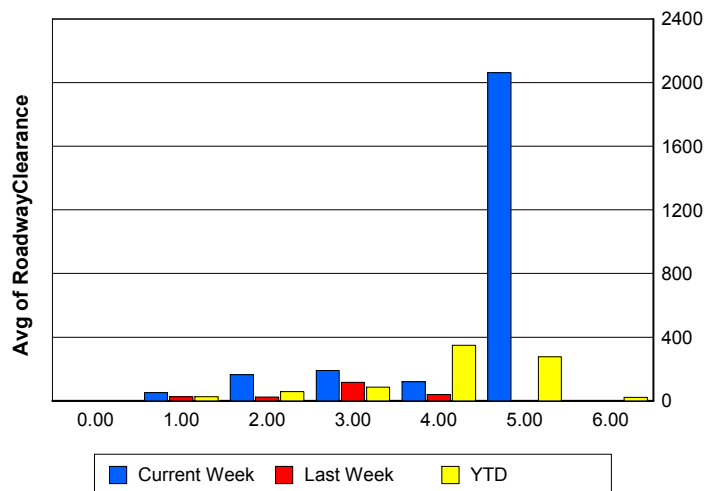
## Incident Clearance Time (3B)



## Roadway Clearance by Maximum Number of Lanes Blocked

	Current Week	Last Week	YTD
0			
1	50.94	26.27	26.00
2	164.46	24.47	56.91
3	190.35	116.84	84.84
4	120.75	38.96	349.47
5	2,062.62	0.00	277.11
6	0.00	0.00	22.35

## Roadway Clearance Time (2A)



## Performance Measures by Roadway

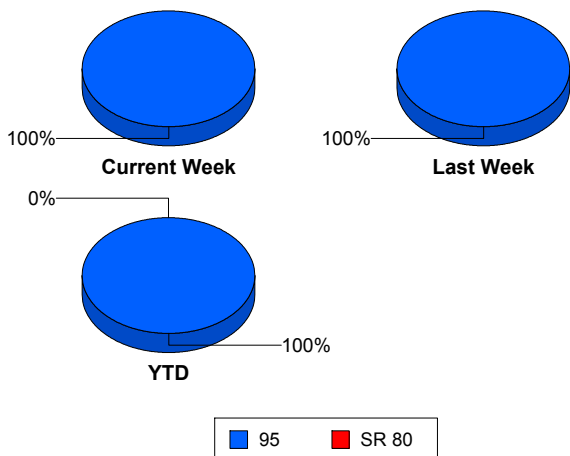
**95**

	<u>Current Week</u>	<u>Last Week</u>	<u>YTD</u>
Number of Events	319	310	7,785
Number of Incidents	17	17	501
TMC Detection (min.)	4.50	0.00	0.19
TMC Verification (min.)	7.41	2.77	3.54
TMC Response (min.)	4.91	5.02	5.44
RR Dispatch Time (min.)	3.69	2.47	1.92
RR Resp. Time (min.)	2.94	2.57	3.62
Event Clearance (min.)	29.99	21.06	23.36
Roadway Clear. (min.)	201.62	43.64	44.84
Incident Clearance (min.)	224.45	75.48	68.07
# of Events w/ RR/SIRV	273	278	6,390
RR/SIRV Responses	273	278	6,390
RR/SIRV Activities	301	305	7,070

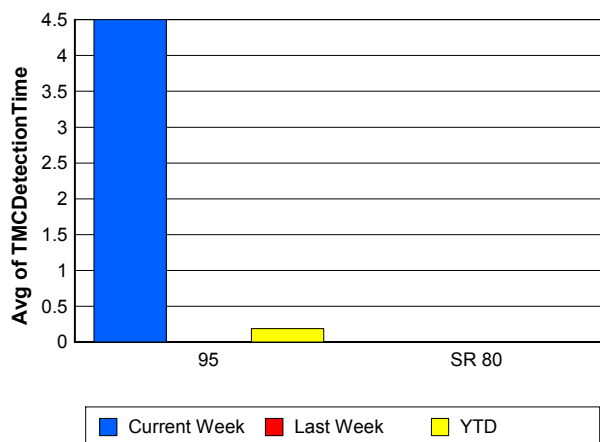
**SR 80**

	<u>YTD</u>
Number of Events	3
Number of Incidents	2
TMC Detection (min.)	0.00
TMC Verification (min.)	0.00
TMC Response (min.)	
RR Dispatch Time (min.)	
RR Resp. Time (min.)	
Event Clearance (min.)	1,813.57
Roadway Clear. (min.)	2,663.80
Incident Clearance (min.)	2,671.02
# of Events w/ RR/SIRV	0
RR/SIRV Responses	0
RR/SIRV Activities	0

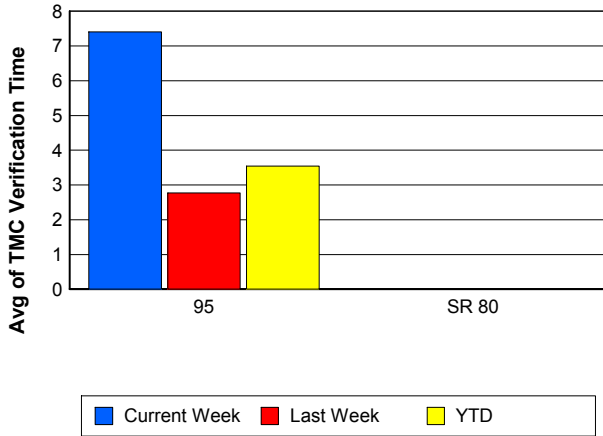
### Number of Events / Roadway



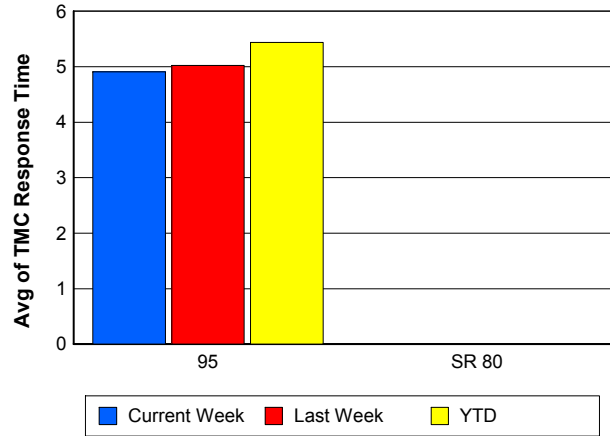
### TMC Detection Time



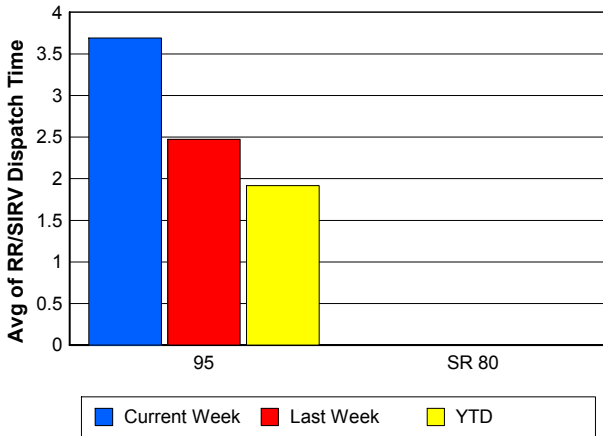
## TMC Verification Time



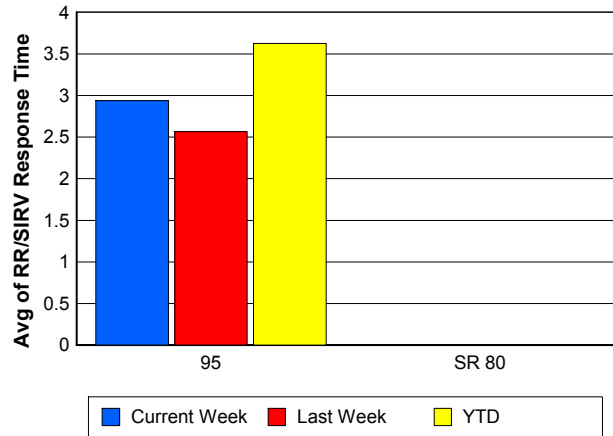
## TMC Response Time



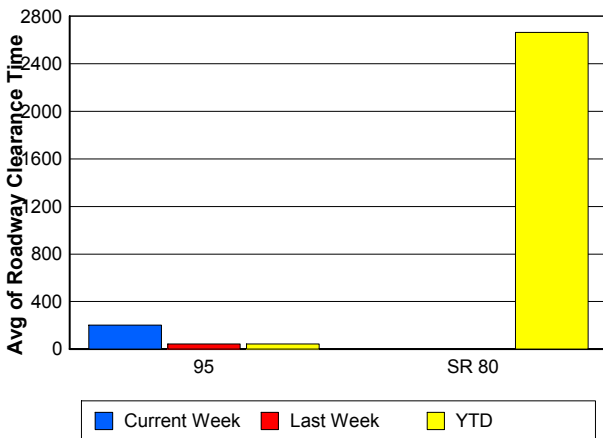
## Road Ranger / SIRV Dispatch Time



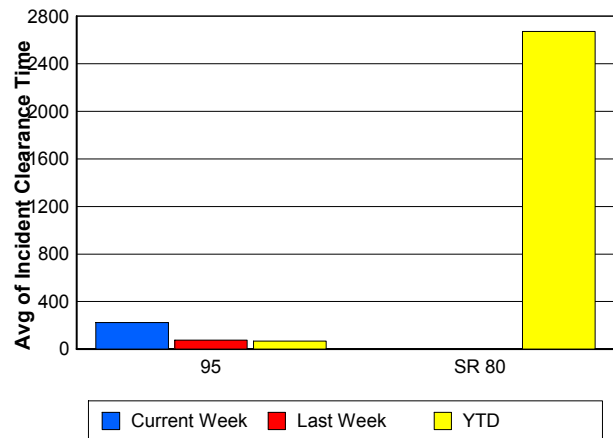
## Road Ranger / SIRV Response Time



## Roadway Clearance Time (2A)



## Incident Clearance Time (3B)



## Performance Measures by Event Type

### Accident

	<u>Current Week</u>	<u>Last Week</u>	<u>YTD</u>
Number of Events	25	21	686
Number of Incidents	9	11	325
TMC Detection (min.)	0.00	0.00	0.01
TMC Verification (min.)	2.36	2.33	3.54
TMC Response (min.)	6.26	25.84	8.35
RR Dispatch Time (min.)	1.89	20.02	3.49
RR Response Time (min.)	4.36	5.82	4.86
Event Clearance (min.)	45.48	67.01	57.84
Roadway Clearance (min.)	28.11	48.84	44.68
Incident Clearance (min.)	47.70	90.31	72.27
# of Events w/ RR/SIRV	19	18	533
RR/SIRV Assists	19	18	533
RR/SIRV Activities	23	22	687

### Debris on Roadway

	<u>Current Week</u>	<u>Last Week</u>	<u>YTD</u>
Number of Events	33	25	573
Number of Incidents	1	1	24
TMC Detection (min.)	0.00	0.00	0.00
TMC Verification (min.)	5.13	5.24	8.08
TMC Response (min.)	5.28	5.23	8.46
RR Dispatch Time (min.)	0.74	1.06	1.72
RR Response Time (min.)	4.55	4.18	6.74
Event Clearance (min.)	8.02	10.35	12.12
Roadway Clearance (min.)	14.80	80.12	17.36
Incident Clearance (min.)	14.58	91.60	21.31
# of Events w/ RR/SIRV	31	25	562
RR/SIRV Assists	31	25	562
RR/SIRV Activities	33	26	603

### Disabled Vehicle

	<u>Current Week</u>	<u>Last Week</u>	<u>YTD</u>
Number of Events	240	242	5,569
Number of Incidents	3	3	104
TMC Detection (min.)	0.00	0.00	0.00
TMC Verification (min.)	2.84	2.76	3.28
TMC Response (min.)	3.40	3.24	4.40
RR Dispatch Time (min.)	3.06	1.19	1.49
RR Response Time (min.)	2.48	2.10	3.05
Event Clearance (min.)	18.10	17.91	17.98
Roadway Clearance (min.)	113.29	16.52	23.25
Incident Clearance (min.)	131.18	37.46	33.96
# of Events w/ RR/SIRV	220	228	5,092
RR/SIRV Assists	220	228	5,092
RR/SIRV Activities	240	252	5,584

## Emergency Vehicles

	<u>Last Week</u>	<u>YTD</u>
Number of Events	1	11
Number of Incidents	1	5
TMC Detection (min.)	0.00	0.00
TMC Verification (min.)	0.00	1.26
TMC Response (min.)		9.08
RR Dispatch Time (min.)	0.82	3.89
RR Response Time (min.)		4.43
Event Clearance (min.)	5.07	39.00
Roadway Clearance (min.)	5.73	25.38
Incident Clearance (min.)	5.07	29.06
# of Events w/ RR/SIRV	1	5
RR/SIRV Assists	1	5
RR/SIRV Activities	0	6

## Other

	<u>Current Week</u>	<u>Last Week</u>	<u>YTD</u>
Number of Events	13	17	587
Number of Incidents	0	0	6
TMC Detection (min.)	0.00	0.00	0.00
TMC Verification (min.)	1.62	0.57	1.20
TMC Response (min.)	10.47	11.58	20.59
RR Dispatch Time (min.)	1.44	5.84	10.62
RR Response Time (min.)	9.03	4.71	8.17
Event Clearance (min.)	58.59	23.97	39.29
Roadway Clearance (min.)			38.11
Incident Clearance (min.)			52.15
# of Events w/ RR/SIRV	2	5	130
RR/SIRV Assists	2	5	130
RR/SIRV Activities	2	4	114

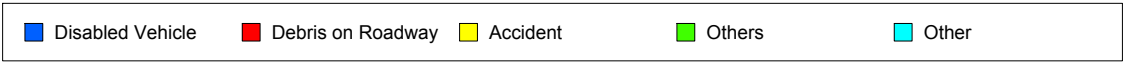
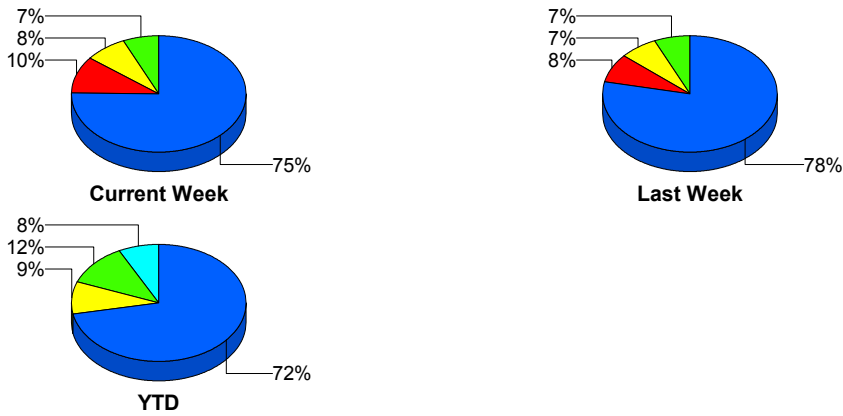
## Police Activity

	<u>Current Week</u>	<u>Last Week</u>	<u>YTD</u>
Number of Events	5	2	296
Number of Incidents	1	1	26
TMC Detection (min.)	1.31	0.00	0.04
TMC Verification (min.)	0.00	0.00	0.16
TMC Response (min.)			9.89
RR Dispatch Time (min.)			6.36
RR Response Time (min.)			3.54
Event Clearance (min.)	109.75	52.72	26.15
Roadway Clearance (min.)	446.10	69.25	80.47
Incident Clearance (min.)	467.30	80.72	114.98
# of Events w/ RR/SIRV	0	0	23
RR/SIRV Assists	0	0	23
RR/SIRV Activities	0	0	26

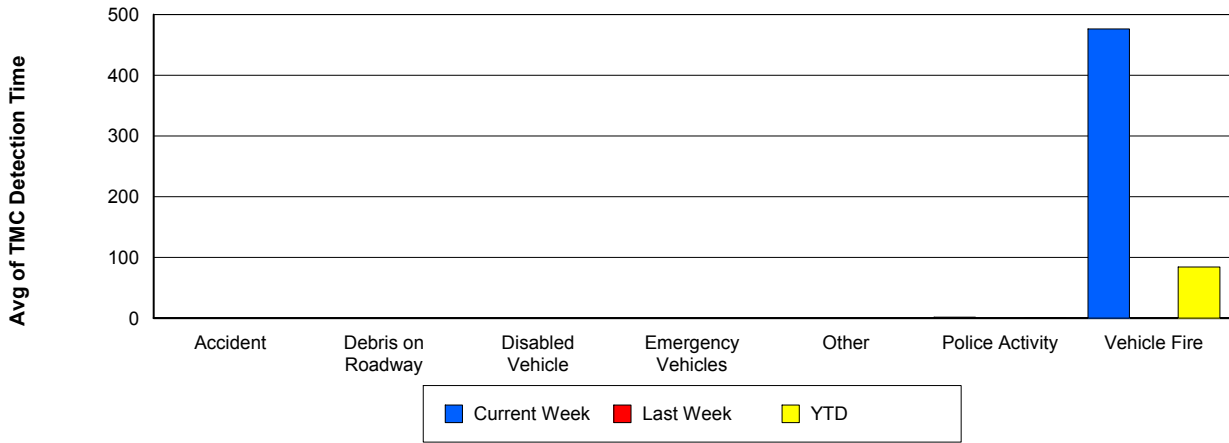
## Vehicle Fire

	<u>Current Week</u>	<u>Last Week</u>	<u>YTD</u>
Number of Events	3	1	17
Number of Incidents	3	0	12
TMC Detection (min.)	476.24	0.00	84.04
TMC Verification (min.)	476.24	0.00	85.70
TMC Response (min.)	286.22	2.47	36.93
RR Dispatch Time (min.)	272.65	0.70	31.17
RR Response Time (min.)	13.57	1.77	5.76
Event Clearance (min.)	836.98	2.88	200.00
Roadway Clearance (min.)	791.24		224.58
Incident Clearance (min.)	836.98		263.83
# of Events w/ RR/SIRV	1	1	9
RR/SIRV Assists	1	1	9
RR/SIRV Activities	3	1	13

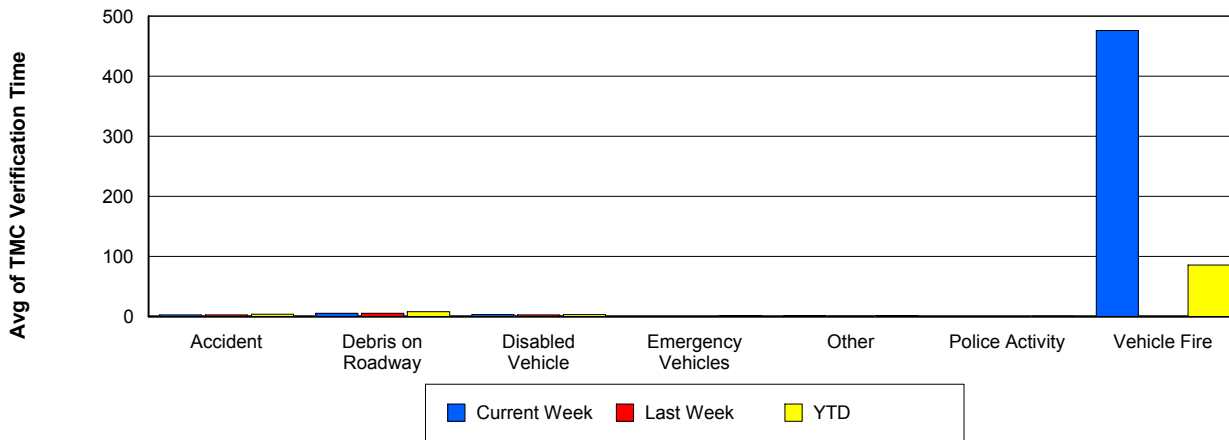
## Number of Events / Event Type



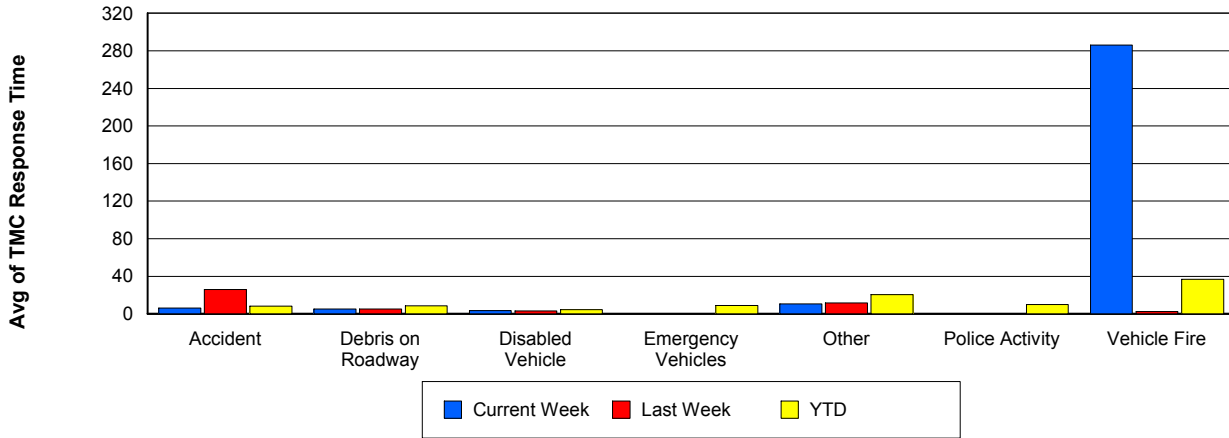
## TMC Detection Time



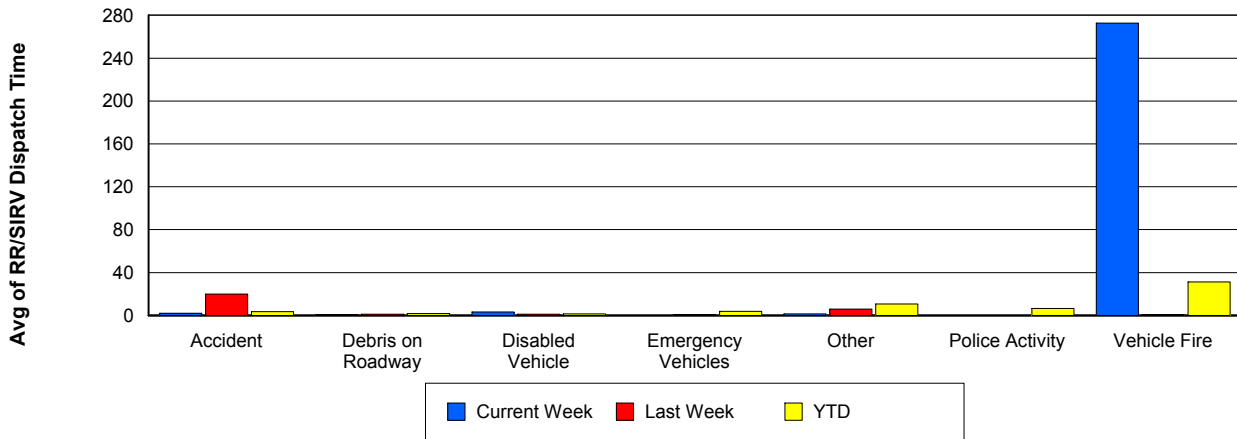
## TMC Verification Time



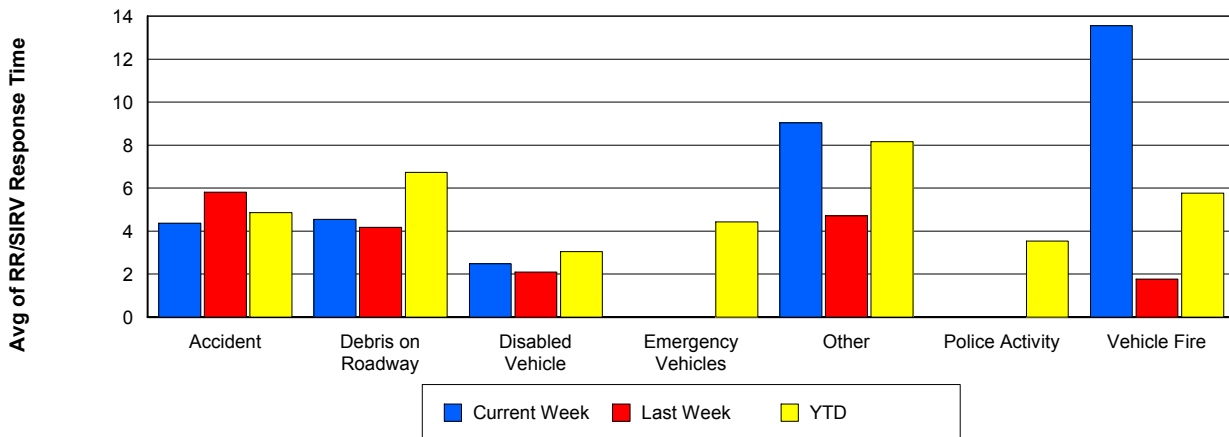
## TMC Response Time



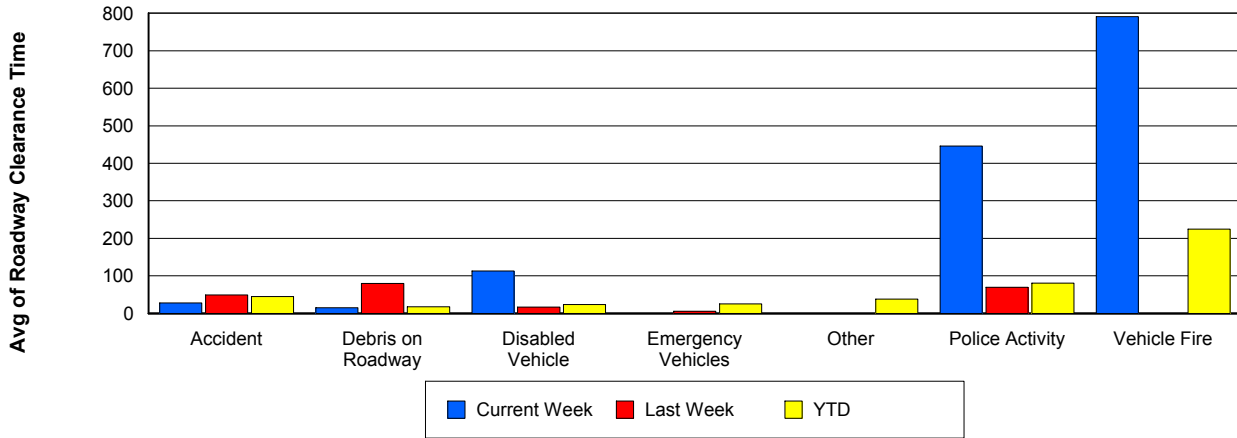
## Road Ranger / SIRV Dispatch Time



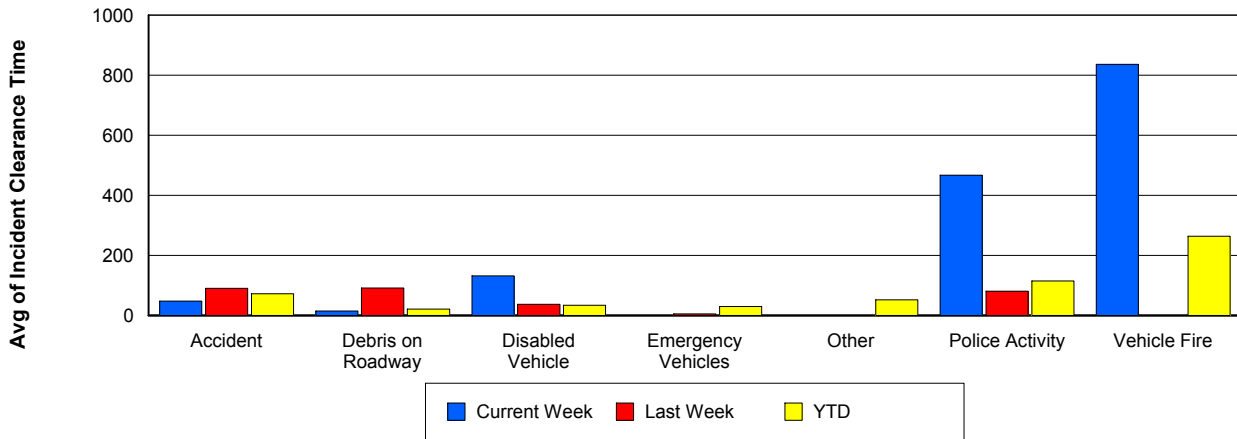
## Road Ranger / SIRV Response Time



## Roadway Clearance Time (2A)



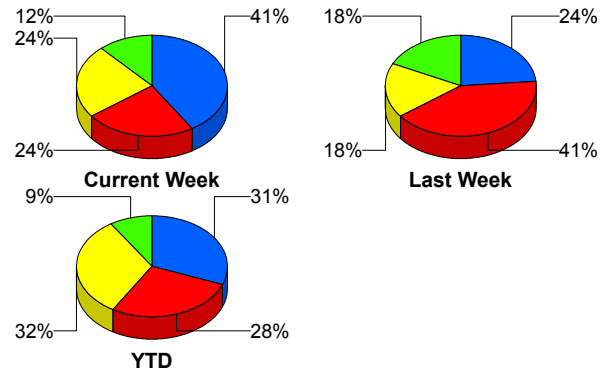
## Incident Clearance Time (3B)



## Incident Detection Methods

	Current Week	Last Week	YTD
Broward CCTV	0	1	6
Broward Road Ranger	1	0	6
Construction CEI	0	1	1
District 4	1	1	11
Emergency Operations	0	0	1
FHP	4	7	140
I-95 Construction PIO	0	0	2
ITMS	0	0	4
ITMS CCTV	7	4	155
Local Police	0	0	1
Motorist	0	0	9
Palm Beach Road Ran	4	3	162
Road Watcher	0	0	1
SmarTraveler (511)	0	0	4
<b>Total</b>	<b>17</b>	<b>17</b>	<b>503</b>

### Total Incidents by Detection Method

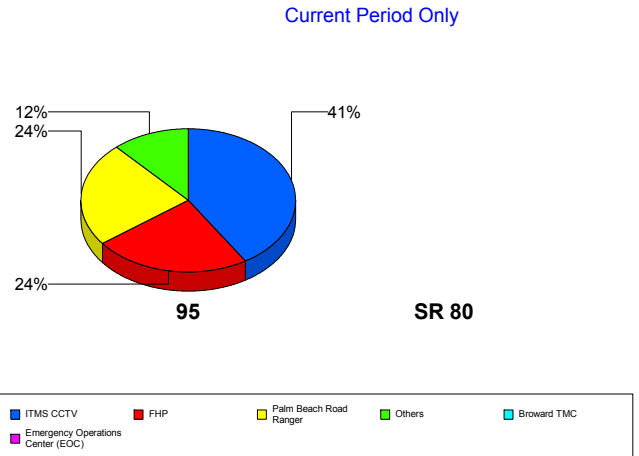


■ ITMS CCTV    
 ■ FHP    
 ■ Palm Beach Road Ranger    
 ■ Others

## Incident Detection Methods by Roadway

		Current Week	Last Week	YTD
95	Broward CCTV	0	1	6
	Broward Road Ranger	1	0	6
	Construction CEI	0	1	1
	District 4	1	1	11
	FHP	4	7	139
	I-95 Construction PIO	0	0	2
	ITMS	0	0	4
	ITMS CCTV	7	4	155
	Local Police	0	0	1
	Motorist	0	0	9
	Palm Beach Road Ran	4	3	162
	Road Watcher	0	0	1

### Total Events by Roadway and Detection Method



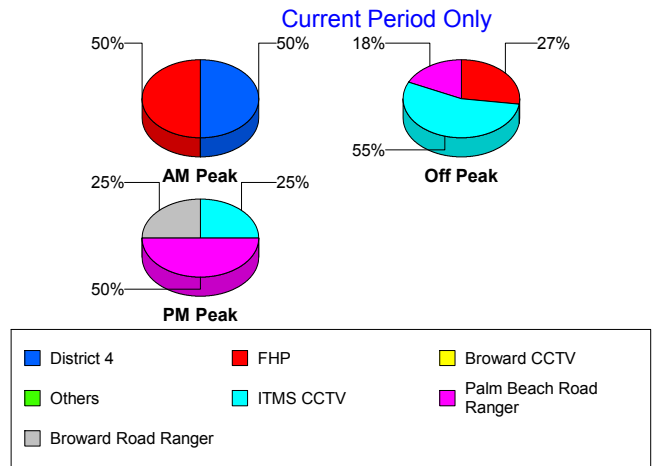
■ ITMS CCTV    
 ■ FHP    
 ■ Palm Beach Road Ranger    
 ■ Others    
 ■ Broward TMC

		Current Week	Last Week	YTD
95	SmarTraveler (511)	0	0	4
	Total	17	17	501
SR 80	Emergency Operations	0	0	1
	FHP	0	0	1
	Total	0	0	2
Total		17	17	503

### Incident Detection Methods by Peak Period

		Current Week	Last Week	YTD
AM Peak	Broward CCTV	0	1	2
	Broward Road Ranger	0	0	3
	District 4	1	1	8
	FHP	1	3	52
	ITMS	0	0	2
	ITMS CCTV	0	0	22
	Motorist	0	0	4
	Palm Beach Road Ran	0	1	55
	Road Watcher	0	0	1
	SmarTraveler (511)	0	0	3
	Total	2	6	152
	Off Peak	Broward CCTV	0	0
Broward Road Ranger		0	0	1
Construction CEI		0	1	1
District 4		0	0	3
FHP		3	3	62
I-95 Construction PIO		0	0	2
ITMS		0	0	2
ITMS CCTV		6	3	78
Motorist		0	0	2
Palm Beach Road Ran		2	1	57
SmarTraveler (511)		0	0	1
Total		11	8	213

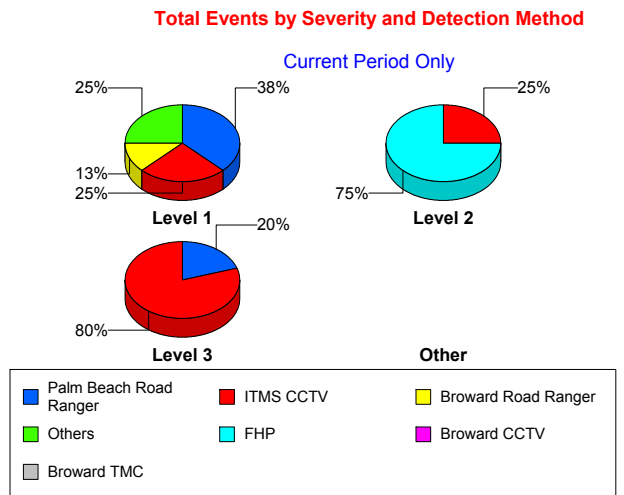
Total Events by Peak Period and Detection Method



		Current Week	Last Week	YTD
PM Peak	Broward Road Ranger	1	0	2
	Emergency Operations	0	0	1
	FHP	0	1	26
	ITMS CCTV	1	1	55
	Local Police	0	0	1
	Motorist	0	0	3
	Palm Beach Road Ran	2	1	50
	Total	4	3	138
Total		17	17	503

### Incident Detection Methods by Severity

		Current Week	Last Week	YTD
Level 1	Broward CCTV	0	1	4
	Broward Road Ranger	1	0	4
	District 4	1	1	9
	FHP	1	3	63
	I-95 Construction PIO	0	0	1
	ITMS	0	0	1
	ITMS CCTV	2	3	65
	Local Police	0	0	1
	Motorist	0	0	6
	Palm Beach Road Ran	3	2	117
	Road Watcher	0	0	1
	SmarTraveler (511)	0	0	1
	Total	8	10	273
	Level 2	Broward Road Ranger	0	0
District 4		0	0	2
FHP		3	2	58
I-95 Construction PIO		0	0	1
ITMS		0	0	3
ITMS CCTV		1	1	63
Motorist		0	0	2



		Current Week	Last Week	YTD
Level 2	Palm Beach Road Ran	0	1	35
	SmarTraveler (511)	0	0	3
	Total	4	4	169
Level 3	Broward CCTV	0	0	2
	Construction CEI	0	1	1
	Emergency Operations	0	0	1
	FHP	0	2	19
	ITMS CCTV	4	0	27
	Motorist	0	0	1
	Palm Beach Road Ran	1	0	10
	Total	5	3	61
Total		17	17	503

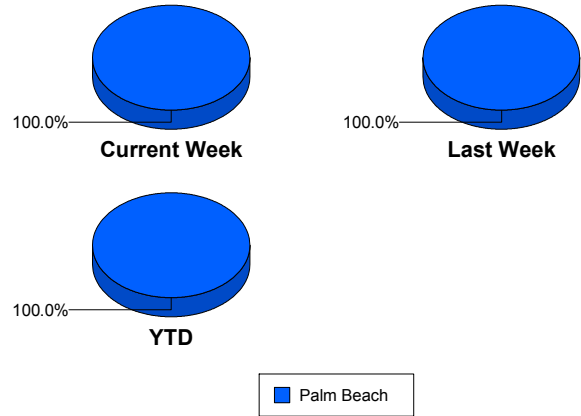
# Road Ranger / SIRV Performance Measures

## Road Ranger / SIRV Performance By County

Values presented are:  
 - Total Events with a RR/SIRV Response  
 - Total RR/SIRV Responses,  
 - Total Activities Performed

	Current We	Last Week	YTD
Palm Beach	360	353	8,314
	373	367	8,585
	392	387	9,154

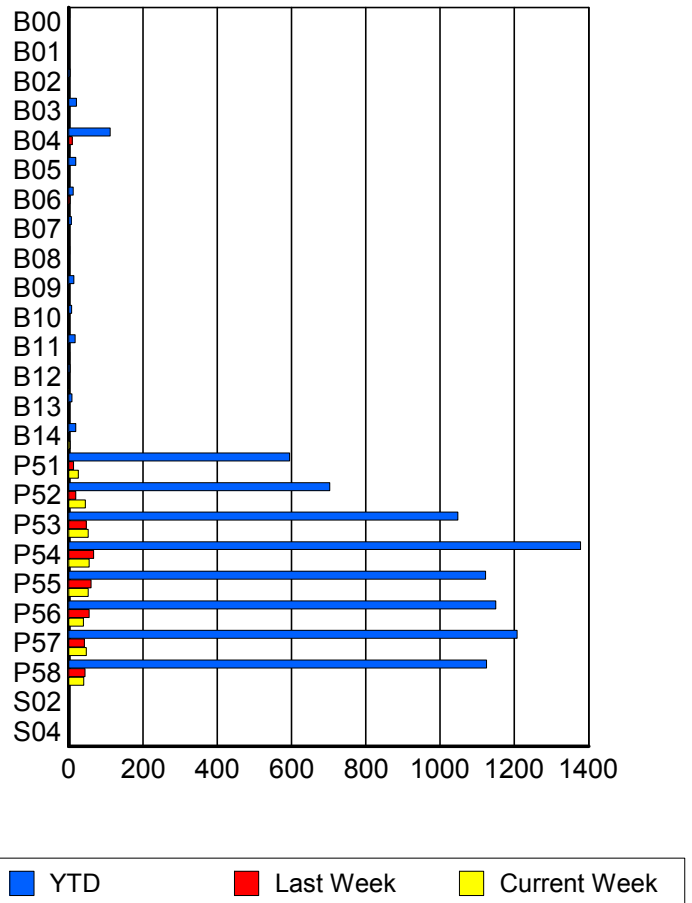
RR/SIRV Responses per County



## Road Ranger / SIRV Performance By Truck

	Current We	Last Week	YTD
B00	0	0	3
	0	0	3
	0	0	3
B01	0	0	1
	0	0	1
	0	0	1
B02	0	0	4
	0	0	4
	0	0	4
B03	0	2	21
	0	2	21
	0	2	22
B04	3	10	111
	3	10	112
	3	11	128
B05	0	0	18
	0	0	19
	0	0	20
B06	0	4	12
	0	4	12
	0	4	12
B07	0	0	7
	0	0	7
	0	0	7
B08	0	0	3
	0	0	3
	0	0	3

RR/SIRV Responses per Truck



	Current We	Last Week	YTD
B09	1	1	14
	1	1	14
	1	1	14
B10	0	0	8
	0	0	8
	0	0	8
B11	3	1	18
	3	1	18
	3	1	19
B12	1	0	4
	1	0	4
	1	0	4
B13	0	1	9
	0	1	9
	0	1	10
B14	4	0	19
	4	0	19
	4	0	20
P51	25	13	589
	26	13	595
	27	14	623
P52	45	19	699
	45	19	703
	45	20	744
P53	53	48	1,036
	53	48	1,048
	54	49	1,114
P54	55	63	1,364
	55	67	1,378
	60	71	1,476
P55	53	60	1,113
	53	60	1,122
	56	67	1,196
P56	37	54	1,134
	40	55	1,150
	43	56	1,238
P57	46	42	1,198
	48	42	1,207
	49	44	1,294
P58	41	43	1,111
	41	44	1,125
	46	46	1,191
S02	0	0	1
	0	0	1
	0	0	1

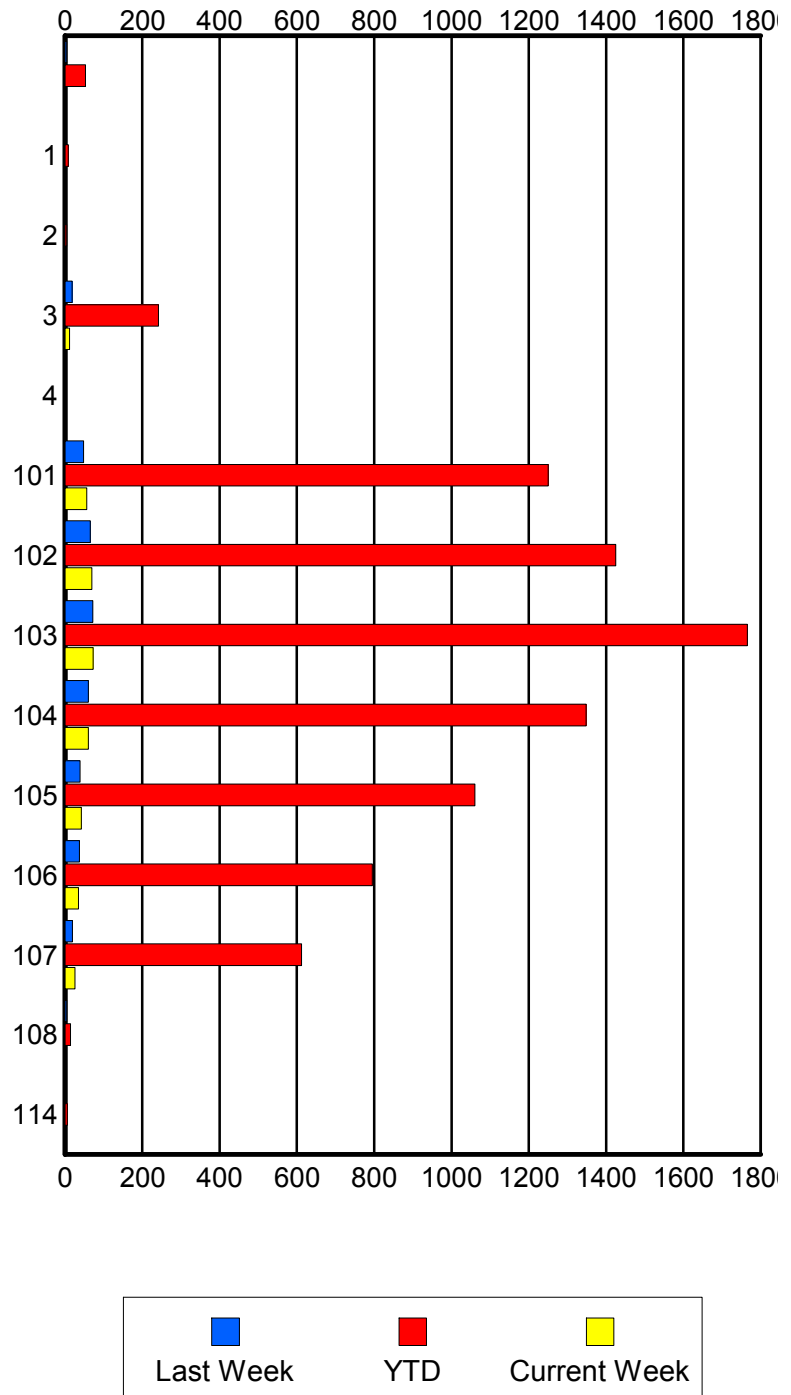
	Current We	Last Week	YTD
S04	0	0	2
	0	0	2
	0	0	2

### Road Ranger / SIRV Performance By Beat

	Current We	Last Week	YTD
	0	4	53
	0	4	53
	0	4	53
1	0	0	8
	0	0	8
	0	0	9
2	0	1	4
	0	1	4
	0	1	5
3	12	17	239
	12	18	242
	12	19	261
4	0	0	1
	0	0	1
	0	0	1
101	55	48	1,235
	56	48	1,250
	60	50	1,344
102	69	64	1,410
	69	65	1,425
	74	71	1,513
103	72	71	1,745
	73	72	1,766
	76	76	1,896
104	59	56	1,335
	60	60	1,348
	61	63	1,441
105	42	39	1,053
	42	39	1,061
	45	42	1,127
106	33	37	785
	35	37	795
	37	37	847
107	25	19	606
	26	19	612
	27	20	637
108	0	4	13
	0	4	14
	0	4	14
114	0	0	6
	0	0	6
	0	0	6

Values presented are:  
 - Total Events with a RR/SIRV Response  
 - Total RR/SIRV Responses,  
 - Total Activities Performed

### RR/SIRV Responses per Beat

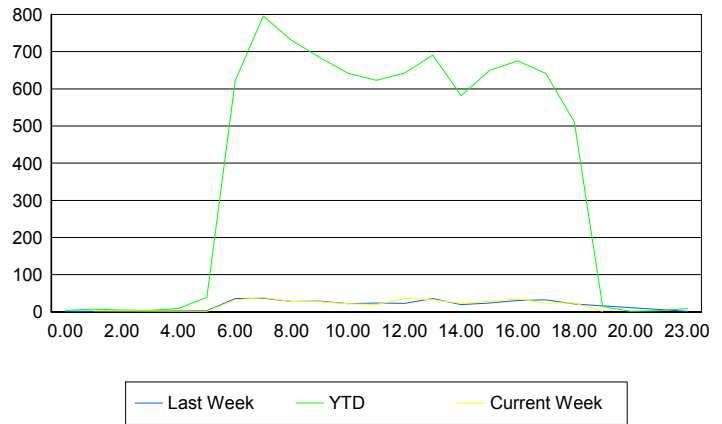


## Road Ranger / SIRV Performance By Time of Day

Values presented are:  
 - Total Events with a RR/SIRV Response  
 - Total RR/SIRV Responses,  
 - Total Activities Performed

	Current We	Last Week	YTD
12AM-1AM	0 0 0	1 1 1	4 4 4
1AM-2AM	1 3 3	0 0 0	5 7 7
2AM-3AM	0 0 0	0 0 0	5 5 6
3AM-4AM	0 0 0	0 0 0	4 4 4
4AM-5AM	0 0 0	0 0 0	6 9 10
5AM-6AM	1 1 2	3 3 4	37 39 41
6AM-7AM	32 32 32	35 36 38	598 622 653
7AM-8AM	34 38 40	35 37 40	761 796 851
8AM-9AM	28 28 28	27 28 30	705 730 784
9AM-10AM	26 27 29	28 29 32	662 684 747
10AM-11AM	20 22 24	21 22 23	621 642 677
11AM-12PM	18 19 19	23 24 24	604 623 673
12PM-1PM	35 36 41	21 23 23	622 643 688

## Number of Responses / Hour of the Day



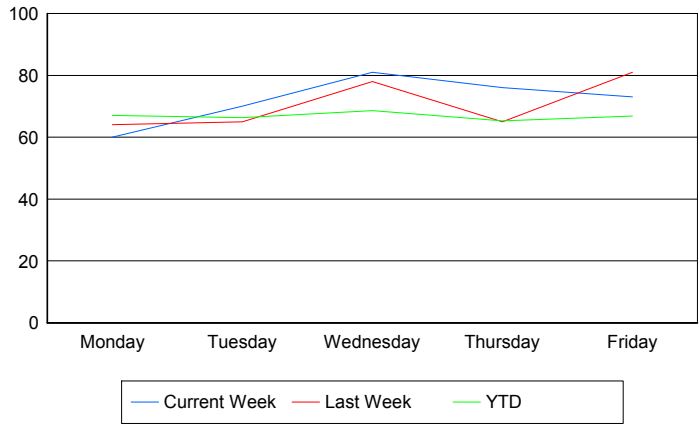
	Current We	Last Week	YTD
1PM-2PM	31	35	676
	32	36	691
	33	39	749
2PM-3PM	22	17	560
	23	19	582
	23	19	614
3PM-4PM	28	23	630
	28	24	650
	30	26	696
4PM-5PM	35	31	657
	35	31	675
	38	33	708
5PM-6PM	24	31	624
	24	32	641
	24	33	673
6PM-7PM	24	21	507
	24	21	511
	25	21	541
7PM-8PM	1	0	14
	1	0	14
	1	0	15
8PM-9PM	0	0	1
	0	0	1
	0	0	1
10PM-11PM	0	0	3
	0	0	3
	0	0	3
11PM-12AM	0	1	8
	0	1	9
	0	1	9

Road Ranger / SIRV Performance By Day of Week

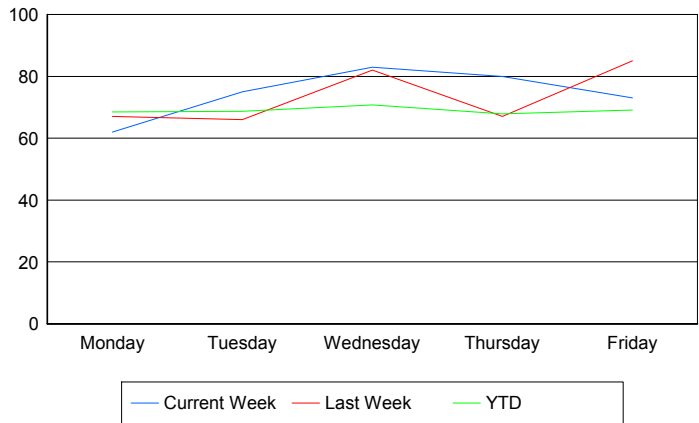
Values presented are:  
 - Total Events with a RR/SIRV Response  
 - Total RR/SIRV Responses,  
 - Total Activities Performed

	Current We	Last Week	YTD
Monday	60	64	1,634
	62	67	1,671
	63	71	1,765
Tuesday	70	65	1,631
	75	66	1,687
	78	67	1,790
Wednesday	81	78	1,689
	83	82	1,743
	90	86	1,875
Thursday	76	65	1,659
	80	67	1,725
	87	72	1,851
Friday	73	81	1,703
	73	85	1,759
	74	91	1,873

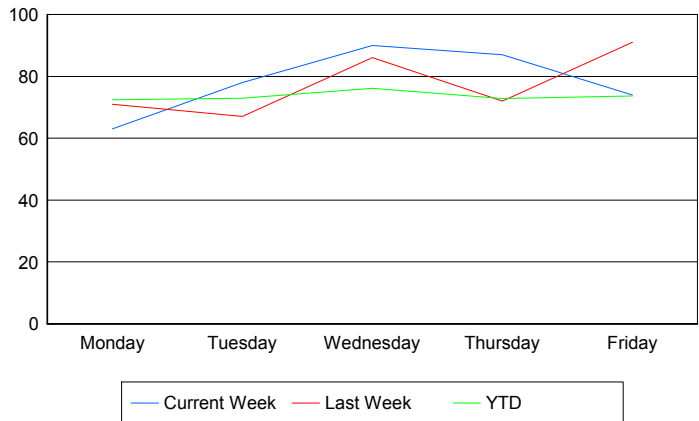
Avg # of events with a RR/SIRV Response per Day of the Week



Avg # of RR/SIRV Responses per Day of the Week



Avg # of RR/SIRV Activities Performed per Day of the Week



### Road Ranger / SIRV Responses per Time of Day and Day of Week

