



Weekly Performance Measures Report Palm Beach County



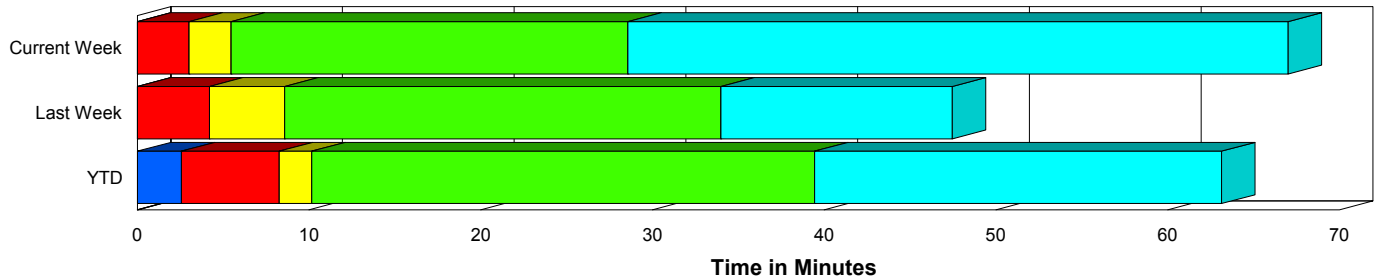
Created on:
July 13, 2009
9:06 am

Period From Jul 5, 2009 to Jul 11, 2009

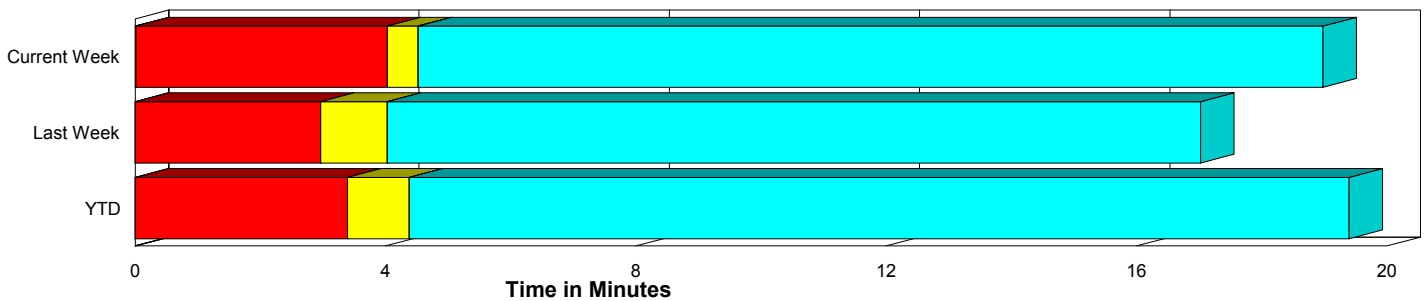
Performance Measures Summary

	Traffic Events (No Lanes Blocked)			Incidents (Lanes Blocked)		
	<u>This Week</u>	<u>Last Week</u>	<u>YTD</u>	<u>This Week</u>	<u>Last Week</u>	<u>YTD</u>
Number of Events	314	259	7,858	24	33	560
TMC Detection (min.)	0.01	0.00	0.00	0.00	0.00	2.58
TMC Verification (min.)	4.01	2.97	3.39	3.02	4.20	5.70
TMC Response (min.)	4.96	4.50	5.16	5.36	10.06	9.19
RR Dispatch Time (min.)	1.41	0.86	1.68	1.38	3.82	4.75
RR Response Time (min.)	3.54	3.64	3.58	4.04	6.24	4.42
Roadway Clearance (min.)				44.81	52.95	54.67
Event Clearance (min.)	19.43	17.50	20.17	83.24	66.40	77.91
# of Events w/ RR/SIRV	277	218	6,498	16	24	427
RR/SIRV Responses	277	218	6,498	16	24	427
RR/SIRV Activities	318	239	7,062	27	31	623

Incident Clearance Time-Line



Traffic Event (Non-Lane Blockage) Time-Line



■ Avg. TMC Detection Time	■ Avg. Time from TMC Response to Roadway Clearance*
■ Avg. Time from TMC Detection to TMC Verification	■ Avg. Time from Roadway Clearance to Incident/Event Clearance**
■ Avg. Time from TMC Verification to TMC Response	

* Roadway clearance equals all travel lanes open

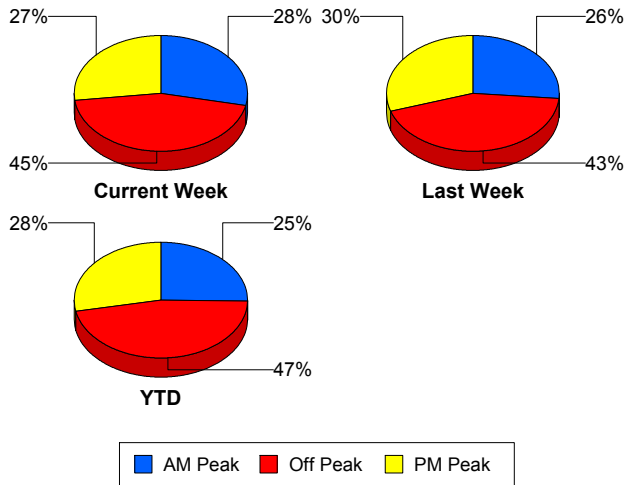
** Incident clearance equals time when last responder has left the scene

Performance Measures by Peak Period

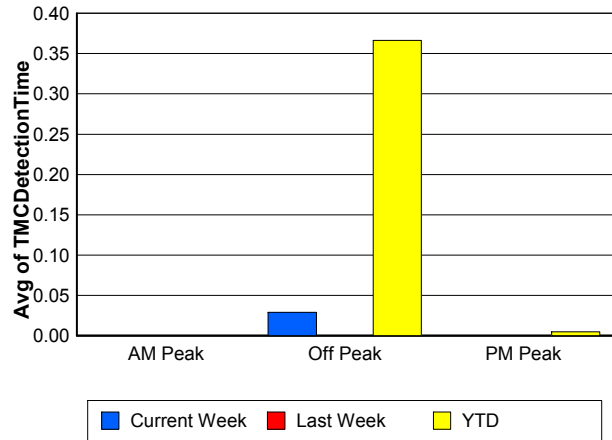
Note: AM peak period is defined as 6am to 10am and PM peak period is defined as 3pm to 7pm.

	AM Peak			Off Peak			PM Peak		
	<u>Current Week</u>	<u>Last Week</u>	<u>YTD</u>	<u>Current Week</u>	<u>Last Week</u>	<u>YTD</u>	<u>Current Week</u>	<u>Last Week</u>	<u>YTD</u>
Number of Events	96	77	2,135	151	127	3,930	91	88	2,353
Number of Incidents	5	12	169	14	15	242	5	6	149
TMC Detection (min.)	0.00	0.00	0.00	0.03	0.00	0.37	0.00	0.00	0.00
TMC Verification (min.)	2.24	2.54	3.06	4.04	3.37	3.30	5.57	3.24	4.39
TMC Response (min.)	3.38	3.97	4.17	5.25	6.21	6.48	6.31	4.72	5.24
RR Dispatch Time (min.)	0.70	0.81	1.02	1.68	1.77	3.00	1.81	0.76	1.26
RR Response Time (min.)	2.68	3.16	3.19	3.57	4.42	3.67	4.50	3.97	3.99
Event Clearance (min.)	22.81	27.56	22.05	28.62	23.32	26.82	17.44	18.63	21.10
Roadway Clearance (min.)	30.40	64.46	39.77	58.14	52.71	58.53	21.90	30.49	65.29
Incident Clearance (min.)	152.01	76.02	66.05	76.49	68.26	82.88	33.35	42.47	83.30
# of Events w/ RR/SIRV	91	70	2,029	116	92	2,703	86	80	2,193
RR/SIRV Responses	91	70	2,029	116	92	2,703	86	80	2,193
RR/SIRV Activities	115	79	2,314	133	105	2,995	97	86	2,376

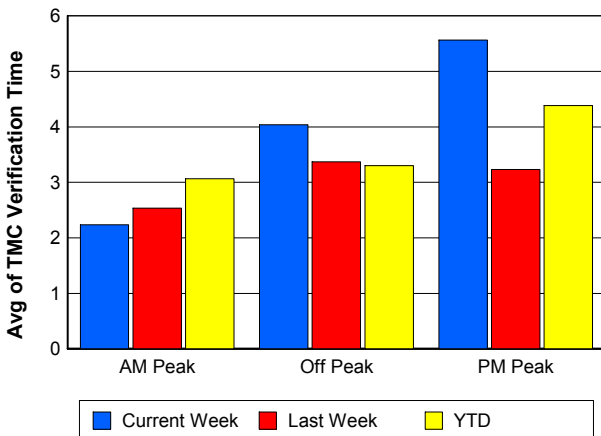
Number of Events / Peak Period



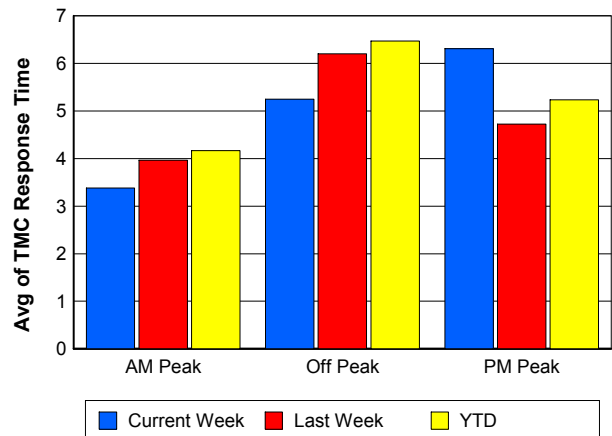
TMC Detection Time



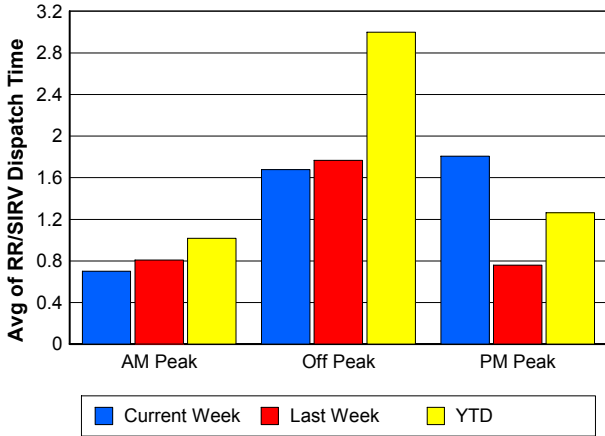
TMC Verification Time



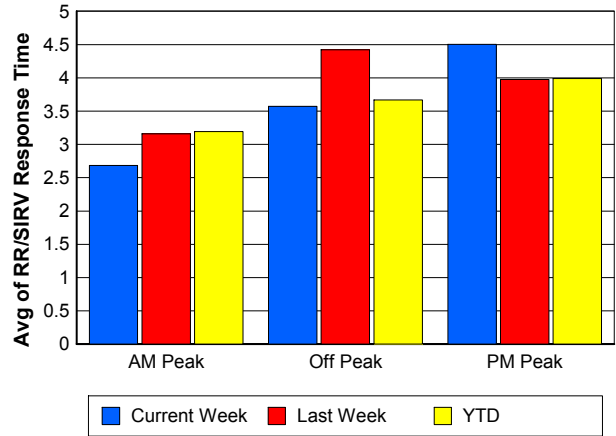
TMC Response Time



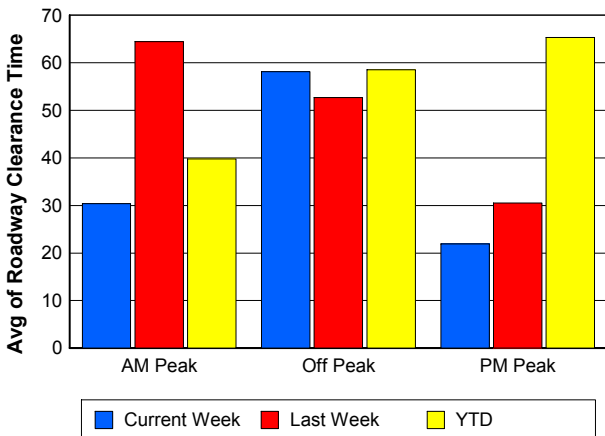
Road Ranger / SIRV Dispatch Time



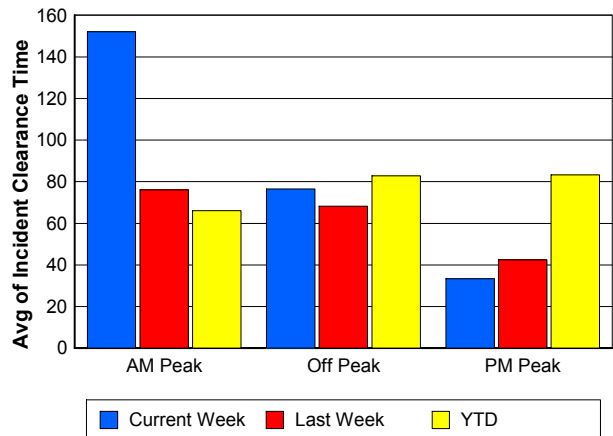
Road Ranger / SIRV Response Time



Roadway Clearance Time (2A)



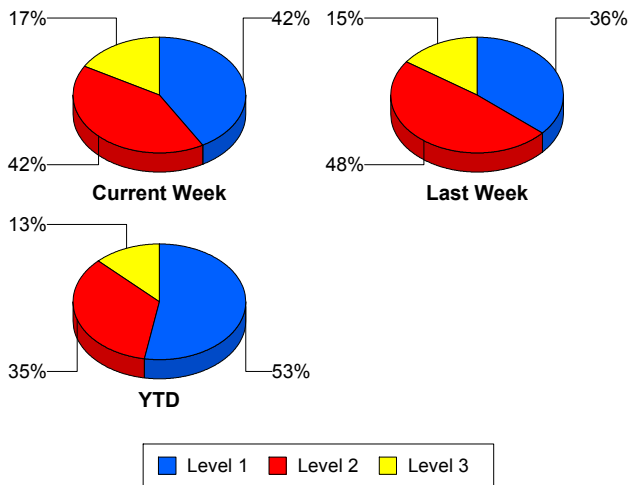
Incident Clearance Time (3B)



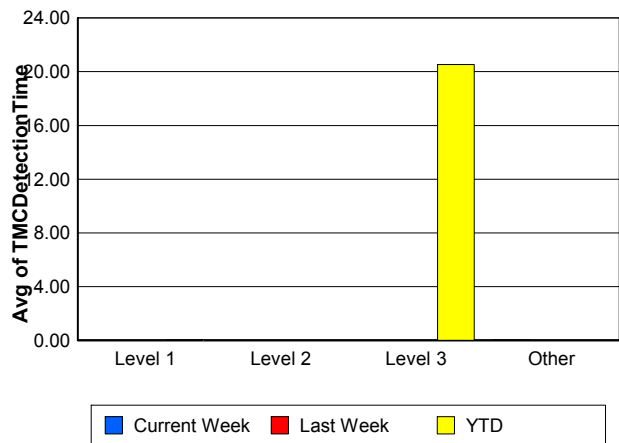
Performance Measures by Severity

	Level 1			Level 2			Level 3			Other		
	<u>This Week</u>	<u>Last Week</u>	<u>YTD</u>	<u>This Week</u>	<u>Last Week</u>	<u>YTD</u>	<u>This Week</u>	<u>Last Week</u>	<u>YTD</u>	<u>This Week</u>	<u>Last Week</u>	<u>YTD</u>
Number of Events	10	12	295	10	16	195	4	5	70	314	259	7,858
Number of Incidents	10	12	295	10	16	195	4	5	70	0	0	0
TMC Detection (min.)	0.00	0.00	0.02	0.00	0.00	0.00	0.00	0.00	20.53	0.01	0.00	0.00
TMC Verification (min.)	0.91	2.16	2.30	4.82	6.11	4.02	3.77	3.02	24.96	4.01	2.97	3.39
TMC Response (min.)	3.10	3.73	4.21	5.16	11.13	8.74	14.89	66.92	38.67	4.96	4.50	5.16
RR Dispatch Time (min.)	1.38	0.45	1.07	1.07	3.52	2.96	2.18	44.48	31.15	1.41	0.86	1.68
RR Resp. Time (min.)	1.85	3.28	3.15	4.08	7.60	5.78	12.71	22.43	7.52	3.54	3.64	3.58
Event Clearance (min.)	44.74	39.74	39.62	100.20	54.50	75.05	137.07	168.44	247.27	19.43	17.50	20.17
Roadway Clear. (min.)	15.00	15.52	14.54	55.10	51.42	53.22	93.59	147.63	227.83			
Incident Clearance (min.)	44.74	39.74	39.62	100.20	54.50	75.05	137.07	168.44	247.27			
# of Events w/ RR/SIRV	9	11	252	5	12	131	2	1	44	277	218	6,498
RR/SIRV Responses	9	11	252	5	12	131	2	1	44	277	218	6,498
RR/SIRV Activities	9	13	324	15	17	224	3	1	75	318	239	7,062

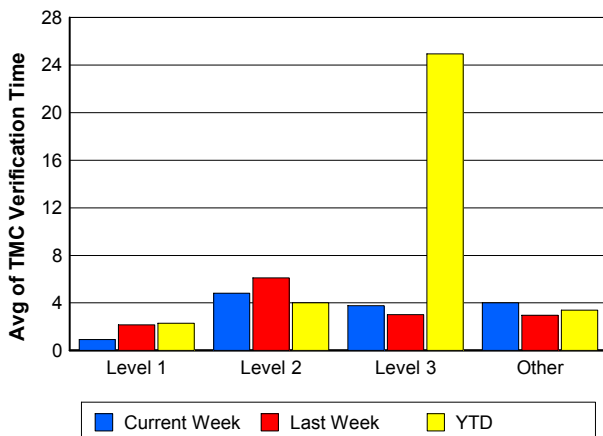
Number of Events / Severity



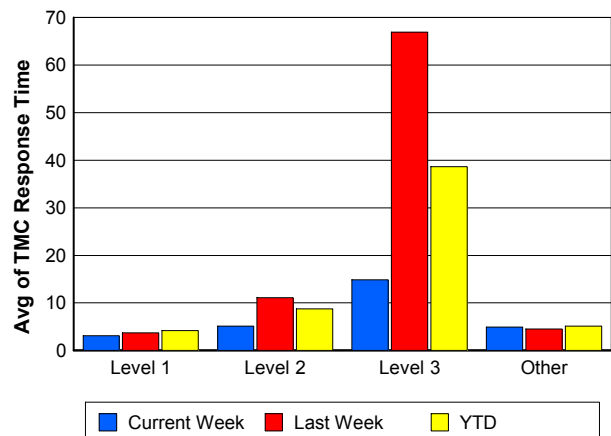
TMC Detection Time



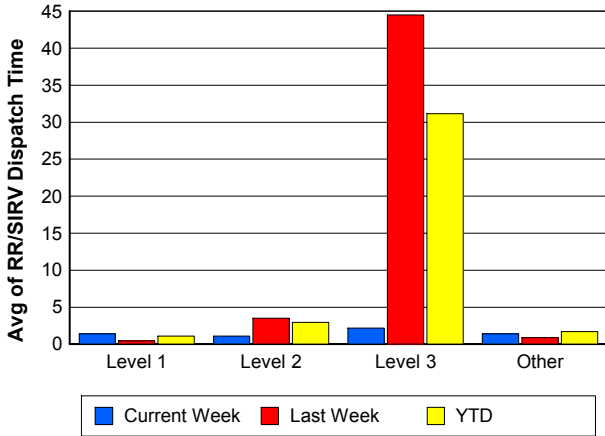
TMC Verification Time



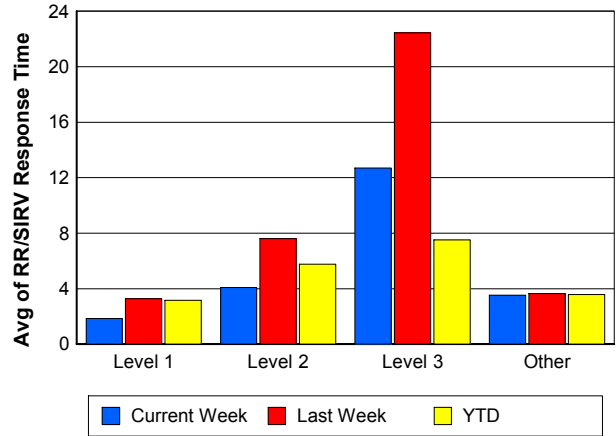
TMC Response Time



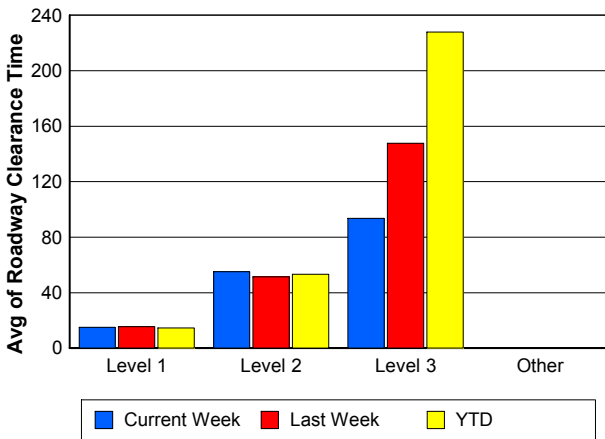
Road Ranger / SIRV Dispatch Time



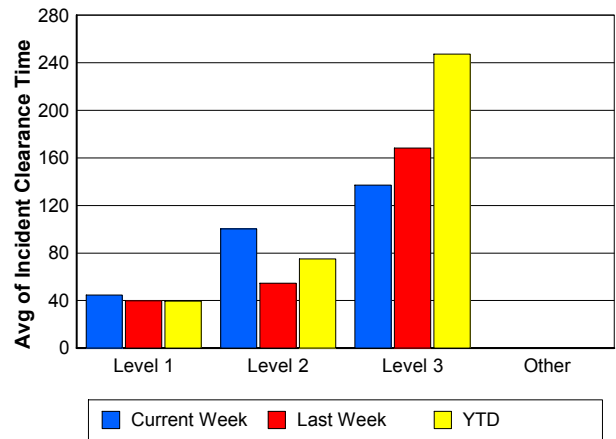
Road Ranger / SIRV Response Time



Roadway Clearance Time (2A)



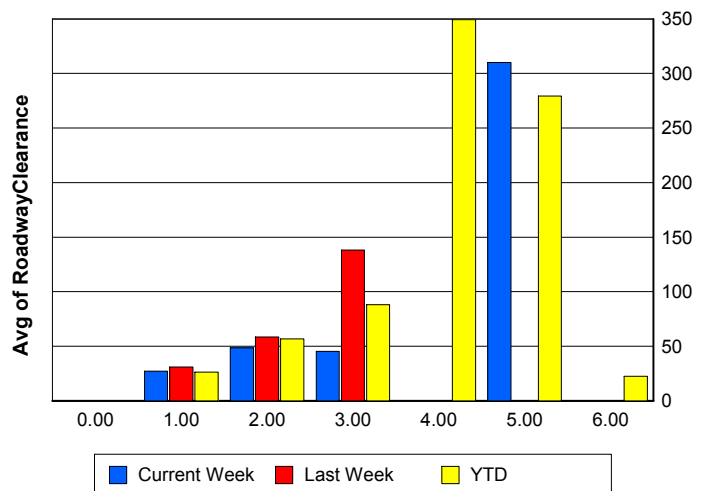
Incident Clearance Time (3B)



Roadway Clearance by Maximum Number of Lanes Blocked

	Current Week	Last Week	YTD
0			
1	27.20	30.85	26.34
2	48.52	58.42	56.71
3	45.33	138.08	87.98
4	0.00	0.00	349.47
5	310.12	0.00	279.47
6	0.00	0.00	22.35

Roadway Clearance Time (2A)



Performance Measures by Roadway

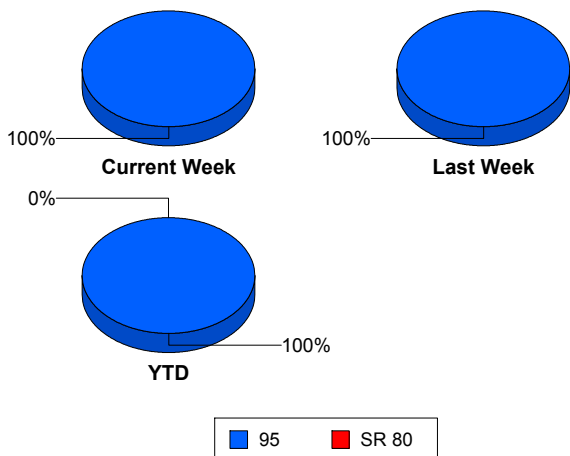
95

	<u>Current Week</u>	<u>Last Week</u>	<u>YTD</u>
Number of Events	338	292	8,415
Number of Incidents	24	33	558
TMC Detection (min.)	0.01	0.00	0.17
TMC Verification (min.)	3.94	3.11	3.55
TMC Response (min.)	4.98	5.07	5.41
RR Dispatch Time (min.)	1.41	1.16	1.87
RR Resp. Time (min.)	3.57	3.91	3.63
Event Clearance (min.)	23.96	23.02	23.38
Roadway Clear. (min.)	44.81	52.95	45.32
Incident Clearance (min.)	83.24	66.40	68.62
# of Events w/ RR/SIRV	293	242	6,925
RR/SIRV Responses	293	242	6,925
RR/SIRV Activities	345	270	7,685

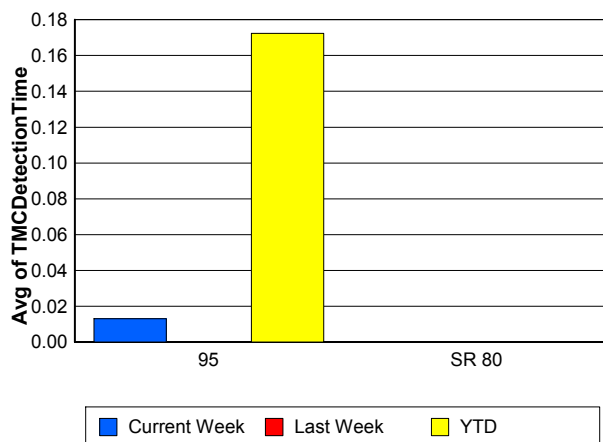
SR 80

	<u>YTD</u>
Number of Events	3
Number of Incidents	2
TMC Detection (min.)	0.00
TMC Verification (min.)	0.00
TMC Response (min.)	
RR Dispatch Time (min.)	
RR Resp. Time (min.)	
Event Clearance (min.)	1,813.57
Roadway Clear. (min.)	2,663.80
Incident Clearance (min.)	2,671.02
# of Events w/ RR/SIRV	0
RR/SIRV Responses	0
RR/SIRV Activities	0

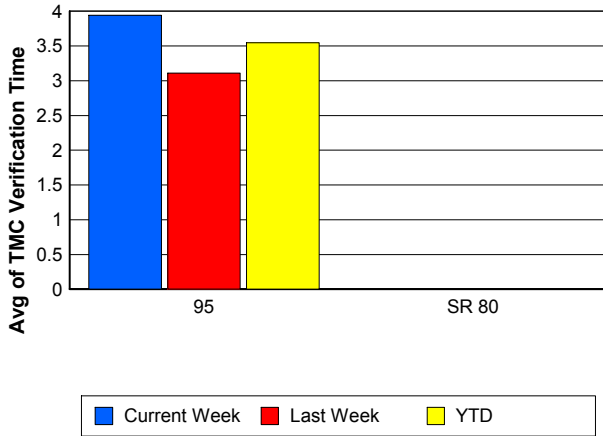
Number of Events / Roadway



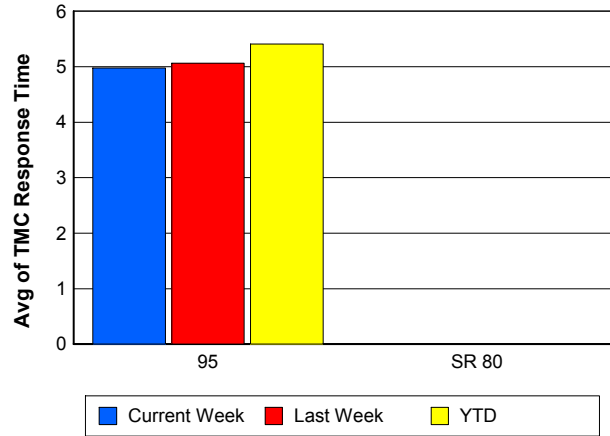
TMC Detection Time



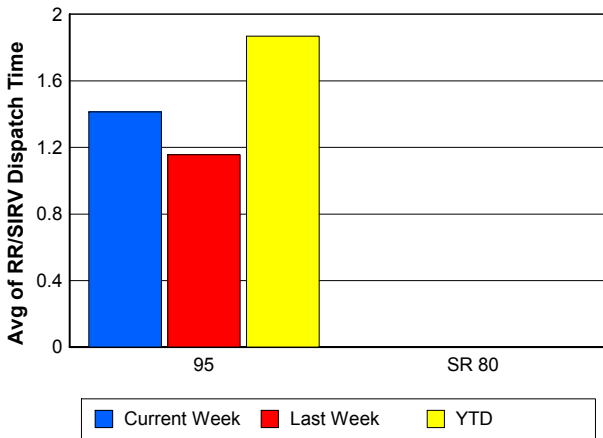
TMC Verification Time



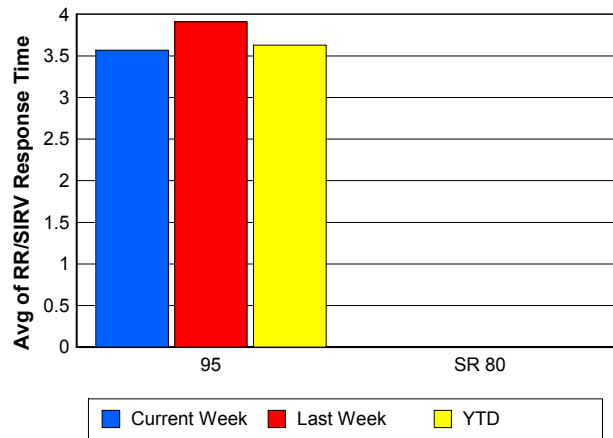
TMC Response Time



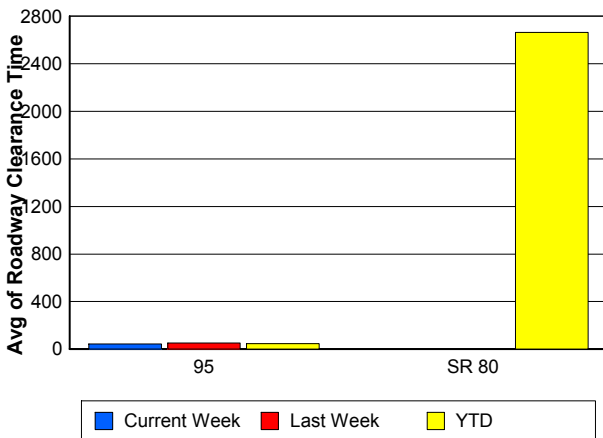
Road Ranger / SIRV Dispatch Time



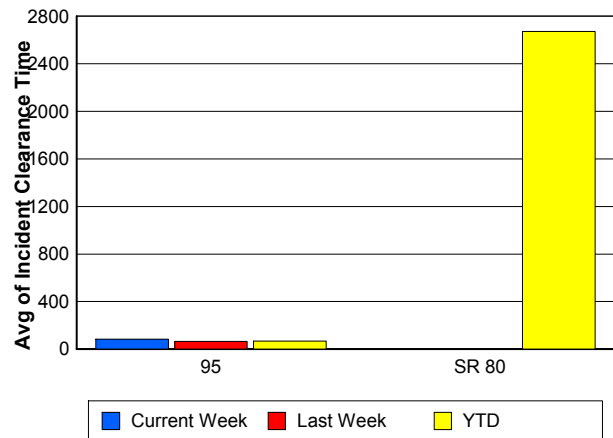
Road Ranger / SIRV Response Time



Roadway Clearance Time (2A)



Incident Clearance Time (3B)



Performance Measures by Event Type

Accident

	<u>Current Week</u>	<u>Last Week</u>	<u>YTD</u>
Number of Events	28	38	752
Number of Incidents	18	24	367
TMC Detection (min.)	0.00	0.00	0.01
TMC Verification (min.)	5.30	3.38	3.60
TMC Response (min.)	7.09	7.45	8.26
RR Dispatch Time (min.)	0.94	2.90	3.37
RR Response Time (min.)	6.15	4.55	4.89
Event Clearance (min.)	79.69	57.86	58.66
Roadway Clearance (min.)	50.00	57.92	45.80
Incident Clearance (min.)	98.09	72.82	73.57
# of Events w/ RR/SIRV	20	31	584
RR/SIRV Assists	20	31	584
RR/SIRV Activities	30	36	753

Debris on Roadway

	<u>Current Week</u>	<u>Last Week</u>	<u>YTD</u>
Number of Events	25	16	614
Number of Incidents	0	1	25
TMC Detection (min.)	0.00	0.00	0.00
TMC Verification (min.)	4.88	8.20	7.95
TMC Response (min.)	4.87	6.53	8.26
RR Dispatch Time (min.)	0.92	0.77	1.66
RR Response Time (min.)	3.95	5.78	6.61
Event Clearance (min.)	8.62	11.87	11.97
Roadway Clearance (min.)		34.38	18.04
Incident Clearance (min.)		34.23	21.83
# of Events w/ RR/SIRV	24	16	602
RR/SIRV Assists	24	16	602
RR/SIRV Activities	26	16	645

Disabled Vehicle

	<u>Current Week</u>	<u>Last Week</u>	<u>YTD</u>
Number of Events	265	213	6,047
Number of Incidents	4	5	113
TMC Detection (min.)	0.00	0.00	0.00
TMC Verification (min.)	3.93	2.67	3.29
TMC Response (min.)	4.66	4.27	4.41
RR Dispatch Time (min.)	1.51	0.81	1.47
RR Response Time (min.)	3.15	3.46	3.07
Event Clearance (min.)	15.95	17.61	17.88
Roadway Clearance (min.)	28.59	23.18	23.44
Incident Clearance (min.)	35.02	30.20	33.83
# of Events w/ RR/SIRV	241	184	5,517
RR/SIRV Assists	241	184	5,517
RR/SIRV Activities	279	207	6,070

Emergency Vehicles

	<u>Last Week</u>	<u>YTD</u>
Number of Events	1	12
Number of Incidents	1	6
TMC Detection (min.)	0.00	0.00
TMC Verification (min.)	0.00	1.15
TMC Response (min.)		9.08
RR Dispatch Time (min.)		3.89
RR Response Time (min.)		4.43
Event Clearance (min.)	10.55	36.63
Roadway Clearance (min.)	4.07	21.83
Incident Clearance (min.)	10.55	25.97
# of Events w/ RR/SIRV	0	5
RR/SIRV Assists	0	5
RR/SIRV Activities	0	6

Other

	<u>Current Week</u>	<u>Last Week</u>	<u>YTD</u>
Number of Events	15	12	614
Number of Incidents	0	0	6
TMC Detection (min.)	0.00	0.00	0.00
TMC Verification (min.)	0.00	1.06	1.17
TMC Response (min.)	9.60	6.97	19.55
RR Dispatch Time (min.)	1.05	3.32	9.97
RR Response Time (min.)	8.55	3.18	7.97
Event Clearance (min.)	86.93	12.65	39.93
Roadway Clearance (min.)			38.11
Incident Clearance (min.)			52.15
# of Events w/ RR/SIRV	5	6	141
RR/SIRV Assists	5	6	141
RR/SIRV Activities	6	5	125

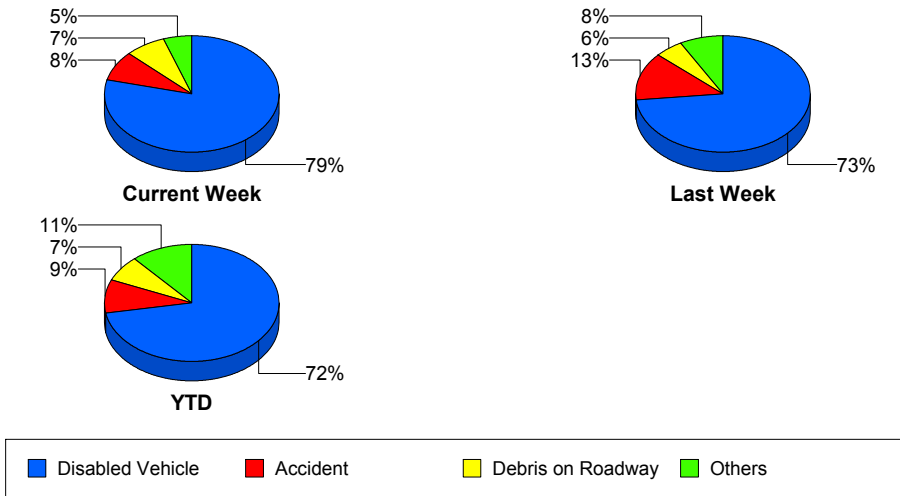
Police Activity

	<u>Current Week</u>	<u>Last Week</u>	<u>YTD</u>
Number of Events	1	8	305
Number of Incidents	0	1	27
TMC Detection (min.)	0.00	0.00	0.04
TMC Verification (min.)	0.00	6.15	0.32
TMC Response (min.)		49.17	11.53
RR Dispatch Time (min.)		6.43	6.36
RR Response Time (min.)		42.73	5.17
Event Clearance (min.)	3.95	42.96	26.52
Roadway Clearance (min.)		196.85	84.78
Incident Clearance (min.)		211.18	118.54
# of Events w/ RR/SIRV	0	1	24
RR/SIRV Assists	0	1	24
RR/SIRV Activities	0	1	27

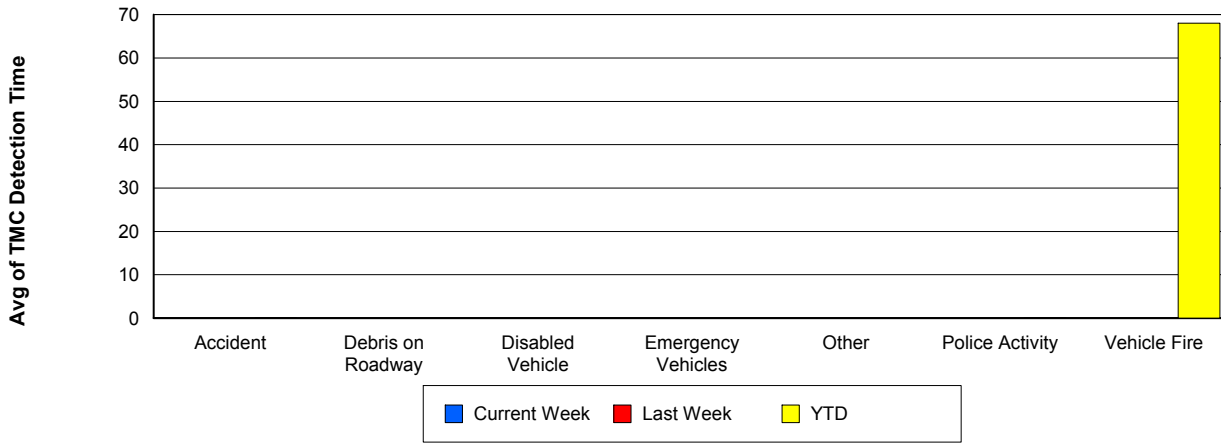
Vehicle Fire

	<u>Current Week</u>	<u>Last Week</u>	<u>YTD</u>
Number of Events	2	2	21
Number of Incidents	2	1	15
TMC Detection (min.)	0.00	0.00	68.03
TMC Verification (min.)	7.55	6.70	70.73
TMC Response (min.)	14.89	6.69	28.89
RR Dispatch Time (min.)	2.18	0.76	22.03
RR Response Time (min.)	12.71	5.93	6.86
Event Clearance (min.)	46.02	32.85	169.42
Roadway Clearance (min.)	30.57	5.92	184.14
Incident Clearance (min.)	46.02	36.38	219.62
# of Events w/ RR/SIRV	2	2	13
RR/SIRV Assists	2	2	13
RR/SIRV Activities	3	3	19

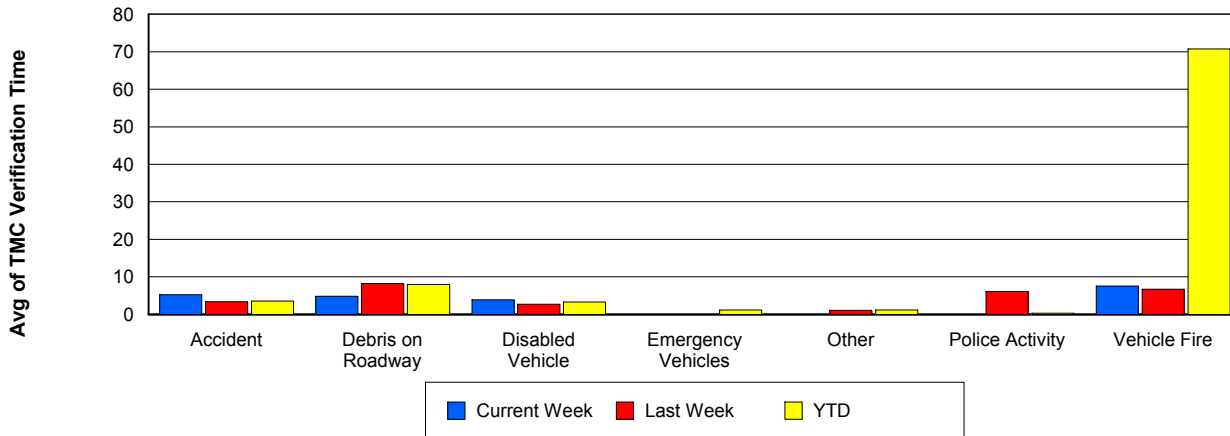
Number of Events / Event Type



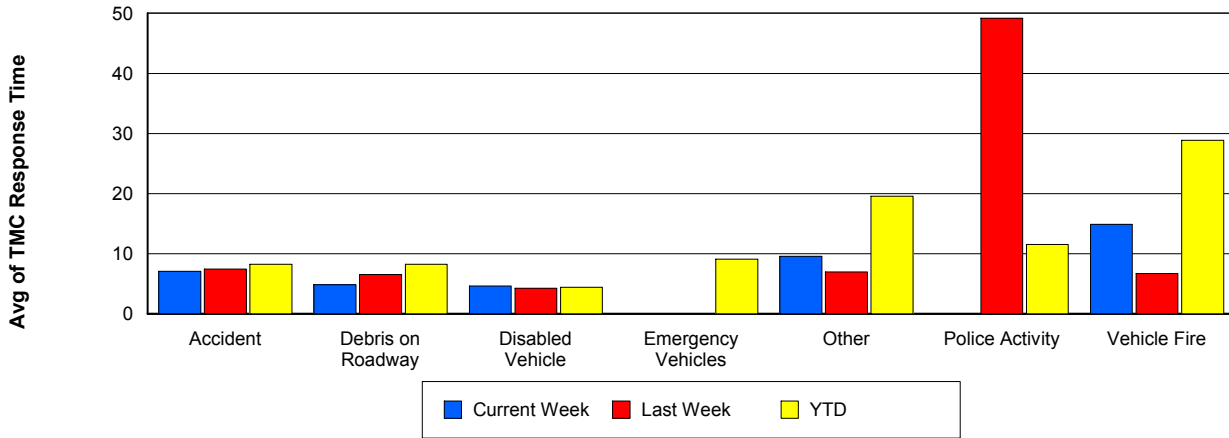
TMC Detection Time



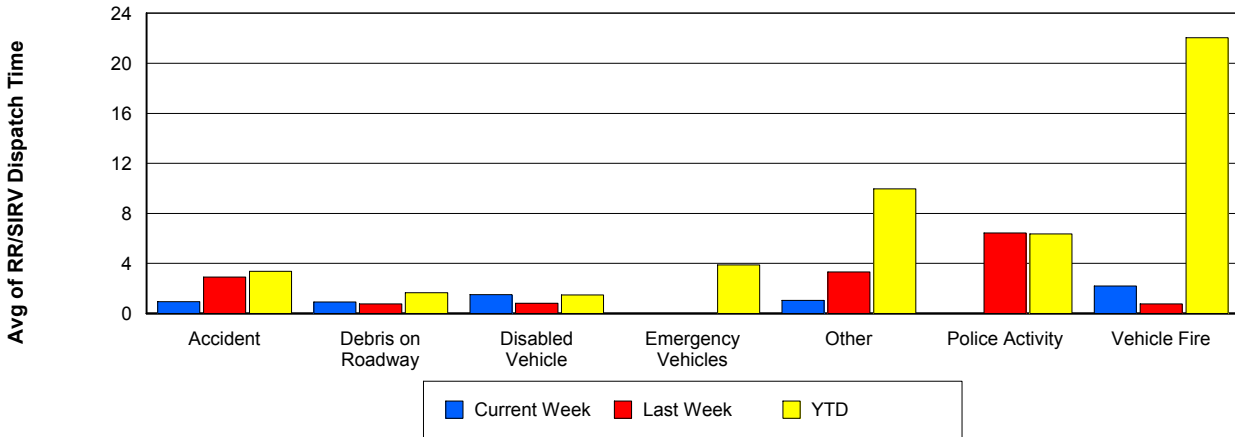
TMC Verification Time



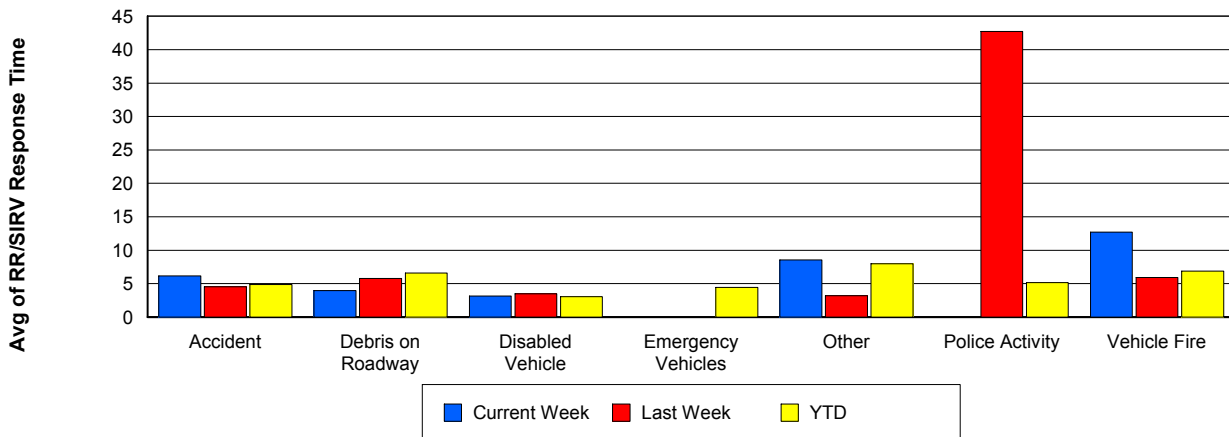
TMC Response Time



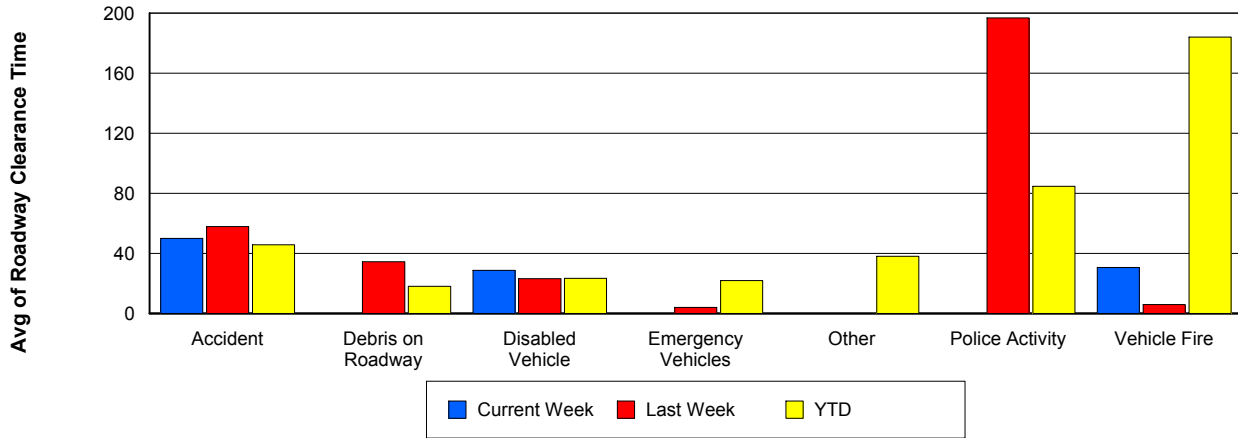
Road Ranger / SIRV Dispatch Time



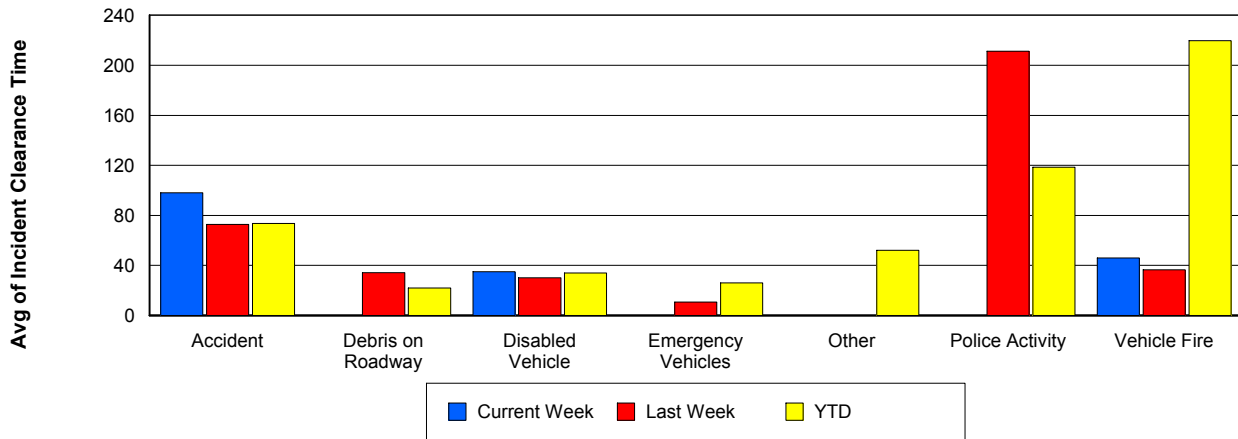
Road Ranger / SIRV Response Time



Roadway Clearance Time (2A)



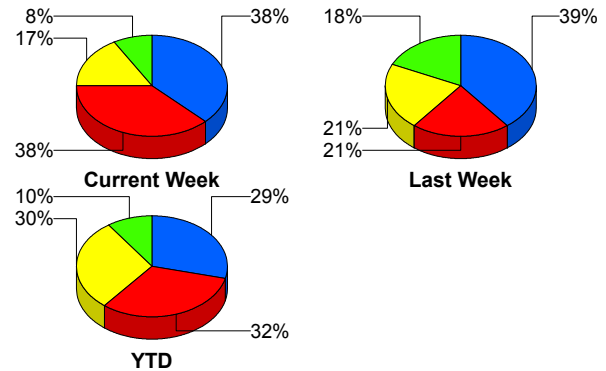
Incident Clearance Time (3B)



Incident Detection Methods

	Current Week	Last Week	YTD
Broward CCTV	0	0	6
Broward Road Ranger	0	0	6
Broward VideoWall	1	0	1
Construction CEI	0	0	1
District 4	1	2	14
Emergency Operations	0	0	1
FHP	9	13	162
I-95 Construction PIO	0	0	2
ITMS	0	1	5
ITMS CCTV	4	7	166
Local Police	0	0	1
Media	0	2	2
Motorist	0	1	10
Palm Beach Road Ran	9	7	178
Road Watcher	0	0	1
SmarTraveler (511)	0	0	4
Total	24	33	560

Total Incidents by Detection Method



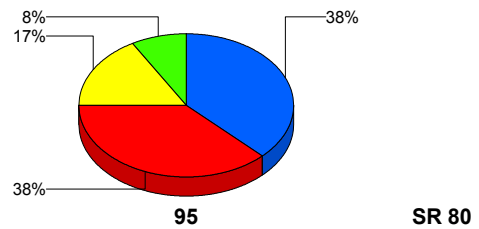
■ FHP
 ■ Palm Beach Road Ranger
 ■ ITMS CCTV
 ■ Others

Incident Detection Methods by Roadway

		Current Week	Last Week	YTD
95	Broward CCTV	0	0	6
	Broward Road Ranger	0	0	6
	Broward VideoWall	1	0	1
	Construction CEI	0	0	1
	District 4	1	2	14
	FHP	9	13	161
	I-95 Construction PIO	0	0	2
	ITMS	0	1	5
	ITMS CCTV	4	7	166
	Local Police	0	0	1
	Media	0	2	2
	Motorist	0	1	10
	Palm Beach Road Ran	9	7	178
	Road Watcher	0	0	1
	SmarTraveler (511)	0	0	4
Total	24	33	558	
SR 80	Emergency Operations	0	0	1
	FHP	0	0	1
	Total	0	0	2
Total		24	33	560

Total Events by Roadway and Detection Method

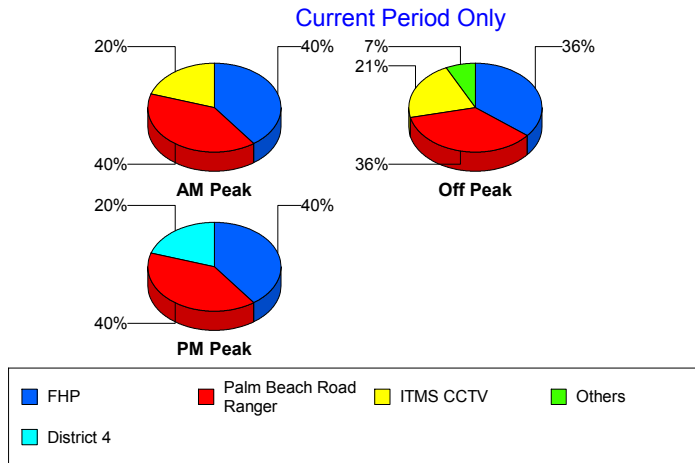
Current Period Only



Incident Detection Methods by Peak Period

		Current Week	Last Week	YTD
AM Peak	Broward CCTV	0	0	2
	Broward Road Ranger	0	0	3
	District 4	0	0	8
	FHP	2	5	59
	ITMS	0	1	3
	ITMS CCTV	1	2	25
	Motorist	0	1	5
	Palm Beach Road Ran	2	3	60
	Road Watcher	0	0	1
	SmarTraveler (511)	0	0	3
	Total	5	12	169
Off Peak	Broward CCTV	0	0	4
	Broward Road Ranger	0	0	1
	Broward VideoWall	1	0	1
	Construction CEI	0	0	1
	District 4	0	2	5
	FHP	5	7	74
	I-95 Construction PIO	0	0	2
	ITMS	0	0	2
	ITMS CCTV	3	3	84
	Motorist	0	0	2
	Palm Beach Road Ran	5	3	65
	SmarTraveler (511)	0	0	1
	Total	14	15	242
PM Peak	Broward Road Ranger	0	0	2
	District 4	1	0	1
	Emergency Operations	0	0	1
	FHP	2	1	29
	ITMS CCTV	0	2	57
	Local Police	0	0	1
	Media	0	2	2

Total Events by Peak Period and Detection Method

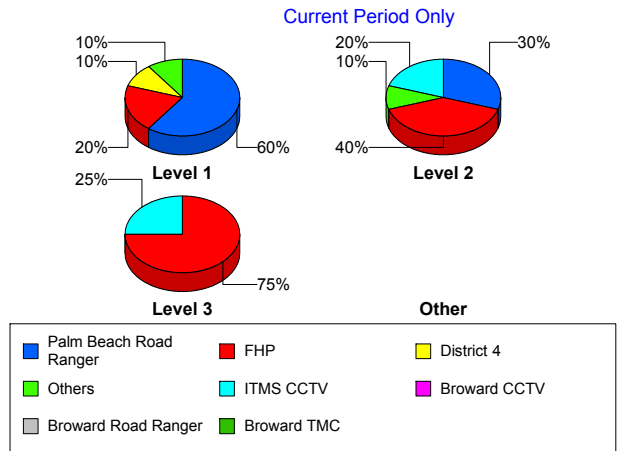


		Current Week	Last Week	YTD
PM Peak	Motorist	0	0	3
	Palm Beach Road Ran	2	1	53
	Total	5	6	149
Total		24	33	560

Incident Detection Methods by Severity

		Current Week	Last Week	YTD
Level 1	Broward CCTV	0	0	4
	Broward Road Ranger	0	0	4
	District 4	1	1	11
	FHP	2	2	67
	I-95 Construction PIO	0	0	1
	ITMS	0	1	2
	ITMS CCTV	1	0	66
	Local Police	0	0	1
	Motorist	0	1	7
	Palm Beach Road Ran	6	7	130
	Road Watcher	0	0	1
	SmarTraveler (511)	0	0	1
	Total	10	12	295
	Level 2	Broward Road Ranger	0	0
Broward VideoWall		1	0	1
District 4		0	1	3
FHP		4	10	72
I-95 Construction PIO		0	0	1
ITMS		0	0	3
ITMS CCTV		2	4	69
Media		0	1	1
Motorist		0	0	2
Palm Beach Road Ran		3	0	38
SmarTraveler (511)		0	0	3
Total		10	16	195

Total Events by Severity and Detection Method



		Current Week	Last Week	YTD
Level 3	Broward CCTV	0	0	2
	Construction CEI	0	0	1
	Emergency Operations	0	0	1
	FHP	3	1	23
	ITMS CCTV	1	3	31
	Media	0	1	1
	Motorist	0	0	1
	Palm Beach Road Ran	0	0	10
	Total	4	5	70
Total		24	33	560

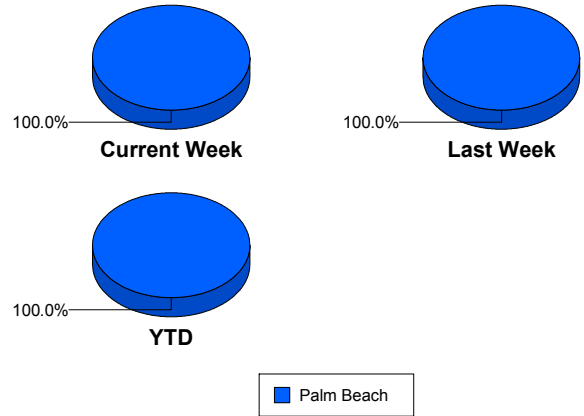
Road Ranger / SIRV Performance Measures

Road Ranger / SIRV Performance By County

RR/SIRV Responses per County

Values presented are: - Total Events with a RR/SIRV Response - Total RR/SIRV Responses, - Total Activities Performed

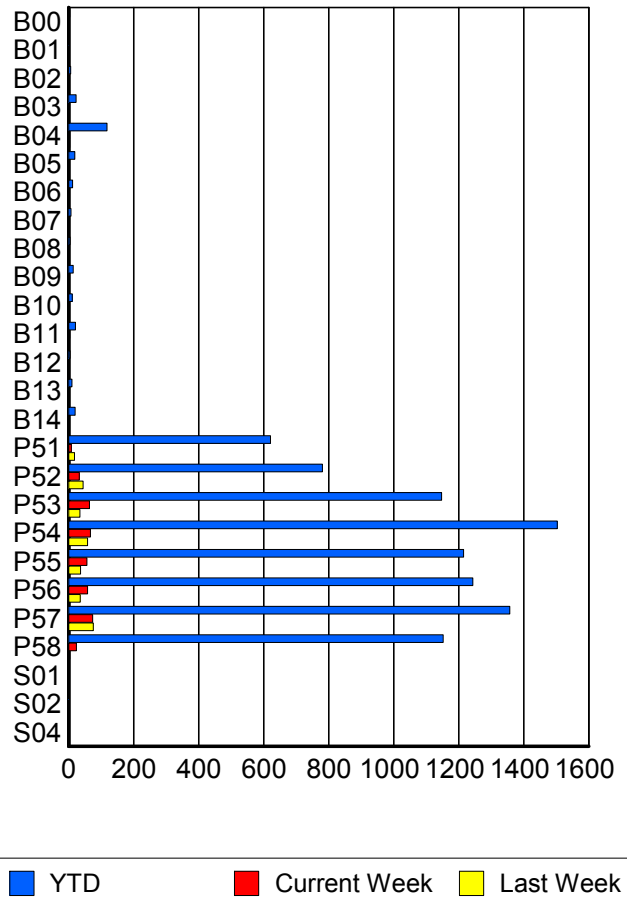
	Current We	Last Week	YTD
Palm Beach	372	301	8,987
	396	316	9,297
	428	339	9,921



Road Ranger / SIRV Performance By Truck

	Current We	Last Week	YTD
B00	0	0	3
	0	0	3
	0	0	3
B01	0	0	1
	0	0	1
	0	0	1
B02	2	0	6
	2	0	6
	2	0	6
B03	0	2	23
	0	2	23
	0	2	24
B04	3	3	117
	3	3	118
	5	4	137
B05	0	0	18
	0	0	19
	0	0	20
B06	0	0	12
	0	0	12
	0	0	12
B07	0	0	7
	0	0	7
	0	0	7
B08	1	0	4
	1	0	4
	1	0	4

**RR/SIRV
Responses per
Truck**



	Current We	Last Week	YTD
B09	0 0 0	0 0 0	14 14 14
B10	1 1 1	1 2 2	10 11 11
B11	3 3 3	0 0 0	21 21 22
B12	0 0 0	0 0 0	4 4 4
B13	1 1 1	0 0 0	10 10 11
B14	0 0 0	1 1 1	20 20 21
P51	6 8 8	18 18 20	613 621 651
P52	31 33 40	45 45 48	775 781 832
P53	61 64 68	34 35 39	1,131 1,147 1,221
P54	64 67 72	57 58 62	1,485 1,503 1,610
P55	55 56 61	37 37 41	1,205 1,215 1,298
P56	58 58 62	36 36 37	1,228 1,244 1,337
P57	71 74 78	74 76 80	1,343 1,357 1,452
P58	23 24 25	3 3 3	1,137 1,152 1,219
S01	1 1 1	0 0 0	1 1 1

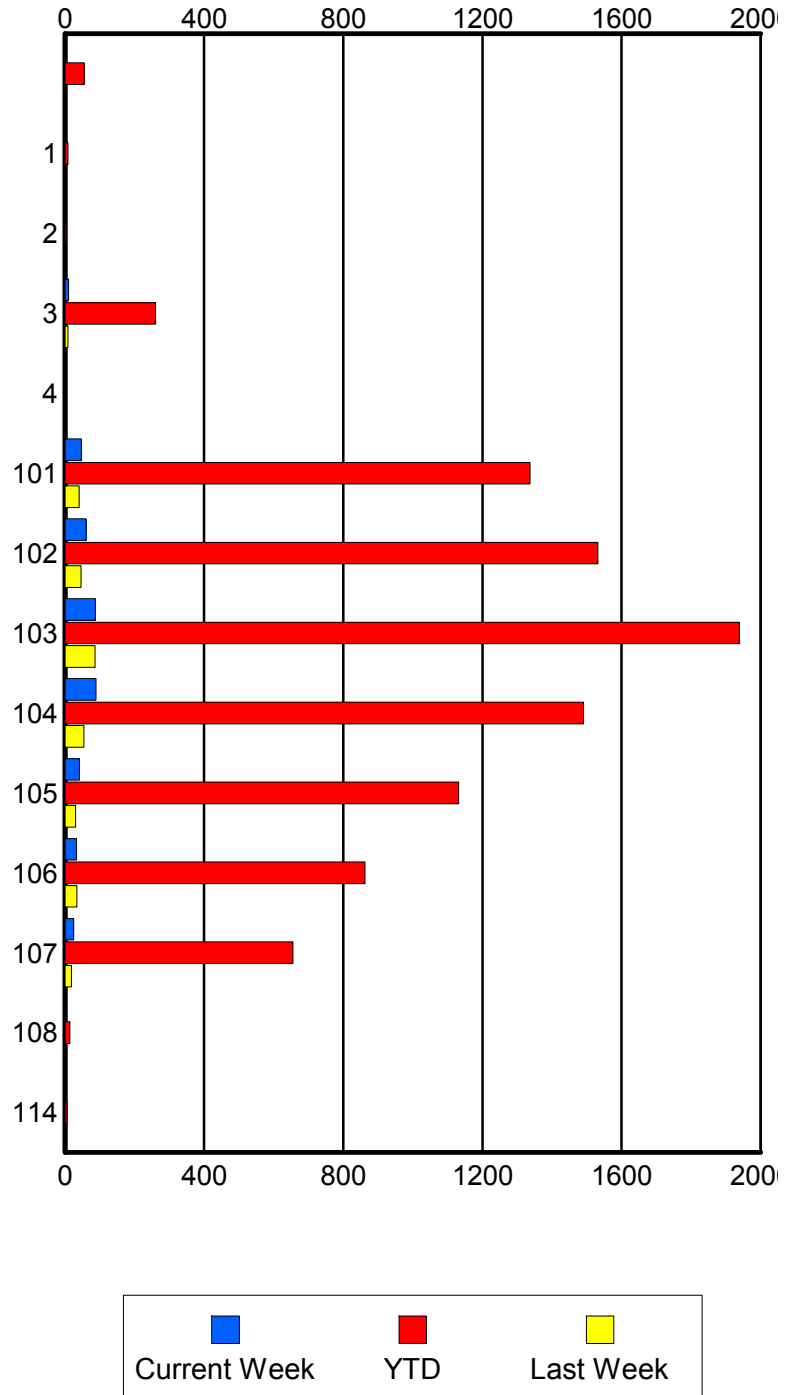
	Current We	Last Week	YTD
S02	0	0	1
	0	0	1
	0	0	1
S04	0	0	2
	0	0	2
	0	0	2

Road Ranger / SIRV Performance By Beat

	Current We	Last Week	YTD
	2	0	55
	2	0	55
	2	0	55
1	0	0	8
	0	0	8
	0	0	9
2	0	0	4
	0	0	4
	0	0	5
3	10	7	256
	10	8	260
	12	9	282
4	1	0	2
	1	0	2
	1	0	2
101	47	40	1,322
	47	40	1,337
	51	44	1,439
102	60	46	1,516
	61	46	1,532
	66	48	1,627
103	84	84	1,913
	87	86	1,939
	92	92	2,080
104	85	53	1,473
	89	54	1,491
	95	57	1,593
105	39	29	1,121
	41	30	1,132
	43	34	1,204
106	31	32	848
	33	34	862
	40	35	922
107	22	18	646
	25	18	655
	26	20	683
108	0	0	13
	0	0	14
	0	0	14
114	0	0	6
	0	0	6
	0	0	6

Values presented are:
 - Total Events with a RR/SIRV Response
 - Total RR/SIRV Responses,
 - Total Activities Performed

RR/SIRV Responses per Beat

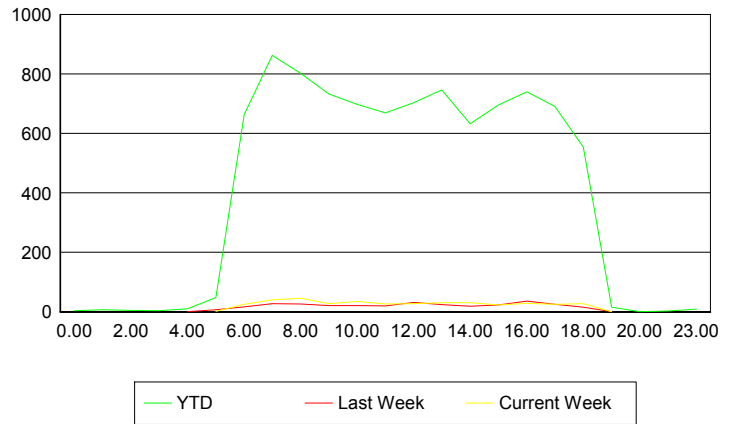


Road Ranger / SIRV Performance By Time of Day

Values presented are:
 - Total Events with a RR/SIRV Response
 - Total RR/SIRV Responses,
 - Total Activities Performed

	Current We	Last Week	YTD
12AM-1AM	0 0 0	0 0 0	4 4 4
1AM-2AM	0 0 0	0 0 0	5 7 7
2AM-3AM	0 0 0	0 0 0	5 5 6
3AM-4AM	0 0 0	0 0 0	4 4 4
4AM-5AM	0 0 0	1 1 1	7 10 11
5AM-6AM	2 2 2	6 7 7	45 48 50
6AM-7AM	24 25 28	16 17 17	638 664 698
7AM-8AM	36 40 43	27 27 31	824 863 925
8AM-9AM	40 46 51	25 26 27	770 802 862
9AM-10AM	27 27 30	20 21 24	709 732 801
10AM-11AM	34 35 39	20 21 23	675 698 739
11AM-12PM	24 26 28	18 20 21	646 669 722
12PM-1PM	25 28 28	31 32 35	678 703 751

Number of Responses / Hour of the Day



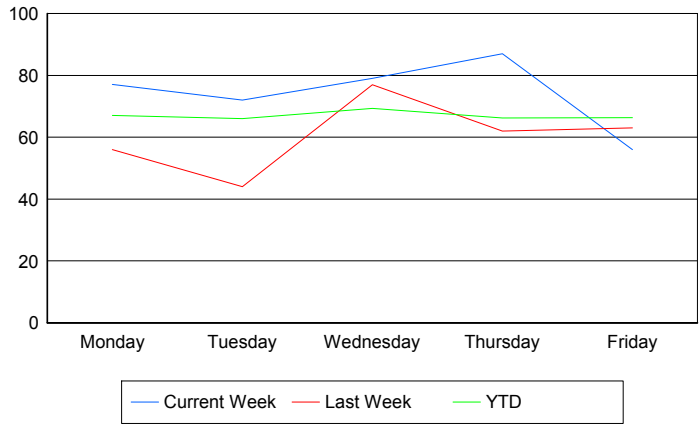
	Current We	Last Week	YTD
1PM-2PM	31	23	730
	31	24	746
	35	27	811
2PM-3PM	30	18	608
	31	19	632
	34	20	668
3PM-4PM	23	22	675
	23	23	696
	25	24	745
4PM-5PM	26	35	718
	29	36	740
	30	38	776
5PM-6PM	24	22	670
	25	25	691
	27	26	726
6PM-7PM	25	16	548
	27	16	554
	27	17	585
7PM-8PM	1	1	16
	1	1	16
	1	1	17
8PM-9PM	0	0	1
	0	0	1
	0	0	1
10PM-11PM	0	0	3
	0	0	3
	0	0	3
11PM-12AM	0	0	8
	0	0	9
	0	0	9

Road Ranger / SIRV Performance By Day of Week

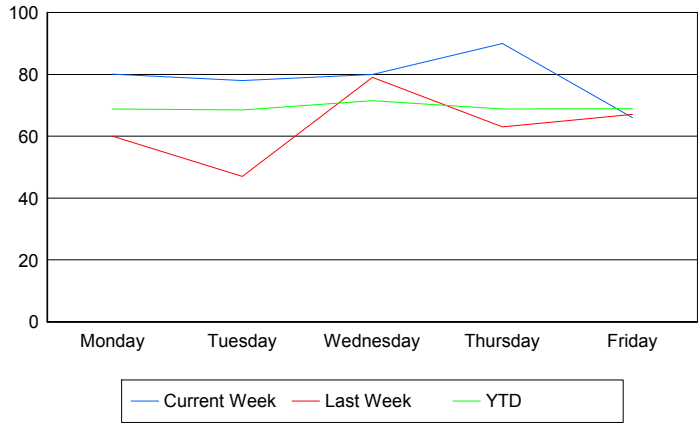
Values presented are: - Total Events with a RR/SIRV Response - Total RR/SIRV Responses, - Total Activities Performed

	Current We	Last Week	YTD
Monday	79	56	1,769
	82	60	1,813
	85	64	1,914
Tuesday	72	44	1,747
	78	47	1,812
	83	51	1,924
Wednesday	79	77	1,845
	80	79	1,902
	92	81	2,048
Thursday	87	62	1,808
	90	63	1,878
	99	71	2,021
Friday	56	63	1,822
	66	67	1,892
	69	72	2,014

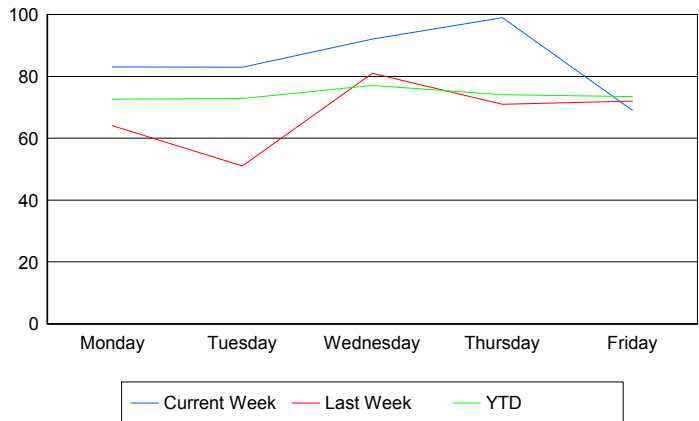
Avg # of events with a RR/SIRV Response per Day of the Week



Avg # of RR/SIRV Responses per Day of the Week



Avg # of RR/SIRV Activities Performed per Day of the Week



Road Ranger / SIRV Responses per Time of Day and Day of Week

