



Weekly Performance Measures Report Palm Beach County



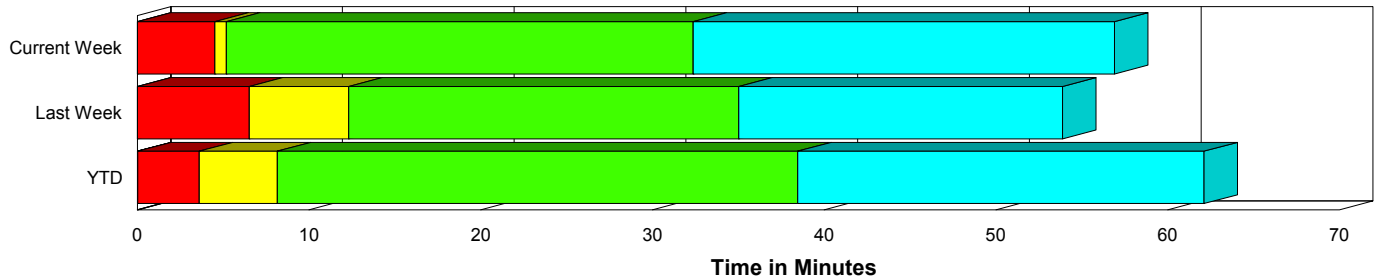
Created on:
October 12, 2009
10:03 am

Period From Oct 4, 2009 to Oct 10, 2009

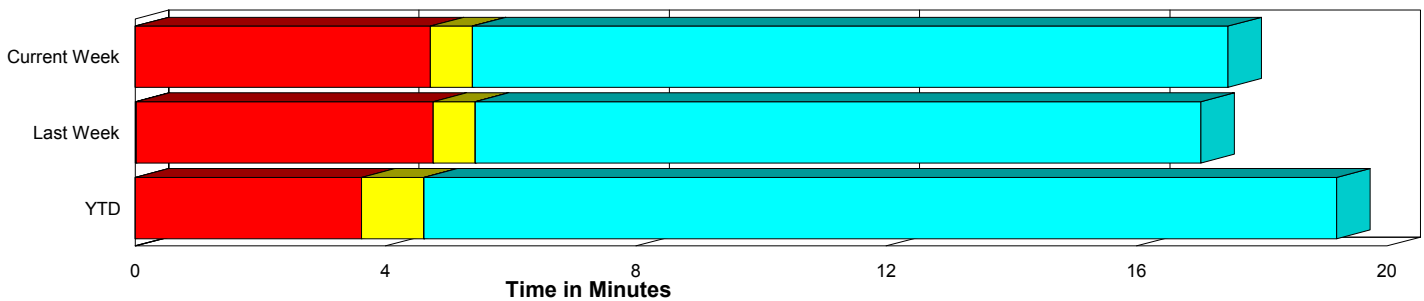
Performance Measures Summary

	Traffic Events (No Lanes Blocked)			Incidents (Lanes Blocked)		
	<u>This Week</u>	<u>Last Week</u>	<u>YTD</u>	<u>This Week</u>	<u>Last Week</u>	<u>YTD</u>
Number of Events	440	430	12,608	25	22	851
TMC Detection (min.)	0.00	0.02	0.00	0.00	0.00	0.03
TMC Verification (min.)	4.72	4.75	3.62	4.51	6.53	3.57
TMC Response (min.)	5.57	5.55	5.22	5.18	12.96	8.82
RR Dispatch Time (min.)	1.40	1.86	1.70	1.28	3.69	3.92
RR Response Time (min.)	4.20	3.74	3.61	3.90	9.11	4.88
Roadway Clearance (min.)				32.38	34.37	48.14
Event Clearance (min.)	17.64	17.16	19.81	56.90	53.20	71.48
# of Events w/ RR/SIRV	435	425	10,913	25	21	670
RR/SIRV Responses	435	425	10,913	25	21	670
RR/SIRV Activities	489	469	11,879	38	26	969

Incident Clearance Time-Line



Traffic Event (Non-Lane Blockage) Time-Line



■ Avg. TMC Detection Time	■ Avg. Time from TMC Response to Roadway Clearance*
■ Avg. Time from TMC Detection to TMC Verification	■ Avg. Time from Roadway Clearance to Incident/Event Clearance**
■ Avg. Time from TMC Verification to TMC Response	

* Roadway clearance equals all travel lanes open

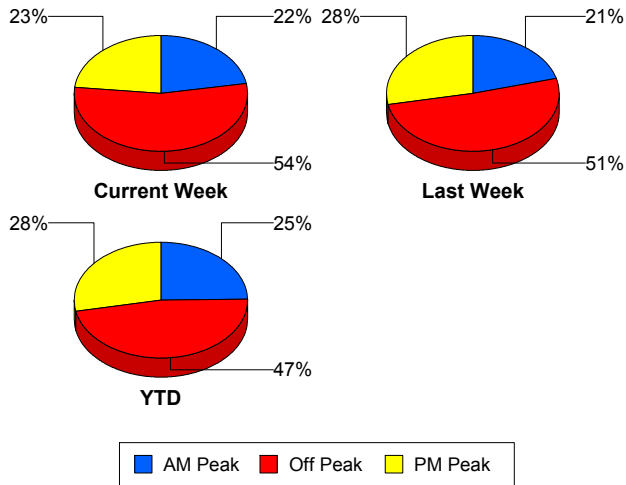
** Incident clearance equals time when last responder has left the scene

Performance Measures by Peak Period

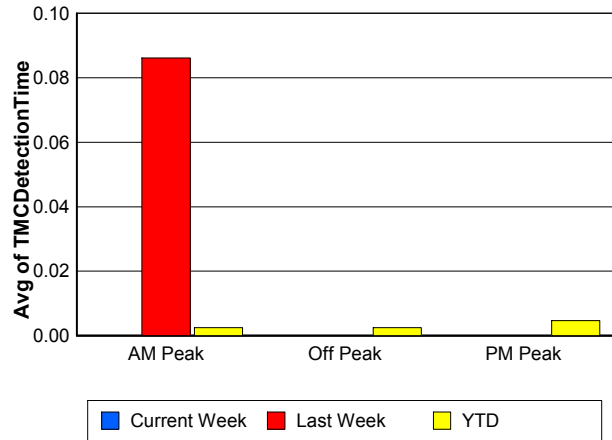
Note: AM peak period is defined as 6am to 10am and PM peak period is defined as 3pm to 7pm.

	AM Peak			Off Peak			PM Peak		
	<u>Current Week</u>	<u>Last Week</u>	<u>YTD</u>	<u>Current Week</u>	<u>Last Week</u>	<u>YTD</u>	<u>Current Week</u>	<u>Last Week</u>	<u>YTD</u>
Number of Events	103	94	3,313	253	231	6,361	109	127	3,785
Number of Incidents	5	8	250	14	9	383	6	5	218
TMC Detection (min.)	0.00	0.09	0.00	0.00	0.00	0.00	0.00	0.00	0.00
TMC Verification (min.)	4.16	5.22	3.20	4.57	5.21	3.31	5.55	3.87	4.48
TMC Response (min.)	5.21	8.36	4.57	5.56	5.97	6.13	5.82	4.03	5.25
RR Dispatch Time (min.)	0.67	3.68	1.25	1.64	1.74	2.50	1.53	1.08	1.43
RR Response Time (min.)	4.55	4.82	3.36	3.99	4.25	3.78	4.30	2.94	3.84
Event Clearance (min.)	17.82	24.62	22.34	20.32	16.94	24.59	20.25	18.29	21.16
Roadway Clearance (min.)	35.41	44.05	39.49	29.56	29.68	49.33	36.43	27.32	55.97
Incident Clearance (min.)	54.14	80.46	67.98	57.37	37.51	71.18	58.11	37.85	76.00
# of Events w/ RR/SIRV	102	91	3,167	249	228	4,848	109	127	3,568
RR/SIRV Responses	102	91	3,167	249	228	4,848	109	127	3,568
RR/SIRV Activities	117	106	3,587	279	251	5,363	131	138	3,898

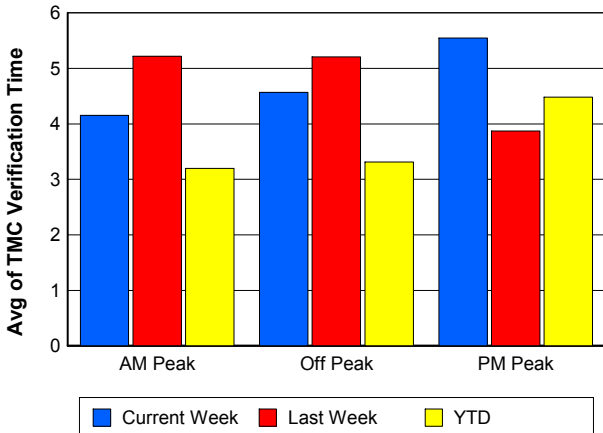
Number of Events / Peak Period



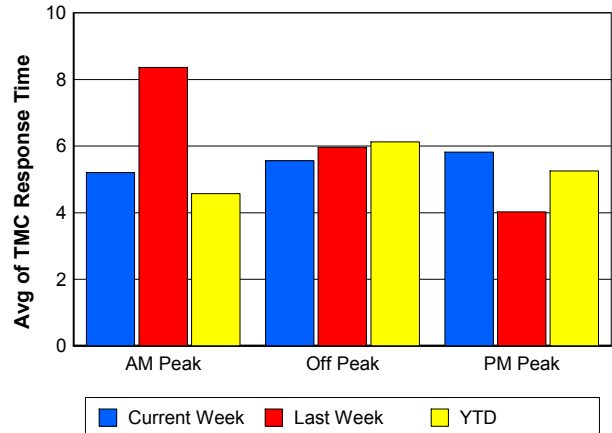
TMC Detection Time



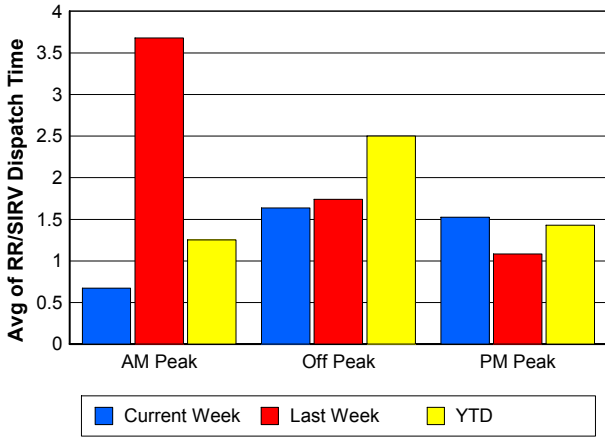
TMC Verification Time



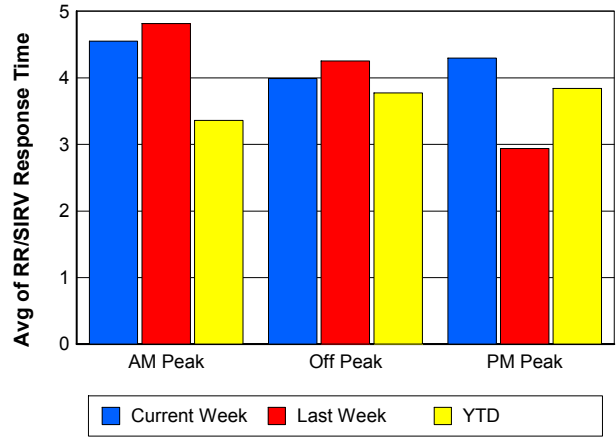
TMC Response Time



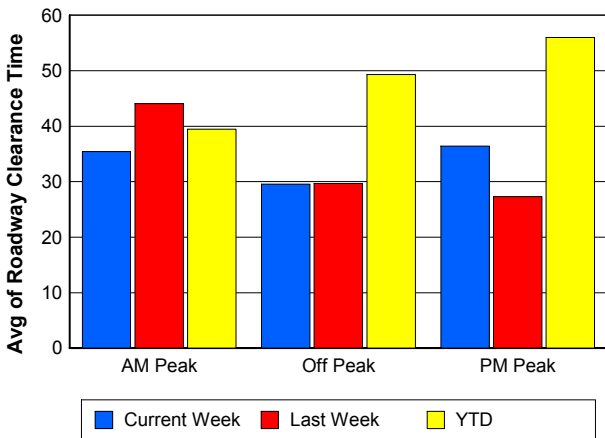
Road Ranger / SIRV Dispatch Time



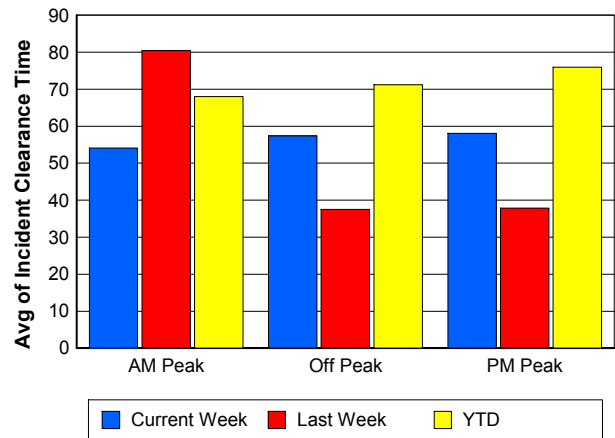
Road Ranger / SIRV Response Time



Roadway Clearance Time (2A)



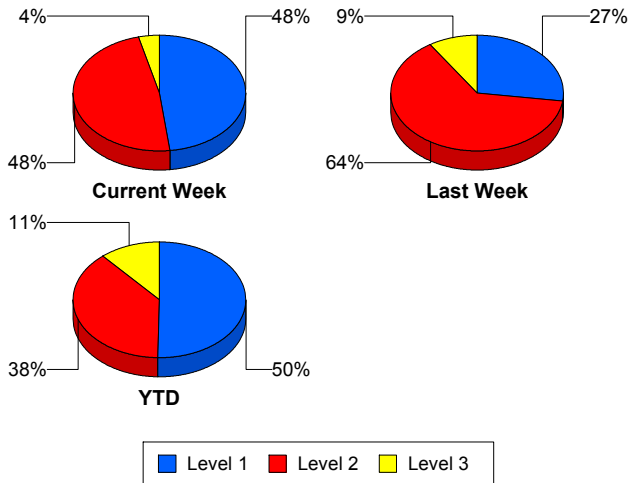
Incident Clearance Time (3B)



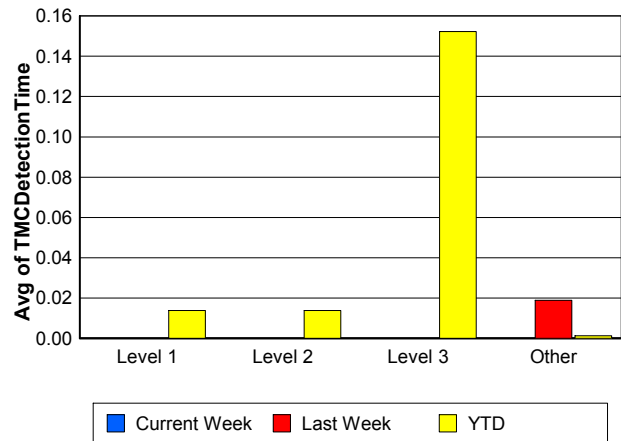
Performance Measures by Severity

	Level 1			Level 2			Level 3			Other		
	<u>This Week</u>	<u>Last Week</u>	<u>YTD</u>	<u>This Week</u>	<u>Last Week</u>	<u>YTD</u>	<u>This Week</u>	<u>Last Week</u>	<u>YTD</u>	<u>This Week</u>	<u>Last Week</u>	<u>YTD</u>
Number of Events	12	6	429	12	14	325	1	2	97	440	430	12,608
Number of Incidents	12	6	429	12	14	325	1	2	97	0	0	0
TMC Detection (min.)	0.00	0.00	0.01	0.00	0.00	0.01	0.00	0.00	0.15	0.00	0.02	0.00
TMC Verification (min.)	3.14	1.94	2.20	5.22	9.11	5.02	12.48	2.27	4.77	4.72	4.75	3.62
TMC Response (min.)	3.26	6.46	4.30	6.49	14.17	9.48	12.45	21.37	32.61	5.57	5.55	5.22
RR Dispatch Time (min.)	1.90	2.06	1.18	0.72	2.40	2.86	0.52	16.78	24.54	1.40	1.86	1.70
RR Resp. Time (min.)	1.37	4.40	3.14	5.77	11.61	6.61	11.93	4.59	8.08	4.20	3.74	3.61
Event Clearance (min.)	39.38	38.27	42.29	72.79	56.13	72.04	76.45	77.53	198.67	17.64	17.16	19.81
Roadway Clear. (min.)	15.85	9.58	14.64	49.55	42.43	53.49	24.63	52.27	178.38			
Incident Clearance (min.)	39.38	38.27	42.29	72.79	56.13	72.04	76.45	77.53	198.67			
# of Events w/ RR/SIRV	12	5	363	12	14	246	1	2	61	435	425	10,913
RR/SIRV Responses	12	5	363	12	14	246	1	2	61	435	425	10,913
RR/SIRV Activities	15	5	463	22	18	403	1	3	103	489	469	11,879

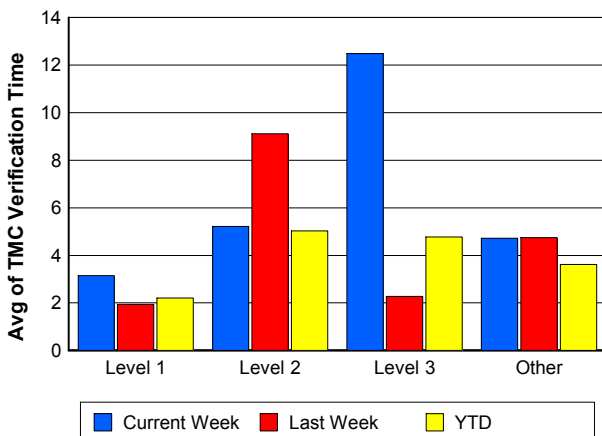
Number of Events / Severity



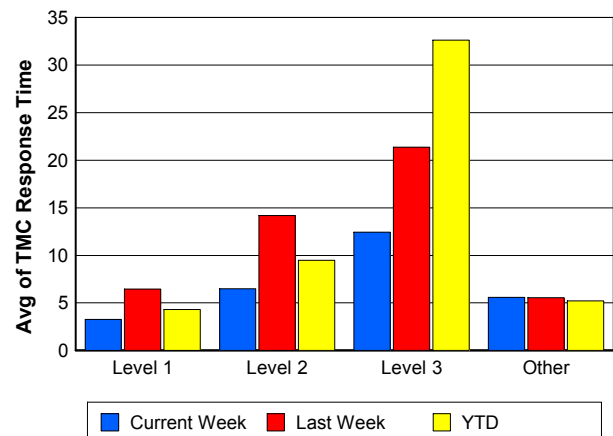
TMC Detection Time



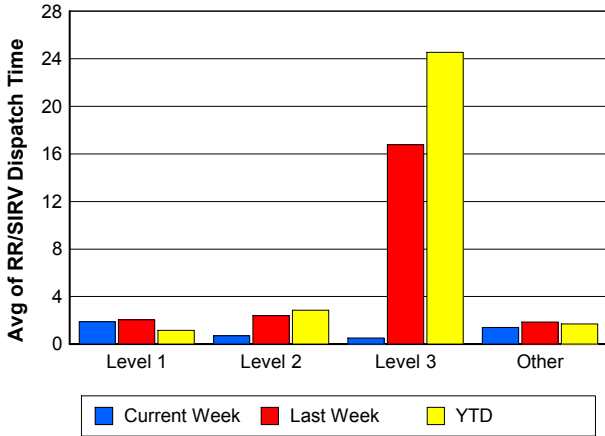
TMC Verification Time



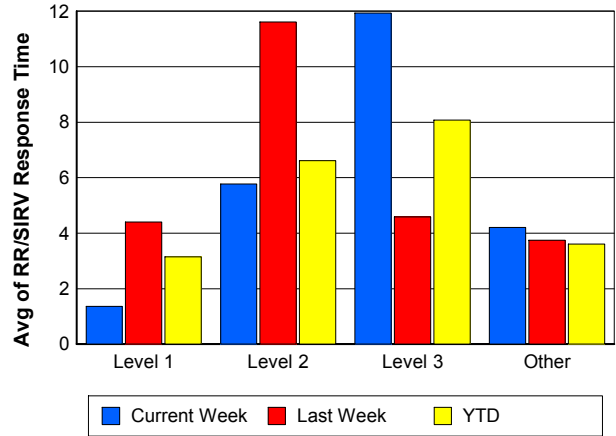
TMC Response Time



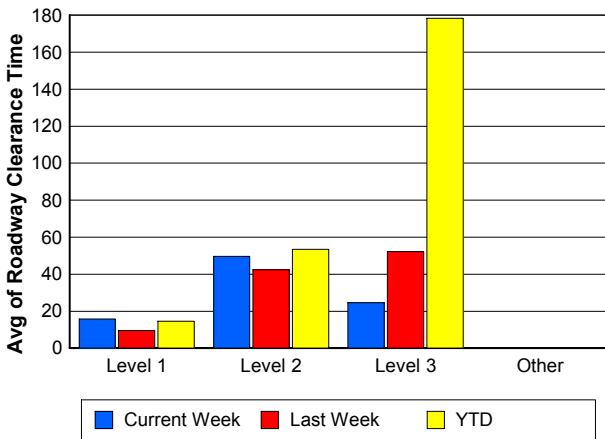
Road Ranger / SIRV Dispatch Time



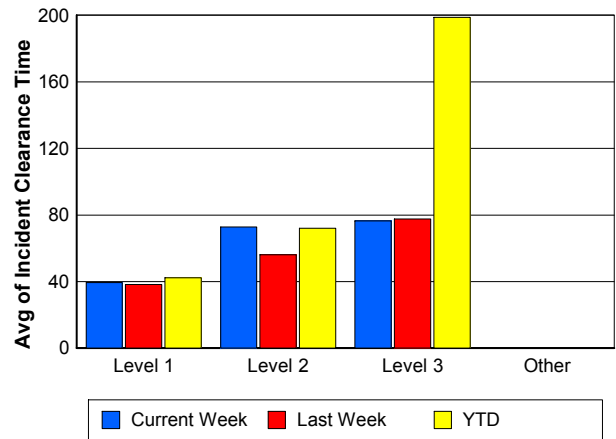
Road Ranger / SIRV Response Time



Roadway Clearance Time (2A)



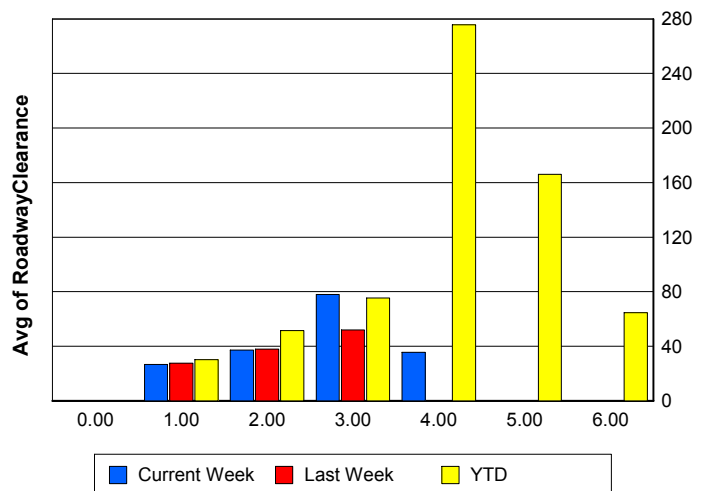
Incident Clearance Time (3B)



Roadway Clearance by Maximum Number of Lanes Blocked

	Current Week	Last Week	YTD
0			
1	26.53	27.63	30.21
2	37.24	37.83	51.53
3	77.97	51.94	75.45
4	35.55	0.00	275.73
5	0.00	0.00	166.12
6	0.00	0.00	64.70

Roadway Clearance Time (2A)



Performance Measures by Roadway

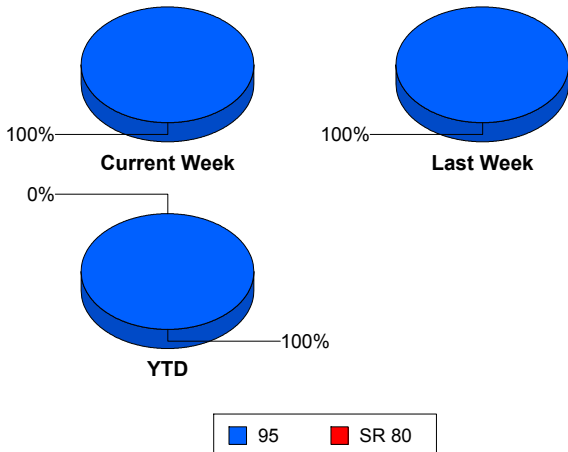
95

	<u>Current Week</u>	<u>Last Week</u>	<u>YTD</u>
Number of Events	465	452	13,455
Number of Incidents	25	22	848
TMC Detection (min.)	0.00	0.02	0.00
TMC Verification (min.)	4.71	4.83	3.61
TMC Response (min.)	5.55	5.89	5.43
RR Dispatch Time (min.)	1.40	1.95	1.83
RR Resp. Time (min.)	4.19	3.99	3.68
Event Clearance (min.)	19.75	18.92	22.66
Roadway Clear. (min.)	32.38	34.37	41.98
Incident Clearance (min.)	56.90	53.20	65.20
# of Events w/ RR/SIRV	460	446	11,583
RR/SIRV Responses	460	446	11,583
RR/SIRV Activities	527	495	12,848

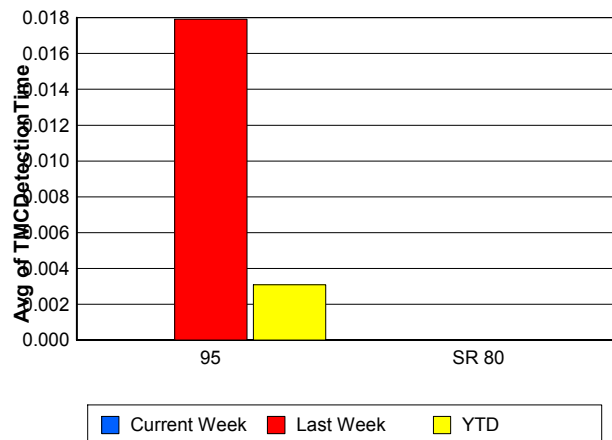
SR 80

	<u>YTD</u>
Number of Events	4
Number of Incidents	3
TMC Detection (min.)	0.00
TMC Verification (min.)	0.00
TMC Response (min.)	
RR Dispatch Time (min.)	
RR Resp. Time (min.)	
Event Clearance (min.)	1,409.98
Roadway Clear. (min.)	1,789.50
Incident Clearance (min.)	1,847.09
# of Events w/ RR/SIRV	0
RR/SIRV Responses	0
RR/SIRV Activities	0

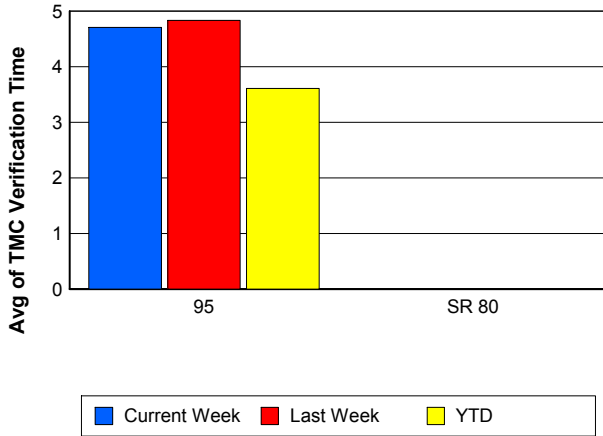
Number of Events / Roadway



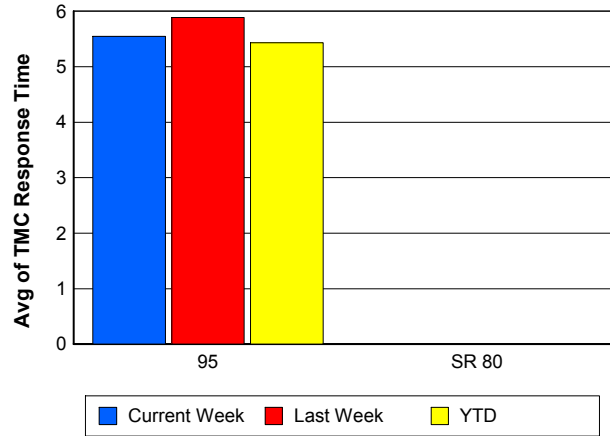
TMC Detection Time



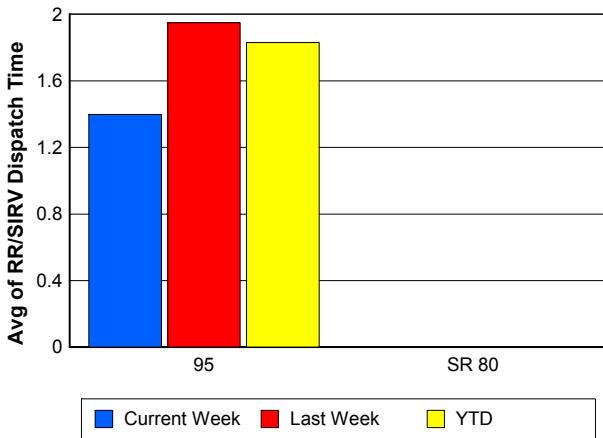
TMC Verification Time



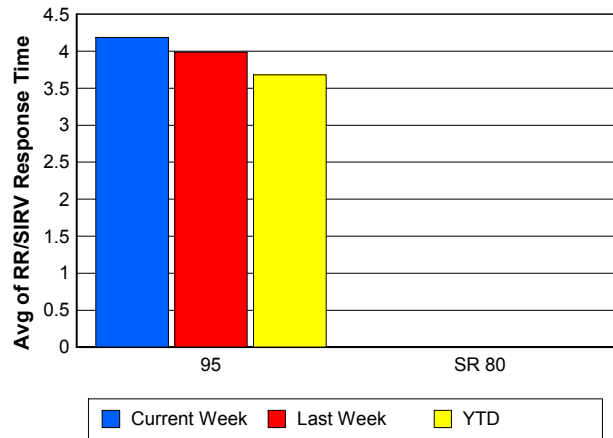
TMC Response Time



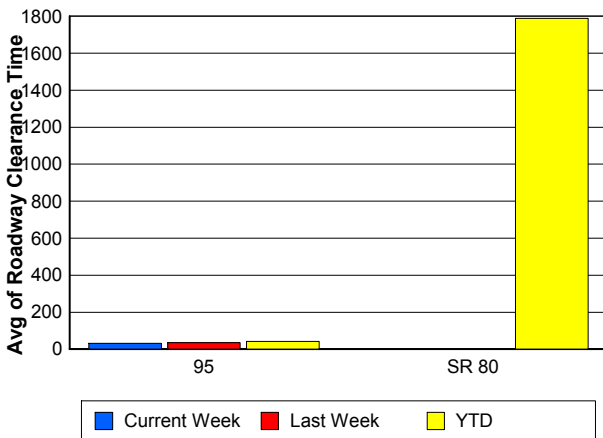
Road Ranger / SIRV Dispatch Time



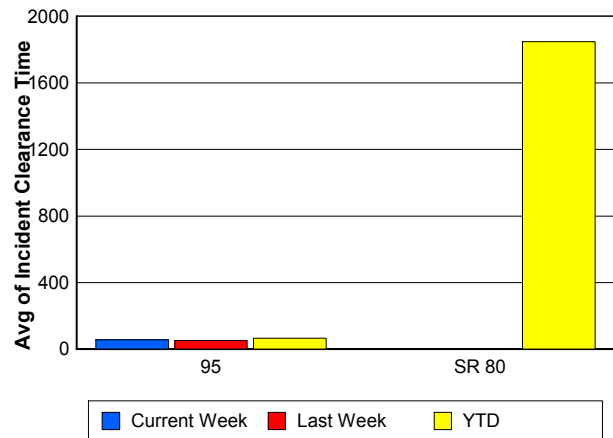
Road Ranger / SIRV Response Time



Roadway Clearance Time (2A)



Incident Clearance Time (3B)



Performance Measures by Event Type

Accident

	<u>Current Week</u>	<u>Last Week</u>	<u>YTD</u>
Number of Events	27	23	1,166
Number of Incidents	16	14	559
TMC Detection (min.)	0.00	0.35	0.01
TMC Verification (min.)	6.93	8.44	4.49
TMC Response (min.)	7.92	11.05	8.26
RR Dispatch Time (min.)	1.36	2.96	2.76
RR Response Time (min.)	6.56	7.97	5.49
Event Clearance (min.)	62.10	57.43	58.83
Roadway Clearance (min.)	36.12	40.46	44.94
Incident Clearance (min.)	72.05	65.07	73.36
# of Events w/ RR/SIRV	27	23	939
RR/SIRV Assists	27	23	939
RR/SIRV Activities	43	29	1,194

Debris on Roadway

	<u>Current Week</u>	<u>Last Week</u>	<u>YTD</u>
Number of Events	36	38	979
Number of Incidents	0	0	33
TMC Detection (min.)	0.00	0.00	0.00
TMC Verification (min.)	9.16	7.38	7.64
TMC Response (min.)	9.15	7.36	7.89
RR Dispatch Time (min.)	2.68	2.86	1.89
RR Response Time (min.)	6.48	4.50	6.01
Event Clearance (min.)	15.09	10.15	12.14
Roadway Clearance (min.)			20.76
Incident Clearance (min.)			24.10
# of Events w/ RR/SIRV	36	38	963
RR/SIRV Assists	36	38	963
RR/SIRV Activities	39	39	1,033

Disabled Vehicle

	<u>Current Week</u>	<u>Last Week</u>	<u>YTD</u>
Number of Events	388	376	10,025
Number of Incidents	7	8	178
TMC Detection (min.)	0.00	0.00	0.00
TMC Verification (min.)	4.28	4.55	3.44
TMC Response (min.)	5.10	5.54	4.60
RR Dispatch Time (min.)	1.27	1.81	1.51
RR Response Time (min.)	3.84	3.76	3.18
Event Clearance (min.)	17.20	17.77	18.01
Roadway Clearance (min.)	15.31	23.71	26.29
Incident Clearance (min.)	19.40	32.44	36.59
# of Events w/ RR/SIRV	384	371	9,290
RR/SIRV Assists	384	371	9,290
RR/SIRV Activities	434	413	10,244

Emergency Vehicles

	<u>YTD</u>
Number of Events	14
Number of Incidents	8
TMC Detection (min.)	0.00
TMC Verification (min.)	2.27
TMC Response (min.)	9.04
RR Dispatch Time (min.)	3.11
RR Response Time (min.)	5.54
Event Clearance (min.)	50.12
Roadway Clearance (min.)	46.52
Incident Clearance (min.)	52.24
# of Events w/ RR/SIRV	7
RR/SIRV Assists	7
RR/SIRV Activities	9

Other

	<u>Current Week</u>	<u>Last Week</u>	<u>YTD</u>
Number of Events	10	10	830
Number of Incidents	0	0	7
TMC Detection (min.)	0.00	0.00	0.00
TMC Verification (min.)	0.00	0.00	1.26
TMC Response (min.)	3.38	2.24	15.50
RR Dispatch Time (min.)	2.49	2.09	8.21
RR Response Time (min.)	3.16	1.70	6.40
Event Clearance (min.)	11.55	11.12	36.41
Roadway Clearance (min.)			40.35
Incident Clearance (min.)			52.93
# of Events w/ RR/SIRV	9	9	265
RR/SIRV Assists	9	9	265
RR/SIRV Activities	6	9	232

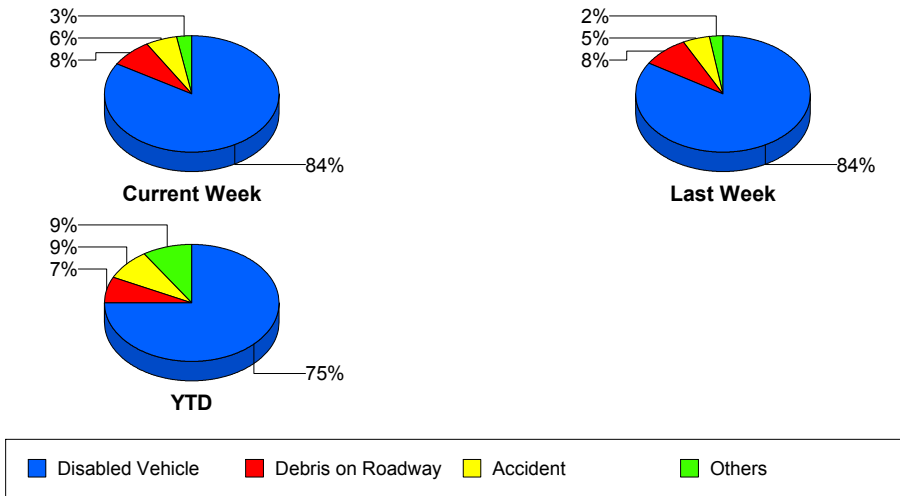
Police Activity

	<u>Current Week</u>	<u>Last Week</u>	<u>YTD</u>
Number of Events	3	1	334
Number of Incidents	2	0	40
TMC Detection (min.)	0.00	0.00	0.06
TMC Verification (min.)	3.43	0.00	0.39
TMC Response (min.)	3.43	0.00	12.75
RR Dispatch Time (min.)	0.22	0.00	6.24
RR Response Time (min.)	3.21	0.00	6.51
Event Clearance (min.)	56.55	14.80	28.21
Roadway Clearance (min.)	62.13		72.22
Incident Clearance (min.)	66.95		101.36
# of Events w/ RR/SIRV	3	1	36
RR/SIRV Assists	3	1	36
RR/SIRV Activities	4	1	42

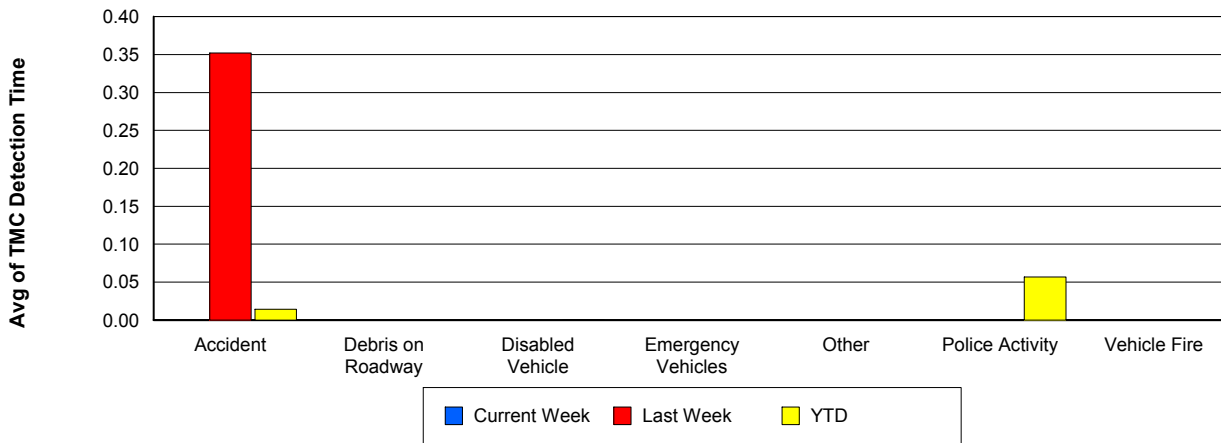
Vehicle Fire

	<u>YTD</u>
Number of Events	33
Number of Incidents	25
TMC Detection (min.)	0.00
TMC Verification (min.)	3.35
TMC Response (min.)	21.43
RR Dispatch Time (min.)	14.97
RR Response Time (min.)	6.46
Event Clearance (min.)	86.05
Roadway Clearance (min.)	65.80
Incident Clearance (min.)	94.79
# of Events w/ RR/SIRV	20
RR/SIRV Assists	20
RR/SIRV Activities	29

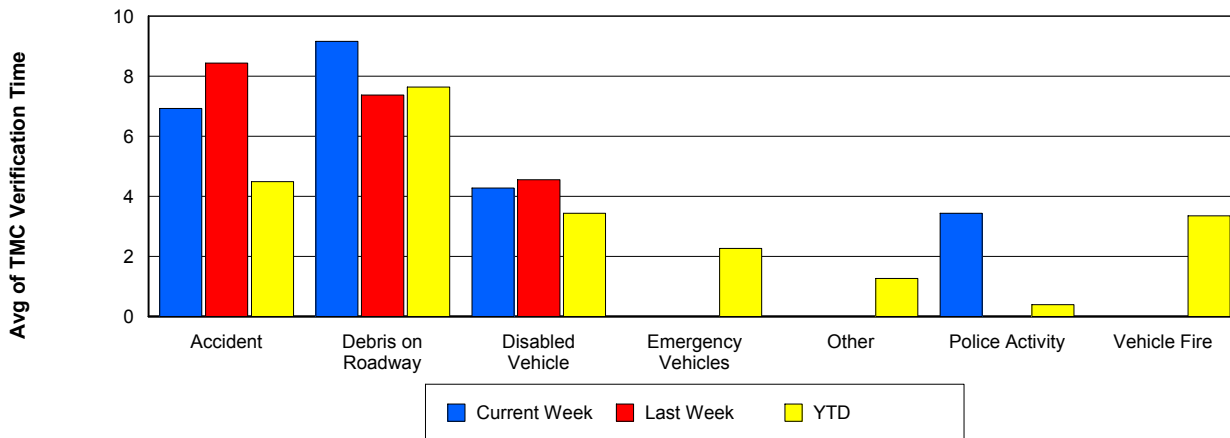
Number of Events / Event Type



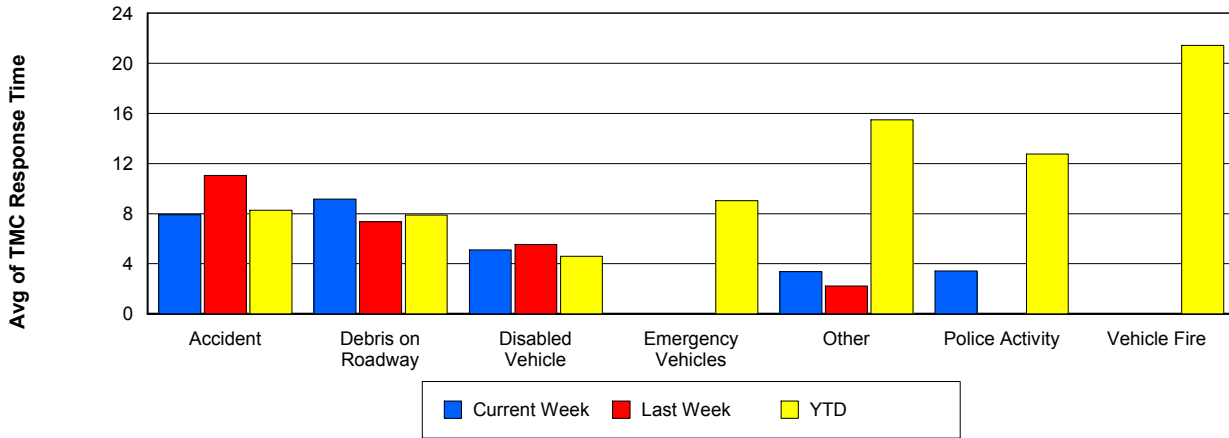
TMC Detection Time



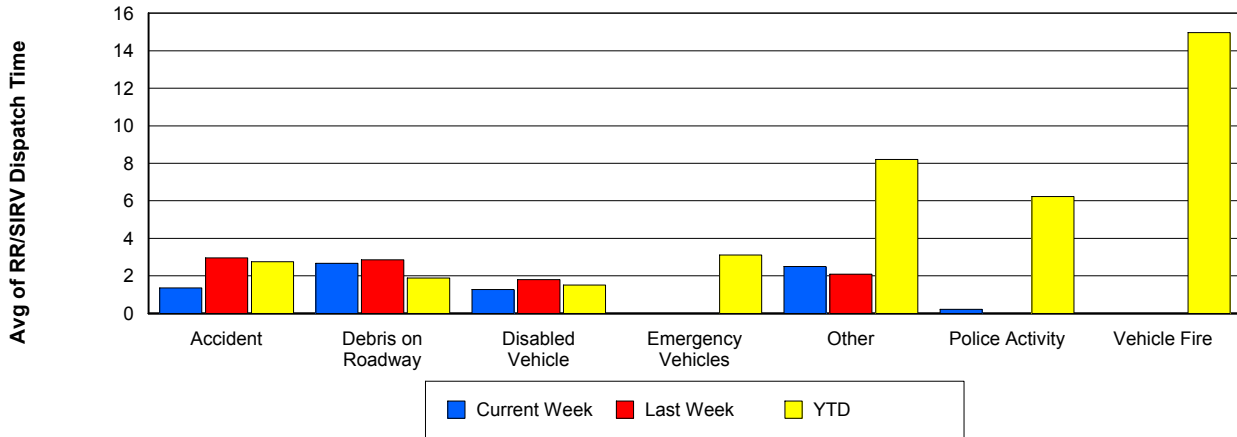
TMC Verification Time



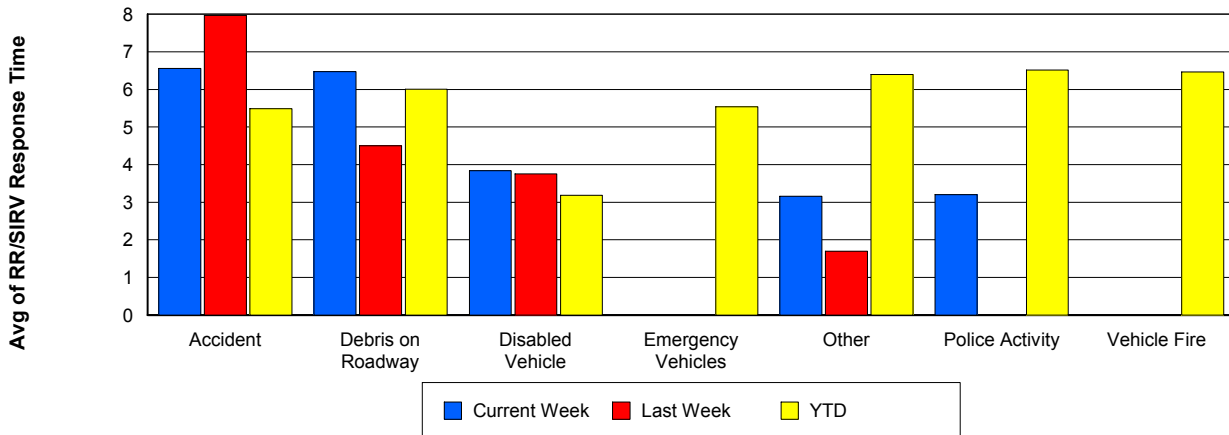
TMC Response Time



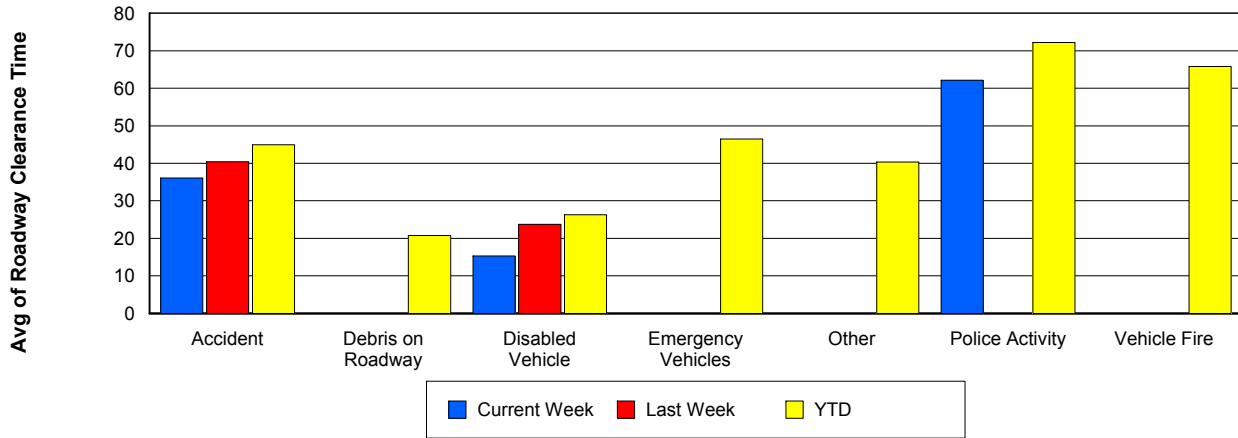
Road Ranger / SIRV Dispatch Time



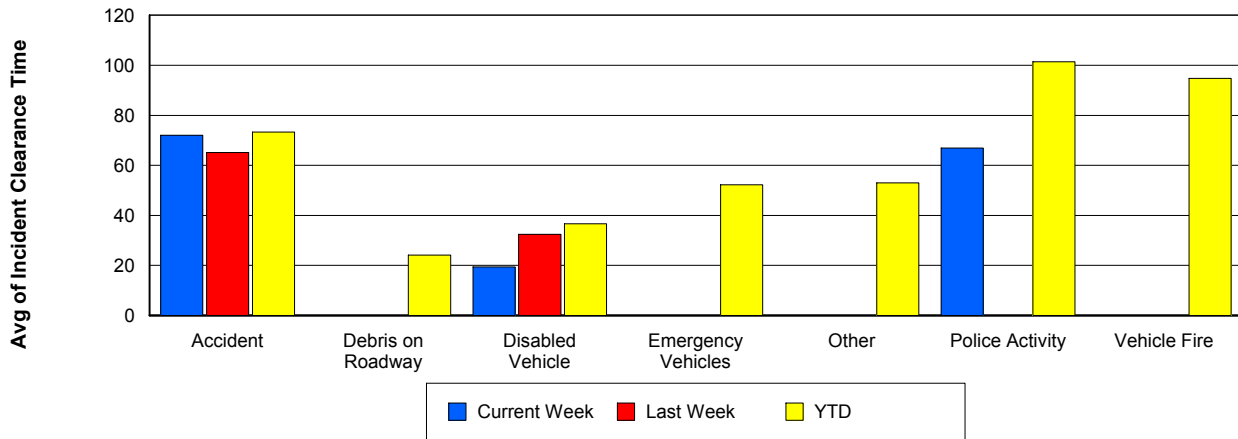
Road Ranger / SIRV Response Time



Roadway Clearance Time (2A)



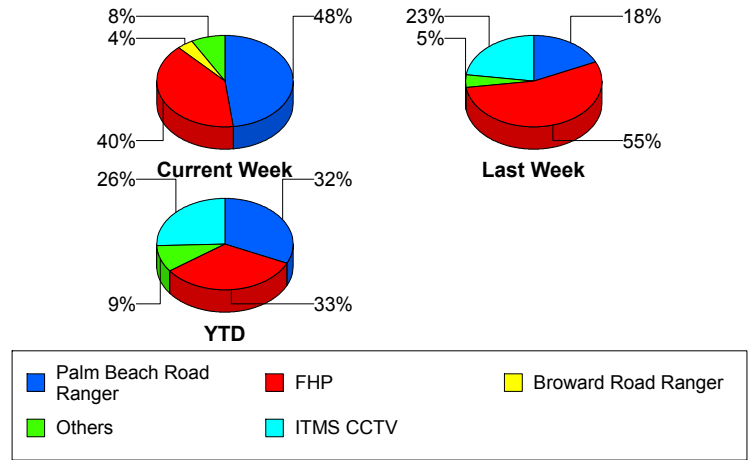
Incident Clearance Time (3B)



Incident Detection Methods

	Current Week	Last Week	YTD
Broward CCTV	0	0	7
Broward Road Ranger	1	0	7
Broward TMC	0	0	2
Broward VideoWall	0	0	1
Construction CEI	0	0	1
District 4	0	0	22
Emergency Operations	0	0	1
FHP	10	12	282
I-95 Construction PIO	1	0	3
ITMS	0	0	12
ITMS CCTV	1	5	218
Local Police	0	0	1
Media	0	0	2
Motorist	0	1	15
Palm Beach Road Ran	12	4	272
Road Watcher	0	0	1
SmarTraveler (511)	0	0	4
Total	25	22	851

Total Incidents by Detection Method

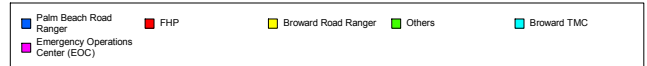
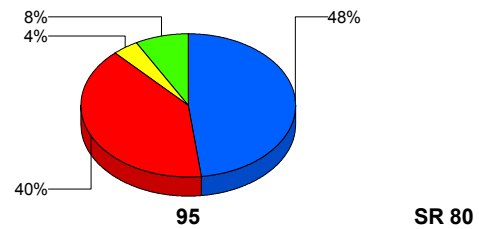


Incident Detection Methods by Roadway

		Current Week	Last Week	YTD
95	Broward CCTV	0	0	7
	Broward Road Ranger	1	0	7
	Broward TMC	0	0	2
	Broward VideoWall	0	0	1
	Construction CEI	0	0	1
	District 4	0	0	22
	FHP	10	12	281
	I-95 Construction PIO	1	0	3
	ITMS	0	0	11
	ITMS CCTV	1	5	218
	Local Police	0	0	1
	Media	0	0	2
	Motorist	0	1	15
	Palm Beach Road Ran	12	4	272
	Road Watcher	0	0	1
	SmarTraveler (511)	0	0	4
Total	25	22	848	
SR 80	Emergency Operations	0	0	1
	FHP	0	0	1
	ITMS	0	0	1
	Total	0	0	3
Total	25	22	851	

Total Events by Roadway and Detection Method

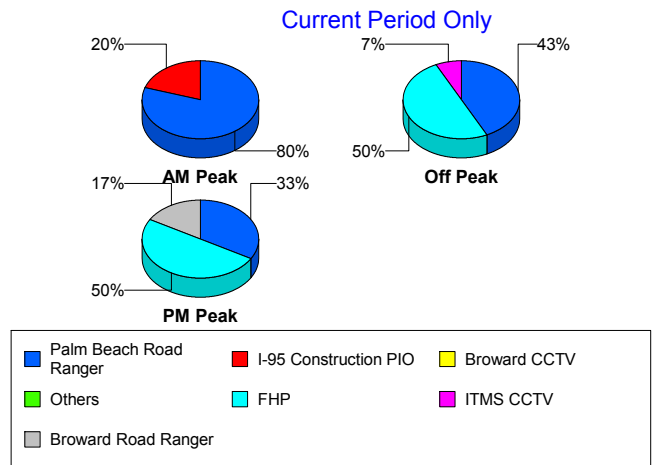
Current Period Only



Incident Detection Methods by Peak Period

		Current Week	Last Week	YTD
AM Peak	Broward CCTV	0	0	2
	Broward Road Ranger	0	0	3
	Broward TMC	0	0	2
	District 4	0	0	11
	FHP	0	5	87
	I-95 Construction PIO	1	0	1
	ITMS	0	0	5
	ITMS CCTV	0	2	37
	Motorist	0	0	6
	Palm Beach Road Ran	4	1	92
	Road Watcher	0	0	1
	SmarTraveler (511)	0	0	3
	Total	5	8	250
	Off Peak	Broward CCTV	0	0
Broward Road Ranger		0	0	1
Broward VideoWall		0	0	1
Construction CEI		0	0	1
District 4		0	0	8
FHP		7	4	139
I-95 Construction PIO		0	0	2
ITMS		0	0	6
ITMS CCTV		1	3	116
Motorist		0	0	5
Palm Beach Road Ran		6	2	99
SmarTraveler (511)		0	0	1
Total		14	9	383
PM Peak		Broward CCTV	0	0
	Broward Road Ranger	1	0	3
	District 4	0	0	3
	Emergency Operations	0	0	1
	FHP	3	3	56

Total Events by Peak Period and Detection Method

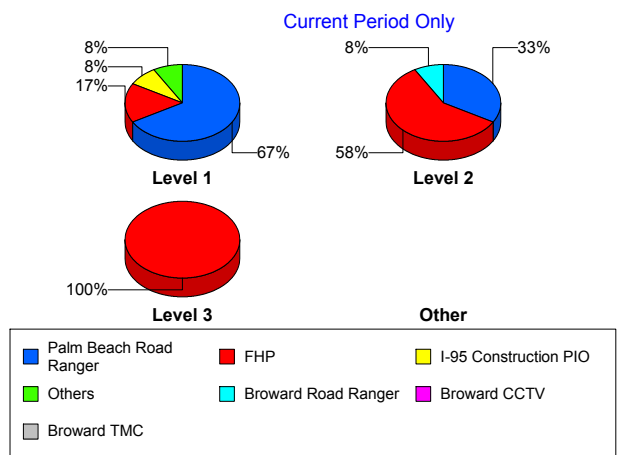


		Current Week	Last Week	YTD
PM Peak	ITMS	0	0	1
	ITMS CCTV	0	0	65
	Local Police	0	0	1
	Media	0	0	2
	Motorist	0	1	4
	Palm Beach Road Ran	2	1	81
	Total	6	5	218
Total		25	22	851

Incident Detection Methods by Severity

		Current Week	Last Week	YTD
Level 1	Broward CCTV	0	0	5
	Broward Road Ranger	0	0	4
	District 4	0	0	15
	FHP	2	3	98
	I-95 Construction PIO	1	0	2
	ITMS	0	0	4
	ITMS CCTV	1	1	97
	Local Police	0	0	1
	Motorist	0	0	10
	Palm Beach Road Ran	8	2	191
	Road Watcher	0	0	1
	SmarTraveler (511)	0	0	1
	Total	12	6	429
	Level 2	Broward Road Ranger	1	0
Broward VideoWall		0	0	1
District 4		0	0	6
FHP		7	7	142
I-95 Construction PIO		0	0	1
ITMS		0	0	6
ITMS CCTV		0	4	90
Media		0	0	1

Total Events by Severity and Detection Method



		Current Week	Last Week	YTD
Level 2	Motorist	0	1	4
	Palm Beach Road Ran	4	2	68
	SmarTraveler (511)	0	0	3
	Total	12	14	325
Level 3	Broward CCTV	0	0	2
	Broward TMC	0	0	2
	Construction CEI	0	0	1
	District 4	0	0	1
	Emergency Operations	0	0	1
	FHP	1	2	42
	ITMS	0	0	2
	ITMS CCTV	0	0	31
	Media	0	0	1
	Motorist	0	0	1
	Palm Beach Road Ran	0	0	13
	Total	1	2	97
Total		25	22	851

Road Ranger / SIRV Performance Measures

Road Ranger / SIRV Performance By County

Values presented are:
 - Total Events with a RR/SIRV Response
 - Total RR/SIRV Responses,
 - Total Activities Performed

	Current We	Last Week	YTD
Palm Beach	643	602	15,168
	681	629	15,418
	729	663	16,801

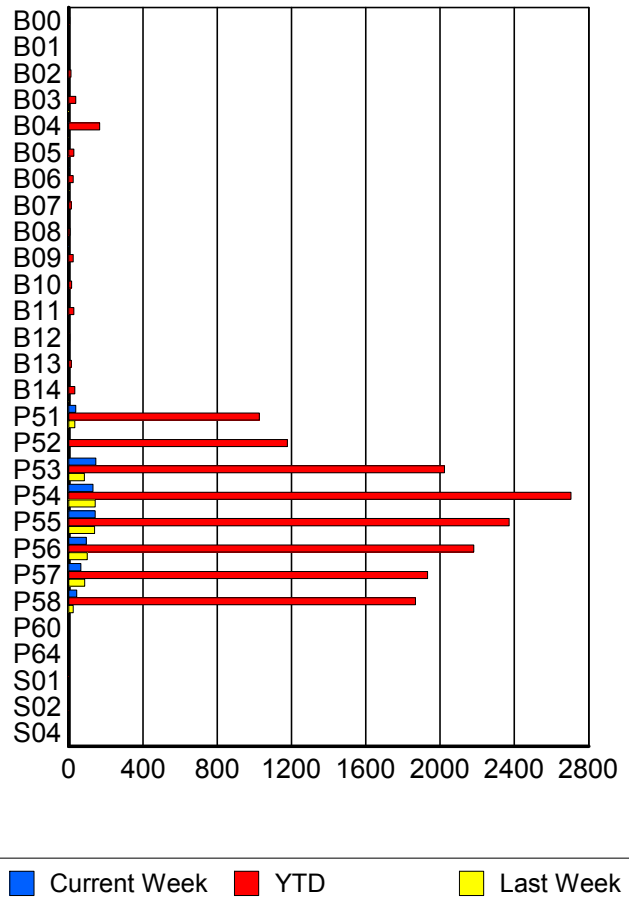
RR/SIRV Responses per County



Road Ranger / SIRV Performance By Truck

	Current We	Last Week	YTD
B00	1	0	6
	1	0	6
	1	0	6
B01	0	0	1
	0	0	1
	0	0	1
B02	0	1	13
	0	1	13
	0	1	14
B03	1	2	39
	1	2	39
	1	2	40
B04	2	3	167
	2	3	168
	3	3	192
B05	1	0	28
	1	0	29
	1	0	30
B06	3	4	24
	4	4	25
	6	4	27
B07	0	1	14
	0	1	14
	0	1	14
B08	0	0	8
	0	0	8
	0	0	9

RR/SIRV Responses per Truck



	Current We	Last Week	YTD
B09	2	1	23
	2	1	24
	2	1	24
B10	0	0	16
	0	0	17
	0	0	17
B11	1	0	28
	1	0	28
	1	0	29
B12	0	0	6
	0	0	6
	0	0	7
B13	0	0	14
	0	0	14
	0	0	15
B14	0	2	32
	0	2	33
	0	2	35
P51	39	34	1,016
	39	34	1,026
	40	35	1,073
P52	2	1	1,174
	2	1	1,178
	2	1	1,263
P53	141	83	1,996
	147	84	2,023
	156	91	2,143
P54	125	143	2,678
	132	144	2,704
	141	151	2,904
P55	144	136	2,355
	144	140	2,371
	155	148	2,540
P56	94	99	2,159
	95	101	2,182
	103	108	2,354
P57	65	86	1,912
	66	87	1,932
	68	88	2,063
P58	42	24	1,841
	43	24	1,868
	48	27	1,991
P60	0	0	1
	0	0	1
	0	0	1

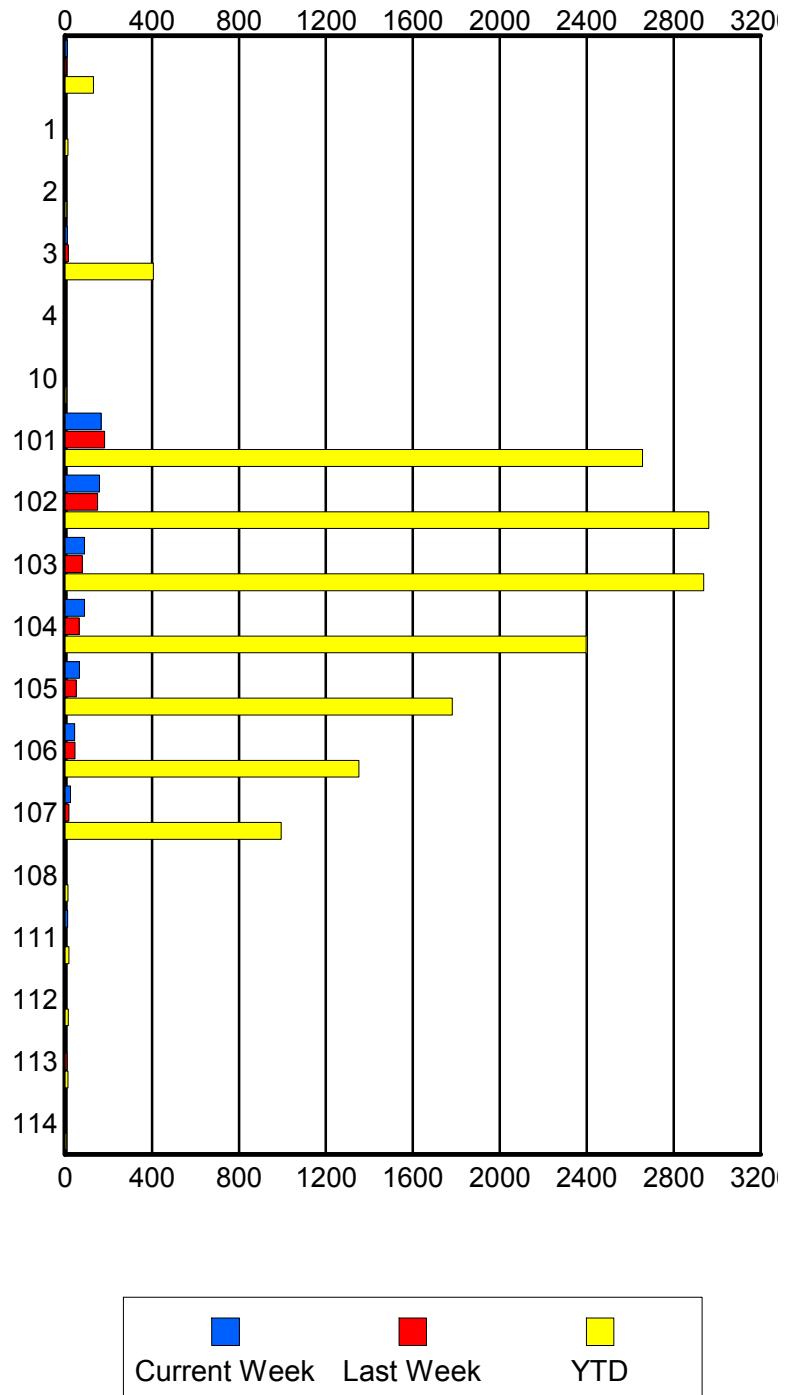
	Current We	Last Week	YTD
P64	0	0	1
	0	0	1
	0	0	1
S01	0	0	3
	0	0	3
	0	0	3
S02	1	0	3
	1	0	3
	1	0	3
S04	0	0	2
	0	0	2
	0	0	2

Road Ranger / SIRV Performance By Beat

	Current We	Last Week	YTD
	10	7	130
	11	7	131
	11	8	135
1	1	1	14
	1	1	14
	1	1	15
2	0	2	8
	0	2	8
	0	2	9
3	9	15	396
	11	15	407
	14	15	440
4	0	0	2
	0	0	2
	0	0	2
10	0	0	6
	0	0	6
	0	0	9
101	164	176	2,632
	166	182	2,656
	175	187	2,855
102	154	148	2,934
	158	150	2,962
	167	157	3,149
103	88	79	2,906
	90	79	2,938
	98	86	3,164
104	87	64	2,371
	90	64	2,397
	96	75	2,569
105	64	52	1,766
	66	52	1,781
	73	53	1,896
106	43	45	1,334
	44	46	1,352
	48	46	1,447
107	24	18	982
	25	18	994
	27	20	1,043
108	0	0	13
	0	0	14
	0	0	14
111	11	0	17
	12	0	18
	12	0	19

Values presented are:
 - Total Events with a RR/SIRV Response
 - Total RR/SIRV Responses,
 - Total Activities Performed

RR/SIRV Responses per Beat



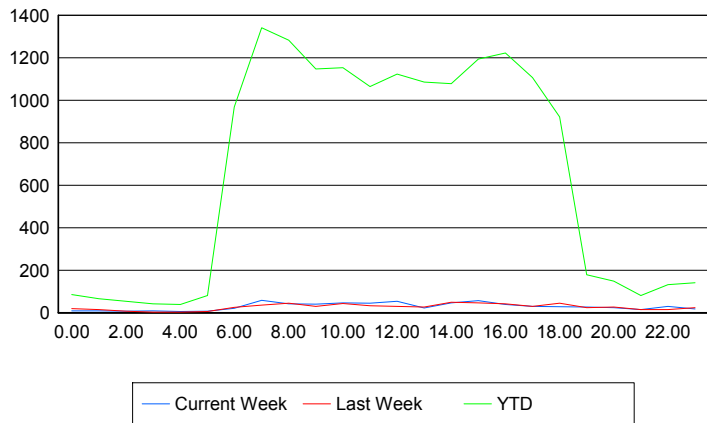
	Current We	Last Week	YTD
112	3	4	14
	3	4	15
	3	4	16
113	4	8	12
	4	9	13
	4	9	13
114	0	0	6
	0	0	6
	0	0	6

Road Ranger / SIRV Performance By Time of Day

Values presented are:
 - Total Events with a RR/SIRV Response
 - Total RR/SIRV Responses,
 - Total Activities Performed

	Current We	Last Week	YTD
12AM-1AM	8	17	81
	9	19	85
	10	20	88
1AM-2AM	8	14	62
	8	14	65
	8	14	67
2AM-3AM	6	7	52
	7	7	54
	7	7	58
3AM-4AM	8	2	39
	8	2	42
	8	2	43
4AM-5AM	5	3	35
	5	3	38
	8	3	42
5AM-6AM	7	5	75
	7	5	80
	7	5	84
6AM-7AM	20	22	927
	20	25	968
	20	25	1,018
7AM-8AM	56	32	1,277
	58	36	1,341
	65	38	1,441
8AM-9AM	37	44	1,226
	42	45	1,282
	45	49	1,372
9AM-10AM	37	28	1,106
	40	29	1,147
	42	32	1,249

Number of Responses / Hour of the Day



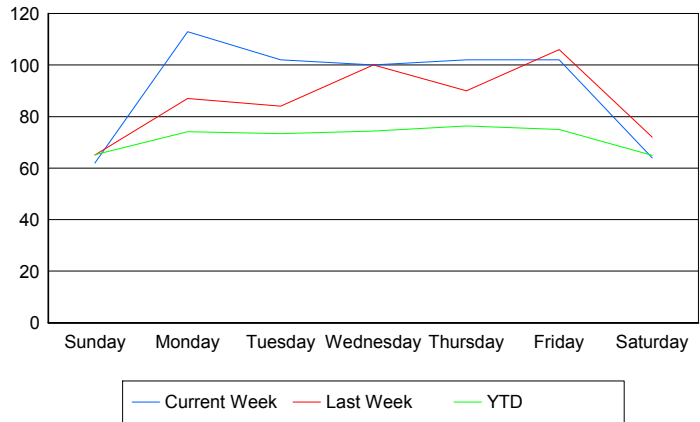
	Current We	Last Week	YTD
10AM-11AM	46	42	1,116
	46	43	1,154
	49	45	1,218
11AM-12PM	43	31	1,035
	45	32	1,065
	48	35	1,160
12PM-1PM	50	28	1,078
	54	30	1,124
	58	33	1,206
1PM-2PM	21	24	1,051
	22	26	1,086
	22	28	1,169
2PM-3PM	41	47	1,035
	46	49	1,078
	48	51	1,140
3PM-4PM	52	44	1,150
	57	46	1,194
	62	47	1,274
4PM-5PM	37	40	1,189
	38	41	1,223
	41	44	1,302
5PM-6PM	27	29	1,073
	30	30	1,106
	34	31	1,170
6PM-7PM	28	45	910
	28	45	921
	30	49	973
7PM-8PM	27	22	174
	27	23	179
	28	25	189
8PM-9PM	23	25	141
	24	26	148
	27	27	156
9PM-10PM	14	13	76
	14	15	81
	15	15	86
10PM-11PM	25	15	121
	29	15	132
	29	15	142
11PM-12AM	17	23	139
	17	23	141
	18	23	154

Road Ranger / SIRV Performance By Day of Week

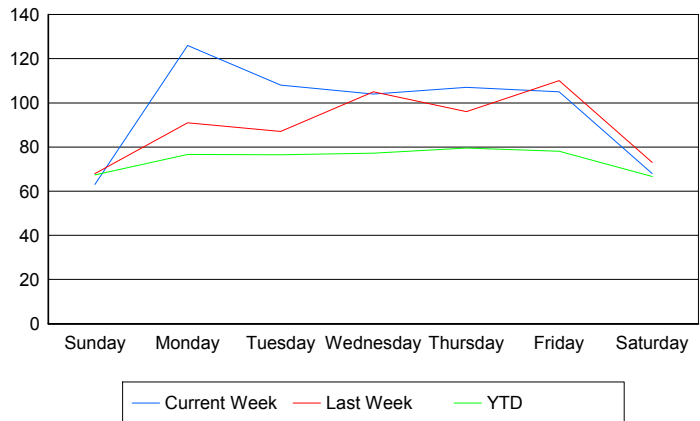
Values presented are:
 - Total Events with a RR/SIRV Response
 - Total RR/SIRV Responses,
 - Total Activities Performed

	Current We	Last Week	YTD
Sunday	62 63 66	64 67 75	325 336 359
Monday	113 126 133	87 91 98	2,839 2,907 3,103
Tuesday	102 108 116	84 87 91	2,812 2,910 3,114
Wednesday	100 104 115	100 105 113	2,894 3,000 3,217
Thursday	102 107 115	90 96 101	2,970 3,052 3,315
Friday	102 105 111	106 110 110	2,955 3,072 3,272
Saturday	64 68 73	72 73 75	389 399 421

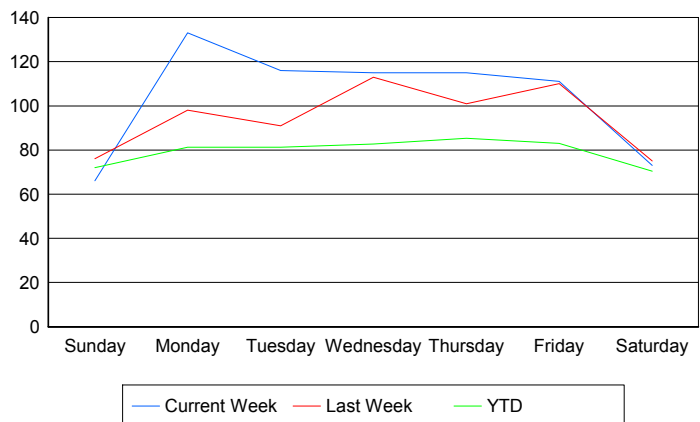
Avg # of events with a RR/SIRV Response per Day of the Week



Avg # of RR/SIRV Responses per Day of the Week



Avg # of RR/SIRV Activities Performed per Day of the Week



Road Ranger / SIRV Responses per Time of Day and Day of Week

