

# Weekly Performance Measures Report Palm Beach County



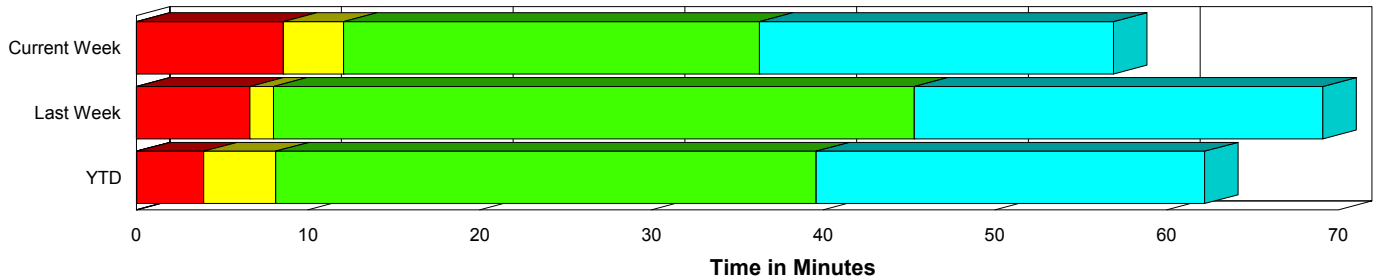
Period From Nov 8, 2009 to Nov 14, 2009

Created on:  
November 16, 2009  
9:10 am

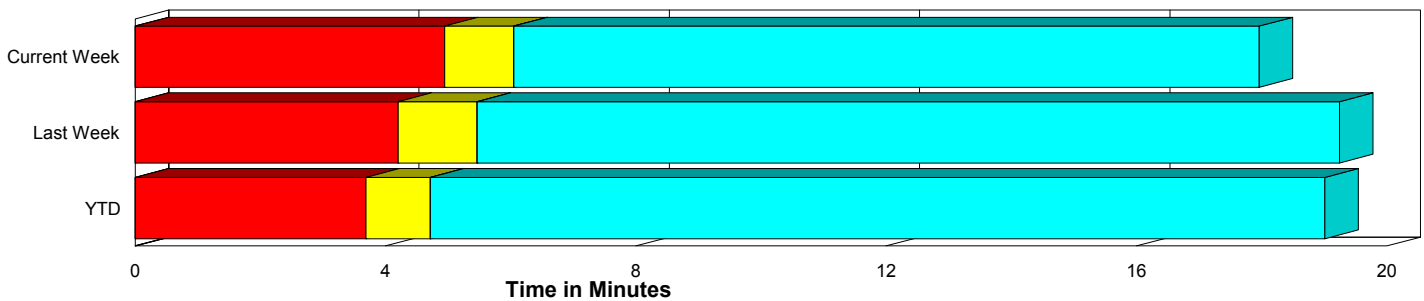
## Performance Measures Summary

	Traffic Events (No Lanes Blocked)			Incidents (Lanes Blocked)		
	<u>This Week</u>	<u>Last Week</u>	<u>YTD</u>	<u>This Week</u>	<u>Last Week</u>	<u>YTD</u>
Number of Events	435	428	14,855	21	24	971
TMC Detection (min.)	0.00	0.00	0.00	0.00	0.00	0.03
TMC Verification (min.)	4.94	4.20	3.69	8.56	6.61	3.88
TMC Response (min.)	6.20	5.62	5.26	12.49	7.98	8.80
RR Dispatch Time (min.)	2.29	1.54	1.68	1.63	0.93	3.58
RR Response Time (min.)	3.91	4.31	3.67	10.86	7.05	5.20
Roadway Clearance (min.)				35.11	45.31	47.81
Event Clearance (min.)	18.11	19.40	19.55	55.72	69.08	69.77
# of Events w/ RR/SIRV	427	422	13,126	20	24	785
RR/SIRV Responses	427	422	13,126	20	24	785
RR/SIRV Activities	455	442	14,241	25	31	1,124

### Incident Clearance Time-Line



### Traffic Event (Non-Lane Blockage) Time-Line



<span style="color: blue;">■</span> Avg. TMC Detection Time	<span style="color: green;">■</span> Avg. Time from TMC Response to Roadway Clearance*
<span style="color: red;">■</span> Avg. Time from TMC Detection to TMC Verification	<span style="color: cyan;">■</span> Avg. Time from Roadway Clearance to Incident/Event Clearance**
<span style="color: yellow;">■</span> Avg. Time from TMC Verification to TMC Response	

\* Roadway clearance equals all travel lanes open

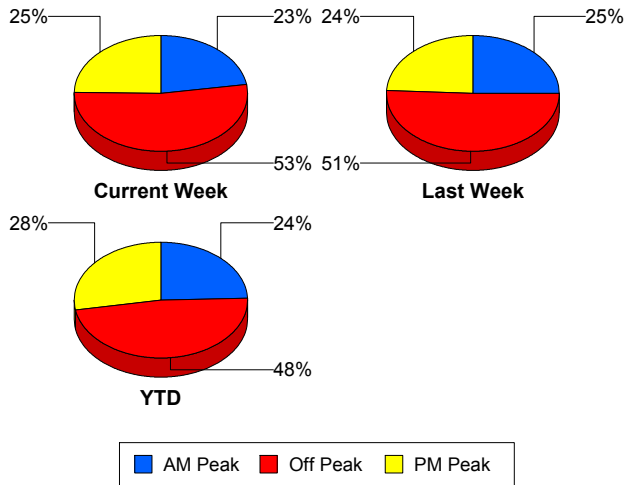
\*\* Incident clearance equals time when last responder has left the scene

## Performance Measures by Peak Period

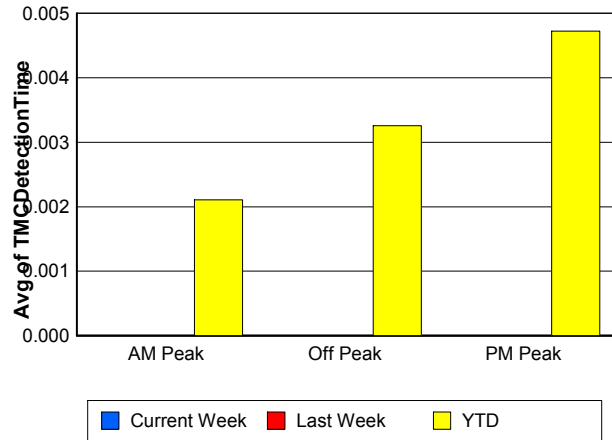
Note: AM peak period is defined as 6am to 10am and PM peak period is defined as 3pm to 7pm.

	AM Peak			Off Peak			PM Peak		
	<u>Current Week</u>	<u>Last Week</u>	<u>YTD</u>	<u>Current Week</u>	<u>Last Week</u>	<u>YTD</u>	<u>Current Week</u>	<u>Last Week</u>	<u>YTD</u>
Number of Events	103	113	3,847	240	230	7,568	113	109	4,411
Number of Incidents	6	10	282	11	12	454	4	2	235
TMC Detection (min.)	0.00	0.00	0.00	0.00	0.00	0.00	0.00	0.00	0.00
TMC Verification (min.)	4.44	2.88	3.15	3.63	4.50	3.42	8.87	5.48	4.66
TMC Response (min.)	5.43	4.76	4.59	5.59	6.17	6.02	9.35	5.85	5.41
RR Dispatch Time (min.)	2.08	0.77	1.26	1.89	1.86	2.33	3.21	1.53	1.47
RR Response Time (min.)	3.35	4.05	3.38	3.70	4.72	3.85	6.11	4.30	3.95
Event Clearance (min.)	21.08	20.76	22.09	17.05	20.94	23.77	24.65	25.68	21.14
Roadway Clearance (min.)	20.99	48.87	39.40	43.16	35.07	49.28	34.13	88.99	55.06
Incident Clearance (min.)	32.29	75.39	66.57	54.40	50.22	68.73	94.50	150.72	75.62
# of Events w/ RR/SIRV	100	111	3,689	235	230	6,043	112	105	4,179
RR/SIRV Responses	100	111	3,689	235	230	6,043	112	105	4,179
RR/SIRV Activities	113	117	4,153	247	248	6,657	120	108	4,555

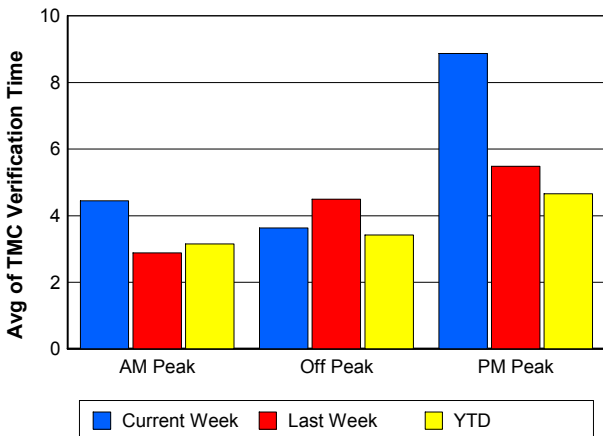
### Number of Events / Peak Period



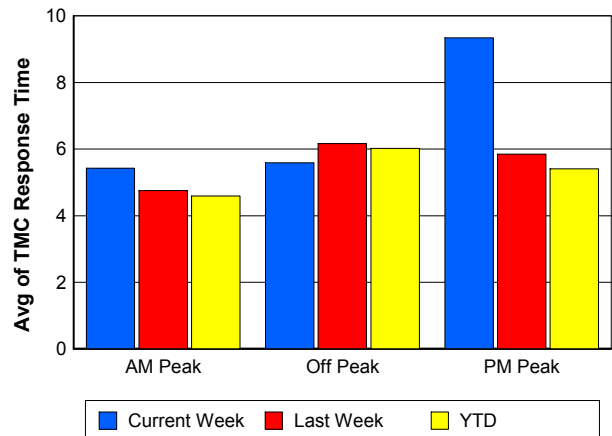
### TMC Detection Time



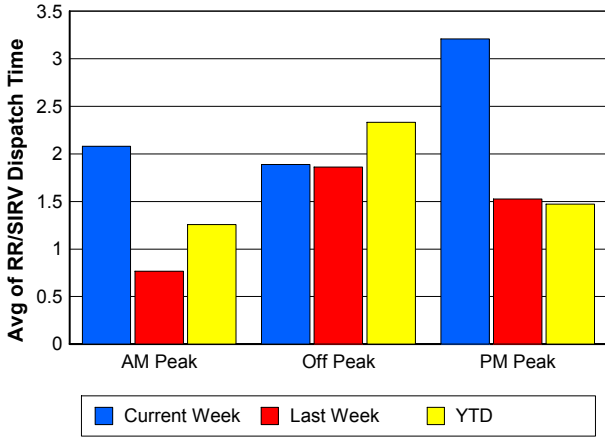
### TMC Verification Time



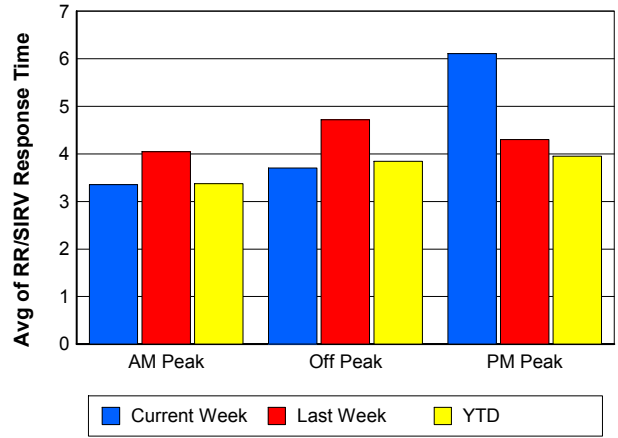
### TMC Response Time



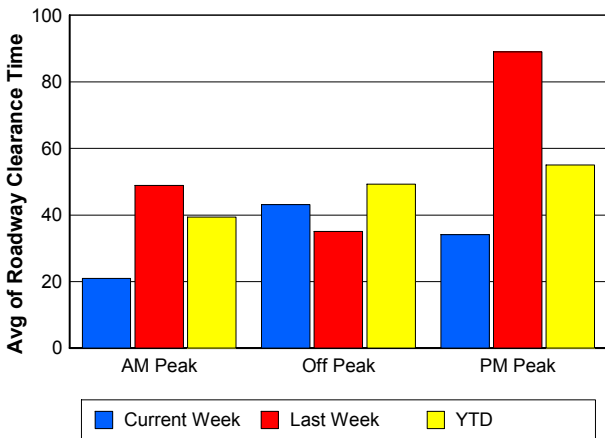
### Road Ranger / SIRV Dispatch Time



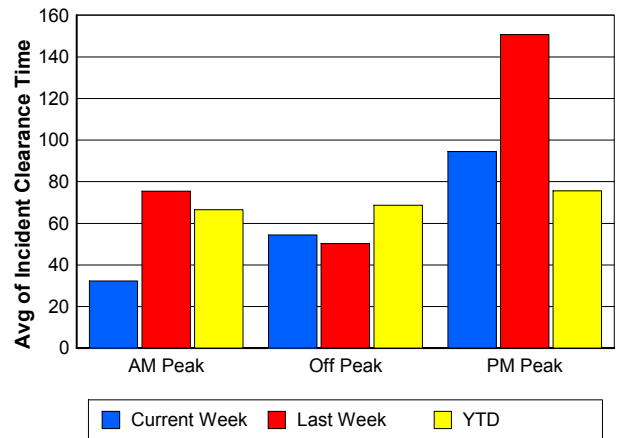
### Road Ranger / SIRV Response Time



### Roadway Clearance Time (2A)



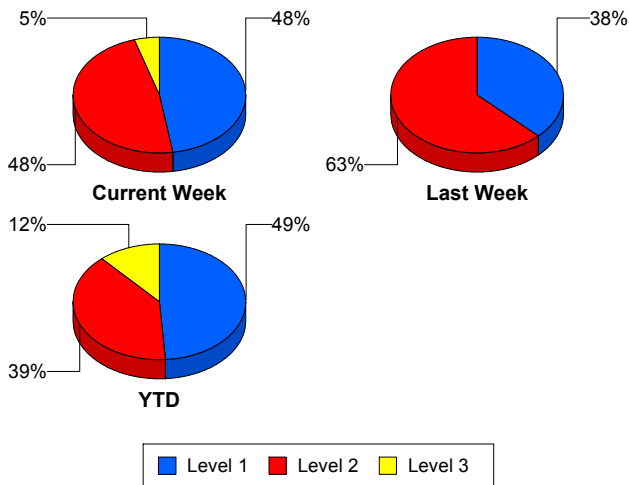
### Incident Clearance Time (3B)



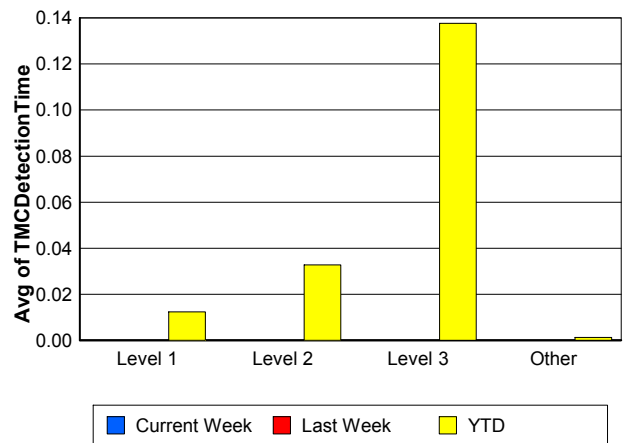
## Performance Measures by Severity

	Level 1			Level 2			Level 3		Other		
	<u>This Week</u>	<u>Last Week</u>	<u>YTD</u>	<u>This Week</u>	<u>Last Week</u>	<u>YTD</u>	<u>This Week</u>	<u>YTD</u>	<u>This Week</u>	<u>Last Week</u>	<u>YTD</u>
Number of Events	10	9	476	10	15	382	1	113	435	428	14,855
Number of Incidents	10	9	476	10	15	382	1	113	0	0	0
TMC Detection (min.)	0.00	0.00	0.01	0.00	0.00	0.03	0.00	0.14	0.00	0.00	0.00
TMC Verification (min.)	5.10	6.68	2.37	11.57	6.57	5.58	13.17	4.55	4.94	4.20	3.69
TMC Response (min.)	6.80	7.04	4.39	17.55	8.54	9.87	13.15	27.85	6.20	5.62	5.26
RR Dispatch Time (min.)	0.58	0.92	1.12	2.37	0.94	2.64	3.75	20.50	2.29	1.54	1.68
RR Resp. Time (min.)	6.22	6.12	3.28	15.18	7.61	7.22	9.40	7.36	3.91	4.31	3.67
Event Clearance (min.)	42.88	62.24	42.00	66.90	73.19	71.06	72.32	182.40	18.11	19.40	19.55
Roadway Clear. (min.)	13.91	18.66	14.74	52.58	61.30	53.59	72.40	167.56			
Incident Clearance (min.)	42.88	62.24	42.00	66.90	73.19	71.06	72.32	182.40			
# of Events w/ RR/SIRV	9	9	407	10	15	302	1	76	427	422	13,126
RR/SIRV Responses	9	9	407	10	15	302	1	76	427	422	13,126
RR/SIRV Activities	11	10	520	13	21	479	1	125	455	442	14,241

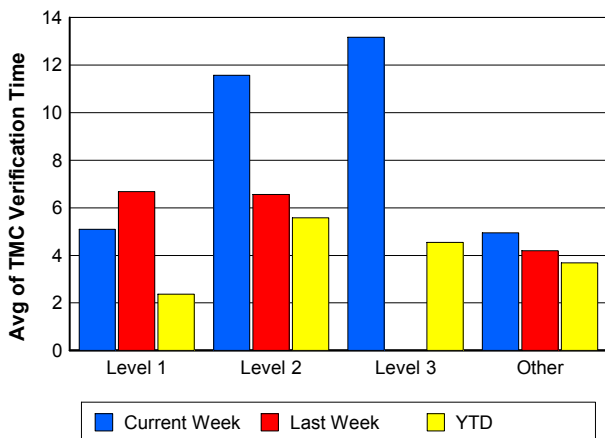
### Number of Events / Severity



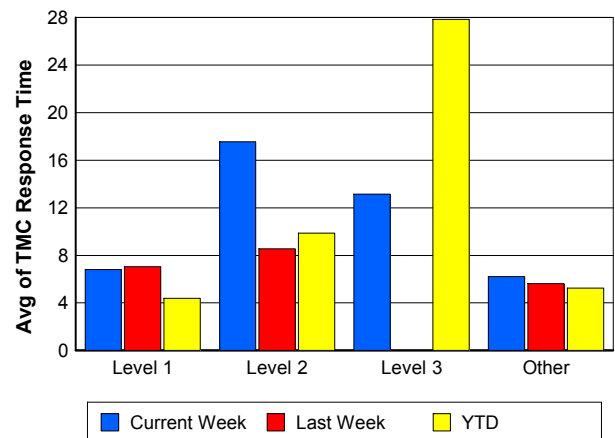
### TMC Detection Time



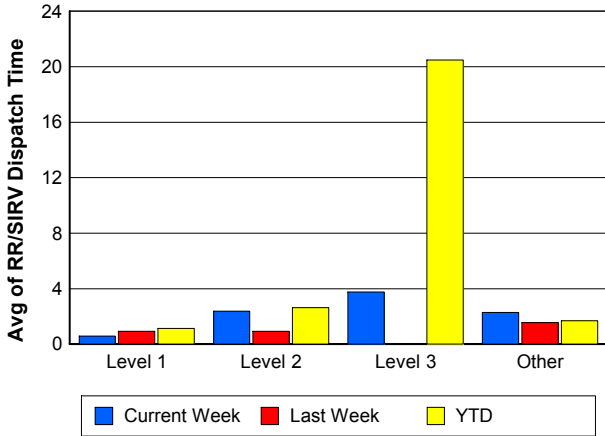
### TMC Verification Time



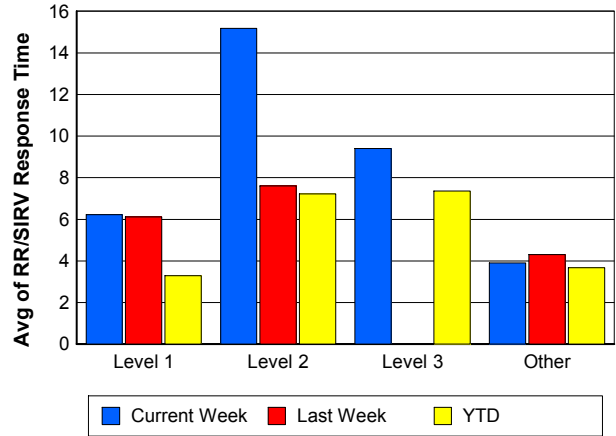
### TMC Response Time



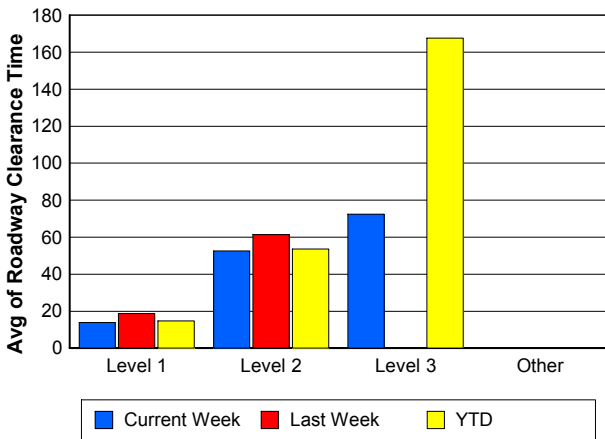
## Road Ranger / SIRV Dispatch Time



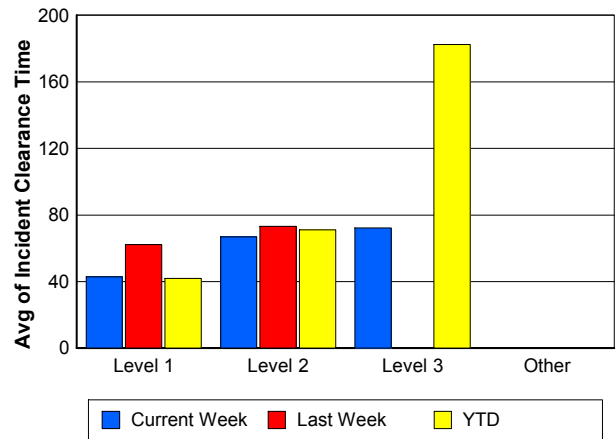
## Road Ranger / SIRV Response Time



## Roadway Clearance Time (2A)



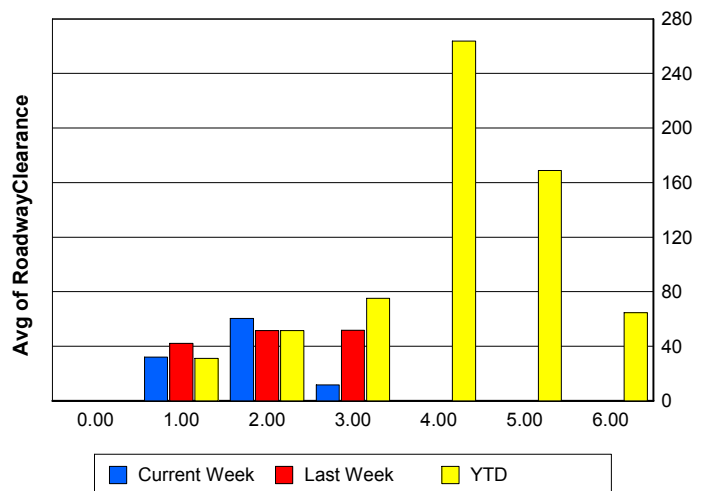
## Incident Clearance Time (3B)



## Roadway Clearance by Maximum Number of Lanes Blocked

	Current Week	Last Week	YTD
0			
1	32.04	42.20	31.18
2	60.34	51.52	51.39
3	11.58	51.62	75.19
4	0.00	0.00	263.87
5	0.00	0.00	168.97
6	0.00	0.00	64.70

## Roadway Clearance Time (2A)



## Performance Measures by Roadway

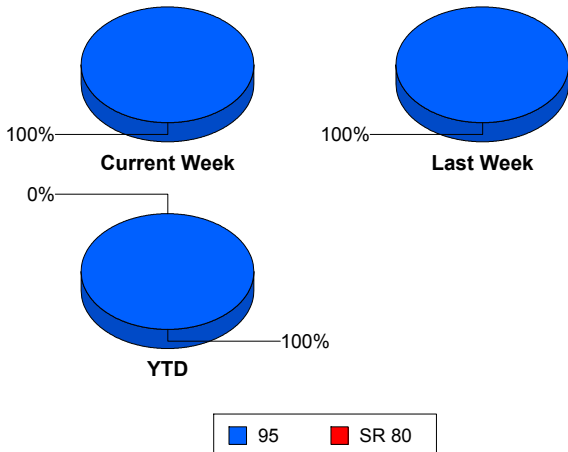
95

	<u>Current Week</u>	<u>Last Week</u>	<u>YTD</u>
Number of Events	456	452	15,822
Number of Incidents	21	24	968
TMC Detection (min.)	0.00	0.00	0.00
TMC Verification (min.)	5.11	4.33	3.70
TMC Response (min.)	6.49	5.75	5.46
RR Dispatch Time (min.)	2.26	1.51	1.79
RR Resp. Time (min.)	4.22	4.46	3.75
Event Clearance (min.)	19.84	22.04	22.28
Roadway Clear. (min.)	35.11	45.31	42.41
Incident Clearance (min.)	55.72	69.08	64.26
# of Events w/ RR/SIRV	447	446	13,911
RR/SIRV Responses	447	446	13,911
RR/SIRV Activities	480	473	15,365

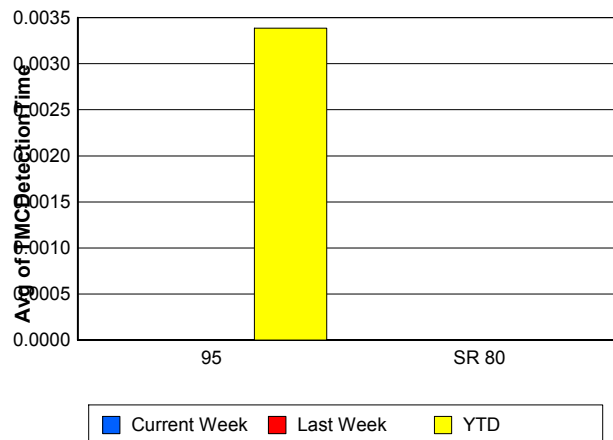
SR 80

	<u>YTD</u>
Number of Events	4
Number of Incidents	3
TMC Detection (min.)	0.00
TMC Verification (min.)	0.00
TMC Response (min.)	
RR Dispatch Time (min.)	
RR Resp. Time (min.)	
Event Clearance (min.)	1,409.98
Roadway Clear. (min.)	1,789.50
Incident Clearance (min.)	1,847.09
# of Events w/ RR/SIRV	0
RR/SIRV Responses	0
RR/SIRV Activities	0

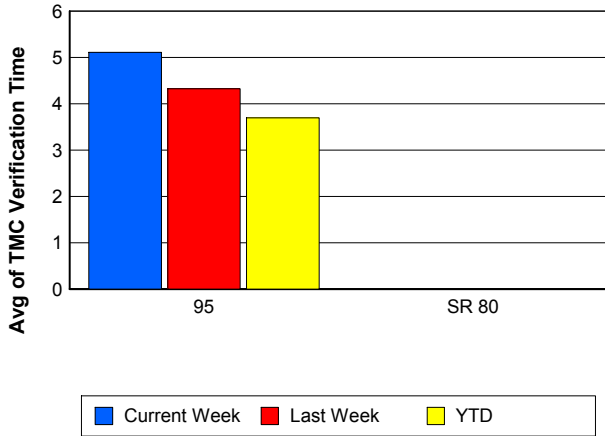
### Number of Events / Roadway



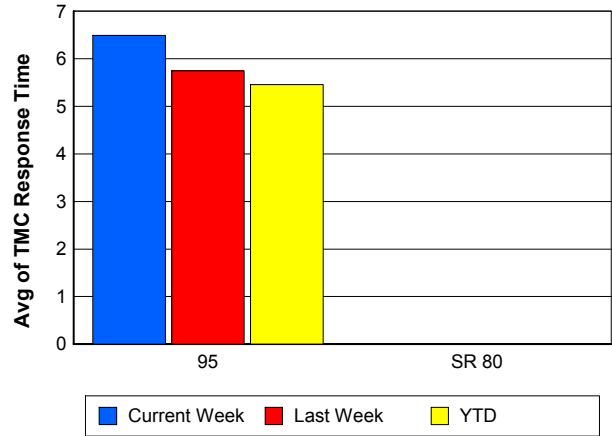
### TMC Detection Time



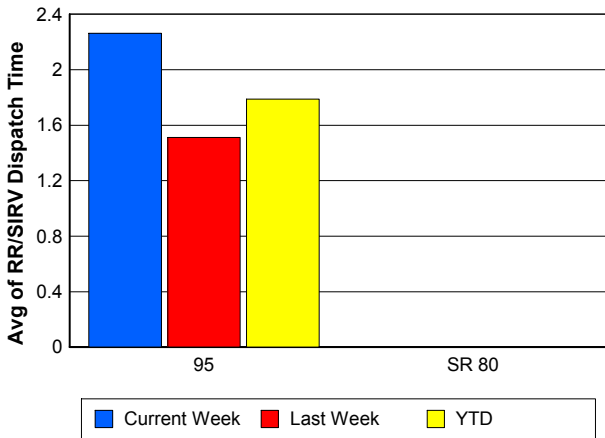
### TMC Verification Time



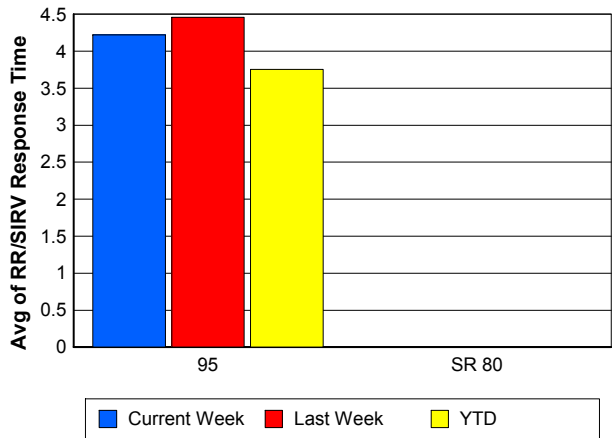
### TMC Response Time



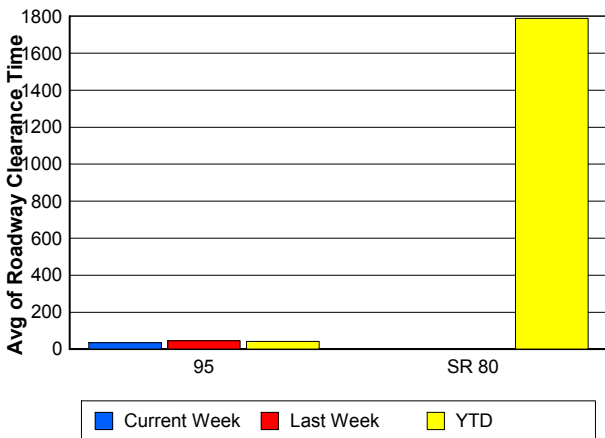
### Road Ranger / SIRV Dispatch Time



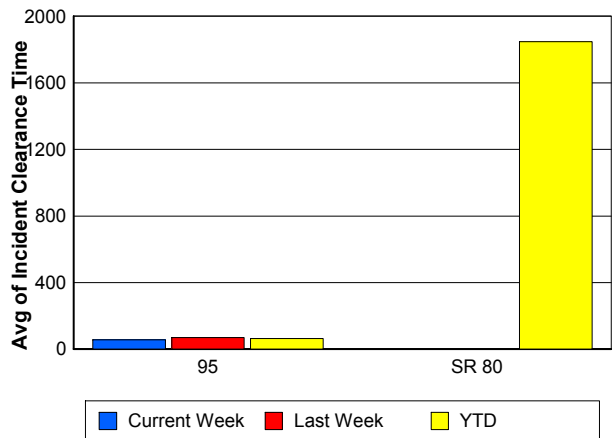
### Road Ranger / SIRV Response Time



### Roadway Clearance Time (2A)



### Incident Clearance Time (3B)



## Performance Measures by Event Type

### Accident

	<u>Current Week</u>	<u>Last Week</u>	<u>YTD</u>
Number of Events	26	42	1,328
Number of Incidents	9	19	626
TMC Detection (min.)	0.00	0.00	0.02
TMC Verification (min.)	10.10	6.27	4.77
TMC Response (min.)	13.80	7.25	8.29
RR Dispatch Time (min.)	2.76	2.13	2.63
RR Response Time (min.)	11.04	5.08	5.65
Event Clearance (min.)	53.69	60.61	58.67
Roadway Clearance (min.)	50.59	48.09	45.61
Incident Clearance (min.)	74.41	75.41	73.20
# of Events w/ RR/SIRV	26	42	1,101
RR/SIRV Assists	26	42	1,101
RR/SIRV Activities	32	47	1,396

### Debris on Roadway

	<u>Current Week</u>	<u>Last Week</u>	<u>YTD</u>
Number of Events	23	25	1,119
Number of Incidents	0	1	37
TMC Detection (min.)	0.00	0.00	0.00
TMC Verification (min.)	12.56	4.84	7.72
TMC Response (min.)	12.67	5.91	7.97
RR Dispatch Time (min.)	4.73	1.60	1.91
RR Response Time (min.)	7.94	4.31	6.07
Event Clearance (min.)	15.01	9.82	12.09
Roadway Clearance (min.)		47.45	21.35
Incident Clearance (min.)		47.33	24.41
# of Events w/ RR/SIRV	23	25	1,102
RR/SIRV Assists	23	25	1,102
RR/SIRV Activities	23	28	1,179

### Disabled Vehicle

	<u>Current Week</u>	<u>Last Week</u>	<u>YTD</u>
Number of Events	387	368	11,998
Number of Incidents	7	3	204
TMC Detection (min.)	0.00	0.00	0.00
TMC Verification (min.)	4.44	4.13	3.50
TMC Response (min.)	5.62	5.51	4.67
RR Dispatch Time (min.)	2.13	1.42	1.51
RR Response Time (min.)	3.48	4.35	3.26
Event Clearance (min.)	17.72	18.68	17.92
Roadway Clearance (min.)	18.50	30.68	26.17
Incident Clearance (min.)	24.43	47.18	36.13
# of Events w/ RR/SIRV	384	364	11,243
RR/SIRV Assists	384	364	11,243
RR/SIRV Activities	413	385	12,353

## Emergency Vehicles

	<u>Current Week</u>	<u>YTD</u>
Number of Events	1	16
Number of Incidents	0	9
TMC Detection (min.)	0.00	0.00
TMC Verification (min.)	0.00	1.98
TMC Response (min.)	0.40	7.80
RR Dispatch Time (min.)	0.35	2.77
RR Response Time (min.)	0.05	4.75
Event Clearance (min.)	2.45	44.69
Roadway Clearance (min.)		41.91
Incident Clearance (min.)		47.66
# of Events w/ RR/SIRV	1	8
RR/SIRV Assists	1	8
RR/SIRV Activities	1	10

## Other

	<u>Current Week</u>	<u>Last Week</u>	<u>YTD</u>
Number of Events	11	15	885
Number of Incidents	0	0	7
TMC Detection (min.)	0.00	0.00	0.00
TMC Verification (min.)	0.00	3.08	1.26
TMC Response (min.)	0.00	8.56	14.93
RR Dispatch Time (min.)	1.09	2.12	7.35
RR Response Time (min.)	0.00	6.49	6.69
Event Clearance (min.)	6.26	16.62	35.02
Roadway Clearance (min.)			40.35
Incident Clearance (min.)			52.93
# of Events w/ RR/SIRV	5	13	306
RR/SIRV Assists	5	13	306
RR/SIRV Activities	3	10	259

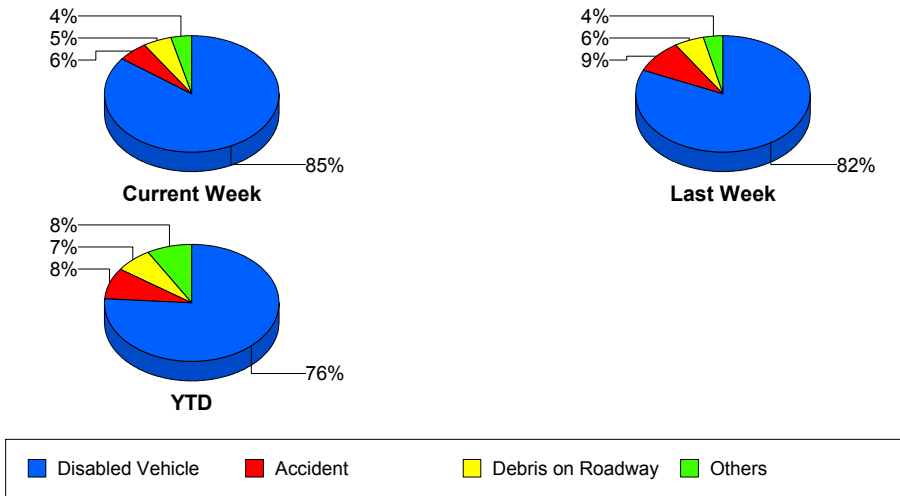
## Police Activity

	<u>Current Week</u>	<u>Last Week</u>	<u>YTD</u>
Number of Events	2	1	353
Number of Incidents	1	1	55
TMC Detection (min.)	0.00	0.00	0.08
TMC Verification (min.)	7.58	0.00	0.57
TMC Response (min.)	7.55	0.00	12.14
RR Dispatch Time (min.)	0.92	0.00	5.53
RR Response Time (min.)	6.63	0.00	6.46
Event Clearance (min.)	24.03	36.40	28.54
Roadway Clearance (min.)	34.42	34.35	68.94
Incident Clearance (min.)	35.83	36.40	84.52
# of Events w/ RR/SIRV	2	1	52
RR/SIRV Assists	2	1	52
RR/SIRV Activities	2	2	58

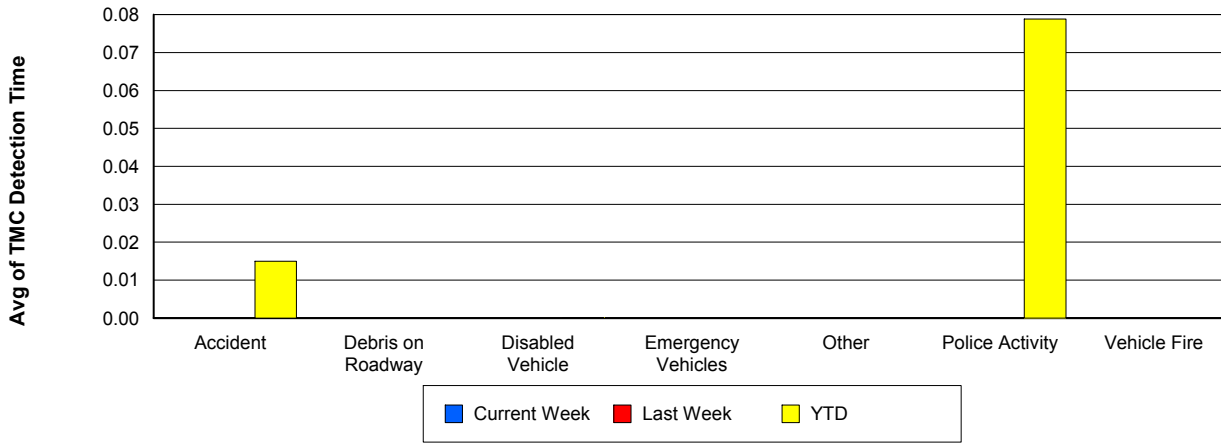
## Vehicle Fire

	<u>Current Week</u>	<u>YTD</u>
Number of Events	4	40
Number of Incidents	4	32
TMC Detection (min.)	0.00	0.00
TMC Verification (min.)	11.27	4.00
TMC Response (min.)	15.41	18.33
RR Dispatch Time (min.)	1.43	11.40
RR Response Time (min.)	13.97	6.93
Event Clearance (min.)	73.40	84.35
Roadway Clearance (min.)	29.50	62.38
Incident Clearance (min.)	73.40	90.75
# of Events w/ RR/SIRV	4	27
RR/SIRV Assists	4	27
RR/SIRV Activities	4	37

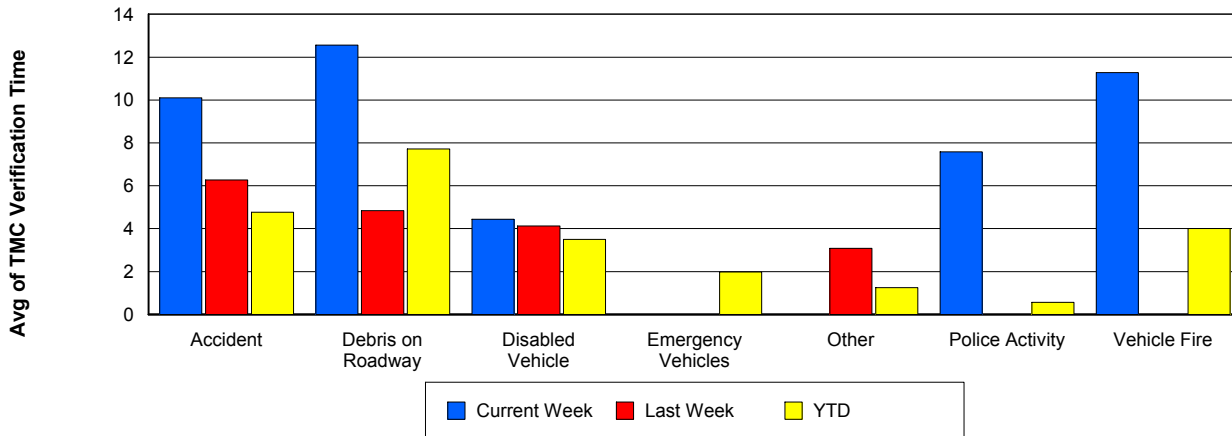
## Number of Events / Event Type



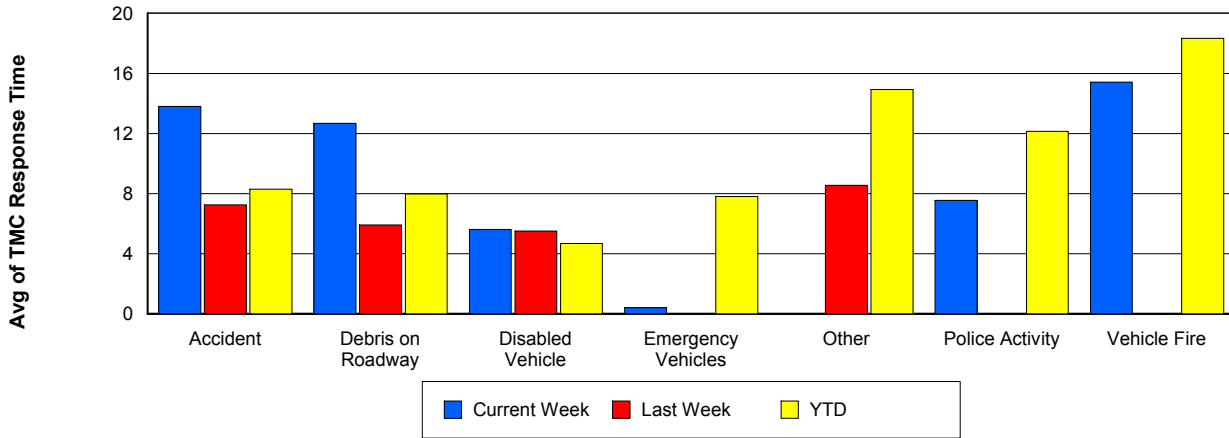
## TMC Detection Time



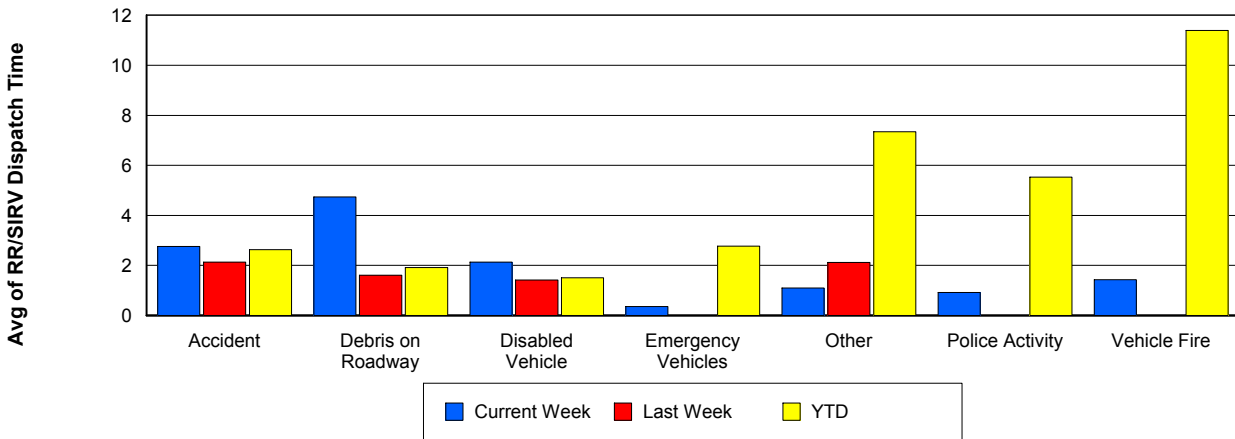
## TMC Verification Time



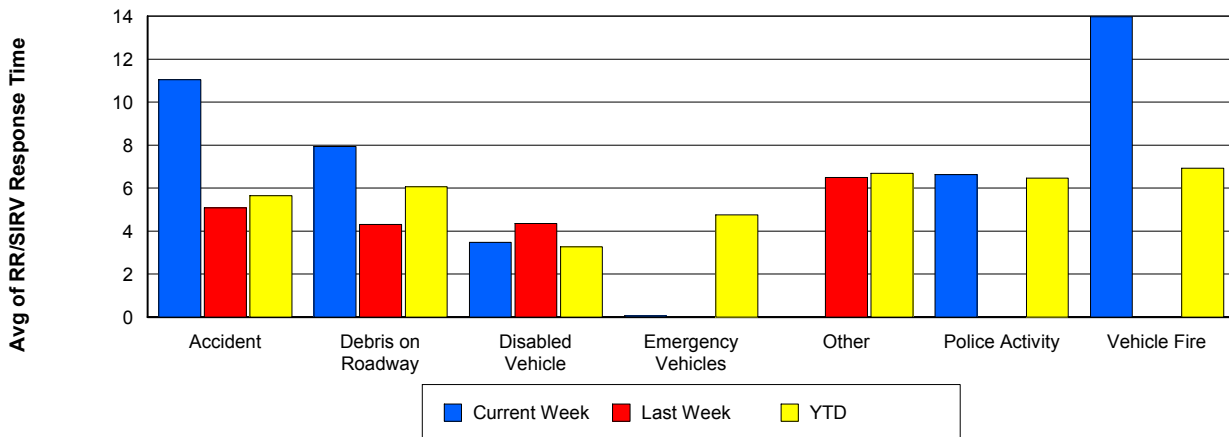
## TMC Response Time



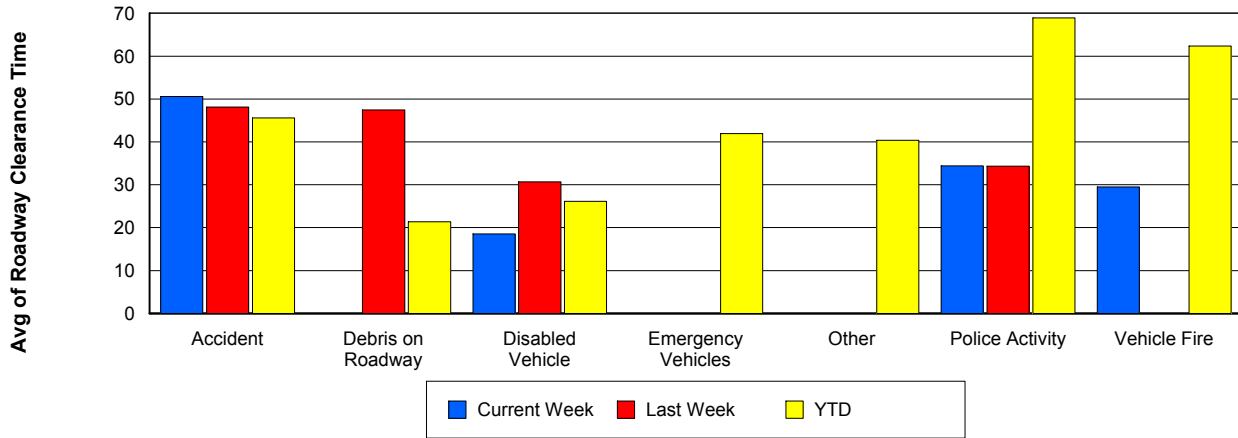
## Road Ranger / SIRV Dispatch Time



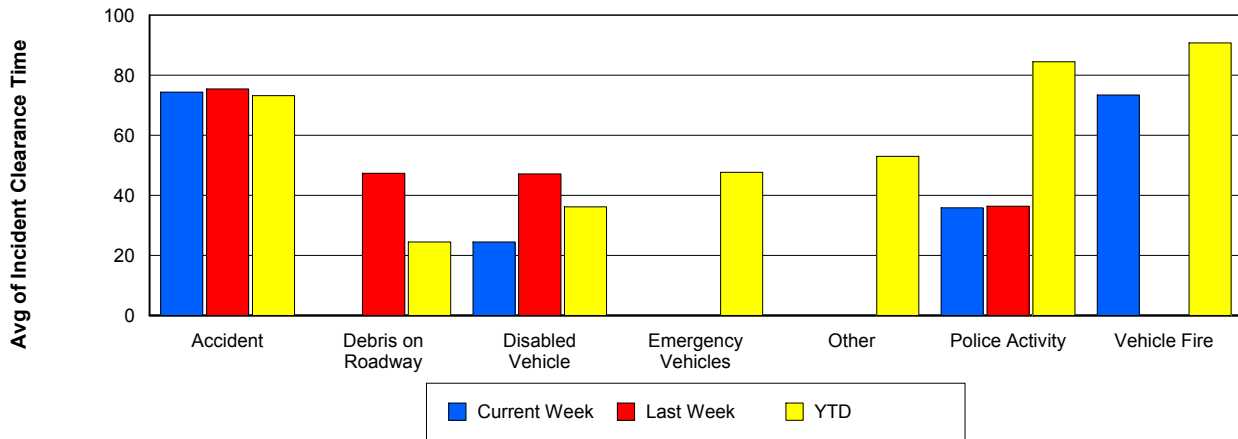
## Road Ranger / SIRV Response Time



## Roadway Clearance Time (2A)



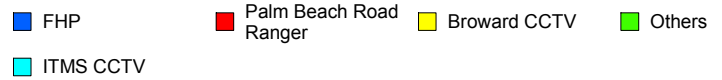
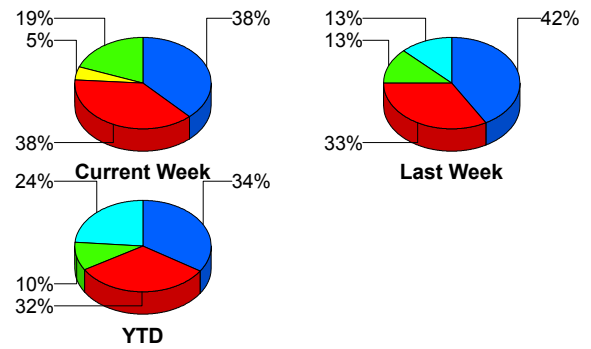
## Incident Clearance Time (3B)



## Incident Detection Methods

	Current Week	Last Week	YTD
Broward CCTV	1	0	9
Broward Road Ranger	0	0	8
Broward TMC	0	1	6
Broward VideoWall	0	0	1
Construction CEI	0	0	2
District 4	0	0	23
Emergency Operations	0	0	1
FDOT Maintenance	0	1	2
FHP	8	10	332
I-95 Construction PIO	1	0	4
ITMS	1	0	14
ITMS CCTV	1	3	230
Local Police	0	0	1
Media	0	0	2
Motorist	1	0	18
Palm Beach Road Ran	8	8	312
Road Watcher	0	1	2
SmarTraveler (511)	0	0	4
<b>Total</b>	<b>21</b>	<b>24</b>	<b>971</b>

### Total Incidents by Detection Method

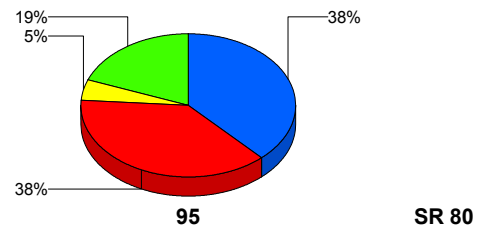


## Incident Detection Methods by Roadway

		Current Week	Last Week	YTD
95	Broward CCTV	1	0	9
	Broward Road Ranger	0	0	8
	Broward TMC	0	1	6
	Broward VideoWall	0	0	1
	Construction CEI	0	0	2
	District 4	0	0	23
	FDOT Maintenance	0	1	2
	FHP	8	10	331
	I-95 Construction PIO	1	0	4
	ITMS	1	0	13
	ITMS CCTV	1	3	230
	Local Police	0	0	1
	Media	0	0	2
	Motorist	1	0	18
	Palm Beach Road Ran	8	8	312
	Road Watcher	0	1	2
	SmarTraveler (511)	0	0	4
	<b>Total</b>	<b>21</b>	<b>24</b>	<b>968</b>
SR 80	Emergency Operations	0	0	1
	FHP	0	0	1
	ITMS	0	0	1
	<b>Total</b>	<b>0</b>	<b>0</b>	<b>3</b>
<b>Total</b>	<b>21</b>	<b>24</b>	<b>971</b>	

**Total Events by Roadway and Detection Method**

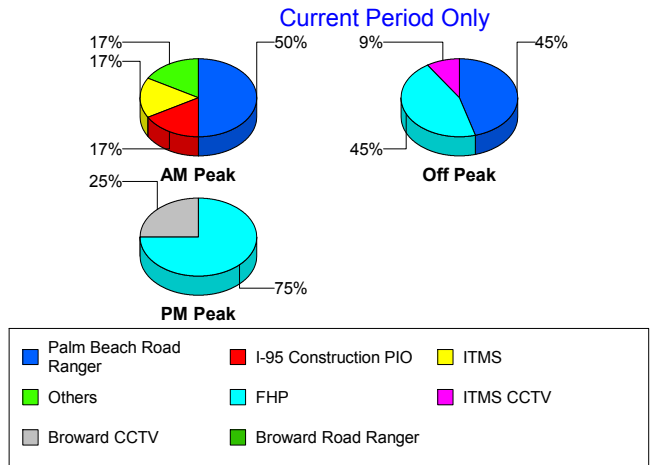
Current Period Only



## Incident Detection Methods by Peak Period

		Current Week	Last Week	YTD
AM Peak	Broward CCTV	0	0	2
	Broward Road Ranger	0	0	3
	Broward TMC	0	0	2
	Construction CEI	0	0	1
	District 4	0	0	11
	FHP	0	5	98
	I-95 Construction PIO	1	0	2
	ITMS	1	0	6
	ITMS CCTV	0	2	42
	Motorist	1	0	9
	Palm Beach Road Ran	3	3	102
	Road Watcher	0	0	1
	SmarTraveler (511)	0	0	3
	<b>Total</b>	<b>6</b>	<b>10</b>	<b>282</b>
	Off Peak	Broward CCTV	0	0
Broward Road Ranger		0	0	2
Broward TMC		0	1	4
Broward VideoWall		0	0	1
Construction CEI		0	0	1
District 4		0	0	9
FDOT Maintenance		0	1	2
FHP		5	3	165
I-95 Construction PIO		0	0	2
ITMS		0	0	7
ITMS CCTV		1	1	123
Motorist		0	0	5
Palm Beach Road Ran		5	5	127
Road Watcher		0	1	1
SmarTraveler (511)		0	0	1
<b>Total</b>	<b>11</b>	<b>12</b>	<b>454</b>	
PM Peak	Broward CCTV	1	0	3

Total Events by Peak Period and Detection Method

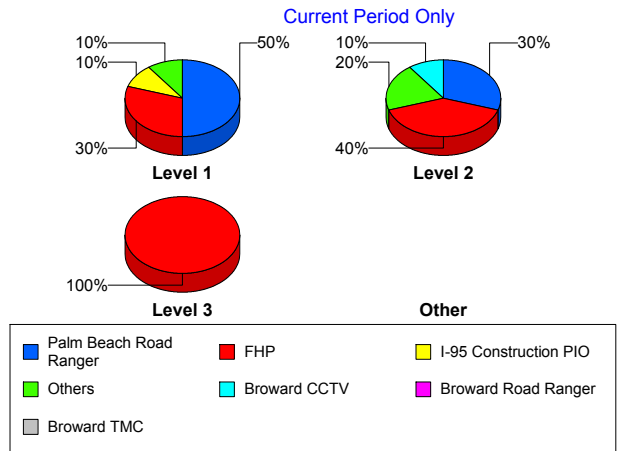


		Current Week	Last Week	YTD
PM Peak	Broward Road Ranger	0	0	3
	District 4	0	0	3
	Emergency Operations	0	0	1
	FHP	3	2	69
	ITMS	0	0	1
	ITMS CCTV	0	0	65
	Local Police	0	0	1
	Media	0	0	2
	Motorist	0	0	4
	Palm Beach Road Ran	0	0	83
	Total	4	2	235
<b>Total</b>	<b>21</b>	<b>24</b>	<b>971</b>	

### Incident Detection Methods by Severity

		Current Week	Last Week	YTD
Level 1	Broward CCTV	0	0	6
	Broward Road Ranger	0	0	4
	Broward TMC	0	1	2
	District 4	0	0	16
	FHP	3	4	113
	I-95 Construction PIO	1	0	3
	ITMS	0	0	5
	ITMS CCTV	1	1	100
	Local Police	0	0	1
	Motorist	0	0	11
	Palm Beach Road Ran	5	3	213
	Road Watcher	0	0	1
	SmarTraveler (511)	0	0	1
	Total	10	9	476
Level 2	Broward CCTV	1	0	1
	Broward Road Ranger	0	0	3
	Broward TMC	0	0	2

Total Events by Severity and Detection Method



		Current Week	Last Week	YTD
Level 2	Broward VideoWall	0	0	1
	Construction CEI	0	0	1
	District 4	0	0	6
	FDOT Maintenance	0	1	2
	FHP	4	6	167
	I-95 Construction PIO	0	0	1
	ITMS	1	0	7
	ITMS CCTV	0	2	97
	Media	0	0	1
	Motorist	1	0	6
	Palm Beach Road Ran	3	5	83
	Road Watcher	0	1	1
	SmarTraveler (511)	0	0	3
	Total	10	15	382
Level 3	Broward CCTV	0	0	2
	Broward Road Ranger	0	0	1
	Broward TMC	0	0	2
	Construction CEI	0	0	1
	District 4	0	0	1
	Emergency Operations	0	0	1
	FHP	1	0	52
	ITMS	0	0	2
	ITMS CCTV	0	0	33
	Media	0	0	1
	Motorist	0	0	1
	Palm Beach Road Ran	0	0	16
	Total	1	0	113
Total		21	24	971

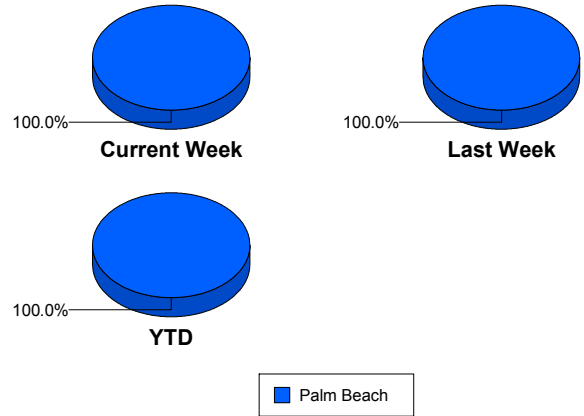
# Road Ranger / SIRV Performance Measures

## Road Ranger / SIRV Performance By County

RR/SIRV Responses per County

Values presented are: - Total Events with a RR/SIRV Response - Total RR/SIRV Responses, - Total Activities Performed
---

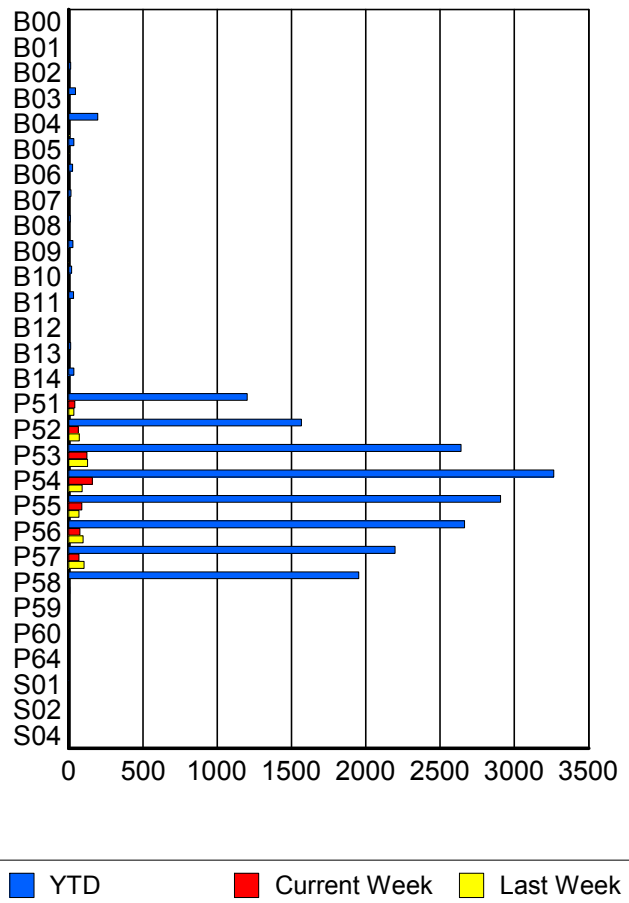
	Current We	Last Week	YTD
Palm Beach	<b>601</b>	<b>604</b>	<b>18,231</b>
	<b>628</b>	<b>622</b>	<b>18,563</b>
	<b>654</b>	<b>650</b>	<b>20,154</b>



## Road Ranger / SIRV Performance By Truck

	Current We	Last Week	YTD
B00	<b>0</b>	<b>0</b>	<b>6</b>
	<b>0</b>	<b>0</b>	<b>6</b>
	<b>0</b>	<b>0</b>	<b>6</b>
B01	<b>0</b>	<b>0</b>	<b>1</b>
	<b>0</b>	<b>0</b>	<b>1</b>
	<b>0</b>	<b>0</b>	<b>1</b>
B02	<b>0</b>	<b>0</b>	<b>14</b>
	<b>0</b>	<b>0</b>	<b>14</b>
	<b>0</b>	<b>0</b>	<b>15</b>
B03	<b>1</b>	<b>2</b>	<b>46</b>
	<b>1</b>	<b>2</b>	<b>46</b>
	<b>1</b>	<b>2</b>	<b>47</b>
B04	<b>2</b>	<b>6</b>	<b>195</b>
	<b>2</b>	<b>6</b>	<b>196</b>
	<b>2</b>	<b>6</b>	<b>220</b>
B05	<b>1</b>	<b>4</b>	<b>34</b>
	<b>1</b>	<b>5</b>	<b>36</b>
	<b>1</b>	<b>5</b>	<b>37</b>
B06	<b>1</b>	<b>1</b>	<b>26</b>
	<b>1</b>	<b>1</b>	<b>27</b>
	<b>1</b>	<b>1</b>	<b>29</b>
B07	<b>1</b>	<b>0</b>	<b>15</b>
	<b>1</b>	<b>0</b>	<b>15</b>
	<b>1</b>	<b>0</b>	<b>15</b>
B08	<b>0</b>	<b>0</b>	<b>11</b>
	<b>0</b>	<b>0</b>	<b>11</b>
	<b>0</b>	<b>0</b>	<b>14</b>

**RR/SIRV  
Responses per  
Truck**



	Current We	Last Week	YTD
B09	0	3	27
	0	3	28
	0	3	29
B10	0	1	19
	0	1	20
	0	1	20
B11	0	0	33
	0	0	33
	0	0	34
B12	0	0	6
	0	0	6
	0	0	7
B13	0	0	14
	0	0	14
	0	0	15
B14	0	1	35
	0	1	36
	0	1	38
P51	40	36	1,189
	41	36	1,201
	43	36	1,255
P52	64	71	1,559
	66	71	1,567
	70	73	1,679
P53	119	127	2,604
	123	128	2,641
	123	133	2,788
P54	157	89	3,231
	159	92	3,265
	170	99	3,505
P55	88	69	2,887
	88	69	2,907
	93	73	3,111
P56	75	96	2,635
	75	97	2,664
	76	103	2,860
P57	70	102	2,175
	70	103	2,196
	73	107	2,337
P58	0	7	1,924
	0	7	1,953
	0	7	2,080
P59	0	0	1
	0	0	1
	0	0	2

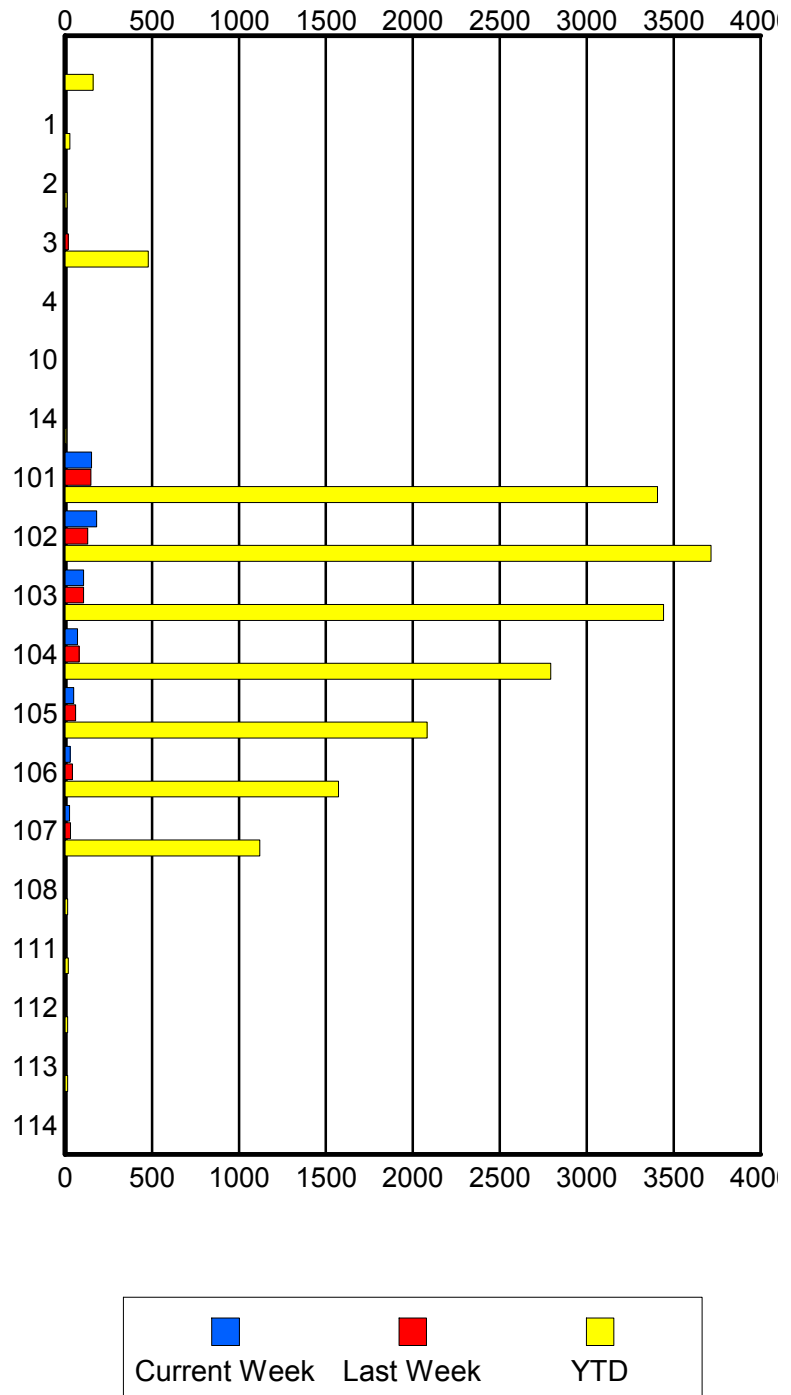
	Current We	Last Week	YTD
P60	0	0	1
	0	0	1
	0	0	1
P64	0	0	1
	0	0	1
	0	0	1
S01	0	0	3
	0	0	3
	0	0	3
S02	0	0	3
	0	0	3
	0	0	3
S04	0	0	2
	0	0	2
	0	0	2

### Road Ranger / SIRV Performance By Beat

	Current We	Last Week	YTD
	5	5	160
	5	5	161
	5	5	166
1	0	0	26
	0	0	27
	0	0	28
2	0	0	11
	0	0	11
	0	0	13
3	6	18	464
	6	19	478
	6	19	515
4	0	0	2
	0	0	2
	0	0	2
10	0	0	6
	0	0	6
	0	0	9
14	0	0	7
	0	0	7
	0	0	7
101	150	148	3,371
	152	149	3,406
	160	153	3,649
102	173	128	3,672
	181	130	3,715
	190	135	3,943
103	105	105	3,401
	107	106	3,441
	109	110	3,695
104	70	79	2,760
	71	80	2,792
	74	88	2,991
105	50	58	2,064
	50	60	2,082
	52	63	2,211
106	30	42	1,555
	30	42	1,573
	31	44	1,679
107	25	31	1,106
	26	31	1,120
	27	33	1,176
108	0	0	13
	0	0	14
	0	0	14

Values presented are:  
 - Total Events with a RR/SIRV Response  
 - Total RR/SIRV Responses,  
 - Total Activities Performed

### RR/SIRV Responses per Beat



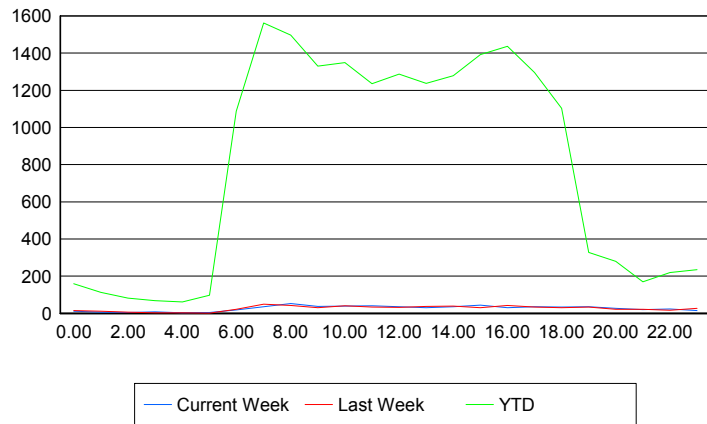
	Current We	Last Week	YTD
111	0	0	18
	0	0	19
	0	0	20
112	0	0	14
	0	0	15
	0	0	16
113	0	0	13
	0	0	14
	0	0	14
114	0	0	6
	0	0	6
	0	0	6

### Road Ranger / SIRV Performance By Time of Day

Values presented are:  
- Total Events with a RR/SIRV Response  
- Total RR/SIRV Responses,  
- Total Activities Performed

	Current We	Last Week	YTD
12AM-1AM	11	14	154
	12	14	160
	13	14	172
1AM-2AM	7	11	108
	7	12	113
	7	13	121
2AM-3AM	4	7	79
	4	7	81
	5	7	86
3AM-4AM	8	3	65
	8	3	68
	8	3	69
4AM-5AM	3	3	57
	3	3	62
	3	3	68
5AM-6AM	4	1	90
	5	1	98
	5	1	102
6AM-7AM	18	20	1,040
	19	21	1,088
	23	23	1,149
7AM-8AM	35	48	1,489
	36	49	1,563
	40	51	1,677
8AM-9AM	50	43	1,434
	53	43	1,497
	53	46	1,594

### Number of Responses / Hour of the Day



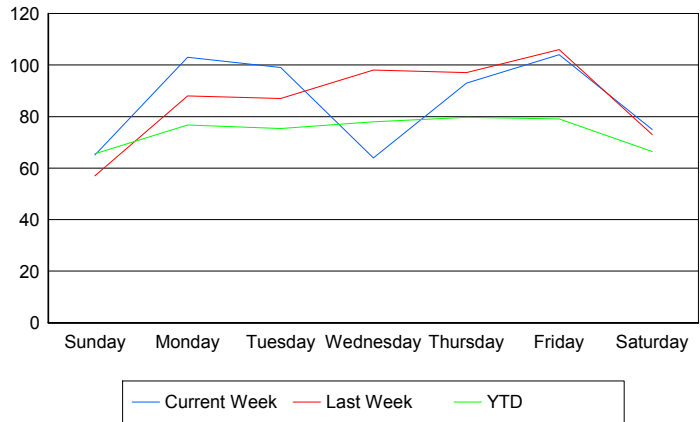
	Current We	Last Week	YTD
9AM-10AM	35	31	1,287
	37	31	1,330
	39	32	1,441
10AM-11AM	37	39	1,302
	38	40	1,349
	38	40	1,422
11AM-12PM	39	33	1,201
	40	33	1,235
	41	37	1,338
12PM-1PM	36	30	1,238
	36	32	1,288
	37	33	1,376
1PM-2PM	29	33	1,195
	30	37	1,238
	32	38	1,329
2PM-3PM	36	38	1,228
	36	39	1,278
	37	41	1,356
3PM-4PM	43	30	1,345
	44	31	1,392
	45	31	1,481
4PM-5PM	29	41	1,395
	30	43	1,436
	35	46	1,530
5PM-6PM	33	33	1,258
	35	33	1,296
	35	33	1,371
6PM-7PM	32	30	1,086
	34	31	1,103
	34	31	1,160
7PM-8PM	33	33	319
	35	33	328
	37	34	348
8PM-9PM	25	20	267
	27	21	280
	27	21	291
9PM-10PM	20	20	160
	20	21	170
	20	25	183
10PM-11PM	20	16	204
	24	17	220
	24	17	235
11PM-12AM	14	27	230
	15	27	235
	16	30	255

## Road Ranger / SIRV Performance By Day of Week

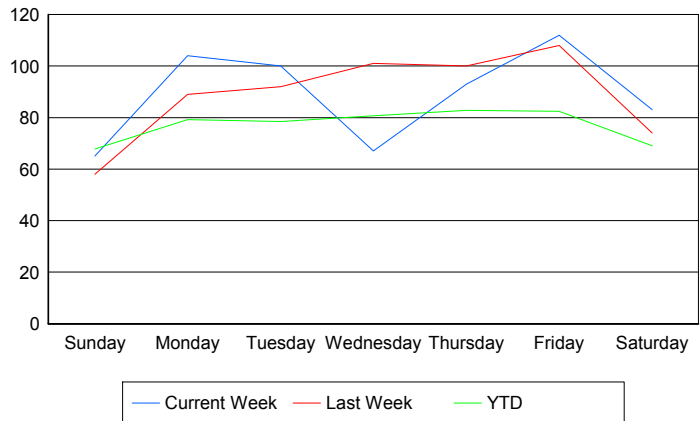
Values presented are:  
 - Total Events with a RR/SIRV Response  
 - Total RR/SIRV Responses,  
 - Total Activities Performed

	Current We	Last Week	YTD
Sunday	69 69 69	57 58 61	655 677 722
Monday	103 104 109	88 89 97	3,305 3,381 3,609
Tuesday	99 100 101	87 92 96	3,252 3,366 3,596
Wednesday	64 67 73	98 101 104	3,379 3,498 3,742
Thursday	93 93 94	97 100 104	3,472 3,563 3,853
Friday	104 112 119	106 108 111	3,466 3,604 3,837
Saturday	75 83 89	73 74 77	726 753 795

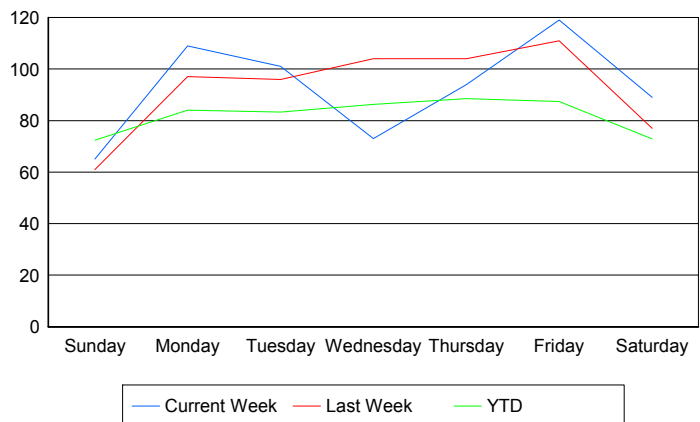
### Avg # of events with a RR/SIRV Response per Day of the Week



### Avg # of RR/SIRV Responses per Day of the Week



### Avg # of RR/SIRV Activities Performed per Day of the Week



### Road Ranger / SIRV Responses per Time of Day and Day of Week

