



# Weekly Performance Measures Report Palm Beach County



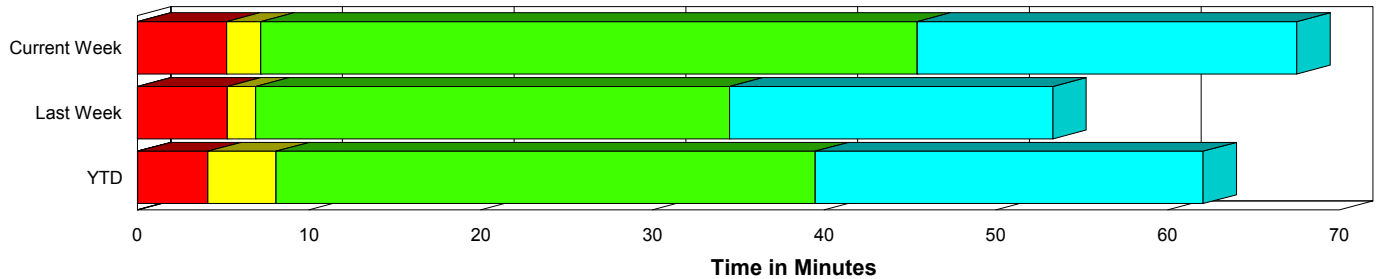
Created on:  
December 07, 2009  
8:52 am

Period From Nov 29, 2009 to Dec 5, 2009

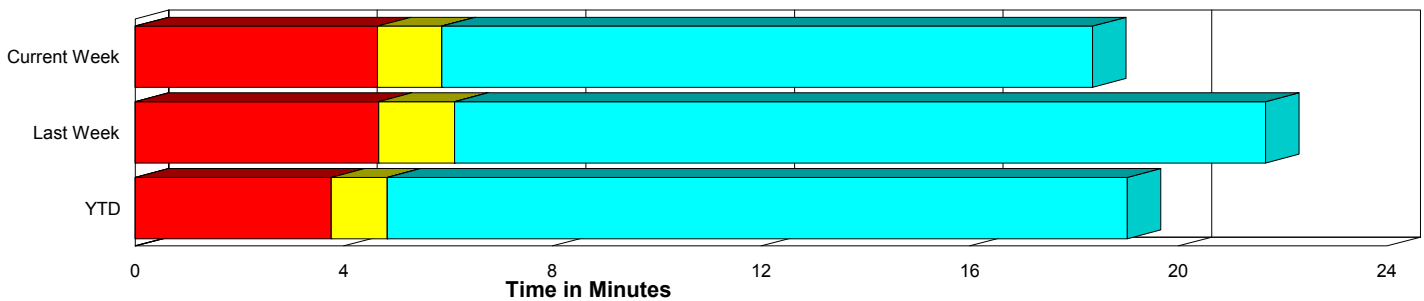
## Performance Measures Summary

	Traffic Events (No Lanes Blocked)			Incidents (Lanes Blocked)		
	<u>This Week</u>	<u>Last Week</u>	<u>YTD</u>	<u>This Week</u>	<u>Last Week</u>	<u>YTD</u>
Number of Events	469	405	16,174	34	35	1,070
TMC Detection (min.)	0.00	0.00	0.00	0.01	0.00	0.03
TMC Verification (min.)	4.65	4.67	3.76	5.19	5.24	4.07
TMC Response (min.)	6.11	6.55	5.36	6.78	6.92	8.71
RR Dispatch Time (min.)	1.58	1.83	1.69	1.08	2.14	3.38
RR Response Time (min.)	4.57	4.81	3.76	5.68	5.13	5.32
Roadway Clearance (min.)				51.51	34.45	47.19
Event Clearance (min.)	18.59	22.10	19.55	73.61	53.27	69.15
# of Events w/ RR/SIRV	459	386	14,404	33	35	883
RR/SIRV Responses	459	386	14,404	33	35	883
RR/SIRV Activities	499	424	15,627	39	43	1,253

### Incident Clearance Time-Line



### Traffic Event (Non-Lane Blockage) Time-Line



<span style="color: blue;">■</span> Avg. TMC Detection Time	<span style="color: green;">■</span> Avg. Time from TMC Response to Roadway Clearance*
<span style="color: red;">■</span> Avg. Time from TMC Detection to TMC Verification	<span style="color: cyan;">■</span> Avg. Time from Roadway Clearance to Incident/Event Clearance**
<span style="color: yellow;">■</span> Avg. Time from TMC Verification to TMC Response	

\* Roadway clearance equals all travel lanes open

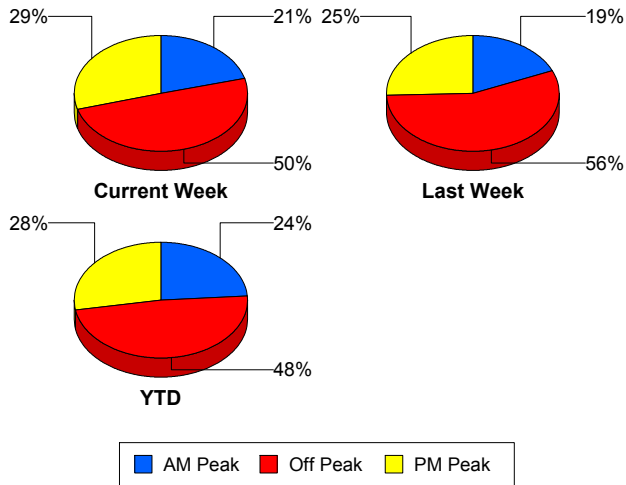
\*\* Incident clearance equals time when last responder has left the scene

## Performance Measures by Peak Period

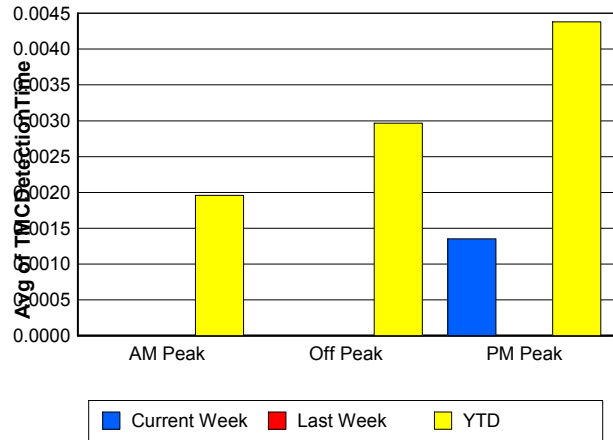
Note: AM peak period is defined as 6am to 10am and PM peak period is defined as 3pm to 7pm.

	AM Peak			Off Peak			PM Peak		
	Current Week	Last Week	YTD	Current Week	Last Week	YTD	Current Week	Last Week	YTD
Number of Events	105	82	4,137	250	246	8,305	148	112	4,802
Number of Incidents	8	12	310	9	19	500	17	4	260
TMC Detection (min.)	0.00	0.00	0.00	0.00	0.00	0.00	0.00	0.00	0.00
TMC Verification (min.)	5.29	4.23	3.20	4.47	5.38	3.57	4.62	3.59	4.64
TMC Response (min.)	7.44	5.67	4.70	6.13	7.55	6.14	5.30	5.10	5.43
RR Dispatch Time (min.)	1.73	0.86	1.27	1.63	2.20	2.30	1.27	1.84	1.47
RR Response Time (min.)	5.71	4.85	3.47	4.57	5.39	3.99	4.02	3.57	3.97
Event Clearance (min.)	24.64	20.40	22.09	19.23	27.47	23.72	25.85	21.30	21.20
Roadway Clearance (min.)	45.75	29.54	38.69	34.45	40.25	48.53	63.25	21.67	54.74
Incident Clearance (min.)	78.91	41.00	65.77	45.68	57.88	67.61	85.89	68.20	76.15
# of Events w/ RR/SIRV	103	79	3,971	245	235	6,757	144	107	4,559
RR/SIRV Responses	103	79	3,971	245	235	6,757	144	107	4,559
RR/SIRV Activities	111	84	4,448	269	265	7,457	158	118	4,975

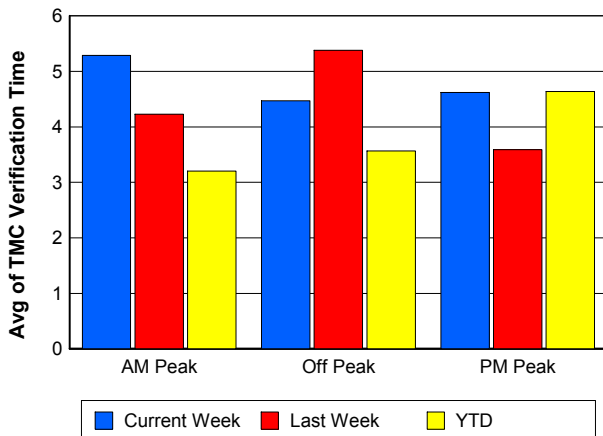
### Number of Events / Peak Period



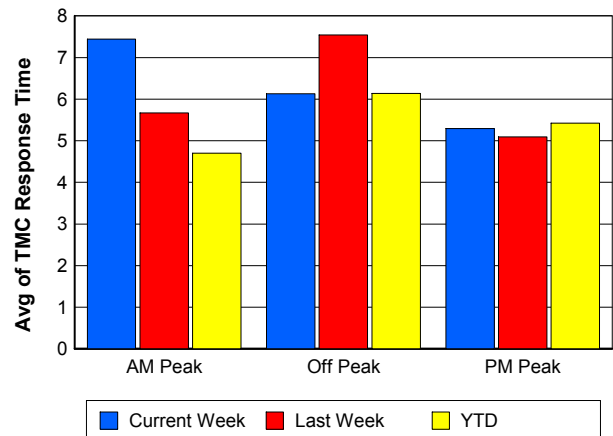
### TMC Detection Time



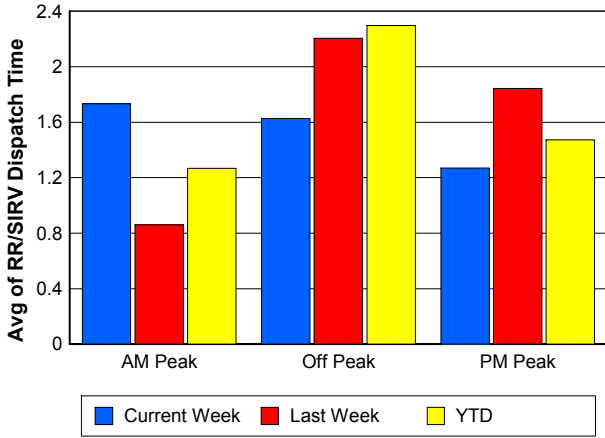
### TMC Verification Time



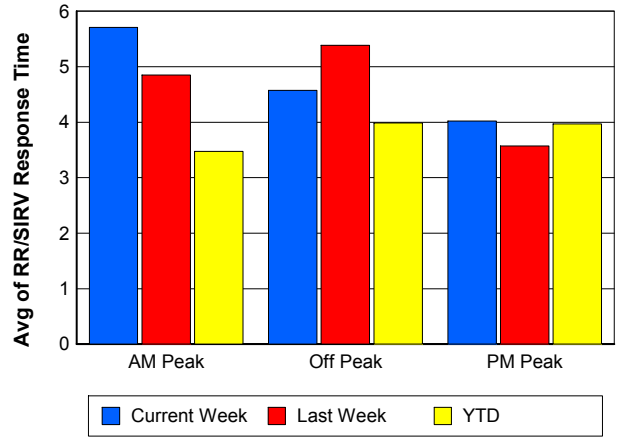
### TMC Response Time



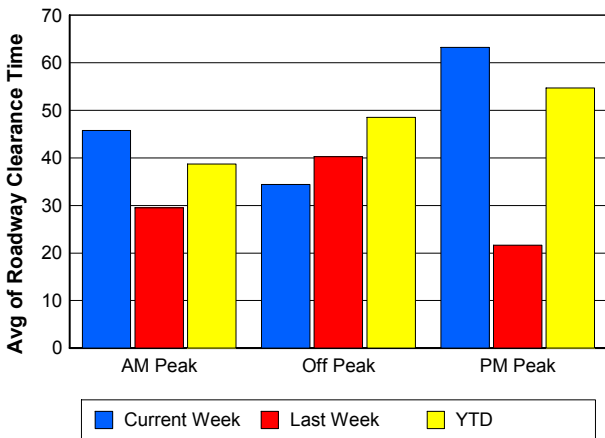
### Road Ranger / SIRV Dispatch Time



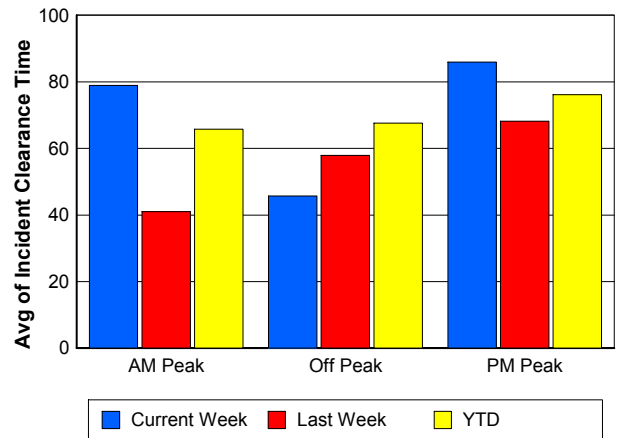
### Road Ranger / SIRV Response Time



### Roadway Clearance Time (2A)



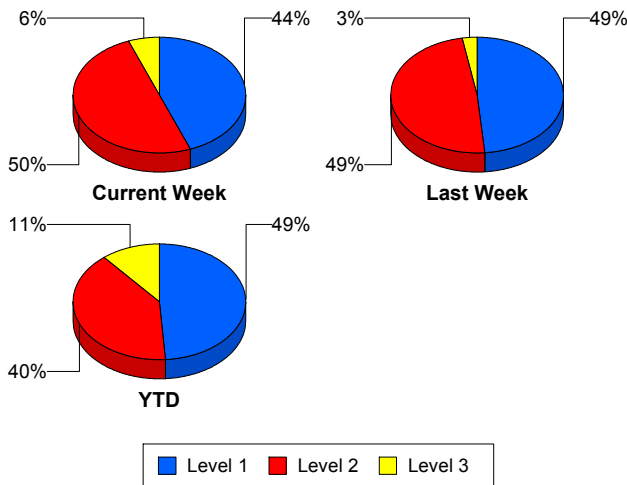
### Incident Clearance Time (3B)



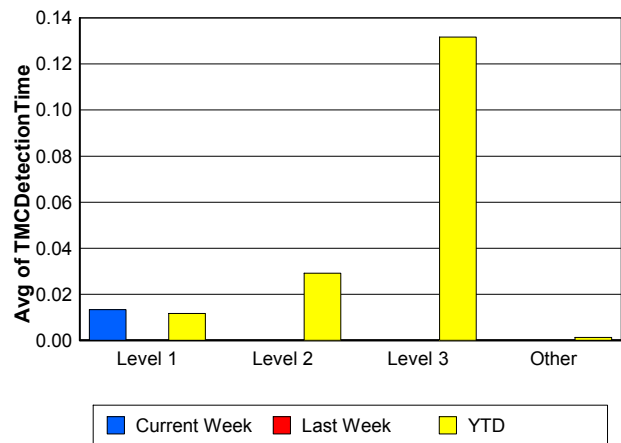
## Performance Measures by Severity

	Level 1			Level 2			Level 3			Other		
	<u>This Week</u>	<u>Last Week</u>	<u>YTD</u>	<u>This Week</u>	<u>Last Week</u>	<u>YTD</u>	<u>This Week</u>	<u>Last Week</u>	<u>YTD</u>	<u>This Week</u>	<u>Last Week</u>	<u>YTD</u>
Number of Events	15	17	523	17	17	429	2	1	118	469	405	16,174
Number of Incidents	15	17	523	17	17	429	2	1	118	0	0	0
TMC Detection (min.)	0.01	0.00	0.01	0.00	0.00	0.03	0.00	0.00	0.13	0.00	0.00	0.00
TMC Verification (min.)	1.94	5.47	2.51	8.60	4.97	5.86	0.59	5.60	4.51	4.65	4.67	3.76
TMC Response (min.)	4.92	6.90	4.61	8.76	7.04	9.86	1.13	5.58	26.69	6.11	6.55	5.36
RR Dispatch Time (min.)	0.44	1.25	1.13	1.62	3.10	2.60	1.01	0.97	19.29	1.58	1.83	1.69
RR Resp. Time (min.)	4.48	5.65	3.49	7.07	4.57	7.27	0.18	4.62	7.18	4.57	4.81	3.76
Event Clearance (min.)	33.01	38.94	41.75	80.89	63.09	71.35	316.17	130.07	182.63	18.59	22.10	19.55
Roadway Clear. (min.)	13.14	14.87	14.69	54.83	48.72	53.51	311.01	124.90	168.24			
Incident Clearance (min.)	33.01	38.94	41.75	80.89	63.09	71.35	316.17	130.07	182.63			
# of Events w/ RR/SIRV	14	17	453	17	17	349	2	1	81	459	386	14,404
RR/SIRV Responses	14	17	453	17	17	349	2	1	81	459	386	14,404
RR/SIRV Activities	14	21	577	24	21	545	1	1	131	499	424	15,627

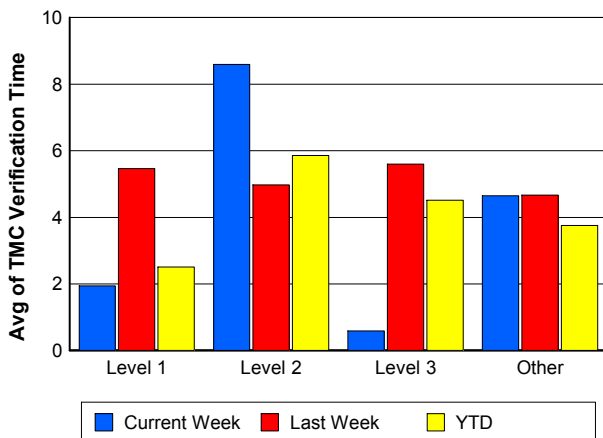
### Number of Events / Severity



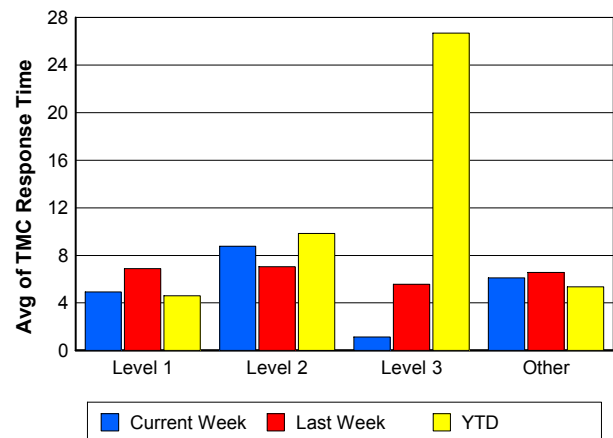
### TMC Detection Time



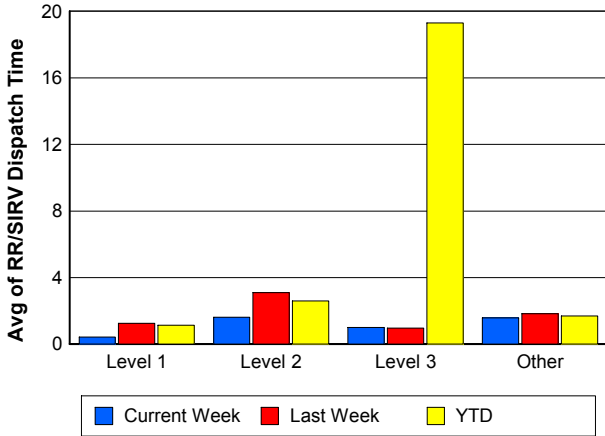
### TMC Verification Time



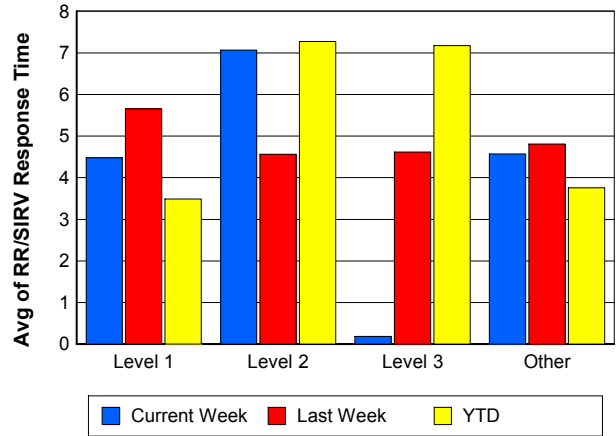
### TMC Response Time



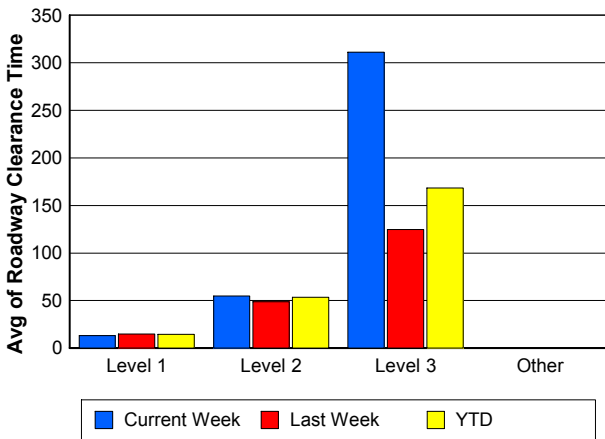
## Road Ranger / SIRV Dispatch Time



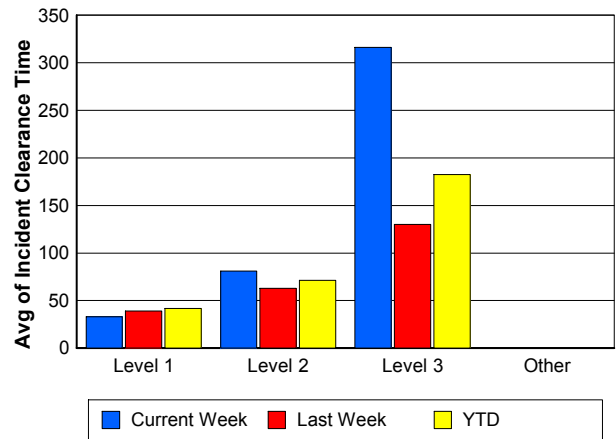
## Road Ranger / SIRV Response Time



## Roadway Clearance Time (2A)



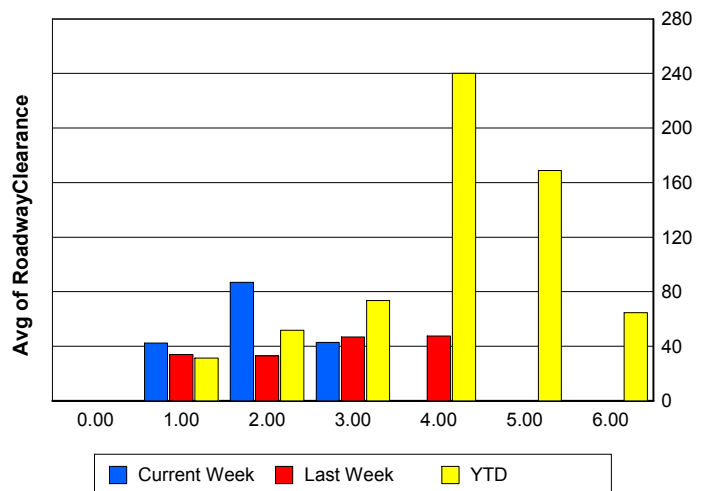
## Incident Clearance Time (3B)



## Roadway Clearance by Maximum Number of Lanes Blocked

	Current Week	Last Week	YTD
0			
1	42.27	33.83	31.42
2	86.91	33.00	51.80
3	42.85	46.90	73.53
4	0.00	47.58	240.06
5	0.00	0.00	168.97
6	0.00	0.00	64.70

## Roadway Clearance Time (2A)



## Performance Measures by Roadway

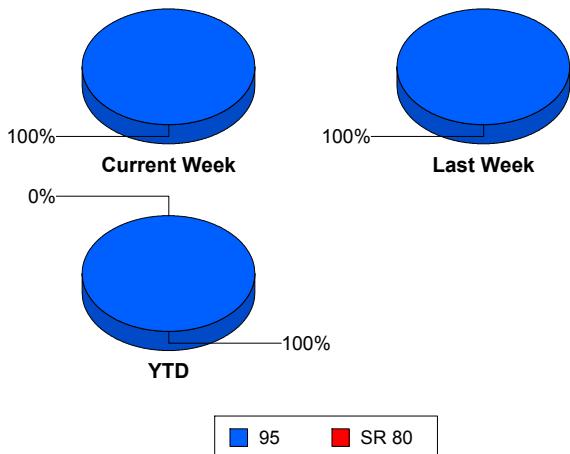
95

	<u>Current Week</u>	<u>Last Week</u>	<u>YTD</u>
Number of Events	503	440	17,240
Number of Incidents	34	35	1,067
TMC Detection (min.)	0.00	0.00	0.00
TMC Verification (min.)	4.68	4.71	3.78
TMC Response (min.)	6.16	6.58	5.55
RR Dispatch Time (min.)	1.54	1.86	1.78
RR Resp. Time (min.)	4.65	4.83	3.85
Event Clearance (min.)	22.31	24.58	22.31
Roadway Clear. (min.)	51.51	34.45	42.29
Incident Clearance (min.)	73.61	53.27	64.15
# of Events w/ RR/SIRV	492	421	15,287
RR/SIRV Responses	492	421	15,287
RR/SIRV Activities	538	467	16,880

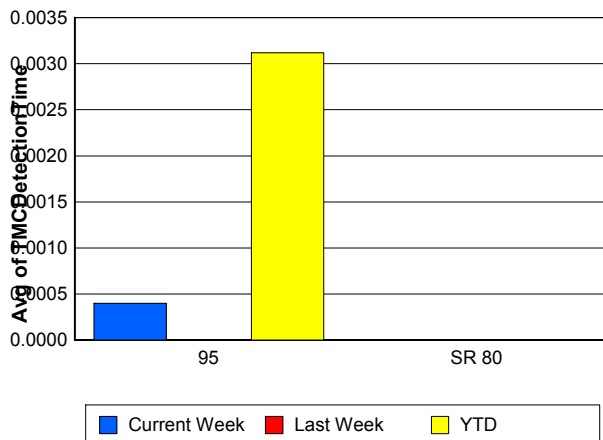
SR 80

	<u>YTD</u>
Number of Events	4
Number of Incidents	3
TMC Detection (min.)	0.00
TMC Verification (min.)	0.00
TMC Response (min.)	
RR Dispatch Time (min.)	
RR Resp. Time (min.)	
Event Clearance (min.)	1,409.98
Roadway Clear. (min.)	1,789.50
Incident Clearance (min.)	1,847.09
# of Events w/ RR/SIRV	0
RR/SIRV Responses	0
RR/SIRV Activities	0

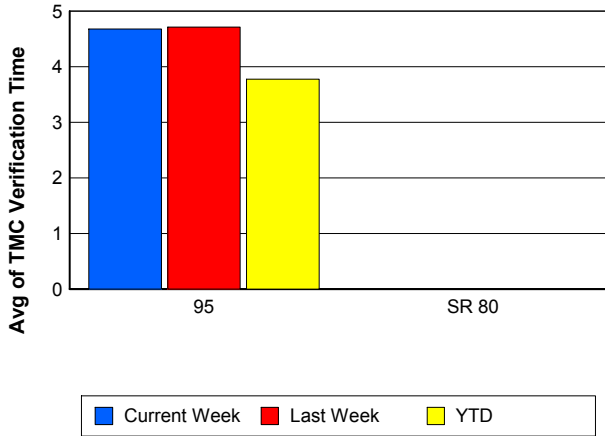
### Number of Events / Roadway



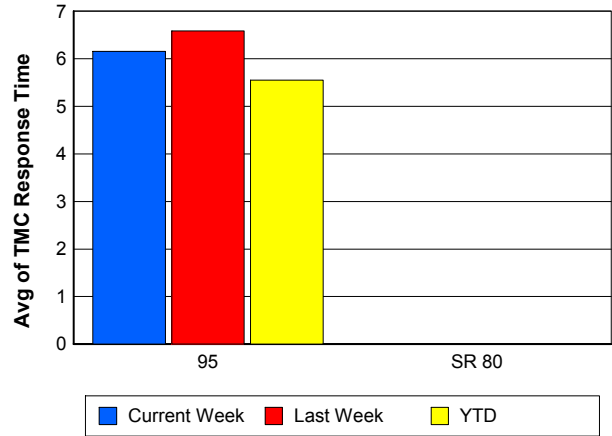
### TMC Detection Time



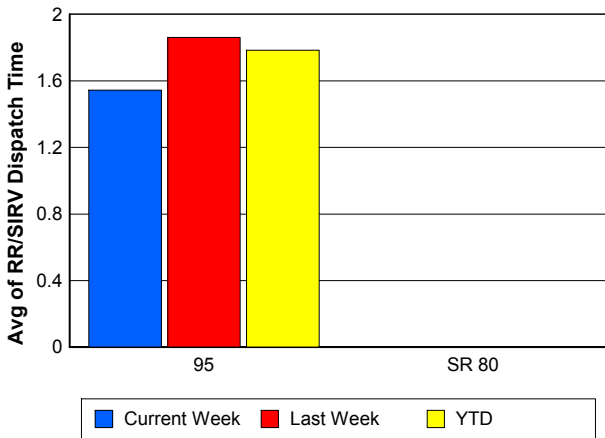
### TMC Verification Time



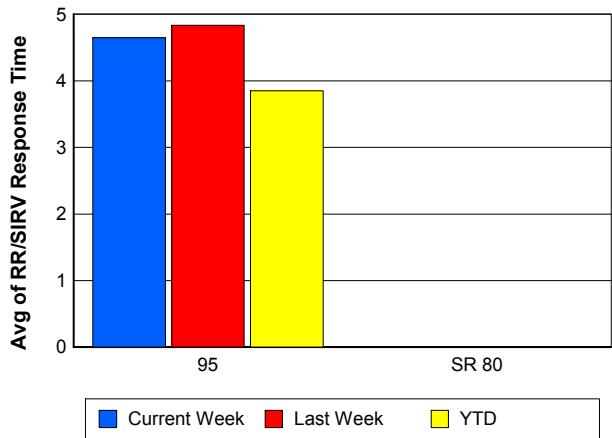
### TMC Response Time



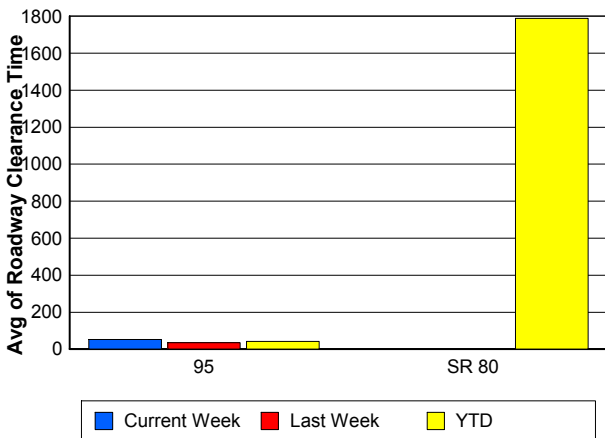
### Road Ranger / SIRV Dispatch Time



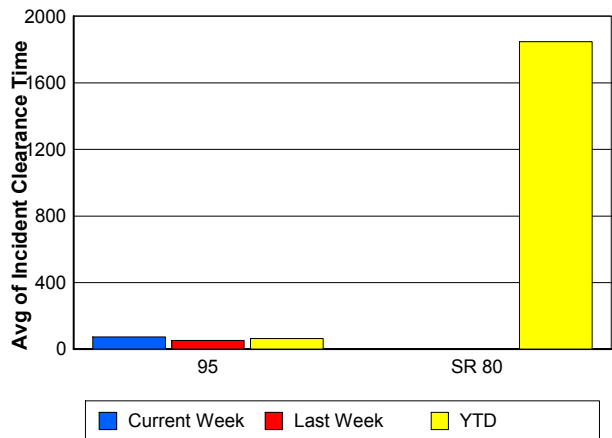
### Road Ranger / SIRV Response Time



### Roadway Clearance Time (2A)



### Incident Clearance Time (3B)



## Performance Measures by Event Type

### Accident

	<u>Current Week</u>	<u>Last Week</u>	<u>YTD</u>
Number of Events	55	39	1,467
Number of Incidents	28	23	698
TMC Detection (min.)	0.00	0.00	0.01
TMC Verification (min.)	4.39	5.39	4.88
TMC Response (min.)	5.67	8.71	8.31
RR Dispatch Time (min.)	0.85	2.78	2.54
RR Response Time (min.)	4.81	6.13	5.76
Event Clearance (min.)	61.28	55.77	58.71
Roadway Clearance (min.)	57.60	38.07	45.80
Incident Clearance (min.)	83.87	63.73	73.44
# of Events w/ RR/SIRV	55	39	1,239
RR/SIRV Assists	55	39	1,239
RR/SIRV Activities	64	44	1,560

### Debris on Roadway

	<u>Current Week</u>	<u>Last Week</u>	<u>YTD</u>
Number of Events	28	21	1,195
Number of Incidents	0	1	38
TMC Detection (min.)	0.00	0.00	0.00
TMC Verification (min.)	4.23	12.68	7.70
TMC Response (min.)	4.22	12.66	7.94
RR Dispatch Time (min.)	0.99	4.13	1.91
RR Response Time (min.)	3.33	8.53	6.03
Event Clearance (min.)	18.94	14.87	12.30
Roadway Clearance (min.)		19.92	21.31
Incident Clearance (min.)		20.05	24.30
# of Events w/ RR/SIRV	28	20	1,176
RR/SIRV Assists	28	20	1,176
RR/SIRV Activities	28	21	1,257

### Disabled Vehicle

	<u>Current Week</u>	<u>Last Week</u>	<u>YTD</u>
Number of Events	401	356	13,118
Number of Incidents	5	9	225
TMC Detection (min.)	0.00	0.00	0.00
TMC Verification (min.)	4.89	4.51	3.59
TMC Response (min.)	6.32	5.88	4.81
RR Dispatch Time (min.)	1.68	1.68	1.53
RR Response Time (min.)	4.68	4.31	3.37
Event Clearance (min.)	17.81	22.30	18.04
Roadway Clearance (min.)	24.05	24.60	25.63
Incident Clearance (min.)	27.26	31.83	35.19
# of Events w/ RR/SIRV	395	346	12,343
RR/SIRV Assists	395	346	12,343
RR/SIRV Activities	435	390	13,584

## Emergency Vehicles

	<u>Current Week</u>	<u>YTD</u>
Number of Events	1	17
Number of Incidents	1	10
TMC Detection (min.)	0.20	0.01
TMC Verification (min.)	0.00	1.87
TMC Response (min.)		7.80
RR Dispatch Time (min.)		2.77
RR Response Time (min.)		4.75
Event Clearance (min.)	18.00	43.12
Roadway Clearance (min.)	18.30	39.55
Incident Clearance (min.)	18.00	44.69
# of Events w/ RR/SIRV	0	8
RR/SIRV Assists	0	8
RR/SIRV Activities	0	10

## Other

	<u>Current Week</u>	<u>Last Week</u>	<u>YTD</u>
Number of Events	16	20	955
Number of Incidents	0	0	7
TMC Detection (min.)	0.00	0.00	0.00
TMC Verification (min.)	0.70	0.00	1.23
TMC Response (min.)	6.21	17.62	14.27
RR Dispatch Time (min.)	1.38	0.78	6.51
RR Response Time (min.)	5.33	17.39	6.71
Event Clearance (min.)	7.22	10.78	33.13
Roadway Clearance (min.)			40.35
Incident Clearance (min.)			52.93
# of Events w/ RR/SIRV	12	12	359
RR/SIRV Assists	12	12	359
RR/SIRV Activities	9	6	287

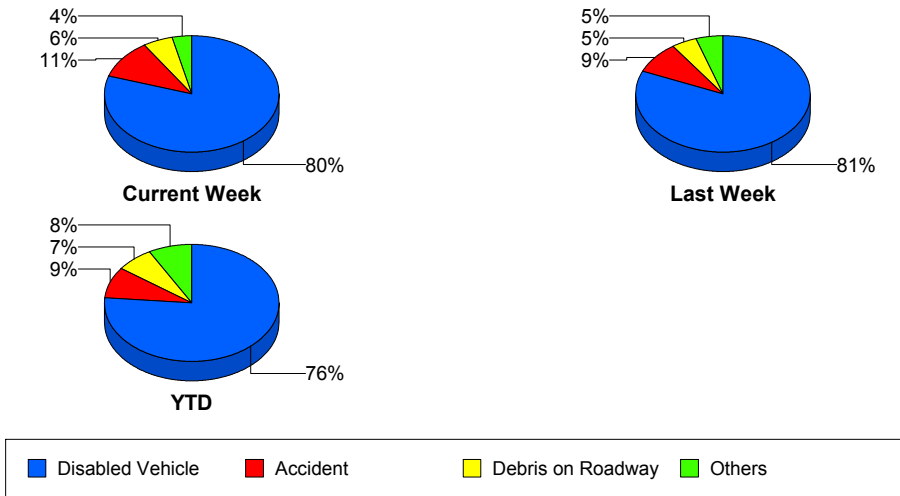
## Police Activity

	<u>Current Week</u>	<u>Last Week</u>	<u>YTD</u>
Number of Events	1	1	358
Number of Incidents	0	1	57
TMC Detection (min.)	0.00	0.00	0.08
TMC Verification (min.)	22.10	0.00	0.62
TMC Response (min.)	22.08	0.00	12.19
RR Dispatch Time (min.)	5.10	0.00	5.26
RR Response Time (min.)	16.98	0.00	6.71
Event Clearance (min.)	25.93	45.07	28.65
Roadway Clearance (min.)		41.90	68.57
Incident Clearance (min.)		45.07	83.65
# of Events w/ RR/SIRV	1	1	56
RR/SIRV Assists	1	1	56
RR/SIRV Activities	1	3	65

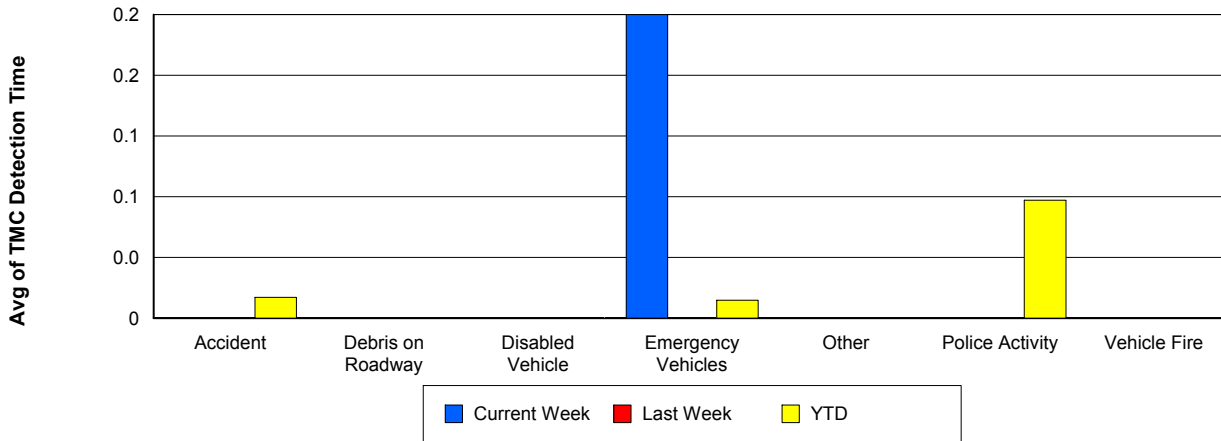
## Vehicle Fire

	<u>Last Week</u>	<u>YTD</u>
Number of Events	1	43
Number of Incidents	1	34
TMC Detection (min.)	0.00	0.00
TMC Verification (min.)	0.00	4.44
TMC Response (min.)	0.00	17.52
RR Dispatch Time (min.)	0.00	10.28
RR Response Time (min.)	0.00	7.25
Event Clearance (min.)	46.98	81.71
Roadway Clearance (min.)	47.07	60.77
Incident Clearance (min.)	46.98	88.45
# of Events w/ RR/SIRV	1	30
RR/SIRV Assists	1	30
RR/SIRV Activities	1	40

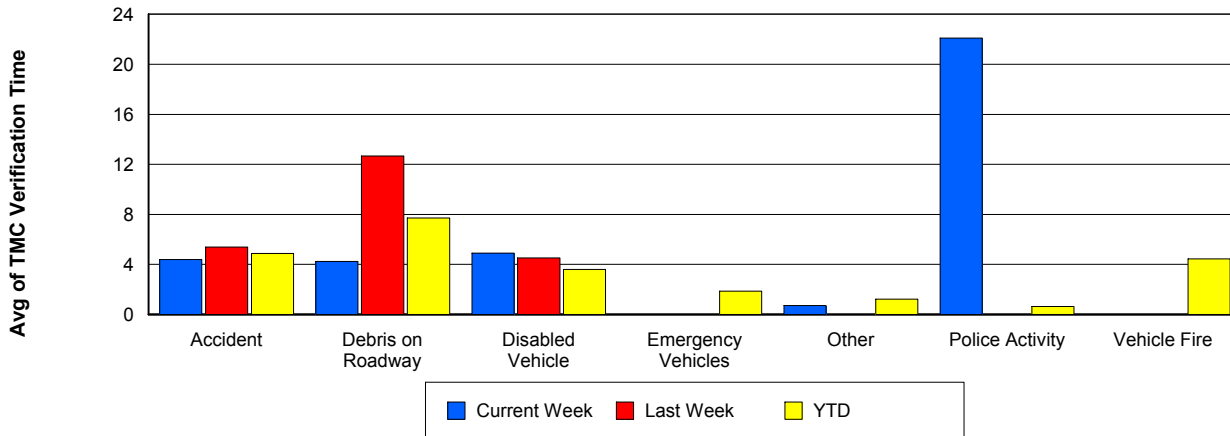
## Number of Events / Event Type



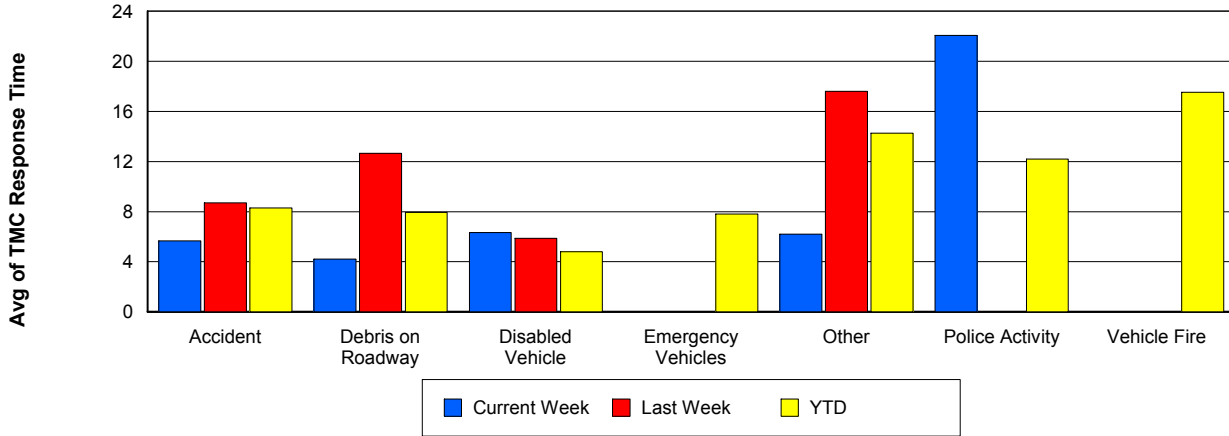
## TMC Detection Time



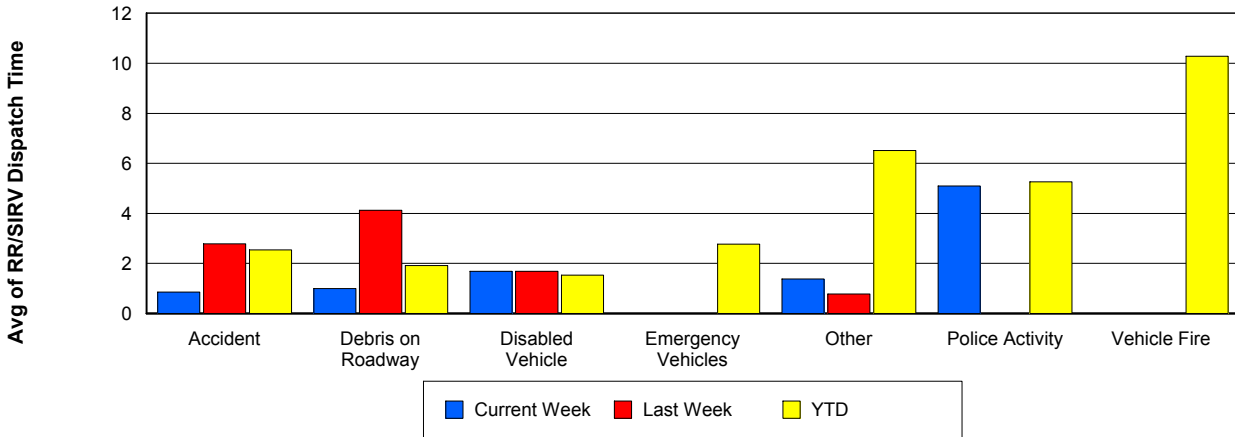
## TMC Verification Time



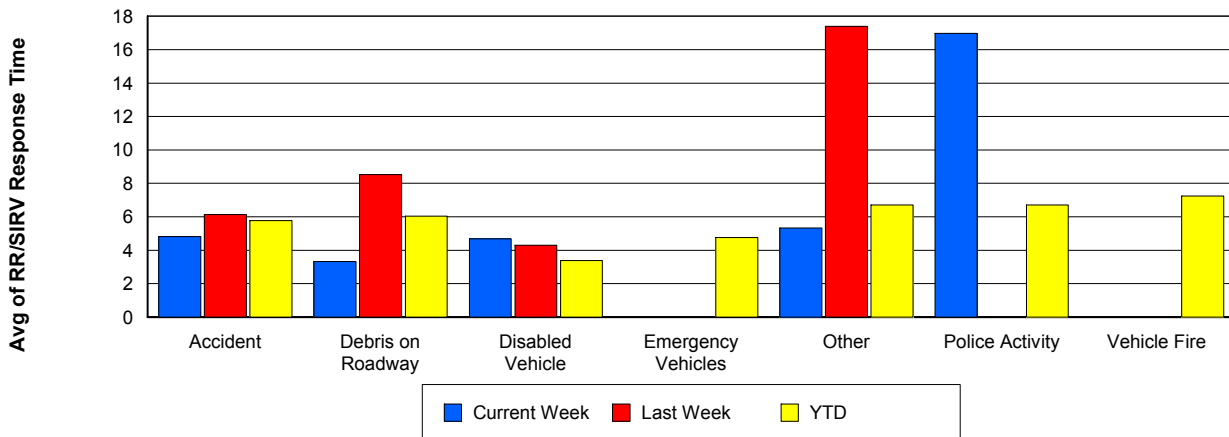
## TMC Response Time



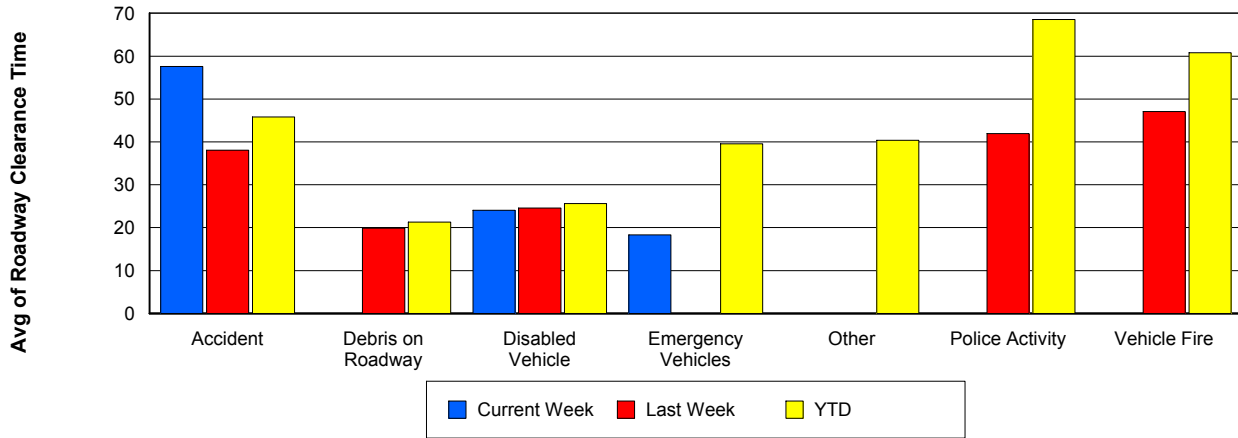
## Road Ranger / SIRV Dispatch Time



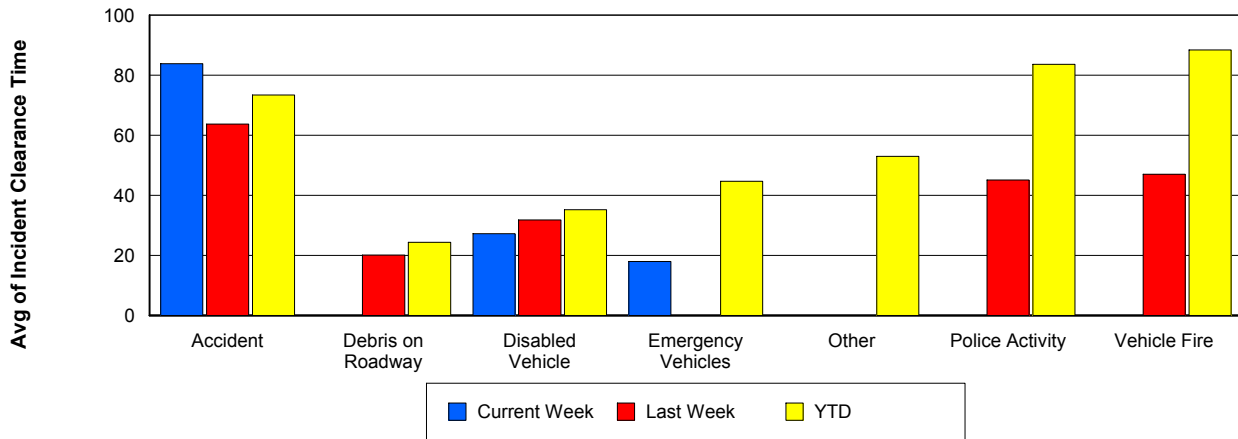
## Road Ranger / SIRV Response Time



## Roadway Clearance Time (2A)



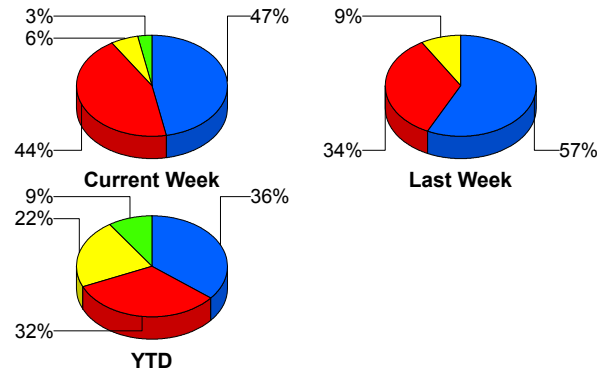
## Incident Clearance Time (3B)



## Incident Detection Methods

	Current Week	Last Week	YTD
Broward CCTV	1	0	11
Broward Road Ranger	0	0	8
Broward TMC	0	0	6
Broward VideoWall	0	0	1
Construction CEI	0	0	2
District 4	0	0	23
Emergency Operations	0	0	1
FDOT Maintenance	0	0	2
FHP	16	20	384
I-95 Construction PIO	0	0	4
ITMS	0	0	14
ITMS CCTV	2	3	238
Local Police	0	0	1
Media	0	0	3
Motorist	0	0	18
Other	0	0	1
Palm Beach Road Ran	15	12	347
Road Watcher	0	0	2
SmarTraveler (511)	0	0	4
<b>Total</b>	<b>34</b>	<b>35</b>	<b>1,070</b>

### Total Incidents by Detection Method



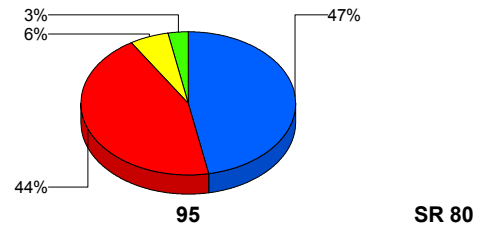
■ FHP     
 ■ Palm Beach Road Ranger     
 ■ ITMS CCTV     
 ■ Others

## Incident Detection Methods by Roadway

		Current Week	Last Week	YTD
95	Broward CCTV	1	0	11
	Broward Road Ranger	0	0	8
	Broward TMC	0	0	6
	Broward VideoWall	0	0	1
	Construction CEI	0	0	2
	District 4	0	0	23
	FDOT Maintenance	0	0	2
	FHP	16	20	383
	I-95 Construction PIO	0	0	4
	ITMS	0	0	13
	ITMS CCTV	2	3	238
	Local Police	0	0	1
	Media	0	0	3
	Motorist	0	0	18
	Other	0	0	1
	Palm Beach Road Ran	15	12	347
	Road Watcher	0	0	2
	SmarTraveler (511)	0	0	4
	<b>Total</b>	<b>34</b>	<b>35</b>	<b>1,067</b>
SR 80	Emergency Operations	0	0	1
	FHP	0	0	1
	ITMS	0	0	1
	<b>Total</b>	<b>0</b>	<b>0</b>	<b>3</b>
<b>Total</b>	<b>34</b>	<b>35</b>	<b>1,070</b>	

Total Events by Roadway and Detection Method

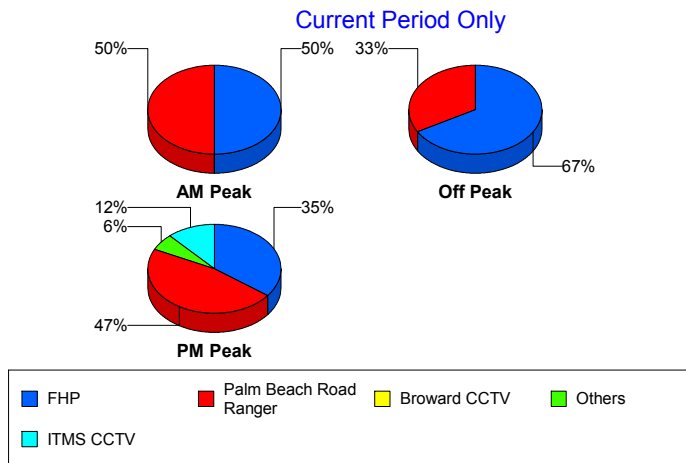
Current Period Only



### Incident Detection Methods by Peak Period

		Current Week	Last Week	YTD
AM Peak	Broward CCTV	0	0	2
	Broward Road Ranger	0	0	3
	Broward TMC	0	0	2
	Construction CEI	0	0	1
	District 4	0	0	11
	FHP	4	6	111
	I-95 Construction PIO	0	0	2
	ITMS	0	0	6
	ITMS CCTV	0	0	44
	Motorist	0	0	9
	Palm Beach Road Ran	4	6	115
	Road Watcher	0	0	1
	SmarTraveler (511)	0	0	3
	Total	8	12	310
	Off Peak	Broward CCTV	0	0
Broward Road Ranger		0	0	2
Broward TMC		0	0	4
Broward VideoWall		0	0	1
Construction CEI		0	0	1
District 4		0	0	9
FDOT Maintenance		0	0	2
FHP		6	13	196
I-95 Construction PIO		0	0	2
ITMS		0	0	7
ITMS CCTV		0	2	125
Motorist		0	0	5
Other		0	0	1
Palm Beach Road Ran		3	4	138
Road Watcher		0	0	1
SmarTraveler (511)	0	0	1	
Total	9	19	500	

Total Events by Peak Period and Detection Method

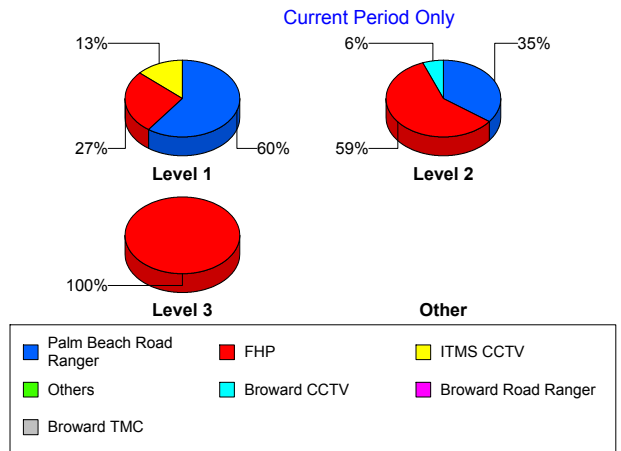


		Current Week	Last Week	YTD
PM Peak	Broward CCTV	1	0	4
	Broward Road Ranger	0	0	3
	District 4	0	0	3
	Emergency Operations	0	0	1
	FHP	6	1	77
	ITMS	0	0	1
	ITMS CCTV	2	1	69
	Local Police	0	0	1
	Media	0	0	3
	Motorist	0	0	4
	Palm Beach Road Ran	8	2	94
	Total	17	4	260
Total		34	35	1,070

### Incident Detection Methods by Severity

		Current Week	Last Week	YTD
Level 1	Broward CCTV	0	0	7
	Broward Road Ranger	0	0	4
	Broward TMC	0	0	2
	District 4	0	0	16
	FHP	4	10	132
	I-95 Construction PIO	0	0	3
	ITMS	0	0	5
	ITMS CCTV	2	2	105
	Local Police	0	0	1
	Motorist	0	0	11
	Other	0	0	1
	Palm Beach Road Ran	9	5	234
	Road Watcher	0	0	1
	SmarTraveler (511)	0	0	1
	Total	15	17	523
Level 2	Broward CCTV	1	0	2

**Total Events by Severity and Detection Method**



		Current Week	Last Week	YTD
Level 2	Broward Road Ranger	0	0	3
	Broward TMC	0	0	2
	Broward VideoWall	0	0	1
	Construction CEI	0	0	1
	District 4	0	0	6
	FDOT Maintenance	0	0	2
	FHP	10	9	195
	I-95 Construction PIO	0	0	1
	ITMS	0	0	7
	ITMS CCTV	0	1	100
	Media	0	0	2
	Motorist	0	0	6
	Palm Beach Road Ran	6	7	97
	Road Watcher	0	0	1
	SmarTraveler (511)	0	0	3
Total	17	17	429	
Level 3	Broward CCTV	0	0	2
	Broward Road Ranger	0	0	1
	Broward TMC	0	0	2
	Construction CEI	0	0	1
	District 4	0	0	1
	Emergency Operations	0	0	1
	FHP	2	1	57
	ITMS	0	0	2
	ITMS CCTV	0	0	33
	Media	0	0	1
	Motorist	0	0	1
	Palm Beach Road Ran	0	0	16
Total	2	1	118	
Total	34	35	1,070	

# Road Ranger / SIRV Performance Measures

## Road Ranger / SIRV Performance By County

Values presented are:  
 - Total Events with a RR/SIRV Response  
 - Total RR/SIRV Responses,  
 - Total Activities Performed

	Current We	Last Week	YTD
Palm Beach	<b>626</b>	<b>551</b>	<b>20,044</b>
	<b>648</b>	<b>573</b>	<b>20,436</b>
	<b>697</b>	<b>617</b>	<b>22,183</b>

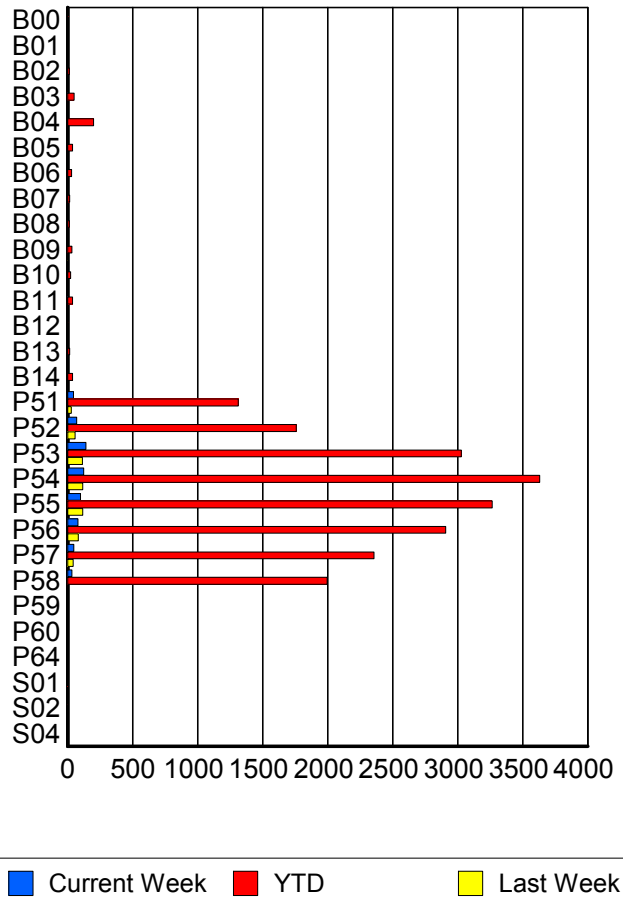
RR/SIRV Responses per County



## Road Ranger / SIRV Performance By Truck

	Current We	Last Week	YTD
B00	1	0	7
	1	0	7
	1	0	7
B01	0	0	1
	0	0	1
	0	0	1
B02	0	0	14
	0	0	14
	0	0	15
B03	3	2	51
	3	2	51
	3	2	52
B04	0	0	198
	0	0	199
	0	0	223
B05	0	1	35
	0	1	37
	0	1	38
B06	0	1	30
	0	1	31
	0	1	33
B07	0	0	15
	0	0	15
	0	0	15
B08	0	2	13
	0	2	13
	0	2	16

RR/SIRV Responses per Truck



	Current We	Last Week	YTD
B09	1	4	32
	1	4	33
	2	5	36
B10	1	2	22
	1	2	23
	1	2	23
B11	3	0	37
	3	0	37
	3	0	38
B12	0	0	6
	0	0	6
	0	0	7
B13	1	0	15
	1	0	15
	1	0	16
B14	0	0	37
	0	0	38
	0	0	40
P51	44	27	1,300
	45	27	1,313
	47	28	1,371
P52	70	58	1,750
	70	58	1,758
	78	62	1,886
P53	141	110	2,986
	142	113	3,028
	150	118	3,195
P54	123	115	3,591
	124	117	3,632
	136	134	3,911
P55	96	115	3,241
	98	116	3,266
	107	121	3,490
P56	77	80	2,875
	79	82	2,908
	85	93	3,128
P57	47	41	2,334
	47	42	2,356
	48	42	2,504
P58	33	6	1,967
	33	6	1,996
	35	6	2,126
P59	0	0	1
	0	0	1
	0	0	2

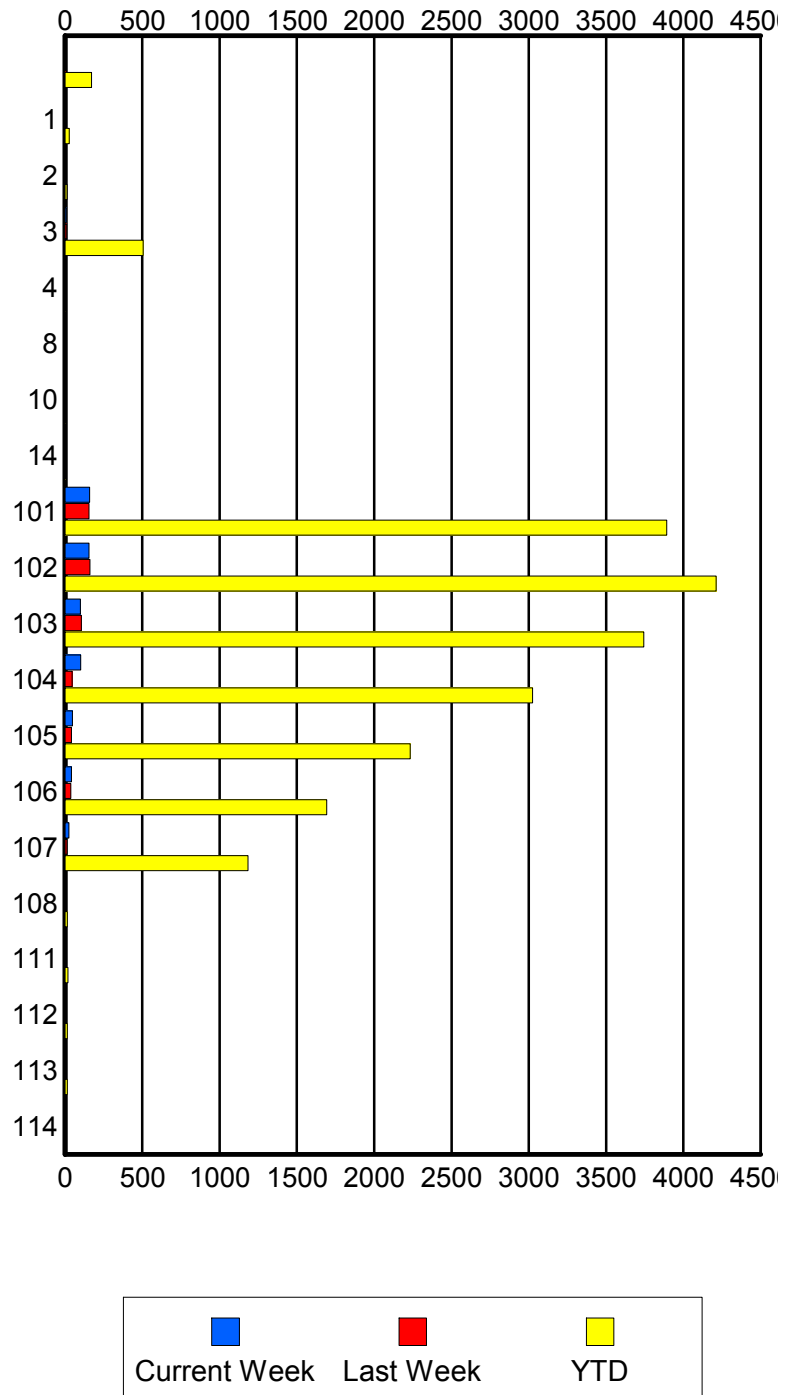
	Current We	Last Week	YTD
P60	0	0	1
	0	0	1
	0	0	1
P64	0	0	1
	0	0	1
	0	0	1
S01	0	0	3
	0	0	3
	0	0	3
S02	0	0	3
	0	0	3
	0	0	3
S04	0	0	2
	0	0	2
	0	0	2

### Road Ranger / SIRV Performance By Beat

	Current We	Last Week	YTD
	4	3	170
	4	3	171
	4	3	176
1	1	0	27
	1	0	28
	1	0	29
2	0	1	12
	0	1	12
	0	1	14
3	9	10	492
	9	10	506
	10	11	545
4	0	0	2
	0	0	2
	0	0	2
8	0	1	1
	0	1	1
	0	1	1
10	0	0	6
	0	0	6
	0	0	9
14	0	0	7
	0	0	7
	0	0	7
101	158	149	3,848
	160	154	3,892
	169	164	4,164
102	155	159	4,162
	156	161	4,213
	172	167	4,474
103	98	105	3,700
	100	106	3,744
	106	118	4,020
104	101	45	2,991
	102	46	3,025
	112	50	3,246
105	48	39	2,213
	48	41	2,233
	51	47	2,374
106	42	37	1,674
	42	37	1,692
	44	42	1,810
107	26	13	1,169
	26	13	1,183
	28	13	1,242

Values presented are:  
 - Total Events with a RR/SIRV Response  
 - Total RR/SIRV Responses,  
 - Total Activities Performed

### RR/SIRV Responses per Beat



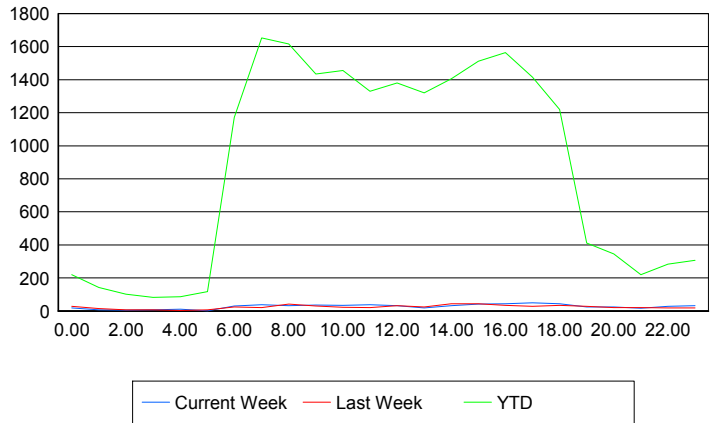
	Current We	Last Week	YTD
108	0	0	13
	0	0	14
	0	0	14
111	0	0	18
	0	0	19
	0	0	20
112	0	0	14
	0	0	15
	0	0	16
113	0	0	13
	0	0	14
	0	0	14
114	0	0	6
	0	0	6
	0	0	6

**Road Ranger / SIRV Performance By Time of Day**

Values presented are:  
 - Total Events with a RR/SIRV Response  
 - Total RR/SIRV Responses,  
 - Total Activities Performed

	Current We	Last Week	YTD
12AM-1AM	18	28	212
	18	28	220
	20	28	234
1AM-2AM	7	12	136
	7	14	143
	7	14	151
2AM-3AM	5	7	100
	5	7	102
	6	9	110
3AM-4AM	7	6	80
	7	6	83
	7	6	84
4AM-5AM	10	3	79
	10	3	86
	11	3	93
5AM-6AM	2	6	105
	2	7	117
	2	7	121
6AM-7AM	29	23	1,122
	30	24	1,172
	32	24	1,235
7AM-8AM	35	20	1,575
	38	20	1,653
	42	20	1,774

**Number of Responses / Hour of the Day**



	Current We	Last Week	YTD
8AM-9AM	32	38	1,545
	33	41	1,617
	34	45	1,721
9AM-10AM	35	30	1,388
	36	31	1,435
	39	32	1,550
10AM-11AM	35	23	1,408
	35	23	1,456
	37	26	1,539
11AM-12PM	35	20	1,291
	37	20	1,331
	38	23	1,441
12PM-1PM	31	33	1,329
	32	33	1,380
	35	40	1,483
1PM-2PM	17	25	1,271
	19	25	1,320
	19	27	1,414
2PM-3PM	32	40	1,348
	33	43	1,406
	36	45	1,495
3PM-4PM	40	40	1,460
	42	43	1,512
	44	49	1,616
4PM-5PM	44	34	1,521
	44	34	1,565
	48	38	1,668
5PM-6PM	48	28	1,374
	50	28	1,415
	52	29	1,497
6PM-7PM	41	33	1,198
	43	35	1,220
	47	36	1,284
7PM-8PM	25	26	398
	25	29	412
	29	34	445
8PM-9PM	23	19	330
	24	20	345
	28	21	362
9PM-10PM	16	19	206
	17	21	219
	17	23	234
10PM-11PM	29	19	268
	29	19	284
	32	19	302

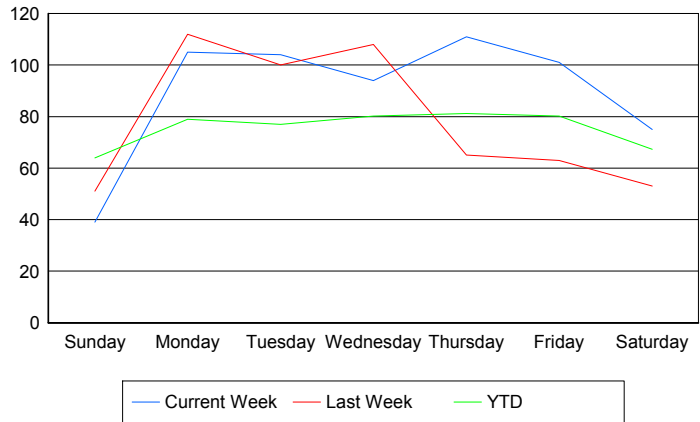
	Current We	Last Week	YTD
11PM-12AM	<b>30</b>	<b>19</b>	<b>300</b>
	<b>32</b>	<b>19</b>	<b>307</b>
	<b>35</b>	<b>19</b>	<b>330</b>

## Road Ranger / SIRV Performance By Day of Week

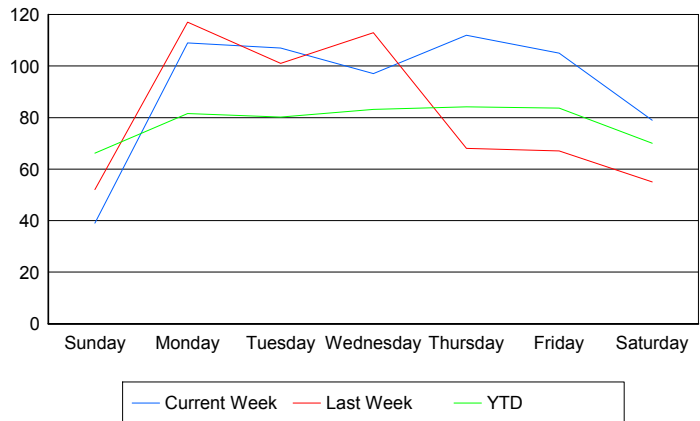
Values presented are:  
 - Total Events with a RR/SIRV Response  
 - Total RR/SIRV Responses,  
 - Total Activities Performed

	Current We	Last Week	YTD
Sunday	39 39 42	51 52 56	814 840 898
Monday	105 109 115	112 117 129	3,608 3,698 3,949
Tuesday	104 107 114	100 101 107	3,536 3,661 3,912
Wednesday	94 97 99	108 113 123	3,692 3,824 4,087
Thursday	111 112 120	65 68 76	3,755 3,855 4,167
Friday	101 105 119	63 67 70	3,735 3,890 4,148
Saturday	75 79 88	53 55 56	932 968 1,022

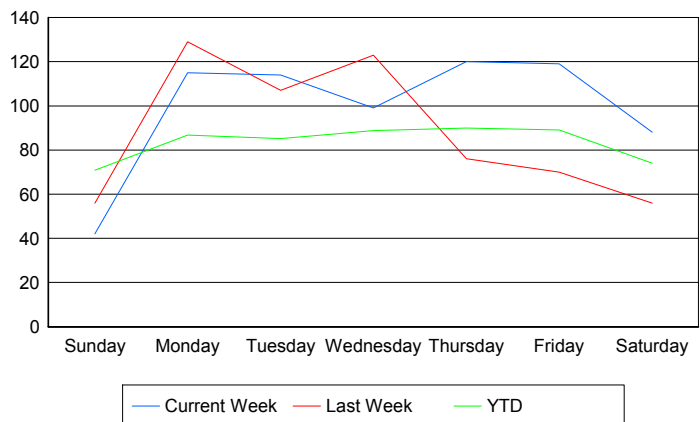
### Avg # of events with a RR/SIRV Response per Day of the Week



### Avg # of RR/SIRV Responses per Day of the Week



### Avg # of RR/SIRV Activities Performed per Day of the Week



### Road Ranger / SIRV Responses per Time of Day and Day of Week

