

# Weekly Performance Measures Report Palm Beach County



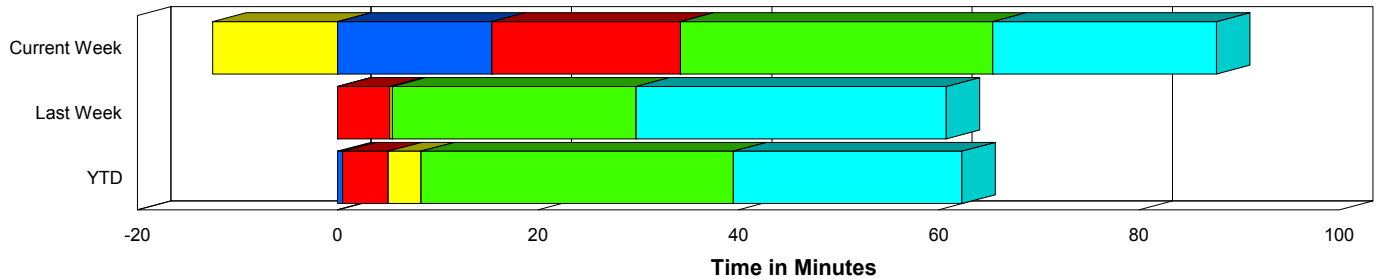
Created on:  
December 21, 2009  
9:01 am

Period From Dec 13, 2009 to Dec 19, 2009

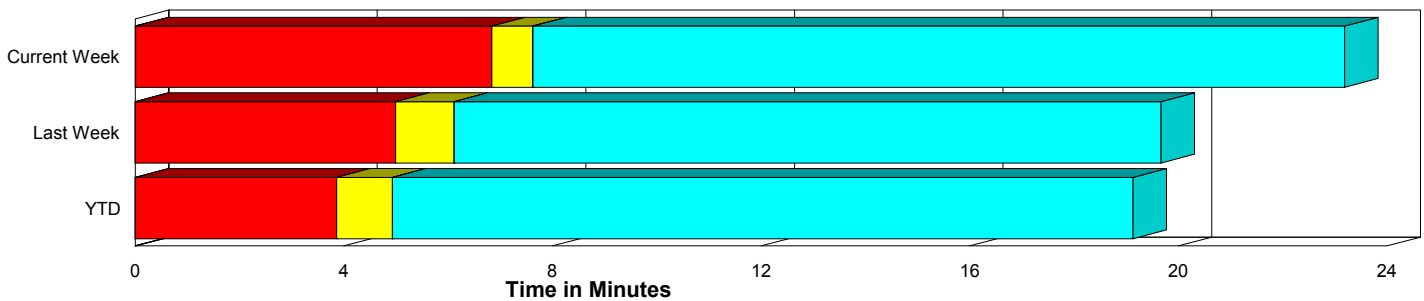
## Performance Measures Summary

	Traffic Events (No Lanes Blocked)			Incidents (Lanes Blocked)		
	<u>This Week</u>	<u>Last Week</u>	<u>YTD</u>	<u>This Week</u>	<u>Last Week</u>	<u>YTD</u>
Number of Events	403	465	17,042	35	31	1,136
TMC Detection (min.)	0.01	0.00	0.00	15.40	0.00	0.50
TMC Verification (min.)	6.83	4.99	3.86	18.81	5.22	4.56
TMC Response (min.)	7.94	6.25	5.45	6.88	5.84	8.55
RR Dispatch Time (min.)	2.63	2.31	1.73	1.38	1.64	3.25
RR Response Time (min.)	5.45	4.03	3.81	5.49	4.16	5.29
Roadway Clearance (min.)				53.62	28.53	46.88
Event Clearance (min.)	23.51	19.81	19.65	75.70	59.33	69.09
# of Events w/ RR/SIRV	393	461	15,258	34	30	947
RR/SIRV Responses	393	461	15,258	34	30	947
RR/SIRV Activities	435	505	16,567	39	39	1,331

### Incident Clearance Time-Line



### Traffic Event (Non-Lane Blockage) Time-Line



<span style="color: blue;">■</span> Avg. TMC Detection Time	<span style="color: green;">■</span> Avg. Time from TMC Response to Roadway Clearance*
<span style="color: red;">■</span> Avg. Time from TMC Detection to TMC Verification	<span style="color: cyan;">■</span> Avg. Time from Roadway Clearance to Incident/Event Clearance**
<span style="color: yellow;">■</span> Avg. Time from TMC Verification to TMC Response	

\* Roadway clearance equals all travel lanes open

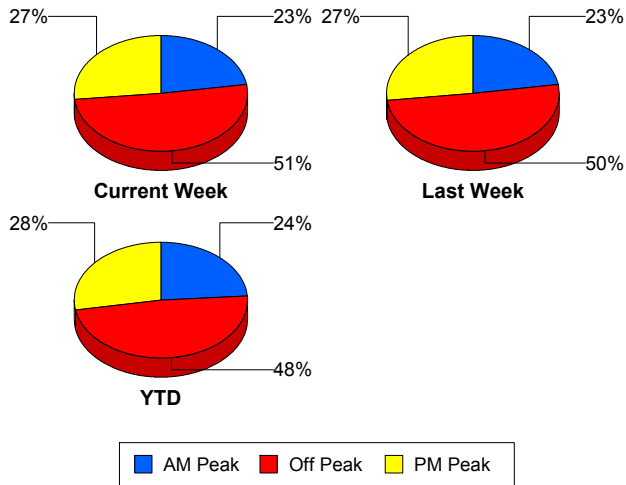
\*\* Incident clearance equals time when last responder has left the scene

## Performance Measures by Peak Period

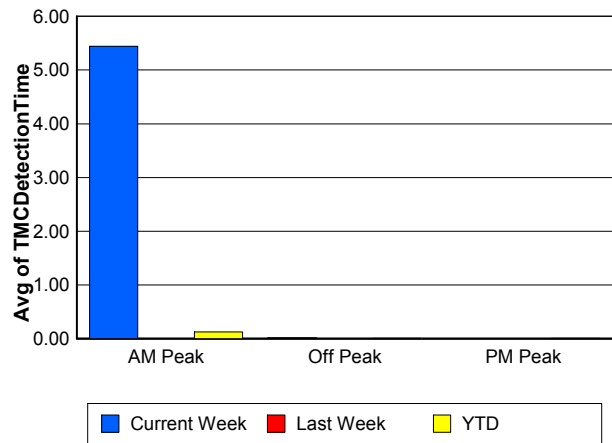
Note: AM peak period is defined as 6am to 10am and PM peak period is defined as 3pm to 7pm.

	AM Peak			Off Peak			PM Peak		
	<u>Current Week</u>	<u>Last Week</u>	<u>YTD</u>	<u>Current Week</u>	<u>Last Week</u>	<u>YTD</u>	<u>Current Week</u>	<u>Last Week</u>	<u>YTD</u>
Number of Events	99	112	4,348	222	250	8,777	117	134	5,053
Number of Incidents	6	5	321	19	17	536	10	9	279
TMC Detection (min.)	5.44	0.00	0.13	0.02	0.00	0.00	0.00	0.00	0.00
TMC Verification (min.)	10.60	3.33	3.38	6.71	4.98	3.69	7.50	6.46	4.75
TMC Response (min.)	6.52	4.28	4.73	8.22	6.04	6.20	8.22	8.16	5.57
RR Dispatch Time (min.)	1.27	1.14	1.27	2.60	2.34	2.31	3.42	3.08	1.56
RR Response Time (min.)	5.26	3.51	3.51	5.85	3.71	4.04	4.86	5.08	4.02
Event Clearance (min.)	34.99	21.99	22.38	24.32	21.72	23.68	27.86	23.54	21.42
Roadway Clearance (min.)	139.56	24.62	40.36	36.76	30.17	47.53	34.09	27.62	53.12
Incident Clearance (min.)	158.75	65.34	67.50	54.95	49.95	66.60	65.31	73.70	75.68
# of Events w/ RR/SIRV	93	110	4,174	218	249	7,224	116	132	4,807
RR/SIRV Responses	93	110	4,174	218	249	7,224	116	132	4,807
RR/SIRV Activities	105	129	4,682	243	272	7,972	126	143	5,244

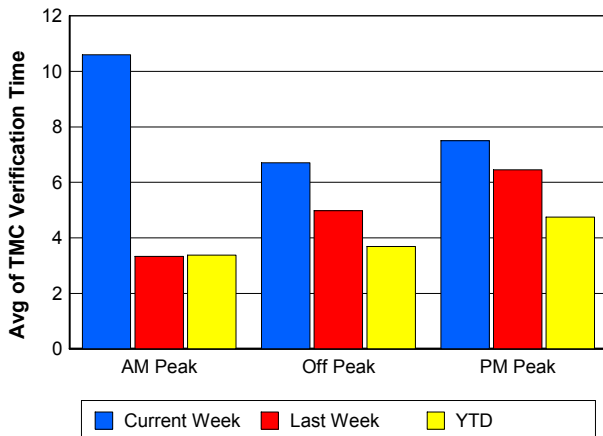
### Number of Events / Peak Period



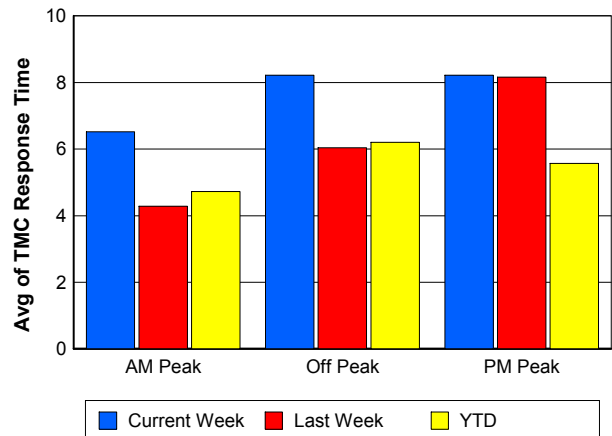
### TMC Detection Time



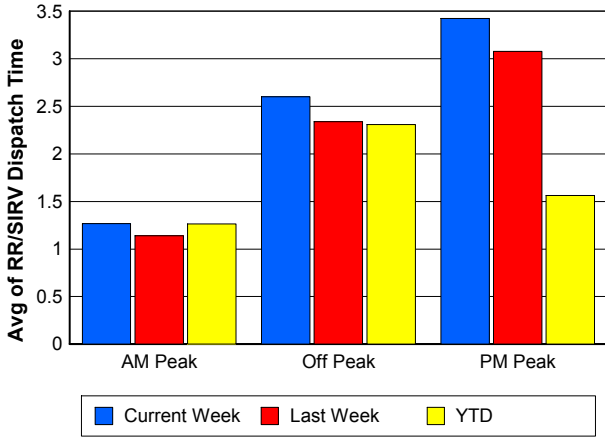
### TMC Verification Time



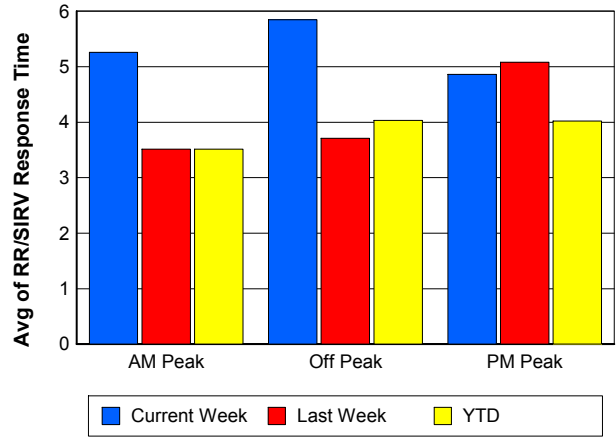
### TMC Response Time



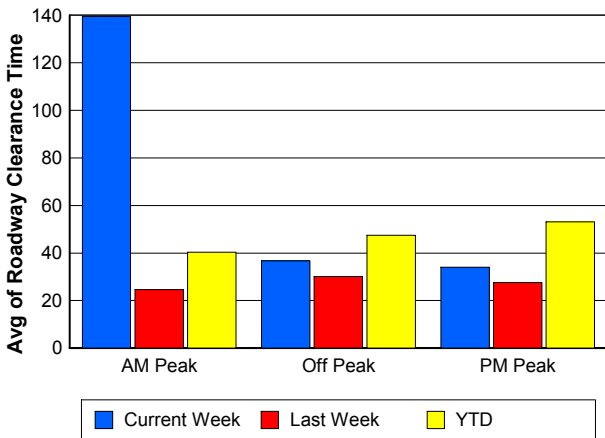
## Road Ranger / SIRV Dispatch Time



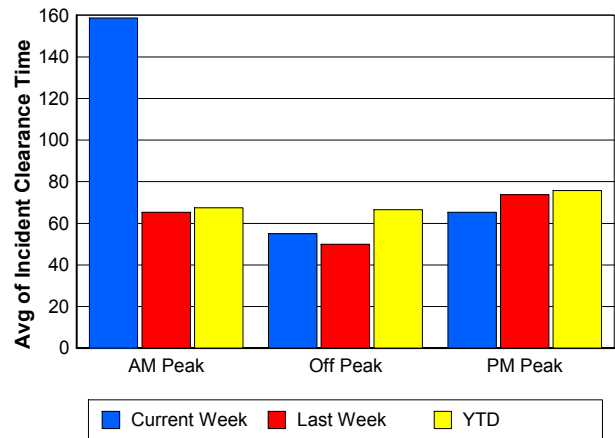
## Road Ranger / SIRV Response Time



## Roadway Clearance Time (2A)



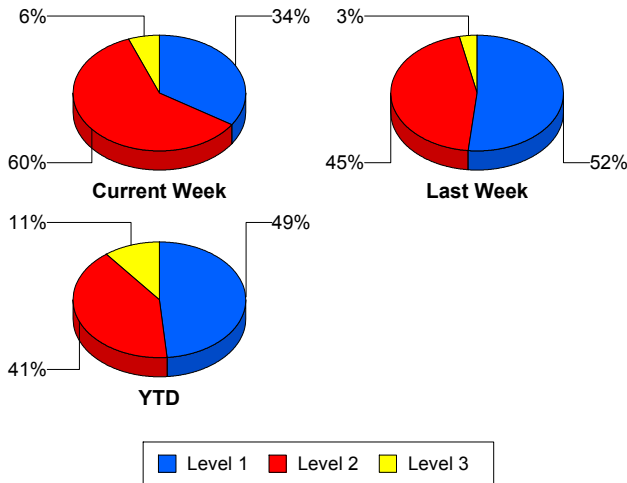
## Incident Clearance Time (3B)



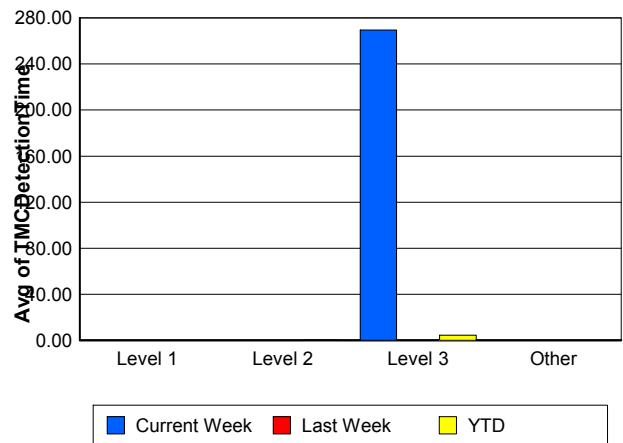
## Performance Measures by Severity

	Level 1			Level 2			Level 3			Other		
	<u>This Week</u>	<u>Last Week</u>	<u>YTD</u>	<u>This Week</u>	<u>Last Week</u>	<u>YTD</u>	<u>This Week</u>	<u>Last Week</u>	<u>YTD</u>	<u>This Week</u>	<u>Last Week</u>	<u>YTD</u>
Number of Events	12	16	551	21	14	464	2	1	121	403	465	17,042
Number of Incidents	12	16	551	21	14	464	2	1	121	0	0	0
TMC Detection (min.)	0.00	0.00	0.01	0.00	0.00	0.03	269.53	0.00	4.58	0.01	0.00	0.00
TMC Verification (min.)	1.52	1.41	2.46	4.81	9.95	5.93	269.53	0.00	8.93	6.83	4.99	3.86
TMC Response (min.)	3.97	1.85	4.51	9.31	10.24	9.84	0.00	0.00	25.73	7.94	6.25	5.45
RR Dispatch Time (min.)	0.76	0.30	1.10	1.90	3.19	2.59	0.00	0.00	18.60	2.63	2.31	1.73
RR Resp. Time (min.)	3.21	1.56	3.43	7.41	7.05	7.27	0.00	0.00	6.92	5.45	4.03	3.81
Event Clearance (min.)	38.88	58.02	42.16	68.94	63.44	71.00	367.69	22.63	184.36	23.51	19.81	19.65
Roadway Clear. (min.)	12.53	12.13	14.57	50.02	48.98	53.21	337.99	4.60	169.69			
Incident Clearance (min.)	38.88	58.02	42.16	68.94	63.44	71.00	367.69	22.63	184.36			
# of Events w/ RR/SIRV	12	15	480	20	14	383	2	1	84	393	461	15,258
RR/SIRV Responses	12	15	480	20	14	383	2	1	84	393	461	15,258
RR/SIRV Activities	13	21	611	23	17	585	3	1	135	435	505	16,567

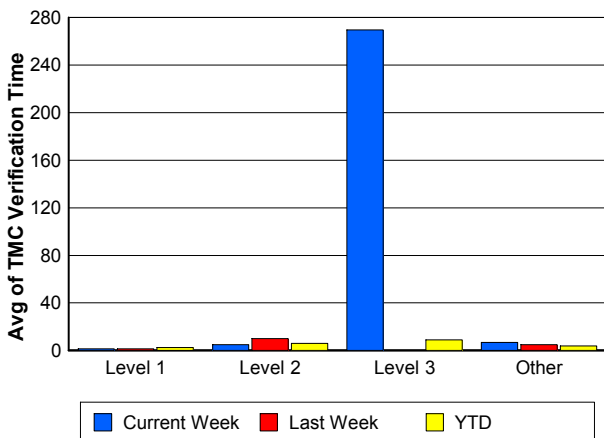
### Number of Events / Severity



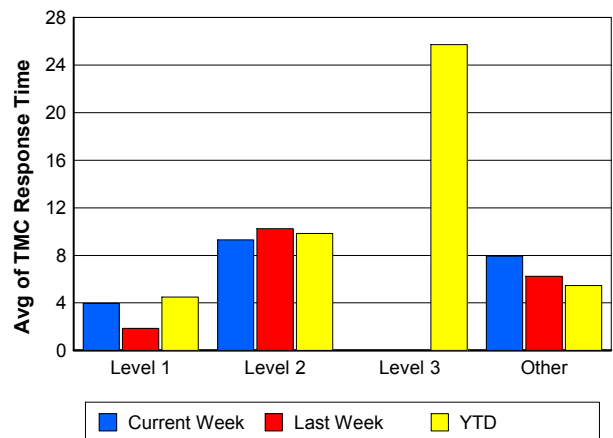
### TMC Detection Time



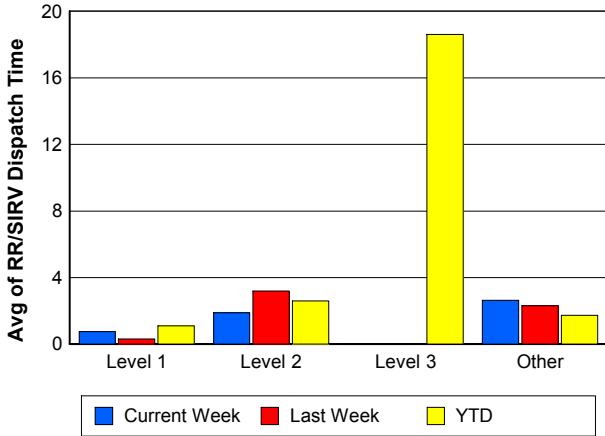
### TMC Verification Time



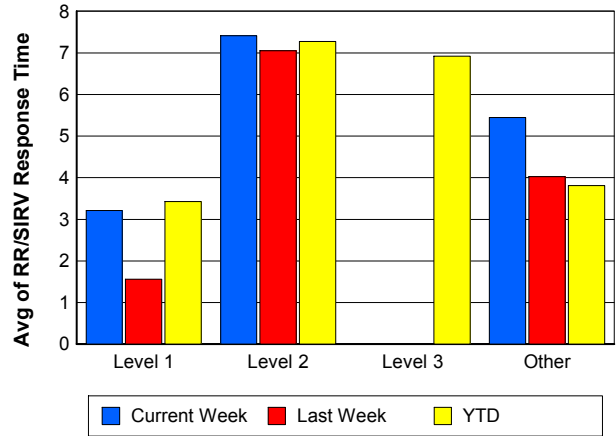
### TMC Response Time



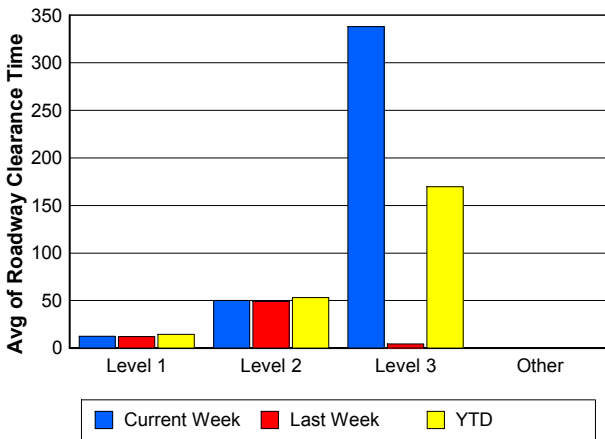
## Road Ranger / SIRV Dispatch Time



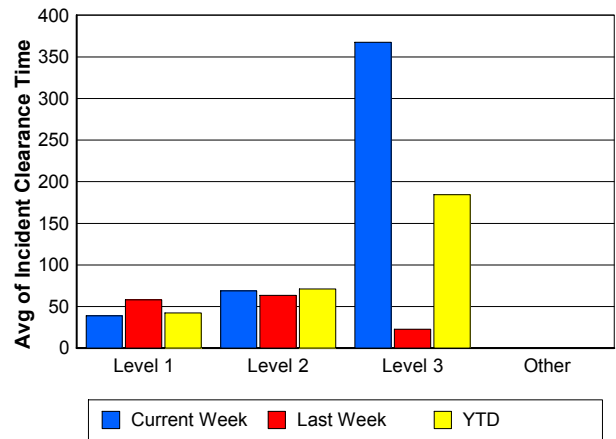
## Road Ranger / SIRV Response Time



## Roadway Clearance Time (2A)



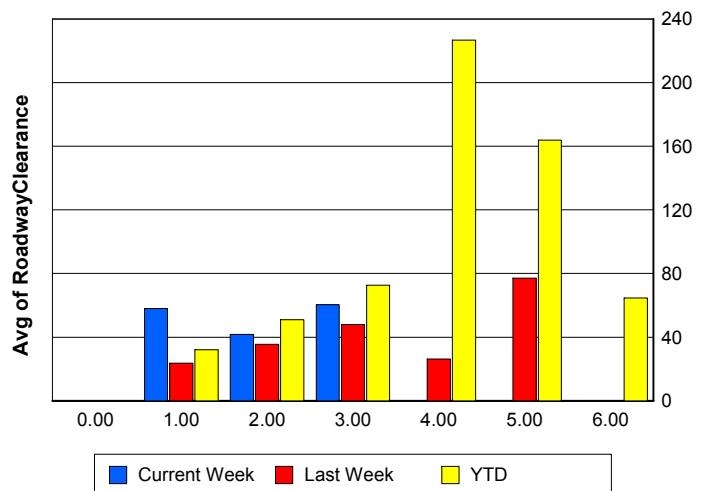
## Incident Clearance Time (3B)



## Roadway Clearance by Maximum Number of Lanes Blocked

	Current Week	Last Week	YTD
0			
1	58.08	23.55	31.99
2	41.80	35.39	51.02
3	60.34	47.88	72.74
4	0.00	26.32	226.71
5	0.00	77.08	163.86
6	0.00	0.00	64.70

## Roadway Clearance Time (2A)



## Performance Measures by Roadway

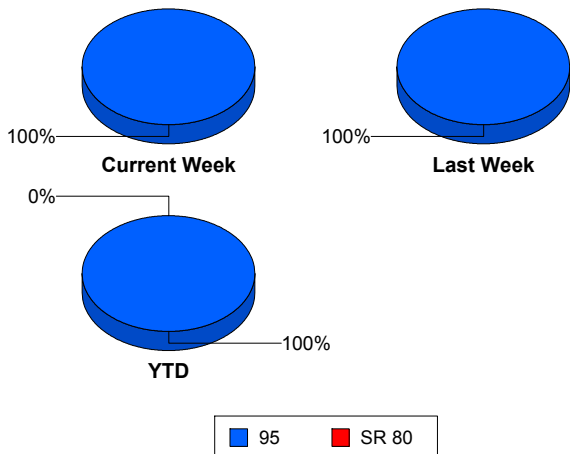
95

	<u>Current Week</u>	<u>Last Week</u>	<u>YTD</u>
Number of Events	438	496	18,174
Number of Incidents	35	31	1,133
TMC Detection (min.)	1.24	0.00	0.03
TMC Verification (min.)	7.80	5.01	3.91
TMC Response (min.)	7.85	6.23	5.63
RR Dispatch Time (min.)	2.53	2.27	1.82
RR Resp. Time (min.)	5.45	4.04	3.90
Event Clearance (min.)	27.68	22.28	22.43
Roadway Clear. (min.)	53.62	28.53	42.26
Incident Clearance (min.)	75.70	59.33	64.38
# of Events w/ RR/SIRV	427	491	16,205
RR/SIRV Responses	427	491	16,205
RR/SIRV Activities	474	544	17,898

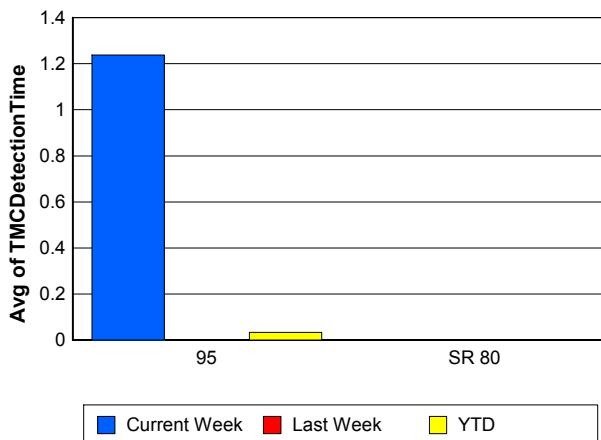
SR 80

	<u>YTD</u>
Number of Events	4
Number of Incidents	3
TMC Detection (min.)	0.00
TMC Verification (min.)	0.00
TMC Response (min.)	
RR Dispatch Time (min.)	
RR Resp. Time (min.)	
Event Clearance (min.)	1,409.98
Roadway Clear. (min.)	1,789.50
Incident Clearance (min.)	1,847.09
# of Events w/ RR/SIRV	0
RR/SIRV Responses	0
RR/SIRV Activities	0

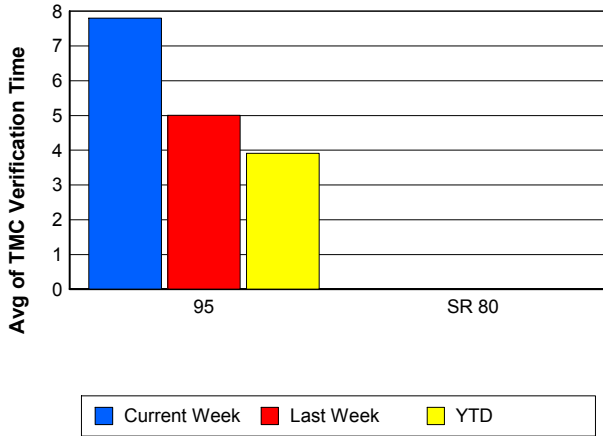
### Number of Events / Roadway



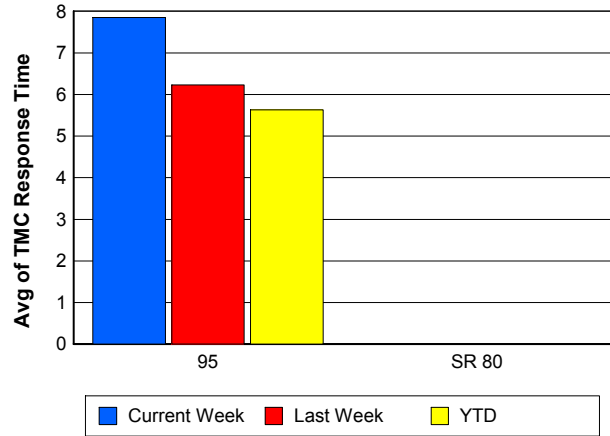
### TMC Detection Time



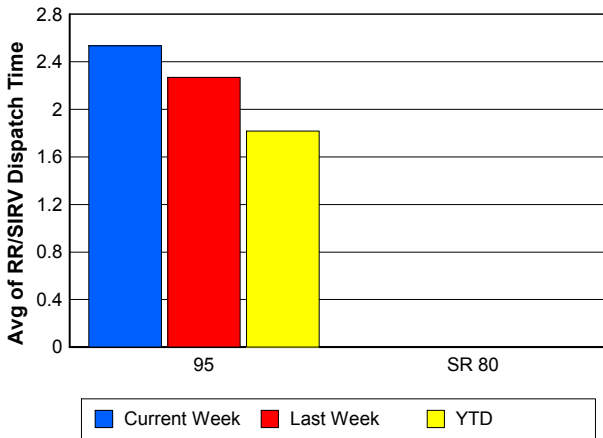
### TMC Verification Time



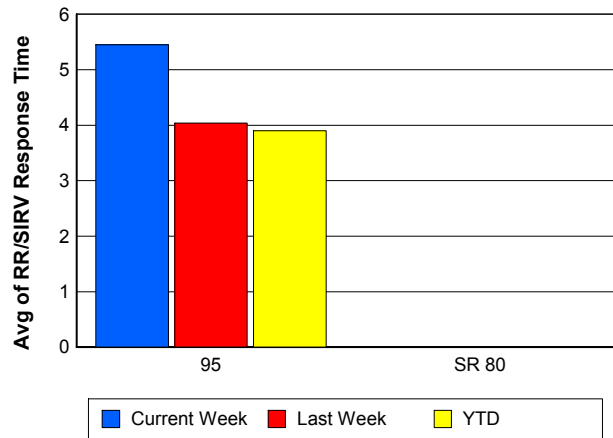
### TMC Response Time



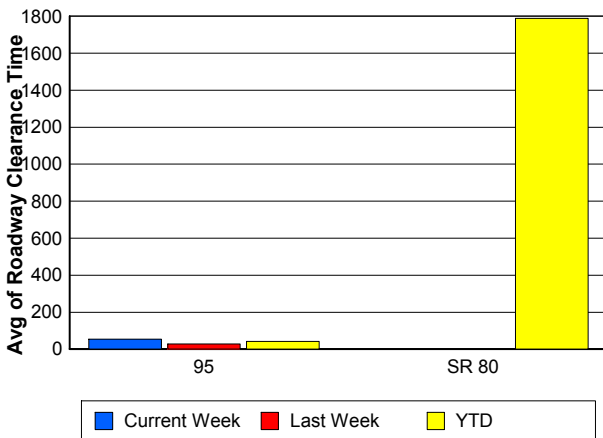
### Road Ranger / SIRV Dispatch Time



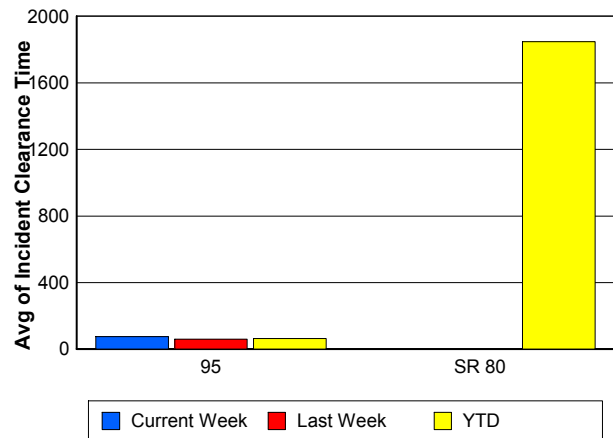
### Road Ranger / SIRV Response Time



### Roadway Clearance Time (2A)



### Incident Clearance Time (3B)



## Performance Measures by Event Type

### Accident

	<u>Current Week</u>	<u>Last Week</u>	<u>YTD</u>
Number of Events	59	48	1,574
Number of Incidents	28	20	746
TMC Detection (min.)	9.14	0.00	0.36
TMC Verification (min.)	15.36	6.25	5.32
TMC Response (min.)	8.15	8.07	8.29
RR Dispatch Time (min.)	1.38	2.11	2.47
RR Response Time (min.)	6.76	5.96	5.81
Event Clearance (min.)	67.26	56.22	58.96
Roadway Clearance (min.)	58.36	31.49	45.89
Incident Clearance (min.)	79.57	73.32	73.67
# of Events w/ RR/SIRV	58	46	1,343
RR/SIRV Assists	58	46	1,343
RR/SIRV Activities	66	54	1,680

### Debris on Roadway

	<u>Current Week</u>	<u>Last Week</u>	<u>YTD</u>
Number of Events	21	29	1,245
Number of Incidents	0	1	39
TMC Detection (min.)	0.00	0.00	0.00
TMC Verification (min.)	15.11	10.09	7.89
TMC Response (min.)	15.10	10.46	8.12
RR Dispatch Time (min.)	3.36	4.43	1.99
RR Response Time (min.)	11.73	5.92	6.13
Event Clearance (min.)	22.16	15.10	12.53
Roadway Clearance (min.)		3.78	20.86
Incident Clearance (min.)		6.27	23.83
# of Events w/ RR/SIRV	21	29	1,226
RR/SIRV Assists	21	29	1,226
RR/SIRV Activities	24	28	1,309

### Disabled Vehicle

	<u>Current Week</u>	<u>Last Week</u>	<u>YTD</u>
Number of Events	344	406	13,868
Number of Incidents	6	7	238
TMC Detection (min.)	0.00	0.00	0.00
TMC Verification (min.)	5.61	4.53	3.66
TMC Response (min.)	6.74	5.73	4.89
RR Dispatch Time (min.)	2.54	2.14	1.57
RR Response Time (min.)	4.39	3.68	3.41
Event Clearance (min.)	20.94	18.64	18.13
Roadway Clearance (min.)	35.59	21.50	25.76
Incident Clearance (min.)	64.65	33.55	35.89
# of Events w/ RR/SIRV	338	404	13,085
RR/SIRV Assists	338	404	13,085
RR/SIRV Activities	378	451	14,413

## Emergency Vehicles

	<u>YTD</u>
Number of Events	17
Number of Incidents	10
TMC Detection (min.)	0.01
TMC Verification (min.)	1.87
TMC Response (min.)	7.80
RR Dispatch Time (min.)	2.77
RR Response Time (min.)	4.75
Event Clearance (min.)	43.12
Roadway Clearance (min.)	39.55
Incident Clearance (min.)	44.69
# of Events w/ RR/SIRV	8
RR/SIRV Assists	8
RR/SIRV Activities	10

## Other

	<u>Current Week</u>	<u>Last Week</u>	<u>YTD</u>
Number of Events	9	6	970
Number of Incidents	0	0	7
TMC Detection (min.)	0.38	0.00	0.00
TMC Verification (min.)	1.02	0.00	1.22
TMC Response (min.)	0.00	0.00	14.01
RR Dispatch Time (min.)	1.23	0.36	6.36
RR Response Time (min.)	0.00	0.00	6.59
Event Clearance (min.)	12.54	26.31	32.90
Roadway Clearance (min.)			40.35
Incident Clearance (min.)			52.93
# of Events w/ RR/SIRV	5	5	369
RR/SIRV Assists	5	5	369
RR/SIRV Activities	1	4	292

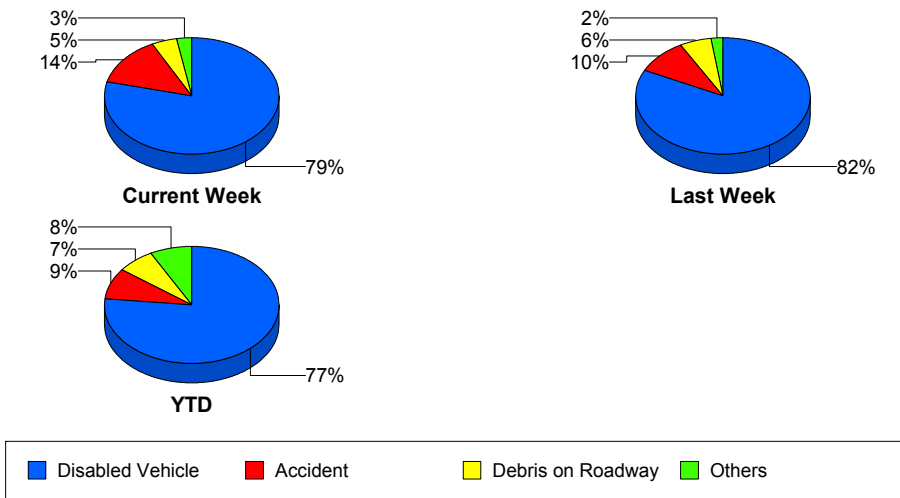
## Police Activity

	<u>Current Week</u>	<u>Last Week</u>	<u>YTD</u>
Number of Events	1	4	363
Number of Incidents	1	2	60
TMC Detection (min.)	0.00	0.00	0.08
TMC Verification (min.)	0.00	6.14	0.68
TMC Response (min.)	0.93	8.17	11.77
RR Dispatch Time (min.)	0.85	5.42	5.20
RR Response Time (min.)	0.08	4.01	6.45
Event Clearance (min.)	33.65	27.21	28.65
Roadway Clearance (min.)	29.03	26.30	66.50
Incident Clearance (min.)	33.65	37.92	81.30
# of Events w/ RR/SIRV	1	4	61
RR/SIRV Assists	1	4	61
RR/SIRV Activities	1	3	69

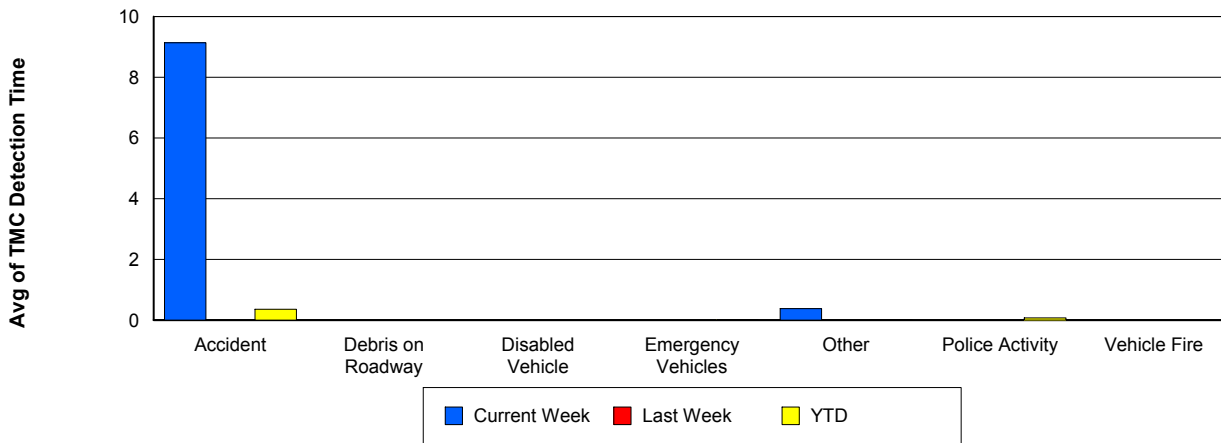
## Vehicle Fire

	<u>Current Week</u>	<u>Last Week</u>	<u>YTD</u>
Number of Events	2	1	46
Number of Incidents	0	1	35
TMC Detection (min.)	0.00	0.00	0.00
TMC Verification (min.)	21.48	17.33	5.46
TMC Response (min.)	21.47	17.28	17.75
RR Dispatch Time (min.)	5.70	1.52	9.73
RR Response Time (min.)	15.77	15.77	8.02
Event Clearance (min.)	66.58	55.88	80.49
Roadway Clearance (min.)		47.88	60.40
Incident Clearance (min.)		55.88	87.52
# of Events w/ RR/SIRV	2	1	33
RR/SIRV Assists	2	1	33
RR/SIRV Activities	2	2	44

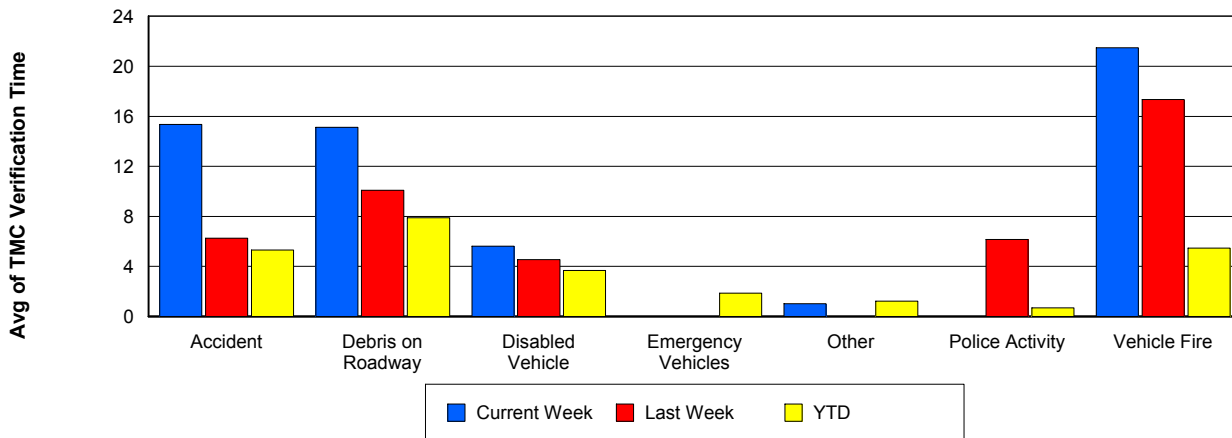
## Number of Events / Event Type



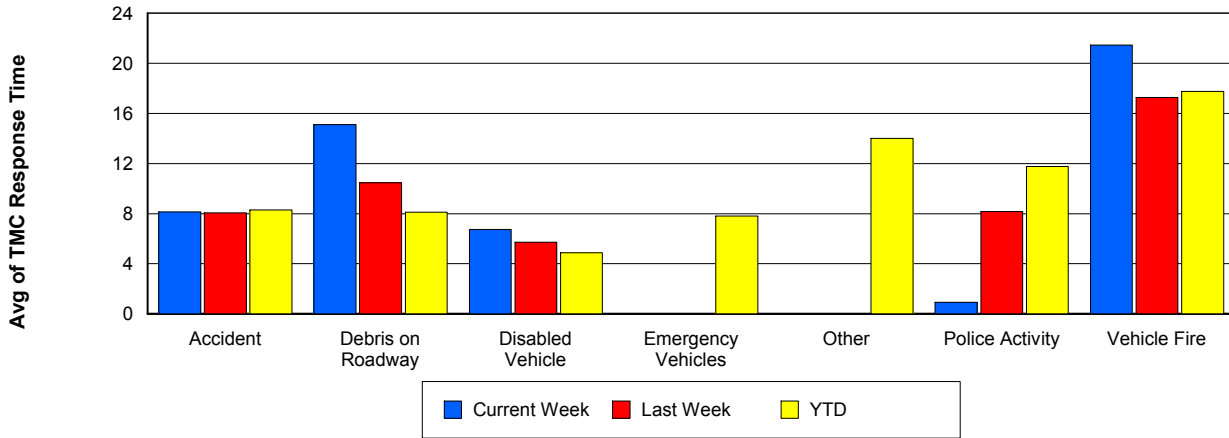
## TMC Detection Time



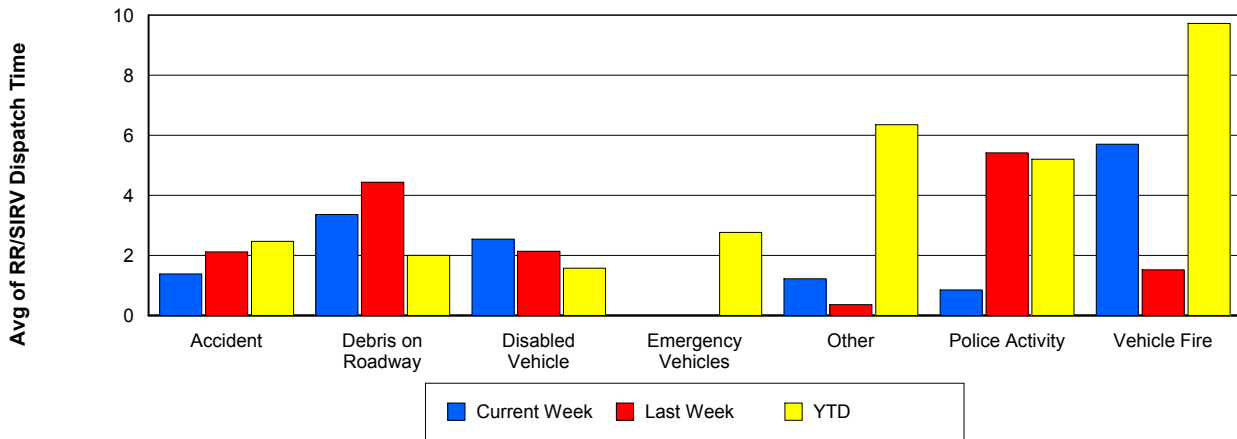
## TMC Verification Time



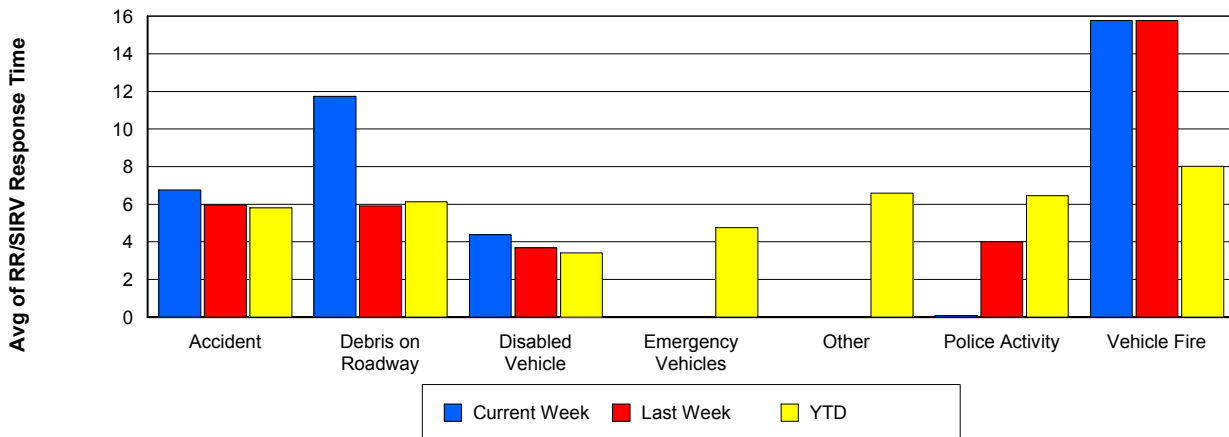
## TMC Response Time



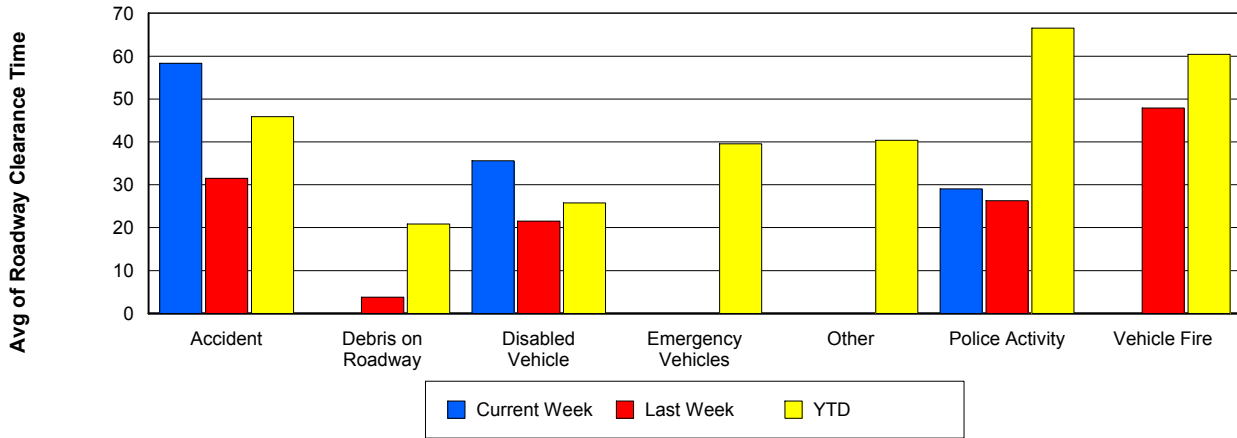
## Road Ranger / SIRV Dispatch Time



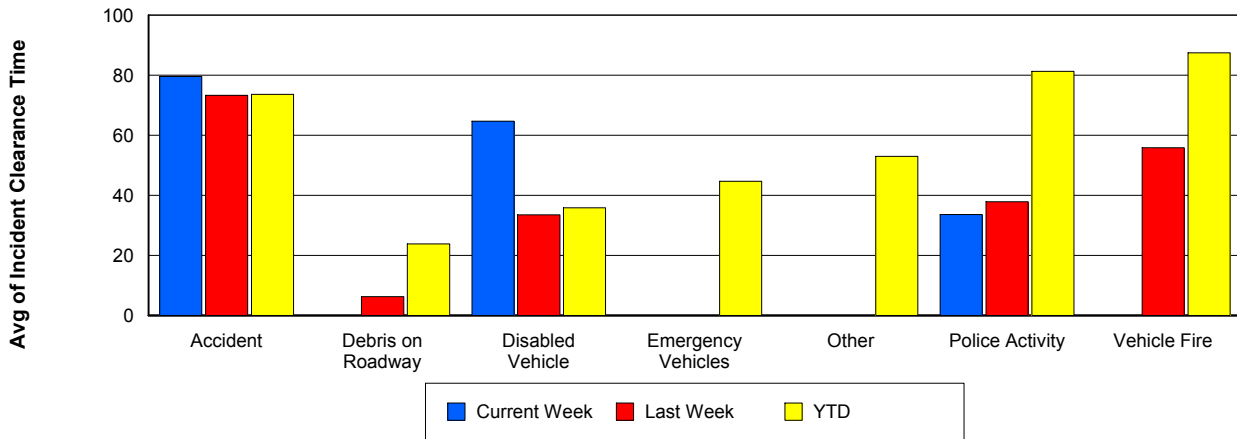
## Road Ranger / SIRV Response Time



## Roadway Clearance Time (2A)



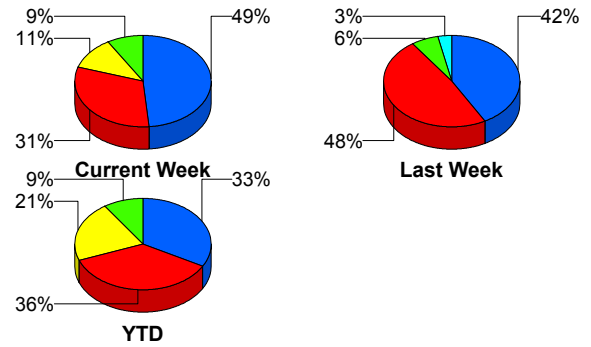
## Incident Clearance Time (3B)



## Incident Detection Methods

	Current Week	Last Week	YTD
Broward CCTV	1	0	12
Broward Road Ranger	0	0	8
Broward TMC	1	1	8
Broward VideoWall	0	0	1
Construction CEI	0	0	2
District 4	0	0	23
Emergency Operations	0	0	1
FDOT Maintenance	0	0	2
FHP	11	15	410
I-95 Construction PIO	0	1	5
ITMS	0	0	14
ITMS CCTV	4	1	243
Local Police	0	0	1
Media	0	0	3
Motorist	1	0	19
Other	0	0	1
Palm Beach Road Ran	17	13	377
Road Watcher	0	0	2
SmarTraveler (511)	0	0	4
<b>Total</b>	<b>35</b>	<b>31</b>	<b>1,136</b>

### Total Incidents by Detection Method

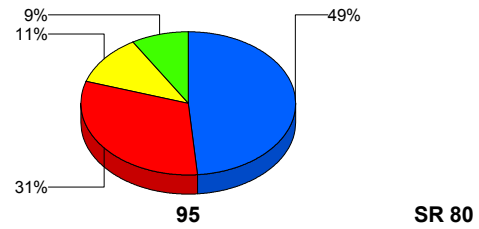


## Incident Detection Methods by Roadway

		Current Week	Last Week	YTD
95	Broward CCTV	1	0	12
	Broward Road Ranger	0	0	8
	Broward TMC	1	1	8
	Broward VideoWall	0	0	1
	Construction CEI	0	0	2
	District 4	0	0	23
	FDOT Maintenance	0	0	2
	FHP	11	15	409
	I-95 Construction PIO	0	1	5
	ITMS	0	0	13
	ITMS CCTV	4	1	243
	Local Police	0	0	1
	Media	0	0	3
	Motorist	1	0	19
	Other	0	0	1
	Palm Beach Road Ran	17	13	377
	Road Watcher	0	0	2
	SmarTraveler (511)	0	0	4
	<b>Total</b>	<b>35</b>	<b>31</b>	<b>1,133</b>
	SR 80	Emergency Operations	0	0
FHP		0	0	1
ITMS		0	0	1
<b>Total</b>		<b>0</b>	<b>0</b>	<b>3</b>
<b>Total</b>	<b>35</b>	<b>31</b>	<b>1,136</b>	

**Total Events by Roadway and Detection Method**

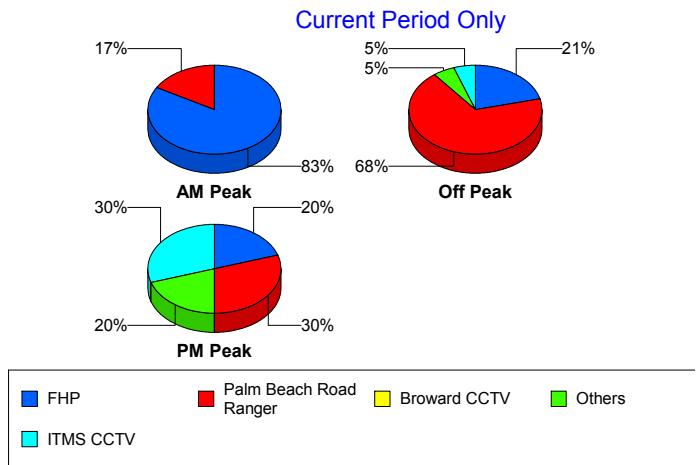
Current Period Only



## Incident Detection Methods by Peak Period

		Current Week	Last Week	YTD
AM Peak	Broward CCTV	0	0	2
	Broward Road Ranger	0	0	3
	Broward TMC	0	0	2
	Construction CEI	0	0	1
	District 4	0	0	11
	FHP	5	3	119
	I-95 Construction PIO	0	0	2
	ITMS	0	0	6
	ITMS CCTV	0	0	44
	Motorist	0	0	9
	Palm Beach Road Ran	1	2	118
	Road Watcher	0	0	1
	SmarTraveler (511)	0	0	3
	<b>Total</b>	<b>6</b>	<b>5</b>	<b>321</b>
	Off Peak	Broward CCTV	0	0
Broward Road Ranger		0	0	2
Broward TMC		0	0	4
Broward VideoWall		0	0	1
Construction CEI		0	0	1
District 4		0	0	9
FDOT Maintenance		0	0	2
FHP		4	9	209
I-95 Construction PIO		0	1	3
ITMS		0	0	7
ITMS CCTV		1	1	127
Motorist		1	0	6
Other		0	0	1
Palm Beach Road Ran		13	6	157
Road Watcher		0	0	1
SmarTraveler (511)	0	0	1	
<b>Total</b>	<b>19</b>	<b>17</b>	<b>536</b>	

Total Events by Peak Period and Detection Method

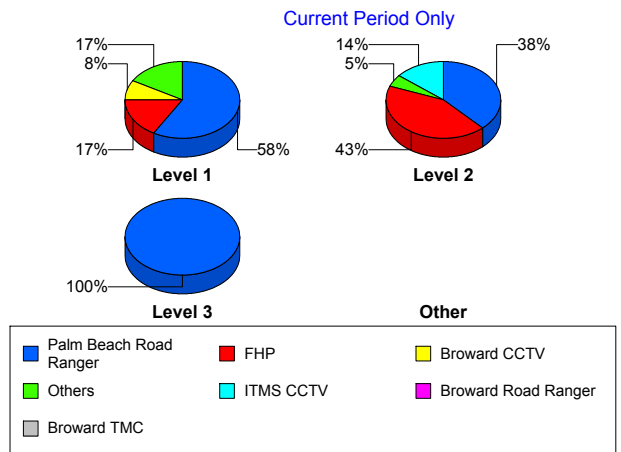


		Current Week	Last Week	YTD
PM Peak	Broward CCTV	1	0	5
	Broward Road Ranger	0	0	3
	Broward TMC	1	1	2
	District 4	0	0	3
	Emergency Operations	0	0	1
	FHP	2	3	82
	ITMS	0	0	1
	ITMS CCTV	3	0	72
	Local Police	0	0	1
	Media	0	0	3
	Motorist	0	0	4
	Palm Beach Road Ran	3	5	102
	Total	10	9	279
Total		35	31	1,136

### Incident Detection Methods by Severity

		Current Week	Last Week	YTD
Level 1	Broward CCTV	1	0	8
	Broward Road Ranger	0	0	4
	Broward TMC	0	1	3
	District 4	0	0	16
	FHP	2	3	137
	I-95 Construction PIO	0	1	4
	ITMS	0	0	5
	ITMS CCTV	1	1	107
	Local Police	0	0	1
	Motorist	1	0	12
	Other	0	0	1
	Palm Beach Road Ran	7	10	251
	Road Watcher	0	0	1
	SmarTraveler (511)	0	0	1
	Total	12	16	551

**Total Events by Severity and Detection Method**



		Current Week	Last Week	YTD
Level 2	Broward CCTV	0	0	2
	Broward Road Ranger	0	0	3
	Broward TMC	1	0	3
	Broward VideoWall	0	0	1
	Construction CEI	0	0	1
	District 4	0	0	6
	FDOT Maintenance	0	0	2
	FHP	9	12	216
	I-95 Construction PIO	0	0	1
	ITMS	0	0	7
	ITMS CCTV	3	0	103
	Media	0	0	2
	Motorist	0	0	6
	Palm Beach Road Ran	8	2	107
	Road Watcher	0	0	1
	SmarTraveler (511)	0	0	3
	Total	21	14	464
Level 3	Broward CCTV	0	0	2
	Broward Road Ranger	0	0	1
	Broward TMC	0	0	2
	Construction CEI	0	0	1
	District 4	0	0	1
	Emergency Operations	0	0	1
	FHP	0	0	57
	ITMS	0	0	2
	ITMS CCTV	0	0	33
	Media	0	0	1
	Motorist	0	0	1
	Palm Beach Road Ran	2	1	19
	Total	2	1	121
Total	35	31	1,136	

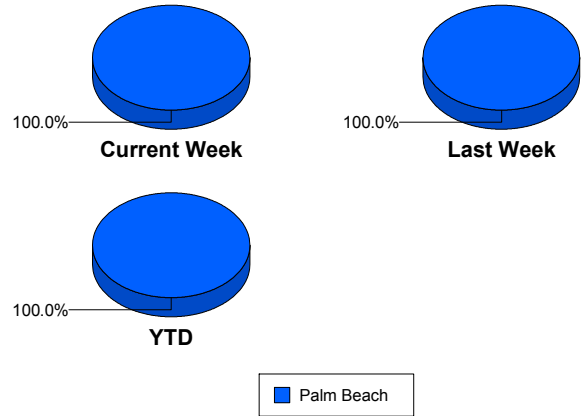
# Road Ranger / SIRV Performance Measures

## Road Ranger / SIRV Performance By County

Values presented are:  
 - Total Events with a RR/SIRV Response  
 - Total RR/SIRV Responses,  
 - Total Activities Performed

	Current We	Last Week	YTD
Palm Beach	546	632	21,222
	571	662	21,666
	609	705	23,498

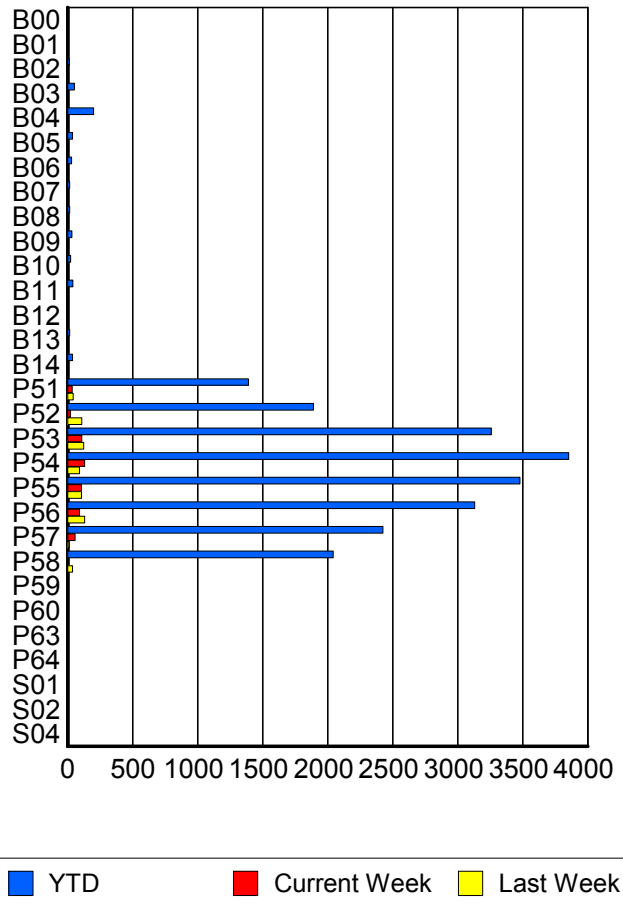
RR/SIRV Responses per County



## Road Ranger / SIRV Performance By Truck

	Current We	Last Week	YTD
B00	0	0	7
	0	0	7
	0	0	7
B01	0	0	1
	0	0	1
	0	0	1
B02	0	0	14
	0	0	14
	0	0	15
B03	1	0	52
	1	0	52
	1	0	53
B04	0	0	198
	0	0	199
	0	0	223
B05	0	0	35
	0	0	37
	0	0	38
B06	0	0	30
	0	0	31
	0	0	33
B07	0	2	17
	0	2	17
	0	2	17
B08	1	2	16
	1	2	16
	1	2	19

RR/SIRV Responses per Truck



	Current We	Last Week	YTD
B09	0	1	33
	0	1	34
	0	1	37
B10	0	0	22
	0	0	23
	0	0	23
B11	0	3	40
	0	3	40
	0	3	41
B12	0	0	6
	0	0	6
	0	0	7
B13	1	0	16
	1	0	16
	1	0	17
B14	1	0	38
	1	0	39
	1	0	41
P51	34	43	1,377
	35	44	1,392
	36	47	1,454
P52	22	107	1,880
	22	109	1,890
	23	110	2,020
P53	104	121	3,211
	108	123	3,259
	115	132	3,442
P54	130	89	3,810
	131	91	3,854
	142	104	4,157
P55	105	105	3,451
	107	107	3,480
	114	111	3,715
P56	91	128	3,094
	92	131	3,131
	99	139	3,366
P57	58	11	2,403
	58	11	2,425
	62	11	2,577
P58	9	38	2,014
	9	38	2,043
	9	43	2,178
P59	0	0	1
	0	0	1
	0	0	2

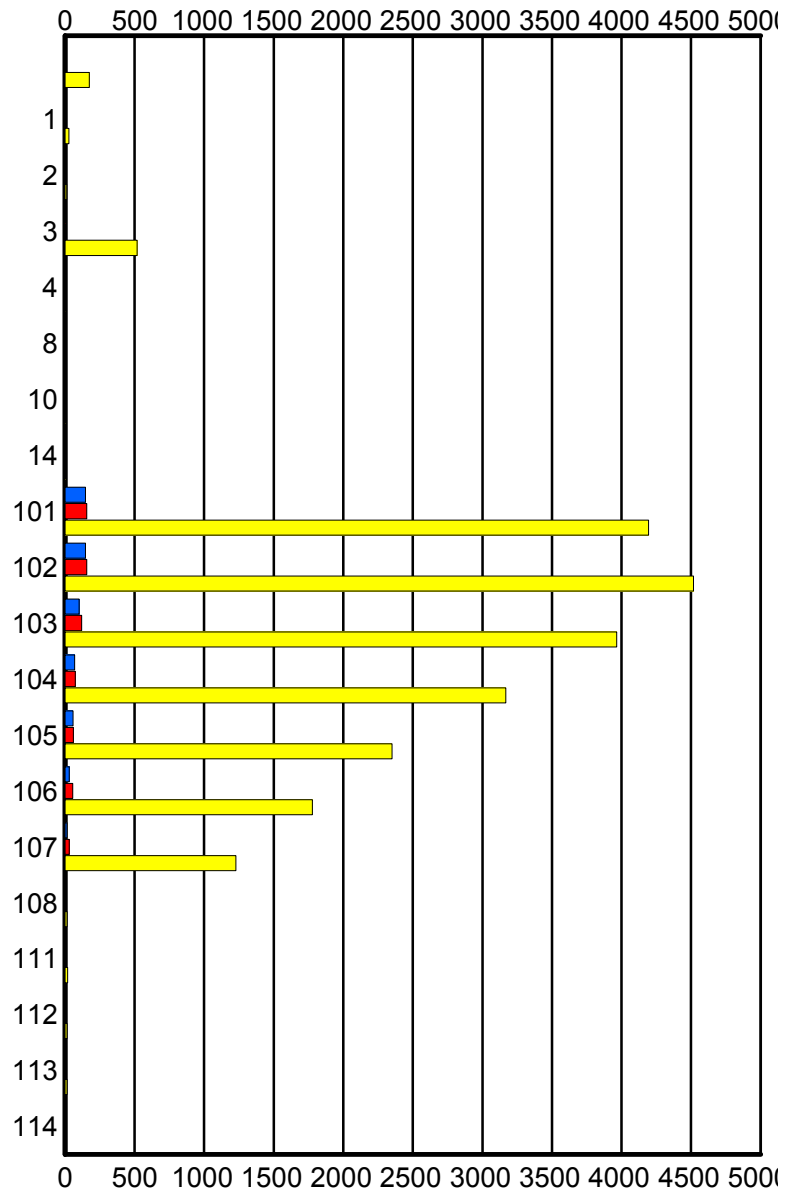
	Current We	Last Week	YTD
P60	0	0	1
	0	0	1
	0	0	1
P63	5	0	5
	5	0	5
	5	0	5
P64	0	0	1
	0	0	1
	0	0	1
S01	0	0	3
	0	0	3
	0	0	3
S02	0	0	3
	0	0	3
	0	0	3
S04	0	0	2
	0	0	2
	0	0	2

### Road Ranger / SIRV Performance By Beat

	Current We	Last Week	YTD
	2	1	173
	2	1	174
	2	1	179
1	0	0	27
	0	0	28
	0	0	29
2	0	0	12
	0	0	12
	0	0	14
3	4	8	504
	4	8	518
	4	8	557
4	0	0	2
	0	0	2
	0	0	2
8	0	0	1
	0	0	1
	0	0	1
10	0	0	6
	0	0	6
	0	0	9
14	0	0	7
	0	0	7
	0	0	7
101	144	152	4,144
	146	156	4,194
	153	167	4,484
102	143	155	4,461
	147	156	4,517
	155	163	4,793
103	99	116	3,915
	102	119	3,965
	115	123	4,258
104	69	72	3,132
	69	74	3,168
	73	79	3,398
105	55	60	2,328
	57	61	2,351
	63	64	2,501
106	29	54	1,757
	29	56	1,777
	29	63	1,902
107	15	31	1,215
	15	31	1,229
	15	37	1,294

Values presented are:  
 - Total Events with a RR/SIRV Response  
 - Total RR/SIRV Responses,  
 - Total Activities Performed

### RR/SIRV Responses per Beat



■ Current Week   
 ■ Last Week   
 ■ YTD

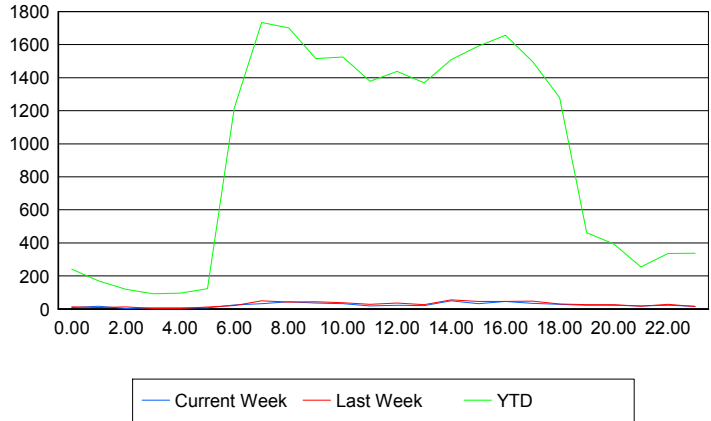
	Current We	Last Week	YTD
108	0	0	13
	0	0	14
	0	0	14
111	0	0	18
	0	0	19
	0	0	20
112	0	0	14
	0	0	15
	0	0	16
113	0	0	13
	0	0	14
	0	0	14
114	0	0	6
	0	0	6
	0	0	6

### Road Ranger / SIRV Performance By Time of Day

Values presented are:  
- Total Events with a RR/SIRV Response  
- Total RR/SIRV Responses,  
- Total Activities Performed

	Current We	Last Week	YTD
12AM-1AM	8	12	232
	9	12	241
	10	12	256
1AM-2AM	16	8	160
	17	9	169
	21	9	181
2AM-3AM	4	13	117
	4	13	119
	4	13	127
3AM-4AM	5	4	89
	6	4	93
	6	5	95
4AM-5AM	7	3	89
	7	3	96
	7	3	103
5AM-6AM	5	0	110
	6	0	123
	6	0	127
6AM-7AM	23	19	1,164
	24	20	1,216
	25	22	1,282
7AM-8AM	30	49	1,654
	32	50	1,735
	33	57	1,864

### Number of Responses / Hour of the Day



	Current We	Last Week	YTD
8AM-9AM	40	38	1,623
	43	41	1,701
	45	45	1,811
9AM-10AM	32	39	1,459
	36	44	1,515
	41	47	1,638
10AM-11AM	31	37	1,476
	32	37	1,525
	33	38	1,610
11AM-12PM	16	29	1,336
	18	29	1,378
	22	30	1,493
12PM-1PM	22	33	1,384
	23	36	1,439
	25	40	1,548
1PM-2PM	21	26	1,318
	21	27	1,368
	21	29	1,464
2PM-3PM	49	53	1,450
	49	55	1,510
	50	61	1,606
3PM-4PM	32	46	1,538
	33	46	1,591
	36	50	1,702
4PM-5PM	46	44	1,611
	46	46	1,657
	46	46	1,760
5PM-6PM	32	41	1,447
	35	48	1,498
	39	50	1,586
6PM-7PM	28	29	1,255
	28	31	1,279
	29	31	1,344
7PM-8PM	23	25	446
	23	26	461
	24	28	497
8PM-9PM	22	26	378
	22	26	393
	23	28	413
9PM-10PM	17	15	238
	18	16	254
	19	17	271
10PM-11PM	21	28	317
	23	28	335
	26	28	356

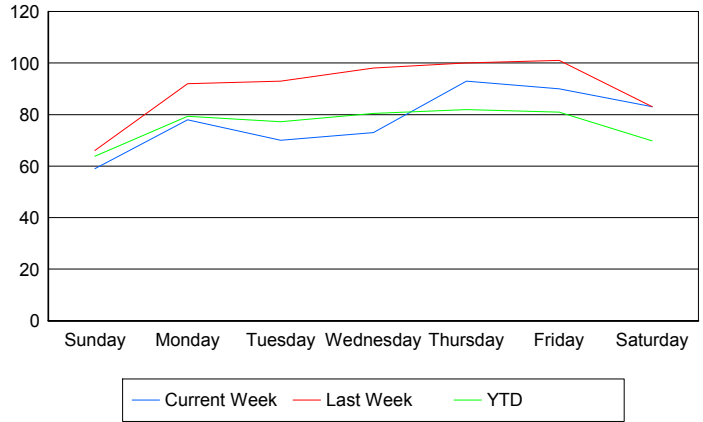
	Current We	Last Week	YTD
11PM-12AM	<b>16</b>	<b>15</b>	<b>331</b>
	<b>16</b>	<b>15</b>	<b>338</b>
	<b>18</b>	<b>16</b>	<b>364</b>

## Road Ranger / SIRV Performance By Day of Week

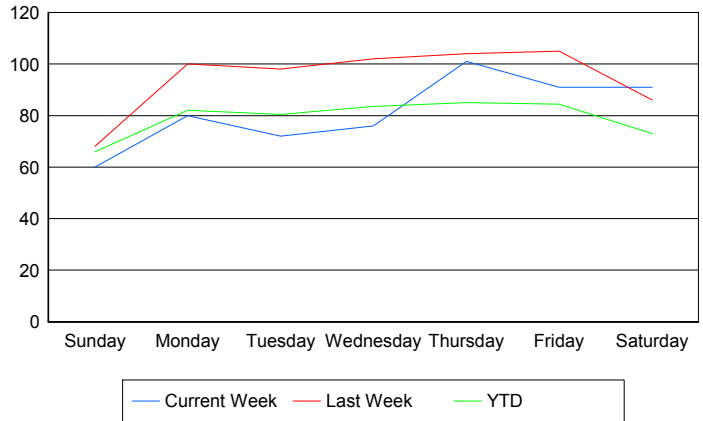
Values presented are:  
 - Total Events with a RR/SIRV Response  
 - Total RR/SIRV Responses,  
 - Total Activities Performed

	Current We	Last Week	YTD
Sunday	59	66	939
	60	68	968
	64	73	1,035
Monday	78	92	3,778
	80	100	3,878
	87	107	4,143
Tuesday	70	93	3,699
	72	98	3,831
	74	105	4,091
Wednesday	73	98	3,863
	76	102	4,002
	78	105	4,270
Thursday	93	99	3,947
	101	103	4,060
	107	108	4,383
Friday	90	101	3,926
	91	105	4,086
	100	113	4,361
Saturday	83	83	1,098
	91	86	1,145
	99	94	1,215

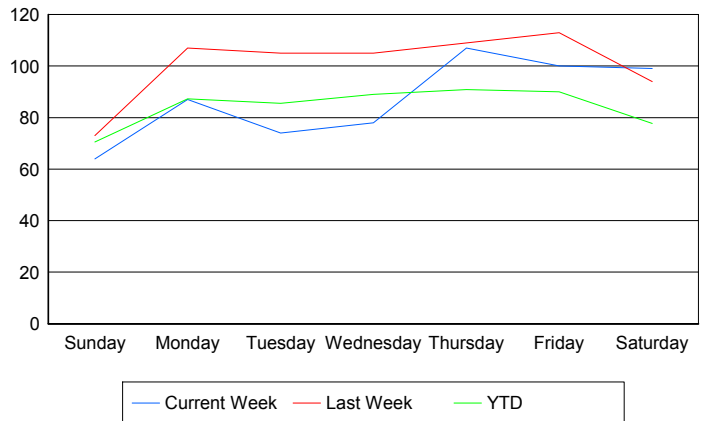
### Avg # of events with a RR/SIRV Response per Day of the Week



### Avg # of RR/SIRV Responses per Day of the Week



### Avg # of RR/SIRV Activities Performed per Day of the Week



### Road Ranger / SIRV Responses per Time of Day and Day of Week

